

Dear Editor,

Thank you for your comments. See the replies for each individual comment below.

Comments to the Author:

Dear authors

Thank you for your revision of the manuscript. It significantly improved and gives now more information about the new technology you developed. I have only a couple of minor points that you need to address before publication.

P6,120: *Change the following statement: "The large standard deviation in CO is due to a sharp spike of several hundred ppb during three experiments, as seen in figure 3 (c). Figure 3 shows the time series of one of the experiments, The mole fractions during the three tests ranged from 394 to 417 ppm for CO₂, 2009 to 2120 ppb for CH₄ and 118 to 1657 ppb for CO."*

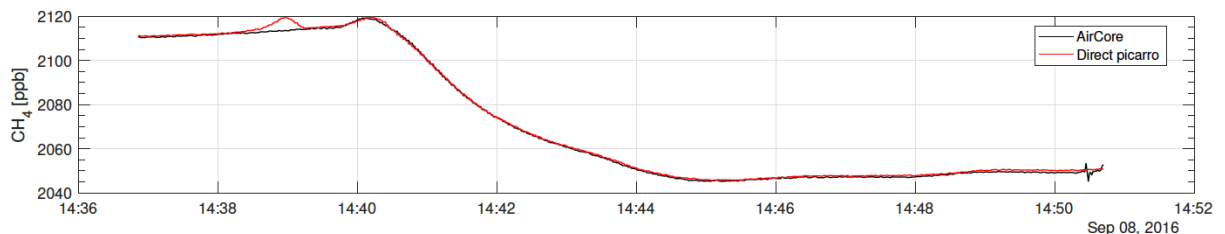
to

"Figure 3 shows the time series of one of the experiments, the mole fractions during the three tests ranged from 394 to 417 ppm for CO₂, 2009 to 2120 ppb for CH₄ and 118 to 1657 ppb for CO. The large standard deviation in CO is due to a sharp spike of several hundred ppb during three experiments, as seen in figure 3 (c)."

- Changed the sentence to the suggested sentence.

Figure 3: Explain the cause why the CH₄ does not agree at around 14:39.

- The little spike in methane around 14:39 is likely due to metal-to-metal friction, by touching the stainless steel tubing during the analysis. We have added a sentence on P7L4 stating this.
"*... Figure 3 (b) also shows a small CH₄ spike around 14:39. This is likely due to metal-to-metal friction, generated by touching the stainless steel tubing during analysis. ...*".



P10, 14-5: *"Table 2 shows the mole fractions of CO₂, CH₄ and CO for the reference and fill gas, calibrated with respect to the WMO 2007, 2004A and 2004A scales for CO₂, CH₄ 5 and CO respectively"*

change to

"Table 2 shows the mole fractions for the reference and fill gas, calibrated with respect to the WMO 2007, 2004A and 2004A scales for CO₂, CH₄ 5 and CO respectively."

- Changed the sentence to the suggested sentence.

P11, 111: AirCore, t is...

- Added a comma after "AirCore".

P16, 11: change blue to red curves!!

- Changed from "blue" to "red"

P16, 13-5: The flight data are not mentioned (blue lines), add them. Why are the values significantly below the red lines despite hovering at 60 meters? As I understand from Figure 10, the flight tracks transect 60 meters but does not hover there. Therefore, change the verb hover to transect (transecting) in the Figure legend of 8.

- Added a mention of the blue real-data curves:
"*... , and the blue curves indicate the sampled mole fractions during each flight. ...*".
- The only flight that hovers at 60m was the fifth flight, all the others, with the exception of flight #4, were vertical profiles that went from 0 up to 500 m. That is why the mole fraction goes down below the

7m and 60m curves; the altitude is much higher, and the concentration lower. As you can see from the last flight, the blue real-data curve overlaps with very nicely with the 60m data, where the UAV active AirCore was hovering close to the 60m inlet. In comparing the transecting at 60 m with the vertical profiles, figure 10 gives the best description, and figure 11 gives the comparison of the hovering active AirCore with the 60m tower.

- The figure text for figure 8 has been changed from:
“Figure 8: the continuous CO₂ (a), CH₄ (b), and CO (c) measurements from the atmospheric tower at 7 m (black) and 60 m (red). The highlighted areas indicate the timespan for each of the flights, approximately spaced one hour apart. The altitude covered during the flights were 485m, 301m, 478m, 23m, and hovering at 60m for flights #1, #2, #3, #4, and #5 respectively.”
 To
“Figure 8: the continuous CO₂ (a), CH₄ (b), and CO (c) measurements from the atmospheric tower at 7 m (black) and 60 m (red), along with the mole fractions measured with the active AirCore (blue). The highlighted areas indicate the timespan for each of the flights, approximately spaced one hour apart. The altitude covered during the flights were 485m, 301m, 478m, and 23m for flights #1, #2, #3, and #4 respectively, transecting both the 7m and 60m altitudes. Flight #5 hovered at 60m close to the 60m tower inlet.”

Figure 8, 9: I would keep the red line for 60 meters as for figure 8. Take the blue line for 40 meters instead.

- For figure 9, we've changed the color of the 60m line to red, and the 40m line to blue, to be consistent with the colors used in figure 8.

Figures: For any Figure, e.g. Figure 10. Vertical - dot after number and start with capital letter.

- All figure and table captions have been changed to the above mentioned format.

P22, 119: I would list them according to the following description numbering.

3.5.3 add Talyor dispersion, i.e. Diffusion and Taylor dispersion

- The line:
“The spatial resolution has four contributors, namely molecular diffusion, Taylor dispersion, smear effects of the analyzer and an innate uncertainty in the GPS measurements. Each contribution is discussed below.”
 has been changed to
“The spatial resolution has four contributors, namely smear effects of the analyzer, molecular diffusion, Taylor dispersion, and an innate uncertainty in the GPS measurements. Each contribution is discussed below.”
 to be consistent with the subsections in the following section.
- Added “... and Taylor dispersion ...” to the section title.

P24, 18: with the major contribution from the Picarro CRDS smearing effect.

- Changed to the above mentioned sentence.

P24, 19: are instead of is

- Changed “is” to “are”.

P25,111: lower case for methane

- Changed CH₄ to CH₄.

A UAV-based active AirCore system for measurements of greenhouse gases

Truls Andersen¹, Bert Scheeren¹, Wouter Peters^{1,2}, Huilin Chen^{1,3}

¹Centre for Isotope Research (CIO), Energy and Sustainability Research Institute Groningen (ESRIG), University of Groningen, the Netherlands

²Meteorology and Air Quality, Wageningen University and Research Center, the Netherlands

³Cooperative Institute for Research in Environmental Sciences (CIRES), University of Colorado, Boulder, Colorado, USA

Correspondence to: Huilin Chen (Huilin.Chen@rug.nl)

Abstract. We developed and field-tested a UAV-based active AirCore for atmospheric mole fraction measurements of CO₂, CH₄, and CO. The system applies an alternative way of using the AirCore technique invented by NOAA. As opposed to the conventional concept of passively sampling air using the atmospheric pressure gradient during descent, the active AirCore collects atmospheric air samples using a pump to pull the air through the tube during flight, which opens up the possibility to spatially sample atmospheric air. The active AirCore system used for this study weighs ~1.1 kg. It consists of a ~50 m long stainless steel tube, a small stainless steel tube filled with magnesium perchlorate, a KNF micropump and a 45 µm orifice working together to form a critical flow of dried atmospheric air through the active AirCore. A cavity ring-down spectrometer (CRDS) was used to analyze the air samples on site not more than 7 minutes after landing for mole fraction measurements of CO₂, CH₄, and CO.

We flew the active AirCore system on a UAV near the atmospheric measurement station at Lutjewad, located in the northwest of the city of Groningen in the Netherlands. Five consecutive flights took place over a five-hour period in the same morning, starting at sunrise until noon. We validated the measurements of CO₂ and CH₄ from the active AirCore against those from the Lutjewad station at 60 m. The results show a good agreement between the measurements from the active AirCore and the atmospheric station (N = 146, R²_{CO₂}: 0.97 and R²_{CH₄}: 0.94, and mean differences: Δ_{CO₂}: 0.18 ppm; Δ_{CH₄}: 5.13 ppb). The vertical and horizontal resolution (for CH₄) at typical UAV speeds of 1.5 m/s and 2.5 m/s were determined to be ± 24.7 to 29.3 m and ± 41.2 to 48.9 m respectively, depending on the storage time. The collapse of the nocturnal boundary layer and the build-up of the mixed layer were clearly observed with three consecutive vertical profile measurements in the early morning hours. Besides this, we furthermore detected a CH₄ hotspot in the coastal wetlands from a horizontal flight north to the dike, which demonstrates the potential of this new active AirCore method to measure at locations where other techniques have no practical access.

1 Introduction

Since the 18th century industrial revolution, greenhouse gas (GHG) mole fractions have been increasing due to anthropogenic activity. Rapid increases in carbon dioxide (CO₂) and methane (CH₄) have occurred since the 1950's, contributing to global climate change (IPCC, 2014a; IPCC, 2014b). Understanding and quantifying both natural and anthropogenic fluxes of the two major GHGs, namely CO₂ and CH₄, is vital to predict future mole fraction levels, and to help monitor the effectiveness of the emissions reduction efforts.

Both CO₂ and CH₄ are naturally occurring greenhouse gases in our atmosphere, with CO₂ the more abundant of the two. Today, natural production of CO₂ happens mainly through decay of organic matter and respiration by aerobic organisms. Besides the natural sources of atmospheric CO₂, there are additional anthropogenic contributions to the total atmospheric CO₂ mole fractions, mainly from burning of fossil fuels. In recent years the mole fractions of atmospheric CO₂ have been increasing by ~ 2 ppm (parts per million) per year (Tans and Keeling, 2017; Hartmann et al., 2013). Methane has a shorter lifetime in the atmosphere compared to that of CO₂, but CH₄ is more efficient at trapping radiation. The comparative impact of CH₄ on climate change is 20-30 times greater than that of CO₂ over a 100-year period (Saunio et al., 2016; Dlugokencky et al., 2011). Methane is naturally produced and emitted to the atmosphere when organic matter decomposes in low oxygen environments, and natural sources include wetlands, swamps, marshes, termites, and oceans. From 2007 to 2016, the increase of the global methane mole fractions has been ~ 7 ppb (parts per billion) per year (Hartmann et al., 2013). The main contributors to anthropogenic methane emissions are leakages from coal mining and oil the oil and gas industry, ruminant animals, rice agriculture, waste management, and biomass burning (Kirschke et al., 2013; Saunio et al., 2016). The quantification of CH₄ emissions is highly important in studying the global methane cycle where vertical profiling with high resolution provide further information on the contributions from CH₄ sources and sinks (Berman et al., 2012).

In 2010, the National Oceanic and atmospheric Administration (NOAA) developed the first AirCore, an innovative atmospheric air sampling system (Karion et al., 2010) from an idea originally developed and patented by Pieter Tans (Tans, 2009). The AirCore consists of long, thin-wall stainless steel tubing capable of sampling and preserving atmospheric profile information. The AirCore is evacuated as it is lifted up to a high altitude (~ 30 km) by a balloon, and then during descent after the balloon bursts, it is passively filled with atmospheric air samples due to the increasing ambient pressure. The samples are analyzed on the ground to retrieve the GHG vertical profiles. The length and diameter of the tubes, and the time it takes from sampling until analysis ultimately determine the vertical resolution. Since the first development of the AirCore (Karion et al., 2010), additional augmentations of the AirCore has been developed and tested. This includes smaller and lighter AirCores developed at Goethe University Frankfurt (Engel et al., 2017), University of Groningen (Paul et al., 2016; Chen et al., 2017) and a high-resolution (HR) AirCore developed at Ecole polytechnique, Université Paris-Saclay (Membrive et al., 2017). Other applications using the AirCore technique includes measurements of $\delta^{13}\text{C}$ CH₄ and C₂H₆/CH₄ ratios, using the AirCore to store a rapidly acquired sample and analyze the sample at a lower flow rate while maintaining the sample integrity (Rella et al., 2015).

In recent years, the use of unmanned aerial vehicles (UAVs) has become a new complimentary platform for GHG measurements. Previous studies include the investigation of temporal and spatial variations of atmospheric CO₂ using a unique CO₂ measurement device attached to a small UAV (Kite plane) (Watai et al., 2006), atmospheric monitoring of point source fossil fuel CO₂ and CH₄ from a gas treatment plant using a Helikite (Turnbull et al., 2014), CO₂, CH₄ and H₂O measurements onboard the National Aeronautics and Space Administration (NASA) Sensor Integrated Environmental Remote Research Aircraft (SIERRA) UAV (Berman et al., 2012), a small atmospheric sensor measuring CO₂, CH₄ and H₂O attached to a robotic helicopter (Khan et al., 2012), the quantification of CH₄ mole fractions and isotopic compositions from heights up to 2700 m on Ascension Island using a remotely piloted octo copter (Lowry et al., 2015; Brownlow et al., 2016), and a dedicated CO₂ analyzer, COm pact Carbon dioxide analyzer for Airborne Platforms (COCAP), capable of being flown onboard small UAVs (Kunz et al., 2017).

For this study, we combine the flexibility and mobility of UAVs, and the AirCore's ability to capture and preserve the spatial resolution of atmospheric air samples to design and develop an alternative AirCore version, named active AirCore. Instead of passively sampling air due to the changing ambient pressure during flight, the active AirCore pulls atmospheric air samples through the tube at a certain flow rate using a micropump. This allows for a highly mobile system that can obtain both vertical and horizontal profiles with a high spatial resolution. Unlike the original AirCore (Karion et al., 2010) and the newer versions (Membrive et al., 2017; Engel et al., 2017; Chen et al., 2017) that are all made to sample the atmospheric column including the stratosphere, the active AirCore has been designed to fulfill a different purpose, and does not aim to reach a height well above the troposphere like its predecessors. The Active AirCore provides a powerful tool to fill the vertical gap of GHG measurements between the surface and the lowest altitude usually reachable by aircrafts. The flexibility and mobility of the system makes it possible to make GHG observations at locations where tall tower measurements are not readily available.

With the capability of sampling horizontal transects, the active AirCore can help quantify CO₂ and CH₄ emissions from local areas such as wetlands, landfills and other CH₄ hot spots, and quantify point sources emissions from such as power plant plumes. It can also provide highly accurate and precise measurements to be used for validation of measurements of remote sensing techniques.

The instrument design is presented in the method section together with the experimental setup and the data processing method. The results section presents the measurements made by the active AirCore during five flights in a day. Section 4 discusses the horizontal and vertical resolution. Section 5 presents the conclusions.

2 Method

The active AirCore, designed to fly with a lightweight UAV (total weight below 4 kg), consists of ~50 m thin-wall stainless steel tubing, a dryer, a micropump, and a datalogger. It is placed in a carbon fiber box and attached to the UAV using two carbon fiber rods. Prior to every flight, the active AirCore is flushed with a calibrated fill gas that is spiked with ~ 10 ppm CO, which helps to identify the starting point of ambient air sampling during later analysis. The active AirCore starts to collect air

samples when the micropump is turned on using a switch located outside the box shortly before a UAV flight, and the pump is turned off after the UAV lands. Air samples are collected during the flight and retained within the active AirCore. The active AirCore samples are then immediately analyzed with a trace gas analyzer (CRDS, Picarro, Inc., CA, model G2401).

2.1 Active AirCore

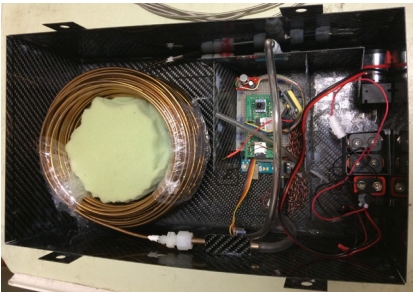
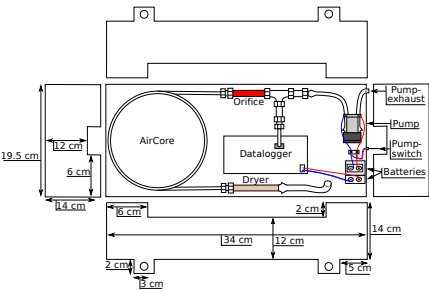
5 The dimensions of the active AirCore, along with some key parameters, are given in table 1.

Table 1. The dimensions and key parameters of the active AirCore.

Length	49.1 m
Tubing	304-grade stainless steel
Outer Diameter (OD)	3.175 mm (1/8 in.)
Wall thickness	0.127 mm (0.005 in.)
Coating	SilcoNert 1000, by Restek Inc.
AirCore tubing weight	431 g
AirCore volume	358 ml
Total payload weight	1131 g
Vertical spatial resolution CO ₂ /CH ₄ (1.5 m/s)	24.1 to 27.5 m/24.7 to 29.3 m
Horizontal spatial resolution CO ₂ /CH ₄ (2.5 m/s)	40.3 to 46.0 m/41.2 to 48.9 m

Deleted: :
Deleted: the

Deleted: 26.4 to 28.2 m/26.8 to 28.8 m
Deleted: 44.0 to 47.0 m/44.7 to 48.0 m



(a) (b)

Figure 1. (a) Schematic design of the UAV AirCore system. (b) Image of the UAV AirCore system

Deleted: :
Deleted: schematic
Deleted: image

As the thin-wall tubing is very fragile, we have used custom-made stainless-steel connectors to reinforce the connection with the coiled tube and Swagelok fittings at both ends. These connectors have an inner diameter (ID) of 3.275 mm on one end, and an outer diameter (OD) of 3.175 mm on the other. The 3.175 mm ID of the connector is inserted onto the thin-walled AirCore tubing, and fastened using glue for ceramics, leaving the 3.175 mm OD side open and usable by Swagelok fittings. To obtain a constant flow through the AirCore, an orifice (OD ¼ in., orifice diameter $45 \pm 10\% \mu\text{m}$, Lenox laser Inc.) is placed between the pump and the coiled tube. The upstream pressure of the orifice is close to ambient, or more accurately the ambient pressure minus a small pressure drop across the whole coiled tube, while the downstream pressure of the orifice is mainly determined by the pumping capacity and was measured at 380 hPa with the pump (KNF micropump, model 020L). Thus, the flow across the coiled tube is expected to be critical as long as the upstream pressure is above $\sim 760 \text{ hPa}$ ($2 \times 380 \text{ hPa}$), or below $\sim 2.4 \text{ km}$ above the sea level, and was measured to be 21.5 sccm (standard cubic centimeter per minute) in the laboratory. The pressure between the orifice and the pump is constantly monitored through a stainless-steel Swagelok tee junction (Honeywell TruStability HSC). The pump and the tee junction are connected via flexible fluorinated ethylene propylene (Tygon) tubing (1/8 in. ID). This same type of tubing is also connected to the outlet of the pump and leads to a hole on the side of the AirCore box, venting the pump exhaust outside of the box. Air samples are dried with a 7.5 cm long stainless-steel tube (1/4 in. OD) filled with magnesium perchlorate before they are sampled into the coiled tube. The inlet of the active AirCore system is placed at the bottom of the carbon fiber AirCore box, and is attached through a hole to the dryer tube with a small piece of flexible ¼ in. ID nylon tubing.

The AirCore box itself is made from 0.5 mm thick carbon fiber plate with a density of 1600 kg/m^3 , providing a sturdy and lightweight box to house the active AirCore system. The AirCore box has a length of 34 cm, a width of 19.5 cm and a height of 12 cm. The total weight of the active AirCore system, including the AirCore box, is 1.1 kg. Figure 1 (a) shows a schematic design of the active AirCore system, while figure 1 (b) shows a photo of the prototype.

The datalogger is made using an Arduino MEGA 2650 board that records meteorological data via two pressure sensors, five temperature sensors, a relative humidity sensor, and a GPS (Global Positioning System) receiver. The pressure sensors are silicon pressure sensors of the model Honeywell TruStability HSC. One pressure sensor monitors the pressure between the pump and the orifice, while the other measures the outside ambient pressure through a flexible nylon tube going through the bottom of the box. These sensors have an accuracy of $\pm 0.25\%$ in the range of 67 - 1034 hPa (1 - 15 psi). The relative humidity is a model DHT22, which measures in a range from 0 - 100% with an uncertainty of 2.5%. The temperature sensor embedded in the relative humidity sensor can measure in a range of - 40 to 125 °C with an uncertainty of 0.5 °C. During the day of this study, we did however not have relative humidity measurements, due to the sensor being placed inside the enclosed AirCore box. This has been resolved in the latest version of the active AirCore system, where the relative humidity sensor is now placed underneath the AirCore box. The external temperature sensors are all PT100 elements from Innovative Sensor Technology, and have an uncertainty of 0.15 °C. The GPS coordinates and time are measured using a GPS model ATM2.5 NEO-6M module with EEPROM built-in activity.

The datalogger is powered by one 9 V battery, while the micro pump is powered by 12 V, four 3 V batteries connected in series. The micro pump was controlled via an on/off switch mounted on the outside of the carbon fiber box for easy use before take-off.

2.2 The trace gas analyzer

5 All mole fraction analyses of air samples from the active AirCore are conducted using a cavity ring-down spectrometer (CRDS, Picarro, Inc., CA, model G2401) (Crosson, 2008), situated close to the landing site of the UAV. The cavity of the analyzer is strictly maintained at a pressure of ~ 186 hPa (140 Torr) and a temperature of 45°C to achieve a precision (one-sigma, 0.5 Hz) better than 0.03 ppm for CO_2 , 0.5 ppb for CH_4 , and 7 ppb for CO, based on cylinder measurements before and after analysis of the AirCore. We control the sample flow of the analyzer operating in the inlet valve control mode at a constant rate using a
10 needle valve between the analyzer and the vacuum pump. We set the flow rate during all the analyses of active AirCore samples at ~ 20.5 sccm. The flowrate was monitored using an Alicat MB-100SCCM-D/5M flowmeter located at the exhaust of the pump, and was noted down at the beginning of the analysis and assumed constant throughout the analysis of the AirCore. After each analysis, the analyzer is switched to measure fill gas through the active AirCore at a higher flow rate of ~ 120 sccm by fully opening the needle valve. In this way, we are able to shorten the time interval between one to the next flight to 50 minutes.

15 2.3 Laboratory tests

Prior to the flights, we validated the active AirCore measurements in laboratory experiments against in situ mole fraction measurements of CO_2 , CH_4 , and CO using a CRDS analyzer. Figure 2 shows a schematic of the experimental setup. During the experiments, the CRDS analyzer and the active AirCore were set up to sample the roof air through the same inlet via a tee junction. The roof air was partially dried, having a water vapor content of $\sim 0.1\%$. The water vapor effects were corrected
20 based on Chen et al., (2010) and Rella et al. (2013) for CO_2 and CH_4 , and Chen et al. (2013) for CO to obtain dry mole fractions of CO_2 , CH_4 , and CO, respectively. Both the analyzer and the AirCore were flushed with dry cylinder air prior to the start of the test, until the measured water vapor level was below 0.005%. Once the active AirCore was fully sampled, the micro pump was turned off and a shut-off valve was switched to close the inlet. This was followed by the analysis of the active AirCore samples using the same CRDS analyzer. A three-way valve at the end of the active AirCore was also turned so that the sample
25 was chased by dry cylinder air with known mole fractions. The flow rate through the CRDS analyzer during analysis was 19.2 sccm, while the air samples were collected into the active AirCore at a flow rate of 21.5 sccm. Once the test was complete, the active AirCore data was processed as described in section 2.6. Three experiments were performed to verify the consistency of the results, and we observed a strong correlation between the direct CRDS analyzer measurements and the sampled active AirCore mole fraction values. The R^2 values were 0.99, 0.97, and 0.97, with the mean differences of 0.04 ± 0.21 ppm, $0.58 \pm$
30 0.67 ppb and 0.86 ± 27.37 ppb for CO_2 , CH_4 , and CO, respectively. Figure 3 shows the time series of one of the experiments, the mole fractions during the three tests ranged from 394 to 417 ppm for CO_2 , 2009 to 2120 ppb for CH_4 and 118 to 1657 ppb for CO. The large standard deviation in CO is due to a sharp spike of several hundred ppb during three experiments, as seen

Deleted: n

Formatted: Subscript

Formatted: Subscript

in figure 3 (c). During the roof air tests, the datalogger tracked the inside pressure, outside pressure, and the temperature of the AirCore, which are the essential parameters that goes into the processing. From figure 3 (a) and (c), a small time lag between the AirCore measurement and the direct measurement can be seen. This is believed to be due to water vapor effects, as the air was not fully dried. Figure 3 (b) also shows a small CH₄ spike around 14:39. This is likely due to metal-to-metal friction, generated by touching the stainless steel tubing during analysis.

Deleted: The large standard deviation in CO is due to a sharp spike of several hundred ppb during three experiments, as seen in figure 3 (c). Figure 3 shows the time series of one of the experiments, The mole fractions during the three tests ranged from 394 to 417 ppm for CO₂, 2009 to 2120 ppb for CH₄ and 118 to 1657 ppb for CO.

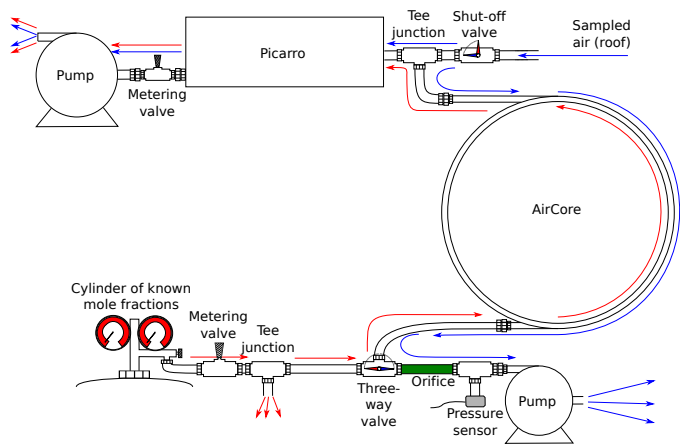


Figure 2. Schematic of the roof-air test setup in the laboratory. The blue lines indicate the time at which both the Picarro and the AirCore sample the roof air, while the red lines indicate the time at which the Picarro analyzes the sampled air from the AirCore.

Deleted: :

Deleted: schematic

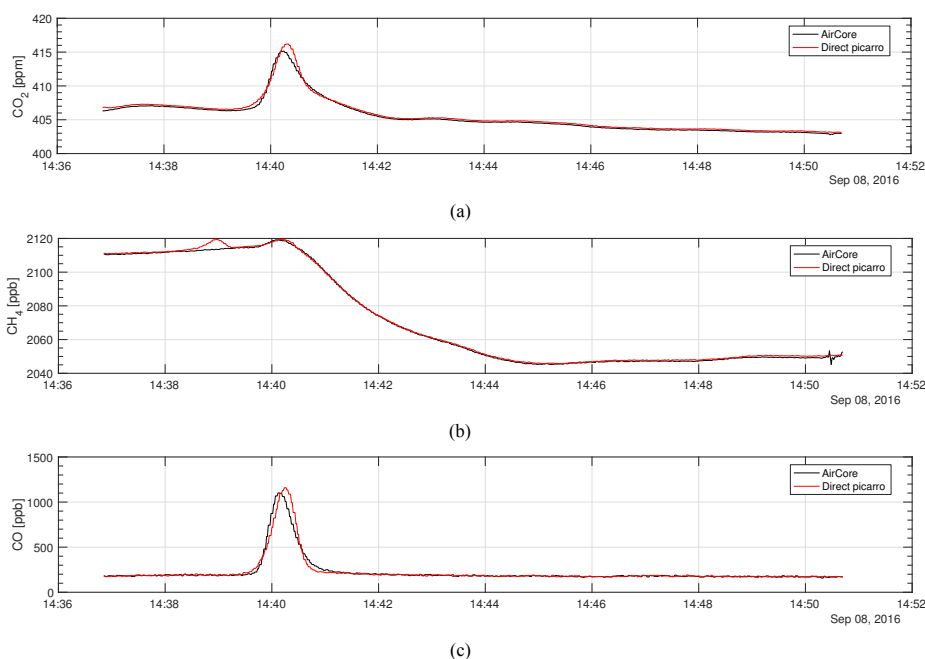


Figure 3. Shows the measured mole fractions of CO₂, CH₄ and CO for both the direct roof air measurement and the AirCore sampled air.

Deleted: :

Deleted: shows

2.4 The UAV

The active AirCore system has been flown aboard a small quadcopter UAV (model DJI Inspire 1 Pro). The UAV (including battery and propellers) weighs ~ 2.9 kg, has a maximum flight time of approximate 15 minutes, and is capable of flying at wind speeds up to 10 m/s. With zero wind, the UAV is capable of ascending with a speed up to 5 m/s, descending with a speed up to 4 m/s and has a maximum horizontal speed of up to 22 m/s. When carrying the active AirCore as payload, the UAV system weighed ~ 4 kg and was able to make a ~ 12 minutes flight. The payload was attached to the bottom of the UAV, so that the inlet was facing downwards towards the ground, using two 10 mm carbon fiber rods that were fixed to the UAV using zip-ties and duck-tape.

2.5 The analysis box

We constructed an analysis box to simplify the analysis of the air samples from the active AirCore, and to reduce the potential contamination of the sample from non-sampled air. A schematic of the analysis box is shown in Figure 4. Two female Swagelok quick connectors (QC series) for the reference and the fill gas are placed on the left side of the box. One of the two cylinders is selected via a Fluid Automation Systems solenoid valve (model CH-1290) by the software of the Picarro CRDS analyzer. A Swagelok metering valve (model SS-SS2) and an excess flow path are situated between the solenoid and the 6 ports Vici rotary valve (model EUDB-26UWE). The metering valve is used to restrict the total airflow that is set slightly larger than the flow rate through the CRDS analyzer, with the rest venting through the excess flow path. The rotary valve provides two positions, namely position A (Analysis) and position B (Bypass). The position is controlled via buttons outside the analysis box. Two 1/8" Swagelok bulkhead connectors are fixed to the middle of the box where the active AirCore is connected. On the right side of the analysis box is the outlet, which is connected directly to the CRDS analyzer.

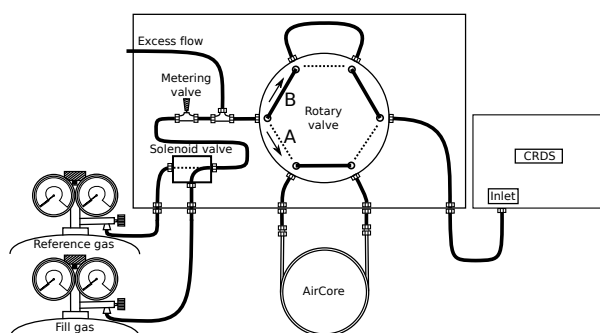


Figure 4. A schematic of the analysis setup

Deleted: :

Deleted: a

2.6 Data processing

One of the major advantages of the UAV-based active AirCore is that in contrast to a free balloon-based AirCore, the UAV normally lands next to the operator. This allows for immediate analysis of the air samples after landing and thus minimizes the spatial resolution degradation due to molecular diffusion of air samples in the tube. During flight, the CRDS analyzer is running a reference gas through a bypass path so that once the active AirCore is connected the analysis can begin immediately. Switching from bypass to analysis makes the reference gas 'push' the active AirCore sample, while the analyzer drags the sample with a constant flow rate of 20.5 sccm. The sample is in fact analyzed in reverse, with the first measured mole fractions linked to the landing of the UAV. The spiked CO mole fractions are seen towards the end of the analysis until finally the

reference gas mole fractions are seen on the analyzer. This leads to a well-defined sample between the two cylinder gas mole fraction values, seen as a 'plug' between the reference gas mole fraction values. Since the active AirCore is open on both ends, a small contamination from water vapor and ambient air is seen at the ends of each sample. [Table 2 shows the mole fractions for the reference and fill gas, calibrated with respect to the WMO 2007, 2004A and 2004A scales for CO₂, CH₄, and CO respectively.](#)

Table 2. The calibrated mole fraction values of the reference and fill gas.

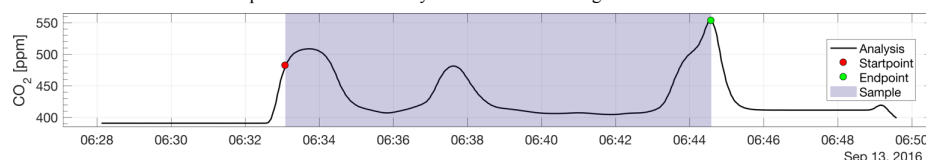
	CO ₂ [ppm]	CH ₄ [ppb]	CO [ppb]
Reference gas	390.8 ± 0.1	2010.9 ± 0.9	156 ± 1
Fill gas	411.4 ± 0.1	2027.7 ± 1.3	9376 ± 23

During the processing of the data the measured mole fraction values are corrected for water vapor as stated in section 2.3. A pre-determined calibration curve is applied to the measured dry mole fractions to correct for drift in the linear calibration curve, and finally the mole fractions are corrected with a single bias between the measured and calibrated values of the reference gas. Figure 5 shows the analysis of CO₂ (a), CH₄ (b), CO (c) and H₂O (d) for the second flight made on September 13th 2016. The green and red dots indicate the start and the endpoint of the sample, respectively. The start point was selected as ¾ ways into the water vapor increase where the analysis goes from dried cylinder air to AirCore, while the endpoint was selected as the last point before the mole fractions goes above 2000 ppb CO, a little into the CO-spiked fill gas. These points were empirically determined from the fifth flight, where the maximum correlation between the active AirCore and the 60m continuous measurements was found. These points were consistently selected for all the flights.

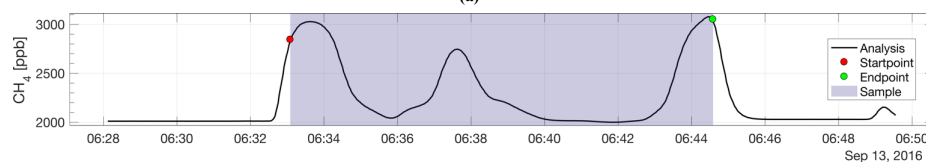
Deleted: Table 2 shows the mole fractions of CO₂, CH₄ and CO for the reference and fill gas, calibrated with respect to the WMO 2007, 2004A and 2004A scales for CO₂, CH₄ and CO respectively.

Deleted: :

Deleted: the



(a)



(b)

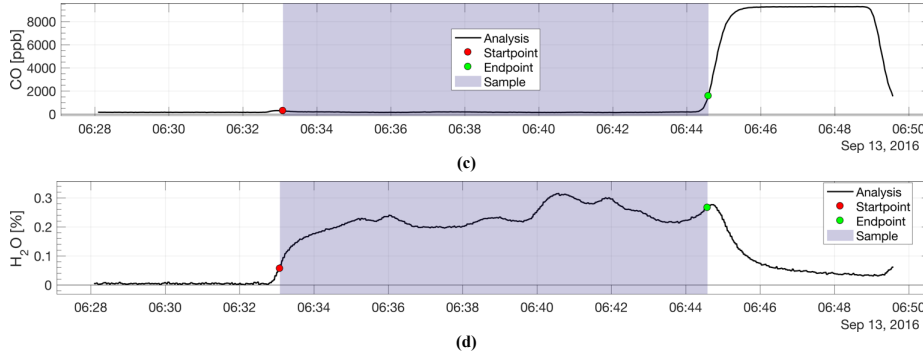


Figure 5. The analysis of CO₂ (a), CH₄ (b), CO (c) and H₂O (d) for the second flight on September 13th 2017. The red and green dots indicate the start- and endpoint of the sample, respectively.

The air entering the tube will quickly equilibrate with the mean active AirCore temperature. The pump creates a low pressure of ~ 380 hPa at the downstream end of the active AirCore, which is more than two times lower than the ambient upstream pressure, forming a critical flow through the orifice. The length and the diameter of the active AirCore remain constant, and thus the only parameters that influence the sampling flow rate are the ambient pressure and the temperature of the AirCore and the orifice. Based on this and the ideal gas law, we estimate the number of moles of air (Δn) that flows into the active AirCore within a time step Δt at any given time as the sum of the change of the number of moles of total air in the active AirCore and the number of moles of air flowing out of the AirCore:

$$\Delta n(t) = \frac{V}{R} \left(\frac{\Delta P(t)}{T(t)} - \frac{P(t)\Delta T(t)}{T^2(t)} \right) + \left(\frac{P(t) \cdot \Delta t \cdot f(t)}{RT(t)} \right) \quad (1)$$

Where Δn is the number of moles of air sampled into the active AirCore, P is the ambient pressure, V is the total volume of the active AirCore, R is the universal gas constant, T the temperature of the active AirCore, t is the time and f is the volumetric flow rate given by:

$$f(t) = C_d \cdot A \sqrt{\frac{R \cdot T}{M}} \quad (2)$$

where C_d is the dimensionless discharge coefficient that can be empirically determined, A is the area of the orifice, R is the universal gas constant, T is the temperature of the orifice in Kelvin, and M is the molar mass of air in kg/mol.

During the analysis of the air samples by the CRDS analyzer, the flow is set at a constant rate. Therefore, the number of moles of air analyzed within a time step $\Delta t'$ at any given time t' can be expressed as

Deleted: :

Deleted: the

$$\Delta n'(t) = \frac{P' f'(t) \Delta t}{RT'} \tag{3}$$

Where f' is the analysis flow rate, P' and T' are the ambient pressure and temperature in the laboratory, respectively.

The number of moles of air samples that entered into the active AirCore during flight and the equal number of moles of air samples analyzed by the CRDS analyzer are used to establish the link between the time it took to collect the sample and the time it took to analyze it.

Using equations (1), (2) and (3), an approximated flight-linked analysis time can be obtained, having effectively linked the number of moles going in to the sample with the analysis time. The measured mole fractions can then be directly linked to the time-series of the datalogger. Figure 6 shows the CRDS analyzer analysis with the original analysis time vs. the flight-linked analysis time.

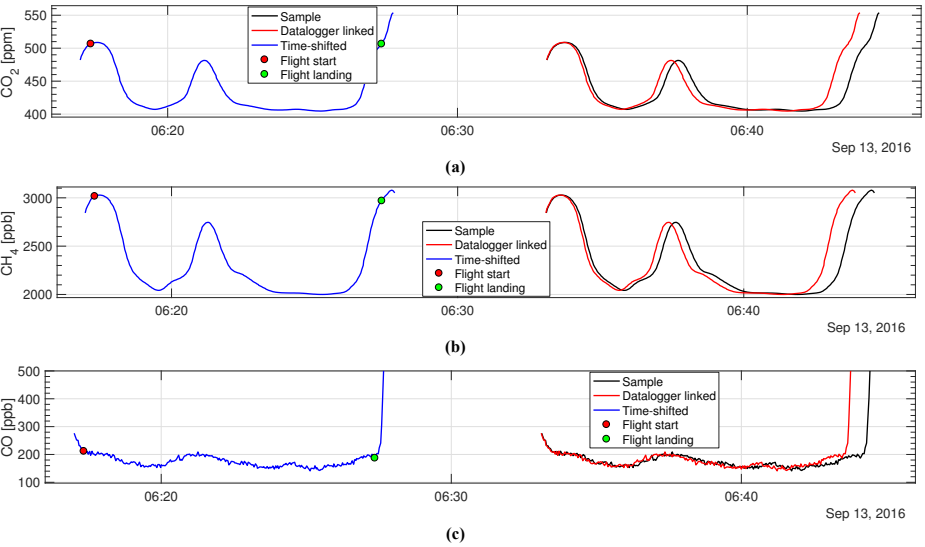


Figure 6. The analysis of CO₂ (a), CH₄ (b), and CO (c) for the second flight on September 13th 2016, with its original analysis time, the datalogger-linked time series and the shifted datalogger-linked time series of the analysis. The red and the green dots represent the time when the drone took off and landed, respectively

2.7 Atmospheric station

The atmospheric measurement station Lutjewad was established in the year 2000 by the Centre for Isotope Research (CIO) University of Groningen, and an aerial photograph is shown in figure 7. The station is located 30 km from the city of Groningen and is easily accessible via roads, and is located on the northern coast of the Netherlands (6.3529° E, 53.4037° N, 1 m asl) situated roughly 50 m behind the Wadden Sea dike. In analyzing wind direction data for the years 2006 to 2014, it was found that the station received 16% of the time northerlies (315 - 45 degrees sector), 34% southerlies (135 - 225 degrees sector), 22% easterlies, and 28% westerlies. Hence, about half of the time the station receives relatively polluted continental air masses. On the seaside, sporadically flooded salt marshes next to the dike pass into the Wadden Sea with its tidal flats. It stretches about six kilometers to the north where the island Schiermonnikoog marks the transition to the North Sea. The observatory itself is surrounded by low shrubs and grass. The rural landscape to the south consists mainly of pasture and cropland with patches of forested land. The livestock in the area is dominated by dairy cows and sheep. The nearest large town is the city of Groningen (200,000 inhabitants) at a distance of about 30 km in the ESE direction. The annual frequency of ESE winds, which could carry pollution from the city directly, is usually less than 1% (van der Laan et al., 2009).

CO₂ and CH₄ were continuously monitored at 60 m a.g.l. via humid air analysis from a Picarro CRDS system model 2301, while measurements of CO₂, CH₄, and CO at 7 m was similarly measured using a Picarro CRDS system model 2401. The Picarro CRDS measurements at the 7 m inlet were started a week prior to this campaign. The atmospheric station maintains continuous temperature, relative humidity and atmospheric pressure measurements at 7 m, 40 m and 60 m. At 7 m and 40 m, the wind speed is also measured, and at 60 m, the wind speed and wind direction. However, during the day of this study the wind speed and wind direction measurements at 60 m malfunctioned, and were not recorded.



Figure 7. ~~Shows~~ a google map image of the atmospheric station Lujewad and its surroundings.

Deleted: :

Deleted: shows

3 Results

3.1 Flight trajectories

- 5 All flights conducted for this study were performed on September 13th 2016. The first three flights aimed to obtain vertical profile measurements of CO₂, CH₄, and CO. Information regarding the flight duration, time between flights, take-off location, landing location and mean speeds can be found in table 3. The first flight took place at 06:15am UTC. The sunrise occurred at 06:05 UTC. The UAV ascended up to 210 m and hovered at this altitude for 45 seconds before ascending up to 500 m. The UAV hovered at this altitude for 20 seconds before descending back down to the landing zone. During the second flight, the
- 10 UAV ascended up to an altitude of 300 m, and upon reaching this altitude, immediately started its descent towards an altitude of 60 m. Once this altitude was reached, it ascended back up to 180 m before starting its final descent towards the landing zone. The third flight trajectory was similar to the first flight, ascending from the take-off zone up to 500 m at a steady pace before descending back down to the landing zone. The datalogger malfunctioned during this flight, causing the micro SD card to appear empty upon retrieval. This lead to no stored temperature, relative humidity, or pressure readings during this flight.
- 15 For the processing of this flight, ambient pressure readings from the first flight were used to approximate similar altitude-pressures. The temperature profile from the first flight was used as the measured active AirCore temperature, but adjusted according to measured temperature profiles from the atmospheric station. The time series from the UAV flight log was used

together with noted down times of when the pump was running to link with the analysis time. The GPS coordinates and altitude was also obtained from the UAV log.

The area between the northern dike and the coastal sea is covered with wetlands, and flight number four measured the CO₂ and CH₄ enhancement by flying from the dike to the sea. The take-off zone was located on the dike; having an elevation of 6.1 m. The UAV started at the take-off zone and ascended to an altitude of 22 m before flying horizontally over the wetlands towards the sea (north-western direction). The horizontal speed was averaging at 12 m/s for this leg of the flight. Once the UAV reached the sea, it descended to an altitude of 10 m and flew along the coastline (south-western direction) at an average speed of 4 m/s. Right before the UAV reached a critical battery level beyond the point of no return, it changed its direction and headed back towards the landing zone, cruising at an average speed of 5 m/s at an altitude of 10 m. At the landing site, the UAV hovered for 2 minutes before landing.

The fifth and final flight was a verification flight for the active AirCore system. The UAV hovered close to the 60 m tower inlet at the atmospheric station, sampling with the active AirCore while air at the 60 m inlet was pumped down to be analyzed by a CRDS analyzer in the ground station. Ascending to an altitude of 60 m, the UAV positioned itself next to the tower and hovered for 9 minutes before starting its descent towards the landing zone.

Table 3. Some of the common characteristics for the 5 different flights.

	Flight #1	Flight #2	Flight #3	Flight #4	Flight #5
Flight duration	00:12:00	00:10:49	00:10:27	00:10:57	00:11:00
Take-off time	05:15:59 UTC	06:17:00 UTC	07:17:16 UTC	08:21:48 UTC	09:18:00 UTC
Landing time	05:27:59 UTC	06:27:49 UTC	07:27:43 UTC	08:32:51 UTC	09:29:00 UTC
Time between flights	-	00:49:00	00:49:27	00:54:05	00:45:09
Take-off location	6.3523 E,	6.3523 E,	6.3519 E,	6.3518 E,	6.3525 E,
	53.4039 N,	53.4039 N,	53.4038 N	53.4041 N,	53.4039 N,
	2.3 m a.s.l	2.3 m a.s.l	6.1 m a.s.l	2.3 m a.s.l	2.3 m a.s.l
Landing location	6.3523 E,	6.3521 E,	6.3519 E,	6.3518 E,	6.3520 E,
	53.4039 N,	53.4039 N,	53.4038 N,	53.4041 N,	53.4038 N,
	2.3 m a.s.l	2.3 m a.s.l	6.1 m a.s.l	2.3 m a.s.l	2.3 m a.s.l

3.2 Tower measurements

Figures 8 (a), (b) and (c) show the continuous measurements of CO₂, CH₄, and CO, respectively, on the full day of September 13th 2016. The 7 m inlet measurements are indicated with the black curves, while the 60 m inlet measurements are indicated

by the red curves. The vertical shaded lines represent the time interval of each of the five flights, and the blue curves indicate the sampled mole fractions during each flight. As shown in figures 8 (a) and (b), the CO₂ and CH₄ mole fractions deviated strongly from each other at the times of the first and second flights. During the third flight the 7 m and 60 m measurements were almost identical, indicating that the boundary layer below 60 m was well mixed. At the time of the third, fourth and fifth flight, a clear well-mixed boundary layer had formed. The third flight took place at 07:17:16 UTC, which was 09:17:16 local time.

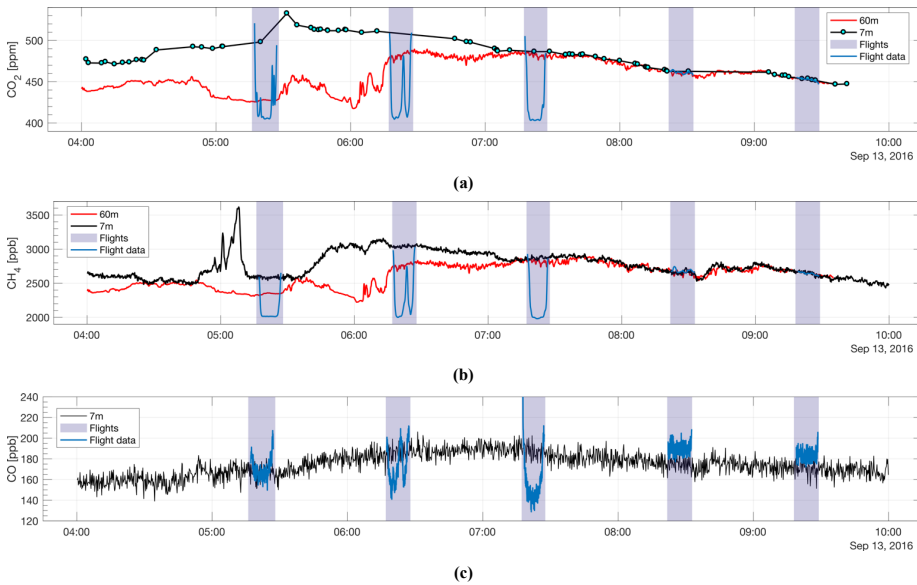


Figure 8. The continuous CO₂ (a), CH₄ (b), and CO (c) measurements from the atmospheric tower at 7 m (black) and 60 m (red), along with the mole fractions measured with the active AirCore (blue). The highlighted areas indicate the timespan for each of the flights, approximately spaced one hour apart. The altitude covered during the flights were 485m, 301m, 478m, and 23m for flights #1, #2, #3, and #4 respectively, transecting both the 7m and 60m altitudes. Flight #5 hovered at 60m close to the 60m tower inlet.

As mentioned in section 2.7, the atmospheric station maintains continuous measurements of temperature, relative humidity and wind speed at 7 m, 40 m and 60 m. The time series during September 13th 2017 are shown in figure 9.

Deleted: blue

Deleted: :

Deleted: t

Deleted: .

Deleted: , and hovering at 60m

Deleted: , and #5

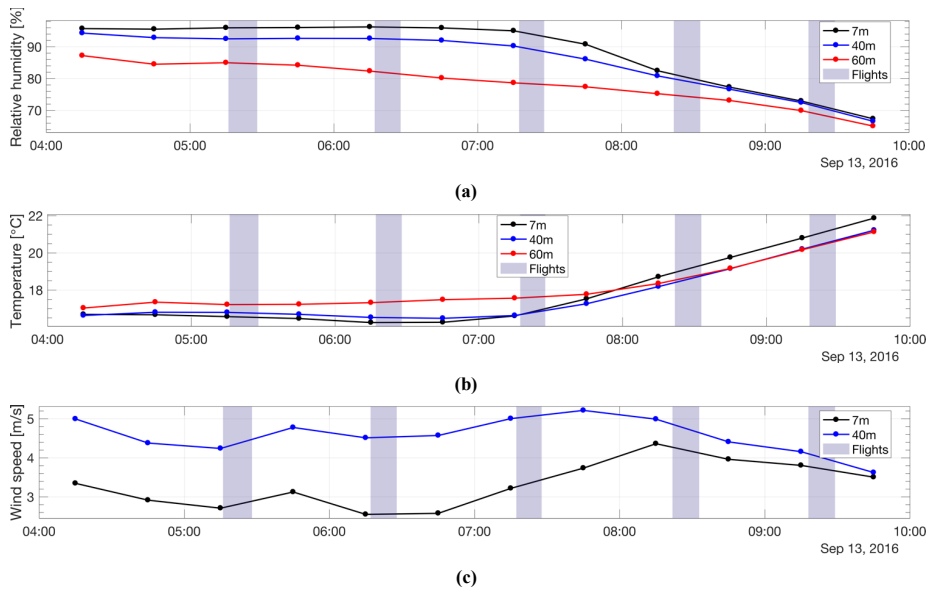


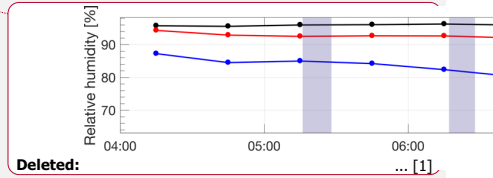
Figure 9. The meteorological data measured at the atmospheric station during September 13th 2016. Figure 6 (a) shows the relative humidity, (b) the temperature and (c) the wind speed. The black curve indicates measurements at 7 m, the red curve at 40 m and the blue curve at 60 m. The highlighted areas indicate the times of the five flights

3.3 The vertical profiles of CO₂, CH₄, and CO

- 5 Figures 10 (a), (b) and (c) show the measured mole fractions of CO₂, CH₄ and CO against altitude for the first three flights, respectively. Flight #1 is indicated by the red curve, the second flight the green curve and the third flight the blue curve. The solid lines indicate the ascending profiles, while the dotted lines indicate the descending profiles. The figures also show the measured tower mole fractions at 60 m and 7 m at the same time the drone was at these altitudes. Tower measurements for CO₂ are shown at 60 m in figure 10 (a), tower measurements for CH₄ at both 60 m and 7 m are shown in figure 10 (b) and
- 10 tower measurements of CO at 7 m are shown in figure 10 (c).

Deleted: :

Deleted: the



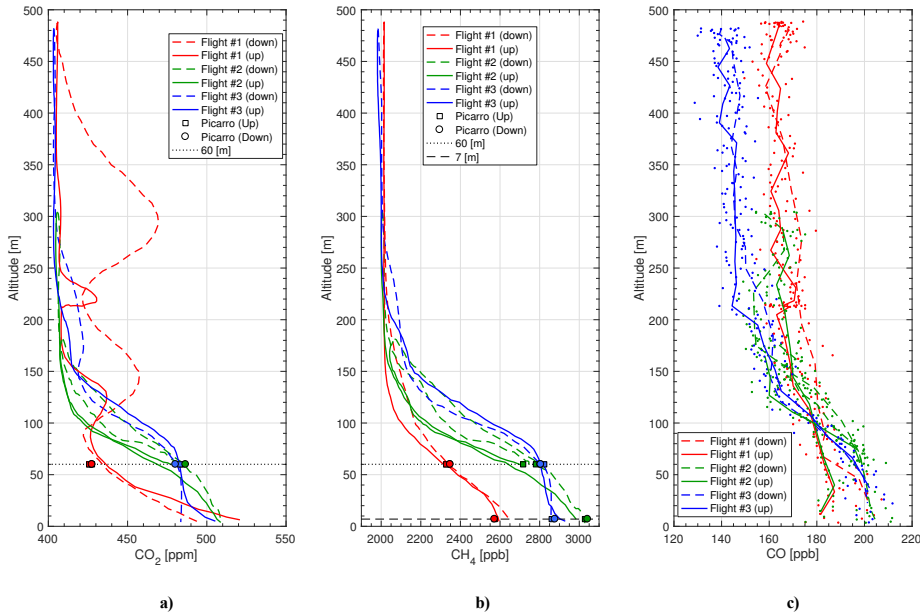


Figure 10. Vertical profiles of a) CO_2 , b) CH_4 and c) CO for flight nos. 1-3. Figures a) and b) include a dotted line indicating 60 m and shows measured trace gas mole fractions from the Lutjewad atmospheric station at this height. Figure b) include also a dotted line to indicate 7 m height and the corresponding CH_4 values obtained from the atmospheric station at this height. The square points represent the mole fractions measured at the time of the UAV ascent, and the circular points represent the mole fractions measured during the UAV descent. The color of the markers represents its respective flight. The CO mole fractions shown in figure 10 (c) has been averaged by every fifth data point, with each dot representing a data point with a time resolution of 3 seconds. The ambient temperature and relative humidity is not shown due to the sensors only being placed inside the box, as discussed in section 2.1.

The vertical CO_2 profiles seen in figure 10 (a) show how CO_2 mole fractions change throughout the morning hours. The vertical mixing of the boundary layer can be seen from the temporal change of CO_2 mole fractions that decrease at ground level from flight #1 to #2, and further from flight #2 to #3, coupled with a simultaneous growth of the CO_2 mole fractions between the flights at 60 m. This mole fraction growth at 60 m is also reflected in the CH_4 profiles shown in figure 10 (b). However, a decrease in CH_4 between flight #1 and #2 is not observed at ground level, which suggests an enhancement of methane has taken place between flight #1 and #2. The enhancement in CH_4 between flight #1 and #2 is confirmed by the observed CH_4 mole fractions at 7 m and 60 m from the Lutjewad tower (Figure 8 (b)). The enhancement is 470 ppb and 450 ppb for CH_4 at 7 m, and 60 m, respectively. These suggest a strong local surface source, likely from, ruminants and wetlands from the land surrounding the Lutjewad area. As seen in figure 8, a strong decoupling between 7 m and 40 m CO_2 and CH_4 until about 08:00

UTC+1 indicated a very shallow nocturnal boundary layer responsible for the high near-ground mole fractions associated with the local emission sources.

Above 200 m, the mole fractions of both CO₂ and CH₄ are nearly constant, with the exception of the CO₂ profile of flight #1. This suggests a stable boundary layer with a height of 200 m. However, we do not have a good explanation for the observed large variability of CO₂ seen in the descending profile of flight #1. Compared to CO₂ and CH₄, there is less variability in the mole fractions of CO, as seen in figure 10 (c). The enhancement in CO in the stable boundary layer relative to the CO aloft is seen for all the three profiles.

3.3.1 Validation against the atmospheric station measurements

Figures 10 (a), (b) and (c) also include the measured atmospheric station mole fractions of CO₂ and CH₄ at 60 m, and CH₄ at 7 m. The square markers indicate that the mole fractions were measured during the time the UAV was ascending, and the round markers indicate mole fractions measured during descent. The differences between the flight profiles and the tower measurements can be seen in table 4, where an average mole fraction from 50 – 70 m has been compared to the average mole fraction from the 60 m inlet during the same timeframe. Similarly, the average 7 m mole fractions within the given timeframe were compared to AirCore mole fractions between 0 – 20 m.

Table 4. The differences between the measured active AirCore profiles and the trace gas mole fractions measured at the atmospheric station at 60 m and 7 m. An average mole fraction from the AirCore profile between 50 – 70 m is compared to an average mole fraction of the 60 m tower measurements within the same timeframe. Similarly, the average mole fraction from the AirCore profile between 0 – 20 m is compared to average a mole fraction of the 7 m tower measurements within the same time span.

Trajectory	Horizontal distance between UAV and Tower	50 – 70 m		0 – 20 m
		ΔCO_2 [ppm]	ΔCH_4 [ppb]	ΔCH_4 [ppb]
Flight #1	Ascending	12.869 ± 4.446	40.1 ± 28.8	19.5 ± 29.2
	Descending	6.162 ± 3.969	-13.2 ± 33.7	57.7 ± 48.9
Flight #2	Ascending	-7.930 ± 7.544	-75.4 ± 79.4	-46.8 ± 12.4
	Mid-point	-5.826 ± 3.896	-87.1 ± 63.0	-
	Descending	-0.076 ± 9.559	-10.5 ± 30.3	-37.3 ± 35.1
Flight #3	Ascending	-0.223 ± 1.565	-20.0 ± 25.6	-1.4 ± 45.6
	Descending	0.146 ± 2.761	13.6 ± 19.3	-20.0 ± 5.9

Deleted: :

Deleted: the

3.3.2 The variability of the flights

As seen in figure 10 (a), the behavior of the first flight with respect to the mole fractions of CO₂ did not follow expectations, nor did it have the same features as seen in the consecutive flights, and the features that are observed for CO₂ does also not occur in the CH₄ or CO profiles. The correlation between CO₂ and CH₄ for flights 2 and 3 is strong, with R² values of 0.99 for both flights, while the correlation for the first flight yields an R² of 0.58. This low correlation could be due to CO₂ emissions from a nearby power plant. The Eemshaven coal power plant is located 34 km East of Lutjewad, and has a stack of 120 m. If the winds were not steady before sunrise, CO₂ emissions from the power plant may have dispersed to influence our flight profile, seen as the features in the figure 10 (a). Hysplit backward trajectories show that the winds emanated from the south-east during the time of the campaign.

Both the descending and ascending mole fraction profiles during all the flights compare well with the continuous measurements of CO₂, CH₄, and CO at 60 m and 7 m. From table 4, it is seen that the best fit between data and atmospheric tower data occurred during the third flight. A possible explanation for this could be the smaller variability of mole fractions within the boundary layer. The drop in the measured mole fractions at higher altitudes with each successive flight indicates that the boundary layer is transitioning from its nocturnal state to a mixed boundary layer. This is expected as the sun rises (Stull, 1988).

3.3.3 Verification of the active AirCore

Figures 11 (a) and (b) show the measured CO₂ and CH₄ mole fractions from the fifth flight together with the measured mole fractions from the 60 m inlet at the time of flight. Figures 11 (c) and (d) show the correlation between the measured flight mole fractions and the 60 m inlet measurements for CO₂ and CH₄, respectively. Figures (e) and (f) show the mole fraction difference between the flight analysis and the 60 m inlet measurements for CO₂ and CH₄ respectively.

As seen in figure 11 (a), the measured flight sample and the 60 m inlet measurements are in very good agreement throughout the time of the flight. The first two minutes of the flight measure slightly higher CO₂ mole fractions than the continuous tower measurements, averaging 0.5 ppm above. An offset of the same size is also seen towards the end of the flight. Figure 11 (c) shows the difference throughout the flight, having a mean difference of 0.14 ± 0.36 ppm between the active AirCore and the 60 m tower inlet. Although the trend is similar, sharp peaks and troughs have been smoothed in the active AirCore compared to the tower measurements. There is a strong correlation between the active AirCore analysis and the 60 m tower inlet measurements. This correlation is seen in figure 11 (e), and yields an R² of 0.97 for CO₂.

As shown in figure 11 (b), the CH₄ analysis from the active AirCore and the 60 m inlet measurements follow the same trend. However, there is a consistent offset where the 60 m tower measurements measure higher mole fractions of CH₄. The difference throughout the flight is shown in figure 11 (f), having a mean difference of -5.6 ± 3.9 ppb between the active AirCore and the 60 m tower inlet. The same smoothed curve as seen in figure 11 (a) is also seen in figure 11 (b). The sharp peaks and troughs

measured by the atmospheric station have been smoothed in the active AirCore. A strong correlation is seen between the CH₄ measurements of the active AirCore and the 60 m inlet analysis, and is shown in figure 9 (d). The R² is 0.95 for the CH₄ measurements. Figure 11 (e) also shows a slight downward trend in the difference. This can be explained by contamination of the AirCore sample at both ends, where the end has been contaminated by a high mole-fraction CO₂ spike in one end, likely due to human breath while disconnecting the AirCore and preparing for the flight, and the other side by the reference gas, which held a lower concentration of CO₂ than the sampled air.

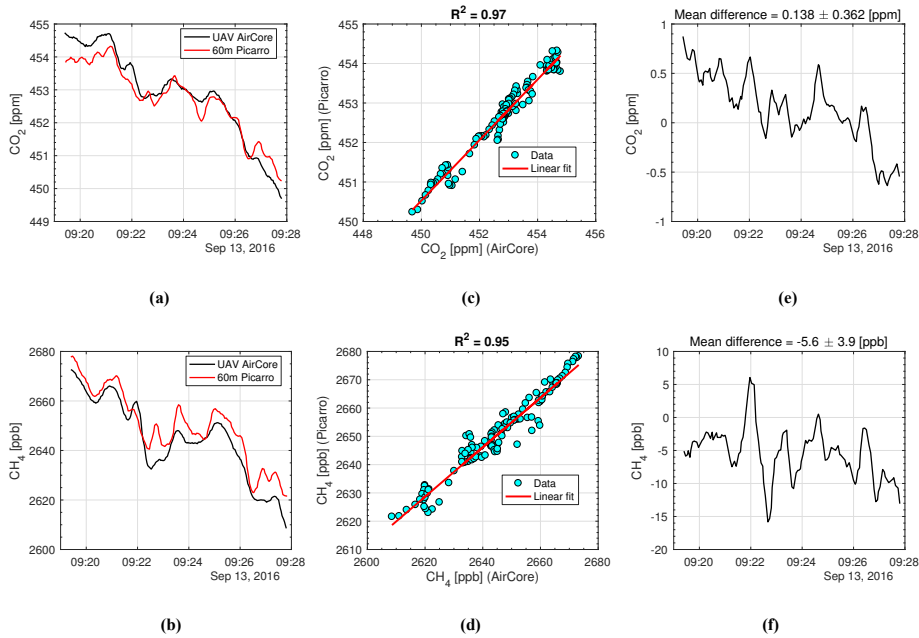


Figure 11. The AirCore analysis of the fifth flight and the continuous tower measurements from 60 m. The plot shows the analysis profiles and the correlation between these two measurements from both CO₂ and CH₄. The differences in CO₂ and CH₄ between the two measurements are also shown.

Deleted :

Deleted: the

10 3.4 Methane enhancement from wetlands

Figures 12 (a) and (b) show the measured CH₄ and CO₂ enhancement relative to the background mole fractions measured at the atmospheric station during the fourth flight, respectively. The red color indicates a high enhancement of its respective trace gas, while the blue color indicates a low enhancement. The flight took place over the wetlands, north of the Wadden sea dike.

The wind was from the southeast with a wind speed of 2.5 – 3.0 m/s, which provided upwind measurements of CO₂ and CH₄ at the atmospheric station with respect to the flight. During the time of flight, the upwind measurements had a mean mole fraction of 2647 ppb with a standard deviation of 24 ppb for CH₄, and 460.0 ppm with a standard deviation of 1.6 for CO₂. The CH₄ mole fractions were obtained from the 7 m inlet at the atmospheric tower, while the 60 m inlet provided the CO₂ mole fractions due to the low sampling frequency of CO₂ at 7 m. The mean altitude of the UAV during the flight was 10.4 m. The mean upwind mole fractions were subtracted from the mole fractions measured during the flight, providing the enhancement seen over the wetlands for each respective trace gas.

As seen in figure 12 (a) and (b), a clear hotspot for both CO₂ and CH₄ is seen towards the most northern part of the wetlands. The enhancement of CO₂ was at its peak 4.3 ppm over the background upwind measurements, and 85 ppb for CH₄, with a ratio $\Delta\text{CH}_4/\Delta\text{CO}_2$ of 19.8 ppb/ppm, which suggests that the emissions are from the local wetlands (Nara et al., 2014). The mean enhancement during the course of the flight was 1.2 ppm for CO₂ and 22.5 ppb for CH₄. The hotspot seen in figures 12 (a) and (b) were measured as the UAV was close to the coast. As mentioned previously, the wind was from the southeast, further supporting that the measured hotspot originated from the wetlands.

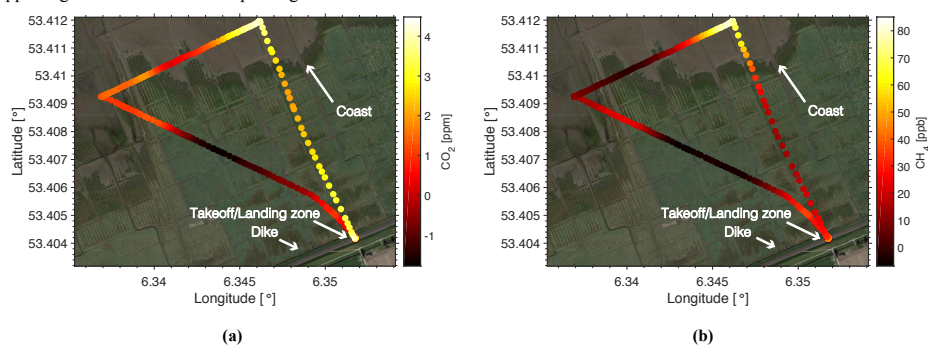


Figure 12. The measured mole fractions of CH₄ and CO₂ during the fourth flight. Take-off for the flight was on the dike, flying out towards the sea, doing a 90-degree turn and flying along the coast before heading back to the take-off spot. The white/yellow and red/black colors indicate high and low mole fraction enhancement, respectively.

3.5 Spatial resolution

The spatial resolution has four contributors, namely smear effects of the analyzer, molecular diffusion, Taylor dispersion, and an innate uncertainty in the GPS measurements. Each contribution is discussed below.

Deleted: :

Deleted: the

Deleted: smear effects of the analyzer

3.5.1 Analyzer smearing effects

The cell of the analyzer also plays a role in the effective spatial resolution, in that it applies an additional smearing effect during the analysis. The sample flow rate through the CRDS analyzer is kept at a constant flow rate of 21.5 sccm. The volume of the analyzer cavity is 35 cc, but is maintained at 140 Torr (187 hPa) and 45 °C, which makes the effective cavity volume roughly 5.5 cc (at STP).

We use the response time (1/e exchange) to calculate the contribution of the smearing effect to the total spatial resolution, and determined it to be 15.3 seconds of the flight time. Considering the smearing effect alone, the spatial resolution of the active AirCore measurements is determined at 23.0 m with a mean ascent or descent speed of 1.5 m/s, or 38.3 m with a mean speed of 2.5 m/s.

3.5.2 GPS uncertainties

While the UAV is at a standstill, the uncertainty of the GPS is given as 0.5 m in the vertical direction and 2.5 m in the horizontal direction.

3.5.3 Diffusion and Taylor dispersion

Molecular diffusion and Taylor dispersion that affects the profiled sample can be expressed with an effective diffusion coefficient, assuming that the flow is laminar through the active AirCore during sampling and analysis (Karion et al., 2010). The effective diffusion is expressed as

$$D_{eff} = D + \frac{a^2 \cdot v^2}{48 \cdot D} \quad (4)$$

where D is the molecular diffusivity of the different molecules in the gas (D is $0.16 \text{ cm}^2 \text{ s}^{-1}$ for CO_2 and $0.23 \text{ cm}^2 \text{ s}^{-1}$ for CH_4 (Massman, 1998)), a is the inner radius of the active AirCore tubing and v is the average velocity of the air inside the active AirCore. The distance of diffusion X_{RMS} is then given as

$$X_{RMS} = 2 \sqrt{2 \cdot D_{eff} \cdot t} \quad (5)$$

where t represents the storage time from the moment the UAV lands and the analysis is complete. The factor 2 in front of the square root comes from diffusion in both directions. The effective resolution in horizontal and vertical direction can then be expressed in terms of a fraction of distance travelled in space:

$$\Delta d_{diff} = \frac{X_{RMS} \cdot A}{f} \cdot v' \quad (6)$$

where Δd_{diff} is the effective resolution due to diffusion and dispersion, f is the mass flowrate of the CRDS analyzer, A is the area of the tube, and v' is the speed of the UAV. Due to the difference in molecular diffusion for CO_2 and CH_4 , the

spatial resolution differs between the GHGs. When the UAV is flying with an average speed of 1.5 m/s, the uncertainties range from 7.6 m to 15.2 m for CO₂ depending on the storage time, while for CH₄ the uncertainty ranges from 9.1 m to 18.2 m depending on the storage time. Storage time ranges from 10 to 40 minutes.

5 3.5.4 Effective spatial resolution

The effective spatial resolution can be calculated as a product of all the mentioned uncertainties, and is given by:

$$\Delta d = \sqrt{\Delta d_{diff}^2 + \Delta d_{smear}^2 + \Delta d_{GPS}^2} \quad (7)$$

Typical spatial resolutions for CO₂ are ± 40.3 to 46.0 m in the horizontal direction with a mean speed of 2.5 m/s, and ± 24.1 to 27.5 m in vertical direction having a mean speed of 1.5 m/s, with the major contribution from the Picarro CRDS smearing effect. For CH₄, the spatial resolutions with similar mean speeds are slightly lower, having ± 41.2 to 48.9 m in the horizontal direction with a mean speed of 2.5 m/s, and ± 24.7 to 29.3 m in vertical direction having a mean speed of 1.5 m/s.

Deleted: with the Picarro CRDS smearing effect the major contributor

Deleted: a

Deleted: is

4 Conclusions and discussion

In this paper, a UAV-based active AirCore was developed and was tested both in the laboratory and during flights.

The laboratory test results show that the mean differences between the measurements of roof air by the active AirCore and a co-located CRDS analyzer are 0.04 ± 0.21 ppm, 0.58 ± 0.67 ppb and 0.86 ± 27.37 ppb for CO₂, CH₄, and CO, respectively.

15 The direct comparison between the measurements of atmospheric air samples at 60 m from the active AirCore during flight and from the tower indicates a mean difference of 0.14 ± 0.36 ppm for CO₂ and -5.6 ± 3.9 ppb for CH₄, respectively.

We demonstrate that the build-up of the boundary layer was clearly observed with three consecutive vertical profile measurements in the early morning hours. A clear enhancement in both CO₂ and CH₄ was captured during a low-altitude horizontal transect flight and was determined to be caused by emissions from the wetlands north of the Wadden sea dike.

25 The spatial resolution of the active AirCore samples is comprised of three factors: analyzer smearing effects, GPS uncertainties and diffusion, where the analyzer smear effect is the largest contributor. At typical speeds of 1.5 m/s for ascent and descent, and 2.5 m/s for horizontal flying, the effective spatial resolution is determined for CH₄ to be 24.7 to 29.3 m and 41.2 to 48.9 m, respectively, depending on the storage time. For CO₂, the spatial resolution at the same speeds are 24.1 m to 27.5 m and 40.3 m to 46.0 m respectively, depending on the storage time. Due to the small amount of time between sampling and analysis (10–40 minutes), samples obtained using the active AirCore experience a low loss of sample resolution due to molecular diffusion. A modified CRDS analyzer with a reduced cavity pressure, e.g. 106 hPa or 53 hPa would greatly enhance the spatial

resolution, since the response time of the CRDS analyzer would go down. Note that with a cavity pressure of 53 hPa, the spatial resolution is determined mainly by molecular diffusion, instead of the smearing in the analyzer.

The design of the volume and the length of the active AirCore, and the chosen sampling flow rate, provides up to 16 minutes of flight time. The range of the flights is largely determined by the performance of the UAV; however, the spatial resolution of the measurements is compromised by the speed of the flight.

The light weight of the active AirCore of 1.1 kg, its excellent preservation of the resolution of atmospheric air samples, and the mobility of a UAV lead to an effective sampling tool to measure greenhouse gases CO₂ and CH₄ mole fractions and a related tracer CO. This study shows the active AirCore's ability to capture both vertical and horizontal trace gas profiles. The usefulness of a UAV platform to quantify instantaneous CH₄ fluxes from a landfill has been demonstrated by Allen et al., 2018. Our UAV-based active AirCore system opens up a wide variety of opportunities, including measurements of GHG on a local scale with high resolution, quantifying CH₄ emissions from wetlands, landfills, other CH₄ hot spots and the quantification of CO₂ emissions from power plants.

Acknowledgements

We would like to acknowledge Guido van der Werf for the loan of the VU CRDS analyzer, Henk Been, Dipayan Paul, Bert Kers and Joram Hooghiem for helping to wind up the coils of the Active AirCore, and Marcel de Vries for creating the data logger and the analysis box. Their help in the laboratory and preparation towards the campaign has been invaluable. We would also like to thank Toine Cornelissen and Vincent Lublink for providing the drone and for piloting and executing the flights.

Formatted: Subscript

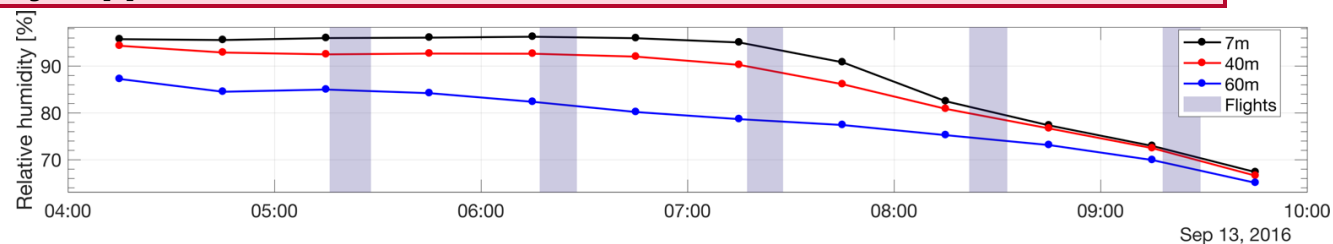
References

- Allen, G., Hollingsworth, P., Kabbabe, K., Pitt, J. R., Mead, M. I., Illingsworth, S., Roberts, G., Bourn, M., Shallcross, D. E., and Percival, C. J.: The development and trial of an unmanned aerial system for the measurement of methane flux from landfill and greenhouse gas emission hotspots, *Waste management*, In Press, doi: [//doi.org/10.1016/j.wasman.2017.12.024](https://doi.org/10.1016/j.wasman.2017.12.024), 2018.
- 5 Berman, E. S. F., Fladeland, M., Liem, J., Kolyer, R., and Gupta, M.: Greenhouse gas analyzer for measurements of carbon dioxide, methane, and water vapor aboard an unmanned aerial vehicle, *Sensors and Actuators B: Chemical*, 169, 128-135, doi: [10.1016/j.snb.2012.04.036](https://doi.org/10.1016/j.snb.2012.04.036), 2012.
- Brownlow, R., Lowry, D., Thomas, R. M., Fisher, R. E., France, J. L., Cain, M., Richardson, T. S., Greatwood, C., Freer, J., Pyle, J. A., MacKenzie, A. R., and Nisbet, E. G.: Methane mole fraction and $\delta^{13}\text{C}$ above and below the trade wind inversion at Ascension Island in air sampled by aerial robotics, *Geophysical Research Letters*, 43, doi: [10.1002/2016GL071155](https://doi.org/10.1002/2016GL071155), 2016.
- 10 Chen, H., Winderlich, J., Gerbig, C., Hoefer, A., Rella, C. W., Crosson, E. R., Van Pelt, A. D., Steinbach, J., Kolle, O., Beck, V., Daube, B. C., Gottlieb, E. W., Chow, V. Y., Santoni, G. W., and Wofsy, S. C.: High-accuracy continuous airborne measurements of greenhouse gases (CO_2 and CH_4) using the cavity ring-down spectroscopy (CRDS) technique, *Atmospheric Measurement Techniques*, 3, 375-386, doi: [10.5194/amt-3-375-2010](https://doi.org/10.5194/amt-3-375-2010), 2010.
- 15 Chen, H., Kivi, R., Heikkinen, P., Kers, B., Vries, M. d., Hatakka, J., Laurila, T., Sweeney, C., and Tans, P.: High-latitude balloon observations of $\text{CO}_2/\text{CH}_4/\text{CO}$ using AirCore: evaluation of Sodankylä TCCON retrievals, *Atmospheric Measurement Techniques*, 2017.
- Crosson, E. R.: A cavity ring-down analyzer for measuring atmospheric levels of methane, carbon dioxide, and water vapor, *Appl. Phys. B*, 92, 403-408, doi: [10.1007/s00340-008-3135-y](https://doi.org/10.1007/s00340-008-3135-y), 2008.
- 20 Dlugokencky, E. J., Nisbet, E. G., Fisher, R., and Lowry, D.: Global atmospheric methane: budget, changes and dangers, *Philosophical Transactions: Mathematical, Physical and Engineering Sciences*, 369, 2058-2072, doi: [10.1098/rsta.2010.0341](https://doi.org/10.1098/rsta.2010.0341), 2011.
- Engel, A., Bönisch, H., Ullrich, M., Sitals, R., Membrive, O., Danis, F., and Crevoisier, C.: Mean age of stratospheric air derived from AirCore observations, *Atmospheric Chemistry and Physics*, 17, 6825-6838, doi: [10.5194/acp-17-6825-2017](https://doi.org/10.5194/acp-17-6825-2017), 2017.
- 25 Hartmann, D. L., Klein Tank, A. M. G., Rusticucci, M., Alexander, L. V., Brönnimann, S., Charabi, Y., Dentener, F. J., Dlugokencky, E. J., Easterling, D. R., Kaplan, A., Soden, B. J., Thorne, P. W., Wild, M., and Zhai, P. M.: Observations: Atmosphere and Surface, in: *Climate Change 2013: The Physical Science Basis. Contribution of Working Group I to the Fifth*

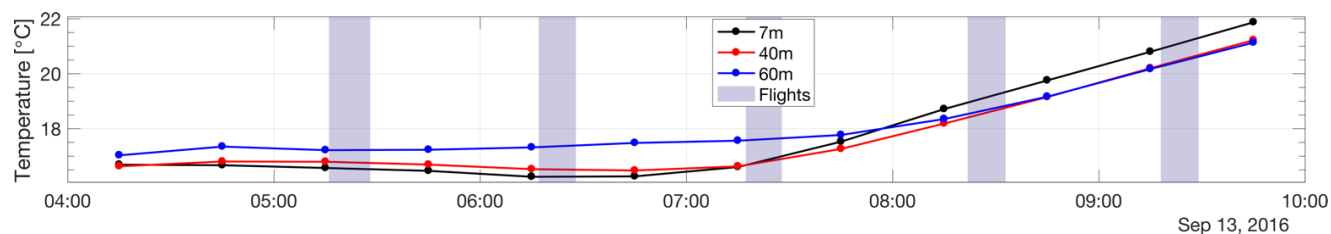
- Assessment Report of the Intergovernmental Panel on Climate Change, 1, Cambridge University Press, Cambridge, United Kingdom and New York, NY, USA, 161-218, 2013.
- IPCC: Climate Change 2014: Impacts, Adaptation, and Vulnerability, Part B: Regional Aspects, Contribution of Working Group II to the Fifth Assessment Report of the Intergovernmental Panel on Climate Change, Cambridge University Press, Cambridge, UK and New York, NY, USA, Open File Rep. -, 688pp., 2014a.
- IPCC: Climate Change 2014: Impacts, Adaptation, and Vulnerability, Part A: Global and Sectoral Aspects, Contribution of Working Group II to the Fifth Assessment Report of the Intergovernmental Panel on Climate Change, Cambridge University Press, Cambridge, UK and New York, NY, Open File Rep. -, 1132pp., 2014b.
- Karion, A., Sweeney, C., Tans, P., and Newberger, T.: AirCore: An Innovative Atmospheric Sampling System, *Journal of Atmospheric and Oceanic Technology*, 27, 1839-1853, doi: 10.1175/2010JTECHA1448.1, 2010.
- Khan, A., Schaefer, D., Tao, L., Miller, D. J., Sun, K., Zondlo, M. A., Harrison, W. A., Roscoe, B., and Lary, D. J.: Low Power Greenhouse Gas Sensors for Unmanned Aerial Vehicles, *Remote Sensing*, 4, 1355-1368, doi: 10.3390/rs4051355, 2012.
- Kirschke, S., Bousquet, P., Ciais, P., Saunoy, M., Canadell, J. G., Dlugokencky, E. J., Bergamaschi, P., Bergmann, D., Blake, D. R., Bruhwiler, L., Cameron-smith, P., Castaldi, S., Chevallier, F., Feng, L., Fraser, A., Heimann, M., Hodson, E. L., Houweling, S., Josse, B., Fraser, P. J., Krummel, P. B., Lamarque, J., Langenfelds, R. L., Le Quéré, C., Naik, V., O'doherty, S., Palmer, P. I., Pison, I., Plummer, D., Poulter, B., Prinn, R. G., Rigby, M., Ringeval, B., Santini, M., Schmidt, M., Shindell, D. T., Simpson, I. J., Spahni, R., Steele, P. L., Stroe, S. A., Sudo, K., Szopa, S., Van Der Werf, Guido R, Voulgarakis, A., Van Weele, M., Weiss, R. F., Williams, J. E., and Zeng, G.: Three decades of global methane sources and sinks, *Nature Geoscience*, 6, 813, doi: 10.1038/ngeo1955, 2013.
- Kunz, M., Lavric, J. V., Gerbig, C., Tans, P., Neff, D., Hummelgård, C., Martin, H., Rödjegård, H., Wrenger, B., and Heimann, M.: COCAP: A carbon dioxide analyser for small unmanned aircraft systems, *Atmospheric measurement Technique Discussion*, doi: //doi.org/10.5194/amt-2017-207, 2017.
- Lowry, D., Brownlow, R., Fisher, R., Nisbet, E., Lanoisellé, M., France, J., Thomas, R., Mackenzie, R., Richardson, T., Greatwood, C., Freer, J., Cain, M., Warwick, N., and Pyle, J.: Methane at Ascension Island, southern tropical Atlantic Ocean:

- continuous ground measurement and vertical profiling above the Trade-Wind Inversion, EGU General Assembly Conference Abstracts, 17, 7100, 2015.
- Massman, W. J.: A review of the molecular diffusivities of H₂O, CO₂, CH₄, CO, O₃, SO₂, NH₃, N₂O, NO, and NO₂ in air, O₂ and N₂ near STP, *Atmospheric Environment*, 32, 1111-1127, doi: [//dx.doi.org.proxy-ub.rug.nl/10.1016/S1352-2310\(97\)00391-9](https://doi.org/10.1016/S1352-2310(97)00391-9), 1998.
- Membrive, O., Crevoisier, C., Sweeney, C., Danis, F., Hertzog, A., Engel, A., Bönisch, H., and Picon, L.: AirCore-HR: A high resolution column sampling to enhance the vertical description of CH₄ and CO₂, *Atmospheric Measurement Techniques Discussions*, 10, 2163-2181, doi: 10.5194/amt-10-2163-2017, 2017.
- Nara, H., Tanimoto, H., Tohjima, Y., Mukai, H., Nojiri, Y., and Machida, T.: Emissions of methane from offshore oil and gas platforms in Southeast Asia, *Scientific Reports*, 4, 6503-6509, doi: 10.1038/srep06503, 2014.
- Paul, D., Chen, H., Been, H. A., Kivi, R., and Meijer, H. A. J.: Radiocarbon analysis of stratospheric CO₂ retrieved from AirCore sampling, *Atmospheric Measurement Techniques Discussions*, 9, 4997-5006, doi: [//doi.org/10.5194/amt-9-4997-2016](https://doi.org/10.5194/amt-9-4997-2016), 2016.
- Rella, C. W., Chen, H., Andrews, A. E., Filges, A., Gerbig, C., Hatakka, J., Karion, A., Miles, N. L., Richardson, S. J., Steinbacher, M., Sweeney, C., Wastine, B., and Zellweger, C.: High accuracy measurements of dry mole fractions of carbon dioxide and methane in humid air, *Atmospheric Measurement Techniques*, 6, 837-860, doi: [//doi.org/10.5194/amt-6-837-2013](https://doi.org/10.5194/amt-6-837-2013), 2013.
- Rella, C. W., Hoffnagle, J., He, Y., and Tajima, S.: Local- and regional-scale measurements of CH₄, δ¹³CH₄, and C₂H₆ in the Uintah Basin using a mobile stable isotope analyzer, *Atmospheric Measurement Techniques*, 8, 4539-4559, doi: 10.5194/amt-8-4539-2015, 2015.
- Saunois, M., Bousquet, P., Poulter, B., Peregon, A., Ciais, P., Canadell, J. G., Dlugokencky, E. J., Etiope, G., Bastviken, D., Houweling, S., Janssens-Maenhout, G., Tubiello, F. N., Castaldi, S., Jackson, R. B., Alexe, M., Arora, V. K., Beerling, D. J., Bergamaschi, P., Blake, D. R., Brailsford, G., Brovkin, V., Bruhwiler, L., Crevoisier, C., Crill, P., Covey, K., Curry, C., Frankenberg, C., Gedney, N., Höglund-Isaksson, L., Ishizawa, M., Ito, A., Joos, F., Kim, H., Kleinen, T., Krummel, P., Lamarque, J., Langenfelds, R., Locatelli, R., Machida, T., Maksyutov, S., McDonald, K. C., Marshall, J., Melton, J. R., Morino, I., Naik, V., O'Doherty, S., Parmentier, F. W., Patra, P. K., Peng, C., Peng, S., Peters, G. P., Pison, I., Prigent, C., Prinn, R., Ramonet, M., Riley, W. J., Saito, M., Santini, M., Schroeder, R., Simpson, I. J., Spahni, R., Steele, P., Takizawa, A., Thornton, B. F., Tian, H., Tohjima, Y., Viovy, N., Voulgarakis, A., van Weele, M., van der Werf, Guido R., Weiss, R., Wiedinmyer, C.,

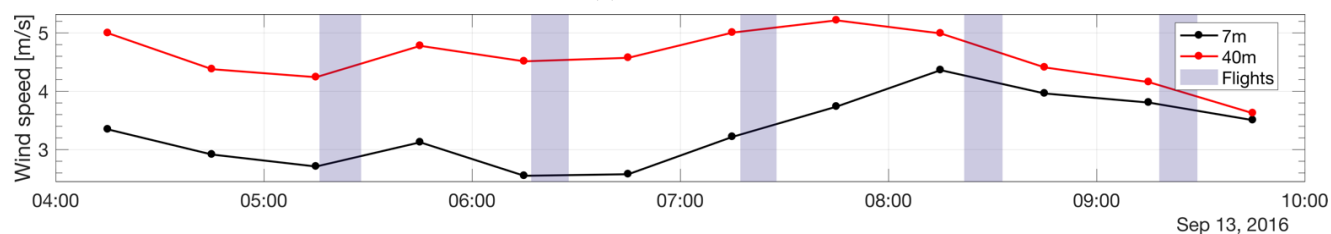
- Wilton, D. J., Wiltshire, A., Worthy, D., Wunch, D., Xu, X., Yoshida, Y., Zhang, B., Zhang, Z., and Zhu, Q.: The global methane budget 2000–2012, *Earth System Science Data*, 8, 697–751, doi: 10.5194/essd-8-697-2016, 2016.
- Stull, R. B.: *Introduction to Boundary Layer Meteorology*, Springer, Dordrecht, Netherlands, 1988.
- Tans, P. and Keeling, R.: Trends in Atmospheric Carbon Dioxide: <http://www.esrl.noaa.gov/gmd/ccgg/trends/>, last access: April, 2017.
- Tans, P. P.: *System and method for providing vertical profile measurements of atmospheric gases*, 2009.
- Turnbull, J. C., Keller, E. D., Baisden, T., Brailsford, G., Bromley, T., Norris, M., and Zonder van, A.: Atmospheric measurement of point source fossil CO₂ emissions, *Atmospheric Chemistry and Physics*, 14, 5001–5014, doi: 10.5194/acp-14-5001-2014, 2014.
- 10 van der Laan, S., Neubert, R. E. M., Meijer, H. A. J., and Simpson, W. R.: A single gas chromatograph for accurate atmospheric mixing ratio measurements of CO₂, CH₄, N₂O, SF₆ and CO, *Atmospheric Measurement Techniques*, 2, 549–559, doi: 10.5194/amt-2-549-2009, 2009.
- Watai, T., Machida, T., Ishizaki, N., and Inoue, G.: A Lightweight Observation System for Atmospheric Carbon Dioxide Concentration Using a Small Unmanned Aerial Vehicle, *Journal of Atmospheric and Oceanic Technology*, 23, 700–710, doi: 10.1175/JTECH1866.1, 2006.
- 15



(a)



(b)



(c)

Figure 9: the meteorological data measured at the atmospheric station during September 13th 2016. Figure 6 (a) shows the relative humidity, (b) the temperature and (c) the wind speed. The black curve indicates measurements at 7 m, the red curve at 40 m and the blue curve at 60 m. The highlighted areas indicate the times of the five flights