

MAX-DOAS NO₂ observations over Guangzhou, China; ground-based and satellite comparisons

Theano Drosoglou¹, Maria Elissavet Koukoulis¹, Natalia Kouremeti², Alkiviadis F. Bais¹, Irene Zyrichidou¹, Dimitris Balis¹, Ronald J. van der A^{3,4}, Jin Xu⁵, Ang Li⁵

5 ¹Laboratory of Atmospheric Physics, Aristotle University of Thessaloniki, Thessaloniki, Greece

²Physikalisch-Meteorologisches Observatorium Davos, World Radiation Center, Davos, Switzerland

³Royal Netherlands Meteorological Institute (KNMI), De Bilt, the Netherlands

⁴Nanjing University of Information Science and Technology, Nanjing, P.R. China

10 ⁵Anhui Institute of Optics and Fine Mechanics Academy of Sciences (AIOFM), Chinese Academy of Sciences (CAS), Hefei, China

Correspondence to: Theano Drosoglou (tdroso@auth.gr)

Abstract. In this study, the tropospheric NO₂ vertical column density (VCD) over an urban site in Guangzhou megacity in China is investigated, by means of MAX-DOAS measurements during a campaign from late March 2015 to mid-March 2016. A MAX-DOAS system was deployed at the Guangzhou Institute of Geochemistry of the Chinese Academy of Sciences and operated there for about one year, during the spring and summer months. The tropospheric NO₂ VCDs retrieved by the MAX-DOAS are presented and compared with space-borne observations from GOME-2/MetOp-A, GOME-2/MetOp-B and OMI/Aura satellite sensors. The comparisons reveal good agreement between satellite and MAX-DOAS observations over Guangzhou, with correlation coefficients ranging between 0.795 for GOME-2B and 0.996 for OMI. However, the tropospheric NO₂ loadings are underestimated by the satellite sensors on average by 25.1%, 10.3% and 5.7%, respectively for OMI, GOME-2A and GOME-2B. Our results indicate that GOME-2B retrievals are closer to those of the MAX-DOAS instrument due to the lower tropospheric NO₂ concentrations during the days with valid GOME-2B observations. In addition, the effect of the main coincidence criteria is investigated, namely the cloud fraction (CF), the distance (d) between the satellite pixel center and the ground-based measurement site, as well as the time period within which the MAX-DOAS data are averaged around the satellite overpass time. The effect of CF and time window criteria is more profound on the selection of OMI overpass data, probably due to its smaller pixel size. The available data pairs are reduced to half and about one third for CF≤0.3 and CF≤0.2, respectively, while, compared to larger CF thresholds, the correlation coefficient is improved to 0.996 from about 0.86, the slope value is very close to unity (~0.98) and the mean satellite underestimation is reduced to about half (from ~7 to ~3.5×10¹⁵ molecules/cm²). On the other hand, the distance criterion affects mostly GOME-2B data selection, because GOME-2B pixels are quite evenly distributed among the different radii used in the sensitivity test. More specifically, the number of collocations is notably reduced when stricter radius limits are applied, the r value is improved from 0.795 (d≤50 km) to 0.953 (d≤20 km), and the absolute mean bias decreases about 6 times for d≤30 km compared to the reference case (d≤50 km).

1 Introduction

Nitrogen dioxide (NO₂) is an important trace gas in the atmosphere. It plays a critical role in the tropospheric photochemistry (Seinfeld and Pandis, 1998; Finlayson-Pitts and Pitts, 2000) and contributes to the radiative forcing of the atmosphere (Solomon et al., 1999). Additionally, NO₂ affects the human health causing respiratory problems and is one of the main air pollutants with National Ambient Air Quality Standard (NAAQS) (EPA, 2010; WHO, 2013). It is emitted both by natural and anthropogenic sources; in the first category lie lightning (Schumann and Huntrieser, 2007), agricultural fertilization and the use of nitrogen fixing plants (Vinken et al., 2014 and references therein) and biomass burning (Mebust et al., 2014). In the latter category lie fossil fuel and biofuel combustion, power plant and industrial emissions, ground and air transport, and so on (Olivier and Berdowski, 2001).

The rapid growth of the Chinese economy during the last decades has led to an increase in emissions of air pollutants. Air quality in Chinese megacities has been of great concern in the atmospheric and environmental science community. NO₂ is an important trace gas in the troposphere in Chinese megacities (Richter et al., 2005; Ma et al., 2013; Jin et al., 2016) and there is significant evidence that secondary aerosols formed from NO_x, as well as SO₂ and VOCs, contribute to haze pollution events which are frequently observed over urban agglomerations in China (Fu et al., 2014; Jiang et al., 2015). The investigation of the global and regional spatial gradients and temporal variations of trace gases and the identification of their main emission sources can lead to a better understanding of the haze pollution events and the mechanisms forcing them, offering a useful tool for governments and policy makers in planning and implementing control regulations (Liu et al., 2013).

Guangzhou is the capital of the province of Guangdong in south-eastern China. It is the third most populous city in China, with Shanghai and Beijing being the first two, and one of the most populated metropolitan agglomerations globally. It is located on the Pearl River Delta (PRD) about 120 km north-northwest of Hong Kong. PRD is one of the most economically developed regions in China and one of the largest urban areas and it includes nine cities with a combined population of about 60 million. It is a heavily industrialized area and a major port serving as a transportation and trade hub. PRD suffers from poor air quality and visibility due to rapid industrialization, massive increase in vehicle population and, also, transportation of air pollutants from the nearby cities of Hong Kong and Macau (Wang et al., 2005; Guo et al., 2009). Air quality in the PRD region is characterized by high concentration levels of primary pollutants, such as NO_x and SO₂, as well as by secondary air pollutants, e.g. ozone and fine particulate matter (Chan and Yao, 2008; Wang et al., 2008; Huang et al., 2012). Shao et al. (2009) amply demonstrated the significant contribution of high NO_x levels to the formation of ground-level ozone.

Due to its important role as an air quality indicator, NO₂ has been observed and monitored from space-borne instruments for the past three decades. Although a rapid growth in NO_x emissions has been observed over China by satellite sensors during the previous two decades (Zhang et al., 2007; Liu et al., 2017), a sharp decline is evident in recent years (Liu et al., 2017; van der A et al., 2017). Satellite observations constitute an important tool of investigating the air pollution levels and trends in global (e.g. Velders et al., 2001; Schneider et al., 2012) and regional (e.g. Zyrichidou et al, 2009; Hilbol et al., 2013) scales. However, the satellite data retrieval is subject to several uncertainty sources related to the spectra analysis and the air mass

factor (AMF) calculation which affect the retrievals of the low tropospheric atmospheric content. The errors introduced by the AMF calculation can be attributed to the a priori profile, the aerosol and cloud properties and the surface albedo assumed (Boersma et al., 2004, 2011; Leitão et al., 2010; Heckel et al., 2011; Lin et al., 2014, 2015). Several validation studies show significant underestimation of tropospheric trace gases, such as NO₂, from satellite observations over regions with strong spatial gradients in tropospheric pollution (e.g. Celarier et al., 2008; Kramer et al., 2008; Chen et al., 2009; Irie et al., 2012; Ma et al, 2013). For example, in Irie et al. (2012) a bias of <10 % between satellite and ground-based tropospheric NO₂ observations has been reported over Tokyo, Japan. Moreover, Kramer et al. (2008) have calculated a negative difference of OMI tropospheric NO₂ columns from CMAX-DOAS corresponding data of 1.78×10^{15} molecules/cm² over Leicester, UK. Drosoglou et al. (2017) have calculated an underestimation of $6.60 \pm 5.71 \times 10^{15}$ molecules cm⁻² for OMI and of about $10 \pm 8 \times 10^{15}$ molecules cm⁻² for both GOME-2A and GOME-2B tropospheric NO₂ observations over Thessaloniki, Greece. Considering that the NO₂ is distributed mainly in the planetary boundary layer (PBL), well-established ground-based measurements of tropospheric vertical columns and profiles of NO₂ are essential for the validation and, subsequently, the improvement of satellite retrievals.

The Multi-Axis Differential Optical Absorption Spectroscopy (MAX-DOAS) (Platt, 1994; Van Roozendaal et al., 2003; Hönninger et al., 2004; Wagner et al., 2004; Wittrock et al., 2004; Platt and Stutz, 2008) is a widely used ground-based remote sensing technique for the retrieval of the vertical column and distribution of various trace gases as well as aerosol properties with relatively high sensitivity in the lower atmosphere (Frieß et al., 2006, 2011, 2016; Clémer et al., 2010; Irie et al., 2008, 2011; Wagner et al., 2011). Moreover, MAX-DOAS measurements have been extensively used for the validation of satellite products (e.g. Brinksma et al., 2008; Herman et al., 2009; Li et al., 2013; Hendrick et al., 2014; De Smedt et al., 2015; Theys et al., 2015; Jin et al., 2016).

Several studies have validated satellite NO₂ products over North China and the Yangtze River delta region using ground-based observations (e.g. Ma et al., 2013; Chan et al., 2015; Jin et al., 2016; Wang et al., 2017b) or have used the satellite measurements of NO₂ to estimate NO_x emissions (e.g. Ding et al., 2015; Han et al., 2015). However, there are only a few studies for the Pearl River Delta area (e.g. Wu et al., 2013). In most cases, underestimation of tropospheric NO₂ from satellite sensors is reported. For example, in Ma et al. (2013) a systematic underestimation of 43% for SCIAMACHY and 26–38% for OMI, depending on the data set used, was derived over Beijing area. In the work of Chan et al. (2015), MAX-DOAS tropospheric NO₂ measurements performed in Shanghai were found 2-3 times higher compared to corresponding OMI data. Jin et al. (2016) also reported an underestimation of NO₂ in the troposphere by space-borne observations during winter months. However, different results are presented in Wang et al. (2017b); a systematic positive bias of 1% has been estimated for OMI and ~30% for both GOME-2A and GOME-2B over the city of Wuxi.

Within the framework of the EU FP7 Monitoring and Assessment of Regional air quality in China using space Observations, Project Of Longterm sino-european co-Operation, MarcoPolo project, a MAX-DOAS system was installed by Aristotle University of Thessaloniki (AUTH) in Guangzhou and operating there for about one year. In this study, the tropospheric NO₂

vertical column densities derived by the MAX-DOAS are presented and compared with tropospheric NO₂ retrievals from OMI/Aura, GOME-2/MetOp-A and GOME-2/MetOp-B satellites.

2 MAX-DOAS observations and satellite data sets

2.1 Instrumentation and data analysis

5 A mini MAX-DOAS system (Phaethon) was deployed on the roof of a nine-storey building of the Guangzhou Institute of Geochemistry of the Chinese Academy of Sciences (GIGCAS), China (23°8'54"N; 113°21'32"E; Fig. 1) and was operating there from late March 2015 to mid-March 2016. The instrument comprises a thermoelectrically cooled miniature CCD spectrograph which detects the radiation in the wavelength range ~300-450 nm with a resolution of about 0.35 nm and acquires fast spectral measurements of both direct solar light and sky radiance. The prototype system was developed in 2006 at the
10 Laboratory of Atmospheric Physics of the Aristotle University of Thessaloniki (LAP-AUTH), Greece (Kouremeti et al., 2008, 2013). Currently, there are three MAX-DOAS systems routinely operating in the greater area of Thessaloniki, Greece. Their operation and their capability in retrieving the tropospheric NO₂ have been tested successfully under different air pollution conditions and NO₂ loadings (Drosoglou et al., 2017).

Guangzhou is the largest city located in Pearl River Delta region and it is affected from elevated concentrations of NO_x (e.g.
15 Zhou et al., 2007; Chan and Yao, 2008). Guangzhou is characterized by humid subtropical monsoon climate and suffers from occasional typhoons and frequent afternoon thunderstorms during the period from early March to mid-October. Under such weather conditions the instrument operation should be interrupted and the outdoors part of the system should be dismantled and brought indoors. This resulted in significant gaps in the data series of NO₂. In addition, the instrument was not operating from late August 2015 to late February 2016, due to an accidental damage of the optical fiber, and subsequently due to problems
20 in the remote access of the system which was essential for controlling the operation of the instrument. Nevertheless, the MAX-DOAS observations of tropospheric NO₂ were quite sufficient to be compared with satellite datasets and provide useful information for future validation works for the Guangzhou area.

In Guangzhou the system was performing sky radiance measurements at different elevation angles between 2° and the zenith and at several selected azimuth angles free of significant obstacles in the surrounding area. Around 40% of the scattered light
25 measurements were performed at two main azimuthal directions (115° and 315°) (Fig. 2a and 2b). Additional elevation sequences were performed at azimuth angles 80° relative to the solar azimuth as presented in Fig 2b. The derived tropospheric columns of NO₂ are characterized by homogeneous spatial distribution along the effective light paths of the MAX-DOAS (Fig. 2b). Thus, observations for all available azimuthal directions were used for the comparisons with the satellite datasets.

The acquired spectral measurements were analysed according to the DOAS method (Platt, 1994; Platt and Stutz, 2008) with
30 the aid of the QDOAS v2.111 software (<http://uv-vis.aeronomie.be/software/QDOAS/>) developed by the Royal Belgian Institute for Space Aeronomy (BIRA-IASB) and S[&]T (<https://www.stcorp.nl/>) (Danckaert et al., 2016). The zenith spectrum of each sequence interpolated at the time of the off-axis measurement was used as the Fraunhofer reference in order to minimize

the stratospheric effect in the resulted differential slant column density (dSCD) (Hönninger et al, 2004). The main DOAS analysis settings are summarized in Table 1. NO₂ and O₃ cross sections have been corrected for the solar I₀-effect (Alliwell et al., 2002). An example of NO₂ DOAS fitting for a measurement obtained on 7 April 2015 around 07:50 UTC (15:50 local time) at an elevation angle of 15° and a solar zenith angle (SZA) of about 51° is presented in Fig. 3. The method used in this study to derive the vertical column density (VCD) of NO₂ is similar to the one applied in Drosoglou et al. (2017). For the conversion of dSCD into VCD a look-up table (LUT) of differential air mass factors (dAMF) was constructed by simulations performed with the uvspec radiative transfer model (RTM), libRadtran version 1.7 (Mayer and Kylling, 2005) using a pseudo-spherical discrete ordinates radiative transfer method (Buras et al, 2011). dAMFs are calculated by subtracting the AMF at 90° from the AMF at the off-axis elevation viewing angles. The aerosol single scattering albedo was assumed to be 0.9, which is a typical value for urban areas in China (e.g. Li et al., 2007 and references therein), while for the aerosol asymmetry factor a value of 0.7 was used (e.g. Xia et al., 2007). For the surface albedo a value of 0.1 was assumed to be representative of an urban area (Feister et al., 1995; Webb et al., 2000). Moreover, NO₂ was assumed to be distributed uniformly in a well-mixed layer extending from the surface up to 1 km height. The vertical profile of aerosol extinction used for the RTM simulations was extracted from the CALIPSO climatology database (LIVAS, <http://lidar.space.noa.gr:8080/livas>). Examples of the derived AMFs for different aerosol optical depth (AOD) values at 440 nm are presented in Fig. 4.

2.2 Satellite tropospheric NO₂ observations

Within the European Space Agency Tropospheric Emission Monitoring Internet Service, www.temis.nl, tropospheric NO₂ columns derived from observations by the GOME-2/ MetOp-A, GOME-2/ MetOp-B and OMI/Aura space-borne instruments have been used in this study. The two EUMETSAT MetOp satellites are flying in sun-synchronous orbits with equator crossing times of approximately 09:30 LT and a repeat cycle of 29 days. They were launched in 2006 and 2012 respectively. The default swath width of the GOME-2 scan is 1920 km, which gives a nadir pixel size of 80 km × 40 km (across-track × long-track) and enables global coverage in about 1.5 days. The current primary GOME-2B is operated in this mode, whereas the older GOME-2A is operated in a reduced swath with a swath width of 960 km and nadir ground pixel size of 40 km × 40 km since June 2013. Further description of the GOME-2 instruments may be found in Munro et al. (2015) and Hassinen et al. (2016). The NASA Aura satellite was launched in 2004 also in a polar orbit and with equator crossing time of 13:30 LT. The Ozone Monitoring Instrument (OMI) is a compact nadir viewing, wide swath (daily global coverage), ultraviolet-visible (270 nm to 500 nm) imaging spectrometer with a foot pixel size at nadir is 13 km × 25 km and, in contrast to the GOME-2 instruments, this foot pixel size is not constant but increases for the off-nadir positions. Further description of the OMI instrument may be found in Levelt et al. (2006; 2017).

Tropospheric NO₂ overpass data from OMI, GOME-2A and GOME-2B satellite sensors have been collected from the www.temis.nl project for the operational period of the MAX-DOAS system for the city of Guangzhou. The tropospheric NO₂ columns are derived from satellite observations based on slant column NO₂ retrievals performed with the DOAS technique, and the KNMI combined modelling/retrieval/assimilation approach. The slant columns from the GOME-2 observations are

derived by BIRA-IASB whereas the slant columns from OMI by KNMI/NASA. For the retrieval of OMI NO₂ product the DOMINO v2.0 algorithm was used (Boersma et al., 2011). The algorithm used for the generation of GOME-2A and GOME-2B products (TM4NO2A version 2.3) is described by Boersma et al. (2004).

Apart from the overpass datasets, monthly mean values averaged on different spatial grids, are also provided within the www.temis.nl service. For visualisation purposes, such monthly mean gridded data for July 2015 were downloaded, plotted only for the area surrounding Guangzhou and are shown in Fig. 5. The values given are the result of averaging and gridding mostly-clear retrievals (cloud radiance fraction <50%, i.e. cloud fractions approximately <20%). White areas in the plots indicate that no meaningful measurement has been available during the month, because a location was persistently covered by clouds, or because of instrument failure. The gridding procedure accounts for the fraction of a satellite pixel overlapping with a particular grid cell and so the contribution of every pixel to the monthly mean is weighted with the overlap fraction. Note that the mean tropospheric NO₂ column for different grid cells may have very different overlap statistics, i.e. grid cell x may have been covered by only 1 meaningful retrieval, whereas grid cell y may be the average of 30 successful cloud-free retrievals.

3 Comparisons of ground-based and space-borne tropospheric NO₂ data sets

Observations of tropospheric NO₂ from three satellite sensors (OMI, GOME-2A and GOME-2B) have been compared with the tropospheric columns derived by the MAX-DOAS system. For the comparison, we used space-borne retrievals corresponding to satellite pixel center located within a distance (d) of up to 50 km from the ground-based site and for SZA ≤ 75°. In the case of OMI, the closest pixel was selected for the comparisons, whereas in the case of GOME-2 sensors, the average measurement of all pixels within 50 km was calculated. For the OMI dataset, only the pixels unaffected by the so-called “row anomaly” (OMI, 2012) were used and only those corresponding to a cross-track dimension smaller than 60 km. In addition, satellite data were screened for clouds and only observations characterized by cloud fraction (CF) ≤ 30% were used. For the tropical conditions prevailing in Guangzhou this CF value is the minimum acceptable to be used as a threshold for our datasets leading to a sufficient number of data available for reliable comparisons, as smaller CFs are rather rare. Each satellite observation is compared with the mean value of the MAX-DOAS measurements recorded within 1 hour centered at the satellite overpass time. In the next section the effect of the criteria selection in the comparisons of the ground-based and satellite data pairs is discussed at length. The coincidence criteria applied in this section and described above are used as the reference case in the sensitivity study of section 4 (Table 2).

The tropospheric NO₂ VCDs retrieved from the ground-based radiance spectra measured at 15° and 30° elevation viewing angles and at all available azimuth viewing angles were used in the comparison with corresponding space-borne observations. The system had been proven to be able to retrieve NO₂ with a spectral fitting residual of the order of 10⁻³, typical residual values of mini MAX-DOAS systems (Drosoglou et al., 2017). The value of 1 × 10⁻² has been used as a threshold to filter out disturbed retrievals under variable conditions, as for example, when fast moving clouds of mist emerge from the nearby river in the Guangzhou area.

Tropospheric NO₂ in Guangzhou exhibits large variability both in single measurements and in hourly averages with maximum values exceeding 60×10^{15} molecules/cm² (see right plot of Fig. 2). The hourly-averaged values range between 10 and 40×10^{15} molecules/cm². Several studies have shown similar tropospheric NO₂ VCD levels over other Chinese cities. For example, Jin et al. (2016) reported monthly-averaged tropospheric NO₂ VCDs within the same range over Gucheng in North China for the spring and summer time period. Ma et al. (2013) showed that the daytime mean tropospheric NO₂ VCD over Beijing varies from 5 to 133×10^{15} molecules/cm² with an average of 36×10^{15} molecules/cm² during summertime. The average diurnal variation of the tropospheric NO₂ column derived from the MAX-DOAS measurements at the elevation angles of 15° and 30° in Guangzhou is shown in Fig. 6 as hourly averages ($\pm 1\sigma$) over three different MAX-DOAS data subsets, each including the overpass days of one of the three satellite sensors, i.e. GOME-2A, GOME-2B and OMI. More specifically, the three subsets have been extracted from the whole operational period of the MAX-DOAS instrument considering only the days for which the satellite NO₂ overpass data corresponded to the selection criteria mentioned above. A double peak appears at around 10:00 am and 06:00 pm local time, indicating higher anthropogenic emissions. The minimum NO₂ levels around local noon reflect the destruction of NO₂ due to photochemical processes (Seinfeld and Pandis, 1998). Unfortunately, our MAX-DOAS dataset covers only spring and summer months and it cannot reveal possibly different diurnal patterns during late-autumn and winter seasons, as observed over industrial areas at mid-latitudes due to different emission strength and NO₂ lifetimes (Richter et al., 2005). A double-peak diurnal cycle has been also reported for other Chinese cities in previous studies, e.g. for Beijing (Ma et al., 2013) and Wuxi (Wang et al., 2017a) in spring and summer. A similar pattern for NO₂ surface concentration in Guangzhou city has been found by Qin et al. (2009) using measurements performed by a long-path DOAS instrument from 10 to 24 July 2006. The large day-to-day variability mentioned already is evident also in this figure from the calculated large standard deviations (up to $\pm 19 \times 10^{15}$ molecules/cm²). Most of the satellite retrievals seem to fall well within the standard deviations of the MAX-DOAS measurements close in time with the satellite overpass, indicating a generally good agreement in the NO₂ levels observed in the Guangzhou area both from space and from the ground. Interestingly, during the collocation days of GOME-2B the tropospheric NO₂ levels observed by MAX-DOAS close to GOME-2B overpass time, both in terms of the average value and the standard deviation, are lower relative to those measured around the same time on GOME-2A and OMI collocation days. Moreover, there is only one common day of collocations between the MAX-DOAS and both GOME-2A and GOME-2B satellite sensors. The above findings could partly explain the very good agreement of the GOME-2B averaged tropospheric NO₂ column with the MAX-DOAS hourly data, despite the larger pixel size of GOME-2B (80 km × 40 km) compared to GOME-2A (40 km × 40 km in reduced swath) and OMI (13 km × 25 km at nadir).

The comparison results of the space-borne and ground-based collocations are summarized in Table 2 and presented as time series in Fig. 7 and scatter plots in Fig. 8. These figures as well as the first data column in Table 2 refer to the reference coincidence criteria as described in the beginning of this section. For the linear regression an error weighted fitting has been applied. Evidently the number of coincident data pairs is rather small and varies for the three satellite sensors (about double the number for GOME-2B), due to gaps in MAX-DOAS data in conjunction with the different overpass times of the satellites. Also connected to the overpass time are the larger NO₂ values reported by MAX-DOAS in the case of the GOME-2 sensors

(overpass around 10:00 LT), compared to OMI (overpass around 13:30 LT), as it is evidenced also from Fig. 6. MAX-DOAS and satellite observations are, qualitatively, in good agreement with the calculated correlation coefficients ranging between 0.996 for OMI and 0.795 for GOME-2B. OMI shows a closer to unit slope (0.98) than GOME-2A and GOME-2B (0.94 and 0.83, respectively). GOME-2B shows the smallest mean difference compared to the ground-based measurements, i.e. -1.8×10^{15} molecules/cm² (-5.7%), probably due to the relatively lower tropospheric NO₂ loading observed in the city of Guangzhou by the MAX-DOAS during the overpass days of GOME-2B (Fig. 6). In contrast to GOME-2B, our comparison results indicate a systematic underestimation of OMI at higher tropospheric NO₂ VCDs (mean bias of -3.52×10^{15} molecules/cm² or -25.1%) and a similar negative bias of GOME-2A from the ground-based observations (-3.9×10^{15} molecules/cm² or -10.3%). The statistical results from the comparison of MAX-DOAS with OMI are more significant due to the lower scattering of the data pairs. The 95% confidence interval (CI) of *r* is 0.985-0.999, while the 95% CI of the mean bias range between -4.935 and -2.098×10^{15} molecules/cm². In case of GOME-2B the 95% CI range is comparable to the one calculated for OMI ($\sim 7 \times 10^{15}$ molecules/cm²). For GOME-2A this range is estimated to $\sim 12 \times 10^{15}$ molecules/cm², which is almost double, possibly due to the short collocation data set in combination with its large variability. However, we should stress again that these statistics have been derived from a very small number of data points.

Our findings are within well agreement with the results of other studies over Chinese areas, which in most cases report underestimation of satellite data. For example, Ma et al. (2013) showed an underestimation in tropospheric NO₂ over Beijing by OMI DOMINO NO₂ product between 26 and 38%, depending on the DOMINO algorithm version and the time period, and monthly mean MAX-DOAS NO₂ 1.1-1.5 times higher than the DOMINO v2.0 product. They also estimated similar correlation coefficient ranging between 0.91 and 0.93. In the study of Wu et al. (2013) tropospheric NO₂ VCDs from mobile DOAS are compared with corresponding OMI retrievals revealing an underestimation of high NO₂ values by the satellite sensor and *r* of about 0.97. Chan et al. (2015) reported MAX-DOAS NO₂ VCDs 2-3 times higher than OMI data over Shanghai during the Shanghai World Expo 2010 and correlation coefficients between 0.67 and 0.93 at four different sites, depending on the air pollution levels. In Wang et al. (2017b), although good consistency is found between the MAX-DOAS and OMI DOMINO v2.0 NO₂ retrievals, with *r*=0.85 and a systematic bias of 1%, for both GOME-2A and GOME-2B a significant overestimation of $\sim 30\%$ is reported and *r* of 0.57 and 0.45 have been estimated, respectively.

In general, satellite retrievals represent a weighted average over all the atmospheric layers contributing to the signal observed by the satellite sensor and, thus, suffer from relatively low sensitivity near the surface. This fact, in combination with an unrealistic a priori profile assumption, can lead to an underestimation of high NO₂ loadings due to local emission sources in polluted areas, such as the Guangzhou city (Eskes and Boersma, 2003). Also, part of the satellite underestimation can be attributed to the so-called gradient smoothing effect (Ma et al., 2013) and aerosol shielding effect (Jin et al., 2016, and references therein), as well as to measurements contaminated by clouds.

4 Effects of the coincidence criteria selection on the comparisons

In order to investigate the effect of the coincidence criteria, the comparisons between the MAX-DOAS and the satellite datasets were repeated for various CF thresholds, namely 0.5, 0.4, 0.2, different time windows for the ground-based data averaging around the overpass time, i.e. 2, 3 and 4 hours, and different radius limits for the area around the MAX-DOAS station within which the satellite pixel center is located, i.e. 20 km, 30 km and 40 km. In each one case, all the other criteria were kept in their reference value. The statistical results of each of the above comparison cases, including the reference case, are reported in Table 2. In Fig. 9 bar plots of the statistical results for the different coincidence criteria thresholds are presented.

The agreement between ground-based and both GOME-2 sensors seems to be only slightly affected by the cloud screening applied (see also Table 2, data columns 1-4), likely due to their large pixel sizes. The average difference of GOME-2B from MAX-DOAS tropospheric NO₂ VCD is reduced to -1.80×10^{15} molecules/cm² (-5.73%) and -0.37×10^{15} molecules/cm² (0.71%) for CF \leq 0.3 and CF \leq 0.2, respectively. In case of GOME-2A, the mean bias from the MAX-DOAS observations is increased for tighter CF and only the r value shows an improvement from 0.88 to 0.94 when a CF \leq 0.2 is used. However, the metrics referring to GOME-2A can be assumed more reliable and statistically significant, considering the smaller 95% CI values estimated for both r and mean bias compared to those for GOME-2B. Interestingly, the intercept values for both GOME-2A and GOME-2B are much higher for CF \leq 0.2 compared to those for increased CF thresholds. However, the intercept cannot be reliably estimated when only a few data pairs (<10 in case of GOME-2A) are available and their dispersion should not be ignored. In fact, the intercept standard errors calculated in this study for GOME-2A and GOME-2B are relatively high.

In contrast, the choice of CF has a more significant effect on the comparisons of MAX-DOAS data with OMI observations: the available data points are reduced to half and about one third for CF \leq 0.3 and CF \leq 0.2, respectively, while metrics are quite improved. This can be attributed to the higher spatial resolution of OMI compared to GOME-2 instruments, which can be 13 km \times 24 km when pointing at nadir. The correlation coefficient and the slope of the linear regression are both improved, respectively, from 0.86 and 1.15 for CF \leq 0.5, to 0.996 and 0.98 for CF \leq 0.3, and to 0.996 and 0.97 for CF \leq 0.2. Moreover, the intercept is improved from -1.68×10^{15} molecules/cm² (CF \leq 0.5) to -0.243 and 0.07×10^{15} molecules/cm² (CF \leq 0.3 and CF \leq 0.2, respectively), while the mean bias is also reduced to more than half when either the CF \leq 0.2 or the CF \leq 0.3 is chosen. Also, the statistical significance of the comparisons with OMI is quite higher, due to the lower variability of the data pairs. The above results reconfirm that clouds is an important factor affecting both the satellite and ground-based measurements, and that under clear skies at least the OMI sensor is probing more accurately the tropospheric column of NO₂ even at strongly polluted environments like the area around the city of Guangzhou. In the study of Wang et al. (2017b), it is shown that the effects of cloud contamination become significant for CF>40% and >30% for OMI and GOME-2 NO₂ product, respectively. Also, Jin et al. (2016) found significant improvement in the correlation between daily MAX-DOAS and OMI products at Gucheng, a rural site in North China, when more strict cloud screening criteria were applied. More specifically, the correlation coefficient for KNMI OMI DOMINO algorithm increased from 0.74 to 0.90 and from 0.75 to 0.95 for the NASA OMNO2 level 2 product.

Depending on the results of our analysis, a relatively low CF threshold (30% or lower) is recommended to be used in future validation studies, especially for OMI products.

The MAX-DOAS data are averaged over a period of time around the satellite overpass time, in order to account for the horizontal gradients of tropospheric NO₂ that are smoothed out by space-borne measurements due to the large satellite footprint. The time window selection depends on the satellite ground pixel size and the lifetime of the trace gas under investigation in combination with the prevailing local weather conditions. For simplicity purposes, in this study, fixed values are used for every satellite and the whole collocation datasets. Four different time windows centered at the overpass time have been investigated, with the reference value included: 1, 2, 3 and 4 hours. The results from the comparison between satellite and MAX-DOAS data are presented in data columns 1 and 8-10 of Table 2. For GOME-2A and GOME-2B the mean difference from the ground-based retrievals is in general lower when a window larger than 1 hour around the overpass time is used and is reduced by more than half for a window of 4 hours. The 95% confidence range for the bias, although shifted, is quite stable in all cases. The lower differences calculated for wider time windows are in agreement with the large pixel sizes of these two satellite sensors. However, lower correlation between the MAX-DOAS and satellite datasets is derived for larger windows, which indicates greater dispersion of the data pairs. The effect on the comparisons with OMI is statistically more significant, which is expected due to its smaller pixel size. The correlation coefficient is reduced from 0.99 to values <0.7 and the absolute mean difference is almost three times higher for the time windows of 3 and 4 hours compared to the reference case. Thus, we suggest that a short time window is used in such studies over areas with strong local NO_x emissions sources, depending on the satellite pixel size; about 1 hour window in case of OMI and GOME-2A and 1 or 2 hours for GOME-2B.

For the satellite validation two options are possible concerning the selection of the satellite overpass data available; either a temporal average value is calculated from space-borne observations or the closest in distance pixel is selected within a predefined radius from the MAX-DOAS station. The KNMI/NASA OMI overpass dataset used in this study has been already filtered by the distance from the Guangzhou city, i.e. only the closest pixel is reported. From the BIRA GOME-2 datasets an average value of all the pixels within an optimum distance have been used in this study, in order to account for the GOME-2 large pixel size and the random noise of the satellite data. The optimum distance criterion may vary for different satellite sensors and different measurement locations, because it depends on many factors such as the satellite footprint, the trace gas under investigation and its horizontal gradients and the time period selected for the MAX-DOAS data averaging. In the present study, four different radii around the MAX-DOAS location have been investigated, namely 20 km, 30 km, 40 km and the reference value of 50 km. The statistics estimated for the investigation of the distance criterion selection are reported in data columns 1 and 5-7 of Table 2. The effect of the distance criterion on the comparison of MAX-DOAS retrievals with OMI observations is rather weak. The calculated values of all statistics remain the same for distances 30-50 km. The correlation coefficient, slope, intercept and mean bias of OMI from MAX-DOAS are slightly affected for $d \leq 20$ km, changing from 0.996 to 0.937, from 0.98 to 0.92, from -0.24×10^{15} to 0.45×10^{15} molecules/cm² and from 3.52 to 3.11×10^{15} molecules/cm², respectively. . These results are attributed to the fact that the majority of the satellite pixels included in the comparisons are centered within 20 km from the ground-based location. The effect of the radius selection on the GOME-2A sensor is different

compared to that on GOME-2B. The comparison of GOME-2A with the MAX-DOAS observations is only slightly affected for a distance limit of 30 km and somewhat improved for $d \leq 20$ km. On the contrary, the comparison with GOME-2B seems to be more sensitive to the distance criterion applied. The number of collocations is one-fourth and two-thirds less for distance ≤ 30 km and ≤ 20 km, respectively, compared to the reference case. In addition, the r value is notably improved from 0.795 to 0.953 for $d \leq 20$ km, while better slopes, ranging between 0.94 and 0.99, appear for more stringent radius limits, and the absolute mean bias decrease about 6 times for $d \leq 30$ km. The large change in bias from negative for $d \leq 30$ km to positive for $d \leq 20$ km cannot be easily explained. Nevertheless, considering the high r value and the quite larger than unity slope value (1.18), GOME-2B seems to overestimate NO_2 columns for high ground-based NO_2 observations. In general, the distance of the satellite pixel center from the ground-based location depends on the pixel size; for smaller satellite footprints, e.g. OMI and GOME-2A, the pixel center is mostly located within a radius of 20 km, while for coarser satellite spatial resolution, e.g. GOME-2B, the pixel center can be within a distance of up to 40 km from the MAX-DOAS location. Thus, an upper distance threshold of 30 km seems to be an optimal selection, considering also the statistic results of this study.

According to our results, a set of coincidence criteria is recommended for the validation of space-borne measurements using MAX-DOAS observations over polluted areas. More specifically, a cloud fraction upper limit of 30% and a maximum radius around the ground-based location of 30 km have led to a very good agreement within acceptable levels of confidence. Moreover, a time window centered at the satellite overpass time of 1 hour for OMI and GOME-2A and 1 or 2 hours for GOME-2B is recommended. Unfortunately, the criteria thresholds have been tested on a limited amount of ground-based and satellite collocation data. In addition, the statistical significance of the comparisons with the GOME-2A and GOME-2B sensors is restricted due to the higher dispersion of the coincident measurements.

20 **5 Conclusions**

In this study, tropospheric NO_2 VCD measurements performed with the MAX-DOAS system of AUTH in Guangzhou, China are presented and used for comparisons with relevant satellite products. The data were collected during a one-year campaign that was held in the framework of the EU FP7 Monitoring and Assessment of Regional air quality in China using space Observations, Project Of Longterm sino-european co-Operation, MarcoPolo project. The MAX-DOAS data are compared with corresponding OMI/Aura, GOME-2/MetOp-A and GOME-2/MetOp-B overpass data, revealing good correlation coefficients, i.e. 0.996, 0.882, 0.795, respectively, and slope values ranging between 0.83 and 0.98. However, the NO_2 levels in the troposphere are underestimated by the satellite sensors on average by 3.5 (25.1%), 3.9 (10.3%) and 1.8 (5.7%) $\times 10^{15}$ molecules/cm², respectively for OMI, GOME-2A and GOME-2B. Similar results have been reported by several studies for OMI observations over other Chinese cities (Ma et al., 2013; Wu et al., 2013; Wang et al., 2017b). However, the agreement of our MAX-DOAS measurements with GOME-2A and GOME-2B retrievals is better compared to other studies (e.g. Wang et al., 2017b). The underestimation of tropospheric NO_2 by satellite sensors can be mainly explained by the relatively low

sensitivity of space-borne measurements near the surface, the a priori profile assumed for the AMF calculations, the gradient smoothing effect and the aerosol shielding effect.

5 Interestingly, GOME-2B shows the smallest underestimation despite its large pixel size (80 km × 40 km). By investigating the diurnal cycles of the ground-based tropospheric NO₂ VCD in Guangzhou as an average of the collocation days for each satellite separately, we conclude that the better agreement between the MAX-DOAS and GOME-2B retrievals can be partly attributed to the significantly lower tropospheric NO₂ loadings observed by MAX-DOAS during the GOME-2B overpass days. We revealed a diurnal pattern of tropospheric NO₂ with two maxima located around late-morning (10:00 LT) and late-afternoon (18:00 LT), indicating higher anthropogenic emissions, and a minimum close to local noon (~14:00 LT), reflecting photochemical sinks of tropospheric NO₂. Similar diurnal variation for the NO₂ surface concentration in Guangzhou city has been found by Qin et al. (2009). A double-peak diurnal cycle has been also shown for other Chinese cities, e.g. for Beijing (Ma et al., 2013) and Wuxi (Wang et al., 2017a) in spring and summer.

15 In order to investigate the effect of the coincidence criteria, the comparisons between ground-based and space-borne tropospheric NO₂ retrievals were repeated for various CF thresholds, different time windows for the averaging of the MAX-DOAS data around the overpass time and different upper limits for the distance of the satellite pixel center from the MAX-DOAS site. The effect of the MAX-DOAS averaging time window on the comparisons with OMI is more significant, probably due to its smaller pixel size. Although the agreement between OMI and MAX-DOAS is worse for larger time windows, for GOME-2 sensors the results are slightly improved. This finding can be explained by the smoothing of the horizontal NO₂ gradients due to the GOME-2 large pixel size. On the other hand, the distance criterion has no significant effect on OMI and GOME-2A results because most of the overpass data are located within 20 km from the ground-based station. In case of GOME-2B better slope values and mean biases are achieved for $d \leq 40$ km and ≤ 30 km, while the correlation coefficient is better for $d \leq 20$ km. The CF threshold seems to have the most profound effect on the comparisons between satellite and MAX-DOAS datasets. Especially in the case of OMI, the underestimation is substantially suppressed when more stringent cloud screening is applied ($CF \leq 20\%$), reducing the average difference to -3.44×10^{15} molecules/cm² (less than half the value for $CF \leq 50\%$) and improving the correlation coefficient to 0.996 and the slope to 0.98 from 0.862 and 1.15, respectively.

25 It should be mentioned here that in this study the MAX-DOAS tropospheric NO₂ time series covers about 1 year in total, with observations during spring and summer months only. This means that all our findings are representative of the spring-summer seasons only and no information is available on the NO₂ patterns in the area during late-autumn and winter seasons which are characterized by different emissions strengths and lifetimes of NO₂. Moreover, only a limited number of coincident space-borne and ground-based data are available, which, combined with the relatively high scattering of the data in case of GOME-2A and GOME-2B, leads to lower statistical level of confidence. Nevertheless, the findings of this study can be useful for future validation efforts.

Acknowledgements

This study has been conducted within the EU FP7 MarcoPolo project, www.marcopolo.eu. We acknowledge the free use of tropospheric NO₂ column data from the GOME2/MetopA, GOME2/MetopB and OMI/Aura sensors from <http://www.temis.nl/airpollution/no2.html>. We further acknowledge that the GOME-2 NO₂ data products were generated using level 1 data developed by EUMETSAT. The overpass tropospheric NO₂ time series for the city of Guangzhou, China, have been disseminated by the EU FP7 MarcoPolo project. The LIVAS products have been collected from the LIVAS database (<http://lidar.space.noa.gr:8080/livas>), and were produced by the LIVAS team under the European Space Agency (ESA) study contract No. 4000104106/11/NL/FF/fk. The authors would like to thank Prof. Xinming Wang for hosting and supporting Phaethon's operation in the infrastructure of Guangzhou Institute of Geochemistry, Chinese Academy of Sciences. The authors also would like to thank Zhonghui Huang for his invaluable and continuous support in operating the instrument and overcoming the technical difficulties.

References

- Aliwell, S., Van Roozendaal, M., Johnston, P., Richter, A., Wagner, T., Arlander, D. W., Burrows, J. P., Fish, D. J., Jones, R. L., Tørnkvist, K. K., Lambert, J.-C., Pfeilsticker, K., and Pundt, I. Analysis for BrO in zenith-sky spectra: An intercomparison exercise for analysis improvement. *J. Geophys. Res.*, 107(D14), 2002.
- Boersma, K.F., H.J. Eskes and E.J. Brinksma, Error Analysis for Tropospheric NO₂ Retrieval from Space, *J. Geophys. Res.* 109 D04311, doi:10.1029/2003JD003962, 2004.
- Boersma, K.F., H.J. Eskes, R. J. Dirksen, R. J. van der A, J. P. Veefkind, P. Stammes, V. Huijnen, Q. L. Kleipool, M. Sneep, J. Claas, J. Leitao, A. Richter, Y. Zhou, and D. Brunner, An improved retrieval of tropospheric NO₂ columns from the Ozone Monitoring Instrument, *Atmos. Meas. Tech.*, 4, 1905-1928, 2011
- Bogumil K., J. Orphal, T. Homann, S. Voigt, P. Spietz, O.C. Fleischmann, A. Vogel, M. Hartmann, H. Bovensmann, J. Frerick, and J.P. Burrows, "Measurements of molecular absorption spectra with the SCIAMACHY pre-flight model: Instrument characterization and reference data for atmospheric remote sensing in the 230-2380 nm region," *J. Photochem. Photobiol. A: Chem.* 157, 167-184, 2003.
- Brinksma, E. J., Pinardi, G., Volten, H., Braak, R., Richter, A., Schönhardt, A., van Roozendaal, M., Fayt, C., Hermans, C., Dirksen, R. J., Vlemmix, T., Berkhout, A. J. C., Swart, D. P. J., Oetjen, H., Wittrock, F., Wagner, T., Ibrahim, O. W., de Leeuw, G., Moerman, M., Curier, R. L., Celarier, E. A., Cede, A., Knap, W. H., Veefkind, J. P., Eskes, H. J., Allaart, M., Rothe, R., Piters, A. J. M., and Levelt, P. F.: The 2005 and 2006 DANDELIONS NO₂ and aerosol intercomparison campaigns, *J. Geophys. Res.*, 113, D16S46, doi:10.1029/2007JD008808, 2008.
- Buras R., Dowling T., and Emde C., New secondary-scattering correction in DISORT with increased efficiency for forward scattering. *Journal of Quantitative Spectroscopy & Radiative Transfer*, v. 112, iss. 12, p. 2028-2034, 2011.

- Celarier, E. A., et al., Validation of Ozone Monitoring Instrument nitrogen dioxide columns, *J. Geophys. Res.*, 113, D15S15, doi:10.1029/2007JD008908, 2008.
- Chan, C.K., Yao, X., Air pollution in mega cities in China. *Atmos. Environ.*, 42 (1), 1e42, 2008.
- Chan, K. L., Hartl, A., Lam, Y. F., Xie, P. H., Liu, W. Q., Cheung, H. M., Lampel, J., Pöhler, D., Li, A., Xu, J., Zhou, H. J.,
5 Ning, Z., and Wenig, M. O.: Observations of tropospheric NO₂ using ground based MAX-DOAS and OMI measurements during the Shanghai World Expo 2010, *Atmos. Environ.*, 119, 45–58, 2015.
- Chance, K., Spurr, R.J.D. Ring effect studies: Rayleigh scattering, including molecular parameters for rotational Raman scattering and the Fraunhofer spectrum. *Appl. Opt.* 36, 5224–5230, 1997.
- Clémer, K., Van Roozendael, M., Fayt, C., Hendrick, F., Hermans, C., Pinardi, G., Spurr, R., Wang, P., and De Mazière, M.:
10 Multiple wavelength retrieval of tropospheric aerosol optical properties from MAXDOAS measurements in Beijing, *Atmos. Meas. Tech.*, 3, 863-878, doi:10.5194/amt-3-863-2010, 2010.
- Crippa, M., Ciarelli, G., Piazzalunga, A., Schwikowski, M., Abbaszade, G., Schnelle-Kreis, J., Zimmermann, R., An, Z., Szidat, S., Baltensperger, U., El Haddad, I., and Prevot, A. S.: High secondary aerosol contribution to particulate pollution during haze events in China, *Nature*, 514, 218–222, 2014.
- 15 Danckaert, T., Fayt, C., Van Roozendael, M., et al.: QDOAS software user manual Version 2.111, IASB/BIRA, Uccle, Belgium, 2016.
- De Smedt, I., Stavrou, T., Hendrick, F., Danckaert, T., Vlemmix, T., Pinardi, G., Theys, N., Lerot, C., Gielen, C., Vigouroux, C., Hermans, C., Fayt, C., Veeffkind, P., Müller, J.-F., and Van Roozendael, M.: Diurnal, seasonal and long-term variations of global formaldehyde columns inferred from combined OMI and GOME-2 observations, *Atmos. Chem. Phys.*, 15, 12519-
20 12545, <https://doi.org/10.5194/acp-15-12519-2015>, 2015.
- Ding, J., van der A, R. J., Mijling, B., Levelt, P. F., and Hao, N.: NO_x emission estimates during the 2014 Youth Olympic Games in Nanjing, *Atmos. Chem. Phys.*, 15, 9399–9412, doi:10.5194/acp-15-9399-2015, 2015.
- Drosoglou, T., Bais, A. F., Zyrichidou, I., Kouremeti, N., Poupkou, A., Liora, N., Giannaros, C., Koukouli, M. E., Balis, D., and Melas, D.: Comparisons of ground-based tropospheric NO₂ MAX-DOAS measurements to satellite observations with the
25 aid of an air quality model over the Thessaloniki area, Greece, *Atmos. Chem. Phys.*, 17, 5829-5849, <https://doi.org/10.5194/acp-17-5829-2017>, 2017.
- EPA: National air quality and emissions trends report 1998, Rep. EPA 454/R-00-003, 1998.
- EPA: Air Quality Index-A Guide to Air Quality and Your Health, United States Environmental Protection Agency, Washington, DC20460, EPA-454/R-00-005, 2000.
- 30 Eskes, H. J. and Boersma, K. F.: Averaging kernels for DOAS total-column satellite retrievals, *Atmos. Chem. Phys.*, 3, 1285-1291, <https://doi.org/10.5194/acp-3-1285-2003>, 2003.
- Feister, U., and R. Grewe, Spectral albedo measurements in the UV and visible region over different types of surface, *Photochem. Photobiol.*, 62(4), 736-744, 1995.

- Frieß, U., Monks, P., Remedios, J., Rozanov, A., Sinreich, R., Wagner, T., and Platt, U.: MAX-DOAS O₄ measurements: A new technique to derive information on atmospheric aerosols: 2. Modeling studies, *J. Geophys. Res.*, 111, D14203, doi:10.1029/2005JD006618, 2006.
- Frieß, U., Sihler, H., Sander, R., Pöhler, D., Yilmaz, S., and Platt, U.: The vertical distribution of BrO and aerosols in the Arctic: Measurements by active and passive differential optical absorption spectroscopy, *J. Geophys. Res.*, 116, D00R04, doi:10.1029/2011JD015938, 2011.
- Frieß, U., Klein Baltink, H., Beirle, S., Clémer, K., Hendrick, F., Henzing, B., Irie, H., de Leeuw, G., Li, A., Moerman, M. M., van Roozendaal, M., Shaiganfar, R., Wagner, T., Wang, Y., Xie, P., Yilmaz, S., and Zieger, P.: Intercomparison of aerosol extinction profiles retrieved from MAX-DOAS measurements, *Atmos. Meas. Tech.*, 9, 3205-3222, doi:10.5194/amt-9-3205-2016, 2016.
- Fu, G. Q., Xu, W. Y., Yang, R. F., Li, J. B., and Zhao, C. S.: The distribution and trends of fog and haze in the North China Plain over the past 30 years, *Atmos. Chem. Phys.*, 14, 11949–11958, doi:10.5194/acp-14-11949-2014, 2014.
- Greenblatt G.D., J.J. Orlando, J.B. Burkholder, and A.R. Ravishankara, "Absorption measurements of oxygen between 330 and 1140 nm," *J. Geophys. Res.* 95, 18577-18582, 1990.
- Guo, H., Jiang, F., Cheng, H. R., Simpson, I. J., Wang, X. M., Ding, A. J., Wang, T. J., Saunders, S. M., Wang, T., Lam, S. H. M., Blake, D. R., Zhang, Y. L., and Xie, M.: Concurrent observations of air pollutants at two sites in the Pearl River Delta and the implication of regional transport, *Atmos. Chem. Phys.*, 9, 7343-7360, <https://doi.org/10.5194/acp-9-7343-2009>, 2009.
- Han, K. M., Lee, S., Chang, L. S., and Song, C. H.: A comparison study between CMAQ-simulated and OMI-retrieved NO₂ columns over East Asia for evaluation of NO_x emission fluxes of INTEX-B, CAPSS, and REAS inventories, *Atmos. Chem. Phys.*, 15, 1913–1938, doi:10.5194/acp-15-1913-2015, 2015.
- Hassinen, S., Balis, D., Bauer, H., Begoin, M., Delcloo, A., Eleftheratos, K., Gimeno Garcia, S., Granville, J., Grossi, M., Hao, N., Hedelt, P., Hendrick, F., Hess, M., Heue, K.-P., Hovila, J., Jønch-Sørensen, H., Kalakoski, N., Kauppi, A., Kiemle, S., Kins, L., Koukouli, M. E., Kujanpää, J., Lambert, J.-C., Lang, R., Lerot, C., Loyola, D., Pedernana, M., Pinardi, G., Romahn, F., van Roozendaal, M., Lutz, R., De Smedt, I., Stammes, P., Steinbrecht, W., Tamminen, J., Theys, N., Tilstra, L. G., Tuinder, O. N. E., Valks, P., Zerefos, C., Zimmer, W., and Zyrichidou, I.: Overview of the O3M SAF GOME-2 operational atmospheric composition and UV radiation data products and data availability, *Atmos. Meas. Tech.*, 9, 383-407, doi:10.5194/amt-9-383-2016, 2016.
- Heckel, A., Kim, S.-W., Frost, G. J., Richter, A., Trainer, M., and Burrows, J. P.: Influence of low spatial resolution a priori data on tropospheric NO₂ satellite retrievals, *Atmos. Meas. Tech.*, 4, 1805–1820, doi:10.5194/amt-4-1805-2011, 2011.
- Hendrick, F., Müller, J.-F., Clémer, K., Wang, P., De Mazière, M., Fayt, C., Gielen, C., Hermans, C., Ma, J. Z., Pinardi, G., Stavrou, T., Vlemmix, T., and Van Roozendaal, M.: Four years of ground-based MAX-DOAS observations of HONO and NO₂ in the Beijing area, *Atmos. Chem. Phys.*, 14, 765-781, doi:10.5194/acp-14-765-2014, 2014.
- Hilboll, A., A. Richter, and J. P. Burrows, Long-term changes of tropospheric NO₂ over megacities derived from multiple satellite instruments, *Atmos. Chem. Phys.*, 13, 4145–4169, 2013.

- Hönninger, G., von Friedeburg, C., and Platt, U.: Multi axis differential optical absorption spectroscopy (MAX-DOAS), *Atmos. Chem. Phys.*, 4, 231-254, doi:10.5194/acp-4-231-2004, 2004.
- Huang, H., Ho, K., Lee, S., Tsang, P., Ho, S., Zou, C., Zou, S., Cao, J., Xu, H., Characteristics of carbonaceous aerosol in PM_{2.5}: Pearl Delta River region, China. *Atmospheric Research* 104-105, 227e236, 2012.
- 5 Huang, R.-J., Zhang, Y., Bozzetti, C., Ho, K.-F., Cao, J., Han, Y., Dällenbach, K. R., Slowik, J. G., Platt, S. M., Canonaco, F., Zotter, P., Wolf, R., Pieber, S. M., Bruns, E. A., Crippa, M., Ciarelli, G., Piazzalunga, A., Schwikowski, M., Abbaszade, G., Schnelle-Kreis, J., Zimmermann, R., An, Z., Szidat, S., Baltensperger, U., Haddad, I. E., and Prévôt, A. S. H.: High secondary aerosol contribution to particulate pollution during haze events in China, *Nature*, 514, 218–222, 2014.
- Irie, H., Kanaya, Y., Akimoto, H., Iwabuchi, H., Shimizu, A., and Aoki, K.: First retrieval of tropospheric aerosol profiles
10 using MAX-DOAS and comparison with lidar and sky radiometer measurements, *Atmos. Chem. Phys.*, 8, 341–350, doi:10.5194/acp-8-341-2008, 2008.
- Irie, H., Takashima, H., Kanaya, Y., Boersma, K. F., Gast, L., Wittrock, F., Brunner, D., Zhou, Y. and Van Roozendael, M.: Eight-component retrievals from ground-based MAX-DOAS observations, *Atmos. Meas. Tech.*, 4(1), 1027–1044, doi:10.5194/amtd-4-639-2011, 2011.
- 15 Irie, H., Boersma, K. F., Kanaya, Y., Takashima, H., Pan, X., and Wang, Z. F.: Quantitative bias estimates for tropospheric NO₂ columns retrieved from SCIAMACHY, OMI, and GOME-2 using a common standard for East Asia, *Atmos. Meas. Tech.*, 5, 2403-2411, doi:10.5194/amt-5-2403-2012, 2012.
- Jiang, C., Wang, H., Zhao, T., Li, T., and Che, H.: Modeling study of PM_{2.5} pollutant transport across cities in China's Jing-Jin-Ji region during a severe haze episode in December 2013, *Atmos. Chem. Phys.*, 15, 5803–5814, doi:10.5194/acp-15-5803-
20 2015, 2015.
- Jin, J., Ma, J., Lin, W., Zhao, H., Shaiganfar, R., Beirle, S., Wagner, T., MAX-DOAS measurements and satellite validation of tropospheric NO₂ and SO₂ vertical column densities at a rural site of North China, *Atmos. Environ*, Volume 133, p. 12-25, 10.1016/j.atmosenv.2016.03.031, 2016.
- Kouremeti N, Bais A.F., Kazadzis S, Blumthaler M., and Schmitt R., "Charge-coupled device spectrograph for direct solar
25 irradiance and sky radiance measurements," *Appl. Opt.* 47, 1594-1607, 2008.
- Kouremeti, N., Bais, A. F., Balis, D., and Zyrichidou, I., Phaethon, A System for the Validation of Satellite Derived Atmospheric Columns of Trace Gases, in *Advances in Meteorology, Climatology and Atmospheric Physics*, edited by C. G. Helmis and P. T. Nastos, pp. 1081-1088, Springer Berlin Heidelberg, 10.1007/978-3-642-29172-2_151, 2013.
- Kramer, L. J., R. J. Leigh, J. J. Remedios, and P. S. Monks, Comparison of OMI and ground-based in situ and MAX-DOAS
30 measurements of tropospheric nitrogen dioxide in an urban area, *J. Geophys. Res.*, 113, D16S39, doi:10.1029/2007JD009168, 2008.
- Leitão, J., Richter, A., Vrekoussis, M., Kokhanovsky, A., Zhang, Q. J., Beekmann, M., and Burrows, J. P.: On the improvement of NO₂ satellite retrievals – aerosol impact on the air mass factors, *Atmos. Meas. Tech.*, 3, 475–493, doi:10.5194/amt-3-475-2010, 2010.

- Levelt P.F., G.H.J. van den Oord, M.R. Dobber, A. Malkki, H. Visser, J. de Vries, P. Stammes, J.O.V. Lundell and H. Saari, “The Ozone Monitoring Instrument”, *IEEE Trans. Geosc. Rem. Sens.*, 44 (5), 1093-1101, 2006.
- Levelt, P., Joiner, J., Tamminen, J., Veefkind, P., Bhartia, P. K., Stein Zweers, D., Duncan, B. N., Streets, D. G., Eskes, H., van der A, R., McLinden, C., Fioletov, V., Carn, S., de Laat, J., DeLand, M., Marchenko, S., McPeters, R., Ziemke, J., Fu, D.,
5 Liu, X., Pickering, K., Apituley, A., Gonzáles Abad, G., Arola, A., Boersma, F., Chan Miller, C., Chance, K., de Graaf, M., Hakkarainen, J., Hassinen, S., Ialongo, I., Kleipool, Q., Krotkov, N., Li, C., Lamsal, L., Newman, P., Nowlan, C., Suileiman, R., Tilstra, L. G., Torres, O., Wang, H., and Wargan, K.: The Ozone Monitoring Instrument: Overview of twelve years in space, *Atmos. Chem. Phys. Discuss.*, <https://doi.org/10.5194/acp-2017-487>, in review, 2017.
- Li, Z., Chen, H., Cribb, M., Dickerson, R., Holben, B., Li, C., Lu, D., Luo, Y., Maring, H., and Shi, G.: Preface to special
10 section on East Asian Studies of Tropospheric Aerosols: An International Regional Experiment (EAST-AIRE). *J. Geophys. Res.*, 112, D22S00, doi: 10.1029/2007JD008479, 2007.
- Lin, J.-T., Martin, R. V., Boersma, K. F., Sneep, M., Stammes, P., Spurr, R., Wang, P., Van Roozendaal, M., Clémer, K., and Irie, H.: Retrieving tropospheric nitrogen dioxide from the Ozone Monitoring Instrument: effects of aerosols, surface reflectance anisotropy, and vertical profile of nitrogen dioxide, *Atmos. Chem. Phys.*, 14, 1441–1461, doi:10.5194/acp-
15 14-1441-2014, 2014.
- Lin, J.-T., Liu, M.-Y., Xin, J.-Y., Boersma, K. F., Spurr, R., Martin, R., and Zhang, Q.: Influence of aerosols and surface reflectance on satellite NO₂ retrieval: seasonal and spatial characteristics and implications for NO_x emission constraints, *Atmos. Chem. Phys.*, 15, 11217–11241, doi:10.5194/acp-15-11217-2015, 2015.
- Liu, F., Beirle, S., Zhang, Q., van der A, R. J., Zheng, B., Tong, D., and He, K.: NO_x emission trends over Chinese cities
20 estimated from OMI observations during 2005 to 2015, *Atmos. Chem. Phys.*, 17, 9261-9275, <https://doi.org/10.5194/acp-17-9261-2017>, 2017.
- Ma, J. Z., Beirle, S., Jin, J. L., Shaiganfar, R., Yan, P., and Wagner, T.: Tropospheric NO₂ vertical column densities over Beijing: results of the first three years of ground-based MAX-DOAS measurements (2008–2011) and satellite validation, *Atmos. Chem. Phys.*, 13, 1547-1567, doi:10.5194/acp-13-1547-2013, 2013.
- 25 Mayer, B. and Kylling, A.: Technical note: The libRadtran software package for radiative transfer calculations – description and examples of use, *Atmos. Chem. Phys.*, 5, 1855–1877, doi: 10.5194/acp-5-1855-2005, 2005.
- Mebust, A. K. and Cohen, R. C.: Space-based observations of fire NO_x emission coefficients: a global biome-scale comparison, *Atmos. Chem. Phys.*, 14, 2509-2524, doi:10.5194/acp-14-2509-2014, 2014.
- Munro, R., Lang, R., Klaes, D., Poli, G., Retscher, C., Lindstrot, R., Huckle, R., Lacan, A., Grzegorski, M., Holdak, A.,
30 Kokhanovsky, A., Livschitz, J., and Eisinger, M.: The GOME-2 instrument on the Metop series of satellites: instrument design, calibration, and level 1 data processing – an overview, *Atmos. Meas. Tech.*, 9, 1279-1301, <https://doi.org/10.5194/amt-9-1279-2016>, 2016.

- Olivier, J.G.J. and J.J.M. Berdowski, Global emissions sources and sinks. In: Berdowski, J., Guicherit, R. and B.J. Heij (eds.) "The Climate System", pp. 33-78. A.A. Balkema Publishers/Swets & Zeitlinger Publishers, Lisse, The Netherlands. ISBN 90 5809 255 0, 2001.
- Ozone Monitoring Instrument (OMI) Data User's Guide, 2012, available at
5 http://disc.sci.gsfc.nasa.gov/Aura/additional/documentation/README.OMI_DUG.pdf
- Platt, U.: Differential optical absorption spectroscopy (DOAS), in *Air Monitoring by Spectroscopic Techniques*, Chem. Anal. Ser., 127, 27–84, John Wiley, New York, 27–84, 1994.
- Platt, U. and Stutz, J.: *Differential Optical Absorption Spectroscopy, Principles and Applications*, Springer, Physics of Earth and Space Environments, ISBN 978-3-540-21193-8, 2008.
- 10 Qin, M., Xie, P., Su, H., Gu, J., Peng, F., Li, S., Zeng, L., Liu, J., Liu, W., and Zhang, Y.: An observational study of the HONO-NO₂ coupling at an urban site in Guangzhou City, South China, *Atmos. Environ.*, 43, 5731–5742, doi:10.1016/j.atmosenv.2009.08.017, 2009.
- Richter, A., Burrows, J. P., Nüß, H., Granier, C., and Niemeier, U.: Increase in tropospheric nitrogen dioxide over China observed from space, *Nature*, 437, 129–132, 2005.
- 15 Schneider, P. and van der A, R. J.: A global single-sensor analysis of 2002–2011 tropospheric nitrogen dioxide trends observed from space, *J. Geophys. Res.*, 117, 1–17, doi:10.1029/2012JD017571, 2012.
- Schumann, U. and Huntrieser, H.: The global lightning-induced nitrogen oxides source, *Atmos. Chem. Phys.*, 7, 3823-3907, doi:10.5194/acp-7-3823-2007, 2007.
- Shao, M., Zhang, Y.H., Zeng, L.M., et al., Ground-level ozone in the Pearl River Delta and the roles of VOC and NO_x in its
20 production. *Journal of Environmental Management* 90, 512-518, 2009.
- Theys, N., De Smedt, I., Gent, J., Danckaert, T., Wang, T., Hendrick, F., Stavrakou, T., Bauduin, S., Clarisse, L., Li, C., Krotkov, N., Yu, H., Brenot, H., and Van Roozendael, M.: Sulfur dioxide vertical column DOAS retrievals from the Ozone Monitoring Instrument: Global observations and comparison to ground-based and satellite data, *J. Geophys. Res.-Atmos.*, 120, 2470–2491, 2015.
- 25 Vandaele A.C., C. Hermans, P.C. Simon, M. Carleer, R. Colins, S. Fally, M.F. Méridienne, A. Jenouvrier, and B. Coquart, "Measurements of the NO₂ absorption cross-sections from 42000 cm⁻¹ to 10000 cm⁻¹ (238-1000 nm) at 220 K and 294 K," *J. Quant. Spectrosc. Radiat. Transfer* 59, 171-184, 1998.
- van der A, R. J., Mijling, B., Ding, J., Koukouli, M. E., Liu, F., Li, Q., Mao, H., and Theys, N.: Cleaning up the air: effectiveness of air quality policy for SO₂ and NO_x emissions in China, *Atmos. Chem. Phys.*, 17, 1775-1789, [https://doi.org/10.5194/acp-](https://doi.org/10.5194/acp-17-1775-2017)
30 [17-1775-2017](https://doi.org/10.5194/acp-17-1775-2017), 2017.
- Van Roozendael, M., Fayt, C., Post, P., Hermans, C., and Lambert, J.-C.: Retrieval of BrO and NO₂ from UV-Visible Observations, in: *Sounding the troposphere from space: a new Era for Atmospheric Chemistry. The TROPOSAT Final Report*, edited by: Borrell, P., Borrell, P. M., Burrows, J. P., and Platt, U., Springer Verlag, Berlin, Heidelberg, 155–166, 2003.

- Velders, G. J. M., C. Granier, R. W. Portmann, K. Pfeilsticker, M. Wenig, T. Wagner, U. Platt, A. Richter, and J. P. Burrows, Global tropospheric NO₂ column distributions: Comparing 3-D model calculations with GOME measurements, *J. Geophys. Res.*, 106, 12,643–12,660, 2001.
- Vinken, G. C. M., Boersma, K. F., Maasackers, J. D., Adon, M., and Martin, R. V.: Worldwide biogenic soil NO_x emissions inferred from OMI NO₂ observations, *Atmos. Chem. Phys.*, 14, 10363-10381, doi:10.5194/acp-14-10363-2014, 2014.
- 5 Wang, X., Carmichael, G., Chen, D., Tang, Y., Wang, T., Impacts of different emission sources on air quality during March 2001 in the Pearl River Delta (PRD) region. *Atmos. Environ* 39 (29), 5227e5241, 2005.
- Wang, J., Wang, C., Lai, C., Chang, C., Zhang, Y., Liu, S., Shao, M., Characterization of ozone precursors in the Pearl River Delta by time series observation of non-methane hydrocarbons. *Atmos. Environ* 42 (25), 6223, 2008.
- 10 Wang, Y., Lampel, J., Xie, P., Beirle, S., Li, A., Wu, D., and Wagner, T.: Ground-based MAX-DOAS observations of tropospheric aerosols, NO₂, SO₂ and HCHO in Wuxi, China, from 2011 to 2014, *Atmos. Chem. Phys.*, 17, 2189-2215, <https://doi.org/10.5194/acp-17-2189-2017>, 2017a.
- Wang, Y., Beirle, S., Lampel, J., Koukoulis, M., De Smedt, I., Theys, N., Li, A., Wu, D., Xie, P., Liu, C., Van Roozendael, M., Stavrou, T., Müller, J.-F., and Wagner, T.: Validation of OMI, GOME-2A and GOME-2B tropospheric NO₂, SO₂ and HCHO
- 15 products using MAX-DOAS observations from 2011 to 2014 in Wuxi, China: investigation of the effects of priori profiles and aerosols on the satellite products, *Atmos. Chem. Phys.*, 17, 5007-5033, <https://doi.org/10.5194/acp-17-5007-2017>, 2017b.
- Wagner, T., B. Dix, C. v. Friedeburg, U. Frieß, S. Sanghavi, R. Sinreich, and U. Platt, MAX-DOAS O₄ measurements: A new technique to derive information on atmospheric aerosols—Principles and information content, *J. Geophys. Res.*, 109, D22205, doi:10.1029/2004JD004904, 2004.
- 20 Wagner, T., Beirle, S., Brauers, T., Deutschmann, T., Frieß, U., Hak, C., Halla, J. D., Heue, K. P., Junkermann, W., Li, X., Platt, U., and Pundt-Gruber, I.: Inversion of tropospheric profiles of aerosol extinction and HCHO and NO₂ mixing ratios from MAX-DOAS observations in Milano during the summer of 2003 and comparison with independent data sets, *Atmos. Meas. Tech.*, 4, 2685–2715, doi:10.5194/amt-4-2685-2011, 2011.
- Webb, A. R., I. M. Stromberg, H. Li, and L. M. Bartlett, Airborne spectral measurements of surface reflectivity at ultraviolet
- 25 and visible wavelengths, *J. Geophys. Res.*, 105, 4945–4948, 2000.
- WHO: Review of evidence on health aspects of air pollution – REVIHAAP Project, Technical Report, World Health Organization, Regional Office for Europe, Copenhagen, Denmark, 2013.
- Wittrock, F., Oetjen, H., Richter, A., Fietkau, S., Medeke, T., Rozanov, A., and Burrows, J. P.: MAX-DOAS measurements of atmospheric trace gases in Ny-Ålesund - Radiative transfer studies and their application, *Atmos. Chem. Phys.*, 4, 955-966,
- 30 doi:10.5194/acp-4-955-2004, 2004.
- Wu, F. C., Xie, P. H., Li, A., Chan, K. L., Hartl, A., Wang, Y., Si, F. Q., Zeng, Y., Qin, M., Xu, J., Liu, J. G., Liu, W. Q., and Wenig, M.: Observations of SO₂ and NO₂ by mobile DOAS in the Guangzhou eastern area during the Asian Games 2010, *Atmos. Meas. Tech.*, 6, 2277-2292, doi:10.5194/amt-6-2277-2013, 2013.

Xia, X., Li, Z., Holben, B., Wang, P., Eck, T., Chen, H., Cribb, M., and Zhao, Y.: Aerosol optical properties and radiative effects in the Yangtze Delta region of China, *J. Geophys. Res.*, 112, D22S12, doi:10.1029/2007JD008859, 2007.

Zhang, Q., et al., NO_x emission trends for China, 1995–2004: The view from the ground and the view from space, *J. Geophys. Res.*, 112, D22306, doi:10.1029/2007JD008684, 2007.

5 Zhou K., Ye Y., Liu Q., Liu A., Peng S., Evaluation of ambient air quality in Guangzhou, China, *Journal of Environmental Sciences* 19 432-437, 2007.

Zyrichidou, I., Koukouli, M. E., Balis, D. S., Katragkou, E., Melas, D., Poupkou, A., Kioutsioukis, I., van der A, R., Boersma, F. K., van Roozendaal, M., and Richter, A.: Corrigendum to "Satellite observations and model simulations of tropospheric NO₂ columns over south-eastern Europe" published in *Atmos. Chem. Phys.*, 9, 6119–6134, 2009, *Atmos. Chem. Phys.*, 9,

10 6495-6496, <https://doi.org/10.5194/acp-9-6495-2009>, 2009.

Table 1. Main features of the DOAS analysis.

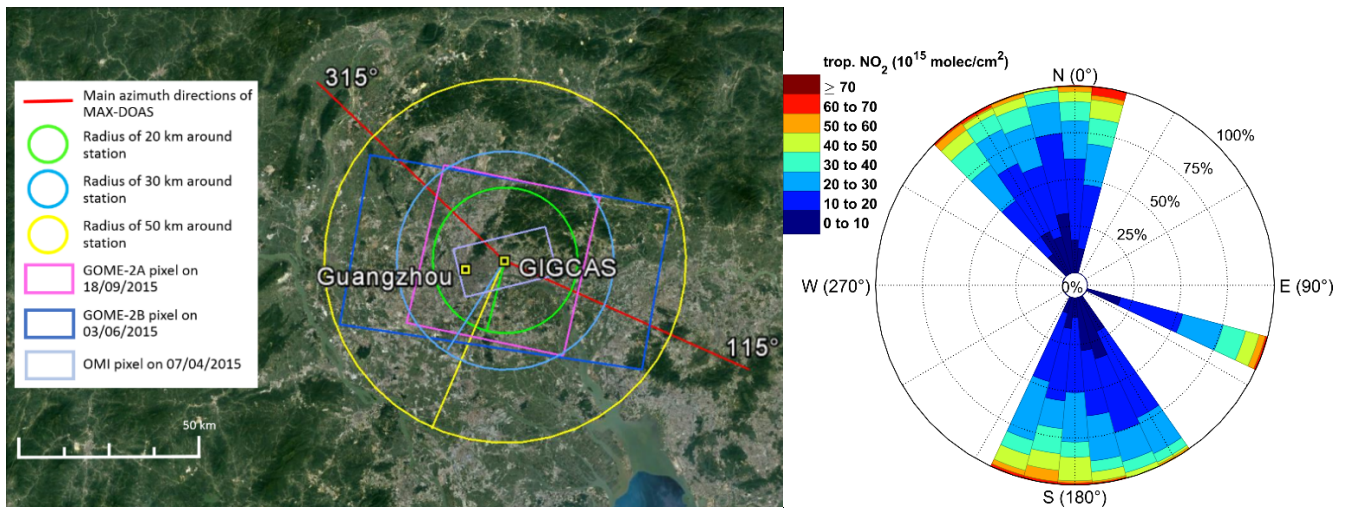
Fitting window	411-445 nm
Fraunhofer reference spectrum	Zenith spectrum of each elevation sequence interpolated at time
Polynomial degree	Order 4 (5 coefficients)
Intensity off-set	0 th order (constant)
Cross-sections:	
NO₂ (298 K)	Vandaele et al. (1998) [I_0 correction with SCD of 1×10^{17} molecules/cm ²]
NO₂ (220 K)	Vandaele et al. (1998) [I_0 correction with SCD of 1×10^{17} molecules/cm ²]
O₃ (223 K)	Serdyuchenko et al. (2014) [I_0 correction with SCD of 1×10^{20} molecules/cm ²]
O₄ (293 K)	Thalman and Volkamer (2013)
H₂O	HITEMP (Rothman et al., 2010)
Ring	Chance and Spurr (1997)

Table 2. Statistics of the comparison of tropospheric NO₂ VCD derived from Phaethon and the three satellite sensors, using the reference coincidence criteria (first data column) and for several different cases of CF filtering, time period around overpass and distance limit between the MAX-DOAS station and the satellite pixel center.

Compared to Phaethon NO ₂ VCD _{trop}	Reference	Cloud Fraction			Radius			Time Window		
	≤ 0.3, ≤ 50km, 1 hour	≤ 0.5	≤ 0.4	≤ 0.2	≤ 40km	≤ 30km	≤ 20km	2 hours	3 hours	4 hours
Number of data pairs	11	22	18	8	11	11	9	13	16	19
Correlation coefficient (r)	0.996	0.862	0.88	0.996	0.996	0.996	0.937	0.874	0.358	0.488
lower (95% confidence)	0.985	0.691	0.70	0.978	0.985	0.985	0.723	0.623	-0.167	0.043
upper (95% confidence)	0.999	0.941	0.95	0.999	0.999	0.999	0.987	0.962	0.725	0.771
OMI Slope	0.98 (±0.03)	1.15	1.13	0.97	0.98	0.98	0.92	1.01	0.44	0.63
Intercept [$\times 10^{15}$ molec/cm ²]	-0.24 (±0.74)	-1.68	-1.46	0.07	-0.24	-0.24	0.45	-2.41	27.8	16.4
Mean bias [$\times 10^{15}$ molec/cm ²]	-3.52	-7.37	-6.88	-3.44	-3.52	-3.52	-3.11	-3.39	-9.72	-8.90
lower (95% confidence)	-4.93	-10.5	-10.4	-5.48	-4.93	-4.93	-4.28	-5.37	-17.0	-14.2
upper (95% confidence)	-2.10	-4.22	-3.38	-1.39	-2.10	-2.10	-1.94	-1.42	-2.40	-3.64
Standard deviation (1 σ) [$\times 10^{15}$ molec/cm ²]	2.11	7.11	7.05	2.45	2.11	2.11	1.53	3.27	13.37	10.91
Number of data pairs	11	13	12	8	11	11	10	11	11	11
Correlation coefficient (r)	0.882	0.901	0.89	0.945	0.882	0.882	0.892	0.790	0.679	0.626
lower (95% confidence)	0.600	0.694	0.64	0.717	0.600	0.598	0.598	0.362	0.133	0.041
upper (95% confidence)	0.969	0.970	0.97	0.990	0.969	0.969	0.974	0.943	0.909	0.891
GOME-2A Slope	0.94 (±0.17)	0.95	0.95	1.05	0.94	0.94	0.91	1.00	0.96	0.88
Intercept [$\times 10^{15}$ molec/cm ²]	0.34 (±7.46)	0.56	0.28	-3.99	0.34	1.42	1.27	-1.89	0.10	3.58
Mean bias [$\times 10^{15}$ molec/cm ²]	-3.91	-3.51	-3.72	-4.14	-3.91	-3.56	-2.23	-4.19	-3.05	-1.48
lower (95% confidence)	-10.08	-8.39	-9.30	-10.1	-10.1	-9.90	-8.30	-10.8	-9.86	-8.42
upper (95% confidence)	2.26	1.37	1.86	1.80	2.26	2.79	3.83	2.43	3.76	5.46
Standard deviation (1 σ) [$\times 10^{15}$ molec/cm ²]	9.19	8.08	8.78	7.11	9.19	9.44	8.48	9.86	10.14	10.33
Number of data pairs	23	31	28	15	23	17	9	25	25	26
Correlation coefficient (r)	0.795	0.780	0.75	0.656	0.866	0.878	0.953	0.806	0.696	0.641
r lower (95% confidence)	0.569	0.588	0.52	0.216	0.705	0.689	0.785	0.603	0.415	0.337
r upper (95% confidence)	0.909	0.889	0.88	0.874	0.942	0.956	0.990	0.911	0.856	0.824
GOME-2B Slope	0.83 (±0.14)	0.89	0.87	0.66	0.97	0.94	0.99	0.69	0.59	0.55
Intercept [$\times 10^{15}$ molec/cm ²]	0.97 (±3.69)	0.95	1.20	3.92	-3.55	-2.95	-0.99	4.72	7.06	9.16
Mean bias [$\times 10^{15}$ molec/cm ²]	-1.80	-2.83	-2.94	-0.37	-1.32	-0.35	4.60	0.91	0.88	0.76
lower (95% confidence)	-5.06	-5.58	-5.98	-3.79	-4.64	-4.71	-0.04	-2.15	-2.55	-2.80
upper (95% confidence)	1.46	-0.08	0.10	3.06	2.00	4.00	9.24	3.97	4.31	4.32
Standard deviation (1 σ) [$\times 10^{15}$ molec/cm ²]	7.54	7.49	7.84	6.19	7.68	8.47	6.04	7.41	8.31	8.82

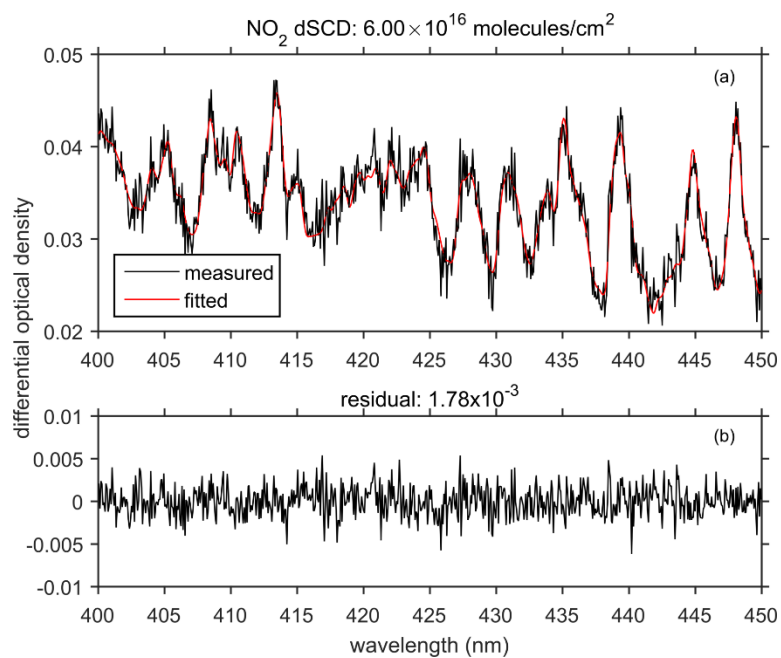


5 **Figure 1: The tracker and entrance optics of the Phaethon MAX-DOAS system (upper-left) installed on the roof of the Institute of Geochemistry, Chinese Academy of Sciences, in Guangzhou (upper-right) and an overview of the surrounding area towards West (bottom).**



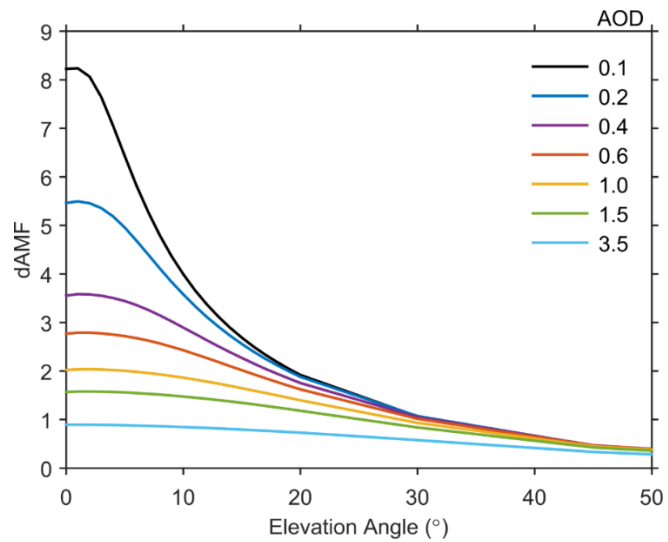
5 **Figure 2: Left panel: Image of the area around the MAX-DOAS station (GIGCAS) in the Guangzhou megacity, China. The red lines indicate the two main azimuth viewing angles of the MAX-DOAS instrument (115° and 315°). The rectangles outline the GOME-2A, GOME-2B and OMI pixel sizes and positions on 18 September, 3 June and 7 April 2015, respectively. The circles outline areas of different radii around GIGCAS. The image is a courtesy of the Google Earth NASA images. Right panel: Rose diagram showing the frequency of tropospheric NO₂ columns observed at the different azimuth viewing angles as a percentage of the total number of measurements performed in each direction separately.**

10

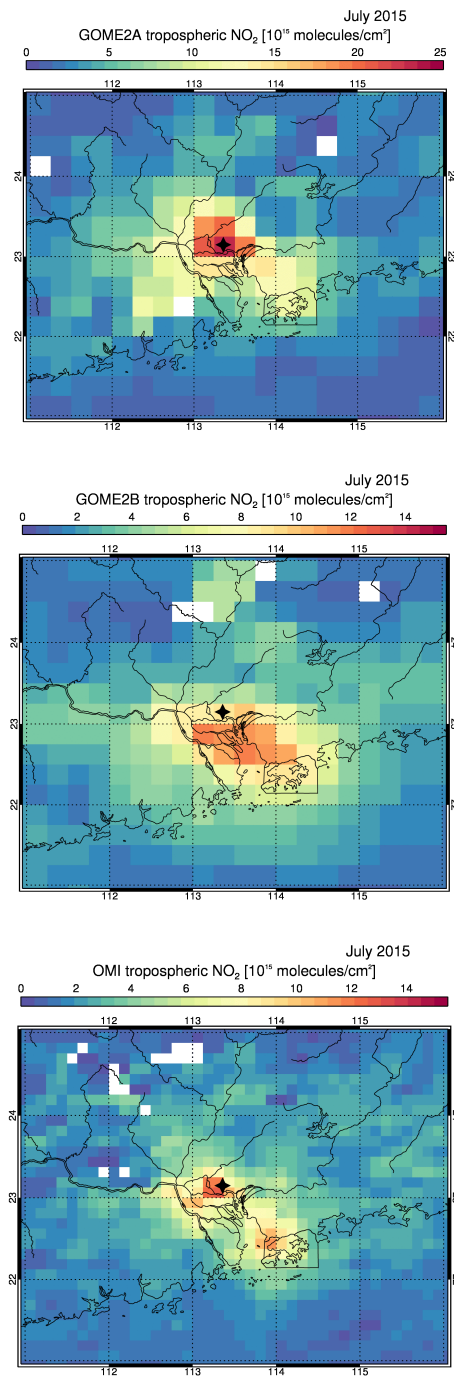


5

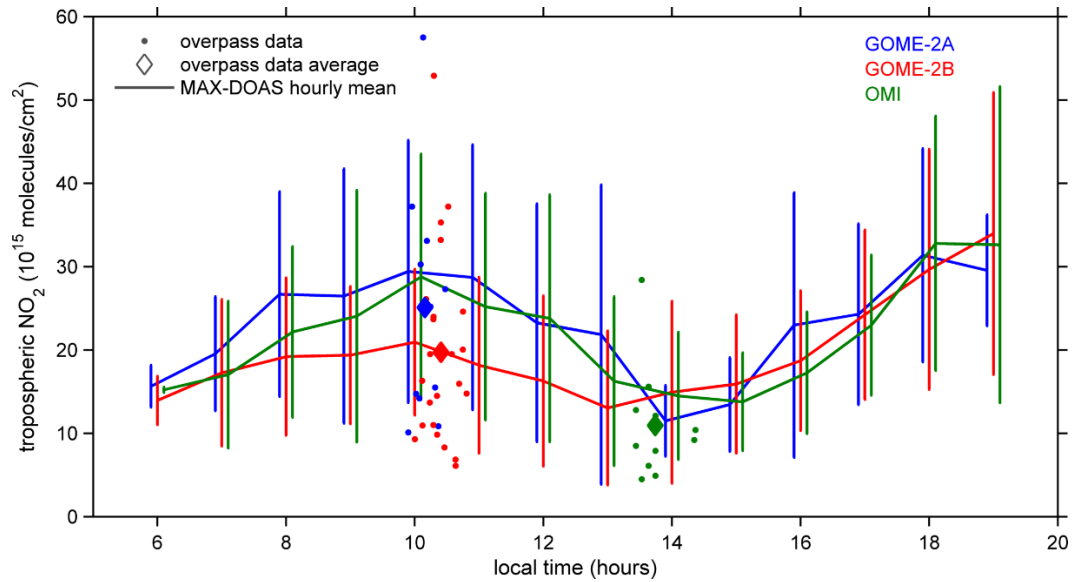
Figure 3: Example of NO₂ fitting results obtained in Guangzhou on 7 April 2015, around 07:50 UTC (15:50 local time), at an elevation angle of 15° and SZA of about 51°. Panel (a) shows the measured (black) and the fitted (red) NO₂ and panel (b) shows the residual of the DOAS fit.



5 Figure 4: Examples of calculated tropospheric dAMFs as a function of elevation viewing angle for different values of the aerosol optical depth (AOD) at 440 nm.

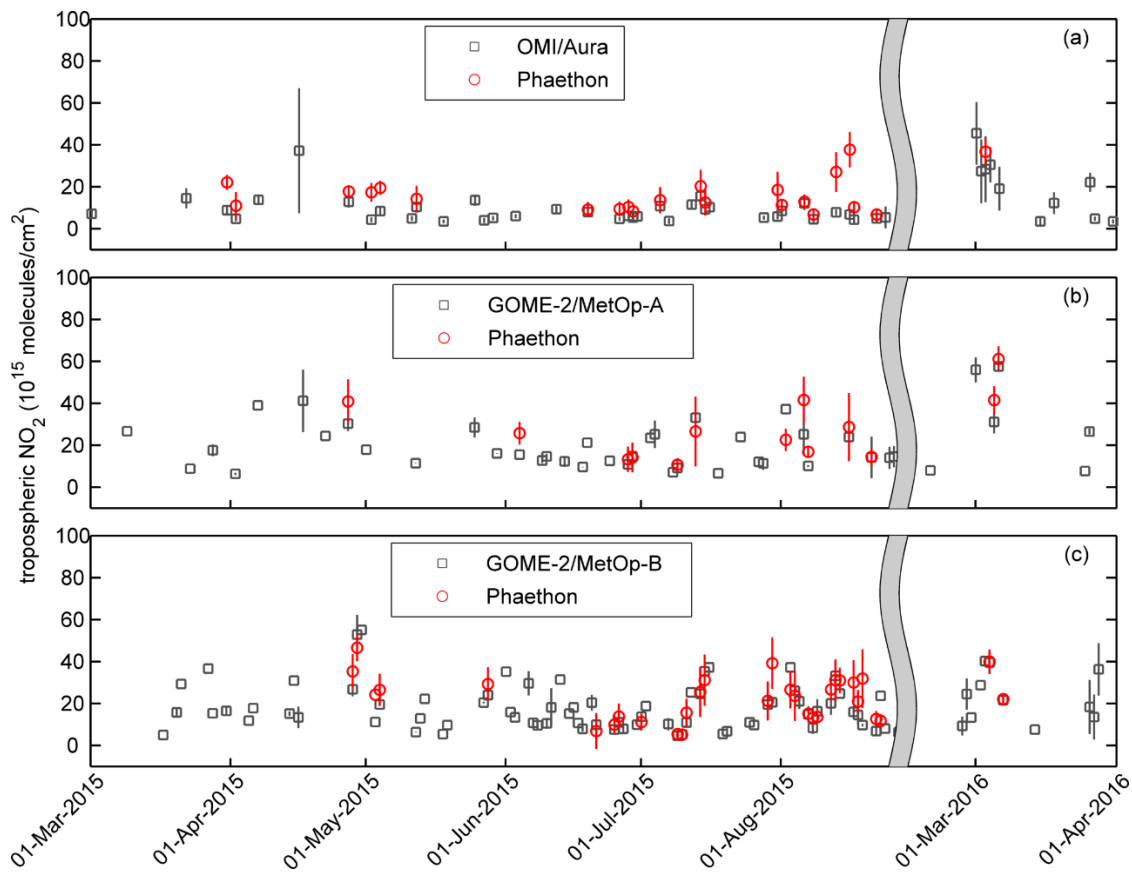


5 Figure 5: Monthly averages of GOME-2A, GOME-2B and OMI NO₂ tropospheric VCDs for July 2015 are presented. The GOME-2A monthly tropospheric NO₂ mean values [on a 0.25×0.25° grid] are shown in the upper panel, the GOME-2B, also on a 0.25×0.25° grid, in the middle and OMI/Aura on a finer, 0.125×0.125°, grid in the bottom panel. The star symbol shows the MAX-DOAS location. The NO₂ observations averaged and gridded here correspond to cloud radiance fraction <50%. Note that the color bars have different ranges.

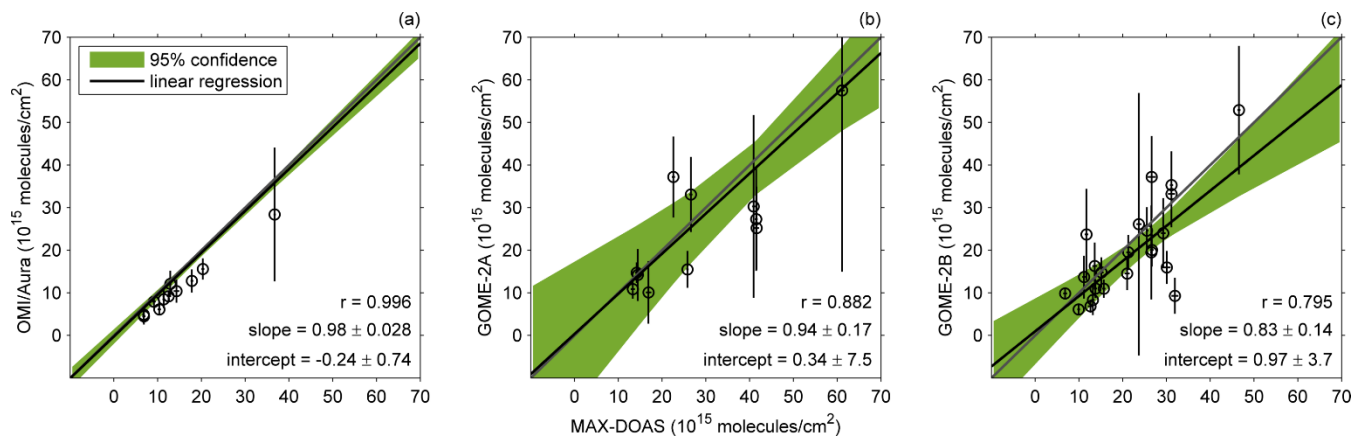


5 **Figure 6: Average diurnal variation of tropospheric NO₂ columns derived from the MAX-DOAS observations at elevation angles of 15° and 30° in Guangzhou from April 2015 to March 2016. The three lines correspond to the MAX-DOAS hourly mean values resulting only from days with collocated OMI (green), GOME-2A (blue) and GOME-2B (red) data. The error bars indicate the standard deviation of the hourly averages ($\pm 1\sigma$). The filled circles represent the NO₂ overpass data of the three satellite sensors that are included in the comparison with the MAX-DOAS measurements, and the filled diamonds their average. The symbols are color-coded similarly to diurnals; blue, red and green indicate GOME-2A, GOME-2B and OMI overpass data, respectively.**

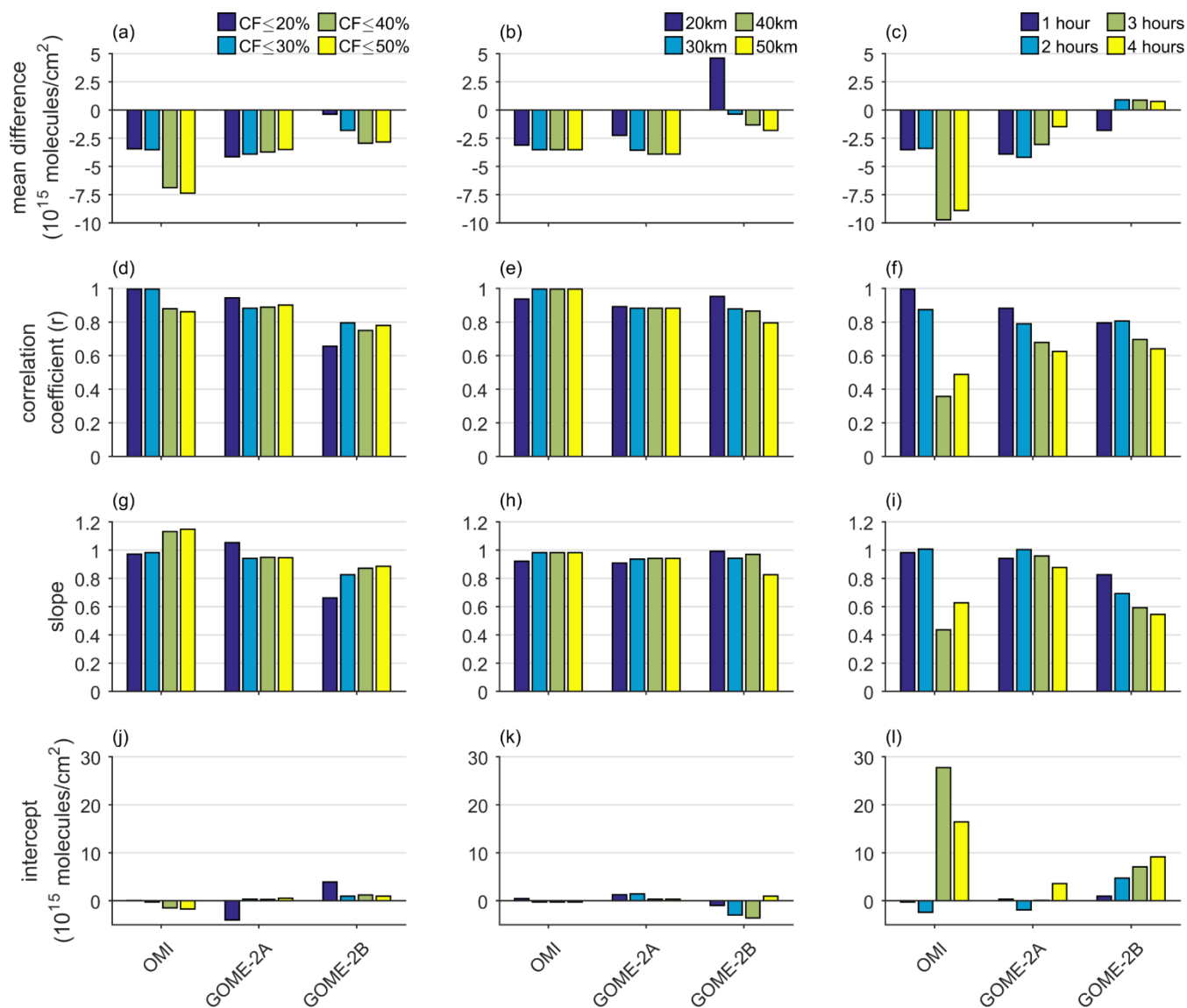
10



5 **Figure 7: Tropospheric NO₂ in Guangzhou from MAX-DOAS measurements at the elevation angles of 15° and 30° and the satellite sensors OMI (a), GOME-2A (b) and GOME-2B (c) corresponding to cloud fraction ≤0.3. Ground-based measurements are averages of 1 hour centered at the satellite overpass time. The error bars represent the measurement error. The grey shaded area stands in for the time period during which the MAX-DOAS was not operating.**



5 **Figure 8: Scatter plots between the ground-based and satellite tropospheric NO₂ datasets presented in Fig. 7. The error bars represent the measurement error. The grey and black lines stand for the y=x reference line and the error weighted linear fit, respectively. The 95% confidence interval of the fitting is also shown (green area). The corresponding comparison statistics are presented in the first data column of Table 2.**



5 **Figure 9:** Bar plots of the statistical results of the comparisons between ground-based and satellite tropospheric NO₂ data pairs for the different coincidence criteria used in this study; cloud fraction (a, d, g, j), distance of satellite pixel center from the ground-based measurement location (b, e, h, k) and time window around satellite overpass (c, f, i, l). The mean difference (a, b, c) refers to the absolute difference of the satellite derived tropospheric NO₂ from the MAX-DOAS observations. All the statistics are presented in Table 2.