

We would like to thank Referee #1 for the comments to improve our manuscript. In this document, we provide our reply to the comments. The original comments made by the referee are numbered and typeset in red. Page, line and figure numbers refer to the old version of the manuscript. After the reply we provide a revised version of the manuscript, in which all changes are highlighted.

1. *Summary Comment.* This is an important paper bench-marking the performance of the TROP-OMI instrument in the SWIR band. The results of the laboratory testing are significant in their use in reducing on-orbit observations and test data. The paper should be published. However, the methodology is complex and the information provided is not sufficient for an outside evaluation to adequately assess the success of the test analyses reported. The reported performance of the instrument is not clearly stated, as different presentations of the information lead the reader to form different conclusions: the raw corrected data, the plotted slit function behaviour and the corrected data. These seem to range from a dynamic range of $1.0\text{E-}7$ to $1.0\text{E-}4$ or $1.0\text{E-}5$. The different presentations and their implications should be clearly described to the reader.

Adjusted. Extra information is given on the methodology and tests (see items 16, 19, 20, 26, 31 and 35 below). The confusion around the performance using stray-light characterization data, corrected example data and slit function data is discussed in items 24 and 28.

2. *General comments.* In some 2-D detector systems it is very difficult to separate optical stray light effects from artifacts generated by the readout and resetting operations. There should be some discussion added to address these issues in order that the stray light effects documented are considered in the correct context. $1.0\text{E-}7$ as a far-wing stray light rejection is good performance for a double monochromator. Accepting that kind of performance in a single monochromator with a array detector should be done with the greatest care.

Adjusted. The readout is discussed in items 16, 20 and 27. The orders of magnitude are discussed in item 24. Two line features in the stray light are discussed in item 35.

3. The description of the testing and analysis, and especially the attribution of systematic affects in section 3, is not likely to be accessible to a wider audience. The terms and methods for drawing the conclusions presented should be more fully explained. In particular, separating blooming and resetting from the effects of stray light is an important issue.

Adjusted. The description is extended in items 20, 23, 25 and 29.

4. It might be instructive to illuminate more than one pixel in a ‘two-source’ test to examine the separation of stray light effects and effects from other sources such as blooming and charge carry-over (incomplete pixel resetting).

Adjusted. Stray light can only be measured with the full spectrometer and that is no longer available for testing. However, measurements have been taken where many pixels have been illuminated and at regular intensities. The stray-light correction still works. See item 24.

Some detailed comments listed by PDF page number.

5. Page 1 Line 1 Suggest: “... Short-Wave InfraRed ...”

Not adjusted. According to the AMT house standards, a capitalized abbreviation does not necessarily warrant the capitalization of the written-out form and non-standard usage of capitalization is only acceptable for proper nouns.

6. Page 1 Line 3 Suggest: “... are needed that are minimally contaminated by instrumental stray light.”

Adjusted according to the suggestion.

7. Page 1 Line 5 “... seven orders of magnitude by making measurements with some saturated and some unsaturated detector pixels ...”

Adjusted. The suggestion does not make it clear that the same setup is measured in different ways. The text is changed to: "... seven orders of magnitude by performing measurements with different exposure times, saturating detector pixels at the longer exposure times."

8. Page 1 Line 7 "... signal, for example in a dark forest scene close to bright clouds, by ..."

Adjusted. The first comma is added to the text, but the second comma would change the meaning; the factor 10 reduction is not fixed, but applies to the difficult forest scene. The text is changed to: "Applying this correction significantly reduces the stray-light signal, for example in a simulated dark forest scene close to bright clouds by a factor of about 10."

9. Page 1 Line 8 "It is expected that this reduces the stray-light error sufficiently for accurate gas-column retrievals." Can a stronger statement be made?

Adjusted. A full retrieval analysis with statistics over different scenes using the final retrieval algorithm is beyond the scope of this article. The given conclusion is based on one challenging scene type and a non-scattering retrieval algorithm. At the end of Sect. 8 extra information is given, but the numbers are not general enough (e.g. only one scene) to include them also in the abstract or conclusion. The old text in Sect. 8 is: "Calculations have shown that the error in the retrieved gas columns is within the allowed error budget." This is replaced by: "Applying non-scattering retrieval (without aerosol or cirrus parameters) to the forest spectrum used for Fig. 16, the error of the methane column reduces from 14 % before correction to 0.26 % after correction, within the error budget of 0.35 % for stray light. The error of the CO column reduces from 26 % before correction to 1.3 % after correction, within the stray-light error budget for the given CO column of 3.0 %. The forest spectra at other rows give similar results after correction." The abstract and conclusion change from old "It is expected that ..." to new "Simulations indicate that ...".

10. Page 1 Line 10 "... long-term, in-flight ..."

Adjusted according to the suggestion.

11. Page 1 Line 12 Suggest: "... (TROPOMI) is the only instrument on board the ..."

Adjusted according to the suggestion.

12. Page 1 Line 16 Suggest: "... sampling interval of 0.1 nm."

Adjusted according to the suggestion.

13. Page 1 Line 20 "To achieve the required accuracy of the measurement of spectral radiance, an accurate correction for the stray light must be included in the analysis."

Adjusted. The term 'analysis' is replaced by 'data processing' because the correction is applied from level 0 to 1, not 1 to 2. The text is changed to: "To achieve the required accuracy of the spectral-radiance measurements, an accurate correction for the stray light must be included in the data processing."

14. Page 2 Line 4 "Examples of corrected measurements are..."

Adjusted according to the suggestion.

15. Page 2 Line 7 If possible, a simplified diagram of the optics would be welcome to readers. Describe what is meant by an 'immersed grating'.

Adjusted. A diagram is included in the article (see Fig. 1 in this author comment). The immersed grating is described by adding the text: "The immersed grating consists of a silicon prism as the immersive medium with a diffraction grating on one surface. By illuminating the grating from inside the prism, the resolving power is increased by the refractive index of silicon. This allows the spectrometer to be much smaller than with a conventional echelle grating."

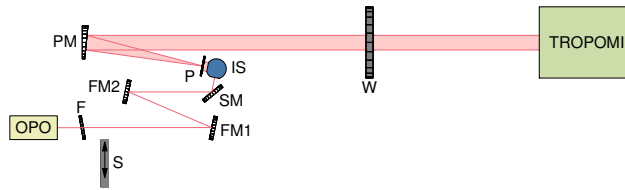


Figure 1. The setup for the stray-light measurements. The elements after the OPO are: neutral density filter F, shutter S, fold mirrors FM1 and FM2, spinning mirror SM, integrating sphere IS, field stop P, parabolic mirror PM and window W of the vacuum chamber containing the TROPOMI instrument.

16. Page 2 Line 13 The methodology for reading out the detectors should be described. Is it CCD, random addressed, multiple amplifiers, A/D(s) etc.?

Adjusted. The text already mentions the detector is “based on silicon complementary metal-oxide-semiconductor (CMOS) technology”, i.e. it is not CCD. At the first mention of the detector (page 2, line 10), the model name is added to the text: “(Saturn model by Sofradir, France)”. Extra information on the signal conversion and storage is added to the text (page 2, line 12): “In each detector pixel, the signal charge is converted into a voltage by a capacitive transimpedance amplifier (CTIA) and after a given exposure time stored in a sample-and-hold circuit before read-out. Details of the detector read-out and characterization are given by Hoogeveen et al. (2013).” An implication of the CTIAs is given when discussing blooming (page 4, line 11): “Due to the use of a CTIA in each detector pixel, the signal does not affect the detector bias voltage and signals of neighbouring pixels do not affect each other, unless a signal saturates. In that case blooming occurs, seen as a ring around the peak...”.

Part of the referenced detector characterization was the optimization of the instrument timing. The integration capacitor is discharged (resetted) long enough to minimize the corresponding memory effect and non-linearity. The charge on the integration capacitor is sampled long enough to minimize the corresponding memory effect. The remaining memory is taken care of by discarding the first two frames at a given exposure time and illumination pattern. The last frame is also discarded in case its readout is affected by the following measurement, which takes place at the same time.

17. Page 2 Line 17 “... calibration were performed ...”

Adjusted according to the suggestion.

18. Page 2 Line 32 “... shutter in front of the spinning mirror ...”

Adjusted according to the suggestion.

19. Page 3 Line 5 “... the instrument was reduced ...”. This description of the attenuation and gain setting indicates that all but the shortest integration time will be saturated. It is suggested that the reason for this be stated explicitly (i.e.: the sensitivity needed to measure the weak stray light on remote pixels) and some indication of the results of tests done to show that the signals are from stray light and not electronic artifacts.

Adjusted. The textual suggestion is incorporated as “... the instrument is reduced ...”. The reason for the saturation is stated explicitly by moving the explanation at the start of the next section (page 4, line 2-5) to this section. The term ‘gain setting’ in the comment prompts another clarification: only the exposure time is changed between measurements, not a gain setting or other detector setting. One indication that the signals are from stray light and not electronic artifacts is given in Sect. 8, where the stray-light correction is applied accurately to measurements with much lower intensities. The text has been changed to: “... taken at four different exposure times with about 20-fold increment steps (0.2, 4.6, 106 and 1998 ms), without changing any other setting. With a neutral density filter just after the OPO, the spectral radiance at the instrument is reduced to 200 times the highest value in nominal operations. At this radiance, the detector is never saturated at the shortest exposure time. However, the signal with this exposure time is noisy away from the peak. At the three longer exposure times, the signal has a much better signal-to-noise ratio away from the peak, but the peak is

saturated. These three exposure times are used to increase the dynamic range of the image by four orders of magnitude (see Sect. 3).”

20. Page 3 Line 12 The methodology here seems strange. One would expect that the dark signal would be a minimum at the smallest integration time and grow larger at the longest integration time. The analysis described here seems to be neglecting dark count and concerning itself only with ‘background’ whatever that encompasses. Perhaps some more detail here would be appropriate. There are a number of phenomena which must be characterized or shown not to be important: electronic readout noise, charge carry-over from reset (and any spreading to other pixels) and actual dark count (thermal generation).

Adjusted. The text is adapted to explain the background better. The first time ‘background’ is mentioned (page 2, line 32), the text is already “Background measurements are taken by closing a shutter in front of the spinning mirror.” As a clarification, the following is added after this text: “Background data contain the same pixel-dependent offset, detector dark current and thermal background as light data taken at the same exposure time.” When the background is used (page 4, line 7), the text is expanded to: “The background signal of this pixel at the chosen exposure time is subtracted, removing the pixel-dependent offset, detector dark current and thermal background.”

The dark signal is indeed larger at longer exposure times, but it is included both in the light measurements and in the background measurements taken at the same exposure time, so it is accurately removed by the background subtraction. Due to the use of CTIAs, the charge spreading to other pixels is not an issue when the signal is not saturated. This is added to the text in item 16. When the signal is saturated, blooming occurs, which is described later on with examples (page 4, line 11). Text is added regarding the electronic readout noise when whole merged frames are shown in Sect. 4 (page 5, line 15): “The electronic noise has been suppressed to about 10^{-7} times the peak signal. It determines the lower end of the dynamic range.” See also item 24.

21. Page 3 Line 23 ‘absolute signal’ should be defined

Adjusted. The text is changed to: “... the total signal (due to external light, thermal background and detector dark current) ...”

22. Page 4 Figure 2. “Background-corrected light peak at different exposure times: (a) 0.2ms, (b) 4.6ms, (c) 106ms, (d) 1998ms. Only at the shortest exposure time are there no pixels saturated.”

Adjusted. The new text is: “Only at the shortest exposure time no pixels are saturated.”

23. Page 4 Line 8 The quantity proportional to intensity after the integration time is taken into account is probably proportional to current but more likely presented in terms of A/D counts per second. The wording should be made more precise to make the information clear to the reader.

Adjusted. The data is actually in electrons per second, but the unit is not important. The text is changed to make a distinction between signal rate (anything per unit time) and signal current (something to do with electrons): “The result is divided by the exposure time to get a signal rate in digital counts per second. By applying a separate calibration of the number of electrons per count, it is converted to a signal current.”

24. Page 4 Line 9 “...the dynamic range of the signal current is *theoretically* larger than seven orders of magnitude.” This does not automatically mean stray light can be characterized to that level. The later figures suggest that the stray light is on the order of 4 orders below the peak intensity at distant pixels. The discrepancy between these two numbers -if the background subtracted includes effects additional to stray light -may lead to a nonlinearity in the stray light correction process.

Adjusted. The dynamic range of the signal current in the merged frames is also in practice seven order of magnitude. This is seen in Fig. 4, where the noise is at 10^{-7} and the peak at 1. In the median of all frames for the stable kernel, the noise is actually smaller. The *characterization* is performed with seven orders, but the *correction* is worse (although good enough), due to neglecting small features. These are discussed in Sect. 4. The noise in the calibration measurements for stray light is negligible in comparison to noise in normal measurements. The later figures referred to in the comment are

presumably the examples of normal measurements in Fig. 12b and c. Here the noise in the far field of the measurements is at 10^{-5} and 10^{-4} , respectively, because the light intensity was much smaller, no merged frames were used and hence the signal-to-noise ratio was much smaller. This is not due to stray light or its correction. To clarify this point, text is added near Fig. 12 (page 15, line 8): “The measurements for Fig. 12b and c were performed with lower light intensities, leading to a smaller signal-to-noise ratio than available in the stray-light characterization. In these cases with illumination over many pixels and at regular intensities, the stray-light correction works well.”

25. Page 4 Line 12 “... saturated by light, not dark current .” It is not clear what this is to mean given that the generation of electrons by light and by heat is essentially the same.

Adjusted. The generation of electrons by light and by heat should indeed be the same, but the data show otherwise. Maybe the dark current of these bad pixels only seems large due to a defective circuit. This was not investigated, because it is rare and does not affect the production of the stable kernel. Text has been added (page 4, line 13): “The reason why blooming does not occur due to dark current is unknown and not investigated further as there are only about 80 detector pixels with a large enough dark current.”

26. Page 4 Line 13 It is not clear what correction has generated the change from figure 2 to figure 3. It suggests a very effective reduction of stray light signal. However, this must be taken in the context of the earlier comments about line 9 (item 24). It would be helpful if the correction procedure were described fully and more clearly.

Adjusted. The transformation from Fig. 2 to Fig. 3 is fully described by the first paragraph of Sect. 3. It is just selection of signals, subtraction of the corresponding background and division by the corresponding exposure time; there is no (other) correction. This may already have been clarified by the extra text on background (item 20), signal rate (item 23) and dynamic range (item 24). Figures 2 and 3 show different data types, so the values should not be compared directly. In case this is not clear, text is added to the caption of Fig. 3: “Combination of data in Fig. 2 (from signal to signal current) to increase the dynamic range...”.

27. Page 5 Line 4 The unknown agent leading to alternating values of signal level is somewhat concerning. One question here is whether a study has been done to see if all combinations of pixel readout values are statistically likely. A problem with the analog and A/D circuitry can cause strange effects in the observed measurements. Perhaps a comment about this might be a useful addition. In the RETICON there is a potential for this kind of effect because of the way charge is shared between pixels. The gain pattern can be seen where it is clear that small differences in the mask used to define the electrodes causes the issue.

Not adjusted. The text already states that it “is not understood” (page 5, line 3) and speculation seems not helpful. As far as we know, the RETICON shares charge that is generated between pixels differently depending on the signal, because the bias voltage depends on the signal. This is not the case for this detector, due to the fact that the CTIA maintains a stable bias voltage (see item 16). Fixed gain variations between pixels are not relevant, because the alternate readings are taken at the same pixel. Statistics are not needed because the variation between signals is not subtle: it can be larger than 100 digital counts, but only at an exposure time of 0.2 ms and when the signal is very high. Non-linearity of the A/D circuitry has been investigated, but the effect is negligible.

28. Page 5 Line 5 “Second, in the conversion to signal current, exposure time 0.2 ms is actually replaced by 0.14 ms.” Is this a statement that measurements were done again at a different integration time or is this the determination of a corrected integration time for measurement nominally made at 0.2 ms? Does this perhaps feed into the high bias of the model stray light curve relative to the data?

Adjusted. The measurements were not performed again but the value of the exposure time was changed in the calculation. The text was changed to: “Second, in the conversion to signal current, nominal exposure time 0.2 ms is actually replaced by the value 0.14 ms.”

The curve in Fig. 8b is not a stray-light model but an ISRF model, based on separate calibration data that did not use saturation. It is accurate on a sub-pixel scale, but only in the central 9 pixels around the peak and accurate to about 0.001. Here it is extrapolated very far, just for comparison. The ISRF model is not used in the stray-light correction. The

extrapolation is already mentioned in the caption, but the curve label is changed from ‘ISRF’ to ‘ISRF, extrapolated’ and the main text is changed from (page 8, line 3) “The logarithmic plot shows the ISRF over an extended range, but in trace-gas retrievals it is only used in the range over the central 9 pixels.” to “It is defined over the central 9 pixels that is used in trace-gas retrievals, but in the logarithmic plot the ISRF is extrapolated beyond that range.”

29. **Page 5 Line 11 It is not clear to this reviewer what is meant by “... Gaussian and block distribution.”**

Adjusted. Block distribution is meant as a more descriptive, alternative name for uniform distribution, but it is clearer to include the fit function explicitly. The original text is: “The peak position and the integrated signal current are determined in each frame by fitting the convolution of a Gaussian and a block distribution in two dimensions. The variation of the light intensity is then removed by dividing each frame by the corresponding integrated signal current.” The new text is: “At this stage, a merged frame consists of signal current $I_{\text{meas}}[r, c]$ as a function of detector row r and column c . The area near the peak is fitted with a two-dimensional function $S(r, c)$. The one-dimensional convolution of a Gaussian distribution with standard deviation σ and a uniform distribution with mean 0 and full width w is given by

$$\mathcal{B}(x; \sigma, w) = \frac{1}{2w} \left[\text{erf} \left(\frac{x+w/2}{\sqrt{2}\sigma} \right) - \text{erf} \left(\frac{x-w/2}{\sqrt{2}\sigma} \right) \right]. \quad (1)$$

The fit function is

$$S(r, c) = a \mathcal{B}(r - r_0; \sigma_{\text{spat}}, w_{\text{spat}}) \mathcal{B}(c - c_0; \sigma_{\text{spec}}, w_{\text{spec}}), \quad (2)$$

with spatial (vertical) peak position r_0 , spectral (horizontal) peak position c_0 , integrated signal current a , spatial width parameters σ_{spat} and w_{spat} and spectral width parameters σ_{spec} and w_{spec} . The variation of the light intensity between frames is removed by normalizing the frame by the integrated signal current:

$$I[r, c] = I_{\text{meas}}[r, c]/a. \quad (3)$$

The values of the four width parameters are not used, only the fitted peak position (r_0, c_0) is needed later on.”

30. **Page 8 Line 11 “(across-track and along-track)”. This description seems somewhat misleading. The detector has cross-track imaging but the other direction is spatial. Better to leave the “along-track” description out to avoid confusion.**

Not adjusted, at least not here. The first paragraph of Sect. 5 is very general about terminology, not about the detector. The signal of one read-out does not show the along-track dimension of the PRF, but when consecutive read-outs in flight are concatenated, the two-dimensional shape of the PRF is seen. When the term is used again (page 10, line 13), the text is made clearer. The original text is: “The light in \mathbf{K}_{near} is considered as the ISRF in the spectral direction and part of the PRF in the spatial direction.” The new text is: “... ISRF in the spectral direction and one dimension of the PRF in the spatial direction.”

31. **Page 10 Line 15+ The equations were very difficult to read because of problems with formatting in the PDF. A description of the methodology which is more accessible to a wider audience would be a great addition to the paper. It is left to the authors to ensure that the equations are correct.**

Adjusted. We could not see the errors in the PDF on the AMT website. The description of the methodology is perhaps clearer by adding an introduction, where the forward model of adding stray light is given. This also introduces the separate terms in the equations. In the new text, the section starts with: “If \mathbf{F} represents an ideal frame without stray light, the stable part of the stray light is given by $\mathbf{K}_{\text{far}} \otimes \mathbf{F}$, where \otimes indicates a convolution. The integrated signal in the stray light is a fraction $\sum_{k,l} (\mathbf{K}_{\text{far}})_{k,l}$ of the total integrated signal. Measured frame \mathbf{J}_0 is the sum of the ideal frame and the stray light, taking into account that the stray light is removed from the ideal frame:

$$\mathbf{J}_0 = \left(1 - \sum_{k,l} (\mathbf{K}_{\text{far}})_{k,l} \right) \mathbf{F} + \mathbf{K}_{\text{far}} \otimes \mathbf{F}. \quad (4)$$

The stable part of the stray light is corrected...”

32. Page 7 Line 9 Is the 2.1 spread compared to the 1.1 degree source in agreement with the instrument design model? It would be more informative to convert the 1.1 degrees to the expected pixel size. It is just quibbling,nn but the bump reported in the next line looks more like 0.6 or 0.7 %.

Adjusted. The spread expressed in pixels and in degrees is indeed as expected. The text is expanded to include this: “The full width at half-maximum of 2.1 spatial pixels corresponds to the stimulus size of about 1.1° , in agreement with the instrument design model.”

The bump has a maximum of 0.6 or 0.7 %, but without bump the signal would already be about 0.2 %. The original text implied the difference: “The 0.5 % bump in the laser signal 3 pixels above the line or peak is probably a feature...” The text is changed to: “The signal 3 pixels above the line or peak is 0.5 % higher than the 0.2 % expected from the neighbouring signals. This bump is probably a feature...”

33. Page 7 Line 10 The comment concerning the Xe lamp should be explained. It is not clear why once source should spread spatially while the other does not.

Adjusted. The reason why the OPO has a bump and the Xe lamp does not is not understood. It is probably due to the setup around the sources. The relevant point is that it is not due to the instrument. To make that clearer, the original text “probably a feature of the stimulus” is expanded to “probably a feature of the stimulus and not the instrument”.

34. Page 8 Line 2 “... at the peak positions used ...” “The ISRF was determined ...”

Adjusted according to both suggestions.

35. Page 8 Line 6 “... contain more stray light than any diagonal cross section ..” Can electronic contributions be ruled out?

Adjusted. Electronic contributions are very unlikely, because far from the peak the horizontal line is slightly rotated (see Fig. 4a) and the vertical line is slightly curved due to spectral smile. The origin of the lines is discussed at the start of Sect. 4, but the deviations from straight lines were not mentioned (for the horizontal line) or only later (for the vertical line). Therefore the text at the start of Sect. 4 is expanded to: “The vertical line through the peak is pure spatial stray light from optics before the spectrometer slit: the common telescope and the relay optics. The line is slightly curved due to the variation of about 0.5 column at a given wavelength but different swath angles, known as the spectral smile. The weak horizontal line through the peak is due to imperfections of the grating line positions. It is slightly rotated, as can be seen at the right side of Fig. 4a.”

36. Page 8 Line 8 “... Once the general behaviour of the stray light was examined, ...”

Adjusted according to the suggestion.

37. Page 8 Line 11 “the point response function (PRF)” “point spread function (PSF)” is more commonly used.

Not adjusted. In this section, a distinction is made between spread functions and response functions. In those terms, the ‘point’ function with two spatial dimensions is a response function.

38. Page 19 Line 5 “We have developed and applied a novel method ...” While the work presented is thorough and makes use of a very useful algorithm, this may be overstating the situation somewhat...

Adjusted. The word ‘novel’ is deleted.

We would like to thank Referee #2 for the comments to improve our manuscript. In this document, we provide our reply to the comments. The original comments made by the referee are numbered and typeset in red. Page, line and figure numbers refer to the old version of the manuscript. After the reply we provide a revised version of the manuscript, in which all changes are highlighted.

1. *General Comments:* This paper presents the laboratory characterization of stray light for the TROPOMI SWIR spectrometer, and the development of a correction algorithm to remove the stray light. The stray light is characterized using a monochromatic quasi-point light source; the signal is obtained with more than 7 orders of magnitude by combining saturated and unsaturated measurements taken at different exposure times. Analysis of the spectral-spatial spread function (SSSF), indicates that the stray light can be approximated by the far field of a stable kernel and a main reflection kernel, both of which do not vary with wavelength and across-track position. A correction algorithm is developed to correct stray light in in-flight observations. Application of the stray light correction to stray light measurements as well as synthetic earthshine observations show that the stray light can be significantly reduced. This study presents key information about TROPOMI SWIR and its performance and is very suitable for publication in AMT. This paper is generally well organized, and the methodology and results are generally well described. However, one of the important conclusions “this reduces stray light error sufficiently for accurate gas-column retrievals” is not supported by details. It does not say if the developed correction algorithm is the operational algorithm or will be implemented for operational processing. If it is not the operational algorithm (i.e., described in ATBD). The authors should talk about it in the introduction and if possible compare the performance between this correction algorithm and the operational algorithm. Some of the sentences are difficult to understand and the English writing needs to be improved. The abstract and conclusion can be improved to include more important aspects of this study. Overall, I think that this paper can be published after addressing the comments mentioned here and specific comments below.

Adjusted. Details on the effect of the remaining stray light on retrieval are given in item 29 below. The correction algorithm is the operational algorithm (item 30). Text is clarified with extra explanations and the suggested textual improvements are included (see many items below). Details are added to the abstract and conclusion (items 3, 4, 30 and 31).

Specific Comments:

2. In abstract, L3, the sentence needs to be rephrased to make it read well. You can change it to “For this purpose, it is required to have calibrated radiance measurements in which ...”

Adjusted. The text is changed, also according to a suggestion of Referee #1: “For this purpose, calibrated radiance measurements are needed that are minimally contaminated by instrumental stray light.”

3. In abstract, L6, suggest adding “from different exposure times” after “unsaturated measurements”

Adjusted. The text is rephrased as: “The dynamic range of the signal was extended to more than seven orders of magnitude by performing measurements with different exposure times, saturating detector pixels at the longer exposure times.”

4. In abstract, L6-8, the sentences do not read well. You may add a little more detail about the algorithm, including the approximation representation with a far-field stable and reflection kernels. Suggest changing the order of sentences to something like “... unsaturated measurements. Analysis of the stray light indicates about 4.4% of the detected light is correctable stray light. An algorithm was then devised Applying this correction significantly reduces the stray-light signal for example ...”

Adjusted according to the suggestion. The new text reads: “Analysis of the stray light indicates about 4.4 % of the detected light is correctable stray light. An algorithm was then devised and implemented in the operational data processor to correct in-flight SWIR observations in near-real time, based on Van Cittert deconvolution. The stray light is

approximated by a far-field kernel independent of position and wavelength and an additional kernel representing the main reflection. Applying this correction significantly reduces the stray-light signal, for example in a simulated dark forest scene close to bright clouds by a factor of about 10.”

5. P1, L15, change “distance” to “interval” as it is more frequently used for the spectral dimension

Adjusted according to the suggestion.

6. P2, L7, if it is a common telescope, should it be called as “SWIR telescope”? Suggest changing it to “telescope”

Adjusted. There are two telescopes: the output of the common telescope goes to the SWIR-only telescope. The text is adjusted: “The SWIR and UVN spectrometers in TROPOMI share a common telescope. After the light is split into the different bands, it is imaged onto the SWIR spectrometer via relay optics and a second telescope.”

7. P3, first paragraph, it is not clear about why to avoid saturation at the shortest exposure time, and why fewer frames are averaged at longest exposure time. Based on section 3, the shortest exposure is to measure the strong signal while the longest exposure time is to measure the weakest signal in the wing of point spread function. L3-5 of page 4 can be moved here to help understand the purpose of taking measurement at 4 exposure times.

Adjusted. As suggested, the explanation for the different exposure times is included from the next section. Fewer frames are used at the longest exposure time, because fewer are measured due to a lack of calibration time. This is included in the text, which is now: “With a neutral density filter just after the OPO, the spectral radiance at the instrument is reduced to 200 times the highest value in nominal operations. At this radiance, the detector is never saturated at the shortest exposure time. However, the signal with this exposure time is noisy away from the peak. At the three longer exposure times, the signal has a much better signal-to-noise ratio away from the peak, but the peak is saturated. These three exposure times are used to increase the dynamic range of the image by four orders of magnitude (see Sect. 3). At the three shorter exposure times at least 9 frames are averaged, but only 3 frames are taken at the longest exposure time in order to limit the total measurement period.”

8. P3, L13-14, change to “ensures that no important features only closer to specific wavelengths or swath angles are missed”

Adjusted according to the suggestion.

9. P3, L15, change to “background measurements”

Adjusted according to the suggestion.

10. P3, L17, add “as background measurements” after “is used”

Adjusted according to the suggestion.

11. P3, L18, suggest changing to “The peak in a given detector area only occurs in a small subset of the light measurements, ...”

Adjusted according to the suggestion.

12. P3, L20, suggest “at which” to “and”, because “the longest exposure time of 1998 ms”, meant by “which” does not occur before “at which”

Adjusted. The sentence is split instead. The new text is: “... for this area only data at the longest exposure time of 1998 ms will be used. In that case background measurements are available ...”

13. P4 L6, suggest changing to “... does not saturate a pixel (a saturated signal ...)”

Adjusted. The parentheses are included. The original text ‘this pixel’ and the suggested text ‘a pixel’ are not needed, because the sentence already starts with the pixel. The new text is: “Then for each pixel, the signal is taken from the longest exposure time that does not saturate (a saturated signal is defined as a signal larger than 90 % of the maximum possible signal).”

14. P4, L8-9, suggest changing to “the signal can be measured with a dynamic range of more than seven orders of magnitude”

Adjusted according to the suggestion, except that ‘signal’ is replaced by ‘signal current’.

15. P4, L11-12, suggest changing to “the signal of unsaturated pixels becomes too high due to spilling from a direct neighbor pixel saturated by light, not dark current”

Adjusted according to the suggestion.

16. P5, L10-11, agree with the first reviewer, the sentence of “The peak positions and Gaussian and a block distribution in these two dimensions ...” is not clear

Adjusted. Block distribution is meant as a more descriptive, alternative name for uniform distribution, but it is clearer to include the fit function explicitly. The original text is: “The peak position and the integrated signal current are determined in each frame by fitting the convolution of a Gaussian and a block distribution in two dimensions. The variation of the light intensity is then removed by dividing each frame by the corresponding integrated signal current.” The new text is: “At this stage, a merged frame consists of signal current $I_{\text{meas}}[r, c]$ as a function of detector row r and column c . The area near the peak is fitted with a two-dimensional function $S(r, c)$. The one-dimensional convolution of a Gaussian distribution with standard deviation σ and a uniform distribution with mean 0 and full width w is given by

$$\mathcal{B}(x; \sigma, w) = \frac{1}{2w} \left[\text{erf} \left(\frac{x+w/2}{\sqrt{2}\sigma} \right) - \text{erf} \left(\frac{x-w/2}{\sqrt{2}\sigma} \right) \right]. \quad (1)$$

The fit function is

$$S(r, c) = a \mathcal{B}(r - r_0; \sigma_{\text{spat}}, w_{\text{spat}}) \mathcal{B}(c - c_0; \sigma_{\text{spec}}, w_{\text{spec}}), \quad (2)$$

with spatial (vertical) peak position r_0 , spectral (horizontal) peak position c_0 , integrated signal current a , spatial width parameters σ_{spat} and w_{spat} and spectral width parameters σ_{spec} and w_{spec} . The variation of the light intensity between frames is removed by normalizing the frame by the integrated signal current:

$$I[r, c] = I_{\text{meas}}[r, c]/a. \quad (3)$$

The values of the four width parameters are not used, only the fitted peak position (r_0, c_0) is needed later on.”

17. P5, L13, change to “After discarding”

Adjusted according to the suggestion.

18. P5, last paragraph in Sect. 3, do the last four sentences describe the PRNU correction as it is not clear to me. If not, it is useful to describe the PRNU in a few sentences.

Adjusted. The last four sentences do not describe the PRNU correction. A description is added: “After these steps, each merged frame is corrected for pixel response non-uniformity (PRNU). This is the pixel-to-pixel variation of the gain (ratio of the signal current to the input photon rate), determined in separate calibration measurements using a light source with a flat spectrum. This correction is very small, up to about 1 %.” The following text forms a new paragraph.

19. P9, L2-3, it is not clear why only stray light originating at spatial coordinates is corrected. Does it mean that the spectral stray light is not corrected? Please clarify it.

Adjusted. The stress in the sentence is not clear. The spatial coordinates refer to the source external to the instrument, as long as it is in view and not just outside it. Once it is in view, the full stray light is corrected. The new text describes it differently: “Stray light is only corrected when the source itself is imaged on the detector, because the direct source light serves as input for the correction.”

20. P10, L4, change “using the element-wise product o” to “where o is the element-wise product”

Adjusted according to the suggestion.

21. P10, L21, add “is as follows” after “The rationale of this algorithm” as it is not a sentence and change “which is” to “and is”

Adjusted according to both suggestions.

22. P11, L1, change to “... center. The iteration consists of ...”

Adjusted according to the suggestion.

23. P11, L7, change to “, as explained”

Adjusted according to the suggestion.

24. P15, L8, suggest adding “After the stray light correction” before “Some stray light ...” to make it more readable.

Adjusted. A whole sentence is added instead, in response to a question of Referee #1. The new text is: “In these cases with illumination over many pixels and at regular intensities, the stray-light correction works well. Some stray light remains...”

25. P16, Figure 14 caption, change “measurement” to “measurements”

Adjusted according to the suggestion.

26. P16, the last paragraph that continues on P18 is not easy to understand and seems to distract the flow from Fig. 15a to Fig. 15b. I think that the main purpose is to describe how to construct signal with stray light by convolving Fig 15 a with the SSSF. It is not clear to me about the need to talk about merged frame and conversion to kernels here. Please make the description clearer.

Adjusted. For an informative stray-light simulation, the SSSF cannot be the stable kernel. It has to be based on the original merged frames, but these have to be normalized first. An introduction is added to the start of the paragraph. That part becomes: “Stray light is introduced by convolving the expected signal with the SSSF. However, if the stable kernel would be used as an SSSF approximation for the whole detector, the effect of neglected features moving relative to the peak cannot be assessed. Instead, the detector is divided into areas of pixels around all peak positions found in the merged frames. A given measured merged frame constitutes the most accurate SSSF available for the detector pixels in the corresponding area. Care has to be taken with signal scaling and padding to the right dimensions before a merged frame can be used in a convolution.”

The procedure that follows can be reduced by referring to an introduction that is added to the start of Sect. 6. The new procedure text is: “A merged frame is converted to a kernel by applying the same normalization factor as in the creation of the stable kernel and padding to the same dimensions with the peak at the centre. The padding values are the values in the stable kernel at the same positions. This is followed by multiplication with \mathbf{M}_{far} . The resulting kernel is used as \mathbf{K}_{far} in Eq. (6) and applied to the corresponding area in the simulated radiance frame. This is repeated for all merged frames and corresponding areas in the radiance frame and the sum is taken.”

The actual application of the kernel is no longer described in words here, but given with an equation at the start of Sect. 6 in extra text: “If \mathbf{F} represents an ideal frame without stray light, the stable part of the stray light is given by $\mathbf{K}_{\text{far}} \otimes \mathbf{F}$, where \otimes indicates a convolution. The integrated signal in the stray light is a fraction $\sum_{k,l} (\mathbf{K}_{\text{far}})_{k,l}$ of the total integrated signal. Measured frame \mathbf{J}_0 is the sum of the ideal frame and the stray light, taking into account that the stray light is removed from the ideal frame:

$$\mathbf{J}_0 = \left(1 - \sum_{k,l} (\mathbf{K}_{\text{far}})_{k,l}\right) \mathbf{F} + \mathbf{K}_{\text{far}} \otimes \mathbf{F}.$$

The stable part of the stray light...”

27. Figure 16 caption, suggest changing to “... respectively, for the forest spectrum in 2305-2385 nm located four rows from the cloud spectra”

Adjusted according to the suggestion, but adding back ‘performance range’. The new text is: “..., respectively, for the forest spectrum in performance range 2305–2385 nm located four rows from the cloud spectra.”

28. P18, L9-10, it is not clear about “one merged frame per 20 pixels”. Do you mean merging 20 pixels across the track (i.e., merging 20 rows)?

Adjusted. We did not mean 20 ground pixels but a basically rectangular area of detector pixels. The new text is: “...there is only one merged frame per area of about 3×8 detector pixels.” The numerical difference is due to rounding.

29. P19, can you provide more quantitative details to support the last sentence of section 8 as this is an important conclusion in abstract and conclusion and the residual error is still up to 1%. In addition, has the instrument noise been added to the simulation? Will the inclusion of instrument noise affect the performance of stray light correction?

Adjusted. A full retrieval analysis with statistics over different scenes using the final retrieval algorithm is beyond the scope of this article. The given conclusion is based on one challenging scene type and a non-scattering retrieval algorithm. The old text is: “Calculations have shown that the error in the retrieved gas columns is within the allowed error budget.” This is replaced by more detailed information: “Applying non-scattering retrieval (without aerosol or cirrus parameters) to the forest spectrum used for Fig. 16, the error of the methane column reduces from 14 % before correction to 0.26 % after correction, within the error budget of 0.35 % for stray light. The error of the CO column reduces from 26 % before correction to 1.3 % after correction, within the stray-light error budget for the given CO column of 3.0 %. The forest spectra at other rows give similar results after correction.”

The retrieval errors (and the error budgets) are given for simulations with noise only due to the measured merged frames used as SSSF. Simulations with read noise and shot noise added before stray-light correction and retrieval show that the total retrieval error is the quadratic sum of the errors due to noise and corrected stray-light separately. Therefore the noise does not affect the performance of the stray-light correction.

30. Also, it is not clear if this stray light correction algorithm is the operational algorithm to be used in level 0 to 1b processor (i.e., described in ATBD)? It looks like it is not, then how is the performance and speed of this correction compared to those of the operational correction?

Adjusted. This is the operational algorithm for stray-light correction used in the level 0 to 1b processor, but only for SWIR data. The ATBD describes it very sketchy and somewhat outdated in Sect. 24.1.6. Text is added in the abstract and conclusion. In the abstract, the old text was: “An algorithm was then devised to correct in-flight observations...”. This is replaced by: “An algorithm was then devised and implemented in the operational data processor to correct in-flight SWIR observations...” In the conclusions, a shorter variation is given: “A fast correction algorithm has been devised and implemented in the operational data processor, based on Van Cittert deconvolution.”

31. In conclusion, it is useful to expand a little bit about the main idea of the fast correction algorithm (e.g., stable kernel, reflection kernel etc.)

Adjusted. In Sect. 9 with the conclusions, an extra sentence is added after the mention of the Van Cittert deconvolution: “The stray light is approximated by a far-field kernel independent of position and wavelength and an additional kernel representing the main reflection.”

32. P20, L2, this sentence does not read well, suggest changing to “The fitted r_{centre} is 127.5, exactly ...”

Adjusted. The value of r_{centre} is not fitted but chosen. The new text is: “...but this row index would have to be determined first by fitting. Parameter r_{centre} is set to 127.5, exactly at the middle of the detector.”

We would like to thank Referee #3 for the comments to improve our manuscript. In this document, we provide our reply to the comments. The original comments made by the referee are numbered and typeset in red. Page, line and figure numbers refer to the old version of the manuscript. After the reply we provide a revised version of the manuscript, in which all changes are highlighted.

General Comments. Initial paragraph or section evaluating the overall quality of the discussion paper. The paper is well written and of good quality, with a considerable number of new interesting topics and techniques related to stray light characterization and correction, and shall certainly be published. However, I am of the opinion that the quality of the paper can be much improved to be more useful with a comparatively small additional effort, in line with the comments and suggestions provided below. After these comments and suggestions have been adequately addressed, the paper shall certainly be published.

1. For the applications in TROPOMI SWIR it is essential to express, quantify and present stray light at L0 and L1b as a percentage of the useful signal for realistic earth atmosphere low-albedo scenes and signals within absorption peaks. This is currently not the case. For example in figure 14 it can be seen that the difference between bright and dark scenes is roughly a factor 8 (see also page 15, line 14), and the difference between rather deep absorption line and continuum is also roughly about a factor 8. Both together would make a difference of a factor 64. For example, in the legend of figure 15 (but also in other places in the paper) it is clear that the stray light is expressed as percentage of the expected continuum in the given row, not as percentage of the useful signal in the absorption lines. If the authors prefer to present the stray light like this, it is essential to at least also show the stray light as percentage with respect to the low albedo useful signal in the absorption lines. This shall be added to the paper in the text, figures and conclusions.

Not adjusted. The stray light was expressed as a percentage of the continuum after consultation of the team that does the operational trace-gas retrieval in SWIR. The reasoning can be explained as follows. In Fig. 14, the signal in the deepest absorption line is 6 % of the continuum in the cloud spectrum and only 1 % of the continuum in the forest spectrum, due to the longer air column to the ground. The used U.S. Standard atmosphere will be drier than the atmosphere in many other scenes, so the signal can be even lower. If the stray light would be expressed as a percentage of that signal, the values would be far above 100 % and extremely dependent on the exact assumptions about the atmospheric composition. This would render the values meaningless. Therefore, the stray light is compared with the continuum (of the low-albedo spectrum), i.e. it is seen as an absolute signal contribution instead of a relative one. Then it turns out to be basically flat before and after correction (Fig. 16), so it is easier to see deviations and to compare spectra. A plot of the stray light relative to the expected signal at the same wavelength would look like an inverted radiance spectrum. Showing the absolute stray light is also in line with operational methane and CO retrieval, where the absolute difference between measurement and model is minimized.

Specific comments. Section addressing individual scientific questions/issues.

2. Page 8, figure 7: It is recommended to (also) show the row distances similarly as the column distances as shown in figure 8, to allow a better comparison between the two. For example, it is recommended to add a figure like the lower figure in figure 7 at a horizontal scale of +/-100 pixels, to allow better comparison with figure 8.

Not adjusted. The cross sections in Figs. 7 and 8 use a limited data set, at all swath angles but only one wavelength, to show the peak area before it is averaged over wavelength to create the stable kernel. The main reflection is always somewhere on the vertical cross section, but at every swath angle at a different position. To see the average cross section outside the reflection over a large row range, the data bins have to be enlarged from 0.025 pixel to 0.5 pixel. The result is shown in Fig. 1 in this author comment. The reflection is still visible at -90 and -14 rows as bumps and at +85 rows as a second curve, formed by every second point. Other deviations from a smooth curve may also be remnants of the reflection, so the data are difficult to interpret. The different bins in the linear and logarithmic plot would also need explaining. Both points would distract from the main focus of the article. Therefore only the central part of the

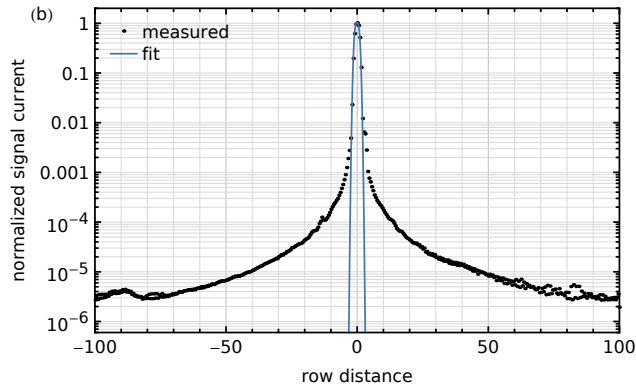


Figure 1. Vertical cross section through the peak using the combined data at 2377.90 nm on a logarithmic scale, but on a larger range than in the article. Included is a fit with the convolution of a Gaussian and a uniform distribution.

cross section is given in the article, with the same bins as in the linear plot. A larger range near the peak is given in the two-dimensional colour plots of Fig. 6 and the full range is shown in the stable-kernel plots of Fig. 9.

3. Page 11, line 20: The number is given as 4.3% of the detected light. In line with the general comment given above, it is recommended to provide also the percentage numbers with respect to low-albedo numbers in the absorption lines.

Not adjusted. The 4.3 % is a property of the far-field kernel, independent of the scene to which it is applied. This section describes the calibration data, among which is the far-field kernel. Application to scenes is the topic of the next section. See item 1 regarding the general point on percentages.

4. Page 18, lines 7-10: Again, in line with the above, this is why it is important to calculate the stray light fraction with respect to the useful signal, because the absorption lines and low-albedo scenes will be filled in with higher signals from the continuum and the higher-albedo scenes. This may also affect the instrument spectral response functions. Please reflect this in the text.

Not adjusted. Regarding the calculation of the stray-light fraction, see item 1. The far-field kernel describing the main stray light and the instrument spectral response function are two complementary parts of the same stable kernel, which is a property of the instrument and is not affected by the scenes.

5. Page 18, lines 11-12: Again, in line with the above, this is as written not agreed. This sentence shall be removed. In case the authors want to keep this sentence, another sentence needs to be added explaining why stray light needs to be assessed as fraction with respect to the useful signal, not the signal in the continuum.

Not adjusted. See item 1.

6. Section 9, conclusions. The statement “It is expected that this brings the stray-light error in gas-column retrievals within the required budget” is not discussed or supported by analyses in the paper. Either provide more support material in the paper to corroborate this statement, or remove it from the conclusions.

Adjusted. A full retrieval analysis with statistics over different scenes using the final retrieval algorithm is beyond the scope of this article. The given conclusion is based on one challenging scene type and a non-scattering retrieval algorithm. At the end of Sect. 8 extra information is given. The old text in Sect. 8 is: “Calculations have shown that the error in the retrieved gas columns is within the allowed error budget.” This is replaced by: “Applying non-scattering retrieval (without aerosol or cirrus parameters) to the forest spectrum used for Fig. 16, the error of the methane column reduces from 14 % before correction to 0.26 % after correction, within the error budget of 0.35 % for stray light. The error of the CO column reduces from 26 % before correction to 1.3 % after correction, within the stray-light error budget

for the given CO column of 3.0 %. The forest spectra at other rows give similar results after correction.” The conclusion changes from old “It is expected that ...” to new “Simulations indicate that ...”.

Technical corrections. Compact listing of purely technical corrections (typing errors, etc.).

7. The legends of (almost) all figures have symbols that cannot be read. This is at least true in the pdf version. Please correct.

Not adjusted yet. We could not see the errors in the PDF on the AMT website, using several PDF viewers in several operating systems. That makes it very difficult to implement effective changes. We will act upon instructions given by the Editor.

8. (Almost) all equations (e.g. 3,4,5,7,8,9,10) have symbols that cannot be read. This is at least true in the pdf version. Please correct.

Not adjusted yet. The document has been generated with pdf_latex in the standard way and all fonts are embedded. We could not see the errors in the PDF on the AMT website, using several PDF viewers in several operating systems. We will act upon instructions given by the Editor.

9. Figure 15: In the legends, please indicate if this is a fraction, percentage or something else.

Not adjusted. Subplots (a) and (b) are absolute currents in femtoampere, as given in the legend. Subplots (c) and (d) are “expressed as a percentage of the expected continuum in the given row” as written in the caption. This is too long to put in the legend, which uses “normalized [%]” instead. Perhaps this was not clear due to item 7.

Characterization and correction of stray light in TROPOMI-SWIR

Paul J. J. Tol¹, Tim A. van Kempen¹, Richard M. van Hees¹, Matthijs Krijger^{1,2}, Sidney Cadot^{1,3}, Ralph Snel^{1,4}, Stefan T. Persijn⁵, Ilse Aben¹, and Ruud W. M. Hoogeveen¹

¹SRON Netherlands Institute for Space Research, Utrecht, the Netherlands

²Earth Space Solutions, Utrecht, the Netherlands

³Jigsaw B.V., Delft, the Netherlands

⁴Science and Technology B.V., Delft, the Netherlands

⁵VSL Dutch Metrology Institute, Delft, the Netherlands

Correspondence to: Paul Tol (p.j.j.tol@sron.nl)

Abstract. The short-wave infrared (SWIR) spectrometer module of the Tropospheric Monitoring Instrument (TROPOMI), on board the ESA Copernicus Sentinel-5 Precursor satellite, is used to measure atmospheric CO and methane columns. For this [purpose](#), calibrated radiance measurements are needed ~~in which the stray light is reduced strongly~~ [that are minimally contaminated by instrumental stray light](#). Therefore, a method has been developed and applied in an on-ground calibration campaign to characterize stray light in detail using a monochromatic quasi-point light source. The dynamic range of the signal was extended to more than seven orders ~~by combining saturated and unsaturated measurements of magnitude by performing measurements with different exposure times, saturating detector pixels at the longer exposure times. Analysis of the stray light indicates about 4.4 % of the detected light is correctable stray light.~~ An algorithm was then devised [and implemented in the operational data processor](#) to correct in-flight [SWIR](#) observations in near-real time, based on Van Cittert deconvolution. **A** ~~fraction of 4.4 % of the detected light is correctable stray light, reducing~~ [The stray light is approximated by a far-field kernel independent of position and wavelength and an additional kernel representing the main reflection. Applying this correction significantly reduces](#) the stray-light signal, for example in a [simulated](#) dark forest scene close to bright clouds by a factor of about 10. ~~It is expected~~ [Simulations indicate](#) that this reduces the stray-light error sufficiently for accurate gas-column retrievals. In addition, the instrument contains five SWIR diode lasers that enable long-term, in-flight monitoring of the stray-light distribution.

1 Introduction

The Tropospheric Monitoring Instrument (TROPOMI) is the ~~single payload of only instrument on board~~ the ESA Copernicus Sentinel-5 Precursor satellite ~~mission~~, which was launched on 13 October 2017 (Veefkind et al., 2012). The instrument maps the Earth atmosphere in two dimensions using two spectrometer modules, one covering the ultraviolet, visible and near-infrared (UVN) spectral ranges and the other covering the short-wave infrared (SWIR) spectral range 2305–2385 nm with a spectral resolution of 0.25 nm and a spectral sampling ~~distance~~ [interval](#) of 0.1 nm. The SWIR band is used for the retrieval of atmospheric CO and methane columns.

The spectral radiance from a ground swath of about 2600 km across track by about 7 km along track is imaged in consecutive periods of 1.08 s. The swath is partitioned into 216 ground pixels, each covering a viewing angle of 0.5° . Hence, the spectrum from a given ground pixel can contain spatial stray light from the 215 other ground pixels, as well as spectral stray light from all ground pixels. To ~~reach~~achieve the required accuracy of the ~~spectral radiance~~spectral-radiance measurements, an accurate correction for the stray light ~~has to be reduced strongly~~must be included in the data processing. The stray light has been characterized in detail with on-ground calibration measurements using a monochromatic quasi-point light source. Based on these measurements, an algorithm has been devised to correct the in-flight observations in near-real time.

The outline of the paper is as follows. The measurements are described in Sect. 2, followed by the first data processing in Sect. 3. The data are then examined in Sect. 4. An appropriate stray-light model and a correction algorithm are presented in Sects. 5 and 6, respectively. The further data processing to produce the input for the correction algorithm is explained in Sect. 7. Examples of ~~correction results~~corrected measurements are given in Sect. 8, followed by the conclusions in Sect. 9.

2 Calibration measurements

The SWIR and UVN spectrometers in TROPOMI share a common telescope. ~~The light is~~After the light is split into the different bands, it is imaged onto the SWIR spectrometer via relay optics and a ~~SWIR~~second telescope. In the SWIR spectrometer (developed by SSTL, United Kingdom), the light passes an entrance slit etched in a metal coating on a wedge prism, a flat fold mirror, two collimator lenses, an immersed diffraction grating (produced by SRON), an anamorphic wedge prism, five imager lenses, a warm window, a cold detector window and finally hits the detector (Saturn model by Sofradir, France). ~~Details~~The immersed grating consists of a silicon prism as the immersive medium with a diffraction grating on one surface. By illuminating the grating from inside the prism, the resolving power is increased by the refractive index of silicon. This allows the spectrometer to be much smaller than with a conventional echelle grating. More details of the spectrometer and specifically the immersed grating are given by Van Amerongen et al. (2012). The photovoltaic HgCdTe detector consists of a pixel array with 256 rows and 1000 columns, hybridized onto a read-out integrated circuit based on silicon complementary metal-oxide-semiconductor (CMOS) technology. In each detector pixel, the signal charge is converted into a voltage by a capacitive transimpedance amplifier (CTIA) and after a given exposure time stored in a sample-and-hold circuit before read-out. Details of the detector read-out and characterization are given by Hoogeveen et al. (2013). The spectral direction is imaged along the rows and the across-track spatial direction along the columns. The first collimator lens, the second imager lens and the warm window are made of germanium, while the other transmitting optics are made of silicon. The entrance slit has a bandpass filter with a reflectance of about 6 % in the operational range. The detector, the immersed grating and all other transmitting optical surfaces have antireflection coatings with a reflectance of 10 %, 0.3 % and 0.1 %, respectively.

The measurements for the SWIR stray-light calibration ~~have been~~were performed at the Centre Spatial de Liège (CSL) in Belgium in February 2015, during the on-ground calibration campaign of TROPOMI (Kleipool et al., 2017). In these measurements, a quasi-point light source at a given across-track (swath) angle and with a given wavelength is imaged on

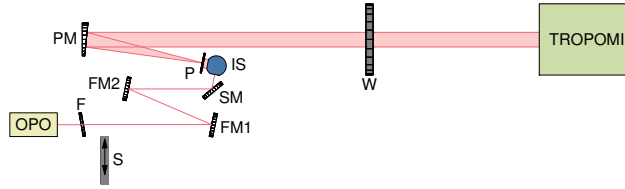


Figure 1. The setup for the stray-light measurements. The elements after the OPO are: neutral density filter F, shutter S, fold mirrors FM1 and FM2, spinning mirror SM, integrating sphere IS, field stop P, parabolic mirror PM and window W of the vacuum chamber containing the TROPOMI instrument.

the SWIR detector. The swath-angle range and the wavelength range are sampled independently, forming a large grid of measurements.

The setup is shown schematically in Fig. 1. The light source is a 2 W continuous-wave optical parametric oscillator (OPO), custom-built by VSL (the Netherlands' national metrology institute). The OPO is pumped by a single-frequency distributed feedback (DFB) fiber laser operating at 1064 nm which is amplified to 10 W by an ytterbium fiber amplifier. The OPO wavelength is set coarsely between 2290 nm and 2390 nm by manually setting the temperature of the periodically poled lithium niobate (PPLN) crystal and rotating the etalon mounted on a galvo. The wavelength is scanned in steps of about 0.8 nm, with a repeating pattern of 1 manual step followed by 3 automatic steps, applying a changing piezo voltage to the fiber laser and simultaneously changing the crystal temperature with a predetermined dependence on the piezo voltage. To remove the speckle pattern from the light, it is sent to a 3.3 inch integrating sphere via a spinning mirror (1 inch diameter, 76 Hz) with an angle of 1° between the rotation axis and the normal. The light exits the integrating sphere and is collimated with a field stop (9.6 mm diameter) and an off-axis parabolic mirror (500 mm focal length). The beam enters TROPOMI through the radiance port of the common telescope with a swath-angle coverage of 1.1°. The instrument is mounted on a cradle in order to scan all swath angles in a range of 108° around nadir. Background measurements are taken by closing a shutter before in front of the spinning mirror. Background data contain the same pixel-dependent offset, detector dark current and thermal background as light data taken at the same exposure time.

At each wavelength, the swath angle is scanned in steps of 1.1°, moving the light peak from top to bottom on the detector, followed by a scan in the opposite direction with the shutter closed. At each swath angle, detector images (frames) are taken at four different exposure times with about 20-fold increment steps (0.2, 4.6, 106 and 1998 ms). ~~At the longest exposure time 3 frames are averaged and at the other exposure times at least 9 frames, without changing any other setting.~~ With a neutral density filter just after the OPO, the spectral radiance at the instrument ~~has been reduced to avoid detector saturation is reduced to 200 times the highest value in nominal operations. At this radiance, the detector is never saturated~~ at the shortest exposure time. ~~This corresponds to 200 times the highest radiance value in nominal operations. The other~~ However, the signal with this exposure time is noisy away from the peak. At the three longer exposure times, the signal has a much better signal-to-noise ratio away from the peak, but the peak is saturated. These three exposure times are used to increase the dynamic range of the

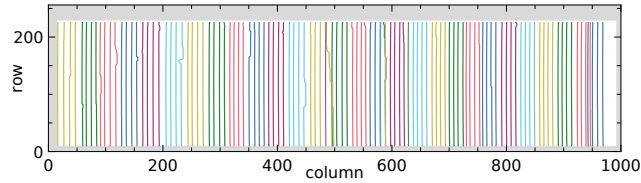


Figure 2. Fitted peak positions, connected by lines per swath-angle scan. Consecutive scans between manual steps have the same, arbitrary colour. In the grey area, the light is blocked by the entrance slit of the spectrometer (top and bottom) or a shield at the detector (left and right). Light scans were performed from top to bottom and (except 4 single scans after the main scans) from right to left.

image by four orders of magnitude (see Sect. 3). At the three shorter exposure times at least 9 frames are averaged, but only 3 frames are taken at the longest exposure time in order to limit the total measurement period.

The wavelength was difficult to set accurately and was sometimes unstable during measurements. This caused some gaps, which were filled by extra scans performed after the main measurement series. In total, a slightly irregular grid was measured of 116 wavelengths by 99 swath angles. The peak positions are shown in Fig. 2, connected by lines per swath-angle scan and identically coloured for a manual scan and any following automatic scans.

A coarser grid with more frames per point would give the same signal-to-noise ratio in the final calibration data used to correct measurement data, but this fine grid ensures that no important features are missed that only occur close only closer to specific wavelengths or swath angles are missed. The total measurement period was reduced to 113 hours by skipping many background measurements. At exposure time 4.6 ms, some of the grid points have no corresponding background measurementmeasurements. Therefore the median of all background measurements at 4.6 ms is combined with each light measurement at 4.6 ms. At exposure times 0.2 ms and 106 ms, no background measurements were taken at all. In these cases, the median of the light measurements is used as background measurements at all swath angles and wavelengths. The peak is in a given detector area only occurs in a small subset of the light measurements, which means it has a small effect on the median. In the area far away from the peak, the median may not constitute an accurate background, but for this area only data at the longest exposure time of 1998 ms will be used, at which. In that case background measurements are available for each combination of swath angle and wavelength.

Both light and background measurements are offset-corrected, but the background measurements are not yet subtracted from the light measurements, because the absolute-signal-total signal (due to external light, thermal background and detector dark current) is needed to merge the frames at the different exposure times.

3 Merging frames with different exposure times

The measurements show a small spot on the detector that moves as a function of swath angle and wavelength. At each position, data have been taken at four exposure times. At the shortest exposure time, the signal is not saturated, but noisy away from the peak. At the longer exposure times, the signal has a much better signal-to-noise ratio away from the peak, but the peak

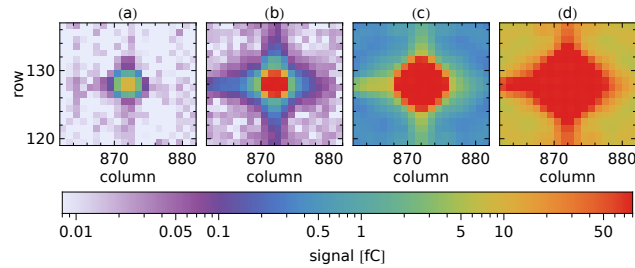


Figure 3. Background-corrected light peak at different exposure times: (a) 0.2 ms, (b) 4.6 ms, (c) 106 ms, (d) 1998 ms. Only at the shortest exposure time ~~is there no saturation~~ pixels are saturated.

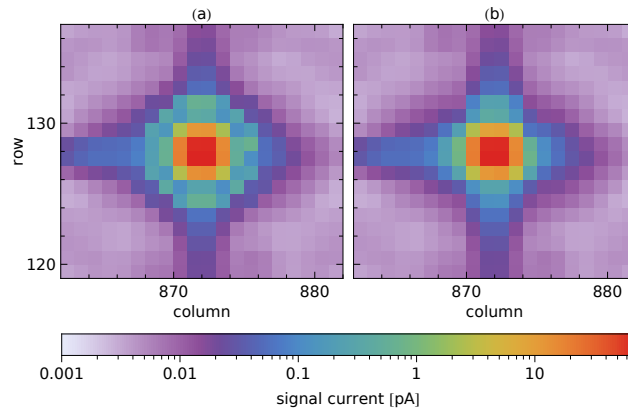


Figure 4. Combination of data in Fig. 3 (~~from signal to signal current~~) to increase the dynamic range, (a) without and (b) with blooming taken into account.

~~is saturated.~~ Figure 3 shows an example, where only a small area around the peak is shown for one illumination at the four exposure times. Then for each pixel, the signal is taken from the longest exposure time that does not saturate ~~this pixel, where~~ (a saturated signal is defined as a signal larger than 90 % of the maximum possible signal). The background signal of this pixel at the chosen exposure time is subtracted ~~and the,~~ removing the pixel-dependent offset, detector dark current and thermal background. The result is divided by the exposure time to get a signal ~~current. Using this method, the rate in digital counts per second. By applying a separate calibration of the number of electrons per count, it is converted to a signal current. By combining the data like this, the signal current can be measured with a dynamic range of the signal current is larger more~~ than seven orders of magnitude.

Without further measures, the result of merging the data taken with different exposure times would look like Fig. 4a. ~~Around the peak, a ring is seen due to blooming~~ Due to the use of a CTIA in each detector pixel, the signal does not affect the detector bias voltage and signals of neighbouring pixels do not affect each other, unless a signal saturates. In that case blooming occurs, seen as a ring around the peak in Fig. 4a: the signal of unsaturated pixels ~~with a saturated direct neighbour is too high, but only~~

~~if the neighbour is becomes too high due to spilling from a direct neighbour pixel~~ saturated by light, not dark current. Hence, for these pixels, the signal is taken from the exposure time that is one step shorter. The corrected result is shown in Fig. 4b. ~~The reason why blooming does not occur due to dark current is unknown and not investigated further as there are only about 80 detector pixels with a large enough dark current.~~

- 5 Two corrections have been applied to the measured signals at an exposure time of 0.2 ms. First, a correction is needed for pixels with a large light signal that alternates between a lower and a higher value from frame to frame. This effect was not observed during the detector characterization in May–June 2013 (Hoogeveen et al., 2013) and is not understood. However, a correction has been derived, based on frames with slightly smaller signals without alternating readings. Second, in the conversion to signal current, nominal exposure time 0.2 ms is actually replaced by the value 0.14 ms. This is based on stray-light
 10 correction of diode-laser, OPO and arc-lamp measurements, which produces consistent intermediate results. The two effects are probably caused by the very large signal currents in the light peak (200 times the highest value in nominal operations) and an exposure time at the limit of the detector specification.

- After these steps, each merged frame is corrected for pixel response non-uniformity (PRNU), ~~which is only a very small correction. The peak position and the integrated signal current are determined in each frame by fitting the~~. This is the
 15 pixel-to-pixel variation of the gain (ratio of the signal current to the input photon rate), determined in separate calibration measurements using a light source with a flat spectrum. This correction is very small, up to about 1 %.

At this stage, a merged frame consists of signal current $I_{\text{meas}}[r, c]$ as a function of detector row r and column c . The area near the peak is fitted with a two-dimensional function $S(r, c)$. The one-dimensional convolution of a Gaussian distribution with standard deviation σ and a uniform distribution with mean 0 and full width w is given by

20
$$\mathcal{B}(x; \sigma, w) = \frac{1}{2w} \left[\text{erf} \left(\frac{x+w/2}{\sqrt{2}\sigma} \right) - \text{erf} \left(\frac{x-w/2}{\sqrt{2}\sigma} \right) \right].$$
 (1)

The fit function is

$$S(r, c) = a \mathcal{B}(r - r_0; \sigma_{\text{spat}}, w_{\text{spat}}) \mathcal{B}(c - c_0; \sigma_{\text{spec}}, w_{\text{spec}}),$$
 (2)

- with spatial (vertical) peak position r_0 , spectral (horizontal) peak position c_0 , integrated signal current a , spatial width parameters σ_{spat} and w_{spat} and spectral width parameters σ_{spec} and w_{spec} . The variation of the light in-
 25 ~~tensity is then removed by dividing each~~ between frames is removed by normalizing the frame by the ~~corresponding~~ integrated signal current;

$$\mathcal{I}[r, c] = I_{\text{meas}}[r, c] / a.$$
 (3)

- The values of the four width parameters are not used, only the fitted peak position (r_0, c_0) is needed later on. In 10 % of the frames, either the peak is too close to the detector edges or one of the fitted widths is too small. ~~Discarding~~ After discarding
 30 these cases, there are still 10361 valid frames left.

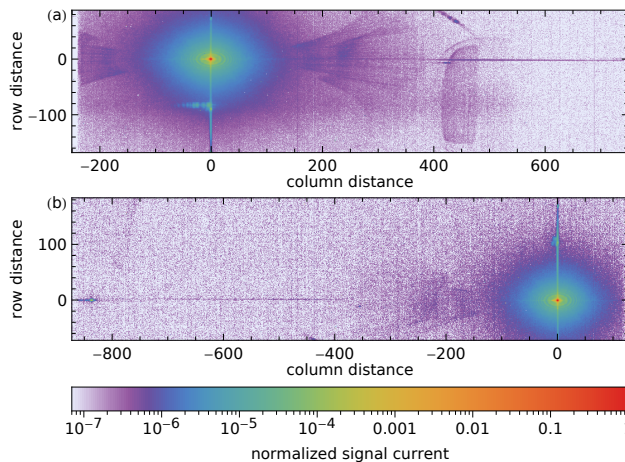


Figure 5. Merged frames at two combinations of wavelength and swath angle, normalized to a peak value of 1: (a) 2320.20 nm and -23.8° , (b) 2377.90 nm and $+23.5^\circ$.

4 Examination of data

Figure 5 shows two examples of merged frames, at 2320 nm and 2378 nm and at opposite swath angles. The electronic noise has been suppressed to about 10^{-7} times the peak signal. It determines the lower end of the dynamic range. The halo around the peak is light scattered from optical surfaces, possibly due to polish imperfections with low spatial frequencies. The vertical line through the peak is pure spatial stray light from optics before the spectrometer slit: the common telescope and the relay optics. The line is slightly curved due to the variation of about 0.5 column at a given wavelength but different swath angles, known as the spectral smile. The weak horizontal line through the peak is due to imperfections of the grating line positions. It is slightly rotated, as can be seen at the right side of Fig. 5a. The origin of the wings 150 to 400 columns from the peak on both sides is unknown. See video S1 in the Supplement for two sequences of frames, at 23.5° and at 2320.20 nm.

The unfocussed spot straight below the peak (Fig. 5a) or above it (Fig. 5b) is due to a double reflection, first at the detector, then at the front side of the immersed grating, from the inside. This means the light is diffracted three times in the same grating order. According to the optical model, below 2360 nm the reflected beam hits the edge of the immersed grating surface, causing the measured feature to stretch horizontally (Fig. 5a). The reflected beam covers the margin of about 1.5 mm at the surface edge without antireflection coating, which makes this the strongest feature moving relative to the peak.

The features described above will be reduced by the correction algorithm. Other features depend too much on wavelength or swath angle and remain after the correction, but they have values six to seven orders lower than the peak value. One is seen in Fig. 5a as a large block shape in the column range 400–500. It is due to a double reflection, first at the detector, then at the front of the fourth imager lens.

To examine the data more closely, all frames at a given wavelength are shifted vertically until the peaks overlap within a pixel. The median for each pixel at 2377.90 nm is shown in Fig. 6. The reflection 110 pixels above the peak in Fig. 5b has

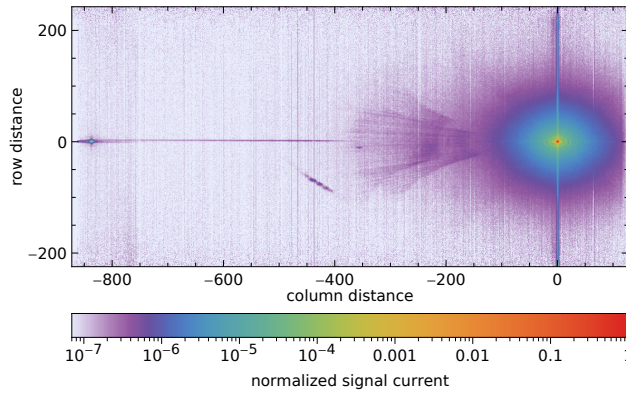


Figure 6. At one wavelength (2377.90 nm), the median frame over all swath angles, normalized to a peak value of 1.

disappeared in the median image, because it moves vertically relative to the peak position. Note also the spot 836 pixels to the left of the peak in Fig. 6. It remains at the same vertical position as the peak, but moves horizontally with wavelength. It is caused by light that diffracts twice in the same order in the immersed grating, with a reflection at the front surface in between.

For an examination of the central area, the scan data are combined differently. For Fig. 6, the original frames were shifted vertically by an integer number of pixels. In Fig. 7, the shift is over a non-integer number to bin the result at subpixel resolution, before the median is taken per bin. This shows the structures near the peak more clearly. The data from two swath-angle scans within a wavelength range of 0.65 nm are combined with bins of 0.2 pixel. All bins are filled, due partly to the **variation of about 0.5 column at a given wavelength but different swath angles, known as the** spectral smile. The rings in Fig. 7 have slightly decreasing diameters with increasing wavelength. Their spacing is consistent with interference of light from two separated surfaces. The radially decreasing brightness suggests interference of scatter, not reflections. The elliptical shape indicates that they are probably generated before the grating surface. The remaining surfaces within the spectrometer are unlikely candidates. At the entrance pupil before the spectrometer, the surface separation needs to be 6 mm vacuum to explain the fringe diameters. The fringes cannot originate in the light source, because they are also seen using the on-board diode lasers. The purple rings in Fig. 7b look like bead strings and the gaps between the beads in different rings form hyperbolas. Their origin is not understood, but it may be related to the origin of the ring structures.

Figure 8 shows a vertical cross section through the peak on a linear and logarithmic scale (after binning the shifted original frames over intervals of 0.025 pixel), including a fit with the convolution of a Gaussian and a **bloek-uniform** distribution. The maximum is not exactly 1, because the same normalization factor has been used as in Fig. 6 despite different binning. The full width at half-maximum of 2.1 spatial pixels corresponds to the stimulus size of about 1.1° . **The 0.5 % bump in the laser**, in agreement with the instrument design model. The signal 3 pixels above the line or peak is 0.5 % higher than the 0.2 % expected from the neighbouring signals. This bump is probably a feature of the stimulus and not the instrument, because it was not seen in measurements with a xenon arc lamp. Figure 9 shows a horizontal cross section using bins of 0.05 pixel and the average instrument spectral response function (ISRF) at the **used-peak-positions-peak positions used**. The ISRF **has-been**

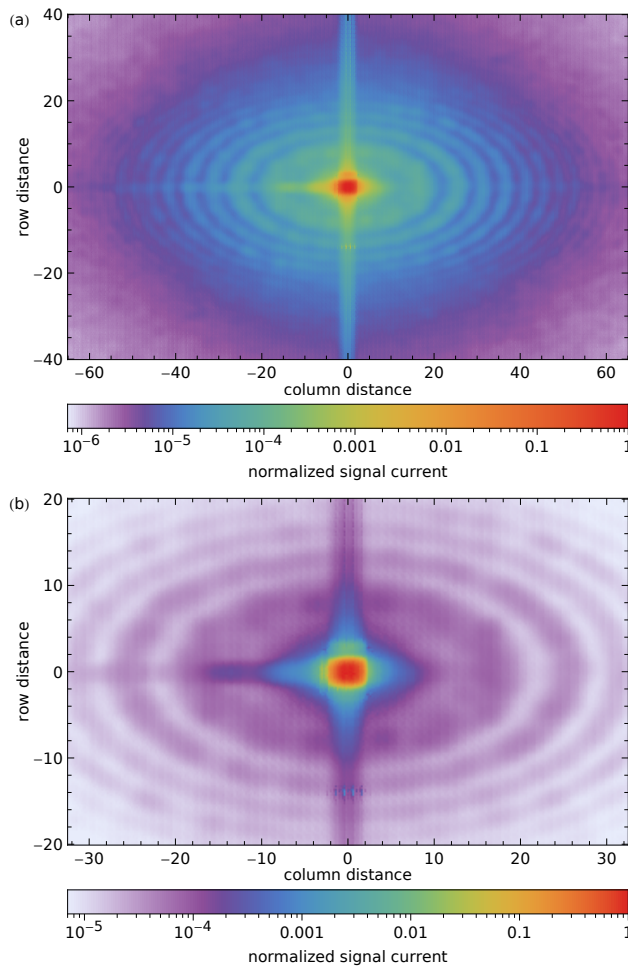


Figure 7. Two views of the peak area at a resolution of 0.2 pixel, binning data at 2319.55 nm and 2320.20 nm.

was determined with different, dedicated measurements (Van Hees et al., 2017). Here it is only scaled vertically to fit the data. The logarithmic plot shows the ISRF over an extended range, but it is defined over the central 9 pixels that is used in trace-gas retrievals; it is only used in the range over the central 9 pixels, but in the logarithmic plot the ISRF is extrapolated beyond that range. The 0.1 % bump centred 7 pixels to the left of the peak seems to be extra stray light, not a laser feature, because it has been seen with the on-board diode lasers as well. Note that the cross sections in Figs. 8 and 9 contain more stray light than any diagonal cross section.

5 Stray-light model

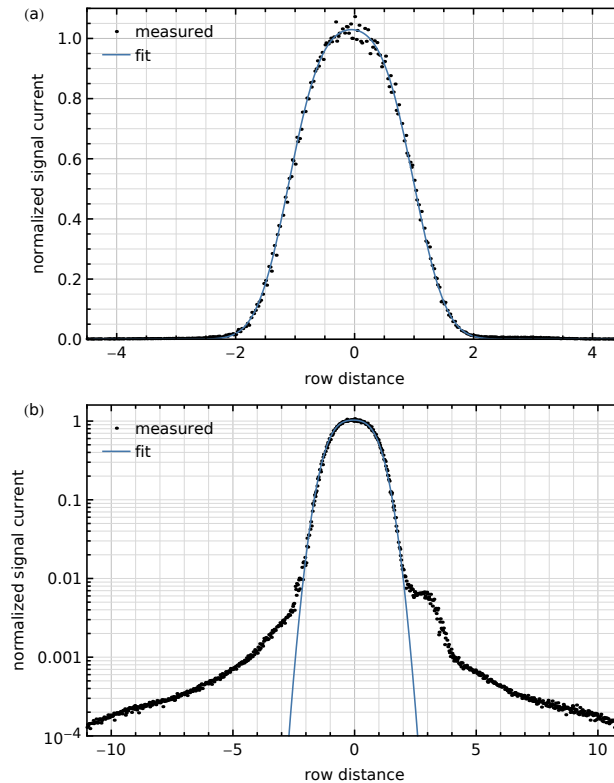


Figure 8. Vertical cross section through the peak using the combined data at 2377.90 nm on (a) a linear scale and (b) a logarithmic scale. Included is a fit with the convolution of a Gaussian and a ~~block-uniform~~ distribution.

~~Now that~~ Once the general behaviour of the stray light ~~has been was~~ examined, a descriptive model ~~is was~~ defined, starting with some terminology. A “spread function” maps an object to image space, which involves many detector pixels. A “response function” maps an image to object space, which is a property of a given detector pixel. A qualifier describes the dimensions involved in the mapping: the point response function (PRF) is used for the two spatial dimensions (across-track and along-track), the ISRF for the spectral dimension and the spatial-spectral spread function (SSSF) for the combination of the across-track spatial dimension and the spectral dimension. While the PRF and ISRF are seen as only descriptive, the part of the SSSF away from the centre is seen as stray light that will be corrected. ~~Only stray light originating at spatial coordinates~~ Stray light is only corrected when the source itself is imaged on the detector ~~is corrected~~, because the ~~stray-light source is measured, serving direct source light serves~~ as input for the correction.

- 10 Any system will have an SSSF contribution that is independent of the peak position as well as contributions that are specific for a peak position. The latter are usually more complicated to correct for. Fortunately, it turns out that these are small in the TROPOMI-SWIR system. Hence, the model for the SSSF as a function of swath angle and wavelength contains only the following two contributions:

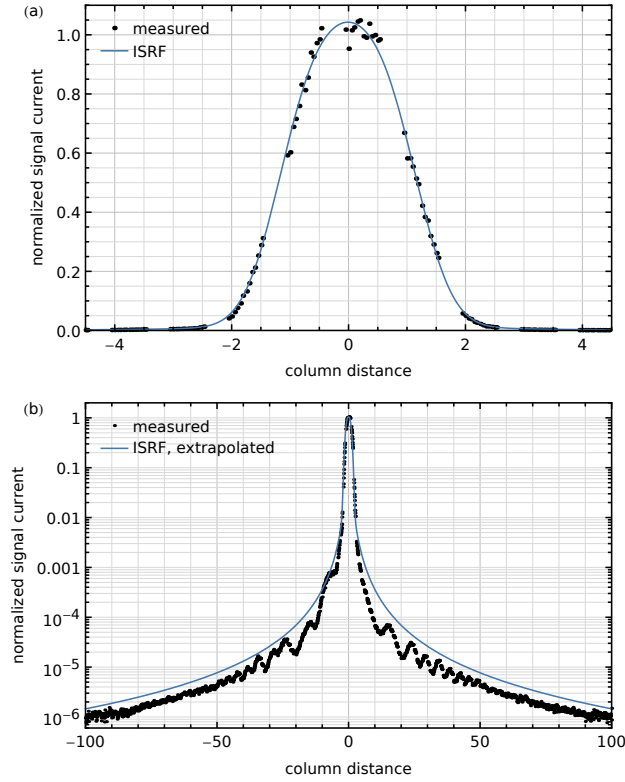


Figure 9. Horizontal cross section through the peak using the combined data at 2377.90 nm on (a) a linear scale and (b) a logarithmic scale. Included is the corresponding ISRF with a fitted height, extended at absolute column distances larger than 4.5.

- The median of images of a monochromatic quasi-point source over all swath angles and wavelengths, after they have been shifted to let the peaks coincide, called the “stable kernel”, $\mathbf{K}_{\text{stable}}$. This kernel has odd dimensions, has the median peak at the centre and is normalized so the sum of all elements is 1. It is split into a near-field kernel \mathbf{K}_{near} and a far-field kernel \mathbf{K}_{far} , by using a mask \mathbf{M}_{far} with values in the range $[0, 1]$:

$$5 \quad \mathbf{K}_{\text{far}} = \mathbf{M}_{\text{far}} \circ \mathbf{K}_{\text{stable}}, \quad (4)$$

$$\mathbf{K}_{\text{near}} = \mathbf{K}_{\text{stable}} - \mathbf{K}_{\text{far}}, \quad (5)$$

using where \circ is the element-wise product. A centred area of 7 spatial by 9 spectral elements in \mathbf{M}_{far} is set to 0 and the rest to 1.

- A dim, blurry version of the peak near the same column that moves downward when the peak is moved upward. This main reflection is described by the median of all images, after the stable kernel has been subtracted and the images have been shifted to let the reflections coincide. This is the “reflection kernel”, \mathbf{K}_{refl} . The main reflection is not already part of the stable kernel, because it moves too much to be noticed in a median. This kernel has also odd dimensions and

is normalized so the sum of all elements is 1, but neither the reflection nor the (subtracted) peak is at the centre (see Appendix A). Intensity variations of the reflection are accounted for by detector map \mathbf{E}_{refl} , where each pixel is set to the relative intensity of the reflection when the main peak is at that pixel.

Contributions of other features moving relative to the peak are neglected. Stray light, i.e. the SSSF part that is corrected, consists of \mathbf{K}_{far} and \mathbf{K}_{refl} . The light in \mathbf{K}_{near} is considered as the ISRF in the spectral direction and part-one dimension of the PRF in the spatial direction.

6 Correction algorithm

If \mathbf{F} represents an ideal frame without stray light, the stable part of the stray light is given by $\mathbf{K}_{\text{far}} \otimes \mathbf{F}$, where \otimes indicates a convolution. The integrated signal in the stray light is a fraction $\sum_{k,l} (\mathbf{K}_{\text{far}})_{k,l}$ of the total integrated signal. Measured frame \mathbf{J}_0 is the sum of the ideal frame and the stray light, taking into account that the stray light is removed from the ideal frame:

$$\mathbf{J}_0 = \left(1 - \sum_{k,l} (\mathbf{K}_{\text{far}})_{k,l}\right) \mathbf{F} + \mathbf{K}_{\text{far}} \otimes \mathbf{F}. \quad (6)$$

The stable part of the stray light is corrected with Van Cittert deconvolution (Van Cittert, 1931; Berry and Burnell, 2000), one of the simplest methods of iterative image restoration: given an input frame \mathbf{J}_0 , the frame after i iterations is

$$\mathbf{J}_i = \frac{\mathbf{J}_0 - \mathbf{K}_{\text{far}} \otimes \mathbf{J}_{i-1}}{1 - \sum_{k,l} (\mathbf{K}_{\text{far}})_{k,l}}. \quad (7)$$

The number of iterations has been set to $n = 3$. Trials have shown that a higher number does not improve the correction, while adding load to the processor. The convolution ~~indicated by \otimes~~ , is performed with zero-padding outside the frame and the result has the same dimensions as the frame. The rationale of this algorithm is as follows: term $\mathbf{K}_{\text{far}} \otimes \mathbf{J}_{i-1}$ is an approximation of the stray light ~~which and~~ is subtracted from original frame \mathbf{J}_0 . The result is closer to the perfect image, and hence also a better input to derive an approximation of the stray light, which is determined in the next iteration. The denominator constitutes a normalization. This is made clearer by writing the first iteration as

$$\mathbf{J}_1 = \frac{\mathbf{J}_0 - \mathbf{K}_{\text{far}} \otimes \mathbf{J}_0}{1 - \sum_{k,l} (\mathbf{K}_{\text{far}})_{k,l}} = \mathbf{K}_1 \otimes \mathbf{J}_0, \quad (8)$$

with

$$\mathbf{K}_1 = \frac{\Delta - \mathbf{K}_{\text{far}}}{1 - \sum_{k,l} (\mathbf{K}_{\text{far}})_{k,l}}, \quad (9)$$

where Δ is a two-dimensional Kronecker delta, i.e. a matrix with one non-zero element 1 at the centre: ~~the~~. The iteration consists of a convolution with a kernel \mathbf{K}_1 , for which the sum of all elements is 1. Hence, the stray light is not removed but redistributed.

Frame \mathbf{J}_n after the last iteration in the correction of the stable part of the stray light, using Eq. (7), is then corrected for the reflection part:

$$\mathbf{J}_{\text{corr}} = \mathbf{J}_n - \mathbf{K}_{\text{refl}} \otimes (\mathbf{E}_{\text{refl}} \circ \mathbf{J}_n)^{\text{R}}, \quad (10)$$

where R indicates the matrix operation of reversing the row order. The reflection kernel has been defined in such a way that this reversing operation maps the main reflection at the correct position, [as](#) explained in Appendix A.

7 Determination of the calibration data

For the correction, three types of calibration data need to be determined: stable kernel $\mathbf{K}_{\text{stable}}$, reflection kernel \mathbf{K}_{refl} and relative reflection intensity \mathbf{E}_{refl} . First the stable kernel is calculated. A merged frame at a given swath angle α and wavelength λ contains signal current $I[r, c, \alpha, \lambda]$ as a function of detector row r and column c . The fitted peak position is $(r_{\alpha, \lambda}, c_{\alpha, \lambda})$. Using linear interpolation, an extended array is produced where the peak is at the centre:

$$K[y, x, \alpha, \lambda] = I[y + r_{\alpha, \lambda}, x + c_{\alpha, \lambda}, \alpha, \lambda], \quad (11)$$

with integers $y \in [-255, +255]$ and $x \in [-999, +999]$. At coordinates outside the detector range, $I[r, c, \alpha, \lambda]$ is assumed to be a dummy value. Note that the resulting array is twice as wide and high as a detector frame. The median of the set of arrays $K[y, x, \alpha, \lambda]$ over all α and λ is $K[y, x]$. In this calculation, dummy values are discarded and if there are no valid values left for a given element, it is set to zero. Afterwards, edge columns and rows that only contain zeros are removed where possible, as long as element $K[0, 0]$ with the peak can be kept at the centre of the array. Stable kernel $\mathbf{K}_{\text{stable}}$ is $K[y, x]$ after normalization so the sum of all elements is 1. The amount of stray light described by the stable kernel can now be determined after applying

Eq. (4): it is a fraction $\sum_{k,l} (\mathbf{K}_{\text{far}})_{k,l} = 0.043$ of the detected light.

The stable kernel is shown in Fig. 10 in three ranges. Figure 10c can be compared with Fig. 7a: they show the same area with the same colour scale, but Fig. 7a uses basically one wavelength and has a higher resolution. Because the ring sizes depend slightly on wavelength, the larger rings are averaged away in the stable kernel. The spot in Fig. 6, 836 pixels to the left of the peak, moves slowly relative to the peak as a function of wavelength, and has become stretched and weakened in the stable kernel.

For the determination of the reflection kernel, only merged frames $I[r, c, \alpha, \lambda]$ are used where the main reflection is separated enough from the peak to be determined accurately, $r_{\alpha, \lambda} \notin [82, 173]$. The stable kernel is shifted and subtracted from each frame, leaving the normalized rest of the stray light:

$$I_{\text{rest}}[r, c, \alpha, \lambda] = I[r, c, \alpha, \lambda] - K_{\text{stable}}[r - r_{\alpha, \lambda}, c - c_{\alpha, \lambda}], \quad (12)$$

using linear interpolation in K_{stable} . The results are shifted by Δr rows and Δc columns until the main reflection is found in an area centred at position $(r_{\text{centre}}, c_{\text{centre}})$, with $r_{\text{centre}} = 127.5$ and arbitrary c_{centre} . This is performed by interpolating values $I_{\text{rest}}[r - \Delta r, c - \Delta c, \alpha, \lambda]$, where $\Delta r = r_{\alpha, \lambda} - r_{\text{centre}}$ and $\Delta c = c_{\text{centre}} - c_{\alpha, \lambda}$ (see Appendix A). Expressed in coordinates $y = r - r_{\text{centre}}$ and $x = c - c_{\text{centre}}$, the new array is given by

$$I_{\text{refl}}[y, x, \alpha, \lambda] = I_{\text{rest}}[y + 255 - r_{\alpha, \lambda}, x + c_{\alpha, \lambda}, \alpha, \lambda], \quad (13)$$

with integers $y \in [-78, +78]$ and $x \in [-49, +49]$. The reflection kernel and relative reflection intensity $E_i[\alpha, \lambda]$ are then determined iteratively. Iteration $i = 1$ starts with $E_0[\alpha, \lambda] = 1$. The median of the set of arrays $I_{\text{refl}}[y, x, \alpha, \lambda]/E_{i-1}[\alpha, \lambda]$ over

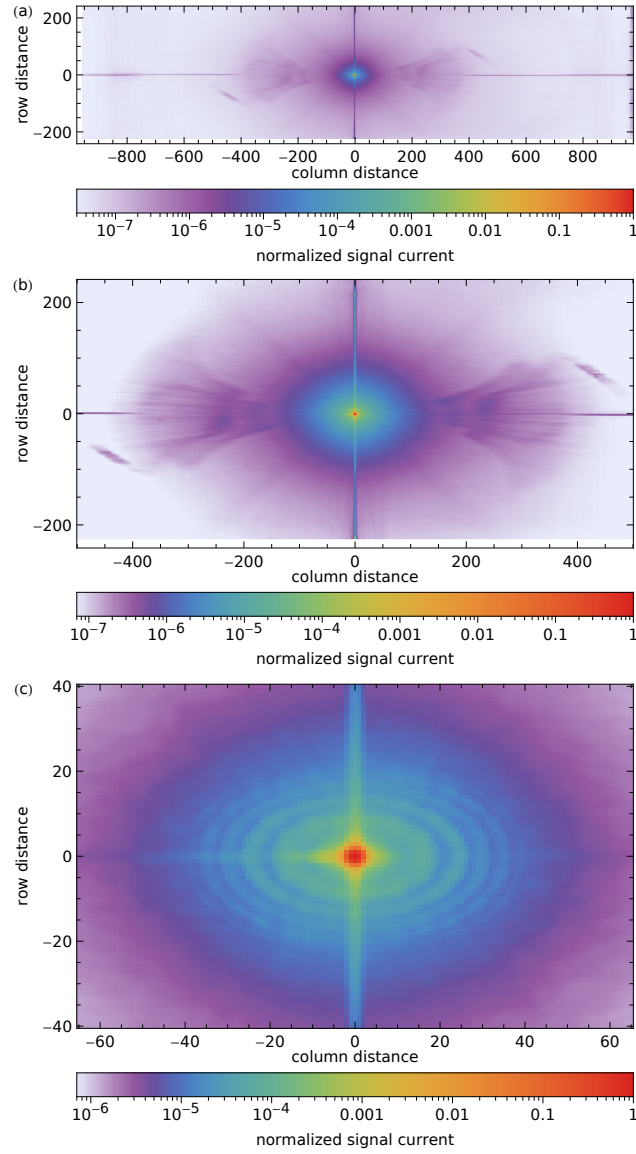


Figure 10. The stable kernel in three ranges: (a) full range, (b) main part, (c) same range as Fig. 7a. For easy comparison, the data have been multiplied by 6.44 in order to get a peak value of 1. White edges have been set to 0.

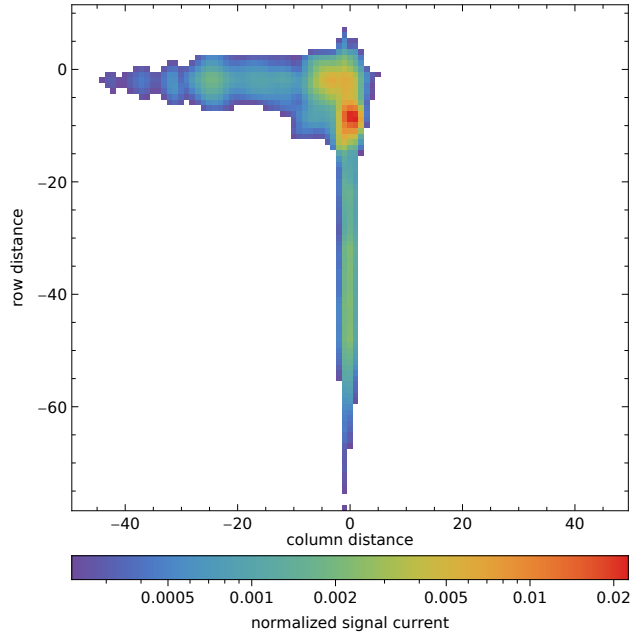


Figure 11. The lower part of the reflection kernel. White pixels have been set to zero as they contain essentially noise. The upper part, making the area symmetric around the origin, contains only zeros.

all α and λ is $k_i[y, x]$. Elements $k_i[y, x] < 0.01 \max_{y,x} (k_i[y, x])$, which contain essentially noise, are set to zero. The result is normalized so the sum of all elements is 1, producing preliminary reflection kernel $K_{\text{refl},i}[y, x]$. The corresponding relative reflection intensity is determined by comparing the remaining measured stray light with a scaled reflection kernel, where the scaling is optimized:

$$5 \quad E_i[\alpha, \lambda] = \arg \min_{\epsilon} \sum_{y,x} \left(I_{\text{refl}}[y, x, \alpha, \lambda] - \epsilon K_{\text{refl},i}[y, x] \right)^2. \quad (14)$$

Only two iterations are needed for convergence: the final reflection kernel is $\mathbf{K}_{\text{refl}} = K_{\text{refl},2}[y, x]$, shown in Fig. 11. Relative reflection intensity $E_2[\alpha, \lambda]$ is given in Fig. 12a. It is a function of peak parameters $r_{\alpha,\lambda}$ and $c_{\alpha,\lambda}$ and needs to be converted to a scaling map \mathbf{E}_{refl} as a function of detector pixel. This is performed by fitting a third-order bivariate polynomial (Figs. 12b and 12c), which also reduces noise and fills gaps. The model is

$$10 \quad E_{\text{fit}}(y, x; \mathbf{a}) = a_0 \\ + a_1 y + a_2 x \\ + a_3 T_2(y) + a_4 xy + a_5 T_2(x) \\ + a_6 T_3(y) + a_7 x T_2(y) + a_8 y T_2(x) + a_9 T_3(x), \quad (15)$$

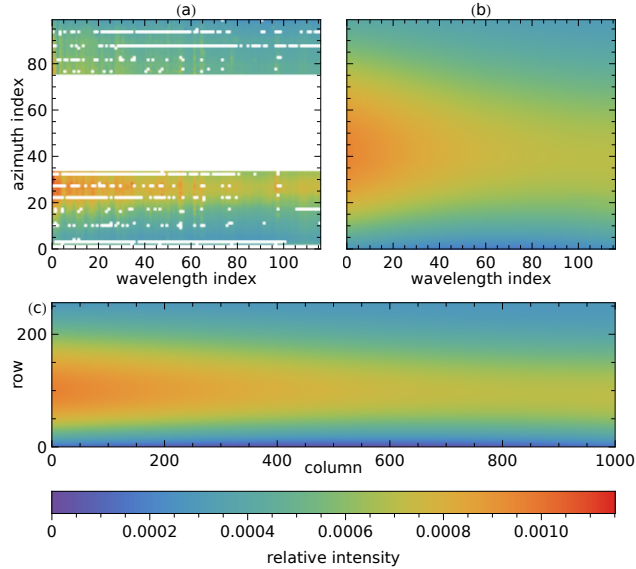


Figure 12. Maps of the relative intensity of the reflection kernel: (a) measured values, sorted by peak wavelength and swath angle, with unused values shown white; (b) fitted values on the same grid; (c) fitted values interpolated as a detector map.

with scaled indices

$$\begin{aligned} y &= 2(r_{\alpha,\lambda}/255) - 1, \\ x &= 2(c_{\alpha,\lambda}/999) - 1 \end{aligned} \tag{16}$$

and Chebyshev polynomials of the first kind $T_i(z)$. The model values for $r_{\alpha,\lambda} \in [0, 255]$ and $c_{\alpha,\lambda} \in [0, 999]$ form map $E_{\text{refl}}[r_{\alpha,\lambda}, c_{\alpha,\lambda}]$.

The stray-light fraction in the detected light described by \mathbf{K}_{refl} is $(\mathbf{E}_{\text{refl}})_{k,l}$, which varies between 0.2×10^{-3} and 1×10^{-3}

5 (Fig. 12).

8 Correction results

In this section, the result of the stray-light correction is shown for several cases. First, the correction of a merged frame is checked. Figure 13a shows the signal before and after correction. The vertical line through the peak is weaker after correction, but it is still visible because the deconvolution cannot take into account the spectral smile of 0.5 pixel. Also remnants of the ring structure can still be seen as the rings are slightly wavelength dependent. Most, but not all of the main reflection is corrected. The large feature at column 700 moves with respect to the peak and is thus not corrected.

Other measurements show the cumulative stray light when one detector dimension is illuminated: for spectral stray light a measurement is used with monochromatic light from one of the five on-board DFB diode lasers (Nanoplus, Germany) via a diffuser (Fig. 13b) and for spatial stray light a measurement with quasi-white light from an external xenon arc lamp (Fig. 13c).

15 The diode lasers have wavelengths in the SWIR spectral range at roughly equal intervals and are used for in-flight monitoring of

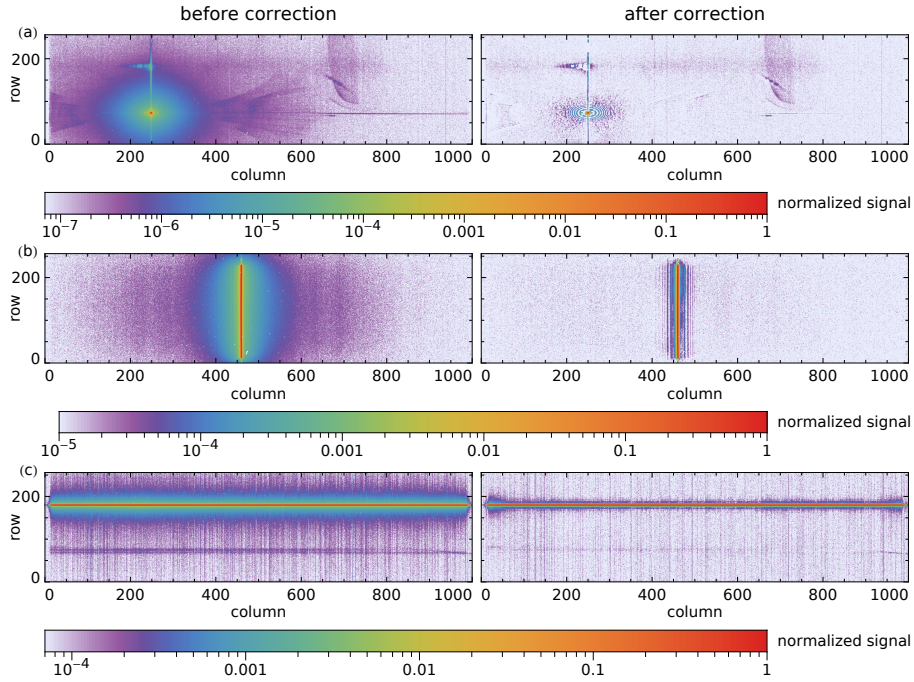


Figure 13. Examples of measurements before (left) and after (right) stray-light correction with different illumination patterns: (a) a monochromatic single swath-angle spot in one of the stray-light measurements; (b) a monochromatic full-swath line from an on-board diode laser; (c) a white-light single swath-angle line from an external xenon arc lamp. In each case, the maximum signal has been set to 1. Because the measured signal range varies between the examples, the minimum value of the colour scale is also different.

the ISRF and stray light. The measurements for Fig. 13b and c were performed with lower light intensities, leading to a smaller signal-to-noise ratio than available in the stray-light characterization. In these cases with illumination over many pixels and at regular intensities, the stray-light correction works well. Some stray light remains around the corrected diode-laser signal, mainly due to the slight wavelength dependence of the rings around the peak. The horizontal line near row 70 in Fig. 13c is the sum of the main reflection over all wavelengths. It is a double line due to the irregular shape of this reflection, but most of it can be corrected. The extra stray light around the main line near the outer columns is attributed to light reflected from the detector shield limiting the wavelength range. Cross sections perpendicular to the lines in Figs. 13b and 13c are shown in Fig. 14.

To show the effect of the stray-light correction applied to an Earth radiance measurement, a swath is simulated which is half clear-sky forest (albedo 0.05) and half clouds (at 2 km height, albedo 0.40), assuming a U.S. Standard atmosphere, a solar zenith angle of 40° and a viewing zenith angle of 0° over the entire swath. The two radiance spectra are given in Fig. 15. The expected signal (without stray light), including the radiance responsivity and the spectral smile, is shown in Fig. 16a.

The Stray light is introduced by convolving the expected signal with the SSSF. However, if the stable kernel would be used as an SSSF approximation for the whole detector, the effect of neglected features moving relative to the peak cannot be assessed. Instead, the detector is divided into areas of pixels around all peak positions found in the merged frames. A given measured

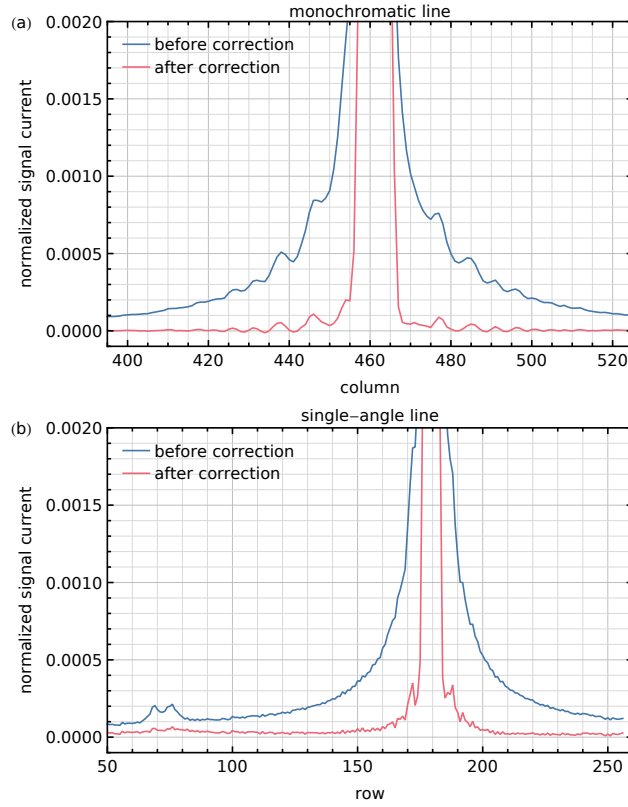


Figure 14. (a) Median horizontal cross section of the monochromatic line shown in Fig. 13b. (b) Median vertical cross section of the single swath-angle line shown in Fig. 13c. In each case, the maximum signal has been set to 1.

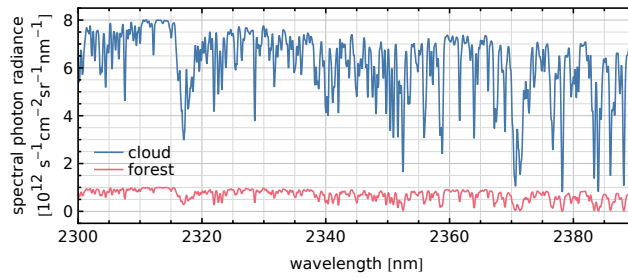


Figure 15. Spectra of cloud and forest scenes as used in the simulated Earth radiance ~~measurement~~measurements.

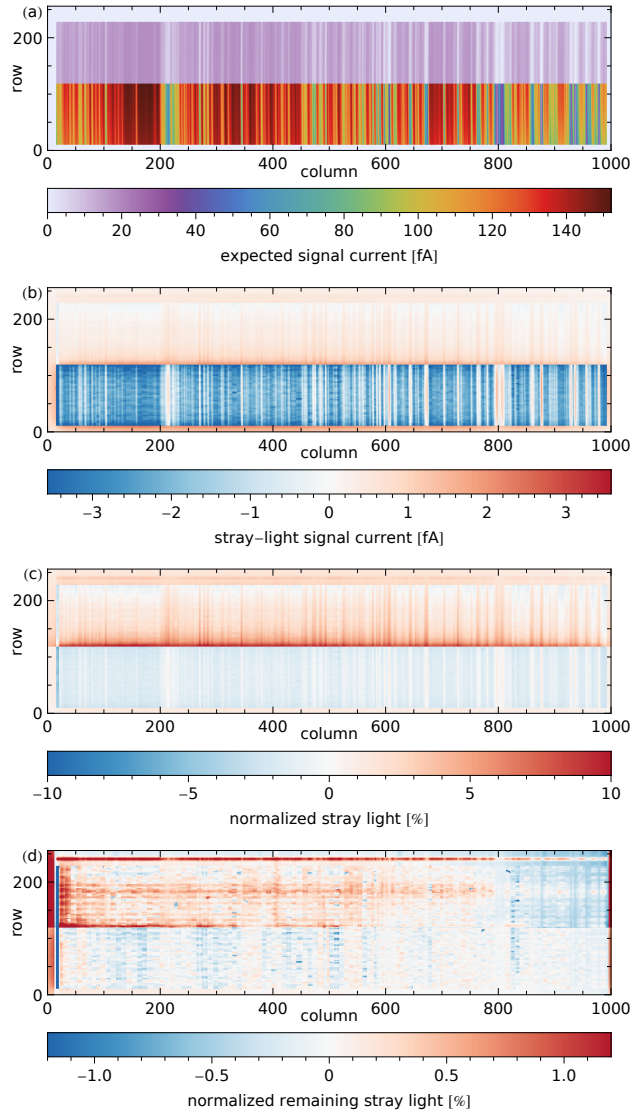


Figure 16. Simulation of an Earth radiance measurement: (a) the expected signal current without stray light, (b) the corresponding stray light, (c) the stray light expressed as a percentage of the expected continuum in the given row, (d) the remaining stray light after stray-light correction expressed as a percentage of the continuum.

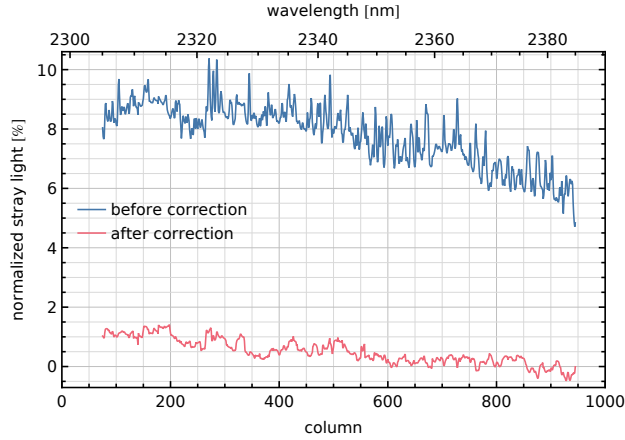


Figure 17. Stray light as a percentage of the expected continuum signal current, before and after correction. These are cross sections of Figs. 16c and 16d, respectively. ~~Shown is, for the forest spectrum in performance range 2305–2385 nm in the forest spectrum~~ located four rows from the cloud spectra.

merged frame constitutes the most accurate SSSF available for the detector pixels in the corresponding area. ~~This Care has to be taken with signal scaling and padding to the right dimensions before a merged frame can be used in a convolution. A~~ merged frame is converted to a kernel by applying the same normalization factor as in the creation of the stable kernel and padding to the same dimensions with the peak at the centre. The padding values are the values in the stable kernel at the same positions.

- 5 ~~The central area is changed to a delta function by multiplying~~ This is followed by multiplication with M_{far} ~~and replacing the central element by the value 1 minus the sum of all other elements; the contribution of the ISRF is already contained in the simulated spectra and the contribution of the PRF is removed to avoid confusion with stray light.~~ The resulting kernel is ~~convolved with~~ used as K_{far} in Eq. (6) and applied to the corresponding area in the simulated radiance frame. This is repeated for all ~~pixel areas~~ merged frames and corresponding areas in the radiance frame and the sum is taken.
- 10 The resulting signal with stray light looks very similar to the signal without in Fig. 16a, hence the difference is given in Fig. 16b. Note that stray light is not simply added light, but a redistribution of light. Effectively, some light is transferred from the bright cloudy scenes to the dark clear-sky scenes and the absorption lines. The data are somewhat grainy, because there is only ~~about~~ one merged frame per ~~20~~ area of about 3×8 detector pixels.

- 15 Since gas-column retrieval is performed per spectrum, the signal at a given pixel is better expressed as a percentage of the maximum expected value on the same row, corresponding to the continuum around 2313 nm (column 167) in the same scene. The normalized stray light is shown in Fig. 16c, with a maximum of about 10 % in the forest spectra that are closest to the cloud spectra. The remaining stray light after correction is given in Fig. 16d, with a maximum of about 1 %, apart from unused areas at the detector edges. The normalized stray light in the forest spectrum located four rows from the cloud spectra before and after correction is given in Fig. 17.

By replacing fixed areas in each merged frame with the corresponding values of the stable kernel, the origin of some remaining features can be found. The positive band centred at row 180 in Fig. 16d is mostly due to shape variations of the main reflection. The rest of the remaining stray light in the upper half of Fig. 16d, both positive and negative, is mostly due to differences smaller than 5×10^{-8} between the merged frames and the stable kernel, for example the low-signal features moving relative to the peak.

The correction reduces not only the general level of stray light, but also the sharp features near absorption lines (Fig. 17). This reduces the impact of the remaining stray light on retrieval. ~~Calculations have shown that the error in the retrieved gas columns is within the allowed error budget~~ Applying non-scattering retrieval (without aerosol or cirrus parameters) to the forest spectrum used for Fig. 17, the error of the methane column reduces from 14 % before correction to 0.26 % after correction, within the error budget of 0.35 % for stray light. The error of the CO column reduces from 26 % before correction to 1.3 % after correction, within the stray-light error budget for the given CO column of 3.0 %. The forest spectra at other rows give similar results after correction.

9 Conclusions

We have developed and applied a ~~novel~~ method to characterize and correct stray light in a push-broom spectral imager. The stray-light distribution in measurements with the TROPOMI-SWIR instrument has been characterized as a function of the position of the main light beam on the detector. A detailed description was possible using a monochromatic quasi-point light source. By combining saturated and unsaturated measurements, the dynamic range of the signal was extended to more than seven orders. A fast correction algorithm has been devised and implemented in the operational data processor, based on Van Cittert deconvolution. The stray light is approximated by a far-field kernel independent of position and wavelength and an additional kernel representing the main reflection. A fraction of 4.4 % of the detected light is stray light that is transferred back to the correct detector positions. As a result, a reduction of the stray-light signal in for example a simulated dark forest scene close to bright clouds by a factor of about 10 has been demonstrated. ~~It is expected~~ Simulations indicate that this brings the stray-light error in gas-column retrievals within the required budget. In addition, the instrument contains five SWIR diode lasers that enable long-term, in-flight monitoring of the stray-light distribution.

10 Data availability

The underlying data of the figures presented in this publication can be found at <ftp://ftp.sron.nl/open-access-data/pault>.

Appendix A: Position of the main reflection

The reflection kernel and the correction algorithm have been designed together to position the main reflection correctly.

If the peak is centred at column $c_0 = c_{\alpha,\lambda}$, there is a reflection at column c_{refl} . Distance $c_{\text{refl}} - c_0$ is constant (and almost zero). If the image is shifted by $c_{\text{centre}} - c_0$ with arbitrary fixed column index c_{centre} , the peak is found at c_{centre} and the reflection a fixed column distance away. The choice of c_{centre} is arbitrary.

5 If the peak is centred at row $r_0 = r_{\alpha,\lambda}$, the reflection is at row r_{refl} . They are at the same distance from fixed row index r_{mirror} , but on opposite sides:

$$r_0 - r_{\text{mirror}} = r_{\text{mirror}} - r_{\text{refl}}. \quad (\text{A1})$$

This means

$$r_{\text{refl}} = 2r_{\text{mirror}} - r_0. \quad (\text{A2})$$

If the image is shifted by $r_0 - r_{\text{centre}}$ with arbitrary fixed row index r_{centre} , the peak is found at $2r_0 - r_{\text{centre}}$ and the reflection at

$$10 \quad r'_{\text{refl}} = 2r_{\text{mirror}} - r_{\text{centre}}, \quad (\text{A3})$$

where r'_{refl} is independent of original peak position r_0 . An obvious choice for r_{centre} would be $r_{\text{centre}} = r_{\text{mirror}}$, but this row index would have to be determined first by fitting. ~~Instead, the choice is $r_{\text{centre}} = 127.5$~~ Parameter r_{centre} is set to 127.5, exactly at the middle of the detector.

15 Skipping some details on signal scaling and removal of the main peak, the reflections in all frames after shifting are averaged to form the reflection kernel. This kernel may be cropped, but the middle should be at $(r_{\text{centre}}, c_{\text{centre}})$; the reflection is not at the middle of the kernel, but at a row distance

$$r'_{\text{refl}} - r_{\text{centre}} = 2(r_{\text{mirror}} - r_{\text{centre}}) \quad (\text{A4})$$

from the middle.

20 In the correction algorithm, any input frame is mirrored relative to row index r_{centre} . With our choice, this is simply reversing the row order, when the frame has 256 rows. The row index of the peak becomes

$$r''_0 = r_{\text{centre}} - (r_0 - r_{\text{centre}}) = 2r_{\text{centre}} - r_0. \quad (\text{A5})$$

Afterwards, the frame is convolved with the reflection kernel. This means the peak at row index r''_0 will produce a secondary peak at a distance given by Eq. (A4), at row index

$$r''_{\text{refl}} = r''_0 + 2(r_{\text{mirror}} - r_{\text{centre}}). \quad (\text{A6})$$

25 Using Eqs. (A5) and (A2), this is the same as

$$r''_{\text{refl}} = 2r_{\text{mirror}} - r_0, \quad (\text{A7})$$

$$= r_{\text{refl}}, \quad (\text{A8})$$

i.e. the secondary peak is created at the correct position of the reflection. The result is subtracted from the input frame affected by the reflection (without mirroring). There are several advantages of this method: r_{mirror} and r_{refl} do not have to be known, the implied r_{mirror} does not have to be an integer and the correction algorithm is relatively fast.

Competing interests. The authors declare that they have no conflict of interest.

- 5 *Acknowledgements.* The authors would like to thank the teams of Airbus Defence and Space Netherlands and KNMI for organizing the calibration campaign and in particular the operators for the tireless data acquisition. TROPOMI is a collaboration between Airbus Defence and Space Netherlands, KNMI, SRON and TNO, on behalf of NSO and ESA. Airbus Defence and Space Netherlands is the main contractor for the design, building and testing of the instrument. KNMI and SRON are the principal investigator institutes for the instrument. TROPOMI is funded by the following ministries of the Dutch government: the Ministry of Economic Affairs, the Ministry of Education, Culture and
- 10 Science, and the Ministry of Infrastructure and the Environment.

References

- Berry, R. and Burnell, J.: The Handbook of Astronomical Image Processing, Willmann-Bell, Richmond, VA, 2000.
- Hoogeveen, R. W. M., Voors, R., Robbins, M. S., Tol, P. J. J., and Ivanov, T. I.: Characterization results of the TROPOMI Short Wave InfraRed detector, Proc. SPIE, 8889, 888 913, doi:10.1117/12.2028759, 2013.
- 5 Kleipool, Q., Babić, L., Bartstra, R., Braak, R., Dierssen, W., Dewitte, P.-J., Kenter, P., Leloux, J., Loots, E., Ludewig, A., Meijering, P., Van der Plas, E., Rozemeijer, N., Schepers, D., Schiavini, D., Smeets, J., Vacanti, G., and Vonk, F.: Pre-launch calibration status of the TROPOMI payload on-board the Sentinel 5 precursor satellite, submitted to Atmos. Meas. Tech., 2017.
- Van Amerongen, A., Krol, H., Grèzes-Besset, C., Coppens, T., Bhatti, I., Lobb, D., Hardenbol, B., and Hoogeveen, R.: State of the art in silicon immersed gratings for space, Proceedings of the International Conference on Space Optics, 2012.
- 10 Van Cittert, P. H.: Zum Einfluß der Spaltbreite auf die Intensitätsverteilung in Spektrallinien. II, Z. Phys., 69, 298–308, doi:10.1007/BF01391351, 1931.
- Van Hees, R. M., Tol, P. J. J., Cadot, S., Krijger, M., Persijn, S. T., Van Kempen, T. A., Snel, R., Aben, I., and Hoogeveen, R. W. M.: Determination of the TROPOMI-SWIR instrument spectral response function, submitted to Atmos. Meas. Tech., 2017.
- Veefkind, J. P., Aben, I., McMullan, K., Förster, H., De Vries, J., Otter, G., Claas, J., Eskes, H. J., De Haan, J. F., Kleipool, Q., Van Weele, M., Hasekamp, O., Hoogeveen, R., Landgraf, J., Snel, R., Tol, P., Ingmann, P., Voors, R., Kruizinga, B., Vink, R., Visser, H., and Levelt, P. F.: TROPOMI on the ESA Sentinel-5 Precursor: A GMES mission for global observations of the atmospheric composition for climate, air quality and ozone layer applications, Remote Sensing of Environment, 120, 70–83, doi:10.1016/j.rse.2011.09.027, 2012.
- 15