

Reply to Referee #1

Thank you for revising the manuscript and providing clear and constructive comments for improving it. Below you find our detailed response to each question.

Specific Comments

1. Equations (1), (5), (6), and (7). The term d^3 is not needed in these equations and is not defined in the text. I expect that “ d ” is raindrop diameter, but “ D ” is defined as the raindrop diameter in the text. Also, the variable $\eta(r)$ denoting the volume reflectivity includes the influence of raindrop diameter. Thus, raindrop diameter does not need to be explicitly stated in the equations.

In the context of this formula the term d^3 was intended to denote the differential in the three-dimensional volume integral over the resolution volume. D is used to clarify the dependence of backscattering cross section on particle size and number-size distribution.

We changed the description of Eq. 3 to: “where $\sigma(D)$ is the backscattering cross section **of particles with diameter D** ” in order to make the meaning of this sentence more clear.

2. Page 3, line 10. For completeness, the backscattered cross section $\sigma(D)$ should be a function of radar operating frequency (or wavelength). Since the backscattering cross section at 35 GHz includes both Rayleigh scattering for small drops and non-Rayleigh scattering from larger drops, this should be reflected in the variable of $\sigma(D)$.

The subscript λ was added in the formula and the text: “where $\sigma_{\lambda}(D)$ is the backscattering cross section of particles with diameter D **at a wavelength λ** .”

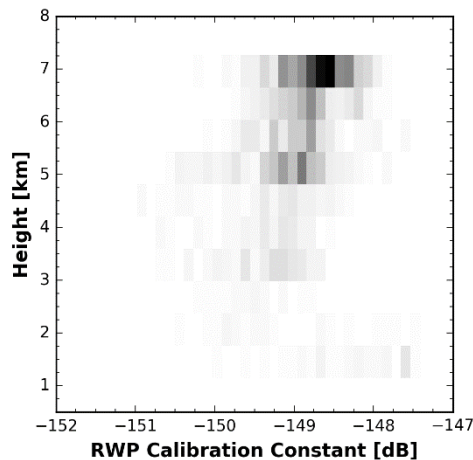
3. Page 3, line 10, equation (1) and also page 9, lines 1-14. Since the calibration is using small raindrops that are in the Rayleigh regime, it would make sense to include after equation (1) the Rayleigh and non-Rayleigh dependence in the 35 GHz backscattering cross-section (see comment #2 above). While this is discussed in the Discussion section (page 21, line 1), Rayleigh and non-Rayleigh scattering should be mentioned near the text developing equation (1).

Below equation 3 (in which the scattering cross section appears first) an explanatory text was added: **A simple analytical relationship for σ_{λ} is available if the Rayleigh approximation holds, i.e. the particles are small compared to the wavelength. In the case of larger particles more complex approaches are required to relate σ_{λ} to particle size and shape. In the following, signals originating from such particles is referred to as non-Rayleigh scattering.**

4. Page 9, lines 1-14. Is there any attenuation correction performed while implementing the calibration procedure? Even if there is not an attenuation correction performed, please include in the manuscript the need to account for attenuation at 35 GHz while performing the reflectivity estimation. Also, is this calibration procedure only performed at low altitudes, when the attenuation will be smaller than at further ranges?

When estimating the calibration constant, all profiles are excluded that show significant attenuation by liquid water. Hence, all profiles with reflectivity greater than 5 dBZ close to ground are neglected. The figure below shows the variation of calibration constant with height. Calibration is stable within a range of 2dB.

After first paragraph of section 4.2 we added: **Attenuation by gases is corrected by using the model of Liebe (1985, Radio Sci.). In this relative calibration scheme highly accurate absolute calibration of the cloud radar is not required, hence attenuation is not a primary concern.**



5. Page 4, lines 1-12, and Fig. 2. The diagram shown in Fig. 2 reminds me of a figure from Ralph (J. Atmos. Oceanic Technol. 257-267, 1995) showing the sensitivities of Bragg and Rayleigh scattering. But, the Ralph figure only goes up to a frequency of 10 GHz.

The figure of Ralph (1995, J. Atmos. Oceanic Technol.) shows reflectivity (dBZ) vs logarithm of C_n^2 . Our representation is more similar to the one shown by Gossard and Strauch (1983) with wavelength vs reflectivity. We have added a reference to both works in the figure caption.

6. Page 8, line 1. Please clarify the expression, “is calculated by subtracting the RWP retrieved air velocity from the cloud radar derived Doppler velocity”. This “subtraction” could mean the subtraction of power within Doppler velocity spectrum, or could mean the subtraction of velocity moments between different radars. Also, the “subtraction” could mean the shift in Doppler velocity spectrum before estimating the moments. I thought the rest of the manuscript read very well with good descriptions of the algorithm and the applications.

We have refined the sentence: **The particle terminal fall velocity is calculated by subtracting the vertical air velocity (first moment of the particle suppressed RWP spectrum) from the cloud radar vertical velocity.**

Reply to Referee #2

Thank you for carefully reading the manuscript and providing clear and constructive comments for improving the manuscript. Below each question is addressed in detail.

The paper presents a method to separate cloud/precipitation radar returns from clear air returns using a 35 GHz cloud radar and a 482 MHz radar wind profiler (RWP). Previous work by Williams and others has shown the utility of using two RWP (UHF and VHF) to separate air motions and hydrometeor terminal velocity. The use of a 35 GHz cloud radar plus a RWP has the specific advantage that it is only sensitive to particles and does not show any influence of Bragg scattering. The authors present a detailed methodology for the approach using Doppler spectra from the clear air and cloud returns. Overall I like the approach but I have some concerns about its robustness since some parameter adjustments are still required. The two cases presented with the separation approach are too limited to adequately assess the technique.

In the present paper we wanted to focus on the technical details of the algorithm. We acknowledge that a comprehensive verification is still pending and would require to incorporate a longer dataset. This is beyond the scope of this work and is intended to be subject of follow up papers.

The authors should improve the meteorological discussion since they provide magnitudes of air motion and terminal velocity but they do not mention much whether the terminal velocity are realistic given the measured reflectivity in the same region.

We acknowledge that an independent validation of the presented terminal velocities is missing. Nevertheless, we think that the available Z-vt relationships will serve not serve purpose. Firstly, they depend crucially on absolute calibration and attenuation correction of the cloud radar signal. Our approach only relies on the relative calibration between RWP and cloud radar and extensive treatment of cloud radar and, as mentioned before, absolute calibration is beyond the scope of this study. Secondly, magnitude of the vertical motion is below 0.4 m/s (see e.g. Fig. 9). Comparing with established Z-vt relationships our velocities are within the internal variability of those relationships.

Other Comments:

1.) The results in the paper are intentionally focused on meteorological situations that are low rain rate, low terminal velocity, and low air motions. The Ka-band should be able to penetrate higher reflectivity clouds – the examples in the paper max out at around 10 dBZ. Can you say more about the upper limits of applicability of both the approach, and Ka-band radar? Does it matter if the Ka-band returns are attenuated in terms of the Cloud Radar/RWP spectra separation? William's use of two RWP allows for studies of more intense precipitation systems.

We agree that the 35 GHz Radar is limited in its capability to penetrate strong precipitation and that a combination of two RWPs is better suited for investigating intense precipitation. The applicability of the algorithm is limited in cases of strong attenuation at the cloud radar frequency. Weak attenuation can nevertheless be corrected as long as the relative shape of the spectrum is preserved. We assume that this is the case for rain events with a precipitation intensity below 10mm/h, but a more solid statement would require a longer dataset as those events are rather rare at Lindenberg (below 0.1% of precipitation time). Nevertheless, we are focusing more on cloud microphysics studies under stratiform conditions. Attenuation from intense precipitation is, hence, not a major concern of this study.

2.) Page 13, Line 31: I'm not clear how the dynamics are a key driver for this cloud. I see upward vertical motion at 5500 m at approximately 16:48 UTC. Is it possible that ice particles are formed aloft in this updraft region, and they fall down through the detected layer. The vertical motions below 5000 m are generally not upward and they do not seem to support ice particle growth.

We agree that the statement is ambiguous. The microphysical processes within such a cloud layer are mostly driven by turbulence at cloud top, aerosol load and ice formation within the cloud top layer. A large updraft as it is visible in Fig. 10, however, can influence the cloud in two significant ways: Firstly, an updraft like this could be responsible for aerosol activation through adiabatic supersaturation and, hence, for actual “creation” of such a cloud layer. Secondly, up- and downdrafts on the scale-length of the cloud can also enhance or decrease the growth of ice particles inside of the cloud. In this way, vertical motions are critical for the life cycle of the cloud. Seeding from aloft is also unlikely, as the layer above the cloud is very dry (spread > 8 K; Fig 10 a) and no cirrus clouds could be observed aloft (not shown).

We have removed the word “key” in the text: As the vertical air motion reveals in Fig. 11 b, **the cloud exists under a background of strong vertical motions.**

3.) Page 12, lines 3-13: The LDR threshold of -13 dB based on Matrosov (1991) seems somewhat arbitrary. How good is your LDR calibration since this calibration can sometimes be challenging. What fraction of the data with detectable cloud reflectivity is deleted based on this threshold.

The calibration was done following Myagkov et al (2015, J. Atmos. Oceanic Technol.) with an integrated cross-polarization ratio (ICPR) of -25 dB. The uncertainty is assumed to be below 3 dB, especially as the impact decreases for high values of LDR (i.e. for an observed LDR of -15.00 dB the corrected value would be -15.45 dB).

The threshold was selected to exclude return from non-hydrometeor scattering, like insects and pollen. The simulations of Matrosov (1991, J. Atmos. Sci.) showed that hydrometers can only cause LDRs below -15 dB, a threshold which was already used in several studies (e.g. Illingworth 2007, Bull. Am. Meteorol. Soc.; Bühl 2016, Atmos. Chem. Phys.). Our choice of -13 dB is rather conservative.

The plankton filtering is done in two steps which were not clearly separated in the original version of the manuscript. Firstly, the cloud radar spectrum is filtered for bins containing high LDR to prohibit a misinterpretation as hydrometeors during the separation. After the separation, the LDR is used to flag spectra, where the reflectivity caused by plankton was higher than the RWP noise level (e.i. could potentially be detected by the RWP). Nevertheless, in the atmospheric boundary layer – where the plankton occurs – the reflectivity of Bragg return observed by the RWP is at least 10-15 dB higher than the plankton signal.

In section 4.1 we added:

Before the broadening, bins in the cloud radar that are dominated by plankton (like insects or pollen) are removed by using the linear depolarization ratio (LDR) to identify highly depolarizing targets (Reinking 1997). All bins with a LDR higher than -13 dB are filtered, because hydrometeors exhibit a smaller LDR (e.g. Matrosov 1991).

And in section 4.4 we modified the part on plankton to:

As stated in section 4.1 a LDR threshold of -13 dB is used to separate scattering from hydrometeors from atmospheric plankton. The plankton flag is set, when the LDR of the whole cloud radar spectrum is above the LDR threshold and the total reflectivity is low, but above the RWP noise level. For scattering by plankton the cloud radar frequently shows the same vertical air velocity as the RWP.

4.) The reference list is appropriate and the technical aspects of the paper in the paper are acceptable.

Minor Changes

Sec. 4.1 [...] the variance of the estimated spectral power densities caused by the small number of incoherent averages.

Fig. 9 Fixed wrong assignment in the legend

Combining cloud radar and radar wind profiler for a value added estimate of vertical air motion and particle terminal velocity within clouds

Martin Radenz¹, Johannes Bühl¹, Volker Lehmann², Ulrich Görzdorf², and Ronny Leinweber²

¹Leibniz Institute for Tropospheric Research (TROPOS), Leipzig, Germany

²Meteorologisches Observatorium Lindenberg/Richard-Aßmann-Observatorium, Deutscher Wetterdienst, Tauche, Germany

Correspondence to: Martin Radenz (radenz@tropos.de)

Abstract. Vertical-stare observations from a 482 MHz radar wind profiler and a 35 GHz cloud radar are combined on the level of individual Doppler spectra to measure vertical air motions in clear air, clouds and precipitation. For this purpose, a separation algorithm is proposed to remove the influence of falling particles from the wind profiler Doppler spectra and to calculate the terminal fall velocity of hydrometeors. The remaining error of both vertical air motion and terminal fall velocity is estimated to be better than 0.1 m s^{-1} using numerical simulations. This combination of both instruments allows direct measurements of in-cloud vertical air velocity and particle terminal fall velocity by means of ground-based remote sensing. The possibility of providing a profile every 10s with a height resolution of $< 100 \text{ m}$ allows further insight into the process scale of in-cloud dynamics. The results of the separation algorithm are illustrated by two case studies, the first covering a deep frontal cloud and the second featuring a shallow mixed phase cloud.

10 *Copyright statement.*

1 Introduction

Clouds are a key component of the Earth's climate system (Bony et al., 2015). They drive the hydrological cycle (Ramanathan, 2001) and influence the radiative balance (Ramanathan et al., 1989). The radiative effect of clouds and the efficiency of precipitation formation depend strongly on the clouds' microphysical structure, i.e. number concentration, size, shape and phase of particles. Cloud microphysics is strongly controlled by vertical velocity, as up- and downdrafts control temperature and supersaturation of an air parcel (Shupe et al., 2008; Korolev, 2007; Morales and Nenes, 2010). Hence, cloud lifetime and the production rate of cloud condensate is sensitively coupled to vertical motion (Korolev and Isaac, 2003; Donner et al., 2016). However, only few observations of in-cloud vertical air motions are available, leaving a major driver of cloud microphysics unconsidered. The current lack of process level understanding leads to large uncertainties in numerical climate simulations and weather prediction models (Williams and Tselioudis, 2007).

Cloudy air is a complex multiphase, multivelocity and multitemperature physical system and there is an ongoing scientific discussion regarding the correct equations for describing the motion of moist atmospheric air in the presence of condensation (Bannon, 2002; Wacker et al., 2006; Bott, 2008; Makarieva et al., 2013, 2017). In this paper we explicitly distinguish between the velocity of the homogeneous gaseous mixture of dry air and water vapor (hereafter called air motion for brevity) and the velocity of liquid and solid water particles with respect to the surrounding air (hydrometeor terminal velocity). In the stationary case, the vertical velocity of hydrometeors, which can be observed by ground-based radars, is simply the superposition of air motion and terminal velocity.

Different radar based methods have been proposed for the retrieval of the vertical wind speeds in clouds, like the Mie notch retrieval (Kollias et al., 2002; Fang et al., 2017) and the dual frequency method (Williams, 2012). This paper presents a dual frequency approach which combines Doppler spectra from a cloud radar and a radar wind profiler (RWP) to obtain this information. RWPs are the only remote sensing instruments which are sufficiently sensitive to scattering from the particle-free “clear air” (Van Zandt, 2000) and can be used to observe air motion directly. However, RWPs are not only sensitive to clear air scattering, but also to particle scattering from clouds and precipitation. This particle scattering can mask the clear air return and leads to the so-called Bragg-Rayleigh ambiguity (Knight and Miller, 1998). An algorithm is presented, which tries to disentangle the contributions of both scattering mechanisms through a combination of Doppler spectra obtained by radars operating at two widely spaced frequencies. The simultaneous observation of air motion and particle velocity makes it furthermore possible to retrieve the particle terminal velocity.

The paper is structured as follows: First the theoretical background is provided in Sect. 2. Campaign and technical details of the instruments are presented in Sect. 3. Afterwards the algorithm is introduced and illustrated by two case studies. Artificially generated spectra together with a Monte Carlo approach are used to evaluate the accuracy of the proposed algorithm and to provide an error estimate for each spectrum operationally. This evaluation is presented in Sect. 6 followed by a short discussion, a summary and the conclusions.

2 Theoretical background

The general form of the weather radar equation can be written as (Doviak and Zrnicek, 1993)

$$P(r_0) = \int_V I(r_0, \mathbf{r}) \eta(\mathbf{r}) d^3 \mathbf{r} \quad (1)$$

where r_0 is the center of a range bin and η denotes the volume reflectivity. $I(r_0, \mathbf{r})$ is the instrument weighting function. It depends on the antenna radiation pattern, especially the beamwidth and the characteristics of the pulse, most importantly pulse length. Its rather complex form can under certain assumptions be simplified into the calibration constant C/r^2 (detailed derivation in Doviak and Zrnicek, 1993).

Two atmospheric scattering mechanisms are relevant for RWP, clear air scattering caused by inhomogeneities of the refractive index at a scale of half the radars wavelength (the Bragg scale) and scattering by hydrometeors. Clear air scattering, often

called Bragg scattering in short, can be used to assess vertical air motion without a particle proxy. While higher-order effects like fluxes of the local refractive index parameter may introduce differences between the observed Doppler velocity and true air velocity (Tatarskii and Muschinski, 2001; Muschinski, 2004; Muschinski et al., 2005; Muschinski and Sullivan, 2013), these effects are assumed to be mainly relevant in the convective boundary layer (Cheinet and Cumin, 2011). The volume reflectivity of clear air η_{air} can be related to the refractive index structure parameter by the Ottersten equation (Hardy et al., 1966; Ottersten, 1969; Fukao and Hamazu, 2014), if the Bragg scale lies within the inertial subrange of fully developed turbulence:

$$\eta_{\text{air}} = 0.38\lambda^{-1/3}C_n^2 \quad (2)$$

In the case of incoherent scattering, i.e. random distribution of the particles within the radar resolution volume, the volume reflectivity can be described with:

$$\eta_{\text{particle}} = \int \sigma_{\lambda}(D)N(D) dD = \frac{\pi^5|K|^2}{\lambda^4}Z. \quad (3)$$

where $\sigma_{\lambda}(D)$ is the backscattering cross section of particles with diameter D at a wavelength λ , $N(D)$ the particle number distribution, Z is the reflectivity factor and $|K|^2$ accounts for the refractive index of the particle. A simple analytical relationship for σ_{λ} is available if the Rayleigh approximation holds, i.e. the particles are small compared to the wavelength. In the case of larger particles more complex approaches are required to relate σ_{λ} to particle size and shape. In the following signal from those particles is referred to as non-Rayleigh scattering.

Coherent radars are able to estimate the Doppler spectrum on the basis of the demodulated and pre-processed receiver data. The use of classical spectral estimators, like the discrete Fourier transform, is very well established in radar meteorology. The obtained power spectrum describes the information content of the raw signal as a function of Doppler frequency. The Doppler spectrum contains the same amount of information as the raw data, if the assumption of a stationary random Gaussian process holds for the duration of the dwell (Note that this does not hold for some types of clutter echoes).

For RWP, clear air and particle scattering act simultaneously and independently, hence the processes are not correlated, which often leads to the appearance of two distinct spectral peaks in the Doppler spectrum (Kollias et al., 2002; Fukao and Hamazu, 2014) (Gossard, 1988; Kollias et al., 2002; Fukao and Hamazu, 2014). While this offers the principal option to retrieve the vertical wind speed even in the presence of precipitation, the applicability of this approach is rather limited since the two scattering peaks are often *entangled*, i.e. they can not be uniquely separated in the the Doppler spectrum as schematically illustrated in Fig. 1. Heuristic models for the Doppler spectrum have been proposed for the purpose of relating its properties to the physical parameters describing the scattering medium, however no comprehensive theory based on first principles is available. For particle scattering, the simple model for the Doppler spectrum established by Wakasugi et al. (1986) has been widely used, see e.g. Williams (2016) or Fang et al. (2012). The particle signal is always shifted by the vertical air motion v_{air} , resulting in a observed velocity $v = v_{\text{air}} + v_t$ and it is furthermore broadened by turbulence within the resolution volume. No such model is yet available for the Doppler spectrum of a clear air scattering signal. The classical assumption that the clear air peak has a

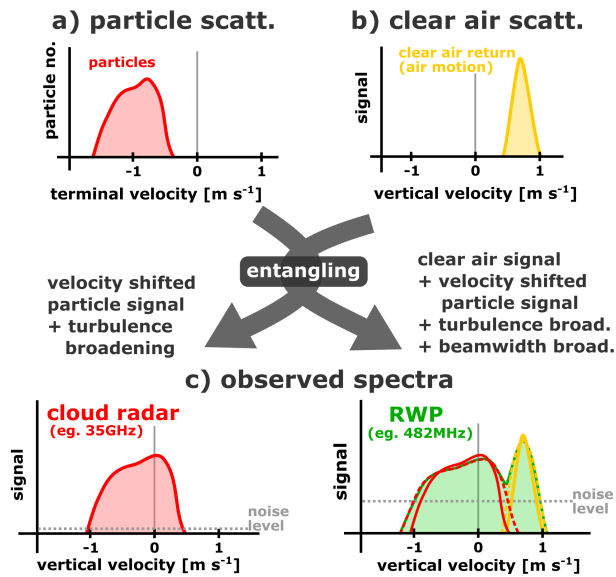


Figure 1. Scheme illustrating the contribution of particle and clear air scattering to the Doppler spectra of the radars. Scattering from particles (and their terminal fall velocity relative to the surrounding air) and the clear air return from the air motion are caused by completely different processes and have to be considered separately in an ideal case (a). Both processes are entangled, when observed by real instruments (b).

Gaussian shape was suggested for simplicity by Woodman (1985), however the author has also mentioned that deviations are not uncommon.

An unambiguous separation of both clear air and particle peaks in a single radars Doppler spectrum is sometimes possible, especially for VHF radars operating near 50 MHz, see e.g. Renggono et al. (2006), due to the strong increase of particle scattering reflectivity towards smaller wavelength, see Fig. 2. The dual frequency method attempts to resolve this entanglement by combining data from radars with sufficiently different wavelengths. The choice of frequencies is crucial to achieve a good separability. Gage et al. (1999) used a 1 and a 3 GHz radar to discriminate between clear air and particle scattering, yielding a frequency spacing factor of 3. Different methods were developed and further refined to separate both contributions (Williams et al., 2000; Williams, 2002). This development lead to the approach of combining Doppler spectra from two radars operating at 50 and a 915 MHz, having a frequency spacing factor of 18 (Williams, 2012). The combination of a 482 MHz RWP and a 35 GHz cloud radar, as used in this study, provides a strongly increased frequency spacing factor of 73. The additional advantage of using a cloud radar operating at 35 GHz is that this instrument is de-facto not sensitive at all to clear air scattering, even for very high values of C_n^2 . While a direct comparison of the theoretically calculated volume reflectivities (as in Fig 2) would not immediately support this statement it needs to be considered that the Ottersten equation implicitly requires the existence of an inertial subrange at the Bragg scale. However, the Bragg scale of the cloud radar is only about 4 mm and therefore on the order of the Kolmogorov length microscale.

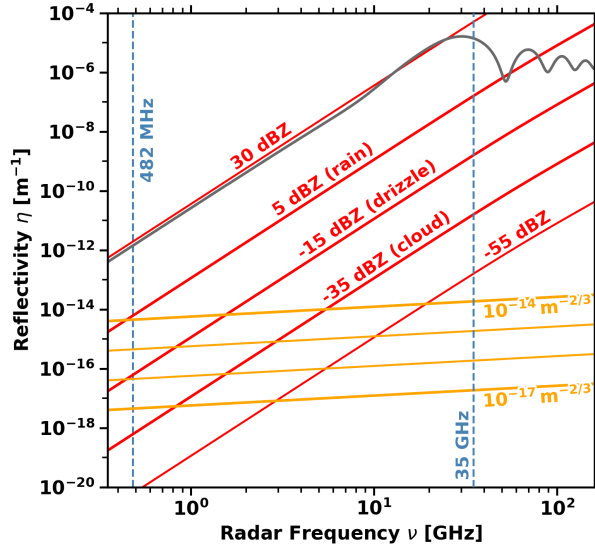


Figure 2. Reflectivity of different scattering processes (following Gossard and Strauch, 1983; Ralph, 1995). Red lines indicate typical values of hydrometeor reflectivity with the sensitivity threshold of the cloud radar at -55 dBZ (Görsdorf et al., 2015). Orange lines indicate the reflectivity for C_n^2 typically observed in the atmosphere (e.g. Clifford et al., 1994). The grey line shows the reflectivity of one liquid drop ($N = 1 \text{ m}^{-3}$) with a diameter of $d = 3 \text{ mm}$ as derived from Mie theory.

A simple model for a single RWP Doppler spectrum $S(v)$ is given by Wakasugi et al. (1986)

$$S(v) = S_{\text{air}}(v) + S_{\text{particle}}(v) + N(v), \quad (4)$$

where $S_{\text{air}}(v)$ and $S_{\text{particle}}(v)$ are the spectra of clear air and particle scattering, respectively and $N(v)$ is the system noise. Following Atlas et al. (1973) and Kneifel et al. (2011), the received power can be decomposed through the Doppler spectrum

5 $S(\mathbf{r}_0, v)$ as

$$P(\mathbf{r}_0) = \int S(\mathbf{r}_0, v) dv = \iint I(\mathbf{r}_0, \mathbf{r}) \eta'(\mathbf{r}, v) d^3 \mathbf{r} dv \quad (5)$$

where $\eta'(\mathbf{r}, v)$ is the spectral reflectivity. For simultaneously acting clear air and particle scattering, the volume reflectivities are additive $\eta = \eta_{\text{air}} + \eta_{\text{particle}}$ (Rodgers et al., 1993), hence

$$\int S_{482}(\mathbf{r}_0, v) dv = \iiint I_{482}(\mathbf{r}_0, \mathbf{r}) [\eta'_{\text{air}}(\mathbf{r}, v) + \eta'_{\text{particle}}(\mathbf{r}, v)] d^3 \mathbf{r} dv \quad (6)$$

$$10 \int S_{35}(\mathbf{r}_0, v) dv = \iiint I_{35}(\mathbf{r}_0, \mathbf{r}) \eta'_{\text{particle}}(\mathbf{r}, v) d^3 \mathbf{r} dv. \quad (7)$$

	RWP	Cloud Radar
Type	LAP 16000	MIRA 35
Wavelength	0.62 m	8.5 mm
Beamwidth	2.9°	0.28°
Range Gate Length	94 m	30 m
Pulse Length	1 μ s	200 ns
No. Coherent Integrations	62	1
Integration Time	10 s	10 s
No. Incoherent Averages	4, 3	200
Pulse Repetition Frequency	12.2, 10.0 kHz	5 kHz
Average Emitted Power	200 W	30 W
N_{FFT}	512	256

Table 1. Configuration settings of the major instruments used in the COLRAWI campaigns (based on Bühl et al., 2015). The second number indicates the setting used for the RWP during IOPs.

This two relationships provide the basis for combination of the cloud radar and RWP Doppler spectra as it is described in the following sections.

3 Collocated observations with a 35 GHz cloud radar and a 482 MHz radar wind profiler

For this study we combine the data from the 35 GHz cloud radar (Görsdorf et al., 2015) and the powerful, narrow beamwidth 482 MHz RWP (e.g. Steinhagen et al., 1998; Lehmann et al., 2003; Böhme et al., 2004), both operated by the German Meteorological Service at Richard Aßmann Observatory in Lindenberg, Germany. Both radars were closely collocated to achieve maximum overlap of the observation volumes. In the following, 'RWP' is used as an abbreviation for the 482 MHz radar and 'cloud radar' is used as a shorthand for the 35 GHz Doppler radar. It is worth mentioning that the proposed methods are not restricted to these frequencies.

The RWP is used with two configurations or operating modes. The first mode is used for intensive observation periods (IOPs), during which the RWP beam is pointing only into the vertical direction. During the second observation mode, 30 minutes of vertical measurements are alternated with 30 minutes of Doppler beam swinging (DBS). This configuration was chosen to fulfill operational requirements and it also has the benefit that measurements of horizontal wind are available. The cloud radar is by design operating in vertical mode only. The technical parameters of cloud radar and RWP are given in Table 1. The measurements were performed between June and September 2015 in the framework of the COLRAWI campaign (Combined observations with lidar, radar and wind profiler; Bühl et al., 2015).

Figure 3 shows the measurements of both systems for an example case (17 June 2015; covered in detail in Sect. 5.1), where the Bragg-Rayleigh ambiguity becomes strikingly evident. A frontal system is approaching Lindenberg with the cloud base

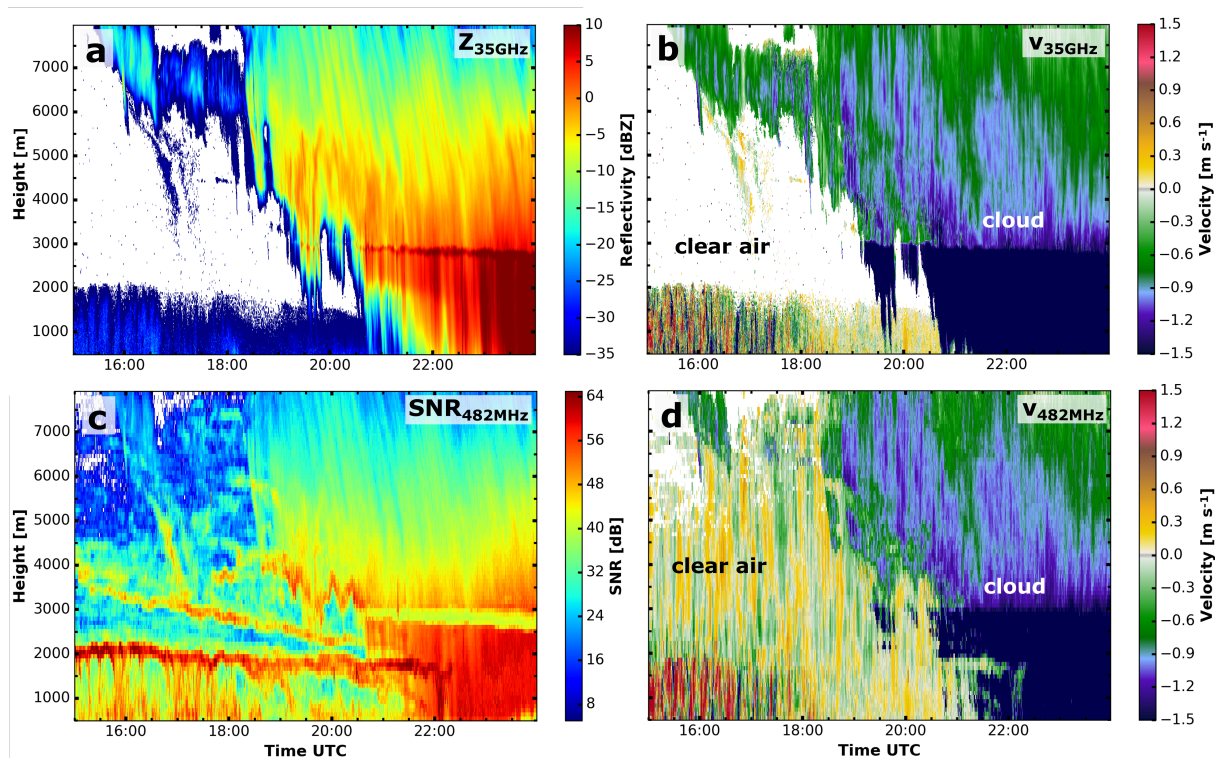


Figure 3. Cloud radar reflectivity (a), RWP SNR (c), cloud radar velocity (b) and RWP velocity (d) at the 17 June 2015 illustrating the Bragg-Rayleigh ambiguity. As soon as the particle return dominates (high reflectivity in the cloud radar), the clear air signal in the RWP is masked by the falling particles. This case is presented in more detail in Sect. 5.1.

continuously decreasing from 6 km down to the ground as can be seen in the cloud radar reflectivity factor $Z_{35\text{ GHz}}$ (hereafter reflectivity). The RWP is able to measure the clear air signal, and hence the vertical velocity of clear air during the cloud free period (Fig. 3 d). As expected, the strongest clear air return is observed at the top of the atmospheric boundary layer (Fig. 3 c at around 2.0 km), but also at local maxima of refractive index gradients higher aloft. As soon as hydrometeors are present, the particle signal dominates and masks the air motion.

4 A synergistic algorithm to use cloud radar Doppler spectra for a suppression of particle echoes in RWP Doppler spectra

An overview of the proposed algorithm is given in Fig. 4. The Doppler spectra produced by the standard signal processing algorithm from the cloud radar (Görsdorf et al., 2015) and the RWP are used as input. In a first step, the effect of the differing sampling characteristics of both radars (especially beamwidth and pulse length) is accounted for: The signal peaks in the cloud radar spectra are artificially broadened and the range resolution is also coarsened. Furthermore, the power density in the

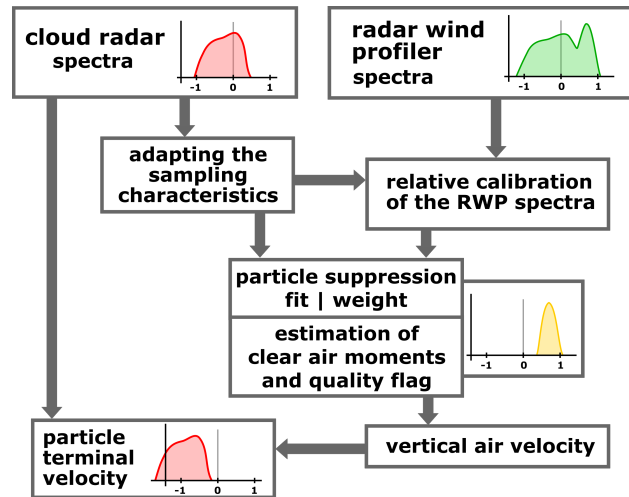


Figure 4. Scheme of the separation algorithm. The separation begins with the raw measurements from cloud radar and RWP as denoted in the top row. The separation between particle and clear air signal is performed after adaption of the different sampling characteristics and relative calibration. The products are the quality flagged vertical air velocity and the particle terminal velocity. Further description in the text.

RWP spectra are relatively calibrated based on the cloud radar data. The actual removal of the Bragg-Rayleigh ambiguity is performed by suppressing the parts of the RWP spectra which are influenced by a particle signal. A peak finder is used with a moment estimation algorithm based on Gaussian fitting to estimate reflectivity, mean velocity and spectral width of the clear air return. The particle terminal fall velocity is calculated by subtracting the ~~RWP retrieved air velocity~~ vertical air velocity (first moment of the particle suppressed RWP spectrum) from the cloud radar ~~derived Doppler~~ vertical velocity.

4.1 Adaption of the cloud radar spectra to match the sampling characteristics of the RWP

Both radars have significantly different instrument weighting functions, because of different antenna radiation patterns and different pulse lengths (Table 1), which results in different resolution volumes. The pulse length is matched by summing the spectral reflectivities of the cloud radar spectra within a RWP range gate. A Gaussian window of 90m width is used to account for the range weighting function of the RWP. The different beamwidth of the RWP is accounted by an artificial broadening of the cloud radar Doppler spectrum. A larger beamwidth is more susceptible to spectral broadening caused by the radial component of the horizontal wind at the edges of the beam. A full theoretical treatment is provided by Nastrom (1997), where an analytical formula is provided, which is used to artificially broaden the cloud radar spectrum. This adapted cloud radar spectrum matches the sampling characteristics of the RWP and is referred to as $S_{35}(v)$ in the following and r_0 is omitted for brevity. The profile of the horizontal wind required for this correction is taken from numerical weather prediction model data from the European Center for Medium-Range Weather Forecasts.

Before the broadening, bins in the cloud radar that are dominated by plankton (like insects or pollen) are removed by using the linear depolarization ratio (LDR) to identify highly depolarizing targets (Reinking et al., 1997). All bins with a LDR higher than -13 dB are filtered, because hydrometeors exhibit a smaller LDR (e.g. Matrosov, 1991).

Furthermore, both radars operate with different temporal sampling (also Table 1), which results in different frequency or equivalently velocity resolutions of their Doppler spectra. The slightly different velocity resolution of the cloud radar is matched by linear interpolation, assuming uniformly distributed energy within each spectral bin. Additionally, the RWP spectrum is smoothed in a pre-processing step by convolution with a Gaussian window ($\sigma = 1$ bin) to reduce the variance of the estimated spectral power densities caused by the small number of ~~coherent~~ incoherent averages. It is referred to as $S_{482}(v)$.

4.2 Relative calibration of the RWP Doppler spectra

For a meaningful comparison of the RWP and cloud radar spectra, a relative calibration of the RWP with the cloud radar as the reference is performed. Selecting a small velocity interval $[v_{\min}, v_{\max}]$, where both the Rayleigh approximation holds for the cloud radar and no clear air scattering contribution is present in the RWP, then equations 6 and 7 combine to

$$C_{482} = C_{35} \frac{\int_{v_{\min}}^{v_{\max}} S_{482}(v) dv}{\int_{v_{\min}}^{v_{\max}} S_{35}(v) dv} \quad (8)$$

with C_{482} and C_{35} the calibration constants of the RWP and the cloud radar, respectively. $S_{482}(v)$ and $S_{35}(v)$ are the for the sampling characteristics adapted Doppler spectra of RWP and cloud radar. This relationship holds, because the reflectivity factor Z is independent of wavelength under the Rayleigh approximation. The calibration of the cloud radar is assumed to be correct with an accuracy of 1.3 dB (Görsdorf et al., 2015). Attenuation by gases is corrected by using the model of Liebe (1985). In this relative calibration scheme highly accurate absolute calibration of the cloud radar is not required, hence attenuation is not a primary concern.

Above the boundary layer and in the absence of deep convection and strong gravity waves, the clear air signal of the vertical beam is always close to 0 m s^{-1} and therefore excluded if v_{\max} is set to -0.9 m s^{-1} . The lower boundary of the velocity interval is intended to exclude non-Rayleigh scattering from large particles, which are characterized by a large terminal velocity (Heymsfield and Westbrook, 2010). Hence, v_{\min} is set to -3.0 m s^{-1} , which corresponds to the terminal velocity of a liquid sphere with a diameter of 1 mm.

For each Doppler spectrum the calibration is additionally checked by comparing the calibrated Doppler spectra $S_{482}(v)$ and $S_{35}(v)$ within the boundaries of the particle peak. If the difference between the spectral reflectivities is less than 2 dB in 4 bins around the maximum of the particle peak and less than 2 dB at its minimum the calibration is considered valid. Otherwise a correction factor is calculated by averaging $S_{482}(v) - S_{35}(v)$ in 4 bins around the maximum of the particle peak. The corrected calibration is applied, if this correction factor is less than 20 dB and the standard deviation less than 10 dB. For larger correction

factors, the calibration is flagged as unreliable.

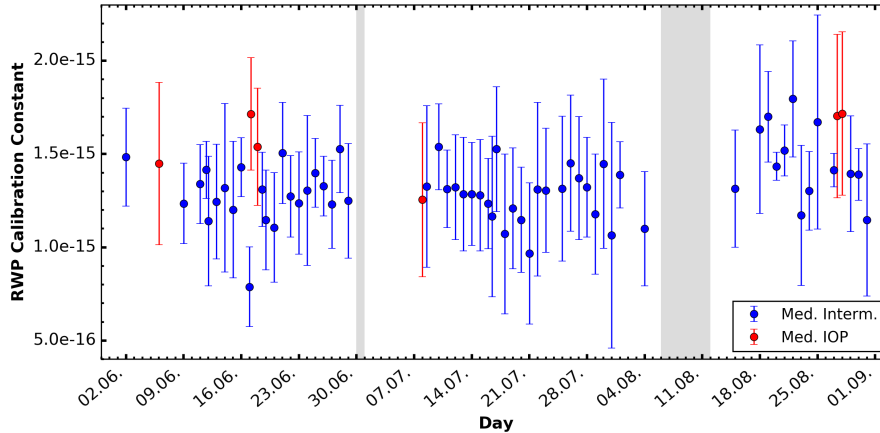


Figure 5. Daily median (dot) and the median absolute deviation (bar) of the RWP calibration for the whole campaign when appropriate conditions were present. The IOP settings are marked in red, the intermitting mode in blue. Measurement gaps due to maintenance are marked in grey. Note that the ordinate is linearly scaled.

This allows the automated estimation of the calibration constant within a wide range of atmospheric conditions and also a continuous monitoring of this relative calibration. Within the three months of the COLRAWI campaign 2015 the daily calibration constant has shown a standard deviation of less than 1 dB (Fig. 5).

4.3 Suppression of the particle scattering contribution in the RWP Doppler spectra and estimation of the clear air moments

4.3.1 Weighting function

A weighting function \mathcal{P}_{air} is used to suppress the particle influence in the RWP spectrum. It describes the relative contribution of clear air scattering to the whole spectral reflectivity

$$\mathcal{P}_{\text{air}} = 1 - \frac{S_{35}(v)}{S_{482}(v)}. \quad (9)$$

- 10 The weighting function is defined to be equal to 1, if a bin in the Doppler spectrum is dominated by clear air scattering and 0 if particle scattering dominates. It is constructed as follows: The adapted cloud radar Doppler spectrum is cut off at the RWP noise level. The relative contribution is calculated from this cloud radar spectrum and the RWP spectrum using Eq. 9. Afterwards the weighting function is set to 1 at all bins where there is no cloud radar signal and is smoothed by a 5 bin wide running mean to reduce noise. It is scaled with the inverse SNR of the cloud radar for all bins with a weight less than 0.5. This

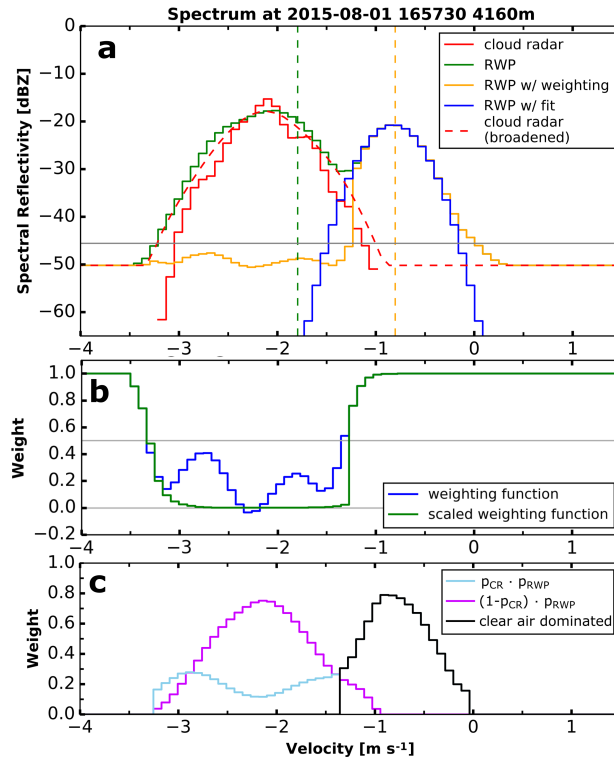


Figure 6. Doppler spectrum for 1 August 2015 16:57 UTC at 4160m (a), the associated weighting function (b) and the fuzzy membership function (c).

reduces the spectral reflectivity in the bins strongly dominated by particle return down to the noise level and provides a clear suppression of the particle contribution. The clear air reflectivity spectrum $S_{\text{air}}(v)$ is then calculated by

$$S_{\text{air}}(v) = \mathcal{P}_{\text{scaled,air}}(v) \cdot S_{482}(v). \quad (10)$$

An example for a spectrum and the associated weighting function is shown in Fig. 6 (a, b). This weighting function approach is similar to Williams (2012) with the difference that our weighting function is calculated for each bin individually without any cumulative distribution and the inverse SNR is used for scaling instead of a fixed 40 dB factor. The estimates for the first three moments (reflectivity, mean velocity and width) are the calculated using a standard moment estimator (e.g. Woodman, 1985; May and Strauch, 1989).

4.3.2 Peak fitting

A second method used to isolate the clear air contribution is fitting a Gaussian shaped function the part of the RWP spectrum which is not influenced by particle return. The peak fitting method is based on the assumption of a Gaussian shape of the

clear air peak (Woodman, 1985; Gossard et al., 1998). The fitting algorithm is constrained by a-priori information from the combined spectra together with long-term statistical properties of the clear air peak.

The bins without particle influence are identified a-priori by using a fuzzy membership like approach and a peak finding algorithm. A region in the spectrum is dominated by clear air return if

$$5 \quad (1 - p_{\text{cloud radar}}) \cdot p_{\text{RWP}} > p_{\text{cloud radar}} \cdot p_{\text{RWP}}, \quad (11)$$

where p is the spectral reflectivity of each instrument scaled to $[0, 1]$. All signal left of the cloud radar peak maximum is neglected. From this membership function (example in Fig. 6 c), the peak with the highest SNR is selected and its moments (reflectivity, mean velocity and width as calculated by a standard moment estimator) are used as a-priori information for the fitting algorithm. The Gaussian peak is then fitted to this part of the spectrum using a Trust Region Reflective algorithm (Branch et al., 1999). This fitting algorithm constrains the parameter space to physically reasonable values for the mean properties of the clear air peak in the absence of hydrometeors. The reflectivity Z_{air} and the spectral width σ_{air} are assumed to lie in the range between -50 and 10 dBZ and 0.07 and 0.45 ms^{-1} , respectively. The resulting fitting parameters are then identified as the moments of the clear air peak.

4.4 Quality flag

15 A threshold based decision tree is used to determine the quality flag (Fig. 7). A RWP Doppler spectrum is considered to be particle influenced if the cloud radar spectrum contains bins where the cloud radar reflectivity is higher than the RWP noise level. Furthermore, spectra of the RWP with a SNR of less than 10 dB are flagged as low SNR. Spectra with a low SNR are not necessarily less reliable, but during further processing, they have to be treated with care. ~~In a next step the linear depolarization ratio (LDR) of the cloud radar is used to identify highly depolarizing targets (Reinking et al., 1997). The~~

20 ~~As stated in section 4.1 a LDR threshold of -13 dB is chosen to exclude all hydrometeors, which exhibit a smaller LDR (e.g. Matrosov, 1991), and -13 dB is frequently employed in synergistic retrievals, used to separate scattering from hydrometeors from atmospheric plankton. The plankton flag is set, when the LDR of the whole cloud radar spectrum is above the LDR threshold and the total reflectivity is low, but above the RWP noise level. For scattering by plankton the cloud radar frequently shows the same vertical air velocity as the RWP.~~

25 The melting layer is characterized by high reflectivities combined with high LDR values in the cloud radar or an elevated noise level in the RWP. Due to the complex scattering processes within the melting layer (water coated irregular spheres), a meaningful separation is not (yet) possible. ~~Atmospheric plankton in the atmospheric boundary layer (like insects or pollen) is classified by high LDR and low reflectivity. For scattering by plankton the cloud radar frequently shows the same vertical air velocity as the RWP.~~ The remaining thresholds are subjectively estimated based on visual inspection of the Doppler spectra.

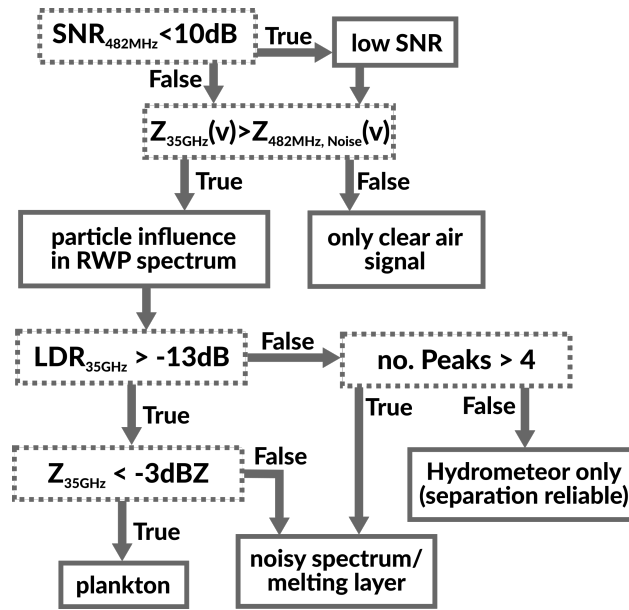


Figure 7. Flowchart of the quality flag decision logic.

5 Examples

5.1 Case Study 1: Frontal Clouds on 17 June 2015

In the following section, the separation algorithm is applied to the example case shown in Fig. 3. During the afternoon of the 17 June 2015, an occlusion with warm front character passed over Lindenberg. First high clouds appeared at about 16 UTC. The cloud base slowly descended from above 6km until liquid precipitation reached the ground at 23 UTC. The melting layer at around 2.8km height is visible from approximately 19:30 onwards. Comparing Fig. 8f to Fig. 3d, the impact of the separation algorithm becomes visible. As shown in Fig. 8 b, high RWP reflectivity can be observed at strong gradients of temperature and/or humidity, both at the top of the atmospheric boundary layer at 2km, where reflectivities of up to 10dBZ are visible as well as at the airmass boundary between 2.5km and 6km. It becomes also visible how the precipitation alters the strong reflectivity feature at the top of the boundary layer at about 22:20 UTC. The vertical air motion (Fig. 8f) reveals that the structure of successive up- and downdrafts sustains within the thinner parts of the cloud, especially before 19:30 UTC. Afterwards this pattern is less pronounced above the melting layer, whereas within the liquid precipitation the pattern of successive up- and downdrafts continues.

The effect of the Bragg-Rayleigh ambiguity becomes also obvious in Fig. 9, which shows the frequency distribution of RWP vertical velocities for the period shown in Fig. 8. The shapes of the distributions for clear air and raw RWP spectra differ significantly. The hydrometeors fall velocity causes a second mode at -1.0m s^{-1} . After the separation, the distribution of vertical velocities within the cloud is rather similar to that of clear air velocities (in terms of mean and width).

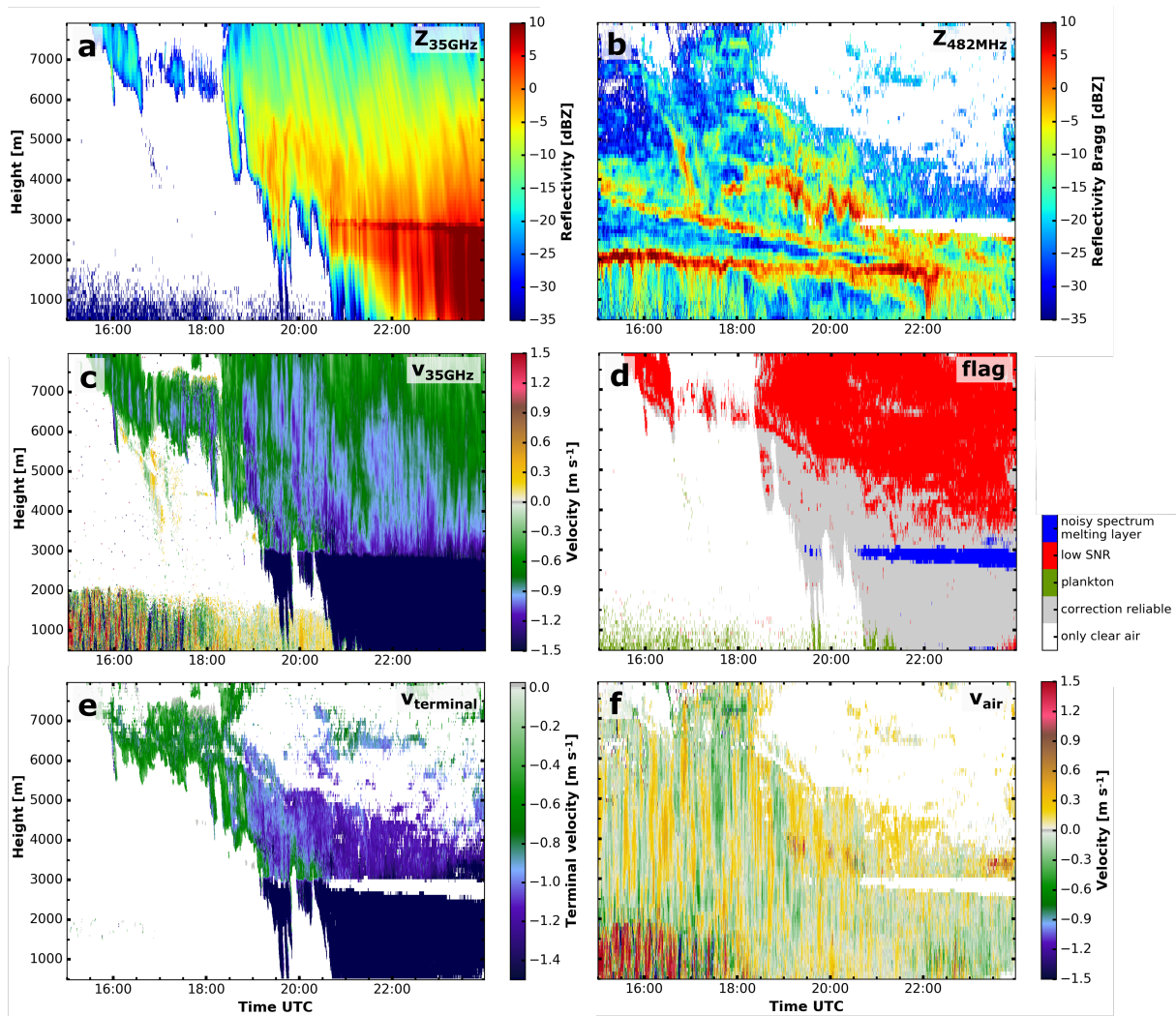


Figure 8. Measurements and value added products during the evening of the 17 June 2015. Cloud radar reflectivity (a) and vertical velocity (c). RWP reflectivity (b), quality flag (d) and retrieved vertical air motion (f). The particle terminal velocity calculated from the air velocity and the cloud radar velocity (e). For the impact of the separation algorithm compare (a) and (f) to Figure 3. Areas flagged for quality reasons are colored white.

5.2 Case Study 2: Mixed phase cloud on 1 August 2015

On 1 August 2015, a small-scale low pressure system over the eastern part of France initiated the development of high and mid-level clouds in the southern part of Germany. During the day these clouds were advected towards Northeast. From 15:30 to 17:45 UTC a single layer mixed phase cloud was observed at Lindenberg. The RWP was operated in the intermitting mode on that day, meaning that 30 minutes of vertical stare are interrupted by 30 minutes of DBS. As the 18 UTC radiosonde ascent

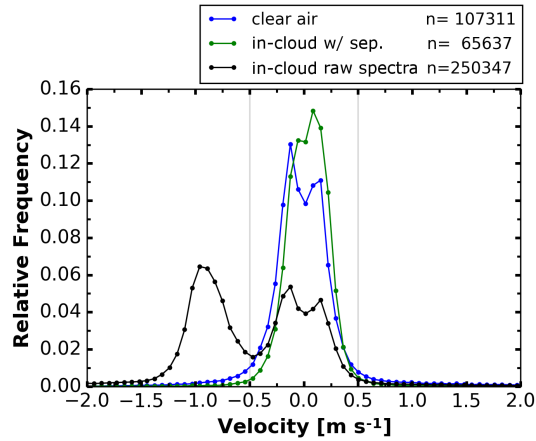


Figure 9. Histogram of RWP vertical velocities for the evening of the 17 June (same period as shown in figure 8). n denotes the number of spectra, that contributed to each class. The minimum at 0 m s^{-1} in the clear air and in-cloud raw spectra is caused by the stationary clutter filtering procedure in the original RWP signal processing.

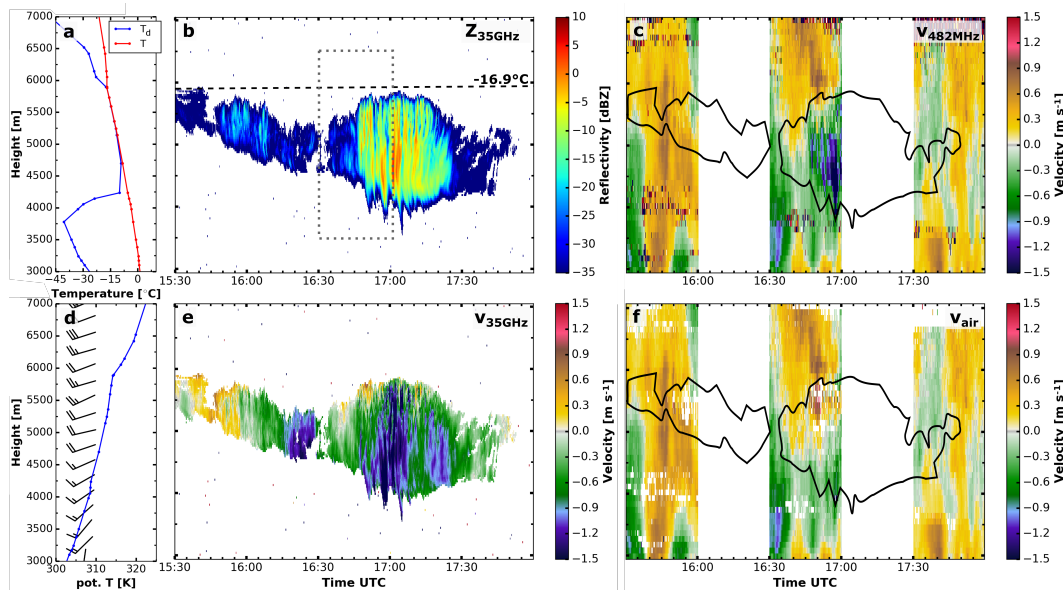


Figure 10. Mixed phase layered cloud in the afternoon of 1 August 2015. Temperature T and dewpoint temperature T_d (a) as well as potential temperature and wind profile from the 18 UTC radiosonde ascend. Cloud radar reflectivity (b), vertical velocity retrieved with the standard RWP signal processing (c), cloud radar vertical velocity (e) and the retrieved vertical air motion (f). Values exceeding the velocity color scale are shown in dark blue and red, respectively.

(Fig. 10 a and d) reveals a moist layer was present between 4 and 6 km with a stable airmass aloft. Near cloud top (around 6 km height), the temperature was around -17°C (Fig. 10a).

During the first part of the period shown in Fig. 10 the liquid water path (LWP) observed by a collocated microwave radiometer ranged between 70 and 120 gm^{-2} , later it peaked at 190 gm^{-2} . Beginning at 16:45 UTC ice production increased, forming a virga with a clear signature in the cloud radar reflectivity and vertical velocity below the liquid layer. The virga dissolves rather quickly in the dry layer below the cloud. In the radiosonde ascent (Fig. 10a) the relative humidity decreases from 100% between 4.7 km and 5.5 km down to below 10% at 3.8 km. This dry layer is also visible in the RWP as gap in the measurements.

As the vertical air motion reveals in Fig. 11b, the ~~dynamics are a key driver for this cloud~~ cloud exists under a background of strong vertical motions. Regrettably only the intermittent mode observations are available for this case. But nevertheless, it is visible that the cloud gap at 16:30 UTC is caused by a downdraft. Before and after that downdraft the particles form or respectively grow when the liquid layer is lifted. It can also be seen, that a short delay exists between the maximum of the vertical velocity and the response (growth) of the particles (maximum of reflectivity and terminal velocity). This example also emphasizes the importance of the separation algorithm. The downward air motion at 16:35 UTC at 3.5 km and the virga 20 minutes later at 4.5 km could not be distinguished in the raw RWP measurement (Fig. 11a). It may also be possible, that the downdraft at 16:55 UTC was amplified by evaporation cooling. Collocated observations of a vertical staring Doppler lidar (not shown) augments these findings by observing the updraft also in the liquid layer at cloud top.

Having an estimate for in-cloud vertical air velocity, the terminal velocity of the particles can be calculated (Fig. 11d). For a first investigation, the mean velocity of the cloud radar peak was used, but the Doppler spectra could also be used. When the updraft strengthens at 16:45, the terminal velocity increases as the particles grow. The particles evaporate rather quickly when reaching the dry layer at 4 km.

6 Evaluation of the separation algorithm

The accuracy of the separation algorithm is estimated with a Monte Carlo approach. Doppler spectra of cloud radar and RWP are generated numerically by composing a particle and a clear air peak

$$S_{482}(v) = P_{\text{Gauss}}(Z_{\text{particle}}, \bar{v}_{\text{particle}}, \sigma_{\text{particle}}) + P_{\text{Gauss}}(Z_{\text{air}}, \bar{v}_{\text{air}}, \sigma_{\text{air}}) \quad (12)$$

$$S_{35}(v) = P_{\text{Gauss}}(Z_{\text{particle}}, \bar{v}_{\text{particle}}, \sigma_{\text{particle}}) \quad (13)$$

with a Gaussian shaped peak P_{Gauss} having the first three moments Z , \bar{v} and σ . These spectra are used as an input for the separation algorithm. The output of the algorithm is then compared with the input parameters of the synthetic Doppler spectra.

A single iteration in this Monte Carlo simulations consists of the following steps: At first, the input parameters (reflectivity, mean velocity and spectrum width) for both peaks are randomly chosen. The frequency distributions for the clear air peak is derived from RWP observations within clear air. The parameters of the particle peak are closely coupled to each other and the parameters cannot be drawn from independent random distributions. Large reflectivity values are more common at higher fall

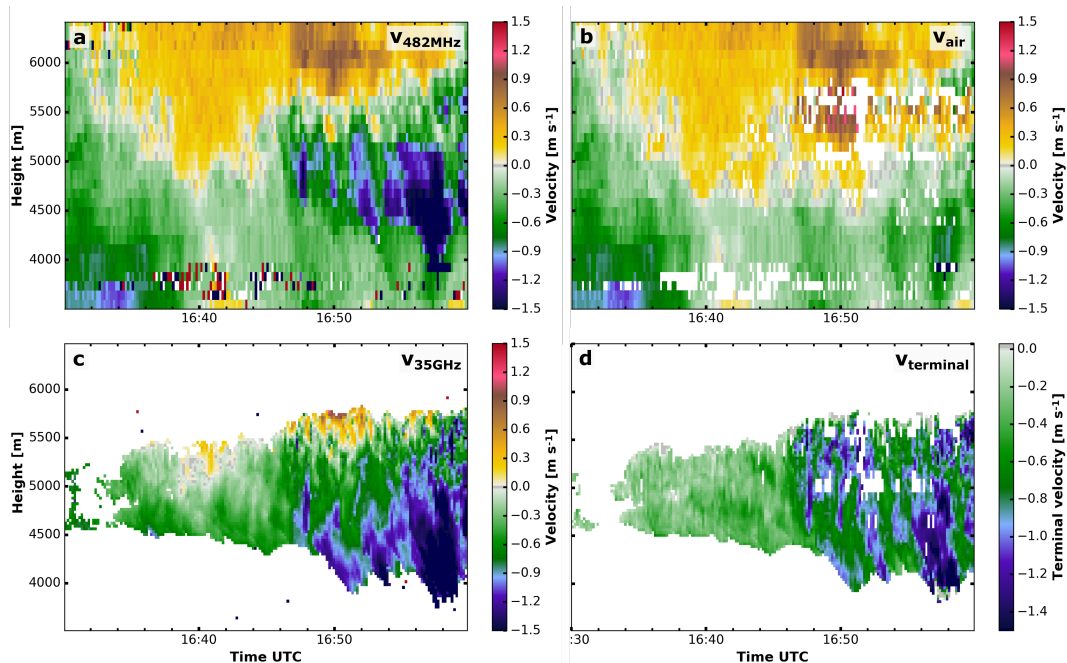


Figure 11. Zoom into the mixed phase layered cloud between 16:30 and 17:00 UTC. Vertical velocity retrieved with the standard RWP signal processing (a), retrieved vertical air motion (b), vertical velocity of the cloud radar (c) and the terminal velocity (d). Values exceeding the velocity color scale are shown in dark blue and red, respectively.

velocities and spectral widths (Fig. 12). All cloud radar observations during the COLRAWI campaign are used to assemble a three-dimensional histogram. The randomly chosen reflectivity is based on the whole frequency distribution. Then a slice through the histogram at this reflectivity is used to obtain the frequency distribution for which the velocity is drawn. The spectral width is chosen accordingly.

- 5 From these set of parameters, the synthetic Doppler spectra are calculated (Eq. 12 and 13). For the cloud radar spectrum only the particle peak is used, whereas for the RWP particle and clear air peak are added. Afterwards the noise floor and optionally multiplicative noise are added. These two synthetic Doppler spectra are in a next step used as input for the separation algorithm described in Section 4. The randomly drawn input parameters and the output from the algorithm are stored for each step. If the separation algorithm fails to reveal the clear air peak, this is also stored.
- 10 By running multiple Monte Carlo steps, all combinations of input parameters are covered. Here, for each method (weighting function and peak fitting) 150000 Monte Carlo steps were used and the error of the vertical air velocity estimate of the algorithm is calculated

$$v_{\text{err}} = \bar{v}_{\text{air, input}} - \bar{v}_{\text{air, corr}} \quad (14)$$

- where $v_{\text{air, input}}$ is the clear air velocity used as input and $v_{\text{air, corr}}$ is the result of the separation process. If the obtained vertical velocity is larger than the actual one, v_{err} becomes negative, indicating an upward bias of the algorithm. If v_{err} is positive, there

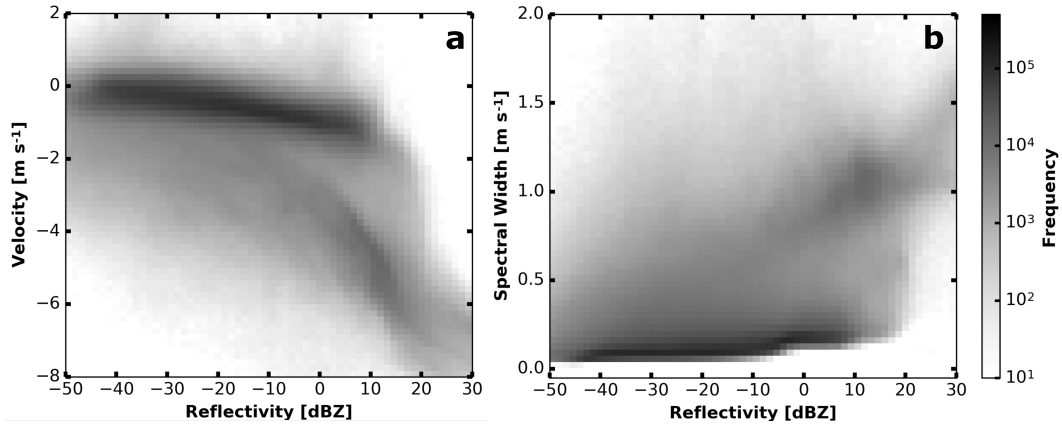


Figure 12. Dependency of the vertical velocity (a) and the width (b) on the reflectivity as observed by the cloud radar during COLRAWI. Clearly visible are the two clusters formed by cloud particles (low reflectivity and slowly falling) and precipitation (high reflectivity and faster falling).

Parameter	Range
Z_{air}	$[-35, 0]$ dBZ
\bar{v}_{air}	$[-1.0, 1.0]$ ms^{-1}
σ_{air}	$[0.1, 0.3]$ ms^{-1}

Table 2. Input settings for the Monte Carlo simulation. The values are based on the clear air properties of the RWP peak. Square brackets denote the range from which the random numbers are drawn.

is a downward bias. This error decreases if both contributions can be better distinguished in the spectrum. As a measure for the distance of the peaks we define the peak separation \mathcal{S}

$$\mathcal{S} = \frac{|\bar{v}_{\text{air}} - \bar{v}_{\text{particle}}|}{\sigma_{\text{air}} + \sigma_{\text{particle}}} \quad (15)$$

where \bar{v} and σ are the first and second moment, respectively, of the Doppler spectrum. For example, a particle peak at $\bar{v}_{\text{particle}} = -1.5 \text{ms}^{-1}$ with $\sigma_{\text{particle}} = 0.8 \text{ms}^{-1}$ and a clear air peak at $\bar{v}_{\text{air}} = +0.5 \text{ms}^{-1}$ with $\sigma_{\text{air}} = 0.3 \text{ms}^{-1}$ give a peak separation of 1.8. The spectral contrast \mathcal{C} at \bar{v}_{air} is used as a second measure for peak distinguishability

$$\mathcal{C} = S_{\text{air}}(\bar{v}_{\text{air}}) - S_{\text{particle}}(\bar{v}_{\text{air}}). \quad (16)$$

The spectral contrast falls back to the RWP SNR, when the reflectivity of the particle signal is below the noise level at \bar{v}_{air} . Fig. 13 a shows how the error depends on \mathcal{S} and \mathcal{C} for the particle influenced measurement. As it becomes clear from Fig. 13 b and c the error reduces with increasing \mathcal{S} and \mathcal{C} . For peak separations \mathcal{S} above 2 and spectral contrasts \mathcal{C} above 15 dB the possible errors of both separation methods are negligible. The peak fitting approach performs slightly better if both, \mathcal{S} and \mathcal{C} are small, but at the cost of larger errors for small \mathcal{C} and \mathcal{S} above 1.8. Altogether the bias for the weighting function

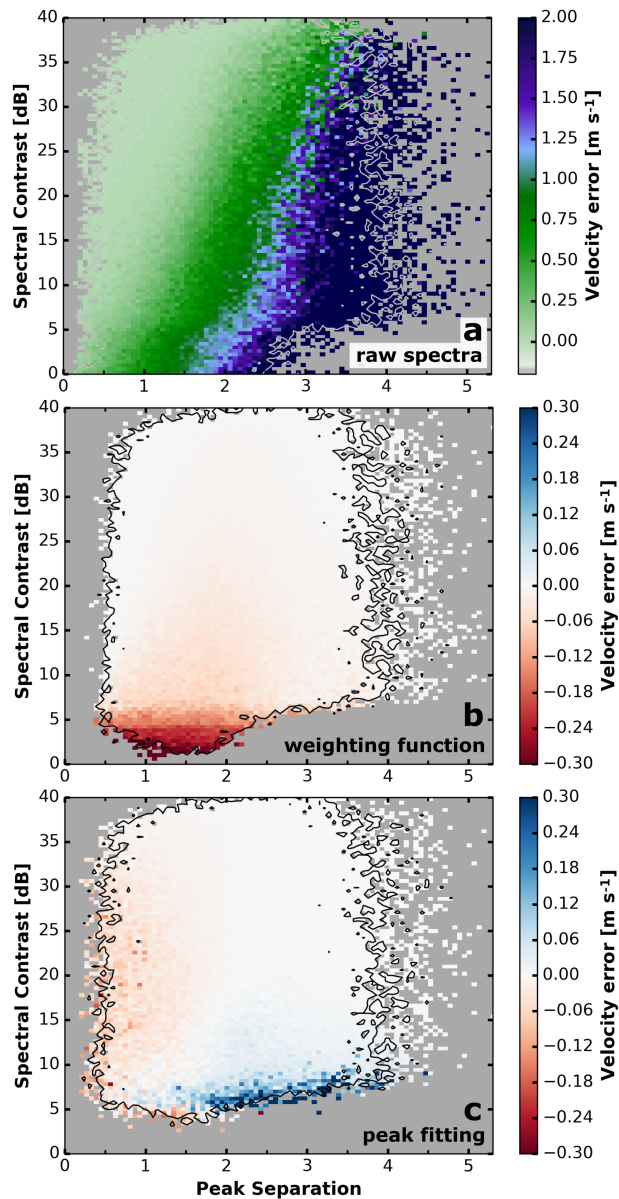


Figure 13. Velocity error before the separation (a), with the weighting function (b) and peak fitting (c). Shown is the bin mean for all Monte Carlo spectra within the respective bin. The black outline marks bins containing more than 7 values. Bins without any simulations are marked in gray.

is on average -0.023 m s^{-1} (median -0.005 m s^{-1} , interdecile range 0.072 m s^{-1}) and for the peak fitting $+0.003 \text{ m s}^{-1}$ (0.001 m s^{-1} , 0.058 m s^{-1}), respectively.

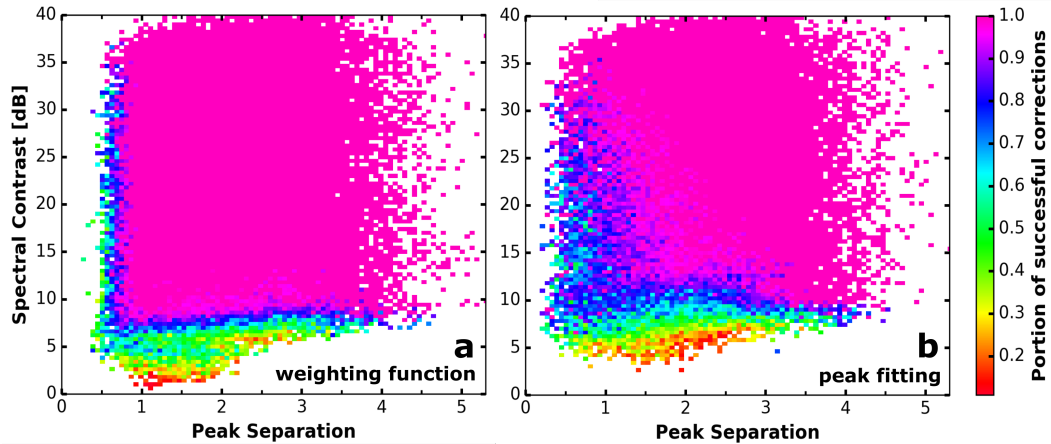


Figure 14. Portion of successfully separated spectra depending on the peak separation and contrast for the weighting function (a) and peak fitting (b)

A detection rate can be calculated from the portion of spectra where the separation was successful. The weighting function approach is able to separate 86% of all synthetically generated spectra and performs slightly better than the peak fitting approach (80%). As evident from Fig. 14, the lowest detection rates occur at low peak separations \mathcal{S} and spectral contrasts \mathcal{C} . Especially for peak separations around 1 the weighting function is more robust compared to the fitting approach.

- 5 Additionally to an estimate of the mean (statistical) error, a single error estimate for each spectrum is of great advantage. The measurements during the first case study (Sec. 5.1) for a error estimate for each spectrum. The observed Doppler spectra from cloud radar and RWP are used to calculate \mathcal{S} and \mathcal{C} . The error is then taken from the binned results from the Monte Carlo simulation (Fig. 13 b or c). The frontal cloud observed on 17 June 2015 (Sect. 5.1) is used to illustrate the error estimate for each spectrum (Fig. 15). Within liquid precipitation (below 3km), the error is negligibly small as clear air and particle
- 10 contribution are clearly distinguishable in the spectrum. Above the melting layer the error is larger because of low terminal velocities, with the particle peak being very close to the clear air peak. The error of the weighting function is mostly negative, indicating a slight upward bias. Contrarily the errors of the peak fitting method are mostly positive, meaning a slight downward bias.

7 Discussion

- 15 The Discussion will concentrate on three issues. The calibration is assessed and compared to previous work. Secondly the selection of frequencies is shortly discussed and the weighting function approach is also compared to prior work. Finally the error as estimated by the Monte Carlo simulation is shortly reviewed.

The accuracy of the relative calibration depends on the calibration of the cloud radar. According to Gorsdorf et al. (2015) the internal budget calibration is accurate to 1.3dB. Neglecting all issues in the cloud radar calibration and including the variability

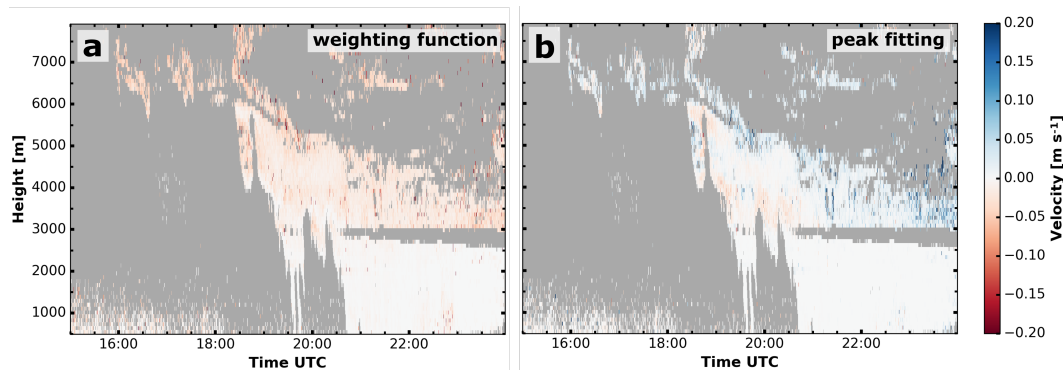


Figure 15. Error estimate for the weighting function (a) and the peak fitting (b) methods during the period covered in case study 1 (Sect. 5.1). Areas where no error estimate is possible are marked in gray.

of the RWP calibration constant (Sect. 4.2), the uncertainty in the RWP calibration is roughly 2 dB. Orr and Martner (1996) applied a similar relative calibration approach as used in this study by calculating the reflectivity of the full spectrum within light rain events. The approach used in here has two advantages. Firstly it is not required to manually select of the events where calibration is possible. Secondly non-Rayleigh contributions are excluded, which would otherwise mix into the SNR of the RWP and obscure the true calibration constant. The check of the calibration constant mitigates effects that decrease the observed reflectivity, like partial beam filling. Furthermore the correction factor may be used as a first assessment of attenuation due to liquid water.

As stated above, the choice of the frequencies governs the whole separation process. In contrast to a lower frequency radar, the 35 GHz system is completely insensitive to clear air scattering. Hence, its Doppler spectrum can be regarded as reference for the particle influence. A large frequency spacing factor of 73 supports an even stronger discrimination of clear air and particle signal.

Compared to Williams (2012), the separation scheme had to be modified in several aspects. The beamwidth of the cloud radar is rather small (0.28° , Table 1), hence the beamwidth broadening effect had to be included (see Sect. 4.1). During construction of the weighting function, the fixed scaling factor of 40 dB was replaced by the inverse SNR, which provides a better suppression of the particle contribution. With the instruments used in this study, the resolution in terms of velocity ($< 0.1 \text{ m s}^{-1}$), height ($< 100 \text{ m}$) and time (10 s) is considerably improved compared to prior work (e.g., Williams, 2012), making the scale of cloud processes accessible.

The Monte Carlo approach can only provide a first estimate of the possible error. For single Doppler spectra the error in velocity according to the Monte Carlo simulation can be up to $\pm 0.3 \text{ m s}^{-1}$, whereas on average this error is much smaller. These large errors are typically caused by spectra where scattering from clear air and particles is hardly separable. The prediction of the error based on parameters computed from the Doppler spectrum allows to get an error estimate for quasi-instantaneous values of the vertical air velocity. This offers the possibility to include the error estimate in all following analysis steps, which is an improvement compared to prior work.

8 Summary, Conclusions and Outlook

An synergistic algorithm based on a combination of Doppler spectra of a RWP and a 35 GHz cloud radar was developed with the goal of resolving the Bragg-Rayleigh ambiguity, which can mask the vertical air motion when particles are present. It was evaluated by a Monte Carlo approach using synthetically generated Doppler spectra. The bias in the vertical air velocity estimate for both methods is close to 0 m s^{-1} with a interdecile range of below 0.1 m s^{-1} . The results of the Monte Carlo simulations are used to provide an error estimate for single Doppler spectra. To automate the algorithm a continuous relative calibration procedure and a quality control flag were also included. The relative calibration proved to be quite stable over the three months of observations available so far.

The application of the separation algorithm for vertical air velocity estimate within clouds was shown for two case studies. They illustrate that the algorithm can be applied to real measurements under various atmospheric conditions, offering a deeper insight into the formation and evolution of clouds.

The Cloudnet retrieval (Illingworth et al., 2007) provides a proven synergistic method for model evaluation (e.g., Morcrette et al., 2012; Neggers et al., 2012) and the long term quality controlled dataset makes also detailed cloud microphysics studies possible (Bühl et al., 2016). However, continuous information on vertical air motion is not yet available in Cloudnet, which means that a major constraining factor of cloud microphysics is disregarded. The presented combination of a RWP and a cloud radar together with the separation algorithm is able close this gap and can provide a dataset for further studies on aerosol-cloud-dynamics interaction and model evaluation.

Besides the air motion, the calibrated RWP can provide additional information. Being less susceptible to attenuation, quantitative measurements of the reflectivity are possible under nearly all conceivable weather conditions. For long term measurements the combination of a 30 minute DBS based wind measurement mode followed by a 30 minutes high resolution vertical wind measurement mode turned out to be the best compromise to obtain a maximum of information. By combining the intermittent mode with standard Cloudnet methodology long term observations of vertical air motion on the scale of clouds become possible. Such a dataset would allow for model evaluation and cloud-dynamics-interaction studies over statistically significant time periods.

Code and data availability. The processing software ‘spectra mole’ as used for this publication is available under <https://doi.org/10.5281/zenodo.1419485>. The most recent version is available via github: https://github.com/martin-rdz/spectra_mole. The raw and processed data is available from the corresponding author on request.

Author contributions. Martin Radenz developed the algorithm and wrote the paper. Johannes Bühl initiated the COLRAWI project and performed synergistic integration of data from cloud radar and wind profiler. Ulrich Görzdorf performed the Cloudnet measurements at Lindenberg. Ronny Leinweber performed the special RWP measurements at Lindenberg. Volker Lehmann performed the special RWP

measurements at Lindenberg, supervised the work and contributed to the manuscript. All authors contributed continuously to the scientific discussion, planning and timing of the measurements and implementation of the project.

Competing interests. The authors declare that they have no conflict of interest.

Acknowledgements. The research leading to these results has received funding from the European Union Seventh Framework Programme 5 (FP7/2007-2013) under grant agreement numbers 262254 (ACTRIS) and 603445 (BACCHUS) and from the HD(CP)² project (FKZ 01LK1209C and 01LK1212C) of the German Ministry for Education and Research.

References

- Atlas, D., Srivastava, R., and Sekhon, R. S.: Doppler radar characteristics of precipitation at vertical incidence, *Reviews of Geophysics*, 11, 1–35, doi:10.1029/RG011i001p00001, 1973.
- Bannon, P. R.: Theoretical Foundations for Models of Moist Convection, *Journal of the Atmospheric Sciences*, 59, 1967–1982, doi:10.1175/1520-0469(2002)059<1967:TFFMOM>2.0.CO;2, 2002.
- 5 Böhme, T., Hauf, T., and Lehmann, V.: Investigation of Short-Period Gravity Waves with the Lindenberg 482 MHz Tropospheric Wind Profiler, *Quarterly Journal of the Royal Meteorological Society*, 130, 2933–2952, doi:10.1256/qj.03.179, 2004.
- Bony, S., Stevens, B., Frierson, D. M. W., Jakob, C., Kageyama, M., Pincus, R., Shepherd, T. G., Sherwood, S. C., Siebesma, A. P., Sobel, A. H., Watanabe, M., and Webb, M. J.: Clouds, Circulation and Climate Sensitivity, *Nature Geoscience*, 8, 261–268, doi:10.1038/ngeo2398, 2015.
- 10 Bott, A.: Theoretical Considerations on the Mass and Energy Consistent Treatment of Precipitation in Cloudy Atmospheres, *Atmospheric Research*, 89, 262–269, doi:10.1016/j.atmosres.2008.02.010, 2008.
- Branch, M. A., Coleman, T. F., and Li, Y.: A Subspace, Interior, and Conjugate Gradient Method for Large-Scale Bound-Constrained Minimization Problems, *SIAM Journal on Scientific Computing*, 21, 1–23, doi:10.1137/S1064827595289108, 1999.
- 15 Bühl, J., Leinweber, R., Görsdorf, U., Radenz, M., Ansmann, A., and Lehmann, V.: Combined Vertical-Velocity Observations with Doppler Lidar, Cloud Radar and Wind Profiler, *Atmospheric Measurement Techniques*, 8, 3527–3536, doi:10.5194/amt-8-3527-2015, 2015.
- Bühl, J., Seifert, P., Myagkov, A., and Ansmann, A.: Measuring Ice- and Liquid-Water Properties in Mixed-Phase Cloud Layers at the Leipzig Cloudnet Station, *Atmospheric Chemistry and Physics*, 16, 10 609–10 620, doi:10.5194/acp-16-10609-2016, 2016.
- Cheinet, S. and Cumin, P.: Local Structure Parameters of Temperature and Humidity in the Entrainment-Drying Convective Boundary Layer: A Large-Eddy Simulation Analysis, *Journal of Applied Meteorology and Climatology*, 50, 472–481, doi:10.1175/2010JAMC2426.1, 2011.
- 20 Clifford, S. F., Kaimal, J. C., Lataitis, R. J., and Strauch, R. G.: Ground-based remote profiling in atmospheric studies: An overview, *Proceedings of the IEEE*, 82, 313–355, doi:10.1109/5.272138, 1994.
- Donner, L. J., O’Brien, T. A., Rieger, D., Vogel, B., and Cooke, W. F.: Are Atmospheric Updrafts a Key to Unlocking Climate Forcing and Sensitivity?, *Atmospheric Chemistry and Physics*, 16, 12 983–12 992, doi:10.5194/acp-16-12983-2016, 2016.
- 25 Doviak, R. J. and Zmic, D. S.: *Doppler Radar & Weather Observations*, Courier Corporation, doi:10.1016/C2009-0-22358-0, 1993.
- Fang, M., Doviak, R. J., and Albrecht, B. A.: Analytical Expressions for Doppler Spectra of Scatter from Hydrometeors Observed with a Vertically Directed Radar Beam, *Journal of Atmospheric and Oceanic Technology*, 29, 500–509, doi:10.1175/JTECH-D-11-00005.1, 2012.
- 30 Fang, M., Albrecht, B., Jung, E., Kollias, P., Jonsson, H., and PopStefanija, I.: Retrieval of Vertical Air Motion in Precipitating Clouds Using Mie Scattering and Comparison with In Situ Measurements, *J. Appl. Meteor. Climatol.*, 56, 537–553, doi:10.1175/JAMC-D-16-0158.1, 2017.
- Fukao, S. and Hamazu, K.: *Radar for Meteorological and Atmospheric Observations*, Springer, doi:10.1007/978-4-431-54334-3, 2014.
- Gage, K. S., Williams, C. R., Ecklund, W. L., and Johnston, P. E.: Use of Two Profilers during MCTEX for Unambiguous Identification of Bragg Scattering and Rayleigh Scattering, *Journal of the Atmospheric Sciences*, 56, 3679–3691, doi:10.1175/1520-0469(1999)056<3679:UOTPDM>2.0.CO;2, 1999.
- 35

- Görsdorf, U., Lehmann, V., Bauer-Pfundstein, M., Peters, G., Vavriv, D., Vinogradov, V., and Volkov, V.: A 35-GHz Polarimetric Doppler Radar for Long-Term Observations of Cloud Parameters—Description of System and Data Processing, *Journal of Atmospheric and Oceanic Technology*, 32, 675–690, doi:10.1175/JTECH-D-14-00066.1, 2015.
- Gossard, E. E.: Measuring Drop-Size Distributions in Clouds with a Clear-Air-Sensing Doppler Radar, *Journal of Atmospheric and Oceanic Technology*, 5, 640–649, doi:10.1175/1520-0426(1988)005<0640:MDSDIC>2.0.CO;2, 1988.
- Gossard, E. E. and Strauch, R. G.: Radar Observation of Clear Air and Clouds, no. 14 in *Developments in atmospheric science*, Elsevier Publishing Ltd, 1983.
- Gossard, E. E., Wolfe, D. E., Moran, K. P., Paulus, R. A., Anderson, K. D., and Rogers, L. T.: Measurement of Clear-Air Gradients and Turbulence Properties with Radar Wind Profilers, *Journal of Atmospheric and Oceanic Technology*, 15, 321–342, doi:10.1175/1520-0426(1998)015<0321:MOCAGA>2.0.CO;2, 1998.
- Hardy, K. R., Atlas, D., and Glover, K. M.: Multiwavelength Backscatter from the Clear Atmosphere, *Journal of Geophysical Research*, 71, 1537–1552, doi:10.1029/JZ071i006p01537, 1966.
- Heymsfield, A. J. and Westbrook, C. D.: Advances in the Estimation of Ice Particle Fall Speeds Using Laboratory and Field Measurements, *Journal of the Atmospheric Sciences*, 67, 2469–2482, doi:10.1175/2010JAS3379.1, 2010.
- Illingworth, A. J., Hogan, R. J., O’Connor, E. J., Bouniol, D., Delanoë, J., Pelon, J., Protat, A., Brooks, M. E., Gaussiat, N., Wilson, D. R., Donovan, D. P., Baltink, H. K., van Zadelhoff, G.-J., Eastment, J. D., Goddard, J. W. F., Wrench, C. L., Haeffelin, M., Krasnov, O. A., Russchenberg, H. W. J., Piriou, J.-M., Vinit, F., Seifert, A., Tompkins, A. M., and Willén, U.: Cloudnet: Continuous Evaluation of Cloud Profiles in Seven Operational Models Using Ground-Based Observations, *Bulletin of the American Meteorological Society*, 88, 883–898, doi:10.1175/BAMS-88-6-883, 2007.
- Kneifel, S., Maahn, M., Peters, G., and Simmer, C.: Observation of snowfall with a low-power FM-CW K-band radar (Micro Rain Radar), *Meteorol. Atmos. Phys.*, 113, 75–87, doi:10.1007/s00703-011-0142-z, 2011.
- Knight, C. A. and Miller, L. J.: Early Radar Echoes from Small, Warm Cumulus: Bragg and Hydrometeor Scattering, *Journal of the Atmospheric Sciences*, 55, 2974–2992, doi:10.1175/1520-0469(1998)055<2974:EREFWS>2.0.CO;2, 1998.
- Kollias, P., Albrecht, B. A., and Marks, F.: Why Mie?, *Bulletin of the American Meteorological Society*, 83, 1471–1484, doi:10.1175/BAMS-83-10-1471, 2002.
- Korolev, A.: Limitations of the Wegener–Bergeron–Findeisen Mechanism in the Evolution of Mixed-Phase Clouds, *Journal of the Atmospheric Sciences*, 64, 3372–3375, doi:10.1175/JAS4035.1, 2007.
- Korolev, A. and Isaac, G.: Phase Transformation of Mixed-Phase Clouds, *Quarterly Journal of the Royal Meteorological Society*, 129, 19–38, doi:10.1256/qj.01.203, 2003.
- Lehmann, V., Dibbern, J., Görsdorf, U., Neuschaefer, J. W., and Steinhagen, H.: The new operational UHF Wind Profiler Radars of the Deutscher Wetterdienst, in: *6th International Conference on Tropospheric Profiling - Extended Abstracts*, 2003.
- Liebe, H. J.: An updated model for millimeter wave propagation in moist air, *Radio Science*, 20, 1069–1089, doi:10.1029/RS020i005p01069, 1985.
- Makarieva, A., Gorshkov, V. G., Nefiodov, A. V., Sheil, D., Nobre, A. D., Bunyard, P., Nobre, P., and Li, B.-L.: The equations of motion for moist atmospheric air, *J. Geophys. Res. Atmos.*, 122, 7300–7307, doi:10.1002/2017JD026773, 2017.
- Makarieva, A. M., Gorshkov, V. G., Sheil, D., Nobre, A. D., and Li, B.-L.: Where do winds come from? A new theory on how water vapor condensation influences atmospheric pressure and dynamics, *Atmospheric Chemistry and Physics*, 13, 1039–1056, doi:10.5194/acp-13-1039-2013, 2013.

- Matrosov, S. Y.: Theoretical Study of Radar Polarization Parameters Obtained from Cirrus Clouds, *Journal of the Atmospheric Sciences*, 48, 1062–1070, doi:10.1175/1520-0469(1991)048<1062:TSORPP>2.0.CO;2, 1991.
- May, P. T. and Strauch, R. G.: An Examination of Wind Profiler Signal Processing Algorithms, *J. Atmos. Oceanic Technol.*, 6, 731–735, doi:10.1175/1520-0426(1989)006<0731:AEOWPS>2.0.CO;2, 1989.
- 5 Morales, R. and Nenes, A.: Characteristic updrafts for computing distribution-averaged cloud droplet number and stratocumulus cloud properties, *Journal of Geophysical Research*, 115, doi:10.1029/2009JD013233, 2010.
- Morcrette, C. J., O’Connor, E. J., and Petch, J. C.: Evaluation of two cloud parametrization schemes using ARM and Cloud-Net observations, *Quarterly Journal of the Royal Meteorological Society*, 138, 964–979, doi:10.1002/qj.969, 2012.
- Muschinski, A.: Local and global statistics of clear-air Doppler radar signals: Statistics of clear-air Doppler radar signals, *Radio Science*, 39, 1–23, doi:10.1029/2003RS002908, 2004.
- 10 Muschinski, A. and Sullivan, P. P.: Using large-eddy simulation to investigate intermittency fluxes of clear-air radar reflectivity in the atmospheric boundary layer, in: 2013 IEEE Antennas and Propagation Society International Symposium (APSURSI), pp. 2321–2322, doi:10.1109/APS.2013.6711819, 2013.
- Muschinski, A., Lehmann, V., Justen, L., and Teschke, G.: Advanced Radar Wind Profiling, *Meteorologische Zeitschrift*, 14, 609–625, doi:10.1127/0941-2948/2005/0067, 2005.
- 15 Nastrom, G. D.: Doppler Radar Spectral Width Broadening Due to Beamwidth and Wind Shear, *Annales Geophysicae*, 15, 786–796, doi:10.1007/s00585-997-0786-7, 1997.
- Neggers, R. A. J., Siebesma, A. P., and Heus, T.: Continuous Single-Column Model Evaluation at a Permanent Meteorological Supersite, *Bulletin of the American Meteorological Society*, 93, 1389–1400, doi:10.1175/BAMS-D-11-00162.1, 2012.
- 20 Orr, B. W. and Martner, B. E.: Detection of Weakly Precipitating Winter Clouds by a NOAA 404-MHz Wind Profiler, *Journal of Atmospheric and Oceanic Technology*, 13, 570–580, doi:10.1175/1520-0426(1996)013<0570:DOWPWC>2.0.CO;2, 1996.
- Ottersten, H.: Atmospheric Structure and Radar Backscattering in Clear Air, *Radio Science*, 4, 1179–1193, doi:10.1029/RS004i012p01179, 1969.
- Ralph, M.: Using Radar-Measured Radial Vertical Velocities to Distinguish Precipitation Scattering from Clear-Air Scattering, *Journal of Atmospheric and Oceanic Technology*, 12, 257–267, doi:10.1175/1520-0426(1995)012<0257:URMRVV>2.0.CO;2, 1995.
- 25 Ramanathan, V.: Aerosols, Climate, and the Hydrological Cycle, *Science*, 294, 2119–2124, doi:10.1126/science.1064034, 2001.
- Ramanathan, V., Cess, R. D., Harrison, E. F., Minnis, P., Barkstrom, B. R., Ahmad, E., and Hartmann, D.: Cloud-Radiative Forcing and Climate: Results from the Earth Radiation Budget Experiment, *Science*, 243, 57–63, doi:10.1126/science.243.4887.57, 1989.
- Reinking, R. F., Matrosov, S. Y., Brientjes, R. T., and Martner, B. E.: Identification of Hydrometeors with Elliptical and Linear Polarization K_a -Band Radar, *Journal of Applied Meteorology*, 36, 322–339, doi:10.1175/1520-0450(1997)036<0322:IOHWEA>2.0.CO;2, 1997.
- 30 Renggono, F., Yamamoto, M. K., Hashiguchi, H., Fukao, S., Shimomai, T., Kawashima, M., and Kudsy, M.: Raindrop size distribution observed with the Equatorial Atmosphere Radar (EAR) during the Coupling Processes in the Equatorial Atmosphere (CPEA-I) observation campaign, *Radio Science*, 41, doi:10.1029/2002RS002767, 2006.
- Rodgers, R., Ecklund, W., Carter, D., Gage, K., and Ethier, S.: Research Applications of a Boundary-Layer Wind Profiler, *Bulletin of the American Meteorological Society*, 74, 567–580, doi:10.1175/1520-0477(1993)074<0567:RAOABL>2.0.CO;2, 1993.
- 35 Shupe, M. D., Kollias, P., Poellot, M., and Eloranta, E.: On Deriving Vertical Air Motions from Cloud Radar Doppler Spectra, *Journal of Atmospheric and Oceanic Technology*, 25, 547–557, doi:10.1175/2007JTECHA1007.1, 2008.

- Steinhagen, H., Dibbern, J., Engelbart, D., Görsdorf, U., Lehmann, V., Neisser, J., and Neuschaefer, J. W.: Performance of the first European 482 MHz Wind profiler radar with RASS under operational conditions, *Meteorologische Zeitschrift*, 7, 248–261, doi:10.1127/metz/7/1998/248, 1998.
- Tatarskii, V. I. and Muschinski, A.: The difference between Doppler velocity and real wind velocity in single scattering from refractive index fluctuations, *Radio Science*, 36, 1405–1423, doi:10.1029/2000RS002376, 2001.
- 5 Van Zandt, T. E.: A Brief History of the Development of Wind-Profiling or MST Radars, *Annales Geophysicae*, 18, 740–749, doi:10.1007/s00585-000-0740-4, 2000.
- Wacker, U., Frisius, T., and Herbert, F.: Evaporation and Precipitation Surface Effects in Local Mass Continuity Laws of Moist Air, *Journal of the Atmospheric Sciences*, 63, 2642–2652, doi:10.1175/JAS3754.1, 2006.
- 10 Wakasugi, K., Mizutano, M., Matsuo, M., Fukao, S., and Kato, S.: A direct method of deriving drop size distribution and vertical air velocities from VHF Doppler radar spectra, *Journal of Atmospheric and Oceanic Technology*, 3, 623–629, doi:10.1175/1520-0426(1986)003<0623:ADMFFD>2.0.CO;2, 1986.
- Williams, C. R.: Simultaneous Ambient Air Motion and Raindrop Size Distributions Retrieved from UHF Vertical Incident Profiler Observations: Simultaneous Ambient Air Motion and Raindrop Size Distributions, *Radio Science*, 37, 8–1–8–16, doi:10.1029/2000RS002603, 15 2002.
- Williams, C. R.: Vertical Air Motion Retrieved from Dual-Frequency Profiler Observations, *Journal of Atmospheric and Oceanic Technology*, 29, 1471–1480, doi:10.1175/JTECH-D-11-00176.1, 2012.
- Williams, C. R.: Reflectivity and Liquid Water Content Vertical Decomposition Diagrams to Diagnose Vertical Evolution of Raindrop Size Distributions, *Journal of Atmospheric and Oceanic Technology*, 33, 579–595, doi:10.1175/JTECH-D-15-0208.1, 2016.
- 20 Williams, C. R., Ecklund, W. L., Johnston, P. E., and Gage, K. S.: Cluster Analysis Techniques to Separate Air Motion and Hydrometeors in Vertical Incident Profiler Observations, *Journal of Atmospheric and Oceanic Technology*, 17, 949–962, doi:10.1175/1520-0426(2000)017<0949:CATTSA>2.0.CO;2, 2000.
- Williams, K. D. and Tselioudis, G.: GCM Intercomparison of Global Cloud Regimes: Present-Day Evaluation and Climate Change Response, *Climate Dynamics*, 29, 231–250, doi:10.1007/s00382-007-0232-2, 2007.
- 25 Woodman, R. F.: Spectral moment estimation in MST radars, *Radio Science*, 20, 1185–1195, doi:10.1029/RS020i006p01185, 1985.