

Response to Reviewer 1

Blue text:

Comment: Referee comment. Page and line numbers relate to the original submission.

Black text:

Response: Our comments to the reviewers and the public

Action: What we have done to change this in the text of the article. Page and line numbers relate to the edited manuscript.

Review: This paper describes a system for measurement of air-sea and air-ice CO₂ flux using the eddy covariance method and dried, closed-path infrared gas analyser instrumentation. The novel aspects are the successful deployment of such instrumentation in a particularly challenging environment (The Canadian Arctic) and the technical challenges overcome in doing so. The authors also present convincing evidence that the flux measurements from their system are plausible, and that the closed-path system performs much better than the different instruments (open-path infrared gas analysers) previously used in such environments.

The paper is well written, well structured and thorough. I have a few questions and comments for the authors and some minor corrections. With these addressed, I am very happy to recommend this manuscript for publication in Atmospheric Measurement Techniques.

Response: We'd like to thank Dr. John Prytherch for taking the time and providing a thoughtful review.

Comment: Section 2.1. and later. I felt like a little more discussion of the flux footprint might be useful. The far reaches of the footprint certainly seem likely to be over water (e.g. the Kljun et al., 2015 model suggests for a 10 m tower the footprint doesn't extend further than 1km). However there can be significant influence from land close to the measurement site (20-100m). On page 8, line 11, you state that winds were selected within 150 deg of the front to reduce flow distortion from the mast and instruments but also because they included land in their footprint. From the photos and video provided, it appears that a far greater wind sector is potentially affected by the island. As the discussion on page 9 and fig 7. makes clear, most of the winds come from the southeast or southwest. It is also stated that the front of the tower facing the water is North. This at least suggests many of the measurement periods had winds blowing over a substantial part of the island. From the information given it is hard to determine how significant this might be. Further discussion, and a more detailed map showing the island itself, and the

position and facing of the mast, would be useful additions. If it is the case that for many of the measurements, significant land (ie greater than say 20m) is within the footprint, then an estimate of this influence on the measurements should be made, using for example the footprint model above.

Response: We looked into this in greater detail. Our original decision to keep such a wide swath was due to the fact that we appeared to get fluxes from these back-hemisphere angles (i.e., believable magnitudes with reasonable-looking cospectra). As per your suggestion we ran the Kljun et al. (2015) model using the mean meteorological conditions from every 5 degree wind sector. We found that for the back-hemisphere angles in question 44% of the flux was coming from the island. Though there were many periods in which that number was much lower. For example, when we ran the same analysis, but input meteorological conditions representative of the 75th percentiles (instead of means) we found this influence dropped to 23%. Overall, we believe that there may still be useable data from these angles. Though, without further data (specifically a time series of pCO_{2w}) we cannot properly address it now. Fortunately, these back-hemisphere wind directions were relatively uncommon. Since the tower was pointed northwest (330°, as stated in the article), the common southeasterly winds were already discarded. We did rerun our plots and statistics using a smaller angle limit (−90° to 90°) and found that it would change the conclusions of the paper in no discernable way. Therefore, we report on this finding, but left the wind direction limits as they were. And we left the possibility open to applying a correction factor down the road when we can test it with a pCO_{2w} dataset.

Action: On page 8, line 10 we changed:

“Quality control criteria were used to select intervals that passed the underlying assumptions of eddy covariance. First, wind directions of −150° to 150° (relative to the anemometer) were selected to eliminate winds from aft that were affected by flow distortion from the instruments and tower frame. Winds from aft were also unwanted as they included the island land surface in their flux footprint. A second quality control criterion selected for intervals that exhibited stationarity following

$$RN_{cov} = \left| \frac{\overline{(w'x')}_5 - \overline{(w'x')}_{20}}{\overline{(w'x')}_{20}} \right| \leq 0.3, \quad (8)$$

where $\overline{(w'x')}_5$ represents the mean of the four 5-minute turbulent flux subintervals and $\overline{(w'x')}_{20}$ represents the turbulent flux of the whole 20-minute interval (Blomquist et al., 2014). The purpose of this criterion is to identify and remove intervals in which large scale phenomena (e.g., mesoscale motions), outside the frequency range of turbulent fluxes, are contributing to the measured flux.”

To read:

“Quality control criteria were used to select intervals that passed the underlying assumptions of eddy covariance. First, intervals were selected that exhibited stationarity, following

$$RN_{cov} = \left| \frac{\overline{(w'x')}_5 - \overline{(w'x')}_{20}}{\overline{(w'x')}_{20}} \right| \leq 0.3, \quad (8)$$

where $\overline{(w'x')}_5$ represents the mean of the four 5-minute turbulent flux subintervals and $\overline{(w'x')}_{20}$ represents the turbulent flux of the whole 20-minute interval (Blomquist et al., 2014). The purpose of this criterion is to identify and remove intervals in which large scale phenomena (e.g., mesoscale motions), outside the frequency range of turbulent fluxes, are contributing to the measured flux.

A second quality control criterion selected for wind directions of -150° to 150° (relative to the anemometer) to eliminate winds from aft that were affected by flow distortion from the instruments and tower frame. The size and shape of the island (0.2 km wide and extending 0.5 km behind the tower) meant the remaining wind directions from the back hemisphere had some degree of island contributing to their flux footprint. To estimate the impact of the island on the flux measurements we ran the flux footprint model of Kljun et al. (2015). Using the mean meteorological conditions from each 5° wind sector it was found that on average the island accounted for 5% of the footprint for wind directions from the front hemisphere (-90° to 90°). From the back wind sectors (-150° to -90° and 90° to 150°) 44% of the flux footprint was represented by the island. However, because extent of the footprint varied with meteorological conditions there were many periods where these wind directions saw minimal influence from the island. The island is bare rock, which means that it should not act as either a source or a sink for CO_2 . This means that the magnitudes of CO_2 fluxes from these back sectors are somewhat underestimated, by a factor that most likely scales with the portion of the footprint that falls on the island. Future work is planned to collect field data (i.e., coincident upwind $\text{pCO}_{2\text{w}}$ data for varying wind directions) to determine if a linear scaling factor could be used to correct flux magnitudes for these wind sectors.”

We added the following reference:

Kljun, N., Calanca, P., Rotach, M. W. and Schmid, H. P.: A simple two-dimensional parameterization for Flux Footprint Prediction (FFP), *Geosci. Model Dev.*, 8, 3695–3713, doi:10.5194/gmd-8-3695-2015, 2015.

Comment: Section 2.2.1. Did the authors have any issues with ice formation, either on the sonic or the open path gas analysers? The model of sonic used does not appear to have any heating element. My experience is that for sonics, affected periods are straightforward to identify but this is not always the case for (open path) IRGAs. Did the authors use any particular method to identify icing periods?

Response: For this study period we did not have issues with ice formation. To assess icing we mounted the GoPro camera so that it included the sonic and the LI7500 in its view. Unfortunately, when there is icing the camera also ices over, though it is still an indication that equipment is icing at the top of the mast. Our other method for identifying periods of icing was to use the CSAT3 diagnostic.

Comment: Section 2.2.2. Newer versions of the Li-7500 have a ‘cold weather’ mode, designed to reduce some of the biases apparent in these conditions. Did the model used in this study have such a mode and was it used or tested?

Response: Yes, our LI-7500 does have a ‘cold weather’ mode. It was set to this mode.

Comment: Section 3.1 and Figure 6. Humidity units are given in ppt. Presumably this is parts per thousand. My preference would be not to use this to avoid confusion with parts per trillion.

Response: We are most comfortable with ppt.

Action: To avoid confusion we define ppt when it is first used. Page 10, Line 2 now reads: “mean of 3.3 parts per thousand (ppt)”

Comment: Section 4.4. The authors note that high spatial and temporal variability in the pCO_{2w} measurements. Is this a potential explanation for the low frequency flux signal observed (ie 2.3.1), either from the temporally varying pCO_{2w} itself, or from varying wind directions and the spatial variation in pCO_{2w}?

Response: It’s an interesting question. We don’t believe the low frequency contribution is from spatially or temporally varying pCO_{2w} because we see it most strongly during the full sea ice coverage periods, when there is likely very small spatial and temporal pCO_{2w} variation.

Comment: Section 4.4, page 13, line 13. I think the statement that open-path IRGAs are not capable of providing accurate FCO₂ measurements in the marine environment is somewhat overstated. As shown in Blomquist et al., 2014, the open path 7500 instrument has a lower sensitivity/signal to noise than the closed path 7200, and particularly the dried closed path instrument. If the flux is large enough (ie a large delta pCO₂) then an open path instrument can work well. When the flux is small, they perform badly. I think this is not necessarily a marine issue (e.g. Landwehr et al., 2014 showed that error in open path measurements did not seem to depend on the presence of hygroscopic particles (salt) as previously thought), though of course marine, and especially sea ice environments typically have much lower CO₂ fluxes than found on land. The sentence here should be slightly changed, perhaps to ‘measurements in the relatively low delta PCO₂ conditions typically found in the marine environment’.

Response: Agreed, if the dpCO₂ was large enough the open-path would work.

Action: We made the suggested change (see page 13, line 26).

Comment: Section 4.6. The limit of 40 uatm for $\Delta p\text{CO}_2$ has been widely used historically, but I think it can be misleading. It was commonly used as a limit on ship-based studies with additional motion-based sources of noise. It may also be more appropriate for different instrumentation than that used in this study. The author's themselves use a limit of 20 uatm elsewhere (Figure 12) so maybe just omit the value here.

Response: Agreed, no need to include it.

Action: We omitted it.

Corrections:

Page 9 line 8. typo, change to 'snow-covered sea ice'.

Action: Changed.

Page 9 line 16. Not clear which period you are referring to. I think to the whole period presented in the paper, so perhaps change to 'through the study period'.

Action: Changed.

Dried, closed-path eddy covariance method for measuring carbon dioxide flux over sea ice

Brian J. Butterworth¹, Brent G. T. Else¹

¹Department of Geography, University of Calgary, Calgary, T2N 1N4, Canada

Correspondence to: Brian J. Butterworth (brian.butterworth@ucalgary.ca)

Abstract. The Arctic marine environment plays an important role in the global carbon cycle. However, there remain large uncertainties in how sea ice affects air–sea fluxes of carbon dioxide (CO₂), partially due to disagreement between the two main methods (enclosure and eddy covariance) for measuring CO₂ flux (F_{CO2}). The enclosure method has appeared to produce more credible F_{CO2} than eddy covariance (EC), but is not suited for collecting long-term, ecosystem-scale flux datasets in such remote regions. Here we describe the design and performance of an EC system to measure F_{CO2} over landfast sea ice that addresses the shortcomings of previous EC systems. The system was installed on a 10-m tower on Qikirtaarjuk Island – a small rock outcrop in Dease Strait located roughly 35 km west of Cambridge Bay, Nunavut in the Canadian Arctic Archipelago. The system incorporates recent developments in the field of air–sea gas exchange by measuring atmospheric CO₂ using a closed-path infrared gas analyzer (IRGA) with a dried sample airstream, thus avoiding the known water vapor issues associated with using open-path IRGAs in low-flux environments. A description of the methods and the results from four months of continuous flux measurements from May through August 2017 are presented, highlighting the winter to summer transition from ice cover to open water. We show that the dried, closed-path EC system greatly reduces the magnitude of measured F_{CO2} compared to simultaneous open-path EC measurements, and for the first time reconciles EC and enclosure flux measurements over sea ice. This novel EC installation is capable of operating year-round on solar/wind power, and therefore promises to deliver new insights into the magnitude of CO₂ fluxes and their driving processes through the annual sea ice cycle.

1 Introduction

The global marine system plays a major role in regulating atmospheric CO₂, currently absorbing roughly 2 PgC from the atmosphere each year, or roughly a quarter of anthropogenic CO₂ emissions (Takahashi et al., 2009; Wanninkhof et al., 2013; Sitch et al., 2015). Sea ice, which covers up to 11.8% of the global ocean's surface, has important implications for the global carbon cycle (Weeks, 2010).

Sea ice does not have the same physical properties as freshwater ice (Gosink et al., 1976). It is porous, with brine channels exchanging salt and gases between the atmosphere and the water below. Compared to terrestrial environments CO₂ fluxes over sea ice are small. However, there are many different types of sea ice and a large degree of uncertainty remains in the physical processes controlling gas exchange in these regions (Miller et al., 2015). The vast size of the sea ice ecosystem means that even small exchange rates may produce important fluxes on the global scale, and therefore improved measurement techniques and increased data collection/coverage are essential to better characterize the baseline CO₂ exchange for sea ice regions. Such developments are also necessary for predicting of how Arctic carbon budgets will change as the current trend towards thinner, younger ice cover and reduced sea ice extent continues (Kwok, 2007; Maslanik et al., 2007; Comiso et al., 2017).

Over the last several decades the two main approaches for measuring F_{CO₂} over sea ice have been the enclosure method and the eddy covariance (EC) method. The enclosure method works by measuring the change in gas concentration over time within a chamber placed on the sea ice (Miller et al., 2015). The main shortcoming with this method is that it alters the environment which is being measured (e.g., affecting temperature, radiation, pressure gradients, wind speed, and turbulence, atmosphere-surface CO₂ concentration differences). Proper technique can minimize these artifacts, but even under the best conditions it is expected that they will cause some underestimation of F_{CO₂} (Miller et al., 2015). Additionally, the measurements are spatially and temporally limited. Measurements are confined to the region enclosed by the chamber (cm scale), making it challenging to accurately measure fluxes over whole ecosystems (m to km scale), which typically contain heterogeneity on scales larger than the footprint of the chamber. Additionally, long-term measurements are not feasible for enclosures due to the fact that they alter the underlying environment and the degree of manual intervention they require.

The EC technique works by measuring vertical wind speed and gas concentration at high frequencies. The covariance between fluctuations in vertical wind and fluctuations in the gas concentration, averaged over a period of time, represent a direct measurement of flux. Unlike the enclosure method it does not alter the environment in which it measures and is practical for gathering long-term continuous measurements of flux over a spatial scale that encompasses the natural heterogeneity of sea ice.

The enclosure and EC methods have not shown good agreement over sea ice, where flux magnitudes measured by EC systems have been consistently higher than those measured by enclosures (Table 1). Over landfast sea ice the enclosure method produces fluxes on the order of -5.4 to $2.2 \text{ mmol m}^{-2} \text{ d}^{-1}$ (Delille, 2006; Nomura et al., 2010, 2013; Sejr et al., 2011; Geilfus et al., 2012, 2014, 2015; Delille et al., 2014; Sievers et al., 2015), while EC often measures F_{CO_2} uptake and effluxes of several hundred $\text{mmol m}^{-2} \text{ d}^{-1}$ (Miller et al., 2011; Papakyriakou and Miller, 2011; Sievers et al., 2015). Fluxes of this magnitude are suspiciously high, comparing with terrestrial fluxes (Christensen et al., 2000; Lafleur et al., 2003; Sullivan et al., 2008), and fluxes over open-ocean algal blooms (Yang et al., 2016a).

The most likely explanation for the large discrepancy between methods is a failure of the open-path IRGA used in the EC systems. Overestimation of F_{CO_2} by open-path EC in the low-flux marine environment has been documented as far back as Broecker et al. (1986), and has since been confirmed (Miller et al., 2010; Blomquist et al., 2014; Landwehr et al., 2014). Closed-path eddy covariance systems may reduce measured F_{CO_2} magnitude (e.g., Sievers et al. [2015] measured a mean F_{CO_2} of $1.73 \pm 5 \text{ mmol m}^{-2} \text{ d}^{-1}$ over landfast sea ice), but have been shown to be affected by the same problems as the open-path IRGAs (Blomquist et al., 2014; Landwehr et al., 2014; Butterworth and Miller, 2016b). An improved technique was developed by Miller et al. (2010) which used a closed-path IRGA and dried sample airstream. This system addressed the problems with previous EC systems by eliminating fluctuations in all variables (pressure, temperature, and H_2O) associated with the density correction (Webb et al., 1980). Subsequent studies have confirmed the effectiveness of this approach for measuring air-sea fluxes (Blomquist et al., 2014; Landwehr et al., 2014; Butterworth and Miller, 2016b; Bell et al., 2017).

Cavity ring-down spectroscopy (CRDS) may be suitable for measuring F_{CO_2} over landfast sea ice, though it has yet to be field tested. Open water results have confirmed flux detection limits for dried Picarro instruments (G1301-f, G2311-f) to be in the range needed for measuring over landfast sea ice (Blomquist et al., 2014; Yang et al., 2016b). The Los Gatos Research FGGA on the other hand (in which drying is less feasible) has flux detection limits that may not be suitable for measuring at the low flux magnitudes expected over landfast sea ice (Yang et al., 2016b), though Prytherch et al. (2017), using an undried FGGA, measured F_{CO_2} in the Arctic marginal ice zone that agreed with previous results (Butterworth and Miller, 2016a). Because CRDS systems are expensive and have significant power demands, systems based on closed-path IRGAs are currently more practical for making continuous flux measurements in Arctic environments.

For this study, we applied the dried, closed-path IRGA design to measure F_{CO_2} from a permanent tower over sea ice in the Canadian Arctic. This is the first EC system of this kind to measure F_{CO_2} over landfast sea ice. The benefits of a fixed tower are that it avoids the motion contamination and flow distortion associated with ship-based EC. Additionally, it is capable of collecting a long-term continuous flux dataset in one area, thus enhancing our ability to address process-level questions. Here we will present four months of flux data from the spring and summer season (May to September 2017) as the region transitioned from full ice cover to open water and describe the performance of the system. Our primary goal in this paper is

to describe the design and performance of the system, while subsequent articles will more fully explore the insights gained about CO₂ exchange in the sea ice environment.

2 Methods

2.1 Site Description

5 An eddy covariance system to measure fluxes of momentum, sensible heat, latent heat, and CO₂ was installed on a 10-m tower located on the northwest side of Qikirtaajuk Island, a low-lying island (500 × 200 m) in Dease Strait, roughly 35 km west of Cambridge Bay, Nunavut (Fig. 1). Qikirtaajuk Island is the southernmost island in a chain that extends across Dease Strait, creating active tidal straits that produce polynyas in the fall and early spring (Fig. 1). Except for the islands north of the tower, the closest being Unihitak Island 3.5 km away, the tower has unimpeded fetch on the order of 50 km from large-angled swaths to the east and west. This ensures that much of the flux footprint represents only water and not a mix of water and land.

2.2 Instrument Setup

The tower was configured with an array of instruments (Fig. 2) to measure mean meteorological variables (logged as 1-minute averages on a Campbell Scientific CR1000 datalogger) and high frequency flux variables (10 Hz; CR3000 datalogger). Mean wind speed and direction were measured using a 2D propeller vane anemometer (RM Young; Marine Wind Monitor) mounted at 7.8 m above ground level (agl). Three temperature and relative humidity probes (Campbell Scientific HMP45C) were mounted at 9.6 m, 5 m, and 2.2 m agl. A net radiometer (Kipp & Zonen; CNR4) was mounted 2.8 m agl.

2.2.1 Wind Vector

20 Measurements of momentum and sensible heat fluxes were obtained using a 3D ultrasonic anemometer (CSAT3; Campbell Scientific) mounted at 9.5 m agl, oriented northwest (330°), and roughly 15 m from the water's edge. The ground level at the tower base was roughly 3 m above mean sea level (asl), making the measurement height 12.5 m asl. However, three-dimensional wind measurements show that the streamlines are directionally dependent and bend upward/downward in proportion to the island incline (a maximum of 6° from head-on winds). Therefore, wind and flux measurements were considered representative of 9.5 m asl (similar to vertical displacement seen in ship-based measurements [Yelland et al. 2002]). For each 20-minute flux interval a double rotation was applied on the wind vector to put it into a mean streamline coordinate system where the x-axis was parallel to the mean wind ($\bar{v} = \bar{w} = 0$) (Kaimal and Finnigan, 1994).

2.2.2 H₂O & CO₂

Water vapor and CO₂ concentrations used to calculate fluxes were measured by three IRGAs. Two were open-path designs (EC150, Campbell Scientific and LI-7500, LI-COR) and one was a closed-path design (LI-7200RS, LI-COR, referred to herein as LI-7200). The EC150 was attached to the CSAT3 anemometer making its measurements collocated with the wind vector measurements. The LI-7500 was mounted 30 cm aft, 18 cm starboard, and at the same height as the CSAT3. Mixing ratios for the IRGAs were calculated from molar density, pressure, and temperature using the WPL correction (Webb et al., 1980). This was even done for the LI-7200 (using $T_{7200} = 0.8 T_{IN} + 0.2 T_{OUT}$ as suggested by LI-COR) because it was deemed more reliable than the LI-7200's on-the-fly calculation of mixing ratio, which inexplicably produced F_{CO_2} with large contributions from low frequencies.

Unlike the open-path IRGAs the LI-7200 required a pump to pull air through its cell. As pumps significantly increase power requirements, this has been one of the barriers to closed-path IRGAs being used in remote Arctic EC towers. The sample air for the LI-7200 was drawn from an inlet 5 cm aft of the CSAT3 sampling volume. Ideally, flow through the LI-7200 should be fast enough to fully flush its cell every sample (9.7 standard liters per minute [slpm] for 10 Hz sampling). However, the maximum flow rate that could consistently be achieved by our 12V DC diaphragm pump (UN814KNDC, KNF) was 7 slpm. To ensure that flow remained constant a mass flow controller (MCRW-10SLPM-D-DB9/5M, Alicat) was installed immediately upstream of the pump. It was expected that this flow rate should cause a minor loss of signal at the high frequency end of the spectrum (evaluated below).

The mounting configuration of the LI-7200 was chosen to minimize signal attenuation by tubing. The diameter of the tubing upstream of the LI-7200 was minimized (3.5 mm I.D.) to increase the Reynolds number (Re). With 7 slpm flow Re in the sample line was 2800, in the transitional zone between laminar ($Re < 2100$) and turbulent ($Re > 4000$). To mitigate the signal smoothing that could occur with non-turbulent flow, the LI-7200 was mounted near the top of the tower, reducing upstream tube length to 2.8 m.

To test for tube delay and attenuation of high frequency signal, inlet tests with CO₂-free air were performed regularly. Twice a day at 2:05 and 14:05 LST a normally-closed, 2-way solenoid valve installed at the base of the CSAT3 would open and inject nine 10-s pulses of N₂ directly in front of the intake tube to the LI-7200. The mean delay for CO₂ from 574 tests was 0.83 ± 0.01 s (Fig. 3). The mean time constant (defined as the time for signal to drop below 1/e strength) was 0.24 ± 0.02 s.

This time constant (less than three samples at 10Hz) was low and suggested minimal attenuation by the tubing. High frequency loss of F_{CO_2} was characterized by estimating the flux lost by the open-path latent heat flux measurement after applying a low-pass filter to H₂O mixing ratio using the CO₂ time constant as a cutoff frequency (Goulden et al., 1996). The ratio (G_c) of unfiltered to filtered latent heat flux indicated an average high frequency F_{CO_2} loss of 1.7%, in line with previous

studies (Ibrom et al., 2007; Butterworth and Miller, 2016b). To account for this loss, while reducing the variability in G_c , a linear regression between G_c and U_{10n} was calculated ($G_c = 0.002 U_{10n} + 1.0024$) and used to compute a multiplier for each flux interval based on the wind speed.

2.2.3 Sea Ice

5 Images of sea ice were captured by a camera (Hero4, GoPro) mounted at the top of the tower. An intervalometer was installed to take a picture once an hour, indefinitely. These images were to be used to determine sea ice concentration (SIC) and melt pond fraction. However, the external battery packs for the camera failed late May 2017, and no images were collected by the camera until the issue was fixed mid-July 2017. Because of this, we relied on several other methods for estimating SIC. The AMSR2 passive microwave SIC product (daily, 3.125 km) by University of Bremen (Spreen et al.,
10 2008) was used to provide a picture of the seasonal ice breakup of the area. The ice concentration from the three grid cells nearest the tower were averaged. In addition to this product a variety of remotely-sensed (Landsat-8 and MODIS) and in situ images were collected. In situ photographs were taken during site visits (four helicopter trips in June and July) and from a motion sensor-equipped trail camera (installed to identify wildlife interactions with the installation, e.g. Fig. S1, but which was frequently set off by environmental conditions). Comparisons between the AMSR2 SIC product and photographs
15 confirms that it was generally accurate within the Dease Strait region (Fig. 4), with the exception that it could not resolve melt ponds as different from open water. This meant that during the melt pond season (June) the product underestimated SIC due to the presence of overlying water. Combining the photographs with the SIC product enabled estimates of melt pond fraction. Additionally, the AMSR2 product continued to measure SIC in mid-July, after images revealed full open water in front of the tower (Fig. 4). This discrepancy was due to the fact the AMSR2 product had a footprint that extended beyond the
20 immediate area in front of the tower (which turns to open water more quickly than the rest of the region).

2.2.4 Power

Power limitations often exert a large influence on experimental design in Arctic field studies. With a closed-path IRGA and airstream drying this study required two pumps and a mass flow controller, and needed roughly 4x the power required by an open-path system. With no external power to draw from, all power needed to be generated on site. Three 150W solar panels
25 (EWS-150P-36, Enerwatt) and one 12V DC wind turbine (AIR Breeze, Primus) were used to generate power that was stored in a battery bank of five 92AH AGM batteries. The battery bank was housed in a large Pelican case, and included charge controllers and circuit breakers for both the solar panels (30A 12VDC EWC-30, Enerwatt) and turbine (Wind Control Panel, Primus). The solar panels were arranged in a triangular formation to collect solar radiation at different times throughout the long summer days. The turbine was used as supplemental power to enable power generation when solar panels were not
30 active (night and winter). To conserve power the flux system was design to shut off the more power-hungry equipment (gas analyzers, mass flow controller, DC pumps, and sonic anemometer) when voltage in the battery bank dropped below 11.8 V,

and turn them back on again when voltage rose above 12.3 V. The system was fully operational 99.2% of the time during the study period. A schematic diagram (Fig. S2) of the power system is included in the Supplemental Material.

2.2.5 Drying

Like previous dried airstream systems our system used a moisture exchanger (Nafion PD-200T-12MPS, Permapure) to dry the sample air. However, instead of a using a zero-air generator for purging water vapor from the counterflow (which would have required AC power and compressed air), a desiccant (Du-Cal Drierite) was used. Air was pumped (UN814KNDC, KNF) in a closed loop through a large cylindrical tank containing 50 lbs. of desiccant, to the moisture exchanger, and back to the tank. The advantage of using a closed loop design is that the only moisture exposed to the desiccant was that which had passed through the moisture exchanger membrane. This, along with the large mass of desiccant, meant that the replacement of desiccant was required only once every 40–60 days, depending on ambient humidity. The need for desiccant replacement was determined with a small amount (1 lbs.) of Indicating Drierite (which changes color when exhausted) placed by a glass window on the tank.

2.3 Data Processing

Fluxes of momentum (τ , N m^{-2}), sensible heat (H_s , W m^{-2}), latent heat (H_L , W m^{-2}), and CO_2 (F_{CO_2} , $\text{mmol m}^{-2} \text{d}^{-1}$) were calculated for 20-minute intervals as

$$\tau = \bar{\rho}_a \sqrt{\overline{u'w'^2} + \overline{v'w'^2}}, \quad (1)$$

$$H_s = \bar{\rho}_a c_p \overline{w'T'}, \quad (2)$$

$$H_L = \bar{\rho}_a L_v \overline{w'q'}, \quad (3)$$

$$F_{\text{CO}_2} = \bar{\rho}_a \overline{w'c'}, \quad (4)$$

where u , v , and w (m s^{-1}) are the along-wind, cross-wind, and vertical wind components, respectively, $\bar{\rho}_a$ (mol m^{-3}) is the mean dry air density, c_p ($\text{J kg}^{-1} \text{K}^{-1}$) is specific heat capacity of air, T (K) is dry air temperature, L_v (J kg^{-1}) is latent heat of vaporization, q (kg kg^{-1}) is specific humidity, c is CO_2 mixing ratio ($\mu\text{mol mol}^{-1}$), primes indicate fluctuations about the mean, and the overbar corresponds to the time average. The dry air temperature was calculated from the sonic temperature after correction for the effect of water vapor on air density and speed of sound (Schotanus et al., 1983).

The mean wind speed from the sonic anemometer was adjusted to neutral stability at 10 m height using a semi-logarithmic wind profile and assuming a constant flux layer according to

$$U_{10n} = (u_*/\kappa) \ln (10/z_0), \quad (5)$$

where $u_* = (\tau / \rho)^{1/2}$ is friction velocity (m s^{-1}) measured by CSAT3, κ is the von Karman constant of 0.4, z is measurement height, and z_0 is roughness length (m) calculated as

$$z_0 = z \exp \left[-\frac{\kappa \bar{U}(z)}{u_*} - \psi_m \left(\frac{z}{L} \right) \right], \quad (6)$$

where ψ_m represents the stability function of Paulson (1970) for unstable stratification and Grachev et al. (2007) for stable stratification, both functions of z/L , where z is measurement height and L is Obukhov length, calculated as

$$L = \frac{T}{\kappa g} \left(\frac{u_*^3}{\overline{w'T'} + \frac{0.61T}{1+0.61Q}\overline{w'q'}} \right), \quad (7)$$

where g is the acceleration due to gravity, T is air temperature, Q is specific humidity, and $\overline{w'T'}$ and $\overline{w'q'}$ are turbulent fluxes of temperature and water vapor (Andreas et al., 2010).

10 Quality control criteria were used to select intervals that passed the underlying assumptions of eddy covariance. First, intervals were selected that exhibited stationarity, following

$$RN_{cov} = \left| \frac{(\overline{w'x'})_5 - (\overline{w'x'})_{20}}{(\overline{w'x'})_{20}} \right| \leq 0.3, \quad (8)$$

where $(\overline{w'x'})_5$ represents the mean of the four 5-minute turbulent flux subintervals and $(\overline{w'x'})_{20}$ represents the turbulent flux of the whole 20-minute interval (Blomquist et al., 2014). The purpose of this criterion is to identify and remove intervals in
15 which large scale phenomena (e.g., mesoscale motions), outside the frequency range of turbulent fluxes, are contributing to the measured flux.

A second quality control criterion selected for wind directions of -150° to 150° (relative to the anemometer) to eliminate winds from aft that were affected by flow distortion from the instruments and tower frame. The size and shape of the island
20 (0.2 km wide and extending 0.5 km behind the tower) meant the remaining wind directions from the back hemisphere had some degree of island contributing to their flux footprint. To estimate the impact of the island on the flux measurements we ran the flux footprint model of Kljun et al. (2015). Using the mean meteorological conditions from each 5° wind sector it was found that on average the island accounted for 5% of the footprint for wind directions from the front hemisphere (-90° to 90°). From the back wind sectors (-150° to -90° and 90° to 150°) 44% of the flux footprint was represented by the island.

25 However, because extent of the footprint varied with meteorological conditions there were many periods where these wind directions saw minimal influence from the island. The island is bare rock, which means that it should not act as either a source or a sink for CO_2 . This means that the magnitudes of CO_2 fluxes from these back sectors are somewhat underestimated, by a factor that most likely scales with the portion of the footprint that falls on the island. Future work is

planned to collect field data (i.e., coincident upwind $p\text{CO}_{2w}$ data for varying wind directions) to determine if a linear scaling factor could be used to correct flux magnitudes for these wind sectors.

2.3.1 Low Frequency Contribution

One issue that was encountered during flux processing was unexpected low frequency (between 10^{-3} to 10^{-2}) contribution to F_{CO_2} , separated from contributions from the typical frequency range for turbulent fluxes by a distinct spectral gap (Fig. 5a). The spectral gap suggests that the low frequency contributions were the result of larger-scale motions (e.g., advection) and not representative of locally meaningful fluxes. To remove this from the flux measurements a high-pass filter (1st order Butterworth filter with cutoff frequency of 0.005 Hz centered on the trough in the spectral gap) was applied to the CO_2 mixing ratio prior to calculating F_{CO_2} . This reduced F_{CO_2} magnitude by an average of 15.8% (or $0.6 \text{ mmol m}^{-2} \text{ d}^{-1}$; Fig. 5a). The choice to filter had to balance the need to remove spurious flux with the possible removal of real flux operating at lower frequencies (Sakai et al., 2001; Finnigan et al., 2003). To assess the loss of real flux we applied the same high-pass filter to T and calculated H_s . Filtering caused an average flux loss of 3.5%; represented in Fig. 5b as the area between the unfiltered and filtered H_s cospectra. This real flux loss is substantially less than that lost by filtering F_{CO_2} , which indicates that the filtering was appropriate in this instance. Future investigations into the processes affecting F_{CO_2} (e.g., melt pond fraction, sea ice concentration) would benefit from a more subjective review of cospectra for individual flux intervals. Because F_{CO_2} is presented more broadly in this paper, that level of scrutiny is not warranted here.

3 Results

3.1 Meteorology

The period reported in this study ranges from May 4 to September 1, 2017, encompassing the transition from full ice coverage to fully open water. From May 4 through May 25 the study area was characterized by snow-covered sea ice. With air temperatures well below 0 C, this period represents winter ice conditions. From May 25 to June 25 melt ponds began to form. Comparing the AMSR2 SIC product to the in situ photographs (which show no open water) suggests that the melt ponds during this period ranged between from between 0 to 50% of the surface area. Following this period there was an ice breakup period (June 25 to July 7) which exhibited both ice and open water. This breakup initially occurred directly in front (north) of the tower, creating a polynya that was probably caused by tidal currents in the strait funneled between the islands (Fig. 1). By the end of the breakup period the area was ice free for the remainder of the summer season.

The meteorology of the study area through the study period shows the strong seasonal shift. The temperature over this period rose from its minimum of -24 C on May 5, to its maximum of 18 C on August 13, with over half of the time in-between being within $\pm 5^\circ$ of 0 C (Fig. 6b). Incoming solar radiation exhibited strong diurnal trends, with over 75% of days experiencing peak daytime values greater than 500 W m^{-2} , and nighttime minimum values near zero (Fig. 6a). These

Deleted: First, wind directions of -150° to 150° (relative to the anemometer) were selected to eliminate winds from aft that were affected by flow distortion from the instruments and tower frame. Winds from aft were also unwanted as they included the island land surface in their flux footprint. A second quality control criterion selected for intervals that exhibited stationarity following ... [1]

Deleted: by

Deleted: this

oscillations did not result in large diurnal temperature swings. Due to the low temperatures, the relative humidity was typically high, with a mean of 86% (Fig 6c). Actual water vapor content of the air was lowest in May, with a mean of 3.3 parts per thousand (ppt), followed by a mean of 7.7 ppt from June to September (Fig 6h). The CO₂ mixing ratio was roughly 410 ppm at the start of May and decreased to 403 ppm by the end of August, indicative of the seasonal trend that occurs when plant biomass consumes atmospheric CO₂ in the boreal growing season (Fig 6g). Wind speed was moderate, ranging between 0 and 16.4 m s⁻¹ with a mean of 5.6 ± 2.7 m s⁻¹. The winds exhibited no distinct change in magnitude over the course of the season (Fig. 6e), and were most commonly out of the southeast (105° to 135°) and the west southwest (235° to 275°)(Fig. 6f, Fig. 7). These directions were generally advantageous due to the large fetch in the east and west directions, the only caveat being the very small island 1.5 km southeast of the tower.

3.2 Air–sea fluxes

Time series of τ , H_s , H_L , and F_{CO_2} over the course of this study are shown in Fig. 8. The τ ranged from 0 to 0.41 N m⁻², with a mean of 0.05 ± 0.05 N m⁻² (Fig. 8a). The range in τ was similar through all different surface conditions, being most strongly influenced by wind speed. The H_s showed a diurnal trend (increasing during the day, decreasing at night) throughout much of the study period. The sea surface type also played a role in mean H_s , with the flux during full ice cover generally upward, then, during ice breakup and early summer – downward, and in the open water at the end of the summer – upward again. H_L acted similarly to H_s , with upward fluxes early in the season (full ice and melt ponds), transitioning to downward fluxes during ice breakup, and upward fluxes under full open water conditions.

3.3 CO₂ flux

F_{CO_2} measured by the dried, closed-path system was low during periods with sea ice cover. During full ice cover F_{CO_2} hovered around zero with a mean of -0.03 ± 1.21 mmol m⁻² d⁻¹. During melt season F_{CO_2} was slightly negative (i.e., downward) with a mean of -0.34 ± 2.04 mmol m⁻² d⁻¹. During ice breakup, when the surface was mixed ice and water, F_{CO_2} was downward (mean of -2.9 ± 4.9 mmol m⁻² d⁻¹). By the full open water period in August, F_{CO_2} had switched direction and the water was outgassing CO₂ to the atmosphere (mean of 3.8 ± 4.7 mmol m⁻² d⁻¹).

F_{CO_2} calculated from the different IRGAs are shown in Fig. 9. Both open-path IRGAs yielded flux values with magnitudes much larger than those from the dried LI-7200, sometimes orders of magnitude larger. For example, during full ice conditions, when the dried LI-7200 measured near-zero F_{CO_2} , the LI-7500 and EC150 had means of -22 ± 58 and -32 ± 103 mmol m⁻² d⁻¹, respectively.

Because comparisons of F_{CO_2} from different gas analyzers do not have a dependent variable we used Pearson's correlation coefficient (r) used to describe the linear correlations between the two variables (Goodrich et al., 2016). Comparisons of F_{CO_2}

from the closed-path LI-7200 against F_{CO_2} from the two open-path IRGAs showed no correlation (Fig. 10a,b), with $r = 0.04$ and $r = 0.15$ for the LI-7500 and EC150, respectively. An orthogonal regression of F_{CO_2} (LI-7500) against F_{CO_2} (EC150) yielded a fit closer to 1-to-1 (Fig 10c), but with more scatter and an $r = 0.44$. On the other hand, the regression for H_L (LI-7500) against H_L (EC150) showed a distinct 1-to-1 relationship (Fig 10d). The correlation coefficient for this case was 0.93, thus showing a strong linear relationship. This suggests that the open path IRGAs are better suited to measuring H_L than F_{CO_2} in this environment.

F_{CO_2} from all three IRGAs were also compared against heat fluxes, H_L and H_S (Fig. 11). Negative relationships were found between F_{CO_2} from the open-path IRGAs and heat fluxes. F_{CO_2} from the dried, closed-path IRGA showed no relationship with H_L or H_S .

4 Discussion

4.1 Sea ice flux comparisons

During the spring season prior to ice breakup the dried, closed-path EC system measured F_{CO_2} of $-0.25 \pm 1.75 \text{ mmol m}^{-2} \text{ d}^{-1}$. When only considering sea ice conditions prior to melt pond formation F_{CO_2} was $-0.03 \pm 1.21 \text{ mmol m}^{-2} \text{ d}^{-1}$. These measurements are within the range measured by previous enclosure measurements, which taken together span from -5.4 to $2.2 \text{ mmol m}^{-2} \text{ d}^{-1}$ (Table 1; [Delille, 2006; Nomura et al., 2010, 2013; Sejr et al., 2011; Geilfus et al., 2012, 2014, 2015; Delille et al., 2014; Sievers et al., 2015]). The measurements also exhibit a sharp divergence from previous open-path EC F_{CO_2} measurements, which at 10s to 100s of $\text{mmol m}^{-2} \text{ d}^{-1}$ are several orders of magnitude larger (Semiletov et al., 2004; Zemmeling et al., 2006; Else et al., 2011; Miller et al., 2011; Papakyriakou and Miller, 2011). Unlike the dried, closed-path system our open-path systems installed at our site did measure F_{CO_2} with similar magnitudes to these previous open-path EC studies, with mean values of -22 ± 58 (LI-7500) and -32 ± 103 (EC150) $\text{mmol m}^{-2} \text{ d}^{-1}$.

This disagreement between simultaneous open-path and dried, closed-path at our site suggests that the reason for discrepancies between previous chamber and open-path EC measurements were not the result of different scales of measurement, but rather problems with the ability of open-path EC to resolve fluxes. This is further demonstrated by the poor agreement between the two open-path F_{CO_2} results (Figure 10c).

4.2 Heat fluxes

Previous undried EC studies over the open ocean have found relationships between heat fluxes (H_S and H_L) and F_{CO_2} (Landwehr et al., 2014; Sievers et al., 2015). However, in these instances the magnitude of measured F_{CO_2} at high latent heat fluxes exceed values calculated from bulk F_{CO_2} formula. In their comparison of dried and undried closed-path EC systems

Landwehr et al. (2014) concluded that such relationships represented bias, and did not result from real physical phenomena. They also found that the degree of bias was different for each individual IRGA instrument. While our OP IRGAs found a relationship between heat fluxes and F_{CO_2} our dried, closed-path system did not (Fig. 11). This supports the finding that these relationships represent bias, further evidence that open-path IRGAs do not fully remove the effects of H_S and H_L in the density correction and/or the instruments' built-in water vapor corrections.

4.3 EC150

To our knowledge, this study is the first published test of the EC150 against the LI7500 in a marine environment. The two instruments produced similar H_L (Fig. 10d), showing that the both are capable instruments for measuring water vapor flux. When it came to F_{CO_2} the EC150 values diverged from the dried, closed-path system to a similar degree as the LI-7500 (Fig. 10b). Like the LI-7500 the EC150 also showed strong negative relationship between F_{CO_2} and both H_S and H_L (Fig. 11). These findings suggest that the EC150 is affected by the same problems that affect the LI-7500.

However, F_{CO_2} comparison between the EC150 and LI-7500 did not show strong agreement (Fig. 10c). It is possible that the disagreement between the two stems from differences in their design (e.g., the EC150 is not necessarily affected by the same instrument-induced H_S as the LI-7500 [Burba et al. 2008], and presumably has a different set of equations accounting for water vapor cross sensitivity). But the overall spurious, high magnitudes for F_{CO_2} appear to stem from problems inherent to the open-path design. The EC150, like the LI-7500, appears to be more appropriate for use in regions with larger magnitude F_{CO_2} .

4.4 Gas transfer velocity

While measuring F_{CO_2} in the same range as chamber measurements shows that the method ameliorates problems associated with open-path systems, it alone is not a full accounting of measurement quality. To further assess the performance of the flux system we compared our open water results against those from previous studies. To do this we calculated gas transfer velocity, a coefficient which describes the efficiency of gas transport across the air-sea interface. Gas transfer velocity is a more effective comparison than F_{CO_2} because it provides more context. It was calculated by setting our measured flux equal to the bulk CO_2 flux formula ($F_{CO_2} = k s [pCO_{2w} - pCO_{2atm}]$), and rearranging the equation to form

$$k = \frac{F_{CO_2}}{s (pCO_{2w} - pCO_{2atm})}, \quad (9)$$

where k is gas transfer velocity, s is solubility of CO_2 in seawater, pCO_{2w} and pCO_{2atm} are the partial pressure of CO_2 in water and the atmosphere, respectively (Wanninkhof and McGillis, 1999). While F_{CO_2} and pCO_{2atm} were continuously measured by the EC system, s and pCO_{2w} were not. They were however, measured aboard the research vessel (RV) *Martin Bergmann*, which made several courses past the island in August 2017. For the flux intervals that aligned temporally with these passes (all fully open water) we calculated k_{660} (k adjusted to a Schmidt number [Sc] of 660). The k_{660} values plotted

against U_{10m} (Fig. 12) showed good agreement with previous parameterizations of k_{660} (Wanninkhof, 1992, 2014). Because the (RV) *Martin Bergmann* data showed that pCO_{2w} had high temporal and spatial variability in this region, and because we only have three data points, this result should not be interpreted as a new functional form to the k versus U_{10m} relationship. What it does indicate, is that the dried, closed-path flux system is able to resolve F_{CO_2} within an expected range, based on previous results. Conversely, k_{660} from the open-path IRGAs were not similar to previous findings. For these three intervals, the mean k_{660} was 247 cm hr^{-1} for the EC150 and -28 cm hr^{-1} for the LI-7500 (where negative represents counter gradient flux). This provides additional evidence that the open-path IRGAs are not capable of resolving CO_2 fluxes in this environment.

The quality of the flux measurement was also assessed by comparing previous years' measurements of pCO_{2w} to estimated pCO_{2w} (using F_{CO_2}) from our study period. Measurements of pCO_{2w} were collected aboard the Canadian Coast Guard (CCGS) Ice Breaker *Amundsen* near Qikirtaajuk Island during five previous summers (2010, 2011, 2014, 2015, 2016). August measurements of pCO_{2w} (collected within a 10 km radius of the tower) ranged from 360 to 469 μatm with a mean of $407 \pm 34 \mu\text{atm}$. Estimates of pCO_{2w} from our study period were calculated by rearranging Eq. (9) so that $pCO_{2w} = F_{CO_2} k^{-1} s^{-1} + pCO_{2atm}$. As stated above, pCO_{2atm} and F_{CO_2} were measured by the tower. Gas transfer velocity was obtained using the Wanninkhof (2014) parameterization with measured U_{10m} , plus the mean Schmidt number (Sc) from the RV *Martin Bergmann* dataset ($Sc = 1150$). Solubility was also estimated as the mean value from the RV *Martin Bergmann* data ($s = 48 \text{ mol m}^{-3} \text{ atm}^{-1}$).

Using F_{CO_2} from the dried, closed-path IRGA yielded pCO_{2w} estimates ranging of 347 to 481 μatm (10th to 90th percentile), and a median value of 407 μatm , over the course of summer 2017. This matched reasonably well with the range identified by the CCGS *Amundsen* measurements. Comparatively, the pCO_{2w} values from the open-path IRGAs were not as tightly clustered around a central value (Fig. 13). The fluxes from the LI-7500 and EC150 led to pCO_{2w} estimates ranging from -1255 to $1101 \mu\text{atm}$ and -1252 to $906 \mu\text{atm}$, respectively. These values are far beyond the magnitude observed in this region (and with no physical basis in the case of negative values); further evidence that the open-path IRGAs are not capable of providing accurate F_{CO_2} measurements in the [relatively low \$\Delta pCO_2\$ conditions typically found in the](#) marine environment.

4.5 Drying

The drying system worked as desired, drying the sample air to dewpoint temperatures of $-27.5 \pm 7.6 \text{ C}$, compared to the LI-7500 which measured average ambient dewpoint of $6.0 \pm 7.6 \text{ C}$. Perhaps more importantly it reduced fluctuations in water vapor, reducing the standard deviation in H_2O mixing ratio over an order of magnitude from $0.1 \pm 0.2 \text{ mmol mol}^{-1}$ to $0.007 \pm 0.008 \text{ mmol mol}^{-1}$. This resulted in reducing the standard deviation of the CO_2 mixing ratio from $0.7 \pm 1.8 \mu\text{mol mol}^{-1}$ to 0.1

$\pm 0.1 \mu\text{mol mol}^{-1}$. This matches the LI-7200's specification for RMS noise at a sampling rate of 10 Hz, showing that preconditioning the sample air completely removed the influence of other variables on the CO_2 measurement.

As the comparisons between the LI-7200 and LI-7500/EC150 show, drying the air did seem helpful in producing F_{CO_2} that are more in line with expected values. Interestingly however, there were two occasions where the desiccant's capacity ran out and the closed-path IRGA was receiving sample air with near-ambient water vapor content (Figure 6h). During those periods of time, the LI-7200 still experienced standard deviations in H_2O mixing ratio 3.5 times lower than the open-path LI-7500. Additionally, there was no increase in the variance of F_{CO_2} from the LI-7200 during these periods, and F_{CO_2} magnitudes did not increase to open-path levels. This suggests that even without a dry counterflow, the Nafion drier still improves F_{CO_2} measurements to an acceptable level by reducing fluctuations in water vapor. This makes sense because spikes of moister or drier air will still exchange H_2O with a counterflow that is at mean ambient humidity. Without a parallel, undried LI7200 it impossible to quantify how much of the smoothing is from the Nafion compared to the natural 'stickiness' of H_2O on tube walls. However, the impact of H_2O smoothing from tube walls alone was tested in Butterworth and Miller (2016b) with an undried LI7200. It was found that tubing did not fully remove the influence of water vapor on the CO_2 flux, and instead showed up as spurious low frequency contribution to the flux, which was visible in the flux cospectra. In this study, when the desiccant was exhausted, the cospectra did not indicate interference from water vapor, suggesting that that the Nafion played a critical role. This finding may have important implications for the design of future systems (i.e., a system could be designed that uses a Nafion and counterflow, but without a dry air source), and should be investigated further.

4.6 Future work

In April 2018 as part of the Polar Knowledge Canada funded CAT-TRAIN project in collaboration with the Arctic Research Foundation, a mobile power station/research lab was installed at the site. This new infrastructure will be used to increase the functionality of the system. Specific additions that are being considered are incorporating waterside $\text{pCO}_{2\text{w}}$ measurements, to be used to calculate gas transfer velocity continuously through an annual cycle. This would be particularly useful considering the $\text{pCO}_{2\text{w}}$ measurements from the CCGS *Amundsen* and the RV *Martin Bergmann*, which showed that this region often has ΔpCO_2 of sufficient magnitude to measure accurate gas transfer velocities.

Additionally, for data redundancy we plan to install a second closed-path greenhouse gas analyzer (CRDS) capable of measuring CO_2 , H_2O , and methane (GGA-FGGA, Los Gatos Research), which we which have only deployed on ships due to the large power consumption. Next spring a planned intercomparison study taking place in Cambridge Bay will add simultaneous enclosure measurements to verify agreement between the two methods. Lastly, the system will be used (in forthcoming papers) to investigate annual gas exchange cycles and process-level questions, including the processes affecting F_{CO_2} during spring melt and autumn freeze-up.

Deleted: (> 40 μatm)

5 Conclusions

With its vast spatial extent, sea ice has the potential to play an important role in the global CO₂ cycle. Unfortunately, there has been significant confusion around the importance of that role, largely because the community studying sea ice gas fluxes has been unable to reconcile large fluxes measured by eddy covariance with significantly smaller fluxes measured by enclosure methods (Table 1). This problem is analogous to the problem faced by researchers studying open water gas exchange, where for several decades EC measurements could not be reconciled with tracer-based measurements (e.g., Broecker et al. [1986]). The open water problem was eventually resolved by using closed-path EC systems with a dried sample airstream (Miller et al., 2010), and EC measurements are now better aligned with other techniques.

The dried, closed-path IRGA method has previously been applied to the marginal ice zone (i.e., open water and drifting ice) where the open water likely dominates the CO₂ flux signal (Butterworth and Miller, 2016a). In this study, we have for the first time applied sample drying techniques to an installation capable of measuring CO₂ fluxes throughout an annual sea ice cycle. This allowed for measurements over many different surface conditions, including landfast sea ice, ice break-up, and open water. Fluxes measured during the open water season matched well with existing gas transfer parameterizations, lending credibility to the method. During the ice-covered season, this new measurement system closed the gap between EC and enclosure methods, producing F_{CO₂} with magnitudes in the range found by enclosure studies. This finding suggests that modeling or upscaling studies aiming to estimate the global CO₂ exchange associated with landfast sea ice should focus on the smaller range of CO₂ fluxes published by enclosure studies, at least until the EC method presented in this paper can be applied to more sea ice environments.

The dried, closed-path EC method presented here represents a significant advancement from previous attempts to measure F_{CO₂} over sea ice. We showed that incorporating the additional system complexity is feasible, even in remote polar locations, by presenting an effective approach for drying under low power requirements. The improved system can obtain long-term, continuous F_{CO₂} measurements over larger spatial scales than is possible with enclosures and opens potential avenues for new research, including a greater scrutiny of the ecosystem-scale processes affecting CO₂ fluxes sea ice regions.

Data availability

The flux data from this study are not currently being placed in a data repository. We plan to publish the dataset as one full year of flux data with an upcoming paper highlighting the annual flux cycle.

Author contribution

Brian Butterworth and Brent Else designed and installed the flux system. Brent Else secured the grant funding for the research activities, and organized field logistics. Brian Butterworth processed and analyzed the flux data. Brian Butterworth prepared the manuscript with contributions from Brent Else.

5 Competing interests

The authors declare that they have no conflict of interest.

Acknowledgements

We wish to thank the many students and technicians who helped install and maintain the eddy covariance tower, in particular: Shawn Marriott, Patrick Duke, Angulalik Pederson, Jasmine Tiktalek, Laura Dalman, and Vishnu Nandan.

- 10 [Thanks to Yves Bernard for providing UAV footage. We also like to thank Dr. John Prytherch and an anonymous reviewer for their thoughtful comments.](#) The deployment of this tower in such a challenging location would not have been possible without the excellent logistical support provided by Polar Knowledge Canada, the Arctic Research Foundation, and the Polar Continental Shelf Program. Financial support was provided by the Marine Environmental Observation Prediction and Response (MEOPAR) Network of Centres of Excellence, Polar Knowledge Canada, the Natural Sciences and Engineering
- 15 Research Council of Canada (NSERC), the Canada Foundation for Innovation John R. Evans Leaders Fund, the Nunavut Arctic College, Irving Shipbuilding Inc., and the University of Calgary. A special thanks to the Ekaluktutiak Hunters & Trappers Organization for their continued support of our projects, and for the expert assistance provided by their guides. This paper is a contribution to SCOR Working Group 152 – Measuring Essential Climate Variables in Sea Ice (ECV-Ice).

20 References

Andreas, E. L., Persson, P. O. G., Grachev, A. A., Jordan, R. E., Horst, T. W., Guest, P. S. and Fairall, C. W.: Parameterizing Turbulent Exchange over Sea Ice in Winter, *J. Hydrometeorol.*, 11, 87–104, doi:10.1175/2009JHM1102.1, 2010.

- Bell, T. G., Landwehr, S., Miller, S. D., Bruyn, W. J. De, Callaghan, A. H., Scanlon, B., Ward, B., Yang, M. and Saltzman, E. S.: Estimation of bubble-mediated air – sea gas exchange from concurrent DMS and CO₂ transfer velocities at intermediate – high wind speeds, *Atmos. Chem. Phys.*, 17, 9019–9033, doi:10.5194/acp-17-9019-2017, 2017.
- 25

Blomquist, B. W., Huebert, B. J., Fairall, C. W., Bariteau, L., Edson, J. B., Hare, J. E. and McGillis, W. R.: Advances in Air-Sea CO₂ Flux Measurement by Eddy Correlation, *Bound.-Lay. Meteorol.*, 152, 245–276, doi:10.1007/s10546-014-9926-2, 2014.

- Broecker, W. S., Ledwell, J. R., Takahashi, T., Weiss, R. F., Merlivat, L., Memery, L., Jähne, B. and Otto Munnich, K.: Isotopic versus micrometeorologic ocean CO₂ fluxes: A serious conflict, *J. Geophys. Res.*, 91, 10517–10527, doi:10.1029/JC09iC09p10517, 1986.
- 5 Burba, G., McDermitt, D. K., Grelle, A., Anderson, D. J. and Xu, L.: Addressing the influence of instrument surface heat exchange on the measurements of CO₂ flux from open-path gas analyzers, *Global Change Biol.*, 14, 1854–1876, doi:10.1111/j.1365-2486.2008.01606.x, 2008.
- Butterworth, B. J. and Miller, S. D.: Air-sea exchange of carbon dioxide in the Southern Ocean and Antarctic marginal ice zone, *Geophys. Res. Lett.*, in review, doi:10.1002/2016GL069581, 2016a.
- 10 Butterworth, B. J. and Miller, S. D.: Automated underway eddy covariance system for air-sea momentum, heat, and CO₂ fluxes in the Southern Ocean, *J. Atmos. Ocean. Tech.*, 33, 635–652, doi:10.1175/JTECH-D-15-0156.1, 2016b.
- Christensen, T. R., Friborg, T., Sommerkorn, M., Kaplan, J., Illeris, L., Soegaard, H., Nordstroem, C. and Jonasson, S.: Trace gas exchange in a high-arctic valley 1. Variations in CO₂ and CH₄ flux between tundra vegetation types, *Global Biogeochem. Cy.*, 14, 701–713, doi:10.1029/1999GB001134, 2000.
- 15 Comiso, J. C., Meier, W. N. and Gersten, R.: Variability and trends in the Arctic Sea ice cover: Results from different techniques, *J. Geophys. Res.-Oceans*, 122, 6883–6900, doi:10.1002/2017JC012768., 2017.
- Delille, B.: Inorganic carbon dynamics and air-ice-sea CO₂ fluxes in the open and coastal waters of the Southern Ocean, Ph.D. thesis, Université de Liège, Liège, France., 2006.
- Delille, B., Vancoppenolle, M., Geilfus, N.-X., Tilbrook, B., Lannuzel, D., Schoemann, V., Becquevort, S., Carnat, G., Delille, D., Lancelot, C., Chou, L., Dieckmann, G. S. and Tison, J.-L.: Southern Ocean CO₂ sink: The contribution of the sea ice, *J. Geophys. Res.-Oceans*, 119, 6340–6355, doi:10.1002/2014JC009941, 2014.
- 20 Else, B. G. T., Papakyriakou, T. N., Galley, R. J., Drennan, W. M., Miller, L. A. and Thomas, H.: Wintertime CO₂ fluxes in an Arctic polynya using eddy covariance: Evidence for enhanced air-sea gas transfer during ice formation, *J. Geophys. Res.*, 116, C00G03, doi:10.1029/2010JC006760, 2011.
- Finnigan, J. J., Clement, R., Malhi, Y., Leuning, R. and Cleugh, H. A.: Re-evaluation of long-term flux measurement techniques. Part I: Averaging and coordinate rotation, *Bound.-Lay. Meteorol.*, 107, 1–48, doi:10.1023/A:1021554900225, 2003.
- 25 Geilfus, N.-X., Carnat, G., Papakyriakou, T. N., Tison, J.-L., Else, B. G. T., Thomas, H., Shadwick, E. and Delille, B.: Dynamics of pCO₂ and related air-ice CO₂ fluxes in the Arctic coastal zone (Amundsen Gulf, Beaufort Sea), *J. Geophys. Res.-Oceans*, 117, C00G10, doi:10.1029/2011JC007118, 2012.
- 30 Geilfus, N.-X., Tison, J.-L., Ackley, S. F., Galley, R. J., Rysgaard, S., Miller, L. A. and Delille, B.: Sea ice pCO₂ dynamics and air-ice CO₂ fluxes during the Sea Ice Mass Balance in the Antarctic (SIMBA) experiment – Bellingshausen Sea, Antarctica, *Cryosphere*, 8, 2395–2407, doi:10.5194/tc-8-2395-2014, 2014.
- Geilfus, N.-X., Galley, R. J., Crabeck, O., Papakyriakou, T. N., Landy, J., Tison, J.-L. and Rysgaard, S.: Inorganic carbon dynamics of melt-pond-covered first-year sea ice in the Canadian Arctic, *Biogeosciences*, 12, 2047–2061, doi:10.5194/bg-12-2047-2015, 2015.
- 35 Goodrich, J. P., Oechel, W. C., Gioli, B., Moreaux, V., Murphy, P. C., Burba, G. and Zona, D.: Impact of different eddy covariance sensors, site set-up , and maintenance on the annual balance of CO₂ and CH₄ in the harsh Arctic environment,

- Agr. Forest Meteorol., 228–229, 239–251, doi:10.1016/j.agrformet.2016.07.008, 2016.
- Gosink, T. A., Pearson, J. G. and Kelley, J. J.: Gas movement through sea ice, *Nature*, 263, 41–42, doi:10.1038/263041a0, 1976.
- 5 Goulden, M. L., Munger, J. W., Fan, S. M., Daube, B. C. and Wofsy, S. C.: Measurements of carbon sequestration by long-term eddy covariance: Methods and a critical evaluation of accuracy, *Global Change Biol.*, 2, 169–182, doi:10.1111/j.1365-2486.1996.tb00070.x, 1996.
- Grachev, A. A., Andreas, E. L., Fairall, C. W., Guest, P. S. and Persson, P. O. G.: SHEBA flux–profile relationships in the stable atmospheric boundary layer, *Bound.-Lay. Meteorol.*, 124, 315–333, doi:10.1007/s10546-007-9177-6, 2007.
- 10 Ibrom, A., Dellwik, E., Flyvbjerg, H., Jensen, N. O. and Pilegaard, K.: Strong low-pass filtering effects on water vapour flux measurements with closed-path eddy correlation systems, *Agr. Forest Meteorol.*, 147, 140–156, doi:10.1016/j.agrformet.2007.07.007, 2007.
- Kaimal, J. C. and Finnigan, J. J.: *Atmospheric boundary layer flows: their structure and measurement*, Oxford University Press, New York., 1994.
- 15 Kaimal, J. C., Wyngaard, J. C., Izumi, Y. and Coté, O. R.: Spectral characteristics of surface-layer turbulence, *Q. J. Roy. Meteor. Soc.*, 98, 563–589, doi:10.1002/qj.49709841707, 1972.
- [Kljun, N., Calanca, P., Rotach, M. W. and Schmid, H. P.: A simple two-dimensional parameterization for Flux Footprint Prediction \(FFP\), *Geosci. Model Dev.*, 8, 3695–3713, doi:10.5194/gmd-8-3695-2015, 2015.](#)
- Kwok, R.: Near zero replenishment of the Arctic multiyear sea ice cover at the end of 2005 summer, *Geophys. Res. Lett.*, 34, L05501, doi:10.1029/2006GL028737, 2007.
- 20 Lafleur, P. M., Roulet, N. T., Bubier, J. L., Frolking, S. and Moore, T. R.: Interannual variability in the peatland-atmosphere carbon dioxide exchange at an ombrotrophic bog, *Global Biogeochem. Cy.*, 17, 1036, doi:10.1029/2002GB001983, 2003.
- Landwehr, S., Miller, S. D., Smith, M. J., Saltzman, E. S. and Ward, B.: Analysis of the PKT correction for direct CO₂ flux measurements over the ocean, *Atmos. Chem. Phys.*, 14, 3361–3372, doi:10.5194/acp-14-3361-2014, 2014.
- 25 Maslanik, J. A., Fowler, C., Stroeve, J., Drobot, S., Zwally, J., Yi, D. and Emery, W.: A younger, thinner Arctic ice cover: Increased potential for rapid, extensive sea-ice loss, *Geophys. Res. Lett.*, 34, L24501, doi:10.1029/2007GL032043, 2007.
- Miller, L. A., Papakyriakou, T. N., Collins, R. E., Deming, J. W., Ehn, J. K., MacDonald, R. W., Mucci, A., Owens, O., Raudsepp, M. and Sutherland, N.: Carbon dynamics in sea ice: A winter flux time series, *J. Geophys. Res.-Oceans*, 116, C02028, doi:10.1029/2009JC006058, 2011.
- 30 Miller, L. A., Fripiat, F., Else, B. G. T., Bowman, J. S., Brown, K. A., Collins, E. R., Ewert, M., Fransson, A., Gosselin, M., Lannuzel, D., Meiners, K. M., Michel, C., Nishioka, J., Nomura, D., Papadimitriou, S., Russell, L. M., Sørensen, L. L., Thomas, D. N., Tison, J.-L., van Leeuwe, M. A., Vancoppenolle, M., Wolff, E. W. and Zhou, J.: Methods for biogeochemical studies of sea ice: The state of the art, caveats, and recommendations, *Elem. Sci. Anthr.*, 3, 38, doi:10.12952/journal.elementa.000038, 2015.
- 35 Miller, S. D., Marandino, C. A. and Saltzman, E. S.: Ship-based measurement of air-sea CO₂ exchange by eddy covariance, *J. Geophys. Res.*, 115, D02304, doi:10.1029/2009JD012193, 2010.

Formatted: Widow/Orphan control, Adjust space between Latin and Asian text, Adjust space between Asian text and numbers

- Nomura, D., Eicken, H., Gradinger, R. and Shirasawa, K.: Rapid physically driven inversion of the air–sea ice CO₂ flux in the seasonal landfast ice off Barrow, Alaska after onset of surface melt, *Cont. Shelf Res.*, 30, 1998–2004, doi:10.1016/j.csr.2010.09.014, 2010.
- 5 Nomura, D., Granskog, M. a., Assmy, P., Simizu, D. and Hashida, G.: Arctic and Antarctic sea ice acts as a sink for atmospheric CO₂ during periods of snowmelt and surface flooding, *J. Geophys. Res.-Oceans*, 118, 6511–6524, doi:10.1002/2013JC009048, 2013.
- Papakyriakou, T. N. and Miller, L. A.: Springtime CO₂ exchange over seasonal sea ice in the Canadian Arctic Archipelago, *Ann. Glaciol.*, 52, 215–224, doi:10.3189/172756411795931534, 2011.
- 10 Paulson, C. A.: The Mathematical Representation of Wind Speed and Temperature Profiles in the Unstable Atmospheric Surface Layer, *J. Appl. Meteorol.*, 9, 857–861, doi:10.1175/1520-0450(1970)009<0857:TMROWS>2.0.CO;2, 1970.
- Prytherch, J., Brooks, I. M., Crill, P. M., Thornton, B. F., Salisbury, D. J., Tjernström, M., Anderson, L. G., Geibel, M. C. and Humborg, C.: Direct determination of the air-sea CO₂ gas transfer velocity in Arctic sea ice regions, *Geophys. Res. Lett.*, 44, 3770–3778, doi:10.1002/2017GL073593, Received, 2017.
- 15 Sakai, R. K., Fitzjarrald, D. R. and Moore, K. E.: Importance of Low-Frequency Contributions to Eddy Fluxes Observed over Rough Surfaces, *J. Appl. Meteorol.*, 40, 2178–2192, doi:10.1175/1520-0450(2001)040<2178:IOLFACT>2.0.CO;2, 2001.
- Schotanus, P., Nieuwstadt, F. T. M. and de Bruin, H. A. R.: Temperature Measurement with a Sonic Anemometer and its Application to Heat and Moisture Fluxes, *Bound.-Lay. Meteorol.*, 26, 81–93, doi:10.1007/BF00164332, 1983.
- Sejr, M. K., Krause-Jensen, D., Rysgaard, S., Sørensen, L. L., Christensen, P. B. and Glud, R. N.: Air – sea flux of CO₂ in arctic coastal waters influenced by glacial melt water and sea ice, *Tellus*, 63B, 815–822, doi:10.1111/j.1600-0889.2011.00540.x, 2011.
- 20 Semiletov, I. P., Makshtas, A., Akasofu, S.-I. and Andreas, E. L.: Atmospheric CO₂ balance: The role of Arctic sea ice, *Geophys. Res. Lett.*, 31, L05121, doi:10.1029/2003GL017996, 2004.
- Semiletov, I. P., Pipko, I. I., Repina, I. and Shakhova, N. E.: Carbonate chemistry dynamics and carbon dioxide fluxes across the atmosphere – ice – water interfaces in the Arctic Ocean : Pacific sector of the Arctic, *J. Marine Syst.*, 66, 204–226, doi:10.1016/j.jmarsys.2006.05.012, 2007.
- 25 Sievers, J., Sørensen, L. L., Papakyriakou, T., Else, B. G. T., Sejr, M. K., Søgaard, D. H., Barber, D. and Rysgaard, S.: Winter observations of CO₂ exchange between sea ice and the atmosphere in a coastal fjord environment, *Cryosphere*, 9, 1701–1713, doi:10.5194/tc-9-1701-2015, 2015.
- Sitch, S., Friedlingstein, P., Gruber, N., Jones, S. D., Murray-Tortarolo, G., Ahlström, A., Doney, S. C., Graven, H., Heinze, C., Huntingford, C., Levis, S., Levy, P. E., Lomas, M., Poulter, B., Viovy, N., Zaehle, S., Zeng, N., Arneth, A., Bonan, G., Bopp, L., Canadell, J. G., Chevallier, F., Ciais, P., Ellis, R., Gloor, E., Peylin, P., Piao, S., Le Quéré, C., Smith, B., Zhu, Z. and Myneni, R.: Trends and drivers of regional sources and sinks of carbon dioxide over the past two decades, *Biogeosciences Discuss.*, 10, 20113–20177, doi:10.5194/bgd-10-20113-2013, 2015.
- 30 Spreen, G., Kaleschke, L. and Heygster, G.: Sea ice remote sensing using AMSR-E 89-GHz channels, *J. Geophys. Res.-Oceans*, 113, C02S03, doi:10.1029/2005JC003384, 2008.
- 35 Sullivan, P. F., Welker, J. M., Arens, S. J. T. and Sveinbjornsson, B.: Continuous estimates of CO₂ efflux from arctic and boreal soils during the snow-covered season in Alaska, *J. Geophys. Res.*, 113, G04009, doi:10.1029/2008JG000715, 2008.

- Takahashi, T., Sutherland, S. C., Wanninkhof, R., Sweeney, C., Feely, R. A., Chipman, D. W., Hales, B., Friederich, G., Chavez, F., Sabine, C. L., Watson, A. J., Bakker, D. C. E., Schuster, U., Metzl, N., Yoshikawa-Inoue, H., Ishii, M., Midorikawa, T., Nojiri, Y., Körtzinger, A., Steinhoff, T., Hoppema, M., Olafsson, J., Arnarson, T. S., Tilbrook, B., Johannessen, T., Olsen, A., Bellerby, R., Wong, C. S., Delille, B., Bates, N. R. and de Baar, H. J. W.: Climatological mean and decadal change in surface ocean pCO₂, and net sea-air CO₂ flux over the global oceans, *Deep-Sea Res. Pt. II*, 56, 554–577, doi:10.1016/j.dsr2.2008.12.009, 2009.
- Wanninkhof, R.: Relationship Between Wind Speed and Gas Exchange, *J. Geophys. Res.*, 97, 7373–7382, doi:10.1029/92JC00188, 1992.
- Wanninkhof, R.: Relationship between wind speed and gas exchange over the ocean, *Limnol. Oceanogr.-Meth.*, 12, 351–362, doi:10.1029/92JC00188, 2014.
- Wanninkhof, R. and McGillis, W. R.: A cubic relationship between air sea CO₂ exchange and wind speed, *Geophys. Res. Lett.*, 26, 1889–1892, doi:10.1029/1999GL900363, 1999.
- Wanninkhof, R., Park, G.-H., Takahashi, T., Sweeney, C., Feely, R. A., Nojiri, Y., Gruber, N., Doney, S. C., McKinley, G. A., Lenton, A., Le Quéré, C., Heinze, C., Schwinger, J., Graven, H. and Khaliwala, S.: Global ocean carbon uptake: Magnitude, variability and trends, *Biogeosciences*, 10, 1983–2000, doi:10.5194/bg-10-1983-2013, 2013.
- Webb, E. K., Pearman, G. I. and Leuning, R.: Correction of flux measurements for density effects due to heat and water vapour transfer, *Q. J. Roy. Meteor. Soc.*, 106, 85–100, doi:10.1002/qj.49710644707, 1980.
- Weeks, W. F.: On sea ice, University of Alaska Press, Fairbanks, AK., 2010.
- Yang, M., Bell, T. G., Hopkins, F. E., Kitidis, V., Cazenave, P. W., Nightingale, P. D., Yelland, M. J., Pascal, R. W., Prytherch, J., Brooks, I. M. and Smyth, T. J.: Air – sea fluxes of CO₂ and CH₄ from the Penlee Point Atmospheric Observatory on the south-west coast of the UK, *Atmos. Chem. Phys.*, 16, 5745–5761, doi:10.5194/acp-16-5745-2016, 2016a.
- Yang, M., Prytherch, J., Kozlova, E., Yelland, M. J., Mony, D. P. and Bell, T. G.: Comparison of two closed-path cavity-based spectrometers for measuring air – water CO₂ and CH₄ fluxes by eddy covariance, *Atmospheric Measurement Techniques*, 9, 5509–5522, doi:10.5194/amt-9-5509-2016, 2016b.
- Yelland, M. J., Moat, B. I., Pascal, R. W. and Berry, D. I.: CFD model estimates of the airflow distortion over research ships and the impact on momentum flux measurements, *J. Atmos. Ocean. Tech.*, 19, 1477–1499, doi:10.1175/1520-0426(2002)019<1477:CMEOTA>2.0.CO;2, 2002.
- Zemmelink, H. J., Delille, B., Tison, J. L., Hintsa, E. J., Houghton, L. and Dacey, J. W. H.: CO₂ deposition over the multi-year ice of the western Weddell Sea, *Geophys. Res. Lett.*, 33, L13606, doi:10.1029/2006GL026320, 2006.

Table 1. Eddy covariance (open-path IRGAs) and enclosure measurements of F_{CO_2} ($mmol\ m^{-2}\ d^{-1}$) over landfast sea ice.

Study		Range	
		Low	High
Eddy Covariance	Semiletov et al., 2004	-38.6	-19.5
	Zemmelink et al., 2006 ^a	-18.2	-4.5
	Semiletov et al., 2007	-3.5	-0.4
	Else et al., 2011 ^a	20	36
	Miller et al., 2011 ^a	-60.5	70.3
	Papakyriakou and Miller, 2011 ^a	-259.2	86.4
	Sievers et al., 2015	-110	295
Enclosure	Delille, 2006	-4	2
	Nomura et al., 2010	-1.0	0.7
	Sejr et al., 2011	0	1.1
	Geilfus et al., 2012	-2.65	2.1
	Nomura et al., 2013	-4.0	0.5
	Geilfus et al., 2014	-2.9	0.3
	Delille et al., 2014	-5.2	1.9
	Geilfus et al., 2015	-5.4	-0.04
	Sievers et al., 2015	0.9	2.2

^a Results were reported as a range of daily averages (5-hr average in the case of Papakyriakou and Miller 2011). Full measurement ranges are necessarily larger, though unreported.

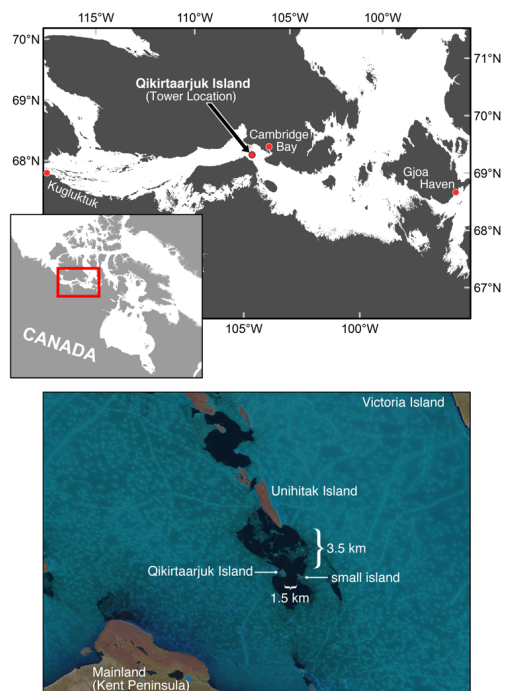
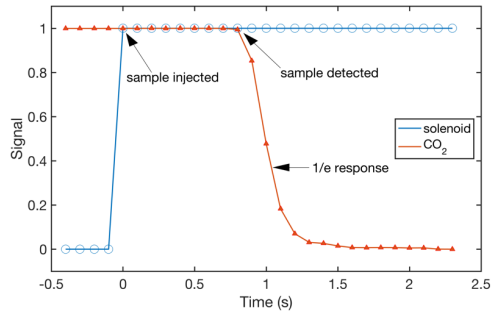


Figure 1. Map (top) showing the location of Qikirtaarjuk Island, 35 km west of Cambridge Bay, Nunavut. Satellite image (bottom) of Qikirtaarjuk Island (June 28, 2017), showing polynya development in the tidal straits. Landsat-8 image courtesy of the U.S. Geological Survey.



Figure 2. Photograph of the tower (left) and the flux instruments mounted at the top of the tower (right).



5 Figure 3. Mean tube delay obtained from 574 inlet tests. Blue circles show the state of the solenoid valve (0 = closed; 1 = opened) responsible for releasing compressed N_2 directly in front of the sample tube inlet to the closed-path IRGA. The red triangles represent the decay in the CO_2 mixing ratio from its pre-test steady state (1) to its settled value during test (0).

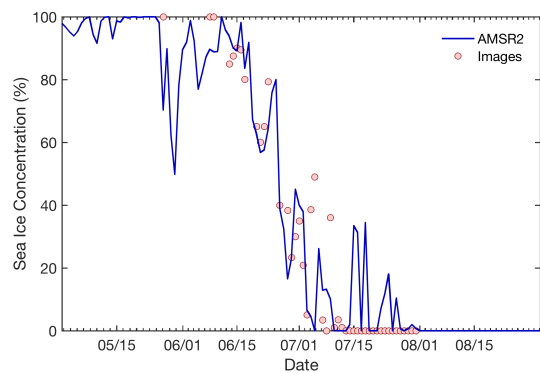


Figure 4. Sea ice concentration from the AMSR2 SIC product and the mean daily average from satellite and in situ images.

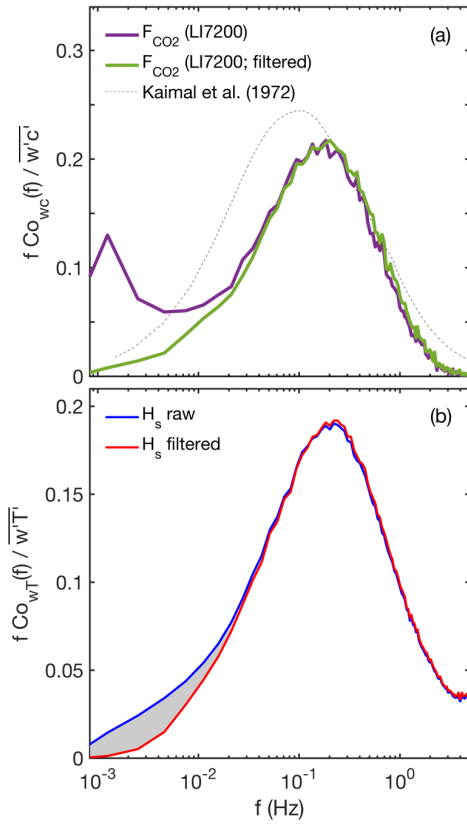


Figure 5. Median normalized frequency-weighted cospectra for F_{CO_2} (a) and H_s (b). In (a) the purple line represents the cospectrum calculated from the uncorrected LI-7200 CO_2 mixing ratio. The green curve represents the cospectrum calculated from the high-pass filtered LI-7200 CO_2 mixing ratio. The dashed gray line represents the theoretical scalar cospectra from Kaimal et al. (1972). In (b) the blue curve represents the cospectrum for H_s calculated from an unfiltered air temperature measurement. The red curve represents the cospectrum for H_s calculated from air temperature passed through the same high-pass filter applied to the CO_2 mixing ratio in the F_{CO_2} calculation (i.e., 1st order Butterworth filter with 0.005 Hz cutoff). The area under the shaded region between the two curves represents the median loss of real low frequency flux due to filtering.

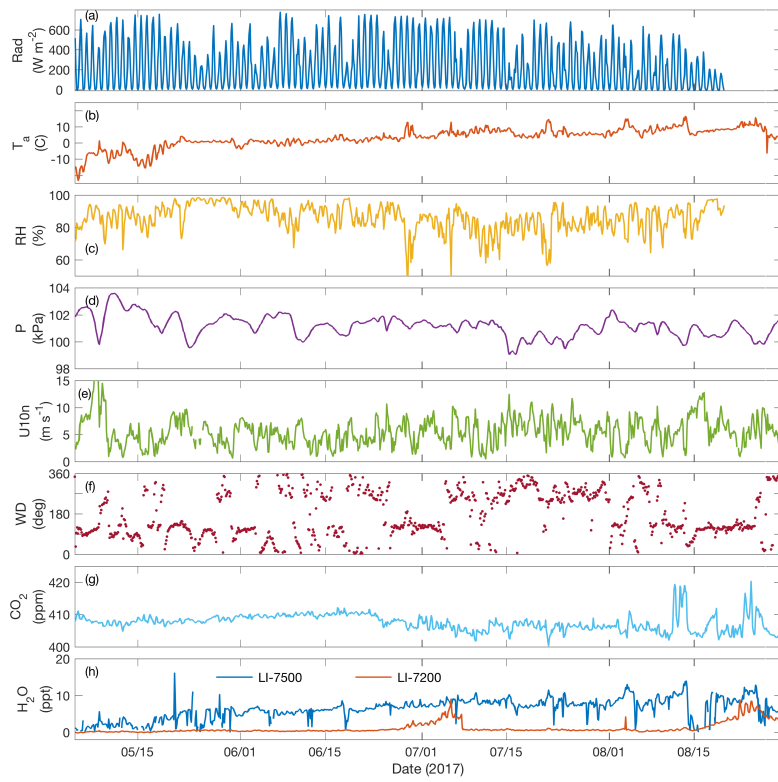


Figure 6. Meteorological conditions from May to September 2017 shown as 3-hour averages for: (a) Incoming solar radiation (W m^{-2}), (b) air temperature ($^{\circ}\text{C}$), (c); relative humidity (%), (d) atmospheric pressure (kPa), (e) wind speed (m s^{-1}), (f) wind direction ($^{\circ}$), (g) CO_2 mixing ratio (ppm), and (h) water vapor concentration (ppt).

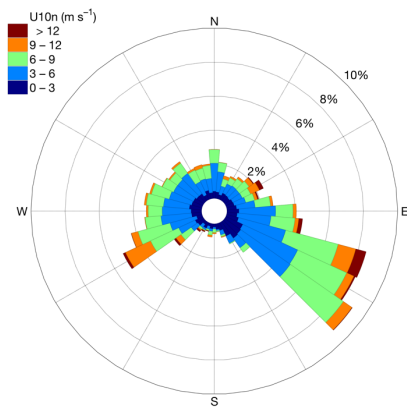


Figure 7. Wind rose for May to September 2017 shown with 10° wind direction bins. Color represents 10 m neutral wind speed and the size of the bars indicates the frequency with which they occur.

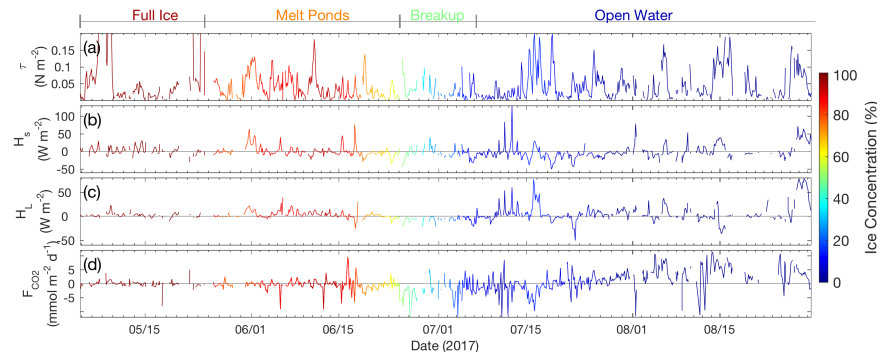


Figure 8. Three-hour averages of measured fluxes, following the meteorological conventions (negative fluxes indicate transport towards the surface): (a) momentum flux (N m^{-2}), (b) sensible heat flux (W m^{-2}), (c) latent heat flux (W m^{-2}), (d) CO_2 flux ($\text{mmol m}^{-2} \text{d}^{-1}$), measured by the closed-path IRGA. Ice concentration from AMSR2 ice product is shown by color, with red representing full ice cover and blue representing open water. Demarcations (determined from satellite and in situ images) of ice regimes (full ice, melt ponds, breakup, and open water) are shown on top.

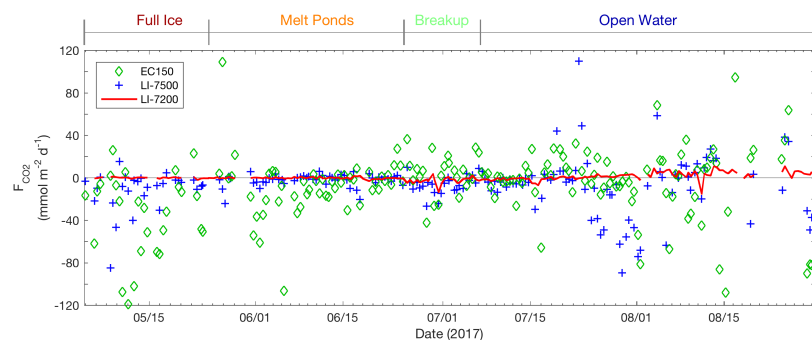


Figure 9. Twelve-hour average CO₂ fluxes calculated using EC150 (green diamonds), LI-7500 (blue pluses), and dried LI-7200 (red line). Demarcations (determined from satellite and in situ images) of ice regimes (full ice, melt ponds, breakup, and open water) are shown on top.

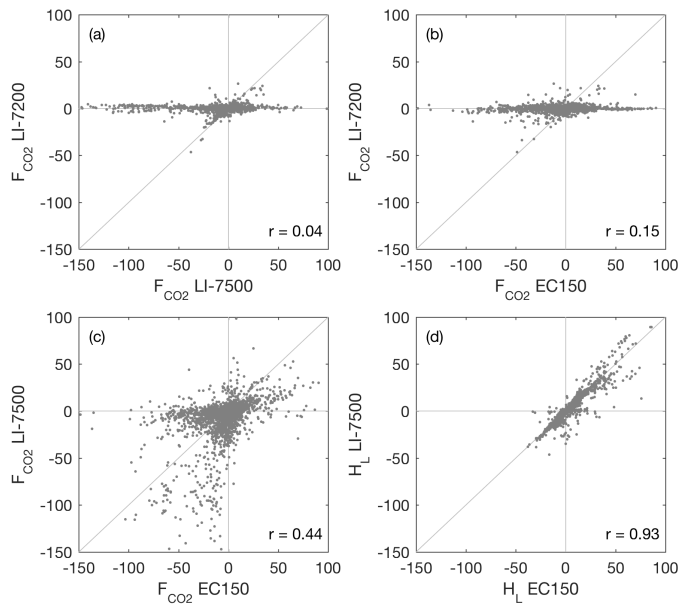


Figure 10. Comparisons of F_{CO_2} and H_L from the three IRGAs: (a) shows F_{CO_2} (LI-7200) vs. F_{CO_2} (LI-7500), (b) shows F_{CO_2} (LI-7200) vs. F_{CO_2} (EC150), (c) shows F_{CO_2} (LI-7500) vs. F_{CO_2} (EC150), and (d) shows H_L (LI-7500) vs. H_L (EC150). Because the sample air to the LI-7200 was dried comparisons to H_L (LI-7200) were omitted.

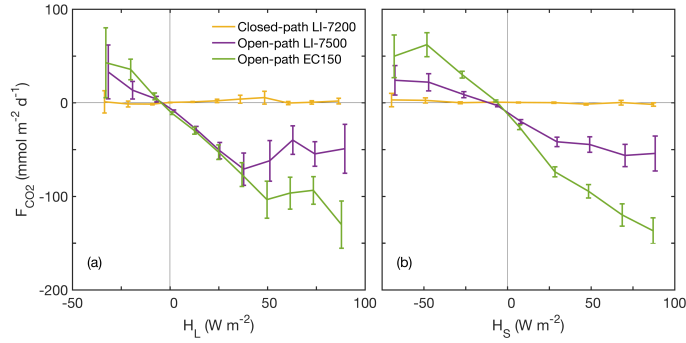


Figure 11. Bin averages of the relationships between F_{CO_2} calculated from all three IRGAs and (a) H_L (LI-7500) and (b) H_S .

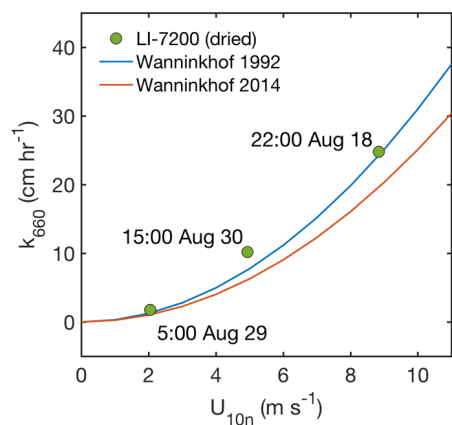


Figure 12. Gas transfer velocity (k_{660}) plotted against 10 m neutral wind speed for three periods in which the RV *Martin Bergmann* measured $p\text{CO}_{2w}$ within 3 km of the tower and in which the magnitude of $\Delta p\text{CO}_2$ (i.e., $p\text{CO}_{2w} - p\text{CO}_{2atm}$) was greater than 20 μatm . Parameterizations of Wanninkhof (1992) and Wanninkhof (2014) shown as red and blue lines, respectively.

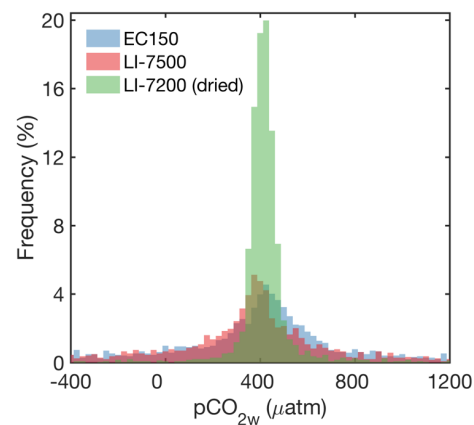


Figure 13. Histograms showing the normalized frequency (%) of $p\text{CO}_{2w}$ calculated using F_{CO_2} from the EC150, LI-7500, and LI-7200. The limits in the x-axis were truncated at -400 and 1200 for better visualization. However, roughly a quarter of $p\text{CO}_{2w}$ values from both the EC150 and LI-7500 extend beyond these limits.