



The MIPAS/Envisat climatology (2002–2012) of polar stratospheric cloud (PSC) volume density profiles

Michael Höpfner¹, Terry Deshler², Michael Pitts³, Lamont Poole⁴, Reinhold Spang⁵, Gabriele Stiller¹, and Thomas von Clarmann¹

¹Institute of Meteorology and Climate Research, Karlsruhe Institute of Technology, Karlsruhe, Germany

²Department of Atmospheric Science, University of Wyoming, Laramie, Wyoming, USA

³NASA Langley Research Center, Hampton, Virginia, USA

⁴Science Systems and Applications, Incorporated, Hampton, Virginia, USA

⁵Institut für Energie und Klimaforschung, Stratosphäre, IEK-7, Forschungszentrum Jülich, Jülich, Germany

Correspondence: M. Höpfner (michael.hoepfner@kit.edu)

Abstract. A global data set of vertical profiles of polar stratospheric cloud (PSC) volume densities has been derived from Michelson Interferometer for Passive Atmospheric Sounding (MIPAS) space-borne infrared limb measurements between 2002 and 2012. To develop a well characterized and efficient retrieval scheme, systematic tests based on limb-radiance simulations for PSCs from in-situ balloon observations have been performed. The finally selected wavenumber range was around 830 cm⁻¹. Optical constants of nitric acid trihydrate (NAT) have been used to derive maximum and minimum profiles of volume density which are compatible with MIPAS observations under the assumption of small, non-scattering and larger, scattering PSC particles. These max/min profiles deviate from their mean value at each altitude by about 40–45%, which is attributed as the maximum systematic error of the retrieval. Further, the retrieved volume density profiles are characterized by a random error due to instrumental noise of 0.02–0.05 μm³cm⁻³, a detection limit of about 0.1–0.2 μm³cm⁻³ and a vertical resolution of around 3 km. Comparisons with co-incident observations by the Cloud-Aerosol Lidar with Orthogonal Polarization (CALIOP) on the CALIPSO (Cloud-Aerosol Lidar and Infrared Pathfinder Satellite Observations) satellite showed good agreement regarding the vertical profile shape. Quantitatively, in the case of supercooled ternary solution (STS) PSCs, the CALIOP dataset fits to the MIPAS retrievals obtained under the assumptions of small particles. Unlike for STS and NAT, in the case of ice PSCs the MIPAS retrievals are limited by the clouds becoming optically thick in limb-directions. In these cases, the MIPAS volume densities represent lower limits. Among other interesting features, this climatology captures the on-set of PSC formation very near to the South Pole, a process observed by no other instrument before with this spatial and temporal coverage. Further, the large variability of the PSC volume densities between different Arctic stratospheric winters is striking.

1 Introduction

Polar stratospheric clouds (PSCs) form when temperatures fall below about 195 K in the Arctic and Antarctic stratosphere during wintertime. They consist either of HNO₃/ H₂SO₄/ H₂O supercooled ternary solution droplets (STS), of nitric acid trihydrate crystals (NAT) or of H₂O ice particles (Peter, 1997; Solomon, 1999; Peter and Grooß, 2012). PSCs play a crucial



role in the depletion of ozone by providing the surface and volume for heterogeneous reactions. Through these reactions the chlorine reservoir gases HCl and ClONO₂ are converted into ozone depleting forms of chlorine. Beside this primary process, PSCs may foster ozone depletion by sedimentation of large NAT particles. This leads to depletion of stratospheric air of HNO₃ (denitrification) by which the reformation of ClONO₂ is delayed.

- 5 Though the relevant processes of PSCs in ozone destruction are well accepted since many years, various aspects are still under discussion. For example, the processes by which NAT particles nucleate are not entirely understood (Peter and Grooß, 2012; Hoyle et al., 2013). Further, our knowledge on the shape of large NAT particles is incomplete, but largely relevant to the efficiency of denitrification (Woiwode et al., 2014, 2016). Also knowledge gaps related to the formation mechanisms of ice PSCs have been discussed recently (Engel et al., 2013) and even the pathways controlling chlorine activation are still under
- 10 investigation (Drdla and Müller, 2012; Wegner et al., 2012; Wohltmann et al., 2013; Kirner et al., 2015; Wegner et al., 2016; Nakajima et al., 2016). In future, PSCs and related processes leading to ozone depletion will be influenced by the changing stratospheric environment through the changes in temperature, trace gas concentrations (H₂O and HNO₃) and small-scale processes such as mountain waves (e.g. Orr et al., 2015). Thus, for a more accurate prediction of future polar ozone depletion a better understanding of processes involving PSCs is desirable.
- 15 In the beginning of the 21st century, the capabilities for observing PSCs and related trace gases covering the wintertime polar stratosphere have improved significantly, mainly due to three space-borne missions: the Cloud-Aerosol Lidar with Orthogonal Polarization (CALIOP) on the CALIPSO (Cloud-Aerosol Lidar and Infrared Pathfinder Satellite Observations) satellite (since 2006), the Microwave Limb Sounder (MLS) on Aura (since 2004) and the Michelson Interferometer for Passive Atmospheric Sounding (MIPAS) on Envisat (2002–2012).
- 20 Due to the insensitivity of the microwave spectral region to PSCs, MLS observations have been used for the characterization of the gas-phase stratospheric composition - thereby allowing to derive indirect characterization of PSCs in combination with the direct observations by CALIOP (Lambert et al., 2012, 2016). Flying within the A-train in formation with MLS, CALIOP provides cross-sections of PSC backscatter and depolarization with hitherto unprecedented spatial resolution in the vertical and along track (Pitts et al., 2007; Pitts et al., 2009, 2011, 2013).
- 25 In case of MIPAS, investigations have concentrated on occurrence of PSCs, cloud top altitude, and their composition derived from specific features in the infrared limb spectra (Spang et al., 2005; Höpfner et al., 2006a; Spang et al., 2018). In these studies, altitude-dependent parameters, like PSC existence and composition, are derived based on each single limb-view separately, i.e. without consideration of the fact that each raypath of the observation intersects multiple altitude levels, leading to an intertwined retrieval problem for a complete limb sequence. In the present work we report on the first complete limb retrievals of altitude
- 30 profiles of PSC volume density over the entire period of MIPAS observations from 2002–2012.

2 MIPAS on Envisat

MIPAS was operated on ESA's sun-synchronous polar orbiter Envisat from June 2002 until April 2012. The limb-scanning instrument analyzed the mid-infrared radiation between 4.1 and 14.6 µm emitted by atmospheric trace gases as well as emitted



and scattered by clouds and aerosols (ESA, 2000; Fischer et al., 2008). Two major time periods with different standard operation modes can be distinguished: from June 2002 to April 2004 a spectral resolution of 0.025 cm^{-1} in combination with a vertical sampling of 3 km tangent point distance in the altitude region of PSCs combined with an along-track horizontal sampling of 530 km was in operation. Then, from January 2005 until April 2012, the spectral resolution was changed to 0.0625 cm^{-1} while the spatial sampling was improved to 1.5 km up to 22 km altitude and to 2 km up to 32 km altitude. An improved along-track sampling of 400 km was achieved. With these two different sampling patterns, MIPAS provided about 1000 limb-profiles per day during the first period increasing to 1400 scans per day in the second phase. Due to the possibility to turn the pointing azimuth of the limb-sounder away from the orbital plane, the MIPAS tangent points cover the polar area nearly up to the poles (from 87.5°S to 89.3°N), while nadir pointing instruments, like CALIOP, reach maximum polar latitudes of about 82° . The following retrievals are based on MIPAS level-1b calibrated radiances of data version 5.02/5.06 as provided by ESA (Nett et al., 2002).

3 Retrieval

Günther et al. (2018) have described the retrieval of stratospheric sulfate aerosol volume density profiles from MIPAS observations. Their analysis relies on the assumption of sulfuric acid as the major component of stratospheric aerosol. The particle sizes of this type of aerosol can be assumed to be less than one micrometer in radius, which simplifies radiative transfer simulations considerably. For absorbing aerosols small compared to the wavelength, scattering effects can be neglected, and the radiance only depends on the volume emission of the particles (e.g. Bohren and Huffman, 2008, p. 130).

In case of PSCs, the retrieval of volume density profiles is complicated by the fact that PSCs consist of particles of different composition belonging to different size classes. STS particles are generally smaller than one micrometer, and, thus fall in the same category as sulfate aerosols regarding their emission of thermal infrared radiation. On the other hand, NAT and ice particles are often larger than $1\text{ }\mu\text{m}$ and, thus, scatter radiation from the troposphere below into the instrument's line-of-sight in addition to their thermal emission (Höpfner et al., 2002; Höpfner, 2004; Höpfner et al., 2006b). Further, in many cases not only PSCs of a single homogeneous composition are present within the field-of-view of the limb sounder. As, e.g., observed by CALIOP, a mixture of particles with different composition in the same airmass or several thin layers of a single composition may be present in the observed volume. This leads to a complex retrieval problem since the measured spectra are not only influenced by the radiative effects of particles with different composition, but also by the different sizes of the different PSC particle types.

To simplify this inversion problem in a way that it becomes applicable for the full MIPAS dataset, we have adopted the following approach. In a first step we have produced a test dataset by simulating MIPAS limb radiances of PSCs including scattering of tropospheric radiation for different tropospheric cloud scenarios. These synthetic observations provide the basis for simulations to optimize the retrieval settings with respect to wavelength range and refractive index set to derive PSC volume density profiles. This parameter set is subsequently used to process the entire MIPAS dataset on basis of which comparisons with measurements by CALIOP has been performed.



In the following these different steps are presented in more detail.

3.1 Radiative transfer modelling

The radiative transfer model KOPRA (Karlsruhe Optimized and Precise Radiative transfer Algorithm) (Stiller, 2000) is suited for analysis of spectrally high resolved remote sensing observations of any observational geometry (Hase and Höpfner, 1999).
 5 Based on line-by-line calculations, the model takes into account all relevant physical effects in the lower and middle atmosphere (Kuntz, 1997; Kuntz and Höpfner, 1999). Radiative transfer in presence of particles is handled with a single scattering approach and the embedded Mie model allows the direct input of microphysical particle properties as well as the calculation of Jacobians with respect to these parameters (Höpfner et al., 2002; Höpfner, 2004). KOPRA has been validated extensively regarding gas-phase (Glatthor et al., 1999; Tjemkes et al., 2001; von Clarmann et al., 2002, 2003; Schreier et al., 2018) and aerosol radiative
 10 transfer (Höpfner and Emde, 2004).

3.2 Retrieval model

KOPRAFIT, a non-linear retrieval environment of KOPRA, is applied as a standard tool for data analysis of infrared limb and nadir observations from satellite, balloon and aircraft (e.g. Wetzel et al., 2015; Höpfner et al., 2009; Keim et al., 2009; Woiwode et al., 2016). The software allows the direct derivation of microphysical properties of particles from radiance spectra (Höpfner et al., 2002; Höpfner et al., 2006b; Höpfner, 2008). It is based on the internal calculation of single scattering properties by the
 15 embedded Mie-model using altitude dependent lognormal size distribution parameters.

The applied retrieval approach is a constrained non-linear multi-parameter fit of the simulated limb-radiances to the observed spectra. Atmospheric profiles of aerosol parameters are represented by the vector of unknowns, \mathbf{x} , which is determined in a Newtonian iteration process to account for the nonlinearity of the atmospheric radiative transfer:

$$20 \quad \mathbf{x}_{i+1} = \mathbf{x}_i + (\mathbf{K}^T \mathbf{S}_y^{-1} \mathbf{K} + \mathbf{R})^{-1} \times (\mathbf{K}^T \mathbf{S}_y^{-1} (\mathbf{y}_{\text{meas}} - \mathbf{y}(\mathbf{x}_i)) - \mathbf{R}(\mathbf{x}_i - \mathbf{x}_a)). \quad (1)$$

\mathbf{y}_{meas} contains measured spectral radiances of all limb views, and \mathbf{S}_y is the related measurement noise covariance matrix. $\mathbf{y}(\mathbf{x}_i)$ contains the spectra calculated by the radiative transfer model using the best guess atmospheric state parameters \mathbf{x}_i of iteration number i . \mathbf{K} is the Jacobian matrix, i.e., the partial derivatives $\partial \mathbf{y}(\mathbf{x}_i) / \partial \mathbf{x}_i$. \mathbf{R} is a regularization matrix and \mathbf{x}_a the a-priori information.

25 The retrieval tests below are performed at 500 m spaced vertical grid levels. This implies undersampling by the measurements and, thus, a vertical constraint is needed to avoid retrieval instabilities. For the regularization, \mathbf{R} a first-order smoothing constraint $\mathbf{R} = \gamma \mathbf{L}^T \mathbf{L}$ with the altitude-independent regularization parameter γ . \mathbf{L} is a first order finite differences operator (Tikhonov, 1963).

To determine the degrees of freedom and the vertical resolution of the retrieved altitude profiles, the averaging kernel is
 30 analyzed:

$$\mathbf{A} = (\mathbf{K}^T \mathbf{S}_y^{-1} \mathbf{K} + \mathbf{R})^{-1} \mathbf{K}^T \mathbf{S}_y^{-1} \mathbf{K}. \quad (2)$$



From **A** the vertical resolution can either be determined in terms of the full width at half maximum of the related column of the averaging kernel matrix or by the grid level distance divided by the diagonal values of **A**.

3.3 Synthetic MIPAS observations based on in-situ data

We have used realistic atmospheric input parameters to simulate MIPAS limb radiances. For profiles of PSC size-distributions, the University of Wyoming database of balloon-borne observations (http://www-das.uwyo.edu/~deshler/Data/Aer_Meas_Wy_read_me.htm) has been chosen. These data result from in-situ size-resolved aerosol concentration measurements using balloon-borne aerosol counters. The datasets with PSC observations have been collected during flights from McMurdo and Kiruna (Deshler et al., 2003). This is by far the largest set of consistent in-situ particle size distribution observations of PSCs. It determines the number (128) of independently simulated MIPAS limb-scans of our test dataset. Beside the original data which consist of the particle number densities within distinct size classes, the database provides one- and two-modal lognormal size distribution parameters (total number concentration, median radius and geometric standard deviation) calculated from size distribution fits to the aerosol measurements. These parameters can directly be applied as input data for the reference radiative transfer calculations with the KOPRA forward model.

Figure 1 shows eight examples from the balloon database. The distinction between STS, NAT and ice has been made on basis of size and volume density. The first mode with median radii much smaller than 1 μm has been attributed to STS, indicated by dotted profiles of median radius and volume density. The second size mode has been assigned to NAT with the exception when the volume densities of the second mode reach values larger than $10 \mu\text{m}^3\text{cm}^{-3}$. In that case ice was used instead of NAT over the whole vertical range of the profile.

In addition to the altitude-dependent particle size parameters, the balloon database provides the supplementary meteorological dataset, especially for pressure and temperature. We have compared these to profiles derived from ERA-Interim re-analysis data (<http://apps.ecmwf.int/datasets/data/interim-full-daily/levtype=sfc/>) interpolated to the position of the balloon. In general, the difference between ERA-Interim and the in-situ observed temperatures are about 1–2 K. The standard deviations between the single profiles amount to 2–3 K. For the reference radiative transfer calculations we have decided to use the pressure/temperature profiles derived from ERA-Interim since these provide consistent pressures and temperatures over a large altitude range suited for simulation of limb radiances. Furthermore, also the surface temperatures for each individual balloon profile are obtained from ERA-Interim analyses (“2 m temperatures”) for the site of the balloon launch. Trace gas profiles are obtained from polar winter standard atmospheres (Remedios et al., 2007). To account for a variability of the the actual tropospheric cloud situation during the balloon observations, we have performed the reference calculations for the following situations: (a) cloud-free, (b) an (in nadir direction) optically thick cloud at 6 km and, (c) an optically thick cloud at 8 km altitude.

Höpfner et al. (2006b) investigated MIPAS observations of PSCs of single-composition for the best fit to radiative transfer simulations. It could be shown, that over large wavenumber regions, the refractive indices of β -NAT by Biermann (1998) fitted best spectra of NAT PSCs, those by Biermann et al. (2000) of STS PSCs, and ice PSC spectra could be modeled well by use of data from Toon et al. (1994). For STS, the altitude dependent refractive indices have been determined by the

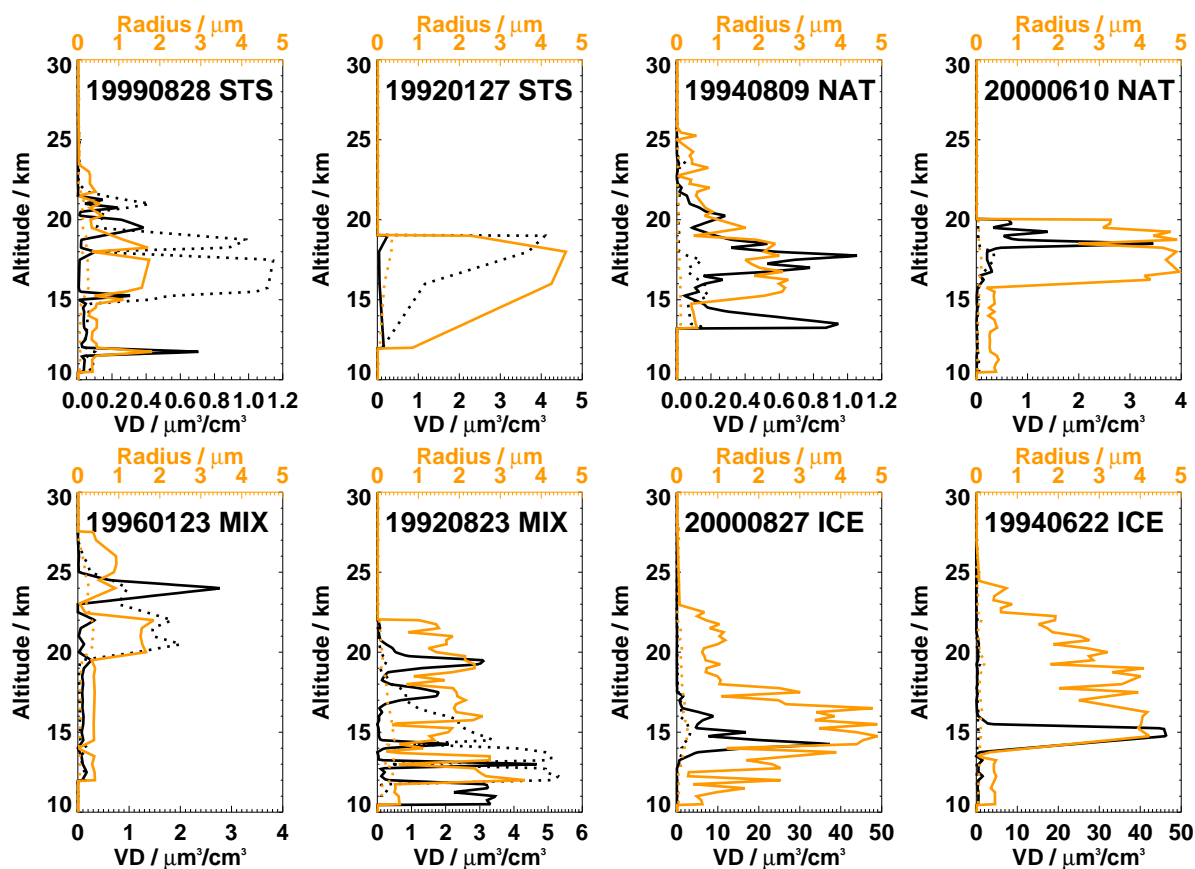


Figure 1. Example profiles of PSC volume density (VD, bottom black axis) and median radius (top orange axis) from the in-situ balloon database used as input for the radiative transfer model. Dotted lines indicate the first mode with smaller particles and solid lines the second mode. The title indicates the date of the balloon observation and the predominant composition of the PSCs (MIX is a mixture of similar volume densities of STS and NAT).



mixing rule provided by Biermann (1998). As input for the mixing rule, the STS particle composition has been calculated from thermodynamic equilibrium (Carslaw et al., 1994) based on the actual temperature, standard winter HNO₃ and H₂O mixing-ratio profiles, and 0.3 ppbv of H₂SO₄.

3.4 Development of the retrieval configuration

5 Using the PSC limb radiance calculations described in the previous chapter, retrieval simulations for aerosol volume density have been performed using in total twelve combinations of (a) composition, and, (b) spectral windows. For composition, refractive indices for (1) STS, (2) NAT, and (3) ice have been applied (see above). For spectral windows, wavenumbers around (1) 831–832.5 cm⁻¹, (2) 956.5–957.5 cm⁻¹, (3) both of (1) and (2) combined, and, (4) 1226.5–1227.5 cm⁻¹ have been used. These infrared windows are characterized by the smallest interference of trace gases within the spectral bands of MIPAS. The
10 retrievals have been performed assuming small particles for which only the volume absorption and emission influences the limb radiances.

Fig. 2 shows an overview of the differences between the reference volume density profiles and the retrieved ones. For these overview tables, the in-situ profiles have roughly been classified with respect to their major composition as STS, NAT, ICE, and MIXed cases (vertical axis). The twelve retrieval test cases described above are distinguished along the horizontal axis.

15 The left part of Fig. 2 refers to the altitude range between 16 and 20 km and the right part to 20–24 km. It is obvious that different retrieval settings show a different performance depending on the reference case. When inspecting the columns for those assumptions resulting in the best overall performance, either NAT in window 1 (“refra_NAT_mw_1”) or ICE in window 1 (“refra_ICE_mw_1”) appear superior compared to the rest of combinations of composition and spectral window.

Based on these tests we have chosen the combination of window 1 together with NAT optical constants as our baseline
20 retrieval configuration. We prefer the use of NAT spectroscopic data since, compared to ice, these kind of PSCs (as well as mixtures of STS and NAT) are more often detected than ice. Especially in the northern polar winter, ice-PSCs are very rare due to the higher temperature levels. But also over Antarctica, ice-PSCs are not as frequent as NAT/STS, especially during the initial phases of the winter and at lower latitudes (Spang et al., 2018).

Figure 3 presents the results obtained on basis of the selected retrieval configuration for the examples shown in Fig. 1. The
25 retrieved profiles (blue lines) for the three different situations of tropospheric cloud cover are compared to the balloon profile of total PSC volume density in original (thin black) and transferred to the vertical resolution of MIPAS (bold black). Where small STS particles dominate the total volume (first two panels), the retrieval results compare within about 0.2–0.4 μm³cm⁻³ with the reference. In case of NAT as the predominant composition, the volume densities are generally overestimated, since scattering is neglected in the retrieval. It can well be observed that the less scattering contributes from the troposphere, which is the case
30 for a cold tropospheric cloud at 8 km, the better the result fits the reference. For mixed profiles of NAT and STS an over-, but also some underestimation is possible. In case ice PSCs dominate the volume, the retrieval leads to an overestimation as in case of NAT. However, for larger volume densities, an underestimation by a factor of about 2–3 is observed. This is explained by saturation effects, because the limb views become optically thick at volume densities of a few tens of μm³cm⁻³.

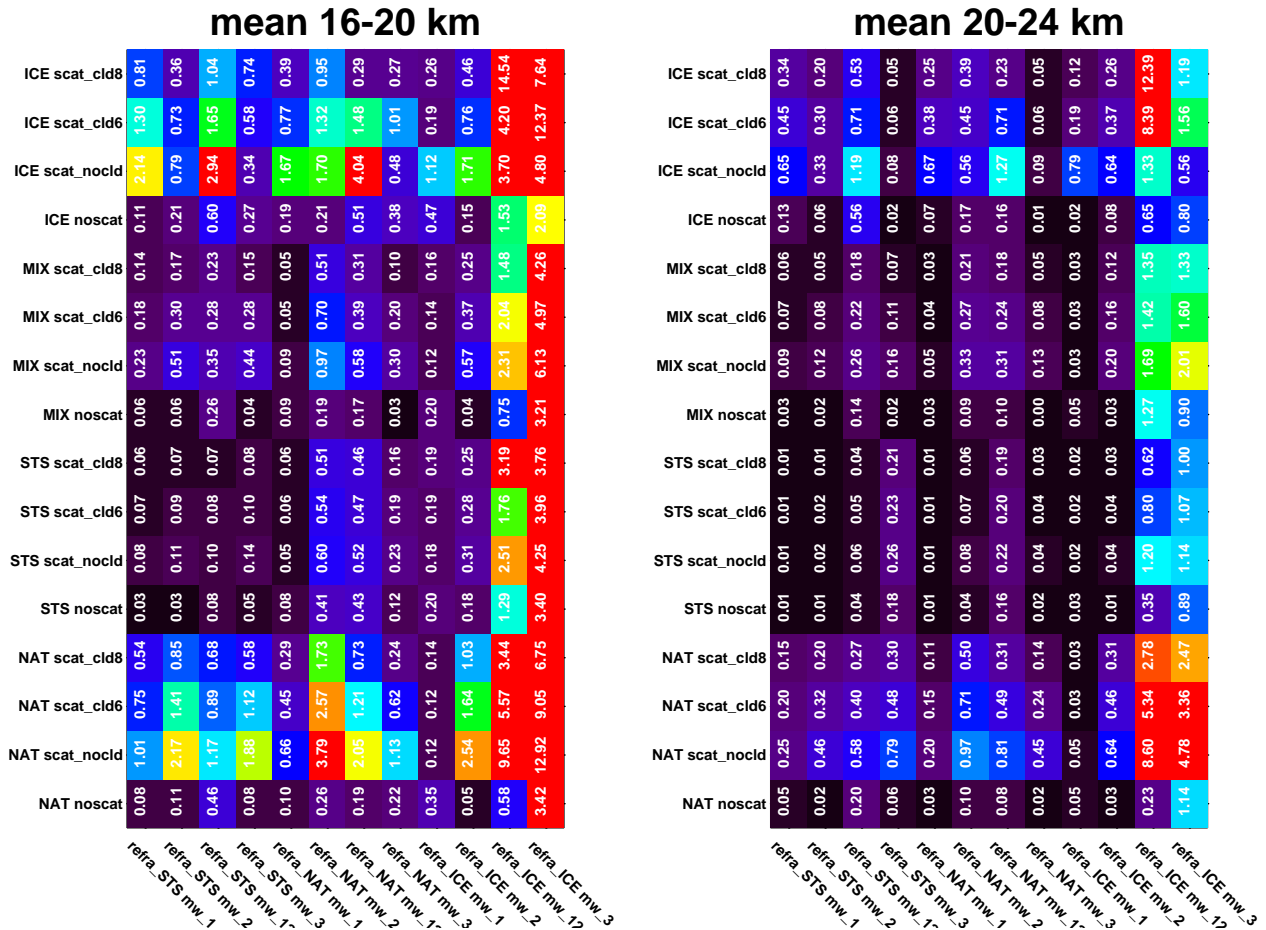


Figure 2. Results of the PSC retrieval sensitivity study. The numbers and the color code of each box indicate the absolute values of the mean differences in volume density ($\mu\text{m}^3\text{cm}^{-3}$) between the retrieval result and the in-situ profiles within the altitude regions 16–20 km (left) and 20–24 km (right). Each column contains the results for a specific retrieval assumption on spectral window ($831\text{--}832.5\text{ cm}^{-1}$ (“mw_1”), $956.5\text{--}957.5\text{ cm}^{-1}$ (“mw_2”), both (“mw_12”), and $1226.5\text{--}1227.5\text{ cm}^{-1}$ (“mw_3”)) and used refractive index (“refra_STS, refra_NAT, refra_ICE”). Each row shows the residuals for a specific assumption of the tropospheric cloud scene (“noctd, cld6, cld8”) for a sub-set of in-situ profiles of PSCs consisting mainly of ice, STS, NAT and NAT/STS mixtures (“MIX”).

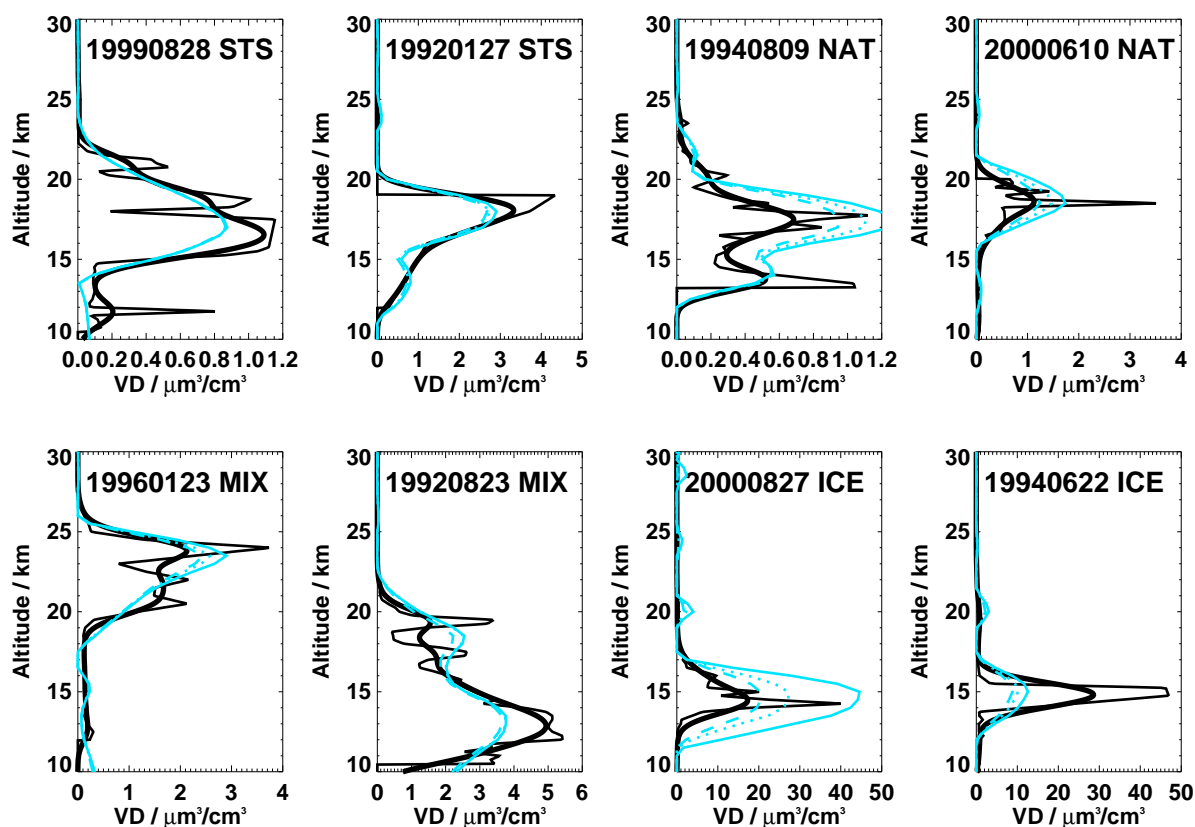


Figure 3. Total volume densities of the balloon profiles shown in Fig. 1 without (thin black lines) and with convolution by the MIPAS averaging kernel (bold black lines). The light blue curves are the retrieval results for the chosen retrieval configuration with cloud-free troposphere (solid), with a tropospheric cloud with 6 km cloud-top altitude (dotted) and a cloud at 8 km (dashed). The title indicates the date of the balloon observation and the predominant composition of the PSC (MIX is a mixture of similar volume densities of STS and NAT).



In summary, in this section we have described the use of simulated limb-measurements, using real in-situ observations as input to develop a fast retrieval configuration based on one spectral window, one set of optical constants and the assumption of volume emission by small particles.

4 Characterization of the retrieval and comparison with CALIOP

5 To characterize in greater depth the method for retrieval of PSC volume density as introduced above, we have applied it to real MIPAS PSC observations during the Antarctic winter of 2009. To be able to judge these retrievals against independent observations, co-incident measurement locations with the CALIPSO lidar instrument have been selected within a circle of 200 km distance and a maximum time difference of 2 h from each MIPAS limb-scan.

From the CALIOP PSC observations, new data products on surface area density and volume density have become available
10 recently (Pitts et al., 2018). Their estimated uncertainties of volume density derived in case of STS PSCs are in the range of $0.05\text{--}1.0\ \mu\text{m}^3\text{cm}^{-3}$. For NAT mixtures and ice PSCs, the CALIOP volume density values are mostly lower limits and can be underestimated by factors of 10 and up to 30 for NAT and ice PSCs, respectively. Thus, additionally to the vertical location of the PSCs, it has been possible to perform quantitative comparisons of the volume density data products between CALIOP and MIPAS.

15 In Figures 4 and 5 we present examples of comparisons between volume density profiles retrieved from single MIPAS limb-scans and co-incident profiles derived from CALIOP. The altitude dependent characterization of the related MIPAS retrievals regarding spectral noise error (black) and vertical resolution (red) are given by the panels in the third Figure column. The vertical resolution, as derived from the diagonal of the averaging kernel, varies around 2.5–3.5 km in nearly all cases. Measurement noise causes a retrieval error of about $0.02\text{--}0.08\ \mu\text{m}^3\text{cm}^{-3}$.

20 As indicated by the PSC-type information of the CALIOP lidar (5th column in Fig. 4 and 5), we have selected cases with STS as the predominant composition in the top two rows of Fig. 4, followed by mixtures between STS, NAT-containing particles (rows 3–4 and Fig. 5). For the last three cases in Fig. 5, CALIOP indicates ice with increasing fraction. All these examples show that the vertical extent and the qualitative shape of the vertical profiles of both instruments fit well. Even secondary PSC layers above the main peak do show up in both datasets (first and second row of Fig. 5) at about 25 km altitude).

25 In the first two columns of Fig. 4 and Fig. 5 we demonstrate the effect of different assumptions on particle size on the MIPAS retrievals. The first column contains MIPAS volume density profiles retrieved under the assumption of small particles (black, as of now called VD_{max}) together with co-incident single CALIOP profiles (thin red), their mean (thick red) as well as the mean lidar profile multiplied with the MIPAS averaging kernel (orange). In the second column, the same lidar profiles are compared to the MIPAS retrievals for a particle radius of $3\ \mu\text{m}$ without (black, called VD_{min} in the following) and with
30 tropospheric clouds at 6 km altitude (blue). Test calculations have shown that particles of about $3\ \mu\text{m}$ radius have the strongest contribution of scattered radiation in limb-direction. In consequence, less particle volume is needed to account for the observed limb radiances. This is clearly indicated by the retrieved VD_{min} profiles in the second column which are by about a factor of 2–3 smaller than for the non-scattering assumption. Furthermore, in case of scattering particles, the retrievals depend on the

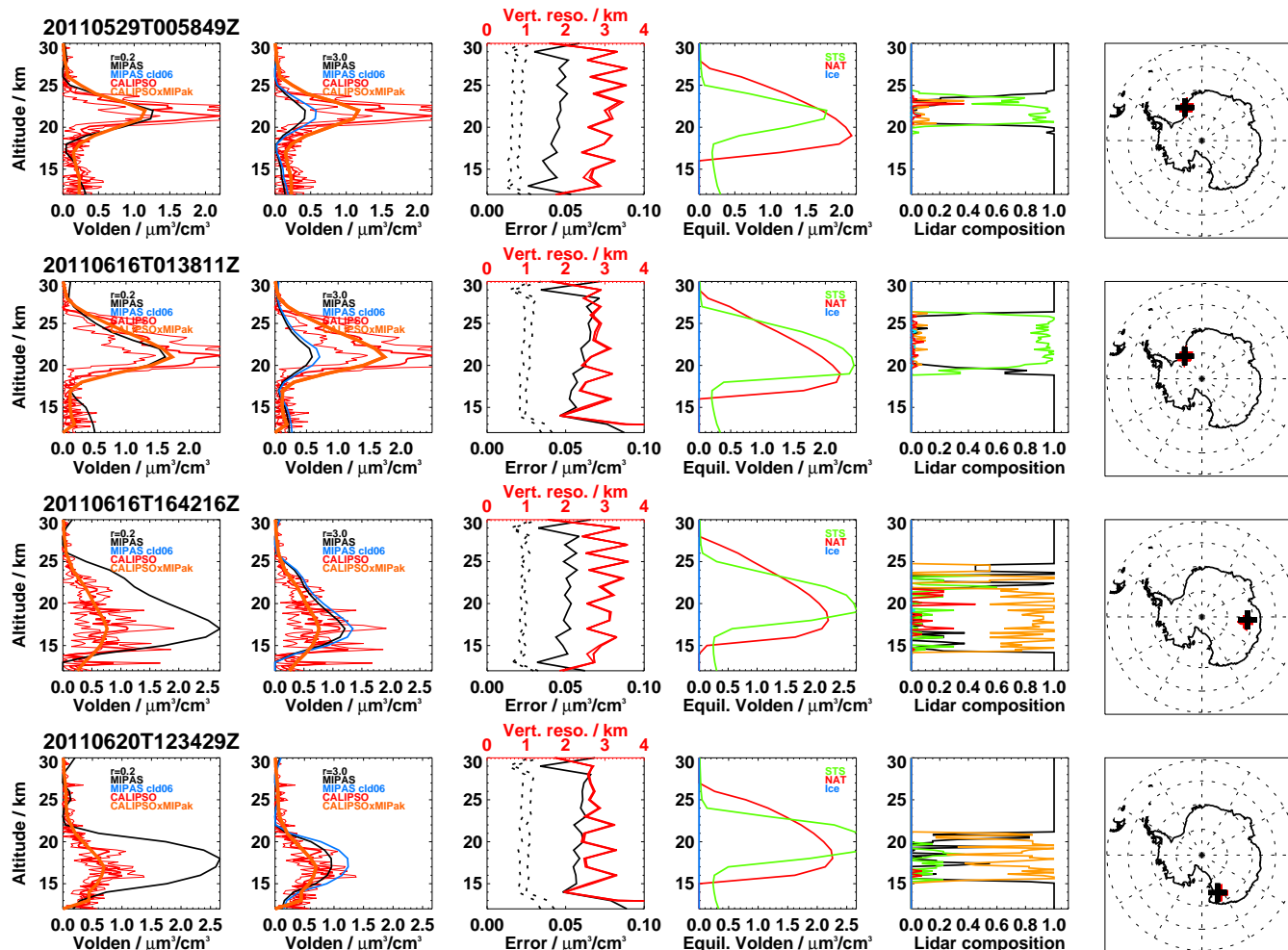


Figure 4. Examples of volume density profiles derived from CALIOP and MIPAS for observations within 200 km and 2 h during the Antarctic winter in 2011. First two columns: CALIOP single profiles as thin red curve and their mean as bold red and, multiplied with the MIPAS averaging kernels, as bold orange line. Black profiles in the 1st column, VD_{max} : MIPAS retrievals assuming the small particle limit, and in the 2nd column, VD_{min} : MIPAS retrievals for a median radius of $3\mu\text{m}$ with clear troposphere below. Blue lines are the MIPAS retrievals as VD_{min} but with a tropospheric cloud at 6 km altitude. Third column, red lines: MIPAS vertical resolution, black: estimated retrieval noise error for the results in the first (solid) and the 2nd column (dotted). The fourth column contains the PSC volume densities in case of equilibrium. Fifth column: altitude profiles of the relative composition derived from all co-incident CALIOP data: green is STS, red/orange are NAT-containing PSCs and blue denote ice particles. Right column: the black crosses show the geolocation of the MIPAS limb-scans and the thinner red crosses, the co-incident CALIOP observations.

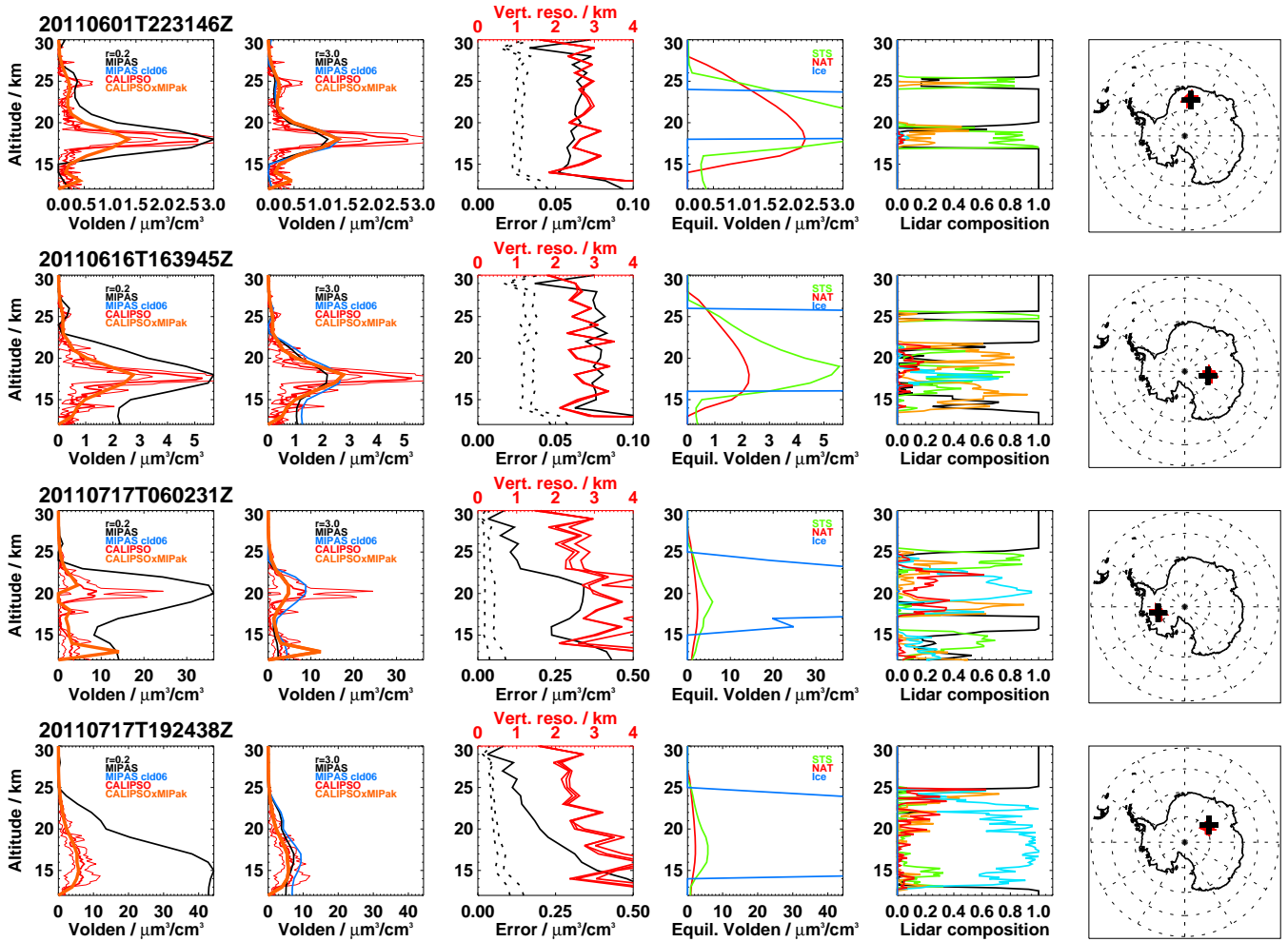


Figure 5. (Fig. 4 continued)



tropospheric situation below the tangent point. This is quantified by introducing an opaque cloud at 6 km altitude. As can be derived by comparing the blue and black (VD_{min}) profiles in the second column of Fig. 4 and Fig. 5, the resulting difference amounts to about 20% larger volume densities when a tropospheric cloud is present, due to the reduced radiation from the scene below the tangent points.

5 When STS PSCs are predominantly present (first two rows), retrieved VD_{max} values typically fit much better to CALIOP than those assuming larger particles. This is in agreement with the expectations that STS PSCs consist of particles smaller than 1 μm radius and that these volume densities can be well derived from CALIOP. For mixtures of STS and NAT PSCs, the MIPAS small-particle retrievals, VD_{max} , in general lead to much larger volume densities compared to CALIOP. However, due to the uncertainties connected to the Lidar volume densities, we cannot unambiguously judge between VD_{max} and VD_{min}
10 when NAT is present.

If there are ice PSCs, it is also difficult to judge on the retrieval quality. First, the Lidar derived volume densities in presence of ice are very uncertain. Second, the problems of the limb-retrievals are increased by the fact that an ice-PSC may become optically thick in limb-direction and only a lower limit will be derived by our retrieval. For these cases MIPAS retrievals between the large and the small limit differ by even factors of more than 4. Despite these difficulties in case of ice, it is generally
15 easy to distinguish the ice-cases from the MIPAS observations when VD_{max} shows values of than about $10 \mu\text{m}^3\text{cm}^{-3}$ or by the classification of ice by MIPAS PSC classification algorithms (Spang et al., 2018).

When comparing to the equilibrium calculations in the forth column of Fig. 4 and Fig. 5, one recognizes that the retrievals of STS and NAT volume densities are generally in the same range of values. However, there are some significant differences when the variation with altitude is taken into account. Here, both MIPAS retrievals and the CALIOP dataset often indicate
20 much smaller values. In those cases where ice may be present according to the equilibrium simulations, there is either only little or no ice indicated by CALIOP and the MIPAS retrievals generally show lower volume densities as discussed above.

A comparison between volume densities by MIPAS and CALIOP for the whole Antarctic winter is shown in Fig. 6. We have selected only those co-incident profiles where the lidar indicates a composition of more than 50% of STS and less than 5% of ice. The left part of the Figure contains the MIPAS VD_{max} data, whereas on the right, the VD_{min} retrieval results are
25 shown. Obviously, the assumption of small particles leads to a much better comparison with the CALIOP dataset than in case of large particles where the volume densities are clearly underestimated. However, there are also some data points of the MIPAS small-particle retrieval which deviate from the behavior of the bulk by exhibiting values larger than about $4\text{--}5 \mu\text{m}^3\text{cm}^{-3}$ while the lidar shows values less than $2 \mu\text{m}^3\text{cm}^{-3}$ (left panel of Fig. 6). These outliers may be caused by interference of ice particles in the field of view of MIPAS, which are not identified by the lidar.

30 Compared to the uncertainties caused by the different assumptions on scattering, the instrumental noise error of around $0.05 \mu\text{m}^3\text{cm}^{-3}$ is small. However, it determines the detection limit of PSCs from the MIPAS dataset as about $0.1\text{--}0.2 \mu\text{m}^3\text{cm}^{-3}$. Further it has to be emphasized that we assume homogeneous PSC layers in horizontal direction. Thus, the retrieved volume density values of horizontally restricted PSCs will be underestimated and one has to regard those as the mean values along the limb-path inside a layer of about 400 km length. Due to the large extent of PSC coverage in the southern hemisphere, we

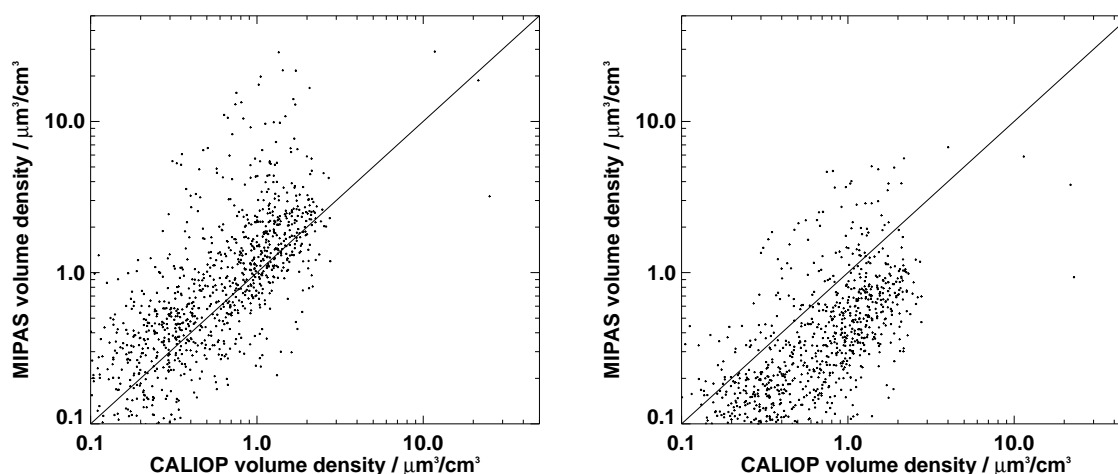


Figure 6. Values of PSC volume density retrieved by MIPAS versus co-incident values of CALIOP for cases where the Lidar indicates more than 50% of STS and less than 5% of ice sightings. Left: MIPAS retrieval for small particles (VD_{max}), right: MIPAS retrieval for large particles and cloud-free troposphere (VD_{min}).

expect this assumption to lead to larger uncertainties in the Arctic stratosphere, since there, PSCs are more often constrained to a smaller regions of cold temperatures.

5 The global MIPAS dataset

For the retrieval of the entire MIPAS dataset covering nine Arctic and nine Antarctic winters between 2002 and 2012 we have adopted the following strategy. In a first step, time periods and spatial coverage was determined on basis of MIPAS PSC detection methods to cover all PSC sightings. In consequence, PSC volume density retrievals were performed for all MIPAS limb-scans from 90°S to 40°S between May, 10th and November, 1st and from 90°N to 40°N between November, 20th and April, 1st, respectively. These calculations could be performed effectively based on the small particle assumption for all selected limb-scans (about 560,000) since no scattering had to be considered. As described above, the resulting profiles can be viewed as an upper limit of volume density (VD_{max}). To determine the lower limit, retrievals including scattering are necessary. However, since those are much more costly, we performed these only for observations where the VD_{max} dataset showed maximum volume densities larger than $0.5\mu\text{m}^3\text{cm}^{-3}$. Still, this resulted in about 160,000 profiles. To estimate the lower limits of volume density for the remaining $\sim 400,000$ locations, a mean linear regression derived from the monthly datasets of



available volume density values calculated with and without scattering has been utilized. This is shown as Figures 1–5 in the supplementary material.

As an example for the coverage of single profiles, Fig. 7 shows the retrieved PSC volume densities at 20 km altitude in mid of May 2010. One can clearly observe the on-set of PSCs evolution right in the center close to the South Pole. During several
5 of the years observed by MIPAS, the first PSCs are detected in this region during very similar times. These observations are unique since no other instrument has observed PSCs during their formation so far south.

Figures 8 and 9 provide an overview over the whole MIPAS dataset of PSC volume density retrievals. Here we show daily 10° zonal mean values calculated as the mean of the VD_{min} and VD_{max} . The equivalent plots containing the results for VD_{min} and VD_{max} separately are provided as Figures A1, A2, A3, and A4 of the appendix. The difference in PSC coverage between
10 the Arctic and Antarctic wintertime stratosphere is clearly visible as well as the large year-to-year variability in the Arctic. In the plots of the southern hemisphere at the highest altitudes above about 27 km, single enhanced values are visible. These often appear as side-lobes of the retrieval when optically thick ice clouds are observed. They could be suppressed by increasing the regularization strength, however, at the expense of a deterioration of the vertical resolution. We have, thus, decided not to change the constraint, but to point at these possible outliers. Further, there is a background of values up to about $0.5 \mu\text{m}^3\text{cm}^{-3}$
15 up to about 15 km altitude throughout most of the years - mainly visible in the northern hemisphere. These values may rather be explained by the influence of tropospheric cirrus, which e.g. reach up to the lower edge of the vertical field-of-view of MIPAS as well as by an increasing influence of aerosol. For example, the enhanced values during the winters of 2008/09, 2009/10 and 2011/12 can be traced back to the enhanced stratospheric aerosol loading caused by the volcanic eruptions of Kasatochi, Sarychev and Nabro (e.g. Günther et al., 2018).

20 6 Conclusions

We have performed the first quantitative retrievals of particle volume density of PSC observations for the whole MIPAS operational period. This is an extension of the available MIPAS datasets on PSC existence, cloud-top and composition as e.g. published by Spang et al. (2018). The retrieval of volume densities of PSCs is complicated through the fact that the particles of NAT and ice PSCs can be so large that the scattered contribution to the detected radiance cannot be neglected. We have tried
25 to minimize this contribution through a systematic selection of spectral window and optical constants, to develop a retrieval approach applicable within limited computer resources. The retrieval configuration was applied to co-incident observations of MIPAS and the CALIPSO lidar in the Antarctic winter of 2011. In case of STS PSCs, the comparisons showed very good agreement between both instruments in terms of the vertical profiles shape as well as the values of volume density. This can be expected since volume emission can be considered as the predominant source of radiation in case of small STS
30 particles. In case of mixed PSCs, these comparisons also support the MIPAS retrievals in terms of vertical profile shape while a quantitative comparison is difficult due to the uncertainties of both datasets. Still, we could demonstrate that retrievals assuming no-scattering and those including scattering of particles with mean radius of $3 \mu\text{m}$ likely cover the entire range of possible volume densities. Thus, we have decided to distribute a dataset containing both, VD_{max} and VD_{min} , to provide the possible

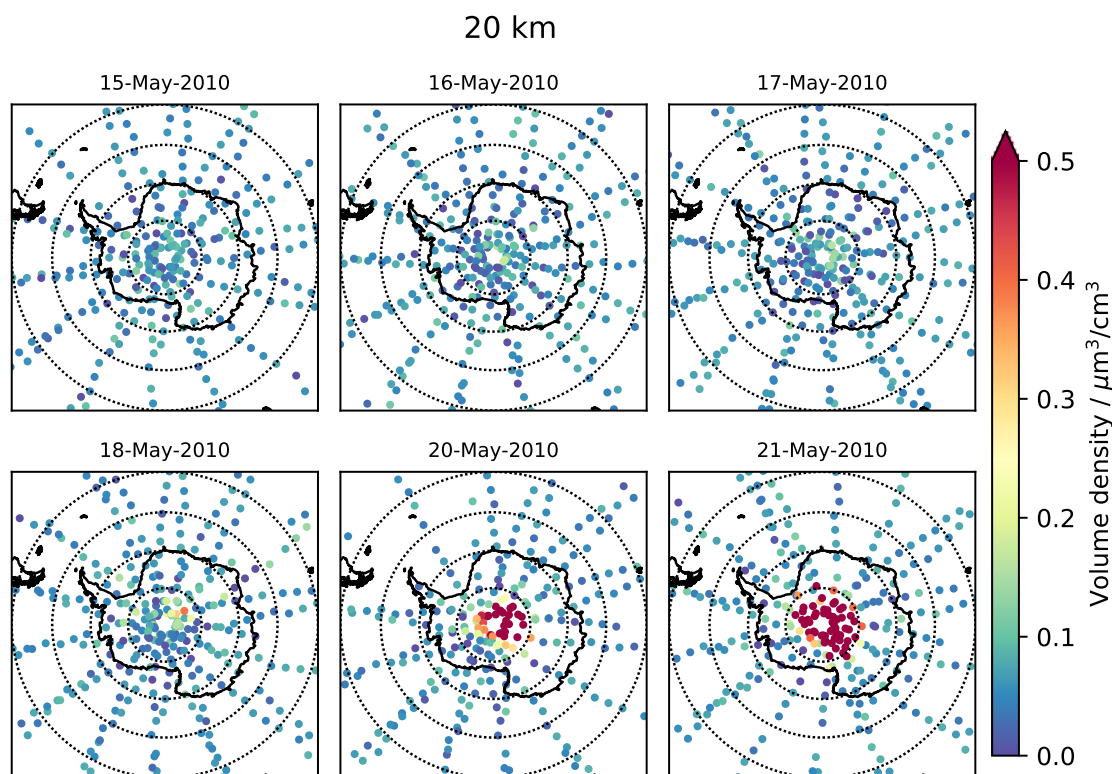


Figure 7. Retrieved volume densities at 20 km altitude from single MIPAS limb scans at the beginning of the PSC season over Antarctica in May 2010. The values are averages of the minimum/maximum retrievals as described in the text.

range of values which are compatible with the MIPAS PSC observations. We are convinced that the dataset is valuable for the validation and analysis of atmospheric model calculations, as e.g. Khosrawi et al. (2018) have reported large discrepancies between their model runs and the MIPAS PSC volume density dataset for the Arctic winter of 2009/10.

In future, upon availability of larger computer capacities in combination with faster infrared limb scattering models, we believe that this dataset can further be improved. This would allow to exploit the broad wavelength coverage of MIPAS which contains information, both, on PSC composition and size. Further, proposed future infrared limb-sounders will allow to characterize the horizontal and vertical structure of PSCs with considerably improved spatial resolution and coverage. Thus, they would be of great help to gain even more insight in the processes of PSCs in a changing stratospheric environment.

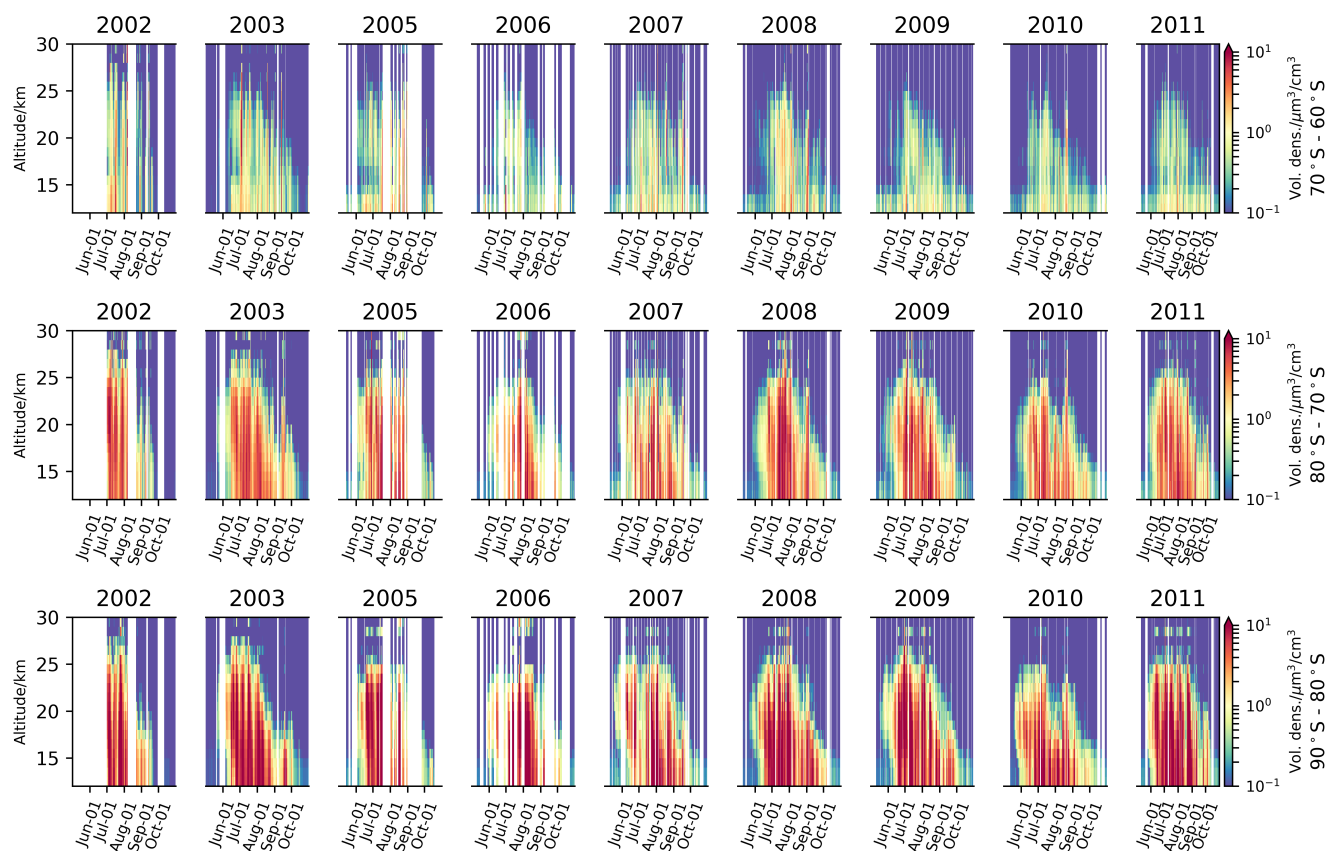


Figure 8. Daily zonal mean PSC volume densities for 10° latitude bins derived from all MIPAS observations during Antarctic polar winter. The values are averages of the minimum/maximum retrievals as described in the text.

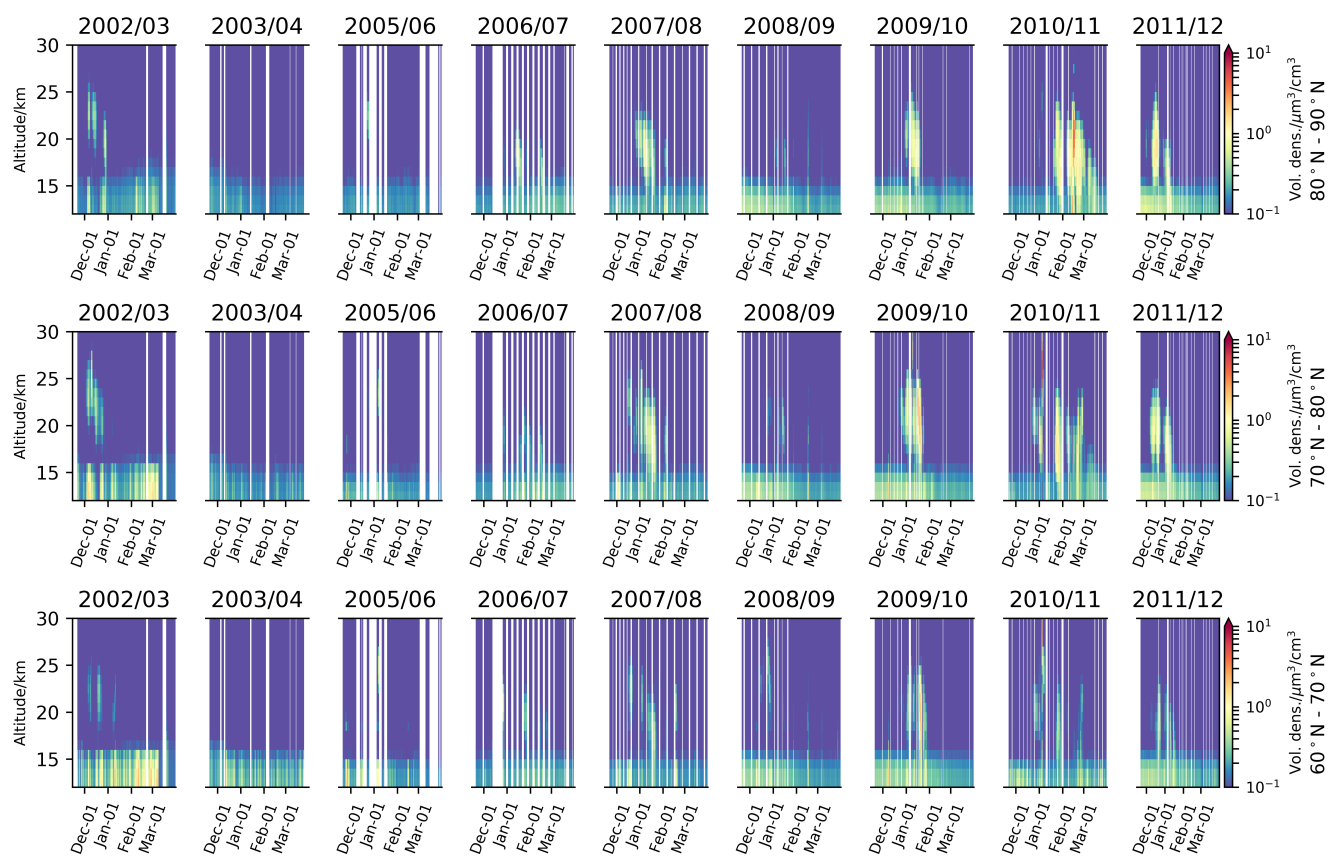


Figure 9. Daily zonal mean PSC volume densities for 10° latitude bins derived from all MIPAS observations during Arctic polar winter. The values are averages of the minimum/maximum retrievals as described in the text.



Data availability. The PSC volume density dataset is available upon request from the author or at <http://www.imk-asf.kit.edu/english/308>.

10 php.



Appendix A

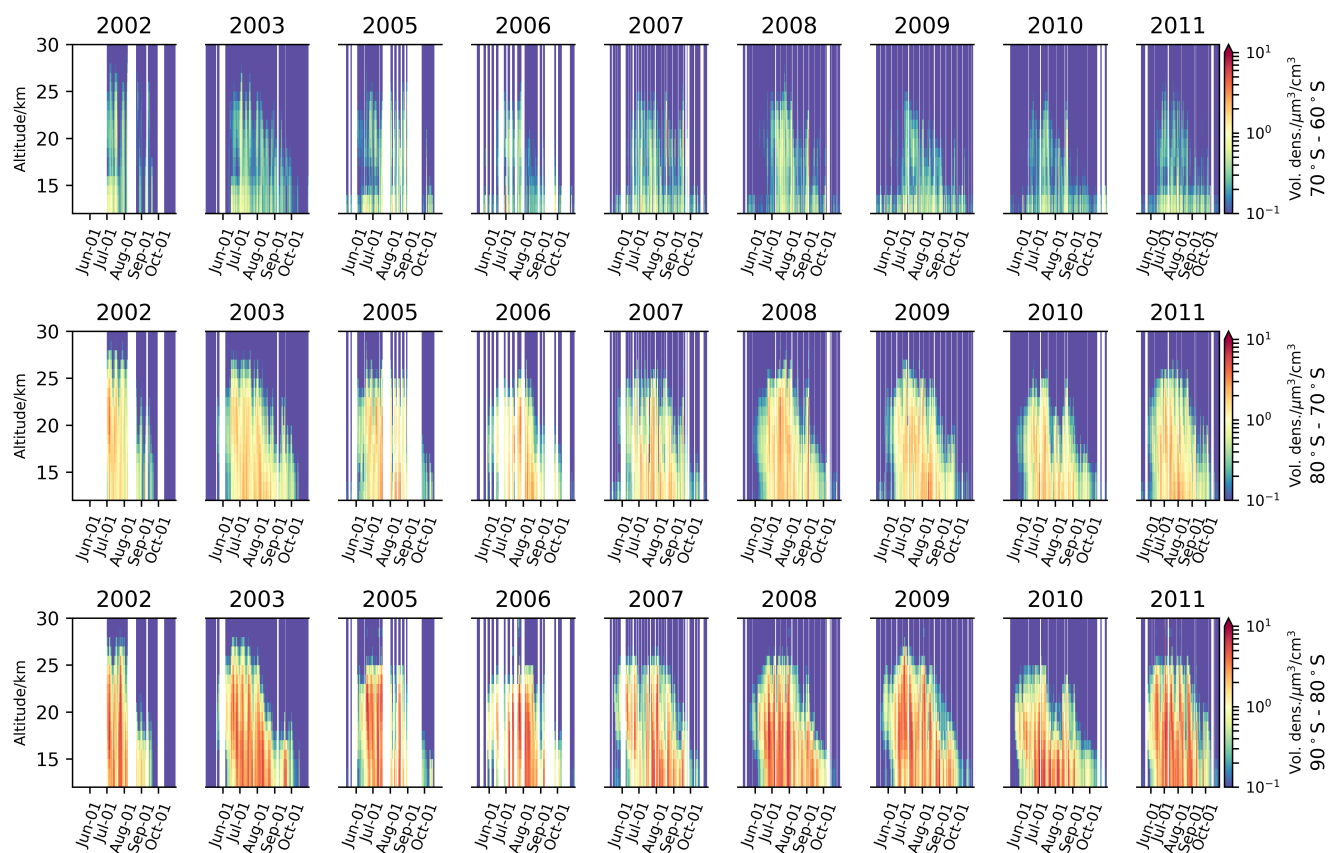


Figure A1. Daily zonal minimum PSC volume densities for 10° latitude bins derived from all MIPAS observations during Antarctic polar winter. The values are the minimum retrieval limits (VD_{min}) as described in the text.

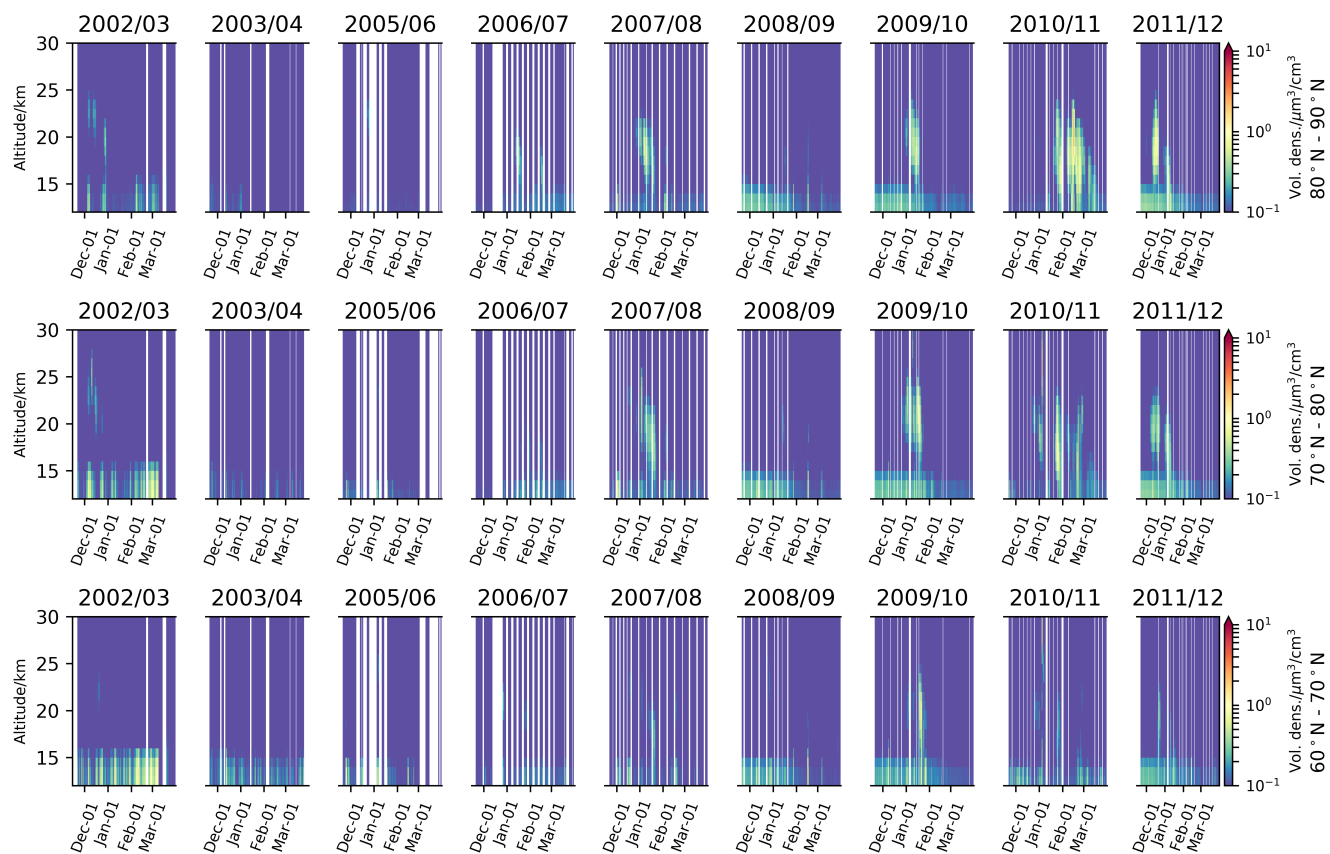


Figure A2. Daily zonal minimum PSC volume densities for 10° latitude bins derived from all MIPAS observations during Arctic polar winter. The values are the minimum retrieval limits (VD_{min}) as described in the text.

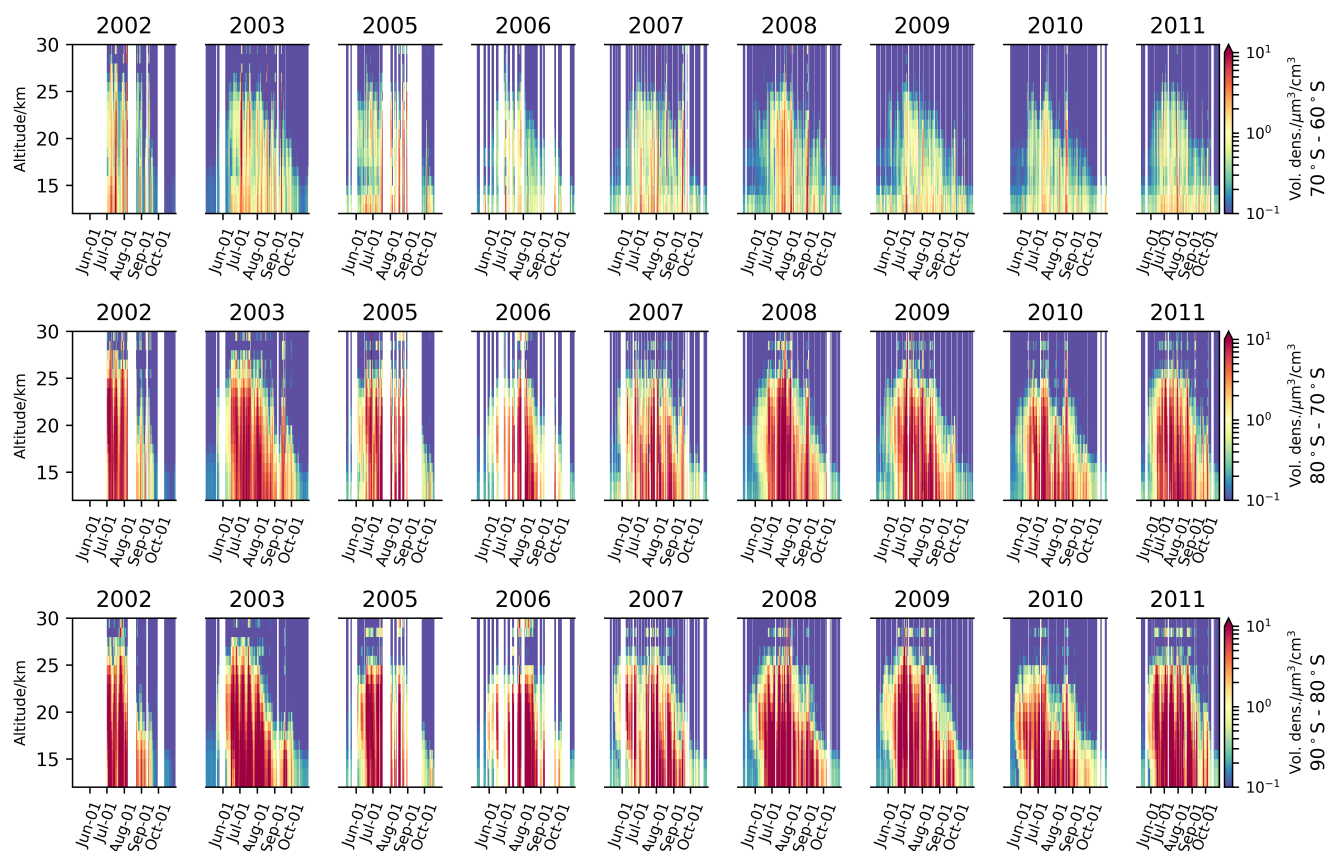


Figure A3. Daily zonal maximum PSC volume densities for 10° latitude bins derived from all MIPAS observations during Antarctic polar winter. The values are the maximum retrieval limits (VD_{max}) as described in the text.

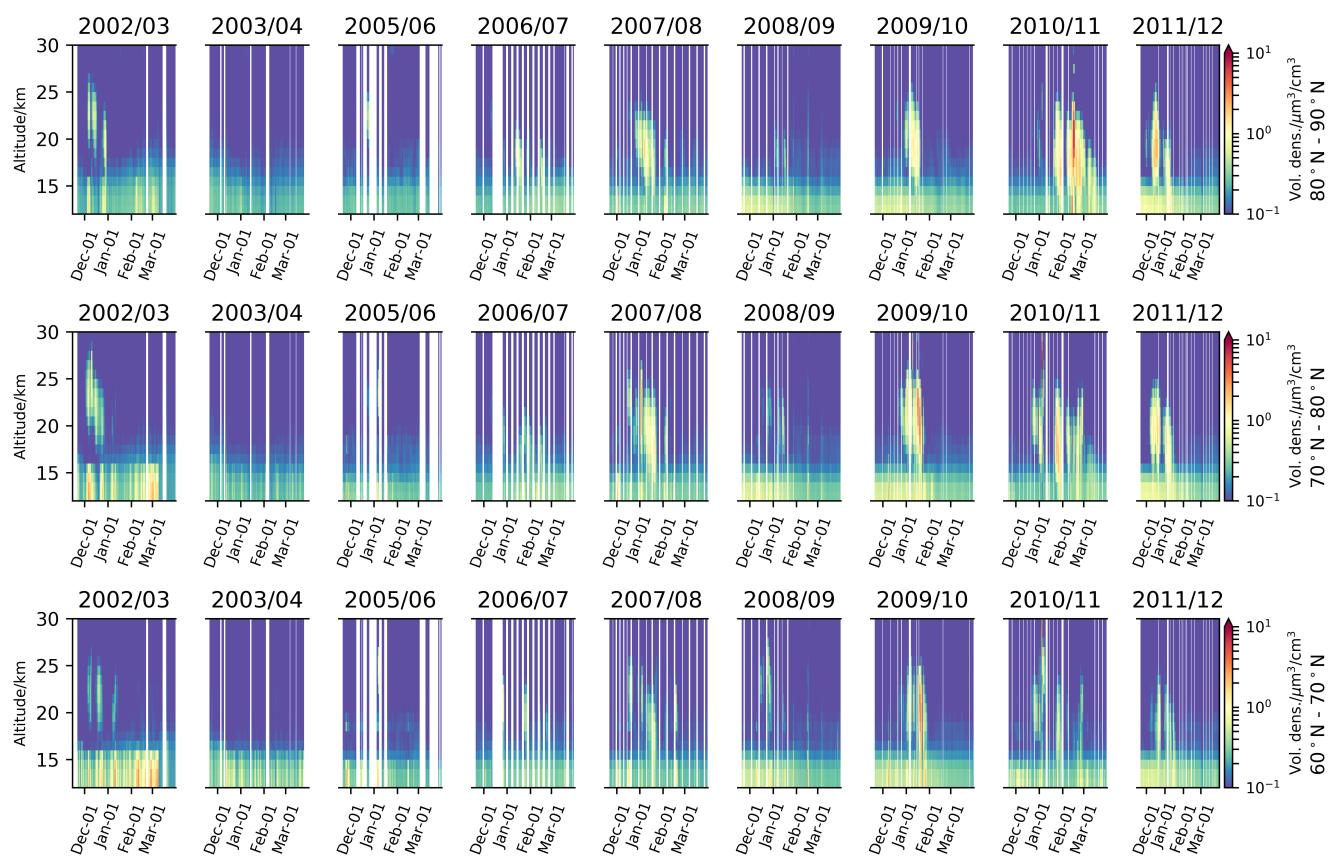


Figure A4. Daily zonal maximum PSC volume densities for 10° latitude bins derived from all MIPAS observations during Arctic polar winter. The values are the maximum retrieval limits (VD_{max}) as described in the text.



Competing interests. The authors declare that they have no conflict of interest.

Acknowledgements. The European Space Agency (ESA) is acknowledged for provision of MIPAS level-1b calibrated spectra and for support within the study “Characterisation of particulates in the upper troposphere/lowerstratosphere (ESA Contract No:400011677/16/NL/LvH)”. Meteorological data have been provided by the European Centre for Medium-Range Weather Forecasts (ECMWF). This work has further been supported by the International Space Science Institute (ISSI) and Stratosphere-troposphere Processes And their Role in Climate (SPARC).

We further acknowledge the Deutsche Forschungsgemeinschaft and Open Access Publishing Fund of the Karlsruhe Institute of Technology.



References

- Biermann, U. M.: Gefrier- und FTIR-Experimente zur Nukleation und Lebensdauer stratosphärischer Wolken, Ph.D. thesis, Universität Bielefeld, cuvillier Verlag, ISBN 3-89712-212-X, 1998.
- Biermann, U. M., Luo, B. P., and Peter, T.: Absorption spectra and optical constants of binary and ternary solutions of H₂SO₄, HNO₃, and H₂O in the mid infrared at atmospheric temperatures, *J. Phys. Chem. (A)*, 104, 783–793, 2000.
- Bohren, C. F. and Huffman, D. R.: Absorption and scattering of light by small particles, Wiley-VCH, Weinheim, 2008.
- Carslaw, K. S., Luo, B. P., Clegg, S. L., Peter, T., Pringle, P. M., and Crutzen, P. J.: Stratospheric aerosol growth and HNO₃ gas phase depletion from coupled HNO₃ and water uptake by liquid particles, *Geophys. Res. Lett.*, 21, 2479–2482, <https://doi.org/10.1029/94GL02799>, 1994.
- Deshler, T., Larsen, N., Weissner, C., Schreiner, J., Mauersberger, K., Cairo, F., Adriani, A., Di Donfrancesco, G., Ovarlez, J., Ovarlez, H., Blum, U., Fricke, K. H., and Dornbrack, A.: Large nitric acid particles at the top of an Arctic stratospheric cloud, *J. Geophys. Res.*, 108, <https://doi.org/10.1029/2003JD003479>, 2003.
- Drdla, K. and Müller, R.: Temperature thresholds for chlorine activation and ozone loss in the polar stratosphere, *Ann. Geophys.*, 30, 1055–1073, <https://doi.org/10.5194/angeo-30-1055-2012>, <http://www.ann-geophys.net/30/1055/2012/>, 2012.
- Engel, I., Luo, B. P., Pitts, M. C., Poole, L. R., Hoyle, C. R., Groö, J.-U., Dornbrack, A., and Peter, T.: Heterogeneous formation of polar stratospheric clouds – Part 2: Nucleation of ice on synoptic scales, *Atmospheric Chemistry and Physics*, 13, 10769–10785, <https://doi.org/10.5194/acp-13-10769-2013>, <http://www.atmos-chem-phys.net/13/10769/2013/>, 2013.
- ESA: Envisat MIPAS: An instrument for atmospheric chemistry and climate research, Tech. Rep. SP-1229, European Space Agency, SA Publications Division, ESTEC, P. O. Box 299, 2200 AG Noordwijk, The Netherlands, 2000.
- Fischer, H., Birk, M., Blom, C., Carli, B., Carlotti, M., von Clarmann, T., Delbouille, L., Dudhia, A., Ehhalt, D., Endemann, M., Flaud, J. M., Gessner, R., Kleinert, A., Koopman, R., Langen, J., López-Puertas, M., Mosner, P., Nett, H., Oelhaf, H., Perron, G., Remedios, J., Ridolfi, M., Stiller, G., and Zander, R.: MIPAS: an instrument for atmospheric and climate research, *Atmos. Chem. Phys.*, 8, 2151–2188, 2008.
- Glatthor, N., Höpfner, M., Stiller, G. P., von Clarmann, T., Dudhia, A., Echele, G., Funke, B., and Hase, F.: Intercomparison of the KOPRA and the RFM Radiative Transfer Codes, in: Proc. European Symposium on Atmospheric Measurements from Space, ESAMS'99, 18–22 Jan 1999, Noordwijk, pp. 757–764, European Space Agency, ESTEC, Noordwijk, The Netherlands, 1999.
- Günther, A., Höpfner, M., Sinnhuber, B.-M., Griessbach, S., Deshler, T., von Clarmann, T., and Stiller, G.: MIPAS observations of volcanic sulfate aerosol and sulfur dioxide in the stratosphere, *Atmos. Chem. Phys.*, 18, 1217–1239, <https://doi.org/10.5194/acp-18-1217-2018>, <https://www.atmos-chem-phys.net/18/1217/2018/>, 2018.
- Hase, F. and Höpfner, M.: Atmospheric ray path modeling for radiative transfer algorithms, *Appl. Opt.*, 38, 3129–3133, 1999.
- Höpfner, M.: Study on the impact of polar stratospheric clouds on high resolution mid-IR limb emission spectra, *J. Quant. Spectrosc. Radiat. Transfer*, 83, 93–107, 2004.
- Höpfner, M.: Charakterisierung polarer stratosphärischer Wolken mittels hochauflösender Infrarotspektroskopie: Zugl.: Karlsruhe, Univ., Habil, 2008, vol. 43 of *Wissenschaftliche Berichte des Instituts für Meteorologie und Klimaforschung der Universität Karlsruhe (TH)*, Universitätsverlag, Karlsruhe, <http://digbib.ubka.uni-karlsruhe.de/volltexte/1000009365>, 2008.
- Höpfner, M. and Emde, C.: Comparison of single and multiple scattering approaches for the simulation of limb-emission observations in the mid-IR, *J. Quant. Spectrosc. Radiat. Transfer*, 91, 275–285, 2004.



- Höpfner, M., Oelhaf, H., Wetzel, G., Friedl-Vallon, F., Kleinert, A., Lengel, A., Maucher, G., Nordmeyer, H., Glatthor, N., Stiller, G., Clarmann, T. v., Fischer, H., Kröger, C., and Deshler, T.: Evidence of scattering of tropospheric radiation by PSCs in mid-IR limb emission spectra: MIPAS-B observations and KOPRA simulations, *Geophys. Res. Lett.*, 29, 119–1, <https://doi.org/10.129/2001GL014443>, 2002.
- Höpfner, M., Larsen, N., Spang, R., Luo, B., Ma, J., Svendsen, S., Eckerman, S. D., Knudsen, B., Massoli, P., Cairo, F., Stiller, G. P., von Clarmann, T., and Fischer, H.: MIPAS detects Antarctic stratospheric belt of NAT PSC's caused by mountain waves, *Atmos. Chem. Phys.*, 6, 1221–1230, 2006a.
- Höpfner, M., Luo, B. P., Massoli, P., Cairo, F., Spang, R., Snels, M., Di Donfrancesco, G., Stiller, G. P., von Clarmann, T., Fischer, H., and Biermann, U.: Spectroscopic evidence for NAT, STS, and ice in MIPAS infrared limb emission measurements of polar stratospheric clouds, *Atmos. Chem. Phys.*, 6, 1201–1219, 2006b.
- 10 Höpfner, M., Orphal, J., von Clarmann, T., Stiller, G., and Fischer, H.: Stratospheric BrONO₂ observed by MIPAS, *Atmos. Chem. Phys.*, 9, 1735–1746, 2009.
- Hoyle, C. R., Engel, I., Luo, B. P., Pitts, M. C., Poole, L. R., Groß, J.-U., and Peter, T.: Heterogeneous formation of polar stratospheric clouds – Part 1: Nucleation of nitric acid trihydrate (NAT), *Atmospheric Chemistry and Physics*, 13, 9577–9595, <https://doi.org/10.5194/acp-13-9577-2013>, <http://www.atmos-chem-phys.net/13/9577/2013/>, 2013.
- 15 Keim, C., Eremenko, M., Orphal, J., Dufour, G., Flaud, J.-M., Höpfner, M., Boynard, A., Clerbaux, C., Payan, S., Coheur, P.-F., Hurtmans, D., Claude, H., Dier, H., Johnson, B., Kelder, H., Kivi, R., Koide, T., López Bartolomé, M., Lambkin, K., Moore, D., Schmidlin, F. J., and Stübi, R.: Tropospheric ozone from IASI: comparison of different inversion algorithms and validation with ozone sondes in the northern middle latitudes, *Atmos. Chem. Phys.*, 9, 9329–9347, 2009.
- Khosrawi, F., Kirner, O., Stiller, G., Höpfner, M., Santee, M. L., Kellmann, S., and Braesicke, P.: Comparison of ECHAM5/MESSy
20 Atmospheric Chemistry (EMAC) Simulations of the Arctic winter 2009/2010 and 2010/2011 with Envisat/MIPAS and Aura/MLS Observations, *Atmospheric Chemistry and Physics Discussions*, 2018, 1–31, <https://doi.org/10.5194/acp-2017-1190>, <https://www.atmos-chem-phys-discuss.net/acp-2017-1190/>, 2018.
- Kirner, O., Müller, R., Ruhnke, R., and Fischer, H.: Contribution of liquid, NAT and ice particles to chlorine activation and ozone depletion in Antarctic winter and spring, *Atmos. Chem. Phys.*, 15, 2019–2030, <https://doi.org/10.5194/acp-15-2019-2015>, <http://www.atmos-chem-phys.net/15/2019/2015/>, 2015.
- 25 Kuntz, M.: A new Implementation of the Humlicek Algorithm for the Calculation of the Voigt Profile Function, *J. Quant. Spectrosc. Radiat. Transfer*, 57, 819–824, 1997.
- Kuntz, M. and Höpfner, M.: Efficient line-by-line calculation of absorption coefficients, *J. Quant. Spectrosc. Radiat. Transfer*, 63, 97–114, 1999.
- 30 Lambert, A., Santee, M. L., Wu, D. L., and Chae, J. H.: A-train CALIOP and MLS observations of early winter Antarctic polar stratospheric clouds and nitric acid in 2008, *Atmospheric Chemistry and Physics*, 12, 2899–2931, <https://doi.org/10.5194/acp-12-2899-2012>, <https://www.atmos-chem-phys.net/12/2899/2012/>, 2012.
- Lambert, A., Santee, M. L., and Livesey, N. J.: Interannual variations of early winter Antarctic polar stratospheric cloud formation and nitric acid observed by CALIOP and MLS, *Atmospheric Chemistry and Physics*, 16, 15 219–15 246, <https://doi.org/10.5194/acp-16-15219-2016>, <https://www.atmos-chem-phys.net/16/15219/2016/>, 2016.
- 35 Nakajima, H., Wohltmann, I., Wegner, T., Takeda, M., Pitts, M. C., Poole, L. R., Lehmann, R., Santee, M. L., and Rex, M.: Polar stratospheric cloud evolution and chlorine activation measured by CALIPSO and MLS, and modeled by ATLAS, *Atmospheric Chemistry and Physics*, 16, 3311–3325, <https://doi.org/10.5194/acp-16-3311-2016>, <http://www.atmos-chem-phys.net/16/3311/2016/>, 2016.



- Nett, H., Perron, G., Sanchez, M., Burgess, A., and Mossner, P.: MIPAS inflight calibration and processor validation, in: ENVISAT Calibration Review - Proc. of the European Workshop, 9–13 September 2002, ESTEC, Noordwijk, The Netherlands, edited by Sawaya-Lacoste, H., vol. SP-520, ESA Publications Division, ESTEC, Postbus 299, 2200 AG Noordwijk, The Netherlands, 2002.
- Orr, A., Hosking, J. S., Hoffmann, L., Keeble, J., Dean, S. M., Roscoe, H. K., Abraham, N. L., Vosper, S., and Braesicke, P.: Inclusion of mountain-wave-induced cooling for the formation of PSCs over the Antarctic Peninsula in a chemistry–climate model, *Atmos. Chem. Phys.*, 15, 1071–1086, <https://doi.org/10.5194/acp-15-1071-2015>, <http://www.atmos-chem-phys.net/15/1071/2015/>, 2015.
- Peter, T.: Microphysics and heterogeneous chemistry of polar stratospheric clouds, *Annu. Rev. Phys. Chem.*, 48, 785–822, 1997.
- Peter, T. and Groöß, J. U.: Polar stratospheric clouds and sulfate aerosol particles: microphysics, denitrification and heterogeneous chemistry, in: *Stratospheric Ozone Depletion and Climate Change*, edited by Müller, R., pp. 141–146, Royal Society of Chemistry, 2012.
- 10 Pitts, M. C., Thomason, L. W., Poole, L. R., and Winker, D. M.: Characterization of Polar Stratospheric Clouds with space-borne Lidar: CALIPSO and the 2006 Antarctic season, *Atmos. Chem. Phys.*, 7, 5207–5228, 2007.
- Pitts, M. C., Poole, L. R., and Thomason, L. W.: CALIPSO polar stratospheric cloud observations: second-generation detection algorithm and composition discrimination, *Atmos. Chem. Phys.*, 9, 7577–7589, <https://doi.org/10.5194/acp-9-7577-2009>, <https://www.atmos-chem-phys.net/9/7577/2009/>, 2009.
- 15 Pitts, M. C., Poole, L. R., Dörnbrack, A., and Thomason, L. W.: The 2009–2010 Arctic polar stratospheric cloud season: A CALIPSO perspective, *Atmos. Chem. Phys.*, 11, 2161–2177, <https://doi.org/10.5194/acp-11-2161-2011>, 2011.
- Pitts, M. C., Poole, L. R., Lambert, A., and Thomason, L. W.: An assessment of CALIOP polar stratospheric cloud composition classification, *Atmospheric Chemistry and Physics*, 13, 2975–2988, <https://doi.org/10.5194/acp-13-2975-2013>, <https://www.atmos-chem-phys.net/13/2975/2013/>, 2013.
- 20 Pitts, M. C., Poole, L. R., and Gonzalez, R.: Polar stratospheric cloud climatology based on CALIPSO spaceborne lidar measurements from 2006–2017, *Atmospheric Chemistry and Physics Discussions*, 2018, 1–54, <https://doi.org/10.5194/acp-2018-234>, <https://www.atmos-chem-phys-discuss.net/acp-2018-234/>, 2018.
- Remedios, J. J., Leigh, R. J., Waterfall, A. M., Moore, D. P., Sembhi, H., Parkes, I., Greenhough, J., Chipperfield, M. P., and Hauglustaine, D.: MIPAS reference atmospheres and comparisons to V4.61/V4.62 MIPAS level 2 geophysical data sets, *Atmos. Chem. Phys. Discuss.*, 7, 9973–10 017, 2007.
- 25 Schreier, F., Milz, M., Buehler, S. A., and von Clarmann, T.: Intercomparison of three microwave/infrared high resolution line-by-line radiative transfer codes, *J. Quant. Spectrosc. Radiat. Transfer*, 211, 64 – 77, <https://doi.org/https://doi.org/10.1016/j.jqsrt.2018.02.032>, <http://www.sciencedirect.com/science/article/pii/S0022407317309445>, 2018.
- Solomon, S.: Stratospheric Ozone Depletion: A Review of Concepts and History, *Rev. Geophys.*, 37, 275–315, 1999.
- 30 Spang, R., Remedios, J. J., Kramer, L. J., Poole, L. R., Fromm, M. D., Müller, M., Baumgarten, G., and Konopka, P.: Polar stratospheric cloud observations by MIPAS on ENVISAT: detection method, validation and analysis of the northern hemisphere winter 2002/2003, *Atmos. Chem. Phys.*, 5, 679–692, 2005.
- Spang, R., Hoffmann, L., Müller, R., Groöß, J.-U., Tritscher, I., Höpfner, M., Pitts, M., Orr, A., and Riese, M.: A climatology of polar stratospheric cloud composition between 2002 and 2012 based on MIPAS/Envisat observations, *Atmos. Chem. Phys.*, 18, 5089–5113, <https://doi.org/10.5194/acp-18-5089-2018>, <https://www.atmos-chem-phys.net/18/5089/2018/>, 2018.
- 35 Stiller, G. P., ed.: *The Karlsruhe Optimized and Precise Radiative Transfer Algorithm (KOPRA)*, vol. FZKA 6487 of *Wissenschaftliche Berichte*, Forschungszentrum Karlsruhe, 2000.
- Tikhonov, A.: On the solution of incorrectly stated problems and method of regularization, *Dokl. Akad. Nauk. SSSR*, 151, 501–504, 1963.



- Tjemkes, S. A., Patterson, T., Rizzi, R., Shephard, M. W., Clough, S. A., Matricardi, M., Haigh, J., Höpfner, M., Payan, S., Trotsenko, A., Scott, N., Rayer, P., Taylor, J. P., Clerbaux, C., Strow, L. L., DeSouza-Machado, S., Tobin, D., and Knuteson, R.: ISSWG Line-by-line Intercomparison Experiment, Programme Development Department Technical Memorandum 8, EUMETSAT, European Organisation for the Exploitation of Meteorological Satellites, 2001.
- 5 Toon, O. B., Tolbert, M. A., Middlebrook, A. M., and Jordan, J.: Infrared optical constants of H₂O, ice, amorphous nitric acid solutions, and nitric acid hydrates, *J. Geophys. Res.*, 99, 25 631–25 654, <https://doi.org/10.1029/94JD02388>, 1994.
- von Clarmann, T., Dudhia, A., Edwards, D. P., Funke, B., Höpfner, M., Kerridge, B., Kostsov, V., Linden, A., López-Puertas, M., and Timofeyev, Y. M.: Intercomparison of radiative transfer codes under non-local thermodynamic equilibrium conditions, *J. Geophys. Res.*, 107, <https://doi.org/10.1029/2001JD001551>, 2002.
- 10 von Clarmann, T., Höpfner, M., Funke, B., López-Puertas, M., Dudhia, A., Jay, V., Schreier, F., Ridolfi, M., Ceccherini, S., Kerridge, B. J., Reburn, J., and Siddans, R.: Modelling of atmospheric mid-infrared radiative transfer: the AMIL2DA algorithm intercomparison experiment, *J. Quant. Spectrosc. Radiat. Transfer*, 78, 381–407, 2003.
- Wegner, T., Grooß, J.-U., von Hobe, M., Stroh, F., Sumińska-Ebersoldt, O., Volk, C. M., Hösen, E., Mitev, V., Shur, G., and Müller, R.: Heterogeneous chlorine activation on stratospheric aerosols and clouds in the Arctic polar vortex, *Atmospheric Chemistry and Physics*, 12, 11 095–11 106, <https://doi.org/10.5194/acp-12-11095-2012>, <http://www.atmos-chem-phys.net/12/11095/2012/>, 2012.
- 15 Wegner, T., Pitts, M. C., Poole, L. R., Tritscher, I., Grooß, J.-U., and Nakajima, H.: Vortex-wide chlorine activation by a mesoscale PSC event in the Arctic winter of 2009/10, *Atmos. Chem. Phys.*, 16, 4569–4577, <https://doi.org/10.5194/acp-16-4569-2016>, <http://www.atmos-chem-phys.net/16/4569/2016/>, 2016.
- Wetzel, G., Oelhaf, H., Birk, M., de Lange, A., Engel, A., Friedl-Vallon, F., Kirner, O., Kleinert, A., Maucher, G., Nordmeyer, H., Orphal, J., Ruhnke, R., Sinnhuber, B.-M., and Vogt, P.: Partitioning and budget of inorganic and organic chlorine species observed by MIPAS-B and TELIS in the Arctic in March 2011, *Atmos. Chem. Phys.*, 15, 8065–8076, <https://doi.org/10.5194/acp-15-8065-2015>, <http://www.atmos-chem-phys.net/15/8065/2015/>, 2015.
- 20 Wohltmann, I., Wegner, T., Müller, R., Lehmann, R., Rex, M., Manney, G. L., Santee, M. L., Bernath, P., Sumińska-Ebersoldt, O., Stroh, F., von Hobe, M., Volk, C. M., Hösen, E., Ravagnani, F., Ulanovsky, A., and Yushkov, V.: Uncertainties in modelling heterogeneous chemistry and Arctic ozone depletion in the winter 2009/2010, *Atmospheric Chemistry and Physics*, 13, 3909–3929, <https://doi.org/10.5194/acp-13-3909-2013>, <http://www.atmos-chem-phys.net/13/3909/2013/>, 2013.
- Woiwode, W., Grooß, J.-U., Oelhaf, H., Molleker, S., Borrmann, S., Ebersoldt, A., Frey, W., Gulde, T., Khaykin, S., Maucher, G., Piesch, C., and Orphal, J.: Denitrification by large NAT particles: the impact of reduced settling velocities and hints on particle characteristics, *Atmos. Chem. Phys.*, 14, 11 525–11 544, <https://doi.org/10.5194/acp-14-11525-2014>, <https://www.atmos-chem-phys.net/14/11525/2014/>, 2014.
- 30 Woiwode, W., Höpfner, M., Bi, L., Pitts, M. C., Poole, L. R., Oelhaf, H., Molleker, S., Borrmann, S., Klingebiel, M., Belyaev, G., Ebersoldt, A., Griessbach, S., Grooß, J.-U., Gulde, T., Krämer, M., Maucher, G., Piesch, C., Rolf, C., Sartorius, C., Spang, R., and Orphal, J.: Spectroscopic evidence of large aspherical β -NAT particles involved in denitrification in the December 2011 Arctic stratosphere, *Atmos. Chem. Phys.*, 16, 9505–9532, <https://doi.org/10.5194/acp-16-9505-2016>, <http://www.atmos-chem-phys.net/16/9505/2016/>, 2016.