

1 First fully-diurnal fog and low cloud satellite
2 detection reveals life cycle in the Namib

3 — RESPONSE TO REVIEWER 1 —

4 Hendrik Andersen and Jan Cermak

5 contact: hendrik.andersen@kit.edu

6 We would like to thank referee 1 for her/his review of the manuscript and
7 her/his constructive criticism. Comments by the referee are colored in blue,
8 our replies or comments are colored in black.

9
10 A good algorithm to obtain the detection of fog and low cloud using the
11 temporal continuity of MSG-SEVIRI data, demonstrated as with high potential
12 for use the product for many applications (for example agriculture). This work
13 represents a novelty because it permits to detect fog and low cloud continuously
14 during day and night with very high performances in terms of statistics. In
15 general, I find this technical paper worth publishing. The technical part is well
16 written, very clear, fast to read. Validation and result sections are very well
17 deduced by the authors. Comments (given below) are suggested to be followed.

18
19 Page 2 Line 26 – From my point of view would be worth to give a brief
20 description of the paper sections.

21 We agree with referee 1 that a brief structural overview can enhance the clarity
22 of the manuscript and have now included this at the end of the introduction:
23 ” *This work is structured as follows: The data used and the novel FLC-detection*
24 *technique are described in section 2, a statistical evaluation of the algorithm is*
25 *given in section 3. Spatiotemporal patterns of fog and low clouds in the Namib*
26 *are presented in section 4, conclusions and an outlook are given in section 5.*”

27
28 Page 3 Line 1 – I would rewrite the sentence in this way: “ The data used
29 in this study cover the period 2015-2017 in the region 13.5° s-35° S and ???-20°
30 E.”

31 We have adjusted the text passage to say: ” *The data used in this study*
32 *cover the period from 2015–2017 in the region from 13.5°S–35°S and from*

33 *10° E–20° E, considering only regions over land.”*

34

35 Page 3 Line 6 – Please explain better what is intended for “...if needed,
36 the application of structural image analyses.” Are there cases in which this
37 analyses can be skipped? If yes maybe can be useful to report it/them.

38 The structural image analyses are only needed if none of the spectral tests is
39 true. The follow-up sentence tries to communicate this: “*Sequential testing*
40 *stops once a class is determined, the following tests are not carried out.*”

41 However, we agree with referee 1 that this may be stated more clearly in the
42 initial sentence and have rephrased it as follows: “*The initial classification of*
43 *a given scene is designed as a decision tree, with sequential application of a)*
44 *simple spectral thresholds as shown in table 1 and, b) if none of the spectral*
45 *tests is true, the application of a structural image test.*”

46

47 Page 3 Line 7 – “Contextual plausibility control” is the same operation
48 that “structural image analyses”? Please resolve this (from my point of view)
49 ambiguity.

50 The contextual plausibility control is one of two structural image analysis
51 techniques used in this work. To clarify:

52 The initial classification is the two step technique that consists of a) spectral
53 thresholds and b) the SSIM test. The contextual plausibility control is intended
54 to review the results of the algorithm and check the plausibility of the detected
55 FLC pixels. Both (SSIM test and contextual plausibility control) can be
56 described as structural image analyses, as is done on Page 3 Line 6.

57 We agree with referee 1 that this can be stated more clearly and have rephrased
58 said text passage: “*The initial classification of a given scene is designed as*
59 *a decision tree, with sequential application of a) simple spectral thresholds as*

60 *shown in table 1 and, b) if none of the spectral tests is true, the application*
61 *of a structural image test. Sequential spectral testing stops once a class is*
62 *determined, the following tests are not carried out. The additional contextual*
63 *plausibility control is only tested for FLC pixels.”*

64

65 *Page 3 Table 1 – In Table 1, please specify threshold measure unit (I think*
66 *is Kelvin degree).*

67 Thank you for pointing this out, units are now included in the table.

68

69 *Page 5 Line 16 – I think Figure ??? is Figure 2b), please correct it.*

70 Yes, indeed. This is now corrected in the manuscript.

71

72 *Page 8 Line 20 – in order to improve the comprehension, I think is good to*
73 *draw highlight the edges of the three core regions in Figure 4.*

74 While we understand the point of referee 1, and agree that highlighting the
75 core regions would help identifying them in the figure, we would like to keep the
76 figure as it is. Our argument is that drawing the regions directly into this results
77 figure would, in our opinion, already introduce somewhat of an interpretation
78 and potentially bias a reader.

1 First fully-diurnal fog and low cloud satellite

2 detection reveals life cycle in the Namib

3 — RESPONSE TO REVIEWER 2 —

4 Hendrik Andersen and Jan Cermak

5 contact: hendrik.andersen@kit.edu

6 We would like to thank referee 2 for her/his review of the manuscript and
7 her/his constructive criticism. Comments by the referee are colored in blue,
8 our replies or comments are colored in black.

9
10 My review and comments will focus on four area: general overview, method-
11 ology, validation, and product impact. The paper is well written and presents
12 an interesting approach to a challenging problem.

13 Overview

14 The authors present an interesting approach and methodology to create a fog
15 and low cloud product. The application of interest stated by the authors is fog
16 detection that is hazardous to traffic and the potential for economic impact, and
17 the need to understand the formation and dissipation processes over the region.
18 Does the algorithm differentiate between fog and low clouds (low clouds may
19 not reduce visibility to the same extent as the fog)? What portion of cases can
20 be isolated or identified as fog versus low clouds? Does the FogNet stations help
21 to isolate and identify and differentiate fog from low clouds?

22 We agree with referee 2 that the differentiation of fog and low clouds is very
23 important for both economical and ecological aspects. The algorithm presented
24 in this work does not differentiate between fog and low clouds, hence the abbrevi-
25 ation FLC (fog and low clouds). As this differentiation is one of the main re-
26 maining challenges in the satellite-based remote sensing of fog, we are currently
27 working on this using both ground- and space-based active remote sensing as
28 well as the available FogNet station data. As of now, we cannot give a reliable
29 estimate of the fraction of fog in the FLC product, which may vary by loca-
30 tion, season and time of day. As such, a differentiation of fog and low clouds is
31 beyond the scope of this work, but will be addressed in future studies.

32 We have included the sentence "*It should be noted that the algorithm*
 33 *presented here does not differentiate between ground fog and low-level clouds.*"
 34 at the end of the first paragraph of section 2.2 for clarity (in the outlook, we
 35 already mention that a retrieval of cloud-base altitudes for the separation of
 36 low-level clouds from ground fog is needed).

37
 38 The goal to develop a common algorithm that works well particularly
 39 during the transition from night to day in order to monitor fog development
 40 and dissipation with solar insolation is admirable. The authors point to other
 41 studies that utilize different approaches during the night and day, but do
 42 not show any failure of these approaches to properly detect the life cycle of
 43 the fog. Are the authors aware of more recent work to produce a stable and
 44 fully diurnal approach for the detection of fog and low clouds with the 24
 45 hour Red-Green-Blue (RGB) microphysics products (developed and applied
 46 to SEVIRI and GOES ABI data) using only the 8, 11, and 12 microme-
 47 ter channels on these instruments? [https://weather.msfc.nasa.gov/sport/](https://weather.msfc.nasa.gov/sport/training/quickGuides/rgb/QuickGuide_24hrMicroRGB_NASA_SPoRT.pdf)
 48 [training/quickGuides/rgb/QuickGuide_24hrMicroRGB_NASA_SPoRT.pdf](https://weather.msfc.nasa.gov/sport/training/quickGuides/rgb/QuickGuide_24hrMicroRGB_NASA_SPoRT.pdf),
 49 [https://www.eumetsat.int/website/home/Data/Training/TrainingLibrary/](https://www.eumetsat.int/website/home/Data/Training/TrainingLibrary/DAT_2044069.html)
 50 [DAT_2044069.html](https://www.eumetsat.int/website/home/Data/Training/TrainingLibrary/DAT_2044069.html). Or NOAA's low cloud and fog product?
 51 <https://www.goes-r.gov/products/opt2-low-cloud-fog.html>. Recognizing
 52 this work or acknowledging these other approaches should be done.

53 We agree with referee 2 that the limitations of day and nighttime FLC
 54 detection algorithms could be stated more clearly. Nighttime detection of FLC
 55 has been achieved in many studies since the 1980s (e.g. Eyre et al., 1984;
 56 Bendix, 2002; Cermak and Bendix, 2007), which typically rely on the difference
 57 between a thermal ($\approx 11 \mu\text{m}$) and mid-infrared ($3.9 \mu\text{m}$) channel. However,
 58 as Cermak and Bendix (2008) state: "*During daytime, however, the situation*

59 *is entirely different. The solar signal that mixes into the 3.9 μm radiation*
60 *renders the method useless after sunrise, as the small fog droplets reflect at this*
61 *wavelength. Therefore an altogether different approach is needed for daytime*
62 *fog detection.”*

63 These current day time techniques typically do not work at low solar eleva-
64 tion angles, which is illustrated by the following examples:

- 65 • The daytime algorithm developed by Nilo et al. (2018) works only in sit-
66 uations with solar zenith angle $> 85^\circ$.
- 67 • The daytime algorithms developed by Cermak and Bendix (2008) and
68 Cermak and Bendix (2011) work only in situations with solar zenith angle
69 $> 80^\circ$.
- 70 • Similarly, Guls and Bendix (1996) state that ” *Unfortunately, at low sun*
71 *elevations (with θ close to 90°) $\cos(\theta)$ [solar zenith angle] approaches zero*
72 *and the normalised grey level approximates to infinity. Therefore, normali-*
73 *sation is limited to sun elevations of about 10° (Saunders, 1985).”*

74 To summarize, separate day and nighttime algorithms are necessary, with
75 neither one working sufficiently well at low solar elevation angles.

76 While we are aware of the qualitative products (false color composites) pro-
77 duced by the Eumetsat, NASA and NOAA, which are a nice tool for visualiza-
78 tion purposes, these are not products well-suited for quantitative analyses and
79 were thus not mentioned. As we agree with referee 2 that these sets of products
80 might be of interest to the reader, we do mention false color imagery now with
81 the following sentence in the introduction: ” *While for visualization purposes,*
82 *24-hour false color image products may be used in case studies, these images are*
83 *not well-suited for quantitative analyses.”*

84 Methodology

85 This is an interesting 2 step approach which eliminates high clouds and then
86 identifies fog and low cloud regions. The temporally varying compositing ap-
87 proach to represent cloud-free scenes over land as a reference is good and has
88 been successfully demonstrated for other cloud detection approaches. The SSIM
89 approach to identify regions that are significantly different from the cloud-free
90 composite is interesting although limits application to ocean coastal regions
91 where sea surface temperature structure is limit. It would be interesting to
92 know how the threshold (0.4) and the window size were determined.

93 The moving window is optimized to be as small as possible and still be useful
94 for comparing local structures. The size of the moving window, as well as the
95 threshold for the SSIM were optimized empirically, by analyzing many individ-
96 ual scenes. We have now mentioned this more clearly in the manuscript: "*The*
97 *size of the moving window, as well as the threshold for the SSIM were optimized*
98 *empirically.*"

99 We would argue that the approach is not limited to coastal regions (it
100 should work in any continental region with enough spatial variance in the
101 composites), but it will certainly not work over ocean.

102

103 The assignment of pixels as "difficult" on the edge of fog and low cloud
104 regions in the contextual plausibility control step seems a bit subjective. While
105 the approach is meant to address sub-pixel issues, other issues could be coming
106 into play (marginal thermal structure in composite, complete pixel coverage
107 if thin or dissipating fog, etc.). Eliminating these regions makes the regions
108 identified as fog and low cloud more limited. These "difficult" pixels also seem
109 to be eliminate from the validation section improving statistical performance of
110 the algorithm. Additional justification is necessary for this approach. Reason

111 for iteration of plausibility control is not clear. Can you elaborate?

112 This is an interesting point for discussion. The contextual plausibility control
113 and the class "difficult" were created during the visual quality assessment of the
114 algorithm of single scenes. It became apparent that sometimes, at the edges of
115 high clouds, the algorithm can misclassify pixels as FLC. This is probably related
116 to sub-pixel cloudiness of the high clouds that can lead to a spectral signature
117 similar to FLC/surface. The SSIM test does not find a strong similarity with the
118 composite, as part of the region that is evaluated is overcast with high clouds.
119 This led to the idea of the contextual plausibility control that is designed to
120 address this issue. It specifically looks for these situations (more than half of
121 the pixels in the immediate neighborhood are classified as high-cloud) and, if
122 true, labels the pixel of interest as difficult. An iterative approach is chosen, as
123 changing the class of one pixel changes the neighborhood of all its neighboring
124 pixels, which needs to be accounted for.

125 We now discuss this in more detail in the manuscript: "*A situation in which
126 this approach may fail is at higher-level cloud edges. These pixels can be have
127 a similar spectral signature to FLC and can pass the SSIM test, as the partly
128 overlying high cloud reduces the similarity with the composites. To avoid such
129 misclassifications, a contextual plausibility control of the detected FLC pixels is
130 conducted after the initial classification.*"

131

132 Validation Only night-time results are presented. A proposed strength of
133 the algorithm is its day and night performance(?) to monitor dissipation of the
134 fog with solar insolation. How do the day-time results compare to these?

135 The validation is limited to nighttime measurements, as the net radiation
136 measurements can be binarized rather easily during night (Fig. 3a)). This
137 is not the case during daytime, where this would have to be done for each

138 solar zenith angle and would still be associated with higher uncertainties. We
 139 argue that this is legitimate, as none of the channels used and no component
 140 of the retrieval technique is physically affected by solar radiation. Thus, from
 141 a physical point-of-view, there is no reason why the algorithm should work
 142 differently during day time. We have looked into a large number of scenes and
 143 found no effect of the time of day on the retrieval.

144
 145 Labeling pixels on edges of clouds as “difficult” helps the validation statics.
 146 What to the results look like if you add in results from the “difficult points”
 147 What percentage of fog pixels to difficult ones?

148 Over the entire data set, the plausibility control ‘corrects’ about 3 % of the
 149 detected FLC pixels and sets their class to ‘difficult’. As such, it only marginally
 150 affects the quantitative validation results as presented in Fig. 1. The right-hand
 151 panel shows the validation where the class ‘difficult’ is analyzed as if it were
 152 classified as FLC, only leading to a slightly higher false alarm rate, with the
 153 POD and PC virtually unchanged.

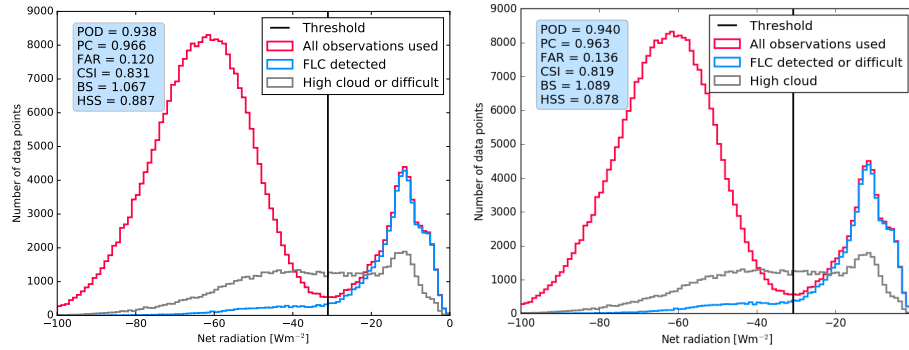


Figure 1: The validation of the algorithm as in the submitted manuscript (left) and computed without the use of the structural plausibility control (right).

154 However, thin cloud edges of higher-level clouds may lead to similar surface-
 155 measured net radiation as FLC, making the quantitative analysis of these pixels

with net radiation measurements difficult. A detailed visual analysis of a large number of individual scenes has shown an improved performance at the edges of higher-level clouds using the plausibility control.

Is there performance variability by year or by season? This would add confidence to the use of the product for climate studies. Good discussion of the potential source of errors.

We have computed the validation as suggested by referee 2. There does not seem to be a marked yearly variability in the performance of the algorithm as illustrated by Fig. 2.

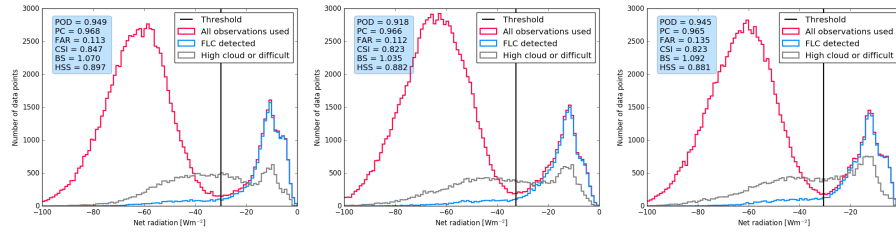


Figure 2: The validation of the algorithm computed separately for the three years 2015 (left), 2016 (center) and 2017 (right).

We also computed the validation on a seasonal basis (cf. Fig. 3), with little variation of the probability of detection and percentage correct of the classification. There does seem to be a seasonal variation in the false alarm rate, which can likely be attributed to the overall occurrence frequency of FLC as outlined in the manuscript (concerning the station GK). If only few FLC situations occur, a (small) randomly occurring misclassification has a relatively large impact. This explains the outliers of the false alarm rate of the inland station GK, as well as the relatively high false alarm rate in the season of March, April and May, where FLC occurs much less frequently. This is already described in the manuscript: "[...] the effect of this small random error on the

validation measures scales inversely with FLC occurrence.”

The results underline the applicability for climate studies. We now discuss this in more detail in the manuscript.

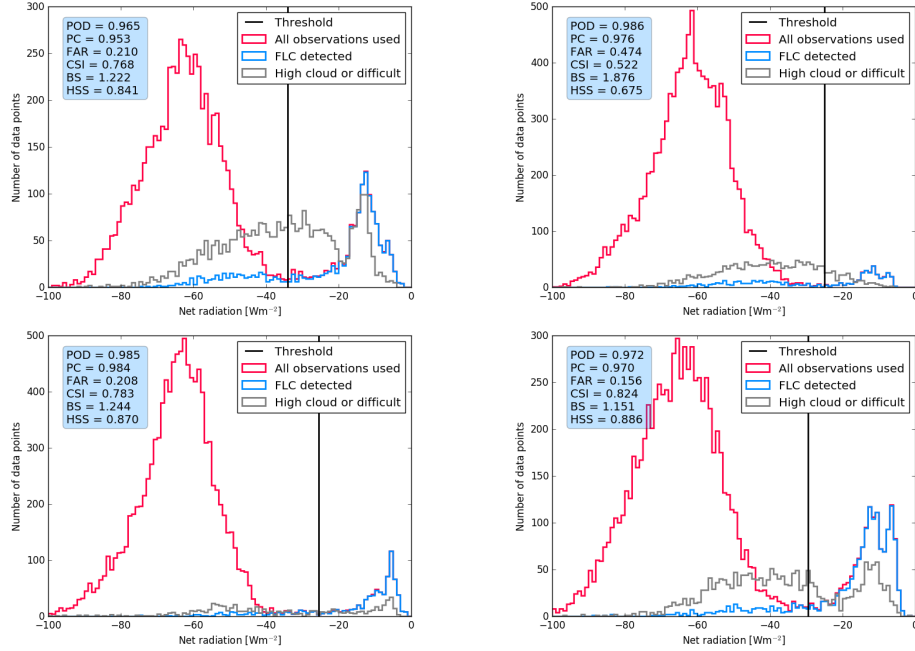


Figure 3: The validation of the algorithm computed separately for the seasons December, January, February (top left), March, April, May (top right), June, July, August (bottom left) and September, October, November (bottom right).

Product impact on science

Interesting and useful inference of spatial and diurnal variation in occurrence of FLC. Could you use a monthly varying composite to increase FLC frequency over the region?

In the current algorithm, we use two composites: a monthly and a yearly composite. We have also tested daytime-specific composites, but found no improvement in the performance of the algorithm.

Other things

I can't locate the grey line in Figure 2a.

Thank you for pointing this out, this referred to an old version of the figure and is now deleted from the manuscript.

Figure 3b it is not obvious that the dot corresponds to the values from GK. Please explain this and the error bars in the figure.

We have now included this information in the caption of Fig. 3b).

The label “BC” should be BS in Figure 3b.

Yes, this is now corrected in the manuscript.

References

Bendix, J. (2002). A satellite-based climatology of fog and low-level stratus in Germany and adjacent areas. *Atmospheric Research*, 64(1-4):3–18.

Cermak, J. and Bendix, J. (2007). Dynamical Nighttime Fog/Low Stratus Detection Based on Meteosat SEVIRI Data: A Feasibility Study. *Pure and Applied Geophysics*, 164(6-7):1179–1192.

Cermak, J. and Bendix, J. (2008). A novel approach to fog/low stratus detection using Meteosat 8 data. *Atmospheric Research*, 87(3-4):279–292.

Cermak, J. and Bendix, J. (2011). Detecting ground fog from space – a microphysics-based approach. *International Journal of Remote Sensing*, 32(12):3345–3371.

Eyre, J. R., Brownscombe, J. L., and Allam, R. J. (1984). Detection of fog at

209 night using Advanced Very High Resolution Radiometer (AVHRR) imagery.
 210 *Meteorological Magazine*, 113:266–271.

211 Guls, I. and Bendix, J. (1996). Fog detection and fog mapping using low cost
 212 Meteosat-WEFAX transmission. *Meteorological Applications*, 3:179–187.

213 Nilo, S., Romano, F., Cermak, J., Cimini, D., Ricciardelli, E., Cersosimo, A.,
 214 Di Paola, F., Gallucci, D., Gentile, S., Geraldi, E., Larosa, S., Ripepi, E., and
 215 Viggiano, M. (2018). Fog Detection Based on Meteosat Second Generation-
 216 Spinning Enhanced Visible and InfraRed Imager High Resolution Visible
 217 Channel. *Remote Sensing*, 10(4):541.

First fully-diurnal fog and low cloud satellite detection reveals life cycle in the Namib

Hendrik Andersen^{1,2} and Jan Cermak^{1,2}

¹Karlsruhe Institute of Technology (KIT), Institute of Meteorology and Climate Research

²Karlsruhe Institute of Technology (KIT), Institute of Photogrammetry and Remote Sensing

Correspondence: Hendrik Andersen (hendrik.andersen@kit.edu)

Abstract. Fog and low clouds (FLC) are a typical feature along the southwestern African coast, especially in the central Namib, where fog constitutes a valuable resource of water for many ecosystems. In this study, a novel algorithm to detect FLC over land from geostationary satellite data using only infrared observations is presented. The algorithm is the first of its kind as it is stationary in time and thus able to reveal a detailed view into the diurnal and spatial patterns of FLC in the Namib region.

5 A validation against net radiation measurements from a station network in the central Namib reveals a high overall accuracy with a probability of detection of 94 %, a false alarm rate of 12 % and an overall correctness of classification of 97 %. The average timing and persistence of FLC seem to depend on the distance to the coast, suggesting that the region is dominated by advection-driven FLC. While the algorithm is applied to study Namib-region fog and low clouds, it is designed to be transferable to other regions and can be used to retrieve long-term data sets.

10 *Copyright statement.* TEXT

1 Introduction

Fog is commonly perceived as a hazardous weather situation that can impact traffic systems as well as the economy (Cermak and Knutti, 2009; Egli et al., 2018). In arid environments like the Namib desert, fog can act as a critical source of water that enables life for diverse species and helps sustain ecosystems (e.g., Seely, 1979; Shanyengana, 2002; Ebner et al., 2011; Azúa-
15 Bustos et al., 2011; Roth-Nebelsick et al., 2012; Eckardt et al., 2013; McHugh et al., 2015). As such, knowledge on the exact occurrence and spatiotemporal patterns of fog holds potential ranging from socio-economic benefits to a better understanding of fog processes and fog-driven ecosystems.

As previous studies (e.g., Cermak and Knutti, 2009; Lee et al., 2011; Egli et al., 2016; Nilo et al., 2018) have shown, geostationary satellites have the potential to draw a spatiotemporally coherent picture of the occurrence of fog and low clouds
20 (FLC). However, information on FLC from satellites is typically inferred using separate daytime (e.g., Bendix et al., 2006; Cermak and Bendix, 2008, 2011; Nilo et al., 2018) and night-time (e.g., Ellrod, 1995; Cermak and Bendix, 2007) algorithms, disrupting our view on fog development at a critical time of its life cycle, as typically, shortwave radiative heating starts the

dissipation of fog shortly after sunrise (Tardif and Rasmussen, 2007; Haeffelin et al., 2010; Wærsted et al., 2017). This break in retrieval techniques has thus limited the applicability of satellite-based FLC observations for the analysis of entire fog life cycles. Lee et al. (2011) have developed an approach to continuously monitor fog from a geostationary satellite platform, however, their algorithm essentially consisted of three different day, dusk/dawn and night modes and cannot be described as stationary in time. While for visualization purposes, 24-hour false color image products may be used in case studies, these images are not well-suited for quantitative analyses. The overarching goal of this study is thus to develop and validate a single, diurnally stable satellite retrieval of FLC over land to enable the exploration of currently untapped potentials of satellite-based analyses of FLC.

Past satellite retrieval algorithms of FLC have typically consisted of a sequential application of a number of spectral tests on the basis of individual pixels in the initial classification and a subsequent merging of FLC pixels to entities (e.g., Cermak and Bendix, 2008; Egli et al., 2016). Using only spectral information, FLC can be detected using a combination of brightness temperatures in the middle infrared (MIR) and thermal infrared (TIR) (Cermak and Bendix, 2007, 2008). As during daytime, the MIR has a solar component, separate daytime and night-time retrievals are needed. A stable and fully-diurnal retrieval of FLC would thus have to solely rely on observations in the TIR. However, as Guls and Bendix (1996) state, a purely TIR-based detection of FLC is not possible, as the brightness temperatures of FLC and land surfaces are too similar.

In the realm of image analysis and machine vision, the spatial context of a pixel is often exploited for its classification (Toussaint, 1978). In recent times, the utilization of contextual information has become more frequent in environmental remote sensing techniques (e.g., Zhu and Woodcock, 2012; Bian et al., 2016; Kim et al., 2018). For FLC, distinct spatial patterns that vary over time are to be expected due to the inversion-limited homogeneous cloud top and the coherent movement of FLC patches over the Earth surface. The guiding hypothesis of this study is thus:

By a combination of spectral tests and contextual information, FLC can be robustly detected using only satellite observations in the thermal infrared and enable new insights into the diurnal patterns of FLC and its spatial variability.

In this study, FLC is detected along the south-west African coast with a specific focus on the central Namib desert, where fog is an important part of local ecosystems (Seely, 1979; Shanyengana, 2002). Knowledge on the spatiotemporal occurrence of Namib-region fog is incomplete (Cermak, 2012), and while it is commonly tied to the quasi-persistent stratiform clouds in the Southeast Atlantic (Lancaster et al., 1984; Henschel and Seely, 2008), the processes that lead to the formation of fog are still controversially discussed, as recently, Kaseke et al. (2017b) found indications for frequent water from freshwater sources in fog and related this to radiatively-driven fog formation.

The data used and the novel FLC detection technique are described in section 2, a statistical evaluation of the algorithm is given in section 3. Spatiotemporal patterns of fog and low clouds in the Namib are presented in section 4, conclusions and an outlook are given in section 5.

2 Data and approach

2.1 Geostationary satellite observations

The main data basis for this study are observations from the most recent Spinning-Enhanced Visible and Infrared Imager (SEVIRI) onboard the Meteosat Second Generation (MSG, in this case Meteosat 11) satellite platform. While the SEVIRI instrument’s measurements cover a spectral range from $0.6\mu m$ to $13.4\mu m$ with 11 channels (plus a high-resolution visible channel), here, only the calibrated brightness temperatures from four channels in the TIR are used (8.7 , 10.8 , 12.0 and $13.4\mu m$). The SEVIRI instrument features a repeat rate of 15 minutes (96 hemispheric scans per day), at a spatial resolution of 3 km at nadir (Schmetz et al., 2002). The data used in this study cover the period from 2015–2017 in the region from $13.5^{\circ}S$ – $35^{\circ}S$ and from ~~the coast inland to~~ $2010^{\circ}E$ – $20^{\circ}E$, considering only regions over land.

2.2 Algorithm design

The FLC-detection algorithm has two parts: 1) an initial classification and 2) a contextual plausibility control of detected FLC pixels. The initial classification of a given scene is designed as a decision tree, with sequential application of a) simple spectral thresholds as shown in table -1 and, ~~if needed~~ b) if none of the spectral tests is true, the application of ~~structural image analyses. Sequential a structural image test. Sequential spectral~~ testing stops once a class is determined, the following tests are not carried out. ~~In the case of surface or high cloud classes, no~~ The additional contextual plausibility control is ~~needed~~ only tested for FLC pixels. It should be noted that the algorithm presented here does not differentiate between ground fog and low-level clouds.

Table 1. The thresholds used for different channels and channel combinations in this study with the outcome of the initial classification. Threshold values were determined by systematic visual analysis of SEVIRI scenes and values found in literature (Cermak, 2012).

Channel/combination	Threshold <u>Criterion</u>	Determined class
$12.0\mu m - 8.7\mu m$	< 0.5 <u>K</u>	High cloud
$12.0\mu m - 8.7\mu m$	< 1.0 <u>K</u>	Surface
$12.0\mu m - 8.7\mu m$	> 3.5 <u>K</u>	Surface
$10.8\mu m$	< 276 <u>K</u>	High cloud
$10.8\mu m$	> 293 <u>K</u>	Surface
$13.4\mu m - 8.7\mu m$	< -19 <u>K</u>	Surface
$13.4\mu m - 8.7\mu m$	> -11 <u>K</u>	High cloud

The discrimination of low-level liquid-water and higher-level ice clouds with satellite observations is comparatively easy, especially in the Namib region (Olivier, 1995). In this study, high clouds are identified based on the brightness temperature at $10.8\mu m$ as a proxy for cloud-top temperature, and the difference in $8.7\mu m$ and $12.0\mu m$ or $13.4\mu m$ brightness temperatures as

an indication of ice clouds (Strabala et al., 1994). To avoid subpixel effects of higher-level cloud edges that may lead to false FLC retrievals, the surrounding pixels of detected high clouds are also classified as difficult.

After the identification of high clouds, low clouds and land surfaces need to be discriminated. As already indicated in the introduction, the separation of FLC and land surfaces is much more difficult in the thermal infrared than in other wavelength regions (Guls and Bendix, 1996). While land surfaces can be distinguished from FLC with the described spectral tests in some regions, frequently this is not the case (cf. Fig. 1). In order to robustly separate land surfaces from FLC, additional contextual information is needed. In this case, the brightness temperature difference between at $12.0\mu m$ and $8.7\mu m$ of each scene is compared to two composites. The composites are constructed on the basis of long-term $12.0\mu m - 8.7\mu m$ observations and are intended to represent land-surface structures in cloud-free conditions. The underlying assumption for the construction of the composites is that clouds typically have lower values in the channel difference of $12.0\mu m - 8.7\mu m$ than land surfaces (Cermak, 2012). The two composites are built as follows:

1. A monthly composite is created by using the monthly maximum $12.0\mu m - 8.7\mu m$ value at each SEVIRI time slot. Of these 96 monthly time-slot maxima, the median value is used at each pixel. Monthly composites comprise seasonal variations in land surface properties, but may in some cases be prone to cloud contamination in cloudy months at cloudy locations.
2. Thus, an annual composite is constructed by taking the median of all monthly composites for each pixel. This way, potential local, seasonally occurring cloud contaminations within the monthly composites can be eliminated.

For the separation of land surfaces and FLC, each scene (Fig. 1 a)) is compared to these composites (e.g., Fig. 1 b)) by computing a structural similarity index (SSIM (Wang et al., 2004), python implementation of scikit-image (van der Walt et al., 2014)) between the scene and the composites. The SSIM consists of comparisons of luminance (averages), contrast (standard deviations of zero-centered anomalies) and structure (correlation of normalized values) of two images. In the context of this work, the SSIM compares a moving window of 5x5-pixel image sections of a given scene with the corresponding image sections of each of the composites (Fig. 1 c)). The moving window is optimized to be as small as possible and still be useful for comparing local structures. A high SSIM (in this case > 0.4) gives a clear indication for the pixel to be clear as illustrated in Fig. 1 c). The size of the moving window, as well as the threshold for the SSIM were optimized empirically. The comparison of Fig. 1 d) and 1 e) shows the effect of introducing the SSIM test in the algorithm. It should be noted that the applicability of the SSIM is only given if a) the composite is indeed cloud free and b) the composite exhibits sufficient spatial heterogeneity in the 5x5 pixel window. Consequently, this technique is only applicable over land and not ocean surfaces (no clear, stable spatial structures in the TIR). To ensure this, two quality flags are empirically derived from the composites: Pixels are flagged when a) the coefficient of variation of the 96 monthly time-slot maxima exceeds 0.3, indicating cloud contamination, and b) when the standard deviation within a 5x5 pixel window of the monthly composite is lower than 0.1, indicating insufficient spatial heterogeneity in the specific window of the composite.

~~After this initial classification~~ A situation in which this approach may fail is at higher-level cloud edges. These pixels can be have a similar spectral signature to FLC and can pass the SSIM test, as the partly overlying high cloud reduces the similarity

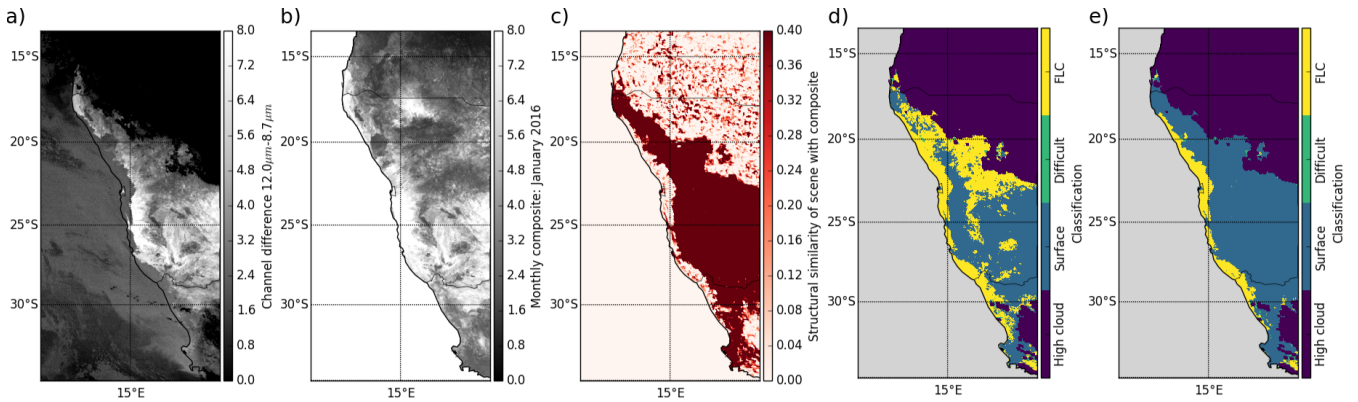


Figure 1. a) An exemplary scene (January 13th, 2016, 05:00 UTC) in the channel combination $12.0\mu\text{m} - 8.7\mu\text{m}$ is compared to b) the monthly composite of January 2016 resulting in c) the structural similarity of the scene with the composite. d) Illustration of the classification results relying on spectral tests only, and e) including the SSIM test. Quality flags are not applied in this example.

with the composites. To avoid such misclassifications, a contextual plausibility control of the detected FLC pixels is conducted after the initial classification. The plausibility of an accurate FLC detection is estimated by analyzing neighboring pixels. Pixel classifications are changed to ‘difficult’, if at least five of their eight directly neighboring pixels are classified as either high cloud or surface due to the SSIM test. As changing a pixel classification to the class ‘difficult’ affects the result of the

5 plausibility control in the direct pixel neighborhood, the plausibility control is iteratively repeated for all FLC pixels until no further changes are possible. After the first iteration, the control mechanism is changed slightly, so that pixels are classified as ‘difficult’ if more than six (instead of five) directly neighboring pixels are classified as either high cloud, surface due to the SSIM test or ‘difficult’ to account for potential control-inherent classification changes.

The introduction of the SSIM test leads to a relative independence of the algorithm from strict thresholds for the separation

10 of FLC and land surfaces. As the monthly and annual composites used for the SSIM test are directly derived from the satellite observations, the algorithm is self-adjusting to the specific characteristics of the data, likely leading to a weaker sensitivity to sensor degradation or platform changes. The technique might thus hold potential for the observation of climatic changes in FLC occurrence. The conceptual design of the algorithm is thought to be applicable to other regions, as long as a valid composite can be constructed from satellite infrared observations.

15 2.3 Validation approach

For the validation of the satellite-derived FLC product, three years (2015–2017) of net radiation measurements from FogNet stations in the central Namib are used. The FogNet station network comprises 11 automated meteorological stations that are aligned in two transects (N-S from 22.97°S – 23.92°S and W-E from 14.46°E – 15.31°E) as illustrated in Fig. 2 a). The stations were installed as part of the Southern African Science Service Centre for Climate Change and Adaptive Land Management

20 (SASSCAL) initiative and offer valuable meteorological measurements in this remote region (Kaseke et al., 2017a). Of the

11 stations, 9 conduct net radiation measurements every minute using the Kipp & Zonen NR-Lite net radiometer. Station measurements are averaged between the start of two SEVIRI time slots to fit its 15-minute temporal resolution. The temporal averaging is also intended to mediate the effects of the different spatial resolutions similar to the approach in Andersen et al. (2017), as borders of advective FLC may be better captured.

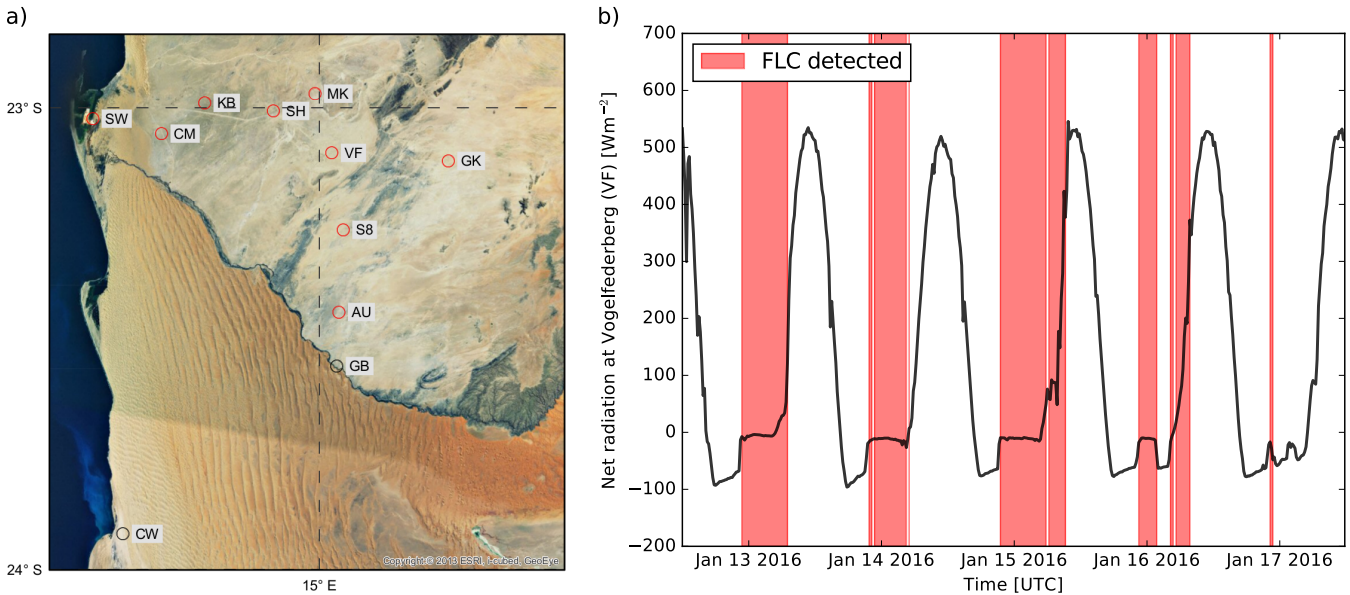


Figure 2. a) Locations of the FogNet stations, abbreviations (station names) are explained in the appendix. Red markers indicate the stations used for validation in this study. b) Exemplary time series of net radiation measurements at Vogelfederberg (VF). Highlighted in red are situations where the satellite algorithm has detected FLC.

5 For validation purposes night-time (solar zenith angle $> 95^\circ$) measurements of net radiation are used to infer the presence of low-level clouds at the stations. At night, upwelling thermal radiation typically far exceeds downwelling radiation in clear conditions, whereas fog or low clouds increase downwelling radiation, leading to a nearly balanced net radiation at ground level (only situations with negative net radiation measurements are used). Figure ??-2 b) illustrates an exemplary 5-day time series of net radiation measurements at Vogelfederberg (VF) and the retrieved occurrence of FLC from co-located satellite observations. At night, the time of FLC occurrence coincides with an abrupt change in net radiation at ground level, from the range of -100 Wm^{-2} / -60 Wm^{-2} to nearly being balanced out at 0 Wm^{-2} . As such, the distribution of night-time net radiation measurements is bound to be bimodal, also found in measurements (cf. Fig. 3 a)). Due to the bimodal nature of the net radiation measurements, a threshold can be defined at the local minimum of its smoothed histogram ((Prewitt and Mendelsohn, 1966; Glasbey, 1993), python implementation of scikit-image (van der Walt et al., 2014)) of the aggregated station measurements to separate clear and FLC situations and create a “ground truth” data set. It should be noted that the distributions of clear and FLC situations are not completely separated, and that as such the validation cannot be expected to be perfect.

The evaluation of the satellite-derived FLC product was performed using a set of confusion matrix tests, as is typically done (e.g., Cermak, 2012; Egli et al., 2016). By comparing the binary (FLC yes or no) information from the satellite product with the ground truth in a 2 by 2 contingency table, each satellite observation can be identified as either a “hit”, “false alarm”, “miss” or “correct negative”. The sum of the four equals the sample size used for the validation. The following statistical measures are computed to evaluate the FLC product: probability of detection (POD - fraction of ground truth FLC that is correctly detected), percent correct (PC - fraction of overall correct classifications), false alarm rate (FAR - fraction of detected FLC that are false alarms), bias score (BS - measure of bias in the classification, overestimation: $BS > 1$, underestimation: $BS < 1$), critical success index (CSI - overall measure of the correctness), and the Heidke skill score (HSS - fractional improvement of the classification over a random classification). The equations for the statistical evaluation measures are given in the appendix.

3 Validation of the algorithm

Figure 3 a) summarizes validation results qualitatively and quantitatively. The red histogram line shows the bimodal distribution of the aggregated night-time net radiation measurements at the nine FogNet stations for the period of 2015–2017 (excluding high cloud and ‘difficult’ observations), whereas the blue line represents the same station measurements, filtered for satellite-detected FLC situations. High clouds and ‘difficult’ situations (grey line) are excluded from the validation as they cannot be clearly separated from neither clear nor FLC situations with surface net radiation measurements. It is apparent that most of the ground-truth FLC situations are captured by the satellite product (POD of 0.94), with only few false alarms (FAR of 0.12). The product features a high accuracy (PC of 0.97) with only a marginal positive bias (BS of 1.01). This leads to an overall high quality of the classification as expressed by a CSI of 0.83 and a HSS of 0.89. All in all, the validation is based on 325,836 co-located observations. As illustrated in Fig. 3 b), there is relatively little variation in the validation results between the different FogNet stations. The inlandmost station Garnet Koppie (GK) accounts for all outliers in Fig. 3 b) and has the highest false alarm rate. [Here](#), FLC occurrence frequency is thus overestimated, leading to lower overall skill. This can be attributed to the rarity of FLC occurrence in this region (cf. Fig. 4 a)), [where a single, random misclassification has a higher relative impact](#). The overall accuracy of the product is considerably higher than current state-of-the-art algorithms for Europe (e.g., Cermak and Knutti, 2009; Egli et al., 2016; Nilo et al., 2018), probably in part due to the more complex and diverse terrain and cloud structures that have to be discriminated there, and comparable to the SEVIRI-based FLC product for this region by Cermak (2012). However, the algorithm in Cermak (2012) is tailored to two specific times of the day and includes satellite observations in the visible and near-infrared spectrum. These comparisons with validation results from other studies are of an indicative nature though, as differences could also be caused by the reference data used as ground truth, or different periods considered.

It should be noted that the comparison of station-level net radiation measurements with a binary satellite product is certainly not perfect. Two potential sources of error may specifically affect the validation results:

- A large difference in spatial resolution of the two observations exists. While station measurements are temporally averaged with the intent of approximating spatial variation within the area covered by a SEVIRI pixel (as in Andersen et al., 2017), the difference in field of view cannot be neglected. The difference in spatial resolution is expected to randomly

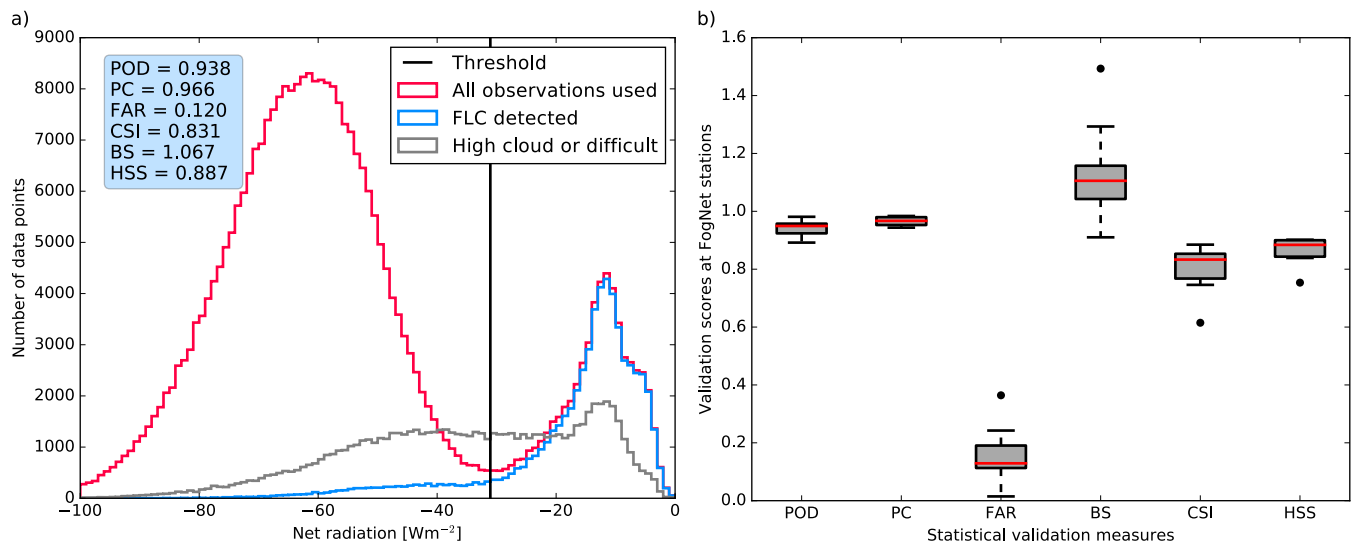


Figure 3. a) The aggregated validation of the satellite-derived FLC product at all stations of the time period of 2015-2017, b) the variability of validation measures across the used FogNet stations. The median is represented in boxes by the red horizontal line, the boxes show the interquartile range, the whiskers expand the boxes by up to 1.5 interquartile ranges. The station GK accounts for all outliers.

lead to erroneous comparisons in both ways and thus not markedly affect the validation results. This may explain the overestimation of FLC occurrence frequency at GK, as the effect of this small random error on the validation measures scales inversely with FLC occurrence.

- Net radiation measurements are binarized in order to create a ‘ground truth’, even though the two modes of the distribution are not perfectly separated. For measurements close to the threshold value, an accurate discrimination of ‘FLC’ and ‘not FLC’ is not possible. This is likely to artificially impair validation results, and is manifested in a higher frequency of false alarms and misses for situations where net radiation measurements are close to the threshold value.

In addition to the validation described here, considerable effort has gone into the systematic evaluation of classifications of individual scenes as illustrated in Fig. 1. In light of these arguments, the validation results give confidence in the skill of the novel algorithm and the derived FLC product, which is well suited for the purpose of characterizing the spatial and temporal patterns of FLC in the Namib desert.

4 Spatiotemporal patterns of fog and low clouds in the Namib

Figure 4 a) shows the average FLC occurrence frequency in the study area over the study period. FLC most frequently occurs in the plane regions along the coastline (cf. Fig. 4 c)). Three core regions of FLC occurrence can be identified in the Angolan parts of the Namib at around 16–17°S, in a region stretching from Walvis Bay at 23°S northwards to about 18°S and at Alexander bay at around 28°S. The patterns closely resemble those found by Olivier (1995) and Cermak (2012) qualitatively

and quantitatively. As illustrated by Fig. 4 b), in some regions a reliable retrieval of FLC is often not possible. This can be related to frequent occurrences of high clouds in the tropical northern parts of the study area, too little spatial variance in the clear-sky composites, as e.g. in the region of the Etendeka flood basalts at 20°S and 14°E (Bauer et al., 2000), or where the monthly composites were not stationary in time in some northeastern parts of the study area.

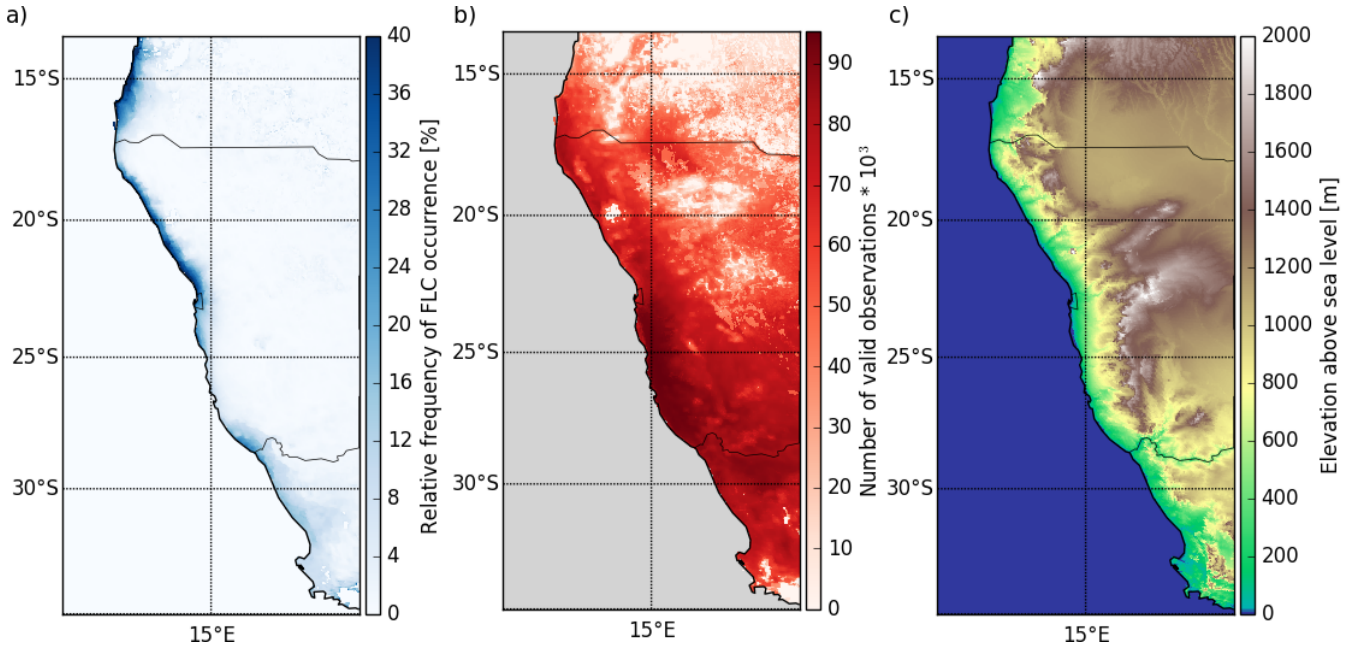


Figure 4. a) Average relative frequency of occurrence of FLC along the southwestern African coast during the period 2015–2017. b) Number of observations where the retrieval of FLC is possible (i.e., no high clouds and no composite-related quality flags). c) Digital elevation model of the study area.

5 Figure 5 illustrates the average diurnal cycle of FLC at all FogNet stations as retrieved from satellite. It is apparent that at stations close to the coast (purple–blueish lines), FLC occurs much more frequently than further inland. The general diurnal behavior of FLC is similar at all stations, with a distinct peak of FLC occurrence at night between 3:30 UTC with 9 % relative occurrence frequency of FLC at Garnet Koppie (GK) and 6:15 UTC with 64 % at SW, and typically a fairly fast dissipation shortly after sunrise. However, distinct features of the diurnal cycle of FLC can be identified at some stations. At the station

10 Saltworks (SW), located directly at the coastline (cf. Fig. 2), FLC tends to start to occur in the early afternoon, several hours before other stations are overcast. This could potentially be related to local land-sea winds that transport FLC from the ocean over land during this time. In general, a time lag exists in the average start of the diurnal cycle, as well as the time of the diurnal maximum occurrence frequency that seem to be dependent on the longitudinal position of the stations, which approximates their distance to the coastline. This time lag is indicative of a region that is generally dominated by FLC that forms at the coast

15 or over the ocean and is then advected inland, as described by Olivier and Stockton (1989), Olivier (1995) and Eckardt et al. (2013), contrasting more recent findings by Kaseke et al. (2017b). As FLCs are advected inland, locations close to the coastline

are overcast first. At the coast, FLC not only occurs earlier in the day, but typically also persists longer than further inland, where FLC tends to start dissipating before sunrise. The dissipation rate (negative δFLS occurrence/ δ time in the morning hours) at inland stations is considerably lower than closer to the coast, which can probably be attributed to stronger solar irradiance later in the day. It should be noted that the figure represents highly aggregated information on the average diurnal cycle of FLC and does not preclude other formation or dissipation processes.

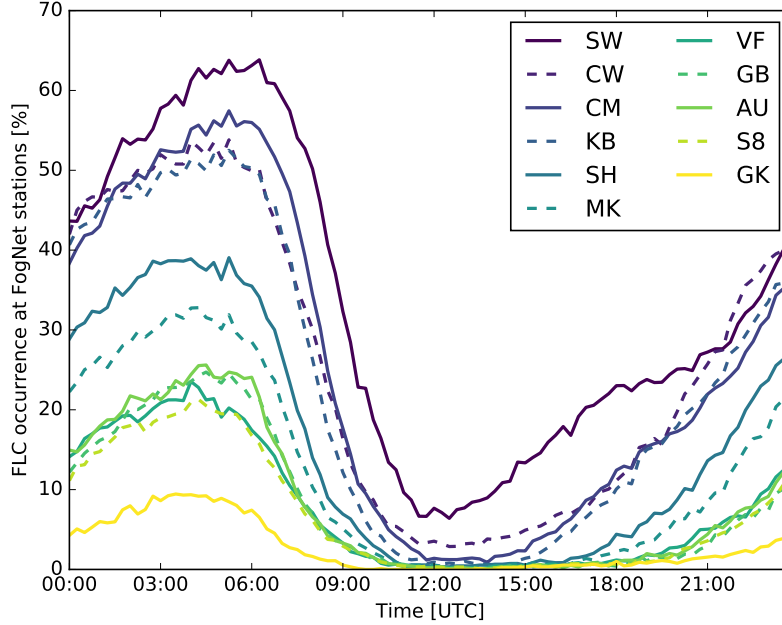


Figure 5. Average diurnal cycle of FLC occurrence at FogNet stations. Lines are colored by the longitudinal rank of each specific station, with coastal stations in dark colors and stations further inland in brighter colors. Every other line is dashed with the only purpose of helping their visual discrimination.

As a detailed statistical analysis of the full life cycle of FLC and its seasonal behavior is not within the scope of this paper, this example is intended to illustrate the potential of the novel algorithm for the analysis of spatiotemporal patterns of fog and low clouds over land.

5 Conclusions and Outlook

- 10 The central aim of this study was to develop the first thermal-infrared-only and thereby diurnally stable satellite retrieval of fog and low clouds. The algorithm design uses a combination of spectral tests and contextual information in order to retrieve FLC. A structural similarity index (Wang et al., 2004) is computed comparing each satellite scene with cloud-free composites to discriminate between land surfaces and FLC. The novel algorithm is thereby relatively independent from exact spectral thresholds and thus has the potential to be easily applied to other regions and to generate climate data sets. An operational

deployment is possible with small adjustments in algorithm design and holds potential for the prediction of FLC dissipation. In the future, the value of the derived FLC product may be further enhanced with a retrieval of cloud-base altitudes for the separation of low-level clouds from ground fog.

The algorithm was applied to detect spatial and temporal patterns of Namib-region FLC and was validated against net radiation measurements at the FogNet station network located in the central Namib region. The algorithm shows good overall detection accuracy, with few false alarms and a small positive bias, and relatively little station-to-station variation. FLCs most frequently occur close to the southwest-African coastline, with Walvis Bay among the core regions, confirming findings from Olivier (1995) and Cermak (2012). The diurnal cycle of FLC is described for the locations of the FogNet stations. Marked differences in the timing of FLC occurrence and temporal persistence are found. The time lag of FLC occurrence from the coast to inland regions may be attributed to the advection of FLC from the coast inland, a typical feature of the region (Henschel and Seely, 2008; Olivier, 1995). FLC persists longer in coastal regions than further inland and but then dissipates more rapidly after sunrise.

The study shows the potential of the diurnal FLC algorithm to study fog and low-cloud patterns, processes and life cycles. Future research efforts should focus on coherently mapping diurnal characteristics of FLC, further understanding fog formation processes specifically considering knowledge on the factors that drive low-level clouds in the Southeast Atlantic (e.g., Adebiyi et al., 2018; Andersen and Cermak, 2015; Fuchs et al., 2017, 2018), and potentially detecting changes in FLC occurrence. This may best be achieved by combining the satellite retrievals with numerical modeling and ground-based observations, and will be undertaken within the ongoing research project Namib Fog Life Cycle Analysis (NaFoLiCA).

Code and data availability. Code and data are available on request.

20 Appendix A: Equations of statistical validation measures

$$\text{POD} = \frac{a}{a+c}$$

$$\text{PC} = \frac{a+d}{a+b+c+d}$$

$$\text{FAR} = \frac{b}{a+b}$$

$$\text{CSI} = \frac{a}{a+b+c}$$

$$25 \quad \text{BS} = \frac{a+b}{a+c}$$

$$\text{HSS} = \frac{2(ad-bc)}{(a+c)(c+d)+(a+b)(b+d)}$$

with a = number of hits, b = number of false alarms, c = number of misses and d = number of correct negatives

Appendix B: Abbreviations of FogNet stations

Aussinanis: AU

Coastal Met: CM

Conception Water: CW

5 Garnet Koppie: GK

Gobabeb Met: GB

Kleinberg: KB

Marble Koppie: MK

Saltworks: SW

10 Sophies Hoogte: SH

Station 8: S8

Vogelfederberg: VF

Author contributions. H. Andersen had the conceptual idea for the algorithm, developed the method and wrote the software, obtained and analyzed the data sets, conducted the original research and wrote the manuscript. J. Cermak contributed to method design, manuscript
15 preparation and the interpretation of findings.

Competing interests. The authors declare that they have no conflict of interest.

Acknowledgements. Funding for this study was provided by Deutsche Forschungsgemeinschaft (DFG) in the project Namib Fog Life Cycle Analysis (NaFoLiCA), CE 163/7-1. The authors would like to thank the Gobabeb Research and Training Centre for access to the station measurements and gratefully acknowledge Folke Olesen, Frank Götsche, Mary Seely and Roland Vogt for their efforts in the field. The
20 authors also thank Julia Fuchs, Frank Götsche, Folke Olesen, Roland Stirnberg and Roland Vogt for helpful discussions [and two anonymous reviewers for helpful comments on the manuscript.](#)

References

- Adebiyi, A. A., Zuidema, P., and Sciences, A.: Low cloud cover sensitivity to biomass-burning aerosols and meteorology over the southeast Atlantic, *Journal of Climate*, 2, <https://doi.org/10.1175/JCLI-D-17-0406.1>, 2018.
- Andersen, H. and Cermak, J.: How thermodynamic environments control stratocumulus microphysics and interactions with aerosols, *Environmental Research Letters*, 10, 24 004, <https://doi.org/10.1088/1748-9326/10/2/024004>, <http://dx.doi.org/10.1088/1748-9326/10/2/024004>, 2015.
- Andersen, H., Cermak, J., Fuchs, J., Knutti, R., and Lohmann, U.: Understanding the drivers of marine liquid-water cloud occurrence and properties with global observations using neural networks, *Atmospheric Chemistry and Physics Discussions*, in review, <https://doi.org/10.5194/acp-2017-282>, <http://www.atmos-chem-phys-discuss.net/acp-2017-282/>, 2017.
- 10 Azúa-Bustos, A., González-Silva, C., Mancilla, R. A., Salas, L., Gómez-Silva, B., McKay, C. P., and Vicuña, R.: Hypolithic Cyanobacteria Supported Mainly by Fog in the Coastal Range of the Atacama Desert, *Microbial Ecology*, 61, 568–581, <https://doi.org/10.1007/s00248-010-9784-5>, 2011.
- Bauer, K., Neben, S., Schreckenberger, B., Emmermann, R., Hinz, K., Fechner, N., Gohl, K., Schulze, A., Trumbull, R. B., and Weber, K.: Deep structure of the Namibia continental margin as derived from integrated geophysical studies, *Journal of Geophysical Research*, 105, 25 829, <https://doi.org/10.1029/2000JB900227>, <http://doi.wiley.com/10.1029/2000JB900227>, 2000.
- 15 Bendix, J., Thies, B., Nauß, T., and Cermak, J.: A feasibility study of daytime fog and low stratus detection with TERRA/AQUA-MODIS over land, *Meteorological Applications*, 13, 111, <https://doi.org/10.1017/S1350482706002180>, <http://doi.wiley.com/10.1017/S1350482706002180>, 2006.
- Bian, J., Li, A., Liu, Q., and Huang, C.: Cloud and snow discrimination for CCD images of HJ-1A/B constellation based on spectral signature and spatio-temporal context, *Remote Sensing*, 8, <https://doi.org/10.3390/rs8010031>, 2016.
- 20 Cermak, J.: Low clouds and fog along the South-Western African coast - Satellite-based retrieval and spatial patterns, *Atmospheric Research*, 116, 15–21, <https://doi.org/10.1016/j.atmosres.2011.02.012>, <http://linkinghub.elsevier.com/retrieve/pii/S0169809511000615>, 2012.
- Cermak, J. and Bendix, J.: Dynamical Nighttime Fog/Low Stratus Detection Based on Meteosat SEVIRI Data: A Feasibility Study, *Pure and Applied Geophysics*, 164, 1179–1192, <https://doi.org/10.1007/s00024-007-0213-8>, <http://www.springerlink.com/index/10.1007/s00024-007-0213-8>, 2007.
- 25 Cermak, J. and Bendix, J.: A novel approach to fog/low stratus detection using Meteosat 8 data, *Atmospheric Research*, 87, 279–292, <https://doi.org/10.1016/j.atmosres.2007.11.009>, <http://www.sciencedirect.com/science/article/pii/S0169809507002074>, 2008.
- Cermak, J. and Bendix, J.: Detecting ground fog from space – a microphysics-based approach, *International Journal of Remote Sensing*, 32, 3345–3371, <https://doi.org/10.1080/01431161003747505>, <http://dl.acm.org/citation.cfm?id=2003147.2003154>, 2011.
- 30 Cermak, J. and Knutti, R.: Beijing Olympics as an Aerosol Field Experiment, *Geophysical Research Letters*, 36, L10 806, <https://doi.org/10.1029/2009GL038572>, <http://www.iac.ethz.ch/people/knuttir/papers/cermak09grl.pdf>, 2009.
- Ebner, M., Miranda, T., and Roth-Nebelsick, A.: Efficient fog harvesting by *Stipagrostis sabulicola* (Namib dune bushman grass), *Journal of Arid Environments*, 75, 524–531, <https://doi.org/10.1016/j.jaridenv.2011.01.004>, <http://www.sciencedirect.com/science/article/pii/S0140196311000061>, 2011.
- 35 Eckardt, F., Soderberg, K., Coop, L., Muller, A., Vickery, K., Grandin, R., Jack, C., Kapalanga, T., and Henschel, J.: The nature of moisture at Gobabeb, in the central Namib Desert, *Journal of Arid Environments*, 93, 7–19, <https://doi.org/10.1016/j.jaridenv.2012.01.011>, <http://www.sciencedirect.com/science/article/pii/S0140196312000432>, 2013.

- Egli, S., Thies, B., Dröner, J., Cermak, J., and Bendix, J.: A 10 year fog and low stratus climatology for Europe based on Meteosat Second Generation data, *Quarterly Journal of the Royal Meteorological Society*, pp. 530–541, <https://doi.org/10.1002/qj.2941>, <http://doi.wiley.com/10.1002/qj.2941>, 2016.
- Egli, S., Thies, B., and Bendix, J.: A Hybrid Approach for Fog Retrieval Based on a Combination of Satellite and Ground Truth Data, *Remote Sensing*, 10, 26, <https://doi.org/10.3390/rs10040628>, 2018.
- Ellrod, G. P.: Advances in the Detection and Analysis of Fog at Night Using GOES Multispectral Infrared Imagery, [https://doi.org/10.1175/1520-0434\(1995\)010<0606:AITDAA>2.0.CO;2](https://doi.org/10.1175/1520-0434(1995)010<0606:AITDAA>2.0.CO;2), 1995.
- Fuchs, J., Cermak, J., Andersen, H., Hollmann, R., and Schwarz, K.: On the Influence of Air Mass Origin on Low-Cloud Properties in the Southeast Atlantic, *Journal of Geophysical Research: Atmospheres*, 122, 11,076–11,091, <https://doi.org/10.1002/2017JD027184>, 2017.
- 10 Fuchs, J., Cermak, J., and Andersen, H.: Building a cloud in the Southeast Atlantic: Understanding low-cloud controls based on satellite observations with machine learning, *Atmospheric Chemistry and Physics Discussions*, 2, 1–23, <https://doi.org/10.5194/acp-2018-593>, 2018.
- Glasbey, C. A.: An Analysis of Histogram-Based Thresholding Algorithms, *CVGIP: Graphical Models and Image Processing*, 55, 532–537, <https://doi.org/10.1006/cgip.1993.1040>, 1993.
- 15 Guls, I. and Bendix, J.: Fog detection and fog mapping using low cost Meteosat-WEFAX transmission, *Meteorological Applications*, 3, 179–187, <https://doi.org/10.1002/met.5060030208>, 1996.
- Haefelin, M., Bergot, T., Elias, T., Tardif, R., Carrer, D., Chazette, P., Colomb, M., Drobinski, P., Dupont, E., Dupont, J. C., Gomes, L., Musson-Genon, L., Pietras, C., Plana-Fattori, A., Protat, A., Rangognio, J., Raut, J. C., Rémy, S., Richard, D., Sciare, J., and Zhang, X.: PARISFOG: Shedding new light on fog physical processes, *Bulletin of the American Meteorological Society*, 91, 767–783, <https://doi.org/10.1175/2009BAMS2671.1>, 2010.
- 20 Henschel, J. and Seely, M.: Ecophysiology of atmospheric moisture in the Namib Desert, *Atmospheric Research*, 87, 362–368, <https://doi.org/10.1016/j.atmosres.2007.11.015>, 2008.
- Kaseke, K. F., Tian, C., Wang, L., Seely, M., Vogt, R., Wassenaar, T., and Mushi, R.: Fog Spatial Distributions over the Central Namib Desert - An Isotope Approach, *Aerosol and Air Quality Research*, pp. 1–13, <https://doi.org/10.4209/aaqr.2017.01.0062>, <http://www.aaqr.org/doi/10.4209/aaqr.2017.01.0062>, 2017a.
- 25 Kaseke, K. F., Wang, L., and Seely, M. K.: Nonrainfall water origins and formation mechanisms, *Science Advances*, 3, e1603131, <https://doi.org/10.1126/sciadv.1603131>, <http://advances.sciencemag.org/lookup/doi/10.1126/sciadv.1603131>, 2017b.
- Kim, M., Lee, J., and Im, J.: Deep learning-based monitoring of overshooting cloud tops from geostationary satellite data, *GIScience & Remote Sensing*, 00, 1–30, <https://doi.org/10.1080/15481603.2018.1457201>, <https://doi.org/10.1080/15481603.2018.1457201>, 2018.
- 30 Lancaster, J., Lancaster, N., and Seely, M. K.: Climate of the central Namib desert, *Madoqua*, 14, 5–61, 1984.
- Lee, J. R., Chung, C. Y., and Ou, M. L.: Fog detection using geostationary satellite data: Temporally continuous algorithm, *Asia-Pacific Journal of Atmospheric Sciences*, 47, 113–122, <https://doi.org/10.1007/s13143-011-0002-2>, 2011.
- McHugh, T. A., Morrissey, E. M., Reed, S. C., Hungate, B. A., and Schwartz, E.: Water from air: An overlooked source of moisture in arid and semiarid regions, *Scientific Reports*, 5, 1–6, <https://doi.org/10.1038/srep13767>, <http://dx.doi.org/10.1038/srep13767>, 2015.
- 35 Nilo, S., Romano, F., Cermak, J., Cimini, D., Ricciardelli, E., Cersosimo, A., Di Paola, F., Gallucci, D., Gentile, S., Geraldini, E., Larosa, S., Ripepi, E., and Viggiano, M.: Fog Detection Based on Meteosat Second Generation-Spinning Enhanced Visible and InfraRed Imager High Resolution Visible Channel, *Remote Sensing*, 10, 541, <https://doi.org/10.3390/rs10040541>, <http://www.mdpi.com/2072-4292/10/4/541>, 2018.

- Olivier, J.: Spatial distribution of fog in the Namib, *Journal of Arid Environments*, 29, 129–138, [https://doi.org/10.1016/S0140-1963\(05\)80084-9](https://doi.org/10.1016/S0140-1963(05)80084-9), <http://linkinghub.elsevier.com/retrieve/pii/S0140196305800849>, 1995.
- Olivier, J. and Stockton, P. L.: The influence of upwelling extent upon fog incidence at Lüderitz, southern Africa, *International Journal of Climatology*, 9, 69–75, <https://doi.org/10.1002/joc.3370090106>, 1989.
- 5 Prewitt, J. M. S. and Mendelsohn, M. L.: The Analysis of Cell Images*, *Annals of the New York Academy of Sciences*, 128, 1035–1053, <https://doi.org/10.1111/j.1749-6632.1965.tb11715.x>, <http://doi.wiley.com/10.1111/j.1749-6632.1965.tb11715.x>, 1966.
- Roth-Nebelsick, A., Ebner, M., Miranda, T., Gottschalk, V., Voigt, D., Gorb, S., Stegmaier, T., Sarsour, J., Linke, M., and Konrad, W.: Leaf surface structures enable the endemic Namib desert grass *Stipagrostis sabulicola* to irrigate itself with fog water., *Journal of the Royal Society, Interface / the Royal Society*, 9, 1965–74, <https://doi.org/10.1098/rsif.2011.0847>, <http://www.pubmedcentral.nih.gov/articlerender.fcgi?artid=3385753&tool=pmcentrez&rendertype=abstract>, 2012.
- 10 Schmetz, J., Pili, P., Tjemkes, S., Just, D., Kerkmann, J., Rota, S., and Ratier, A.: An Introduction to Meteosat Second Generation (MSG), *Bulletin of the American Meteorological Society*, 83, 977–992, <https://doi.org/10.1175/BAMS-83-7-Schmetz-1>, 2002.
- Seely, M. K.: Irregular fog as a water source for desert dune beetles, *Oecologia*, 42, 213–227, <https://doi.org/10.1007/BF00344858>, <http://www.springerlink.com/content/x34r526hn5075653>, 1979.
- 15 Shanyengana, E.: Exploring fog as a supplementary water source in Namibia, *Atmospheric Research*, 64, 251–259, [https://doi.org/10.1016/S0169-8095\(02\)00096-0](https://doi.org/10.1016/S0169-8095(02)00096-0), 2002.
- Strabala, K. I., Ackerman, S. A., and Menzel, W. P.: Cloud Properties inferred from 8-12- μ m Data, [https://doi.org/10.1175/1520-0450\(1994\)033<0212:CPIFD>2.0.CO;2](https://doi.org/10.1175/1520-0450(1994)033<0212:CPIFD>2.0.CO;2), 1994.
- Tardif, R. and Rasmussen, R. M.: Event-based climatology and typology of fog in the New York City region, *Journal of Applied Meteorology and Climatology*, 46, 1141–1168, <https://doi.org/10.1175/JAM2516.1>, 2007.
- 20 Toussaint, G. T.: The use of context in pattern recognition, *Pattern Recognition*, 10, 189–204, [https://doi.org/10.1016/0031-3203\(78\)90027-4](https://doi.org/10.1016/0031-3203(78)90027-4), 1978.
- van der Walt, S., Schönberger, J. L., Nunez-Iglesias, J., Boulogne, F., Warner, J. D., Yager, N., Gouillart, E., and Yu, T.: scikit-image: image processing in Python, *PeerJ*, 2, e453, <https://doi.org/10.7717/peerj.453>, <https://peerj.com/articles/453>, 2014.
- 25 Wærsted, E. G., Haeffelin, M., Dupont, J. C., Delanoë, J., and Dubuisson, P.: Radiation in fog: Quantification of the impact on fog liquid water based on ground-based remote sensing, *Atmospheric Chemistry and Physics*, 17, 10811–10835, <https://doi.org/10.5194/acp-17-10811-2017>, 2017.
- Wang, Z., Bovik, A. C., Sheikh, H. R., and Simoncelli, E. P.: Wavelets for Image Image quality assessment: From error visibility to structural similarity, *IEEE Transactions on Image Processing*, 13, 600–612, <https://doi.org/10.1109/TIP.2003.819861>, 2004.
- 30 Zhu, Z. and Woodcock, C. E.: Object-based cloud and cloud shadow detection in Landsat imagery, *Remote Sensing of Environment*, 118, 83–94, <https://doi.org/10.1016/j.rse.2011.10.028>, <http://dx.doi.org/10.1016/j.rse.2011.10.028>, 2012.