

Introduction

We thank referee #2 for his/her careful reading, comments and suggestions which we address in the following. The authors' answers are printed in italics:

Remark: The figure and page numbers in the referee comments are corresponding to the original manuscript. If not stated otherwise, figure and equation numbers in the authors' answers are referring to the revised, marked-up manuscript version (showing the changes made) which can be found at the end of this text.

General comments

- “The authors included a paragraph in the introduction, which addressed my initial concerns about the manuscript (i.e., novelty). This is well done. However, I feel it would help to summarize the advances in regard to older, similar studies, again in the conclusion. Here, the authors mention that the study advances on prior frameworks, but specifically highlighting the limitations of these older studies and the advances would highlight the impact of the submitted work. One or two sentences should suffice.”

→ *Thank you very much for your time and effort in compiling this thorough and detailed review! At the end of this text you will find a detailed track change for the revised manuscript. We agree that such a conclusion was missing so far in our manuscript. For this reason, we added and modified the following paragraph in the conclusion section:*

Page 37, line 8ff:

Up to now, their approach could not directly applied to realistic cloud side measurements (e.g. specMACS on HALO) since their studies lack the varying geometries of an airborne perspective. Furthermore, the effective radius was only parameterized and not directly calculated by a microphysical model. Moreover, Zinner et al. (2008) used the line of sight method to associate the forward modeled radiance with r_{eff} found at the first cloudy grid box. To advance the technique to realistic airborne measurements, this study addressed following scientific objectives to overcome these limitations:

- 1. Extend the existing approach to realistic airborne perspectives and develop methods to test the sensitivity of reflected radiances from cloud sides to cloud droplet radius, where the observer position is located within the cloud field. To this end, methods were developed to identify suitable observation positions within a model cloud field and to calculate an apparent effective radius for each forward modeled sensor pixel.*
- 2. In this course, 3D radiative effects caused by the unknown cloud surface orientation were investigated. A technique was proposed to mitigate their impact on cloud droplet size retrievals by putting pixel in context with their surrounding.*
- 3. Finally, an effective radius retrieval for the cloud side perspective was developed and tested for cloud scenes which were used during the retrieval development, as well as for unknown scenes.*

(...)

- “The paper mentions that the retrieval is designed to drive the retrieval of cloud properties for observations performed with their own specMacs instrument. The authors point out several times that the retrieval conditions are designed to mimic the conditions encountered during these campaigns. Unfortunately, the sampled measurement, field campaign/campaigns and the encountered conditions are never explicitly mentioned anywhere in the paper. From what I can gather from the tables and figures, the observed clouds during the specMacs employment were small cumuli, low flight altitudes of < 2 km, cloud top heights between 1.5 and 2 km, CCN concentrations up to 1000 cm^{-3} , possible solar zenith angles up to 67° , the airplane about 2 – 3 km away from the clouds. Is this correct? From my quick research the measurements were performed with the European HALO aircraft; did you really fly in an altitude of < 2 km? I feel it would help to at least mention the campaigns and the overall conditions encountered during the measurement flights.”

→ *Thank you for this comments and questions. You are right in your assumption that the proposed retrieval is focused on the liquid part of convective liquid water clouds, e.g., Cumuli and Cumuli congesti and was designed for specMACS on HALO. As you have already guessed, specMACS measurements of these clouds were performed during the ACRIDICON-CHUVA campaign (Wendisch et al., 2016). Regarding the flight altitude of around 2 km, we refer you to Fig. 7 in Wendisch et al. (2016). Before the developing convection was probed in profile flights, the aerosol background and the small-scale convection was probed in their early stages in low-level flight legs between 1 km to 3 km altitude. To introduce the encountered conditions, we now added following paragraph to Section 1.1 (“Scientific objectives and scope of this work”):*

Page 3, line 19ff:

*The target of this work is the liquid part of convective liquid water clouds, e.g., Cumulus mediocris, Cumulus congestus and Trade-wind cumulus, which exhibit well-developed cloud sides. During September 2014, images of such cloud sides were acquired with the **spectrometer** of the **Munich Aerosol Cloud Scanner** (specMACS, Ewald et al., 2016) over the Amazonian rainforest near Manaus, Brazil. The measurements were performed during the ACRIDICON-CHUVA campaign (Wendisch et al., 2016) during which the specMACS instrument was deployed on the German research aircraft HALO (Krautstrunk and Giez, 2012), mounted in a side-looking configuration. The campaign focused on aerosol-cloud-precipitation interactions over the Amazon rain forest. More specific, the campaign investigated the impact of wildfire aerosols on cumulus clouds and on their later development into deep convection. During the campaign flights, the aerosol background and the small-scale convection in their early stages was probed in low-level flight legs between 1 km to 3 km altitude. At cloud base level, mean cloud condensation nuclei (CCN) concentrations ranged between 250 cm^{-3} and 2000 cm^{-3} (Andreae et al., 2018). The specMACS measurements were done of smaller cumulus clouds in a distance of 2 km to 6 km and with top heights between 1.5 km and 3 km. Subsequently, vertical profile flights were performed to measure the microphysical properties of the developing convection in-situ. This manuscript (Part 1) develops a statistical effective radius retrieval for these non-glaciated cumulus clouds which were measured during the low-level flights. (...)*

We hope that this paragraph now gives the reader a better understanding of the conditions the retrieval was designed for.

- “I would recommend to thoroughly proofread the manuscript, if possible by a native English speaker. Some sentences are awkward, there are a number of extra words and punctuation marks that can be removed, some citations are not implemented correctly, and I feel some sentences can either be split up or readability can be improved by commas.”

→ *Thank you for this suggestion. We went through the manuscript once again to correct for grammar, spelling, wrong citations and punctuation. To further improve the readability, a native English speaker re-edited the manuscript. For a detailed track change, the reader is referred to the revised, marked-up manuscript version at the end of this text.*

- “The derived moments from the LES droplet size spectra are used to derive the “truth” for the retrieval comparison. Not only would I recommend to avoid scientifically wrong designations like “truth” here, the process of deriving the LES variables for r_{eff} and LWP is not straightforward and induces more uncertainty; see Alexandrov et al. (2012); Miller et al. (2016); Zhang et al. (2017), Miller et al. (2018). A lot more information is needed here. How did you average each profile within each height, how did you incorporate weighting functions, etc.”

→ *Thank you very much for pointing this out. We are fully aware of the complicated process of deriving LES variables for r_{eff} . We are confident that we correctly addressed all required steps to infer r_{eff} , e.g. the step to convert LES moments to r_{eff} and the step to determine the apparent effective radius of cloud sides in case of inhomogeneous cloud microphysics. Your comment made us realize that we should improve the description of these*

two steps to enhance the reproducibility of our study. For this reason, we now included Equations 5-9 in Section 2.4 (“Cumulus cloud model”) to describe the conversion from the model particle size distribution to model effective radius r_{eff} for each model grid box:

Page 7, line 21ff:

Using Equation 5-8, effective radius r_{eff} , liquid water content LWC and total cloud droplet concentration N_d can be calculated from mass mixing ratios m_i in g kg^{-1} and cloud droplet mixing ratios n_i in kg^{-1} given for the 33 LES size bins:

$$r_i(x, y, z) = \sqrt[3]{\frac{m_i(x, y, z)}{n_i(x, y, z)} \frac{3}{4\pi\rho_w}}, \quad (1)$$

$$r_{\text{eff}}(x, y, z) = \frac{\sum_{i=1}^{33} r_i^3(x, y, z) n_i(x, y, z) \Delta r_i}{\sum_{i=1}^{33} r_i^2(x, y, z) n_i(x, y, z) \Delta r_i}, \quad (2)$$

$$\text{LWC}(x, y, z) = \sum_{i=1}^{33} m_i(x, y, z) \rho_{\text{air}}(x, y, z), \quad (3)$$

$$N_d(x, y, z) = \sum_{i=1}^{33} n_i(x, y, z) \rho_{\text{air}}(x, y, z). \quad (4)$$

To improve upon the description of the second step (the conversion from model effective radius r_{eff} to visible $\langle r_{\text{eff}} \rangle_{\text{app}}$ at cloud side), we now try to better introduce our approach in Section 3.2 (“Determination of the apparent effective radius”) to obtain $\langle r_{\text{eff}} \rangle_{\text{app}}$ during the Monte Carlo tracing of photons:

Page 12, line 2ff:

3.2 Determination of the apparent effective radius

As various studies have pointed out, the process of deriving the LES variables for r_{eff} in the first place is not straightforward (Alexandrov et al., 2012; Miller et al., 2016; Zhang et al., 2017; Miller et al., 2018). First, r_{eff} has to be derived from model parameters which describe the particle size distribution. This step was explained in Section 2.4 by Equation 5-8. Secondly, an approach to infer the visible effective radius has to be developed in case of inhomogeneous cloud microphysics. In their statistical retrieval approach, Zinner et al. (2008) traced along the line of sight of each sensor pixel until hitting the first cloudy model grid box from which they selected their r_{eff} corresponding to the observed radiances. This method has its limitations when it comes to highly structured cloud sides with horizontally inhomogeneous microphysics.

In our approach, we calculate radiances $L_{0.87}$, $L_{2.10}$ and the apparent effective radius $\langle r_{\text{eff}} \rangle_{\text{app}}$ for each pixel. For this reason, we do not have to average each profile within each height. In contrast, we have a direct co-registration of radiances and microphysics. In addition, a weighting function is directly incorporated by the Monte Carlo tracing of photons to obtain the apparent effective radius"

This is explained on page 12, line 17ff:

The co-registration of responsible cloud droplet sizes with modeled radiances is essential. Besides the observation perspective, this apparent effective radius $\langle r_{\text{eff}} \rangle_{\text{app}}$ also depends on the observed wavelength since different scattering and absorption coefficients lead to different cloud penetration depths. In the following, a technique will be introduced to obtain $\langle r_{\text{eff}} \rangle_{\text{app}}$ during the Monte Carlo tracing of photons. As discussed by Platnick (2000), there exist analytical as well as statistical methods to consider the contribution of each cloud layer to the apparent effective radius $\langle r_{\text{eff}} \rangle_{\text{app}}$. Advancing the one-dimensional weighting procedures of Platnick (2000) and Yang et al. (2003), the 3D tracing of photons in MYSTIC is utilized to calculate the optical properties of inhomogeneous, mixed-phase clouds. The apparent effective radius $\langle r_{\text{eff}} \rangle_{\text{ph}}$ for a photon is a weighted, linear combination of the individual effective radii r_{eff} the photon encounters on its path through the cloud: (...)

Finally, we replaced the misleading term “true effective radius” with “apparent effective radius” throughout the manuscript.

- “It is mentioned several times that the proposed retrieval seems reasonable for optically thick clouds. However, it is never mentioned what this actually means, and whether these conditions are realistic for the expected clouds. At one point, the authors assume $\tau=500$, which from a TOA perspective seems exceptionally high. Is this the regime where we can assume the retrieval to produce reasonable results?”

→ *Thank you for this observation. By answering your question we realized that we have to be more specific regarding the term “optically thicker” and “optically thick”. In addition, we forgot to summarize the retrieval*

specifications in our conclusions.

As a thought experiment, we use a “optically thick” water cloud with $\tau_c = 500$) in Section 4.2, to dissect and study the impact of an unknown cloud surface orientation. The retrieval, however, is designed to produce reasonable results for cumuli with $\tau_c = 15 - 150$ and well-developed cloud sides, e.g. Cumuli mediocris, Cumuli congestus and Trade-wind cumuli. Here, the optical thickness range is defined by the LES cloud model ensemble. In Figure 19, we bring together both studies and compare the ambiguity of radiance from the realistic LES cloud scenes (2D histogram plot) with the ambiguity of radiance from the spherical cloud with $\tau_c = 500$. Here, we note that ...

Page 31, Line 4ff:

... the radiance spread from the three-dimensional model cloud sides, for the most part, can be explained by the one-dimensional DISORT results for $\tau_c = 500$ (dashed line for variable cloud surface inclination).

We now reason and clarify our definition of “optically thicker” and “optically thick” for these two cases:

Page 14, Line 16ff:

By “optically thicker”, we refer to cumuli contained in the LES model output which exhibit well-developed cloud sides, e.g. like Cumuli mediocris, Cumuli congestus and Trade-wind cumuli. To give a concrete example, this term includes clouds with $\tau_c > 15$, e.g. with an average LWC of 0.5 g m^{-3} , $r_{\text{eff}} = 10 \mu\text{m}$ and with a vertical extent of 200m and onward. Since the maximum optical thickness contained in the LES output is $\tau_c = 176$, the retrieval is designed for cumuli with $\tau_c = 15 - 150$. To dissect the impact of an unknown cloud surface orientation on the effective radius retrieval, the following study will use a “optically thick” water cloud ($\tau_c = 500$). We subsequently develop a method to exclude cloud shadows and to mitigate radiance ambiguities for the cumulus clouds contained in the LES ensemble using the obtained insights.

Furthermore, the conclusion now summarizes the regime for which the retrieval was designed:

Page 38, Line 20ff:

Defined by the used LES model fields and the chosen geometries of the forward simulations, this retrieval is designed for

- *cloud side measurements of the liquid part of convective water clouds, e.g., Cumulus mediocris, Cumulus congestus and Trade-wind cumulus, which exhibit well-developed cloud sides.*
- *cloud tops between 1.5 – 2 km, an optical thickness between 15 – 150 and effective radii between 4 – 24 μm ,*
- *spatially highly resolved ($10 \times 10 \text{ m}$) images of the spectral radiance at $\lambda = 870 \text{ nm}$ and $\lambda = 2100 \text{ nm}$,*
- *a variable and unknown CCN background concentration between $100 - 1000 \text{ cm}^{-3}$,*
- *variable sun zenith angles ϑ_0 between $7 - 67^\circ$ for tropical as well as mid-latitude application,*
- *an airborne perspective at 1.7 km altitude with a field of view of $\Delta\varphi = 46^\circ$ (azimuthal) and $\Delta\vartheta = 40^\circ$ (horizontal) centered 5° below the horizon.*

Specific comments

- “Page 1, line 6: remove “with””

→ *Thank you for this find. Removed.*

- “Page 1, line 6: do you mean “small scale cloud heterogeneity”? What do you mean by “small scale structure”?”

→ *This is correct. We changed this formulation from “... faced with the small scale structure of cloud sides ...” to “... faced with the small-scale heterogeneity of cloud sides ...”.*

- “Page 1, line 18: Remove the subheading. There is no other subsection in the introduction...”

→ *Thank you for this comment. We now renamed the “Introduction” into “1. Current state of passive remote sensing of clouds” and included the un-numbered subsection “Scientific objectives and scope of this work”. By that way, we separate the paragraph containing the literature research from the paragraph introducing the scientific objectives and the novelty of our work.*

- “Page 2, line 35: This sentence is hard to read and a bit awkward. Maybe change to “..., where the observer position is located within the cloud field.””

→ *Thanks! The sentence now reads:*

Page 3, line 13ff:

Extend the existing approach to realistic airborne perspectives and develop methods to test the sensitivity of reflected radiances from cloud sides to cloud droplet radius, where the observer position is located within the cloud field.

- “Page 3, line 6: fix citation”

→ *Fixed citation.*

- “Page 3, line 7: Which data set do you mean here? This is not about the specMacs measurements, correct? This is the statistical retrieval data set for the Bayesian reff retrieval, correct? Please clarify.”

→ *This is correct. In Section 2, we introduce the new LES cloud model data set which is used for the Monte Carlo forward calculations. For this reason, the sentence now reads:*

Page 4, line 1:

Section 2 shortly recapitulates established methods and introduces the new cloud model data set with explicit cloud microphysics. (...)

- “Page 3, line 12: pixels (plural)”

→ *Thank you for this comment. We corrected this mistake at several locations throughout the manuscript.*

- “Page 3, line 15: awkward sentences, maybe add “ ... and the proposed retrieval is analyzed/tested...””

→ *Thank you. We split the sentence into two, which now read:*

Page 4, line 9ff:

Finally, the developed retrieval is tested in Section 6 with unknown scenes of cloud sides and different aerosol backgrounds. Furthermore, the retrieval is analyzed for potential biases.

- “Page 4, Eq. 1 and 2: Can you be more precise? These don’t really help much...”

→ *You are right. This was also pointed out by referee #1 (AMTD-2018-234-RC1). Eqs. (1) and (2) were indeed rather imprecise.*

Page 3, Eqs. (1) and (2) now reads:

$$p_{\text{fwd}}(L_{0.87}, L_{2.10}, r_{\text{eff}}) = \frac{1}{N} n(L_{0.87}, L_{2.10}, r_{\text{eff}}) \quad (5)$$

$$p_{\text{fwd}}(r_{\text{eff}}) = \frac{1}{N} n(r_{\text{eff}}). \quad (6)$$

Here, the number of radiative transfer results N needs to be large enough for a successful estimation of these two probabilities.

- “Page 5, line 8: fix unit format (1 nm) to be non-italic”

→ *Corrected.*

- “Page 5, line 9: Here, it would help (as mentioned earlier) if we knew more about the specMacs observations, for which the retrieval is designed. You mention that the mid-latitude summer profiles are taken, yet later on you mention that the retrieval should also work for observations in the tropics. Do you adapt the profile for these other measurements?”

→ *Thank you for this question. As suggested earlier we now describe the encountered campaign conditions in the introduction section. For the LES simulations (Jiang and Li, 2009), a mean thermodynamic sounding from the Rain In Cumulus over the Ocean (RICO) field experiment (Raubert et al., 2007) was used. Regarding air temperature and water*

vapor concentration, this profile is in between the tropical and the mid-latitude summer profiles by Anderson et al. (1986). Since gaseous absorption is negligible at the chosen wavelength region of (870.0 ± 0.6) nm and (2100.0 ± 3.3) nm and since the pressure profiles are almost identical we have chosen the mid-latitude summer profile. This choice still allows for a tropical as well as a mid-latitude application of the retrieval without the need to adapt the atmospheric profile. We added following sentence to our manuscript:

Page 6, line 11ff:

Since gaseous absorption is negligible at the chosen wavelength region of (870.0 ± 0.6) nm and (2100.0 ± 3.3) nm, this choice still allows for a tropical as well as a mid-latitude application of the retrieval.

- “Page 5, line 23-24: Is this part of the final retrieval? You perform simulations for two different CCN concentrations, yet this does not seem to be part of the Bayesian approach later on. How do you consider CCN concentrations, if at all?”

→ *Thank you for this question. This made use realize that the combination of different CCN concentrations into the same lookup table was only implicitly described and needs a better introduction! It is important to emphasize that the retrieval is designed to be independent from a-priori knowledge of N_{CCN} . Otherwise, retrieved r_{eff} could be biased by measured CCN concentrations which would made the retrieval unsuitable for aerosol-cloud-interactions studies. For this reason, we now mention this earlier in our manuscript.*

Page 4, line 7ff now reads:

In contrast to previous studies, different aerosol backgrounds are now also considered. For the retrieval, the results for different CCN concentrations are combined within one lookup table to be independent from a-priori knowledge of N_{CCN} . (...)

Where we describe the “Construction of the lookup table” in Section 5.2, we now motivate and explicitly describe this combination of results within the same histogram:

Page 29, line 1ff:

5.2 Construction of the lookup table

In the next step, simulated radiances were binned into a multidimensional histogram with equidistant steps in $L_{0.87}$, $L_{2.10}$, r_{eff} , ϑ and g_{class} . Here, it is important to emphasize that the retrieval is designed to be independent from a-priori knowledge of N_{CCN} . If the posterior distributions would separate between clean and polluted cases, the retrieval could tend to larger r_{eff} when a low N_{CCN} is measured. Such an retrieval would be unsuitable to study aerosol-cloud-interactions. For this reason, the radiance results from the polluted and the clean cloud ensemble are combined within the same histogram.

– “Page 6, lines 3-4: fix citation”

→ *Fixed citation.*

- “Page 6, line 6: So the model includes rain droplets? Maybe mention this explicitly, for some reason I thought this was a typo, because I initially only considered typical effective droplet radii up to $40\mu\text{m}$ or so..., this raises another question though. How sensitive is the retrieval to rain? Several studies show retrieval issues (TOA, bispectral) when there is precipitation in the clouds, as the vertical profiles and assumptions about gamma-distribution and effective variance fail.”

→ *Thank you very much for addressing this issue! As authors of Zinner et al. (2010), we investigated the impact of drizzle on effective radius retrievals and came to following conclusion:*

Zinner et al. (2010) on page 13, right column, first paragraph:

(...) We investigate two different types of boundary layer clouds: (1) a case of a drizzling fully overcast marine stratocumulus deck at two stages during a diurnal cycle; and (2) a more complex cloud scene of a drizzling cumulus field. For both cloud types the impact of drizzle formation on the MODIS retrieval is very small. The sensitivity to the drizzle size drops in the cloud deck is too small to explain contrasts like that seen in Fig. 1 let alone a clear detection of drizzle. (...)

Further studies (Nakajima et al., 2009; Zhang et al., 2012) also found only a small impact of drizzle on bi-spectral methods of about $0.5 - 2\mu\text{m}$. Zhang et al. (2012), for example, found that

On page 10, left column:

(...) drizzle drops with $r_{\text{eff}} > 30\mu\text{m}$ have a very minor impact on the $r_{e2.1}$ and τ retrievals (...)

These studies were done for smaller cumulus clouds with light or moderate rain rates of $0.05 - 1\text{mmh}^{-1}$. As our study also focused on shallow

cumulus convection, we went along with these findings and did no further sensitivity study regarding rain. For higher precipitation rates, however, the more recent study by Zhang (2013) suggested more detailed studies to assess the impact of rain on bi-spectral retrieval techniques. For this reason, we added following paragraph in our conclusion to state this limitation and to suggest further studies:

Page 39, line 12ff now read:

This study did not address the open question if and how strong rain can influence the retrieval performance. Several studies (Nakajima et al., 2009; Zinner et al., 2010; Zhang et al., 2012) found only a small impact of drizzle on bi-spectral methods of about 0.5 – 2 μm . Although beyond the scope of this work, subsequent studies should address the influence of rain on bi-spectral retrievals for stronger precipitation rates as suggested by the more recent study of Zhang (2013).

- “Page 6, line 26: reff and LWC are already defined”

→ *That is correct. We removed this redundant definition here.*

- “Page 6, line 29: add comma after “As intended””

→ *Thanks, done.*

- “Page 6, line 34: add space between “K” and “km”, add comma before “neglecting””

→ *Done.*

- “Figure 2, this figure lacks “a)” and “b)”, so the caption is confusing, also the text mentions it shows reff, but it starts with LWP. Overall, very confusing to follow.”

→ *Thank you for this feedback. We now divided this figure in panel group (A) and (B) and labeled each panel accordingly:*

Caption of Figure 2 now reads:

(A) Snapshot of LES cloud fields at 12h 40min LT with **(A1)** liquid water path in g m^{-2} and **(A2)** north-south and **(A3)** east-west cross-sections of the liquid water content field in g m^{-3} . **(B)** Same LES snapshot with **(B1)** optical thickness τ and **(B2)** north-south and **(B3)** east-west cross-sections of effective radius r_{eff} in μ . The insets in A3 and B3 contain zoomed cross-sections of LWC and r_{eff} for a cloud edge region showing signs of lateral entrainment.

We also revised the description of Figure 2 in the text of our manuscript.

- “Caption Figure 3: you not only show results for $N_{\text{CCN}} = 1000 \text{ cm}^{-1}$, but also 100 cm^{-1} . Also, I am confused by the unit, which should be cm^{-3} , correct? Please clarify.”

→ *Thank you for pointing this out. The unit was indeed a typo which we fixed throughout the manuscript. We explain Figure 3 now more detailed:*

Caption of Figure 3 now reads:

The contoured frequency by altitude diagrams (CFADs) show **(a)** effective radius r_{eff} , **(b)** liquid water content LWC and **(c)** cloud droplet number concentration N_d for the polluted cases with $N_{\text{CCN}} = 1000 \text{ cm}^{-3}$. Respective mean profile (black solid line) and its standard deviation (error bar) are superimposed. For the polluted cases with $N_{\text{CCN}} = 100 \text{ cm}^{-3}$, only the mean profiles are shown (red solid lines). In both cases, the dashed profile is the theoretical adiabatic limit calculated for conditions at cloud base ($T_{\text{cb}} = 293 \text{ K}, 4 \text{ K km}^{-1}$) and $N_{\text{cb}} = 300 \text{ cm}^{-3}$ for the polluted and $N_{\text{cb}} = 50 \text{ cm}^{-3}$ for the clean case.

- “Page 8, line 8: remove “the””

→ *Thanks, done.*

- “Page 8, line 11: add comma before “which””

→ *Done.*

- “Figure 4: Again, this figures lacks “a)” and “b)”, and as far as I can tell, the “b)” part is not discussed at all in the text.”

→ *Thanks for this note. We now have labeled each sub panel with “a)”, “b)” and “c)”. We now also discuss all sub plots in the revised manuscript:*

Page 10, Line 14ff now read:

In Figure 4a, a three-dimensional visualization of the observation kernel method is presented. While the observation position (yellow dot) is moved through the model domain, the result of the convolution between observation kernel and cloud field is shown as arbitrary score on the surface in Figure 4a. A more detailed view on the observation kernel is given in Figure 4b by a horizontal and in Figure 4c by a vertical cut at the dashed cutting line. The arbitrary score is strongly negative in the vicinity of the observer to penalize locations where clouds are too close. Observation distances of 3km to 5km turned out to maximize the likelihood to observe a complete cloud side in the used LES model output. For a distance of 2km and onward, the weighting score becomes thus positive with a maximum at 3.5km to favor locations with clouds in this region. For all LES cloud fields on average, this method positions the observer at a distance of around 4 km from cloud sides.

- “Page 10, line 4: Change “found” to “retrieved””

→ *Done.*

- “Page 10, Eq 5: change comma to full stop after the equation.”

→ *Corrected.*

- “Page 11, line 4-9: As far as I can tell you don’t show any cloud edge reff results. Also, no vertical gradients are shown to evaluate the “better agreement”.”

→ This is true. Since our technique to determine the apparent effective radius $\langle r_{\text{eff}} \rangle_{\text{app}}$ is essential for the realistic LES model output used (Figure 5b), we now also show results for the simple line-of-sight method in Figure 5a.

Page 13, line 16ff now read:

For the cloud scene shown in Figure 5, Figure 6b shows the apparent effective radius $\langle r_{\text{eff}} \rangle_{\text{app}}$ obtained with MYSTIC REFF. Compared with the effective radius found at the cloud edge shown in Figure 6a, the apparent effective radius $\langle r_{\text{eff}} \rangle_{\text{app}}$ appears much smoother in Figure 6b. The range of values for $\langle r_{\text{eff}} \rangle_{\text{app}}$ obviously compares much better with the range of values of r_{eff} shown in Figure 2(B3) and Figure 3a.

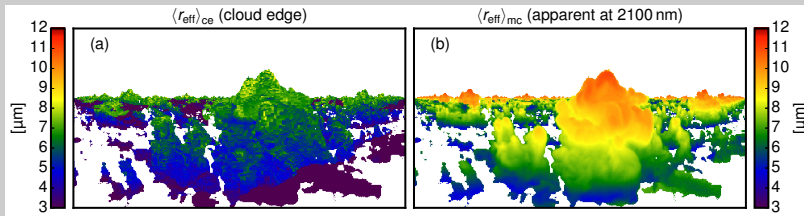


Figure 6. (a) Effective radii r_{eff} found at cloud edge for the scene shown in Figure 5, (b) Apparent effective radii $\langle r_{\text{eff}} \rangle_{\text{app}}$ obtained with MYSTIC REFF for the same scene.

– “Page 11, lines 14-15. This sentence sounds awkward and I am not sure what you mean here.”

→ *Yes, the original sentence was too unspecific and confusing. For this reason we inserted an additional sentence to clarify what we meant with “In such a situation, ...”:*

Page 14, line 10ff now read:

(...) In contrast to the typical observation geometry from above, where a plane-parallel cloud is assumed, the cloud surface orientation is mostly unknown for the cloud side perspective. In such a situation, where only the scattering angle ϑ_s is known, the limitation to optically thicker clouds can be a way out. (...)

– “Page 11, line 16: add comma before “where””

→ *Corrected. This sentence now precedes the sentence mentioned in the last comment as clarification.*

– “Page 11, line 29: This seems to be a really high optical thickness. Why did you choose that? From a TOA retrieval perspective, this is not really realistic. For comparison: the operational MODIS retrieval stops at $\tau=150$, which is rarely encountered. Does the change in perspective (i.e., cloud side) yield this large limit? Please clarify.”

→ *Thank you for this comment. We already discussed this in our answer to one of your general comments (“optically thicker” vs. “optically thick”). As we mentioned there, we now dedicated a short subsection (Section 4.1, “Limitation to optically thicker clouds”) to reason and specify our limitation to higher optical thickness.*

In Section 4.2 (“Ambiguities of reflected radiances”), we use a spherical water cloud with this high optical thickness of $\tau_c = 500$, to dissect the impact of an unknown cloud surface orientation on the effective radius retrieval. For the subsequent development of the gradient classifier (Section 4.3, “Additional information from surrounding pixels”), the shadow filter (Section 4.4, “Exclusion of cloud shadows”) and for the retrieval itself (Section 5, “Retrieval”) we use the RICO LES output with the described optical thickness range of $\tau_c = 15 - 150$. This retrieval specifications regarding optical thickness are now also mentioned and summarized in the conclusion (Section 7).

- “Page 12, line 9: “optically thick clouds” is very ambiguous. A cirrus is optically thick if $\tau > 5$, a stratus with $\tau > 25$, a cumulus with $\tau > 50$. Can you be more specific?”

→ *Thank you for this suggestion. We hope to have answered this question with our last reply and our answer to one of your general remarks (“optically thicker” vs. “optically thick”). In addition, we are now more specific and repeat our definitions throughout the manuscript when appropriate (“optically thicker”, $\tau_c > 15$) and (“optically thick”, $\tau_c = 500$).*

- “Figure 8: What is shown in the circles? What is the difference between grey and black lines? This Figure is very dense and includes a lot of information, it needs a better description.”

→ *Thank you for this question. Since referee #1 (AMTD-2018-234-RC1) also was confused about Fig. 8, we completely restructured this section and disentangled the plots from Fig. 8 (in the old manuscript version) into Fig. 11 and Fig. 12 (in the new manuscript version).*

The gray circles/spheres in Figure 11a,c are radiance images $L_{0.87}$ of the spherical water cloud, while the colored spheres in Figure 11b,d are images of the radiance ratio $L_{2.10}/L_{0.87}$. We have chosen to show this ratio in Fig. 11 and the 2-wavelength diagram in Fig. 12 to connect the scattered points in Fig. 12 with their spatial location on the sphere in Fig. 11.

The large green and red dots in Fig. 11 and Fig. 12 indicate cloud surfaces with same local illumination angle $\vartheta_0^* = 30^\circ$, but steeper ($\vartheta^* < \vartheta_0^*$, green dot) or more oblique local viewing angle ($\vartheta^* > \vartheta_0^*$, red dot). These two perspectives are illustrated in Figure 9. We now removed the gray lines (which too indicated results with same local illumination angle ϑ_0^*) to reduce the complexity of this plot. Analogous to Fig. 8, the black isolines show radiances from one-dimensional DISORT simulations for optically thick water clouds with different effective radii.

We updated the captions of these figures to ease their understanding. Furthermore, the answer to #1 (AMTD-2018-234-RC1) is copied here to give a total overview of our changes:

In addition, we included more color cues and markings to separate the two considered cases ($\vartheta^* = \vartheta_0^*$, *direct backscatter, orange color* and $\vartheta^* \neq \vartheta_0^*$, *not direct backscatter, blue color*) in Fig. 7, 9, 11 and 12.

Description of Fig. 11 now reads (Page 19, line 7ff):

For the direct backscatter geometry ($\vartheta^* = \vartheta_0^*$) on the left and outside the direct backscatter geometry ($\vartheta^* \neq \vartheta_0^*$) on the right, Figure 11a,c show radiance images of $L_{0.87}$ and Figure 11b,d show radiance ratios $L_{2.10}/L_{0.87}$ for the spherical water cloud. The colored radiance ratios will later help to identify regions on the sphere within the 2-wavelength diagram. Furthermore, the two viewing geometries considered in Figure 9 are marked by the green and red dots.

For the case with $\vartheta^* \neq \vartheta_0^*$, we furthermore included more markings to separate the two cases ($\vartheta^* > \vartheta_0^*$, **oblique viewing angle, red color** and $\vartheta^* < \vartheta_0^*$, **steep viewing angle, green color**) in Fig. 9 and 12.

Description of Fig. 12 now reads (Page 19, line 11ff):

Figure 12 shows the results in 2-wavelength diagrams for the direct backscatter direction (left) and for a scattering angle of 150° (right). In the 2-wavelength diagrams the radiance pairs from the 3D MYSTIC simulation are shown as scattered points, the results from the one-dimensional DISORT simulations for different effective radii are shown as black lines. Just like in 9 to 11, the large green and red dots in Figure 12 indicate cloud surfaces with same local illumination angle $\vartheta_0^* = 30^\circ$, but steeper ($\vartheta^* < \vartheta_0^*$, green dot) or more oblique local viewing angle ($\vartheta^* > \vartheta_0^*$, red dot).

The same (red/green) color scheme is now also used in the following section (4.2.1 Comparison of pixel brightness) to strengthen the connection between the preceding analysis of radiance ambiguities and the mitigation of radiance ambiguities in Section 4.2.1.

- “Page 13, last sentence: remove “Figure””

→ *Removed.*

- “Page 15, lines 9-10: This sentence is awkward.”

→ *Thanks for this comment. This sentence now reads:*

Page 21, line 20-21:

Previous studies, like Marshak et al. (2006a) and Zinner et al. (2008), did not investigate in detail the origin of these radiance ambiguities.

- “Page 15, line 12: change the last “,” to “and” or “to”.”

→ *Thanks, changed.*

- “Page 15, line 14: add comma after “Here””

→ *We added this comma after “Here”*

- “Page 15, line 16: pixels (plural)”

→ *Fixed.*

- “Page 16, line 11: define CMOS”

→ *We changed “CMOS” to “image sensor” since the suppression of pixel-to-pixel noise has to be considered for all image sensors.*

References

- Alexandrov, M. D., Cairns, B., Emde, C., Ackerman, A. S., and van Diedenhoven, B.: Accuracy assessments of cloud droplet size retrievals from polarized reflectance measurements by the research scanning polarimeter, *Remote Sens. Environ.*, 125, 92–111, doi:10.1016/j.rse.2012.07.012, 2012b.
- Anderson, G., Clough, S., Kneizys, F., Chetwynd, J., and Shettle, E.: *AFGL Atmospheric Constituent Profiles (0-120 km)*, Tech. Rep. AFGL-TR-86-0110, 1986.
- Andreae, M. O., Afchine, A., Albrecht, R., Holanda, B. A., Artaxo, P., Barbosa, H. M. J., Borrmann, S., Cecchini, M. A., Costa, A., Dollner, M., Fütterer, D., Järvinen, E., Jurkat, T., Klimach, T., Konecny, T., Knörr, C., Krämer, M., Krisna, T., Machado, L. A. T., Mertes, S., Minikin, A., Pöhlker, C., Pöhlker, M. L., Pöschl, U., Rosenfeld, D., Sauer, D., Schlager, H., Schnaiter, M., Schneider, J., Schulz, C., Spanu, A., Sperling, V. B., Voigt, C., Walser, A., Wang, J., Weinzierl, B., Wendisch, M., and Ziereis, H.: Aerosol characteristics and particle production in the upper troposphere over the Amazon Basin, *Atmospheric Chemistry and Physics*, 18(2), 921–961, 2018.
- Ewald, F. and Kölling, T. and Baumgartner, A. and Zinner, T. and Mayer, B.: Design and characterization of specMACS, a multipurpose hyperspectral cloud and sky imager, *Atmos. Meas. Tech.*, 9, 2015–2042, doi:10.5194/amt-9-2015-2016, 2016.
- Jiang, G. M. and Li, Z. L.: Cross-calibration of MSG1-SEVIRI infrared channels with Terra-MODIS channels, *Int. J. Remote Sensing*, 30, 753–769, doi:http://dx.doi.org/10.1080/01431160802392638, 2009.
- Krautstrunk, M. and Giez, A.: The Transition From FALCON to HALO Era Airborne Atmospheric Research, in: *Atmospheric Physics*, edited by: Schumann, U., *Research Topics in Aerospace*, 609–624, Springer Berlin Heidelberg, http://link.springer.com/chapter/10.1007/978-3-642-30183-4_37 2012.
- Marshak, A., Martins, J. V., Zubko, V., and Kaufman, Y.: What does reflection from cloud sides tell us about vertical distribution of cloud droplet sizes?, *Atmospheric Chemistry & Physics*, 6, 7207–7233, 2006a.
- Miller, D. J., Zhang, Z., Ackerman, A. S., Platnick, S., and Baum, B. A.: The impact of cloud vertical profile on liquid water path retrieval based on the bispectral method: A theoretical study based on large-eddy simulations of shallow marine boundary layer clouds, *J. Geophys. Res.*, 121, 4122–4141, doi:10.1002/2015JD024322, 2016.

- Miller, D. J., Zhang, Z., Platnick, S., Ackerman, A. S., Werner, F., Cornet, C., and Knobelspiesse, K.: Comparisons of bispectral and polarimetric retrievals of marine boundary layer cloud microphysics: case studies using a LES–satellite retrieval simulator, *Atmos. Meas. Tech.*, 11, 3689–3715, doi:10.5194/amt-11-3689-2018, 2018.
- Nakajima, T. Y., Suzuki, K., and Stephens, G. L.: Droplet Growth in Warm Water Clouds Observed by the A-Train. Part I: Sensitivity Analysis of the MODIS-Derived Cloud Droplet Sizes, *Journal of the Atmospheric Sciences*, 67(6), 1884–1896, 2009.
- Rauber, R. M., Ochs, H. T., Di Girolamo, L., Göke, S., Snodgrass, E., Stevens, B., Knight, C., Jensen, J. B., Lenschow, D. H., Rilling, R. A., Rogers, D. C., Stith, J. L., Albrecht, B. A., Zuidema, P., Blyth, A. M., Fairall, C. W., Brewer, W. A., Tucker, S., Lasher-Trapp, S. G., Mayol-Bracero, O. L., Vali, G., Geerts, B., Anderson, J. R., Baker, B. A., Lawson, R. P., Bandy, A. R., Thornton, D. C., Burnet, E., Brenguier, J.-L., Gomes, L., Brown, P. R. A., Chuang, P., Cotton, W. R., Gerber, H., Heikes, B. G., Hudson, J. G., Kollias, P., Krueger, S. K., Nuijens, L., O’Sullivan, D. W., Siebesma, A. P., and Twohy, C. H.: Rain in Shallow Cumulus Over the Ocean: The RICO Campaign, *Bulletin of the American Meteorological Society*, 88, 1912–1928, doi:10.1175/BAMS-88-12-1912, <http://journals.ametsoc.org/doi/abs/10.1175/BAMS-88-12-1912>, 2007.
- Platnick, S.: Vertical photon transport in cloud remote sensing problems, *Journal of Geophysical Research*, 105, 22919–22935, 2000.
- Wendisch, Manfred and Pöschl, Ulrich and Andreae, Meinrat O. and Machado, Luiz A. T. and Albrecht, Rachel and Schlager, Hans and Rosenfeld, Daniel and Martin, Scot T. and Abdelmonem, Ahmed and Afchine, Armin and Araùjo, Alessandro C. and Artaxo, Paulo and Aufmhoff, Heinfried and Barbosa, Henrique M. J. and Borrmann, Stephan and Braga, Ramon and Buchholz, Bernhard and Cecchini, Micael Amore and Costa, Anja and Curtius, Joachim and Dollner, Maximilian and Dorf, Marcel and Dreiling, Volker and Ebert, Volker and Ehrlich, André and Ewald, Florian and Fisch, Gilberto and Fix, Andreas and Frank, Fabian and Fütterer, Daniel and Heckl, Christopher and Heidelberg, Fabian and Hüneke, Tilman and Jäkel, Evelyn and Järvinen, Emma and Jurkat, Tina and Kanter, Sandra and Kästner, Udo and Kenntner, Mareike and Kesselmeier, Jürgen and Klimach, Thomas and Knecht, Matthias and Kohl, Rebecca and Kölling, Tobias and Krämer, Martina and Krüger, Mira and Krisna, Trismono Candra and Lavric, Jost V. and Longo, Karla and Mahnke, Christoph and Manzi, Antonio O. and Mayer, Bernhard and Mertes, Stephan and Minikin, Andreas and Molleker, Sergej and Münch, Steffen and Nillius, Björn and Pfeilsticker, Klaus and Pöhlker, Christopher and Roiger, Anke and Rose, Diana and Rosenow, Dagmar and Sauer, Daniel and Schnaiter, Martin and Schneider, Johannes and Schulz, Christiane and de Souza, Rodrigo

- A. F. and Spanu, Antonio and Stock, Paul and Vila, Daniel and Voigt, Christiane and Walser, Adrian and Walter, David and Weigel, Ralf and Weinzierl, Bernadett and Werner, Frank and Yama-soe, Marcia A. and Ziereis, Helmut and Zinner, Tobias and Zöger, Martin: ACRIDICON–CHUVA Campaign: Studying Tropical Deep Convective Clouds and Precipitation over Amazonia Using the New German Research Aircraft HALO, *Bulletin of the American Meteorological Society*, 18, 1885–1908, doi:10.1175/BAMS-D-14-00255.1, 2016.
- Yang, P., Wei, H., Baum, B., Huang, H., Heymsfield, A., Hu, Y., Gao, B., and Turner, D.: The spec-tral signature of mixed-phase clouds composed of non-spherical ice crystals and spherical liq-uid droplets in the terrestrial window region, *Journal of Quantitative Spectroscopy and Radiative Transfer*, 79, 1171–1188, 2003.
- Zhang, Z., Ackerman, A. S., Feingold, G., Platnick, S., Pincus, R., and Xue, H.: Effects of cloud hor-izontal inhomogeneity and drizzle on remote sensing of cloud droplet effective radius: Case stud-ies based on large-eddy simulations, *Journal of Geophysical Research: Atmospheres*, 117(D19), 2012.
- Zhang, Z.: On the sensitivity of cloud effective radius retrieval based on spectral method to bi-modal droplet size distribution: A semi-analytical model, *Journal of Quantitative Spectroscopy and Radiative Transfer*, 129(), 79–88, 2013.
- Zhang, Z., Dong, X., Xi, B., Song, H., Ma, P. L., Ghan, S. J., Plat-nick, S., and Minnis, P.: Intercom-parisons of marine boundary layer cloud properties from the ARM CAP-MBL campaign and two MODIS cloud products, *J. Geophys. Res.*, 122, 2351–2365, doi:10.1002/2016JD025763, 2017.
- Zinner, T., Wind, G., and Platnick, S.: Testing remote sensing on artificial observations: impact of drizzle and 3-D cloud structure on effective radius retrievals, *Atmos. Chem. Phys.*, 10, 9535–9549, 2010.
- Zinner, T., Marshak, A., Lang, S., Martins, J. V., and Mayer, B.: Remote sensing of cloud sides of deep convection: towards a three-dimensional retrieval of cloud particle size profiles, *Atmos. Chem. Phys.*, 8, 4741–4757, doi:10.5194/acp-8-4741-2008, 2008.

Remote Sensing of Cloud Droplet Radius Profiles using solar reflectance from cloud sides. Part I: Retrieval development and characterization

Florian Ewald^{1,2}, Tobias Zinner¹, Tobias Kölling¹, and Bernhard Mayer¹

¹Ludwig Maximilians Universität, Meteorologisches Institut, München, Germany

²Deutsches Zentrum für Luft und Raumfahrt, Institut für Physik der Atmosphäre, Oberpfaffenhofen, Germany

Correspondence: Florian Ewald (florian.ewald@dlr.de)

Abstract. Convective clouds play an essential role for Earth's climate as well as for regional weather events since they have a large influence on the radiation budget and the water cycle. In particular, cloud albedo and the formation of precipitation are influenced by aerosol particles within clouds. In order to improve the understanding of processes from aerosol activation, over cloud droplet growth to changes in cloud radiative properties, remote sensing techniques become more and more important. While passive retrievals for spaceborne observations have become sophisticated and commonplace to infer cloud optical thickness and droplet size from cloud tops, profiles of droplet size have remained largely uncharted territory for passive remote sensing. In principle they could be derived from observations of cloud sides, but faced with ~~with~~ the small-scale **structure heterogeneity** of cloud sides, 'classical' passive remote sensing techniques are rendered inappropriate. In this work the feasibility is demonstrated to gain new insights into the vertical evolution of cloud droplet effective radius by using reflected solar radiation from cloud sides. Central aspect of this work on its path to a working cloud side retrieval is the analysis of the impact unknown cloud surface geometry has on effective radius retrievals. ~~Using This study examines the sensitivity of reflected solar radiation to cloud droplet size, using~~ extensive 3D radiative transfer calculations on the basis of realistic droplet size resolving cloud simulations, ~~the sensitivity of reflected solar radiation to cloud droplet size is examined. Sensitivity is enhanced by considering the pixel surrounding to.~~ Furthermore, it explores a further technique to resolve ambiguities caused by illumination and cloud geometry by considering the surrounding of each pixel. Based on these findings, a statistical approach is used to provide an effective radius retrieval. ~~An in-depth sensitivity study of the presented approach on the basis of a wide range of radiative transfer test cases demonstrates the feasibility to retrieve cloud particle size profiles from cloud sides. This statistical effective radius retrieval is focused on the liquid part of convective water clouds, e.g., Cumulus mediocris, Cumulus congestus and Trade-wind cumulus, which exhibit well-developed cloud sides. Finally, the developed retrieval is tested using known and~~ unknown cloud side scenes to analyze its performance.

0.1 Current state of passive remote sensing of clouds

1 Current state of passive remote sensing of clouds

There exist various methods to infer optical properties (e.g., optical thickness and cloud droplet effective radius) from observation of cloud tops ~~from above~~ using information about the scattered and absorbed radiation in the solar spectrum (e.g., ~~Plass and Kattawar (1968); King (1987)~~Plass and Kattawar, 1968; King, 1987). Phase detection is the first step for every cloud property retrieval. Spectral absorption differences in the near-infrared or brightness temperature differences in the thermal infrared are commonly used to distinguish between liquid water and ice (e.g., ~~Nakajima and King (1990)~~Nakajima and King, 1990). Various operational techniques exist to retrieve microphysical cloud properties like cloud thermodynamic phase and effective particle size (e.g., ~~Han et al. (1994); Platnick et al. (2001); Roebeling et al. (2006)~~Han et al., 1994; Platnick et al., 2001; Roebeling et al., 2006).

Remote sensing of cloud and aerosol parameters is mostly done by use of multi-spectral sensors, i.e., using only a limited number of spectral bands. Common examples of spaceborne imagers are the Advanced Very High Resolution Radiometer (AVHRR), the Moderate Resolution Imaging Spectroradiometer (MODIS), and the Spinning Enhanced Visible Infrared Imager (SEVIRI). However, there are concerns about measurement artifacts influencing retrievals of aerosol and cloud properties caused by small-scale cloud inhomogeneity which are unresolved by the coarse spatial resolution of spaceborne platforms (Zinner and Mayer, 2006; Marshak et al., 2006b; Varnai and Marshak, 2007).

Non-imaging systems like the Solar Spectral Flux Radiometer (SSFR, Pilewskie et al., 2003) or the Spectral Modular Airborne Radiation measurement system (SMART, Wendisch et al., 2001; Wendisch and Mayer, 2003) were used for cloud remote sensing from ground (McBride et al., 2011; Jäkel et al., 2013) or aircraft (Ehrlich et al., 2008; Eichler et al., 2009; Schmidt et al., 2007). ~~The imaging spectrometer of the Munich Aerosol Cloud Scanner (specMACS, Ewald et al., 2016), is the instrument for which the retrieval in this manuscript has been developed.~~

~~Marshak et al. (2006a); Martins et al. (2011)~~

Scientific objectives and scope of this work

~~In order to observe the vertical development of convective clouds' microphysics, Marshak et al. (2006a) and Martins et al. (2011) proposed cloud side scanning measurements and Zinner et al. (2008); Ewald et al. (2013) presented while Zinner et al. (2008) and Ewald et al. (2013) presented concrete~~ steps towards a cloud side retrieval for profiles of phase and particle size ~~of convective clouds in order to observe the vertical development of cloud microphysics~~. Similar to ~~earlier previous~~ satellite retrievals they propose to use solar radiation in the near-visible to near-infrared spectral regions reflected by cloud sides. Especially the vertical dimension of these observations should reflect ~~many~~ aspects of cloud-aerosol-interaction as well as ~~the~~ mixing of cloudy and ambient air (Martins et al., 2011; Rosenfeld et al., 2012). ~~In order to provide a resolved vertical profile a fairly~~ However, the retrieval of cloud microphysical profiles demands a high spatial resolution ~~of on~~ the order of 100 m or better ~~is needed. This means that a method has~~. In turn, the high spatial resolution necessitates a method to consider 3D radiative transfer effects.

Albeit sophisticated, the studies of Zinner et al. (2008) and Ewald et al. (2013) are limited to an idealized geometry and simplified cloud microphysics. First, they focus on a space-like perspective for a fixed viewing zenith and scattering angle above the cloud field where sun and sensor have the same azimuth. Therefore, their studies lack the varying geometries of an airborne perspective and avoid the challenge to identify suitable observation positions within the cloud field. Moreover, the spatial resolution of their model cloud fields of 250 m is still rather coarse ~~with respect to~~ for an airborne perspective of cloud sides. Second, the effective radius is only parameterized in their studies. For all cloud fields, the effective radius profile is calculated by using a sub-adiabatic ascent of one air parcel in the context of a fixed cloud condensation nuclei (CCN) concentration. Finally, the approach was not tested for the potential bias to always detect larger effective radii with increasing cloud height; a potential pitfall that could be caused by the prior information contained in the forward calculations.

Since the diverse perspectives and the high spatial resolution of airborne cloud side measurements hampered the application of the approach presented by Zinner et al. (2008) and Ewald et al. (2013) until now, the present work will extend and test their ideas in the context of an airborne perspective. In the course of this part 1, the following scientific objectives will be addressed:

1. Extend the existing approach to realistic airborne perspectives and develop methods to test the sensitivity of reflected radiances from cloud sides to cloud droplet radius ~~with~~, where the observer position is located within the cloud field.
2. Investigate and mitigate 3D radiative effects which can interfere with the proposed cloud side remote sensing technique.
3. Test the approach in the context of realistic and explicit cloud microphysics with a specific focus on potential biases caused by the prior contained in the forward calculations.

~~Target~~

The target of this work is the liquid part of convective ~~liquid~~-water clouds, e.g. ~~Cumulus and Cumulus congestus~~, Cumulus mediocris, Cumulus congestus and Trade-wind cumulus, which exhibit well-developed cloud sides. ~~Part~~ During September 2014, images of such cloud sides were acquired with the spectrometer of the Munich Aerosol Cloud Scanner (specMACS, Ewald et al., 2014) over the Amazonian rainforest near Manaus, Brazil. The measurements were performed during the ACRIDICON-CHUVA campaign (Wendisch et al., 2016) during which the specMACS instrument was deployed on the German research aircraft HALO (Krautstrunk and Giez, 2012), mounted in a side-looking configuration. The campaign focused on aerosol-cloud-precipitation interactions over the Amazon rain forest. More specific, the campaign investigated the impact of wildfire aerosols on cumulus clouds and on their later development into deep convection. During the campaign flights, the aerosol background and the small-scale convection in their early stages was probed in low-level flight legs between 1 km to 3 km altitude. At cloud base level, mean CCN concentrations ranged between 250 cm^{-3} and 2000 cm^{-3} (Andreae et al., 2018). The specMACS measurements were done of cumulus clouds in a distance of 2 km to 6 km and with top heights between 1.5 km and 3 km. Subsequently, vertical profile flights were performed to measure the microphysical properties of the developing convection in-situ. This manuscript (Part 1) develops a statistical effective radius retrieval for these non-glaciated cumulus clouds which were measured during the low-level flights. Part 2 of this work presents ~~an application demonstration~~ the application to airborne specMACS data collected during the ACRIDICON-CHUVA ~~campaign over Amazonia 2014~~ Wendisch et al. (2016) and comparison to in-situ measurements.

This study is organized as follows: Section 2 shortly recapitulates established methods and introduces the new [cloud model](#) data set with explicit cloud microphysics. New methods to select suitable cloud sides and connect 3D radiances with 3D cloud microphysics will be described in Section 3. In Section 4, the sensitivity of reflected radiances to cloud droplet radii is examined ~~on-the-basis-of-for~~ a simple, spherical cloud geometry, before moving the focus to the more realistic cloud side scenes. ~~On-the~~ ~~basis-of-the~~ [With the](#) obtained insights, a method is developed to mitigate 3D radiative effects by using additional information from surrounding [pixelpixels](#). The extensive three-dimensional (3D) radiative transfer simulations of cloud sides, which form the basis of the statistical effective radius retrieval, is described in Section 5. In contrast to previous studies, different aerosol backgrounds are now also considered. [For the retrieval, the results for different CCN concentrations are combined within one lookup table to be independent from a-priori knowledge of \$N_{CCN}\$](#) . Finally, the developed retrieval is tested in Section 6 with unknown scenes of cloud sides ~~and~~ different aerosol backgrounds~~and~~. [Furthermore, the retrieval is](#) analyzed for potential biases.

2 Models

2.1 Statistical approach

The derivation of vertical profiles of cloud microphysics from radiance reflected by cloud sides is a strongly under-determined problem. The statistical approach tries to provide a probability for a specific cloud microphysical state (e.g., effective radius) where a deterministic inversion is impossible due to ambiguities caused by ~~a-an~~ unknown cloud geometry. This work will follow the approach proposed by Marshak et al. (2006a) and Zinner et al. (2008) who developed a statistical method to account for three-dimensional radiative effects on complex-shaped cloud sides. In their studies, a large number of 3D radiance simulations of cloud data sets provide a database for a statistical effective radius retrieval.

More specific, a forward model is used to perform an ensemble of radiative transfer calculations to estimate the joint probability $p_{\text{fwd}}(L_{0.87}, L_{2.10}, r_{\text{eff}})$ to observe the joint occurrence of radiances $L_{0.87}$, $L_{2.10}$ and effective radius r_{eff} . The likelihood $p(L_{0.87}, L_{2.10} | r_{\text{eff}})$ to observe radiances $L_{0.87}$ and $L_{2.10}$ for a specific effective radius r_{eff} is obtained when the joint probability is normalized with the number of calculations for r_{eff} , the marginal probability $p_{\text{fwd}}(r_{\text{eff}})$. Subsequently, *Bayes' Theorem* is applied to obtain the posterior probability $p(r_{\text{eff}} | L_{0.87}, L_{2.10})$ which solves the inverse problem to retrieve the most likely effective radius r_{eff} when radiances $L_{0.87}$ and $L_{2.10}$ are observed.

2.2 Monte Carlo approximation

When no analytical expression for the likelihood probability is available, Monte Carlo sampling from the joint distribution can be used to approximate the likelihood and posterior probability (Mosegaard and Tarantola, 1995). [Using a-The sampling via the](#) radiative transfer model ~~and~~ [this sampling](#) yields a histogram $n(L_{0.87}, L_{2.10}, r_{\text{eff}})$ of the frequency of observed radiances $L_{0.87}$ and $L_{2.10}$ and the corresponding effective radius r_{eff} . With the histogram n as a very simple non-parametric density estimator (Scott et al., 1977), the following relation between [the](#) histogram n and the joined probability $p_{\text{fwd}}(L_{0.87}, L_{2.10}, r_{\text{eff}})$

and marginal probability $p_{\text{fwd}}(r_{\text{eff}})$ can be made:

$$\begin{aligned} \frac{2p_{\text{fwd}}(L_{0.87}, L_{2.10}, r_{\text{eff}})}{p_{\text{fwd}}(r_{\text{eff}})} &\propto \frac{n(L_{0.87}, L_{2.10}, r_{\text{eff}})}{n(r_{\text{eff}})} = \frac{\sum_{L_{0.87}} \sum_{L_{2.10}} n.}{n.} \end{aligned}$$

$$5 \quad \frac{p_{\text{fwd}}(L_{0.87}, L_{2.10}, r_{\text{eff}})}{p_{\text{fwd}}(r_{\text{eff}})} = \frac{1}{N} n(L_{0.87}, L_{2.10}, r_{\text{eff}}) \quad (1)$$

$$\frac{p_{\text{fwd}}(r_{\text{eff}})}{p_{\text{fwd}}(r_{\text{eff}})} = \frac{1}{N} n(r_{\text{eff}}). \quad (2)$$

For a successful estimation of these two probabilities Here, the number of radiative transfer results contained in histogram n N needs to be large enough for a successful estimation of these two probabilities. Simultaneously, the forward simulation has to cover all values expected in the real world application. With the likelihood probability $p(L_{0.87}, L_{2.10}|r_{\text{eff}})$ as a conditional probability, it can be written as the quotient of the joined probability $p_{\text{fwd}}(L_{0.87}, L_{2.10}, r_{\text{eff}})$ and $p_{\text{fwd}}(r_{\text{eff}})$ describing the ensemble of forward calculations contained in n . In this work, the likelihood probability $p(L_{0.87}, L_{2.10}|r_{\text{eff}})$ is approximated by the histogram $n(L_{0.87}, L_{2.10}, r_{\text{eff}})$ which is normalized with $n(r_{\text{eff}})$ using the relations in from Equation (1) and Equation (2):

$$15 \quad p(L_{0.87}, L_{2.10}|r_{\text{eff}}) = \frac{p_{\text{fwd}}(L_{0.87}, L_{2.10}, r_{\text{eff}})}{p_{\text{fwd}}(r_{\text{eff}})} \quad (3)$$

$$p(r_{\text{eff}}|L_{0.87}, L_{2.10}) = \frac{p(L_{0.87}, L_{2.10}|r_{\text{eff}}) p_{\text{pr}}(r_{\text{eff}})}{\int p(L_{0.87}, L_{2.10}|r_{\text{eff}}) p_{\text{pr}}(r_{\text{eff}}) dr_{\text{eff}}} \quad (4)$$

In Equation (3), the prior distribution of r_{eff} in the radiative transfer ensemble is removed by the normalization with the marginal probability $p_{\text{fwd}}(r_{\text{eff}})$. In a final step, the likelihood probability can be used with an arbitrary prior $p_{\text{pr}}(r_{\text{eff}})$ to get the posterior probability $p(r_{\text{eff}}|L_{0.87}, L_{2.10})$ given measurements $L_{0.87}$ and $L_{2.10}$. Hereby, the arbitrary prior $p_{\text{pr}}(\mathbf{m}_1)$ $p_{\text{pr}}(r_{\text{eff}})$ must be included within the bounds of the implicit prior $p(r_{\text{eff}})$ marginal probability $p_{\text{fwd}}(r_{\text{eff}})$ in the forward calculations. Values of r_{eff} that are not included in the forward calculations cannot be retrieved since the likelihood probability $p(L_{0.87}, L_{2.10}|r_{\text{eff}})$ is not defined for them. Figure 1 shows how such a For given radiance measurements $L_{0.87}$ and $L_{2.10}$, Figure 1 shows an exemplary Monte Carlo approximation (blue histogram) of a posterior distribution (red line) could look like for given radiance measurements $L_{0.87}$ and $L_{2.10}$. Besides an estimated mean effective radius $\langle r_{\text{eff}} \rangle$, the standard deviation of. With its mean and its standard deviation, the posterior distribution also yields the uncertainty connected with this estimate provides an estimation of the mean effective radius $\langle r_{\text{eff}} \rangle$.

2.3 Radiation transport model

The analysis of radiative transfer effects in one-dimensional clouds is done using *DISORT* (Stamnes et al., 1988). The representation of 3D radiative transfer in realistic cloud ensembles is done using the Monte Carlo approach with the *Monte Carlo*

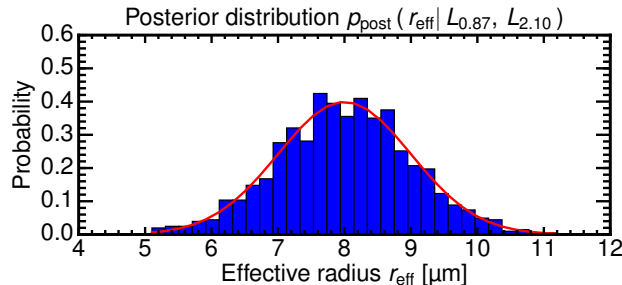


Figure 1. Approximation of a posterior pdf (red) by Monte Carlo Sampling (blue).

code for the physically correct tracing of photons in cloudy atmospheres (*MYSTIC*; Mayer, 2009). In order to avoid confusion with the Monte Carlo sampling of posterior distributions mentioned above, this method will be termed “3D radiative transfer forward modeling” in the following. Both codes are embedded in the radiative transfer library *libRadtran* (Mayer et al., 2005; Emde et al., 2016) which provides prerequisites and tools needed for the radiative transfer modeling. The atmospheric absorption is described by the representative wavelengths absorption parametrization (*REPTRAN*; Gasteiger et al., 2014). This parametrization is based on the HITRAN absorption database (Rothman et al., 2005) and provides spectral bands of different resolution (1 cm^{-1} , 5 cm^{-1} , and 15 cm^{-1}). Calculations have shown that the spectral resolution of 15 cm^{-1} (e.g., $\Delta\lambda = 1.1 \text{ nm}$ at 870 nm , $\Delta\lambda = 6.6 \text{ nm}$ at 2100 nm) best suits the spectral resolution of common hyperspectral imagers. The extraterrestrial solar spectrum is based on data from Kurucz (1994) which is averaged over $\pm 0.0 \text{ nm}$ 1 nm . In order to include vertical profiles of gaseous constituents, the standard summer mid-latitude profiles by Anderson et al. (1986) are used throughout this work. Since gaseous absorption is negligible at the chosen wavelength region of $(870.0 \pm 0.6) \text{ nm}$ and $(2100.0 \pm 3.3) \text{ nm}$, this choice still allows for a tropical as well as a mid-latitude application of the retrieval. Pre-computations of the cloud scattering phase function and single scattering albedo are done using the Mie tool *MIEVO* from Wiscombe (1980). When not mentioned otherwise, a Gamma size distribution with $\alpha = 7$ was used for the Mie calculations. The high computational costs of the 3D Monte Carlo radiative transfer method for tracing large numbers of photons are reduced using the *Variance Reduction Optimal Option Method (VROOM)* (Buras and Mayer, 2011), a collection of various variance reduction techniques.

2.4 Cumulus cloud model

In order to calculate realistic posterior probability distributions $p(r_{\text{eff}} | L_{0.87}, L_{2.10})$, likelihood probabilities, produced by a sophisticated forward model, have to be combined with a realistic prior. While Marshak et al. (2006a) used statistical models to obtain this prior of 3D cloud fields, the physical consistency of cloud structures and cloud microphysics are an advantage of the explicit simulation of cloud dynamics and droplet interactions. Following Zinner et al. (2008), this work applies the three-dimensional radiative transfer model *MYSTIC* to realistic cloud fields which were generated with a *large eddy simulation (LES)* model on a cloud-resolving-cloud-resolving scale. While Zinner et al. (2008) uses realistic cloud structures combined with a bulk microphysics parametrization, this work extends their approach by including explicit simulations of fully-entirely

consistent, spectral cloud microphysics. In order to cover clean as well as polluted atmospheric environments, LES model outputs with different ~~background cloud condensation nuclei (CCN)~~ CCN concentrations will be used.

This work uses large-eddy simulations of ~~trade wind~~ Trade-wind cumulus clouds. The simulations were initially performed by Graham Feingold in the context of the Rain In Cumulus over Ocean (RICO) campaign (Rauber et al., 2007). The simulations use an adapted version of the Regional Atmospheric Modeling System (RAMS) coupled to a microphysical model ~~Feingold et al. (1996)~~ (Feingold et al., 1996) and described in more detail in Jiang and Li (2009). In addition to the high spatial resolution, cloud microphysics are explicitly represented by size-resolved simulations of droplet growth within each grid box. The cloud droplet distributions cover radii between 1.56-2540 μm which are divided into 33 size bins with mass doubling between bins. All warm cloud processes, such as collision-coalescence, sedimentation, and condensation/evaporation are handled by the method of moments developed by Tzivion et al. (1987, 1989). Droplet activation is included by using the calculated supersaturation field and a given cloud condensation nucleus concentration in two versions with ~~$N_{\text{CCN}} = 100\text{cm}^{-3}$~~ and $N_{\text{CCN}} = 1000\text{cm}^{-3}$ ~~$N_{\text{CCN}} = 100\text{cm}^{-3}$ and $N_{\text{CCN}} = 1000\text{cm}^{-3}$~~ . The LES simulations (*dx25-100* and *dx25-1000*; Jiang and Li, 2009) have a domain size of $6.4 \times 6.4 \times 4\text{ km}$ with a spatial resolution of 10 m in the vertical and a spatial resolution of $25 \times 25\text{ m}$ in the horizontal with periodic boundary conditions. As initial forcing, thermodynamic profiles collected during the RICO campaign (Rauber et al., 2007) were used. With condensation starting at a cloud base temperature of around 293 K at 600 m, the cloud depth of the warm cumuli varies over a large range from 40 m to a maximum of 1700 m (Jiang and Li, 2009).

In order to sample a representative prior from this cumulus cloud simulations, a 2 hour (12h – 14h LT) model output is sampled every 10 min for both background CCN concentrations. As input for the following radiative transfer calculations, microphysical moments are derived from the simulated cloud droplet spectra. ~~Effective~~ Using Equations (5) to (8), effective radius r_{eff} , liquid water content LWC and total cloud droplet concentration N_d can be calculated from mass mixing ratios m_i in g kg^{-1} and cloud droplet mixing ratios n_i in kg^{-1} given for the 33 LES size bins–

∴

$$\underline{r_i(x, y, z)} = \sqrt[3]{\frac{m_i(x, y, z)}{n_i(x, y, z)} \frac{3}{4\pi\rho_w}}, \quad (5)$$

$$\underline{r_{\text{eff}}(x, y, z)} = \frac{\sum_{i=1}^{33} r_i^3(x, y, z) n_i(x, y, z) \Delta r_i}{\sum_{i=1}^{33} r_i^2(x, y, z) n_i(x, y, z) \Delta r_i}, \quad (6)$$

$$\underline{\text{LWC}(x, y, z)} = \sum_{i=1}^{33} m_i(x, y, z) \rho_{\text{air}}(x, y, z), \quad (7)$$

$$\underline{N_d(x, y, z)} = \sum_{i=1}^{33} n_i(x, y, z) \rho_{\text{air}}(x, y, z). \quad (8)$$

Figure 2 shows ~~a snapshot of the 3D effective radius field around~~ representative fields of cloud microphysics at 12h 40 min LT for the case with $N_{\text{CCN}} = 1000\text{cm}^{-3}$. In ~~this figure, the full range of LWP and LWC is shown by a logarithmic colormap to highlight their characteristics at cloud edges~~ Figure 2A, the center panel (A1) shows a snapshot of the

liquid water path (LWP). The side panel (A2) shows a north-south and (A3) a east-west cross-section of the liquid water content field. With 1067 g m^{-2} , the LWP maximum is found co-located with a LWC maximum of over 2 g m^{-3} inside the strongest convective core (Figure 2a). The inset in (A3) contains a zoomed view of the LWC gradient at cloud edge. For the same scene, Figure 2B provides an overview of optical thickness τ in the center panel (B1). The side panel (B2) shows a north-south and (B3) a east-west cross-section of the effective radius field. In the cross-sections of r_{eff} , the growth of cloud droplets with height can clearly be seen in the cloud-vertical profile (Figure 2b) is visible. With an overall cloud fraction of 7.6% and a mean optical thickness $\tau = 27$ for cloudy regions with $\text{LWP} > 20 \text{ g m}^{-2}$, the maximum optical thickness of $\tau_c = 176$ is found at the convective core as well. At the same time, the case with $N_{\text{CCN}} = 100 \text{ cm}^{-3}$ has a lower LWP maximum of 660 g m^{-2} and a lower mean cloud optical thickness of $\tau_c = 11$, while the cloud fraction is a little bit higher with 8.9%.

As the main object of interest of the retrieval developed herein is the vertical droplet growth, the range of variation of this process in the cloud data sets. In the following, the variation of the vertical cloud droplet growth is explored in more detail since this is the main scientific objective of the proposed retrieval. Figure 3 shows so-called contoured frequency by altitude diagrams (CFADs; Yuter and Houze, 1995) for effective radius r_{eff} , liquid water content LWC and total cloud droplet number concentration N_d . Their typical profile is summarized with black lines over all sampled time steps for $N_{\text{CCN}} = 1000 \text{ cm}^{-3}$ and The black lines summarize the typical profiles of r_{eff} , LWC and N_d for $N_{\text{CCN}} = 1000 \text{ cm}^{-3}$, the red lines for $N_{\text{CCN}} = 100 \text{ cm}^{-3}$. The frequently occurring low values of N_d and LWC are associated with grid boxes at cloud edges while the wide spectrum of larger values can be found are located within the cloud cores. As intended While effective radii sharply increase from $3 \mu\text{m}$ after droplet activation at cloud base to $12 \mu\text{m}$ (for $N_{\text{CCN}} = 100 \text{ cm}^{-3}$: $24 \mu\text{m}$) at cloud top ($h = 1.7 \text{ km}$) with a small spread, the LWC increases gradually from cloud base to 0.9 g m^{-3} at $h = 1.5 \text{ km}$ with a broad spread of LWC values. Above 1.5 km , convection is capped by a subsidence inversion where cloud liquid water accumulates to values of up to 1.5 g m^{-3} . As intended, the two cloud ensembles cover a wide range of possible values for r_{eff} and N_d between low ("clean") and high CCN concentration ("polluted"). Small droplet r_{eff} and slow growth during ascent characterize the $N_{\text{CCN}} = 1000 \text{ cm}^{-3}$ case, while quick growth to much higher values is present for smaller $N_{\text{CCN}} = 100 \text{ cm}^{-3}$ droplet growth with height characterize cases with $N_{\text{CCN}} = 1000 \text{ cm}^{-3}$, while fast droplet growth to larger r_{eff} values are a characteristic of the cases with $N_{\text{CCN}} = 100 \text{ cm}^{-3}$. LWC and cloud lower and upper boundaries show only small differences.

Based on the cloud base droplet number N_{cb} , temperature T_{cb} , pressure and a saturation adiabatic lapse rate (here we assume 4 K km^{-1}), "adiabatic" reference values can be calculated for an ensemble of droplets growing by condensation during ascent, neglecting entrainment of dry environmental air (broken-dashed lines). The existence of other effects (e.g. entrainment, coalescence, entrainment, coalescence) becomes evident in comparison with the modeled LWC and N_d profiles, as the adiabatic theory provides only an upper limit to their values. In contrast, r_{eff} follows the adiabatic limit more closely with sub-adiabatic values between 60 – 80% which is in accordance agrees with in-situ aircraft observations during the RICO campaign (Arabas et al., 2009) and other studies (Martin et al., 1994).

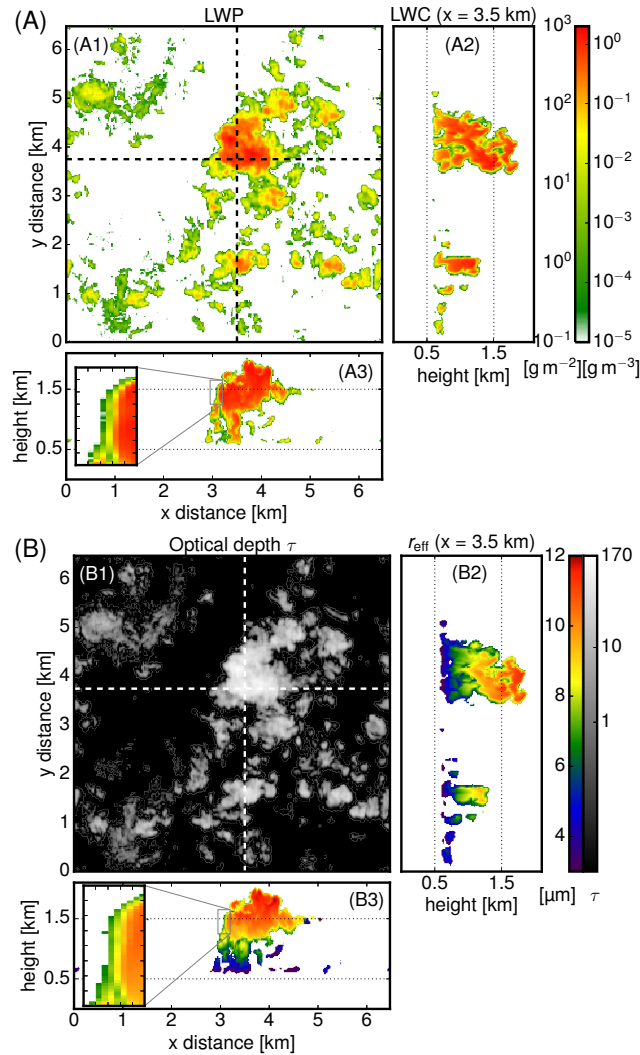


Figure 2. (a) **Liquid (A)** Snapshot of LES cloud fields at 12h 40 min LT with (A1) liquid water path in g m^{-2} and vertical (A2) north-south and (A3) east-west cross-sections of the liquid water content field in g m^{-3} at $x = 3.5 \text{ km}$ and $y = 2.75 \text{ km}$ for the LES cloud field around 12h 40 min LT. (b) Corresponding (B) Same LES snapshot with (B1) optical thickness τ and vertical (B2) north-south and (B3) east-west cross-sections of effective radius r_{eff} for the same cloud scene in μ . Zoomed-out-outs The insets in A3 and B3 contain zoomed cross-sections of r_{eff} and LWC and r_{eff} for a cloud edge region showing signs of lateral entrainment.

3 Methods

3.1 Selection of suitable cloud sides

A key component of the Bayesian approach is the selection of a suitable sampling strategy to explore the likelihood distribution $p_{\text{fwd}}(L_{0.87}, L_{2.10} | r_{\text{eff}})$. This is especially true, if the sampling of the observation parameter space is done with A

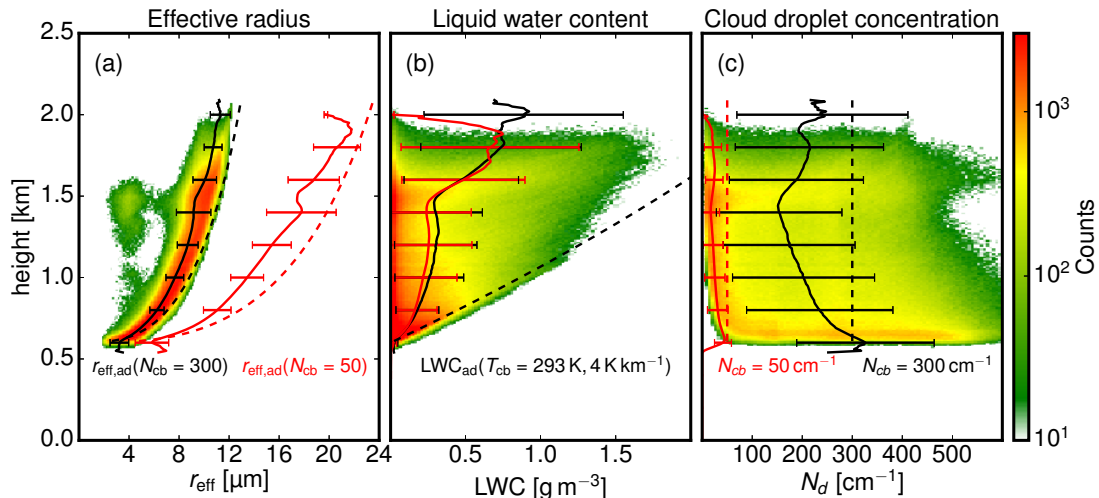


Figure 3. Contoured frequency by altitude diagrams (CFADs) of (a) effective radius r_{eff} , (b) liquid water content LWC and (c) cloud droplet number concentration N_d for $N_{\text{CCN}} = 1000 \text{ cm}^{-3}$ the polluted cases with $N_{\text{CCN}} = 1000 \text{ cm}^{-3}$. The respective mean profile (black solid line) and its standard deviation (error bar) are superimposed. For the polluted cases with $N_{\text{CCN}} = 100 \text{ cm}^{-3}$, results for $N_{\text{CCN}} = 100 \text{ cm}^{-3}$ only the mean profiles are shown in (red solid lines). The In both cases, the dashed profile is the theoretical adiabatic limit calculated for conditions at cloud base ($T_{\text{cb}} = 293 \text{ K}, N_{\text{cb}} = 300 \text{ cm}^{-3}, 4 \text{ K km}^{-1}$ $T_{\text{cb}} = 293 \text{ K}, 4 \text{ K km}^{-1}$) and $N_{\text{cb}} = 300 \text{ cm}^{-3}$ for the polluted and $N_{\text{cb}} = 50 \text{ cm}^{-3}$ for the clean case.

suitable sampling strategy becomes furthermore essential when a computational expensive 3D radiative transfer method is used to sample the observation parameter space. Following Mosegaard and Tarantola (1995), the sampling of the model space can be improved when the model space is sampled with the intended measurements in mind should always fit the expected measurement range. Instead of sampling the radiative transfer in 3D cloud fields completely at random, the indented measurement location and perspective should be taken into account.

To that end, we introduce a technique to select suitable locations within the LES model output for which cloud sides are visible from the airborne perspective. Cloud side measurements are intended for clouds within several kilometers from the instrument location. With the sun in the back, azimuthal positions of $\pm 45^\circ$ around the principal plane will be accepted for an airborne field of view, which is centered slightly below the horizon. To ensure reproducibility in the following, an analytical method is chosen ensures the reproducibility to select observation locations to sample the likelihood distribution. The field-of-view is modeled by. Here, an observation kernel k_{FOV} models the field-of-view with an azimuthal opening angle of $\Delta\varphi = 45^\circ$ and a zenithal opening angle of $\Delta\vartheta = 40^\circ$, centered around 5° below the horizon. As a function of radial distance, the observation kernel comprises a scalar weighting to curtail the location where clouds are desired. Figure 4 shows a vertical cross-section of this kernel desired location of clouds. In Figure 4a, a three-dimensional visualization of the observation kernel method is presented. While the observation position (yellow dot) is moved through the model domain, the result of the convolution between observation kernel and cloud field is shown as arbitrary score on the surface in Figure 4a.

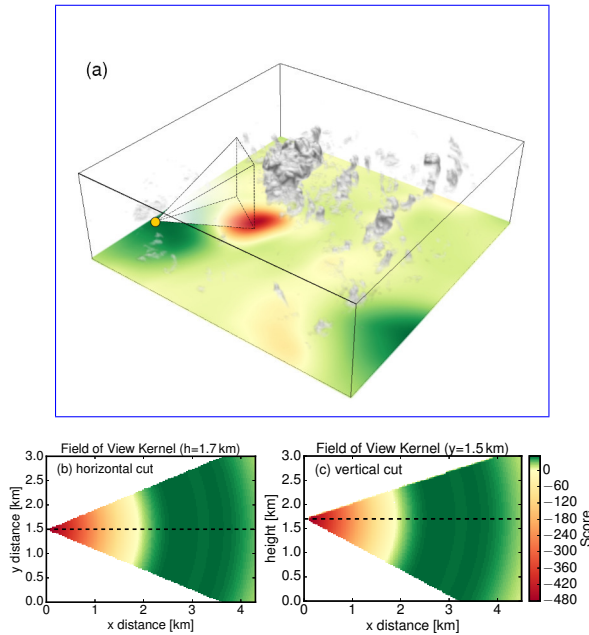


Figure 4. (a) Finding the optimal observation location for cloud side measurements. The surface shows the location score derived by convolving the observation kernel (shown in Figure 4b,c) with the LES cloud field (12 h 40 min LT) shown presented in Figure 2 (b) **Vertical cross-section within the principal plane** **Horizontal and (c) vertical cross-sections** of the observation kernel. The arbitrary score is positive for regions where clouds are desired.

A more detailed view on the observation kernel is given in Figure 4b by a horizontal and in Figure 4c by a vertical cut at the dashed cutting line. The arbitrary score is strongly negative in the vicinity of the observer to penalize locations where clouds are too close. Observation distances of 3 km to 5 km turned out to maximize the likelihood to observe a complete cloud side in the used LES model output. For a distance of 2 km and onward, the weighting score becomes thus positive with a maximum at 5 3.5 km to favor locations with clouds in this region. For all LES cloud fields on average, this method positions the observer at a distance of around 4 km from cloud sides.

Subsequently, the field of cloudy grid boxes is convolved with the observation kernel at an observation altitude of $h = 1.7$ km, creating a two-dimensional score field s_{obs} . For every cloud field and chosen azimuthal orientation, the observation position is then placed where s_{obs} has its global maximum. In Figure 4a, the already introduced LES cloud field (12 h 40 min LT) is shown 10 in combination with the corresponding score field s_{obs} obtained for a viewing azimuth of $\phi = 315^\circ$. The **observation position is indicated by the yellow dot** yellow dot indicates the observation position, where s_{obs} has its global maximum as recognizable by the green color. Also depicted is the field of view towards the largest cloud in the center of the domain. The red region in s_{obs} would be unfavorable for a cloud side perspective since it would be too close to the cloud. For the selected perspective shown in Figure 4a, a simulated **true color** true-color image is shown in **Figure 6a** Figure 5.

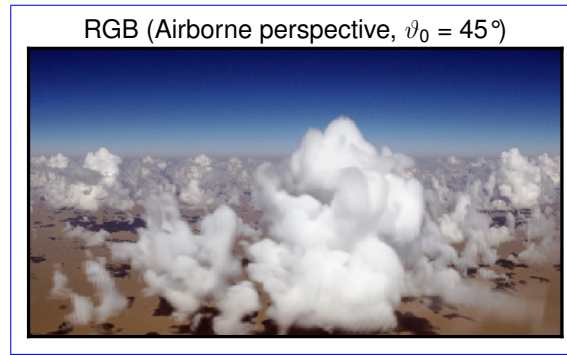


Figure 5. True-color image of a scene selected with the observation kernel method shown in Figure 4.

Determination of the apparent effective radius

3.2 Determination of the apparent effective radius

As various studies have pointed out, the process of deriving the LES variables for r_{eff} in the first place is not straightforward (Alexandrov et al., 2012; Miller et al., 2016; Zhang et al., 2017; Miller et al., 2018). First, r_{eff} has to be derived from model parameters which describe the particle size distribution. This step was explained in Section 2.4 by Equations (5) to (8). Secondly, an approach to infer the visible effective radius has to be developed in case of inhomogeneous cloud microphysics. In their statistical retrieval approach, Zinner et al. (2008) traced along the line of sight of each individual sensor pixel until hitting the first cloudy model grid box from which they selected their r_{eff} corresponding to the observed radiances. This method has its limitations when it comes to highly structured cloud sides with horizontally inhomogeneous microphysics. By neglecting the penetration depth of photons, the neglect of photon penetration depth disregards reflection from deeper within the cloud are disregarded. Radiance observations at given wavelengths can not carry the information from this. In the solar spectrum, radiance observations contain information from a multi-scattering path and not from the first grid box alone, but from the full multi-scattering path. The found. With the line of sight method, the retrieved effective radius r_{eff} therefore becomes biased towards droplet sizes found directly at cloud edges. However, due to very low LWCs, these grid boxes have only a marginal contribution to the overall reflectance.

As Platnick (2000) showed, the penetration depth of reflected photons in the visible spectrum lies within some hundred meters while in the near-infrared spectrum the penetration depth is only a few dozen meters. The co-registration of responsible cloud droplet sizes with modeled radiances is essential. Besides the observation perspective, this *apparent effective radius* $\langle r_{\text{eff}} \rangle_{\text{app}}$ also depends on the observed wavelength since different scattering and absorption coefficients lead to different cloud penetration depths.

(a) Truecolor image of a scene selected. (b) Apparent effective radii $\langle r_{\text{eff}} \rangle_{\text{mc}}$ obtained with MYSTIC REFF for the same scene. In the following, a technique will be introduced to obtain $\langle r_{\text{eff}} \rangle_{\text{app}}$ during the Monte Carlo tracing of photons. As discussed by Platnick (2000), there exist analytical as well as statistical methods to consider the contribution of each cloud

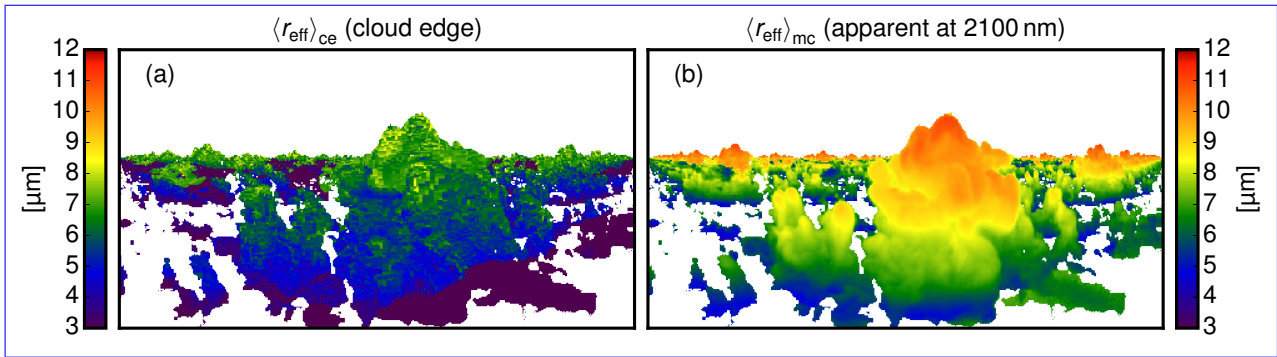


Figure 6. (a) Effective radii r_{eff} found at cloud edge for the scene shown in Figure 5, (b) Apparent effective radii $\langle r_{\text{eff}} \rangle_{\text{app}}$ obtained with MYSTIC REFF for the same scene.

layer to the apparent effective radius $\langle r_{\text{eff}} \rangle_{\text{app}}$. Advancing the one-dimensional weighting procedures of Platnick (2000) and Yang et al. (2003), the 3D tracing of photons in MYSTIC is utilized to calculate the optical properties of inhomogeneous, mixed-phase clouds. The apparent effective radius $\langle r_{\text{eff}} \rangle_{\text{app}}$ for a photon can be described as is a weighted, linear combination (Equation (9)) of the individual effective radii r_{eff} the photon encounters on its path through the cloud:

$$5 \quad \langle r_{\text{eff}} \rangle_{\text{app}} = \frac{\int_0^l k_{\text{ext}}(l') r_{\text{eff}}(l') dl'}{\int_0^l k_{\text{ext}}(l') dl'} \quad (9)$$

In Equation (9), the effective radii are weighted with the corresponding extinction coefficient k_{ext} of the cloud droplets along the path length in each grid box. Subsequently, the mean over all photons traced for one forward simulated pixel leads to the apparent effective radius $\langle r_{\text{eff}} \rangle_{\text{mc}}$ of this pixel:

$$10 \quad \langle r_{\text{eff}} \rangle_{\text{mc}} = \frac{\sum_{i=0}^{\text{photons}} p_{w,i} \langle r_{\text{eff}} \rangle_{\text{app}}}{\sum_{i=0}^{\text{photons}} p_{w,i}} \frac{\sum_{i=0}^{\text{photons}} w_{ph,i} \langle r_{\text{eff}} \rangle_{ph,i}}{\sum_{i=0}^{\text{photons}} w_{ph,i}} \quad (10)$$

10 In the summation Equation (10), the photon weight $p_{w,n}$ is used to account for the different photon path probabilities. w_{ph} describes the probability for the current photon path. With each absorption (or scattering) event, this weight is reduced until it reaches the detector where it is summed and converted into radiance. As the photon weights $p_{w,n}$ are also used in the calculation of $L_{0.87}$ and $L_{2.10}$, the apparent effective radius $\langle r_{\text{eff}} \rangle_{\text{mc}}$ can be derived simultaneously. This method was integrated within the MYSTIC 3D code and will therefore, therefore, be referred to as the MYSTic method To Infer the Cloud droplet Effective Radius (MYSTIC REFF).

15 For the cloud scene shown in Figure 6a, Figure 6b shows the apparent effective radius $\langle r_{\text{eff}} \rangle_{\text{mc}}$ obtained with MYSTIC REFF. Compared with the effective radius found at the cloud edge $\langle r_{\text{eff}} \rangle_{\text{ce}}$ shown in Figure 6a, the apparent effective radius $\langle r_{\text{eff}} \rangle_{\text{app}}$ appears much smoother. The vertical gradient of $\langle r_{\text{eff}} \rangle_{\text{mc}}$ also compares in Figure 6b. The range of values for $\langle r_{\text{eff}} \rangle_{\text{app}}$ obviously compares much better with the vertical gradient of effective radii range of values of r_{eff} shown

in ~~Figure 3b~~ Figure 2(B3) and Figure 3a. The method shows very good agreement with the analytical solution of Yang et al. (2003) for homogeneous mixed-phase clouds and Platnick (2000) for one-dimensional clouds with a vertical effective radius profile.

4 The cloud geometry effect and its mitigation

5 Reflected radiance at non-absorbing wavelengths is mainly influenced by the optical thickness and by the amount of radiation incident on the cloud surface. For the latter, the cloud surface orientation ~~with respect relative~~ to the sun is decisive. ~~This is a problem~~ Therefore, an unknown cloud surface orientation is a challenge for all retrievals using ~~this radiance~~ radiances to derive τ_c ~~or, in combination with an absorbing wavelength, τ_c and r_{eff} (Nakajima and King, 1990) in all situations with unknown (non-plane-parallel) clouds. In such a situation, e.g. for cloud side observations, the~~ (e.g., Nakajima and King, 1990
10). In contrast to the typical observation geometry from above, where a plane-parallel cloud is assumed, the cloud surface orientation is mostly unknown for the cloud side perspective. In such a situation, where only the scattering angle ϑ_s is known, the limitation to optically ~~thick~~ thicker clouds can be a way out.

4.1 Limitation to optically thicker clouds

With increasing optical thickness τ_c , the solar cloud reflectance becomes less sensitive to variations of τ_c . ~~In contrast to the~~
15 ~~typical observation geometry from above where a plane-parallel cloud is assumed,~~ This reduces an essential degree of freedom with respect to the radiative transfer. By “optically thicker”, we refer to cumuli contained in the LES model output which exhibit well-developed cloud sides, e.g. like Cumuli mediocris, Cumuli congestus and Trade-wind cumuli. To give a concrete example, this term includes clouds with $\tau_c > 15$, e.g. with an average LWC of 0.5 g m^{-3} , $r_{\text{eff}} = 10 \mu\text{m}$ and with a vertical extent of 200m and onward. Since the maximum optical thickness contained in the LES output is $\tau_c = 176$, the retrieval is
20 designed for cumuli with $\tau_c = 15 - 150$. To dissect the impact of an unknown cloud surface orientation ~~is unknown and only the scattering angle ϑ_s is known,~~ on the effective radius retrieval, the following study will use a “optically thick” water cloud ($\tau_c = 500$). We subsequently develop a method to exclude cloud shadows and to mitigate radiance ambiguities for the cumulus clouds contained in the LES ensemble using the obtained insights.

4.2 Ambiguities of reflected radiances

25 In the following study, the ambiguity caused by the unknown cloud surface orientation and the remaining sensitivity to the effective radius will be explored. ~~Molecular~~ For this idealized study, molecular absorption and scattering will be neglected ~~in the following idealized study.~~

4.3 ~~Ambiguities of reflected radiances~~

Figure 7 shows the basic geometry for cloud side remote sensing. The normal which defines Here, the cloud surface normal
30 is \hat{n} , the ~~vector pointing from sun into direction of light propagation is denoted with~~ illumination vector from the sun is \hat{s} and

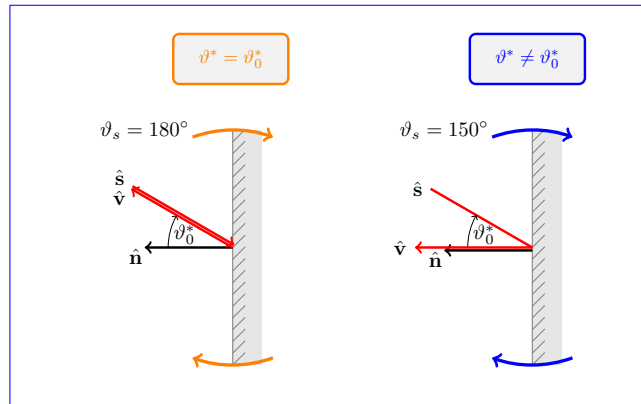


Figure 7. Two observation geometries with a scattering angle of $\vartheta_s = 180^\circ$ (left) and $\vartheta_s = 150^\circ$ (right). Same cloud surface orientation \hat{n} (cloud surface normal) and illumination \hat{s} (solar direction vector) but different local viewing angle ϑ^* . The impact of the indicated cloud surface rotation on reflected radiances is shown in Figure 8

the ~~vector pointing into direction of viewing vector towards~~ the observer is denoted with \hat{v} . The viewing zenith angle ϑ and the sun zenith angle ϑ_0 are ~~still referenced within the global coordinate system which is defined parallel to the ground referenced in ground frame coordinates~~. Corresponding to these two angles, two additional angles exist which describe the inclination of \hat{s} and \hat{v} on the oriented cloud surface: the local illumination angle ϑ_0^* and the local viewing angle ϑ^* with respect to the cloud surface. In a first step

4.2.1 Principal plane (1D)

First, all vectors are assumed to be within the principal plane (the plane spanned by \hat{s} and \hat{n}). Figure 7 shows two different viewing geometries of a vertically-oriented cloud surface under the angles onto a vertical cloud surface and same local illumination angle ϑ_0^* . In the following study, global illumination and viewing geometry remain constant while the cloud surface is rotated in a clockwise direction. By varying the cloud surface normal, this approach explores the ambiguity of $L_{0.87}$ and $L_{2.10}$ in the context of an unknown cloud surface orientation. For the direct backscattering geometry (Figure 7, left), the local viewing angle and the local illumination angle are always equal ($\vartheta^* = \vartheta_0^*$). In contrast, the local viewing angle can be larger ($\vartheta^* > \vartheta_0^*$) or smaller ($\vartheta^* < \vartheta_0^*$) than the local illumination angle for scattering angles $\vartheta_s < 180^\circ$ (Figure 7, right).

For both cases, Figure 8 shows spectral radiances at $\lambda = 870\text{ nm}$ and $\lambda = 2100\text{ nm}$ for a $L_{0.87}$ and $L_{2.10}$ during the clockwise rotation of the cloud surface. The radiative transfer calculations for this surface rotation of a water cloud were done with DISORT for an optically thick (by varying the illumination and viewing angles while the scattering angle remained fixed. To exclude any effects of a varying optical thickness, the calculations were done for a very high optical thickness of $\tau = 500$) water cloud with a fixed r_{eff} of $9\mu\text{m}$ and a fixed $r_{\text{eff}} = 9\mu\text{m}$. The arrows in Figure 8 indicate the progression of radiance values, as it could be observed during a cloud surface rotation during the rotation of the cloud surface within the principal plane as shown in Figure 7. The figure uses a typical two-channel diagram with the absorbing channel on the x-axis and the

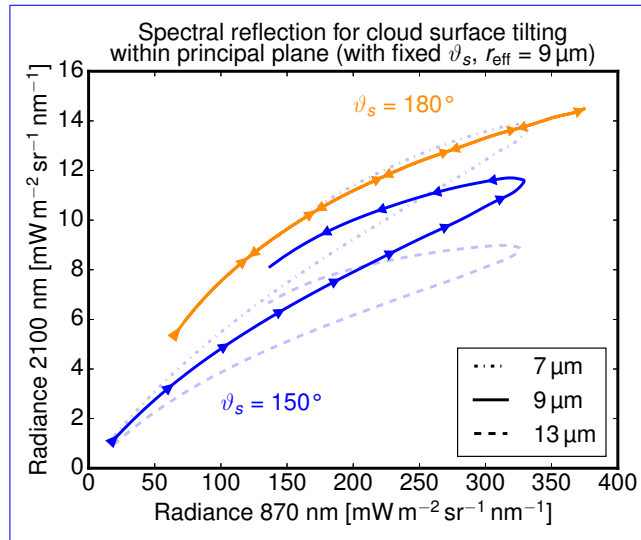


Figure 8. Spectral radiances used in 2-wavelength retrievals at $\lambda = 870 \text{ nm}$ and $\lambda = 2100 \text{ nm}$ during the rotation of the cloud surface for observation geometries shown in Figure 7. Calculations of spectral reflection were done for an optically thick ($\tau = 500$) water cloud with a fixed effective radius $r_{\text{eff}} = 9 \mu\text{m}$ with a fixed scattering angle of $\vartheta_s = 180^\circ$ (orange line, $9 \mu\text{m}$) and three different effective radii with a fixed scattering angle of $\vartheta_s = 150^\circ$ (blue lines, $7 \mu\text{m}$, $9 \mu\text{m}$ and $13 \mu\text{m}$).

non-absorbing on the y-axis. E.g. Nakajima and King (1990) use this form to present the dependence of reflected radiance in both channels on the systematic variation of τ and r_{eff} values for plane-parallel clouds (hereafter denoted as “2-wavelength retrieval” and “2-wavelength diagram”). The similarity of these lines to the isolines for fixed r_{eff} and varying τ in their diagrams is striking.

- 5 ~~Nakajima and King (1990) use the radiance in the non-absorbing wavelength to infer the optical thickness τ . Numerous studies Cahalan et al. (1994); Varnai and Marshak (2002); Zinner and Mayer (2006); Vant-Hull et al. (2007)~~ Numerous studies (Cahalan et al., 1994; Varnai and Marshak, 2002; Zinner and Mayer, 2006; Vant-Hull et al., 2007) pointed out, that tilted and therefore more shadowed or illuminated cloud sides have a huge impact on the retrieval of optical thickness. The radiance similarity of cloud surface rotation and optical thickness variation further underlines the necessity to restrict the retrieval to
- 10 optically ~~thick clouds~~ thicker clouds (e.g. $\tau_c > 15$) when the cloud surface orientation is unknown. ~~Therefore, the following analysis will determine the~~ The following study will first focus on the “optically thick” water cloud ($\tau_c = 500$) to exclude any influence of optical thickness. In this way, the remaining information content for r_{eff} in $L_{0.87}$ and $L_{2.10}$ ~~about r_{eff} for optically thick clouds with an unknown cloud surface orientation~~ is determined.

~~A difference-~~

- 15 4.2.2 Influence of scattering angle ϑ_s

The obvious difference in Figure 8 between the direct backscatter case with a scattering angle of $\vartheta_s = 180^\circ$ and the case with a scattering angle of $\vartheta_s = 150^\circ$ becomes already evident in Figure 8 highlights the influence of ϑ_s on the radiance ambiguity. While the spectral radiance first increases at both wavelengths as the local illumination and viewing angle becomes smaller, it is only in case of direct backscatter that spectral radiances decrease the same way as they increased when the illumination angle becomes more oblique again. In case of scattering angle For $\vartheta_s = 150^\circ$, as long as the local viewing angle ϑ^* is smaller than the local illumination angle ϑ_0^* , spectral radiances at $\lambda = 2100 \text{ nm}$ are lower than for spectral radiances $L_{2,10}$ are lower as long as $\vartheta^* < \vartheta_0^*$ when compared to the remaining part of the rotation when $\vartheta^* > \vartheta_0^*$. Two observation geometries with a scattering angle of $\vartheta_s = 180^\circ$ (left) and $\vartheta_s = 150^\circ$ (right). Same cloud surface orientation \hat{n} (cloud surface normal) and illumination \hat{s} (solar direction vector) but different local viewing angle ϑ^* . The impact of the indicated cloud surface rotation on reflected radiances is shown in Figure 8 Spectral radiances used in 2-wavelengths retrievals at $\lambda = 870 \text{ nm}$ and $\lambda = 2100 \text{ nm}$ during the rotation of the cloud surface for observation geometries shown in Figure 8. Calculations of spectral reflection were done for an optically thick ($\tau = 500$) water cloud with a fixed effective radius $r_{\text{eff}} = 9 \mu\text{m}$ with a fixed scattering angle of $\vartheta_s = 180^\circ$ (orange line, $9 \mu\text{m}$) and three different effective radii with a fixed scattering angle of $\vartheta_s = 150^\circ$ (blue lines, $7 \mu\text{m}$, $9 \mu\text{m}$ and $13 \mu\text{m}$). Within the principal plane, a rotation of the cloud surface

As evident in Figure 8, a variable cloud surface orientation thus produces a characteristic bow structure for scattering angles $\vartheta_s < 180^\circ$ (evident in Figure 8 outside of the direct backscatter geometry ($\vartheta_s = 180^\circ$)). For optically thick clouds the optically thick cloud ($\tau_c = 500$) with unknown cloud surface orientation, this introduces the ambiguity to be dealt with into the relation bow structure introduces ambiguity between $L_{0,87}$, $L_{2,10}$ and cloud optical properties. For the different effective radii. For an oblique viewing geometry, radiances for ($\vartheta^* > \vartheta_0^*$), radiances from larger effective radii ($r_{\text{eff}} = 9 \mu\text{m}$ within the upper branch of the bow structure coincide with radiance values for) coincide with radiances from smaller effective radii ($r_{\text{eff}} = 7 \mu\text{m}$. Nevertheless, towards higher values of $L_{0,87}$) for a steeper viewing geometry ($\vartheta^* < \vartheta_0^*$). For brighter cloud parts, however, there remain unambiguous regions where radiance pairs ($L_{0,87}, L_{2,10}$) of different effective radii do not overlap (compare line for $r_{\text{eff}} = 13 \mu\text{m}$ in Figure 8).

4.2.3 Origin of ambiguity for $\vartheta_s < 180^\circ$

For a deeper insight into the origin of the observed radiance ambiguity for $\vartheta_s < 180^\circ$, we analyze the angular distribution of cloud reflectance at the absorbing and non-absorbing wavelength. In the following figures, the green dot will mark the cloud surface with a steeper local viewing angle (Figure 9, $\vartheta^* < \vartheta_0^*$) and the red dot the cloud surface with a more oblique local viewing angle (Figure 9, $\vartheta^* > \vartheta_0^*$). Contrary to the last study, the next Figure 10 shows radiances modeled for a fixed cloud surface orientation and illumination angle $\vartheta_0^* = 30^\circ$ for different effective radii while the local viewing angle ϑ^* is varied.

4.2.4 3D

Obviously, the angular characteristic differs between the absorbing and non-absorbing wavelength. Between the steep (green dot) and the oblique (red dot) viewing perspective, the radiance at the absorbing wavelength increases slightly while the radiance at the non-absorbing wavelength decreases. This asymmetric behavior becomes less pronounced for scattering angles

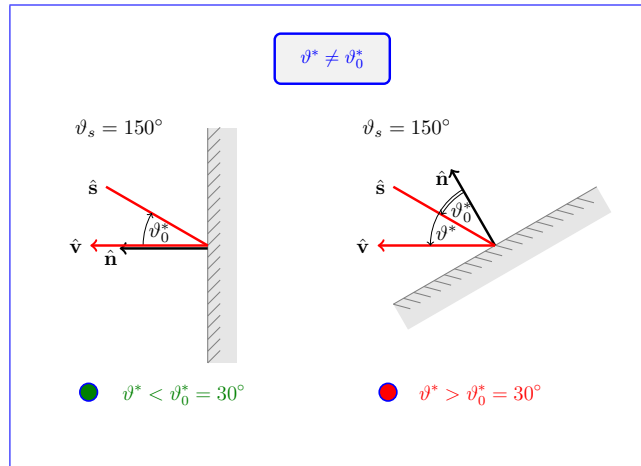


Figure 9. Spectral radiances at $\lambda = 870\text{ nm}$ and $\lambda = 2.1\text{ }\mu\text{m}$ for a spherical and optically thick water cloud Two observation geometries with a with fixed $r_{\text{eff}} = 9\text{ }\mu\text{m}$ observed at a fixed same scattering angle of $\vartheta_s = 180^\circ$ (left) and $\vartheta_s = 150^\circ$ (right). Images of $L_{0.87}$, $L_{2.10}$ and their ratio are shown left and right to identify the origin of radiance pairs in the scatter-plots. Radiances from one-dimensional DISORT simulations for optically thick water clouds with different effective radii are shown as black isolines. The gray isolines mark 1D radiance pairs with same local illumination angle $\vartheta_0^* \vartheta_0^* = 30^\circ$. (left) Steep viewing direction perpendicular ($\vartheta^* = 0^\circ$) to the cloud surface. (right) Oblique viewing perspective ($\vartheta^* = 60^\circ$).

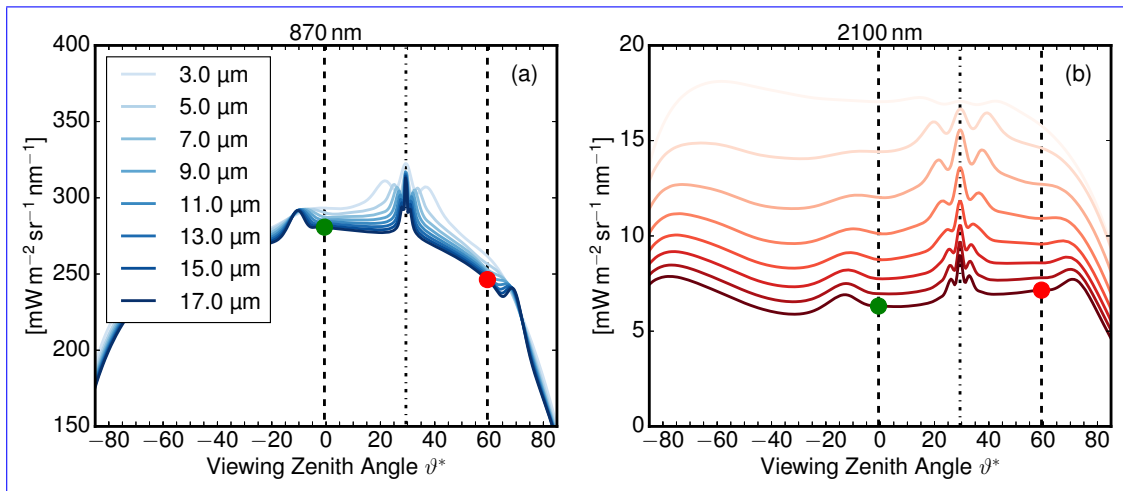


Figure 10. Spectral radiances at (a) $\lambda = 870\text{ nm}$ and (b) $\lambda = 2.1\text{ }\mu\text{m}$ for an optically thick water cloud ($\tau_c = 500$) for different effective radii as a function of relative viewing angle ϑ^* for a fixed illumination of $\vartheta_0^* = 30^\circ$. The green and red dots mark viewing configurations shown in Figure 9 and Figures 11 and 12

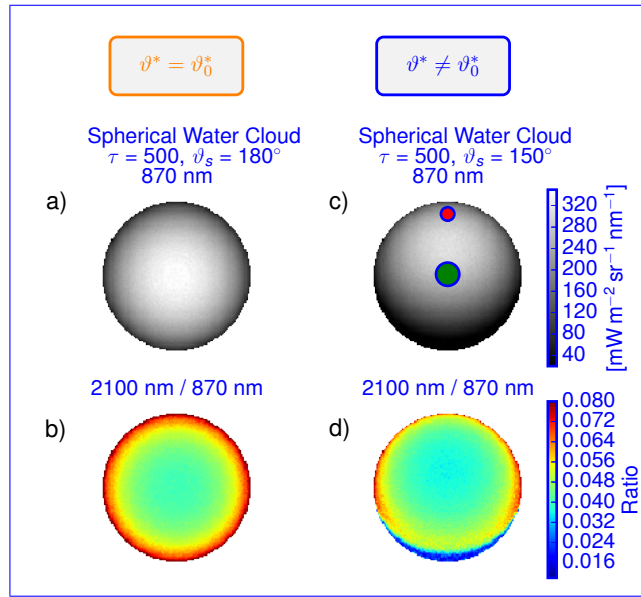


Figure 11. (a,c) Images of radiances $L_{0,87}$ and (b,d) of radiance ratios $L_{2,10}/L_{0,87}$ for the spherical and optically thick water cloud ($\tau_c = 500$) with a fixed $r_{\text{eff}} = 9\mu\text{m}$ and for a fixed scattering angle of $\vartheta_s = 180^\circ$ (left) and $\vartheta_s = 150^\circ$ (right). The radiance ratio is shown to identify the origin of radiance pairs in the 2-wavelength diagram (Figure 12). As previously, the green and red dots mark viewing configurations shown in Figure 9.

near $\vartheta_s = 180^\circ$. The reason for this different angular reflectance is connected with different photon penetration depths at the two wavelengths. The smaller penetration depth of near-infrared light leads to a more uniform reflection, while the larger penetration depth of visible light leads to a stronger reflection for the steep viewing perspective.

4.2.4 Spherical cloud (3D)

- 5 Next, the analysis is extended from principal plane considerations to a full 3D setup. To this end, 3D MYSTIC radiance simulations were done for a spherical, optically thick **cloud** water cloud ($\tau_c = 500$) and different scattering regimes of $\vartheta_s = 180^\circ$ and 150° . **Figure Figure 12** For the direct backscatter geometry ($\vartheta^* = \vartheta_0^*$) on the left and outside the direct backscatter geometry ($\vartheta^* \neq \vartheta_0^*$) on the right, Figure 11a,c show radiance images of $L_{0,87}$ and Figure 11b,d show radiance ratios $L_{2,10}/L_{0,87}$ for the spherical water cloud. The colored radiance ratios will later help to identify regions on the sphere within the 2-wavelength diagram. Furthermore, the two viewing geometries considered in Figure 9 are marked by the green and red dots.

- 10 **Figure 12** shows the results in 2-wavelength diagrams (**center**) and as **images** for the direct backscatter direction (left) and for a scattering angle of 150° (right). In the 2-wavelength diagrams the radiance pairs ($L_{0,87}, L_{2,10}$) from the 3D **radiative transfer forward** MYSTIC simulation are shown as scattered points, the results from the one-dimensional DISORT simulations for different effective radii are shown as **isolines**. **Within the principal plane** black lines. Just like in Figures 9 to 11, the large green and red dots in **Figure 12** indicate cloud surfaces with same local illumination angle $\vartheta_0^* = 30^\circ$. **Figure 9 illustrates the**
- 15

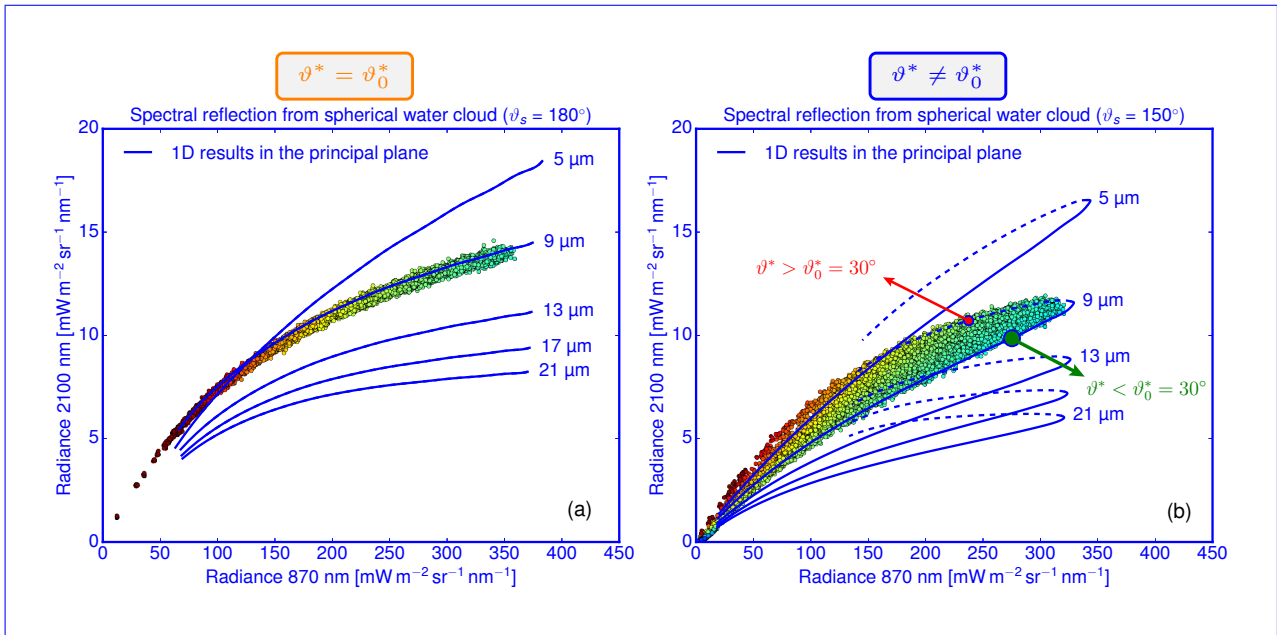


Figure 12. The scatter plots show the spectral radiances at $\lambda = 870\text{ nm}$ and $\lambda = 2.1\ \mu\text{m}$ for the spherical cloud cases with a fixed $r_{\text{eff}} = 9\ \mu\text{m}$. (a) Results from Figure 11a for a fixed scattering angle of $\vartheta_s = 180^\circ$ and (b) from Figure 11c for $\vartheta_s = 150^\circ$. The color of the scatter points can be used to identify their location on the spherical water cloud in Figure 11b,d. For the same scattering angles and analogous to Figure 8, the black isolines show radiances from 1D DISORT simulations for an optically thick water cloud ($\tau_c = 500$) with different effective radii and variable cloud surface orientation. As previously, the green and red dots mark viewing configurations shown in Figure 9.

viewing and illumination setup at the green and red dot. In the following, the green dot will mark the cloud surface with smaller, but steeper ($\vartheta^* < \vartheta_0^*$, green dot) or more oblique local viewing angle ($\vartheta^* < \vartheta_0^*$), the red dot the cloud surface with larger local viewing angle ($\vartheta^* > \vartheta_0^*$). In the 2-wavelength diagrams, the gray isolines mark radiance pairs with same local illumination angle ϑ_0^* . The corresponding images show radiances $L_{0,87}$, $L_{2,10}$ and the colored ratio $\frac{L_{2,10}}{L_{0,87}}$ to aid mapping radiance pairs with their spatial location ($\vartheta^* > \vartheta_0^*$, red dot).

This ratio reflects the radial symmetry of the local illumination angle for $\vartheta_s = 180^\circ$ (Figure 12 left part). For this the direct backscatter geometry in Figure 12a, 3D results for $r_{\text{eff}} = 9\ \mu\text{m}$ match the 1D DISORT results for $r_{\text{eff}} = 9\ \mu\text{m}$ very closely. Due to the radial symmetry of the local illumination angles, radiance values also decrease radially symmetric with more oblique cloud surfaces. Albeit restricted to airborne or spaceborne platforms, this perspective minimizes the 3D effect on radiance ambiguities caused by unknown cloud surface orientations. The picture changes when the observer leaves the backscatter geometry as shown for a scattering angle of $\vartheta_s = 150^\circ$ in Figure 12 on the right b. As already shown with the DISORT results in Figure 8, the radiance pairs form a bow-like pattern with higher $L_{2,10}$ values at more oblique surface orientations. Furthermore, the red and green dots with same local illumination angle now become separated since $\vartheta^* \neq \vartheta_0^*$. While radiance at the non-absorbing wavelength drops considerably with a more oblique local viewing angle ($\vartheta^* = 60^\circ > \vartheta_0^*$, red dot), radiance at

the absorbing wavelength ~~changes only slightly at very steep local viewing angle ($\vartheta^* = 0^\circ$, green dot)~~increase even slightly. Consequently, droplets at the ~~green red~~ dot with $r_{\text{eff}} = 9 \mu\text{m}$ could be miss-interpreted as effective radius $r_{\text{eff}} = 7 \mu\text{m}$ or even $5 \mu\text{m}$.

~~Two observation geometries with same scattering angle $\vartheta_s = 150^\circ$ and same local illumination angle $\vartheta_0^* = 30^\circ$. (left) Viewing direction perpendicular ($\vartheta^* = 0^\circ$) to the cloud surface corresponding to the configuration found at the green dot in Figure 12 (right). (right) Oblique viewing perspective ($\vartheta^* = 60^\circ$) corresponding to the configuration found at the red dot in Figure 12 (right). Spectral radiances at (a) $\lambda = 870 \text{ nm}$ and (b) $\lambda = 2.1 \mu\text{m}$ for an optically thick water cloud for different effective radii as a function of relative viewing angle ϑ^* for a fixed illumination of $\vartheta_0^* = 30^\circ$. The green and red dots mark viewing configurations shown in Figure 12 (right). For a deeper insight into the different observation at the green and red dot, we analyze the angular distribution of cloud reflectance at the absorbing and non-absorbing wavelength. For a fixed illumination angle $\vartheta_0^* = 30^\circ$, Figure 10 shows the DISORT radiances for different effective radii and all possible local viewing angles. The two locations considered in Figure 12 (right) are, again, marked with green and red dots. Obviously, the angular characteristic differs between the absorbing and non-absorbing wavelength. For a wide range of scattering angles $\vartheta_s < 180^\circ$, the radiance at the absorbing wavelength remains quite constant between steep (green dot) and oblique (red dot) viewing perspective while the radiance at the non-absorbing wavelength is considerably smaller for the oblique viewing perspective. This asymmetric behavior becomes less pronounced for scattering angles near $\vartheta_s = 180^\circ$, when the red and green dots both move symmetrically towards the backscatter peak in Figure 10. The reason for this different angular reflectance is connected with different photon penetration depths at the two wavelengths. Smaller penetration depths lead to a more uniform reflection, while larger penetration depths lead to a stronger reflection perpendicular to the cloud surface.~~

~~Previous studies, like~~ Marshak et al. (2006a) and Zinner et al. (2008)~~do not investigate these reasons for the cloud geometry caused scatter of reflected radiance in detail, did not investigate in detail the origin of these radiance ambiguities~~. Nonetheless, they ~~suggest suggested~~ to limit the influence of missing geometry information by additional consideration of vertical thermal radiation temperature gradients (containing part of the geometry information). In the following a more systematic use of available geometry information in the visible ~~and~~ near-infrared spectrum ~~itself~~ is presented.

25 4.3 Additional information from surrounding pixels

Here, a technique is presented that uses information from surrounding pixels to ~~classify the geometrical environment of the considered pixel~~resolve the radiance ambiguities caused by an unknown cloud surface orientation. Already Varnai and Marshak (2003) discussed and developed a method to determine how the surrounding of a cloud pixel influences the pixel brightness. In a recent study, Okamura et al. (2017) also ~~use surrounding pixel~~used surrounding pixels to train a neural network to retrieve cloud optical properties more reliably. Our study will try to find a link between the pixel surrounding and the radiance ambiguity discussed in the preceding section.

As discussed in the preceding section, ambiguous radiances are ~~mainly~~ caused by the ~~lower asymmetric behavior of $L_{0.87}$ radiances from oblique cloud surfaces when compared to the more steeper cloud surfaces. With the sun behind the observer and convex cloud structures, cloud regions with steeper surfaces should generally be brighter than their surroundings while~~

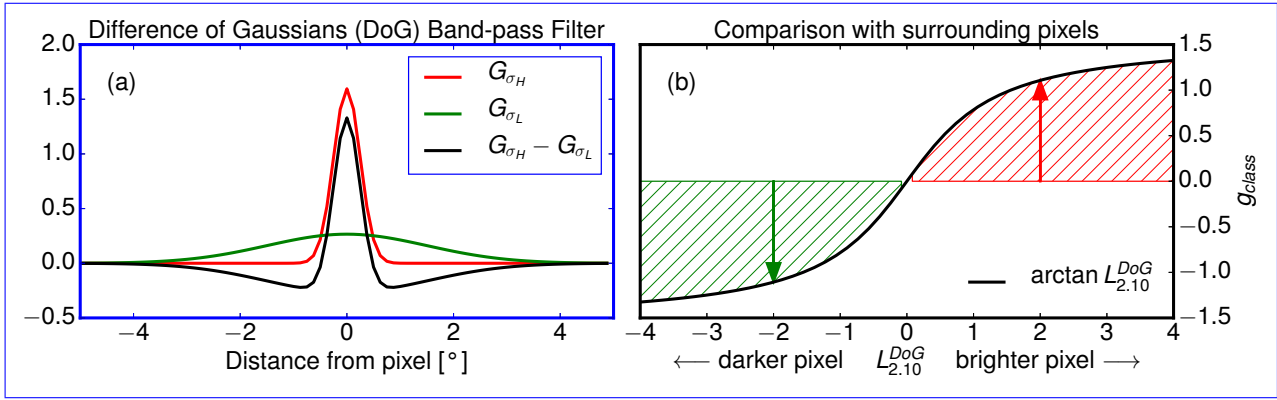


Figure 13. 2D Difference of Gaussians G_{σ_H} (red) and G_{σ_L} (green) which is used as a filter to derive The gradient classifier g_{class} which compares the pixel brightness with the brightness of the surrounding pixels.

oblique surfaces should be darker than their surroundings. In line with recent developments of multi-pixel retrievals, the and $L_{2,10}$ when changing from a steep local viewing angle towards a more oblique perspective onto a cloud surface. While the pixel brightness $L_{0,87}$ decreases considerably at a more oblique perspective the pixel brightness $L_{2,10}$ increases. While changes in $L_{2,10}$ along a whole cloud profile are associated with a change in effective radius, the geometry-based brightness increase in $L_{2,10}$ should generally occur at smaller scales associated with cloud structures. The method should therefore determine if the pixel is surrounded by darker pixels or surrounded by brighter pixels surrounding pixels are darker or brighter at $\lambda = 2100$ nm. At the same time, the method should be robust regarding instrument or radiative insensitive to instrument noise or Monte Carlo noise between adjacent pixels.

4.3.1 Comparison of pixel brightness

- 10 To this end, a 2D Gaussian band-pass difference of Gaussians (DoG) filter is used to classify different illumination regimes in simulated or the viewing geometry onto the cloud surface in simulated as well as in measured radiance images. As a 2D band-pass difference filter, it compares the brightness of each pixel with the brightness of other pixels in the periphery. Pixels are classified according to their positive or negative radiance deviation compared to their surrounding pixels. The band-pass The filter consists of two 2D Gaussian functions $H_{LP}(x, y)$ and $H_{HP}(x, y)$ $G_{\sigma_L}(x, y)$ and $G_{\sigma_H}(x, y)$ with different standard deviations σ_L and σ_H which specify the inner and outer search radius for this comparison the pixel brightness comparison:

$$G_{\sigma_H}(x, y) = \frac{1}{\sqrt{2\pi\sigma_H^2}} \exp\left(-\frac{x^2 + y^2}{2\sigma_H^2}\right) \quad (11)$$

$$G_{\sigma_L}(x, y) = \frac{1}{\sqrt{2\pi\sigma_L^2}} \exp\left(-\frac{x^2 + y^2}{2\sigma_L^2}\right) \quad (12)$$

Figure 13a shows the two Gaussians as a function of the angular distance from the considered pixel within the field of view. When the broader kernel G_{σ_L} is subtracted from the narrower kernel G_{σ_H} (Figure 13a, black line), the average pixel brightness

within σ_L is compared with the average pixel brightness of the center pixels within σ_H . ~~By neglecting directly adjacent pixels, the filter is insensitive to pixel-to-pixel noise of CMOS.~~ This pixel brightness deviation $L_{2,10}^{DoG}$ is obtained by convolving the difference of $(G_{\sigma_H} - G_{\sigma_L})$ with the radiance image $L_{2,10}$:

$$L_{2,10}^{DoG}(x, y) = (G_{\sigma_H} - G_{\sigma_L}) * L_{2,10}(x, y) \quad (13)$$

- 5 ~~Due to this subtraction, pixels are classified according to their positive or negative radiance deviation compared to their surrounding pixels. By using a not-too-small σ_H , not only the current pixel but a small surrounding is used, making the method less sensitive to noise of image sensors or Monte Carlo radiative transfer calculations. With $D(x, y)$ as the distance (Section 4.3.1) from the origin pixel, D_H and D_L limit the inner and outer search radius respectively:~~

$$\underline{2D(x, y)} = \sqrt{x^2 + y^2}$$

$$10 \quad \underline{H_{LP}(x, y, D_L)} = e^{-\frac{D(x, y)^2}{2D_L^2}}$$

$$\underline{H_{HP}(x, y, D_H)} = 1 - e^{-\frac{D(x, y)^2}{2D_H^2}}$$

~~Both functions $H_{LP}(x, y)$ and $H_{HP}(x, y)$ are then combined into the Gaussian Band-pass Kernel $H_{BP}(x, y)$:~~

$$\underline{2H_{BP}(x, y, D_L, D_H)} = \underline{H_{LP}(x, y, D_L) * H_{HP}(x, y, D_H)}$$

$$\underline{g_{class}(x, y, D_L, D_H)} = \underline{\arctan H_{BP}(x, y, D_L, D_H)}$$

- 15 ~~The absolute deviation values obtained from $H_{BP}(x, y)$ can vary from scene to scene.~~

For the classification into steep or oblique perspectives, we are ~~more~~ interested in the ~~relative deviation~~. ~~To constrain the brightness deviation relative to the pixel surrounding. However, the absolute pixel brightness deviation $L_{2,10}^{DoG}$ can vary from scene to scene. To ease the binning of the gradient classifier $g_{class}(x, y)$, we constrain it into a fixed interval, the arcus tangent function is used (Equation (14)) using the arctangent function:~~

$$20 \quad \underline{g_{class}(x, y)} = \underline{\arctan L_{2,10}^{DoG}(x, y)} \quad (14)$$

This restriction of g_{class} to the range $[-\pi/2, \pi/2]$ is shown in Figure 13b where positive values indicate pixels which are brighter at $\lambda = 2100$ nm compared to the brightness of their surrounding.

4.3.2 Pixel brightness deviation as a proxy of 3D effects

- 25 ~~In practice, the radiance ambiguity cannot be directly derived from passive radiance measurements without a detailed knowledge of the cloud surface orientation. Hence, the following study will investigate if the gradient classifier g_{class} can be used as a proxy to resolve the discussed radiance ambiguity. To demonstrate the method, the cloud field illustrated in Figure 6 was used again for radiance calculations, but with a fixed effective radius of $r_{eff} = 8 \mu\text{m}$. For this fixed effective radius, the broad radiance distribution of $L_{0,87}$ and $L_{2,10}$ shown in Figure 14a is mainly caused by the different cloud surface orientations discussed in~~

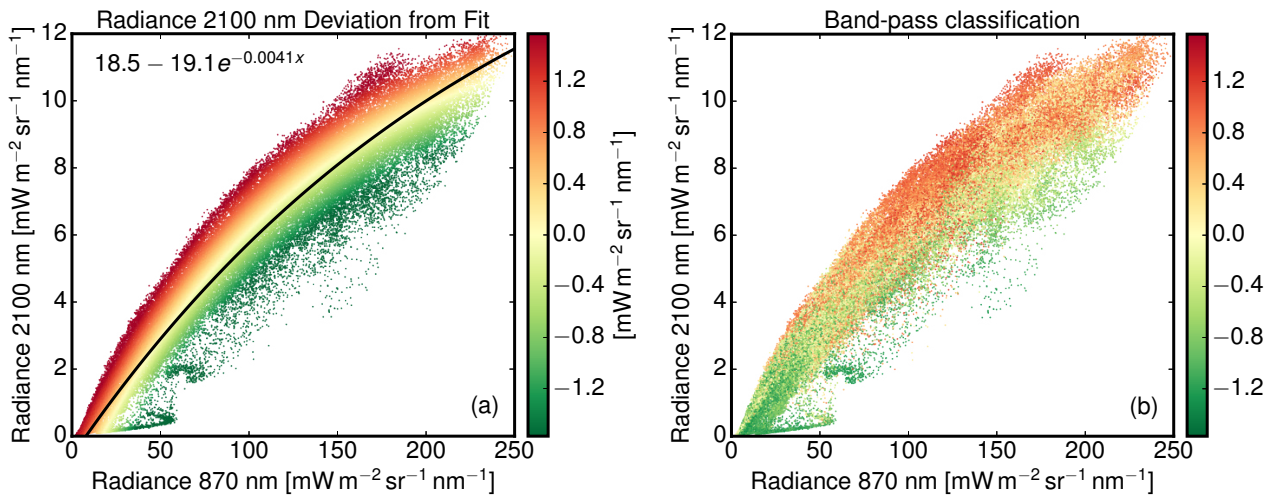


Figure 14. (a) 2-wavelength diagram for the MYSTIC calculation shown in [Figure 6a](#)–[Figure 5](#) but with a fixed effective radius of $r_{\text{eff}} = 8 \mu\text{m}$. (b) Result of the gradient classifier g_{class} applied to the same scene.

the previous section. In order to identify the regions leading to the upper part of the radiance scatter cloud in Figure 14a, an exponential function was fitted (black line) to the data points to determine the positive (blue/red) or negative (red/green) deviation $\Delta L_{2,10}$ from the typical best fit (black ~~line~~) for each radiance pair.

In the following, this deviation $\Delta L_{2,10}$ is taken as a reference for a perfect separation of 3D radiance ambiguities. It is important to mention, that this deviation $\Delta L_{2,10}$ can only be determined when the effective radius is already known. A method that would yield ~~the same separation from observable parameters—a similar separation without prior knowledge of r_{eff}~~ could be used as a proxy to mitigate the problem of ambiguous radiances. ~~For the gradient classifier g_{class} , a maximal correlation with $\Delta L_{2,10}$ is found when the band-pass operates between $D_H = 0.25^\circ$. First, an optimal inner and outer search radius σ_H and $D_L = 1.5^\circ$. σ_L has to be found to use g_{class} as a proxy for the inaccessible radiance deviation $\Delta L_{2,10}$.~~ This optimal search region was found by ~~correlating the result from variation of search radii σ_H and σ_L and by subsequent correlation of the obtained g_{class} with the~~ in Figure 15b with the radiance deviation $\Delta L_{2,10}$ ~~while the nearby and distant cut-off D_H and D_L was varied. For a cloud side at a distance of 6 km, pixel in Figure 15a. A maximum correlation with $\Delta L_{2,10}$ was found when the filter operated between $\sigma_H = 0.25^\circ$ and $\sigma_L = 1.5^\circ$. In spatial terms, the brightness within a search region of 30 m to 150 m around the pixel would be considered.~~ Figure 14b shows the ~~is compared with the considered pixel brightness. For the optimal search radii, Figure 14 compares the radiance separation provided by the gradient classifier (Equation (14)). Reference and proxy are also shown as images in Figure 15 in Figure 14b with the reference in Figure 14a. Figure 15 shows reference and proxy also as images,~~ where the radiance deviation $\Delta L_{2,10}$ ~~from the fit in the scatter plot is shown as reference is shown~~ on the left (Figure 15a) ~~and the result of the in Figure 15a and the gradient classifier on the right (Figure 15b) in Figure 15b.~~

Apparently, the radiance separation by the gradient classifier g_{class} is ~~able to reproduce the general appearance of the gradient classifier g_{class} used in Figure 15. similar to the radiance deviation $\Delta L_{2,10}$.~~ It is able to separate the radiance distribution into

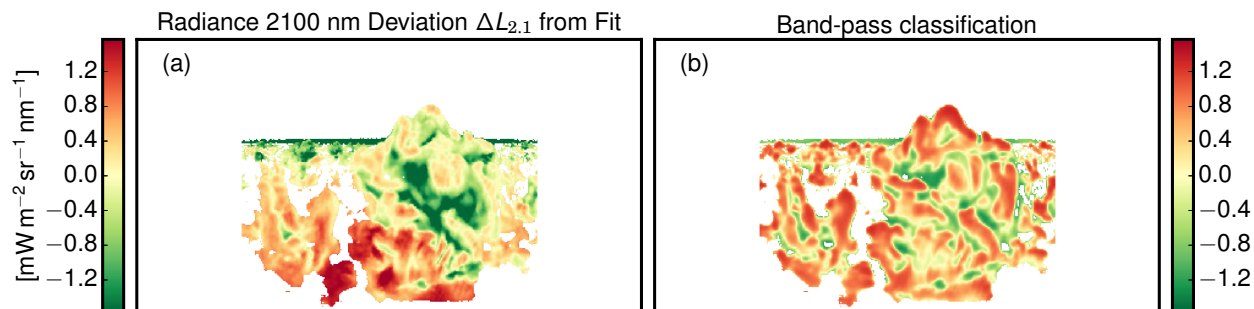


Figure 15. (a) Deviation $\Delta L_{2,10}$ from the fit in the 2-wavelength diagram in Figure 14a used as a reference for the (b) gradient classifier g_{class} which puts the pixel radiance into context with surrounding pixels.

positive and negative radiance deviations $\Delta L_{2,10}$ at high as well as at low radiance values, radiances. Large g_{class} values are more likely to be associated with a steeper illumination angle compared to the viewing angle more oblique local viewing angle ($\vartheta^* > \vartheta_0^*$), while smaller values are more likely to be associated with a more oblique illumination angle compared to the viewing angle steep local viewing angle ($\vartheta^* < \vartheta_0^*$). For two pixels with same illumination angle, $g_{\text{class}} > 0$ therefore marks marks thus the upper radiance branch in Figure 8 for $\vartheta_s = 150^\circ$ Figure 14b, while $g_{\text{class}} < 0$ marks the lower radiance branch. Based on this feature, the band-pass classification gradient classifier g_{class} can be used as a proxy to determine the location geometry-induced radiance deviation of a pixel within the radiance distribution. In the following For the retrieval, the gradient classifier g_{class} is used for the 3D forward calculation ensemble as well as for real measurements.

4.4 Exclusion of cloud shadows

10 Depending on the illumination, cloud surfaces Cloud regions can also be in direct shadow self-shadowed if the local solar zenith angle onto the cloud surface ϑ'_0 is larger than 90° . Illuminated cloud parts can also cast shadows onto other cloud parts. Without direct illumination, reflected photons from these shadowed cloud parts originate from previous scattering events and are affected by those. For this reason, shadowed cloud parts have to be filtered out before applying any retrieval based on direct illumination.

15 Usually radiation from shadow regions encountered more absorption compared to directly reflected light (Vant-Hull et al., 2007). This enhanced absorption is visible in Figure 16a, where the reflectivity at $2.1\mu\text{m}$ drops considerable (Figure 16a) for shadowed cloud regions. In Figure 16a, the blue areas illustrate a simple reflectivity threshold $R_{2,10} < 0.15$. As a proxy of enhanced absorption, the reflectivity ratio $R_{0,87}/R_{2,10}$ (Figure 16b) increases in this region regions. In the following, this ratio will be used as shadow index f_{shad} to exclude pixel $R_{0,87}/R_{2,10}$ to exclude pixels for which light has likely undergone multiple
20 diffuse reflections:

$$f_{\text{shad}} = \frac{R_{0,87}}{R_{2,10}} \frac{R_{0,87}}{R_{2,10}} > 3.5 \quad (\text{shadowed})(\text{shadow index}) \quad (15)$$

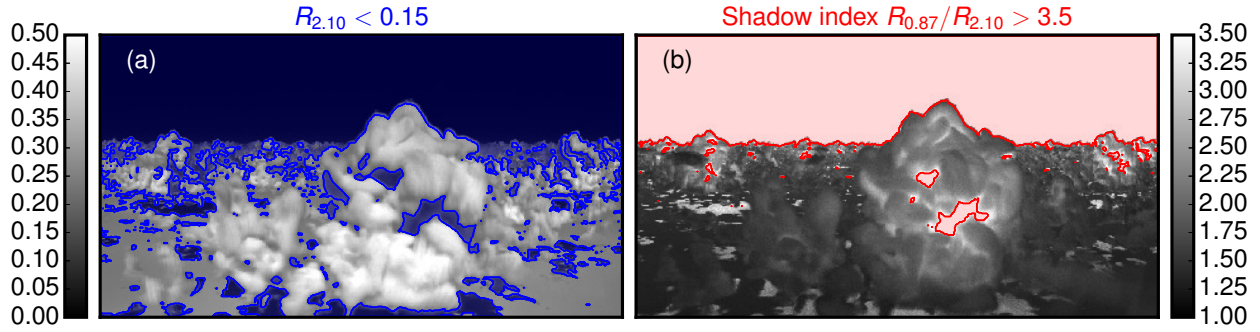


Figure 16. (a) Reflectivity at 2.1 μm for the cloud scene shown in Figure 6 (blue regions mark the simple reflectivity threshold $R_{2.10} < 0.15$). (b) Shadow index $R_{0.87}/R_{2.10}$ highlighting regions of enhanced cloud absorption caused by multiple diffuse reflections. (red regions mark the shadow index threshold $R_{0.87}/R_{2.10} > 3.5$)

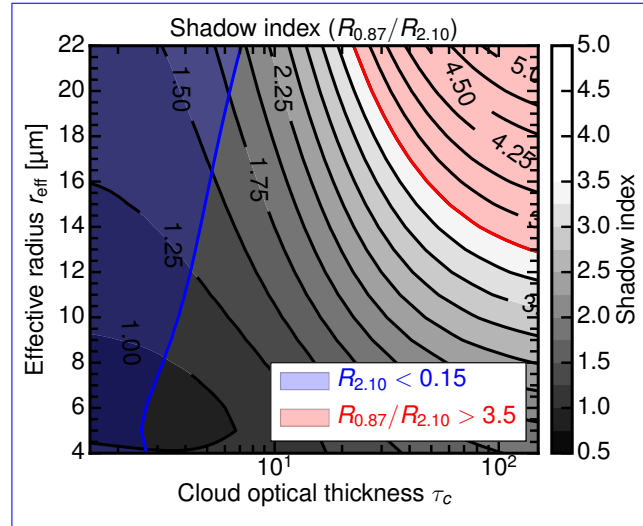


Figure 17. Shadow index $R_{0.87}/R_{2.10}$ for water clouds as a function of effective radius r_{eff} and cloud optical thickness τ_c for a geometry ($\vartheta^* = 0^\circ$, $\vartheta_0^* = 30^\circ$) with high absorption at 2.1 μm . Like in Figure 16, the blue area indicates the simple reflectivity threshold $R_{2.10} < 0.15$ while the red area indicates the shadow index threshold $R_{0.87}/R_{2.10} > 3.5$.

In Figure 16b, the red areas marks regions with $R_{0.87}/R_{2.10} > 3.5$. The manual inspection of many scenes confirmed $f_{\text{shad}} > 3.5$ as viable threshold for most shadowed cloud regions cloud scenes confirmed 3.5 as a viable shadow index threshold.

Unfortunately, clouds with very large cloud droplets ($r_{\text{eff}} > 12 \mu\text{m}$) can exhibit similar high values of the shadow index. To study this limitation, DISORT calculations were done for an idealized water cloud to characterize the shadow index with respect to cloud optical thickness and effective radius. Figure 17 shows the shadow index as a function of effective radius r_{eff} and optical thickness τ_c for a geometry ($\vartheta^* = 0^\circ$, $\vartheta_0^* = 30^\circ$) with high absorption at 2.1 μm . Like in Figure 16,

the blue area indicates the simple reflectivity threshold $R_{2.10} < 0.15$ while the red area indicates the shadow index threshold $R_{0.87}/R_{2.10} > 3.5$. Obviously, both shadow thresholds have their disadvantages. At higher optical thickness ($\tau_c > 100$), the shadow index $R_{0.87}/R_{2.10} > 3.5$ can confuse very large cloud droplets ($r_{\text{eff}} > 12\mu\text{m}$) with cloud shadows. In contrast, the simple reflectivity threshold $R_{2.10} < 0.15$ can misidentify optical thin clouds ($\tau_c < 10$) as cloud shadows. The combined shadow mask f_{shad} of both thresholds in Equation (16) compensates the disadvantage of the shadow index threshold:

$$f_{\text{shad}} = [R_{2.10} < 0.15 \quad \text{and} \quad R_{0.87}/R_{2.10} > 3.5] \quad (\text{shadow mask}) \quad (16)$$

In this way, only dark and highly absorptive cloud regions at 2.10nm are classified as shadows. In addition, a threshold of $L_{0.87} > 75 \text{ [mWm}^{-2}\text{nm}^{-1}\text{sr}^{-1}]$ is used to focus the retrieval on optically thicker clouds and to filter out clear-sky regions.

5 Retrieval

In this section, the Monte Carlo sampled posterior distributions $p(r_{\text{eff}}|L_{0.87}, L_{2.10})$ will be used to infer droplet size profiles from convective cloud sides. As mentioned in Section 2.2, the posterior $p(r_{\text{eff}}|L_{0.87}, L_{2.10})$ can be derived from Bayes' theorem by solving the easier forward problem $p(L_{0.87}, L_{2.10}|r_{\text{eff}})$ for all values of r_{eff} .

The three-dimensional radiative transfer code MYSTIC is applied to LES model clouds to obtain simulations of realistic *specMACS* measurements. A whole ensemble of these MYSTIC forward simulations of cloud sides will then be incorporated within the statistical framework introduced in Section 2.1. Subsequently, the sampled statistics of reflected radiances are analyzed for their sensitivity to the effective cloud droplet radius.

5.1 Implementation of the 3D forward radiative transfer ensemble

In the following, an ensemble of 3D radiative transfer simulations is created to sample the posterior probability distribution $p(r_{\text{eff}}|L_{0.87}, L_{2.10})$. The ensemble of simulated cloud side measurements is set up by using the method to select suitable observation perspectives introduced in Section 3.1. During the radiative transfer calculations, the MYSTIC REFF method (Section 3.2) determines the apparent effective radius which links the simulated radiances with the corresponding cloud droplet sizes. Despite the variance reduction methods in the MYSTIC code itself (Buras and Mayer, 2011), the time-consuming 3D technique still limits the number of model runs. Figure 18 illustrates the different illumination setups and the viewing geometry included within the 3D forward simulation ensemble. With LES cloud tops between 1.5 and 2.0km, the airborne perspective is set to an altitude of $h = 1.7\text{km}$. Since the retrieval should also be applicable in tropical regions, solar zenith angles were chosen at $\vartheta_0 = 7, 27, 47$ and 67° .

For each observation position selected in Section 3.1, images of cloud sides were simulated using MYSTIC. In line with the position selection method, the field of view of each image has an azimuthal opening angle of $\Delta\varphi = \pm 45^\circ$, a zenithal opening angle of $\Delta\vartheta = 46^\circ$ and is centered around 5° below the horizon. Comprising 720×368 [pixelpixels](#), each image was calculated with a spatial resolution of 0.125° . For this image setup, solar radiances were calculated at the non-absorbing wavelength $\lambda = 870\text{nm}$ ($L_{0.87}$) and the absorbing wavelength $\lambda = 2100\text{nm}$ ($L_{2.1}$ $L_{2.10}$). Since the width of the cloud droplet

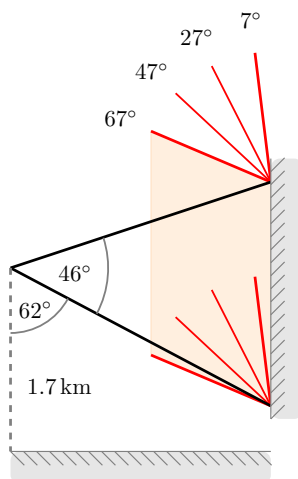


Figure 18. Setup of the viewing geometry ($\Delta\vartheta = 46^\circ$, starting 62° from nadir) and the illumination geometry ($\vartheta_0 = 7, 27, 47$ and 67°) for the airborne ($h = 1.7$ km) 3D forward simulation ensemble. The horizontal extent of the field of view is $\Delta\varphi = \pm 45^\circ$ from the principal plane.

size distribution has no large impact on radiances at $L_{0.87}$ and $L_{2.1}$ $L_{2.10}$ (analysis not shown), the scattering properties were derived according to Mie theory using modified gamma size distributions with a fixed width of $\alpha = 7$ and the effective radius as simulated by RAMS. For the ensemble, the surface albedo was set to zero since the influence of radiation reflected by vegetation on the ground is masked out in measurements. This technique will be described in the following part 2 paper.

- 5 Atmospheric aerosol was included by using the continental average mixture from the Optical Properties of Aerosols and Clouds (OPAC) package (Hess et al., 1998). The aerosol optical thickness (AOT) at 550 nm is around $\tau_a^{550} = 0.15$ for this profile. This aerosol profile is typical for anthropogenically influenced continental areas and contains soot and an increased amount of insoluble (e.g. soil) as well as water-soluble (e.g. sulfates, nitrates and organic) components.

10 A compromise had to be found to minimize the noise of the 3D Monte Carlo radiative transfer results and to keep computation time within reasonable limits. Here, the Monte Carlo noise should stay below the accuracy of the radiometric sensor which is assumed to be $\sim 5\%$. The photon number was thus chosen to be 2000 photons per pixel which leads to a standard deviation of about 2%.

15 All 12 RICO LES snapshots between 12h 00 min LT (local time) and 14h 00 min LT with a time step of 10 min were included in the 3D forward simulation ensemble. For four azimuth directions $\varphi = 45^\circ, 135^\circ, 225^\circ$ and 315° , suitable locations for cloud side observations were determined in each LES snapshot. ~~In summary, for each ensemble~~ For the polluted as well as for the clean cloud ensemble, $12 \times 4 = 48$ cloud scenes have been simulated for 4 solar zenith angles and 2 wavelengths with 720×368 ~~pixel~~ pixels, totaling 101,744,640 forward simulation pixels. In total, 2.0×10^{11} photons have been traced on a computing cluster with 300 cores consuming 2.0×10^8 s of CPU time.

Table 1. Variables, range and step size into which simulated radiances are binned to obtain a multidimensional histogram which is then used as a lookup table.

Variable	Range		Step	Bins
	Lower	Upper		
$L_{0.87}^*$	0	290	5	58
$L_{2.1}^*$ $L_{2.10}^*$	0	18	0.2	90
r_{eff}^\dagger	3	25	2	11
ϑ	80°	180°	10°	10
g_{class}	$-\frac{\pi}{2}$	$+\frac{\pi}{2}$	$\frac{\pi}{5}$	5

* $\text{mWm}^{-2}\text{nm}^{-1}\text{sr}^{-1}$, $\dagger\mu\text{m}$

5.2 Construction of the lookup table

In the next step, simulated radiances were binned into a multidimensional histogram with equidistant steps in $L_{0.87}$, $L_{2.10}$, r_{eff} , ϑ and g_{class} . Here, it is important to emphasize that the retrieval is designed to be independent from a-priori knowledge of N_{CCN} . If the posterior distributions would separate between clean and polluted cases, the retrieval could tend to larger r_{eff} when a low N_{CCN} is measured. Such an retrieval would be unsuitable to study aerosol-cloud-interactions. For this reason, the radiance results from the polluted and the clean cloud ensemble are combined within the same histogram. Table 1 shows the ~~range and step sizes~~ specific binning of this histogram. During this discretization, radiances were counted in adjoining bins by linear interpolation. In the following, the histogram will be normalized to yield the posterior probability $p(r_{\text{eff}}|L_{0.87}, L_{2.10})$.

5.3 Biased and unbiased priors

- 10 In ~~our input cloud field~~ the used cloud fields, the effective radius always increases with height which might impact the retrieval. The retrieval should not exhibit any trend towards a specific profile. ~~Instead of an unbiased result~~ Otherwise, the retrieval would ~~otherwise only~~ reflect a-priori knowledge about the vertical profile of cloud microphysics. For this reason, the assumed prior is a key element to be considered in the sampling of the posterior and the subsequent Bayesian inference. In the case of cloud side remote sensing, two possible priors $p_{\text{pr}}(r_{\text{eff}})$ come into mind: a uniform prior or the LES model provided prior. For the
- 15 LES model the prior is a function of viewing geometry, as some r_{eff} are more likely to be observed under certain viewing directions. In particular, relative frequency of r_{eff} for different scattering angles ϑ_s and gradient classes should be the same. For this problem, the prior probability should be uniform in r_{eff} to avoid the introduction of any bias.

Another important prerequisite of the Monte Carlo based Bayesian approach is the sufficient sampling of the likelihood probability $p(L_{0.87}, L_{2.10}, r_{\text{eff}})$. Naturally, effective radii not included in the ensemble of forward calculations cannot be re-

20 trieved using Bayesian inference. Furthermore, it should be kept in mind that sparsely sampled likelihood regions are probably

not representative for the whole distribution. This is especially true for the smallest and largest effective radii contained in the LES model.

For this reasons an unbiased coverage of the likelihood probability is ~~pursued. In order to meet this objective~~ aspired. To this end, the ensemble with the *normal* cloud microphysics data from the LES model was complemented with calculations with vertically *flipped* cloud microphysics. The flipped cloud microphysics ~~are derived by subtracting the~~ were derived by taking the additive inverse $-r_{\text{eff}}^{\text{orig}}$ of the original effective radius ~~value $r_{\text{eff}}^{\text{orig}}$ from $16\mu\text{m}$ for the polluted cloud ensemble ($\text{CCN} = 1000\text{cm}^{-1}$) and from $26\mu\text{m}$ for the clean cloud ensemble ($\text{CCN} = 100\text{cm}^{-1}$):-~~

$$\begin{aligned} 2r_{\text{eff}}^{\text{flip}} &= 16\mu\text{m} - r_{\text{eff}}^{\text{orig}} & (\text{CCN} = 1000\text{cm}^{-1}) \\ r_{\text{eff}}^{\text{flip}} &= 26\mu\text{m} - r_{\text{eff}}^{\text{orig}} & (\text{CCN} = 100\text{cm}^{-1}) \end{aligned}$$

10 fields and add an offset $r_{\text{eff}}^{\text{offset}}$.

$$r_{\text{eff}}^{\text{flip}} = -r_{\text{eff}}^{\text{orig}} + r_{\text{eff}}^{\text{offset}}. \quad (17)$$

~~These values are~~ To ensure positive and realistic values for $r_{\text{eff}}^{\text{flip}}$, the offset $r_{\text{eff}}^{\text{offset}}$ was chosen to be at least $4\mu\text{m}$ larger than the ~~maximum largest~~ values found in the respective ensembles to ensure positive and realistic values for $r_{\text{eff}}^{\text{flip}}$. In order to all cloud fields. Thus, $r_{\text{eff}}^{\text{offset}} = 12\mu\text{m} + 4\mu\text{m} = 16\mu\text{m}$ was used in Equation (17) for the polluted cloud ensemble ($\text{CCN} = 1000\text{cm}^{-3}$) and $r_{\text{eff}}^{\text{offset}} = 22\mu\text{m} + 4\mu\text{m} = 26\mu\text{m}$ for the clean cloud ensemble ($\text{CCN} = 100\text{cm}^{-3}$). To preserve the optical thickness τ^{orig} of the original cloud field (Section 5.3), the original liquid water content LWC^{orig} is changed (Equation (20)) according to the,

$$\tau^{\text{flip}} \equiv \tau^{\text{orig}}, \quad (18)$$

the well established relationship (Equation (19)) in the optical limit:-

$$\begin{aligned} 20 \quad \tau &\propto \frac{\text{LWC}}{r_{\text{eff}}} \\ \tau^{\text{flip}} &\equiv \tau^{\text{orig}} \\ \text{LWC}^{\text{flip}} &= \frac{r_{\text{eff}}^{\text{flip}}}{r_{\text{eff}}^{\text{orig}}} \text{LWC}^{\text{orig}} \end{aligned}$$

in Equation (19) was used to derive the liquid water content LWC^{flip} for the flipped cases in Equation (20):

$$\tau \propto \frac{\text{LWC}}{r_{\text{eff}}}, \quad (19)$$

$$\text{LWC}^{\text{flip}} = \frac{r_{\text{eff}}^{\text{flip}}}{r_{\text{eff}}^{\text{orig}}} \text{LWC}^{\text{orig}}. \quad (20)$$

25 5.4 Radiance and posterior distributions

The following section will present the radiance histograms $n(L_{0.87}, L_{2.10}, r_{\text{eff}})$ and the corresponding posterior distributions $p(r_{\text{eff}} | L_{0.87}, L_{2.10})$. Analogous to the likelihood distribution, the first gives the spread of radiances for a given effective radius

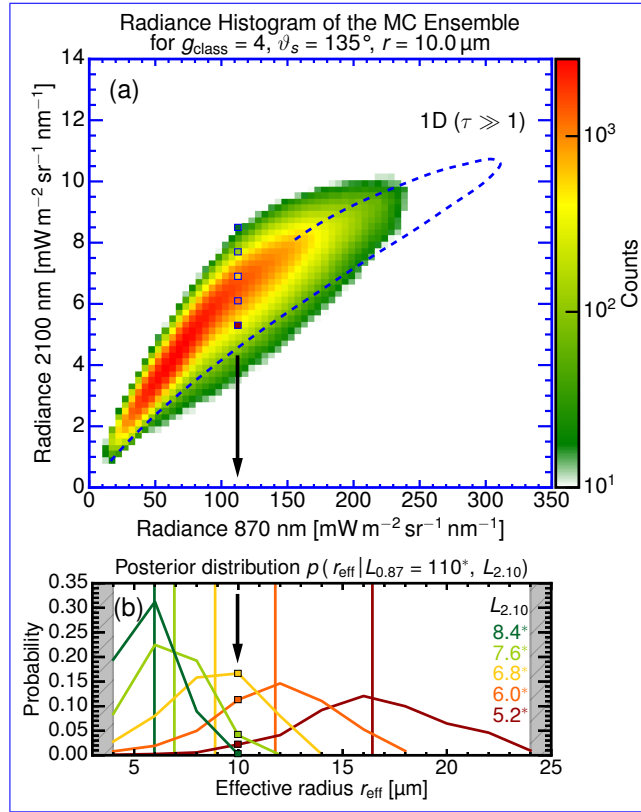


Figure 19. (a) Radiance histogram ($\vartheta_s = 135^\circ$, $g_{\text{class}} = 4$) the 3D forward simulation ensemble of cloud sides which illustrates the radiance spread for the effective radius bin of (top) $r_{\text{eff}} = 10 \mu\text{m}$. The dashed line shows reflected radiances which were calculated with DISORT (1D RT code) for an optically thick ($\tau = 500$, $\tau_c = 500$) water cloud with the same effective radius and the same scattering angle for different a variable cloud surface inclinations-inclination within the principal plane. The colored dots indicate locations within the histogram for which the posterior distributions are shown in ??Figure 19b. (b) Corresponding posterior probability for a fixed radiance $L_{0.87} = 110 \text{ mW m}^{-2} \text{ nm}^{-1} \text{ sr}^{-1}$ at the non-absorbing wavelength and different $L_{2.10}$ radiances at the absorbing wavelength. The vertical lines indicate the corresponding mean effective radius for each posterior distribution.

r_{eff} , while the latter describes the spread of effective radii r_{eff} for a given radiance pair $L_{0.87}$ and $L_{2.10}$. Figure 19a shows a 2D histogram of simulated radiance combinations $L_{0.87}$ and $L_{2.10}$ for the airborne perspective. The histogram shows the results for the effective radius bin centered at $r_{\text{eff}} = 10 \mu\text{m}$, the scattering angle bin between $\vartheta_s = 130^\circ$ and 140° and the gradient class bin $g_{\text{class}} = 4$ which holds pixels that are brighter as their surroundings. The spread of the radiance from radiance spread from the three-dimensional model cloud sides, for the most part, can be explained by the one-dimensional DISORT results for $\tau_c = 500$ (dashed line for variable cloud surface inclination).

After normalization of the histograms in Equation (3) and after the application of the uniform prior in Equation (4), the posterior probabilities $p(r_{\text{eff}} | L_{0.87}, L_{2.10})$ can be examined. ??Figure 19b shows posterior probabilities as a function of r_{eff}

for different radiances $L_{2,10}$ at the absorbing wavelength corresponding to the colored dots in the histogram panels (Figure 19 panel (Figure 19a)). The vertical lines indicate the corresponding mean effective radius for each posterior distribution which were derived using Equation (21). The descending order of mean effective radii with ascending radiance $L_{2,10}$ demonstrates the general feasibility to discriminate different effective radii in cloud side measurements. Albeit ~~the relatively large spread in r_{eff} a~~
5 ~~relatively large statistical retrieval uncertainty $\sigma(r_{\text{eff}})$~~ , the measurement of a radiance pair ($L_{0,87}$, $L_{2,10}$) can still narrow down r_{eff} to $\pm 1.5 \mu\text{m}$ around the most likely value. ~~(left) Posterior probability ($\vartheta_s = 135^\circ$, $g_{\text{class}} = 4$) for the airborne 3D forward simulation ensemble for a fixed radiance $L_{0,87} = 110 \text{ mWm}^{-2}\text{nm}^{-1}\text{sr}^{-1}$ at the non-absorbing wavelength and different $L_{2,10}$ radiances at the absorbing wavelength. The vertical lines indicate the corresponding mean effective radius for each posterior distribution. The color of the different posterior distributions corresponds with the dots in the radiance histograms in Figure 19~~
10 ~~Interestingly, $\sigma(r_{\text{eff}})$ increases with the effective radius from $\sigma(r_{\text{eff}} = 6 \mu\text{m}) = \pm 1 \mu\text{m}$ to $\sigma(r_{\text{eff}} = 16 \mu\text{m}) = \pm 3 \mu\text{m}$.~~ In the following, the tabulated set of posterior distributions is used as lookup table for the effective radius retrieval.

5.5 Bayesian inference of the effective radius

Based on this lookup table of posterior probabilities $p(r_{\text{eff}} | L_{0,87}, L_{2,10})$, the actual retrieval of effective radii can now be introduced. After a set of spectral radiance pairs $L_{0,87}$ and $L_{2,10}$ has been measured, the ~~band-pass-DoG~~ filter (Section 4.3)
15 is applied to the $L_{2,10}$ image to derive the gradient classifier g_{class} . Scattering angles are calculated from the orientation and navigation data of the aircraft. With the four parameters, $L_{0,87}$, $L_{2,10}$, g_{class} and ϑ_s defined for each pixel, the corresponding posterior is retrieved from the lookup table by linear interpolation between posteriors defined at the bin centers of the lookup table. Finally, the mean effective radius $\langle r_{\text{eff}} \rangle$ and the corresponding standard deviation $\sigma(r_{\text{eff}})$ can be derived as first and second moments of the posterior distribution:

$$20 \quad \underline{\langle r_{\text{eff}} \rangle} = \int r_{\text{eff}} p(r_{\text{eff}} | L_{0,87}, L_{2,10}) dr_{\text{eff}}.$$

$$\underline{\sigma(r_{\text{eff}})} = \sqrt{\int (r_{\text{eff}} - \langle r_{\text{eff}} \rangle)^2 p(r_{\text{eff}} | L_{0,87}, L_{2,10}) dr_{\text{eff}}}.$$

$$\underline{\langle r_{\text{eff}} \rangle} = \int r_{\text{eff}} p(r_{\text{eff}} | L_{0,87}, L_{2,10}) dr_{\text{eff}}. \quad (21)$$

$$\underline{\sigma(r_{\text{eff}})} = \sqrt{\int (r_{\text{eff}} - \langle r_{\text{eff}} \rangle)^2 p(r_{\text{eff}} | L_{0,87}, L_{2,10}) dr_{\text{eff}}}. \quad (22)$$

25 This 1-sigma standard deviation $\sigma(r_{\text{eff}})$ will be referred to as the *statistical retrieval uncertainty*.

6 Numerical analysis of the retrieval

The next section will examine the stability of the statistical relationship between reflected radiance and cloud droplet size. How well can we retrieve the cloud droplet size after different viewing directions and cloud surface orientations have been

combined within one lookup table? To answer this, the statistical retrieval is applied to simulated cloud side measurements for which the underlying effective radius is known. First, this is done for scenes that have already been included in the lookup table. Using scenes with normal and flipped effective radius profile, the lookup table is tested for an inherent bias towards a specific effective radius profile that could be caused by the chosen forward sampling strategy. In addition, tests are repeated for
5 the same scenes with a fixed effective radius of $8\mu\text{m}$; a case which is not included in the lookup table.

6.1 Analysis of the sampling bias

~~Retrieval comparison between the true effective radius (left) and the retrieved mean effective radius (right) for a cloud scene that was not included in the forward ensemble, (d) Apparent effective radius $\langle r_{\text{eff}} \rangle_{mc}$ for the airborne perspective, (e) Mean and standard deviation of the true (black) and retrieved (green) vertical effective radius profile, (f) Retrieved mean effective~~
10 ~~radius for the airborne perspective.~~ By design the retrieval should not exhibit any trend towards a specific profile. The polluted scene ($N_{\text{CCN}} = 1000\text{cm}^{-1}$ ~~$N_{\text{CCN}} = 1000\text{cm}^{-3}$~~), already introduced in ~~Figure 6a~~ ~~Figure 5~~, will be used as a first case study. Figure 20 shows result of the statistical effective radius retrieval with the normal effective radius profile on top, the flipped profile in the center and a fixed effective radius profile at the bottom. The retrieved mean effective radius is shown in the right panels (Figure 20c,f,i), the apparent effective radius $\langle r_{\text{eff}} \rangle_{mc}$ (“the truth“) $\langle r_{\text{eff}} \rangle_{\text{app}}$ is shown in the left panels (Figure 20a,d,g).
15 The center panels compare the mean vertical profile (lines) and its spatial standard deviation (shaded areas) of the apparent (black) and the retrieved (green) effective radius. Furthermore, the ~~green-red~~ error bars show the ~~error estimate~~ ~~mean statistical retrieval uncertainty~~ $\sigma(r_{\text{eff}})$ provided by the retrieval.

~~Overall, Like in Figure 19b, $\sigma(r_{\text{eff}})$ increases with r_{eff} from $\sigma(r_{\text{eff}} = 6\mu\text{m}) = \pm 1\mu\text{m}$ to $\sigma(r_{\text{eff}} = 12\mu\text{m}) = \pm 2\mu\text{m}$. Within $\sigma(r_{\text{eff}})$, the retrieval reproduces all three profiles the mean effective radius profile for all three cases quite well. However, For~~
20 ~~some specific cloud regions, however,~~ there are also large differences (of up to $\pm 3\mu\text{m}$) ~~for specific cloud regions. For the normal profile as well as for the flipped profile, the retrieved effective radius agrees well with its true value for the upper half of the cloud side. In the lower half of the cloud side near cloud base, the retrieval underestimates the large droplets of the flipped profile by up to $1\mu\text{m}$. This is especially true at cloud edges and close to shadows.~~

Altogether, the statistical relationship between reflected radiance and cloud droplet size seems stable enough to be used
25 for highly complex cloud sides. Moreover, these first results indicate that the retrieval seems to be resilient to the unrealistic, flipped cloud profiles included in its lookup table. Although the retrieval showed minor problems to retrieve the flipped profile, no substantial bias towards a specific effective radius profile could be detected. Mean values for all heights agree within the natural variability in the LES data; the retrieval error estimate $\sigma(r_{\text{eff}})$ seems to overestimate the uncertainty. Since these results were only obtained for a single cloud side scene, the following section will investigate these findings for a representative
30 number of scenes.

Statistic stability for included scenes

In a first step, the retrieval will be tested for perspectives which are already included in the lookup table. This is done to test the retrieval for biases and to obtain a robust measure of correlation between the retrieval and the cloud side scenes it is composed

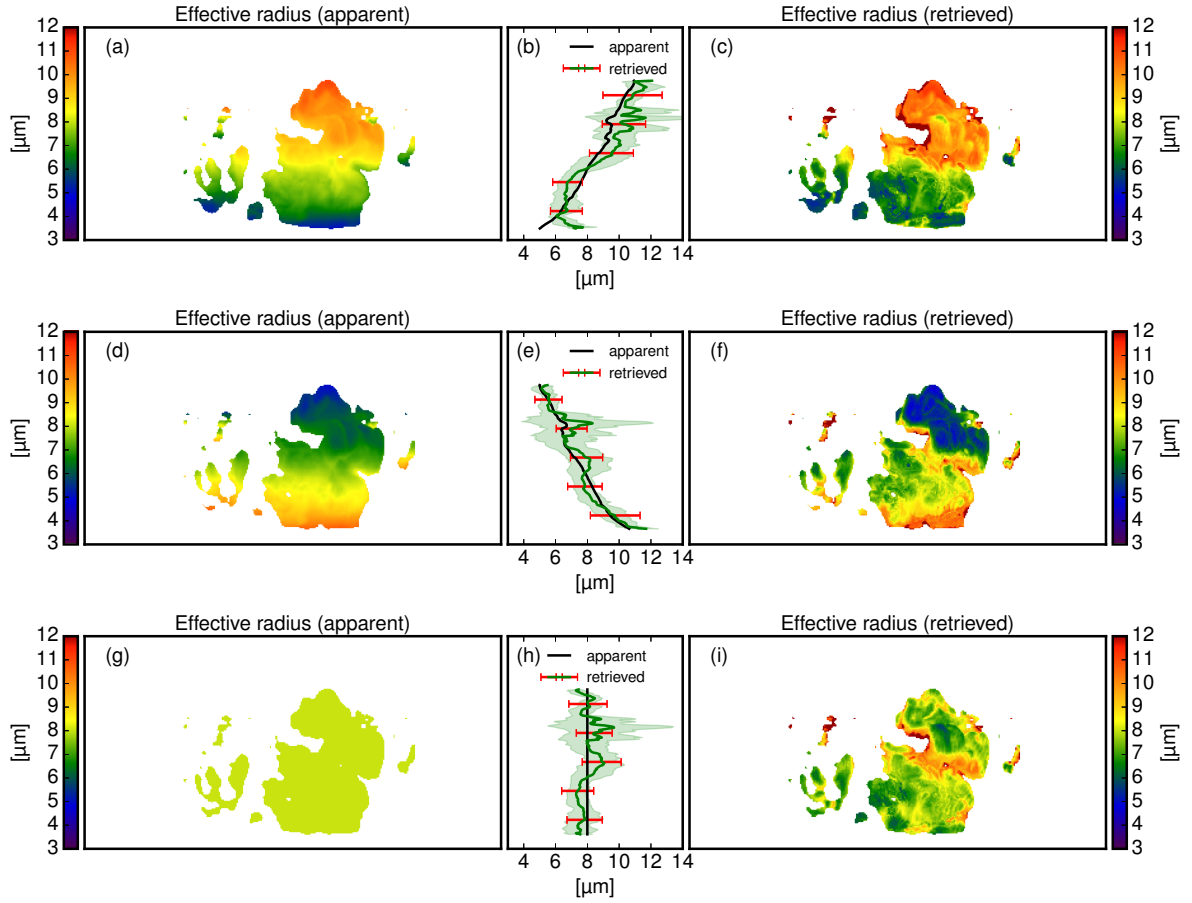


Figure 20. Retrieval test between the true-apparent effective radius (left) and the retrieved mean effective radius (right) for the normal (top), flipped (center) and fixed (bottom) effective radius profile. **(a)** Apparent effective radius $\langle r_{\text{eff}} \rangle_{mc} \langle r_{\text{eff}} \rangle_{app}$ for the normal profile, **(b)** Mean and standard deviation of the true-apparent (black) and retrieved (green) vertical effective radius profile (normal) with the mean statistical retrieval uncertainty (red errorbars), **(c)** Retrieved mean effective radius for the normal profile, **(d)** Apparent effective radius $\langle r_{\text{eff}} \rangle_{mc} \langle r_{\text{eff}} \rangle_{app}$ for the flipped profile, **(e)** Mean and standard deviation of the true-apparent (black) and retrieved (green) vertical effective radius profile (flipped) with the mean statistical retrieval uncertainty (red errorbars), **(f)** Retrieved mean effective radius for the flipped profile, **(g)** Apparent effective radius $\langle r_{\text{eff}} \rangle_{mc} \langle r_{\text{eff}} \rangle_{app}$ for the fixed profile, **(h)** Mean and standard deviation of the true-apparent (black) and retrieved (green) vertical effective radius profile (fixed) with the mean statistical retrieval uncertainty (red errorbars), **(i)** Retrieved mean effective radius for the fixed profile

of. By comparing this correlation with the correlation for cloud side scenes that are not included in the lookup table, this analysis will also be used to detect a potential over-fitting. There is the risk that the lookup table only reflects 3D effects that are specific for the included cloud side scenes.

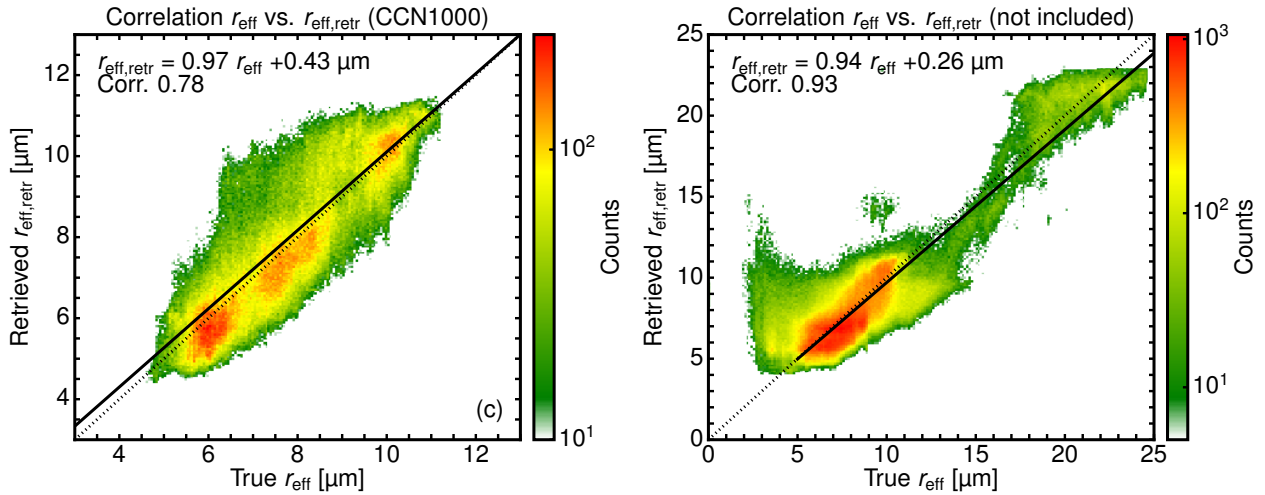


Figure 21. 2D histograms and linear regressions to determine the correlation between the **true-apparent** effective radius r_{eff} and the retrieved effective radius $r_{\text{eff,retr}}$ for **(a)** the included polluted cases ($N_{\text{CCN}} = 100 \text{ cm}^{-3}$, $N_{\text{CCN}} = 100 \text{ cm}^{-3}$) with normal and flipped effective radius profile and **(b)** for the not included cases with normal and flipped effective radius profile.

In total, 9 cloud side perspectives were randomly chosen from the polluted as well as the clean dataset. For each perspective, the normal, the flipped as well as the fixed effective radius profile were tested. This amounts to $2 \times 9 \times 3 = 54$ test cases. For this statistical comparison, only reliable results with an retrieval error estimate $\sigma(r_{\text{eff}})$ of less than $2.5 \mu\text{m}$ were included.

Figure 21a shows the correlation for the normal and the flipped polluted profiles which include around 358,000 **pixelpixels**. The linear regression with a slope of 0.97 and an offset of $0.43 \mu\text{m}$ shows no significant retrieval bias for these cases. The correlation between the **true-apparent** and the retrieved values is 0.78. A deeper insight can be gained through Table 2, where all comparisons are summarized separately for normal and flipped profiles. The higher correlation coefficient (0.80 vs. 0.73) seem to indicate a slightly better ability to detect the cases with a normal effective radius profile. Nevertheless, comparable linear regressions show no substantial bias towards the normal or the flipped cases. This confirms the observation made in the case study shown in Figure 20.

For the fixed effective radius profiles, the histogram in Figure 22 shows the deviation of the statistical retrieval with two distinct modes. With most likely values between $0 \mu\text{m}$ and $-1 \mu\text{m}$, the retrieval underestimates the effective radius slightly. A second mode is found where the retrieval overestimates r_{eff} with values between $1 \mu\text{m}$ and $2 \mu\text{m}$. In combination, there is only a slight overestimation of $0.10 \mu\text{m}$ with a larger standard deviation of $1.17 \mu\text{m}$. A further investigation showed that the overestimation peak is connected with and found around undetected cloud shadows.

Statistic stability for unknown scenes

To check the retrieval for potential over-fitting, the retrieval was applied to unknown cloud side scenes. Nine new cloud side perspectives were selected from the polluted and the clean LES runs. While the forward ensemble contains viewing azimuths

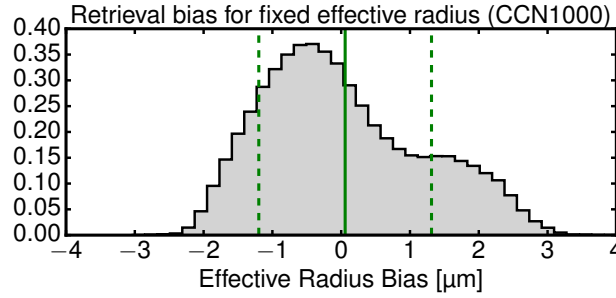


Figure 22. Retrieval deviations (retrieved $r_{\text{eff, retr}}$ - ~~true~~ apparent r_{eff}) for the 9 cloud sides with fixed effective radius profile which are not included in the ensemble. The green line shows the average bias in retrieved effective radius $r_{\text{eff, retr}}$, the green dashed lines the root mean square error for $r_{\text{eff, retr}}$.

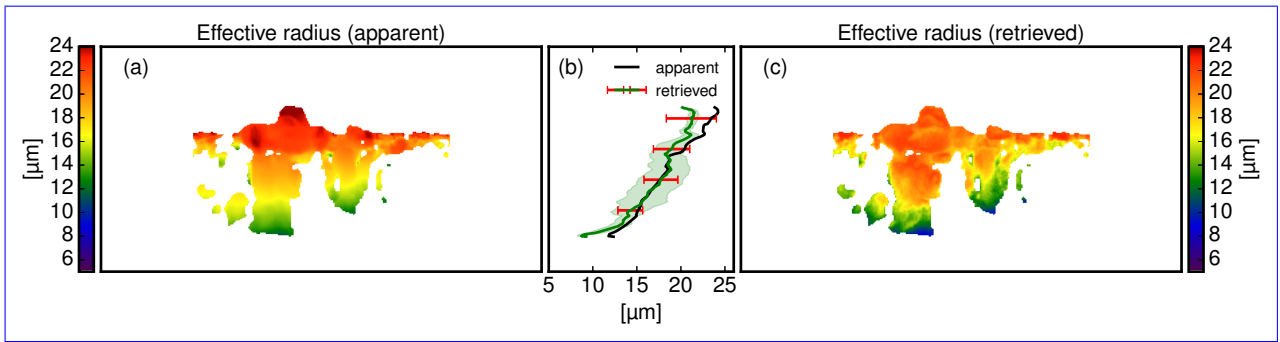


Figure 23. Retrieval comparison between the apparent effective radius (left) and the retrieved mean effective radius (right) for a cloud scene that was not included in the forward ensemble. (a) Apparent effective radius $\langle r_{\text{eff}} \rangle_{\text{app}}$ for the airborne perspective, (b) Mean and standard deviation of the apparent (black) and retrieved (green) vertical effective radius profile with the mean statistical retrieval uncertainty (red errorbars), (c) Retrieved mean effective radius for the airborne perspective.

of 45° , 135° , 225° and 315° , these new cloud side perspectives were chosen for new viewing azimuths of 0° , 90° , 180° and 270° and only normal effective radius profiles were used this time.

Figure 23 shows one of these new cloud side scenes with a normal effective radius profile. In contrast to Figure 20, this clean ($N_{\text{CCN}} = 100 \text{ cm}^{-3}$) scene features a much larger range of cloud droplet sizes. ~~Again, the~~ For this scene with overall larger r_{eff} , the retrieval underestimates r_{eff} by $\pm 2.5 \mu\text{m}$ at the upper cloud side part. Nevertheless, the statistical retrieval detects the ~~effective radius profile well~~. ~~The true values for r_{eff} remain within the retrieval error estimate~~ mean effective radius profiles well within $\sigma(r_{\text{eff}})$. Like in Figure 20a, $\sigma(r_{\text{eff}})$ increases with r_{eff} from $\sigma(r_{\text{eff}} = 12 \mu\text{m}) = \pm 2 \mu\text{m}$ to $\sigma(r_{\text{eff}} = 21 \mu\text{m}) = \pm 3 \mu\text{m}$.

The comparison for all not included cloud sides is shown in Figure 21b. The correlation for the not included cases is 0.93, where around 339,000 pixel-pixels are compared in total.

Table 2. Results of retrieval performance tests when faced with normal, flipped and not included effective radius profiles, grouped for $CCN = 1000$, $CCN = 100$ and for all not included cases. Linear regression, bias, RMSE and correlation are calculated between ~~true~~ apparent and retrieved effective radius.

Dataset	Slope	Offset	Bias	RMSE	Correlation
<i>CCN 1000</i>					
Included Profiles	+0.93	+0.65	-0.18	+1.18	+0.81
- Normal Profiles	+0.95	+0.49	-0.12	+1.20	+0.80
- Flipped Profiles	+0.96	+0.52	-0.24	+1.17	+0.73
Unknown Profiles	+1.08	-0.85	+0.10	+1.26	+0.79
<i>CCN 100</i>					
Included Profiles	+0.95	+0.19	-0.16	+2.17	+0.95
Unknown Profiles	+1.05	+0.25	-0.26	+2.28	+0.78
<i>All</i>					
Unknown Profiles	+0.94	+0.26	-0.01	+1.86	+0.93

With nearly the same correlation coefficient, the retrieval performance remains the same when faced with unknown cloud side scenes. It can therefore be concluded that the retrieval is not trained only for the included cloud side scenes. Rather, it represents the statistical relationship between reflected radiance and cloud droplet size for this cloud ensemble.

7 Conclusions

- 5 The presented work advanced a framework for the remote sensing of cloud droplet effective radius profiles from cloud sides which was introduced by Marshak et al. (2006a); Zinner et al. (2008) and Martins et al. (2011). ~~Testing the feasibility of the approach, understanding its limitations and advancing its technique were central motivations of this work. Following scientific objectives were addressed: (1) The degree of ambiguity of~~ Up to now, their approach could not directly applied to realistic cloud side measurements (e.g. specMACS on HALO) since their studies lack the varying geometries of an airborne
- 10 perspective. Furthermore, the effective radius was only parameterized and not directly calculated by a microphysical model. Moreover, Zinner et al. (2008) used the line of sight method to associate the forward modeled radiance with r_{eff} found at the first cloudy grid box. To advance the technique to realistic airborne measurements, this study addressed following scientific objectives to overcome these limitations:
1. Extend the existing approach to realistic airborne perspectives and develop methods to test the sensitivity of reflected
- 15 radiances from cloud sides ~~with respect to cloud droplet size was analyzed in the context of a unknown cloud geometry.~~ (2) radius, where the observer position is located within the cloud field. To this end, methods were developed to identify

suitable observation positions within a model cloud field and to calculate an apparent effective radius for each forward modeled sensor pixel.

2. In this course, 3D radiative effects caused by the unknown cloud surface orientation were investigated. A technique was proposed to mitigate their impact on cloud droplet size retrievals by putting pixel in context with their surrounding. (3)
- 5 3. Finally, an effective radius retrieval for the cloud side perspective was developed and tested for cloud scenes which were used during the retrieval development, as well as for unknown scenes.

The scope of this work was limited to the liquid part of convective ~~liquid~~-water clouds, e.g. Cumulus mediocris, Cumulus congestus and Trade-wind cumulus, which exhibit well-developed cloud sides. In principle, the proposed technique could also be extended to ice clouds.

10 In a first step, this work introduced a statistical framework for the proposed remote sensing of cloud sides following Marshak et al. (2006a). A statistical relationship between reflected sunlight in a near-visible and near-infrared wavelength and droplet size is found following the classical approach by (Nakajima and King, 1990). By simulating the three-dimensional radiative transfer for high-resolution LES model clouds using the 3D Monte Carlo radiative transfer model MYSTIC(~~Monte Carlo~~
15 ~~code for the physically correct tracing of photons in cloudy atmospheres~~), probability distributions for this relationship were sampled. These distributions describe the probability to find a specific droplet size after a specific solar reflectance pair of values has been measured. In contrast to many other effective radius retrievals, this work thereby provides essential information about the retrieval uncertainties which are intrinsically linked with the reflectance ambiguities caused by three-dimensional radiative effects. Furthermore, this work developed a technique (Section 4.3) to reduce 3D radiance ambiguities when no information about the cloud surface orientation is available. More precisely, additional information from surrounding pixels was
20 used to classify the environment of the considered pixel. Subsequently, this technique and the forward simulated probability distributions were incorporated into a statistical retrieval of the effective radius from cloud sides. Defined by the used LES model fields and the chosen geometries of the forward simulations, this retrieval is designed for

- cloud side measurements of the liquid part of convective water clouds, e.g., Cumulus mediocris, Cumulus congestus and Trade-wind cumulus, which exhibit well-developed cloud sides.
- 25 – cloud tops between 1.5 – 2 km, an optical thickness between 15 – 150 and effective radii between 4 – 24 μm ,
- spatially highly resolved ($10 \times 10\text{m}$) images of the spectral radiance at $\lambda = 870\text{nm}$ and $\lambda = 2100\text{nm}$,
- a variable and unknown CCN background concentration between $100 - 1000\text{cm}^{-3}$,
- variable sun zenith angles ϑ_0 between $7 - 67^\circ$ for tropical as well as mid-latitude application,
- an airborne perspective at 1.7 km altitude with a field of view of $\Delta\varphi = 46^\circ$ (azimuthal) and $\Delta\vartheta = 40^\circ$ (horizontal)
30 centered 5° below the horizon.

The numerical analysis of the statistical retrieval showed a RMSE between retrieved and ~~true-apparent~~ r_{eff} of around 1-1.5 μm . For the airborne measurement perspective aimed for (see part 2 of this work), the statistical retrieval reliably detects the present effective radius profile, while sanity checks showed no prior bias of the retrieval towards specific cloud droplet size profiles. This is an essential prerequisite for all consecutive interpretation of the retrieval results. Furthermore, the retrieval performance remained the same when faced with unknown cloud side scenes not included in the ensemble used for the retrieval.

5 It can therefore be concluded that the retrieval is not over-fitted and that it represents the statistical relationship between reflected radiance and cloud droplet size for this cloud side perspective.

~~Limited to optically thick water clouds~~ Moreover, this work ~~investigated the main reason for reflectance ambiguities from cloud sides. Within the same~~ dissected the impact of an unknown cloud surface orientation on bi-spectral effective radius retrievals using an optically thick water cloud sphere ($\tau_c = 500$). Just with every other 3D cloud side scene, viewing perspectives some local viewing angles onto cloud surfaces ~~can be steeper or more oblique as they are~~ steeper while some viewing perspectives onto cloud surfaces are more oblique than the local illumination angle. As a consequence, the correlation between reflected solar radiance pairs and droplet sizes becomes ambiguous.

15 This study did not address the open question if and how strong rain can influence the retrieval performance. Several studies (Nakajima et al., 2009; Zinner et al., 2010; Zhang et al., 2012) found only a small impact of drizzle on bi-spectral methods of about 0.5 – 2 μm . Although beyond the scope of this work, subsequent studies should address the influence of rain on bi-spectral retrievals for stronger precipitation rates as suggested by the more recent study of Zhang (2013).

The next important step is the application of the proposed retrieval technique to real measurements. In combination with simultaneous in-situ measurements, airborne cloud side ~~measurements-observations~~ have been acquired with the hyperspectral cloud and sky imager specMACS. In a follow-up paper part 2, the proposed retrieval will be validated with this independent
20 in-situ data.

A further important point is the development of a distance mapping for the retrieval. The height and location assignment of retrieval results is not just of uttermost importance for the comparison with in situ measurements and models, but also essential to estimate the cloud distance for a potential aerosol correction. Here, first promising results could be achieved by exploiting the oxygen A-band absorption at $\lambda = 762 \text{ nm}$ presented in Zinner et al. (2018). In conclusion, the present work developed a
25 working effective radius retrieval to measurements of clouds sides applicable to real measurements and thus paved the way for further research on this topic.

Acknowledgements. We would like to thank Graham Feingold for providing the RICO cloud model fields. Thanks and acknowledgment also go to Silke Gross and the DLR Institute of Atmospheric Physics who supported the completion of this manuscript. Florian Ewald was partly funded by the German Research Foundation (DFG) under grant number MA 2548/9-1. Tobias Kölling was supported by the German Research Foundation (DFG) under grant number Zi 1132/3-1.

References

- [Alexandrov, M. D., Cairns, B., Emde, C., Ackerman, A. S., and van Diedenhoven, B.: Accuracy assessments of cloud droplet size retrievals from polarized reflectance measurements by the research scanning polarimeter, *Remote Sens. Environ.*, 125, 92–111, <https://doi.org/10.1016/j.rse.2012.07.012>, 2012b.](#)
- 5 Anderson, G., Clough, S., Kneizys, F., Chetwynd, J., and Shettle, E.: AFGL Atmospheric Constituent Profiles (0-120 km), Tech. Rep. AFGL-TR-86-0110, 1986.
- [Andreae, M. O., Afchine, A., Albrecht, R., Holanda, B. A., Artaxo, P., Barbosa, H. M. J., Borrmann, S., Cecchini, M. A., Costa, A., Dollner, M., Fütterer, D., Järvinen, E., Jurkat, T., Klimach, T., Konemann, T., Knöbe, C., Krämer, M., Krisna, T., Machado, L. A. T., Mertes, S., Minikin, A., Pöhlker, C., Pöhlker, M. L., Pöschl, U., Rosenfeld, D., Sauer, D., Schlager, H., Schnaiter, M., Schneider, J., Schulz, C., Spanu, A., Sperling, V. B., Voigt, C., Walsler, A., Wang, J., Weinzierl, B., Wendisch, M., and Ziereis, H.: Aerosol characteristics and particle production in the upper troposphere over the Amazon Basin, *Atmospheric Chemistry and Physics*, 18\(2\), 921–961, 2018.](#)
- 10 [Anderson, G., Clough, S., Kneizys, F., Chetwynd, J., and Shettle, E.: AFGL Atmospheric Constituent Profiles \(0-120 km\), Tech. Rep. AFGL-TR-86-0110, 1986.](#)
- 15 Arabas, S., Pawlowska, H., and Grabowski, W. W.: Effective radius and droplet spectral width from in-situ aircraft observations in trade-wind cumuli during RICO, *Geophys. Res. Lett.*, 36, L11 803, <https://doi.org/10.1029/2009GL038257>, 2009.
- Arking, A. and Childs, J.: Retrieval of cloud cover parameters from multispectral satellite images., *Journal of Applied Meteorology*, 24, 322–334, 1985.
- Bugliaro, L., Zinner, T., Keil, C., Mayer, B., Hollmann, R., Reuter, M., and Thomas, W.: Validation of cloud property retrievals with simulated satellite radiances: a case study for SEVIRI, *Atmos. Chem. Phys.*, 11, 5603–5624, <https://doi.org/10.5194/acp-11-5603-2011>, <http://www.atmos-chem-phys.net/11/5603/2011/>, 2011.
- 20 Buras, R. and Mayer, B.: Efficient unbiased variance reduction techniques for Monte Carlo simulations of radiative transfer in cloudy atmospheres: the solution, *J. Quant. Spectrosc. Radiat. Transfer*, 112, 434–447, 2011.
- Cahalan, R. F., Ridgway, W., Wiscombe, W., and Bell, T.: The albedo of fractal stratocumulus clouds, *Journal of the Atmospheric Sciences*, 25, 51, 2434–2455, 1994.
- Dubovik, O., Herman, M., Holdak, A., Lapyonok, T., Tanré, D., Deuzé, J. L., Ducos, F., Sinyuk, A., and Lopatin, A.: Statistically optimized inversion algorithm for enhanced retrieval of aerosol properties from spectral multi-angle polarimetric satellite observations, *Atmos. Meas. Tech.*, 4, 975–1018, <https://doi.org/10.5194/amt-4-975-2011>, <http://www.atmos-meas-tech.net/4/975/2011/>, 2011.
- 30 Ehrlich, A., Bierwirth, E., Wendisch, M., Gayet, J.-F., Mioche, G., Lampert, A., and Heintzenberg, J.: Cloud phase identification of Arctic boundary-layer clouds from airborne spectral reflection measurements: test of three approaches, *Atmos. Chem. Phys.*, 8, 7493–7505, <https://doi.org/10.5194/acp-8-7493-2008>, <http://www.atmos-chem-phys.net/8/7493/2008/>, 2008.
- Eichler, H., Ehrlich, A., Wendisch, M., Mioche, G., Gayet, J.-F., Wirth, M., Emde, C., and Minikin, A.: Influence of ice crystal shape on retrieval of cirrus optical thickness and effective radius: A case study, *Journal of Geophysical Research: Atmospheres*, 114, D19 203, <https://doi.org/10.1029/2009JD012215>, <http://onlinelibrary.wiley.com/doi/10.1029/2009JD012215/abstract>, 2009.
- 35 Emde, C., Buras-Schnell, R., Kylling, A., Mayer, B., Gasteiger, J., Hamann, U., Kylling, J., Richter, B., Pause, C., Dowling, T., and Bugliaro, L.: The libRadtran software package for radiative transfer calculations (version 2.0.1), *Geosci. Model Dev.*, 9, 1647–1672, <https://doi.org/10.5194/gmd-9-1647-2016>, <https://www.geosci-model-dev.net/9/1647/2016/>, 2016.

- Ewald, F.: Implications of cloud geometry for the remote sensing of particle size profiles, Master's thesis, Ludwig–Maximilians–University, 2012.
- Ewald, F., Zinner, T., and Mayer, B.: Remote sensing of particle size profiles from cloud sides: Observables and retrievals in a 3D environment, in: AIP Conference Proceedings, vol. 1531, pp. 83–86, AIP Publishing, <https://doi.org/10.1063/1.4804713>, <http://scitation.aip.org/content/aip/proceeding/aipcp/10.1063/1.4804713>, 2013.
- Ewald, F. and Kölling, T. and Baumgartner, A. and Zinner, T. and Mayer, B.: Design and characterization of specMACS, a multipurpose hyperspectral cloud and sky imager, *Atmos. Meas. Tech.*, 9, 2015–2042, <https://doi.org/0.5194/amt-9-2015-2016>, 2016.
- Feingold, G., Kreidenweis, S. M., Stevens, B., and Cotton, W. R.: Numerical simulations of stratocumulus processing of cloud condensation nuclei through collision-coalescence, *Journal of Geophysical Research: Atmospheres*, 101, 21 391–21 402, <https://doi.org/10.1029/96JD01552>, <http://onlinelibrary.wiley.com/doi/10.1029/96JD01552/abstract>, 1996.
- Fischer, J. and Grassl, H.: Detection of Cloud-Top Height from Backscattered Radiances within the Oxygen A Band. Part 1: Theoretical Study, *Journal of Applied Meteorology*, 30, 1245–1259, [https://doi.org/10.1175/1520-0450\(1991\)030<1245:DOCTHF>2.0.CO;2](https://doi.org/10.1175/1520-0450(1991)030<1245:DOCTHF>2.0.CO;2), [http://journals.ametsoc.org/doi/abs/10.1175/1520-0450\(1991\)030%3C1245:DOCTHF%3E2.0.CO%3B2](http://journals.ametsoc.org/doi/abs/10.1175/1520-0450(1991)030%3C1245:DOCTHF%3E2.0.CO%3B2), 1991.
- 15 Gasteiger, J., Emde, C., Mayer, B., Buras, R., Buehler, S. A., and Lemke, O.: Representative wavelengths absorption parameterization applied to satellite channels and spectral bands, *Journal of Quantitative Spectroscopy and Radiative Transfer*, 148, 99–115, <https://doi.org/10.1016/j.jqsrt.2014.06.024>, <http://www.sciencedirect.com/science/article/pii/S0022407314002842>, 2014.
- Han, Q., Rossow, W., and Lacis, A.: Near-global survey of effective droplet radii in liquid water clouds using ISCCP data, *Journal of Climate*, 7, 465–497, 1994.
- 20 Hansen, J. and Pollack, J.: Near-infrared light scattering by terrestrial clouds, *Journal of the Atmospheric Sciences*, 27, 265–281, 1970.
- Hess, M., Koepke, P., and Schult, I.: Optical Properties of Aerosols and Clouds: The Software Package OPAC, *Bulletin of the American Meteorological Society*, 79, 831–844, [https://doi.org/10.1175/1520-0477\(1998\)079<0831:OPOAAC>2.0.CO;2](https://doi.org/10.1175/1520-0477(1998)079<0831:OPOAAC>2.0.CO;2), <http://journals.ametsoc.org/doi/abs/10.1175/1520-0477%281998%29079%3C0831%3AOPOAAC%3E2.0.CO%3B2>, 1998.
- Holben, B., Eck, T., Slutsker, I., Tanre, D., Buis, J., Setzer, A., Vermote, E., Reagan, J., Kaufman, Y., Nakajima, T. Y., Lavenu, F., Jankowiak, I., and Smirnov, A.: AERONET - a federated instrument network and data archive for aerosol characterization, *Remote Sens. Environ.*, 25 66, 1–16, 1998.
- Jäkel, E., Walter, J., and Wendisch, M.: Thermodynamic phase retrieval of convective clouds: impact of sensor viewing geometry and vertical distribution of cloud properties, *Atmos. Meas. Tech.*, 6, 539–547, <https://doi.org/10.5194/amt-6-539-2013>, <http://www.atmos-meas-tech.net/6/539/2013/>, 2013.
- 30 Jiang, G. M. and Li, Z. L.: Cross-calibration of MSG1-SEVIRI infrared channels with Terra-MODIS channels, *Int. J. Remote Sensing*, 30, 753–769, <https://doi.org/http://dx.doi.org/10.1080/01431160802392638>, 2009.
- Jiang, H., Feingold, G., Jonsson, H. H., Lu, M.-L., Chuang, P. Y., Flagan, R. C., and Seinfeld, J. H.: Statistical comparison of properties of simulated and observed cumulus clouds in the vicinity of Houston during the Gulf of Mexico Atmospheric Composition and Climate Study (GoMACCS), *Journal of Geophysical Research: Atmospheres*, 113, D13 205, <https://doi.org/10.1029/2007JD009304>, <http://onlinelibrary.wiley.com/doi/10.1029/2007JD009304/abstract>, 2008.
- 35 King, M.: A method for determining the single scattering albedo of clouds through observation of the internal scattered radiation field, *Journal of the Atmospheric Sciences*, 38, 2031–2044, 1981.
- King, M.: Determination of the scaled optical thickness of clouds from reflected solar radiation measurements, *Journal of the Atmospheric Sciences*, 44, 1734–1751, 1987.

- King, M., Radke, L., and Hobbs, P.: Determination of the spectral absorption of solar radiation by marine stratocumulus clouds from airborne measurements within clouds, *Journal of the Atmospheric Sciences*, 47, 894–907, 1990.
- King, M., Platnick, S., Yang, P., Arnold, G., Gray, M., Riedi, J., Ackermann, A., and Liou, K.: Remote sensing of liquid water and ice cloud optical thickness and effective radius in the Arctic: Application of airborne multispectral MAS data, *Journal of Atmospheric and Oceanic Technology*, 21, 857–875, 2004.
- [Krautstrunk, M. and Giez, A.: The Transition From FALCON to HALO Era Airborne Atmospheric Research, in: Atmospheric Physics, edited by: Schumann, U., Research Topics in Aerospace, 609–624, Springer Berlin Heidelberg, http://link.springer.com/chapter/10.1007/978-3-642-30183-4_37 2012.](http://link.springer.com/chapter/10.1007/978-3-642-30183-4_37)
- 10 Kurucz, R. L.: Synthetic Infrared Spectra, in: *Infrared Solar Physics*, edited by D. M. Rabin, J. T. Jefferies, & C. Lindsey, vol. 154 of *IAU Symposium*, p. 523, 1994.
- Langmore, I., Davis, A., and Bal, G.: Multipixel Retrieval of Structural and Optical Parameters in a 2-D Scene With a Path-Recycling Monte Carlo Forward Model and a New Bayesian Inference Engine, *IEEE Transactions on Geoscience and Remote Sensing*, 51, 2903–2919, <https://doi.org/10.1109/TGRS.2012.2217380>, 2013.
- 15 Marshak, A., Martins, J. V., Zubko, V., and Kaufman, Y.: What does reflection from cloud sides tell us about vertical distribution of cloud droplet sizes?, *Atmospheric Chemistry & Physics*, 6, 7207–7233, 2006a.
- Marshak, A., Platnick, S., Varnai, T., Wen, G., and Cahalan, R. F.: Impact of three-dimensional radiative effects on satellite retrievals of cloud droplet sizes, *Journal of Geophysical Research*, 111, D09 207, <https://doi.org/10.1029/2005JD006686>, 2006b.
- Martin, G. M., Johnson, D. W., and Spice, A.: The Measurement and Parameterization of Effective Radius of Droplets in Warm Stratocumulus Clouds, *Journal of the Atmospheric Sciences*, 51, 1823–1842, [https://doi.org/10.1175/1520-0469\(1994\)051<1823:TMAPOE>2.0.CO;2](https://doi.org/10.1175/1520-0469(1994)051<1823:TMAPOE>2.0.CO;2), [http://journals.ametsoc.org/doi/abs/10.1175/1520-0469\(1994\)051%3C1823:TMAPOE%3E2.0.CO;2](http://journals.ametsoc.org/doi/abs/10.1175/1520-0469(1994)051%3C1823:TMAPOE%3E2.0.CO;2), 1994.
- Martin, W., Cairns, B., and Bal, G.: Adjoint methods for adjusting three-dimensional atmosphere and surface properties to fit multi-angle/multi-pixel polarimetric measurements, *Journal of Quantitative Spectroscopy and Radiative Transfer*, 144, 68–85, <https://doi.org/10.1016/j.jqsrt.2014.03.030>, <http://www.sciencedirect.com/science/article/pii/S002240731400154X>, 2014.
- 25 Martins, J., Marshak, A., Remer, L., Rosenfeld, D., Kaufman, Y., Fernandez-Borda, R., Koren, I., Correia, A., Zubko, V., and Artaxo, P.: Remote sensing the vertical profile of cloud droplet effective radius, thermodynamic phase, and temperature, *Atmos. Chem. Phys*, 11, 9485–9501, 2011.
- Mayer, B. and Kylling, A.: Technical note: The libRadtran software package for radiative transfer calculations - description and examples of use, 5, 1855–1877, 2005.
- 30 Mayer, B.: MYSTIC, Monte Carlo code for the physically correct tracing of photons in cloudy atmospheres, 1998.
- Mayer, B.: Radiative transfer in the cloudy atmosphere, *European Physical Journal Conferences*, 1, 75–99, 2009.
- McBride, P. J., Schmidt, K. S., Pilewskie, P., Kittelman, A. S., and Wolfe, D. E.: A spectral method for retrieving cloud optical thickness and effective radius from surface-based transmittance measurements, *Atmos. Chem. Phys.*, 11, 7235–7252, <https://doi.org/10.5194/acp-11-7235-2011>, <http://www.atmos-chem-phys.net/11/7235/2011/>, 2011.
- 35 McFarlane, S., Evans, K., and Ackerman, A.: A Bayesian algorithm for the retrieval of liquid water cloud properties from microwave radiometer and millimeter radar data, *J. Geophys. Res.*, 107, 10.1029, 2002.
- [Miller, D. J., Zhang, Z., Ackerman, A. S., Platnick, S., and Baum, B. A.: The impact of cloud vertical profile on liquid water path retrieval based on the bispectral method: A theoretical study based on large-eddy simulations of shallow marine boundary layer clouds, J. Geophys. Res., 121, 4122–4141, https://doi.org/10.1002/2015JD024322, 2016.](https://doi.org/10.1002/2015JD024322)

- [Miller, D. J., Zhang, Z., Platnick, S., Ackerman, A. S., Werner, F., Cornet, C., and Knobelspiesse, K.: Comparisons of bispectral and polarimetric retrievals of marine boundary layer cloud microphysics: case studies using a LES–satellite retrieval simulator, *Atmos. Meas. Tech.*, **11**, 3689–3715, <https://doi.org/10.5194/amt-11-3689-2018>, 2018.](#)
- 5 Mosegaard, K. and Tarantola, A.: Monte Carlo sampling of solutions to inverse problems, *Journal of Geophysical Research: Solid Earth*, **100**, 12 431–12 447, <https://doi.org/10.1029/94JB03097>, <http://onlinelibrary.wiley.com/doi/10.1029/94JB03097/abstract>, 1995.
- Nakajima, T. Y. and King, M. D.: Determination of the optical thickness and effective particle radius of clouds from reflected solar radiation measurements. Part I: Theory, *J. Atmos. Sci.*, **47**, 1878–1893, 1990.
- [Nakajima, T. Y., Suzuki, K., and Stephens, G. L.: Droplet Growth in Warm Water Clouds Observed by the A-Train. Part I: Sensitivity Analysis of the MODIS-Derived Cloud Droplet Sizes, *Journal of the Atmospheric Sciences*, **67**\(6\), 1884–1896, 2009.](#)
- 10 POKamura, R. and Iwabuchi, H. and Schmidt, K. S.: Feasibility study of multi-pixel retrieval of optical thickness and droplet effective radius of inhomogeneous clouds using deep learning, *Atmos. Meas. Tech.*, **10**, <https://doi.org/10.5194/amt-10-4747-2017>, 4747–4759, 2017.
- Pilewskie, P., Pommier, J., Bergstrom, R., Gore, W., Rabbette, M., Schmid, B., Hobbs, P. V., and Tsay, S. C.: Solar spectral radiative forcing during the Southern African regional science initiative, *J. Geophys. Res.*, **108**, doi:10.1029/2002JD002411, 2003.
- 15 Plass, G. N. and Kattawar, G. W.: Influence of Single Scattering Albedo on Reflected and Transmitted Light from Clouds, *Applied Optics*, **7**, 361–367, <https://doi.org/10.1364/AO.7.000361>, <http://ao.osa.org/abstract.cfm?URI=ao-7-2-361>, 1968.
- Platnick, S.: Vertical photon transport in cloud remote sensing problems, *Journal of Geophysical Research*, **105**, 22 919–22 935, 2000.
- Platnick, S., Li, J., King, M. D., Gerber, H., and Hobbs, P.: A solar reflectance method for retrieving the optical thickness and droplet size of liquid water clouds over snow and ice surfaces, *Journal of Geophysical Research*, **106**, 15, 2001.
- 20 Rauber, R. M., Ochs, H. T., Di Girolamo, L., Göke, S., Snodgrass, E., Stevens, B., Knight, C., Jensen, J. B., Lenschow, D. H., Rilling, R. A., Rogers, D. C., Stith, J. L., Albrecht, B. A., Zuidema, P., Blyth, A. M., Fairall, C. W., Brewer, W. A., Tucker, S., Lasher-Trapp, S. G., Mayol-Bracero, O. L., Vali, G., Geerts, B., Anderson, J. R., Baker, B. A., Lawson, R. P., Bandy, A. R., Thornton, D. C., Burnet, E., Brenguier, J.-L., Gomes, L., Brown, P. R. A., Chuang, P., Cotton, W. R., Gerber, H., Heikes, B. G., Hudson, J. G., Kollias, P., Krueger, S. K., Nuijens, L., O’Sullivan, D. W., Siebesma, A. P., and Twohy, C. H.: Rain in Shallow Cumulus Over the Ocean: The RICO Campaign,
- 25 *Bulletin of the American Meteorological Society*, **88**, 1912–1928, <https://doi.org/10.1175/BAMS-88-12-1912>, <http://journals.ametsoc.org/doi/abs/10.1175/BAMS-88-12-1912>, 2007.
- Roebeling, R. A., Feijt, A. J., and Stammes, P.: Cloud property retrievals for climate monitoring: Implications of differences between Spinning Enhanced Visible and Infrared Imager (SEVIRI) on METEOSAT-8 and Advanced Very High Resolution Radiometer (AVHRR) on NOAA-17, *Journal of Geophysical Research*, **111**, D20 210, <https://doi.org/10.1029/2005JD006990>, 2006.
- 30 Rosenfeld, D., Williams, E., Andreae, M. O., Freud, E., Pöschl, U., and Rennó, N. O.: The scientific basis for a satellite mission to retrieve CCN concentrations and their impacts on convective clouds, *Atmos. Meas. Tech.*, **5**, 2039–2055, <https://doi.org/10.5194/amt-5-2039-2012>, <http://www.atmos-meas-tech.net/5/2039/2012/>, 2012.
- Rothman, L. S., Jacquemart, D., Barbe, A., Benner, D. C., Birk, M., Brown, L. R., Carleer, M. R., Chackerian Jr., C., Chance, K., Coudert, L. H., Dana, V., Devi, V. M., Flaud, J. ., Gamache, R. R., Goldman, A., Hartmann, J. ., Jucks, K. W., Maki, A. G., Mandin, J. ., Massie, S. T., Orphal, J., Perrin, A., Rinsland, C. P., Smith, M. A. H., Tennyson, J., Tolchenov, R. N., Toth, R. A., Vander Auwera, J., Varanasi, P., and Wagner, G.: The HITRAN 2004 molecular spectroscopic database, *Journal of Quantitative Spectroscopy and Radiative Transfer*, **96**, 139–204, 2005.
- 35 Rozanov, V., Kokhanovsky, A., and Burrows, J.: The determination of cloud altitudes using GOME reflectance spectra: multilayered cloud systems, *IEEE Transactions on Geoscience and Remote Sensing*, **42**, 1009–1017, 2004.

- Schmidt, K., Pilewskie, P., Platnick, S., Wind, G., Yang, P., and Wendisch, M.: Comparing irradiance fields derived from Moderate Resolution Imaging Spectroradiometer airborne simulator cirrus cloud retrievals with solar spectral flux radiometer measurements, *J. Geophys. Res.*, 112, D24 206, 2007.
- 5 Scott, D. W., Tapia, R. A., and Thompson, J. R.: Kernel density estimation revisited, *Nonlinear Analysis: Theory, Methods & Applications*, 1, 339–372, [https://doi.org/10.1016/S0362-546X\(97\)90003-1](https://doi.org/10.1016/S0362-546X(97)90003-1), <http://www.sciencedirect.com/science/article/pii/S0362546X97900031>, 1977.
- Stamnes, K., Tsay, S.-C., Wiscombe, W., and Jayaweera, K.: A numerically stable algorithm for discrete-ordinate-method radiative transfer in multiple scattering and emitting layered media, *Applied Optics*, 27, 2502–2509, 1988.
- 10 Twomey, S. and Cocks, T.: Remote sensing of cloud parameters from spectral reflectance in the near-infrared, *Beiträge zur Physik der Atmosphäre*, 62, 172–179, 1989.
- Tzivion, S., Feingold, G., and Levin, Z.: An Efficient Numerical Solution to the Stochastic Collection Equation, *Journal of the Atmospheric Sciences*, 44, 3139–3149, [https://doi.org/10.1175/1520-0469\(1987\)044<3139:AENSTT>2.0.CO;2](https://doi.org/10.1175/1520-0469(1987)044<3139:AENSTT>2.0.CO;2), [http://journals.ametsoc.org/doi/abs/10.1175/1520-0469\(1987\)044%3C3139%3AAENSTT%3E2.0.CO%3B2](http://journals.ametsoc.org/doi/abs/10.1175/1520-0469(1987)044%3C3139%3AAENSTT%3E2.0.CO%3B2), 1987.
- 15 Tzivion, S., Feingold, G., and Levin, Z.: The Evolution of Raindrop Spectra. Part II: Collisional Collection/Breakup and Evaporation in a Rainshaft, 46, 3312–3328, [https://doi.org/10.1175/1520-0469\(1989\)046<3312:TEORSP>2.0.CO;2](https://doi.org/10.1175/1520-0469(1989)046<3312:TEORSP>2.0.CO;2), 1989.
- van Diedenhoven, B., Hasekamp, O. P., and Landgraf, J.: Retrieval of cloud parameters from satellite-based reflectance measurements in the ultraviolet and the oxygen A-band, *Journal of Geophysical Research: Atmospheres*, 112, D15 208, <https://doi.org/10.1029/2006JD008155>, <http://onlinelibrary.wiley.com/doi/10.1029/2006JD008155/abstract>, 2007.
- 20 Vant-Hull, B., Marshak, A., Remer, L., and Li, Z.: The effects of scattering angle and cumulus cloud geometry on satellite retrievals of cloud droplet effective radius, *Geoscience and Remote Sensing, IEEE Transactions on*, 45, 1039–1045, 2007.
- Varnai, T. and Marshak, A.: Observations of the three-dimensional radiative effects that influence MODIS cloud optical thickness retrievals, *Journal of the Atmospheric Sciences*, 59, 1607–1618, 2002.
- Varnai, T. and Marshak, A.: A method for analyzing how various parts of clouds influence each other's brightness, *Journal of Geophysical Research*, 108, 4706, <https://doi.org/10.1029/2003JD003561>, 2003.
- 25 Varnai, T. and Marshak, A.: View angle dependence of cloud optical thicknesses retrieved by Moderate Resolution Imaging Spectroradiometer (MODIS), *Journal of Geophysical Research*, 112, D06 203, <https://doi.org/10.1029/2005JD006912>, 2007.
- Varnai, T. and Marshak, A.: MODIS observations of enhanced clear sky reflectance near clouds, *Geophys. Res. Lett.*, 36, L06 807, <https://doi.org/10.1029/2008GL037089>, 2009.
- 30 Warner, J.: The Water Content of Cumuliform Cloud, *Tellus*, 7, 449–457, <https://doi.org/10.1111/j.2153-3490.1955.tb01183.x>, <http://onlinelibrary.wiley.com/doi/10.1111/j.2153-3490.1955.tb01183.x/abstract>, 1955.
- Wen, G., Marshak, A., Cahalan, R. F., Remer, L. A., and Kleidman, R. G.: 3-D aerosol-cloud radiative interaction observed in collocated MODIS and ASTER images of cumulus cloud fields, *Journal of Geophysical Research*, 112, D13 204, <https://doi.org/10.1029/2006JD008267>, 2007.
- 35 Wendisch, M., Müller, D., Schell, D., and Heintzenberg, J.: An airborne spectral albedometer with active horizontal stabilization, *Journal of Atmospheric and Oceanic Technology*, 18, 1856–1866, 2001.
- Wendisch, M. and Mayer, B.: Vertical distribution of spectral solar irradiance in the cloudless sky - A case study, *Geophys. Res. Lett.*, 30, [doi:10.1029/2002GL016529](https://doi.org/10.1029/2002GL016529), 2003.

- Wendisch, Manfred and Pöschl, Ulrich and Andreae, Meinrat O. and Machado, Luiz A. T. and Albrecht, Rachel and Schlager, Hans and Rosenfeld, Daniel and Martin, Scot T. and Abdelmonem, Ahmed and Afchine, Armin and Araújo, Alessandro C. and Artaxo, Paulo and Aufmhoff, Heinfried and Barbosa, Henrique M. J. and Borrmann, Stephan and Braga, Ramon and Buchholz, Bernhard and Cecchini, Micael Amore and Costa, Anja and Curtius, Joachim and Dollner, Maximilian and Dorf, Marcel and Dreiling, Volker and Ebert, Volker and Ehrlich, André and Ewald, Florian and Fisch, Gilberto and Fix, Andreas and Frank, Fabian and Fütterer, Daniel and Heckl, Christopher and Heidelberg, Fabian and Hüneke, Tilman and Jäkel, Evelyn and Järvinen, Emma and Jurkat, Tina and Kanter, Sandra and Kästner, Udo and Kenntner, Mareike and Kesselmeier, Jürgen and Klimach, Thomas and Knecht, Matthias and Kohl, Rebecca and Kölling, Tobias and Krämer, Martina and Krüger, Mira and Krisna, Trismono Candra and Lavric, Jost V. and Longo, Karla and Mahnke, Christoph and Manzi, Antonio O. and Mayer, Bernhard and Mertes, Stephan and Minikin, Andreas and Molleker, Sergej and Münch, Steffen and Nillius, Björn and Pfeilsticker, Klaus and Pöhlker, Christopher and Roiger, Anke and Rose, Diana and Rosenow, Dagmar and Sauer, Daniel and Schnaiter, Martin and Schneider, Johannes and Schulz, Christiane and de Souza, Rodrigo A. F. and Spanu, Antonio and Stock, Paul and Vila, Daniel and Voigt, Christiane and Walser, Adrian and Walter, David and Weigel, Ralf and Weinzierl, Bernadett and Werner, Frank and Yamasoe, Marcia A. and Ziereis, Helmut and Zinner, Tobias and Zöger, Martin: ACRIDICON-CHUVA Campaign: Studying Tropical Deep Convective Clouds and Precipitation over Amazonia Using the New German Research Aircraft HALO, Bulletin of the American Meteorological Society, 18, 1885–1908, <https://doi.org/10.1175/BAMS-D-14-00255.1>, 2016.
- Wiscombe, W. and Warren, S.: A Model for the Spectral Albedo of Snow. I: Pure Snow, *Journal of the Atmospheric Sciences*, 37, 2712–2733; [Improved Mie scattering algorithms](#), *Applied Optics*, 19, 1505–1509, 1980.
- Yang, P., Wei, H., Baum, B., Huang, H., Heymsfield, A., Hu, Y., Gao, B., and Turner, D.: The spectral signature of mixed-phase clouds composed of non-spherical ice crystals and spherical liquid droplets in the terrestrial window region, *Journal of Quantitative Spectroscopy and Radiative Transfer*, 79, 1171–1188, 2003.
- Yuter, S. E. and Houze, R. A.: Three-Dimensional Kinematic and Microphysical Evolution of Florida Cumulonimbus. Part II: Frequency Distributions of Vertical Velocity, Reflectivity, and Differential Reflectivity, *Monthly Weather Review*, 123, 1941–1963, [https://doi.org/10.1175/1520-0493\(1995\)123<1941:TDKAME>2.0.CO;2](https://doi.org/10.1175/1520-0493(1995)123<1941:TDKAME>2.0.CO;2), [http://journals.ametsoc.org/doi/abs/10.1175/1520-0493\(1995\)123%3C1941%3ATDKAME%3E2.0.CO%3B2](http://journals.ametsoc.org/doi/abs/10.1175/1520-0493(1995)123%3C1941%3ATDKAME%3E2.0.CO%3B2), 1995.
- [Zhang, Z., Ackerman, A. S., Feingold, G., Platnick, S., Pincus, R., and Xue, H.: Effects of cloud horizontal inhomogeneity and drizzle on remote sensing of cloud droplet effective radius: Case studies based on large-eddy simulations](#), *Journal of Geophysical Research: Atmospheres*, 117(D19), 2012.
- [Zhang, Z.: On the sensitivity of cloud effective radius retrieval based on spectral method to bi-modal droplet size distribution: A semi-analytical model](#), *Journal of Quantitative Spectroscopy and Radiative Transfer*, 129(), 79–88, 2013.
- [Zhang, Z., Dong, X., Xi, B., Song, H., Ma, P. L., Ghan, S. J., Platnick, S., and Minnis, P.: Intercomparisons of marine boundary layer cloud properties from the ARM CAP-MBL campaign and two MODIS cloud products](#), *J. Geophys. Res.*, 122, 2351–2365, <https://doi.org/10.1002/2016JD025763>, 2017.
- Zinner, T. and Mayer, B.: Remote sensing of stratocumulus clouds: Uncertainties and biases due to inhomogeneity, *Journal of Geophysical Research*, 111, D14 209, <https://doi.org/10.1029/2005JD006955>, 2006.
- Zinner, T., Marshak, A., Lang, S., Martins, J. V., and Mayer, B.: Remote sensing of cloud sides of deep convection: towards a three-dimensional retrieval of cloud particle size profiles, *Atmos. Chem. Phys.*, 8, 4741–4757, 2008.
- [Zinner, T., Wind, G., and Platnick, S.: Testing remote sensing on artificial observations: impact of drizzle and 3-D cloud structure on effective radius retrievals](#), *Atmos. Chem. Phys.*, 10, 9535–9549, 2010.

Zinner, T., Schwarz, U., Kölling, T., Ewald, F., Jäkel, E., Mayer, B., and Wendisch, M.: Cloud geometry from oxygen-A band observations through an aircraft side window, Atmos. Meas. Tech. Diss., submitted, 2018.