

The OCO-3 mission; measurement objectives and expected performance based on one year of simulated data

Annamarie Eldering¹, Thomas E. Taylor², Chris W. O'Dell², and Ryan Pavlick¹

¹Jet Propulsion Laboratory, California Institute of Technology, Pasadena, CA, 91109, USA.

²Cooperative Institute for Research in the Atmosphere, Colorado State University, Fort Collins, CO, 80521, USA.

Correspondence: Annmarie Eldering (eldering@jpl.nasa.gov)

Abstract. The Orbiting Carbon Observatory-3 (OCO-3) is NASA's next instrument dedicated to extending the record of the dry-air mole fraction of column carbon dioxide (XCO₂) and solar-induced fluorescence (SIF) measurements from space. The current schedule calls for a launch ~~in the first half from the Kennedy Space Center no earlier than April~~ of 2019 via a Space-X Falcon 9 and Dragon capsule, ~~with installation~~. ~~The instrument will be installed~~ as an external payload on the Japanese Experimental Module Exposed Facility (JEM-EF) of the International Space Station (ISS). ~~The~~ ~~with a~~ nominal mission lifetime ~~is of~~ 3 years. The precessing orbit of the ISS will allow for viewing of the earth at all latitudes less than approximately 52°, with a ground repeat cycle that is much more complicated than the polar orbiting satellites that so far have carried all of the instruments capable of measuring carbon dioxide from space.

The grating spectrometer at the core of OCO-3 is a direct copy of the OCO-2 spectrometer, which was launched into a polar orbit in July 2014. As such, OCO-3 is expected to have similar instrument sensitivity and performance characteristics to OCO-2, which provides measurements of XCO₂ with precision better than 1 ppm at 3 Hz with each viewing frame containing 8 footprints of approximate size 1.6 by 2.2 km. However, the physical configuration of the instrument aboard the ISS, as well as the use of a new pointing mirror assembly (PMA), will alter some of the characteristics of the OCO-3 data, compared to OCO-2. Specifically, there will be significant differences from day to day in the sampling locations and time of day. In addition, the flexible PMA system allows for a much more dynamic observation mode schedule.

This paper outlines the science objectives of the OCO-3 mission and, using a simulation of one year of global observations, characterizes the spatial sampling, time of day coverage, and anticipated data quality of the simulated L1b. After application of cloud and aerosol prescreening, the L1b radiances are run through the operational L2 full physics retrieval algorithm, as well as post-retrieval filtering and bias correction, to examine the expected coverage and quality of the retrieved XCO₂ and to show how the measurement objectives are met. In addition, results of the SIF from the IMAP-DOAS algorithm are analyzed. This paper focuses only on the nominal nadir-land and glint-water observation modes, although on-orbit measurements will also be made in transition and target modes, similar to OCO-2, as well as the new ~~"snapshot" area mapping~~ ~~snapshot area mapping~~ (SAM) mode.

1 Introduction

As called for in NASA's Climate Architecture Report (June 2010), the Orbiting Carbon Observatory-3 (OCO-3) was built from spare parts during the construction of OCO-2 to be made available as an instrument of opportunity. After assessment of various options, the decision was made in 2013 to design and build the OCO-3 payload for operation on the International Space Station (ISS). The primary scientific objective of OCO-3 is to provide global, dense, high-precision measurements of the dry-air mole fraction of column carbon dioxide (XCO_2) and solar-induced fluorescence (SIF) from space. A planned 3 year lifetime aboard the ISS will allow for continuation of the international measurement record of CO_2 that began in earnest with the Japanese GOSAT satellite (January 2009 to present) (Kuze et al., 2009), followed by ~~the NASA~~NASA's OCO-2 mission (July 2014 to present), ~~and most recently by~~ the Chinese TANSAT (December 2016 to present) (Yang et al., 2018), and most recently by GOSAT-2 (launched 29-Oct-2018) (Nakajima et al., 2012). Furthermore, a 2019 launch of OCO-3 with a 3 year mission lifetime would provide overlap for future planned ~~missions such as GOSAT-2 (planned 2018 launch) (Nakajima et al., 2012); the MicroCARB mission endeavors such as MicroCARB~~ from CNES (planned 2021 launch) (Buil et al., 2011), and possibly even with the ~~recently selected~~ NASA GeoCarb mission (~~O'Brien et al., 2016~~)(Moore III et al., 2018), which has a planned ~~2022-mid-2022~~ launch. Because of the relatively small variations in atmospheric CO_2 globally, it is critical to understand how the data products from various sensors intercompare at levels less than their precision, which is 0.1% for both OCO-2 and OCO-3. It is worth noting that all of the sensors mentioned above are polar orbiting, with the exception of OCO-3 (precessing) and GeoCarb, which is the first planned geostationary observation system for measuring XCO_2 .

The nominal planned viewing strategy of OCO-3 is to take down-looking nadir viewing measurements over land to minimize the probability of cloud and aerosol contamination. Over water, measurements will be taken near the specular reflection spot (glint viewing) to maximize the signal over the low reflectivity surface. However, unlike OCO-2, which performs complex maneuvers of the entire satellite bus to observe ground targets, the OCO-3 instrument will be fitted with an agile 2-D pointing mechanism, i.e., a pointing mirror assembly (PMA). This will allow for ~~rapid~~ transitions between nadir and glint mode (~~less than 1 minute~~)on order 10's of seconds. The PMA will also allow for target mode observations, similar to those taken by OCO-2, typically at Total Column Carbon Observation Network (TCCON) ground sites for use in validation (Wunch et al., 2010). ~~The~~In addition, the PMA will provide the ability to scan large contiguous areas (order ~~80~~100 km by ~~80~~100 km), such as cities and forests, on a single overpass. This will be known as ~~"snapshot"~~snapshot area mapping (SAM) mode and will allow for fine scale spatial sampling of CO_2 and SIF variations unlike what can be done with any current satellite system. If OCO-2 and OCO-3 operate concurrently, the ~~snapshot mode can~~SAM mode will be used to gather a significant fraction of overlapping data. However, this paper deals exclusively with the two main viewing modes (nadir-land and glint-water), while a detailed discussion of ~~snapshot~~SAM mode is deferred to a companion paper.

The sampling that will be provided by OCO-3 aboard the precessing ISS will differ significantly compared to the polar orbits of OCO-2 and GOSAT. The overpasses will not always occur at the same local time of day for a given point on the earth, which has implications with respect to the diurnal cycle of both clouds and aerosols (which contaminate the observations of XCO_2) and studies of the carbon cycle, which itself has a strong diurnal variation. The precession in time-of-day sampling

will be especially informative for the SIF observations with respect to studying the biosphere response (both natural and anthropogenic) to changes in sunlight.

The international record of satellite remote sensing of CO₂ has extended across a number of measurement platforms, e.g. SCIAMACHY (2002-2012), Aqua-AIRS (2002-present), GOSAT (2009-present), TANSAT (2016-present) and is being used to quantify several aspects of the carbon cycle. The CO₂ seasonal cycle has been studied with SCIAMACHY and GOSAT data (e.g., (Buchwitz et al., 2015; Lindqvist et al., 2015; Reuter et al., 2013; Wunch et al., 2013)). The GOSAT measurements have been used to characterize a number of relatively large disturbances to the carbon cycle, including reduced carbon uptake in 2010 due to the Eurasia heat wave (Guerlet et al., 2013), larger than average carbon fluxes in tropical Asia in 2010 due to above-average temperatures (Basu et al., 2014), and anomalous carbon uptake in Australia (Detmers et al., 2015). In addition, Parazoo et al. (2014) used GOSAT XCO₂ and SIF estimates to better understand the carbon balance of southern Amazonia (Parazoo et al., 2014), while Ross et al. (2013) used GOSAT data to obtain information on wildfire CH₄:CO₂ emission ratios (Ross et al., 2013).

Relative to earlier carbon dioxide measurements from space, OCO-2 is providing a much denser data set (in both time and space) with higher precision in retrieved XCO₂. The publicly available B7 version of the OCO-2 data (~~(now superseded by B9, available at <https://disc.gsfc.nasa.gov/>)~~) ~~has recently~~ has been used to ~~assess the 2015-2016 global carbon cycle (Crowell et al., 2019), and to~~ quantify changes in ~~the~~ tropical carbon fluxes (Liu et al., 2017) and the equatorial Pacific ocean (Chatterjee et al., 2017) ~~;~~ due to the strong 2015 El Niño. ~~Both Nassar et al. (2017) and~~ Schwandner et al. (2017) highlighted localized sources detected by OCO-2, while Eldering et al. (2017b) provided an extensive global view of the atmospheric carbon dioxide as observed from OCO-2 after its first ~~two years~~ 18 months in space.

In order to continue the international measurement record of global carbon dioxide from space, NASA plans to operate OCO-3 from the ISS for a period of about 3 years, ~~beginning nominally in early 2019.~~ ~~The launch date at the time of writing is scheduled for April 25, 2019 from the Kennedy Space Center in Florida, U.S.A.~~ Since there are a number of new considerations related to the unique viewing and sampling from this platform, it is desirable to study the expected performance of the instrument prior to launch. To do this we generated one full year of simulated OCO-3 measurements, on which we ran the current versions of the OCO-2 prescreeners and ~~L2-retrieval~~ XCO₂ retrieval algorithm, as well as the post-processing quality filtering and bias correction. The bulk of this paper is based on these simulations to evaluate expected data quality and data density from OCO-3 aboard the ISS.

The paper is organized as follows. Section 2 provides an overview of the OCO-3 mission, the science objectives and planned measurement modes. In Section 3, the generation of one year of simulated L1b radiances using realistic geometry, instrument characteristics and meteorology is detailed. Section 4 ~~discusses properties of the retrieved~~ briefly overviews the various algorithms (prescreeners and XCO₂ from OCO-3 using effectively operational algorithms for retrieval, filtering, retrieval) and methodologies (filtering and bias correction. Overall analysis) employed in this work. Analysis of the results are presented in Section 5. Particular focus is given to the temporal and spatial coverage, expected signal-to-noise ratios, and XCO₂ and SIF errors. Finally, Section 6 provides a summary of the expected performance of the OCO-3 mission based on these simulations.

2 The OCO-3 science objectives and measurement overview

Like OCO-2, the OCO-3 mission has been designed to collect a dense set of precise measurements of XCO₂ with a small footprint. The scientific objective of the mission is to quantify variations of XCO₂ with the precision, resolution, coverage, and temporal stability needed to improve our understanding of surface sources and sinks of carbon dioxide on regional scales (≈1000 km by 1000 km) and the processes controlling their variability over the seasonal cycle. The measurement objective is to quantify the dry air column carbon dioxide ratio (the total column of carbon dioxide normalized by the column of dry air) to better than 1 ppm for collections of 100 footprints, the same objective as OCO-2. The footprint size is equal to or less ~~then~~ than 4 km², and changes in aspect ratio with the viewing geometry. The OCO-3 mission will also provide a measurement of solar-induced fluorescence (SIF), again with similar characteristics as OCO-2. As will be discussed in Section 3, the sampling characteristic from the ISS will result in changing latitudinal coverage each month, such that the regions where sources and sinks can be quantified will vary in time. The nominal measurement operation mode will be to collect data in nadir viewing over land and glint viewing over oceans, with a variable number of target ~~and-snapshot-mode and snapshot area mapping~~ (SAM) mode measurements integrated each day.

In addition, the OCO-3 mission also has the potential to contribute to carbon cycle science beyond its primary objective. The current plan includes the nearly simultaneous installation of three other instruments aboard the ISS that are focused on various aspects of the terrestrial carbon cycle (Stavros et al., 2017). This includes NASA's Global Ecosystem Dynamics Investigation (GEDI), which is a lidar instrument designed to make observations of forest vertical structure to assess the above-ground carbon balance of the land surface and investigate its role in mitigating atmospheric CO₂ in the coming decades (Dubayah et al., 2014; Stysley et al., 2015). NASA/JPL's Ecosystem Spaceborne Thermal Radiometer Experiment on Space Station (ECOSTRESS) will measure evapotranspiration and assess plant stress and its relationship to water availability (Fisher et al., 2015; Hulley et al., 2017). Finally, the Hyperspectral Imager Suite (HISUI) from JAXA will have a multi-band spectrometer with a focus on identifying plant types (Matsunaga et al., 2015, 2017). The integration of these data, along with OCO-3 measurements of XCO₂ and SIF, have the potential to inform our understanding of many aspects of ecosystem processes (Stavros et al., 2017).

An additional enhancement to the OCO-3 data set will be provided by the currently operating OCO-2 instrument if its special pointing capability is synchronized with this suite of instruments to view specific ground targets. A second opportunity for OCO-3 relates to the use of the ~~snapshot-SAM~~ mode to focus on emissions hotspots, such as emissions from cities and power plants, or from natural sources such as volcanoes and wildfires. If OCO-2 and OCO-3 operate concurrently, complementary sampling could maximize the insights on the sources and sinks of carbon dioxide.

2.1 The OCO-3 instrument payload

At the core of OCO-3 is a three-band grating spectrometer built as a spare for the OCO-2 instrument, which measures ~~reflected sunlight (Crisp et al., 2017; Eldering et al., 2017a).~~ sunlight reflected from the earth (Crisp et al., 2017; Eldering et al., 2017a). Estimates of XCO₂ are derived from these spectra using an optimal estimation retrieval method, denoted the Level 2 Full

~
The oxygen A-band (O₂ A-band) ~~measures~~ is sensitive to absorption by molecular oxygen near 0.76 μm, while two carbon dioxide bands, labelled here as the weak and strong CO₂ bands, are located near 1.6 and 2.0 μm, respectively. The O₂ A-band provides several important pieces of information. The absorption by oxygen molecules is sensitive to the atmospheric path length ~~observed due to the absorption by oxygen, and is used to estimate the apparent surface elevation and as part of the detection of clouds. This band also provides sensitivity to~~, allowing for an estimate of the apparent surface pressure, which in turn is used for cloud screening (Taylor et al., 2016), the retrieval of cloud macrophysical properties (Richardson et al., 2018) and to provide a surface pressure estimate within the XCO₂ retrieval algorithm (O'Dell et al., 2018). Aerosol scattering in this band informs the XCO₂ retrieval algorithm which necessarily contains aerosol parameters in the state vector (Nelson and O'Dell, 2018). Finally, solar Fraunhofer lines in this spectral band allow for the retrieval of solar-induced fluorescence (SIF), a small amount of light emitted during plant photosynthesis (Frankenberg et al., 2012).

The weak CO₂ and strong CO₂ ~~bands~~ spectral bands primarily provide sensitivity to carbon dioxide, with peaks at different vertical heights, ~~but~~. They are also used as part of the cloud detection scheme since they are ~~particularly~~ sensitive to the wavelength dependence of aerosol ~~scattering and absorption. Estimates of XCO₂ extinction. In addition, the CO₂ are derived from these spectra using an optimal estimation retrieval method that integrates detailed models of the physics of the atmosphere (Bösch et al., 2006; Connor et al., 2008; O'Dell et al., 2012)~~ bands allow for a very accurate retrieval of total column water vapor due to the existence of a number of water vapor absorption lines (Nelson et al., 2016a).

The instrument ~~has~~ measures at 1016 ~~spectral elements in each channels, i.e., wavelengths, in each spectral~~ band, with 160 pixels averaged in groups of 20 along the slit, creating eight spatial footprints ~~per measurement frame~~. The entrance optics have been modified to reduce the magnification from 2.4:1 to 1:1, to maintain similar footprint sizes given the lower altitude of the ISS, which typically flies at ≈404 km, compared to OCO-2 at ≈705 km. This magnification change will result in OCO-3 footprints that are < 4 km², comparable to the 3 km² of OCO-2. The instrument field of view, i.e., the frame, will be approximately 13 km, or 1.6 km width per eight footprints, and the spacecraft motion covers ≈2.2 km during the 0.33 seconds of integration time. The rate of data collection will be approximately 1 million sets of 3 spectral band measurements per day, before considering ISS limitations discussed in Section 2.3.

The OCO-3 project inherited a fully characterized spectrometer from the OCO-2 project, which was designed for integration on a LeoStar spacecraft. For utilization on the ISS JEM-EF, a number of adaptations were required (Basilio et al., 2013). These include redesign of the thermal system, updates to the electrical system, and updates to the data flow from the instrument to the data processing center at JPL. These changes do not fundamentally change the radiometric characteristics, and therefore the science data quality, so will not be discussed in this paper. As described in the following section, a new pointing mirror assembly was also required for OCO-3.

2.2 OCO-3 pointing mirror assembly overview

A design change that impacts the radiometric characteristics of the data is the addition of a pointing mirror assembly (PMA). The PMA is required to allow non-nadir observations from the fixed position on the ISS, unlike the currently operating OCO-2, which maneuvers the entire spacecraft to point. Two important design requirements of the PMA were to allow quick movement through a large range of angles, and that the movement not impart any angular dependent polarization or radiance changes in the measurements. To meet these objectives a variation of the pointing system designed for the Glory Aerosol Polarimetry Sensor (APS) (Persh et al., 2010) was selected. This system relies on a single pair of matched mirrors in an orthogonal configuration that impart less than 0.05% change to the polarization (Mishchenko et al., 2007). For the OCO-3 PMA the concept was extended to a 2-axis pointing system. There are two elements; one controlling the azimuthal (cross-track) angle, and the other controlling the elevation (along-track) angle. Although the PMA itself does not change the polarization of the light more ~~them than~~ 0.1%, there are polarization implications, since the image of the slit is rotated as a function of the change in the PMA, primarily driven by the elevation (along-track) angle. It is worth noting that reflected sunlight is naturally polarized by its interaction with the earth's surface and atmosphere, especially over water.

Early in the mission design, a trade study was performed, evaluating the expected signal with and without the installation of an additional polarization scrambler, i.e., a polarization nulling optical component. ~~Without a scrambler, the signal measured by the instrument is large when the polarization of the incident light is aligned with the axis of polarization sensitivity of the instrument, i.e., polarization angle of zero. However, the measured signal decreases towards zero as the polarization of the incoming light rotates orthogonal to the axis of instrument polarization (polarization angle of 90 degrees).~~ Inserting a scrambler would make the polarization orientation of the incoming light random, regardless of the position of the PMA and the orientation of the instrument slit, but would reduce the signal by nearly 50% ~~compared to having no scrambler~~. In addition, the analysis showed that a single optical element that could scramble light at all of the OCO-3 wavelengths could not be manufactured and characterized to the required precision. Lastly, the volume and coverage of data with sufficient signal in the no-scrambler case was predicted to be more than sufficient to meet the science objectives. Therefore, OCO-3 will be operated without a polarization scrambler.

As will be discussed in more detail in Section 5.1, the PMA is one element that contributes to a change in the overall light throughput of OCO-3 compared to OCO-2. In the O₂ A-band, each mirror has a reflectivity of 95.4%, so the 4 mirror PMA system has an effective transmission of 83%. The weak and strong CO₂ band overall transmissions are higher, at 93% and 95%, respectively.

~~The thermal vacuum testing of OCO-3 has been finalized and analysis of the data is underway, with completion planned in the second half of 2018. Details of the measurement performance and how it compares to the instrument requirements will be reported in a forthcoming manuscript.~~

2.3 Sampling from the International Space Station - routine measurements

The ISS orbit is nearly circular about the earth, with altitudes that ranges from 330 km to 410 km. The planned altitude during the time of OCO-3 operation is 405 km. With a ground-track velocity of 27,600 km/h (7.667 km/s), one orbit around the earth is completed in about 92 minutes. The inclination of the orbit is 51.6°, which limits the latitudinal range that can be sampled by OCO-3. These orbital parameters result in a precessing orbit, ~~meaning the local overpass time with the equator crossing time occurring about 20 minutes early each day. The effect is that over the course of a year the OCO-3 sampling at a particular geolocation varies across all hours of the day over the course of a year.~~ Many more details of the ISS and its orbit can be found in the technical document ESA (2011). Section 3.2 pertains specifically to the ISS orbit parameters.

OCO-3 will dynamically control the viewing mode along each orbit via the PMA, with routine data collection consisting of nadir and glint measurements. ~~Over land, where both nadir and glint measurements provide sufficient signal, the~~ The PMA compensates for ISS pitch and roll in real-time using the on-board star tracker and Inertial Measurement Unit (IMU). The IMU comprises three fiber-optic gyros and three solid-state accelerometers in a compact package that measure velocity and angle changes in a coordinate system fixed relative to its case. In principle, OCO-3 could operate even when the ISS is rolled 90 degrees relative to its nominal attitude.

Over land measurements will primarily be made in nadir mode, where both the optical path length and statistical probability of observing clouds are minimized.

Glint measurements are necessary over the ocean, as the surface reflectivity is not large enough to produce adequate signal, except in a few cases. A small offset from the true glint spot will be included to avoid saturation of the instrument. While the glint measurements provide larger signal over oceans, the longer optical path lengths and enlarged footprint of this geometry also make these measurements more sensitive to cloud cover (Miller et al., 2007).

The transition time for the PMA is required to be less than 50 seconds between nadir and glint modes, which translates into approximately 380 km along-track. In testing with the flight hardware, all moves were made within 10 seconds, which corresponds to about 75 km along track. Mission planning assumes the required 50 s move time, and thus, ~~similarly similar~~ to GOSAT, small land masses in the ocean will be measured in glint mode, while continental scale areas (areas that will be sampled for more than 200 seconds) will be measured in nadir mode. Unfortunately, this means that most inland fresh water bodies will be observed in nadir mode and will therefore not provide useful retrievals due to low signal to noise ratios. This will include ~~bodies as large as, for example,~~ substantial bodies of water such as the Great Lakes of North America. However, bodies of water as large as the Mediterranean Sea for example will be sampled in glint viewing. ~~This~~ The sampling strategy is one of the key differences from OCO-2, where the measurement mode is specified orbit by orbit.

A subtlety of OCO-3 relative to OCO-2 is that, for nadir-land observations, the slit will remain perpendicular to the direction of flight since the instrument is not rotated to maintain measurements in the principle plane. This will produce a constant swath width of about 13 km, as depicted in Figure 1, which provides a best-guess representation of several frames viewing the Los Angeles metropolitan area. The ground footprint for glint mode measurements, however, will more closely resemble that of OCO-2, as the PMA will rotate to view near the specular reflection point.

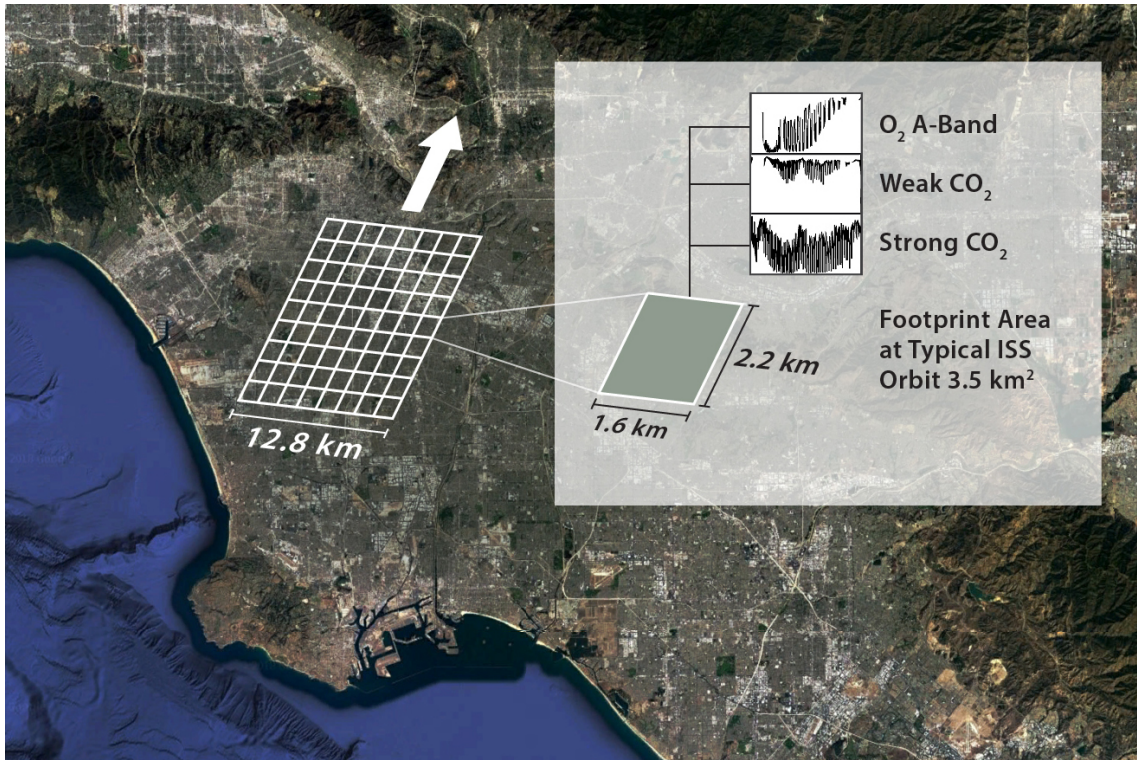


Figure 1. OCO-3 context image depicting 9 sequential frames acquired in 3.0 seconds in nadir viewing mode over the Los Angeles basin. Each frame contains 8 adjacent footprints in the cross-track direction of size 2.2 by 1.6 km, yielding a footprint area of approximately 3.5 km². Each footprint constitutes a sounding, containing high resolution spectra in the Oxygen-A, weak CO₂ and strong CO₂ bands. Image courtesy of Karen Yuen and Laura Generosa at JPL.

2.4 Target validation measurements

For the currently operating OCO-2, target mode measurements are taken over ground validation sites of the Total Carbon Column Observing Network (TCCON) (Wunch et al., 2010, 2011, 2017). The TCCON instruments are ground-based Fourier Transform Spectrometers that look directly at the sun (thus avoiding the complications of atmospheric scattering phenomena), and are used to derive total column carbon dioxide measurements with similar sensitivity as OCO-2 and OCO-3. The TCCON data are tied to the WMO scale for carbon dioxide through routine, ongoing overflights of aircraft equipped with in-situ sensors. The mechanics of the target mode observations of OCO-3 will be very similar to that of OCO-2, where data is collected using a sweeping, or dithering, pattern over the ground-based station. The width of the sampling area is determined by the combination of the instrument field-of-view and rotation of the footprints, which, in turn, is determined by the extent of PMA motion. Each target acquisition provides a set of overlapping observations that are used to statistically evaluate the retrieval performance for a range of viewing geometries as compared to the static TCCON ground-based measurement. The current OCO-2 mission

captures 1 or 2 target measurements per day, such that the total number gathered over the mission lifetime has been sufficient to perform validation (Wunch et al., 2017). OCO-3 will follow this basic strategy, although for some sites, where there are very few measurements in some seasons, e.g., at high latitudes in the winter, OCO-3 will potentially take more target measurements per day if it will improve the seasonal coverage for these sites.

5 2.5 Snapshot area mapping (SAM) mode measurements

The agile pointing system of OCO-3 will also allow for collection of data in new spatial patterns relative to OCO-2. ~~We have designed a snapshot mode, which can simply be thought of as a target observation~~ The snapshot area mapping (SAM) mode has been designed, which is similar to the target mode observations, but with two dimensional sweeping, i.e., from side to side as well as back and forth. In this way, an area on the order of ~~80~~100 km by ~~80~~100 km can be sampled. The types of areas that will be sampled include CO₂ emission hotspots, terrestrial carbon focus areas, and volcanos. Based on analysis of fossil fuel emissions and uncertainties of the emissions estimates (Oda and Maksyutov, 2011; Oda et al., 2018), a nominal sampling strategy for the emission hotspots is being developed. Preliminary results suggest that 50 to 100 snapshots per day will be collected, consuming up to 200 of the approximately 650 day-light orbit minutes, i.e., 25 to 30% of the data volume. ~~This will~~ All (or nearly all) of the SAM's will be made over land, especially in the northern hemisphere, leading to a vast reduction in the amount of nominal nadir-land data that is actually collected. The SAM's will provide a novel data set for exploration by the scientific community that is focused on the remote sensing of greenhouse gases and SIF from space. The full details of the new ~~snapshot SAM~~ mode will be presented in a future companion paper paper post-launch using on-orbit measurements.

3 Simulated geometry, meteorology and L1b dataset

In this section, we discuss the simulation of OCO-3 data in terms of viewing geometry, meteorology and observed radiometric quantities such as data density and ~~SNR~~ signal to noise ratio (SNR) of the measurements, the latter of which is the primary driver of instrument precision. This will enable ~~us to realistically discern a realistic analysis of~~ the effects that the ISS orbit will have on ~~our~~ the OCO-3 data products, in comparison to the sun-synchronous afternoon orbits of OCO-2. The generation of OCO-3 L1b radiances presented in this paper followed the same basic methodology as that used in previously published work on both GOSAT and OCO-2, e.g., (Bösch et al., 2006; O'Brien et al., 2009; O'Dell et al., 2012).

25 3.1 Simulated OCO-3 observation geometry

Actual ISS ephemeris data for the year 2015 were used to provide position and velocity vectors of the space station each second over the course of a year. To create a manageable data set for this work, samples were taken only once every 10 seconds, rather than at the true 3 Hz collection rate of the OCO-3 instrument. Also, only one sounding per frame, rather than eight, was used since the truth models lack the fidelity necessary for such high spatial resolution. The analysis presented in this work focuses ~~on nadir and glint nadir-land and glint-water~~ observation modes only, i.e., ignores transition, target and snapshot modes. This provides a baseline of the densest possible nadir and glint data if all the other viewing modes were disabled. As was mentioned

in Sect. 2.5, it is estimated that as much as 25-30% of the data volume will be collected in snapshot mode, ~~with some mostly over northern hemisphere land. Some~~ additional small amount, ~~(on order of a few percent), will be~~ collected in target ~~mode~~ and transition modes.

5 ~~Although the ISS latitude varies between $\pm 51.6^\circ$, the OCO-3 PMA allows for measurements extending beyond this range to approximately $\pm 55.5^\circ$ latitude. However, we found that useful measurements, i.e., those assigned a good XCO₂ quality flag as described in Sect. 4.3 and 5.3, are obtained at latitudes less than about 52° , where the solar zenith angle is less than about 73° . The exact range of latitudes measured on any given day will vary, depending on solar geometry and mechanical viewing constraints from the ISS, as described below.~~

10 The top panels of Figure 2 show the number of measurements as a function of latitude and day of year, ~~for the full annual data set. Nadir-land with nadir-land (left column) and glint-water observations are shown separately in the left and right columns, respectively (right column) observations shown separately.~~ The data are binned in increments of 1 day and 2° latitude. The values in these figures, and in the accompanying discussion, must be inflated by 240 to reflect expected real sounding densities at the full spatiotemporal resolution. Note that the figures in this section use L1b data collection density with no filtering. That is no cloud/aerosol prescreening or post ~~L2-L2FP~~ filtering have been performed here, topics which are discussed in later
15 sections.

The most notable feature of ~~both the nadir-land and glint-water observation density~~ the density data is the sinusoidal pattern with a period of ~~about approximately~~ 70 days, yielding ~~approximately ~ 5 repeats repeat cycles~~ per year. The nadir-land observation density ranges from close to zero soundings per bin below ~~about $\sim 30^\circ$ S~~ latitude (where there is little land), to ~~about approximately~~ 25 soundings per bin (per day, per 2° latitude) ~~up to about southward of $\sim 20^\circ$ N latitude. Above about~~ Northward of $\sim 20^\circ$ north-N latitude, the sampling density has significant dependences on latitude and time ~~dependences~~, with
20 a maximum of more than 300 soundings per bin at the northern extremity (~~approximately $\sim 55^\circ$ N~~).

The ~~density~~ pattern for glint-water viewing is qualitatively very similar, but with ~~much higher (50 to 60 soundings per bin)~~ density 2 to 3 times higher than land across most of the subtropics. The data densities can be over 300 soundings per bin at high latitudes near the satellite orbit inflection points. The simulated geometry used in this work takes into account the physical
25 limitations of the PMA due to interference from the solar panels and other constraints on the ISS. These physical restrictions have an especially large impact on the southern hemisphere glint data, as seen around DOY 120, 180 and ~~240. 240 in Figure 2.~~

The lower panels of Figure 2 show the same data subset to DOY range 60 to 119 (approximately March-April) to highlight the latitude and time dependence of the data collection across most of a single 70 day repeat cycle. Some interesting features,
30 advantages and limitations of these collection patterns are presented after the discussion of the seasonal maps that are shown next.

Another way to visualize the spatiotemporal distribution of the data is presented in Figure 3, which shows seasonal sounding density maps from the simulated data set, binned at 2° latitude by 2° latitude/longitude. Here, and elsewhere in the manuscript, the seasons are defined as December/January/February (DJF), March/April/May (MAM), June/July/August (JJA), and Septem-
35 ber/October/November (SON). ~~Here, no prescreening has been applied, and the reduction in spatiotemporal resolution requires~~

~~inflation of the values by 240 to get real expected sounding densities.~~ There are just under a million soundings total for the full year, with approximately 25 soundings in each 2° bin over most of the globe per season. Presenting the data in this manner accentuates the high density of soundings at the orbit inflection points, although the drift in coverage with seasons is muted. The gaps in data collection so apparent in Figure 2 are no longer observed when the data have been aggregated monthly or
5 seasonally. This has implications for the spatial and temporal scales of science questions that can be probed with the OCO-3 observations made from the ISS.

~~Due to the precessing orbit, the local overpass time of the ISS ranges across all hours of the day. For OCO-3, with its pointing capability, this means that all daylight hours can in principle be sampled.~~ Figure 4 uses Hovmoller diagrams to illustrate some of ~~these features~~ the features of the sampling from the ISS precessing orbit. The upper left panel shows the observation latitude
10 as a function of hours from local noon (HFLN) and day of year (DOY) for the full annual data set. The dominance of the yellow colors suggests that a large fraction of the soundings are taken at latitudes greater than 50° N.

The upper right panel shows the HFLN as a function of latitude and DOY for the full annual data set. Most of the observations are taken ± 5 hours relative to local solar noon. Here the $\simeq 70$ day repeat cycle is evident, and the precession in observation time as a function of latitude becomes clear.

15 The lower panels of Figure 4 subset the data to DOY 60 to 119 (approximately March and April) to highlight some of the detail across a single repeat cycle. Ten day periods are denoted with vertical lines in the diagrams. The data dropouts due to mechanical interference of the PMA by the ISS are seen at the higher southern latitudes. In general, the diurnal and spatial sampling pattern of OCO-3 aboard the ISS will vary significantly from the more familiar polar orbiting satellites. This will have implications on the XCO₂ and SIF science questions that can be explored.

20 ~~An additional way to visualize the data is shown in~~ Figure 5 ~~, which~~ presents global maps of the sampling pattern for the six sets of ten sequential days, highlighting both the spatial coverage and time of day sampling for a single repeat cycle. These maps clearly show the ascending/descending node variation in time ~~and make it easy to comprehend~~, elucidating the drift in HFLN as a function of day for any given location.

~~For example, imagine a field site of interest located in the Amazon basin. At the beginning of the repeat cycle this area is
25 sampled in the ascending node (ground track orientated from south-west to north-east) about 3-4 hours after local noon. Ten days later (days 70-79), the orbits are still oriented in the ascending node, but now the sampling time has drifted closer to noon. The next ten day period (days 80-89) continues with ascending node orbits but sampling time about 3-4 hours before noon, when the biological processes driving SIF and CO₂ are only just ramping up for the day. Then suddenly, during the next 10 day period (days 90-99), the very same field site begins to be sampled in the descending node, i.e., from north-west to
30 south-east, about 5 hours after noon. The sampling time again drifts closer to noon over the course of the next 10 days (days 100-109) before the final set of days (110-119) are observed in the morning hours. Disentangling the diurnal from the annual (and semi-annual) signals could be a challenge with this complex sampling pattern. Other sites at different latitudes will, of course, have different sampling patterns. The~~ The interpretation of this complex sampling pattern by global flux inversion models in an observing system simulation experiment (OSSE), as was performed for OCO-2 by Miller et al. (2007) and for
35 GOSAT by Liu et al. (2014), is an interesting, but unexamined, issue that is outside of the scope of the current work.

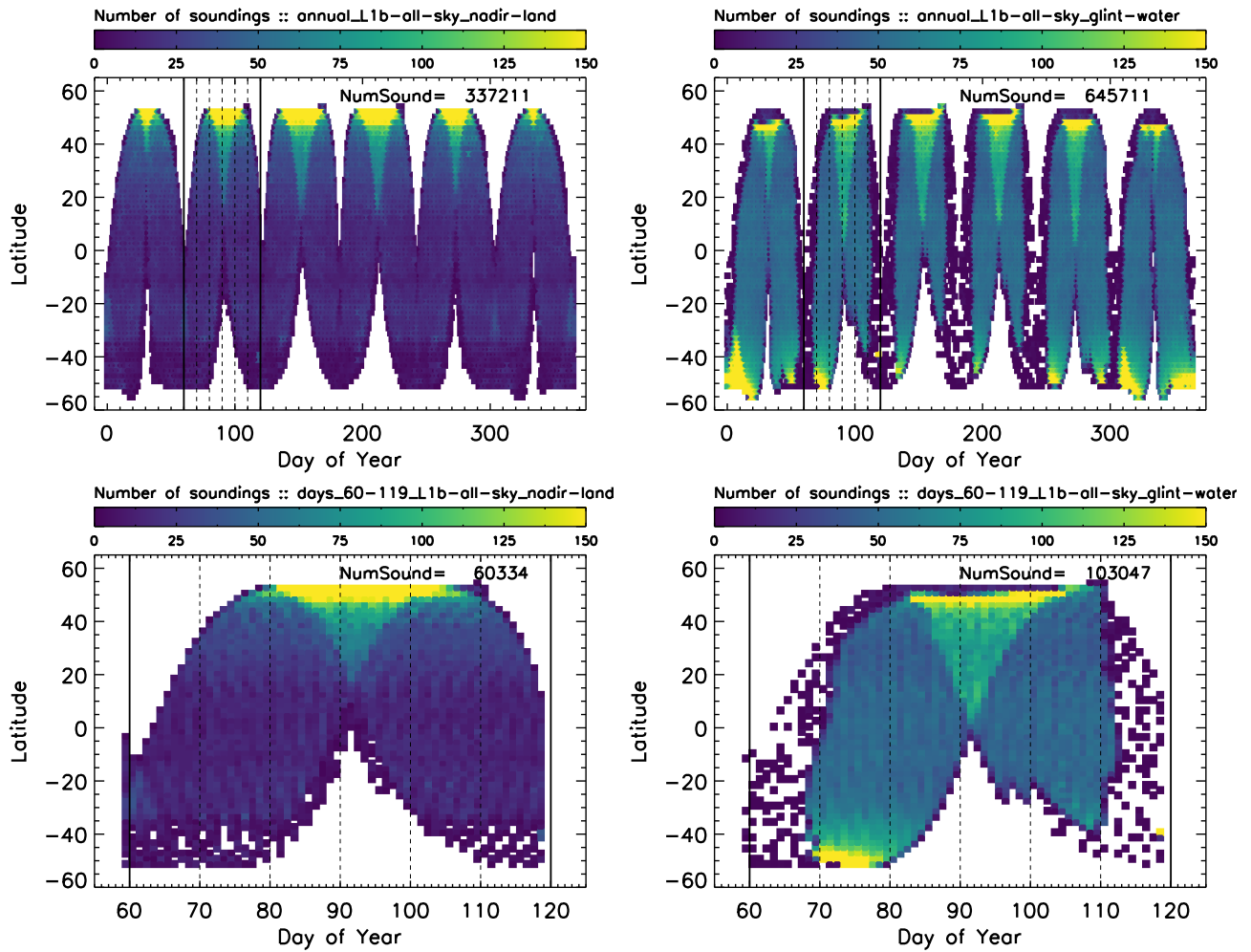


Figure 2. Simulated sounding densities for nadir-land (left) and glint-water (right) for the annual (top) and DOY 60-119 (bottom) data sets. Data are binned in 1 day by 2° latitude increments. Values should be inflated by 240 to reflect real expected sounding densities at the full spatial (8 footprints per frame) and temporal (3 Hz) acquisition rates. To account for the large dynamic range, the density scale has been truncated at 150, although the extreme high latitudes contains up to 300 soundings per bin in some cases.

3.2 Simulated instrument polarization angle and Stokes coefficients

As unpolarized solar radiation traverses the earth's atmosphere (twice) prior to incidence upon [the OCO instrument](#) [a space-borne sensor](#), interactions with particles, e.g., oxygen molecules and aerosols, as well as reflection off the surface, introduce some amount of polarization. Both the OCO-2 and OCO-3 instruments are sensitive only to [radiation that is oriented](#) [the component](#)

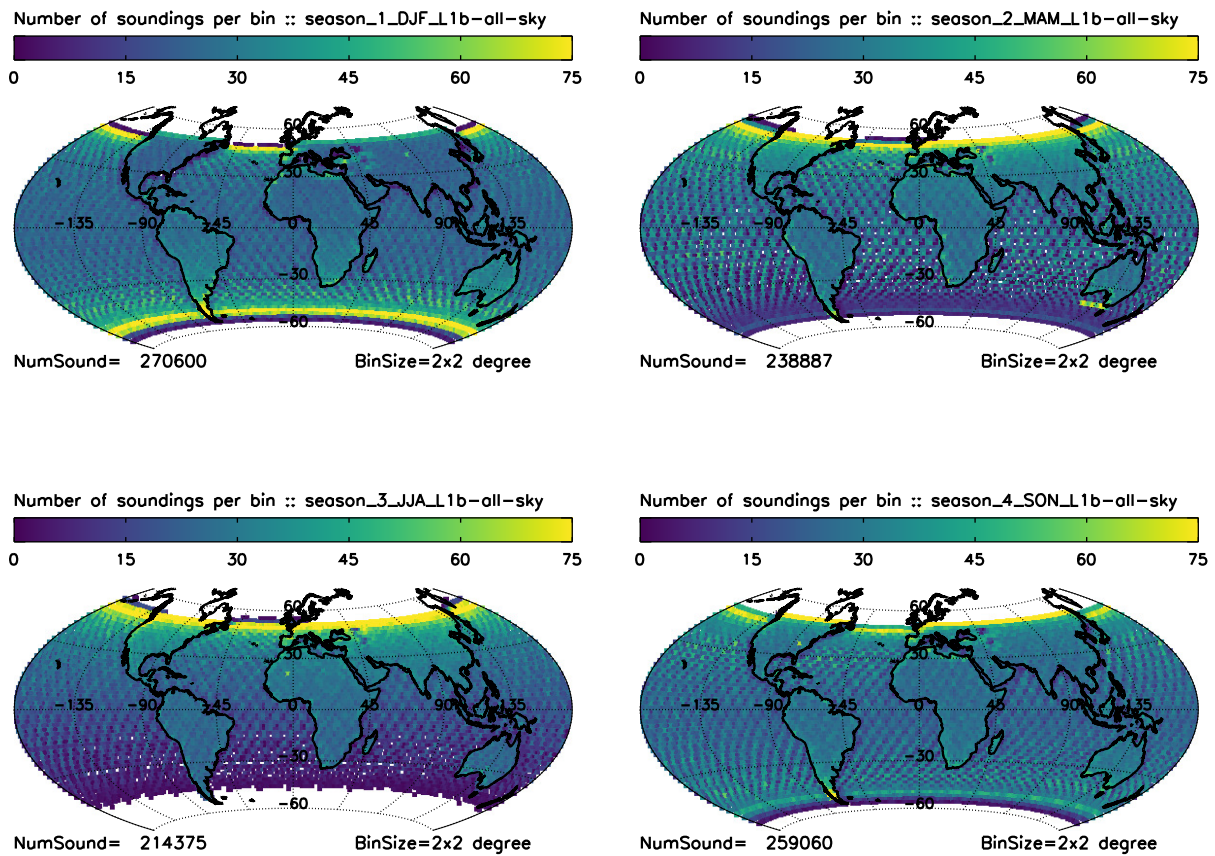


Figure 3. Seasonal L1b sounding density maps for 2° latitude by 2° latitude-longitude bins. Values should be inflated by 240 to reflect real expected sounding densities at the full spatial (8 footprints per frame) and temporal (3 Hz) acquisition rates.

of radiation polarized perpendicular to the long axis of the spectrometer slits ¹. This is critical over strongly polarizing water surfaces, but of lesser concern over land surfaces, which are only slightly polarizing. ~~In the limit that the axis of accepted and actual polarization are perfectly orthogonal, the intensity observed by the instrument is identically zero. Although the degree (i.e., amount) of polarization of the reflected sun light is unknown (although somewhat predictable for water glint measurements);~~

5 ~~the~~ Specifically, the vertically polarized component of light reflecting off a water surface is very low for incidence angles in

¹As noted in (Crisp et al., 2017), the OCO-2 instrument was built erroneously; it was intended to be sensitive only to light parallel to the long axis of the spectrometer slits. OCO-3 was built in the same manner. This error was mitigated on OCO-2 by yawing the spacecraft in order to maximize the signal over ocean while simultaneously maintaining sufficient electrical power generated from sunlight on incident on the spacecraft solar panels. For OCO-3, electrical power comes from the ISS and is therefore a non-issue.

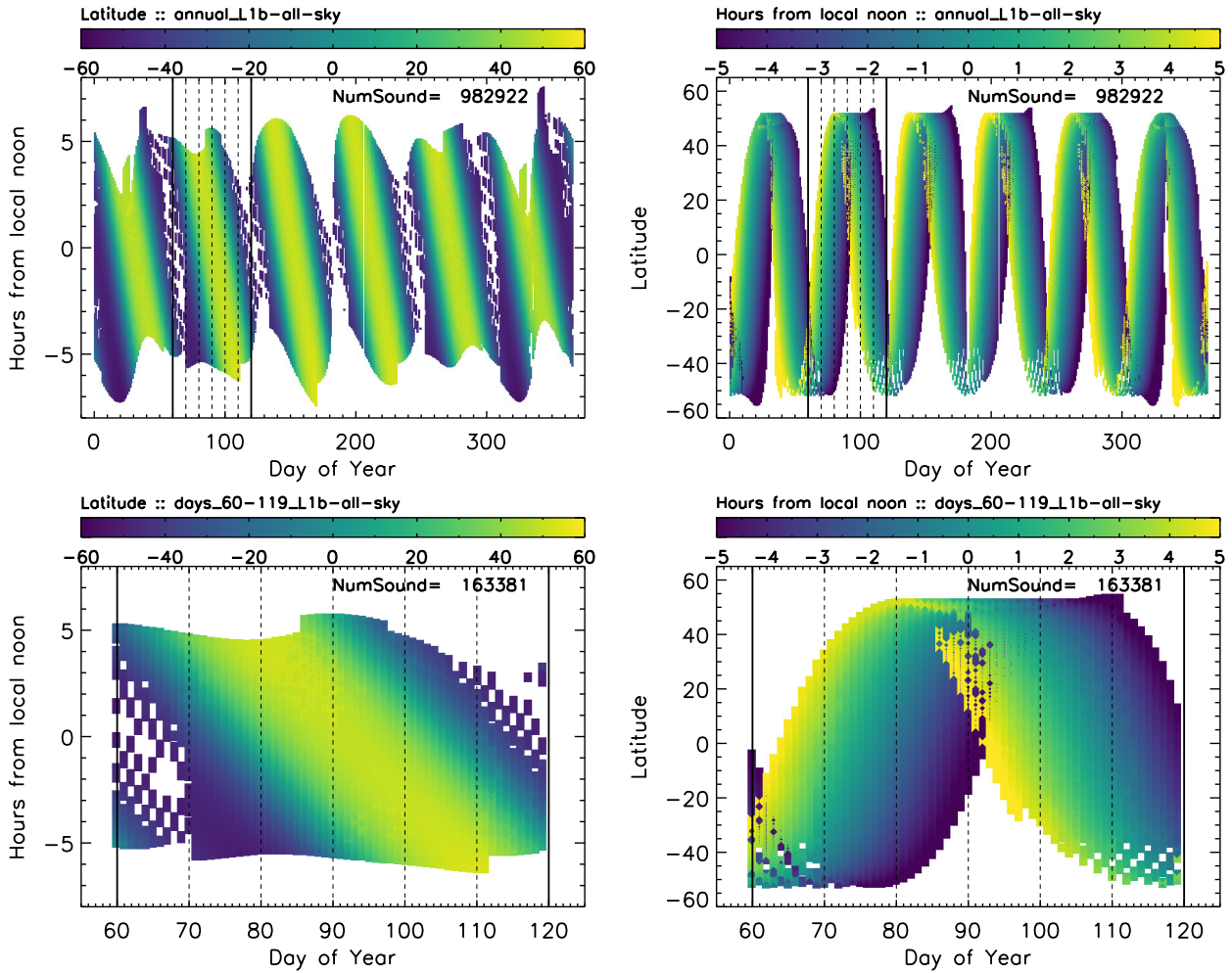


Figure 4. Hovmoller plots showing the observation latitude versus day of year and sampling time relative to local noon (top left) and the time relative to local noon versus DOY and latitude (top right) for the full year of simulations. Lower panels are subsets highlighting the patterns across days 60 to 119. Values should be inflated by 240 to reflect real expected sounding densities at the full spatial (8 footprints per frame) and temporal (3 Hz) acquisition rates.

a broad range about Brewster's Angle (53°). If the instrument is oriented such that it only accepts the vertically polarized component for a given sounding then the measurement SNR is expected to be very low in clear-sky or nearly-clear-sky scenes, making the retrieval of XCO₂ unreliable. The polarization angle of any particular sounding, which is a form of the throughput of the instrument, is a quantity that is calculable from illumination and observing geometries the observing geometry. The

5 local meridian plane, formed by the local normal and the ray from the ground FOV to the satellite, forms the reference plane for polarization. The polarization angle of a measurement (ϕ_p) is then defined as the angle between the axis of the instrument's

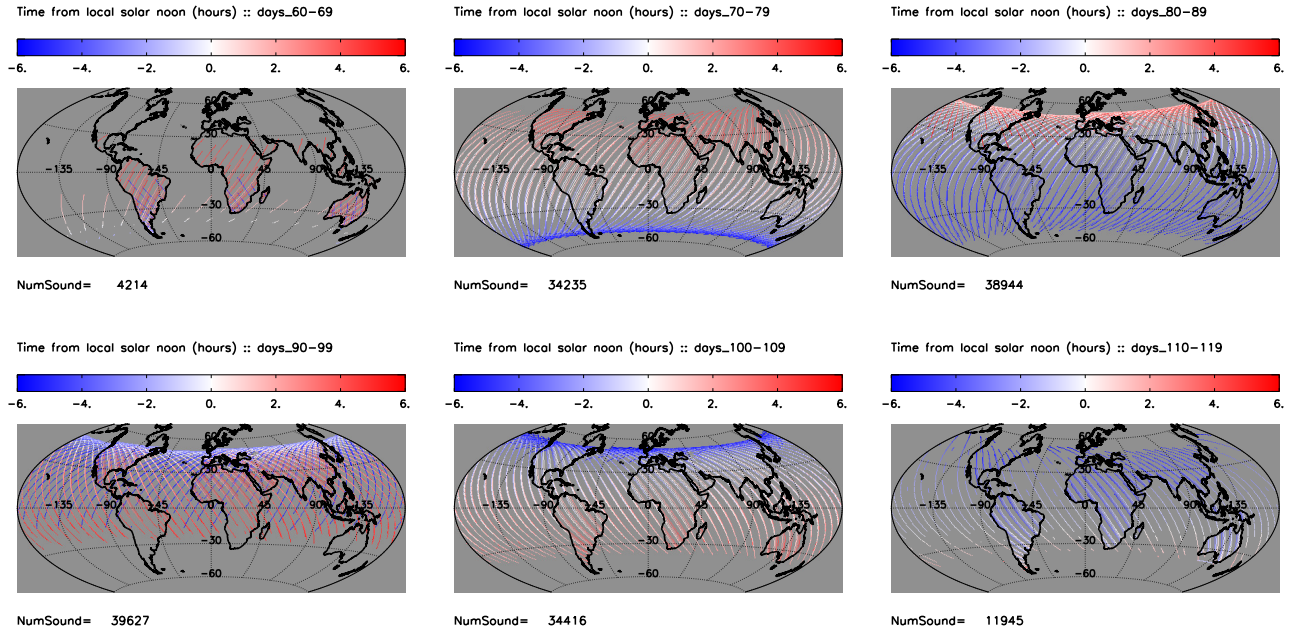


Figure 5. Simulated OCO-3 sampling pattern for six 10-day periods, colored by the time in hours relative to local noon. The pixel size of individual footprints has been magnified for viewing purposes.

accepted polarization and this reference plane (Boesch et al., 2015). Since fundamental physics predicts that scattered light will be preferentially polarized parallel to the plane of a horizontal surface, i.e., perpendicular to the local meridian reference plane, the **larger (smaller) the polarization angle closer the OCO-3 polarization angle to 90° (0°)**, the more (less) of the reflected sunlight incident on the instrument will pass through to the detectors, assuming a constant amount of polarization of the light.

- 5 **The geometry of individual soundings allows for the calculation of ϕ_p , and hence to the calculation of the Stokes coefficients, which**

The polarized intensity detected by OCO-2 or OCO-3 is given by:

$$I_{meas} = m_I I + m_Q Q + m_U U \quad (1)$$

- 10 where I represents the total intensity, and Q and U represent components of the linearly polarized portion of the light. The circular component of polarization, V , is ignored as it is typically extremely close to zero in the atmosphere, and most instruments are designed to be insensitive to it. The so-called Stokes' coefficients m_i for an instrument containing a polarizer such as OCO-2 and OCO-3 are given by the set of equations:-

⋮

$$m_I = \frac{1}{2} \tag{2}$$

$$m_Q = \frac{1}{2} \cdot \cos(2\phi_p) \tag{3}$$

$$m_U = \frac{1}{2} \cdot \sin(2\phi_p) \tag{4}$$

5 A critical difference in OCO-3 observations aboard the ISS is that the polarization angle of the measurements will not be constant nor tied to latitude, as is the case for OCO-2, where ϕ_p is controlled by the dynamic orientation of the spacecraft to maximize instrument throughput (Crisp et al., 2017). For OCO-2 all data since November 2015 have been collected with the spacecraft yawed at 30° , resulting in a constant polarization angle ~~of with~~ about the same sign and magnitude. For OCO-3, the polarization angle of the glint measurements will vary significantly in ~~time and space as the pointing mirror space and time as~~
10 ~~the PMA~~ is oriented to view the ground target of interest.

Detailed optical modeling and laboratory tests ~~have been were~~ performed to simulate the effects of the ~~PMA-induced~~
~~PMA-induced~~ changes to the polarization angle. The analysis ~~showed shows~~ that ϕ_p is ~~a~~-largely driven by the the PMA
elevation ~~angles with a some influence of angle with some influence from~~ the PMA azimuth angle. For elevation angles below
20°, the polarization angle is nearly equal to the elevation angle of the PMA. In the nadir observing mode, the sensitivity to
15 polarization is essentially negligible. However, for all off-nadir measurements, i.e., glint, transition, target, and ~~snapshot SAM~~
modes, there will be a range of polarization angles, as the elevation angle of the PMA is adjusted to view the ground target.
~~Ultimately this will have effects on the signal to noise ratios, as will be discussed in Section 5.1~~

~~These effects are neatly summarized in Figure 6, which shows contours of the theoretical O₂ A-band SNR as a function
of both solar zenith angle and polarization angle for a specularly reflecting surface model (Cox and Munk, 1954) at a fixed
20 wind speed of 8 m/s. The constant polarization angle of OCO-2 at 30° is designated by the horizontal dot-dashed line, while
the polarization angle of OCO-3 assumed in this work is shown by the labeled dashed line, which used a simple but inexact
parameterization of the relationship between the PMA elevation angle (ζ_{PMA}) and the polarization angle. In the figure, the actual
range of polarization angles for OCO-3 expected on-orbit using a more complete parameterization is indicated by the gray
shaded area. As stated above, this range is closely tied to the PMA elevation angle, which itself is closely related to the solar
25 zenith angle at the glint spot. Note that actual on-orbit OCO-3 SNRs over ocean at the higher SZA values will be somewhat less
than those depicted in Figure 6 and Section 5, as OCO-3 will off-point from the true glint spot to avoid saturating its detectors,
as was done for OCO-2 (Crisp et al., 2017).~~

O₂-A spectral band :: wind= 8 m/s

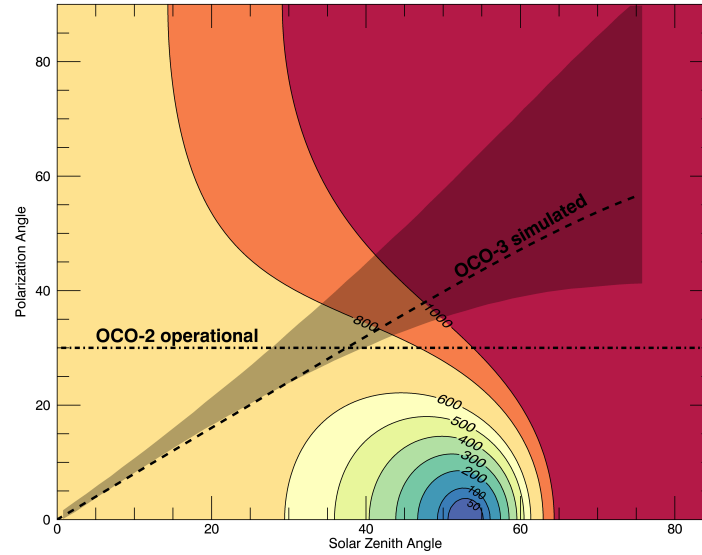


Figure 6. Contour plot of the theoretical SNR versus solar zenith and polarization angles as determined from a Cox and Munk surface reflectance model. Results here are for the O₂ A-band assuming an 8 meter per second surface wind speed. Results for the CO₂ spectral bands and for other realistic wind speeds look qualitatively similar (not shown). The fixed OCO-2 operational polarization angle due to the 30° instrument yaw is indicated by the horizontal dot-dashed line, while the simple relationship between the OCO-3 polarization angle and solar zenith angle used in these simulations is indicated by the dashed line. The gray shaded region shows the range of the expected on-orbit OCO-3 polarization angles determined from recent calculations.

3.3 Simulated meteorology, gas and cloud/aerosol fields

In our simulations, vertical profiles of standard meteorological information needed to calculate realistic radiances were taken from the National Centers for Environmental Prediction (NCEP) (Saha et al., 2014). The NCEP database has a native spatial resolution of 2.5° latitude by 2.5° longitude (10,512 spatial points) with variables given on 17 vertical layers every 6 hours.

- 5 For this work, the model was sampled at individual OCO-3 observations, defined by time, latitude, longitude, and surface elevation, for temperature, humidity, two meter temperature, surface pressure, and winds. The data are interpolated spatially and temporally to 26 vertical levels to create "scenes" for every individual OCO-3 sounding.

Vertical values of carbon dioxide for each sounding were sampled from the CarbonTracker 2015 database (CT2015) (Peters et al., 2007), with updates documented at <http://carbontracker.noaa.gov>, which has a native spatial resolution of 2.0° latitude by
10 3.0° longitude (10,800 spatial points), with CO₂ mole fractions given on 25 vertical layers every 3 hours. Data are interpolated in space and time to match individual OCO-3 soundings. Note that although the ISS ephemeris was taken from 2015, the CT database was sampled for 2012. Ultimately this makes no difference to the overall outcomes reported in this paper (which are

not focused on actual carbon cycle science), but it is important to note that the simulations are representative of an earth-like system, not the actual conditions on Earth at the time of the soundings.

For each individual sounding, a cloud and aerosol profile containing 25 vertical layers was built based on a random selection from a monthly climatology of CALIOP profiles [based on the 05kmALay product \(Winker et al., 2007\) as described in the OCO simulator document \(O'Brien et al., 2009\)](#). This is a static database of real CALIPSO profiles measured in a single year binned at 2.0° latitude by 2.0° longitude (16,200 spatial points) ~~as described in the OCO simulator document (O'Brien et al., 2009)~~ with each bin containing on average about 90 profiles, for a total of approximately 1.4 million profiles. While these profiles do not capture the diurnal characteristics of cloud and aerosol fields ~~(as CALIOP, flying in the A-Train, always has the same since CALIOP has a fixed~~ local overpass time), they are sufficient for this analysis, which is assessing statistics on monthly or seasonal time scales.

3.4 Simulated land surface model and SIF

A model of the earth's surface is a critical component for the calculation of reflected solar radiances. For land surfaces, scalar Bi-Directional Reflectance Distribution Functions (BRDF) were taken from the MODIS 16-day ~~MCD43B1~~ [MCD43B1](#) product (Schaaf et al., 2002). For water surfaces, a fully polarized Cox and Munk model with a foam component based on wind speed was used. Additional details and citations can be found in the CSU simulator ATBD (O'Brien et al., 2009). Realistic estimates of solar induced chlorophyll fluorescence (SIF) from biological activity were added to the ~~oxygen-O₂~~ A-band L1b radiances based on the implementation of Frankenberg et al. (2012). A static gross primary production (GPP) climatology of Beer et al. (2010), which is a mean monthly climatology based on the 18 IGBP surface types at 0.5° by 0.5° latitude and longitude resolution, is scaled to a daily average SIF value using the empirical scaling factor of Frankenberg et al. (2011). Daily average SIF is converted to instantaneous SIF via scaling by the instantaneous solar insolation relative to the average for that day and location. The wavelength dependence is a double Gaussian function as given in Frankenberg et al. (2012). Overall, this provides values of SIF that are representative in time (seasonal and diurnal cycle) and space (as a function of latitude and local plant physiology). It is worth noting that the use of the static GPP climatology does not allow for interannual variability, but this has no effect on the single year of simulated data presented here.

3.5 Simulated L1b radiances

Radiances, as ~~would be expected to~~ be observed by the OCO-3 instrument in space, are calculated using the same forward model (FM) that has previously been employed for GOSAT and OCO-2 simulation studies, e.g., O'Dell et al. (2012). The FM consists of ~~a~~ [an](#) atmospheric model, surface model, instrument model, solar model, and radiative transfer model.

The solar spectrum is comprised of two parts; a pseudo-transmittance spectrum (Toon et al., 1999) and a solar continuum spectrum (Thuillier et al., 2003), used to produce a high-resolution, absolutely-calibrated input solar spectrum for the forward model (Boesch et al., 2015). For this work, the gas absorption coefficients, i.e., spectroscopy, of the ~~current operational~~ OCO-2 [operational](#) B8 ~~L2-L2FP~~ algorithm, ABSCO v5.0.0, were used. The instrument model, which includes the instrument line shapes (ILS), radiometric characteristics, polarization sensitivity, and noise specifications, were taken from the OCO-3 thermal

vacuum tests performed in September 2016. Noise was applied to the calculated radiances via the same model used for OCO-2, as described in Rosenberg et al. (2017). The radiative transfer calculation ~~accurately~~ accounts for multiple scattering from clouds and aerosols as well as polarization, as described in O'Brien et al. (2009) and references therein.

4 Level 2 preprocessors and full physics retrieval ~~algorithms~~algorithm

5 The primary data products for OCO-2 and OCO-3 are the column-averaged dry-air mole fraction of CO₂ (XCO₂) and the solar induced chlorophyll fluorescence (SIF), both of which can be used to help constrain the global carbon cycle, e.g. Eldering et al. (2017b); Sun et al. (2017). For this work, the simulated L1b radiances were analyzed with the same tools used in OCO-2 operational data processing, as described in Section 4 of Eldering et al. (2017a). These steps include prescreening, ~~L2 retrievals,~~
10 ~~quality screening~~the Level 2 Full Physics (L2FP) algorithm, quality filtering (QF) and the application of a bias correction (BC)
for XCO₂. This section briefly discusses each of the components as it relates specifically to the OCO-3 simulations. Relevant citations containing the full details are provided.

4.1 Preprocessors

Cloud screening was performed using only the A-Band Preprocessor (ABP), as described in Taylor et al. (2016). The ABP identifies cloud contaminated soundings primarily via a threshold on the difference in retrieved and prior surface pressure
15 in the Oxygen-A band, typically ± 25 hPa. Although operational OCO-2 data also utilizes a weak filter on the ratio of CO₂ retrieved independently in the strong and weak CO₂ bands by the IMAP-DOAS Preprocessor (IDP), we did not implement this filter for cloud screening. The IDP CO₂ and H₂O ratios were however used for post ~~L2-L2FP~~L2FP retrieval quality filtering and bias correction. In addition, IDP performs a retrieval of SIF, which is used as a prior for the full physics ~~L2-SIF retrieval.~~
20 ~~After some additional post processing, such as removing a zero level offset (ZLO), the IDP SIF becomes the formal LiteSIF product~~
~~that is available on the NASA DISC~~L2FP SIF retrieval, which is included in the L2FP state vector as a necessary interferent parameter (See Section 3.5 of O'Dell et al. (2018)). Both preprocessors neglect scattering in the atmosphere (except Rayleigh scattering is included in ABP), making them computationally very efficient.

4.2 Full physics retrieval algorithm for XCO₂~~and SIF~~

The soundings that were identified as clear by the ABP cloud flag were then run thru the OCO-2 B8 operational FPL2 retrieval
25 algorithm. The algorithm was first described in Bösch et al. (2006) and Connor et al. (2008) prior to the failed launch of OCO-1 in February 2009, and was later applied to GOSAT as described in O'Dell et al. (2012). Recent updates and a complete description of the modern B8 version of the algorithm can be found in Boesch et al. (2015) and O'Dell et al. (2018).

In summary, the ~~algorithm~~L2FP is an optimal estimation retrieval ~~with containing~~with containing a prior that ~~minimizes radiance residuals,~~
30 ~~i.e., chi-squared, to maximize~~maximizes the a posterior probability of the solution space via minimization of the radiance residuals through the chi-squared statistic. The solution is solved on 20 vertical levels, with the state vector containing CO₂ dry air mole fraction, aerosol parameters, surface albedo, wind speed, water vapor, ~~and~~and a temperature scaling factor, as well as

a [SIF term](#). The high spectral resolution measurements of top of the atmosphere reflected radiances measured by sensors such as GOSAT, OCO-2, or OCO-3 serve as the primary source of information in the retrieval. The measurements are coupled with an a priori state of the atmosphere ([the state vector elements listed above](#)) in order to constrain the inversion. Within the [L2 L2FP](#) retrieval, modeled spectra are generated by a radiative transfer ([RT](#)) code as described in O'Dell et al. (2012) and Boesch et al. (2015). Although they share many components, the [L2-L2FP RT](#) code base differs slightly from the RT ~~FM used in the generation of the model used to generate the simulated~~ L1b radiances, thus creating a realistic error source in the simulation exercise, ~~i. e., imperfect radiative transfer.~~

4.3 Filtering and bias correction approach

The NASA operational procedure for both OCO-2 and GOSAT applies a quality filtering (QF) and bias correction (BC) process to the ~~retrieved~~-[L2FP](#) XCO₂ (O'Dell et al., 2018). Correlations between variables and XCO₂ error variability are quantified and used to develop the filtering thresholds and linear bias correction equations. The quality filtering is designed to remove soundings with anomalous XCO₂ values relative to other soundings in close proximity, making use of the assumption that real variations in XCO₂ are quite small (<1 ppm) on small scales (< 100 km). Some form of "truth" metric, or truth proxy, is required with which to calculate an "error" in XCO₂. For operational OCO-2 data, several forms of a truth proxy are used, as detailed in Section 4.1 of O'Dell et al. (2018).

A similar treatment was applied to the OCO-3 simulation dataset. However, with simulations it was possible to use the actual true XCO₂ as the truth proxy in the QF and BC procedures. There are both advantages and disadvantages to the circularity imposed by knowing the true values of the atmospheric state. In this case, we expect that the use of the truth data will result in an overly optimistic QF and BC. [On the other hand, we don't have to consider errors in the truth proxy itself in our analysis, an issue of real concern when working with real measurements such as those from TCCON validation sites or model estimates of XCO₂.](#)

At its completion, the QF/BC procedure assigns to every sounding a binary flag indicating good/bad quality, as well as a BC value (in units ppm). The operational OCO-2 BC equation contains three components; a correction based on retrieval variables (parametric), a correction for inter-footprint dependence and a global bias, each calculated separately for land (combined nadir and glint) and ocean-glint. For the OCO-3 simulations the inter-footprint bias is not needed since only a single footprint per frame was calculated. Explicit results from the procedure as performed on the OCO-3 simulations are given in Sections 5.3 and 5.4.

5 Results

This section discusses characteristics of the L1b radiances, performance of the preprocessors, and application of the quality filter and bias correction methodology before presenting the [L2-L2FP](#) XCO₂ results. In addition, we provide a brief analysis of the SIF determined by the [HP-IMAP-DOAS Preprocessor \(IDP\)](#) retrieval. Table 1 summarizes the number of soundings in the simulated data set at each stage of the analysis, broken out by nadir-land and glint-water observations.

5.1 Simulated L1b radiance characteristics

At a gross level, the characteristics of the simulated OCO-3 radiances are very similar to those from real OCO-2 measurements. The high resolution spectra for OCO-3 (not shown) exhibit the expected absorption features that allow for cloud and aerosol screening, and the retrieval of surface pressure and SIF (from the O₂ A-band) and XCO₂ (from the weak and strong CO₂ bands).

However, some differences are expected between the two sensors in both measured signal and instrument noise due to the addition of the PMA and calibration characteristics of the spectrometers, e.g., dark noise, stray light and ILS. Optical inefficiencies in the ~~OCO-3~~ OCO-3 PMA will reduce the transmission of light by about 17% in the O₂ A-band, and 7% and 5% in the weak and strong CO₂ bands, respectively. To compensate for the effects of the PMA, the instrument aperture of the O₂ A-band was increased. When all of the optical elements and instrument changes are considered, the O₂ A-band transmission of OCO-3 will be about 95% of OCO-2, while the weak and strong CO₂ bands will have 75% of the transmission of OCO-2, thus reducing the observed signal for the same scene.

The instrument calibration parameters for the OCO-3 simulations reported here were ~~taken derived~~ from ~~results of~~ the September 2016 pre-launch thermal vacuum testing (TVAC), which was performed using an early version of the instrument telescope and without the PMA installed. The noise coefficients were adjusted post-hoc to account for the reduced optical throughput caused by the PMA, which was discussed in Section 2.2. Although the final ~~round of pre-launch TVAC calibration thermal vacuum test of the OCO-3 payload, including the PMA~~, was completed in ~~May-July~~ 2018, ~~the results were still not available at the time of writing. However, based~~ analysis is still in progress to generate calibration coefficients from this data. Some values will remain fixed, while others will be regularly updated in flight. Instrument performance will be reported in forthcoming manuscripts post-launch. Based on preliminary analysis, the updated instrument characteristics are not expected to change at a level that would greatly effect the results presented here.

A key characteristic of the radiances measured by satellite sensors is the SNR, which effectively determines the information content of the measurements, thereby controlling the precision of the retrieval estimates of XCO₂ and SIF. The signal for each band is calculated from continuum level radiances, using the ten channels with the highest values, after filtering for outliers that occasionally exist due to cosmic rays or some other random electronic ~~anomaly~~ anomaly. The OCO noise model combines contributions from a constant background (dark noise) term and a photon (shot noise) term, the later of which is proportional to the square root of the radiance (Rosenberg et al., 2017).

Figure 7 compares the OCO-2 SNR calculated from the operational noise model (solid traces) against OCO-3 (dashed traces) versus a measure of the surface brightness (parameterized as the albedo scaled by the cosine of the solar zenith angle, $A \cdot \cos(\text{SZA})$). The left panel displays the SNR of each spectral band for both sensors, while the right panel shows the ratio of the two sensor's SNR per spectral band. This data demonstrates that the only situation in which OCO-3 has a higher SNR than OCO-2 (~~values >1.0 on the right panel~~) is in the O₂ A-band ~~for when~~ when $A \cdot \cos(\text{SZA}) \gtrsim 0.15$. This typically occurs over very bright deserts and during glint-water measurements when the sun is low in the sky. It is worth noting that the O₂ A-band is used primarily for cloud and aerosol detection and for the ~~L2-FP~~ L2FP surface pressure retrieval as well as for SIF.

In both of the weak and strong CO₂ bands (green and red, respectively, in ~~the figure~~Figure 7), OCO-3 always has a significantly lower SNR than OCO-2. This reduced SNR can be attributed to ~~both increased noise due to the use of noisier instrument detectors that were spare parts from the rebuild of the OCO-2 instrument, and~~some combination of increased noise in the instrument detectors and/or to decreased signal incurred by the use of the PMA, a polarizer in the telescope, and a larger center
5 obscuration in the entrance optics.

The overall SNR differences are captured in the histograms of Figure 8, which compare the OCO-3 simulations with the real SNR for operational OCO-2 B8 measurements acquired in 2016. The operational OCO-2 data has been ~~down-selected~~down-selected to include only a single footprint per frame and one sounding every 10 seconds to provide a fairer comparison against the OCO-3 simulations. Both data sets have been screened using ~~the L2-FP~~their respective L2FP quality flags, which
10 were introduced in Section 4.3, and will be discussed in more detail in Section 5.3. At a gross level, the data look reasonably similar, although a few key distinctions stand out, particularly that the slightly brighter OCO-3 O₂ A-band is primarily due to a long tail of high values for glint-water soundings. The OCO-3 weak CO₂ band exhibits a substantially lower SNR for glint-water compared to OCO-2, while the strong CO₂ band tends to be ~~also somewhat~~also somewhat lower than OCO-2. These figures show that the OCO-3 data will include less data with SNR values over 600, and more data with SNR between 200 and 400. Previous
15 OCO-2 studies and experience with the real data show that an SNR of 200 is sufficient to achieve the desired precision of the retrieval algorithm. As will be shown in Sections 5.5 and 5.6, the ~~L2-FP~~L2FP retrieval still provides good estimates of XCO₂ and SIF on this set of OCO-3 simulated radiances, even with the lower SNR values.

Maps comparing the simulated OCO-3 SNR to the operational B8 OCO-2 data ~~for each spectral band~~ are shown in Figure 9 for the month of April for each spectral band. Qualitatively, the overall patterns agree quite well, although the difference in
20 latitudinal coverage from the two spacecraft is ~~noteworthy. We also note that a~~apparent as are differences in the throughput, notably over the Amazon, the Sahara and eastern China. A higher fraction of the soundings that converge in the ~~L2-FP~~L2FP retrieval are assigned a good quality filter in the OCO-3 simulations (approximately 70%), versus only about 40% for real OCO-2 B8 data. ~~This is~~The differences in throughput are likely driven by deficiencies in the simulation setup, ~~such as~~. In particular, lack of a Southern Atlantic Anomaly model, and a parameterized cloud and aerosol scheme in the L1b simulations
25 that lacks full realism. We expect that real on-orbit OCO-3 good quality sounding fractions will in reality be closer to the OCO-2 values-

, especially over the three continental areas mentioned above. For both sensors, the highest SNR's are obtained over ~~un-vegetated~~unvegetated (bright) land, and for glint-water when the sun is low in the sky, ~~producing~~which produces a strong specular reflection. The lowest values of SNR occur when ~~when~~ the sun is high in the sky, and for vegetated (dark) land surfaces
30 at higher latitudes. As with OCO-2, the weak CO₂ band displays the highest SNR values, while the O₂ A-band and strong CO₂ bands have lower but comparable SNRs.

A final glimpse of the SNR characteristics are shown in Figures 10 and 11, which compare the SNR dependence on latitude and SZA for both sensors. The restriction of OCO-3 to latitudes ~~less than approximately~~below $\sim 54^\circ$ is pronounced, especially for the glint-water soundings, when comparing to the wider latitudinal distribution obtained from OCO-2. This is simply a
35 consequence of the ISS precessing orbit versus the polar orbit of OCO-2. ~~On the other hand, the~~It is also evident that the

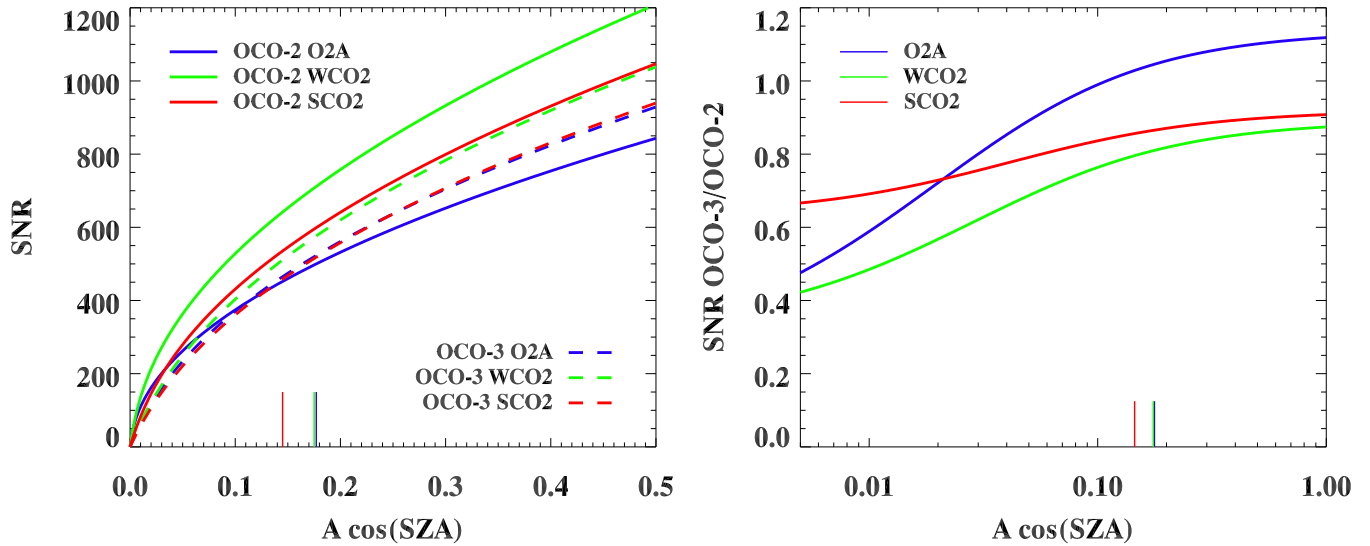


Figure 7. OCO-2 and OCO-3 mean SNR (averaged across footprints and channels) for each band as a function of the product of surface albedo and cosine of solar zenith angle (left panel). The quantity $A \cos(\text{SZA})$ is proportional to the reflected sunlight off of a surface. The right panel shows the ratio of OCO-3 SNR to OCO-2 SNR using a logarithmic abscissa scale. The small vertical lines represent $A \cos(\text{SZA})$ for Railroad Valley at the winter solstice. OCO-3 SNR is lower at lower signal levels because it has a higher noise floor than OCO-2.

OCO-3 measurements span ~~SZA 's from approximately 85° a much larger SZA range ($\sim 75^\circ$ to 0° , while), compared to OCO-2 measurements are limited to a minimum SZA of approximately 20° in the subtropics and larger than 30° above 40° latitude.~~ As was demonstrated previously in the histogram plots (Figure 8, ~~we again see here), we find that for nadir-land the OCO-3 SNR values tend to be lower for OCO-3 compared to OCO-2 in all spectral bands, with the exception of a few high O_2 A-band SNRs around 20° latitude which correspond to the Sahara desert. For glint-water soundings, there is a population of very high SNR values (> 800) spanning the full latitudinal space, at SZA around $\sim 60^\circ$ due to the very bright specular glint spot achieved under these conditions.~~

While real on-orbit SNR characteristics will likely differ somewhat from those shown here, these simulations suggest that the instrument has been well built and well calibrated and should provide SNR that meets the mission requirements. In addition, due to the nature of the precessing orbit of the ISS, ~~which decouples the solar zenith angle from the latitude, we expect that the SNR distribution, which fundamentally drives the information content in the L2-FP-L2FP retrievals, will not be tied to latitude in the same way that it is for OCO-2. This has implications as to the spatial ~~patters-patterns~~ of good quality XCO_2 and SIF retrievals, as will be discussed in the following sections.~~

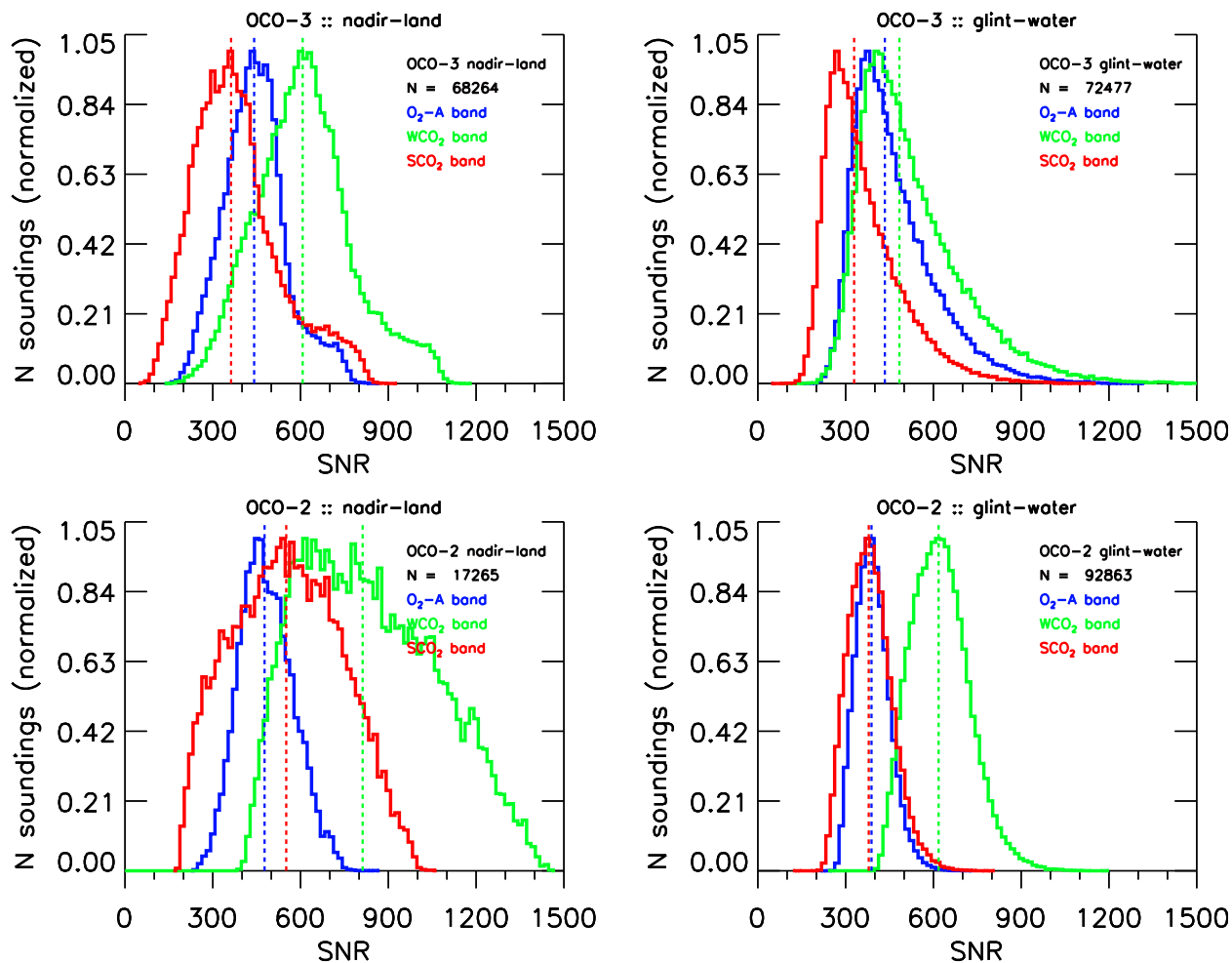


Figure 8. SNR histograms comparing simulated OCO-3 (left column) to operational B8 OCO-2 (right column) for nadir-land (top row) and glint-water (bottom row). The colors represent the three spectral bands, as described in the legend. Both data sets have been filtered using their respective [L2-L2FP](#) quality flags. The median value for each spectral band is shown as a vertical dashed line in the corresponding color.

5.2 Preprocessor performance

For this simulation experiment only the ABP cloud flag was used to select soundings, although real operational sounding selection is expected to be slightly more elaborate (see Sec. 2 of O'Dell et al. (2018)). In particular, no IDP variables were used in the [L2-L2FP](#) sounding selection here, although they were used later in the post-filtering and bias correction. The results

5 shown in Table 1 indicate that about a quarter (24.2%) of all of the observations passed the ABP cloud flag, leaving about 250,000 to run through the [L2-FP retrieval](#). Broken out by [L2FP retrieval](#). By viewing mode, approximately one third (31.8%)

of the nadir-land and one fifth (20.2%) of the glint-water observations passed the ABP cloud flag. These statistics are roughly similar to those seen in real OCO-2 operational processing.

Figure 12 shows maps of the clear-sky fractions in each 2° spatial bin (left) and the resulting clear-sky sounding densities (right). As expected, the highest fraction (up to about 75%) of the scenes pass in the arid land regions, where there are few clouds and aerosols. The southern subtropical oceans also tend to have areas of moderately high passing rates ~~around of~~ $\sim 50\%$. Tropical land regions, e.g., the Amazon, Congo and Indonesian rainforests, have on average only about 5 to 10% passing rates. Most temperate land regions such as the eastern United States and southern Europe generally have passing rates of ~~about~~ $\sim 30\%$. These results meet expectations and are qualitatively very similar to those seen in Fig. -1 of O'Dell et al. (2018) for OCO-2 operational B8 data.

The right panel of Figure 12 confirms that the highest density of cloud-free soundings (more than 100 per 2° bin) are found over the arid regions of the globe, as expected. In addition, a large number of soundings are found over the northern hemisphere land at the satellite orbit inflection points. Much of the temperate land regions contain ~~about~~ ~ 30 -50 soundings per bin, while few soundings remain over tropical forests. In glint-water viewing, the regions of high clear-sky fraction have ~~about~~ ~ 50 to 80 soundings per 2° bin, while the cloudy areas contain only ~~about~~ ~ 10 soundings per bin selected for processing by the ~~L2~~ ~~FP-L2FP~~ retrieval. Recall that on-orbit OCO-3 sounding densities will be ~~about~~ ~~approximately~~ 240 times greater due to the reduced spatiotemporal sampling used in this simulation set.

5.3 Application of XCO₂ quality filter

The ~~L2-FP-L2FP~~ retrieval algorithm described in Section 4.2 was applied to the cloud screened set of soundings, and then, as with operational OCO-2 data, a set of post-processing filters were implemented to determine the binary XCO₂ quality ~~flags~~ flag (QF) for each sounding. Details of the methodology are documented in O'Dell et al. (2018). Here, the true XCO₂ for each sounding was used as the truth metric to assess residual biases and errors. This provides perhaps an overly optimistic interpretation of the results, and should be considered an upper limit on the actual performance expected from ~~the real system.~~ on-orbit OCO-3 measurements.

Explicit values of the QF thresholds determined for the OCO-3 simulations are presented in Tables 2 and 3. The QF methodology was applied independently to the nadir-land and glint-water scenes, as is done with ~~real-operational~~ OCO-2 data. Eleven variables were used to form the QF for nadir-land, while nine were used for glint-water. Not surprisingly, many of the same variables are selected for quality filtering the OCO-3 simulations as were used in the operational OCO-2 procedure. See Figures 10 and 11 of O'Dell et al. (2018). Approximately 70% of the soundings that converged in ~~L2-FP-L2FP~~ were assigned a good quality flag.

The quality filtering process had similar impacts on data volume across all months (not shown). On average, global data densities of good QF soundings in the simulations were 11,000 to 12,000 soundings per month, or 33,000 to 36,000 per season. When using the full spatiotemporal resolution, this translates to approximately 2.5 million soundings per month (7.5 million per season), similar to the density of OCO-2 B8 data.

Figure 13 shows seasonal plots of the fraction (left column) and number (right column) of soundings passing the quality filters for each season (DJF, MAM, JJA, SON), binned in 4° degree lat/lon bins. The spatial patterns are useful, but the absolute numbers need to be inflated by 240 to reflect actual predicted on-orbit throughput. These maps can be compared with those shown in Figure 12 of O'Dell et al. (2018).

In general, the QF throughputs for glint-water are quite high (>70%) in the tropics and subtropics (<30° latitude), and display very little seasonal cycle. The QF throughput is persistently low for glint-water observations at the extreme latitudes. The QF throughputs are more varied for nadir-land observations, and a modest seasonal cycle is seen for some regions. But overall, the results look qualitatively similar to those from OCO-2 for the B8 operational data set, and demonstrate that the methodology is a robust procedure.

5.4 Bias correction of XCO₂

The final bias correction (BC) [for the OCO-3 simulations](#) incorporates four of the QF variables for nadir-land and three for glint-water as shown in Table 4. ~~There are notable similarities and differences in the selected variables when comparing between the OCO-3 simulations and real OCO-2 data. See Section 4.3.1 in O’Dell et al. (2018).~~

5 Figure 14 illustrates how the final BC parameters for land affect the XCO₂ error. Each panel shows median binned values of the XCO₂ error (retrieved minus true in ppm) versus a particular retrieval variable ~~shown by the heavy black dots~~[\(heavy, black dots\)](#). Also shown are the range in XCO₂ error (thin vertical bars) and the least squares linear fit (thin dashed line). To provide context, the relative histogram of points is shown in the background by the shaded grey region. The slope of the fit, the standard deviation of the XCO₂ error post BC, and the percent of the variance explained by this variable are given in the
10 legend. The original standard deviation is shown in the upper left panel for reference.

For land, 25% of the variance is explained by the [L2-dP \(difference in the L2FP](#) retrieved surface pressure ~~minus a priori from the prior (denoted “dp”)~~, while another 15% is explained by the [square root of the](#) combined retrieved AOD from dust, [water cloud](#) and sea salt [aerosols\(DWS\)](#). An additional 3% and 2% are explained by the [L2-L2FP](#) fine mode AOD and the water vapor scaling factor, respectively. We believe that a minor indexing bug found in the [simulated](#) meteorology is responsible
15 for the reliance on water vapor. The final reduction in XCO₂ error is shown in Table 6, which gives the standard deviations ([sigma \$\sigma\$](#)) in the retrieved XCO₂ with and without QF and BC. For land, [sigma \$\sigma\$](#) was reduced from 1.88 ppm to 0.85 ppm after application of both QF and BC.

Figure 15 is similar to Figure 14, but for the glint-water scenes. Here, 18% of the variance in XCO₂ error is explained by the IDP CO₂ ratio, while another 16% is explained by the ABP dP. An additional 7% is explained by the [L2-dP-L2FP dP](#). ~~The need for two preprocessor variables in the glint-water bias correction hints that the prescreening for clouds may not have been stringent enough. Use of the IDP results for prescreening on real OCO-3 data may alter this outcome.~~ As seen in Table 6, [sigma](#)
20 [the XCO₂ \$\sigma\$](#) was reduced from 2.15 ppm to 0.52 ppm for glint water soundings after application of both QF and BC. [It is likely that the smaller QF/BC \$\sigma\$ for glint-water \(0.52 ppm\) relative to nadir-land \(0.85 ppm\) is driven by L2FP retrieval interference errors such as albedo and aerosols, which vary more over land, as concluded by Worden et al. \(2017\) in their study of OCO-2](#)
25 [B7 data](#).

~~There are notable similarities and differences in the selected variables when comparing between the OCO-3 simulations and either real OCO-2 data (Section 4.3.1 of O’Dell et al. (2018)), or OCO-2 simulations (Kulawik et al., 2018). In all cases the L2FP dp is found to be the primary bias correction parameter for land and water soundings. Both the real OCO-2 data and the simulated OCO-3 land data rely on a form of the aerosol parameterization for bias correction (DWS for the former and DWS
30 and fine mode aerosols for the later). This stands to reason as aerosols are highly varying over land and have been shown to be a strong source of interference error (Connor et al., 2016).~~

~~A key difference is that the L2FP variable CO₂ grad del ($\delta \nabla_{\text{CO}_2}$), a measure of the change of the retrieved vertical profile of CO₂ relative to the prior (See Eq. 5 in O’Dell et al. (2018)), does not show up as a strong bias correction parameter in the simulated OCO-3 data set. Kulawik et al. (2018) discuss in detail the ties between $\delta \nabla_{\text{CO}_2}$, the L2FP prior CO₂ and the~~

partitioning of CO₂ in the upper and lower atmosphere in the retrieved state vector. At this time we have no real explanation as to why $\delta \nabla_{\text{CO}_2}$ is not showing up as a bias correction term in the OCO-3 simulations. Analysis of on-orbit OCO-3 data, when available, will be revealing as to whether this is due to some fundamental difference in the OCO-3 measurements or perhaps associated with something particular in the retrieval setup.

- 5 Spatial seasonal maps of the total bias correction (in units ppm) are shown in Figure 16. Although the results are qualitatively different from those seen for operational OCO-2 B8 data presented in O'Dell et al. (2018), this follows expectations in that here we are working with simulated data which is more internally consistent than real data, especially with respect to ABSCO and meteorology. These results underscore the conclusion that even given nearly perfect alignment of the retrieval model with the truth, there are still retrieval errors that induce biases and scatter into the estimates of XCO₂. This is particularly true
- 10 of aerosols, which are a continued known source of trouble in virtually all retrievals of greenhouse gases from space ~~e.g., (Aben et al., 2007; Butz et al., 2009).~~ (Aben et al., 2007; Butz et al., 2009; Nelson and O'Dell, 2018).

5.5 Retrieved XCO₂ characteristics after filtering and bias correction

One of the objectives of this study was to analyze the error on the retrieved XCO₂ from OCO-3. Here the “actual” error is given as the retrieved value minus the known truth (after applying the averaging kernel correction), and is denoted ΔXCO_2 . The “predicted” error is an [L2-FP-L2FP](#) retrieval state vector parameter that provides the theoretical error due to the combination of measurement noise plus smoothing and interference errors, as discussed in Boesch et al. (2015). The actual errors in the simulated framework are expected to be substantially lower than those seen in OCO-2 operational data, while the predicted errors should be roughly equivalent due to use of similar instrument model and retrieval algorithm.

As demonstrated in Figure 17, which shows the histograms of ΔXCO_2 for nadir-land and glint-water data separately, ΔXCO_2 is small and effectively corrected by the filtering and bias correction process on an annual average basis. Overall, QF/BC reduces the median ΔXCO_2 bias from -0.12 to -0.02 ppm for land soundings and from 0.23 to -0.09 ppm for glint-water soundings. The histograms indicate that the filtering process identifies a significant population of glint-water soundings with large negative biases up to about -12 ppm.

The seasonal spatial distributions of ΔXCO_2 are shown in the maps of Figure 18. These can be compared to Figure 19 of O’Dell et al. (2018). While the qualitative patterns of actual XCO₂ errors are quite different between OCO-2 B8 and simulated OCO-3 data, note that the dynamic range of the scale is much lower for OCO-3 (± 1 ppm) compared to OCO-2 (± 3 ppm). Again, this follows expectations since the truth proxy for the simulations is the actual truth, while that metric is not available in the real world. [Although the ISS latitude varies between \$\pm 51.6^\circ\$, the OCO-3 PMA allows for measurements extending beyond this range to approximately \$\pm 55.5^\circ\$ latitude. However, we found that measurements assigned a good XCO₂ quality flag are obtained at latitudes less than about \$52^\circ\$, where the solar zenith angle is less than about \$73^\circ\$.](#)

For the OCO-3 simulations, after QF/BC have been applied, the errors are largely uncorrelated with any geophysical or retrieval parameters. Specifically, we used the glint-water soundings to check for correlation of both the raw and BC XCO₂ data against latitude, solar zenith angle, polarization angle, SNR (per spectral band), and the true aerosol optical depth. The results are summarized in Table 5. It is worth noting that the true AOD was not used as a bias fitting parameter, yet there is a high reduction in the correlation with ΔXCO_2 . The very small slopes, offsets and linear correlation coefficients that remain after application of the QF/BC indicates that remaining errors in the XCO₂ are likely driven by retrieval errors such as the aerosol parameterization (Nelson et al., 2016b).

Shown in Figure 19 are the OCO-3 actual (ΔXCO_2) versus the [L2-FP-L2FP](#) retrieval predicted XCO₂ errors comparing the unfiltered raw, the filtered raw and the filtered and bias corrected data. There is a huge improvement in the performance after filtering is applied. Additional improvements are achieved by application of the bias correction. Results fall nearly on the one-to-one line, with some exception for nadir-land soundings when the predicted error falls below about 0.7 ppm, in which case the actual error is larger than theory. Overall, these results provide evidence that the filtering and bias correction methodology is a robust procedure that performs according to theory given a (nearly) perfect truth metric.

5.6 Retrieved SIF characteristics

Similar to the analysis of XCO₂ in the previous section, here we present the IDP SIF relative to the true values and examine both the actual and predicted errors. In order to calculate the “actual” SIF error (retrieved - true), the L1b truth values, which are calculated at 755 nm in the simulator code, were first wavelength shifted to match the IDP retrieved values at 758.65 nm and 769.95 nm. Note that these IDP-channel values denote the center points of the IDP retrieval ranges but are labeled as 757 nm and 771 nm throughout the code and analysis for historical purposes as reported in Section 2.2 of Sun et al. (2018). For brevity, we only show results for the 757 nm band, although there is no reason to expect a significant difference in performance in the 771 nm band.

The retrieval of SIF from space is highly sensitive to measurement error, i.e., instrument noise (Frankenberg et al., 2014). It is therefore a common practice to aggregate some number of soundings, N, in order to minimize the random noise. Since these simulations have spatiotemporal sampling of 1/240 of the real expected value, we “noise-corrected” our results by scaling the noise as;

$$\text{SIF}' = \text{SIF} + \frac{\text{noise}}{\sqrt{240}}, \quad (5)$$

where SIF represents the retrieved values using noiseless radiances, and noise is calculated by differencing the with- and without-instrument noise retrievals SIF from IDP runs with and without instrument noise added to the L1b radiances.

Unlike with XCO₂ retrievals, the retrieval of SIF using the solar Fraunhofer lines is not highly sensitive to cloud and aerosol contamination (Frankenberg et al., 2012) We therefore did not apply any strict prescreening or L2 quality flagging prior to running the IDP retrieval on the L1b files. Although IDP can in principle retrieve SIF over water, glint-water soundings were ignored since the L1b simulator assumes zero SIF in these cases. Out of the ~337,000 total land soundings approximately 12% of the IDP retrievals failed altogether (identified by way of fill values in the output) outright, leaving ~300,000 for analysis.

We then applied a post processing quality filter on the approximately 300,000 successful nadir-land soundings, which was then applied, which included removal of scenes with SZA > 70, for which the actual SIF error became very large. We also removed 49 soundings where the predicted retrieval noise as a function of the continuum level radiance fell well outside a smooth fitting criteria. For unknown reason these small number of soundings had very large actual SIF errors. After application of the filtering criteria, approximately 264,000 land soundings (88% of the successful soundings²) remained in the annual data set.

The top row of Figure 20 shows maps of the true (left) and IDP retrieved SIF (right) for the 757 nm band for the JJA season, when the northern hemisphere land photosynthetic activity is at its annual maximum. The units are expressed in radiance space as Watts-per-square-meter-per-micron-per-steradian (W/m²/μm/sr). SIF typically comprises at the maximum about 1 to 2% of the total radiance measured at the top of the atmosphere by satellite sensors (Frankenberg et al., 2012). At a gross scale, the true and retrieved values show the expected patterns, with SIF up to about 1.2 W/m²/μm/sr in densely vegetated tropical regions, when aggregated to 1° by 1° bins, and (near) zero SIF over barren deserts, high mountains and high latitudes.

²It is coincidence that both the fraction of soundings that failed the IDP retrieval and the number that were flagged by our post processing filter is 12%.

Although they appear qualitatively similar, the absolute difference in true and retrieved values suggests that the IDP tends to underestimate SIF. This is particularly so for higher fluorescing areas, as seen in the middle left of Figure 20. To better quantify the differences in the retrieved and true values, a fractional difference was calculated after masking out the soundings with true SIF less than $0.2 \text{ W/m}^2/\mu\text{m/sr}$ (to avoid the intractable math of the ratio of two numbers close to zero). As seen in the middle right panel, the median fractional differences in SIF is -9% for this subset of the data, with individual soundings having outliers as large as -240%. The bottom row of panels shows the correlation between the true and retrieved values for the JJA data, with and without the true SIF $< 0.2 \text{ W/m}^2/\mu\text{m/sr}$. The Pearson linear correlation coefficients are very close to 1, indicating that the retrieval of SIF from the IDP is expected to perform well for the OCO-3 instrument, as has already been shown for operational OCO-2 data (Sun et al., 2017, 2018).

10 The comparison between the “actual” (retrieved minus true) and “predicted” SIF error are shown in Figure 21. Here we show both the unfiltered, i.e., no quality flag applied, and filtered annual data sets. When the retrieval predicted error is above approximately $0.25 \text{ W/m}^2/\mu\text{m/sr}$ the actual error is in very close agreement for the filtered data. Below predicted error of $\simeq 0.25 \text{ W/m}^2/\mu\text{m/sr}$, the filtered data set still tends to have a slightly larger value of actual error. For predicted error $< 0.25 \text{ W/m}^2/\mu\text{m/sr}$ the actual error becomes quite large in the unfiltered data set.

15 A comparison of the single sounding SIF precision between the OCO-3 simulations and the operational B8 OCO-2 data is given in Figure 22 for both the 757 nm and 771 nm windows. For both instruments, the precision is an increasing function of the continuum level radiance, as explained in Section 3.1 of Frankenberg et al. (2014) in association with Figure 8. The darker the scene, the better the precision, due to decreasing noise in the Fraunhofer lines. Overall, both instruments have better precision at the shorter wavelength channel. This analysis suggests that OCO-3 SIF precision will be 10-20% worse than for
20 OCO-2, which may be directly ascribable to the noisier instrument detectors. More research and analysis on IDP SIF using real on-orbit measurements will be needed to determine answers.

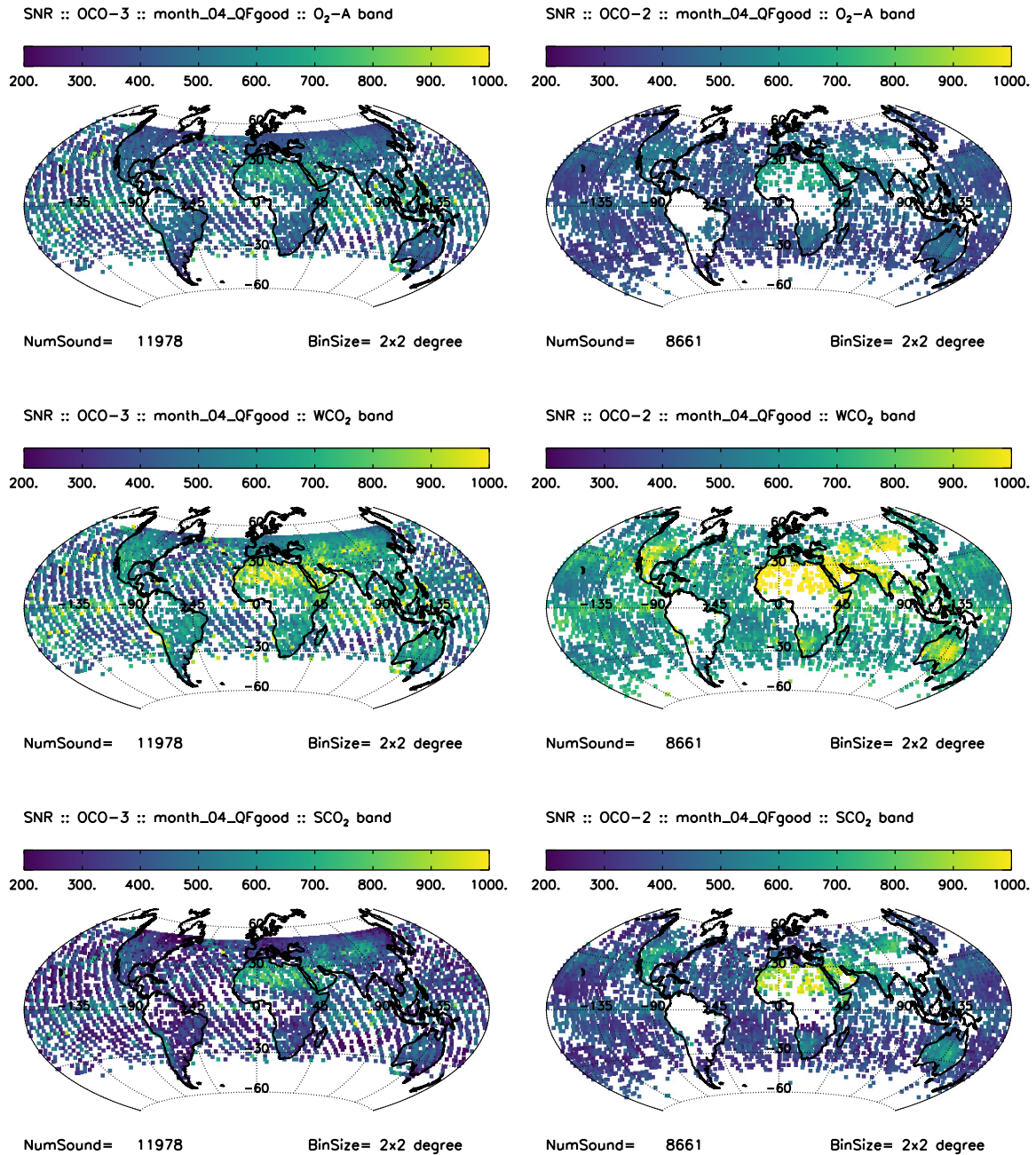


Figure 9. Maps comparing the SNR of OCO-3 (left) to OCO-2 (right) for each spectral band (rows) for the month of April binned in 2° latitude bins. Both data sets have been filtered using the [L2-L2FP](#) quality flag. The operational OCO-2 data has been downsampled to include a single footprint and one sounding every 10 seconds to provide a fairer comparison against the OCO-3 simulations. The OCO-2 data also includes both nadir and glint land soundings, in addition to glint-water.

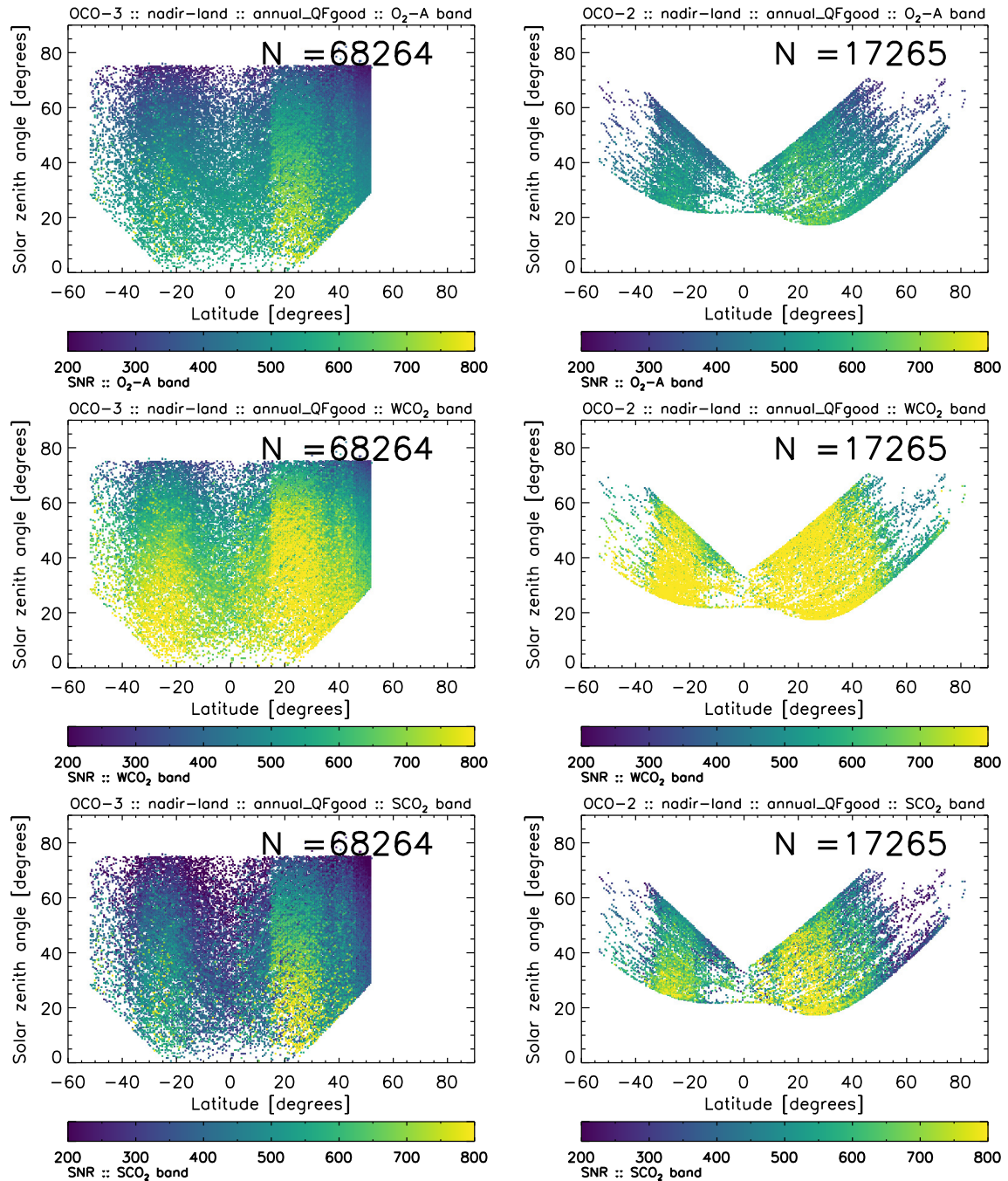


Figure 10. Comparison of the nadir-land SNR of OCO-3 (left) to OCO-2 (right) for each spectral band (rows) for the full annual data set. Both data sets have been filtered using the [L2-L2FP](#) quality flag. The operational OCO-2 data has been downsampled to include a single footprint and one sounding every 10 seconds to provide a fairer comparison against the OCO-3 simulations.

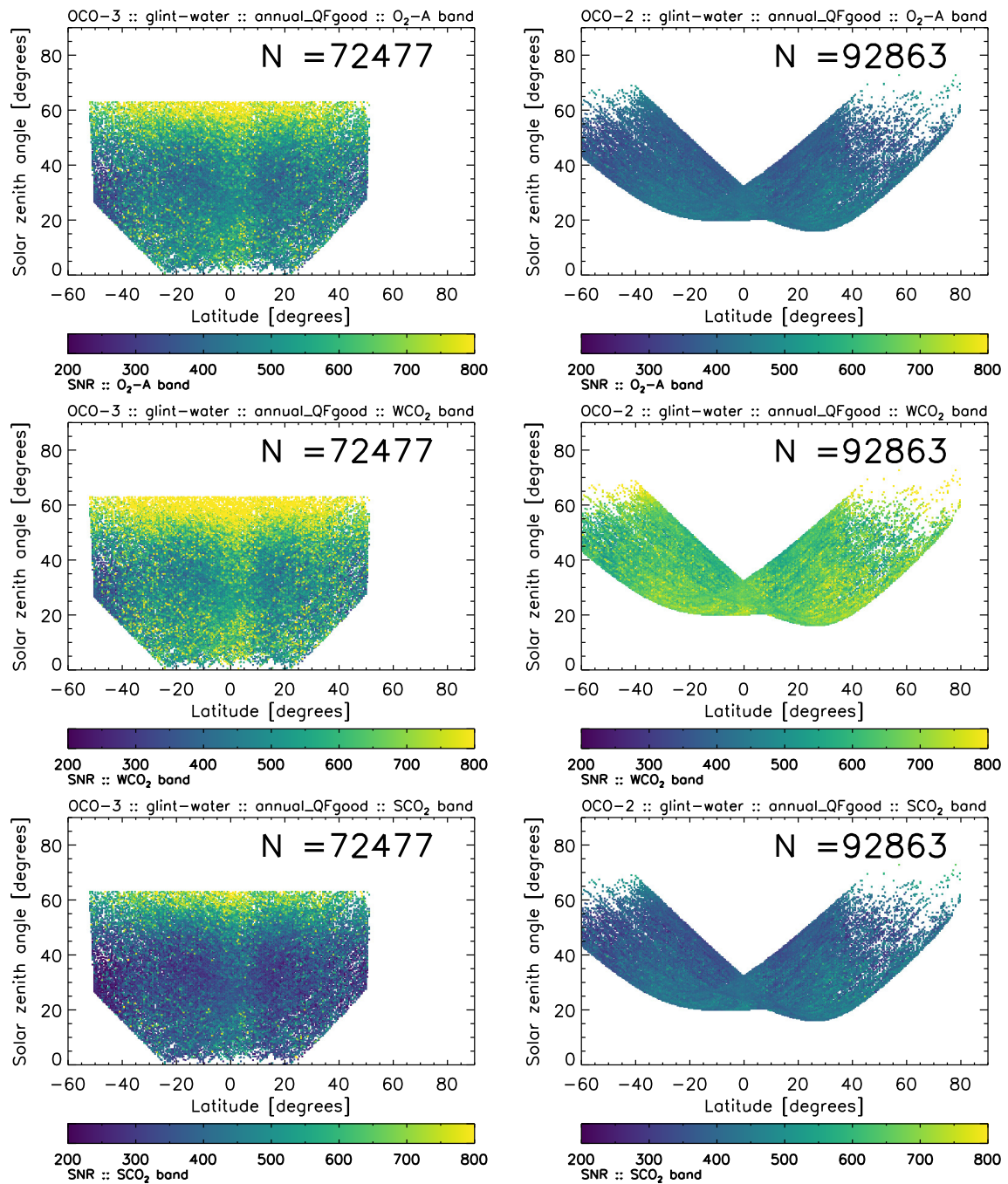


Figure 11. Same as Figure 10, but for glint-water soundings.

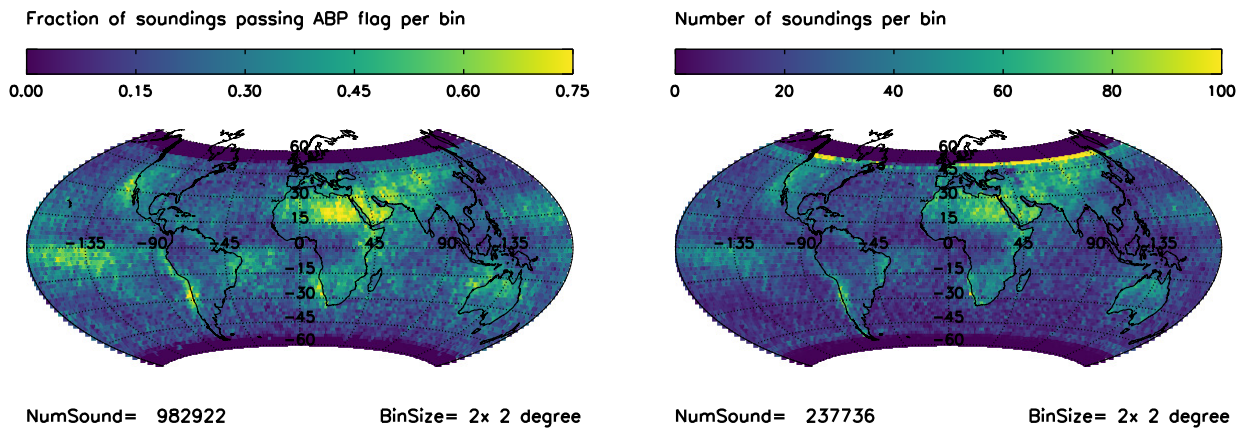


Figure 12. Maps of the annual fraction of soundings passing the ABP cloud flag (left) and the resultant clear-sky sounding density (right) binned $2^\circ \times 2^\circ$ latitude. Number densities should be inflated by 240 to provide real estimated number of soundings at the full spatiotemporal sampling.

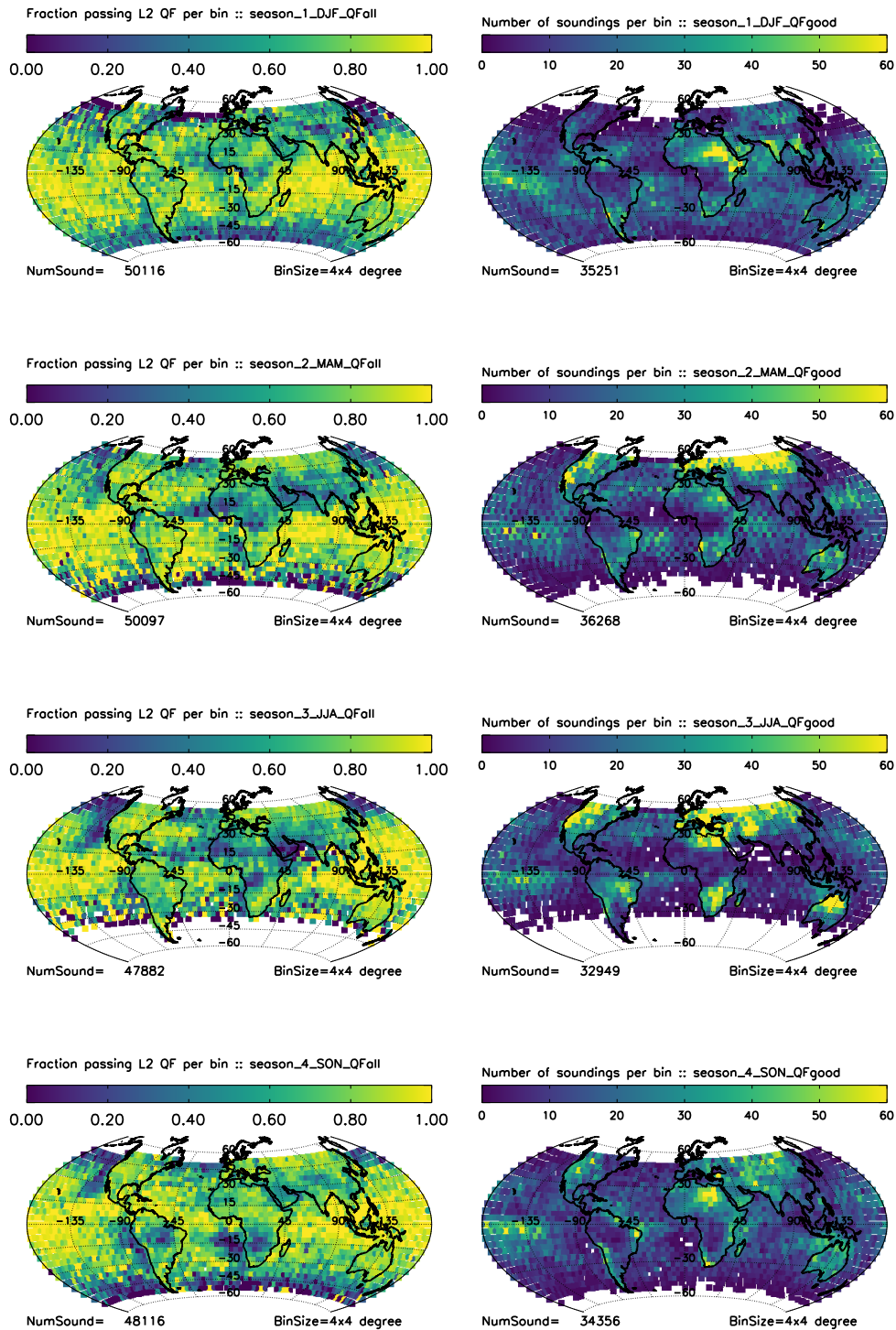


Figure 13. Maps of the seasonal throughput (left column) and the resulting sounding densities (right column) in 4° lat/lon bins after application of the L2-FP-L2FP quality flag. Inflate densities by 240 to account for on-orbit spatiotemporal sampling.

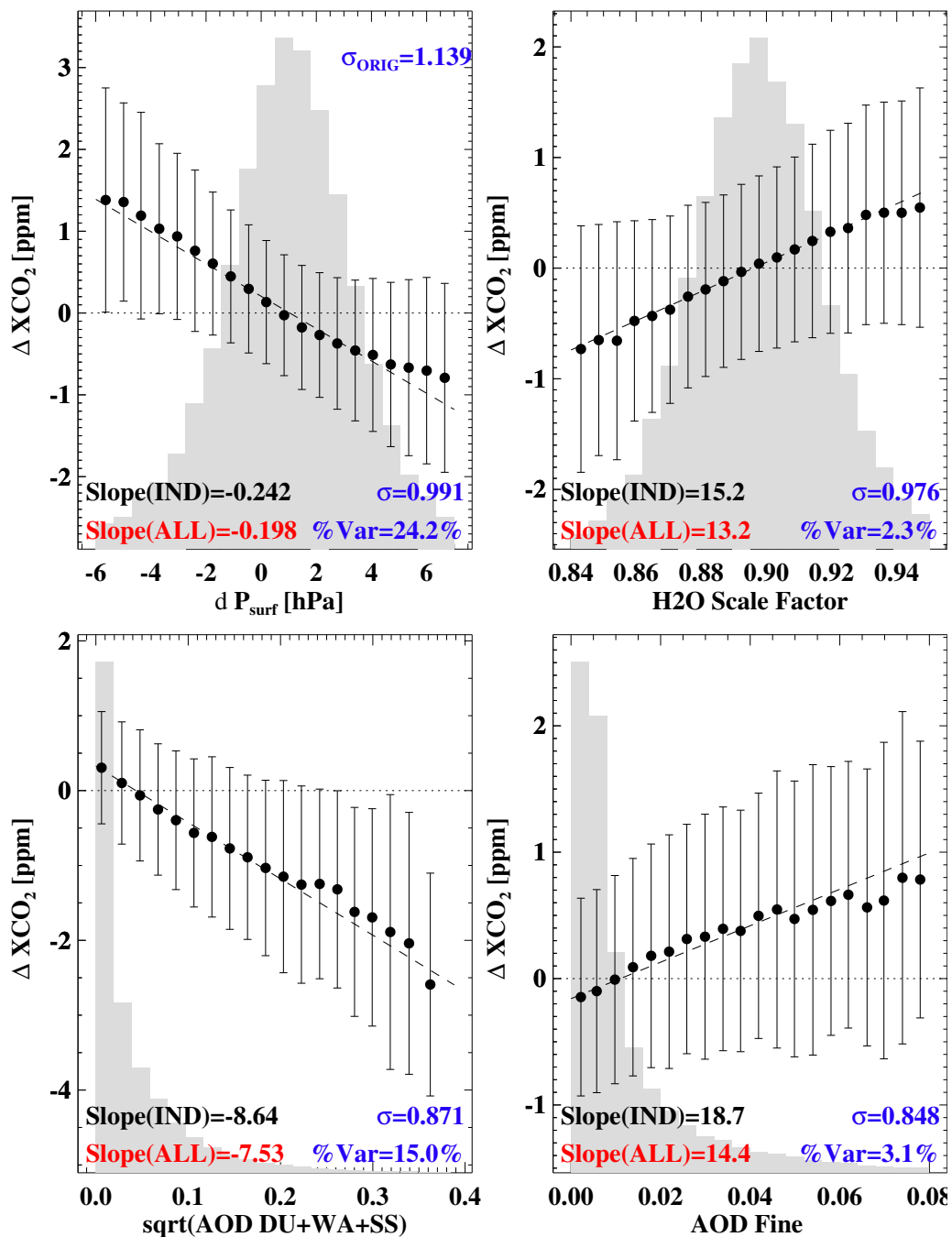


Figure 14. Final bias correction variables used for land-nadir-land scenes illustrating the correlation of the actual error (ΔXCO_2 defined as retrieved - true) as a function of variable value. The leading retrieval parameters that explain the maximum variance for land are the L2-delta surface-pressure, L2FP dp, L2-L2FP H2O scale factor, and two L2-L2FP aerosol terms. The original standard deviation (σ) of the data set is given in the upper part of the first panel, with the cumulative reduction in σ and percent variance explained given in the lower right.

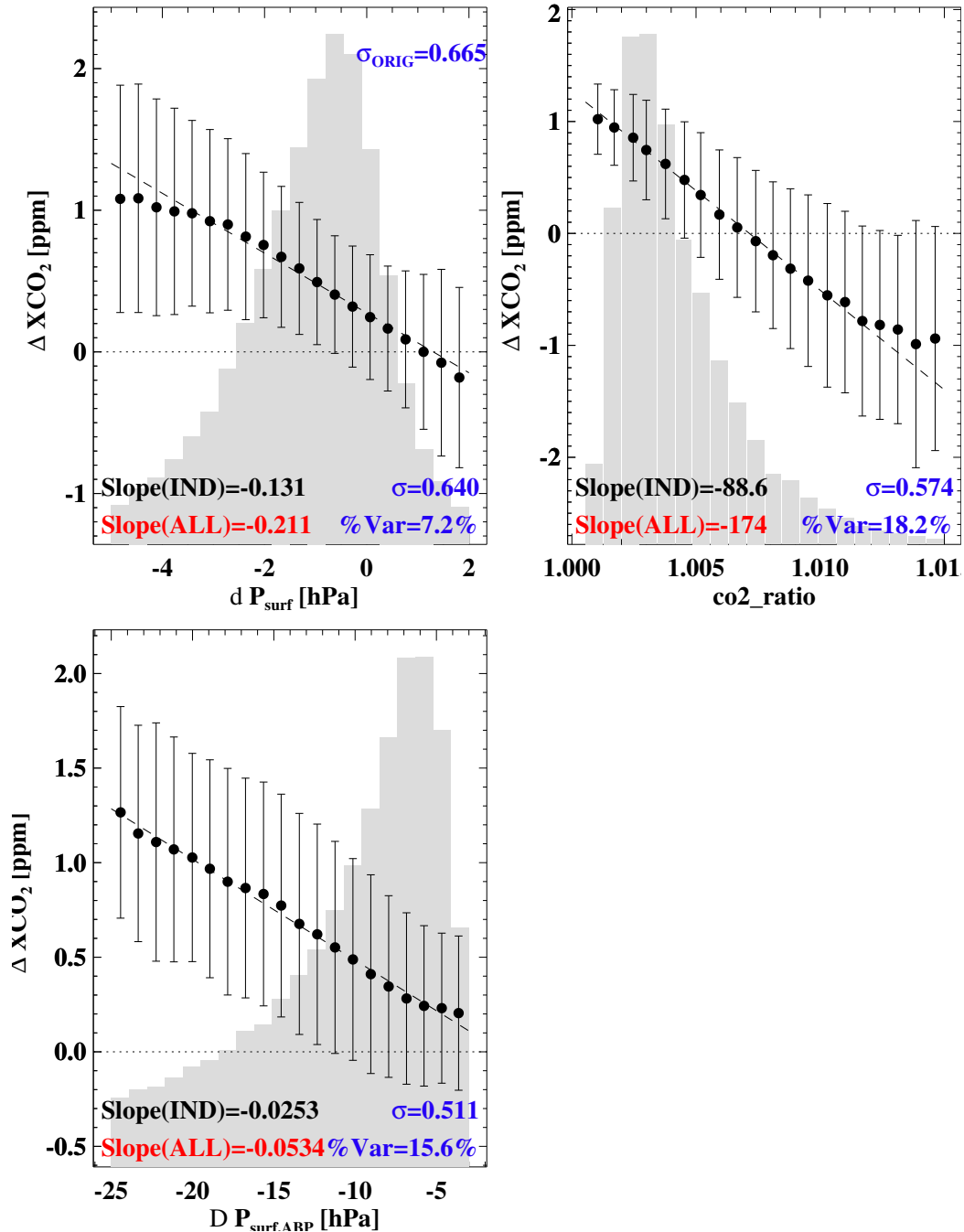


Figure 15. Same as in Fig.14, but for water-glint-water scenes. Here the leading retrieval variables that explain the maximum variance are the L2-delta-surface-pressure, L2FP dp, the IDP $co2_ratio$ and the ABP dp_cld .

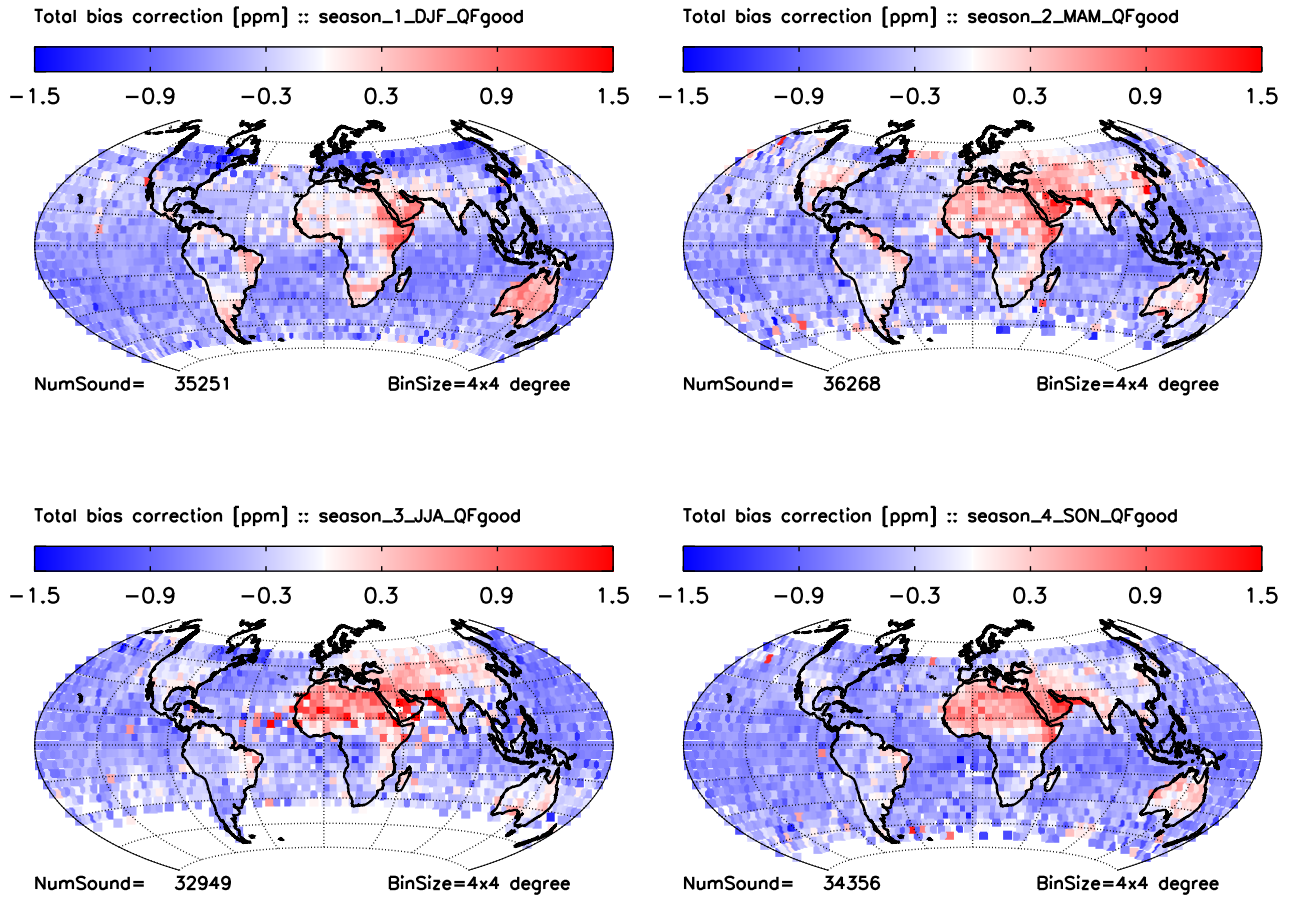


Figure 16. Seasonal maps of the total XCO₂ bias correction in 4° lat/lon bins for all good quality soundings. Top left is DJF, top right is MAM, bottom left is JJA and bottom right is SON.

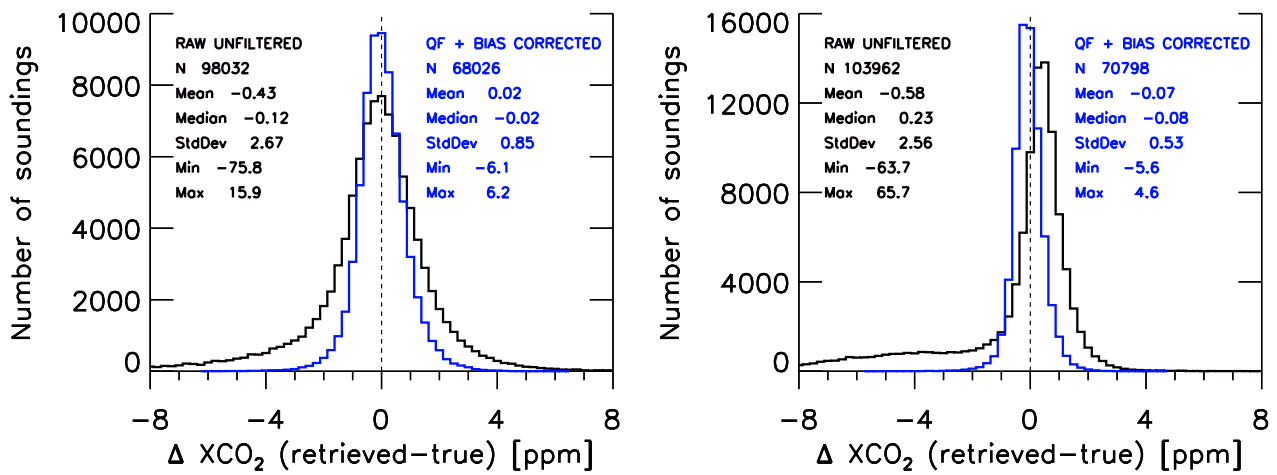


Figure 17. Histograms of the error in XCO₂ (retrieved - true) at 0.25 ppm resolution for land (left) and water (right) for the full year of simulations. The raw, uncorrected XCO₂ are shown in black, while the filtered and bias corrected values are shown in blue.

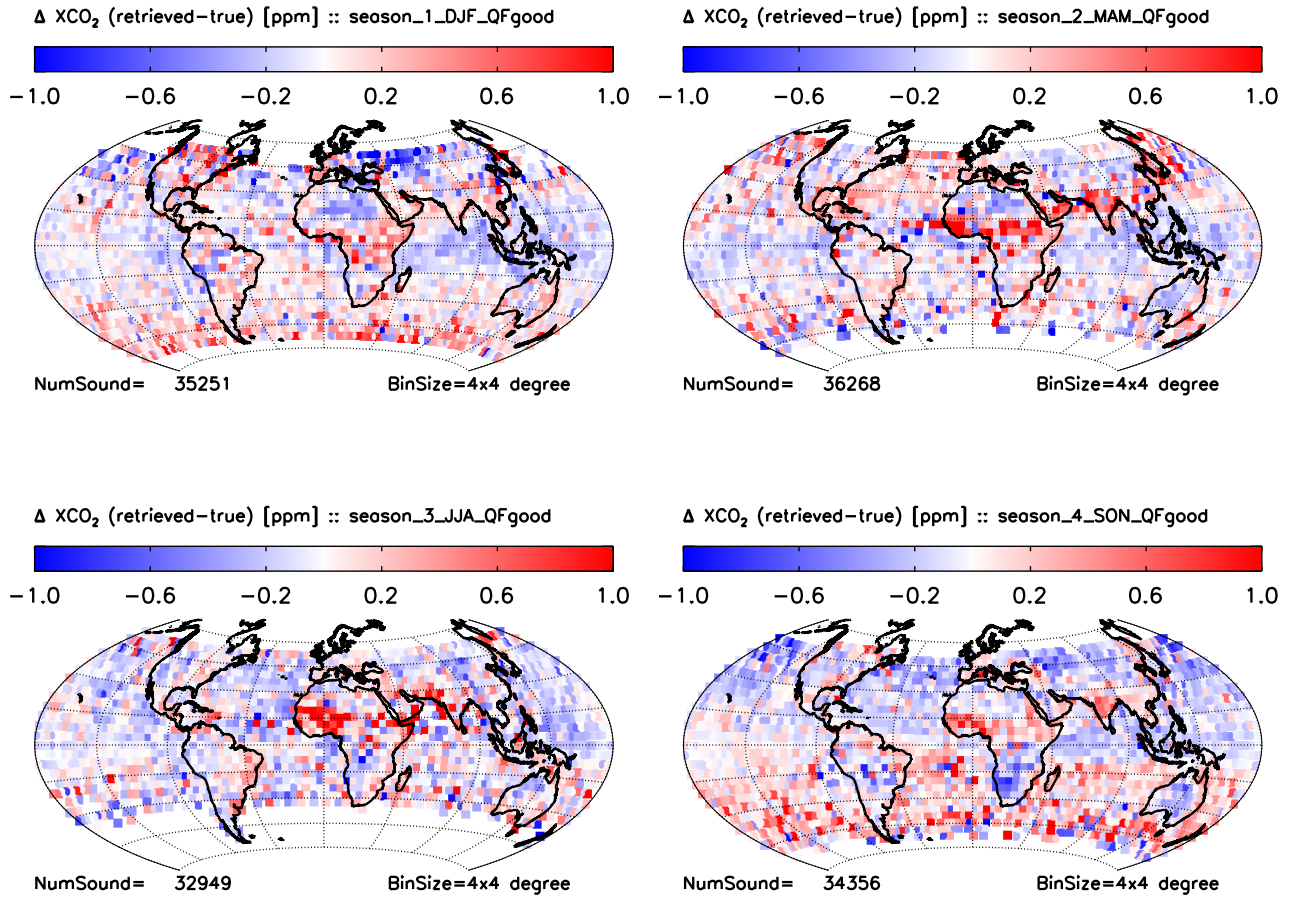


Figure 18. Seasonal maps of delta XCO₂ (retrieved - true [ppm]) in 4° lat/lon bins after quality filtering and bias correction. Top left is DJF, top right is MAM, bottom left is JJA and bottom right is SON.

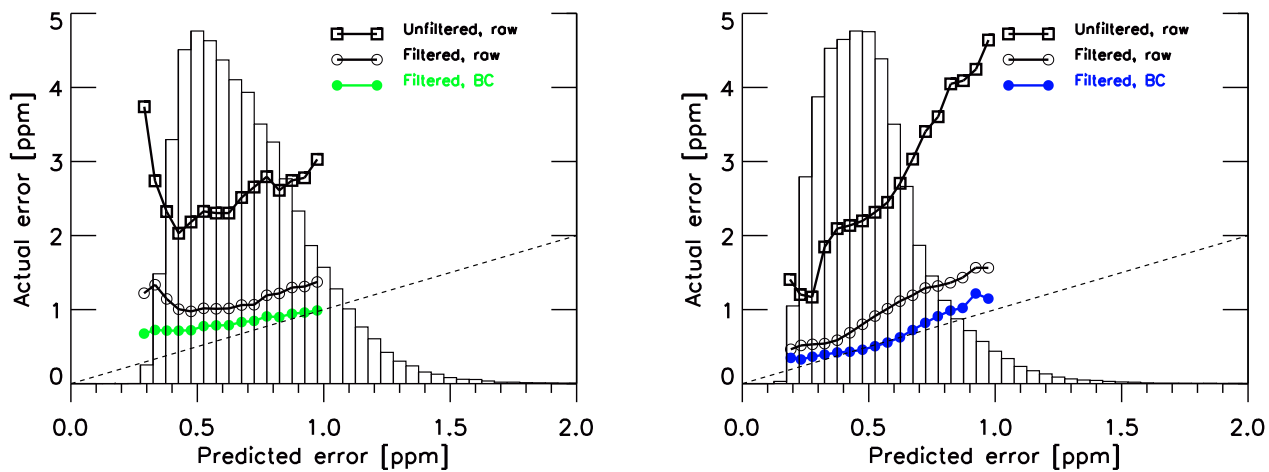


Figure 19. Binned median values of the actual versus predicted XCO₂ error for the full annual data set, for nadir-land (left panel) and the glint-water soundings (right panel). Each panel shows the unfiltered raw XCO₂ (open diamonds), the quality filtered raw XCO₂ (open circles), and the quality filtered and bias corrected XCO₂ (closed circles). To provide reference, the raw, unfiltered data set is also displayed as individual values (tiny black dots) and a histogram. The one-to-one line is shown given as a dashed line.

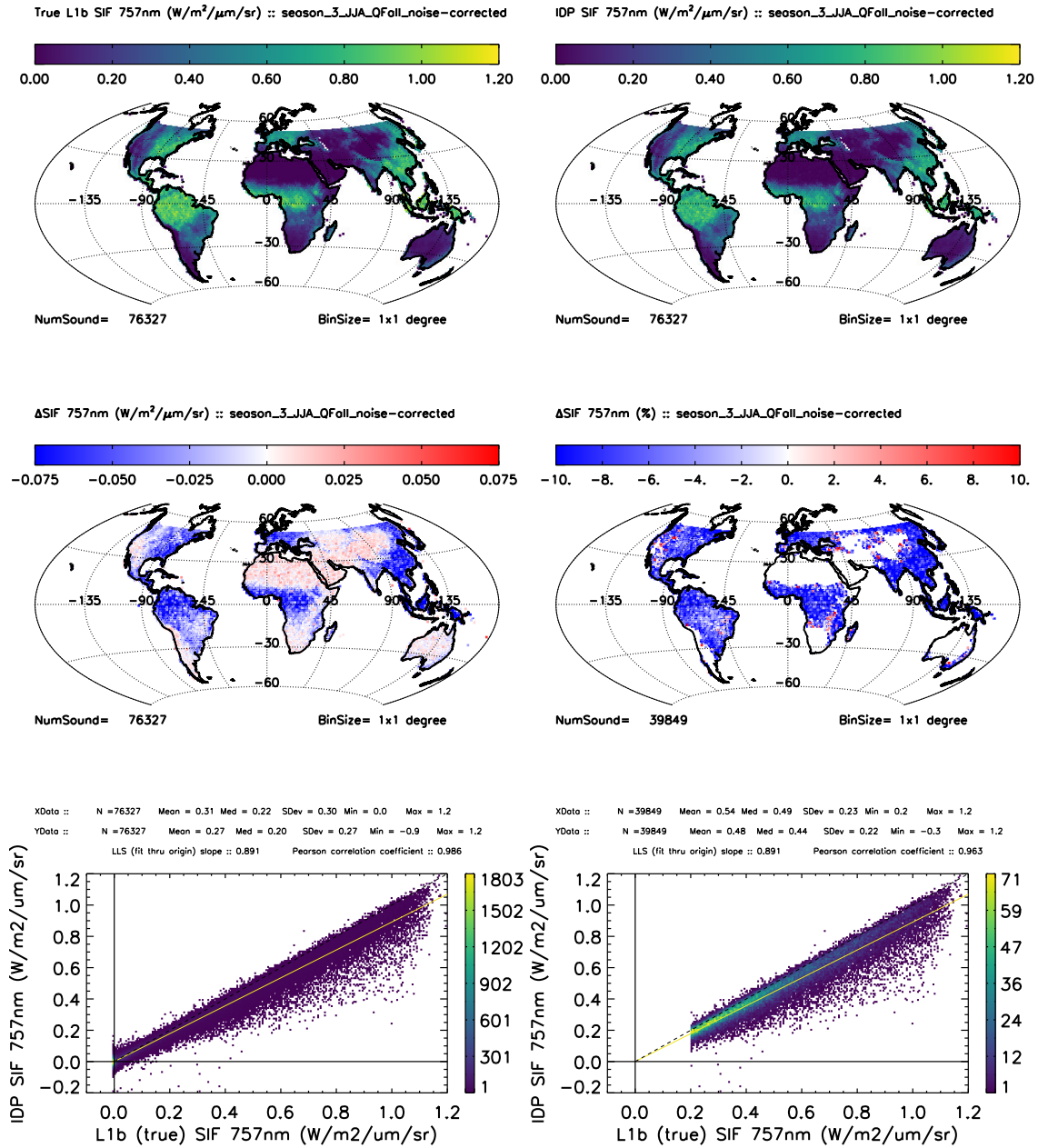


Figure 20. Results comparing the IDP retrieved and true L1b SIF. These results are from the cloudy with noise-corrected SIF at 757 nm. The top two rows show maps gridded to 1° by 1° for the quality filtered JJA data set. The true L1b values (left) and the corresponding IDP retrieved values (right) are both in units $W/m^2/\mu m/sr$. The middle row shows the absolute difference between the retrieved and true values (left) and the fractional difference after an additional screening on true SIF >0.2 (right). The bottom row shows the linear correlation, along with some basic statistics for the full JJA set and the subsetted data.

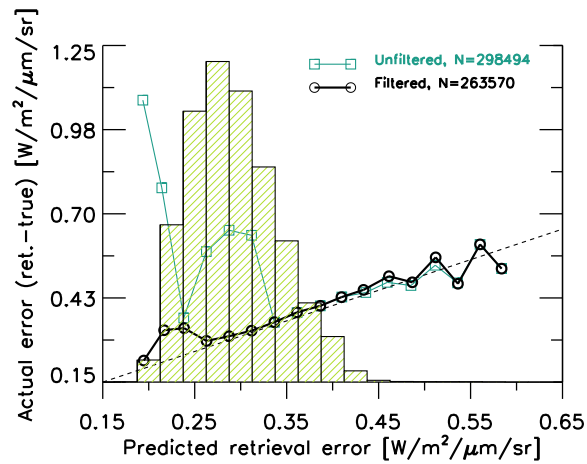


Figure 21. Actual versus predicted IDP SIF error for the unfiltered and filtered annual data set. This is for the nadir-land retrievals using instrument noise. The histogram shows the filtered data frequency normalized to one, with the one-to-one relationship given by the dotted line.

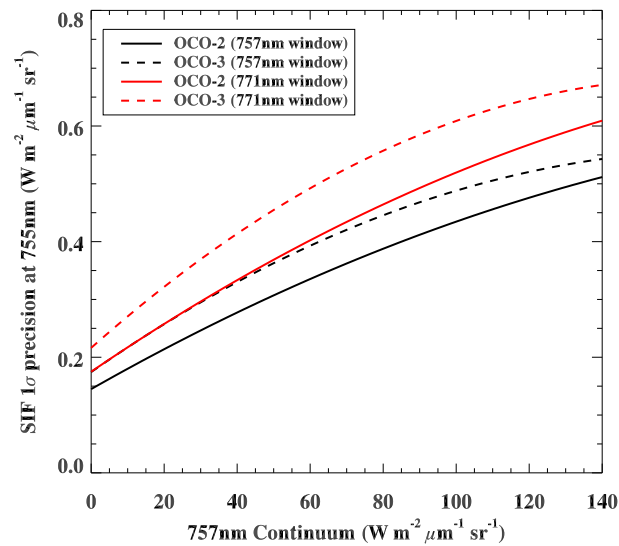


Figure 22. 1σ precision of estimated SIF, using both the 757 nm window (black) and the 771 nm window (red), for OCO-2 (solid) and OCO-3 (dashed). SIF precision at 755 nm was estimated from the 757 nm (771 nm) value by scaling by a factor of 1.10 (1.76), following Frankenberg et al. (2015). The OCO-2 values have been evaluated from the IDP posterior uncertainties in the actual SIF data product, for an average of all eight footprints. The OCO-3 values have come from an early version of the preflight noise estimates, which are subject to change.

Table 1. Summary statistics of the filtering for each stage of the analysis. Results are shown for the nadir-land, glint-water, and combined soundings separately.

Filter	N	N	N	Fraction passing (relative to combined total)			Fraction passing (relative to surface type total)	
	Combined	Land	Water	Combined	Land	Water	Land	Water
L1b (all)	982922	337211	645711	100.0%	34.3%	65.7%	100.0%	100.0%
ABP (pass)	237736	107295	130441	24.2%	10.9%	13.3%	31.8%	20.2%
L2 -L2FP (converge)	196211	96182	100029	20.0%	9.8%	10.2%	28.5%	15.5%
QF (good)	140741	68264	72477	14.3%	6.9%	7.4%	20.2%	11.2%

Table 2. Variables and thresholds used for quality filtering in the OCO-3 simulations for nadir-land. The cumulative fraction of scenes passing are also given. Note that the need for the water vapor scale factor (~~L2-L2FP~~ WV scale) is likely due to a recently discovered bug in the simulator code that introduced a mismatch between the vertical profile in the scene and meteorology files.

Variable <u>Short Name</u>	<u>Variable Description</u>	QF range	Cum Frac Pass
IDP CO ₂ ratio	<u>ratio of the CO₂ value retrieved in the 1.61 and 2.0 μm bands from the IDP</u>	[0.9, 1.03]	88.7%
IDP H ₂ O ratio	<u>ratio of the H₂O value retrieved in the 1.61 and 2.0 μm bands from the IDP</u>	[0.88, 1.1]	85.6%
L2-L2FP dp	<u>difference between the retrieved and prior surface pressure from the L2FP retrieval</u>	[-6.0, 7.0]	81.6%
L2-L2FP total AOD	<u>combined optical depth from all aerosol and cloud species from the L2FP retrieval</u>	[0.0, 0.4]	79.1%
L2-L2FP water AOD	<u>optical depth of water cloud from the L2FP retrieval</u>	[0.0008, 0.1]	77.3%
L2-L2FP fine mode AOD	<u>combined optical depth of fine mode aerosol particles from the L2FP retrieval</u>	[0.0, 0.08]	74.8%
L2-L2FP WV scale	<u>water vapor profile scaling factor from the L2FP retrieval</u>	[0.84, 0.95]	73.7%
ABP dp	<u>difference between the retrieved and prior surface pressure from the ABP retrieval</u>	[-25.0, 4.0]	71.7%
L2-L2FP $\delta \nabla_{\text{CO}_2}$	<u>a measure of the change in the CO₂ grad-del profile shape versus the prior</u>	[-40.0, 40.0]	71.2%
L2-L2FP χ^2 O ₂ A-A	<u>from the L2FP retrieval (in plain text denoted co2_grad_del)</u>		
L2FP χ^2 O ₂ A-A	<u>the chi-squared goodness-of-fit statistic from the L2FP retrieval</u>	[0, 1.25]	71.1%
L1b signal 3/1	<u>ratio of the 2.0 μm to 0.76 μm spectral band from the measured L1b radiances</u>	[0.075, 0.4]	70.7%

Table 3. Same as Table 2, but for glint-water soundings.

Variable <u>Short Name</u>	<u>Variable Description</u>	QF range
Albedo slope weak CO₂ <u>L2FP WCO₂ albedo slope</u>	<u>albedo slope term of the 1.61 μm spectral band from the L2FP retrieval</u>	[0.1, 100.0]
ABP dp	<u>difference between the retrieved and prior surface pressure from the ABP retrieval</u>	[-50.0, -3.0]
L2- <u>L2FP dp</u>	<u>difference between the retrieved and prior surface pressure from the L2FP retrieval</u>	[-5.0, 2.0]
IDP CO ₂ ratio	<u>ratio of the CO₂ value retrieved in the 1.61 and 2.0 μm bands from the IDP retrieval</u>	[1.0005, 1.015]
IDP H ₂ O ratio	<u>ratio of the H₂O value retrieved in the 1.61 and 2.0 μm bands from the IDP retrieval</u>	[0.88, 1.03]
L2- <u>L2FP $\delta \nabla_{\text{CO}_2}$</u>	<u>a measure of the change in the CO₂ grad del profile shape versus the prior from the L2FP retrieval (in plain text denoted <u>co2_grad_del</u>)</u>	[-30.0, 60.0]
L2-Total- <u>L2FP total AOD</u>	<u>combined optical depth from all aerosol and cloud species from the L2FP retrieval</u>	[0.0, 0.25]
Solar zenith angle	<u>solar zenith angle at the local target contained in the geolocation</u>	[0.0, 63.0]

Table 4. Bias correction parameters for the the OCO-3 simulation. Only the dp terms have units [hPa], while the other parameters are unitless. Again, the need for a water vapor scaling factor bias correction term is likely due to an indexing bug in the L1b simulator code. The “DS” AOD is the combined optical depth of dust and sea salt aerosols.

Variable	<u>Short Name</u>	<u>Variable Description</u>	Nadir-land Global bias=0.18 BC slope, offset	Glint-wat Global bias: BC slope, o
L2 -L2FP dp		<u>difference between the retrieved and prior surface pressure</u> <u>from the L2FP retrieval</u>	-0.20, 1.0 [hPa]	-0.21, 0.0 [hPa]
L2 -L2FP WV scale		<u>water vapor profile scaling factor from the L2FP retrieval</u>	14.0, 0.9	NA
L2-DS AOD -L2FP $\sqrt{\text{DWS AOD}}$		<u>combined optical depth from the dust, water and sea salt aerosol species</u> <u>from the L2FP retrieval</u>	-7.6, 0.0	NA
L2-Fine -L2FP fine mode AOD		<u>combined optical depth of fine mode aerosol particles from the L2FP retrieval</u>	14.0, 0.0	NA
IDP CO ₂ ratio		<u>ratio of the CO₂ value retrieved in the 1.61 and 2.0 μm bands</u> <u>from the IDP retrieval</u>	NA	-170.0, 1.0
ABP dp		<u>difference between the retrieved and prior surface pressure</u> <u>from the ABP retrieval</u>	NA	-0.053, 0.0 [hPa]

Table 5. The slope (m) and offset (b) of a linear least squares fit (LLS) and Pearson linear correlation coefficient (R) for ΔXCO_2 versus geophysical parameters before and after application of the QF/BC procedure. Data is for the full annual glint-water soundings only.

Variable Name	Pre QF/BC		Post QF/BC	
	LLS m/b	R	LLS m/b	R
Sounding latitude	-0.000/ 0.520	-0.009	0.002/-0.086	0.041
Solar zenith angle	-0.013/0.924	-0.255	-0.002/0.009	-0.052
Polarization angle	-0.016/ 0.928	-0.256	-0.002/ 0.009	-0.052
SNR (Oxygen-A band)	-0.000/ 0.513	-0.001	-0.000/-0.054	-0.002
SNR (Weak CO ₂ band)	-0.000/ 0.519	-0.005	-0.000/-0.054	-0.001
SNR (Strong CO ₂ band)	-0.000/ 0.518	-0.005	-0.000/-0.055	-0.001
True AOD	-1.469/ 0.673	-0.171	-0.029/-0.053	-0.004

Table 6. Comparison of the standard deviation (σ) in XCO₂ before and after QF and BC.

	Land-nadir	Ocean-glint
N	96,182	100,029
Sigma-σ raw	1.88 ppm	2.15 ppm
Sigma-σ BC	1.79 ppm	1.76 ppm
Sigma-σ raw QF	1.14 ppm	0.67 ppm
Sigma-σ QF, BC	0.85 ppm	0.52 ppm

6 Summary

The work presented here highlights the overall science objectives and expected performance for NASA's upcoming Orbiting Carbon Observatory-3 (OCO-3) mission. OCO-3 will be a hosted payload on the International Space Station, which is in a precessing orbit. The launch is currently planned for ~~early-late~~ April 2019, with a nominal three year mission life. While the instrument itself is a duplicate of the operational OCO-2, several features, such as the addition of a pointing mirror assembly, and other necessary optical components, will slightly alter the instrument performance. The OCO-3 mission will largely inherit the data algorithms that have been tested and refined using OCO-2.

After introducing the high level science objectives (which are similar to the OCO-2 mission) and providing a brief overview of the planned measurement strategy, a detailed analysis of a year long simulation of OCO-3 measurements is presented. The analysis begins with realistic ephemeris and measurement geometries, which are used, along with modeled meteorology and trace gases, to generate synthetic L1b radiances. Cloud screening preprocessors are used to select soundings to be run through the OCO-2 B8 L2 full physics (L2FP) retrieval, which is the current version of the algorithm that will be adopted for the OCO-3 mission. We performed a full quality filtering and bias correction to the retrieved ~~L2-L2FP~~ XCO₂, following the methodology ~~given-by-described in~~ O'Dell et al. (2018). Overall XCO₂ errors, relative to both the true XCO₂ and to the predicted error, are assessed. We also present analysis of the solar induced chlorophyll fluorescence from the IMAP DOAS retrieval algorithm, and discuss implications of the spatiotemporal sampling from the ISS relative to polar ~~orbiters~~ orbiting satellites.

Generally, these simulations highlight the spatial and temporal sampling expected from OCO-3 aboard the precessing ISS, illustrating how measurements will span a wide range of sunlit hours, and have large day to day variation in latitudinal sampling. The simulated L1b radiances show signal to noise characteristic that are generally slightly lower than OCO-2, but still sufficient to accurately estimate XCO₂. Over monthly timescales that are ~~typical of the global flux analysis, all latitudes are sampled and typically used in global flux inversion algorithms to estimate sources and sinks of CO₂~~, roughly 2.5 million good quality ~~L2 retrievals are expected~~ estimates of XCO₂ are expected spanning latitudes $\sim \pm 52^\circ$. An assessment of the error characteristics of XCO₂ indicate that they will be comparable to operational OCO-2 data. Furthermore, we demonstrate that the general methodology of ~~L2-L2FP~~ quality filtering and bias correction on the retrieved XCO₂ which is being used on operational OCO-

2 data can be used to identify the most useful data and reduce the bias inherent in the full physics retrieval algorithm. In fact, the filtering and bias correction process is necessary in order to meet the measurement objectives.

Retrievals of SIF using the IDP algorithm are also expected to have similar error characteristics compared to OCO-2, especially with respect to error induced by instrument noise. This new set of space-based SIF will be highly informative because of the varying ~~time-of-day~~ time-of-day sampling, so important to characterizing the local behavior of SIF. The dense coverage of latitudes ~~below about 50~~ spanning $\sim \pm 52^\circ$, where global SIF is most active on an annual scale, is expected to provide a rich data set to the science community.

Overall, the OCO-3 performance characteristics, as assessed in this simulation, should provide a global dataset that achieves the mission goals and continues the dense, high-precision XCO₂ and SIF record from space-borne measurements.

10 *Author contributions.* The overall research goals were crafted by AE, with contributions from CWO and TET. RP provided the OCO-3 simulated geometry, with input from AE. TET generated the L1b radiances and ran the ABP and IDP preprocessors. AE ran the L2 FP retrievals and CWO performed the quality filtering and bias correction procedure. The data analysis and word smithing were joint efforts between TET, CWO and AE. The figures were generated by TET, with input from CWO and AE.

Competing interests. We declare no competing interests in this work.

15 *Acknowledgements.* A portion of the research described in this paper was carried out at the Jet Propulsion Laboratory, California Institute of Technology, under a contract with the National Aeronautics and Space Administration. The CSU contribution to this work was supported by JPL subcontract 1439002.

We would like to acknowledge the hard work of the OCO-3 calibration team for providing data necessary to generate the L1b simulations.

Finally, we thank the two anonymous reviewers that provided useful comments on the manuscript.

References

- Aben, I., Hasekamp, O., and Hartmann, W.: Uncertainties in the space-based measurements of CO₂ columns due to scattering in the Earth's atmosphere, *J. Quant. Spectrosc. Radiat. Transfer*, 104, 450–459, 2007.
- Basilio, R., Bennett, M., Boland, S., Crisp, D., Eldering, A., Ellis, A., Glavich, T., Gunson, M., Khaki, S., and Pollock, R.: SYSTEMS
5 DESIGN AND IMPLEMENTATION OF THE PROPOSED ORBITING CARBON OBSERVATORY-3 ON THE INTERNATIONAL SPACE STATION'S JAPANESE EXPERIMENTAL MODULE, *Science and Technology Series*, 114, 321–323, 2013.
- Basu, S., Krol, M., Butz, A., Clerbaux, C., Sawa, Y., Machida, T., Matsueda, H., Frankenberg, C., Hasekamp, O., and Aben, I.: The seasonal variation of the CO₂ flux over Tropical Asia estimated from GOSAT, CONTRAIL, and IASI, *Geophysical Research Letters*, 41, 1809–1815, 2014.
- 10 Beer, C., Reichstein, M., Tomelleri, E., Ciais, P., Jung, M., Carvalhais, N., Rodenbeck, C., Arain, M. A., Baldocchi, D., Bonan, G. B., Bondeau, A., Cescatti, A., Lasslop, G., Lindroth, A., Lomas, M., Luysaert, S., Margolis, H., Oleson, K. W., Rouspard, O., Veenendaal, E., Viovy, N., Williams, C., Woodward, F. I., and Papale, D.: Terrestrial gross carbon dioxide uptake: Global distribution and covariation with climate, *Science*, <https://doi.org/10.1126/science.1184984>, 2010.
- Boesch, H., Brown, L., Castano, R., Christi, M., Connor, B., Crisp, D., Eldering, A., Fisher, B., Frankenberg, C., Gunson, M., Granat,
15 R., McDuffie, J., Miller, C., Natraj, V., O'Brien, D., O'Dell, C., Osterman, G., Oyafuso, F., Payne, V., Polonsky, I., Smyth, M., Spurr, R., Thompson, D., and Toon, G.: Orbiting Carbon Observatory (OCO)-2 Level 2 Full Physics, Algorithm Theoretical Basis Document D-55207, Jet Propulsion Laboratory, 2015.
- Bösch, H., Toon, G. C., Sen, B., Washenfelder, R. A., Wennberg, P. O., Buchwitz, M., de Beek, R., Burrows, J. P., Crisp, D., Christi, M., Connor, B. J., Natraj, V., and Yung, Y. L.: Space-based near-infrared CO₂ measurements: Testing the Orbiting Carbon Observatory
20 retrieval algorithm and validation concept using SCIAMACHY observations over Park Falls, Wisconsin, *J. Geophys. Res.*, 111, D23302, <https://doi.org/10.1029/2006JD007080>, 2006.
- Buchwitz, M., Reuter, M., Schneising, O., Boesch, H., Guerlet, S., Dils, B., Aben, I., Armante, R., Bergamaschi, P., and Blumenstock, T.: The Greenhouse Gas Climate Change Initiative (GHG-CCI): Comparison and quality assessment of near-surface-sensitive satellite-derived CO₂ and CH₄ global data sets, *RSE*, 162, 344–362, 2015.
- 25 Buil, C., Pascal, V., Loesel, J., Pierangelo, C., Roucayrol, L., and Tauziede, L.: A new space instrumental concept for the measurement of CO₂ concentration in the atmosphere, in: *SPIE Remote Sensing*, pp. 817 621–817 621–11, International Society for Optics and Photonics, 2011.
- Butz, A., Hasekamp, O., Frankenberg, C., and Aben, I.: Retrievals of atmospheric CO₂ from simulated space-borne measurements of backscattered near-infrared sunlight: accounting for aerosol effects, *Appl. Opt.*, 48, 3322–3336, <https://doi.org/10.1364/AO.48.003322>,
30 2009.
- Chatterjee, A., Gierach, M., Sutton, A., Feely, R., Crisp, D., Eldering, A., Gunson, M., O'dell, C., Stephens, B., and Schimel, D.: Influence of El Niño on atmospheric CO₂ over the tropical Pacific Ocean: Findings from NASA's OCO-2 mission, *Science*, 358, eaam5776, 2017.
- Connor, B., Bösch, H., McDuffie, J., Taylor, T., Fu, D., Frankenberg, C., O'Dell, C., Payne, V. H., Gunson, M., Pollock, R., Hobbs, J., Oyafuso, F., and Jiang, Y.: Quantification of uncertainties in OCO-2 measurements of XCO₂: simulations and linear error analysis, *Atmospheric Measurement Techniques*, 9, 5227–5238, <https://doi.org/10.5194/amt-9-5227-2016>, <https://www.atmos-meas-tech.net/9/5227/2016/>, 2016.
- 35

- Connor, B. J., Boesch, H., Toon, G., Sen, B., Miller, C., and Crisp, D.: Orbiting Carbon Observatory: Inverse method and prospective error analysis, *J. Geophys. Res.*, 113, D05 305, <https://doi.org/10.1029/2006JD008336>, 2008.
- Cox, C. and Munk, W. H.: The measurement of the roughness of the sea surface from photographs of the sun's glitter, *J. Opt. Soc. Amer.*, 44, 838–850, <https://doi.org/10.1364/JOSA.44.000838>, 1954.
- 5 Crisp, D., Pollock, H. R., Rosenberg, R., Chapsky, L., Lee, R. A., Oyafuso, F. A., Frankenberg, C., O'Dell, C. W., Brueffe, C. J., Doran, G. B., Eldering, A., Fisher, B. M., Fu, D., Gunson, M. R., Mandrake, L., Osterman, G. B., Schwandner, F. M., Sun, K., Taylor, T. E., Wennberg, P. O., and Wunch, D.: The on-orbit performance of the Orbiting Carbon Observatory-2 (OCO-2) instrument and its radiometrically calibrated products, *Atmos. Meas. Tech.*, 10, 59–81, <https://doi.org/10.5194/amt-10-59-2017>, 2017.
- Crowell, S., Baker, D., Schuh, A., Basu, S., Jacobson, A. R., Chevallier, F., Liu, J., Deng, F., Feng, L., Chatterjee, A., Crisp, D., Eldering, A., Jones, D. B., McKain, K., Miller, J., Nassar, R., Oda, T., O'Dell, C., Palmer, P. I., Schimel, D., Stephens, B., and Sweeney, C.: The 10 2015–2016 Carbon Cycle As Seen from OCO-2 and the Global *In Situ* Network, *Atmospheric Chemistry and Physics Discussions*, 2019, 1–79, <https://doi.org/10.5194/acp-2019-87>, <https://www.atmos-chem-phys-discuss.net/acp-2019-87/>, 2019.
- Detmers, R., Hasekamp, O., Aben, I., Houweling, S., Leeuwen, T., Butz, A., Landgraf, J., Köhler, P., Guanter, L., and Poulter, B.: Anomalous carbon uptake in Australia as seen by GOSAT, *Geophysical Research Letters*, 42, 8177–8184, 2015.
- 15 Dubayah, R., Goetz, S., Blair, J. B., Fatoyinbo, T., Hansen, M., Healey, S., Hofton, M., Hurtt, G., Kellner, J., and Luthcke, S.: The global ecosystem dynamics investigation, in: *AGU Fall Meeting Abstracts*, 2014.
- Eldering, A., O'Dell, C. W., Wennberg, P. O., Crisp, D., Gunson, M. R., Viatte, C., Avis, C., Braverman, A., Castano, R., Chang, A., Chapsky, L., Cheng, C., Connor, B., Dang, L., Doran, G., Fisher, B., Frankenberg, C., Fu, D., Granat, R., Hobbs, J., Lee, R. A., Mandrake, L., McDuffie, J., Miller, C. E., Myers, V., Natraj, V., O'Brien, D., Osterman, G. B., Oyafuso, F., Payne, V. H., Pollock, H. R., Polonsky, 20 I., Roehl, C. M., Rosenberg, R., Schwandner, F., Smyth, M., Tang, V., Taylor, T. E., To, C., Wunch, D., and Yoshimizu, J.: The Orbiting Carbon Observatory-2: first 18 months of science data products, *Atmos. Meas. Tech.*, 10, 549–563, <https://doi.org/10.5194/amt-10-549-2017>, 2017a.
- Eldering, A., Wennberg, P., Crisp, D., Schimel, D., Gunson, M., Chatterjee, A., Liu, J., Schwandner, F., Sun, Y., and O'Dell, C.: The Orbiting Carbon Observatory-2 early science investigations of regional carbon dioxide fluxes, *Science*, 358, eaam5745, 2017b.
- 25 ESA: Research announcement for ISS experiments relevant to study global climate change: Additional technical information on ISS capabilities and background information, Report, ESA, <http://wsn.spaceflight.esa.int/docs/201107/Annex1-ESA-ISS-CC-AO-Climate-Change.pdf>, 2011.
- Fisher, J., Hook, S., Allen, R., Anderson, M., French, A., Hain, C., Hulley, G., and Wood, E.: ECOSTRESS: NASA's next-generation mission to measure evapotranspiration from the International Space Station, in: *AGU Fall Meeting Abstracts*, 2015.
- 30 Frankenberg, C., Butz, A., and Toon, G.: Disentangling chlorophyll fluorescence from atmospheric scattering effects in the O2 A band spectra of reflected sunlight, *Geophysical Research Letters*, 38, 2011.
- Frankenberg, C., O'Dell, C., Guanter, L., and McDuffie, J.: Remote sensing of near-infrared chlorophyll fluorescence from space in scattering atmospheres: implications for its retrieval and interferences with atmospheric CO2 retrievals, *Atmospheric Measurement Techniques*, 5, 2081–2094, 2012.
- 35 Frankenberg, C., O'Dell, C., Berry, J., Guanter, L., Joiner, J., Kohler, P., Pollock, R., and Taylor, T. E.: Prospects for chlorophyll fluorescence remote sensing from the Orbiting Carbon Observatory-2, *RSE*, 147, 1–12, <https://doi.org/10.1016/j.rse/2014.02.007>, 2014.
- Guerlet, S., Basu, S., Butz, A., Krol, M., Hahne, P., Houweling, S., Hasekamp, O., and Aben, I.: Reduced carbon uptake during the 2010 Northern Hemisphere summer from GOSAT, *Geophysical Research Letters*, 40, 2378–2383, 2013.

- Hulley, G., Hook, S., Fisher, J., and Lee, C.: ECOSTRESS, a NASA Earth-Ventures instrument for studying links between the water cycle and plant health over the diurnal cycle, in: IEEE International Geoscience and Remote Sensing Symposium (IGARSS), <https://doi.org/10.1109/IGARSS.2017.8128248>, 2017.
- 5 Kulawik, S. S., O'Dell, C., Nelson, R. R., and Taylor, T. E.: Validation of OCO-2 error analysis using simulated retrievals, Atmospheric Measurement Techniques Discussions, 2018, 1–42, <https://doi.org/10.5194/amt-2018-368>, <https://www.atmos-meas-tech-discuss.net/amt-2018-368/>, 2018.
- Kuze, A., Suto, H., Nakajima, M., and Hamazaki, T.: Thermal and near infrared sensor for carbon observation Fourier-transform spectrometer on the Greenhouse Gases Observing Satellite for greenhouse gases monitoring, Appl. Opt., 48, 6716–6733, 2009.
- Lindqvist, H., O'Dell, C., Basu, S., Bösch, H., Chevallier, F., Deutscher, N., Feng, L., Fisher, B., Hase, F., and Inoue, M.: Does GOSAT capture the true seasonal cycle of carbon dioxide?, Atmos. Chem. Phys., 15, 13 023–13 040, 2015.
- 10 Liu, J., K., B., Lee, M., Henze, D., Bousserez, N., Brix, H., Collatz, G., Menemenlis, D., Ott, L., Pawson, S., Jones, D., and Nassar, R.: Carbon monitoring system flux estimation and attribution: impact of ACOS-GOSAT XCO₂ sampling on the inference of terrestrial biospheric sources and sinks, Tellus B, 66, <https://doi.org/10.3402/tellusb.v66.22486>, 2014.
- Liu, J., Bowman, K. W., Schimel, D. S., Parazoo, N. C., Jiang, Z., Lee, M., Bloom, A. A., Wunch, D., Frankenberg, C., and Sun, Y.: 15 Contrasting carbon cycle responses of the tropical continents to the 2015–2016 El Niño, Science, 358, eaam5690, 2017.
- Matsunaga, T., Iwasaki, A., Tsuchida, S., Tanii, J., Kashimura, O., Nakamura, R., Yamamoto, H., Tachikawa, T., and Rokugawa, S.: Hyperspectral Imager Suite (HISUI), Optical Payloads for Space Missions, pp. 215–222, 2015.
- Matsunaga, T., Iwasaki, A., Tsuchida, S., Tanii, J., Kashimura, O., Nakamura, R., Yamamoto, H., Tachikawa, T., and Rokugawa, S.: Current status of Hyperspectral Imager Suite (HISUI) onboard International Space Station (ISS), in: IEEE International Geoscience and Remote 20 Sensing Symposium (IGARSS), <https://doi.org/10.1109/IGARSS.2017.8126989>, 2017.
- Miller, C., Crisp, D., DeCola, P., Olsen, S., Randerson, J., Michalak, A., Alkhaled, A., Rayner, P., Jacob, D., Suntharalingam, P., Jones, D., Denning, A., Nicholls, M., Doney, S., Pawson, S., Boesch, H., Connor, B., Fung, I., O'Brien, D., Salawitch, R., Sander, S., Sen, B., Tans, P., Toon, G., Wennberg, P., Wofsy, S., Yung, Y., and Law, R.: Precision requirements for space-based X_{CO₂} data, J. Geophys. Res., 112, <https://doi.org/10.1029/2006JD007659>, 2007.
- 25 Mishchenko, M. I., Cairns, B., Kopp, G., Schueler, C. F., Fafaul, B. A., Hansen, J. E., Hooker, R. J., Itchkawich, T., Maring, H. B., and Travis, L. D.: Accurate monitoring of terrestrial aerosols and total solar irradiance: introducing the Glory Mission, Bulletin of the American Meteorological Society, 88, 677–692, 2007.
- Moore III, B., Crowell, S. M. R., Rayner, P. J., Kumer, J., O'Dell, C. W., O'Brien, D., Utembe, S., Polonsky, I., Schimel, D., and Lemen, J.: The Potential of the Geostationary Carbon Cycle Observatory (GeoCarb) to Provide Multi-scale Constraints on the Carbon Cycle in 30 the Americas, Frontiers in Environmental Science, 6, 109, <https://doi.org/10.3389/fenvs.2018.00109>, <https://www.frontiersin.org/article/10.3389/fenvs.2018.00109>, 2018.
- Nakajima, M., Kuze, A., and Suto, H.: The current status of GOSAT and the concept of GOSAT-2, in: SPIE 8533, Sensors, Systems, and Next-Generation Satellites XVI, pp. 853 306–853 306–10, International Society for Optics and Photonics, <http://dx.doi.org/10.1117/12.974954>, 2012.
- 35 Nassar, R., Hill, T., McLinden, C., Wunch, D., Jones, D., and Crisp, D.: Quantifying CO₂ emissions from individual power plants from space, Geophys. Res. Lett., 44, 10,045–10,053, <https://doi.org/10.1002/2017GL074702>, 2017.
- Nelson, R., Crisp, D., Ott, L., and O'Dell, C.: High-accuracy measurements of total column water vapor from the Orbiting Carbon Observatory-2, Geophys. Res. Lett., 43, 12,261–12,269, <https://doi.org/10.1002/2016GL071200R>, 2016a.

- Nelson, R., O'Dell, C. W., Taylor, T. E., Mandrake, L., and Smyth, M.: The potential of clear-sky carbon dioxide satellite retrievals, *Atmos. Meas. Tech.*, 9, 1671–1684, <https://doi.org/10.5194/amt-9-1671-2016>, 2016b.
- Nelson, R. R. and O'Dell, C. W.: The Impact of Improved Aerosol Priors on Near-Infrared Measurements of Carbon Dioxide, *Atmos. Meas. Tech. Discuss.*, 2018, 1–32, <https://doi.org/10.5194/amt-2018-366>, <https://www.atmos-meas-tech-discuss.net/amt-2018-366/>, 2018.
- 5 O'Brien, D. M., Polonsky, I., O'Dell, C., and Carheden, A.: Orbiting Carbon Observatory (OCO), Algorithm Theoretical Basis Document: The OCO simulator, Technical Report ISSN 0737-5352-85, Cooperative Institute for Research in the Atmosphere, Colorado State University, ftp://ftp.cira.colostate.edu/ftp/TTaylor/publications/20090813_OCO_simulator.pdf, 2009.
- O'Brien, D. M., Polonsky, I., Utembe, S. R., and Rayner, P. J.: Potential of a geostationary geoCARB mission to estimate surface emissions of CO₂, CH₄ and CO in a polluted urban environment: case study Shanghai, *Atmos. Meas. Tech.*, 9, 4633–4654, [https://doi.org/10.5194/amt-](https://doi.org/10.5194/amt-9-4633-2016)
10 9-4633-2016, 2016.
- Oda, T. and Maksyutov, S.: A very high-resolution (1 km x 1 km) global fossil fuel CO₂ emission inventory derived using a point source database and satellite observations of nighttime lights, *Atmos. Chem. Phys.*, 11, 543–556, <https://doi.org/10.5194/acp-11-543-2011>, <https://www.atmos-chem-phys.net/11/543/2011/>, 2011.
- Oda, T., Maksyutov, S., and Andres, R. J.: The Open-source Data Inventory for Anthropogenic CO₂, version 2016 (ODIAC2016): a global
15 monthly fossil fuel CO₂ gridded emissions data product for tracer transport simulations and surface flux inversions, *Earth System Science Data*, 10, 87–107, <https://doi.org/10.5194/essd-10-87-2018>, <https://www.earth-syst-sci-data.net/10/87/2018/>, 2018.
- O'Dell, C. W., Connor, B., Bösch, H., O'Brien, D., Frankenberg, C., Castano, R., Christi, M., Crisp, D., Eldering, A., Fisher, B., Gunson, M., McDuffie, J., Miller, C. E., Natraj, V., Oyafuso, F., Polonsky, I., Smyth, M., Taylor, T., Toon, G. C., Wennberg, P. O., and Wunch, D.: The ACOS CO₂ retrieval algorithm—Part 1: Description and validation against synthetic observations, *Atmos. Meas. Tech.*, 5, 99–121,
20 <https://doi.org/10.5194/amt-5-99-2012>, 2012.
- O'Dell, C. W., Eldering, A., Wennberg, P. O., Crisp, D., Gunson, M. R., Fisher, B., Frankenberg, C., Kiel, M., Lindqvist, H., Mandrake, L., Merrelli, A., Natraj, V., Nelson, R. R., Osterman, G. B., Payne, V. H., Taylor, T. R., Wunch, D., Drouin, B. J., Oyafuso, F., Chang, A., McDuffie, J., Smyth, M., Baker, D. F., Basu, S., Chevallier, F., Crowell, S. M. R., Feng, L., Palmer, P. I., Dubey, M., García, O. E., Griffith, D. W. T., Hase, F., Iraci, L. T., Kivi, R., Morino, I., Notholt, J., Ohyama, H., Petri, C., Roehl, C. M., Sha, M. K., Strong, K.,
25 Sussmann, R., Te, Y., Uchino, O., and Velazco, V. A.: Improved Retrievals of Carbon Dioxide from the Orbiting Carbon Observatory-2 with the version 8 ACOS algorithm, *Atmospheric Measurement Techniques Discussions*, 2018, 1–57, [https://doi.org/10.5194/amt-2018-](https://doi.org/10.5194/amt-2018-257)
257, <https://www.atmos-meas-tech-discuss.net/amt-2018-257/>, 2018.
- Parazoo, N. C., Bowman, K., Fisher, J. B., Frankenberg, C., Jones, D., Cescatti, A., Perez-Priego, O., Wohlfahrt, G., and Montagnani, L.: Terrestrial gross primary production inferred from satellite fluorescence and vegetation models, *Global change biology*, 20, 3103–3121,
30 2014.
- Persh, S., Shaham, Y., Benami, O., Cairns, B., Mishchenko, M. I., Hein, J. D., and Fafaul, B. A.: Ground performance measurements of the Glory aerosol polarimetry sensor, in: *Earth Observing Systems XV*, vol. 7807, p. 780703, International Society for Optics and Photonics, 2010.
- Peters, W., Jacobson, A. R., Sweeney, C., Andrews, A. E., Conway, T. J., Masarie, K., Miller, J. B., Bruhwiler, L. M., Pétron, G., and Hirsch, A. I.: An atmospheric perspective on North American carbon dioxide exchange: CarbonTracker, *Proceedings of the National Academy of Sciences*, 104, 18925–18930, 2007.

- Reuter, M., Bösch, H., Bovensmann, H., Bril, A., Buchwitz, M., Butz, A., Burrows, J., O'Dell, C., Guerlet, S., and Hasekamp, O.: A joint effort to deliver satellite retrieved atmospheric CO₂ concentrations for surface flux inversions: the ensemble median algorithm EMMA, *Atmospheric Chemistry and Physics*, 13, 1771–1780, 2013.
- Richardson, M., Leinonen, J., Cronk, H. Q., McDuffie, J., Lebsock, M. D., and Stephens, G. L.: Liquid marine cloud geometric thickness retrieved from OCO-2's oxygen A-band spectrometer, *Atmospheric Measurement Techniques Discussions*, 2018, 1–33, <https://doi.org/10.5194/amt-2018-387>, <https://www.atmos-meas-tech-discuss.net/amt-2018-387/>, 2018.
- Rosenberg, R., Maxwell, S., Johnson, B. C., Chapsky, L., Lee, R., and Pollock, R.: Preflight radiometric calibration of the Orbiting Carbon Observatory 2, *TGRS*, 55, 1994–2006, <https://doi.org/10.1109/TGRS.2016.2634023>, 2017.
- Ross, A. N., Wooster, M. J., Bösch, H., and Parker, R.: First satellite measurements of carbon dioxide and methane emission ratios in wildfire plumes, *Geophysical Research Letters*, 40, 4098–4102, 2013.
- Saha, S., Moorthi, S., Wu, X., Wang, J., Nadiga, S., Tripp, P., Behringer, D., Hou, Y.-T., ya Chuang, H., Iredell, M., Ek, M., Meng, J., Yang, R., Mendez, M. P., van den Dool, H., Zhang, Q., Wang, W., Chen, M., and Becker, E.: The NCEP Climate Forecast System Version 2, *J. Climate.*, 27, 2185–2208, <https://doi.org/10.1175/JCL-D-12-00823.1>, 2014.
- Schaaf, C. B., Gao, F., Strahler, A. H., Lucht, W., Li, X., Tsang, T., Strugnell, N. C., Zhang, X., Jin, Y., Muller, J.-P., Lewis, P., Barnsley, M., Hobson, P., Disney, M., Roberts, G., Dunderdale, M., Doll, C., d'Entremont, R. P., Hu, B., Liang, S., Privette, J. L., and Roy, D.: First operational BRDF, albedo nadir reflectance products from MODIS, *Remote Sens. Environ.*, 83, 135–148, [https://doi.org/10.1016/S0003-4257\(02\)00091-3](https://doi.org/10.1016/S0003-4257(02)00091-3), 2002.
- Schwandner, F. M., Gunson, M. R., Miller, C. E., Carn, S. A., Eldering, A., Krings, T., Verhulst, K. R., Schimel, D. S., Nguyen, H. M., and Crisp, D.: Spaceborne detection of localized carbon dioxide sources, *Science*, 358, eaam5782, 2017.
- Stavros, E. N., Schimel, D., Pavlick, R., Serbin, S., Swann, A., Duncanson, L., Fisher, J. B., Fasnacht, F., Ustin, S., and Dubayah, R.: ISS observations offer insights into plant function, *Nature Ecology & Evolution*, 1, s41 559–017–0194, 2017.
- Stysley, P. R., Coyle, D. B., Kay, R. B., Frederickson, R., Poulious, D., Cory, K., and Clarke, G.: Long term performance of the High Output Maximum Efficiency Resonator (HOMER) laser for NASA's Global Ecosystem Dynamics Investigation (GEDI) lidar, *Optics & Laser Technology*, 68, 67–72, <https://doi.org/10.1016/j.optlastec.2014.11.001>, 2015.
- Sun, Y., Frankenberg, C., Wood, J. D., Schimel, D. S., Jung, M., Guanter, L., Drewry, D., Verma, M., Porcar-Castell, A., Griffis, T. J., et al.: OCO-2 advances photosynthesis observation from space via solar-induced chlorophyll fluorescence, *Science*, 358, eaam5747, 2017.
- Sun, Y., Frankenberg, C., Jung, M., Joiner, J., Guanter, L., Kohler, P., and Magney, T.: Overview of the solar-induced chlorophyll fluorescence SIF from the Orbiting Carbon Observatory-2: Retrieval, cross-mission comparison, and global monitoring for GPP, *RSE*, 209, 808–823, <https://doi.org/10.1016/j.rse/2018.02.016>, 2018.
- Taylor, T. E., O'Dell, C. W., Frankenberg, C., Partain, P. T., Cronk, H. Q., Savtchenko, A., Nelson, R. R., Rosenthal, E. J., Chang, A., Fisher, B. M., Osterman, G. B., Pollock, R. H., Crisp, D., Eldering, A., and Gunson, M. R.: Orbiting Carbon Observatory-2 (OCO-2) cloud screening algorithms: validation against collocated MODIS and CALIOP data, *Atmos. Meas. Tech.*, 9, 973–989, <https://doi.org/10.5194/amt-9-973-2016>, 2016.
- Thuillier, G., Hersé, M., Foujols, T., Peetermans, W., Gillotay, D., Simon, P., and Mandel, H.: The solar spectral irradiance from 200 to 2400 nm as measured by the SOLSPEC spectrometer from the ATLAS and EURECA missions, *Solar Physics*, 214, 1–22, 2003.
- Toon, G., Blavier, J., Sen, B., Salawitch, R., Osterman, G., Notholt, J., Rex, M., McElroy, C., and Russell, J.: Groundbased observations of Arctic O₃ loss during spring and summer 1997, *Journal of Geophysical Research: Atmospheres*, 104, 26 497–26 510, 1999.

- Winker, D. M., Hunt, W. H., and McGill, M. J.: Initial performance assessment of CALIOP, *Geophys. Res. Lett.*, 34, L19 803, <https://doi.org/10.1029/2007GL030135>, 2007.
- Worden, J. R., Doran, G., Kulawik, S., Eldering, A., Crisp, D., Frankenberg, C., O'Dell, C., and Bowman, K.: Evaluation and attribution of OCO-2 XCO₂ uncertainties, *Atmospheric Measurement Techniques*, 10, 2759–2771, <https://doi.org/10.5194/amt-10-2759-2017>, <https://www.atmos-meas-tech.net/10/2759/2017/>, 2017.
- Wunch, D., Toon, G., Wennberg, P., Wofsy, S., Stephens, B., Fischer, M., Uchino, O., Abshire, J., Bernath, P., Biraud, S., Blavier, J., Boone, C., Bowman, K., Browell, E., Campos, T., Connor, B., Daube, B., Deutscher, N., Diau, M., Elkins, J., Gerbig, C., Gottlieb, W., Griffith, D., Hurst, D., Jimenez, R., Keppel-Aleks, G., Kort, E., Macatangay, R., Machida, T., Matsueda, H., Moore, F., Morino, I., Park, S., Robinson, J., Roehl, C., Sawa, Y., Sherlock, V., Sweeney, C., Tanaka, T., and Zondlo, M.: Calibration of the Total Carbon Column Observing Network using aircraft profile data, *Atmos. Meas. Tech.*, 3, 1351–1362, <https://doi.org/10.5194/amt-3-1351-2010>, 2010.
- Wunch, D., Wennberg, P., Toon, G., Connor, B., Fisher, B., Osterman, G., Frankenberg, C., Mandrake, L., O'Dell, C., P.Ahonen, Biraud, S., Castano, R., Cressie, N., Crisp, D., Deutscher, N., Eldering, A., Fisher, M., Griffith, D., Heikkinen, M. G. P., Kyro, G. K.-A. E., Lindenmaier, R., Macatangay, R., Mendonca, J., Messerschmidt, J., Miller, C., Morino, I., Notholt, J., Oyafuso, F., Rettinger, M., Robinson, J., Roehl, C., Salawitch, R., Sherlock, V., Strong, K., Sussmann, R., Tanaka, T., Thompson, D., Uchino, O., Warneke, T., and Wofsy, S.: A method for evaluating bias in global measurements of CO₂ total columns from space, *Atmos. Chem. Phys.*, 11, 12 317–12 337, <https://doi.org/10.5194/acp-11-12317-2011>, 2011.
- Wunch, D., Wennberg, P., Messerschmidt, J., Parazoo, N., Toon, G., Deutscher, N., Keppel-Aleks, G., Roehl, C., Randerson, J., and Warneke, T.: The covariation of Northern Hemisphere summertime CO₂ with surface temperature in boreal regions, *Atmospheric Chemistry and Physics*, 13, 9447–9459, 2013.
- Wunch, D., Wennberg, P. O., Osterman, G., Fisher, B., Naylor, B., Roehl, C. M., O'Dell, C., Mandrake, L., Viatte, C., and Kiel, M.: Comparisons of the Orbiting Carbon Observatory-2 (OCO-2) X CO₂ measurements with TCCON, *Atmospheric Measurement Techniques*, 10, 2209, 2017.
- Yang, D., Liu, Y., Cai, Z., Chen, X., Yao, L., and Lu, D.: First Global Carbon Dioxide Maps Produced from TanSat Measurements, *Adv. Atmos. Sci.*, 35, <https://doi.org/10.1007/s00376-018-7312-6>, 2018.

25 **Appendix A: Response to anonymous reviewer 1**

1. Section 3.2 presents the issue of polarization and the computation of Stokes coefficients, but no further analysis is presented in the results section. Why should the reader be interested in the computation of these Stokes coefficients (Eq. 1 and 2) if they are not used later on? It would be nice to actually see some discussion of polarization effects in Section 5.1, as promised at the end of Sect. 3.2.
- 30 This is a fair point. We felt that some discussion of the polarization angle is warranted as this to some extent drives the “throughput” or “signal” that the instrument measures. Since the polarization angle is a form of geometry, we felt that placement in Section 3 “Simulated geometry, meteorology and L1b dataset” was the appropriate place to introduce it. In an attempt to better tie the discussion of the (expected) OCO-3 polarization angle to the solar zenith angle and the signal to noise ratio, we have provided a more comprehensive discussion of the polarization in Section 3.2 “Simulated instrument polarization angle and Stokes coefficients”. This includes addition of a new figure (Fig.6) that shows the
- 35

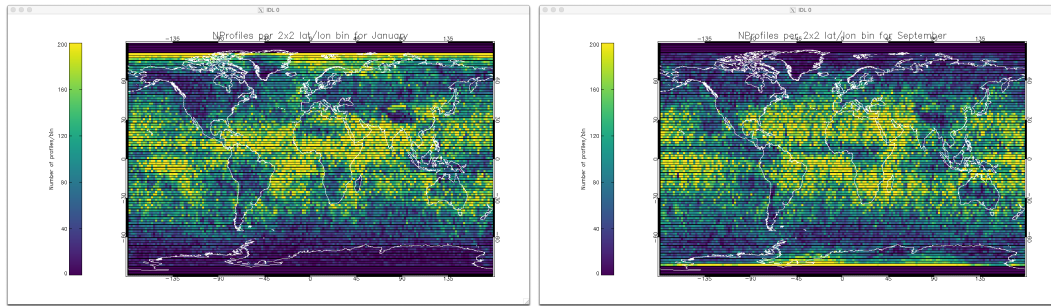


Figure A1. Maps showing the number of CALIPSO cloud and aerosol profiles contained in each 2° by 2° lat/lon bin for January (left) and September (right). For each OCO-3 sounding in the simulated data set a single profile was picked at random from the appropriate month and bin.

theoretical relationship between the polarization angle, the solar zenith angle and the measured signal to noise ratio for a specularly reflecting surface driven by a Cox and Munk model, i.e., glint-water viewing. The reference in Sec 3.2 to further discussion on polarization in Sect 5.1 was removed since Sect 5.1 focuses mainly on the SNR aspect of the measurements, which is of overall greater importance than polarization w/t/ XCO₂ retrievals.

5 2. Page 4, Line 25: Isn't the O2-A band also providing useful information on aerosols?

Yes, this is true. We have slightly modified the wording in Section 2.1: "The OCO-3 instrument payload" to more accurately describe the function of each of the three spectral bands. A few relevant citations have been added as well.

3. P15, L19: I didn't quite understand how exactly the random selection of cloud and aerosol profiles was made. Was the random selection made following some probability of detecting a cloud based on climatological cloud coverage?

10 No, there is no climatological cloud coverage taken into account. However, the static database is composed of real CALIPSO/CALIOP profiles that are binned into monthly 2x2 lat/lon bins, so each randomly selected profile represents a scene that was actually measured by CALIOP, but there is no continuity among adjacent OCO-3 soundings which are order 2x2 km. Some examples of the number of CALIPSO profiles for each lat/lon bin are shown in Figure A1. Although this material is interesting, we feel that the paper is already a bit lengthy so have opted not to include this figure in the text. Some alterations were made to the wording in Section 3.3 "Simulated meteorology, gas and cloud/aerosol fields" in
15 an attempt to more clearly explain the procedure.

4. Small corrections:

(a) 1. Page 3, line 32: 'then 4 km' -> 'than 4 km' Corrected.

(b) 2. P3, L12. Point is missing in front of 'Finally' Corrected.

20 (c) 3. P9, L14: It should probably be '30 south latitude' Corrected.

- (d) 4. P9, L26: It should probably be '2 longitude x 2 latitude'. Same issue in legend of Fig. 3. [Corrected.](#)
- (e) 5. P14, L12: There are two 'a' on this line that should be deleted. [Corrected.](#)
- (f) 6. P16, L15: I suggest to delete 'accurately' in this sentence. The calculation will always only be an approximation of reality and will only be (nearly) accurate, if the inputs such as aerosol properties are accurate. [Corrected.](#)
- 5 (g) 7. P17, L1: What is the 'NASA DISC'? [Removed this reference as it is irrelevant in this context.](#)
- (h) 8. P17, L13: What do you mean by 'a priori state of the atmosphere'? What properties of the atmosphere are described? [Slight rewording of Section 4.2 to better describe the setup of the L2 retrieval algorithm.](#)
- (i) 9. P18, L29: 'anomoly' -> 'anomaly' [Corrected.](#)
- (j) 10. P19, L32: delete one of the two 'when' [Corrected.](#)
- 10 (k) 11. P20, L6: There seems to be a closing bracket missing. [Corrected.](#)
- (l) 12. P20, L7: 'the OCO-3 SNR' -> 'the SNR' [Corrected.](#)
- (m) 13. Tables 2-4: These tables are full of acronyms and hard to read. I suggest adding another column 'description' describing the variables. [Updated the three tables to include a Variable Description column](#)
- (n) 14. P25, L2: Could you be more specific regarding the similarities and differences in the selected variables between OCO-3 and OCO-2 [We modified the discussion in Section 5.4 "Bias correction of XCO₂" to be more explicit about the similarities and differences with both real and simulated OCO-2 data.](#)
- 15 (o) 15. Fig. 13, lower left panel: Why is the x-axis the square root of the AOD and not AOD directly? [We found that the XCO₂ error was closer to linear versus the square-root of the AOD. Since the BC formulation is linear in nature, this is the optimal variable to make the correction against. Table 4 was corrected to show this variable \(was improperly just DS AOD before\). It is such a minor detail that we did not insert any additional verbiage into the text for the sake of brevity.](#)
- 20 (p) 16. Fig. 18: I can't see any 'tiny black dots' [Removed the reference to the tiny black dots since they had been removed from this version of the plot for clarity.](#)

Appendix A: Response to anonymous reviewer 2

- 25 1. It is not stated whether the spacecraft pitch and roll is either taken into account (i.e. the PMA can compensate for spacecraft pitch and roll in real time) or is assumed to be small enough that the results aren't affected; it would be interesting to know whether the spacecraft orientation is a problem in terms of achieving the required pointing accuracy. [This is a good point. Yes, the PMA does compensate for ISS pitch and roll. We updated the text in Section : "Sampling from the International Space Station - routine measurements" to better describe the expected operations and provided a](#)
- 30 [reference to an ISS technical document that specifies orbit parameters and other interesting information.](#)

2. In the spatial comparison shown in Figure 8, the lack of OCO-2 soundings over the Amazon, sub-Saharan Africa, and China compared with OCO-3 stands out; is this due to the ‘deficiencies in the simulation setup’ mentioned on page 19 line 28, meaning that in reality we might expect these regions to be filtered out in the OCO-3 data as well as in OCO-2? Yes, our expectation is that the OCO-3 data as presented here is a bit over optimistic relative to what is expected from real data. Think of it as a “best case” scenario, if all systems function perfectly, e.g., perfect instrument calibration and spectroscopy. Some text has been added to the discussion in Section 5.1 “Simulated L1b radiance characteristics” in reference to Fig 8 to more explicitly call out and explain the expected lack of data in these three particular regions.
3. Page 2 Line 7: GOSAT-2 has now been launched, on 29th October 2018 We slightly modified the discussion in the Introduction to more accurately describe the current situation as the original text was a bit out of date.
4. Page 6 Line 4: Update on whether analysis of thermal vacuum testing data is complete (I assume the results will go in the forthcoming manuscript mentioned on Line 5) The final OCO-3 TVAC data is still under analysis and the results are planned for publication, likely post-launch. The discussion in Section 2.2 “OCO-3 pointing mirror assembly overview” was updated and consolidated in Section 5.1 “Simulated L1b radiance characteristics” to more accurately describe the current situation as the original text was a bit out of date.
5. Page 18 Line 23: I assume this refers to the same testing data mentioned on Page 6 Line 4; perhaps an ‘in preparation’ reference would help clarify this? To clarify the message, the discussion of instrument calibration was removed from Section 2.2 “OCO-3 pointing mirror assembly overview” and consolidated in Section 5.1 “Simulated L1b radiance characteristics”.
6. Page 20 Line 6: Close brackets on ‘Figure 7’ Corrected.
7. Page 25 Line 18: Acronym ‘IDP’ not defined? The IMAP-DOAS Preprocessor (IDP) was first defined in Section 4.1 “Preprocessors”. We now spell it out explicitly again in the header of Section 5 for the convenience of the reader.
8. Page 25 Line 25: Move ‘e.g.’ inside the brackets, i.e. ‘. . . gases from space (e.g. Aben et al., 2007; Butz et al., 2009)’ Corrected.