

## Response to the comments (RC1)

Eriko Kobayashi<sup>1</sup>, Shunsuke Hoshino, Masami Iwabuchi, Takuji Sugidachi, Kensaku Shimizu and Masatomo Fujiwara

<sup>1</sup>Aerological Observatory, 1-2 Nagamine, 5 Tsukuba-shi, Ibaraki, 305-0052, Japan

eriko-kobayashi@met.kishou.go.jp

5

Thank you very much for your thoughtful comments and suggestions.

Our responses to your comments are as follows:

### 10 SPECIFIC COMMENTS

Page 1, line 13: Why were data from only 52 of the flights analysed. Why not all 87 flights? Did the other 35 not pass the quality controls for conversion to a GRUAN data product? If that is the case, perhaps that should be stated.

15 - The RS-11G GDP was created at Tateno; however, data for 5 flights were not used for the analysis because of the delay  
in data processing. Therefore 82 RS-11G GDPs were available. Once an RS-11G GDP is created, quality control  
procedures should be taken; however, the quality control procedures have not been established and are still under  
consideration. On the other hand, the RS92 GDPs were created at the GRUAN Lead Centre, and quality control  
procedures were taken; 25 of the RS92 GDPs for the Tateno dual flights failed these procedures and were thus not  
available at the GRUAN data archive. The quality control procedures for the RS92 GDP are as follows (Dirksen et al.,  
20 2014): The first step verifies the results of the ground check procedure; after the GRUAN corrections have been applied  
to raw RS92 measurements, the second step checks that profile data are within valid ranges to ensure that the estimated  
uncertainties of GDPs are within the manufacturer-provided uncertainties. Most of the excluded 25 RS92 GDPs have  
failed the second step of the quality control procedures. Among the remaining 57 sets of dual flight data, 5 were judged  
as outliers by the results of RS-11G RH measurements or of the temperature differences. We have revised the text in  
25 section 3 as follows:

‘The RS-11G GDP was created at Tateno for the analysis of this paper. However, among all the 87 dual flights involved,  
5 RS-11G flight data were not used due to problems in data processing. Once an RS-11G GDP is created, quality control  
procedures should be taken; however, the quality control procedures have not been established and are still under  
consideration. Therefore, 82 RS-11G GDPs were available for this paper. Among the 82 dual flights, 25 RS92 GDPs  
30 failed the quality control procedures at the GRUAN Lead Centre and were not available at the GRUAN data archive. The

quality control procedures for the RS92 GDP are as follows (Dirksen et al., 2014): The first step verifies the results of the ground check procedure; after the GRUAN corrections have been applied to raw RS92 measurements, the second step checks that profile data are within valid ranges to ensure that the estimated uncertainties of GDPs are within the manufacturer-provided uncertainties. For one of the 25 RS92 data, there was more than 1.5%RH difference between the two RH sensors at the ground check, while other 24 RS92 data did not have any problem in ground check data. Also, another one of the excluded RS92 had instrumental issues during the flight. Therefore, most of the excluded 25 RS92 have failed the second step of the quality control procedures at the GRUAN Lead Centre. It is noted that two thirds of the excluded 25 RS92 data were daytime observations, and 8 dual soundings had large differences between RS-11G and RS92 (processed at Tateno with the manufacturer's software) in temperature or RH profiles. Furthermore, 5 dual soundings were judged as outliers by the results of RS-11G RH measurements or of the temperature differences. These are the reasons why we only have 52 sets of dual flight data for the data analysis.'

Page 1, line 15: Replace 'were0.4K' with 'were, on average, 0.4K'. They were not always exactly 0.4K lower right? A similar change needs to be made on the next two lines.

-Yes, you are correct. We have revised the text as 'on average, 0.4K', and similarly revised the text for RH.

Page 1, lines 26-27: I don't know what you mean by 'Most night-time temperature differences for pressures of 10hPa were in agreement.'. The differences were in agreement with what? Or do you mean that the measurements (not the differences) were in agreement (which I would then understand). And likewise for the next phrase about the relative humidity differences.

-We have revised the text as "temperature measurements were in agreement".

Page 1, lines 28-29: Similar to my comments above, when you say 'Around half of all daytime temperature differences at pressures of  $\leq 150$ hPa and relative humidity differences around the 500hPa level were not in agreement', this is confusing. The 'differences' were not in agreement with what? I can understand the measurements not being in agreement, but a differences is one number and when you say that difference is not in agreement, it begs the question of not being in agreement with what?

-We meant 'measurements were not in agreement', and we have revised the text.

Page 2, line 27: I was surprised to read that the GRUAN data product for the RS-11G was generated at Tateno. I understood that all GRUAN data processing was centralized and was done at the GRUAN Lead Centre?

-Tateno is in charge of generating GRUAN data products for Meisei RS-11G. This is in part to reduce the workload of the GRUAN Lead Centre. When other GRUAN sites start to use Meisei RS-11G, Tateno is going to accept the role of generating their RS-11G GDP. We have added this explanation to Introduction.

5 Page 3, lines 24-25: You say 'and converted to create the RS-11G GRUAN data product'. Converted in what way, or converted into what? It feels like something is missing here.

-We have revised the text as 'RS-11G observation data are collected at 1-second intervals, and the raw data is converted into the RS-11G GRUAN data product.'

10

Page 3, line 28: I would suggest changing 'Such errors' to 'Such external influences on the temperature measurement' since it describes more specifically what these are, and I am not sure that it is appropriate to refer to these as 'errors'. It is a correct measurement that the temperature sensor is making (there is no error), it just isn't measuring the atmospheric variable you are directly interested in i.e. the ambient air temperature.

15

-We have revised this part as suggested.

Page 3, line 30: I don't know what a 'minima-pass filter' is. Is this the same as a low-pass filter? If not, I think that you need to say more about what this filter is and/or cite a paper that describes the functioning of the filter. Similarly, it is not clear to me what you mean by 'minimum filter' on line 15 of page 4.

20

-We have added the following explanation to the text: 'The minima-pass filtering is applied to the temperature measurements with a certain time window, which picks up only minimum values within the time window (see Kizu et al., 2018).' Also, we have revised line 15 of Page 4 (for Humidity measurements) as 'This type of wet contamination error manifests as spikes in the raw RH profile; therefore, a minimum filter, which is similar to the filter for heat spikes in the temperature measurements, with a window width of pendulum frequency, is applied to the high-frequency components of raw RH data.'

25

Page 4, line 17: But you say nothing about the functional form of the curve fitted to the data. Is it possible to cite an example of a correction curve to the data characterizing the temperature-dependence of the thin-film polymer RH sensors?

30

-We have cited Figure 3.19 of Kizu et al. (2018) as follows: 'The temperature-dependence of thin-film polymer RH sensors in colder environments was evaluated under laboratory conditions by comparison with reference values from a chilled mirror hygrometer, and a correction curve was developed using the least squares method. The RH sensor has wet

biases between -60°C and 40°C, and dry biases below -60°C. Further details of the temperature dependence correction of RH sensor can be found in Kizu et al. (2018, Figure 3.19).'

Page 7, lines 11-23: This information should be in a table rather.

5

-We have added a new Table for information about the bins of 13 pressure layers instead of these lines.

Page 9, lines 15-16: You state that 'Temperature differences also influence pressure differences' but this is only true in cases where the pressure is derived from GPS altitude and temperature profiles right?

10

-This sentence indicates the pressure differences in stratosphere. We have revised the sentence as 'Temperature differences also influence pressure differences particularly in the stratosphere, because both radiosondes use temperature, relative humidity, and GPS height data to derive pressure data.'

15

#### GRAMMAR AND TYPOGRAPHICAL ERRORS

Page 1, lines 14-15: Just a suggestion → Replace 'The authors then quantified differences in the performance of the radiosondes using GRUAN data products' with 'Differences in the performance of the radiosondes were then quantified using the GRUAN data products'.

20 Page 1, lines 19-21: Again just a suggestion to write in the third person rather than referring to 'The authors' → Replace 'The authors additionally investigated the RS-11G minus RS92-SGP difference of temperature and relative humidity based on combined uncertainties to clarify major influences behind the difference with 'Differences between the RS-11G and RS92-SGP temperature and relative humidity measurements, based on combined uncertainties, were also investigated to clarify major influences behind the differences'.

25 Page 1, line 22: Replace 'in RS92-SGP' with 'in the RS92-SGP'.

Page 1, line 23: Replace 'source for RS-11G' with 'source of uncertainty for RS-11G'.

Page 1, line 24: Replace 'and temperature-humidity' with 'and the temperature-humidity'.

Page 2, line 3: Replace 'JMA's' with 'JMA'.

Page2, line5: Replace 'Upper Air' with 'Upper-Air' i.e. as you have it in the abstract.

30 Page 2, line 10: Replace 'height' with 'altitude'.

Page 2, lines 11-12: Replace 'temperature and RH measurement has been improved' with 'the quality of the temperature and RH measurements have been improved'.

Page 2, line 14: Replace 'GRUAN will provide' with 'GRUAN is providing'.

Page 2, line 14: Delete 'for levels'.

- Page 2, line 15: Replace 'will be' with 'are'.
- Page 2, line 16: Replace 'will have' with 'have'.
- Page 2, line 20: I would suggest changing 'habitually' to 'regularly'.
- Page 2, line 25: I would suggest changing 'elevated change' to 'heightened likelihood'.
- 5 Page 3, lines 8-9: I would suggest changing 'The former is operated with a Vaisala DigiCora Sounding System III, and the latter is operated with a Meisei MGPS2' to 'The ground-station for the RS92 was a Vaisala DigiCora Sounding System, while the ground-station for the RS-11G was a Meisei MGPS2'.
- Page 3, line 20: I would suggest changing 'for SHC' to 'inside the SHC' for clarity.
- Page 3, line 23: Replace 'temperature measurement values' with 'temperature values'.
- 10 Page 3, line 29: Given what is displayed in Figure 1, I would suggest changing 'may be too' to 'is too'.
- Page 3, line 31: Replace 'theoretically estimated' with 'estimated theoretically'.
- Page 4, line 6: Replace 'measurement values' with 'measurements'. And likewise on line29.
- Page 4, line 12: Replace 'involves the use of' with 'uses the'.
- Page 4, line 27: Replace 'height data' with 'altitude data'. And likewise on line31.
- 15 Page 5, line 29: Replace 'is sufficient' with 'is sufficiently good'.
- Page 6, lines 25-27: I would suggest changing this to 'Temporally simultaneous observations were compared, using the statistical approach adopted by Kobayashi et al.(2012), to evaluate differences in sensors and correction methods'.
- Page 8, line 15: Replace 'a reference' with 'the reference'.
- Page 9, line 20: When you say 'much larger than others' what does the 'others' refer to?
- 20 Page 9, line 30: Replace 'checking' with 'comparing'.
- Page 10, line 13: Replace 'RH measurement' with 'the RH measurement'.
- Page 10, line 33: 'few %RH degrees' sounds confusing. Is the 'degrees' necessary?
- Page 11, line 4: Replace 'quantitated' with 'quantified'.
- Page 12, line 9: Replace 'as per' with 'as for'.
- 25 Page 12, line 13: Replace 'the purpose of utilization' with 'use'.
- Page 13, line 4: Replace 'generally corresponded' with 'generally agree well'.

-We have revised the text as suggested.

- 30 For Page 9, line 20, we have revised as 'The daytime standard deviation in spring at pressures  $\leq 30$  hPa is much larger than the standard deviation in other seasons'. Also, we have deleted the term 'degrees' for Page 10, line 33.

Thank you very much again for your valuable comments and suggestions.

## Reference

Dirksen, R. J., Sommer, M., Immler, F. J., Hurst, D. F., Kivi, R., and Vömel, H.: Reference quality upper-air measurements: GRUAN data processing for the Vaisala RS92 radiosonde, *Atmos. Meas. Tech.*, 7, 4463–4490, 2014.

## Response to the comments (RC2)

Eriko Kobayashi<sup>1</sup>, Shunsuke Hoshino, Masami Iwabuchi, Takuji Sugidachi, Kensaku Shimizu and Masatomo Fujiwara

<sup>1</sup>Aerological Observatory, 1-2 Nagamine, 5 Tsukuba-shi, Ibaraki, 305-0052, Japan

eriko-kobayashi@met.kishou.go.jp

5

Thank you very much for your thoughtful comments and suggestions.

Our responses to your comments are as follows:

### 10 Major points

My first major point would be that the fact that the two products are far more frequently found to be inconsistent with one another than would be expected by chance if both products had a comprehensive metrological traceability. We would expect only 5% of measurements to fall outside  $k=2$  yet far more cases occur (Section 5) particularly for daytime temperatures and tropospheric humidity. While I would not expect the authors to definitively ascertain the causes of this it would be useful to: 15 i) more explicitly flag this; ii) in the discussion more directly allude to various possible reasons; and iii) point to ways that this could in future be addressed. For the latter point the authors may wish to point to the value of repeating the analysis once a third generation RS92 product is available and whether known issues to be addressed in that product version may help or hinder the explanation of discovered differences.

20

-Thank you very much for giving us very valuable comments. We have verified the distribution of temperature differences for daytime observation (see Figure R1) on the basis of your comments and the short comments (SC1, SC2). (Figure R1 has been added to the Supplement.) As for the temperature differences in the troposphere (bottom panels of Figure R1), although we had excluded outliers from the samples, some samples have large negative differences, which 25 are either due to some issues during the flights or to possible calibration issues. On the other hand, the histograms of the temperature differences in the stratosphere (top panels in Figure R1) are considered to be normally distributed, with a non-zero mean, and we think that extreme cases such as those in the troposphere are not included. It is speculated that the main cause of the temperature differences in the stratosphere is due to systematic effects which still have not been fully corrected by both the GDP processes. As for RH differences in the troposphere (Figure R2), we have identified 30 that the humidity sensor of RS-11G has a dry bias in the lower troposphere and a wet bias in the upper troposphere based on comparison observations with CFH. Thus, we consider that the RS-11G GDP needs to be upgraded. It is our

future task to investigate the sources of the errors by e.g., making comparison observation with high-performance instruments. Also, we agree that we need to repeat the analysis with the third generation RS92 GRUAN data product to explain more details. We have added these notes to Sections 5.3 and 5.4 as follows:

5 -Section 5.3 : ‘Possible reasons for the fact that the percentages of “inconsistent” and “significantly different”  
categories are larger at pressures < 150hPa at daytime are as follows. We investigated the histogram of temperature  
10 difference and found that it is normally distributed and that the number of samples is large enough. Therefore, the  
temperature difference in the stratosphere at daytime is thought to be caused by unexpected systematic effects. Also,  
some samples showed large temperature differences (about -0.5 K) even in the troposphere, which is considered to be  
due either to some issues during the flights or to possible calibration problems. Further works, including comparisons  
with high-performance temperature instruments and additional ground checks, are required. Also, the RS92 GDP  
version 3 is supposed to be available in the near future (Ruud Dirksen, private communication, 2018), and it would be  
useful to redo the analysis with the new RS92 GDP.’

15 -Section 5.4 : ‘There are some samples with large RH differences (more than 10 %RH), which is considered to be either  
due to evaporative cooling effects or related to the sensor hysteresis characteristics as mentioned in section 5.2. In  
addition, the authors have identified that the humidity sensor of RS-11G shows drier values in the lower troposphere  
and wetter values in the upper troposphere when compared to chilled-mirror hygrometer measurements as mentioned in  
Section 6. It is our future work to improve the RS-11G RH GDP when more intercomparison data with chilled-mirror  
20 hygrometers become available.’

25

30



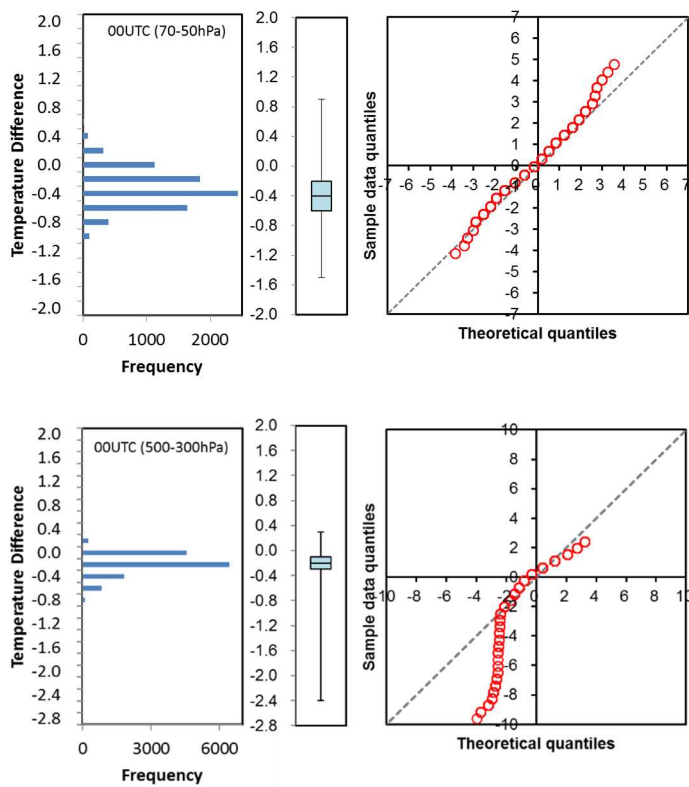
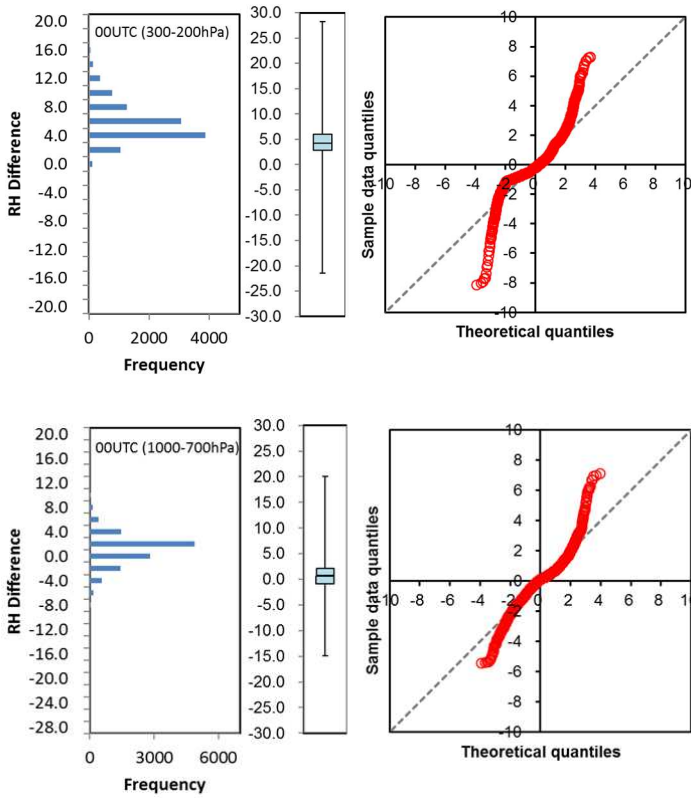


Figure R1: Distribution of temperature difference at pressure between 70 hPa and 50 hPa, and 500 hPa and 300 hPa for daytime.

Left: histogram, center: box plot, and Right: Quantile-Quantile plot.

5

10



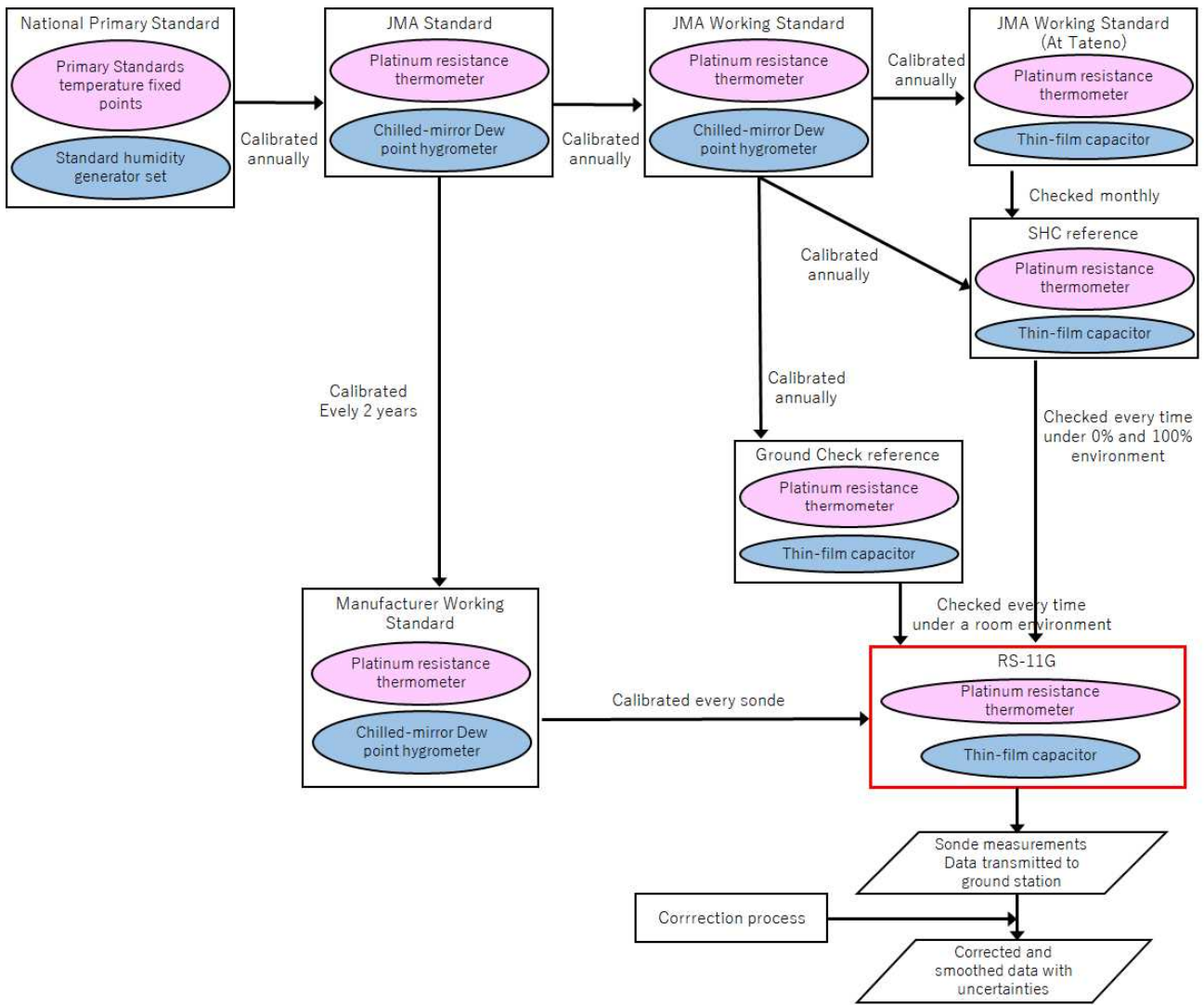
**Figure R2: Distribution of RH difference at pressure between 300 hPa and 200 hPa, and 1000 hPa and 700 hPa for daytime. Left:histogram, center:box plot, and Right:Quantile-Quantile plot.**

5

My second major point would be that substantially more detail on the product derivation for the RS-11G sonde would be useful in Section 2. Is there a diagram similar to the PTU diagrams produced within GAIA-CLIM by NPL? (e.g. <http://www.gaia-clim.eu/document/product-traceability-and-uncertainty-gruan-rs92-radiosonde-temperature-product>). Can the traceability analysis be shown in a similar manner by expanding / modifying Figure 1? Can further details on the important sources of uncertainty and how they were derived be shown? The GAIA-CLIM approach provides a basis to do this and the tables and analysis they employ in the PTU document linked above could be used and placed in a technical appendix in the final draft, likely at little effort to support Figures 1 through 4 and provide the reader with a better expectation of the RS-11G product. Tom Gardiner of NPL may be able to help the completion of this.

15

- We have added a diagram of traceability of the RS-11G sensors as in Figure R3 (Figure 1 in the revised manuscript). Further details of the traceability of the RS-11G sensors can be found in Section 5 of Kizu et al. (2018).



**Figure R3: Traceability of the temperature and RH sensors on RS-11G**

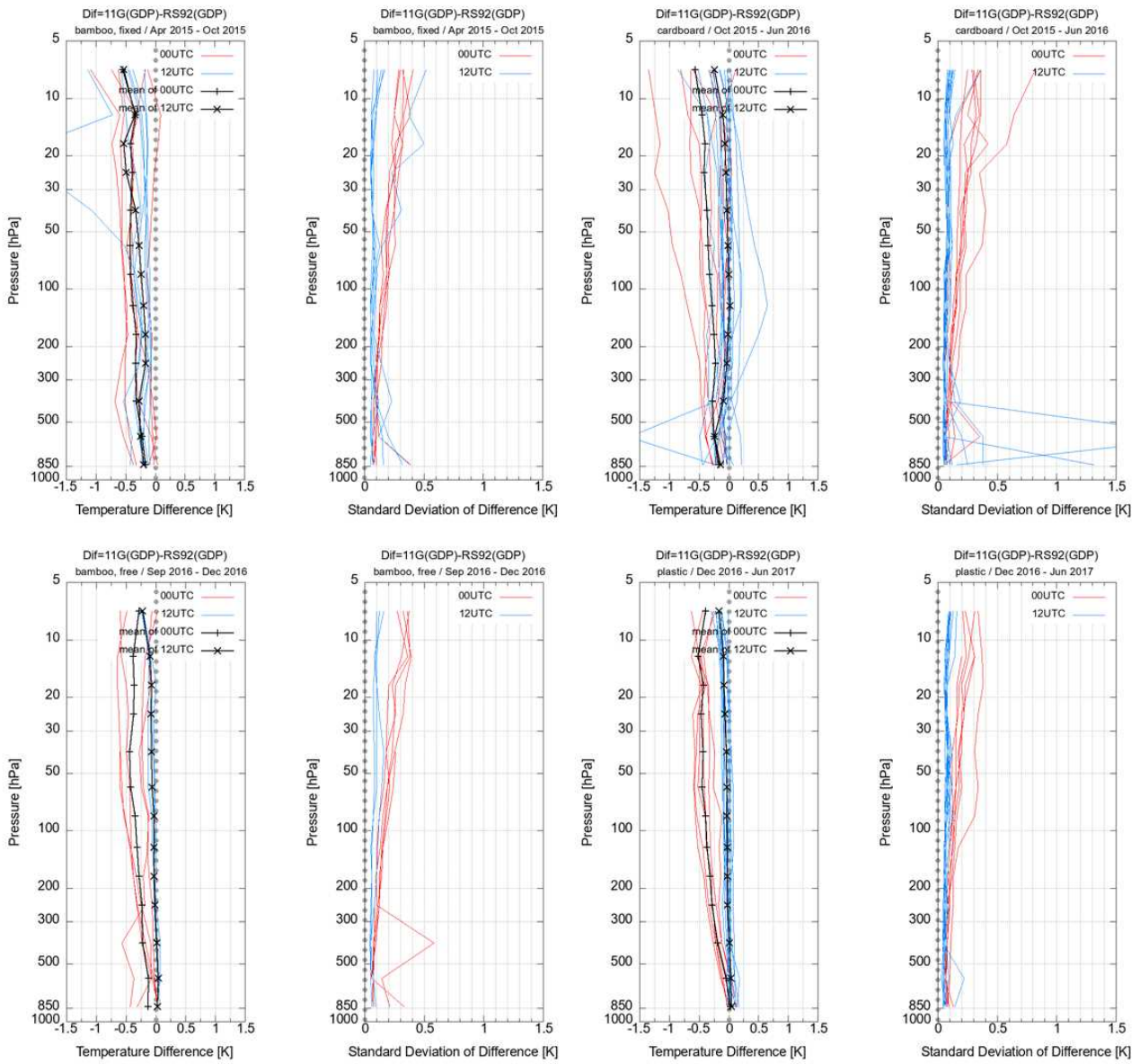
**Pink and blue ellipses indicate temperature and RH sensors, respectively. Parallelograms indicate data. The details of the correction procedures are shown in Figs. 2 through 5 in the revised manuscript.**

5

10

Third, given the differences found between different rod configurations (Section 3) would there be value in undertaking a split analysis where the results for each rig are considered in turn? If the resulting populations are too small to justify this then I would expand Section 3 to directly state this. Otherwise it would be a reasonable question that many readers may have.

5 -Figure R4 in this document shows temperature differences between RS-11G and RS92 for four different rig configurations. The sample size of each configuration is 11 for bamboo rod with fixed radiosondes, 21 for paper cardboard rod, 8 for bamboo rod with radiosondes hanged freely, and 17 for plastic cardboard rod. Although each sample size is not large enough, we think that it is useful to show the results for each configuration. The standard deviation for the paper cardboard rod tended to be larger than that for other rods. Also, the standard deviation with the  
10 plastic cardboard rod at pressure < 30 hPa is smaller than others in daytime data. In addition, when the radiosondes are fixed to the rod directly, sensor orientation can influence the temperature measurements (Rohden et al., 2016). We are planning to write another paper on the influences of different rig configurations on the temperature measurements. We have added Figure R4 (as Figure 7 in the revised manuscript) and revised the text in Section 3 as follows:  
15 ‘However, the paper cardboard rod was thicker than the bamboo rod and kept much air inside, this might have caused unexpected heat flow and influenced the temperature measurements. The temperature differences investigated for each of the four different rig configurations are shown in Fig. 7. The temperature differences are averaged for each pressure layer based on the method described in Section 4.2. Note that the five outliers are not excluded in Fig. 7. The temperature difference and standard deviation for the paper cardboard rod tend to be somewhat larger than those for the bamboo and plastic rods in the lower troposphere and the lower stratosphere. In the main analysis (Figs. 8-20 in the  
20 revised manuscript) three among the soundings with the paper cardboard rod were excluded because of very large temperature differences. When these three outliers are excluded, the mean difference for those with the paper cardboard rod is found to be essentially within the standard deviation for all the four configurations combined.’



**Figure R4: Temperature differences and standard deviation for four different rig configurations**

The temperature data were allocated to four categories, i.e., bamboo rod with fixed radiosondes (upper left two panels), paper cardboard rod (upper right two panels), bamboo rod with radiosondes hanged freely (lower left two panels), and plastic cardboard rod (lower right two panels). Red and blue lines show the results in daytime and nighttime observation, respectively. Black lines show means of temperature differences for daytime and nighttime data.

Specific comments:

1. In the abstract it would be useful to be clear that the departures experienced are typical values. Currently it could be read as being more exact than the results show.

5 -We have revised the text about the temperature and RH differences as follows:

The temperature measurements of RS-11G were, on average 0.4 K lower than those of RS92-SGP in the stratosphere for daytime observations. The relative humidity measurements of RS-11G were, on average 2%RH lower than those of RS92-SGP under 90–100%RH conditions, while RS-11G gave on average 5%RH higher values than RS92-SGP under  $\leq 50\%$ RH conditions.

10

2. Figures 1 through 4 the rationale for the different shaped boxes should be clearly described in the figure 1 caption and this referred to in the caption to subsequent figures.

15 -We have added the explanation for the different shaped boxes to Fig.1 through 4 (Fig. 2 through 5 in the revised manuscript).

3. To Section 2.2 it would be worth appending text that alludes to the fact that the Lead Centre plan to reprocess the RS-92  
20 product to v3 based upon new insights.

Some allusion to what the impacts of this are likely to be would, I think, be useful.

-We have added the following sentence to Section 2.2:

25 While the authors used version 2 of the RS92 GDP, version 3 is supposed to be available in the near future (Ruud Dirksen, private communication, 2018), and it would be useful to redo the analysis with it.

4. Page 6 paragraph starting line 5 why were there so many flights for which a GDP was not derived? Was there a pattern?  
Or an underlying reason why? This would be important to describe for full traceability of the analysis.

30

- The quality control procedures for the RS92 GDP are as follows (Dirksen et al., 2014): The first step verifies the results of the ground check procedure; after the GRUAN corrections have been applied to raw RS92 measurements, the second step checks that profile data are within valid ranges to ensure that the estimated uncertainties of GDPs are within the manufacturer-provided uncertainties. One of the excluded soundings of RS92 had more than 1.5%RH difference

between two RH sensors at the ground check. Most of the excluded RS92 GDPs are considered to have failed the second step of the quality control procedures. Two-third of the excluded soundings were daytime observations. It is our future task to clarify the exact causes. We have added these explanations to Section 3.

5 5. P. 10 line 10 and line 34 delete 'degrees'

-We have revise the text as suggested.

10 6. In table 6 does eq. 8 refer to equation 8 in your paper (seems unlikely) or rather in Dirksen et al? If the latter please be explicit.

15 -It is Equation 8 in Section 5.3 or our paper. We have added the text, 'Uncertainties for frequency splitting, contamination correction, and moving averaging are associated with the use of filtering or of moving averaging, which are determined by using the standard deviation of the correction amounts.' to the caption of Table 6 (Table 7 in revised paper).

Also, we have revised the description of 'Averaging (filtering)' in Table 5 as follows: 'Derived by Eq.(8) in Section 5.3, determined by using the standard deviation of the correction amount' (Table 6 in revised paper.)

20 Thank you very much again for your valuable comments and suggestions.

#### References

- 25 Kizu N., Sugidachi T., Kobayashi E., Hoshino S., Shimizu K., Maeda R. and Fujiwara M.: Technical characteristics and GRUAN data processing for the Meisei RS-11G and iMS-100 radiosondes (GRUAN-TD-5), GRUAN Lead Centre, 2018.
- Rohden, C., Sommer M. and Dirksen R.: Rigging Recommendations For Dual Radiosonde Soundings (GRUAN-TD-7). GRUAN Lead Centre, 2016.
- Dirksen, R. J., Sommer, M., Immler, F. J., Hurst, D. F., Kivi, R., and Vömel, H.: Reference quality upper-air measurements: GRUAN data processing for the Vaisala RS92 radiosonde, Atmos. Meas. Tech., 7, 4463-4490, 2014.

## Response to the comments (SC1)

Eriko Kobayashi<sup>1</sup>, Shunsuke Hoshino, Masami Iwabuchi, Takuji Sugidachi, Kensaku Shimizu and Masatomo Fujiwara

<sup>1</sup>Aerological Observatory, 1-2 Nagamine, 5 Tsukuba-shi, Ibaraki, 305-0052, Japan

eriko-kobayashi@met.kishou.go.jp

5

Thank you very much for your valuable comments and suggestions.

Our responses to your comments are as follows:

10 1) The paper considers the mean in each of the 13 pressure layers of Kobayashi et al. (2012) and compares the ensemble average of the two instruments for each layer. The statistical approach is quite simple and clear. Nonetheless, state of the art literature is not considered.

In my opinion, it should be important to deepen the literature review and cite recent papers on alternative methods for radiosonde comparisons such as the approach based on functional data analysis of Fassò et al. (2014).

15

-Thank you for your very useful comment. The analysis method of Fassò et al. (2014) would really be helpful for radiosonde data comparisons as an alternative approach. However, we are afraid that it will take long time for us to work on functional data analysis, and thus we would like to try it in a future work. We have added the citation of Fassò et al. (2014) as one of our future tasks.

20

2) Figure 22 shows that the two instruments have differences with a probability much larger than stated, under zero mean Gaussian assumptions, in Tab. 4, leading to inconsistent measurements. This is especially true for daytime as noted by the authors in the abstract, in Section 5.3 and in the Summary.

Now, this may be due partly to random and correlated effects and partly to a non-Gaussian distribution of the differences.

25 Using notation of Eq. (9), we may have that

$$d > 3u_c$$

for various (and combined) reasons:

a) The ensemble average difference, estimated in Eq.(6) and mentioned in point 1 of this discussion, is not zero. For example, the observed difference of 0.4 K is enough to justify Tab. 4?

30 b) d is not Gaussian;

c) the number of samples is small.



I do not consider point c) in detail here because  $M$  is not very small and, moreover, the number of seconds per layer is relatively large.

Regarding point a), we have information given by Figure 8 where  $M$  (independent) launches are averaged and each layer gives an average of possibly correlated differences (d). So the following question arises:

- 5 Is the ensemble average difference (6) large enough to justify the inconsistency or other co-location issues are present, or measurements are not Gaussian, so the use of Immler's constants ( $k=1,2,3$ ) is not appropriate?

I think that addressing this point using e.g. the histogram of differences (d) in each layer and/or other techniques to analyse the distribution of the differences (d) may help.

- 10 - We followed your suggestion to create the histogram of temperature differences to confirm the distribution. Please see the following Figure R1, which shows the histogram of temperature differences for 70-50hPa and 500-300hPa pressure layers. (Figure R1 has been added to the Supplement.) Firstly, as for the possibility that sample data has outliers, we detected outliers with a criterion of  $d > 3\sigma$  ( $d$  and  $\sigma$  are estimated in Eq. (3) and Eq. (7) for all data during a comparison period) and the detected data were excluded from the statistical analysis (i.e., in Fig.8 in the original manuscript).
- 15 Therefore, extreme outliers are not included in the results of the statistical analysis (i.e., in Fig.8 through Fig.20 in revised manuscript). However, the distribution at pressures between 500hPa and 300hPa (the bottom panels of Figure R1) shows that there are some samples with large negative differences. This is probably because there were some issues in some of the flights in the troposphere, or there may have been some cases with calibration issues. At the moment, we do not know the exact reasons.

- 20 The top two panels of Figure R1 are for the histogram of temperature differences for 70-50hPa pressure layer, which show that the mean of the temperature differences at daytime was about -0.4 K. The temperature differences are considered to be normally distributed. Therefore, the large temperature difference for the daytime observations may have occurred due to systematic effects. We have added this note to Section 5.3.

- To investigate possible systematic effects in more detail, we need to make much more comparison observations with high-performance instruments in actual flights. Also, more detailed ground checks may be necessary. These are our future tasks.
- 25

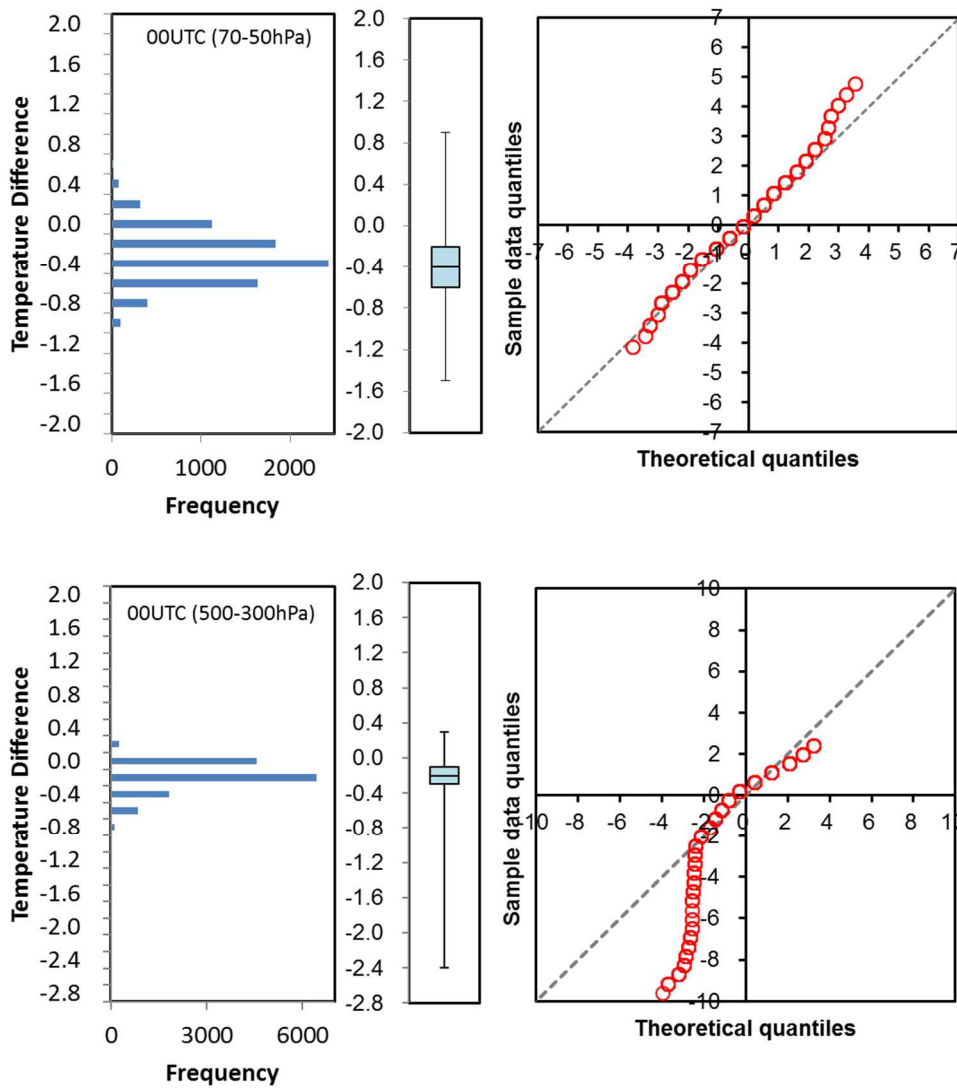
It is also possible that different rig configurations used for the comparison flights influenced the measurements, but this is not considered in the uncertainty budget in this study.

- 30 Minor points & typos:

Fig. 22 legend misspelling

Eq. (8) is a square missing?

-We have corrected these.



5 Figure R1: Distribution of the temperature differences at pressures between 70 hPa and 50 hPa, and 500 hPa and 300 hPa for daytime.

Left:histogram, center:box plot, and Right:Quantile-Quantile plot.

## Response to the comments (SC2)

Eriko Kobayashi<sup>1</sup>, Shunsuke Hoshino, Masami Iwabuchi, Takuji Sugidachi, Kensaku Shimizu and Masatomo Fujiwara

<sup>1</sup>Aerological Observatory, 1-2 Nagamine, 5 Tsukuba-shi, Ibaraki, 305-0052, Japan

eriko-kobayashi@met.kishou.go.jp

5

Thank you very much for your valuable comments and suggestions.

Our responses to your comments are as follows:

10

Regarding comments of RC2, please note that in my comment SC1, I suggest that "the histogram of differences (d) in each layer ... may help".

In fact,  $P(|d| > 2 \cdot \sigma) = 0.95$  is true if the differences are zero-mean Gaussian coherently with authors' lines 32-33: "Assume that  $m_1 = m_2$  is true and that uncertainty follows normal distribution.". If the differences are zero mean, but non-

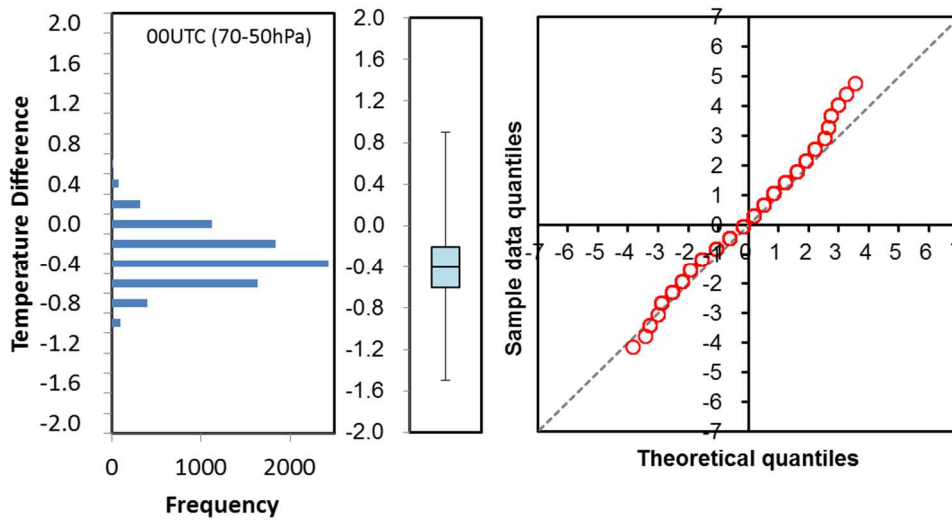
15 Gaussian, for example, zero mean Student's t with 3 degrees of freedom, then the constant 2 is wrong and the corresponding Student's t percentile should be used.

So if, after subtracting the mean of d, the distribution of d at a certain pressure level is not approximately Gaussian, then the constant 2 is not the appropriate one.

20 Which would be the correct constant depends on the distribution of d. So my general consideration does not give the final answer but may help in understanding a step more on this issue.

- Thank you for your very useful comment. We followed your suggestion in SC1 to create the histogram of temperature differences to confirm the distribution. Please see the following Figure R1 (this figure is also attached to our reply to your comments in SC1), which shows the histogram of temperature differences for 70-50hPa pressure layer. The mean of the temperature differences at daytime was about -0.4 K in 70-50hPa pressure layer. The temperature differences are considered to be normally distributed with a non-zero mean. Thus, the large temperature difference of 70-50hPa pressure layer for the daytime observations may have occurred due to systematic effects.

30



**Figure R1: Distribution of the temperature differences at pressures between 70 hPa and 50 hPa for daytime.**

**Left:histogram, center:box plot, and Right:Quantile-Quantile plot.**

# Comparison of the GRUAN data products for Meisei RS-11G and Vaisala RS92-SGP radiosondes at Tateno (36.06°N, 140.13°E), Japan

Eriko Kobayashi<sup>1</sup>, Shunsuke Hoshino<sup>1</sup>, Masami Iwabuchi<sup>2</sup>, Takuji Sugidachi<sup>3</sup>, Kensaku Shimizu<sup>3</sup> and Masatomo Fujiwara<sup>4</sup>

5 <sup>1</sup>Aerological Observatory, 1-2 Nagamine, Tsukuba-shi, Ibaraki, 305-0052, Japan

<sup>2</sup>Japan Meteorological Agency, 1-3-4 Otemachi, Chiyoda-ku, Tokyo, 100-8122, Japan

<sup>3</sup>Meisei Electric Co., Ltd., 2223 Naganumamachi, Isesaki-shi, Gunma, 372-8585, Japan

<sup>4</sup>Faculty of Environmental Earth Science, Hokkaido University, Kita 10 Nishi 5, Kita-ku, Sapporo, 060-0810, Japan

*Correspondence to:* Eriko Kobayashi (eriko-kobayashi@met.kishou.go.jp)

10 **Abstract.** A total of 87 dual flights of Meisei RS-11G radiosondes and Vaisala RS92-SGP radiosondes were carried out at the Aerological Observatory of the Japan Meteorological Agency (36.06°N, 140.13°E, 25.2 m) from April 2015 to June 2017. Global Climate Observing System (GCOS) Reference Upper-Air Network (GRUAN) data products from both sets of radiosonde data for 52 flights were subsequently created using a documented processing program along with the provision of optimal estimates for measurement uncertainty. Differences in the performance of the radiosondes were then quantified  
15 using the GRUAN data products~~The authors then quantified differences in the performance of the radiosondes using GRUAN data products.~~ The temperature measurements of RS-11G were, on average 0.4 K lower than those of RS92-SGP in the stratosphere for during daytime observations. The relative humidity measurements of RS-11G were, on average 2%RH lower than those of RS92-SGP under 90–100%RH conditions, while RS-11G gave on average 5%RH higher values than RS92-SGP under  $\leq 50\%$ RH conditions. The results from a dual flight of RS-11G and a cryogenic frostpoint hygrometer  
20 Differences between the RS-11G and RS92-SGP temperature and relative humidity measurements, based on combined uncertainties, were also investigated to clarify major influences behind the differences~~The authors additionally investigated the RS-11G minus RS92-SGP difference of temperature and relative humidity based on combined uncertainties to clarify major influences behind the difference.~~ It was found that temperature differences in the stratosphere during daytime observation were within the range of  
25 uncertainty ( $k = 2$ ), and that sensor orientation is the major source of uncertainty in the RS92-SGP temperature measurement, while sensor albedo is the major source of uncertainty for RS-11G. The relative humidity difference in the troposphere was larger than the uncertainty ( $k = 2$ ) after the radiosondes had passed through the cloud layer, and the temperature-humidity dependence correction was the major source of uncertainty in RS-11G relative humidity measurement. Uncertainties for all soundings were also statistically investigated. Most night-time temperature measurements differences for pressures of  $> 10$   
30 hPa were in agreement, while relative humidity differences in the middle troposphere exhibited significant differences. Around half of all daytime temperature measurements differences at pressures of  $\leq 150$  hPa and relative humidity measurements differences around the 500 hPa level were not in agreement.

## 1 Introduction

The Aerological Observatory of the Japan Meteorological Agency (JMA) (location: Tateno, 36.06°N, 140.13°E, 25.2 m above mean sea level) has played a leading role in the operation of all JMA's radiosonde stations since its establishment in 1920. The Tateno station was chosen as a candidate site for the Global Climate Observation System (GCOS) Reference Upper-Air Network (GRUAN; Seidel et al., 2009; Bodeker et al., 2016) in 2009, and was certified as a GRUAN site in 2018. The Vaisala RS92-SGP radiosonde (referred to here as RS92; Dirksen et al., 2014) was used for routine observation at the site from December 2009 to June 2013 (Kobayashi et al., 2015), after which it was replaced with the Meisei RS-11G radiosonde (Kizu et al., 2018). The Meisei iMS-100 radiosonde (Kizu et al., 2018) was also introduced in September 2017. RS-11G is equipped with a thermistor, a capacitive relative humidity (RH) sensor, a Global Positioning System (GPS) receiver for monitoring ~~altitude~~height, pressure and horizontal wind, and a transmitter at 400 MHz (Kizu et al., 2018). Compared with the previous-generation Meisei RS-06G radiosonde (Nash et al., 2011), the quality of the temperature and RH measurements have been improved~~temperature and RH measurement has been improved~~ via hardware and software upgrades. RS-11G is used at a variety of JMA stations, at stations of other meteorological service providers, and by numerous research institutes and universities.

GRUAN ~~is providing~~will provide long-term, high-quality climate data records ~~for levels~~ ranging from the surface to the troposphere to the stratosphere (Seidel et al., 2009; Bodeker et al., 2016). GRUAN data products (GDPs) ~~are~~will be open, documented in peer-reviewed literature and traceable to SI standards, and ~~will~~ have the best possible estimates of vertically resolved measurement uncertainties (Dirksen et al., 2014). When measurement systems, including instrument types are changed, any systematic biases between the old and new systems need to be characterized (GCOS-134, 2009; GCOS-170, 2013). In this context, JMA previously made several changes in radiosonde types for improved upper-air measurement with state-of-the-art technology (Kizu et al., 2018), and ~~regularly~~habitually makes dual flights of old and new radiosondes to characterize these measurements (JMA Aerological Division, 1983; Sakoda et al., 1999; Kobayashi et al., 2012). Kobayashi et al. (2012) reported results from 103 dual flights of the Meisei RS2-91 rawinsonde and RS92 when the latter was introduced at Tateno.

Following the change in routine radiosonde type from RS92 to RS-11G at Tateno in July 2013, manufacturer-independent ground checking for RS-11G was started from July 2014, and a thin hydrophilic polymer of RH sensor was updated in January 2015. And then a total of 87 weekly dual flights of RS-11G and RS92 were conducted from April 2015 to June 2017 (avoiding the July to mid-September period when there is ~~an~~ heightened likelihood~~elevated chance~~ that a radiosonde may fall into the densely populated Tokyo metropolitan area). The GRUAN data product made from RS92 measurements at Tateno was created at the GRUAN Lead Centre, and is available on the GRUAN website at <https://www.gruan.org/>. The GRUAN data product made from RS-11G measurements was created at Tateno and submitted to the GRUAN Lead Centre, and will be available on the GRUAN website when this paper is published. GRUAN sites undertake some of the roles of Lead Centre to reduce its workload and Tateno accepted a role of generating GDP of Meisei GPS sondes. -A novel aspect of

GRUAN data products is that vertically resolved uncertainty estimates and metadata are provided for each sounding. Quantitative comparisons of GRUAN data products based on data from these radiosondes are important in securing the temporal homogeneity of climate data records (GCOS-134, 2009). This paper details results from comparison of GRUAN data products based on data collected by RS-11G and RS92 on dual flights conducted from Tateno between April 2015 and June 2017.

In this paper, Section 2 describes the instrumentation used and GRUAN data products (i.e., data processing details) for RS-11G and RS92, Section 3 outlines the methods used for dual launches, Section 4 details the comparison analysis methods, Section 5 gives the comparison results, Section 6 discusses outcomes from a dual flight of RS-11G and a cryogenic frostpoint hygrometer (CFH; Vömel et al., 2007, 2016), and Section 7 summarizes the findings.

## 2 Instrumentation

Table 1 shows the specifications of RS92 and RS-11G. The ground-station for the RS92 was a Vaisala DigiCora Sounding System, while the ground-station for the RS-11G was a Meisei MGPS2. ~~The former is operated with a Vaisala DigiCora Sounding System III, and the latter is operated with a Meisei MGPS2.~~

### 2.1 Sensor material and GRUAN data processing for RS-11G

RS-11G has a thermistor temperature sensor and an electrostatic capacitance humidity sensor. Geopotential height is derived from GPS data, and pressure is derived from GPS geopotential height. Wind speed and wind direction are calculated from GPS Doppler speed data.

Figure 1 shows traceability of the temperature and RH sensors on RS-11G. Further details of traceability of the RS-11G sensors can be found in Section 5 of Kizu et al. (2018). All the RS-11G radiosondes used are subjected to the manufacturer's specified ground check before launch. At this time, the temperature and RH sensors are compared with reference sensors under indoor conditions (Appendix 7 of Kizu et al., 2018). If the differences between RS-11G and the reference sensors are within  $\Delta U < \pm 7\%RH$  and  $\Delta T < \pm 0.5^\circ C$ , the radiosonde is considered suitable for observation. The units are also subjected to manufacturer-independent ground checking with a standard humidity chamber (SHC, Appendix F of Kizu et al., 2018) at least a day before launch. The SHC provides conditions of approximately 0%RH using a molecular sieve and 100%RH using a sponge saturated with distilled water. The RH sensor of RS-11G is compared with the reference sensor inside the ~~for~~ SHC during this additional ground check. The results of the SHC ground check are used to create new calibration coefficients together with the values of the original manufacturer's calibration, which is conducted between 15%RH and 95%RH (Kizu et al., 2018).

~~Figure 1~~Figure 2 shows the processing flow followed to derive temperature ~~measurement~~-values from RS-11G GRUAN data processing-version 1. RS-11G observation data are collected at 1-second intervals and the raw data is converted into converted to create the RS-11G GRUAN data product (Kizu et al., 2018). The received frequency for temperature is converted into thermistor resistance, which is then converted into temperature using factory-set calibration coefficients. The raw temperature data need to be corrected for heat spike ~~influences~~errors and solar radiation ~~influences~~errors. Heat spike ~~influences~~errors result from air being heated by the sensor frame, package, and balloon, but warm air from the balloon may be the main source (e.g., Shimizu and Hasebe, 2010). Such ~~external influences on the temperature measurements~~errors are corrected when the string between the balloon and the radiosonde ~~is may be~~ too short (e.g., 10 m with a 600 g balloon) using minima-pass filtering and a moving-average procedure. The minima-pass filtering is applied to the temperature measurements with a certain time window, which picks up only minimum values within the time window (Kizu et al., 2018). Solar radiation errors result from solar heating, particularly at higher altitudes during daytime soundings. The amount of such heating can be ~~estimated~~estimated theoretically using a heat-balance equation (JMA, 1995) as a function of solar radiative flux, solar elevation angle, pressure, temperature, and ventilation speed at the measurement time. Although there are other error sources such as infrared radiation, evaporative cooling when the thermistor is coated with water or ice during flight through a cloud layer, and sensor response time, correction to remove errors from these sources is not applied for the current RS-11G GDP because their impacts are negligible compared to the above-mentioned sources or difficult to quantify.

~~Figure 2~~Figure 3 shows the processing flow followed to derive RH measurementsvalues for RS-11G GDP. The received frequency for RH is converted into capacitance, which is then converted into raw RH data using sensor-specific calibration coefficients. The raw RH data need to be corrected for sensor time-lag, contamination, temperature-humidity dependence, and sensor-versus-air temperature difference. The response time of thin-film polymer RH sensors increases exponentially at lower temperatures, and has been measured in laboratory experiments at various temperature points in a chamber (Kizu et al., 2018). The response time also depends on the direction of change between wet and dry conditions. Current GRUAN data processing for RS-11G ~~uses the involves the use of~~ response time values from dry to wet conditions because the use of values from wet to dry conditions could result in over-correction. A contamination filter is used to remove errors caused by water droplets or ice in rainy conditions. This type of wet contamination error manifests as spikes in the raw RH profile; ~~therefore,~~ and a minimum filter, which is similar to the filter for heat spikes in the temperature measurements, with a window width of pendulum frequency, is ~~therefore~~ applied to the high-frequency components of raw RH data (Kizu et al., 2018). The temperature-dependence of thin-film polymer RH sensors in colder environments was evaluated under laboratory conditions by comparison with reference values from a chilled mirror hygrometer, and a correction curve was developed using the least squares method. The RH sensor has wet biases between -60°C and 40°C, and dry biases below -60°C. Further details of the temperature dependence correction of RH sensor can be found in Kizu et al. (2018, Figure 3.19). As the temperature of the RH sensor is not exactly the same as that of ambient air due to solar heating and heat conduction from the RS-11G unit, RH values from RS-11G need to be adjusted with respect to the saturation pressure of the ambient air temperature (a process referred to as  $T_s/T_a$  correction). The temperature of the RH sensor is estimated using data on air temperature and the amount



of solar heating on the RH sensor. A further error source is the hysteresis property of the RH sensor. The results of chamber experiments showed that RH values exhibited wet biases when the condition was changed from 100%RH to 0%RH. As related quantification is rather complicated, this influence is not corrected in the current GDP version.

~~Figure 3~~~~Figure 4~~ shows the processing flow followed to derive geopotential height and pressure measurement values for RS-11G GDP. Geopotential height is calculated from geometric altitude data provided by the GPS receiver on RS-11G. The offset between the altitude when the balloon is actually released and the altitude at release time, as determined by the sounding system, is added to the measurement value. As ~~altitude~~~~height~~ data are also affected by the payload, a moving average is applied to the data with a 61-point-wide window.

~~Figure 4~~~~Figure 5~~ shows the processing flow followed to derive horizontal wind measurement values for RS-11G GDP. Zonal and meridional winds (U and V, respectively) are derived from GPS Doppler speed data. As U and V data include random noise caused by pendulum motion, as with ~~altitude~~~~height~~ data, a low-pass digital filter with a Kaiser window (Appendix E<sub>7</sub> of Kizu et al., 2018) is applied to remove this influence, and the final wind speed and wind direction data are derived from the smoothed values of U and V.

Further details of data processing for RS-11G GDP can be found in Kizu et al. (2018).

## 2.2 Sensor material and GRUAN data processing for RS92

RS92 has a capacitive wire temperature sensor, a thin-film capacitor with a heated twin humidity sensor, a silicon pressure sensor, and a GPS receiver (Dirksen et al., 2014). All RS92 units are subjected the manufacturer's specified ground check before launch. At this time, the temperature and RH sensors are inserted into a ground check unit (GC25) and heated to remove contamination. The temperature sensor is then compared with the reference sensors under indoor conditions and the RH sensor is checked under dry (about 0%RH) conditions maintained with a desiccant bed. Pressure is compared with the reference value of the Automated Meteorological Data Acquisition System (AMeDAS) run by JMA at Tateno. If the differences between RS92 and the reference values are within  $\Delta U < \pm 4\%RH$ ,  $\Delta T < \pm 1.0^\circ C$ , and  $\Delta P < \pm 3.0$  hPa, the radiosonde is considered suitable for observation. Additional ground checking with the SHC (under 100%RH conditions) for RS92 is not conducted at Tateno station. Version 2 of RS92 GDP (Dirksen, 2014) was created at the GRUAN Lead Centre. Related processing is briefly outlined below.

The processing flow followed for temperature data is shown in ~~Figure 2~~~~Figure 2~~ of Dirksen et al. (2014). Raw temperature data are corrected for solar radiation errors and heat spike errors as with RS-11G. Solar radiation errors relate to overall direct and scattered solar irradiance, ambient pressure and ventilation, and are estimated from a radiative transfer model that takes into account the solar elevation angle at the measurement time. Vaisala radiation error correction data are also available in table form. GRUAN data processing for RS92 involves application of the average of the two, as it remains unclear which correction model is more appropriate (Dirksen et al., 2014, GRUAN-TD-4, 2016). Heat spike errors are removed by applying a low-pass digital filter with a cut-off frequency of 0.1 Hz (Dirksen et al., 2014).

RS92 RH sensors have a temperature-dependent dry bias. GRUAN data processing corrects for this based on multiplication with an empirical correction factor before other forms of correction are applied. The raw RH data are corrected for radiation dry bias, sensor time-lag, and temperature-dependence errors. Radiation dry bias is caused by solar heating on the RH sensors, and the same approach as for the temperature sensor is used to estimate the amount of correction required. RH sensor response slows at low temperatures, and time-lag becomes significant below  $-40^{\circ}\text{C}$ . Time-lag is corrected based on the relationship between a time constant and temperature using a low-pass filter in the GRUAN data product for RS92 (Dirksen et al., 2014).

The RS92 used at Tateno has a pressure sensor and a GPS receiver, both of which can be used to calculate geopotential height. Pressure measurement data are used to derive geopotential height in the lower part of the profile where the signal-to-noise performance of the pressure sensor is sufficiently good, and measurements from the GPS sensor are used in the upper part of the profile. The altitude of the switch is typically between 9 and 17 km (GRUAN-TD-4, 2016). The pressure sensor is recalibrated against the reference value from a station barometer during the ground check, and calculation is performed to determine the correction factor for application to the entire pressure profile during sounding (Dirksen et al., 2014).

U and V data are retrieved from the Doppler shift in the GPS carrier signal, and noise is removed using a low-pass digital filter. The smoothed data are converted into wind speed and direction values (Dirksen et al., 2014).

While the authors used version 2 of the RS92 GDP, version 3 is supposed to be available in the near future (Sommer, 2016) and it would be useful to redo the analysis with it.

### 3 Methods used for dual launches

GDPs produced from RS-11G and RS92 data between April 2015 and June 2017 were chosen for this study. The RS-11G GDP was created at Tateno for the analysis of this paper. However, Among all the 87 dual flights involved, 5 RS-11G flight data were not used due to problems in data processing. Once an RS-11G GDP is created, quality control procedures should be taken; however the quality control procedures have not been established and are still under consideration. Therefore, 82 RS-11G GDPs were available for this paper. Among the 82 dual flights, 25 RS92 GDPs failed the quality control procedures at the GRUAN Lead Centre and were not available at the GRUAN data archive. The quality control procedures for the RS92 GDP are as follows (Dirksen et al., 2014): The first step verifies the results of the ground check procedure; after the GRUAN corrections have been applied to raw RS92 measurements, the second step checks that profile data are within valid ranges to ensure that the estimated uncertainties of GDPs are within the manufacturer-provided uncertainties. For one of the 25 RS92 data, there was more than 1.5%RH difference between the two RH sensors at the ground check, while other 24 RS92 data did not have any problem in ground check data. Also, another one of the excluded RS92 had instrumental issues during the flight. Therefore, most of the excluded 25 RS92 have failed the second step of the quality control procedures at the GRUAN Lead Centre. It is noted that two thirds of the excluded 25 RS92 data were daytime observations, and 8 dual soundings had

large differences between RS-11G and RS92 (processed at Tateno with the manufacturer's software) in temperature or RH profiles. Furthermore, 5 dual soundings were judged as outliers by the results of RS-11G RH measurements or of the temperature differences. These are the reason why we only have 52 sets of dual flight data for the data analysis. ~~5 were excluded from the analysis due to significant RS-11G water/ice contamination issues, and 30 more were excluded because GDPs of the soundings were not made or there were in-flight instrumental issues.~~ Analysis of 22 daytime (09 LT, 00 UTC) and 30 nighttime (21 LT, 12 UTC) measurements (52 in all) is reported below. Table 2 shows surface observations and balloon burst heights for each of the 52 flights. The burst heights were mostly above 30 km.

~~Figure 5~~Figure 6 shows the flight configurations. For all soundings, a 1,200 g balloon was used. The RS-11G and RS92 units were attached to both ends of a 1 m or 0.9 m rod. Table 3 shows the details of the rigs used for the comparison flights. The bamboo rod used from April 2015 to September 2015 was replaced with a lightweight paper-cardboard rod in October 2015 for safety in the event of a fall to the ground. During these periods, the radiosondes were directly attached to the rod with elevated temperature sensors to avoid any rod-related influence on temperature and humidity measurement. However, the paper cardboard rod was thicker than the bamboo rod, and kept much air inside, which this might have caused an unexpected heat flow and influenced ~~on the~~ temperature measurements. The temperature differences investigated for each of the four different rig configurations are shown in Fig. 7. The temperature differences are averaged for each pressure layer based on the method described in Section 4.2. Note that the five outliers are not excluded in Fig. 7. The  $\overline{T}$  temperature differences and standard deviation withfor the paper cardboard rod tended to be somewhat larger than those withfor the bamboo ~~or~~and plastic rods in the lower troposphere and the lower stratosphere. In the main analysis (Figs. 8-20), three among the soundings with the paper cardboard rod were excluded because of very large temperature differences. When these three outliers are excluded, although the mean difference withfor these with the paper cardboard rod was found to be essentially within the standard deviation ~~offor all the~~ four configurations combined mean difference for all soundings. Additionally, for radiosondes with a direct rod attachment, temperature differences can be expected due to varying sensor orientation with respect to the position of the sun. Accordingly, the rig was replaced with a bamboo rod from which radiosondes were hung in September 2016. The latest rod, which is a plastic cardboard composite with an aluminum tape covering (Table 3) applied to reduce the effects of radiation, has been used since December 2016 based on the GRUAN recommendation (Rohden et al., 2016). Fig. 7 shows that the standard deviations with the plastic cardboard rod at pressure < 30 hPa is smaller than others in daytime data.

#### 4 Comparison method

Data for the GDPs of RS-11G and RS92 are collected at 1-second intervals. Temporally simultaneous observations were compared, using the ~~The authors compared simultaneous observation data on the basis of time since balloon release using a statistical approach as per the approach~~ adopted by Kobayashi et al. (2012) to evaluate differences in sensors and correction methods.

#### 4.1 Time adjustment procedure

Observation data from each radiosonde have a time stamp from the relevant sounding system. As there may be minor discrepancies in balloon-launch time stamps, these data are time-adjusted using temperature as a parameter based on Kobayashi et al. (2012). Values in any 5-minute period during which the temperature difference between two radiosondes is smaller than 1 K with a marked change (e.g., in the inversion layer) are chosen from temperature data between 3 and 30 minutes after balloon release. Correlation coefficients are calculated by shifting the two temperature profiles every second. The lag time that gives the greatest correlation coefficient is used to shift one of the two sets of profiles. In this study, the time lag between RS-11G and RS92 was less than 3 seconds in most cases.

#### 4.2 Statistical procedure

After time adjustment, per-second differences between RS-11G and RS92 measurements were calculated and the resulting data were allocated to the following 13 pressure layers based on RS92 pressure data ( $P_t^{92}$ , where 92 represents RS92 and  $i$  indicates the time step) as per Kobayashi et al. (2012). The bins for 13 pressure layers are listed in Table 4.

$$1st\ layer : 1000\ hPa \geq P_t^{92} > 700\ hPa$$

$$2nd\ layer : 700\ hPa \geq P_t^{92} > 500\ hPa$$

$$3rd\ layer : 500\ hPa \geq P_t^{92} > 300\ hPa$$

$$4th\ layer : 300\ hPa \geq P_t^{92} > 200\ hPa$$

$$5th\ layer : 200\ hPa \geq P_t^{92} > 150\ hPa$$

$$6th\ layer : 150\ hPa \geq P_t^{92} > 100\ hPa$$

$$7th\ layer : 100\ hPa \geq P_t^{92} > 70\ hPa$$

$$8th\ layer : 70\ hPa \geq P_t^{92} > 50\ hPa$$

$$9th\ layer : 50\ hPa \geq P_t^{92} > 30\ hPa$$

$$10th\ layer : 30\ hPa \geq P_t^{92} > 20\ hPa$$

$$11th\ layer : 20\ hPa \geq P_t^{92} > 15\ hPa$$

$$12th\ layer : 15\ hPa \geq P_t^{92} > 10\ hPa$$

$$13th\ layer : 10\ hPa \geq P_t^{92} > 5\ hPa$$

$A_i^{11G}$  and  $A_i^{92}$  are RS-11G and RS92 values, respectively, at time step  $i$ . The mean of each variable ( $\overline{A^{11G}}$ ,  $\overline{A^{92}}$ ) and the mean of the difference ( $\overline{\Delta A}$ ) are calculated using Eqs. (1) – (3) below for each pressure layer (from  $i = is$  to  $i = ie$ ). The difference is defined as the RS-11G value minus the RS92 value ( $\Delta A_i = A_i^{11G} - A_i^{92}$ ).

$$\overline{A^{11G}} = \frac{\sum_{i=is}^{ie} A_i^{11G}}{ie - is + 1} \quad (1)$$

$$5 \quad \overline{A^{92}} = \frac{\sum_{i=is}^{ie} A_i^{92}}{ie - is + 1} \quad (2)$$

$$\overline{\Delta A} = \frac{\sum_{i=is}^{ie} \Delta A_i}{ie - is + 1} \quad (3)$$

Statistics for each pressure layer are calculated separately for daytime, nighttime, and individual seasons. ~~Figure 6~~Figure 8 shows the number of flights for each season. M is defined as the total number of soundings (k=1,2,...,M) in each condition; e.g., M = 6 for daytime in spring, and M = 7 for nighttime in spring.

The ensemble mean of the RS-11G GDP for individual pressure layers with each condition is

$$\overline{\overline{A^{11G}}} = \frac{\sum_{k=1}^M \overline{A_k^{11G}}}{M} \quad (4)$$

The ensemble mean of RS92 GDP for each pressure layer for each condition is

$$\overline{\overline{A^{92}}} = \frac{\sum_{k=1}^M \overline{A_k^{92}}}{M} \quad (5)$$

10 The ensemble mean difference for each pressure layer is

$$\overline{\overline{\Delta A}} = \frac{\sum_{k=1}^M \overline{\Delta A_k}}{M} \quad (6)$$

The standard deviation of the ensemble mean difference for individual pressure layers for each condition is

$$\sigma = \sqrt{\frac{\sum_{k=1}^M (\overline{\Delta A_k} - \overline{\overline{\Delta A}})^2}{M}} \quad (7)$$

Daytime observation is conducted at 00 UTC (9:00 LT, launched at 8:30 LT) and nighttime observation at 12 UTC (21:00 LT, launched at 20:30 LT). Spring is defined as March to May, summer June to August, autumn September to November, and winter December to February. ~~Figure 7~~Figure 9 shows mean profiles of temperature and RH from RS-11G.

## 5 Results

### 20 5.1 Comparison of simultaneous measurements

~~Figure 8~~Figure 10 shows ensemble mean temperature differences and the standard deviation of these differences. The RS92 GDP was chosen as thea reference in this study for its status as a GRUAN certified data product. In the stratosphere during the daytime, the RS-11G GDP value is about -0.4 K lower than the RS92 GDP value. At nighttime, temperature differences are very small at pressures > -20 hPa. Differences among the four seasons are limited.

25 ~~Figure 9~~Figure 11 shows ensemble mean RH differences and the standard deviation of these differences. The RH values of RS-11G GDPs are larger than those of RS92 GDPs, and the RH difference exceeds 2%RH between 500 and 150 hPa in both

daytime and nighttime data. ~~Figure 10~~Figure 12 shows ensemble mean RH differences classified for six RH ranges. Most samples in the 90–100%RH range are found at pressures > 300 hPa, and the RS-11G GDP value in this range is 2%RH smaller than the RS92 GDP value. The RH differences in the 50–70%RH and 70–90%RH ranges are very small at pressures > 500 hPa. In dry conditions with values less than 50%RH, the RS-11G GDP value is larger than the RS92 GDP value and the RH difference is approximately 5%RH between 500 and 150 hPa. RH differences in the 0–10%RH range are within 1%RH at pressures ≤ 70 hPa. The results shown in ~~Fig. 10~~Fig. 12 also indicate that absolute RH differences at pressures > 500 hPa in ~~Fig. 9~~Fig. 11 are smaller than those between 500 and 200 hPa because the mean differences are balanced out by the values in both dry and humid conditions.

The RH sensor for the RS-11G GDP is checked using SHC values of 0%RH (a desiccant-based dry condition) and 100%RH (a distilled water-based wet condition) before launch, and the check data are utilized for correction of the RH calibration curve in the GDP. ~~Figure 11~~Figure 13 shows RH profiles with and without SHC correction for 7 March 2016 at 12 UTC as an example of the effects of SHC correction. The difference between RS-11G GDP with correction and RS92 GDP is smaller in wet conditions at values greater than 90%RH, and SHC correction can therefore be deemed effective in this case. Half of the samples including very humid conditions indicate that SHC correction for RS-11G gives improved results. However, the effects of SHC correction for very dry conditions are relatively limited.

Figures 124 and 135 show seasonal ensemble mean differences of pressure and geopotential height and the related standard deviations, respectively. RS-11G GDP pressure is generally lower than that of RS92 GDP except at pressures > 700 hPa in summer and autumn. In the daytime, RS-11G GDP pressure is 0.5 hPa lower than RS92 GDP between 500 and 50 hPa, and the pressure difference is small at pressures ≤ 50 hPa. The pressure difference at nighttime is smaller than during the day. The measurement methods used contribute to pressure differences in tropospheric data; RS-11G GDP pressure is derived from GPS data, while RS92 GDP pressure is derived from pressure sensor data. Temperature differences also influence pressure differences particularly in stratosphere, because both radiosondes use temperature, relative humidity, and GPS altitude data to derive pressure data. In ~~Fig. 8~~Fig. 10, the daytime temperature difference is larger than at nighttime, which may cause differences between daytime and nighttime data in pressure comparison results. The RS-11G GDP geopotential height is larger than that of RS92 GDP in the daytime, and the difference is 10–20 m at pressures ≤ 100 hPa. The geopotential height difference at nighttime is smaller than during the day. The daytime standard deviation in spring at pressures ≤ 30 hPa is much larger than the standard deviation in other seasonsothers, but if the exceptional case causing this is removed, the seasonal difference is very small.

~~Figure 14~~Figure 16 shows wind speed and wind direction profiles from each RS-11G sounding. Figures 157, 168, 179, and 1820 show seasonal ensemble mean differences of wind speed and wind direction. The mean wind speed differences are smaller than 0.2 m s<sup>-1</sup>, and the mean wind direction differences are smaller than 1 degree. The mean wind component differences are also smaller than 0.1 m s<sup>-1</sup>, and the standard deviations for all seasons are smaller than 0.1 m s<sup>-1</sup> between 700 and 15 hPa. As RS-11G and RS92 both use GPS-based wind measurement procedures, RS-11G GDP winds and RS92 GDP winds show a close statistical correlation.

## 5.2 Case analysis with consideration of uncertainty estimates in GRUAN data products

An important aspect of GDP data is that uncertainty estimates are given for each measurement point to support climate record quality. Immler et al. (2010) defined terminology for ~~comparing~~~~checking~~ pairs of independent measurements of the same quantity for consistency using estimated uncertainties as described here. Consider two independent measurements,  $m_1$  and  $m_2$ , of the same measurand with standard uncertainties  $u_1$  and  $u_2$ , respectively. Assume that  $m_1 = m_2$  is true and that uncertainty follows normal distribution. Expression of the degree of consistency between  $m_1$  and  $m_2$  is given as in ~~Table 4~~~~Table 5~~, where  $k$  is a coverage factor. Overall uncertainty is calculated from independent sources of uncertainties. The sources contributing to the RS-11G temperature and RH uncertainty budget are listed in Tables ~~56~~ and ~~67~~, respectively. Uncertainty estimates for RS92 and RS-11G GDPs are described in Dirksen et al. (2014) and Kizu et al. (2018), respectively.

~~Figure 19~~~~Figure 21~~ shows temperature and RH profiles along with related uncertainties for a dual flight conducted at 00 UTC on 28 October 2016 as an example of a daytime flight. The radiosondes appear to pass through cloud layers around 850 and 500 hPa, at which a value of almost 100%RH is observed. The RS-11G GDP temperature is lower than that of RS92 GDP at pressures  $> 400$  hPa, and the related difference is larger than the expanded uncertainty (with  $k = 2$ ). The temperature difference is notably larger than the uncertainty when the RH drops quickly (around 850 and 500 hPa). The temperature difference between 400 hPa and the tropopause is within the standard uncertainty (with  $k = 1$ ). For RH, the RS-11G GDP is larger than the RS92 GDP after the radiosondes pass through the layer in which humidity drops rapidly (around 500 and 250 hPa) where the RH difference is larger than the expanded uncertainty. When radiosondes leave clouds, temperature data and RH sensors may be affected by cooling as water or ice evaporates from the sensor surface, leading to errors in measurement. Additionally, ~~the~~ RH measurement may be affected by sensor hysteresis characteristics. The RS-11G GDP includes a noise filter that removes the influence of water or ice when radiosondes pass through clouds, and the RH sensor of RS92 has a heating function to prevent icing during flight. The RS-11G GDP appears to be affected by water droplets or ice more than the RS92 GDP in this case. The temperature difference in the stratosphere is also larger than that in the troposphere, probably due to errors in the treatment of solar radiation effects for both GDPs. However, the difference is within the expanded uncertainty, and the discrepancy is categorized as being in agreement. The RH of the RS-11G GDP in the stratosphere is a few %RH ~~degrees-~~larger than the RS92 GDP and within the standard uncertainty. However, the water vapor mixing ratios derived from the RH of the RS-11G GDP and the RS92 GDP in the lower stratosphere (between 70 and 60 hPa) in ~~Fig. 19~~~~Fig. 21~~ are approximately 4.7 and 3.0 ppmv, respectively, and the difference between RS-11G GDP and RS92 GDP is around 1.7 ppmv, which is approximately half the RS92 GDP value. Hurst et al. (2016) reported that water vapor mixing ratios at 68 hPa in the northern middle latitudes are roughly 3.5–5.0 ppmv, and the mixing ratio discrepancy caused by differences in the measurement method (e.g., the difference between balloon-borne frost point hygrometers and Aura Microwave Limb Sounders) may be 0.3 ppmv. Hurst et al. (2016) also reported that rates for the stratospheric average trend of the mixing ratio from 2010 to mid-2015 ranged from 0.03 to 0.07 ppmv per year<sup>-1</sup>. The RH difference between RS-11G

GDP and RS92 GDP in [Fig. 19](#) [Fig. 21](#) is much larger than these index values, and the RH sensors of RS-11G and RS92 are deemed too unresponsive for stratospheric evaluation in this case. Accordingly, no discussion will be made here regarding RH measurement differences in the stratosphere based on the results shown in [Fig. 19](#) [Fig. 21](#).

[Figure 20](#) [Figure 22](#) shows a nighttime situation with a launch at 12 UTC on 4 November 2016. In contrast to the daytime situation, in which temperature uncertainty increases with height due to solar radiation, nighttime temperature uncertainty does not depend on height and remains within the standard range at pressures > 30 hPa. For RH, although RS-11G GDP is a few %RH ~~degrees~~ larger than RS92 GDP between 850 and 200 hPa at nighttime, the values correspond within the expanded uncertainty.

### 10 5.3 Consistency of temperature measurements from RS-11G and RS92

Overall uncertainty in GDPs is estimated from all sources of uncertainty, and measurement results can be assessed using the [quantified/quantitated](#) uncertainties of each source. The sources contributing to the RS-11G temperature uncertainty budget are listed in [Table 5](#) [Table 6](#) (Kizu et al., 2018). Uncertainty associated with filtering (including moving averaging) is derived using

$$15 \quad \sqrt{\frac{N'}{N'-1} \sum c_i^2 (T_{org} - T_{filtered})^2 (T_{org} - T_{filtered})} \quad (8)$$

$$N' = (\sum c_i^2)^{-1},$$

where  $c_i$  represents the coefficients of filtering at time step  $i$  and  $N'$  is the effective sample size. For the RS92 temperature, uncorrelated uncertainty is based on statistical uncertainty and determined via spike removal. Correlated uncertainty consists of the uncertainty associated with radiation correction and the calibration uncertainty of the temperature sensor (Dirksen et al., 2014; Sommer et al., 2016). The standard uncertainty of each source for observation at 00 UTC on 28th October, 2016, is illustrated in [Fig. 21](#) [Fig. 23](#). While sensor orientation derived from Table 2 in Dirksen et al. (2014) is the major source of uncertainty in RS92 temperature measurement, albedo is the major source for RS-11G because orientation is not explicitly considered in RS-11G GDPs. The JMA solar radiation correction model (JMA, 1995) assumes that the surface and cloud albedo is constant at 20%. However, the actual albedo during the flight depends on surface and cloud conditions, and the correction amount is underestimated when highly reflective clouds are present (Kizu et al., 2018).

For statistical comparison, the percentages of consistency ranks (1, 2, 3 or 4) between RS92 GDP and RS-11G GDP in a particular pressure layer are calculated as follows:

- a. Calculate the combined uncertainty  $u_c$  for every data point with a 1-sec resolution.

$$u_c = \sqrt{u_{92}^2 + u_{11G}^2} \quad (9)$$

- b. Define  $T_{11G}$ ,  $T_{92}$  and  $d = |T_{11G} - T_{92}|$  as temperature measurements from RS-11G GDP and RS92 GDP, and the absolute value of the difference between RS-11G GDP and RS92 GDP at every data point, respectively. Rank  $d$  is then



defined as 1 ( $d \leq u_c$ : consistent), 2 ( $u_c < d \leq 2u_c$ : in agreement), 3 ( $2u_c < d \leq 3u_c$ : significantly different) and 4 ( $3u_c < d$ : inconsistent).

c. Arrange the rank values in ascending order for the pressure layer; the 95% value is assigned as the consistency rank of the layer for each flight.

- 5 The percentages of consistency ranking for all daytime and nighttime flights are illustrated in [Fig. 22](#)[Fig. 24](#). While most measurements at pressures  $> 10$  hPa are consistent at nighttime, most are not consistent during the daytime for all layers. Such uncertainty estimates enable vertical evaluation of measurement uncertainty. [Possible reasons for the fact that the percentages of “inconsistent” and “significantly different” categories are larger at pressures  \$< 150\$ hPa at daytime are as follows. The authors investigated the histogram of temperature difference and found that it is normally distributed and that](#)
- 10 [the number of samples is large enough. Therefore, the temperature difference in the stratosphere at daytime is thought to be caused by unexpected systematic effects. Also, some samples showed large temperature differences \(about -0.5 K\) even in the troposphere, which is considered to be due either to some issues during the flights or to possible calibration problems. Further works, including comparisons with high-performance temperature instruments and additional ground checks, are required. Also, the RS92 GDP version 3 is supposed to be available in the near future \(Ruud Dirksen, private communication,](#)
- 15 [2018; Sommer, 2016\), and it would be useful to redo the analysis with the new RS92 GDP.](#)

#### 5.4 Consistency of RH measurements from RS-11G and RS92

Sources contributing to the RS-11G RH uncertainty budget are listed in [Table 6](#)[Table 7](#) (Kizu et al., 2018). The standard uncertainty of each source for observation at 00 UTC on 28th October, 2016, is illustrated in [Fig. 23](#)[Fig. 25](#). For RS92 RH,

20 uncertainty consists of correction for calibration uncertainty and temperature-dependent calibration uncertainty, radiation dry bias, the time-lag constant, and the statistical uncertainty of time-lag correction (Dirksen et al., 2014). As the calculation method for each component with RS92 is not detailed in Dirksen et al. (2014), only uncorrelated and correlated uncertainties are illustrated for RS92. For RS-11G, the major source of uncertainty is temperature-humidity dependence correction for the whole layer. Statistical uncertainty and uncertainty from the sensor versus air temperature correction (green) are important in

25 the lower and middle troposphere, and uncertainty from time-lag correction (red) is important near the tropopause.

The percentages of consistency ranking (calculated as ~~forper~~ temperature) are illustrated in [Fig. 24](#)[Fig. 26](#). In the middle troposphere, half of RS92 GDP and RS-11G GDP values are significantly different or inconsistent. [There are some samples with large RH differences \(more than 10 %RH\), which is considered to be either due to evaporative cooling effects or related to the sensor hysteresis characteristics as mentioned in section 5.2. In addition, the authors have identified that the humidity](#)

30 [sensor of RS-11G shows drier values in the lower troposphere and wetter values in the upper troposphere when compared to chilled-mirror hygrometer measurements as mentioned in Section 6. It is our future work to improve the RS-11G RH GDP when more intercomparison data with chilled-mirror hygrometers become available.](#) In the stratosphere, RS92 GDP and RS-11G GDP are always consistent. However, as discussed in Section 5.2, RH values in the stratosphere range across a

few %RH-degrees, and the RH sensors of RS92 and RS-11G are considered unresponsive in relation to conditions in the troposphere. Although the availability of measurement values from the stratosphere depends on use the purpose of utilization and related accuracy requirements (Miloshevich et al., 2009), the consistency of RH measurements from the stratosphere is not discussed here.

5

## 6 Comparison of RS-11G GDP humidity with CFH

At Tateno, radiosonde and Cryogenic Frostpoint Hygrometer (CFH, Vömel et al., 2007, 2016) comparison flights have been conducted twice a year since 2015. ~~Figure 25~~Figure 27 shows the results of a RS-11G and CFH comparison flight conducted on 10 November, 2016. This CFH is interfaced with RS-11G, and RH calculation for CFH involves the use of temperature values from RS-11G GDP. ~~Figure 25~~Figure 27 shows RH profiles from RS-11G GDP and CFH. The RH of the RS-11G GDP is around 7%RH greater than that of CFH between 500 and 200 hPa, and around 1%RH greater at pressures > 500 hPa. The difference is also more than 10%RH around 350 hPa, where RH drops rapidly and the difference is larger than the overall uncertainty. This significant difference is influenced by water or ice on the sensor and related hysteresis characteristics. The tropopause is recorded at 100.5 hPa with temperatures lower than -70°C, and the RH difference is somewhat large, RS-11G GDP being a few percent smaller than CFH. In low-temperature conditions (~~Fig. 23~~Fig. 25), sensor time-lag and RS-11G RH sensor temperature dependence may be important factors in the humidity difference. ~~Figure 26~~Figure 28 shows results from a RS-11G, RS92, and CFH comparison flight conducted on 20 April, 2018. The RH of the RS-11G GDP is around 4%RH smaller than that of CFH at pressure > 700 hPa, while that of the RS92 GDP is largely in agreement with the RH of CFH. Meanwhile, the RH of the RS-11G GDP is 2%RH greater than that of CFH between 400 and 200 hPa, while the RH of the RS92 GDP is 2%RH smaller than that of CFH. These comparisons indicate that the RS-11G GDP has a wet bias between 400 and 200 hPa, as is common in the results shown in ~~Fig. 9~~Fig. 11.

15  
20

## 7 Summary

To help characterize the GDPs of RS-11G and RS92, data collected on dual flights conducted from Tateno between April 2015 and June 2017 were analyzed in this study. The RS-11G GDP temperature was around -0.4 K lower than RS92 GDP data in daytime measurement in the stratosphere, while nighttime measurements generally agree well~~corresponded~~. The RS-11G GDP RH was 2%RH smaller than the RS92 GDP for 90–100%RH, and the RS-11G GDP was around 5%RH larger than the RS92 GDP at values lower than 50%RH. The effects of SHC correction were also verified, with samples featuring highly humid conditions showing improved results for RS-11G data. The pressure difference was 0.5 hPa in the troposphere, and the geopotential height difference was around 10–20 m in the stratosphere. The authors compared the GDPs using general statistical approach based on allocated 13 pressure layers, but the analysis using the functional regression approach (Fassò et al., 2014) is useful as another method and this is one of our future tasks.

25  
30

The consistency of temperature and RH measurements from RS-11G and RS92 with uncertainties was also analyzed. The major sources of uncertainty in temperature measurements for RS-11G and RS92 GDPs were albedo and sensor orientation, respectively. Statistical comparison showed that most daytime temperature measurements were not consistent for any pressure layer. For RH measurements, the major source of uncertainty for the RS-11G GDP was temperature-humidity dependence correction for the whole layer, and half of RS92 and RS-11G GDP values were significantly different or inconsistent in the middle troposphere.

RS-11G GDP RH data were also evaluated based on comparison with CFH data, with results showing a wet bias in the former from CFH values between 400 and 200 hPa. The same characteristic was also observed in comparison with RS92 GDP data. The extent of CFH measurements to date remains limited, but plans are being made to conduct temperature and humidity measurement using high-quality radiosondes twice a year along with continuous comparison flights of a high-quality radiosonde and a routine radiosonde to facilitate GDP evaluation and further analysis of RS-11G characteristics.

This study involved evaluation of the characteristics of RS-11G GDP values with RS92 GDP as base data due to the latter's GRUAN radiosonde certification. The GRUAN certification process for RS-11G is underway, and ongoing analysis of GDP data is considered important for the provision of high-quality products to the user community.

15

Acknowledgments. The authors are grateful to the Aerological Observatory, the Observation Division of JMA's Observation Department and Meisei Electric for their support and helpful advice. Thanks are also due to GRUAN staff for their support.

## References

- Aerological Division of JMA: Comparisons of the RS2-80 type Rawinsonde with the RSII-56 Type One. *Sokkou-jihou*, 50, 373-384 (in Japanese), 1983.
- Bodeker, G. E., Bojinski, S., Cimini, D., Dirksen, R. J., Haeffelin, M., Hannigan, J. W., Hurst, D. F., Leblanc, T., Madonna, F., Maturilli, M., Mikalsen, A. C., Philipona, R., Reale, T., Seidel, D. J., Tan, D. G. H., Thorne, P. W., Vömel, H., and Wang, J.: Reference Upper-Air Observations for Climate: From Concept to Reality, *Bull. Amer. Meteor. Soc.*, 97, 123–135, <https://doi.org/10.1175/bams-d-14-00072.1>, 2016.
- Dirksen, R. J., Sommer, M., Immler, F. J., Hurst, D. F., Kivi, R., and Vömel, H.: Reference quality upper-air measurements: GRUAN data processing for the Vaisala RS92 radiosonde, *Atmos. Meas. Tech.*, 7, 4463-4490, 2014.
- [Fassò, A., Ignaccolo, R., Madonna, F., Demoz, B. and Franco-Villoria M.: Statistical modelling of collocation uncertainty in atmospheric thermodynamic profiles, \*Atmos. Meas. Tech.\*, 7, 1803–1816, doi: 10.5194/amt-7-1803-2014, 2014.](#)
- GCOS-134: GRUAN Implementation Plan 2009-2013. WMO/TD No.1506, World Meteorological Organization (WMO), 2009.
- GCOS-170: The GCOS Reference Upper-Air Network (GRUAN) MANUAL. TECHNICAL REPORT No.2013-02, World Meteorological Organization (WMO), 2013.

- Hurst, D. F., Read, W. G., Vömel, H., Selkirk, H. B., Rosenlof, K. H., Davis, S. M., Hall, E. G., Jordan, A. F., and Oltmans, S. J.: Recent divergences in stratospheric water vapor measurements by frost point hygrometers and the Aura Microwave Limb Sounder, *Atmos. Meas. Tech.*, 9, 4447-4457, doi: 10.5194/amt-9-4447-2016, 2016.
- Hyland, R. and Wexler A.: Formulations for the thermodynamic properties of the saturated phases of H<sub>2</sub>O from 173.15 K to 473.15 K, *ASHRAE Trans.*, 89, 500–519, 1983.
- 5 Immler, F. J., Dykema, J., Gardiner, T., Whiteman, D. N., Thorne, P.W., and Vömel, H.: Reference Quality Upper-Air Measurements: guidance for developing GRUAN data products, *Atmos. Meas. Tech.*, 3, 1217-1231, doi:10.5194/amt-3-1217-2010, 2010.
- JMA: Guidelines of radiosonde soundings, Technical report, Japan Meteorological Agency, in Japanese, 1995.
- 10 Kizu N., Sugidachi T., Kobayashi E., Hoshino S., Shimizu K., Maeda R. and Fujiwara M.: Technical characteristics and GRUAN data processing for the Meisei RS-11G and iMS-100 radiosondes (GRUAN-TD-5), GRUAN Lead Centre, 2018.
- Kobayashi E., Noto Y., Wakino S., Yoshii H., Ohyoshi T., Saito S. and Baba Y.: Comparison of Meisei RS2-91 Rawinsondes and Vaisala RS92-SGP Radiosondes at Tateno for the Data Continuity for Climatic Data Analysis, *J. Meteor. Soc. Japan*, Vol.90, No.6, 923-945, 2012.
- 15 Kobayashi E: Quantitative comparison of the Meisei RS-11G radiosonde and the Vaisala RS92-SGP radiosonde for characterization of routine soundings. *Jour. of the Aerological Observatory*, 73, 11-24, in Japanese, 2015.
- Meisei: GPS Radiosonde RS-11G. Available on [http://www.meisei.co.jp/english/products/RS-11G\\_E.pdf](http://www.meisei.co.jp/english/products/RS-11G_E.pdf), accessed on 4 June 2018, 2016.
- Miloshevich, L. M., Vömel, H., Whiteman, D. N., and Leblanc, T.: Accuracy assessment and correction of Vaisala RS92 radiosonde water vapor measurements. *J. Geophys. Res.*, 114, D11305, doi:10.1029/2008JD011565, 2009.
- 20 Nash, J., T. Oakley, H. Vömel, and L. Wei: WMO Intercomparison of High Quality Radiosonde Systems Yangjiang, China, 12 July–3 August 2010, WMO/TD-No.1580, Instruments And Observing Methods Report No.107, 2011.
- Rohden, C., Sommer M. and Dirksen R.: Rigging Recommendations For Dual Radiosonde Soundings (GRUAN-TD-7). GRUAN Lead Centre, 2016.
- 25 Sakoda, Y., Naganuma K., Ogihara H., Inoue N., and Mita A.: RS-91 Rawinsonde. *Meteorological Research Note*, 194, 3 – 24, in Japanese, 1999.
- Seidel, D. J., Berger, F. H., Immler, F., Sommer, M., Vömel, H., Diamond, H. J., Dykema, J., Goodrich, D., Murray, W., Peterson, T., Sisterson, D., Thorne, P., and Wang, J.: Reference Upper-Air Observations for Climate: Rationale, Progress, and Plans, *B. Am. Meteorol. Soc.*, 90, 361–369, <https://doi.org/10.1175/2008BAMS2540.1>, 2009.
- 30 Shimizu, K. and Hasebe, F.: Fast-response high-resolution temperature sonde aimed at contamination-free profile observations. *Atmos. Meas. Tech.*, 3, 1673-1681, 2010.
- Sommer M., Dirksen, R. and Rohden, C.: Brief Description of the RS92 GRUAN Data Product (GRUAN-TD-4). GRUAN Lead Centre, 2016.

[Sommer M.: New GRUAN data processor for radiosonde measurements – status of RS92 \(v3\) and RS41 \(alpha\) data](#)

products. GRUAN ICM-8, available on [https://www.gruan.org/gruan/editor/documents/meetings/icm-8/pres/pres\\_0606\\_ICM-8\\_Sommer\\_GDPS-RS92\\_v4.pdf](https://www.gruan.org/gruan/editor/documents/meetings/icm-8/pres/pres_0606_ICM-8_Sommer_GDPS-RS92_v4.pdf), accessed on 13 February 2019, 2016.

Vaisala: Vaisala Radiosonde RS92-SGP. Available on <https://www.vaisala.com/sites/default/files/documents/RS92SGP-Datasheet-B210358EN-F-LOW.pdf>, accessed on 4 June 2018, 2013.

- 5 Vömel, H., David, D.E., and Smith, K.: Accuracy of tropospheric and stratospheric water vapor measurements by the cryogenic frost point hygrometer: Instrumental details and observations, *J. Geophys. Res.*, 112, D08305, doi:10.1029/2006JD007224, 2007.

Vömel, H., Naebert, T., Dirksen, R., and Sommer, M.: An update on the uncertainties of water vapor measurements using cryogenic frost point hygrometers, *Atmos. Meas. Tech.*, 9, 3755–3768, doi:10.5194/amt-9-3755-2016, 2016.

10



15

20

25

30

**Table 1:** Specifications of radiosondes and GRUAN data products (Meisei, 2016; Valsala, 2013; Dirksen et al., 2014, Kizu et al., 2018).

Radioonde		RS-11G (RS-11G GPSsonde)	RS92 (RS92-SGP GPSsonde)
Temperature	Sensor	Type: Thermistor Range: -90°C to +60°C Resolution: 0.1°C	Type: Capacitive wire Range: -90°C to +60°C Resolution: 0.1°C
	Correction procedures in the GDP*	Heat spike filtering Solar radiation correction	Heat spike filtering Solar radiation correction (average of GRUAN and Vaisala correction model)
Humidity	Sensor	Type: Electrostatic capacitance humidity sensor Range: 0%RH to 100%RH Resolution: 0.1%RH	Type: Thin-film capacitor, Headed twin sensor Range: 0%RH to 100%RH Resolution: 1%RH
	Saturation vapour pressure formulation	Hyland and Wexler equation	Hyland and Wexler equation (Hyland and Wexler, 1983)
	Correction procedures in the GDP	Contamination removal filter for rain and cloud droplets Time-lag correction Temperature-Humidity dependent bias correction Sensor versus air temperature correction	Radiation dry bias correction Time-lag correction Temperature dependent bias correction
Pressure/ Geopotential height	Sensor	Type: GPS Range: 1050.0 hPa to 3.0 hPa Resolution: 0.1 hPa	Type: Silicon pressure sensor, and GPS Range: 1080 hPa to 3 hPa Resolution: 0.1 hPa
	Calculation	Pressure is calculated from the GPS geopotential height using the hypsometric equation	In the lower part of the profile: the pressure sensor is used, and the geopotential height is derived from pressure using the hypsometric equation In the upper part of the profile: use the GPS sensor
	Correction procedures in the GDP	Offset between the balloon release altitude and the altitude at the release time	The pressure sensor is recalibrated against the station barometer
Wind		GPS wind finding (with SBAS)	GPS wind finding (with GBAS)
	Correction procedures in the GDP	Smoothing (a low-pass digital filter is used to remove noises)	Smoothing (a low-pass digital filter is used to remove noises)
Dimensions(DWH)		67 × 86 × 155 (mm)	75 × 80 × 220 (mm)
Weight		85 g (with a battery)	290 g (with batteries)
Ground System		MGPS2 (Version 2)	Vaisala DigiCORA III (Version 3.64)
Photo			

\*: GRUAN data product





5

**Table 2:** Flight information including surface observation, cloud cover data, and balloon burst height from RS-11G data

Flight Number	Date	Time (LST)	Pressure (hPa)	Temperature (°C)	Humidity (%RH)	Wind		Cloud						Weather	Balloon burst height and pressure	
						Direction (degree)	Speed (ms <sup>-1</sup> )	N	N h	C L	h	C M	C H		Height (km)	Pressure (hPa)
1	4/21/2015	20:30:17	1013.2	12.4	71	90	2.9	7	7	0	/	7	/	02	36.006	4.8
2	5/7/2015	20:30:20	1008.9	15.5	77	130	1.7	1	0	0	9	0	2	02	35.166	5.5
3	5/11/2015	8:30:21	1020.1	15.9	33	30	1.5	1	0	0	9	0	1	02	34.285	6.2
4	5/25/2015	8:30:15	1008.0	21.0	68	70	3.4	6	1	2	/	3	2	02	34.467	6.2
5	6/1/2015	20:30:14	1011.0	21.0	74	140	2.1	7	0	0	9	0	2	02	36.531	4.7
6	6/16/2015	20:30:14	1002.4	22.0	89	80	2.4	8	3	5	/	7	/	02	36.961	4.5
7	6/22/2015	8:30:16	1010.0	22.1	78	40	1.3	7	6	2	/	3	2	02	34.917	6.0
8	9/28/2015	8:30:17	1013.1	22.8	72	310	1.0	0	0	0	9	0	0	02	35.320	5.4
9	10/5/2015	20:30:12	1019.6	15.8	68	50	2.2	7	1	0	9	3	2	02	34.366	6.2
10	10/13/2015	8:30:15	1010.3	18.0	73	300	1.3	0	0	0	9	0	0	02	33.581	6.9
11	10/22/2015	20:30:16	1017.6	14.8	80	40	2.4	7	3	5	/	3	/	02	34.373	6.2
12	10/26/2015	8:30:15	1019.8	12.4	55	260	0.6	0	0	0	9	0	0	02	34.078	6.3
13	11/30/2015	20:30:16	1016.6	7.2	95	300	2.0	1	0	0	9	0	2	01	34.664	6.0
14	12/7/2015	20:30:14	1018.9	10.6	72	40	2.9	7	7	5	/	/	/	02	35.327	5.5
15	12/21/2015	8:32:15	1021.1	4.5	73	290	1.6	7	7	0	/	7	/	02	34.757	6.0
16	12/28/2015	20:30:16	1017.7	0.6	69	90	1.0	1	1	0	/	3	0	02	30.301	11.4
17	1/4/2016	8:30:17	1012.4	4.5	88	280	0.6	0	0	0	9	0	0	02	33.615	6.7
18	1/12/2016	20:30:14	1011.1	-0.6	93	310	1.3	0	0	0	9	0	0	02	34.548	5.8
19	1/25/2016	20:30:15	1018.3	-1.7	54	150	2.4	1	1	1	/	0	0	02	34.099	6.1
20	2/8/2016	20:30:15	1013.2	0.7	80	40	1.6	1	1	1	/	0	0	02	34.079	6.3
21	2/15/2016	8:30:17	998.3	9.7	64	70	2.3	8	8	5	/	/	/	02	33.586	6.6
22	3/7/2016	20:30:15	1013.8	13.6	99	50	1.3	6	6	0	/	3	0	10	33.188	6.9
23	3/22/2016	20:30:19	1008.9	9.1	84	120	1.6	0	0	0	9	0	0	02	34.235	6.0
24	4/1/2016	8:30:16	1017.5	13.7	44	60	3.4	3	1	8	/	0	1	02	34.147	6.1
25	4/29/2016	8:30:18	994.4	17.0	41	310	5.9	5	2	8	/	3	2	02	33.746	6.7
26	6/3/2016	20:30:16	1011.3	18.8	62	150	2.7	0	0	0	9	0	0	02	35.920	5.1
27	6/17/2016	20:30:13	1003.9	23.3	85	70	1.8	7	7	2	/	/	/	02	26.471	20.9
28	9/30/2016	8:30:14	1016.3	18.2	63	50	2.9	8	8	5	/	/	/	02	34.619	5.9
29	10/14/2016	8:30:14	1023.0	15.0	68	360	2.0	7	6	0	/	3	2	02	31.569	9.3
30	10/28/2016	8:32:12	1018.4	12.5	77	360	1.2	8	8	5	/	/	/	02	35.435	5.1
31	11/4/2016	20:30:14	1014.1	9.5	81	90	1.3	7	7	0	/	3	/	02	35.303	5.1
32	11/18/2016	20:30:13	1021.0	7.6	89	300	1.2	7	7	5	/	0	0	10	35.651	4.8
33	11/25/2016	8:37:12	1019.7	1.2	93	310	1.3	5	2	0	/	3	2	02	20.566	48.8
34	12/2/2016	20:30:14	1020.5	5.7	68	60	1.8	1	0	0	9	0	2	02	35.665	5.1
35	12/9/2016	8:30:15	1009.9	5.8	60	310	2.0	0	0	0	9	0	0	02	36.896	4.4
36	12/16/2016	20:30:14	1013.5	2.1	37	270	3.0	0	0	0	9	0	0	02	35.827	4.9
37	12/23/2016	8:32:16	994.9	12.7	94	260	2.2	6	6	8	/	0	0	10	34.979	5.5
38	12/30/2016	20:30:14	1022.3	-0.9	64	300	0.8	0	0	0	9	0	0	02	34.883	5.7
39	1/6/2017	8:40:16	1022.8	1.7	55	340	0.5	7	0	0	9	0	2	02	28.553	14.2
40	1/13/2017	20:30:14	999.0	1.9	73	100	1.7	2	2	2	/	0	0	02	26.877	18.2
41	1/27/2017	20:30:15	1014.1	7.6	50	300	1.7	1	1	1	/	3	0	02	32.090	8.2
42	2/10/2017	20:30:12	1000.2	2.5	34	360	2.1	7	0	0	9	0	2	02	32.346	7.8
43	2/24/2017	20:30:13	1013.2	4.5	33	50	1.1	8	8	8	/	/	/	02	34.834	5.3
44	3/3/2017	8:30:15	1005.0	6.8	86	280	1.8	0	0	0	9	0	0	02	35.128	5.1
45	3/10/2017	20:30:14	1010.9	5.9	32	300	2.1	2	1	1	/	3	0	02	32.679	7.5
46	3/24/2017	20:30:12	1015.7	3.6	48	320	1.8	1	1	1	/	0	0	02	33.889	6.4
47	4/7/2017	20:30:09	1013.3	16.5	92	160	2.7	6	2	8	/	0	2	02	32.877	7.5
48	4/14/2017	8:35:14	1015.8	13.1	44	280	1.9	0	0	0	9	0	0	02	30.477	10.8
49	6/2/2017	20:30:15	995.1	18.6	45	300	3.1	0	0	0	9	0	0	02	35.107	5.8
50	6/9/2017	8:34:15	1005.6	21.7	71	100	3.5	7	4	2	/	7	/	02	35.364	5.6
51	6/16/2017	20:30:14	1005.8	18.5	91	40	2.4	7	7	0	/	7	/	02	33.281	7.6
52	6/23/2017	8:30:13	1005.9	24.6	68	240	0.6	2	1	1	/	0	2	02	34.476	6.4

5

Table 3: Rig configurations adopted for dual observation

Rig	Bamboo rod. The sensor booms are fixed and are pointing to opposite directions.	<del>Paper C</del> cardboard rod. The sensor booms are fixed and are pointing to the outward direction.	Bamboo rod. Sondes are hanging and rotating freely.	Plastic cardboard rod with aluminum tape. Sondes are hanging and rotating freely.
Photo				
Length of the rod	1 m	1 m	1 m	0.9 m
Period	April 2015– September 2015	October 2015– June 2016	September 2016– November 2016	December 2016–

**Table 4:** Pressure range for an allocation of RS-11G and RS92 measurements

The differences between RS-11G and RS92 measurements were allocated to the 13 pressure layers based on RS92 pressure data (Bottom  $\geq P_i^{92} > Top$ ).

Layer	1st	2nd	3rd	4th	5th	6th	7th	8th	9th	10th	11th	12th	13th
Top (hPa)	700	500	300	200	150	100	70	50	30	20	15	10	5
Bottom (hPa)	1000	700	500	300	200	150	100	70	50	30	20	15	10

5

**Table 5:** Terminology for comparing pairs of independent measurements of the same quantification for consistency; excerpt from Section 2 of Immler et al. (2010)

$ m_1 - m_2  < k\sqrt{u_1^2 + u_2^2}$	TRUE	FALSE	Significant level
k=1	consistent	suspicious	32%
k=2	in agreement	significantly different	4.5%
k=3	-	inconsistent	0.27%

10



10 **Table 5** **Table 6:** Sources contributing to RS-11G temperature measurement uncertainty

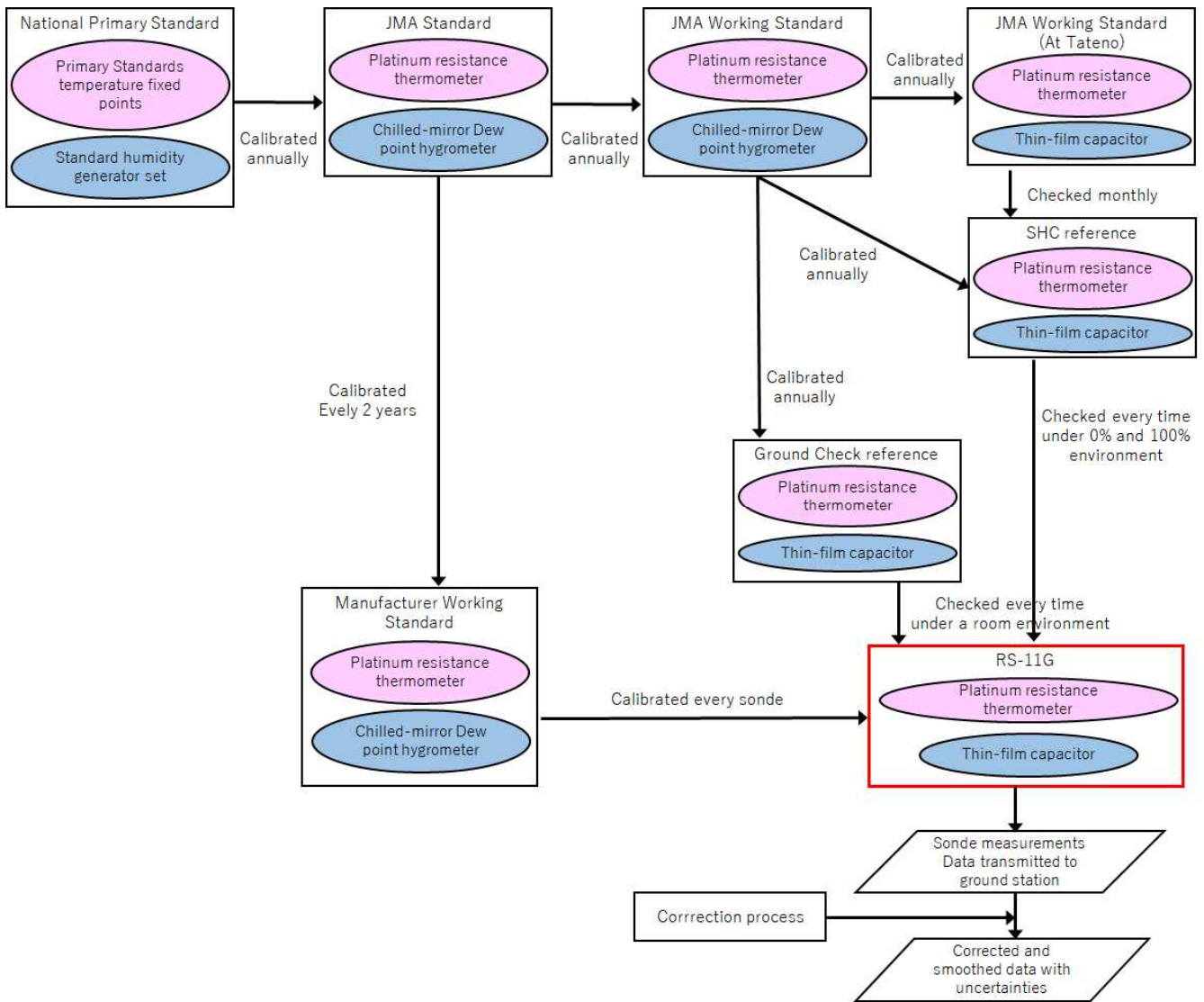
Source	Description	Value
Calibration of T sensor $u_{Tcalib1}$	Provided by the manufacturer	$0.3/\sqrt{3}$
Variation of Temperature in calibration chamber $u_{Tcalib2}$	Provided by the manufacturer	$0.13/\sqrt{3}$
Averaging (filtering) $u_{std}(T)$	Derived by Eq. (8) <u>in section 5.3, determined by using the standard deviation of the correction amount</u>	Depending on the measurement
Albedo $u_{albedo}(T)$	$\frac{1}{2\sqrt{3}}  T_{cor}(albedo = 0.6) - T_{cor}(albedo = 0.1) $	Depending on the measurement
Ventilation $u_{ventilation}(T)$	$\frac{1}{\sqrt{3}}  T_{cor}(v = asc + u(v)) - T_{cor}(v = asc) $ $u(v) = 3.0$	Depending on the measurement
Correlated $u_{cor}(T)$	$\sqrt{u_{Tcalib1}^2 + u_{Tcalib2}^2 + u_{albedo}^2(T) + u_{ventilation}^2(T)}$	Depending on the measurement
Total $u(T)$	$\sqrt{u_{cor}^2(T) + u_{std}^2(T)}$	

15 **Table 6** **Table 7:** Sources contributing to RS-11G RH measurement uncertainty

Uncertainties for frequency splitting, contamination correction, and moving averaging are associated with the use of filtering or moving averaging, which are determined by using the standard deviation of the correction amounts.

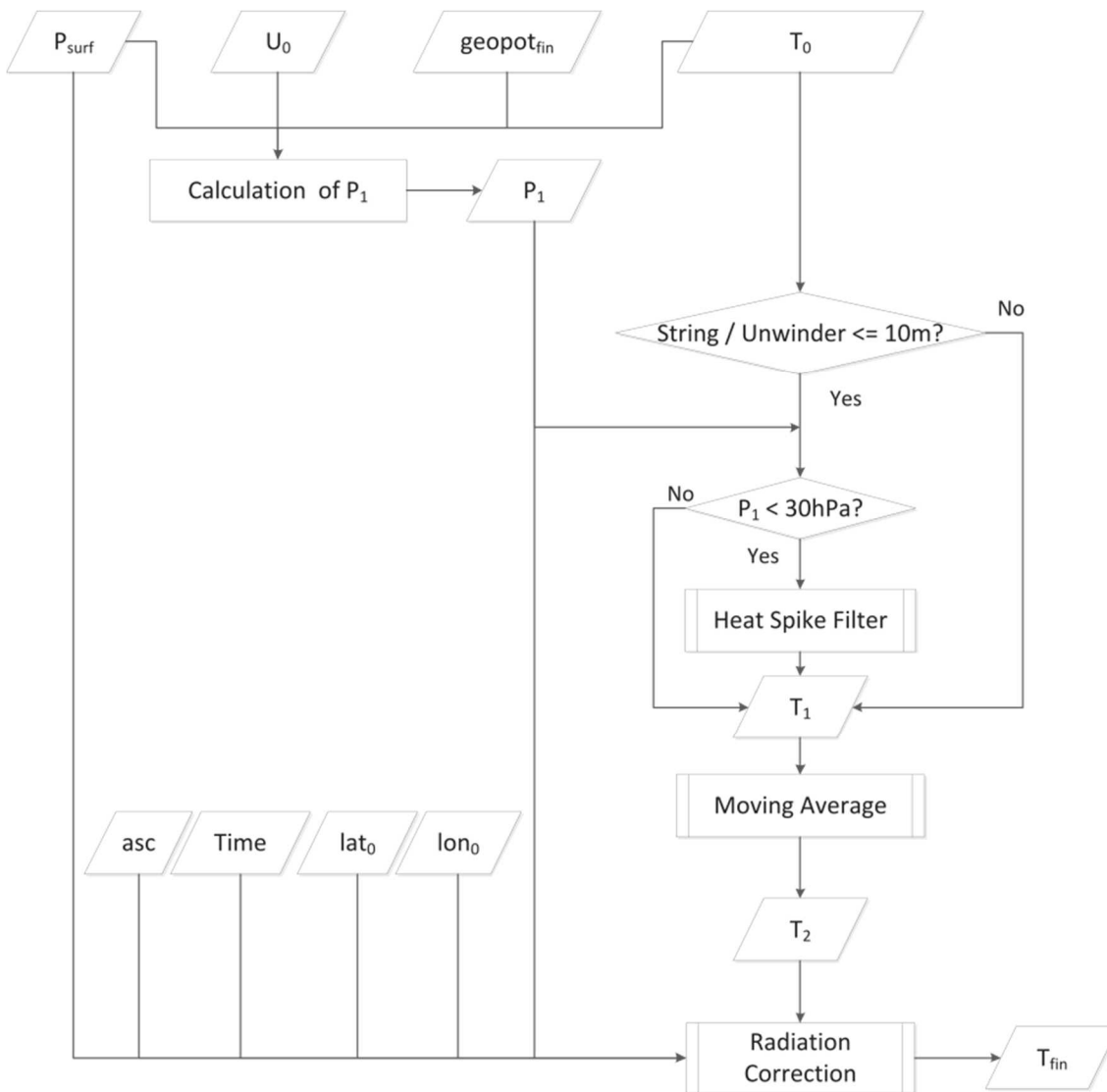
Source	Description	Value
Calibration of RH sensor $u_{Ucalib}$	Provided by the manufacturer	$2/\sqrt{3}$
Frequency splitting $u_{std1}(U)$	Derived by Eq. (8) <u>in section 5.3</u>	Depending on the measurement
Contamination correction $u_{std3}(U)$	Derived by Eq. (8) <u>in section 5.3</u>	Depending on the measurement
Moving averaging $u_{std4}(U)$	Derived by Eq. (8) <u>in section 5.3</u>	Depending on the measurement
Time lag correction $u_{TL}(U)$	$\frac{1}{2\sqrt{3}}  u(\tau = \tau_U + u(\tau_U)) - U(\tau = \tau_U + u(\tau_U)) $ $u(\tau_U) = 0.25$	Depending on the measurement

TUD correction $u_{TUD}(U)$		1.8
Ts/Ta correction $u_{T_s}(U)$	$\frac{1}{2\sqrt{3}}  U(T_s = T_{s,fin} + u(T_s)) - U(T_s = T_{s,fin} - u(T_s)) $ $u(T_s) = 0.3$	Depending on the measurement
Hysteresis $u_{hysteresis}(U)$	only when relative humidity is decreasing	$0 \quad (\Delta U/\Delta t \geq -0.05)$ $1.8/\sqrt{3} \quad (\Delta U/\Delta t < -0.05)$
Statistical $u_{std}(U)$	$\sqrt{u_{std1}^2(U) + u_{std3}^2(U) + u_{std4}^2(U)}$	Depending on the measurement
Correlated $u_{cor}(U)$	$\sqrt{u_{Ucalib}^2 + u_{TL}^2(U) + u_{TUD}^2(U) + u_{T_s}^2(U) + u_{hysteresis}^2(U)}$	Depending on the measurement
Total $u(U)$	$\sqrt{u_{std}^2(U) + u_{cor}^2(U)}$	

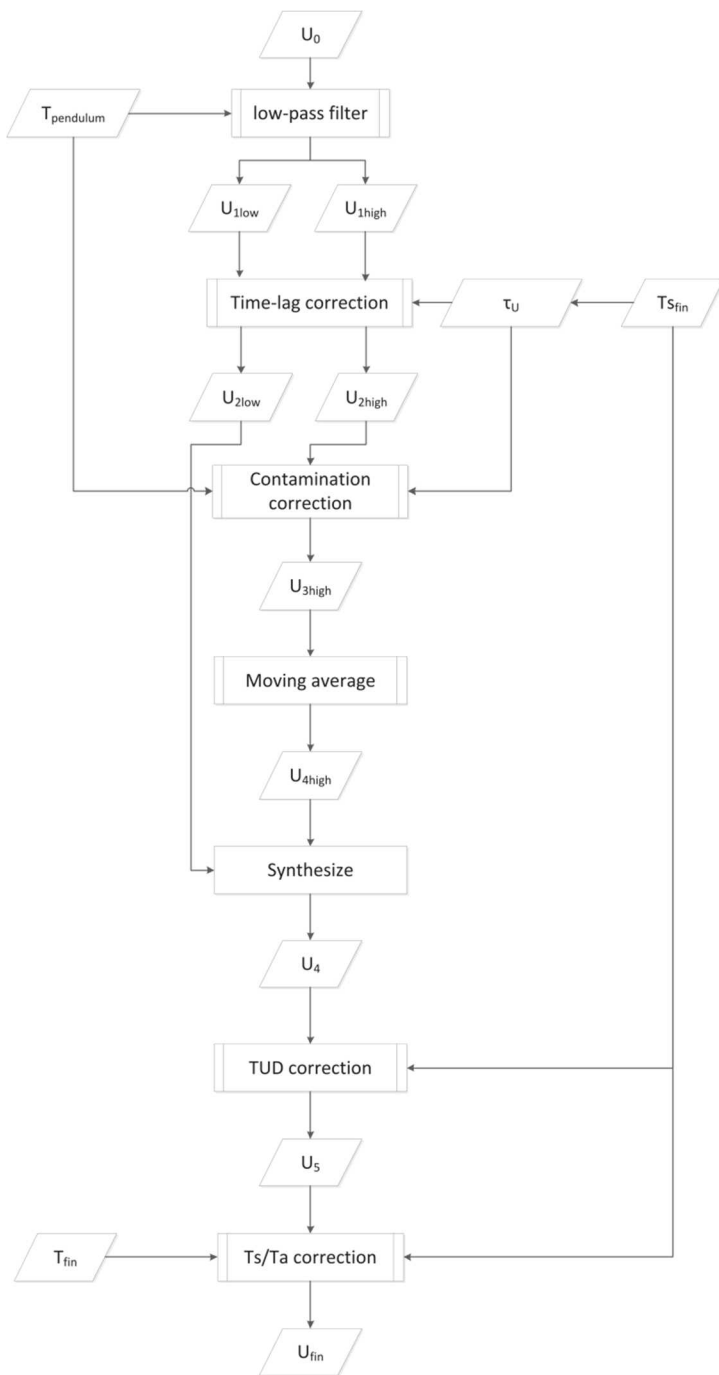


**Figure 1:** Traceability of the temperature and RH sensors on RS-11G

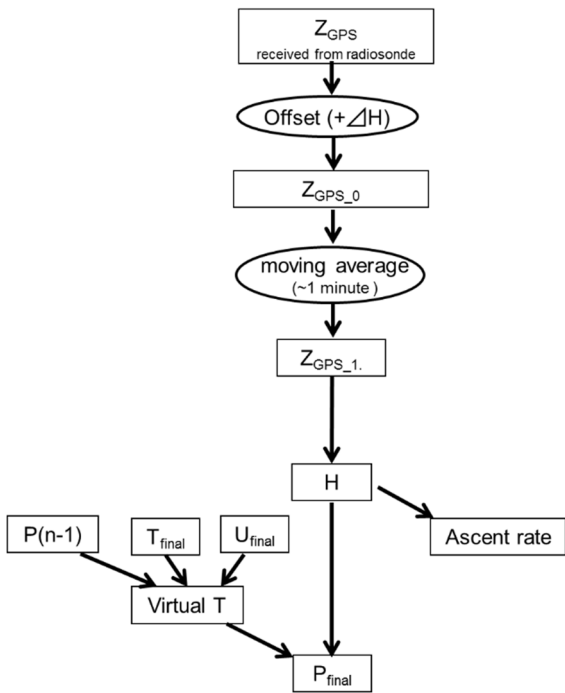
Pink and blue ellipses indicate temperature and RH sensors, respectively. Parallelograms indicate data. The details of the correction procedures are shown in Fig. 2 through Fig. 5. Further details of the traceability of the RS-11G sensors can be found in Section 5 of Kizu et al. (2018).



**Figure 2:** GRUAN data processing flow for RS-11G temperature measurement (excerpt from Kizu et al., 2018).  $T_0$  and  $U_0$  represent uncorrected temperature and RH, respectively,  $P_{surf}$  is surface pressure,  $lat_0$  and  $lon_0$  are the initial data set of GPS latitude and longitude, respectively,  $geopot_{fin}$  is the final geopotential height as derived from GPS altitude and latitude,  $asc$  is the ascent rate, and  $T_{fin}$  is the corrected final temperature value. Parallelograms, rectangles, diamonds, and rectangles with double vertical lines indicate input or output data, processes, decisions, and correction processes, respectively.

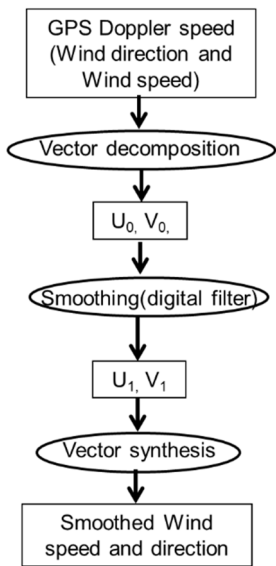


**Figure 32:** GRUAN data processing flow for RS-11G RH measurement (Kizu et al., 2018).  $U_0$  is the uncorrected RH,  $T_{\text{pendulum}}$  is the period of pendulum motion,  $U_{1\text{low}}$  and  $U_{1\text{high}}$  are low- and high-frequency components of  $U_0$ ,  $\tau_U$  is the sensor response time,  $T_{s\text{fin}}$  is the corrected RH sensor temperature,  $T_{\text{fin}}$  is the corrected final temperature, and  $U_{\text{fin}}$  is the corrected final RH value. The different shaped boxes indicate as per Fig. 2.



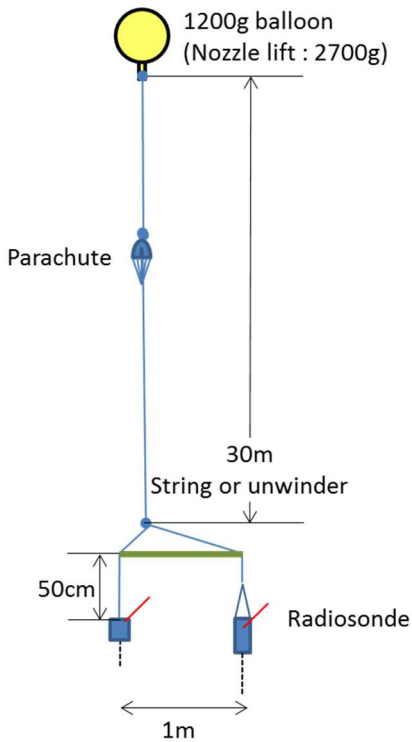
**Figure 4:** GRUAN data processing flow for RS-11G geopotential height and pressure measurement (Kizu et al., 2018).  $Z_{GPS}$  is the GPS geometric altitude,  $\Delta H$  is the offset between balloon release altitude and GPS geometric altitude upon balloon release,  $H$  is the geopotential height,  $T_{final}$  and  $U_{final}$  are the corrected final temperature and RH, respectively, and  $P_{final}$  is the corrected final pressure.

5 Rectangles and ellipses indicate input or output data and correction processes, respectively.

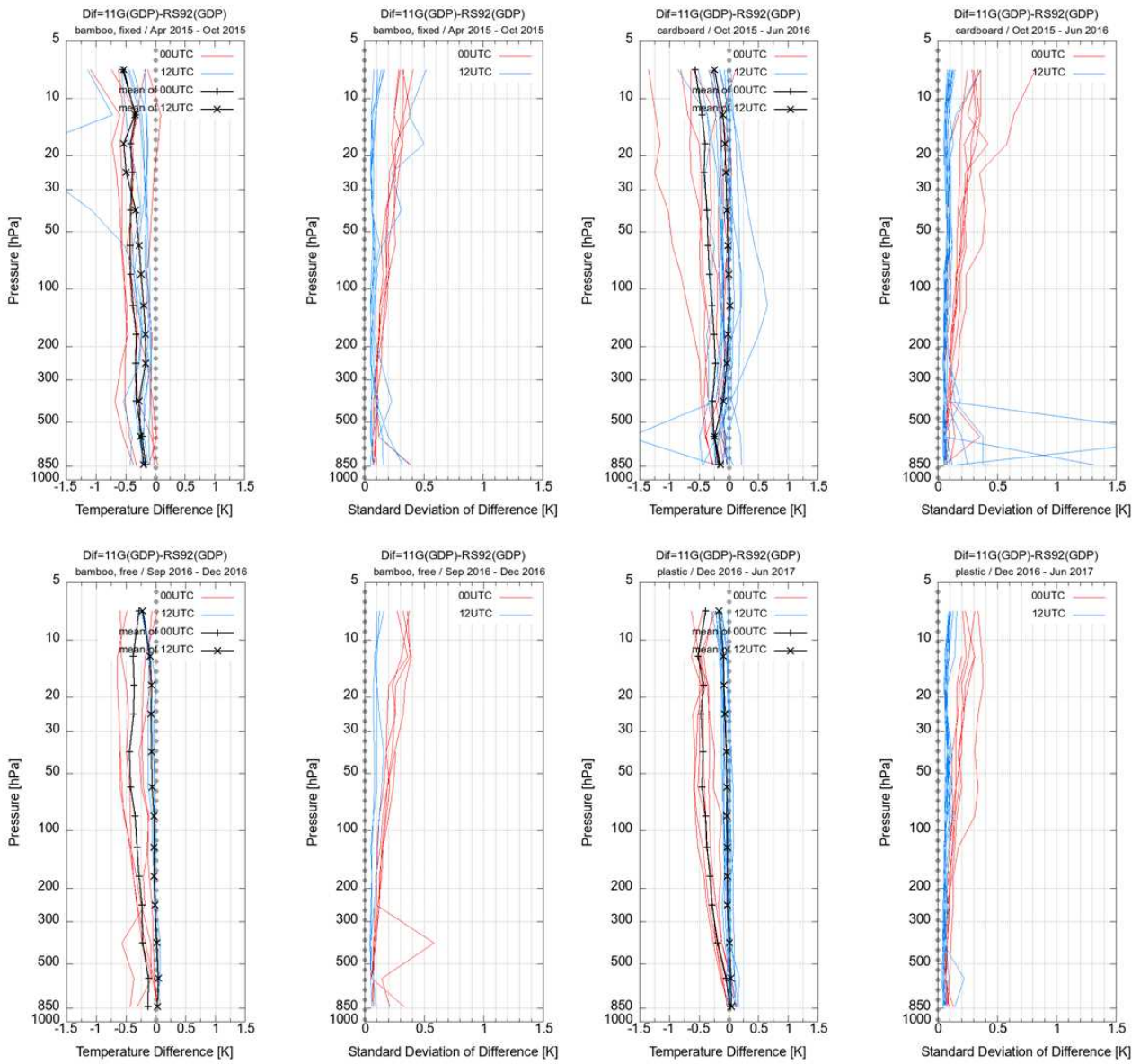


**Figure 4****Figure 5:** GRUAN data processing flow for RS-11G horizontal wind measurement (Kizu et al., 2018).  $U_0$  and  $V_0$  are uncorrected zonal wind and meridional wind, respectively,  $U_1$  is smoothed zonal wind, and  $V_1$  is smoothed meridional wind. The different shaped boxes indicate as per Fig. 4.

5



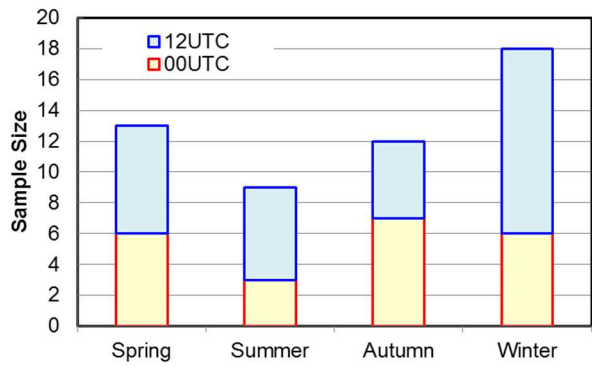
**Figure 5****Figure 6:** Flight configuration



**Figure 7: Temperature differences and standard deviation for four different rig configurations**

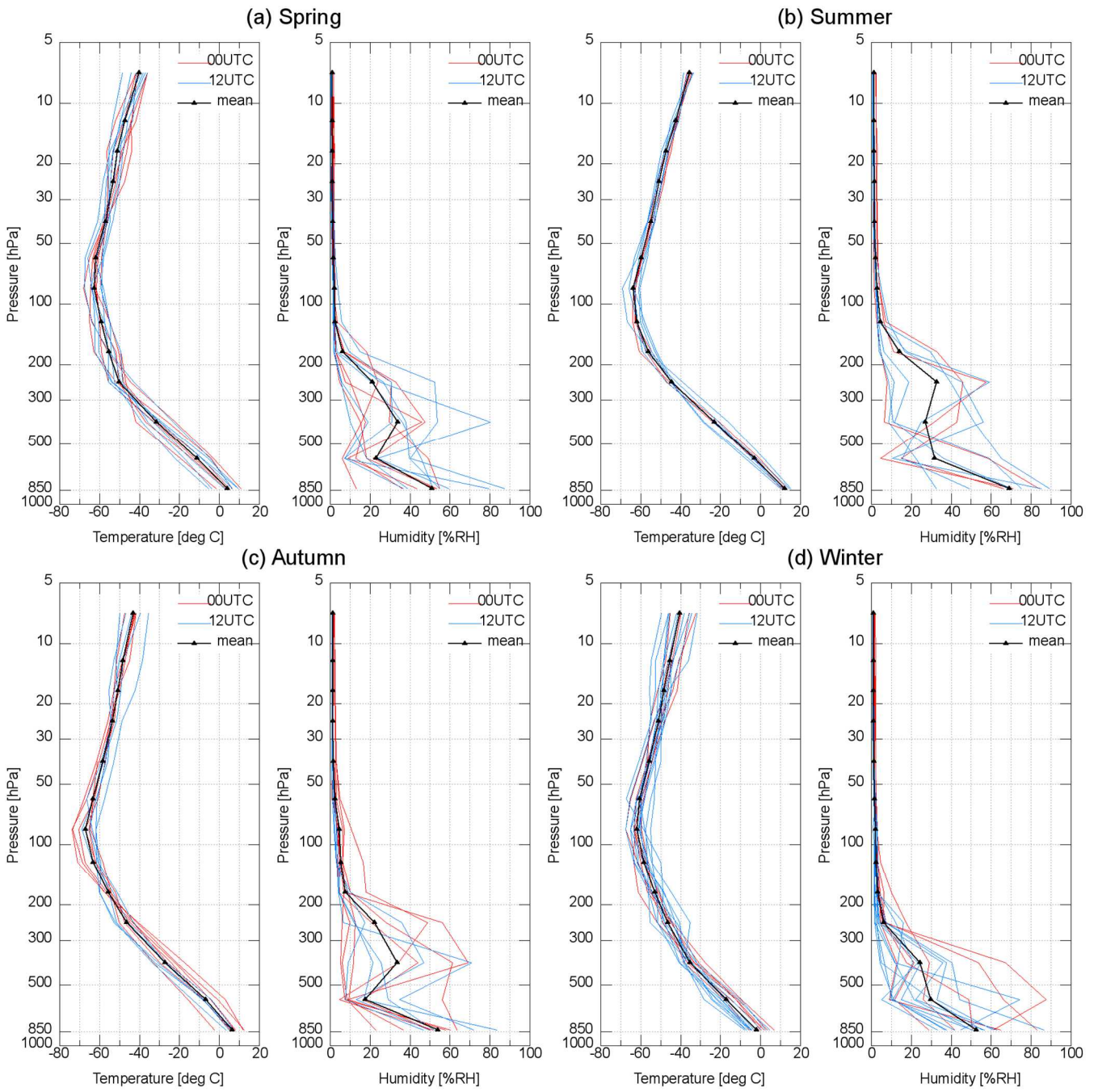
The temperature data were allocated to four categories, i.e. bamboo rod with fixed radiosondes (upper left two panels), paper cardboard rod (upper right two panels), bamboo rod with radiosondes hanged freely (lower left two panels), and plastic cardboard rod (lower right two panels). Red and blue lines show the results in daytime and nighttime observation, respectively. Black lines show means of temperature differences for daytime (00UTC) and nighttime (12UTC) data.



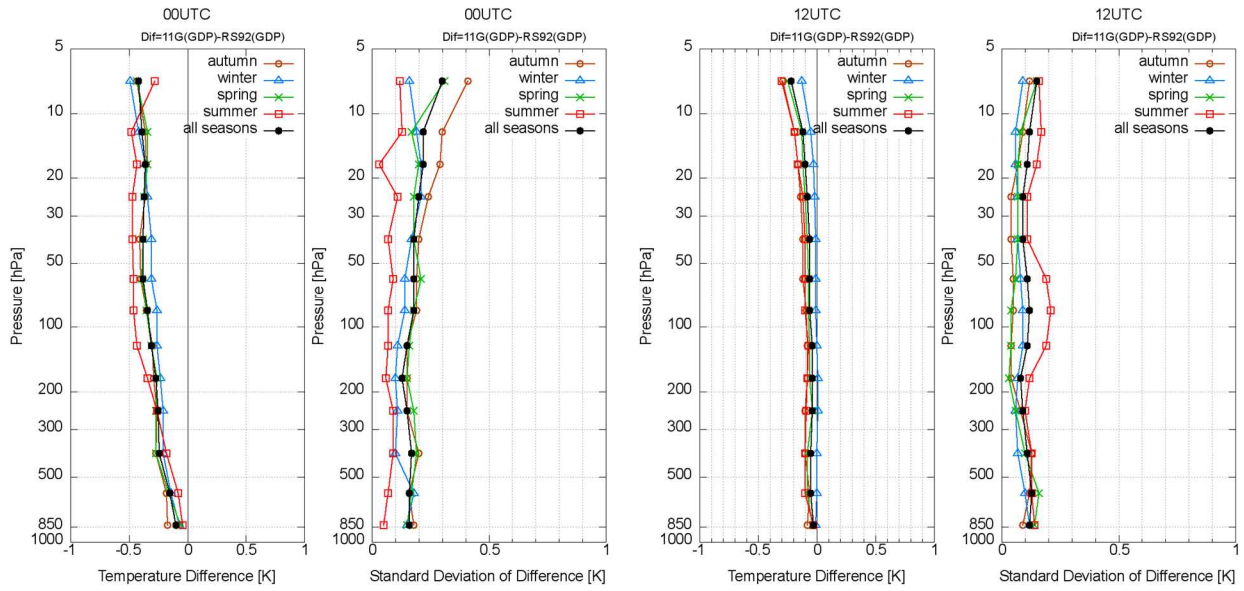


**Figure 6** **Figure 8:** Number of samples for each season and for daytime/nighttime

5

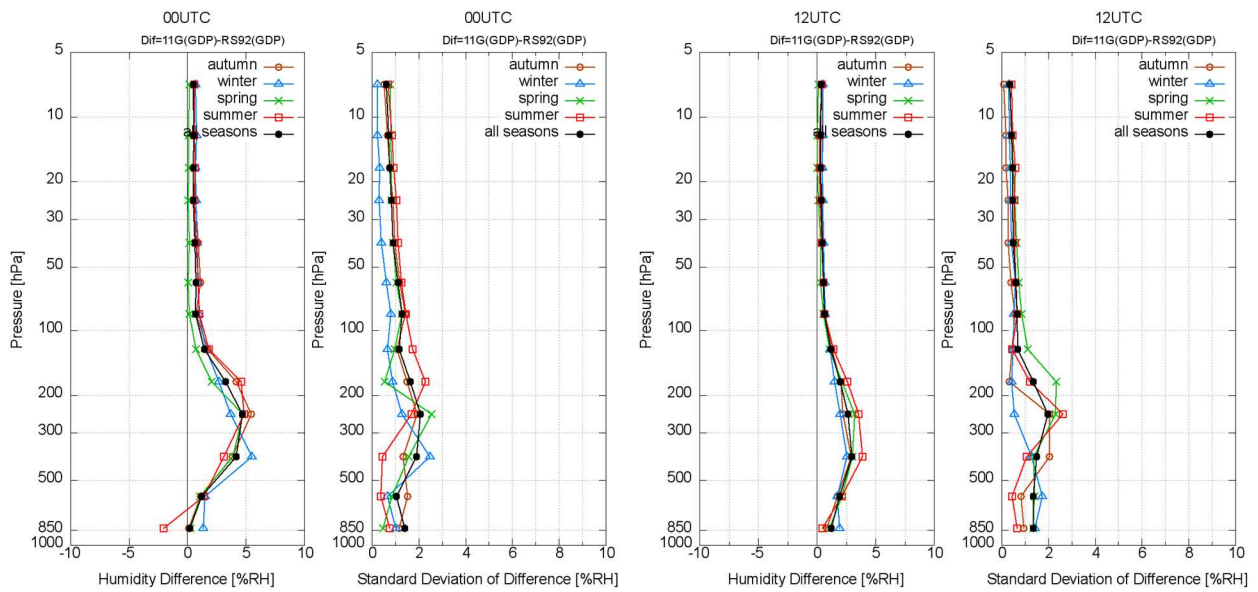


**Figure 9:** Seasonal profiles of temperature and RH from RS-11G. Red and blue lines show daytime and nighttime observations, respectively, and black lines show means for all observations.

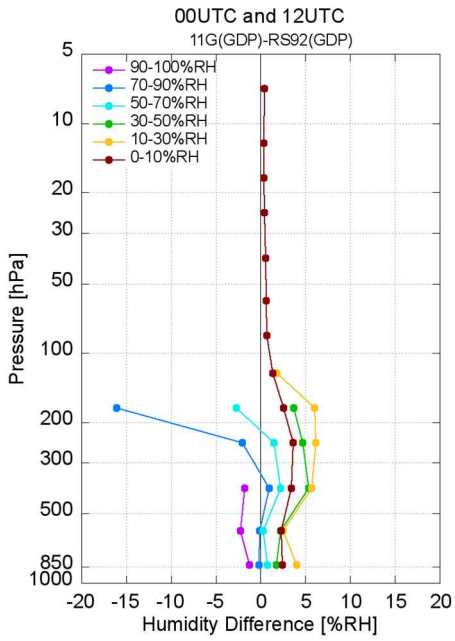


**Figure 8** **Figure 10**: Profiles of mean temperature differences (RS-11G GDP minus RS92 GDP) and standard deviations for each season and for all seasons combined. Brown, blue, green, and red lines show means for autumn, winter, spring, and summer, respectively, and black lines show means for all seasons.

5

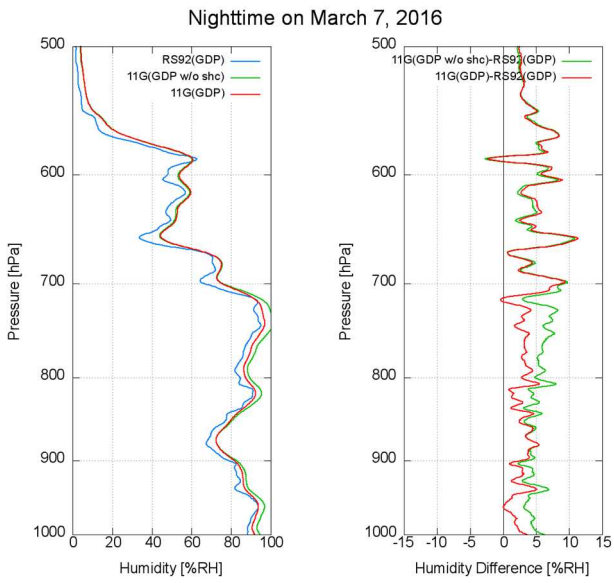


**Figure 9** **Figure 11**: As per **Fig. 8** **Fig. 10**, but for RH

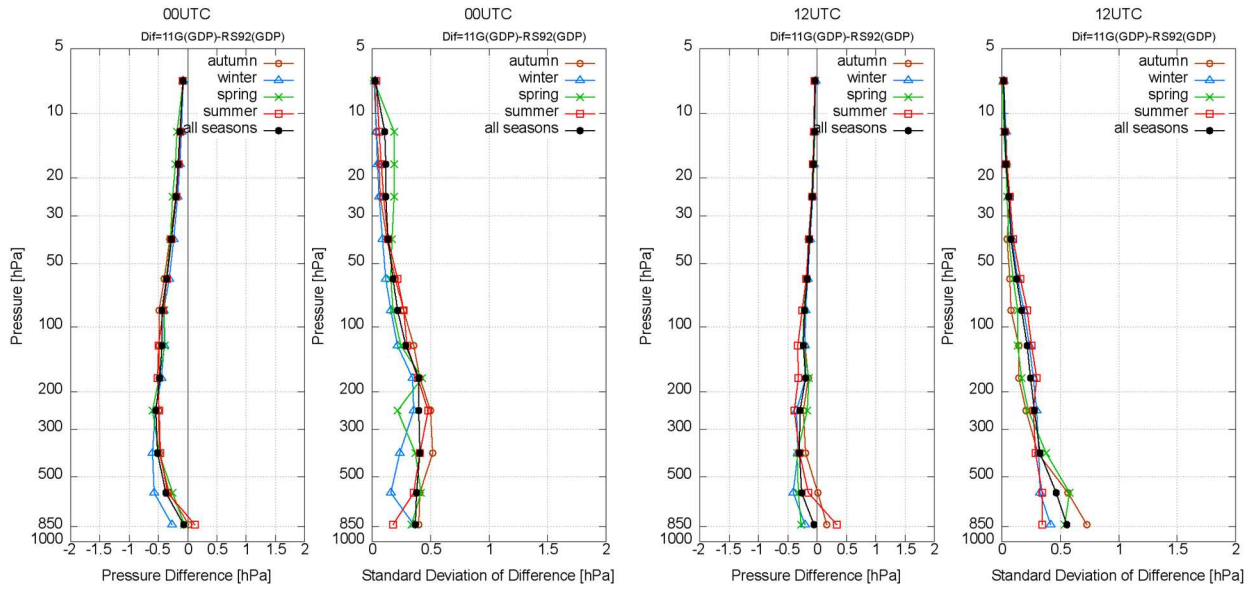


**Figure 12:** Profiles of mean differences (RS-11G GDP minus RS92 GDP) for all seasons and day and night combined for different RH ranges

5

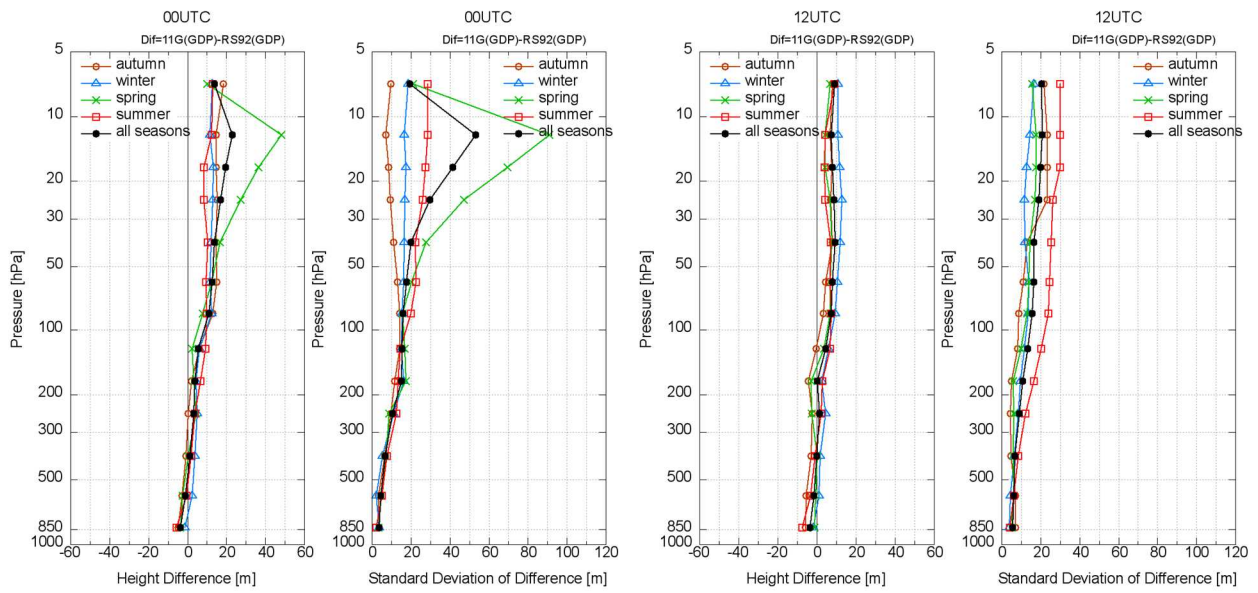


**Figure 13:** Profiles of relative humidity and differences (RS-11G GDP minus RS92 GDP). RS-11G (GDP) shows RS-11G GDP RH with SHC correction, and RS-11G (GDP w/o SHC) shows RS-11G GDP RH without SHC correction. RS92 data are not included in SHC checking at Tateno.

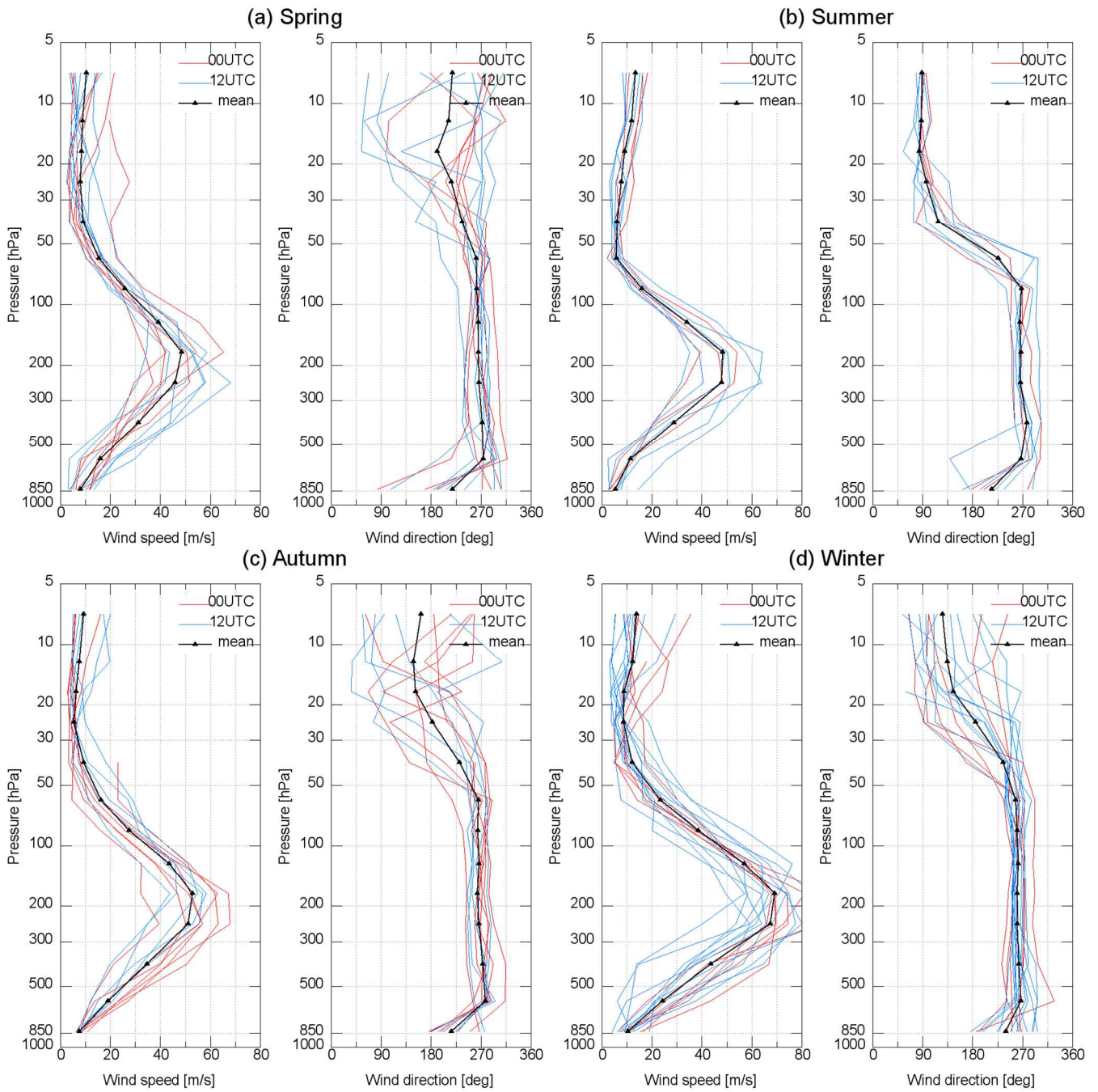


**Figure 12 Figure 14:** As per Fig. 8 Fig. 10, but for pressure

5



**Figure 13 Figure 15:** As per Fig. 8 Fig. 10, but for geopotential height



**Figure 14** **Figure 16**: As per **Fig. 7** **Fig. 9**, but for wind speed and direction

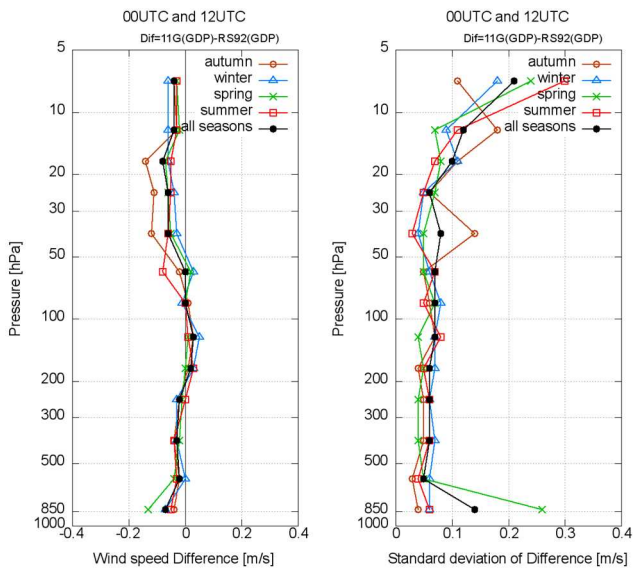
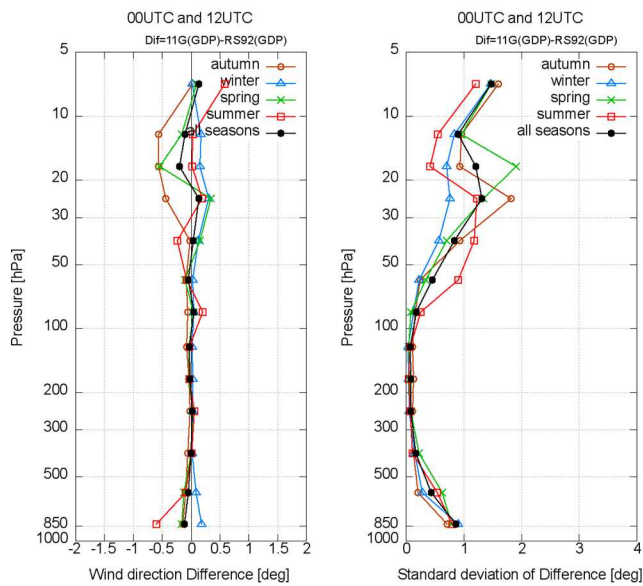


Figure 15 Figure 17: As per Fig. 8 Fig. 10, but for wind speed for all soundings (00 and 12 UTC combined)



5

Figure 16 Figure 18: As per Fig. 15 Fig. 17, but for wind direction

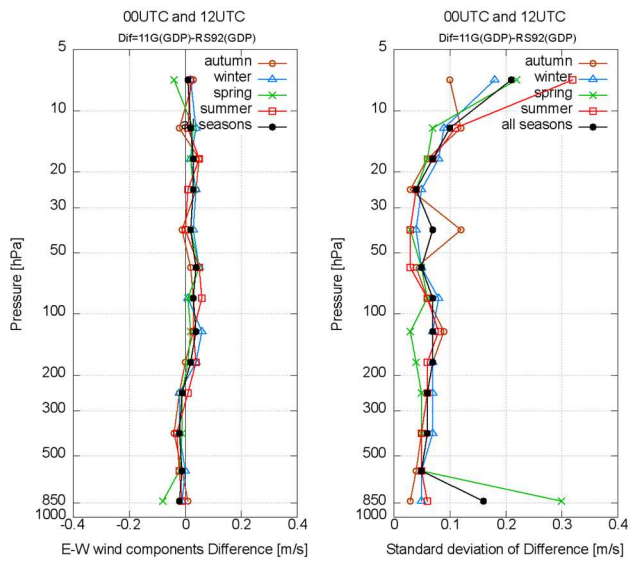
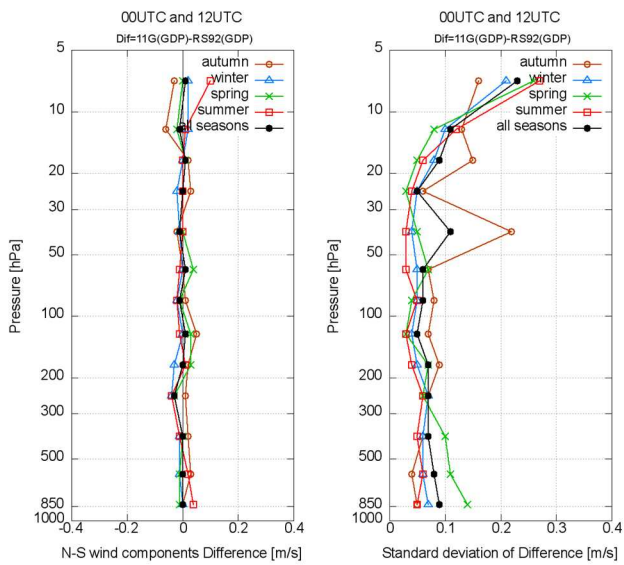
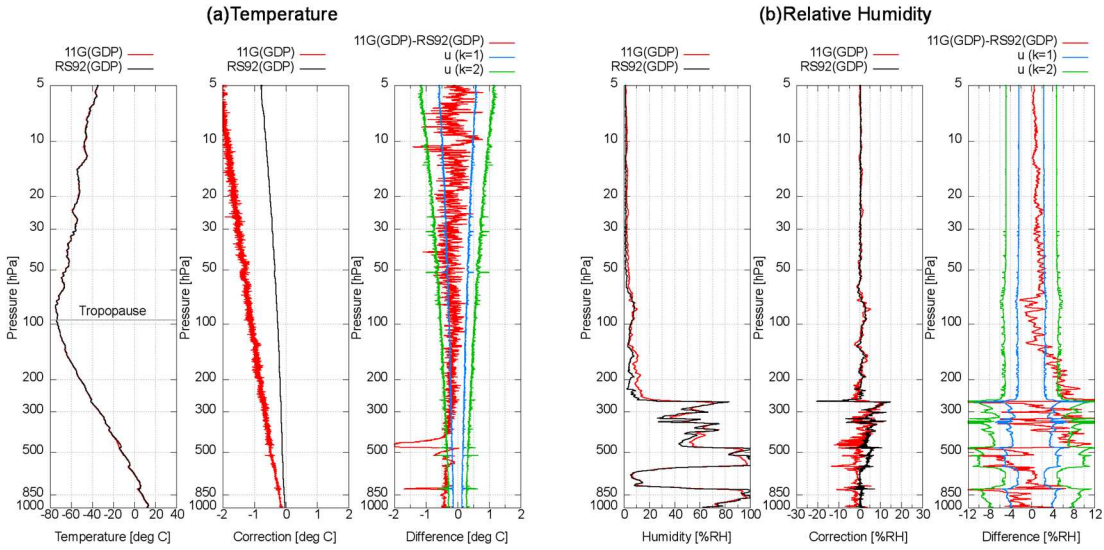


Figure 17 Figure 19: As per Fig. 15 Fig. 17, but for U

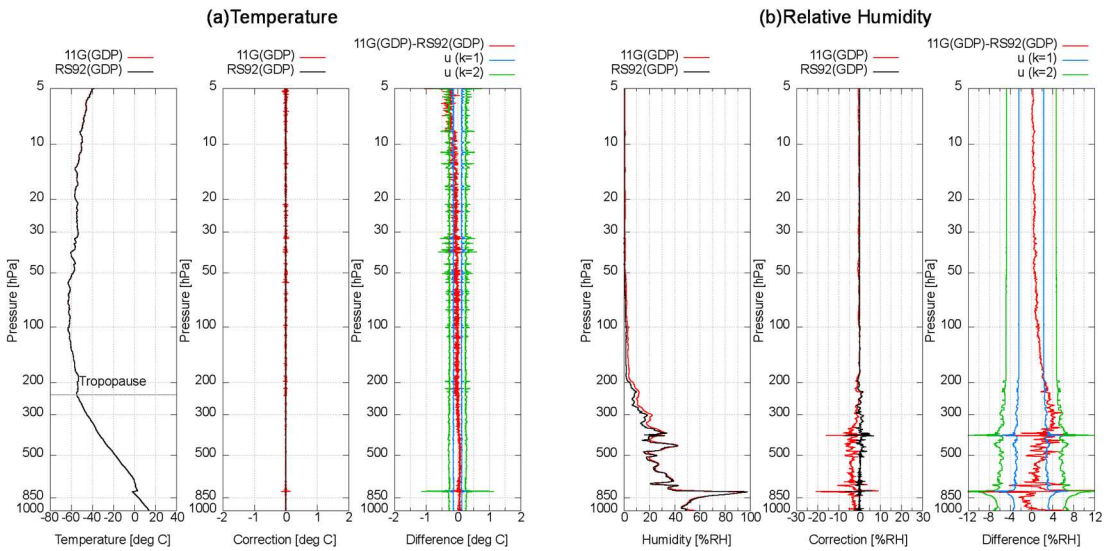


5 Figure 18 Figure 20: As per Fig. 15 Fig. 17, but for V



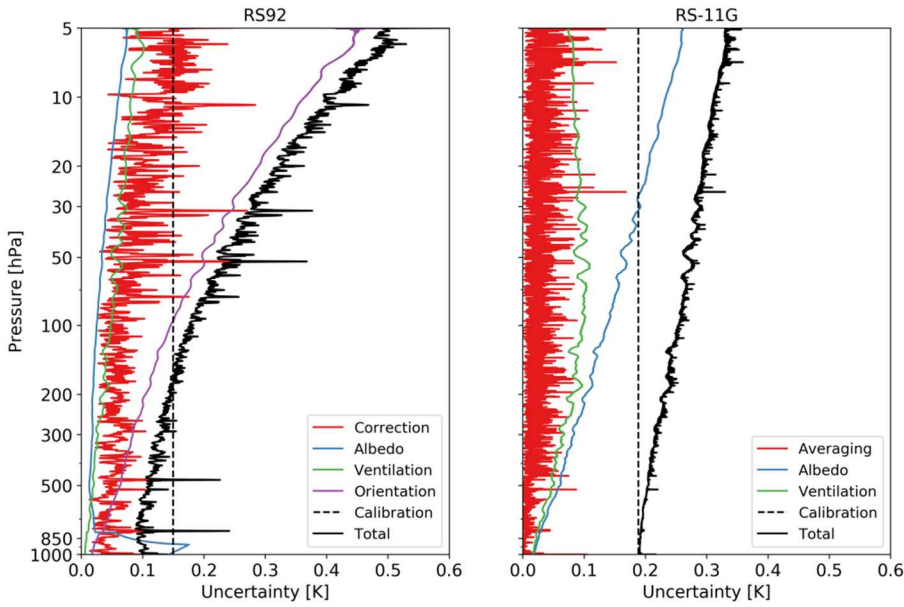


**Figure 19** **Figure 21**: Temperature (a) and RH (b) profiles from the dual flight launched at 8:32 (LST) on 28th October, 2016. The panels on the left in (a) and (b) show temperature and RH profiles, respectively, from RS-11G GDP (red) and RS92 GDP (black). The middle panels show the total amount of correction. The panels on the right show differences (RS-11G GDP minus RS92 GDP) (red) and estimated uncertainties for  $k = 1$  in blue and  $k = 2$  in green. RH results for the stratosphere are not discussed here because measurement values for the stratosphere are considered to exceed the limit for reliable measurement.



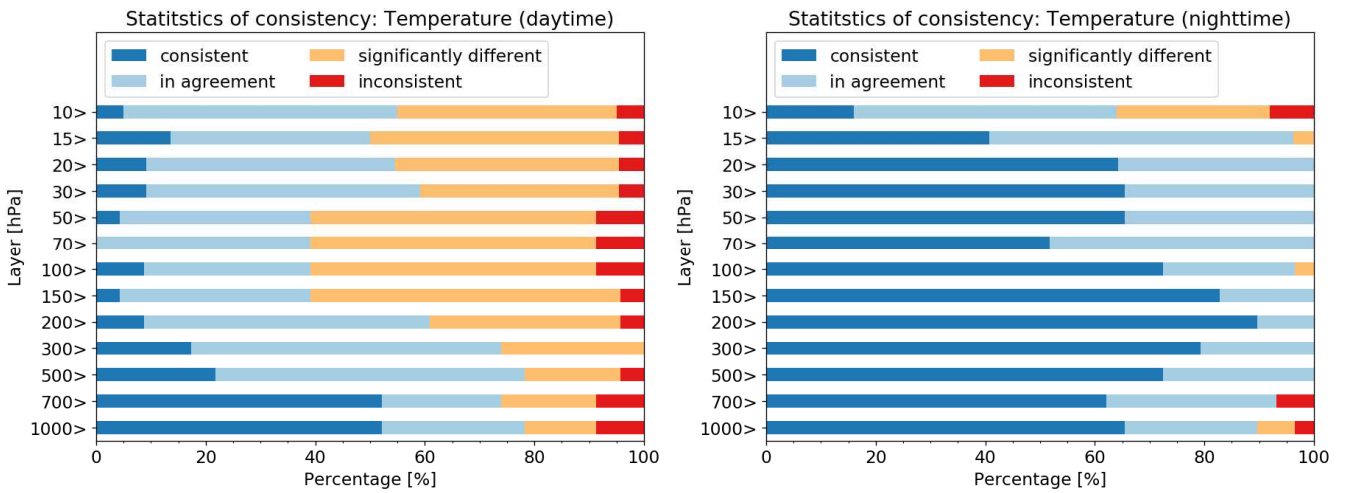
**Figure 20** **Figure 22**: As per **Fig. 19** **Fig. 21** but for the flight launched at 20:30 (LST) on 4th November, 2016.

Uncertainty budget of temperature at 2016-10-28 00UTC



**Figure 21****Figure 23:** Uncertainty budget for temperature measurements at 00 UTC (daytime) on 28th October, 2016, for RS92 GDP (left) and RS-11G GDP (right)

5



**Figure 22****Figure 24:** Percentages of consistency ranks “consistent,” “in agreement,” “significantly different”, and “inconsistent” for temperature measurements between RS92 GDP and RS-11G GDP in each pressure layer for daytime (left) and nighttime (right) dual flights

10

Uncertainty budget of relative humidity at 2016-10-28 00UTC

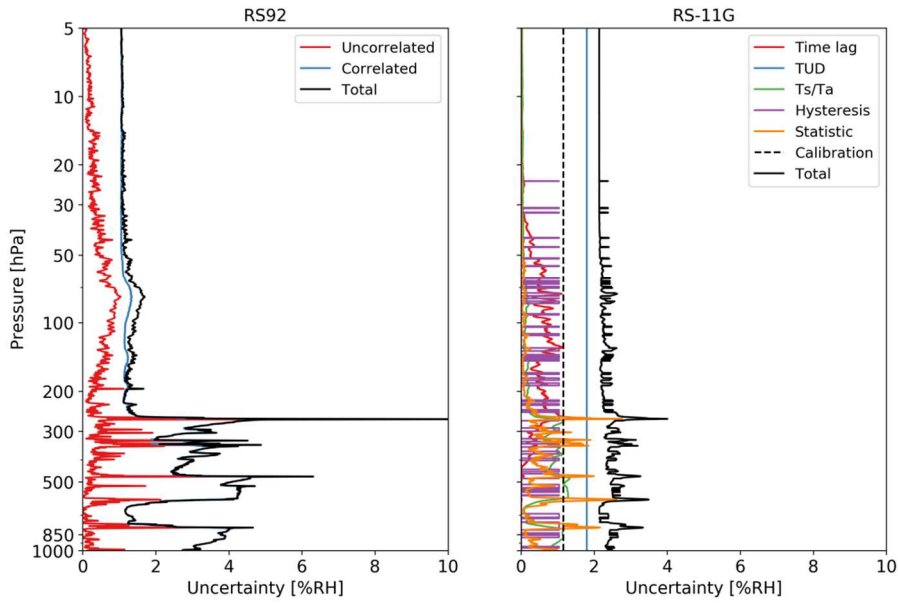


Figure 23 Figure 25: As per Fig. 24 Fig. 23, but for RH

5

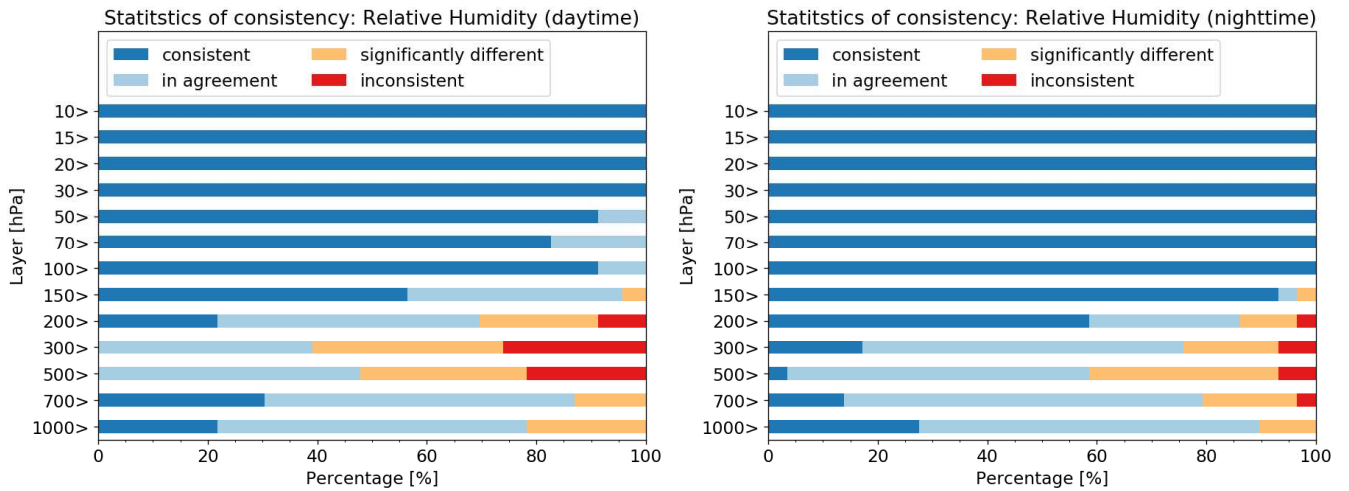
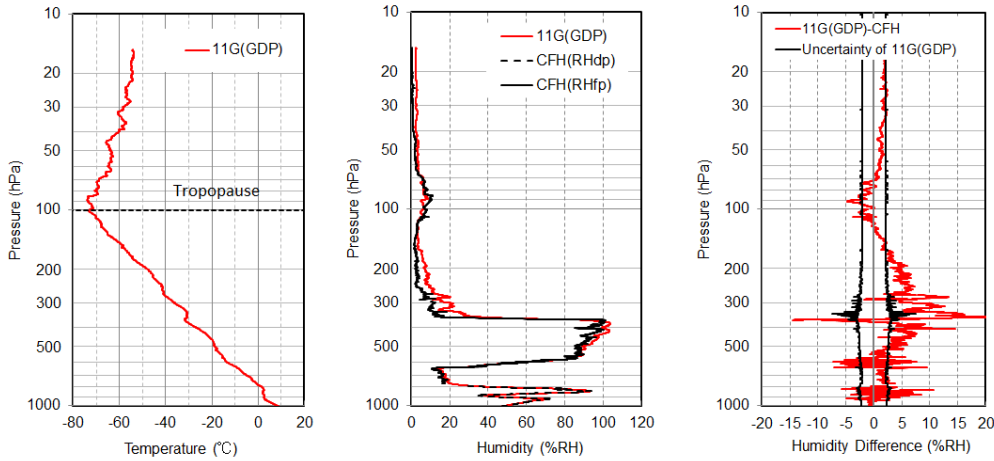
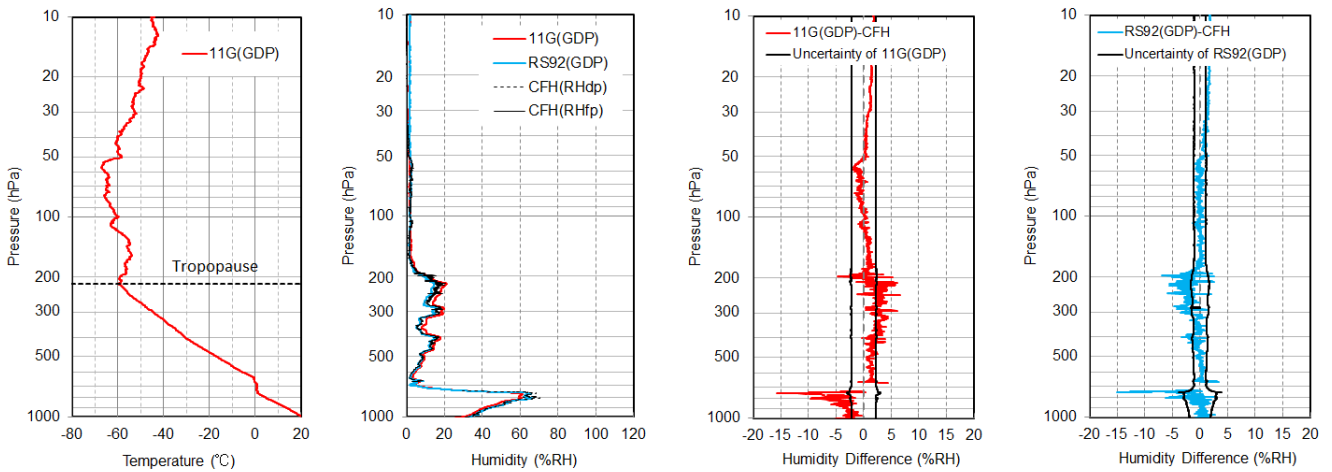


Figure 24 Figure 26: As per Fig. 22 Fig. 24, but for RH. RH results for the stratosphere are not discussed here because measurement values for the stratosphere are considered to exceed the limit for reliable measurement.

10



5 **Figure 25** **Figure 27**: Profiles of temperature and RH/RH difference from an RS-11G and CFH comparison flight launched at 14:50 (LST) on 10 November, 2016. The panel on the left shows temperature data from RS-11G GDP. The middle panel shows the RH of RS-11G GDP (red), converted RH from CFH dewpoint temperature (black dashed line) below the height of the forced freezing point (Vömel et al., 2007), and converted RH from CFH frost point temperature (black thick line) above the height of the forced freezing point. The panel on the right shows RS-11G GDP minus CFH humidity difference (red) and the overall uncertainty of RS-11G GDP (black).



10 **Figure 268**: Profiles of temperature and RH/RH difference from an RS-11G, RS92, and CFH comparison flight launched at 14:50 (LST) on 20 April, 2018. The panel on the left shows temperature data from RS-11G GDP and the RH of RS-11G GDP (red), RS92 (light blue), converted RH from CFH dewpoint temperature (dashed black line) below the height of the forced freezing point, and converted RH from

CFH frost point temperature (thick black line) above the height of the forced freezing point. The panel on the right shows RH differences for RS-11G GDP (red) and RS92 GDP (light blue) from CFH, and the overall uncertainties of RS-11G GDP and RS92 GDP (black).