

Automatic pollen recognition with the Rapid-E particle counter: the first-level procedure, experience and next steps

Ingrida Šaulienė¹, Laura Šukienė¹, Gintautas Daunys¹, Gediminas Valiulis¹, Lukas Vaitkevičius¹,
5 Predrag Matavulj², Sanja Brdar², Marko Panic², Branko Sikoparija², Bernard Clot³, Benoît Crouzy³
Mikhail Sofiev^{1,4}

¹Siauliai University, Siauliai, 76352 Lithuania

²BioSense Institute - Research Institute for Information Technologies in Biosystems, University of
10 Novi Sad, Novi Sad, 21000, Serbia

³Federal Office of Meteorology and Climatology MeteoSwiss, Payerne, CH-1530, Switzerland

⁴Finnish Meteorological Institute, Helsinki, 00560, Finland

Correspondence to: Ingrida Šaulienė (ingrida.sauliene@su.lt)

15

Abstract. Pollen-induced allergy is among the most-prevalent non-contagious diseases, with about a quarter of European population sensitive to various atmospheric bioaerosols. In most European countries, pollen information is based on a weekly-cycle Hirst-type pollen trap method. This method is labour-intensive, requires narrow specialized abilities and substantial time, so that the pollen data are always
20 delayed, subject to sampling- and counting-related uncertainties. Emerging new approaches to automatic pollen monitoring can, in principle, allow for real-time availability of the data with no human involvement.

The goal of the current paper is to evaluate the capabilities of the new Plair Rapid-E pollen monitor and to construct the first-level pollen recognition algorithm. The evaluation was performed for three devices
25 located in Lithuania, Serbia and Switzerland, with independent calibration data and classification algorithms. The Rapid-E output data include multi-angle scattering images and the fluorescence spectra recorded at several times for each particle reaching the device. Both modalities of the Rapid-E output were treated with artificial neural networks (ANN) and the results were combined to obtain the pollen type. For the first classification experiment, the monitor was challenged with a large variety of pollen
30 types and the quality of many-to-many classification was evaluated. It was shown that in this case, both scattering- and fluorescence- based recognition algorithms fall short of acceptable quality. The combinations of these algorithms performed better exceeding 80% accuracy for 5 out of 11 species. Fluorescence spectra showed similarities among different species ending up with three well-resolved groups: (*Alnus*, *Corylus*, *Betula* and *Quercus*), (*Salix* and *Populus*), and (*Festuca*, *Artemisia*, *Juniperus*).
35 Within these groups, pollen is practically non-distinguishable for the first-level recognition procedure. Construction of multi-steps algorithms with sequential discrimination of pollen inside each group seems to be one of possible ways forwards. In order to connect the classification experiment to existing technology, a short comparison with the Hirst measurements is presented and an issue of the false-positive pollen detections by Rapid-E is discussed.

40

Key words: pollen observations, real-time monitoring, artificial neural networks (ANN), scattering, fluorescence

1 Introduction

Pollen of many wind-pollinated plants has specific proteins that cause human allergy (Valenta et al., 1992; 45 Bousquet et al., 2006; Radauer and Breiteneder, 2006; Bousquet et al., 2015; Choual et al. 2018), particularly affecting children (Skoner 2001; Höst et al., 2003; Douladiris et al., 2018). Stress due to contact with the pollen-contained allergen can cause an allergic reaction or exacerbate some related diseases (Leynaert et al., 2000; Devillier et al., 2017; Poethko-Müller et al., 2018). Allergy impairs the quality of life of about 30% of the world population (Akdis et al., 2015). In most of European countries, 50 national organizations of various kinds provide information about pollen concentration in the air, publish pollen prognosis and issue warnings. The bulk of such efforts are based on retrospective pollen observations and climatological pollen calendars. Most observers use Hirst-type volumetric pollen traps where airborne particles ($>5 \mu\text{m}$) are collected on a rotating drum covered by Melinex tape. Samples are identified by a microscopic analysis (Galán et al., 2014; Buters et al., 2018). This method is labour- 55 intensive, tedious, requires narrow specialization abilities and incorporates significant uncertainties – e.g. (Oteros et al., 2017). In addition, due to the manual treatment of the collected samples and weekly cycle of the trap the data are always delayed from a few days up to a few weeks. However, timely data about pollen concentration in the air are also needed for improving the accuracy of tools for personalized medicine (for example, PASYFO app, <http://www.pasyfo.lt>, POLLEN app, <http://www.polleninfo.org>, 60 NORKKO forecast and app <http://www.norkko.fi>, etc.) (Bousquet et al., 2017; Horgan and Pazzagli, 2017; Pereira et al., 2018, Tabatabaian and Casale 2018). It can be also used for informing people about current pollen concentration in the air. Finally, real-time data are needed for short-term pollen forecasts with statistical and atmospheric dispersion models (Sofiev et al, 2013, 2015, 2017, Prank et al., 2016; Ritenberga et al., 2016; Zink et al., 2017).

65 As the approach to information and personal responsibility for health is changing, it has become a necessity to develop new methods enabling the information on airborne pollen to become available in real-time. The first attempts to obtain automated information were related to image recognition technologies (Bennett, 1990). Their development was accompanied by the formation of more potential possibilities (Ronneberger et al., 2002; Landsmeer, 2009). Currently, two types of technologies seem to 70 be the most-suitable for taxon-level classification of pollen: based on image recognition and laser-fluorescence (or their combinations). Image-based technologies are used in detectors, such as BAA500 (Hund Wetzlar, <https://www.hund.de>); the laser fluorescence-based approach is implemented in WIBS device (<http://www.dropletmeasurement.com>), PA-300 and Rapid-E (Plair, <http://www.Plair.ch>), whereas the new Poleno device (Swisens, <https://swisens.ch/>) aims at integration of both features. The 75 Hund- and Plair- manufactured devices were used in limited-scale scientific studies: Oteros et al. (2015) for BAA500 and Crouzy et al. (2016) for PA-300 and showed promising results. However, the large-scale evaluation and calibration suitable for European-scale applications are yet to be concluded (Oteros et al., 2015, Crouzy et al., 2016).

The goal of the current paper is to evaluate the capabilities of the new Plair Rapid-E pollen monitor and 80 to construct and evaluate the first-level pollen recognition algorithms using particle scattering and fluorescent data from the Rapid-E. The key questions to answer were:

- can we identify different pollen genera using the Rapid-E data?
- can we identify different species within the same pollen genus?

- what is the recognition accuracy for the most-common pollen types in Europe?

85 The experiment was performed in Siauliai (University of Siauliai and Finnish Meteorological Institute),
Novi Sad (BioSense Institute of University of Novi Sad) and Payerne (Federal office of meteorology and
climatology MeteoSwiss) with three newly acquired experimental Rapid-E devices. The devices were
provided with local pollen samples and several pollen recognition algorithms have been constructed
independently in each center. This organization of the study allowed accounting for variability of the
90 actual technical characteristics of the individual devices and an absence of “good practice” for such type
of measurements. The best classification results compared across the centres formed the basis of the
Result section of this paper. Finally, outputs of the MeteoSwiss classifier are compared with airborne
pollen data collected with the Hirst-type pollen trap. The provided time series were used to discuss the
“false positive” identifications important for the operational context.

95 **2 Methods**

2.1. Description of the measurement instrument

The new Rapid-E instrument designed and produced by Plair S.A is the successor of the first-generation
particle analyser PA-300 used by Crouzy et al. (2016). It is a particle counter, i.e. it analyses all particles
coming to its inlet one-by-one. Operation of the instrument is based on two physical principles: scattering
100 of near-UV laser beam and deep-UV laser-induced fluorescence (Kiselev et al., 2011; 2013). Multi-angle
scattering is used for determination of the particle’s morphology, such as size and shape. The fluorescent
light is analysed for its spectrum and lifetime. The instrument constantly takes in the ambient air through
the air inlet on the top of its panel. Sample air flow is up to 2.8 litres per minute with the counting rate of
up to 4500 particle detections per minute, i.e. the theoretical saturation level is $1.6 \cdot 10^6$ particles m^{-3} . Since
105 according to the device provider the smallest observable particle is $0.5 \mu m$ in diameter, this saturation
level will not be reached in realistic ambient conditions.

The sampled air enters the nozzle, which creates a laminar flow in the measurement zone. Particles
interact with 400 nm laser light source and the scattered light is captured by twenty-four time-resolving
detectors distributed at different angles. The information on chemical properties of the particles is
110 obtained by a powerful deep-UV laser (320 nm) source that induces fluorescence. Its spectrum (32
measuring channels within spectral range of 350-800 nm, 8 sequential acquisitions with 500 ns retention)
and lifetime (4 particular bands) are recorded and used for the particle identification (Figure 1).

The threshold of the particle fluorescence intensity (> 1500 units) was empirically determined as a cut-
off level for sufficiently recorded pollen grains. The spectra were subsequently normalized to eliminate
115 the difference in the signal strength between the instruments.

Rapid-E has an embedded mechanism for collecting the particles, which passed through the registration
chamber, onto sticky slides for the follow-up microscopic analysis.

The device has several modes of operations. Since the deep-UV laser has a limited resource, the 400 nm
scattering image is used for prior estimation of the particle morphology and deciding if it can be pollen.
120 In the Pollen mode, the device ignites the deep-UV laser only for 5-100 micrometer particle size range
(used in this study). Another mode allows detecting particles in the range of 0.5-100 micrometers for

spores, particulate matter and bacteria identification. However, the expected lifetime of the deep-UV laser is much shorter in this mode, especially in polluted atmosphere.

2.2. Data processing and recognition methods

125 2.2.1. Siauliai

Both modalities of the Rapid-E output (scattering image and the fluorescence spectra) were processed independently with artificial neural networks (ANN) and the scores were merged to obtain the final classification result.

Both scattering and fluorescence signals (Figure 1) significantly depend on the particle position with regard to the laser beam while passing through it. In particular, the apparent particle size (scattering) and the fluorescence intensity varied between the recordings. Apart from that, 15-50% of particles are missed by the deep-UV laser. Therefore, pre-processing included: (i) identification of a characteristic template of 44x20 pixels from the scattering image to localize the features characteristic for each pollen type; (ii) particles with insufficient fluorescence intensity are filtered out (Table 1); (iii) fluorescence spectrum was 135 normalised, (iv) at the first time moment, only 16 of 32 wavelengths were included in the feature vector to exclude the saturated short-wavelength fluorescence bands.

Several ANNs were created. One of the best-performing networks included only scattering and fluorescence signals taking them separately and disregarding the noisy lifetime component.

ANN for scattering images consists of two convolutional blocks for the feature extraction and two fully 140 connected layers for classification (Figure 2). Every convolutional block consists of the 2D convolutional layer, the batch normalization layer, the ReLU activation layer, and the maxpooling layer. One mask of the convolutional layer has size of 5x5. The convolutional layer of the first block has 16 filters, and the one of the second block has 32 filters. The maxpooling layer selects the maximal response from the area of 2x2. At the output of the second convolutional block, the size of the feature vector is 1760. The first 145 fully connected layer has 256 neurons. The second fully connected layer classifies these vectors to the number of pollen classes chosen for the calibration. The ANN was trained using the cross-entropy loss criterion.

The fluorescence spectrum was processed by a multilayer perceptron ANN (Figure 2) with dropout and batch normalization layers used for regularization. This ANN also was trained using the cross-entropy 150 loss criterion.

Results of two ANN were fused by summing scores of every pollen type.

The training process was monitored to avoid over-fitting the networks – see the Discussion section.

2.2.2. Novi Sad

All Rapid-E signals (i.e. scattering, fluorescence and life time) were transformed into images and jointly 155 processed by a single ANN (Figure 3). Its architecture considers the same input dimensions of every image, and since the scatter signal could vary in the number of acquisitions, each image's width was equalised by finding its centre of mass and either cutting or zero-padding to fit to 24x70 pixels. The dynamic range of each image was reduced by replacing each pixel value with its logarithm, which resulted

in enhancing of the low intensity pixels. Images from temporally resolved spectrum data and all bands of the life time data were used unprocessed.

Similarly to Siauliai, particles with the fluorescence intensity less than 1500 units at the Rapid-E scale at all wavelengths were filtered out. In addition, particles with calculated optical size out of the range 5-100 micrometers were filtered out using the manufacturers size approximation, depending on the sum of the scattering image. Size is 0.5 micrometers if the sum is less than 5500000. If the sum is between 5500000 and 500000000, the size is given by the $9.95e-01 * \log(3.81e-05 * x) - 4.84e+00$. Finally, if the sum is greater than 500000000, the size is given by $0.0004 * x^{0.5} - 3.9$.

Each input signal is analysed with its own chain consisting of 2D convolutional layers, replication padding layers, ReLU activation functions, batch normalization layers, max pooling and the dropout layers, together forming the convolutional block (Figure 3).

The convolutional layer of the first scattering block had 10 filters with the kernel size of 5x5 while the second one had 20 filters with the kernel size of 3x3. For the spectral images, the convolutional layer of the first block had 50 filters with the kernel size of 5x5, and the one of the second block had 100 filters with the kernel size of 3x3. For the lifetime images, the first convolutional layer had 70 filters with kernel size of 7x1, the second one had 140 filters with kernel size of 5x1 and the one of the final block had 200 filters with the kernel size of 3x3. At the output of the final convolutional block, the sizes of the feature vectors for scattering image, fluorescence spectrum and lifetime are 1800, 1600 and 1400, respectively. Each feature vector is passed through one fully connected layer with 50 neurons. Those features were concatenated resulting in the feature vector of dimension of 150. The size of the second (last) fully connected layer was of the size of the number of classes, after which the samples were classified with the log-softmax activation function.

The ANN was trained using negative log-likelihood (NLL) loss and the Stochastic Gradient Descent with the learning rate of 0.001 and the momentum of 0.9.

2.2.3. Payerne

At the pre-processing stage, all three signals were normalized with their maxima. For scattering, the image was additionally centered and cut to a 24 x 100 shape. Extra filtering was imposed retaining only calibrations with optical size above 10 micrometers and a fluorescence signal in a range and spectrum compatible with single pollen grains (see Crouzy et al., 2016, for examples of spectra). The optical size corresponding to 10 micrometers was estimated by comparing the integral of the scattering signal of 5 micrometer PSLs with the integral of the scattering signal for *Urtica* and *Parietaria* pollen grains.

For scattering ANN, 5x5 convolutions were applied with 32 filters, ReLU activation, and the pooling layers with a 2x2 window. For lifetime, 1D convolution was applied with ReLU activation, with windows size 10x1 and 10 filters. For the spectrometer, asymmetric 2x4 convolution was applied with 8 filters with ReLU activation. The ANN was trained using the Adam optimizer and categorical cross-entropy as loss function (Figure 4). In order to retain flexibility, additional features were inserted before the final fully-connected layers after Crouzy et al. (2016): the maximum and the integral of the scattering together with the maxima of each of the four lifetime bands and the maxima of the first three spectrum acquisition.

2.2.4. Additional filtering of false-positives in operational context

Even if high expectations on the performance of the classifier are met, problems are bound to occur in the operational applications due to false-positive detections. For example, Birch pollen concentrations regularly exceed 1000 pollen m⁻³ in Switzerland in spring. If just 2% of these are mis-interpreted as, e.g., Ambrosia pollen, the false concentration of 20 grains per cubic meter would be already significant for allergy analysis. In order to cope with this, extra steps were introduced in Payerne.

Additional filtering was applied disregarding the events with classifications quality below a certain threshold as was done in (Crouzy et al., 2016) where a reduction of sampling of 20% lead to an increase in precision of about 10%.

For the operational monitoring, at least a few events with extremely good classification score were required during the same or two preceding days to accept the middle-confidence recognition of the specific pollen type. This condition is applied uniformly over the pollen season to verify what pollen taxa are present in the air.

2.3. The scheme of the experiment

In this chapter, we present in details how the calibration experiment was implemented in Siauliai, followed by the description of specifics of the setups in Novi Sad and Payerne. Most-importantly, only pollen characteristic for each location was used. Comparison of the results were based on pollen types belonging to the same plant families found in all three locations.

2.3.1 Siauliai

The experiment in Siauliai was carried out with 14 pollen morphotypes, the tested amounts of which are given in Table 1. Three genera (*Salix*, *Acer*, *Pinus*) were represented by two plant types. All 14 plants are naturally widespread in Lithuania and their airborne pollen is abundantly recorded annually (Šaulienė et al., 2016).

Pollen was taken from the plant inflorescences collected during the vegetation period in April-August of 2018 during the days with intense pollen release. The collected material was put in air-permeable paper bags and dried at a temperature of 40°C until the maximum release of pollen from the inflorescences. Vibratory Sieve Shaker ANALYSETTE 3 PRO was used for gentle shaking the pollen grains out of the inflorescences. The extracted pollen was stored in Petri dishes at +4°C.

Each experiment was performed twice and consisted of up to 8 sample tests, using approximately 5 mg of pollen per sample test. The number of grains registered in the scattering signal is indicated in Table 1 as “Total particles”, whereas the column “Fluorescent particles” shows the number of grains with usable fluorescent and lifetime signals.

The experiments were carried out in laboratory conditions with a self-designed manual exposure method (Figure5). In order to isolate the environment of the experiment from the ambient particles, a plastic (PET) bottle was fitted tightly to the Rapid-E inlet. One of the bottle walls was cut open and two holes of ~15 cm² were covered with a household air filter. The filter fabric was tested to hold ~99% of particles larger than 1 micrometre in diameter without any noticeable disturbance of the air inflow into the device.

235 The pollen was injected into the upper part of the bottle by inserting the pipette tip with the pollen sample into the narrow cut in the bottle and then gently blowing the air through the pipette. With the sampling rate up to 2.8 litres per minute, Rapid-E was collecting the pollen grains from the bottle within a few tens of seconds. This simple scheme enabled reducing the environmental sample contamination by up to 5 times compared to the unfiltered air in the lab. Each new experiment used a new bottle and the nozzle of the instrument was cleaned, thus ensuring the removal of previously sampled pollen.

240 Quality and level of contamination of the samples was manually controlled by using the sticky slides. The presence of non-pollen particles (debris from the remnants of inflorescences etc.) was verified to be substantially less than 1% by the visual inspection of a subset of the calibration events. Abundance of pollen aggregates (several pollens stuck together) was also low but their reliable identification by
245 microscopic analysis was more difficult because of thick layer of pollen on slides. The calibration was performed in the Pollen mode, which excluded particles smaller than 5 µm of optical size.

2.3.2 Novi Sad

The scheme of the pollen exposure experiment was similar to that in Siauliai. The exposure was conducted on the roof by fitting the PET bottle to the sampling pipe after removing the Sigma-2 inlet. Manual
250 microscopic analysis of sticky slides was used to confirm the quality of samples and absence of non-pollen debris and pollen agglomerates. The device was also in Pollen mode, i.e. it filtered out particles smaller than 5 µm of optical size.

Classification was tested for an adjusted set of pollen morphotypes accounting for the availability of the fresh material during the study season. In particular, *Juniperus* was replaced by *Taxus* and *Festuca* was
255 replaced by *Cynodon* and *Dactylis* aiming to assess the degree of discrimination between different grass genera. Similarly, *Picea* and *Cedrus* pollen were used for assessing differences between the same pollen morphotype. Only *Acer negundo* was analysed as it is the only *Acer* pollen that is recorded regularly in Serbia. *Fraxinus* (including both *F. excelsior* and *F. ornus*) was added to the test as it is commonly recorded throughout spring season.

260 2.3.3 Payerne

Low ambient concentration of coarse particles allowed a less laborious approach: pollen calibrations in Payerne were performed by directly blowing the material into the Sigma 2 inlet, without protection from contamination. The details of the procedure are described in (Crouzy et al., 2016). In order to obtain a reasonable panel of the relevant pollen types, 60 calibrations were performed for 21 different taxa. Focus
265 was set on repeating calibrations, if possible under varying conditions. Only fresh pollen was used and time between collection and calibration was reduced to a minimum (range: 15-120 minutes). The presence of agglomerates and debris was investigated by collecting histograms of the optical size and of the fluorescence intensity of the recorded events. Cut-offs were introduced accordingly, in order to retain only single pollen grains. The device was also in Pollen mode, i.e. filtered out particles smaller than 5 µm
270 of optical size.

3. Results obtained in Siauliai

The analysis was started from a semi-qualitative consideration of the fluorescence spectra, primarily aiming at demonstration of the capabilities and the limitations of the approach and preliminarily assessing the principal possibility to construct a reliable particle recognition algorithm.

275 3.1. Qualitative comparison of the fluorescence spectra of different pollen species

3.1.1. Comparison of fluorescence spectra of different species of the same genus

The experiment included three genera, for which we collected pollen from different species (Table 1): *Salix*, *Pinus*, and *Acer*. Their fluorescence spectra are shown in Figure 7, where the solid lines represent the normalized mean spectrum and shadows show the standard deviation range. The uncertainties of the
280 mean spectra were a fraction of a percentage leading to the statistically significant difference ($p < 0.001$) at all wavelengths for both *Pinus* and *Acer* mean spectra and even for some wavelengths of the *Salix* spectra.

Despite statistically significant differences between the mean spectra, the sample standard deviation (shadowed ranges in Figure 6) was quite large. Therefore, it was not possible to distinguish between *Salix*
285 *alba* and *Salix fragilis*. The normalised spectra of *Pinus sylvestris* and *Pinus mugo* coincided at the maximum value of the amplitudes at the wavelength of 460 nm but the mean amplitude of the *Pinus sylvestris* spectrum was higher in short-wave range (< 450 nm). At the longer wavelengths (480-550 nm) the amplitude was higher for the *Pinus mugo* pollen. However, these differences were well inside the sample standard deviation. The difference between the species of the *Acer* genus was the most-
290 pronounced and, even taking the sample variability into account, these were the ones that could be distinguished. The *Acer pseudoplatanus* spectrum showed higher amplitude than *Acer negundo* in the short-wave range and lower in the central part of the spectrum (400-520 nm).

Therefore, two out of three tested genera allowed, in principle, an inter-genus species classification using the pollen fluorescence spectrum. However, the differences between them were evidently too small for
295 the multi-species algorithm considered in the current paper. Practical work was therefore left for the follow-up studies.

3.1.2 Comparison of fluorescence spectra of species of different genera

The study included 11 different pollen genera (Table 1), whose spectra are shown in Figure 7 for recordings at every 500 ns starting from the first pulse reaching the detector. For all species, the most
300 intense fluorescence was observed for the wavelengths from 390 to 570 nm, with different locations of the maximum and with different amplitude. For example, the highest mean intensity of fluorescence was recorded for the *Artemisia* pollen: it exceeded >7000 . Meanwhile, the amplitudes of *Betula* and *Quercus* reached more than 4000. In all cases, the first pulse had a wider wavelength range than the subsequent ones. The amplitudes of already the second recording (500 ns from the first pulse) was close to zero for
305 wavelengths longer than 600 nm.

In addition, Figure 7 shows that not only the intensity of the first signal between separate genera differs, but the shape of the second recording is also specific, which is significant for the identification of the

pollen morphotype. For example, the difference in fluorescence intensity of *Salix* pollen between the first and second signals was larger than for other tested taxa. Tests with *Festuca* pollen actually showed that, unlike all other species, the signal amplitude grows during the first 500 ns resulting in the absolute maximum intensity of the spectrum registered at the second recording, 500 ns after the fluorescence is induced.

The qualitative analysis of the data was continued by grouping the data according to similarity of the fluorescence spectrum of the first recording (Figure 8).

Alnus, *Corylus* and *Betula* plants are in one taxonomic family, and our results indicate that their pollen has a similar fluorescence spectrum. Interestingly, according to the similarities of the fluorescence spectra, *Quercus* pollen appeared in the same group with *Betulaceae*, although the maximum value of its mean of the normalised spectrum was the lowest in the group.

Another group in which the pollen fluorescence curves have similar shapes also consists of pollen of woody plants: *Populus* and *Salix*. They also bloom at a similar time; therefore their precise identification is an important but, as seen from Figure 8, a challenging task. The tested grass pollens form a separate group, which however also included pollen of the woody plant *Juniperus*. This group is characterised by the high mean amplitude in short (< 400 nm) wavelength range.

3.2 Recognition skills

The key practical question for the Rapid-E application in the daily pollen monitoring is the accuracy of the pollen type classification presented below via the confusion matrices. In these matrices, rows represent the actual type of pollen and columns are the assigned type. All values are in %, the sum of values over each row is 100%: every pollen has to be assigned to some type.

3.2.1. Comparison of the confusion tables obtained in Novi Sad, Payerne and Siauliai

The recognition procedure in Siauliai was built independently for scattering and fluorescence signals with subsequent fusion of the results. The tables for the individual components are presented in Annex 1. Table 2 presents the outcome of the combined identification using both the scattering image and the fluorescence spectra. With the exception of *Alnus*, the combination of the identification methods showed better recognition skills than each of the methods separately. Overall, the improvement over individual methods was ~23% compared to scattering images and ~7% compared to fluorescence.

Overall, 6 out of 11 tested pollen genera were identified with the accuracy better than 75%. The best results (> 91% of correct classification) were achieved for *Pinus* pollen. The pollen of the plants of *Betulaceae* genus was identified comparatively well but the recognition of the individual species of this family was poor.

The overall accuracy was very similar for Siauliai and Novi Sad and somewhat better for Payerne, partially owing to the stricter filtering of the raw data. Although it is difficult to make exact comparison of the confusion tables between the studies, it still sheds some light on the overall performance and also highlights the similarities and differences between the regions. Comparing the Tables 2 and 3, one can see that the difference in the recognition quality is about 10% for most of species, being practically identical for *Betula* (~50% in both studies) and *Quercus* (~60%). Somewhat higher skills in Novi Sad were obtained for *Corylus*, *Alnus* and *Populus* while in Siauliai higher skills were reached for *Acer* and

Artemisia. It is interesting to note that the confusion between the two chosen grass pollen morphotypes in Novi Sad was not notable and for these genera the Rapid-E data have certain discrimination potential. One can therefore conclude that the multi-species discrimination algorithms applied in these studies
350 showed similar recognition skills. It should be stressed however that the training of the ANNs were completely independent and used the local pollen grains. Therefore, the similar recognition quality does not imply similar pollen in these regions.

As mentioned earlier (Section 2.2.3), the calibration procedure used at MeteoSwiss was slightly different than in Novi Sad and in Siauliai. In addition, the focus at MeteoSwiss was more towards operational
355 applications. As a consequence, only a subset of the 60 calibrations was used to train the classifier. Only taxa with high relevance for monitoring or for which very good calibrations were available were selected. It was noticed that increasing the number of taxa could worsen the problem of false positive detections (see below). An optimum for monitoring purposes was found when using 10 taxa. The performance of the corresponding classifier is shown in Table 4. It is interesting to note that, as expected, most errors
360 occur within the *Betulacae* family, with an extremely low recall for *Alnus*. It was hypothesised that, although calibrations were repeated, the classifier may to some extent recognize the conditions under which the calibration was performed and quality of the sample. Obtaining a classifier working only on the generic features of the taxa is a very difficult task. A holistic validation procedure, going from the analysis of device raw outputs (Section 3.1) analysis to the comparison with reference measurements
365 (Section 4.5), is therefore essential.

4 Discussion

4.1. Over-training – a problem?

The problem of potential over-training was addressed from two directions: via the standard training vs test datasets evaluation, and via an explicit verification of homogeneity of the datasets.

370 4.1.1. Performance in the training and test datasets

Prior to starting the ANN training, all datasets were split to the training and test subsets. The test subset in Siauliai consisted of 1000 particles picked at the end of every calibration event while all other particles were used for training. The Siauliai ANN training continued until saturation of the recognition quality for the training dataset (see example in Figure 9), thus including the overfitting range. The maximum
375 performance of the fluorescence-based recognition was obtained at the epoch of ~900, after which the over-fitting gradually picked up. Therefore, the ANN parameters after this epoch were taken as the study outcome. For the scattering-image-based training, a similar consideration suggested the epoch 3500 as the optimum.

For Novi Sad (Figure 10), the training was stopped before the overfitting picked up and thus the
380 parameters of the last trained epoch 3000 were used.

4.1.2. Test of homogeneity of the calibration datasets

One of the concerns regarding the fluorescence-based technology is the stability of the spectra for different conditions of pollen grains, which are affected by ambient humidity, temperature, time they spent in the air, chemical interaction and degradation, etc. Full-scale evaluation of this problem lies
385 beyond the scope of this paper. Here, we only present a brief check demonstrating that it was not the major issue.

As stated in the methodological section, the calibration set for each pollen type in Siauliai consisted of up to 8 independent calibration sessions for four species, these sessions were performed in different days and thus with pollen of different age. A simple check of homogeneity of the fluorescence spectra is then to
390 use the data of one of these days as the training set and those from another day as the test subset. Substantial difference in the recognition quality would point at the inhomogeneous data. Distinguishing the 4 species is simpler than 11 but important is the difference between the training and test recognition quality.

Comparing the upper and lower rows of Figure 11, one can see that for the above epochs (3500 for
395 scattering- and 900 for fluorescence-based ANNs), the quality of recognition for the training subset (one day) and test subset (another day) differ by <5% for all 4 species. Therefore, we conclude that the conditions during the different days of calibration did not affect the homogeneity of the dataset.

4.2. Comparison with other studies on pollen recognition

During recent years, a number of attempts to obtain information about pollen concentration in the air in
400 real time have been undertaken. However, even the most-successful tests carried out with WIBS-4 (O'Connor et al., 2014), Hund BAA500 (Oteros et al., 2015), Yamatronics KH-3000-01 (Kawashima et al., 2017), and Plair PA-300 (Crouzy et al., 2016) devices, strongly advancing the pollen monitoring field, left open the questions of scalability and replicability of the results. They also did not touch the topics related to application of the tested systems in the operational context. Application of yet-another new
405 device – Plair Rapid-E – in our study was pursuing, apart from the scientific objectives, the operational implementation as a mid- to long-term goal. However, having tested 14 different pollen morphotypes, we found that significant work is still needed.

One of the challenges to the automatic monitors is the rich mixture of pollen types in Europe that all pose significant allergenic threat. This makes it particularly difficult for the monitors to satisfy the needs of
410 allergic people and allergologists – unlike in many other regions. For instance, *Cryptomeria japonica* identified more than 10 years ago by Kawashima et al. (2007) is still the main pollen type recognised by that system (Kawashima et al., 2007; Wang et al., 2013; Wang et al., 2014; Takahashi et al., 2018). However, it seems to be more or less sufficient for that region.

Varying level of allergenicity of species within a single genus or a family raises the question if the intra-
415 genus classification is possible. Hirst-based manual techniques do not allow it: pollen grains are too similar in the microscopic analysis. Our results show that such level of identification is not immediately possible using Rapid-E information either. In particular, our data demonstrated that the fluorescence spectra of the *Salix alba* and *Salix fragilis* species were almost identical. More promising were the experiments with *Pinus* and *Acer* (Figure 6) and some grasses (Table 3) where the work should be

420 continued with different identification algorithms built for these very species after their separation from other pollen types. Other genera should also be tested.

Fluorescence spectra can be similar not only between species of a particular genus but also between different families. Several groups of otherwise unconnected species manifested very similar spectra, to a degree that did not allow their reliable differentiation (Figure 8). Similar results were obtained in the
425 studies conducted by D. J. O'Connor with co-authors (2011). They assessed the fluorescence spectrum of pollen of *Betulaceae* family and stated that “birch and alder spectra closely resemble each other although there is a possibility that the birch pollen is less fluorescent than alder”. Our results show that in the case of *Alnus*, the fluorescence amplitudes are higher than of *Betula* but the spectra are indeed similar.

Similar spectra of *Salix* and *Populus* pollen (Figure 7) also resulted in poor differentiation between them.
430 At the same time, the degree of confusion was higher for *Populus* than for *Salix* (Tables 2 – 4). This is in agreement with the results obtained with Hund BAA500 by Oteros et al. (2015), who identified *Salix* pollen as the worst of pollen types analysed (Oteros et al., 2015). The BAA500 algorithm is based on recognition of the particle shape, which can be weakly related to the scattering images in our study – the very part that showed substantial confusion of almost all studied pollens with *Salix* and *Populus*.

435 Crouzy et al. suggested that a non-zero fluorescence amplitude around 600 nm wavelength is incompatible with pollen from the *Betulaceae* family (*Alnus*, *Carpinus*, *Corylus* and *Betula*) but could possibly be observed for grass pollen (*Dactylis* and *Phleum*) (Crouzy et al., 2016). Our results support this suggestion and in addition the test in Novi Sad shows that ANN could show some discriminatory power between *Dactylis* and *Cynodon*. Noteworthy, recognition of the herbaceous plants (*Festuca*, *Artemisia*) was
440 considerably better than that of pollen of *Betulaceae* family also in Siauliai (Table 2).

One can note that the recognition accuracy of this study (just above 70%) is in an apparent contradiction with the results of Crouzy et al. (2016), where the skills were significantly higher: 91% was obtained with PA-300. However, there are several important differences between the approaches. Firstly, the pre-filtering of the particles is substantially stricter and about 20% of classifications were filtered out as
445 uncertain (failed the threshold of the classification quality). Secondly, the accuracy of the recognition depends significantly on the number of pollen morphotypes used for the test (8 by Crouzy et al). In an extreme case, automated discrimination of just one species (*Cryptomeria japonica*) from non-pollen particles using KH-3000 was high already 10 year ago (Kawashima et al., 2007; Kawashima et al., 2017). Similarly, the high fraction of BAA500 true positive counts (93,3%) against manual analysis of individual
450 species by Oteros et al. (2015) went down to 65% when the recognition of 13 pollen morphotypes was requested. It took an additional training of the algorithm to raise it up to the same 72% as in our study. Finally, it should also be noted that PA-300 delivers fewer parameters than Rapid-E, possibly making it difficult to identify the important combinations in the raw signal in a single-level many-to-many identification task. Application of additional levels of the discrimination filters can improve the results.

455 **4.3. Possible ways to improve the recognition skills**

The dependence of the recognition quality on the number of categories is one of the directions of the future research. It may be possible to consider independent groups of pollens that never (or very rarely) appear in the air at the same time – but it can make the algorithm place-specific. It is vital however to

obtain improvement of the algorithm for reliable separation of pollens that can be in the air together (e.g.,
460 *Betulaceae*, *Quercus*, and the like).

Considering improvements of the recognition algorithms, Matsuda and Kawashima (2018) suggested the
“extract window” method of analysis of the scattering images, which enabled to distinguish unique ranges
of light scattering intensities for each taxon. However, the reliability of the algorithm is known only for
5 pollen morphotypes. Development of this and similar approaches for the Rapid-E scattering images
465 may eventually improve this line of analysis and, subsequently, push up the overall scores.

Since the output of the ANN can be transformed to give a vector of probabilities, where each element i
of the vector represents the probability that the sample belongs to class c_i , we expect improvement of the
classification accuracy if we demand that the classification occurs only if the highest probability in that
vector is greater than some probability threshold, but with the price of discarding the samples below the
470 defined threshold. This direction was initially explored by Crouzy et al (2016) and showed high potential:
discarding 20% of samples led to an increase of precision of about 10% (see also Section 2.2.4).

As a more radical approach, one can challenge the usage of ANNs without a-priori relations derived from
physical or chemical features of each pollen type. Even generic considerations of scattering and
fluorescence theories might hint on quantities, which show enhanced contrast in comparison with the raw
475 data. The idea was tried in the Payerne algorithm and showed its potential.

4.4 Lessons from the comparison of the Hirst and Rapid-E measurements

Comparison of the Rapid-E of MeteoSwiss with the operational Hirst measurements in Payerne from
February to June 2018 extended the results of Crouzy et al. (2016) to more important taxa (Figure 12),
but also showed that robust determination of the sampling still needs to be achieved. In order to obtain
480 pollen concentrations, large particles presenting bimodal fluorescence spectra with position and intensity
of maxima compatible with the observations made from calibrations (see Section 3.1) were first selected.
Then, the classifier presented in Section 2.2.3 was applied. The effective sampling of Rapid-E is the result
of a series of physical and algorithmic processes: the sampling efficiency of the Sigma-2 head, the
imperfect targeting by lasers and the drop-offs due to the below-threshold classification. In Figure 12, the
485 Rapid-E data are scaled with species-dependent factors (constant over the season) bringing the seasonal
mean to that of the Hirst time series. The issue deserves attention since, as shown by the Novi Sad results,
tightening the thresholds improves the recognition skills but increases the drop-offs at the recognition
stage. Sampling with *Poaceae* is the highest, *Pinaceae* present a 2% decrease of sampling and *Betula*
presents a 33% decrease in sampling with respect to *Poaceae*. False positive is a significant issue with
490 *Fraxinus*: the sampling is dramatically reduced (75%) for higher fluorescence thresholds. As a
consequence of those limitations, the results presented here should not be taken as a complete
demonstration of operational capabilities.

The suppression of the false-positive detections as described in Section 2.2.4 worked quite efficiently but
still an evident false-positive event resulting from the *Betula* misinterpretation as *Poaceae* is visible in
495 the beginning of April. Further work is required to completely remove such events, and, as a last resort,
expert supervision could be used in an operational setup.

4.5. Opinion of the Rapid-E producer

During the work, we have been in periodic contact with the Plair company regarding features and issues of the Rapid-E devices used by our groups. Having the paper finalised, we asked their feedback.

500 D.Kiselev, Plair: “Our impression concerning the presented material is mixed. While I see some positive and encouraging results, my main critics would be addressed to your calibration sets, which cleaning and filtering falls short of the actual needs. Our results are 5-10 % better without overfitting the data or other special processing. Time series Plair gets for "problematic pollens" like *Betula*, *Corylus* and *Alnus* are actually very good. Our goal is to obtain high quality time series calculated in real-time by the instruments
505 and the good calibration is essential for that.”

We agree with importance of the calibration datasets; the procedures ensuring their quality are described in the Methodology section and further explained in the discussion above. Noteworthy, our groups were working largely independently using local pollen and original methods of the data collection and processing. Therefore, the similarities in the observed features provide additional support for our
510 conclusions. Unfortunately, details of the Plair analysis were not available when the paper was prepared. Therefore, independent evaluation of that algorithm against the common criteria described in this paper was not possible.

5 Conclusions

We conducted the first analysis of the pollen monitoring capabilities of the new automatic pollen detector
515 Plair Rapid-E. Using the very limited data pre-processing and basic ANN classification it was shown that, if comparatively large number of pollen types is considered, stand-alone scattering- and fluorescence-based recognition algorithms fail to produce reliable results for majority of species. The combination of these algorithms performed better exceeding 80% accuracy for 5 out of 11 species. Therefore, this combination can be considered as the first-stage classification of pollen types. It should be followed by
520 more in-depth discrimination efforts, including also life time of florescence into the classification model, etc.

The fluorescence spectra showed similarities among several tested species ending up with three groups: (*Alnus*, *Corylus*, *Betula* and *Quercus*), (*Salix* and *Populus*), and (*Festuca*, *Artemisia*, *Juniperus*) – as identified from the Siauliai data. The classification between the groups was comparatively easy. Attempts
525 to distinguish between the species of the same genus showed certain potential for some genera but more work is needed.

The results obtained in Siauliai and Novi Sad with very similar experimental setup but independent analysis, showed comparable results confirming the overall conclusions. They also pointed out at certain limitations of replicability of the raw data features between the devices, which will require an additional
530 conversion step to make them compatible. In this line, the comparison performed at MeteoSwiss shows a reasonable potential for automatic monitoring of important taxa, however it is not clear to which extent algorithms can be transposed from one device to another.

The in-depth discussion and improvement of the methodology and the extension to more taxa goes beyond the scope of this paper. We decided to communicate early the current results, as well as the methods
535 developed independently by the three teams currently working with the Rapid-E counters, in order to

stimulate parallel developments by the user community of the Rapid-E devices. The emergence of such community is a good opportunity to address generalization and replicability of the device-specific results. We also believe that moving from expert supervision or calendar methods to the approach presented here and based only on device outputs for, e.g., elimination of false-positive detections could be of help for
540 other automatic monitoring systems.

Among the main challenges to be resolved in the future work, the most important ones are:

- to obtain reliable recognition skills at least for the pollen types that can be in the air at same time
- to reach full replicability of the algorithms and results across the different copies of the same monitors (we are thankful to the Plair team for suggesting the scripts addressing this problem,
545 which are now under evaluation)
- to resolve specific questions related to the algorithm construction and training – including the minimal sample volume, problems of over- and under-fitting, preprocessing and pre-filtering of the data, false-positive identifications, etc.

Successful resolution of these questions will open the way for wide applications of the automatic particle
550 counters for pollen observations.

Code and data availability

All data and algorithms presented in the paper are experimental and subject to further development. They are available for research purposes on-request basis from the authors of the manuscript. Work is in
555 progress to harmonise the algorithms and make them public together with the data via open software and data repositories. Possibility of GPL-type license is being evaluated.

Author Contributions:

All the authors made significant contributions to this study. Conceptualization M.S.; Writing – Original
560 Draft Preparation, Review & Editing I.Š., M.S., L.Š., B.S., B.C., B. Cr.; Methodology G.V., I.Š, L.Š; Data analysis and visualization G.D; L.V; M.S; Experiment in Novi Sad P.M., S.B., M.P., B.S; Experiment in Payerne B.C., B. Cr.

Funding: Part of this research is funded by the European Social Fund according to the activity
565 “Improvement of researchers’ qualification by implementing world-class R&D projects” of Measure No. 09.3.3-LMT-K-712-01-0066. Support of the PS4A project (No 318194) of Academy of Finland is kindly acknowledged. The experiment in Novi Sad was performed in the frame of RealForAll project (2017HR-RS151) co-financed by the Interreg IPA Cross-border Cooperation programme Croatia – Serbia 2014-2020 and Provincial secretariat for Science, Autonomous Province Vojvodina, Republic of Serbia
570 (contract no. 102-401-337/2017-02-4-35-8).

Acknowledgements

Authors thank the Plair engineering team for their advices concerning the Rapid-E operations.

575 **Conflicts of Interest:** The authors declare no conflict of interest.

References

- Akdis, C. A., Hellings, P. W., and Agache, I. (Eds.): European Academy of Allergy and Clinical Immunology. Global atlas of allergic rhinitis and chronic rhinosinusitis, EAACI, Zürich, 2015.
- Bennett, K. D.: Pollen counting on a pocket computer, *New Phytol.*, 114, 275–280, 580 <https://doi.org/10.1111/j.1469-8137.1990.tb00399.x>, 1990.
- Bousquet, J., Caimmi, D. P., Bedbrook, A., Bewick, M., Hellings, P. W., Devillier, P., Arnavielhe, S., Bachert, C., Bergmann, K. C., Canonica, G. W., Chavannes, N. H., Cruz, A. A., Dahl, R., Demoly, P., De Vries, G., Mathieu-Dupas, E., Finkwagner, A., Fonseca, J., Guldemond, N., Haahtela, T., Hellqvist-Dahl, B., Just, J., Keil, T., Klimek, L., Kowalski, M. L., Kuitunen, M., Kuna, P., Kvedariene, V., 585 Laune, D., Pereira, A. M., Carreiro-Martins, P., Melén, E., Morais-Almeida, M., Mullol, J., Muraro, A., Murray, R., Nogueira-Silva, L., Papadopoulos, N. G., Passalacqua, G., Portejoie, F., Price, D., Ryan, D., Samolinski, B., Sheikh, A., Siroux, V., Spranger, O., Todo Bom, A., Tomazic, P. V., Valero, A., Valovirta, E., Valiulis, A., VandenPlas, O., van der Meulen, S., van Eerd, M., Wickman, M., and Zuberbier, T.: Pilot study of mobile phone technology in allergic rhinitis in European countries: the 590 MASK-rhinitis study, *Allergy*, 72, 857–865, <https://doi.org/10.1111/all.13125>, 2017.
- Bousquet, J., Schunemann, H.J., Fonseca, J., Samolinski, B., Bachert, C., Canonica, G. W., Casale, T., Cruz, A. A., Demoly, P., Hellings, P., Valiulis, A., Wickman, M., Zuberbier, T., Bosnic-Anticevitch, S., Bedbrook, A., Bergmann, K. C., Caimmi, D., Dahl, R., Fokkens, W. J., Grisle, I., Lodrup Carlsen, K., Mullol, J., Muraro, A., Palkonen, S., Papadopoulos, N., Passalacqua, G., Ryan, D., Valovirta, E., 595 Yorgancioglu, A., Aberer, W., Agache, I., Adachi, M., Akdis, C. A., Akdis, M., Annesi-Maesano, I., Ansotegui, I. J., Anto, J. M., Arnavielhe, S., Arshad, H., Baiardini, I., Baigenzhin, A. K., Barbara, C., Bateman, E.D., Beghé, B., Bel, E. H., Ben Kheder, A., Bennoor, K. S., Benson, M., Bewick, M., Bieber, T., Bindslev-Jensen, C., Bjermer, L., Blain, H., Boner, A. L., Boulet, L. P., Bonini, M., Bonini, S., Bosse, I., Bourret, R., Bousquet, P. J., Braidó, F., Briggs, A. H., Brightling, C. E., Brozek, J., Buhl, R., Burney, P. G., Bush, A., Caballero-Fonseca, F., Calderon, M. A., Camargos, P. A. M., Camuzat, T., Carlsen, K. H., Carr, W., Cepeda Sarabia, A. M., Chavannes, N. H., Chatzi, L., Chen, Y. Z., Chiron, R., Chkhartishvili, E., Chuchalin, A. G., Ciprandi, G., Cirule, I., Correia De Sousa, J., Cox, L., Crooks, G., Costa, D. J., Custovic, A., Dahlen, S. E., Darsow, U., De Carlo, G., De Blay, F., Dedeu, T., Deleanu, D., Denburg, J. A., Devillier, P., Didier, A., Dinh-Xuan, A. T., Dokic, D., Douagui, H., Dray, G., 600 Dubakiene, R., Durham, S. R., Dykewicz, M. S., El-Gamal, Y., Emuzyte, R., Fink Wagner, A., Fletcher, M., Fiocchi, A., Forastiere, F., Gamkrelidze, A., Gemicioğlu, B., Gereda, J. E., González Diaz, S., Gotua, M., Grouse, L., Guzmán, M. A., Haahtela, T., Hellquist-Dahl, B., Heinrich, J., Horak, F., Hourihane, J. O. B., Howarth, P., Humbert, M., Hyland, M. E., Ivancevich, J. C., Jares, E. J., Johnston, S. L., Joos, G., Jonquet, O., Jung, K. S., Just, J., Kaidashev, I. P., Kalayci, O., Kalyoncu, A. F., Keil, T., Keith, P. K., Khaltayev, N., Klimek, L., Koffi N'Goran, B., Kolek, V., Koppelman, G. H., Kowalski, M. L., Kull, I., Kuna, P., Kvedariene, V., Lambrecht, B., Lau, S., Larenas-Linnemann, D., Laune, D., Le, L. T. T., Lieberman, P., Lipworth, B., Li, J., Louis, R., Magard, Y., Magnan, A., Mahboub, B., Majer, I., Makela, M. J., Manning, P., De Manuel Keenoy, E., Marshall, G. D., Masjedi, M. R., Maurer, M., Mavale-Manuel, S., Melén, E., Melo-Gomes, E., Meltzer, E. O., Merk, H., 605 Miculinic, N., Mihaltan, F., Milenkovic, B., Mohammad, Y., Molimard, M., Momas, I., Montilla-Santana, A., Morais-Almeida, M., Mösges, R., Namazova-Baranova, L., Naclerio, R., Neou, A.,

- Neffen, H., Nekam, K., Niggemann, B., Nyembue, T. D., O'Hehir, R. E., Ohta, K., Okamoto, Y., Okubo, K., Ouedraogo, S., Paggiaro, P., Pali-Schöll, I., Palmer, S., Panzner, P., Papi, A., Park, H. S., Pavord, I., Pawankar, R., Pfaar, O., Picard, R., Pigearias, B., Pin, I., Plavec, D., Pohl, W., Popov, T.
620 A., Portejoie, F., Postma, D., Potter, P., Price, D., Rabe, K. F., Raciborski, F., Radier Pontal, F., Repka-Ramirez, S., Robalo-Cordeiro, C., Rolland, C., Rosado-Pinto, J., Reitamo, S., Rodenas, F., Roman Rodriguez, M., Romano, A., Rosario, N., Rosenwasser, L., Rottem, M., Sanchez-Borges, M., Scadding, G. K., Serrano, E., Schmid-Grendelmeier, P., Sheikh, A., Simons, F. E. R., Sisul, J. C., Skrindo, I., Smit, H. A., Solé, D., Sooronbaev, T., Spranger, O., Stelmach, R., Strandberg, T., Sunyer, J., Thijs, C., Todo-Bom, A., Triggiani, M., Valenta, R., Valero, A. L., Van Hage, M., Vandenplas, O., Vezzani, G., Vichyanond, P., Viegi, G., Wagenmann, M., Walker, S., Wang, D. Y., Wahn, U., Williams, D. M., Wright, J., Yawn, B. P., Yiallourous, P. K., Yusuf, O. M., Zar, H. J., Zernotti, M. E., Zhang, L., Zhong, N., Zidarn, M., and Mercier, J.: MACVIA-ARIA Sentinel NetworK for allergic rhinitis (MASK-rhinitis): the new generation guideline implementation, *Allergy*, 70, 1372–1392,
630 <https://doi.org/10.1111/all.12686>, 2015.
- Bousquet, J., Van Cauwenberge, P., Ait Khaled, N., Bachert, C., Baena-Cagnani, C. E., Bouchard, J., Bunnag, C., Canonica, G. W., Carlsen, K. H., Chen, Y. Z., Cruz, A. A., Custovic, A., Demoly, P., Dubakiene, R., Durham, S., Fokkens, W., Howarth, P., Kemp, J., Kowalski, M. L., Kvedariene, V., Lipworth, B., Lockey, R., Lund, V., Mavale-Manuel, S., Meltzer, E. O., Mullol, J., Naclerio, R.,
635 Nekam, K., Ohta, K., Papadopoulos, N., Passalacqua, G., Pawankar, R., Popov, T., Potter P., Price, D., Scadding, G., Simons, F. E. R., Spicak, V., Valovirta, E., Wang, D.-Y., Yawn, B., and Yusufand, O.: Pharmacologic and anti-IgE treatment of allergic rhinitis ARIA update (in collaboration with GA2LEN), *Allergy*, 61, 1086–96, <https://doi.org/10.1111/j.1398-9995.2006.01144.x>, 2006.
- Buters, J. T. M., Antunes, C., Galveias, A., Bergmann, K. C., Thibaudon, M., Galán, C., Schmidt-Weber, C., and Oteros, J.: Pollen and spore monitoring in the world, *Clin Transl Allergy*, 8, 9,
640 <https://doi.org/10.1186/s13601-018-0197-8>, 2018.
- Choual, I., Radu, C., Khayath, N., Beck, N., Schoettel, F., Jacob, A., Domis, N., de Blay, F. J., and MD: Comparison of symptoms during a conjunctival provocation test (CPT) and a controlled exposure to birch pollen in the Strasbourg Environmental Exposure Chamber (EEC) (ALYATEC), *J. Allergy Clin. Immunol.*, 141, AB236, <https://doi.org/10.1016/j.jaci.2017.12.748>, 2018.
645
- Crouzy, B., Stella, M., Konzelmann, T., Calpini, B., and Clot, B.: All-optical automatic pollen identification: towards an operational system, *Atmos. Environ.*, 140, 202–212, <https://doi.org/10.1016/j.atmosenv.2016.05.062>, 2016.
- Devillier, P., Wahn, U., Zielen, S., and Heinrich, J.: Grass pollen sublingual immunotherapy tablets
650 provide long-term relief of grass pollen-associated allergic rhinitis and reduce the risk of asthma: findings from a retrospective, real-world database subanalysis, *Expert Rev Clin Immunol*, 13, 1199–1206, <https://doi.org/10.1080/1744666X.2017.1398082>, 2017.
- Douladiris, N., Garib, V., Tejkl, M. F., Valenta, R., Papadopoulos, N. G., and Linhart, B.: Detection of genuine grass pollen sensitization in children by skin testing with a recombinant grass pollen hybrid,
655 *Pediatr Allergy Immunol*, <https://doi.org/10.1111/pai.12991>, 2018.
- Galán, C., Smith, M., Thibaudon, M., Frenguelli, G., Oteros, J., Gehrig, R., Berger U., Clot, B., Brandao R., and EAS QC working group: Pollen monitoring: minimum requirements and reproducibility of analysis, *Aerobiologia*, 30, 385–395, <https://doi.org/10.1007/s10453-014-9335-5>, 2014.

- Horgan, D., and Pazzagli, M.: Prevention, Early Dialogue and Education in the Personalised Healthcare Era, *Biomed Hub.*, 2, 7–7, <https://doi.org/10.1159/000479492>, 2017.
- 660 Høst, A., Andrae, S., Charkin, S., Diaz-Vázquez, C., Dreborg, S., Eigenmann, P. A., Friedrichs, F., Grinsted, P., Lack, G., Meylan, G., Miglioranza, P., Muraro, A., Nieto, A., Niggemann, B., Pascual, C., Pouech, M. G., Rancé, F., Rietschel, E., and Wickman, M.: Allergy testing in children: why, who, when and how?, *Allergy*, 58, 559–569, 2003.
- 665 Kawashima, S., Clot, B., Fujita, T., Takahashi, Y., and Nakamura, K.: An algorithm and a device for counting airborne pollen automatically using laser optics, *Atmos. Environ.*, 41, 7987–7993, <https://doi.org/10.1016/j.atmosenv.2007.09.019>, 2007.
- Kawashima, S., Thibaudon, M., Matsuda, S., Fujita, T., Lemonis, N., Clot, B., and Oliver, G.: Automated pollen monitoring system using laser optics for observing seasonal changes in the concentration of total airborne pollen, *Aerobiologia*, 33, 351–362, <https://doi.org/10.1007/s10453-017-9474-6>, 2017.
- 670 Kiselev, D., Bonacina, L., and Wolf, J. P.: A flash-lamp based device for fluorescence detection and identification of individual pollen grains, *Rev Sci Instrum*, 84, 033302, <https://doi.org/10.1063/1.4793792>, 2013.
- Kiselev, D., Bonacina, L., and Wolf, J. P.: Individual bioaerosol particle discrimination by multi-photon excited fluorescence, *Opt Express*, 19, 24516–24521, <https://doi.org/10.1364/OE.19.024516>, 2011.
- Landsmeer, S. H., Hendriks, E. A., De Weger, L. A., Reiber, J. H., and Stoel, B. C.: Detection of pollen grains in multifocal optical microscopy images of air samples, *Microsc. Res. Tech.*, 72, 424–430, <https://doi.org/10.1002/jemt.20688>, 2009.
- Leynaert, B., Neukirch, C., Liard, R., Bousquet, J., and Neukirch, F.: Quality of life in allergic rhinitis and asthma: a population-based study of young adults, *Am. J. Respir. Crit. Care Med.*, 162, 1391–1396, <https://doi.org/10.1164/ajrccm.162.4.9912033>, 2000.
- 680 Matsuda, S., and Kawashima, S.: Relationship between laser light scattering and physical properties of airborne pollen, *J Aerosol Sci*, 124, 122–132, <https://doi.org/10.1016/j.jaerosci.2018.07.009>, 2018.
- O’Connor, D. J., Iacopino, D., Healy, D. A., O’Sullivan, D., and Sodeau, J. R.: The intrinsic fluorescence spectra of selected pollen and fungal spores, *Atmos. Environ.*, 45, 6451–6458, <https://doi.org/10.1016/j.atmosenv.2011.07.044>, 2011.
- 685 O’Connor, D. J., Healy, D. A., Hellebust, S., Buters, J. T., and Sodeau, J. R.: Using the WIBS-4 (Waveband Integrated Bioaerosol Sensor) technique for the on-line detection of pollen grains, *Aerosol Sci. Technol.*, 48, 341–349, <https://doi.org/10.1080/02786826.2013.872768>, 2014.
- 690 Oteros, J. Buters, J., Laven, G., Roseler, S., Wachter, R., Schmidt-Weber, C., and Hofman, F.: Errors in determining the flow rate of Hirst-type pollen traps, *Aerobiologia*, 33, 201–210, <https://doi.org/10.1007/s10453-016-9467-x>, 2017.
- Oteros, J., Pusch, G., Weichenmeier, I., Heimann, U., Möller, R., Röseler, S., Traidl-Hoffmann, C., Schmidt-Weber, C., and Buters, J. T.: Automatic and online pollen monitoring, *Int. Arch. Allergy Immunol.*, 167, 158–166, <https://doi.org/10.1159/000436968>, 2015.
- 695 Pereira, A. M., Jácome, C., Almeida, R., and Fonseca, J. A.: How the Smartphone Is Changing Allergy Diagnostics, *Curr Allergy Asthma Rep*, 18, 69, <https://doi.org/10.1007/s11882-018-0824-4>, 2018.
- Poethko-Müller, C., Thamm, M., and Thamm, R.: Allergic rhinitis and asthma among children and adolescents in Germany. Results of the cross-sectional KiGGS Wave 2 study and trends, *Journal of Health Monitoring*, 52–56, <http://doi.org/10.25646/5557>, 2018.
- 700

- Prank, M., Sofiev, M., Siljamo, P., and Kauhaniemi, M.: Increasing the Number of Allergenic Pollen Species in SILAM Forecasts, in: *Air Pollution Modeling and its Application XXIV*, edited by: Steyn, G. D., Chaumerliac, N., Springer International Publishing, Cham, Switzerland, 313–317, <https://doi.org/10.1007/978-3-319-24478-5>, 2016.
- 705 Radauer, C., and Breiteneder, H.: Pollen allergens are restricted to few protein families and show distinct patterns of species distribution, *J. Allergy Clin. Immunol.*, 117, 141–147, <https://doi.org/10.1016/j.jaci.2005.09.010>, 2006.
- Ritenberga, O., Sofiev, M., Kirillova, V., Kalnina, L., and Genikhovich, E.: Statistical modelling of non-stationary processes of atmospheric pollution from natural sources: example of birch pollen, *Agric For Meteorol*, 226, 96–107, <https://doi.org/10.1016/j.agrformet.2016.05.016>, 2016.
- 710 Ronneberger, O., Schultz, E., and Burkhardt, H.: Automated pollen recognition using 3D volume images from fluorescence microscopy, *Aerobiologia*, 18, 107–115, <https://doi.org/10.1023/A:1020623724584>, 2002.
- Šaulienė, I., Šukienė, L., Kainov, D., and Greičiuvienė, J.: The impact of pollen load on quality of life: a questionnaire-based study in Lithuania, *Aerobiologia*, 32, 157–170, <https://doi.org/10.1007/s10453-015-9387-1>, 2016.
- 715 Skoner, D. P.: Allergic rhinitis: definition, epidemiology, pathophysiology, detection, and diagnosis, *J. Allergy Clin. Immunol.*, 108, S2–S8, <https://doi.org/10.1067/mai.2001.115569>, 2001.
- Sofiev, M., Berger, U., Prank, M., Vira, J., Arteta, J., Belmonte, J., Bergmann, K. C., Chéroux, F., Elbern, H., Friese, E., Galan, C., Gehrig, R., Khvorostyanov, D., Kranenburg, R., Kumar, U., Marécal, V., Meleux, F., Menut, L., Pessi, A. M., Robertson, L., Ritenberga, O., Rodinkova, V., Saarto, A., Segers, A., Severova, E., Sauliene, I., Siljamo, P., Steensen, B. M., Teinmaa, E., Thibaudon, M., and Peuch V. H.: MACC regional multi-model ensemble simulations of birch pollen dispersion in Europe, *Atmos Chem Phys*, 15, 8115–8130, <https://doi.org/10.5194/acp-15-8115-2015>, 2015.
- 720 Sofiev, M., Ritenberga, O., Albertini, R., Arteta, J., Belmonte, J., Bonini, M., Celenk, S., Damialis, A., Douros, J., Elbern, H., Friese, E., Galan, C., Oliver, G., Hrga, I., Kouznetsov, R., Krajsek, K., Magyar, D., Parmentier, J., Plu, M., Prank, M., Robertson, L., Steensen, B. M., Thibaudon, M., Segers, A., Stepanovich, B., Valdebenito, A. M., Vira, J., and D. Vokou: Multi-model ensemble simulations of olive pollen distribution in Europe in 2014, *Atmos Chem Phys*, 17, 12341–12360, <https://doi.org/10.5194/acp-2016-1189>, 2017.
- 730 Sofiev, M., Siljamo, P., Ranta, H., Linkosalo, T., Jaeger, S., Rasmussen, A., Rantio-Lehtimäki, A., Severova, E., and Kukkonen, J.: A numerical model of birch pollen emission and dispersion in the atmosphere. Description of the emission module, *Int J Biometeorol*, 57, 45–58, <https://doi.org/10.1007/s00484-012-0532-z>, 2013.
- 735 Tabatabaian, F., and Casale, T. B.: Allergic rhinitis management: what's next?, *Expert Rev Clin Immunol.*, 14, 191–196, <https://doi.org/10.1080/1744666X.2018.1438270>, 2018.
- Takahashi, Y., Kawashima, S., Suzuki, Y., Ohta, N., and Kakehata, S.: Enrichment of airborne Japanese cedar (*Cryptomeria japonica*) pollen in mountain ranges when passing through a front accompanying temperate low pressure, *Aerobiologia*, 34, 105–110, <https://doi.org/10.1007/s10453-017-9494-2>, 2018.
- 740

- Valenta, R., Vrtala, S., Ebner, C., Kraft, D., and Scheiner, O.: Diagnosis of grass pollen allergy with recombinant timothy grass (*Phleum pratense*) pollen allergens, *Int. Arch. Allergy Immunol.*, 97, 287–294, <https://doi.org/10.1159/000236135>, 1992.
- 745 Wang, Q., Gong, X., Suzuki, M., Lu, S., Sekiguchi, K., Nakajima, D., and Miwa, M.: Size-segregated Allergenic Particles Released from Airborne *Cryptomeria japonica* Pollen Grains during the Yellow Sand Events within the Pollen Scattering Seasons, *Asian J. Atmos. Environ.*, 7, 191–198, <https://doi.org/10.5572/ajae.2013.7.4.191>, 2013.
- 750 Wang, Q., Nakamura, S., Gong, S., Suzuki, M., Nakajima, D., Takai, Y., Lu, S., Sekiguchi, K., and Miwa, M.: Release behaviour of *Cryptomeria japonica* pollen allergenic cry j 1 and cry j 2 in rainwater containing air pollutants, *Int J Dev Sustain*, 9, 42–53, <https://doi.org/10.2495/SDP-V9-N1-42-53>, 2014.
- Zink, K., Kaufmann, P., Petitpierre, B., Broennimann, O., Guisan, A., Gentilini, E., and Rotach, M. W.: Numerical ragweed pollen forecasts using different source maps: a comparison for France, *Int J Biometeorol*, 61, 23–33, <https://doi.org/10.1007/s00484-016-1188-x>, 2017.
- 755

Table 1. Pollen used for testing the identification capabilities of the instrument in Siauliai

| Plant group | Total particles counted by 400 nm laser | Fluorescent particles * | |
|----------------------------|---|-------------------------|--|
| | | Number | Percentage of particles with sufficient fluorescence level |
| <i>Festuca</i> | 21808 | 12205 | 56 |
| <i>Artemisia</i> | 15521 | 13370 | 86 |
| <i>Corylus</i> | 14858 | 10865 | 73 |
| <i>Alnus</i> | 13692 | 10486 | 77 |
| <i>Betula</i> | 20676 | 12089 | 58 |
| <i>Salix alba</i> | 15383 | 13431 | 87 |
| <i>Salix fragilis</i> | 12942 | 10401 | 80 |
| <i>Populus</i> | 15340 | 10963 | 71 |
| <i>Acer negundo</i> | 11832 | 8647 | 73 |
| <i>Acer pseudoplatanus</i> | 11030 | 7372 | 67 |
| <i>Juniperus</i> | 17926 | 10404 | 58 |
| <i>Quercus</i> | 17677 | 8934 | 51 |
| <i>Pinus sylvestris</i> | 14224 | 8537 | 60 |
| <i>Pinus mugo</i> | 13399 | 8287 | 62 |

* the particle fluorescence intensity level > 1500 at the Rapid-E scale for at least one emitted wavelength. The initial number of pollen noticed by the scattering laser is not used in the analysis. The algorithms were based on data of fluorescent particles. Calibration datasets were normalised.

760

Table 2. Confusion table obtained in Siauliai. Accuracy: 73 %

| Plant genus | <i>Festuca</i> | <i>Artemisia</i> | <i>Corylus</i> | <i>Alnus</i> | <i>Betula</i> | <i>Salix</i> | <i>Populus</i> | <i>Acer</i> | <i>Juniperus</i> | <i>Quercus</i> | <i>Pinus</i> |
|------------------|----------------|------------------|----------------|--------------|---------------|--------------|----------------|-------------|------------------|----------------|--------------|
| <i>Festuca</i> | 88 | 1 | 0 | 0 | 0 | 0 | 2 | 5 | 2 | 0 | 2 |
| <i>Artemisia</i> | 2 | 86 | 0 | 0 | 0 | 2 | 1 | 4 | 5 | 0 | 0 |
| <i>Corylus</i> | 2 | 0 | 63 | 17 | 8 | 1 | 0 | 0 | 0 | 9 | 0 |
| <i>Alnus</i> | 1 | 0 | 15 | 53 | 18 | 2 | 1 | 0 | 0 | 9 | 1 |
| <i>Betula</i> | 3 | 1 | 9 | 30 | 47 | 1 | 1 | 0 | 1 | 6 | 1 |
| <i>Salix</i> | 1 | 1 | 2 | 1 | 2 | 78 | 10 | 0 | 1 | 4 | 0 |
| <i>Populus</i> | 3 | 6 | 1 | 1 | 1 | 18 | 58 | 3 | 3 | 5 | 1 |
| <i>Acer</i> | 5 | 2 | 1 | 1 | 1 | 0 | 2 | 86 | 1 | 1 | 0 |
| <i>Juniperus</i> | 4 | 4 | 0 | 0 | 0 | 0 | 3 | 1 | 87 | 0 | 1 |
| <i>Quercus</i> | 2 | 0 | 9 | 10 | 5 | 4 | 1 | 0 | 0 | 69 | 0 |
| <i>Pinus</i> | 7 | 0 | 0 | 0 | 0 | 0 | 0 | 0 | 1 | 0 | 91 |

True label

Predicted label

Table 3. Confusion table obtained in Novi Sad. Accuracy 74% (obs different number of species)

| Plant genus | <i>Dactilis</i> | <i>Cynodon</i> | <i>Corylus</i> | <i>Alnus</i> | <i>Betula</i> | <i>Salix</i> | <i>Fraxinus</i> | <i>Populus</i> | <i>Acer</i> | <i>Artemisia</i> | <i>Taxus</i> | <i>Quercus</i> | <i>Picea</i> | <i>Cedrus</i> |
|------------------|-----------------|----------------|----------------|--------------|---------------|--------------|-----------------|----------------|-------------|------------------|--------------|----------------|--------------|---------------|
| <i>Dactilis</i> | 78 | 3 | 0 | 3 | 0 | 2 | 0 | 4 | 5 | 0 | 1 | 0 | 0 | 0 |
| <i>Cynodon</i> | 4 | 70 | 0 | 0 | 0 | 6 | 1 | 0 | 0 | 12 | 5 | 0 | 2 | 0 |
| <i>Corylus</i> | 0 | 0 | 64 | 6 | 12 | 1 | 10 | 0 | 0 | 0 | 4 | 2 | 0 | 0 |
| <i>Alnus</i> | 1 | 2 | 6 | 72 | 3 | 2 | 3 | 2 | 1 | 2 | 6 | 3 | 0 | 0 |
| <i>Betula</i> | 1 | 0 | 25 | 5 | 51 | 3 | 3 | 0 | 0 | 1 | 1 | 10 | 1 | 0 |
| <i>Salix</i> | 3 | 1 | 0 | 2 | 1 | 80 | 3 | 2 | 2 | 2 | 1 | 3 | 1 | 0 |
| <i>Fraxinus</i> | 0 | 0 | 7 | 1 | 3 | 2 | 79 | 1 | 0 | 0 | 4 | 3 | 0 | 0 |
| <i>Populus</i> | 5 | 3 | 1 | 4 | 0 | 4 | 3 | 71 | 1 | 1 | 3 | 4 | 1 | 0 |
| <i>Acer</i> | 8 | 1 | 0 | 2 | 1 | 4 | 0 | 0 | 73 | 0 | 1 | 9 | 1 | 0 |
| <i>Artemisia</i> | 1 | 5 | 0 | 2 | 1 | 4 | 0 | 1 | 0 | 84 | 0 | 1 | 1 | 0 |
| <i>Taxus</i> | 0 | 3 | 0 | 2 | 0 | 0 | 0 | 0 | 0 | 0 | 93 | 1 | 1 | 0 |
| <i>Quercus</i> | 1 | 0 | 4 | 5 | 8 | 9 | 2 | 1 | 1 | 1 | 1 | 63 | 4 | 0 |
| <i>Picea</i> | 3 | 3 | 0 | 2 | 4 | 3 | 0 | 1 | 1 | 7 | 1 | 13 | 61 | 0 |
| <i>Cedrus</i> | 0 | 0 | 0 | 0 | 0 | 1 | 0 | 1 | 0 | 1 | 0 | 0 | 1 | 95 |

Predicted label

True label

765

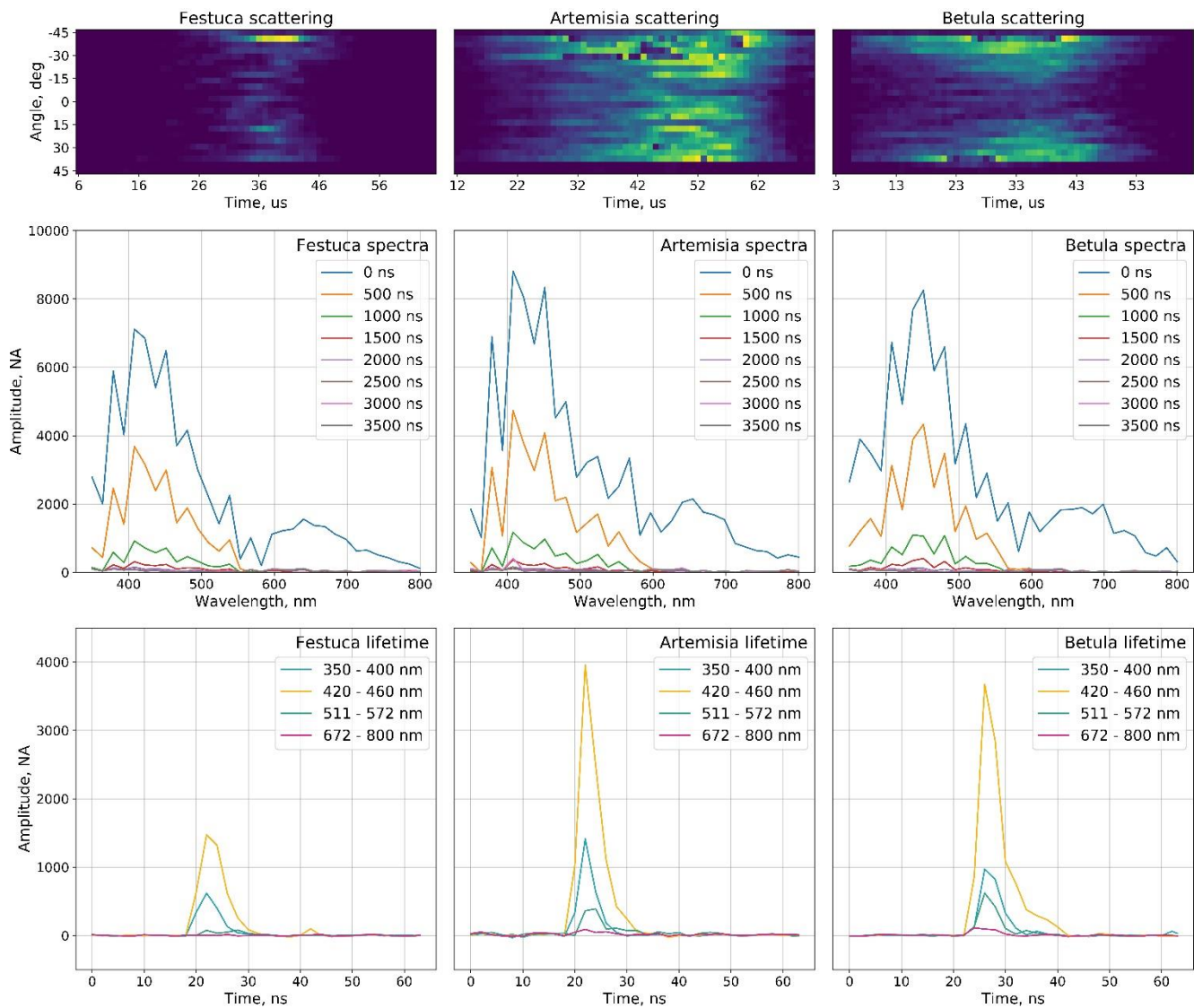
Table 4 Confusion table obtained at MeteoSwiss, Payerne. Accuracy 80%

| Plant genus | <i>Alnus</i> | <i>Betula</i> | <i>Carpinus</i> | <i>Cupressus</i> | <i>Fagus</i> | <i>Fraxinus</i> | <i>Corylus</i> | <i>Pinus</i> | <i>Poaceae</i> | <i>Taxus</i> |
|------------------|--------------|---------------|-----------------|------------------|--------------|-----------------|----------------|--------------|----------------|--------------|
| <i>Alnus</i> | 27 | 27 | 1 | 0 | 0 | 1 | 43 | 0 | 0 | 1 |
| <i>Betula</i> | 1 | 83 | 2 | 0 | 0 | 4 | 7 | 0 | 0 | 1 |
| <i>Carpinus</i> | 0 | 13 | 74 | 0 | 0 | 2 | 3 | 0 | 6 | 1 |
| <i>Cupressus</i> | 0 | 3 | 1 | 84 | 0 | 0 | 1 | 2 | 1 | 8 |
| <i>Fagus</i> | 0 | 2 | 3 | 1 | 88 | 0 | 1 | 1 | 2 | 3 |
| <i>Fraxinus</i> | 0 | 12 | 2 | 0 | 0 | 78 | 2 | 1 | 2 | 3 |
| <i>Corylus</i> | 4 | 8 | 0 | 0 | 0 | 0 | 87 | 0 | 0 | 0 |
| <i>Pinus</i> | 0 | 0 | 0 | 0 | 0 | 0 | 0 | 98 | 0 | 2 |
| <i>Poaceae</i> | 0 | 3 | 8 | 1 | 0 | 1 | 0 | 1 | 82 | 4 |
| <i>Taxus</i> | 0 | 0 | 0 | 1 | 0 | 0 | 0 | 1 | 0 | 97 |

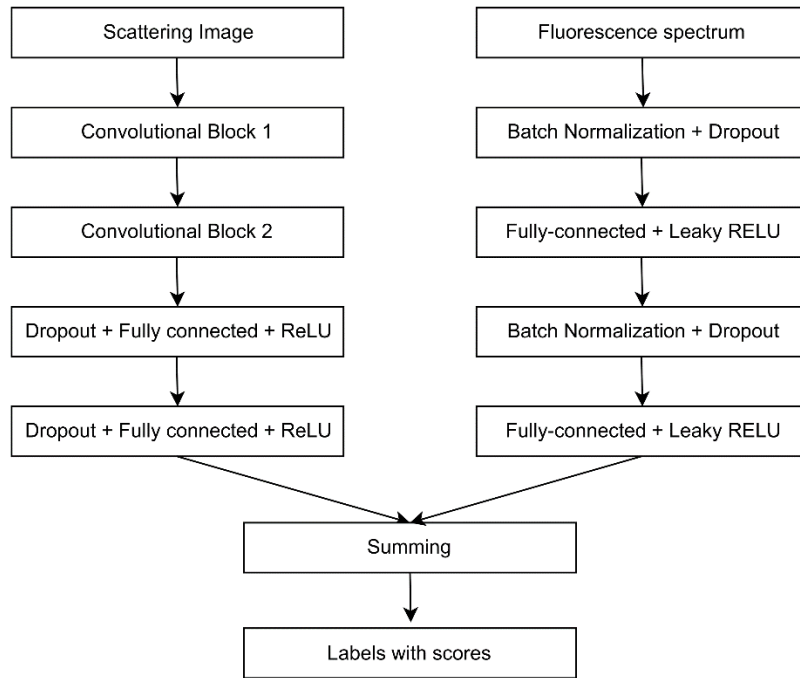
Predicted label

True label

770

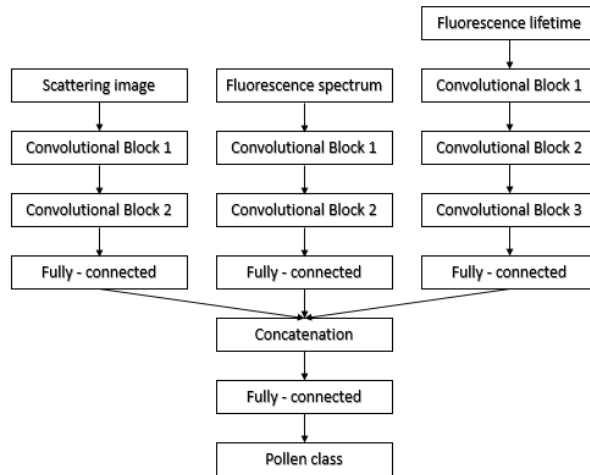


775 **Figure 1.** Examples of scattering images, fluorescence spectra and lifetimes of selected pollen types



780

Figure 2. Neural network for pollen classification in Siauliai based on separately treated scattering and fluorescence signals



785

Figure 3. Neural network for pollen classification in Novi Sad using all three signals

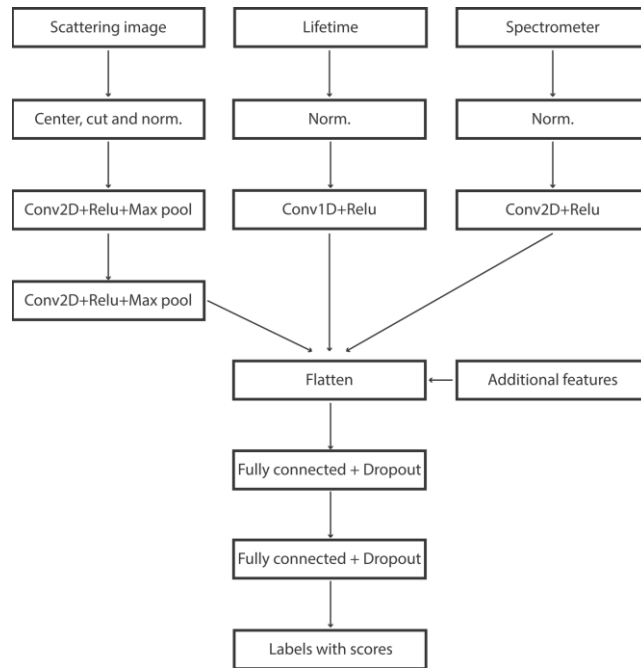


Figure 4. Neural network used for classification at Payerne

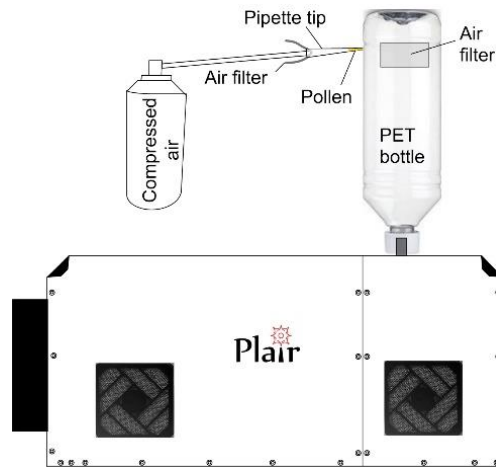


Figure 5. The scheme of the experiment for identification of pollen

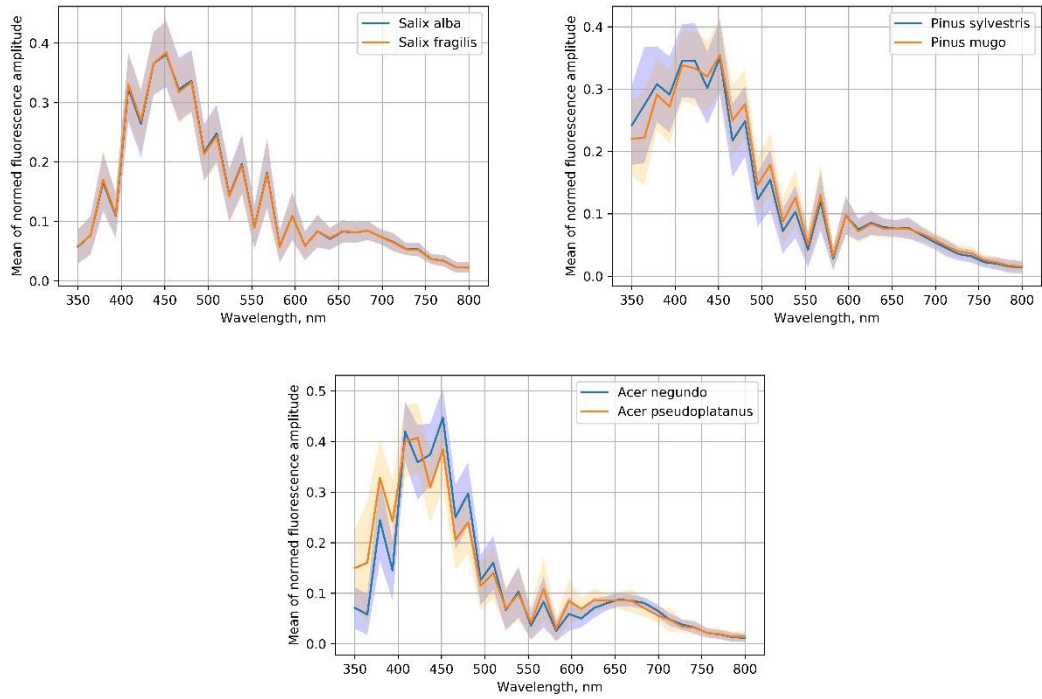
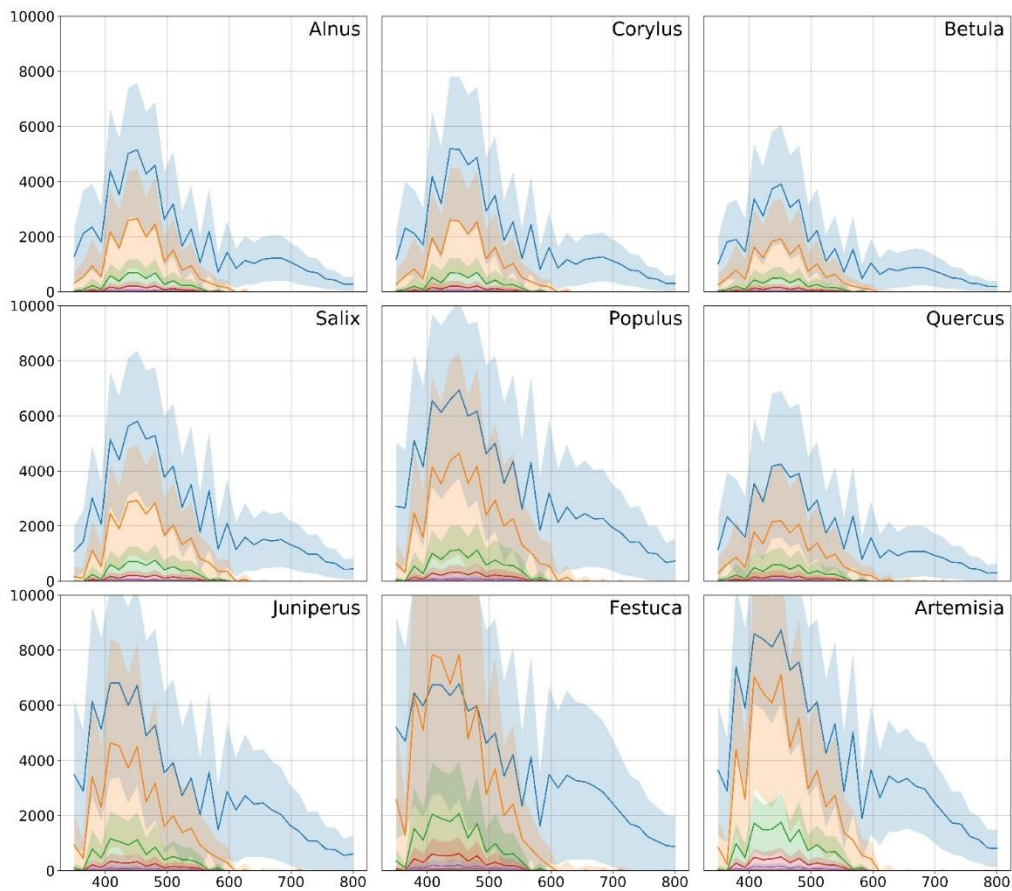


Figure 6. Fluorescence spectra (first acquisition) of *Salix*, *Pinus* and *Acer* species



800 **Figure 7.** Comparison of fluorescence indicators of the tested pollen. The blue line represents the first acquisition. All other lines are delayed acquisition by step of 500 ns from the last. Shadows show the standard deviation ranges for each acquisition. In the figures, the x-axis represents the wavelength, nm; the y axis shows the amplitude, NA

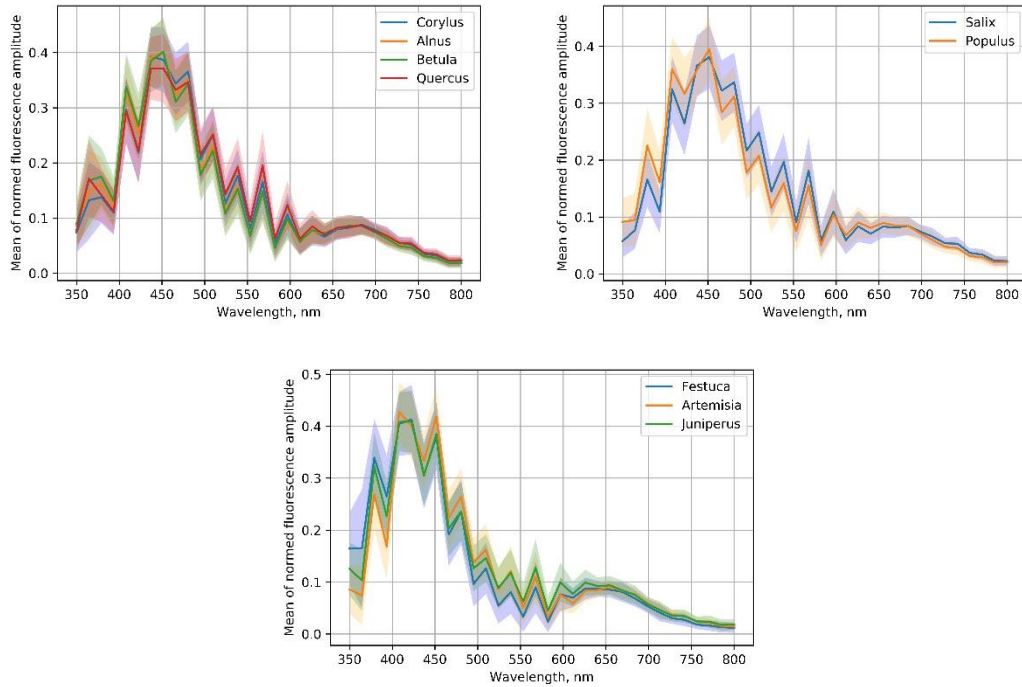


Figure 8. Groups with similar fluorescence spectra

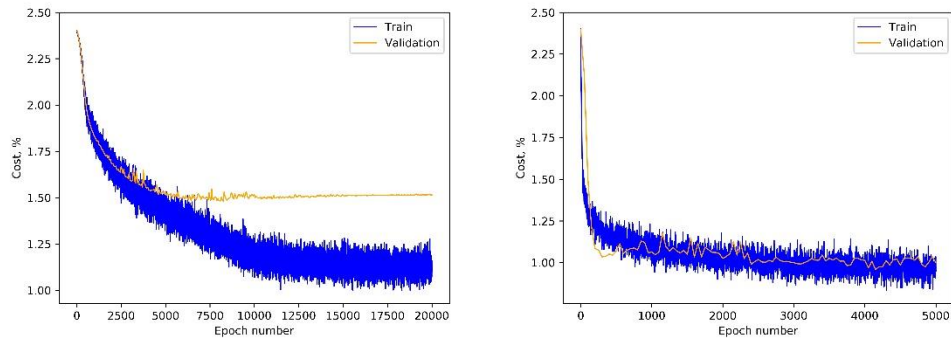
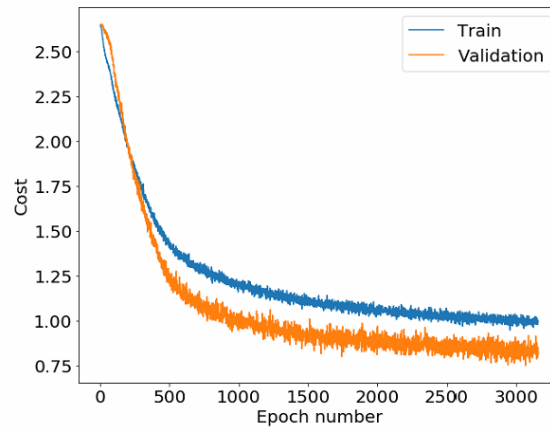
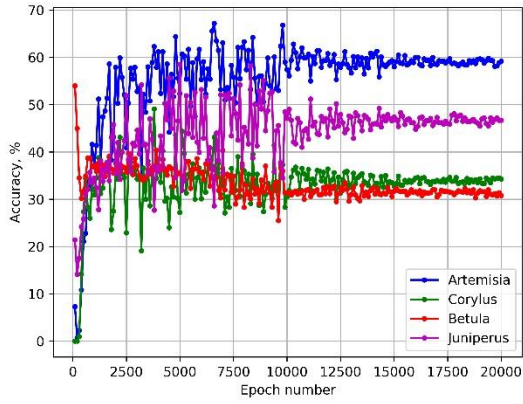


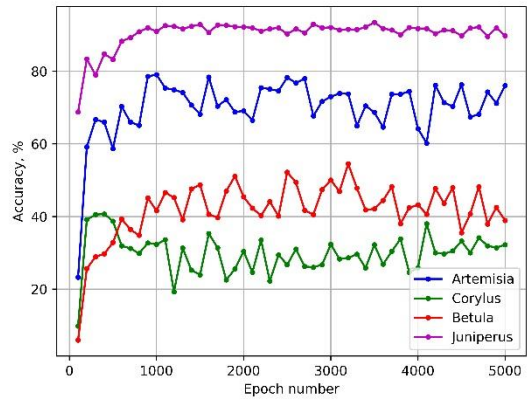
Figure 9. Siauliai ANN multi-species cost function for scatter (left) and fluorescence-(right) based recognition as a function of the training epoch



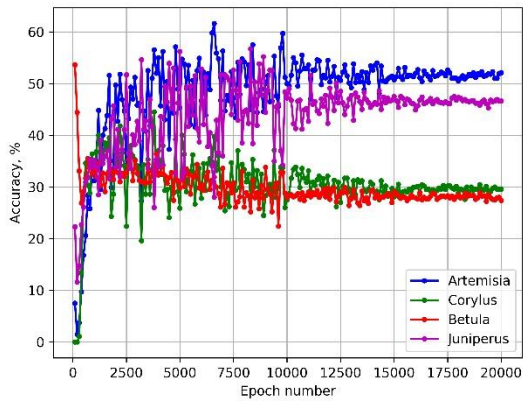
815 **Figure 10.** Novi Sad ANN overall cost as a function of the training epoch. The evaluation error is lower than the training error due to dropout (0.5) in each convolutional and fully connected layer, not used in the validation round



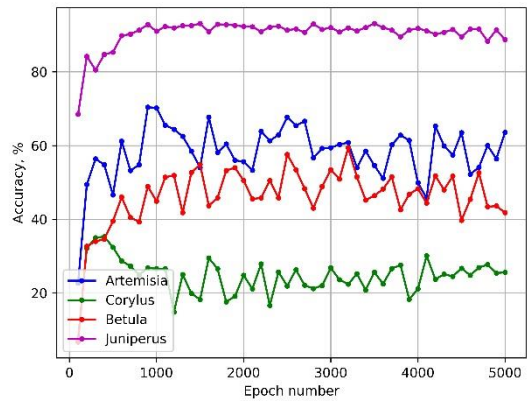
Scattering training accuracy



Fluorescence training accuracy

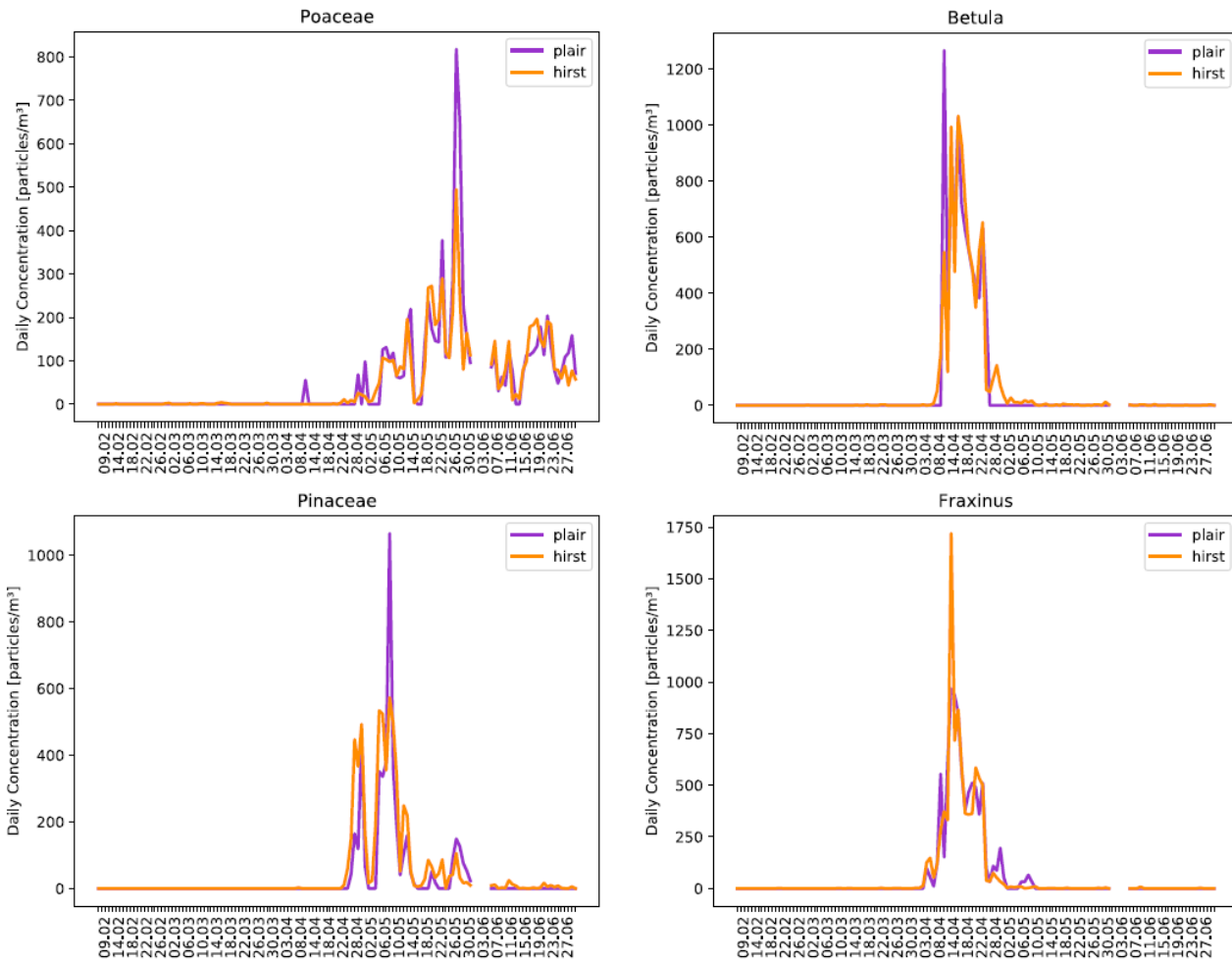


Scattering test accuracy



Fluorescence test accuracy

820 **Figure 11.** Performance of the Siauliai ANN for the test subset taken from different days than the calibration subset. Unit: %.



825 **Figure 12.** Comparison between automatic (Plair Rapid-E) and manual (Hirst-type) pollen counts for *Betula*, *Fraxinus*, *Pinaceae*, *Poaceae*

830 **Table A1.** Confusion table for pollen taxa identification by using ANN based on scattering image.

Multiclass accuracy 44 %

| Plant genus | <i>Festuca</i> | <i>Artemisia</i> | <i>Corylus</i> | <i>Alnus</i> | <i>Betula</i> | <i>Salix</i> | <i>Populus</i> | <i>Acer</i> | <i>Juniperus</i> | <i>Quercus</i> | <i>Pinus</i> |
|------------------|----------------|------------------|----------------|--------------|---------------|--------------|----------------|-------------|------------------|----------------|--------------|
| <i>Festuca</i> | 52 | 1 | 1 | 2 | 1 | 3 | 3 | 5 | 5 | 9 | 19 |
| <i>Artemisia</i> | 2 | 58 | 1 | 1 | 4 | 13 | 3 | 4 | 9 | 3 | 2 |
| <i>Corylus</i> | 3 | 1 | 38 | 20 | 20 | 1 | 1 | 5 | 1 | 9 | 1 |
| <i>Alnus</i> | 4 | 3 | 21 | 29 | 19 | 3 | 1 | 6 | 1 | 11 | 2 |
| <i>Betula</i> | 4 | 4 | 19 | 15 | 37 | 3 | 1 | 5 | 1 | 9 | 2 |
| <i>Salix</i> | 5 | 8 | 1 | 0 | 5 | 51 | 13 | 3 | 6 | 7 | 1 |
| <i>Populus</i> | 16 | 4 | 0 | 1 | 1 | 16 | 28 | 4 | 16 | 8 | 6 |
| <i>Acer</i> | 8 | 5 | 6 | 7 | 4 | 4 | 5 | 29 | 4 | 23 | 5 |
| <i>Juniperus</i> | 16 | 19 | 0 | 0 | 0 | 4 | 10 | 2 | 36 | 3 | 10 |
| <i>Quercus</i> | 7 | 2 | 10 | 6 | 3 | 3 | 3 | 14 | 2 | 48 | 2 |
| <i>Pinus</i> | 13 | 2 | 0 | 1 | 1 | 1 | 1 | 1 | 3 | 1 | 76 |

Predicted label

True label

Table A2. Confusion table for pollen taxa identification using fluorescence spectrum.

Multiclass accuracy 67 %

| Plant genus | <i>Festuca</i> | <i>Artemisia</i> | <i>Corylus</i> | <i>Alnus</i> | <i>Betula</i> | <i>Salix</i> | <i>Populus</i> | <i>Acer</i> | <i>Juniperus</i> | <i>Quercus</i> | <i>Pinus</i> |
|------------------|----------------|------------------|----------------|--------------|---------------|--------------|----------------|-------------|------------------|----------------|--------------|
| <i>Festuca</i> | 84 | 2 | 0 | 0 | 0 | 0 | 1 | 5 | 3 | 0 | 5 |
| <i>Artemisia</i> | 2 | 80 | 0 | 0 | 0 | 1 | 3 | 6 | 8 | 0 | 0 |
| <i>Corylus</i> | 2 | 0 | 53 | 15 | 7 | 6 | 1 | 0 | 1 | 14 | 1 |
| <i>Alnus</i> | 1 | 0 | 14 | 45 | 19 | 3 | 4 | 1 | 1 | 10 | 2 |
| <i>Betula</i> | 3 | 1 | 7 | 29 | 38 | 3 | 4 | 0 | 1 | 12 | 2 |
| <i>Salix</i> | 0 | 2 | 7 | 2 | 3 | 72 | 9 | 0 | 1 | 4 | 0 |
| <i>Populus</i> | 2 | 9 | 3 | 2 | 2 | 17 | 53 | 4 | 4 | 3 | 1 |
| <i>Acer</i> | 6 | 3 | 1 | 0 | 1 | 0 | 2 | 84 | 2 | 1 | 0 |
| <i>Juniperus</i> | 6 | 5 | 0 | 0 | 1 | 0 | 3 | 0 | 84 | 0 | 1 |
| <i>Quercus</i> | 1 | 0 | 12 | 13 | 9 | 6 | 2 | 0 | 1 | 55 | 1 |
| <i>Pinus</i> | 11 | 0 | 0 | 0 | 1 | 0 | 0 | 0 | 1 | 1 | 86 |

Predicted label

True label