

Comparison of turbulence measurements by a CSAT3B sonic anemometer and a high-resolution bistatic Doppler lidar

Matthias Mauder¹, Michael Eggert², Christian Gutsmuths², Stefan Oertel², Paul Wilhelm², Ingo Voelksch¹, Luise Wanner¹, Jens Tambke³, Ivan Bogoev⁴

5 ¹ Karlsruhe Institute of Technology, Institute of Meteorology and Climate Research, Garmisch-Partenkirchen, 82467, Germany

² Physikalisch-Technische Bundesanstalt, Department 1.4 Gas Flow, Braunschweig, 38116, Germany

³ Carl von Ossietzky Universität Oldenburg, ForWind – Center for Wind Energy Research, 26129 Oldenburg, Germany

⁴ Campbell Scientific Inc., Logan, UT 84321, USA

10 *Correspondence to:* Matthias Mauder (matthias.mauder@kit.edu)

Abstract. Accurate measurements of turbulence statistics in the atmosphere are important for eddy-covariance measurements, wind energy research, and the validation of atmospheric numerical models. Sonic anemometers are widely used for these applications. However, these instruments are prone to probe-induced flow distortion effects, and the magnitude of the resulting errors has been debated due to the lack of an absolute reference instrument under field conditions. Here, we present the results of an intercomparison experiment between a CSAT3B sonic anemometer and a high-resolution bistatic Doppler lidar, which is inherently free of any flow distortion. This novel remote sensing instrument has otherwise very similar spatial and temporal sampling characteristics as the sonic anemometer and hence served as a reference for this comparison. The presented measurements were carried out over flat homogeneous terrain, at a measurement height of 30 m. We provide a comparative statistical analysis of the resulting mean wind velocities, the standard deviations of the vertical wind speed and the friction velocity and investigate the reasons for the observed deviations based on the turbulence spectra and cospectra. Our results show an agreement of the mean wind velocity measurements and the standard deviations of the vertical wind speed with comparabilities of 0.082 and 0.020 m s⁻¹, respectively. Biases for these two quantities were 0.003 and 0.012 m s⁻¹, respectively. Slightly larger differences were observed for friction velocity. Analysis of the corresponding cospectra showed that the CSAT3B underestimates this quantity systematically by about 3 % on average as a result of cospectral losses in the frequency range between 0.1 s⁻¹ and 5 s⁻¹. We also found that an angle-of-attack dependent transducer-shadowing correction does not improve the agreement between the CSAT3B and the PTB lidar effectively.

1 Introduction

Accurate fast-response measurements of the three-dimensional wind vector are of great importance to fundamental research in micrometeorology for flux measurements using the eddy-covariance methods in ecological studies (Aubinet et al., 2012). However, in recent years, several studies found that most, if not all, sonic anemometers may be afflicted by a systematic underestimation of turbulent fluctuations due to probe-induced flow-distortion errors (Frank et al., 2013, 2016; Wyngaard,

1988). These errors can be further classified into errors due to transducer self-shadowing, caused by cross-shadowing and influences of the support structure. This has been demonstrated in field studies by means of specially modified reference instruments with a vertical measurement path, so that the measurement path is perfectly perpendicular to the horizontal flow, or by rotating an additional sonic anemometer by 90° around the x -axis for comparison. An intercomparison experiment
5 between six different commercially available sonic anemometers showed that all participating instruments agreed very well (Mauder and Zeeman, 2018). Nevertheless, it is possible that all instruments measure vertical fluxes with similar inaccuracies, since no independent reference measurement was available. Consequently, the absolute magnitude of the potential bias remains unknown.

A particular sonic anemometer, the CSAT3 (Campbell Scientific Inc., Logan, Utah, USA) and its variant the CSAT3B, have
10 been investigated intensively. It is one of the most widely used and highly reputed instruments, which has often served as a reference in past intercomparison studies (Foken and Oncley, 1995; Loescher et al., 2005; Mauder et al., 2007). Features such as its small transducer diameter, 30° tilt angle with respect to the vertical axis, short sonic path length, and symmetrical boom design following the recommendations of Wyngaard (1988) increase confidence in its high-fidelity vertical wind fluctuation measurements. Based on the results of a field comparison with an orthogonal sonic anemometer as reference, Horst et al.
15 (2015, thereafter H15) propose a wind-tunnel derived correction for the CSAT3, which typically leads to an increase of vertical wind fluctuations and hence also vertical fluxes by 4 to 5 %.

A numerical simulation of the flow around this instrument indicates that the H15 correction actually reduced the measurement error of common turbulence statistics, but a considerable uncertainty remained (Huq et al., 2017). This study found that the error is dependent on the azimuth angle, which can be explained by cross-shadowing effects. A similar wind-direction
20 dependence of the CSAT3's flow-distortion error was also found in a field experiment in comparison to another non-orthogonal sonic anemometer (Grare et al., 2016). Moreover, a spectral analysis based on theoretically derived ratios between the different wind components in the inertial subrange substantiates the earlier finding that the correction by H15 only partially compensates for the CSAT3's flow distortion error (Peña et al., 2019). Nevertheless, the main problem of all these past investigations has been the lack of an accurate standard reference for the measurement of turbulent flow statistics, since wind-tunnel calibrations
25 of sonic anemometers are conducted under quasi-laminar conditions at much lower Reynolds numbers than in the free atmosphere and therefore their transferability to measurements in the field is questionable (Högström and Smedman, 2004). Further problems of past studies are the influence of shadowing between adjacent sensors and support structures, and lack of homogenous flat terrain. Our study seeks to overcome the limitations and uncertainties of previous experiments comparing sonic anemometers in the field.

30 As a reference instrument, we employ a high-resolution bistatic Doppler lidar, which has been developed at the Physikalisch-Technische Bundesanstalt (PTB) in Braunschweig, Germany (Oertel et al., 2019). This optical remote sensing device is naturally free of any flow-distortion errors and determines the 3D wind vector in a volume of less than 0.0005 m^3 for measurement heights up to 200 m at an output frequency of up to 10 s^{-1} , which is comparable to the sampling characteristics of a typical sonic anemometer. The very small sampling volume of this lidar system has the advantage that both data sets can

be directly compared, without the need for extensive modelling of spatial averaging effects, which would lead to a large uncertainty of the resulting turbulence statistics (Brugger et al., 2016). Hence, our objectives for this study are:

- to compare the measurement of turbulence statistics of a CSAT3B sonic anemometer with the PTB lidar during a side-by-side field deployment,
- 5 - to investigate reasons for the observed deviations by means of (co-)spectral analysis, and
- to evaluate the correction proposed by H15 using the PTB lidar as a reference.

In this analysis, we will mainly focus on three statistics: (i) the mean wind velocity, because this quantity is of high relevance for a number of applications, especially in wind energy research, (ii) the standard deviation of the vertical velocity component, because errors in this variable directly translate into errors of fluxes between ecosystems and the atmosphere when using the eddy-covariance method, and (iii) friction velocity, because this quantity is crucial for the validation of meteorological models (Tambke et al., 2005). To better understand the reasons for the differences between both instruments, we will analyse spectra and cospectra of the observed turbulent time series, including an analysis of spectral ratios of wind components in the inertial subrange as proposed by Peña et al. (2019).

2 Methods

15 2.1 Instruments

2.1.1 CSAT3B sonic anemometer

The CSAT3B sonic anemometer used in this study is the successor of the well-established CSAT3. The biggest difference to the CSAT3 is an improved placement of the control electronics inside the mounting block of the sensor head, whereas the sensor geometry, the measurement principle, etc. remained the same, so that findings of previous studies conducted with the CSAT3 are transferable to this study. The sensor geometry of the CSAT3B is after Zhang et al. (1986) which is optimized for low flow distortion due to transducer wakes designed for predominantly horizontal flow. In comparison to previous sonic anemometers with orthogonal sonic paths, where the horizontal velocity components are measured from a pair of axes located in the horizontal plane and the vertical velocity is measured by a single vertical pair of transducers, the flow-distortion effects in the CSAT3B are reduced by positioning all six transducers and their supporting structures out of the horizontal plane. This is important because horizontal wind velocities are usually much larger than vertical wind velocities, and when using sonic anemometers with non-orthogonal paths, a distorted measurement of the horizontal wind speed directly affects the vertical wind speed measurement. Each sonic path is tilted 30° from the vertical axis and spaced 120° apart in the horizontal plane. The length of the sonic path is 0.1154 m and the diameter of the ultrasonic transducers is 0.00635 m, giving a path length to diameter ratio of 18, which is larger than those of other commercially available instruments (Mauder and Zeeman, 2018). The higher this ratio and the steeper the angle between the sonic path and the vertical axis the less self-shadowing effects are

expected on the wind measurement, because a smaller portion of the path is affected by the transducer wake (Kaimal, 1979; Wyngaard and Zhang, 1985).

As part of the calibration procedure, the sonic path length (the distance between the transducers) and the actual values of the angles of the sonic axes of each individual CSAT3B instrument are precisely determined with a coordinate measuring machine and stored in the internal non-volatile memory. The wind speed along each sonic path is calculated from the sonic path distance between each pair of transducers and the difference of the reciprocal of the times of flight (TOF) of the ultrasonic pulses traveling along the sonic axes in opposite directions. Accurate and precise TOF measurements are achieved using advanced digital processing techniques. The wind components along the three non-orthogonal sonic axes are transformed into orthogonal components using a 3×3 coordinate transformation matrix unique for each CSAT3B and derived from the actual angles determined during the geometry measurement procedure. To determine accurate TOF estimates and to account for ultrasonic transducer delays associated with the conversion of the electrical-to-acoustical signal, each CSAT3B is factory calibrated in a specially designed temperature-controlled, zero-wind chamber over the entire operating temperature range of $-30\text{ }^{\circ}\text{C}$ to $+50\text{ }^{\circ}\text{C}$. Any temperature-induced changes in the sonic path length are also compensated for during this procedure.

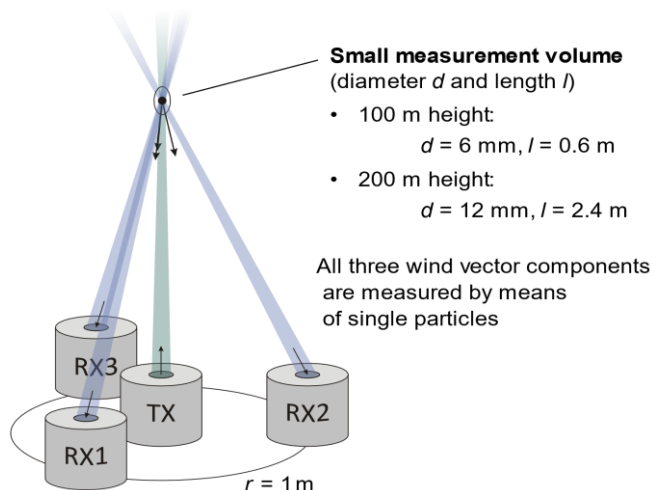
The speed of sound can also be measured by the CSAT3B using the measured transducer-to-transducer distance and sum of the reciprocal of the TOF of the pulses along the acoustic path traveling in opposite direction. The quality and accuracy of the CSAT3B acoustic temperature measurements are evaluated during calibration by comparison with an air temperature standard. This procedure provides additional independent verification of the fidelity of the TOF measurements and the accuracy of the sonic path distance.

2.1.2 Bistatic Doppler lidar

The most widely used wind remote sensing devices are conventional monostatic Doppler lidar systems that were established in wind energy applications in the recent years (e.g. Pearson et al., 2009). Such systems utilize a common transmitting and receiving beam that measures the wind velocity component in beam direction via a Doppler shift of the received scattering light from aerosols traveling along the path of the transmitting laser beam (Drain, 1980). To measure the complete wind vector, the common beam is tilted in different directions (Eder et al., 2015; Newman et al., 2015). Provided that the wind field is almost homogeneous within the measurement volume, these systems deliver reliable measurement results (Gottschall et al., 2012; Peña et al., 2009). However, leaving flat terrain and having to consider the inhomogeneous wind conditions that predominate over complex terrain, significant errors for the wind speed measured arise (Bradley, 2008) and can be on the order of 10 % (Bingöl et al., 2009). Thus, in the case of unidentified and complex wind fields, the reliability of monostatic lidar measurements becomes questionable without considering any other reference measurements.

The novel three-component lidar system developed by the PTB is aimed to overcome the present limitation to almost homogeneous wind fields given by the monostatic working principle (Oertel et al., 2019). The basic idea of this system relies on utilizing a bistatic measurement setup (Harris et al., 2001), i.e. on the use of one transmitting laser beam and three detection beams (spatial separation), in order to determine all three components of the wind vector simultaneously in a small

measurement volume by means of the same aerosols (Figure 1). In contrast to monostatic systems, which typically use a common transmitting and receiving unit and an optical circulator to separate the received scattering light, the bistatic system is based on one transmitter and three discrete, spatially separated receivers.



5

Figure 1: Principle of the novel bistatic lidar consisting of one transmitting unit TX and three receiving units RX.

The receivers are positioned at a radius of 1 m around the transmitter to ensure both sufficient particle-scattering light intensity (quasi-backward direction) and sufficient resolution for the determination of the horizontal velocity component. Each of the three heterodyne receivers converts the particle scattering light of its respective receiving beam into an optical beat signal, which is then converted into an electrical signal by a differential photodetector. The measurement volume calculated according to Gaussian beam optics has a diameter of 2 mm and a length of 50 mm for a measurement height of 30 m above ground. A time-of-flight measurement of the overall optical path length is used to actively control the receiver optics in order to maintain the measurement volume at the desired, well-known height. To ensure a mobile operation with stable working conditions in the field, especially with respect to requirements on the mechanical setup and the optoelectronics, the bistatic lidar system has been enclosed in a temperature-controlled housing unit mounted on a trailer (Figure 2). The accuracy of the bistatic PTB lidar was validated with the laser Doppler anemometer (LDA) reference standard in a wind tunnel erected on a platform at a height of 8 m. Long-term measurements each lasting 1 h were carried out. At seven velocities between 4 m s^{-1} and 16 m s^{-1} and different orientations of the lidar system, an average deviation of less than 0.4 % was observed.



Figure 2: Photograph of the bistatic PTB lidar at the measurement site (opened trailer housing).

2.2 Experimental set-up

The field intercomparison experiment was set up at the boundary of a recently harvested maize field on the compound of the Johann Heinrich von Thünen-Institut in Braunschweig, Germany (52.2943°N 10.4461°E, 81 m a.s.l.) and measurements were carried out from 14-09-2018 0900 until 27-09-2018 0600 UTC. The CSAT3B was installed on top of a trailer-mounted pneumatic telescopic mast (Clark Masts Systems Ltd., Binstead, England) at a height of 30.5 m (Figure 3). Its measuring volume was 0.85 m from the center of the mast; the mast's diameter at mounting height was 0.05 m. Since the prevailing wind direction expected for the measurement period was west, the PTB lidar was set up approximately 9 m west of the trailer mast and the CSAT3B was oriented towards 270°. This set up was chosen to minimize interference from the trailer mast with the PTB lidar measurements, on the one hand, and interference from the anemometer's arms and the mast with the CSAT3B measurements, on the other. Data acquisition from the CSAT3B was accomplished using a CR6 datalogger (Campbell Scientific, Inc., Logan, Utah, USA) with SDM (Synchronous Device for Measurements) communications. The sampling rate was 10 s⁻¹ and the three orthogonal (referenced to the anemometer head) wind components u_x , u_y , and u_z [m s⁻¹], the ultrasonic air temperature T_s [°C] as well as the CSAT3B diagnostic flag were recorded. Measurement times were logged in UTC, and data acquisition systems were synchronized with a time server via internet. The PTB lidar system recorded the measured (Doppler) frequency and amplitude of every detected scattered light signal. This raw data was also averaged to 10 s⁻¹ velocity vectors afterwards.



Figure 3: Photograph of the set-up of the field intercomparison experiment between the bistatic PTB lidar (left) and the CSAT3B mounted on a mobile 30 m telescopic mast (centre right). The camera is facing north-west.

2.3 Meteorological conditions

- 5 In continuation of the previous months, the air temperature stayed relatively high for the first week of the measurement campaign, due to a series of high-pressure systems. The remains of an Atlantic hurricane (“Ex-Helene”) pushed hot air up to the Northern border of Germany, which culminated in air temperatures of more than 30 °C on 18 September 2018 at the site of our experiment. The clear sky led to a strong diurnal variation in temperature with differences of up to 15 °C between the nocturnal minimum and the daytime maximum. The wind was relatively weak, with 10-min mean wind speeds (in 10 m height)

ranging from 1 m s^{-1} to 6 m s^{-1} , and between 1 m s^{-1} and 10 m s^{-1} for wind gusts. Wind speed was correlated with the variation in air temperature, with higher speeds at noon, due to more intense convection and better mixing, and lower speeds during the night. The wind direction was mostly between South and West. At noon on 21 September 2018, the air temperature dropped abruptly from more than $25 \text{ }^\circ\text{C}$ to less than $15 \text{ }^\circ\text{C}$, accompanied by wind speeds of up to 11 m s^{-1} , wind gusts of up to 20 m s^{-1} , and some rain. During this second week, the nocturnal temperature minimum was at $5 \text{ }^\circ\text{C}$ and wind speeds were generally higher than during the first week (Figure 4).

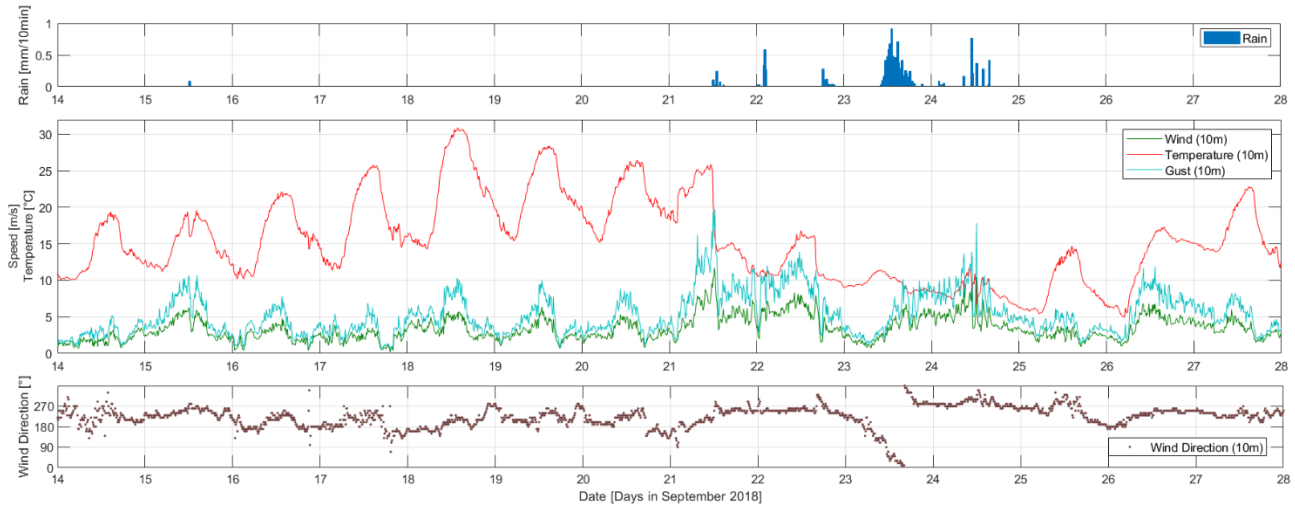


Figure 4: Meteorological conditions during the intercomparison experiment based on 10-min data from the nearby weather station (ID 662, 52.2915° N, 10.4464° E, 81 m a.s.l.) of the German Weather Service (DWD). Data were provided by the DWD Climate Data Center (CDC).

2.4 Calculation of turbulence statistics

All turbulence statistics were calculated from the 10 s^{-1} raw data of both instruments using the eddy-covariance software TK3 (Mauder and Foken, 2015) with an averaging time of 30 min. The same settings were applied in TK3 for both data sets, including a spike detection algorithm (Mauder et al., 2013). In addition, we used the diagnostic flag of the CSAT3B for filtering of the raw data, and we screened our data for rain in the last hour, which may have affected the optics of the lidar and the transducers of the sonic anemometer. After this preparation of the raw data, we discarded any 30-min statistics if more than 10 % of the high-frequency data were missing, including those data rejected by the spike test. These are commonly used settings for eddy-covariance measurements (Fratini and Mauder, 2014; Mauder et al., 2013). For the CSAT3B, no spikes at all were detected for 92 % of the 618 30-min intervals, and for the PTB lidar, 73 % of the 618 30-min intervals were spike-free. This means, application of the spike detection algorithm is important to ensure high data quality, but its impact on the comparison is limited. As a result of the data preparation described above, 615 30-min intervals remained for the CSAT3B and 458 for the PTB lidar. Subsequently, the raw turbulence statistics were corrected using the double rotation method (Kaimal and Finnigan, 1994), and a correction of low-pass filtering effects due to path length averaging (Moore, 1986) to allow for a

direct comparison of both data sets. In an alternative processing stream, we applied the correction for transducer-shadowing effects by H15 in order to validate this method as part of this intercomparison experiment. To facilitate this, we implemented this method into the TK3 software based on a software script provided by Campbell Scientific Inc.

2.5 Statistical analysis of the comparison

5 For the statistical analysis of the intercomparison, an orthogonal Deming regression was applied in order to account for measurement errors in both x - and y -variables, using the R package `mcr` (Manuilova et al., 2014). In this regression analysis, we generally selected the PTB lidar data as the x -variable and the sonic anemometer data as the y -variable. In contrast to a traditional least-squares method, the orthogonal regression provides deviations measured perpendicularly and not parallel to the y -axis, which addresses problems when there is a measurement error in both x and y variables and implies that errors in x
10 and y have equal variances. Pearson’s correlation coefficient r is also determined by using the same R package. Furthermore, we calculated comparability, which is equivalent to the root-mean-square-error (RMSE), and bias, which is the mean error of a certain measurement quantity.

2.6 Spectral analysis

Based on dimensional analysis of energy distribution of turbulence, it has been deduced that spectra and cospectra of fully
15 developed turbulence follow similarity laws (Kolmogorov, 1941). Comparing the theoretically derived and measured spectra can be a powerful tool to investigate the performance of measuring instruments. Here, we focus on two spectral characteristics in the inertial subrange: (i) the ratio between the spectra of transversal wind velocity components, i.e. S_v and S_w , and of the longitudinal component S_u is theoretically derived to be $4/3$, and (ii) the power-law behavior with a slope of $-5/3$ for spectra and $-7/3$ for cospectra (Kaimal and Finnigan, 1994). A ratio smaller than $4/3$ between S_w and S_u indicates a general
20 underestimation of vertical wind velocity or overestimation of the horizontal velocity (Peña et al., 2019). In case of high-frequency dampening, the slope of a measured spectrum drops below $-5/3$ at the high-frequency end of the spectrum (Aubinet et al., 2000). This allows for the determination of the cut-off frequency f_c , describing the associated sonic path averaging low-pass filter effect, by spectral analysis as proposed by e.g. Ibrom et al. (2007). The half-hourly wind spectra are calculated using the TK3 software (Mauder and Foken, 2015), following the method of Stull (1988). Further processing is based on the method
25 of Ibrom et al. (2007) for cut-off frequency determination. To investigate the ratio between S_u , S_v and S_w within the inertial subrange, the half-hourly spectra were weighted by frequency and exponentially binned. All u , v and w spectra from 30-minute intervals with absolute values of sensible heat flux larger than 10 W m^{-2} and absolute values of the stability parameter $z/L < 2$ (z = measurement height, L = Obukhov length) were averaged to derive one ensemble spectrum. For the empirical determination of the cut-off frequency of the w -measurements, half-hourly spectra $S_{w,norm}$ were additionally normalized by the
30 variance of w and inspected for blue noise.

We assume that the low-pass filtering of $S_{w,norm}(f)$ can be described by the following function (Fratini et al., 2012),

$$\frac{f \cdot S_{w,norm}(f)}{S_{w,mod}(f)} = F_n \frac{1}{1 + \left(\frac{f}{f_c}\right)^2}, \quad (1)$$

where F_n is an additional normalization factor, which is intended to compensate for the reduction of the overall variance (Ibrom et al., 2007). We fitted the $S_{w,norm}$ to equation (1) to determine the cut-off frequency, using the Levenberg-Marquardt nonlinear least-squares algorithm as implemented in the R package `minpack.lm` (Elzhov et al., 2016). This fit was weighted by the number of frequencies in each bin. Instead of sonic temperature spectra, as proposed by Ibrom et al. (2007), we used the spectral models for vertical wind velocity $S_{w,mod}(f)$ that are implemented in TK3 as universal reference spectra. These models are a corrected version of Moore (1986) for stable stratification, and of Højstrup (1981) for unstable conditions. The model spectra were calculated for each 30-minute interval and then averaged to one ensemble spectrum in order to determine the cut-off frequency. Please note, that this does not apply to the ensemble spectra presented to determine the spectral ratios. These are purely based on measured spectra.

3 Results and discussion

3.1 Comparison of turbulence statistics

Scatter plots and regression parameters for \bar{u} , $\overline{w'w'}^{1/2}$ and u_* generally show a good agreement between the CSAT3B and the PTB lidar measurements (Figure 5, Table 1). Particularly, the measurements of the vertical velocity fluctuations are almost identical with a regression slope of 0.994, a correlation coefficient of 0.998 and a comparability of 0.017 m s^{-1} . This is somewhat unexpected because previous studies indicated an underestimation of $\overline{w'w'}^{1/2}$ by 3-5 % due to probe-induced flow distortion (H15, Frank et al., 2016). However, only a very small negative bias of -0.009 m s^{-1} was found in our analysis using the flow-distortion-free PTB lidar as reference. One might argue that perhaps both instruments underestimated $\overline{w'w'}^{1/2}$ in the same way. However, we regard this as implausible, because the measurement principles are very different and therefore it is unlikely that the effect of potential errors is so similar under this broad range of atmospheric conditions. Based on the remote optical measurement principle and the lack of any physical structure, it can safely be assumed that flow-distortion errors can be ruled out for the lidar. Any potential high-frequency dampening effects of the lidar signal should be small considering its short measurement path of 0.05 m and the sampling frequency of 10 s^{-1} . Furthermore, we have even compensated for those small low-pass filtering effects as part of the standard post-processing routine using the TK3 software (Moore, 1986). Our findings partially contradict the conclusions of earlier sonic anemometer intercomparison studies that proposed vertical wind underestimation by the CSAT3 as the source of error on the order of 5 %. The discrepancy of our findings with the results from previous experiments can be explained by the lack of a suitable and accurate reference instrument. For example, H15 used an ATI K-probe sonic anemometer as reference instrument, which they assumed to be more accurate because of its orthogonal transducer array. However, the measurements by this instrument are also corrected for flow-distortion effects by a

variable factor of 1.02 on average for w -measurements, and this wind-tunnel based correction factor might not be applicable in the turbulent free atmosphere.

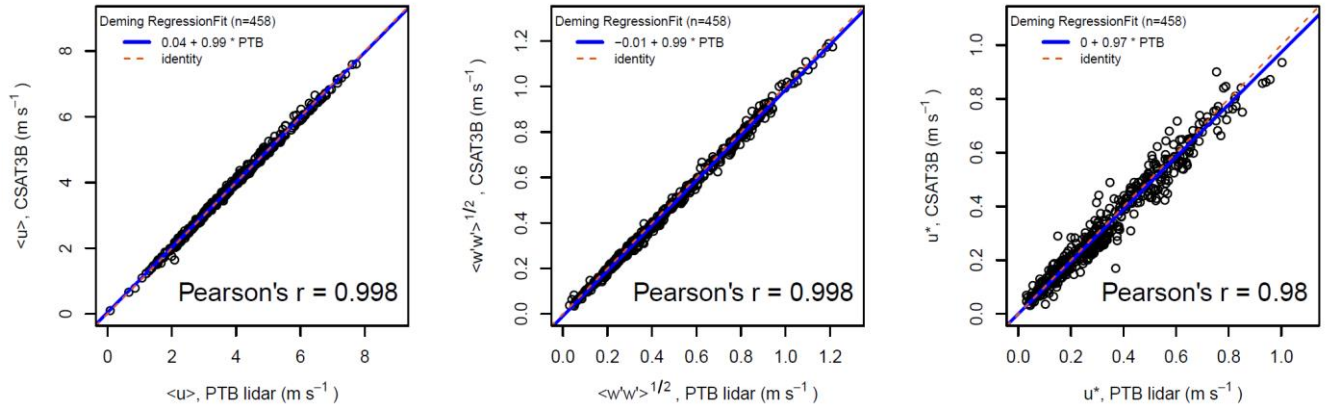


Figure 5: Comparison for mean wind velocity (left), standard deviation of the vertical velocity component (centre), and friction velocity (right), including the regression equation and correlation coefficient. A solid blue line indicates the Deming regression and the dashed red line indicates identity.

The mean wind velocity \bar{u} also compares very well on average. There are just a few data points at higher wind speeds between 5 m s^{-1} and 6 m s^{-1} , for which the CSAT3B reports slightly larger values than the PTB lidar. Nevertheless, this comparison, with a very small bias of 0.003 m s^{-1} and a RMSE of 0.082 m s^{-1} (Table 1), is still as good as or even better than between two adjacent CSAT3 sonic anemometers (Mauder and Zeeman, 2018).

Friction velocity u_* is typically more difficult to measure due to the spectral separation between the peaks in the u and w spectra. Nevertheless, the comparability of these values is still good between the two instruments with an RMSE of 0.042 m s^{-1} , which is again as good as between adjacent sonic anemometers (Mauder and Zeeman, 2018). However, the u_* data measured by the CSAT3B are slightly too low compared to the PTB lidar, indicated by a regression slope of 0.973 and a bias of -0.009 m s^{-1} (Table 1). The differences in \bar{u} at larger wind speeds and the systematic differences in u_* will be investigated further below.

Table 1: Statistical quantities characterizing the differences between the measurements of the CSAT3B sonic anemometer and the PTB bistatic Doppler lidar, based on 458 paired observations of turbulence statistics, each one averaged over 30 min. The statistics for the CSAT3B data after applying the H15 correction are shown in round brackets. The statistics without application of a low-pass filtering correction to either of the instruments are shown in square brackets (\bar{u} is not altered).

	\bar{u}	$\overline{w'w'}^{1/2}$	u_*
Bias (m s^{-1})	0.003 (0.077)	-0.012 (0.002) [-0.011]	-0.009 (-0.010) [-0.007]
Comparability/RMSE (m s^{-1})	0.082 (0.110)	0.020 (0.019) [0.023]	0.042 (0.041) [0.041]
Regression intercept (m s^{-1})	0.044 (0.041)	-0.010 (-0.011) [-0.005]	0.000 (-0.013) [0.002]
Regression slope	0.989 (1.010)	0.994 (1.030) [-0.982]	0.973 (1.007) [0.973]
Correlation coefficient	0.998 (0.998)	0.998 (0.998) [0.998]	0.980 (0.981) [0.980]

As a first step, we assess whether the comparison of the CSAT3B data improves through application of the H15 method, which is intended to correct for flow distortion by transducer shadowing. However, as can be seen from Table 1, \bar{u} and $\overline{w'w'^{1/2}}$ show slightly larger differences from the PTB lidar after applying the H15 correction. The “corrected” mean wind velocity \bar{u} has a larger bias, 0.077 instead of 0.003 m s⁻¹, and a larger RMSE, 0.110 instead of 0.082 m s⁻¹, although intercept and slope are similar to before applying the H15 correction. H15 reported that $\overline{w'w'^{1/2}}$ is increased by 4-5 % through this correction. Our results are on the lower end of this range, as the regression slope is increased from 0.994 to 1.030 (Table 1). However, the slope is now clearly larger than unity and the regression intercept for $\overline{w'w'^{1/2}}$ slightly more negative, so that the comparability is similar before and after the correction. The agreement of the u_* values improves slightly after applying the H15 correction, since the regression slope increases from 0.0973 to 1.007 and the correlation coefficient is marginally closer to unity than before (Table 1).

In order to investigate the reason for the remaining discrepancies in \bar{u} , we analysed the relationship between the differences of the \bar{u} measurements from both instruments and potential driving variables, such as u_* , sonic temperature, wind direction, and the standard deviations of the velocity components. We found the strongest relationship between $\Delta\bar{u}/\bar{u}$ and the wind direction (Figure 6). This could be explained by the horizontally symmetrical design of the CSAT3 structure as recommended by Wyngaard and Zhang (1985). A very similar wind-direction dependence of the error in \bar{u} has also been reported by Grare et al. (2016), when comparing a CSAT3 sonic anemometer against a Gill R3-50 sonic anemometer. Moreover, Horst et al. (2016) observed similar behavior when they measured the flow distortion within the IRGASON integrated sonic anemometer and CO₂/H₂O gas analyzer. They found good agreement for w , but not for \bar{u} and u_* . It is interesting to note that this wind-direction dependence does not improve after application of the H15 flow-distortion correction (Figure 6), which only leads to larger wind speeds in general. Hence, these results confirm the finding of Huq et al. (2017) based on numerical simulations that the H15 correction does not account for the pronounced azimuth dependence of the CSAT3 velocity measurements. Moreover, we can now quite reliably attribute the observed differences in \bar{u} to a systematic wind-direction dependent error of the CSAT3B.

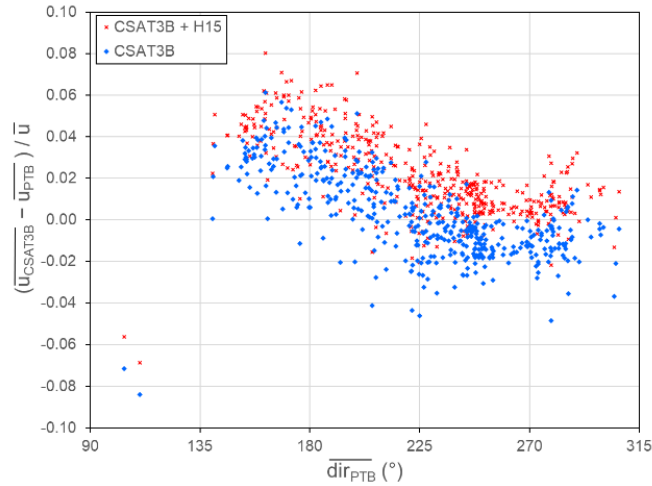


Figure 6: Differences in wind velocity measurements between the two instruments \bar{u} , normalized by the mean wind velocity in $\Delta\bar{u}/\bar{u}$ versus the wind direction dir . The CSAT3 data are shown with and without the H15 correction.

3.2 Spectral and cospectral analysis

- 5 In the following section, we investigate the ensemble turbulence spectra of the three wind components, with a special focus on the ratios between them in the inertial subrange. This may help to shed more light on the reasons for the very good agreement between the CSAT3B and the PTB lidar measurements of $\overline{w'w'^{1/2}}$. As can be seen in Figure 7, all three wind components measured by the PTB lidar are afflicted by some noise at very high frequencies. In addition, the w -spectra show a dampening of the signal at high frequencies. The CSAT3B spectra follow the theoretical $-5/3$ power law very well across the entire inertial
- 10 subrange in all three wind components. There are no signs of noise, aliasing or high-frequency dampening in the spectra (Figure 7).

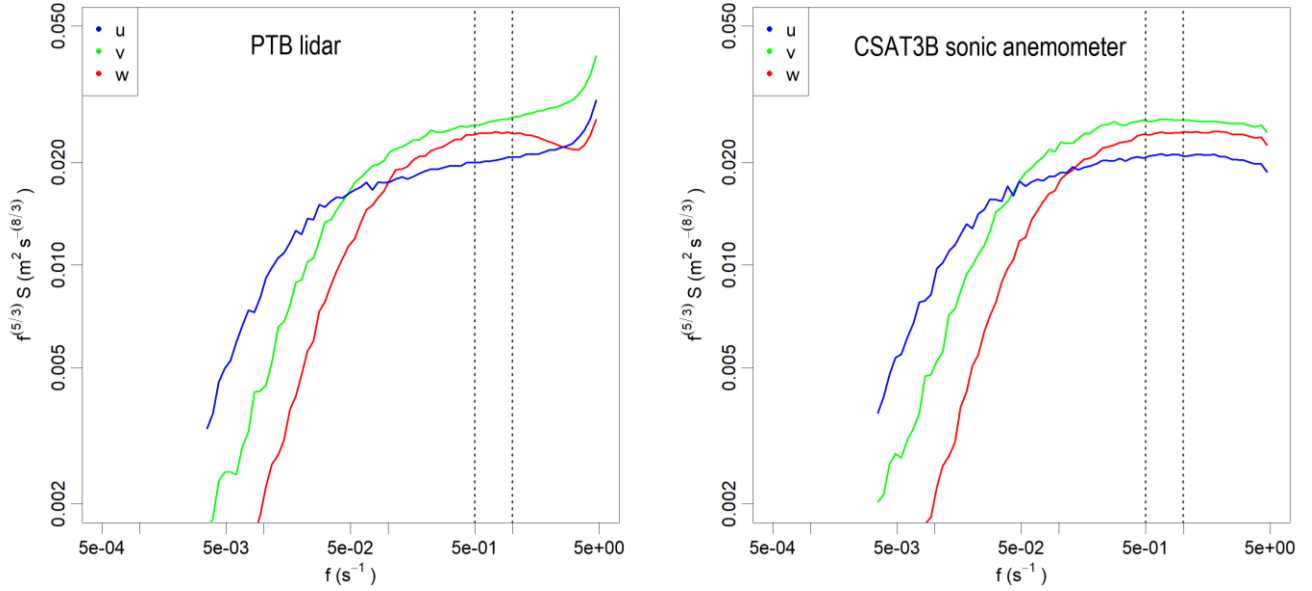


Figure 7: Ensemble turbulence spectra of the three wind components u , v , and w , pre-multiplied by the frequency $f^{(5/3)}$, so that the theoretical $-5/3$ power law appears as horizontal line. The spectra of the PTB lidar data are shown on the left and the spectra of the CSAT3B data are shown on the right. The vertical dashed lines indicate the range between 0.5 s^{-1} and 1 s^{-1} in the inertial subrange, for which the spectral ratios were calculated. Note that the deviations from the expected behavior in the inertial subrange appear larger than at lower frequencies due to the pre-multiplication.

In addition to the $-5/3$ power law, a spectral ratio of $4/3$ has been theoretically derived for S_v/S_u and S_w/S_u in the inertial subrange (Kaimal and Finnigan, 1994). We generally find smaller ratios for both instruments, while the ratios measured by the PTB lidar are generally larger than for the CSAT3B by a few percent (Table 2). We also find that the S_v/S_u ratios are generally larger than those for S_w/S_u . The lower S_w/S_u ratios have been interpreted as an indicator for probe-induced flow distortion (Peña et al., 2019), which is in line with our findings since the flow-distortion free lidar measurements show larger values. However, these flow-distortion free data do not reach the theoretical value of $4/3$, neither for S_v/S_u and even less for S_w/S_u . Hence, we suspect that this theoretical value was probably not fulfilled in reality for the ensemble spectrum, presumably because the turbulence was not quite isotropic under all atmospheric conditions during the measurement period, which can happen due to different reasons (Brugger et al., 2018; Stiperski and Calaf, 2018). In comparison to the uncorrected CSAT3 measurements of Peña et al. (2019), our CSAT3B data show slightly smaller S_v/S_u ratios of 1.26 versus 1.32 and 1.34, while the S_w/S_u ratios are slightly larger, being 1.16 versus 1.13 and 1.07 for their two data sets. It is interesting to note that after the application of the H15 correction, which is supposed to correct for flow distortion effects, the spectral ratio indeed agrees better with the theoretical value of $4/3$ and with the PTB lidar values than without the correction (Table 2).

Table 2: Ratios between the spectral densities between the different wind components in the inertial subrange (at frequencies between 0.5 s^{-1} and 1 s^{-1}) measured by the lidar and the sonic anemometer, with and without the H15 flow distortion correction. Note that both ratios S_v/S_u and S_w/S_u should theoretically be $4/3$ assuming isotropic turbulence (Kaimal and Finnigan, 1994).

Spectral ratios	PTB lidar	CSAT3B	CSAT3B + H15
-----------------	-----------	--------	--------------

S_w/S_u	1.30	1.26	1.30
S_w/S_u	1.20	1.16	1.23

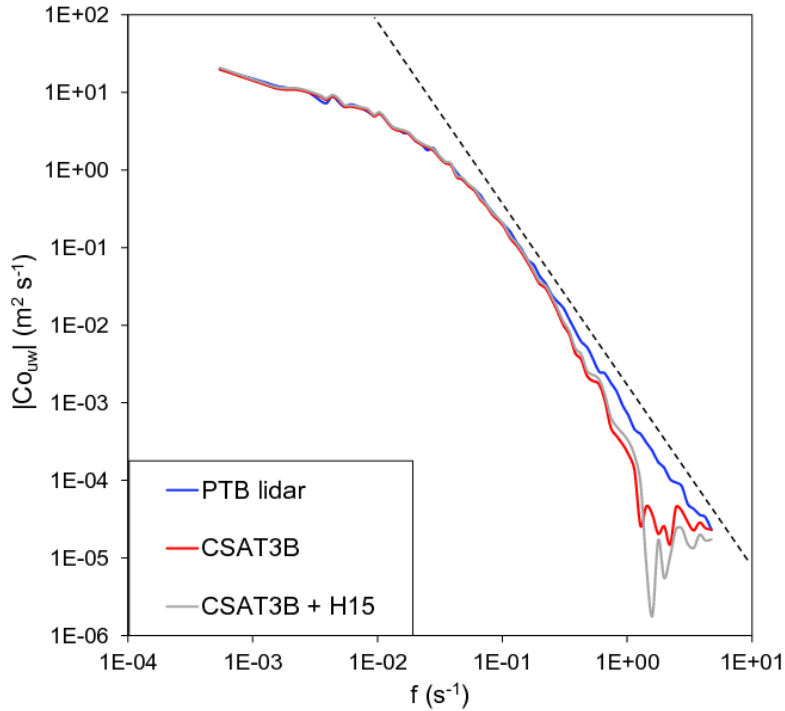
As mentioned above, all the turbulence statistics of the PTB lidar are corrected for path-averaging effects according to Moore (1986) using a length of 0.05 m. Since the underlying analytical transfer function might not necessarily be correct for this instrument, we also determined the low-pass filtering transfer function empirically based on the ensemble spectrum of w . We found a cut-off frequency of 4 s^{-1} , which results in an increase of $\overline{w'w'^{1/2}}$ by ca. 0.25 %, when applied as part of the Moore correction, compared to the value for the path averaging correction for 0.05 m measurement length. This small uncertainty adds confidence to the suitability of the PTB lidar for serving as absolute reference for $\overline{w'w'^{1/2}}$ in this comparison. Significant blue or white noise in S_w measured by the PTB lidar was not detected, either. In addition, we also calculated the turbulent statistics of the PTB lidar and the CSAT3B without any low-pass filtering correction whatsoever, and the results for $\overline{w'w'^{1/2}}$ show some small differences in comparison to the Moore-corrected data (Table 1), e. g. the bias is slightly smaller by 0.001 m s^{-1} while the RMSE is slightly larger by 0.003 m s^{-1} . This shows that the effect of the low-pass correction is generally small because of the relatively large measurement height of 30 m.

Obviously, the results of this intercomparison partially contradict the findings of H15, Frank et al. (2016) and Huq et al. (2017), who advocate the need of a flow-distortion correction on $\overline{w'w'^{1/2}}$ on the order of several percent. However, these previous field intercomparisons only compared different sonic anemometers with each other, partially with different sensor geometries, but none of them can be considered as flow-distortion free as the bistatic Doppler lidar. It remains unclear why the numerical simulations of Huq et al. (2017) detect an underestimation of $\overline{w'w'^{1/2}}$ by 3-7 % for the CSAT3, when we see deviations of approximately 1 % in this field experiment. Perhaps the numerical simulations were not turbulent enough, so that wake effects are stronger than under fully-developed turbulent conditions in the field. Generally, wake effects depend on the Reynolds number and the wake extent is reduced suddenly at the transition from laminar to turbulent flow (e.g. Williamson, 1996). This is also the reason why it is problematic to transfer quasi-laminar wind-tunnel calibrations to real-world turbulence (Högström and Smedman, 2004). Therefore, we believe that this explains the differences between our field study and previous wind-tunnel based and LES-based experiments, and we expect that the field experiment has more validity in principle, since sonic anemometers are normally used in the field.

Nevertheless, our results show that an azimuth-dependent flow-distortion correction is indeed needed for obtaining more accurate measurements of the mean wind velocity of the CSAT3B (Sect. 3.1, Figure 6). Further field comparisons with the PTB lidar or more realistic LES studies would be needed to this end. Moreover, it is generally preferable to minimize flow-distortion errors to begin with through a clever design of the instrument, e.g. by increasing the ratio between path length and transducer diameter, than relying on the transferability of wind-tunnel based correction models to real-world conditions.

We found that the H15 flow-distortion correction improves the u_* comparison with the PTB lidar considerably, but why is only u_* improved and not \bar{u} and $\overline{w'w'^{1/2}}$? An analysis of the Co_{uw} cospectra shows that the CSAT3B from the expected $-7/3$

power-law behaviour in the inertial subrange at frequencies $f > 0.1 \text{ s}^{-1}$ (Figure 8). It can also be seen that the H15 correction slightly increases the cospectral energy across the entire range of frequencies. However, the too steep drop-off of the CSAT3B ensemble cospectrum is not improved effectively. Hence, our analysis shows that the H15 correction results in improved the comparison of the u_* values, but the ensemble cospectrum shows that this improvement occurred for the wrong reasons. In consequence, the observed behaviour of this correction for u_* may potentially be site-specific and not universally transferable. Nevertheless, we would like to recall here that the underestimation of u_* measured by the CSAT3B is only by a few percent, so that the accuracy of these uncorrected measurements is still sufficient for many applications.



10 **Figure 8: Ensemble cospectra between u and w (absolute value) based on turbulence measurements from the PTB lidar and the CSAT3B sonic anemometer. The dashed line indicates the theoretical $-7/3$ power law in the inertial subrange.**

4 Conclusions

We presented the results of a field intercomparison experiment, comparing the measurements of turbulence statistics in the atmospheric surface layer of a CSAT3B sonic anemometer and a novel bistatic Doppler lidar, which has been recently developed by PTB. Spectral analysis of the high-frequency data shows that the PTB lidar has some minor noise at high frequencies in all three wind components. In addition, w is slightly dampened at high frequencies probably due to path length averaging, which can be corrected by a low-pass filtering correction normally applied for sonic anemometers (Moore, 1986). Nevertheless, this newly-developed instrument is well suited for serving as independent reference in measuring turbulent

statistics in the atmospheric surface layer due to its traceability to laser Doppler anemometer measurements in a wind tunnel and its completely unobstructed measurement volume.

Our comparison shows a very good agreement between both instruments for the measurement of \bar{u} and $\overline{w'w'^{1/2}}$. Nevertheless, our results for spectral ratios between w and u confirm that the CSAT3B is somewhat affected by flow distortion in the measurement of $\overline{w'w'^{1/2}}$. Moreover, u_* from the CSAT3B is about 3 % too low compared to the PTB lidar, which is explained by too steep a drop-off of the Co_{uw} cospectrum. We also evaluated whether the overall accuracy of the CSAT3B measurements can be improved by the H15 flow-distortion correction, and our results indicate that this method increases the spectral energy across the entire range of frequencies equally and does not appropriately correct the CSAT3B data in the inertial subrange. It leads to an overestimation of $\overline{w'w'^{1/2}}$, and it does not correct for the wind-direction dependent error of \bar{u} . Based on these results, we conclude that the probe-induced flow-distortion issue of sonic anemometers warrants further investigations in the future to effectively correct general measurements of scalar fluxes.

Since any systematic effects in the measurement of $\overline{w'w'^{1/2}}$ usually directly translate into errors in eddy-covariance flux measurements, the findings of this study are also relevant with respect to the energy balance closure problem (Stoy et al., 2013) and the accuracy of any trace gas flux measurement (Foken et al., 2011; Wilson et al., 2002). In this context, we can state that the very good agreement in the $\overline{w'w'^{1/2}}$ measurements of both instruments indicates that a probe-induced flow-distortion error of the CSAT3B sonic anemometer contributes only very little to the observed systematic underestimation of scalar fluxes using the eddy-covariance method.

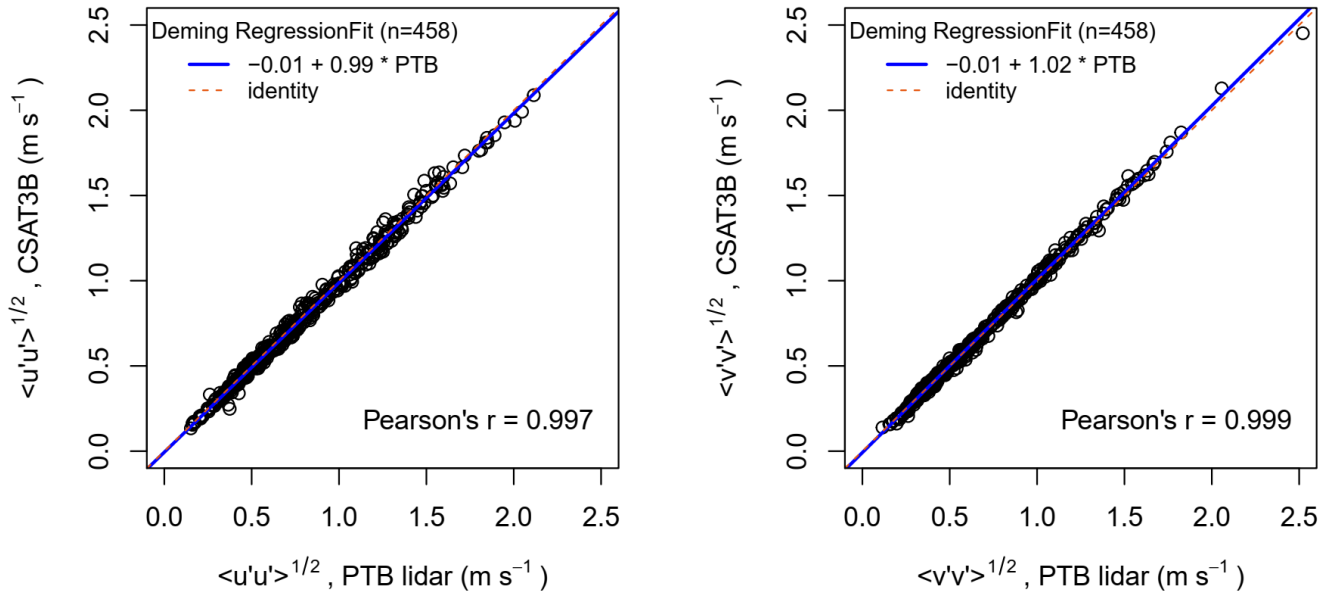
In summary, the agreement of all variables tested in this comparison experiment is at least as good as or better than that between two adjacent sonic anemometers (Mauder and Zeeman, 2018). This indicates that both instruments are very precise devices for measuring turbulence statistics, particularly for vertical scalar fluxes. Considering the findings of the intercomparison experiment of Mauder and Zeeman (2018), we conclude that the other sonic anemometers tested in that study are also suitable for general flux measurements within the range of comparability and bias described in that study. However, our spectral analysis shows that the bistatic Doppler lidar developed by PTB is slightly more accurate, particularly for measurements of friction velocity and the momentum flux.

Data availability

Sonic anemometer and Doppler lidar data are available upon request to Matthias Mauder (matthias.mauder@kit.edu).

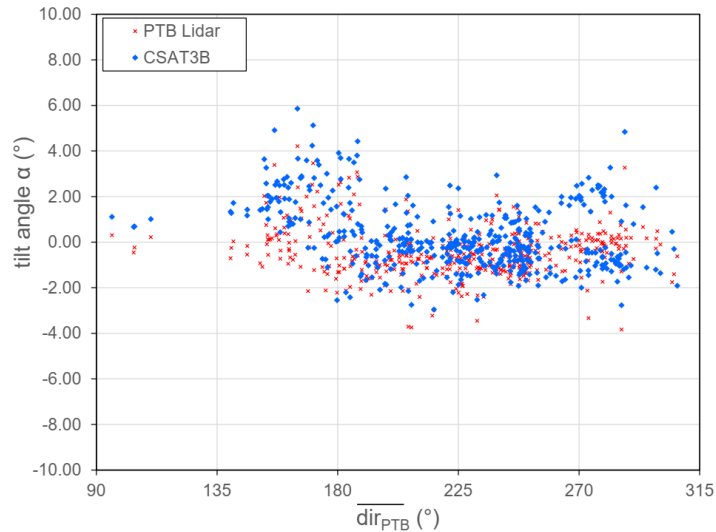
Appendix

For completeness, we show the comparison for the standard deviations of u and v between the CSAT3B and the PTB lidar measurements in Figure A1. The overall agreement is very good:



5 **Figure A1:** Comparison for the standard deviation of the u velocity component (left) and the standard deviation of the v velocity component (right), including the regression equation and correlation coefficient. A solid blue line indicates the Deming regression and the dashed red line indicates identity. For $\overline{u'u'}^{1/2}$, the bias is -0.008 m s^{-1} and RMSE is 0.028 m s^{-1} , and for $\overline{v'v'}^{1/2}$, the bias is 0.003 m s^{-1} and RMSE is 0.018 m s^{-1} .

Tilt angles of the double rotation method as a function of wind direction can provide an indication about the potential misalignment of the instruments, which has been corrected for by this coordinate rotation as part of the post-processing. As expected, tilt angles of the PTB lidar are generally smaller than those of the CSAT3B (Fig. A2):



10 **Figure A2:** Tilt angles α of the double rotation method about the y -axis, forcing $\bar{w} = 0$, as a function of the mean wind direction.

Author contributions

MM and IV operated the sonic anemometer and ME, CG, SO, and PW operated the Doppler lidar and pre-processed its 10 Hz raw data. MM calculated turbulence statistics including the relevant corrections based on the raw sonic anemometer and Doppler lidar data and calculated the statistical metrics for the intercomparison. LW and MM conducted the (co-spectral) analysis. MM wrote sections 1, 2.4, 2.5, 3, 4, IB wrote section 2.1.1, ME wrote section 2.1.2, IV wrote section 2.2, JT wrote section 2.3 and LW wrote section 2.6. All coauthors provided comments and suggestion on a previous version of this manuscript.

Competing interests

10 The authors declare that they have no conflict of interest.

Acknowledgements

We acknowledge Mathias Herbst of the DWD Zentrum für Agrarmeteorologische Forschung in Braunschweig for providing logistical support during the measurement campaign, and we thank the Thünen-Institut in Braunschweig for providing the field site for this experiment. The equipment for study has been financially supported in part by the Helmholtz initiative “Modular Observations Solutions for Earth Systems (MOSES)”. We thank Jamie Smidt (KIT) for checking the English grammar and spelling.

References

- Aubinet, M., Grelle, A., Ibrom, A., Rannik, U., Moncrieff, J., Foken, T., Kowalski, A. S., H., M. P., Berbigier, P., Bernhofer, C., Clement, R., Elbers, J., Granier, A., Grünwald, T., K., M., K., P., C., R., W., S., Valentini, R. and Vesala, T.: Estimates of the annual net carbon and water exchange of forest: the EUROFLUX methodology, *Adv. Ecol. Res.*, 30, 113–117, doi:10.1016/S0065-2504(08)60018-5, 2000.
- Aubinet, M., Vesala, T. and Papale, D., Eds.: *Eddy Covariance - A Practical Guide to Measurement and Data Analysis*, Springer, Dordrecht., 2012.
- 25 Bingöl, F., Mann, J. and Foussekis, D.: Conically scanning lidar error in complex terrain, *Meteorol. Zeitschrift*, 18(2), 189–195, doi:10.1127/0941-2948/2009/0368, 2009.
- Bradley, S.: Wind speed errors for LIDARs and SODARs in complex terrain, *IOP Conf. Ser. Earth Environ. Sci.*, 1, 012061, doi:10.1088/1755-1307/1/1/012061, 2008.
- Brugger, P., Träumner, K. and Jung, C.: Evaluation of a procedure to correct spatial averaging in turbulence statistics from a doppler lidar by comparing time series with an ultrasonic anemometer, *J. Atmos. Ocean. Technol.*, 33(10), 2135–2144, doi:10.1175/JTECH-D-15-0136.1, 2016.
- 30 Brugger, P., Katul, G. G., De Roo, F., Kröniger, K., Rotenberg, E., Rohatyn, S. and Mauder, M.: Scalewise invariant analysis

- of the anisotropic Reynolds stress tensor for atmospheric surface layer and canopy sublayer turbulent flows, *Phys. Rev. Fluids*, 3, 054608, doi:10.1103/PhysRevFluids.3.054608, 2018.
- Drain, L. E.: *The Laser Doppler Technique*, John Wiley & Sons Ltd., 1980.
- Eder, F., De Roo, F., Rotenberg, E., Yakir, D., Schmid, H. P. and Mauder, M.: Secondary circulations at a solitary forest surrounded by semi-arid shrubland and its impact on eddy-covariance measurements, *Agric. For. Meteorol.*, 211–212, 115–127, doi:10.1016/j.agrformet.2015.06.001, 2015.
- Elzhov, T. V., Mullen, K. M., Spiess, A.-N. and Bolker, B.: minpack.lm: R Interface to the Levenberg-Marquardt Nonlinear Least-Squares Algorithm Found in MINPACK, Plus Support for Bounds, [online] Available from: <https://cran.r-project.org/package=minpack.lm>, 2016.
- 10 Foken, T. and Oncley, S. P.: Workshop on instrumental and methodical problems of land surface flux measurements, *Bull. Am. Meteorol. Soc.*, 76, 1191–1193, 1995.
- Foken, T., Aubinet, M., Finnigan, J. J., Leclerc, M. Y., Mauder, M. and Paw U, K. T.: Results of a panel discussion about the energy balance closure correction for trace gases, *Bull. Am. Meteorol. Soc.*, 92(4), doi:10.1175/2011BAMS3130.1, 2011.
- Frank, J. M., Massman, W. J. and Ewers, B. E.: Underestimates of sensible heat flux due to vertical velocity measurement errors in non-orthogonal sonic anemometers, *Agric. For. Meteorol.*, 171–172, 72–81, doi:10.1016/j.agrformet.2012.11.005, 15 2013.
- Frank, J. M., Massman, W. J., Swiatek, E., Zimmerman, H. A. and Ewers, B. E.: All sonic anemometers need to correct for transducer and structural shadowing in their velocity measurements, *J. Atmos. Ocean. Technol.*, 33(1), 149–167, doi:10.1175/JTECH-D-15-0171.1, 2016.
- 20 Fratini, G. and Mauder, M.: Towards a consistent eddy-covariance processing: an intercomparison of EddyPro and TK3, *Atmos. Meas. Tech.*, 7, 2273–2281, doi:10.5194/amt-7-2273-2014, 2014.
- Fratini, G., Ibrom, A., Arriga, N., Burba, G. and Papale, D.: Relative humidity effects on water vapour fluxes measured with closed-path eddy-covariance systems with short sampling lines, *Agric. For. Meteorol.*, 165(0), 53–63, doi:10.1016/j.agrformet.2012.05.018, 2012.
- 25 Gottschall, J., Courtney, M. S., Wagner, R., Jørgensen, H. E. and Antoniou, I.: Lidar profilers in the context of wind energy - a verification procedure for traceable measurements, *Wind Energy*, 15, 147–159, doi:10.1002/we, 2012.
- Grare, L., Lenain, L. and Melville, W. K.: The Influence of Wind Direction on Campbell Scientific CSAT3 and Gill R3-50 Sonic Anemometer Measurements, *J. Atmos. Ocean. Technol.*, 33(11), 2477–2497, doi:10.1175/JTECH-D-16-0055.1, 2016.
- Harris, M., Constant, G. and Ward, C.: Continuous-wave bistatic laser Doppler wind sensor, *Appl. Opt.*, 40(9), 1501–1506, 30 doi:10.1364/AO.40.001501, 2001.
- Högström, U. and Smedman, A. S.: Accuracy of sonic anemometers: Laminar wind-tunnel calibrations compared to atmospheric in situ calibrations against a reference instrument, *Boundary-Layer Meteorol.*, 111(1), 33–54, doi:10.1023/B:BOUN.0000011000.05248.47, 2004.
- Højstrup, J.: A simple model for the adjustment of velocity spectra in unstable conditions downstream of an abrupt change in

- roughness and heat flux, *Boundary-Layer Meteorol.*, 21(3), 341–356, doi:10.1007/BF00119278, 1981.
- Horst, T. W., Semmer, S. R. and Maclean, G.: Correction of a Non-orthogonal, Three-Component Sonic Anemometer for Flow Distortion by Transducer Shadowing, *Boundary-Layer Meteorol.*, 155(3), 371–395, doi:10.1007/s10546-015-0010-3, 2015.
- Horst, T. W., Vogt, R. and Oncley, S. P.: Measurements of Flow Distortion within the IRGASON Integrated Sonic Anemometer and CO₂/H₂O Gas Analyzer, *Boundary-Layer Meteorol.*, doi:10.1007/s10546-015-0123-8, 2016.
- 5 Huq, S., De Roo, F., Foken, T. and Mauder, M.: Evaluation of Probe-Induced Flow Distortion of Campbell CSAT3 Sonic Anemometers by Numerical Simulation, *Boundary-Layer Meteorol.*, 165(1), doi:10.1007/s10546-017-0264-z, 2017.
- Ibrom, A., Dellwik, E., Flyvbjerg, H., Jensen, N. O. and Pilegaard, K.: Strong low-pass filtering effects on water vapour flux measurements with closed-path eddy correlation systems, *Agric. For. Meteorol.*, 147(3–4), 140–156, 2007.
- 10 Kaimal, J. .: Sonic Anemometer Measurement of Atmospheric Turbulence, in *Proceedings of the Dynamic Flow Conference 1978 on Dynamic Measurements in Unsteady Flows*, edited by B. W. Hanson, pp. 551–565, Springer Netherlands., 1979.
- Kaimal, J. C. C. and Finnigan, J. J.: *Atmospheric Boundary Layer Flows: Their Structure and Measurement*, Oxford University Press, New York., 1994.
- Kolmogorov, A. N.: The local structure of turbulence in incompressible viscous fluid for very large Reynolds numbers, *C. R. Acad. Sci. URSS*, 30, 301–305, 1941.
- 15 Loescher, H. W., Ocheltree, T., Tanner, B., Swiatek, E., Dano, B., Wong, J., Zimmerman, G., Campbell, J., Stock, C., Jacobsen, L., Shiga, Y., Kollas, J., Liburdy, J. and Law, B. E.: Comparison of temperature and wind statistics in contrasting environments among different sonic anemometer-thermometers, *Agric. For. Meteorol.*, 133(1–4), 119–139, doi:10.1016/j.agrformet.2005.08.009, 2005.
- 20 Manuilova, E., Schuetzenmeister, A. and Model, F.: mcr: Method Comparison Regression, [online] Available from: <https://cran.r-project.org/package=mcr>, 2014.
- Mauder, M. and Foken, T.: Eddy-Covariance Software TK3, [online] Available from: <http://dx.doi.org/10.5281/zenodo.20349>, 2015.
- Mauder, M. and Zeeman, M. J.: Field intercomparison of prevailing sonic anemometers, *Atmos. Meas. Tech.*, 11, 249–263, doi:10.5194/amt-11-249-2018, 2018.
- 25 Mauder, M., Oncley, S. P., Vogt, R., Weidinger, T., Ribeiro, L., Bernhofer, C., Foken, T., Kohsiek, W., Bruin, H. a R. and Liu, H.: The energy balance experiment EBEX-2000. Part II: Intercomparison of eddy-covariance sensors and post-field data processing methods, *Boundary-Layer Meteorol.*, 123(1), 29–54, doi:10.1007/s10546-006-9139-4, 2007.
- Mauder, M., Cuntz, M., Drüe, C., Graf, A., Rebmann, C., Schmid, H. P., Schmidt, M. and Steinbrecher, R.: A strategy for quality and uncertainty assessment of long-term eddy-covariance measurements, *Agric. For. Meteorol.*, 169, 122–135, doi:10.1016/j.agrformet.2012.09.006, 2013.
- 30 Moore, C. J.: Frequency response corrections for eddy correlation systems, *Boundary-Layer Meteorol.*, 37(1–2), 17–35, doi:10.1007/BF00122754, 1986.
- Newman, J. F., Klein, P. M., Wharton, S., Sathe, A., Bonin, T. A., Chilson, P. B. and Muschinski, A.: Evaluation of three lidar

- scanning strategies for turbulence measurements, *Atmos. Meas. Tech.*, 8(11), 12329–12381, doi:10.5194/amtd-8-12329-2015, 2015.
- Oertel, S., Eggert, M., Gutmuths, C., Wilhelm, P., Müller, H. and Többen, H.: Validation of three-component wind lidar sensor for traceable highly resolved wind vector measurements, *J. Sensors Sens. Syst.*, 8, 9–17, doi:10.5194/jsss-8-9-2019, 5 2019.
- Pearson, G., Davis, F., Collier, C., Davies, F., Collier, C., Davis, F. and Collier, C.: An analysis of the performance of the UFAM pulsed Doppler Lidar for observing the Boundary Layer, *J. Atmos. Ocean. Technol.*, 26(2), 240–249, doi:10.1175/2008JTECHA1128.1, 2009.
- Peña, A., Hasager, C. B., Gryning, S.-E., Courtney, M., Antoniou, I. and Mikkelsen, T.: Offshore wind profiling using light 10 detection and ranging measurements, *Wind Energy*, 12(2), 105–124, doi:10.1002/we.283, 2009.
- Peña, A., Dellwik, E. and Mann, J.: A method to assess the accuracy of sonic anemometer measurements, *Atmos. Meas. Tech.*, 12, 237–252, doi:10.5194/amt-12-237-2019, 2019.
- Stiperski, I. and Calaf, M.: Dependence of near-surface similarity scaling on the anisotropy of atmospheric turbulence, *Q. J. R. Meteorol. Soc.*, 144, 641–657, doi:10.1002/qj.3224, 2018.
- 15 Stoy, P. C., Mauder, M., Foken, T., Marcolla, B., Boegh, E., Ibrom, A., Arain, M. A. A., Arneth, A., Aurela, M., Bernhofer, C., Cescatti, A., Dellwik, E., Duce, P., Gianelle, D., van Gorsel, E., Kiely, G., Knohl, A., Margolis, H., Mccaughey, H., Merbold, L., Montagnani, L., Papale, D., Reichstein, M., Saunders, M., Serrano-Ortiz, P., Sottocornola, M., Spano, D., Vaccari, F. and Varlagin, A.: A data-driven analysis of energy balance closure across FLUXNET research sites: The role of landscape-scale heterogeneity, *Agric. For. Meteorol.*, 171–172, 137–152, doi:10.1016/j.agrformet.2012.11.004, 2013.
- 20 Stull, R. B.: *An Introduction to Boundary Layer Meteorology*, Kluwer Academic Publishers, Dordrecht., 1988.
- Tambke, J., Focken, U., Lange, M., Wolff, J.-O. and Bye, J. A. T.: Forecasting offshore wind speeds above the North Sea, *Wind Energy*, 8, 3–16, doi:10.1002/we.140, 2005.
- Williamson, C. H. K.: Vortex Dynamics in the Cylinder Wake, *Annu. Rev. Fluid Mech.*, 28, 477–539, doi:10.1146/annurev.fl.28.010196.002401, 1996.
- 25 Wilson, K., Goldstein, A., Falge, E., Aubinet, M., Baldocchi, D., Berbigier, P., Bernhofer, C., Ceulemans, R., Dolman, H. and Field, C.: Energy balance closure at FLUXNET sites, *Agric. For. Meteorol.*, 113(1–4), 223–243, doi:10.1016/S0168-1923(02)00109-0, 2002.
- Wyngaard, J. C.: Flow-distortion effects on scalar flux measurements in the surface layer: Implications for sensor design, *Boundary-Layer Meteorol.*, 42(1–2), 19–26, doi:10.1007/BF00119872, 1988.
- 30 Wyngaard, J. C. and Zhang, S.-F. F.: Transducer-Shadow Effects on Turbulence Spectra Measured by Sonic Anemometers, *J. Atmos. Ocean. Technol.*, 2(4), 548–558, doi:10.1175/1520-0426(1985)002<0548:TSEOTS>2.0.CO;2, 1985.
- Zhang, S. F., Wyngaard, J. C., Businger, J. A. and Oncley, S. P.: Response characteristics of the U.W. sonic anemometer, *J. Atmos. Ocean. Technol.*, 3, 315–323, doi:10.1175/1520-0426(1986)003<0315:RCOTUS>2.0.CO;2, 1986.