

## Supporting information for:

### Intercomparison of nitrous acid (HONO) measurement techniques in a megacity (Beijing)

Leigh R. Crilley<sup>1</sup>, Louisa J. Kramer<sup>1</sup>, Bin Ouyang<sup>2</sup>, Jun Duan<sup>3</sup>, Wenqian Zhang<sup>4</sup>, Shengrui Tong<sup>4</sup>, Maofa Ge<sup>4</sup>, Ke Tang<sup>3</sup>, Min Qin<sup>3</sup>, Pinhua Xie<sup>3</sup>, Marvin D. Shaw<sup>5,6</sup>, Alastair C. Lewis<sup>5,6</sup>, Archit Mehra<sup>7</sup>, Thomas J. Bannan<sup>7</sup>, Stephen D. Worrall<sup>7</sup><sup>▲</sup>, Michael Priestley<sup>7</sup>, Asan Bacak<sup>7</sup>, Hugh Coe<sup>7</sup>, James Allan<sup>7,6</sup>, Carl J. Percival<sup>7</sup><sup>†</sup>, Olalekan A. M. Popoola<sup>8</sup>, Roderic L. Jones<sup>8</sup> and William J. Bloss<sup>1</sup>.

<sup>1</sup>School of Geography, Earth and Environmental Science, University of Birmingham, Edgbaston, Birmingham, B15 2TT, UK

<sup>2</sup>Lancaster Environment Centre, Lancaster University, LA1 4YQ, UK

<sup>3</sup>Key Laboratory of Environment Optics and Technology, Anhui Institute of Optics and Fine Mechanics, Chinese Academy of Sciences, Hefei, 230031, China

<sup>4</sup>Beijing National Laboratory for Molecular Sciences (BNLMS), State Key Laboratory for Structural Chemistry of Unstable and Stable Species, CAS Research/Education Center for Excellence in Molecular Sciences, Institute of Chemistry, Chinese Academy of Sciences, Beijing 100190, China

<sup>5</sup>Wolfson Atmospheric Chemistry Laboratories, University of York, Heslington, York, YO10 5DD, UK

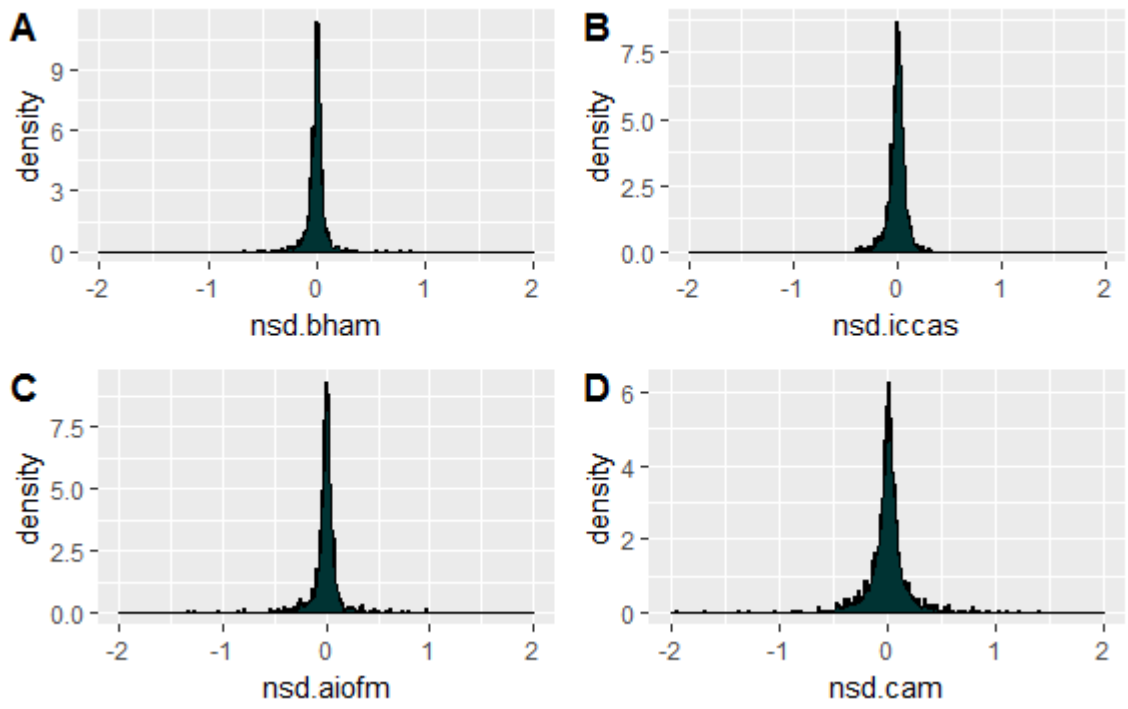
<sup>6</sup>National Centre for Atmospheric Science, UK

<sup>7</sup>Centre for Atmospheric Science, School of Earth and Environmental Sciences, University of Manchester, Manchester, M13 9PL, UK

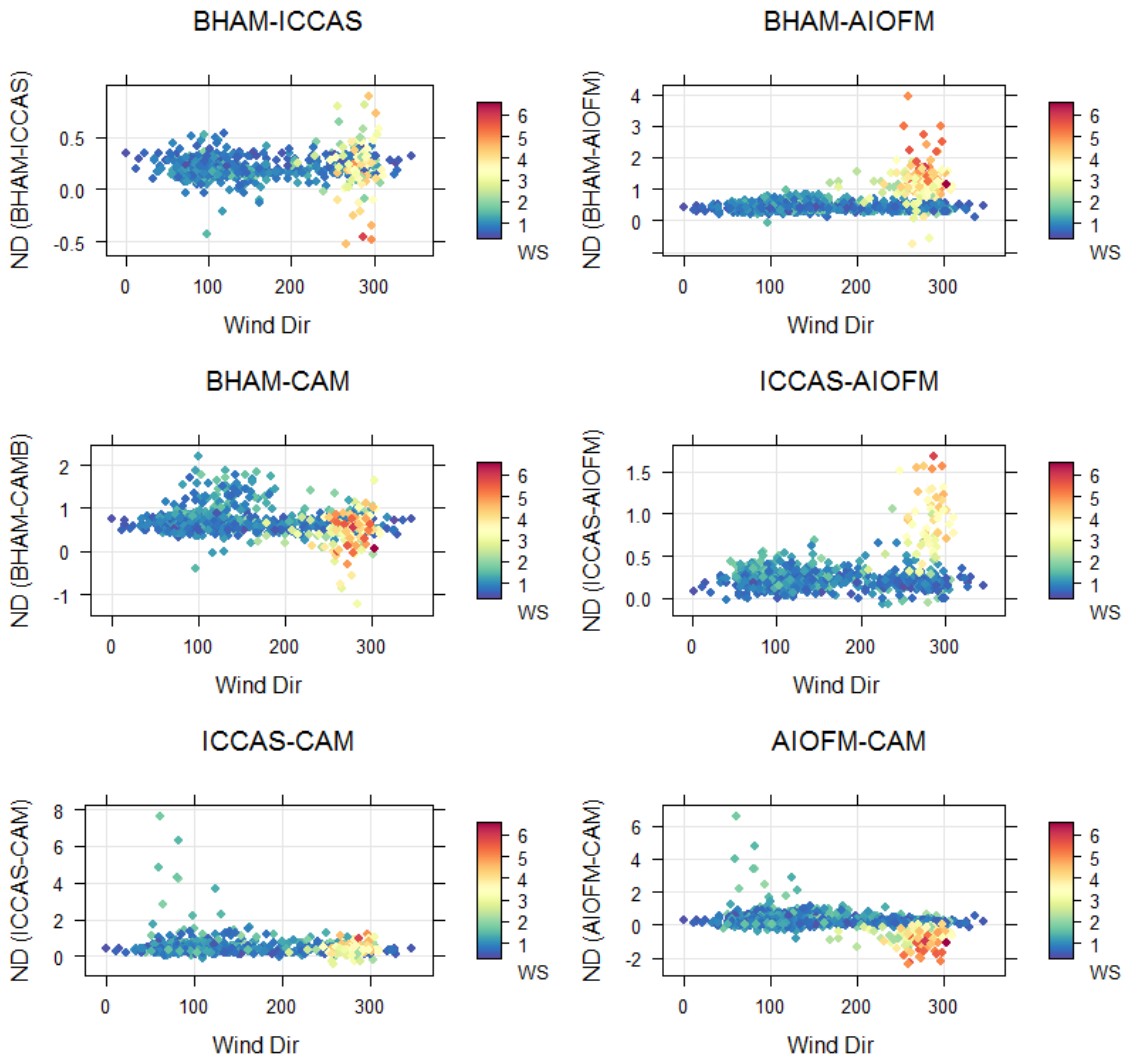
<sup>8</sup>Department of Chemistry, University of Cambridge, CB2 1EW, UK

<sup>▲</sup> Now at Chemical Engineering and Applied Chemistry, School of Engineering and Applied Sciences, Aston University, Birmingham, B4 7ET, UK

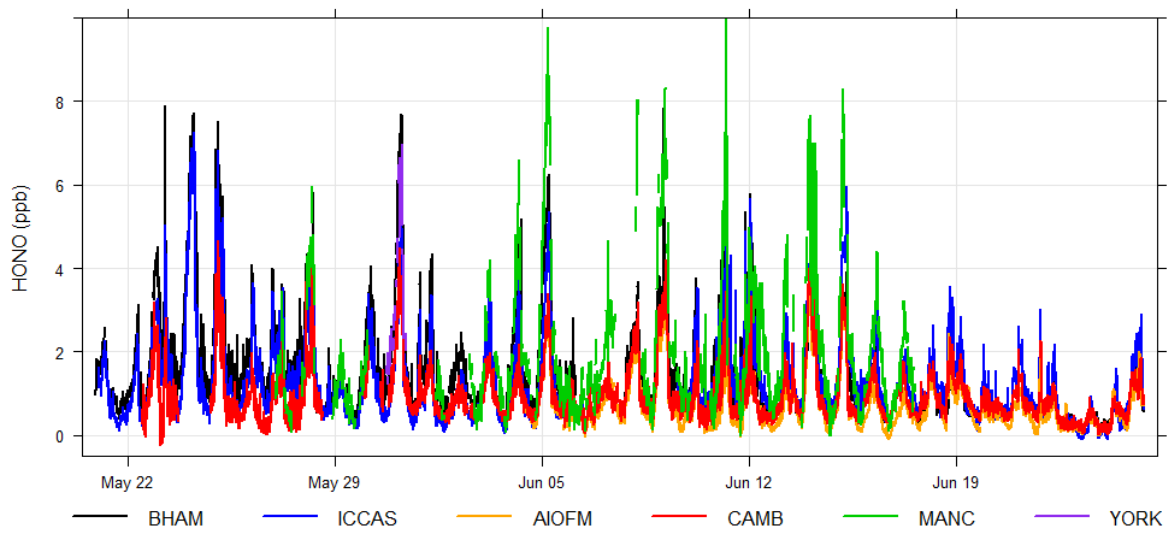
<sup>†</sup> Now at Jet Propulsion Laboratory, 4800 Oak Grove Drive, Pasadena, CA 91109, USA



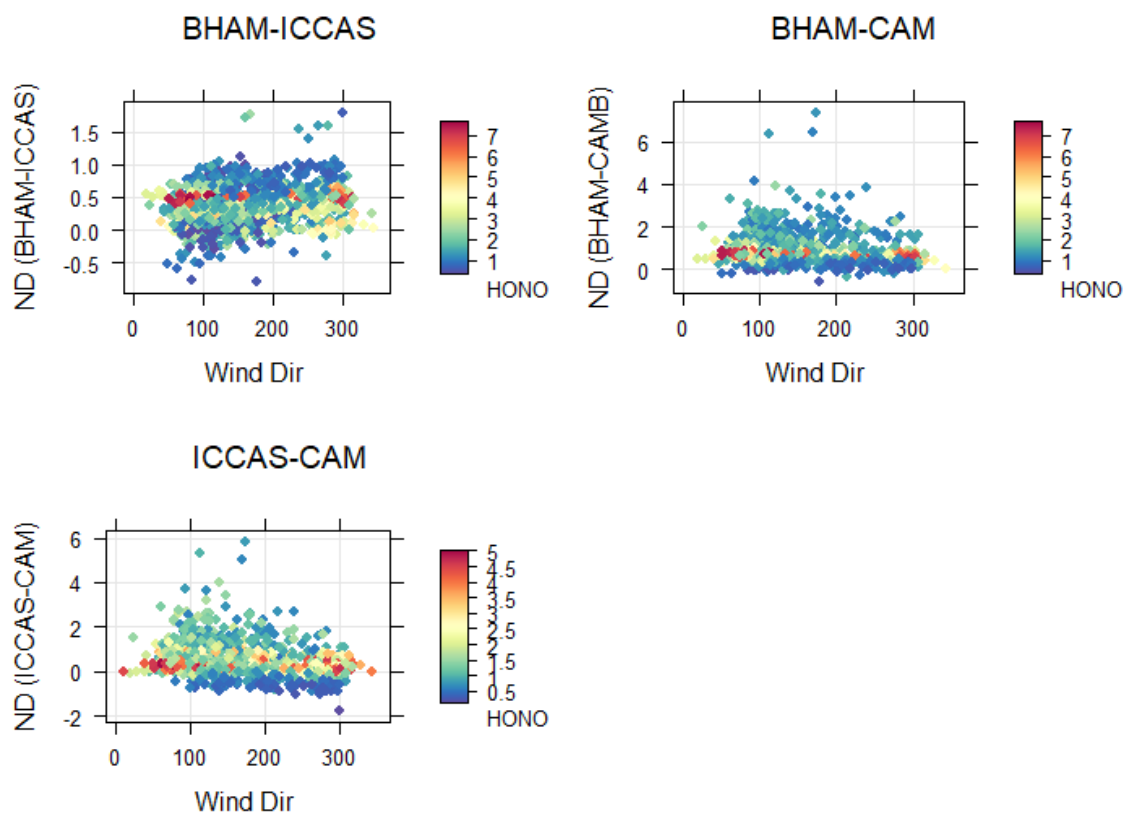
**Figure S1:** Normalised Sequential Difference (NSD) for each instrument during the winter inter-comparison



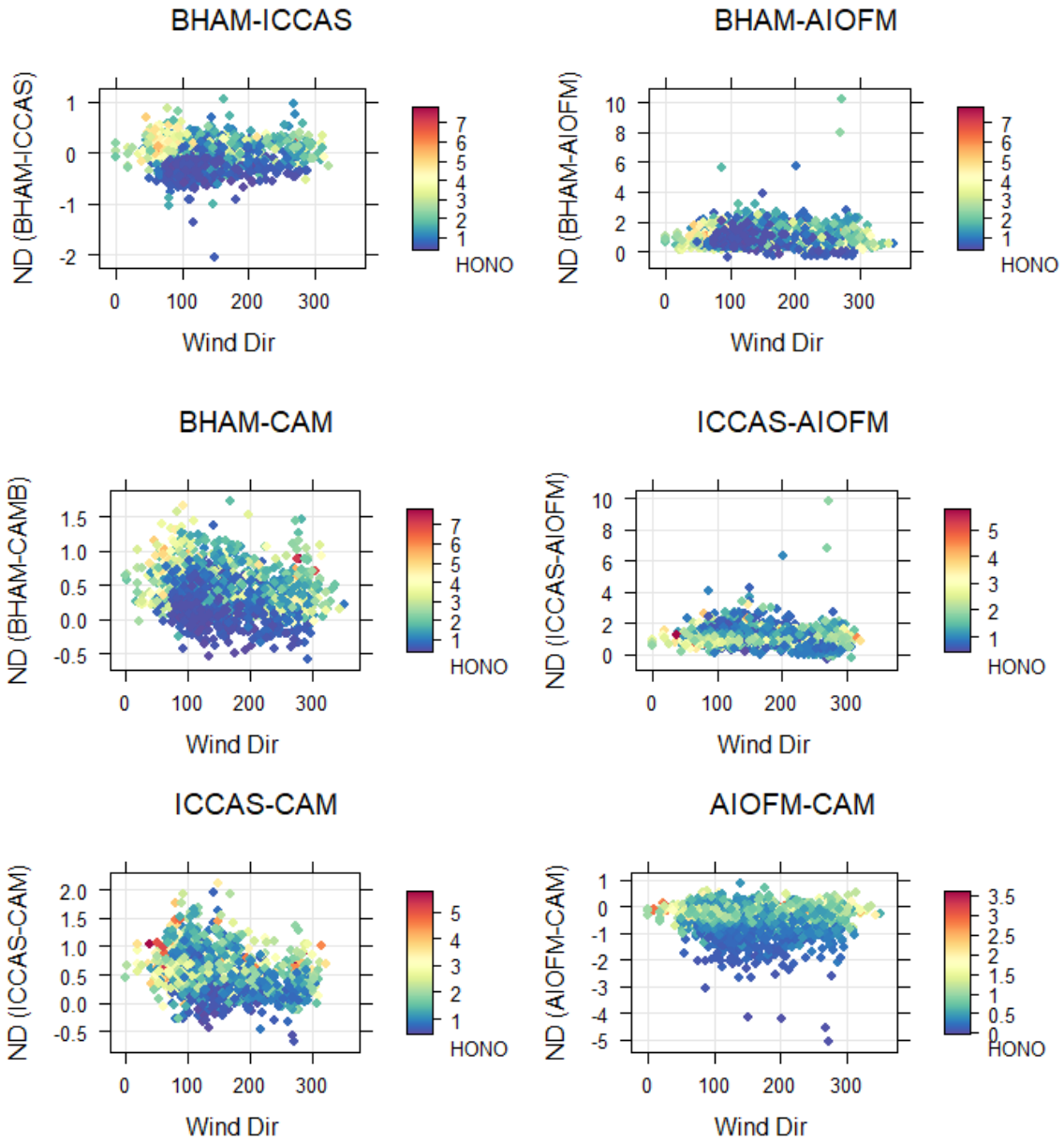
**Figure S2:** Normalised Differences (ND) for each instrument pair as a function of wind direction, coloured by wind speed during the winter inter-comparison.



**Figure S3:** Time series of ground level summer measurements at IAP for all instruments measuring HONO.



**Figure S4:** Normalised Differences (ND) for each instrument pair as a function of wind direction, coloured by HONO measurements during the start of the summer campaign, when only BHAM, ICCAS and CAM were measuring.



**Figure S5:** Normalised Differences (ND) for each instrument pair as a function of wind direction, coloured by HONO measurements during the middle of the summer campaign (7<sup>th</sup>-14<sup>th</sup> June 2017), when all four instruments were measuring.