

Responses to reviewer 2

Evaluation of differential absorption radars in the 183 GHz band for profiling water vapour in ice clouds

A. Battaglia, P Kollias

May 9th, 2019

We thank the reviewer for his/her interesting and insightful comments.

Hereafter a point to point response (reviewers' comment in black, response in red). We also attached a revised version of the paper with changes in bold.

Comments from reviewer 2

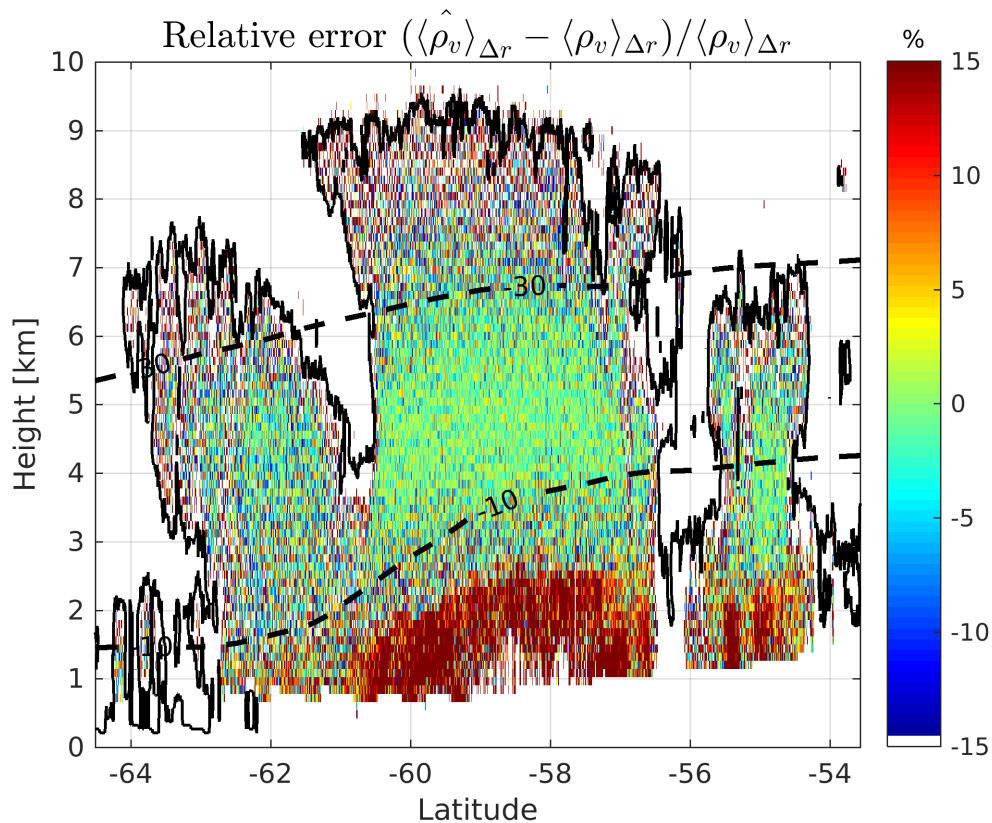
General comments

Thanks for this general comments. We have now expanded the introduction trying to make clear what is the goal and the paper and where it is different from previous research (see new text at page 4, lines 20-27).

Specific comments

1. In the abstract you mention an airborne system in the same breath as a spaceborne system, and in the paper you concentrate on the satellite option. But these two setups are actually quite dissimilar. A satellite moves at about 7km/s relative to the earth's surface, which means even relatively few pulses lead to quite large pixels. A research aircraft flies at speeds of about 100m/s - seventy times slower. So in principle you could do a lot more averaging of pulses, which improves your number of independent samples. It would be interesting to consider a separate "airborne" scenario in addition to your ground and space views.

We have introduced a section in the discussion (Sect3.1, page 13) where we refer also to the possibility of adopting an airborne configuration. The review is absolutely correct: the key advantage for an airborne scenario is indeed to collect more pulses and therefore to significantly improve the precision of the measurements (or otherwise to improve the resolution of the measurements).



2. Page 2 line 25. "...coupled with that of temperature" - I agree with the other reviewer that the impact of not knowing T perfectly (e.g. estimating from reanalysis/forecast model with 1 or 2K typical uncertainty) needs to be discussed somewhere.
This has been discussed now at page 4, line 5-19.
3. Page 2 line 28. You start talking about supercooled LWC here. Is this factor included in the retrieval? or does that 0.5dB differential not matter relative to the size of signal you are estimating?
Supercooled LWC were not included in the microphysical scenario but the eventual presence of a SLWC layer will indeed be captured by the retrieval via the B-term in Eq.6. A typical supercooled layer with 100 g/m² LWP will indeed produce a difference between two channels within 10 GHz of less than 0.1 dB.
4. Page 3 line 2 "could help us understand how the ice crystal grow significantly enhance water mass fluxes due to sedimentation" - this sentence needs rewording
Sentence has been rephrased.
5. Page 3 line 5, and figure 1. You have constructed some sort of Magono-Lee style diagram in the figure here, but this is not a particularly accurate representation of our current state of knowledge. Specifically, at temperatures below -20C or so the crystals are almost always polycrystalline, which may be in the form of multiple plates, or bullet rosettes (the column polycrystal form). This was recognised a long time ago (e.g. Aufm Kampe et al 1951 J. Meteorol.) and has been reiterated by e.g. Bailey and Hallett (2009 JAS). Minor points - one of your images, which I suspect is meant to show a column, actually shows a capped column. This happens when a column is transported (by convection, or sedimentation) to a temperature favouring plate growth. This touches on a problem for your idea of using T,RH_{ice} to constrain the crystal types in the cloud in a deep ice cloud like your case study in figure 3, particles are

growing and falling through temperature changes of 10s of K across their lifetime. The habit diagram in figure 1 is for isothermal growth in the lab. Connecting the two is not simple. Indeed in your retrieval you actually assume the particles are aggregates... which do not even appear on your habit diagram...

Criticism accepted: we have got rid of all the shapes in Fig1 and modified the text at page 3 along the reviewer's suggestions. See new text at page 3 , third item in the list.

6. Figure 1: A simple, but useful exercise to add here, would be to give some indication of how the growth rates of the crystals depend on RH_{ice} and T. You could show indicative calculations for a few temperatures and crystal size of a few hundred microns. Then you could perturb the calculation by your expected uncertainties (q +/- 3%) and see how the growth rate is affected. Ultimately the uncertainties will be most important for RH_{ice} close to 100%, and the more sub- or super-saturated you are, the less significant they will become.

Growth by the vapour deposition is described by the differential equation (e.g. see Field et al., JAS 2008):

$$\frac{dm}{dt} = 4\pi C S_i f(Re, T)$$

where C is the capacitance of the ice crystal, f is a function of the Reynolds number and the temperature, and S_i is the supersaturation with respect to ice. As a result dm/dt is linearly proportional to S_i. A +/-3% change in S_i will therefore induce a +/-3% change in the growth rate. In terms of size of the ice crystals we have looked at the increase/reduction of an ice crystal of 500 micron size in different conditions of RH_i. Results are plotted in the new right panel of Fig.1.

7. Page 4 line 14. Multiple scattering neglected because footprint is small and SSA is low. Can you foresee any scenario where these would become significant? I'm surprised CloudSat suffers from multiple scattering at 94GHz, yet this G-band system would not, especially if there is a substantial optical depth to the cloud.

Multiple scattering effects are driven not by the optical depth of the cloud but by its scattering optical depth. Since most of the optical depth is indeed due to absorption it does not generate multiple scattering. For instance in the profile shown in Fig. 5 we do expect multiple scattering to occur more likely for the channels away from the line centre. The footprint of our space-borne configuration is of the order of 400m, so significantly less than for CloudSat, again suppressing multiple scattering contributions. We do expect such effects to really occur in the region of high CloudSat reflectivities (above 10 dBZ) where the water vapor profiling is indeed expected not to perform greatly anyhow. For CloudSat, multiple scattering in ice clouds is marginal (see Matrosov and Battaglia). We have added also a suggestion how to identify multiple scattering. New text has been introduced at page 5, lines 8-13 to explain this.

8. Page 5 line 7 and Figure 2. This calculation needs explanation. What are we assuming here and why? Various D_m values are shown. What size distribution is assumed here? The caption tells us this is from Leinonen and Szyrmer's study, but with "LWC=0" – so I infer no riming. It would be better to explain these things directly. Then later on, you say you are using SSRGA for the ice scattering. This seems to be a contradiction? Are you somehow using both? Or SSRGA tuned to L&S's aggregates?

The assumed size distribution for ice crystals is an exponential particle size distribution, this has been clarified in the caption. An additional scattering model (more useful for aggregates) has been added to show the strong dependence of the scattering model of the ice extinction properties. The supercooled attenuation coefficient has also been revised (the Ellison 07 model has been used for the refractive index of water: this provides a better agreement with radiometric measurements as demonstrated in Turner et al, 2016). For the single scattering properties we are using SSRGA for different particle models as generated by Leinonen and Szyrmer. Their particle model is used to compute the SSRGA parameters that describe the

distribution of mass along the radiation incident direction. See new figure 2 plus text at page 8, lines 3-7.

9. Figure 2: I was quite surprised both at the amount of attenuation here, and its frequency dependence. What physical effect is driving this - absorption or scattering? Is there any sensitivity of this to the scattering model assumed?

The attenuation is mainly caused by scattering and yes it is strongly scattering model dependent (a different scattering model has now been shown in Fig.2). new text at page6, lines 6-10.

10. Figure 4 - show ground based simulated Z's here as well, to match figure 6

Two panels have been added to Fig4 as requested. Text has been added at page 10, lines 1-4.

11. Page 11. It could be useful to explore the trade off between long vs short pulses. Long pulses = better SNR which seems to be a critical parameter. But shorter pulses = more range gates = better fit to attenuation profile (and implicitly more independent pulses in total)?

The trade-off has been explored (compare bottom panels in Fig.6 where a configuration with a 120m and a 480 m pulses is considered.). Clearly it is much better to use pulses that match the required vertical resolution because SNR is a critical parameter for the precision of the measurement. Averaging more gates do not recover the same precision. See new text at page13, lines 28-32

12. Page 12 ground based system assumed to be at 270K level. Why? Are the data from everywhere in globe, or a particular latitude band? I would expect the performance trade offs you touch on to change a lot between the tropics and polar regions The discussion of figure 8 is very brief. Please expand and carefully explain what you want the reader to take from this, and how the plot supports that argument.

The selection of the 270 K level was totally arbitrary. Also data are taken from everywhere in the globe (above such temperature level). The idea was to assess the potential of a DAR system when operated from a ground-based at freezing temperature. Of course the selection of the tones could be optimized for a specific location and time of the year based on the local cloud and temperature climatology. This aspect has now been noticed at page 17, lines 9-11.

Minor points

I'm not a spectroscopy person, but the use of "left" and "right" in relation to the wings of the absorption line seemed odd. I guess you are referring to higher and lower frequencies? or is the diagram in your head in wavelength (in which case, it's the opposite way around!)

We change the term "right" to "upper", it is always in junction with "183 GHz" band so it should be implicit that we are thinking in the frequency domain.

Page 9 line 8 tidy up brackets] -> [

Done

Figure 5. When I printed this half the figure disappeared. I'm not sure if this reflects an underlying issue with the figure file. I could view it OK on the screen however. Note that in the lower panel, the legend for the 94GHz profile is wrong (cyan line rather than black x)

Done

Figure 8 caption - dashed region -> shaded region

Corrected

Evaluation of differential absorption radars in the 183 GHz band for profiling water vapour in ice clouds

Alessandro Battaglia^{1,2} and Pavlos Kollias^{3,4}

¹Department of Physics and Astronomy, University of Leicester, Leicester, UK

²National Centre for Earth Observation, UK

³Stony Brook University, NY, USA

⁴University of Cologne, Cologne, Germany

Correspondence: Alessandro Battaglia
ab474@le.ac.uk

Abstract. Relative humidity (RH) measurements in ice clouds are essential for determining the ice crystals growth processes and rates. A differential absorption radar (DAR) system with several frequency channels within the 183.3 GHz water vapor absorption band is proposed for measuring RH within ice clouds. Here, the performance of a DAR system is evaluated by applying a DAR simulator to A-Train observations in combination with collocated European Centre for Medium-Range Weather
5 Forecasts (ECMWF) reanalysis. Observations from the CloudSat W-band radar and from the CALIPSO lidar are converted first into ice microphysical properties and then coupled with ECMWF temperature and relative humidity profiles in order to compute scattering properties at any frequency within the 183.3 GHz band. Self-similar Rayleigh Gans approximation is used to model the ice crystal scattering properties. The radar reflectivities are computed both for a space/air-borne and a ground-based
10 DAR system by using appropriate radar receiver characteristics. Sets of multi-frequency synthetic observation of attenuated reflectivities are then exploited to retrieve profile of water vapour density by fitting the line shape at different levels. 10 days of A-Train observations are used to test the measurement technique performance for different combination of tones when sampling ice clouds globally. Results show that that water vapour densities can be derived at the level that can enable ice process
15 studies (i.e. better than 3%) both from a ground-based system (at the minute temporal scale and with circa 100 m vertical resolution) and from a **space-borne system** (at 500 m vertical resolution and with circa 5 km integration lengths) with four tones in the **upper** wing of the absorption line. A ground-based DAR system to be deployed at high latitude/high altitudes is highly recommended to test the findings of this work in the field.

1 Introduction

Adequate understanding of the cloud and precipitation processes that contribute to Earth's water and energy cycle is required before significant progress occur in our ability to predict future climate scenarios. This calls for a paradigm shift away from
20 the current observing system that mainly capture snapshots of "states" to the next-generation of observing systems that can observe both states and "processes" (Stephens et al., 2018).

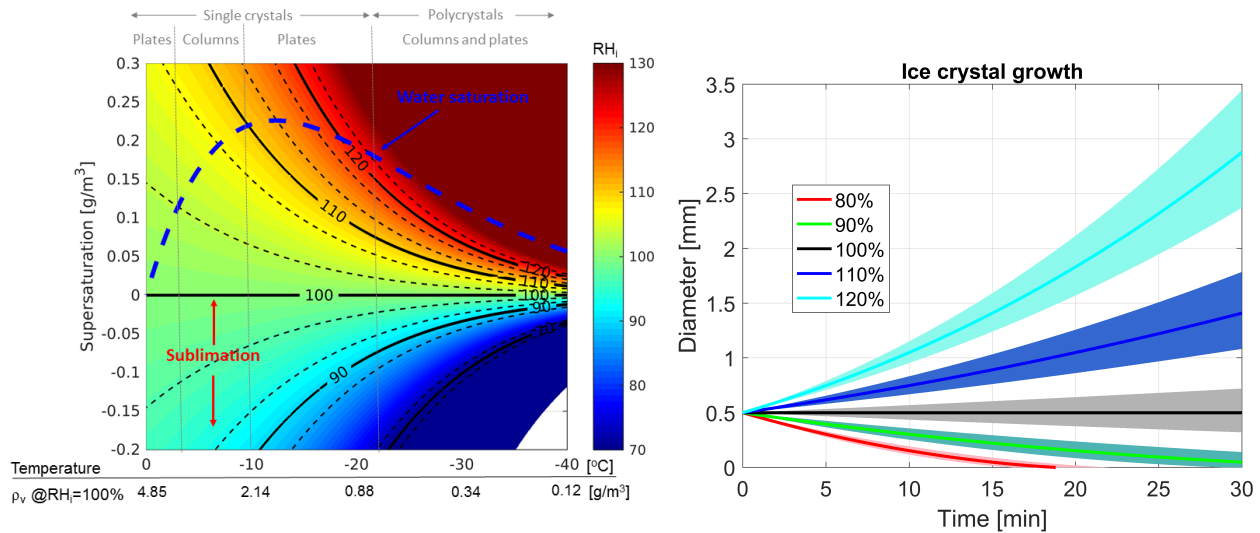


Figure 1. Left panel: dominant ice crystal habits (small photographs) as suggested by Magono and Lee (1966) for different environmental conditions as classified in terms of temperature (x-axis) and supersaturation (y-axis). The color maps the relative humidity with respect to ice, RH_i . The dashed blue line indicates the supersaturation of supercooled water relative to ice. Black lines correspond to different level of RH_i as indicated by the labels. The dashed lines surrounding each continuous line correspond to a $\pm 3\%$ change in RH_i . **Right panel: temporal evolution of the diameter of a $500 \mu\text{m}$ crystal environment with different supersaturation RH_i (as indicated in the legend) and at $T=260 \text{ K}$ and $p=500 \text{ mb}$. The shading corresponds to a $\pm 3\%$ perturbation in RH_i . The rate of mass change is assumed to be driven by diffusional growth or sublimation (description provided in Field et al. (2008)) with the Brown and Francis (1995) mass-size relationship.**

Future space-borne cloud and precipitation radars are expected to be at the center of such a revolution (The Decadal Survey, 2017), thus enhancing the view depicted in the past 20 years by the TRMM Ku-band Precipitation radar (Kummerow et al., 1998), the GPM Dual-frequency (Ku-Ka) Precipitation Radar (Skofronick-Jackson et al., 2016) and the CloudSat W-band Cloud Profiling Radar (Tanelli et al., 2007). While the first Doppler radar is expected to be launched on board the EarthCARE satellite in 2021 (Illingworth et al., 2015) innovative radar concepts have been studied in the past decade ranging from multi-wavelength radars proposed e.g. as payloads of the Aerosol/Cloud/Ecosystems (ACE) mission and the Polar Precipitation Measurement (PPM) mission for microphysical studies (Leinonen et al., 2015; Joe et al., 2010; Durden et al., 2016; Tanelli et al., 2018) to Doppler radars for understanding cloud dynamics (Battaglia and Kollias, 2014; Illingworth et al., 2018; Battaglia et al., 2018; Kollias et al., 2018) to constellations of radars in a CubeSat for advancing convective parameterizations (Peral et al., 2015; Haddad et al., 2017; Sy et al., 2017).

In parallel, radar systems operating at much higher frequencies such as the G-band (110-300 GHz) have been proposed to study ice/snow microphysical properties (Hogan and Illingworth, 1999; Battaglia et al., 2014). Furthermore, there is interest in

exploring the possibility of profiling the water vapor in cloudy areas (Lebsock et al., 2015; Millán et al., 2016; Roy et al., 2018) by using differential absorption radar (DAR) measurements near the 183.3 GHz water vapor absorption line. Water vapor is one of the most critical atmospheric variables for numerical weather prediction models (Millán et al. (2016)) and profiles of humidity in cloudy areas are not adequately measured by current or planned systems as stated by WMO (Anderson, 2014; 5 Nehrir et al., 2017). While Lebsock et al. (2015) theoretically investigated the possibility of profiling water vapor within the cloudy boundary layer in presence of cumulus and stratocumulus clouds and of quantifying integrated column water vapor over ocean surfaces with a DAR system with channels on the **upper** wing of the 183.3 GHz absorption line, Millán et al. (2016) examined how the DAR technique can be applied to water vapor sounding in clouds at all levels by adopting multiple tones within the whole absorption band (140 to 200 GHz). **A serious issue that must be considered is that international**
10 **frequency allocations currently prohibit space-borne transmission at frequencies between 174.8 and 191.8 GHz due to reservation for passive only remote sensing. Viceversa allocations are more flexible for ground-based instruments.**

Recently the DAR technique within the G-band has been demonstrated by Cooper et al. (2018): not only ground-based measurements of planetary-boundary-layer clouds have been performed but an error model and an inversion algorithm have been developed for retrieving the water vapor profile as well (Roy et al., 2018). **An initial assessment of the performances of**
15 **such retrieval have been performed for boundary layer clouds.**

This work aims at assessing the potential of both space-borne and ground-based DAR systems **with a specific focus to water vapour profiling in ice cloud studies.** When coupled with that of temperature the knowledge of the water vapor density in ice clouds has two benefits.

1. It allows to derive the relative humidity with respect to ice (RH_i) and then to identify regions where depositional
20 growth/sublimation processes are dominant (i.e. when the supersaturation is positive/negative in Fig. 1). Particle growth by deposition is an important growth process in cold environments particularly when supercooled liquid water layers provide sufficient water vapor for rapid growth (i.e. in regions above the dashed blue line in the left panel of Fig. 1). **The right panel of Fig. 1 shows for instance the growth rate of an initial 500 μm ice crystal for different RH_i conditions clearly highlighting how the ice crystal growth rate is affected by RH_i .**

25 DAR observations could complement polarimetric radar observations like differential reflectivity that are particularly sensitive to depositional growth in temperature regions which favor growth of asymmetric particle shapes (e.g. Verlinde et al. (2013); Oue et al. (2016)).

2. The detection and the description of supersaturation areas in high level ice clouds could help us understand how the
30 **ice crystal growth significantly enhances water mass fluxes due to sedimentation.** This could have an impact on the dehydration of the air entering the lower stratosphere (Kärcher et al., 2014).

3. It may contribute to identify ice crystal habits based on the knowledge of the dominant growth in the different por-
tions of the clouds based on thermal and moisture condition as suggested by Bailey and Hallett (2009) (dominant habits reported at the top of Fig. 1). This identification may indeed be complicated by the fact that substantial

changes in habit can occur due to vertical transport caused by convection or sedimentation with ice crystals experiencing temperature changes of tenths of K across their lifetime. Since the shape and internal mass distribution of the ice particles is affecting their scattering properties this has an immediate impact onto improving remote sensing retrievals.

5 The water vapor density for a given relative humidity is a strong function of temperature: for instance for $RH_i = 100\%$ the water vapor density, ρ_v , is changing by more than one order of magnitude (from 4.85 to 0.34 g/m³, see x-axis in Fig. 1) when moving from 0 to -30°C . A knowledge of RH_i within 5 – 7% seems appropriate for identifying the relevant regimes in Fig. 1. Since $RH_i = \rho_v / \rho_{s,i}$ (with $\rho_{s,i}$ the water vapor density in saturated condition with respect to ice) the uncertainty in RH_i is affected by the uncertainty in the numerator and in the denominator. The uncertainty in the denominator is driven by the uncertainty in the temperature: an error of 1 K propagates into an 8 to 10% error in $\rho_{s,i}$ with temperatures ranging from 0°C to -30°C . Uncertainties in current analyses of atmospheric temperatures are strongly regional dependent, with large uncertainties over polar, oceanic and developing nations which lack frequent radiosoundings (LANGLAND et al., 2008). Temperature uncertainties of the order of less than 1 K or better are expected from reanalysis in the middle/upper troposphere and in regions where radiosonde observations are plentiful. Advances in hyperspectral microwave sounders promise to reduce errors in temperature profiling to 0.5 K (Blackwell et al., 2011; Aires et al., 2019) and this figure is certainly at reach for ground location hosting a remote sensing observatory. This highlights that, in order to retrieve useful information for ice cloud studies, water vapor densities must be retrieved within $\sim 3 - 5\%$ or better -this in order to account for the previously mentioned additional uncertainty due to temperature- for a range of values between 0.5 and 5 g/m³.

20 The previous study by Millán et al. (2016) has clearly demonstrated that, when dealing with DAR profiling capabilities, the main roadblock for the use of space-borne DAR measurements in process studies is represented by the precision of the measurements with potential biases being generally much smaller (e.g. see their Fig. 7). The key science question which we aim to answer in this work is therefore whether or not it is possible to beat the noise of the measurement (by averaging and by including more tones) to the level at which water vapor profiling in ice clouds could help in refining our understanding of microphysical processes. Our strategy is therefore to exploit the novel retrieval model proposed in Roy et al. (2018) in assessing the precision of DAR techniques in profiling ice clouds both from a ground and a space-borne perspective. This will allow to draw some conclusions on the potential of such observations for ice studies.

The paper is structured as following: first the theory of water vapor retrieval with DAR is shortly revisited (Sect. 2). In Sect. 3 CloudSat observations are used to reconstruct realistic ice microphysics profiles that can be used as input in a forward model for simulating reflectivities profiles at any frequency in the G-band.

Conclusions and future work are presented in Sect. 5.

2 Theory of water vapor retrievals

Here the theory underpinning DAR, thoroughly covered in Lebsack et al. (2015); Millán et al. (2016); Roy et al. (2018), is briefly revised. The measured reflectivity from target with effective reflectivity $Z_e(r, f)$ at a given range r is given by:

$$Z_{meas}(r, f) = Z_e(r, f) e^{-2\tau(0 \rightarrow r, f)} \quad (1)$$

5 where $\tau(0 \rightarrow r, f)$ is the one way optical depth from the radar to the range r . The exponential term accounts for the radar attenuation due to the gases and the hydrometeors with the factor two accounting for the two way path of the radar wave. Note that multiple scattering effects (Battaglia et al., 2010; Matrosov and Battaglia, 2009) will be neglected hereafter since they are minimized by the small radar footprints (**less than 450 m for the space-borne configuration**) and by the **low single scattering albedo of the medium at frequencies in the vicinity of the absorption line. Multiple scattering could be an**

10 **issue for tones located far away from the absorption centre when encountering heavily rimed particles and it could potentially be flagged by introducing a cross-polar channel to measure linear depolarization ratio (like proposed in Battaglia et al. (2007)). As shown afterwards, such conditions, which corresponds certainly to CloudSat reflectivities exceeding 10 dBZ, are anyhow challenging for the DAR retrieval.** Following Roy et al. (2018) we consider the ratio of measured reflectivities at two ranges r_1 and $r_2 = r_1 + \Delta r$:

$$15 \frac{Z_{meas}(r_1, f)}{Z_{meas}(r_2, f)} = \frac{Z_e(r_1, f)}{Z_e(r_2, f)} e^{-2[\tau(0 \rightarrow r_1, f) - \tau(0 \rightarrow r_2, f)]} = \frac{Z_e(r_1, f)}{Z_e(r_2, f)} e^{2\langle k_e(f) \rangle_{\Delta r} \Delta r} \quad (2)$$

where the $\langle \rangle_{\Delta r}$ symbol corresponds to taking the mean value for ranges between r_1 and r_2 so that

$$\langle k_e(f) \rangle_{\Delta r} \equiv \frac{\tau(0 \rightarrow r_2, f) - \tau(0 \rightarrow r_1, f)}{\Delta r} = \frac{\int_{r_1}^{r_2} k_e(r, f) dr}{\Delta r} = \frac{\int_{r_1}^{r_2} [k_{e\ gas}(r, f) + k_{e\ hydro}(r, f)] dr}{\Delta r} \quad (3)$$

is the mean extinction coefficient for such ranges. This equation can be further simplified by separating the water vapour components from the other gases and introducing the water vapour absorption coefficient per unit mass, κ_v as:

$$20 \langle k_e(f) \rangle_{\Delta r} = \langle \rho_v \kappa_v(f, p, T) \rangle_{\Delta r} + \langle k_{e\ dry\ air + hydro}(f) \rangle_{\Delta r} \approx \langle \rho_v \rangle_{\Delta r} \kappa_v(f, \langle p \rangle_{\Delta r}, \langle T \rangle_{\Delta r}) + \langle k_{e\ dry\ air + hydro}(f) \rangle_{\Delta r} \quad (4)$$

where in the last step we have assumed that the line shape $\kappa_v(f)$ within the Δr -layer can be approximated by its value at the mean temperature and pressure of the layer and we have conjoined the dry air and hydrometeor extinction.

If we invert Eq. (3) we can then write:

$$\langle k_e(f) \rangle_{\Delta r} = \frac{1}{2\Delta r} \log \left(\frac{Z_{meas}(r_1, f) Z_e(r_2, f)}{Z_{meas}(r_2, f) Z_e(r_1, f)} \right) \quad (5)$$

25 and recombining Eq. (5) and Eq. (4) we finally get:

$$\gamma(f, r_1, r_2) \equiv \frac{1}{2\Delta r} \log \left(\frac{Z_{meas}(r_1, f)}{Z_{meas}(r_2, f)} \right) = \underbrace{\langle \rho_v \rangle_{\Delta r} \kappa_v(f, \langle p \rangle_{\Delta r}, \langle T \rangle_{\Delta r}) + \langle k_{e\ dry\ air + hydro}(f) \rangle_{\Delta r}}_{A+Bf} - \frac{1}{2\Delta r} \log \left(\frac{Z_e(r_2, f)}{Z_e(r_1, f)} \right) \quad (6)$$

The DAR rationale is based on the idea that by performing measurements of the left hand side of Eq. (6) at different frequencies it will be possible to fit the terms on the right hand side. The first term is directly proportional to the water vapor density via the line shape $\kappa_v(f)$; the last two terms are related to the dry air plus hydrometeor attenuation and the effective reflectivity ratio at the two ranges (thus affected by the vertical variability). They can be assumed to vary weakly with frequency. Extinction of supercooled droplet is indeed proportional to frequency (e.g. see Lhermitte (1990)) and ice crystals behaves similarly with a linear increase with frequency, as demonstrated in Fig. 2. **Note that the ice crystal attenuation is mainly driven by scattering since the single scattering albedo for all the cases here illustrated exceeds 0.95. Also the ice crystal attenuation is strongly depending on the ice crystal type (i.e. on the scattering model) as already noticed in Battaglia et al. (2014), but this dependence can be factored out in the differential method because of its distinctness from the absorption band spectral feature.** Therefore the last two terms are modelled in this study via a dependence which is linear with frequency. Since the line shape $\kappa_v(f)$ is known at a given T and p then $\langle \rho_v \rangle_{\Delta r}$ can be derived by a **least squares** fitting procedure which fits all three terms on the right in Eq. (6) to the measured γ terms. The procedure also allows the computation of errors for the retrieved fitted parameters and of a quality index for the fitting via the normalised χ^2 . Note that the quantities $\gamma(f, r_1, r_2)$ are not affected by absolute calibration, which makes the whole procedure immune to calibration errors.

If only three tones are available (or the full range of tones is less than 10 GHz) then B is assumed to be equal 0 (as done in Roy et al. (2018)). **When only two tones are available ρ_v and its error can be directly computed from:**

$$\sigma_{\langle \rho_v \rangle_{\Delta r}} = \frac{1}{2\Delta r [\kappa_v(f_1, \langle p \rangle_{\Delta r}, \langle T \rangle_{\Delta r}) - \kappa_v(f_2, \langle p \rangle_{\Delta r}, \langle T \rangle_{\Delta r})]} \sqrt{[\Delta Z_{f_1}(r_1)]^2 + [\Delta Z_{f_1}(r_2)]^2 + [\Delta Z_{f_2}(r_1)]^2 + [\Delta Z_{f_2}(r_2)]^2} \quad (7)$$

as derived in Roy et al. (2018), where ΔZ are the uncertainties in the reflectivity measurements at the given range and frequency. This shows that the maximum achievable absolute precision in water vapor density is fixed by the given spatial resolution (i.e. the value of Δr), by the difference in the line shape κ_v between the two tones and by the precision of the reflectivity measurements. This has the consequence that, the latter two factors being the same, lower values of absolute humidity will be measured with lower relative precision. Averaging over longer path or time improves the precision because it increases Δr and the number of radar pulses (thus improves the precision of Z measurements), respectively. Adopting multiple tones allows to improve the precision for a range of water vapor densities by finding the right balance between large differences in κ_v and good precision in the reflectivity signal, i.e. good signal to noise ratio (SNR). When multiple tones are involved, the line-fitting retrieval routine implemented in this work gives an estimate of the measurement precision by generalising Eq. (7).

3 Simulation of DAR profiles from CloudSat data

At present, no radar reflectivity measurements at multiple G-band tones are available that can be used to evaluate the performance of the technique. Our approach relies on using retrieved ice microphysical properties from spaceborne sensors and use them as input to a forward radar model (DAR model) to generate reflectivities around the 183.3 GHz absorption band.

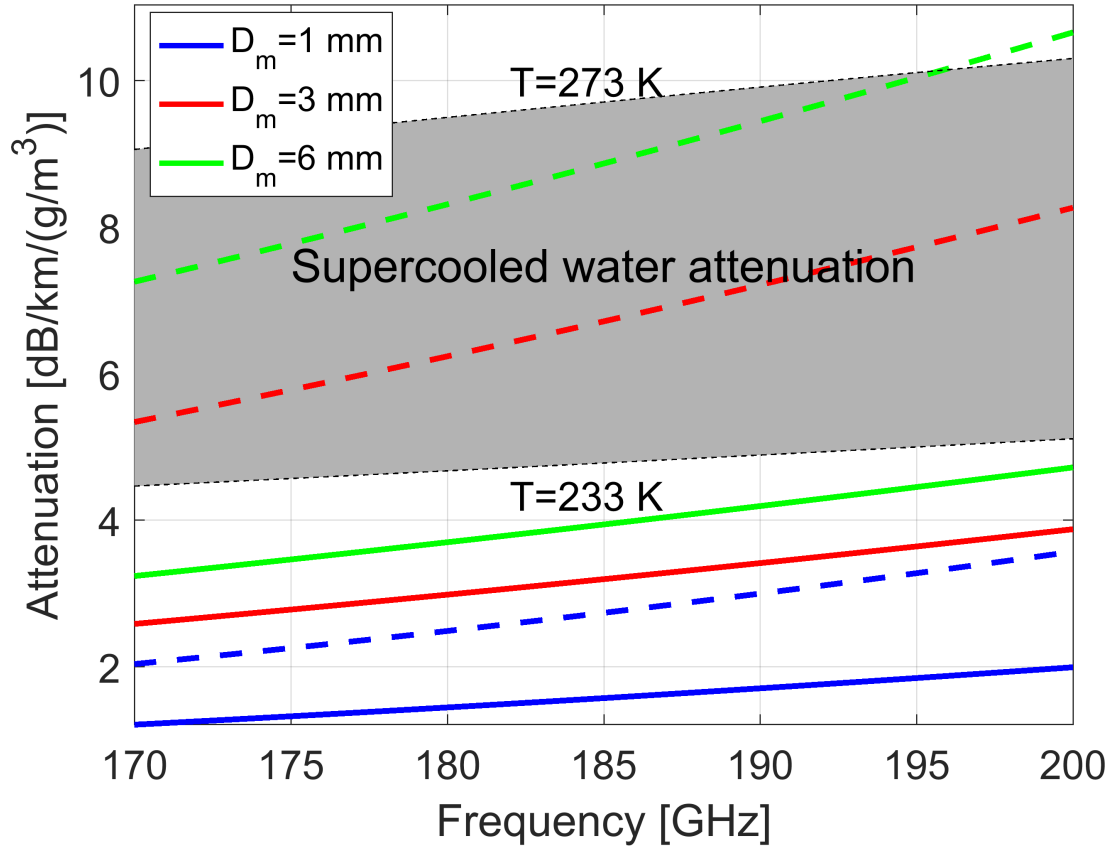


Figure 2. Attenuation coefficient for ice crystals with different mass-weighted maximum particle diameters as indicated in the legend for the frequency range of interest for this study. **Exponential size distributions have been assumed. Dashed and continuous lines correspond to the model “A; $LWP = 0.1 \text{ kg/m}^2$ ” from Leinonen and Szyrmer (2015) and to the Hogan and Westbrook (2014) model, respectively. The grey shaded area corresponds to the attenuation coefficient for supercooled liquid clouds for temperatures in the range between -30°C and 0°C . Water refractive index is computed according to the Ellison07 model, see Turner et al. (2016).**

The CloudSat 94 GHz (3.2 mm) Cloud Profiling Radar (CPR) provides global observations of ice cloud profiles at a vertical resolution of 480 m and a cross-track/along-track horizontal footprint of $1.5 \text{ km} \times 2.5 \text{ km}$ (Tanelli et al., 2008). When integrated with the observations from the CALIPSO Cloud-Aerosol Lidar with Orthogonal Polarization (CALIOP) (Winker et al., 2007) such observations can be used to retrieve ice microphysics. Here retrievals adopting the DARDAR algorithm (Delanoë and Hogan (2010), <http://www.icare.univ-lille1.fr/projects/dardar/>) are used as input for the the DAR modelling. ECMWF auxiliary data are used as input for temperature, pressure and relative humidity.

Table 1. Technical specifications of the DAR space-borne system used in this study. The configuration here adopted is the one proposed in an on-going UK-CEOI study (Dr Duncan Robertson, personal communications).

Satellite altitude, h_{sat}	500 km
Satellite velocity, v_{sat}	7600 ms^{-1}
Frequency	170-200 GHz
Transmit power	100 W (EIK technology)
Antenna diameter	$\geq 2 \text{ m}$
Antenna beam-width, θ_{3dB}	$\leq 0.05^\circ$
Antenna gain	70 dBi
Receiver Noise Figure	6 dB
Pulse width	$3.3 \mu\text{s}$
Pulse Repetition Frequency (with frequency diversity)	6 kHz
Single pulse sensitivity	-22 dBZ

Table 2. Specifics of the frequency-modulated-continuous wave radar based on W-band power amplifier and GaAs Schottky diode frequency multiplication (Nils et al. (2017)) for the ground-based simulation (Dr Peter Huggard, personal communications).

Frequency	170-200 GHz
Transmit power	200 mW
Antenna diameter	0.4 m
Antenna beam-width, θ_{3dB}	$\leq 0.3^\circ$
Antenna gain	55 dBi
Receiver Noise Figure	6.5 dB
Chirp Repetition Frequency	6 kHz
Bandwidth	2 MHz
Range resolution	75 m
Minimum detectable reflectivity @ 1km range and 1 s integration	-50 dBZ

The DAR forward model uses the millimeter-wave propagation model from Rosenkranz (1999) for gas attenuation whereas the self-similar Rayleigh-Gans scattering model (Hogan and Westbrook, 2014) is adopted for computing the scattering properties of ice particles. **This approach has the clear advantage that scattering properties can be computed at any frequency with practically no computational cost.** The ice crystals model proposed by Leinonen and Szyrmer (2015) and labelled as model “A; $LWP = 0.1 \text{ kg/m}^2$ ” is used to derive the parameters for the self-similar model by taking into account the internal structure of the aggregates. Tridon et al. (2019) have shown that the scattering properties generated via this methodology generally well fits triple frequency radar measurements and in situ measurements.

Noise is injected into the reflectivity measurements according to the formula (see Appendix in Hogan et al. (2005)):

$$\Delta Z[dB] = \frac{4.343}{\sqrt{N_p}} \left[\max \left(1, \frac{\lambda}{4\sqrt{\pi}\sigma_v\tau_s} \right) + \frac{2}{SNR} + \frac{1}{SNR^2} \right]^{1/2} \quad (8)$$

where N_p is the number of transmitted radar pulses (e.g. in the space-borne configuration 4200 for an integration length of 5 km), τ_s is the time between samples (i.e. the reciprocal of the pulse repetition frequency) and σ_v is the spectral width of the Doppler spectrum. For space-borne systems the first term inside the bracket is practically always close to one because the Doppler spectral width is expected to exceed 2 m/s due to the large satellite velocity (see Eq. 6 in Battaglia and Kollias (2014)). The first term inside the square bracket needs to be at least one because the number of independent samples has to be smaller or equal to the number of samples. This implies that the so-called “time to independence” is of the order of 100 μ s, thus smaller than the time between pulses (equal to 166.7 μ s for a PRF=6 kHz). The single pulse sensitivity is assumed to be -22 dBZ, a realistic value with current technology (see Tab. 1). For ground-based system on the other hand we have assumed a spectral width equal to 1 m/s and a single pulse sensitivity of -50 dBZ at 1 km range with 1 s integration (see Tab. 2). **The DAR system shown in Tab. 1 is for a 2% duty cycle, 100 W peak output power Extended Interaction Klystron (EIK) system. The Communications and Power Industries (CPI) has about 15 GHz bandwidth. Selecting a number of tones (e.g. four) is technologically feasible using a single chirp generator and four intermediate chains which are switched between to select the tone. The switching can be done from pulse to pulse.**

In addition to high power sources (EIK), lower power sources are available either using frequency multipliers coupled with commercially available amplifiers or microwave sources/oscillators (Virginal Diodes, <https://www.vadiodes.com/>). Recently, Jet Propulsion Laboratory developed a new power approach using GaAs Schottky diode frequency two-time multipliers at 183 GHz (Cooper et al., 2016). Preliminary estimates of the expected radar sensitivity using these different architectures indicate that a minimum sensitivity of -22 dBZ is possible for four different tones. The impact of reducing the number of samples to accommodate additional tones is discussed in Sect. 4.

3.1 Case study

The methodology is demonstrated for a precipitating system observed by CloudSat over the Southern Ocean between Antarctica and South America on the 2nd January 2007 at about 20:16 UTC. The system extends for roughly 1300 km with temperature at the surface ranging from 281 K at the southern edge of the system to 274 K at the the northern edge of the system. The CloudSat 94 GHz reflectivity as derived from the 2B-GEOPROF product (Mace et al., 2007) is shown on the top left panel of Fig. 3. The zero isotherm clearly demarcates the ice vs the liquid transition. The co-located ECMWF reanalysis for the relative humidity field with respect to ice is depicted in the top right panel. In the glaciated region of the precipitating system the synergy between the CloudSat radar and the CALIPSO lidar (Sassen et al., 2008) offers a unique prospective on the ice microphysics (Battaglia and Delanoë, 2013). The outputs of the DARDAR retrieval (Delanoë and Hogan, 2010) are shown in the bottom panels of Fig. 3.

These microphysical outputs are then used with look-up-tables generated from scattering models to compute reflectivities at any frequency within the 183.3 GHz absorption line. **Examples of two pair of frequencies (187 and 200 GHz for the space-**

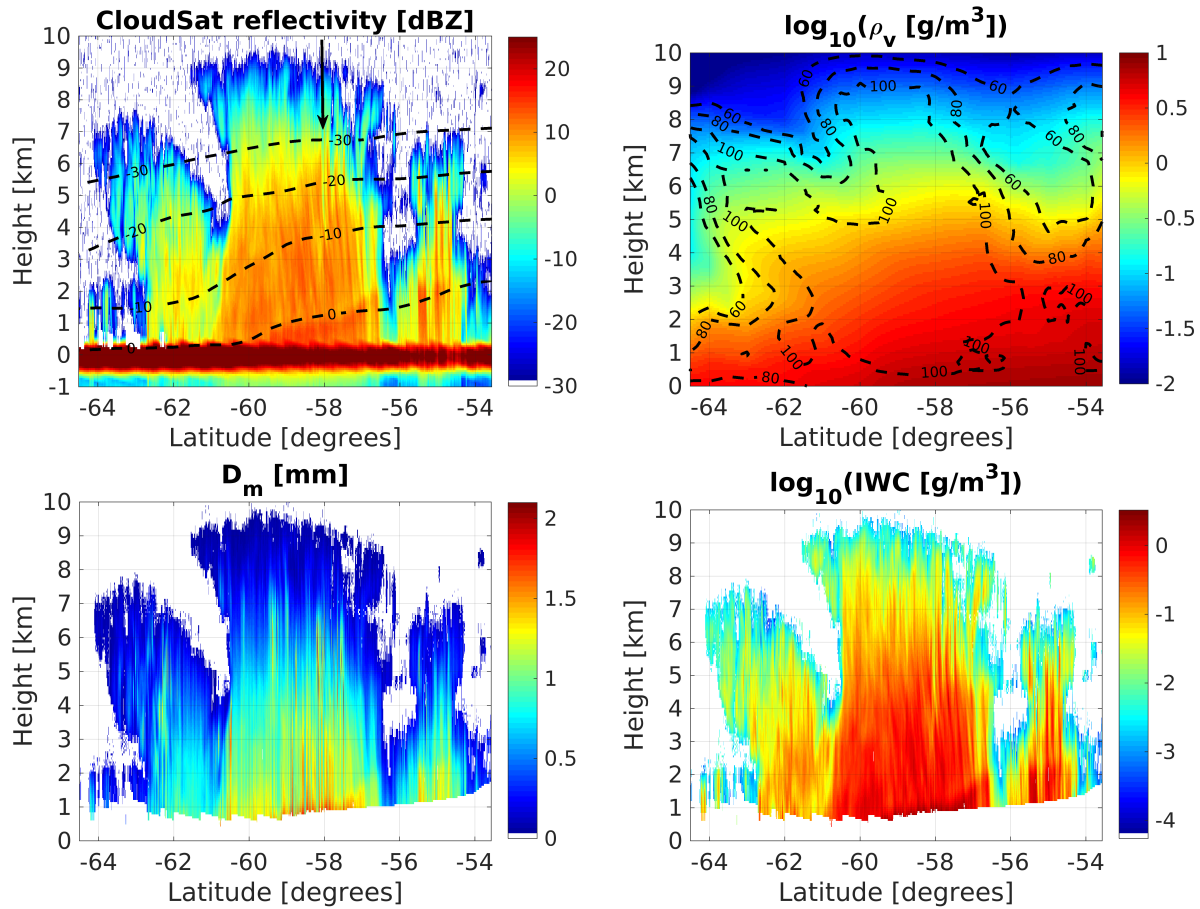


Figure 3. Top left: CloudSat measured reflectivity in the Southern Ocean south-west of Cape Horn. Dashed black lines corresponds to different isotherms as labeled while the black arrow corresponds to the profile analysed in Fig. 5. Top right: water vapor density as derived from ECMWF reanalysis with regions of constant relative humidity with respect to ice depicted as dashed lines. Bottom panels: mean mass-weighted diameter of ice particle (left) and ice water content (right) as retrieved by the DARDAR product.

borne and 186.3 and 200 GHz for the ground-based configurations, respectively) are shown in Fig. 4. It is interesting to note how differently the two frequencies are penetrating into the precipitating system, with the 187 GHz (186.3 GHz) severely attenuated by water vapour below 4 km (above 3 km) in the space-borne (ground-based) configuration. On the other hand the 200 GHz is clearly attenuated in the region below 2 km at latitudes between -60° and -58° , a combined result of large ice water and water vapor contents.

The profile at latitude -58.07° (black arrow in the top left panel of Fig. 3) is used here to demonstrate how to derive a water vapor profile in a three-step procedure (see Fig. 5):

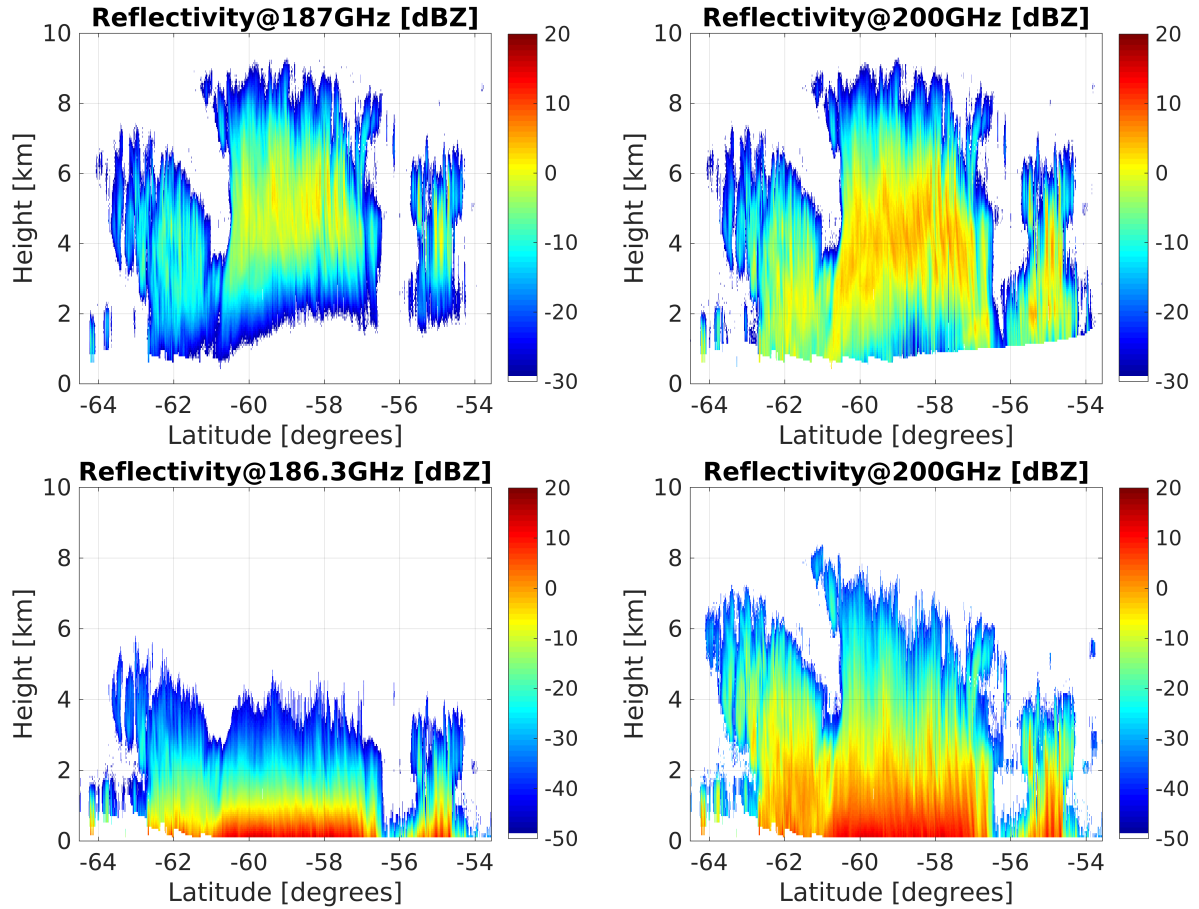


Figure 4. Top (bottom) panels: simulated reflectivities at 187 and 200 GHz (186.3 and 200 GHz) for a space-borne (ground-based) system with specifics as in Tab. 1 for the scene shown in Fig. 3. The ground-based system is assumed to be located at the 270 K isotherm line drawn in the top left panel of Fig. 3. Note the different ranges in the reflectivity colorbars of top and bottom panels driven by the better sensitivity achieved by the ground-based system at short ranges.

1. an interval Δr is selected and the profiles of the quantity $\gamma(f_j, r)$ [see Eq. (6)] are computed with their corresponding errors [computed from the estimated errors on the measured reflectivities via Eq. (8)] at the different DAR frequencies f_1, f_2, \dots (continuous blue lines with bars in the small insets of Fig. 5);
2. the spectral dependence of the line shape $\kappa_v(f, \langle p \rangle_{\Delta r}, \langle T \rangle_{\Delta r})$ is derived at each level (dashed red lines in the small insets of Fig. 5) by using the average temperature and pressure of the layer and the gas absorption model;

5

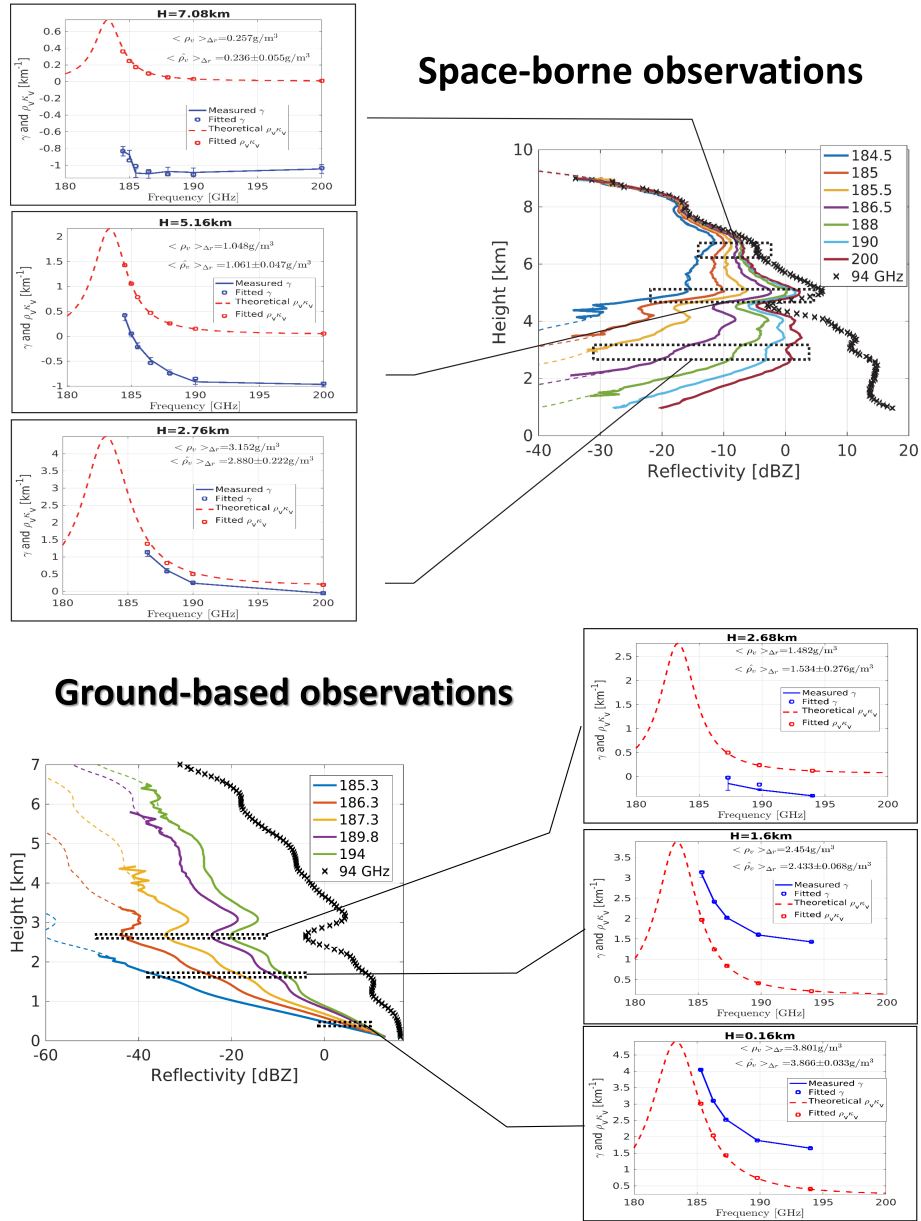


Figure 5. Top panel: simulated reflectivities for the profile at latitude -58.07° (black arrow in the top left panel of Fig. 3) for a 7-channel space-borne DAR with frequencies on the upper wing of the 183.3 GHz line. An integration length of 1.1 km is assumed (corresponding to $N_p = 920$). The CloudSat 94 GHz profiles is shown for reference as well (black crosses). Continuous (dashed) lines correspond to reflectivities including (without) noise. Three panels: examples of the fitting procedure at three different altitudes to estimate $\langle \rho_v \rangle_{\Delta r}$ with $\Delta r = 500$ m. True and estimated values are inserted in the figure. Bottom panel: same as top panel side for a 5-tone ground-based DAR. An integration time of 2 min (corresponding to $N_p = 720,000$) and a vertical resolution of 120 m are assumed.

3. **a least squares** fitting procedure of the form expressed in Eq. (6) which accounts for the errors in $\gamma(f_j, r)$ allows to retrieve estimates of the three fitting parameters (\hat{A}, \hat{B} and $\langle \hat{\rho}_v \rangle_{\Delta r}$). γ values that are too noisy are excluded from the fitting (e.g. at 2.76 km only four tones are considered for the space-borne configuration).

For the space-borne configuration the retrieval shows that a set of 7-tone DAR with frequencies on the upper wing of the 183.3 GHz band as listed in the legend of the top panel of Fig. 5 can retrieve water vapor within the ice cloud with good **precision** (i.e. within 15%) between 7.0 km (240 K) down to 2.5 km (268 K) with water vapour contents changing by more than one order of magnitude. The relative error in the retrieval of ρ_v for the whole case study shown in Fig. 3 is reproduced in **the top panel** of Fig. 6. Clearly there are two critical regions: 1) at low temperatures ($\approx T < -30^\circ\text{C}$) low values of ρ_v limit the amplitude of the signal (e.g. compare the red curves between the top three small insets in Fig. 5); 2) at warm temperatures ($\approx T > -10^\circ\text{C}$) and large CloudSat reflectivities the cumulated attenuation tends to strongly reduce the SNR and therefore [see formula (8)] increase the uncertainty of the reflectivity measurements and as a result of $\gamma(f_j, r)$. In both situations the retrieval errors become large but such deterioration can be clearly identified by looking at the SNR of the different DAR channels and at the associated error induced in the estimated value of water vapor, $\langle \hat{\rho}_v \rangle_{\Delta r}$.

The same profile has also been used to analyze the performance of a ground-based instrument by assuming that the instrument is located at the -3°C isothermal line and is looking upward. Again tones in the upper wing of the absorption band are selected. The simulated reflectivities, shown in the bottom panels of Fig. 4-5, show strong attenuation in the lower troposphere with the tones close to the center of the line reaching the noise level already just above 2 km. The only tones that can penetrate deep into the clouds are the ones that have not enough water vapor signal high up in the troposphere (e.g. the highest three tones at 2.68 km, see bottom small insets in Fig. 5). This demonstrates why, while the **precision** of the retrieval in the lower troposphere is excellent, it deteriorates quickly above 2.5 km. The **bottom** panel of Fig. 6 demonstrates the same thing for the whole event: the **precision** of the retrieval is quickly worsening 2/2.5 km above the ground where temperatures decrease to values lower than -15°C . On the other hand, by integrating for periods of the order of 1-2 minutes, ground-based system can achieve extremely accurate results for temperature between 0 and -15°C .

Compared to the space-borne set-up things are expected to substantially improve when dealing with an airborne configuration (bottom panels). The key advantages are: 1) better sensitivity because of closer distance to the target; 2) slower platform speed that allows to collect more pulses for the same integration length. As a result the precision and/or the resolution of the retrieval are significantly improved compared to the space-borne configuration (contrast the top left and bottom panels). The two bottom panels demonstrate the trade off between long and short pulses for the air-borne mode. In the left panel a pulse which is four times shorter than that in the right panel is adopted (i.e. 120 vs 480 m). As a result the sensitivity is 12 dB (a factor of 16) better in the latter case, which translates in a much better precision of the retrieval. Thus it is recommended to use pulses that match the required vertical resolution because SNR is a critical parameter for the precision of the measurement. Averaging more gates do not recover the same precision.

This case study highlights that sounding ice clouds by air-borne or space-borne DAR systems is clearly advantageous with respect to ground systems because regions with low water vapor contents (thus low attenuation) are encountered first. This implies that tones close to the line center can stay well above MDT in the areas where they provide useful information (i.e. at

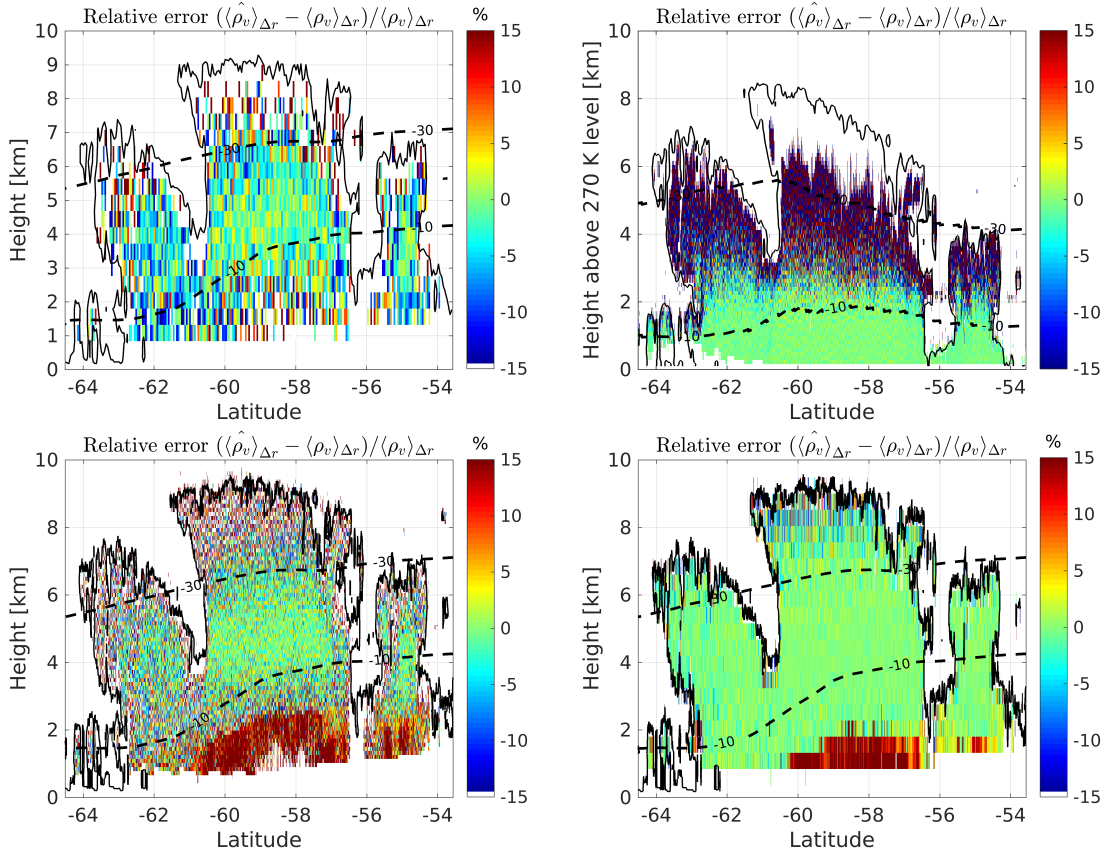


Figure 6. Top left panel: relative error in the retrieval of ρ_v for the case study shown in Fig. 3 for a 7-channel space-borne DAR with frequencies as listed in the legend on the top side of Fig. 5. Here $\Delta r = 480$ m and a 5 km along-track averaging has been performed. The dashed lines correspond to the -30°C and -10°C isotherms and the black line corresponds to CloudSat reflectivities of -25 dBZ (roughly indicating the cloud boundaries). Top right panel: same as left panel for a 5-tone ground-based DAR with frequencies as listed in the legend on the bottom side of Fig. 5. Here $\Delta r = 120$ m and a 2-minute averaging has been performed. Bottom panels: same as top left panel for an airborne system with $\Delta r = 120$ m (left) and $\Delta r = 480$ m (right) and a 1 km along-track averaging. The single pulse sensitivity is assumed to be -33 dBZ (left) and -45 dBZ (right) at 1 km distance.

low water vapor contents). The same is not true for ground-based geometry because, unless the temperature at the ground is very cold, large levels of attenuation are experienced by the radar pulse in the lower troposphere.

4 Statistical analysis from CloudSat climatology

The A-Train has provided the first global climatology of ice clouds with a detailed description of ice cloud occurrences, ice microphysics and ice radiative effects (Hong and Liu, 2015). The A-Train ice cloud dataset represents therefore an ideal test-bed to investigate the potential of a DAR system for measuring relative humidity inside ice clouds. The methodology described

in Sect. 3 has been applied to ten days of CloudSat data (from 1st to 10th January 2007) to study the performances both of a space-borne and a ground-based DAR system with several channels within the 183.3 GHz absorption band. The ground-based system is assumed to look upward from the height corresponding to the 270 K isothermal level, as identified by the ECMWF reanalysis. For any profile with ice water path exceeding 20 g/m² the profile of water vapour is retrieved via the DAR technique and, by comparing such value with the assumed one (from ECMWF reanalysis), the relative error on ρ_v is computed. Results are binned according to the CloudSat reflectivity values (above -10 dBZ and -25 dBZ for the space borne and ground-based system, respectively) and the ambient temperatures (above 240 K). Fig. 7 shows the fractional occurrence when the DAR systems provide ρ_v with **precision** better than 3% (i.e. a very valuable information). For the space-borne system there is an optimal region between -5 and 15 dBZ and for temperatures between 250 and 265 K. Results tends to worsen at temperature close to 273 K and at very high **W-band CloudSat reflectivities, which occur typically at higher temperatures (a result of the reduced number of tones with signal significantly above the noise floor), but also at very cold temperature (a result of the reduced absorption for tones further away from the band center) and low CloudSat reflectivities (a result of the reduced SNR).**

For the ground-based system (right panels in Fig. 7) ρ_v is optimally retrieved in the lower troposphere with the quality of the retrieval typically worsening with decreasing temperatures and decreasing reflectivities (due to the reduced SNRs). The only exception is at very large reflectivities, where non linearities of the right hand term in Eq. (6) introduced by Mie and attenuation effects cause larger errors.

We have selected different combinations with 2, 3, ... 5 tones and we have analysed which combinations achieve the best retrieval performances. **As a first step we have assumed that the sensitivity of the system does not change when increasing the number of tones. This is the case if the duty cycle of the radar system could be increased accordingly and frequency diversity could be implemented. Otherwise the sensitivity of each channel is going down with $\sqrt{N_{tones}}$ because of the reduction in the number of samples N_p , and the effect will be discussed later.** Results are summarized in Fig. 8. Clearly increasing the number of tones (all with the same sensitivities) is beneficial but the improvement when surpassing four tones is marginal (e.g. compare the 4 with the 5 and 6 tones). On the other hand it is obvious that improving the SNR is generally producing better results via a reduction of the noise in the reflectivity measurements according to Eq.(8). For instance for the two- and four-tone curves the impact of the improvement corresponding to a variation of a factor of two in sensitivity (± 3 dB) is illustrated in Fig. 8 by the shading. **As a result there is indeed an improvement in water vapor profiling when using four vs two channels. In fact there is the obvious advantage that with four tones it is possible to perform the three-parameter fit of Eq. (6), thus avoiding the biases introduced by frequency-dependent hydrometeor scattering effects. This remains true even when considering DAR configurations with the same duty cycle. In that case, doubling the number of channel corresponds to averaging half the number of samples, which equates to a reduction of 1.5 dB in sensitivity (so roughly half the range currently shown by the shaded area). But the blue shaded region remains well above the red shaded one.**

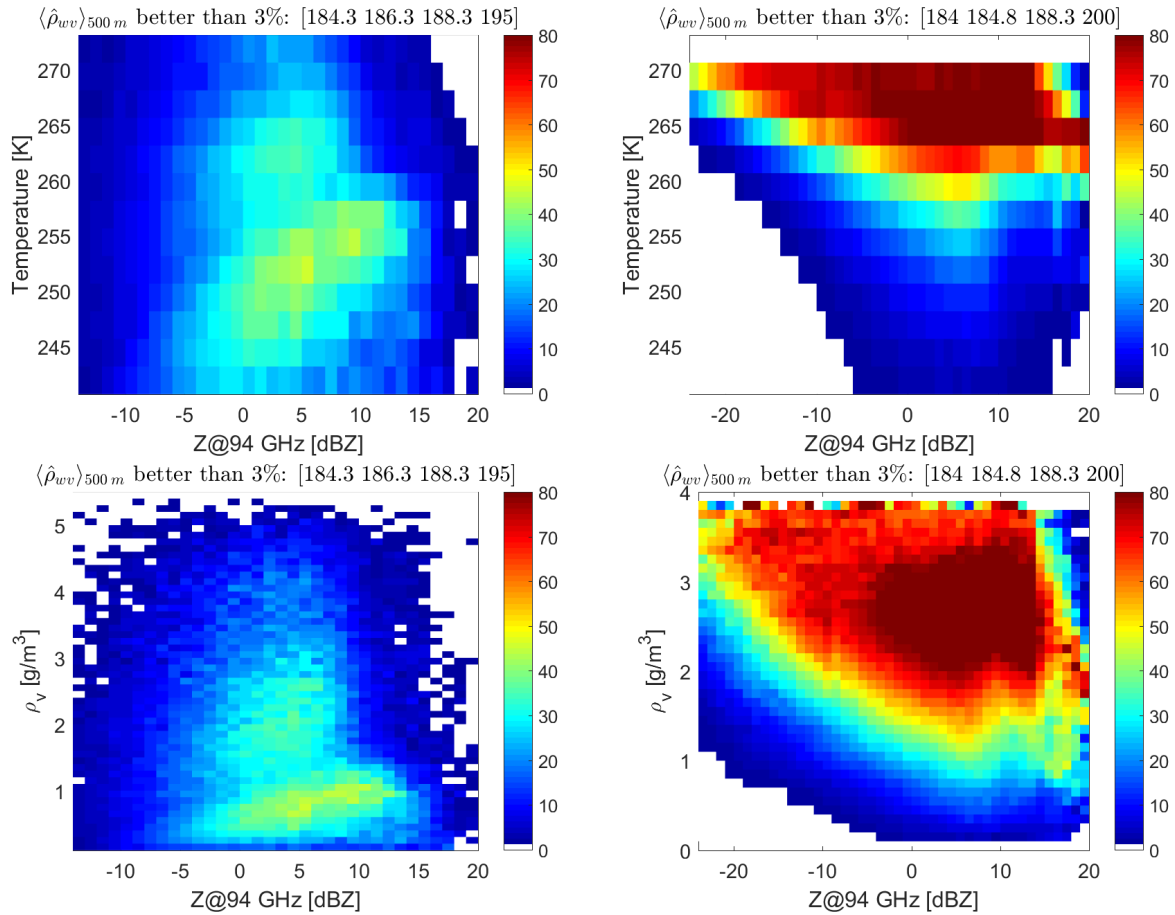


Figure 7. Statistical analysis based on 10 days of CloudSat showing the expected frequency occurrence of retrievals of ρ_v better than 3% for a space-borne system (left) and a ground-based system (with ground temperature of 270 K). Top (bottom) panels: results are clustered using reflectivities vs temperatures (water vapor contents). The specifications of the systems correspond to 4-tone DARs which are optimized for ice cloud studies.

5 Discussion and conclusions

The potential of a multi-frequency differential absorption radar (DAR) system with several tones within the 183.3 GHz water vapor absorption band for profiling water vapour within ice clouds is assessed both for a ground-based and a space-borne configuration. Realistic ice profiles derived from A-Train observations are inputs of DAR simulations which are used to test the precision performances of water vapor retrievals based on fitting the line shape via a minimum least square fitting procedure.

Our findings can be summarized as following.

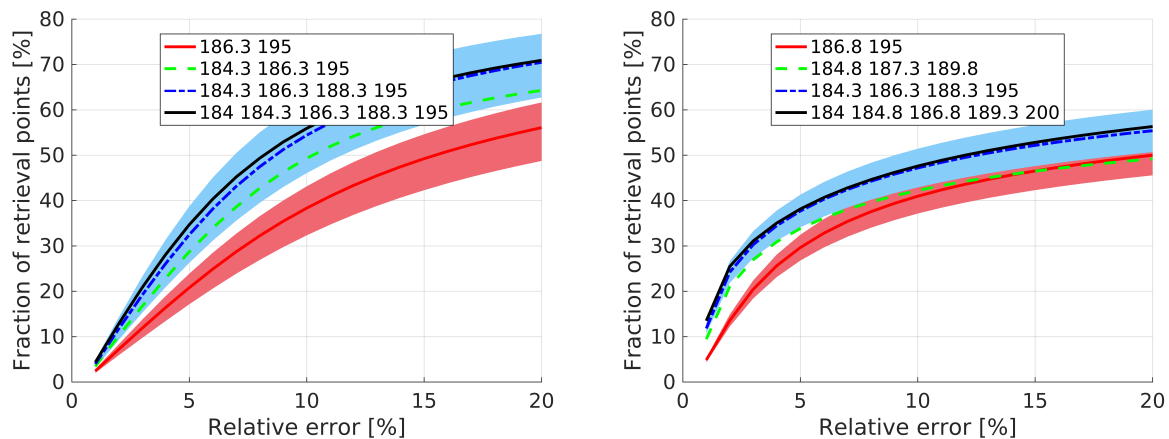


Figure 8. Fraction of retrieval points (y-axis) having errors lower than a given threshold (x-axis) for the space-borne configuration (left) and the ground-based configuration with 2-3-4 and 5 tones. Only the combinations that achieve the best accuracies (as indicated in the legend) are reported. The **shaded region indicates** results when the sensitivity is increased/decreased by 3 dB. For the space-borne (ground-based) configuration the retrieval is applied only to points corresponding to CloudSat reflectivities exceeding -15 dBZ (-25 dBZ) and temperature exceeding 240 K.

1. With realistic minimum detection thresholds, DARs can provide useful information in thick ice/mixed-phase clouds and they can complement other techniques (e.g. water vapor DIALs, Nehrir et al. (2017)). Four tone DARs seem to be the right balance between complexity (i.e. number of channels) and retrieval performances. In the domain of CloudSat reflectivities above -15 dBZ and $T > 240$ some of the best 4-tone combination allow to retrieve ρ_v with precision better than 3% in more than 25% of the cases when ice is present with the best results obtained for ice clouds with reflectivities between -5 and 10 dBZ.
2. Ground-based DAR systems can provide excellent profiling of the warmer parts of ice clouds where ρ_v values exceed 1 gm^{-3} but they become increasingly less precise when looking at the cold regions with low moisture. In such areas things are expected to improve when colder ground temperature are considered. **In this study we have simulated a scenario with ground temperature of 270 K with global climatology. Of course the selection of the tones could be optimized for a specific location and time of the year based on the local cloud and temperature climatology.** Also scanning options could be considered to increase the differential absorption signal of channels far away from the center of the band by increasing the path length.
3. Air-borne or space-borne DAR systems are clearly advantageous with respect to ground systems when looking at regions with low water vapor contents because such regions are encountered first by the radar wave and therefore are affected by less attenuation. This implies that tones close to the band center can stay well above MDT in the areas where they

provide useful information (i.e. at low water vapor contents). The same is not true for ground-based geometry because, unless the temperature at the ground is very cold, large levels of attenuation are experienced by the radar tones close to the band center in the lower troposphere.

4. **Because SNR is a critical parameter for the precision of the measurement the selection of the radar resolution should ideally match the vertical resolution required for the water vapor product.**
5. The selection of the tones is driven by a tradeoff between differential signal and signal. Ideally the attenuation signal should be maximised but if the attenuation is too strong the signal becomes increasingly noisy and ultimately goes below the minimum sensitivity. For ground-based systems it would be ideal to have tones that can be adjusted depending on the atmospheric conditions and latitude/altitude location since, with lower ground temperatures, channels closer to the 183.3 GHz center becomes increasingly useful.
6. The quality of the retrieval can be easily evaluated by considering retrieval errors and χ^2 values that are computed as part of the minimum least square fitting procedure.
7. Transmitting licences are attainable for airborne and ground-based (e.g. in UK DAR tones within the following bands may be allowed: 173.85 to 182 GHz, 185 to 190 GHz, 191.8 to 195.75 GHz, 196.15 to 199.99 GHz with other allowed windows below 173.85) but currently much more inaccessible for space-borne systems since such bands are reserved to passive microwave radiometers. As a first step to assess the potential of the DAR concept for ice cloud studies **and to properly evaluate its accuracy (via comparison with radio-soundings) it is highly recommended to deploy a ground-based DAR system at high latitude/ high altitudes.**

Acknowledgements. This work was supported by the European Space Agency under the activity “Multi Frequency Radar Instrument Study”, Contract: 4000120689/17/NL/IA. The work by Alessandro Battaglia has been supported by the project Radiation and Rainfall funded by the UK National Center for Earth Observation. This research used the ALICE High Performance Computing Facility at the University of Leicester.

References

- Aires, F., Prigent, C., Buehler, S. A., Eriksson, P., Milz, M., and Crewell, S.: Towards more realistic hypotheses for the information content analysis of cloudy/precipitating situations – Application to a hyperspectral instrument in the microwave, *Quart. J. Roy. Meteor. Soc.*, 145, 1–14, <https://doi.org/10.1002/qj.3315>, <https://rmets.onlinelibrary.wiley.com/doi/abs/10.1002/qj.3315>, 2019.
- Anderson, E.: Statement of guidance for global numerical weather prediction (NWP), Tech. rep., WMO, <https://www.wmo.int/pages/prog/www/OSY/GOS-RRR.html>, 2014.
- Bailey, M. P. and Hallett, J.: A Comprehensive Habit Diagram for Atmospheric Ice Crystals: Confirmation from the Laboratory, AIRS II, and Other Field Studies, *Journal of the Atmospheric Sciences*, 66, 2888–2899, <https://doi.org/10.1175/2009JAS2883.1>, <https://doi.org/10.1175/2009JAS2883.1>, 2009.
- Battaglia, A. and Delanoe, J.: Synergies and complementarities of CloudSat-CALIPSO snow observations, *J. Geophys. Res.*, 118, 721–731, DOI: 10.1029/2012JD018092, 2013.
- Battaglia, A. and Kollias, P.: Error Analysis of a Conceptual Cloud Doppler Stereoradar with Polarization Diversity for Better Understanding Space Applications, *J. Atmos. Ocean Technol.*, 32, 1298–1319, doi: <http://dx.doi.org/10.1175/JTECH-D-14-00015.1>, 2014.
- Battaglia, A., Ajewole, M. O., and Simmer, C.: Evaluation of radar multiple scattering effects in CloudSat configuration, *Atmos. Chem. Phys.*, 7, 1719–1730, 2007.
- Battaglia, A., Tanelli, S., Kobayashi, S., Zrnica, D., Hogan, R., and Simmer, C.: Multiple-scattering in radar systems: a review, *J. Quant. Spectrosc. Radiat. Transfer*, 111, 917–947, doi:10.1016/j.jqsrt.2009.11.024, 2010.
- Battaglia, A., Westbrook, C. D., Kneifel, S., Kollias, P., Humpage, N., Lohnert, U., Tyynelä, J., and Petty, G. W.: G-band (140-220 GHz) atmospheric radars: new frontiers in cloud physics, *Atm. Meas. Tech.*, 7, 1527–1546, doi:10.5194/amt-7-1527-2014, 2014.
- Battaglia, A., Dhillon, R., and Illingworth, A.: Doppler W-band polarization diversity space-borne radar simulator for wind studies, *Atm. Meas. Tech.*, 11, 5965–5979, <https://doi.org/10.5194/amt-11-5965-2018>, 2018.
- Blackwell, W. J., Bickmeier, L. J., Leslie, R. V., Pieper, M. L., Samra, J. E., Surussavadee, C., and Upham, C. A.: Hyperspectral Microwave Atmospheric Sounding, *IEEE Transactions on Geoscience and Remote Sensing*, 49, 128–142, <https://doi.org/10.1109/TGRS.2010.2052260>, 2011.
- Brown, P. R. A. and Francis, P. N.: Improved Measurements of the Ice Water Content in Cirrus Using a Total-Water Probe, *Journal of Atmospheric and Oceanic Technology*, 12, 410, 1995.
- Cooper, K. B., Durden, S., Choukroun, M., Lebsock, M., Siles, J., Monje, R., and Lee, C.: FMCW Radars at 95 and 183 GHz for Planetary and Earth Science Remote Sensing, in: 2016 Global Symposium on Millimeter Waves (GSMM) and ESA Workshop on Millimetre-Wave Technology and Applications, 2016.
- Cooper, K. B., Monje, R. R., Millán, L., Lebsock, M., Tanelli, S., Siles, J. V., Lee, C., and Brown, A.: Atmospheric Humidity Sounding Using Differential Absorption Radar Near 183 GHz, *IEEE Geosci. Remote Sens. Lett.*, 15, 163–167, 2018.
- Delanoë, J. and Hogan, R.: Combined CloudSat-CALIPSO-MODIS retrievals of the properties of ice clouds, *J. Geophys. Res.*, 115, doi:10.1029/2009JD012346, 2010.
- Durden, S. L., Tanelli, S., Epp, L. W., Jamnejad, V., Long, E. M., Perez, R. M., and Prata, A.: System Design and Subsystem Technology for a Future Spaceborne Cloud Radar, *IEEE Geosci. Remote Sens. Lett.*, 13, 560–564, 2016.

- Field, P. R., Heymsfield, J., Bansemir, A., and Twohy, C. H.: Determination of the Combined Ventilation Factor and Capacitance for Ice Crystal Aggregates from Airborne Observations in a Tropical Anvil Cloud, *Journal of the Atmospheric Sciences*, 65, 376–391, <https://doi.org/10.1175/2007JAS2391.1>, <https://doi.org/10.1175/2007JAS2391.1>, 2008.
- 5 Haddad, Z. S., Sy, O. O., Hristova-Veleva, S., and Stephens, G. L.: Derived observations from frequently-sampled microwave measurements of precipitation. Part I: Relations to atmospheric thermodynamics, *IEEE Trans. Geosci. Remote Sens.*, 55, doi: 10.1109/TGRS.2017.2671598, 2017.
- Hogan, R. J. and Illingworth, A. J.: The Potential of Spaceborne Dual-Wavelength Radar to Make Global Measurements of Cirrus Clouds, *J. Atmos. Ocean Technol.*, 16, 518–531, doi: [http://dx.doi.org/10.1175/1520-0426\(1999\)016<0518:TPOSDW>2.0.CO;2](http://dx.doi.org/10.1175/1520-0426(1999)016<0518:TPOSDW>2.0.CO;2), 1999.
- 10 Hogan, R. J. and Westbrook, C. D.: Equation for the microwave backscatter cross section of aggregate snowflakes using the Self-Similar Rayleigh-Gans Approximation, *J. Atmos. Sci.*, 71, 3292–3301, 2014.
- Hogan, R. J., Gaussiat, N., and Illingworth, A.: Stratocumulus Liquid Water Content from Dual-Wavelength Radar, *J. Atmos. Ocean Technol.*, 22, 1207–1218, doi: <http://dx.doi.org/10.1175/JTECH1768.1>, 2005.
- Hong, Y. and Liu, G.: The Characteristics of Ice Cloud Properties Derived from CloudSat and CALIPSO Measurements, *J. Climate*, 28, 3880–3901, doi: 10.1175/JCLI-D-14-00666.1, 2015.
- Illingworth, A. J., Barker, H. W., Beljaars, A., Chepfer, H., Delanoe, J., Domenech, C., Donovan, D. P., Fukuda, S., Hirakata, M., Hogan, R. J., Huenerbein, A., Kollias, P., Kubota, T., Nakajima, T., Nakajima, T. Y., Nishizawa, T., Ohno, Y., Okamoto, H., Oki, R., Sato, K., Satoh, M., Wandinger, U., and Wehr, T.: The EarthCARE Satellite: the next step forward in global measurements of clouds, aerosols, precipitation and radiation, *Bull. Amer. Met. Soc.*, pp. 1311–1332, doi: <http://dx.doi.org/10.1175/BAMS-D-12-00227.1>, 2015.
- 20 Illingworth, A. J., Battaglia, A., Bradford, J., Forsythe, M., Joe, P., Kollias, P., Lean, K., Lori, M., Mahfouf, J.-F., Mello, S., Midthassel, R., Munro, Y., Nicol, J., Potthast, R., Rennie, M., Stein, T., Tanelli, S., Tridon, F., Walden, C., and Wolde, M.: WIVERN: A new satellite concept to provide global in-cloud winds, precipitation and cloud properties, *Bull. Amer. Met. Soc.*, pp. 1669–1687, doi: 10.1175/BAMS-D-16-0047.1, 2018.
- Joe, P., Kidd, C., Kollias, P., Tanelli, S., Moisseev, D., Battaglia, A., Koikinen, J., Arbery, G., Deligny, B., Caubet, E., Hudak, D., Stewart, R., Wolde, M., Im, E., Vane, D., Stephens, G., Bennartz, R., Blanchet, J.-P., and Cober, S.: The Polar Precipitation Measurement mission, in: *Proc. 6th European Conference on Radar Meteorology and Hydrology: Satellite radar measurements and hydro-meteorological applications*, Sibiu, Romania, 6-10 September, 2010, 2010.
- 25 Kärcher, B., Dörnbrack, A., and Sölch, I.: Supersaturation Variability and Cirrus Ice Crystal Size Distributions, *J. Atmos. Sci.*, 71, 2905–2926, doi: 10.1175/JAS-D-13-0404.1, 2014.
- 30 Kollias, P., Battaglia, A., Tatarevic, A., Lamer, K., Tridon, F., and Pfizenmaier, L.: The EarthCARE cloud profiling radar (CPR) doppler measurements in deep convection: challenges, post-processing, and science applications, in: *Proc. SPIE 10776, Remote Sensing of the Atmosphere, Clouds, and Precipitation VII*, vol. 107760R, doi: 10.1117/12.2324321, 2018.
- Kummerow, C. D., Barnes, W., Kozu, T., Shiue, J., and Simpson, J.: The Tropical Rainfall Measuring Mission (TRMM) sensor package, *J. Atmos. Ocean Technol.*, pp. 809–817, 1998.
- 35 LANGLAND, R. H., MAUE, R. N., and BISHOP, C. H.: Uncertainty in atmospheric temperature analyses, *Tellus A*, 60, 598–603, <https://doi.org/10.1111/j.1600-0870.2008.00336.x>, <https://onlinelibrary.wiley.com/doi/abs/10.1111/j.1600-0870.2008.00336.x>, 2008.
- Lebsock, M. D., Suzuki, K., Millán, L. F., and Kalmus, P. M.: The feasibility of water vapor sounding of the cloudy boundary layer using a differential absorption radar technique, *Atm. Meas. Tech.*, 8, 3631–3645, doi:10.5194/amt-8-3631-2015, 2015.

- Leinonen, J. and Szyrmer, W.: Radar signatures of snowflake riming: A modeling study, *Earth and Space Science*, 2, 346–358, doi:10.1002/2015EA000102, 2015.
- Leinonen, J., Lebsock, M., Tanelli, S., Suzuki, K., Yashiro, H., and Miyamoto, Y.: Performance assessment of a triple-frequency spaceborne cloud-precipitation radar concept using a global cloud-resolving model, *Atm. Meas. Tech.*, 8, 3493–3517, doi:10.5194/amt-8-3493-2015, 2015.
- Lhermitte, R.: Attenuation and Scattering of Millimeter Wavelength Radiation by Clouds and Precipitation, *J. Atmos. Ocean Technol.*, 7, 464–479, 1990.
- Mace, G. G., Marchand, R., Zhang, Q., and Stephens, G.: Global hydrometeor occurrence as observed by CloudSat: Initial observations from summer 2006, *Geophys. Res. Lett.*, 34, L09808, doi:10.1029/2006GL029017, 2007.
- Magono, C. and Lee, C.: Meteorological classification of natural snow crystals, *J. Fac. Sci.*, 4, 321–335, 1966.
- Matrosov, S. Y. and Battaglia, A.: Influence of multiple scattering on CloudSat measurements in snow: a model study, *Geophys. Res. Lett.*, 36, doi:10.1029/2009GL038704, 2009.
- Millán, L., Lebsock, M., Livesey, N., and Tanelli, S.: Differential absorption radar techniques: water vapor retrievals, *Atm. Meas. Tech.*, 9, 2633–2646, doi:10.5194/amt-9-2633-2016, 2016.
- Nehir, A. R., Kiemle, C., Lebsock, M. D., Kirchengast, G., Buehler, S. A., Löhnert, U., Liu, C.-L., Hargrave, P. C., Barrera-Verdejo, M., and Winker, D. M.: Emerging Technologies and Synergies for Airborne and Space-Based Measurements of Water Vapor Profiles, *Surv. Geophys.*, 38, 1445–1482, <https://doi.org/10.1007/s10712-017-9448-9>, 2017.
- Nils, K., Kneifel, S., Löhnert, U., Kollias, P., Czekala, H., and Rose, T.: A W-Band Radar–Radiometer System for Accurate and Continuous Monitoring of Clouds and Precipitation, *J. Atmos. Ocean Technol.*, 34, 2375–2392, doi: 10.1175/JTECH-D-17-0019.1, 2017.
- Oue, M., Kumjian, M. R., Lu, Y., Jiang, Z., Clothiaux, E. E., Verlinde, J., and Aydın, K.: X-band polarimetric and Ka-band Doppler spectral radar observations of a graupel producing Arctic mixed-phase cloud, *J. Appl. Meteorol. Climatol.*, 55, 403–424, 2016.
- Peral, E., Tanelli, S., Haddad, Z., Sy, O., Stephens, G., and Im, E.: Raincube: A proposed constellation of precipitation profiling radars in CubeSat, in: 2015 IEEE International Geoscience and Remote Sensing Symposium (IGARSS), Milan, pp. 1261–1264, doi: 10.1109/IGARSS.2015.7326003, 2015.
- Rosenkranz, P. W.: Correction [to “Water vapor microwave continuum absorption: A comparison of measurements and model” by Philip W. Rosenkranz], *Radio Science*, 34, 1025–1025, <https://doi.org/10.1029/1999RS900020>, <http://dx.doi.org/10.1029/1999RS900020>, 1999.
- Roy, R. J., Lebsock, M., Millán, L., Dengler, R., R., R. M., Siles, J. V., and Cooper, K. B.: Boundary-layer water vapor profiling using differential absorption radar, *Atm. Meas. Tech.*, 11, 6511–6523, doi: 10.5194/amt-11-6511-2018, 2018.
- Sassen, K., Wang, Z., and Liu, D.: The global distribution of cirrus clouds from CloudSat/CALIPSO measurements, *Geophys. Res. Lett.*, 113, doi:10.1029/2008JD009972, 2008.
- Skofronick-Jackson, G., Petersen, W., Berg, W., Kidd, C., Stocker, E., Kirschbaum, D., Kakar, R., Braun, S., Huffman, G., Iguchi, T., Kirstetter, P., Kummerow, C., Meneghini, R., Oki, R., Olson, W., Takayabu, Y., Furukawa, K., and Wilhelm, T.: The Global Precipitation Measurement (GPM) Mission for Science and Society, *Bull. Amer. Met. Soc.*, doi:10.1175/BAMS-D-15-00306.1, 2016.
- Stephens, G., Winker, D., Pelon, J., Trepte, C., Vane, D., Yuhas, C., L’Ecuyer, T., and Lebsock, M.: CloudSat and CALIPSO within the A-Train: Ten Years of Actively Observing the Earth System, *Bull. Amer. Met. Soc.*, 99, 569–581, <https://doi.org/10.1175/BAMS-D-16-0324.1>, 2018.

- Sy, O. O., Haddad, Z. S., Stephens, G. L., and Hristova-Veleva, S.: Derived Observations From Frequently Sampled Microwave Measurements of Precipitation. Part II: Sensitivity to Atmospheric Variables and Instrument Parameters, *IEEE Trans. Geosci. Remote Sens.*, 55, 2898–2912, 2017.
- 5 Tanelli, S., Im, E., Durden, S., and Pak, K.: In-Flight Performance of the CloudSat Radar & L1B processing, CloudSat/CALIPSO Joint Science Team meeting, June 11-14, San Francisco, CA, USA, 2007.
- Tanelli, S., Durden, S., Im, E., Pak, K., Reinke, D., Partain, P., Haynes, J., and Marchand, R.: CloudSat’s Cloud Profiling Radar After 2 Years in Orbit: Performance, Calibration, and Processing, *IEEE Trans. Geosci. Remote Sens.*, 46, 3560–3573, 2008.
- Tanelli, S., Haddad, Z. S., Im, E., Durden, S. L., Sy, O. O., Peral, E., Sadowy, G. A., and Sanchez-Barberty, M.: Radar concepts for the next
10 generation of spaceborne observations of cloud and precipitation processes, in: *IEEE Proceedings of Radar Conference*, Oklahoma City, OK, 2018.
- The Decadal Survey, ed.: *Thriving on Our Changing Planet: A Decadal Strategy for Earth Observation from Space*, The National Academies Press, 2017.
- Tridon, F., Battaglia, A., Chase, R., Turk, J., Leinonen, J., Kneifel, S., Mroz, K., Finlon, J., Bansemmer, A., Tanelli, S., Heymsfield, A., and
15 Nesbitt, S.: The microphysics of stratiform precipitation during OLYMPEX: compatibility between 3-frequency radar and airborne in situ observations, *J. Geophys. Res.*, 2019.
- Turner, D. D., Kneifel, S., and Careddu, M. P.: An Improved Liquid Water Absorption Model at Microwave Frequencies for Supercooled Liquid Water Clouds, *J. Atmos. Ocean Technol.*, 33, 33–44, doi: 10.1175/JTECH-D-15-0074.1, 2016.
- Verlinde, J., Rambukkange, M. P., Clothiaux, E. E., McFarquhar, G. M., and Eloranta, E. W.: Arctic multilayered, mixed-phase cloud pro-
20 cesses revealed in millimeter-wave cloud radar Doppler spectra, *J. Geophys. Res. Atm.*, 118, 199–13,213, doi:10.1002/2013JD020183, 2013.
- Winker, D. M., Hunt, W. H., and McGill, M. J.: Initial performance assessment of CALIOP, *Geophys. Res. Lett.*, 34, doi:10.1029/2007GL030135, 2007.