

Towards an understanding of surface effects: Testing of various materials in a small volume measurement chamber and its relevance for atmospheric trace gas analysis

Ece Satar^{1,2}, Peter Nyfeler^{1,2}, Céline Pascale³, Bernhard Niederhauser³, and Markus Leuenberger^{1,2}

¹Climate and Environmental Physics, Physics Institute, University of Bern, Bern, Switzerland

²Oeschger Centre for Climate Change Research, University of Bern, Bern, Switzerland

³Federal Institute of Metrology METAS, Bern, Switzerland

Correspondence: satar@climate.unibe.ch

Abstract. A critical issue for the long-term monitoring of atmospheric trace gases is precision and accuracy of the measurement systems employed. Both measuring and preparing reference gas mixtures for trace gases are challenging due to e.g. adsorption/desorption of the substances of interest on surfaces; this is particularly critical at low amount fraction and/or for reactive gases. Therefore, to ensure the best preparation and measurement conditions for trace gases in very low amount fractions, usage of coated materials is in demand in gas metrology and atmospheric measurement communities. This study focuses on testing potential adsorption/desorption effects for different materials or coatings that are currently used, or may be relevant in future for the measurements of greenhouse gases. For this study we used small volume chambers designed to be used for adsorption studies. Various materials with or without coatings were loaded into the small cylinder to test their adsorption/desorption behavior. We used the aluminum cylinder as the measurement chamber, and glass, aluminum, copper, brass, steel and three different commercially available coatings as test materials. Inserting the test materials into the measurement chamber doubles the available geometric area for the surface processes. The presented experiments were designed to investigate the pressure dependency of adsorption up to 15 bar, and its temperature dependency up to 80 °C for the test materials placed in the measurement chamber. Here, we focused on the species CO₂, CH₄, CO and H₂O measured by a cavity ring down spectroscopy analyzer. Our results show that the materials currently used in atmospheric measurements are well-suited. The investigated coatings were not superior to untreated aluminum or to stainless steel at the tested pressure ranges, whereas under changing temperature aluminum showed better performance for CO₂ (< 0.05 μmol mol⁻¹ change in measured amount fractions) than stainless steel (> 0.1 μmol mol⁻¹). To our knowledge, this study is one of the first attempts to investigate surface effects of different materials in such a setup for the above-mentioned gases.

1 Introduction

Long term atmospheric monitoring of trace gases requires great attention to precision and accuracy. In order to achieve a high level of compatibility for data obtained at different sites and/or at different time, the World Meteorological Organization (WMO) has recommended compatibility goals for measurements of trace gases within its Global Atmosphere Watch (GAW)

Programme (2016). These challenging limits can be achieved not only by regular calibration with standard gases of known composition, but also by limiting any cause of amount fraction alteration. During their relatively long lifetime, in the order of decades, standard gas cylinders may not be stable due to diffusion, leakage, regulator effects, gravimetric fractionation and surface processes (Keeling et al., 2007; Langenfelds et al., 2005). The latter, which encompass adsorption/desorption, are also dependent on temperature, pressure and surface properties. Currently there exists only limited data and a few attempts to quantify these surface processes for CO₂ and CH₄ (Leuenberger et al., 2015; Miller et al., 2015; Brewer et al., 2018; Schibig et al., 2018). These studies use Langmuir (1918) adsorption theory (Leuenberger et al., 2015; Schibig et al., 2018) and Rayleigh fractionation (Schibig et al., 2018) to explain the enrichment in the amount fractions towards the end of the cylinder lifetime with respect to different flow rates.

Key results of the above-mentioned studies point out that the adsorption behavior is pressure- and temperature- dependent. All mentioned studies used larger volume (10, 29.5 or 50 L) cylinders, which were already in use as standard cylinders. Their approach on filling varied from compressing natural air (Schibig et al., 2018) to gravimetric preparation in synthetic air or in nitrogen (Brewer et al., 2018). In their study, neither Brewer et al. (2018) nor Schibig et al. (2018) observed that their passivation treatment for the aluminum cylinder decreased the surface interaction of CO₂.

Langmuir (1918) defines adsorption as the time lag between the condensation of a molecule and its evaporation from a surface. The simplest relation which can be linked to adsorption is the pressure dependency. At higher pressures, the gas molecules are pressed to the cylinder walls, where they are adsorbed to the cylinder surface. As the pressure decreases during the lifetime of a cylinder, these molecules are desorbed from the surface and lead to an enhancement in the amount fraction of the gas. Changes in temperature also affect the equilibrium amount fraction of the adsorbed molecules by varying temperature dependent rate constants of adsorption and desorption.

In this study, we aim at distinguishing these effects among various materials under controlled conditions in a previously characterized measurement chamber (Satar et al., 2019). We limited ourselves to a selection of materials ranging from materials frequently used in atmospheric measurement community to commercially available coatings. Aluminum cylinders are now the state of the art for the measurements of greenhouse gases such as CO₂ and CH₄ (WMO, 2018). Although not recommended anymore for above-mentioned species, some steel cylinders may still be in use. Additionally, stainless steel pieces are very commonly used as tubings and in pressure regulators, and have contact with the measured gases. Some regulators are made of brass (WMO, 2018), and copper is commonly used as seals in vacuum applications of atmospheric trace gas measurements (Behrens et al., 2008). Moreover, commercially available coatings are increasingly interesting for both atmospheric measurement and metrology communities, since with the improvement of experimental techniques, the demand for higher precision and accuracy in trace gas analysis is growing.

The affinity of adsorption/desorption deviates largely for different species on various surfaces. Some coatings may provide inert, corrosion resistant, or hydrophobic surfaces, and enable usage of metals instead of polymers with ambiguous outgassing effects. According to the current literature, surface losses are critical especially for more reactive gases during the preparation of the standards. In gas metrology community, this issue has already been investigated in more detail i.e. for species such as ammonia using test tubes with various coatings (Vaitinen et al., 2014), for propane and benzene (Lee et al., 2017), and for

monoterpenes in cylinders (Allen et al., 2018). In their study, Vaittinen et al. (2014) observed that some of the commercial coatings reduced the adsorption loss on the stainless steel surface by a factor of ten or more. The atmospheric measurement community makes use of inert coatings of chemically protective barrier of amorphous silicon (Silcotek Corporation) in air core applications (Karion et al., 2010; Andersen et al., 2018), where the surface to volume ratio is large. Diamond-like carbon coatings are not yet commonly used in trace gas analysis, but have found their place in many applications in a range varying from wear and corrosion protection of magnetic storage media to biological implantations (Grill, 1999).

This study contributes to the limited literature on the discussion of surface effects of different materials for the species CO₂, CH₄, CO and H₂O. It is one of the first attempts to systematically investigate the differences among various materials in a reproducible way using a relatively small custom-made aluminum measurement chamber requiring less gas and time for the measurements. In this study, we briefly introduce the setup and the established procedure for the measurements. Then, we proceed with eight material loadings to the measurement chamber, and test their response to pressure and temperature variations.

2 Data and Methods

2.1 Measurement setup and used materials

In order to understand adsorption/desorption behavior of various materials, high pressure (up to 130 bar) and small volume (5 L) cylinders of aluminum and steel were designed. These cylinders served as measurement chambers in which various test materials can be inserted. Since the aluminum cylinder showed smaller effects with respect to surface effects in the previous study (Satar et al., 2019), we have chosen to use the aluminum cylinder only for the material experiments in order to minimize the background effect related to the measurement chamber. More information and details on the filling history of the cylinders were previously explained (Satar et al., 2019). Here we provide a brief summary: The aluminum cylinder is made of the aluminum alloy AlMg1SiCu (EN AW-6061), and its composition is specifically chosen that it corresponds to the aluminum commonly used in the atmospheric measurement community. This custom-made cylinder consists of three pieces: a body part in the middle with two caps on the sides (Fig. 1a). These pieces are joined by twelve necked-down bolts on each side, and Inconel X750 seals with silver coating are placed in the caps. It is equipped with four stainless steel bellows sealed valves (SS-4H from Swagelok), where the wetted surfaces are solely of stainless steel and do not include any polymers. The connections are from stainless steel and all tubings are of electropolished stainless steel 1/4". At the outlet, the cylinders are equipped with dual stage pressure regulators made of a stainless steel body with a polychlorotrifluoroethylene (PCTFE) seat (64-3441KA412 from Tescom). Pressure transducers are used at low (PTU-S-AC6-31AC from Swagelok), and high (PTU-S-AC160-31AC from Swagelok) pressure sides of the pressure regulators. Temperature sensors spanning a range from -35 °C to +100 °C (AF25.PT100 from Thermokon) are placed on the outer cylinder surfaces. All measured temperature and pressure data were read and logged by a signal converter (midi logger GL820 from Graphtec). On the measurement line between the pressure regulator and the Picarro Cavity-Ring Down Spectroscopy analyzer (CRDS) G2401 either an electropolished stainless steel

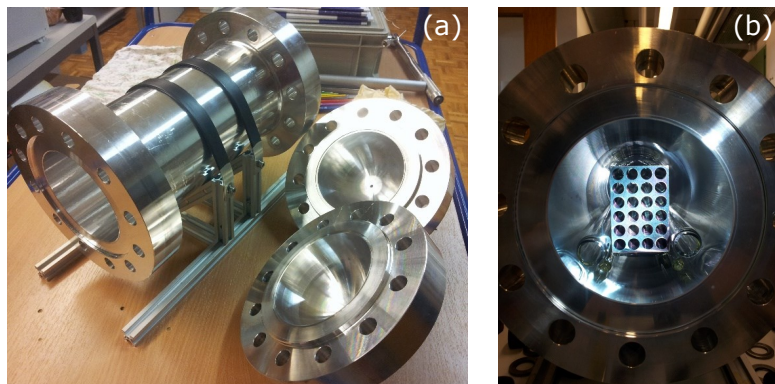


Figure 1. (a) Custom made cylinder of three pieces. (b) Material loading into the cylinder. The metal blocks are placed on the glass ladder, and two rod shaped glass pieces support the material from the sides.

1/4" tubing, a mass flow controller (358 Series from ANALYT-MTC) or a multiport valve (EMT2CSD6MWE from VICI AG) was placed.

The fillings were done using compressed air from high pressure 50 L aluminum cylinders (LUX3586 and LUX3575). These two cylinders are called the mother cylinders and their air content the mother mixture from here on. A mother cylinder was directly connected to a small expansion volume (0.5 L) made of stainless steel (316L-HDF4-500 from Swagelok). In addition to the mother mixture, another mixture of comparable content and from a cylinder of comparable material and equipment to the mother cylinder was measured to check the stability of the measurement device. This mixture (from cylinder LUX3579) is referred to as the working gas. All three cylinders were filled by Carbagas, Switzerland with compressed air according to their own protocol. The filling history of the cylinders is known only to the extent that the cylinders were filled with compressed air only. In order to test for higher amount fractions of CO, the mother mixtures were spiked: a known amount of pure CO gas was injected into a known volume (60 mL), and was pushed into the sample cylinder using another compressed air mixture as carrier gas. For example, after spiking the mother mixture, the composition of LUX3575 was $428.59 \mu\text{mol mol}^{-1}$, $1083.73 \text{ nmol mol}^{-1}$, $2132.93 \text{ nmol mol}^{-1}$, $<15 \mu\text{mol mol}^{-1}$ for CO_2 , CO, CH_4 and H_2O .

Material loadings into the cylinder were conducted as follows: glass pieces were inserted in order to avoid sharp metal-metal contact points between the sample pieces and the cylinder inner surface. These consisted of a ladder and two rod shaped glass pieces (Fig. 1b). Then, on top of the ladder-shaped glass piece, two metal blocks were placed. Each metal block has the dimensions $100 \times 74 \times 50 \text{ mm}$, and has 24 drill holes of 1 cm in diameter. The two blocks have in total comparable (factor of 1.17) geometric area to the cylinder inner surface. Aluminum (AlMgSi1), copper (CuETP), brass (CuZn39Pb3), steel (316L), and three different commercially available coatings on steel (SilcoNert®2000, Dursan®, and CERODEM® diamond-like carbon (DLC)) were used as test materials. Glass pieces and metal blocks without coatings underwent a cleaning procedure consisting of ultrasonic bath with a diluted solution of a mildly alkaline commercial cleaning agent (Deconex HT1201), and vacuum oven drying at $120 \text{ }^\circ\text{C}$.

Since the cylinder was exposed to outside air in between loadings of different materials, a specific cleaning procedure was applied to eliminate water vapor. The measurement chamber was first pumped down to 0.05 mbar using a dry piston vacuum pump (EcoDry M15 from Leybold), and then filled with 2 bar of N₂, and pumped again while heating with a heat gun. After three fill-pump-heat cycles of 30 minutes each, the cylinder was filled with N₂, and left for cooling overnight. During these heating cycles, the surface temperature of the sample cylinder increased up to 60 °C. The following morning, the cylinder was pumped down to 0.05 mbar, and filled with compressed air through expansion. The desired pressure in the small cylinder was achieved by repeating the expansion step several times. An hour was allowed for equilibration prior to starting the measurements.

2.2 Measurement sequence and data collection

Figure 2 shows a scheme of the measurement setup. For each material loading, temperature and pressure experiments were conducted using the same procedure as before (Satar et al., 2019). The experiments were conducted using a Picarro G2401 CRDS analyzer enabling measurements of CO₂, CO, CH₄ and H₂O. According to the specification sheet of the analyzer, 5-minute, 1- σ standard deviation is <0.2 $\mu\text{mol mol}^{-1}$, <1.5 nmol mol^{-1} , <0.5 nmol mol^{-1} , and <50 $\mu\text{mol mol}^{-1}$ for the species CO₂, CO, CH₄ and H₂O, respectively. In order to investigate the material's pressure dependency, the cylinder was filled through expansion from the mother cylinder to around 15 bar, and was evacuated through the Picarro analyzer. Each sample material loading had at least three replicates for both temperature and pressure runs with the exception of the blank cylinder (Table 1). Bracketing each measurement, the working gas cylinder was measured to check the stability of the measurement device. The measurement sequence for an individual loading was established in the following order: The first two runs were pressure experiments. These were followed by three cycles of temperature experiments. Lastly, the cylinder underwent the third pressure experiment. This order enables the detection of any changes in pressure response after heating cycles. Table 1 shows an overview of the experiments presented in this study.

For the pressure dependency experiments, data analysis was based on Satar et al. (2019). There was no flow regulation after the pressure regulator prior to the analyzer inlet. At the beginning of the experiment the flow rate was 220 mL min^{-1} (STP) and towards the end of the experiment it decreased to 15 mL min^{-1} (STP). The end point of the experiments was set to a fixed internal parameter of the measurement device called the "outlet valve". This value can easily be linked to the outflow from the instrument, which corresponds to about 15 mL min^{-1} at STP. For better comparability among the measurements, measured amount fractions were subtracted from the mean of the first hour of measurements for each run. In order to eliminate instrumental noise, 5-minute means of these differences were calculated. In this study, all reported values are in amount fraction differences (ΔCO_2 , ΔCH_4 , ΔCO , $\Delta\text{H}_2\text{O}$).

In order to investigate the temperature dependency, the cylinder was placed into a climate cabinet (ACS Challenge 600) at the Swiss Federal Institute of Metrology (METAS). The temperature of the cabinet was set to -10 °C, 20 °C, 50 °C and 80 °C, with 30 °C increments, heated or cooled within an hour (Fig. 3). The temperature was kept constant for four hours at each level, of which during the last 35 minutes the material loaded cylinder was measured. These measurements were bracketed by working gas measurements which had not experienced any temperature changes. A multiport valve was used to switch between

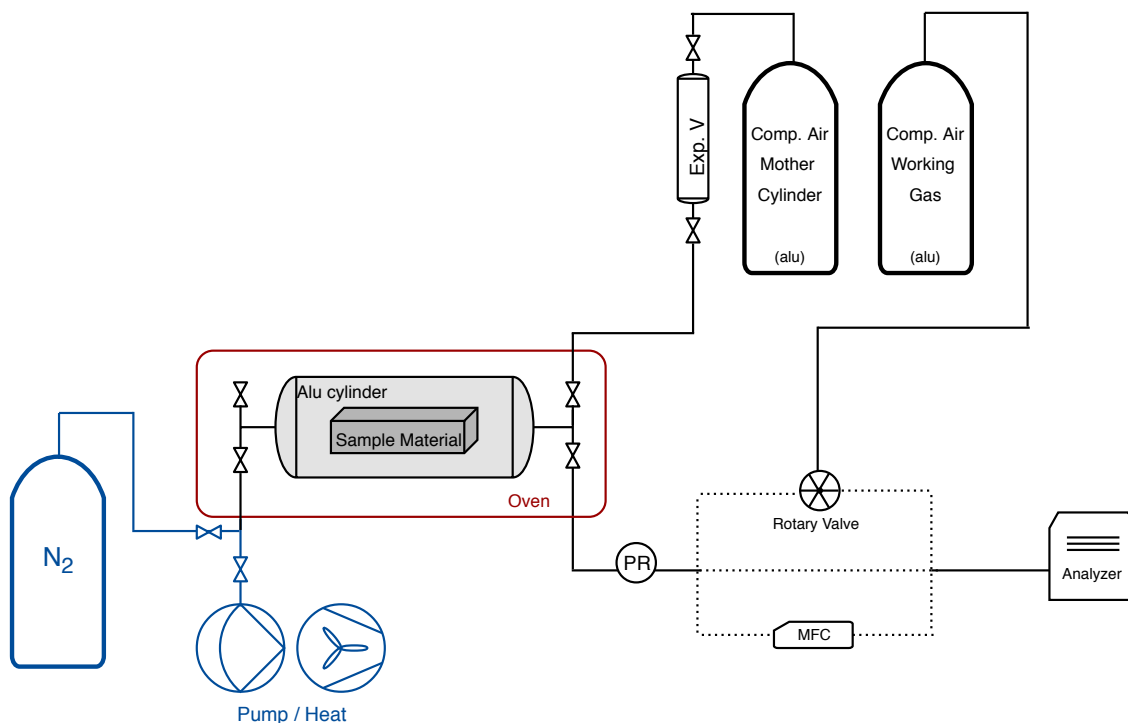


Figure 2. Schematic of the experimental setup. The aluminum cylinder is placed in the oven (denoted by the red box). The cylinder is filled through the expansion volume from the mother cylinder. At the outlet of the cylinder, the dashed lines show the three possible paths into the analyzer: through the rotary valve, direct tubing or mass flow controller (MFC). The equipment related to the cleaning procedure is denoted in blue.

the small cylinder and the working gas. A full temperature cycle lasted 34 hours. For the data analysis, for each temperature step the first 10 minutes of the measurements were not included in order to allow time for equilibration; the mean of the remaining 25 minutes was calculated. Then, differences for each temperature level were calculated with respect to the measurements at 20 °C.

3 Results

3.1 Pressure experiments

In Fig. 4, an overview of all measured species is shown. For each run, we calculated the amount fraction differences with respect to the initial amount fraction and selected the maximal difference. Maximal difference was chosen to highlight the maximum possible effect related to desorption. Since all data was processed using the same criterion, the effects originating from the

Table 1. An overview of data included in this study. The pressure values indicate the pressure in the small cylinder at the beginning of each replicate run.

Experiment	Type	Pressure [bar]	Number of replicates	Mother cylinder
Blank	Pressure	13.9; 13.9	2	LUX3575
Blank	Temperature	15.8; 15.0; 16.7	3	LUX3586
Glass	Pressure	13.3; 13.0	2	LUX3586
Glass	Temperature	15.3; 14.7; 14.5	3	LUX3586
Aluminum	Pressure	13.6; 13.0; 16.3	3	LUX3575
Aluminum	Temperature	15.3; 14.7; 14.7	3	LUX3586
Steel	Pressure	16.0; 15.4	2	LUX3586
Steel with VICI	Pressure	16.4 - 20.3	7	LUX3586
Steel MFC	Pressure	15.5; 15.0	2	LUX3586
Steel	Temperature	12.7; 18.5; 18.3	3	LUX3586
SilcoNert®2000	Pressure	14.5; 13.7; 14.0	3	LUX3586
SilcoNert®2000	Temperature	13.9; 14.0; 16.1	3	LUX3586
Glass	Pressure	17.1; 16.7; 16.0	3	LUX3575
Glass	Temperature	16.8; 16.9; 16.7	3	LUX3575
Dursan®	Pressure	16.3; 9.2; 15.5; 12.3	4	LUX3575
Dursan®	Temperature	15.8; 15.5; 15.0	3	LUX3575
DLC	Pressure	13.0; 13.5; 18.3	3	LUX3575
DLC	Temperature	13.9; 19.6; 19.5	3	LUX3575
Copper	Pressure	15.4; 14.9; 13.4	3	LUX3575
Copper	Temperature	15.5; 14.7; 14.6	3	LUX3575
Brass	Pressure	18.1; 17.3; 15.4	3	LUX3575
Brass	Temperature	18.4; 17.3; 16.9	3	LUX3575

analyzer is cancelled out and we focus on the differences between the materials. We grouped replicate runs of each material loading together and showed the calculated maximal differences in the boxplots. The median is denoted by the horizontal line, whereas the mean is shown by the square. Since for most cases only 3 replicates are present, the 1st quartile is the mean of the minimum and the median, whereas the 3rd quartile is the mean of the median and the maximum value. For clarity, data points used for the box plots are also shown and they are denoted by the black points. In Fig. 4a and b, CO₂ amount fractions are plotted: the first panel includes all materials, whereas the second is a zoom-in aiming to distinguish smaller differences among the material loadings. For CO₂, we were able to detect significant changes only for Dursan®, where the final amount fraction was about 10 times higher than all other materials. For CO and CH₄, the maximum difference in the amount fractions did not exceed 6 nmol mol⁻¹ and 1 nmol mol⁻¹, respectively. According to the analyzer (Picarro G2401) specification sheet, the

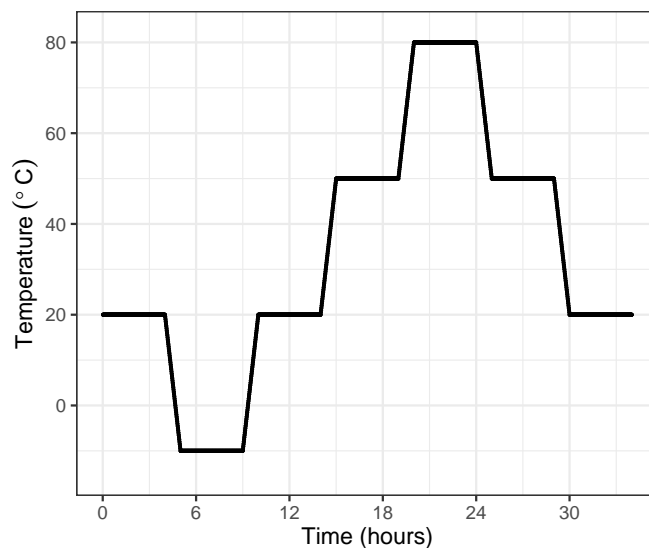


Figure 3. Temperature cycle set at the climate cabinet

5-minute, $1-\sigma$ precision of the instrument is $<1.5 \text{ nmol mol}^{-1}$ and $<0.5 \text{ nmol mol}^{-1}$, whereas the 5-minute standard deviation of measured data corresponded to 5 nmol mol^{-1} and $0.2 \text{ nmol mol}^{-1}$, for CO and CH₄, respectively. Therefore, we have concluded that no significant change was observed in the final amount fractions for any of the materials during the course of the pressure experiments for the species CO and CH₄. For H₂O, steel with mass flow controller and Dursan® loading showed significantly higher maximal amount fractions, corresponding to about 3 times higher enhancements than other species.

In order to highlight the changes during the emptying of the measurement chamber, we show differences of the measured amount fractions from the initial amount fraction (ΔCO_2 and $\Delta\text{H}_2\text{O}$) with respect to pressure for each material loading (Fig. 5). The first panel shows all materials together, whereas in the second and the third panels, individual runs are grouped together for each material loading. As indicated in Fig. 2, we made some changes to the measurement line in order to distinguish whether various equipment upstream of the analyzer had an influence on the measurements. Therefore, for the steel loading, we show results of the pressure experiments with a mass flow controller, and a multiport valve. For CO₂, only Dursan® showed a significant difference as high as $1.85 \pm 0.14 \mu\text{mol mol}^{-1}$ in the final amount fractions. The enrichment in the CO₂ measurements started significantly earlier, and followed a distinctly different evolution compared to all other tested materials. We do link this enhancement to desorption from the surface of the material. Besides being resistant to adsorption of corrosive and reactive media, the coating layer consists of amorphous silicon, oxygen and carbon (Silcotek Corporation). The desorption from the material to the gas mixture is most probably a combination of both desorption of newly adsorbed molecules after the filling, and desorption of already existing carbon in form of CO₂ on the coating. In order to distinguish this difference, fillings containing no CO and CO₂ such as synthetic air or N₂ would be worthwhile.

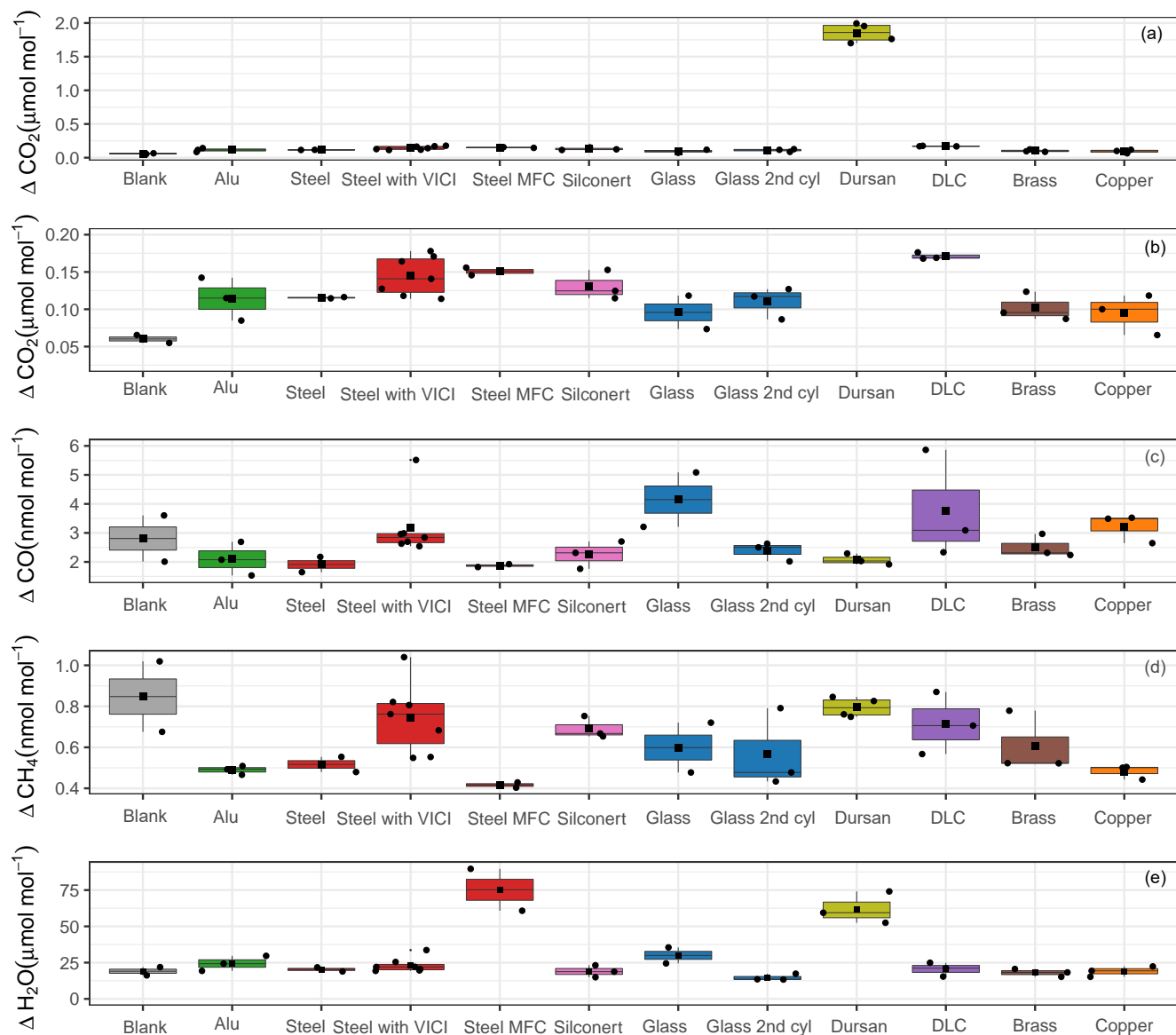


Figure 4. Box plots for all materials for the species (a) CO_2 , (b) zoom-in for CO_2 , (c) CO , (d) CH_4 and (e) H_2O . y-axes show the maximal amount fraction difference relative to the initial amount fraction. Horizontal lines in each box plot shows the median, whereas the square in the center of the box is the mean of the maximal amount fractions of the replicates.

For CO_2 measurements, the amount fraction differences for all materials except Dursan® were less than $0.17 \mu\text{mol mol}^{-1}$, with slight differences among the various loadings. Of this difference, $0.05 \mu\text{mol mol}^{-1}$ is related to the blank cylinder (background effect). The blank cylinder corresponded to the “14 bar after heating” case presented in Satar et al. (2019). More

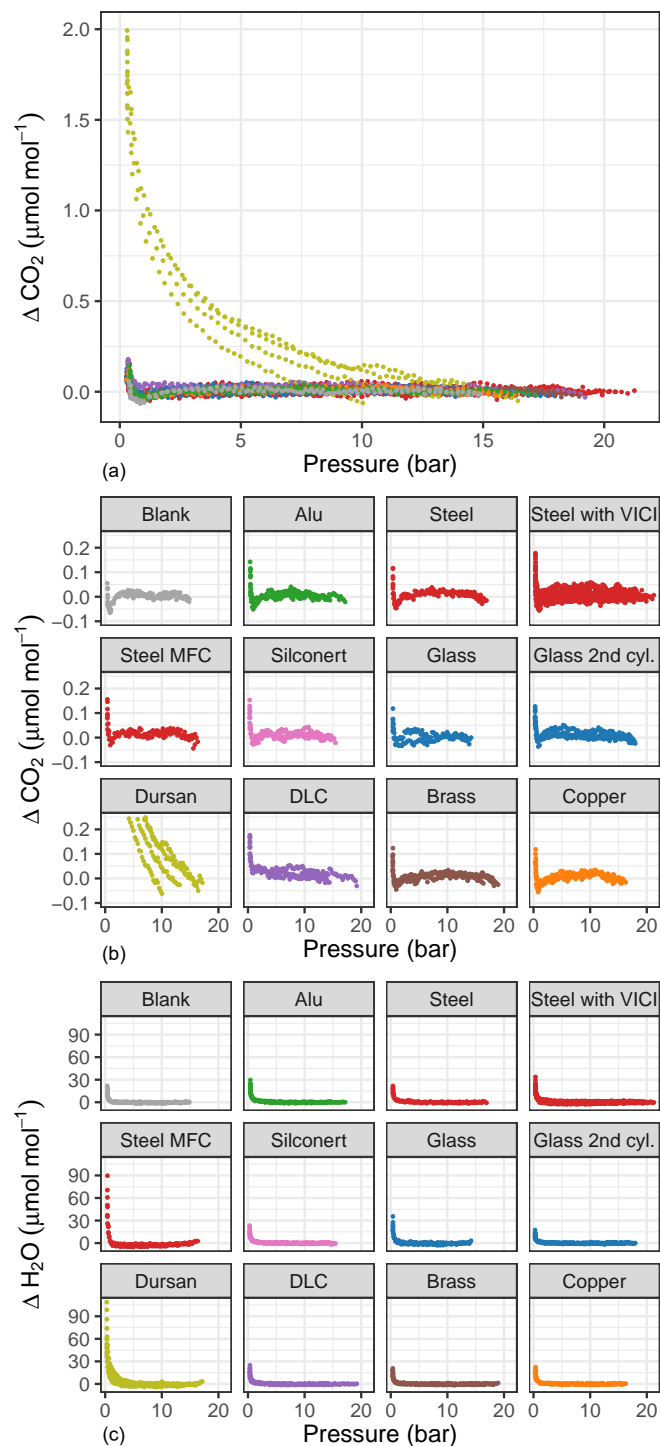


Figure 5. Amount fraction difference relative to the start of the experiment for (a, b) CO_2 , and (c) H_2O with respect to pressure for all tested materials. The first panel shows all materials together, whereas in the second and third panels, each material is plotted separately. Consistent color codes are used throughout the study.

information on the blank cylinder and its filling history is provided in the above-mentioned publication. It is also crucial to consider that during all material block experiments, glass pieces were also present in the small measurement chamber. When the material runs were compared to the experiments with glass, except the DLC loading, the remaining differences were in the order of $0.02 \mu\text{mol mol}^{-1}$, which corresponded to the 5-minute standard deviation of the measured data. Moreover, during the evacuation of the measurement chamber with the DLC loading, a slightly increasing trend of $-0.004 \mu\text{mol mol}^{-1} \text{bar}^{-1}$ was observed. For the steel loaded cylinder, the experiments where a multiport valve was upstream of the analyzer showed slightly more variation both for final amount fractions and during the pressure run. Whereas, the mass flow controller employed did not have a significant effect on the CO_2 measurements.

H_2O measurements (Fig. 5) showed greater differences than CO_2 measurements, corresponding to $19.05 \pm 2.84 \mu\text{mol mol}^{-1}$ for the blank cylinder. Compared to other materials, Dursan® loading and the measurements with the mass flow controller showed significantly higher final amount fractions of $73.71 \pm 12.55 \mu\text{mol mol}^{-1}$, and $75.22 \pm 14.45 \mu\text{mol mol}^{-1}$, respectively. The difference observed for the mass flow controller was most probably related to a memory effect combined with teflon tape, since it was used for humid air prior to these measurements. Similar to the CO_2 response of Dursan® loading, the increase in H_2O amount fraction is most probably a combination of both desorption of newly adsorbed molecules and, desorption from the coated layer. It is unlikely that the enrichment of H_2O is related to the mother mixture since all other materials resulted in significantly lower amount fraction differences.

Since CO and CH_4 (Fig. 4c-d) showed no distinct differences in amount fractions with decreasing cylinder pressure, we include their analog plots in Fig. A1 for completeness. Under these "extreme" conditions of cylinder evacuation, the observed effects were minimal for most of the investigated materials. However, the Dursan® loading showing a difference revealed that the measurement chamber and the established procedure were successful to detect changes.

3.2 Temperature experiments

Based on the results of the pressure tests, the temperature experiments were conducted within a pressure range for which no pressure effect should occur, with the exception of Dursan®. In order to graphically distinguish the temperature effect on various materials, data was split into four different groups (Fig. 6): group 1 corresponded to materials showing the least response, group 2 were materials showing a significant temperature response, and group 3 and 4 corresponded to Dursan® and DLC separately, since they showed an order of magnitude higher differences for some of the measured species. Note that all x-axes in Fig. 6 correspond to a temperature cycle. Blank cylinder, glass, SilcoNert®2000 and brass loadings (Fig. 6a) showed the least response to temperature variations between -10°C and 80°C . For CO_2 , the observed mean differences per material were less than $0.05 \mu\text{mol mol}^{-1}$. However, this difference was as high as 11 nmol mol^{-1} for CO . At 80°C , there was a clear change in the amount fractions of CO , whereas this step change was not as clear in CO_2 measurements. The reason of this behavior is most probably related to the cylinder itself, which points to an irreversible chemical reaction, since the enhancement in amount fraction stayed prominent even when the cylinder was cooled back down to 20°C . For CH_4 , temperature variations resulted in non-significant amount fraction differences, and they stayed in a narrow range from $-0.75 \text{ nmol mol}^{-1}$ to $0.5 \text{ nmol mol}^{-1}$. All material loadings showed an effect with respect to H_2O measurements. This effect was reversible: lower H_2O amount

fractions were observed at colder temperatures, and higher amount fractions at higher temperatures. This is an indication of adsorption/desorption, in which at colder temperatures desorption rate is lower, and the system equilibrates at lower amount fractions in the gas mixture. As the temperature increases, desorption rate increases, resulting temporally in higher amount fractions in water vapor. For the first group of materials, H₂O measurements were within the range of $-5 \mu\text{mol mol}^{-1}$ to $5 \mu\text{mol mol}^{-1}$. After cooling the cylinder to 20°C , a slight change of $1 \mu\text{mol mol}^{-1}$ compared to the initial amount fraction was
5 observed.

Figure 6b shows steel, aluminum and copper. These loadings showed a more significant temperature response compared to group 1. Note that the dashed lines represent the ranges from the first group of materials. For CO₂, all materials showed a clear increase when the temperature was increased to 80°C . This increase corresponded to $0.16 \pm 0.02 \mu\text{mol mol}^{-1}$, $0.10 \pm 0.01 \mu\text{mol mol}^{-1}$, and $0.05 \pm 0.02 \mu\text{mol mol}^{-1}$, for copper, steel, and aluminum respectively. After cooling back to 20°C , the
10 amount fraction increase in aluminum and steel dropped back to less than $0.07 \mu\text{mol mol}^{-1}$, whereas for copper the difference persisted and was $0.13 \pm 0.02 \mu\text{mol mol}^{-1}$. For CO, the effects were even more significant. At 80°C , ΔCO for the copper loading increased to $29 \pm 1 \text{ nmol mol}^{-1}$, and was followed by $16 \pm 4 \text{ nmol mol}^{-1}$ and $14 \pm 2 \text{ nmol mol}^{-1}$ for aluminum and steel respectively. Aluminum and steel loadings reached their maximum increase at 50°C after cooling down from 80°C , and stayed at that level even with further cooling. The increase in CO amount fraction for the copper loading continued and
15 reached $43 \pm 1 \text{ nmol mol}^{-1}$. This might be an indication of an irreversible chemical reaction happening after the threshold of 80°C which uses copper as a catalyst. This is further supported by the fact that the amount fraction enhancement after each temperature cycle was reproducible. Similarly to the first group, CH₄ measurements of the second group stayed in the narrow window of $-0.75 \text{ nmol mol}^{-1}$ to $0.5 \text{ nmol mol}^{-1}$. For H₂O, group 2 materials showed a slightly greater effect than group 1 materials with a mean of $7.55 \pm 2.88 \mu\text{mol mol}^{-1}$ at 80°C , and reached $11 \pm 1 \mu\text{mol mol}^{-1}$ for aluminum. After cooling to
20 20°C , a difference over $2 \mu\text{mol mol}^{-1}$ compared to the beginning was observed.

Figure 6c-d show Dursan® and DLC on separate panels for each of the measured species. For CO₂, Dursan® showed differences as high as $0.64 \pm 0.02 \mu\text{mol mol}^{-1}$. A fraction of this difference was related to the pressure decrease of the cylinder from 15 bar to 5 bar. However, during most of the temperature cycle including measurements at 80°C , the pressure in the cylinder was over 9.5 bar, corresponding to a pressure effect of less than $0.25 \mu\text{mol mol}^{-1}$. Even when this difference was
25 considered, the temperature effect of this material was an order of magnitude greater than group 1 materials at 80°C . Whereas at 20°C at the end of the temperature cycle, the pressure contribution was as high as $0.5 \mu\text{mol mol}^{-1}$. CO and CH₄ did not show any significant difference in their response compared to group 1 and group 2 materials. H₂O measurements were higher than in the other groups, but reversible.

The DLC loading clearly showed different temperature response compared to all other materials, especially with regard to
30 the variability of its replicates. CO₂ showed a mean difference of $0.15 \pm 0.04 \mu\text{mol mol}^{-1}$ compared to the beginning of the cycle. For CO and CH₄, the differences from the starting amount fractions were 10 and 20 times larger than the differences observed for other tested materials. At each temperature cycle, the measured CO difference at 80°C decreased, for the first and last cycle, this difference corresponded to 87 nmol mol^{-1} and 51 nmol mol^{-1} , respectively. This feature was observed in CH₄ and H₂O measurements as well. During the first temperature cycle at 80°C , CH₄ and H₂O showed an increase of 18

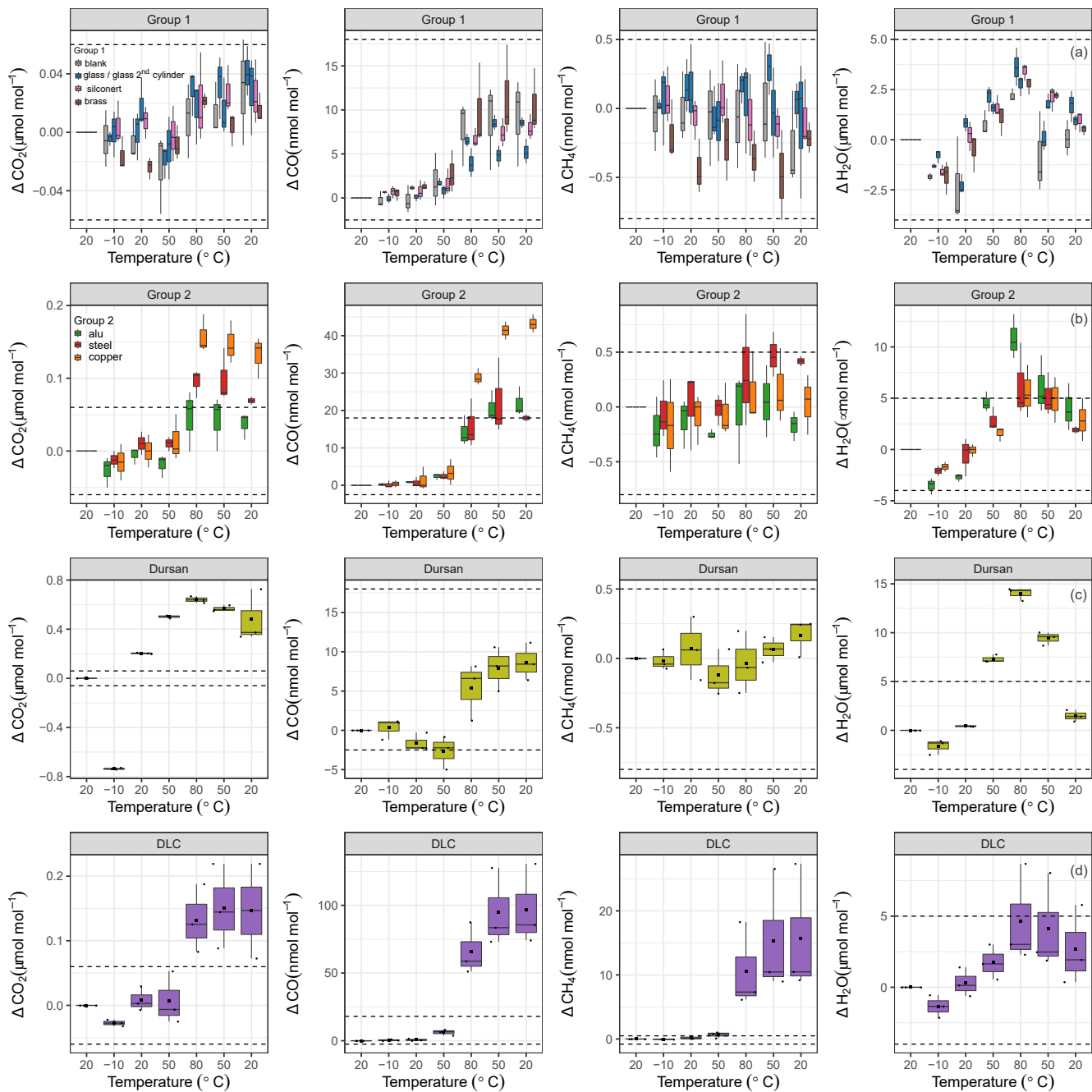


Figure 6. Temperature experiments grouped according to temperature response. **(a)** Group 1 materials are blank cylinder (gray), glass (blue), SilcoNert®2000-coated steel (pink), and brass (brown). **(b)** Group 2 materials are aluminum (green), stainless steel (red), and copper (orange). **(c)** Dursan® (light green) and **(d)** DLC (purple) coatings on stainless steel. Dashed lines indicate the same ranges for each species. The x-axes correspond to the temperature cycles (cf. Fig. 3), and the y-axes show the amount fraction differences relative to the first measurement block at 20 °C.

35 nmol mol⁻¹ and 8 μmol mol⁻¹, whereas during the third temperature cycle, CH₄ and H₂O showed an increase of 6 nmol mol⁻¹ and 3 μmol mol⁻¹, respectively. This behavior in DLC measurements showed that the underlying reason of the enhancement in the amount fractions were substances on the surface of the DLC coating, which by repeated heating were depleted. According to Grill (1999), thermal relaxation of the DLC film may occur at temperatures as low as 100 °C.

Moreover, it should be noted that during the set of the measurements presented in this study, the aluminum cylinder experienced the temperature cycle 30 times. This presumably resulted in a change of the background effect over the course of the presented analysis in the range of 0.04 μmol mol⁻¹. We measured the blank cylinder at the very beginning and at the end of the material set. The blank cylinder results shown in the Fig. 6a is a mean of the former and latter temperature experiments, therefore resulted in a higher variation. Due to the observed variation, we did not subtract the background to avoid disturbing other measurements. More detailed information on heating experiments and its consequences were presented in Satar et al. (2019).

4 Discussion

The presented setup enabled the investigation of surface effects under “extreme” conditions which favored adsorption/desorption. Compared to common usage in the atmospheric measurement and gas metrology communities, our study has differed in cylinder size, geometric surface to volume ratios, pressure and temperature ranges. Previous studies (Leuenberger et al., 2015; Brewer et al., 2018; Schibig et al., 2018) investigating surface effects in compressed gas cylinders have used (50 L, 10 L, or 29.5 L) cylinders. The geometric surface of the small (5 L) aluminum cylinder used in this study is 0.18 m², which results in a surface to volume ratio of 35.7 for the unloaded cylinder. Compared to 29.5 L Luxfer cylinders, the small cylinders are estimated to be more prone to adsorption by 40 %. Inserting material blocks into the aluminum cylinder further increased the surface area. Therefore, the setup allows to test materials under increased surface to volume ratios in which the surface effects should be stronger and dominant. However, despite our efforts of increasing the surface material effects were minor.

In addition to the properties of the materials, pressure and temperature play a role on surface effects. The following assumption lies behind the pressure experiments: if the material has adsorbed a significant amount of gas while filling the cylinder, this should be desorbed towards the end of the experiments controlled by desorption. The onset of the desorption for all tested materials except Dursan® and partly DLC was observed well-below atmospheric pressures.

Increasing temperature is expected to facilitate desorption by providing the required energy to desorb the gas molecules from the surface and mix into gas phase. On the contrary, cooling the cylinder and its content favor adsorption and it is expected that this results in a decrease in the measured amount fraction.

Testing pieces cut from the aluminum and steel cylinders commonly used in the community would be a valuable addition to enable direct comparison between the commonly used cylinder materials and the produced material blocks at low pressures and high temperatures. Moreover, in order to observe significant surface effects, materials of very high surface areas can be inserted into the measurement chamber. Some ideas would be using thin metal plates, metal spheres or metal pieces resulting from manufacturing processes (e.g. metal chips).

5 Conclusions

We have presented the pressure and temperature dependent response of the species CO₂, CH₄, CO and H₂O with respect to glass, aluminum, copper, brass, steel, and three different commercially available coatings on stainless steel (Dursan®, SilcoNert®2000 and DLC). For the pressure response, under the circumstances of our experimental setup and procedure, within the pressure range varying from 15 bar to 200 mbar absolute, we were only able to detect changes for CO₂ in the loading with Dursan® coated stainless steel reaching 2 μmol mol⁻¹ enrichment in the amount fractions. All other materials showed effects less than 0.17 μmol mol⁻¹ for CO₂. Under exposure to temperatures from -10 °C to 80 °C, the response of glass, brass and SilcoNert®2000 coated steel were minimal, whereas DLC and Dursan® showed distinctly different temperature effects than all other tested materials. For most materials, including stainless steel, copper, aluminum, DLC and Dursan® a step change in the measured amount fractions were observed after 80 °C.

These experiments show that all coatings not necessarily enable more passive surfaces, and might result in enhancements when exposed to pressure and temperature changes. Materials currently used by the atmospheric measurement community for storing standard gases are well suited under 80 °C, which are typical utilisation temperatures. Moreover, the materials presented in this study are not only relevant for measurements of standard gases, but also of interest for other gas handling and measuring applications.

Appendix A

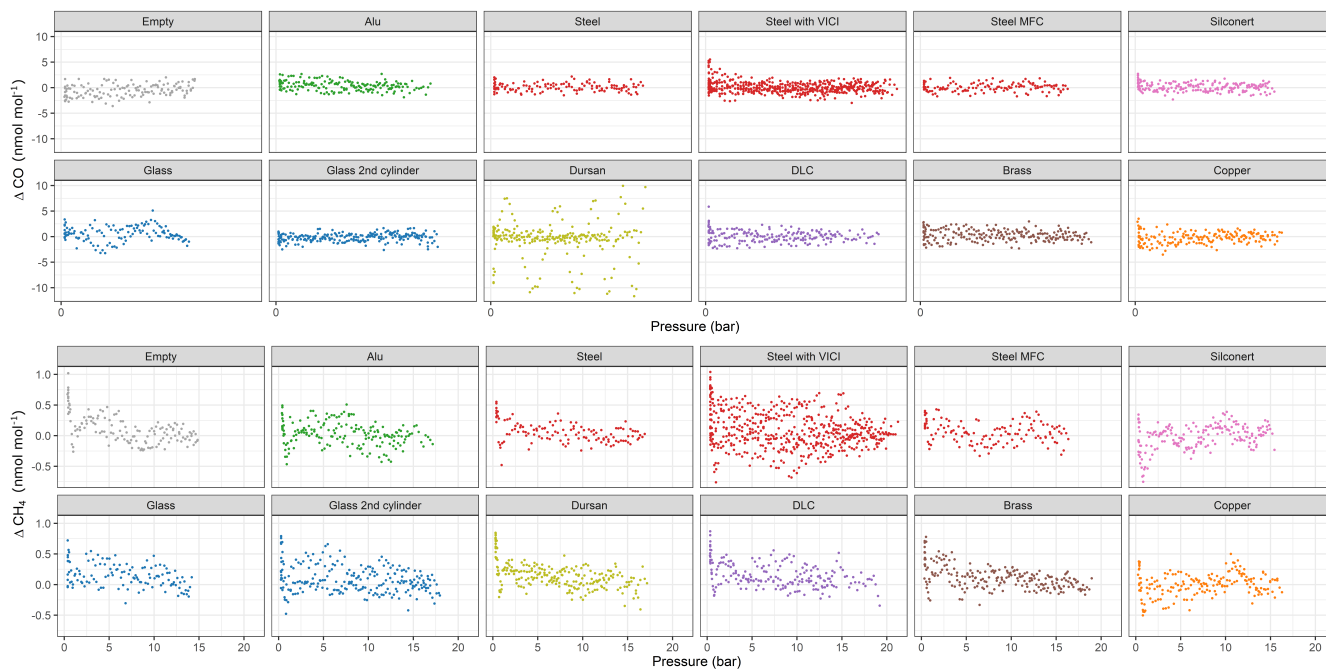


Figure A1. Amount fraction differences compared to the start of the experiment for CO, and CH₄ for all tested materials

Acknowledgements. This project is supported by a research contract (F-5232.30052) between the Swiss Federal Institute of Metrology (METAS) and the University of Bern as well as the SNF project “Klima- und Umweltphysik: Isotope im Erdklimasystem” (icoCEP)(SNF-5 200020_172550). The authors would like to thank to the Workshop of University of Bern for the production of the cylinders, and METAS Gas Analysis Laboratory and METAS workshop for their technical support during this work.

References

- Allen, N. D. C., Worton, D. R., Brewer, P. J., Pascale, C., and Niederhauser, B.: The importance of cylinder passivation for preparation and long-term stability of multicomponent monoterpene primary reference materials, *Atmospheric Measurement Techniques*, 11, 6429–6438, <https://doi.org/10.5194/amt-11-6429-2018>, <https://www.atmos-meas-tech.net/11/6429/2018/>, 2018.
- 10 Andersen, T., Scheeren, B., Peters, W., and Chen, H.: A UAV-based active AirCore system for measurements of greenhouse gases, *Atmospheric Measurement Techniques*, 11, 2683–2699, <https://doi.org/10.5194/amt-11-2683-2018>, <https://www.atmos-meas-tech.net/11/2683/2018/>, 2018.
- Behrens, M., Schmitt, J., Richter, K.-U., Bock, M., Richter, U. C., Levin, I., and Fischer, H.: A gas chromatography/combustion/isotope ratio mass spectrometry system for high-precision $\delta^{13}\text{C}$ measurements of atmospheric methane extracted from ice core samples, *Rapid Communications in Mass Spectrometry*, 22, 3261–3269, <https://doi.org/10.1002/rcm.3720>, <https://onlinelibrary.wiley.com/doi/abs/10.1002/rcm.3720>, 2008.
- 15 Brewer, P. J., Brown, R. J. C., Resner, K. V., Hill-Pearce, R. E., Worton, D. R., Allen, N. D. C., Blakley, K. C., Benucci, D., and Ellison, M. R.: Influence of Pressure on the Composition of Gaseous Reference Materials, *Analytical Chemistry*, 90, 3490–3495, <https://doi.org/10.1021/acs.analchem.7b05309>, <https://doi.org/10.1021/acs.analchem.7b05309>, pMID: 29381338, 2018.
- 20 Grill, A.: Diamond-like carbon: state of the art, *Diamond and Related Materials*, 8, 428 – 434, [https://doi.org/https://doi.org/10.1016/S0925-9635\(98\)00262-3](https://doi.org/https://doi.org/10.1016/S0925-9635(98)00262-3), <http://www.sciencedirect.com/science/article/pii/S0925963598002623>, 1999.
- Karion, A., Sweeney, C., Tans, P., and Newberger, T.: AirCore: An Innovative Atmospheric Sampling System, *Journal of Atmospheric and Oceanic Technology*, 27, 1839–1853, <https://doi.org/10.1175/2010JTECHA1448.1>, <https://doi.org/10.1175/2010JTECHA1448.1>, 2010.
- 25 Keeling, R. F., Manning, A. C., Paplawsky, W. J., and Cox, A. C.: On the long-term stability of reference gases for atmospheric O_2/N_2 and CO_2 measurements, *Tellus B*, 59, 3–14, <https://doi.org/10.1111/j.1600-0889.2006.00228.x>, <https://onlinelibrary.wiley.com/doi/abs/10.1111/j.1600-0889.2006.00228.x>, 2007.
- Langenfelds, R. L., van der Schoot, M. V., Francey, R. J., Steele, L. P., Schmidt, M., and Mukai, H.: Modification of air standard composition by diffusive and surface processes, *Journal of Geophysical Research: Atmospheres*, 110, <https://doi.org/10.1029/2004JD005482>, <https://agupubs.onlinelibrary.wiley.com/doi/abs/10.1029/2004JD005482>, 2005.
- 30 Langmuir, I.: The adsorption of gases on plane surfaces of glass, mica and platinum, *Journal of the American Chemical Society*, 40, 1361–1403, <https://doi.org/10.1021/ja02242a004>, <https://doi.org/10.1021/ja02242a004>, 1918.
- Lee, S., Kim, M. E., Oh, S. H., and Kim, J. S.: Determination of physical adsorption loss of primary standard gas mixtures in cylinders using cylinder-to-cylinder division, *Metrologia*, 54, L26, <http://stacks.iop.org/0026-1394/54/i=6/a=L26>, 2017.
- 35 Leuenberger, M. C., Schibig, M. F., and Nyfeler, P.: Gas adsorption and desorption effects on cylinders and their importance for long-term gas records, *Atmospheric Measurement Techniques*, 8, 5289–5299, <https://doi.org/10.5194/amt-8-5289-2015>, <https://www.atmos-meas-tech.net/8/5289/2015/>, 2015.
- Miller, W. R., Rhoderick, G. C., and Guenther, F. R.: Investigating Adsorption/Desorption of Carbon Dioxide in Aluminum Compressed Gas Cylinders, *Analytical Chemistry*, 87, 1957–1962, <https://doi.org/10.1021/ac504351b>, <https://doi.org/10.1021/ac504351b>, pMID: 25519817, 2015.
- Satar, E., Nyfeler, P., Bereiter, B., Pascale, C., Niederhauser, B., and Leuenberger, M.: Investigation of adsorption/desorption behavior of small volume cylinders and its relevance for atmospheric trace gas analysis, *Atmospheric Measurement Techniques Discussions*, 2019, 1–23, <https://doi.org/10.5194/amt-2019-197>, <https://www.atmos-meas-tech-discuss.net/amt-2019-197/>, 2019.

- Schibig, M. F., Kitzis, D., and Tans, P. P.: Experiments with CO₂-in-air reference gases in high-pressure aluminum cylinders, *Atmospheric Measurement Techniques*, 11, 5565–5586, <https://doi.org/10.5194/amt-11-5565-2018>, <https://www.atmos-meas-tech.net/11/5565/2018/>, 2018.
- Vahtinen, O., Metsälä, M., Persijn, S., Vainio, M., and Halonen, L.: Adsorption of ammonia on treated stainless steel and polymer surfaces, *Applied Physics B*, 115, 185–196, <https://doi.org/10.1007/s00340-013-5590-3>, <https://doi.org/10.1007/s00340-013-5590-3>, 2014.
- 350 WMO: 19th WMO/IAEA Meeting of Experts on Carbon Dioxide Concentration and Related Tracers Measurement Techniques (GGMT 2017), Dübendorf, Switzerland, 27-31 August 2017, Tech. Rep. GAW Report No. 242, World Meteorological Organization, Geneva, Switzerland, 2018.