

Interactive comment on “On Study of Two-Dimensional Lunar Scan for Advanced Technology Microwave Sounder Geometric Calibration” by Jun Zhou and Hu Yang

Anonymous Referee #1

Received and published: 3 June 2019

General Comments

The manuscript demonstrates how a raster scan of the Moon during a pitch-over maneuver can be used for calculating and correcting the boresight pointing error of a microwave sounder. This method is new and relevant for the check-out phase of future microwave sounders, because it makes a good case for pitch-over maneuvers. It was correctly applied by the authors and their approach is described in a convincing way.

Thank you very much for your valuable comments and suggestions. They are very helpful for us to improve the lunar scan algorithm and the quality of the manuscript. We’ve studied your comments thoroughly and been able to respond to each of them as below. The manuscript has been revised accordingly and the changes made to it have been marked by using latexdiff.

Specific Comments

I see two potential issues with the method the authors employ:

1. De Bartolomei’s comment is not completely addressed by Zhou’s answer. The Moon describes a full circle in the sky in about one month, i. e. it moved by about 0.1 degrees during the 14 minutes of the pitch maneuver. This is more than most of the misalignments the authors found. How long did it take to carry out the two-dimensional lunar scan observation? How can the authors be sure they calculated the variation of the cost function correctly, when the Moon moved during the observation?

Reply: Thank you for your question. During the pitch maneuver operation, about ± 20 scan lines are affected by the Moon and that is equivalent to about 2 minutes. It is true that both the Moon and the satellite moved during this 2-minute period. The algorithm developed in this paper has already taken that into consideration.

As stated in Section 3, the key to calculate the cost function is to determine lunar position vector pointing from satellite to the Moon in antenna pattern coordinate system. The algorithm begins with calculating the lunar vector in ECI through the Naval Observatory Vector Astrometry Software Package version F3.1 (NOVAS F3.1). This software package is an open source library for computing various commonly used

quantities in positional astronomy (Kaplan et al., 2011). It has been implemented in the Algorithm Development Library (ADL), a software program for the NOAA polar-orbiting satellite data process, to calculate the Sun and the Moon vectors in order to determine the zenith and azimuthal angles of the Sun and set the Lunar intrusion flag (<https://jpss.ssec.wisc.edu/>). The process is summarized as below.

For a specific observation time, the Earth position vector \overrightarrow{PEB} and the Moon position vector $\overrightarrow{POS_1}$ referred to the International Celestial Reference System (ICRS) are interpolated from their ephemeris provided by file "SS_EPHEM.TXT". ICRS is the barycentric coordinate system with its x-axis pointing to the dynamical equinox of J2000, z-axis being aligned with the Earth spin axis, and y-axis completing the right-hand coordinate system. The satellite position vector \overrightarrow{POG} in ECEF can be interpolated from GPS observations and then transformed into Geocentric Celestial Reference System (GCRS), i.e. ECI. GCRS is a geocentric coordinate system oriented according to the ICRS axes. Therefore, the transformation between ICRS and GCRS coordinates contains no rotation components (IERS Technical Note No. 36. https://www.iers.org/SharedDocs/Publikationen/EN/IERS/Publications/tn/TechnNote36/tn36_174.pdf?__blob=publicationFile&v=1). The satellite position vector is then transformed from GCRS to ICRS:

$$\overrightarrow{POB} = \overrightarrow{PEB} + \overrightarrow{POG}$$

The Lunar vector originating from the satellite to the Moon in GCRS can be calculated:

$$\overrightarrow{l_{ECI}} = \overrightarrow{POS_1} - \overrightarrow{POB}$$

The light-time correction, gravitational light bending, and aberration are also considered in the process.

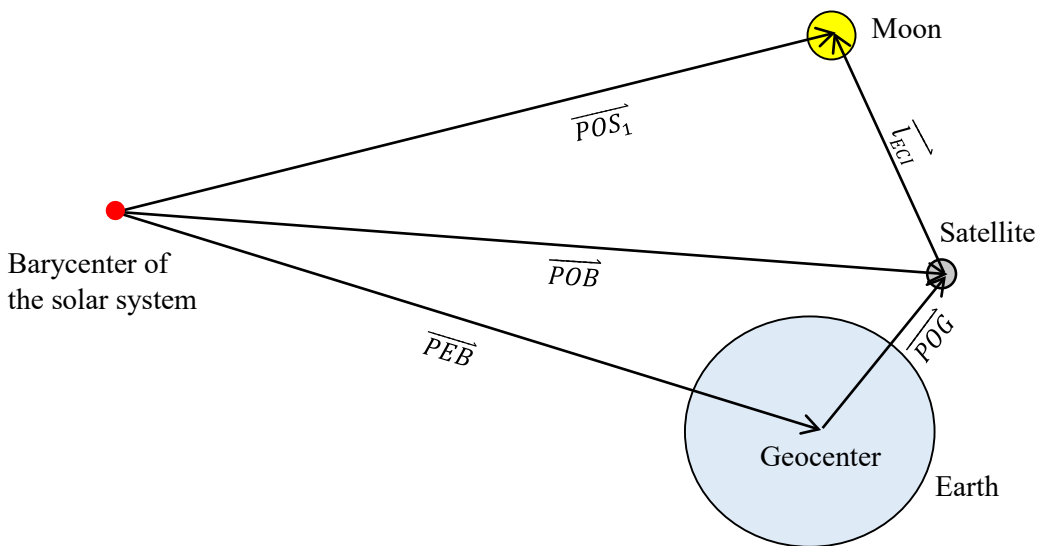


Fig.1 The geometry in the calculation of the lunar vector $\overrightarrow{l_{ECI}}$ by NOVAS package.

For the details, please refer to the subroutine PLACE in NOVAS package and ProSdrCmnGeo.cpp in ADL 5.3.

The lunar vector is then transformed from ECI to antenna pattern coordinate system ($l_{AntPattn}$) through equation (4)-(9) in the manuscript. The zenith and azimuthal angles of the Moon in the antenna pattern frame can be obtained by equation (10). The observations of the Moon projected in antenna pattern frame are plotted in Figure 4 (a), (c), (e). These observations are fitted by using 2D Gaussian function (Equation 14) and the deviation of the center (x_0, y_0) are used to calculate the cost function.

In brief, the algorithm doesn't require that the Moon and the satellite stay still during the lunar scan. From the Moon ephemeris, the GPS observations, and a series of rotation matrices in geolocation process, the position of the Moon where it appears in the antenna pattern frame at any observation time can be accurately determined.

As the way to calculate the Moon vector in ECI through NOVAS package has already been implemented in ADL, to keep the paper concise, the detailed description of the process is not added to the manuscript. Instead, the application of the package in ADL will be mentioned for reference. The following statements are added to Section 3.1:

"Given the ephemeris of the Moon and the satellite position vector provided by GPS, the lunar vector (l_{ECI}) originating from satellite to the Moon in ECI at any observation time can be calculated through the Naval Observatory Vector Astrometry Software Package version F3.1 (NOVAS F3.1). This software package is an open source library for computing various commonly used quantities in positional astronomy (Kaplan et al., 2011). It has been implemented in the Algorithm Development Library (ADL), a software program for processing the NOAA polar-orbiting satellite data, to calculate the Sun and Moon vectors in order to determine the zenith and azimuthal angles of the Sun and set the lunar intrusion flag (<https://jpss.ssec.wisc.edu/>)."

2. The authors give no explanation for the surprising fact that the boresight pointing error of channels 1 - 15 in pitch direction is three times as high as all other errors. Could it be that this error is an artefact caused by the time constant of the receiver V and K/Ka? If the devices react with a little delay to changes in the incoming flux, then they will give their maximum signal only after the Moon was at the origin of the antenna pattern frame.

Reply: Thank you for your comment. We've noticed this issue and pointed it out in the manuscript. The receiver response delay seems not like the major cause. ATMS is a cross-track scanning radiometer. The response delay of its receivers will not only lead to the maximum signal deviation in along-track direction but also in cross-track direction.

The aim of the lunar algorithm developed in this manuscript is to estimate the total static geolocation error contributed by all the possible static error sources, such as antenna beam misalignment and instrument mounting error caused by the on-orbit thermal dynamic change and shift during the launch. As for quantitatively identifying the bias caused by each internal interface alignment, though it is very helpful for finding out the instrument hardware deficiency, it is beyond the capability of this algorithm and beyond the scope of this study. To achieve that goal, other new methods need to be developed and we will work on that topic in our future study.

The following discussion has been added to the end of the first paragraph in section 5:

"As the coastline inflection point method, the lunar scan method estimates the boresight pointing error caused by all the possible instrument interfaces, such as the antenna beam misalignment and the instrument mounting error. To further identify the amount of bias each internal interface of the instrument could cause is beyond the capability of the lunar scan algorithm."

Technical Corrections:

Page 1, line 15: The authors only explain what the "S" in "SNPP" stands for - it is better to explain the whole abbreviation.

The full name for SNPP, "Suomi National Polar-orbiting Partnership" is added. Thank you for pointing out this.

Page 2, lines 17 and 19: I suggest to cite also R. Bonsignori, In-orbit verification of microwave humidity sounder spectral channels coregistration using the moon, Applied Remote Sensing, Volume 12, id. 025013 (2018).

Reply: Thank you very much for your suggestion. This article is very innovative and inspiring. We've cited it and added some more discussion about the application of Lunar intrusion to geolocation validation based on it. The 4th paragraph of Section 1 is rewritten as follows:

“However, the possibility of using the Moon for geolocation validation and correction of microwave sensors has not been widely discussed. Attempt has been made to utilize the lunar intrusion data to assess the boresight pointing error of Microwave Humidity Sounder (MHS) (Burgdorf et al., 2016,) and ATMS (Zhou et al., 2017), and the mutual alignment of channels of MHS (Bonsignori et al., 2018). The advantage of using lunar intrusion data to assess the beam misalignment is that it won’t interrupt the routine operations of the satellite. However, the disadvantage is only the along-track component of the misalignment can be obtained, since the Moon only passes four space view pixels sampled 1.1° apart along the cross-track direction (Bonsignori et al., 2018). Besides, for ATMS, it has already been proved that its boresight pointing error is scan-angle dependent (Zhou et al., 2019). The boresight deviation estimated at space views thus cannot represent that at the Earth views which is truly valuable for the on-orbit geolocation accuracy enhancement.”

Page 2, lines 19 and 20: I do not understand "the Moon only passes the along-track direction".

Reply: This statement has been revised to:

“However, the disadvantage is that only the along-track component of the misalignment can be obtained, since the Moon only passes four space view pixels sampled 1.1° apart along the cross-track direction (Bonsignori et al., 2018).”

Thank you!

Page 2, line 31: There is no Sect. 6.

Sorry for this typo. It is corrected as follows:

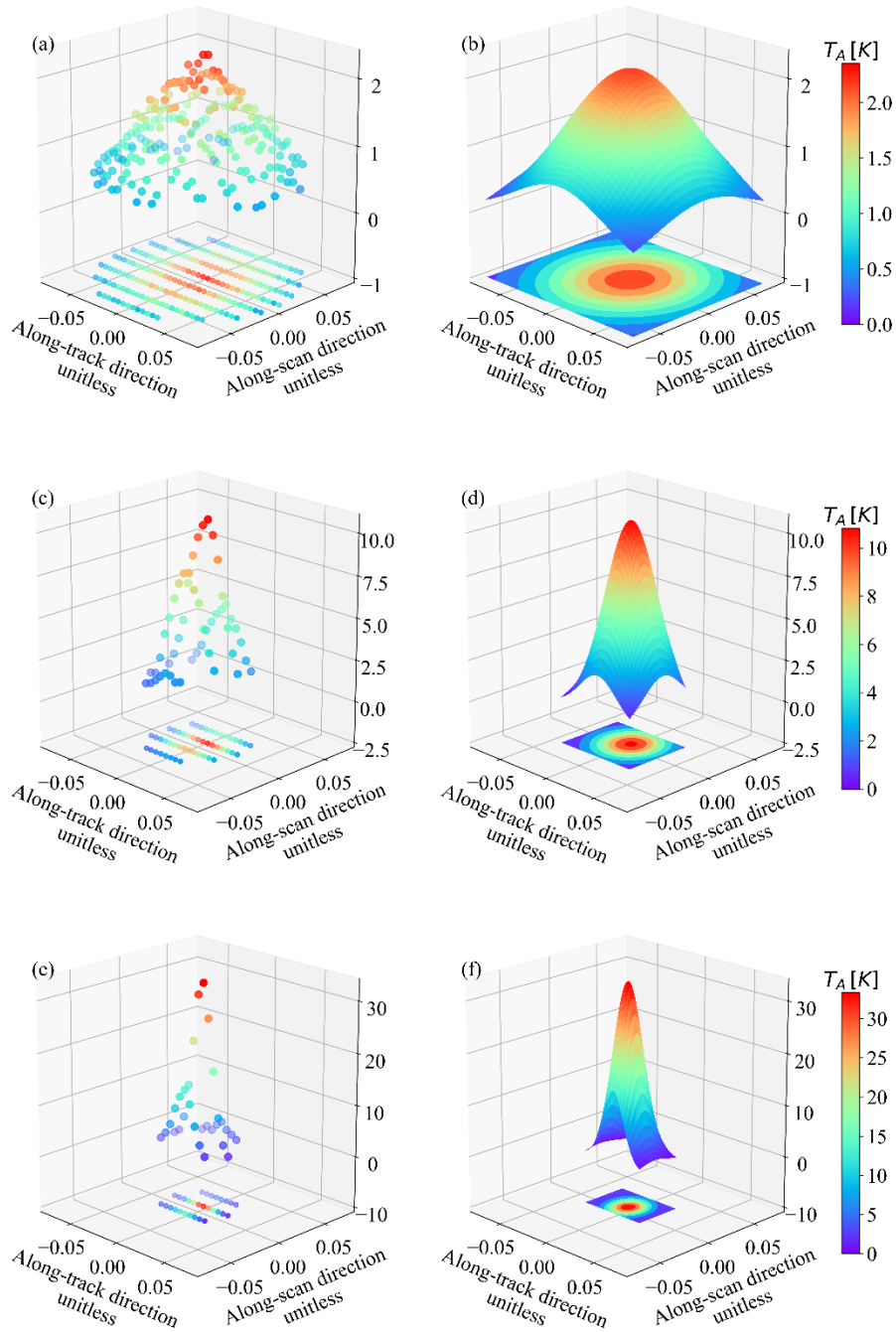
“This paper is organized as follows: Sect. 2 briefs ATMS instrument scan geometry and geolocation process, followed by presenting the lunar scan observations captured by ATMS during the pitch-over maneuver operation, Sect.3 describes the methodology, Sect. 4 presents the results and the validation with the coastline method developed in (Zhou et al., 2019), conclusions and discussions are in Sect. 5”

Page 7, line 16: What are "negative observations"?

Reply: The negative observations are caused by observation noise. As described in the last paragraph of Section 2, after calibration, correction for warm bias, earth side lobe contamination and reflector emission contamination, and removal of the cosmic background radiation, the observations only contain the lunar signal and random noise. For the pixel where the Moon is far away from beam center, the signal is so weak that its magnitude is exceeded by that of the noise. Under this circumstance, the observations may have negative values as showed in Figure 2 of the manuscript and these observations should be removed from the data set.

Figure 4: Units of axes?

Reply: The axes of Figure 4 are unitless. The labels of the axes are updated:



Page 9, line 15: "lower" instead of "higher"?

Yes. We have corrected it. Thank you!

Figure 5: The red X is hard to see.

The red X has been made bold. Thanks!

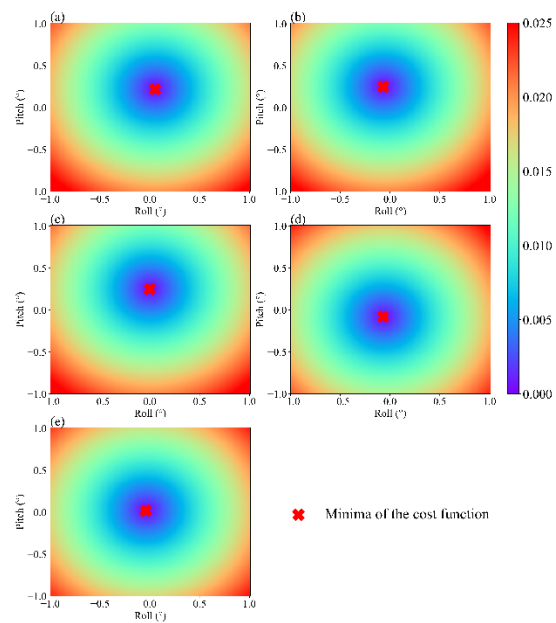
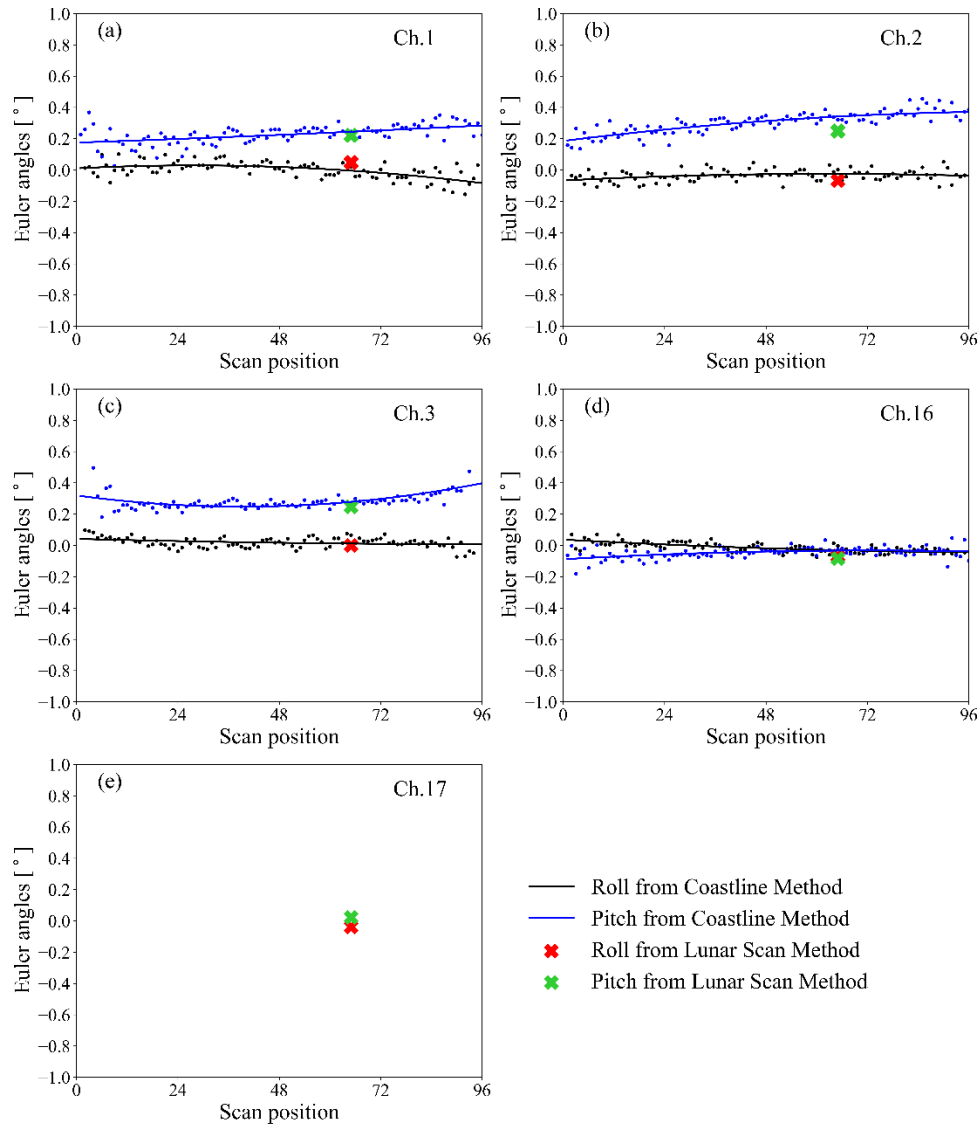


Figure 7: The colours of the two Xs are almost the same.

The color of the X for pitch is changed to green to enhance the contrast. Thanks!



Interactive comment on “On Study of Two-Dimensional Lunar Scan for Advanced Technology Microwave Sounder Geometric Calibration” by Jun Zhou and Hu Yang

Anonymous Referee #2

Received and published: 5 June 2019

General Comments

This paper gives a good overview of the application of using the moon as a calibration reference for determining geolocation, which is necessary for microwave radiometers and as noted by the authors is difficult for channels that do not see Earth’s surface. A detailed explanation of the method is given and results shown applying the method to ATMS. In addition to the comments already noted by the other reviewers, I have the following comments below.

Thank you very much for your valuable comments and suggestions. They are very helpful for us to improve the lunar scan algorithm and the quality of the manuscript. We’ve studied your comments thoroughly and been able to respond to each of them as below. The manuscript has been revised accordingly and the changes made to it have been marked by using latexdiff.

Specific Comments

The Figure 7 coastline Euler angles do not match those shown in Zhou et al. 2019 Figure 9. Can you please provide an explanation for this? Since Figure 7 provides validation for your lunar method and makes a direct reference to the Zhou et al. 2019 paper, I’m assuming Figure 9 in that paper is what you are referring to and these figures should then match unless you explain the discrepancies.

Reply: Yes, the Euler angles of ATMS presented in Figure 7 of this manuscript are different from those in Figure 9 of Zhou et al. 2019. This is because they are the retrieval results for ATMS onboard different satellites. This manuscript focuses on NOAA-20, whereas Zhou et al. 2019 focuses on SNPP. Though for the same instruments, due to the different installation process, on-orbit thermal dynamic change and shift during the launch the two satellites have gone through, the boresight pointing errors of them could be different.

Another comment in regards to Figure 7, is that it would be good to show a table listing the coastline Euler angles from your previous paper at FOV 66, compared with these numbers along with the difference to quantitatively show how the methods compare rather than just the figure.

Reply: Thank you for your suggestion. The retrieval results of the two methods and the absolute difference between them are presented in Table 1. This table is added to the revised manuscript right after Figure 7.

| Ch. | Lunar Scan Method | | Coastline Method | | Difference | |
|-----|-------------------|-----------|------------------|-----------|------------|-----------|
| | Roll (°) | Pitch (°) | Roll (°) | Pitch (°) | Roll (°) | Pitch (°) |
| 1 | 0.05 | 0.22 | -0.01 | 0.25 | 0.06 | 0.03 |
| 2 | -0.07 | 0.25 | -0.02 | 0.34 | 0.05 | 0.09 |
| 3 | 0.0 | 0.25 | 0.01 | 0.28 | 0.01 | 0.03 |
| 16 | -0.07 | -0.08 | -0.03 | -0.03 | 0.04 | 0.05 |
| 17 | -0.04 | 0.02 | None | None | None | None |

Table 1 Euler angles at FOV 66 retrieved from lunar scan method and coastline inflection point method as well as the absolute difference between them.

The following discussion is also added to the end of the third paragraph of Section 4:

“The numbers are also listed in Table 1.

The correlation between the Euler angles retrieved from these two independent methods is evident. Considering the RMSE of the fitting in coastline method is 0.05 ° on average, the difference between the two methods are close to the uncertainty of the coastline method except for the pitch of channel 2. The lunar scan algorithm can measure the on-orbit instrument boresight pointing error to subpixel accuracy. For the sounding channels where the coastline method is inapplicable, the lunar scan algorithm is still capable of delivering reasonable estimations of the geometric calibration errors. The retrieval error of the lunar scan method could be mainly caused by the instrument noise and the irregularities of the antenna pattern. With more lunar scan data accumulated in the future, the uncertainty of the method can be better estimated and reduced.”

The abstract and conclusion section are revised accordingly.

Technical Corrections

Page 2, line 7. Change "matric" to "metric".

What we are talking about here is the correction matrices that could be applied to operational geolocation process to enhance the on-orbit geolocation accuracy. The “matric” is corrected to “matrices”. Thanks!

Page 4, line 3. Change "showed" to "shown".

Corrected. Thanks!

Page 6, line 2. Change "locating" to "located".

[Corrected. Thanks!](#)

Page 6, line 11. Change "showed" to "shown".

[Corrected. Thanks!](#)

Page 8, line 6. Change "locating" to "located".

[Corrected. Thanks!](#)

Page 9, line 22. Change "corresponding" to "correspond".

[Corrected. Thanks!](#)

On Study of Two-Dimensional Lunar Scan for Advanced Technology Microwave Sounder Geometric Calibration

Jun Zhou¹ and Hu Yang¹

¹Earth System Science Interdisciplinary Center (ESSIC), University of Maryland, College Park, MD, 20740, USA

Correspondence: Hu Yang (huyang@umd.edu)

Abstract. The NOAA-20 satellite was successfully launched on 18 November 2017. It carries five key instruments including Advanced Technology Microwave Sounder (ATMS). On January 31, 2018, the spacecraft performed a pitch-over maneuver operation, during which the two-dimensional lunar scan observations were collected. In this study, a technique has been developed by which the ATMS on-orbit geometric calibration accuracy can be validated based on this lunar scan dataset. The fully calibrated data are fitted in the antenna pattern coordinate by Gaussian function. The deviation of the center of the fit function from the origin of the frame is taken to be the boresight pointing error of the instrument. This deviation is further transformed to the Euler angle roll and pitch defined in spacecraft coordinate system. The estimated ATMS boresight pointing Euler angle roll (pitch) is 0.05° (0.22°) at K-band, -0.07° (0.25°) at Ka-band, 0.02° (0.24°) at V-band, -0.07° (-0.08°) at W-band, and -0.04° (0.02°) at G-band. The results are validated by comparing with those derived from the coastline inflection point method. ~~It shows that the Euler angles derived from these two independent methods are consistent very well.~~, showing a good correlation. For the sounding channels where the coastline method is inapplicable, the lunar scan method is still capable of delivering reasonable estimations of their geometric calibration errors.

1 Introduction

On 18 November 2017, NOAA-20 satellite was launched to a polar orbit at 824 km above the Earth with an inclination angle of 98.7° , leading its predecessor Suomi ~~NPP~~ National Polar-orbiting Partnership (SNPP) by half an orbit. It inherits all the five key instruments from SNPP, that is, the Advanced Technology Microwave Sounder (ATMS), the Cross-track Infrared Sounder (CrIS), the Ozone Mapping and Profiler Suite, the Visible Infrared Imaging Radiometer Suite (VIIRS), and the Clouds and the Earth's Radiant Energy System (CERES). ATMS is a cross-track scanning microwave radiometer, providing total of 22 channels at microwave frequency ranging from 23 to 183 GHz for profiling the atmospheric temperature and moisture under all weather conditions. As part of the ATMS calibration and validation activities, the geolocation accuracy of ATMS data must be well characterized and documented during post-launch.

Most of the methods applied to assess the on-orbit geolocation error of microwave sensors rely on Earth targets, such as coastline inflection point method (CIP) (Hoffman et al., 1987; Smith et al., 2009; Gregorich and Aumann, 2003; Currey, 2002), image co-registration method (Wang et al., 2013, 2017; Wolfe et al., 2002, 2013; Khlopenkov et al., 2010), land-sea fraction method (LFM) (Bennartz, 1999), and ascending and descending observation comparison (Moradi et al., 2013). Recent

study (Zhou et al., 2019) disclosed that antenna beam misalignment is a major error source in ATMS total geolocation error budget. This static error term causes ATMS boresight pointing error to have a scan-angle dependent feature that should be corrected by Euler angle roll and pitch determined at each field-of-view (FOV) position. In that study, the coastline inflection point method has been improved by taking this into account. In addition, the coastlines along in-track and cross-track direction are carefully selected to assess the geolocation error in a more accurate way. By taking these measures, the retrieval error can be reduced below 10% and the scan-angle dependent feature of geolocation error is also largely mitigated. Based on the retrieved Euler angles, correction ~~matric~~-matrices can be built and applied into the operational geolocation process to enhance the on-orbit geolocation accuracy.

However, the application of these earth-target dependent methods has some limitations. Firstly, they can only be applied to the window channels of microwave radiometers as sounding channels cannot see Earth surface due to strong atmospheric absorption. Secondly, the existence of clouds will shade the Earth target, and thus the cloud contaminated pixels need to be screened out. Regarding the aforementioned issues, it is very necessary to develop an on-orbit boresight pointing accuracy evaluation algorithm which is completely independent of the Earth targets.

As a distinctive target with stable microwave emission in the cold cosmic background, the Moon has already been proved to be very useful in evaluating ATMS long-term calibration stability. In doing so, a physical model is developed to simulate the lunar emission at microwave frequencies (Yang et al., 2018). However, the possibility of using the Moon for geolocation validation and correction of microwave sensors has not been widely discussed. Attempt has been made to utilize the lunar intrusion data to assess the boresight pointing error of Microwave Humidity Sounder (MHS) (Burgdorf et al., 2016) and ATMS (Zhou et al., 2017).~~-But as the Moon only passes-, and the mutual alignment of channels of MHS (Bonsignori, 2018). The advantage of using lunar intrusion data to assess the beam misalignment is that it won't interrupt the routine operations of the satellite. However, the disadvantage is only~~ the along-track ~~direction-of-the component of the misalignment can be obtained, since the Moon only passes~~ four space view ~~positions-during lunar intrusion, the boresight pointing information the data can provide is very limited~~ pixels sampled 1.1° apart along the cross-track direction (Bonsignori, 2018). Besides, for ATMS, it has already been proved that its boresight pointing error is scan-angle dependent (Zhou et al., 2019). The beam misalignment estimated at space views thus cannot represent that at the Earth views which is truly valuable for the on-orbit geolocation accuracy enhancement.

On January 31, 2018, spacecraft pitch maneuver operation was carried out for NOAA-20 satellite, when lunar disk is in a full moon phase. The spacecraft was pitched completely 360° in about 14 minutes when satellite entered the Earth umbra region, thereby enabling all the instruments to acquire full scans of deep space. For ATMS, this maneuver establishes a baseline radiometer output from pure cold space. In the middle of pitch-over operation, a full-Moon disk radiation flux was captured at pitch angle around 179° and data was collected for all channels of ATMS. This two-dimensional lunar scan observation dataset provides a unique chance to study the ATMS radiometric and geometric calibration accuracy.

The objective of this study is to develop an algorithm to assess ATMS boresight pointing accuracy based on the two-dimensional lunar scan observations during pitch-over maneuver operation. This paper is organized as follows: Sect. 2 briefs ATMS instrument scan geometry and geolocation process, ~~Sect. 3 presents~~ followed by presenting the lunar scan observations

captured by ATMS during the pitch-over maneuver operation, Sect. 4.3 describes the methodology, Sect. 5.4 presents the results and the validation with the coastline method developed in (Zhou et al., 2019), conclusions and discussions are in Sect. 6.5.

2 ATMS geolocation algorithm

2.1 Scan geometry

During the process of pitch maneuver, the ATMS instrument performed a normal scan and data from the Earth view, deep space view(DSV) and internal calibration target (ICT) view were collected. For each ATMS scan cycle, the earth is viewed at 96 different scan angles, which are distributed symmetrically around the nadir direction. Such 96 ATMS field-of-view (FOV) samples are taken with each FOV sample representing the mid-point of a brief sampling interval of about 18 ms (JPSS ATMS SDR Calibration ATBD, 2013). With a scan rate of 61.6° per second, the angular sampling interval is 1.11° . Therefore, the angular range between the first and last (i.e., 96th) sample centroids is 105.45° (i.e., 52.725° relative to nadir). At each scan, while there are four warm load samples being taken at angle of 193.3° , 194.4° , 195.5° and 196.6° , four deep space view samples can also be collected around 83.4° , with each sample spaced 1.11 degrees apart (Yang and Weng, 2016). The Moon's disk was captured by ATMS at all channels during the pitch-over maneuver operation. The Moon appears between ATMS FOV 60 to 70 in about ± 20 scan lines around center peak pitch angle of 180° . With the DSV and ICT samples at each scan, the collected raw data counts of lunar scans were being able to transferred to lunar radiation flux by using the two-point calibration equation (Yang et al., 2016).

2.2 Geolocation algorithm

The goal of the ATMS geolocation algorithm is to map the beam pointing vector to geodetic longitude and latitude on the Earth ellipsoid for each FOV at each scan position. Specifically, the ATMS geolocation process includes an instrument geolocation module and a common geolocation module. In the instrument geolocation module, the sensor exit vector in the antenna coordinate system is built from scan angle ϑ :

$$\mathbf{b}_{Ant} = \begin{pmatrix} 0 \\ \sin \vartheta \\ \cos \vartheta \end{pmatrix} \quad (1)$$

\mathbf{b}_{Ant} is then transformed to the spacecraft coordinate system (SC) by applying the antenna beam misalignment correction matrix $ROT_{Inst/Ant}$ and the instrument mounting matrix $ROT_{SC/Inst}$. The antenna beam alignment with respect to the instrument cube was measured as Euler angles during the antenna subsystem verification test for each channel at three different scan positions (FOV-1, 48, and 96) and interpolated to the other positions. Instrument mounting error is defined as the misalignment between the instrument and the spacecraft coordinate systems. It is measured in terms of Euler angles during prelaunch ground test (JPSS ATMS Calibration Data Book, 2007). The corrected vector continues to go through the common geolocation

module which is shared among all the sensors onboard NOAA-20. In this module, the beam vector is first transformed from the spacecraft coordinate system to Earth-centered initial (ECI) coordinate system through the matrix $ROT_{ECI/SC}$ built from the quaternions of spacecraft attitude. The rotation matrix $ROT_{ECEF/ECI}$ is then applied to transform the beam vector from ECI to the Earth-centered Earth-fixed (ECEF) coordinate system by taking Earth orientation, including polar wander, procession, and nutation, into account. Finally, the geodetic latitude and longitude for each FOV can be derived from the intersection of the corrected sensor exit vector b_{ECEF} with WGS84 reference frame (Baker, 2011). The complete geolocation algorithm is ~~showed~~shown in the following equation:

$$\mathbf{b}_{ECEF} = ROT_{ECEF/ECI} ROT_{ECI/SC} ROT_{SC/Inst} ROT_{Inst/Ant} \mathbf{b}_{Ant} \quad (2)$$

The antenna beam pointing direction is differentiated into five bands: K- (channel 1), Ka- (channel 2), V- (channels 3–15), W- (channel 16), and G- (channels 17–22) bands. Each band has its own set of latitude and longitude at each beam position.

This study focuses on the evaluation and correction of the static error mainly originating from the antenna beam misalignment and the instrument mounting error which are the dominant part in the total geolocation error budget. Even though these static error terms have been measured in the prelaunch ground test and the corrections have been included in geolocation process, residual errors may still exist due to the on-orbit thermal dynamic change and shift during and after the launch.

When operating in normal mode, the spacecraft coordinate system is fixed to the spacecraft with its origin at the spacecraft center of mass, Z-axis (Z_{SC}) pointing towards nadir, X-axis (X_{SC}) pointing to the along-track direction, and Y-axis (Y_{SC}) completing the right-hand coordinate system. While during the pitch-over maneuver operation, the satellite was rotating around Y_{SC} , as is showed in Fig. 1. For ATMS, the scan is performed in y-z plane of the antenna coordinate system. As the antenna and instrument coordinates are aligned with the spacecraft frame, the pitch-over maneuver operation made the scan plane rotate around Y_{SC} with the satellite. When the scan plane rotated towards the Moon, a full lunar disk radiation flux was captured and the data was collected for all channels of ATMS.

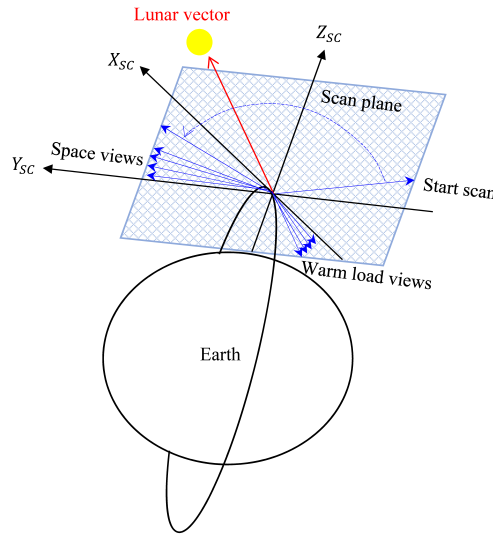


Figure 1. ATMS scan geometry when operating in pitch-over mode. X_{SC} , Y_{SC} , and Z_{SC} are the axes of spacecraft coordinate system and its Y-Z plane is the scan plane. The lunar vector entered the scan plane as the spacecraft rotated about 180° pitch angle around Y_{SC} .

The observed raw data counts were transferred to lunar radiation flux by using the calibration equation with the warm load brightness temperature and cold space brightness temperature being further corrected for warm bias, earth side lobe contamination, as well as the reflector emission contamination (Yang et al., 2016). To derive the pure lunar signal, the cosmic background radiation is subtracted from the calibrated brightness temperature. Fig. 2 shows the observed lunar brightness temperature for channel 1, 3 and 17. Note that in Fig. 2, since the beam width is different for different channel, the lunar disk extended over more scan lines and FOVs for lower frequency channels (channel 1) than higher frequency channels (Channel 3 with 2.2° and channel 17 with 1.1°).

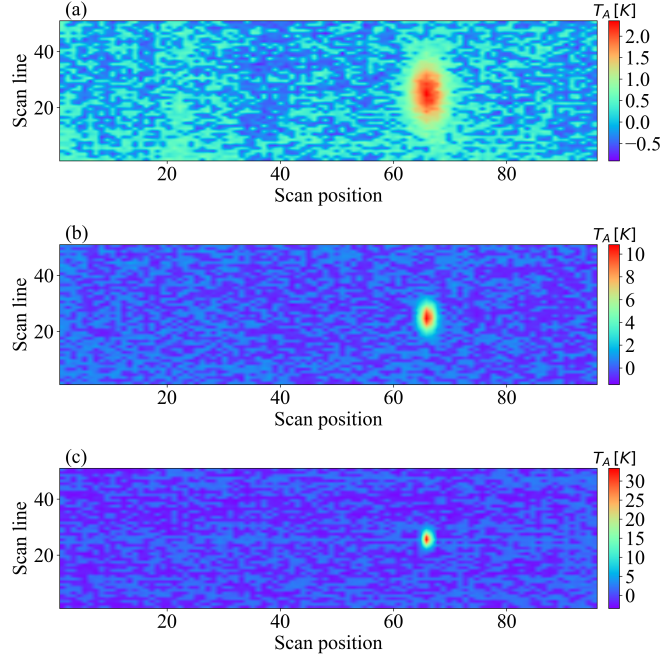


Figure 2. Calibrated lunar antenna temperature T_A for channel 1(a), 3(b), and 17(c).

3 Methodology

The Lunar scan data can be expressed as the integration of antenna response weighted Moon radiance over solid angle Ω_{moon} and sampling time τ :

$$T_A = \frac{1}{\tau \cdot \Omega_A} \int_{-\frac{\tau}{2}}^{\frac{\tau}{2}} \iint_{\Omega_{moon}} T b_{moon}^{disk} \cdot G_{ant}(\theta, \varphi) \cdot \sin \theta d\theta d\varphi \quad (3)$$

where Ω_A is a beam solid angle, $T b_{moon}^{disk}$ is the brightness temperature of the Moon disk, and $G_{ant}(\theta, \varphi)$ is ATMS antenna pattern. $T b_{moon}^{disk}$ depends on the effective surface emissivity and the phase angle of the Moon. As the change of the phase angle during the pitch-over operation is less than 0.001° , $T b_{moon}^{disk}$ can be regarded as a constant for a certain channel and taken out of the integration. Therefore, the lunar observations can be modeled as the scaled integration of antenna response. For ATMS, the antenna response has a Gaussian-like distribution with its peak ~~located~~located at the center of the antenna pattern frame. Accordingly, the lunar scan data should appear the same shape in that frame except that the spread of the Gaussian function is widened by the integration over solid angle and sampling time. More details about the lunar modeling can be found in (Yang et al., 2018).

In this section, the method to project lunar observations into the antenna pattern frame is presented, followed by the development of the algorithm to derive ATMS boresight pointing error from the projected lunar scan data.

3.1 Determination of lunar position in antenna pattern coordinates

Antenna pattern coordinate system, where the antenna response is measured in the pre-launch ground test, is defined with its X-axis ($X_{AntPattn}$) pointing to the along-track direction, Z-axis ($Z_{AntPattn}$) being aligned with the beam vector, and Y-axis ($Y_{AntPattn}$) completing the right-hand coordinate system. The zenith and azimuthal angles of the Moon vector in this frame, ~~showed~~ shown as the (θ, φ) in black in Fig. 3, can be determined through the following process.

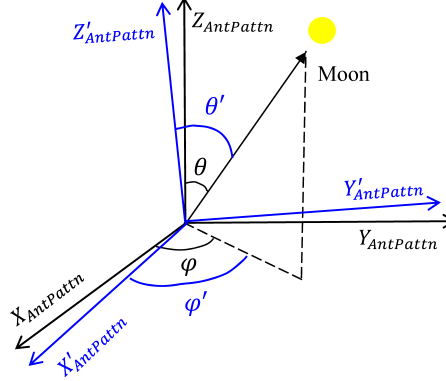


Figure 3. Schematic illustration of the Moon vector in antenna pattern frame. $(X'_{AntPattn}, Y'_{AntPattn}, Z'_{AntPattn})$ are the real axes of the frame and $(X_{AntPattn}, Y_{AntPattn}, Z_{AntPattn})$ are the nominal axes with beam boresight pointing error. (θ', φ') and (θ, φ) are the zenith and azimuthal angles of the Moon vector determined in the real and nominal frames respectively.

Given the ephemeris of the Moon ~~, the Lunar vector in ECI and the satellite position vector provided by GPS, the lunar vector~~ (l_{ECI}) originating from satellite to the Moon in ECI at any observation time can be calculated through the Naval Observatory Vector Astrometry Software Package version F3.1 (NOVAS F3.1). This software package is an open source library for computing various commonly used quantities in positional astronomy (Kaplan et al., 2011). It has been implemented in the Algorithm Development Library (ADL), a software program for NOAA polar-orbiting satellite data process, to calculate the Sun and Moon vectors in order to determine the zenith and azimuthal angles of the Sun and set the lunar intrusion flag (<https://jpss.ssec.wisc.edu/>). l_{ECI} is then transformed back to antenna coordinate system by applying the transpose of the rotation matrices in operational geolocation process Eq. (2):

$$15 \quad l_{Ant} = ROT_{Inst/Ant}^T ROT_{SC/Inst}^T ROT_{ECI/SC}^T l_{ECI} \quad (4)$$

To further transform l_{Ant} into antenna pattern coordinate system, the rotation matrix $ROT_{AntPattn/Ant}$ needs to be created. This can be done by defining the three axes of antenna pattern coordinate in antenna coordinate system. According to its definition, $X_{AntPattn}$ is aligned with X_{Ant} , $Z_{AntPattn}$ is aligned with b_{Ant} , and $Y_{AntPattn}$ is the cross product of $Z_{AntPattn}$

and $X_{AntPattn}$. Therefore, the rotation matrix $ROT_{AntPattn/Ant}$ can be built as below:

$$X_{AntPattn} = \begin{pmatrix} 1 \\ 0 \\ 0 \end{pmatrix} \quad (5)$$

$$Z_{AntPattn} = b_{Ant} = \begin{pmatrix} 0 \\ \sin \vartheta \\ \cos \vartheta \end{pmatrix} \quad (6)$$

$$5 \quad Y_{AntPattn} = Z_{AntPattn} \times X_{AntPattn} \quad (7)$$

$$ROT_{AntPattn/Ant} = \begin{pmatrix} X_{AntPattn} & Y_{AntPattn} & Z_{AntPattn} \end{pmatrix}^T \quad (8)$$

Then the lunar vector in antenna pattern coordinate system can be derived:

$$l_{AntPattn} = ROT_{AntPattn/Ant} l_{Ant} \quad (9)$$

The zenith and azimuthal angle of the lunar vector in polar coordinate system of antenna pattern can be obtained:

$$10 \quad \theta = \arctan \left(\frac{\sqrt{l_{AntPattn}[1]^2 + l_{AntPattn}[2]^2}}{l_{AntPattn}[3]} \right)$$

$$\varphi = \arctan \left(\frac{l_{AntPattn}[2]}{l_{AntPattn}[1]} \right) \quad (10)$$

To present the Gaussian-like distribution of observations, the data are projected in Cartesian coordinate:

$$x = \sin \theta \cos \varphi$$

$$y = \sin \theta \sin \varphi \quad (11)$$

15 The observations of channel 1, 3, and 17 projected in antenna pattern coordinate are plotted on Fig. 4 (a), (c), and (e). To extract the valid lunar signal, the observations with the zenith angle larger than a certain value where the negative observations appear are excluded from the dataset. Because of the difference in beam width, the FOV positions that can detect the Moon radiance range from FOV 63 - 70 for channel 1-2, FOV 65 - 68 for channel 3-16, and FOV 65 - 67 for channel 17 -22. The FOV 66 is the scan position where the center of the Moon appears closest to the center of FOV.

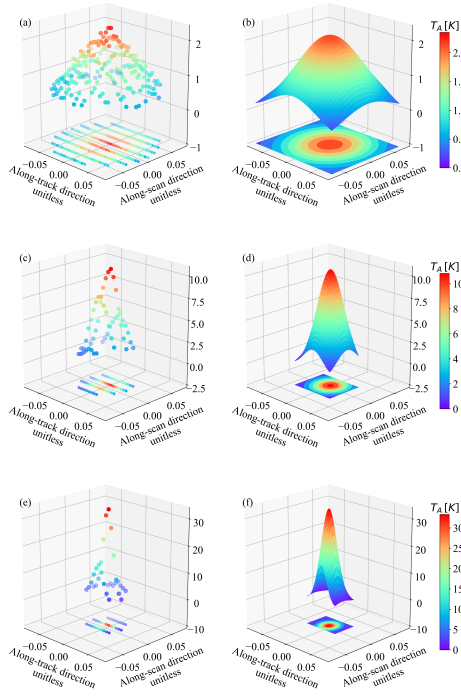


Figure 4. Raw observations (the first column) and their fitted two-dimensional Gaussian function (the second column) of channel 1 (a-b), 3 (c-d), and 17 (e-f) in antenna pattern coordinate system.

3.2 Development of the evaluation algorithm

As described in Sect. 3.1, the key issue in determining the position of the Moon in antenna pattern is to correctly establish the antenna pattern frame based on the pointing direction of beam vector. If the boresight pointing error exists, as the case showed in Fig. 3, the beam misalignment will make the actual antenna pattern coordinate $(X'_{AntPattn}, Y'_{AntPattn}, Z'_{AntPattn})$ deviate from its nominal position $(X_{AntPattn}, Y_{AntPattn}, Z_{AntPattn})$. The deviation of antenna pattern frame leads to errors in the determined zenith and azimuthal angles of the Moon vector. Through Eq. (4-11), the Lunar vector is projected into the nominal antenna pattern frame, not the actual one where the observations are carried out. Consequently, the maxima of the observations in the nominal antenna pattern frame will shift from the coordinate origin.

- 10 The basic idea of using Lunar scan data to identify the ATMS geometric calibration error is to correct the nominal antenna pattern frame until it is perfectly aligned with the actual one, under which condition the maxima of the observations would be ~~located~~ located at the origin of the antenna pattern frame. The correction can be done by correcting each axis of the antenna pattern frame with the Euler angles counteracting the geometric calibration error. To maintain the consistency with the coastline method (Zhou et al., 2019), in which the boresight pointing error is defined in terms of Euler angle roll and pitch at each FOV
- 15 in spacecraft coordinate system, the axes of antenna pattern coordinate system need to be transformed from antenna coordinate system to spacecraft coordinate system by going through the rotation matrices in Eq. (2), corrected, and then transformed back

to the antenna coordinate system:

$$X'_{AntPattn} = ROT_{Inst/Ant}^T ROT_{SC/Inst}^T ROT_{corr} ROT_{SC/Inst} ROT_{Inst/Ant} X_{AntPattn} \quad (12)$$

where ROT_{corr} is the correction matrix. Since the FOV 66 is the scan position where the lunar vector is closest to the FOV center during the pitch-over maneuver operation, the beam pointing error of that specific FOV is supposed to have the strongest contribution to the shift of the observation peak in antenna pattern frame. Therefore, the elements of ROT_{corr} are defined by Euler angle roll ξ_r and pitch ξ_p in spacecraft coordinate system at the 66th scan position:

$$ROT_{corr} = ROT_r(\xi_r) \cdot ROT_p(\xi_p)$$

$$ROT_r(\xi_r) = \begin{pmatrix} 1 & 0 & 0 \\ 0 & \cos \xi_r & -\sin \xi_r \\ 0 & \sin \xi_r & \cos \xi_r \end{pmatrix}$$

$$ROT_p(\xi_p) = \begin{pmatrix} \cos \xi_p & 0 & \sin \xi_p \\ 0 & 1 & 0 \\ -\sin \xi_p & 0 & \cos \xi_p \end{pmatrix} \quad (13)$$

The same correction process is applied to $Z_{AntPattn}$. After the vectors of the x- and z-axis of antenna pattern coordinate system in antenna frame are corrected, the rotation matrix can be updated through Eq. (7-8) and the lunar vector in antenna pattern frame can be relocated through Eq. (9-11). Since the observations are made at discrete points, the Moon may not pass the center of the antenna pattern during the pitch-over maneuver operation. To determine the position of the lunar vector in the antenna pattern frame where the Moon reaches the center of antenna pattern, the observations are fitted by the two-dimensional Gaussian function:

$$f(x, y) = A \cdot \exp \left(- \left(\frac{(x - x_0)^2}{2\sigma_x^2} + \frac{(y - y_0)^2}{2\sigma_y^2} \right) \right) \quad (14)$$

where A is the amplitude, (σ_x, σ_y) are the Gaussian RMS width along x-, and y-axis direction, and (x_0, y_0) is the position of the center of the Gaussian function. The cost function can be defined as:

$$\varepsilon = \sqrt{x_0^2 + y_0^2} \quad (15)$$

The fitting can also help to reduce the observation noise, especially for channel 1 and 2 whose signal-to-noise ratio are **higher** lower than other channels. The fitting results are presented in Fig. 4 (b), (d), and (f).

The steps of the evaluation algorithm are summarized as below. Given an initial value of Euler angles (ξ_r, ξ_p) , the axes of the nominal antenna pattern frame (Eq. (5-6)) are corrected through Eq. (12-13). Then the rotation matrix $ROT_{AntPattn/Ant}$ defined in Eq. (8) is updated, through which the Moon in antenna pattern frame is relocated by applying Eq. (9-11). The observations projected in antenna pattern frame are fitted by two-dimensional Gaussian function (Eq. (14)) and the center of the function is used to calculate the cost function (Eq. (15)). The Euler angles are adjusted and the above process is repeated until the cost function reaches its minima. The Euler angles that **corresponding** correspond to the minima of the cost function are the estimated boresight pointing error.

4 Results and validation

The evaluation algorithm developed in Sect. 3 is applied to ATMS lunar scan observations obtained during the NOAA-20 pitch-over maneuver operation. Fig. 5 shows the variation of the cost function with the Euler angle roll and pitch being tuned from -1° to 1° with 0.01° interval. For each channel, a unique minimum value of the cost function is found and the pair of roll and pitch angle at that point is taken to be the boresight pointing error for that channel.

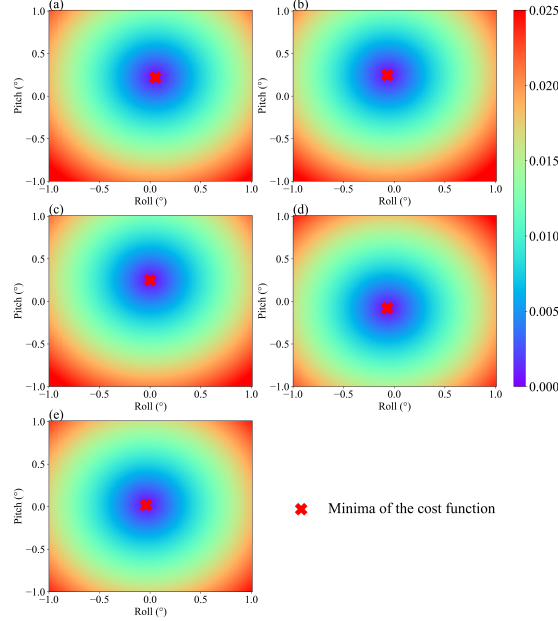


Figure 5. Variation of cost function with respect to the shifting of the Euler angle roll and pitch for ATMS channel 1 (a), 2 (b), 3 (c), 16 (d), and 17 (e). The red crosses represent the points where the minima of the cost functions are found.

The estimated boresight pointing error for ATMS total 22 channels are presented in Fig. 6. It is noticeable that channel 1 - 15 have large boresight pointing error in pitch direction that is up to 0.25° while the error in roll direction of these channels and the error in roll and pitch directions of other channels are below 0.08° . The retrieved Euler angles of the channels in each band are quite stable, which coincides with the fact that the channels in each band share the same geolocation position. The Euler angle roll (pitch) averaged over the channels of each band is 0.05° (0.22°) at K-band, -0.07° (0.25°) at Ka-band, 0.02° (0.24°) at V-band, -0.07° (-0.08°) at W-band, and -0.04° (0.02°) at G-band.

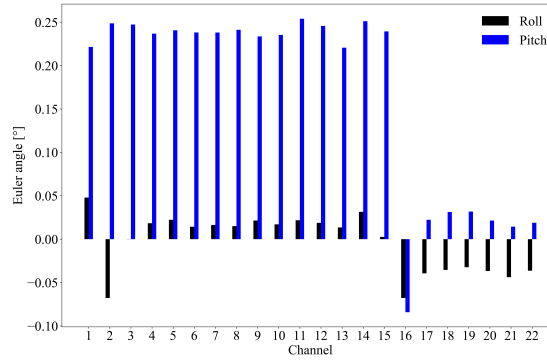


Figure 6. Retrieved Euler angle roll (black bar), and pitch (blue bar) for ATMS channel 1-22.

To independently validate the boresight pointing error estimated from the Lunar scan observations, the retrieved Euler angle roll and pitch at FOV 66 are compared with those retrieved from the coastline inflection point method (Zhou et al., 2019). The results are presented in Fig. 7. Note that in coastline method, the Euler angle roll and pitch at each FOV position is retrieved from the samples around that specific position. To reduce the uncertainty, the retrieved roll and pitch of each channel is then fitted by a quadratic polynomial function and the Euler angle at each FOV on the fitting line is taken as the final solution, which is showed as the black and blue lines on the panels of Fig. 7. The Euler angle roll and pitch at FOV 66 derived from the lunar observations are plotted as the red and magenta-green crosses on the same panel. It can be seen that The numbers are also listed in Table 1.

The correlation between the Euler angles retrieved from these two independent methods are consistent with each other very well. The difference between them are within is evident. Considering the RMSE of the fitting in coastline method is 0.05° on average, the difference between the two methods are close to the uncertainty of the retrieval results of coastline method except for the pitch of channel 2. The lunar scan algorithm can measure the on-orbit instrument boresight pointing error to subpixel accuracy. For the sounding channels where the coastline inflection point method is inapplicable, the lunar scan method algorithm is still capable of delivering reasonable estimations of the geometric calibration errors. The retrieval error of the lunar scan method could be mainly caused by the instrument noise and the irregularities of the antenna pattern. With more lunar scan data accumulated in the future, the uncertainty of the method can be better estimated and reduced.

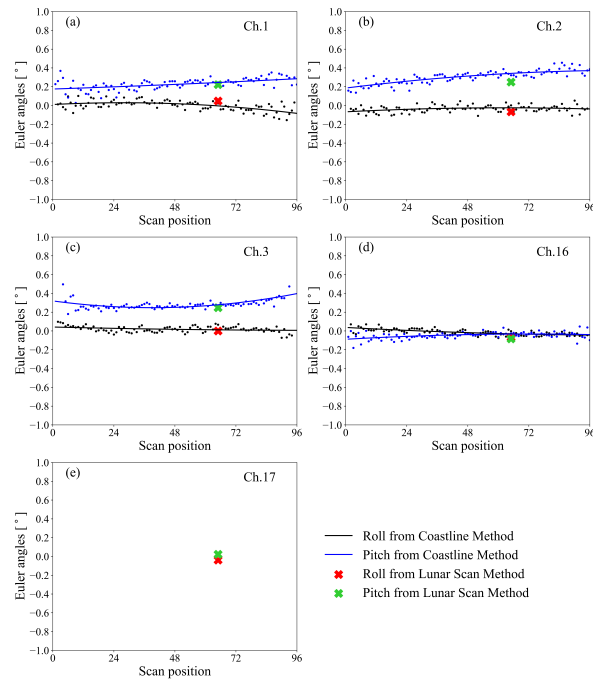


Figure 7. Comparison between the Euler angles retrieved from coastline inflection point method and those from lunar scan method.

| Ch. | Lunar Scan Method | | Coastline Method | | Difference | |
|-----|-------------------|----------|------------------|----------|------------|----------|
| | Roll(°) | Pitch(°) | Roll(°) | Pitch(°) | Roll(°) | Pitch(°) |
| 1 | 0.05 | 0.22 | -0.01 | 0.25 | 0.06 | 0.03 |
| 2 | -0.07 | 0.25 | -0.02 | 0.34 | 0.05 | 0.09 |
| 3 | 0.0 | 0.25 | 0.01 | 0.28 | 0.01 | 0.03 |
| 16 | -0.07 | -0.08 | -0.03 | -0.03 | 0.04 | 0.05 |
| 17 | -0.04 | 0.02 | None | None | None | None |

Table 1. Euler angles at FOV 66 retrieved from lunar scan method and coastline inflection point method as well as the absolute difference between them.

5 Conclusions and discussions

In this study, a unique two-dimensional lunar scan dataset from Advanced Technology Microwave Sounder (ATMS) onboard NOAA-20 was studied and an algorithm was developed for validating ATMS pointing accuracy based on this dataset. Beam

pointing errors were derived in terms of Euler angle roll and pitch defined in spacecraft coordinate system, so that they can be directly compared with those retrieved by the coastline method proposed in our previous study. Existing research showed that ATMS boresight pointing error has scan-angle dependent feature due to the dominant role played by antenna beam misalignment in total error budget. As the Moon signal has the most significant impact on the 66th FOV during the pitch-over maneuver, the boresight pointing error assessed by this lunar scan dataset is regarded as the error at that specific scan position. Retrieving results show that NOAA-20 ATMS beam misalignment in terms of Euler angle roll (pitch) at the 66th FOV is estimated to be 0.05° (0.22°) at K-band, -0.07° (0.25°) at Ka-band, 0.02° (0.24°) at V-band, -0.07° (-0.08°) at W-band, and -0.04° (0.02°) at G-band. These results are ~~consistent with those derived~~ validated by coastline method, showing a good correlation. For the sounding channels where the coastline method is inapplicable, the lunar scan method is still capable of delivering reasonable estimations of the geometric calibration errors. The uncertainty of the lunar scan method could be mainly caused by the instrument noise and the irregularities of the antenna pattern. More lunar scan data are needed to better assess and reduce the retrieval uncertainty. As the coastline inflection point method, the lunar scan method estimates the boresight pointing error caused by all the possible instrument interfaces, such as the antenna beam misalignment and the instrument mounting error. To further identify the amount of bias each internal interface of the instrument could cause is beyond the capability of the lunar scan algorithm.

The advantage of this method is that it can be used as a unique method to assess the instrument beam pointing error during the post-launch instrument early check-up phase. It can also serve as a supplement for the earth-target based technique to evaluate the geometric calibration accuracy of sounding channels. For window channels, it can provide a cross-check of the methods relying on ground reference.

For NOAA-20 operating in an afternoon orbit, the pitch-maneuver brings the Moon into ATMS scan plane at a specific scan angle and thus only the beam pointing error at that specific FOV position can be derived through the algorithm developed in this study. If the roll-over maneuver is carefully designed and carried out at appropriate times, allowing the Moon to enter the scan plane at different scan angles, the pointing error at other FOVs can be evaluated as well.

Data availability. The NOAA-20 ATMS data during pitch-over maneuver are available from NOAA CLASS, <https://www.bou.class.noaa.gov/saa/products/welcome;jsessionid=D424F0127A4B97AD2AFF957AA2B15687>. Some of them are displayed on STAR ICVS, <https://www.star.nesdis.noaa.gov/icvs/index.php>. The Lunar vector is calculated through the Naval Observatory Vector Astrometry Software (NOVAS) Package, which is an open source library provided by <https://aa.usno.navy.mil/software/novas/novas;info.php>. The instrument beam vector and rotation matrices of ATMS geolocation process are output from Algorithm Development Library (ADL) software, <https://jpss.ssec.wisc.edu/>.

Author contributions. H. Yang started and guided this investigation. J. Zhou developed the retrieval algorithm. H. Yang and J. Zhou prepared the manuscript.

Competing interests. The authors declare that they have no conflict of interest.

References

- Baker, N.: Joint Polar Satellite System (JPSS) VIIRS Geolocation Algorithm Theoretical Basis Document (ATBD), document, Goddard Space Flight Center, Greenbelt, MD, USA, Jul. 2011.
- Bennartz, R.: On the use of SSM/I measurements in coastal regions, *J. Atmos. Oceanic Technol.* 16, 417–432, 1999.
- Burgdorf, M., Buehler, S. A., Lang, T., Michel, S., and Hans, I.: The Moon as a photometric calibration standard for microwave sensors, *Atmos. Meas. Tech.*, 9, 3467–3475, <https://doi.org/10.5194/amt-9-3467-2016>, 2016.
- Bonsignori, R.: [In-orbit verification of microwave humidity sounder spectral channels coregistration using the moon, *Applied Remote Sensing*, 12, id. 025013, 2018.](#)
- Currey, J. C.: Geolocation assessment algorithm for CALIPSO using coastline detection, Nat. Aeronaut. Space Admin. (NASA) Langley Res. Center, Hampton, VA, USA, Tech. Rep. NASA/TP-2002-211956, pp. 1–27, 2002.
- Gregorich, D. T. and Aumann, H. H.: Verification of AIRS boresight accuracy using coastline detection, *IEEE Trans. Geosci. Remote Sens.* 41(2), 298–302, 2003.
- Hoffman, L. H., Weaver, W. L., and Kibler, J. F: Calculation and accuracy of ERBE scanner measurement locations, NASA Langley Research Center, Hampton, VI, USA, Tech. Rep. NASA/TP-2670, pp.1–34, 1987.
- Kaplan, G., Bartlett, J., Monet, A., Bangert, J., and Puatua, W.: User’s Guide to NOVAS Version F3.1, Naval Observatory Vector Astrometry, Fortran Edition, U.S. Naval Observatory, Mar. 2011.
- Khlopenkov, K. V., Trishchenko, A. P., and Luo, Y.: Achieving subpixel georeferencing accuracy in the Canadian AVHRR processing system, *IEEE Trans. Geosci. Remote Sens.* 48(4), 2150–2161, 2010.
- Moradi, I., Meng, H., Ferraro, R. R. and Bilanow S.: Correcting geolocation errors for microwave instruments aboard NOAA satellites, *IEEE Trans. Geosci. Remote Sens.* 51(6), 3625–3637, 2013.
- Smith, G. L., Priestley, K. J., Hess, P. C., Currey C., and Spence, P.: Validation of geolocation of measurements of the Clouds and the Earth’s Radiant Energy System (CERES) scanning radiometers aboard three spacecraft, *J. Atmos. Ocean. Technol.*, 26, 2379–2391, 2009.
- Wang L., Tremblay, D. A., Han, Y., Esplin M., Hagan, D. E., Predina, J., Suwinski, L., Jin, X., and Chen, Y.: Geolocation assessment for CrIS sensor data records, *J. Geophys. Res. Atmos.*, 118(12), 690–12,704, 2013.
- Wang, L., Zhang, B., Tremblay, D., and Han, Y.: Improved scheme for Cross-track Infrared Sounder geolocation assessment and optimization, *J. Geophys. Res. Atmos.*, 122, 519–536, [doi:10.1002/2016JD025812](https://doi.org/10.1002/2016JD025812), 2017.
- Wolfe, R. E., Nishihama, M., Fleig, A. J., Kuyper, J. A., Roy, D. P., Storey, J. C., and Patt, F. S.: Achieving sub-pixel geolocation accuracy in support of MODIS land science, *Remote Sens. Environ.*, 83(1/2), 31–49, 2002.
- Wolfe, R. E., Lin, G., Nishihama, M., Tewari, K. P., Tilton, J. C., and Isaacman, A. R.: Suomi NPP VIIRS prelaunch and on-orbit geometric calibration and characterization, *J. Geophys. Res. Atmos.*, 118(20), 11508–11521, 2013.
- Yang, H. and Weng, F.: Corrections for on-orbit ATMS lunar contamination, *IEEE Trans. Geosci. Remote Sens.*, 54(4), 1918–1924, 2016.
- Yang, H., Weng, F., and Anderson, K.: Estimation of ATMS antenna emission from cold space observations, *IEEE Trans. Geosci. Remote Sens.*, 54(8), 4479–4487, 2016.
- Yang, H., Zhou, J., Weng, F., Sun, N., Anderson, K., Liu, Q., Kim, E.: Developing Vicarious Calibration for Microwave Sounding Instruments Using Lunar Radiation, *IEEE Trans. Geosci. Remote Sens.* 56(11), 6723 – 6733, 2018.
- Zhou, J., Yang, H., and Weng, F.: Validate and improve ATMS geolocation accuracy by using lunar observations, *IEEE IGARSS 2017*, Fort Worth, Texas, USA, 2017.

- Zhou, J. , Yang, H., and Anderson, K.: SNPP ATMS On-Orbit Geolocation Error Evaluation and Correction Algorithm, IEEE Trans. Geosci. Remote Sens. 99(6), 1–11, 2019.
- 5 Joint Polar Satellite System (JPSS) Advanced Technology Microwave Sounder (ATMS) SDR Calibration Algorithm Theoretical Algorithm Theoretical Basis Document (ATBD), Center for Satellite Applications and Research, College Park, Maryland, December 18, 2013.
- Joint Polar Satellite System (JPSS) Advanced Technology Microwave Sounder (ATMS) Calibration Data Book, document ATMS PFM P/N
- 315 1362460-1 S/N 302, Northrop Grumman, Azusa, CA, USA, Mar. 2007.