

## Response to the reviewer's comments:

The manuscript describes a new approach to retrieve in-cloud water vapor supersaturations based on radar and lidar measurements. The approach is applied to data of the ACE-ENA field campaign, including a comparison with in-situ measurements and an assessment of uncertainties. The manuscript is overall interesting, well-written, and I support its publication in Atmospheric Measurement Techniques once my minor concerns are addressed.

We would like to thank the reviewer for careful reading of the manuscript and helpful comments.

P. 1, l. 13: The supersaturation in clouds does not only depend on the updraft velocity of a cloud (to which “calm” and “energetic” most likely refer to) but also on the cloud microphysical composition (see, e.g., Grabowski and Wang (2013, doi: 10.1146/annurev-fluid-011212-140750)).

We modify the text based on the reviewer's comment:

~~“Supersaturation ( $s$ ), varying from less than 0.1% in calm stratiform clouds to larger than 1% in energetic convective clouds, plays a crucial role in cloud droplet formation and growth (Lamb and Verlinde, 2011). Supersaturation, which plays a crucial role in cloud droplet formation and growth, depends on air vertical velocity and can also be adjusted by cloud microphysical composition (Lamb and Verlinde, 2011; Grabowski and Wang, 2013).”~~

P. 2, ll. 1 – 2: The adverb “simultaneously” describes a process happening at the same time. It is, however, also important that the measurements are co-located in physical space.

Agreed. We modify the text as,

**“If we can simultaneously measure water vapor pressure ( $p$ ) and temperature ( $T$ ) at the same location, ...”**

P. 2, ll. 11 – 12: It is misleading to write about a specific location of the effective  $s$  determined by the CDNC closure method (“ $s$  in the CCN counter”). To my understanding, the  $s$  describes the maximum  $s$  at cloud base where it is able to activate the number of CCN that are measured in the CCN counter.

Agreed. To make the sentence clear, we modify it as,

**“For the CDNC closure method,  $s$  in the CCN counter is taken to be the effective  $s$  in clouds used to describe the maximum  $s$  at cloud base if the number concentrations of CCN and cloud droplets are similar the number of activated CCN in the counter is similar to that of cloud droplets.”**

P. 2, ll. 19 – 21: Since Eq. 2 is not an integral, changes in the microphysical composition in time and space are not important. However, I agree that once Eq. 2 is applied to a larger volume (i.e., it is integrated), changes in the microphysical composition will matter, especially if they are fast as it is the case for small  $N_d$  and large  $w$  as stated correctly by the authors. Therefore, the sentence should read as: “[...] for which the time scale for the change of cloud microphysical properties is shorter than the time scale for the change of environmental conditions.”

We still think that the quasi-steady state assumption does not hold when the time scale for the change of cloud microphysical properties (which is the phase relaxation time) is **longer (not shorter)** than the time scale for the change of environmental conditions (e.g., the mixing time). The phase relaxation time describes how quickly a cloud can response to the change of environmental conditions. A longer phase relaxation time means the cloud responds slower to the environmental change, in other words, cloud needs a longer time to return to the quasi-steady state. In order to eliminate the potential confusion, we modify the text as,

“However, this assumption might not be valid in clean (low  $N_d$ ) and/or vigorous (large  $w$ ) clouds, ~~for which the time scale for the change of cloud microphysical properties is longer than the time scale for the change of environmental conditions~~ **for which clouds need a longer time to return to the quasi-steady state for the change of environmental conditions.**”

P. 3, Eq. 4: It might be helpful to give the reader a hint on why one can neglect the time dependency of  $f(r)$  during integration (although it becomes apparent after some thinking).

The reviewer raises a subtle point! Equation 4 follows from the continuity equation for particle number, which is conserved for condensation/evaporation, for which an integration by parts uses the fact that  $f(r)$  vanishes at the limits of integration. We add more description to the manuscript:

**“It should be mentioned that equation 4 follows from the continuity equation for particle number, which is conserved for condensation/evaporation, for which an integration by parts uses the fact that  $f(r)$  vanishes at the limits of integration (McGraw and Wright, 2003).”**

P. 3, Eq. 8: By restricting the temporal change of LWC to changes in height and then vertical velocity (Eq. 8), other important processes affecting the supersaturation (foremost entrainment and mixing processes) are neglected. I believe that this simplification is valid in stratocumulus, in which entrainment and mixing are less important than in cumulus clouds. And in fact, the authors have chosen a relatively low turbulent stratocumulus cloud (p. 4, ll. 19 – 20) in which the inherent assumptions of Eq. 8 are probably fulfilled. However, I strongly recommend the authors to comment more on the implications of Eq. 8, especially the neglected cloud processes, to account for potential other applications of this approach.

Very good point. We add more text on the limitations of Eq. 8.

**“However, If the lateral entrainment and mixing are not the main processes affecting supersaturation, which is likely to be true for stratocumulus clouds, the change in LWC with time is can also be linked to the change of LWC in altitude,”**

P. 5, l. 8: It probably will not change the results significantly, but why do the authors not assume a Weibull distribution here (as done in Sec. 2)?

The method we use to retrieve cloud droplet number concentration is based on Snider et al. (2017), in which a lognormal size distribution is assumed. If we use a Weibull distribution, the retrieved cloud droplet number concentration will be 25% larger. Such difference is smaller than using different retrieval methods, as shown in Figure 5d. Using the exact same method and size distribution used in Snider et al. (2017) is helpful to compare the retrieved cloud droplet number concentration with other studies, and it will be easier to extend the application of equation 11 for people who only use retrieval products. To make the text clear and consistent in the manuscript, we add more discussion,

**“It should be mentioned that the method we use to retrieve cloud droplet number concentration is based on Snider et al. (2017), in which a lognormal size distribution is assumed. If we use a Weibull distribution, the retrieved cloud droplet number concentration will be 25% larger (detailed in the Appendix B). Such difference is smaller than using different retrieval methods, as shown in Figure 5d. Using the exact same method and size distribution used in Snider et al. (2017) is helpful to compare the retrieved cloud droplet number concentration with other studies, and it will be easier to extend the application of equation 11 for people who only use retrieval products.”**

**“Appendix B: Retrieving cloud droplet number concentration**

Based on Snider et al. (2017), the cloud droplet number concentration can be retrieved from the lidar backscatter coefficient ( $\sigma$ ) and liquid water content ( $q_l$ ),

$$N_d = \frac{2e^{3\sigma_x^2} \rho^2 \sigma^3}{9\pi q_l^3},$$

where the cloud droplet size distribution is assumed to be lognormal and have a standard deviation of  $\sigma_x = \ln 1.4$ . If we assume the cloud droplet sizes to follow a Weibull distribution (Equation 10), the cloud droplet number concentration has a similar relationship between  $\sigma$  and  $q_l$  but a different prefactor,

$$N_d = \frac{\rho^2 \sigma^3}{8 q_l^3},$$

Specifically, the retrieved cloud droplet number concentration using a Weibull distribution is 25% larger than if a lognormal distribution was used.”

P. 8, l. 7: *s* fluctuations at the cloud base could also arise from changes in cloud base height, and therefore differences in thermodynamics and not turbulence.

The reviewer makes a very good point. But we think the turbulent effect is stronger than the thermodynamic effect under most of the conditions in our case, because: (1) the cloud-base height is roughly constant around that time as shown in Figure 1; (2) when we calculate supersaturation, we only consider the case when both layers (upper layer and lower layer) have the retrieved LWC values—if the cloud-base height is higher such that only one layer (upper layer) has a retrieved LWC, we do not use the profile; (3) Figure 4 shows that the gradient of LWC is small at cloud base, compared with that at cloud top, suggesting that the broader distribution of *s* fluctuation at cloud base is unlikely mainly due to the narrower distribution in LWC gradient (thermodynamic effect). But it is still possible that the thermodynamic effect is stronger than the turbulent effect at the cloud base in some local regions. We add some discussion to the manuscript,

**“...It should be mentioned that a larger fluctuation in *s* at cloud base could also arise from changes in cloud-base height. However, this thermodynamic effect is unlikely the main cause in our case because the gradient of LWC close to cloud base is relatively small, as shown in Figure 4d.”**

P. 9, ll. 4 – 5, “[...] large drizzle and raindrops which are abundant in marine stratocumulus clouds [...]”: This means that all marine stratocumulus clouds are drizzling or raining which is not true. In fact, the authors state that the analyzed stratocumulus cloud does not precipitate (p. 4, ll. 18 – 20).

Agreed. To make the manuscript accurate and consistent, we modify it as,

**“...large drizzle or raindrops which are ~~abundant~~ frequently observed in marine stratocumulus clouds...”**

P. 12, Eqs. A2, A3, A4: There are some typos in the equations. Check Korolev and Mazin (2003, doi:10.1175/1520-0469(2003)060<2957:SOWVIC>2.0.CO;2) for details. Please also check if these errors affected the results of the manuscript. I state the corrected equations below (changes are highlighted in red):

Thank the reviewer for checking the equation carefully. The equation is correct because we follow the equations used in Lamb and Verlinde (2011). The difference is that Lamb and Verlinde use a mole-based unit, while Korolev and Mazin use a mass-based unit. For example, the unit of  $l_v$  is J/mol in Lamb and Verlinde (2011), but it is J/kg in Korolev and Mazin (2003). To make it clear, we added a statement to the manuscript:

**“Note that the unit here is mole-based, i.e., the units for  $l_v$  is J/mol (e.g., not J/kg).”**

## Technical Comments

P. 3, l. 1: It should read “k-th” or “k<sup>th</sup>”, but not “k<sub>th</sub>”.

Corrected in the manuscript.

P. 3, Eq. 8: The equation should read:  $\frac{d\ln LWC}{dt} = \frac{\partial \ln LWC}{\partial z} \frac{dz}{dt} = w \frac{\partial \ln LWC}{\partial z}$ , with a total derivative of  $z$ .

Corrected in the manuscript.

P. 7, l. 8: The flight was probably at  $1.471 \pm 0.004$  km above sea level and not  $1.471 \pm 0.004$  m.

Corrected in the manuscript.

P. 11, l. 7: Add parentheses to all squared percentage values, e.g.,  $(20 \%)^2$ .

Corrected in the manuscript.

## Response to the reviewer's comments:

Supersaturation ( $s$ ) in cloud is hard to measure even with an in-situ instrument that aims at measuring it directly in cloud, mainly due to the difficulty of measuring humidity in cloudy environment. Estimating it utilizing ground remote sensing instruments would be even more challenging. The authors in this manuscript propose a new approach to estimate  $s$  in such a way. The formulation of the equation that derives  $s$  seems to be done solidly and the key variables in the equations seem to be obtainable from radar and lidar output with some assumptions. If  $s$  can be estimated reasonably well by the proposed method, it would benefit a lot on the effort to estimate cloud supersaturation profile in a continuous manner, which would be impossible from aircraft measurements that are inherently episodic and expensive. Despite such enormous benefits, however, the uncertainty of estimated  $s$  with ground remote sensing data seems insurmountably high, according to the results described in this manuscript. Not only the PDF of the estimated  $s$  is much narrower than those obtained from in-situ cloud microphysics measurement but also the mode values of  $s$  do not seem to match well among each other, about which the authors did not mention anything. Moreover, there is no guarantee that the estimated  $s$  from the in-situ cloud microphysics measurement represent true  $s$  in cloud because such estimation itself is based on the big “quasi-steady state assumption,” rather than from direct and correct humidity measurement. So even if they do match well, that does not mean that the estimated  $s$  from ground remote sensing data represent the true  $s$ . Therefore, I am not sure if realistic in-cloud supersaturation values are obtainable from this approach. Perhaps this approach of estimating  $s$  can still be very useful as a way to get a relative measure of in-cloud supersaturation. In that sense, I urge the authors to do  $s$  estimations in some other clouds using the same approach and see how much they are different from the one presented in this manuscript. Matching in situ cloud microphysics measurement may not be available for these other clouds but that is ok. Here the purpose is to demonstrate the capability of this approach to estimate different  $s$  distribution for different clouds.

We would like to thank the reviewer's constructive comments. We agree with the reviewer that, even when supersaturation fluctuations estimated from our method agree with that estimated from in-situ measurements, we still don't know the truth, and we believe that nobody knows the truth at present. As the reviewer states “this approach of estimating  $s$  can still be very useful as a way to get a relative measure of in-cloud supersaturation”—this is also the idea we want to express in the manuscript. For example, Figure 4b shows the  $s$  profiles in stratocumulus clouds. The most important and useful information is **not** to say whether  $s$  fluctuation is 0.3% or 0.4% (which depends on those retrieval variables), **but** that there are relatively narrower or broader regions of  $s$  fluctuation. It is interesting and useful to investigate the  $s$  distribution for different clouds in the future, but it is beyond the scope of the scope of this manuscript for the following reasons. There are two main points to be made.

First, we think it is important to convey to people that there is a new method and that it works by evaluating the retrieved variables and estimated supersaturations with in-situ measurements before we extend this method to estimate supersaturation under other cloud conditions. To do so, we went through all cases during the ACE-ENA field campaign to find that the case we present

in this study is the best one and the only one suitable for evaluation due to the stable cloud base and long flight leg. “Matching in situ cloud microphysics measurement may not be available for these other clouds but that is ok” is meaningful after we show some evidence that our method compares reasonably well with in-situ measurements, which is the scope of this study.

Second, we agree with the reviewer that it will be very interesting to “look at other clouds using the same approach and see how much they are different from the one presented in this manuscript.” However, one should be very careful to estimate supersaturation for different cloud conditions. The reason is that supersaturation estimated based on our method strongly depends on the retrieved variables, and the retrieved variables might have different uncertainties under different cloud conditions. The advantage of the case we choose in this study is that the environmental conditions are very stable (Figure 1), which is the best case for retrieval and evaluation compared with other days. Further, as mentioned by the other reviewer, use of a stratocumulus cloud minimizes the effects of lateral entrainment and mixing, which may not be true for other cloud types (except for their more-spatially limited cores).

In summary, we agree with the reviewer that supersaturation estimated based on our method might not “represent the true  $s$ ”, because nobody knows what truth is. But it is a method to get “a relative measure of in-cloud supersaturation”. We believe that there could be rich scientific implications of this study, as the reviewer mentioned, to look at the “supersaturation in some other clouds”. It is interesting, but more time and effort is needed. In this study, we choose one aspect of the scientific application: the supersaturation fluctuation profile in the stratocumulus cloud (Figure 4), which is not achievable from in-situ measurements. The relative broader regions of  $s$  fluctuation suggest the important roles of dynamics and thermodynamics.

We add some discussion in the manuscript to highlight the merit and limitation of this study,

**“...It should be mentioned that our approach of estimating  $s$  cannot obtain the true supersaturation at the current stage due to (1) the difficulty of directly measuring  $s$  for evaluation and (2) the uncertainty in retrieved variables used in our method, but it still can be very useful to get a relative measure of in-cloud supersaturation. For example, for the profiles in Figure 4b, the most important and useful information is to say where there are relatively narrower or broader regions of  $s$  fluctuation, not whether the  $s$  fluctuation is 0.3% vs. 0.4%, as the latter would require exact accuracy in the retrieved variables. It is interesting and useful to investigate the  $s$  distribution for different clouds in the future....”**

Some specific comments:

P2, L12: Why might this method (Yum et al., 1998) overestimate  $s$  due to kinetic limitations? Due to counting unactivated but large haze droplets as activated cloud droplets in cloud probes? Explain more clearly.

**“However, this method might overestimate  $s$  due to kinetic limitations  $s$  estimated based on this method indicates the maximum supersaturation at cloud base for droplet activation and does not represent the real-time in-cloud supersaturation fluctuation...”**



P4, L26: No explanation is given on ground remote sensing instruments. Add brief explanation.

We add more discussion about the remote sensing instruments in the manuscript.

**“The site's zenith-pointing Ka - band cloud radar (KAZR), ceilometer, micropulse lidar (MPL), and microwave radiometer were used to derive the information on vertical air velocity, liquid water content, and cloud droplet number concentration. The vertical resolution of the KAZR is 30 m (one range gate), and for the ceilometer and MPL is 15 m. The temporal resolutions of the KAZR, ceilometer, and MPL are 2 s, 16 s, and 10 s respectively. At the distance of the observed targets, the radar and lidar beams are, respectively, about 3 m and 2 mm wide. The microwave radiometer employs three receiver channels operating at 23.84, 31.4, and 90 GHz, providing liquid water path estimates at a temporal resolution of 3 s. Specifically,...”**

P5, L8: Nd is estimated using a lognormal distribution assumption. This distribution is similar but different from the Weibull distribution that was originally used for formulating s equation (Eq. 11). Explain the effect of such change.

The method we use to retrieve cloud droplet number concentration is based on Snider et al. (2017), in which a lognormal size distribution is assumed. If we use a Weibull distribution, the retrieved cloud droplet number concentration will be 25% larger. Such difference is smaller than using different retrieval methods, as shown in Figure 5d. Using the exact same method and size distribution used in Snider et al. (2017) is helpful to compare the retrieved cloud droplet number concentration with other studies, and it will be easier to extend the application of equation 11 for people who only use retrieval products. To make the text clear and consistent in the manuscript, we add more discussion,

**“It should be mentioned that the method we use to retrieve cloud droplet number concentration is based on Snider et al. (2017), in which a lognormal size distribution is assumed. If we use a Weibull distribution, the retrieved cloud droplet number concentration will be 25% larger (detailed in the Appendix B). Such difference is smaller than using different retrieval methods, as shown in Figure 5d. Using the exact same method and size distribution used in Snider et al. (2017) is helpful to compare the retrieved cloud droplet number concentration with other studies, and it will be easier to extend the application of equation 11 for people who only use retrieval products.”**

**“Appendix B: Retrieving cloud droplet number concentration**

**Based on Snider et al. (2017), the cloud droplet number concentration can be retrieved from the lidar backscatter coefficient ( $\sigma$ ) and liquid water content ( $q_l$ ),**

$$N_d = \frac{2e^{3\sigma_x^2} \rho^2 \sigma^3}{9\pi q_l^3},$$



where the cloud droplet size distribution is assumed to be lognormal and have a standard deviation of  $\sigma_x = \ln 1.4$ . If we assume the cloud droplet sizes to follow a Weibull distribution (Equation 10), the cloud droplet number concentration has a similar relationship between  $\sigma$  and  $q_l$  but a different prefactor,

$$N_d = \frac{\rho^2 \sigma^3}{8 q_l^3},$$

Specifically, the retrieved cloud droplet number concentration using a Weibull distribution is 25% larger than if a lognormal distribution was used.”

P9, L11-12: 20% overestimation is not exactly meaning that the true value is 0.8 times the retrieved value. Just use one metric to avoid confusion.

To make the text clearer, we modify it as,

“Specifically, we will assume that the “true” values of those variables, respectively, are **0.5x**, **0.8x**, **1.2x**, and **2.0x** our original retrieved values.”

P10, L4-5: Similarly confusing. We do not usually say “overestimate 0.5 times.” Just say 0.5 times the true value (underestimation) or 1.2 times the true value (overestimation).

To make the text clearer, we modify it as,

“The “true” value of each retrieved variable is assumed to be systematically smaller (**0.5x or 0.8x**) or larger (**1.2x or 2.0x**) than the original retrieval.”

# A new approach to estimate supersaturation fluctuations in stratocumulus cloud using ground-based remote sensing measurements

Fan Yang<sup>1</sup>, Robert McGraw<sup>1</sup>, Edward P. Luke<sup>1</sup>, Damao Zhang<sup>1</sup>, Pavlos Kollias<sup>1,2</sup>, and Andrew M. Vogelmann<sup>1</sup>

<sup>1</sup>Brookhaven National Laboratory, Upton, NY, USA

<sup>2</sup>School of Marine and Atmospheric Sciences, Stony Brook University, Stony Brook, NY, USA

**Correspondence:** Fan Yang (fanyang@bnl.gov)

**Abstract.** Supersaturation, crucial for cloud droplet activation and condensational growth, varies in clouds at different spatial and temporal scales. In-cloud supersaturation is poorly known and rarely measured directly. On the scale of a few tens of meters, supersaturation in clouds has been estimated from in-situ measurements assuming quasi-steady state supersaturation. Here, we provide a new method to estimate supersaturation using ground-based remote sensing measurements, and results are compared with those estimated from aircraft in-situ measurements in a marine stratocumulus cloud during the ACE-ENA field campaign. Our method agrees reasonably well with in-situ estimations and it has three advantages: (1) it does not rely on the quasi-steady state assumption, which is questionable in clean or turbulent clouds; (2) it can provide a supersaturation profile, rather than just point values from in-situ measurements; and (3) it enables building statistics of supersaturation in stratocumulus clouds for various meteorological conditions from multi-year ground-based measurements. The uncertainties, limitations and possible applications of our method are discussed.

## 1 Introduction

Cloud forms under supersaturated conditions when the air contains more water vapor than it can retain. ~~Supersaturation, varying from less than 0.1% in calm stratiform clouds to larger than 1% in energetic convective clouds, plays a crucial role in cloud droplet formation and growth (Lamb and Verlinde, 2014).~~ **Supersaturation ( $s$ ), which plays a crucial role in cloud droplet formation and growth, depends on air vertical velocity and can also be adjusted by cloud microphysical composition (e.g., Lamb and Verlinde, 2011; Grabowski and Wang, 2013).**  $s$  in atmospheric clouds fluctuates on a wide range of temporal and spatial scales because of turbulence. Previous studies show that the average value of  $s$  as well as its fluctuation are important for cloud microphysical processes. For example, the variation of supersaturation in a vertically oscillating cloud parcel can cause droplet deactivation and reactivation (see Yang et al. (2018a) and references therein). Additionally, results from recent laboratory experiments and direct numerical simulations show that stochastic diffusional growth due to supersaturation fluctuations in a turbulent environment can broaden the cloud droplet size distribution, which might be important to drizzle formation in warm clouds (e.g., Sardina et al., 2015; Chandrakar et al., 2016; Li et al., 2019).

Despite its importance,  $s$  is barely known and poorly measured in atmospheric clouds. If we can simultaneously measure water vapor pressure ( $e$ ) and temperature ( $T$ ) **at the same location**, we can directly calculate  $s$  based on its definition,

$$s = \frac{e}{e_{sat}} - 1, \quad (1)$$

where  $e_{sat}$  is the saturated water vapor pressure which depends only on  $T$ . However, it is extremely difficult to measure  $e$  and  $T$  precisely in clouds due to the influence of liquid droplets on the measurements (Siebert and Shaw, 2017). For example, fast-response measurements of water vapor mixing ratio usually rely on the absorption of infrared light, which can be affected by the presence of liquid droplets or the accumulation of a liquid film on the instrument. Temperature measurements can be biased by latent heat of condensation, evaporation, and also ram heating caused by the deceleration of air on the aircraft body (Wendisch and Brenguier, 2013).

Because of the difficulties in using direct measurements,  $s$  is usually estimated indirectly based on either (1) cloud condensation nuclei (CCN) - cloud droplet number concentration (CDNC) closure, or (2) the quasi-steady state assumption. For the CDNC closure method,  $s$  in the CCN counter is ~~taken to be the effective  $s$  in clouds~~ **used to describe the maximum  $s$  at cloud base** if the number concentrations of CCN and cloud droplets are similar **the number of activated CCN in the counter is similar to the number of cloud droplets** (e.g., Yum et al., 1998). However, ~~this method might overestimate  $s$  due to kinetic limitations~~  **$s$  estimated based on this method indicates the maximum supersaturation at cloud base for droplet activation and does not represent real-time in-cloud supersaturation fluctuations.** Additionally, the effective **maximum  $s$**  for cloud droplet activation can only be positive whereas the  $s$  of interest here can be either positive or negative due to turbulence. The second method is to estimate  $s$  in clouds based on the quasi-steady state assumption through the following formula (e.g., Politovich and Cooper, 1988),

$$s \approx s_{qs} = A \frac{w}{N_d \bar{r}}, \quad (2)$$

where  $s_{qs}$  is the quasi-steady state supersaturation,  $A$  is a parameter that depends on temperature and pressure (see Equation A1 in Appendix),  $w$  is vertical air velocity,  $N_d$  is the cloud droplet number concentration, and  $\bar{r}$  is the mean cloud droplet radius. This method relies on the quasi-steady state assumption in which the source/sink of water vapor in an adiabatic air parcel due to vertical motion is roughly balanced with the sink/source of water vapor due to condensation/evaporation. However, this assumption might not be valid in clean (low  $N_d$ ) and/or vigorous (large  $w$ ) clouds, ~~for which the time scale for the change of cloud microphysical properties is longer than the time scale for the change of environmental conditions~~ **for which clouds need a longer time to return to the quasi-steady state for the change in environmental conditions.** Additionally, since all of these methods need in-situ measurements, they have limited scope, owing to the difficulties of building statistics from short-term aircraft flights.

Here we develop a new method to estimate  $s$  in clouds using ground-based remote sensing measurements. A non-drizzling marine stratocumulus cloud is chosen to evaluate the estimation of in-cloud  $s$  based on our method (equation 11), and results are compared with  $s$  estimated based on in-situ measurements (equation 2). The uncertainties, limitations, and applications of our method are discussed.

## 2 In-Cloud Supersaturation Equation for Ground-Based Measurements

Our remote sensing method is adapted from McGraw (1997), in which aerosol dynamics is represented by the method of moments and equations describing moment evolution. Here, we apply the method of moments to derive the in-cloud supersaturation equation, starting with the definition of the  $k^{\text{th}}$  radial moment ( $\mu_k$ ) of the cloud droplet size distribution ( $f(r)$ ),

$$\mu_k = \int r^k f(r) dr. \quad (3)$$

Differentiating the moments with respect to time gives (McGraw, 1997),

$$\frac{d\mu_k}{dt} = k \int r^{k-1} \left( \frac{dr}{dt} \right) f(r) dr. \quad (4)$$

It should be mentioned that equation 4 follows from the continuity equation for particle number, which is conserved for condensation/evaporation, for which an integration by parts uses the fact that  $f(r)$  vanishes at the limits of integration (McGraw and Wright, 2003). Meanwhile, the change of droplet radius due to condensation/evaporation is governed by the

diffusional growth equation (Lamb and Verlinde, 2011),

$$\frac{dr^2}{dt} = 2Gs, \quad (5)$$

where  $G$  is the growth factor depending on temperature and pressure, and  $s$  is supersaturation. Combining equations 4 and 5 results in

$$\frac{d\mu_k}{dt} = kGs\mu_{k-2}. \quad (6)$$

It should be noted that the moments of  $f(r)$  are related to several physical variables, such as cloud droplet number concentration

( $N_d = \mu_0$ ) and liquid water content ( $LWC = \frac{4\pi}{3}\rho_l\mu_3$  where  $\rho_l$  is the density of liquid water).

Now consider the logarithmic change of  $LWC$  with time for a rising parcel. The relationship between  $LWC$  and  $\mu_3$  leads to

$$\frac{d \ln LWC}{dt} = \frac{1}{\mu_3} \frac{d\mu_3}{dt}. \quad (7)$$

However, If the lateral entrainment and mixing are not the main processes affecting supersaturation, which is likely to be true for stratocumulus clouds, the change of  $LWC$  with time is can also be linked to the change of  $LWC$  in altitude,

$$\frac{d \ln LWC}{dt} = \frac{\partial \ln LWC}{\partial z} \frac{dz}{dt} = w \frac{\partial \ln LWC}{\partial z}. \quad (8)$$

By substituting  $\frac{d\mu_3}{dt}$  from equation 6 into equation 7 and combining in equation 8, we get

$$s = \frac{w}{3G} \frac{\partial \ln LWC}{\partial z} \frac{\mu_3}{\mu_1}. \quad (9)$$

Note that  $\frac{\partial \ln LWC}{\partial z}$  is the gradient of  $LWC$  which can be retrieved from the ground-based measurements (explained in the following section).

If the cloud droplet size distribution is assumed to be represented by a Weibull distribution,

$$f(r) = 2\pi N_d \left( \frac{\rho_l N_d}{LWC} \right)^{2/3} r \exp \left[ -\pi \left( \frac{\rho_l N_d}{LWC} \right)^{2/3} r^2 \right], \quad (10)$$

5 substituting the first and third moments of equation 10 into equation 9 leads to the final equation of  $s$ ,

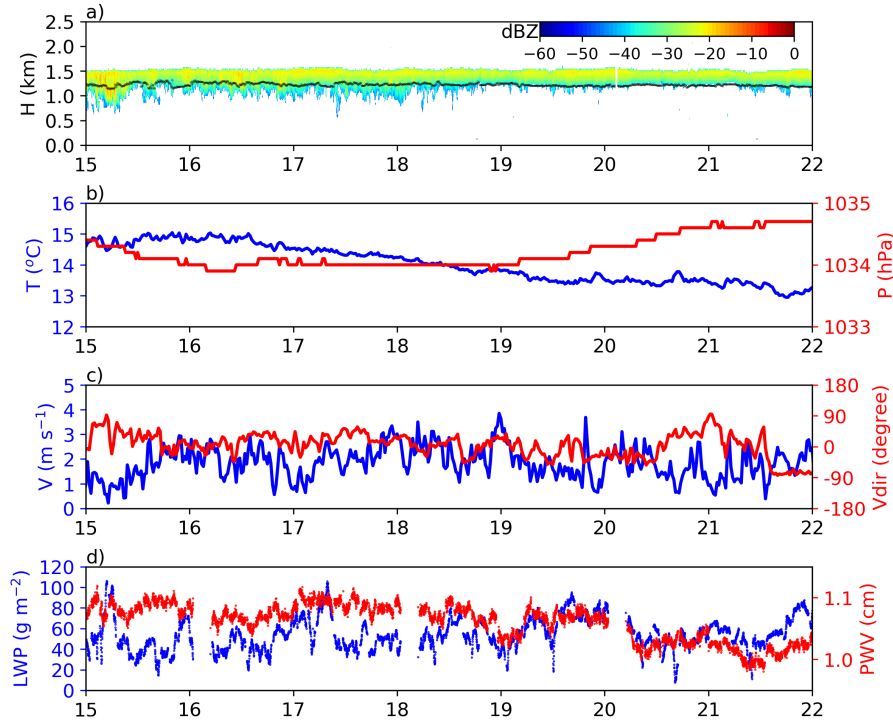
$$s = \frac{w}{2\pi G} \frac{\partial \ln LWC}{\partial z} \left( \frac{LWC}{\rho_l N_d} \right)^{2/3}. \quad (11)$$

We note that assuming a different functional shape for the cloud droplet size distribution ( $f(r)$ ) can change the expression of  $s$ . However, it is unclear whether there is a unified  $f(r)$  for atmospheric clouds applicable for different conditions. This is a general question for cloud retrievals that is worth investigation, but it is beyond the scope of this study. We choose the Weibull distribution (equation 10) because it shows good agreement with previous in-situ measurements (e.g., Costa et al., 2000). Additionally, it has a theoretical basis as it can be derived analytically either using a Brownian drift-diffusion model (McGraw and Liu, 2006), or using the maximum entropy approach constrained by surface area (Zhang and Zheng, 1994; Liu and Hallett, 1998; Wu and McFarquhar, 2018), or solving the Fokker-Planck equation (Saito et al., 2019). Recent lab experiments also show that equation 10 fits reasonably well with the cloud droplet size distribution in a turbulent cloud chamber (Chandrakar et al., submitted). The effect and limitation of the assumed  $f(r)$  on  $s$  will be discussed in Section 6.

Our method requires  $LWC$  for two adjacent layers to estimate  $s$  (i.e., the  $LWC$  vertical gradient). This is the major difference compared with the quasi-steady supersaturation (equation 2) where  $LWC$  is only needed for one layer. In fact,  $s$  estimated based on our method represents the mean  $s$  between two layers and does not rely on the quasi-steady state assumption. However, if the cloud is adiabatic, meaning that  $LWC$  increases linearly with height, equation 11 is dimensionally similar to equation 2:  $w(\partial \ln LWC / \partial z)(LWC / N_d)^{2/3} \sim (\partial LWC / \partial z)(w / LWC^{1/3} N_d^{2/3}) \sim w / (\bar{\tau} N_d)$ .

### 3 Data and Methods

We use data for a marine stratocumulus cloud observed over the Department of Energy (DOE) Atmospheric Radiation Measurement (ARM) Eastern North Atlantic (ENA) Facility on Feb. 7, 2018, during the Aerosol and Cloud Experiments (ACE-ENA) field campaign (Wang et al., 2016). The stratocumulus cloud was precipitating in the morning, but between 15 UTC and 22 UTC it had little-to-no precipitation as shown in Figure 1a. The cloud is very stable during this period, with a base height of  $1.23 \pm 0.03$  km and a top height of  $1.52 \pm 0.02$  km. The stable cloud is also consistent with the steady meteorological conditions during that time: Surface pressure varies less than 1 hPa within seven hours (red line in Figure 1b), and surface temperature decreases only slightly from about 15 °C to 13 °C (blue line in Figure 1b), mainly due to the decrease of shortwave radiation (Sunset at 19 UTC). The wind is from the North and is very light near the surface with a mean value of  $1.84 \pm 0.65$  ms<sup>-1</sup> (Figure 1c). The liquid water path and precipitable water vapor retrieved from the microwave radiometer (MWRRet; Turner et al., 2007) are  $54 \pm 16$  g m<sup>-2</sup> and  $1.06 \pm 0.03$  cm, respectively (Figure 1d).



**Figure 1.** Cloud and environmental property time series observed at the Eastern North Atlantic (ENA) site on Graciosa Island ( $39^{\circ}5' \text{ N}$ ,  $28^{\circ}1' \text{ W}$ ) on 7 February, 2018. Shown are: (a) cloud base height (black line) and Ka-band radar reflectivity (colored shading), (b) surface temperature (blue line) and pressure (red line), (c) surface horizontal wind speed (blue line) and direction (red line), (d) liquid water path (blue line) and precipitable water vapor (red line).

Ground-based remote sensing is used to retrieve all the variables needed to estimate in-cloud  $s$  based on Equation 11. **The site's zenith-pointing Ka-band cloud radar (KAZR), ceilometer, micropulse lidar (MPL), and microwave radiometer were used to derive the information on vertical air velocity, liquid water content, and cloud droplet number concentration. The vertical resolution of the KAZR is 30 m (one range gate), and for the ceilometer and MPL is 15 m. The temporal resolutions of the KAZR, ceilometer, and MPL are 2 s, 16 s, and 10s respectively. At the distance of the observed targets, the radar and lidar beams are, respectively, about 3 m and 2 mm wide. The microwave radiometer employs three receiver channels operating at 23.84, 31.4, and 90 GHz, providing liquid water path estimates at a temporal resolution of 3 s. Specifically,  $w$ ,  $LWC$ , and  $N_d$ .  $w$  at each radar height is computed by taking the difference between the estimated radar reflectivity-weighted particle sedimentation speed and measured mean Doppler velocity (Kalesse and Kollias, 2013). The estimate of particle sedimentation speed at each radar time sample (every 2 sec) is obtained by mapping measured reflectivity to velocity using a two-parameter Z-V power law model computed from the data within a 30-minute moving window centered on the sample. The retrieval of  $LWC$  is a two-step process. The first step is to identify cloud columns in which drizzle does not dominate the reflectivity by applying two criteria. The majority of the samples in a cloud column must either**

have a negative Doppler spectral skewness (Luke and Kollias, 2013), assuming a positive-up velocity sign convention, or have a reflectivity of less than -25 dBZ. The skewness and reflectivity fields used for this determination are first smoothed by a two-minute-wide box-car filter. For the columns identified, the second step is to partition the measured integrated liquid water path over the cloud vertical extent in accordance with measured radar reflectivity (Frisch et al., 1998).

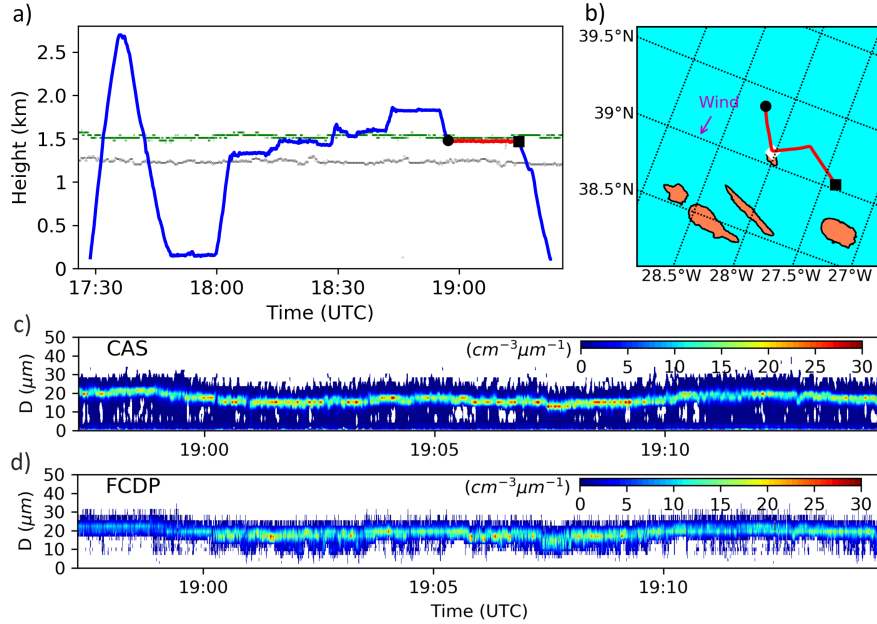
- 5 Retrieving  $N_d$  remains a challenge and presents larger uncertainties compared with  $LWC$  and  $w$  retrievals, as recently discussed in a review (Grosvenor et al., 2018). Here,  $N_d$  is retrieved using ground-based micropulse lidar (MPL) measurements following Snider et al. (2017). In summary,  $N_d$ , cloud extinction coefficient ( $\sigma$ ), and  $LWC$  can be expressed as the zeroth, second, and third moments of cloud droplet size distributions.  $N_d$  can be estimated from the lidar-derived  $\sigma$  profile by assuming that the cloud droplet size distribution follows a lognormal distribution with a constant geometric standard deviation ( $\sigma_g = 1.4$ ),  
 10 and that the cloud  $LWC$  profile follows an adiabatic model. In this study, cloud  $\sigma$  profiles are obtained through inversion of the lidar attenuated backscatter measurements using the Fernald (1984) method and assuming that the extinction-to-backscatter ratio for liquid droplets is 18.8 (O'Connor et al., 2004). The retrievals can be affected at cloud base by turbulent mixing and higher above cloud base by the lidar signal's quick attenuation, so we use the mean  $\sigma$  and  $LWC$  over the range between 30 m and 120 m above the cloud base. Additionally, stratocumulus may have a subadiabatic  $LWC$  profile, which would adversely  
 15 affect the retrievals. Thus, we reduce the bias caused by subadiabatic  $LWC$  profiles by scaling the  $LWP$  from the adiabatic  $LWC$  profile to the  $LWP$  retrieved by MWRRet.

In-situ measurements from ARM's Gulfstream-159 (G-1) aircraft on that day (Figure 2a) enable evaluating our retrieved variables and estimate of quasi-steady supersaturation (equation 2). Air vertical velocity is measured at 20 Hz by the Aircraft-Integrated Meteorological Measurement System (AIMMS-20) with an uncertainty of  $\pm 0.75 \text{ m s}^{-1}$ .  $N_d$  and  $\bar{r}$ , used to estimate  
 20  $s$ , are obtained from cloud droplet size distributions measured by the Cloud Aerosol Spectrometer (CAS, DMT, Inc.) and the Fast Cloud Droplet Probe (FCDP, SPEC, Inc.). The CAS measures small particles ranging from 0.5 to 50  $\mu\text{m}$  in 30 size bins at 1 Hz, while the FCDP measures cloud droplets ranging from 1 to 50  $\mu\text{m}$  with a resolution of about 3  $\mu\text{m}$  at a frequency of 10 Hz. Because in-situ measurements from AIMMS-20, CAS, and FCDP have different sampling frequencies, we average them to the lowest frequency (1 Hz) to calculate  $s$ , which represents the mean value over 100 m (aircraft speed 100  $\text{m s}^{-1}$ ).

## 25 4 Results and Discussions

We use probability density functions (PDFs) of  $w$ ,  $LWC$ , and  $N_d$  to compare the ground-based retrievals with in-situ aircraft observations. Otherwise, it is difficult to make an apples-to-apples comparison between the two because they never sample the same cloud volume at the same time. PDFs are compared from the 105 km in-cloud flight leg (from the 17.5-min period highlighted in Figure 2a,b) with those retrieved at flight level from seven-hours of ground-based measurements, between 15 and  
 30 22 UTC. We choose that horizontal flight leg rather than all in-cloud measurements because (1)  $LWC$  depends on the height above the cloud base, and (2) that flight leg was the longest, providing reliable statistics from the in-situ measurements. Note that although the flight height is very steady during the 17.5 min ( $1.471 \pm 0.004 \text{ km}$  above sea level, see Figure 2a), the G-1 does not fly in one direction, as is shown in Figure 2b. The flight leg is initially 37 km from the ENA site, heading toward the

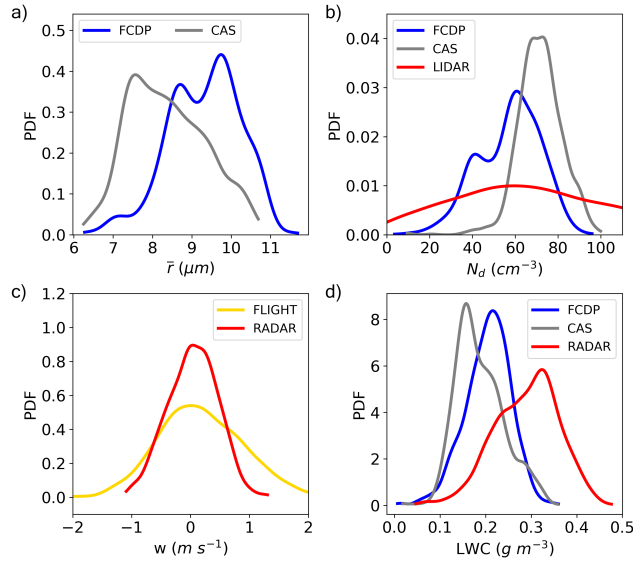




**Figure 2.** Time series of flight patterns and cloud droplet size distributions for our study period. (a) Time series of flight altitude, where black and green lines represent, respectively, the cloud base and top heights from the ground-based measurements. The red line indicates the in-cloud flight leg used in this study, and black dots represent the beginning and ending points of the selected flight leg. (b) Top view of the flight path for the selected in-cloud flight leg in (a). Ocean is bluish-green, land is coral, and the ENA Facility is marked by a white dot. Measured cloud droplet size distributions in the red flight leg are obtained from the (c) Cloud Aerosol Spectrometer (CAS) and (d) Fast Cloud Droplet Probe (FCDP).

site from the northwest, and then turning to the northeast. The nearest horizontal distance between the G-1 and the site is more than 1 km away, which is also why we use a statistical rather than point-to-point comparison. We assume that the stratocumulus cloud has sufficient statistical spatiotemporal homogeneity during the chosen flight period for the statistical properties to fall within a relatively narrow range. This assumption is supported by the ground-based measurements, e.g. the stable cloud base and top heights as shown in Figure 1a. A stable cloud layer also increases confidence in the determination of how far above cloud base the in-situ measurements are obtained. Additionally, cloud droplet size distributions measured by CAS and FCDP do not significantly change during the flight leg (Figure 2c,d), suggesting that the cloud is spatially homogeneous within  $\sim 56$  km of the site (Figure 2b).

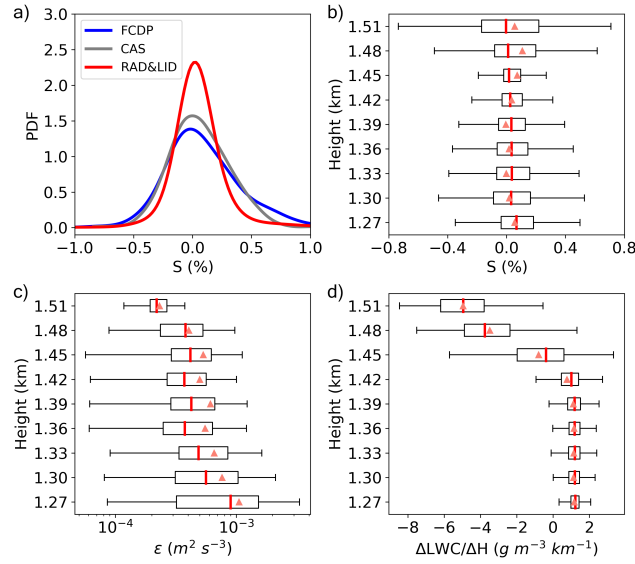
Figure 3 shows the PDFs of four key variables used to estimate  $s$ . The in-situ values for  $\bar{r}$ ,  $N_d$ , and  $LWC$  are calculated from the cloud droplet size distributions measured by the CAS and FCDP. Because the CAS has the ability to measure sub-micron sized particles (see Figure 2c), we only use droplet diameters larger than  $1.5 \mu\text{m}$  from the CAS to match the observational range of the FCDP. Results show that mean  $\bar{r}$  from the CAS ( $8.4 \pm 1.0 \mu\text{m}$ ) is about  $1 \mu\text{m}$  smaller than that from the FCDP ( $9.3 \pm 0.9 \mu\text{m}$ ) (Figure 3a), and the mean  $N_d$  from the CAS ( $72 \text{ cm}^{-3}$ ) is about  $15 \text{ cm}^{-3}$  larger than that from the FCDP ( $57$



**Figure 3.** PDFs of four key variables used to estimate  $s$ . Shown are (a) mean droplet radius ( $\bar{r}$ ), (b) droplet number concentration ( $N_d$ ), (c) air vertical velocity ( $w$ ), and (d) liquid water content ( $LWC$ ). In-situ measured cloud microphysical properties and air vertical velocity are collected during the flight leg highlighted in Figure 2. The measurements are from the FCDP (blue), CAS (gray), and AIMMS-20 (gold). Red lines represent the variables retrieved from ground-based measurements between 15 and 22 UTC. Retrieval methods are explained in the text.

$\text{cm}^{-3}$ ) (Figure 3b). These differences might be due to the shattering of large cloud droplets for the CAS, resulting in reduced  $\bar{r}$  and enhanced  $N_d$ . The retrieved  $N_d$  ( $71 \pm 43 \text{ cm}^{-3}$ ) is significantly broader than the in-situ measurements, but it is gratifying to see that their modes are similar (Figure 3b). The mean  $w$  from in-situ measurements is  $0.2 \text{ m s}^{-1}$  with a standard deviation of about  $0.7 \text{ m s}^{-1}$ . For ground-based measurements, the retrieved  $w$  at the flight level is smaller ( $0.04 \text{ m s}^{-1}$ ) with a smaller standard deviation ( $0.4 \text{ m s}^{-1}$ ) (Figure 3c). The mean  $LWC$  from the CAS ( $0.19 \pm 0.05 \text{ g m}^{-3}$ ) and the FCDP ( $0.20 \pm 0.05 \text{ g m}^{-3}$ ) are similar; however, the retrieved  $LWC$  is about  $0.1 \text{ g m}^{-3}$  larger and with a broader PDF (Figure 3d). Note that our new method primarily depends on the vertical gradient of  $LWC$  and, to a lesser degree, on its absolute value.

With the measured/retrieved variables in Figure 3, we estimate  $s$  during the flight leg using the quasi-steady state assumption (equation 2) for the in-situ measurements, and  $s$  at the flight level using equation 11 for the ground-based remote sensing measurements. The PDFs of  $s$  are shown in Figure 4a with two noticeable features. First, although the  $\bar{r}$  and  $N_d$  measured by the CAS and FCDP are somewhat different (Figure 3), the PDFs of the estimated  $s$  based on these two instruments are similar. This is because  $s \sim (\bar{r}N_d)^{-1}$  based on equation 2 and  $\bar{r}N_d$  is similar for the CAS (smaller  $\bar{r}$  and larger  $N_d$ ) and FCDP (larger  $\bar{r}$  and smaller  $N_d$ ). Second, the PDF of  $s$  (i.e., supersaturation fluctuation) estimated from the retrieved variables based on the radar and lidar measurements (Figure 4a) is of the same order of magnitude as the in-situ measurements, although its full width at half maximum (FWHM) of 0.3 that is narrower than the in-situ measurements (0.6).



**Figure 4.** PDF of estimated  $s$  and profiles of energy dissipation rate, and of the vertical gradients of liquid water content. (a) PDF of estimated  $s$  from the quasi-steady state assumption (equation 2) based on the in-situ measurements from the CAS (grey) and FCDP (blue) during the flight leg highlighted in Figure 2a. PDF of estimated  $s$  from remote sensing measurements (equation 11) (red) is given for the flight level between 15 UTC and 22 UTC. Box-and-whisker plots are provided for the profiles of: (b)  $s$  based on equation 11, (c) the energy dissipation rate ( $\epsilon$ ) on a log scale, and (d) liquid water content gradients ( $\Delta LWC/\Delta z$ ) in the stratocumulus cloud between 15 UTC and 22 UTC. The box and whiskers indicate the 5th, 25th, 50th, 75th, and 95th percentiles and the means are indicated by triangles.

With our new method, we can also estimate the profile of in-cloud supersaturation fluctuations based on the retrieved  $LWC$  and  $w$  profiles. Figure 4b shows box-and-whisker plots of estimated  $s$  based on equation 11 at different heights. It is interesting to see that the  $s$  fluctuations are larger either close to cloud base or at cloud top. The main reason for the larger  $s$  fluctuations in these two regions likely has different root causes. Close to cloud base,  $s$  fluctuations are mainly driven by stronger turbulence.

- 5 This is supported by the energy dissipation rate ( $\epsilon$ ) profile shown in Figure 4c, which is retrieved by relating the power spectrum of mean Doppler velocity computed over a 25-minute moving window to the  $-5/3$  slope line of the Kolmogorov law of energy dissipation (Borque et al., 2016). Note that turbulence having a maximum at cloud base on this day is inconsistent with the general statistical properties of  $\epsilon$  in marine stratocumulus clouds, in which  $\epsilon$  typically reaches a maximum close to the cloud top where turbulence is mainly driven by wind shear or radiative cooling, especially at nighttime (Wood, 2012; Borque et al.,
- 10 2018). This inconsistency is believed to be because, for our particular case, the daytime cloud is thin and the wind is light; thus, turbulence in the cloud may be mainly driven by surface forcing (Borque et al., 2018). At cloud top, the large  $s$  fluctuations are mainly controlled by the large gradient of  $LWC$  and spread therein (Figure 4d), where the large reduction of  $LWC$  is likely due to the cloud-top entrainment and mixing (Mellado, 2017). **It should be mentioned that a larger fluctuation in  $s$  at cloud base could also arise from changes in cloud-base height. However, this thermodynamic effect is unlikely the main cause**
- 15 **because the gradient of  $LWC$  close to cloud base is relatively small, as shown in Figure 4d.**

## 5 Uncertainties of our supersaturation estimation

Our method relies on several retrieved variables ( $w$ ,  $LWC$ , and  $N_d$ ). Although efforts have been made to improve the retrieval quality for decades, these retrieved variables still have large uncertainties that could impact the estimated supersaturation. The retrieved  $LWC$  and  $w$  can be affected by the existence of large drizzle or raindrops which are ~~abundant~~ **frequently observed** in marine stratocumulus clouds (Yang et al., 2018b). Minimizing the influence of drizzle on the retrieved  $LWC$  and  $w$  would be helpful for the estimation of supersaturation in drizzling stratocumulus clouds using our method. The retrieved  $N_d$  is usually extracted from higher moments of the droplet size distribution, such as radar reflectivity (6th moment) or lidar back scattering (2nd moment) such that droplet size uncertainty can cause large uncertainties in  $N_d$ . The uncertainty of the retrieved  $N_d$  can be up to 100% which is much greater than that for the  $LWC$  and  $w$  retrieval (Grosvenor et al., 2018).

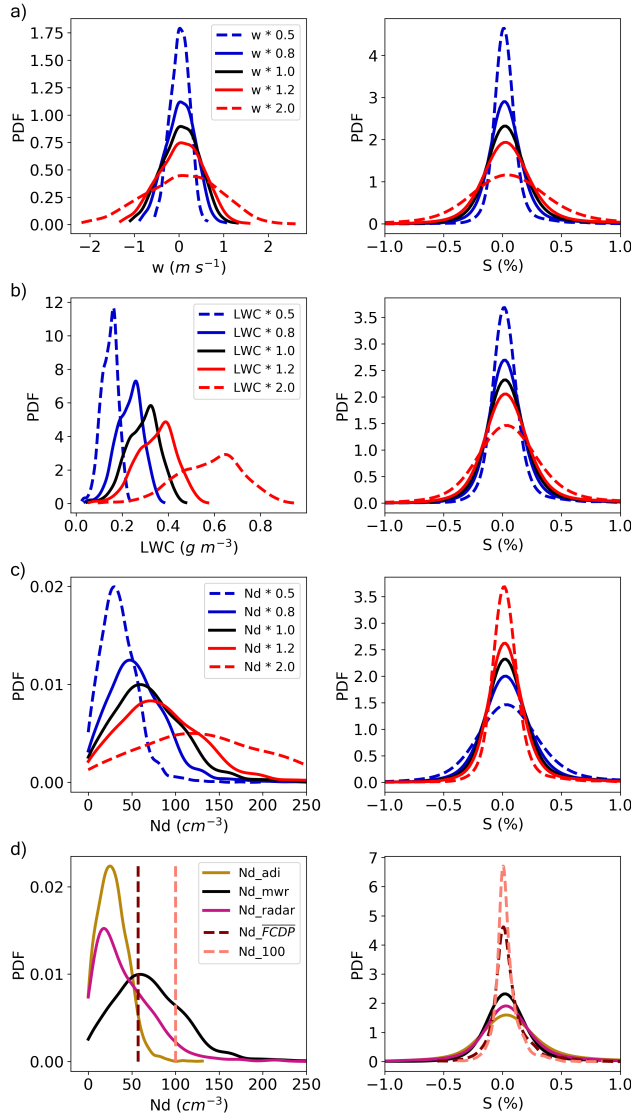
In this section, we will explore uncertainties of our estimated supersaturation fluctuations due to the uncertainties of  $w$ ,  $LWC$ , and  $N_d$ . ~~Specifically, we will assume that the “true” values of those variables are 0.5, 0.8, 1.2, and 2.0 times of our original retrieved values. Specifically, we will assume that the “true” values of those variables, respectively, are 0.5x, 0.8x, 1.2x, and 2.0x our original retrieved values.~~ Also, two additional retrieval methods of  $N_d$  are used. While a careful investigation of which retrieval method agrees best with  $N_d$  in-situ measurements is under investigation (Zhang et al., in prep.), here we only focus on the influence of different retrieval methods of  $N_d$  on supersaturation estimation.

PDFs of retrieved/modified variables ( $w$ ,  $LWC$ , and  $N_d$ ) and the corresponding estimated supersaturation are shown in Figure 5 a-c. The “truth” value of each retrieved variable is assumed to be systematically either smaller (~~0.5 times and 0.8 times~~) **0.5x or 0.8x** or larger (~~1.2 times and 2.0 times~~) **1.2x or 2.0x** than the original retrieval, while keeping other retrieved variables unchanged. It can be seen that an underestimation of  $w$  and  $LWC$  will lead to a larger estimated  $s$  and with a broader PDF (Figure 5 a,b), while an underestimation of  $N_d$  will cause a smaller estimated supersaturation. This is because  $s$  is proportional to  $w$  and  $LWC^{2/3}$ , but inversely proportional to  $N_d^{2/3}$ .

Of course, all retrieved variables have uncertainties that can propagate to the estimated  $s$ . The total error budget of  $s$  can be expressed as,

$$\left(\frac{\partial s}{s}\right)^2 = \left(\frac{\partial w}{w}\right)^2 + \left(\frac{2}{3} \frac{\partial LWC}{LWC}\right)^2 + \left(\frac{2}{3} \frac{\partial N_d}{N_d}\right)^2. \quad (12)$$

Thus, our estimated  $s$  uncertainties are more sensitive to the relative changes of  $w$  compared with those for  $LWC$  and  $N_d$ . Specifically, 20% uncertainties of  $w$ ,  $LWC$ , and  $N_d$  will cause a total of  $[(20\%)^2 + \frac{4}{9}(20\%)^2 + \frac{4}{9}(20\%)^2]^{1/2} = 27\%$  uncertainty of  $s$ . If we assume the in-situ measurements represent “truth”, the standard deviation of the retrieved  $w$  is about 43% smaller, the mean retrieved  $LWC$  is about 50% larger, and the uncertainty in retrieved  $N_d$  can be up to 100%. So if we assume the uncertainties of the retrieved  $w$ ,  $LWC$ , and  $N_d$  are 43%, 50%, and 100%, respectively, the total uncertainty of the estimated  $s$  is about 86%. However, we do not see such large fluctuations ( $\sigma(s)/|s|$ ) in Figure 4a. The reason is probably because this uncertainty assumes no correlations among the retrieved variables, and it represents a systematic bias rather than a random bias. Although such uncertainty exists in the estimated  $s$ , the location of the regions of larger supersaturation fluctuations should not change in Figure 4b.



**Figure 5.** Various retrieved and modified PDFs of input properties and their corresponding the PDFs of the estimated  $s$ : (a)  $w$ , (b)  $LWC$ , (c)  $N_d$ , and (d)  $N_d$  from three different retrieval methods and two constant  $N_d$ . Details of the modified variables and retrieval methods are described in the text.

The retrieved  $N_d$  in the previous section uses  $LWC$  profiles by scaling the integrated  $LWP$  from the adiabatic  $LWC$  profile to the  $LWP$  retrieved by MWRRet (labeled as  $N_{d\_mwr}$  in Figure 5d). Two additional retrieval methods of  $N_d$  are applied here:  $N_d$  is retrieved by assuming an adiabatic  $LWC$  profile without the constraint of  $LWP$  (labeled as  $N_{d\_adi}$  in Figure 5d);  $N_d$  is retrieved using  $LWC$  profiles derived from the combined radar and microwave radiometer measurements following Frisch et al. (1998) (labeled as  $N_{d\_radar}$ ). In addition, two constant values of  $N_d$  are tested: mean  $N_d$  from FCDP

(labeled as  $N_{d\_FCDP}$ ) and  $100 \text{ cm}^{-3}$  (labeled as  $N_{d\_100}$ ). The PDFs of  $N_d$  and the corresponding PDFs of  $s$  are shown in Figure 5d. It can be seen that the FWHMs of the estimated  $s$  are similar for three retrieval methods of  $N_d$ , with a value of 0.49 for  $N_{d\_adi}$ , 0.40 for  $N_{d\_radar}$ , and 0.37 for  $N_{d\_mwr}$ . But the PDFs of the estimated  $s$  is much narrower for constant  $N_d$ , with the FWHM of 0.15 for  $N_{d\_FCDP}$  and 0.10 for  $N_{d\_100}$ .

- 5     **It should be mentioned that the method we use to retrieve cloud droplet number concentration is based on Snider et al. (2017), in which a lognormal size distribution is assumed. If we use a Weibull distribution, the retrieved cloud droplet number concentration will be 25% larger (detailed in the Appendix B). Such difference is smaller than using different retrieval methods, as shown in Figure 5d. Using the exact same method and size distribution used in Snider et al. (2017) is helpful to compare the retrieved cloud droplet number concentration with other studies, and it will be**  
10   **easier to extend the application of equation 11 for people who only use retrieval products.**

## 6 Conclusions

In this study, we provide a new method to estimate in-cloud supersaturation from ground-based remote sensing measurements. Our analytical formula (equation 11) relies on the retrieved values of  $w$ ,  $LWC$ , and  $N_d$ . The fundamental idea is that the difference in  $LWC$  between two cloud layers is the result of condensation or evaporation of cloud droplets; thus, the gradient  
15   of  $LWC$  together with  $w$  can be used to estimate the mean supersaturation between the two layers. We evaluate our method using a stable, non-drizzling stratocumulus cloud observed over the ARM ENA Facility on Feb. 7, 2018, during the ACE-ENA field campaign. In-situ measurements from a 105 km (17.5-min) flight leg are compared to values and supersaturation estimates retrieved from ground-based measurements for the aircraft flight level. Results show that PDFs of the retrieved  $w$  agree reasonably well with the in-situ measurements, while the retrieved  $N_d$  has larger fluctuations, and the retrieved  $LWC$   
20   is about  $0.1 \text{ gm}^{-3}$  larger and with a broader distribution. The FWHM of the PDF of supersaturation fluctuations based on equation 11 is about half that for the quasi-steady supersaturation estimated from equation 2. We also investigate the profile of supersaturation in the stratocumulus cloud. Results show that supersaturation fluctuations are larger either at cloud base where, for this case, the eddy dissipation rate is largest due to strong turbulence, or close to the cloud top where the reduction of  $LWC$  is largest due to entrainment and mixing.

- 25   Note that our analytical expression for supersaturation (equation 11) assumes that cloud droplet distribution follows a Weibull distribution (equation 10). The formula will change if a different shape is assumed for cloud droplet size distribution. We choose a Weibull distribution because it has a theoretical basis and is consistent with previous observational and laboratory studies (Costa et al., 2000; McGraw and Liu, 2006; Chandrakar et al., 2016). However, it is still unclear what the best shape is for representing the cloud droplet distribution in atmospheric clouds over a broader range of conditions. This  
30   topic is beyond the scope of this paper but is worth investigation in the future. The uncertainty of the estimated  $s$  based on our method strongly depends on the uncertainties of three retrieved variables ( $w$ ,  $LWC$ , and  $N_d$ ). Improving retrieval accuracy can increase the confidence level of the estimated  $s$ , as well as support other model evaluations.

The good agreement between the supersaturation estimated from ground-based measurements and from the quasi-steady supersaturation obtained from in-situ measurements suggests that equation 11 is a suitable tool to estimate in-cloud supersaturation, which has several advantages over the quasi-steady method. First, our method does not rely on the quasi-steady state assumption, which is questionable in clean (low  $N_d$ ) or vigorous (large  $w$ ) clouds. In fact, supersaturation based on our method is not as sensitive to  $N_d$  ( $\sim N_d^{-2/3}$  in equation 11) compared with quasi-steady supersaturation ( $\sim N_d^{-1}$  in equation 2), but it is sensitive to  $w$  and the vertical gradient in  $LWC$ . Also note that retrieved  $w$  is more reliable compared with retrieved  $N_d$ , which is good for the estimation of  $s$ . Second, our method can provide profiles of supersaturation in clouds (Figure 4b), rather than point values from the in-situ measurements. Last, our method enables building statistics of supersaturation in stratocumulus clouds for various meteorological conditions from multi-year ground-based measurements.

**It should be mentioned that our approach of estimating  $s$  cannot obtain the true supersaturation at the current stage due to (1) the difficulty of directly measuring  $s$  for evaluation and (2) the uncertainty in retrieved variables used in our method, but it still can be very useful to get a relative measure of in-cloud supersaturation. For example, for the profiles in Figure 4b, the most important and useful information is to say where there are relatively narrower or broader regions of  $s$  fluctuation, not whether the  $s$  fluctuation is 0.3% vs. 0.4%, as the latter would require exact accuracy in the retrieved variables. It is interesting and useful to investigate the  $s$  distribution for different clouds in the future.**

Our method might be helpful to improve understanding of drizzle initiation in marine stratocumulus clouds. Ground-based observations at the ENA facility show that 83% of marine stratocumulus clouds are drizzling (Yang et al., 2018b). A long-standing problem in drizzle initiation is the requirement of a mechanism to increase cloud droplet size 10-fold to become drizzle-sized. Recent laboratory and theoretical studies suggest that stochastic condensational growth due to supersaturation fluctuations could provide the link, where some lucky cloud droplets stay longer in high supersaturation regions and form drizzle drops (e.g., McGraw and Liu, 2003, 2004; Sardina et al., 2015; Chandrakar et al., 2016). Equation 11 can be used to estimate supersaturation fluctuations in atmospheric clouds for different conditions, which may be helpful to assess the notion that drizzle formation is due to stochastic condensational growth. Finally, it should be mentioned that supersaturation fluctuation varies on spatial and temporal scales (Siebert and Shaw, 2017). If all measurements are perfect, we expect that  $s$  estimated from 1-Hz in-situ measurements represents the mean over about 100 m, while  $s$  estimated from ground-based measurements can represent the value in one radar sampling volume, about  $10 \times 10 \times 30 \text{ m}^3$ . It is interesting to note that the radar sampling volume for one range gate is close in size to one grid box in a large eddy simulation (LES) model. This provides an opportunity to further compare estimated and simulated supersaturation fluctuations in the future.

## Appendix A: Parameter $A$ in Equation 2

The parameter  $A$  in Equation 2 follows Lamb and Verlinde (2011),

$$A = \frac{Q_1 G}{4\pi \rho_l Q_2}, \quad (\text{A1})$$



where,

$$Q_1 = \left( \frac{l_v}{c_p T} - 1 \right) \frac{M_a g}{RT}, \quad (\text{A2})$$

$$Q_2 = \frac{l_v^2}{M_w c_p p T} + \frac{RT}{M_w e_s}, \quad (\text{A3})$$

$$G = \frac{\rho_l RT}{M_w D_v e_s} + \frac{\rho_l l_v}{M_w k_v T} \left( \frac{l_v}{RT} - 1 \right). \quad (\text{A4})$$

- 5 Here  $l_v$  is the latent heat of vaporization,  $c_p$  is the specific heat of air at constant pressure,  $M_a$  is the molar mass of air,  $M_w$  is the molar mass of water,  $R$  is the universal gas constant,  $D_v$  is the molecular diffusion coefficient,  $k_v$  is the coefficient of thermal conductivity of air, and  $e_s$  is the saturated water vapor pressure at temperature  $T$ . **Note that the unit here is mole-based, i.e., the unit for  $l_v$  is J/mol (e.g., not J/kg).**

## Appendix B: Retrieving cloud droplet number concentration

- 10 **Based on Snider et al. (2017), the cloud droplet number concentration can be retrieved from the lidar backscatter coefficient ( $\sigma$ ) and liquid water content ( $q_l$ ),**

$$N_d = \frac{2e^{3\sigma_x^2} \rho_1^2 \sigma^3}{9\pi q_l^2}, \quad (\text{B1})$$

- where the cloud droplet size distribution is assumed to be lognormal and have a standard deviation of  $\sigma_x = \ln 1.4$ . If we assume the cloud droplet sizes follow a Weibull distribution (Equation 10), the cloud droplet number concentration has a similar relationship between  $\sigma$  and  $q_l$  but a different prefactor,

$$N_d = \frac{\rho_1^2 \sigma^3}{8 q_l^2}. \quad (\text{B2})$$

**Specifically, the retrieved cloud droplet number concentration using a Weibull distribution is 25% larger than if a lognormal distribution was used.**

- Author contributions.* R.M. and F.Y. derived the analytical equation; F.Y. R.M. E.L. and P.K. designed research; E.L., D.Z., and F.Y. analyzed data; F.Y. and A.V. wrote the paper.

- Acknowledgements.* We thank Raymond Shaw (MTU), Yangang Liu (BNL), Katia Lamer (PSU) and Zeen Zhu (SBU) for helpful discussions. **We are grateful to two anonymous reviewers for their helpful comments and feedback.** Data were obtained from the Atmospheric Radiation Measurement (ARM) Climate Research Facility, a U.S. Department of Energy Office of Science user facility sponsored by the Office of Biological and Environmental Research. All data are available from the ARM Data Discovery website (<https://www.archive.arm.gov/discovery/>).  
This work was supported by the U.S. Department of Energy (DOE) under grant DE-SC0012704.

## References

- Borque, P., Luke, E., and Kollias, P.: On the unified estimation of turbulence eddy dissipation rate using Doppler cloud radars and lidars, *Journal of Geophysical Research: Atmospheres*, 121, 5972–5989, <https://doi.org/10.1002/2015JD024543>, 2016.
- Borque, P., Luke, E. P., Kollias, P., and Yang, F.: Relationship between turbulence and drizzle in continental and marine low stratiform clouds, *Journal of the Atmospheric Sciences*, 75, 4139–4148, <https://doi.org/10.1175/JAS-D-18-0060.1>, 2018.
- Chandrakar, K. K., Cantrell, W., Chang, K., Ciochetto, D., Niedermeier, D., Ovchinnikov, M., Shaw, R. A., and Yang, F.: Aerosol indirect effect from turbulence-induced broadening of cloud-droplet size distributions, *Proceedings of the National Academy of Sciences*, 113, 14 243–14 248, <https://doi.org/10.1073/pnas.1612686113>, 2016.
- Chandrakar, K. K., Saito, I., Yang, F., Cantrell, W., Gotoh, T., and Shaw, R. A.: Droplet size distributions in turbulent clouds: experimental evaluation of theoretical distributions, *Quarterly Journal of the Royal Meteorological Society*, submitted.
- Costa, A. A., de Oliveira, C. J., de Oliveira, J. C. P., and da Costa Sampaio, A. J.: Microphysical observations of warm cumulus clouds in Ceara, Brazil, *Atmospheric Research*, 54, 167–199, [https://doi.org/10.1016/S0169-8095\(00\)00045-4](https://doi.org/10.1016/S0169-8095(00)00045-4), 2000.
- Fernald, F. G.: Analysis of atmospheric lidar observations: some comments, *Applied optics*, 23, 652–653, <https://doi.org/10.1364/AO.23.000652>, 1984.
- Frisch, A., Feingold, G., Fairall, C., Uttal, T., and Snider, J.: On cloud radar and microwave radiometer measurements of stratus cloud liquid water profiles, *Journal of Geophysical Research: Atmospheres*, 103, 23 195–23 197, <https://doi.org/10.1029/98JD01827>, 1998.
- Grabowski, W. W. and Wang, L.-P.: Growth of cloud droplets in a turbulent environment, *Annual review of fluid mechanics*, 45, 293–324, <https://doi.org/10.1146/annurev-fluid-011212-140750>, 2013.
- Grosvenor, D. P., Sourdeval, O., Zuidema, P., Ackerman, A., Alexandrov, M. D., Bennartz, R., Boers, R., Cairns, B., Chiu, J. C., Christensen, M., et al.: Remote sensing of droplet number concentration in warm clouds: A review of the current state of knowledge and perspectives, *Reviews of Geophysics*, 56, 409–453, <https://doi.org/10.1029/2017RG000593>, 2018.
- Kalesse, H. and Kollias, P.: Climatology of high cloud dynamics using profiling ARM Doppler radar observations, *Journal of Climate*, 26, 6340–6359, <https://doi.org/10.1175/JCLI-D-12-00695.1>, 2013.
- Lamb, D. and Verlinde, J.: *Physics and chemistry of clouds*, Cambridge University Press, <https://doi.org/10.1017/CBO9780511976377>, 2011.
- Li, X.-Y., Svensson, G., Brandenburg, A., and Haugen, N. E.: Cloud-droplet growth due to supersaturation fluctuations in stratiform clouds, *Atmospheric Chemistry and Physics*, 19, 639–648, <https://doi.org/10.5194/acp-19-639-2019>, 2019.
- Liu, Y. and Hallett, J.: On size distributions of cloud droplets growing by condensation: A new conceptual model, *Journal of the atmospheric sciences*, 55, 527–536, [https://doi.org/10.1175/1520-0469\(1998\)055<0527:OSDOCD>2.0.CO;2](https://doi.org/10.1175/1520-0469(1998)055<0527:OSDOCD>2.0.CO;2), 1998.
- Luke, E. P. and Kollias, P.: Separating cloud and drizzle radar moments during precipitation onset using Doppler spectra, *Journal of Atmospheric and Oceanic Technology*, 30, 1656–1671, <https://doi.org/10.1175/JTECH-D-11-00195.1>, 2013.
- McGraw, R.: Description of aerosol dynamics by the quadrature method of moments, *Aerosol Science and Technology*, 27, 255–265, <https://doi.org/10.1080/02786829708965471>, 1997.
- McGraw, R. and Liu, Y.: Kinetic potential and barrier crossing: A model for warm cloud drizzle formation, *Physical review letters*, 90, 018 501, <https://doi.org/10.1103/PhysRevLett.90.018501>, 2003.
- McGraw, R. and Liu, Y.: Analytic formulation and parametrization of the kinetic potential theory for drizzle formation, *Physical Review E*, 70, 031 606, <https://doi.org/10.1103/PhysRevE.70.031606>, 2004.

- McGraw, R. and Liu, Y.: Brownian drift-diffusion model for evolution of droplet size distributions in turbulent clouds, *Geophysical research letters*, 33, <https://doi.org/10.1029/2005GL023545>, 2006.
- McGraw, R. and Wright, D. L.: Chemically resolved aerosol dynamics for internal mixtures by the quadrature method of moments, *Journal of Aerosol Science*, 34, 189–209, [https://doi.org/10.1016/S0021-8502\(02\)00157-X](https://doi.org/10.1016/S0021-8502(02)00157-X), 2003.
- 5 Mellado, J. P.: Cloud-top entrainment in stratocumulus clouds, *Annual Review of Fluid Mechanics*, 49, 145–169, <https://doi.org/10.1146/annurev-fluid-010816-060231>, 2017.
- O'Connor, E. J., Illingworth, A. J., and Hogan, R. J.: A technique for autocalibration of cloud lidar, *Journal of Atmospheric and Oceanic Technology*, 21, 777–786, [https://doi.org/10.1175/1520-0426\(2004\)021<0777:ATFAOC>2.0.CO;2](https://doi.org/10.1175/1520-0426(2004)021<0777:ATFAOC>2.0.CO;2), 2004.
- Politovich, M. K. and Cooper, W. A.: Variability of the supersaturation in cumulus clouds, *Journal of the atmospheric sciences*, 45, 1651–1664, [https://doi.org/10.1175/1520-0469\(1988\)045<1651:VOTSIC>2.0.CO;2](https://doi.org/10.1175/1520-0469(1988)045<1651:VOTSIC>2.0.CO;2), 1988.
- 10 Saito, I., Gotoh, T., and Watanabe, T.: Broadening of Cloud Droplet Size Distributions by Condensation in Turbulence, *Journal of the Meteorological Society of Japan. Ser. II*, <https://doi.org/10.2151/jmsj.2019-049>, 2019.
- Sardina, G., Picano, F., Brandt, L., and Caballero, R.: Continuous growth of droplet size variance due to condensation in turbulent clouds, *Physical review letters*, 115, 184 501, <https://doi.org/10.1103/PhysRevLett.115.184501>, 2015.
- 15 Siebert, H. and Shaw, R. A.: Supersaturation fluctuations during the early stage of cumulus formation, *Journal of the Atmospheric Sciences*, 74, 975–988, <https://doi.org/10.1175/JAS-D-16-0115.1>, 2017.
- Snider, J. R., Leon, D., and Wang, Z.: Droplet concentration and spectral broadening in southeast Pacific stratocumulus clouds, *Journal of the Atmospheric Sciences*, 74, 719–749, <https://doi.org/10.1175/JAS-D-16-0043.1>, 2017.
- Turner, D. D., Clough, S. A., Liljegren, J. C., Clothiaux, E. E., Cady-Pereira, K. E., and Gaustad, K. L.: Retrieving Liquid Water Path and Precipitable Water Vapor From the Atmospheric Radiation Measurement (ARM) Microwave Radiometers, *IEEE Transactions on Geoscience and Remote Sensing*, 45, 3680–3690, <https://doi.org/10.1109/TGRS.2007.903703>, 2007.
- 20 Wang, J., Dong, X., and Wood, R.: Aerosol and Cloud Experiments in Eastern North Atlantic (ACE-ENA) Science Plan, Tech. rep., DOE Office of Science Atmospheric Radiation Measurement (ARM) Program, <https://doi.org/10.2172/1253912>, 2016.
- Wendisch, M. and Brenguier, J.-L.: Airborne measurements for environmental research: methods and instruments, John Wiley & Sons, <https://doi.org/10.1002/9783527653218>, 2013.
- 25 Wood, R.: Stratocumulus clouds, *Monthly Weather Review*, 140, 2373–2423, <https://doi.org/10.1175/MWR-D-11-00121.1>, 2012.
- Wu, W. and McFarquhar, G. M.: Statistical theory on the functional form of cloud particle size distributions, *Journal of the Atmospheric Sciences*, 75, 2801–2814, <https://doi.org/10.1175/JAS-D-17-0164.1>, 2018.
- Yang, F., Kollias, P., Shaw, R. A., and Vogelmann, A. M.: Cloud droplet size distribution broadening during diffusional growth: ripening amplified by deactivation and reactivation, *Atmospheric Chemistry and Physics*, 18, 7313–7328, <https://doi.org/10.5194/acp-18-7313-2018>, 2018a.
- 30 Yang, F., Luke, E. P., Kollias, P., Kostinski, A. B., and Vogelmann, A. M.: Scaling of drizzle virga depth with cloud thickness for marine stratocumulus clouds, *Geophysical Research Letters*, 45, 3746–3753, <https://doi.org/10.1029/2018GL077145>, 2018b.
- Yum, S. S., Hudson, J. G., and Xie, Y.: Comparisons of cloud microphysics with cloud condensation nuclei spectra over the summertime Southern Ocean, *Journal of Geophysical Research: Atmospheres*, 103, 16 625–16 636, <https://doi.org/10.1029/98JD01513>, 1998.
- 35 Zhang, X. and Zheng, G.: A simple droplet spectrum derived from entropy theory, *Atmospheric research*, 32, 189–193, [https://doi.org/10.1016/0169-8095\(94\)90059-0](https://doi.org/10.1016/0169-8095(94)90059-0), 1994.