

## **Response to Reviewer Comments**

### **Measurements of Delays of Gas-Phase Compounds in a Wide Variety of Tubing Materials due to Gas-Wall Interactions**

Benjamin Deming,<sup>1</sup> Demetrios Pagonis,<sup>1</sup> Xiaoxi Liu,<sup>1</sup> Doug Day,<sup>1</sup> Ranajit Talukdar,<sup>1</sup> Jordan Krechmer,<sup>2</sup> Joost A. de Gouw,<sup>1</sup> Jose L. Jimenez,<sup>1</sup> and Paul J. Ziemann<sup>1</sup>

<sup>1</sup>Dept of Chemistry and Cooperative Institute for Research in Environmental Sciences, University of Colorado, Boulder, CO, USA

<sup>2</sup> Center for Aerosol and Cloud Chemistry, Aerodyne Research Inc., Billerica, MA, USA

Correspondence to: Paul J. Ziemann (paul.ziemann@colorado.edu) and Jose L. Jimenez (jose.jimenez@colorado.edu)

We thank the reviewers for their insightful comments. They are copied and numbered below and each one is followed by our response.

## **Reviewer 1**

### *General Comments*

The authors present a very useful comparison between many widely used tubing types. They report equilibration times of each tubing material when switching between sampling representative atmospheric compounds and clean air. In particular, polymeric tubing (i.e. Teflon) is reported to generally have substantially faster equilibration times than metal tubing (in most cases even when coated). While relatively technical in nature, this work tackles an important issue in designing new instrumentation for the analysis of difficult-to-measure atmospheric components. I have relatively few comments and recommend publication with only minor revisions.

### *Specific Comments*

Comment 1. It is not clear to me how well adsorbent and absorbent tubing can be compared by their approach, which is concerning given that a major conclusion of this work is the advantage of absorbing tubing over adsorbing tubing for sampling gases. One specific issue on this topic is that adsorbing times are on a 50% benchmark and the absorbing times on a 90% benchmark. Are these quantitatively comparable, which is to say, do they have the same mathematical meaning to allow direct comparison across modes? In Eq. (3), it seems odd to subtract the time it takes to get to 90% in the instrument from the time it takes to get to 50% in the complete setup. Couldn't the sigmoidal fit of the adsorbing data be used to similarly estimate time it takes to get to 90% and provide a uniform comparison? On a similar note, why where timescales measured during depassivation for absorbent and passivation for adsorbent? The authors explicitly discuss that these metrics are different, so different equations are used and when they are included on the same plots a note is made. However, the authors nevertheless compare these cases, for instance stating in the abstract that "glass and uncoated and coated metals ... always caused longer delays than Teflon." I think it is important to compare across these materials, so my suggestion is not to stop comparing (e.g. removing the offending sentence in the abstract), but to put a little more care into figuring out how best to compare across categories (e.g. unify benchmarks).

Response. The decision to use a 50% benchmark for adsorptive materials was made for practical reasons. We had originally fit traces to sigmoidal curves and calculated the time to 90% as suggested by the reviewer. This approach worked well for some data sets, but not others. A number of traces, particularly at higher RH, fit very poorly to sigmoidal curves. Conversely, the 50% benchmark yields more consistent, stable results. Using the 90% benchmark for traces that do fit a sigmoidal curve well only increases the reported delay time by ~40% compared to the 50% benchmark. And since the delays caused by adsorptive materials are already larger than the 50% delay times of absorptive materials, changing to a 90% benchmark for adsorptive materials would only slightly increase this difference. So the statement that Teflon performs better does not depend on the benchmarks.

The decision to measure delays by passivation rather than depassivation was similarly made for practical reasons. Because depassivation can take a long time for some adsorbent tubing, measurement delays in adsorptive tubing were determined from passivation curves. Furthermore, because measurements of adsorptive uptake are much more common in the literature such curves may have more practical value.

To further clarify these issues we added the following text on lines 144–148:

“Although the time series are approximately sigmoidal, fitting to these types of curves resulted in poor fits for a number of experiments. The 50% benchmark used here resulted in more consistent and stable results, and although it reduced the reported delay time by ~40% compared to a sigmoidal fit, it did not significantly the comparisons between materials.”

And we also added the following text on lines 126–129:

“Because adsorbent tubing can take much longer to depassivate than absorbent tubing, for these experiments measurement delays were determined from passivation curves. This approach also has more comparative value, since measurements of adsorptive uptake to various materials are much more common in the literature.”

Comment 2. A lot of time is spent rationalizing and discussing the fact that the steel tubing was previously used. I’m not sure how best to handle this; in short my issue is that large sections of pages 13 and 15 discuss the potential impact of this issue on the observed results but fundamentally it is just an N of 1. If the authors truly believe that the results of steel are strongly influenced by the history of the tubing, it seems best to just leave that data out and focus on 13 instead of 14 types of tubing. Otherwise, given the amount of time these seem to need to talk about it, it is apparently a bit of an apples to oranges comparison. Maybe they could have another small paragraph in which they discuss the possibility that tubing history has an impact and present their evidence for that specific issue there.

Response. We think that it is worthwhile to note the potential importance of tubing history or gas sampling, so have added the following text on lines 287–290:

“Although some segments of the scientific community are aware of “memory effects” and the possible advantages of “conditioning” sampling lines, it is still worthwhile to raise awareness of the potentially important but unpredictable effects of tubing history on gas sampling.”

### *Technical Comments*

Comment 1. I actually have very few minor technical comments. I noticed no typos or specific issues in language, and believe the figures are clear and to the point.

Comment 2. I notice that the manufacturers of C-PFA also make C-FEP, and it seems to be significantly cheaper (a little more than half the price). Given the relatively similar results between FEP and PFA, is there a reason the authors chose to test C-PFA but not C-FEP? Convincing the community to switch to conductive Teflon would be easier if cheaper, so it is a little bit unfortunate that C-FEP was not tested or discussed.

Response. When in our initial investigations we found conductive PTFE behaved similarly to PTFE we decided to seek out conductive PFA because it seemed to perform the best out of the tested materials. Based on the similarity between PFA and FEP, and the fact that the added conductive material seems to have a negligible effect on delays, we agree that C-FEP may be a much more cost-effective solution. We have added the following text on lines 350–352 to make readers aware of this:

“Conductive FEP, although not tested in this work, may combine good gas and particle transmission at approximately half the price of conductive PFA.”

Comment 3. I think Figure S3 actually adds a lot of insight, and should maybe be added to the main body of the manuscript. If this change were made, the figure would need some cleanup to bring it up to the clarity standards of the current main figures.

Response. We have considered this suggestion, but decided it would not be a good use of journal space to move Figure S3 to the main body of the manuscript. The point of the figure was to show that conductive PFA and Silonite tubing efficiently pass particles, which was already expected since conductive silicone tubing is used by some investigators for particle sampling because of this property.

## **Reviewer 2**

### *General Comments*

In analytical chemistry of gases and particles interactions with wall material of tubing, adsorbents, and/or material of other devices are often crucial. This paper investigates the impact of various tubing materials on the recovery of 4 ketones (C6-C13) and one C12-hydrocarbon in different humidity regimes. The authors present the results clearly and well structured.

### *Specific Comments*

The gas/particle phase analytical community certainly appreciates such an investigation assisting in choosing an appropriate tuning material in the applications. The tubing material selected in the experiments is well tuned far from being comprehensive. It may be worthwhile to discuss more deeply effects of humidity and aging of tubing material on adsorption/desorption processes and thus related recovery of the target compounds. The paper is recommended for publication with minor revisions considering the technical comments.

### Response.

We have chosen not to expand our discussion of these issues since we think our Discussion and Conclusions already capture our thoughts and extent of understanding on aged tubing and the effects of humidity. We also note the other reviewer suggested that we delete our work on aged tubing. Our summary statements on this are given on lines 287–290:

“Although some segments of the scientific community are aware of “memory effects” and the possible advantages of “conditioning” sampling lines, it is still worthwhile to raise awareness of the potentially important but unpredictable effects of tubing history on gas sampling.”

And on lines 345–348:

“If adsorbent tubing must be used, delays can be minimized by ensuring the RH is maintained above 20%. It should also be emphasized that use of adsorbent tubing can result in large memory effects and sampling artifacts, particularly upon changes in RH.”

#### *Technical Comments*

Comment 1. The author team should thoroughly check the comma settings throughout the text. This would lead to better structured text improving text understanding.

Response. We have reviewed our manuscript and revised our use of commas as deemed necessary.

Comment 2. Page 2 line 47: . . . demonstrated that partitioning is depended . . .

Response. The reviewers have misread the sentence, which does not include this quote. On lines 47–48 it reads: “They also *demonstrated that partitioning depended* only on the saturation concentration of the organic compound and not its specific functionality.”

Comment 3. Page 4/5 line 86/87: per definition ppb is not a concentration. It is a mixing ratio. It is not clear whether weight or volume of the compound of interest is used. It is recommended to use amount fraction or mol fraction throughout the text.

Response. We have changed from ppb to ppbv (volume mixing ratio) throughout the text. We also added clarifying text on lines 85–87:

“The initial concentration in the chamber was approximately 20 ppbv (mixing ratio, 1 ppbv =  $2.06 \times 10^{10}$  molecules  $\text{cm}^{-3}$  for the temperature and pressure of this study) for each compound prior to gas-wall partitioning.”

Comment 4. Page 5 line 101: please explain how the flow of 300 ml/min was adjusted. A possible artefact formation through the flow regulating device should be discussed.

Response. The flow into the instrument was adjusted with a needle valve incorporated as part of the inlet. This did not lead to any artefacts, as noted in the text added on lines 102–104:

“The flow rate through the inlet was maintained at  $0.300 \pm 0.015 \text{ L min}^{-1}$  with a Teflon needle valve, with any delay due to absorption in the valve being accounted for as a component of the instrument delay as described below.”

Comment 5. Figure 1 legend: the dashed line represents not the chamber concentration. Please describe the correct meaning of the dashed line in the legend below the figure and remove dashed line and label from the legend box in Figure 1a.

Response. We have removed the dashed line and “chamber concentration” from the legend, but have retained the dashed line in the figure. The y-axis is now labeled “Normalized Signal” instead of “Signal (Normalized to Chamber Concentration)”. We have also added the following text to the caption in Figure 1:

“Signals were normalized to the values measured when sampling directly from the chamber, which were given a value of 1.0 and are represented by the dashed line in the figure.”

Comment 6. Page 12 line 249: “... we hope will help inform decisions in designing sampling schemes. The meaning is not clear. Please rephrase.

Response. We have rewritten this sentence on lines 259–260 as follows:

“Instead, we discuss a few general findings that we hope will provide guidance for researchers when choosing materials for sampling lines.”

Comment 7. Page 12 line 253 to line 256: “The longest measured delay times were for aluminium tubing and aluminium tubing treated with hexavalent chromate conversion coating. This treatment is intended to prevent corrosion and is used in the Potential Aerosol Mass flow reactor (Kang et al. 2007), and it does not appear to significantly affect the measurement delays.” Please check for consistency: “longest measured delay times” versus “does not appear to significantly affect the measurement delays”. Correct “aluminum”.

Response. The chromate conversion coating does not appear to significantly alter the already long delay times of aluminum. We have clarified this by changing the text on lines 269–272 to the following:

“This coating is intended to prevent corrosion and is also used in the Potential Aerosol Mass flow reactor (Kang et al. 2007). Delays through aluminum tubing, either with or without this coating, were long, so the coating does not appear to provide and improvement in the measured tubing delays.”

We also note that AMT permits either spelling of aluminum (or aluminium), as long as consistency is maintained.

Comment 8. Figure 2, legend x-axis: what is the meaning of the “\*” in SIMPOL C? Please explain or delete.

Response. The caption in Figure 2 has been rewritten to clarify this as follows:

“Delay times measured for a series of 2-ketones sampled through tubing composed of different materials. Delay times were normalized to tubing length and saturation concentrations ( $C^*$ ) of 2-ketones were estimated using SIMPOL.1. Error bars...”

Comment 9. Page 14 line 283: Please start new sentence after “(Fig S3)”. ... (Fig S3). The measurements may be . . .

Response. We have changed the text on lines 294–296 as follows:

“Notably, Silonite tubing performed as well as PFA Teflon in terms of delays, even at low relative humidity, and exhibited good particle transmission (Fig S3). We note, however, that measurements can be influenced by humidity and VOC-VOC interactions.”

# Measurements of Delays of Gas-Phase Compounds in a Wide Variety of Tubing Materials due to Gas-Wall Interactions

Benjamin Deming,<sup>1</sup> Demetrios Pagonis,<sup>1</sup> Xiaoxi Liu,<sup>1</sup> Doug Day,<sup>1</sup> Ranajit Talukdar,<sup>1</sup> Jordan Krechmer,<sup>2</sup> Joost A. de Gouw,<sup>1</sup> Jose L. Jimenez,<sup>1</sup> and Paul J. Ziemann<sup>1</sup>

5 <sup>1</sup> *Dept of Chemistry and Cooperative Institute for Research in Environmental Sciences, University of Colorado, Boulder, CO, USA*

<sup>2</sup> *Center for Aerosol and Cloud Chemistry, Aerodyne Research Inc., Billerica, MA, USA*

Correspondence to: Paul J. Ziemann (paul.ziemann@colorado.edu) and Jose L. Jimenez (jose.jimenez@colorado.edu)

## 10 **Abstract**

Losses of gas-phase compounds or delays on their transfer through tubing are important for atmospheric measurements and also provide a method to characterize and quantify gas-surface interactions. Here we expand recent results by comparing different types of Teflon and other polymer tubing, as well as glass, 15 uncoated and coated stainless steel and aluminium, and other tubing materials by measuring the response to step increases and decreases in organic compound concentrations. All polymeric tubings showed absorptive partitioning behaviour with no dependence on humidity or concentration, with PFA Teflon tubing performing best in our tests. Glass and uncoated and coated metal tubing showed very different phenomenology due to adsorptive partitioning to a finite number of surface sites. Strong 20 dependencies on compound concentration, mixture composition, functional groups, humidity, and memory effects were observed for glass and uncoated and coated metals, which (except for Silonite-coated stainless steel) also always caused longer delays than Teflon for the compounds and concentrations tested. Delays for glass and uncoated and coated metal tubing were exacerbated at low relative humidity but reduced for RH > 20%. We find that conductive PFA and Silonite tubing perform 25 best among the materials tested for gas plus particle sampling lines, combining reduced gas-phase delays with good particle transmission.

## 1 Introduction

A number of studies have demonstrated that absorptive partitioning of volatile organic compounds (VOCs) into the Teflon walls of environmental chambers can affect the results of the experiments. This partitioning has been shown to be reversible and relatively fast, on a timescale of minutes (Matsunaga and Ziemann, 2010; Yeh and Ziemann, 2015; Krechmer et al., 2016; Ye et al., 2016; Huang et al., 2018). Furthermore, a recent study showed analogous absorptive partitioning of VOCs when transported through PFA (perfluoroalkoxy alkanes) Teflon tubing, with similar interaction parameters as for FEP (fluorinated ethylene propylene) Teflon chamber walls (Pagonis et al., 2017). That work found that the tubing acted roughly as a chromatography column, effectively smearing the time profile of the measured compounds and affecting the measured concentrations. Delays of over 10 minutes were observed for realistic conditions for the least-volatile compounds ( $C^* \sim 3 \times 10^4 \mu\text{g m}^{-3}$ ) with longer delays predicted for compounds less volatile than those measured in that study. The resulting time profiles were well-reproduced by a simple numerical chromatography model that divided the length of tubing into a series of bins in which organic compounds partitioned between the gas phase and the walls based on the vapor pressure of the organic compound and an equivalent absorbing mass of the wall ( $C_w$ ,  $\mu\text{g m}^{-3}$ ) according to Eq. (1):

$$F_w = \frac{1}{1 + \frac{C^*}{C_w}} \quad (1)$$

In this equation,  $F_w$  is the fraction of the compound partitioned to the wall at equilibrium, and  $C^*$  ( $\mu\text{g m}^{-3}$ ) is the saturation concentration (the vapor pressure in mass units) of the organic compound estimated using the SIMPOL.1 group contribution method (Pankow and Asher, 2008). The model code was made publicly available in the paper. They also demonstrated that partitioning depended only on the saturation concentration of the organic compound and not its specific functionality.

Although PFA Teflon is one of the most commonly used materials for gas sampling lines and instrumentation surfaces, a wide variety of materials finds use in practice for sampling gases, including other types of Teflon, PEEK (polyether ether ketone), glass, and uncoated and coated stainless steel and aluminum. Quantitative aerosol sampling requires electrically conductive tubing to avoid major losses



of charged particles in Teflon tubing, and is commonly performed using uncoated stainless steel, copper, aluminium, or polymeric tubing that has been rendered conductive by additives such as black carbon. Partitioning of semi-volatile gases to and from tubing and instrument internal surfaces can disturb gas/particle equilibrium, resulting in additional evaporation or condensation of material that may interfere with measurements. In oxidation flow reactors, such tubing and inlet delays can perturb the equilibrium of lower volatility compounds that are thought to dominate potential aerosol mass (Palm et al, 2018). Decisions on material choice are based on a number of criteria, including but not limited to cost, weight, and electrical conductivity (for aerosols only). Also considered are the potential for gas-phase losses, delays, measurement artefacts, or memory effects, particularly when measuring low volatility compounds or those that interact strongly with surfaces. However, systematic testing of the effects of different materials on measurements has been limited.

Here we present results of a systematic survey of 14 commonly used tubing materials with the same compounds, conditions, and measurement protocol. The effect of tubing on measurements was characterized by introducing step-function changes in compound concentrations while sampling through a length of tubing or directly into the instrument inlet, allowing characteristics of the tubing to be separated from any instrument effects. Through these measurements, the physical basis of partitioning in different materials can be understood, and relative performance of the different materials can be accurately compared. We aim to facilitate more informed decisions about material choice for sampling lines and inlet and instrument design, and also to provide information on gas/surface interactions that may be useful to interpret studies in indoor air chemistry and other fields.

## **2 Experimental**

### **2.1 Absorbent tubing experiments**

A series of experiments was conducted with the polymeric tubing materials listed in Table 1. Selected 2-ketones and 1-dodecene were added to an 8 m<sup>3</sup> FEP Teflon environmental chamber (the “VOC chamber”), which was filled with purified air from an AADCO 737 Pure Air Generator. 2-Hexanone (99%), 2-octanone (98%), 2-decanone (98%), 2-tridecanone (99%), and 1-dodecene (95%) were obtained from Aldrich; and 2-dodecanone (98%) and 2-tetradecanone (98%) were obtained from

80 Table 1. Tubing materials investigated in this study.

Material	Classification	Internal Diameter (cm)	Supplier (Part No.)
PFA (perfluoroalkoxy alkanes)	Absorbent	0.476	McMaster-Carr (52705K34)
FEP (fluorinated ethylene propylene)	Absorbent	0.476	McMaster-Carr (2129T13)
PEEK (polyether ether ketone)	Absorbent	0.381	BGB Analytik
PTFE (polytetrafluoroethylene)	Absorbent	0.476	McMaster-Carr (5239K12)
C-PTFE (conductive PTFE)	Absorbent	0.476	Finemech (S1827-68)
C-PFA (conductive PFA)	Absorbent	0.476	Fluorotherm
Aluminum	Adsorbent	0.457	McMaster-Carr (89965K431)
Chromated aluminium	Adsorbent	0.457	As above, then chromated by KMG Industrial Screening & Metal Finishing, Inc.
Electropolished steel	Adsorbent	0.457	Harrington Pure
Copper	Adsorbent	0.483	Grainger (2LKK2)
Glass	Adsorbent	0.457	CU glassblowing workshop
Silcosteel	Adsorbent	0.457	Restek
Stainless steel	Adsorbent	0.457	McMaster-Carr (89895K724)
Silonite	Adsorbent	0.457	Entech Instruments

ChemSampCo. Solid standard compounds were weighed and added to a glass bulb, whereas liquids were measured via syringe and dispensed directly into the same bulb. These standards were then evaporated and flushed from the bulb (with heating in some cases) directly into the chamber using a 5 L min<sup>-1</sup> stream of ultra-high purity (UHP) N<sub>2</sub> (Airgas). The initial concentration in the chamber was approximately 20 ppbv (mixing ratio, 1 ppbv =  $2.06 \times 10^{10}$  molecules cm<sup>-3</sup> for the temperature and

pressure of this study) for each compound prior to gas-wall partitioning. Using Eq. (1),  $C^*$  values estimated using SIMPOL.1 (Pankow and Asher, 2008), and a  $C_w$  value of  $20 \text{ mg m}^{-3}$  (Matsunaga and Ziemann, 2010; Yeh and Ziemann, 2015), chamber concentrations ranged from 20 ppbv for the most volatile compound (2-hexanone) to approximately 13 ppbv for the least volatile (2-tetradecanone). It should be noted, however, that since all signals were normalized to the measured chamber signal the absolute concentrations did not matter for this analysis. For experiments conducted under dry conditions the humidity was less than 0.5% RH, whereas for humid experiments the desired RH was achieved by adding HPLC-grade water to the chamber in the same manner as described above for the VOCs. An FEP Teflon-coated fan was run for ~1 min to guarantee complete mixing and to help achieve gas-wall partitioning equilibration in the 30 min period before measurements were taken. A second chamber (the “clean chamber”) contained only purified air, and in some cases added water vapor. The chambers operated at room pressure (~630 Torr) and temperature ( $23^\circ\text{C} \pm 2^\circ\text{C}$ ), which was typically stable within  $1^\circ\text{C}$ , and the humidity (measured using an Amprobe THWD-5) of the two chambers differed by less than 5% RH.

After the chambers had equilibrated, the instrument inlet was connected to the VOC chamber via the tubing to be investigated. The flow rate through the inlet was maintained at  $0.300 \pm 0.015 \text{ L min}^{-1}$  with a Teflon needle valve, with any delay due to absorption in the valve being accounted for as a component of the instrument delay as described below. Once the measured signals had reached steady-state, meaning that both the tubing and the instrument were equilibrated with the gas phase (“passivation”), sampling was rapidly switched to the clean chamber either before the tubing entrance (to measure the total delay due to instrument and tubing) or directly at the instrument inlet (to measure the instrument delay only) (“depassivation”).

Delays were quantified by fitting the measured depassivation time series to exponential decays. The tubing delay for these experiments is defined in Eq. (2) as the difference in the time it takes each of these curves to reach 90% of the final value:

$$t_{\text{tubing,abs}} = \ln(10) (\tau_{\text{total}} - \tau_{\text{instrument}}) \quad (2)$$

where  $t_{\text{tubing,abs}}$  is the absorptive tubing delay,  $\tau_{\text{total}}$  is the fitted timescale for the tubing plus instrument

depassivation,  $\tau_{instrument}$  is the fitted timescale from the instrument-only depassivation, and the factor of  $\ln(10) = 2.3$  accounts for the difference between the fitted timescales and the time required to reach 90% depassivation. Comparing these two depassivation timescales allows the tubing delay to be decoupled from the instrument response. Each tubing delay was then normalized by the length of the piece of tubing used. Note that we use  $t$  to refer to measurement delay times and  $\tau$  to refer to fitted exponential timescales. A derivation of this equation can be found in the Supplement. The tubing model of Pagonis et al. (2017) was used to simulate the tubing delays expected for different values of  $C_w$  across the range of  $C^*$  of the compounds investigated. The value of  $C_w$  resulting in the lowest error (calculated as the sum of squared residuals between modelled and measured delay curves) was chosen to be the best estimate.

## 2.2 Adsorbent tubing experiments

A series of experiments was conducted with the uncoated and coated metal and glass tubing listed in Table 1. Because adsorbent tubing can take much longer to depassivate than absorbent tubing, for these experiments measurement delays were determined from passivation curves. This approach also has more comparative value, since measurements of adsorptive uptake to various materials are much more common in the literature. To avoid surface displacement processes that can occur with these materials (discussed in detail further below), only a single compound (2-hexanone, 2-decanone, or 1-dodecene) at a time was loaded into the chamber for most experiments. Each sample of tubing was depassivated using air from the clean chamber until steady-state values were reached. The tubing was then connected directly to the VOC chamber and sampled until a steady-state signal was reached. Because the time series consisted of a long period with no signal followed by an approximately sigmoidal increase in signal, the tubing delay for this adsorptive tubing,  $t_{tubing,ads}$ , is defined as the time it takes the measured signal to reach 50% of its steady-state value during passivation. This value was determined by selecting the points between 35% and 65% of the maximum, performing a linear fit, and solving the linear fit equation for the point at which 50% was reached. These delays were then corrected for the measured instrument response. Because  $t_{total}$  is defined differently than  $\tau_{total}$ , adsorptive tubing delays were calculated using Eq. 3:

$$t_{tubing,ads} = t_{total} - \ln(10) \tau_{instrument} \quad (3)$$

where  $t_{tubing}$  is the tubing delay,  $t_{total}$  is the measured passivation delay (calculated as described in Section 2.1), and  $\tau_{instrument}$  is the measured instrument timescale for the compound. A derivation of this equation is given in the Supplement and an example time series is shown in Fig. S1. Although the time series are approximately sigmoidal, fitting to these types of curves resulted in poor fits for a number of experiments. The 50% benchmark used here resulted in more consistent and stable results, and although it reduced the reported delay time by ~40% compared to a sigmoidal fit, it did not significantly affect the comparisons between materials.

## 2.3 Instrumentation

The quadrupole proton transfer reaction-mass spectrometer (q-PTR-MS) used in this work has been previously described (de Gouw, 2007). The inlet system was reduced prior to these experiments by removing a length of Silcosteel tubing (~1 m, 1/8" OD) and simplifying the valve system. Experiments were performed after the instrument had been pumped down and running for several days. A Vocus proton transfer reaction-time of flight mass spectrometer (Vocus PTR-TOF) was also used for several experiments (Krechmer et al., 2018).

## 3 Results and Discussion

### 3.1 Independent absorptive versus competitive adsorptive behavior

In surveying different tubing materials it became evident that two fundamentally different mechanisms for passivation/depasivation exist. Example time series for the passivation and depasivation of 3 m of FEP Teflon and 1 m of stainless steel tubing are shown in Fig. 1. Although the experimental procedures were identical, the resulting time series for the FEP Teflon (Fig. 1a and b) and stainless steel tubing (Fig. 1c and d) show significant differences that give insight into the sorption mechanisms responsible for the tubing delays. For the FEP Teflon tubing, the approximately exponential build-in of signal during passivation (Fig. 1a) and decrease during depasivation (Fig. 1b) are consistent with an absorptive process in which each compound partitions into the tubing walls according to its vapor pressure, independent of interactions with the other compounds (Pagonis et al., 2017). This contrasts

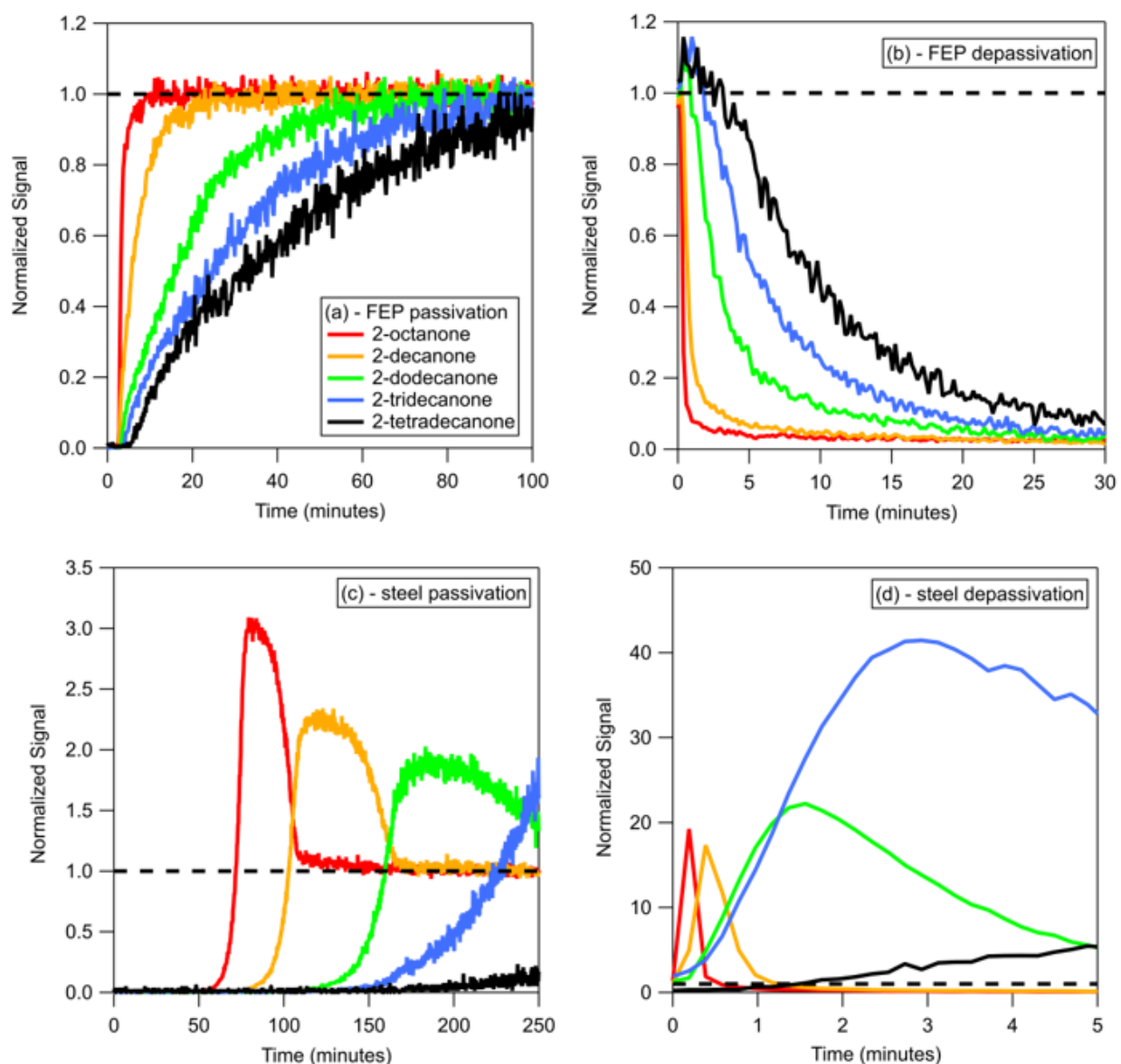


Figure 1. (a) Passivation and (b) depassivation curves measured for step function changes in a series of 2-ketones sampled through absorbent tubing (3 m of FEP Teflon). (c) Passivation and (d) depassivation curves measured for step function changes in a series of 2-ketones sampled through adsorbent tubing (1 m of stainless steel). Absorbent and adsorbent tubing was depassivated using dry and 40% RH air, respectively. Note the different scales in panels c and d. Signals were normalized to the values measured when sampling directly from the chamber, which were given a value of 1.0 and are represented by the dashed line in the figure.

with the behavior seen for the stainless steel tubing (Fig. 1c), in which there is a period of nearly an hour before any signal is measured, followed by a transient enhancement in the signal of the most volatile compound (2-octanone) above that corresponding to its concentration in the chamber (measured separately the same day using FEP Teflon tubing as an inlet). This transient enhancement ends as the signal from the next most volatile compound in the homologous series (2-decanone) grows in, and then after that signal peaks the same pattern of signals occurs sequentially for the other 2-ketones in the series. This behavior suggests that during the period when no signal is measured the compounds in the mixture are all adsorbing to unoccupied surface adsorption sites, and that once these sites are all filled the compounds competitively displace one another according to their vapor pressures as they travel through the tubing. When an identical experiment was conducted with a single ketone no enhancement in the concentration above the chamber concentration was observed (as in Fig. S1), which we take as further evidence for competitive adsorption in the mixture experiment. This conclusion is also based on the characteristics of the time series presented in Fig. 1d, which were measured when the passivated stainless-steel tube was depassivated with humid room air. Rather than appearing as a series of exponential decays (as seen for FEP Teflon in Fig. 1b), the measured concentrations were again enhanced above the chamber concentration (by up to a factor of 40) before approaching zero (the background level for room air). In this experiment, 2-ketones adsorbed to the stainless steel were suddenly displaced by water, causing rapid desorption that led to the enhancement in measured compound concentrations. We therefore used the observation of a strong humidity dependence in measured tubing delays as additional evidence that the delays were controlled by adsorption and used it as an identifying characteristic to divide the investigated materials into two classes (Table 1): absorptive (independent VOC absorption, RH-independent, polymer-like) and adsorptive (competitive VOC adsorption, RH-dependent, metal-like).

The conclusion that there are two sorption mechanisms at play is supported by measurements of partitioning of VOCs to Teflon membrane filters and quartz filters by Mader and Pankow (2000, 2001). Although these authors framed their findings as adsorption in both cases, they report that partitioning to Teflon showed no humidity dependence and was not influenced by other compounds in the ambient air

sampled (Mader and Pankow, 2000). In contrast, sorption to the quartz filters was strongly humidity  
205 dependent and influenced by other organic compounds (Mader and Pankow, 2001), consistent with our  
hypothesis that sorption to some polymeric materials occurs independent of intermolecular interactions  
by absorption while for some other materials it occurs by competitive adsorption. Further evidence of  
competitive VOC adsorption also appears in the work of Roscioli et al. (2015). These authors found that  
210 active, continuous passivation of the glass inlet and internal surfaces of an instrument with surface-  
active fluorinated acidic or basic compounds improved the time response for nitric acid and ammonia,  
respectively. Upon initial passivation they observed spikes in nitric acid or ammonia concentrations  
(similar to the behaviour in Fig. 1d) that corresponded to displacement from surfaces.

### 3.2 Measurements of absorptive delays

The measured tubing delays of 2-ketones through polymer-like, absorbent materials (PFA, FEP, PTFE,  
215 PEEK, and conductive PTFE) under dry conditions are shown in Fig. 2. The lines are model runs fitted  
to the experimental data, which reproduce the observed trends well and were used to calculate the  $C_w$   
values for each tubing material given in Table 2. These  $C_w$  values may be used in conjunction with the  
model presented by Pagonis et al. (2017) to simulate the effects of different sampling lines on measured  
gas-phase concentrations. When applied to tubes with other diameters or to these materials in other  
220 geometries  $C_w$  should be scaled by the surface-to-air volume ratio (Pagonis et al., 2017). PFA Teflon  
appeared to outperform FEP Teflon in terms of measurement delays, although the differences may be  
within our estimated error and within the level of reproducibility observed for different pieces of tubing  
of the same material. PEEK, PTFE, and conductive PTFE showed significantly larger delays than PFA  
and FEP Teflon. According to Fluorotherm (2018), PFA and FEP both have shorter polymer chain  
225 lengths and increased chain entanglements as compared to PTFE. Absorption into Teflon likely occurs  
as gas molecules fit into spaces between the polymer chains as they thermally oscillate (Yeh et al.,  
2015). The fact that the polymer chains of PTFE are not as tangled as those of PFA and FEP suggests  
that there may be more spaces available for gases to absorb into the material, consistent with the larger  
value of  $C_w$  determined here. Conductive Teflon is PTFE or PFA with added black carbon to make the  
230 tubing electrically conductive and therefore appropriate for sampling aerosol. It does not appear that the



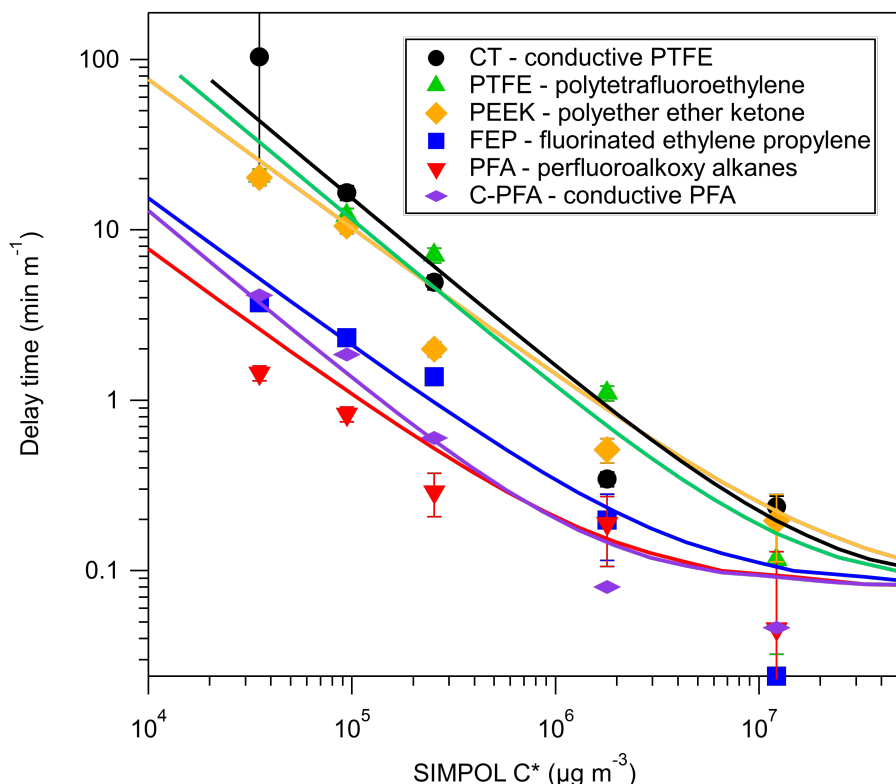


Figure 2. Delay times measured for a series of 2-ketones sampled through tubing composed of different materials. Delay times were normalized to tubing length and saturation concentrations ( $C^*$ ) of 2-ketones were estimated using SIMPOL.1. Error bars were propagated from exponential fits of depassivation curves. Lines are results from the Pagonis et al. (2017) chromatography model.

added black carbon significantly changes the partitioning properties of the tubing for the compounds studied here. Transport of charged particles through conductive PFA tubing wrapped in aluminium foil (to further prevent static build-up) was comparable to sampling through copper, as shown in Fig. S3. Contrary to the commercially available conductive silicone tubing (Timko et al., 2009; Yu et al., 2009), we did not observe emission of any species from the tubing with either the VOCUS PTR-TOF in this study, or with an I CIMS in a related study (Liu et al., 2019). Since conductive PFA combines low interaction with gases with the electrical conductivity needed to sample particles it is an optimal choice for applications that require joint gas plus aerosol sampling lines. As mentioned previously, measurement delays due to absorbent, polymer-like tubing do not exhibit humidity dependence for the

Table 2. Fitted values of  $C_w$  for absorbent tubing materials.

Tubing Material	$C_w$ ( $\mu\text{g m}^{-3}$ ) <sup>a</sup>	Internal Diameter (cm) <sup>b</sup>	Internal Surface Area/ Volume Ratio ( $\text{cm}^{-1}$ )
PFA (perfluoroalkoxy alkanes)	$8.0 \times 10^5$	0.476	8.40
C-PFA (conductive PFA)	$1.3 \times 10^6$	0.476	8.40
FEP (fluorinated ethylene propylene)	$2.0 \times 10^6$	0.476	8.40
PEEK (polyether ether ketone)	$8.0 \times 10^6$	0.381	10.5
PTFE (polytetrafluoroethylene)	$1.2 \times 10^7$	0.476	8.40
C-PTFE (conductive PTFE)	$1.6 \times 10^7$	0.476	8.40

<sup>a</sup>Values of  $C_w$  for other conditions should be scaled proportionally to the surface-to-volume ratio.

<sup>b</sup>Outer diameter = 0.635 cm.

250

species studied here, as demonstrated for PFA, FEP, and PTFE in Fig. S4. We also note that we briefly investigated a short (0.60 m) length of Nafion tubing (0.178 cm ID) using the methodology described for absorbent tubing. After 30 min even the most volatile ketone (2-hexanone) had only reached 30% of the chamber concentration (Fig S2), so the experiment was aborted. It thus appears that this tubing may interfere with the sampling of polar compounds, although further investigation is needed to determine the reason.

255

### 3.3 Measurements and characterization of adsorptive delays

A full, quantitative investigation into the adsorptive mechanism reported here was not attempted in this paper. Instead, we discuss a few general findings that we hope will provide guidance for researchers when choosing materials for sampling lines. As discussed above, the measurement delays arising from adsorptive, or metal-like, tubing materials are highly humidity dependent. This is highlighted in Fig. 3, where an increase from 0% to 20% RH generally decreases the tubing delay by about an order of magnitude. The longest measured delay times were for aluminum tubing and aluminum tubing treated

260

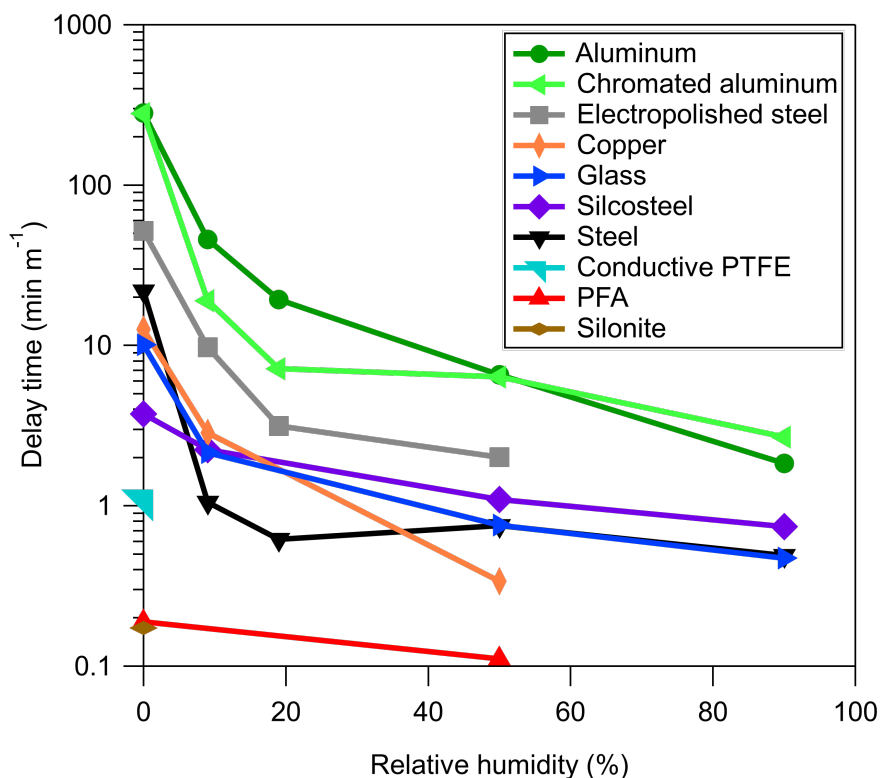


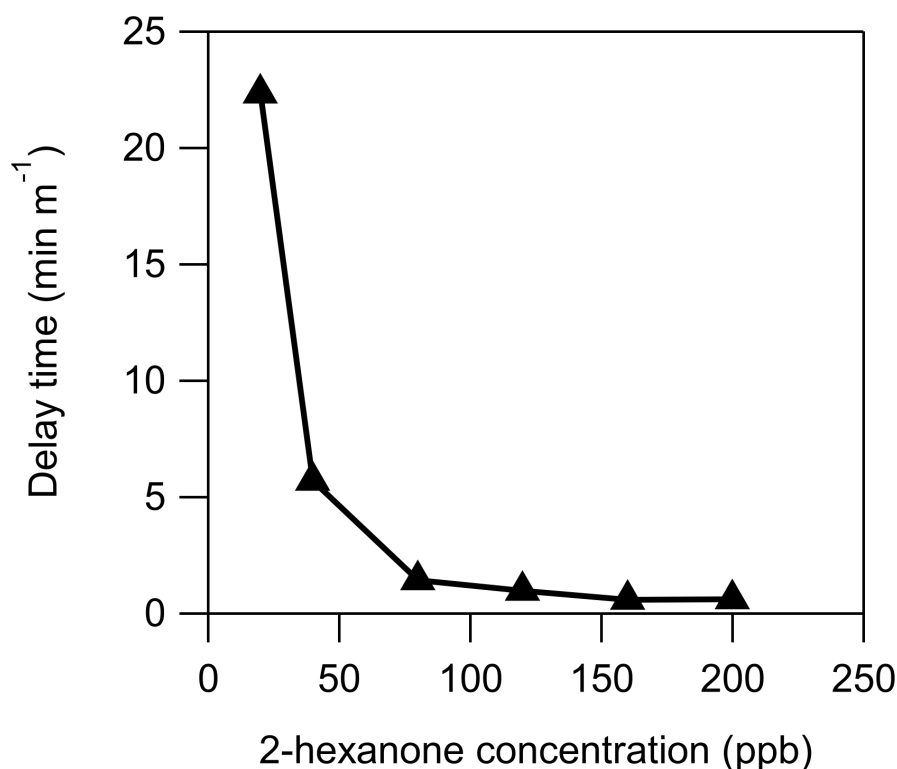
Figure 3. Humidity-dependent delay times measured for 2-decanone for a series of adsorptive tubing materials. Conductive PTFE and PFA are also included for comparison.

with hexavalent chromate conversion coating. This coating is intended to prevent corrosion and is also used in the Potential Aerosol Mass flow reactor (Kang et al. 2007). Delays through aluminum tubing, either with or without this coating, were long, so the coating does not appear to provide any improvement in the measured tubing delays. Stainless steel, Silcosteel, copper, and glass showed similar results to each other, among the lowest delays for the adsorptive-type tubing. Surprisingly, electropolished steel performed worse than regular stainless steel. Electropolishing creates a very smooth surface, which would be expected to reduce the number of surface sites available for adsorption. It is possible that the polishing did reduce the internal surface area of the tubing, but actually increased the number of sites by changing the elemental composition or microstructure of the surface. Alternatively, it should be noted that the steel and copper tubing used in these particular measurements

had previously been used in laboratory experiments, which included sampling compounds with lower saturation concentration than 2-decanone. It is possible that some of these compounds remained adsorbed to the tubing even after depassivation with clean air, effectively conditioning the tubing by blocking some of the adsorption sites. The other tubing samples, in contrast, were bought new and used only for the adsorptive delay experiments. This could partially explain the discrepancy between normal and electropolished stainless steel. In support of this hypothesis, we note that the measurement delay through a short length of electropolished steel previously used for SOA sampling in hundreds of chamber experiments (and therefore coated in low volatility organic compounds) was also measured and found to be much lower than for stainless and electropolished steel. Although some segments of the scientific community are aware of “memory effects” and the possible advantages of “conditioning” sampling lines, it is still worthwhile to raise awareness of the potentially important but unpredictable effects of tubing history on gas sampling.

Although we define the delay times slightly differently for the two types of tubing, the values for PFA Teflon and conductive Teflon are also shown in Fig. 3 for comparison. In addition to exhibiting less complex behaviour, the delays produced using PFA Teflon were shorter than the majority of the tested adsorptive materials, even at high RH. Notably, Silonite tubing performed as well as PFA Teflon in terms of delays, even at low RH, and exhibited good particle transmission (Fig S3). We note, however, that measurements can be influenced by humidity and VOC-VOC interactions.

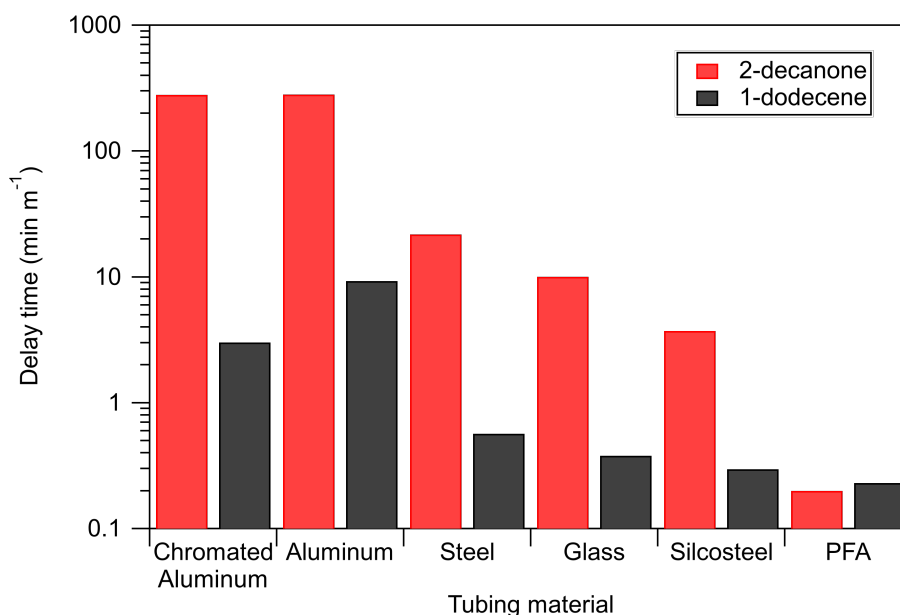
In addition to humidity, the measured tubing delay depends on the concentration of the compound being measured, as seen in Fig. 4. At a concentration of approximately 100 ppbv of 2-hexanone it appears that the stainless-steel tube is saturated: increasing the concentration no longer decreases the measured delay. Using the flow rate and internal surface area of the tube, this corresponds to an estimated coverage of  $4 \times 10^{13}$  molecules  $\text{cm}^{-2}$ . This is slightly less than the surface concentration of  $1.4 \times 10^{14}$  molecules  $\text{cm}^{-2}$  measured by Vaittinen et al. (2014) for ammonia on steel, which may be due in part to the larger size of 2-hexanone molecules. Additionally, these authors had more control over the humidity in their system than in this work, and since small changes in RH can drastically affect the measured delay time, it is possible that our value is artificially low. Furthermore, because the adsorption mechanism appears to be competitive, and this tubing had been previously exposed to



310 Figure 4. Measurement delays of 2-hexanone through 1 m of stainless steel as a function of chamber 2-hexanone concentration under dry ( $RH < 0.5\%$ ) conditions.

organic compounds with lower vapor pressure than 2-hexanone, some of those compounds may have remained sorbed to the tubing and reduced the number of adsorption sites available for 2-hexanone.

315 Partitioning in adsorbent tubing is also dependent on the functionality of the sorbed compound, rather than solely on saturation concentration. This was demonstrated to be the case for absorbent tubing, at least for alkenes and ketones (Pagonis et al, 2017). Fig. 5 compares the delays measured for 2-decanone and 1-dodecene: two compounds with similar saturation concentrations as estimated from SIMPOL.1 ( $1.8 \times 10^6 \mu\text{g m}^{-3}$  and  $1.6 \times 10^6 \mu\text{g m}^{-3}$ ) but different functionality. For all but the absorptive  
 320 PFA tubing the delays are much shorter for the alkene than the ketone, suggesting that more polar compounds adsorb more strongly. This is consistent with our explanation of adsorption as the mechanism behind these delays, as adhesion to surface sites may depend on molecular weight, polarity,



325 Figure 5. Comparison of measured tubing delay times for a ketone and an alkene of similar saturation  
 330 concentration (2-decanone and 1-dodecene). All measurements were performed under dry conditions  
 (RH < 0.5%) with 20 ppbv of the standard in the VOC chamber.

or even specific functionality. It is also consistent with the ability of water vapor to displace the ketones  
 330 from the sites. It should be noted that the alkene delay measurements are more uncertain than the ketone  
 measurements due to lower instrument sensitivity, but because the delay times typically differ by an  
 order of magnitude or more we conclude that this functionality dependence is real.

#### 4. Conclusions

Building on the work of Pagonis et al. (2017), we measured the tubing delays associated with sampling  
 335 VOCs through a wide array of tubing materials. It was found that delays through polymer tubing are  
 controlled by independent absorption, whereas delays in glass and uncoated and coated metal tubing are  
 controlled by competitive adsorption. Absorbent tubing exhibits delays that can be characterized by an  
 effective absorbing mass concentration of the wall, which we report here for six different materials, and  
 which can be scaled for other tubing sizes or material geometries. These values can be used in the  
 340 model provided by Pagonis et al. (2017) to predict the effects of sampling lines on measurements.

Furthermore, delays in absorbent tubing do not show humidity, concentration, or functionality dependence over the ranges of these variables tested here. This is in contrast to adsorbent tubing, which demonstrates a strong dependence on these three factors in addition to generally longer delay times. We therefore recommend the use of absorbent tubing when possible to simplify analysis of gases. If they  
345 can be used, PFA and FEP Teflon appear to be the best choices for minimizing measurement delays. If  
adsorbent tubing must be used, delays can be minimized by ensuring the RH is maintained above 20%.  
It should also be emphasized that use of adsorbent tubing can result in large memory effects and  
sampling artefacts, particularly upon changes in RH. Conductive PFA tubing and Silonite were shown  
to be the best choices for simultaneous gas and particle sampling; however, we note that the Silonite  
350 purchased here cost 2.5 times that of conductive PFA per foot. Conductive FEP, although not tested in  
this work, may combine good gas and particle transmission at approximately half the price of  
conductive PFA. Despite these recommendations, adsorbent materials will no doubt continue to find use  
in sampling lines and instrument internal surfaces. Further work is therefore necessary to more  
completely characterize the relationships put forth in this paper. Specifically, the effects of functionality  
355 and concentration should be analyzed more fully to develop a better working model for the mechanism  
of these measured delays.

## Acknowledgements

This work was supported by the Dept. of Energy (BER/ASR) DE-SC0016559 and by the Sloan  
360 Foundation program on the Chemistry of Indoor Environments (CIE, Grants 2016-7173 and 2018-  
10071). We thank the ToF-CIMS users community, Bill Brune, and Eric Apel for useful discussions.

## References

- De Gouw, J. and Warneke, C.: Measurements of volatile organic compounds in the earth's atmosphere  
using proton-transfer-reaction mass spectrometry, *Mass Spectrom. Rev.*, 26, 223–257,  
365 doi:10.1002/mas.20119, 2007.
- Fluorotherm; FEP Properties: <https://www.fluorotherm.com/technical-information/materials-overview/fep-properties/>; PFA Properties: <https://www.fluorotherm.com/technical-information/materials-overview/pfa-properties/>, last accessed: 2 July 2018.

- 370 Huang, Y., Zhao, R., Charan, S. M., Kenseth, C. M., Zhang, X. and Seinfeld, J. H.: Unified theory of vapor-wall mass transport in Teflon-walled environmental chambers, *Environ. Sci. Technol.*, 52, 2134–2142, doi:10.1021/acs.est.7b05575, 2018.
- Kang, E., Root, M. J., Toohey, D. W., and Brune, W. H.: Introducing the concept of Potential Aerosol Mass (PAM), *Atmos. Chem. Phys.*, 7, 5727–5744, <https://doi.org/10.5194/acp-7-5727-2007>, 2007.
- 375 Krechmer, J.E., D. Pagonis, P.J. Ziemann, and J.L. Jimenez. Quantification of gas-wall partitioning in Teflon environmental chambers using rapid bursts of low-volatility oxidized species generated in-situ. *Environ. Sci. Technol.*, 50, 5757–5765, doi:10.1021/acs.est.6b00606, 2016.
- 380 Krechmer, J. E.; Lopez-Hilfiker, F.; Koss, A.; Hutterli, M.; Stoerner, C.; Deming, B.; Kimmel, J.; Warneke, C.; Holzinger, R.; Jayne, J.; Worsnop, D.; Fuhrer, K.; Gonin, M.; de Gouw, J. Evaluation of a new Vocus reagent-ion source and focusing ion-molecule reactor for use in proton-transfer-reaction mass spectrometry, *Anal. Chem.*, accepted, 2018.
- Lee, B. H., Lopez-Hilfiker, F. D., Mohr, C., Kurtén, T., Worsnop, D. R., Thornton, J. A. An iodide-adduct high-resolution time-of-flight chemical-ionization mass spectrometer: application to atmospheric inorganic and organic compounds *Environ. Sci. Technol.*, 48, 6309–6317, doi:10.1021/es500362a, 2014.
- 385 Liu, X., et al. Effects of Gas-Wall Interactions on Measurements of Semivolatile Compounds and Small Molecules. *Atmos. Meas. Tech.*, in prep., 2019.
- Mader, B. T. and Pankow, J. F.: Gas/solid partitioning of semivolatile organic compounds (SOCs) to air filters. 2. Partitioning of polychlorinated dibenzodioxins, polychlorinated dibenzofurans, and polycyclic aromatic hydrocarbons to quartz fiber filters, *Atmos. Environ.*, 35, 1217–1223, doi:10.1016/S1352-390 2310(00)00398-8, 2001.
- Mader, B. T. and Pankow, J. F.: Gas/solid partitioning of semivolatile organic compounds (SOCs) to air filters. 1. Partitioning of polychlorinated dibenzodioxins, polychlorinated dibenzofurans and polycyclic aromatic hydrocarbons to teflon membrane filters, *Atmos. Environ.*, 34, 4879–4887, doi:10.1016/S1352-2310(00)00241-7, 2000.
- 395 Matsunaga, A. and Ziemann, P. J.: Gas-wall partitioning of organic compounds in a Teflon film chamber and potential effects on reaction product and aerosol yield measurements, *Aerosol Sci. Technol.*, 44, 881–892, doi:10.1080/02786826.2010.501044, 2010.
- 400 Pagonis, D., Krechmer, J. E., De Gouw, J., Jimenez, J. L. and Ziemann, P. J.: Effects of gas-wall partitioning in Teflon tubing and instrumentation on time-resolved measurements of gas-phase organic compounds, *Atmos. Meas. Tech.*, 10, 4687–4696, doi:10.5194/amt-10-4687-2017, 2017.
- Palm, B. B., de Sá, S. S., Day, D. A., Campuzano-Jost, P., Hu, W., Seco, R., Sjostedt, S. J., Park, J.-H., Guenther, A. B., Kim, S., Brito, J., Wurm, F., Artaxo, P., Thalman, R., Wang, J., Yee, L. D., Wernis, R., Isaacman-VanWertz, G., Goldstein, A. H., Liu, Y., Springston, S. R., Souza, R., Newburn, M. K., Alexander, M. L., Martin, S. T., and Jimenez, J. L.: Secondary organic aerosol formation from ambient 405 air in an oxidation flow reactor in central Amazonia, *Atmos. Chem. Phys.*, 18, 467–493, <https://doi.org/10.5194/acp-18-467-2018>, 2018.



- Timko, M.T., Yu, Z., Kroll, J., Jayne, J. T., Worsnop, D. R., Miake-Lye, R.C.: Sampling artifacts from conductive silicone tubing, *Aerosol Sci. Technol.*, 43, 855-865, doi:10.1080/02786820902984811, 2009.
- 410 Vaittinen, O., Metsälä, M., Persijn, S., Vainio, M. and Halonen, L.: Adsorption of ammonia on treated stainless steel and polymer surfaces, *Appl. Phys. B*, 115, 185–196, doi:10.1007/s00340-013-5590-3, 2014.
- Veres, P., Roberts, J. M., Warneke, C., Welsh-Bon, D., Zahniser, M., Herndon, S., Fall, R., and de Gouw, J.: Development of negative-ion proton-transfer chemical-ionization mass spectrometry (NI-PT-CIMS) for the measurement of gas-phase organic acids in the atmosphere, *Int. J. Mass. Spectrom.*, 274, 48-55, 2008.
- 415 Ye, P., Ding, X., Hakala, J., Hofbauer, V., Robinson, E. S. and Donahue, N. M.: Vapor wall loss of semi-volatile organic compounds in a Teflon chamber, *Aerosol Sci. Technol.*, 50, 822–834, doi:10.1080/02786826.2016.1195905, 2016.
- 420 Yeh, G. K. and Ziemann, P. J.: Gas-wall partitioning of oxygenated organic compounds: Measurements, structure-activity relationships, and correlation with gas chromatographic retention factor, *Aerosol Sci. Technol.*, 49, 727–738, doi:10.1080/02786826.2015.1068427, 2015.
- Yu, Y., Alexander, M. L., Perraud, V., Bruns, E. A., Johnson, S. N., Ezell, M. J., Finlayson-Pitts, B. J.: Contamination from electrically conductive silicone tubing during aerosol chemical analysis, *Atmos. Environ.*, 43:17, 2836-2839, <https://doi.org/10.1016/j.atmosenv.2009.02.014>, 2009.
- 425 Zheng, W., Flocke, F. M., Tyndall, G. S., Swanson, A., Orlando, J. J., Roberts, J. M., Huey, L. G., and Tanner, D. J.: Characterization of a thermal decomposition chemical ionization mass spectrometer for the measurement of peroxy acyl nitrates (PANs) in the atmosphere, *Atmos. Chem. Phys.*, 11, 6529-6547, 2011.

**Measurements of Delays of Gas-Phase Compounds in a Wide Variety of Tubing Materials due to Gas-Wall Interactions**

**Benjamin Deming et al.**

5 *Correspondence to:* Paul J. Ziemann (paul.ziemann@colorado.edu) and Jose L. Jimenez (jose.jimenez@colorado.edu)

10

15

20

25

## Calculation of tubing delays

The depassivation time traces for the instrument only and combined instrument plus absorbent tubing  
30 were fitted to exponential decays using Eq. (S1):

$$\frac{S}{S_0} = e^{-\frac{t}{\tau}} \quad (\text{S1})$$

where  $S$  is the measured signal at time  $t$ ,  $S_0$  is the signal before depassivation, and  $\tau$  is the fitted timescale. Calculating the time at which the measured signal decays to 90% of its final value is equivalent to determining the point at which  $\frac{S}{S_0}$  equals 0.1, which yields Eq. (S2):

$$t = \tau \ln(10) \quad (\text{S2})$$

We then define the tubing delay for absorbent materials as the difference between the instrument only delay and the instrument plus tubing delay, giving Eq. (S3):

$$t_{\text{tubing,abs}} = \ln(10) (\tau_{\text{total,abs}} - \tau_{\text{instrument}}) \quad (\text{S3})$$

where  $t_{\text{tubing,abs}}$  is the tubing delay for absorbent materials,  $\tau_{\text{instrument}}$  is the instrument delay timescale,  
40 and  $\tau_{\text{total,abs}}$  is the timescale for depassivation of the instrument plus tubing.

The tubing delay for adsorbent materials is defined slightly differently. Namely,  $t_{\text{total,ads}}$  is not determined from an exponential fit (due to the sigmoidal shape of the time series), but by calculating the point at which the signal reaches 50% of its maximum on passivation. An example time series is presented in Fig. S1. The calculated value of  $t_{\text{total,ads}}$  is corrected by the measured instrument delay to  
45 give Eq. (S4):

$$t_{\text{tubing,ads}} = t_{\text{total,ads}} - \ln(10) \tau_{\text{instrument}} \quad (\text{S4})$$

where  $t_{\text{tubing,ads}}$  is the adsorbent tubing delay time,  $t_{\text{total,ads}}$  is the measured delay to 50% as described above, and  $\tau_{\text{instrument}}$  is the instrument delay timescale.

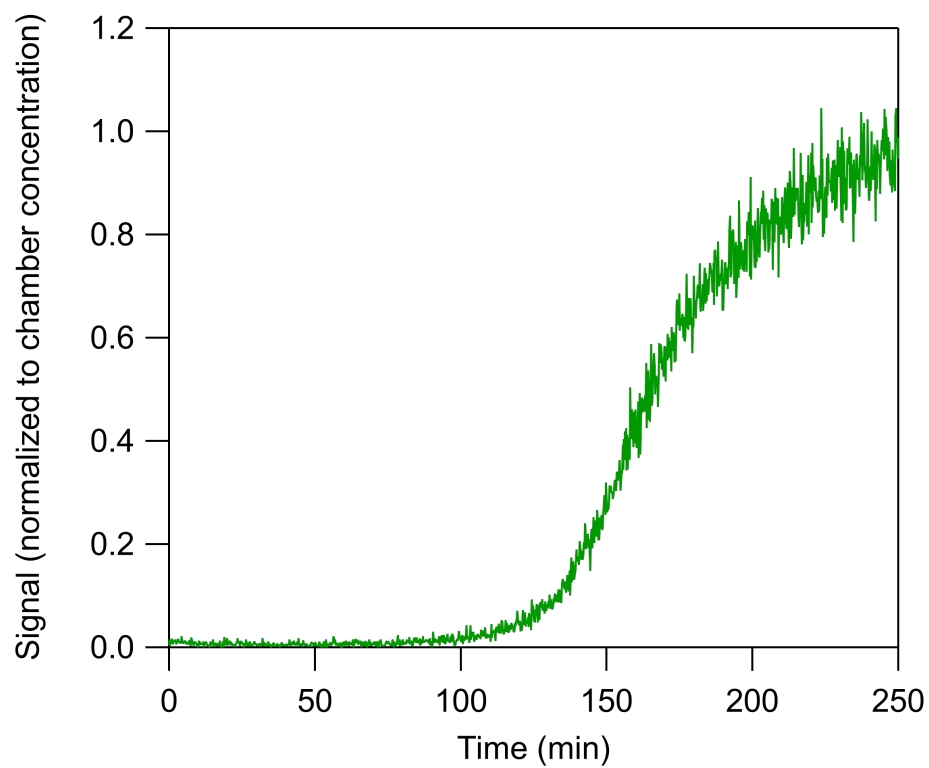


Figure S1. Time series of the delay of 20 ppbv of 2-decanone through approximately 0.6 m of aluminum tubing at  $RH = 0\%$ . This is a typical tubing delay measurement for adsorbent tubing.

## 65 Sampling through Nafion tubing

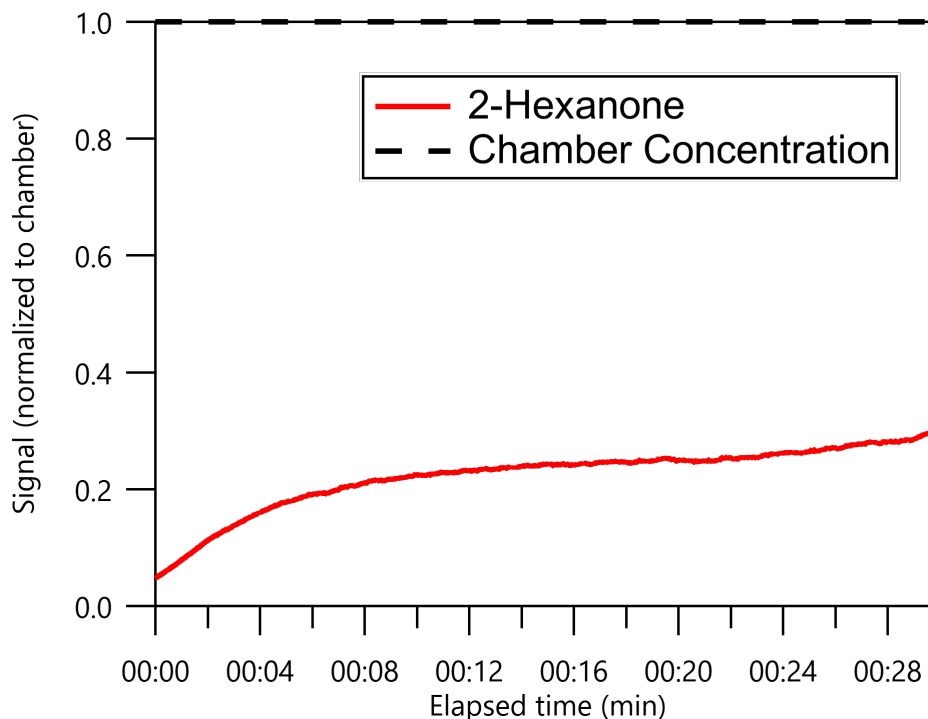


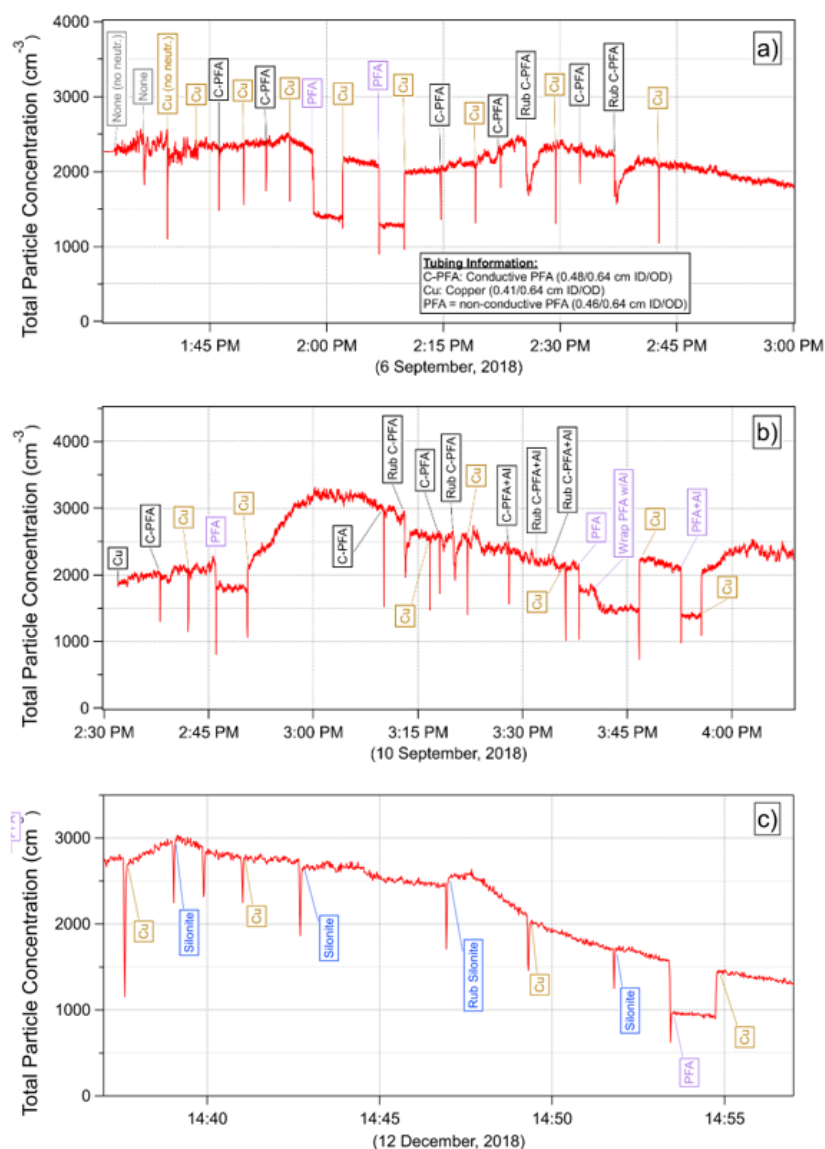
Figure S2. Time series of signal from 2-hexanone sampled through 0.6 m of Nafion tubing. No counter flow was passed over the Nafion, and signals from the other sampled 2-ketones were negligible over this time period.

70

### Losses of charged particles during transport through copper, PFA, and conductive PFA tubing

Fig. S3a shows no detectable particle losses in conductive PFA tubing compared to copper tubing. In contrast, non-conductive PFA tubing showed a consistent loss of ~35–40% of particles, possibly due to complete loss of particles of one charge polarity. Upon briefly (10s) rubbing the conductive PFA tubing with bare hands, however, an additional immediate loss of ~30% was observed followed by full recovery within ~1 min. During this measurement period the particle number distribution had a geometric mean  $\pm$  standard deviation of  $76 \pm 1.8$  nm. Fig. S3b shows a similar response to rubbing the conductive PFA; however, after wrapping it in aluminum foil ("Al") no particle loss was observed upon rubbing as compared to sampling through copper tubing. One other observation is that when non-

80 conductive PFA tubing was retested it showed a smaller loss than the ~20% shown in Fig S3a, whereas  
upon wrapping with aluminum foil the loss was more comparable to the ~35% seen before. This may be  
because the non-conductive tubing had not been touched for several days, and handling it while  
wrapping the foil caused it to build additional charge. During this measurement period the particle  
number distribution had a geometric mean  $\pm$  standard deviation of  $62 \pm 2.0$  nm. Fig S3c shows no losses  
85 of particles through Silonite tubing, even after rubbing with bare hands. The particle number  
distribution had a geometric mean  $\pm$  standard deviation of  $70 \pm 1.7$  nm over this time.



90

Figure S3. Time series of total particle number concentration (TSI CPC 3775, 1 LPM) while sampling laboratory (room) air. Measurements were alternated every few minutes by sampling through different tubing materials, while sampling through copper tubing between changes. All tubing was 1.5 meters long and nominally ¼" outer diameter (dimensions in legend). Tags indicating tubing material or activity are placed at the time when valves were switched or activity was initiated. All sampling was conducted through a TSI 3077 aerosol neutralizer unless otherwise indicated ("no neutr."). Sharp, brief (1-3 s) dips are from sampling particle-depleted air upon initial valve switching to tube that did not have flow for several minutes. Data shown are 1-s points. Residence time in the tubing was 8–11 s.

95

### RH dependence of tubing delays for polymeric materials

A diagnostic used to label tubing materials as either absorbent or adsorbent was the humidity dependence of the measured tubing delay times. Tubing delays measured for a series of polymeric materials under both dry (<0.5% RH) and humid (45% RH) conditions are shown in Fig. S4. The similarity between the curves demonstrates a lack of humidity dependence and verifies that these delays are controlled by compound saturation vapor concentration  $C^*$ .

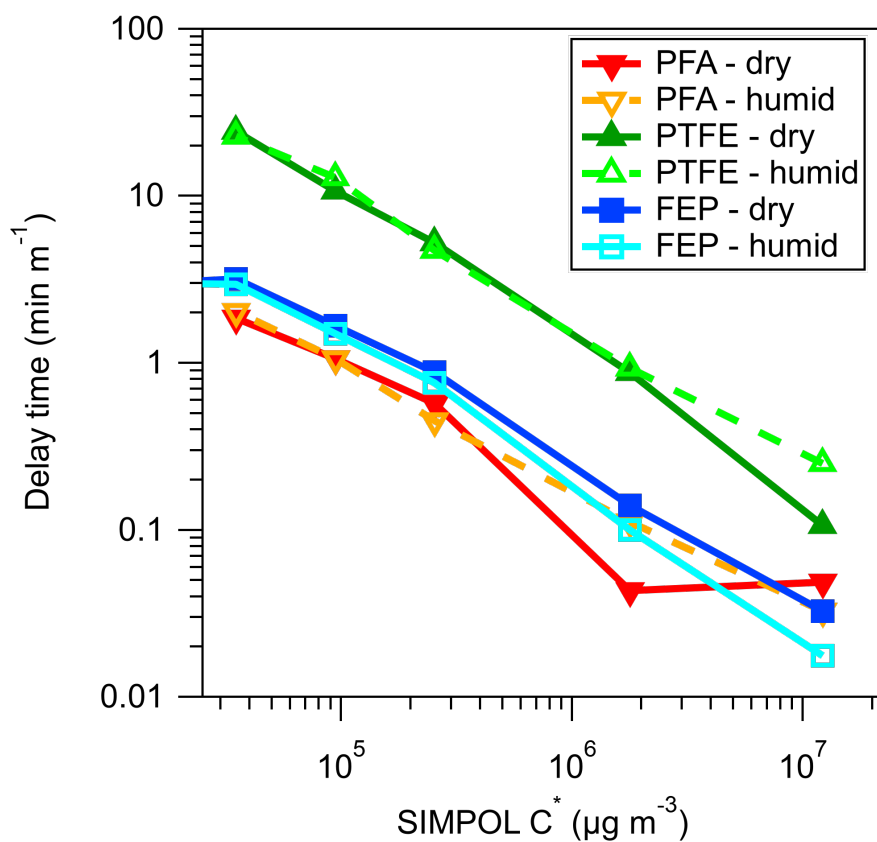


Figure S4. Comparison of tubing delay times measured under dry conditions (<0.5% RH, solid lines, darker colors) and humid conditions (45%RH, dashed lines, lighter colors).