

Response to Referee #1

We thank the reviewer for the careful reading and the critical remarks, especially about the MAXDOAS validation. Our response to the comments and detailed changes made to the manuscript are described below in black and blue, respectively, and the reviewer's comments are shown in red.

General comments

(1) Please add a short paragraph with general information about the GOME-2 instrument (e.g. launch date, FOV, spectral resolution, etc). Aspects of the AMF modifications have been tested with other satellite instruments, so some context would be useful.

We have extended the introduction of the GOME-2 instrument on Page 2 Line 8:

The GOME-2 instrument, which is the main focus of this study, is included on a series of MetOp satellites as part of the EUMETSAT Polar System (EPS). The first GOME-2 was launched in October 2006 aboard the MetOp-A satellite, and a second GOME-2 was launched in September 2012 aboard MetOp-B. This dataset will be extended with a third GOME-2 aboard the MetOp-C satellite, launched in December 2018. GOME-2 is a nadir-scanning UV-VIS spectrometer measuring the solar irradiance and Earth's backscattered radiance with four main optical channels, covering the spectral range between 240 and 790 nm with a spectral resolution between 0.26 nm and 0.51 nm. The default swath width of GOME-2 is 1920 km, enabling a global coverage in ~ 1.5 days. The along-track dimension of the instantaneous field of view is ~ 40 km, while the across-track dimension depends on the integration time used for each channel. For the 1920 km swath, the maximum ground pixel size is 80 km \times 40 km in the forward scan, which remains almost constant over the full swath width. In a tandem operation of MetOp-A and MetOp-B from July 2013 onwards, a decreased swath of 960 km and an increased spatial resolution of 40 km \times 40 km are employed by GOME-2/MetOp-A (Munro et al., 2016). GOME-2 provides morning observations ...

(2) The validations described are very limited, and the GOME-2 footprint is large (40 \times 80 km²). It is hard to draw conclusions based on measurements from a single groundbased instrument at a single station, despite the large number of days of data used. The authors allude to the resolution issue by referencing Pinardi et al. (2015), but please add more details about the implications of such limitations. If any additional independent ground-based measurements are available, I strongly recommend including them in the paper.

Focusing on the available BIRA stations, we have added Tables I to IV in Appendix

B showing the validation results for the urban Uccle station, the remote Bujumbura station, and the background OHP station. As the response to another reviewer, the comparisons are shown for the reference product, the new product, as well as the operational GDP 4.8 product.

The validation of our improved GOME-2 tropospheric NO₂ columns is based on ground-based MAXDOAS NO₂ measurements at the Xianghe station (39.75° N, 116.96° E) from March 2010 to December 2016, the Uccle station (51° N, 4.36° E) from April 2011 to March 2016, the Bujumbura station (3.38° S, 29.38° E) from December 2013 to October 2016, and the OHP station (43.94° N, 5.71° E) from March 2007 to December 2016, respectively. Tables I to IV summarise the validation of the improved retrieval, the reference retrieval, and the current operational GDP 4.8 product against the four MAXDOAS stations. Xianghe is a typical suburban station in northeastern China, Uccle is an urban station in Belgium, Bujumbura is a small city in remote region, and OHP is largely rural but occasionally influenced by polluted air masses transported from neighboring cities.

Table I: Mean difference (MD, SAT-GB in 10^{15} molec/cm²), standard deviation (STDEV), standard error of the mean (STERR), relative difference (RD, (SAT-GB)/GB in %), and correlation coefficient R and regression parameters (slope S and intercept I) of the orthogonal regression for the monthly mean GOME-2 tropospheric NO₂ product when comparing to MAXDOAS data at the suburban Xianghe station. Values for the improved retrieval (this study) are given, and values for the reference retrieval and the current operational GDP 4.8 product are reported. Results are reported for cloud radiance fraction < 0.5 for a total of 77 GOME-2 monthly points.

	improved retrieval	reference retrieval	GDP 4.8 product
MD ($\times 10^{15}$)	-3.8	-2.7	-9.2
STDEV ($\times 10^{15}$)	5.3	5.6	7.1
STERR ($\times 10^{15}$)	0.60	0.64	0.81
RD (%)	-9.9	-5.8	-30
R	0.94	0.91	0.86
S	0.69	0.73	0.63
I	0.41	0.42	1.31

We have rewritten the introduction and added the implications of the resolution-related issue in Pg 27 L 20:

A validation of our improved GOME-2 tropospheric NO₂ columns is performed with BIRA-IASB ground-based MAXDOAS measurements at Xianghe, Uccle, Bujumbura,

Table II: Similar as Table I but for the urban Uccle station for a total of 57 monthly points.

	improved retrieval	reference retrieval	GDP 4.8 product
MD ($\times 10^{15}$)	-4.5	-5.0	-6.2
STDEV ($\times 10^{15}$)	2.9	2.7	3.7
STERR ($\times 10^{15}$)	0.38	0.36	0.49
RD (%)	-37	-43	-52
R	0.79	0.82	0.49
S	0.53	0.47	0.35
I	0.62	0.83	1.1

Table III: Similar as Table I but for the remote Bujumbura station for a total of 36 monthly points.

	improved retrieval	reference retrieval	GDP 4.8 product
MD ($\times 10^{15}$)	-3.7	-3.6	-3.7
STDEV ($\times 10^{15}$)	1.9	1.8	1.1
STERR ($\times 10^{15}$)	0.32	0.30	0.18
RD (%)	-76	-76	-89
R			
S		na	
I			

Table IV: Similar as Table I but for the background OHP station for a total of 106 monthly points.

	improved retrieval	reference retrieval	GDP 4.8 product
MD ($\times 10^{15}$)	-0.82	-0.85	-1.2
STDEV ($\times 10^{15}$)	0.9	1.0	0.7
STERR ($\times 10^{15}$)	0.09	0.10	0.07
RD (%)	-24	-25	-45
R	0.34	0.40	0.69
S	0.39	0.25	0.73
I	1.1	1.2	-0.5

and Observatoire de Haute Provence (OHP), as introduced in Appendix B. The Xi-anghe station, owing to its polluted suburban nature, is the best site for validation

(Liu et al., 2019). The satellite-based NO₂ data is commonly underestimated for urban polluted stations like Uccle, due to the averaging of a local source over a pixel size (80×40/40×40 km² for GOME-2) larger than the horizontal sensitivity of the ground-based measurements which is about few to tens of km (Irie et al., 2011; Wagner et al., 2011; Ortega et al., 2015). Difficulties may arise when small local sources are present in remote locations, such as the Bujumbura (urban station in Burundi) or OHP (background station in southern France) sites (Pinardi et al., 2015; Gielen et al., 2017). For the validation of GOME-2 measurements ...

We have extended the analysis in Pg 28 L 10:

Similar figures as Figs. 20 and 21 for the reference retrieval can be found in (Liu et al., 2019), and figures for previous GDP products can be found on the AC-SAF validation website (<http://cdop.aeronomie.be/validation/valid-results>). Tables I to IV in Appendix B summarize the statistics for the improved retrieval, the reference retrieval, and the operational GDP 4.8 product at Xianghe, Uccle, Bujumbura, and OHP, respectively. As discussed in Pinardi et al. (2015), for remote (Bujumbura) and background (OHP) stations, the mean bias is considered as the best indicator of the validation results, due to the relatively small variability in the measured NO₂. In urban (Uccle) and suburban (Xianghe) situations, the NO₂ variability is large enough and the correlation coefficient provides a good indication of the coherence of the satellite and ground-based datasets, although larger differences in terms of slope and mean bias can be expected for the urban case, because satellite measurements smooth out the local NO₂ hot spots. Comparing to the reference retrieval, the improvement of the algorithm leads to an increase of the correlation coefficient in the suburban Xianghe condition from 0.9 to 0.94 and a decrease of the mean relative bias in the urban Uccle condition from -43% to -37%, and small impacts on the mean bias are found for Bujumbura and OHP. Comparing to the operational GDP 4.8 product, however, both the reference retrieval and the improved retrieval show a significant improvement for all the stations.

As Xianghe is located in a highly polluted region, the presence of large aerosol loads increases the uncertainty on the tropospheric NO₂ columns for both the satellite and MAXDOAS retrievals (Richter et al., 2017) and increases the complexity of validation. Since the cloud retrieval can hardly distinguish between clouds and aerosols (see Sect. 4), the “typical” validation results in Table I (cloud radiance fraction < 0.5) do not show improvements e.g. in the mean bias and the slope of the regression line when comparing to the reference retrieval. To separate this effect, the validation at Xianghe is differentiated in completely clear sky in Table 4 below (cloud radiance fraction = 0) and aerosol-dominated cases in Table 5 (cloud radiance fraction < 0.5, cloud optical depth < 5, and cloud top height < 3 km).

Specific and minor comments

(1) Page 2, Lines 5 – 8: “...on long time scales. New-generation instruments like the TROPospheric Monitoring Instrument (TROPOMI) (Veefkind et al., 2012) aboard the Sentinel-5 Precursor satellite and geostationary missions like the Sentinel-4 (Ingmann et al., 2012) will continue this record and deliver NO₂ datasets with high spatial resolution and short revisit time.”

Changed.

(2) Page 2, Line 26: “...geometry in the NO₂ retrieval (e.g. Boersma...”

Changed.

(3) Page 2, Line 35: I suggest adding Krotkov et al., 2018 to these citations.

Done.

(4) Page 3, Line 8: “...developed and is running operationally...”

Changed.

(5) Page 3, Line 18: I suggest adding Martin et al., 2002 to these citations regarding cloud influences on the NO₂ retrieval.

Done.

(6) Page 5, Line 3: I suggest Bucsela et al., 2013 as an additional reference on the temperature dependency of the NO₂ cross section.

Done.

(7) Page 5, Line 11: “...cloud-free scenes found with a statistical method...”

Changed.

(8) Page 6, Line 11: “...from OCRA as inputs.”

Changed.

(9) Page 7, Line 30: “...east of the orbit swath. This effect is larger over snow and ice, due to the forward scattering...”

Changed.

(10) Page 8, Figure 1: Perhaps the labels over the figures could be written more clearly to show that the first two maps are monthly climatologies, while the others are datespecific.

We have changed the labels to (a) monthly GOME-2 LER climatology and (b) daily improved GOME-2 LER dataset.

(11) Page 10, Line 6: "...derives the surface reflectivity for the direct (sun) and diffuse (sky) incident radiation separately..

Changed.

(12) Page 14, Lines 13: "The NO₂ data is available on an hourly basis, with profiles at the satellite measurement time obtained by linear interpolation."

Changed.

(13) Page 15, Lines 8 – 10: "Differences in AMFs are on the order of 0.2 for the Netherlands and 0.02 for China, due to difference in horizontal and vertical resolutions."

As the difference in the vertical resolution affects the example in the Netherlands by 0.03, we would like to keep the general description that the AMFs differ by more than 0.02 for both examples.

(14) Page 19, Lines 6 – 7: "...from an LUT with fixed reference points. This requires no projection from..."

Changed.

(15) Page 20, Line 11: "...AMF calculation is likely reduced relative to the reference retrieval..."

Changed.

(16) Page 28, Lines 33 – 34: You may also include Lamsal et al. (2014) in the list of satellite validation studies.

Done.

(17) Page 29, Figure 20 and 21 captions: Please explicitly define SAT and GB and state that the light and dark data points in Figure 21 represent daily and monthly-

mean differences.

We have updated the plot legend for Figure 20 and caption for Figure 21.

(18) Page 30, Tables 4 and 5: For the uncertainties in MD, please use the standard error of the mean (although you may additionally give the standard deviation).

Done.

References

- Gielen, C., Hendrick, F., Pinardi, G., De Smedt, I., Fayt, C., Hermans, C., Stavrakou, T., Bauwens, M., Müller, J.-F., Ndenzako, E., Nzohabonayo, P., Akimana, R., Niyonzima, S., Van Roozendael, M., and De Mazière, M.: Characterisation of Central-African aerosol and trace-gas emissions based on MAX-DOAS measurements and model simulations over Bujumbura, Burundi., *Atmospheric Chemistry and Physics Discussions*, pp. 1–41, 2017.
- Irie, H., Takashima, H., Kanaya, Y., Boersma, K., Gast, L., Wittrock, F., Brunner, D., Zhou, Y., and Roozendael, M. V.: Eight-component retrievals from ground-based MAX-DOAS observations, *Atmos. Meas. Tech.*, 4, 1027–1044, 2011.
- Liu, S., Valks, P., Pinardi, G., De Smedt, I., Yu, H., Beirle, S., and Richter, A.: An Improved Total and Tropospheric NO₂ Column Retrieval for GOME-2, *Atmos. Meas. Tech.*, 12, 1029–1057, 2019.
- Munro, R., Lang, R., Klaes, D., Poli, G., Retscher, C., Lindstrot, R., Huckle, R., Lacan, A., Grzegorski, M., Holdak, A., Kokhanovsky, A., Livschitz, J., and Eisinger, M.: The GOME-2 instrument on the Metop series of satellites: instrument design, calibration, and level 1 data processing—an overview, *Atmos. Meas. Tech.*, 9, 1279–1301, 2016.
- Ortega, I., Koenig, T., Sinreich, R., Thomson, D., and Volkamer, R.: The CU 2-D-MAX-DOAS instrument—Part 1: Retrieval of 3-D distributions of NO₂ and azimuth-dependent OVOC ratios, *Atmos. Meas. Tech.*, 8, 2371, 2015.
- Pinardi, G., Lambert, J.-C., Granville, J., Yu, H., De Smedt, I., van Roozendael, M., and Valks, P.: O3M-SAF validation report, Tech. rep., SAF/O3M/IASB/VR/NO2/TN-IASB-GOME2-O3MSAF-NO2-2015, Issue 1/1, 2015.
- Richter, A., Behrens, L. K., Hilboll, A., Munassar, S., , Burrows, J. P., Pinardi, G., and Van Roozendael, M.: cloud effects on satellite retrievals of tropospheric NO₂ over China, in: 8th International DOAS Workshop, Yokohama, Japan, 2017.

Wagner, T., Beirle, S., Brauers, T., Deutschmann, T., Frieß, U., Hak, C., Halla, J. D., Heue, K. P., Junkermann, W., Li, X., Platt, U., and Pundt-Gruber, I.: Inversion of tropospheric profiles of aerosol extinction and HCHO and NO₂ mixing ratios from MAX-DOAS observations in Milano during the summer of 2003 and comparison with independent data sets, *Atmos. Meas. Tech.*, 4, 2685–2715, 2011.

Response to Referee #2

We thank the reviewer for the careful reading and the critical remarks, especially about the MAXDOAS validation. Our response to the comments and detailed changes made to the manuscript are described below in black and blue, respectively, including the reviewer's text in red.

General comments

My only major concern with this paper is that the new retrieval is only compared to a single MAX-DOAS site. Given the wealth of data available for NO₂ validation (Pandora spectrometers, aircraft data from HIPPO/ATom/DISCOVER-AQ and other campaigns), and that recent validation efforts have seen variation in performance even within one region (e.g. Laughner et al. 2019), a global retrieval really needs to be evaluated in multiple locations around the world. Therefore I strongly recommend that the authors expand the validation before final publication in AMT.

We agree that many additional validation sources are becoming available, and this could be the scope of an additional paper. The present paper mainly illustrates the impact of improving the AMF with DLER, higher temporal and spatial resolution of a priori profiles and a more realistic cloud treatment. Focusing on the available BIRA stations, we have added Tables I to IV in Appendix B showing the validation results for the urban Uccle station, the remote Bujumbura station, and the background OHP station. The comparisons are shown for both the operational GDP 4.8 product and the reference product against the MAXDOAS data as well as the new product.

The validation of our improved GOME-2 tropospheric NO₂ columns is based on ground-based MAXDOAS NO₂ measurements at the Xianghe station (39.75° N, 116.96° E) from March 2010 to December 2016, the Uccle station (51° N, 4.36° E) from April 2011 to March 2016, the Bujumbura station (3.38° S, 29.38° E) from December 2013 to October 2016, and the OHP station (43.94° N, 5.71° E) from March 2007 to December 2016, respectively. Tables I to IV summarise the validation of the improved retrieval, the reference retrieval, and the current operational GDP 4.8 product against the four MAXDOAS stations. Xianghe is a typical suburban station in northeastern China, Uccle is an urban station in Belgium, Bujumbura is a small city in remote region, and OHP is largely rural but occasionally influenced by polluted air masses transported from neighboring cities.

We have rewritten the introduction and added the implications of the resolution-related issue in Pg 27 L 20:

A validation of our improved GOME-2 tropospheric NO₂ columns is performed with

Table I: Mean difference (MD, SAT-GB in 10^{15} molec/cm²), standard deviation (STDEV), standard error of the mean (STERR), relative difference (RD, (SAT-GB)/GB in %), and correlation coefficient R and regression parameters (slope S and intercept I) of the orthogonal regression for the monthly mean GOME-2 tropospheric NO₂ product when comparing to MAXDOAS data at the suburban Xianghe station. Values for the improved retrieval (this study) are given, and values for the reference retrieval and the current operational GDP 4.8 product are reported. Results are reported for cloud radiance fraction < 0.5 for a total of 77 GOME-2 monthly points.

	improved retrieval	reference retrieval	GDP 4.8 product
MD ($\times 10^{15}$)	-3.8	-2.7	-9.2
STDEV ($\times 10^{15}$)	5.3	5.6	7.1
STERR ($\times 10^{15}$)	0.60	0.64	0.81
RD (%)	-9.9	-5.8	-30
R	0.94	0.91	0.86
S	0.69	0.73	0.63
I	0.41	0.42	1.31

Table II: Similar as Table I but for the urban Uccle station for a total of 57 monthly points.

	improved retrieval	reference retrieval	GDP 4.8 product
MD ($\times 10^{15}$)	-4.5	-5.0	-6.2
STDEV ($\times 10^{15}$)	2.9	2.7	3.7
STERR ($\times 10^{15}$)	0.38	0.36	0.49
RD (%)	-37	-43	-52
R	0.79	0.82	0.49
S	0.53	0.47	0.35
I	0.62	0.83	1.1

BIRA-IASB ground-based MAXDOAS measurements at Xianghe, Uccle, Bujumbura, and Observatoire de Haute Provence (OHP), as introduced in Appendix B. The Xianghe station, owing to its polluted suburban nature, is the best site for validation (Liu et al., 2019). The satellite-based NO₂ data is commonly underestimated for urban polluted stations like Uccle, due to the averaging of a local source over a pixel size ($80 \times 40 / 40 \times 40$ km² for GOME-2) larger than the horizontal sensitivity of the ground-based measurements which is about few to tens of km (Irie et al., 2011; Wagner et al., 2011; Ortega et al., 2015). Difficulties may arise when small local sources

Table III: Similar as Table I but for the remote Bujumbura station for a total of 36 monthly points.

	improved retrieval	reference retrieval	GDP 4.8 product
MD ($\times 10^{15}$)	-3.7	-3.6	-3.7
STDEV ($\times 10^{15}$)	1.9	1.8	1.1
STERR ($\times 10^{15}$)	0.32	0.30	0.18
RD (%)	-76	-76	-89
R			
S		na	
I			

Table IV: Similar as Table I but for the background OHP station for a total of 106 monthly points.

	improved retrieval	reference retrieval	GDP 4.8 product
MD ($\times 10^{15}$)	-0.82	-0.85	-1.2
STDEV ($\times 10^{15}$)	0.9	1.0	0.7
STERR ($\times 10^{15}$)	0.09	0.10	0.07
RD (%)	-24	-25	-45
R	0.34	0.40	0.69
S	0.39	0.25	0.73
I	1.1	1.2	-0.5

are present in remote locations, such as the Bujumbura (urban station in Burundi) or OHP (background station in southern France) sites (Pinardi et al., 2015; Gielen et al., 2017). For the validation of GOME-2 measurements ...

We have extended the analysis in Pg 28 L 10:

Similar figures as Figs. 20 and 21 for the reference retrieval can be found in (Liu et al., 2019), and figures for previous GDP products can be found on the AC-SAF validation website (<http://cdop.aeronomie.be/validation/valid-results>). Tables I to IV in Appendix B summarize the statistics for the improved retrieval, the reference retrieval, and the operational GDP 4.8 product at Xianghe, Uccle, Bujumbura, and OHP, respectively. As discussed in Pinardi et al. (2015), for remote (Bujumbura) and background (OHP) stations, the mean bias is considered as the best indicator of the validation results, due to the relatively small variability in the measured NO₂. In urban (Uccle) and suburban (Xianghe) situations, the NO₂ variability is large

enough and the correlation coefficient provides a good indication of the coherence of the satellite and ground-based datasets, although larger differences in terms of slope and mean bias can be expected for the urban case, because satellite measurements smooth out the local NO₂ hot spots. Comparing to the reference retrieval, the improvement of the algorithm leads to an increase of the correlation coefficient in the suburban Xianghe condition from 0.9 to 0.94 and a decrease of the mean relative bias in the urban Uccle condition from -43% to -37%, and small impacts on the mean bias are found for Bujumbura and OHP. Comparing to the operational GDP 4.8 product, however, both the reference retrieval and the improved retrieval show a significant improvement for all the stations.

As Xianghe is located in a highly polluted region, the presence of large aerosol loads increases the uncertainty on the tropospheric NO₂ columns for both the satellite and MAXDOAS retrievals (Richter et al., 2017) and increases the complexity of validation. Since the cloud retrieval can hardly distinguish between clouds and aerosols (see Sect. 4), the “typical” validation results in Table I (cloud radiance fraction < 0.5) do not show improvements e.g. in the mean bias and the slope of the regression line when comparing to the reference retrieval. To separate this effect, the validation at Xianghe is differentiated in completely clear sky in Table 4 below (cloud radiance fraction = 0) and aerosol-dominated cases in Table 5 (cloud radiance fraction < 0.5, cloud optical depth < 5, and cloud top height < 3 km).

My other general question is relates to the authors’ other paper on the GOME-2 retrieval earlier this year (Liu et al. 2019). The authors state that that retrieval is used as the reference retrieval for the one presented in this paper. Why are these two upgrades being published separately? Will either be available publicly?

The paper Liu et al. 2019 focuses mainly on the improvements to the DOAS retrieval and stratosphere-troposphere-separation, with also an improved AMF calculation based on newer a priori information relative to the current operational GDP product (Valks et al. 2011, 2017). The use of these new features reduces the NO₂ column uncertainty and improves the validation results. Since then additional improvements addressing surface albedo, a priori NO₂ profile, and cloud and aerosol treatment have been implemented with the aim of further improving the AMF calculation. All these improvements will be implemented in the next version of the GDP.

Specific comments

When discussing the NO₂ prior profiles, I recommend avoiding characterizing them as “high-resolution”, given that ~80 km is still relatively coarse compared to the horizontal resolution used in regional retrievals (e.g. Russell et al. 2011, McLinden et al. 2014, Goldberg et al. 2017, Laughner et al. 2018).

We have removed the expression "high-resolution" e.g. in Pg 3 L 16, Pg 4 L 20, Pg 16 L 9, and Pg 31 L 19.

Pg. 6, l. 15: Over land, SZA and RAA will be relatively constant at a given latitude over a certain time period, but can vary quite a bit over the course of a year. Have you tested how the DLER varies if you fit the constants in Eq. (4) for different latitude bands and time periods (e.g. 1–3 months)?

The coefficients are fitted for different latitude, longitude, month, and wavelength, as described for Eq. (4). The surface DLER varies with time, and this is partly due to actual changes in the surface properties (with time) and partly due to the changes in the solar angles (with time). The empirical approach that was used to derive the surface DLER does not try to separate these two effects, so it is not possible to extract the impact of the changing solar position from the DLER itself.

We have, however, simulated the impact of the changing solar position on the BRDF/DLER. In Figure I, the change of the SZA over the year is plotted in the top window for a location in the Amazonian rainforest (15°S,65°W). This simulation of the SZA for this location is valid for nadir view geometries (VZA = 0) at a fixed local time of 09:34 LT (corresponding to an hour angle of -36.45 degrees). The twelve horizontal red lines indicate the average SZA of the twelve calendar months.

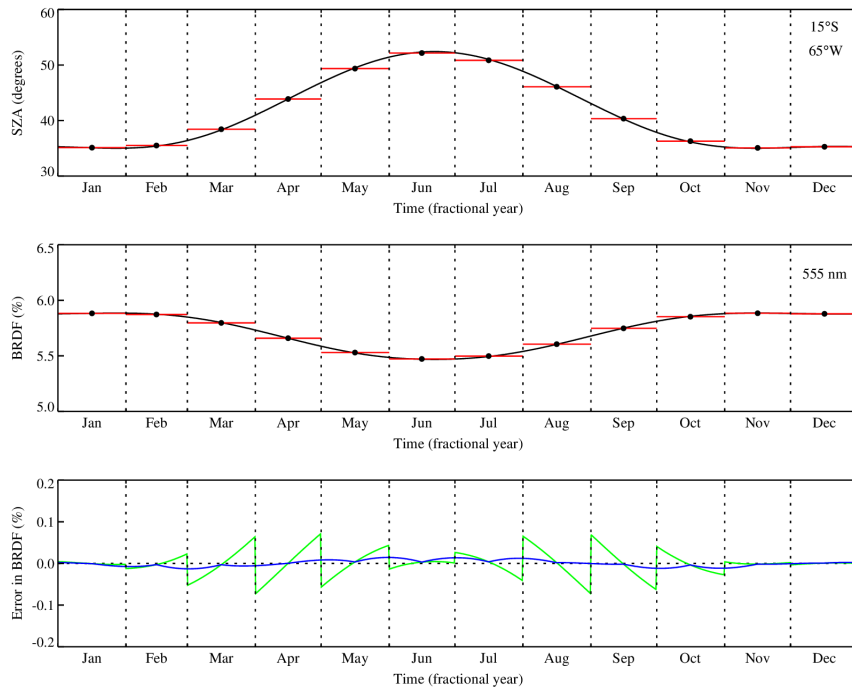


Figure I: Impact of the changing solar position on the BRDF/DLER over the course of a year at the Amazonian rainforest (15°S,65°W).

The changes in the SZA over the course of a year can be translated into changes in the BRDF using the kernel-based MODIS BRDF approach. The geometric and volumetric kernels (K_{geo} , K_{vol}) only need to know the VZA, SZA, and RAA. We use nadir view ($VZA = 0$) and the SZA as shown in the top window of the figure. The kernel coefficients (f_{iso} , f_{vol} , f_{geo}) are determined from the MODIS MCD43C1 product, for a fixed day (15 March 2008). These kernel coefficients are used for each day of the year, as we are only interested in studying the impact of the change of the solar position.

The change in the BRDF is shown in the middle window of the figure. MODIS band 4 was used, so the relevant wavelength is 555 nm. The twelve horizontal red lines indicate the average BRDF of the twelve calendar months. The difference between the BRDF curve and the red horizontal lines represents the error that is made by assuming that the SZA is more or less constant in the course of a month.

In the bottom window this error in the BRDF is plotted as the green curve. The error in the BRDF is well below 0.001 in almost all cases. If a user of the GOME-2 DLER database applies linear interpolation over time (between the calendar months), then this error should be reduced to the 0.0001 level, as indicated by the blue curve.

Pg 9: could you be more specific about what characteristics of the DLER are in good agreement with previous work?

We have updated the characteristics of the DLER in Pg 9 L 6:

Accounting for the BRDF effect, the surface DLER captures the cross-track dependency of surface albedo, such as the increased reflectivity in backward scattering viewing geometries, in agreement with studies applying the BRDF product from MODIS to describe the dependency of land surface reflectance on illumination and viewing geometry (e.g. Zhou et al., 2010; Noguchi et al., 2014; Vasilkov et al., 2017; Lorente et al., 2018; Laughner et al., 2018; Qin et al., 2019). With a good agreement with the established MODIS BRDF product (Tilstra et al., 2019), both in the absolute sense and in the directional/angular dependency, the GOME-2 DLER dataset ...

Pg. 15, end of first paragraph: the authors note that the differences in a priori profiles may be due to, among other factors, difference in chemical mechanism? But Table 2 shows no difference in chemical mechanism between the old and new model.

We have removed the wrong reason "chemical mechanism" since both of the models apply the same CB05 chemistry.

Related to the previous point: some plots or a discussion of how the emissions differ in the two models would be welcome (perhaps in a supplement).

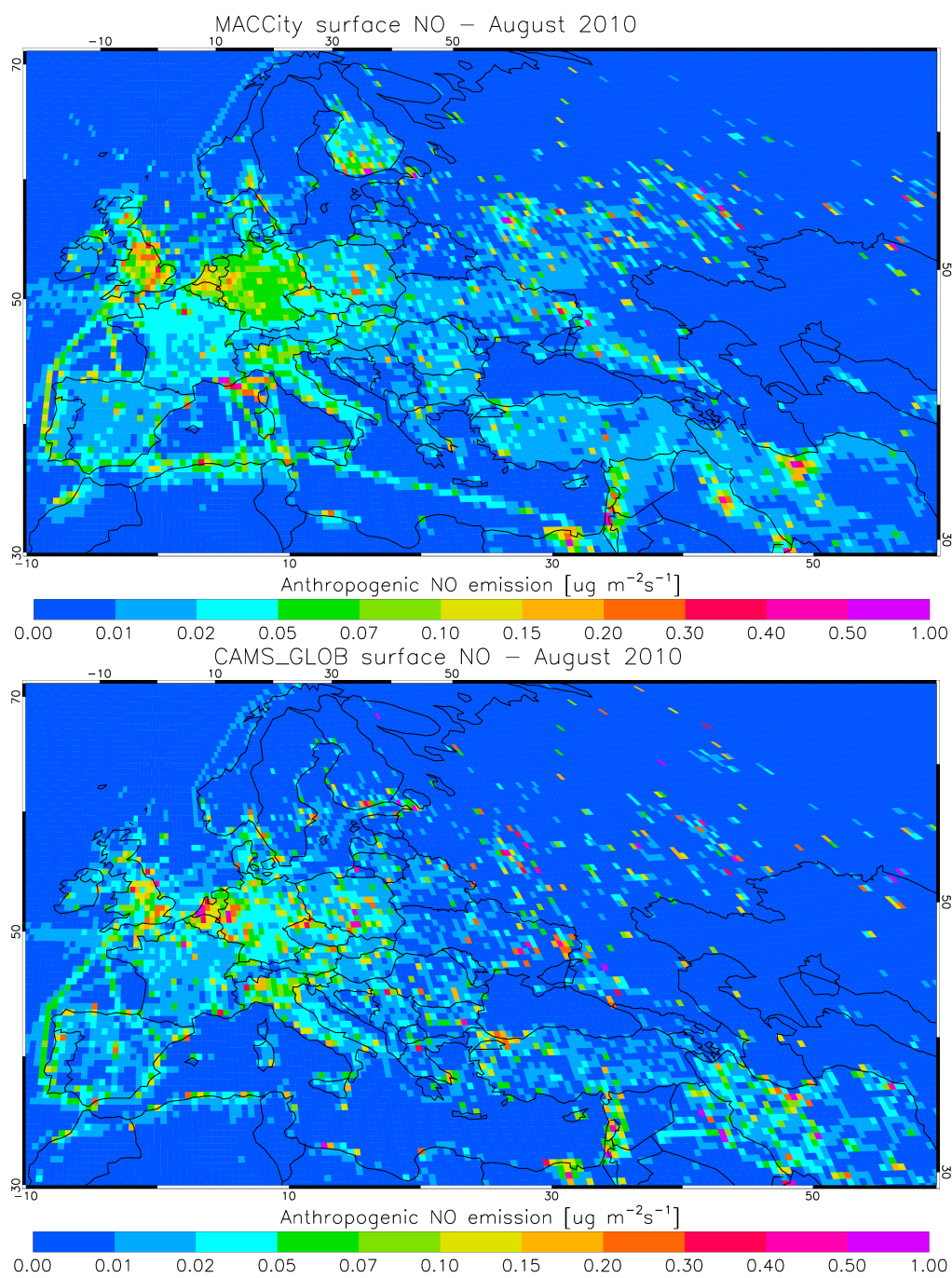


Figure II: MACCity and CAMSGLOB_ANT v2.1 anthropogenic surface nitrogen oxides ($\text{NO}_x = \text{NO}_2 + \text{NO}$) emissions (emitted as nitric oxide, NO) for Europe in August 2010.

We have added the comparisons in Appendix A:

Figure II shows the emission maps of inventories MACCity (Granier et al., 2011) and CAMS_GLOB_ANT v2.1 (Granier et al., 2019) for Europe in August 2010. The annual total anthropogenic emissions are 70.8 Tg NO/yr for MACCity and 73.7 Tg NO/yr for CAMS_GLOB_ANT v2.1. Significant changes in local emission patterns are clear in Fig. II.

Regarding the a priori profiles, how are they matched up to GOME-2 pixels? Interpolation? Area-weighted averaging? Simple averaging? Nearest?

We have added the description in Pg 5 L 20:

... Williams et al. (2013)). The a priori profiles are determined for the GOME-2 overpass time (9:30 LT) and interpolated to the center of the GOME-2 pixel based on four nearest neighbour TM5-MP cell centers.

Pg. 16, l. 8: the authors cite agreement with one study (Kuhlmann et al. 2015) that used much finer horizontal resolution profiles (3×3 km²) than used in this study. Given that other products using NO₂ profiles at comparable resolution to the Kuhlmann et al. retrieval see larger changes to the NO₂ columns (e.g. Russell et al. 2011, McLinden et al. 2014, Goldberg et al. 2017), this comparison needs to be careful to avoid implying that 0.7° resolution for the a priori profiles performs as well as 3 km resolution.

We have removed the misleading comparison and rewritten the finding in Pg 16 L 7:

... 20% for polluted regions, confirming the importance of applying a priori NO₂ profiles with better spatial resolution (Heckel et al., 2011; Lin et al., 2014; Kuhlmann et al., 2015).

Pg. 18, end of second paragraph: my understanding is that using the optical centroid as the “cloud top height” was a compromise between simplicity and accounting for the fact that there is penetration of light into the cloud, that the actual top of the cloud is not a hard surface. This line could be written more carefully to acknowledge that.

We have acknowledged this fact by adding in Pg 18 L 33:

... (Saiedy et al., 1967). The retrieved cloud height is normally close to the middle, i.e., the optical centroid of clouds (Ferlay et al., 2010; Richter et al., 2015), which can be considered as a reflectance-weighted height located inside a cloud. Additionally,

since the enhanced multiple scattering is not fully taken into account in the CRB-based cloud retrieval, the retrieved cloud height is close to the altitude of the middle.”

Cloud discussion in general: would be helped by making explicitly clear whether the VCDs being considered are total VCDs including the below cloud ghost column via the AMF correction (just to avoid potential confusion).

We have made the fact clear by adding in Pg 6 L 14:

The tropospheric NO₂ column calculation is complicated in case of cloudy conditions. For many measurements over cloudy scenes, the cloud top is well above the NO₂ pollution in the boundary layer, and the enhanced tropospheric NO₂ concentrations cannot be detected by GOME-2 if the clouds are optically thick. Therefore, the tropospheric NO₂ column is only calculated for GOME-2 observations with a cloud radiance fraction $\omega < 0.5$. Note that the “below cloud amount” (i.e. the amount of NO₂ below the cloud top) for these partly cloudy conditions is implicitly accounted for via the cloudy-sky AMF M_{cl} (in which $m_l = 0$ for layers below the cloud top).

Cloud discussion: it might be interesting to discuss how this would affect results from cloud-slicing approaches. Since this shows that the sensitivity to below cloud NO₂ is not 0, how should the theoretical framework for cloud slicing be modified?

The cloud-slicing technique takes advantage of optically thick clouds to estimate the NO₂ concentrations in the free troposphere between the clouds. In the cloud-slicing technique, the NO₂ profile is assumed to be vertically uniform (not met for highly polluted regions), and thus only pixels with cloud radiance fraction > 0.9 is used. For these pixels, the below-cloud contribution to the observed total column is small.

Fig. 18 & 19: I don’t understand what is meant by “no” aerosol correction. Does this mean that clear-sky box-AMFs were used? If so please state that explicitly, if not, please clarify.

We have clarified this in Pg 26 L 31:

... no aerosol correction (i.e., applying the clear-sky AMFs) and ...

Table 4: which cloud/aerosol correction is used?

The results are reported for completely clear sky with no aerosol/cloud correction (i.e., applying the clear-sky AMFs), as indicated in the table caption.

Tables 4 & 5, Figs. 20 & 21, validation section in general: it would be nice to

actually see a comparison of both the operational product and the reference product against the MAX-DOAS data as well as the new product so that we can actually see how the new product is an improvement over those products.

We have added the comparisons in Appendix B. Please see response to the general comment.

Technical comments

Pg. 3 l. 16: “high horizontal [resolution]” - in the context of NO₂ chemistry, 80 km is not really high resolution.

Changed.

Table 1: please add to the caption that the different in prior profile models is detailed in table 2.

We have added in the caption:

See Table 2 for details on the chemistry transport models used to obtain the a priori NO₂ profiles.

Fig. 1c & d: having 0 be at different colors in the two plots is potentially confusing. Recommend standardizing and using the same colormap as in Fig. 3.

We have standardized the colorbar with the white color representing 0 as Fig III.

Pg. 10 l. 19: define “case 1 waters”

We have added the definition in Pg 10 L 19:

open ocean waters dominated by phytoplankton as well as associated products and

Fig 6: does “CIFS” in the legend = IFS(CBA) in the caption, and if so, why are these not the same text?

We have changed to IFS(CBA) for Figs. 6 and 7.

Pg. 15: “These values are of the same order of magnitude as the model resolutions of TM5-MP and other chemistry transport models currently employed in the satellite retrieval of NO₂” – this is the typical resolution for global retrievals, regional retrievals often use 5-80x finer resolution.

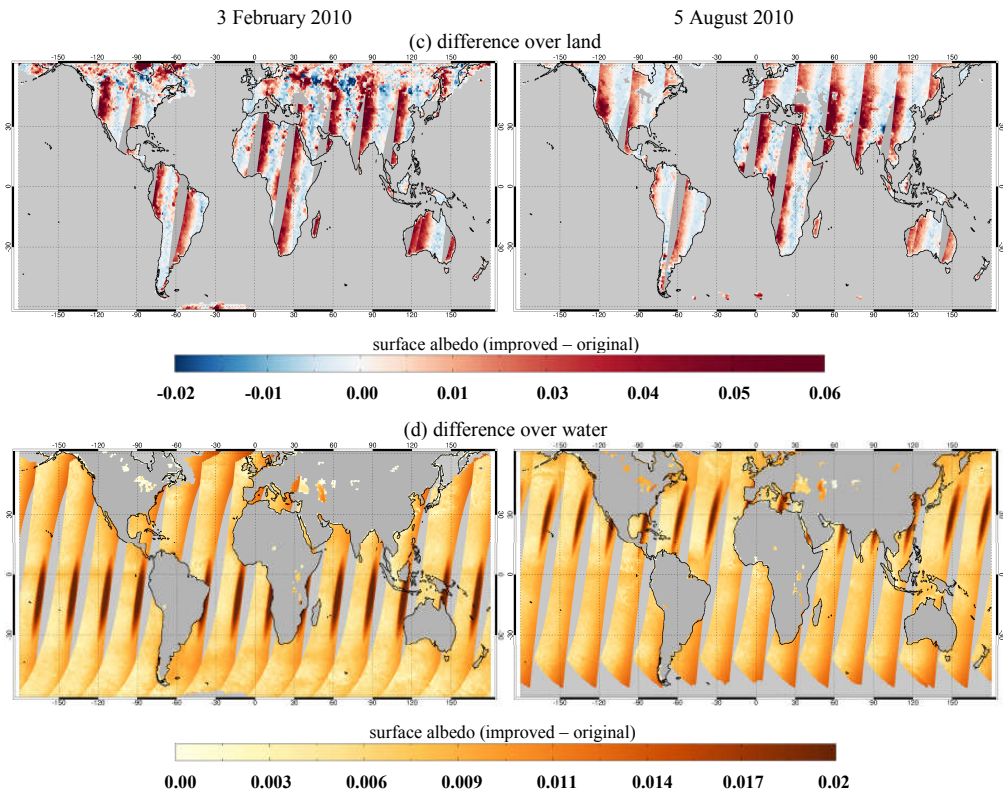


Figure III: (figure continued from previous page)

We have addressed [global](#) in Pg 15 L 5.

Pg. 15-16: “Consequently, the AMF is underestimated for unpolluted areas and overestimated for polluted areas” - this has been well known for many years (e.g. Heckel et al. 2011, Russell et al. 2011, Valin et al. 2011), please acknowledge previous work.

We have added the references ([Heckel et al., 2011](#); [Russell et al., 2011](#); [Valin et al., 2011](#)) in Pg 16 L 2.

Pg. 18, last paragraph: perhaps the discussion of aerosol effects should be moved to the aerosol section? It might make it easier for the reader to follow if this discussion of the shortcomings of the CRB method vis-a-vis aerosols is integrated with the treatment of aerosols in the CAL approach.

As Fig. 10 shows the differences in cloud top heights obtained with the CRB and CAL models, followed by an analysis of the distinct opposite (positive and negative)

difference for different aerosol cover. This effect is also repeated in the aerosol section like Fig. 16. We have added a reference in Pg 19 L 11:

... radiometric cloud fractions from OCRA. See Sect. 4 for more discussions of the CRB and CAL cloud models in the presence of aerosols.

References

- Ferlay, N., Thieuleux, F., Cornet, C., Davis, A. B., Dubuisson, P., Ducos, F., Parol, F., Riédi, J., and Vanbauce, C.: Toward new inferences about cloud structures from multidirectional measurements in the oxygen A band: Middle-of-cloud pressure and cloud geometrical thickness from POLDER-3/PARASOL, *J. Appl. Meteorol. Climatol.*, 49, 2492–2507, 2010.
- Gielen, C., Hendrick, F., Pinardi, G., De Smedt, I., Fayt, C., Hermans, C., Stavrakou, T., Bauwens, M., Müller, J.-F., Ndenzako, E., Nzohabonayo, P., Akimana, R., Niyonzima, S., Van Roozendael, M., and De Mazière, M.: Characterisation of Central-African aerosol and trace-gas emissions based on MAX-DOAS measurements and model simulations over Bujumbura, Burundi., *Atmospheric Chemistry and Physics Discussions*, pp. 1–41, 2017.
- Granier, C., Bessagnet, B., Bond, T., D’Angiola, A., van Der Gon, H. D., Frost, G. J., Heil, A., Kaiser, J. W., Kinne, S., Klimont, Z., Kloster, S., Lamarque, J.-F., Liousse, C., Masui, T., Meleux, F., Mieville, A., Ohara, T., Raut, J.-C., Riahi, K., Schultz, M. G., Smith, S. J., Thompson, A., van Aardenne, J., van der Werf, G. R., and van Vuuren, D. P.: Evolution of anthropogenic and biomass burning emissions of air pollutants at global and regional scales during the 1980–2010 period, *Climatic Change*, 109, 163, 2011.
- Granier, C., Darras, S., Denier van der Gon, H., Doubalova, J., Elguindi, N., Galle, B., Gauss, M., Guevara, M., Jalkanen, J.-P., Kuenen, J., Liousse, C., Quack, B., Simpson, D., and Sindelarova, K.: The Copernicus Atmosphere Monitoring Service global and regional emissions (April 2019 version), Tech. rep., Copernicus Atmosphere Monitoring Service (CAMS) report, 2019.
- Heckel, A., Kim, S.-W., Frost, G., Richter, A., Trainer, M., and Burrows, J.: Influence of low spatial resolution a priori data on tropospheric NO₂ satellite retrievals, *Atmos. Meas. Tech.*, 4, 1805, 2011.
- Irie, H., Takashima, H., Kanaya, Y., Boersma, K., Gast, L., Wittrock, F., Brunner, D., Zhou, Y., and Roozendael, M. V.: Eight-component retrievals from ground-based MAX-DOAS observations, *Atmos. Meas. Tech.*, 4, 1027–1044, 2011.

- Kuhlmann, G., Lam, Y., Cheung, H., Hartl, A., Fung, J. C. H., Chan, P., and Wenig, M. O.: Development of a custom OMI NO₂ data product for evaluating biases in a regional chemistry transport model, *Atmos. Chem. Phys.*, 15, 5627–5644, 2015.
- Laughner, J. L., Zhu, Q., and Cohen, R. C.: The Berkeley High Resolution Tropospheric NO₂ product, *Earth Syst. Sci. Data*, 10, 2069–2095, 2018.
- Lin, J., Martin, R., Boersma, K., Sneep, M., Stammes, P., Spurr, R., Wang, P., Van Roozendaal, M., Clémer, K., and Irie, H.: Retrieving tropospheric nitrogen dioxide from the Ozone Monitoring Instrument: effects of aerosols, surface reflectance anisotropy, and vertical profile of nitrogen dioxide, *Atmos. Chem. Phys.*, 14, 1441–1461, 2014.
- Liu, S., Valks, P., Pinardi, G., De Smedt, I., Yu, H., Beirle, S., and Richter, A.: An Improved Total and Tropospheric NO₂ Column Retrieval for GOME-2, *Atmos. Meas. Tech.*, 12, 1029–1057, 2019.
- Lorente, A., Boersma, K. F., Stammes, P., Tilstra, L. G., Richter, A., Yu, H., Kharbouche, S., and Muller, J.-P.: The importance of surface reflectance anisotropy for cloud and NO₂ retrievals from GOME-2 and OMI, *Atmos. Meas. Tech.*, 11, 4509–4529, 2018.
- Noguchi, K., Richter, A., Rozanov, V., Rozanov, A., Burrows, J., Irie, H., and Kita, K.: Effect of surface BRDF of various land cover types on geostationary observations of tropospheric NO₂, *Atmos. Meas. Tech.*, 7, 3497–3508, 2014.
- Ortega, I., Koenig, T., Sinreich, R., Thomson, D., and Volkamer, R.: The CU 2-D-MAX-DOAS instrument—Part 1: Retrieval of 3-D distributions of NO₂ and azimuth-dependent OVOC ratios, *Atmos. Meas. Tech.*, 8, 2371, 2015.
- Pinardi, G., Lambert, J.-C., Granville, J., Yu, H., De Smedt, I., van Roozendaal, M., and Valks, P.: O3M-SAF validation report, Tech. rep., SAF/O3M/IASB/VR/NO2/TN-IASB-GOME2-O3MSAF-NO2-2015, Issue 1/1, 2015.
- Qin, W., Fasnacht, Z., Haffner, D., Vasilkov, A., Joiner, J., Krotkov, N., Fisher, B., and Spurr, R.: A geometry-dependent surface Lambertian-equivalent reflectivity product at 466 nm for UV/Vis retrievals: Part I. Evaluation over land surfaces using measurements from OMI, *Atmospheric Measurement Techniques Discussions*, pp. 1–31, doi:10.5194/amt-2018-327, 2019.
- Richter, A., Behrens, L. K., Hilboll, A., Munassar, S., Burrows, J. P., Pinardi, G., and Van Roozendaal, M.: cloud effects on satellite retrievals of tropospheric NO₂ over China, in: 8th International DOAS Workshop, Yokohama, Japan, 2017.
- Richter, A. et al.: S5P/TROPOMI Science Verification Report, Tech. rep., S5P-IUP-L2-ScVR-RP issue 2.1, 2015.

- Russell, A., Perring, A., Valin, L., Bucsela, E., Browne, E., Wooldridge, P., and Cohen, R.: A high spatial resolution retrieval of NO₂ column densities from OMI: method and evaluation, *Atmos. Chem. Phys.*, 11, 8543–8554, 2011.
- Tilstra, L., Tuinder, O., and Stammes, P.: GOME-2 surface LER product - Algorithm Theoretical Basis Document, Tech. rep., KNMI Report SAF/AC/KNMI/ATBD/003, Issue 3.1, 2019.
- Valin, L., Russell, A., Hudman, R., and Cohen, R.: Effects of model resolution on the interpretation of satellite NO₂ observations, *Atmos. Chem. Phys.*, 11, 11 647–11 655, 2011.
- Vasilkov, A., Qin, W., Krotkov, N., Lamsal, L., Spurr, R., Haffner, D., Joiner, J., Eun-Su, Y., and Marchenko, S.: Accounting for the effects of surface BRDF on satellite cloud and trace-gas retrievals: a new approach based on geometry-dependent Lambertian equivalent reflectivity applied to OMI algorithms, *Atmos. Meas. Tech.*, 10, 333, 2017.
- Wagner, T., Beirle, S., Brauers, T., Deutschmann, T., Frieß, U., Hak, C., Halla, J. D., Heue, K. P., Junkermann, W., Li, X., Platt, U., and Pundt-Gruber, I.: Inversion of tropospheric profiles of aerosol extinction and HCHO and NO₂ mixing ratios from MAX-DOAS observations in Milano during the summer of 2003 and comparison with independent data sets, *Atmos. Meas. Tech.*, 4, 2685–2715, 2011.
- Zhou, Y., Brunner, D., Spurr, R., Boersma, K., Sneep, M., Popp, C., and Buchmann, B.: Accounting for surface reflectance anisotropy in satellite retrievals of tropospheric NO₂, *Atmos. Meas. Tech.*, 3, 1185–1203, 2010.

An improved air mass factor calculation for NO₂ measurements from GOME-2

Song Liu¹, Pieter Valks¹, Gaia Pinardi², Jian Xu¹, Athina Argyrouli^{4,1}, Ronny Lutz¹, L. Gijsbert Tilstra³, Vincent Huijnen³, François Hendrick², and Michel Van Roozendael²

¹Deutsches Zentrum für Luft- und Raumfahrt (DLR), Institut für Methodik der Fernerkundung (IMF), Oberpfaffenhofen, Germany

²Belgian Institute for Space Aeronomy (BIRA-IASB), Brussels, Belgium

³Royal Netherlands Meteorological Institute (KNMI), De Bilt, the Netherlands

⁴Technical University of Munich (TUM), Department of Civil, Geo and Environmental Engineering, Chair of Remote Sensing Technology, Munich, Germany

Correspondence to: Song Liu (Song.Liu@dlr.de)

Abstract. An improved tropospheric nitrogen dioxide (NO₂) retrieval algorithm from the Global Ozone Monitoring Experiment-2 (GOME-2) instrument based on air mass factor (AMF) calculations performed with more realistic model parameters is presented. The viewing angle-dependency of surface albedo is taken into account by improving the GOME-2 Lambertian-equivalent reflectivity (LER) climatology with a directionally dependent LER (DLER) dataset over land and an ocean surface albedo parametrization over water. A priori NO₂ profiles with higher spatial and temporal resolutions are obtained from the IFS(CB05BASCOE) chemistry transport model based on recent emission inventories. A more realistic cloud treatment is provided by a Clouds-As-Layers (CAL) approach, which treats the clouds as uniform layers of water droplets, instead of the current Clouds-as-Reflecting-Boundaries (CRB) model, which assumes the clouds as Lambertian reflectors. Improvements in the AMF calculation affect the tropospheric NO₂ columns on average within $\pm 15\%$ in winter and $\pm 5\%$ in summer over largely polluted regions. In addition, the impact of aerosols on our tropospheric NO₂ retrieval is investigated by comparing the concurrent retrievals based on ground-based aerosol measurements (explicit aerosol correction) and aerosol-induced cloud parameters (implicit aerosol correction). Compared to the implicit aerosol correction through the CRB cloud parameters, the use of CAL reduces the AMF errors by more than 10%. Finally, to evaluate the improved GOME-2 tropospheric NO₂ columns, a validation is performed using ground-based Multi-AXis Differential Optical Absorption Spectroscopy (MAX-DOAS) measurements at [the BIRA-IASB Xianghe station](#) [different BIRA-IASB stations](#). [At the suburban Xianghe station](#), the improved tropospheric NO₂ dataset shows better agreement with coincident ground-based measurements with a correlation coefficient of 0.94.

1 Introduction

Tropospheric nitrogen dioxide (NO₂) is an important air pollutant that harms the human respiratory system even with short exposures (Gamble et al., 1987; Kampa and Castanas, 2008) and contributes to the formation of tropospheric ozone, urban haze, and acid rain (Charlson and Ahlquist, 1969; Crutzen, 1970; McCormick, 2013). Besides the natural sources like soil

emissions and lightning, the combustion-related emission sources from anthropogenic activities like fossil fuel consumption, car traffic, and biomass burning produce substantial amounts of NO_2 nitrogen oxides ($\text{NO}_x = \text{NO}_2 + \text{NO}$).

Satellite measurements from the Global Ozone Monitoring Experiment (GOME) (Burrows et al., 1999), the SCanning Imaging Absorption SpectroMeter for Atmospheric CHartographyY (SCIAMACHY) (Bovensmann et al., 1999), the Ozone
5 Monitoring Instrument (OMI) (Levelt et al., 2006), and the Global Ozone Monitoring Experiment-2 (GOME-2) (Callies et al., 2000; Munro et al., 2016) have produced global NO_2 measurements on long-time scales. ~~In the following years, new generation~~ **New-generation** instruments like the TROPOspheric Monitoring Instrument (TROPOMI) (Veefkind et al., 2012) aboard the Sentinel-5 Precursor satellite and geostationary missions like the Sentinel-4 (Ingmann et al., 2012) will **continue this record and** deliver NO_2 datasets with high spatial resolution and short revisit time.

~~The GOME-2 instruments, which are on the EUMETSAT's MetOp-A and MetOp-B satellites (referred to as GOME-2A and GOME-2B in this work), have provided a long-term NO_2 dataset started in the year 2007. This dataset will be extended with a third GOME-2 aboard the MetOp-C satellite, launched in December 2018. GOME-2 is a scanning spectrometer measuring the solar irradiance and Earth's backscattered radiance in the UV and VIS spectral ranges with a spectral resolution of 0.2-0.4 nm and a spatial resolution of 80 km \times 40 km (the spatial resolution has been increased to 40 km \times 40 km for GOME-2A from July
15 2013 onwards).~~ The GOME-2 instrument, which is the main focus of this study, is included on a series of MetOp satellites as part of the EUMETSAT Polar System (EPS). The first GOME-2 was launched in October 2006 aboard the MetOp-A satellite, and a second GOME-2 was launched in September 2012 aboard MetOp-B. This dataset will be extended with a third GOME-2 aboard the MetOp-C satellite, launched in December 2018. GOME-2 is a nadir-scanning UV-VIS spectrometer measuring the solar irradiance and Earth's backscattered radiance with four main optical channels, covering the spectral range between 240
20 and 790 nm with a spectral resolution between 0.26 nm and 0.51 nm. The default swath width of GOME-2 is 1920 km, enabling a global coverage in ~ 1.5 days. The along-track dimension of the instantaneous field of view is ~ 40 km, while the across-track dimension depends on the integration time used for each channel. For the 1920 km swath, the maximum ground pixel size is 80 km \times 40 km in the forward scan, which remains almost constant over the full swath width. In a tandem operation of MetOp-A and MetOp-B from July 2013 onwards, a decreased swath of 960 km and an increased spatial resolution of 40 km \times 40 km are
25 employed by GOME-2/MetOp-A (Munro et al., 2016). GOME-2 provides morning observations of NO_2 at about 9:30 local time (LT), which complements early afternoon measurements e.g. from OMI or TROPOMI. The GOME-2 NO_2 measurements have been widely used in trend studies, satellite dataset intercomparisons, and NO_2 emission estimations (e.g. Mijling et al., 2013; Hilboll et al., 2013, 2017; Krotkov et al., 2017; Irie et al., 2012; Gu et al., 2014; Miyazaki et al., 2017; Ding et al., 2017).

The NO_2 retrieval algorithm for the GOME-2 instrument contains three steps: the spectral fitting of the slant column (concentration along the effective light path) with the differential optical absorption spectroscopy (DOAS) method (Platt and Stutz, 2008) from the measured GOME-2 (ir)radiances, the separation of stratospheric and tropospheric contributions with a modified reference sector method, and the conversion of the tropospheric slant column to a vertical column with a tropospheric air mass factor (AMF) calculation. The quality of GOME-2 NO_2 measurements is strongly related to the calculation of the AMF, determined with a radiative transfer model, depending on a set of model parameters, such as viewing geometry, surface albedo,

vertical distribution of NO₂, cloud, and aerosol. The model parameters, generally taken from external databases, contribute substantially to the overall AMF uncertainty, estimated to be in the range of 30-40% (Lorente et al., 2017).

The surface is normally assumed to be Lambertian with an isotropic diffuse reflection independent of viewing and illumination geometry in the NO₂ retrieval (e.g. Boersma et al., 2011; van Geffen et al., 2019; Liu et al., 2019b). However, due to the 5 occurrences of retroreflection and shading effects (mainly over rough surfaces like vegetation) and specular reflection (mainly over smooth surfaces like water), the Lambertian assumption is not always fulfilled. To account for the geometry-dependent surface scattering characteristics, the surface bidirectional reflectance distribution function (BRDF) (Nicodemus et al., 1992) has been considered in previous studies (e.g. Zhou et al., 2010; Lin et al., 2014, 2015; Noguchi et al., 2014; Vasilkov et al., 2017; Lorente et al., 2018; Laughner et al., 2018; Qin et al., 2019), mainly based on measurements from MODerate resolution 10 Imaging Spectroradiometer (MODIS) over land. However, due to the use of different instruments, biases are possibly introduced in the NO₂ retrieval. In addition, due to the generally unavailable full surface BRDF in all conditions and the complexity of accounting for BRDF, most of the current NO₂ and cloud retrievals still rely on Lambertian surface reflection (e.g., Krotkov et al., 2017; Boersma et al., 2018; van Geffen et al., 2019; Loyola et al., 2018; Desmons et al., 2019).

To account for the varying sensitivity of the satellite to NO₂ at different altitudes, a priori vertical profiles of NO₂ are required, 15 generally prescribed using a chemistry transport model. The importance of the a priori NO₂ profiles used in the retrieval has been recognised earlier and motivated the use of model data with high spatial resolution and/or high temporal resolution (e.g. Valin et al., 2011; Heckel et al., 2011; Russell et al., 2011; McLinden et al., 2014; Yamaji et al., 2014; Kuhlmann et al., 2015; Lin et al., 2014; Boersma et al., 2016; Laughner et al., 2016). Within the Monitoring Atmospheric Composition and Climate (MACC) European project, a global data assimilation system for atmospheric composition forecasts and analyses has been 20 developed and is running operationally in Copernicus Atmosphere Monitoring Service (CAMS, <http://atmosphere.copernicus.eu>). The CAMS system relies on a combination of satellite observations with state-of-the-art atmospheric modelling (Flemming et al., 2017), for which purpose the European Centre for Medium Range Weather Forecasts (ECMWF) numerical weather prediction Integrated Forecast System (IFS) was extended with modules for describing atmospheric composition (Flemming et al., 2015; Inness et al., 2015; Morcrette et al., 2009; Benedetti et al., 2009; Engelen et al., 2009; Agustí-Panareda et al., 25 2016). Profile forecasts from CAMS are planned to be applied in the operational NO₂ retrieval algorithm for the Sentinel-4 (Sanders et al., 2018) and Sentinel-5 (van Geffen et al., 2018) missions with the advantage of operational implementation and high resolution. Lately, an advanced IFS system, referred to IFS(CB05BASCOE) (Huijnen et al., 2016, 2019) or IFS(CBA) for short, operates at high improved horizontal, vertical, and temporal resolutions based on recent emission inventories, providing an improved profile “representativeness”.

30 Clouds influence the NO₂ retrieval through their increased reflectivity, their shielding effect on NO₂ column below the cloud, and multiple scattering that enhances absorption inside the cloud (Martin et al., 2002; Liu et al., 2004; Stammes et al., 2008; Kokhanovsky and Rozanov, 2008). The presence of clouds is taken into account in the NO₂ AMF calculation using cloud parameters based on the Optical Cloud Recognition Algorithm (OCRA) and the Retrieval Of Cloud Information using Neural Networks (ROCINN) algorithms (Loyola et al., 2007, 2011). OCRA/ROCINN has been applied in the operational 35 retrieval of trace gases from GOME (Van Roozendaal et al., 2006), GOME-2 (Valks et al., 2011; Hao et al., 2014; Liu et al.,

2019b), and TROPOMI (Heue et al., 2016; Theys et al., 2017; Loyola, in preparation). The latest version of OCRA/ROCINN (Lutz et al., 2016; Loyola et al., 2018) provides two sets of cloud products: one treats clouds as ideal Lambertian reflectors in a “Clouds-as-Reflecting-Boundaries” (CRB) model, and the second treats clouds as uniform layers of water droplets in a “Clouds-As-Layers” (CAL) model. The CAL model, which allows for the penetration of photons through the cloud, is more realistic than the CRB model, which screens the atmosphere below the cloud (Rozanov and Kokhanovsky, 2004; Richter et al., 2015).

Aerosol scattering and absorption influence the top-of-atmosphere radiances and the light path distribution. The radiative effect of scattering aerosols and clouds is comparable (i.e., the albedo effect, shielding effect, and multiple scattering), while the presence of absorbing aerosols generally reduces the sensitivity to NO₂ within and below the aerosol layer by decreasing the number of photons returning scattered back from this region to the satellite (Leitão et al., 2010). Because cloud retrieval does not distinguish between clouds and aerosols, the effect of aerosol on the AMF is normally corrected using an “implicit aerosol correction” by assuming that the effective clouds retrieved as Lambertian reflectors (i.e., using the CRB model) account for the effect of aerosols on the light path (Boersma et al., 2004, 2011). Previous works have also applied an “explicit aerosol correction” for OMI pixels considering additional aerosol parameters (e.g. Lin et al., 2014, 2015; Kuhlmann et al., 2015; Castellanos et al., 2015; Liu et al., 2019a; Chimot et al., 2019) and have reported large biases related to the implicit aerosol correction for polluted cases, likely because the simple CRB model can not fully describe the effects inherent to aerosol particles (Chimot et al., 2019).

The operational GOME-2 NO₂ products are generated with the GOME Data Processor (GDP) algorithm and provided by DLR in the framework of EUMETSAT’s Satellite Application Facility on Atmospheric Composition Monitoring (AC-SAF). The retrieval algorithm of total and tropospheric NO₂ from GOME-2 has been introduced by Valks et al. (2011, 2017) as implemented in the current operational GDP version 4.8. An updated slant column retrieval and stratosphere-troposphere separation have been presented by Liu et al. (2019b), and an improved AMF calculation is described in this paper, which will be implemented in the next version of GDP.

In the AC-SAF context (Hassinen et al., 2016), the NO₂ data derived from the GOME-2 GDP algorithm is being validated at BIRA-IASB by comparison with correlative observations from ground-based Multi-AXis Differential Optical Absorption Spectroscopy (MAXDOAS) (Pinaridi et al., 2014, 2015; Pinaridi, in preparation). The MAXDOAS instrument collects scattered sky light in a series of line-of-sight angular directions extending from the horizon to the zenith. High sensitivity towards absorbers near the surface is obtained for the smallest elevation angles, while measurements at higher elevations provide information on the rest of the column. This technique allows the determination of vertically resolved abundances of atmospheric trace species in the lowermost troposphere (Hönninger et al., 2004; Wagner et al., 2004; Wittrock et al., 2004; Heckel et al., 2005).

In this work, we briefly introduce in Sect. 2 the reference retrieval algorithm for GOME-2 NO₂ measurements, which was described in detail in Liu et al. (2019b). We improve the AMF calculation in the reference retrieval algorithm in Sect. 3 by accounting for the direction-dependency of surface albedo over land and over water, applying the advanced high-resolution IFS(CBA) a priori NO₂ profiles with higher model resolution, and implementing the more realistic CAL cloud model. We

Table 1. Ancillary parameters in deriving GOME-2 tropospheric NO₂ columns. See Table 2 for details on the chemistry transport models used to obtain the a priori NO₂ profiles.

	reference retrieval (Liu et al., 2019b)	improved algorithm (this work)
surface albedo	GOME-2 LER climatology	GOME-2 direction-dependent LER
a priori NO ₂ profile	TM5-MP	IFS(CBA)
cloud parameter	OCRA/ROCINN_CRB	OCRA/ROCINN_CAL

investigate the properties of the implicit aerosol correction for aerosol-dominated scenes by comparing it to the explicit aerosol correction in Sect. 4. Finally, we show a validation of the GOME-2 tropospheric NO₂ columns using MAXDOAS datasets in Sect. 5.

2 Reference retrieval for GOME-2 NO₂ measurements

- 5 As described in Liu et al. (2019b), the NO₂ slant column retrieval applies an extended 425-497 nm wavelength fitting window (Richter et al., 2011) to include more NO₂ structures and an improved slit function treatment to compensate for the long-term and in-orbit drifts of the GOME-2 slit function. The uncertainty in the NO₂ slant columns is $\sim 4.4 \times 10^{14}$ molec/cm², calculated from the average slant column error using a statistical method (Valks et al., 2011, Sect. 6.1 therein). To determine the stratospheric NO₂ components, the STRatospheric Estimation Algorithm from Mainz (STREAM) method (Beirle et al., 2016) with an improved treatment of polluted and cloudy pixels is adopted. The uncertainty in the GOME-2 stratospheric columns is $\sim 4\text{-}5 \times 10^{14}$ for polluted conditions based on the daily synthetic GOME-2 data and $\sim 1\text{-}2 \times 10^{14}$ for monthly averages.

Mainly focusing on the third retrieval step, we apply the tropospheric AMF M conversion (Palmer et al., 2001; Boersma et al., 2004) to account for the average light path through the atmosphere:

$$M = \frac{\sum_l m_l(\mathbf{b}) x_l c_l}{\sum_l x_l} \quad (1)$$

- 15 with m_l the box-air mass factors (box-AMFs) in layer l , x_l the partial columns from the a priori NO₂ profiles, and c_l a correction coefficient to account for the temperature dependency of NO₂ cross-section (Boersma et al., 2004; Nüß et al., 2006; Bucsele et al., 2013). The box-AMFs m_l are derived using the multi-layered multiple scattering LIDORT (Spurr et al., 2001) radiative transfer model and stored in a look-up table (LUT) as a function of several model inputs \mathbf{b} , including GOME-2 viewing geometry, surface pressure, and surface albedo. Table 1 summarises the ancillary parameters used in the AMF calculation.
- 20 The surface albedo is described by a monthly Lambertian-equivalent reflectivity (LER) database (Tilstra et al., 2017), derived from GOME-2 measurements for the years 2007-2013 with a spatial resolution of $1.0^\circ \text{ long} \times 1.0^\circ \text{ lat}$ for standard grid cells and $0.25^\circ \text{ long} \times 0.25^\circ \text{ lat}$ for coastlines (Tilstra et al., 2019). The LER is retrieved by matching the simulated reflectances to the Earth reflectance measurements for cloud-free scenes found with a statistical method (Koelemeijer et al., 2003; Kleipool et al., 2008; Tilstra et al., 2017).

Table 2. Summary of chemistry transport model specifications.

	TM5-MP (Huijnen et al., 2010) (Williams et al., 2017)	IFS(CBA) (Flemming et al., 2015) (Huijnen et al., 2016)
horizontal resolution	1° (long/lat)	~80 km (T255) or ~0.7° (long/lat)
vertical resolution	34 layers (~6 layers below 1.5 km)	137 ¹ layers (~12 layers below 1.5 km)
temporal resolution	2 h archiving	1 h archiving
meteorological fields	ECMWF 3 h	ECMWF online (initialized with ERA-5)
tropospheric chemistry	modified CB05 (Williams et al., 2013)	modified CB05 (Williams et al., 2013)
anthropogenic emission	MACCity (Granier et al., 2011)	CAMS_GLOB_ANT v2.1 (Granier et al., 2019)
advection	slopes scheme (Russell and Lerner, 1981)	semi-Lagrangian scheme as described in Temperton et al. (2001) and Hortal (2002)
convection	ECMWF	Bechtold et al. (2014)
diffusion	Holtslag and Boville (1993)	Beljaars and Viterbo (1998)

¹ 69 layers are employed in this study.

The daily a priori NO₂ profiles are obtained from the three-dimensional chemistry transport model TM5-MP (Williams et al., 2017) with a horizontal resolution of 1° long×1° lat for 34 vertical layers, as summarised in Table 2. The model is driven by ECMWF ERA-Interim meteorological re-analysis (Dee et al., 2011) and updated every 3 h with interpolation of fields for the intermediate time periods. Compared to previous versions of TM model (e.g. Williams et al., 2009; Huijnen et al., 2010), which have been commonly used in tropospheric NO₂ retrieval studies (e.g. Boersma et al., 2011; Chimot et al., 2016; Lorente et al., 2017), the main advantages of TM5-MP is the better spatial resolution (1° long×1° lat), updated NO_x emissions (year-specific MACCity emission inventory, Granier et al. (2011)), and improved chemistry scheme (an expanded version of the modified CB05 chemistry scheme, Williams et al. (2013)). [The a priori profiles are determined for the GOME-2 overpass time \(9:30 LT\) and interpolated to the center of the GOME-2 pixel based on four nearest neighbour TM5-MP cell centers.](#)

In the presence of clouds, the AMF is derived based on the independent pixel approximation (Cahalan et al., 1994), which assumes the AMF as a linear combination of a cloudy-sky AMF M_{cl} and a clear-sky AMF M_{cr} :

$$M = \omega M_{cl} + (1 - \omega)M_{cr}, \quad (2)$$

where ω is the cloud radiance fraction. M_{cl} is determined using Eq. (1) with the cloud surface regarded as a Lambertian reflector and with $m_l=0$ for layers below the cloud top pressure c_p . ω is derived from the GOME-2 cloud fraction c_f :

$$\omega = \frac{c_f I_{cl}}{(1 - c_f)I_{cr} + c_f I_{cl}} \quad (3)$$

with I_{cr} the backscattered radiance for a clear scene derived using LIDORT and I_{cl} for a cloudy scene. Note that the cloud fraction c_f is a radiometric ~~or effective~~ cloud fraction instead of a geometric one.

The GOME-2 cloud properties are derived by the OCRA and the ROCINN algorithms (Loyola et al., 2007, 2011; Lutz et al., 2016; Loyola et al., 2018). Since clouds generally have a higher reflectivity than the ground, OCRA calculates the radiometric cloud fractions by comparing the measured reflectances in 3 broadband wavelength regions across the UV-VIS-NIR region with corresponding cloud-free background composite maps using a RGB color space approach. The monthly cloud-free background map is calculated from ~~GOME-2A~~ GOME-2/MetOp-A measurements for the years 2008-2013, accounting for instrumental degradation and dependencies on viewing zenith angle (VZA), latitude, and season. With the radiometric cloud fractions from OCRA as inputs, ROCINN retrieves the cloud top pressures (cloud top heights) and cloud albedo (cloud optical depth) by comparing the simulated and measured satellite radiances in the O₂ A band around 760 nm using regularization theory. Based on the independent pixel approximation and the CRB cloud model, the ROCINN algorithm treats the clouds as Lambertian surfaces.

The tropospheric NO₂ column calculation is complicated in case of cloudy conditions. For many measurements over cloudy scenes, the cloud top is well above the NO₂ pollution in the boundary layer, and the enhanced tropospheric NO₂ concentrations cannot be detected by GOME-2 if the clouds are optically thick. Therefore, the tropospheric NO₂ column is only calculated for GOME-2 observations with a cloud radiance fraction $\omega < 0.5$. Note that the “below cloud amount” (i.e. the amount of NO₂ below the cloud top) for these partly cloudy conditions is implicitly accounted for via the cloudy-sky AMF M_{cl} (in which $m_l = 0$ for layers below the cloud top).

3 Improved AMF calculation

3.1 Surface albedo

The dependency of surface reflection on incoming and outgoing directions is mathematically described by the BRDF (Nicodemus et al., 1992), which shows a “hot spot” of increased reflectivity in backward scattering directions over rough surfaces like vegetation and a strong forward scattering peak near “sun glint” geometries over smooth surfaces like water. In this study, we account for the direction-dependency of surface albedo for the GOME-2 LER climatology by applying a directionally dependent LER (DLER) dataset over land surfaces (see Sect. 3.1.1) and by implementing an ocean surface albedo parametrization over water surfaces (see Sect. 3.1.2).

3.1.1 Over land

To account for the surface BRDF in our NO₂ AMF calculation over land, the surface reflectivity is described by a GOME-2 DLER dataset (Tilstra et al., 2019) that captures the VZA-dependency. Compared to the traditional GOME-2 LER climatology (Tilstra et al., 2017), derived from a range of viewing angles ($\sim 115^\circ$ for GOME-2 measurements covering the directions from east to west), the GOME-2 DLER dataset is derived by dividing the range of viewing angles into five segments and applying the same retrieval method as in the traditional GOME-2 LER determination for each segment with a parabolic fit to parametrize the VZA-dependency. The main idea of this VZA-dependency parametrization is to use the VZA as a proxy of observation

geometry over land, since solar zenith angle (SZA) and relative azimuth angle (RAA) are nearly constant at a given latitude and thus have been captured in the original GOME-2 LER dataset.

For each GOME-2 measurement, the surface DLER α_{DLER} is calculated as:

$$\alpha_{DLER} = \alpha_{LER} + c_0 + c_1 \times \theta + c_2 \times \theta^2 \quad (4)$$

5 with VZA θ positive on the west side of the orbit swath and negative on the east side of the orbit swath. c_0 , c_1 , and c_2 are parabolic fitting coefficients depending on latitude, longitude, month, and wavelength. The non-directional LER α_{LER} is taken from the traditional GOME-2 LER climatology. Note that no directionality is provided by the DLER dataset over water (without sea ice cover), mainly due to the dependency on parameters such as wind speed and chlorophyll concentration, which can not be cast into climatology easily. Additionally, due to the strong solar and viewing angles-dependency of specular
10 reflection, changes of the solar position during a month influence the albedo over water bodies much more than for land, and this influence is modelled and described in Sect. 3.1.2.

Figure 1a-c shows the traditional GOME-2 LER climatology, the GOME-2 DLER dataset over land, and their differences on 3 February and 5 August 2010. The DLER data shows a stronger increase for western viewing direction by ~ 0.02 over vegetation, ~ 0.05 over desert, and ~ 0.2 over snow and ice, due to the increasing BRDF in the backward scattering direction.
15 A slight change by up to 0.01 is found over vegetation and desert with enhancement for the central part of the orbit swath and reduction for the east side of the orbit swath, ~~and this~~. This effect is larger over snow and ice, ~~resulted from~~ due to the forward scattering peak or double scattering peak in the BRDF pattern for snow (Dumont et al., 2010). The difference in surface albedo is generally larger in winter, due to the change of surface condition and/or sun elevation, at the exception of desert.

Figure 2 compares the surface LER and DLER as a function of VZA and presents the impact on the clear-sky AMFs over
20 western Europe (44° N- 53° N, 0° E- 7° E) and eastern China (21° N- 41° N, 110° E- 122° E) in February 2010. The surface albedo on the west side of the orbit swath (backward scattering direction) is higher for both regions by up to 0.024, which increases the calculated clear-sky AMFs by 9-14%. Smaller differences are found for the central and eastern viewing direction by up to 0.006 for surface albedo and up to 4% for clear-sky AMFs.

Figure 3 shows the differences in tropospheric NO_2 columns retrieved using surface LER and DLER dataset for a given day
25 and for the monthly average in February and August 2010. The daily differences in tropospheric NO_2 columns are consistent with Fig. 1c, with a larger impact found over polluted regions. Taking Spain on 3 February 2010 as an example, the smaller surface DLER on the central part of the orbit swath by ~ 0.005 results in a lower sensitivity to tropospheric NO_2 columns in the AMF calculation, and therefore the AMF decreases and the tropospheric NO_2 columns increases by $\sim 1 \times 10^{14}$ molec/cm² (3%). Vice versa, the surface DLER is higher by ~ 0.02 on the west side of the orbit swath over eastern China at the same day,
30 and thus the tropospheric NO_2 column is lower by $\sim 3 \times 10^{15}$ molec/cm² (11%). The monthly differences in tropospheric NO_2 columns show a larger reduction in winter by more than 5×10^{14} molec/cm² over e.g. central Europe, South Africa, India, and eastern China, and by $\sim 1 \times 10^{14}$ molec/cm² over e.g. the eastern US, Southeast Asia, and Mexico.

~~The above results are~~ Accounting for the BRDF effect, the surface DLER captures the cross-track dependency of surface albedo, such as the increased reflectivity in backward scattering viewing geometries, in agreement with studies applying the

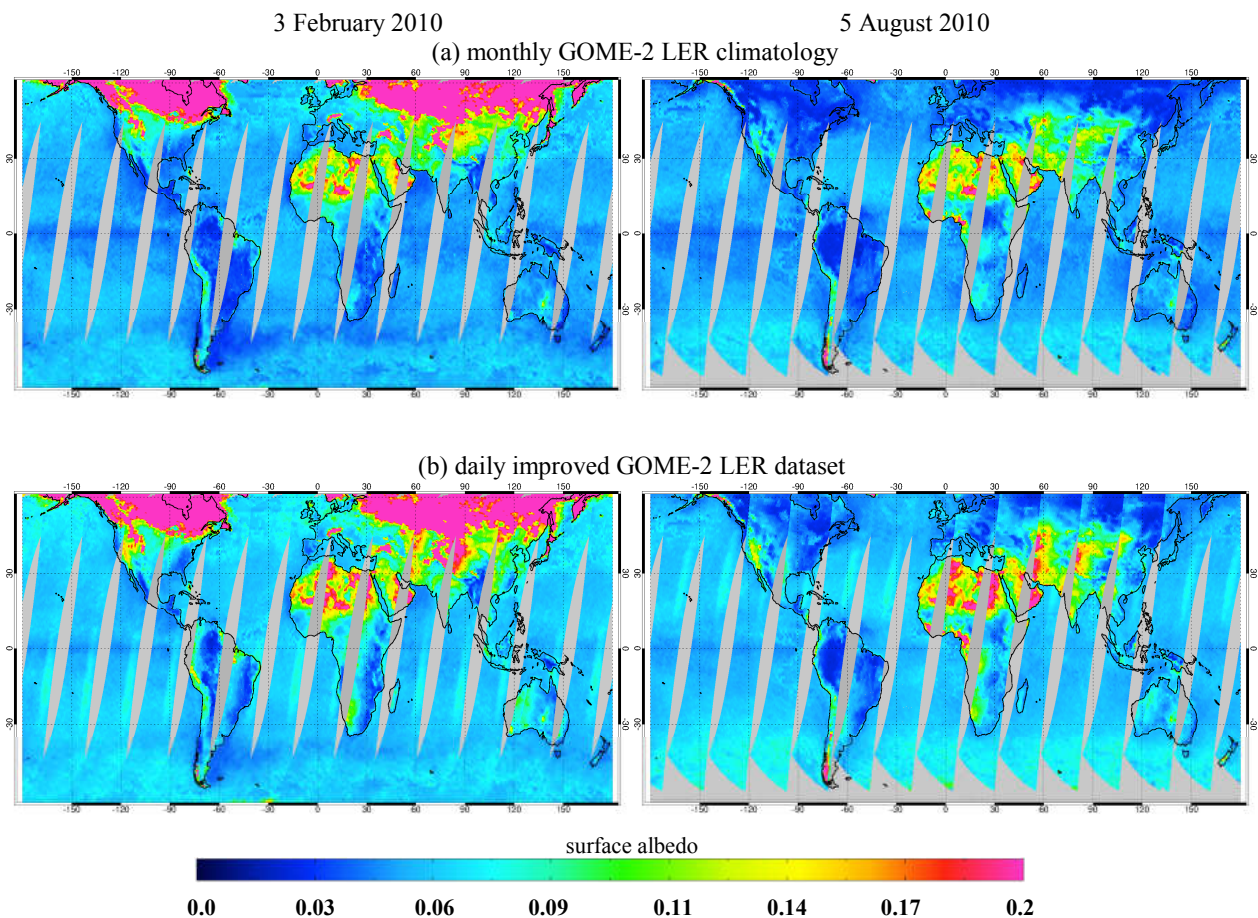


Figure 1. Map of GOME-2 surface LER climatology (Tilstra et al., 2017) version 3.1 in February and August (a), improved GOME-2 surface LER data taking into account the direction-dependency on 3 February and 5 August 2010 (b), and their differences over land (c) and over water (d) (figure continued on next page). The improvements are described in Sect. 3.1.1 for land and in Sect. 3.1.2 for water.

BRDF product from MODIS to describe the dependency of land surface reflectance on illumination and viewing geometry (e.g. Zhou et al., 2010; Noguchi et al., 2014; Vasilkov et al., 2017; Lorente et al., 2018; Laughner et al., 2018; Qin et al., 2019). With a good agreement with the established MODIS BRDF product (Tilstra et al., 2019), **both in the absolute sense and in the directional/angular dependency**, the GOME-2 DLER dataset is derived from measurements of the instrument itself, consistent with the GOME-2 NO₂ observations, considering the illumination conditions, observation geometry, and instrumental characteristics, and therefore the use of GOME-2 DLER introduces no additional bias caused by the instrumental differences.

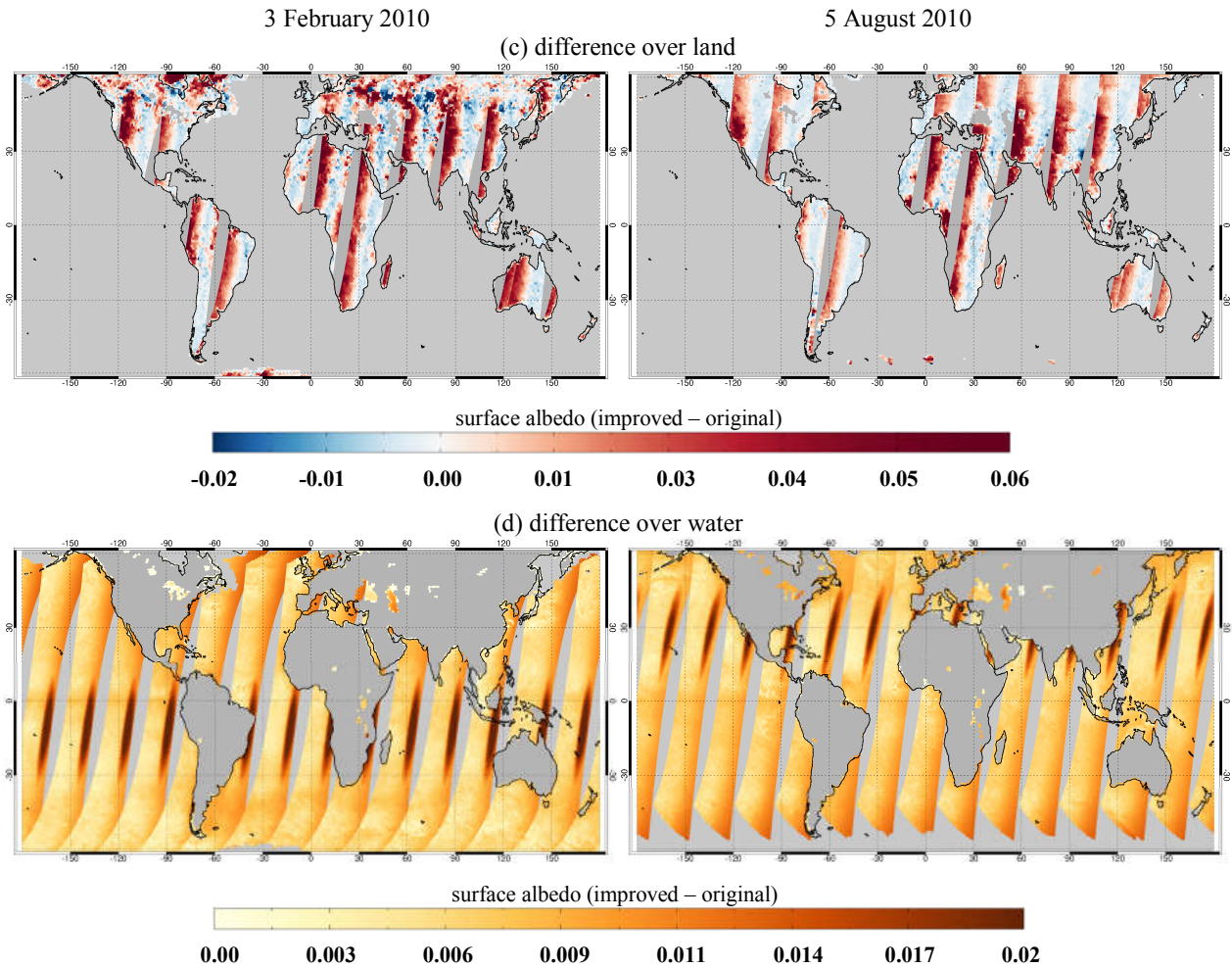


Figure 1. (figure continued from previous page)

3.1.2 Over water

The surface reflectivity over water is described with an improved GOME-2 LER data using an ocean surface albedo parametrization (Jin et al., 2004, 2011) to account for the direction-dependency. Based on atmospheric radiation measurements and the Coupled Ocean-Atmosphere Radiative Transfer (COART) model (Jin et al., 2006), the parametrization developed by Jin et al. (2011) derives the surface reflectivity for the direct (sun) and diffuse (sky) incident radiation separately and further divides each of them into contributions from surface and water, respectively. This parametrization has been used to derive ocean surface albedo (e.g. Séférian et al., 2018) and to generate satellite NO₂ product (e.g. Laughner et al., 2018).

Following Jin et al. (2011), the ocean surface albedo α_{total} is defined as:

$$\alpha_{total} = f_{dir}(\alpha_{dir}^s + \alpha_{dir}^w) + f_{dif}(\alpha_{dif}^s + \alpha_{dif}^w) \quad (5)$$

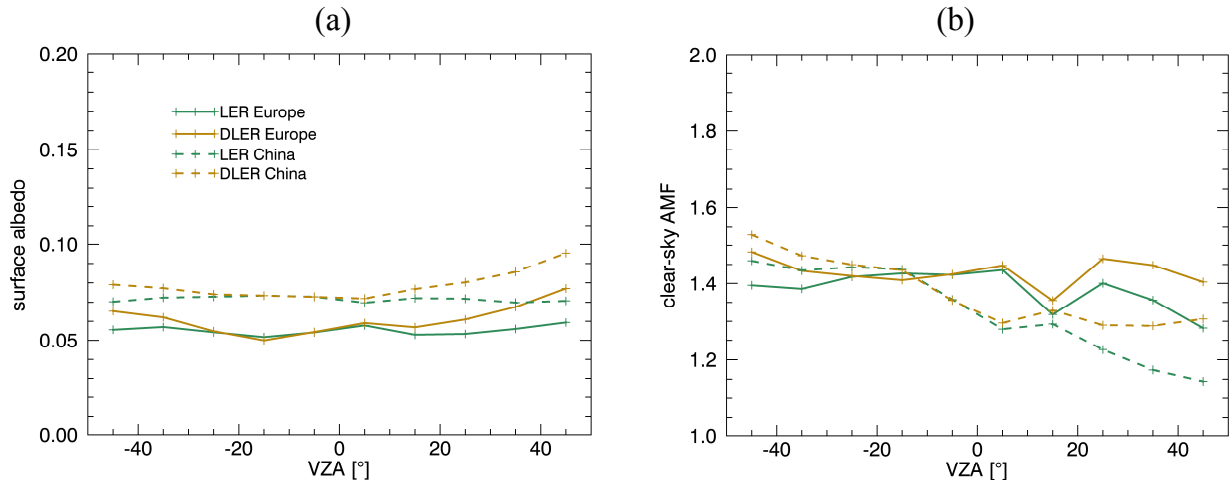


Figure 2. Comparison of GOME-2 LER climatology (Tilstra et al., 2017) and GOME-2 DLER data (a) and the impact on the clear-sky AMFs (b) over western Europe (44° N-53° N, 0° E-7° E) and eastern China (21° N-41° N, 110° E-122° E) as a function of VZA in February 2010 (VZAs are negative for observations on the east side of the orbit swath).

with α_{dir}^s and α_{dif}^s the direct and diffuse contribution of the surface reflection and α_{dir}^w and α_{dif}^w the direct and diffuse contribution of the volume scattering of water below the surface, respectively. The direct and diffuse fraction of downward surface flux f_{dir} and f_{dif} ($f_{dif} = 1 - f_{dir}$) are calculated using the online COART (<https://satcorps.larc.nasa.gov/jin/coart.html>). The direct surface albedo α_{dir}^s , which is one main component of the total ocean surface albedo, describes the contribution of Fresnel reflection depending on the incident angle, refractive index of seawater (1.343 at 460 nm), and slope distribution of the ocean surface (defined by Cox and Munk (1954) and related to wind speed (5 m/s from the climatological mean)). The diffuse surface albedo α_{dif}^s is difficult to formulate analytically due to its variation with atmospheric conditions and thus parametrized practically to be 0.06 for an assumed 5 m/s wind speed. The direct water volume albedo α_{dir}^w is considered for the case 1 waters (open ocean waters dominated by phytoplankton as well as associated products and consisting 99% of the ocean) and primarily affected by the chlorophyll concentration (0.2 mg/m³ from the global ocean average). The diffuse water volume albedo α_{dif}^w is defined by the α_{dir}^w at an effective incident direction (i.e. $\arccos(0.676)$) and calculated to be 0.0145. The direct fraction of downward surface flux f_{dir} is calculated with radiative transfer simulation using a mid-latitude summer atmosphere with a marine aerosol optical depth of 1 (at 550 nm) and using a 100 m depth ocean with the average Petzold phase function for ocean particle scattering.

Figure 4 shows the parametrized ocean surface albedo for a non-glint situation and its four albedo components as a function of incident angle. The overall shape of the total ocean surface albedo α_{total} is dependent on incident angle with a peak near 70°, similar with Jin et al. (2004) and Laughner et al. (2018). The surface component ($\alpha_{dir}^s + \alpha_{dif}^s$) is larger than the water volume component ($\alpha_{dir}^w + \alpha_{dif}^w$), particularly for larger incident angles. The direct component ($\alpha_{dir}^s + \alpha_{dir}^w$) increases with incident angle with lower values than the diffuse component ($\alpha_{dif}^s + \alpha_{dif}^w$) for smaller incident angles (below 55°) and higher

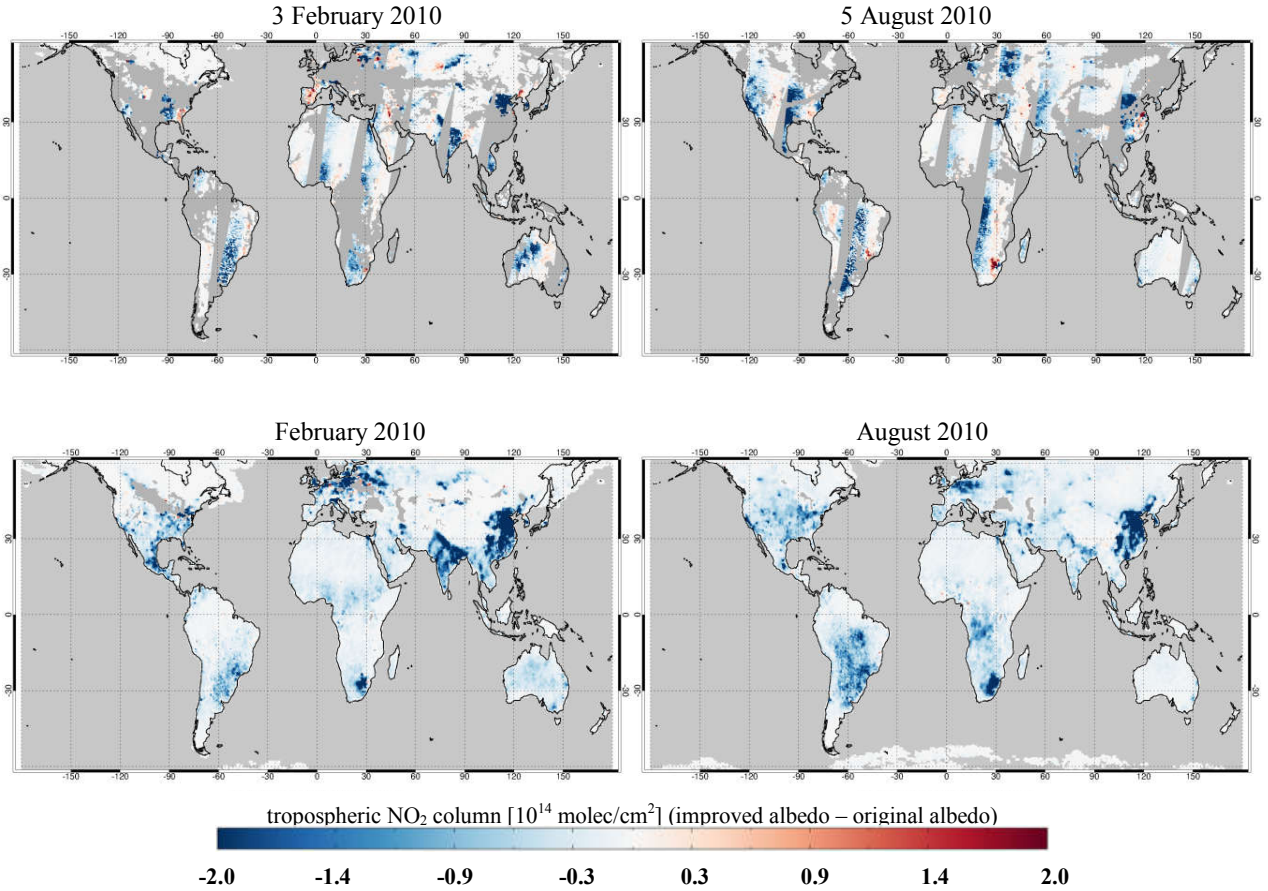


Figure 3. Differences in GOME-2 tropospheric NO₂ columns retrieved using GOME-2 LER and DLER dataset for a given day and for the monthly average in February and August 2010. Only measurements with cloud radiance fraction < 0.5 are included.

values for larger incident angles. The relative contribution of diffuse component to the total ocean surface albedo f_{dif} increases from ~ 0.65 to ~ 1 with incident angle. It is worth noting that the four albedo components are independent of each other and thus flexible to update or replace.

Based on measurements over a long period (2007-2018 for version 3.1), the GOME-2 LER climatology provides mainly the diffuse component ($\alpha_{dif}^s + \alpha_{dif}^w$) over water bodies with minimized impact of direct contribution. Therefore, we replace the simplified expression of $\alpha_{dif}^s + \alpha_{dif}^w$ in Jin et al. (2011) with values taken from the GOME-2 LER climatology. This scheme enables the consideration of the direction-dependency for the GOME-2 LER climatology over water with minimal bias introduced. In addition, most of the ocean surface albedo studies (e.g. Ohlmann, 2003; Jin et al., 2004; Li et al., 2006; Jin et al., 2011; Laughner et al., 2018) employ a straightforward assumption that SZA is the only directional parameter involved in the parametrization, namely the incident angle is assumed to be equivalent to the SZA in the Fresnel reflection calculation. In this work, we apply the full equation to derive the local incident angle with dependencies on VZA and RAA also taken into

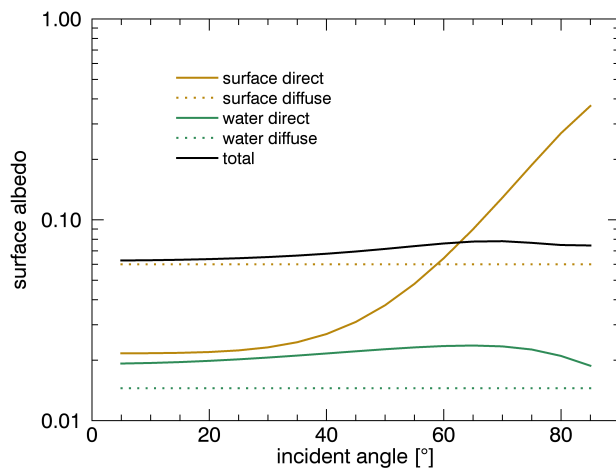


Figure 4. Parametrized ocean surface albedo for a non-glint condition and its albedo components due to direct and diffuse surface reflection and direct and diffuse water volume scattering as a function of incident angle.

account, and we additionally implement the Cox-Munk sun glitter model over glint-contaminated regions. See Cox and Munk (1954) and Gordon (1997) for more details on configuration and derivation.

Figure 1b,d presents the calculated ocean surface albedo and the differences with values taken from GOME-2 LER climatology on 3 February and 5 August 2010. Consistent with Vasilkov et al. (2017), the improved ocean surface albedo shows higher values by up to 0.015 at larger SZAs and VZAs, where the higher incident angles result in stronger Fresnel reflections, and by up to 0.025 over areas affected by sun glint, typically the eastern swath of GOME-2 orbits.

Figure 5 shows the impact of using updated ocean surface albedo on our GOME-2 NO_2 retrieval for a given day and for the monthly average in February and August 2010. The tropospheric NO_2 columns are reduced mainly over the polluted coastal regions with large NO_2 concentrations and with large SZAs and VZAs. For instance, the ocean surface albedo around Spain increases by ~ 0.01 on 3 February 2010, leading to a decrease of tropospheric NO_2 columns by up to 8×10^{14} molec/cm² (9%). The monthly average of tropospheric NO_2 columns decreases in winter by more than 3×10^{14} molec/cm² near the coastal area, e.g. around the US, eastern China, and Brazil, and by up to 1×10^{14} molec/cm² along the shipping lanes, e.g. in the Mediterranean Sea, the Red Sea, and the maritime Southeast Asia.

3.2 A priori NO_2 profile

In regions with strong gradients in NO_x emission in space and time, the significant variation of surface NO_2 can only be captured in a model with sufficient horizontal, vertical, and temporal resolutions. The advanced IFS(CBA) (Huijnen et al., 2016, 2019) global chemistry forecast and analysis system combines the stratospheric chemistry scheme developed for the Belgian Assimilation System for Chemical Observations (BASCOE, Skachko et al. (2016)) and the modified CB05 tropo-

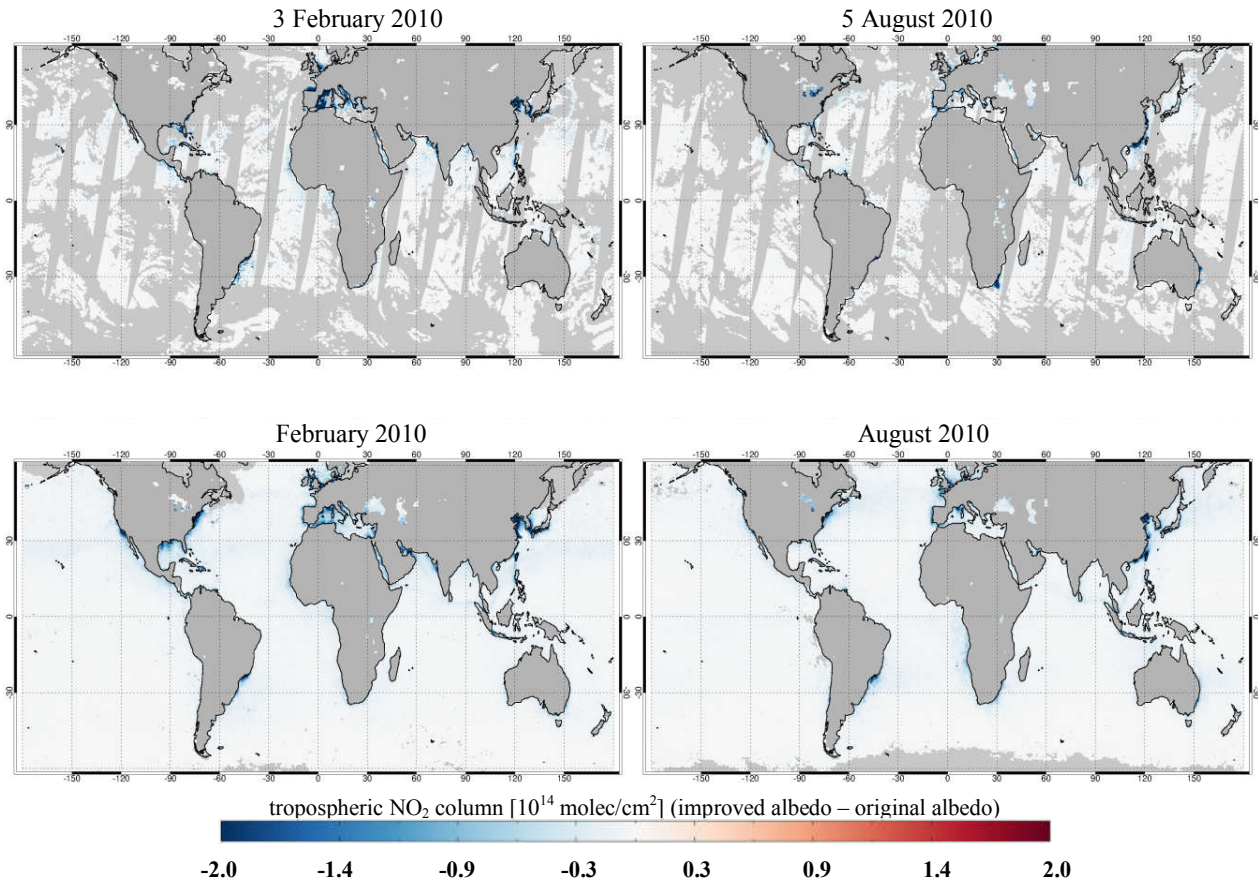


Figure 5. Differences in GOME-2 tropospheric NO₂ columns retrieved using the original GOME-2 LER climatology and the GOME-2 LER data improved with the ocean surface albedo parametrization for a given day and for the monthly average in February and August 2010. Only measurements with cloud radiance fraction < 0.5 are included.

spheric chemistry scheme (Williams et al., 2013). As summarized in Table 2, the spatial resolution of IFS(CBA) is a reduced Gaussian grid at a spectral truncation of T255, which is equivalent to a grid spacing of ~ 80 km globally ($\sim 0.7^\circ$). The model is run with the standard 137 hybrid sigma-pressure layers as also used operationally in the ECMWF’ forecast and reanalysis model. From this we select a vertical discretisation based on 69 vertical levels up to 0.1 hPa with ~ 12 layers in the boundary layer for further processing. An essential difference compared to TM5-MP is that in IFS(CBA) the chemistry is an integral part of the meteorological forecast model. Here we use the forecast model from cycle 45r2, which is daily initialized using ERA5 meteorology. Additionally, anthropogenic emissions are based on the recently prepared CAMS_GLOB_ANT v2.1 emission inventory (Granier et al., 2019), as illustrated in Appendix A, while day-specific biomass burning emissions are taken from GFASv2.1 (Kaiser et al., 2012). The NO₂ data is available on an hourly basis, based on which the profiles at the satellite

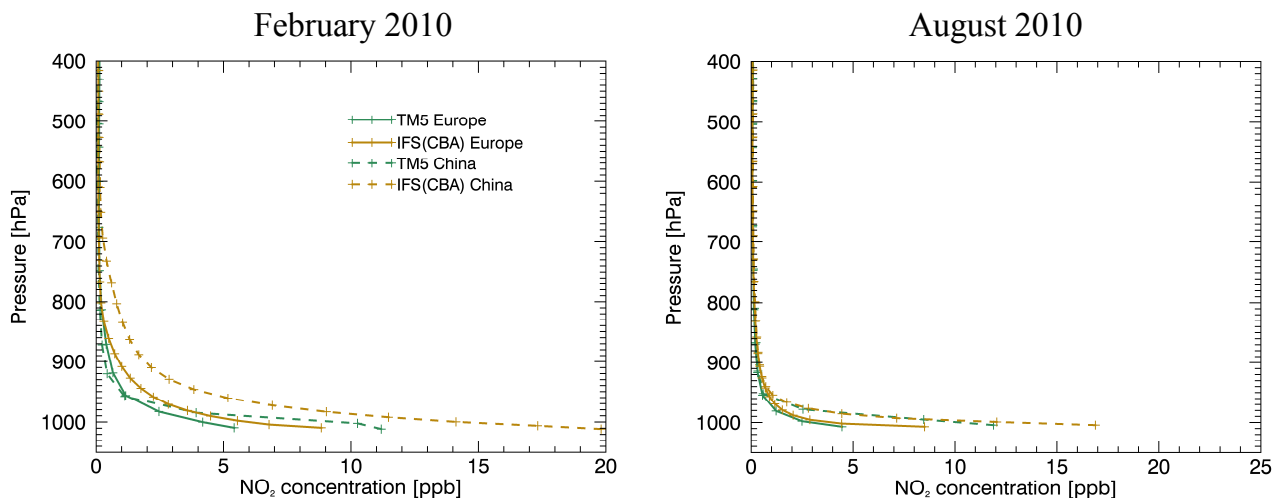


Figure 6. Area-averaged and monthly-averaged profiles from TM5-MP and IFS(CBA) at GOME-2 overpass time (9:30 LT) over western Europe (44° N-53° N, 0° E-7° E) and eastern China (21° N-41° N, 110° E-122° E) in February and August 2010.

measurement time can be obtained with a linear interpolation with profiles at the satellite measurement time obtained by linear interpolation.

Figure 6 shows an intercomparison of area-averaged and monthly-averaged profiles from TM5-MP and IFS(CBA) at GOME-2 overpass time (9:30 LT) over western Europe (44° N-53° N, 0° E-7° E) and eastern China (21° N-41° N, 110° E-122° E) in February and August 2010. Generally, TM5-MP and IFS(CBA) show similar mean profile shapes over the two regions. In February, IFS(CBA) shows a larger boundary layer concentration and a sharper transition to the free troposphere over western Europe and a larger NO₂ gradients in the free troposphere over eastern China. In August, the NO₂ concentrations in the free troposphere are lower than in February for both models due to the reduced emissions and the reduced lifetime of NO₂, and a larger surface layer NO₂ gradient is found for the IFS(CBA) model for both regions.

Figure 7 shows the daily TM5-MP and IFS(CBA) a priori NO₂ profiles over the Netherlands (52.8° N, 4.7° E) and China (39.1° N, 118.0° E) on 3 February 2010 as examples. IFS(CBA) shows a higher surface layer NO₂ concentration (more steep profile shape) and yields a tropospheric AMF reduced by 0.21 over the Netherlands, which will enhance the retrieved tropospheric NO₂ column. In contrast, the tropospheric AMF increases by 0.06 over China due to the larger NO₂ gradients in the free troposphere (less steep profile shape) modelled by IFS(CBA).

Figure 8 shows the differences in tropospheric NO₂ columns retrieved using TM5-MP and IFS(CBA) a priori NO₂ profiles for a given day and for the monthly average in February and August 2010. The differences are consistent with the changes in the profile shapes in Fig. 6 and 7. The use of IFS(CBA) generally increases the tropospheric NO₂ columns over polluted regions by up to 2×10^{15} molec/cm², e.g. over western Europe, eastern US, and Argentina, and decreases the values by up to 1×10^{15} molec/cm², e.g. over central Africa, South Africa, and Brazil. In February, however, a strong enhancement by $\sim 7 \times 10^{15}$ molec/cm² is found over northern Germany and Poland, and a strong reduction by $\sim 4 \times 10^{15}$ molec/cm² is found

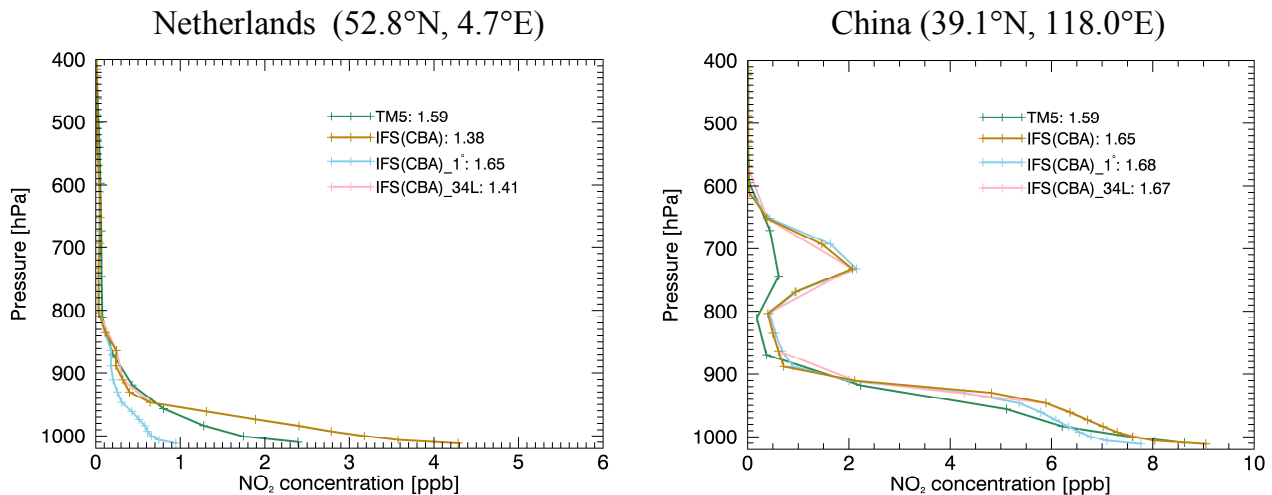


Figure 7. A priori NO_2 profiles from TM5-MP, IFS(CBA) (original resolution), and IFS(CBA) with different model resolutions over the Netherlands (52.8° N , 4.7° E) and China (39.1° N , 118.0° E) on 3 February 2010. The IFS(CBA) profiles are compared for 1° grid and for 34 layers. The calculated clear-sky tropospheric AMF is given next to each label.

over the North China Plain. The differences in Fig. 8 are likely related to the different **chemical mechanism**, transport scheme, and emission inventories employed by the model as well as the different model resolutions.

To quantify the effect of model resolutions, a more detailed analysis for IFS(CBA) is implemented with 1° grids for horizontal resolution, with 34 layers for vertical resolution, and with 2-hours time steps for temporal resolution, respectively. These values are of the same order of magnitude as the model resolutions of TM5-MP and other chemistry transport models currently employed in the satellite retrieval of **global** NO_2 (e.g. van Geffen et al., 2019; Lorente et al., 2017; Boersma et al., 2018; Liu et al., 2019b). Figure 7 compares the IFS(CBA) a priori NO_2 profiles with original and different model resolutions over the Netherlands (52.8° N , 4.7° E) and China (39.1° N , 118.0° E) on 3 February 2010. Both examples are located at polluted coastal regions, which typically have a large heterogeneity and variability in the NO_2 distribution. The AMFs differ by more than 0.02 for both examples due to differences in horizontal and vertical resolutions. The current 2-hours temporal sampling and subsequent linear interpolation between the sampling points is sufficient for the retrieval of tropospheric NO_2 columns (not shown). When a coarser spatial resolution is used, the “domain-averaged” profiles generally show an increased surface NO_2 concentration for unpolluted domain and the opposite for emission source. Consequently, the AMF is underestimated for unpolluted areas and overestimated for polluted areas. When the number of layers is reduced, the coarser sampling points can not capture accurately the large NO_2 gradients at low altitudes, particularly for polluted regions where the measurement sensitivity of the satellite decreases significantly towards the surface.

Figure 9 shows the absolute and relative differences in tropospheric NO_2 columns retrieved by altering the model resolutions for IFS(CBA) a priori NO_2 profiles in February 2010. In Fig. 9a, the increase of the spatial resolution (1° vs. 0.7° grid) changes the tropospheric NO_2 columns by up to 7×10^{14} molec/cm² or 20% for polluted regions, **in agreement with previous case studies**

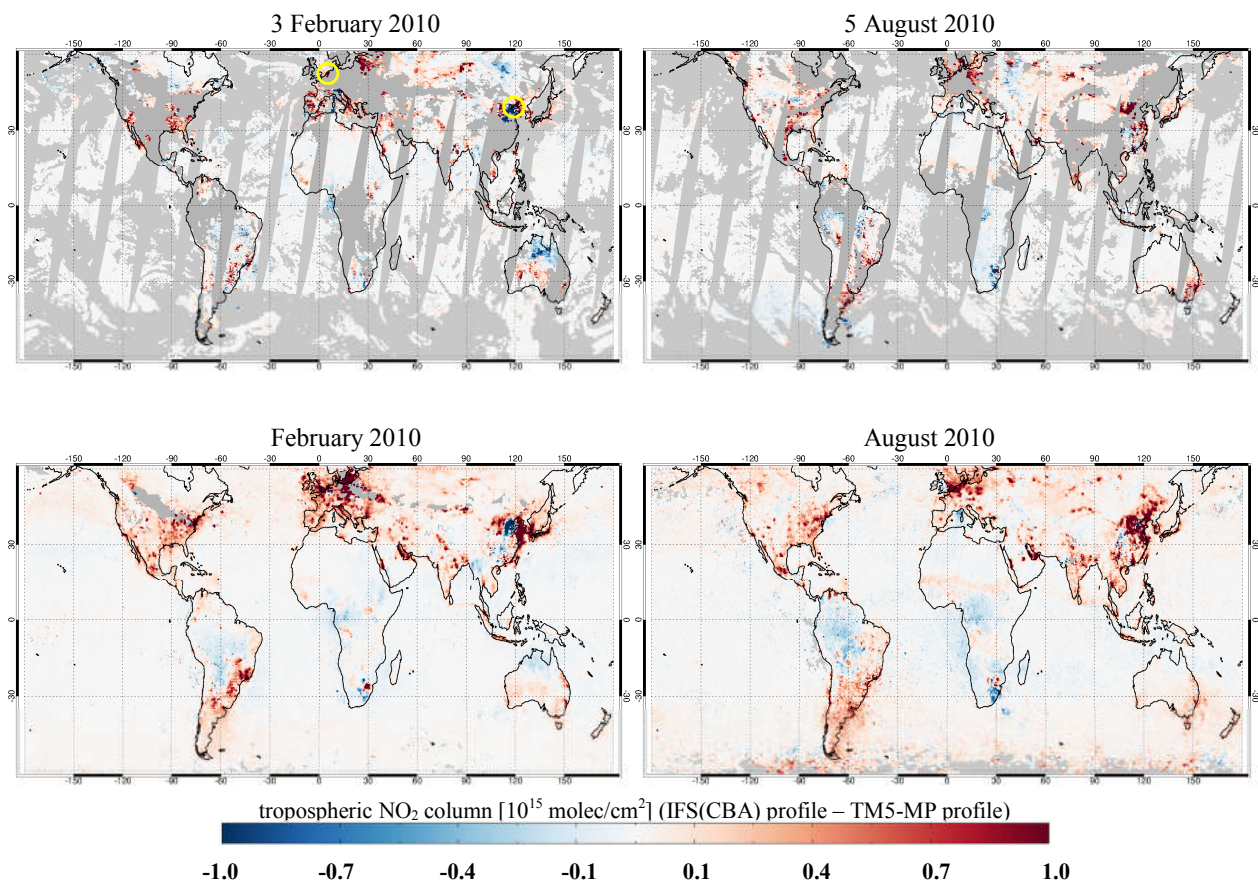


Figure 8. Differences in tropospheric NO₂ columns retrieved using TM5-MP and IFS(CBA) a priori NO₂ profiles for a given day and for the monthly average in February and August 2010. Yellow circles on 3 February 2010 indicate locations in Fig. 7. Only measurements with cloud radiance fraction < 0.5 are included.

or regional retrievals confirming the importance of applying a priori NO₂ profiles with better spatial resolution (Heckel et al., 2011; Lin et al., 2014; Kuhlmann et al., 2015). Larger relative differences are observed over cities surrounded by rural areas, coastal regions, isolated islands, and shipping lanes, where the use of high spatial resolutions captures more accurately the NO₂ emission and chemistry for a priori profiles. In Fig. 9b, the improvement in the vertical resolution (34 vs. 69 layers) enhances the tropospheric NO₂ columns by up to 5×10^{14} molec/cm² or 15%. Increasing the number of layers generally better resolves the NO₂ vertical variation, especially for the lowest model layers where the box-AMF decreases significantly in the polluted cases. Consequently, the tropospheric AMFs are lower and the tropospheric NO₂ columns are higher for polluted regions (Heckel et al., 2011; Russell et al., 2011; Valin et al., 2011). For unpolluted regions, the differences are generally small (within $\pm 2 \times 10^{14}$ molec/cm² or $\pm 3\%$). In addition, the use of different temporal resolution (2-hours vs. 1-hour time step) generally has a negligible impact on the tropospheric NO₂ columns (less than 2×10^{14} molec/cm² or 3%, not shown).

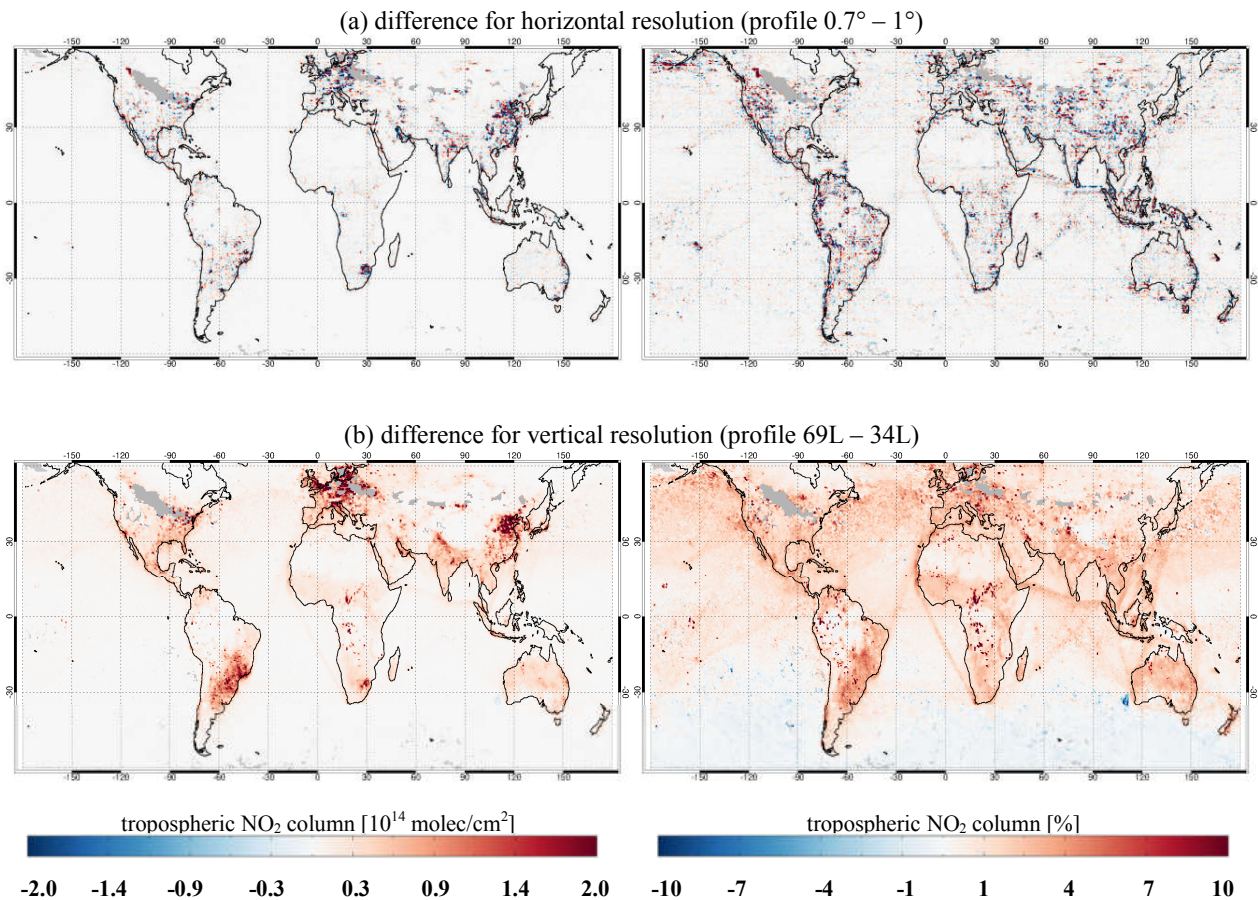


Figure 9. Absolute and relative differences in tropospheric NO₂ columns retrieved by altering the model resolutions for IFS(CBA) a priori NO₂ profiles in February 2010. The tropospheric NO₂ columns are compared for 1° and 0.7° grid (a) and for 34 and 69 layers (b). Only measurements with cloud radiance fraction < 0.5 are included.

3.3 Cloud correction

For cloudy scenarios, the retrieval of tropospheric NO₂ is affected by the cloud parameters due to the variation of scene albedo and the photon path redistribution in the troposphere. As described in Sect. 2, the cloudy-sky AMFs are calculated with the independent pixel approximation using GOME-2 cloud parameters: radiometric cloud fraction from OCRA and cloud top pressure (cloud top height) and cloud albedo (cloud optical depth) from ROCINN. To improve the cloud correction in our NO₂ retrieval, the CAL model from ROCINN cloud algorithm (Loyola et al., 2018), with the clouds treated as optically uniform layers of light-scattering water droplets, is applied. The CAL model is more representative of the real situation than the CRB model (with the clouds idealized as Lambertian reflectors with zero transmittance) by allowing the penetration of

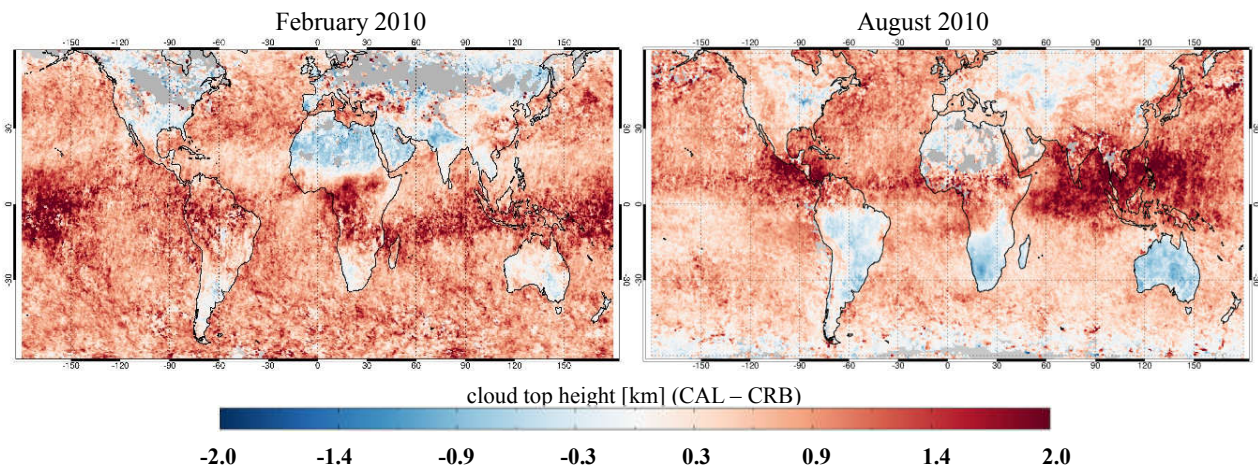


Figure 10. Differences in cloud top heights retrieved using ROCINN_CAL and ROCINN_CRB cloud model in February and August 2010. Only measurements with cloud fraction < 0.3 are included. Observations with fitting RMS $> 1 \times 10^{-4}$ or number of iterations > 20 are filtered out.

photons through the cloud layer. This treatment takes the multiple scattering of light inside the cloud and the contribution of the atmospheric layer between the cloud bottom and the ground into account.

Figure 10 shows the differences in cloud top heights obtained with the CRB and CAL model from GOME-2 measurements in February and August 2010. Consistent with Loyola et al. (2018) (see Fig 3 and 13 therein), the cloud top heights from CAL are generally higher by on average ~ 0.9 km. Stronger increases (up to 2 km) are found over regions with thick and high clouds, such as the Intertropical Convergence Zone and the Western Hemisphere Warm Pool, very similar to Lelli et al. (2012) (see Fig. 12 therein). In general, the CRB-based cloud retrieval underestimates the cloud top height due to the neglect of oxygen absorption throughout a cloud layer (Vasilkov et al., 2008) and thus the misinterpretation of the smaller top-of-atmosphere reflectance as a lower cloud layer (Saiedy et al., 1967). **The retrieved cloud height is normally close to the middle, i.e., the optical centroid of clouds (Ferlay et al., 2010; Richter et al., 2015), which can be considered as a reflectance-weighted height located inside a cloud.** Additionally, since the enhanced multiple scattering is not fully taken into account in the CRB-based cloud retrieval, the retrieved cloud height is normally close to the **middle, i.e., the optical centroid of clouds (Ferlay et al., 2010; Richter et al., 2015)- altitude of the middle.**

In Fig. 10, higher cloud top heights are found using CRB mainly over land surfaces characterised by the presence of a large amount of absorbing aerosols, for instance, over regions with strong desert dust emissions, such as the Sahara, the Arabian Desert, and the deserts in Australia, as well as regions with strong biomass burning emissions, such as South America, South Africa, and Southeast Asia. Over these areas, ROCINN likely retrieves an effective aerosol height close to the top of aerosol layer, depending on the type of absorbing aerosols and on aerosol optical depth. The presence of strongly absorbing aerosols, which typically have large aerosol optical depth and/or locate at high altitudes (up to ~ 8 km), reduces the fraction of photons reaching the lowest part of the atmosphere. In order to approximate this shortened light path, the CRB-based cloud retrieval

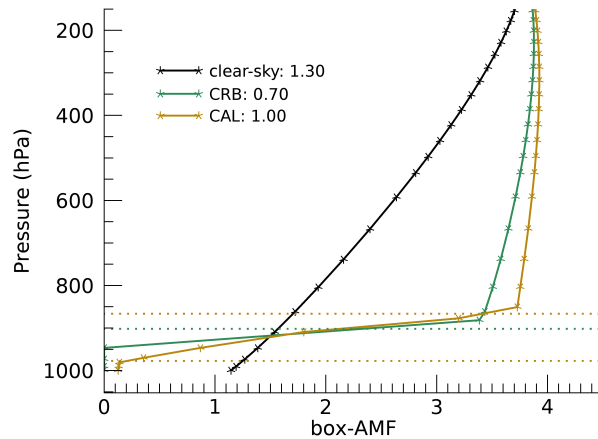


Figure 11. The box-AMFs for clear and cloudy sky using ROCINN_CAL and ROCINN_CRB cloud model over Italy (45.3° N, 11.2° E) on 1 February 2010. The tropospheric AMF is given next to each label. The ROCINN_CRB cloud top pressure is shown as a horizontal green line, and the ROCINN_CAL cloud top and base pressure are shown as horizontal brown lines. Cloud radiance fraction = 0.47, cloud optical depth = 6.85, SZA = 69°, VZA = 3°, RAA = 42°.

has to put the Lambertian reflector at a higher altitude (Wang et al., 2012; Chimot et al., 2016). This effect is larger for aerosol layers at higher altitudes and dependent also on geometry parameters like SZA, on surface properties like surface albedo, and on the accuracy of radiometric cloud fractions from OCRA. [See Sect. 4 for more discussions of the CRB and CAL cloud models in the presence of aerosols.](#)

- 5 To apply the CAL cloud model in our NO₂ AMF calculation, a single scattering albedo of 1 and an asymmetry parameter of 0.85 for water clouds are assumed for the radiative transfer calculation, consistent with the values used in the cloud retrieval (Loyola et al., 2018). Cloud observations with fitting root mean square (RMS) > 1 × 10⁻⁴ or number of iterations > 20 are filtered out. The NO₂ box-AMFs are derived through the pixel-specific radiative transfer calculation instead of the interpolation from a LUT with fixed reference points, ~~which~~. [This](#) requires no projection from the layer coordinate of NO₂ profile to the coordinate assumed in the LUT and requires no linear interpolation based on the model parameters.

Figure 11 shows an example of the derived box-AMFs for clear and cloudy sky using the CRB and CAL model over Italy (45.3° N, 11.2° E) on 1 February 2010. The cloud information and the calculated tropospheric AMFs are also reported. Compared to the clear-sky box-AMFs, the CAL-based cloudy-sky box-AMFs increase above the cloud layer (albedo effect) and decrease below the cloud layer (shielding effect). Compared to the CRB model, the use of CAL model takes account of the sensitivities inside and below the cloud layer and increases the cloudy-sky AMF by 0.3, which consequently decreases the retrieved tropospheric NO₂ column by 2.5 × 10¹⁵ molec/cm² (12%), based on the polluted NO₂ profile with most of the NO₂ concentration located near the surface.

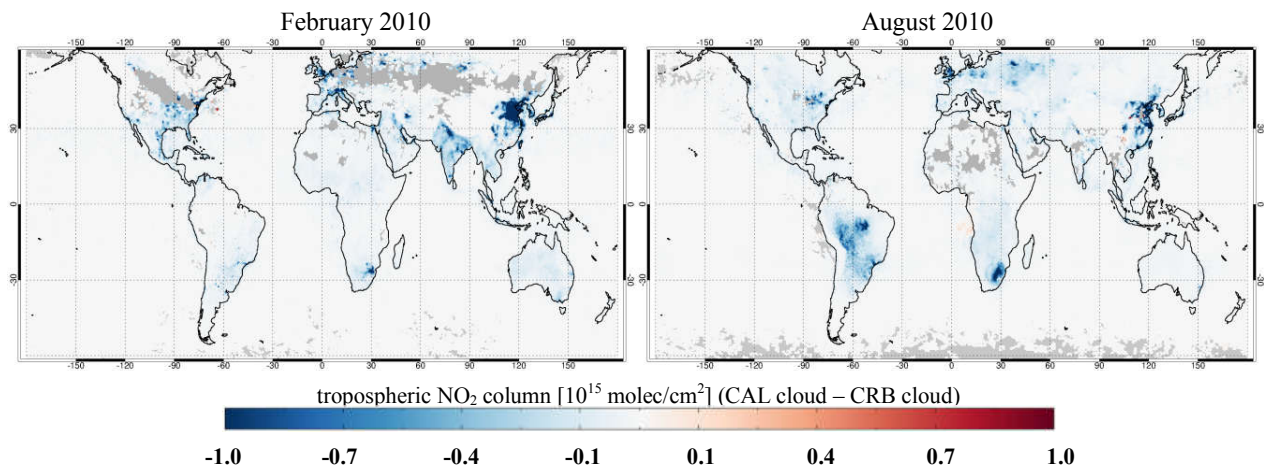


Figure 12. Differences in GOME-2 tropospheric NO₂ columns retrieved using ROCINN_CRB and ROCINN_CAL cloud model in February and August 2010. Only measurements with cloud radiance fraction < 0.5 are included. Cloud observations with fitting RMS > 1×10^{-4} or number of iterations > 20 are filtered out.

Figure 12 shows the differences in tropospheric NO₂ columns retrieved using CRB and CAL model in February and August 2010. The use of CAL model decreases the tropospheric NO₂ columns by more than 1×10^{14} molec/cm² over polluted regions. Larger values are found in winter (up to 3×10^{15} molec/cm²), when most of the NO₂ concentrations are located at the surface and the cloud fractions are generally larger due to the seasonal variation of clouds.

5 3.4 Combined impact

Figure 13 shows the tropospheric NO₂ columns retrieved using the improved AMF calculation and the differences with the reference data in February and August 2010. Larger differences are found in winter over the polluted regions. For instance, the tropospheric NO₂ columns are reduced by more than 1×10^{15} molec/cm² over China and India in February and Brazil and South Africa in August. Increased values are found e.g. over Mexico, Argentina, and Russia.

10 Table 3 summarizes the individual changes and combined effect of our improved AMF calculation on the retrieved tropospheric NO₂ columns over western Europe, eastern China, eastern US, and central Africa. Increases in GOME-2 surface albedo reduce the tropospheric NO₂ columns by 2-6%. The use of IFS(CBA) a priori NO₂ profiles affects (mostly increases) the tropospheric NO₂ columns by up to 21%, and the use of CAL cloud parameters decreases the values by up to 14%. The combined effect of individual improvements yields to a change of tropospheric NO₂ columns on average within $\pm 15\%$ in winter and
 15 $\pm 5\%$ in summer over polluted regions.

The uncertainty in the improved AMF calculation is likely reduced **comparing relative** to the reference retrieval, considering the improved surface albedo dataset, a priori NO₂ profiles, and cloud parameters, which are the main causes of AMF uncertainty (Lorente et al., 2017). The uncertainty in the AMF calculation for polluted conditions is estimated to improve from 10-45% for the reference retrieval to the 10-35% range for this work.

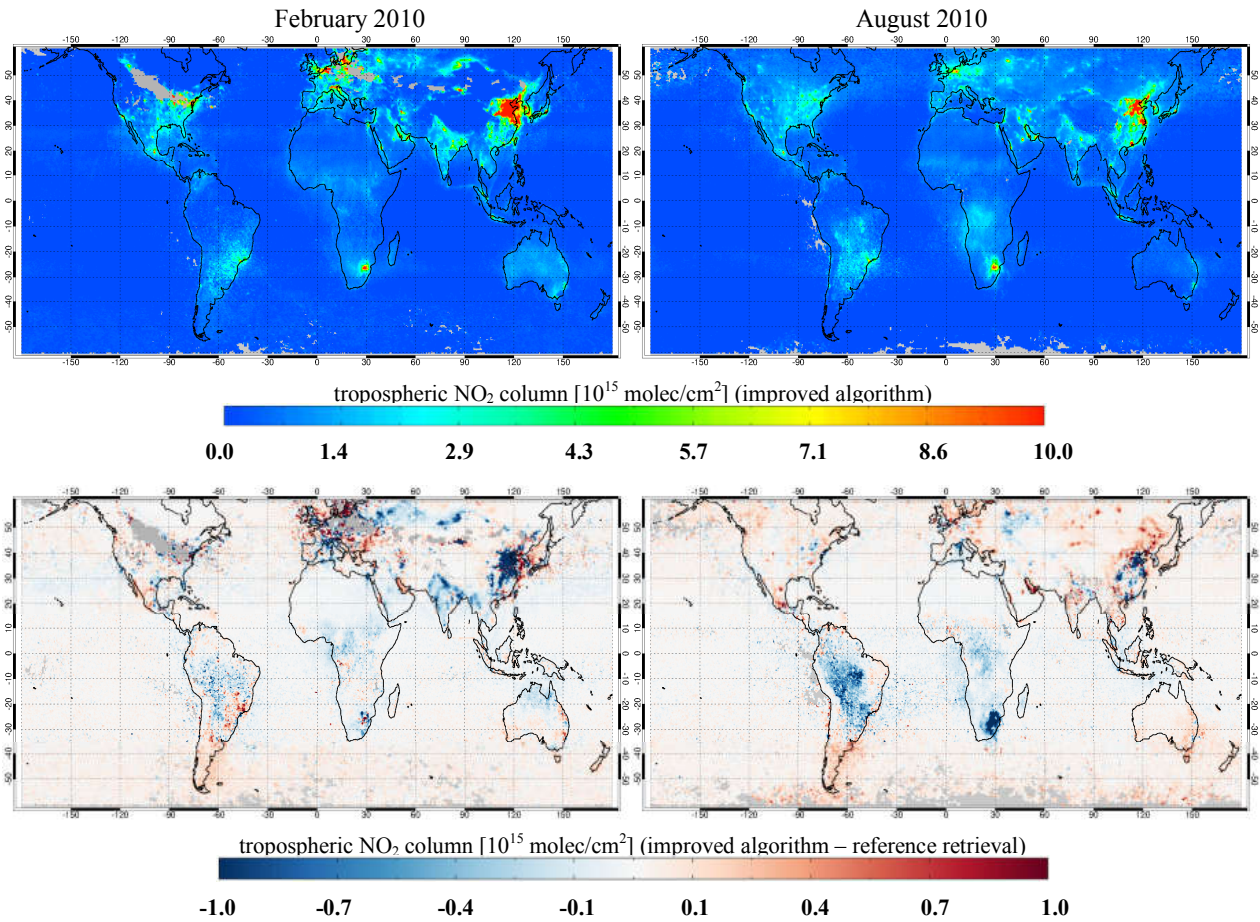


Figure 13. GOME-2 tropospheric NO₂ columns retrieved using the improved algorithm and the differences with the reference data in February and August 2010. Only measurements with cloud radiance fraction < 0.5 are included. Cloud observations with fitting RMS > 1×10^{-4} or number of iterations > 20 are filtered out.

4 Implicit aerosol correction

Aerosols can increase or decrease the sensitivity to tropospheric NO₂, depending on the NO₂ and aerosol vertical distribution, and the optical and physical properties of the particles (Martin et al., 2003; Leitão et al., 2010). Since the OCRA/ROCINN cloud retrieval does not distinguish between clouds and aerosols, the aerosol effect is assumed to be corrected implicitly in the AMF calculation via the effective cloud parameters (i.e., aerosols are treated as clouds).

Figures 14 and 15 show the land surface RGB image with active fire locations from the Moderate Resolution Imaging Spectroradiometer (MODIS) on board the Terra (10:30 LT) and OCRA/ROCINN cloud products measured by GOME-2 (9:30 LT) over eastern China and central Africa on a given day, respectively. The MODIS dataset (<https://worldview.earthdata.nasa.gov/>) describes the cloud or aerosol amount and fire locations (for central Africa). For both regions, a large amount of aerosol

Table 3. Individual changes and combined effect in tropospheric NO₂ columns relative to reference retrievals for western Europe (44° N-53° N, 0° E-7° E), eastern China (21° N-41° N, 110° E-122° E), eastern US (30° N-45° N, 70° W-90° W), and central Africa (5° S-15° S, 10° E-30° E).

	surface albedo	a priori NO ₂ profile	cloud correction	combined effect
Europe (February 2010)	-2.2%	+19.6%	-9.3%	+2.0%
China	-5.9%	+0.7%	-12.1%	-13.3%
US	-4.6%	+15.6%	-12.2%	+8.9%
Africa	-2.1%	-1.2%	-3.3%	-5.8%
Europe (August 2010)	-3.6%	+20.5%	-9.4%	+1.1%
China	-5.6%	+15.9%	-14.0%	-2.3%
US	-4.3%	+10.1%	-9.7%	+1.1%
Africa	-3.8%	-0.6%	-5.4%	-4.8%

loads are found in the RGB image for cloud-free areas, e.g. Beijing-Tianjin-Hebei economic region in eastern China and burning regions across central Africa, where the aerosol loads are identified as thin clouds (cloud optical depth of ~ 5) near the surface (cloud top height of ~ 3 km) with cloud fractions up to 0.18.

Therefore, we assume that the thin clouds near the surface from the OCRA/ROCINN cloud products are attributed to aerosol loads for measurements with cloud radiance fraction < 0.5 or cloud fraction < 0.2 , and we evaluate the accuracy of the implicit aerosol correction by comparing it with the explicit aerosol correction. For that purpose, the explicit correction for aerosols is implemented using ground-based aerosol observations at Xianghe (39.75° N, 116.96° E), which is a suburban site surrounded by heavily industrialized areas in northeastern China (Clémer et al., 2010; Hendrick et al., 2014; Vlemmix et al., 2015), and at Bujumbura (3.38° S, 29.38° E), which is located in the Central African country of Burundi with intensive biomass burning activities in the surroundings (Gielen et al., 2017), as indicated in Figs. 14 and 15, respectively. Our analysis is further limited to satellite measurements with cloud optical depth < 5 and cloud top height < 3 km to reduce the cloud contamination. With this selection, the aerosol concentrations are generally low or moderate (aerosol optical depth < 1).

The explicit modelling of aerosol scattering and absorption for the AMF calculation is implemented by introducing the aerosol optical properties (i.e., single scattering albedo and phase function) and vertical distributions (i.e., extinction vertical profiles) in the radiative transfer calculation. The single scattering albedo describes the fraction of the aerosol light scattering over the extinction, and the phase function describes the angular distribution of scattered light intensity. In this study, we apply the Henyey-Greenstein phase function with an asymmetry parameter (the first moment of phase function) describing the asymmetry between forward and backward scattering. A long-term statistics of single scattering albedo and asymmetry parameter at 440 nm is derived for Xianghe and Bujumbura using the version 3 level 2.0 inversion products from the sun photometer radiance measurements at AERONET (Holben et al., 1998; Giles et al., 2019) (<http://aeronet.gsfc.nasa.gov/>). Monthly mean

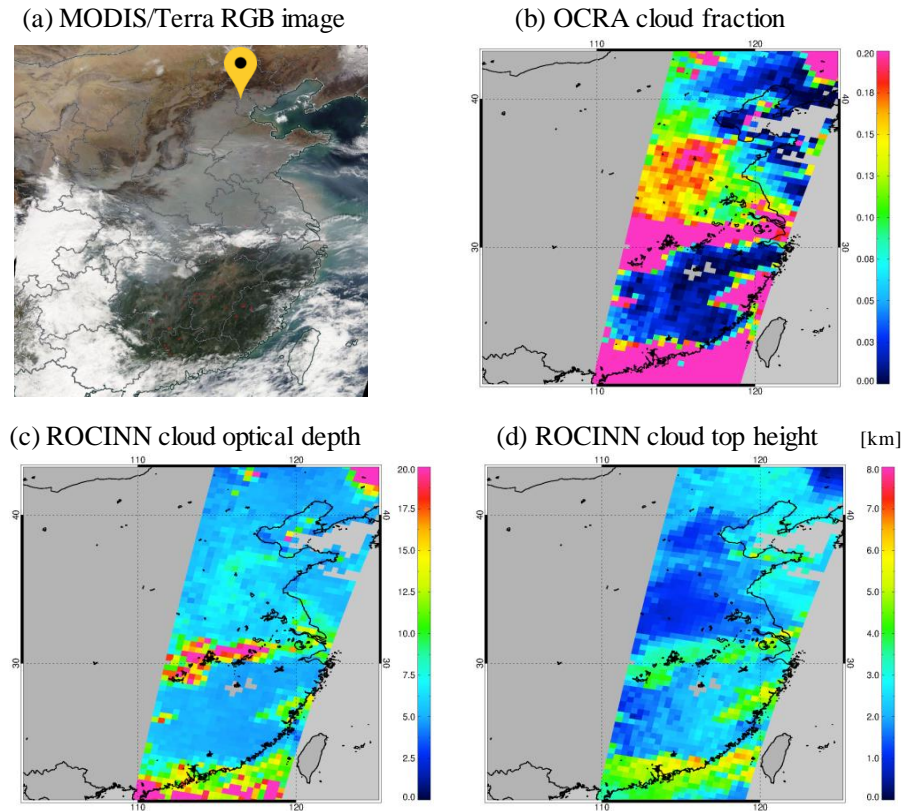


Figure 14. MODIS/Terra RGB image (a), GOME-2 OCRA cloud fraction (b), GOME-2 ROCINN_CAL cloud optical depth (c), and GOME-2 ROCINN_CAL cloud top height (d) over eastern China on 21 November 2013. Cloud observations with fitting RMS $> 1 \times 10^{-4}$ or number of iterations > 20 are filtered out. The yellow location symbol in MODIS image indicates the Xianghe station (39.75° N, 116.96° E), and the red dots indicate fires.

parameters are calculated based on up to seven years of observations (2010-2016 for Xianghe and 2013-2016 for Bujumbura) available within ± 1 h of the GOME-2 overpass time (9:30 LT) for each month.

Xianghe is located ~ 60 km south-east of Beijing, belonging to the highly urbanized Beijing-Tianjin-Hebei economic region on the North China Plain with heavy anthropogenic aerosol emissions, especially in winter due to the enhanced domestic heating. Mixtures of desert dust with the urban-industrial aerosols affect the regions mainly in spring (March-May). Based on the monthly climatology of AERONET measurements, the single scattering albedo at Xianghe is on average 0.91 with a maximum in July (0.96) and low values in winter (~ 0.87), which are mostly related to the black carbon emissions (Yang et al., 2011). The asymmetry parameter ranges between 0.7 and 0.75, consistent with the values from the urban aerosol models in East Asia (Lee and Kim, 2010).

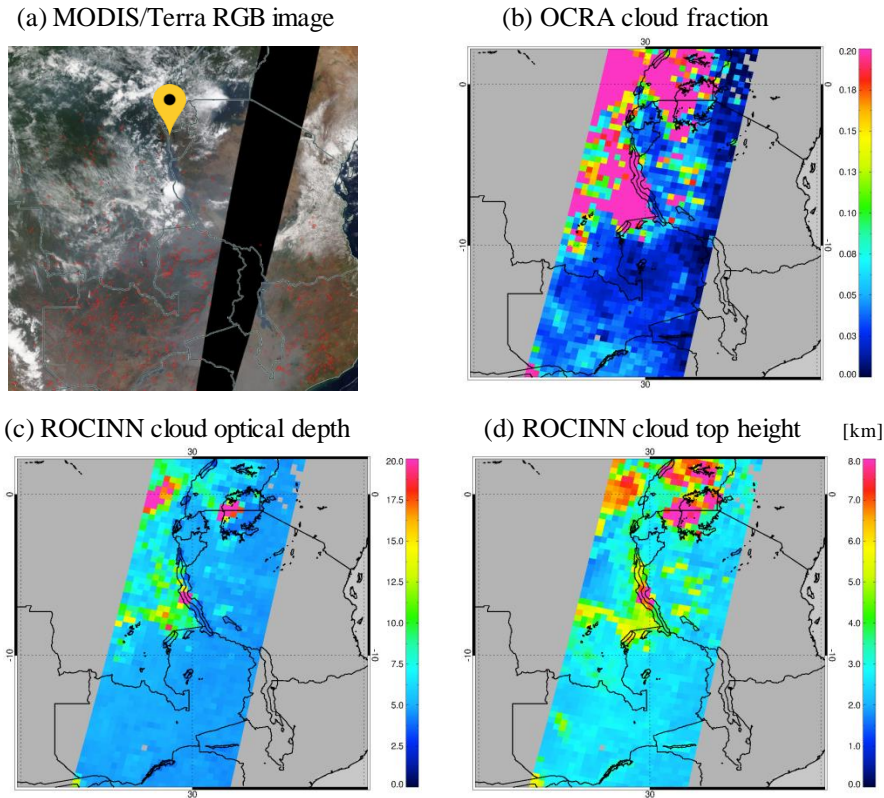


Figure 15. Similar as Fig. 14 but for central Africa on 9 September 2015. The yellow location symbol in MODIS image indicates the Bujumbura station (3.38° S, 29.38° E).

Bujumbura is located in tropical Africa that is typically affected by the biomass burning emissions, mainly during the local dry seasons (June-August and January-February), and to a lesser extent, by the anthropogenic emissions, throughout the year with negligible seasonal variations. The single scattering albedo at Bujumbura is higher in March-May (~ 0.9), related to the major rain season, and lower in July-August and December-January (0.83-0.87), coinciding with the intensive agricultural activities and transport of forest fire emissions in the surrounding regions (Gielen et al., 2017). The asymmetry parameter is on average 0.69, in agreement with values in biomass burning aerosol models (Torres et al., 2013).

The collocated aerosol extinction vertical profiles at 477 nm are taken from the MAXDOAS measurements at Xianghe from March 2010 to December 2016 (Clémer et al., 2010) and at Bujumbura from December 2013 to December 2015 (Gielen et al., 2017). The MAXDOAS data is used to derive aerosol information based on the oxygen collision complexes (O_4) absorption, since the O_4 vertical profile is generally constant and thus capable of describing the influence of aerosol scattering and absorption on photon path (Wagner et al., 2004; Frieß et al., 2006). The MAXDOAS technique can reliably determine the aerosol extinction profiles in the lower troposphere (Frieß et al., 2016), where most aerosols are located over Xianghe and Bujum-

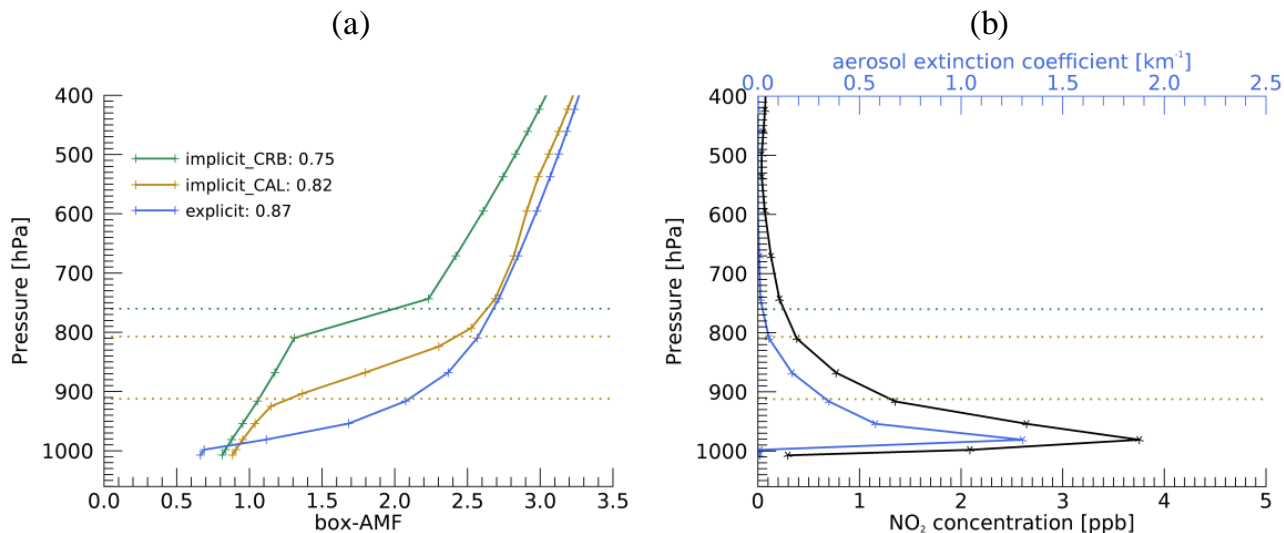


Figure 16. The NO₂ box-AMFs from the explicit aerosol correction and implicit correction using ROCINN_CRB and ROCINN_CAL cloud model (a) and the TM5-MP NO₂ profiles and the MAXDOAS aerosol extinction profiles used in the retrievals (b) at the Xianghe station on 21 November 2013. The tropospheric AMF is given next to each label. The ROCINN_CRB cloud top pressure is shown as a horizontal green line, and the ROCINN_CAL cloud top and base pressure are shown as horizontal brown lines. Cloud radiance fraction = 0.28, cloud optical depth = 4.96, aerosol optical depth = 0.66, SZA = 66°, VZA = 17°, RAA = 133°.

bura. We collocate the space- and ground-based measurements by selecting GOME-2 pixels within 50 km of the stations and averaging the MAXDOAS aerosol profiles within ± 1 h of the GOME-2 overpass time (9:30 LT).

Figure 16 shows typical NO₂ box-AMFs, simulated TM5-MP NO₂ profile, and MAXDOAS aerosol extinction profile for Xianghe on 21 November 2013. The MAXDOAS aerosol profile follows an exponentially decreasing shape with a peak of aerosol loads close to the ground (950 hPa or 0.4 km). The NO₂ follows the same profile shape and is well mixed with aerosol. Depending on seasonal variation, local emission, and transport process, aerosol profiles with peak at elevated heights (up to 900 hPa or 1 km) are also observed (not shown) due to the long residence time. The discontinuity of box-AMFs corrected using the CRB cloud model is introduced by the effective clouds (see Eq. (2)), below which the cloudy box-AMFs are zero. Due to the overestimated cloud altitudes from the CRB-based cloud retrieval (see Sect. 3.3), the CRB-based implicit aerosol correction underestimates the tropospheric AMF by 14%, and this bias is largely reduced by applying the CAL cloud model (6%), which brings a gradual reduction in box-AMFs towards the surface, agreeing reasonably better with the shape from explicit aerosol correction. Figure 17 shows the same data as Fig. 16 but for Bujumbura on 9 September 2015. Compared to the data at Xianghe, the aerosol profile at Bujumbura shows a smaller amount but an uplifted layer of aerosol loads (820 hPa or 1.8 km), while NO₂ continues to peak at the surface. The difference in AMF between implicit and explicit aerosol correction decreases from 15% using CRB to 5% using CAL.

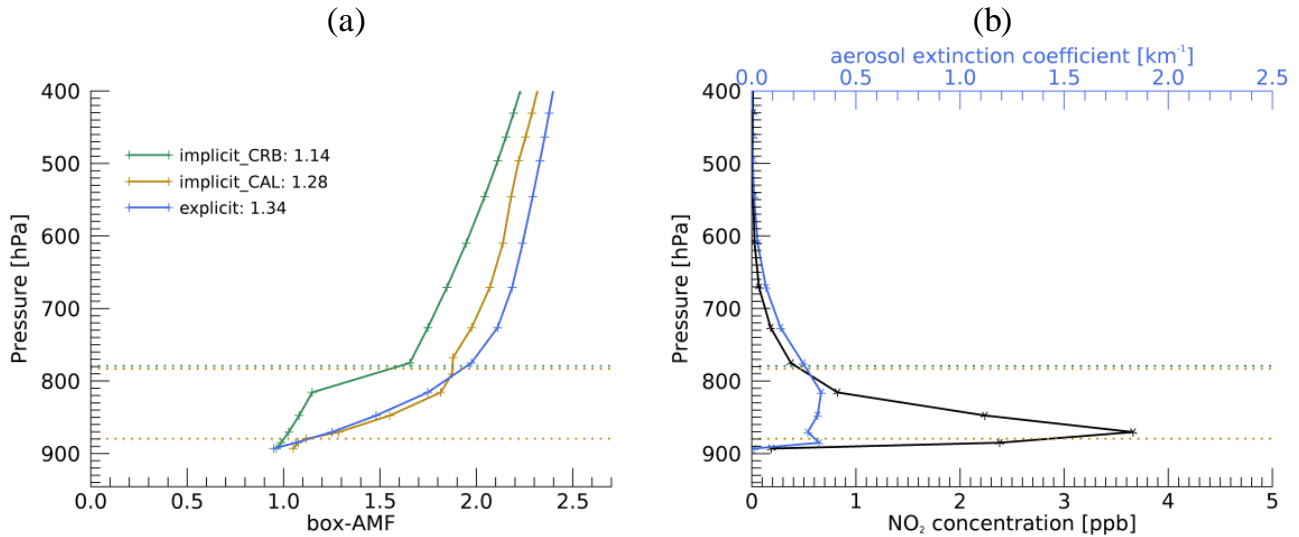


Figure 17. Similar as Fig. 16 but for the Bujumbura station on 9 September 2015. Cloud radiance fraction = 0.18, cloud optical depth = 4.83, aerosol optical depth = 0.58, SZA = 40°, VZA = 14°, RAA = 155°.

Figure 18 presents the relative biases in tropospheric NO₂ columns retrieved assuming no aerosol correction (i.e., applying the clear-sky AMFs) and assuming implicit aerosol correction via the CRB and CAL cloud model for Xianghe from March 2010 to December 2016. Only measurements with cloud radiance fraction < 0.5, cloud optical depth < 5, and cloud top height < 3 km are included. The relative biases introduced by assuming no aerosol correction vary between -30% to 31% with an average of 7% for GOME-2 pixels, in agreement with previous studies focusing on the industrialized part of eastern China (Ma et al., 2013; Lin et al., 2014, 2015; Kuhlmann et al., 2015; Chimot et al., 2016; Wang et al., 2017). Resulted from the overestimated shielding effect, the tropospheric NO₂ columns retrieved using CRB-based implicit aerosol correction are on average 33% larger than using explicit aerosol correction, and the differences are largely reduced by applying the CAL cloud model (9%). Enhanced differences are found for larger cloud radiance fraction, probably due to the increased pollution level (NO₂ columns) comparing to the clear sky (Richter et al., 2017), as the cloud (radiance) fraction is highly correlated with the MAXDOAS aerosol optical depth (correlation coefficient of 0.7 and regression slope of 0.17, not shown). Figure 19 shows the same data but for Bujumbura from December 2013 to December 2015. The explicit aerosol correction yields tropospheric NO₂ columns on average 6% smaller than the clear-sky tropospheric NO₂ columns, consistent with Martin et al. (2003); Castellanos et al. (2015). The average difference between the tropospheric NO₂ columns from the implicit and explicit aerosol correction decreases from 15% using CRB model to 5% using CAL model.

In Fig. 18 and 19, the relative biases introduced by the CAL-based implicit aerosol correction are close to the values assuming no aerosol correction, addressing the complexities related to the tropospheric NO₂ measurements in the presence of aerosols. In combination with the cloud model error, errors related to the implicit aerosol correlation can result from the different radiative

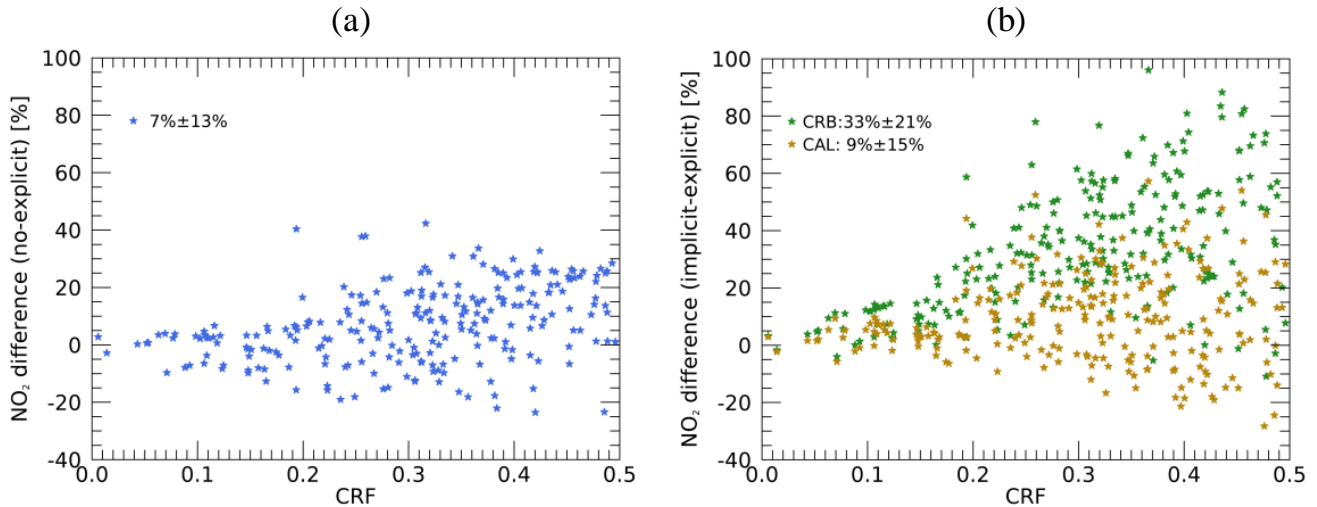


Figure 18. Scatter plot for relative biases in GOME-2 tropospheric NO₂ columns assuming no aerosol correction (a) and assuming implicit aerosol correction through ROCINN_CRB and ROCINN_CAL cloud model (b) with respect to the cloud radiance fraction at the Xianghe station from March 2010 to December 2016. Only measurements with cloud radiance fraction < 0.5, cloud optical depth < 5, and cloud top height < 3 km are included. Cloud observations with fitting RMS > 1×10^{-4} or number of iterations > 20 are filtered out. The mean value and standard deviation are given next to each label.

effect of scattering clouds and absorbing aerosols and the different characteristic sizes and phase functions of clouds and aerosols in general. The errors may be additionally enhanced in the presence of actual clouds. Therefore, future works include the further quantitative interpretation of OCRA/ROCINN cloud parameters for aerosol-dominated scenes and the impact on NO₂ retrieval algorithm.

5 5 Tropospheric NO₂ validation

A validation of our improved GOME-2 tropospheric NO₂ columns is based on BIRA-IASB ground-based MAXDOAS measurements at ~~the Xianghe station from March 2010 to December 2016~~ Xianghe, Uccle, Bujumbura, and Observatoire de Haute Provence (OHP), as introduced in Appendix B. The Xianghe station, owing to its polluted suburban nature, is the best site for validation (Liu et al., 2019b). The satellite-based NO₂ data is commonly underestimated for urban polluted stations like Uccle, due to the averaging of a local source over a pixel size ($80 \times 40 / 40 \times 40$ km² for GOME-2) larger than the horizontal sensitivity of the ground-based measurements which is about few to tens of km (Irie et al., 2011; Wagner et al., 2011; Ortega et al., 2015). Difficulties may arise when small local sources are present in remote locations, such as the Bujumbura (urban station in Burundi) or OHP (background station in southern France) sites (Pinardi et al., 2015; Gielen et al., 2017). For the validation of GOME-2 measurements, the satellite data is filtered for clouds (cloud radiance fraction < 0.5), and the closest

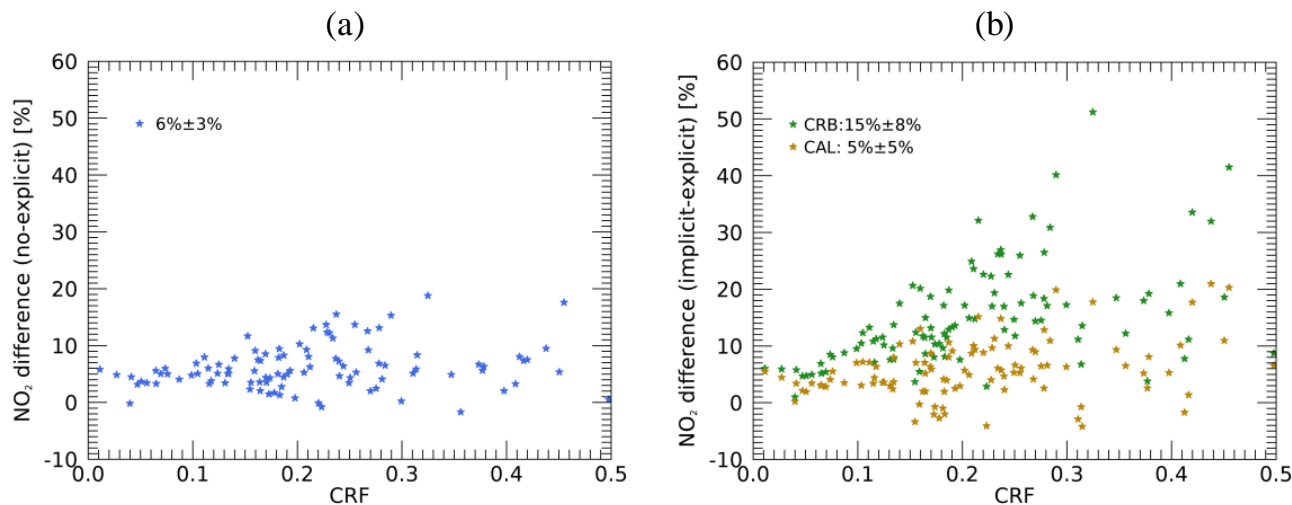


Figure 19. Similar as Fig. 18 but for the Bujumbura station from December 2013 to December 2015.

valid pixel within 50 km of the stations is compared to the ground-based MAXDOAS data, which is linearly interpolated to the GOME-2 overpass time (9:30 LT), if original data exists within ± 1 hour. *As introduced in Sect. 4, Xianghe is a typical suburban station adequate for GOME-2 tropospheric NO₂ validation (Liu et al., 2019b). Urban stations are generally underestimated by GOME-2 data due to the averaging of a local source over a pixel size (Pinardi et al., 2015; Pinardi, in preparation).*

5 Figure 20 shows the time series and scatter plot of the daily and monthly means comparison between the improved GOME-2 tropospheric NO₂ columns and the ground-based MAXDOAS measurements at Xianghe, including the statistical information on the correlation coefficient, slope, and intercept of orthogonal regression analysis. The monthly mean values from the GOME-2 and MAXDOAS measurements indicate good agreement with similar seasonal variations in tropospheric NO₂ column. A correlation coefficient of 0.94, a regression slope of 0.69, and an intercept of 0.41×10^{15} molec/cm² are derived when
 10 comparing the monthly mean values. These results are qualitatively similar to previous validation exercises at other sites, from other satellites, and using other NO₂ products (Celarier et al., 2008; Kramer et al., 2008; Chen et al., 2009; Irie et al., 2012; Ma et al., 2013; Wu et al., 2013; Kanaya et al., 2014; Lamsal et al., 2014; Wang et al., 2017; Drosoglou et al., 2017, 2018). Similar figures for previous GDP products can be found in Liu et al. (2019b) and on the AC-SAF validation website (<http://cdop.aeronomie.be/validation/valid-results>).

15 Figure 21 presents the daily and monthly mean absolute and relative differences of GOME-2 and MAXDOAS measurements at Xianghe. The differences are on average within $\pm 1 \times 10^{16}$ molec/cm² with a mean difference of -3.7×10^{15} molec/cm². The NO₂ levels are underestimated by 9.9% by GOME-2 with a standard deviation of $\pm 21\%$, mostly explained by the relatively low sensitivity of space-borne measurements near the surface, the gradient-smoothing effect, and the aerosol shielding effect. These effects are often inherent to the different measurements types or the specific conditions of the validation sites and also

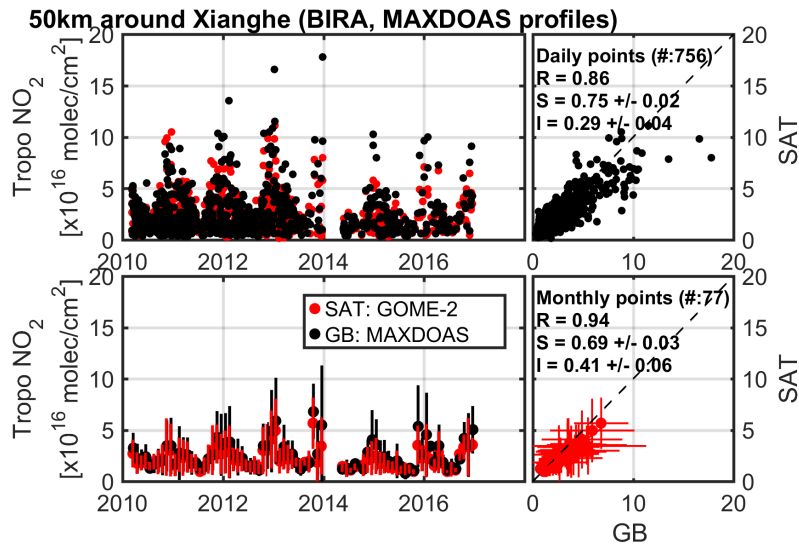


Figure 20. Daily and monthly mean time series and scatter plot of GOME-2 (upper row) and MAXDOAS tropospheric NO₂ columns (mean value of all the pixels within 50km around Xianghe).

to the remaining impact of structural uncertainties (Boersma et al., 2016), such as the impact of the choices of the a priori NO₂ profiles and/or the albedo database assumed for the satellite AMF calculations.

Table 4. Mean difference (MD) and median difference (AD) (SAT-GB in 10¹⁵ molec/cm²), standard deviation (STDEV), standard error of the mean (STERR), and correlation coefficient R and regression parameters (slope S and intercept I) of the orthogonal regression for the daily GOME-2 tropospheric NO₂ product when comparing to MAXDOAS data at Xianghe. Intermediate results for different surface albedo and a priori NO₂ profiles are reported for completely clear sky (cloud radiance fraction = 0) for a total of 73 GOME-2 pixels.

surface albedo	LER	DLER	DLER
a priori NO ₂ profile	TM5-MP	TM5-MP	IFS(CBA)
MD ($\times 10^{15}$)	-2.5	-2.6	-1.9
AD ($\times 10^{15}$)	-1.9	-1.7	-1.0
STDEV ($\times 10^{15}$)	7.2	7.1	7.2
STERR ($\times 10^{15}$)	0.84	0.83	0.84
R	0.63	0.64	0.63
S	0.60 \pm 0.09	0.60 \pm 0.08	0.63 \pm 0.09
I	0.30 \pm 0.12	0.29 \pm 0.12	0.31 \pm 0.12

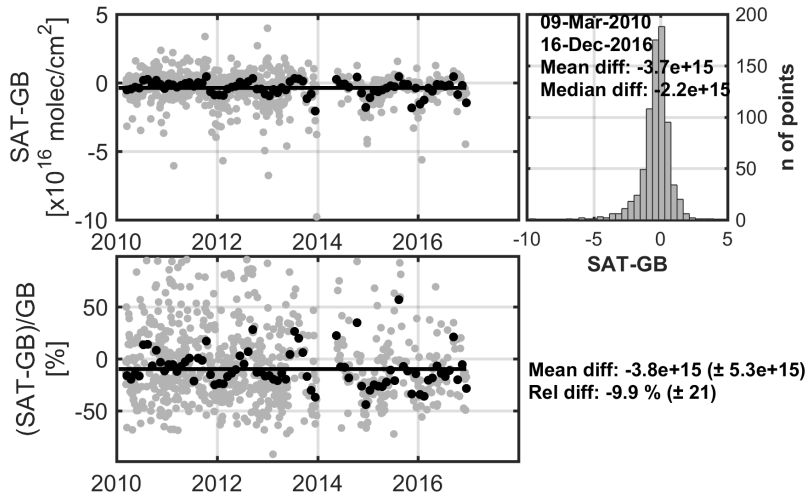


Figure 21. Daily (grey dots) and monthly mean (black dots) absolute and relative GOME-2 (SAT) and MAXDOAS (GB) time series differences for the Xianghe station. The histogram of the daily differences is also given, with the mean and median difference. The total time series absolute and relative monthly differences are given outside the panels.

Table 5. Similar as Table 4 but for different aerosol corrections for aerosol-dominated conditions (cloud radiance fraction < 0.5, cloud optical depth < 5, and cloud top height < 3 km) for a total of 146 GOME-2 pixels. Results are calculated using DLER surface albedo and IFS(CBA) a priori profiles.

aerosol correction	no	implicit_CAL
MD ($\times 10^{15}$)	-4.0	-2.7
AD ($\times 10^{15}$)	-2.8	-2.3
STDEV ($\times 10^{15}$)	10.0	9.4
STERR ($\times 10^{15}$)	0.83	0.78
R	0.83	0.86
S	0.72 \pm 0.04	0.91 \pm 0.05
I	0.34 \pm 0.09	-0.05 \pm 0.10

Similar figures as Figs. 20 and 21 for the reference retrieval can be found in (Liu et al., 2019b), and figures for previous GDP products can be found on the AC-SAF validation website (<http://cdop.aeronomie.be/validation/valid-results>). Tables A1 to A4 in Appendix B summarize the statistics for the improved retrieval, the reference retrieval, and the operational GDP 4.8 product at Xianghe, Uccle, Bujumbura, and OHP, respectively. As discussed in Pinardi et al. (2015), for remote (Bujumbura)

and background (OHP) stations, the mean bias is considered as the best indicator of the validation results, due to the relatively small variability in the measured NO₂. In urban (Uccle) and suburban (Xianghe) situations, the NO₂ variability is large enough, and the correlation coefficient provides a good indication of the coherence of the satellite and ground-based datasets, although larger differences in terms of slope and mean bias can be expected for the urban case, because satellite measurements smooth out the local NO₂ hot spots. Comparing to the reference retrieval, the improvement of the algorithm leads to an increase of the correlation coefficient in the suburban Xianghe condition from 0.9 to 0.94 and a decrease of the mean relative bias in the urban Uccle condition from -43% to -37%, and small impacts on the mean bias are found for Bujumbura and OHP. Comparing to the operational GDP 4.8 product, however, both the reference retrieval and the improved retrieval show a significant improvement for all the stations.

As Xianghe is located in a highly polluted region, the presence of large aerosol loads increases the uncertainty on the tropospheric NO₂ columns for both the satellite and MAXDOAS retrievals (Richter et al., 2017) and increases the complexity of validation. Since the cloud retrieval can hardly distinguish between clouds and aerosols (see Sect. 4), the “typical” validation results in Table A1 (cloud radiance fraction < 0.5) do not show improvements e.g. in the mean bias and the slope of the regression line when comparing to the reference retrieval. To separate this effect, the validation at Xianghe is differentiated in completely clear sky in Table 4 below (cloud radiance fraction = 0) and aerosol-dominated cases in Table 5 (cloud radiance fraction < 0.5, cloud optical depth < 5, and cloud top height < 3 km).

To summarise the improvements of each of the changes discussed in previous sections, Table 4 reports the statistical results including the biases and regression analysis for the use of different surface albedo and a priori NO₂ profiles at the Xianghe station for completely clear sky (cloud radiance fraction = 0). Compared to the reference retrieval (based on GOME-2 surface LER climatology and TM5-MP a priori profile), better results are obtained with the improved algorithm (based on surface DLER dataset and IFS(CBA) a priori profile) with a median difference of -1.0×10^{15} molec/cm², which will be used to further test for aerosol correction type below.

Table 5 presents the statistical results for the retrievals with no aerosol correction and CAL-based implicit aerosol correction at the Xianghe station for aerosol-dominated cases (cloud radiance fraction < 0.5, cloud optical depth < 5, and cloud top height < 3 km). Consistent with Fig. 18, the GOME-2 NO₂ columns retrieved using the CAL-based implicit aerosol correction are higher than the results assuming no aerosol correction, which improve the biases relative to the MAXDOAS measurements (e.g. median difference from -2.8×10^{15} molec/cm² to -2.3×10^{15} molec/cm²), as well as the standard deviation, correlation coefficient, and regression parameters. ~~We note here that all the validation results in this work show a significant improvement compared to the current operational GDP 4.8 product (Pinardi et al., 2015; Pinardi, in preparation; Liu et al., 2019b) in the AC-SAF context (Hassinen et al., 2016).~~

6 Conclusion

The operational GOME-2 NO₂ dataset, generated with the GDP algorithm at DLR, has been introduced in detail by Valks et al. (2011, 2017) and successfully applied in many studies. An improved AMF calculation with more accurate knowledge

of surface albedo, a priori NO₂ profile, as well as cloud and aerosol correction is described in this paper and expected to be implemented in an upcoming version of GDP in combination with Liu et al. (2019b).

The viewing angle-dependency of surface albedo is taken into account by improving the currently used GOME-2 surface LER climatology (Tilstra et al., 2017). Over land, the surface albedo is described by a GOME-2 DLER dataset (Tilstra et al., 2019), determined by dividing the GOME-2 orbit swath into five segments and retrieving the traditional surface LER for each segment based on the data from the respective part of orbit swath. Compared to the non-directional GOME-2 LER climatology, the use of the DLER dataset improves the underestimation of the surface albedo at the west side of the GOME-2 orbit (backscattering geometry) and increases the AMFs by up to 15% for polluted regions. Over water, the surface albedo is improved with an ocean surface albedo parametrization (Jin et al., 2011), in which the albedo is parametrized for the direct and diffuse incident radiation separately. We update the simplified expression of diffuse contribution with more realistic values taken from the GOME-2 LER data, and we improve the description of the dependency on viewing direction for the parametrization. The resulting surface albedo increases over sun glint areas and polluted coastal regions with large SZAs and VZAs, for which the tropospheric NO₂ columns are reduced by up to 10%.

Higher-resolution a priori profiles, obtained from the chemistry transport model IFS(CBA) with recent emission inventories, provide a better description of the spatial and temporal variability in the NO₂ fields. Compared to the currently used TM5-MP profiles, the application of IFS(CBA) profiles affects the tropospheric NO₂ columns by up to 7×10^{15} molec/cm² for polluted regions, mainly due to the differences in the model specifications and model resolutions. To quantify the influence of model resolutions, we implement an analysis by altering the horizontal, vertical, and temporal resolutions for IFS(CBA). Changing the horizontal resolution from 1° to 0.7° affects the tropospheric NO₂ columns by up to 20%, with enhanced values for emission sources and the opposite for their unpolluted surroundings. When the vertical resolution changes from 34 layers to 69 layers, the tropospheric NO₂ columns increase by up to 15% due to the capture of small box-AMFs at low altitudes. Small differences (< 3%) are found for a temporal resolution of 2-hours and 1-hour time step.

The CAL model from the ROCINN cloud algorithm, with the clouds treated as uniform layers of water droplets, allows the penetration of photons through the clouds and provides more realistic cloud parameters than the current CRB model, with the clouds idealised as Lambertian reflectors. The application of CAL cloud parameters in the AMF calculation takes the sensitivities inside and below the cloud layers into account and reduces the tropospheric NO₂ columns by up to 3×10^{15} molec/cm² for polluted regions.

As the cloud retrieval does not distinguish between clouds and aerosols, the aerosol correction is implicitly implemented in the AMF calculation using the cloud parameters. To evaluate the accuracy of the implicit aerosol correction through a cloud model, we explicitly account for the aerosol effect using ground-based aerosol measurements for aerosol-dominated conditions. For Xianghe, a suburban site in China with primarily anthropogenic aerosol emissions, and Bujumbura, a remote site in tropical Africa typically affected by biomass burning aerosols, aerosol optical properties from AERONET measurements and extinction vertical profiles from correlative MAXDOAS measurements are applied. Assuming the explicit aerosol correction as reference, the use of implicit aerosol correction through the CAL cloud model yields a bias 24% smaller than the CRB cloud model for Xianghe and 10% smaller for Bujumbura.

A validation of the improved NO₂ measurements is performed by comparing the GOME-2 tropospheric NO₂ dataset with BIRA-IASB ground-based MAXDOAS measurements ~~at the Xianghe station~~. ~~At the suburban Xianghe station~~, the GOME-2 NO₂ measurements show similar seasonal variation as the MAXDOAS dataset with a monthly averaged difference of -9.9% (-3.8×10^{15} molec/cm² in absolute) and a correlation coefficient of 0.94, indicating good agreement. The application of
5 the new surface albedo, a priori NO₂ profile, and cloud correction in the AMF calculation improves the biases, correlation coefficients, and regression parameters for Xianghe.

In the future, further studies focusing on the cloud correction will be implemented due to its importance in the AMF calculation. The BRDF effect on cloud parameters will be considered by implementing the GOME-2 DLER dataset in the cloud retrieval from ROCINN, providing a consistent treatment of surface albedo for both NO₂ and cloud retrieval. Note that the
10 BRDF effect is not discussed for OCRA, because no surface albedo climatology is directly needed, and the correction for VZA-dependency has been applied in the cloud fraction retrieval as a proxy of BRDF constellation (see Lutz et al., 2016, Sect. 2.2.2 therein). In addition, the interpretation of the OCRA/ROCINN cloud product for aerosol-dominated scenes and the impact on NO₂ retrieval algorithm will be further investigated in future studies. Furthermore, the NO₂ algorithm will be adapted to measurements from the TROPOMI instrument with a spatial resolution as high as 7 km×3.5 km (~~5.5 km×3.5 km~~
15 ~~from August 2019 onwards~~).

Appendix A: Comparison of anthropogenic NO_x emissions

Figure A1 shows the emission maps of inventories MACCity (Granier et al., 2011) and CAMS_GLOB_ANT v2.1 (Granier et al., 2019) for Europe in August 2010. The annual total anthropogenic emissions are 70.8 Tg NO/yr for MACCity and 73.7 Tg NO/yr for CAMS_GLOB_ANT v2.1. Significant changes in local emission patterns are clear in Fig. A1.

20 Appendix B: Validation for different MAXDOAS stations

The validation of our improved GOME-2 tropospheric NO₂ columns is based on ground-based MAXDOAS NO₂ measurements at the Xianghe station (39.75° N, 116.96° E) from March 2010 to December 2016, the Uccle station (51° N, 4.36° E) from April 2011 to March 2016, the Bujumbura station (3.38° S, 29.38° E) from December 2013 to October 2016, and the OHP station (43.94° N, 5.71° E) from March 2007 to December 2016, respectively. Tables A1 to A4 summarise the validation of the
25 improved retrieval, the reference retrieval, and the current operational GDP 4.8 product against the four MAXDOAS stations. Xianghe is a typical suburban station in northeastern China, Uccle is an urban station in Belgium, Bujumbura is a small city in remote region, and OHP is largely rural but occasionally influenced by polluted air masses transported from neighboring cities.

Acknowledgements. This work is funded by the DLR-DAAD Research Fellowships 2015 (57186656) programme with reference number 91585186 and is undertaken in the framework of the EUMETSAT AC-SAF project. We acknowledge the Belgian Science Policy Office
30 (BELSPO) supporting part of this work through the PRODEX project B-ACSAF. We thank EUMETSAT for the GOME-2 ground segment

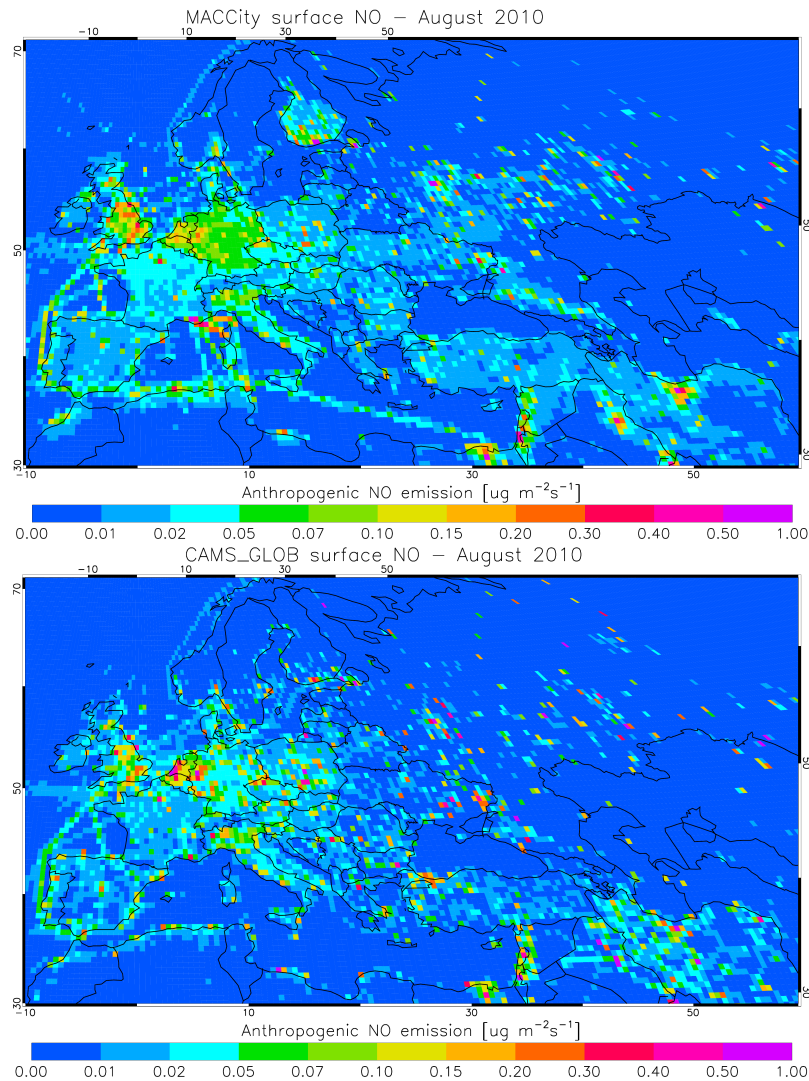


Figure A1. MACCity and CAMS_GLOB_ANT v2.1 anthropogenic surface NO_x emissions (emitted as NO) for Europe in August 2010.

interfacing work and for the provision of GOME-2 level 1 products. We thank the UPAS team for the development work on the Universal Processor for UV/VIS Atmospheric Spectrometers (UPAS) system at DLR. We are thankful to Henk Eskes (KNMI) for creating the TM5-MP a priori NO_2 profiles. We acknowledge the free use of the GOME-2 surface LER database created by KNMI and provided through the AC-SAF of EUMETSAT. We also acknowledge the free use of the online COART radiative transfer model established at NASA Langley

5 Research Center. We thank the use of imagery from the NASA Worldview application (<https://worldview.earthdata.nasa.gov/>) as part of the NASA Earth Observing System Data and Information System (EOSDIS). We also thank the PIs of the AERONET sites used in this study for maintaining their instruments and providing their data to the community.

Table A1. Mean difference (MD, SAT-GB in 10^{15} molec/cm²), standard deviation (STDEV), standard error of the mean (STERR), relative difference (RD, (SAT-GB)/GB in %), and correlation coefficient R and regression parameters (slope S and intercept I) of the orthogonal regression for the monthly mean GOME-2 tropospheric NO₂ product when comparing to MAXDOAS data at the suburban Xianghe station. Values for the improved retrieval (this study) are given, and values for the reference retrieval and the current operational GDP 4.8 product are reported. Results are reported for cloud radiance fraction < 0.5 for a total of 77 GOME-2 monthly points.

	improved retrieval	reference retrieval	GDP 4.8 product
MD ($\times 10^{15}$)	-3.8	-2.7	-9.2
STDEV ($\times 10^{15}$)	5.3	5.6	7.1
STERR ($\times 10^{15}$)	0.60	0.64	0.81
RD (%)	-9.9	-5.8	-30
R	0.94	0.91	0.86
S	0.69	0.73	0.63
I	0.41	0.42	1.31

Table A2. Similar as Table A1 but for the urban Uccle station for a total of 57 monthly points.

	improved retrieval	reference retrieval	GDP 4.8 product
MD ($\times 10^{15}$)	-4.5	-5.0	-6.2
STDEV ($\times 10^{15}$)	2.9	2.7	3.7
STERR ($\times 10^{15}$)	0.38	0.36	0.49
RD (%)	-37	-43	-52
R	0.79	0.82	0.49
S	0.53	0.47	0.35
I	0.62	0.83	1.1

References

- Agustí-Panareda, A., Massart, S., Chevallier, F., Balsamo, G., Boussetta, S., Dutra, E., and Beljaars, A.: A biogenic CO₂ flux adjustment scheme for the mitigation of large-scale biases in global atmospheric CO₂ analyses and forecasts, *Atmos. Chem. Phys.*, 16, 10 399–10 418, 2016.
- 5 Bechtold, P., Semane, N., Lopez, P., Chaboureau, J.-P., Beljaars, A., and Bormann, N.: Representing equilibrium and nonequilibrium convection in large-scale models, *J. Atmos. Sci.*, 71, 734–753, 2014.

Table A3. Similar as Table A1 but for the remote Bujumbura station for a total of 36 monthly points.

	improved retrieval	reference retrieval	GDP 4.8 product
MD ($\times 10^{15}$)	-3.7	-3.6	-3.7
STDEV ($\times 10^{15}$)	1.9	1.8	1.1
STERR ($\times 10^{15}$)	0.32	0.30	0.18
RD (%)	-76	-76	-89
R			
S		na	
I			

Table A4. Similar as Table A1 but for the background OHP station for a total of 106 monthly points.

	improved retrieval	reference retrieval	GDP 4.8 product
MD ($\times 10^{15}$)	-0.82	-0.85	-1.2
STDEV ($\times 10^{15}$)	0.9	1.0	0.7
STERR ($\times 10^{15}$)	0.09	0.10	0.07
RD (%)	-24	-25	-45
R	0.34	0.40	0.69
S	0.39	0.25	0.73
I	1.1	1.2	-0.5

Beirle, S., Hörmann, C., Jöckel, P., Liu, S., Penning de Vries, M., Pozzer, A., Sihler, H., Valks, P., and Wagner, T.: The STRatospheric Estimation Algorithm from Mainz (STREAM): estimating stratospheric NO₂ from nadir-viewing satellites by weighted convolution, *Atmos. Meas. Tech.*, 9, 2753–2779, 2016.

5 Beljaars, A. and Viterbo, P.: Role of the boundary layer in a numerical weather prediction model, *Clear and cloudy boundary layers*, pp. 287–304, 1998.

Benedetti, A., Morcrette, J.-J., Boucher, O., Dethof, A., Engelen, R. J., Fisher, M., Flentje, H., Huneeus, N., Jones, L., Kaiser, J. W., Kinne, S., Mangold, A., Razinger, M., Simmons, A. J., and Suttie, M.: Aerosol analysis and forecast in the European centre for medium-range weather forecasts integrated forecast system: 2. Data assimilation, *J. Geophys. Res. Atmos.*, 114, 2009.

Boersma, K., Eskes, H., and Brinkma, E.: Error analysis for tropospheric NO₂ retrieval from space, *J. Geophys. Res. Atmos.*, 109, 2004.

10 Boersma, K., Vinken, G., and Eskes, H.: Representativeness errors in comparing chemistry transport and chemistry climate models with satellite UV–Vis tropospheric column retrievals, *Geosci. Model Dev.*, 9, 875, 2016.

- Boersma, K. F., Eskes, H. J., Dirksen, R. J., van der A, R. J., Veefkind, J. P., Stammes, P., Huijnen, V., Kleipool, Q. L., Sneep, M., Claas, J., Leitão, J., Richter, A., Zhou, Y., and Brunner, D.: An improved tropospheric NO₂ column retrieval algorithm for the Ozone Monitoring Instrument, *Atmos. Meas. Tech.*, 4, 1905, 2011.
- Boersma, K. F., Eskes, H. J., Richter, A., De Smedt, I., Lorente, A., Beirle, S., van Geffen, J. H. G. M., Zara, M., Peters, E., Van Roozendael, M., Wagner, T., Maasakkers, J. D., van der A, R. J., Nightingale, J., De Rudder, A., Irie, H., Pinardi, G., Lambert, J.-C., and Compernelle, S. C.: Improving algorithms and uncertainty estimates for satellite NO₂ retrievals: results from the quality assurance for the essential climate variables (QA4ECV) project, *Atmos. Meas. Tech.*, 11, 6651–6678, 2018.
- Bovensmann, H., Burrows, J., Buchwitz, M., Frerick, J., Rozanov, V., Chance, K., and Goede, A.: SCIAMACHY: Mission objectives and measurement modes, *J. Atmos. Sci.*, 56, 1999.
- 10 Bucselá, E., Krotkov, N., Celarier, E., Lamsal, L., Swartz, W., Bhartia, P., Boersma, K., Veefkind, J., Gleason, J., and Pickering, K.: A new stratospheric and tropospheric NO₂ retrieval algorithm for nadir-viewing satellite instruments: applications to OMI, *Atmos. Meas. Tech.*, 6, 2607, 2013.
- Burrows, J. P., Weber, M., Buchwitz, M., Rozanov, V., Ladstätter-Weißmayer, A., Richter, A., DeBeek, R., Hoogen, R., Bramstedt, K., Eichmann, K.-U., Eisinger, M., and Perner, D.: The global ozone monitoring experiment (GOME): Mission concept and first scientific results, *J. Atmos. Sci.*, 56, 151–175, 1999.
- 15 Cahalan, R. F., Ridgway, W., Wiscombe, W. J., Bell, T. L., and Snider, J. B.: The albedo of fractal stratocumulus clouds, *J. Atmos. Sci.*, 51, 2434–2455, 1994.
- Callies, J., Corpaccioli, E., Eisinger, M., Hahne, A., and Lefebvre, A.: GOME-2-Metop’s second-generation sensor for operational ozone monitoring, *ESA bulletin*, 102, 28–36, 2000.
- 20 Castellanos, P., Boersma, K., Torres, O., and De Haan, J.: OMI tropospheric NO₂ air mass factors over South America: effects of biomass burning aerosols, *Atmos. Meas. Tech.*, 8, 3831–3849, 2015.
- Celarier, E. A., Brinksma, E. J., Gleason, J. F., Veefkind, J. P., Cede, A., Herman, J. R., Ionov, D., Goutail, F., Pommereau, J.-P., Lambert, J.-C., van Roozendael, M., Pinardi, G., Wittrock, F., Schönhardt, A., Richter, A., Ibrahim, O. W., Wagner, T., Bojkov, B., Mount, G., Spinei, E., Chen, C. M., Pongetti, T. J., Sander, S. P., Bucselá, E. J., Wenig, M. O., Swart, D. P. J., Volten, H., Kroon, M., and Levelt, P. F.: Validation of Ozone Monitoring Instrument nitrogen dioxide columns, *J. Geophys. Res. Atmos.*, 113, 2008.
- 25 Charlson, R. and Ahlquist, N.: Brown haze: NO₂ or aerosol?, *Atmos. Environ.*, 3, 653–656, 1969.
- Chen, D., Zhou, B., Beirle, S., Chen, L., and Wagner, T.: Tropospheric NO₂ column densities deduced from zenith-sky DOAS measurements in Shanghai, China, and their application to satellite validation, *Atmos. Chem. Phys.*, 9, 3641–3662, 2009.
- Chimot, J., Vlemmix, T., Veefkind, J., de Haan, J., and Levelt, P.: Impact of aerosols on the OMI tropospheric NO₂ retrievals over industrialized regions: how accurate is the aerosol correction of cloud-free scenes via a simple cloud model?, *Atmos. Meas. Tech.*, 9, 359, 2016.
- 30 Chimot, J., Veefkind, J. P., Haan, J. F. d., Stammes, P., and Levelt, P. F.: Minimizing aerosol effects on the OMI tropospheric NO₂ retrieval—An improved use of the 477 nm O₂-O₂ band and an estimation of the aerosol correction uncertainty, *Atmos. Meas. Tech.*, 12, 491–516, 2019.
- 35 Clémer, K., Van Roozendael, M., Fayt, C., Hendrick, F., Hermans, C., Pinardi, G., Spurr, R., Wang, P., and De Mazière, M.: Multiple wavelength retrieval of tropospheric aerosol optical properties from MAXDOAS measurements in Beijing, *Atmos. Meas. Tech.*, 3, 863, 2010.
- Cox, C. and Munk, W.: Measurement of the roughness of the sea surface from photographs of the sun’s glitter, *Josa*, 44, 838–850, 1954.

- Crutzen, P. J.: The influence of nitrogen oxides on the atmospheric ozone content, *Q. J. R. Meteorol. Soc.*, 96, 320–325, 1970.
- Dee, D. P., Uppala, S. M., Simmons, A. J., Berrisford, P., Poli, P., Kobayashi, S., Andrae, U., Balmaseda, M. A., Balsamo, G., Bauer, P., Bechtold, P., Beljaars, A. C. M., van de Berg, L., Bidlot, J., Bormann, N., Delsol, C., Dragani, R., Fuentes, M., Geer, A. J., Haimberger, L., Healy, S. B., Hersbach, H., Hólm, E. V., Isaksen, I., Kållberg, P., Köhler, M., Matricardi, M., McNally, A. P., Monge-Sanz, B. M., Morcrette, J.-J., Park, B.-K., Peubey, C., de Rosnay, P., Tavolato, C., Thépaut, J.-N., and Vitart, F.: The ERA-Interim reanalysis: Configuration and performance of the data assimilation system, *Q. J. R. Meteorol. Soc.*, 137, 553–597, 2011.
- Desmons, M., Wang, P., Stammes, P., and Tilstra, L. G.: FRESKO-B: a fast cloud retrieval algorithm using oxygen B-band measurements from GOME-2, *Atmos. Meas. Tech.*, 12, 2485–2498, 2019.
- Ding, J., Miyazaki, K., van der A, R. J., Mijling, B., Kurokawa, J.-I., Cho, S., Janssens-Maenhout, G., Zhang, Q., Liu, F., and Levelt, P. F.: Intercomparison of NO_x emission inventories over East Asia, *Atmos. Chem. Phys.*, 17, 10 125, 2017.
- Drosoglou, T., Bais, A. F., Zyrichidou, I., Kouremeti, N., Poupkou, A., Liora, N., Giannaros, C., Koukouli, M. E., Balis, D., and Melas, D.: Comparisons of ground-based tropospheric NO₂ MAX-DOAS measurements to satellite observations with the aid of an air quality model over the Thessaloniki area, Greece, *Atmos. Chem. Phys.*, 17, 5829–5849, 2017.
- Drosoglou, T., Koukouli, M. E., Kouremeti, N., Bais, A. F., Zyrichidou, I., Balis, D., van der A, R. J., Xu, J., and Li, A.: MAX-DOAS NO₂ observations over Guangzhou, China: ground-based and satellite comparisons, *Atmos. Meas. Tech.*, 11, 2239–2255, 2018.
- Dumont, M., Brissaud, O., Picard, G., Schmitt, B., Gallet, J.-C., and Arnaud, Y.: High-accuracy measurements of snow Bidirectional Reflectance Distribution Function at visible and NIR wavelengths—comparison with modelling results, *Atmos. Chem. Phys.*, 10, 2507–2520, 2010.
- Engelen, R. J., Serrar, S., and Chevallier, F.: Four-dimensional data assimilation of atmospheric CO₂ using AIRS observations, *J. Geophys. Res. Atmos.*, 114, 2009.
- Ferlay, N., Thieuleux, F., Cornet, C., Davis, A. B., Dubuisson, P., Ducos, F., Parol, F., Riédi, J., and Vanbauce, C.: Toward new inferences about cloud structures from multidirectional measurements in the oxygen A band: Middle-of-cloud pressure and cloud geometrical thickness from POLDER-3/PARASOL, *J. Appl. Meteorol. Climatol.*, 49, 2492–2507, 2010.
- Flemming, J., Huijnen, V., Arteta, J., Bechtold, P., Beljaars, A., Blechschmidt, A.-M., Diamantakis, M., Engelen, R. J., Gaudel, A., Inness, A., Jones, L., Josse, B., Katragkou, E., Marecal, V., Peuch, V.-H., Richter, A., Schultz, M. G., Stein, O., and Tsikerdekis, A.: Tropospheric chemistry in the Integrated Forecasting System of ECMWF, *Geosci. Model Dev.*, 8, 975–1003, 2015.
- Flemming, J., Benedetti, A., Inness, A., Engelen, R. J., Jones, L., Huijnen, V., Remy, S., Parrington, M., Suttie, M., Bozzo, A., Peuch, V.-H., Akritidis, D., and Katragkou, E.: The CAMS interim reanalysis of carbon monoxide, ozone and aerosol for 2003–2015, *Atmos. Chem. Phys.*, 17, 1945–1983, 2017.
- Frieß, U., Monks, P., Remedios, J., Rozanov, A., Sinreich, R., Wagner, T., and Platt, U.: MAX-DOAS O₄ measurements: A new technique to derive information on atmospheric aerosols: 2. Modeling studies, *J. Geophys. Res. Atmos.*, 111, 2006.
- Frieß, U., Klein Baltink, H., Beirle, S., Clémer, K., Hendrick, F., Henzing, B., Irie, H., de Leeuw, G., Li, A., Moerman, M. M., van Roozendaal, M., Shaiganfar, R., Wagner, T., Wang, Y., Xie, P., Yilmaz, S., and Zieger, P.: Intercomparison of aerosol extinction profiles retrieved from MAX-DOAS measurements, *Atmos. Meas. Tech.*, 9, 3205–3222, 2016.
- Gamble, J., Jones, W., and Minshall, S.: Epidemiological-environmental study of diesel bus garage workers: acute effects of NO₂ and respirable particulate on the respiratory system, *Environ. Res.* 42, 201–214, 1987.
- Gielen, C., Hendrick, F., Pinardi, G., De Smedt, I., Fayt, C., Hermans, C., Stavrakou, T., Bauwens, M., Müller, J.-F., Ndenzako, E., Nzo-habonayo, P., Akimana, R., Niyonzima, S., Van Roozendaal, M., and De Mazière, M.: Characterisation of Central-African aerosol and

- trace-gas emissions based on MAX-DOAS measurements and model simulations over Bujumbura, Burundi., *Atmospheric Chemistry and Physics Discussions*, pp. 1–41, 2017.
- Giles, D. M., Sinyuk, A., Sorokin, M. G., Schafer, J. S., Smirnov, A., Slutsker, I., Eck, T. F., Holben, B. N., Lewis, J. R., Campbell, J. R., Welton, E. J., Korkin, S. V., and Lyapustin, A. I.: Advancements in the Aerosol Robotic Network (AERONET) Version 3 database—automated near-real-time quality control algorithm with improved cloud screening for Sun photometer aerosol optical depth (AOD) measurements, *Atmos. Meas. Tech.*, 12, 169–209, 2019.
- Gordon, H. R.: Atmospheric correction of ocean color imagery in the Earth Observing System era, *J. Geophys. Res. Atmos.*, 102, 17 081–17 106, 1997.
- Granier, C., Bessagnet, B., Bond, T., D’Angiola, A., van Der Gon, H. D., Frost, G. J., Heil, A., Kaiser, J. W., Kinne, S., Klimont, Z., Kloster, S., Lamarque, J.-F., Liousse, C., Masui, T., Meleux, F., Mieville, A., Ohara, T., Raut, J.-C., Riahi, K., Schultz, M. G., Smith, S. J., Thompson, A., van Aardenne, J., van der Werf, G. R., and van Vuuren, D. P.: Evolution of anthropogenic and biomass burning emissions of air pollutants at global and regional scales during the 1980–2010 period, *Climatic Change*, 109, 163, 2011.
- Granier, C., Darras, S., Denier van der Gon, H., Doubalova, J., Elguindi, N., Galle, B., Gauss, M., Guevara, M., Jalkanen, J.-P., Kuenen, J., Liousse, C., Quack, B., Simpson, D., and Sindelarova, K.: The Copernicus Atmosphere Monitoring Service global and regional emissions (April 2019 version), Tech. rep., Copernicus Atmosphere Monitoring Service (CAMS) report, 2019.
- Gu, D., Wang, Y., Smeltzer, C., and Boersma, K. F.: Anthropogenic emissions of NO_x over China: Reconciling the difference of inverse modeling results using GOME-2 and OMI measurements, *J. Geophys. Res. Atmos.*, 119, 7732–7740, 2014.
- Hao, N., Koukouli, M. E., Inness, A., Valks, P., Loyola, D. G., Zimmer, W., Balis, D. S., Zyrichidou, I., Van Roozendaal, M., Lerot, C., and Spurr, R. J. D.: GOME-2 total ozone columns from MetOp-A/MetOp-B and assimilation in the MACC system, *Atmos. Meas. Tech.*, 7, 2937–2951, 2014.
- Hassinen, S., Balis, D., Bauer, H., Begoin, M., Delcloo, A., Eleftheratos, K., Gimeno Garcia, S., Granville, J., Grossi, M., Hao, N., Hedelt, P., Hendrick, F., Hess, M., Heue, K.-P., Hovila, J., Jönch-Sørensen, H., Kalakoski, N., Kauppi, A., Kiemle, S., Kins, L., Koukouli, M. E., Kujanpää, J., Lambert, J.-C., Lang, R., Lerot, C., Loyola, D., Pedernana, M., Pinardi, G., Romahn, F., van Roozendaal, M., Lutz, R., De Smedt, I., Stammes, P., Steinbrecht, W., Tamminen, J., Theys, N., Tilstra, L. G., Tuinder, O. N. E., Valks, P., Zerefos, C., Zimmer, W., and Zyrichidou, I.: Overview of the O3M SAF GOME-2 operational atmospheric composition and UV radiation data products and data availability, *Atmos. Meas. Tech.*, 9, 383, 2016.
- Heckel, A., Richter, A., Tarsu, T., Wittrock, F., Hak, C., Pundt, I., Junkermann, W., and Burrows, J.: MAX-DOAS measurements of formaldehyde in the Po-Valley, *Atmos. Chem. Phys.*, 5, 909–918, 2005.
- Heckel, A., Kim, S.-W., Frost, G., Richter, A., Trainer, M., and Burrows, J.: Influence of low spatial resolution a priori data on tropospheric NO₂ satellite retrievals, *Atmos. Meas. Tech.*, 4, 1805, 2011.
- Hendrick, F., Müller, J.-F., Clémer, K., Wang, P., De Mazière, M., Fayt, C., Gielen, C., Hermans, C., Ma, J. Z., Pinardi, G., Stavrou, T., Vlemmix, T., and Van Roozendaal, M.: Four years of ground-based MAX-DOAS observations of HONO and NO₂ in the Beijing area, *Atmos. Chem. Phys.*, 14, 765–781, 2014.
- Heue, K.-P., Coldewey-Egbers, M., Delcloo, A., Lerot, C., Loyola, D., Valks, P., and Roozendaal, M. v.: Trends of tropical tropospheric ozone from 20 years of European satellite measurements and perspectives for the Sentinel-5 Precursor, *Atmos. Meas. Tech.*, 9, 5037–5051, 2016.
- Hilboll, A., Richter, A., and Burrows, J.: Long-term changes of tropospheric NO₂ over megacities derived from multiple satellite instruments, *Atmos. Chem. Phys.*, 13, 4145–4169, 2013.

- Hilboll, A., Richter, A., and Burrows, J. P.: NO₂ pollution over India observed from space—The impact of rapid economic growth, and a recent decline, *Atmospheric Chemistry and Physics Discussions*, 2017.
- Holben, B. N., Eck, T. F., Slutsker, I., Tanre, D., Buis, J. P., Setzer, A., Vermote, E., Reagan, J. A., Kaufman, Y. J., Nakajima, T., Lavenu, F., Jankowiak, I., and Smirnov, A.: AERONET—A federated instrument network and data archive for aerosol characterization, *Remote Sens. Environ.*, 66, 1–16, 1998.
- Holtzlag, A. and Boville, B.: Local versus nonlocal boundary-layer diffusion in a global climate model, *J. Clim.*, 6, 1825–1842, 1993.
- Hönninger, G., Friedeburg, C. v., and Platt, U.: Multi axis differential optical absorption spectroscopy (MAX-DOAS), *Atmos. Chem. Phys.*, 4, 231–254, 2004.
- Hortal, M.: The development and testing of a new two-time-level semi-Lagrangian scheme (SETTLS) in the ECMWF forecast model, *Q. J. R. Meteorol. Soc.*, 128, 1671–1687, 2002.
- Huijnen, V., Williams, J., van Weele, M., van Noije, T., Krol, M., Dentener, F., Segers, A., Houweling, S., Peters, W., de Laat, J., Boersma, F., Bergamaschi, P., van Velthoven, P., Le Sager, P., Eskes, H., Alkemade, F., Scheele, R., Nédélec, P., and Pätz, H.-W.: The global chemistry transport model TM5: description and evaluation of the tropospheric chemistry version 3.0, *Geosci. Model Dev.*, 3, 445–473, 2010.
- Huijnen, V., Flemming, J., Chabrilat, S., Errera, Q., Christophe, Y., Blechschmidt, A.-M., Richter, A., and Eskes, H.: C-IFS-CB05-BASCOE: stratospheric chemistry in the Integrated Forecasting System of ECMWF, *Geosci. Model Dev.*, 9, 3071–3091, 2016.
- Huijnen, V., Pozzer, A., Arteta, J., Brasseur, G., Bouarar, I., Chabrilat, S., Christophe, Y., Doumbia, T., Flemming, J., Guth, J., Josse, B., Karydis, V. A., Marécal, V., and Pelletier, S.: Quantifying uncertainties due to chemistry modelling: Evaluation of tropospheric composition simulations in the CAMS model (cycle 43R1), *Geosci. Model Dev.*, 12, 1725–1752, 2019.
- Ingmann, P., Veihelmann, B., Langen, J., Lamarre, D., Stark, H., and Courrèges-Lacoste, G. B.: Requirements for the GMES Atmosphere Service and ESA's implementation concept: Sentinels-4/-5 and-5p, *Remote Sens. Environ.*, 120, 58–69, 2012.
- Inness, A., Blechschmidt, A.-M., Bouarar, I., Chabrilat, S., Crepulja, M., Engelen, R. J., Eskes, H., Flemming, J., Gaudel, A., Hendrick, F., Huijnen, V., Jones, L., Kapsomenakis, J., Katragkou, E., Keppens, A., Langerock, B., de Mazière, M., Melas, D., Parrington, M., Peuch, V. H., Razinger, M., Richter, A., Schultz, M. G., Suttie, M., Thouret, V., Vrekoussis, M., Wagner, A., and Zerefos, C.: Data assimilation of satellite-retrieved ozone, carbon monoxide and nitrogen dioxide with ECMWF's Composition-IFS, *Atmos. Chem. Phys.*, 15, 5275–5303, 2015.
- Irie, H., Takashima, H., Kanaya, Y., Boersma, K., Gast, L., Wittrock, F., Brunner, D., Zhou, Y., and Roozendael, M. V.: Eight-component retrievals from ground-based MAX-DOAS observations, *Atmos. Meas. Tech.*, 4, 1027–1044, 2011.
- Irie, H., Boersma, K., Kanaya, Y., Takashima, H., Pan, X., and Wang, Z.: Quantitative bias estimates for tropospheric NO₂ columns retrieved from SCIAMACHY, OMI, and GOME-2 using a common standard for East Asia, *Atmos. Meas. Tech.*, 5, 2403–2411, 2012.
- Jin, Z., Charlock, T. P., Smith Jr, W. L., and Rutledge, K.: A parameterization of ocean surface albedo, *Geophys. Res. Lett.*, 31, 2004.
- Jin, Z., Charlock, T. P., Rutledge, K., Stamnes, K., and Wang, Y.: Analytical solution of radiative transfer in the coupled atmosphere-ocean system with a rough surface, *Appl. Opt.*, 45, 7443–7455, 2006.
- Jin, Z., Qiao, Y., Wang, Y., Fang, Y., and Yi, W.: A new parameterization of spectral and broadband ocean surface albedo, *Opt. Express*, 19, 26429–26443, 2011.
- Kaiser, J. W., Heil, A., Andreae, M. O., Benedetti, A., Chubarova, N., Jones, L., Morcrette, J.-J., Razinger, M., Schultz, M. G., Suttie, M., and van der Werf, G. R.: Biomass burning emissions estimated with a global fire assimilation system based on observed fire radiative power, *Biogeosciences*, 9, 527–554, 2012.
- Kampa, M. and Castanas, E.: Human health effects of air pollution, *Environ. Pollut.* 151, 362–367, 2008.

- Kanaya, Y., Irie, H., Takashima, H., Iwabuchi, H., Akimoto, H., Sudo, K., Gu, M., Chong, J., Kim, Y. J., Lee, H., Li, A., Si, F., Xu, J., Xie, P.-H., Liu, W.-Q., Dzhola, A., Postlyakov, O., Ivanov, V., Grechko, E., Terpugova, S., and Panchenko, M.: Long-term MAX-DOAS network observations of NO₂ in Russia and Asia (MADRAS) during the period 2007–2012: instrumentation, elucidation of climatology, and comparisons with OMI satellite observations and global model simulations., *Atmos. Chem. Phys.*, 14, 7909–7927, 2014.
- 5 Kleipool, Q., Dobber, M., de Haan, J., and Levelt, P.: Earth surface reflectance climatology from 3 years of OMI data, *J. Geophys. Res. Atmos.*, 113, 2008.
- Koelemeijer, R., De Haan, J., and Stammes, P.: A database of spectral surface reflectivity in the range 335–772 nm derived from 5.5 years of GOME observations, *J. Geophys. Res. Atmos.*, 108, 2003.
- Kokhanovsky, A. and Rozanov, V.: The uncertainties of satellite DOAS total ozone retrieval for a cloudy sky, *Atmos. Environ.*, 42, 27–36, 2008.
- 10 Kramer, L. J., Leigh, R. J., Remedios, J. J., and Monks, P. S.: Comparison of OMI and ground-based in situ and MAX-DOAS measurements of tropospheric nitrogen dioxide in an urban area, *J. Geophys. Res. Atmos.*, 113, 2008.
- Krotkov, N. A., Lamsal, L. N., Celarier, E. A., Swartz, W. H., Marchenko, S. V., Bucsela, E. J., Chan, K. L., Wenig, M., and Zara, M.: The version 3 OMI NO₂ standard product, *Atmos. Meas. Tech.*, 10, 3133–3149, 2017.
- 15 Kuhlmann, G., Lam, Y., Cheung, H., Hartl, A., Fung, J. C. H., Chan, P., and Wenig, M. O.: Development of a custom OMI NO₂ data product for evaluating biases in a regional chemistry transport model, *Atmos. Chem. Phys.*, 15, 5627–5644, 2015.
- Lamsal, L., Krotkov, N., Celarier, E., Swartz, W., Pickering, K., Bucsela, E., Gleason, J., Martin, R., Philip, S., Irie, H., et al.: Evaluation of OMI operational standard NO₂ column retrievals using in situ and surface-based NO₂ observations, *Atmos. Chem. Phys.*, 14, 11 587–11 609, 2014.
- 20 Laughner, J. L., Zare, A., and Cohen, R. C.: Effects of daily meteorology on the interpretation of space-based remote sensing of NO₂, *Atmos. Chem. Phys.*, 16, 15 247–15 264, 2016.
- Laughner, J. L., Zhu, Q., and Cohen, R. C.: The Berkeley High Resolution Tropospheric NO₂ product, *Earth Syst. Sci. Data*, 10, 2069–2095, 2018.
- Lee, K. and Kim, Y.: Satellite remote sensing of Asian aerosols: a case study of clean, polluted, and Asian dust storm days, *Atmos. Meas. Tech.*, 3, 1771–1784, 2010.
- 25 Leitão, J., Richter, A., Vrekoussis, M., Kokhanovsky, A., Zhang, Q., Beekmann, M., and Burrows, J.: On the improvement of NO₂ satellite retrievals–aerosol impact on the airmass factors, *Atmos. Meas. Tech.*, 3, 475–493, 2010.
- Lelli, L., Kokhanovsky, A., Rozanov, V., Vountas, M., Sayer, A., and Burrows, J.: Seven years of global retrieval of cloud properties using space-borne data of GOME, *Atmos. Meas. Tech.*, 5, 1551, 2012.
- 30 Levelt, P., Van den Oord, G., Dobber, M., Malkki, A., Visser, H., de Vries, J., Stammes, P., Lundell, J., and Saari, H.: The Ozone Monitoring Instrument, *IEEE T. Geosci. Remote Sens.*, 44, 1093–1101, 2006.
- Li, J., Scinocca, J., Lazare, M., McFarlane, N., Von Salzen, K., and Solheim, L.: Ocean surface albedo and its impact on radiation balance in climate models, *J. Clim.*, 19, 6314–6333, 2006.
- Lin, J., Martin, R., Boersma, K., Sneep, M., Stammes, P., Spurr, R., Wang, P., Van Roozendaal, M., Clémer, K., and Irie, H.: Retrieving tropospheric nitrogen dioxide from the Ozone Monitoring Instrument: effects of aerosols, surface reflectance anisotropy, and vertical profile of nitrogen dioxide, *Atmos. Chem. Phys.*, 14, 1441–1461, 2014.
- 35 Lin, J., Liu, M., Xin, J., Boersma, K., Spurr, R., Martin, R., and Zhang, Q.: Influence of aerosols and surface reflectance on satellite NO₂ retrieval: seasonal and spatial characteristics and implications for NO_x emission constraints, *Atmos. Chem. Phys.*, 15, 11 217, 2015.

- Liu, M., Lin, J., Boersma, K. F., Pinardi, G., Wang, Y., Chimot, J., Wagner, T., Xie, P., Eskes, H., Van Roozendaal, M., Hendrick, F., Wang, P., Wang, T., Yan, Y., Chen, L., and Ni, R.: Improved aerosol correction for OMI tropospheric NO₂ retrieval over East Asia: constraint from CALIOP aerosol vertical profile, *Atmos. Meas. Tech.*, 12, 1–21, 2019a.
- Liu, S., Valks, P., Pinardi, G., De Smedt, I., Yu, H., Beirle, S., and Richter, A.: An Improved Total and Tropospheric NO₂ Column Retrieval for GOME-2, *Atmos. Meas. Tech.*, 12, 1029–1057, 2019b.
- Liu, X., Newchurch, M., Loughman, R., and Bhartia, P.: Errors resulting from assuming opaque Lambertian clouds in TOMS ozone retrieval, *J. Quant. Spectrosc. Radiat. Transf.*, 85, 337–365, 2004.
- Lorente, A., Folkert Boersma, K., Yu, H., Dörner, S., Hilboll, A., Richter, A., Liu, M., Lamsal, L. N., Barkley, M., De Smedt, I., Van Roozendaal, M., Wang, Y., Wagner, T., Beirle, S., Lin, J.-T., Krotkov, N., Stammes, P., Wang, P., Eskes, H. J., and Krol, M.: Structural uncertainty in air mass factor calculation for NO₂ and HCHO satellite retrievals, *Atmos. Meas. Tech.*, 10, 759, 2017.
- Lorente, A., Boersma, K. F., Stammes, P., Tilstra, L. G., Richter, A., Yu, H., Kharbouche, S., and Muller, J.-P.: The importance of surface reflectance anisotropy for cloud and NO₂ retrievals from GOME-2 and OMI, *Atmos. Meas. Tech.*, 11, 4509–4529, 2018.
- Loyola, D.: The near-real-time total ozone retrieval algorithm from TROPOMI onboard Sentinel-5 Precursor, in preparation.
- Loyola, D., Thomas, W., Livschitz, Y., Ruppert, T., Albert, P., and Hollmann, R.: Cloud properties derived from GOME/ERS-2 backscatter data for trace gas retrieval, *IEEE Trans. Geosci. Remote Sens.*, 45, 2747–2758, 2007.
- Loyola, D., García, S. G., Lutz, R., Argyrouli, A., Romahn, F., Spurr, R. J., Pedergnana, M., Doicu, A., García, V. M., and Schüssler, O.: The operational cloud retrieval algorithms from TROPOMI on board Sentinel-5 Precursor, *Atmos. Meas. Tech.*, 11, 409, 2018.
- Loyola, D. G., Koukouli, M. E., Valks, P., Balis, D. S., Hao, N., Van Roozendaal, M., Spurr, R. J. D., Zimmer, W., Kiemle, S., Lerot, C., and Lambert, J.-C.: The GOME-2 total column ozone product: Retrieval algorithm and ground-based validation, *J. Geophys. Res. Atmos.*, 116, 2011.
- Lutz, R., Loyola, D., Gimeno García, S., and Romahn, F.: OCRA radiometric cloud fractions for GOME-2 on MetOp-A/B, *Atmos. Meas. Tech.*, 9, 2357–2379, 2016.
- Ma, J., Beirle, S., Jin, J., Shaiganfar, R., Yan, P., and Wagner, T.: Tropospheric NO₂ vertical column densities over Beijing: results of the first three years of ground-based MAX-DOAS measurements (2008–2011) and satellite validation, *Atmos. Chem. Phys.*, 13, 1547–1567, 2013.
- Martin, R. V., Chance, K., Jacob, D. J., Kurosu, T. P., Spurr, R. J., Bucsela, E., Gleason, J. F., Palmer, P. I., Bey, I., Fiore, A. M., et al.: An improved retrieval of tropospheric nitrogen dioxide from GOME, *J. Geophys. Res. Atmos.*, 107, 2002.
- Martin, R. V., Jacob, D. J., Chance, K., Kurosu, T. P., Palmer, P. I., and Evans, M. J.: Global inventory of nitrogen oxide emissions constrained by space-based observations of NO₂ columns, *J. Geophys. Res. Atmos.*, 108, 2003.
- McCormick, J.: *Acid Earth: the global threat of acid pollution*, Routledge, 2013.
- McLinden, C. A., Fioletov, V., Boersma, K. F., Kharol, S. K., Krotkov, N., Lamsal, L., Makar, P. A., Martin, R. V., Veefkind, J. P., and Yang, K.: Improved satellite retrievals of NO₂ and SO₂ over the Canadian oil sands and comparisons with surface measurements, *Atmos. Chem. Phys.*, 14, 3637–3656, 2014.
- Mijling, B., van der A, R., and Zhang, Q.: Regional nitrogen oxides emission trends in East Asia observed from space, *Atmos. Chem. Phys.*, 13, 12 003–12 012, 2013.
- Miyazaki, K., Eskes, H., Sudo, K., Boersma, K. F., Bowman, K., and Kanaya, Y.: Decadal changes in global surface NO_x emissions from multi-constituent satellite data assimilation, *Atmos. Chem. Phys.*, 17, 807–837, 2017.

- Morcrette, J.-J., Boucher, O., Jones, L., Salmond, D., Bechtold, P., Beljaars, A., Benedetti, A., Bonet, A., Kaiser, J. W., Razinger, M., Schulz, M., Serrar, S., Simmons, A. J., Sofiev, M., Suttie, M., Tompkins, A. M., and Untch, A.: Aerosol analysis and forecast in the European Centre for medium-range weather forecasts integrated forecast system: Forward modeling, *J. Geophys. Res. Atmos.*, 114, 2009.
- Munro, R., Lang, R., Klaes, D., Poli, G., Retscher, C., Lindstrot, R., Huckle, R., Lacan, A., Grzegorski, M., Holdak, A., Kokhanovsky, A., Livschitz, J., and Eisinger, M.: The GOME-2 instrument on the Metop series of satellites: instrument design, calibration, and level 1 data processing—an overview, *Atmos. Meas. Tech.*, 9, 1279–1301, 2016.
- Nicodemus, F. E., Richmond, J., Hsia, J., Ginsberg, I., and Limperis, T.: Geometrical considerations and nomenclature for reflectance, in: *Radiometry*, pp. 94–145, Jones and Bartlett Publishers, Inc., 1992.
- Noguchi, K., Richter, A., Rozanov, V., Rozanov, A., Burrows, J., Irie, H., and Kita, K.: Effect of surface BRDF of various land cover types on geostationary observations of tropospheric NO₂, *Atmos. Meas. Tech.*, 7, 3497–3508, 2014.
- Nüß, H., Richter, A., Valks, P., and Burrows, J.: Improvement of the NO₂ total column retrieval for GOME-2, O3M SAF Visiting Scientist Activity, Final Report, IUP University of Bremen, 2006.
- Ohlmann, J. C.: Ocean radiant heating in climate models, *J. Clim.*, 16, 1337–1351, 2003.
- Ortega, I., Koenig, T., Sinreich, R., Thomson, D., and Volkamer, R.: The CU 2-D-MAX-DOAS instrument—Part 1: Retrieval of 3-D distributions of NO₂ and azimuth-dependent OVOC ratios, *Atmos. Meas. Tech.*, 8, 2371, 2015.
- Palmer, P. I., Jacob, D. J., Chance, K., Martin, R. V., Spurr, R. J., Kurosu, T. P., Bey, I., Yantosca, R., Fiore, A., and Li, Q.: Air mass factor formulation for spectroscopic measurements from satellites: Application to formaldehyde retrievals from the Global Ozone Monitoring Experiment, *J. Geophys. Res. Atmos.*, 106, 14 539–14 550, 2001.
- Pinardi, G.: Validation of tropospheric NO₂ columns measurements from GOME-2 and OMI using MAX-DOAS and direct sun network observations, in preparation.
- Pinardi, G., Van Roozendael, M., Lambert, J.-C., Granville, J., Hendrick, F., Tack, F., Yu, H., Cede, A., Kanaya, Y., Irie, I., Goutail, F., Pommereau, J.-P., Pazmino, A., Wittrock, F., Richter, A., Wagner, T., Gu, M., Remmers, J., Friess, U., Vlemmix, T., PETERS, A., Hao, N., Tiefengraber, M., Herman, J., Abuhassan, N., Bais, A., Kouremeti, N., Hovila, J., Holla, R., Chong, J., Postylyakov, O., and Ma, J.: GOME-2 total and tropospheric NO₂ validation based on zenith-sky, direct-sun and multi-axis DOAS network observations, in: *Proc. of the 2014 EUMETSAT Meteorological Satellite Conference*, Geneva, Switzerland, EUMETSAT, 2014.
- Pinardi, G., Lambert, J.-C., Granville, J., Yu, H., De Smedt, I., van Roozendael, M., and Valks, P.: O3M-SAF validation report, Tech. rep., SAF/O3M/IASB/VR/NO2/TN-IASB-GOME2-O3MSAF-NO2-2015, Issue 1/1, 2015.
- Platt, U. and Stutz, J.: *Differential Optical Absorption Spectroscopy*, Springer, 2008.
- Qin, W., Fasnacht, Z., Haffner, D., Vasilkov, A., Joiner, J., Krotkov, N., Fisher, B., and Spurr, R.: A geometry-dependent surface Lambertian-equivalent reflectivity product at 466 nm for UV/Vis retrievals: Part I. Evaluation over land surfaces using measurements from OMI, *Atmospheric Measurement Techniques Discussions*, pp. 1–31, doi:10.5194/amt-2018-327, 2019.
- Richter, A., Begoin, M., Hilboll, A., and Burrows, J.: An improved NO₂ retrieval for the GOME-2 satellite instrument, *Atmos. Meas. Tech.*, 4, 1147–1159, 2011.
- Richter, A., Behrens, L. K., Hilboll, A., Munassar, S., Burrows, J. P., Pinardi, G., and Van Roozendael, M.: cloud effects on satellite retrievals of tropospheric NO₂ over China, in: *8th International DOAS Workshop*, Yokohama, Japan, 2017.
- Richter, A. et al.: S5P/TROPOMI Science Verification Report, Tech. rep., S5P-IUP-L2-ScVR-RP issue 2.1, 2015.

- Rozanov, V. V. and Kokhanovsky, A. A.: Semianalytical cloud retrieval algorithm as applied to the cloud top altitude and the cloud geometrical thickness determination from top-of-atmosphere reflectance measurements in the oxygen A band, *J. Geophys. Res. Atmos.*, 109, 2004.
- Russell, A., Perring, A., Valin, L., Bucselo, E., Browne, E., Wooldridge, P., and Cohen, R.: A high spatial resolution retrieval of NO₂ column densities from OMI: method and evaluation, *Atmos. Chem. Phys.*, 11, 8543–8554, 2011.
- Russell, G. L. and Lerner, J. A.: A new finite-differencing scheme for the tracer transport equation, *J. Appl. Meteorol.*, 20, 1483–1498, 1981.
- Saiedy, F., Jacobowitz, H., and Wark, D.: On cloud-top determination from Gemini-5, *J. Atmos. Sci.*, 24, 63–69, 1967.
- Sanders, A., Richter, A., and Eskes, H.: Sentinel-4 Level-2 ATBD Total and Tropospheric NO₂, Tech. rep., S4-L2-IUP_KNMI-ATBD-2004 issue 2.0, 2018.
- 10 Séférian, R., Baek, S., Boucher, O., Dufresne, J.-L., Decharme, B., Saint-Martin, D., and Roehrig, R.: An interactive ocean surface albedo scheme (OSAv1.0): formulation and evaluation in ARPEGE-Climat (V6.1) and LMDZ (V5A), *Geosci. Model Dev.*, 11, 321–338, 2018.
- Skachko, S., Ménard, R., Errera, Q., Christophe, Y., and Chabrilat, S.: EnKF and 4D-Var data assimilation with chemical transport model BASCOE (version 05.06), *Geosci. Model Dev.*, 9, 2893–2908, 2016.
- Spurr, R., Kurosu, T., and Chance, K.: A linearized discrete ordinate radiative transfer model for atmospheric remote-sensing retrieval, *J. Quant. Spectrosc. Radiat. Transf.*, 68, 689–735, 2001.
- 15 Stammes, P., Sneep, M., De Haan, J., Veefkind, J., Wang, P., and Levelt, P.: Effective cloud fractions from the Ozone Monitoring Instrument: Theoretical framework and validation, *J. Geophys. Res. Atmos.*, 113, 2008.
- Temperton, C., Hortal, M., and Simmons, A.: A two-time-level semi-Lagrangian global spectral model, *Q. J. R. Meteorol. Soc.*, 127, 111–127, 2001.
- 20 Theys, N., De Smedt, I., Yu, H., Danckaert, T., van Gent, J., Hörmann, C., Wagner, T., Hedelt, P., Bauer, H., Romahn, F., Pedergnana, M., Loyola, D., and Van Roozendaal, M.: Sulfur dioxide retrievals from TROPOMI onboard Sentinel-5 Precursor: algorithm theoretical basis., *Atmos. Meas. Tech.*, 10, 2017.
- Tilstra, L., Tuinder, O., Wang, P., and Stammes, P.: Surface reflectivity climatologies from UV to NIR determined from Earth observations by GOME-2 and SCIAMACHY, *J. Geophys. Res. Atmos.*, 122, 4084–4111, 2017.
- 25 Tilstra, L., Tuinder, O., and Stammes, P.: GOME-2 surface LER product - Algorithm Theoretical Basis Document, Tech. rep., KNMI Report SAF/AC/KNMI/ATBD/003, Issue 3.1, 2019.
- Torres, O., Ahn, C., and Chen, Z.: Improvements to the OMI near-UV aerosol algorithm using A-train CALIOP and AIRS observations, *Atmos. Meas. Tech.*, 6, 3257–3270, 2013.
- Valin, L., Russell, A., Hudman, R., and Cohen, R.: Effects of model resolution on the interpretation of satellite NO₂ observations, *Atmos. Chem. Phys.*, 11, 11 647–11 655, 2011.
- 30 Valks, P., Pinardi, G., Richter, A., Lambert, J.-C., Hao, N., Loyola, D., Van Roozendaal, M., and Emmadi, S.: Operational total and tropospheric NO₂ column retrieval for GOME-2, *Atmos. Meas. Tech.*, 4, 1491, 2011.
- Valks, P., Loyola, D., Hao, N., Hedelt, P., Slijkhuis, S., Grossi, M., Begoin, M., Gimeno Garcia, S., and Lutz, R.: Algorithm Theoretical Basis Document for GOME-2 Total Column Products of Ozone, NO₂, BrO, SO₂, H₂O, HCHO and Cloud Properties (GDP 4.8 for AC SAF OTO and NTO), Tech. rep., SAF/AC/DLR/ATBD/01, Iss./Rev.: 3/A/2, 2017.
- 35 van Geffen, J., Boersma, K., Eskes, H., Maasackers, J., and Veefkind, J.: TROPOMI ATBD of the total and tropospheric NO₂ data products, Tech. rep., S5P-KNMI-L2-0005-RP issue 1.4.0., 2019.

- van Geffen, J. H. G. M., Eskes, H. J., Boersma, K. F., and Veefkind, J. P.: ATBD for NO₂ in Sentinel-5 L2 Prototype Processors, Tech. rep., KNMI-ESA-S5L2PP-ATBD-001 version 3.0., 2018.
- Van Roozendael, M., Spurr, R., Loyola, D., Lerot, C., Balis, D., Lambert, J.-C., Zimmer, W., van Gent, J., van Geffen, J., Koukouli, M., Granville, J., Doicu, A., Fayt, C., and Zehner, C.: Ten years of GOME/ERS-2 total ozone data—The new GOME data processor (GDP) version 4: 1. Algorithm description, *J. Geophys. Res. Atmos.*, 111, 2006.
- 5 Vasilkov, A., Joiner, J., Spurr, R., Bhartia, P. K., Levelt, P., and Stephens, G.: Evaluation of the OMI cloud pressures derived from rotational Raman scattering by comparisons with other satellite data and radiative transfer simulations, *J. Geophys. Res. Atmos.*, 113, 2008.
- Vasilkov, A., Qin, W., Krotkov, N., Lamsal, L., Spurr, R., Haffner, D., Joiner, J., Eun-Su, Y., and Marchenko, S.: Accounting for the effects of surface BRDF on satellite cloud and trace-gas retrievals: a new approach based on geometry-dependent Lambertian equivalent reflectivity applied to OMI algorithms, *Atmos. Meas. Tech.*, 10, 333, 2017.
- 10 Veefkind, J., Aben, I., McMullan, K., Förster, H., De Vries, J., Otter, G., Claas, J., Eskes, H., De Haan, J., Kleipool, Q., van Weele, M., Hasekamp, O., Hoogeveen, R., Landgraf, J., Snel, R., Tol, P., Ingmann, P., Voors, R., Kruizinga, B., Vink, R., Visser, H., and Levelt, P.: TROPOMI on the ESA Sentinel-5 Precursor: A GMES mission for global observations of the atmospheric composition for climate, air quality and ozone layer applications, *Remote Sens. Environ.*, 120, 70–83, 2012.
- 15 Vlemmix, T., Hendrick, F., Pinardi, G., De Smedt, I., Fayt, C., Hermans, C., Pitters, A., Wang, P., Levelt, P., and Van Roozendael, M.: MAX-DOAS observations of aerosols, formaldehyde and nitrogen dioxide in the Beijing area: comparison of two profile retrieval approaches, *Atmos. Meas. Tech.*, 8, 941, 2015.
- Wagner, T., Dix, B. v., Friedeburg, C. v., Frieß, U., Sanghavi, S., Sinreich, R., and Platt, U.: MAX-DOAS O₄ measurements: A new technique to derive information on atmospheric aerosols—Principles and information content, *J. Geophys. Res. Atmos.*, 109, 2004.
- 20 Wagner, T., Beirle, S., Brauers, T., Deutschmann, T., Frieß, U., Hak, C., Halla, J. D., Heue, K. P., Junkermann, W., Li, X., Platt, U., and Pundt-Gruber, I.: Inversion of tropospheric profiles of aerosol extinction and HCHO and NO₂ mixing ratios from MAX-DOAS observations in Milano during the summer of 2003 and comparison with independent data sets, *Atmos. Meas. Tech.*, 4, 2685–2715, 2011.
- Wang, P., Tilstra, L., de Graaf, M., and Stammes, P.: Interpretation of FRESCO cloud retrievals in case of absorbing aerosol events., *Atmos. Chem. Phys.*, 12, 2012.
- 25 Wang, Y., Beirle, S., Lampel, J., Koukouli, M., De Smedt, I., Theys, N., Li, A., Wu, D., Xie, P., Liu, C., Van Roozendael, M., Stavrou, T., Müller, J.-F., and Wagner, T.: Validation of OMI, GOME-2A and GOME-2B tropospheric NO₂, SO₂ and HCHO products using MAX-DOAS observations from 2011 to 2014 in Wuxi, China: investigation of the effects of priori profiles and aerosols on the satellite products, *Atmos. Chem. Phys.*, 17, 5007–5033, 2017.
- Williams, J., Scheele, M., van Velthoven, P., Cammas, J.-P., Thouret, V., Galy-Lacaux, C., and Volz-Thomas, A.: The influence of biogenic emissions from Africa on tropical tropospheric ozone during 2006: a global modeling study, *Atmos. Chem. Phys.*, 9, 5729–5749, 2009.
- 30 Williams, J., Van Velthoven, P., and Brenninkmeijer, C.: Quantifying the uncertainty in simulating global tropospheric composition due to the variability in global emission estimates of Biogenic Volatile Organic Compounds, *Atmos. Chem. Phys.*, 13, 2857–2891, 2013.
- Williams, J. E., Boersma, K. F., Le Sager, P., and Verstraeten, W. W.: The high-resolution version of TM5-MP for optimized satellite retrievals: description and validation, *Geosci. Model Dev.*, 10, 721, 2017.
- 35 Wittrock, F., Oetjen, H., Richter, A., Fietkau, S., Medeke, T., Rozanov, A., and Burrows, J.: MAX-DOAS measurements of atmospheric trace gases in Ny-Ålesund-Radiative transfer studies and their application, *Atmos. Chem. Phys.*, 4, 955–966, 2004.

Wu, F. C., Xie, P. H., Li, A., Chan, K. L., Hartl, A., Wang, Y., Si, F. Q., Zeng, Y., Qin, M., Xu, J., Liu, J. G., Liu, W. Q., and Wenig, M.: Observations of SO₂ and NO₂ by mobile DOAS in the Guangzhou eastern area during the Asian Games 2010, *Atmos. Meas. Tech.*, 6, 2277–2292, 2013.

5 Yamaji, K., Ikeda, K., Irie, H., Kurokawa, J.-i., and Ohara, T.: Influence of model grid resolution on NO₂ vertical column densities over East Asia, *J. Air Waste Manage.*, 64, 436–444, 2014.

Yang, F., Tan, J., Zhao, Q., Du, Z., He, K., Ma, Y., Duan, F., and Chen, G.: Characteristics of PM 2.5 speciation in representative megacities and across China, *Atmos. Chem. Phys.*, 11, 5207–5219, 2011.

Zhou, Y., Brunner, D., Spurr, R., Boersma, K., Sneep, M., Popp, C., and Buchmann, B.: Accounting for surface reflectance anisotropy in satellite retrievals of tropospheric NO₂, *Atmos. Meas. Tech.*, 3, 1185–1203, 2010.