

Reply to reviewer #2

We thank anonymous reviewer #2 for her/his valuable comments. Please find below the reviewer's comments (in black), our responses (in blue), and changes or additions to the text (in red).

All page / line numbers refer to the old version of the manuscript.

Please note that we identified an issue in the GTO-ECV data record, which affected ozone values from 2017 onward, in particular in the middle latitudes of the southern hemisphere. We had to reprocess the data record for this period. The comparison with Adjusted-MERRA was repeated and all figures were updated. In general, the main findings did not change, except for the behavior in 2017/18 in the middle latitudes of the SH (see p.6, ll.25-26), where the differences are smaller now.

General comment:

This is an extremely well-written and well-presented paper on the comparisons between space-born and modelled total columns. It is quite important for non-informed users of all the datasets described in this text to have this work as reference for their own particular applications. I strongly suggest that the authors include a clear statement on their opinion for the capabilities of these datasets: can they be used as they are for trend studies? for inter-sensor comparisons? for climate forcing applications? a paragraph with a strong message in this direction in the conclusions should be enough.

→ We have added the following paragraph to the conclusions:

Based on the results of our comparison, we conclude that both the GTO-ECV and the Adjusted-MERRA-2 total ozone data sets can be used for a number of relevant applications. GTO-ECV fulfills official user requirements (Garane et al., 2018) and is suitable for longer-term analyses that require good stability, e.g. trend studies, and for the evaluation of model simulations. The Adjusted MERRA-2 was developed primarily for input into climate models and for data intercomparison studies, but has not been evaluated for long-term trend studies (i.e. high spatial resolution trends) and should not be used for this purpose.

Detailed comments and suggestions for improvements can be found in the attached annotated document.

p.2, l.13:

Maybe you could recommend other similar works such as:

<https://rdcu.be/bQFVw>

<https://science.sciencemag.org/content/353/6296/269>

etc.

→ We have added “Solomon et al., 2016”, “Kuttippurath and Nair, 2017” and “Kuttippurath et al., 2018” to p. 2, ll. 9-10.

p.2, l.24:

Are you sure this is the most appropriate reference to make at this point?

→ We have added “Weber et al., 2018a” here.

p.2, ll.30-32:

This sentence is too vague, you can either not mention it at all or you can add proper references to the proper teams that work on the merged ozone profiles.

→ We decided to remove this sentence.

p.4, l.5:

Here you mean GOME as well as the two GOME2 sensors? Please re-write more clearly.

→ We have re-written this part of the sentence as follows:

“... while GOME, SCIAMACHY, GOME-2A, and GOME-2B are adjusted in terms of...”

An explanation of the terms “GOME-2A” and “GOME-2B” has been added to the footnote of Tab.1.

p.4, l.6:

... of the sufficiently...”

→ Corrected.

p.5, l.4:

From which time onwards?

→ We added: “(from 1980 to September 2004)”

p.5, ll.8-10:

Shouldn't you first mention which model has actually assimilated the TOC data? This phrase reads a bit out of sequence.

→ We agree with the reviewer and added the information on the model in lines 2-5:

“It is produced with version 5.12.4 of the Goddard Earth Observing System (GEOS-5.12.4) atmospheric data assimilation system, whose key components are the GEOS-5 Atmospheric General Circulation Model (Molod et al., 2015) and the Gridpoint Statistical Interpolation (GSI) analysis scheme (Kleist et al., 2009).”

p.5, ll.10-12:

Surely you need more detail here and not just a general phrase on the “realistic” global distribution of ozone and two references. If you include more details further below in the text you could also state this here, so that it is not lacking.

→ This part now reads:

“The MERRA-2 assimilation produces realistic global distributions of ozone in the stratosphere and upper troposphere (Stajner et al., 2008; Wargan et al., 2015, Davis et al., 2017). The column ozone values agree with NASA's Total Ozone Monitoring Spectrometer (TOMS) to $1.8 \pm 2.8\%$ in the tropics and $1.4 \pm 3.7\%$ at higher latitudes. A more detailed validation of the MERRA-2 ozone fields and parameterized ozone chemistry are discussed in Wargan et al. (2015, 2017).”

p.5, ll.12-14:

You definitely need to include more details on the model input parameters. Which meteorology was used? which chemistry? where was the model validated? [not the ozone output, the model itself]. Where was it used in the past? and so on.

→ The MERRA-2 assimilation is based on the GEOS-5 Atmospheric General Circulation Model, which includes no input meteorology per se. The meteorology is generated by the model, which ingests temperature, pressure, and other state variables from satellite IR instruments and ground/balloon-based radiosonde measurements, among other data sources. Time dependent sea surface temperatures and sea ice data are input as boundary conditions. Only a simplified two-dimensional ozone production/loss chemistry scheme is included. Wargan et al. (2015) [<https://agupubs.onlinelibrary.wiley.com/doi/full/10.1002/2014JD022493>] argue that this simplified chemistry is sufficient as ozone data are being ingested daily in the assimilation process, and ozone chemical time scales throughout most of the stratosphere are longer than a day. The validation of the MERRA-2 ozone is relevant to this publication, but a comprehensive summary of validation studies of the GEOS-5 AGCM and MERRA-2 dynamical fields is beyond the scope of this manuscript. However we include the website of the GMAO GEOS project as a source of summary information [https://gmao.gsfc.nasa.gov/GEOS_systems/].

We note that MERRA-2 is often used as meteorological/dynamical input, which, coupled to a comprehensive chemistry package, constitutes a chemistry climate model. In this work, though a model is being used, it is used in the sense of a “smart interpolater” to give high resolution spatial coverage from lower-resolution satellite data.

p.6, l.26:

...investigation...

→ Corrected.

p.8, l.2:

I know that it might make a busy graph even busier, but it might be worth adding two vertical lines at the $\pm 1\%$ levels hence showing that the drift almost for all latitudes is well-within this limitation, to optically also convince the reader that these wiggles seen are not "serious". You could also of course increase the x-axis limits to $\pm 5\%$, might also achieve the same effect.

This is a simple suggestion, not massively important.

→ Thanks for the suggestion. We added two vertical lines at the $\pm 1\%$ levels and increased the x-axis limits to $\pm 4.5\%$.

p.9, Reference to Figure 4:

Very nice, very useful but incredibly small plots! Either make this plot a one page plot or include columns 3&4 in a supplement and make the two first columns into one page.

→ We split the figure into two separate figures (new Figs. 4 and 5) and increased the size to enhance the readability.

p.10, ll.1-2:

You definitely need references corroborating this fact and even enumerating it at this point.

→ We expanded this point and added references. It now reads:

"Both parameters are low and nearly constant throughout the year in the tropical region, except for a little enhancement over the Atlantic Ocean. This enhancement is due to zonal variability in tropospheric ozone in terms of a persistent wave-one pattern (Fishman et al., 1992; Ziemke et al., 1996; Thompson et al., 2003), which maximizes near 0° longitude in the South Atlantic. The minimum occurs in the South Pacific near the date line. The amplitude of this wave pattern shows a seasonal variation with minimum values of $\sim 15\text{DU}$ in austral autumn and maximum values of $\sim 25\text{DU}$ in austral spring, associated with large-scale biomass burning in southern Africa and South America (e.g., Thompson et al., 2003).

p.11, l.6, Reference to Figure 6:

Again, this plot is very small to be able to see much, make it one page long.

→ Done. We have enlarged the figure.

p.11, l.9:

In numerics? how significant?

→ We have included numbers here. This part now reads:

Positive differences of about $0.5\text{--}1.0\%$ occur in the tropical Pacific and in the northern part of the tropical Atlantic. On the other hand negative differences of $-1.5\text{--}-2.5\%$ occur in the southern part of the tropical Atlantic and over southern Africa.

p.11, l.12:

Can you state some numerics from the climatologies used? this would help in quantifying if these differences are due to the climatology or whether we are seeing a "true" effect, i.e. un-related to the apriori conditions.

→ We have investigated the longitudinal structure in the tropics in more detail. The amplitude of the wave-one pattern in ozone is slightly lower for Adjusted-MERRA, which leads to the observed differences. We added:

An investigation of the zonal structure of total ozone columns from GTO-ECV and Adjusted MERRA yields that the wave-one pattern known from tropospheric columns is visible in the total column data, too. Locations of the maximum and the minimum are identical for both data records. However, the amplitude is slightly lower for Adjusted-MERRA compared to GTO-ECV, which leads to the observed longitudinal pattern in the differences (Fig. 7).

p.12, l.8:

Again, are there any numerics you can add to state how much of "non-negligible" this sampling issue can be?

→ The errors are up to $\pm 5\%$. We provide this number in the text.

p.12, l.10, Reference to Figure 7:

As before, this figure is rather small.

→ We have enlarged this figure.

p.12, l.13:

Number?

→ We have added the number (2.0 – 2.5 DU).

p.13, l.1:

Number?

→ We have added the number (0.5 DU).

p.15, l.5, Reference to Figures 10 and 11:

Again, please make these slightly bigger.

→ Done. We have enlarged these figures.

p.16, l.7:

...between...

→ Corrected.

p.16, l.10:

Not sure I understand what you mean here.

→ The previous paragraph describes Figure 10, that shows the standard deviations of the ozone anomalies for two individual months (April (top) and October (bottom)). The next sentence (p.16, ll.9-11) refers to the standard deviation obtained from all months. For this, we do not show a figure. We removed "(without figure)" to avoid confusion.

p.19, l.3:

...between...

→ Corrected.

p.19, l.4:

...a result of the...

→ Corrected.

p.20, l.5:

...months...

→ Corrected.

p.20, l.5:

A beat frequency?

→ The beat frequency is the difference between two individual frequencies, which interfere. See

also p. 19, ll.5-6 for more details.

p.20, l.16:

Missing comma.

→ [Corrected.](#)

Reply to reviewer #3

We thank anonymous reviewer #3 for her/his valuable comments. Please find below the reviewer's comments (in black), our responses (in blue), and changes or additions to the text (in red).

All page / line numbers refer to the old version of the manuscript.

Please note that we identified an issue in the GTO-ECV data record, which affected ozone values from 2017 onward, in particular in the middle latitudes of the southern hemisphere. We had to reprocess the data record for this period. The comparison with Adjusted-MERRA was repeated and all figures were updated. In general, the main findings did not change, except for the unclear behavior in 2017/18 in the middle latitudes of the SH (see p.6, ll.25-26), where the differences are smaller now.

The authors present a comparison of two total ozone datasets, which generally is of interest for the atmospheric community.

Main drawback of this study is that both datasets are NOT independent, as both involve OMI measurements. This is mentioned in the paper (paper 6, line 10), but ignored in other parts and not thoroughly discussed. The GTO-ECV product, involving satellite measurements, is compared to an assimilated ozone product, also involving satellite measurements. In fact, both products involve O₃ from OMI (from different algorithms, but based on the same OMI spectra). This should be clearly stated in the manuscript (earlier than in section 3). It remains unclear to me how far the differences between GTO-ECV and MERRA after 2005 reflect just the difference between the DOAS vs. SBUV algorithm, or how far the assimilation model contributes. So please add a comparison of the OMI input data used in GTO-ECV vs. MERRA, or provide a reference on such a comparison. The impact of having data from the same instrument contributing to both datasets, and the meaning of such an intercomparison between dependent datasets, has to be discussed in more details in the manuscript.

→ We agree with the reviewer that it is a little drawback of this study that both data records involve OMI measurements, which will obviously introduce an inevitable interdependence. We add a corresponding statement in the introduction. However, the data records involve OMI measurements from two different retrieval algorithms. Our opinion is that such comparison nevertheless is of value.

We broke up the analysis of the gridded data into the periods before and after the ingestion of OMI (10/2004). The spatial pattern of the differences does not change from one period to the other (see Figs. 6 and 7) which gives evidence that the differences do not reflect just the difference between the retrieval algorithms.

Furthermore, as stated in the beginning of Section 3.1 for the zonal means both data records can be regarded as virtually independent, because of the normalization of MERRA-2 w.r.t. SBUV MOD.

Detailed comments:

- add a statement in the introduction that both datasets are not independent and provide arguments why the comparison still makes sense and what can be learned from it.

→ We added a statement in the introduction (p.3, ll.13-16):

"Beginning in late 2004, total ozone column data from the OMI instrument are assimilated in the MERRA-2 reanalysis. GTO-ECV also includes OMI measurements, meaning the two data sources are not completely independent. However, the OMI data assimilated by MERRA-2 is retrieved using a different algorithm than that included in GTO-ECV. To estimate the effect of the shared OMI data on our results, we analyze differences in two periods, before and after the OMI data are included in the data products."

- Page 6 line 18: after the introduction of OMI in GTO-ECV AND in MERRA!

→ We added "and in MERRA-2" here.

- Page 6 lines 22ff: when discussing differences here, the respective comparison of the input OMI data to GTO-ECV vs. MERRA has to be provided.
→ We included basic information about both OMI ozone retrieval algorithms here, and we refer to a number of papers providing more detailed technical information, results of the geophysical validation and a comparison of both retrieval algorithms.

- Page 8 line 11: introduction of OMI in GTO-ECV AND in MERRA!
→ Here, we would like to refrain from including “and in MERRA”, because for the zonal means both data records can be regarded as independent due to the normalization of MERRA-2 w.r.t. SBUV MOD (see beginning of Sec. 3.1).

- Figure 3: please provide these plots also for before-OMI and post-OMI periods.
→ We split this plot into before-OMI and post-OMI periods, but the difference is almost invisible for this kind of plot. Thus, we would prefer to leave the plot as it is.

- Extend the discussion/conclusions wrt both datasets not being independent. What is the worth of an "excellent agreement" between two datasets that are not independent?
→ We extended the summary/discussion w.r.t. both data records not being independent.

- Minor comments:

- Table 1: please add a column for local overpass time.
→ Done.

- Page 4, line 13: if gridded on 1°, the smaller OMI pixels compared to SCIAMACHY do not matter that much.
→ We do not fully agree, since the smaller ground pixel size and the almost daily global coverage in case of OMI increases the representativeness of the monthly means a lot, compared to the representativeness of monthly means obtained from SCIAMACHY data (global coverage every 6 days) alone.

- Page 5, line 18: please provide a detailed description of the "renormalization"
→ A more detailed description of the normalization is provided in lines 29-33 on the same page.

- Fig. 7: why do the difference plot on the right have such strong latitude-dependency, e.g. a jump at 30°N in spring?
→ We think that this is related to the quite steep gradient in standard deviation which occurs at ~30°N/S, in particular in spring of the respective hemisphere. The standard deviation drops down from >40DU to <20DU within a very tight latitude range.

Reply to reviewer #4

We thank anonymous referee #4 for his helpful comments and corrections. Please find below the reviewer's comments (in black), our responses (in blue), and changes or additions to the text (in red).

All page / line numbers refer to the old version of the manuscript.

Please note that we identified an issue in the GTO-ECV data record, which affected ozone values from 2017 onward, in particular in the middle latitudes of the southern hemisphere. We had to reprocess the data record for this period. The comparison with Adjusted-MERRA was repeated and all figures were updated. In general, the main findings did not change, except for the unclear behavior in 2017/18 in the middle latitudes of the SH (see p.6, ll.25-26), where the differences are smaller now.

Anonymous Referee #4

Received and published: 27 November 2019

General comments

The authors present the newest version of the GTO-ECV dataset, containing long-term harmonized total-column ozone measurements from the GOME, SCIAMACHY, OMI, and GOME-2A satellites, and compare it with the Adjusted-MERRA dataset which assimilates measurements from the SBUV and SBUV-2 satellite instruments, as well as MLS, IASI, CRIS, ATMS, as well as OMI.

First, a comparison of the two datasets in terms of zonal mean ozone and its trends and seasonal cycles is presented. Then the two datasets are analyzed and compared seasonally at 5 x 5 degree spatial resolution. Similarly, the ozone anomalies for selected 5x5 grid cells are shown and a comparison of the two datasets is made. The inter-annual variability of the anomalies is calculated as a standard deviation, and once again the two datasets are compared.

Finally, the authors perform an empirical orthogonal function (EOF) analysis on the total column ozone anomalies, within 25 degrees of the equator. The first four EOFs are found to explain 92% of the variance, and these are related to climatic indicators: quasi-biennial oscillation (QBO), solar flux, and the multivariate ENSO index (MEI). This analysis and presentation of large public datasets is important, since users of the data will probably not do this analysis themselves before using it in their specific application. Thus, users will not be aware of potential problems which hide in the details. However, the present paper does not draw any new scientific conclusions, despite the huge effort in gathering, processing and analysis of the data. The article is generally well written and the figures are of a suitable quality, if often quite small on the page (however, see the section on technical corrections).

Specific comments

When initially looking at Figure 1, and investigating the genealogy of the two datasets that are being compared, one's initial conclusion is that the clear change in October 2004 is because of the OMI data that is being assimilated into both of the datasets.

Therefore, it is easy to conclude that after this date, the comparison is simply OMI-to-OMI. The adjustment of the MERRA using SBUV is described in one sentence in page 5, and this subtlety is easy to miss. The start to section 3.1 on page 6, which is not very clear, further adds to the confusion.
→ We have expanded this part to make it more clear.

It is almost impossible to make sense of the present paper and the data presented without a thorough reading of Coldewey-Egbers et al (2015) and Garane et al (2018), with particular attention to the subtle changes that have been made. A genealogy/timeline of the evolution of the datasets will assist readers to understand what they are working with.

→ We agree with the reviewer and have reformulated the beginning of Sec. 2.1 to make it more clear.

Technical corrections

Pg 1

line 11: "second period", "later period": without the context of reading further into the paper, it's not clear what this means. The abstract needs to stand alone.

→ This part now reads:

"...whereas the difference is $-1.1 \pm 1.2\%$ for the period from October 2004 to December 2018. The variability in the differences is considerably reduced in the period after 2004 due to..."

Pg 3

line 33: why is the analysis limited to the low and middle latitudes? Surely total-column ozone is important at high latitudes? In your 2015 AMT paper (which I call CE2015), (pg 3924 second column, second paragraph) you state that GODFIT is robust at high SZA.

→ We added:

"...middle latitudes, but also toward higher latitudes the data sets present a uniform and stable behavior."

Pg 4

Line 1: "seperate" -> "separate"

→ Corrected.

Line 4: "remarkable long-term stability": where is this remarkable stability demonstrated?

→ We now provide a reference and add:

"w.r.t. the ground-based reference (Garane et al., 2018),"

Perhaps you should point out here that this is different to CE2015, where GOME is used as the long-term reference. Also, in the 2015 edition of your dataset, you use a "soft-calibration" procedure, which has since been discontinued. Indeed a genealogy of the various data products (GTO-ECV and SBUV/OMI-MERRA-derived) and their versions, and the changes from version to version, would be helpful to make sense of them all.

→ We provide a note here on the different versions of GTO-ECV and the change of the long-term reference.

Line 22: the url takes me to news about the ocean-colour dataset, rather than ozone.

→ Replaced with the correct url.

Pg 5

Line 17: A glance at your Figure 1 shows that the discontinuities have not been removed (or perhaps they exist in the GTO-ECV dataset?). Here you speak of "renormalizing", while lower down in the page it is referred to as simply normalizing. Use consistent naming.
→ We now use "normalizing" throughout the manuscript.

Pg 6

line 4: "which is completely independent of GTO-ECV": at first reading this might be taken to mean that Adjusted-MERRA is independent of GTO-ECV. Perhaps "which is itself completely..." is clearer. This paragraph as it is currently written adds to the confusion regarding the different datasets and their history.
→ We inserted "itself" here.

line 17: "difference in zonal mean total ozone column is ..." here you quote a single number while talking about the zonal means. This is shown later on in the paper (i.e. Fig 5) however here it is somewhat surprising. Does this refer to the global mean?
→ Thanks for pointing out this inconsistency. We now state, that this number refers to the average over all zonal means, and we provide a range for the individual zonal mean differences to make this more clear.

line 27: "high latitudes and before 2002: that is probably caused by sparse data coverage..." this is in stark contrast to your detailed explanation in CE2015 where you show that the poles receive better spatial coverage.
→ We specify this and add "...high latitudes close to the polar night and before 2002...".

Pg 7

Fig 1: When you say A-MERRA vs GTO-ECV, what does this mean? There is no agreed-upon meaning for 'vs' in this context. In C-E2015 you spell it out, e.g. (AM -GE) / AM. Later on in the present paper (pg 13) it becomes clear that this "vs" is not calculated how one might assume it is.
→ We agree and remove "A-MERRA vs. GTO-ECV" from the title and instead of that we provide the formula in the figure caption.

Fig 1: In Garane et al 2018, their Fig 9, the lifespans of each satellite are shown as horizontal bars on a figure similar to Fig 1. It be helpful to show these, for both GTO-ECV and A-MERRA. For example, one might unkindly split the GTO-ECV into the Gome-SCIA-ECV and the OMI-ECV, such is the heavy influence of OMI measurements on the dataset;
→ We can understand the reviewer's request to show horizontal bars indicating the satellites' lifespans, but we think that adding 10 lines would make the plot too confusing. For GTO-ECV the temporal coverage is provided in Table 1, and for MERRA-2 we would like to refer to Wargan et al., 2017, their Table 1.

However, one might for example ponder if there has been a change since the launch of GOME-2. Might this also give a clue as to the subtle change towards the end of the time-series?

→ The unclear change in the behavior toward the end of the time period (2017/18) has been solved, since we identified a problem in GTO-ECV, which could be eradicated. The complete analysis has been repeated and all figures were updated.

Fig 1: The upper figure shows differences as a percentage, the lower figure shows differences in stdev as Dobson units. Is this intentional?

Honestly, for us this is just a matter of taste. We prefer to show differences in standard deviation as absolute differences.

Line 10: "differences are found the north": insert "in"

→ [Done](#).

Page 8

Table 2: Here you describe a global dataset. However, you describe DJF as being "Winter", which is only true in the northern hemisphere. Similarly for the other seasons. This is repeated several times throughout the figures and text.

→ [We have corrected this throughout the entire manuscript and provide either only month names or specify the hemisphere \(boreal/austral\). In all corresponding figures, we changed the titles.](#)

Line 2: "5[°]latitude band separately": space missing

→ [Corrected](#).

Line 11: "introduction of OMI data into GTO-ECV data record..." OMI data is also introduced into the adjusted-MERRA dataset. This omission is made several times in the text.

→ [Solved](#).

Line 17 & 18: "trough" is spelled "through"

→ [Corrected](#).

Page 9

Lines 7 & 8: the seasons for a global dataset are described in terms of northern hemisphere seasons.

→ [Solved; please see reply to comment p.8, Table 2.](#)

Page 10:

Line 1: "Atlantic Ocean, in particular in autumn" is this the North Atlantic, or the South Atlantic? Is this the boreal autumn or the austral autumn? This is extremely confusing.

→ [Solved; please see reply to comment p.8, Table 2.](#)

Line 7 & 8: "southern hemisphere minimum ozone columns in autumn" is this the boreal or austral autumn? This is particularly confusing after reading the beginning of the paragraph, and looking at the figure.

→ [Solved; please see reply to comment p.8, Table 2.](#)

Page 11:

Figure 4: This figure describes the seasons in terms of the northern hemisphere, for a global dataset. Also, the small title above each global map indicates the northern hemisphere seasons. Perhaps you could put the southern hemisphere season below the map? This might make the figure too busy: you decide. This figure is very small. It could easily be split across 2 full pages.

→ We replaced the season in the title above each map with the names of the months that are covered. Furthermore, the figure is split into two (new Figures 4 and 5, see also reply to reviewer#2).

Page 12:

Figure 5: This figure is very small. The bars are too close together in these histograms, e.g. in the left-hand pair of figures, I can't see if the blue or the orange is taller for a given total ozone amount. Are adjacent orange and blue bars meant to be for the same interval or for consecutive intervals?

→ We increased the figure size and inserted space between the individual bars.

Line 11: Northern-hemisphere seasons are described for a global dataset

→ Solved; please see reply to comment p.8, Table 2.

Page 13:

Figure 6: northern hemisphere seasons in the figure and caption

→ Solved; please see reply to comment p.8, Table 2.

Line 1: "i.e. Adj-MERRA standard deviations are higher..." if you simply give the formula for what you mean by "vs" on your graph titles (such as in CE2015), then this sort of clarification is not necessary. Indeed, this clarification makes me go back and question how I have interpreted all of your figures, since this is the opposite of my intuition.

→ We removed "A-MERRA vs GTO-ECV" from the titles of all related figures and provide the formula in the text.

Line 10: "corresponding seasonal cycle": is this the seasonal cycle presented in Figure 3?

→ Yes, this is correct.

Line 11: on what basis do you select your seven grid cells, or rather, the longitude at which you have selected them?

→ We selected this longitude, because it covers not only the regions where the anomalies indicate an extremely high correlation, but also the region, where we found the "minimum" correlation (tropical southern Atlantic; shown later on in Fig. 9).

Page 14:

Line 3: "variability is dominated by the QBO". While there is clearly a biennial cycle in the data, the QBO itself is a climatological phenomenon, and you present no mechanism or evidence linking ozone column anomalies to the QBO.

→ We added an explanation and a reference.

"In this latitude band ozone anomalies result from a QBO-induced residual circulation, i.e. ascending/descending motion (Steinbrecht et al., 2003). For instance, westerly winds lead to downward transport and, thus, to an increase in total ozone. At the same time, less ozone-poor air from the lowermost layers is lifted upward."

Line 10: "cofficient" spelling

→ Corrected.

Page 15:

Line 4: "ozone anomalies" are these the same as the ones presented in Fig 8?

→ Yes, we computed the standard deviations from these ozone anomalies.

Page 16

Fig 9: does [-] denote the units?

→ Yes.

Line 5: "variability maximizes ..." this is not idiomatic English. "variability reaches a maximum..." would be better.

→ Changed as suggested.

Line 7: "also linked to wave activity." Have you demonstrated this connection somewhere?

→ We have replaced "wave activity" with "dynamic processes" and provide two references: Hood et al. (1999) and Entzian and Peters (1999).

Line 7: "Fig 10 indicates an excellent agreement..." by using an eyeball to examine the differences on a very small plot perhaps. A plot showing the difference between (i.e. GTO-ECV - A-MERRA) the two datasets would show the agreement more clearly.

→ Instead of a plot, we would prefer to provide some numbers to underpin the good agreement. We added:

"The mean difference in the standard deviation of ozone anomalies between Adjusted-MERRA and GTO-ECV is -0.2 ± 0.5 DU or $-1.5 \pm 3.8\%$."

Line 11: "lower correlations between GTO-ECV and A-MERRA ozone anomalies." Are these the correlations shown in Figure 9?

→ Yes. We added the reference to this Figure.

Line 13: "According to Press et al..." perhaps "Following Press et al..." would be better.

→ Changed as suggested.

Line 21: "To a large extend..." -> "extent"

→ Corrected.

Page 18

Title and Line 1: Is it PCA or EOF? Please use consistent naming.

→ We now use EOF throughout the manuscript.

Line 7: "to a lesser extend..." -> "extent"

→ Corrected.

Line 8: Perhaps "The EOF analysis is performed on the detrended and deseasonalized 5x5 monthly mean ozone columns presented earlier" is better?

→ Sentence has been reformulated.

Line 9: You give a reference for the EOF analysis in line 2, do you have one describing the Savitzky-Golay filter?

→ We added a reference:

Savitzky, A. and Golay, M. J. E.: Smoothing and Differentiation of Data by Simplified Least Squares Procedures, Anal. Chem., pp. 1627–1639, <https://doi.org/10.1021/ac60214a047>, 1964.

Why did you choose 13 months?

→ We wanted to remove fluctuations/noise with frequencies of less than one year.

Page 19

Fig 12: The units in on the colour-scale in the first column of plots don't match the second column.

→ Solved.

Page 20

Line 15: "extend" -> "extent"

→ Corrected.

Line 20: "also a positive correlation..." delete "also"

→ Done.

Page 21

Line 8: "included in GTO-ECV." and also in A-MERRA.

→ Added.

Line 13: "seaonsal"

→ Corrected.

Line 21-22: "more than 97% of the grid cells..." mention here the size of the grid cells.

→ Done.

Comparison of GTO-ECV and ~~Adjusted-MERRA~~ Adjusted-MERRA-2 total ozone columns from the last two decades and assessment of interannual variability

Melanie Coldewey-Egbers¹, Diego Loyola¹, Gordon Labow^{2,3}, and Stacey Frith^{2,3}

¹German Aerospace Centre (DLR), Remote Sensing Technology Institute, Oberpfaffenhofen, Germany

²Science Systems and Applications Inc., Lanham, Maryland, USA

³Atmospheric Chemistry and Dynamics Laboratory, Code 614, NASA Goddard Space Flight Center, Greenbelt, Maryland, USA

Correspondence: Melanie Coldewey-Egbers (Melanie.Coldewey-Egbers@dlr.de)

Abstract. In this study we compare the satellite-based GOME-type Total Ozone Essential Climate Variable (GTO-ECV) record, generated as part of the European Space Agency's Climate Change Initiative (ESA-CCI) ozone project, with the Adjusted total ozone product from the Modern Era Retrospective Analysis for Research and Applications version 2 (~~Adjusted-MERRA~~Adjusted-MERRA-2 reanalysis, produced at the National Aeronautics and Space Administration (NASA) Global Modeling and Assimilation Office (GMAO). Total ozone columns and associated standard deviations show a very good agreement in terms of both spatial and temporal patterns during their 23-year overlap period from July 1995 to December 2018. The mean difference between ~~Adjusted-MERRA~~Adjusted-MERRA-2 and GTO-ECV $5^\circ \times 5^\circ$ monthly mean total ozone columns is $-0.9 \pm 1.5\%$. A small discontinuity in the deviations is detected in October 2004 when data from the Ozone Monitoring Instrument (OMI) was ingested in the GTO-ECV ~~data record~~and Adjusted-MERRA-2 data records. This induces a small overall negative drift in the differences for almost all latitude bands, which, however, does not exceed $1\% \text{ decade}^{-1}$. The mean difference for the period prior to October 2004 is $-0.5 \pm 1.7\%$, whereas the difference is $-1.1 \pm 1.2\%$ for the ~~second period~~period from October 2004 to December 2018. The variability in the differences is considerably reduced in the ~~later period~~period after 2004 due to significant increase in data coverage and sampling. In the tropical region the differences indicate a slight zonal variability with negative deviations over the Atlantic, Africa, and the Indian Ocean, and positive deviations over the Pacific. Ozone anomalies and the distribution of their statistical moments indicate a very high correlation among both data records as to the temporal and spatial structures. Furthermore, we evaluate the consistency of the datasets by means of an empirical orthogonal function (EOF) analysis. The interannual variability is assessed in the tropics, and both GTO-ECV and ~~Adjusted-MERRA~~Adjusted-MERRA-2 exhibit a remarkable agreement with respect to the derived patterns. The first four EOFs can be attributed to different modes of interannual climate variability, and correlations with the Quasi-Biennial Oscillation (QBO), the El Niño Southern Oscillation (ENSO) signal, and the solar cycle were found.

1 Introduction

The stratospheric ozone layer shields life on Earth from harmful solar ultraviolet radiation. In the late 20th century a strong decline in ozone amounts was observed that has been attributed to anthropogenic release of halocarbons into the atmosphere. In response to the dramatic loss the Montreal Protocol (United Nations Environment Programme, 1986) was designed to protect the ozone layer by eliminating the use of Ozone Depleting Substances (ODSs). It was adopted in 1987 and the actions taken under the agreement have led to noticeable decreases in the concentrations of ODSs about ten years later (Braesicke et al., 2018). With the onset of the decline in ODSs a slow healing of the ozone layer is expected. However, the detection of ozone trends and its attribution to the decline in ODSs is challenging because of strong natural ozone variability, in particular in the middle and high latitudes, and complex feedback mechanisms with atmospheric dynamics and climate change (e.g., Harris et al., 2008; Weber et al., 2011). The Antarctic and the upper stratosphere in the northern middle latitudes are now showing first evidence of recovery and indicate a substantial contribution of the decline in ODSs (Braesicke et al., 2018) (Solomon et al., 2016; Kuttippurath and Nair, 2017; Kuttippurath et al., 2018; Braesicke et al., 2018). On the other hand, no statistically significant trends over the past two decades could be detected in other regions or for the near-global mean total column ozone. In the lower stratosphere there is some indication for a small, non-significant negative trend (Ball et al., 2018; Wargan et al., 2018). Nonetheless, the overall success of the Montreal Protocol is undisputed since the previous substantial decrease in ozone was successfully stopped, and ozone levels have remained stable, although below pre-1980 values, since the turn of the century (Braesicke et al., 2018).

The aforementioned results reveal and strengthen the need for independent and consistent long-term data records of ozone in order to identify and to quantify reliable and robust trend estimates. In this regard an essential prerequisite is sufficient temporal and spatial coverage of the measurements, which in general cannot be provided by single-instrument data records. Observations from space-borne instruments offer the required spatial coverage, but owing to their limited lifetime merging of multiple records is necessary to achieve adequate temporal coverage. To this effect much progress has been made during the past two decades and several data records have emerged and have been used for initial trend assessment (e.g., Pawson et al., 2014; Braesicke et al., 2018; Weber et al., 2018a; SPARC/IO3C/GAW, 2019). Moreover, great efforts are made to evaluate and to understand the different sources of uncertainties in the trend estimates, e.g. the trend model itself or the stability of the data records (SPARC/IO3C/GAW, 2019).

Regarding total ozone four different merged long-term data records providing global coverage are currently available that are based on satellite sensors measuring in nadir-viewing geometry (Braesicke et al., 2018) (Weber et al., 2018a; Braesicke et al., 2018). Two of them are based on the Solar Backscatter Ultra Violet (SBUV) and SBUV-2 series of satellite instruments (Frith et al., 2014, 2017; Weber et al., 2018a) and cover the period from 1979 to present. In addition, measurements from the GOME-type (Global Ozone Monitoring Experiment) series of sensors are used to create (i) the GOME-type Total Ozone Essential Climate Variable (GTO-ECV; Coldewey-Egbers et al., 2015) and (ii) the GOME, SCIAMACHY (Scanning Imaging Absorption Spectrometer for Atmospheric Chartography), and GOME-2 (GSG; Weber et al., 2018a) data record. All of them were recently used for the analysis of decadal ozone changes and indicate very good consistency (Braesicke et al., 2018; Weber et al., 2018a,

b). ~~Concerning ozone profile data records different families are available that are built using observations performed in nadir-, limb-, or occultation-viewing geometry (Braesicke et al., 2018).~~

In this study we focus on total ozone columns and use the GTO-ECV total ozone climate data record that has been generated in the framework of the European Space Agency's Climate Change Initiative (ESA-CCI; Hollmann et al., 2013) ozone project. GTO-ECV covers the 23-year period from 1995 to 2018 and comprises measurements from GOME on board ERS-2 (second European Remote Sensing satellite), SCIAMACHY on board Envisat (Environmental Satellite), OMI/Aura (Ozone Monitoring Instrument on board Aura), and GOME-2 on board MetOp-A and -B (Meteorological Operational satellites A and B). Chiou et al. (2014) compared GTO-ECV with the SBUV-based total ozone data record provided by the National Aeronautics and Space Administration (NASA; Frith et al., 2014) and found very good agreement in zonal mean ozone columns and corresponding anomalies. In particular the differences showed no significant trend for the 16-year overlap period from 1996 to 2011.

The focus of the present work is to compare the gridded GTO-ECV ozone product with ozone columns from the Adjusted Modern Era Retrospective Analysis for Research and Applications version 2 reanalysis data set (~~Adjusted-MERRA; Bosilovich et al., 2015~~, July 1995 to December 2018. Reanalysis data are generated using the data assimilation technique that allows the production of global long-term ozone fields with high spatial and temporal resolution by combining observations from satellites and/or ground-based systems with a general circulation model (Kalnay, 2003). While Wargan et al. (2017) and also Davis et al. (2017) focused on the validation and analysis of zonal mean values from the reanalysis using independent satellite and ozonesonde data as well as other reanalysis products, in this study we make use of the good spatial resolution of the ESA-CCI GTO-ECV data record and investigate the longitudinal dependence of the differences as well as regional features. ~~We~~ Beginning in late 2004, total ozone column data from the OMI instrument are assimilated in the MERRA-2 reanalysis. GTO-ECV also includes OMI measurements, meaning the two data sources are not completely independent. However, the OMI data assimilated by MERRA-2 is retrieved using a different algorithm than that included in GTO-ECV. To estimate the effect of the shared OMI data on our results, we analyze differences in two periods, before and after the OMI data are included in the data products.

Furthermore, we assess the impact of year-to-year changes on ozone induced by regional phenomena, e.g., the Quasi-Biennial Oscillation (QBO) or the El Niño Southern Oscillation (ENSO) signal, and we compare ozone anomalies in terms of their distribution functions. ~~Furthermore~~ Additionally, we carry out an empirical orthogonal function (EOF) analysis in the tropics aiming at a detailed assessment of the consistency of both long-term data records with regard to interannual variability.

The paper is organized as follows. Section 2 contains short descriptions of the data records. In Sect. 3 we present the results of the comparison of total ozone columns, associated standard deviations, and anomalies. The interannual variability in the tropics is assessed in Sect. 4. Summary and outlook can be found in Sect. 5.

Table 1. Overview of individual satellite sensors included in GTO-ECV

Instrument/Platform	Time period <u>Period</u> of operation	Ground-pixel size	<u>Overpass</u>	No. of measurements	Reference
GOME/ERS-2	06/1995 – 07/2011(05/2003)* ^a	320×40 km ²	<u>10:30 LT</u> ^b	$\sim 3.5 \times 10^4 \text{ day}^{-1}$	Burrows et al. (1999)
SCIAMACHY/ENVISAT	08/2002 – 04/2012(12/2004)* ^c	60×30 km ²	<u>10:00 LT</u>	$\sim 8.0 \times 10^4 \text{ day}^{-1}$	Bovensmann et al. (1999)
OMI/AURA	10/2004 – today	13×24 km ²	<u>13:38 LT</u>	$\sim 1.5 \times 10^6 \text{ day}^{-1}$	Levelt et al. (2018)
GOME-2/MetOp-A ^d	01/2007 – today	40×80 km ²	<u>09:30 LT</u>	$\sim 2.0 \times 10^5 \text{ day}^{-1}$	Munro et al. (2016)
GOME-2/MetOp-B ^e	01/2013 – today	40×80 km ²	<u>09:30 LT</u>	$\sim 2.0 \times 10^5 \text{ day}^{-1}$	Munro et al. (2016)

^alast month used in GTO-ECV is 05/2003 (see text for more details); ^bLT = Local time at the equator; ^clast month used in GTO-ECV is 12/2004 (see text for more details); ^din the following we refer to GOME-2 on board MetOp-A as GOME-2A; ^ein the following we refer to GOME-2 on board MetOp-B as GOME-2B.

2 Data sets

2.1 GOME-type Total Ozone Essential Climate Variable

The GTO-ECV total ozone ~~data record covers the 23-year period from July 1995 to December 2018 and~~ climate data record has been generated in the framework of the ESA-CCI ozone project (Ozone_cci). ~~A detailed description of the generation of the data record and its validation results is provided in Coldewey-Egbers et al. (2015) and Garane et al. (2018). The~~ As part of Phase I of Ozone_cci the first version of GTO-ECV data record is a combination of measurements from five nadir viewing satellite sensors, listed was developed (Coldewey-Egbers et al., 2015), which incorporated measurements from three nadir-viewing satellite sensors (GOME/ERS-2, SCIAMACHY/Envisat, and GOME-2/MetOp-A) and which covered the period 1996 to 2011. During Phase II of Ozone_cci a number of changes regarding GTO-ECV has been realized: the underlying ozone retrieval algorithm and the merging approach were improved, two more sensors were ingested (OMI/Aura and GOME-2/MetOp-B), and the data record was expanded in time (Garane et al., 2018). Version 3 of GTO-ECV now covers the 23-year period from July 1995 to December 2018.

An overview of the individual satellite sensor characteristics is provided in Table 1, ~~starting with GOME in 1995.~~ All instruments are mounted on low earth-orbit platforms and measure the solar radiation reflected and scattered by the Earth's atmosphere and surface in the ultraviolet and visible wavelength range. ~~The~~ For GTO-ECV version 3, the total ozone columns are derived using the retrieval algorithm GODFIT (GOME-type Direct FITting) version 4 (Lerot et al., 2014; Garane et al., 2018) that is applied to all sensors. The ground-based validation reveals that the mean bias between the individual level-2 ozone columns and those from ~~ground-based~~ reference instruments (Brewer, Dobson, and zenith-sky spectrometers) is well within $1.5 \pm 1.0\%$ and the drift is below $1.4\% \text{ decade}^{-1}$ (Garane et al., 2018). ~~The~~ In particular the inter-sensor consistency of these individual data sets is high and generally within 0.5% in low and middle latitudes, but also toward higher latitudes the data sets present a uniform and stable behavior.

To generate the merged product, at first, the ~~seperate~~ separate pixel-based (level-2) observations are converted into level-3 products per sensor, i.e. daily and monthly averages on a regular grid of $1^\circ \times 1^\circ$ in latitude and longitude. Then they are com-

bined into one single cohesive record. Before merging the individual data records, corrections are applied in order to account for possibly remaining inter-sensor biases and drifts. Owing to its remarkable long-term stability ~~the w.r.t. the ground-based reference (Garane et al., 2018), the~~ OMI record is used as a reference basis ~~for GTO-ECV version 3,~~ while GOME-2 and SCIAMACHY, SCIAMACHY, GOME-2A, and GOME-2B are adjusted in terms of correction factors that depend on latitude and time. ~~For this purpose, we~~ Note that in the first version of GTO-ECV (Coldewey-Egbers et al., 2015), we used GOME as the long-term reference, but replaced it with OMI, because of its daily nearly full global coverage. Furthermore, we can take advantage of the sufficiently long overlap periods (>5 years) among all sensors ~~leading to robust estimates of the inter-sensor differences.~~

Finally, all available data sets are averaged into one single record that consists of monthly mean total ozone columns as well as the corresponding standard deviations and standard errors. GOME data are included only until May 2003 due to the loss of global coverage at that time (as a consequence of the permanent failure of the on-board tape recorder). SCIAMACHY is used only until December 2004, since the validation of the corresponding level-2 data indicated some lingering issues with increasing lifetime (Garane et al., 2018). With the incorporation of OMI data in GTO-ECV in October 2004 the amount of data (see Table 1) has increased and, thus, the representativeness of the monthly averages is significantly improved, since OMI provides daily global coverage along with a much finer spatial resolution compared to the predecessor sensors.

For the validation of GTO-ECV total ozone columns against ground-based observations a very good agreement of 0.5–1.5% peak-to-peak amplitude was found (Garane et al., 2018). In addition, the long-term drift is negligible in the northern hemisphere with $0.11 \pm 0.10\%$ decade⁻¹ for Dobson and $0.22 \pm 0.08\%$ decade⁻¹ for Brewer collocated measurements. In the southern hemisphere the drift w.r.t. Dobson collocations is $0.23 \pm 0.09\%$ decade⁻¹. Hence, the target requirements of 1–3% decade⁻¹, defined within the Global Climate Observing System (GCOS, 2011), are well satisfied. It has been clearly stated that the GTO-ECV data record is suitable for climate applications, such as the longer-term analyses of the ozone layer, i.e. decadal trend studies (Coldewey-Egbers et al., 2014; Weber et al., 2018a), and the evaluation of climate model simulations (Loyola et al., 2009). Both the level-2 as well as the level-3 Climate Research Data Packages (CRDPs) are freely available via the Ozone_cci web site <http://cci.esa.int/ozone/>.

For the comparison with ~~MERRA-Adjusted-MERRA-2~~ data we compute $5^\circ \times 5^\circ$ gridded as well as 5° zonal monthly averages from the original $1^\circ \times 1^\circ$ product.

2.2 ~~Adjusted-MERRA-Adjusted-MERRA-2~~ ozone product

The Modern Era Retrospective Analysis for Research and ~~Applications-2-Applications~~ (MERRA-2) dataset was released in 2015 by NASA's Global Modeling and Assimilation Office (GMAO) (Bosilovich et al., 2015). It is produced with version 5.12.4 of the Goddard Earth Observing System (GEOS-5.12.4) atmospheric data assimilation system, whose key components are the GEOS-5 Atmospheric General Circulation Model (Molod et al., 2015) and the Gridpoint Statistical Interpolation (GSI) analysis scheme (Kleist et al., 2009). The assimilated data set contains data from the National Oceanic and Atmospheric Administration (NOAA) series of SBUV/2 instruments (from 1980 to September 2004), the Microwave Limb Sounder (MLS, beginning in 2004), the Infrared Atmospheric Sounding Interferometer (IASI, starting in September 2008), the Cross-Track

Infrared Sounder (on the Suomi-NPP satellite, from April 2012 onward) and Advanced Technology Microwave Sounder (on Suomi-NPP, starting in November 2011) along with total ozone observations from OMI (beginning in October 2004). By combining available measurements with global circulation model short-term forecasts, the data assimilation methodology allows the propagation of observational information by assimilated winds resulting in global 3-dimensional maps of ozone concentrations at spatial and temporal resolutions exceeding those attainable with satellite data alone. ~~The assimilation produces realistic global distributions of ozone in the stratosphere and upper troposphere (Stajner et al., 2008; Wargan et al., 2015).~~ Gridded data are released at a $0.625^\circ \times 0.5^\circ$ longitude by latitude resolution at 72 sigma-pressure hybrid layers between the surface and 0.01 hPa. The bottom 32 layers are terrain-following while remaining model layers, from 164 to 0.01 hPa, are constant pressure surfaces. ~~The~~

The assimilation produces realistic global distributions of ozone in the stratosphere and upper troposphere (Stajner et al., 2008; Wargan et al., 2015). The column ozone values agree with NASA's Total Ozone Monitoring Spectrometer (TOMS) to $1.8 \pm 2.8\%$ in the tropics and $1.4 \pm 3.7\%$ at higher latitudes. A more detailed validation of the MERRA-2 ozone fields and parameterized ozone chemistry are discussed in ~~Wargan et al. (2017).~~ Wargan et al. (2015, 2017). A principle finding was that the ozone record could not be used for trend research due to the small but discernable step functions in the data when one instrument was removed from the assimilation and/or another was added. An overview of all ozone data sources in MERRA-2 is provided in Wargan et al. (2017, their Table 1). The transition from SBUV to MLS in 2004 produced the largest of these discontinuities. We have reduced/removed these features by “~~renormalizing~~normalizing” back to the complete SBUV record (1979-present) using the long-term ozone record found in the Merged Ozone Data Set (MOD; Frith et al., 2014).

The SBUV MOD is a time series of total column and profile ozone constructed by combining measurements from eight individual SBUV and SBUV/2 instruments. These instruments provide continual coverage from late 1978 to the present. The SBUV/2 instruments were launched into drifting orbits, such that the equator crossing times (ECTs) drifted slowly towards the terminator. MOD includes only measurements made while the ECTs of the respective orbits were between 8am–4pm. After additional minimal filtering based on known instrument issues, the individual records are combined using a simple average during periods when more than one instrument is operational. In general the differences between measurements during periods of overlap are less than the inherent instrument uncertainty (particularly for total ozone), so no external adjustments are applied. Rather the offsets and drifts observed between instruments during overlap periods are used to estimate the uncertainty of the MOD record. Details of the total ozone MOD data set and uncertainties can be found in Frith et al. (2014).

The normalization of MERRA-2 was done by making 5° monthly zonal means for each data set (the MERRA-2 being sampled in time and space to match the individual SBUV measurements) and determining the difference between the two in Dobson Units. This difference, either positive or negative, is then added to the MERRA-2 gridded data for each latitude band and month in order to keep the long-term calibration of the SBUV record and take advantage of the spatial sampling of MERRA-2. In the following we refer to the normalized MERRA-2 data set as Adjusted-MERRA-2.

3 Results and discussion

3.1 Zonal mean total ozone

With the normalization of the MERRA-2, the resulting monthly zonal mean ~~Adjusted-MERRA~~ Adjusted-MERRA-2 product is roughly equal to SBUV MOD, which is itself completely independent of GTO-ECV. The only difference between SBUV MOD and ~~Adjusted-MERRA~~ Adjusted-MERRA-2 is the difference in the zonal means computed at SBUV sampling compared to that computed from the full ~~MERRA~~ MERRA-2 sampling. However, when considering the standard deviations in the monthly zonal means, and the comparisons between the spatially resolved patterns in ozone later in this work, the GTO-ECV and ~~Adjusted-MERRA~~ Adjusted-MERRA-2 are not independent, because both include the OMI data after October 2004, as described in Sect. 2. Before this time, the GTO-ECV contains GOME and SCIAMACHY data, whereas SBUV/2 measurements are assimilated in ~~MERRA~~ MERRA-2. Thus the GTO-ECV and ~~Adjusted-MERRA~~ Adjusted-MERRA-2 are completely independent prior to October 2004, but the longitudinally-resolved gridded means are not completely independent after this time. However, total ozone columns from OMI are retrieved using different algorithms for GTO-ECV (~~GODFIT version 4; Lerot et al., 2014~~) and ~~Adjusted-MERRA (OMI-TOMS version 8.5; Wargan et al., 2017)~~ GODFIT version 4 and Adjusted-MERRA-2 (OMI-TOMS version 8.5), respectively. Detailed information about GODFIT version 4 can be found in Lerot et al. (2014) and Rahpoe et al. (2017), and a description of OMI-TOMS version 8.5 is provided in Bhartia (2007) and McPeters et al. (2013). A main difference between both algorithms is that OMI-TOMS uses just two wavelengths — a weakly absorbing wavelength (331.2 nm) and a strong absorbing wavelength (317.5 nm) — to retrieve ozone. On the other hand, GODFIT is a direct fitting approach (Van Roozendaal et al., 2012) which makes use of the high spectral resolution that OMI provides. The fitting window spans the wavelength range 325–335 nm. For an overview of the results of the geophysical validation of both data products we refer to McPeters et al. (2008) and McPeters et al. (2015) for OMI-TOMS and to Koukouli et al. (2015) and Garane et al. (2018) for GODFIT. A comparison of total ozone columns derived from GOME using GODFIT with ozone from OMI retrieved with the TOMS algorithm is presented in Lerot et al. (2010).

At first we compare 5° zonal monthly mean ozone columns and focus on the time dependence of the differences. Figure 1 shows the difference between ~~Adjusted-MERRA~~ Adjusted-MERRA-2 and GTO-ECV total ozone fields as a function of latitude from 1995 to 2018 (top panel) and the difference in the standard deviations that are provided with the data (bottom panel). The comparison of both parameters clearly shows a small change in the behavior in late 2004. Therefore, for parts of our discussion we will analyze the differences separately for both time periods. The average difference in zonal mean total ozone columns is $-0.5 \pm 1.1\%$ before October 2004 and $-1.0 \pm 1.0\%$ after the introduction of OMI/Aura data in GTO-ECV ~~and MERRA-2~~. In the period before October 2004 the zonal mean differences range from $-1.3 \pm 1.3\%$ in the middle latitudes of the southern hemisphere to $1.4 \pm 1.0\%$ in the northernmost bands. After October 2004 the differences vary from $-1.9 \pm 0.7\%$ (middle latitudes of the southern hemisphere) to $0.6 \pm 0.9\%$ (northernmost band). From the validation of the GTO-ECV data record (Garane et al., 2018, their Fig. 12) we know that there is a small positive bias compared to ground-based data and also with respect to MOD (which is likewise used for ~~renormalizing~~ normalizing MERRA-2 ozone fields). These ~~positive~~ deviations are most pronounced in the southern hemisphere.

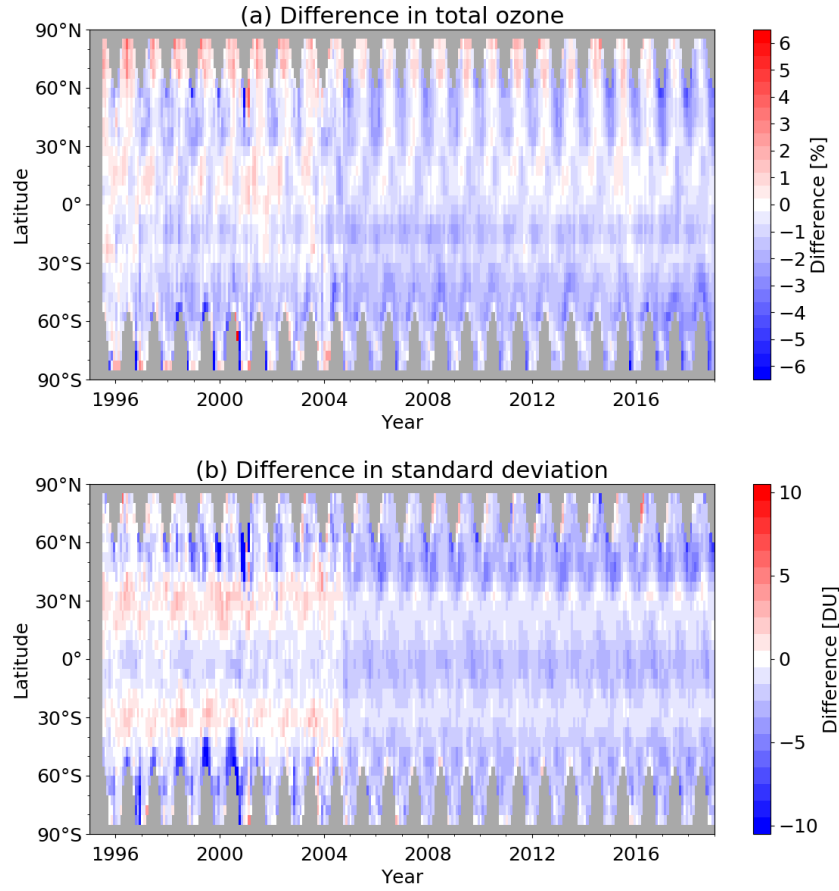


Figure 1. (a) Difference [%] between ~~Adjusted-MERRA~~ Adjusted-MERRA-2 and GTO-ECV 5° zonal monthly mean total ozone columns as a function of latitude and time from July 1995 to December 2018 ~~and computed as:~~ $(\text{Adjusted-MERRA-2} - \text{GTO-ECV}) / \text{GTO-ECV}$. (b) Absolute difference [DU] between Adjusted-MERRA and GTO-ECV 5° zonal monthly mean standard deviations provided with the products computed as: $\text{Adjusted-MERRA-2} - \text{GTO-ECV}$.

Positive differences between ~~Adjusted-MERRA~~ Adjusted-MERRA-2 and GTO-ECV ozone columns are found in boreal summer poleward of 60°N during the entire time period and in spring in the northern part of the tropics before October 2004. In all other seasons and latitude belts differences are negative with maximum values in the southern hemisphere middle latitudes and under ozone hole conditions. ~~In 2017 and 2018 negative differences seem to increase, in particular in the southern~~
5 ~~hemisphere in middle and high latitudes, which definitely needs further investigations using independent data records.~~ A small number of outliers is found, mostly in high latitudes close to the polar night and before 2002, that is probably caused by sparse data coverage and, hence, non-representative monthly averages in GTO-ECV or MOD. During that time period GTO-ECV exclusively consists of GOME observations and suffers from their large ground-pixels sizes and global coverage that is completed only after three days.

Table 2. Difference between ~~Adjusted-MERRA~~ Adjusted-MERRA-2 and GTO-ECV total ozone columns for different broad latitude belts. Annual mean value and seasonal mean values for ~~winter-December-February~~ (~~December, January, February~~ Dec-Jan-Feb), ~~spring March-May~~ (~~March, April, May~~ Mar-Apr-May), ~~summer-June-August~~ (~~June, July, August~~ Jun-Jul-Aug), and ~~autumn-September-November~~ (~~September, October, November~~ Sep-Oct-Nov), respectively, are provided. Note, that no data is available in the ~~polar-high~~ latitudes during the ~~winter-months~~ polar night.

Latitude belt	Annual mean	Winter-December-February <u>Winter-Dec-Jan-Feb</u>	Spring-March-April-May <u>Spring-Mar-Apr-May</u>	Summer-June-July-August <u>Summer-Jun-Jul-Aug</u>	Autumn-September-October-November <u>Autumn-Sep-Oct-Nov</u>
60° – 90°N	0.0±1.5%	—	0.0± 1.5 <u>1.4</u> %	0.9 <u>0.8</u> ± 1.1 <u>1.0</u> %	-0.8 <u>-0.9</u> ±1.5%
30° – 60°N	-0.9±1.5%	-1.7 <u>-1.8</u> ± 2.0 <u>1.7</u> %	-0.7 <u>-0.8</u> ± 1.4 <u>1.3</u> %	0.1 <u>0.0</u> ±1.0%	-0.9 <u>-1.0</u> ± 1.4 <u>1.3</u> %
30° N – 30° S	-0.6± 1.1 <u>1.0</u> %	-0.8± 1.2 <u>1.0</u> %	-0.5± 1.1 <u>1.0</u> %	-0.8± 1.1 <u>1.0</u> %	-0.5±1.1%
30° – 60° S	-1.5± 1.3 <u>1.2</u> %	-1.3± 1.1 <u>0.9</u> %	-1.6 <u>-1.7</u> ± 1.3 <u>1.2</u> %	-1.4± 1.7 <u>1.6</u> %	-1.5± 1.3 <u>1.1</u> %
60° – 90° S	-1.3±2.0%	-0.6 <u>-0.7</u> ± 1.4 <u>1.3</u> %	-1.0 <u>-1.2</u> ± 1.5 <u>1.3</u> %	—	-1.8 <u>-1.9</u> ± 3.6 <u>2.6</u> %

The behavior of the difference in the standard deviation (Fig. 1 (b)) also changes considerably with the introduction of OMI data in October 2004. The mean difference in the standard deviation between ~~Adjusted-MERRA~~ Adjusted-MERRA-2 and GTO-ECV is -0.7 ± 2.1 DU and -1.4 ± 1.3 DU, respectively. Prior to October 2004 ~~Adjusted-MERRA~~ Adjusted-MERRA-2 standard deviations are higher than GTO-ECV around 30°N/S and lower elsewhere. After October 2004 ~~Adjusted-MERRA~~ Adjusted-MERRA-2 standard deviations are lower than GTO-ECV in all latitude bands but differences around 30°N/S are very close to zero. ~~As for the total ozone toward the end of the period differences become larger, in particular in the middle latitudes of the southern hemisphere, but also in the tropical region.~~ From 1996 to 2001 the differences indicate a drift in the middle latitudes, in particular in the southern hemisphere. This could be related to the significant decrease in the latitudinal coverage of NOAA-14 data due to orbital drift of this spacecraft (see Wargan et al., 2017, their Fig. 1). During that period NOAA-14 and NOAA-11 data constitute the MOD data record.

Table 2 shows the differences (annual mean as well as seasonal means) for individual latitude belts based on the entire period 1995–2018. Largest negative differences ($\sim -1.5\%$) occur year-round in the middle latitudes of the southern hemisphere and ~~in autumn from September to November in~~ the southern hemisphere polar latitudes ($-1.8 \pm 3.6\%$). In the northern hemisphere middle and high latitudes there is an apparent seasonal cycle in the differences with positive deviations in boreal summer and negative deviations in winter. When we compute the differences in the tropics separately for the northern (30°N–0°) and the southern (0°–30°S) part, small positive differences are found in the north and negative differences in the south.

Next we analyze the drift in the differences in zonal mean total ozone. We fit a linear curve to the percentage difference (~~Adjusted-MERRA vs.~~, i.e. (Adjusted-MERRA-2 - GTO-ECV) / GTO-ECV), as a function of time for each 5° latitude band separately. Figure 2 shows the drift [% decade⁻¹] for three time periods used for the fit: the entire period 1995–2018 (black), the period 1995–2004, when only SBUV(-2) data is assimilated in ~~MERRA~~ MERRA-2, and GTO-ECV is based on GOME and SCIAMACHY (blue), and the period 2004–2018, when OMI data is assimilated in ~~MERRA~~ MERRA-2 and in-

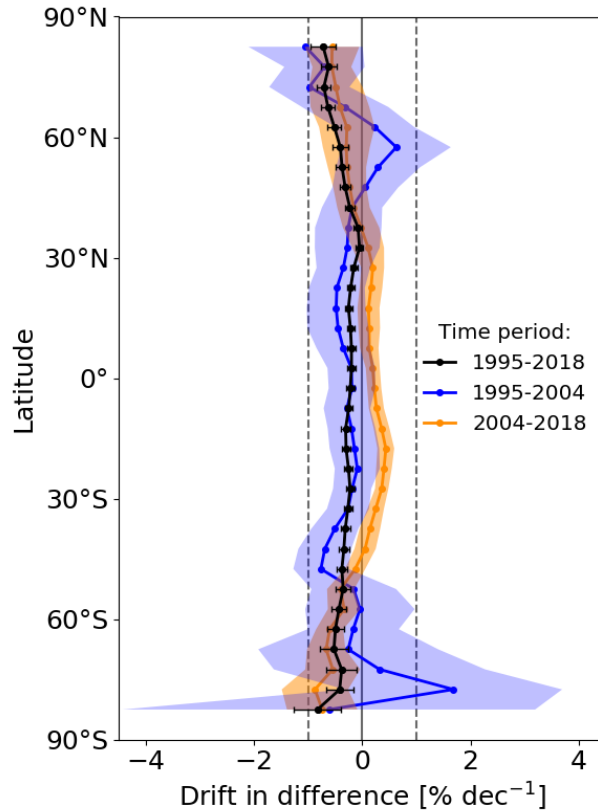


Figure 2. Linear drift in difference between ~~Adjusted-MERRA~~ Adjusted-MERRA-2 and GTO-ECV zonal monthly mean ozone columns as a function of latitude. Linear fit over (i) the entire period 1995–2018 (black), (ii) limited to the period 1995–2004 (blue), and (iii) limited to the period 2004–2018 (orange). Errorbars and shading indicate the $2\text{-}\sigma$ errors of the linear fit coefficients, respectively.

gested in GTO-ECV (orange). Analysis over the entire period (black curve) indicates that the drift is slightly negative, but well below 1 \% decade^{-1} . Note that the uncertainty of the data records was not taken into account for this analysis. In general the drift is stronger in the southern hemisphere compared to the northern hemisphere, except for latitudes poleward of 60°N/S . In these regions the drift is strongest ($-0.85 - -0.45\text{ \% decade}^{-1}$) and similar for both hemispheres. When we limit the analysis to the period July 1995 to October 2004 (blue curve) the drift is also mostly negative. For the third period 2004–2018 (orange curve) the drift is slightly positive in the tropics, and in middle and high latitudes the drift is negative. This analysis reveals that the introduction of OMI data in the GTO-ECV data record leads to a slight change in the behavior of the differences, though the trend that is induced is below 1 \% decade^{-1} . Nevertheless, it should be kept in mind whenever these datasets are used for trend detection in total ozone amounts.

Figure 3 shows a comparison of the annual cycle of zonal mean total ozone columns from GTO-ECV and ~~Adjusted-MERRA~~ Adjusted-MERRA-2 for a selection of several 5° -wide latitude bands in the northern (a) and southern (b) hemisphere. The an-

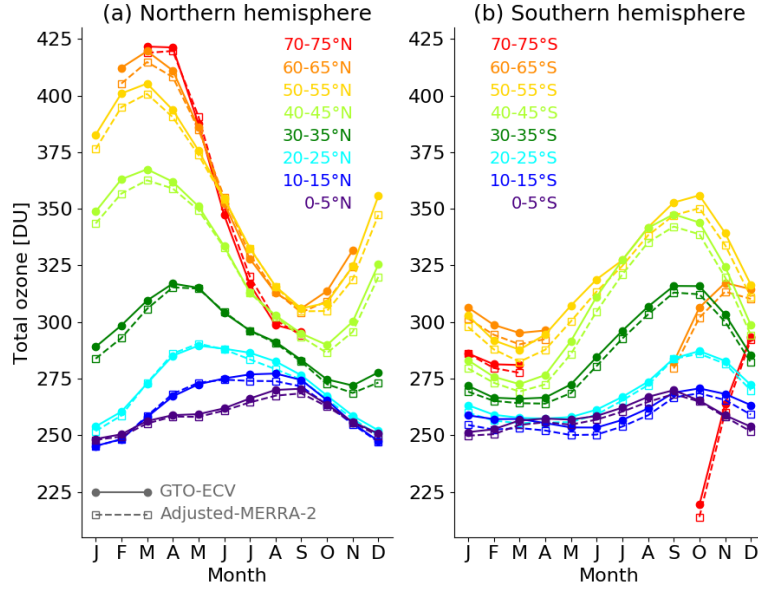


Figure 3. Comparison of the seasonal cycle of zonal mean total ozone columns from GTO-ECV (solid curves with filled circles) and Adjusted-MERRA (dashed curves with open squares) for different 5° wide latitude bands in the northern (a) and southern hemisphere (b). The annual cycles have been calculated using the entire period 1995–2018.

nual cycles have been calculated from the entire overlap period 1995–2018. The curves reveal the well-known typical ozone features. A much stronger variation (~~peak-to-through~~~~peak-to-trough~~ amplitude of ~ 120 DU) is observed in the northern hemisphere compared to the south (~~peak-to-through~~~~peak-to-trough~~ amplitude of ~ 70 DU), with maximum values that are reached in spring of each hemisphere. An exception are the polar latitudes of the southern hemisphere, where extremely low values occur from September to November when the ozone hole develops. In the tropical region the seasonal variation is less pronounced. The seasonal cycles for both data records agree quite well for all latitude bands, even for the aforementioned extreme conditions in the high latitudes of each hemisphere. In general ~~Adjusted-MERRA~~~~Adjusted-MERRA-2~~ has a small negative bias compared to GTO-ECV (as already shown in Fig. 1) with minor exceptions, i.e. a positive bias, in the northern hemisphere in summer poleward of 60°N . The amplitudes of the seasonal cycles show very good agreement and differences do not exceed 2 DU.

3.2 Spatial patterns of differences

In this section we analyze the spatial and seasonal patterns of the gridded $5^\circ \times 5^\circ$ total ozone columns, the associated standard deviations, and the corresponding differences between both data records. ~~Figure~~~~Figures ?? shows~~ ~~4 and 5 show~~ seasonal mean total ozone columns ~~and standard deviations~~ for both GTO-ECV ~~and Adjusted-MERRA in the first and second column~~and ~~the standard deviations in the third and fourth column~~(left column) and Adjusted-MERRA-2 (right column), respectively.

From top to bottom the plot shows ~~winter (December–January–February; DJF), spring (March–April–May; MAM), summer (June–July–August; JJA)~~ the three-months averages for December–February (Dec–Jan–Feb), March–May (Mar–Apr–May), June–August (Jun–Jul–Aug), and ~~autumn (September–October–November; SON)~~ mean values. ~~September–November (Sep–Oct–Nov).~~

Both data records show the same (typical) spatial patterns and the same temporal evolution within a year for total ozone and standard deviation. Both parameters are low and nearly constant throughout the year in the tropical region, except for a little enhancement over the Atlantic Ocean, ~~in particular in autumn, which is caused by the seasonal variation in tropospheric ozone induced by biomass burning.~~ This enhancement is due to zonal variability in tropospheric ozone in terms of a persistent wave-one pattern (Fishman et al., 1992; Ziemke et al., 1996; Thompson et al., 2003), which maximizes near 0° longitude in the South Atlantic. The minimum occurs in the South Pacific near the date line. The amplitude of this wave pattern shows a seasonal variation with minimum values of ~15 DU in austral autumn and maximum values of ~25 DU in austral spring, associated with large-scale biomass burning in southern Africa and South America (e.g., Thompson et al., 2003).

Ozone amounts increase toward higher latitudes where they also indicate a clearer seasonal cycle. Maximum ozone columns are found in boreal spring in the middle latitudes of the northern hemisphere, whereas minimum values occur in austral spring south of 60°S. Standard deviations reach their peak values in winter and spring in the northern hemisphere and ~~in autumn in~~ between September and November in the southern hemisphere. Furthermore, the two data records agree quite well regarding the longitudinal variability of both parameters. Winter-spring maxima in total ozone in the northern hemisphere are located over the Canadian Arctic and eastern Siberia, whereas a local minimum is found in the North Atlantic region (c.f., Fioletov, 2008). ~~In~~ From September–November, in the southern hemisphere minimum ozone columns ~~in autumn~~ are found in the 0°–60°W region, while high values are located in the opposite area (120°–180°E). This displacement of the polar vortex toward the southern Atlantic Ocean and South America is due to planetary wave activity (e.g., Ialongo et al., 2012).

Figure 6 shows the histograms of total ozone (top left panel) and the standard deviations (bottom left panel) for both 5°×5° data records. Numbers provided in the plots indicate the corresponding mean values and their 2-σ standard deviations. In general the shapes of the histograms show a very good agreement. ~~Adjusted-MERRA-Adjusted-MERRA-2~~ data have a negative bias compared to GTO-ECV, except for total ozone columns in the range 250–300 DU. These values mainly occur in the tropics. For the standard deviations ~~MERRA-Adjusted-MERRA-2~~ shows higher values in the range 10–20 DU, which generally corresponds to the subtropics (cf. Fig. 1). Panels on the right hand side indicate the histograms of the differences in total ozone (top) and standard deviation (bottom). Because of the discontinuity in the differences that occurs in October 2004 (see Fig. 1), we plot the histograms of the differences separately for both periods, i.e. before and after that date. As already seen in Sect. 3.1 the mean bias in total ozone is $-0.5 \pm 1.7\%$ in the first time period and ~~-1.1~~ -1.0 ± 1.2 1.1% in the second part. For the standard deviation the difference is -0.6 ± 3.3 DU and ~~-1.8~~ -1.7 ± 1.7 1.6 DU, respectively. For both parameters the small negative bias becomes larger in the second period, while the variance in the differences becomes smaller.

The spatial patterns of the difference in total ozone are presented in Fig. 7. Seasonal mean differences are shown that were computed as $(\text{Adjusted-MERRA-2} - \text{GTO-ECV}) / \text{GTO-ECV}$ for two different time periods: 07/1995–09/2004 (left) and 10/2004–12/2018 (right), respectively. The plots indicate that the differences do not solely depend on latitude, but also on longitude, in particular in the tropics. Positive differences of about 0.5–1.0% occur in the tropical Pacific and in the northern

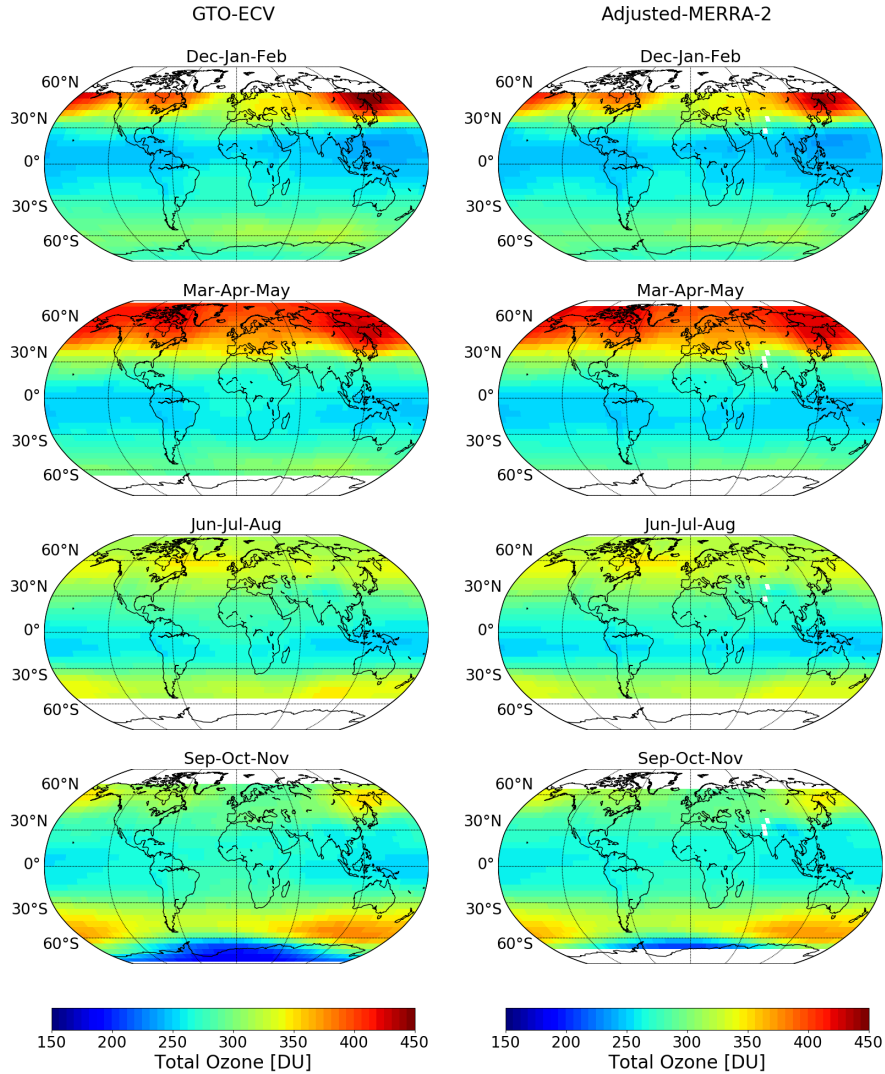


Figure 4. Seasonal mean total ozone columns for GTO-ECV and ~~Adjusted-MERRA~~ Adjusted-MERRA-2 (first and second column) and corresponding seasonal mean standard deviations (third and fourth column). From top to bottom: ~~winter~~ December–February (~~DJF~~ Dec-Jan-Feb), ~~spring~~ March–May (~~MAM~~ Mar-Apr-May), ~~summer~~ June–August (~~JJA~~ Jun-Jul-Aug), and ~~autumn~~ September–November (~~SON~~ Sep-Oct-Nov).

part of the tropical Atlantic. On the other hand ~~significant negative differences~~ negative differences of $-1.5 - -2.5\%$ occur in the southern part of the tropical Atlantic and over southern Africa. Since the longitudinal structure of total ozone in the tropics is mainly determined by longitudinal variation in the troposphere (Ziemke et al., 1998), differences might be related to differences in tropospheric ozone. The pattern of the differences in total ozone indicates some correlation with the climatology of tropical tropospheric ozone (e.g., Heue et al., 2016). Maximum negative differences occur in the area of maximum

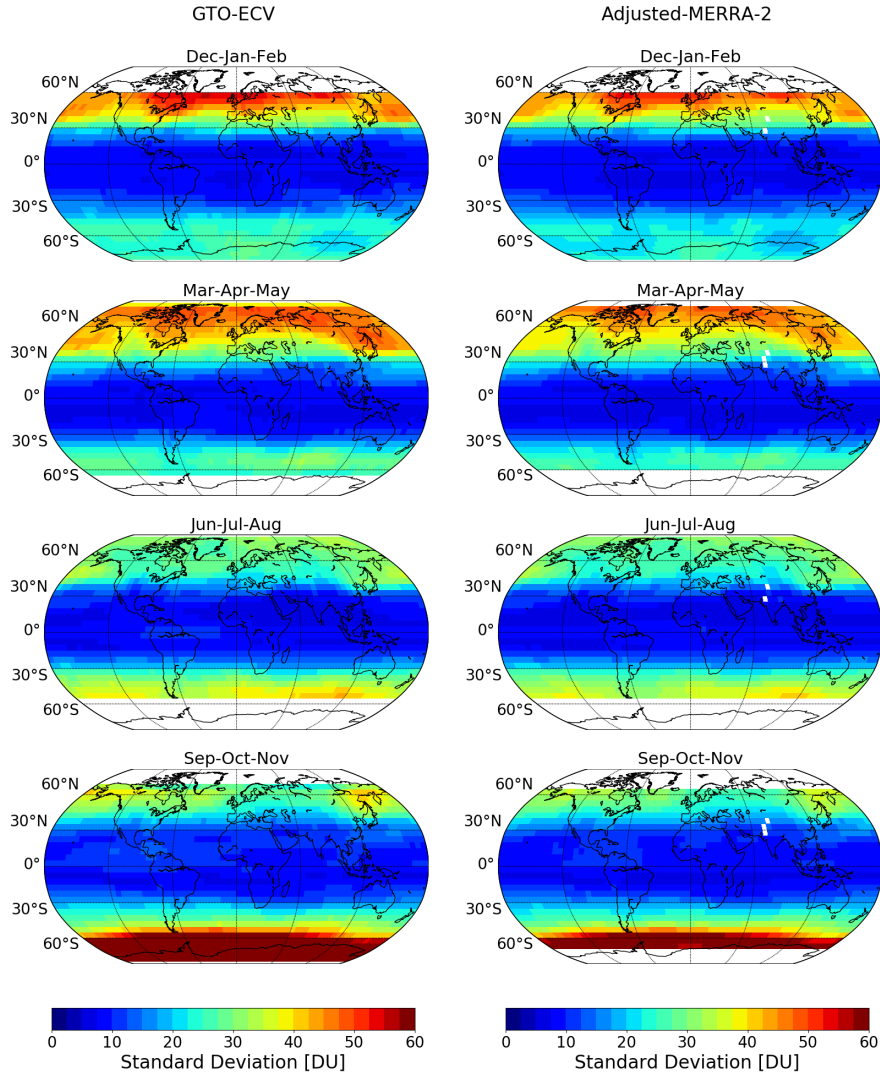


Figure 5. Seasonal mean total ozone columns for GTO-ECV and Adjusted-MERRA-2 (first and second column) and corresponding seasonal mean standard deviations (third and fourth column). From top to bottom: December–February (Dec-Jan-Feb), March–May (Mar-Apr-May), June–August (Jun-Jul-Aug), and September–November (Sep-Oct-Nov).

tropospheric ozone amounts (southern Atlantic and southern Africa) and positive differences correlate with minimum values in tropospheric ozone over the Pacific. An investigation of the zonal structure of total ozone columns from GTO-ECV and Adjusted-MERRA-2 yields that the wave-one pattern known from tropospheric columns is visible in the total column data, too. Locations of the maximum and the minimum are identical for both data records. However, the amplitude is slightly lower for Adjusted-MERRA-2 compared to GTO-ECV, which leads to the observed longitudinal pattern in the differences (Fig. 7).

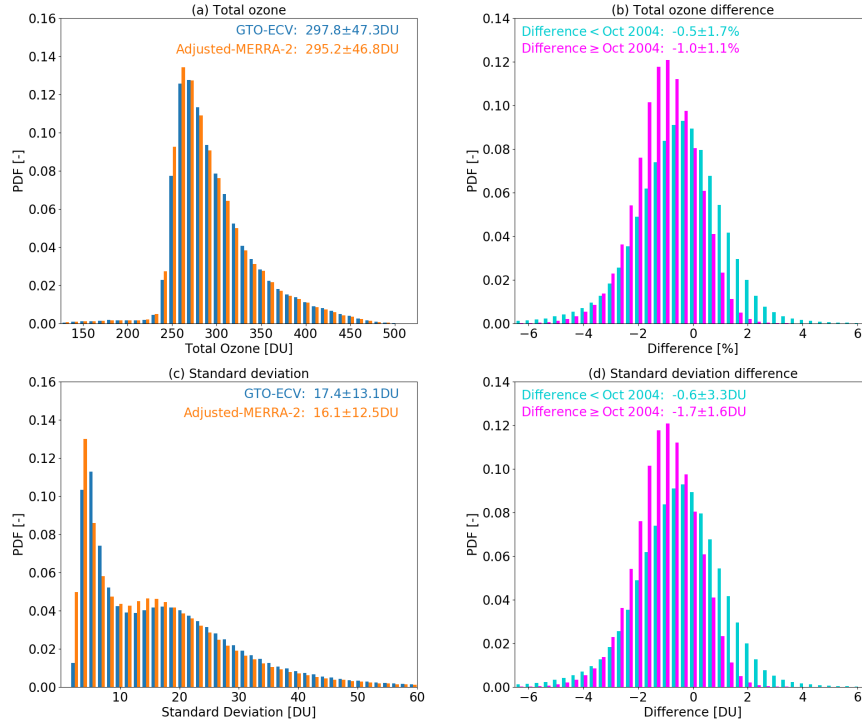


Figure 6. Top left: Histograms of total ozone for GTO-ECV (blue) and Adjusted-MERRA-Adjusted-MERRA-2 (orange). Top right: Histogram of differences [%] in total ozone between Adjusted-MERRA-Adjusted-MERRA-2 and GTO-ECV for two different time periods: before October 2004 (turquoise) and after October 2004 (magenta). Bottom panels: corresponding histograms for standard deviations (left) and difference in standard deviation [DU] for two periods (right).

In the middle latitudes of the southern hemisphere and in high latitudes of both hemispheres differences are more or less zonally invariant while in northern hemisphere middle latitudes higher spatial variability is noticed. Negative differences are found mostly over Asia, the northern Pacific, and North America, while they are less pronounced in the North Atlantic/Europe sector.

- 5 In general the spatial patterns are quite similar for both time periods, except for a shift toward more negative values in the second period. In the first period the variability in the differences is stronger (cf. Fig. 6), which is probably related to the much sparser data coverage during that period. GTO-ECV is limited to GOME and SCIAMACHY (see Table 1) and the Adjusted-MERRA-Adjusted-MERRA-2 data record is limited to the assimilation of SBUV/-2 (see Wargan et al., 2017, their Fig. 1). GOME as well as SCIAMACHY provide global coverage only every three and six days, respectively.
- 10 MACHY sampling pattern is moreover determined by the alternation of limb and nadir measurements. As illustrated by Coldewey-Egbers et al. (2015, their Fig. 5) this sparse sampling may have a non-negligible, i.e. adverse impact on monthly mean ozone columns, in particular in middle latitudes during months with strong natural variability. As a consequence, average values might not be fully representative for the corresponding month and, moreover, might reflect the sampling pattern.

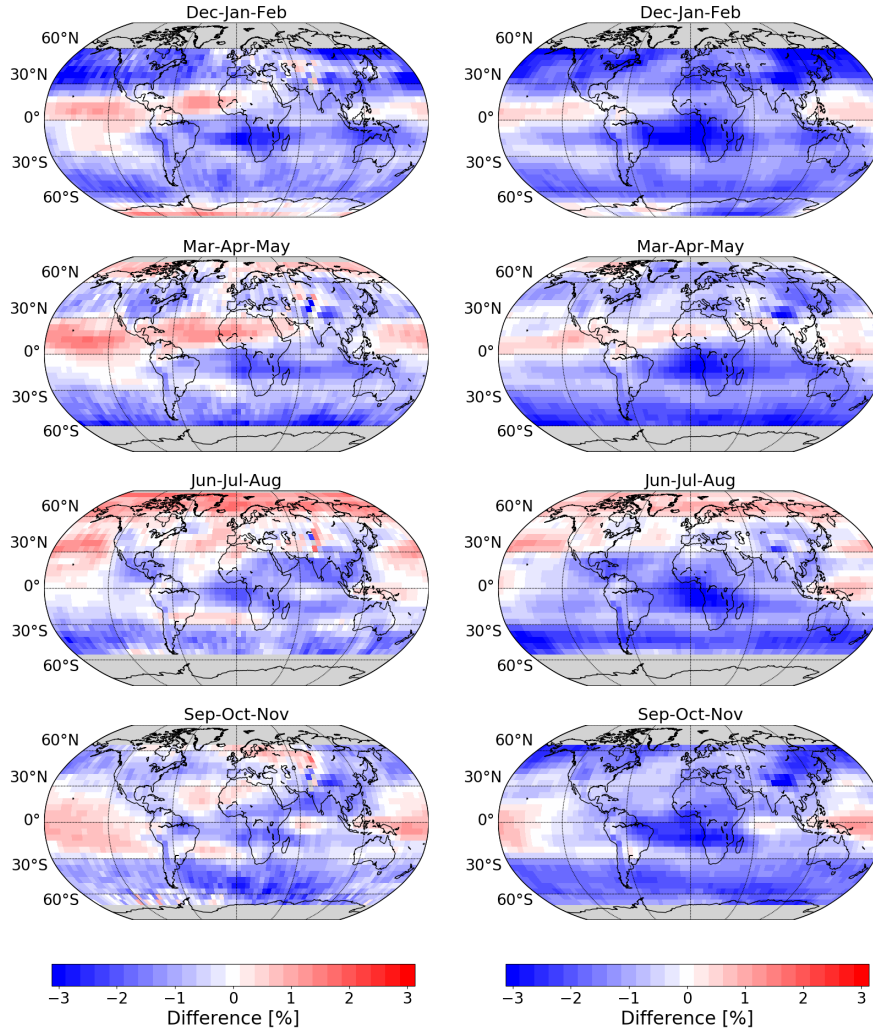


Figure 7. Seasonal mean percentage difference in total ozone columns between ~~Adjusted-MERRA~~ Adjusted-MERRA-2 and GTO-ECV. From top to bottom: ~~winter~~ December–February, ~~spring~~ March–May, ~~summer~~ June–August, and ~~autumn~~ September–November. Panels on the left hand side correspond to the period 1995–2004 and panels on the right hand side correspond to the period 2004–2018.

Figure 8 denotes the seasonal mean difference for the standard deviations. As before we show them separately for the two periods: 07/1995–09/2004 (left) and 10/2004–12/2018 (right) for ~~winter, spring, summer, and autumn~~ December–February, March–May, June–August, and September–November (from top to bottom). In contrast to total ozone differences, we compute the difference for the standard deviation as the absolute difference: Adjusted-MERRA-2 - GTO-ECV. All panels indicate latitudinal and longitudinal structures in the differences. During the first period, ~~Adjusted-MERRA~~ Adjusted-MERRA-2 standard

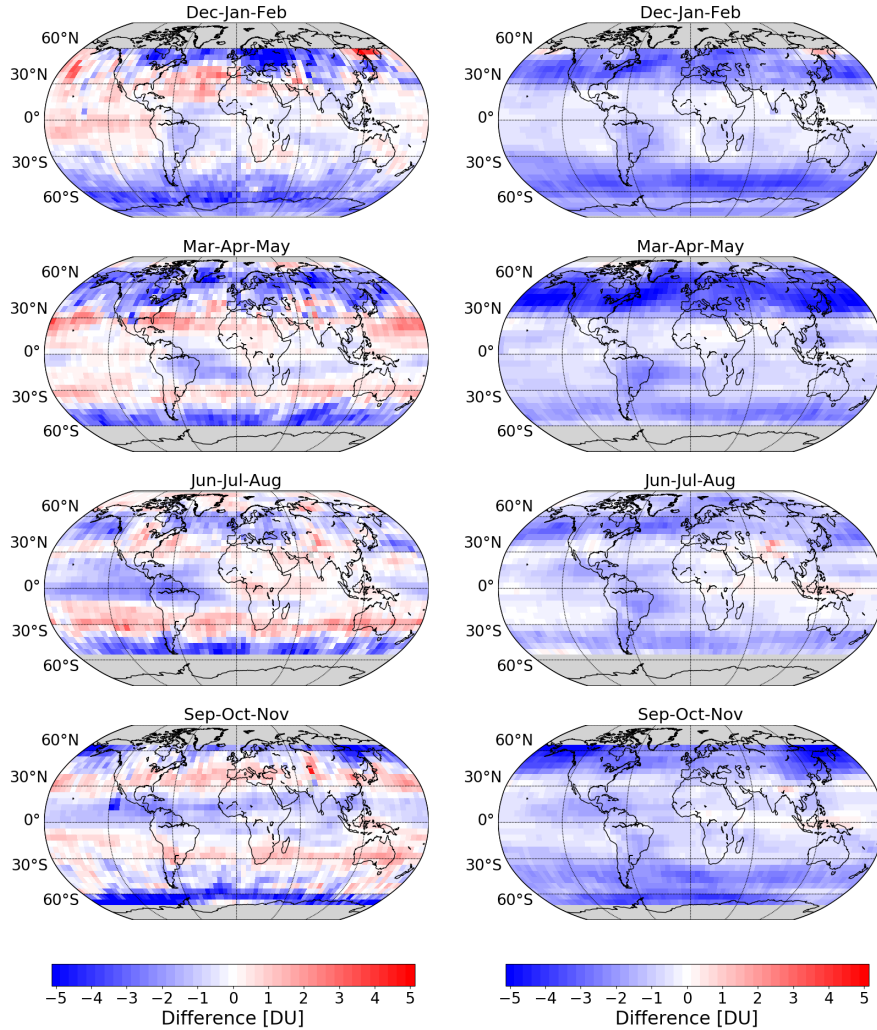


Figure 8. Seasonal mean absolute difference in monthly standard deviation between ~~Adjusted-MERRA~~Adjusted-MERRA-2 and GTO-ECV. From top to bottom: ~~winter~~December–February, ~~spring~~March–May, ~~summer~~June–August, and ~~autumn~~September–November. Panels on the left hand side correspond to the period 1995–2004 and panels on the right hand side correspond to the period 2004–2018.

deviations are slightly lower (~ 2 – 2.5 DU) than GTO-ECV standard deviations south of 40°S , whereas in the subtropics of both hemispheres the differences are slightly positive, i.e. ~~Adjusted-MERRA~~Adjusted-MERRA-2 standard deviations are higher than GTO-ECV by about 0.5 DU. In the northern hemisphere differences vary with season and longitude, in particular in boreal winter and spring. In the second period, the differences are negative for almost the entire globe, except for very high northern

5 latitudes in spring and small areas in the tropics. Significant negative differences occur in the middle latitudes, most notably in

the northern hemisphere. As for total ozone the higher spatial variability in the differences during the first period (1995–2004) is probably related to the sparser satellite data coverage.

3.3 Comparison of total ozone anomalies

In addition to the differences in total ozone and standard deviation we now study ozone anomalies and their moments, i.e. standard deviation and skewness, derived from the ~~Adjusted-MERRA~~ Adjusted-MERRA-2 and GTO-ECV products. Anomalies are computed for each data record by subtracting the corresponding seasonal cycle over the period 1995 to 2018. Figure 9 shows the deseasonalized ozone as a function of time for seven selected $5^\circ \times 5^\circ$ grid cells along 32.5°W with latitudes 72.5°N , 42.5°N , 12.5°N , 2.5°N , 12.5°S , 42.5°S , and 72.5°S , from top to bottom. Numbers in the bottom right corners denote the correlation coefficient ρ between ~~Adjusted-MERRA~~ Adjusted-MERRA-2 and GTO-ECV anomalies, which exceeds 0.90 in all cases except for 12.5°S . All panels indicate a very good consistency of both data records, even in high latitudes, where extreme anomalies (>50 DU) may appear occasionally. The interannual variability in the inner tropics (2.5°N) is dominated by the QBO and both time series agree extremely well ~~in that region~~. In this region ozone anomalies result from a QBO-induced residual circulation, i.e. ascending/descending motion (Steinbrecht et al., 2003). For instance, westerly winds lead to downward transport and an increase in total ozone. At the same time, less ozone-poor air from the lowermost layers is lifted upward. In northern hemisphere middle latitudes (42.5°N) two outliers in GTO-ECV in mid 2003 occur which are most likely caused by the limited data coverage in the respective months. This period is impacted by the loss of the global coverage of GOME measurements due to the permanent failure of the on-board tape recorder. The anomalies at 12.5°S indicate a slightly worse agreement ($\rho = 0.83$) and the drift between the two data records is quite obvious here. ~~Adjusted-MERRA~~ Adjusted-MERRA-2 anomalies show a positive bias compared to GTO-ECV before 2004 and a negative bias afterwards.

The correlation coefficient ρ for all 36×72 (latitude \times longitude) grid cells is depicted in Fig. 10. The median correlation ~~coefficient~~ coefficient is $\rho = 0.96$, and for 97.5% of the grid boxes the correlation is larger than 0.90. Maximum values appear in high latitudes of both hemispheres which are affected and determined by extreme events (see Fig. 9) and in the inner tropics which are dominated by the periodic QBO. Outliers are found in the region north of the Indian subcontinent ($30\text{--}55^\circ\text{N}$, $70\text{--}85^\circ\text{E}$). This area suffers from regular gaps in GOME data (due to limitation of the ERS-2 tape recorder) which directly impact the quality of GTO-ECV since GOME is the only instrument during the period 1995 to 2002. In addition, lower values in the correlation ($\rho \leq 0.90$) occur in the tropical Atlantic north and south of the equator ($10\text{--}30^\circ\text{N/S}$), which corresponds with the region of minimum interannual variability (see next paragraph).

As a measure of the interannual variability (IAV) of ozone we compute the standard deviation of the ozone anomalies separately for each month and compare the spatial patterns for both data records. Figure 11 shows the IAV for GTO-ECV (left) and ~~Adjusted-MERRA~~ Adjusted-MERRA-2 (right) for April (top) and October (bottom). Generally the IAV increases from low to high latitudes, whereas the IAV in the inner tropics ($5^\circ\text{N} - 5^\circ\text{S}$) is slightly larger than for the surrounding latitude belts ($5\text{--}30^\circ\text{N/S}$). In the tropics the IAV of ozone is dominated by the QBO with influence from annual and decadal oscillations and the ENSO (Camp et al., 2003). In middle and high latitudes the IAV is mainly governed by variations in planetary wave activity during wintertime (e.g., Fusco and Salby, 1999; Weber et al., 2011). Therefore, the year-to-year vari-

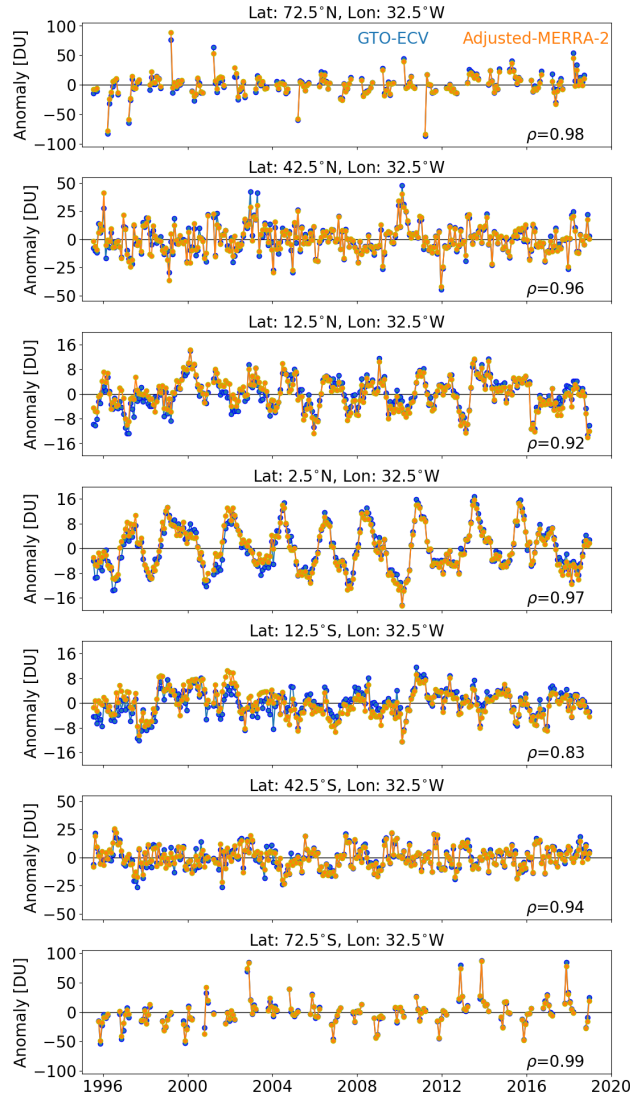


Figure 9. Total ozone anomalies [DU] as a function of time from 1995 to 2018 for GTO-ECV (blue) and ~~Adjusted-MERRA~~ Adjusted-MERRA-2 (orange) for seven selected $5^\circ \times 5^\circ$ grid cells along 32.5°W with latitudes from top to bottom: 72.5°N , 42.5°N , 12.5°N , 2.5°N , 12.5°S , 42.5°S , and 72.5°S . Numbers in the bottom right corner of each panel denote the correlation coefficient ρ between ~~Adjusted-MERRA~~ Adjusted-MERRA-2 and GTO-ECV anomalies.

ability ~~maximizes~~ reaches a maximum in high latitudes in winter and spring of each hemisphere. Furthermore, in middle and high latitudes the IAV exhibits certain longitudinal structures that are also linked to ~~wave-activity~~ dynamic processes (Entzian and Peters, 1999; Hood et al., 1999). Figure 11 indicates an excellent agreement ~~among~~ between both records with regard to these latitudinal and longitudinal patterns as well as to the magnitude of the IAV.

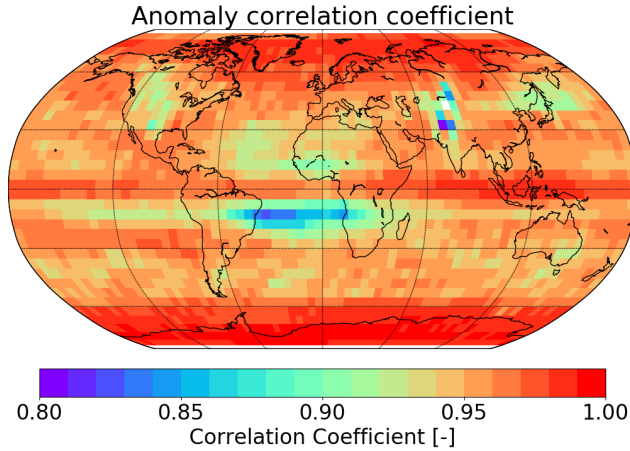


Figure 10. Correlation coefficient between ~~Adjusted-MERRA~~Adjusted-MERRA-2 and GTO-ECV ozone anomalies.

~~The IAV obtained~~ The mean difference in the standard deviation of ozone anomalies between Adjusted-MERRA-2 and GTO-ECV is -0.2 ± 0.5 DU or $-1.5 \pm 3.8\%$. That means, the IAV obtained from the model-based Adjusted-MERRA-2 reanalysis is slightly lower than the IAV from the satellite-based record. The IAV obtained using all months reveals that the minimum variability can be found in the outer tropics in particular over the southern Atlantic and southern Africa (without figure). This might be the reason for the lower correlations between GTO-ECV and ~~Adjusted-MERRA ozone anomalies~~ Adjusted-MERRA-2 ozone anomalies (see Fig. 10).

Figure 12 shows a comparison of the skewness derived from the distribution of the ozone anomalies. As before we show the results for the months April (top) and October (bottom). ~~According to~~ Following Press et al. (1992) we present only values higher than the standard deviation of the skewness which is defined as $\sigma_{\text{skew}} = \sqrt{6/N}$. N is the number of data points used for the calculation of the skewness. In case of σ_{skew} for individual months N is the number of years so that the standard deviation is equal to $\sqrt{6/23} = 0.51$. Again the plots indicate a quite good consistency of both data records in terms of the spatial patterns. In April the skewness is strongly negative in high latitudes of the northern hemisphere except for Greenland and northern Canada. This means that the tails of the anomaly distributions extend toward negative values. The distribution of the ozone anomalies in this region is strongly impacted by severe ozone losses, i.e. significant negative anomalies, during the cold Arctic winters in the 1990s (Weber et al., 2011). On the other hand, in high latitudes of the southern hemisphere ozone anomalies indicate a considerable positive skewness in October (bottom panels of Fig. 12) in the region 30°W – 120°E . To a large ~~extend~~ extent this is due to the Antarctic ozone hole anomaly in 2002. In this year strong wave events and a major warming led to a split of the polar vortex and higher than normal ozone values (Stolarski et al., 2005). More noticeable positive anomalies occurred in 2010, 2012, and 2017, respectively. In those years the mean size of the ozone hole was much smaller ($\leq 20 \times 10^6$ km²) than in other years. Negative anomalies and larger than normal ozone hole sizes occurred in 2006 (which was the severest),

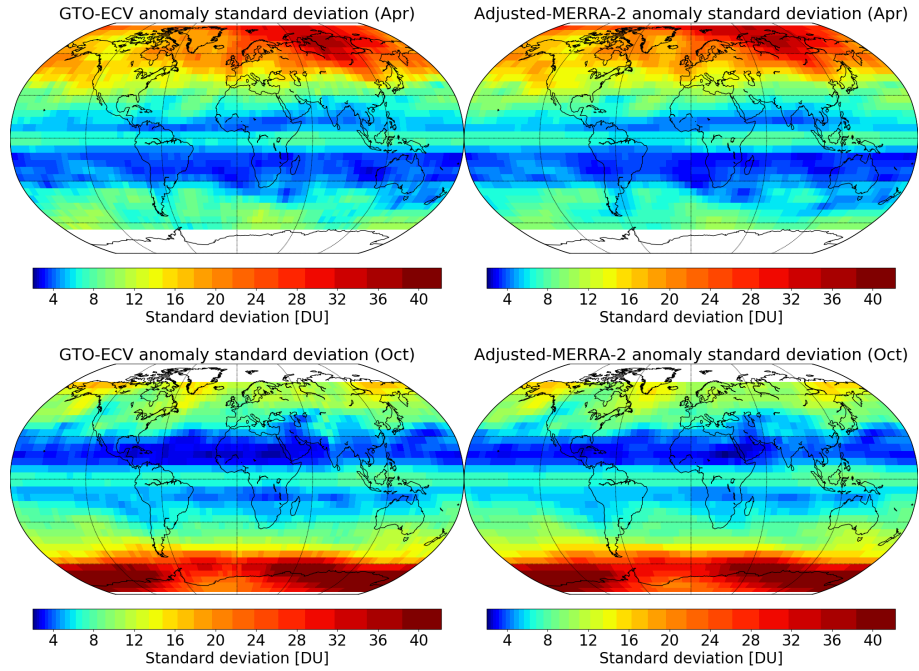


Figure 11. Standard deviation of ozone anomalies [DU] for GTO-ECV (left) and ~~Adjusted-MERRA~~ Adjusted-MERRA-2 (right) data records for April (top) and October (bottom). Note the nonlinear colorscale.

2008, 2011, and 2015, although the aforementioned positive anomalies are more pronounced (see also Fig. 9, bottom panel) leading to the positive skewness.

4 ~~Principal component~~ Empirical orthogonal function analysis in the tropics

To extend the comparison of the interannual variability of ozone we carry out an empirical orthogonal function (EOF) analysis (Preisendorfer, 1988) on both data records. Similar to Camp et al. (2003) we restrict the investigation to the tropical belt from 25°N–25°S in order to isolate and unravel the various well-known forcings (e.g., QBO or ENSO) in this region from the stronger variations in the middle latitudes. Note that essentially the EOF analysis is not based on physical principles, but the results sometimes can be interpreted as or attributed to known climate modes. The focus of this investigation is mainly the comparison of the spatial patterns and the principal component (PC) time series and is to a lesser ~~extend~~ extent dedicated to the physical interpretation of the results. The EOF analysis is performed on the detrended and deseasonalized $5^\circ \times 5^\circ$ monthly mean ozone columns ~~which were detrended and deseasonalized before~~ represented earlier. In addition, a Savitzky-Golay smoothing filter (Savitzky and Golay, 1964) with a window length of 13 months was applied to the anomalies in order to remove higher frequency fluctuations from the data.

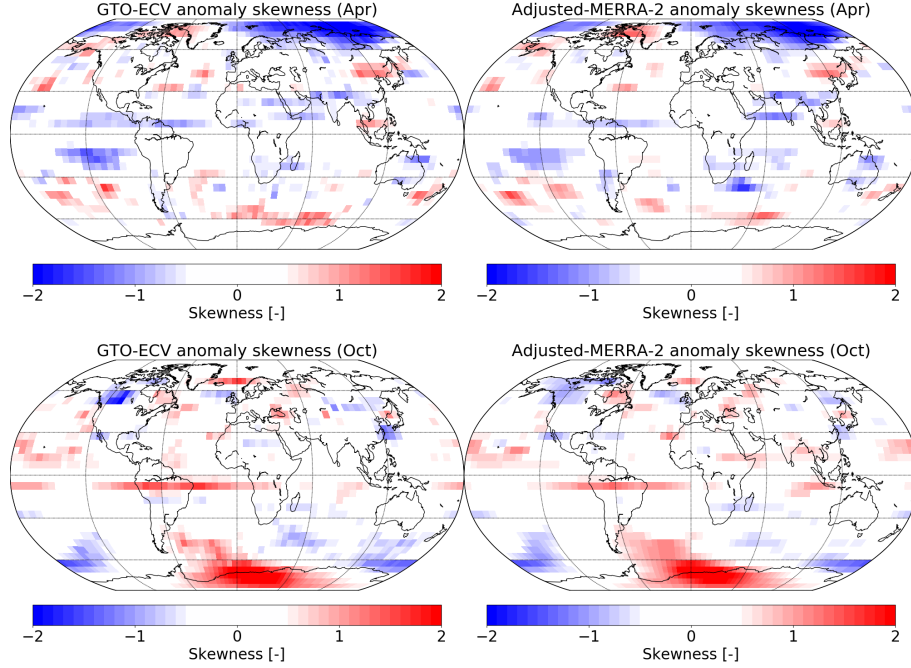


Figure 12. Skewness of the ozone anomaly distributions for GTO-ECV (left) and ~~Adjusted-MERRA~~ Adjusted-MERRA-2 (right) data records for April (top) and October (bottom). Only values exceeding the standard deviation of the skewness ($\sigma_{\text{skew}} = 0.51$) are presented.

For both data records the first four EOFs account for $\sim 92\%$ of the variance which can be inferred from the computed eigenvalues. Figure 13 shows the first four EOFs (from top to bottom) for GTO-ECV (left) and ~~Adjusted-MERRA~~ Adjusted-MERRA-2 (right) as a function of latitude and longitude. They capture 53%, 21%, 16%, and 2% of the total variance, respectively. The spatial patterns and the magnitudes agree well with the results presented in Camp et al. (2003, their Fig. 3) who analyzed (among
5 two other data records) the MOD ozone anomalies for the period 1978 to 2000. Note that EOFs 2 and 4 are of the opposite sign compared to Camp et al. (2003). However, generally the signs of the eigenvectors are arbitrary and a physical interpretation will become possible by looking at EOFs and PC time series together. The EOFs of GTO-ECV and ~~Adjusted-MERRA~~ Adjusted-MERRA-2 show a quite good consistency regarding the spatial structures and the range. The associated PC time series and Fourier spectra are given in Figs. 14 and 15, respectively.

10 The first EOFs (Figs. 13 (a) and (b)) indicate zonal invariance and symmetry w.r.t. the equator. EOFs are maximum (~ 7 DU) at the equator and the sign switches at about 15°N/S . Minimum values are ~ 3.3 DU. The PC time series (Fig. 14 a) indicates an amplitude of around 2, which means that the maximum peak-to-peak amplitude of ozone at the equator is about 28 DU. PCs for both GTO-ECV and ~~Adjusted-MERRA~~ Adjusted-MERRA-2 agree quite well and their correlation coefficient is high ($\rho_1 = 0.99$). Figure 15 (a) indicates a very dominant peak at a period of 28 months which is consistent with the mean period
15 of the QBO (Baldwin et al., 2001). Therefore, in addition to the PCs, the green curve in Fig. 14 (a) denotes the QBO index

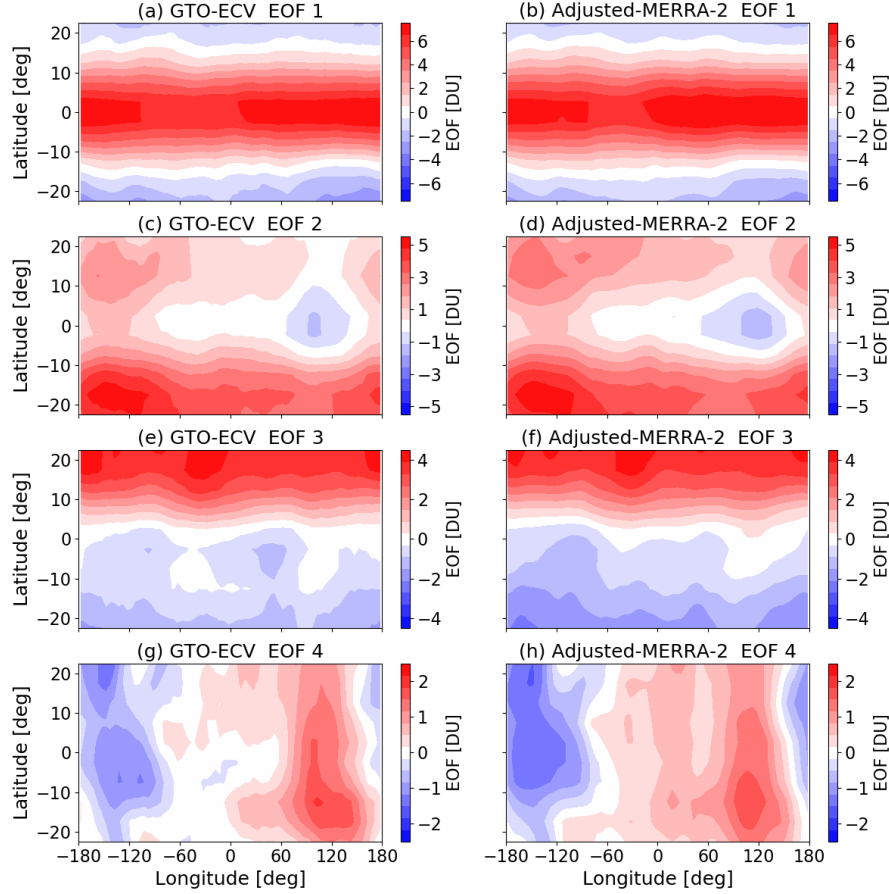


Figure 13. Spatial patterns for the first four EOFs (from top to bottom) in the tropics from 25°N–25°S. Left: GTO-ECV and right: ~~Adjusted-MERRA~~Adjusted-MERRA-2.

at 30 hPa (available at <https://www.cpc.ncep.noaa.gov/data/indices/qbo.u30.index>) and we find a good correlation between the PCs and the QBO index ($\rho_2 = 0.81$ for GTO-ECV and $\rho_3 = 0.77$ for ~~Adjusted-MERRA~~Adjusted-MERRA-2).

The second EOFs for GTO-ECV and ~~Adjusted-MERRA~~Adjusted-MERRA-2 (Figs. 13 (c) and (d)) are almost entirely positive. Only a small region between 60°E and 150°E indicates negative values (~ -1.2 DU). Maximum values of about 5.3 DU are found south of the equator. The associated PCs are shown in Fig. 14 (b), and as for the first EOF they indicate a good correlation ($\rho_1 = 0.94$) between GTO-ECV and ~~Adjusted-MERRA~~Adjusted-MERRA-2. The Fourier spectra for the second PCs (Fig. 15 (b)) show a dominant peak at 138 months (≈ 11.5 years), but also at ~ 21 and ~ 40 months. Figure 14 (b) reveals a moderate correlation of the PCs with the solar cycle index (green curve, available at ftp://ftp.geolab.nrcan.gc.ca/data/solar_flux/monthly_averages/solflux_monthly_average.txt).

- 10 The values of the third EOFs (Fig. 13 (e) and (f)) range from -1.7 DU (-2.2 DU in case of ~~Adjusted-MERRA~~Adjusted-MERRA-2) in the south to 4.3 DU toward the northern boundary. The change of sign occurs roughly at the equator and the patterns are

more or less zonally invariant. Again the agreement ~~among-between~~ both data records is good. The associated Fourier spectra (Fig. 15 (c)) indicate a strong peak at 21 months. According to Tung and Yang (1994) and Camp et al. (2003) this period is ~~resulting from an~~ a result of the interaction between the QBO and the annual cycle. The so-called QBO-annual beat frequency is the difference between the annual frequency (1/12 month) and the frequency of the QBO (1/28 month). The correlation

5 between the PCs for GTO-ECV and ~~Adjusted-MERRA~~ Adjusted-MERRA-2 is quite high ($\rho_1 = 0.98$).

The spatial patterns of the fourth EOFs are presented in Figs. 13 (g) and (h) and the corresponding PCs and Fourier spectra are shown in the bottom panels of Figs. 14 and 15, respectively. The EOFs show a clear zonal structure with maximum values (~ 1.9 DU) in the eastern Indian Ocean and over Indonesia and the western Pacific (60–180°E) and minimum values (~ 1.5 DU) over the central and eastern Pacific (90–180°W). The sign switches somewhat west of the dateline and the maxima

10 are found slightly south of the equator. The PCs for GTO-ECV and ~~Adjusted-MERRA~~ Adjusted-MERRA-2 show an excellent agreement ($\rho_1 = 0.95$). Fig. 15 (d) indicates discrete peaks at 18 and 28 months and a broader peak for periods greater than 40 months. In contrast to the first three PCs the dominant peaks for GTO-ECV and ~~Adjusted-MERRA~~ Adjusted-MERRA-2 do not agree for this PC. The dominant period for GTO-ECV is 18 months, whereas for ~~Adjusted-MERRA~~ Adjusted-MERRA-2 it is the decadal signal. Wang et al. (2011) found a distinct peak at 17 ~~month~~ months and suggested that this could be a

15 beat frequency between ENSO and the annual cycle. Additionally, a comparison with the Multivariate ENSO Index (MEI, <https://www.esrl.noaa.gov/psd/enso/mei/>) time series indicates a considerable correlation ($\rho \approx 0.60$) with this climate mode. In particular the strong El Niño events in 1997 and 2015 are in accordance with positive peaks in the PC time series (Fig. 14 (d)). We assume that the rather irregular periodicity of ENSO events (~ 3 –7 years) is responsible for the broad peak with substantial power for periods greater than 40 months.

20 The investigation of the EOFs and associated PC time series inferred from GTO-ECV and ~~Adjusted-MERRA~~ Adjusted-MERRA-2 total ozone anomalies in the tropics has demonstrated an excellent agreement among the two long-term data records in terms of both spatial and temporal patterns. PC time series indicate a high correlation and also the derived spectral features are very consistent. Furthermore, the extracted structures can be attributed to different modes of interannual dynamically-induced climate variability. As shown in Fig. 14 and discussed in, e.g., Tung and Yang (1994), Camp et al. (2003), or Jiang et al. (2004),

25 to a large ~~extend~~ extent the QBO, the solar cycle, and ENSO induce year-to-year changes in ozone.

Regarding the QBO at 30 hPa, an in-phase relation between the mean zonal wind and total ozone was observed for the inner tropical belt ($\pm 15^\circ$), i.e. high ozone during westerly winds and low ozone during easterly winds (see also Baldwin et al., 2001; Coldewey-Egbers et al., 2014). Variations in ozone of up to 28 DU were found, which is in very good agreement with Steinbrecht et al. (2003) who found variations of up to 25 DU using a multiple linear least squares analysis. For the second

30 EOF, which was attributed to the solar cycle, ~~also~~ a positive correlation between total ozone and the solar radio flux at 10.7 cm was detected for almost the entire tropical region. Variations up to 25 DU were found, which is the same value as stated by Steinbrecht et al. (2003). EOF 3 could be attributed to a combination of two parameters, the QBO and the annual cycle, and EOF 4 could be attributed to ENSO. For the latter the maximum peak-to-peak amplitude is 10 DU which is also in line with Steinbrecht et al. (2003).

5 Summary and conclusions

In this paper we present a comparison of the GOME-type Total Ozone Essential Climate Variable (GTO-ECV) with the ~~Adjusted-MERRA~~ Adjusted-MERRA-2 (Modern Era Retrospective Analysis for Research and Applications [version 2](#)) total ozone products during their 23-year overlap period from July 1995 to December 2018. The analysis is based on $5^\circ \times 5^\circ$ monthly mean ozone columns and associated standard deviations that are provided with the products. The main focus of this study is the assessment of the consistency among both data records concerning temporal and spatial patterns as well as interannual variability.

The GTO-ECV data record has been created in the framework of the ESA Climate Change Initiative ozone project (Coldewey-Egbers et al., 2015). It is a merged product that comprises observations from five satellite sensors (all measuring in nadir-viewing geometry, starting in 1995 with GOME/ERS-2), characterized by very high inter-sensor consistency, good spatial resolution, and near global coverage. We compare GTO-ECV with the ~~Adjusted-MERRA~~ Adjusted-MERRA-2 reanalysis ozone product provided by NASA. It is mainly based on the MERRA-2 data set released in 2015 (Bosilovich et al., 2015), but has been recently ~~renormalized~~ normalized to ozone columns from the Merged Ozone Data Set (MOD; Frith et al., 2014) in order to improve its long-term coherence.

In general the analysis indicates a very good agreement among both data records. The mean bias between ~~Adjusted-MERRA~~ Adjusted-MERRA-2 and GTO-ECV monthly mean total ozone columns is $-0.9 \pm 1.5\%$. The comparison of zonally averaged data revealed that there is a small change in the behavior occurring in October 2004 when data from the Ozone Monitoring Instrument (OMI) are included in GTO-ECV ~~and also in Adjusted-MERRA-2~~. Since the ingestion of OMI observations in both data records introduces a slight inevitable interdependence, we split the analysis into two sub-periods: 07/1995–09/2004 and 10/2004–12/2018. The mean difference between ~~Adjusted-MERRA~~ Adjusted-MERRA-2 and GTO-ECV ozone columns is $-0.5 \pm 1.8\%$ before October 2004 and $-1.0 \pm 1.3\%$ after that date. For the standard deviations the mean difference is -0.4 ± 3.4 DU and -1.0 ± 1.8 DU, respectively. The small negative bias between ~~MERRA~~ Adjusted-MERRA-2 and GTO-ECV slightly increases in the later period, but the scatter in the differences is reduced. Because of the observed discontinuity in 2004 we compute the drift in the differences and found a small negative trend for the period 1995–2018 for almost all latitude bands, which is still well below $1\% \text{ decade}^{-1}$. The ~~seasonal~~ seasonal cycles agree quite well and the differences in their amplitudes do not exceed 2 DU.

Regarding the spatial patterns of ozone and its standard deviation both data records reveal the same general structures, though the differences indicate some minor seasonal and regional features. In the tropics differences are negative over the southern Atlantic, southern Africa and the Indian Ocean, whereas positive differences were found over the Pacific and the northern Atlantic in winter and spring. Although the small overall negative bias is slightly larger in the period with OMI involved in both data records (10/2004–12/2018), the spatial pattern of the differences remains nearly the same (see Fig. 7). This might indicate that the interdependence of both data records plays only a minor role.

The variability in the differences is notably reduced in the second period (~~2004–2108~~2004–2018) probably related to the enhanced data coverage and improved spatial resolution that comes along with the integration of OMI data. A similar behavior was found by Garane et al. (2018) who validated the GTO-ECV product against independent ground-based observations.

The comparison of ozone anomalies indicates an excellent agreement between both data records. For more than 97% of the $1^\circ \times 1^\circ$ grid cells the correlation coefficient is larger than 0.90. The spatial patterns of the moments of the anomalies, i.e. standard deviation and skewness, show a very good consistency. Furthermore we assessed the interannual variability in the tropics (25°N – 25°S) and carried out an EOF analysis. GTO-ECV and ~~Adjusted-MERRA~~Adjusted-MERRA-2 exhibit a remarkable agreement in terms of spatial and temporal structures. The first four EOFs account for $\sim 92\%$ of the total variance and can be attributed to different modes of interannual climate variability. Distinct correlations with QBO, ENSO, and the solar cycle were detected.

Based on the results of our comparison, we conclude that both the GTO-ECV and the Adjusted-MERRA-2 total ozone data sets can be used for a number of relevant applications. GTO-ECV fulfills official user requirements (Garane et al., 2018) and is suitable for longer-term analyses that require good stability, e.g. trend studies, and for the evaluation of model simulations. The Adjusted MERRA-2 was developed primarily for input into climate models and for data intercomparison studies, but has not been evaluated for long-term trend studies (i.e. high spatial resolution trends) and should not be used for this purpose.

In the framework of the recently established ESA-CCI+ ozone project (www.esa-ozone-cci.org) the GTO-ECV data record will be revisited and further extended. Data from the newly launched sensors TROPOMI (Tropospheric Monitoring Instrument, launched on 13 October 2017 on-board the Sentinel 5 Precursor platform) and GOME-2 on-board MetOp-C (launched on 07 November 2018) will be integrated in GTO-ECV. Additionally, as part of the second phase of the European Union (EU) Copernicus Climate Change Service (C3S) ozone project GTO-ECV is regularly (every six months) expanded in time.

Data availability. The GTO-ECV Climate Research Data Package is available at <http://www.esa-ozone-cci.org/?q=node/160> (Coldewey-Egbers et al., 2015). The Adjusted-MERRA-2 data record is available via <ftp://jwocky.gsfc.nasa.gov/pub/MergedOzoneData/>.

Author contributions. MCE performed the analysis and wrote the paper. DL and GL initiated this comparison in the framework of the Committee on Earth Observation Satellites Atmospheric Composition Virtual Constellation (CEOS AC-VC). MCE and DL are responsible for the generation of the GTO-ECV data record. GL and SF provided the Adjusted-MERRA-2 ozone product. All authors contributed to the interpretation of the results and the revision of the manuscript.

Competing interests. The authors declare that they have no conflict of interest.

Acknowledgements. Melanie Coldewey-Egbers and Diego Loyola are grateful for the support by the ESA-CCI and ESA-CCI+ ozone projects and the EU Copernicus Climate Change Service ozone projects. The SBUV Merged Ozone Data Set was constructed under the NASA MeaSURES (Making Earth System Data Records for Use in Research Environments) Project and is maintained under NASA WBS 479717 (Long Term Measurement of Ozone).

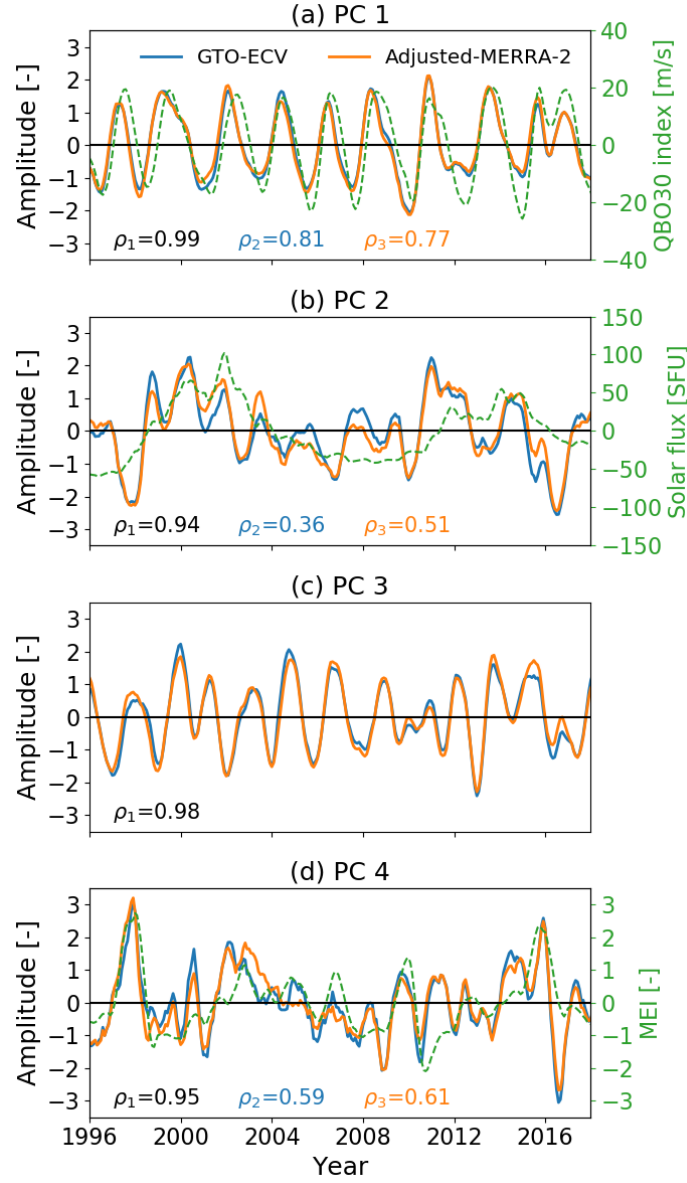


Figure 14. Principal component (PC) time series for the first four EOFs (from top to bottom) for GTO-ECV (blue) and Adjusted-MERRA-2 (orange). The green curves denote appropriate climatic indices: (a) QBO at 30 hPa, (b) solar flux at 10.7 cm, and (d) the Multivariate ENSO Index (MEI). All indices were detrended and a Savitzky-Golay smoothing filter with a window length of 13 months was applied. The solar flux is given in solar flux units (SFU) which is defined as $1 \text{ SFU} = 10^{-22} \text{ W m}^{-2} \text{ Hz}^{-1}$. The numbers provided in the bottom part of the plots indicate the correlation coefficients between GTO-ECV and Adjusted-MERRA-2 PCs (ρ_1 , black), between the GTO-ECV PC and the selected proxy (ρ_2 , blue), and the Adjusted-MERRA-2 PC and the selected proxy (ρ_3 , orange), respectively. For PC3 (c) no proxy is shown (see text for more details).

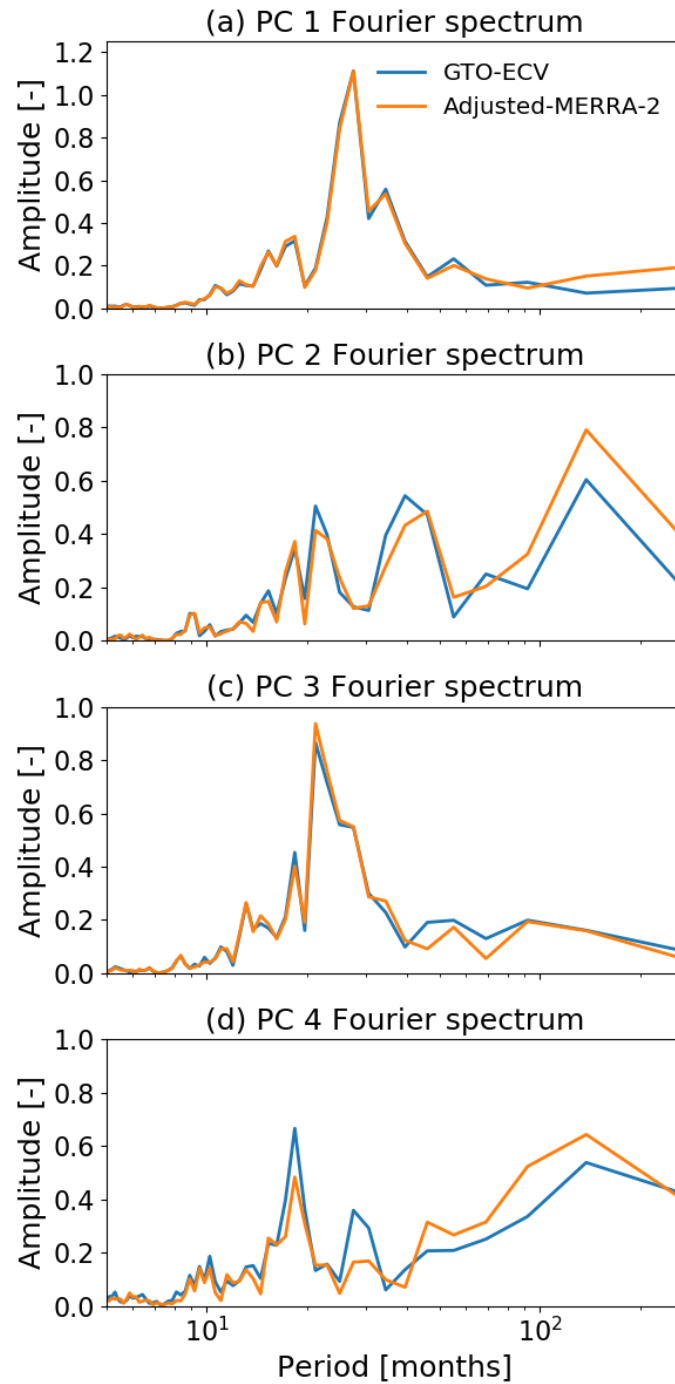


Figure 15. Fourier spectra of the first four principal components (shown in Fig. 14). From top to bottom: PC1, PC2, PC3, and PC4. Blue: GTO-ECV and orange: ~~Adjusted-MERRA~~Adjusted-MERRA-2.

References

- Baldwin, M. P., Gray, L. J., Dunkerton, T. J., Hamilton, K., Haynes, P. H., Randel, W. J., Holton, J. R., Alexander, M. J., Hirota, I., Horinouchi, T., Jones, D. B. A., Kinnnersley, J. S., Marquardt, C., Sato, K., and Takahashi, M.: The quasi-biennial oscillation, *Rev. Geophys.*, 39, 179–229, <https://doi.org/10.1029/1999RG000073>, 2001.
- 5 Ball, W. T., Alsing, J., Mortlock, D. J., Staehelin, J., Haigh, J. D., Peter, T., Tummon, F., Stübi, R., Stenke, A., Anderson, J., Bourassa, A., Davis, S. M., Degenstein, D., Frith, S., Froidevaux, L., Roth, C., Sofieva, V., Wang, R., Wild, J., Yu, P., Ziemke, J. R., and Rozanov, E. V.: Evidence for a continuous decline in lower stratospheric ozone offsetting ozone layer recovery, *Atmos. Chem. Phys.*, 18, 1379–1394, <https://doi.org/10.5194/acp-18-1379-2018>, 2018.
- Bhartia, P. K.: Total ozone from backscattered ultraviolet measurements, in: *Observing Systems for Atmospheric Composition*, edited by Visconti, G., pp. 48–63, Springer, New York, 2007.
- 10 Bosilovich, M., Akella, S., Coy, L., Cullather, R., Draper, C., Gelaro, R., Kovach, R., Liu, Q., Molod, A., Norris, P., Wargan, K., Chao, W., Reichle, R., Takacs, L., Vikhliayev, Y., Bloom, S., Collow, A., Firth, S., Labow, G., Partyka, G., Pawson, S., Reale, O., Schubert, S. D., and Suarez, M.: MERRA-2: Initial Evaluation of the Climate, Tech. rep., Series on Global Modeling and Data Assimilation, edited by: Koster, R. D., NASA Goddard Space Flight Center, Greenbelt, Maryland, NASA/TM-2015-104606, 43, 2015.
- 15 Bovensmann, H., Burrows, J. P., Buchwitz, M., Frerick, J., Noël, S., Rozanov, V. V., Chance, K. V., and Goede, A. P. H.: SCIAMACHY: Mission Objectives and Measurement Modes, *J. Atmos. Sci.*, 56, 127–150, [https://doi.org/10.1175/1520-0469\(1999\)056<0127:SMOAMM>2.0.CO;2](https://doi.org/10.1175/1520-0469(1999)056<0127:SMOAMM>2.0.CO;2), 1999.
- Braesicke, P., Neu, J., Fioletov, V., Godin-Beekmann, S., Hubert, D., Petropavlovskikh, I., Shiotani, M., and Sinnhuber, B.-M.: Update on Global Ozone: Past, Present, and Future, Chapter 3, *Scientific Assessment of Ozone Depletion: 2018*, Global Ozone Research and Monitoring Project–Report No. 58, World Meteorological Organization, Geneva, Switzerland, 2018.
- 20 Burrows, J. P., Weber, M., Buchwitz, M., Rozanov, V. V., Ladstädter-Weissenmayer, A., Richter, A., de Beek, R., Hoogen, R., Bramstedt, K., Eichmann, K.-U., Eisinger, M., and Perner, D.: The Global Ozone Monitoring Experiment (GOME): Mission Concept and First Scientific Results, *J. Atmos. Sci.*, 56, 151–175, [https://doi.org/10.1175/1520-0469\(1999\)056<0151:TGOMEG>2.0.CO;2](https://doi.org/10.1175/1520-0469(1999)056<0151:TGOMEG>2.0.CO;2), 1999.
- Camp, C. D., Roulston, M. S., and Yung, Y. L.: Temporal and spatial patterns of the interannual variability of total ozone in the tropics, *J. Geophys. Res.*, 108, <https://doi.org/10.1029/2001JD001504>, 2003.
- 25 Chiou, E. W., Bhartia, P. K., McPeters, R. D., Loyola, D. G., Coldewey-Egbers, M., Fioletov, V. E., van Roozendael, M., Spurr, R., Lerot, C., and Frith, S. M.: Comparison of profile total ozone from SBUV (v8.6) with GOME-type and ground-based total ozone for a 16-year period (1996 to 2011), *Atmos. Meas. Tech.*, 7, 1681–1692, <https://doi.org/10.5194/amt-7-1681-2014>, 2014.
- Coldewey-Egbers, M., Loyola, D., Braesicke, P., Dameris, M., van Roozendael, M., Lerot, C., and Zimmer, W.: A new health check of the ozone layer at global and regional scales, *Geophys. Res. Lett.*, 41, 4363–4372, <https://doi.org/10.1002/2014GL060212>, 2014.
- 30 Coldewey-Egbers, M., Loyola, D. G., Koukouli, M., Balis, D., Lambert, J.-C., Verhoelst, T., Granville, J., van Roozendael, M., Lerot, C., Spurr, R., Frith, S. M., and Zehner, C.: The GOME-type Total Ozone Essential Climate Variable (GTO-ECV) data record from the ESA Climate Change Initiative, *Atmos. Meas. Tech.*, 8, 3923–3940, <https://doi.org/10.5194/amt-8-3923-2015>, 2015.
- Davis, S. M., Hegglin, M. I., Fujiwara, M., Dragani, R., Harada, Y., Kobayashi, C., Long, C., Manney, G. L., Nash, E. R., Potter, G. L., Tegtmeier, S., Wang, T., Wargan, K., and Wright, J. S.: Assessment of upper tropospheric and stratospheric water vapor and ozone in reanalyses as part of S-RIP, *Atmos. Chem. Phys.*, 17, 12 743–12 778, <https://doi.org/10.5194/acp-17-12743-2017>, 2017.
- 35

- Entzian, G. and Peters, D.: Very low zonally asymmetric ozone values in March 1997 above the North Atlantic-European region, induced by dynamic processes, *Ann. Geophys.*, 17, 933–940, <https://doi.org/10.1007/s00585-999-0933-4>, 1999.
- Fioletov, V. E.: Ozone climatology, trends, and substances that control ozone, *Atmosphere-Ocean*, 46, 39–67, <https://doi.org/10.3137/ao.460103>, 2008.
- 5 Fishman, J., Brackett, V. G., and Fakhruzzaman, K.: Distribution of tropospheric ozone in the tropics from satellite and ozonesonde measurements, *Journal of Atmospheric and Terrestrial Physics*, 54, 589–597, [https://doi.org/10.1016/0021-9169\(92\)90099-7](https://doi.org/10.1016/0021-9169(92)90099-7), 1992.
- Frith, S. M., Kramarova, N. A., Stolarski, R. S., McPeters, R. D., Bhartia, P. K., and Labow, G. J.: Recent changes in total column ozone based on the SBUV Version 8.6 Merged Ozone Data Set, *J. Geophys. Res. Atmos.*, 119, 9735–9751, <https://doi.org/10.1002/2014JD021889>, 2014.
- 10 Frith, S. M., Stolarski, R. S., Kramarova, N. A., and McPeters, R. D.: Estimating uncertainties in the SBUV Version 8.6 merged profile ozone data set, *Atmos. Chem. Phys.*, 17, 14 695–14 707, <https://doi.org/10.5194/acp-17-14695-2017>, 2017.
- Fusco, A. C. and Salby, M. L.: Interannual Variations of Total Ozone and Their Relationship to Variations of Planetary Wave Activity, *J. Climate*, 12, 1619–1629, [https://doi.org/10.1175/1520-0442\(1999\)012<1619:IVOTOA>2.0.CO;2](https://doi.org/10.1175/1520-0442(1999)012<1619:IVOTOA>2.0.CO;2), 1999.
- Garane, K., Lerot, C., Coldewey-Egbers, M., Verhoelst, T., Koukouli, M. E., Zyrichidou, I., Balis, D. S., Danckaert, T., Goutail, F., Granville, J., Hubert, D., Keppens, A., Lambert, J.-C., Loyola, D., Pommereau, J.-P., van Roozendael, M., and Zehner, C.: Quality assessment of the Ozone_cci Climate Research Data Package (release 2017) – Part 1: Ground-based validation of total ozone column data products, *Atmos. Meas. Tech.*, 11, 1385–1402, <https://doi.org/10.5194/amt-11-1385-2018>, 2018.
- GCOS: Systematic Observation Requirements for Satellite-Based Data Products for Climate - 2011 Update, <http://www.wmo.int/pages/prog/gcos/Publications/gcos-154.pdf>, [accessed: 21-May-2019], 2011.
- 20 Harris, N. R. P., Kyrö, E., Staehelin, J., Brunner, D., Andersen, S.-B., Godin-Beekmann, S., Dhomse, S., Hadjinicolaou, P., Hansen, G., Isaksen, I., Jrrar, A., Karpetchko, A., Kivi, R., Knudsen, B., Krizan, P., Lastovicka, J., Maeder, J., Orsolini, Y., Pyle, J. A., Rex, M., Vanicek, K., Weber, M., Wohltmann, I., Zanis, P., and Zerefos, C.: Ozone trends at northern mid- and high latitudes – a European perspective, *Ann. Geophys.*, 26, 1207–1220, <https://doi.org/10.5194/angeo-26-1207-2008>, 2008.
- Heue, K.-P., Coldewey-Egbers, M., Delcloo, A., Lerot, C., Loyola, D., Valks, P., and van Roozendael, M.: Trends of tropical tropospheric ozone from 20 years of European satellite measurements and perspectives for the Sentinel-5 Precursor, *Atmos. Meas. Tech.*, 9, 5037–5051, <https://doi.org/10.5194/amt-9-5037-2016>, 2016.
- Hollmann, R., Merchant, C. J., Saunders, R., Downy, C., Buchwitz, M., Cazenave, A., Chuvieco, E., Defourny, P., de Leeuw, G., Forberg, R., Holzer-Popp, T., Paul, F., Sandven, S., Sathyendranath, S., van Roozendael, M., and Wagner, W.: The ESA Climate Change Initiative: satellite data records for essential climate variables, *Bull. Amer. Meteor. Soc.*, 94, 1541–1552, <https://doi.org/10.1175/BAMS-D-11-00254.1>, 2013.
- 30 Hood, L., Rossi, S., and Beulen, M.: Trends in lower stratospheric zonal winds, Rossby wave breaking behavior, and column ozone at northern midlatitudes, *J. Geophys. Res. Atmos.*, 104, 24 321–24 339, <https://doi.org/10.1029/1999JD900401>, 1999.
- Ialongo, I., Sofieva, V., Kalakoski, N., Tamminen, J., and Kyrölä, E.: Ozone zonal asymmetry and planetary wave characterization during Antarctic spring, *Atmos. Chem. Phys.*, 12, 2603–2614, <https://doi.org/10.5194/acp-12-2603-2012>, 2012.
- 35 Jiang, X., Camp, C., Shia, R., Noone, D., Walker, C., and Yung, Y.: Quasi-biennial oscillation and quasi-biennial oscillation-annual beat in the tropical total column ozone: A two-dimensional model simulation, *J. Geophys. Res.*, 109, <https://doi.org/10.1029/2003JD004377>, D16305, 2004.
- Kalnay, E.: *Atmospheric Modeling, Data Assimilation and Predictability*, Cambridge University Press, 368 pp., 2003.

- Kleist, D. T., Parrish, D. F., Derber, J. C., Treadon, R., Wu, W.-S., and Lord, S.: Introduction of the GSI into the NCEP Global Data Assimilation System, *Weather and Forecasting*, 24, 1691–1705, <https://doi.org/10.1175/2009WAF2222201.1>, 2009.
- Koukouli, M. E., Lerot, C., Granville, J., Goutail, F., Lambert, J.-C., Pommereau, J.-P., Balis, D., Zyrichidou, I., Van Roozendaal, M., Coldewey-Egbers, M., Loyola, D., Labow, G., Frith, S., Spurr, R., and Zehner, C.: Evaluating a new homogeneous total ozone climate data record from GOME/ERS-2, SCIAMACHY/Envisat, and GOME-2/MetOp-A, *J. Geophys. Res.*, 120, 12 296–12 312, <https://doi.org/10.1002/2015JD023699>, 2015.
- Kuttippurath, J. and Nair, P. J.: The signs of Antarctic ozone hole recovery, *Sci. Rep.*, 7, <https://doi.org/10.1038/s41598-017-00722-7>, 2017.
- Kuttippurath, J., Kumar, P., Nair, P. J., and Pandey, P. C.: Emergence of ozone recovery evidenced by reduction in the occurrence of Antarctic ozone loss saturation, *npj Clim. Atmos. Sci.*, 1, <https://doi.org/10.1038/s41612-018-0052-6>, 2018.
- 10 Lerot, C., van Roozendaal, M., Lambert, J.-C., Granville, J., van Gent, J., Loyola, D., and Spurr, R.: The GODFIT algorithm: a direct fitting approach to improve the accuracy of total ozone measurements from GOME, *Int. J. Remote Sensing*, 31, 543–550, <https://doi.org/10.1080/01431160902893576>, 2010.
- Lerot, C., van Roozendaal, M., Spurr, R., Loyola, D., Coldewey-Egbers, M., Kochenova, S., van Gent, J., Koukouli, M., Balis, D., Lambert, J.-C., Granville, J., and Zehner, C.: Homogenized total ozone data records from the European sensors GOME/ERS-2, SCIAMACHY/Envisat, and GOME-2/MetOp-A, *J. Geophys. Res. Atmos.*, 119, 1639–1662, <https://doi.org/10.1002/2013JD020831>, 2014.
- 15 Levelt, P. F., Joiner, J., Tamminen, J., Veefkind, J. P., Bhartia, P. K., Stein Zweers, D. C., Duncan, B. N., Streets, D. G., Eskes, H., van der A, R., McLinden, C., Fioletov, V., Carn, S., de Laat, J., DeLand, M., Marchenko, S., McPeters, R., Ziemke, J., Fu, D., Liu, X., Pickering, K., Apituley, A., González Abad, G., Arola, A., Boersma, F., Chan Miller, C., Chance, K., de Graaf, M., Hakkarainen, J., Hassinen, S., Ialongo, I., Kleipool, Q., Krotkov, N., Li, C., Lamsal, L., Newman, P., Nowlan, C., Suleiman, R., Tilstra, L. G., Torres, O., Wang, H., and Wargan, K.: The Ozone Monitoring Instrument: overview of 14 years in space, *Atmos. Chem. Phys.*, 18, 5699–5745, <https://doi.org/10.5194/acp-18-5699-2018>, 2018.
- 20 Loyola, D. G., Coldewey-Egbers, M., Dameris, M., Garny, H., Stenke, A., van Roozendaal, M., Lerot, C., Balis, D., and Koukouli, M.: Global long-term monitoring of the ozone layer – a prerequisite for predictions, *Int. J. Remote Sensing*, 30, 4295–4318, <https://doi.org/10.1080/01431160902825016>, 2009.
- 25 McPeters, R. D., Kroon, M., Labow, G., Brinksma, E., Balis, D., Petropavlovskikh, I., Veefkind, J. P., Bhartia, P. K., and Levelt, P. F.: Validation of the Aura Ozone Monitoring Instrument total column ozone product, *J. Geophys. Res. Atmos.*, 113, <https://doi.org/10.1029/2007JD008802>, 2008.
- McPeters, R. D., Bhartia, P. K., Haffner, D., Labow, G. J., and Flynn, L.: The version 8.6 SBUV ozone data record: An overview, *J. Geophys. Res. Atmos.*, 118, 8032–8039, <https://doi.org/10.1002/jgrd.50597>, 2013.
- 30 McPeters, R. D., Frith, S., and Labow, G. J.: OMI total column ozone: extending the long-term data record, *Atmos. Meas. Tech.*, 8, 4845–4850, <https://doi.org/10.5194/amt-8-4845-2015>, 2015.
- Molod, A., Takacs, L., Suarez, M., and Bacmeister, J.: Development of the GEOS-5 atmospheric general circulation model: evolution from MERRA to MERRA2, *Geoscientific Model Development*, 8, 1339–1356, <https://doi.org/10.5194/gmd-8-1339-2015>, 2015.
- Munro, R., Lang, R., Klaes, D., Poli, G., Retscher, C., Lindstrot, R., Huckle, R., Lacan, A., Grzegorski, M., Holdak, A., Kokhanovsky, A., Livschitz, J., and Eisinger, M.: The GOME-2 instrument on the Metop series of satellites: instrument design, calibration, and level 1 data processing – an overview, *Atmos. Meas. Tech.*, 9, 1279–1301, <https://doi.org/10.5194/amt-9-1279-2016>, 2016.
- 35

- Pawson, S., Steinbrecht, W., Charlton-Perez, A. J., Fujiwara, M., Karpechko, A. Y., Petropavlovskikh, I., Urban, J., and Weber, M.: Update on Global Ozone: Past, Present, and Future, Chapter 2, Scientific Assessment of Ozone Depletion: 2014, Global Ozone Research and Monitoring Project – Report No. 55, World Meteorological Organization, Geneva, Switzerland, 2014.
- Preisendorfer, R. W.: Principal Component Analysis in Meteorology and Oceanography, Elsevier, New York, 1988.
- 5 Press, W. H., Teukolsky, S. A., Vetterling, W. T., and Flannery, B. P.: Numerical Recipes in C (2nd Ed.): The Art of Scientific Computing, Cambridge University Press, New York, NY, USA, 1992.
- Rahpoe, N., van der A, R., Adams, C., Bernath, P., von Clarmann, T., Coldewey-Egbers, M., Degenstein, D., Dudhia, A., Hargreaves, R., Laeng, A., Lerot, C., Loyola, D., van Peet, J., Sofieva, V., Stiller, G., Tamminen, J., Urban, J., Van Roozendaal, M., Weber, M., Danckaert, T., Astoreca, R., Heue, K.-P., Sheese, P., Walker, K., and Tukiainen, S.: Algorithm Theoretical Basis Document Version 2 (ATBDv2), Ozone_cci Phase-2 (Project Deliverable), Tech. rep., available at:
10 http://cci.esa.int/sites/default/files/filedepot/incoming/Ozone_cci_ATBD_Phase2_V2.pdf (last access: 15 January 2020), 2017.
- Savitzky, A. and Golay, M. J. E.: Smoothing and Differentiation of Data by Simplified Least Squares Procedures, *Anal. Chem.*, pp. 1627–1639, <https://doi.org/10.1021/ac60214a047>, 1964.
- Solomon, S., Ivy, D. J., Kinnison, D., Mills, M. J., Neely, R. R., and Schmidt, A.: Emergence of healing in the Antarctic ozone layer, *Science*,
15 353, 269–274, <https://doi.org/10.1126/science.aae0061>, 2016.
- SPARC/IO3C/GAW, 2019: SPARC/IO3C/GAW Report on Long-term Ozone Trends and Uncertainties in the Stratosphere, I. Petropavlovskikh, S. Godin-Beekmann, D. Hubert, R. Damadeo, B. Hassler, V. Sofieva (Eds.), SPARC Report No. 9, GAW Report No. 241, WCRP-17/2018, doi:10.17874/f899e57a20b, available at www.sparc-climate.org/publications/sparc-reports/sparc-report-no-9/, [accessed: 21-May-2019].
- 20 Stajner, I., Wargan, K., Pawson, S., Hayashi, H., Chang, L.-P., Hudman, R. C., Froidevaux, L., Livesey, N., Levelt, P. F., Thompson, A. M., Tarasick, D. W., Stübi, R., Andersen, S. B., Yela, M., König-Langlo, G., Schmidlin, F. J., and Witte, J. C.: Assimilated ozone from EOS-Aura: Evaluation of the tropopause region and tropospheric columns, *J. Geophys. Res. Atmos.*, 113, <https://doi.org/10.1029/2007JD008863>, D16S32, 2008.
- Steinbrecht, W., Hassler, B., Claude, H., Winkler, P., and Stolarski, R. S.: Global distribution of total ozone and lower stratospheric temperature variations, *Atmos. Chem. Phys.*, 3, 1421–1438, <https://doi.org/10.5194/acp-3-1421-2003>, 2003.
- 25 Stolarski, R. S., McPeters, R. D., and Newman, P. A.: The Ozone Hole of 2002 as Measured by TOMS, *J. Atmos. Sci.*, 62, 716–720, <https://doi.org/10.1175/JAS-3338.1>, 2005.
- Thompson, A. M., Witte, J. C., Oltmans, S. J., Schmidlin, F. J., Logan, J. A., Fujiwara, M., Kirchhoff, V. W. J. H., Posny, F., Coetzee, G. J. R., Hoegger, B., Kawakami, S., Ogawa, T., Fortuin, J. P. F., and Kelder, H. M.: Southern Hemisphere Additional Ozonesondes (SHADOZ) 1998–2000 tropical ozone climatology 2. Tropospheric variability and the zonal wave-one, *J. Geophys. Res.*, 108, <https://doi.org/10.1029/2002JD002241>, 8241, 2003.
- 30 Tung, K. K. and Yang, H.: Global QBO in Circulation and Ozone. Part I: Reexamination of Observational Evidence, *J. Atmos. Sci.*, 51, 2699–2707, [https://doi.org/10.1175/1520-0469\(1994\)051<2699:GQICAO>2.0.CO;2](https://doi.org/10.1175/1520-0469(1994)051<2699:GQICAO>2.0.CO;2), 1994.
- United Nations Environment Programme, 1986: Handbook for the Montreal Protocol on Substances that Deplete the Ozone Layer, Ozone Secretariat — United Nations Environment Programme, http://ozone.unep.org/Publications/MP_Handbook/index.shtml, 1986.
- 35 Van Roozendaal, M., Spurr, R., Loyola, D., Lerot, C., Balis, D., Lambert, J.-C., Zimmer, W., van Gent, J., van Geffen, J., Koukouli, M., Granville, J., Doicu, A., Fayt, C., and Zehner, C.: Sixteen years of GOME/ERS-2 total ozone data: The new direct-fitting GOME Data Processor (GDP) version 5 — Algorithm description, *J. Geophys. Res. Atmos.*, 117, <https://doi.org/10.1029/2011JD016471>, 2012.

- Wang, J., Pawson, S., Tian, B., Liang, M.-C., Shia, R.-L., Yung, Y.-L., and Jiang, X.: El Niño–Southern Oscillation in Tropical and Midlatitude Column Ozone, *J. Atmos. Sci.*, 68, 1911–1921, <https://doi.org/10.1175/JAS-D-11-045.1>, 2011.
- Wargan, K., Pawson, S., Olsen, M. A., Witte, J. C., Douglass, A. R., Ziemke, J. R., Strahan, S. E., and Nielsen, J. E.: The global structure of upper troposphere-lower stratosphere ozone in GEOS-5: A multiyear assimilation of EOS Aura data, *J. Geophys. Res. Atmos.*, 120, 2013–2036, <https://doi.org/10.1002/2014JD022493>, 2015.
- Wargan, K., Labow, G., Frith, S., Pawson, S., Livesey, N., and Partyka, G.: Evaluation of the Ozone Fields in NASA’s MERRA-2 Reanalysis, *J. Climate*, 30, 2961–2988, <https://doi.org/10.1175/JCLI-D-16-0699.1>, 2017.
- Wargan, K., Orbe, C., Pawson, S., Ziemke, J. R., Oman, L. D., Olsen, M. A., Coy, L., and Knowland, K. E.: Recent Decline in Extratropical Lower Stratospheric Ozone Attributed to Circulation Changes, *Geophys. Res. Lett.*, 45, 5166–5176, <https://doi.org/10.1029/2018GL077406>, 2018.
- Weber, M., Dikty, S., Burrows, J. P., Garny, H., Dameris, M., Kubin, A., Abalichin, J., and Langematz, U.: The Brewer-Dobson circulation and total ozone from seasonal to decadal time scales, *Atmos. Chem. Phys.*, 11, 11 221–11 235, <https://doi.org/10.5194/acp-11-11221-2011>, 2011.
- Weber, M., Coldewey-Egbers, M., Fioletov, V. E., Frith, S. M., Wild, J. D., Burrows, J. P., Long, C. S., and Loyola, D.: Total ozone trends from 1979 to 2016 derived from five merged observational datasets – the emergence into ozone recovery, *Atmos. Chem. Phys.*, 18, 2097–2117, <https://doi.org/10.5194/acp-18-2097-2018>, 2018a.
- Weber, M., Steinbrecht, W., Frith, S. M., Tweedy, O., Coldewey-Egbers, M., Davis, S., Degenstein, D., Fioletov, V. E., Froidevaux, L., de Laat, J., Long, C. S., Loyola, D., Roth, C., and Wild, J. D.: [Global Climate] Stratospheric Ozone [in “State of the Climate in 2017”], *Bull. Amer. Meteor. Soc.*, 99 (8), S49–S51, doi:10.1175 /2018BAMSStateoftheClimate.1, 2018b.
- Ziemke, J. R., Chandra, S., Thompson, A. M., and McNamara, D. P.: Zonal asymmetries in southern hemisphere column ozone: Implications of biomass burning, *J. Geophys. Res.*, 101, 14 421–14 427, <https://doi.org/10.1029/96JD01057>, 1996.
- Ziemke, J. R., Chandra, S., and Bhartia, P. K.: Two new methods for deriving tropospheric column ozone from TOMS measurements: The assimilated UARS MLS/HALOE and convective-cloud differential techniques, *J. Geophys. Res.*, 103, 22 115–22 127, <https://doi.org/10.1029/98JD01567>, 1998.