

Evaluating and Improving the Reliability of Gas-Phase Sensor System Calibrations Across New Locations for Ambient Measurements and Personal Exposure Monitoring

Sharad Vikram ¹, Ashley Collier-Oxandale ², Michael H. Ostertag ¹, Massimiliano Menarini ¹, Camron Chermak ¹, Sanjoy Dasgupta ¹, Tajana Rosing ¹, Michael Hannigan ², and William G. Griswold ¹

¹Department of Computer Science & Engineering, University of California, San Diego

²Environmental Engineering Program, University of Colorado, Boulder

Correspondence: William B. Griswold (wgg@cs.ucsd.edu)

Abstract.

Advances in ambient environmental monitoring technologies are enabling concerned communities and citizens to collect data to better understand their local environment and potential exposures. These mobile, low-cost tools make it possible to collect data with increased temporal and spatial resolution providing data on a large scale with unprecedented levels of detail. This type of data has the potential to empower people to make personal decisions about their exposure and support the development of local strategies for reducing pollution and improving health outcomes.

However, calibration of these low-cost instruments has been a challenge. Often, a sensor package is calibrated via field calibration. This involves colocating the sensor package with a high-quality reference instrument for an extended period, and then applying machine learning or other model fitting technique such as multiple-linear regression to develop a calibration model for converting raw sensor signals to pollutant concentrations. Although this method helps to correct for the effects of ambient conditions (e.g., temperature) and cross-sensitivities with non-target pollutants, there is a growing body of evidence that calibration models can overfit to a given location or set of environmental conditions on account of the incidental correlation between pollutant levels and environmental conditions, including diurnal cycles. As a result, a sensor package trained at a field site may provide less reliable data when moved, or *transferred*, to a different location. This is a potential concern for applications seeking to perform monitoring away from regulatory monitoring sites, such as personal mobile monitoring or high-resolution monitoring of a neighborhood.

We performed experiments confirming that transferability is indeed a problem and show that it can be improved by collecting data from multiple regulatory sites and building a calibration model that leverages data from a more diverse dataset. We deployed three sensor packages to each of three sites with reference monitors (nine packages total), and then rotated the sensor packages through the sites over time. Two sites were in San Diego, CA, with a third outside of Bakersfield, CA, offering varying environmental conditions, general air quality composition, and pollutant concentrations.

When compared to prior single-site calibration, the multi-site approach exhibits better model transferability for a range of modeling approaches. Our experiments also reveal that random forest, is especially prone to overfitting, and confirms prior results that transfer is a significant source of both bias and standard error. Linear regression on the other hand, although it

exhibits relatively high error, does not degrade much in transfer. Bias dominated in our experiments, suggesting that transferability might be easily increased by detecting and correcting for bias.

Also, given that many monitoring applications involve the deployment of many sensor packages based on the same sensing technology, there is an opportunity to leverage the availability of multiple sensors at multiple sites during calibration to lower the cost of training and better tolerate transfer. We contribute a new neural network architecture model termed *split-NN* that splits the model into two-stages, in which the first stage corrects for sensor-to-sensor variation and the second stage uses the combined data of all the sensors to build a model for a single sensor package. The split-NN modeling approach outperforms multiple linear regression, traditional 2- and 4-layer neural network, and random forest models. Depending on the training configuration, compared to random forest the split-NN method reduced error 0-11% for NO₂ and 6-13% for O₃.

10 1 Introduction

As the use of low-cost sensor systems for citizen science and community-based research expands, improving the robustness of calibration for low-cost sensors will support these efforts by ensuring more reliable data and enabling a more effective use of the often-limited resources of these groups. These next-generation technologies have the potential to reduce the cost of air quality monitoring instruments by orders of magnitude, enabling the collection of data at higher spatial and temporal resolution, providing new options for both personal exposure monitoring and communities concerned about their air quality (Snyder et al., 2013). High resolution data collection is important because air quality can vary on small temporal and spatial scales (Monn et al., 1997; Wheeler et al., 2008). This variability can make it difficult to estimate exposure or understand the impact of local sources using data from existing monitoring networks (Wilson et al., 2005), which provide information at a more regional scale. Furthermore, studies have highlighted instances where air quality guidelines have been exceeded on small spatial scales, in so called ‘hot spots’ (Wu et al., 2012). This may be of particular concern for environmental justice communities, where residents are unknowingly exposed to higher concentrations of pollutants due to a lack of proximity to local monitoring stations. One group using low-cost sensors to provide more detailed and locally specific air quality information is the Imperial County Community Air Monitoring Network (English et al., 2017). The goal of this network of particulate monitors is to help inform local action (e.g., keeping kids with asthma inside), or open the door to conversations with regulators (English et al., 2017). In another example, researchers are investigating the potential for wearable monitors to improve personal exposure estimates (Jerrett et al., 2017).

The increasing use of low-cost sensors is driving a growing concern regarding data quality (Clements et al., 2017). Low-cost sensors, particularly those designed to detect gas-phase pollutants, are often cross-sensitive to changing environmental conditions (e.g., temperature, humidity, and barometric pressure) and other pollutant species. Much work has gone into exploring calibration methods, models, and techniques that incorporate corrections for these cross-sensitivities to make accurate measurements in complex ambient environments (Spinelle et al., 2014, 2015b, 2017; Cross et al., 2017; Sadighi et al., 2018; Zimmerman et al., 2018). While the methods of building (or *training*) calibration models differ, these studies have all utilized colocations with high-quality reference instruments in the field, instruments such as Federal Reference Method or Federal

Equivalent Method monitors (FRM/FEM) (Spinelle et al., 2014, 2015b, 2017; Cross et al., 2017; Sadighi et al., 2018; Zimmerman et al., 2018). This colocated data allows accurate calibration models to be built for the conditions that the sensors will experience in the field (e.g., diurnal environmental trends and background pollutants). A recurring observation has been that laboratory calibrations, while valuable for characterizing a sensor's abilities, perform poorly compared to field calibrations likely due to an inability to replicate complex conditions in a chamber (Piedrahita et al., 2014; Castell et al., 2017).

Recently, researchers have begun to explore calibrating sensors in one location and testing them in another, called *transfer*. Often, a decrease in performance is seen in new locations where conditions are likely to differ from the conditions of calibration. In one study, researchers testing a field calibration for electrochemical SO₂ sensors from one location in Hawaii and at another location also in Hawaii found a small drop in correlation between the reference and converted sensor data (Hagan et al., 2018). This was attributed to the testing location being a generally less polluted environment (Hagan et al., 2018). In a study that involved calibration techniques for low-cost metal-oxide O₃ sensors and non-dispersive infrared CO₂ sensors in different environments (e.g., typical urban vs. a rural area impacted by oil and gas activity), researchers found that simpler calibration models (i.e., linear models), although generally lower in accuracy, performed more consistently (i.e., transferred better) when faced with significant extrapolations in time or typical pollutant levels and sources (Casey and Hannigan, 2018). In contrast, more complex models (i.e., artificial neural networks) only transferred well when there was little extrapolation in time or pollutant sources. A study utilizing electrochemical CO, NO, NO₂, and O₃ sensors found that performance varied spatially and temporally according to changing atmospheric composition and meteorological conditions (Castell et al., 2017). This team also found calibration model parameters differed based on where exactly a single sensor node was colocated (i.e., a site on a busy street versus a calm street), supporting the idea that these models are being specialized to the environment where training occurred (Castell et al., 2017). In a recent study targeting this particular issue with low-cost sensors, electrochemical NO and NO₂ sensors were calibrated at a rural site using multivariate linear regression model, support vector regression models, and a random forest regression model. The performance of these models was then examined at two urban sites (one background urban site and one near-traffic urban site). For both sensor types, random forests were found to be the best-performing models, resulting in mean average errors between 2–4 parts per billion (ppb) and relatively useful information in the new locations (Bigi et al., 2018). One important note from the authors is that both sensor signals were included in the models for NO and NO₂ respectively, potentially helping to mitigate cross interference effects (Bigi et al., 2018). In another recent study, researchers also compared several different calibration model types, as well as the use of individualized versus generalized models and how model performance is affected when sensors are deployed to a new location (Malings et al., 2018). An individualized model is a model for a sensor based on its own data, whereas a generalized model combines the data from all the sensors of the same type being calibrated. The researchers found that the best-performing and most robust model types varied by sensor type; for example, simpler regression models performed best for electrochemical CO sensors, whereas more complicated models, such as artificial neural networks and random forest models, resulted in the best performance for NO₂. Despite the varied results, in terms of the best performing model types, the researchers observed that across the different sensor types tested, generalized models resulted in more consistent performance at new sites than individualized models despite having slightly

poorer performance during the initial calibration (Malings et al., 2018). If this observation holds across sensor types and the use in other locations, it could help solve the problem of scaling up sensor networks allowing for much larger deployments.

The mixed results and varying experimental conditions of these studies highlight the need for a more comprehensive understanding of how and why calibration performance degrades when sensors are moved. A better understanding could inform potential strategies to mitigate these effects. As recent research has successfully applied advanced machine learning techniques to improve sensor calibration models (Zimmerman et al., 2018; De Vito et al., 2009; Casey et al., 2018), we believe these techniques could also be leveraged in innovative ways to improve the transferability of calibration models.

This paper contributes an extensive transferability study as well as new techniques for data collection and model construction to improve transferability. We hypothesize that transferability is an important issue for sensors that exhibit cross-sensitivities. Based on the hypothesis that the increased errors under transfer are due to overfitting, we propose that training a calibration model on multiple sites will improve transfer. Finally, we propose that transfer can be further improved with a new modeling method, split-NN, that can use the data from multiple sensor packages trained at multiple sites to train a two-stage model with a global component that incorporates information from several different sensors and locations and a sensor-specific model that transforms an individual sensor’s measurements to a form that can be input to the global model

As many previous studies studied collocation with reference measurements in one location and a validation at a second location, we designed a deployment that included triplicates of sensor packages colocated at three different reference monitoring stations and then rotated through the three sites – two near the city of San Diego, CA and one in a rural area outside of Bakersfield, CA. This allows for further isolating the variable of a new deployment location. The analysis focuses on data from electrochemical O₃ and NO₂ sensors, although other sensor types were deployed and used in the calibration, analogous to Bigi et al. (2018). These pollutants are often of interest to individuals and communities given the dangers associated with ozone exposure (Brunekreef and Holgate, 2002), and nitrogen dioxide’s role in ozone formation. In studying these pollutants, we are adding to the existing literature by examining the transferability issue in relation to electrochemical O₃ and NO₂ sensors, which are known to exhibit cross-sensitive effects (Spinelle et al., 2015a). We compare the transferability of multiple linear regression models, neural networks, and random forest models. Based on these results, we introduce a new training method that trains all the sensors using a “split” neural network that consists of a global model and sensor-specific models that account for the differing behaviors among the individual sensors. Sharing data holds the promise to lower training costs while at the same time lower prediction error.

2 Methods

2.1 The MetaSense System

2.1.1 Hardware Platform

A low-cost air quality sensing platform was developed to interface with commercially available sensors, initially described in Chan et al. (2017). The platform was designed to be mobile, modular, and extensible, enabling end users to configure the

platform with sensors suited to their monitoring needs. It interfaces with the Particle Photon or Particle Electron platforms, which contain a 24 MHz ARM Cortex M3 microprocessor and a Wi-Fi or 3G cellular module, respectively. In addition, a Bluetooth Low Energy (BLE) module supports energy efficient communication with smartphones and other hubs with BLE connectivity. The platform can interface with any sensor that communicates using standard communication protocols (i.e. analog, I2C, SPI, UART) and supports an input voltage of 3.3 V or 5.0 V. The platform can communicate results to nearby devices using BLE or directly to the cloud using Wi-Fi or 2G/3G cellular, depending on requirements. USB is also provided for purposes of debugging, charging, and flashing the firmware. The firmware can also be flashed or configured remotely if a wireless connection is available. An SD card slot provides the option for storing measurements locally, allowing for completely disconnected and low-power operation.

Our configuration utilized electrochemical sensors for traditional air quality indicators (NO_2 , CO , O_3), nondispersive infrared sensors for CO_2 , photoionization detectors for volatile organic compounds (VOCs), and a variety of environmental sensors (temperature, humidity, barometric pressure). The electrochemical sensors (NO_2 : Alphasense NO_2 -A43F, O_3 : Alphasense O_3 -A431, and CO : Alphasense CO -A4) are mounted to a companion analog front end (AFE) from Alphasense, which assists with voltage regulation and signal amplification. Each sensing element has two electrodes which give analog outputs for the working electrode (WE) and auxiliary electrodes (AE). The difference in signals is approximately linear with respect to the ambient target gas concentration but have dependencies with temperature, humidity, barometric pressure, and cross-sensitivities with other gases. The electrochemical sensors generate an analog output voltage, which is connected to a pair of analog-to-digital converters (ADCs), specifically the TI ADS1115, and converted into a digital representation of the measured voltage, which is later used as inputs for our machine learning models.

Modern low-cost electrochemical sensors offer a low cost and low power method to measure pollutants, but currently available sensors are more optimized for industrial applications than air pollution monitoring: the overall sensing range is too wide and the noise levels are too high. For example, the AlphaSense A4 sensors for NO_2 , O_3 , and CO have a measurement range of 20, 20, and 500 ppm, respectively, which is significantly higher than the unhealthy range proposed by the United States Air Quality Index. Unhealthy levels for NO_2 at 1-hour exposure range from 0.36 – 0.65 ppm, O_3 at 1-hour exposure from 0.17 – 0.20 ppm, and CO at 8-hour exposure from 12.5 – 15.4 ppm (Uniform Air Quality Index (AQI) and Daily Reporting,). Along with the high range, the noise levels of the sensors make it difficult to distinguish whether air quality is good. Using the analog front end (AFE) offered by Alphasense, the noise levels for NO_2 , O_3 , and CO have standard deviations of 7.5 ppb, 7.5 ppb, and 10 ppb, respectively. These standard deviations are large compared to observed signal levels for NO_2 and O_3 measurements, which ranged between 0 – 35 ppb and 12 – 60 ppb, respectively, during the 6 month testing period.

The ambient environmental sensors accurately measure temperature, humidity, and pressure and are important for correcting the environmentally related offset in electrochemical sensor readings. The TE Connectivity MS5540C is a barometric pressure sensor capable of measuring across a 10 to 1100 mbar range with 0.1 mbar resolution. Across 0 C to 50 C, the sensor is accurate to within 1 mbar and has a typical drift of +/- 1 mbar per year. The Sensiron SHT11 is a relative humidity sensor capable of measuring across the full range of relative humidity (0 to 100% RH) with $\pm 3\%$ RH accuracy. Both sensors come equipped

with temperature sensors with ± 0.8 C and ± 0.4 C accuracy, respectively. The sensors stabilize to environmental changes in under 30 seconds, which is sufficiently fast to accurately capture changes in the local environment.

In order to improve the robustness of the boards to ambient conditions, the electronics were conformally coated with silicone and placed into an enclosure as shown in Figure 2. The housing prevents direct contact with the sensors by providing ports over the electrochemical sensors and a vent near the ambient environmental sensors. The system relies on passive diffusion of pollutants into the sensors due to the high power cost of active ventilation. However, as described in Sect. 2.3, for this study the housed sensor packages were placed in an actively ventilated container.

2.1.2 Software Infrastructure

We developed two applications for Android smartphones that leverage the BLE connection of the MetaSense platform. The first application, the MetaSense Configurator app, enables users to configure the hardware for particular deployment scenarios, adjusting aspects such as sensing frequency, power gating of specific sensors connected, and the communication networks utilized. The second application, simply called the MetaSense app, collects data from the sensor via BLE and uploads all readings to a remote database. Each sensor reading is stamped with time and location information, supporting data analysis for mobile use cases. Moreover, users can read the current air quality information on their device, giving them immediate and personalized insight into their exposure to pollutants.

The remote measurements database is supported by the MetaSense cloud application and built on Amazon's AWS cloud. Not only can the MetaSense app connect to this cloud, but the MetaSense boards can be configured to connect directly to it using Wi-Fi or 3G. The measurement data can be processed by machine learning algorithms in virtual machines in AWS or the data can be downloaded to be analyzed offline. The aforementioned over-the-air firmware updates are handled through Particle's cloud, which also allows remotely monitoring, configuring and resetting boards. These direct-to-cloud features are key to supporting a long-term, wide-scale deployment like the one presented in this paper.

2.2 Sampling Sites

For this deployment, our team coordinated with two regulatory agencies (the San Diego and San Joaquin Valley Air Pollution Control Districts) in order to access three regulatory monitoring sites. Sensor packages were then rotated through each site over the course of approximately six months. Each monitoring site included reference instruments for NO₂ and O₃, among others. The first site was in El Cajon, CA, located at an elementary school east of San Diego, CA (El Cajon Site). This site is classified by the SDAPCD as being in the middle of a major population center, primarily surrounded by residences (Shina and Canter, 2016); expected influences at this site include transported emissions from the heavily populated coastal region to the west as well as emissions from a major transportation corridor (Shina and Canter, 2016). The second site was approximately 15 miles to the south east of San Diego, located at the entrance to a correctional facility (Donovan Site). This site is not located in a high density residential or industrial area and does not have many influences very near to the site; it is expected to provide air quality information for the south east area of the county (Shina and Canter, 2016). Additionally, this site is approximately two miles from a border crossing utilized by heavy duty vehicles commercial vehicles - the Otay Mesa Port of Entry. The third site

was located on a the roof of a DMV in the rural community of Shafter, CA, 250 miles to the north near Bakersfield (Shafter Site). The SJVAPCD lists the following potential sources of air pollution for this community: rural sources (agricultural and oil and gas production), mobile (including highways and railroads), and local sources (commercial cooking, gas stations, and consumer products) (SJVAPCD Website). Given the differences in location, land use, and nearby sources we expect to see differences in both the environmental (i.e., temperature, humidity, and barometric pressure) and pollutant profiles at each sites. For example, the Shafter site is considerably more inland, where weather would be more dominated by the desert ecosystem rather than the ocean ecosystem as compared to the two San Diego sites. In addition to being further inland, the Shafter site is rural and has a unique nearby source (i.e., oil and gas production), which might also result in a unique pollutant profile and differing composition of background pollutants when compared to the San Diego sites. Similarly, given the differences in land use and expected influences at the two San Diego sites, we may expect to see different trends in ozone chemistry. For example, given that the El Cajon site is a highly residential area, while the Donovan site is near the Otay Mesa border crossing, there may be more local heavy duty vehicle emissions at the second site. Comparing the historical data from these sites provides some support for this idea. In the 2016 Network Plan by the SDAPCD we see that the El Cajon site had a slightly higher maximum 8-hr ozone average than the Donovan site, at 0.077 ppm and 0.075 ppm respectively. While the Donovan site had a higher maximum 1-hr nitrogen dioxide average than the El Cajon site, at 0.067 ppm and 0.057 ppm respectively. It is possible that this difference in peak levels at each site may be driven by the sources influencing each site, in particular the nitrogen dioxide levels, which may be tied to heavy-duty vehicle traffic. In terms of the differences between regions, the San Joaquin Valley has consistently had more days where the 8-hr ozone standard has been exceeded than San Diego County from 2000 - 2015 (Shina and Canter, 2016; San Joaquin Valley Air Pollution Control District, 2016). In this instance the higher frequency of ozone elevations in the San Joaquin Valley may be evidence for different climate, meteorology, and sources driving different ozone trends. This variety of environmental and emissions profiles would allow us to meaningfully test for transferability, in particular to assess to what degree a calibration model trained on one site would overfit for the other sites.

2.3 Data Collection

In ordinary use cases, the air quality sensors would be mounted to a backpack, bike, or other easily transportable item as shown in Figure 2. A calibration algorithm located either on the sensor or a Bluetooth-compatible smartphone would convert the raw voltage readings from the sensors and ambient environmental conditions to a prediction of the current pollutant levels in real time. In order to develop these calibration models, we gathered data from air quality sensors and co-located regulatory monitoring sites over a 6-month deployment period.

To support a long-term deployment in potentially harsh conditions where no human operator would be able to monitor the sensors on a regular basis, the sensors were placed into environmentally robust containers, shown in Figure 3, bottom right. The container was a dry box, measuring 27.4 x 25.1 x 12.4 cm, that was machined to have two sets of two vents on opposing walls. Louvers were installed with two 5 V, 50 mm square axial fans expelling ambient air from one wall and two louvers allowing air to enter the opposite side. The configuration allowed the robust container to equilibrate with the local environment for accurate measurement of ambient pollutants. Each container could hold up to three MetaSense boards with cases and complementary

hardware. Due to the long timeframe of the deployment, a USB charging hub was installed into the container to power the fans, the air quality sensors, and either a BLU Android phone or Wi-Fi cellular hotspot. The phones and hot spots were used to connect the sensors to the cloud; therefore, we could remotely monitor the sensors' status in real-time and perform preliminary data analysis and storage. Each board also had an SD card to record all measurements locally, increasing the reliability of data storage. It is important to note that end users of the air quality sensors would not need to perform this lengthy calibration procedure. End users will either received pre-calibrated devices or can perform calibration by co-locating their sensor with existing, calibrated sensors.

A container holding three MetaSense Air Quality Sensors was placed at each regulatory site, such that each site had one container of sensors for simultaneous measurement of conditions at all three regulatory sites. After a period of time, the containers were rotated to a new site. After three rotations, each sensor had taken measurements at each site. Table 1 lists the dates for each rotation as well as where each sensor system was located for each rotation. The dates are approximate due to the logistics of gaining access to regulatory field sites and the distances traveled to deploy sensors. Also of note is that the deployments were not of equal length. This does not affect the results reported below because we ran all combinations of training and testing sites, and training set sizes were normalized to remove the influence of training set size.

The data from the reference monitors was provided by the cooperating air quality districts in the form of minute-averaged O_3 and NO_2 concentrations for the time period that our sensor packages were deployed. We removed reference data collected during calibration periods as well as any data flagged during initial quality assurance/control by the regulatory agency who supplied the data. The reference data is not final ratified data as the timing of our study did not allow us to wait that long.

2.4 Preprocessing

Prior to using the dataset for training the calibration models, we performed a preprocessing step. First, we programmatically filtered out data samples that contained anomalous values that might have occurred due to a temporary sensor board malfunction (e.g., due to condensation). Specifically, we searched for temperature and voltage spikes that were outside the realm of reasonable values (i.e., temperature values above 60 degrees Celsius or ADC readings above 5 volts) and removed the corresponding measurements. Each removed group of samples was visually inspected to ensure data was not being erroneously removed. 422,551 samples removed from the 17,948,537 collected samples, 2.4% of the total. For the remaining data, a simple average was computed over each one-minute window so as to match the time resolution of the data from the reference monitors. If an entire minute of data is missing due to a crashed sensor or preprocessing, no minute-averaged value is generated. Although we gathered sensor voltage measurements from both the auxilliary (AE) and working electrodes (WE) of the electrochemical sensors, we used the difference between the two ($AE - WE$) as the representative voltage for each sensor since the auxilliary voltage is meant to serve as a reference voltage for the working electrode. This treatment is consistent with the methodology of Zimmerman et al. (2018), and we validated that the performance of the calibration models did not differ between tests with both electrodes and test with the difference as input features. As a final step, the resulting minute-averaged readings were time-matched with the reference data, removing readings that had no corresponding reference reading. The resulting data set over the three rounds at the three site contains 1,100,000 minute-averaged measurements.

Furthermore, after receiving and examining the reference data we were able to verify our hypothesis in Sect. 2.2 that we would observe varied environmental and pollutant conditions among the sites. Again, this hypothesis was based on site characteristics and data/statistics from reports available from the respective regulatory agencies. Generally higher ozone values were reported at Shafter, whereas generally higher NO₂ values were reported at Donovan. Higher humidity values were reported at the Donovan and El Cajon sites, as compared to Shafter. Some of the lowest temperature values were reported at Shafter. For more information see the distribution plots in Appendix A.

2.5 Baseline Calibration Methods

Sensor calibration is the process of developing and training models to convert a sensor voltage into a pollutant concentration. We formulate sensor calibration as a regression problem with input features x and e representing signals from the electrochemical sensors (O₃ voltage, NO₂ voltage, CO voltage) and environmental factors (temperature, pressure, humidity), respectively, for a total of 6 features. These features are input to a calibration function $h_{\theta}(x, e)$ that estimates target values y representing pollutant concentrations (O₃ ppb and NO₂ ppb).

In our regression problem, we seek a function such that $h_{\theta}(x, e) \approx y$, which we formulate as an optimization where we minimize a measure of error over a training data set $\{x_n, e_n, y_n\}_{n=1}^N$ according to a loss function $L(h_{\theta}(x, e), y)$, i.e.

$$\theta^* = \arg \min_{\theta} \frac{1}{N} \sum_{n=1}^N L(h_{\theta}(x_n, e_n), y_n) \quad (1)$$

For most of the modeling techniques we minimize the mean squared error (MSE), except for Random Forest where we minimize the variance, which behaves similar to MSE. Models trained in this way assume that at inference time, predictions are made on data sampled from the training distribution. While this assumption holds true when the air quality sensors are trained and tested at the same site, the distribution of pollutants and environmental conditions changes when the sensors are moved to a new location.

We investigated the performance of three calibration models: multiple linear regression, neural networks (sometimes called deep learning), and random forest. These methods vary in their ability to accurately model complex behaviors, otherwise known as *capacity*, with linear regression having relatively low capacity and neural nets and random forests having substantial capacity. The price of high capacity is the potential to overfit the training distribution, which is a failure to generalize beyond the training data. Models that overfit will incur significant error when predicting on out-of-distribution examples. Overfitting can be mitigated with regularization and by reducing the model capacity, but this can only go so far if the testing distribution is substantially different from the train distribution. All of these methods have been previously applied to ambient pollutant estimation by various research groups (Piedrahita et al., 2014; Spinelle et al., 2015b, 2017; Sadighi et al., 2018; Zimmerman et al., 2018; Casey and Hannigan, 2018) and are generally common predictive modeling methods. For neural nets, we investigated three variants: two-layer, four-layer, and four-layer with a "split" architecture, which we motivate and describe in the next subsection.

Our baseline models were trained using the Scikit-Learn Python package, and the model parameters for each baseline model can be seen below:

1. **Linear regression:** we assume the functional form $h(x) \triangleq w^T x + b$, and fit the parameters in closed form. We use no regularization or polynomial features.
2. **Two-layer neural network:** we fit a two-hidden layer (200 wide) multilayer perceptron with rectified-linear unit activation functions and a final linear layer. We train this neural network using the Adam optimizer ($\beta_0 = 0.9, \beta_1 = 0.999$) and a learning rate of 10^{-3} .
3. **Four-layer neural network:** Same as two-layer neural network, but four hidden layers of width 200 instead of two.
4. **Random forest:** We divide our data into five folds and train a random forest of size 100 on each fold, resulting in 500 trees. We aim to reproduce the strategy of Zimmerman et al. (2018) as closely as possible.

2.6 Split Neural Network Method

Overfitting is a problem for high capacity models with a limited distribution in training data, resulting in poor performance when a model is transferred to new locations and environments. One method to improve model transferability would be to collect more training data that includes the test distribution. However, colocating a sensor at multiple different regulatory field sites in order to capture a sufficiently wide distribution is prohibitive in terms of cost and time. An alternative solution is to deploy a set of sensors based on the same technology across multiple sites and then pool their data. However, there can be substantial sensor-to-sensor variance in performance that would amplify prediction errors.

Recent work in sensor calibration has produced architectures that split model training into global and sensor-specific training phases, primarily for metal oxide (MOX) gas sensors produced in an industrial setting. The process involves training a global or master model on a small subset of devices over a wide range of environmental conditions. The master model translates raw sensor readings (i.e. voltage or current measurements) to a target pollutant. MOX sensors, similar to electrochemical sensors, are sensitive to ambient conditions, so a wide range of conditions and combinations are explored in the master calibration phase. While it can produce very accurate calibration models, the time and expense of gathering calibration data over a wide range of conditions is prohibitively expensive in the industrial manufacturing process for low-cost sensors. To overcome this, a limited number of master models are created, and then an affine transformation is generated between individual sensors and the master sensors. The affine transformation effectively transforms the sensors readings of individual sensors to match that of the master, after which, the master calibration model can be used. A variety of methods have been developed to this end. Zhang et al. (2011) propose a method to calibrate a MOX sensor for detecting volatile organic compounds using a neural network to capture the complexity of the master model and an affine transform and a Kennard-Stone sample selection algorithm to develop a linear model between individual sensors and the master sensor. Other research has utilized windowed piecewise direct standardization to transform the sensor readings from a slave sensor to a calibrated master for single gas concentrations (Yan and Zhang, 2015) and direct standardization for a range of gases and concentrations over a longer timeframe (Fonollosa et al., 2016). While previous efforts utilized single master sensors, Solórzano et al. (2018) showed that including multiple master sensors in a calibration model can improve the robustness of the overall model. Similar findings were reached by Smith et al. (2017) when investigating sensor drift whereby an ensemble model was generated by training models for multiple sensors

and the prediction was reported as the cluster median. These two-stage calibrations have primarily been performed in controlled laboratory settings, but not in real-world conditions where ambient conditions and cross-sensitivities may impact results. In addition, these studies train models in a piecewise fashion, training master and sensor-specific models separately.

We propose end-to-end training of a global and sensor-specific models. In particular, we propose a training architecture that consists of two sets of models: a global calibration model that leverages the data from a set of similar sensors spread across different training environments and sensor-specific calibration models that detect and correct the differences between sensors. In the previous subsection, we associated each board i with a calibration function $h_{\theta_i}(x)$ and fit this calibration function with its colocated data. Taking into consideration a collection of many air quality sensors, we propose an alternate architecture based on transfer learning (Goodfellow et al., 2016, p. 535). We propose using a calibration function split into two distinct steps: first, pollutant sensor voltages x are input into a sensor-specific model, $s_{\theta_i}(x)$, a function parameterized by θ_i , which outputs a fixed dimensional vector u . This intermediate representation u is concatenated with environmental data e , which is then passed into a global calibration model $c_\phi([u|e])$. For a single air quality sensor, our final calibration function is $c_\phi([s_{\theta_i}(x)|e])$. Figure 4 depicts the use of such a model. Such a model is called a split neural network model (*split-NN*) since neural networks are generally used for both the sensor-specific models and the global calibration models. In our experiments, the sensor-specific model s_{θ_i} is either a linear regressor or neural network; c_ϕ is a two-layer, 100-wide neural network.

The purpose of the split-NN model is that s_{θ_i} corrects for differences in air quality sensor i 's performance relative to the other sensors, thus normalizing the values and making the behavior of all the sensors compatible with the global model c_ϕ . The performance of the estimates from c_ϕ should be superior to those from an individual sensor model because it has been trained on the (normalized) data of all the boards as opposed to just a single board.

The split model can be trained efficiently with stochastic gradient descent. Specifically, we first collect N data sets for each board $D_i = \{x^{(i)}, e^{(i)}, y^{(i)}\}_{i=1}^N$. We ensure each of these data sets is the same size by sampling each with replacement to artificially match the largest data set. We then pool the data sets together into one data set from which we sample mini-batches. While each sensor-specific model s_{θ_i} is trained only on data collected by its sensor, the regression with the other s_{θ_i} sensor-specific models is designed to detect and correct its bias, outputting an intermediate representations u that is normalized with the others. The global calibration model is trained on the normalized data from all air quality sensors.

Although training this neural network will take longer than training one for a single board, it has several key advantages over conventional calibration techniques. The first is its ability to share information across multiple boards. Suppose Board A is trained on Location 1 and Board B is trained on Location 2. Pooling the data sets and using a shared model enables the global calibration model to predict well in both locations, and the calibration models for both boards will have information about the other locations in them, in theory improving transferability. The second is more efficient utilization of data. By pooling data and training jointly, we effectively multiply our data size by the number of boards. Alternatively, field deployments can be shortened.

Calibrating a New Board without a Full Training. Field calibration is traditionally performed by collocating a sensor package with reference monitors and then training to match pollutant concentrations. But, suppose we already had a fleet of low-cost sensor packages already deployed. A simpler method not requiring coordination with regulatory agencies would be to colocate

it with a calibrated sensor package and train a model to match its predicted pollutant levels. This risks compounding errors across models, however. The split-NN model enables calibrating a new sensor package by colocating to match *representation* instead of predictions, as learned representations can often improve generalization in transfer learning problems (Goodfellow et al., 2016, p. 536).

5 We propose calibrating sensor package $N + 1$ to match the intermediate representation output of a colocated, previously-calibrated sensor package. Specifically, we train model $N + 1$ to minimize $L(u_N, u_{N+1})$, or the loss between the two packages' intermediary outputs. These intermediate representations are designed to be robust to changes in location so training to match these representation so it is expected that it will result in a robust calibration model. We analyze this potential calibration technique by holding out a board from our data sets and training a split model. We then simulate calibrating the held out board
10 by training a sensor model to match the representations produced by another board it was colocated with. We then use this new sensor model with the global calibration function to produce pollutant values.

3 Results and Discussion

3.1 Robustness of Different Calibration Techniques Across New Locations

We evaluated a set of four baseline models described in Sect. 2.5: multiple linear regression, two-layer neural network (NN-2),
15 four-layer neural network (NN-4), and random forest (RF). With each of these four models, we performed a suite of identical calibration benchmarks that measure the robustness of models to out-of-distribution data. We split all data sets uniformly at random into training and testing subsets, reserving 20% of each board's data for testing. In each benchmark, we progressively widened the training distribution by combining training data from more locations (using subsampling to maintain the training set size), while keeping the testing set data set from one location. We have four "levels" of such benchmarks:

- 20 – **Level 0:** Train a model on one location and test on the same location. Several studies, discussed in Sect. 1, have previously assessed this configuration (Zimmerman et al., 2018; Spinelle et al., 2015b, 2017; Cross et al., 2017).
- **Level 1:** Train a model on one location and test on another location. Some recent studies, also discussed in Sect. 1, have previously studied this configuration (Hagan et al., 2018; Casey and Hannigan, 2018; Bigi et al., 2018; Malings et al., 2018).
- 25 – **Level 2:** Train a model on two locations and test on a third location.
- **Level 3:** Train a model on three locations and test on one of the three locations.

In the Level 0 and Level 3 benchmarks, the training and testing data distributions have explicit overlap, whereas in Level 1 and 2, there is no explicit overlap. We expect performance on Level 0 to be the best, as the training and testing distributions are identical. We expect performance on Level 3 to be similar, due to the overlap in training and testing distributions. We expect
30 performance on Level 1 to be the worst, as the training distribution is the narrowest and with no explicit overlap, whereas we

expect performance on Level 2 to be between Level 1 and Level 3, for although there is no explicit overlap, the overall training distribution will be wider, forcing the models to be more general and possibly affording more implicit overlap. Furthermore, we expect higher capacity models to overfit more to the training data set, and as a result, have the largest gap between Level 0 and Level 1. Thus, we expect linear regression to have more consistent performance across the benchmarks, albeit at relatively high error, followed by the 2-layer neural network, 4-layer neural network, and finally the random forest.

We ran each benchmark across all possible permutations of location and sensor package, measuring six metrics in order to facilitate comparisons in the literature: mean squared error (MSE), root mean squared error (rMSE, also known as the standard error), centered root mean squared error (crMSE), mean absolute error (MAE), the coefficient of variation of mean absolute error (CvMAE), mean bias error (MBE), and coefficient of determination (R^2). Predictions were made in parts per billion (ppb), thus MSE is reported in ppb^2 , and the other errors are reported in ppb. CvMAE and R^2 are dimensionless. The results for MAE of the baseline models are plotted in Figure 6. Details can be explored further in Appendix C.

From Figure 6 we observe that on average, as model capacity increases, Level 0 error decreases. This is consistent across both NO_2 and O_3 prediction and reflects the ability of the model to fit the training distribution. Concerning model transferability, we find that consistently, all models exhibit relatively high error when tested on different locations. The Level 1 and 2 benchmarks test the ability of a model to generalize to a distribution it hasn't seen before, and we see in these benchmarks that errors are much higher and the gaps between models are much smaller. Furthermore, Level 2 error is slightly lower on average than Level 1 error. By adding data from another site, effectively widening the training distribution, the models are slightly more robust to the unseen testing distribution. Level 3 performance aligns closely with Level 0 performance, which is to be expected, since in both cases the training distribution contains the testing distribution.

Across baselines, we observe that on average, linear regression has the highest error on all the benchmarks. However, its errors across the Level benchmarks are more consistent than the other models, suggesting that low-capacity linear regression is more robust to transfer. On the other hand, random forests have on average the lowest error, but have the most inconsistent results across the Levels. The results indicate a tradeoff between model capacity and robustness to transfer, consistent with our intuitions about model overfitting and generalization. Neural networks lie in between linear regression and random forests, and offer a tradeoff between low error and consistent error.

To better understand how model performance degrades, we produced target plots, which visualize the tradeoff between centered error (crMSE) and bias error (MBE) (Figure 7). The target plots indicate that while error approximately doubles when there is no explicit overlap in the distribution, the increase in model bias is many times more. When considering the two types of error examined, the crMSE may be of greater concern when considering sensor performance in new locations as compared to error due to bias. Sensor data exhibiting errors due to bias may still provide useful information regarding the diurnal trends of pollutants or relatively large enhancements. Despite the higher capacity models showing better error and bias in a Level 0 benchmark, the models have similar error-bias tradeoffs in a Level 1 benchmark, indicating that a high-capacity model cannot avoid this performance degradation. Finally, in comparing the Level 1 and Level 2 plots, we observe that adding an additional (no-overlapping) site primarily reduces bias. The Level 3 plots are very similar to the Level 0 plots and are excluded from Figure 7 for brevity.

In general, however, we observe that model performance degrades non-trivially when moved to different locations. This decrease in performance could result in overconfidence in a sensor's readings, potentially affecting downstream decisions. We briefly analyze the properties of our data that could result in overfitting by first investigating how data distributions across sites and times differ. Over each location and round, pollutant values can be highly variable. This is reflected, for example, in Figure A3 where Shafter has higher values of NO₂ in Round 1 and 2 but lower in Round 3. Furthermore, in Figure A4, the distribution of O₃ changes remarkably across round and location. Similarly, temperature and humidity change significantly across location and round, which can be seen in Figure A1 and Figure A2.

A question that remains is to what degree overfitting or unique (non-overlapping) distributions of environmental data at the sites is contributing to the failure of the high capacity models to transfer well. In an effort to better understand what may be driving the drop in performance of the high capacity models when boards are moved, we examined error density plots for temperature and humidity for the Level 1 benchmarks. In these types of plots, one of the predictors, such as temperature or humidity, is plotted against the error for all three sites in a single plot. Figure 8 displays the error density plots in MAE for absolute humidity against the error for the O₃ estimation, for both the linear regression and random forest models. These plots illustrate how the magnitude of error varies with respect to higher or lower predictor values as well as how different pairs of training and testing sites compare. There are a couple of things we can derive from this collection of plots. First, we observe that the pollutant concentrations at the Shafter site are difficult to predict, except for random forest when trained at Shafter itself (Figure 8f). The Shafter site was spatially far from the other sites and likely had a unique composition of background pollutants and ambient environmental conditions. Second, we observe that when training a random forest model at one site and testing it at a different site (Figure 8, bottom row), the error density plots look similar to the results from the linear regression models (Figure 8, top row) despite the higher capacity of random forest models. Furthermore, comparing panels a and d, the errors at Shafter seem comparable to those at El Cajon for the random forest model, whereas for the linear regression model the errors seem greater at Shafter versus the second San Diego site. This difference potentially indicates that linear regression models are better at transferring between more similar environments, which has been observed by other researchers as well (Casey and Hannigan, 2018). We also observe that the greater errors at the Shafter site are occurring at humidity values that were seen in the training data set (more centrally in the plot), as is evident by their representation in the Donovan data. This implies that these errors did not occur at humidity values that have been extrapolated beyond the original training data set, but rather from overfitting at values in the distribution. This leads us to conclude that overfitting is the reason random forest's net performance in transfer is not much better than linear regression.

3.2 Benefits of Sharing Data Across Sensor Packages

In this section, we evaluate the split-NN model architecture's utility for improving the transferability of a calibration model. The novelty of the split-NN model for calibrating a board's model is its ability include (normalized) data from other boards. Given that the resources for calibration are limited, the research questions for split-NN revolve around how boards could be best distributed to available field sites. For a standard modeling technique like random forest, a board has to be placed at three sites for three rounds to experience the wide training distribution that achieves the exceptional transferability observed in the

Level 3 benchmarks. However, with the split-NN model, multiple boards can be deployed for just one round, divided equally across the sites. Then the data from their boards can be normalized and shared to produce models that we hypothesize to be of similar quality to a Level 3 benchmark, but in one-third the time, in a single round.

To help reveal the value of calibrating multiple boards at once, we performed three one-round benchmarks: 1 board at each of the three sites, 2 boards at each of the three sites, and 3 boards at each of the three sites. In each of these conditions, a board is trained from a single round of data and tested on the other locations, not its own. In this vein, these are all Level 1 benchmarks, thus we compare the resulting models against our Level 1 baselines. We expect the split-NN to outperform Level 1 random forest, as the inclusion of more data helps reduce bias. In the situation that there are more boards to calibrate than there are training sites, there is an opportunity to also incorporate data additional boards at the same site. We expect that a greater multiplicity of boards at each site will produce slightly better models, but with diminishing returns. We evaluated this effect by including training split-NN's with increasing numbers of boards at each site, indicated by the variants Split-NN (3), Split-NN (6), and Split-NN (9), corresponding to having one board at each site, two boards at each site, and three boards at each site. Figure 6 depicts how the voltages collected from one board in the Split-NN (9) condition are translated into predictions, both plotted against the corresponding reference data points. We perform a similar assessment with two-round (Level 2) benchmarks, still testing only on sites that a board hasn't been trained on. As previously, we control for the total amount of data, simulating an abbreviated deployment for the Level 2 benchmarks.

Figure 10a-b shows that the split-NN model on average has slightly lower MAE in the Level 1 benchmarks when compared to the random forest model. We see in and Figure 10c-d that the gap widens with the Level 2 benchmark, indicating that the Split-NN model is able to better capitalize on the additional data. The results also support our hypothesis that we receive diminishing returns with additional data. Detailed results are provided in Appendix D.

The marginal improvement seen in the Level 1 benchmarks has two possible causes. One possibility is that the difference in behavior between sensors is non-linear. To test this, we implemented a full neural network as the first stage. The results were comparable with a linear regression first stage with only slight improvement, suggesting that the relationship between the sensors is well represented by a linear model. The other possibility is that the pollution distributions have insufficient overlap across sites, compromising the first-stage linear regression to for correct bias. The fact that using two rounds of data (Level 2) does much better suggests that this lack of overlap is a likely culprit.

3.3 Discussion

As low-cost sensor studies move from understanding sensor signal performance to how this performance is affected by moving sensors to new sampling locations or utilizing them in new applications, it is important that the results are translated into best practices to support the collection of usable high quality data. This is particularly important given the interest in sensors by community-based organizations and citizen scientists. Although the present study examined only electrochemical O₃ and NO₂ sensors and the sampling sites were limited to three in California, it adds to a body of evidence that location matters in the calibration of low-cost sensors because the background environmental conditions matter. With this in mind, we make the following observations and recommendations.

We observed how prediction performance degrades when a sensor is moved to a new location, especially for high-capacity modeling techniques. In particular, training a complex random forest calibration model will likely result in relatively low error at a colocated site but can incur relatively high error at a different site. Although their predictions at a new site will have lower error than linear regression, the error they exhibit at the training site will likely not be representative of their error in practice.

5 A linear model, on the other hand, despite not predicting as well at the training site, will not have substantially greater error at testing time. Thus, if it is important to know the likely error of your calibration model under transfer, it would be best to use a low-capacity method like linear regression.

When we drilled down to investigate the contributors to error when changing location, we found that bias error was a significant contributor in many cases. This is interesting because bias error indicates a loss of accuracy (a non-random additive error) rather than a loss of precision (random noise). This suggests that when moving a sensor to a new location, if the bias can somehow be detected, then it may be possible to make a bias correction to improve model performance. This result also motivates the use of the split neural network architecture, which has a model-specific correction stage that is designed to learn unbiased representations of sensor measurements.

We had expected that training at multiple sites would provide much better transferability, but the improvements were not substantial, suggesting that the high-capacity models were mostly improving due to implicit overlap in distributions and not actual generalization. This suggests that calibration should be directed at capturing the widest conditions possible, for example using many field sites with varying conditions, so as to create an overlap between the distributions of training and use. This recommendation is further supported by the observation that the Level 3 benchmarks performed nearly as well as the Level 0 benchmarks, in spite of carrying the load of a much wider distribution in the models.

20 The split-NN approach provides a potentially economical approach to creating overlap in distributions since sensors can share their data for calibration. That is, when calibrating multiple sensors, rather than colocating multiple sensors at a field site and rotating those sensors over time, it makes sense to distribute the sensors to as many field sites as possible to capture the widest distribution of conditions. The split-NN method has the additional benefit of being able to train a calibration model for a sensor that has never been colocated with a reference instrument. By simply colocating an uncalibrated sensor with a calibrated sensor and training the sensor-specific model to match the intermediate output of the calibrated sensor, the uncalibrated sensor can leverage the same global calibration model. More study will be required to see how well the split-NN approach scales as the training data distribution increases and to determine the bounds on calibration without reference colocation.

4 Conclusion

As low-cost gas-phase sensors are increasingly being adopted for citizen science efforts and community-based studies, there is a need to better understand what contributes to accurate sensing. A key question is how a change in background environmental or pollutant conditions, often unique to a location, affects accuracy. A rotating deployment strategy enabled benchmarking the transferability of models and investigating how to improve accuracy.

For our setting and conditions, we found that:

- Model error increased under transfer for all the modeling techniques investigated, demonstrating that overfitting is a concern. The effects are most dramatic when transferring high-capacity models like random forest that are trained with data that will not be representative of the conditions of use. The lower-capacity linear regression method deteriorated much less. This suggests that the predicted model error for linear regression will be more accurate under transfer, making it attractive when knowing the predicted error is important for the intended application.
- Tantalizingly, much of the error introduced by transfer was bias. Given the simple structure of bias error, this suggests that transferability might be increased by detecting and correcting for bias.
- When multiple sensors based on the same technology are being trained at the same time, we found that a split neural network architecture modestly decreases prediction error under transfer by giving a sensor’s model access to normalized data from other sensors at other locations, hence widening the distribution without requiring additional data collection. Depending on the training configuration, compared to random forest the split-NN method reduced error 0-11% for NO₂ and 6-13% for O₃. This method also enables calibrating new sensors against existing calibrated sensors at incremental cost.
- For all the modeling techniques investigated, widening the data distribution proved a good strategy to reduce prediction error under transfer, even for the lower-capacity linear regression method. Notably, markedly better results were achieved when training distribution contained the distribution encountered in use. In other words, for the setting and conditions investigated, training with representative data trumped algorithms.

In the future work we will be extending this work to answer open questions that we believe are relevant to the future of low-cost sensor calibration. One, the split neural network method underperformed our expectations, so we believe techniques of this sort warrant additional investigation. Two, there are questions about the effect of temporal resolution on accuracy. Currently, our MetaSense sensors are sampled every five seconds, but the ground-truth data provided from reference monitors is minute-averaged. By averaging our own sensor measurements every minute, we discard data that could be relevant for calibration. Recent advances in recurrent neural networks for sequence prediction might help leverage the high-resolution data for more robust prediction. On the other hand, noise will be more of a factor at this resolution, and the sensor can take up to 30 seconds to stabilize in new environmental conditions (See 2.1.1). Three, a potential application of low-cost sensing is truly mobile sensing with person- or vehicle-mounted sensors. Deployments such as these will raise questions about the effects of mobility on sensing accuracy, such as rapidly changing conditions, with few studies to date (Arfire et al., 2016). Finally, we will be examining the possible use of infrastructure data (e.g., knowledge of pollution sources) to infer the likelihood of specific pollutants, providing the potential to control for cross-sensitivity.

5 Acknowledgements

Funding for this work was provided by the National Science Foundation (awards: CNS-1446912 and CNS-1446899) and KACST. We would also like to thank partners at the San Diego Air Pollution Control District as well as San Joaquin Valley Air Pollution Control District for their support throughout this deployment.

5 6 Data and Code Availability

Our hardware designs, software, and raw collected data are archived on GitHub at <https://github.com/metasenseorg/MetaSense>. The reference data used for analysis was provided courtesy of the San Diego and San Joaquin Valley Air Pollution Control Districts. These data have not passed through the normal review process and are therefore not quality-assured, and they are thus unofficial data.

References

- AQI: Uniform Air Quality Index (AQI) and Daily Reporting, 40 C.F.R. Appendix G to Part 58, 2015.
- Arfire, A., Marjovi, A., and Martinoli, A.: Mitigating Slow Dynamics of Low-Cost Chemical Sensors for Mobile Air Quality Monitoring Sensor Networks, in: Proceedings of the 2016 International Conference on Embedded Wireless Systems and Networks, pp. 159–167, Junction Publishing, 2016.
- 5 Bigi, A., Mueller, M., Grange, S. K., Ghermandi, G., and Hueglin, C.: Performance of NO, NO₂ low cost sensors and three calibration approaches within a real world application, *Atmospheric Measurement Techniques*, 11, 3717–3735, <https://doi.org/10.5194/amt-11-3717-2018>, <https://www.atmos-meas-tech.net/11/3717/2018/>, 2018.
- Brunekreef, B. and Holgate, S. T.: Air pollution and health, *The Lancet*, 360, 1233–1242, 2002.
- 10 Casey, J., Collier-Oxandale, A., and Hannigan, M.: Performance of artificial neural networks and linear models to quantify 4 trace gas species in an oil and gas production region with low-cost sensors, *Sens. Actuators B*, p. submitted, 2018.
- Casey, J. G. and Hannigan, M. P.: Testing the performance of field calibration techniques for low-cost gas sensors in new deployment locations: across a county line and across Colorado, *Atmospheric Measurement Techniques*, 11, 6351–6378, 2018.
- Castell, N., Dauge, F. R., Schneider, P., Vogt, M., Lerner, U., Fishbain, B., Broday, D., and Bartonova, A.: Can commercial low-cost sensor platforms contribute to air quality monitoring and exposure estimates?, *Environment International*, 99, 293–302, <https://doi.org/10.1016/j.envint.2016.12.007>, 2017.
- 15 Chan, C. S., Ostertag, M. H., Akyürek, A. S., and Rosing, T. Š.: Context-aware system design, in: *Micro-and Nanotechnology Sensors, Systems, and Applications IX*, vol. 10194, p. 101940B, International Society for Optics and Photonics, 2017.
- Clements, A. L., Griswold, W. G., RS, A., Johnston, J. E., Herting, M. M., Thorson, J., Collier-Oxandale, A., and Hannigan, M.: Low-Cost Air Quality Monitoring Tools: From Research to Practice (A Workshop Summary), *Sensors*, 17, <https://doi.org/10.3390/s17112478>, 2017.
- 20 Cross, E. S., Williams, L. R., Lewis, D. K., Magoon, G. R., Onasch, T. B., Kaminsky, M. L., Worsnop, D. R., and Jayne, J. T.: Use of electrochemical sensors for measurement of air pollution: Correcting interference response and validating measurements, *Atmospheric Measurement Techniques*, 10, 3575–3588, <https://doi.org/10.5194/amt-10-3575-2017>, 2017.
- De Vito, S., Piga, M., Martinotto, L., and Di Francia, G.: CO, NO₂, and NO_x urban pollution monitoring with on-field calibrated electronic nose by automatic bayesian regularization, *Sensors and Actuators, B: Chemical*, 143, 182–191, <https://doi.org/10.1016/j.snb.2009.08.041>, 2009.
- 25 English, P. B., Olmedo, L., Bejarano, E., Lugo, H., Murillo, E., Seto, E., Wong, M., King, G., Wilkie, A., Meltzer, D., et al.: The Imperial County Community Air Monitoring Network: a model for community-based environmental monitoring for public health action, *Environmental health perspectives*, 125, 2017.
- Fonollosa, J., Fernandez, L., Gutiérrez-Gálvez, A., Huerta, R., and Marco, S.: Calibration transfer and drift counteraction in chemical sensor arrays using Direct Standardization, *Sensors and Actuators B: Chemical*, 236, 1044–1053, 2016.
- Goodfellow, I., Bengio, Y., and Courville, A.: *Deep Learning*, MIT Press, <http://www.deeplearningbook.org>, 2016.
- Hagan, D. H., Isaacman-VanWertz, G., Franklin, J. P., Wallace, L. M., Kocar, B. D., Heald, C. L., and Kroll, J. H.: Calibration and assessment of electrochemical air quality sensors by co-location with regulatory-grade instruments, 2018.
- 35 Jerrett, M., Donaire-gonzalez, D., Popoola, O., Jones, R., Cohen, R. C., Almanza, E., Nazelle, A. D., Mead, I., Carrasco-turigas, G., Colehunter, T., Triguero-mas, M., Seto, E., and Nieuwenhuijsen, M.: Validating novel air pollution sensors to improve exposure estimates for epidemiological analyses and citizen science, *Environmental Research*, 158, 286–294, <https://doi.org/10.1016/j.envres.2017.04.023>, 2017.

- Malings, C., Tanzer, R., Hauryliuk, A., Kumar, S. P., Zimmerman, N., Kara, L. B., Presto, A. A., and Subramanian, R.: Development of a General Calibration Model and Long-Term Performance Evaluation of Low-Cost Sensors for Air Pollutant Gas Monitoring, *Atmospheric Measurement Techniques Discussions*, p. in review, 2018.
- Monn, C., Carabias, V., Junker, M., Waeber, R., Karrer, M., and Wanner, H.-U.: Small-scale spatial variability of particulate matter < 10 μm (PM₁₀) and nitrogen dioxide, *Atmospheric Environment*, 31, 2243–2247, 1997.
- Piedrahita, R., Xiang, Y., Masson, N., Ortega, J., Collier, A., Jiang, Y., Li, K., Dick, R. P., Lv, Q., Hannigan, M., et al.: The next generation of low-cost personal air quality sensors for quantitative exposure monitoring, *Atmospheric Measurement Techniques*, 7, 3325–3336, 2014.
- Sadighi, K., Coffey, E., Polidori, A., Feenstra, B., Lv, Q., Henze, D. K., and Hannigan, M.: Intra-urban spatial variability of surface ozone in Riverside, CA: viability and validation of low-cost sensors., *Atmospheric Measurement Techniques*, 11, 2018.
- 10 San Joaquin Valley Air Pollution Control District: 2016 Plan for the 2008 8-Hour Ozone Standard, Appendix A, http://valleyair.org/Air_Quality_Plans/Ozone-Plan-2016/a.pdf, 2016.
- Shina, D. N. and Canter, A.: Annual Air Quality Monitoring Network Plan 2016, https://www.sdapcd.org/content/dam/sdc/apcd/monitoring/2016_Network_Plan.pdf, 2016.
- SJVAPCD Website: Shafter | Valley Air District, <http://community.valleyair.org/selected-communities/shafter/>, Accessed: 2019-05-06.
- 15 Smith, K. R., Edwards, P. M., Evans, M. J., Lee, J. D., Shaw, M. D., Squires, F., Wilde, S., and Lewis, A. C.: Clustering approaches to improve the performance of low cost air pollution sensors, *Faraday discussions*, 200, 621–637, 2017.
- Snyder, E. G., Watkins, T. H., Solomon, P. A., Thoma, E. D., Williams, R. W., Hagler, G. S., Shelow, D., Hindin, D. A., Kilaru, V. J., and Preuss, P. W.: The changing paradigm of air pollution monitoring, 2013.
- Solórzano, A., Rodriguez-Perez, R., Padilla, M., Graunke, T., Fernandez, L., Marco, S., and Fonollosa, J.: Multi-unit calibration rejects 20 inherent device variability of chemical sensor arrays, *Sensors and Actuators B: Chemical*, 265, 142–154, 2018.
- Spinelle, L., Gerboles, M., Villani, M. G., Alexandre, M., and Bonavitacola, F.: Calibration of a cluster of low-cost sensors for the measurement of air pollution in ambient air, *SENSORS*, pp. 21–24, 2014.
- Spinelle, L., Gerboles, M., and Alexandre, M.: Performance Evaluation of Amperometric Sensors for the Monitoring of O₃ and NO₂ in Ambient Air at ppb Level, *Procedia Engineering*, 120, 480 – 483, <https://doi.org/https://doi.org/10.1016/j.proeng.2015.08.676>, 2015a.
- 25 Spinelle, L., Gerboles, M., Villani, M. G., Alexandre, M., and Bonavitacola, F.: Field calibration of a cluster of low-cost available sensors for air quality monitoring. Part A: Ozone and nitrogen dioxide, *Sensors and Actuators B: Chemical*, 215, 249–257, 2015b.
- Spinelle, L., Gerboles, M., Villani, M. G., Alexandre, M., and Bonavitacola, F.: Field calibration of a cluster of low-cost commercially available sensors for air quality monitoring. Part B: NO, CO and CO₂, *Sensors and Actuators B: Chemical*, 238, 706 – 715, <https://doi.org/https://doi.org/10.1016/j.snb.2016.07.036>, 2017.
- 30 Wheeler, A. J., Smith-Doiron, M., Xu, X., Gilbert, N. L., and Brook, J. R.: Intra-urban variability of air pollution in Windsor, Ontario—measurement and modeling for human exposure assessment, *Environmental Research*, 106, 7–16, 2008.
- Wilson, J. G., Kingham, S., Pearce, J., and Sturman, A. P.: A review of intraurban variations in particulate air pollution: Implications for epidemiological research, *Atmospheric Environment*, 39, 6444–6462, 2005.
- Wu, X., Fan, Z., Zhu, X., Jung, K., Ohman-Strickland, P., Weisel, C., and Li, P.: Exposures to volatile organic compounds (VOCs) and associated health risks of socio-economically disadvantaged population in a "hot spot" in Camden, New Jersey., *Atmospheric environment*, 57, 72–79, 2012.
- Yan, K. and Zhang, D.: Improving the transfer ability of prediction models for electronic noses, *Sensors and Actuators B: Chemical*, 220, 115–124, 2015.

Zhang, L., Tian, F., Kadri, C., Xiao, B., Li, H., Pan, L., and Zhou, H.: On-line sensor calibration transfer among electronic nose instruments for monitoring volatile organic chemicals in indoor air quality, *Sensors and Actuators B: Chemical*, 160, 899–909, 2011.

Zimmerman, N., Presto, A. A., Kumar, S. P., Gu, J., Hauryliuk, A., Robinson, E. S., Robinson, A. L., and Subramanian, R.: A machine learning calibration model using random forests to improve sensor performance for lower-cost air quality monitoring., *Atmospheric*

5 *Measurement Techniques*, 11, 2018.

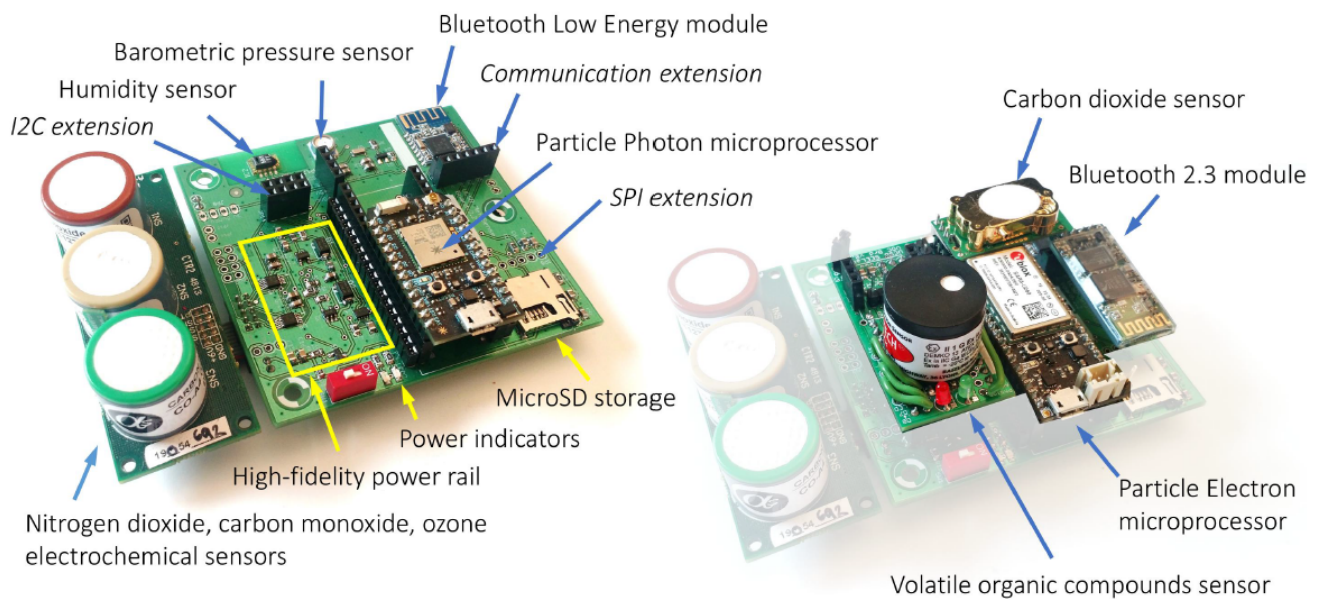


Figure 1. Labeled MetaSense Air Quality Sensing Platform. (Left) Modular, extensible platform in standard configuration with NO₂, O₃, and CO electrochemical sensors. (Right) Additional modules that can be added to the board for additional measurement capabilities.

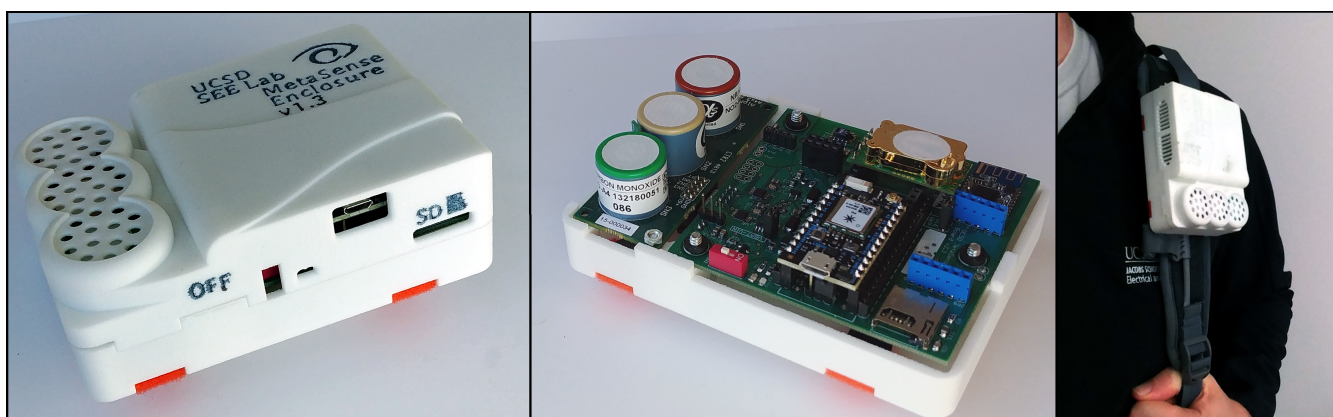


Figure 2. An enclosure was 3D printed for the MetaSense Air Quality Sensing Platform with top-side ports above the electrochemical sensors and a side port next to the ambient environmental sensors. The sensor is sized to be portable and has velcro straps that can be used to mount it to backpacks, bicycles, etc.

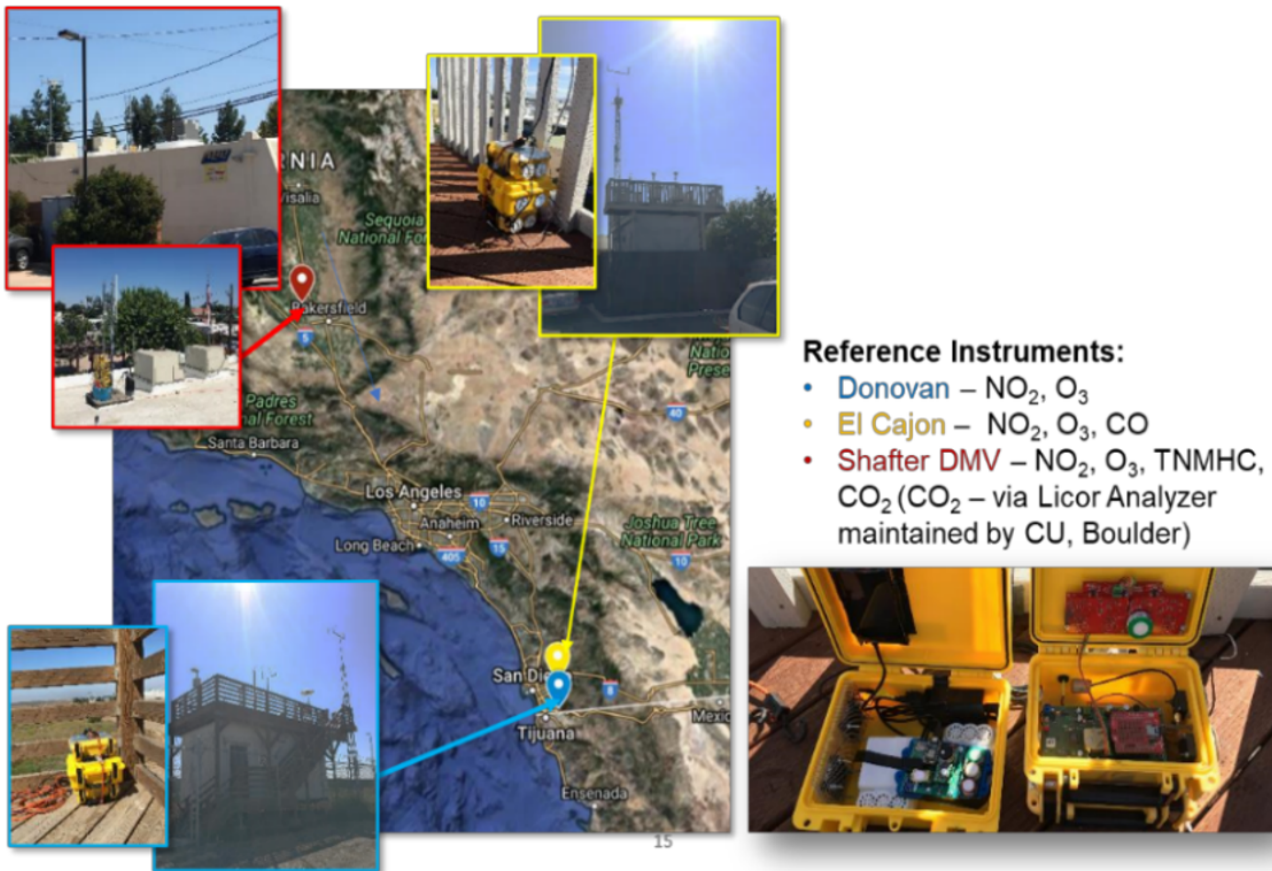


Figure 3. Map and images of deployment locations. Shafter DMV (red) was located 250 mi away from Donovan (blue) and El Cajon (yellow), which were located in San Diego, CA. (bottom right) Deployment containers configuration for the extended deployment. Each container has active ventilation to keep the internal conditions equivalent to the ambient environment.

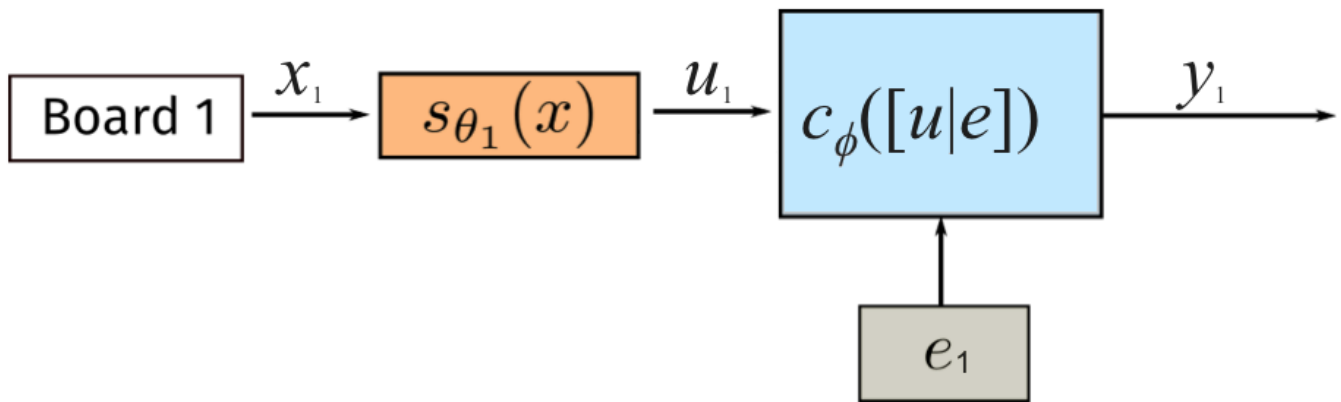


Figure 4. Architecture of the split-NN model in deployment (testing). Each air quality sensor has a board-specific model $s_{\theta_i}(x)$ that normalizes a given sensor's output (x) to an intermediate representation from all sensors (u). The intermediate representation is combined with environmental data (e) and input to the global model c_{ϕ} .

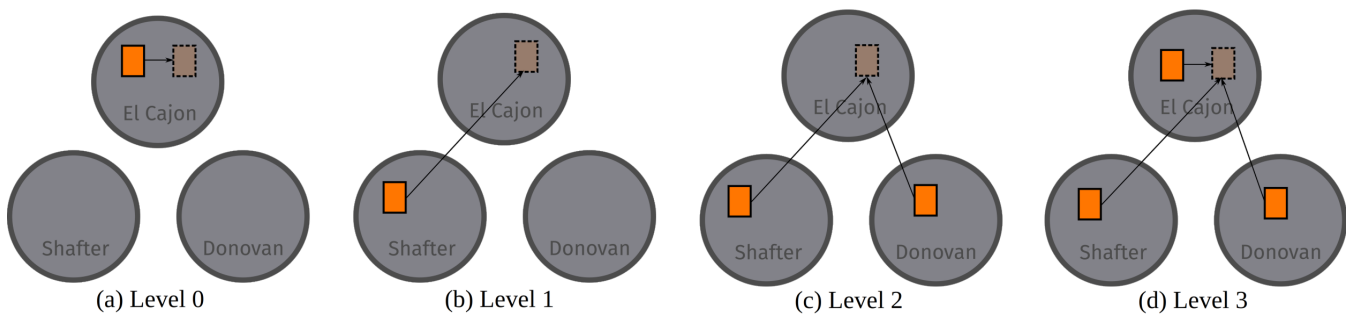


Figure 5. Graphical depiction of training versus testing for the Level 0 through Level 3 benchmarks. The Level 0 and 3 benchmarks test on a training site using held out data. The Level 1 and 2 benchmarks train and test on different sites, also using held out data for consistency.

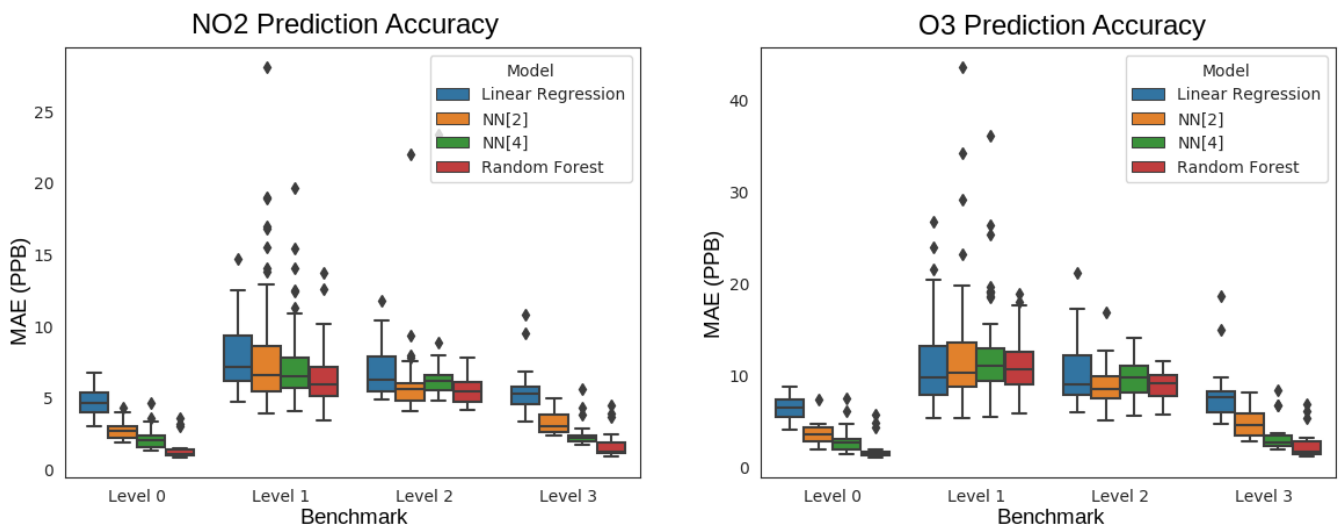


Figure 6. Mean absolute error (MAE) boxplots for NO₂ and O₃, for the Level 0 through Level 3 benchmarks.

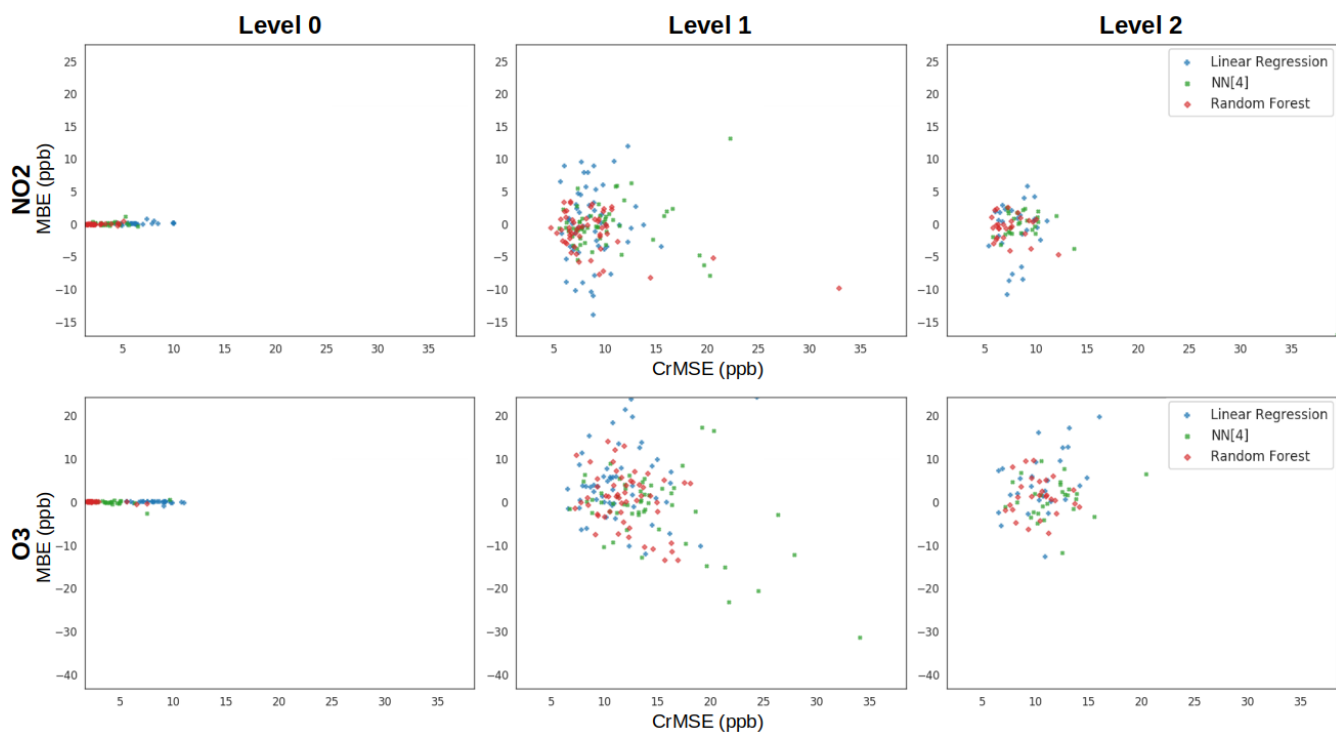


Figure 7. Target plots for Level 0 through Level 2 for both NO_2 and O_3 . In each panel, the centered error is plotted on the x-axis, while the bias error (MBE) is plotted on the y-axis. The differing colors then illustrate the performance of each calibration model at each level and for these metrics. Each point in the plot corresponds to a different individual benchmark (i.e., a unique round, location, and board).

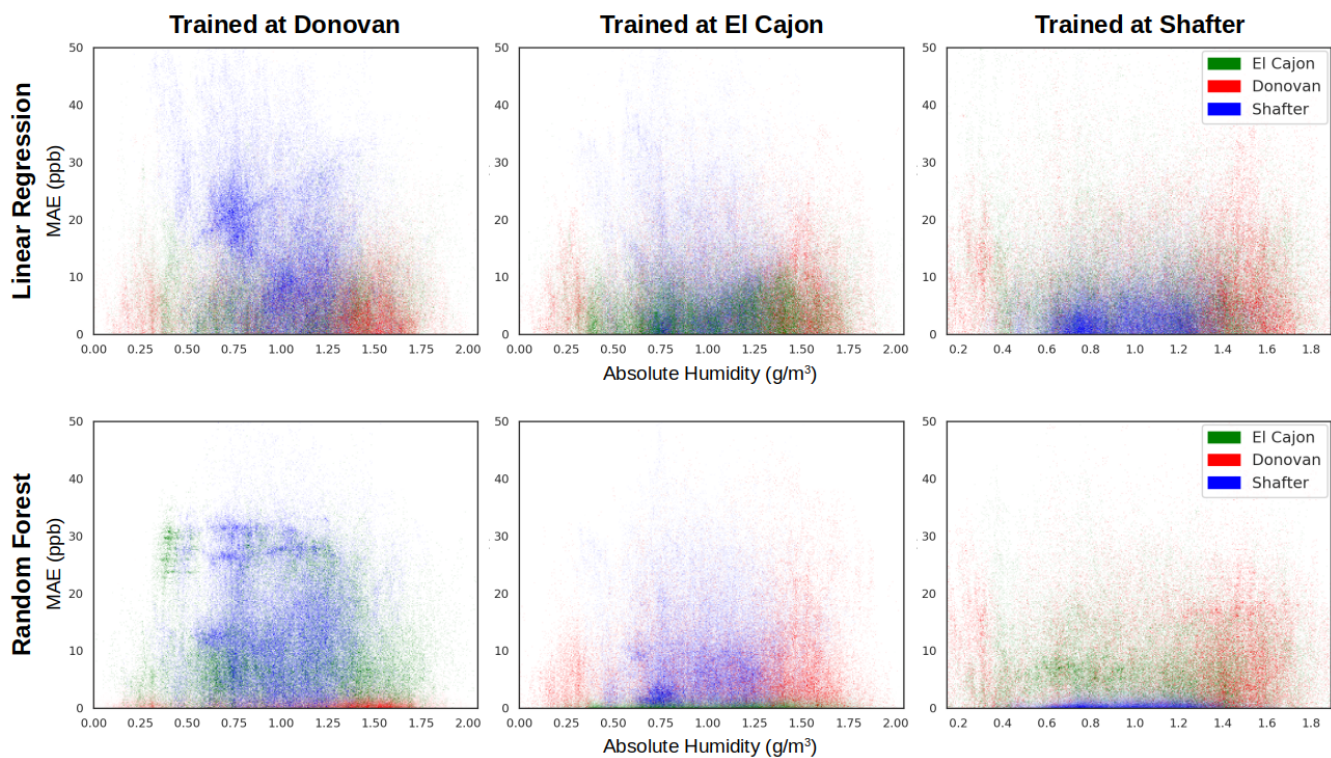


Figure 8. Error density plots for O_3 versus normalized absolute humidity for both Linear Regression (LR) and Random Forest (RF) in a Level 1 benchmark.

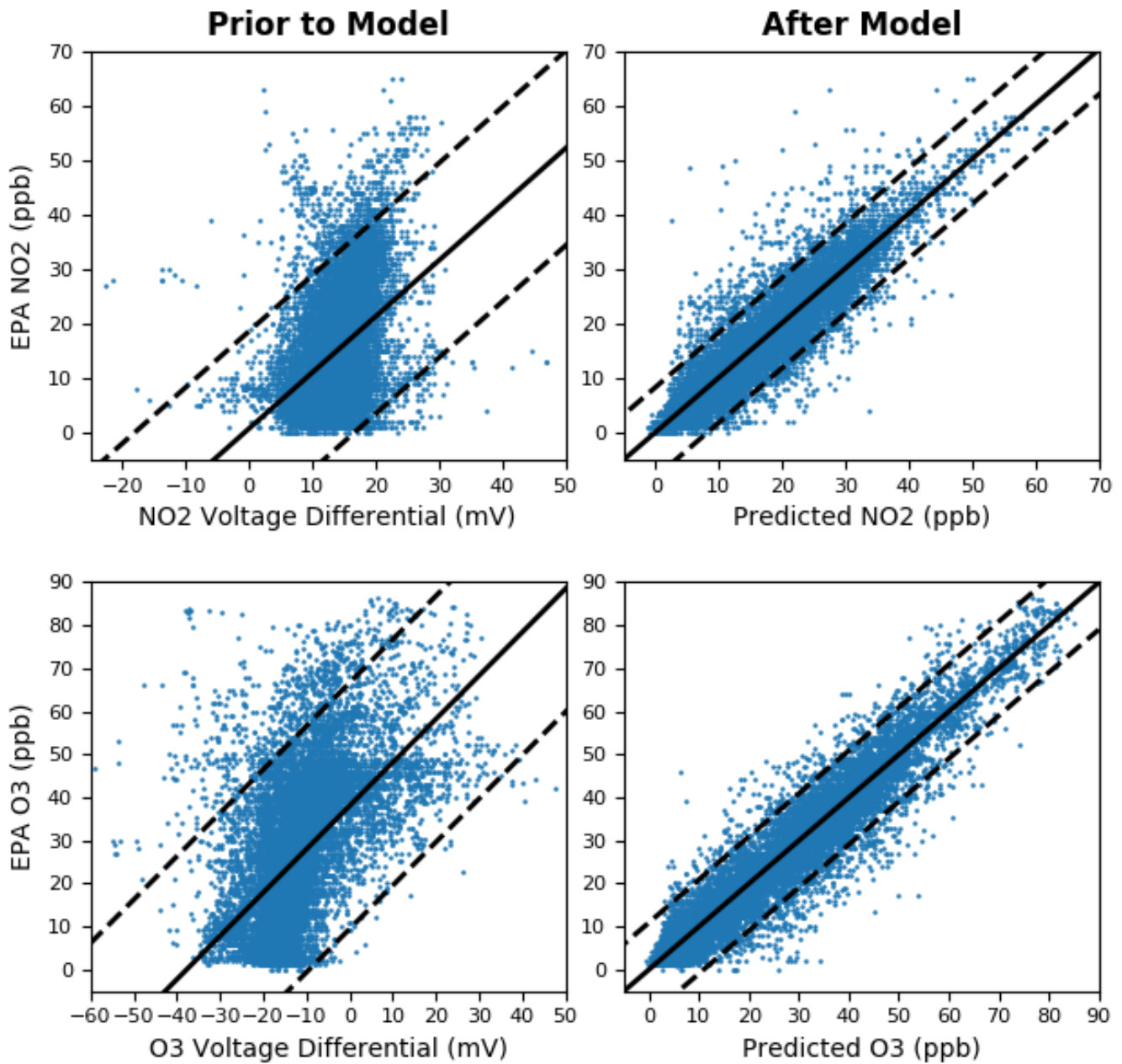


Figure 9. A single board comparison (Board 12) of the relationship between the raw sensor values and target pollutant concentrations (left) and the predicted and target pollutant concentrations after the model was run (right) for the Level 1 Split-NN (9) condition. The solid black line is a linear trend line and the dashed lines represent the 95th percentile.

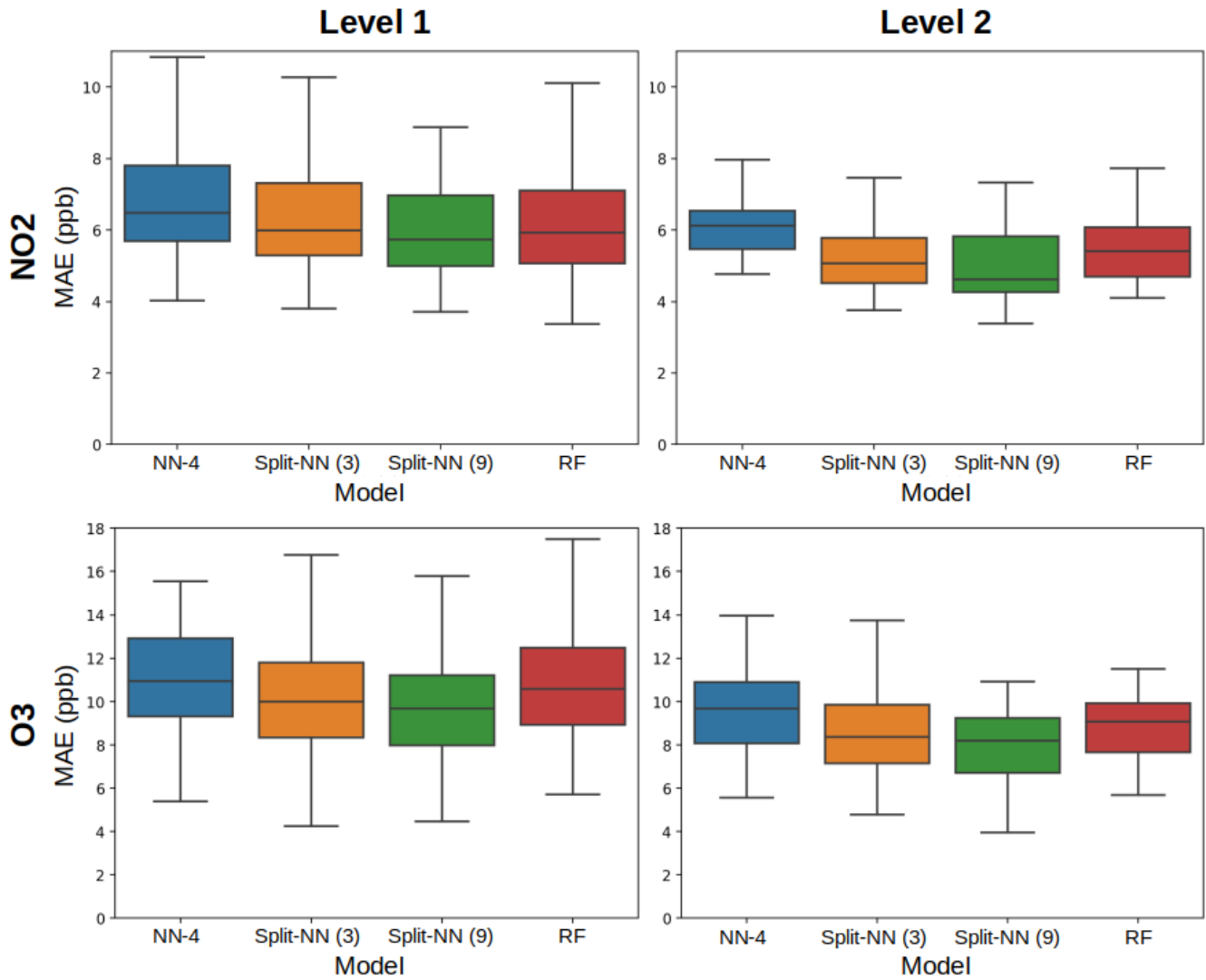


Figure 10. Results of evaluating the split-NN model with a linear regression first stage, compared against the RF model in both Level 1 and Level 2 comparisons. The split-NN model has a lower mean and median error in all conditions. Boxplots are pictured without outliers for clarity.

Table 1. Board locations and dates for each round.

	Round 1 9/26/17 - 10/19/17	Round 2 10/19/17 - 12/21/17	Round 3 12/21/17 - 3/5/18
Board 17	El Cajon	Shafter	Donovan
Board 19	El Cajon	Shafter	Donovan
Board 21	El Cajon	Shafter	Donovan
Board 11	Shafter	Donovan	El Cajon
Board 12	Shafter	Donovan	El Cajon
Board 13	Shafter	Donovan	El Cajon
Board 15	Donovan	El Cajon	Shafter
Board 18	Donovan	El Cajon	Shafter
Board 20	Donovan	El Cajon	Shafter

Appendix A: Environment and Pollutant Distributions (based on reference data)

The following graphs summarize the distributions of pollutants and environment variables provided from the reference sensors at the three sites during the three rounds of the study. Each bar represents the total proportion of measurements at the given temperature or humidity (a histogram plot). The lines are a visualization of the kernel density estimation of the raw measurements.

5

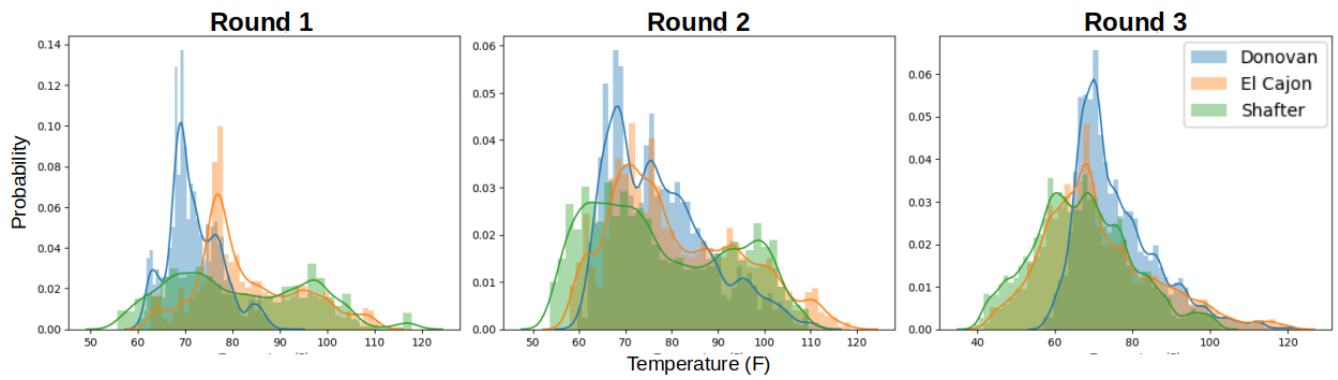


Figure A1. Temperature distributions for each location, by round.

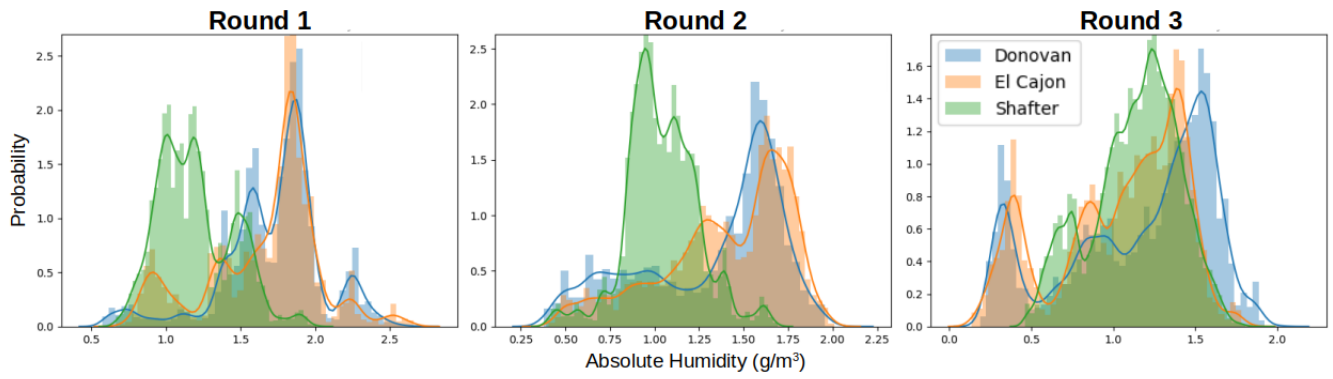


Figure A2. Humidity distributions for each location, by round.

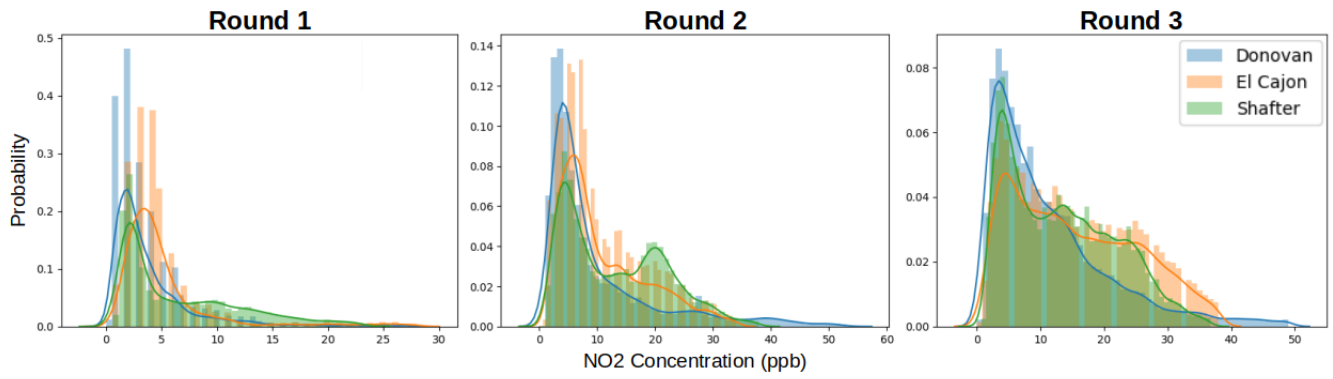


Figure A3. NO₂ distributions for each location, by round.

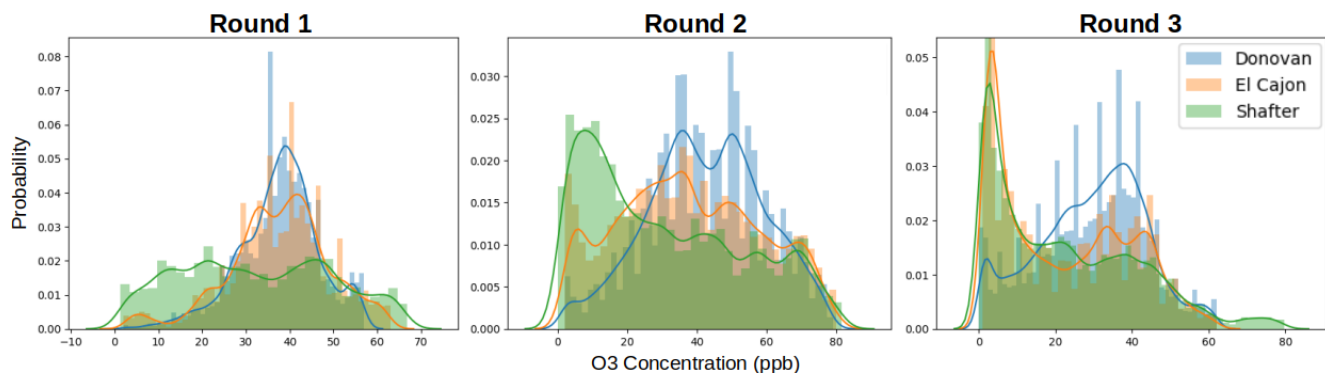


Figure A4. O₃ distributions for each location, by round.

Appendix B: Summaries of Data for each Location and Round

Table B1. Summary of data set grouped by location

Location		epa-no2	epa-o3	temperature	pressure	humidity
Donovan	count	100780	100780	100780	100780	100780
	mean	10.434	33.742	24.170	991.767	45.936
	std	10.807	15.378	5.624	3.226	21.966
	min	0.000	0.000	13.900	982.820	4.086
	25%	3.000	24.000	20.100	989.530	27.244
	50%	7.000	35.000	22.620	991.460	49.511
	75%	14.000	43.000	27.000	993.610	64.394
	max	157.000	96.000	49.710	1004.160	92.753
El Cajon	count	97412	97412	97412	97412	97412
	mean	12.914	29.331	24.342	997.288	43.923
	std	9.732	19.337	8.232	3.507	20.077
	min	0.000	1.000	5.430	989.230	2.733
	25%	5.000	11.000	18.570	994.880	28.623
	50%	10.000	31.000	23.380	996.890	45.053
	75%	20.000	43.000	29.700	999.450	61.166
	max	66.000	95.000	49.790	1010.480	85.827
Shafter	count	119785	119785	119785	119785	119785
	mean	12.578	26.357	22.101	1003.883	45.804
	std	9.079	20.739	8.184	5.596	18.072
	min	0.000	0.000	4.010	872.756	6.349
	25%	4.700	7.800	16.156	999.750	30.585
	50%	10.800	22.300	21.040	1003.990	46.763
	75%	19.000	41.200	27.200	1007.400	60.965
	max	594.600	110.400	47.700	1019.580	85.047

Table B2. Summary of data set grouped by round

Round		epa-no2	epa-o3	temperature	pressure	humidity
1	count	49771	49771	49771	49771	49771
	mean	5.509	36.010	26.062	994.459	48.322
	std	5.472	13.869	6.777	4.787	19.539
	min	0.000	1.300	13.100	872.756	9.644
	25%	2.000	28.000	20.900	990.920	31.790
	50%	3.700	37.300	24.600	995.240	50.507
	75%	6.600	45.000	30.130	997.640	61.525
	max	57.000	110.400	47.700	1002.940	92.753
2	count	75129	75129	75129	75129	75129
	mean	11.916	36.974	25.953	995.989	41.511
	std	9.583	21.259	7.577	6.075	19.757
	min	0.000	0.000	12.000	982.820	4.420
	25%	5.000	19.200	20.000	990.990	23.461
	50%	8.000	36.000	24.400	995.420	41.539
	75%	17.900	53.000	31.710	1000.710	56.961
	max	82.000	96.000	48.180	1009.890	87.562
3	count	193077	193077	193077	193077	193077
	mean	13.708	25.093	21.791	999.732	45.946
	std	10.225	17.807	7.276	6.708	20.013
	min	0.000	0.000	4.010	986.770	2.733
	25%	5.100	8.000	17.190	994.300	30.192
	50%	11.600	24.700	21.000	999.090	48.470
	75%	20.000	38.500	25.780	1004.690	63.450
	max	594.600	87.900	49.790	1019.580	85.440

Appendix C: Raw Results for the Baseline Calibration Models

The following tables are the complete error results for the baseline models across the various conditions. In these tables, the modeling methods are labeled as MLR for multiple linear regression, NN-2 for 2-layer neural network, NN-4 for 4-layer neural network, and RF for random forest, as described in Sect. 2.5. Likewise, the error measures are labeled as MAE for mean absolute error, CvMAE for coefficient of variation of the mean absolute error, MBE for mean bias error, MSE for mean standard error, R^2 is the coefficient of determination, crMSE for centered root mean square error, and rMSE for root mean squared error. MSE is reported in parts per billion squared. All other errors are reported in parts per billion. CvMAE and R^2 are dimensionless. The results are disaggregated by train and test sites, and averaged across the sensor packages.

Table C1. Level 0 train results for NO₂ (train and test on the same data set).

Train Site	Method	MAE	CvMAE	MBE	MSE	R ²	crMSE	rMSE
El Cajon	MLR	3.860	0.256	1.163e-14	28.094	0.685	5.259	5.259
Donovan	MLR	5.520	0.567	1.528e-15	73.035	0.312	8.374	8.374
Shafter	MLR	4.671	0.354	3.628e-15	40.945	0.492	6.380	6.380
El Cajon	NN-2	2.003	0.135	0.127	8.137	0.905	2.831	2.844
Donovan	NN-2	3.134	0.328	0.093	27.100	0.733	5.175	5.189
Shafter	NN-2	2.648	0.200	0.051	17.439	0.787	4.131	4.135
El Cajon	NN-4	1.109	0.074	0.076	2.976	0.967	1.700	1.704
Donovan	NN-4	1.946	0.213	0.033	13.955	0.835	3.527	3.548
Shafter	NN-4	1.755	0.133	-0.054	8.541	0.895	2.868	2.872
El Cajon	RF	0.477	0.032	-0.011	0.673	0.993	0.808	0.808
Donovan	RF	0.999	0.112	-0.022	3.705	0.956	1.870	1.871
Shafter	RF	0.514	0.039	-0.016	1.513	0.981	1.193	1.193

Table C2. Level 0 test results for NO₂.

Train Site	Test Site	Method	MAE	CvMAE	MBE	MSE	R ²	crMSE	rMSE
El Cajon	El Cajon	MLR	3.869	0.256	0.015	28.999	0.683	5.333	5.333
Donovan	Donovan	MLR	5.573	0.556	0.160	75.037	0.315	8.504	8.512
Shafter	Shafter	MLR	4.671	0.353	0.004	38.467	0.511	6.191	6.191
El Cajon	El Cajon	NN-2	2.074	0.140	0.127	9.185	0.895	3.006	3.018
Donovan	Donovan	NN-2	3.390	0.345	0.204	31.458	0.696	5.559	5.581
Shafter	Shafter	NN-2	2.694	0.203	0.052	15.772	0.802	3.942	3.946
El Cajon	El Cajon	NN-4	1.465	0.098	0.076	5.524	0.938	2.327	2.331
Donovan	Donovan	NN-4	2.739	0.288	0.105	24.875	0.729	4.907	4.924
Shafter	Shafter	NN-4	2.089	0.158	-0.060	10.702	0.865	3.252	3.256
El Cajon	El Cajon	RF	0.972	0.064	-0.028	2.929	0.968	1.683	1.683
Donovan	Donovan	RF	2.010	0.216	0.031	15.113	0.830	3.794	3.797
Shafter	Shafter	RF	1.028	0.078	-0.041	3.822	0.951	1.943	1.943

Table C3. Level 0 train results for O₃ (train and test on the same data set).

Train Site	Method	MAE	CvMAE	MBE	MSE	R ²	crMSE	rMSE
El Cajon	MLR	6.010	0.245	1.647e-14	60.276	0.827	7.666	7.666
Donovan	MLR	6.916	0.193	-1.881e-15	85.486	0.584	9.131	9.131
Shafter	MLR	5.882	0.239	9.460e-15	63.567	0.841	7.877	7.877
El Cajon	NN-2	2.810	0.112	-0.150	16.200	0.954	3.940	3.947
Donovan	NN-2	4.237	0.117	-0.270	35.055	0.821	5.824	5.855
Shafter	NN-2	3.498	0.141	0.013	24.929	0.939	4.895	4.909
El Cajon	NN-4	1.369	0.055	-0.092	4.418	0.987	2.053	2.064
Donovan	NN-4	2.781	0.077	-0.212	21.314	0.874	4.055	4.102
Shafter	NN-4	2.184	0.090	0.001	10.817	0.973	3.248	3.251
El Cajon	RF	0.598	0.024	0.006	0.962	0.997	0.976	0.976
Donovan	RF	1.341	0.037	0.014	4.938	0.971	1.988	1.988
Shafter	RF	0.643	0.027	0.011	1.176	0.997	1.083	1.083

Table C4. Level 0 test results for O₃.

Train Site	Test Site	Method	MAE	CvMAE	MBE	MSE	R ²	crMSE	rMSE
El Cajon	El Cajon	MLR	6.038	0.245	0.040	61.471	0.822	7.744	7.744
Donovan	Donovan	MLR	6.931	0.195	-0.255	85.324	0.604	9.116	9.124
Shafter	Shafter	MLR	5.877	0.240	0.020	63.379	0.842	7.857	7.858
El Cajon	El Cajon	NN-2	2.919	0.115	-0.133	17.626	0.950	4.113	4.118
Donovan	Donovan	NN-2	4.516	0.126	-0.488	40.687	0.802	6.193	6.253
Shafter	Shafter	NN-2	3.568	0.145	0.020	26.052	0.937	4.999	5.011
El Cajon	El Cajon	NN-4	1.903	0.075	-0.068	9.252	0.974	2.966	2.974
Donovan	Donovan	NN-4	3.830	0.107	-0.330	33.794	0.825	5.399	5.456
Shafter	Shafter	NN-4	2.672	0.109	-0.012	17.052	0.959	4.050	4.052
El Cajon	El Cajon	RF	1.217	0.049	0.015	3.987	0.988	1.987	1.987
Donovan	Donovan	RF	2.723	0.076	-0.103	19.179	0.897	3.931	3.934
Shafter	Shafter	RF	1.284	0.054	0.024	4.651	0.988	2.155	2.155

Table C5. Level 1 train results for NO₂ (train and test on the same data set).

Train Site	Method	MAE	CvMAE	MBE	MSE	R ²	crMSE	rMSE
El Cajon	MLR	3.869	0.256	0.015	28.999	0.683	5.333	5.333
Donovan	MLR	5.573	0.556	0.160	75.037	0.315	8.504	8.512
Shafter	MLR	4.671	0.353	0.004	38.467	0.511	6.191	6.191
El Cajon	NN-2	2.074	0.140	0.127	9.185	0.895	3.006	3.018
Donovan	NN-2	3.390	0.345	0.204	31.458	0.696	5.559	5.581
Shafter	NN-2	2.694	0.203	0.052	15.772	0.802	3.942	3.946
El Cajon	NN-4	1.465	0.098	0.076	5.524	0.938	2.327	2.331
Donovan	NN-4	2.739	0.288	0.105	24.875	0.729	4.907	4.924
Shafter	NN-4	2.089	0.158	-0.060	10.702	0.865	3.252	3.256
El Cajon	RF	0.972	0.064	-0.028	2.929	0.968	1.683	1.683
Donovan	RF	2.010	0.216	0.031	15.113	0.830	3.794	3.797
Shafter	RF	1.028	0.078	-0.041	3.822	0.951	1.943	1.943

Table C6. Level 1 test results for NO₂.

Train Site	Test Site	Method	MAE	CvMAE	MBE	MSE	R ²	crMSE	rMSE
El Cajon	Donovan	MLR	7.994	0.841	-4.447	119.171	-0.304	8.782	10.639
El Cajon	Shafter	MLR	7.495	0.565	-1.816	103.831	-0.303	8.871	9.990
Donovan	El Cajon	MLR	6.383	0.436	1.998	69.142	0.179	6.801	8.203
Donovan	Shafter	MLR	8.860	0.676	0.639	132.238	-0.711	8.201	11.351
Shafter	El Cajon	MLR	7.472	0.504	1.940	115.789	-0.303	9.532	10.366
Shafter	Donovan	MLR	8.553	0.856	0.904	143.748	-0.309	10.080	11.542
El Cajon	Donovan	NN-2	6.552	0.688	-1.875	98.026	-0.063	8.628	9.641
El Cajon	Shafter	NN-2	5.367	0.405	-0.491	52.894	0.334	7.077	7.189
Donovan	El Cajon	NN-2	9.960	0.649	2.435	282.631	-1.896	13.732	14.872
Donovan	Shafter	NN-2	8.567	0.662	2.822	173.652	-1.359	10.145	11.805
Shafter	El Cajon	NN-2	9.623	0.642	3.077	269.781	-2.158	13.186	14.291
Shafter	Donovan	NN-2	9.446	0.918	2.953	250.758	-1.049	11.432	13.326
El Cajon	Donovan	NN-4	6.164	0.632	-1.301	83.675	0.163	8.663	9.103
El Cajon	Shafter	NN-4	5.771	0.436	-0.298	58.188	0.266	7.473	7.601
Donovan	El Cajon	NN-4	7.702	0.500	-0.698	132.834	-0.385	10.342	10.622
Donovan	Shafter	NN-4	7.947	0.614	1.850	148.190	-0.995	10.032	10.690
Shafter	El Cajon	NN-4	8.609	0.563	-0.022	156.109	-0.689	11.210	11.768
Shafter	Donovan	NN-4	8.358	0.827	-0.362	176.864	-0.769	12.024	12.658
El Cajon	Donovan	RF	5.813	0.598	-1.477	72.216	0.291	8.005	8.414
El Cajon	Shafter	RF	5.560	0.420	-0.604	50.668	0.364	6.887	7.065
Donovan	El Cajon	RF	5.904	0.384	-1.458	61.572	0.346	7.186	7.597
Donovan	Shafter	RF	6.579	0.505	-1.846	79.515	-0.048	7.700	8.645
Shafter	El Cajon	RF	7.182	0.487	-0.148	198.620	-1.665	10.882	11.411
Shafter	Donovan	RF	7.220	0.725	-1.549	153.445	-0.642	11.112	11.635

Table C7. Level 1 train results for O₃ (train and test on the same data set).

Train Site	Method	MAE	CvMAE	MBE	MSE	R ²	crMSE	rMSE
El Cajon	MLR	6.038	0.245	0.040	61.471	0.822	7.744	7.744
Donovan	MLR	6.931	0.195	-0.255	85.324	0.604	9.116	9.124
Shafter	MLR	5.877	0.240	0.020	63.379	0.842	7.857	7.858
El Cajon	NN-2	2.919	0.115	-0.133	17.626	0.950	4.113	4.118
Donovan	NN-2	4.516	0.126	-0.488	40.687	0.802	6.193	6.253
Shafter	NN-2	3.568	0.145	0.020	26.052	0.937	4.999	5.011
El Cajon	NN-4	1.903	0.075	-0.068	9.252	0.974	2.966	2.974
Donovan	NN-4	3.830	0.107	-0.330	33.794	0.825	5.399	5.456
Shafter	NN-4	2.672	0.109	-0.012	17.052	0.959	4.050	4.052
El Cajon	RF	1.217	0.049	0.015	3.987	0.988	1.987	1.987
Donovan	RF	2.723	0.076	-0.103	19.179	0.897	3.931	3.934
Shafter	RF	1.284	0.054	0.024	4.651	0.988	2.155	2.155

Table C8. Level 1 test results for O₃.

Train Site	Test Site	Method	MAE	CvMAE	MBE	MSE	R ²	crMSE	rMSE
El Cajon	Donovan	MLR	11.383	0.319	8.605	227.071	-0.176	10.340	14.065
El Cajon	Shafter	MLR	9.812	0.415	5.474	182.938	0.509	11.107	12.920
Donovan	El Cajon	MLR	8.384	0.327	0.173	118.977	0.671	10.163	10.488
Donovan	Shafter	MLR	13.931	0.614	4.485	304.950	0.096	11.566	16.753
Shafter	El Cajon	MLR	9.819	0.400	-0.489	187.609	0.448	12.064	13.055
Shafter	Donovan	MLR	13.205	0.373	6.385	321.685	-0.639	13.259	16.624
El Cajon	Donovan	NN-2	10.910	0.305	4.597	231.519	-0.184	13.095	14.476
El Cajon	Shafter	NN-2	8.799	0.358	0.850	138.822	0.659	11.204	11.562
Donovan	El Cajon	NN-2	11.993	0.492	-5.201	300.587	0.088	14.488	15.944
Donovan	Shafter	NN-2	12.644	0.547	-4.902	276.752	0.186	14.168	15.888
Shafter	El Cajon	NN-2	14.346	0.630	-7.165	565.238	-0.780	17.245	19.883
Shafter	Donovan	NN-2	16.290	0.447	0.309	533.943	-1.188	15.973	20.250
El Cajon	Donovan	NN-4	11.144	0.311	5.321	233.599	-0.182	13.149	14.506
El Cajon	Shafter	NN-4	9.151	0.376	1.102	148.600	0.623	11.621	12.024
Donovan	El Cajon	NN-4	12.290	0.506	-5.953	294.927	0.099	14.143	16.031
Donovan	Shafter	NN-4	17.186	0.773	-10.780	597.851	-0.945	17.224	21.627
Shafter	El Cajon	NN-4	11.177	0.480	-3.281	271.195	0.156	14.606	15.313
Shafter	Donovan	NN-4	13.084	0.372	3.730	325.781	-0.556	15.852	17.251
El Cajon	Donovan	RF	10.679	0.302	6.487	189.558	0.051	11.079	13.496
El Cajon	Shafter	RF	9.739	0.401	1.367	157.403	0.601	11.999	12.406
Donovan	El Cajon	RF	11.458	0.469	-4.232	206.904	0.381	12.335	13.735
Donovan	Shafter	RF	14.236	0.608	-4.891	300.792	0.165	14.834	17.082
Shafter	El Cajon	RF	8.610	0.364	-1.488	120.284	0.640	10.315	10.841
Shafter	Donovan	RF	11.045	0.311	6.332	182.582	0.156	11.390	13.459

Table C9. Level 2 train results for NO₂ (train and test on the same data set).

Train Sites	Method	MAE	CvMAE	MBE	MSE	R ²	crMSE	rMSE
{Donovan, Shafter}	MLR	5.277	0.416	0.046	56.139	0.400	7.429	7.429
{Donovan, El Cajon}	MLR	4.480	0.326	0.042	44.649	0.585	6.559	6.559
{El Cajon, Shafter}	MLR	4.829	0.332	0.021	43.007	0.514	6.531	6.531
{Donovan, Shafter}	NN-2	2.935	0.231	0.212	23.237	0.755	4.755	4.765
{Donovan, El Cajon}	NN-2	2.629	0.192	0.178	19.636	0.820	4.327	4.338
{El Cajon, Shafter}	NN-2	2.665	0.183	-0.014	15.152	0.829	3.871	3.877
{Donovan, Shafter}	NN-4	2.026	0.159	0.079	12.776	0.865	3.531	3.537
{Donovan, El Cajon}	NN-4	1.763	0.129	0.077	10.645	0.901	3.192	3.195
{El Cajon, Shafter}	NN-4	1.823	0.126	0.070	8.225	0.906	2.857	2.860
{Donovan, Shafter}	RF	1.284	0.101	-0.044	7.900	0.918	2.741	2.743
{Donovan, El Cajon}	RF	1.154	0.084	-0.030	6.068	0.945	2.370	2.371
{El Cajon, Shafter}	RF	1.102	0.076	-0.039	4.081	0.954	2.017	2.017

Table C10. Level 2 test results for NO₂.

Train Sites	Test Site	Method	MAE	CvMAE	MBE	MSE	R ²	crMSE	rMSE
{Donovan, Shafter}	El Cajon	MLR	5.880	0.408	1.644	65.552	0.202	7.514	7.901
{Donovan, El Cajon}	Shafter	MLR	7.243	0.547	-2.411	90.821	-0.153	8.164	9.373
{El Cajon, Shafter}	Donovan	MLR	7.312	0.759	-2.242	101.530	-0.043	8.570	9.915
{Donovan, Shafter}	El Cajon	NN-2	7.881	0.513	-1.165	243.984	-1.583	11.727	12.331
{Donovan, El Cajon}	Shafter	NN-2	5.013	0.380	0.434	47.193	0.402	6.699	6.829
{El Cajon, Shafter}	Donovan	NN-2	5.786	0.592	-0.804	77.869	0.242	8.167	8.693
{Donovan, Shafter}	El Cajon	NN-4	8.579	0.554	-1.420	281.996	-1.869	12.447	12.951
{Donovan, El Cajon}	Shafter	NN-4	5.864	0.445	0.069	62.582	0.203	7.721	7.883
{El Cajon, Shafter}	Donovan	NN-4	5.991	0.606	-0.629	92.061	0.068	9.122	9.332
{Donovan, Shafter}	El Cajon	RF	5.510	0.376	-0.670	61.713	0.255	7.271	7.561
{Donovan, El Cajon}	Shafter	RF	5.312	0.402	-0.096	47.764	0.396	6.733	6.863
{El Cajon, Shafter}	Donovan	RF	5.533	0.567	-0.883	74.962	0.255	8.271	8.562

Table C11. Level 2 train results for O₃ (train and test on the same data set).

Train Sites	Method	MAE	CvMAE	MBE	MSE	R ²	crMSE	rMSE
{Donovan, Shafter}	MLR	6.396	0.249	-0.034	73.967	0.785	8.493	8.494
{Donovan, El Cajon}	MLR	6.702	0.227	0.005	75.618	0.788	8.640	8.640
{El Cajon, Shafter}	MLR	6.312	0.271	0.006	71.620	0.811	8.385	8.385
{Donovan, Shafter}	NN-2	3.857	0.150	-0.050	30.588	0.911	5.487	5.493
{Donovan, El Cajon}	NN-2	3.721	0.127	0.169	28.691	0.919	5.332	5.344
{El Cajon, Shafter}	NN-2	3.508	0.150	0.082	25.892	0.934	5.041	5.048
{Donovan, Shafter}	NN-4	2.447	0.096	0.046	14.251	0.959	3.763	3.765
{Donovan, El Cajon}	NN-4	2.355	0.080	0.116	13.973	0.961	3.716	3.721
{El Cajon, Shafter}	NN-4	2.210	0.094	0.104	11.863	0.969	3.408	3.412
{Donovan, Shafter}	RF	1.499	0.059	0.069	6.184	0.982	2.480	2.482
{Donovan, El Cajon}	RF	1.466	0.050	0.041	5.897	0.984	2.421	2.422
{El Cajon, Shafter}	RF	1.325	0.057	0.023	4.921	0.987	2.216	2.216

Table C12. Level 2 test results for O₃.

Train Sites	Test Site	Method	MAE	CvMAE	MBE	MSE	R ²	crMSE	rMSE
{Donovan, Shafter}	El Cajon	MLR	8.981	0.362	-1.747	136.139	0.607	10.070	11.263
{Donovan, El Cajon}	Shafter	MLR	10.436	0.447	6.596	195.691	0.452	10.844	13.384
{El Cajon, Shafter}	Donovan	MLR	11.842	0.332	8.646	234.924	-0.168	10.887	14.470
{Donovan, Shafter}	El Cajon	NN-2	8.585	0.353	-0.863	142.215	0.581	10.743	11.402
{Donovan, El Cajon}	Shafter	NN-2	8.227	0.338	-0.202	120.049	0.694	10.390	10.844
{El Cajon, Shafter}	Donovan	NN-2	9.896	0.278	5.069	180.978	0.103	11.353	12.892
{Donovan, Shafter}	El Cajon	NN-4	9.708	0.391	-1.786	187.381	0.466	12.179	12.983
{Donovan, El Cajon}	Shafter	NN-4	9.019	0.374	-0.536	139.776	0.638	11.293	11.721
{El Cajon, Shafter}	Donovan	NN-4	9.802	0.274	4.557	159.778	0.249	11.398	12.544
{Donovan, Shafter}	El Cajon	RF	7.892	0.327	-1.715	100.997	0.702	9.286	9.875
{Donovan, El Cajon}	Shafter	RF	9.568	0.397	0.597	150.607	0.613	11.533	12.148
{El Cajon, Shafter}	Donovan	RF	9.133	0.259	4.811	135.414	0.351	9.986	11.571

Table C13. Level 3 train results for NO₂ (train and test on the same data set).

Train Sites	Method	MAE	CvMAE	MBE	MSE	R ²	crMSE	rMSE
{Donovan, El Cajon, Shafter}	MLR	5.505	0.478	-0.585	66.057	0.257	7.474	7.805
{Donovan, El Cajon, Shafter}	NN-2	3.205	0.276	0.024	26.908	0.711	4.929	4.967
{Donovan, El Cajon, Shafter}	NN-4	1.916	0.164	0.006	10.234	0.883	3.083	3.095
{Donovan, El Cajon, Shafter}	RF	0.971	0.090	-0.102	3.344	0.961	1.628	1.648

Table C14. Level 3 test results for NO₂.

Train Sites	Test Site	Method	MAE	CvMAE	MBE	MSE	R ²	crMSE	rMSE
{Donovan, El Cajon, Shafter}	El Cajon	MLR	4.458	0.296	0.560	37.307	0.585	6.001	6.060
{Donovan, El Cajon, Shafter}	Donovan	MLR	6.819	0.707	-2.001	91.429	0.074	8.431	9.428
{Donovan, El Cajon, Shafter}	Shafter	MLR	5.156	0.390	-0.060	48.853	0.381	6.928	6.961
{Donovan, El Cajon, Shafter}	El Cajon	NN-2	2.595	0.175	-0.063	13.555	0.845	3.655	3.669
{Donovan, El Cajon, Shafter}	Donovan	NN-2	4.108	0.420	0.050	47.008	0.556	6.660	6.765
{Donovan, El Cajon, Shafter}	Shafter	NN-2	3.064	0.231	0.120	20.686	0.742	4.473	4.486
{Donovan, El Cajon, Shafter}	El Cajon	NN-4	1.837	0.123	-0.041	7.837	0.912	2.772	2.782
{Donovan, El Cajon, Shafter}	Donovan	NN-4	3.167	0.335	-0.075	38.583	0.542	5.784	5.812
{Donovan, El Cajon, Shafter}	Shafter	NN-4	2.108	0.159	0.016	10.459	0.868	3.220	3.225
{Donovan, El Cajon, Shafter}	El Cajon	RF	1.079	0.072	-0.039	3.634	0.959	1.885	1.886
{Donovan, El Cajon, Shafter}	Donovan	RF	2.583	0.277	-0.302	20.818	0.768	4.453	4.495
{Donovan, El Cajon, Shafter}	Shafter	RF	1.358	0.103	-0.035	5.324	0.933	2.281	2.287

Table C15. Level 3 train results for O₃ (train and test on the same data set).

Train Sites	Method	MAE	CvMAE	MBE	MSE	R ²	crMSE	rMSE
{Donovan, El Cajon, Shafter}	MLR	7.893	0.277	1.474	117.623	0.509	9.553	10.226
{Donovan, El Cajon, Shafter}	NN-2	4.547	0.157	0.426	43.025	0.834	6.216	6.309
{Donovan, El Cajon, Shafter}	NN-4	2.509	0.088	0.174	14.705	0.938	3.611	3.660
{Donovan, El Cajon, Shafter}	RF	1.379	0.044	0.308	5.251	0.976	1.865	1.936

Table C16. Level 3 test results for O₃.

Train Sites	Test Site	Method	MAE	CvMAE	MBE	MSE	R ²	crMSE	rMSE
{Donovan, El Cajon, Shafter}	El Cajon	MLR	6.859	0.278	-0.920	81.607	0.764	8.628	8.865
{Donovan, El Cajon, Shafter}	Donovan	MLR	9.870	0.276	5.047	169.555	0.141	10.236	12.282
{Donovan, El Cajon, Shafter}	Shafter	MLR	6.727	0.275	0.400	82.576	0.796	8.831	8.891
{Donovan, El Cajon, Shafter}	El Cajon	NN-2	3.732	0.148	-0.018	28.075	0.920	5.208	5.224
{Donovan, El Cajon, Shafter}	Donovan	NN-2	5.826	0.162	1.373	65.155	0.690	7.610	7.934
{Donovan, El Cajon, Shafter}	Shafter	NN-2	4.210	0.168	-0.039	36.454	0.914	5.843	5.855
{Donovan, El Cajon, Shafter}	El Cajon	NN-4	2.375	0.095	-0.069	13.066	0.963	3.552	3.572
{Donovan, El Cajon, Shafter}	Donovan	NN-4	4.541	0.126	1.132	46.867	0.757	6.182	6.402
{Donovan, El Cajon, Shafter}	Shafter	NN-4	2.669	0.109	-0.106	15.932	0.961	3.937	3.945
{Donovan, El Cajon, Shafter}	El Cajon	RF	1.391	0.056	0.019	5.064	0.985	2.233	2.234
{Donovan, El Cajon, Shafter}	Donovan	RF	3.504	0.096	1.142	28.621	0.849	4.594	4.837
{Donovan, El Cajon, Shafter}	Shafter	RF	1.853	0.072	0.105	8.391	0.980	2.775	2.783

Appendix D: Raw Results for the Split Neural Network Models

The following tables are error results for the split-NN models of size 3 and size 9. The error measures are labeled as MAE for mean absolute error, CvMAE for coefficient of variation of the mean absolute error, MBE for mean bias error, MSE for mean standard error, R^2 is the coefficient of determination, crMSE for centered root mean square error, and rMSE for root mean squared error. The results are disaggregated by train and test sites, and averaged across the sensor packages. However, because these are split models, both the the global model and the board-specific models are trained on all the sites. However, the trained board was not placed at the test site during training.

Table D1. Test results for split-NN level 1, size 3 (NO₂).

Train Site	Test Site	MAE	CvMAE	MBE	MSE	R ²	crMSE	rMSE
El Cajon	Donovan	5.838	0.601	-0.775	90.006	0.054	8.787	9.123
El Cajon	Shafter	5.246	0.397	0.284	51.872	0.345	6.909	7.142
Donovan	El Cajon	7.177	0.484	-0.676	118.001	-0.311	9.916	10.295
Donovan	Shafter	6.515	0.497	0.941	87.773	-0.143	8.652	9.130
Shafter	El Cajon	7.544	0.484	0.452	183.866	-0.923	10.592	11.094
Shafter	Donovan	7.516	0.736	-0.530	155.259	-0.307	10.295	11.056

Table D2. Test results for split-NN level 1, size 9 (NO₂).

Train Site	Test Site	MAE	CvMAE	MBE	MSE	R ²	crMSE	rMSE
El Cajon	Donovan	5.713	0.590	-1.012	78.898	0.206	8.326	8.800
El Cajon	Shafter	5.011	0.379	0.007	48.441	0.390	6.726	6.896
Donovan	El Cajon	6.426	0.436	0.016	88.722	-0.018	8.797	9.180
Donovan	Shafter	6.272	0.478	-0.493	78.929	-0.028	8.441	8.760
Shafter	El Cajon	6.333	0.410	0.961	77.864	0.168	7.881	8.569
Shafter	Donovan	6.924	0.681	-1.288	110.268	0.039	9.319	10.083

Table D3. Test results for split-NN level 1, size 3 (O_3).

Train Site	Test Site	MAE	CvMAE	MBE	MSE	R ²	crMSE	rMSE
El Cajon	Donovan	10.278	0.287	4.704	188.996	0.060	11.801	13.266
El Cajon	Shafter	8.280	0.336	0.862	125.486	0.692	10.668	10.982
Donovan	El Cajon	10.706	0.420	-3.206	225.276	0.355	13.079	14.170
Donovan	Shafter	11.369	0.486	-3.829	230.534	0.351	13.619	14.783
Shafter	El Cajon	10.857	0.480	-3.101	380.840	-0.227	14.472	15.351
Shafter	Donovan	12.195	0.343	4.319	302.175	-0.297	14.332	15.918

Table D4. Test results for split-NN level 1, size 9 (O_3).

Train Site	Test Site	MAE	CvMAE	MBE	MSE	R ²	crMSE	rMSE
El Cajon	Donovan	10.414	0.291	6.012	187.446	0.057	10.945	13.250
El Cajon	Shafter	8.234	0.335	1.909	123.068	0.696	10.482	10.872
Donovan	El Cajon	10.244	0.394	-2.838	192.420	0.459	12.167	13.186
Donovan	Shafter	9.980	0.416	-0.463	177.129	0.534	12.147	13.237
Shafter	El Cajon	9.709	0.423	-2.282	211.003	0.344	12.567	13.295
Shafter	Donovan	11.240	0.317	5.503	216.113	-0.003	12.947	14.428

Table D5. Test results for split-NN level 2, size 3 (NO₂).

Train Sites	Test Site	MAE	CvMAE	MBE	MSE	R ²	crMSE	rMSE
{Donovan, Shafter}	El Cajon	5.915	0.392	-1.035	91.805	-0.013	8.458	8.739
{Donovan, El Cajon}	Shafter	4.884	0.370	0.576	46.812	0.406	6.558	6.793
{El Cajon, Shafter}	Donovan	5.362	0.543	-0.373	73.628	0.302	8.108	8.411

Table D6. Test results for split-NN level 2, size 9 (NO₂).

Train Sites	Test Site	MAE	CvMAE	MBE	MSE	R ²	crMSE	rMSE
{Donovan, Shafter}	El Cajon	4.923	0.337	-0.648	48.985	0.424	6.500	6.795
{Donovan, El Cajon}	Shafter	4.749	0.360	0.676	43.165	0.453	6.221	6.497
{El Cajon, Shafter}	Donovan	5.301	0.538	-0.330	69.482	0.352	7.881	8.198

Table D7. Test results for split-NN level 2, size 3 (O_3).

Train Sites	Test Site	MAE	CvMAE	MBE	MSE	R ²	crMSE	rMSE
{Donovan, Shafter}	El Cajon	8.285	0.336	-1.515	139.473	0.596	10.573	11.204
{Donovan, El Cajon}	Shafter	8.079	0.331	-0.189	115.897	0.708	10.153	10.577
{El Cajon, Shafter}	Donovan	9.356	0.262	4.033	155.842	0.250	11.020	12.172

Table D8. Test results for split-NN level 2, size 9 (O_3).

Train Sites	Test Site	MAE	CvMAE	MBE	MSE	R ²	crMSE	rMSE
{Donovan, Shafter}	El Cajon	7.434	0.297	-0.910	105.619	0.695	9.443	9.977
{Donovan, El Cajon}	Shafter	7.819	0.320	0.372	110.537	0.723	9.774	10.314
{El Cajon, Shafter}	Donovan	9.022	0.253	4.190	141.869	0.313	10.427	11.654