

The development of the Atmospheric Measurements by Ultra-Light Spectrometer (AMULSE) greenhouse gas profiling system and application for satellite retrieval validation

Lilian Joly¹, Olivier Coopmann², Vincent Guidard², Thomas Decarpenterie¹, Nicolas Dumelié¹, Julien Cousin¹, Jérémie Burgalat¹, Nicolas Chauvin¹, Grégory Albora¹, Rabih Maamary¹, Zineb Miftah El Khair¹, Diane Tzanos³, Joël Barrié³, Éric Moulin³, Patrick Aressy³, and Anne Belleudy³

¹GSMA, UMR CNRS 7331, Université de Reims, U.F.R. Sciences Exactes et Naturelles, Reims, France

²CNRM, Université de Toulouse, Météo-France, CNRS, Toulouse, France (NWP team)

³CNRM, Université de Toulouse, Météo-France, CNRS, Toulouse, France (Instrumentation team)

Correspondence: L. Joly, GSMA, UMR CNRS 7331, Université de Reims, U.F.R. Sciences Exactes et Naturelles, Reims, France (lilian.joly@univ-reims.fr); O. Coopmann, Météo-France, CNRM/GMAP/OBS, 42 Avenue Gaspard Coriolis, 31057 Toulouse Cedex, France (olivier.coopmann@umr-cnrm.fr);

Abstract.

We report in this paper the development of an embedded ultralight spectrometer (< 3 kg) based on tuneable diode laser absorption spectroscopy (with a sampling rate of 24 Hz) in the mid-infrared spectral region. This instrument is dedicated to in-situ measurements of the vertical profile concentrations of three main greenhouse gases: carbon dioxide (CO_2), methane (CH_4) and water vapour (H_2O) via standard weather and tethered balloons. The plug and play instrument is compact, robust, cost-effective, and autonomous. The instrument also has a low power consumption and is non-intrusive.

It was first calibrated during an *in situ* experiment on an ICOS (Integrated Carbon Observation System) site for several days, then used in a two experiments with several balloon flights up to 30 km altitude in the Reims-France in 2017-2018 in collaboration with Météo-France/CNRM Centre National de Recherches Météorologiques.

This paper shows the valuable interest of the data measured by AMULSE (Atmospheric Measurements by UltraLight Spectrometer) instrument during the APOGEE (Atmospheric Profiles Of Greenhouse gasEs) measurement experiment, specifically for the vertical profiles of CO_2 and CH_4 , which remain very sparse. We have carried out several experiments showing that the measured profiles have several applications: for the validation of simulations of infrared satellite observations, for evaluating the quality of chemical profiles from Chemistry Transport Models (CTM) and for evaluating the quality of retrieved chemical profiles from the assimilation of infrared satellite observations. The results show that the simulations of infrared satellite observations from IASI (Infrared Atmospheric Sounding Interferometer) and CrIS (Cross-Track Infrared Sounder) instruments performed in operational mode for Numerical Weather Prediction (NWP) by the Radiative Transfer Model (RTM) RTTOV (Radiative Transfer for TIROS Operational Vertical sounder) are of good quality. We also show that the MOCAGE (Modèle de Chimie Atmosphérique à Grande Échelle) and CAMS (Copernicus Atmospheric Monitoring Service) CTMs modeled ozone profiles fairly accurately and that the CAMS CTM represents the methane in the troposphere well compared to MOCAGE. Fi-

nally, the measured *in situ* ozone profiles allowed us to show the good quality of the retrieved ozone profiles by assimilating ozone-sensitive infrared spectral radiances from IASI and CrIS.

Keywords. greenhouse gases; atmosphere; ultralight; spectrometer; balloons; in-situ; vertical; Radiative Transfer Model; Numerical Weather Prediction, Chemistry Transport Model, IASI, CrIS, CAMS, MOCAGE

5 Copyright statement. TEXT

1 Introduction

1

The climate of the Earth currently undergoes a quick change. During the last decades, evidence has been accumulated that this climate change is directly related to the human activities (Stocker et al., 2013) 2019 IPCC Report and 2019 AMS State
10 of the Climate. The abrupt acceleration of technological progress, the explosion of the industrial activities and agricultural, as well as the multiplication of the means of transport, create a profound change of our environment, gradually modifying the chemical composition of the atmosphere at a global level. In particular, the minority chemical compounds in the atmosphere have a fundamental impact on the regulation of the radiative balance of the planet. Indeed, certain gases have the property to absorb a part of the terrestrial infrared radiation. These gases called "GreenHouse Gas" (GHG) are naturally present in
15 the atmosphere (water vapor (H_2O), carbon dioxide (CO_2), methane (CH_4), nitrogen oxide (NO_x), ...). The energy that they collect is then returned in all the directions, at the same time towards space, but also towards the surface and the various layers of the atmosphere. It is the natural greenhouse effect which makes it possible to have average surface temperature of approximately $15^\circ C$ instead of $-18^\circ C$ if the atmosphere were transparent with the terrestrial radiation. Any modification of the atmospheric concentration of a GHG induces a modification of the climatic equilibrium. Thus, the atmosphere is certainly
20 the medium most rapidly affected by the disturbances of the equilibrium of the environment, whether natural, as during major climate cycles or linked to human activities. The main greenhouse gases related to the human activities are CO_2 , CH_4 and N_2O .

The satellite observations have brought information of thermodynamic structure and atmospheric composition using the hyperspectral infrared sounders such as IASI (Infrared Atmospheric Sounding Interferometer), CrIS (Cross-Track Infrared
25 Sounder) or AIRS (Atmospheric InfraRed Sounder). It is important to assess the quality of the atmospheric information provided by these instruments. Thus, several works were carried out in order to validate the atmospheric profile retrievals (temperature, humidity, trace gases, etc.) from infrared satellite observations. As for IASI (Hilton et al., 2012), CrIS ((Nalli et al., 2017a), (Nalli et al., 2017b)), AIRS ((Susskind et al., 2003), (Chahine et al., 2005)) or the work of (Liang et al., 2017) that evaluated XCO_2 satellite retrievals obtained from the Greenhouse Gases Observing Satellite (GOSAT) and Orbiting Carbon
30 Observatory-2 (OCO-2) instruments by comparison with total carbon dioxide column observations measured by the international Total Carbon Column observing Network (TCCON).

These observations are crucial to the study, understanding and follow-up of the atmospheric compounds to monitor the greenhouse gases. Météo-France operational Numerical Weather Prediction (NWP) systems use RTTOV (Radiative Transfer for TIROS Operational Vertical sounder) as a Radiative Transfer Model (RTM) during data assimilation, as many other NWP centers. In order to assimilate the satellite sounder observations, the actual observations have to be compared to the simulation from the model state with a RTM. Simulating infrared satellite observations from a RTM requires an *a priori* knowledge of the state of the atmosphere and its chemical composition. RTTOV uses chemical reference profiles that are constant in time and in space. This approximation may lead to possible errors in the simulations. The quality of simulations is essential since the information extracted from these models is then used in data assimilation systems for weather forecasting. Which is why there is a need to assess the quality of chemical profiles with *in situ* measurements.

In addition to the NWP models, Chemistry Transport Models (CTM) are available. Indeed, air pollution is a public health issue especially in big cities and would be responsible for 790000 deaths per year just in Europe (Lelieveld et al., 2019). One of the main pollutants in the troposphere is ozone which increases the death rate during pollution episodes. At large scales, the effect of the global change continues to be important due to the increase of GHG whose main contributors are carbon dioxide and methane. CTM such as MOCAGE (MOdèle de Chimie Atmosphérique à Grande Échelle) at Météo-France and C-IFS (atmospheric Chemistry in the Integrated Forecasting System) of CAMS (Copernicus Atmospheric Monitoring Service) at ECMWF (European Centre for Medium-Range Weather Forecasts) allow to produce high-quality forecast of chemistry field in the stratosphere and upper troposphere but forecast quality is weaker in the UTLS (Upper Troposphere Lower Stratosphere). However, satellite sounding in the atmospheric boundary layer is more difficult, especially for infrared sensors because of cloud and aerosols that interfere with the signal; land surface emissivity and temperature uncertainties also are part of the problem. The data assimilation of satellite observations sensitive to atmospheric composition allows to obtain accurate chemical description of the atmosphere especially in the UTLS. Presently, C-IFS assimilates Level 2 products from several satellite instruments. To assess the quality of the CTM forecasts of chemical fields, we need to have accurate measurements of these compounds on the atmospheric column. Despite many chemistry measurements at ground stations, information on chemistry is not widely available at high altitudes. To overcome this lack of data, many projects have been started such as the APOGEE (Atmospheric Profiles Of Greenhouse gasEs) experiment. APOGEE experiment derives from a collaboration between GSMA (Groupe de Spectrométrie Moléculaire et Atmosphérique) at Reims University in France, LSCE (Laboratoire des Sciences du Climat et de l'Environnement) in France and CNRM (Centre National de Recherches Météorologiques) at Météo-France. The objective of APOGEE experiment is to realize measurements of pressure, temperature, humidity and main atmospheric chemical vertical profiles (CO_2 , CH_4 , O_3 and H_2O) up to 30 km included atmospheric boundary layer. Ozone profile is measured using Vaisala *in situ* soundings with electrochemical cell. CO_2 , CH_4 and H_2O are measured using AMULSE (Atmospheric Measurement Ultralight SpEctrometer) instrument developed by GSMA.

In Section 2, we will identify some ways to measure the chemical composition of the atmosphere. Then in Section 3, we will describe the different characteristics of the AMULSE instrument as well as comparisons with another instrument. Finally,

we will use the data from the APOGEE measurement experiment on one study case to evaluate the sensitivity of infrared observation simulations on CO₂, CH₄ and O₃ information and we will use the *in situ* profiles to evaluate *a priori* profiles from the CTMs and retrieval profiles by 1D assimilation experiments.

2 Atmospheric composition measurements

5 2.1 Molecules of interest

CO₂ and CH₄ are long-lived gases. Atmospheric residence time is a few decades for CH₄ whose reactivity makes it an important player in atmospheric chemistry (Voulgarakis et al., 2013) and a few hundred to thousands of years for the CO₂ that is inert to it in the atmosphere from a chemical point of view (Archer and Brovkin, 2008; Eby et al., 2009). The increase of these gases in the atmosphere is conditioned by their anthropogenic emissions which add up to an active natural cycle. The CO₂ cycle is the carbon cycle as this gas dominates the atmospheric composition of carbon compounds in terms of mass (nearly 215 times higher than that of methane). However, the effectiveness of CH₄ in absorbing infrared radiation is much greater than that of carbon dioxide. Since the beginning of the industrial era in 1750, the mixing ratio of atmospheric CO₂ has increased from around 280 ppm to 401 ppm till October 2016, an increase of more than 40%. The increases in the CO₂ and CH₄ levels along with the uncertainty of the H₂O at high altitudes upset the radiative balance of the planet. Therefore, having information and data about the vertical distribution of these three GHG is very useful to improve our knowledge of the future of our climate. Hence, we should improve the knowledge and estimation of the regional anthropogenic GHG natural sinks and emission sources for a better quantification : 1) by enhancing the atmospheric chemistry-transport models that are used to link the sources and the sinks to the atmospheric concentrations; 2) by increasing the atmospheric observation and measurements.

2.2 GHG atmospheric observations

The goal of atmospheric observations of GHG is to follow the evolution of these gases. According to the IPCC (Intergovernmental Panel on Climate Change), it is necessary to be able to determine both the long-term trend related to global emissions, a seasonal cycle linked to vegetation activity or the availability of OH, and a synoptic variability linked to the transport of air masses over periods of time from few hours to few days. Typically, in one year, the air of the Northern Hemisphere is mixed with that of the Southern Hemisphere and vice versa. At mid-latitudes in the northern hemisphere, emissions are transported around the Earth in a few days by a zonal circulation of air masses that is much more efficient than mixing at latitudes. By nature, in-situ measurements, therefore, require continuous and diversified observation means on a global scale: ground measurements (ICOS , WMO , ...), airborne measurements (CAMMAS et al., 2008; Filges et al., 2015; Nédélec et al., 2015; Petzold et al., 2015), satellite observations (Crevoisier et al., 2013; Thompson et al., 2012; Wecht et al., 2014) and vertical measurements using balloons (Ghysels et al., 2016). Tethered balloons measurements can be used up to 800 meters altitude and they are cheap and allowed in France. They do not require a lot of preparation and logistics while they offer controlled travelling speed as well as fixed point measurements along with good payload options. On the other hand, weather balloon

offers high altitude measurements (up to 30 km) but the fixed point measurement cannot be realized. In our previous papers (Joly et al., 2016; Khair et al., 2017) we discussed the advantages and disadvantages of the different ground and airborne measurement techniques as well as the need for observations on the vertical along the atmospheric column in order to complete the spatial measurements. To complement the current observational system, stratospheric balloons are unique scientific research tools for accessing the stratosphere, an area inaccessible to airborne measurements. The information provided by the satellites is an integrated average over all or part of the atmospheric column with the exception of a few measurements taken at the limb which provide information with a low vertical resolution. The balloons' ability to access the profiles, makes them an ideal tool to explore the distribution of many atmospheric parameters between the surface and 40 km of altitude in a strategic zone where the masses of air mix a large number of particles and chemical compounds emitted from the Earth. We report in this paper the development of a lightweight instrument called AMULSE (for Atmospheric Measurements by UltraLight SpEctrometer) that fulfills the requirements for weather balloons flights in order to increase the atmospheric GHG measurements. This instrument was first tested at ground level during an intercomparison with PICARRO's instrument of the LSCE laboratory in Paris member in the ICOS network. It was then deployed into *in situ* measurements on tethered balloons and on weather balloon up to the stratosphere at about 30 km altitude for CO₂ and CH₄ while we measured simultaneously the H₂O up to 10 km altitude in order to calculate the mixing ratios in dry air column. High precision measurements and vertical resolution of 5-7 meters in-situ concentration profiles is achieved by using diode-laser spectroscopic technique (Durry and Megie, 1999a; Joly et al., 2007, 2016) combined with weather balloon and tethered balloons. The developed optical sensor is then based on mid-infrared absorption spectroscopy which provides a compact, cost-effective, fully autonomous, low-power consumption and non-intrusive probe to measure the targeted gases in the atmosphere using an open-path multipass cell.

3 AMULSE

In recent years, the AMULSE instrument has evolved in order to offer a single-gas CO₂ version in 2014, a single-gas CH₄ version in 2015, a dual-gases version in 2016 (CO₂/CH₄) and a tri-gases version (CO₂/CH₄/H₂O) in 2017, still weighing less than 3 kg. We are also working to improve the accuracy and robustness of the instrument.

3.1 Principle

The high selectivity and sensitivity in the gases detection realized using the diode laser absorption spectroscopy is considered as the most advantageous technique for measuring atmospheric gas concentrations (Durry and Megie, 1999b). It is based on semiconductor diode lasers because they offer a continuous mode emission, they are tunable and have a relatively low noise amplitude. The diodes used in this work emit in the near infrared spectral region (NIR) where most atmospheric pollutant molecules feature suitable absorption lines. Direct Absorption Spectroscopy is the simplest application of this technique and it is well adapted to in-situ measurements. It requires that the tunable laser beam with an intensity of I_0 passes through the gas sample on a distance L and then measured using a detector. When the frequency of the emitted light is close to a molecular

transition ν_0 of the gaseous sample, the light is then absorbed and the transmitted intensity $I(\nu)$ decreases. The concentration of the absorbing species in the gas mixture is then calculated according to Beer's law.

3.2 Technical description

Its architecture is similar to that used in our previous papers (Joly et al., 2016; El Khair et al., 2017). This new version is equipped with two lasers (purchased from nanoplus GmbH, Gerbrunn, Germany). The first one is a GaSb-based **distributed feedback (DFB)** semiconductor diode emitting at $2.004 \mu\text{m}$. A simple change on its scanning ramp allows us to target the CO_2 (4992.51 cm^{-1}) and H_2O (4992.94 cm^{-1}) molecules simultaneously on the same scanning window. The second laser is an **interband cascade laser (ICL)** DFB diode emitting at $3.24 \mu\text{m}$ detailed by (El Khair et al., 2017) used to target the CH_4 molecules (R(6) transition at 3085.86 cm^{-1}). The lasers driving current is ramped at 24 Hz (42 ms) ensuring a good spatial resolution ($1\text{-}20 \text{ m}$) depending on the ascent and decent flight speed. After collimation, the laser beams pass then into a home-made open-path Herriott multipass cell achieving an optical path-length of 16 m on the $\text{CO}_2/\text{H}_2\text{O}$ channel and 18 m on the CH_4 channel. The mirrors are heated in order to avoid the condensation on their surfaces using 2 W heaters.

At the output of the cell, both laser beams are focalized onto the two photodetectors (purchased from **Teledyne Judson Technologies**, Montgomeryville, PA, USA). The central processing unit (National Instrument real time) records all data (spectra, **pressure, temperature and humidity (PTU)** and GPS from the on-board meteorological *in situ* sounding). **The spectrometer weighs less than** 3 kg in flight-ready condition and power supplies ensuring about 6 h of operation. When operated under weather balloons, the spectrometer is equipped with a satellite communication system based on an Iridium element. The Iridium module **sends** various datas such as meteorological parameters and GPS localisation as well as monitoring parameters of the instrument during the flights. Under a tethered balloon, a Wi-Fi module replaces the Iridium, allowing to send to a ground station the recorded spectra in order to achieve nearly real-time data processing and hence determine the position and the concentration of the plume.

3.3 AMULSE compared to Picarro (2015-2018)

Each time AMUSLE evolved, we made different comparisons with measurements from an ICOS site in order to characterize the impact of instrumental modifications. The table shows the improvement in sensitivity between 2015 and 2018 (Table 1). This improvement comes from the optimization of the optical cell, electronics and spectroscopy.

Table 1. Evolution between 2015 (with two single-gas versions CO_2 and CH_4) and 2018 of AMULSE sensitivities with respect to years and measurable molecular species. It highlights an increasing improvement in the performance of the instrument. **It's the standard deviation over a one-second integration period.**

	2015	2017	2018
CH_4	97 ppb	14 ppb	2.7 ppb
CO_2	1.4 ppm	2.6 ppm	0.5 ppm
H_2O		50 ppm	18 ppm

In order to better understand the values in this table, we will describe the last comparison measurement experiment that achieved in February 2018. It took place at the LSCE on their ICOS site where a Picarro's instruments (model G1301, Picarro Inc., Santa Clara, CA, USA) is installed. All Picarro's concentration are calibrated (every 6 hours) with a WMO (World Meteorological Organization) standard gas. The analyser pulled air continuously at few centimeters from the AMULSE about more than three continuous days. Figure 1 shows the intercomparison between the two instruments with Picarro's data plotted in green and AMULSE's data in blue. Insets (a), (b) and (c) in Figure 1 correspond to a zoom on 10 minute. The results show a good correlation between the two instruments for the three measured species. The average absolute difference between the two instruments for the CO₂ channel is equal to 0.01 ppm with a standard deviation of 0.5 ppm (0.2 %), 0.1 ppb with a standard deviation of 2.7 ppb (0.2 %) for the CH₄ channel and 2 ppm with a standard deviation of 18 ppm (0.05 %) for the H₂O channel.

10 4 Atmospheric applications

Once the validation of the instrument was realized with the help of the PICARRO's, several atmospheric measurement experiments were carried out.

4.1 Tethered balloons application (2017)

Tethered balloons offer great opportunities in order to characterize the temporal atmospheric evolution of the three measured species up to 800 m altitude. In such application we can control the motion speed of the balloon, we can have a bigger payload (which depends on the type of the balloon used), we can even acquire data from a fixed stationary point. Tethered balloon is a carrier that allows measurements to be made between a fixed tower and under-aircraft measurements. The costs of a tethered balloon are much lower than the installations mentioned above.

A experiment was conducted to monitor the evolution of the atmospheric boundary layer early in the morning at sunrise. We carried out 21 ascents/descents (up to 50 metres above sea level). The time of an ascent is about 6 minutes, which results in a vertical resolution of between 20 and 50 cm.

These results were first interpolated over all the heights so that we visualized the spatio-temporal evolution of the boundary layer that morning (Figure 2). the evolution of concentrations and temperature is consistent with what has previously been observed by (K.H. Reid, 1997) AMULSE simultaneously records the concentration of CO₂ (top left), CH₄ (top right), H₂O (bottom left) and temperature (bottom right).

This illustrates the interest of this instrument on board a tethered balloon, as it allows the study of CO₂, CH₄ and H₂O of the boundary layer.

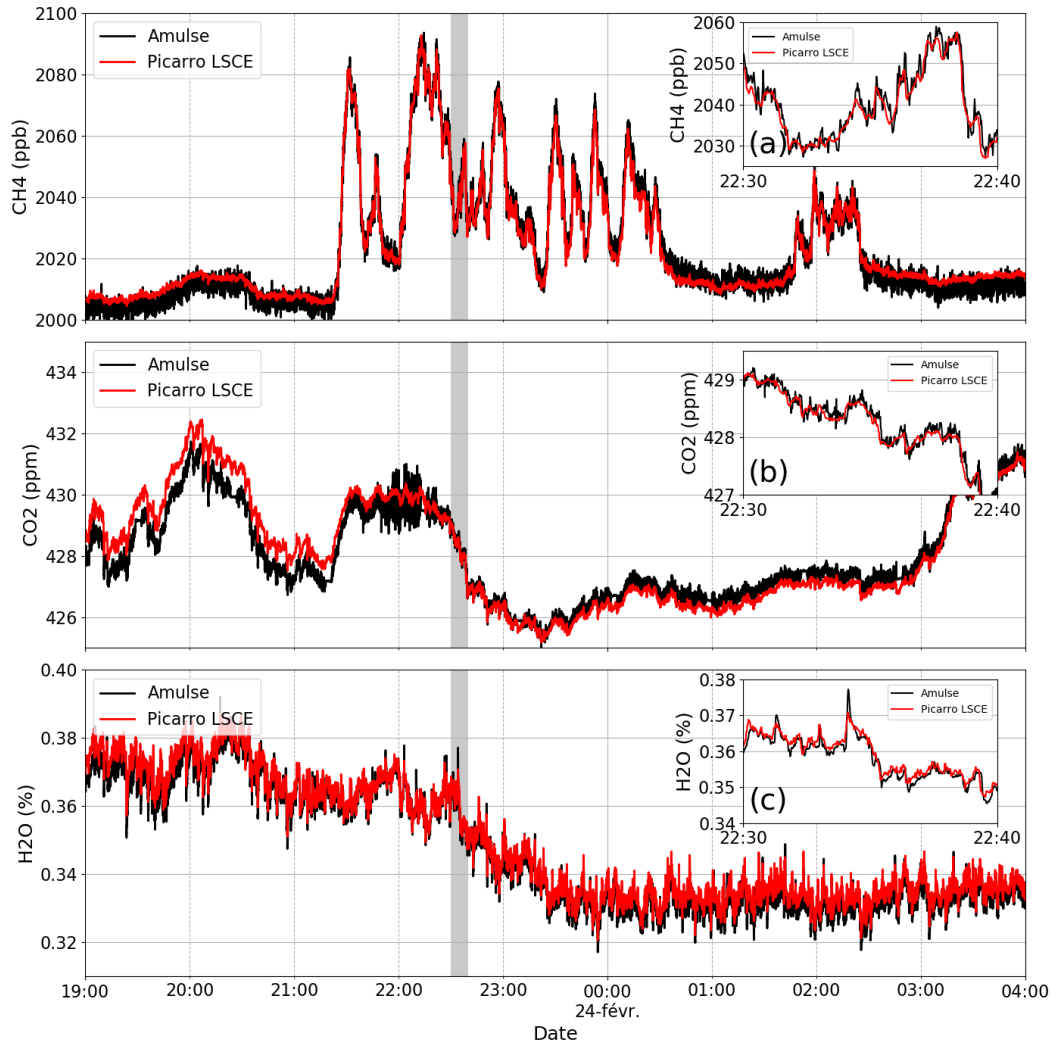


Figure 1. Intercomparison between AMULSE’s concentration (in black) and Picarro’s concentration calibrated with WMO gases (in red) during 9 hours for CO₂, CH₄ and H₂O. Gray areas correspond to the zoomed views.

4.2 APOGEE experiment (2017-2018)

4.2.1 Objectives

One of the goals is to carry out weather balloon measurements in co-location with the IASI satellite, in orbit around the earth, developed jointly by CNES (Centre National d’Etude Spatiale) and EUMETSAT (European Organisation for the Exploitation of Meteorological Satellites). The measurement made by AMULSE instrument will provide comparative data that can be used to validate CNRM/Météo France meteorological models. In addition, the combination of all these measures offers an

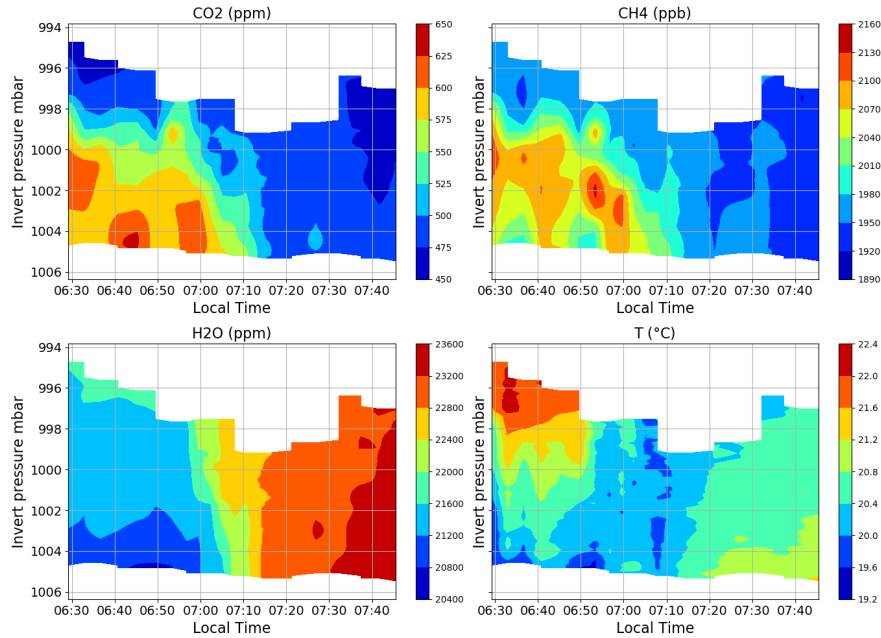


Figure 2. Atmospheric boundary layer evolution. Here is an example of the results of the AMULSE measurements under tethered balloon, it allows to measure simultaneously as a function of time and altitude, the concentration of CO₂ (top left), CH₄ (top right), H₂O (bottom left) and temperature (bottom right)

opportunity to analyse physico-chemical processes that have not yet been studied in the stratosphere and the interface between the troposphere and the stratosphere, commonly known as UTLS (Upper Troposphere - Lower Stratosphere). To achieve these objectives, we carried out measurements from the site of our laboratory using meteorological balloon for the measurements of CO₂, CH₄, H₂O, O₃, P, T, U in co-location with Metop A, Metop B and Suomi-NPP.

- 5 To measure all these parameters, the instruments used were as follows:
 - Vaisala RS92-SGP *in situ* soundings (pressure, temperature, relative humidity and GPS location measurement every second with a real time transmission)
 - Electrochemical concentration cell (ECC) ozonesondes from Science Pump Corporation, models 5A and 6A with Vaisala RS-92 interfacing (ozone concentration measurement every second with a real time transmission)
- 10 – The AMULSE instrument presented above

4.2.2 Description of the flight chain

Flight chain is composed of a carrier balloon, a parachute and the payload (AMULSE and *in situ* sounding) (Figure 3a). Balloon is inflated using a tare to ensure good repeatability of ascent speed. A wire is connected to both parachute and AMULSE release

system; the carrier balloon is hooked up to the wire using a sliding ring. Balloon is released when the wire is cutted and it can be triggered either at a specific atmospheric pressure (fixed before the launch), or via a satellite communication system based on an Iridium modem embedded on the AMULSE electronic board or at a specific timeout fixed in advance. When the carrier balloon is released, the wire slides out of the ring and the instrumentation descends with the parachute at a speed lower than 5m/s (Figure 3b). A meteorological *in situ* sounding with a GPS probe fixed on the instrumentation and connected to a ground station allows the determination of the landing site which helps recovery of the instrumentation. A flight simulation software is used to estimate the trajectories and the landing point of the probe. This estimation is based on the wind forecasts from both Météo-France operational numerical weather prediction models: the mesoscale model AROME (Applications de la Recherche à l'Opérationnel à Méso-Echelle) (Seity et al., 2011; Brousseau et al., 2016) and the global model ARPEGE (Action de Recherche Petite Echelle Grande Echelle)(Courtier and Geleyn, 1988; Déqué et al., 1994). Hypothesis are made on both ascending/descending speed of the system and the release of the carrier balloon in order to run a first simulation. A measured vertical profile of horizontal winds by the recent sounding can also be used. The trajectories of the balloon are updated in real time by the rawinsonde RS92 measured wind. As the trajectories are adjusted in real-time and AMULSE release system can be remotely triggered, landing area can be optimized in order to maximize safety landings.

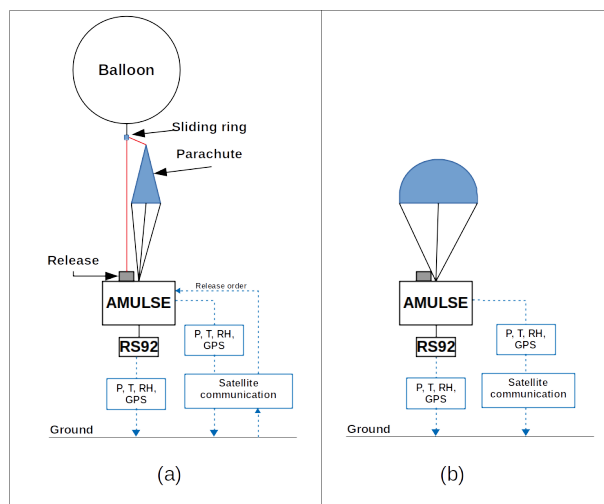


Figure 3. A schematic diagram of the flight chain during (a) ascent and (b) descent. Transmission and reception of the information during the flight is done using both satellite and radio communications. A Vaisala *in situ* sounding RS92 is connected which measures and transmits instantaneous P, T, relative humidity and GPS data to a ground mobile station to inject those data in the trajectory model and hence ensure the tracking/recovery of the instrument. Note that the trigger release system can be controlled by either home-made smartphone application or web application using Iridium satellite communication system. Theses applications can also track AMULSE position as the latter transmits its GPS position, pressure and temperature data every 5 min ensuring redundant retrieval system.

4.2.3 Performed Flights

The measurement experiment was held in France in the Champagne - Ardenne region. The launching site was located at the Campus Moulin de la Housse, in Reims (49°14'29.608" N, 4°4'4.709" E). The flights took place over the period from November 2017 to April 2018 (Table 2) and was carried out either by day or night. Several launches could be done at the same time (Figure 4).



Figure 4. Launching site (a) at day and (b) at night, ready for multiple launches.

Flight	Date	Max altitude (m)
1	07/11/2017 13:48 UTC	19,121
2	08/11/2017 11:50 UTC	25,460
3	15/11/2017 12:02 UTC	31,156
4	15/11/2017 12:09 UTC	31,388
5	15/11/2017 12:06 UTC	31,110
6	13/04/2018 12:06 UTC	29,490
7	17/04/2018 10:15 UTC	25,000
8	17/04/2018 20:12 UTC	19,660

Table 2. List of flights between November 2017 and April 2018

Figure 5 shows examples of vertical concentrations profiles of CO₂, CH₄, H₂O obtained from the flights and we added temperature for identification of the tropopause. The concentration of CO₂ on the ground can vary greatly, depending on the time of measurement because the boundary layer is enriched with CO₂ when flying close to night (plant respiration - (Schmidt et al., 2014). Concerning CH₄, we see that there is a slight difference but the decrease always occurs at the tropopause level. Its decrease is due to its oxidation with the OH radical. For water measurements, we are currently using the "Imet 1" *in situ* sounding. The measurements are consistent below 10 km altitude but above this altitude we consider that the measurements are biased. For this reason, one of the goals for the year 2020 is to make water vapour measurements by laser diode spectrometry more accurate in the stratosphere. It should also be taken into account that we generally see an increase in water vapour concentration above 10 km, this is due to the degassing of water from the instrument and the balloon during the ascent. For this reason, water measurements in the stratosphere are only possible during descents.

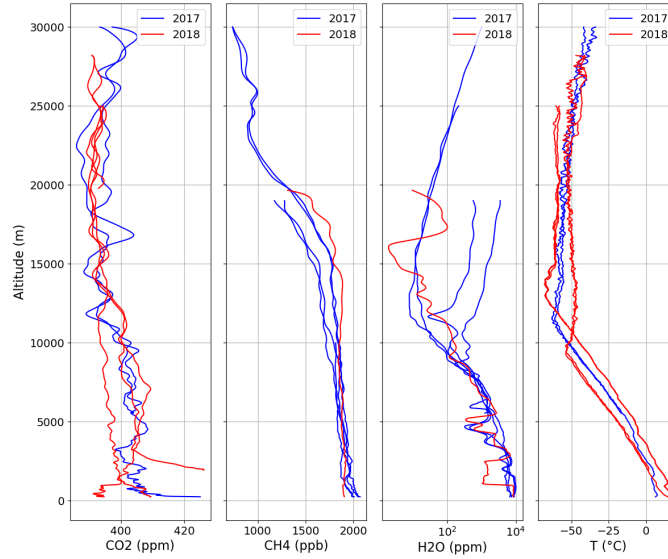


Figure 5. Balloon measurement : CO₂, CH₄, H₂O, temperature vertical concentration profiles between November 2017 and April 2018

5 Use of data from the APOGEE measurement experiment

The data produced during the APOGEE measurement experiment have different applications. Initially, they were used as satellite validation data for the IASI and CrIS infrared sounders. They were then used to evaluate the quality of vertical ozone and methane profiles extracted from the MOCAGE and CAMS Chemistry Transport Models. Finally, they were used as

5 verification data to compare the ozone profiles returned in one-dimensional variational assimilation experiments (1D-Var) with the *a priori* ozone profiles from MOCAGE and CAMS.

5.1 Sensitivity of infrared satellite sensors to CO₂, CH₄ and O₃ information

5.1.1 IASI and CrIS sensors

IASI is flying on board 3 European polar-orbiting satellites Metop-A, B and C, respectively launched in 2006, 2012 and

10 2018. The IASI spectrum covers the range between 645 and 2760 cm⁻¹, with as spectral sampling of 0.25 cm⁻¹ and spectral resolution of 0.5 cm⁻¹ after apodisation. CrIS is part of the payload of the US polar-orbiting satellites S-NPP and NOAA-20, respectively launched in 2011 and 2017. Only the so-called CrIS Normal Spectral Resolution data are used in this study, leaving the CrIS spectrum divided into three parts: between 650 and 1095 cm⁻¹ with a spectral resolution of 0.625 cm⁻¹, between 1210 and 1750 cm⁻¹ (1.25 cm⁻¹ spectral resolution) and between 2155 and 2550 cm⁻¹ (2.5 cm⁻¹ spectral resolution).

5.1.2 Radiative Transfer Model

During the assimilation process within the NWP analysis step, a compromise is found between *a priori* knowledge of the atmospheric state (a short-range forecast, in general) and various observations, including radiosoundings, aircraft measurements, ground stations, space-borne passive sounders both in the microwave and in the infrared, among others. When assimilating satellite radiances, eg. infrared radiances, a radiative transfer model is needed in several ways. Firstly, the observations have to be compared to the prior atmospheric state: simulations of radiances are made using the temperature and humidity profiles and surface parameters from that state. The differences between observations and simulations are called innovations or first-guess departures. Then, the information contained in the first-guess departures is used to modify the atmospheric state so that the analyzed atmospheric state is a compromise between all sources of information. To achieve this inverse problem, the RTM has to either have tangent linear and adjoint codes or compute the jacobians (the Jacobians of IASI channels are described in Section 5.1.3). At Météo-France, the RTM used in the operational assimilation software is the fast radiative transfer model RTTOV (Saunders et al., 2018) developed and maintained by the NWP-SAF (Satellite Application Facility) of EUMETSAT (European Organisation for the Exploitation of METeorological SATellites).

For infrared sensor simulation, RTTOV requires not only temperature and humidity profiles, but also a knowledge of the atmospheric composition. As few NWP models have in-line atmospheric composition yet or are coupled to a CTM, RTTOV also provides the users with average chemical profiles that are invariant in time and space, hereafter referenced as REF profiles. These REF profiles are plotted on Figure 7 for O_3 (a), CO_2 (b) and CH_4 (c). In this study, we use RTTOV version 12, with coefficients for IASI and CrIS on 101 fixed pressure levels.

5.1.3 Theoretical sensitivity of IASI and CrIS spectra to GHG

Infrared satellite observations measured by IASI and CrIS instruments are sensitive to atmospheric temperature and humidity, skin temperature but also atmospheric chemistry. To identify the channels sensitive to the different parameters, RTTOV offers the possibility to calculate the jacobians which represent the sensitivity of the brightness temperature to the variation of a thermodynamic or chemical parameter. Thus we have represented in Figure 6, the jacobians in temperature (a), humidity (b), skin temperature (c), ozone (d), carbon dioxide (e) and methane (f) for the 8461 IASI channels using the reference chemical profiles for our case study according to the 101 RTM levels. It should be noted that temperature jacobians are sensitive over a large part of the spectrum but at different altitudes. Indeed, channels between 650 to 770 cm^{-1} describe a temperature sensitivity from the top of the stratosphere to the surface. There are also high sensitivity *near the surface* to window channels between 790 to 980 cm^{-1} and 1080 to 1150 cm^{-1} . There is a sensitivity over the entire atmosphere for channels between 1000 to 1070 cm^{-1} . Then, temperature jacobians are sensitive in the troposphere between 1210 to 1650 cm^{-1} . Humidity jacobians are surface sensitive for channels between 650 to 770 cm^{-1} and 1080 to 1150 cm^{-1} and in the troposphere between 650 to 1150 cm^{-1} . Jacobians of skin temperature have essentially high values for window channels between 790 to 980 cm^{-1} and 1080 to 1150 cm^{-1} . Ozone jacobians are slightly sensitive between 650 to 770 cm^{-1} and have a sensitivity over the entire

atmosphere between 1000 to 1070 cm^{-1} . We note that carbon dioxide jacobians have high values over the entire atmospheric column for channels between 650 to 770 cm^{-1} . Finally, methane jacobians have high sensitivities for channels between 1210 to 1650 cm^{-1} .

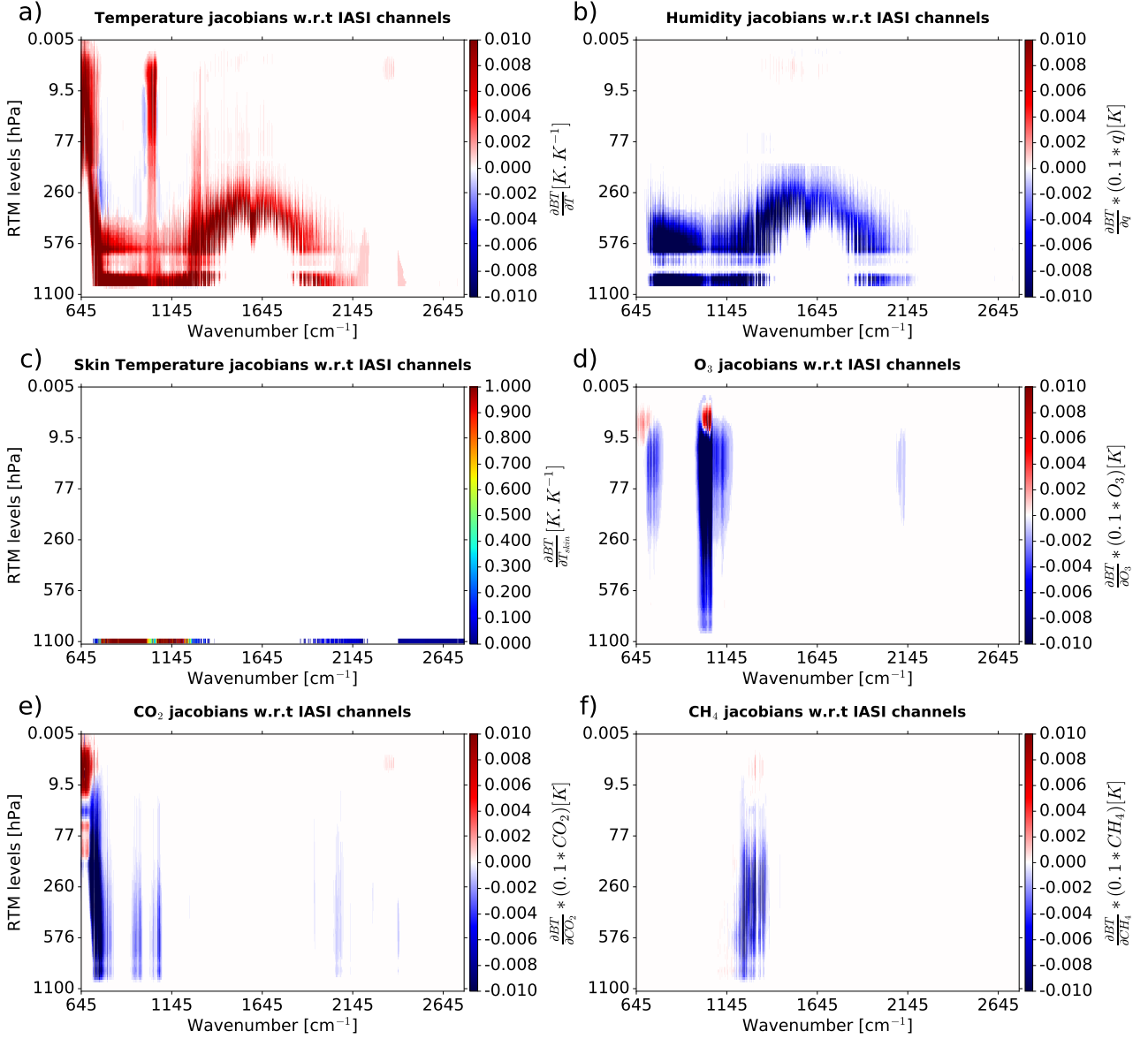


Figure 6. Jacobians of temperature (a), humidity (b), skin temperature (c), ozone (d), carbon dioxide (e) and methane (f) for 8461 IASI channels w.r.t. 101 RTM levels.

5.1.4 Pre-processing of APOGEE measurements

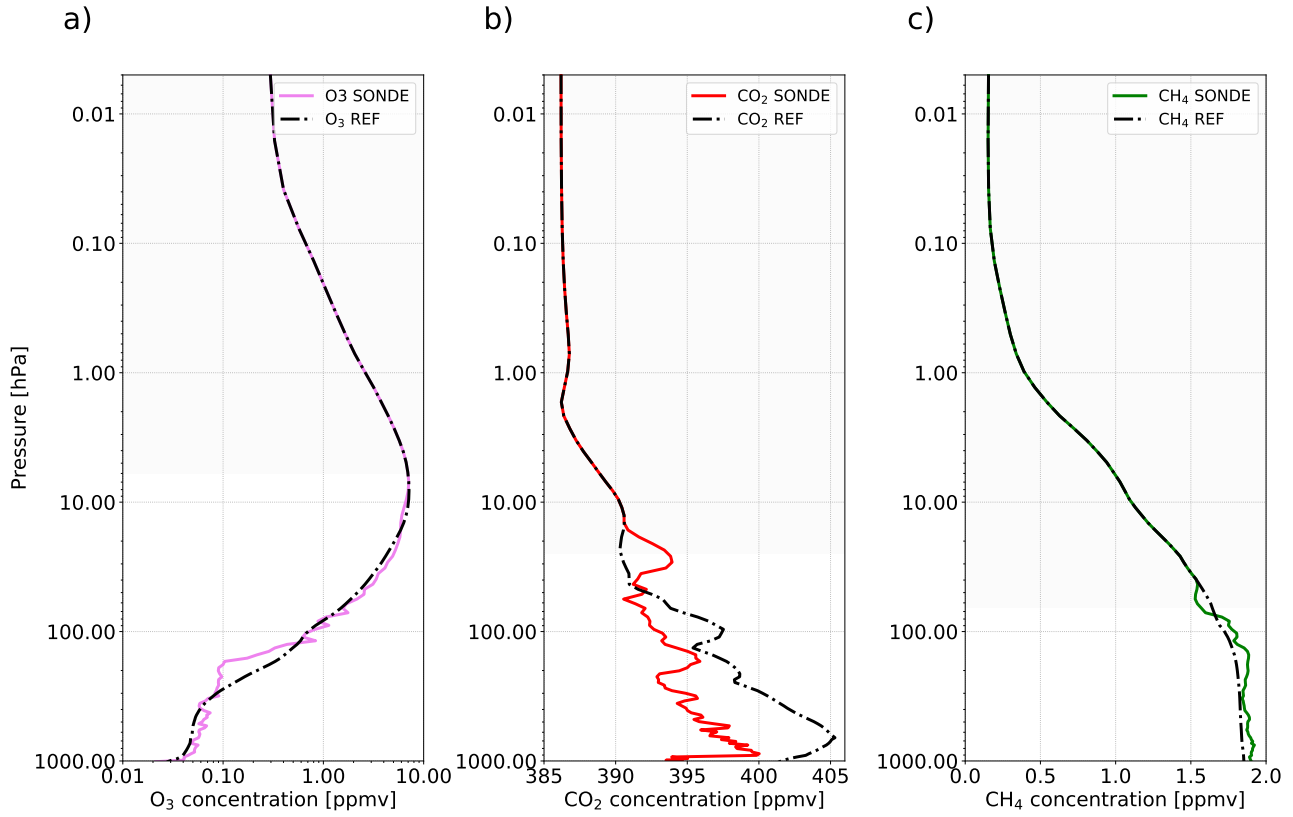


Figure 7. Representation of reference profiles (black dotted lines) of O₃ (a), CO₂ (b) and CH₄ (c) and profiles measured by *in situ* sounding and convoluted with reference profiles of O₃ in violet (a), CO₂ in red (b) and CH₄ in green (c).

We selected the sounding from 2018-04-17 at 10 UTC for which ozone, carbon dioxide and methane are measured. The profiles are plotted in Figure 7. The ozone profile is available up to 6 hPa (TBC), the carbon dioxide up to 25 hPa (TBC) and the methane up to 65 hPa (TBC). There are few differences between the reference and *in situ* profiles for ozone and methane, except around the tropopause. Unlike carbon dioxide, where the difference can be as much as 10 ppmv in the lower troposphere.

In order to assess the impact of using the *in situ* chemical information instead of the reference profiles, we have interpolated the in-situ profiles on the 101 fixed pressure levels by making layer averages centred on these levels. Moreover, the measured profiles do not reach the highest fixed pressure level. Thus a polynomial function was used to link the *in situ* profiles to the reference profiles from the levels where the data are missing. Shaded areas in Figure 7 represent parts or profiles *in situ* are linked to reference profiles to replace missing data.

Then, modeled atmospheric profiles of temperature, humidity, surface temperature, surface humidity, surface pressure, zonal and meridian wind come from the global model ARPEGE forecasts (every 3 hr), which have been extracted for the same period and location as for the *in situ* sounding. The coefficient file used during the simulation process in RTTOV being on 101 fixed pressure levels, the thermodynamic profiles of ARPEGE were interpolated on these same levels.

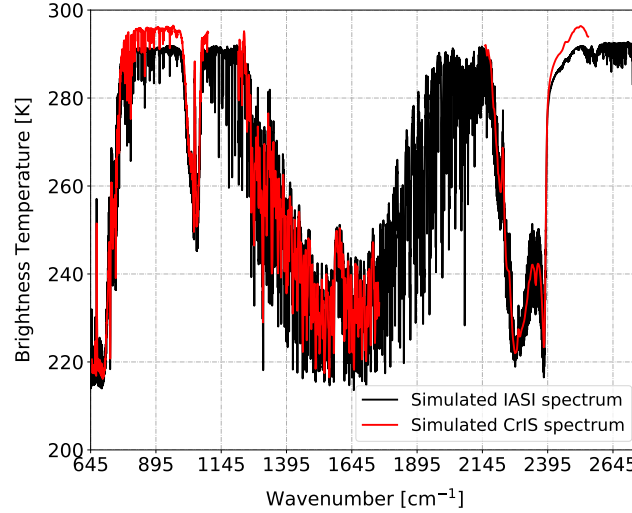


Figure 8. Brightness Temperature spectrum of simulated IASI (in black) and CrIS (in blue) observations w.r.t wavenumbers using O_3 , CO_2 and CH_4 reference profiles for *in situ* sounding from 2018-04-17 at 10 UTC.

- 5 In this study we simulated satellite observations from two types of infrared instruments: IASI and CrIS. In order to evaluate the quality of our simulations, we sought to spatially and temporally co-locate the IASI (MetOp-B) and CrIS (Suomi-NPP) pixels as close as possible to the *in situ* soundings. To avoid problems related to clouds, we carried out the April 17, 2018 release at 10 UTC in clear sky. Thus, Figure 8 represents the brightness temperature spectrum of the IASI observations simulations in black and CrIS in red with respect to the wave number using as RTTOV input the reference profiles of O_3 , CO_2 and
- 10 CH_4 for the *in situ* sounding from 2018-04-17 to 10 UTC. There is a good agreement between the simulated IASI and CrIS spectrum except for the window channels. The difference seen between the simulated IASI and CrIS window channels is due to the temporal and spatial differences between the selected pixels, which implies a different skin temperature used in RTTOV. However, the skin temperature has an obvious impact on the simulation of infrared observations sensitive to the surface, hence these differences.

15

5.1.5 Impacts on simulations

We evaluated the impact on the simulations of IASI and CrIS observations of using chemical information from *in situ* measurements as input to RTTOV in replacement of the constant profiles. Figure 9 shows the difference between simulated brightness

temperature (BT^S) with O_3 in purple (resp. CO_2 in red or CH_4 in green) *in situ* measurement profiles (X^M) and simulated brightness temperature with O_3 (resp. CO_2 or CH_4) reference profiles (X^R) for *in situ* sounding from 2018-04-17 at 10 UTC for all channels contained in the IASI (a) and CrIS (b) spectrum, where EXP means experiment (for example, EXPO3 means experiment for ozone case, etc.), such as:

$$EXPO_3 = BT^S[O_3^M + CO_2^R + CH_4^R]$$

$$-BT^S[O_3^R + CO_2^R + CH_4^R]$$

$$EXPCO_2 = BT^S[O_3^R + CO_2^M + CH_4^R]$$

$$-BT^S[O_3^R + CO_2^R + CH_4^R]$$

$$EXPCH_4 = BT^S[O_3^R + CO_2^R + CH_4^M]$$

$$-BT^S[O_3^R + CO_2^R + CH_4^R]$$

The differences of BT affects ozone-sensitive channels located between 710 to 760 cm^{-1} , 980 to 1150 cm^{-1} and 2060 to 2135 cm^{-1} (for IASI). Then, the differences of BT affects a larger part of the spectrum especially the CO_2 sensitive channels with spectral intervals between: 645 to 820 cm^{-1} , 930 to 980 cm^{-1} , 1030 to 1085 cm^{-1} , 1900 to 1940 cm^{-1} (for IASI), 2010 to 2120 cm^{-1} (for IASI) and 2200 to 2440 cm^{-1} . Finally, the differences of BT affects CH_4 sensitive channels located between 1200 to 1380 cm^{-1} and less so between 2650 to 2760 cm^{-1} .

The maximum difference values of BT for CO_2 sensitive channels are around 0.2 K and for CH_4 sensitive channels around -0.4 K for both instruments. The maximum difference values of BT for ozone sensitive channels are around 0.9 K for IASI and 0.75 K for CrIS. The differences in ΔBT values between the two instruments can be explained by the difference in spectral resolution.

Even if the reference profile is close to the *in situ* profile, as for example for ozone, this does not necessarily imply small differences between the simulations. However, the spatial and temporal variability of atmospheric composition is very important, especially for ozone. In addition, differences in BT too large in CO_2 to have a direct impact on the quality of temperature forecasts, since we use channels sensitive to this species to retrieved temperature profiles.

Finally, in order to assess the quality of our simulations of infrared satellite observations for IASI and CrIS instruments using the reference profiles provided by RTTOV, we calculated the difference between real and simulated observations (O-B) using chemical information from reference profiles (black line) and from *in situ* profiles (red line) with respect to IASI (Figure 10.a) and CrIS (10.b) monitored channels for *in situ* sounding from 2018-04-17 at 10 UTC. IASI and CrIS has respectively 314 and 330 monitored channels. For this case study the differences (O-B) using reference chemical profiles (REF) and simulations using *in situ* chemical profiles (SONDE) are small over all IASI (a) and CrIS (b) spectrum. However, there are significant dif-

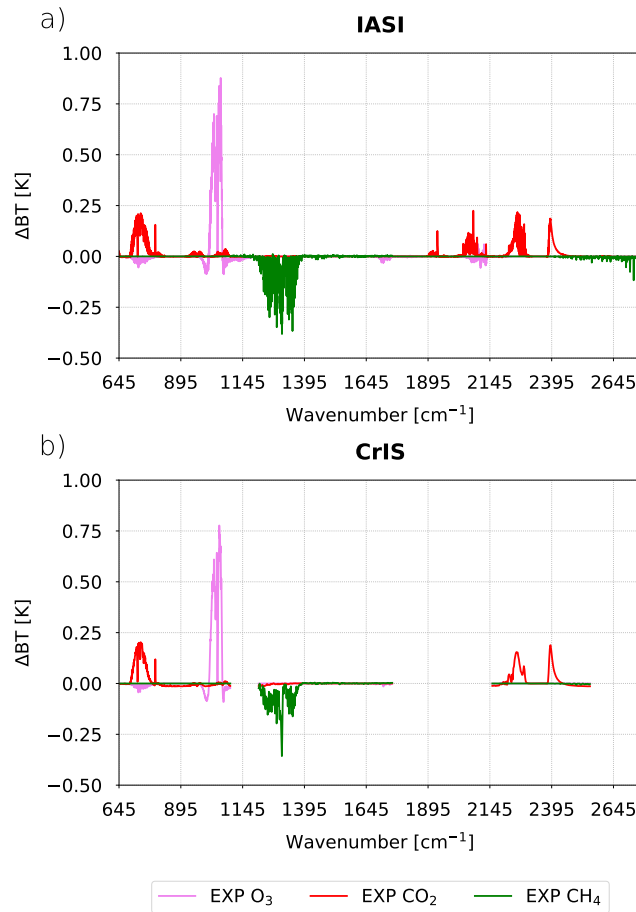


Figure 9. Difference between simulated brightness temperature (BT) with O₃ in purple (resp. CO₂ in red or CH₄ in green) *in situ* profiles from SONDE and AMULSE and simulated brightness temperature with O₃ (resp. CO₂ or CH₄) reference profiles for *in situ* sounding from 2018-04-17 at 10 UTC for all channels contained in the IASI (a) and CrIS (b) spectrum.

ferences for ozone-sensitive channels with (O-B) values closer to zero when using the reference ozone. This could be explained by a smaller accuracy of ozone measurement with ozone-sondes than with the AMULSE instrument. Another possibility is the existence of other biases (eg. depending on the scan position) which are compensated for by bias of the opposite sign in the case of REF. The same experiments were performed on other *in situ* sounding data with generally the same results (not shown here). For the case of 2018-04-07, it can be seen in Figure 9 that our static reference profiles of carbon dioxide and methane lead to realistic simulations, as for *in situ* profiles. However, it is more difficult to accurately simulate ozone-sensitive channels. Indeed, ozone differs from CO₂ and CH₄ because it has a very high spatial and temporal variability. Hopefully in the future, chemical measurements of this type will be carried out on a more regular basis across the globe allowing for more robust assessments.

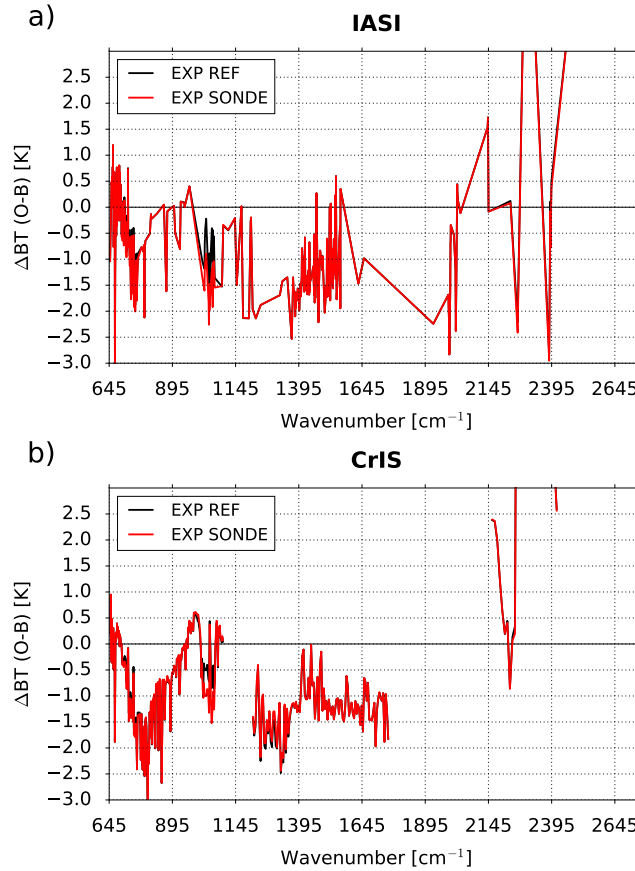


Figure 10. Difference between real and simulated observations (O-B) using chemical information from reference profiles (black line) and from *in situ* profiles (red line) with respect to IASI (a) and CrIS (b) monitored channels for *in situ* sounding from 2018-04-17 at 10 UTC.

5.2 Comparison between *a priori*, retrieval and *in situ* chemical profiles

In situ chemical profiles can directly be used as verification data for modeled profiles or retrievals from satellite sensors. In this section, two possible usages are illustrated on APOGEE data.

5.2.1 Forecasts of atmospheric composition

- 5 One possible use of these *in situ* profiles of CO₂, CH₄ and O₃ is to use them as comparison data to the *a priori* chemical profiles from the Chemistry Transport Models (CTM). As part of our study, we compared our measured data against the profiles extracted from the CTM MOCAGE and C-IFS. These two models differ in that the global version fo the MOCAGE model does not assimilate any observation in operation, while C-IFS assimilates Level-2 products from several instruments such as MLS, OMI, SBUV-2, GOME-2A/2B, IASI, MOPITT, OMPS and PMAp (Basart et al., 2018). C-IFS provides analyses and
- 10 5-day forecasts of atmospheric composition at regional and global scales in near-real time. MOCAGE is an off-line global

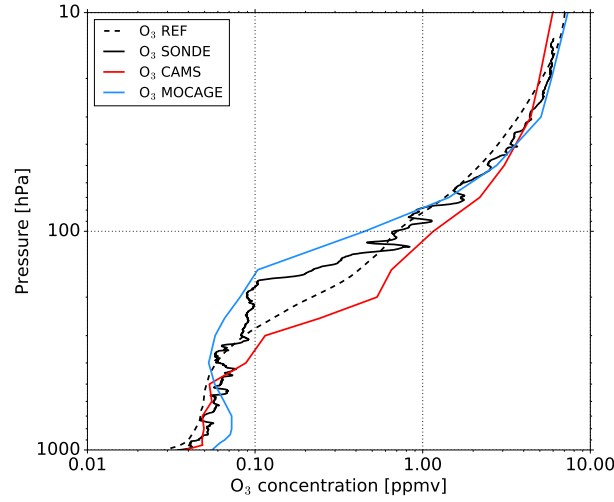
three-dimensional chemistry transport model (Guth et al., 2016). It provides the time evolution of the chemical air composition from the surface to the stratosphere. MOCAGE is used for operational daily forecasts and also for research studies. Thus, we extracted the profiles *a priori* from CH₄ and O₃ from the CTM MOCAGE and C-IFS for our case study of the *in situ* sounding from 2018-04-17 to 10 UTC. These profiles could therefore be compared to the *in situ* and reference profiles available in RTTOV. We have shown in Figure 11 the ozone (a) and methane (b) *in situ* profiles in black line compared to O₃ and CH₄ *a priori* profiles from CAMS in red line and MOCAGE in blue line and compared to O₃ and CH₄ reference profiles in dotted.

In Figure 11.a we notice that the reference ozone profile is relatively in good agreement with the *in situ* profile except in the upper troposphere between 300 and 150 hPa. The ozone values of the reference profile are slightly higher than the *in situ* profile in the lower troposphere between 1000 and 350 hPa and in the lower stratosphere between 60 and 20 hPa. Then, we observe that the *a priori* profile of ozone from MOCAGE is very close to the profile measured over the entire lower stratosphere. The MOCAGE ozone profile follows the profile measured in the upper troposphere between 500 and 80 hPa, with lower values. The MOCAGE ozone values are overestimated compared to the profile measured in the lower troposphere between 1000 and 500 hPa. Finally, the ozone profile from CAMS is in very good agreement with the profile measured in the lower troposphere between 1000 and 450 hPa and in the lower stratosphere between 45 and 15 hPa. However, CAMS ozone profile overestimates the values compared to the profile measured over a large part of the atmosphere between 500 and 50 hPa. Overall, the different ozone profiles are more or less close to the measured profile. The CTMs are able to simulate the shape of ozone profiles relatively well with good values for MOCAGE in the stratosphere and in the lower troposphere for CAMS. The reference profile seems to be a good compromise on this particular case.

Methane simulation is a much more difficult task in the field of CTMs. Indeed, there are major scientific questions about the increase in atmospheric methane concentration and its hypothetical sources (Archibald et al. 2020; Houweling et al. 2017; Naik et al. 2013). That is why assimilation into CTMs for this species is very useful. We notice again in Figure 11.b that the reference methane profile is rather good with the profile measured between 1000 and 70 hPa. Indeed, above 70 hPa, there is a faster decrease in the measured concentration than the values of the reference profile. This decrease is simulated by the profile from MOCAGE but with a large underestimation over the entire profile of about 0.5 ppmv. This difference can be explained by a missing source in the model and/or too many OH molecules that are the main methane sink. Assimilation can solve this problem, so there is a very good agreement between CAMS methane profile and the measured profile in the lower troposphere between 1000 and 300 hPa. Then the values of the CAMS profile are underestimated compared to the measured profile between 300 and 45 hPa.

Such *in situ* chemical profiles can be very useful in assessing the quality of simulations of atmospheric composition from CTMs, especially if they can be made on a regular basis within a network. For our study case, we note the rate and concentration of ozone are relatively well simulated by MOCAGE and CAMS, while methane is largely underestimated in MOCAGE and very well represented in the troposphere by CAMS.

a)



b)

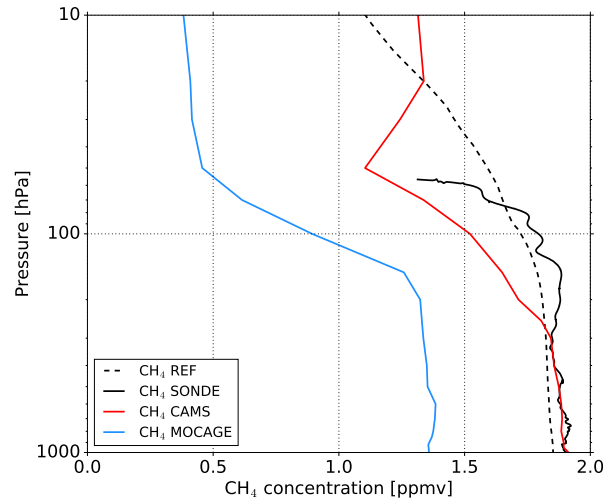


Figure 11. Ozone (a) and methane (b) *in situ* profiles in black line compared to O_3 and CH_4 *a priori* profiles from CAMS in red line and MOCAGE in blue line and compared to O_3 and CH_4 reference profiles in dotted for *in situ* sounding from 2018-04-17 at 10 UTC.

5.2.2 Ozone retrieval from 1D assimilation

Profiles of various atmospheric compounds can be retrieved from satellite data. Among them, hyperspectral infrared sounders like [AIRS](#), [CrIS](#) and IASI have the ability to be used both in NWP models and for atmospheric composition purposes, which could be used in combining meteorological and chemistry transport models to achieve a so-called coupled assimilation. A precursor way is to add some chemical variable to the control variable of NWP models. This is the case, for example, for

ozone in the IFS model of ECMWF, which assimilates 16 IASI ozone-sensitive channels in operational near-real time providing ozone analysis (Han and McNally, 2010). Such an approach can also be used at the pixel level to retrieve profiles or from cloud-cleared spectra as done by the AIRS and NUCAPS systems ((Susskind et al., 2003); (Smith and Barnett, 2019)). Indeed, (Coopmann et al., 2018) study shows that the assimilation of 15 ozone sensitive IASI channels makes it possible to simultaneously improve temperature, humidity and ozone retrievals. In both cases, it is also important to assess the quality of ozone analyses using independent comparative data. For ozone, this can be done almost in any region around the world since there are several stations that perform *in situ* soundings measuring ozone (Nalli et al., 2017b). However, if methane or carbon dioxide analyses are to be retrieved, *in situ* vertical profiles of these compounds are much sparse. This is why the data measured by the AMULSE instrument can be valuable when these compounds are reproduced by meteorological models. As part of the APOGEE measurement experiment, we carried out several assimilation experiments in a simplified one-dimensional framework (1D-Var) where we retrieved ozone. The NWP SAF (Satellite Application Facilities) 1D-Var algorithm (Pavelin et al., 2008) is based on the Optimal Estimation Method (OEM) (Rodgers, 2009). This method makes it possible in a simplified way to get closer to what is done operationally in large NWP centres using variational assimilation methods. There are other methods of retrieval such as the Piece-Wise Linear Regression used at EUMETSAT (IASI, 2014) or the NOAA Unique CrIS/ATMS processing System (NUCAPS) for the infrared physical retrieval based on a regularized iterated least square minimization ((Gambacorta et al., 2012); (Nalli et al., 2013)).

The measured *in situ* ozone profiles could be used as comparative data to evaluate the quality of our retrievals. In this study we conducted these experiments using observations from IASI and CrIS, focusing on simultaneous retrieval of temperature, humidity and ozone, taking ozone background/*a priori* from MOCAGE or CAMS. Similar work on the validation of ozone restitution from IASI is presented in (Dufour et al., 2012) and for CrIS in (Nalli et al., 2017b). Soundings of 2017-06-01 to 10 UTC, 2017-07-04 to 02 UTC, 2017-07-04 to 09 UTC and 2017-07-04 to 12 UTC are selected for that case study. The methodology and techniques used in this study are the same as those used in (Coopmann et al., 2018). To retrieve ozone using observations from IASI, we assimilated 123 channels used in operations at Météo-France plus 15 ozone-sensitive channels, using a full observation error covariance matrix diagnosed from the method described by (Desroziers et al., 2005). Based on CrIS observations, we assimilated 68 channels used in operations at Météo-France and 14 ozone-sensitive channels, using a diagonal observation error covariance matrix whose values are derived from the operational settings at Météo-France. IASI and CrIS observations were collocated with *in situ* soundings. The ozone background errors available in the background error covariance matrix were calculated using ozone-sondes based on the method described in the work of (Coopmann et al., 2018). Finally, the thermodynamic *a priori* profiles and surface parameters were extracted from the global model ARPEGE and were extracted at the same coordinates and time as the *in situ* soundings, same for the ozone *a priori* profiles from MOCAGE and CAMS.

Figure 12 represent the ozone *in situ* profile in black compared to O_3 *a priori* profile from MOCAGE in red and O_3 retrieval profile from CrIS in blue for *in situ* sounding from 2017-07-04 at 02 UTC (a) and 2017-07-04 at 12 UTC (c) and ozone *in situ*

profile in black compared to O₃ *a priori* profile from CAMS in orange and O₃ *retrieval* profile from CrIS in cyan for *in situ* sounding from 2017-07-04 at 02 UTC (b) and 2017-07-04 at 12 UTC (d). In Figure 12.a, we notice that overall the MOCAGE *a priori* profile underestimates the ozone concentration compared to the measured profile except in the lower troposphere and above 25 hPa. In this case, the ozone *retrieval* profile is very close to the measured profile. In Figure 12.b, the CAMS *a priori* profile is generally closer to the measured profile than the MOCAGE *a priori* profile. However, there are some overestimation of CAMS ozone concentration between 300 - 200 hPa and 150 - 50 hPa. We note that with this *a priori* profile, the ozone *retrieval* profile is less modified than previously. In the same way as the previous *in situ* sounding, we notice in Figure 12.c that the MOCAGE *a priori* profile underestimates the ozone concentration compared to the measured profile except in the lower troposphere. The ozone *retrieval* profile is again of very good quality. Finally, we note in Figure 12.d that CAMS's *a priori* profile underestimates the concentration of ozone in the lower troposphere compared to the measured profile and overestimates it between 500 - 20 hPa. In this experiment, the ozone *retrieval* profile is very close to the measured profile except in the lower troposphere.

Figure 13 represent ozone *in situ* profile in black compared to O₃ *a priori* profile from MOCAGE in red and O₃ *retrieval* profile from IASI in blue for *in situ* sounding from 2017-06-01 at 10 UTC (a) and 2017-07-04 at 09 UTC (c) and ozone *in situ* profile in black compared to O₃ *a priori* profile from CAMS in orange and O₃ *retrieval* profile from IASI in cyan for *in situ* sounding from 2017-06-01 at 10 UTC (b) and 2017-07-04 at 09 UTC (d). Figure 13.a shows that the *a priori* from MOCAGE underestimates the ozone concentration compared to the measured profile except in the lower troposphere. This experiment makes it possible to retrieve a profile very close to the measured profile except above 50 hPa where the latter remains close to the *a priori*. In Figure 13.b, the *a priori* from CAMS is generally close to the measured profile except at the UTLS where there is an overestimation of the ozone concentration. It can be seen that with this *a priori* profile, the *retrieval* profile approaches the measured profile and shows the same structure as the measured profile in the UTLS. Then Figure 13.c shows that the *a priori* profile from MOCAGE underestimates the ozone concentration compared to the profile measured in this case except in the lower troposphere and above 25 hPa. The *retrieval* profile is also of good quality. Finally, we note in Figure 13.d that the *a priori* profile from CAMS underestimates ozone concentration in the lower troposphere compared to the measured profile and overestimates it by 150 - 40 hPa. This last experiment allows to retrieve an ozone profile very close to the measured profile except between 300 - 150 hPa.

6 Conclusions

This article shows the interest and possibilities of the AMULSE instrument for the fast and accurate measurement of CO₂, CH₄ and H₂O in the atmosphere. The APOGEE measurement experiment was an opportunity to highlight the various benefits of the data from the AMULSE instrument for different research projects: satellite validation, model comparison, verification data, etc. The measurements will continue with monthly radiosoundings on the Reims site to get more consistent data sets.

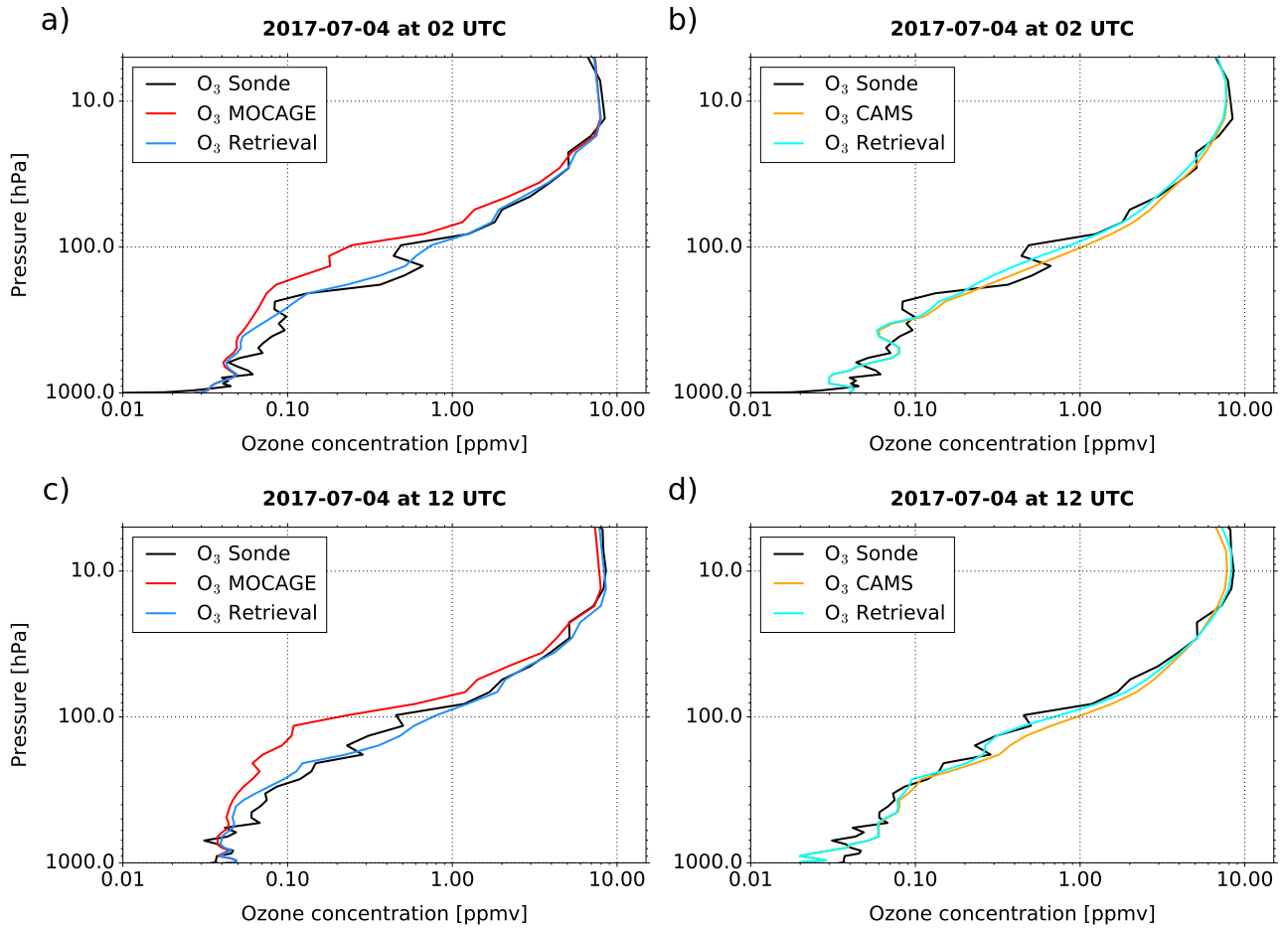


Figure 12. Ozone *in situ* profile in black compared to O₃ *a priori* profile from MOCAGE in red and O₃ *retrieval* profile from CrIS in blue for *in situ* sounding from 2017-07-04 at 02 UTC (a) and 2017-07-04 at 12 UTC (c). Ozone *in situ* profile in black compared to O₃ *a priori* profile from CAMS in orange and O₃ *retrieval* profile from CrIS in cyan for *in situ* sounding from 2017-07-04 at 02 UTC (b) and 2017-07-04 at 12 UTC (d).

The prime aim of this study was to assess the sensitivity of infrared satellite observations to chemical information. The objective was to use carbon dioxide, methane and ozone profiles measured as part of the APOGEE measurement experiment to validate the quality of IASI and CrIS observation simulations. The *in situ* profiles were measured for ozone using an electrochemical cell and the CO₂ and CH₄ profiles using the AMULSE instrument. These instruments were placed under meteorological balloons to produce vertical profiles up to 30 km in altitude. Experiments for one case study showed us that infrared observations are extremely sensitive to changes in chemical concentrations. The RTM RTTOV model allowed us to perform several simulations of infrared observations under several configurations of chemical *a priori* profiles provided as input. This is how we were able to highlight differences in simulation between the use of the *in situ* and reference profiles. However, de-

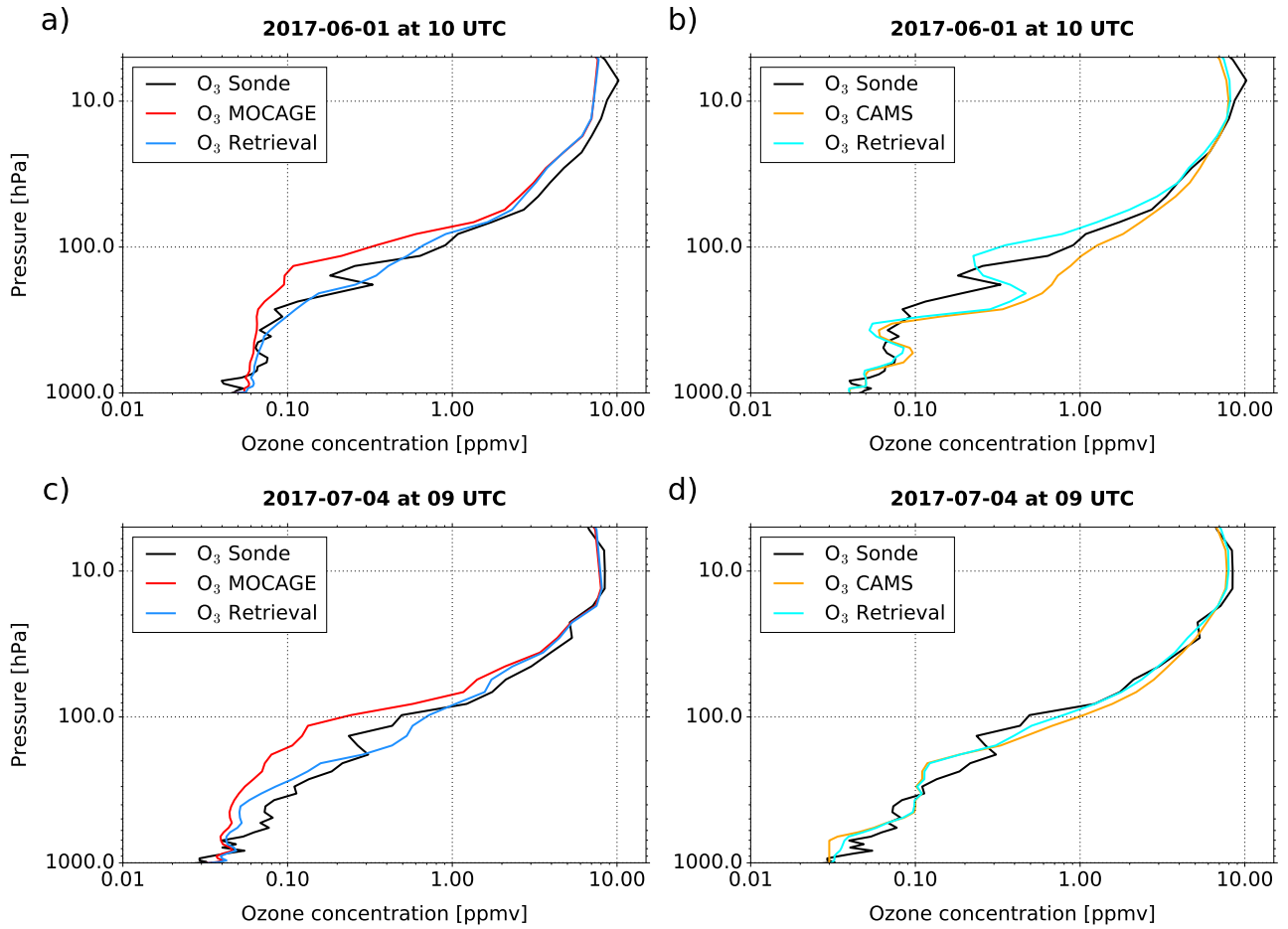


Figure 13. As Figure 12, except for IASI for *in situ* sounding from 2017-06-01 at 10 UTC (b) and 2017-07-04 at 09 UTC (d).

spite these differences, we have shown little impact in differences between the real and simulate observations using either the reference chemical profiles or the *in situ* profiles except for ozone. Indeed, the latter reacts differently in the atmosphere and is highly variable compared to CO₂ and CH₄. The data measured by the AMULSE instrument are valuable to evaluate the quality of our simulations, which is essential for NWP models. Indeed, as mentioned above, the a priori information of gases provided to RTTOV is invariant in time and space. In reality these gases such as CO₂, CH₄, O₃ or CO show significant variability, both temporarily and spatially in the atmosphere. In addition, carbon dioxide sensitive channels are often used to extract information on atmospheric temperature. However, the approximation of using a fixed CO₂ for the simulation of infrared satellite observations can have a negative impact on the quality of temperature retrieval as shown by the work of (Engelen et al., 2001) from the AIRS instrument. Finally, data assimilation systems have a bias correction method called VarBC (Auligné et al., 2007). However, this method can correct systematic biases that do not necessarily take into account the specificity of the variability of certain gases. Thus, it is preferable to correct biases at the source through an improvement of simulations in Radiative Transfer

Models and will improve the analysis of temperature, humidity and wind in global model assimilations.

Secondly, the measured profiles in the APOGEE framework were also valuable for comparison with the chemical profiles derived from the CTMs. Thus, we extracted ozone and methane profiles from the MOCAGE and CAMS CTMs for a case study.

5 This comparison with the measured profiles showed us that the CTMs represent atmospheric ozone rather well, especially in the stratosphere for MOCAGE and in the troposphere for CAMS. Having good chemical concentrations in the troposphere for CAMS is important as it also provides air quality forecasts. We also showed that methane is very well simulated by the CTM CAMS in the troposphere but underestimated by 0.5 ppmv by the CTM MOCAGE. The difference is mainly due to the fact that CAMS's C-IFS model assimilates level 2 products compared to MOCAGE which does not assimilate anything. Once
10 again, we can see the importance of these *in situ* profiles for the comparison and validation of chemical predictions from CTMs.

Finally, a method to obtain more accurate chemical profiles was used. In this case, ozone profiles were retrieved using one-dimensional assimilation (1D-Var) using observations from IASI and CrIS and *a priori* ozone profiles from MOCAGE and CAMS for 4 *in situ* soundings. The *in situ* profiles have allowed us to highlight very encouraging results since, the method
15 used in this study allows us to retrieve ozone profiles very close to the measured ozone profiles, particularly in the UTLS which remains an area difficult to model by CTMs. We have also shown that some retrieved ozone profiles simulate very well the complex structures that some measured ozone profiles generated by isentropic transport in the UTLS can have.

AMULSE regularly evolves in terms of performance, weight and number of detectable gas molecules. Different perspectives are possible, such as the measurement of other molecular species of atmospheric interest in tethered balloons or weather balloons for measurements in the stratosphere. Thus, the data measured by the AMULSE instrument are useful for many scientific studies. However, the small number of measurements performed remains an important limitation in making conclusions from comparisons with satellite observations or chemical fields from models. Therefore, it would be interesting to extend these chemical measurements on a regular basis over the whole globe in the same way as is done with the ozone measurement
25 networks.

Acknowledgements. This research based on data from the APOGEE measurement experiment has been conducted within the framework of O. Coopmann's PhD thesis, which funded by CNES (Centre National d'Études Spatiales) and the Région Occitanie. Thanks to Michel Ramonet (from LSCE) and his team for allowing us to perform the measurements on their ICOS site.

Code availability. Codes of the Radiative Transfer Model RTTOV and the uni-dimensional data assimilation system 1D-Var used in this
30 study are all available on (<https://www.nwpsaf.eu/site/software/rttov/download/>).

Data availability. IASI data are available from EUMETSAT or AERIS: (<https://www.aeris-data.fr/>). Copernicus Atmosphere Monitoring Service data are available from: (<https://atmosphere.copernicus.eu/catalogue#/>) implemented by ECMWF as part of The Copernicus Programme. Model data are available upon request.

Competing interests. The authors declare that they have no conflict of interest.

References

- Archer, D. and Brovkin, V.: The millennial atmospheric lifetime of anthropogenic CO₂, *Climatic Change*, 90, 283–297, <https://doi.org/10.1007/s10584-008-9413-1>, <http://link.springer.com/10.1007/s10584-008-9413-1>, 2008.
- Archibald, A. T., O'Connor, F., Abraham, N. L., Archer-Nicholls, S., Chipperfield, M., Dalvi, M., Folberth, G., Dennison, F., Dhomse, S., Griffiths, P. T., et al.: Description and evaluation of the UKCA stratosphere–troposphere chemistry scheme (StratTrop vn 1.0) implemented in UKESM1, *Geoscientific Model Development*, 13, 1223–1266, 2020.
- Auligné, T., McNally, A., and Dee, D.: Adaptive bias correction for satellite data in a numerical weather prediction system, *Quarterly Journal of the Royal Meteorological Society*, 133, 631–642, 2007.
- Basart, S., Benedictow, A., Bennouna, Y., Blechschmidt, A.-M., Chabrillat, S., Christophe, Y., Clark, H., Cuevas, E., Eskes, H., Hansen, K. M., et al.: Addendum to: Upgrade verification note for the CAMS near-real time global atmospheric composition service Evaluation of the e-suite experiment gu42, 2018.
- Brousseau, P., Seity, Y., Ricard, D., and Léger, J.: Improvement of the forecast of convective activity from the AROME-France system, *Quarterly Journal of the Royal Meteorological Society*, 142, 2231–2243, <https://doi.org/10.1002/qj.2822>, <https://rmets.onlinelibrary.wiley.com/doi/abs/10.1002/qj.2822>, 2016.
- CAMMAS, J.-P., ATHIER, G., Boulanger, D., Chéroux, F., Cousin, J.-M., Girod, F., Karcher, F., Law, K., Nédélec, P., Peuch, V.-H., Smit, H., Stoll, M., Texier, D., Thouret, V., Volz-Thomas, A., and Zbinden, R.: Les programmes aéroportés Mozaic et Iagos (1994-2008), *La Météorologie*, 8, 18, <https://doi.org/10.4267/2042/19172>, <http://hdl.handle.net/2042/19172>, 2008.
- Chahine, M., Barnet, C., Olsen, E., Chen, L., and Maddy, E.: On the determination of atmospheric minor gases by the method of vanishing partial derivatives with application to CO₂, *Geophysical research letters*, 32, 2005.
- Coopmann, O., Guidard, V., Fourrié, N., and Plu, M.: Assimilation of IASI ozone-sensitive channels in preparation for an enhanced coupling between Numerical Weather Prediction and Chemistry Transport Models, *Journal of Geophysical Research: Atmospheres*, 2018.
- Courtier, P. and Geleyn, J.-F.: A global numerical weather prediction model with variable resolution: Application to the shallow-water equations, *Quarterly Journal of the Royal Meteorological Society*, 114, 1321–1346, <https://doi.org/10.1002/qj.49711448309>, <https://rmets.onlinelibrary.wiley.com/doi/abs/10.1002/qj.49711448309>, 1988.
- Crevoisier, C., Nobileau, D., Armante, R., Crépeau, L., Machida, T., Sawa, Y., Matsueda, H., Schuck, T., Thonat, T., Pernin, J., Scott, N. A., and Chédin, A.: The 2007–2011 evolution of tropical methane in the mid-troposphere as seen from space by MetOp-A/IASI, *Atmospheric Chemistry and Physics*, 13, 4279–4289, <https://doi.org/10.5194/acp-13-4279-2013>, <https://www.atmos-chem-phys.net/13/4279/2013/>, 2013.
- Déqué, M., Dreveton, C., Braun, A., and Cariolle, D.: The ARPEGE/IFS atmosphere model: a contribution to the French community climate modelling, *Climate Dynamics*, 10, 249–266, <https://doi.org/10.1007/BF00208992>, <https://doi.org/10.1007/BF00208992>, 1994.
- Desroziers, G., Berre, L., Chapnik, B., and Poli, P.: Diagnosis of observation, background and analysis-error statistics in observation space, *Quarterly Journal of the Royal Meteorological Society*, 131, 3385–3396, 2005.
- Dufour, G., Eremenko, M., Griesfeller, A., Barret, B., LeFlochmoën, E., Clerbaux, C., Hadji-Lazaro, J., Coheur, P.-F., and Hurtmans, D.: Validation of three different scientific ozone products retrieved from IASI spectra using ozonesondes, *Atmospheric Measurement Techniques*, 5, 611–630, 2012.

- Durry, G. and Megie, G.: Atmospheric CH₄ and H₂O monitoring with near-infrared InGaAs laser diodes by the SDLA, a balloonborne spectrometer for tropospheric and stratospheric in situ measurements, *Applied Optics*, 38, 7342, <https://doi.org/10.1364/AO.38.007342>, <https://www.osapublishing.org/abstract.cfm?URI=ao-38-36-7342>, 1999a.
- Durry, G. and Megie, G.: Atmospheric CH₄ and H₂O monitoring with near-infrared InGaAs laser diodes by the SDLA, a balloonborne spectrometer for tropospheric and stratospheric in situ measurements, *Applied optics*, 38, 7342–7354, 1999b.
- Eby, M., Zickfeld, K., Montenegro, A., Archer, D., Meissner, K. J., Weaver, A. J., Eby, M., Zickfeld, K., Montenegro, A., Archer, D., Meissner, K. J., and Weaver, A. J.: Lifetime of Anthropogenic Climate Change: Millennial Time Scales of Potential CO₂ and Surface Temperature Perturbations, *Journal of Climate*, 22, 2501–2511, <https://doi.org/10.1175/2008JCLI2554.1>, <http://journals.ametsoc.org/doi/abs/10.1175/2008JCLI2554.1>, 2009.
- 10 El Khair, Z. M., Joly, L., Cousin, J., Decarpenterie, T., Dumelié, N., Maamary, R., Chauvin, N., and Durry, G.: In situ measurements of methane in the troposphere and the stratosphere by the Ultra Light SpEctrometer Amulse, *Applied Physics B*, 123, 281, 2017.
- Engelen, R. J., Stephens, G. L., and Denning, A. S.: The effect of CO₂ variability on the retrieval of atmospheric temperatures, *Geophysical research letters*, 28, 3259–3262, 2001.
- Filges, A., Gerbig, C., Chen, H., Franke, H., Klaus, C., and Jordan, A.: The IAGOS-core greenhouse gas package: a measurement system for continuous airborne observations of CO₂, CH₄, H₂O and CO, *Tellus B: Chemical and Physical Meteorology*, 67, 27989, <https://doi.org/10.3402/tellusb.v67.27989>, <https://www.tandfonline.com/doi/full/10.3402/tellusb.v67.27989>, 2015.
- 15 Gambacorta, A., Barnet, C., Wolf, W., Goldberg, M., King, T., Nalli, N., Maddy, E., Xiong, X., and Divakarla, M.: The NOAA unique CrIS/ATMS processing system (NUCAPS): First light retrieval results, in: *Proceedings of the ITWG meeting*, ITWG, Toulouse, France, 2012.
- Ghysels, M., Riviere, E. D., Khaykin, S., Stoeffler, C., Amarouche, N., Pommereau, J.-P., Held, G., and Durry, G.: Intercomparison of in situ water vapor balloon-borne measurements from Pico-SDLA H₂O and FLASH-B in the tropical UTLS, *Atmospheric Measurement Techniques*, 9, 1207–1219, <https://doi.org/10.5194/amt-9-1207-2016>, <https://www.atmos-meas-tech.net/9/1207/2016/>, 2016.
- 25 Guth, J., Josse, B., Marécal, V., Joly, M., and Hamer, P.: First implementation of secondary inorganic aerosols in the MOCAGE version R2.15.0 chemistry transport model, *Geoscientific Model Development*, 9, 137–160, <https://doi.org/10.5194/gmd-9-137-2016>, <https://www.geosci-model-dev.net/9/137/2016/>, 2016.
- Han, W. and McNally, A.: The 4D-Var assimilation of ozone-sensitive infrared radiances measured by IASI, *QJ Roy. Meteor. Soc.*, 136, 2025–2037, 2010.
- 30 Hilton, F., Armante, R., August, T., Barnet, C., Bouchard, A., Camy-Peyret, C., Capelle, V., Clarisse, L., Clerbaux, C., Coheur, P.-F., et al.: Hyperspectral Earth observation from IASI: Five years of accomplishments, *Bulletin of the American Meteorological Society*, 93, 347–370, 2012.
- Houweling, S., Bergamaschi, P., Chevallier, F., Heimann, M., Kaminski, T., Krol, M., Michalak, A. M., and Patra, P. K.: Global inverse modeling of CH₄ sources and sinks: an overview of methods, *Atmospheric chemistry and physics*, 17, 235–256, 2017.
- 35 IASI, L.: PPF v6: Validation Report, EUMETSAT, Tech. rep., EUM/TSS/REP/14/776443, v4C. 13 October, 2014.
- Joly, L., Parvitte, B., Zeninari, V., and Durry, G.: Development of a compact CO₂ sensor open to the atmosphere and based on near-infrared laser technology at 2.68 μm , *Applied Physics B*, 86, 743–748, <https://doi.org/10.1007/s00340-006-2568-4>, <http://link.springer.com/10.1007/s00340-006-2568-4>, 2007.

- Joly, L., Maamary, R., Decarpenterie, T., Cousin, J., Dumelié, N., Chauvin, N., Legain, D., Tzanos, D., Durry, G., Joly, L., Maamary, R., Decarpenterie, T., Cousin, J., Dumelié, N., Chauvin, N., Legain, D., Tzanos, D., and Durry, G.: Atmospheric Measurements by Ultra-Light SpEctrometer (AMULSE) Dedicated to Vertical Profile in Situ Measurements of Carbon Dioxide (CO₂) Under Weather Balloons: Instrumental Development and Field Application, *Sensors*, 16, 1609, <https://doi.org/10.3390/s16101609>, <http://www.mdpi.com/1424-8220/16/10/1609>, 2016.
- 5 K.H. Reid, D. S.: Diurnal variations of boundary layer carbon dioxide in a coastal city—observations and comparison with model, *Atmospheric Environment*, 31, 3101–3114, 1997.
- Khair, Z. M. E., Joly, L., Cousin, J., Decarpenterie, T., Dumelié, N., Maamary, R., Chauvin, N., and Durry, G.: In situ measurements of methane in the troposphere and the stratosphere by the Ultra Light SpEctrometer Amulse, *Applied Physics B*, 123, 281, <https://doi.org/10.1007/s00340-017-6850-4>, <http://link.springer.com/10.1007/s00340-017-6850-4>, 2017.
- 10 Lelieveld, J., Klingmüller, K., Pozzer, A., Pöschl, U., Fnais, M., Daiber, A., and Münzel, T.: Cardiovascular disease burden from ambient air pollution in Europe reassessed using novel hazard ratio functions, *European heart journal*, 2019.
- Liang, A., Gong, W., Han, G., and Xiang, C.: Comparison of satellite-observed XCO₂ from GOSAT, OCO-2, and ground-based TCCON, *Remote Sensing*, 9, 1033, 2017.
- 15 Naik, V., Voulgarakis, A., Fiore, A. M., Horowitz, L. W., Lamarque, J.-F., Lin, M., Prather, M. J., Young, P., Bergmann, D., Cameron-Smith, P., et al.: Preindustrial to present-day changes in tropospheric hydroxyl radical and methane lifetime from the Atmospheric Chemistry and Climate Model Intercomparison Project (ACCMIP), *Atmospheric Chemistry and Physics*, 13, 5277–5298, 2013.
- Nalli, N. R., Barnet, C. D., Reale, A., Tobin, D., Gambacorta, A., Maddy, E. S., Joseph, E., Sun, B., Borg, L., Mollner, A. K., et al.: Validation of satellite sounder environmental data records: Application to the Cross-track Infrared Microwave Sounder Suite, *Journal of Geophysical Research: Atmospheres*, 118, 13–628, 2013.
- 20 Nalli, N. R., Gambacorta, A., Liu, Q., Barnet, C. D., Tan, C., Iturbide-Sanchez, F., Reale, T., Sun, B., Wilson, M., Borg, L., et al.: Validation of atmospheric profile retrievals from the SNPP NOAA-unique combined atmospheric processing system. Part 1: Temperature and moisture, *IEEE Transactions on Geoscience and Remote Sensing*, 56, 180–190, 2017a.
- Nalli, N. R., Gambacorta, A., Liu, Q., Tan, C., Iturbide-Sanchez, F., Barnet, C. D., Joseph, E., Morris, V. R., Oyola, M., and Smith, J. W.: Validation of Atmospheric Profile Retrievals from the SNPP NOAA-Unique Combined Atmospheric Processing System. Part 2: Ozone, *IEEE Transactions on Geoscience and Remote Sensing*, 56, 598–607, 2017b.
- 25 Nédélec, P., Blot, R., Boulanger, D., Athier, G., Cousin, J.-M., Gautron, B., Petzold, A., Volz-Thomas, A., and Thouret, V.: Instrumentation on commercial aircraft for monitoring the atmospheric composition on a global scale: the IAGOS system, technical overview of ozone and carbon monoxide measurements, *Tellus B: Chemical and Physical Meteorology*, 67, 27 791, <https://doi.org/10.3402/tellusb.v67.27791>, <https://www.tandfonline.com/doi/full/10.3402/tellusb.v67.27791>, 2015.
- 30 Pavelin, E., English, S., and Eyre, J.: The assimilation of cloud-affected infrared satellite radiances for numerical weather prediction, *Quarterly Journal of the Royal Meteorological Society: A journal of the atmospheric sciences, applied meteorology and physical oceanography*, 134, 737–749, 2008.
- Petzold, A., Thouret, V., Gerbig, C., Zahn, A., Brenninkmeijer, C. A. M., Gallagher, M., Hermann, M., Pontaud, M., Ziereis, H., Boulanger, D., Marshall, J., Nédélec, P., Smit, H. G. J., Friess, U., Flaud, J.-M., Wahner, A., Cammas, J.-P., Volz-Thomas, A., and TEAM, I.: Global-scale atmosphere monitoring by in-service aircraft – current achievements and future prospects of the European Research Infrastructure IAGOS, *Tellus B: Chemical and Physical Meteorology*, 67, 28 452, <https://doi.org/10.3402/tellusb.v67.28452>, <https://www.tandfonline.com/doi/full/10.3402/tellusb.v67.28452>, 2015.
- 35

- Rodgers, C. D.: Inverse methods for atmospheric sounding: theory and practice, Singapore: World Scientific Rothman LS, Gordon IE, Barbe A, et al, 2009.
- Saunders, R., Hocking, J., Turner, E., Rayer, P., Rundle, D., Brunel, P., Vidot, J., Roquet, P., Matricardi, M., Geer, A., et al.: An update on the RTTOV fast radiative transfer model (currently at version 12), *Geoscientific Model Development*, 11, 2717–2737, 2018.
- 5 Schmidt, M., Lopez, M., Kwok, C. Y., Messenger, C., Ramonet, M., Wastine, B., Vuillemin, C., Truong, F., Gal, B., Parmentier, E., Cloué, O., and Ciais, P.: High-precision quasi-continuous atmospheric greenhouse gas measurements at Trainou tower (Orléans forest, France), *Atmospheric Measurement Techniques*, 7, 2283–2296, 2014.
- Seity, Y., Brousseau, P., Malardel, S., Hello, G., Bénard, P., Bouttier, F., Lac, C., and Masson, V.: The AROME-France Convective-Scale Operational Model, *Monthly Weather Review*, 139, 976–991, <https://doi.org/10.1175/2010MWR3425.1>, <https://doi.org/10.1175/2010MWR3425.1>, 2011.
- 10 Smith, N. and Barnett, C. D.: Uncertainty Characterization and Propagation in the Community Long-Term Infrared Microwave Combined Atmospheric Product System (CLIMCAPS), *Remote Sensing*, 11, 1227, 2019.
- Stocker, T., Intergovernmental Panel on Climate Change., and Intergovernmental Panel on Climate Change. Working Group I.: Climate change 2013 : the physical science basis : Working Group I contribution to the Fifth Assessment Report of the Intergovernmental Panel on Climate Change, 2013.
- 15 Susskind, J., Barnett, C. D., and Blaisdell, J. M.: Retrieval of atmospheric and surface parameters from AIRS/AMSU/HSB data in the presence of clouds, *IEEE Transactions on Geoscience and Remote Sensing*, 41, 390–409, 2003.
- Thompson, D. R., Chris Benner, D., Brown, L. R., Crisp, D., Malathy Devi, V., Jiang, Y., Natraj, V., Oyafuso, F., Sung, K., Wunch, D., Castaño, R., and Miller, C. E.: Atmospheric validation of high accuracy CO₂ absorption coefficients for the OCO-2 mission, *Journal of Quantitative Spectroscopy and Radiative Transfer*, 113, 2265–2276, <https://doi.org/10.1016/j.jqsrt.2012.05.021>, <https://linkinghub.elsevier.com/retrieve/pii/S0022407312002804>, 2012.
- 20 Voulgarakis, A., Naik, V., Lamarque, J.-F., Shindell, D. T., Young, P. J., Prather, M. J., Wild, O., Field, R. D., Bergmann, D., Cameron-Smith, P., Cionni, I., Collins, W. J., Dalsøren, S. B., Doherty, R. M., Eyring, V., Faluvegi, G., Folberth, G. A., Horowitz, L. W., Josse, B., MacKenzie, I. A., Nagashima, T., Plummer, D. A., Righi, M., Rumbold, S. T., Stevenson, D. S., Strode, S. A., Sudo, K., Szopa, S., and Zeng, G.: Analysis of present day and future OH and methane lifetime in the ACCMIP simulations, *Atmospheric Chemistry and Physics*, 13, 2563–2587, <https://doi.org/10.5194/acp-13-2563-2013>, <https://www.atmos-chem-phys.net/13/2563/2013/>, 2013.
- 25 Wecht, K. J., Jacob, D. J., Frankenberg, C., Jiang, Z., and Blake, D. R.: Mapping of North American methane emissions with high spatial resolution by inversion of SCIAMACHY satellite data, *Journal of Geophysical Research: Atmospheres*, 119, 7741–7756, <https://doi.org/10.1002/2014JD021551>, <http://doi.wiley.com/10.1002/2014JD021551>, 2014.