

Manuscript number amt-2019-358

**Consistency and structural uncertainty of multi-mission GPS radio occultation records
by A.K. Steiner et al.**

Dear Editor,

in this second revision, we revised the manuscript along the remaining four minor comments of reviewer#2. In addition, we made minor corrections in Fig.8 to 11 by changing lines from thin to bold as stated in the figure captions. Please find in the following a list of changes to the manuscript.

List of minor changes

- We revised Table 1 and included specified information on the use of GPS orbits (along comment 1 of the reviewer). We made some further minor clarifications in Table 1.
- We made some minor changes in Table 2 to make it more clear, i.e. we moved the information about the common data set used in this study from the bottom to the top.
- We rephrased the last sentence in section 4 (along comment 3 of the reviewer).
- We made minor corrections in Fig.8 to 11. We changed the lines representing the all-center mean trend from thin lines to bold lines. It is now consistent with the description in the figure captions.

We thank you very much for handling our paper.

Kind regards,
Andrea Steiner
on behalf of the authors

Manuscript number amt-2019-358

**Consistency and structural uncertainty of multi-mission GPS radio occultation records
by A.K. Steiner et al.**

Response to Referee #2

We thank the reviewer for a second review of our manuscript and for the remaining minor comments. We revised the manuscript accordingly. Please find our responses below.

Minor comments:

Comment 1

If any information from IGS is used in the processing, this may be worth referencing/acknowledging.

Response 1

We included and specified information on the use of GPS orbit information in the different processings of the centers in the revised Table 1 of the manuscript.

Comment 2

Is the smallest structural uncertainty (found for one mission) the result of receiver design?

Response 2

This is considered due to advanced receivers (better onboard clocks). We also note that for the structural uncertainty estimate only three centers delivered data for the GRACE and Metop missions, while five centers provided data for CHAMP and four centers provided data for F3C.

We discuss this already in the manuscript at two places:

Section 4.2 last paragraph:

“Comparing results of the four RO missions, we find the highest consistency for GRACE and Metop between the centers. CHAMP and F3C show a bit larger differences, above 25 km (CHAMP) and at high latitudes (F3C). Apart from small features, the results are very consistent at 8–30 km. One potential reason for the higher consistency of GRACE and Metop records is considered to be technological advances on the newer satellite generations. Partly it might also be due to that only three centers delivered data for these missions, while five centers provided data for CHAMP and four centers provided data for F3C.”

Section 5, paragraph 4: *“... data products from the newer satellite missions F3C, and specifically GRACE and Metop, are usable to higher altitudes due to advanced receivers (better onboard clocks) and lower bending angle noise at higher altitudes.”*

Comment 3

End of section 4, are the structural uncertainties the only sources of uncertainties to consider when assessing conformity to the GCOS stability requirements?

Response 3

As discussed in our former response to comment 11 of referee#2, RO is considered a stable measurement technique as it is based on highly precise and stable atomic clocks. Therefore structural uncertainty/different processing choices encompass the main source of uncertainty in the case of RO. For obtaining a reasonable estimate of this uncertainty, a sufficient diversity of the basic data processing (from the raw data to orbit and excess phase data level) as well as of retrieval processing (from excess phase level to finally-retrieved atmospheric profiles) need be available. We account for this by a clear quality control of the input data, in order to statistically safeguard the basic characteristics of precision and long-term stability of the raw data that flow into the processings, and by the diversity of processing setups and implementation variants of the five different centers that we comprehensively summarize in Table 1.

We rephrased the last sentence of section 4 to:

“These results underline the value of RO as climate data record along the GCOS stability requirements for air temperature, and correspondingly for the other RO variables in the specified regions.”

Comment 4

Typo in Figure 2 caption: 'on exemplary' -> 'one exemplary'

Response 4 Corrected

Consistency and structural uncertainty of multi-mission GPS radio occultation records

Andrea K. Steiner^{1,2}, Florian Ladstädter^{1,2}, Chi O. Ao³, Hans Gleisner⁴, Shu-Peng Ho⁵, Doug Hunt⁶,
Torsten Schmidt⁷, Ulrich Foelsche^{2,1}, Gottfried Kirchengast^{1,2}, Ying-Hwa Kuo⁶, Kent B. Lauritsen⁴,
5 Anthony J. Mannucci³, Johannes K. Nielsen⁴, William Schreiner⁶, Marc Schwärz^{1,2}, Sergey Sokolovskiy⁶,
Stig Syndergaard⁴, Jens Wickert^{7,8}

¹ Wegener Center for Climate and Global Change (WEGC), University of Graz, Graz, Austria

² Institute for Geophysics, Astrophysics, and Meteorology/Institute of Physics, University of Graz, Graz, Austria

³ Jet Propulsion Laboratory (JPL), California Institute of Technology, Pasadena, CA, USA

10 ⁴ Danish Meteorological Institute (DMI), Copenhagen, Denmark

⁵ NESDIS/STAR/SMCD, Center for Weather and Climate Prediction, College Park, MD, USA

⁶ COSMIC Project Office, University Corporation for Atmospheric Research (UCAR), Boulder, CO, USA

⁷ German Research Centre for Geosciences (GFZ), Potsdam, Germany

⁸ Technische Universität Berlin, Berlin, Germany

15 *Correspondence to:* Andrea K. Steiner (andi.steiner@uni-graz.at)

Abstract.

Atmospheric climate monitoring requires observations of high-quality conforming to the criteria of the Global Climate
Observing System (GCOS). Radio occultation (RO) data based on Global Positioning System (GPS) signals are available since
2001 from several satellite missions with global coverage, high accuracy, and high vertical resolution in the troposphere and
20 lower stratosphere. We assess the consistency and long-term stability of multi-satellite RO observations for use as climate data
records. As a measure of long-term stability, we quantify the structural uncertainty of RO data products arising from different
processing schemes. We analyze atmospheric variables from bending angle to temperature for four RO missions, CHAMP,
Formosat-3/COSMIC, GRACE, and Metop, provided by five data centers. The comparisons are based on profile-to-profile
differences, aggregated to monthly medians. Structural uncertainty in trends is found lowest from 8 km to 25 km altitude
25 globally for all inspected RO variables and missions. For temperature, it is <0.05 K per decade in the global mean and <0.1 K
per decade at all latitudes. Above 25 km, the uncertainty increases for CHAMP while data from the other missions – based on
advanced receivers – are usable to higher altitudes for climate trend studies: dry temperature to 35 km, refractivity to 40 km,
and bending angle to 50 km. Larger differences in RO data at high altitudes and latitudes are mainly due to different
implementation choices in the retrievals. The intercomparison helped to further enhance the maturity of the RO record and
30 confirms the climate quality of multi-satellite RO observations towards establishing a GCOS climate data record.

1 Introduction

Consistent and long-term stable observations are critically important for monitoring the Earth's changing climate. In the free atmosphere above the boundary layer, uncertainties across data sets can be substantial and observations of thermodynamic variables are sparse, especially when considering measurements capable of detecting changes in the climate state. This was identified as a key issue in the Fifth Assessment report of the Intergovernmental Panel on Climate Change (IPCC), stating the need for data with better accuracy for monitoring and detecting atmospheric climate change, particularly in the upper troposphere and in the stratosphere (Hartmann et al., 2013).

In order to ensure global homogenous and accurate measurements, the Global Climate Observing System (GCOS) Program defined basic monitoring principles for climate data generation (GCOS, 2010 a; b), and requirements for Climate Data Records (CDRs) of Essential Climate Variables (ECVs), such as air temperature (GCOS, 2016). A CDR is based on a series of instruments with sufficient calibration and quality control for the generation of homogeneous products. This means that separate data sets from different platforms must be directly comparable to give reliable long-term records, accurate and stable enough for climate monitoring (GCOS, 2010 a), which requires that the observations are traceable to standards of the international system of units (SI) (Ohring, 2007).

For climate observations, the accuracy requirement is much more stringent than for weather observations (Trenberth et al., 2013). However, the key attribute is long-term stability, defined as the extent to which uncertainty of measurement remains constant with time (GCOS, 2016). The uncertainty of the measurement must be smaller than the signal expected for decadal change (Ohring et al., 2005; Bojinski et al., 2014). Accordingly, ECV product requirements for air temperature include global coverage, a vertical resolution of 1–2 km in the troposphere and the stratosphere, a horizontal resolution of 100 km, a measurement uncertainty of 0.5 K, and a stability of 0.05 K per decade (GCOS, 2016). For a definition of the metrological quantities we refer to Annex B of GCOS (2016) and to JCGM (2012).

Global Navigation Satellite System (GNSS) radio occultation (RO) has been identified as a key component for the GCOS due to its potential of being a climate benchmark record (GCOS, 2011). Efforts of the RO community are ongoing since the pioneering GPS/MET proof-of-concept mission in 1995 (Ware et al. 1996; Kursinski et al. 1997; Rocken et al. 1997; Steiner et al. 1999; 2001) to establish GNSS RO as observing system for Earth's atmosphere and climate. Since 2001, continuous observations are available from several RO satellite missions with beneficial properties for climate use. Most missions have used only GPS signals so far, including the ones analyzed in this study; multi-GNSS use started with the Chinese FY-3C RO mission that also exploits Beidou System (BDS) signals (Bai et al., 2018; Sun et al., 2018).

RO is a limb sounding technique based on GNSS radio signals, which are refracted and retarded by the atmospheric refractivity field during their propagation to a receiver on a Low Earth Orbit (LEO) satellite. An occultation event occurs when a GNSS satellite sets behind (or rises from behind) the horizon. Its signals are then occulted by the Earth's limb from the viewpoint of the receiver. The atmosphere is scanned vertically through the relative movements of the satellites providing a good vertical resolution. RO accurately measures the Doppler shifts of the refracted signals by relying on precise atomic clocks, which

enables traceability to the SI unit of the second (Leroy et al., 2006), long-term stability, and small uncertainties. Therefore, a seamless observation record can be formed using data from different missions without the need for inter-calibration nor temporal overlap (Foelsche et al., 2011; Angerer et al., 2017). Observations are available in nearly all-weather conditions as signals in the L-band microwave range are not affected by clouds.

- 5 GNSS RO provides high vertical resolution profiles of atmospheric bending angle and refractive index that relate directly to temperature under dry atmospheric conditions, where water vapor influence is negligible. For moist atmospheric conditions, in the troposphere, a priori information is needed in the retrieval. The vertical resolution is typically about 100 m in the lower troposphere to about 1 km in the stratosphere (Kursinski et al. 1997; Gorbunov et al. 2004). Zeng et al. (2019) established the vertical resolution as 100–200 m near the tropopause, about 500 m in the lower stratosphere at low to mid-latitudes, and about
10 1.4 km at 22–27 km at high latitudes.

Data products comprise profiles and gridded fields of bending angle, refractivity, pressure, geopotential height, temperature, and specific humidity, for use in atmosphere and climate studies (see the reviews of Anthes et al., 2011; Steiner et al., 2011; Ho et al., 2019a). Various derived quantities include, e.g., planetary boundary layer height (e.g., Sokolovskiy et al., 2006; Xie et al., 2006; Guo et al., 2011; Ao et al., 2012; Ho et al., 2015), tropopause parameters (e.g., Randel et al., 2003; Schmidt et al.,
15 2005; 2008; Rieckh et al., 2014), and geostrophic wind (e.g., Verkhoglyadova et al., 2014; Scherllin-Pirscher et al., 2014). RO provides atmospheric profiles with essentially independent information on altitude and pressure. This unique property ensures equivalent data quality on different vertical coordinates, i.e., mean-sea-level (MSL) altitude, geopotential height, pressure levels, or potential temperature coordinates (Scherllin-Pirscher et al., 2017).

RO observations improve weather prediction (Healy et al., 2005; Aparicio and Deblonde, 2008; Cardinali, 2009; Cucurull, 2010; Cardinali and Healy, 2014) and hurricane forecasts (e.g., Huang et al., 2005; Kuo et al., 2008; Liu et al. 2012; Chen et al., 2015; Ho et al., 2019b). The RO data anchor atmospheric (re)analyses (Poli et al., 2010; Bauer et al., 2014; Simmons et al., 2017), and are useful for validating other types of observations (e.g., Steiner et al., 2007; He et al., 2009; Ladstädter et al., 2011; 2015; Ho et al., 2009a; 2010; 2017; 2018) and climate models (Ao et al., 2015; Pincus et al., 2017; Steiner et al., 2018). The importance of the RO record for climate monitoring grows with its increasing length (e.g., Steiner et al., 2009; Schmidt
25 et al., 2010; Lackner et al., 2011; Steiner et al., 2011; Gleisner et al., 2015; Khaykin et al., 2017; Leroy et al., 2018).

An important prerequisite for CDRs is information on uncertainties of the provided variables. For individual RO temperature profiles, the observational uncertainty estimate is 0.7 K in the tropopause region, slightly decreasing into the troposphere and gradually increasing into the stratosphere (Scherllin-Pirscher et al., 2011a; 2017). For monthly-zonal averaged temperature fields, the total uncertainty estimate is smaller than 0.15 K in the upper troposphere-lower stratosphere (UTLS), and up to
30 0.6 K at higher latitudes in wintertime (Scherllin-Pirscher et al., 2011b). Overall, the uncertainties of RO climatological fields are small compared to any other UTLS observing system for thermodynamic atmospheric variables. An overview of the main properties of RO is given in Steiner et al. (2011).

The systematic assessment of accuracy and quality of RO records is in the focus of joint studies by the RO Trends intercomparison working group, an international collaboration of RO processing centers since 2006

(<http://irowg.org/projects/rotrends/>). The aim is to validate RO as a climate benchmark by comparing trends in RO products determined by different retrieval centers. This is assessed by quantifying the structural uncertainty in RO products arising from different processing schemes.

Structural uncertainty of an observational record arises due to different choices in processing and methodological approaches for constructing a data set from the same raw data (Thorne, 2005). The challenge is thus to quantify the true spread of physically possible solutions from a limited number of data sets. At least three independently processed datasets are regarded necessary for an estimate of the structural uncertainty, but the more data sets the better. Thus, multiple independent efforts should be undertaken to create climate records.

In the first intercomparison studies, we so far quantified the structural uncertainty of RO data from the CHAMP mission (CHALLENGING Minisatellite Payload for geoscientific research) provided by different RO data centers. Profile-to-profile intercomparisons (Ho et al., 2009b; 2012) were based on exactly the same set of profiles from each data center. Complementarily, we compared RO gridded climate records, based on the full set of profiles provided by each center and accounted for the different sampling (Steiner et al., 2013a). The results for gridded CHAMP records were consistent with those for individual profiles. The structural uncertainty in the CHAMP RO record was found lowest in the tropics and mid-latitudes at 8–25 km and to increase above and at high latitudes due to different choices in the retrievals.

Here we present an advanced assessment of the consistency of multi-year RO records for multiple satellite missions and for the full set of dry and moist atmospheric variables. We systematically intercompare RO data products provided by those five international RO processing centers that are processing several or all available RO missions and that provide RO data for long-term records (from CHAMP to current RO missions). We quantify the structural uncertainty for nine RO climate variables from bending angle to temperature and specific humidity. The comparisons are based on profile-to-profile differences, aggregated to monthly medians. We discuss the results with respect to GCOS stability requirements for climate variables. The quantification of structural uncertainty as one property of a climate benchmark data type is regarded as an essential advance towards a multi-year RO climate record.

In this respect, our study contributes to enhancing the maturity of RO data (Bates and Privette, 2012; Merchant et al., 2017), which is a goal of the RO-CLIM project (<http://www.scope-cm.org/projects/scm-08/>) within the initiative on Sustained and COordinated Processing of Environmental satellite data for Climate Monitoring (SCOPE-CM). SCOPE-CM supports the coordination of international activities to generate CDRs. It is also a recommendation of the WMO/CGMS International RO Working Group (IROWG, www.irowg.org) to establish RO-based CDRs at the quality standards of the GCOS climate monitoring principles (IROWG, 2018).

In the following, we give a concise description of the RO data sets and the data processing in section 2. In section 3 we describe the study setup and analysis method. We present and discuss results on the consistency and structural uncertainty of multi-satellite RO products in section 3. Section 4 closes with a summary and conclusions.

2 Radio occultation data and processing description

2.1 RO missions and data

The first continuous RO measurements were provided by the German mission CHAMP from May 2001 to October 2008, tracking about 250 RO events per day with a BlackJack GPS receiver (Wickert et al., 2004; 2009). The US/German GRACE (Gravity Recovery and Climate Experiment) twin-satellites (GRACE-A and GRACE-B) were launched in 2002 (Wickert et al., 2005; Beyerle et al., 2005). RO measurements have been provided since 2006, when the BlackJack receivers onboard GRACE were switched on. As the first constellation mission, the Taiwan/U.S. Formosat-3/COSMIC (Constellation Observing System for Meteorology, Ionosphere, and Climate/ Formosa Satellite Mission 3; denoted F3C hereafter) mission consists of six satellites for RO observations (Anthes et al., 2008). Launched in 2006, the Integrated GPS Occultation Receiver (IGOR) tracked both setting and rising occultations, resulting in about 500 RO events per day. The Metop series (Luntama et al., 2008) is operated by the European Organisation for the Exploitation of Meteorological Satellites (EUMETSAT). Metop-A has delivered data since the end of 2007 and Metop-B since spring 2013; Metop-C only started data delivery early 2019. All three Metop satellites carry a GNSS receiver for Atmospheric Sounding (GRAS) with four dual-frequency channels for simultaneous tracking of two rising and two setting events, yielding about 700 observed RO events per day.

Data from these four satellite missions have been delivered for the assessment of the consistency of multi-satellite RO records. The following processing centers provided reprocessed RO data products from bending angle to temperature for this study: Danish Meteorological Institute (DMI) Copenhagen, Denmark; German Research Centre for Geosciences (GFZ) Potsdam, Germany; Jet Propulsion Laboratory (JPL) Pasadena, CA, USA; University Corporation for Atmospheric Research (UCAR) Boulder, CO USA; and Wegener Center/University of Graz (WEGC), Graz, Austria. Each center has implemented an independently developed processing system for the retrieval of RO data products. While the basic steps in the retrieval (Kursinski et al., 1997) are essentially the same, different implementation options are chosen by the centers for specific processing steps.

2.2 General RO data processing description

Here, we briefly describe the basic retrieval steps from the phase measurements to atmospheric variables for dry and moist atmospheric conditions. Table 1 gives a concise overview on the retrieval steps and the implementation at each center.

The fundamental measurement is the GNSS signal phase change as function of time, which varies according to the optical path length between the transmitter satellite and the LEO receiver satellite. Highly accurate atomic clocks are the heart of the system ensuring long-term frequency stability. Two coherent carrier signals are transmitted, in case of the U.S. Global Positioning System (GPS) at wavelengths of 0.19 m (L1 signal) and 0.24 m (L2 signal) (Hofmann-Wellenhof et al., 2008; Teunissen and Montenbruck, 2017), which enables removing contributions due to Earth's ionosphere in a later retrieval step.

In the retrieval, the Doppler shift, i.e., the time-derivative of the phase, is propagated further (e.g. Melbourne et al., 1994; Kursinski et al., 1997). The kinematic contribution to the Doppler shift due to the relative motion of the GNSS and LEO

satellites is determined from precise position and velocity information, i.e., precise orbit determination (POD) (Bertiger et al., 1994; König et al., 2006). Removing it yields the Doppler shift due to the Earth's refractivity field. Errors in the receiver clock are removed by single differencing with a second reference satellite link or with double differencing, by using additional ground clock information (Wickert et al., 2002). No differencing is needed, i.e., zero differencing, if there are ultra-stable
5 clocks aboard the LEO satellites and clock errors are very small, such as for GRACE or Metop (e.g., Wickert et al., 2002; Schreiner et al., 2010; 2011; Bai et al. 2018). Geodetic processing systems are used to estimate errors in the GNSS transmitter clocks.

For microwave refraction, geometric optics is applied to convert Doppler shift to bending angle profiles, assuming local spherical symmetry of the atmosphere. In the lower troposphere, multipath and diffraction effects become important due to
10 atmospheric humidity. Here, wave optics methods are applied for the retrieval of bending angle, using phase and amplitude information (e.g., Gorbunov, 2002; Jensen et al., 2003; 2004; Gorbunov et al., 2004; Sokolovskiy et al., 2007). The ionospheric contribution to the signal is largely removed by differencing the dual-frequency GNSS signals, typically at bending angle level (Vorob'ev and Krasil'nikova, 1994). Current research aims at further minimization of the residual ionospheric error (Danzer et al. 2015). The ionosphere-corrected bending angle represents the cumulative signal refraction due to atmospheric density
15 gradients.

The next retrieval step is the computation of refractivity from bending angle by an Abel transform (Fjeldbo et al., 1971). This involves an integral with an upper bound of infinity. Also, the signal-to-noise ratio of the bending angle decreases with increasing altitude (above about 50 km depending on the thermal noise of the receiver). Therefore, an initialization of bending angle profiles with background information is performed at high altitudes. The optimized bending angle profiles are then
20 converted to refractivity profiles.

Refractivity at microwave wavelengths in the neutral atmosphere mainly depends on thermodynamic conditions of the dry and the moist atmosphere, and is given by the Smith Weintraub formula (Smith and Weintraub, 1953) or updated formulations (Aparicio and Laroche, 2011; Healy, 2011; Cucurull et al., 2013). Dry density profiles are calculated from atmospheric refractivity by neglecting the wet term in the formula. Dry pressure profiles are retrieved using the hydrostatic equation and
25 dry temperature profiles using the equation of state for dry air conditions in the upper troposphere and lower stratosphere. In the lower to middle troposphere, the retrieval of (physical) atmospheric temperature or humidity requires additional background information in order to resolve the wet-dry ambiguity information inherent in refractivity (e.g., Kursinski et al., 1996; Healy and Eyre, 2000; Kursinski and Gebhard, 2014). Different methods are applied for moist air retrievals including a priori knowledge of the state of the atmosphere. Finally, quality control (QC) is implemented at several processing steps.

30 Atmospheric profiles are provided as function of mean sea level (MSL) altitude due to accurate knowledge of transmitter and receiver positions (and the assumption of local spherical symmetry), referred to a reference coordinate system and the Earth's geoid (see Table 1). The vertical integration of density also provides pressure as function of altitude. Geopotential height can be computed without the need of information on surface pressure or any other information except gravity potential. Further details on vertical coordinates and geolocation of RO are given in Scherllin-Pirscher et al. (2017).

2.3 Center-specific RO processing steps and comparison

Table 1 provides an overview on current state-of-the-art retrieval versions and the processing steps implemented at each center as well as information on data description and availability (Steiner et al., 2013; Table 1 updated for current processing versions and extended for moist air processing steps). Three of the RO centers (GFZ, JPL, UCAR) have the full processing chain implemented, going from raw data level to atmospheric variables. Two centers (DMI and WEGC) start their processing at phase data level in this study, by using phase data and orbit data from UCAR/CDAAC (COSMIC Data Analysis and Archive Center). Thus, as some centers start with the same phase and orbit data (from UCAR), the products from raw data to atmospheric parameters are not strictly independent for these centers.

The main differences between the centers' processing steps include the initialization of the Abel integral that transforms bending angles to refractivity, moist-air retrieval, and quality control. For the bending angle vertical profiles, JPL performs an extrapolation of the bending angle to higher altitudes while the other centers apply statistical optimization methods that combine the bending angle measurements with a background bending angle. Each center uses different background information, either atmosphere model climatologies (GFZ, UCAR), observation based climatologies (DMI), or short-range forecasts (WEGC). Handling of observational and background errors affects the amount of information from observations and from the background included in the retrieved optimized bending angle. Observational error is typically smaller in data from RO systems with improved performance, i.e., lower thermal noise or higher gain antennas enabling higher signal-to-noise-ratio up to higher altitudes. In the different moist air retrieval implementations, a priori information is also included, stemming either from atmospheric analyses or forecasts (JPL, WEGC) or (model forecast produced with) reanalysis (DMI, UCAR) data. Figure 1 shows the number of profiles per month delivered by each center for each RO mission. Indicated is also the number of profiles in the common subsets, which we used in the profile-to-profile intercomparison for quantifying structural uncertainty. For CHAMP, GFZ delivered the largest number of data, followed by UCAR, DMI, WEGC, and JPL. There is a data gap in July 2006 when CHAMP had only very few measurements. The common subset of profiles for CHAMP summed up on average to about 1500 profiles per month.

For F3C, DMI, UCAR, and WEGC delivered nearly the same number of data, only JPL provided a smaller amount. GFZ did not process F3C data. The number of F3C measurements was highest from 2007 to 2010 with more than 70000 profiles per month and decreased over time as the satellites successively ceased achieving full function. The mission design life was two years. Only two of the six F3C satellites still produced data in 2018. For this study, UCAR provided a reprocessed F3C data set until 04/2014. The common subset of F3C data ranged from 20000 up to 50000 profiles per month over time.

Data for GRACE were provided by three centers, DMI, GFZ, WEGC, delivering nearly the same amount of profiles with a common subset of about 3000 profiles per month. Metop data were provided by DMI, UCAR, and WEGC, with a common subset of about 15000 profiles increasing to 25000 per month when the second Metop satellite started measuring.

The number of common profiles is noticeably smaller than the number of profiles delivered by any of the centers which is mainly due to the different quality control handling. This means that not the same set of profiles is delivered by each center.

3 Study setup and analysis method

We investigated the structural uncertainty of the following RO variables: bending angle (α), optimized bending angle (α_{opt}), refractivity (N), dry pressure (p_{dry}), dry temperature (T_{dry}), dry geopotential height (Z_{dry}), pressure (p), temperature (T), and specific humidity (q). The atmospheric profiles were provided on a 100 m MSL altitude grid, except bending angle which was given on impact altitude, and geopotential height which was related to dry pressure levels, i.e., “dry pressure altitude” defined as $z_p[\text{m}] = (7000 \text{ m}) \cdot \ln(1013.25 \text{ hPa} / p_{\text{dry}} [\text{hPa}])$.

Table 2 summarizes the data delivered for this study by each center and gives information on satellite missions, time periods and atmospheric variables. Not all of the centers provided data for each satellite and each variable. UCAR did not provide optimized bending angle profiles. GFZ did not provide moist-air variables. This was adequately considered in the computations.

The study was based on the intercomparison of collocated profiles between the centers for each satellite mission and atmospheric variable. The profiles were collocated based on a unique event identifier (ID) including information on receiver ID, GPS satellite ID, date, and time of the observation. The common subset of data was analyzed further. This means that only the common time periods can be intercompared for which each center provided data continuously. The investigated periods are 09/2001–09/2008 for CHAMP (5 centers), 03/2007–12/2016 for GRACE (3 centers), 08/2006–04/2014 for F3C (4 centers), and 03/2008–12/2015 for Metop (3 centers).

We first calculated the differences (ΔX_i) of each center (c) to the all-center mean (i.e. mean of all centers) (X_i^{all}) over time based on individual profiles of atmospheric parameters (X_i), with i denoting the index of matched profiles and n_{center} denoting the number of centers, using Eq. 1 and Eq. 2:

$$X_i^{\text{all}} = \frac{1}{n_{\text{center}}} \sum_{c=1}^{n_{\text{center}}} X_i(c), \quad (1)$$

$$\Delta X_i = X_i - X_i^{\text{all}}. \quad (2)$$

The profiles (X_i , ΔX_i , X_i^{all}) were then binned into 10-degree zonal bands and averaged to monthly medians (X , ΔX , X^{all}). By using difference time series we remove the climate variability that is common in the data sets. Anomaly difference time series were then computed by subtracting the mean annual cycle for the respective time period (see Table 2) to reduce the natural variability in the differences. Percentage anomaly difference time series were computed for variables which decrease exponentially with altitude.

The spread of the anomaly difference trends and the spread of the center trends were used for estimating the structural uncertainty (Wigley, 2006) of RO records. For each atmospheric variable and satellite mission, we computed the linear trend

over the respective time period for the all-center mean and for each center. The standard deviation of the center trends was finally used as a measure of the spread.

We performed the calculations for each atmospheric parameter (X) for each satellite mission (s) of each center (c) given at monthly resolution (t) for latitude bands (ϕ) and altitude levels (z), i.e. nine parameters, four satellite missions, five centers, for 18 latitude bands and up to 600 altitude levels as well as for six large latitude bands and up to 8 altitude layers (after Steiner et al., 2013; Mochart, 2018).

The mean difference of each center to the all-center mean was computed by averaging over the satellite dependent period, with n_{time} as the number of time steps (months), using Eq. 3:

$$\overline{\Delta X}(c_i, \phi_j, z_k, s_m) = \frac{1}{n_{\text{time}}} \sum_{l=1}^{n_{\text{time}}} [\Delta X(c_i, \phi_j, z_k, t_l, s_m)]. \quad (3)$$

Results from these computations are discussed in section 4.1.

The annual cycle for the differences to the all-center mean was computed using Eq. 4. The number of years over which the annual cycle was calculated is denoted n_{yr} , the index l' takes the values one to twelve, and $\tau_{l'}$ denotes one of the twelve months of a year:

$$\overline{\Delta X}_{\text{AnnCycle}}(c_i, \phi_j, z_k, \tau_{l'}, s_m) = \frac{1}{n_{\text{yr}}} \sum_{l''=1}^{n_{\text{yr}}} \Delta X(c_i, \phi_j, z_k, t_{l'+12 \cdot (l''-1)}, s_m). \quad (4)$$

Subtracting the annual cycle provided the de-seasonalized anomaly differences for each center c and satellite mission s , obtained according to Eq. 5:

$$\Delta X_{\text{DeseasAnomDiff}}(c_i, \phi_j, z_k, t_l, s_m) = \Delta X(c_i, \phi_j, z_k, t_l, s_m) - \overline{\Delta X}_{\text{AnnCycle}}(c_i, \phi_j, z_k, \tau_{1+(l-1) \bmod 12}, s_m). \quad (5)$$

Fractional (percentage) de-seasonalized anomaly differences were computed analogously.

Linear trends were then computed with standard linear regression for the de-seasonalized anomaly difference time series and, analogously, for the de-seasonalized time series of each center. Results from these computations are discussed in sections 4.2 and 4.3. For better comparison, the trends are stated per 10 years. However, we do not discuss climatological trends here as the time periods are different for each RO mission. We are interested in the structural uncertainty of trends represented by the standard deviation of the n_{center} individual center trends. This measure gives us an indication of the stability of the multi-satellite RO records.

We performed the computations for 10°-zonal medians, averaging the collocated individual RO profiles on the given vertical grid on a monthly median basis. We then averaged to larger latitudinal domains and altitude layers, in which RO data show similar behavior and similar structural uncertainty. We defined six latitude bands: the tropics (TRO; 20°N–20°S), northern/southern mid latitudes (NML/SML; 20°N/S–60°N/S), northern/southern high latitudes (NHL/SHL; 60°N/S–90°N/S), and a global band (GLOB; 90°N–90°S). We defined (up to) eight altitude layers. The uppermost altitude levels are 60 km for bending angle, 50 km for refractivity, and 40 km for the other variables except humidity (15 km). The inspected vertical layers

include 8–18 km, 18–25 km, 25–30 km, 30–35 km, 35–40 km, 40–50 km, 50–60 km. Structural uncertainty in trends is finally presented at the full 100 m altitude grid.

4 Results and discussion

4.1 Comparison of differences in multi-satellite RO profiles for one exemplary month and for the total mean

- 5 As a first overview, we present comparison results for one exemplary month, July 2008, for selected atmospheric RO variables in order to introduce several characteristic features. Figure 2 shows the global mean difference of profiles from each center with respect to the all-center mean, for the missions CHAMP, F3C, GRACE, and Metop. Differences for the variables bending angle, optimized bending angle, refractivity, dry temperature, and physical temperature are presented. Note that deviations of one center are counter-balanced by other centers due to referencing to the all-center mean.
- 10 The mean difference profiles for non-optimized bending angle and bending angle are smaller at upper altitudes for F3C, GRACE, and Metop compared to CHAMP due to enhanced receiver quality, and smoother due to the larger number of data available. For CHAMP, the bending angle becomes noisy near 35–40 km and above 40–50 km for the other RO missions. The optimization of the bending angle reduces the noise and stabilizes the retrieval at high altitudes above 50 km. The noise reduction is visible in the optimized bending angle differences, specifically for F3C, GRACE, and Metop. The bending angle
- 15 differences are $<0.1\%$ from 10–40/50 km impact altitude, depending on the mission.

In the RO retrieval chain of further derived parameters, such as refractivity, pressure, or dry temperature, the impact of background information propagates further downward in altitude for each retrieved parameter. Refractivity, which is proportional to atmospheric density, shows differences of $<0.05\%$ at 10–30 km for all satellites in July 2008. Dry temperature differences are small from 8–25/30 km depending on the mission. Physical temperatures, usually derived with a priori

20 information, show similar differences, with JPL showing larger deviations due to cut-off artefacts below 15 km (see below). Next, we give an overview on mean differences with respect to the all-center mean, averaged over the full time period of a mission, which we exemplarily show for the F3C mission. Figure 3 presents averaged anomaly differences for bending angle, refractivity, dry temperature, temperature, and specific humidity for 10° -zonal means at a 100 m vertical grid. The mean differences for bending angle are found to be very small (0.1–0.2%) at all latitudes, except at high latitudes, where differences

25 are larger for JPL and UCAR bending angles. Different choices for the bending angle initialization by the centers are reflected in larger refractivity differences above about 40 km, while below the mean differences are very small ($<0.1\%$). For subsequent derived variables, the differences become larger already above 30 km as seen for dry temperature. There, some latitude dependent features appear which might stem from high-altitude initialization in the retrieval, specifically at high latitudes. At

30 differences of <0.2 K at 2–30 km altitude. JPL provides physical temperature products only down to a certain altitude. RO temperature is cut off when it rises above 240 K in their moist air retrieval, where background temperature information from ECMWF (European Centre for Medium-Range Weather Forecasts) analyses is used to derive specific humidity. DMI and

UCAR use a 1-dimensional variational (1D-Var) method to derive temperature with ERA-Interim (ECMWF Reanalysis-Interim) products as background. WEGC applies a simplified 1D-Var retrieval method, using ECMWF forecasts as background below about 16 km altitude. Above this altitude, WEGC dry and physical temperatures are the same. However, in Fig. 3, differences are shown with respect to the all-center mean, and the latter is different for dry and physical temperature.

5 For specific humidity we find mean differences of each center to the all-center mean of $<15\%$. JPL provides specific humidity data up to 10 km altitude only in synergy with the temperature cut-off, and the number of data decreases above 8 km. The larger differences at this altitude are artefacts and can be removed with a more rigid cut-off. Only few centers delivered humidity and the data have different height availability, which hampers a rigorous statistical intercomparison of humidity in this study. We thus do not show further comparisons here.

10 Comparison of mean differences with data of the other satellite missions CHAMP, GRACE, and Metop shows good consistency over the same regions, however, differences are found smaller at higher altitudes, specifically for Metop. Commonalities and differences are further investigated in the full difference time series and revealed in the structural uncertainty estimates.

4.2 Comparison of anomaly difference time series

15 Here, we investigate anomaly difference time series (see Eq. 5) for each satellite mission (CHAMP, F3C, GRACE, Metop) over the respective time periods as presented in Fig. 4 to 7. We show monthly median differences to the all-center mean for two selected variables, bending angle and dry temperature. Bending angle stands at the beginning of the processing chain (after phase data processing) while dry temperature is one of the final RO products commonly used in climate studies. We present results for the global mean (GLO) and for selected zonal means, the tropics (TRO), and high latitudes (SHL, NHL). We do not

20 show results for the mid-latitude bands (NML, SML) as the results are similar to those in the tropics. We investigate consistencies and deviations in the anomaly difference time series of individual centers to the all-center mean.

For all satellite missions we find that bending angle differences are overall very small and consistent below 30 km at all latitudes. However, there are some differences which we discuss in the following. For CHAMP, the spread of mean anomaly difference trends in bending angle (Fig. 4a) is larger than for the other missions. For the zonal means, it is about $\pm 0.05\%$ per

25 decade below 25 km, increasing to about $\pm 0.1\%$ per decade above. At SHL, a larger difference trend is seen for GFZ at 25–30 km. Larger variability in bending angle is found for JPL over the investigated period. The difference time series in CHAMP bending angle show similar behavior at high latitudes and in the tropics. The global mean difference trends (90°S – 90°N) for CHAMP are $\pm 0.04\%$ per decade at 8–18 km and $\pm 0.02\%$ per decade above.

For F3C, the spread of mean anomaly difference trends (Fig. 5a) is found larger at high latitudes than in the tropics. Largest

30 difference trends are found at SHL, with a spread of -0.17% to 0.1% per decade in all altitude layers. This is due to a small shift in UCAR bending angle in 2013, which is currently under investigation. In the tropics, the differences are small. In the global mean, the spread in difference trends is $\pm 0.02\%$ per decade at 18–25 km, and $\pm 0.01\%$ per decade at 25–30 km, which is smaller than for CHAMP.

GRACE shows highly consistent anomaly differences (Fig. 6a) and a similar behavior at all latitudes. An interesting feature in GFZ bending angle is an oscillating variability over time for GRACE data. However, the spread in difference trends is very small with $\pm 0.01\%$ in all altitude layers. Globally it is zero. Also, for Metop we find high consistency in anomaly differences (Fig. 7a), with a spread in difference trends of $\pm 0.02\%$ per decade for bending angle except in the tropical band. There, differences are slightly larger with $\pm 0.05\%$ per decade at 18–25 km.

For refractivity, we find high consistency in the difference trends (not shown here for the time series, but later in section 4.3). The spread of the difference trends is about $\pm 0.01\%$ to $\pm 0.02\%$ per decade at all latitudes at 8–30 km for F3C, GRACE, and Metop, and near zero globally. For CHAMP, it is within $\pm 0.02\%$ to $\pm 0.03\%$ per decade, and larger differences only occur for GFZ time series at high latitudes.

For dry temperature, the difference time series show some common features for all satellites. We find that the spread in anomaly difference trends for dry temperature is smallest in the troposphere layer (8–18 km), larger in the lower stratosphere layer (18–25 km), and further increases above. The spread in difference trends is found largest for CHAMP (Fig. 4b), followed by F3C (Fig. 5b), GRACE (Fig. 6b), and Metop (Fig. 7b).

The global mean difference trends for CHAMP range from about ± 0.06 K per decade at 8–18 km to ± 0.15 K per decade at 18–25 km, and to about ± 0.4 K per decade at 25–30 km. For F3C, the global spread is only ± 0.02 K per decade at 8–25 km to ± 0.08 K per decade at 25–30 km. For GRACE, it is even smaller with ± 0.01 K per decade at lower altitudes increasing to ± 0.06 K per decade at 25–30 km. For Metop, it is near-zero in the troposphere, ± 0.02 K per decade in the lower stratosphere, and -0.07 K to $+0.02$ K per decade above.

For CHAMP dry temperature, some larger differences occur in the tropics. There, the JPL time series show a slight shift, which is most prominent at upper altitude levels. Some deviations occur in the UCAR time series for some winter months at NHL. These peaks are only visible for a few months, when sudden stratospheric warmings occurred. The peaks can be explained by high altitude initialization with the NCAR climatology, which does not capture the extraordinary large temperature changes at high latitudes during sudden stratospheric warmings. For GRACE, a peak in WEGC data is seen at the beginning of the time series at upper height levels. However, in the global average, the anomaly differences are found very small despite some larger deviations in some NHL winter months. Also, the results for physical temperature are in very good agreement. They are consistent with dry temperature and UCAR data peaks are reduced to about 50%.

Comparing results of the four RO missions, we find the highest consistency for GRACE and Metop between the centers. CHAMP and F3C show a bit larger differences, above 25 km (CHAMP) and at high latitudes (F3C). Apart from small features, the results are very consistent at 8–30 km. One potential reason for the higher consistency of GRACE and Metop records is considered to be technological advances on the newer satellite generations. Partly it might also be due to that only three centers delivered data for these missions, while five centers provided data for CHAMP and four centers provided data for F3C.

4.3 Structural uncertainty for RO multi-satellite records

Finally, we analyzed the consistency of trends for multi-satellite records from five different processing centers. We calculated trends for all variables based on the anomaly time series of the individual centers. We also computed the all-center mean trend. The spread of the center trends, i.e., the standard deviation of the individual center trends, is taken as a measure for the structural uncertainty of the RO records. We stress at this point that we do not investigate nor interpret climatological trends because this is not the focus of this study. Here, we are interested in the structural uncertainty of the RO records.

We present trends and standard deviations for each RO mission separately, for CHAMP (Fig. 8), F3C (Fig. 9), GRACE (Fig. 10), and Metop (Fig. 11), for bending angle, refractivity, dry pressure, dry geopotential height, dry temperature, and temperature. We show the results for five latitude zones and for the global mean at the vertically resolved grid, for bending angle up to 60 km altitude, for refractivity up to 50 km, and for the other variables up to 40 km. At lower altitudes, we cut at 8 km for dry parameters, and at 2 km for temperature.

For CHAMP (Fig. 8), the structural uncertainty of trends from different processing centers is found small below 40 km for bending angle, below 30 km for refractivity and dry pressure, and below 25–28 km for (dry) temperature at all latitudes. Structural uncertainty increases above 25 km and at high latitudes, mainly due to increased sensitivity to the different bending angle initialization approaches implemented at each center, including different high altitude background information. Compared to the results of Steiner et al. (2013) for CHAMP, we find in this study better agreement between the centers because improved data versions have been delivered. At high latitudes the uncertainty is smaller here, which is most probably due to a new data version provided by GFZ.

For F3C (Fig. 9), the structural uncertainty is much smaller compared to CHAMP. It is low for bending angle up to 50 km, for refractivity up to 45 km, for dry pressure up to 40 km, and for (dry) temperature up to 30 km. At SHL, the structural uncertainty becomes larger for dry pressure and dry temperature above about 25 km altitude.

For GRACE (Fig. 10), the structural uncertainty is very small at all altitude levels and at all latitudes, except for SHL. Larger structural uncertainty is only found at upper altitudes for bending angle and refractivity and at SHL for all variables.

For Metop (Fig. 11), the structural uncertainty is found smallest compared to the other missions. High consistency is found at all latitudes and over all altitudes. A small difference in the trend near 20 km is visible for WEGC data. This is due to the handling of Metop data, where due to a tracking update in 2013 rising occultations are tracked only from about 20 km upwards. A summary of the resulting standard deviation numbers is given in Fig. 12 for all parameters and all satellites. We set these results into context with the GCOS stability requirements for ECVs, defined by 0.05 K per decade air temperature in the troposphere and stratosphere (GCOS, 2016), formerly by 0.1 K per decade in the stratosphere (GCOS, 2011). For the other RO variables no dedicated GCOS requirements exist but they can be estimated from physical relations between these variables with reasonable scaling. The corresponding estimates for 0.1 K per decade in temperature are 0.05% per decade for refractivity (factor 0.5), 0.12% per decade for bending angle (factor ~ 2.4), 0.06% per decade for pressure, and about 4 m per decade for

geopotential height. The relation between geopotential height and pressure changes is given via atmospheric scale height of about 70 m geopotential height change per one percent pressure change (see Steiner et al., 2013).

In Fig. 12, we visually relate the standard deviation to the GCOS stability criteria via color coding, where light orange indicates that the criteria are met for temperature with 0.05–0.1 K per decade and the corresponding criteria for the other RO variables.

5 For the global average, the standard deviation of bending angle trends is <0.06% per decade for the altitude layers 8–50 km for all satellite missions, and <0.12% for latitudinal averages. For CHAMP it is larger above 30 km. For refractivity trends, the standard deviation is <0.03% per decade at 8–35 km for all satellites globally. Only for CHAMP it is again larger above 30 km and for Metop and GRACE at NHL/SHL (~0.05%) for some layers. For (dry) pressure trends, the standard deviation is <0.03% per decade at 8–30 km globally and <0.06% per decade at all latitudes, except for CHAMP. Dry geopotential height
10 shows a standard deviation of <2–4 m for all satellites below 35 km globally, and below 30 km for tropics and mid-latitudes. For CHAMP it is about 10–20 m per decade at 25–35 km altitude.

For dry temperature trends, the standard deviation is <0.05 K per decade at 8–25 km for all satellites, except for CHAMP it is about 0.1 K at 18–25 km. Even at 25–35 km, the standard deviation for dry temperature is globally <0.05–0.11 K per decade for F3C, GRACE, and Metop, whereas for CHAMP it increases to about 0.5 K per decade globally. Physical temperature
15 shows similar uncertainty at lower altitudes, however, above about 30 km it can be larger than for dry temperature due to different a priori information in moist air retrievals.

We find that RO multi-satellite data products from different centers are highly consistent at 8–25 km for all RO missions over all latitudes. Figure 12 reveals that F3C, GRACE, and Metop are usable for climate studies up to higher altitudes, to 30–35 km for temperature, geopotential height and pressure, and to 40 km for refractivity. Bending angles are found to be consistent up
20 to 50 km because they are less sensitive to a priori information and thus useful for climate monitoring (Ringer and Healy, 2008). ~~Therefore, structural uncertainty meets~~ These results underline the value of RO as climate data record along the GCOS stability requirements for air temperature, ~~as well as corresponding requirements and correspondingly~~ for the other RO variables in the specified regions.

25 5 Summary and conclusions

The aim of this study was to assess the consistency and long-term stability of RO observations for use as climate data records of essential climate variables in a global climate observing system. We therefore performed a rigorous intercomparison study of a full set of RO data products from multiple satellites provided by different RO processing centers. We analyzed all available RO data products from dry and moist air retrievals. The atmospheric variables included bending angle, optimized bending
30 angle, refractivity, dry pressure, dry temperature, dry geopotential height, pressure, temperature, and specific humidity. Data products were delivered by five RO processing centers for the RO missions CHAMP, Formosat-3/COSMIC, GRACE, and Metop.

As a measure for consistency and stability, we investigated the structural uncertainty of RO multi-satellite records which arises from different processing schemes. Based on the common subsets of delivered RO profiles, we computed de-seasonalized time series and difference time series of individual centers with respect to the all-center mean, as well as respective linear trends of the time series. The spread of the difference time series was investigated as one indication of structural uncertainty. We finally quantified the structural uncertainty of trends based on the standard deviation of the individual center trends. This uncertainty measure gives a representation of the stability of the multi-satellite RO records, enabling assessment against GCOS stability requirements and of the consistency of products from different processing centers.

Globally, the standard deviation of bending angle trends is found $<0.06\%$ per decade in the altitude layers 8–50 km for all satellite missions except for CHAMP (up to 30 km). For refractivity trends, the standard deviation is $<0.03\%$ per decade at 8–35 km in these altitude layers for all satellites except CHAMP. For (dry) pressure trends, the standard deviation is $<0.03\%$ per decade at 8–30 km globally. Dry geopotential height shows a standard deviation of $<2\text{--}4$ m per decade below 35 km for all satellites except CHAMP. For global dry temperature trends, the standard deviation is <0.05 K per decade at 8–25 km and <0.1 K per decade at 25–35 km for all satellites, except for CHAMP it is about 0.1 K per decade and about 0.5 K per decade, respectively.

Our results show that RO multi-satellite data products from different centers are highly consistent between 8 and 25 km for all RO missions over all latitudes. Furthermore, data products from the newer satellite missions F3C, and specifically GRACE and Metop, are usable to higher altitudes due to advanced receivers (better onboard clocks) and lower bending angle noise at higher altitudes. For these missions, (dry) temperature, dry geopotential height, and (dry) pressure is found to be consistent up to 30–35 km, refractivity up to 40 km, and bending angle up to 50 km.

In conclusion, we find that the RO record can be used for reliable climate trend assessments globally within 90°S to 90°N in these altitude regions, meeting the stringent GCOS stability requirements for air temperature and corresponding requirements for the other RO variables. Data users should be aware of the larger uncertainty of the CHAMP record at higher altitudes. Also, temperature derived with a moist air retrieval can have a larger uncertainty above 25 km due to a priori information. Knowledge of the differences in quality of the various satellite data is essential, especially when data from several missions are combined into a multi-satellite record. The final Fig. 12 gives an instructive overview on the structural uncertainties for all RO variables over latitude and altitude.

This intercomparison study helped to further improve the maturity and quality of the RO records. During the course of work, we reported small issues and gave feedback to the processing centers, which was incorporated into the product development and resulted in improved reprocessed data sets for this study. We regard the quantification of structural uncertainty of multi-satellite RO records from different RO processing centers as an essential advance towards the establishment of a global climate benchmark record as key component of GCOS.

Efforts at RO centers are ongoing on further improving and advancing RO data processing, such as the new WEGC RO processing system with integrated uncertainty propagation and traceability to the fundamental time standard (Li et al., 2015; Kirchengast et al. 2016; Schwarz et al., 2017; 2018; Gorbunov and Kirchengast, 2018; Innerkofler et al., 2018). Also, new RO

missions with advanced receivers will provide RO data with better quality. RO receivers are established on the Chinese FY-3 meteorological satellite series (Sun et al., 2018), Metop-C is in orbit since November 2018, and the six-satellite FORMOSAT-7/COSMIC-2 constellation was successfully launched in June 2019 (Schreiner et al., 2016; Ho et al., 2019a).

New receivers are capable of tracking different GNSS signals from the U.S. GPS, the Russian GLONASS, the European Galileo system, and the Chinese Beidou system and will provide a larger number of observations. These recently launched and further planned RO missions will ensure the continuation of the RO record into the future for long-term climate monitoring and trend detection.

Data availability. Information on the availability of the analyzed data sets is given in Table 1.

Author contributions. A.K.S. designed the study, organized the data collection, discussed with the co-author team, analyzed the results, and wrote the manuscript text. F.L. performed the computations and analysis, created all figures, and contributed to the paper text. C.O.A., H.G., S.-P.H., D.H, T.S. delivered the data products and provided information on data and processing description. A.J.M. influenced JPL's strategy on data products. All authors engaged in discussions on data characteristics and issues, on the interpretation of results and contributed to the finalization of the manuscript text.

Competing interests. The authors declare that they have no conflict of interest.

Acknowledgements. We thank B. Angerer (WEGC, AT), B. A. Iijima (JPL), and O. P. Verkhoglyadova (JPL) for valuable support on data processing and quality control of the provided data sets. We acknowledge M. Mochart (WEGC, AT) for his Master thesis work on a first analysis of the intercomparison study.

This work was funded by the Austrian Science Fund (FWF) under research grant P27724-NBL (VERTICLIM), the European Space Agency (ESA) project MMValRO, and the Austrian Research Promotion Agency (FFG-ALR) projects OPSCLIMVALUE (ASAP-11 848013) and ATROMSAF1 (ASAP-13 859771). Portions of this research were carried out at the Jet Propulsion Laboratory, California Institute of Technology, under a contract with the National Aeronautics and Space Administration. Support of the NASA Earth Science Division is gratefully acknowledged. H. Gleisner (DMI), J. K. Nielsen (DMI), K. B. Lauritsen (DMI), and S. Syndergaard (DMI) were supported by the Radio Occultation Meteorology Satellite Application Facility (ROM SAF) which is a decentralized operational RO processing center under EUMETSAT. The radio occultation data from DMI were provided by the ROM SAF (<http://www.romsaf.org>). The manuscript contents are solely the opinions of the author(s) and do not constitute a statement of policy, decision, or position on behalf of NOAA or the U.S. Government.

References

- Angerer, B., Ladstädter, F., Scherllin-Pirscher, B., Schwärz, M., Steiner, A. K., Foelsche, U. and Kirchengast, G.: Quality aspects of the Wegener Center multi-satellite GPS radio occultation record OPSv5.6, *Atmos. Meas. Tech.*, 10(12), 4845–4863, doi:10.5194/amt-10-4845-2017, 2017.
- 5 Anthes, R. A.: Exploring Earth’s atmosphere with radio occultation: contributions to weather, climate and space weather, *Atmos. Meas. Tech.*, 4(6), 1077–1103, doi:10.5194/amt-4-1077-2011, 2011.
- Anthes, R. A., Ector, D., Hunt, D. C., Kuo, Y.-H., Rocken, C., Schreiner, W. S., Sokolovskiy, S. V., Syndergaard, S., Wee, T.-K., Zeng, Z., Bernhardt, P. A., Dymond, K. F., Chen, Y., Liu, H., Manning, K., Randel, W. J., Trenberth, K. E., Cucurull, L., Healy, S. B., Ho, S.-P., McCormick, C., Meehan, T. K., Thompson, D. C. and Yen, N. L.: The COSMIC/FORMOSAT-10 3 Mission: Early Results, *Bull. Amer. Meteor. Soc.*, 89(3), 313–333, doi:10.1175/BAMS-89-3-313, 2008.
- Ao, C. O., Waliser, D. E., Chan, S. K., Li, J.-L., Tian, B., Xie, F. and Mannucci, A. J.: Planetary boundary layer heights from GPS radio occultation refractivity and humidity profiles, *Journal of Geophysical Research: Atmospheres*, 117(D16), doi:10.1029/2012JD017598, 2012.
- Ao, C. O., Jiang, J. H., Mannucci, A. J., Su, H., Verkhoglyadova, O., Zhai, C., Cole, J., Donner, L., Iversen, T., Morcrette, C., 15 Rotstayn, L., Watanabe, M. and Yukimoto, S.: Evaluation of CMIP5 upper troposphere and lower stratosphere geopotential height with GPS radio occultation observations, *J. Geophys. Res. Atmos.*, 2014JD022239, doi:10.1002/2014JD022239, 2015.
- Aparicio, J. M., and Laroche, S.: An evaluation of the expression of the atmospheric refractivity for GPS signals, *J. Geophys. Res.*, 116, D11104, doi:10.1029/2010JD015214, 2011.
- 20 Bai, W., Liu, C., Meng, X., Sun, Y., Kirchengast, G., Du, Q., Wang, X., Yang, G., Liao, M., Yang, Z., Zhao, D., Xia, J., Cai, Y., Liu, L. and Wang, D.: Evaluation of atmospheric profiles derived from single- and zero-difference excess phase processing of BeiDou radio occultation data from the FY-3C GNOS mission, *Atmos. Meas. Tech.*, 11(2), 819–833, doi:10.5194/amt-11-819-2018, 2018.
- Bates, J. J. and Privette, J. L.: A maturity model for assessing the completeness of climate data records, *Eos Trans. AGU*, 25 93(44), 441–441, doi:10.1029/2012EO440006, 2012.
- Bauer, P., Radnóti, G., Healy, S. and Cardinali, C.: GNSS Radio Occultation Constellation Observing System Experiments, *Mon. Wea. Rev.*, 142(2), 555–572, doi:10.1175/MWR-D-13-00130.1, 2014.
- Bertiger, W. I., Bar-Sever, Y. E., Christensen, E. J., Davis, E. S., Guinn, J. R., Haines, B. J., Ibanez-Meier, R. W., Jee, J. R., Lichten, S. M., Melbourne, W. G., Muellerschoen, R. J., Munson, T. N., Vigue, Y., Wu, S. C., Yunck, T. P., Schutz, B. E., 30 Abusali, P. A. M., Rim, H. J., Watkins, M. M. and Willis, P.: GPS precise tracking of TOPEX/POSEIDON: Results and implications, *J. Geophys. Res.*, 99(C12), 24449–24464, doi:10.1029/94JC01171, 1994.
- Beyerle G., Schmidt T., Michalak G., Heise S., Wickert J. and Reigber C.: GPS radio occultation with GRACE: Atmospheric profiling utilizing the zero difference technique, *Geophysical Research Letters*, 32(13), doi:10.1029/2005GL023109, 2005.

- Bojinski, S., Verstraete, M., Peterson, T. C., Richter, C., Simmons, A. and Zemp, M.: The Concept of Essential Climate Variables in Support of Climate Research, Applications, and Policy, *Bull. Amer. Meteor. Soc.*, 95(9), 1431–1443, doi:10.1175/BAMS-D-13-00047.1, 2014.
- Cardinali, C.: Monitoring the observation impact on the short-range forecast, *Q.J.R. Meteorol. Soc.*, 135(638), 239–250, doi:10.1002/qj.366, 2009.
- Cardinali, C. and Healy, S.: Impact of GPS radio occultation measurements in the ECMWF system using adjoint-based diagnostics, *Quarterly Journal of the Royal Meteorological Society*, 140(684), 2315–2320, doi:10.1002/qj.2300, 2014.
- Chen, Y.-C., Hsieh, M.-E., Hsiao, L.-F., Kuo, Y.-H., Yang, M.-J., Huang, C.-Y. and Lee, C.-S.: Systematic evaluation of the impacts of GPSRO data on the prediction of typhoons over the Northwestern Pacific in 2008–2010, *Atmos. Meas. Tech.*, 8(6), 2531–2542, doi:10.5194/amt-8-2531-2015, 2015.
- Cucurull, L.: Improvement in the Use of an Operational Constellation of GPS Radio Occultation Receivers in Weather Forecasting, *Wea. Forecasting*, 25(2), 749–767, doi:10.1175/2009WAF2222302.1, 2010.
- Cucurull, L., Derber, J. C., and Purser, R. J.: A bending angle forward operator for global positioning system radio occultation measurements, *J. Geophys. Res. Atmos.*, 118, 14–28, doi:10.1029/2012JD017782, 2013.
- Culverwell, I. D. and Healy, S. B.: The Radio Occultation Processing Package (ROPP) User Guide Part II: Forward model and 1D–Var modules Version 6.0, GRASSAF Rep. SAF/GRAS/METO/UG/ROPP/003., 2011.
- Danzer, J., Healy, S. B. and Culverwell, I. D.: A simulation study with a new residual ionospheric error model for GPS radio occultation climatologies, *Atmospheric Measurement Techniques*, 8(8), 3395–3404, doi:10.5194/amt-8-3395-2015, 2015.
- Fjeldbo, G., Kliore, A. J. and Eshleman, V. R.: The neutral atmosphere of Venus as studied with the Mariner V radio occultation experiments, *Astron. J.*, 76, 123–140, doi:10.1086/111096, 1971.
- Foelsche, U., Scherllin-Pirscher, B., Ladstädter, F., Steiner, A. K. and Kirchengast, G.: Refractivity and temperature climate records from multiple radio occultation satellites consistent within 0.05%, *Atmos. Meas. Tech.*, 4(9), 2007–2018, doi:10.5194/amt-4-2007-2011, 2011.
- GCOS: Guideline for the generation of datasets and products meeting GCOS requirements, GCOS-143, WMO/TD No. 1530, World Meteorological Organization. [online] Available from: https://library.wmo.int/doc_num.php?explnum_id=3854 (Accessed 3 September 2019), 2010a.
- GCOS: Implementation plan for the global observing system for climate in support of the UNFCCC, GCOS-138, WMO/TD No. 1523, World Meteorological Organization. [online] Available from: https://library.wmo.int/doc_num.php?explnum_id=3851 (Accessed 3 September 2019), 2010b.
- GCOS: Systematic observation requirements for satellite-based data products for climate, GCOS-154, World Meteorological Organization. [online] Available from: https://library.wmo.int/doc_num.php?explnum_id=3710 (Accessed 3 September 2019), 2011.
- GCOS: The global observing system for climate: implementation needs, GCOS-200, World Meteorological Organization. [online] Available from: https://library.wmo.int/doc_num.php?explnum_id=3417 (Accessed 3 September 2019), 2016.

- Gleisner, H., Thejll, P., Christiansen, B. and Nielsen, J. K.: Recent global warming hiatus dominated by low-latitude temperature trends in surface and troposphere data, *Geophys. Res. Lett.*, 2014GL062596, doi:10.1002/2014GL062596, 2015.
- Gorbunov, M. E.: Canonical transform method for processing radio occultation data in the lower troposphere, *Radio Sci.*, 37(5), doi:10.1029/2000RS002592, 2002.
- 5 Gorbunov, M. E. and Kirchengast, G.: Wave-optics uncertainty propagation and regression-based bias model in GNSS radio occultation bending angle retrievals, *Atmospheric Measurement Techniques*, 11(1), 111–125, doi:<https://doi.org/10.5194/amt-11-111-2018>, 2018.
- Gorbunov, M. E. and Lauritsen, K. B.: Analysis of wave fields by Fourier integral operators and their application for radio occultations, *Radio Sci.*, 39(4), RS4010, doi:10.1029/2003RS002971, 2004.
- 10 Gorbunov, M. E., Benzon, H.-H., Jensen, A. S., Lohmann, M. S. and Nielsen, A. S.: Comparative analysis of radio occultation processing approaches based on Fourier integral operators, *Radio Sci.*, 39(6), RS6004, doi:10.1029/2003RS002916, 2004.
- Guo, P., Kuo, Y.-H., Sokolovskiy, S. V. and Lenschow, D. H.: Estimating Atmospheric Boundary Layer Depth Using COSMIC Radio Occultation Data, *J. Atmos. Sci.*, 68(8), 1703–1713, doi:10.1175/2011JAS3612.1, 2011.
- Hajj, G. A., Kursinski, E. R., Romans, L. J., Bertiger, W. I. and Leroy, S. S.: A technical description of atmospheric sounding by GPS occultation, *Journal of Atmospheric and Solar-Terrestrial Physics*, 64(4), 451–469, doi:10.1016/S1364-6826(01)00114-6, 2002.
- 15 Hartmann, D.L., Klein Tank, A.M.G, Rusticucci, M., Alexander, L. V., Brönnimann, S., Charabi, Y., Dentener, F. J., Dlugokencky, E. J., Easterling, D. R., Kaplan, A., Soden, B. J., Thorne, P. W., Wild, M. and Zhai, P. M.: Observations: Atmosphere and Surface, in *Climate Change 2013: The Physical Science Basis. Contribution of Working Group I to the Fifth Assessment Report of the Intergovernmental Panel on Climate Change*. [Stocker, T.F., D. Qin, G.-K. Plattner, M. Tignor, S.K. Allen, J. Boschung, A. Nauels, Y. Xia, V. Bex and P.M. Midgley (eds.)], Cambridge University Press, Cambridge, United Kingdom and New York, NY, USA. [online] Available from: https://www.ipcc.ch/site/assets/uploads/2017/09/WG1AR5_Chapter02_FINAL.pdf, 2013.
- 20 He, W., Ho, S., Chen, H., Zhou, X., Hunt, D. and Kuo, Y.-H.: Assessment of radiosonde temperature measurements in the upper troposphere and lower stratosphere using COSMIC radio occultation data, *Geophys. Res. Lett.*, 36(17), L17807, doi:10.1029/2009GL038712, 2009.
- Healy, S. B., Jupp, A. M. and Marquardt, C.: Forecast impact experiment with GPS radio occultation measurements, *Geophys. Res. Lett.*, 32(3), doi:10.1029/2004GL020806, 2005.
- Healy, S. B.: Refractivity coefficients used in the assimilation of GPS radio occultation measurements, *J. Geophys. Res.*, 116, D01106, doi:10.1029/2010JD014013, 2011.
- 30 Healy, S. B. and Eyre, J. R.: Retrieving temperature, water vapour and surface pressure information from refractive-index profiles derived by radio occultation: A simulation study, *Q.J.R. Meteorol. Soc.*, 126(566), 1661–1683, doi:10.1002/qj.49712656606, 2000.

- Ho, S.-P., Goldberg, M., Kuo, Y.-H., Zou, C.-Z. and Schreiner, W.: Calibration of temperature in the lower stratosphere from microwave measurements using COSMIC radio occultation data: Preliminary results., *Terr. Atmos. Oceanic Sci.*, 20(1), 87–100, doi:10.3319/TAO.2007.12.06.01(F3C), 2009a.
- Ho, S.-P., Kirchengast, G., Leroy, S., Wickert, J., Mannucci, A. J., Steiner, A., Hunt, D., Schreiner, W., Sokolovskiy, S., Ao, C., Borsche, M., Engeln, A., Foelsche, U., Heise, S., Iijima, B., Kuo, Y.-H., Kursinski, R., Pirscher, B., Ringer, M., Rocken, C. and Schmidt, T.: Estimating the uncertainty of using GPS radio occultation data for climate monitoring: Intercomparison of CHAMP refractivity climate records from 2002 to 2006 from different data centers, *J. Geophys. Res.*, 114(D23), doi:10.1029/2009JD011969, 2009b.
- Ho, S.-P., Zhou, X., Kuo, Y.-H., Hunt, D. and Wang, J.: Global Evaluation of Radiosonde Water Vapor Systematic Biases using GPS Radio Occultation from COSMIC and ECMWF Analysis, *Remote Sensing*, 2(5), 1320–1330, doi:10.3390/rs2051320, 2010.
- Ho, S.-P., Hunt, D., Steiner, A. K., Mannucci, A. J., Kirchengast, G., Gleisner, H., Heise, S., von Engeln, A., Marquardt, C., Sokolovskiy, S., Schreiner, W., Scherllin-Pirscher, B., Ao, C., Wickert, J., Syndergaard, S., Lauritsen, K. B., Leroy, S., Kursinski, E. R., Kuo, Y.-H., Foelsche, U., Schmidt, T. and Gorbunov, M.: Reproducibility of GPS radio occultation data for climate monitoring: Profile-to-profile inter-comparison of CHAMP climate records 2002 to 2008 from six data centers, *J. Geophys. Res.*, 117(D18), D18111, doi:10.1029/2012JD017665, 2012.
- Ho, S.-P., Peng, L., Anthes, R. A., Kuo, Y.-H. and Lin, H.-C.: Marine Boundary Layer Heights and Their Longitudinal, Diurnal, and Interseasonal Variability in the Southeastern Pacific Using COSMIC, CALIOP, and Radiosonde Data, *J. Climate*, 28(7), 2856–2872, doi:10.1175/JCLI-D-14-00238.1, 2015.
- Ho, S.-P., Peng, L. and Vömel, H.: Characterization of the long-term radiosonde temperature biases in the upper troposphere and lower stratosphere using COSMIC and Metop-A/GRAS data from 2006 to 2014, *Atmospheric Chemistry and Physics*, 17(7), 4493–4511, doi:10.5194/acp-17-4493-2017, 2017.
- Ho, S.-P., Peng, L., Mears, C. and Anthes, R. A.: Comparison of global observations and trends of total precipitable water derived from microwave radiometers and COSMIC radio occultation from 2006 to 2013, *Atmos. Chem. Phys.*, 18(1), 259–274, doi:10.5194/acp-18-259-2018, 2018.
- Ho, S.-P., Anthes, R. A., Ao, C. O., Healy, S., Horanyi, A., Hunt, D., Mannucci, A. J., Pedatella, N., Randel, W., Simmons, A., Steiner, A. K., Xie, F., Yue, X. and Zeng, Z.: The COSMIC/FORMOSAT-3 radio occultation mission after 12 years: accomplishments, remaining challenges, and potential impacts of COSMIC-2, *Bull. Amer. Meteorol. Soc.*, doi:10.1175/BAMS-D-18-0290.1, 2019a.
- Ho, S.-P., Anthes, R. A., Zhang, H. and Chen, S.-Y.: Improving the impact of radio occultation observations on numerical forecasts of tropical cyclones, *JCSDA quarterly*. No. 62, Winter 2019, 11–17, doi:10.25923/w2dh-ep66, 2019b.
- Hofmann-Wellenhof, B., Lichtenegger, H. and Wasle, E.: *GNSS — Global Navigation Satellite Systems*, Springer Vienna, Vienna, 2008.

- Huang, C.-Y., Kuo, Y.-H., Chen, S.-H. and Vandenberghe, F.: Improvements in Typhoon Forecasts with Assimilated GPS Occultation Refractivity, *Wea. Forecasting*, 20(6), 931–953, doi:10.1175/WAF874.1, 2005.
- Innerkofler, J., Pock, C., Kirchengast, G., Schwärz, M., Jäggi, A., Andres, Y., Marquardt, C., Hunt, D., Schreiner, W. and Schwarz, J.: GNSS Radio Occultation Excess Phase Data including Integrated Uncertainty Estimation and Intercomparison
5 between Processing Centers, Austin, TX, USA. [online] Available from: <https://ams.confex.com/ams/98Annual/meetingapp.cgi/Paper/336035>, 2018.
- IROWG: Summary of the Sixth International Radio Occultation Workshop, Estes Park, CO, USA, 21-27 September 2018. [online] Available from: http://irowg.org/wpcms/wp-content/uploads/2018/06/IROWG6_Minutes_Summary.pdf, 2018.
- JCGM: International vocabulary of metrology—Basic and general concepts and associated terms (VIM 3rd edition), Tech.
10 Rep. JCGM 200:2012, Joint Committee for Guides in Metrology, Office BIPM, Paris. [online] Available from: https://www.bipm.org/utls/common/documents/jcgm/JCGM_200_2012.pdf, 2012.
- Jensen, A. S., Lohmann, M. S., Benzon, H.-H. and Nielsen, A. S.: Full Spectrum Inversion of radio occultation signals, *Radio Science*, 38(3), doi:10.1029/2002RS002763, 2003.
- Jensen, A. S., Lohmann, M. S., Nielsen, A. S. and Benzon, H.-H.: Geometrical optics phase matching of radio occultation
15 signals, *Radio Sci.*, 39(3), RS3009, doi:10.1029/2003RS002899, 2004.
- Khaykin, S. M., Funatsu, B. M., Hauchecorne, A., Godin-Beekmann, S., Claud, C., Keckhut, P., Pazmino, A., Gleisner, H., Nielsen, J. K., Syndergaard, S. and Lauritsen, K. B.: Postmillennium changes in stratospheric temperature consistently resolved by GPS radio occultation and AMSU observations, *Geophys. Res. Lett.*, 44(14), 2017GL074353, doi:10.1002/2017GL074353, 2017.
- 20 Kirchengast, G., Hafner, J. and Poetzi, W.: The CIRA86aQ_UoG model: An extension of the CIRA-86 monthly tables including humidity tables and a Fortran95 global moist air climatology model, Techn. Rep. for ESA/ESTEC No. 8/1999, Inst. Meteorol. Geophys., Univ. of Graz, Austria., 1999.
- Kirchengast, G., Schwärz, M., Schwarz, J., Scherllin-Pirscher, B., Pock, C., Innerkofler, J., Proschek, V., Steiner, A. K., Danzer, J., Ladstädter, F. and Foelsche, U.: The reference occultation processing system approach to interpret GNSS radio
25 occultation as SI-traceable planetary system refractometer, Seggau Castle, Austria., 2016.
- König, R., Michalak, G., Neumayer, K. and Zhu, S.: Remarks on CHAMP orbit products, in *Observation of the Earth From Space*, edited by J. Flury, R. Rummel, C. Reigber, M. Rothacher, G. Boedecker, and U. Schreiber, Springer, Berlin., 2006.
- Kuo, Y.-H., Liu, H., Guo, Y.-R., Terng, C.-T. and Lin, Y.-T.: Impact of FORMOSAT-3/COSMIC Data on Typhoon and Mei-yu Prediction, in *Recent Progress in Atmospheric Sciences*, pp. 458–483, WORLD SCIENTIFIC., 2008.
- 30 Kursinski, E. R. and Gebhardt, T.: A Method to Deconvolve Errors in GPS RO-Derived Water Vapor Histograms, *J. Atmos. Oceanic Technol.*, 31(12), 2606–2628, doi:10.1175/JTECH-D-13-00233.1, 2014.
- Kursinski, E. R., Hajj, G. A., Bertiger, W. I., Leroy, S. S., Meehan, T. K., Romans, L. J., Schofield, J. T., McCleese, D. J., Melbourne, W. G., Thornton, C. L., Yunck, T. P., Eyre, J. R. and Nagatani, R. N.: Initial Results of Radio Occultation Observations of Earth’s Atmosphere Using the Global Positioning System, *Science*, 271(5252), 1107–1110, 1996.

- Kursinski, E. R., Hajj, G. A., Schofield, J. T., Linfield, R. P. and Hardy, K. R.: Observing Earth's atmosphere with radio occultation measurements using the Global Positioning System, *J. Geophys. Res.*, 102(D19), 23429–23465, doi:10.1029/97JD01569, 1997.
- Lackner, B. C., Steiner, A. K., Kirchengast, G. and Hegerl, G. C.: Atmospheric Climate Change Detection by Radio
 5 Occultation Data Using a Fingerprinting Method, *J. Climate*, 24(20), 5275–5291, doi:10.1175/2011JCLI3966.1, 2011.
- Ladstädter, F., Steiner, A. K., Schwärz, M. and Kirchengast, G.: Climate intercomparison of GPS radio occultation, RS90/92 radiosondes and GRUAN from 2002 to 2013, *Atmospheric Measurement Techniques*, 8(4), 1819–1834, doi:10.5194/amt-8-1819-2015, 2015.
- Ladstädter, F., Steiner, A. K., Foelsche, U., Haimberger, L., Tavolato, C. and Kirchengast, G.: An assessment of differences
 10 in lower stratospheric temperature records from (A)MSU, radiosondes, and GPS radio occultation, *Atmos. Meas. Tech.*, 4(9), 1965–1977, doi:10.5194/amt-4-1965-2011, 2011.
- Leroy, S. S., Anderson, J. G. and Dykema, J. A.: Climate benchmarking using GNSS occultation, in *Atmosphere and Climate: Studies by Occultation Methods*, edited by U. Foelsche, G. Kirchengast, and A. Steiner, pp. 287–301, Springer-Verlag Berlin Heidelberg., 2006.
- 15 Leroy, S. S., Ao, C. O. and Verkhoglyadova, O. P.: Temperature Trends and Anomalies in Modern Satellite Data: Infrared Sounding and GPS Radio Occultation, *Journal of Geophysical Research: Atmospheres*, 123(20), 11,431–11,444, doi:10.1029/2018JD028990, 2018.
- Li, Y., Kirchengast, G., Scherllin-Pirscher, B., Norman, R., Yuan, Y. B., Fritzer, J., Schwaerz, M. and Zhang, K.: Dynamic statistical optimization of GNSS radio occultation bending angles: advanced algorithm and performance analysis,
 20 *Atmospheric Measurement Techniques*, 8(8), 3447–3465, doi:10.5194/amt-8-3447-2015, 2015.
- Liu, H., Anderson, J. and Kuo, Y.-H.: Improved Analyses and Forecasts of Hurricane Ernesto's Genesis Using Radio Occultation Data in an Ensemble Filter Assimilation System, *Mon. Wea. Rev.*, 140(1), 151–166, doi:10.1175/MWR-D-11-00024.1, 2012.
- Luntama, J.-P., Kirchengast, G., Borsche, M., Foelsche, U., Steiner, A., Healy, S., Engeln, A., O'Clerigh, E. and Marquardt,
 25 C.: Prospects of the EPS GRAS Mission For Operational Atmospheric Applications, *Bull. Amer. Meteor. Soc.*, 89(12), 1863–1875, doi:10.1175/2008BAMS2399.1, 2008.
- Melbourne, W. G., Davis, E. S., Duncan, C. B., Hajj, G. A., Hardy, K. R., Kursinski, E. R., Meehan, T. K., Young, L. E. and Yunck, T. P.: The application of spaceborne GPS to atmospheric limb sounding and global change monitoring, *JPL Publication 94-18*, Jet Propulsion Lab, Pasadena, CA, USA, 147, 1994.
- 30 Merchant, C. J., Paul, F., Popp, T., Ablain, M., Bontemps, S., Defourny, P., Hollmann, R., Lavergne, T., Laeng, A., de Leeuw, G., Mittaz, J., Poulsen, C., Povey, A. C., Reuter, M., Sathyendranath, S., Sandven, S., Sofieva, V. F. and Wagner, W.: Uncertainty information in climate data records from Earth observation, *Earth Syst. Sci. Data*, 9(2), 511–527, doi:10.5194/essd-9-511-2017, 2017.

- Mochart, M.: Multi-mission GPS radio occultation observations from different processing centers - consistency and structural uncertainty, Master Thesis, Wegener Center, University of Graz, Graz, Austria, March., 2018.
- Ohring, G., Wielicki, B., Spencer, R., Emery, B. and Datla, R.: Satellite Instrument Calibration for Measuring Global Climate Change: Report of a Workshop, *Bull. Amer. Meteor. Soc.*, 86(9), 1303–1313, doi:10.1175/BAMS-86-9-1303, 2005.
- 5 Ohring, G. (Ed): Achieving satellite instrument calibration for climate change, ASIC3 Workshop Report, NOAA/NESDIS., 2007.
- Pincus, R., Beljaars, A., Buehler, S. A., Kirchengast, G., Ladstaedter, F. and Whitaker, J. S.: The Representation of Tropospheric Water Vapor Over Low-Latitude Oceans in (Re-)analysis: Errors, Impacts, and the Ability to Exploit Current and Prospective Observations, *Surveys in Geophysics*, 38(6), 1399–1423, doi:10.1007/s10712-017-9437-z, 2017.
- 10 Poli, P., Healy, S. B. and Dee, D. P.: Assimilation of Global Positioning System radio occultation data in the ECMWF ERA–Interim reanalysis, *Q.J.R. Meteorol. Soc.*, 136(653), 1972–1990, doi:10.1002/qj.722, 2010.
- Randel, W. J., Chanin, M.-L. and Michaut, C.: SPARC Intercomparison of Middle Atmosphere Climatologies, WCRP-116, WMO/TD-No. 1142, SPARC Report No. 3. [online] Available from: https://www.sparc-climate.org/wp-content/uploads/sites/5/2017/12/SPARC_Report_No3_Dec2002_Climatologies.pdf, 2002.
- 15 Randel, W. J., Wu, F. and Rivera Ríos, W.: Thermal variability of the tropical tropopause region derived from GPS/MET observations, *J. Geophys. Res.*, 108(D1), 4024, doi:10.1029/2002JD002595, 2003.
- Rieckh, T., Scherllin-Pirscher, B., Ladstädter, F. and Foelsche, U.: Characteristics of tropopause parameters as observed with GPS radio occultation, *Atmospheric Measurement Techniques*, 7(11), 3947–3958, doi:10.5194/amt-7-3947-2014, 2014.
- Ringer, M. A., and Healy, S. B. (2008), Monitoring twenty-first century climate using GPS radio occultation bending angles, *Geophys. Res. Lett.*, 35, L05708, doi:10.1029/2007GL032462.
- 20 Rocken, C., Anthes, R., Exner, M., HUNT, D., SOKOLOVSKIY, S., Ware, R., Gorbunov, M., Schreiner, W., Feng, D., Herman, B., Kuo, Y.-H. and Zou, X.: Analysis and validation of GPS/MET data in the neutral atmosphere, *J. Geophys. Res.*, 102(D25), 29849–29866, doi:10.1029/97JD02400, 1997.
- Scherllin-Pirscher, B., Steiner, A. K., Kirchengast, G., Kuo, Y.-H. and Foelsche, U.: Empirical analysis and modeling of errors of atmospheric profiles from GPS radio occultation, *Atmos. Meas. Tech.*, 4(9), 1875–1890, doi:10.5194/amt-4-1875-2011, 2011a.
- 25 Scherllin-Pirscher, B., Kirchengast, G., Steiner, A. K., Kuo, Y.-H. and Foelsche, U.: Quantifying uncertainty in climatological fields from GPS radio occultation: an empirical-analytical error model, *Atmos. Meas. Tech.*, 4(9), 2019–2034, doi:10.5194/amt-4-2019-2011, 2011b.
- 30 Scherllin-Pirscher, B., Steiner, A. K. and Kirchengast, G.: Deriving dynamics from GPS radio occultation: Three-dimensional wind fields for monitoring the climate, *Geophys. Res. Lett.*, 2014GL061524, doi:10.1002/2014GL061524, 2014.
- Scherllin-Pirscher, B., Syndergaard, S., Foelsche, U. and Lauritsen, K. B.: Generation of a bending angle radio occultation climatology (BAROCLIM) and its use in radio occultation retrievals, *Atmospheric Measurement Techniques*, 8(1), 109–124, doi:10.5194/amt-8-109-2015, 2015.

- Scherllin-Pirscher, B., Steiner, A. K., Kirchengast, G., Schwärz, M. and Leroy, S. S.: The power of vertical geolocation of atmospheric profiles from GNSS radio occultation, *J. Geophys. Res. Atmos.*, 2016JD025902, doi:10.1002/2016JD025902, 2017.
- Schmidt, T., Heise, S., Wickert, J., Beyerle, G. and Reigber, C.: GPS radio occultation with CHAMP and SAC-C: global monitoring of thermal tropopause parameters, *Atmos. Chem. Phys.*, 5(6), 1473–1488, doi:10.5194/acp-5-1473-2005, 2005.
- Schmidt, T., Wickert, J., Beyerle, G. and Heise, S.: Global tropopause height trends estimated from GPS radio occultation data, *Geophys. Res. Lett.*, 35(11), doi:10.1029/2008GL034012, 2008.
- Schmidt, T., Wickert, J. and Haser, A.: Variability of the upper troposphere and lower stratosphere observed with GPS radio occultation bending angles and temperatures, *Advances in Space Research*, 46(2), 150–161, doi:10.1016/j.asr.2010.01.021, 2010.
- Schreiner, W., Rocken, C., Sokolovskiy, S. and Hunt, D.: Quality assessment of COSMIC/FORMOSAT-3 GPS radio occultation data derived from single- and double-difference atmospheric excess phase processing, *GPS Solut.*, 14(1), 13–22, doi:10.1007/s10291-009-0132-5, 2010.
- Schreiner, W., Sokolovskiy, S., Hunt, D., Rocken, C. and Kuo, Y.-H.: Analysis of GPS radio occultation data from the FORMOSAT-3/COSMIC and Metop/GRAS missions at CDAAC, *Atmos. Meas. Tech.*, 4(10), 2255–2272, doi:10.5194/amt-4-2255-2011, 2011.
- Schreiner, W. S., Anthes, R., Braun, J., Ho, B., Hunt, D., Kuo, Y.-H., Liu, H., Pedatella, N., Sokolovskiy, S., Vanhove, T., Wee, T.-K., Weiss, J., Yue, X. and Zeng, J.: GNSS RO retrieval science and science applications with FORMOSAT-7/COSMIC-2, Taipei, TW. [online] Available from: <https://opensky.ucar.edu/islandora/object/conference:3185/datastream/PDF/view>, 2016.
- Schwarz, J., Kirchengast, G. and Schwaerz, M.: Integrating uncertainty propagation in GNSS radio occultation retrieval: From bending angle to dry-air atmospheric profiles, *Earth and Space Science*, 4(4), 200–228, doi:10.1002/2016EA000234, 2017.
- Schwarz, J., Kirchengast, G. and Schwaerz, M.: Integrating uncertainty propagation in GNSS radio occultation retrieval: from excess phase to atmospheric bending angle profiles, *Atmos. Meas. Tech.*, 11(5), 2601–2631, doi:10.5194/amt-11-2601-2018, 2018.
- Schwärz, M., Kirchengast, G., Scherllin-Pirscher, B., Schwarz, J., Ladstädter, F. and Angerer, B.: Multi-mission validation by satellite radio occultation extension project—Final report, Tech. Rep. for ESA/ESRIN No. 01/2016, Wegener Center, University of Graz, Graz, Austria. [online] Available from: https://wegcwww.uni-graz.at/publ/wegcpubl/arsclisys/2016/Schwaerz-etal_MMValRO-FinRep_Dec2016.pdf, 2016.
- Simmons, A. J., Berrisford, P., Dee, D. P., Hersbach, H., Hirahara, S. and Thépaut, J.-N.: A reassessment of temperature variations and trends from global reanalyses and monthly surface climatological datasets, *Q.J.R. Meteorol. Soc.*, 143(702), 101–119, doi:10.1002/qj.2949, 2017.
- Smith, E. K. and Weintraub, S.: The Constants in the Equation for Atmospheric Refractive Index at Radio Frequencies, *Proceedings of the IRE*, 41, 1035–1037, doi:10.1109/JRPROC.1953.274297, 1953.

- Sokolovskiy, S. and Hunt, D.: Statistical optimization approach for GPS/MET data inversion, University of Arizona, Tucson., 1996.
- Sokolovskiy, S., Kuo, Y.-H., Rocken, C., Schreiner, W. S., Hunt, D. and Anthes, R. A.: Monitoring the atmospheric boundary layer by GPS radio occultation signals recorded in the open-loop mode, *Geophysical Research Letters*, 33(12), doi:10.1029/2006GL025955, 2006.
- 5 Sokolovskiy, S. V., Rocken, C., Lenschow, D. H., Kuo, Y.-H., Anthes, R. A., Schreiner, W. S. and Hunt, D. C.: Observing the moist troposphere with radio occultation signals from COSMIC, *Geophys. Res. Lett.*, 34(18), doi:10.1029/2007GL030458, 2007.
- Sokolovskiy, S. V., Schreiner, W., Rocken, C. and Hunt, D.: Optimal Noise Filtering for the Ionospheric Correction of GPS Radio Occultation Signals, *J. Atmos. Oceanic Technol.*, 26(7), 1398–1403, doi:10.1175/2009JTECHA1192.1, 2009.
- 10 Steiner, A. K., Kirchengast, G. and Ladreiter, H. P.: Inversion, error analysis, and validation of GPS/MET occultation data, *Ann. Geophys.*, 17(1), 122–138, doi:10.1007/s00585-999-0122-5, 1999.
- Steiner, A. K., Kirchengast, G., Foelsche, U., Kornblueh, L., Manzini, E. and Bengtsson, L.: GNSS occultation sounding for climate monitoring, *Physics and Chemistry of the Earth, Part A: Solid Earth and Geodesy*, 26(3), 113–124, doi:10.1016/S1464-1895(01)00034-5, 2001.
- 15 Steiner, A. K., Kirchengast, G., Borsche, M., Foelsche, U. and Schoengassner, T.: A multi-year comparison of lower stratospheric temperatures from CHAMP radio occultation data with MSU/AMSU records, *J. Geophys. Res.*, 112(D22), D22110, doi:10.1029/2006JD008283, 2007.
- Steiner, A. K., Kirchengast, G., Lackner, B. C., Pirscher, B., Borsche, M. and Foelsche, U.: Atmospheric temperature change detection with GPS radio occultation 1995 to 2008, *Geophys. Res. Lett.*, 36(18), doi:10.1029/2009GL039777, 2009.
- 20 Steiner, A. K., Lackner, B. C., Ladstädter, F., Scherllin-Pirscher, B., Foelsche, U. and Kirchengast, G.: GPS radio occultation for climate monitoring and change detection, *Radio Sci.*, 46, RS0D24, doi:10.1029/2010RS004614, 2011.
- Steiner, A. K., Hunt, D., Ho, S.-P., Kirchengast, G., Mannucci, A. J., Scherllin-Pirscher, B., Gleisner, H., von Engel, A., Schmidt, T., Ao, C., Leroy, S. S., Kursinski, E. R., Foelsche, U., Gorbunov, M., Heise, S., Kuo, Y.-H., Lauritsen, K. B., Marquardt, C., Rocken, C., Schreiner, W., Sokolovskiy, S., Syndergaard, S. and Wickert, J.: Quantification of structural uncertainty in climate data records from GPS radio occultation, *Atmos. Chem. Phys.*, 13(3), 1469–1484, doi:10.5194/acp-13-1469-2013, 2013.
- 25 Steiner, A. K., Lackner, B. C. and Ringer, M. A.: Tropical convection regimes in climate models: evaluation with satellite observations, *Atmos. Chem. Phys.*, 18(7), 4657–4672, doi:10.5194/acp-18-4657-2018, 2018.
- Sun, Y., Bai, W., Liu, C., Liu, Y., Du, Q., Wang, X., Yang, G., Liao, M., Yang, Z., Zhang, X., Meng, X., Zhao, D., Xia, J., Cai, Y. and Kirchengast, G.: The FengYun-3C radio occultation sounder GNOS: a review of the mission and its early results and science applications, *Atmos. Meas. Tech.*, 11(10), 5797–5811, doi:10.5194/amt-11-5797-2018, 2018.
- 30 Syndergaard, S.: Modeling the impact of the Earth’s oblateness on the retrieval of temperature and pressure profiles from limb sounding, *Journal of Atmospheric and Solar-Terrestrial Physics*, 60(2), 171–180, doi:10.1016/S1364-6826(97)00056-4, 1998.

- Teunissen, P. J. G. and Montenbruck, O., Eds.: Springer Handbook of Global Navigation Satellite Systems, Springer International Publishing, Cham, Switzerland. 2017.
- Thorne, P. W.: Revisiting radiosonde upper air temperatures from 1958 to 2002, *J. Geophys. Res.*, 110(D18), doi:10.1029/2004JD005753, 2005.
- 5 Trenberth, K. E., Anthes, R. A., Belward, A., Brown, O. B., Habermann, T., Karl, T. R., Running, S., Ryan, B., Tanner, M. and Wielicki, B.: Challenges of a Sustained Climate Observing System, in *Climate Science for Serving Society*, edited by G. R. Asrar and J. W. Hurrell, pp. 13–50, Springer Netherlands. [online] Available from: http://dx.doi.org/10.1007/978-94-007-6692-1_2, 2013.
- Verkhoglyadova, O. P., Leroy, S. S. and Ao, C. O.: Estimation of Winds from GPS Radio Occultations, *J. Atmos. Oceanic Technol.*, 31(11), 2451–2461, doi:10.1175/JTECH-D-14-00061.1, 2014.
- 10 Vorob'ev, V. V. and Krasil'nikova, T. G.: Estimation of the accuracy of the atmospheric refractive index recovery from Doppler shift measurements at frequencies used in the NAVSTAR system, *Phys. Atmos. Ocean*, 29, 602–609, 1994.
- Ware, R., Rocken, C., Solheim, F., Exner, M., Schreiner, W., Anthes, R., Feng, D., Herman, B., Gorbunov, M., Sokolovskiy, S., Hardy, K., Kuo, Y., Zou, X., Trenberth, K., Meehan, T., Melbourne, W. and Businger, S.: GPS Sounding of the Atmosphere from Low Earth Orbit: Preliminary Results, *Bull. Amer. Meteor. Soc.*, 77(1), 19–40, doi:10.1175/1520-0477(1996)077<0019:GSOTAF>2.0.CO;2, 1996.
- 15 Wee, T.-K.: Variational Atmospheric Retrieval Scheme (VARS) for GPS Radio Occultation Data Version 1.1, COSMIC Project Office, UCAR. [online] Available from: <http://cdaac-www.cosmic.ucar.edu/cdaac/doc/documents/1dvar.pdf> (Accessed 3 September 2019), 2005.
- 20 Wickert, J., Beyerle, G., Hajj, G. A., Schwieger, V. and Reigber, C.: GPS radio occultation with CHAMP: Atmospheric profiling utilizing the space-based single difference technique, *Geophysical Research Letters*, 29(8), 28-1-28-4, doi:10.1029/2001GL013982, 2002.
- Wickert, J., Schmidt, T., Beyerle, G., König, R., Reigber, C. and JAKOWSKI, N.: The Radio Occultation Experiment aboard CHAMP: Operational Data Analysis and Validation of Vertical Atmospheric Profiles, *Journal of the Meteorological Society of Japan*, 82(1B), 381–395, doi:10.2151/jmsj.2004.381, 2004.
- 25 Wickert, J., Beyerle, G., König, R., Heise, S., Grunwaldt, L., Michalak, G., Reigber, C. and Schmidt, T.: GPS radio occultation with CHAMP and GRACE: A first look at a new and promising satellite configuration for global atmospheric sounding, *Ann. Geophys.*, 23(3), 653–658, doi:10.5194/angeo-23-653-2005, 2005.
- Wickert, J., Michalak, G., Schmidt, T., Beyerle, G., Cheng, C.-Z., Healy, S. B., Heise, S., Huang, C.-Y., Jakowski, N., Köhler, W., Mayer, C., Offiler, D., Ozawa, E., Pavelyev, A. G., Rothacher, M., Tapley, B. and Köhler, C.: GPS Radio Occultation: Results from CHAMP, GRACE and FORMOSAT-3/COSMIC, *Terr. Atmos. Ocean. Sci.*, 20(1), 35, doi:10.3319/TAO.2007.12.26.01(F3C), 2009.
- 30

- Wigley, T. M. L.: Statistical Issues Regarding Trends, in *Temperature Trends in the Lower Atmosphere: Steps for Understanding and Reconciling Differences*, edited by T. R. Karl, S. J. Hassol, C. D. Miller, and W. L. Murray, Washington, D. C., 2006.
- Xie, F., Syndergaard, S., Kursinski, E. R. and Herman, B. M.: An Approach for Retrieving Marine Boundary Layer Refractivity
 5 from GPS Occultation Data in the Presence of Superrefraction, *J. Atmos. Oceanic Technol.*, 23(12), 1629–1644, doi:10.1175/JTECH1996.1, 2006.
- Zeng, Z., Sokolovskiy, S., Schreiner, W., Hunt, D., Lin, J. and Kuo, Y.-H.: Ionospheric correction of GPS radio occultation data in the troposphere, *Atmospheric Measurement Techniques*, 9(2), 335–346, doi:10.5194/amt-9-335-2016, 2016.
- Zeng, Z., Sokolovskiy, S., Schreiner, W. S. and Hunt, D.: Representation of vertical atmospheric structures by radio occultation
 10 observations in the UTLS: comparison to high resolution radiosonde profiles, *J. Atmos. Oceanic Technol.*, doi:10.1175/JTECH-D-18-0105.1, 2019.

Tables:

Table 1. Overview on processing steps for RO dry and moist air retrieval at DMI, GFZ, JPL, UCAR, WEGC.

Processing step	Center	Implementations of each center
5	URL	DMI http://www.romsaf.org GFZ http://www.gfz-potsdam.de/en/section/space-geodetic-techniques/topics/gnss-radio-occultation/ JPL https://genesis.jpl.nasa.gov/genesis/ UCAR http://cdaac-www.cosmic.ucar.edu WEGC http://www.wegcenter.at
10	Processing version; and POD orbitphase and phaseorbit data data version	DMI GPAC-2.3.0/ROPP software; orbit and Excess phase & ; amplitude and orbit data from UCAR. GFZ Version POCS ATM version ion -006; GPS and LEO POD: EPOS-OC, RSO orbit products (König et al., 2006); JPL al., 2006 ; Excess phase: CHAMP: S single differencing, reference link smoothing; GRACE: zero differencing. Version 2.7 processing (single differencing, cubic phase smoothing); POD: GPS orbits from JPL FLINN products; LEO orbits reduced-dynamic strategy using GIPSY software (Bertiger et al., 1994). UCAR CDAAC version 4.6; GPS final-orbit products from CODE (for CHAMP, METOP) and IGS (for COSMIC), LEO reduced-dynamic orbits using Bernese v-version 5.2. WEGC OPSv5.6; UCAR/CDAAC orbit and phase & amplitude data (Angerer et al., 2017, Table 1).
20	Calculation of bending angle (BA)	DMI Canonical Transform (CT2) inversion <20 km (Gorbunov and Lauritsen, 2004), transition to geometric optics (GO) inversion at 20–25 km, GO >25 km. GFZ Full Spectrum Inversion (FSI) <15 km (Jensen et al., 2003), smooth transition between 11 km and 15 km to GO, GO >15 km. JPL Canonical transform (CT) after (Gorbunov, 2002) applied to L1 at impact height <30 km. GO for L1 >30 km and L2 at all heights. UCAR Phase matching <20 km (Jensen et al., 2004), GO >20 km. WEGC CT2 inversion (Gorbunov and Lauritsen, 2004) with a Gaussian transition of 4.5 km width and variable center height between 7 km and 13 km, GO above.
25	Ionospheric correction	All Linear combination of L1 and L2 BA (Vorob’ev and Krasil’nikova, 1994). DMI Linear combination, ionospheric correction extrapolated with constant L1–L2 BA below dynamic L2 height – transition over 2 km. GFZ Linear combination, ionospheric correction extrapolated with constant L1–L2 BA below 12 km. JPL Linear combination, ionospheric corr. term extrapolation <10 km when L2 1sec SNR<30 V/V. UCAR Above 20 km: correction of L1 BA by L1–L2 BA smoothed with window determined individually for each occultation to minimize combined noise (Sokolovskiy et al., 2009). Below 20 km: L1 BA corrected by a 3-parameter function fitted to observational L1–L2 BA at 20–80 km (Zeng et al., 2016). WEGC Linear combination, ionospheric correction term extrapolated with constant linear L1–L2 BA <15 km.
30		
35		
40		
45		

Table 1. Continued.

5	Initialization of BA	DMI	Optimization with dynamic estimation of observation errors (Gorbunov, 2002) and background errors fixed at 50%, background based on BAROCLIM (best global fit to data between 40 and 60 km, scaled using two-parameter regression) (Scherllin-Pirscher et al., 2015).
10		GFZ	Optimization after (Sokolovskiy and Hunt, 1996) with MSISE-90 (>40 km), observation error variance estimated as 25% of mean observation-background deviation between 60 km and 70 km.
		JPL	Exponential function fit at 50–60 km and extrapolation >60 km impact height.
		UCAR	Static optimization (independent of the observational noise), 2-parameter fitting of NCAR BA climatology (Randel et al., 2002) to observational BA in 35–60 km interval, transition to fitted BA climatology in the same interval, transition to un-fitted BA climatology in the 55–65 km interval.
15		WEGC	Optimization >30 km with ECMWF short-range forecasts (24h or 30h) and above with MSISE-90 to 120 km, dynamic estimation of observation errors and inverse covariance weighting (Schwärz et al., 2016, Appendix A.4).
20	Refractivity Retrieval	All	Abel inversion (Fjeldbo et al., 1971) of optimized bending angle profile.
		DMI	Abel inversion below 150 km.
		GFZ	Abel Inversion below 150 km.
		JPL	Abel Inversion below 120 km.
		UCAR	Abel inversion below 150 km.
25		WEGC	Abel inversion below 120 km.
30	Dry air retrieval	All	Refractivity (N) is directly proportional to air density (ideal gas equation).
		DMI	Pressure integration, hydrostatic integral initialization at 150 km, upper boundary condition from refractivity gradient, geopotential height relative to EGM-96 geoid.
		GFZ	Hydrostatic integral initialization at 100 km with MSISE-90 pressure, geopotential height relative to EGM-96.
		JPL	Hydrostatic integral initialization at 40 km using ECMWF analysis, geopotential height relative to JGM-3.
		UCAR	Hydrostatic integral initialization at 150 km with zero boundary condition.
35		WEGC	Hydrostatic integral initialization at 120 km with MSISE-90 pressure, geopotential height relative to EGM-96.
		All	Dry temperature (T_d) is obtained using the Smith-Weintraub formula for dry air (Smith and Weintraub, 1953) and the equation of state (ideal gas).
40	Moist air retrieval	DMI	1D-Var using ERA-Interim as background and refractivity observations as input.
		GFZ	Not included, but relevant data products can be provided on demand.
		JPL	Direct method using temperature/specific humidity from ECMWF analysis when $T > 250$ K (Kursinski et al., 1996).
		UCAR	1D-Var using ERA-Interim as background and refractivity observations (Wee, 2005).
45		WEGC	Above 16 km: calculation of physical temperature T and pressure p using a first order approximation for the ratio between p and dry pressure p_d . Below 14 km, with half-sine half-sine transition between 16–14 km, simplified 1D-Var : -retrieval of T and p using ECMWF short-range forecast short-range forecast specific humidity q_B -retrieval of q and p using ECMWF short-range forecast short-range forecast temperature T_B -statistical optimization of T and q with qT_B and Tq_B , background standard standard errors from ROPpv6.0 (Culverwell and Healy, 2011), RO observational standard standard error (Scherllin-Pirscher et al., 2011a).
50			

5 **Table 1.** Continued.

10	Quality control (QC)	DMI	Provider QC (reject if phase data are flagged); QC of L2 quality from impact parameters (reject if noise is too large); QC of BA using ERA-Interim forecasts (reject if >90% in 10–40 km); QC of regression parameters (reject if too far from 1.0); QC of optimized BA using background (reject if >5 μ rad above 60 km); QC of background weight in optimization (reject if >10% below 40km); QC of refractivity using ERA-Interim forecasts (reject if >10% in 10–35 km); QC of dry temperature using ERA-Interim forecasts (reject if >20 K in 30–40 km);
15		GFZ	QC of 1D-Var cost function (reject if too large), and convergence (reject if too many iterations). Minimum duration of occultation event: 20 s; Quotient L1/L2 excess phase forward differences between 0.97 and 1.03 for at least 650 connected data samples;
20		JPL	QC of refractivity N using MSISE-90: reject if $\Delta N > 22.5\%$ between 8–31 km. Refractivity difference with ECMWF <10% between 0–40 km and temperature difference with ECMWF <10 K below 40 km.
25		UCAR	Multiple QC checks including: - Comparison of retrieved N and N from NCAR climatology (Randel et al., 2002); - Comparison of maximum relative BA difference between RO and NCAR climatology; - BA error check of local spectral width; - SNR too low;
30		WEGC	- Check of L2 data quality by comparison of maximum L1–L2 Doppler; - Checks of mean and standard deviation of difference of retrieved and climatological BA between 60–80 km. Raw QC check: Straight line tangent point altitude (SLTA) range at least between 65–20 km; GO only QC of BA: - cut off <15 km impact height if gradient is too large; - reject if BA <0 rad below 50 km; - reject if bias relative to MSIS-90 >10 ⁻⁵ rad; - reject if standard deviation relative to MSIS-90 >5*10 ⁻⁵ rad;
35			WO only QC: cut off data at bottom of measurement if: - amplitude of CA-signal is lower than 10% of max amplitude; - smoothed GO BA (over 3 km) exceeds 0.05 rad; - smoothed impact parameter (over 3 km) <0 m; - SLTA < -250 km.
40			QC of BA, N , T using ECMWF analyses: reject if $\Delta BA > 20\%$, $\Delta N > 10\%$ in 5–35 km or $\Delta T > 20$ K in 8–25 km (Angerer et al., 2017).
45	Reference frame vertical coordinate	DMI	Earth figure: WGS-84 ellipsoid; Vertical coordinate: mean-sea level (MSL) altitude; Conversion of ellipsoidal height to MSL altitude (at SLTA=0 TP location) via EGM-96 geoid smoothed to 1° x 1° resolution.
		GFZ	Earth figure: WGS-84 ellipsoid, EGM-96 geoid used for altitude above MSL calculation.
		JPL	Earth figure: IERS Standards 1989 ellipsoid; Vertical coordinate: MSL altitude computed using the JGM3/OSU91A geoid truncation at spherical harmonic degree 36.
50		UCAR	Earth figure: WGS-84 ellipsoid; The occultation point is determined using BA for CIRA+Q climatology (Kirchengast et al., 1999) and 500 m observed excess phase. The center of reference frame is in the local center of curvature of the reference ellipsoid at the occultation point

(Syndergaard, 1998) in the direction of the occultation plane. JGM2 geoid undulation is used to calculate MSL altitude.

- WEGC Earth figure: WGS-84 ellipsoid; yVertical coordinate: MSL altitude; cConversion of ellipsoidal height to MSL altitude (at SLTA=0 TP location) via EGM96 smoothed to a $0.25^\circ \times 0.25^\circ$ resolution.
- All Bending angle is given as a function of impact altitude, i.e. impact parameter minus radius of curvature minus the undulation of the geoid. The impact parameter is defined as the perpendicular distance between the local center of curvature and the ray path from the GPS satellite.

Table 1. Continued.

Reference/ Publication	DMI	ROM SAF ATBD documents: http://www.romsaf.org/product_archive.php
	GFZ	ftp://isdftp.gfz-potsdam.de/
	JPL	Hajj et al. (2002)
	UCAR	CDAAC Website documentation area: http://cdaac-www.cosmic.ucar.edu/cdaac/doc/overview.html
	WEGC	https://doi.org/10.25364/WEGC/OPS5.6:2019.1 ; Schwärz et al. (2016), Angerer et al. (2017)

Table 2. Overview on RO data delivered by the different processing centers, and the common time periods used in this study: processing center, satellite mission, time period, variables.

Center	Satellites	Period	Variables
All centers	CHAMP	09/2001–09/2008	
common periods	COSMIC	08/2006–04/2014	
(used in this	GRACE	03/2007–12/2016	
study)	METOP	03/2008–12/2015	
DMI	CHAMP	09/2001–09/2008	All variables ⁽¹⁾
	COSMIC	05/2006–12/2016	All variables
	GRACE	03/2007–12/2016	All variables
	METOP	02/2008–12/2016	All variables
GFZ	CHAMP	05/2001–09/2008	All except: p, T, q
	GRACE	02/2006–11/2017	All except: p, T, q
JPL	CHAMP	04/2001–09/2008	All variables
	COSMIC	05/2006–12/2016	All variables
UCAR	CHAMP	05/2001–09/2008	All except: α_{opt}
	COSMIC	05/2006–04/2014	All except: α_{opt}
	METOP	02/2008–12/2015	All except: α_{opt}
WEGC	CHAMP	05/2001–09/2008	All variables
	COSMIC	08/2006–12/2018	All variables
	GRACE	03/2007–11/2017	All variables
	METOP	02/2008–12/2018	All variables
All centers	CHAMP	09/2001–09/2008	
common	COSMIC	08/2006–04/2014	
periods	GRACE	03/2007–12/2016	
	METOP	03/2008–12/2015	

⁽¹⁾ All variables include $\alpha, \alpha_{\text{opt}}, N, p_{\text{dry}}, T_{\text{dry}}, Z_{\text{dry}}, p, T, q$.

Figures:

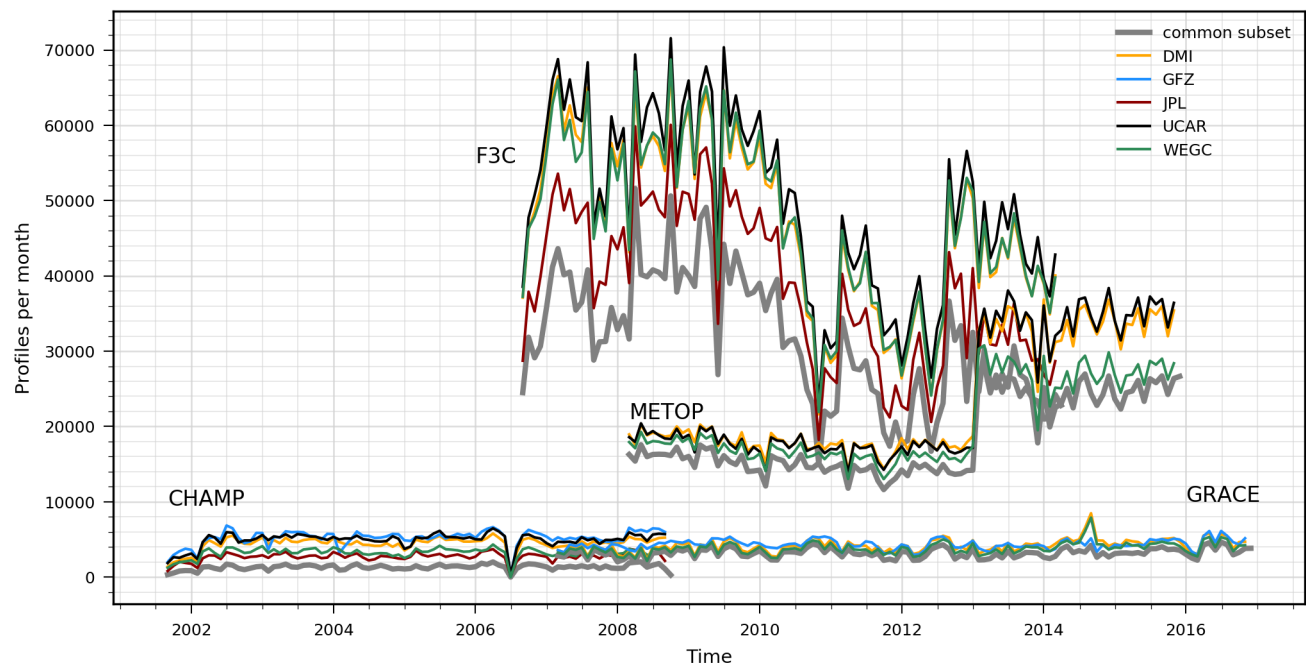


Figure 1. Number of RO profiles per month delivered by each processing center, DMI (yellow), GFZ (blue), JPL (red), UCAR (black), WEGC (green), and the maximum subset of profiles (gray), shown for the respective time periods of the four missions CHAMP, F3C, GRACE, and Metop.

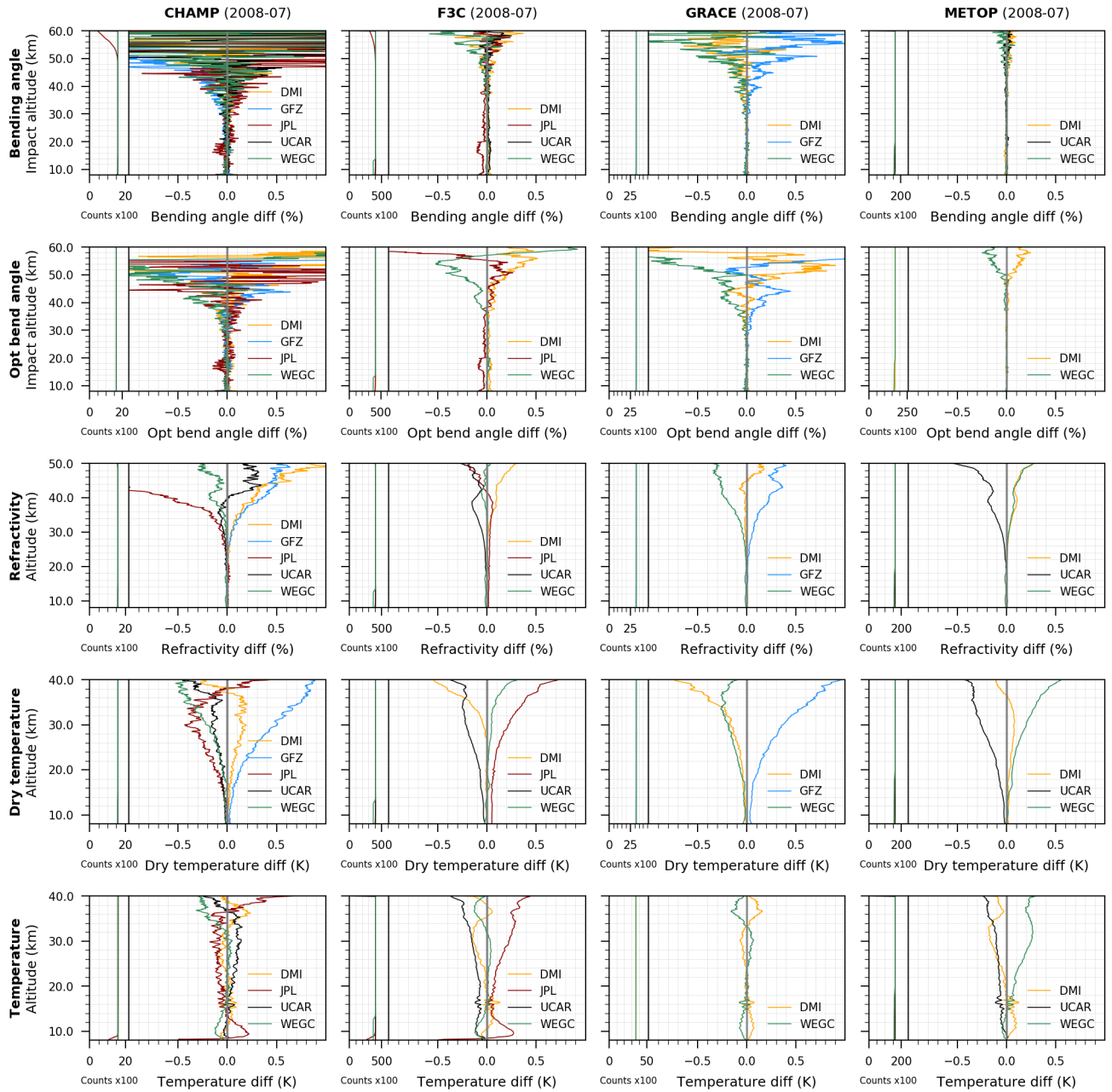


Figure 2. Global mean difference of atmospheric profiles from each center to the all-center mean for one exemplary month (July 2008) based on 10°-zonal medians, shown for the satellite missions, CHAMP, F3C, GRACE, and Metop (left to right) for bending angle, optimized bending angle, refractivity, dry temperature, and temperature (top to bottom). The number of data points is shown in the left subpanels.

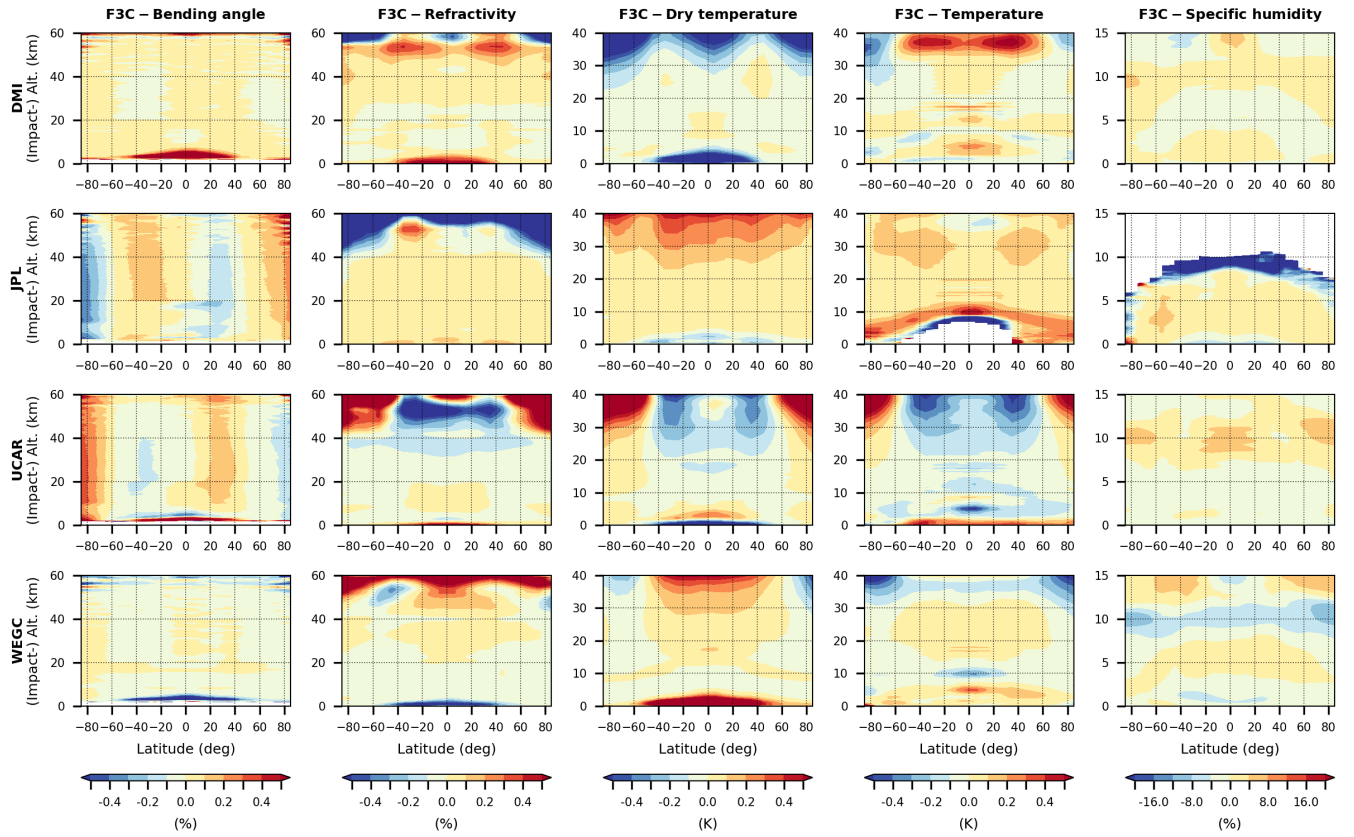


Figure 3. Mean difference of each center, DMI, JPL, UCAR, WEGC (top to bottom), to the all-center mean for F3C data averaged over 08/2006–04/2014, based on 10°-zonal medians, shown for bending angle, refractivity, dry temperature, temperature, and specific humidity (left to right).

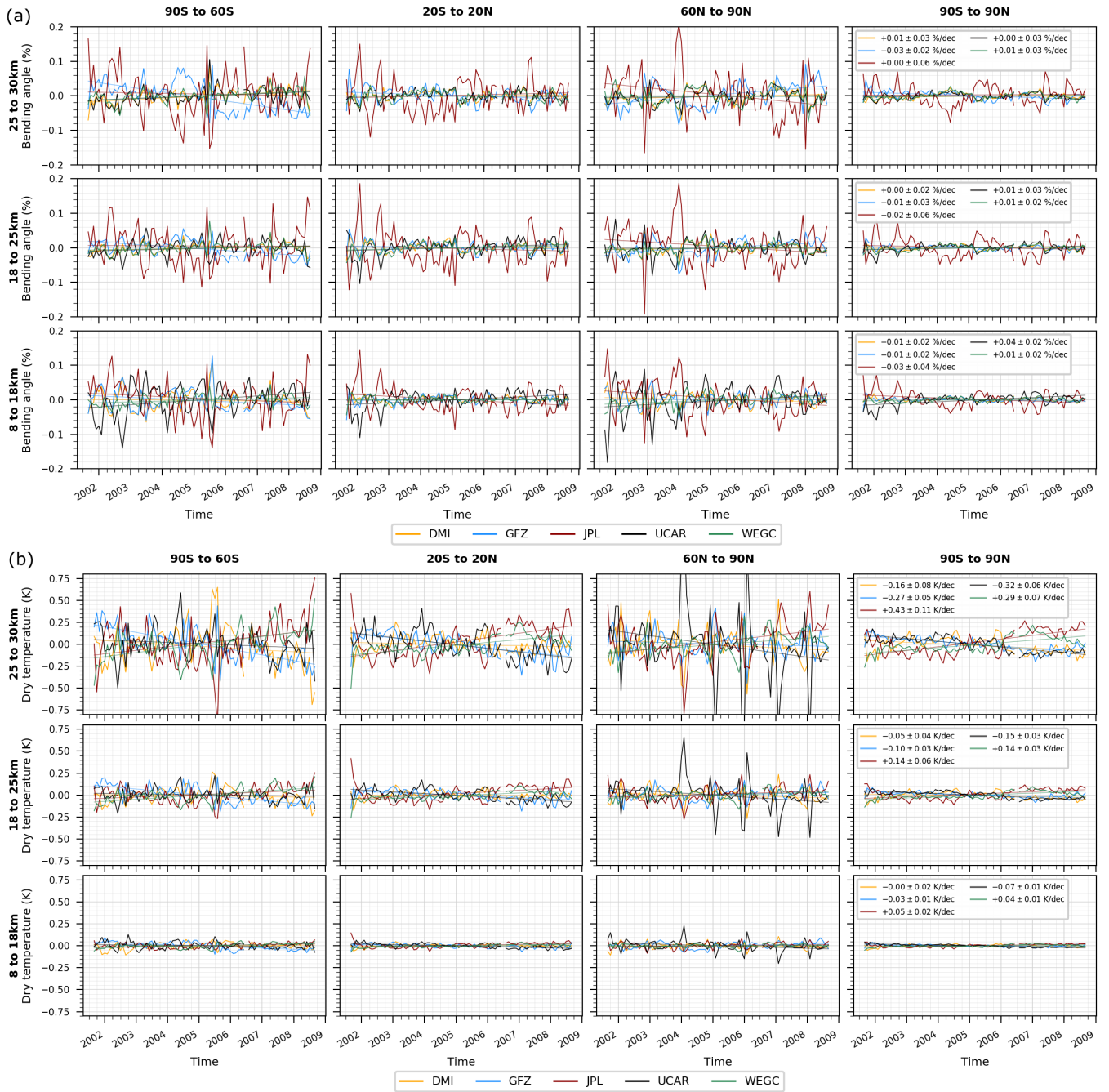


Figure 4. CHAMP bending angle **(a)** and dry temperature **(b)**: De-seasonalized anomaly difference time series based on 10°-zonal medians of each center to the all-center mean for latitude bands 90°S to 60°S, 20°S to 20°N, 60°N to 90°N and globally 90°S to 90°N (left to right) for altitude layers 8–18 km, 18–25 km, 25–30 km (bottom to top). Time series from DMI (orange), GFZ (blue), JPL (red), UCAR (black), and WEGC (green) are shown.

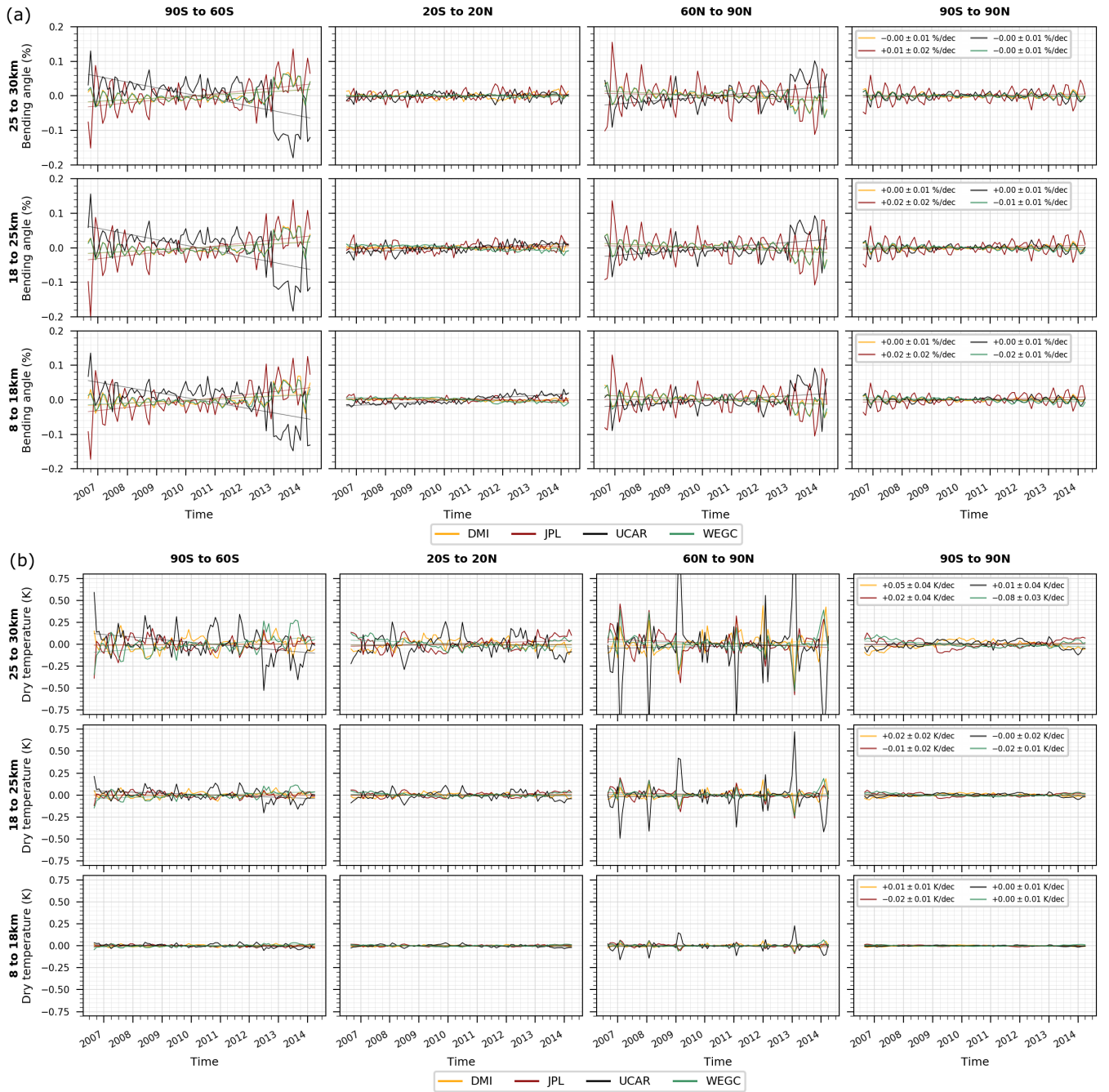


Figure 5. F3C bending angle (a) and dry temperature (b): De-seasonalized anomaly difference time series based on 10°-zonal medians of each center to the all-center mean for latitude bands 90°S to 60°S, 20°S to 20°N, 60°N to 90°N and globally 90°S to 90°N (left to right) for altitude layers 8–18 km, 18–25 km, 25–30 km (bottom to top). Time series from DMI (orange), JPL (red), UCAR (black), and WEGC (green) are shown.

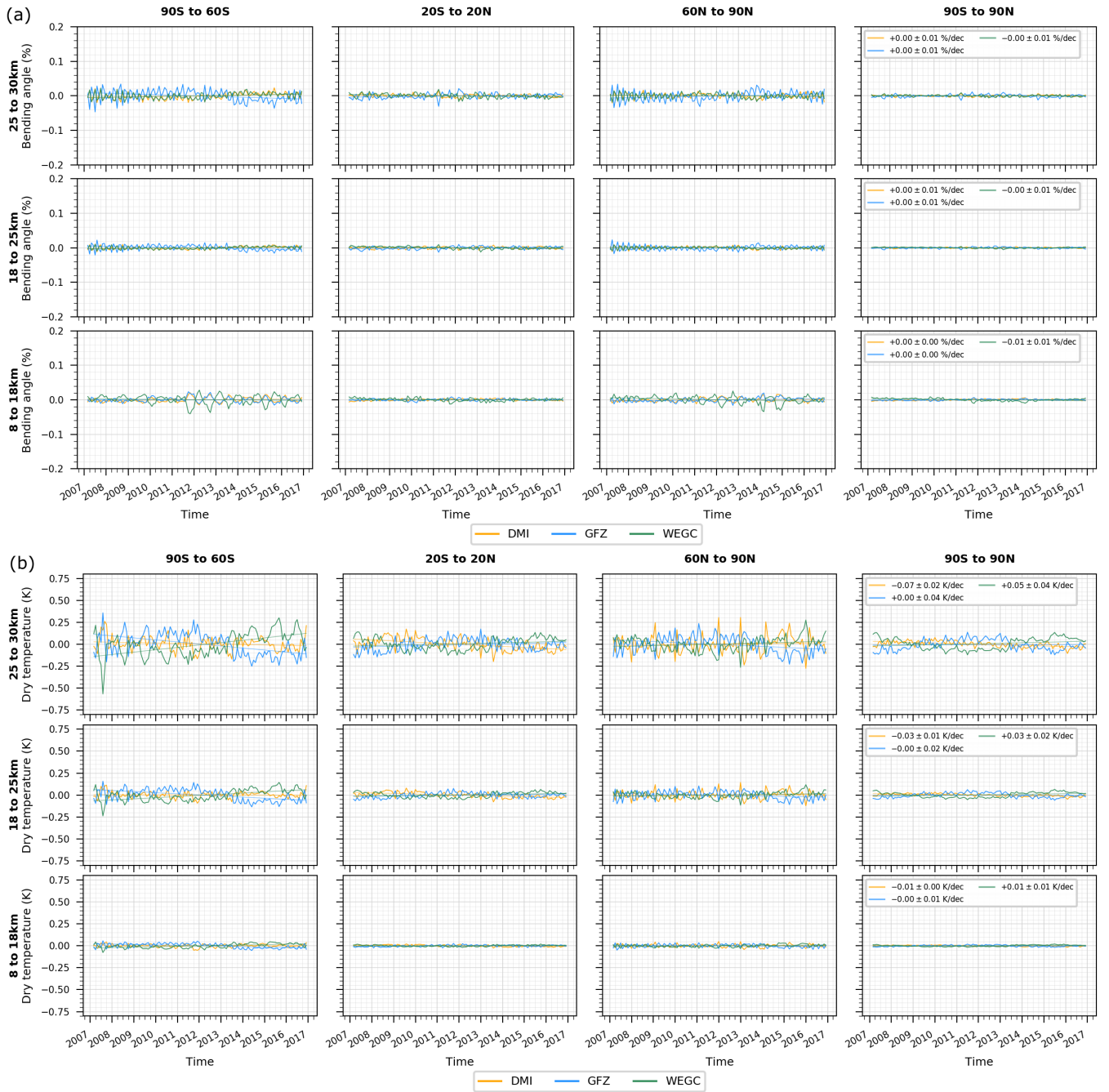


Figure 6. GRACE bending angle (a) and dry temperature (b): De-seasonalized anomaly difference time series based on 10°-zonal medians, of each center to the all-center mean for latitude bands 90°S to 60°S, 20°S to 20°N, 60°N to 90°N and globally 90°S to 90°N (left to right) for altitude layers 8–18 km, 18–25 km, 25–30 km (bottom to top). Time series from DMI (orange), GFZ (blue), and WEGC (green) are shown.

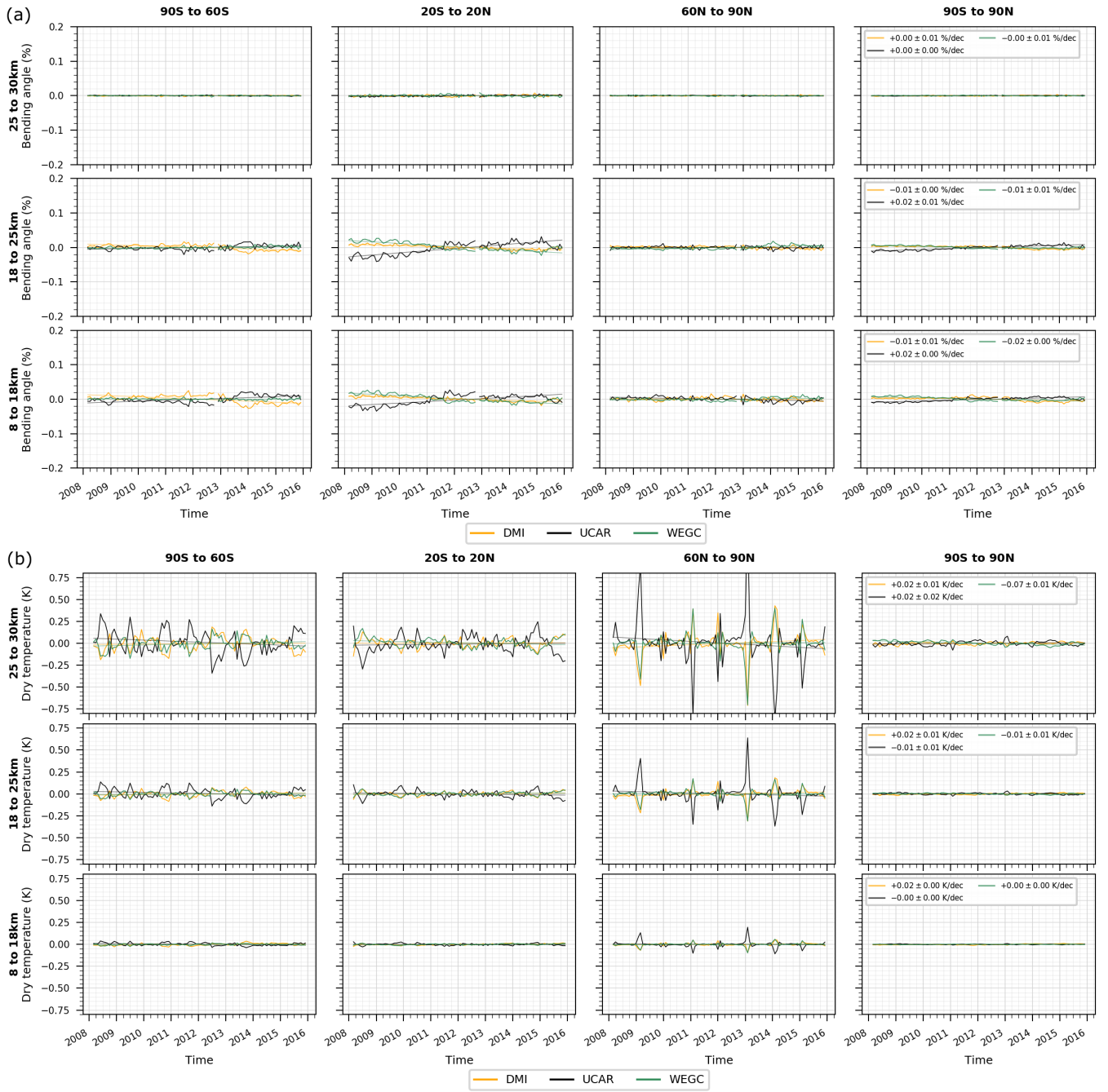
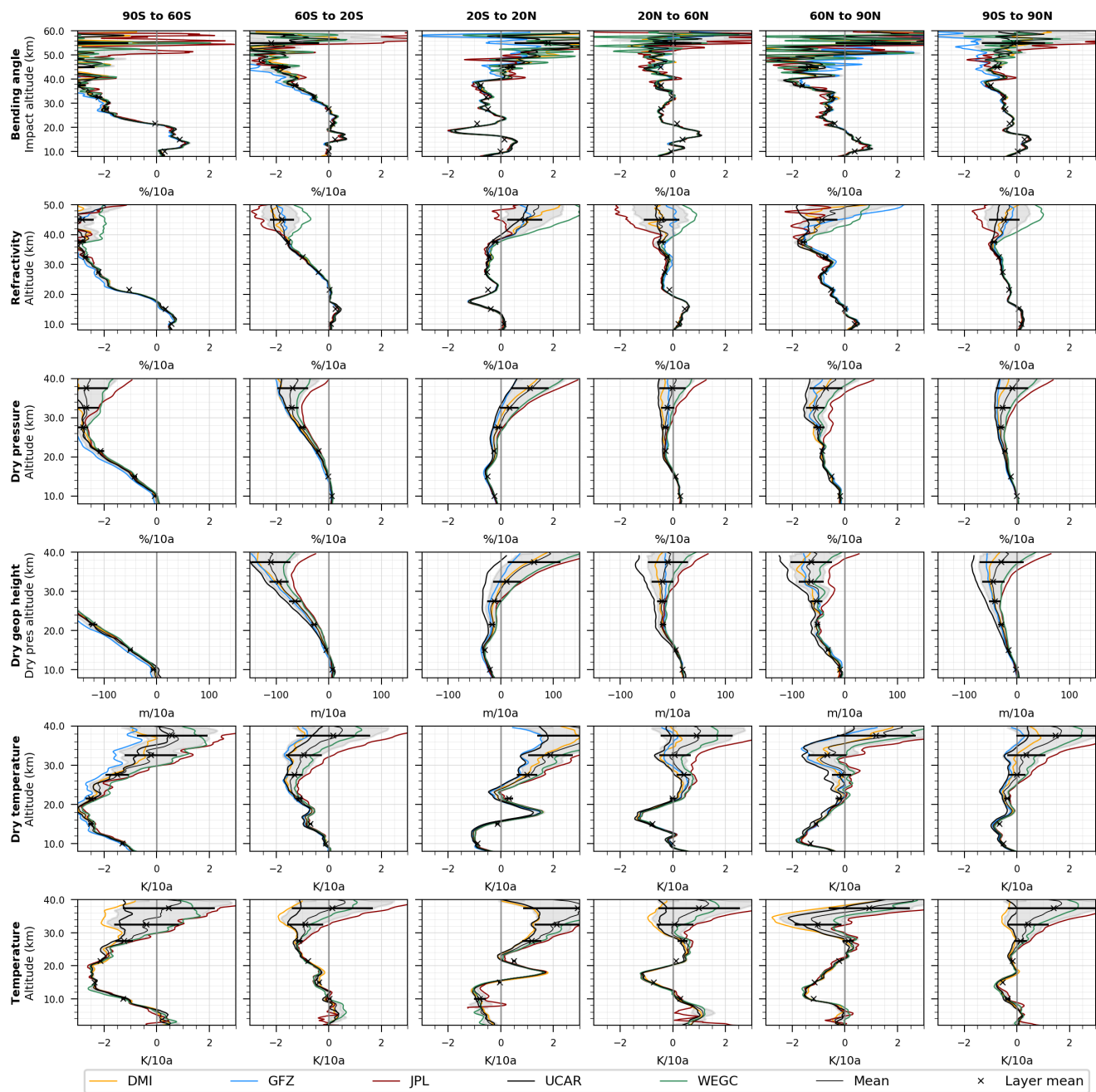
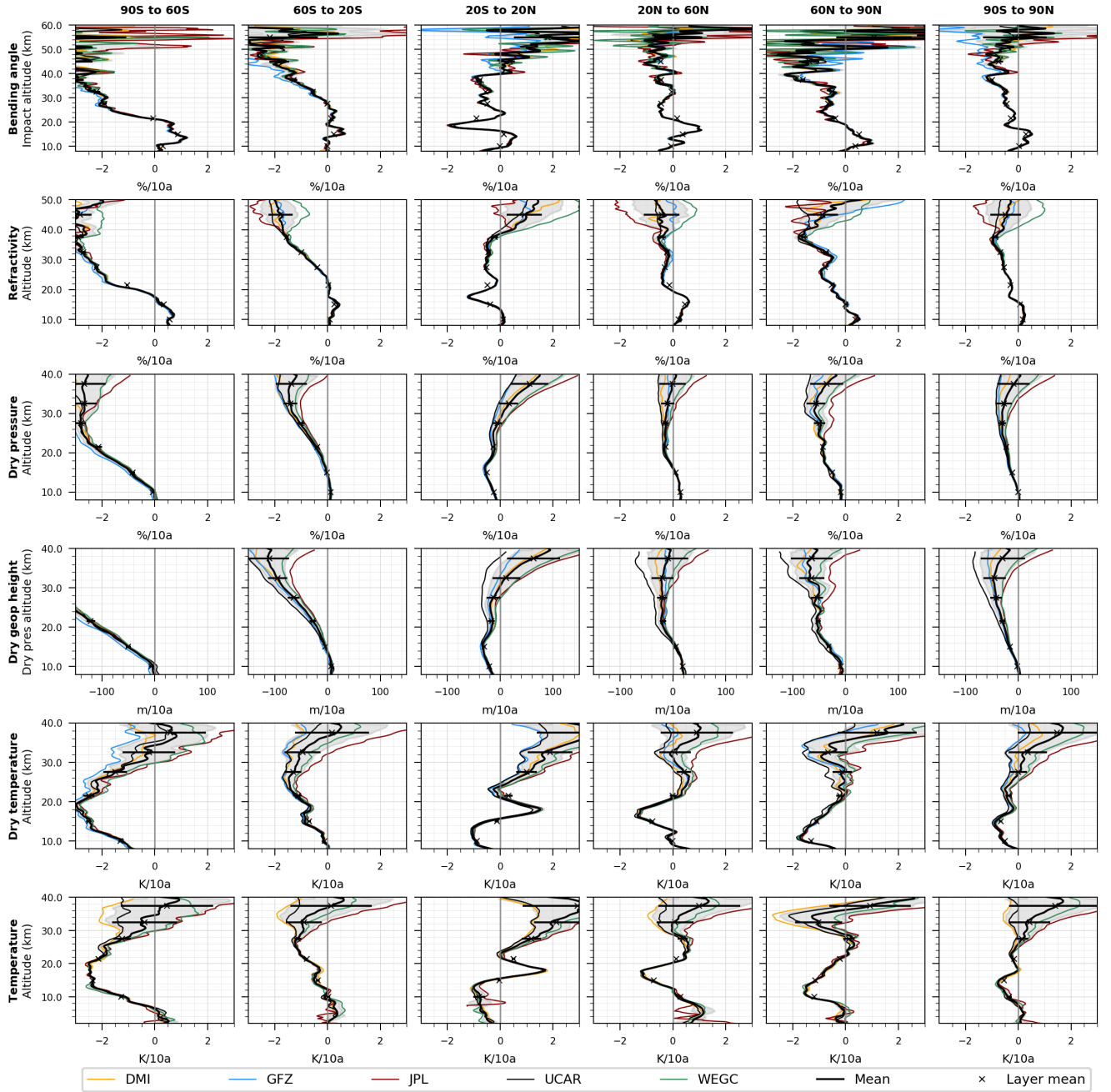


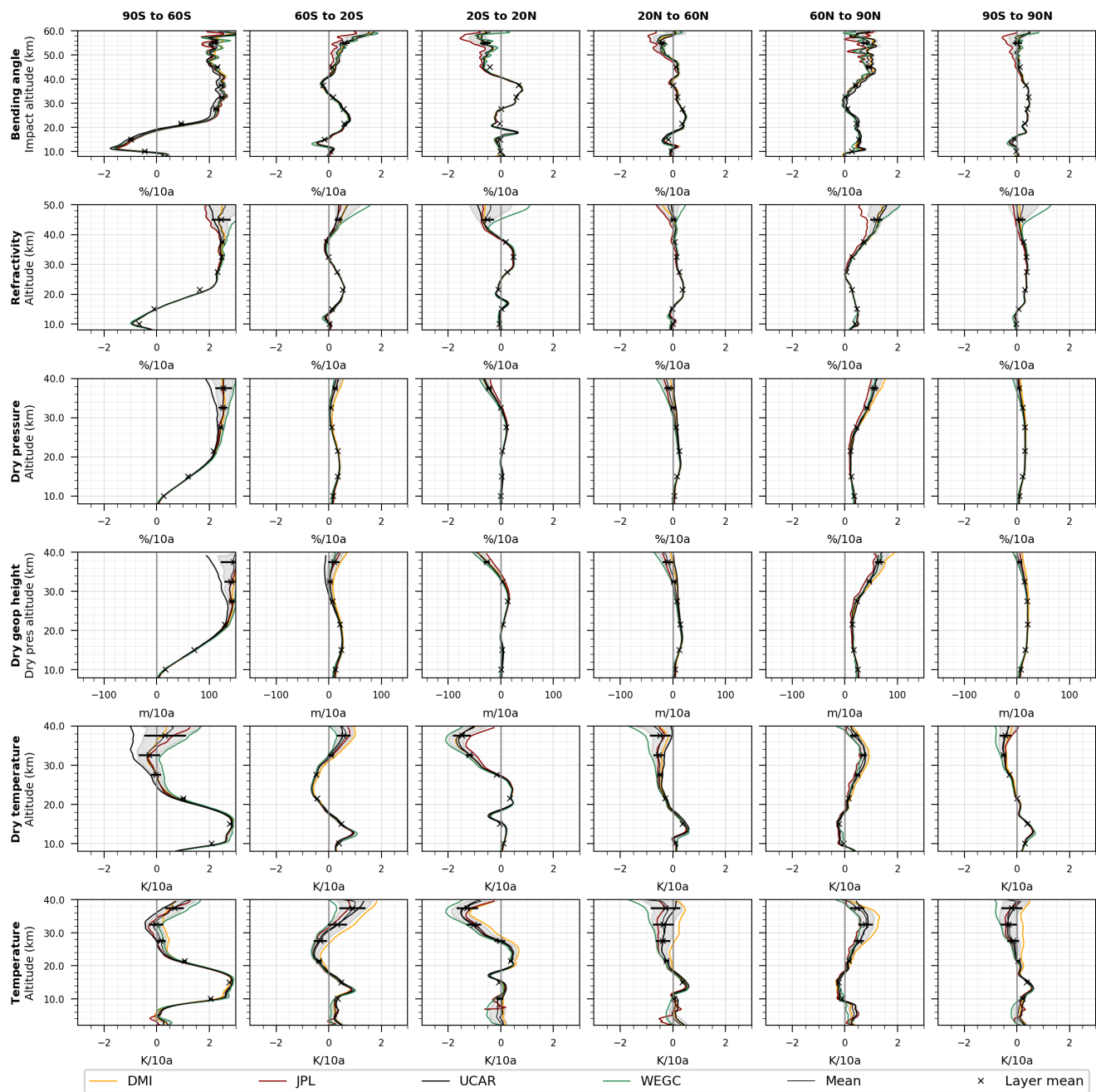
Figure 7. Metop bending angle **(a)** and dry temperature **(b)**: De-seasonalized anomaly difference time series based on 10° -zonal medians of each center to the all-center mean for latitude bands 90°S to 60°S , 20°S to 20°N , 60°N to 90°N and globally 90°S to 90°N (left to right) for altitude layers 8–18 km, 18–25 km, 25–30 km (bottom to top). Time series from DMI (orange),

5 UCAR (black), and WEGC (green) are shown.





mean-trend profile (bold black line) and the altitude-layer mean trends (crosses, and horizontal bars showing the uncertainty) are indicated. Profiles are smoothed with a 1 km running average.



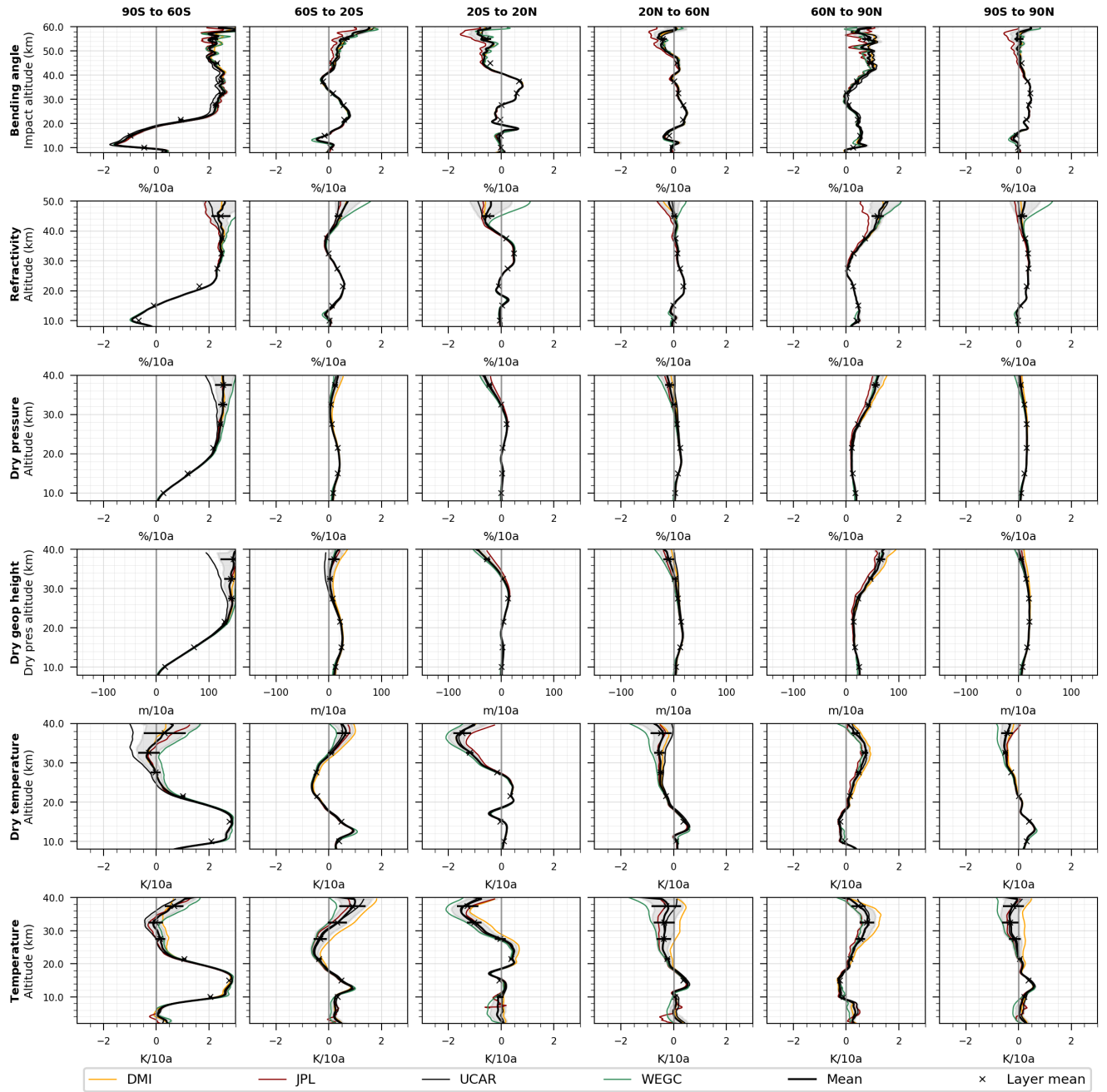
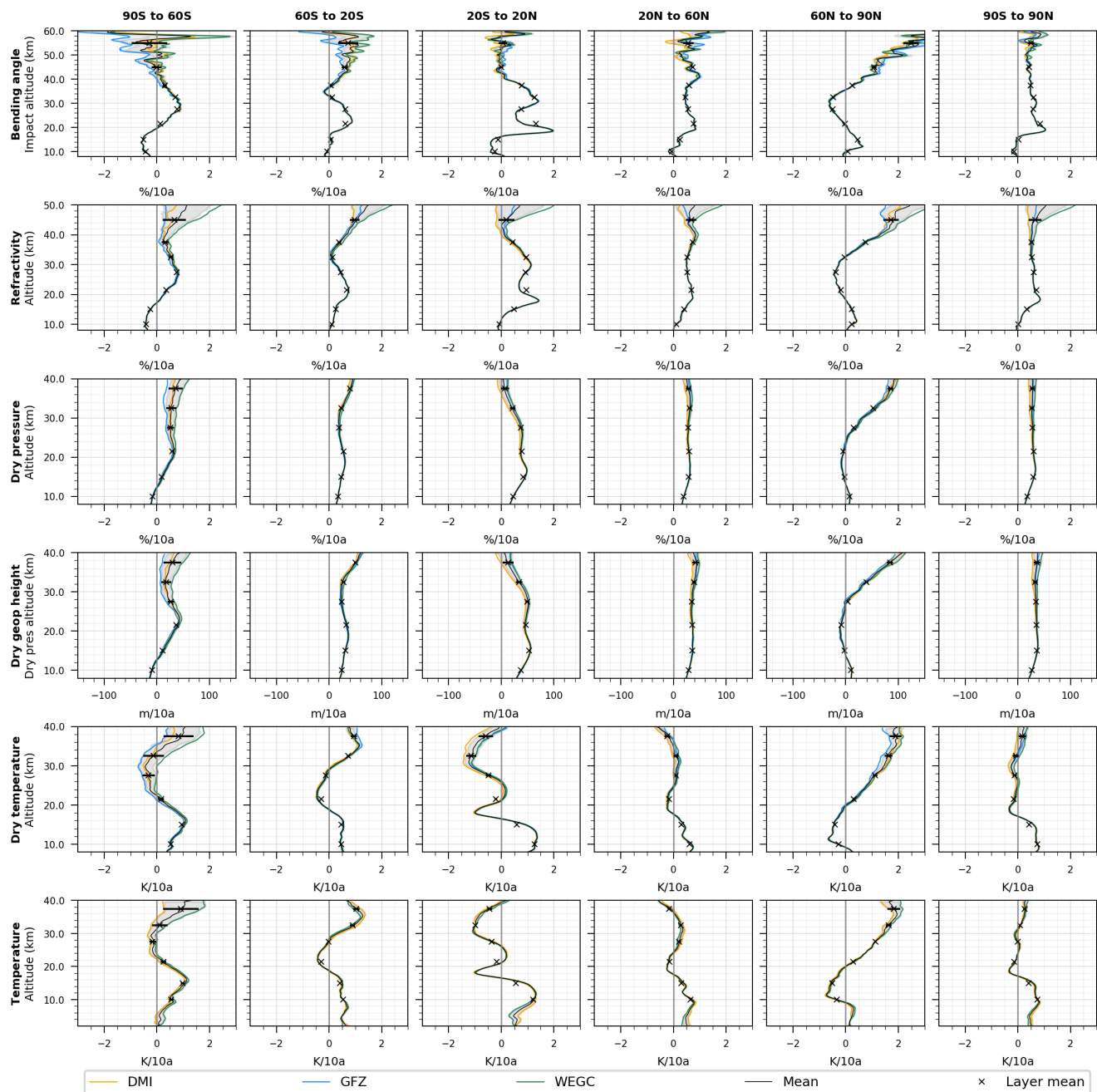


Figure 9. F3C structural uncertainty indicated as the standard deviation (gray) of the individual center trends per decade, based on 10°-zonal medians, for DMI (orange), JPL (red), UCAR (black), and WEGC (green) shown for bending angle, refractivity, dry pressure, dry geopotential height, dry temperature, and temperature (top to bottom). The all-center mean trend profile (bold black line) and the altitude-layer mean trends (crosses, and horizontal bars showing the uncertainty) are indicated. Profiles are smoothed with a 1 km running average.



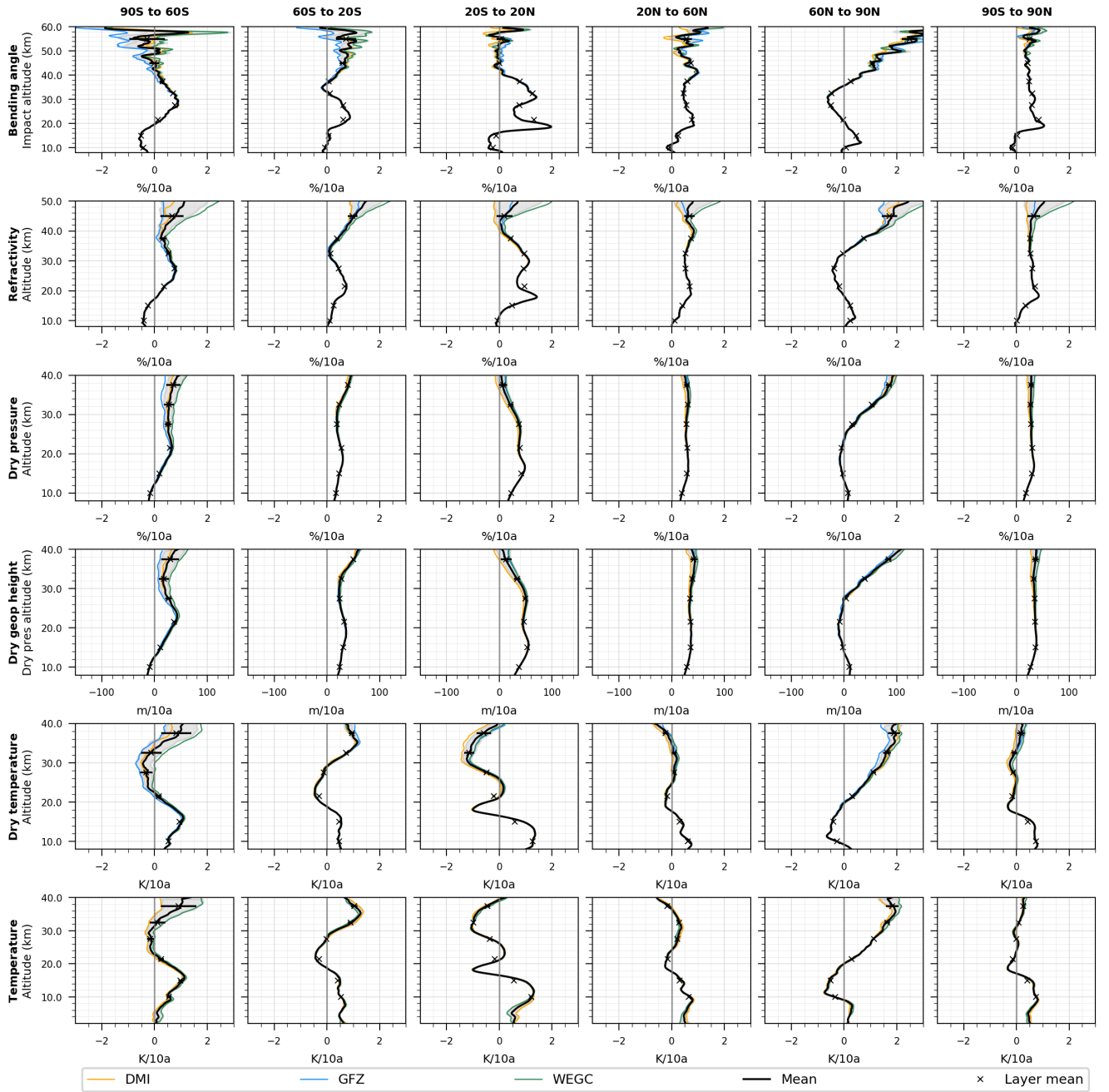
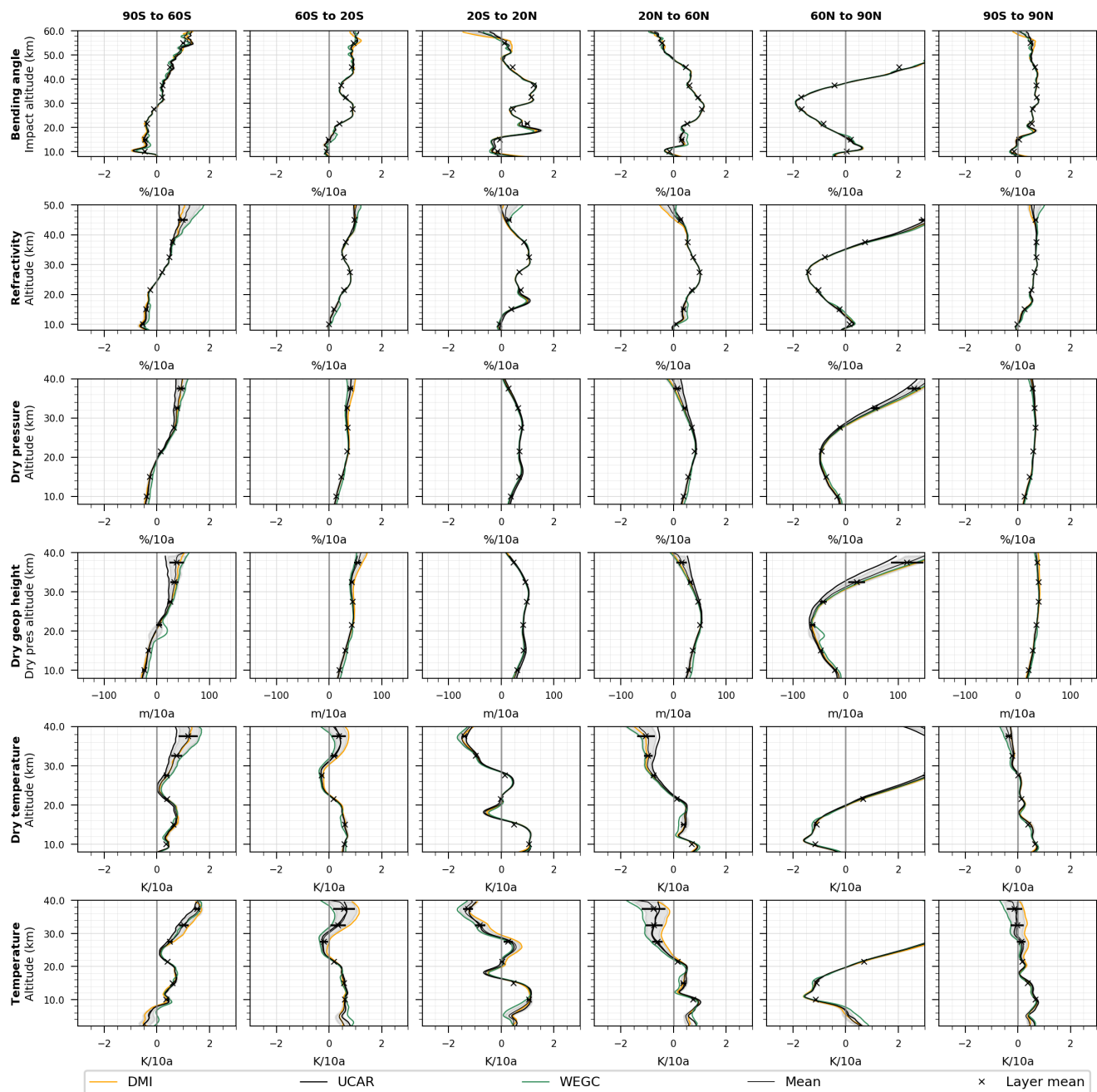


Figure 10. GRACE structural uncertainty indicated as the standard deviation (gray) of the individual center trends per decade, based on 10°-zonal medians, for DMI (orange), GFZ (blue), and WEGC (green) shown for bending angle, refractivity, dry pressure, dry geopotential height, dry temperature, and temperature (top to bottom). The all-center mean trend profile (bold

black line) and the altitude-layer mean trends (crosses, and horizontal bars showing the uncertainty) are indicated. Profiles are smoothed with a 1 km running average.



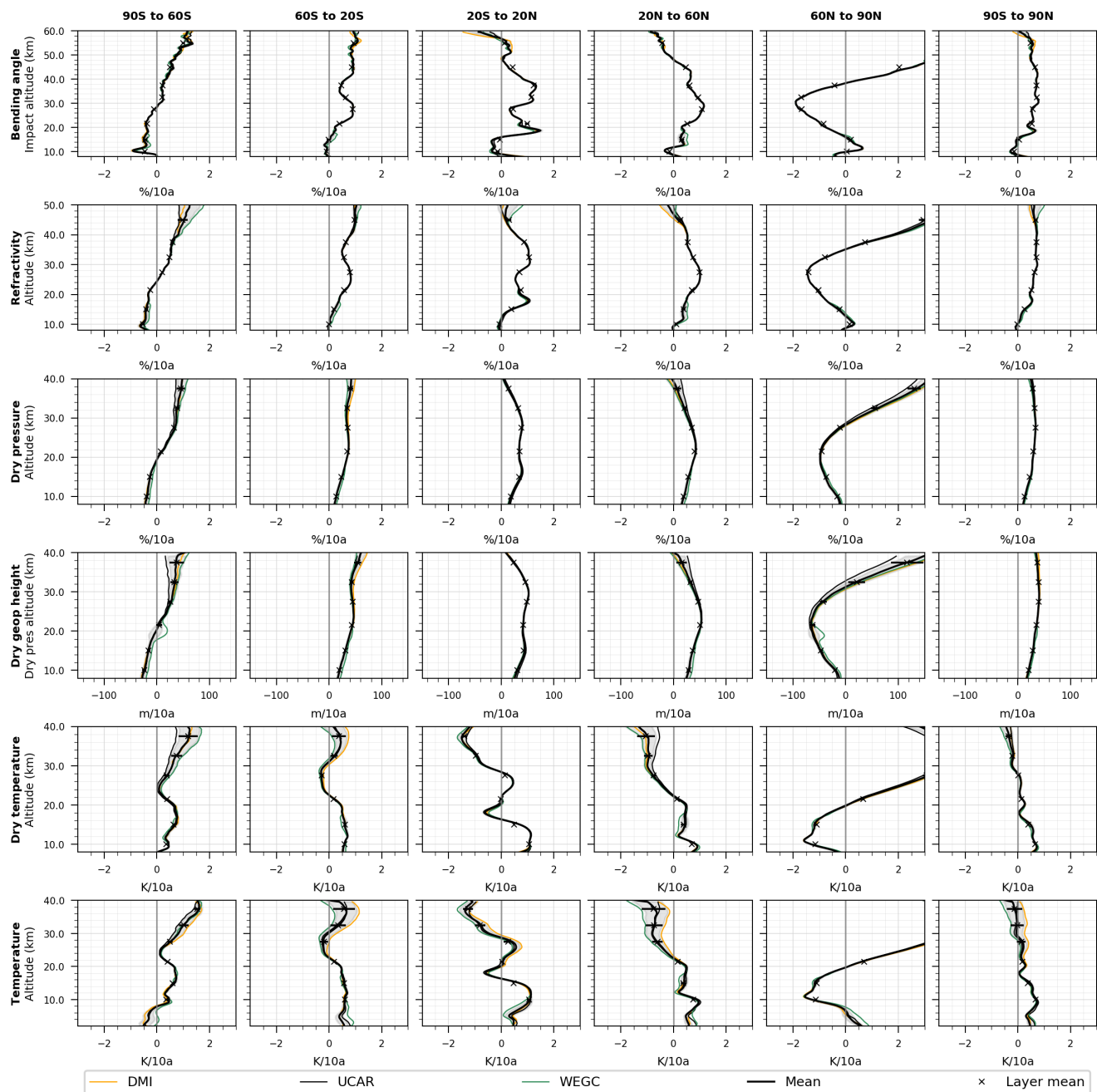


Figure 11. Metop structural uncertainty indicated as the standard deviation (gray) of the individual center trends per decade, based on 10°-zonal medians, for DMI (orange), UCAR (black), and WEGC (green) shown for bending angle, refractivity, dry pressure, dry geopotential height, dry temperature, and temperature (top to bottom). The all-center mean trend profile (bold

black line) and the altitude-layer mean trends (crosses, and horizontal bars showing the uncertainty) are indicated. Profiles are smoothed with a 1 km running average.

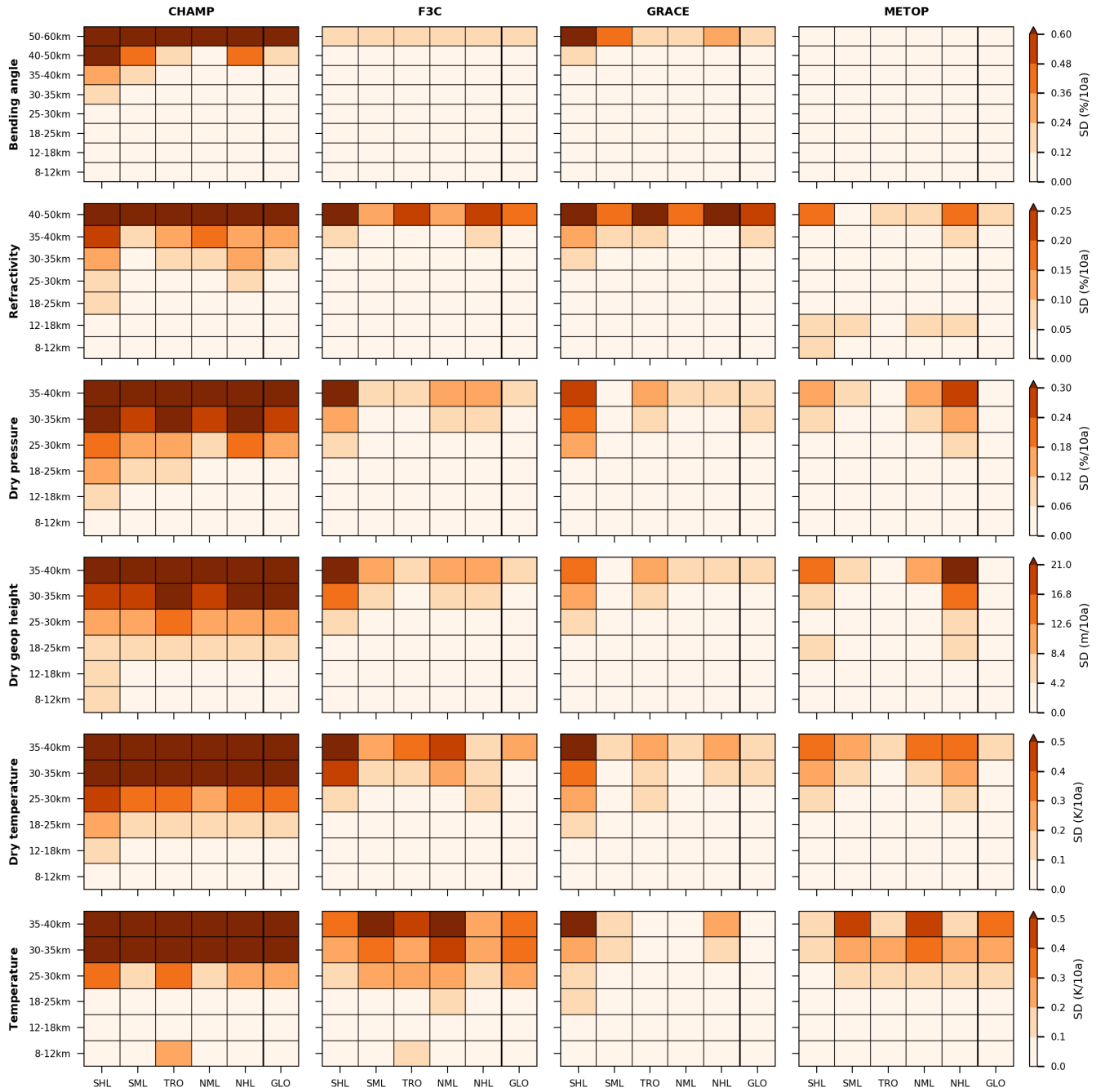


Figure 12. Overview on structural uncertainty for different RO missions, CHAMP, F3C, GRACE, and Metop (left to right). Shown is the standard deviation of individual center trends per decade, based on 10°-zonal medians, for RO bending angle, refractivity, dry pressure, dry geopotential height, dry temperature, and temperature (top to bottom), for all latitude zones and altitude layers in the sub-panels.