

Dear Anonymous Referee #1,

The authors really appreciate for your kind and helpful comments. We respond to the reviewer's comments as follows. The comments from the reviewer are written in blue and the author's response are written in the following. The sentences modified or added in the manuscript are highlighted by red.

Main comments

- 1) One nice result from this paper is the potential impact of dust on the ammonia retrievals. The paper presently states on Page 8: "The presence of dust can lead to the overestimation of ammonia because of the wavenumber dependence of its absorption properties. Figure 13 shows an example of the observed spectra contaminated by dust aerosols over Saharan desert. The residual shows some similarity of wavenumber dependencies of ammonia signals on the spectra.". The wavelength dependence of dust in the longwave infrared being similar to sharp ammonia spectra is very surprising. In general would expect the optical properties from the dust to have broad spectral features. The authors will need to show the input optical properties of the dust (e.g. emissivity, absorption cross-sections, etc.) and the LBLRTM radiative transfer forward model calculations showing the resulting difference in the spectra with and without the dust (keeping the rest of the input atmospheric state the same). Why does the dust only impact ammonia retrievals over some deserts around the globe? Does the moisture play a role? Is it the dust composition (e.g. type of sand)? Is there ammonia mixed in with the dust (transport)? These results can be shown in an appendix and just referred to in the paper.

We had investigated the dust aerosol impacts on the ammonia absorption band using the radiative transfer code, Pstar (Ota et al. 2010) and LBLRTM. Several refractive indices were obtained from Di Biagio et al. (2014) and Hess et al. (1998) and the simulations were operated using some patterns of the particle size distributions for each. However, we could not reproduce the spectral feature like Fig. 13 in AMTD. As the presence of dust layer can also lead to errors in the temperature and humidity retrievals, the spectral feature may be the results of the combinations of the errors and the impacts from the certain types or compositions of dust aerosols. On the errors and contaminations on the desert area, we have to investigate the impacts more precisely. Therefore, this topic would be a further investigation according to the comment from reviewer#2. The body text was modified and the following sentences were added. In addition, Figure 13 in AMTD was included in Supplement as Fig. S2.

Page 8, line 30: "Figure S2 shows an example of the observed spectra from which a high ammonia value was retrieved in the Sahara. The spectra are V shaped, which are spectral characteristics of dusty conditions. Therefore, a part of the high values in northwestern Africa during JJA were caused by dust contamination. However, further investigation is needed because the composition of dust and its impact are quite complicated. Moreover, other error sources such as surface emissivity and humidity also exist."

- 2) Page 3: The authors did add in much more details on the GOSAT sensor capabilities in the revised manuscript, which is a great help in determining GOSAT for ammonia retrievals. However, it would be good to help address the question of why one might want to use GOSAT when there are other sensors with more coverage, such as IASI, CrIS, and AIRS. I would suggest highlighting the higher spectral resolution of GOSAT compared to other

sensors more upfront. There is some information provided later in the paper on Page 8 the authors mention a bit about the sensitivity when discussing potential differences between GOSAT and IASI (Page 8 lines 3-7). However, the spectral resolution is only part of the signal-to-noise to determine the sensitivity of the instrument. Thus, to investigate it more fully one needs to determine how much the slightly higher spectral noise of GOSAT mitigates some of the potential sensitivity gains from the higher spectral resolution. It would be great if an estimate of the sensitivity (e.g. minimum detection limit) could be computed. Again, this might be done by performing simulations where the truth is known. The forward model calculations (LBLRTM) can be run over a number of atmospheric conditions and varying ammonia amounts. Then the ammonia spectral signal can be compared with the estimated GOSAT spectral noise (to obtain a signal-to-noise). Under conditions where the signal-to-noise is just above 1 (the NH₃ spectral signature can be seen) will indicate the detection limit for GOSAT. One other thing that higher spectral resolution provides is the potential to reduce systematic errors (e.g. interfering species) as there is a greater capability to micro-window around weak spectral features from other species reducing the cross-state errors in the GOSAT NH₃ retrievals. It would be good to add more to this discussion to help the community with the question of why they might want to use GOSAT NH₃ observations.

We assumed that the spectral accuracy of the retrieval is 0.3K. However, in our simulation, the column amount corresponding to the signal of this value in the strongest channel is more than 1.0×10^{16} [molec/cm²] which is much larger in the lower values shown in Figures. Therefore, we guess that the random noise is smaller than that. The following text was added in the manuscript and the figure of the signals for the different spectral resolution was also added in Supplemental as Fig. S3.

Page 8, line 1: “Cause (2) is related to the detection limits of the instruments used. The spectral resolution of GOSAT is higher than that of IASI, AIRS, and CrIS, which have fine coverage. Because fine spectral resolution provides a stronger signal in the spectra, it provides a high signal-to-noise. Moreover, high spectral resolution can reduce the contaminations from interfering species, such as water vapor, by channel selection. The maximum signal is approximately 0.04 K or 0.05 K for a spectral resolution of 0.5 or 0.6, which corresponds to AIRS, IASI, and CrIS. On the other hand, it is approximately 0.1 K for a resolution of 0.2, which corresponds to GOSAT (Fig. S3). This indicates that the signal of ammonia in the GOSAT spectra is approximately twice as strong as those in the other sounders. In Section 2.1, we assumed a spectral noise of 0.3 K. If the relation between the signal and the ammonia concentration is linear, then the ammonia column amount corresponding to this is approximately 1.4×10^{16} molec/cm². This value is considerably higher than the minimum values seen in the previous figures. Based on these figures, the lower limit of GOSAT retrieval seems to be approximately 0.2×10^{16} – 0.4×10^{16} molec/cm². This corresponds to a value lower than 0.1 K in the spectra. Although our assumption of spectral noise is based on Kataoka et al. (2013), the reported values not only include random noise but also spectral biases. Therefore, our results imply that the random noise of the GOSAT spectral region used in the ammonia retrieval is approximately 0.1 K.

”

- 3) For a new product it is best to show a little validation (e.g. surface, aircraft, or FTIR). In general most FTIR stations have relatively low concentration amounts, however, there are sites like Bremen, Toronto, Mexico City, Pasadena, that obviously have high concentrations that can be compared with GOSAT. GOSAT might even have

some special stare observations for these sites as they are also part of TCCON and NDACC networks.

We investigate the match-up data between GOSAT and the FTIR at Bremen, Toronto, Mexico City, and Pasadena with the condition according to Dammers et al. (2017). Unfortunately, there are no co-located measurements at Toronto, Mexico City, and Pasadena due to the coarse geometry of the GOSAT observation. Since there were co-located measurements geometrically at Bremen, I requested to Prof. Palm at University of Bremen and obtained the FTIR data. However, there were only five match-up measurements. Therefore, we couldn't find enough data for validations.

Minor comments

- 4) Page 1: Line 24: "Atmospheric nitrogen is taken up by animals" ???...reword

The sentence was modified as follows.

Page 1, line 24: "Nitrogen is taken up by animals and plants and is emitted into the atmosphere when organic matter decays or is burned."

- 5) Page 2: Line 30: Change "(Shephard and Cady-Pereira, 2015)" to "Shephard and Cady-Pereira (2015)"

Page 2, line 30: Corrected.

- 6) Page 3: Lines 2-4: "Since carbon dioxide (CO₂) and methane (CH₄) concentrations have been previously derived from both regions (Yoshida et al., 2011, 2013; Saitoh et al., 2009, 2016), it was possible to calculate the concentrations of ammonia within the same footprint." Can more context be provided here as to why CO₂ and CH₄ needs to be retrieved for NH₃. It is not directly for the retrieval of NH₃ as it is mostly window region where temperature (from CO₂) and water vapour retrievals are retrieved before NH₃ (as stated in the paper later on).

We didn't mean CO₂ and CH₄ need to be retrieved before NH₃ retrieval, but we can obtain the CO₂ and CH₄ concentrations in the same footprint for the combinational use of them. The text was modified as follows.

Page 3, line 4: "Carbon dioxide (CO₂) and methane (CH₄) concentrations have been derived from both spectral regions (Yoshida et al., 2011, 2013; Saitoh et al., 2009, 2016) and provided as products. Therefore, the combinational use of concentrations of ammonia and these products within the same footprint can be useful to study carbon cycles."

- 7) Page 4: Need a "." After (Van Damme et al., 2017).

Page 4, line 15: Corrected.

- 8) Page 4: Just a comment as a future improvement: The AFGL NH₃ is likely very low apriori for most hot-spot regions. That being said, ammonia is not known well globally so there is not a good "climatological" apriori fields to use. As a future GOSAT retrieval refinement, the authors might want to consider using an apriori selection process (e.g. similar to TES and CrIS).

Thank you for your comment. We would like to modify a priori selection in the ammonia retrieval using GOSAT-2 which is a successor of GOSAT.

- 9) Page 4: When showing averaging kernels it is common to show the rows of the averaging kernels, rather than columns of the averaging kernels. It would be useful to show the 2D averaging kernel plot included in the response to the initial Review 1 questions so that the GOSAT vertical sensitivity can be compared against other sensors such as TES, AIRS, and CrIS. Even if it is just added in as an appendix and referred to in the text relative to other sensors that produce averaging kernels.

The 2D averaging kernel plot was added as Figure.S1 in the appendix. The following sentence was added.

Page 4, line 31: “The 2D plot of the averaging kernel matrix is also shown in Fig. S1.”

- 10) For ease of comparisons, the GOSAT team might want to consider reporting the NH₃ retrieval values in units commonly used by the other satellite retrievals (e.g. level values in ppbv and total column in molecules/cm²).

Figure 3, 4, 7, 8, 9, 10: Corrected.

- 11) Page 5: Figures 3 and 7. Just a suggestion: Is it possible to change the colour bar slightly to highlight a few more hot-spot regions (e.g. North America and Western Europe) without making the plot look very noisy. Maybe bring the yellow and reds reach down to lower values.

Figure 3 and 7: Rainbow color bar was corrected. In addition, same color bar was applied to Fig. 4 and 6.

- 12) Page 5, line 19: averaged errors: excluded when estimated concentrations were negative. . . does this mean they excluded negative concentrations in all of their analysis? As that would high bias the results.

No, they are not excluded in the analysis of the horizontal distribution or time series of the concentrations.

- 13) Page 5: line 20: change “highconcentrations” to “high concentrations”.

Corrected.

- 14) Page 5: line 21: add in the reference for the TES global plots showing the typical hotspots (Shephard et al., 2011).

Page 6, line 1: “TES (Shephard et al., 2011)” was added.

- 15) Page 6, line 5-6: The high concentrations can be explained by soil emissions, Hickman et al., 2018: see <https://www.atmos-chem-phys.net/18/16713/2018/acp-18-C4-AMTD-Interactive-comment-Printer-friendly-version-Discussion-paper-16713-2018.pdf>.

The following sentence was added.

Page 8, line 25: “In another study, Hickman et al. (2018) reported that the high concentrations of NH₃ in March and April observed by IASI are related to the soil moisture.”

- 16) Page 7: Discussion section: Lines 13 & 14 list possible causes for differences, and then the rest of the paragraph goes into more detail for some of them. The authors might consider merging (3) and (4) together as “signal-to-noise (spectral resolution and noise)”. Then order the more detail discussion in the rest of the paragraph in the

same order as listed so it is so that it is easy to follow.

The spectral resolution and noise were merged as (2) signal-to-noise. The discussion section was reconstructed along with the order as listed in the first paragraph.

17) Page 8: See main comment above on dust.

18) Page 17: It would be good to expand the EUR to include Northern Italy and NE Spain as both are known hotspots in Europe.

The area was modified. Figure 5 and Table 2 were also modified.

19) Acknowledgements: I believe there is a user agreement on how to acknowledge the use of the IASI NH₃ product.

As there are no IASI NH₃ product developers as coauthors there should be an acknowledgement stated here for using the IASI data.

Page 10, line3: The following text was added in the acknowledgements.

“The IASI-NH₃ products were accessed in August 2019 from <http://cds-espri.ipsl.fr/etherTypo/index.php?id=1700&L=1>”

Atmospheric ammonia retrieval from the TANSO-FTS/GOSAT thermal infrared sounder

Yu Someya¹, Ryoichi Imasu², Kei Shiomi³, Naoko Saitoh⁴

¹ Center for Global Environmental Research, National Institute for Environmental Studies, Tsukuba, Japan

5 ²Atmosphere and Ocean Research Institute, the University of Tokyo, Chiba, Japan

³Japan Aerospace Exploration Agency, Tsukuba, Japan

⁴Center for Environmental Remote Sensing, Chiba University, Chiba, Japan

Correspondence to: Yu Someya (someya.yu@nies.go.jp)

10 **Abstract.** Hyperspectral thermal infrared sounders enable us to grasp the global behavior of minor atmospheric constituents. Ammonia, which imparts large impacts on the atmospheric environment by reacting with other species, is one of them. In this work, we present an ammonia retrieval system that we developed for the Greenhouse Gases Observing Satellite (GOSAT) and the estimates of global atmospheric ammonia column amounts that we derived from 2009 to 2014. The horizontal distributions of the seasonal ammonia column amounts represent significantly high values stemming from six
15 anthropogenic emission source areas and four biomass burning ones. The monthly mean time series of these sites were investigated, and their seasonality was clearly revealed. A comparison with the Infrared Atmospheric Sounding Interferometer (IASI) ammonia product showed a good agreement spatially and seasonally, though there are some differences in detail. The values from GOSAT tend to be slightly larger than those from IASI for low concentrations, especially in spring and summer. On the other hand, they are lower for particularly high concentrations during summer, such
20 as Eastern China and Northern India. In addition, the largest differences were observed in central Africa. These differences seem to stem from the temporal gaps in observations and the fundamental differences in the retrieval systems.

1 Introduction

Atmospheric ammonia plays an important role in the nitrogen cycle (Galloway et al., 2004; Behera et al., 2013). Nitrogen is taken up by animals and plants and is emitted into the atmosphere when organic matter decays or is burned.
25 Ammonia is one of the compounds generated as a byproduct of this process. It is well known that atmospheric ammonia reacts with acids, such as H_2SO_4 or HNO_3 , and produces nitrate aerosols (e.g., Seinfeld and Pandis, 2016). These aerosols lead to widespread environmental problems, such as the formation of $\text{PM}_{2.5}$ or PM_{10} that is harmful to human health, by

changing radiation budgets through the formation of cloud condensation nuclei, and by causing eutrophication through deposition into oceans or lakes.

The main emission sources of anthropogenic ammonia into the atmosphere are related to food production (e.g., ammonium-based fertilizers and domestic animals) (Behera et al., 2013). Emissions from these sources have increased along with the growth in the population after industrial evolution. The Emission Database for Global Atmospheric Research (EDGAR) provides several anthropogenic gas emission inventories, including that for ammonia. The analysis of EDGAR-HYDE data indicated that the annual global emission of ammonia into the atmosphere has increased from 8.6 TgN/yr in 1890 to 43.4 TgN/yr in 1990 (Aardenne et al., 2001). Further, data from EDGAR v4.2 were used to estimate the annual rate of increase in emissions of approximately 0.6 TgN/yr between 1970 and 2008. Biomass burning is also one of the large sources of ammonia emissions. The Global Fire Emissions Database, Version 4 (GFEDv4) (Randerson J.T. and Kasibhatla, 2017) provides information on atmospheric trace gas and aerosol emissions from fire events globally. Ammonia emissions are estimated using the burned area (Giglio et al., 2013) and an emission factor (Akagi et al., 2011). However, large uncertainties may be associated with these inventories owing to atmospheric ammonia being active and having a short lifetime. Although there are many in situ observations of ammonia, particularly in developed countries and including the Ammonia Monitoring Network (AMoN), it is quite hard to understand the global scale simply using these observational data.

Satellite remote sensing is an effective tool to get a better grasp of the global behavior of atmospheric constituents. Recent advancements in satellite sensors have allowed us to monitor minor gases, such as greenhouse gases and air pollutants. Currently, the five space-borne nadir satellite sounders, namely, the Atmospheric Infrared Sounder (AIRS), Tropospheric Emission Spectrometer (TES), Infrared Atmospheric Sounding Interferometer (IASI), Thermal and Near-infrared Spectrometer for Observation-Fourier Transform Spectrometer (TANSO-FTS), and Cross-track Infrared Sounder (CrIS), are available to observe atmospheric ammonia. Ammonia has narrow absorption bands in a spectral region of around 10 μm , and the five sounders measure thermal infrared (TIR) data in this region. The detectable phenomena should differ slightly for each sensor because of the differences in the characteristics of the sensors or because of the orbit paths of the satellites. The frontier work of these sounders for estimating atmospheric ammonia is represented by Beer et al. (2008) using TES data. The authors developed a scaling factor for the ammonia profile and converted it into an averaging kernel weighted molar fraction. Clarisse et al. (2009) revealed the highly spatially resolved global distributions of atmospheric ammonia by converting brightness temperature differences into ammonia column amounts in the atmosphere. The sensitivities of the different spectral resolutions and the thermal contrast between surface skin and surface air were investigated by Clarisse et al. (2010). Following these investigations, several other papers have presented results on the global distribution of tropospheric or column-integrated ammonia. Shephard et al. (2011) reported the spatial and seasonal variability on the basis of TES measurements, and they compared them to the GEOS-Chem model simulation. Van Damme et al. (2014, 2015) showed detailed horizontal distributions and time series derived from IASI. Shephard and Cady-Pereira (2015) investigated the detectability of ammonia and demonstrated the potential retrieval using CrIS data. Warner et al. (2016, 2017) detected

ammonia hotspots using AIRS spectra and reported increasing concentrations from agricultural areas. However, some differences in the distributions among the products have been noted but have not been well compared to date.

In this study, atmospheric ammonia was determined using data from the TANSO-FTS on the Greenhouse Gases Observing SATellite (GOSAT). GOSAT observes both the shortwave infrared and the TIR regions simultaneously. Carbon dioxide (CO₂) and methane (CH₄) concentrations have been derived from both spectral regions (Yoshida et al., 2011, 2013; Saitoh et al., 2009, 2016) and provided as products. Therefore, the combinational use of concentrations of ammonia and these products within the same footprint can be useful to study carbon cycles. In Sect. 2, we present the details of the satellite data and the retrieval algorithm. In Sect. 3, the horizontal and temporal distributions of ammonia column amounts derived from the GOSAT are shown. Those results are then compared with the IASI ammonia product, and the differences are discussed.

2 Methodology

2.1 Data and Models

GOSAT was launched into polar orbit on 23 January 2009. With the exception of a few time periods, data have been obtained continuously. The data cover almost the entire globe between about 85°N and 85°S. The equator-crossing time is 13:00 (local time). TANSO on GOSAT consists of FTS and Cloud and Aerosol Imager (CAI). TANSO-FTS has four bands, of which Band 4 measures the thermal infrared region between 5.5 and 14.3 μm (700–1,800 cm^{-1}). Spectral resolution of level 1B (L1B) product is approximately 0.2 cm^{-1} . The spectral accuracy of the TIR band of TANSO-FTS has a wavenumber dependency. Kataoka et al. (2013) reported that is 0.5 K at 800 – 900 cm^{-1} and 0.1 K at 980 – 1080 cm^{-1} . As noting in Sect. 2.2, we assumed that that is 0.3 K in the spectral range used in the ammonia retrieval. This is larger than those of the other hyper-spectral sounders (AIRS: ~0.15 K, IASI: ~0.2 K, CrIS: 0.05 K at 280 K). The instantaneous field of view of TANSO-FTS is 15.8 mrad circular, which corresponds to approximately a 10.5 km diameter at the earth's surface. TANSO-FTS's scanning system adopts a two-axis pointing mechanism. The maximum pointing angle is $\pm 35^\circ$ in the cross-track direction and $\pm 20^\circ$ in the along-track direction (Kuze et al., 2009). With the exception of the target mode or sunglint mode observations over the ocean, the observation pattern was a five-point cross-track scan mode until July 2010 and a three-point cross-track scan mode since August 2010. Since the solar paddle was stopped, the operation of GOSAT was stopped on 24 May 2014. Although the operation of GOSAT restarted on 30 May 2014, the spectral resolution of TANSO-FTS had become slightly lower and the instrument line shape function was changed after the incident (Kuze et al., 2016). In this study, the L1B V160.160 products (Kuze et al., 2012) obtained from the launch to 24 May 2014 provided by the National Institute of Environmental Studies (NIES) was used. Since the magnitude of ammonia emissions to the atmosphere is much higher over land than over the oceans, and because of the computational resources required, only data obtained over land was analyzed.

Cloud contaminated scenes were eliminated by CAI cloud screening (Ishida and Nakajima, 2009). The analyzed spectra are only for daytime because CAI is observable during the daytime. In addition to cloud contamination, the dusty scenes over the desert surface were eliminated using the GOSAT slicing technique (Someya et al., 2016).

Line-By-Line Radiative Transfer Model (Clough et al., 2005) version 12.4, provided by Atmospheric Environmental Research, Inc., was used to calculate the radiative transfer and included gas absorption data obtained from the High-resolution TRANsmission molecular absorption database (HITRAN) 2012 (Rothman et al., 2013). The species of H₂O, CO₂, O₃, N₂O, CO, CH₄, and O₂ were considered in the radiative transfer calculations.

The IASI L2 NH₃ product version 2.1 (ANNI-NH3-v2.1) (Van Damme et al., 2017) was used for intercomparison of the results. The previous version of this product was evaluated with the data from ground-based FTS measurements from several sites (Dammers et al., 2016). This product provides ammonia column amounts for both the morning and the evening. The equator crossing time of the IASI is around 9:30 and 21:30, which are 3 h and 30 min earlier than that of GOSAT. The Interim atmospheric data from the European Centre for Medium-Range Weather Forecasts reanalysis (ERA-Interim) was used for processing this version of the products. The versions of the ERA-Interim were frequently changed, and there were discontinuities among the versions. As a result, the quality and the baseline values of the ammonia column amounts in the products could vary temporally (Van Damme et al., 2017).

2.2 Retrieval Algorithm

Ammonia has an antisymmetric stretch mode (ν_3) band around 950 cm⁻¹. Figure 1 illustrates the observed GOSAT spectrum over Northern India, its residual between the observed and calculated spectra, and ammonia transmittance. The calculated spectrum was constructed using the a priori temperature and water vapor profiles. In this study, the band between 960 and 969 cm⁻¹ was utilized for the retrievals because the band near 930 cm⁻¹ overlapped with those of the other species. The ammonia retrieval algorithm is based on the nonlinear optimal estimation (Rodgers, 2000) with the Gauss–Newton iteration represented as the following equation:

$$\mathbf{x}_{i+1} = \mathbf{x}_a + (\mathbf{S}_a^{-1} + \mathbf{K}_i^T \mathbf{S}_\epsilon^{-1} \mathbf{K}_i)^{-1} \mathbf{K}_i^T \mathbf{S}_\epsilon^{-1} [\mathbf{y} - \mathbf{F}(\mathbf{x}_i) + \mathbf{K}_i(\mathbf{x}_i - \mathbf{x}_a)], \quad (1)$$

where \mathbf{x} is the state vector, \mathbf{S}_a and \mathbf{S}_ϵ are the covariance matrices for a priori and measurements, respectively, \mathbf{K} is the Jacobian matrix, \mathbf{y} is the measurement vector, $\mathbf{F}(\mathbf{x})$ is the forward model vector, and the subscripts i and a denote the number of iterations and an a priori value, respectively. In this study, the shape of the ammonia mixing ratio profile follows that of the Air Force Geophysics Laboratory (AFGL) atmospheric constituent profiles (Anderson et al., 1986) from which the scaling factor for the profile was retrieved. The standard deviations of the a priori scaling factor and the measured spectra for ammonia retrievals were assumed to be 20 and 0.3 K, respectively. The ammonia profile of the AFGL profiles and the column averaging kernel for the a priori value is shown in Figure 2. The 2D plot of the averaging kernel matrix is also shown

in Fig. S1. If the retrieved scaling factor is negative, the column amount will be recognized as zero. The ammonia profile was scaled using the retrieved scaling factor and converted to a column-integrated amount.

Since temperature and water vapor profiles significantly affect the ammonia retrieval results, they should be considered appropriately. In this study, they are retrieved from the measured spectra in advance of the ammonia retrievals. The retrievals are performed sequentially according to Table 1. The a priori information of temperature and water vapor is estimated from linear temporal and spatial interpolations of the Grid Point Value (GPV) of Global Spectral Model (GSM) products provided by the Japan Meteorological Agency. The GPV (GSM) data are provided for four times per day and have a spatial resolution of 21 layers vertically and $0.5^\circ \times 0.5^\circ$ grids horizontally. The profiles of CO₂ and CH₄ were obtained from the NIES transport model (Saeki et al., 2013). In each retrieval step, the surface temperature was retrieved simultaneously. Surface emissivity was inferred from the Advanced Spaceborne Thermal Emission and Reflection Radiometer Spectral Library (Baldrige et al., 2009) for the land cover types obtained from the MODIS land cover products for each scan (Friedl et al., 2010) based on the International Geosphere-Biosphere Programme land cover classification.

3 Results

Figure 3 contains seasonal maps of the horizontal distributions of the ammonia column amounts obtained from GOSAT within $2.5^\circ \times 2.5^\circ$ grids for each season. Considerably high values were observed above several areas such as India, eastern China, and central Africa. Figure 4 shows the averaged errors within each grid. When the estimated amounts were negative, the values were excluded. The errors were approximately 0.5×10^{16} molec/cm². The high concentration areas are highlighted in Figure 5 and listed in Table 2. Figure 6 depicts the distributions of anthropogenic ammonia emissions obtained from version 2 of the Emission Database for Global Atmospheric Research–Hemispheric Transport of Air Pollution (EDGAR-HTAP; Janssens-Maenhout et al., 2012), and from GFED4.1s. Similar to Figure 3, the ammonia column amounts over land obtained from IASI are shown in Figure 7. The time period of these observations was the same as that for the GOSAT data and was from 23 April 2009 to 14 December 2014. The data were filtered to obtain data collected only during the day and in the absence of clouds. The differences between Figure 3 and Figure 7 are shown in Figure 8. The time series of the monthly averaged ammonia column amounts obtained from GOSAT and IASI for six agricultural emission areas (central U.S., Europe, central Asia, India, Southeast Asia, and eastern China) and four biomass burning areas (South America, central Africa, South Africa, and western Russia) are outlined in Table 2 and are shown in Figure 9 and Figure 10, respectively.

3.1 Ammonia hotspots and their sources

The horizontal distribution of hotspots and their seasonal variations are clearly seen in Figure 3. The values were high in the spring and summer seasons across most of the areas. The distribution of these hotspots is quite similar to those previously reported using TES (Shephard et al., 2011), IASI (Van Damme et al., 2015), and AIRS (Warner et al., 2016). The largest

values were observed in northern India. In this area, the values were high throughout the year and were more than 1.2 molec/cm² during JJA. According to these figures, anthropogenic emissions predominate in India. This area is known to be the strongest anthropogenic ammonia emission source in the world, stemming from agricultural activities, such as livestock and fertilizer applications. The high concentrations also observed in eastern China, central U.S., and Europe during MAM and JJA are similarly due to agricultural emissions. China, in particular, uses the largest amount of nitrogen fertilizers in the world (Lu and Tian, 2017), as corroborated by the correspondingly high concentrations of ammonia detected. In spite of the smaller emissions indicated by the EDGAR data, the results from GOSAT show high values in central Asia. In this area, the application of nitrogen fertilizers for cotton production has increased, in addition to the number of domesticated sheep (Huang et al., 2012). High concentrations for this area were also noted for in situ observations (Li et al., 2012) and those reported by Van Damme et al. (2014) using the IASI data and by Warner et al. (2016) using the AIRS data. Hence, the high values obtained from the GOSAT probably reflect these emissions. On the other hand, emissions from biomass burning dominate in South America, central Africa, South Africa, and western Russia as seen in GFED. Peak values were noted in central Africa during MAM and in South America and South Africa during SON. The high values noted in JJA for western Russia were a result of large-scale biomass burning that occurred during the disastrous heatwave in 2010. With the exception of central Africa, the temporal variations in these areas agreed well with those obtained from the MODIS fire count product (not shown). In central Africa, temporal variations are not consistent with the MODIS product, as is discussed in Sect. 4. Both anthropogenic and biomass burning emissions are seen in Southeast Asia inventories. The peak was observed in MAM, although only a few observations were available for JJA owing to the high cloud occurrences.

3.2 Comparison of the GOSAT and IASI L2 product

Results from GOSAT are compared with the IASI ammonia product. The horizontal distributions and seasonal variations observed for GOSAT and IASI data in Figure 3 and Figure 7 show similar patterns. Nonetheless, some differences were noted. As a whole, the values from GOSAT tend to be larger than those from IASI in Figure 8. The differences were especially large in several areas. The values from GOSAT were much higher than those from IASI in such as western Africa and southern India during JJA. On the other hand, they were smaller in the coastal area of central Africa during DJF, in northern India during JJA, and in eastern China during JJA. These differences are discussed in the next section.

In Figure 9, the peak term was short (i.e., one or two months) in India, Southeast Asia, and eastern China. On the other hand, in central U.S., Europe, and central Asia, the peak terms were relatively long, about three or four months. The temporal variation patterns in the values obtained from GOSAT and IASI were similar, although some differences in the magnitude were noted as per the results shown in Figure 8. In central U.S., the values from GOSAT and IASI were in good agreement. With the exception of 2010, GOSAT estimated higher values in the peak season over Europe. A similar trend was noted for both central Asia and Southeast Asia. The differences were especially large for central Asia. Although the peak values were not so different for India and eastern China, the GOSAT values in the bottoms were higher. In Figure 10,

the variations of peak value between each year over South America were larger than those over the other areas. In contrast, the peak values in South Africa were very similar across the years. This should be reflected in the difference in scale of biomass burning among the years. For example, only the value of August 2010 for western Russia was quite large, which is attributed to the large-scale wildfires that occurred during this period. The consistency between the results from GOSAT and IASI in these areas is higher than that observed in Figure 9. However, the largest difference was observed over central Africa. Although IASI shows peaks around March, the peak for GOSAT appeared in summer and the values from March were much smaller than those from IASI. One of the causes for these high summer values from GOSAT is probably dust aerosol contamination, as discussed in Sect. 4.

4 Discussion

The comparison between GOSAT and IASI product results showed a similarity in the spatial and temporal distributions. However, some differences larger than the level of estimated errors shown in Figure 4 were also found as noted in the previous section. The possible main causes generating differences are (1) local time of observation, (2) signal-to-noise (spectral resolution and noise level), (3) scan geometry, (4) assumed ammonia profile, and (5) cloud/aerosol screening. In the previous section, the differences between the values from GOSAT and IASI were relatively large above agricultural areas (see Figure 8 and Figure 9).

The temporal gap of (1) is probably to incur the most significant differences in the measured values. The sensitivity of the TIR measurements changes diurnally because of the diurnal thermal contrast between surface skin and air. In many cases, the surface temperature at the GOSAT measurement time is higher than that at the IASI measurement time during the daytime. As a result, the thermal contrast was larger at the GOSAT measurement. Clarisse et al. (2010) compared ammonia retrievals using both IASI and TES, which have observation times close to that of GOSAT and a higher spectral resolution than that of IASI. They reported that the thermal contrast was larger, the spectral resolution was higher, and the sensitivity to the lower level was higher. Therefore, GOSAT should be more sensitive to the lower atmospheric levels where, in many cases, the concentration of ammonia is generally higher than that in the high levels as compared to IASI. This can explain the differences are smaller or in opposite in the summer. **The fact that the differences are smaller at high latitudes also supports the large contribution of thermal contrast differences.** In addition, the anthropogenic ammonia emissions should be temporally variable. There is about 3.5 h gap between GOSAT and IASI observations. Several studies have investigated the diurnal variations in atmospheric ammonia concentrations near the surface. According to these studies, the variations are especially large over agricultural areas during the summer season, with patterns differing for each location (e.g., Erisman et al., 2001, Meng et al., 2011, Sharma et al., 2014, Wang et al., 2015). These reports estimated that the variations fluctuate along with the temporal variations in human activities, such as fertilization and traffic. **However, the differences caused by diurnal cycles of ammonia should be larger during summer. Therefore, the contribution from this seems to be smaller than that from the thermal contrast.**

Cause (2) is related to the detection limits of the instruments used. The spectral resolution of GOSAT is higher than that of IASI, AIRS, and CrIS, which have fine coverage. Because fine spectral resolution provides a stronger signal in the spectra, it provides a high signal-to-noise. Moreover, high spectral resolution can reduce the contaminations from interfering species, such as water vapor, by channel selection. The maximum signal is approximately 0.04 K or 0.05 K for a spectral resolution of 0.5 or 0.6, which corresponds to AIRS, IASI, and CrIS. On the other hand, it is approximately 0.1 K for a resolution of 0.2, which corresponds to GOSAT (Fig. S3). This indicates that the signal of ammonia in the GOSAT spectra is approximately twice as strong as those in the other sounders. In Sect. 2.1, we assumed a spectral noise of 0.3 K. If the relation between the signal and the ammonia concentration is linear, then the ammonia column amount corresponding to this is approximately 1.4×10^{16} molec/cm². This value is considerably higher than the minimum values seen in the previous figures. Based on these figures, the lower limit of GOSAT retrieval seems to be approximately 0.2×10^{16} – 0.4×10^{16} molec/cm². This corresponds to a value lower than 0.1 K in the spectra. Although our assumption of spectral noise is based on Kataoka et al. (2013), the reported values not only include random noise but also spectral biases. Therefore, our results imply that the random noise of the GOSAT spectral region used in the ammonia retrieval is approximately 0.1 K.

Over smaller and more scattered agricultural areas as compared to hotspots, such as those noted for Europe, (3) likely also contributes to the differences noted in Figure 9.

Cause (4) possibly affects the column integration of ammonia amounts. In this study, the ammonia profile shape is assumed to be that of the AFGL profiles. However, the vertical gradients of the concentrations can be considerably larger in source regions and considerably smaller in clear air. On the other hand, IASI retrieval uses a priori profiles from the model calculations, and these vertical gradients are larger than those of the AFGL profile. Although differences between the profile shapes of GOSAT and IASI are equally present across the globe, the magnitude of relations between the estimated values vary for each area. This suggests that this effect is not so apparent in the other causes.

In Figure 8 and Figure 10, the largest differences were observed over central Africa. The time series from GOSAT has two peaks around March and July. The peaks in March are consistent with those observed by Whitburn et al. (2015), who reported that these peaks, observed from the IASI product, were related to biomass burning at the end of the boreal winter in this area. In another study, Hickman et al. (2018) reported that the high concentrations of NH₃ in March and April observed by IASI are related to the soil moisture. In this study, the dusty scenes were eliminated by the CO₂ slicing technique that uses the TIR region in addition to CAI cloud screening as mentioned Sect. 2 because it is very hard to detect dust aerosols over desert surfaces using only a visible imager. If the CO₂ slicing is not used for the screening, large apparent ammonia column amounts are calculated over the Saharan desert in JJA, where no emission sources are present, as a result of the frequent dust storms that occur in this region. However, the dusty scenes are not completely eliminated by this technique. Figure S2 shows an example of the observed spectra from which a high ammonia value was retrieved in the Sahara. The spectra are V shaped, which are spectral characteristics of dusty conditions. Therefore, a part of the high values in northwestern Africa during JJA were likely caused by dust contamination. However, further investigation is needed because the composition of dust and its impact are quite complicated. Moreover, other error sources such as surface emissivity and humidity also exist. On the other

hand, the high values obtained by GOSAT over central Africa in the boreal spring and summer may not only result from these contaminations. The seasonal variations observed by AIRS and reported by Warner et al. (2016) showed similarly high concentrations in central Africa during MAM and JJA. This area is characterized by a number of distributed surface types whose temporal patterns of ammonia concentrations are different for each. Figure 11 shows the monthly variations in ammonia column amounts over six surface types, derived from GOSAT. Peaks over forests or woody savannas were observed in February or March, similar to the IASI observations. In contrast, peaks were noted in the boreal summer over open shrublands, grasslands, and croplands. Adon et al. (2010) reported that the peaks in atmospheric ammonia concentrations are more commonly detected during the wet season (boreal summer) over dry savannas, whereas those detected during the dry season (boreal winter) were found over wet savannas and forests. Herein, grasslands are included in the dry savanna categorization as per Adon et al. (2010), and the observed patterns in Figure 11 are consistent with this report. Therefore, the peaks in the boreal summer observed by GOSAT might be a result of the high concentrations over surfaces such as grasslands and open shrublands. Further studies are required to investigate the source, sink, and concentration patterns and to understand the dynamics of ammonia in this area.

5 Summary

Ammonia column amounts were retrieved using the thermal infrared spectra obtained from GOSAT for a period of approximately five years. The optimal estimation, which iteratively minimize the difference between the calculated and the observed spectra, was used for analysis. Temperature and water vapor profiles were also retrieved sequentially in order to reduce retrieval errors. The gridded horizontal distributions of atmospheric ammonia column amount for each season (DJF, MAM, JJA, and SON) were shown. Significantly large ammonia column amounts were noted in central U.S., South America, Europe, central Africa, South Africa, western Russia, central Asia, India, Southeast Asia, and eastern China. These distributions are similar to those previously reported using the other sounders. The areas categorized as anthropogenic and biomass burning emission source regions, based on inventories and characteristics, were investigated. The hotspots noted in the data were consistent with those from the inventories. However, high values were detected in central Asia in spite of the lower inventoried emissions. These high values likely resulted from the application of fertilizers for cotton production, as reported by in situ observations. The regional time series of the concentrations in those areas clearly detect the high and low seasons. A comparison with the IASI ammonia product showed a good agreement horizontally and temporally, although there were some differences in the details. The values obtained from the GOSAT data tend to be large relative to the background level of concentrations in the spring and summer. Differences are especially large in areas and during seasons with heavy fertilizer application. The main cause of these differences seems to be temporal gaps in the observations, especially caused by the thermal contrast between surface skin and air. In the biomass burning emission areas, the consistency is relatively high. The largest differences were noted in central Africa. These differences may stem from the

contaminations such as dust aerosols and the variation in seasonal patterns over various surface types. **However, further investigation of these differences is needed because the contaminations are complicated in this area.**

In a recent paper, it was reported that the use of nitrogen fertilizers has been increasing (Lu and Tian, 2017) and that this trend will continue with the growth of the human population. Hence, it is urgent to continue monitoring global atmospheric ammonia in order to understand its influence on the environment. The same analysis will be applicable to data from GOSAT-2, which was launched in October 2018. This will lead to the construction of a long-term ammonia database. In addition, GOSAT-2 will be able to observe CO₂, CH₄, and CO simultaneously with ammonia. This combination of observed products is useful for better understanding the role of specific phenomena, such as biomass burning and agricultural activities.

10 Acknowledgements

This work was supported by JSPS KAKENHI Grant number 17K17670 and the program of JAXA (JX-PSPC-455165). The computational resources were partly provided by NIES-RCF2. **The IASI-NH₃ products were accessed in August 2019 from <http://cds-espri.ipsl.fr/etherTypo/index.php?id=1700&L=1>**

References

- 15 Aardenne, J. A. van, Dentener, F. J., Olivier, J. G. J., Goldewijk, C. G. M. and Lelieveld, J.: A 1 × 1 resolution data set of historical anthropogenic trace gas emissions for the period 1890–1990, *Global Biogeochem. Cycles*, 15(4), 909–928, 2001.
- Adon, M., Galy-Lacaux, C., Yoboué, V., Delon, C., Lacaux, J. P., Castera, P., Gardrat, E., Pienaar, J., Ourabi, H. Al and Laouali, D.: Long term measurements of sulfur dioxide, nitrogen dioxide, ammonia, nitric acid and ozone in Africa using passive samplers, *Atmos. Chem. Phys.*, 10(15), 7467–7487, 2010.
- 20 Akagi, S. K., Yokelson, R. J., Wiedinmyer, C., Alvarado, M. J., Reid, J. S., Karl, T., Crounse, J. D. and Wennberg, P. O.: Emission factors for open and domestic biomass burning for use in atmospheric models, *Atmos. Chem. Phys.*, 11(9), 4039–4072, 2011.
- Anderson, G. P., Clough, S. A., Kneizys, F. X., Chetwynd, J. H. and Shettle, E. P.: AFGL Atmospheric Constituent Profiles (0.120km)., 1986.
- 25 Baldridge, A. M., Hook, S. J., Grove, C. I. and Rivera, G.: The ASTER spectral library version 2.0, *Remote Sens. Environ.*, 113(4), 711–715, doi:10.1016/j.rse.2008.11.007, 2009.
- Beer, R., Shephard, M. W., Kulawik, S. S., Clough, S. A., Eldering, A., Bowman, K. W., Sander, S. P., Fisher, B. M., Payne, V. H. and Luo, M.: First satellite observations of lower tropospheric ammonia and methanol, *Geophys. Res. Lett.*, 35(9), 2008.

- Behera, S. N., Sharma, M., Aneja, V. P. and Balasubramanian, R.: Ammonia in the atmosphere: a review on emission sources, atmospheric chemistry and deposition on terrestrial bodies, *Environ. Sci. Pollut. Res.*, 20(11), 8092–8131, 2013.
- Clarisse, L., Clerbaux, C., Dentener, F., Hurtmans, D. and Coheur, P.-F.: Global ammonia distribution derived from infrared satellite observations, *Nat. Geosci.*, 2(7), 479–483, 2009.
- 5 Clarisse, L., Shephard, M. W., Dentener, F., Hurtmans, D., Cady-Pereira, K., Karagulian, F., Van Damme, M., Clerbaux, C. and Coheur, P.: Satellite monitoring of ammonia: A case study of the San Joaquin Valley, *J. Geophys. Res. Atmos.*, 115(D13), 2010.
- Clough, S. A., Shephard, M. W., Mlawer, E., Delamere, J. S., Iacono, M., Cady-Pereira, K., Boukabara, S. and Brown, P. D.: Atmospheric radiative transfer modeling: a summary of the AER codes, *J. Quant. Spectrosc. Radiat. Transf.*, 91(2), 233–244, doi:10.1016/j.jqsrt.2004.05.058, 2005.
- 10 Van Damme, M., Clarisse, L., Heald, C. L., Hurtmans, D., Ngadi, Y., Clerbaux, C., Dolman, A. J., Erisman, J. W. and Coheur, P.-F.: Global distributions, time series and error characterization of atmospheric ammonia (NH₃) from IASI satellite observations, *Atmos. Chem. Phys.*, 14(6), 2905–2922, 2014.
- Van Damme, M., Erisman, J. W., Clarisse, L., Dammers, E., Whitburn, S., Clerbaux, C., Dolman, A. J. and Coheur, P.: Worldwide spatiotemporal atmospheric ammonia (NH₃) columns variability revealed by satellite, *Geophys. Res. Lett.*, 42(20), 8660–8668, 2015.
- 15 Van Damme, M., Whitburn, S., Clarisse, L., Clerbaux, C., Hurtmans, D. and Coheur, P. F.: Version 2 of the IASI NH₃ neural network retrieval algorithm: near-real-time and reanalysed datasets, *Atmos. Meas. Tech.*, 10(12), 4905–4914, doi:10.5194/amt-10-4905-2017, 2017.
- 20 Dammers, E., Palm, M., Van Damme, M., Vigouroux, C., Smale, D., Conway, S., Toon, G. C., Jones, N., Nussbaumer, E., Warneke, T., Petri, C., Clarisse, L., Clerbaux, C., Hermans, C., Lutsch, E., Strong, K., Hannigan, J. W., Nakajima, H., Morino, I., Herrera, B., Stremme, W., Grutter, M., Schaap, M., Wichink Kruit, R. J., Notholt, J., Coheur, P. F. and Erisman, J. W.: An evaluation of IASI-NH₃ with ground-based Fourier transform infrared spectroscopy measurements, *Atmos. Chem. Phys.*, 16(16), 10351–10368, doi:10.5194/acp-16-10351-2016, 2016.
- 25 Erisman, J. W., Otjes, R., Hensen, A., Jongejan, P., van den Bulk, P., Khlystov, A., Möls, H. and Slanina, S.: Instrument development and application in studies and monitoring of ambient ammonia, *Atmos. Environ.*, 35(11), 1913–1922, 2001.
- Friedl, M. A., Sulla-Menashe, D., Tan, B., Schneider, A., Ramankutty, N., Sibley, A. and Huang, X.: MODIS Collection 5 global land cover: Algorithm refinements and characterization of new datasets, *Remote Sens. Environ.*, 114(1), 168–182, 2010.
- 30 Galloway, J. N., Dentener, F. J., Capone, D. G., Boyer, E. W., Howarth, R. W., Seitzinger, S. P., Asner, G. P., Cleveland, C. C., Green, P. A. and Holland, E. A.: Nitrogen cycles: past, present, and future, *Biogeochemistry*, 70(2), 153–226, 2004.
- Giglio, L., Randerson, J. T. and Werf, G. R.: Analysis of daily, monthly, and annual burned area using the fourth-generation global fire emissions database (GFED4), *J. Geophys. Res. Biogeosciences*, 118(1), 317–328, 2013.

- Hickman, J. E., Dammers, E., Galy-Lacaux, C. and van der Werf, G. R.: Satellite evidence of substantial rain-induced soil emissions of ammonia across the Sahel, *Atmos. Chem. Phys.*, doi:10.5194/acp-18-16713-2018, 2018.
- Huang, X., Song, Y., Li, M., Li, J., Huo, Q., Cai, X., Zhu, T., Hu, M. and Zhang, H.: A high-resolution ammonia emission inventory in China, *Global Biogeochem. Cycles*, 26(1), 2012.
- 5 Ishida, H. and Nakajima, T. Y.: Development of an unbiased cloud detection algorithm for a spaceborne multispectral imager, *J. Geophys. Res.*, 114, doi:10.1029/2008jd010710, 2009.
- Janssens-Maenhout, G., Dentener, F., Van Aardenne, J., Monni, S., Pagliari, V., Orlandini, L., Klimont, Z., Kurokawa, J., Akimoto, H. and Ohara, T.: EDGAR-HTAP: a harmonized gridded air pollution emission dataset based on national inventories, *Eur. Comm. Jt. Res. Cent. Inst. Environ. Sustain. JRC 68434 UR 25229 EUR 25229*, ISBN 978-92-79-23123-0, 10 2012.
- Kataoka, F., Knuteson, R. O., Kuze, A., Suto, H., Shiomi, K., Harada, M., Garms, E. M., Roman, J. A., Tobin, D. C., Taylor, J. K., Revercomb, T. H., Sekio, N., Higuchi, R. and Mitomi, Y.: TIR Spectral Radiance Calibration of the GOSAT Satellite Borne TANSO-FTS With the Aircraft-Based S-HIS and the Ground-Based S-AERI at the Railroad Valley Desert Playa, *IEEE Trans. Geosci. Remote Sens.*, 52(1), 89–105, doi:10.1109/TGRS.2012.2236561, 2013.
- 15 Kuze, A., Suto, H., Nakajima, M. and Hamazaki, T.: Thermal and near infrared sensor for carbon observation Fourier-transform spectrometer on the Greenhouse Gases Observing Satellite for greenhouse gases monitoring, *Appl. Opt.*, 48(35), 6716–6733, doi:10.1364/ao.48.006716, 2009.
- Kuze, A., Suto, H., Shiomi, K., Urabe, T., Nakajima, M., Yoshida, J., Kawashima, T., Yamamoto, Y., Kataoka, F. and Buijs, H.: Level 1 algorithms for TANSO on GOSAT: processing and on-orbit calibrations, *Atmos. Meas. Tech.*, 5(10), 2447–2467, 20 2012.
- Kuze, A., Suto, H., Shiomi, K., Kawakami, S., Tanaka, M., Ueda, Y., Deguchi, A., Yoshida, J., Yamamoto, Y., Kataoka, F., Taylor, T. E. and Buijs, H. L.: Update on GOSAT TANSO-FTS performance, operations, and data products after more than 6 years in space, *Atmos. Meas. Tech.*, 9(6), 2445–2461, doi:10.5194/amt-9-2445-2016, 2016.
- Li, K. H., Song, W., Liu, X. J., Shen, J. L., Luo, X. S., Sui, X. Q., Liu, B., Hu, Y. K., Christie, P. and Tian, C. Y.: 25 Atmospheric reactive nitrogen concentrations at ten sites with contrasting land use in an arid region of central Asia, *Biogeosciences*, 9(10), 4013–4021, doi:10.5194/bg-9-4013-2012, 2012.
- Lu, C. and Tian, H.: Global nitrogen and phosphorus fertilizer use for agriculture production in the past half century: shifted hot spots and nutrient imbalance, *Earth Syst. Sci. Data*, 9(1), 181–192, doi:10.5194/essd-9-181-2017, 2017.
- Meng, Z. Y., Lin, W. L., Jiang, X. M., Yan, P., Wang, Y., Zhang, Y. M., Jia, X. F. and Yu, X. L.: Characteristics of 30 atmospheric ammonia over Beijing, China, *Atmos. Chem. Phys.*, 11(12), 6139–6151, doi:10.5194/acp-11-6139-2011, 2011.
- Randerson J.T., G. R. van der W. L. G. G. J. C. and Kasibhatla, P. S.: Global Fire Emissions Database, Version 4.1 (GFEDv4), 2017.
- Rodgers, C. D.: Inverse methods for atmospheric sounding: theory and practice, World scientific., 2000.

- Rothman, L. S., Gordon, I. E., Babikov, Y., Barbe, A., Chris Benner, D., Bernath, P. F., Birk, M., Bizzocchi, L., Boudon, V., Brown, L. R., Campargue, A., Chance, K., Cohen, E. A., Coudert, L. H., Devi, V. M., Drouin, B. J., Fayt, A., Flaud, J.-M., Gamache, R. R., Harrison, J. J., Hartmann, J.-M., Hill, C., Hodges, J. T., Jacquemart, D., Jolly, A., Lamouroux, J., Le Roy, R. J., Li, G., Long, D. A., Lyulin, O. M., Mackie, C. J., Massie, S. T., Mikhailenko, S., Müller, H. S. P., Naumenko, O. V., Nikitin, A. V., Orphal, J., Perevalov, V., Perrin, A., Polovtseva, E. R., Richard, C., Smith, M. A. H., Starikova, E., Sung, K., Tashkun, S., Tennyson, J., Toon, G. C., Tyuterev, V. G. and Wagner, G.: The HITRAN2012 molecular spectroscopic database, *J. Quant. Spectrosc. Radiat. Transf.*, 130, 4–50, doi:10.1016/J.JQSRT.2013.07.002, 2013.
- Saeki, T., Saito, R., Belikov, D. and Maksyutov, S.: Global high-resolution simulations of CO₂ and CH₄ using a NIES transport model to produce a priori concentrations for use in satellite data retrievals, *Geosci. Model Dev.*, 6(1), 81–100, 2013.
- 5 Saitoh, N., Imasu, R., Ota, Y. and Niwa, Y.: CO₂ retrieval algorithm for the thermal infrared spectra of the Greenhouse Gases Observing Satellite: Potential of retrieving CO₂ vertical profile from high-resolution FTS sensor, *J. Geophys. Res.*, 114, doi:10.1029/2008jd011500, 2009.
- Saitoh, N., Kimoto, S., Sugimura, R., Imasu, R., Kawakami, S., Shiomi, K., Kuze, A., Machida, T., Sawa, Y. and Matsueda, H.: Algorithm update of the GOSAT/TANSO-FTS thermal infrared CO₂ product (version 1) and validation of the UTLS
- 15 CO₂ data using CONTRAIL measurements, *Atmos. Meas. Tech.*, 9(5), 2119–2134, doi:10.5194/amt-9-2119-2016, 2016.
- Seinfeld, J. H. and Pandis, S. N.: Atmospheric chemistry and physics: from air pollution to climate change, John Wiley & Sons., 2016.
- Sharma, S. K., Kumar, M., Rohtash, Gupta, N. C., Saraswati, Saxena, M. and Mandal, T. K.: Characteristics of ambient ammonia over Delhi, India, *Meteorol. Atmos. Phys.*, 124(1), 67–82, doi:10.1007/s00703-013-0299-8, 2014.
- 20 Shephard, M. W. and Cady-Pereira, K. E.: Cross-track Infrared Sounder (CrIS) satellite observations of tropospheric ammonia, *Atmos. Meas. Tech.*, 8(3), 1323–1336, doi:10.5194/amt-8-1323-2015, 2015.
- Shephard, M. W., Cady-Pereira, K. E., Luo, M., Henze, D. K., Pinder, R. W., Walker, J. T., Rinsland, C. P., Bash, J. O., Zhu, L. and Payne, V. H.: TES ammonia retrieval strategy and global observations of the spatial and seasonal variability of ammonia, *Atmos. Chem. Phys.*, 11(20), 10743–10763, 2011.
- 25 Someya, Y., Imasu, R., Saitoh, N., Ota, Y. and Shiomi, K.: A development of cloud top height retrieval using thermal infrared spectra observed with GOSAT and comparison with CALIPSO data, *Atmos. Meas. Tech.*, 9(5), doi:10.5194/amt-9-1981-2016, 2016.
- Wang, S., Nan, J., Shi, C., Fu, Q., Gao, S., Wang, D., Cui, H., Saiz-Lopez, A. and Zhou, B.: Atmospheric ammonia and its impacts on regional air quality over the megacity of Shanghai, China, *Sci. Rep.*, 5, 2015.
- 30 Warner, J. X., Wei, Z., Strow, L. L., Dickerson, R. R. and Nowak, J. B.: The global tropospheric ammonia distribution as seen in the 13-year AIRS measurement record, *Atmos. Chem. Phys.*, 16(8), 5467–5479, doi:10.5194/acp-16-5467-2016, 2016.
- Warner, J. X., Dickerson, R. R., Wei, Z., Strow, L. L., Wang, Y. and Liang, Q.: Increased atmospheric ammonia over the world’s major agricultural areas detected from space, *Geophys. Res. Lett.*, 44(6), 2875–2884, 2017.

Whitburn, S., Van Damme, M., Kaiser, J. W., Van Der Werf, G. R., Turquety, S., Hurtmans, D., Clarisse, L., Clerbaux, C. and Coheur, P.-F.: Ammonia emissions in tropical biomass burning regions: Comparison between satellite-derived emissions and bottom-up fire inventories, *Atmos. Environ.*, 121, 42–54, 2015.

Yoshida, Y., Ota, Y., Eguchi, N., Kikuchi, N., Nobuta, K., Tran, H., Morino, I. and Yokota, T.: Retrieval algorithm for CO₂ and CH₄ column abundances from short-wavelength infrared spectral observations by the Greenhouse gases observing satellite, *Atmos. Meas. Tech.*, 4(4), 717–734, doi:10.5194/amt-4-717-2011, 2011.

Yoshida, Y., Kikuchi, N., Morino, I., Uchino, O., Oshchepkov, S., Bril, A., Saeki, T., Schutgens, N., Toon, G. C., Wunch, D., Roehl, C. M., Wennberg, P. O., Griffith, D. W. T., Deutscher, N. M., Warneke, T., Notholt, J., Robinson, J., Sherlock, V., Connor, B., Rettinger, M., Sussmann, R., Ahonen, P., Heikkinen, P., Kyro, E., Mendonca, J., Strong, K., Hase, F., Dohe, S. and Yokota, T.: Improvement of the retrieval algorithm for GOSAT SWIR XCO₂ and XCH₄ and their validation using TCCON data, *Atmos. Meas. Tech.*, 6(6), 1533–1547, doi:10.5194/amt-6-1533-2013, 2013.

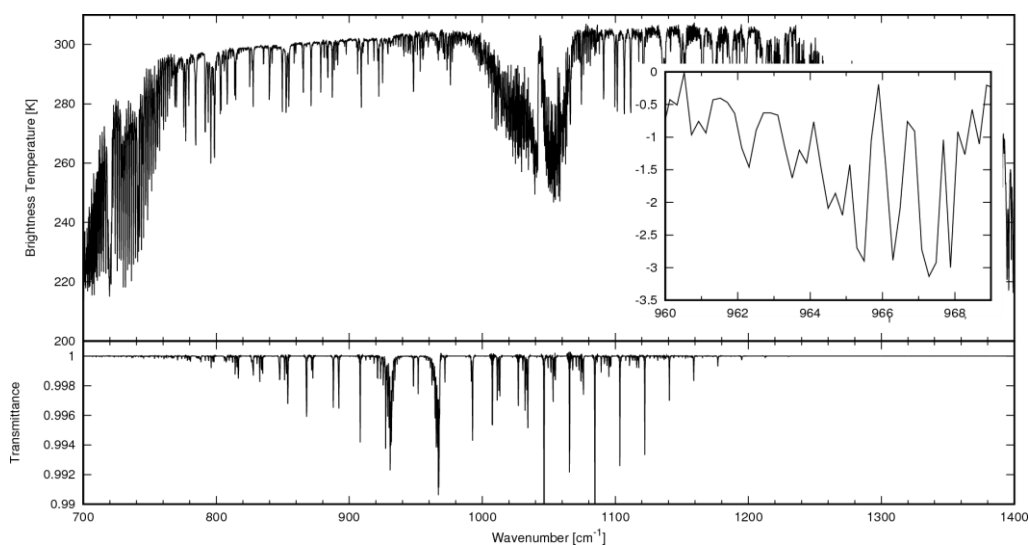


Figure 1: Observed spectra by the GOSAT at (75.85°E, 29.80°N) on 15 July 2013 (top), the residuals between the observed spectra and the one calculated without NH₃ (right inside), and NH₃ transmittance using the AFGL profile (bottom).

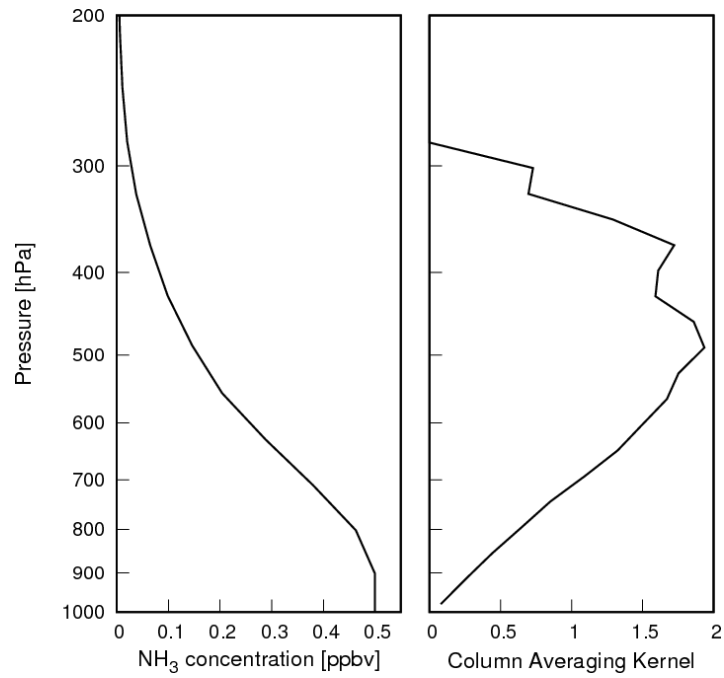


Figure 2: Ammonia concentration of the AFGL profiles (left) and the column averaging kernel for the a priori ammonia profile using mid-latitude summer atmosphere (right).

5

Table 1: Wavenumber range and a priori information used in the retrieval steps.

Retrieved parameter	Wavenumber range (cm^{-1})	A priori
Temperature	720–780	GPV (GSM)
Water vapor	1,205–1,245	GPV (GSM)
Ammonia profile	960–969	AFGL profile

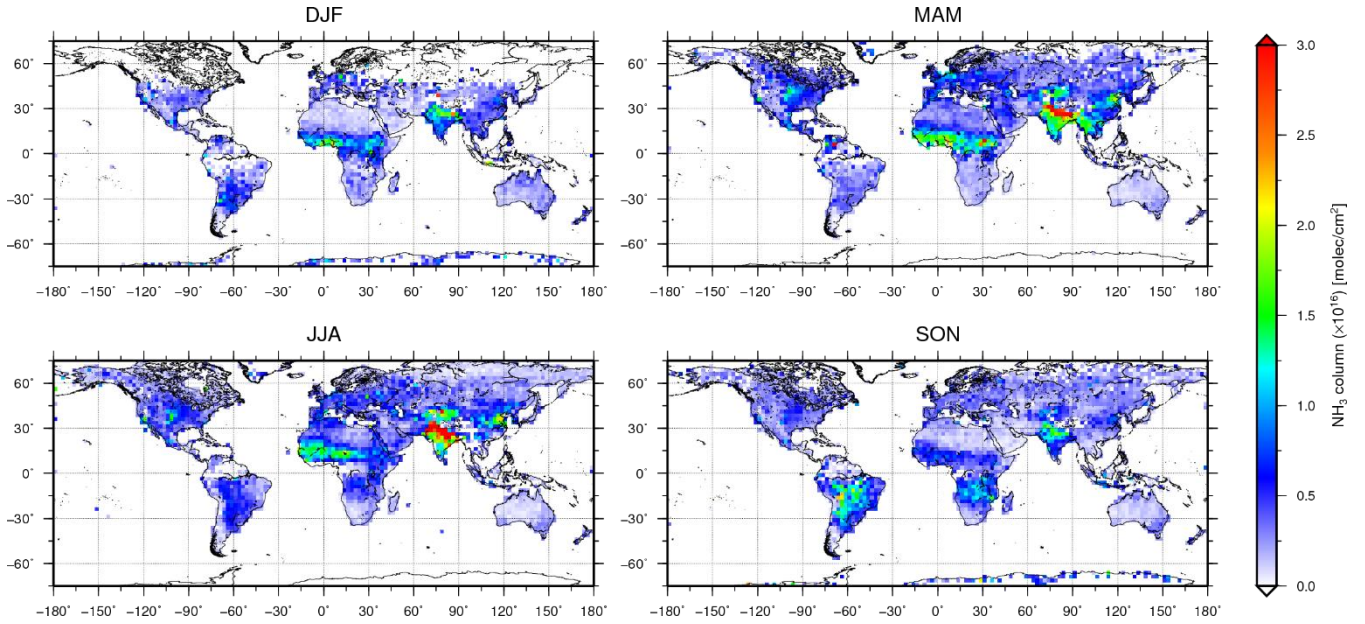


Figure 3: Horizontal distributions of ammonia column amounts for each season: December through February (DJF); March through May (MAM); June through August (JJA); and September through November (SON); as retrieved from the GOSAT over $2.5^\circ \times 2.5^\circ$ grids averaged from April 2009 to May 2014.

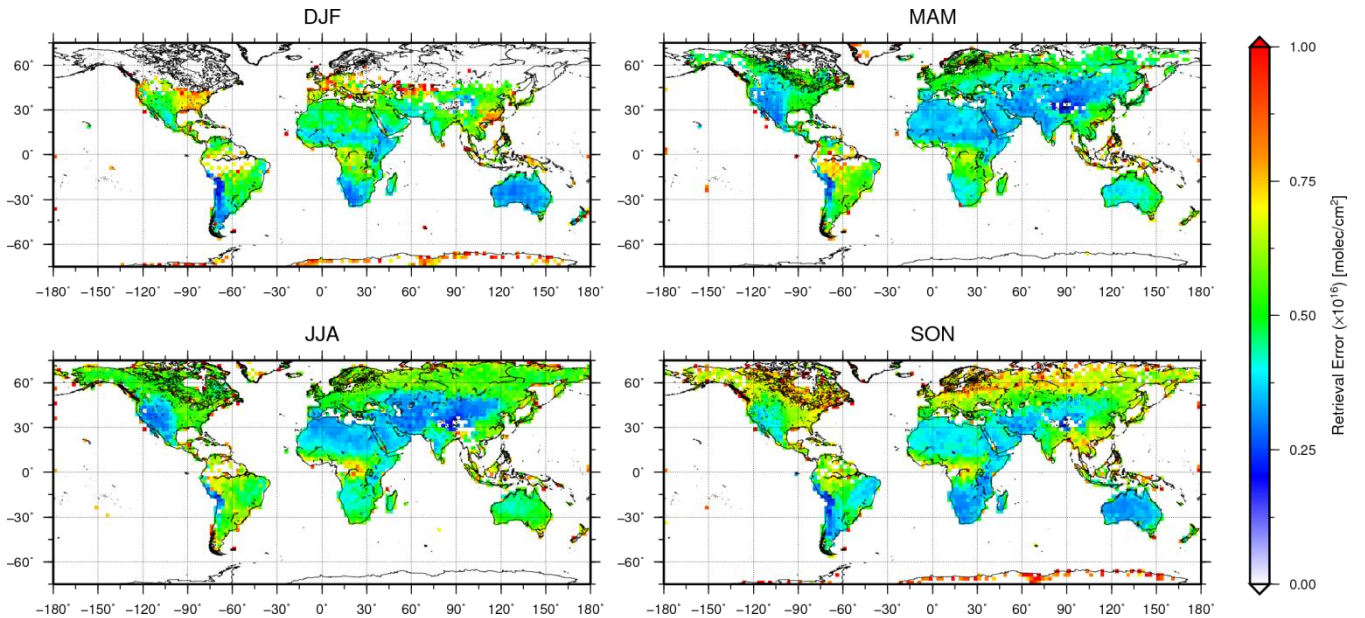


Figure 4 Same as Figure 3 but for averaged errors.

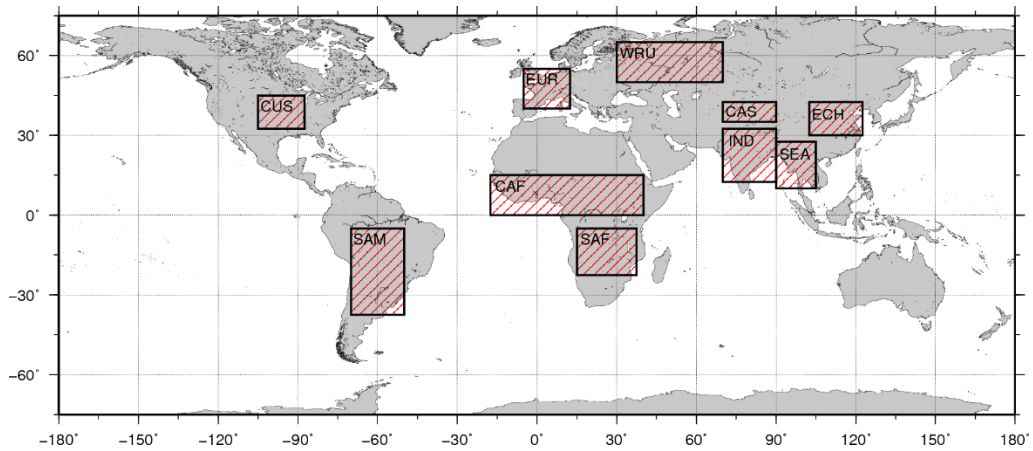


Figure 5: Distribution of areas with high ammonia concentrations obtained from the GOSAT.

5

Table 2: List of areas indicated in Figure 5 and their locations.

Area	Location
Central U.S. (CUS)	(32.5°N–45°N, 105°W–87.5°W)
South America (SAM)	(37.5°S–5°S, 70°W–50°W)
Europe (EUR)	(40°N–55°N, 5°W–12.5°E)
Central Africa (CAF)	(0°–15°N, 17.5°W–40°E)
South Africa (SAF)	(22.5°S–5°S, 15°E–37.5°E)
Western Russia (WRU)	(50°N–65°N, 30°E–70°E)
Central Asia (CAS)	(35°N–42.5°N, 70°E–90°E)
India (IND)	(12.5°N–32.5°N, 70°E–90°E)
Southeast Asia (SEA)	(10°N–27.5°N, 90°E–105°E)
Eastern China (ECH)	(30°N–42.5°N, 102.5°E–122.5°E)

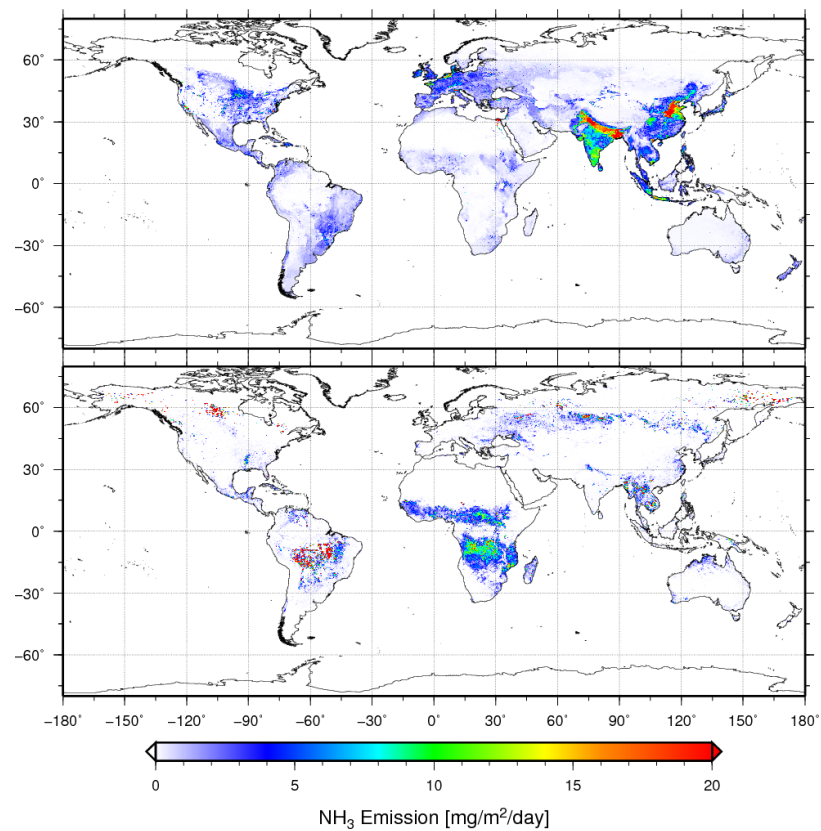


Figure 6: Anthropogenic ammonia emissions in 2010 obtained from EDGAR-HTAP v2 (top) and the biomass burning emissions from GFED4.1s (bottom).

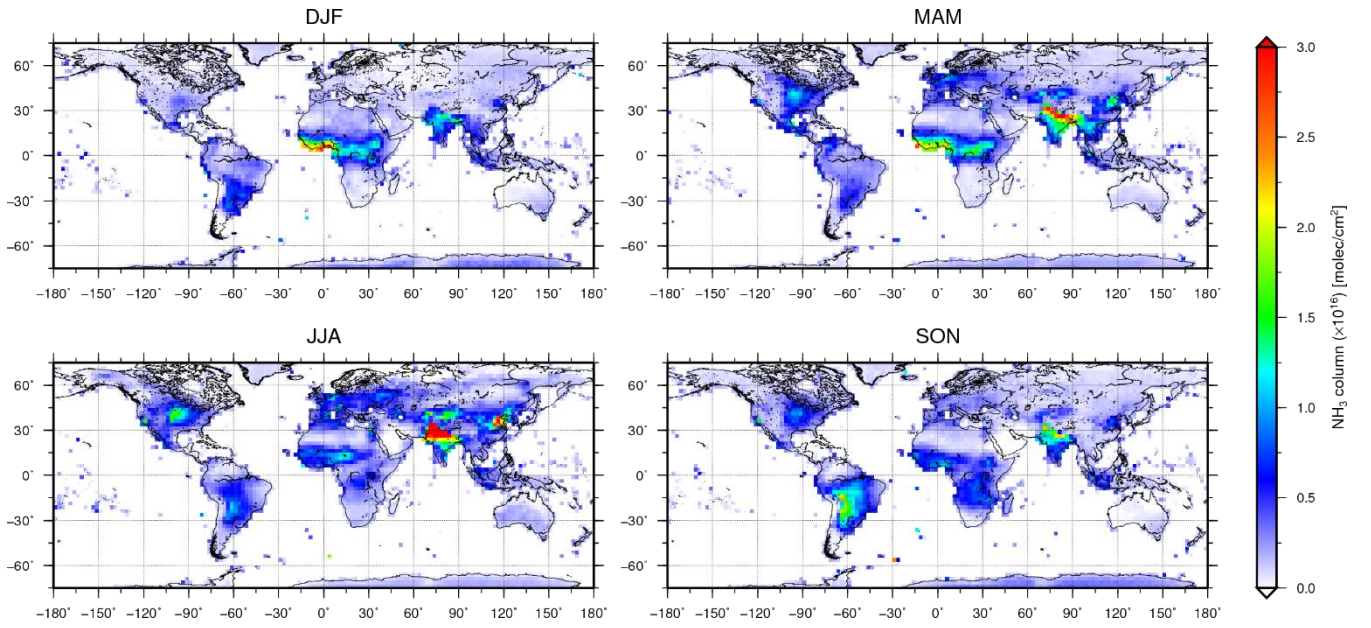


Figure 7: Same as Figure 3, but for the IASI measurements.

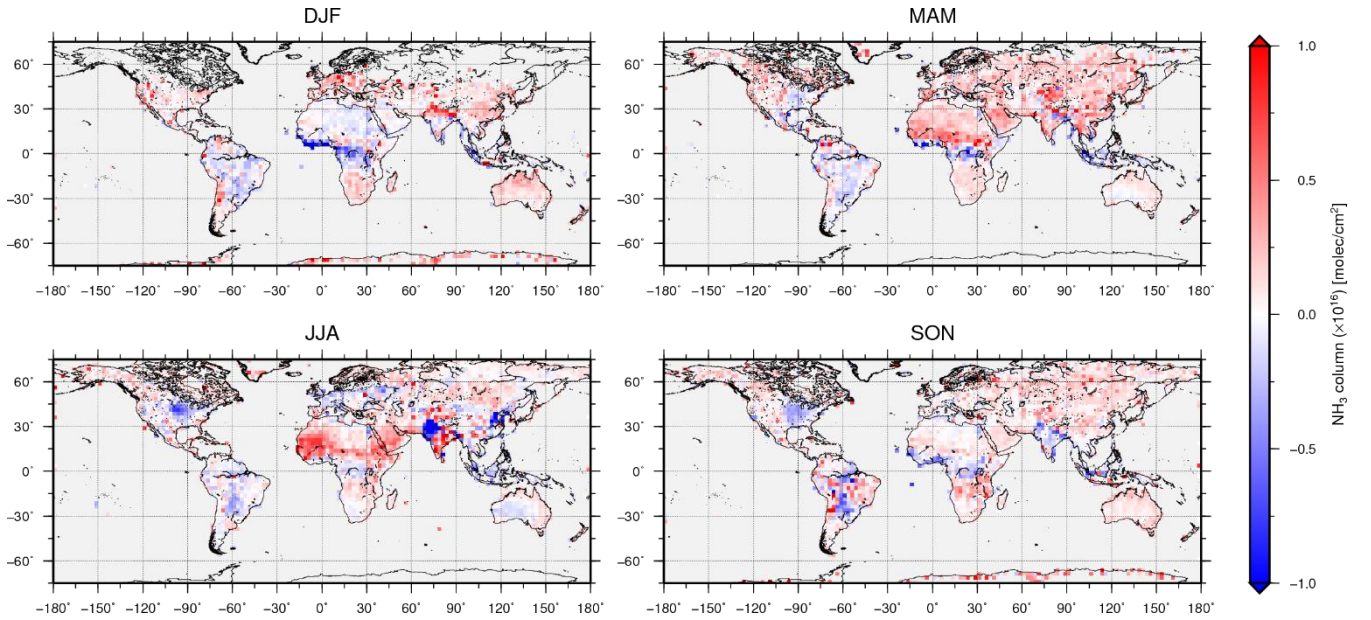


Figure 8: Same as Figure 3, but for the difference between the GOSAT and the IASI ammonia column amounts. The red color indicates that the GOSAT data is higher than that from the IASI.

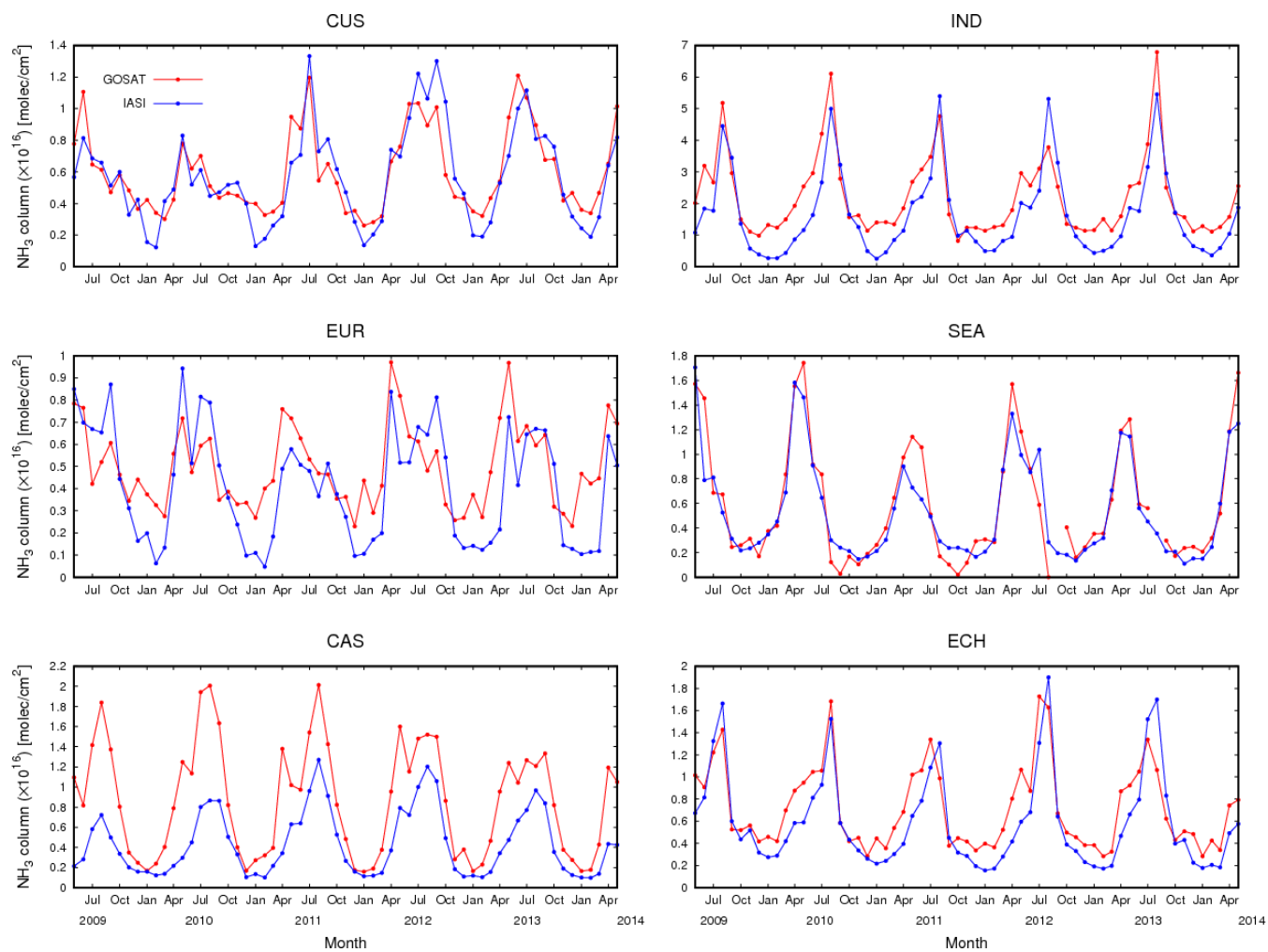


Figure 9: Time series of the monthly averaged ammonia column amounts from the GOSAT (red) and IASI (blue) from May 2009 to May 2014 in the agricultural emission areas noted in Table 2.

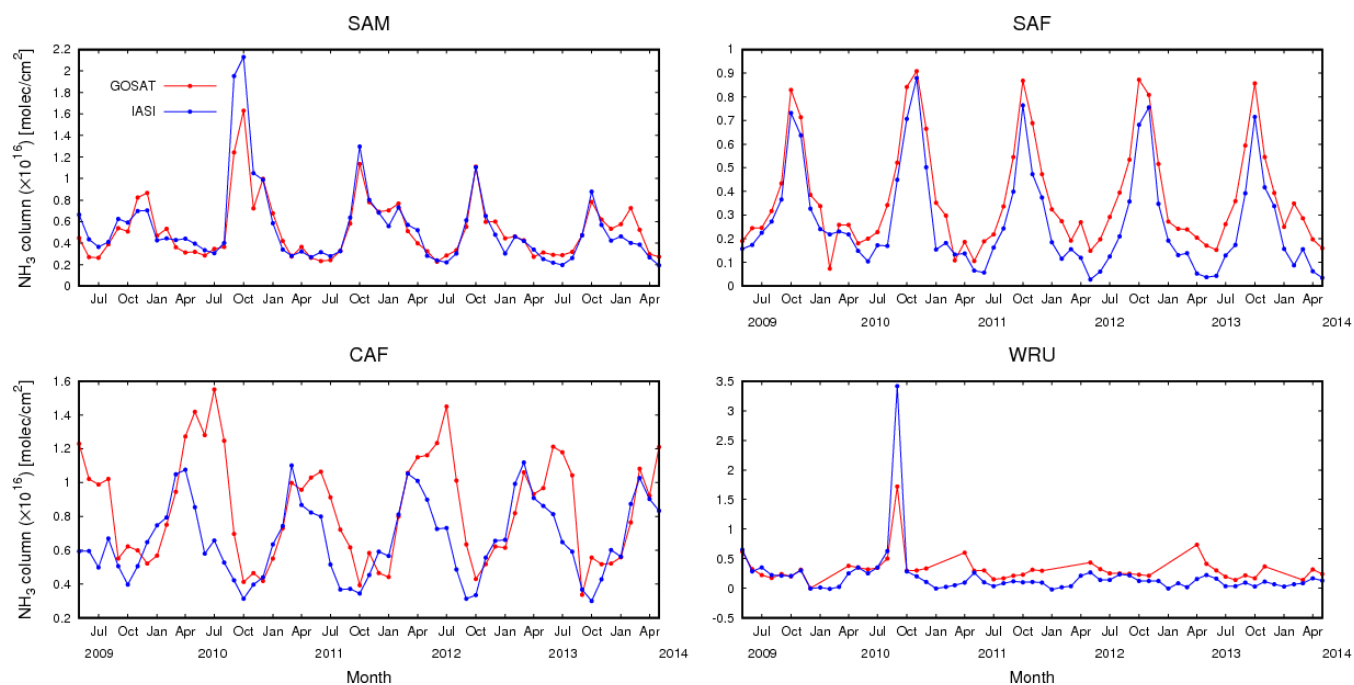
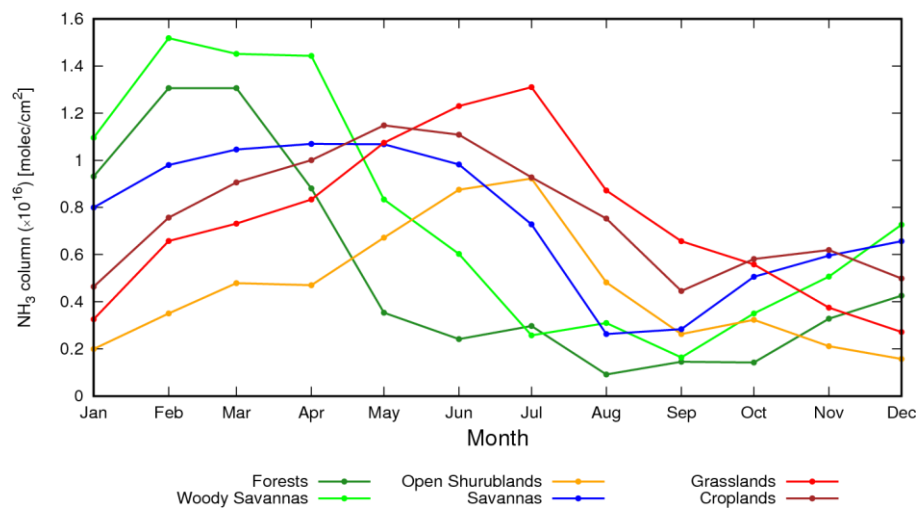


Figure 10: Same as Figure 9, but for the biomass burning areas.



5 **Figure 11.** Monthly variations of ammonia column amount from the GOSAT for the study period over forests, woody savannas, open shrublands, savannas, grasslands, and croplands classified by the MODIS product in CAF.

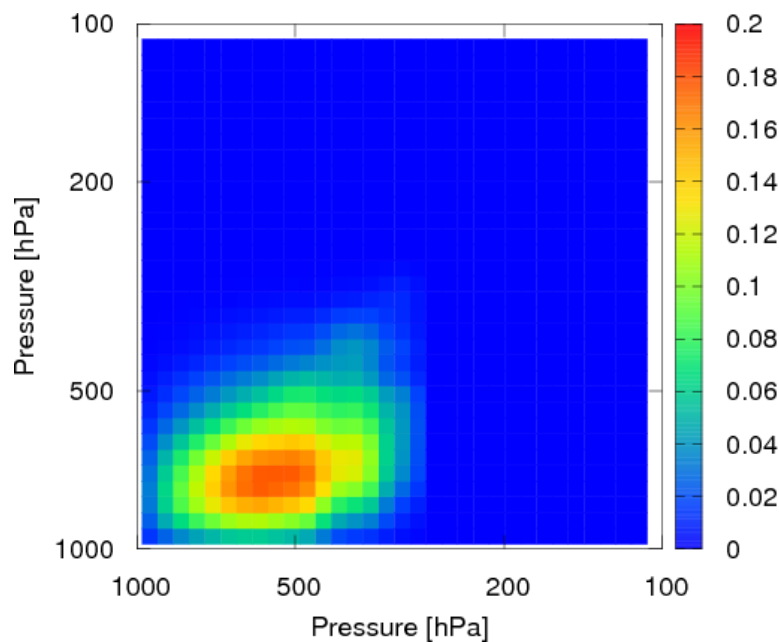


Figure S1. An example of the averaging kernel matrix of the ammonia profile retrieval using the AFGL ammonia profile and mid-latitude summer atmosphere.

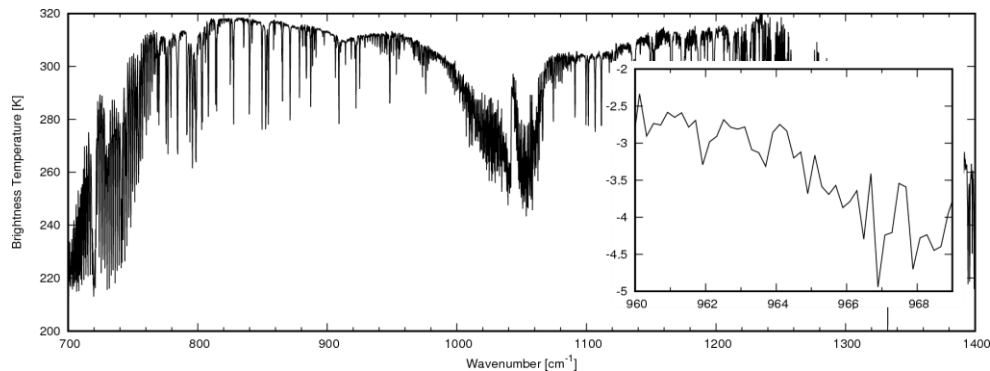


Figure S2. An example of the observed spectra by the GOSAT affected by dust aerosols at (0.86°E, 29.17°N) on 22 July 2010.

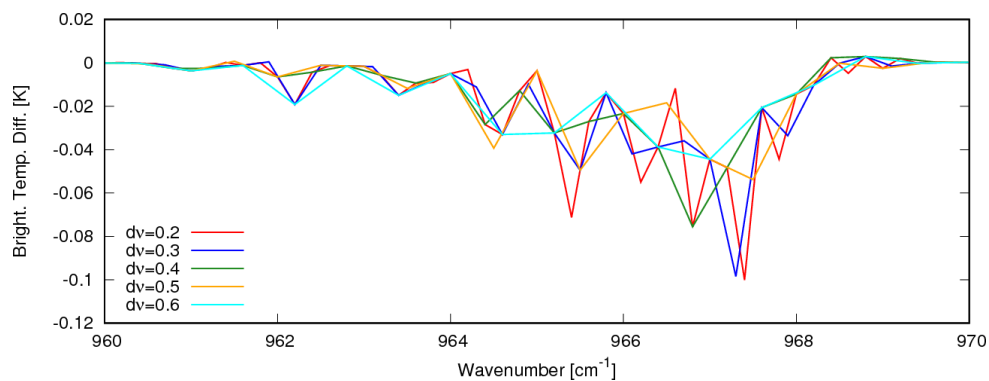


Figure S3. Brightness temperature differences between the case assuming and not assuming ammonia for spectral resolutions of 0.2 – 0.6. Mid-latitude summer profile was used and ammonia column amount of 4.56×10^{15} molec/cm² was assumed. The instrumental line shape function was assumed as that of GOSAT.