

Inter-calibrating SMMR brightness temperatures over continental surfaces.

Samuel Favrichon^{1,2}, Carlos Jimenez^{2,1}, and Catherine Prigent^{1,2}

¹Sorbonne Université, Observatoire de Paris, Université PSL, CNRS, LERMA, Paris, France

²Estellus, Paris, France

Correspondence: Favrichon Samuel (samuel.favrichon@obspm.fr)

Abstract.

Microwave remote sensing can be used to monitor the time evolution of some key parameters over land, such as land surface temperature or surface water extent. Observations are made with ~~instrument~~instruments such as the Scanning Microwave Multichannel Radiometer (SMMR) before 1987, the Special Sensor Microwave / Imager (SSM/I) and the following Special Sensor Microwave Imager / Sounder (SSMIS) from 1987 and still operating, to the more recent Global Precipitation Mission Microwave Imager (GMI). As these instruments differ on some of their characteristics and use different calibration schemes, they need to be inter-calibrated before long time series products can be derived from the observations. Here an inter-calibration method is designed to remove major inconsistencies between the SMMR and other microwave radiometers for the 18GHz and 37 GHz channels over continental surfaces. Because of a small overlap in observations and a ~ 6 h difference in overpassing times between SMMR and SSM/I, GMI was chosen as a reference despite the lack of a common observing period. The diurnal cycles from three years of GMI brightness temperatures are first calculated, and then used to evaluate SMMR differences. Based on a statistical analysis of the differences, a simple linear correction is implemented to calibrate SMMR on GMI. This correction is shown to also reduce the biases between SMMR and SSM/I, and can then be applied to SMMR observations to make them more coherent with existing data record of microwave brightness temperatures over continental surfaces.

15 *Copyright statement.* TEXT

1 Introduction

Since 1978, passive microwave satellite imagers provide Earth observations at multiple frequencies, over ocean and land, for atmospheric or surface applications such as cloud and precipitation monitoring, surface temperature estimation, ocean wind speed or sea ice concentration retrievals (Ulaby et al. 1986). With now more than 40 years of data record, climate analysis can be performed from these measurements, provided that the observation time series are well calibrated, consistent, and homogeneous.

The successive microwave imagers share common characteristics, but with technological changes from a generation to the next and possible calibration issues between instruments even from the same series. Major microwave imagers include the Seasat [Nimbus-G](#) Scanning Multichannel Microwave Radiometer (SMMR) from 1978 to 1987 (Gloersen and Barath 1977), the Special Sensor Microwave Imagers (SSM/I) ~~and the Special Sensor Microwave Imager / Sounder (SSMIS)~~ from 1987 up to now (Hollinger et al. 1990) ~~-, the Advanced Microwave Scanning Radiometer (AMSR-E and AMSR2) since 2002 (Kawanishi et al. 2003),~~ or the more recent Global Precipitation Microwave Imager (GMI) since 2014 (Hou et al. 2014). To create homogeneous measurements from different instruments, each instrument has to be carefully calibrated first and the different instruments have then to be inter-calibrated. The changes between instruments include differences in overpassing times, in Earth Incidence Angles (EIA), in channel center frequencies or in bandwidths. All these aspects need to be accounted for in the inter-calibration process.

Multiple teams have worked to provide corrections for the brightness temperatures of microwave imagers to ensure homogeneous data records over time (e.g., Berg et al. 2013; Wentz 2013; Fennig et al. 2019) ~~than that~~ can be used as Fundamental Climate Data Records (FCDR). FCDR are calibrated data from multiple sensors that have been made coherent and quality controlled to be accurate and stable over long time periods. These are the basic data records from which geophysical products can be computed and aggregated to form long term records of Essential Climate Variables (Bojinski et al. 2014).

Different methods exist to inter-calibrate sensors. Quasi-direct comparisons of observations can be performed at the poles, where overpassing of polar satellites are frequent and the surface responses rather stable. However, this calibration is limited to rather cold brightness temperatures (Sapiano et al. 2013). The statistics of the coldest or warmest scenes have also been analyzed to inter-calibrate the sensors. This is the so-called vicarious calibration, applied over ocean for the cold end (Ruf 2000) and on the Amazon forest for the warm end (Brown and Ruf 2005).

More recently this vicarious method has been extended to other forested sites, taking into account their seasonal variability (Yang et al. 2016). Over ocean, double difference methods are often adopted, using radiative transfer simulations as the reference, to bridge the gap between instruments with different characteristics (Kroodsma et al. 2012). The radiative transfer model is usually fed by atmospheric and surface information from reanalyses and it can theoretically account for changes in EIA, in channel characteristics (e.g., frequency, bandwidth), as well as differences in overpassing times. ~~This~~ ~~However,~~ ~~this~~ method is very challenging over continental surfaces. First, microwave radiative transfer models over land, along with all their necessary input parameters (e.g., soil moisture, vegetation density, snow water equivalent), are not available with the required quality over a large range of surface types. Second, the possibly strong diurnal variability of the land surface temperatures is not described with enough accuracy and temporal resolution to account for differences in the satellite overpassing times. Nevertheless, Dai and Che (2009) tested a modeling of the diurnal variation of the surface temperature to inter-calibrate instruments with different over-passing times over land.

Another inter-calibration method consists in using matchups with a reference instrument that has a different orbit type, making it possible to provide quasi-direct comparisons over a large range of latitudes, even for satellites with different overpassing times. With their low orbits that sample the diurnal cycle, the Tropical Rainfall Measuring Mission Microwave Imager (TMI), and more recently the Global Precipitation Mission Microwave Instrument (GMI) can be used as intermediate references to

inter-calibrate Sun-synchronous instruments with drastically different overpassing times such as the SSM/I series (equator overpassing time around dusk and dawn) and the AMSR series (equator overpassing times at midnight and midday). Berg et al. (2018) applied the different methods to inter-calibrate the SSM/I series. The different methods agreed well with each other, offering an increased confidence in the proposed inter-calibration.

Instrument	Reference	SMMR	SSM/I	SSMIS	TMI	AMSR-E	AMSR2	GMI
CDR CSU V01	Berg et al. (2013)	-	✓	✓	*	-	-	-
CSU V03	Berg et al. (2018)	-	✓	✓	✓	✓	✓	*
CDR RSS	Wentz (2013)	-	✓	✓	-	-	-	-
CM SAF FCDR	Fennig et al. (2019)	✓	*	✓	-	-	-	-

Table 1. The characteristics of the available Fundamental Climate Data Records from passive microwave imagers. The ✓ denotes an inter-calibrated instrument while the * is for the reference instrument.

- 5 Table 1 lists the major FCDRs from passive microwave imagers available to the community, indicating the inter-calibrated instruments, and the reference instrument. EUMETSAT Climate Monitoring Satellite Application Facility (CM SAF), Colorado State University (CSU), and Remote Sensing Systems (RSS) all include SSM/I and SSMIS in their inter-calibrations. CSU uses for the first time GMI in their recent inter-calibration scheme (Berg et al. 2018). They simultaneously employ multiple calibrations methods to reduce the uncertainty on the data record. Their initial work (V01) is improved by adding more satellites
- 10 and by using GMI as the reference for its description of the diurnal cycle over land. RSS inter-calibration effort is essentially based on the use of a radiative transfer model over ocean (Wentz 2013). The CM SAF uses SSM/I F11 as their reference satellite. The inter-calibration is a scene dependent correction. It is done by correcting the cold end of the observed $SMMR - ERA T_b$ differences to match the $SSM/I - ERA T_b$ differences but keeping the warm calibration end at the observed hot load target temperature. It is therefore not expected to have an impact on the warm T_b range.
- 15 So far, only the CM SAF includes SMMR in their FCDR. The inter-calibration was developed initially for the monitoring of fluxes over the ice-free ocean (Andersson et al. 2010). To extend the climate record of satellite-derived land surface parameters in time, here we propose to analyze the possibility of inter-calibrating the SMMR instrument over land. The SMMR instrument failed in August 1987 and the first SSM/I (F08) was launched in 1987, with an overlapping time of only a few weeks, and with ~ 6 h differences in their overpassing times at the equator. Here, we suggest to use GMI as a reference instrument, assuming
- 20 that the environmental conditions have not changed drastically from the SMMR to the GMI era, to allow the comparison of a

large set of observations averaged over time. This strategy does not allow to perform a detailed inter-calibration but it makes it possible to correct for major biases that so far hamper the use of SMMR over land for the generation of climate record of geophysical parameters. We will concentrate on the channels that are common to all the microwave imagers used in the FCDR in Table 1, the Ku (around 18 GHz) and Ka (around 36 GHz) channels. These are key observations for the retrieval of several land surface parameters (e.g., surface water extent (Prigent et al. 2007), snow water equivalent (Pulliainen 2006), or land surface temperature (Jiménez et al. 2017)). We will use the CM SAF FCDR ~~datasets~~ for SMMR dataset as the starting point of our developments.

In Section 2, the satellite observations used in this study are briefly described, along with their preprocessing for the analysis. The result of the inter-comparison is presented in Section 3, along with the proposed inter-calibration procedure and its evaluation. Section 4 concludes this study.

2 Data and Method

2.1 The satellite data

Table 2 summarizes the major characteristics of the SMMR and GMI instruments for the Ku and Ka channels. SSM/I on board F08 is also included, as it is the only instrument with an overlap period with SMMR (albeit of only 28 days) and it will be used for evaluation. GMI, with its non Sun-synchronous orbit, observes the full diurnal cycle, including the SMMR and SSM/I overpassing times.

SMMR was launched in 1978 on the Nimbus-7 satellite, and operated until August 1987. It is the first multichannel microwave imager, designed mainly for oceanic applications to estimate the surface wind speed and sea surface temperature (Gloersen and Barath 1977). Due to power limitation onboard, measurements were performed only every other day. The EIA decreases from 50.2° to 49.3° starting in 1986. The initial SMMR record used by the CM SAF is the Level 1B data, not the raw counts ~~as for the other instruments~~ that are not available. The SMMR Level 1B data is described by Njoku (1980) and it includes the antenna pattern and spill-over correction, as well as sensor drift correction. The calibration uses the cosmic background temperature as a cold reference (2.7 K), an on-board hot calibration load around 300 K as well as climatological means to estimate biases in the calibrations. A linear calibration was performed to reduce instrument bias in the target domain, i.e. for ocean surface parameter estimations. The inter-calibration performed by the CM SAF is based on the double difference technique between the SSM/I F08 and SMMR brightness temperatures (T_{bs}), using radiative transfer simulations from reanalysis to account for the changes in frequencies, bandwidths, and EIA. This correction is computed only over cloud-free water surfaces. It is described in details in Fennig et al. (2019). In this study, we will only use SMMR data showing the best quality (data with sun intrusion, field-of-view, or scan error are removed).

GMI is a recent microwave imager launched in 2015. It observes between 10 and 190 GHz to measure precipitation across the globe. It will be used here as a reference standard for calibration. The instrument characteristics are summarized in Table 2, listing only the channels relevant to this study. The satellite has a 65° inclination, allowing non Sun-synchronous observations of the Earth, from the tropics to the high latitudes. The antenna has an EIA of 52.8° and a swath of ~900 km. This swath width

Instrument	SMMR	SSM/I (F08)	GMI
Earth Incidence Angle (°)	50.2 to 49.3*	53.1	52.8
Channels (GHz)	18.0 (V,H), 21.0 (V,H)*, 37 (V,H)	19.35 (V,H), 22.235 (V), 37 (V,H)	18.7 (V,H), 23.8 (V), 36.5 (V,H)
Instantaneous Field Of View (km x km at 37 GHz)	17×29	24×36	8.6×14
Ascending equator overpassing time (h)	00:00	06:00	non synchronous
Operating years	Oct 1978 - Aug 1987	Jun 1987 - 2006	Sep 2014-

Table 2. The major characteristics of the passive microwave imagers, directly relevant to this study. The instruments include other channels but are not used here. *failure of the 21 GHz channel in 1985 and drift from 1986.

associated with the inclination means that polar regions are not fully covered. The GMI calibration is described by Wentz and Draper (2016). In addition to the usual hot load, GMI uses noise diodes improving calibration accuracy. The satellite can also perform flight maneuvers to correct drift and improve calibration. Lean (2017) found low biases for all channels, as compared to ECMWF simulations (lower than 0.8 K). All these technical specificities make GMI an excellent reference for inter-calibration purposes. In this study, the calibrated T_b Level 1C (Hou et al. 2014) are used.

The first SSM/I was launched in 1987 on-board the F08 satellite of the Defense Meteorological Satellites Program (DMSP). ~~The SSM/I~~ In the following years multiple instruments were launched such as the Tropical Rainfall Measuring Mission's (TRMM) Microwave Imager (TMI) in 1997, or the Special Sensor Microwave - Imager ~~I~~ instruments were upgraded to SSMIS in 2003, with more channels for atmospheric profiling of temperature and water vapor. ~~Sounder (SSMIS) in 2003. Both will be referred to as the SSM/I series here.~~ The DMSP polar orbiters cannot correct orbital degradation and as a consequence, the instruments are subject to drifts in the overpassing times, making instrument inter-calibration more challenging. Here, the SSM/I data provided by the CM SAF without the ~~intere~~calibration inter-calibration layer will be used to evaluate the consistency of our SMMR land calibration.

2.2 The method

SMMR and GMI do not have any common observing period. Therefore we need to rely on a statistical analysis of SMMR and GMI observations from different years to provide a correction of the SMMR biases over continental surfaces. The fundamental hypothesis here is that the changes in the environmental conditions affecting the microwave signals are limited between the 1980s and 2010s, as compared to the SMMR and the GMI instrument calibration differences.

The SMMR and GMI EIA difference is $\sim 3^\circ$. Over ocean, this can strongly affect the signal, due to the sensitivity of the ocean emissivity to the incidence angle as well as to the changing atmospheric contribution with angle. Over land, the surface emissivity is usually high for both polarizations, with values of 0.9 and higher for most surface types (Prigent et al. 2006), with very limited changes with EIA (Prigent et al. 2000). With a high land surface emissivity, the atmospheric contribution to the

signal is small compared to the surface one and the changes in the atmospheric contribution with angle will not significantly affect the measurement. By the same token, the land surface emissivities being rather high and showing very smooth variations with frequency (Prigent et al. 2000), the differences in frequencies between the Ku and Ka channels of SMMR and GMI is not expected to significantly affect the signals.

- 5 To facilitate the comparison, each dataset is projected on the Equal Area EASE 2.0 grid globally between 60°S and 70°N and on the EASE southern hemisphere azimuthal grid over the Antarctica area (Brodzik et al. 2012). A land mask is used to filter out water pixels at the 25 km resolution.

- GMI data are collected for two months in July and August (respectively January and February) from 2015 to 2017. ~~This allows to reproduce~~ These 4 months per year include the boreal summer and winter T_b diurnal cycles, and with data sampled
 10 from the whole Earth most of the possible surface conditions are represented in the analysed dataset. As GMI has a higher spatial resolution than the target grid, all observations falling within a grid cell of ~ 12 km radius are averaged to derive one value per grid cell. Regarding the temporal dimension, the values are averaged with a 15 minutes window for each grid cell to suppress small scale variability in the signal. If no observation in a given grid cell is available in a particular 15 minutes interval, a linear interpolation with the closest existing measurements is performed. Finally, to get a smooth diurnal cycle, a
 15 moving average is applied over each grid cell with a 75 minutes window (two data points before and after the target one).

- For SMMR, T_{bs} are collected from 1981, 1982, and 1987 for the same months as GMI. The observations are available twice a day (for the ascending and descending overpasses). Given the comparable resolutions of SMMR observations and the target grid, a nearest-neighbour technique is used to project the T_{bs} into the EASE grid. Using several years of data for each instrument can alleviate possible effects of strong inter-annual variability in the signals (related to Niño or Niña events for
 20 instance).

The resulting datasets contain almost 2 million data points spanning all the continents and two contrasted seasons (summer and winter).

3 Results

3.1 SMMR and GMI comparisons at regional scale

- 25 At regional scales, a set of different areas have been selected to represent a large variability in environmental conditions. The averaged T_{bs} diurnal cycle derived from GMI is calculated for sample areas covering 25 grid cells, over two months, over 3 years (2015-2017). ~~For the same areas,~~ Over these areas, covering roughly a $1^\circ \times 1^\circ$ surface, the averaged SMMR T_{bs} for the ascending and descending orbits are also calculated, over the same months, for 1981, 1982 and 1987.

- Figure 1 presents the results for areas in the North Hemisphere, during winter (January and February), at 18 and 37 GHz,
 30 for both orthogonal polarizations. It includes cold mountainous regions, arid deserts with high T_{bs} during the day and a large amplitude of the diurnal cycle, as well as warm rainforest with a limited variation in T_{bs} . Forested regions show a low diurnal cycle amplitude of the T_{bs} (< 10 K), with almost no difference between V and H polarizations due to the emission and scattering effect of the dense vegetation. Arid regions (cold or warm) have large diurnal variations in T_{bs} , directly related to the diurnal

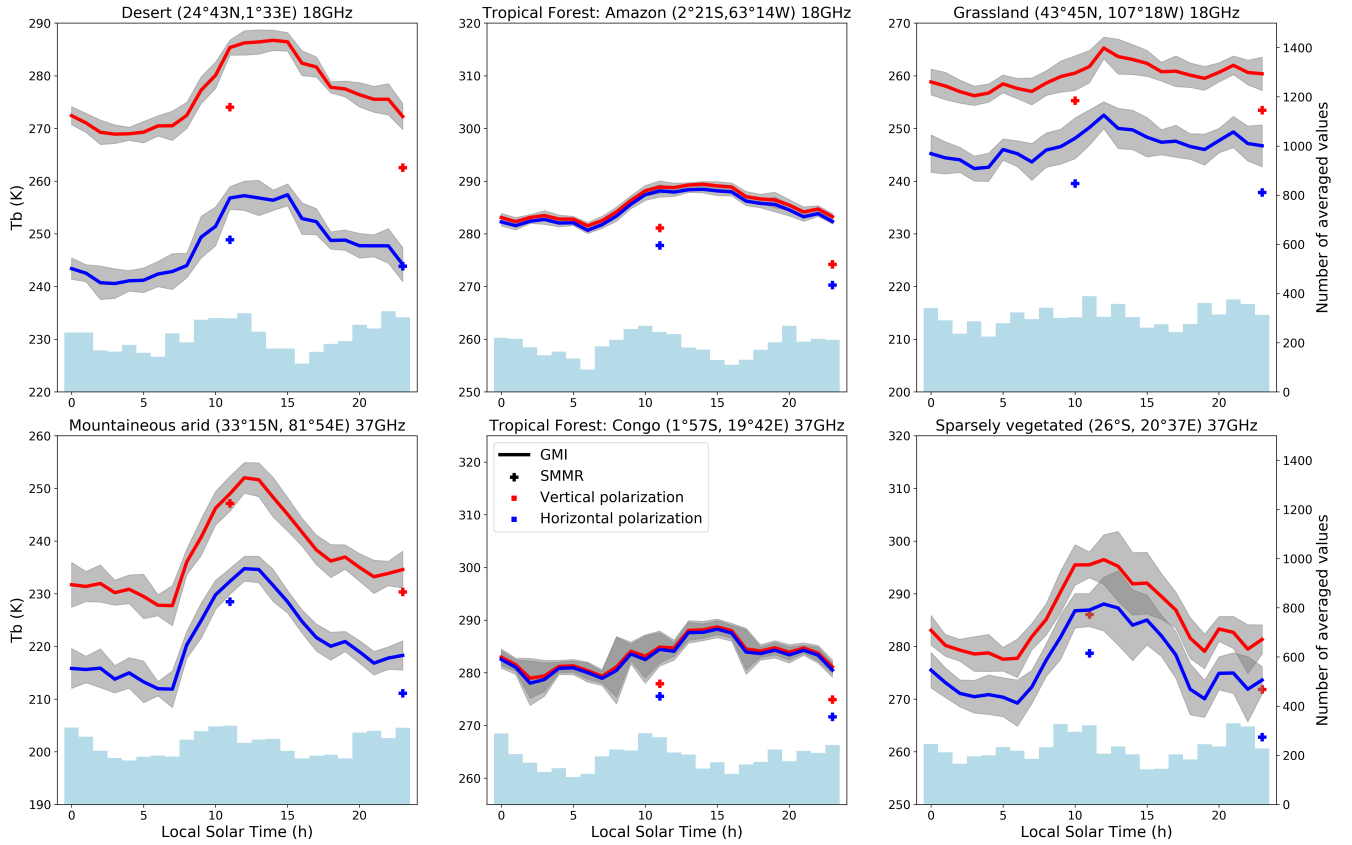


Figure 1. Diurnal cycles from GMI compared to SMMR values at different frequencies and locations averaged for the January and February months (horizontal polarization in blue and vertical in red). Measurements are averaged over 25 grid cells and by hour with the standard deviation of each average temperature in the diurnal cycle and the associated number of measurements displayed below.

cycle of the land surface temperature. The polarization difference is significant, due to an almost specular behavior of these rather flat surfaces. With increasing vegetation cover (sparsely vegetated or grassland) an intermediate behavior is observed. The variability associated to each GMI average is computed and also displayed (the grey shades around the diurnal cycle indicate one standard deviation). The number of individual pixels used in the diurnal cycle calculation is also indicated (blue shades). The low variability of the signals over the Amazon confirms the high stability of the T_{bs} in this region that is regularly used as a warm radiometric reference (e.g., Brown and Ruf (2005)). The SMMR values have been calculated for the initial Level 1B data as well as for the CM SAF inter-calibrated results but only the level 1B data is displayed on Fig. 1. Note that the CM SAF inter-calibration is not designed nor validated for observations over land.

The SMMR day and night values follow the same diurnal pattern as GMI, but with a systematic underestimation of the T_{bs} , regardless of the frequency and polarization. These differences are usually significantly larger than what is expected from the GMI signal variability, indicated by the standard deviation around the average. The difference between SMMR and GMI

appears to be almost the same for both polarizations. The difference seems to decrease for the coldest locations. The variability is higher under mid latitudes where year-on-year variations are possible and meteorological ~~variations~~ events can impact the measurements. The differences cannot be explained solely by the instrument different characteristics (EIA or frequencies), or by environmental changes between the periods covered by the two instruments (the 1980s for SMMR and the 2010s for GMI).

- 5 ~~A possible source of error could be~~ Different sources could cause such errors, for instance an erroneous warm calibration load temperature or an error in the correction of antenna pattern that misses the Earth.

The inter-calibration layer from CM SAF for SMMR does not seem to improve the results. Over land the mean correction added by the calibration is below 0.5 K for the 18 GHz vertical and horizontal polarization and 37 GHz horizontal channel. The correction for the 37 GHz vertically polarized channel is on average around 2 K. The inter-calibration has been designed
10 mainly for ocean observations with low T_{bs} and not for ~~our land application~~ land applications so it does not adequately correct for calibration issues over land (not shown on the figure). Other locations and seasons were analyzed, with similar conclusions (not shown here).

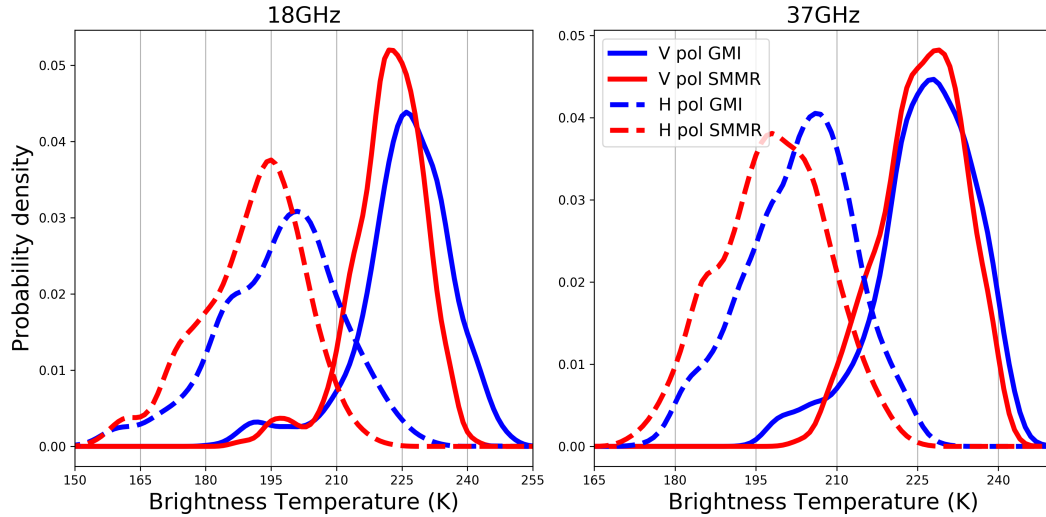


Figure 2. Probability density functions of July/August brightness temperatures over Antarctica for GMI in 2015 and SMMR in 1987.

The observations over the Antarctic ice sheet are also explored, to extend our investigation to lower T_{bs} . Because of the GMI coverage, the comparison is limited to the edge of Antarctica. Care is exercised to avoid contamination by the ocean and
15 sea ice. South Hemisphere winter months are selected (July and August). During this long night, there is no diurnal cycle and the T_{bs} distribution for the two satellites are directly compared (Figure 2). The delta between SMMR level 1B and GMI T_{bs} distribution is between 5 and 10 K for all channels except the 37 GHz vertical polarization that shows a lower difference.

Here as well, the significant differences in the SMMR level 1B and GMI T_{bs} cannot be attributed only to changes in environmental conditions, even over ~ 30 years. Jezek et al. (1991) compared SMMR and SSM/I over the Antarctic ice sheet
20 during their overlap period and also found significant differences in both Ku and Ka bands. They discussed the impact of the

change in EIA and frequency between the instruments but concluded that it cannot explain the large observed differences. Only calibration issues can explain the observed differences, with the SMMR T_{bs} colder than the GMI ones.

3.2 Derivation of a SMMR correction over continental surfaces

In order to assess the possibility to correct for the SMMR calibration issue, SMMR and GMI observations are compared at global scale. The SMMR observations (both ascending and descending orbits) are compared to the corresponding GMI values for the same times in the day, for January and February and for July and August, over 3 years for the two instruments (1981-1982-1987 for SMMR and 2015 to 2017 for GMI, as before). Points for which the difference between the GMI and SMMR values is outside 3 standard deviations from the mean difference are suppressed. We checked that these points were essentially located over coastal regions: GMI has a better spatial resolution than SMMR and over the coasts the SMMR observations will likely include more contributions from the surrounding ocean. Figure 3 displays the distribution of the GMI against the SMMR T_{bs} , at 18 and 37 GHz, both polarizations. The underestimation of the SMMR T_{bs} compared to the GMI ones clearly increases with T_{bs} . Here we suggest a simple linear correction to inter-calibrate the SMMR observations toward the GMI ones. A more sophisticated correction would not be justified. First, we are aware that this is a first order inter-calibration, as the comparison involves different years. Second, it would be more complex to implement especially in processing chains. Lastly, it would likely overfit some part of the signal rather than correcting the T_{bs} .

A simple correction is proposed for all channels with the form $\hat{T}_{SMMR} = a \times T_{SMMR} + b$. The coefficients slope a and the intercept b are estimated through the minimization of the sum of squared difference : $\sum_{i=1}^N (T_{GMI} - a \times T_{SMMR} - b)^2$ derived from the assumption that $\hat{T}_{SMMR} = T_{GMI}$, with N the number of data points used for the regression coefficient estimation. The data collection covers the full T_b range observable over continental surfaces, including some polar regions.

The distribution of the data points from the cold and warm ends is uneven, with less points for lower T_{bs} . To alleviate this issue, we randomly sample the points from both the cold and warm ends to simulate an even distribution over the full T_b range. Different samplings were tested to confirm the stability of the estimated coefficients. The resulting regression lines are added to Fig. 3. The mean squared errors of the linear regression are indicated with grey shades. It appears clearly that the uncertainty on the areas with less data (between the Antarctica temperatures and the land data points) or near the edge of the range of values are the ones with the highest errors. The coefficients of the linear regressions are provided in Table 3. The uncertainties on the regression coefficients are computed with a t-test for a 99% confidence level.

3.3 Evaluation

The suggested corrections are applied to SMMR values and the results can be compared to other imager observations. The inter-calibration being derived from GMI, a good agreement is expected with that sensor. The first ~~consistency~~ check consists in comparing the calibrated SMMR observations to the SSM/I observations, for their overlapping period. The GMI-derived diurnal cycle of T_{bs} is used as a bridge between the SMMR and SSM/I observations that have different overpassing times. Figure 4 presents the comparisons of SMMR and SSM/I F08, for different locations, averaged over their common period in July and August 1987, along with the GMI-derived diurnal cycle of the T_{bs} (estimated over three different years). It shows

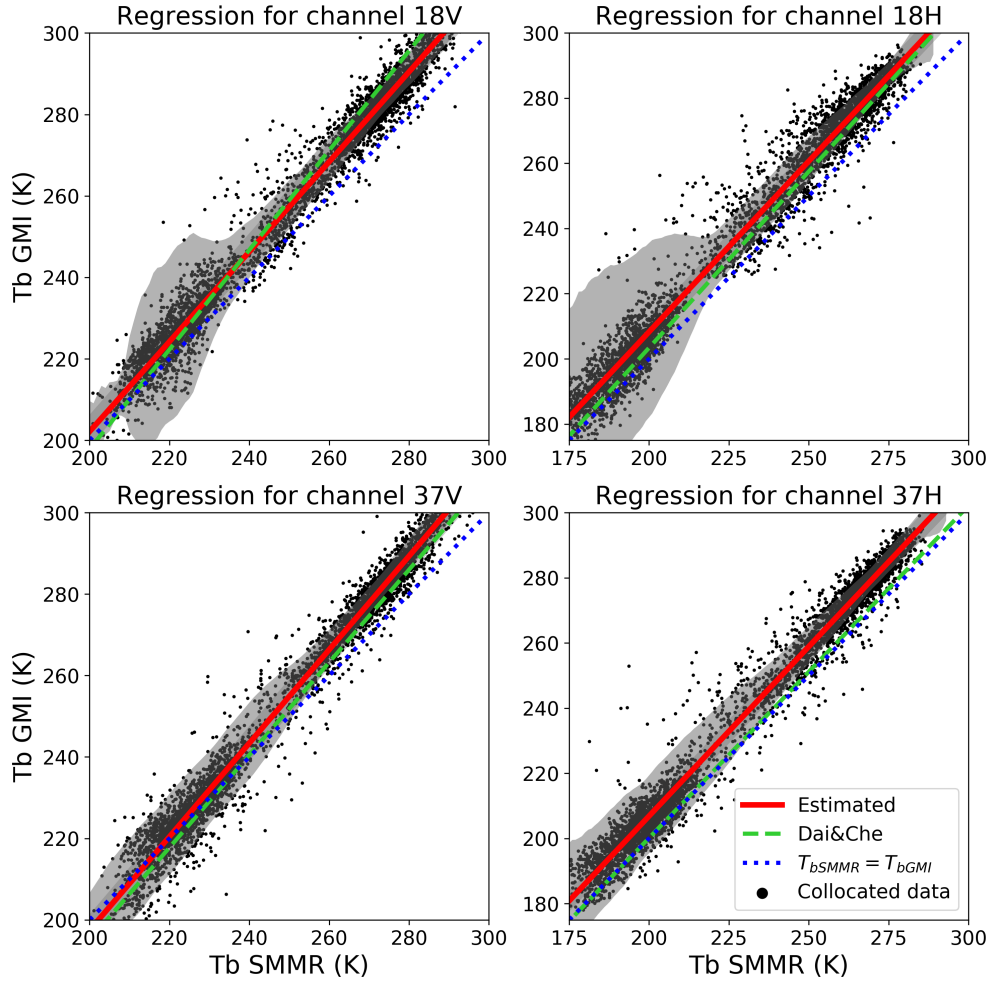


Figure 3. Linear regression on SMMR values against GMI after filtering points. In addition the correction derived by Dai and Che (and corrected for the SSM/I F08 to GMI calibration) is displayed.

that SSM/I T_{bs} , used without any inter-calibration, are in good agreement with the T_b diurnal cycle estimated from GMI. Contrarily to the SMMR observations before inter-calibration, no obvious large bias is observed between SSM/I and GMI, even for the very warm scenes, at 18 and 37 GHz for both polarizations. The average difference between SSM/I F08 (without any inter-calibration scheme applied) is around 2.5 K for the 18 GHz channels, and around 0.5 K for the 37 GHz channels.

- 5 A bias is expected between measurements that have not been inter-calibrated, but it is lower than the one detected for SMMR and confirms our assumptions regarding the emissivity behavior over continental surfaces as well as the small variation in [environmental conditions in](#) the 30 year gap between the 1980s and the 2010s.

Channel	Slope	Intercept	R^2
18V	1.10 ± 0.01	-18.7 ± 2.2	0.976
18H	1.05 ± 0.01	-1.29 ± 1.9	0.971
37V	1.15 ± 0.01	-32.2 ± 2.2	0.976
37H	1.04 ± 0.01	-1.23 ± 1.9	0.976

Table 3. Estimated linear correction coefficients, for the inter-calibration of the SMMR observations at 18 and 37 GHz, vertical and horizontal polarizations, with respect to GMI observations over the continents. The uncertainties are also added (computed with a t-test at 99% confidence level).

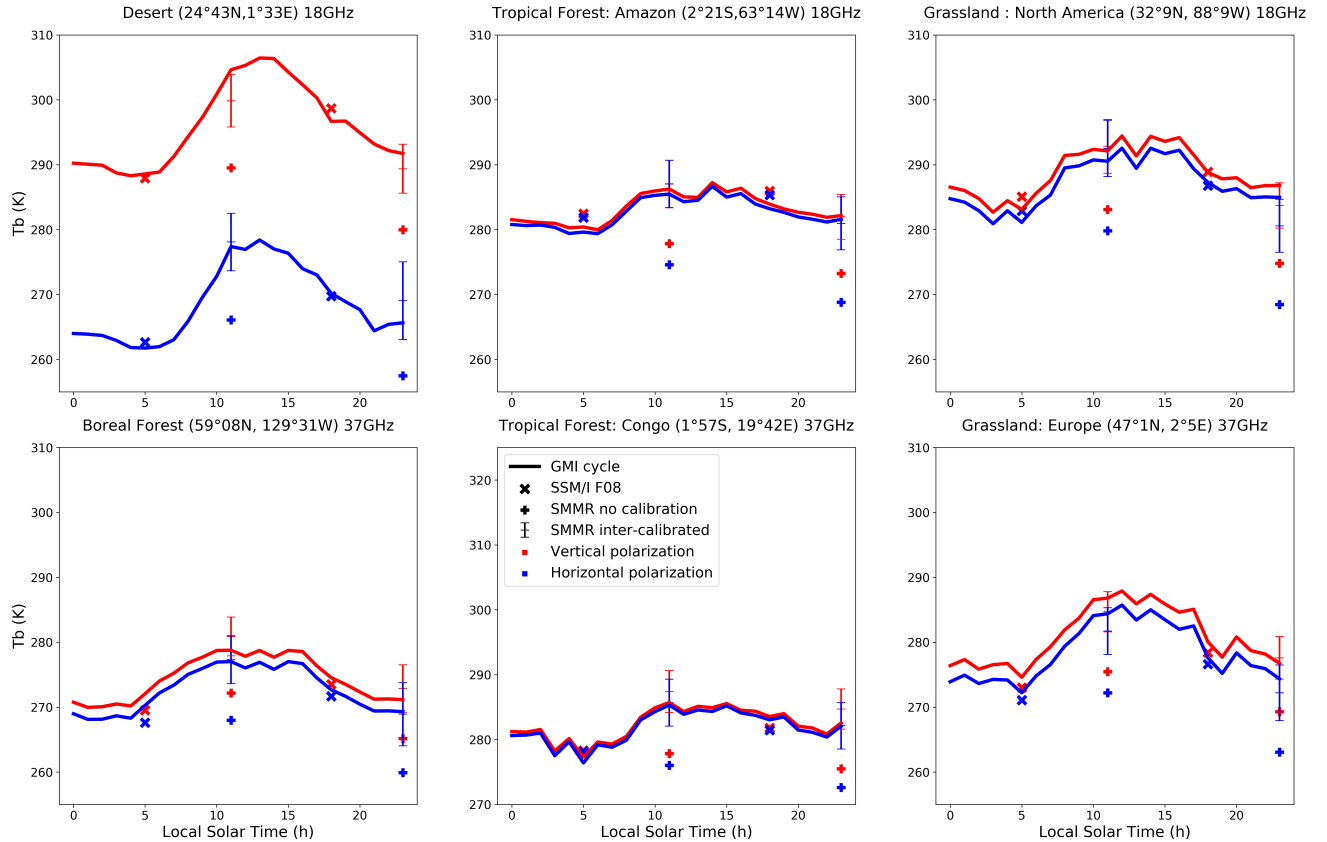


Figure 4. Diurnal cycle of GMI in July/August compared to values measured by SMMR with and without the proposed correction, and SSM/I values for the months of July/August 1987 over various locations and at different frequencies.

The agreement between the SMMR inter-calibrated values and GMI is clearly improved, as compared to the previous SMMR Level 1B results. These results show that the SSM/I F08 and the newly inter-calibrated SMMR are consistent, at least within the uncertainty provided with this inter-calibration. More cases have been tested, with similar results ([not shown here](#)).

In addition to the evaluation with other sensors, the results of our inter-calibration are compared with an alternative method developed for SMMR. Dai and Che (2009) built their inter-calibration scheme upon observations in desert and polar areas. The SSM/I F08 instrument is adopted as the reference and a model is developed to account for the diurnal changes in temperatures. The resulting linear regressions are added on Fig. 3 (green dotted lines). The two inter-calibration methods are based on very different principles. Nevertheless, they agree well for all channels, with similar slopes and slightly different intercepts. This adds confidence to our methodology.

4 Conclusions

Several FCDRs from passive microwave imagers have been produced, from pioneer instruments such as SMMR to the AMSR series. So far, the efforts essentially focussed over ocean where radiative transfer simulations fed by reanalysis can serve as a reference to bridge the differences between the instruments, in terms of frequency, EAI, and overpassing time. Over continental surfaces, inter-calibration of passive microwave imagers is challenging, especially for Sun-synchronous polar orbiting satellites with different over-passing times at the equator. Here we derived a method to extend the FCDR collection to SMMR over land at 18 and 37 GHz, using the non Sun-synchronous GMI instrument as a reference, despite the lack of a common observing period. GMI observations are used to reconstruct the diurnal cycles of T_{bs} that should be observed with SMMR, with the assumption that the environmental conditions have not changed drastically over the last 30 years and that the differences in frequencies and EIA between the two instruments can be neglected over land. With these hypotheses, the objective is to correct for the large differences between the sensors. Before inter-calibration, the comparison of the SMMR and GMI observations ~~show~~ shows a significant underestimation of the T_{bs} with SMMR, and this underestimation tends to increase with increasing T_{bs} . A linear regression is suggested for the 18 and 37 GHz channels, vertical and horizontal polarizations, to calibrate the SMMR observations toward the GMI estimates. The SMMR correction is evaluated with respect to the SSM/I F08 observations over their overlapping period in orbit, in July and August 1987. The GMI-derived diurnal cycle of T_{bs} acts as a bridge between the two instruments that have different overpassing times. A good agreement is reached between all sensor measurements. This inter-calibration of the SMMR instrument over land will make it possible to extend the passive microwave estimations of land surface variables over 9 more years backward, from 1978 to 1987. However, given the use of the more recent GMI instrument as a calibration reference, and the uncertainty regarding the calibration error sources as well as the validity of the environmental stability hypothesis, any comparison between the different epochs should be conducted with extreme care. The use of this correction to derive climate series should be thoroughly assessed before using it. This will be practically tested in the near future for the estimates of e.g., surface water extent and land surface temperatures from microwave observations, two variables that rely on the 18 and 37 GHz observations for their retrieval, under clear and cloudy sky conditions.

Data availability. The Satellite Application Facility on Climate Monitoring provides access to the Fundamental Climate Data Record of Microwave Imager Radiances (10.5676/EUM_SAF_CM/FCDR_MWI/V003; Fennig et al. (2019)). The Global Precipitation Measurement

Mission Microwave Imager GMI_R Common Calibrated Brightness Temperatures Collocated L1C 1.5 h 13 km V05 (GPM_1CGPMGMI_R 10.5067/GPM/GMI/R/1C/05; Berg et al. (2016)) is provided by NASA.

Author contributions. All authors have been involved in interpreting the results, discussing the findings, and editing the paper. SF conducted the main analysis and wrote the draft of the paper. CJ and CP provided guidance on using the data sets and expertise on analysing the results.

5 *Competing interests.* The authors declare that they have no conflict of interest.

Acknowledgements. The authors ~~would like to acknowledge the data providers: Wesley Berg and Christian Kummerow from Colorado State University for the discussion on their intercalibration method, and special thanks are due to~~ are grateful to the Karsten Fennig and Marc Schröder for their valuable help on using the CM SAF FCDR ~~and the comments on the work done~~ data as well as the discussion regarding the SMMR instrument and the work performed in this paper. We would also like to acknowledge Wesley Berg and Christian Kummerow from Colorado State University for the data and information they provided us.

References

- Andersson, A., Fennig, K., Klepp, C., Bakan, S., Graßl, H., and Schulz, J.: The Hamburg ocean atmosphere parameters and fluxes from satellite data-HOAPS-3, *Earth System Science Data*, 2, 215–234, <https://doi.org/10.5194/essd-2-215-2010>, 2010.
- Berg, W., Sapiano, M. R., Horsman, J., and Kummerow, C.: Improved geolocation and earth incidence angle information for a
5 fundamental climate data record of the SSM/I sensors, *IEEE Transactions on Geoscience and Remote Sensing*, 51, 1504–1513, <https://doi.org/10.1109/TGRS.2012.2199761>, 2013.
- Berg, W., Bilanow, S., Chen, R., Datta, S., Draper, D., Ebrahimi, H., Farrar, S., Jones, W. L., Kroodsma, R., McKague, D., Payne, V., Wang, J., Wilheit, T., and Yang, J. X.: Intercalibration of the GPM microwave radiometer constellation, *Journal of Atmospheric and Oceanic Technology*, 33, 2639–2654, <https://doi.org/10.1175/JTECH-D-16-0100.1>, 2016.
- 10 Berg, W., Kroodsma, R., Kummerow, C., and McKague, D.: Fundamental Climate Data Records of Microwave Brightness Temperatures, *Remote Sensing*, 10, 1306, <https://doi.org/10.3390/rs10081306>, <http://www.mdpi.com/2072-4292/10/8/1306>, 2018.
- Bojinski, S., Verstraete, M., Peterson, T. C., Richter, C., Simmons, A., and Zemp, M.: The concept of essential climate variables in support of climate research, applications, and policy, *Bulletin of the American Meteorological Society*, 95, 1431–1443, <https://doi.org/10.1175/BAMS-D-13-00047.1>, 2014.
- 15 Brodzik, M. J., Billingsley, B., Haran, T., Raup, B., and Savoie, M. H.: EASE-Grid 2.0: Incremental but significant improvements for earth-gridded data sets, *ISPRS International Journal of Geo-Information*, 1, 32–45, <https://doi.org/10.3390/ijgi1010032>, 2012.
- Brown, S. T. and Ruf, C. S.: Determination of an Amazon hot reference target for the on-orbit calibration of microwave radiometers, *Journal of Atmospheric and Oceanic Technology*, 22, 1340–1352, <https://doi.org/10.1175/JTECH1769.1>, <http://journals.ametsoc.org/doi/abs/10.1175/JTECH1769.1>, 2005.
- 20 Dai, L. and Che, T.: Cross-platform calibration of SMMR, SSM/I and AMSR-E passive microwave brightness temperature, *Data Processing*, 7841, 784 103–784 103–10, <https://doi.org/10.1117/12.873150>, [{&}Agg=doi](http://link.aip.org/link/PSISDG/v7841/i1/p784103/s1), 2009.
- Fennig, K., Schröder, M., Andersson, A., and Hollmann, R.: A Fundamental climate data record of SMMR, SSM/I, and SSMIS brightness temperatures, *Earth System Science Data Discussions*, 15, 1–54, <https://doi.org/10.5194/essd-2019-146>, 2019.
- Gloersen, P. and Barath, F. T.: A Scanning Multichannel Microwave Radiometer for Nimbus-G and SeaSat-A, *IEEE Journal of Oceanic
25 Engineering*, 2, 172–178, <https://doi.org/10.1109/JOE.1977.1145331>, 1977.
- Hollinger, J. P., Peirce, J. L., and Poe, G. A.: SSM/I instrument evaluation, *IEEE Transactions on Geoscience and Remote Sensing*, 28, 781–790, <https://doi.org/10.1109/36.58964>, 1990.
- Hou, A. Y., Kakar, R. K., Neeck, S., Azarbarzin, A. A., Kummerow, C. D., Kojima, M., Oki, R., Nakamura, K., and Iguchi, T.: The global precipitation measurement mission, *Bulletin of the American Meteorological Society*, 95, 701–722, <https://doi.org/10.1175/BAMS-D-13-00164.1>, <http://journals.ametsoc.org/doi/abs/10.1175/BAMS-D-13-00164.1>, 2014.
- 30 Jezek, K., Merry, C., Cavalieri, D., Grace, S., Bedner, J., Wilson, D., and Lampkin, D.: Comparison Between SMMR and SSM/I Passive Microwave Data Collected over the Antarctic Ice Sheet, *BPRC Technical Report Number 91-03*, 1991.
- Jiménez, C., Prigent, C., Ermida, S. L., and Moncet, J. L.: Inversion of AMSR-E observations for land surface temperature estimation: 1. Methodology and evaluation with station temperature, *Journal of Geophysical Research*, 122, 3330–3347, <https://doi.org/10.1002/2016JD026144>, <http://doi.wiley.com/10.1002/2016JD026144>, 2017.
- 35 Kawanishi, T., Sezai, T., Ito, Y., Imaoka, K., Takeshima, T., Ishido, Y., Shibata, A., Miura, M., Inahata, H., and Spencer, R. W.: The Advanced Microwave Scanning Radiometer for the Earth observing system (AMSR-E), NASDA’s contribution to the EOS for global energy and

- water cycle studies, *IEEE Transactions on Geoscience and Remote Sensing*, 41, 184–193, <https://doi.org/10.1109/TGRS.2002.808331>, 2003.
- Kroodasma, R. A., McKague, D. S., and Ruf, C. S.: Inter-calibration of microwave radiometers using the vicarious cold calibration double difference method, *IEEE Journal of Selected Topics in Applied Earth Observations and Remote Sensing*, 5, 1006–1013, <https://doi.org/10.1109/JSTARS.2012.2195773>, 2012.
- Lean: Assimilation of Global Precipitation Mission (GPM) Microwave Imager (GMI) in all-sky conditions, *Boletin Tecnico/Technical Bulletin*, 55, 255–262, <http://www.ecmwf.int/en/research/publications>, 2017.
- Njoku, E. G.: Antenna pattern correction procedures for the Scanning Multichannel Microwave Radiometer (SMMR), *Boundary-Layer Meteorology*, 18, 79–98, <https://doi.org/10.1007/BF00117912>, 1980.
- 10 Prigent, C., Wigneron, J. P., Rossow, W. B., and Pardo-Carrion, J. R.: Frequency and angular variations of land surface microwave emissivities: Can we estimate SSM/T and AMSU emissivities from SSM/I emissivities?, *IEEE Transactions on Geoscience and Remote Sensing*, 38, 2373–2386, <https://doi.org/10.1109/36.868893>, 2000.
- Prigent, C., Aires, F., and Rossow, W. B.: Land surface microwave emissivities over the global for a decade, *Bulletin of the American Meteorological Society*, 87, 1573–1584, <https://doi.org/10.1175/BAMS-87-11-1573>, <http://journals.ametsoc.org/doi/10.1175/BAMS-87-11-1573>, 2006.
- 15 Prigent, C., Papa, F., Aires, F., Rossow, W. B., and Matthews, E.: Global inundation dynamics inferred from multiple satellite observations, 1993-2000, *Journal of Geophysical Research Atmospheres*, 112, 1–13, <https://doi.org/10.1029/2006JD007847>, 2007.
- Pulliainen, J.: Mapping of snow water equivalent and snow depth in boreal and sub-arctic zones by assimilating space-borne microwave radiometer data and ground-based observations, *Remote Sensing of Environment*, 101, 257–269, <https://doi.org/10.1016/j.rse.2006.01.002>, 2006.
- 20 Ruf, C. S.: Detection of calibration drifts in spaceborne microwave radiometers using a vicarious cold reference, *IEEE Transactions on Geoscience and Remote Sensing*, 38, 44–52, <https://doi.org/10.1109/36.823900>, 2000.
- Sapiano, M. R., Berg, W. K., McKague, D. S., and Kummerow, C. D.: Toward an intercalibrated fundamental climate data record of the SSM/I sensors, *IEEE Transactions on Geoscience and Remote Sensing*, 51, 1492–1503, <https://doi.org/10.1109/TGRS.2012.2206601>, 2013.
- 25 Ulaby, F. T., Moore, R. K., and Fung, A. K.: *Microwave Remote Sensing Active and Passive-Volume III: From Theory to Applications*, Artech House, Inc, 1986.
- Wentz, F. J.: SSM/I version-7 calibration report, *Remote Sensing Systems Tech. Rep.*, 11012, 46, 2013.
- Wentz, F. J. and Draper, D.: On-orbit absolute calibration of the global precipitation measurement microwave imager, *Journal of Atmospheric and Oceanic Technology*, 33, 1393–1412, <https://doi.org/10.1175/JTECH-D-15-0212.1>, 2016.
- 30 Yang, J. X., McKague, D. S., and Ruf, C. S.: Boreal, Temperate, and Tropical Forests as Vicarious Calibration Sites for Spaceborne Microwave Radiometry, *IEEE Transactions on Geoscience and Remote Sensing*, 54, 1035–1051, <https://doi.org/10.1109/TGRS.2015.2472532>, 2016.

Response to reviewer #3 on the paper “Inter-calibrating SMMR brightness temperatures over continental surfaces”:

The thorough reading of our paper by the reviewer highlighted some possible improvements that could be made to improve readers understanding. We are grateful for these comments that helped us finalize this paper.

Response to the review

I initially had some serious reservations regarding the authors attempt to intercalibrate SMMR Tbs using data from GMI almost 30 years later. After reading the manuscript, however, I think that the authors are providing some valuable insight into the SMMR data, although I would like to see them strengthen their conclusions a bit regarding the limitations of the SMMR data. I tend to agree that the SMMR data has value for certain applications, but any attempt to use this data to look at climate trends or more subtle variations is definitely not warranted. I believe the authors conclusions bear this out, but I would like to see a bit more explicit statement to this effect.

Response Indeed the proposed correction can only be used if all the hypothesis made are understood by the user. The exploration of the SMMR data teaches valuable lessons in itself regarding the instrument performances and expected accuracy from any information derived from the brightness temperatures. These limitations are made more explicit in the paper conclusion.

Specific Comments:

Page 3, line 17: The statement “Here, we suggest to use GMI as a reference instrument, assuming that the environmental conditions have not changed drastically from the SMMR to the GMI era, to allow the comparison of a large set of observations averaged over time. This strategy does not allow to perform a detailed intercalibration but it makes it possible to correct for major biases that so far hamper the use of SMMR over land for the generation of climate record of geophysical parameters.” This statement regarding the nature of the intercalibration needs to be reiterated in the conclusions. I’m also a bit concerned with the statement suggesting that the intercalibrated data can subsequently be used for climate data records. While it depends greatly on the specific application, certainly using SMMR data to extend the global satellite time series for identifying subtle climate trends is not warranted.

R The paper uses data that are considered CDR, however we highlight the fact that over land the intercalibration already performed might not be sufficient. Our proposed method is a way to improve the land surface brightness temperatures measurements for further application. Indeed it is most likely not enough to perform reliable climate analysis using this dataset. These limitations are again made clearer in the conclusion.

Page 5, Table 2: GMI has operated from March 2019 forward. The data have been reprocessed back to this date to provide a consistent data record.

R The data available for the GMI instrument covers the 2014-2020 period from which we have extracted the data for the years 2015 to 2017 for our analysis.

Page 5, line 13. Again, this hypothesis of limited changes in environmental conditions comes with significant caveats given climate change.

R This is one of the hypothesis required for our method to work. Given the existing uncertainty surface temperature changes in the past 40 years, as well as the instruments limitations we deemed it acceptable. This limitation is now also repeated in the conclusion.

Page 6, line 4: This statement is a bit unclear. Do the authors mean GMI data are collected for 2 months in summer (i.e. July and August) and two months in winter (i.e. January and February)?

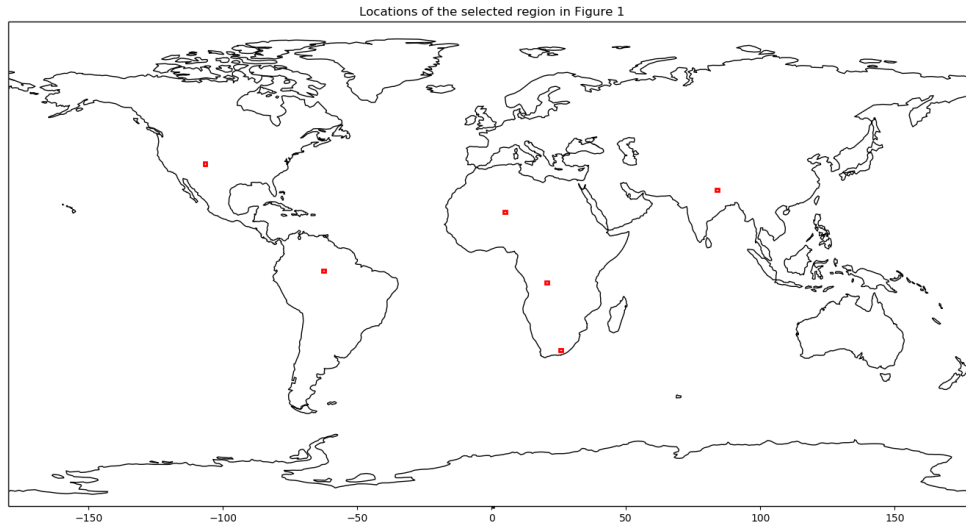
R Exactly, to increase the number of points available for the comparison and improve the diurnal cycle constructed (taking into account the fact that SMMR only operates every other day) data from 4 months was used: January, February, July, and August from 2015 to 2017. This was made clearer in the paper.

Page 6, line 12: Did the authors attempt to look at potential calibration differences between the three years of SMMR data used (i.e. 1981, 1982 and 1987)? Is there any indication of a time-dependent change or calibration drift (or lack thereof)?

R This is a question that we raised also when conducting the study, however we could not notice any obvious change between the different years. A time dependent drift is still possible, but it would need access to the raw SMMR data.

Page 7, figure 1: I'm a bit unclear on the location and extent of the regions chosen. The text mentions 25 grid cells. How large is the region covered by 25 grid cells. A figure showing the various regions selected for the results in Figure 1 would be useful.

R To help clarify the location of the selected region the following figure was created. Each box covers roughly a $1^\circ \times 1^\circ$ area. However to limit the number of figures, it was not added to the paper as the selected regions mostly serve an illustrative purpose.



Page 8, line 1: The relative consistency in the slopes shown in Figure 3 does lead point to the possibility of an error in either the warm load temperature or the antenna pattern correction (i.e. spillover). This might be worth mentioning in the conclusion, although the results by Dai and Che don't appear as consistent between channels.

R The possible sources of error are mentioned p.8, l.1 and were repeated in the conclusion. We haven't looked into the results of Dai&Che to explain these differences.

Page 8, Figure 2: The large difference between the histograms shown over Antarctica (i.e. 5-10K for all except the 37 GHz V-Pol channel) raises some questions. Is this result consistent with the subsequent results shown in Figure 3? The authors mention screening out ocean and sea ice, but isn't the land region covered by snow/ice? What impact might changes in snow/ice emissivity have on the observed Tb? Emissivity

of snow/ice is difficult to determine and could potentially be influenced by a number of different factors and thus have little or nothing to do with calibration differences. As a result, unless these differences are consistent with the linear fit derived from Figure 3, it isn't clear to me that these results over Antarctica are useful. Please justify.

R The histograms shown are in line with the results in the remaining of the paper. As a matter of fact, the same data points used for Figure 2 are also used for the estimation of the linear regression coefficient in Figure 3. The coldest data points between 200K and 240K are the ones taken over Antarctica. The issue of changing emissivity and snow coverage could have an impact on the results, as these surfaces may show more variability in brightness temperatures compared with other more radiative stable environments. To alleviate this issue we sampled over multiple years, mitigating the impact on the results.

Page 9, Table 3: The values of slope and intercept from the linear fit don't provide the reader a clear sense of the magnitude of the calibration differences. I suggest that the authors consider adding the mean intercalibration difference and uncertainty for GMI Tb values of 200 and 300K. This would provide the reader a much better sense of the magnitude of the adjustment as well as the uncertainty for both cold (ocean) and warm (land) scenes.

R The following table summarizes the expected correction at the 200K and 300K temperatures; it highlights the magnitude of the correction at the higher temperature.

Channel	Expected correction @200K	Expected correction @300K
18GHz V-pol	1.3 ± 4.1	11.3 ± 5.2
18GHz H-pol	8.7 ± 3.9	13.7 ± 4.9
37GHz V-pol	-2.2 ± 4.2	12.8 ± 5.2
37GHz H-pol	6.8 ± 3.9	10.7 ± 4.9

Page 12, line 13: I would like to see the authors strengthen and better qualify the statement "With these hypothesis, the objective is to correct for the large differences between the sensors". As mentioned regarding Table 3, exactly how large are these differences for typical cold ocean and warm land scenes (i.e. 200 and 300 K)? Ultimately, I believe that highlighting the limitations of the SMMR data is as important if not more so than that value of the corrected data itself. The results in Figure 4 support this in that F08 SSM/I appears to be significantly better calibrated than SMMR. This should be stated in the conclusions.

R This remark is completely in line with the reviewer previous comments. The emphasis on the caveats of the SMMR data will be added to the conclusion and the better performance of the calibration of the later instruments will be highlighted.

The authors would like to thanks the reviewer for the comments on this paper and hope that the above responses helped clarify the questions that were raised. The work done should be useful to anyone working with SMMR data over continental surfaces.