

Establishment of AIRS Climate-Level Radiometric Stability using Radiance Anomaly Retrievals of Minor Gases and SST

by L. Larrabee Strow and Sergio DeSouza-Machado

Our responses are given below. For ease of review, we type-faced the reviewers questions in blue. At the bottom of our responses we include a copy of the new manuscript with removals in red and additions in blue with an underline. The main changes to the manuscript are:

1. Additional material on our clear selection has been added to Section 3 to show that we are not "matching" to ERA-I and indeed have objectively chosen the clear scenes.
2. Enhanced justification for using ERA-I model fields for evaluation of the anomaly retrieval Jacobians. This is done in a general manner in new Section 4.3. In Section 5 we include a detailed numerical analysis of any possible errors in our trend and anomaly results due to inaccurate ERA-I model fields, esp. see Table 4. (The blue underlining denoting new material in this table is overlapping the Jacobian denominators in Columns 1 and 2, but that will not show up in the final manuscript.)
3. The description of how we handle the co-linearity of the CO₂ and temperature Jacobians in Sect. 4.4 has been considerably lengthened. In addition, our main results shown in Table 3 now include (second row) an estimate of the AIRS stability using ESRL CO₂ trends as the standard performed **without** applying our correction for the co-linearity of these Jacobians.
4. Section 6 now includes new material, as suggested by Reviewer 1, that illustrates how the AIRS BT anomaly trends are modified by individual gases, temperature, and water vapor.
5. In several places in this manuscript, such as Eq. 1 and 2, we have rewritten terms and tried to clarify the language so that the reader understands that our "measurement" is BT anomalies, not BT absolute spectra. This fact removes many concerns about biases in our data that seemed to trip people up.

Reply to: Anonymous Referee 3

Note: Many comments refer the reviewer to changes in the manuscript that are included at the end of this file.

1 General

The authors present a novel approach with which to characterize decadal trends using AIRS radiance data. They apply this method to test instrument stability as well as temporal accuracy of retrieved geophysical variables over 16 years of AIRS measurements, limiting their scope to clear daytime scenes over ocean. With this work, the authors make a unique and valuable contribution to the science and application of satellite soundings.

This is a dense paper, and the authors expect the reader to hold on to an everincreasing number of abstract concepts as the paper progresses. I suspect some of the meaning and impact of their work may be lost as a result.

The main issue appears to be that the concept of retrieving atmospheric state anomalies directly from the observed BT spectra anomalies is not always kept in mind, and concerns that are raised are only relevant for standard state retrievals from absolute BT spectra. We have tried to clarify what is being retrieved in several places in the manuscript, including changes to Eq. 2. We also added a sentence to the end of Sect. 4.1 to emphasize we are retrieving anomalies from **BT anomalies**.

2 Scientific Issues

2.1 (1)

Could the authors explain how they determine a scene to be over ocean? From Figure 1 it looks like coastlines are included.

Coastlines are not included. The AIRS Level 1 landfrac value must equal 0 for us to call the scene "ocean".

2.2 (2)

Determining clear scenes (Lines 91-93): The authors mention that the BT of each scene is subtracted from the BT of each of its 8 neighbors. Do the authors mean that they do this calculation for each 3 x 3 cluster of fields-of-view (i.e., within a field-of regard), or do they treat each AIRS footprint (BT spectrum) independently and find 8 neighbors from adjacent fields-of-regard?

We treat each AIRS footprint independently and find 8 neighbors from adjacent "fields-of-regard". The concept of "field-of-regard" does not really exist in the level 1 data (the term does not appear in the Level 1b ATBD). I see no reason to introduce a construct of the AIRS Level 2 retrieval that has no meaning for this work.

- What do the authors mean by "scene"? A field-of-view, or field-of-regard?

In Section 3.1 we added a sentence to clarify more technically what we mean by scene. It is a single footprint. Again the concept of field-of-regard plays no role in this work.

- My understanding here is that the authors select clear scenes based on two criteria, (i) scene uniformity, and (ii) accuracy of BT residuals, using ERA-I in simulation. This means that the authors select scenes for subsequent analyses only where ERA-I agrees well with the measured radiance. I feel one should keep this in mind when interpreting results. Could the authors clarify how many scenes are removed from each step?

This is a far too general statement. We only compare ERA-I simulated radiances to the measured radiances for two window channels, as stated in the text. No other channels are compared, since we are looking for cloud contamination.

We have added more information on this process as requested in Section 3.1 where we now state the the 4K ERA-I bias test removes ~20% of the scenes detected with the uniformity filter. A map of these scenes shows very clearly that they are due to marine boundary layer stratus clouds, which form along the west coasts of the Americas and Africa.

Moreover, we now state the the distribution of observed biases for the very clear 1231 cm^{-1} channel is almost gaussian with a width of $\sim 0.6\text{K}$. The wing of this distribution is near zero for the -4K cutoff used for marine boundary layer stratus.

So, there is little "matching" to ERA-I at all. This is emphasized by changing Fig. 2 to include the single footprint standard deviation of the bias between ERA-I simulations and AIRS observations. We show in the figure that in the CO_2 region from $700\text{-}750\text{ cm}^{-1}$ that the ERA-I bias standard deviation is just every so slightly higher than the AIRS NEDT, consequently the ERA-I model fields for temperature follow the AIRS observations very closely.

- After applying these clear-sky filters, the authors then select 20k scenes randomly. Given the total available, what percentage is this?

We mistakenly stated 20K scenes were selected, our hard limit was upped to 40K a while ago. Now, that hard limit is almost never reached. Since we are using descending only, our total number of clear scenes is in the 10K range for most days. This is now stated in the paper.

2.3 (3)

Lines 106-107: This is the first time the authors introduce the AIRS Level 1c radiance product.

- Could the authors provide a reference here?

Done, and now with the date.

- What is the significance of using the L1c product?

We added 2 paragraphs in Sect. 3.1 that covers this.

- Do the authors use L1b radiances at all? If not, are the recommendations about radiometric stability and channel selection for the L1c product exclusively or does it also apply to L1b?

We added some text that basically says there is almost no difference between L1b and L1c for the "real" channels used in our retrievals, except for quite small adjustment in L1c for drifts in the AIRS frequency scale.

2.4 (4)

Attributing results to sampling issues, Line 132 "the non-uniform spatial sampling", Line 162 "Some of this is likely due to changes in sampling from day to day", Line 166 "weather and sampling". I'm wondering how their sampling strategy could contribute large systematic effects in the results. If 20,000 scenes are randomly selected every day, then sampling variation from day to day will average out by design. The sampling bias should be a minimum. Could the authors elaborate on their reasoning here? I am wondering if some of the systematic effects visible in Figures 4 and 5 cannot not partly be explained by spectral interference from state variables used in simulation, especially those not present in ERA-I, like the minor gases.

I disagree. Regions of clear scenes vary from day-to-day, especially in times of ENSO events. The clear sampling is far from uniform!

Also, I think the reviewer is thinking of the data in Fig. 4 as a bias. It is not, it is the BT **anomaly**. So, for example, the value of $\sim 0.25\text{K}$ in the window region in Fig. 4, blue curve, means that that channel "changed" during the time period by $\sim 0.25\text{K}/8$ years, since the anomaly is 16-years long, the mean is representative of the average anomaly after 8 years. Divide $0.25\text{K}/8\text{year}$ and you get $0.03\text{K}/\text{year}$, which is very close to the ERA-I SST rate of increase for this latitude, over the 16 years. This is not a bias plot! And the blue curve is not showing a systematic "effect" other than climate change.

Figure 5 just says that for this channel (710.14 cm^{-1} , now specified in the figure caption) that the radiance in the 28.3° North latitude bin varies by $\sim 0.5\text{K}$ day to day. That is extremely small for a non-uniform sampling over longitude! The "Noise" in the blue and red curves (AIRS data, ERA-I simulation) are almost identical! The black curve is (AIRS minus ERA_simulation), ie blue minus red curve, and it has essentially NO noise because the ERA-I simulations "follow" the AIRS observations very very closely. The droop in the black curve is just the effect of the global increases in CO_2 during this time period. Note that in the ERA-I simulations the CO_2 amount is fixed at 385 ppm.

2.5 (5)

Line 168: "Note that since the ERA-I tracks the atmospheric state quite accurately most of the time-series "noise" is removed" Could the authors provide a reference here? How accurate is ERA-I compared to other models? Here, one should also remember that the authors specifically selected those scenes where ERA-I simulated BT spectral yielded a low residual. I feel that this simply demonstrates that their sampling strategy produced the desired results, not that ERA-I is accurate per se.

This is covered a bit in the previous comment. I cannot provide a reference, this is original work. As stated earlier we did NOT specifically select scenes where ERA-I simulated BT spectral yielded a low residual, we showed that this selection ONLY used a window channel (not a channel high the atmosphere like this one) and that we only selected out marine boundary layer stratus decks.

More importantly, we **do not use** the ERA-I simulations in this work, they are shown here just for context, and to make the case that ERA-I model fields **are** sufficiently accurate for computing the Jacobians used to do the retrievals. Please see new material in Sec. 4.2 and an extensive evaluation in Table 4 on the effect of any inaccuracies in ERA-I for Jacobian retrievals. They are so small they can be ignored.

2.6 (6)

Line 202: "These a-priori covariance uncertainty terms improved simulated retrievals and profile trends generated from these retrievals by 3-10%." Could the authors elaborate on this result? It appears like a large range and I'm wondering if improvements were limited to specific latitudinal zones or regions.

Quite the opposite. Almost all infrared retrievals, especially those trying to measure CO₂, use fairly strict a-priori uncertainties in order to regularize the retrieval solutions. Here we use almost no a-priori constraints, and rely almost completely on empirical smoothing regularization (L in Eq. 5) rather than a-priori constraints. We did find that some very loose a-priori constraints helped a little, which is the quote above. 3-10% improvement in the retrievals refers to improvements in the **anomaly** retrievals of temperature and humidity. (1) Neither of those quantities are used to determine AIRS stability, (2) The range of temperature in the anomaly retrievals is ~3K max, so 10% of 3K is 0.3K, not much, and (3) similarly for water vapor, these are very small shifts.

So, it's really quite amazing that these retrievals can be done with very little a-priori constraints, which is most likely due to the fact that anomaly retrievals are insensitive to both AIRS calibration biases and RTA biases!

The effect of these a-priori constraints were very similar with latitude.

2.7 (7)

Section 4.3 (Lines 250-259): This section is confusing to me. Could the authors better explain Figure 7? Is the panel on the left, "-55 deg latitude CO₂ retrieval" for a single scene?

Section 4.3 is now Section 4.4.

There was a mistake in labelling in Fig. 7, right panel, that could have lead to some confusion, now fixed. As stated in the paper, all anomaly retrievals were done using 16-day clear scene averages binned into 40 equal area latitude bins. There are no "single scene" retrievals in this paper, and no retrievals using absolute radiances (or BT spectra). This is stated clearly in Equations 2 and 3 where our observable y is defined.

This figure addresses how we accounted for the retrievals mixing up temperature and CO₂ in the retrieval process. This is a common problem, we now have included some context on this from a EOS AURA-TES paper. Overall we have devoted about 1+1/2 pages to this approach. It's new and our results show tremendous self-consistency. Given that this is a new novel approach, most researchers stumble on it. However, in order to remove doubts, we have added a new row (number two) to Table 3, which summarizes our CO₂ trend results. In this new entry we show the measured drifts of our AIRS retrieved CO₂ anomalies relative to the ESRL in-situ CO₂ anomalies **without** using our correction that accounts for the co-linearity of the CO₂ and temperature Jacobians. The drift relative to ESRL is still very small (even smaller than what we deem our correct result) but it does have almost 3X higher statistical uncertainty.

We hope that the expanded discussion of this in Section 4.4 helps the reviewer understand the approach better.

2.8 (8)

Figure 9: How is it that the AIRS-ERA SST trend is a perfectly straight line across all wavenumbers?

This figure is showing the fitted linear trend in the time series of the anomaly residuals. The shortwave region residuals have a drift in them, something that could not be fitted out over time using the longwave and midwave channels. We conclude that the short wave is drifting. The (AIRS - ERA) SST trend line is the difference in trend (K/year) between the AIRS retrieved trend (K/year) in SST (from the anomaly retrievals) and the trend in the ERA-I SST product. There is only one trend for either product! What this line shows is that the longwave and midwave AIRS channels produced a SST trend that is far closer to zero than the un-fit trend in the AIRS shortwave channels.

2.9 (9)

Lines 567-568: "This work emphasizes that users of AIRS data for climate applications must pay careful attention to channel selection since certain detector arrays and channels are presently not suitable for climate trending, including all of the AIRS short wave channels"

- By "AIRS data", do the authors mean L1c?

Changed to say both L1b and L1c.

- The authors demonstrated that they could calculate the shortwave spectral drift after the fact and, when subtracting it from the retrieved trend in Susskind et al. (2019), they could correct the trend sufficiently. Would such an approach not be a suitable alternative to channel selection? I imagine that the range of geophysical retrievals possible from bias-free channels must be reduced. This gives rise to the question whether climate-quality retrievals could be made from a reduction in spectral channels.

Not sure I understand. You always need a variety of channels since the geophysical trends will always be mixed together in many channels. The AIRS Level 2 algorithm has bias-correction estimates applied to the BT radiance spectra, who knows what that is doing. I spoke with the AIRS Level 2 implementers on this (John Blaisdell) and they found that they could not retrieve emissivity and surface temperature together using only the longwave window channels. Therefore, they used just the shortwave to get surface temperature, and did not vary that when they retrieved surface emissivity (and some of the water column) using only the longwave channels. So, it's a mess in terms of climate.

But, yes, if biases are removed, the retrieval should be more accurate. But, I think the approach used here is far better, just retrieve the anomaly trends, since they don't contain AIRS calibration biases or RTA biases. Generally the climate community is primarily only interested in anomalies.

- How do the authors envisage the practical implementation of their recommendation here? The method the authors present here appears nuanced and expensive, not easy to implement by users of AIRS data.

Agreed. We have not yet explored how much scene dependence there might be on the offsets in the radiances caused by the AIRS events. I believe it needs to be done by the AIRS/SNPP Projects.

- Do the authors consider publishing a list of AIRS channels suitable for climate applications?

We plan to add the channel list to a repo that goes with this article.

3 TECHNICAL ISSUES:

- Discussion of spectral features: It will help the reader a great deal if the authors specify the wavenumber range they refer to with each mention of specific features, e.g., "CO₂ region" in Line 160, or "upper-tropospheric water vapor" in Line 162, or "window region...water bands" in Line 207, etc.

Done.

- Line 28: "sea surface temperatures." Define the acronym "SST" upon first use.

Done.

- Line 59: “After a summarizing”

Done.

- Line 89: “Radiance (BT) anomalies” this is confusing since “BT” is an acronym or Brightness temperature, not Radiance.

Tried to clarify. But most people are conversant with interchanging radiance with BT.

- Line 106: “are matched to each clear scene are also saved”

Done

- Figure 1 caption: “Density of AIRS clear ocean scene for calendar years 2012” should be “Density of AIRS clear ocean scenes for calendar year 2012”

Done

- Figure 2: Caption: Should it not be “long-wave” instead of “short-wave”? Since the authors make specific reference to a CO₂ feature, would they consider expanding the x-axis and adding more detailed tick marks to help the reader identify this feature specifically? As reader, I have the same issue with Figure 3 and its subsequent discussion.

Yes, fixed, thanks. This figure was substantially changed in response to this reviewer, as discussed above.

- Y-axis label: Reference to B(T) instead of BT. (Same in Fig. 4, Fig. 9)

Fixed

All the rest of the comments below have been addressed.

- Line 161: “by by”
- Line 203: “each observations”
- Lines 202-203: Awkward sentence. Meaning unclear.
- Line 225: Add a comma to ease reading: “As discussed in Section 2, only”
- Lines 238, 264, 516: “(Aumann)” reference needs a date.
- Line 254: “to to”
- Figure 6 (page 11): legend should probably be “All channels used” for the blue profile?
- Line 267: “every so slightly”
- Line 294: “channels in located below 1615 cm⁻¹”
- Line 300: Could the authors provide a reference for the L2c product here, so that the reader could follow up and better understand how “channels that do not exist . . . are filled during L1c creation”.
Printer-friendly version
- Line 312: “discussed in Sect. sec:sst”
- Line 316: “results presented here use avoid the short wave”
- Line 418: “just two two small”
- Line 546: “improvements to the AIRS products can be improved”
- Line 564: “jumps are observed in the all retrieved” Interactive comment on Atmos. Meas. Tech. Discuss., doi:10.5194/amt-2019-504, 2020.

Establishment of AIRS Climate-Level Radiometric Stability using Radiance Anomaly Retrievals of Minor Gases and SST

L. Larrabee Strow and Sergio DeSouza-Machado

Dept of Physics and JCET, University of Maryland Baltimore County, Baltimore, Maryland

Correspondence: L. Larrabee Strow (strow@umbc.edu)

Abstract. Temperature, H₂O, and O₃ profiles, as well as CO₂, N₂O, CH₄, CFC12, and SST scalar anomalies are computed using a clear subset of AIRS observations over ocean for the first 16-years of NASA's EOS-AQUA AIRS operation. The AIRS ~~Level-1e~~Level-1c radiances are averaged over 16 days and 40 equal-area zonal bins and then converted to brightness temperature anomalies. Geophysical anomalies are retrieved from the brightness temperature anomalies using a relatively standard optimal estimation approach. The CO₂, N₂O, CH₄, and CFC12 anomalies are derived by applying a vertically uniform multiplicative shift to each gas in order to obtain an estimate for the gas mixing ratio. The minor gas anomalies are compared to the NOAA ESRL in-situ values and used to estimate the radiometric stability of the AIRS radiances. Similarly the retrieved SST anomalies are compared to the SST values used in the ERA-Interim reanalysis and to NOAA's OISST SST product. These inter-comparisons strongly suggest that many AIRS channels are stable to better than 0.02 to 0.03 K/Decade, well below climate trend levels, indicating that the AIRS blackbody is not drifting. However, detailed examination of the anomaly retrieval residuals (observed minus computed) show various small unphysical shifts that correspond to AIRS hardware events (shutdowns, etc.). Some examples are given highlighting how the AIRS radiances stability could be improved, especially for channels sensitive to N₂O and CH₄. The AIRS short wave channels exhibit larger drifts that make them unsuitable for climate trending, and they are avoided in this work. The AIRS Level 2 surface temperature retrievals only use short wave channels. We summarize how these short wave drifts impacts recently published comparisons of AIRS surface temperature trends to other surface climatologies.

1 Introduction

The Atmospheric Infrared Sounder (AIRS) on NASA's AQUA satellite platform (Aumann et al., 2003) measures 2378 high-spectral resolution infrared radiances between 650 and 2665 cm⁻¹ with a resolving power ($\lambda/\Delta\lambda$) of ~1200. Launched in 2002 into a sun-synchronous polar orbit with a 13:30 ascending node equator crossing time, AIRS now has been operating almost continuously for 17+ years.

The long record of AIRS allows measurements of short-term climate trends that are especially useful given it's global coverage. Nominal decadal climate temperature trends are in the 0.1-0.2K/decade range. For example a recent Intergovernmental Panel on Climate Change (IPCC) report (Masson-Delmotte et al., 2018) suggests 20th century trends (2000-2017) of about 0.17K/decade. If AIRS is to contribute to climate-level trend measurements, uncertainty estimates for the time stability of the

AIRS radiances are a pre-requisite before using AIRS Level 2/3 products for climate level trending. Estimating the level of any instrument-related trends, for a wide range of AIRS channels, is the subject of this work.

A recent study (Aumann et al., 2019) addressed the stability of a single AIRS channel by comparisons to sea surface temperatures (SST). Some limitations of ~~this~~ ~~that~~ study are addressed below, but ~~the major limitation of this work is that its~~

30 ~~major limitation is that is evaluates only one channel~~. AIRS retrievals use 400+ AIRS channels, and there is no guarantee that the AIRS stability in one channel applies to all channels, as acknowledged in (Aumann et al., 2019).

AIRS is sensitive to a host of atmospheric and surface variables, including atmospheric temperature (via CO₂ emissions), humidity, surface temperature, O₃, CH₄, N₂O, carbon monoxide, clouds, coarse mode aerosols and other minor gases. 1D-var retrievals such as the AIRS Level 2 products (Susskind et al., 2014) attempt to retrieve all relevant atmospheric and surface
35 variables in order to produce the most accurate temperature and H₂O profiles. The atmospheric CO₂ concentration is especially important for AIRS retrievals since most of the radiance measured in the temperature sounding channels is due to CO₂ emission. However, it is difficult to separate the CO₂ concentration from variations in the temperature profile due to co-linearity of their Jacobians. Consequently, the AIRS Level 2 retrievals instead vary CO₂ in the forward model to account for CO₂ growth during the mission (Blaisdell, 2019).

40 The largest radiance trends seen by AIRS are due to the growth rate of CO₂ in the atmosphere. Assuming a nominal growth rate of 2 ppm/year, and max sensitivity of AIRS channels of CO₂ of 0.03K/ppm, the brightness temperature (BT) shift in AIRS over 16-years is ~1K, or 0.06K/year. Concentrations of atmospheric carbon dioxide have been measured worldwide for many years with extremely high accuracy (Masarie and Tans, 1995; Tans and Keeling) by NOAA Earth System Research Laboratory (ESRL). Averaged yearly, CO₂ concentrations are highly uniform globally, with little latitudinal variation in growth rates.
45 Similarly NOAA ESRL also provides a wide network of measurements of N₂O and CH₄, which are also relatively uniformly mixed over yearly time-periods. Here we use the high accuracy of the trends in these in-situ measurements of minor gases to determine the stability of a large number of AIRS channels.

~~Sea surface temperature (SST)~~ ~~SST~~ trends are also extremely well measured and generally referenced to the in-situ ARGO (Argo, 2019) buoy network but interpolated to a full grid using instruments such as the AVHRR. Two SST products referenced
50 to the buoy network are compared to AIRS trends here: (1) NOAA's Optimum Interpolation SST (version 2) (OISST) (Banzon et al., 2016), and (2) the Operational Sea Surface Temperature and Ice Analysis (OSTIA) (Stark et al., 2007), which has been used in the ERA-I Interim Reanalysis (ERA-I) since 2009 (Dee et al., 2011). Prior to Feb. 2009 ERA-I used the NCEP Real-Time Global SST (RTG) product, a precursor to OISST.

AIRS stability is referenced to trends in these minor gases and SST by performing 1D-var retrievals of clear scene radiance
55 anomalies averaged into 40 equal-area latitude bins and 16-day time periods. Comparisons of the retrieved gas concentrations and SST trends, combined with examination of the retrieval residuals, provides a number of powerful tests of AIRS radiometric stability as well as detailed information on AIRS performance changes due to several minor instrument shutdowns that took place occasionally over the mission.

After ~~a~~-summarizing the characteristics of the AIRS instrument, and the data used in this work, the retrieval methodology
60 is reviewed with a short discussion of the retrieved temperature profile time series. We follow with stability estimates derived

from the anomaly spectra retrievals of CO₂, N₂O, CH₄, and SST. Although AIRS is most sensitive to the two best in-situ data sets, CO₂ and SST, we also compare to retrievals of N₂O and CH₄ since they are also relatively well measured and help test the AIRS performance in spectral regions not covered by CO₂ and SST. Finally we examine the time series of the anomaly retrieval residuals (BT observed - fit) time series since, together with the anomaly geophysical retrievals, they provide detailed information on AIRS radiances over time, especially the instrument response to various short shutdowns that occurred during the mission.

2 AIRS Instrument and Data

Several details of the AIRS instrument design are relevant to the processing performed here and are needed to understand some of the results. AIRS has 2378 spectral channels divided up into 17 different detector arrays. Appendix A gives the nominal wavenumber boundaries of these arrays. Arrays M-11 and M-12 are linear arrays of single photoconductive HgCdTe detectors. The other AIRS arrays are photovoltaic detectors, and each reported detector output is actually some linear combination of two detectors offset from each other in the vertical (not dispersive) direction. The photovoltaic detectors for each AIRS ~~channels~~ channel are labeled "A" and "B". The relative contributions of A and B detectors can be changed by command to the spacecraft. The majority of these detectors are wired for equal contributions by the A and B detectors, which we denote as A+B detectors. However, some detectors have always been inoperable, or their performance characteristics changed in orbit, so there are a number of A-only and B-only detectors.

The radiometric and spectral characteristics of the A versus B detectors can be slightly different. During the mission, good A+B detectors can suddenly exhibit greatly increased noise when one or the other of the two detectors fails or degrades. In many circumstances the AIRS Project has changed A+B detectors to be either A-only or B-only in order to recover that particular channel, albeit at slightly lower noise levels than if both detectors were working properly. Fortunately, many of the A-only and B-only detectors are in the window regions where AIRS has tremendous redundancy. Unfortunately, the M-10 array which covers the tropospheric CO₂ sounding channels also has a good number of A-only, B-only detectors.

Here we avoid any photovoltaic channel that is not A+B, and any channel with a state change during the mission. Although A-only and B-only channels may perform well, many of these single detector channels exhibit drifts over the mission for colder scenes. This is especially apparent in time series of cold scene observations (deep convective clouds) by comparison to similar time series derived from IASI on METOP-1. In addition, we avoid any channels with detector noise above 0.5K NEDT (for a 250K scene). As discussed below in more detail, we also avoid all short wave AIRS channels, meaning channels past 2000 cm⁻¹ for our final trend measurements, since we find that the short wave is drifting slightly.

3 Radiance~~(BT)~~/Brightness Temperature Anomalies

3.1 Clear Selection

The new AIRS Level-1c radiance product (Aumann et al., 2020) is used in this work rather than the standard L1b product. The Level-1c product provides single-footprint radiance estimates for channels in Level-1b that are not functional, or are extremely noisy. Even high quality Level-1b channels can sometimes "pop" or experience radiation hits that invalidate the measurement. In these extremely rare cases the Level-1c algorithm substitutes an estimated radiance using a principal-components approach. These corrections are rare enough that they have no effect on the long-term trends under study in this work. Level-1c also includes some channels (in-between detector arrays) that do not exist.

More importantly for this work, the radiances in Level-1c have been corrected for small drifts in the channel center frequencies. These drifts are small, but are large enough to have some minor impact on radiance trends. We emphasize that the channels selected for the anomaly retrievals are all valid Level-1b channels, and most have undergone no corrections other than adjusting the radiances back to a fixed frequency scale.

AIRS L1c clear scenes are primarily detected using a uniformity filter. (Throughout this paper the term "scene" refers to a single AIRS nominal 12-by-12 km. footprint or field-of-view.) The BT of each AIRS ocean scene is subtracted from the BT of each of its 8 neighbors for two window channels at 819.3 and 961.1 cm^{-1} . A scene is initially deemed clear only if the absolute value of all of these differences, averaged over the two channels, is less than 0.4K. The selected scenes are matched to ERA-I model fields and a simulated clear BT for the 961.1 cm^{-1} channel is computed using a stand-alone version of the AIRS radiative transfer algorithm (Strow et al., 2003) called SARTA, implemented using HITRAN 2008 line parameters. If the difference between the observed and computed clear scene BT values is more than $\pm 4\text{K}$ the scene is discarded from the clear list. This test mostly removes colder scenes made up of very uniform marine boundary layer stratus clouds. The clear yield and mean zonal radiances are quite insensitive to the exact value of this threshold. The uniformity test is not performed on the first and last of the 135 along-track scans in each AIRS granule since they do not have 8 neighbors and we wanted to avoid cross-granule processing. The total number of clear scenes is limited to ~~~20~~40,000 daily clear scenes by randomly sub-setting the detected clear scenes, however this daily limit is almost never reached. In this work we only use descending node observations in order to avoid solar and nonLTE contributions to the AIRS radiances in the short wave. After subsetting for descending (ocean) only the total number of clear scenes detected is $\sim 10,000$ per day.

The 4K (observed minus computed) BT test removes $\sim 20\%$ of the scenes detected with the uniformity filter. A map of these deleted scenes very clearly shows that they are almost all located along the west coasts of the Americas and Africa, where marine boundary layer stratus clouds commonly occur. The (observed minus computed) BT values for the 1231 cm^{-1} window channel have a nearly gaussian distribution with a width of $\sim 0.6\text{K}$. Note that this distribution of biases is well separated from the 4K cutoff used to remove marine boundary layer stratus clouds.

Another important characteristic of this clear subset is the stability of the observing times. If the mean observing time changes during this 16-year time period, trends in the SST could be confused with the diurnal cycle of the SST. Due to the high stability of the AQUA orbit, this is not an issue. The short term day-to-day variations in the mean clear subset times can vary by several hours. In addition, there is a seasonal variation of several hours in the clear subset. But, these variation are extremely stable, and the total linear drift of the clear subset over the 16-year observing period, for any given latitude bin in the tropics, is $\sim 20 \pm 40$ ($2\text{-}\sigma$) seconds per year, effectively zero.

All observing parameters, on a footprint basis, are saved, such as satellite viewing zenith angle and noise (converted to BT units).

130 ~~The~~ In addition, the ERA-I model parameters (temperature, H₂O, and O₃ profiles, and surface temperature with a spatial resolution of approximately 80 km on 60 levels in the vertical from the surface up to 0.1 hPa) are matched to each clear scene ~~are also and~~ saved along with their associated simulated L1c radiances. This allows our processing to use simulated rather than observed radiances for testing. The ERA-I profiles are also used to compute the anomaly Jacobians ~~, as discussed below. All of our processing can be tested using the simulated radiances rather than the observed radiances as input~~ used in the retrievals, and are discussed in detail in Sects. 4.3 and 5.

3.2 Clear Scene Characteristics

Figure 1 illustrates the density and location of the clear ocean dataset, averaged over 2012. Retrievals are only performed on

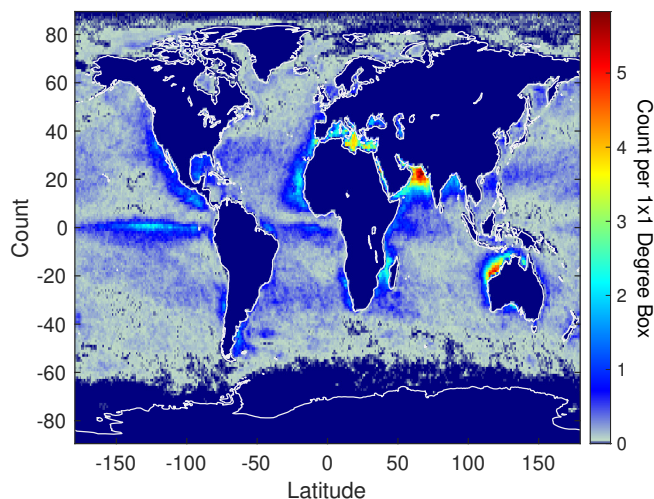


Figure 1. Density of AIRS clear ocean ~~scene~~ scenes for calendar years 2012.

135 zonally averaged data, which translates into ~44/25 observations/day at -50°/+50° latitude respectively, with a maximum of 200 observations per day at -0.5° latitude. The non-uniform nature of this sampling should be kept in mind when examining temperature, H₂O, or O₃ trends in that this data set is not necessarily representative of global/zonal climate trends. However, we do assume that the minor gas anomaly trends we are retrieving are uniformly mixed over ~~year~~ year+multi-year time scales. Our
140 anomaly retrieval results show uniform mixing is generally quite accurate over even 16-day time scales.

~~The ERA-I model fields, suitably converted to temperature, humidity, and ozone profile anomalies are used to compute the BT profile Jacobians needed for the anomaly retrievals. In principle we could have performed 1D-var retrievals on each 16-day averaged BT spectrum in each latitude zone. However, ERA-I is so accurate, that is not necessary.~~ Figure 2 illustrates the accuracy of ERA-I for this dataset ~~, where we show by plotting~~ the (observed - ERA-I) ~~based simulated~~ BT bias for 28.4°N.
145 ~~This is the initial mean bias derived from a time-series fit to both the observed and~~ The ERA-I simulated time series, ie for time

= 0 (Sept. 2002). The time series fit are discussed in Sect. 3.3 simulated BT used our SARTA RTA, which has a default value of 385 ppm for CO₂. This CO₂ value is matched in the observations by comparing to AIRS observations for the time period centered around June 2008 when the nominal global CO₂ amount was 385 ppm. The window regions (800-1000 cm⁻¹) exhibit a bias of ~0.5K, which is quite small and likely some combination of instrument bias, evaporative cooling of the ocean surface relative to the ERA-I SST, incorrect ERA-I water vapor column affecting the H₂O continuum, and some cloud-contamination. Sampling errors may contribute to the larger biases in the water region beyond 1300 cm⁻¹. A zoom of the bias in the bottom panel of Fig. 2 highlights the low bias in the 700-750 cm⁻¹ region which is sensitive to tropospheric CO₂, with a mean of ~0.2-0.3K.

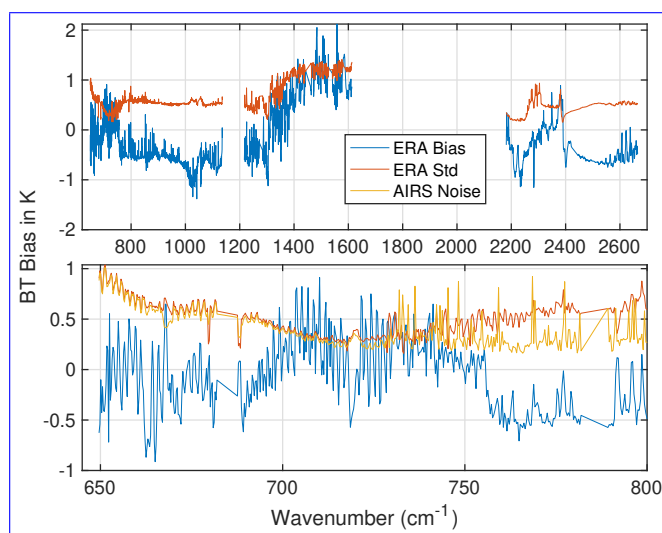


Figure 2. Top Panel: (AIRS - ERA-I simulated) BT bias for 28.4°N in Sept. 2002. The for a time period centered around June 2008 when the global CO₂ feature in amount was ~385 ppm. Bottom Panel: Zoom of top panel. Shows that the mid-wave region near 700-760 cm⁻¹, which is due our use of a constant most sensitive to CO₂ concentration, has a mean bias of 385 ppm for the ERA-I simulations ~0.2-0.3K, rather than and a value single-footprint standard deviation of ~370 ppm more appropriate for this date 0.3K. Also shown is the AIRS NEDT, which is barely smaller than the bias standard deviation.

The CO₂ tropospheric sounding region in the 700-780 cm⁻¹ region shows a sharp increase in the bias of about 0.6K (depending on channel) that is due to the fact that the single-footprint standard deviation of the bias is also shown in Fig. 2, bottom panel along with the average AIRS NEDT for these footprints. The ERA-I bias standard deviation is barely larger than the AIRS noise in this spectral region, indicating that ERA-I based radiance simulations used a constant amount of CO₂ set at 385 ppm. This feature will go through zero bias and become negative by approximately the same BT amount at the end of our 16-year test period temperatures in the mid-troposphere track the AIRS observations very closely with a standard deviation considerably smaller than the AIRS noise. This makes a strong case for the accuracy of the BT Jacobians computed from ERA-I temperature fields.

Figure 3 shows the linear trend for the clear dataset averaged over ±50° latitude.

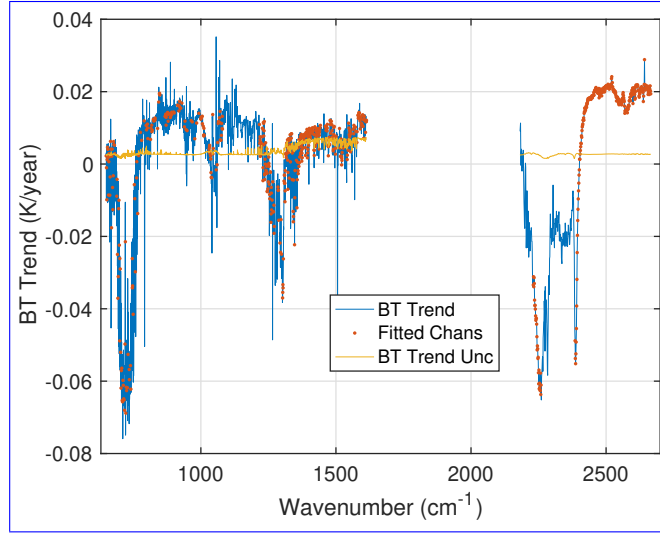


Figure 3. Mean BT trends (a_1 in Eq 1) averaged over $\pm 50^\circ$ in Δ BT/year units. The 2- σ uncertainty shown has been corrected for serial correlations in the BT time series. Channels used in the anomaly retrievals are denoted in red, and the BT trend uncertainty is in yellow.

Mean-radiance trends for $\pm 50^\circ$ in Δ BT/year units. The 2- σ uncertainty shown is lag-1 corrected for time-series correlations. Channels used in the anomaly retrievals are denoted in red, and the BT trend uncertainty is in yellow.

165 These BT trends prominently exhibit the growth in CO_2 in the tropospheric channels from 700 to 750 cm^{-1} , which results in a negative change in the observed BT since increasing CO_2 shifts the emission to higher and therefore colder regions of the atmosphere. The growth in CO_2 in the stratospheric channels (a positive BT change) below 700 cm^{-1} is roughly cancelled by cooling in the stratosphere. All window channels exhibit warming, with larger values in the shortwave past 2450 cm^{-1} .
 170 these observations we clearly see ~~warmingsurface~~ warming in the 800-1250 cm^{-1} region, if the AIRS radiometry is stable. In addition, the effects of much stronger water vapor absorption in the long wave compared to the short wave windows makes definitive inter-comparisons of the BT trends complicated, which is addressed below by doing retrievals on these data.

3.3 Construction of Anomalies

The clear scene radiance subset is sorted into 40 equivalent area latitude bins that cover the full -90° to 90° latitude range and
 175 are averaged over every 16 days. This results in a data set for the first 16-years of AIRS that has ~~the size a size of~~ a size of (40 x 2645 x 365~~denoting~~) latitude bins, AIRS L1c channels, and the total number of 16-day averages. The following time-series function was fit to these averaged radiances, $r_{\text{obs}}(t)$, for each latitude and AIRS L1c channel,

$$r_{\text{fit}}(t) = r_o + a_1 t + \sum_{i=1}^4 c_i \sin(2\pi n t + \phi_i) \quad (1)$$

where t is AIRS mission times in years, r_o is a constant, c_i are the amplitudes of the season cycle and three harmonics, and the
 180 ϕ_i are their associated phases. The function models periodic variations in the radiances using an annual term and the first three

harmonics. At 28°N, for example, the annual amplitude relative to the mean radiance, c_1/r_o , has a median value (taken over channel) of 4.2%. The median amplitudes of the three harmonics terms, c_2, c_3, c_4 relative to r_o is 0.32%, 0.45% and 0.23% respectively, all with 2- σ uncertainties of ~0.05%.

185 ~~For the retrievals performed we created the radiance anomaly by inserting the linear trend into the residuals of the above time-series fits,-~~

$$r_a(t) = r_{\text{obs}} - r(t) + a_1 t.$$

~~The linear term~~ The linear trends a_1 ~~represents the linear-part of the minor gas signals we aim to measure. The a_1 terms are included in the anomaly time-series fits since they are a useful way to quickly understand AIRS trends and because this allows us to measure a more correct lag-1 auto-correlation of the time series noise, which is used to estimate corrections for the~~
 190 ~~uncertainties in the time-series parameters using the approach popularized in (Santer et al., 2000). The radiances anomalies for simple diagnostic purposes, and are not used directly in the anomaly retrievals.~~

The radiance anomalies, $r_a(t)$ are formed by removing the constant r_o , and the sinusoidal terms in Eq. 1, from the observed radiance time series $r_{\text{obs}}(t)$. This can be expressed as

$$r_a(t) = r_{\text{obs}} - \left(r_o + \sum_{i=1}^4 c_i \sin(2\pi n t + \phi_i) \right) \quad (2)$$

195 The radiance anomalies $r_a(t)$ were converted to brightness temperature units using

$$y(\nu) \equiv BT_a(\nu, t) = \frac{r_a(\nu, t)}{\frac{\partial r(\nu)}{\partial BT(\nu)}}. \quad (3)$$

~~for our retrievals.~~ The 40 x 2645 x 365 array of BT_a vectors are the retrieval inputs y ~~as denoted~~ in the retrieval formation discussed in Sect. 4.

~~All uncertainties quoted in this paper derived from time series are for 95% uncertainty levels and are lag-1 corrected for correlations in the time series residuals.-~~
 200

The anomaly BT time series mean BT spectra and their standard deviations are shown in Figure 4 for the 28.4°N latitude bin. The BT anomaly is set to zero at the mission start, therefore the mean BT in the CO₂ region channels sensitive to tropospheric CO₂ between 700 and 750 cm⁻¹ is -0.5K ~~given that it changes by by ~-1K, which then increases by ~1K~~ during the mission. The standard deviation indicates that the SST (and H₂O continuum) vary by ~1K during this time period. Some of this is likely
 205 ~~due to changes in sampling from day to day .The upper-tropospheric water vapor and ERA-I errors in SST and column H₂O.~~ Upper-tropospheric water vapor, which dominates the spectral region between 1350-1615 cm⁻¹, has the highest variability, which is expected due to both the high temporal variability of water vapor ~~in time~~, and our non-uniform sampling.

An example radiance BT anomaly for the 710.141 cm⁻¹ channel is shown in Fig. 5, for the same latitude bin. This channel is heavily ~~influence~~ influenced by the CO₂ growth, so the AIRS observed trends are becoming more negative, although there is
 210 considerable noise, again due to weather and sampling. For comparison we also plot the ERA-I simulated BT anomaly, which

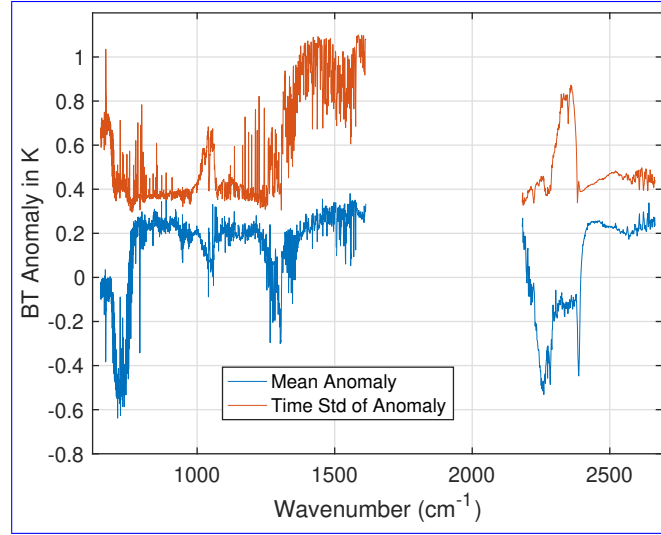


Figure 4. Mean and standard deviation of the AIRS BT anomalies for the zonal bin centered at 28.3°N.

does not contain the CO₂ growth, since it is set to a fixed value of 385 ppm in the simulations. The difference between these two BT anomalies will primarily be due to CO₂ growth, and is shown in black. Note that since the ERA-I tracks the atmospheric state quite accurately most of the time-series "noise" is removed. This helps lend credence to our use of the ERA-I model fields for Jacobian evaluation.

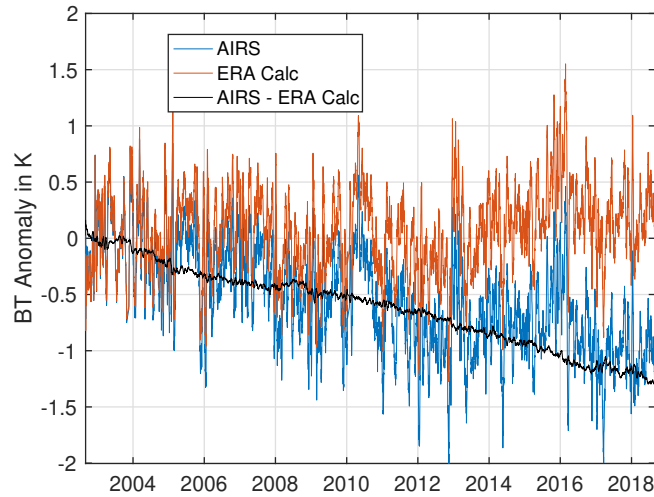


Figure 5. Sample AIRS observed and ERA-I simulated BT anomalies for the zonal bin centered at 28.3°N for the AIRS channel centered at 710.14 cm⁻¹. The differences in the AIRS and ERA-I anomalies ~~is~~ are plotted in black. Note, this difference anomaly is not used in the anomaly retrievals.

4.1 Approach

Geophysical retrievals are derived from ~~BT-anomalies~~the BT spectral anomalies $y(\nu)$, defined in Eq. 3. Using standard retrieval notation the atmospheric state x is derived from the observations y , $y(\nu) \equiv BT_a(\nu, t)$, by minimizing the cost function J

$$J = (y - F(x))^T \mathbf{S}_\epsilon^{-1} (y - F(x)) + (x - x_a)^T \mathbf{R} (x - x_a) \quad (4)$$

220 where \mathbf{S}_ϵ is a diagonal observation error covariance matrix containing the square of the BT noise, \mathbf{K} are the anomaly Jacobians, and \mathbf{R} is a regularization matrix. The retrieved atmospheric state x (the geophysical anomalies) are given by

$$x = x_a + (\mathbf{K}^T \mathbf{S}_\epsilon^{-1} \mathbf{K} + \mathbf{R})^{-1} (\mathbf{K}^T \mathbf{S}_\epsilon^{-1} (y - F(x_n))), \text{ where } \mathbf{R} = \mathbf{S}_a^{-1} + \alpha \mathbf{L}^T \mathbf{L}, \quad (5)$$

225 where \mathbf{S}_a is the a-priori covariance matrix, and $\alpha \mathbf{L}$ is an empirical regularization constraint using Tikhonov L1-type derivative smoothing. This retrieval approach is standard Optimal Estimation (OE) (Rodgers, 1976) enhanced to include both covariance and empirical Tikhonov regularization in \mathbf{R} (Steck, 2002). Forward model uncertainty is not included in the measurement error covariance. The mathematical approach is very similar to the author's single-footprint AIRS retrieval algorithm (DeSouza-Machado et al., 2002).

230 A-priori estimates for $x_a(t) \equiv 0$ for $\text{T}(\text{z})$, $\text{O}_3(\text{z})$, $\text{H}_2\text{O}(\text{z})$ and T_{SST} were set to zero. Two approaches were used for the minor gas a-priori estimates. The first approach set $x_a(t) = x_a(t - 1)$ where $x_a(t = 0) = 0$ for the minor gases, iteratively increasing the a-priori gas amount in time based on the previous 16-day retrieval.

Another approach used the known growth rates in the minor gases (from ESRL) by setting $x_a(t) = g * (t - t_o)$ for the a-priori minor gas amount, where g is the nominal yearly growth rate for each gas from the NOAA ESRL atmospheric gas trends. For both approaches we set the a-priori covariance to g times one year, the yearly variation in that gas. Nearly identical results are obtained if we used g times five years. The iterative approach for setting the minor gas a-priori produces noisier retrieval anomalies. However, if our retrievals are averaged over $\pm 50^\circ$ latitude, both approaches produced identical differences compared to in-situ measurements, including error uncertainties. The figures shown here use the a-priori ramp from the ESRL data, although the figures for the iterative ramp are only distinguishable from what is shown for single zonal retrievals (such as the Mauna Loa and Cape Grim comparisons).

240 The retrieval approach is standard Optimal Estimation (OE) (Rodgers, 1976) enhanced to include both covariance and empirical Tikhonov regularization in \mathbf{R} (Steck, 2002). Here we use Tikhonov L1-type derivative smoothing. Forward model uncertainty is not included in the measurement error covariance.

245 The temperature, H_2O , and O_3 profile retrievals use 20 atmospheric layers, selected from the AIRS standard 100-layer pressure grid (Strow et al., 2003) by accumulating five of the standard AIRS layers at a time. The lowest layer is about 1.5 km thick, with increasingly wider layers as you go higher in the atmosphere. This layering scheme allows more layers than degrees-of-freedom (DOFs) although it does limit retrievals in the upper-stratosphere. We wish to minimize our sensitivity to

the upper-stratosphere since our comparisons to in-situ measurements are made in the troposphere. Consequently we removed all channels peaking above 10 hPa.

Most of the regularization in the retrieval comes from the Tikhonov terms, since we do not want to invoke climatology too strongly for a climate level measurement. Appendix B discusses the profile retrievals, and simulations of these retrievals, in more detail. In summary, after experimentation with Tikhonov regularization we added some a-priori covariance uncertainties in temperature and water vapor of 2.5K and 60% respectively. These ~~are extremely large values for a-priori covariance uncertainty terms improved simulated retrievals and uncertainties compared to the anomaly variations.~~ For example, the retrieved 400 hPa temperature anomalies shown in Fig. B3 are all less than $\pm 3\text{K}$, indicating that the temperature a-priori covariance uncertainty is providing very minimal regularization. This means that almost all of the retrieved temperature variability is coming from the data, and is not damped by the a-priori estimates, a desirable situation for the measurement of climate trends. These a-priori covariance uncertainty terms did, however, improve the profile trends generated from these retrievals by in simulation by a slight amount, 3-10%, and thus were retained in our retrieval.

The observation error covariances ~~were derived by averaging the noise from each observations contributing to the averaged anomaly being retrieved~~ (noise) are the mean AIRS NEDT for each channel, averaged over 16-days, and then divided by the square root of N, the number of scenes averaged. Originally a fixed value of 0.01K observation noise was used, but we found that this noise value depressed the CO₂ anomaly retrievals as they grew in size over time. This problem disappeared once we switched to the true measurement noise values, which are in the range of noise equivalent brightness temperature (NEDT) equal to 0.004K for long wave CO₂ channels from 700-750 cm⁻¹, about 0.001K in window regions between 800-1250 cm⁻¹, and 0.001 to 0.002K in the water bands. ~~band that covers the 1300-1615 cm⁻¹ spectra region. These are extremely low noise values, which help explain why the anomaly retrievals have a relatively high number of degrees-of-freedom.~~

As stated earlier, the profile Jacobians used the ERA-I profiles, which were converted to anomaly profiles for each pressure layer. The minor gas Jacobians were computed using our pseudo line-by-line kCARTA radiative transfer algorithm (Strow et al., 1998; DeSouza-Machado et al., 2019). kCARTA allows for extremely accurate Jacobian calculations, including analytic trace gas and temperature Jacobians. Initial retrievals used a fixed value for the minor-gas Jacobians. However, given the large increase in the minor gases (10% for CO₂), we determined that the minor-gas Jacobians need to be updated as the gas amounts increase. Therefore we used finite-difference Jacobians, computed using the minor gas amount retrieved from the previous time-step during the anomaly retrievals (or from the gas amount estimated using NOAA ESRL in-situ gas amount data). The minor gas profiles used in the Jacobian calculations are from (Anderson et al., 1986). The CO₂ profile is essentially constant in ppm until you reach the highest atmospheric layer.

There exists a weak dependence of these retrievals on the ERA-I model fields since we use the ERA-I model fields for the temperature, H₂O, and O₃ profiles in the profile Jacobians, **K**. While we could retrieve the atmospheric profiles from the full radiance at each time step and latitude zone, ERA-I is so accurate we do not believe this is needed. ~~Moreover, we do retrieve the profile anomaly in each step, so we are not dependent on the actual~~ Section 5.4 discusses potential errors introduced by using ERA-I model values for the retrieval other than a weak dependence via the Jacobians. ~~In the results shown later the impact of attempting to use the ERA-I profile anomalies, rather than retrieved profile anomalies, is presented. The end result~~

~~show conclusively that we did need to retrieve the true profile anomalies, using ERA-I profile anomalies, for example, results in increased errors in the trace gas retrievals for Jacobian evaluation, where they are shown to be extremely small and unimportant.~~

285 The direct retrieval of anomalies from the BT anomaly spectra represents a very different approach than normally used in infrared remote sounding. Although the mathematical approach is the same as in single-fooprint retrievals (DeSouza-Machado et al., 2018), the often troublesome problem of static measurement and RTA bias errors is largely removed here since instrument calibration and/or absolute RTA biases do not appear in the retrieval process.

4.2 Channel Selection

As discussed in Section 2, only channels that remain A+B throughout the mission are used, noting that the designation A+B
290 does not apply to detectors in the M-11 and M-12 long wave detector arrays. Initial retrievals showed that the AIRS short wave detectors are drifting slightly, so these channels are also excluded from the anomaly fits (except for demonstration tests as discussed below). Unfortunately, the use of only A+B detectors greatly restricts the number of available channels in the important long wave CO₂ temperature sounding region from 710-780 cm⁻¹, where many channels are either A-only or B-only. It is important to weight these channels relatively strongly in the retrieval minimization. Since we also wish to de-emphasize
295 stratospheric contributions to the minor-gas rates only every 5th channel from 650-720 cm⁻¹ was included in the retrieval. In addition, any channels in this range with Jacobians that peaked above 10 hPa were excluded.

All channels in the M-5 array were excluded since they have relatively poor radiometric stability (as will be shown later). Several window channels that are sensitive to CFC11 were excluded, although many channels sensitive to CFC12 were included, and CFC12 trends were retrieved. Many H₂O channels were included, since they are mostly A+B and have been stable
300 throughout the mission. After some experimentation, four channels sensitive to N₂O were also excluded since they appear to be behaving significantly out-of-family. Three of these channels are located near the end of the M-4c array, which also exhibits some anomalous frequency shifting behavior (Aumann et al., 2020).

A total of 470 channels remained after this pruning process. These channels are nicely distributed throughout the AIRS spectrum and are easily sufficient for 1D-var retrievals. The nominal number of DOFs for tropical scenes for this channel set
305 are ~6 ozone DOFs, ~8 temperature DOFs, and 12 H₂O DOFs. The larger number of H₂O DOFs is likely due to the large number of H₂O channels used (321 out of 470 channels).

The overall sensitivity of the anomaly retrievals to CO₂ is shown in Figure 6 where the mean CO₂ Jacobian, averaged over all channels, is plotted. The CO₂ sensitivity peaks around 400 hPa, and drops to near zero at the surface. There is some dependence on stratospheric CO₂, but stratospheric CO₂ trends, especially in the lower stratosphere, should track the
310 tropospheric trends, albeit with growth rates that are slightly influenced by previous years due to age-of-air. This figure also shows the mean CO₂ Jacobian ~~is-if~~ if all channels below 700 cm⁻¹ are removed (all sensitive to the stratosphere). Retrieval tests using ~~this-these~~ these restrictions are discussed later.

4.3 Construction of Jacobians

The relatively high accuracy of ERA-I temperature fields was highlighted previously in Fig. 5 which plots the time dependence of the bias between the observed and simulated BT for this channel. This bias, in black, has very little variability (other than the smooth decrease due to increasing CO₂) compared to either the observed or simulated BT values due to the high accuracy of the ERA-I temperature profiles. This is not unexpected in a reanalysis product that assimilates a wide range of in-situ measurements (radiosondes) and satellite measurements (microwave and infrared sounders, including AIRS). In principle we could use the AIRS Level-2 atmospheric state for generating the Jacobians for the anomaly retrievals. However, for the large-scale averaging used in this work errors introduced by the relatively large ERA-I spatial grid compared to AIRS are minimized.

Moreover ERA-I is constrained by a large number of instruments and in-situ measurements for the temperature profile. Monthly mean ERA-I observation minus analysis differences for radiosonde temperatures are below 0.2K throughout the troposphere, rising to 0.3K in the lower stratosphere (Simmons et al., 2014). We note that the statistical accuracy of the AIRS Level-2 algorithm is mainly verified by inter-comparisons with ECMWF forecast/analysis fields (Susskind et al., 2014), which are likely even more stable in a reanalysis product. The AIRS Level-2 retrieved temperature and H₂O global biases relative to ECMWF are very small, well below 0.5K for temperature and 5% for water vapor.

In principle we could have performed 1D-var retrievals on each 16-day averaged BT spectrum in each latitude zone, but given the relatively small biases between ERA-I and AIRS shown in Fig. 2 retrievals will produce minimal improvements to the ERA-I fields. Note that the ERA-I bias in the 700-750 cm⁻¹ region with the most sensitivity to tropospheric CO₂ is only in the 0-0.5K range. Moreover, 1D-var retrievals using AIRS will also be limited by uncertainties in the AIRS radiometric calibration, which is estimated to be in the 0.2K range (Pagano and Broberg, 2016).

More importantly, since we are only retrieving anomalies, highly accurate Jacobians are unnecessary since the BT variations in the anomalies are so small, especially when applied to trends. A quantitative assessment of errors in our measured anomaly trends from using ERA-I for Jacobian evaluations is presented in Sections 5.4 and 5.7.

4.4 Temperature and Minor Gas Jacobian Co-linearity

A non-standard "correction" is made to the minor gas retrievals that attempts to correct for the co-linearity of the temperature and minor gas Jacobians. We demonstrate that this new approach clearly removes un-physical variability in the CO₂ anomaly retrievals. Co-linearity of the temperature and minor gas Jacobians makes it difficult for the retrieval to separate temperature profile variations from variations in CO₂ retrievals using hyperspectral infrared are difficult because of this co-linearity. As stated above, the, CH₄, and N₂O. Usually this is managed by constraining the retrievals with accurate a priori estimates that have small enough covariances to allow some separation of T(z) and CO₂ variability. Kulawik et.al. Kulawik et al. (2010) discuss this problem in the context of CO₂ retrievals using the NASA EOS-AQUA TES instrument, where they describe the selection of constraints as a way to "determine the partitioning of shared degrees of freedom between CO₂ and temperature".

345 Here we take a different approach based on the fact that we have highly accurate simulated anomalies computed from the ERA-I model fields ~~are matched one-to-one with each clear observations, followed by a RTA computation of a simulated radiance, using constant amounts of~~. The simulated anomalies are derived using our SARTA radiative transfer algorithm (RTA) and were generated using constant values for the minor gases throughout the mission. ~~Since the 16-year time period.~~ Except for the minor gas signatures, the ERA-I spectral anomalies are very similar to ~~to observed AIRS anomalies, we can~~ partially evaluate the observed anomalies since both AIRS calibration errors and RTA errors are largely removed when forming the anomalies. Fig. 5 shows the excellent agreement between the observed and simulated BT anomalies for the 710.14 cm^{-1} channel. The only major difference in these anomalies is the downward drift in the observations primarily due to the growth of CO_2 . Note that almost all the high frequency variability in the observed and simulated anomalies is removed when taking their difference, shown in black in Fig. 5, indicating that the ERA-I temperature fields match the AIRS observations very closely.

355 Given that the ERA-I spectral anomalies are very similar to observed anomalies we can largely determine the effect of the Jacobian co-linearities ~~by retrieving the minor gas amounts on the observed CO_2 anomaly retrievals by retrieving a (fictitious, or non-existing) CO_2 anomaly~~ from the ERA-I simulated ~~anomalies that contain no minor gas variations. We illustrate this with CO_2 retrievals in Figure 7~~ BT anomalies using an identical retrieval algorithm. Since the simulated anomalies have a constant value for each minor gas the variations in the retrieved CO_2 (or other minor gases) is a measure of the inability of the retrieval

360 ~~to separate the minor gas anomalies from the temperature profile.~~

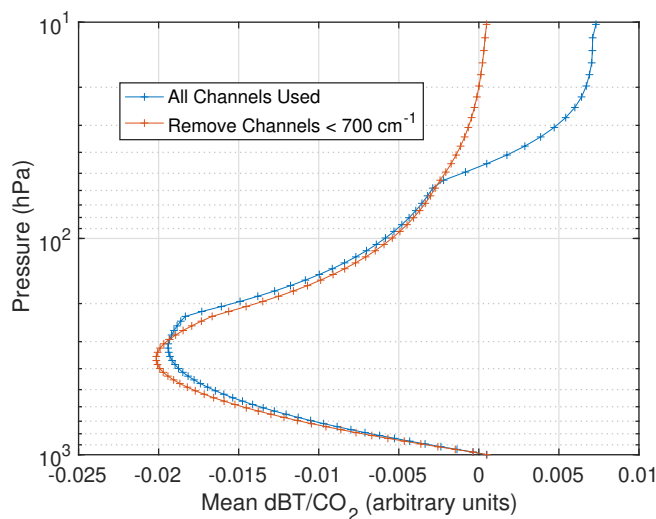


Figure 6. Mean of CO_2 Jacobians for all channels used in the anomaly retrievals, and the same if all channels below 700 cm^{-1} (stratospheric channels) are excluded.

~~While the long-term trends are not very sensitive to this removal of co-linearity, the lowered noise this approach affords is extremely useful for detecting and understanding shifts in the AIRS radiometry due to various instrument shutdowns that occurred over the mission.~~ Figure 7 illustrates this process for: (1) a single latitude bin near -55° lat (with a width of $\sim 4^\circ$ latitude) in the left hand panel and (2) the average of 30 latitude bins covering $\pm 50^\circ$ latitude in the right hand panel. The

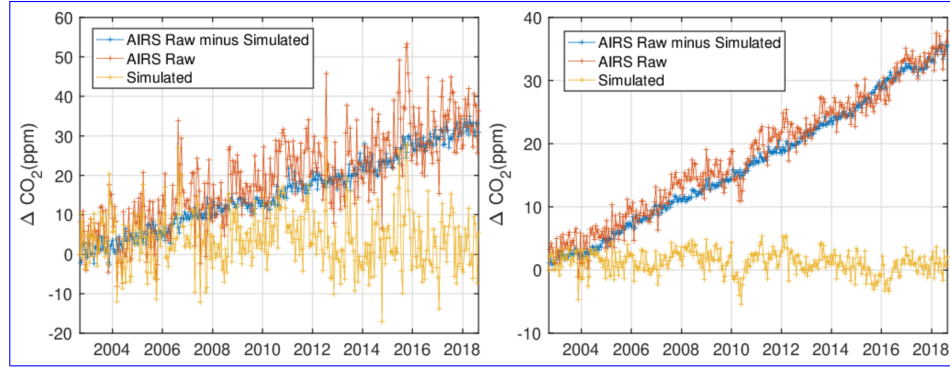


Figure 7. Illustration of "noise" removal in the CO₂ anomaly retrievals by subtracting the CO₂ retrieved from ERA-I simulations from the observed CO₂ retrievals. Left: -55° latitude CO₂ retrieval. Right: ± 50° latitude average CO₂ retrieval.

365 yellow curve (labelled Simulated) is the retrieved CO₂ anomaly derived from the ERA-I simulated anomalies. Although close to zero in the mean, this retrieved CO₂ anomaly varies considerably by up to ± 15 ppm. The red curve (labelled AIRS Raw) shows the CO₂ anomaly retrieved from the AIRS observations, which has similar variability superimposed on a linear ramp of ~2 ppm/year. Our adjusted observed CO₂ anomaly is generated by subtracting the simulated from the observed CO₂. This is shown in blue (labelled AIRS Adjusted), where we see that most of the "noise" has been removed resulting in a very smooth
 370 CO₂ anomaly curve.

The right hand panel of Fig. 7 shows similar results but using the average of all latitude bins between ± 50° latitude. The co-linearity of the temperature and CO₂ Jacobians apparently changes randomly enough with latitude that the simulated CO₂ has far less variability than in the left panel. The utility of this approach is nicely illustrated by examining the dip of about 7 ppm in the "Simulated" CO₂ retrieval in early 2010 for the ± 50° latitude bin. This dip is also visible in the observed anomaly
 375 curve (AIRS Raw). The "Simulated" CO₂ anomaly is subtracted from the "AIRS Raw" curve to obtain the final observed CO₂ anomaly (AIRS adjusted) and it is quite evident that the dip in early 2010 has cancelled out, as desired.

The above adjustments to the CO₂ anomaly retrievals have little effect on estimates of AIRS stability over 16 years, as outlined later in Sect. 5.4, although it does increase the statistical uncertainty in the AIRS BT trends by a factor 2.4. More importantly, the application of these adjustments greatly reduces the apparent noise in the derived CO₂ trends, making the
 380 detection of instrument shifts in the AIRS BT time series much more sensitive.

5 Anomaly Retrievals

5.1 AIRS Events

Evaluation of the anomaly retrievals requires some knowledge of the AIRS mission events. Table 1 summarizes the major events during the AIRS mission that had thermal consequences for either the spectrometer or the focal plane arrays. While
 385 most of these events were minor, recent measurements of the AIRS frequency shifts (Aumann et al., 2020) highlight that these

events are associated with small shifts in the AIRS frequency scale. These shifts are indicative of very small movements of the detectors relative to the instrument spectrometer axis ~~-, and therefore they could also~~ and could, for example, slightly alter the detector's view of the blackbody and cold scene. Any small non-uniformities in these calibration looks could affect the absolute radiometry ~~because viewing angles to the Earth and cold scenes might change every so slightly~~. We will refer to these

390 events during discussions of the anomaly retrieval results.

Table 1. Summary of AIRS events that had a thermal impact on either the spectrometer, the focal plane, or both.

Date	Event
10/29/03	AQUA shutdown lasting for several weeks (solar flare)
01/09/10	Single event upset, focal plane temperature cycling
03/28/14	Single event upset, small focal plane cooler variation
09/25/16	Single event upset, one cooler restart

5.2 Truth Anomalies

The retrieved minor gas anomalies are compared to the NOAA Earth System Research Laboratories (ESRL) monthly mean data derived from in-situ measurements (Tans and Keeling). We chose the ESRL Mauna Loa, Cape Grim, and Global mean data for CO₂, N₂O, and CH₄. Monthly anomalies for these in-situ datasets were computed using the same methods used to

395 compute the BT anomalies for consistency. We focus mainly on the global CO₂ ESRL anomalies since they are derived from a wide geographical range and sites and carefully merged to avoid local sources. The N₂O ESRL anomalies provide information on AIRS channels in the 1250 -1310 cm⁻¹ region that are distinct from the main CO₂ channels below 780 cm⁻¹. (There are also strong N₂O channels in the short wave band of AIRS.) The CH₄ anomalies mostly probe AIRS channels from 1230 to 1360 cm⁻¹. There is some concern that CH₄ anomaly trends may have more spatial variability than CO₂ and N₂O, however we find

400 good overall agreement with the ESRL global CH₄ trends, and CH₄ provides some sensitivity to channels that overlap with N₂O, but extend a bit further into the water band.

We focus mostly on the use of CO₂ for AIRS stability estimations since CO₂ is so well measured and has the largest BT signal in the AIRS spectrum (relative to N₂O and CH₄). In addition, the N₂O and CH₄ spectra overlap strongly in the AIRS BT spectrum, possibly introducing some retrieval uncertainty relative to CO₂. Absolute errors in the ESRL CO₂ data are estimated

405 to be ~0.2 ppm (https://www.esrl.noaa.gov/gmd/ccl/ccl_uncertainties_co2.html), with yearly growth rate uncertainties of ~0.07 ppm/year (https://www.esrl.noaa.gov/gmd/ccgg/trends/gl_gr.html). Anomaly growth rate errors averaged over 16 years are likely much lower since yearly sampling errors should diminish over time. Moreover, most absolute errors will not be applicable to the CO₂ anomaly, which is a relative measurement. Therefore it is difficult to definitively estimate the ESRL anomaly trend uncertainty. If the yearly growth rate uncertainties of 0.07 ppm/year are random, then the average of 16 of these growth rates

410 would be 0.018 ppm/year, which corresponds to a percentage uncertainty of 0.8% in the anomaly trend.

Estimates for N₂O and CH₄ anomaly trend uncertainties using the ESRL stated uncertainties in yearly growth rates, and assuming these are random errors each year, are 3.5% and 2.4%. These larger uncertainties, and the smaller total impact of these two gases on the AIRS BT anomalies, suggest that the best estimates for AIRS stability are likely derived from the CO₂ anomalies.

415 5.3 Short Wave Trends

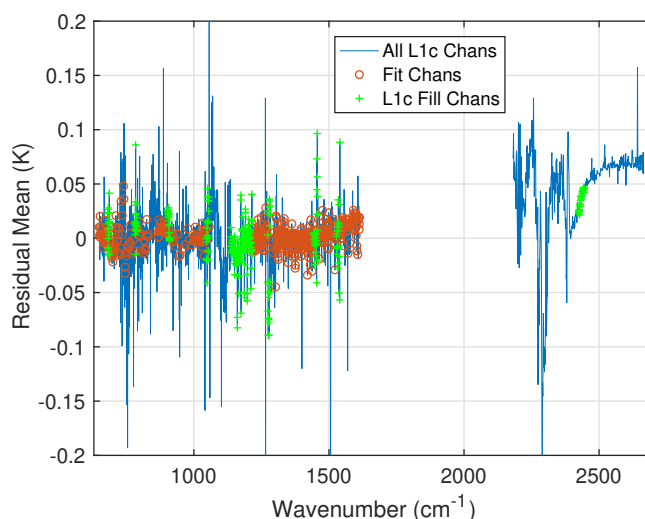


Figure 8. Anomaly fit residual, averaged over all 365 16-day time steps for $\pm 30^\circ$ latitude. The L1c fill channels have no L1b counterparts and are simulated in the production of L1c. Note the offset in the short wave.

Most of the anomaly retrievals performed here only included AIRS channels ~~in~~ located below 1615 cm⁻¹, avoiding the short wave channels in the 2181 to 2665 cm⁻¹ region. Early retrievals showed that the AIRS short wave channels exhibit a positive trend compared to the longer wave channels. Moreover, anomaly fits to just the short wave channels return SST trends that are significantly larger than both the long wave channels and both the ERA-I (OSTIA) and OISST SST products.

420 The behavior of the AIRS short wave channel relative to the long wave is easily seen in the anomaly retrieval fit residuals. Figure 8 shows the mean value (taken over the 365 16-day time steps for $\pm 30^\circ$ latitude) for the residuals. All AIRS L1c channels are plotted, which includes many bad channels, and channels that do not exist but are filled during L1c creation ([Aumann et al., 2020](#)). The channels selected for the anomaly fits (see Sect. 4.2) are shown in red circles. The fit residuals for channels used in these retrievals are almost all well below 0.02K. However, the short wave channels show anomalies
425 inconsistent with the long wave of up to ~ 0.07 K in the window channels past 2450 cm⁻¹.

The anomaly retrievals can respond to drifts/offsets in the AIRS radiances by retrieving geophysical variables (CO₂, temperature, etc.) that vary incorrectly in time. Alternatively, un-physical changes in the radiances could also be reflected in larger non-zero fit residuals. This could happen when the forward model Jacobians cannot model time-dependent radiance errors, especially for jumps in the radiometric calibration that happen due to AIRS events (shutdowns). One way to examine this

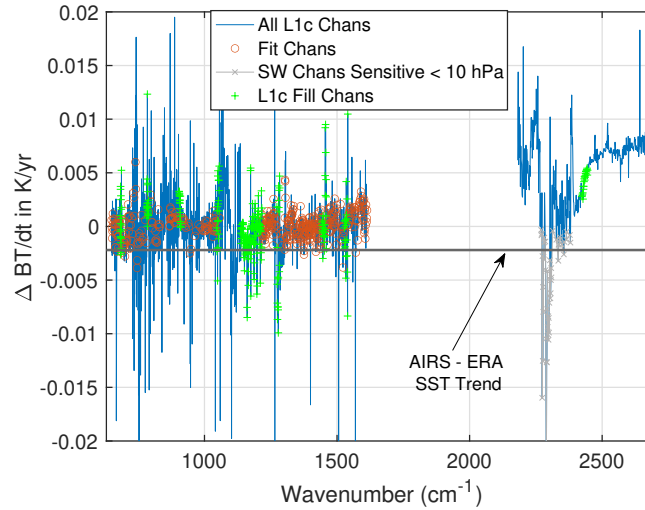


Figure 9. Linear trends in the anomaly fit residuals, averaged over all 365 16-day time steps for $\pm 30^\circ$ latitude. Note the linear trend in the short wave in these fit residuals. Also shown is the trend difference (ERA-I SST - AIRS SST) for these data.

430 possibility is to look for any remaining trends in the anomaly fit residuals. These are shown for the same data set used in Fig. 8 in Fig. 9. Most of the channels used in the anomaly fits have residual slopes below 0.002K/year, although careful examination of the residual time series for particular channels can exhibit jumps associated with AIRS shutdowns.

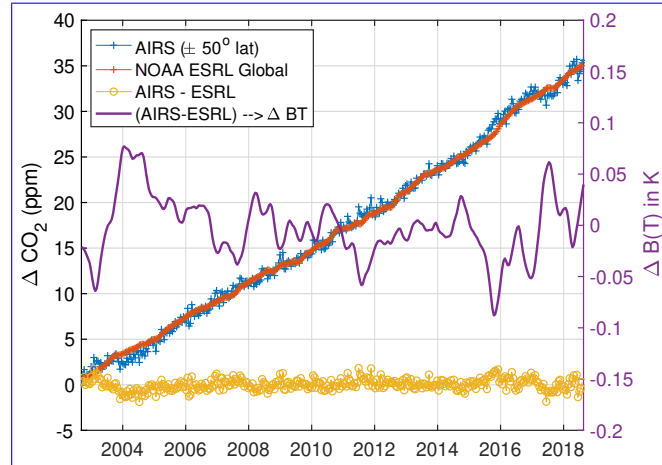


Figure 10. Retrieved CO_2 anomalies compared to ESRL global in-situ data. The CO_2 anomaly difference between AIRS and ESRL is shown in yellow. The magenta curve is that difference converted into BT units.

The main observation in Fig. 9 is a clear positive trend in the short wave relative to the longer wave channels used in the retrievals. The (AIRS - ERA) SST trend plotted as a solid horizontal line in this figure (discussed in Sect. [5.7](#)) shows that the AIRS short wave trends are more different from the ERA-I SST trends than the long wave channels. Most of the

short wave channels, including those in the mid-troposphere, exhibit positive trends relative to the long wave, except for some channels that are peaking very high in the stratosphere, below 10 hPa, that are marked in gray.

Consequently, unless otherwise noted, all the remaining results presented here ~~use avoid the~~ avoid short wave channels, and use the channel set (470 channels) denoted in these figures.

440 5.4 CO₂ Anomaly Retrievals

~~Retrieved CO₂ anomalies compared to ESRL global in-situ data. The CO₂ anomaly difference between AIRS and ESRL is shown in yellow. The magenta curve is that difference converted into BT units.~~

Figure 10 shows the retrieved CO₂ anomalies averaged over $\pm 50^\circ$ latitude in blue and the ESRL global anomaly product in red. The correspondence over time is excellent. The AIRS minus ESRL anomaly differences are shown in yellow.

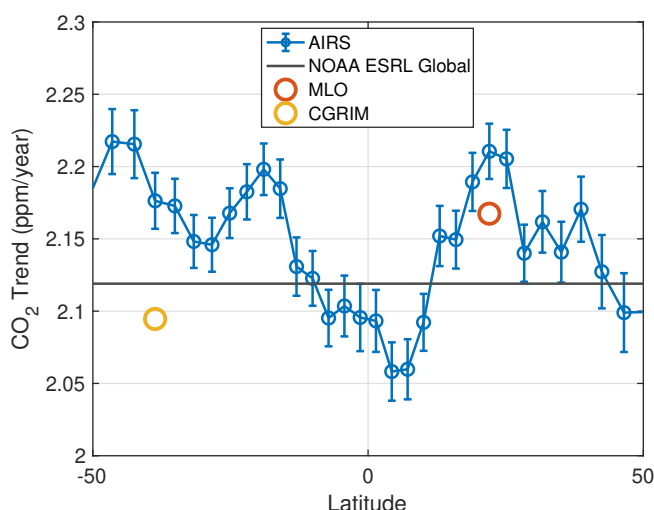


Figure 11. Observed linear trend in the AIRS CO₂ anomalies versus latitude, compared to NOAA ESRL Mauna Loa (MLO), ESRL Cape Grim (GCRIM), and the ESRL global CO₂ product trends (black line).

445 In order to convert the variation in the gas anomalies to an equivalent AIRS BT anomaly temperature we computed anomaly retrievals with the observed AIRS BT anomaly spectra modified by a 0.01K/year ramp, for all channels. This 0.01K/year ramp is divided by the resulting changes in the CO₂ anomaly linear trends (ppm/year) to obtain the sensitivity of the retrieval to a trend in the AIRS radiances, in K/ppm. For CO₂ this sensitivity is ~~0.073~~ 0.073 K/ppm. This is about 2X larger than the largest column Jacobians in the AIRS spectra, which have a value of ~ 0.030 K/ppm. This is not unexpected, since the CO₂ column
 450 measurement is partially a relative measurement, especially for weak CO₂ channels in the window region where the absolute BT errors are mostly accounted for by (incorrect) adjustments in the SST that minimize the effect of the 0.01K/year applied ramp. It is also possible that the temperature profile could also adjust to minimize sensitivity of the ramp on the CO₂ ppm values. In addition, this sensitivity estimate assumes all AIRS channels are drifting, which is clearly an approximation given the results shown here.

Table 2. Slope of the (AIRS - ESRL) CO₂ anomalies in ppm/year units.

Data Set	Mean Trend Difference	Uncertainty in Trend
CO ₂	(ppm/year)	(ppm/year)
Global	0.032	0.012
Mauna Loa	0.033	0.023
Cape Grim	0.056	0.020

455 The magenta curve in Fig. 10 is the (AIRS minus ESRL) anomaly differences converted to BT units using the ~~0.073~~0.073K/ppm sensitivity factor. This curve has been slightly smoothed for clarity. The right-hand side vertical axis shows the variations in this curve in BT units. Most of the BT variability is within ± 0.05 K, however a transition in BT in late 2003 is larger. This larger transition is likely due to the Nov 2003 shutdown of the AQUA spacecraft. The AIRS channel center frequencies were shifted due to this shutdown (Strow et al., 2006) and were subsequently corrected in the AIRS L1c product (Aumann et al.,
460 2020; Manning et al., 2019). In addition, as reported in (Strow et al., 2006) interference fringes in the AIRS entrance filters shifted after the Nov. 2003 AQUA shutdown because AIRS was restarted at a slightly different spectrometer temperature. The fringes change the AIRS spectral response functions, which has not yet been corrected in the AIRS L1c product radiances.

Figure 11 illustrates the differences between the AIRS and ESRL CO₂ linear growth rates. The growth ~~rate were computed~~
~~using rates for both our CO₂ retrievals and the ESRL CO₂ time series were computed by re-using the fitting function in Eq.~~
465 ~~1 where the input data is the CO₂ ppm anomaly rather than a radiance. Figure 11 shows the a_1 term in this equation, but now applied to the retrieved CO₂ anomalies, ie.~~

$$\text{CO}_2(t) = \text{CO}_2(t=0) + b_1 t + \sum_{i=1}^4 d_i \sin(2\pi n t + \phi_i) \quad (6)$$

where b_1 are the CO₂ trends in ppm/year. Later this equation will be used to fit the N₂O, CH₄, and SST anomalies, instead of the CO₂ anomalies as shown here.

470 Figure 11 plots the fitted values for the AIRS growth rates (the b_1 term in Eq. 6), computed as a function of latitude. The CO₂ growth rates are not completely uniform from year-to-year, so Eq. ~~4~~6 cannot perfectly fit the trend data. However, it provides a convenient metric for inter-comparing these two CO₂ anomalies. Note that the error bars shown for AIRS are slightly over-estimated because of the fact that Eq. ~~4~~6 does not perfectly fit the slightly non-linear anomaly curve. The error estimates are ~~for~~ 95% confidence intervals and ~~have been~~ they have been corrected for serial correlations in the anomaly time series using
475 the popular lag-1 auto-correlation-corrected using the auto-correlation approach detailed in (Santer et al., 2000).

The Mauna Loa and Cape Grim growth rates are also shown, also derived using Eq. ~~4~~6, as is the ESRL global rate, indicated by the dark black horizontal line. If the 16-year in-situ rates indeed have an estimated error of 0.018 ppm/year (assuming the 0.07 ppm/year uncertainties in the ESRL rates are random), then AIRS is in close agreement with ESRL averaged over latitude. The latitude dependence of the AIRS derived rates appear to have clear latitudinal dependencies, with lower rates near

the ITCZ and higher rates in regions of descending air. We do not examine this latitude dependence in this work, not only is it small, it could also be related to small inaccuracies in our retrieval algorithm.

Table 3. Slope of the (AIRS - ESRL) CO₂ anomalies in K/Decade units. Trend differences for various modifications of our retrieval algorithm are shown, see the text for details. Note that Baseline is the algorithm configuration detailed in the text and used for inter-comparisons.

CO ₂ Test	Mean Trend Difference (K/Decade)	Uncertainty in Trend (K/Decade)
Global		
Baseline	-0.023	0.009
<u>Baseline (no CO₂ adjustment)</u>	<u>+0.019</u>	<u>0.022</u>
No Strat	-0.034	0.008
No Cov Reg.	-0.043	0.009
No ν Cal.	-0.059	0.010
Shortwave Only	+0.070	0.009
ERA-I T(z)	+0.060	0.035
Mauna Loa		
Baseline	-0.024	0.017
Cape Grim		
Baseline	-0.040	0.020

Since the CO₂ linear growth rate measurements are not sensitive to year-to-year variability in the CO₂ anomaly, we instead use the (AIRS - ESRL) global anomaly differences shown in Fig. 10 to quantify the AIRS stability. Any linear trend differences between the AIRS and ESRL CO₂ in Fig. 10 are quantified by fitting the (AIRS - ESRL) CO₂ anomaly differences to Eq. 46. Table 2 summarizes any trend in AIRS relative to ESRL by tabulating the a_1 terms from the fit for the ESRL global, Mauna Loa, and Cape Grim sites. The uncertainties are as before, 95% confidence intervals corrected for lag-1 auto-correlations. As one might expect, the global trends agree the best, and Cape Grim the worst. The higher errors for Cape Grim may be related to our clear subset having fewer samples at -40° latitude relative to the 20° latitude zone occupied by Mauna Loa. These mean differences are extremely small, corresponding, for global, to $1.5 \pm 0.6\%$ trend differences.

Table 3 shows the conversion of the CO₂ ppm trend differences to equivalent BT differences using the ~~0.073~~-0.073 K/ppm sensitivity conversion. The baseline entry, first line of the table, represents the final configuration for the anomaly retrievals and ~~represents~~ is our best estimate for the ~~true~~ differences between the ESRL and AIRS CO₂ anomaly trends, ~~namely~~ -0.023 \pm 0.009 K/decade. This is an exceedingly small trend difference. While suggesting that AIRS is extremely stable, for channels sensitive to CO₂ and temperature, systematic errors may be larger than the differences reported here. Our ~~optimistic~~ estimate of the ESRL global anomaly ~~uncertainty~~ trend uncertainty discussed in Section 5.2, 0.8%, is equivalent to 0.017 ppm/year ~~or 0.27 ppm over 16 years. From Table tableco2ppmthe~~. The AIRS minus ESRL global trend ~~differences are difference shown in Table 2 is~~ about 2X times ~~this optimistic larger than this~~ estimate for the ESRL uncertainty. ~~This translates, in Table 3 to an~~

estimate for AIRS stability of -0.023 ± 0.009 and slightly larger than the statistical uncertainty in this trend difference. In BT units, this potential uncertainty in the ESRL global CO₂ anomaly trend is ~ 0.012 K/decade.

500 In addition to the possible 0.8% The sensitivity of these results to uncertainties in the Jacobians are derived from the second partials derivative of BT as follows,

$$M_{unc} = \frac{\partial}{\partial X} \left(\frac{\partial BT}{\partial Y} \right) \times X_{unc} \times Y_{meas} = \left(\frac{\partial^2 BT}{\partial X \partial Y} \right) \times X_{unc} \times Y_{meas} \quad (7)$$

where M is the quantity being measured (here, CO₂ anomalies and trends), X_{unc} is the uncertainty in the ESRL global trends, our AIRS anomaly retrieval could be in error if profile variables used to compute the Jacobians, and Y_{meas} is either the maximum anomaly or the mean trend we measured for Y . These are quantified in Table 4.

510 The first entry accounts for errors in $\partial BT / \partial CO_2$ due to uncertainties in the CO₂ Jacobians are inaccurate spectroscopy. The HITRAN database (Gordon et al., 2017) reports uncertainties in the CO₂ line strengths of 1-2%. These uncertainties would translate into the same percentage error in the Jacobians. In addition, atmospheric spectra are sensitive to line widths, line shape, line mixing, often at temperatures that are not measured in laboratory spectra. Characterizing the combination of these errors is essentially impossible, so here we assume a 1% uncertainty in the CO₂ Jacobians, using the line strength uncertainty only. The maximum CO₂ anomaly error occurs at the end of the time series when the CO₂ anomaly is highest (35 ppm). Therefore the max anomaly error is $1\% \times 35 \text{ ppm} = 0.35 \text{ ppm}$. Using our retrieval sensitivity of -0.073 K/ppm , this translates into an effect max error in the BT anomaly error of 0.026 K . Dividing this anomaly uncertainty by the 16 year time period under study gives a trend uncertainty due to CO₂ spectroscopy errors of 0.016 K/decade as shown in Table 4. This value is slightly larger than the statistical uncertainty in the baseline CO₂ trend shown in Table 3, and slightly smaller than the derived trend differences versus ESRL CO₂.

520 The second entry in Table 4 lists estimated uncertainties in the CO₂ anomalies and trends (converted to BT units) that could arise due to errors in the ERA-I temperature profile. The second partial derivative was computed with finite differences using a fixed temperature offset for all levels and then summed over all levels, a worst case scenario. The mean of these second order derivatives, taken over the retrieval channels in the $\sim 700\text{-}750 \text{ cm}^{-1}$ spectral region that has high sensitive to CO₂, represents an effective scalar value for $\partial^2(BT) / (\partial X \partial Y)$ in Eq. 7. This term is multiplied by an assumed uncertainty in the ERA-I temperature of 0.5 K and by the maximum anomaly value of 35 ppm to obtain a maximum uncertainty of 0.0035 K in the CO₂ anomaly. The maximum effect on the CO₂ trend is again this value divided by 16 years giving an uncertainty of $2.2 \times 10^{-3} \text{ K/decade}$, an insignificant uncertainty. Note that our assumed uncertainty of 0.5 K is higher than ERA-I error estimates discussed in Section 4.3.

530 Clearly the estimated 1% uncertainty in the CO₂ spectroscopy is the dominant source of error in our CO₂ retrievals. If the ESRL 0.8% uncertainty is combined in quadrature with the 1% HITRAN uncertainty, a total minimum expected uncertainty in the CO₂ anomaly trends is 1.3%. This translates to a BT uncertainty of 0.02 K/decade , close to our derived mean trend difference between AIRS and ESRL based on the CO₂ anomaly measurements. This may be a more accurate uncertainty estimate for this measurement rather than the 0.009 K/Decade statistical uncertainty derived from fitting the AIRS minus ESRL anomalies.

Table 3

Table 4. Anomaly and trend error estimates for CO₂ and SST due to uncertainties in BT Jacobians via their second derivatives with respect to possible ERA-I uncertainties. As noted, the maximum effect on the CO₂ anomalies would be at the time of the largest anomaly, which is at the end of our time series in Aug. 2019. See the text for details.

Jacobian	Sensitivity	Uncertainty	Max Effect on Anomaly	Effect on Trend
$\frac{\partial BT}{\partial CO_2}$	$\frac{\partial^2 BT}{\partial CO_2^2}$	1% CO ₂ Spectroscopy	0.026K (in Aug. 2019)	0.016 K/decade
	$\frac{\partial^2 BT}{\partial T_{air} \partial CO_2}$	0.5K T profile	0.0035K (in Aug. 2019)	2.2×10^{-3} K/decade
$\frac{\partial BT}{\partial T_{SST}}$	$\frac{\partial^2 BT}{\partial T_{SST}^2}$	0.5K T _{SST}	4.0×10^{-4}	9.6×10^{-5} K/decade
	$\frac{\partial^2 BT}{\partial T_{air} \partial T_{SST}}$	0.5K T profile	8×10^{-4} K	1.8×10^{-4} K/decade
	$\frac{\partial^2 BT}{\partial T_{H_2O} \partial T_{SST}}$	10% H ₂ O column	0.02K	4.5×10^{-3} K/decade

The second entry in Table 3 lists the mean trend difference and its uncertainty if the adjustment for co-linearity discussed in Sect. 4.4 is not applied, which leads to a larger trend uncertainty by a factor of 2.4. The resulting trend difference is somewhat smaller, but with a different sign. The baseline retrievals with and without the co-linear CO₂ adjustments do not quite overlap within their respective 2 σ uncertainties, missing statistical agreement by 0.013 K/Decade, which is relatively small. However, based on the discussion in Sect. 4.4 we believe that the application of the co-linear CO₂ adjustment improves the accuracy of the AIRS CO₂ anomaly.

Table 3 also shows the results of a number of fit testing the sensitivity of the retrievals to various retrieval alternatives. The "No Strat" entry removed all channels that primarily sense the stratosphere by removing all channels below 700 cm⁻¹. Fig. 6 shows how this modifies the mean CO₂ Jacobian used in the retrieval, essentially removing all sensitivity to CO₂ above 60 hPa. Unfortunately channels above 700 cm⁻¹ have some residual sensitivity to CO₂ in the stratosphere, and removing channels below 700 cm⁻¹ may make it more difficult to properly minimize the retrieval residuals for some channels above 700 cm⁻¹. If S_a is completely removed, removing a-priori profile regularization, the CO₂ anomaly trend difference increases by a factor of two. Removing the L1c frequency calibration adjustments increases the anomaly trend differences by nearly a factor of three, and changes their sign. If only short wave channels are fit (excluding channels that peak above 10 hPa, and some channels sensitive to both carbon monoxide), the mean trend differences are more than three times larger than the baseline, again with a sign change.

The last test, labeled "ERA-I T(z)", examines the impact of performing simultaneous retrievals of temperature profiles while retrieving the CO₂ anomalies by using the ERA-I temperature profiles anomalies instead of fitting for them. This test increased the anomaly differences between AIRS and ESRL by almost a factor of three, with a significant increase in the uncertainty of the trend, giving 0.35 K/decade instead of close to 0.009 K/decade for the baseline.

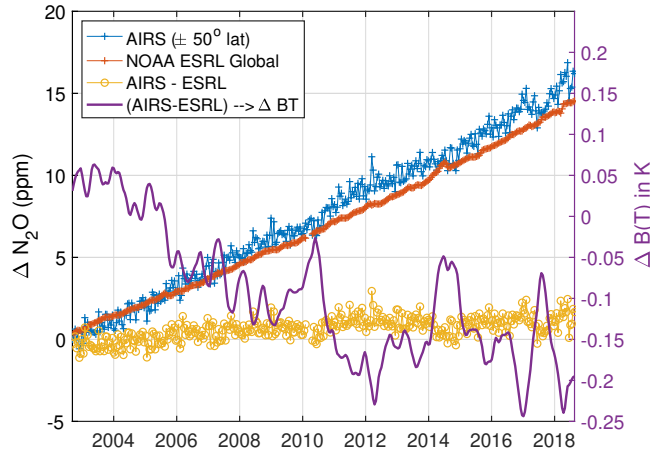


Figure 12. Retrieved N₂O anomalies compared to ESRL global in-situ data. The N₂O anomaly difference between AIRS and ESRL is shown in yellow. The magenta curve is that difference converted into BT units.

Table 3 also shows the Mauna Lao anomaly difference, which is close to the global result, although accompanied by a higher uncertainty of 0.017 K/decade compared to the 0.009 K/decade for the global anomaly. Cape Grim anomaly differences are almost two times higher than the global trend differences, but this is not surprising given the much lower number of observations at that latitude.

The retrieved AIRS global CO₂ anomalies did detect a small seasonal pattern in the anomaly for latitudes above 40° N of with an amplitude of ~0.5 ppm. This is due to the residual of the seasonal cycle of CO₂ that is not completely removed when constructing the BT anomalies.

Table 5. Slope of the (AIRS - ESRL) N₂O anomalies in K/Decade units.

Data Set	Mean Trend Difference	Uncertainty in Trend
N ₂ O	(K/Decade)	(K/Decade)
Global	-0.141	0.012
Mauna Loa	-0.200	0.030
Cape Grim	-0.080	0.033

Note that radiometric shifts or drifts in the AIRS BT time series could be either reflected in incorrect geophysical trends, or partially buried in the anomaly fit residuals. The high quality of the anomaly retrievals for CO₂ and the small fit residuals for CO₂ channels strongly suggest that the AIRS blackbody is extremely stable, at least for long and mid wave A+B channels. The SST retrievals discussed later reinforce this conclusion. However, we do see evidence of radiometric shifts due to discrete AIRS events (especially for N₂O and CH₄) that might be amenable to correction. Future work will include careful examination of both the anomaly retrievals and their residuals, likely in an iterative fashion, in order to determine what channels are responsible for unphysical shifts in the anomaly products.

5.5 N₂O Anomaly Retrievals

The N₂O retrieved anomaly time series is shown in Fig. 12 and primarily senses the 1240-1325 cm⁻¹ spectral region. Clearly the observed N₂O anomaly is growing slightly faster than the ESRL values. The N₂O anomalies are converted to equivalent
 570 BT variations just as for CO₂, but with a derived sensitivity of 0.140 K/ppb. Table 5 tabulates the derived trend for the (AIRS
 minus ESRL) anomaly by fitting the difference to Eq. 16, and then converting to BT units.

The trend differences here are much larger than for CO₂. Examination of either the AIRS minus ESRL anomalies in ppb,
 or their equivalent in BT units (left hand y-axis) suggest that two unphysical steps might be present in the time series, one
 in mid-2005 and another ~~on one~~ in mid-to-late 2010. Unfortunately, these steps do not closely coincide with AIRS events,
 575 possibly appearing more than one year after the Nov. 2003 event and and slightly less than one year after the Jan. 2010 event.

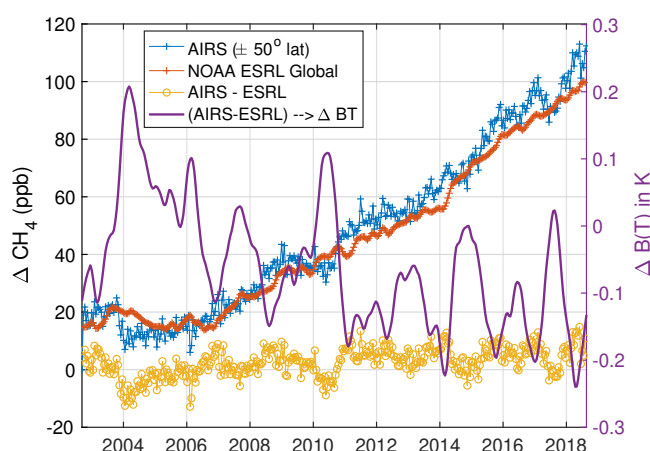


Figure 13. Retrieved CH₄ anomalies compared to ESRL global in-situ data. The CH₄ anomaly difference between AIRS and ESRL is shown in yellow. The magenta curve is that difference converted into BT units.

Table 6. Slope of the (AIRS - ESRL) CH₄ anomalies in K/Decade units.

Data Set	Mean Trend Difference	Uncertainty in Trend
CH ₄	(K/Decade)	(K/Decade)
Global	-0.107	0.024
Mauna Loa	-0.062	0.039
Cape Grim	-0.100	0.037

To illustrate the effect of these two discrete shifts on the anomaly trend differences we empirically introduce a step in our
 retrieved N₂O time series of -0.6 ppb on July 1, 2005 and another step on Jan. 18, 2010 of -0.5 ppb. The trend difference
 between this empirically modified time series and ESRL, in BT units, becomes -0.022 ± 0.009 K/decade, very similar to the
 CO₂ trend differences. The main point of this exercise is to illustrate that just two ~~two~~ small discrete radiometric shifts could
 580 be responsible for the higher trend differences between AIRS and ESRL for N₂O. More work is needed to map these discrete

non-physical events in the retrieved N₂O anomaly time series back into steps in the AIRS BT time series. The hope is that careful examination of the anomaly time series residuals during this process would highlight specific channels (or cluster of channels) that are behaving non-physically.

5.6 CH₄ Anomaly Retrievals

585 The CH₄ retrieved anomalies have some similarities to the N₂O anomalies, since the spectra of both gases occur in the same general spectral region. The CH₄ the region of sensitivity is ~1210-1380 cm⁻¹. Figure 13 shows the CH₄ results using the same approach as for CO₂ and N₂O. The ppb to BT conversion for CH₄ was measured to be 0.023 K/ppb, significantly lower than for CO₂ or N₂O, although total BT trend due to CH₄ is only marginally lower than CO₂ and N₂O.

The high variability of atmospheric CH₄ growth is well known, as can be seen in the ESRL curve in Fig. 13. The AIRS
590 derived anomalies follow that variable growth rate quite nicely overall. It should be noted that the ESRL CH₄ curve is more variable than CO₂ and N₂O, and may be less uniform globally, making CH₄ a less ideal gas for testing AIRS stability. However, the AIRS minus ESRL anomaly differences are valuable in that they, like N₂O, highlight discrete jumps that can often be identified with AIRS events, such as late 2003 (biggest jump), early 2010, and possibly in early 2014. The positive jump in the CH₄ anomaly difference near March 2014 also coincides with a jump in the N₂O anomaly difference, both taking place after
595 the March 2014 event. However, this apparent jump seems to fade within one year for both gases. We believe this might be caused by AIRS frequency shifts that occurred in the M-4a and M-4c detector modules after this event. Those frequency shifts appeared to disappear within one year, and at present they are not corrected for in the AIRS L1c product.

Table 6 lists the trend differences between AIRS and ESRL for CH₄, showing trends differences that similar to those for N₂O, presumably since both gases occur in the same spectral region.

600 5.7 SST Retrievals

The SST anomaly retrievals are compared to the ERA-I supplied SST (mostly OSTIA) and to NOAA's OISST operational SST product. Although both of these SST products are tied to the ARGO floating buoy network, they are gridded SST products using interpolation derived from satellite data such as AVHRR.

A recent study (Fiedler et al., 2019) compared various SST products to the buoy network and found differences for OSTIA
605 of 1.1 mK/year, and 7.8 mK/Year for OISST. This establishes a rough estimate of the differences in these products when evaluating them relative to our retrieved SST anomalies.

Figure 14 plots time series of our retrieved SST anomaly and the co-located ERA-I SST (mostly OSTIA) anomaly, averaged over ± 30° latitude, where these products are expected to be most accurate since most buoy's are located in the tropics. The AIRS SST trend derived from this time series is 0.096 ± 0.046 K/decade. The AIRS and ERA-I 16-day averaged anomalies
610 agree very closely, their difference is shown in black. A zoom of the AIRS minus ERA-I SST anomaly is shown in Fig. 15 to highlight their differences. Steps in these differences are possibly evident near the end of 2003 and especially near the end of September 2016 when AIRS had ~~an~~a cooler-restart.

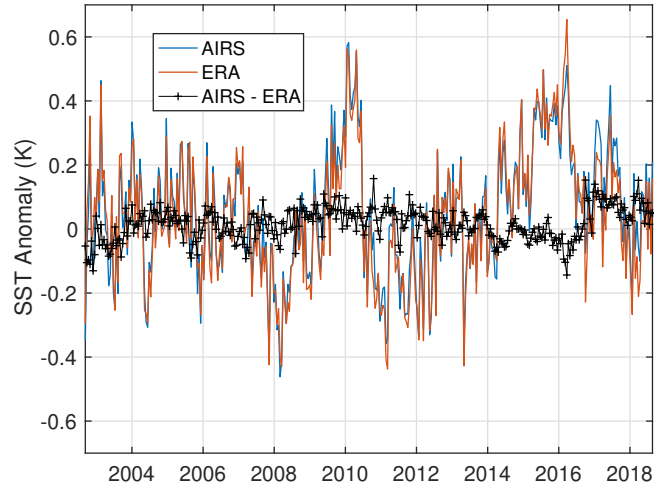


Figure 14. Tropical ($\pm 30^\circ$) SST anomalies retrieved from AIRS compared to the ERA-I anomalies. The black curve is the difference between the AIRS and ERA-I anomalies.

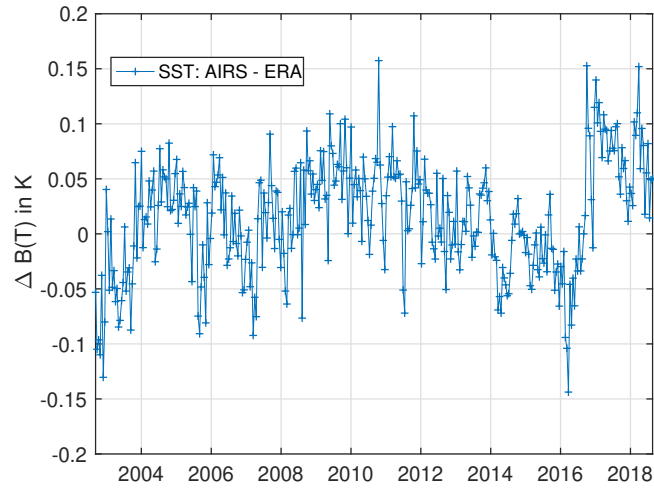


Figure 15. Zoom of Fig. 14 that highlights the shift in the AIRS - ERA-I SST anomaly presumably due to the AIRS Sept. 25, 2016 cooler restart. A small shift is also seen at the date of the Nov. 2003 AQUA shutdown.

Table 7 summarizes the AIRS minus (ERA-I and OISST) anomaly trend differences, computed using Eq. 16. The trend differences are quite small for both SST products. The (AIRS minus ERA-I) trend has the same magnitude as the trend derived using CO₂, but with the opposite sign. Overlap of the CO₂ and ERA-I SST within their stated uncertainty estimates is missed by 0.01K/decade, which is very small. The CO₂ and OISST trend estimates miss overlap by slightly more, 0.02K/decade. However, this overlap difference is small compared to the differences between OISST and the buoy network reported by (Fiedler et al., 2019).

Overall the excellent agreement of these two extremely independent assessments (CO₂ versus SST) to within 0.02K/decade is very encouraging given the complexity of the CO₂ measurement and the uncertainties in the SST product trends.

Comparisons between AIRS-derived SST and ERA-I or OISST products will contain biases due to time aliasing between the AIRS observations and daily means used in the SST products. Although these time dependent biases can have random and seasonal variations of several hours the observed linear drift in the AIRS local observing time over the 16-year observation period was less than one minute/year, far too small to introduce any drifts in the AIRS SST relative to the ERA-I or OISST daily averages.

Uncertainties in the SST anomaly retrievals due to our use of ERA-I fields for the evaluation of the SST Jacobians were estimated using the same approach for the CO₂ anomaly retrievals. The BT Jacobians (dBT/dSST) for channels sensitive to SST depend on accurate values for the SST itself, the air temperature profile, and most importantly the H₂O profile, especially in the lower troposphere. We computed the partial derivatives of the BT Jacobians with respect to all three of these variables, again using finite differences and a constant offset for the air temperature profile and constant percentage offsets for the H₂O profile. The partial derivatives were averaged for all AIRS channels used in our retrievals in the 800-1235 cm⁻¹ region that is sensitive to surface temperature. The uncertainties assumed in the ERA model fields (X_{unc} in Eq. 7) are listed in column three of Table 4 and are likely higher than the estimated uncertainties summarized in Section 4.3. The uncertainties in the BT Jacobians are then multiplied by Y_{meas} in Eq. 7 which is either 0.4 K (the maximum SST anomaly, see Fig. 14), or 0.0096K/year (our retrieved trend in SST).

The results shown in columns four and five of Table 4 clearly indicate that using ERA profile fields for estimated BT surface temperature Jacobian is extremely accurate. The highest uncertainties are due to H₂O, but even these are far below the statistical uncertainties shown in Table 7.

Table 7. Slope of the (AIRS - (ERA/OISST)) SST anomaly differences.

Data Set	Mean Trend Difference (K/Decade)	Uncertainty in Trend (K/Decade)
(AIRS - ERA-I)	0.022	0.012
(AIRS - OISST)	0.034	0.021

Aumann (Aumann et al., 2019) recently compared the 1231 cm⁻¹ AIRS channel trends to RTGSST, a precursor to OISST. He used a statistical approach to remove trends in water vapor that affect the 1231 cm⁻¹ channel radiances, which he concedes

could introduce artifacts if there is a shift in the mean vertical distribution of water vapor. Our approach does not contain this limitation in principle, although we have not carefully examined the retrieved water vapor trends, mainly because there is no truth for comparison. An intercomparison of our results to his are not strictly possible since we used different SST products for truth and our SST anomalies used many channels. However, the trend of the 1231 cm^{-1} channel in our retrievals can be
645 derived by adding the slope of our fit residual for the 1231 cm^{-1} channel (-0.7 mK/year) to our derived SST trends for ERA-I and OISST. Using Aumann's units of mK/year , the result is a trend of 1.5 mK/year and 2.7 mK/year for ERA-I and OISST respectively, with respective uncertainties of 1.2 and 2.1 mK/year . These two trends compare favorably with Aumann's night trend for 1231 cm^{-1} of $+2.9 \pm 0.4\text{ mK/year}$. It is interesting that our OISST trend differences agrees more closely with his RTGSST trend difference since these two data sets have similar heritage. Of course the extremely low statistical errors reported
650 by Aumann do not allow overlap of these two results, but that is not necessarily expected since we use different SST products. Agreement for AIRS radiometric trends at the several mK/year level for at least a single channel should be considered quite remarkable.

We also derived AIRS minus (ERA-I, OISST) SST trend differences using AIRS short wave only anomaly retrievals. For tropical latitudes, $\pm 30^\circ$, the (AIRS - ERA-I) trend is $0.078 \pm 0.040\text{ K/decade}$ and $0.065 \pm 0.09\text{ K/decade}$ for OISST. These
655 represent significantly higher trend than observed using long and mid wave channels only. The trend difference between (AIRS long wave minus AIRS short wave) anomaly fits is $-0.058 \pm 0.026\text{ K/decade}$, clearly indicating the short wave positive drift relative to the long wave.

The latitude dependence of the AIRS derived SST trends versus ERA-I and OISST may eventually help determine the source of some of these differences. Figure 16 shows these trends between $\pm 60^\circ$ latitude. The uncertainties in these trends are
660 $\sim 0.005\text{ K/year}$, but are not shown since these uncertainties are primarily geophysical in nature (how linear is the SST trend) and affect each SST product identically. Agreement is quite good among all products in the northern hemisphere, while OISST is systematically lower than AIRS and ERA-I in the southern hemisphere. Also shown are the AIRS SST trends using only the short wave channels (gray curve), which are always higher than the long wave AIRS trends except at the highest latitudes and near the equator.

Unfortunately, the AIRS Level 2 retrieval algorithm only uses short wave channels for surface temperature retrievals (Susskind et al., 2014). A recent inter-comparison of surface temperature trends from the AIRS Level 2 retrievals to three established surface temperature climate products (Susskind et al., 2019) concluded that the AIRS surface temperature trends were 0.24 K/decade , slightly higher than GISTEMP's (Hansen et al., 2010) value of 0.22 K/decade , and significantly higher than the HadCRUT4 (Morice et al., 2012) and Cowtan and Way (Cowtan et al., 2015) values of 0.17 and 0.19 K/decade respectively.
665

The results presented here conclude that the AIRS short wave channels are drifting positive by about 0.058 K/decade relative to the long wave channels, which appear to be in extremely good agreement with established SST climate products as discussed above. If we subtract this 0.058 K/decade AIRS short wave drift from the ~~the~~ AIRS 0.24 K/decade trend presented in (Susskind et al., 2019) we obtain a corrected AIRS trend of 0.18 K/decade , much more in line with the HadCRUT4 and C+W values. In this case GISTEMP is now the only outlier. A more straightforward way to validate the reported AIRS Level 2 surface trends
670

675 reported by (Susskind et al., 2019) would be to directly compare them to other SST products such as OISST, but unfortunately this was not part of the (Susskind et al., 2019) analysis.

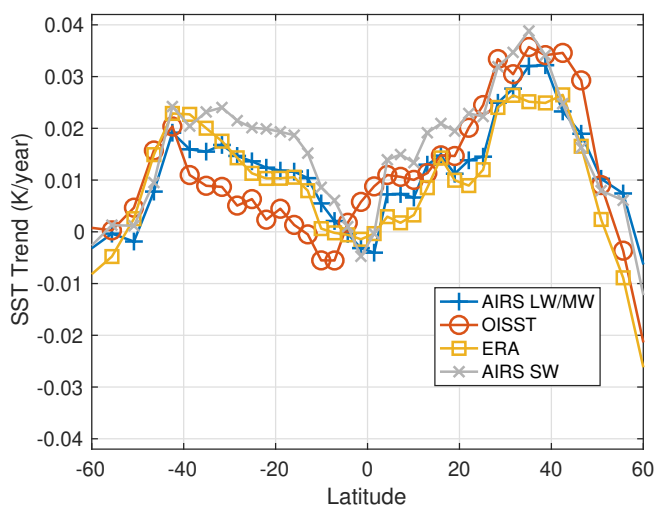


Figure 16. Latitude dependence of the linear trend in the AIRS retrieved SST, OISST, and ERA-I SST. Also shown are the SST trends when only the AIRS short wave channels are used to compute the anomalies.

5.8 CFC12 Retrieval

All anomaly retrievals presented here included CFC12 retrievals. Although these are not used for quantitative assessments of AIRS radiometric stability, the retrieved CFC12 anomaly is shown in Fig. 17 for completeness. Excellent agreement [is found](#)
 680 between the AIRS observed CFC12 and the ESRL Northern Hemisphere measurements (ESRL). The linear trends derived from these two curves are -2.94 ± 0.04 ppt/year for AIRS, and -2.93 ± 0.02 ppt/year for ESRL, nearly perfect agreement. These results give us confidence that the SST retrievals have not been compromised by CFC12 contamination, since there are a number of channels sensitive to both. Note that the trend of ~ 40 ppt of CFC12 derived here from AIRS is equivalent to only ~ 0.11 K in BT!

685 6 Retrieval [BT Breakouts and Residuals](#)

The anomaly fit residuals provide a wealth of information on the behavior of each AIRS channel versus time. As stated earlier, unphysical shifts in the AIRS radiance time series can be reflected in either the retrieved geophysical anomalies or in the fit residuals. Jumps in the fit residuals will generally take place when the shifted radiances cannot be "adjusted away" by the BT Jacobians, which require a reasonably accurate physical response to radiance jumps. We believe that the anomaly retrieval
 690 approach presented here will allow objective corrections to AIRS radiances, especially for radiance jumps that can be tied to

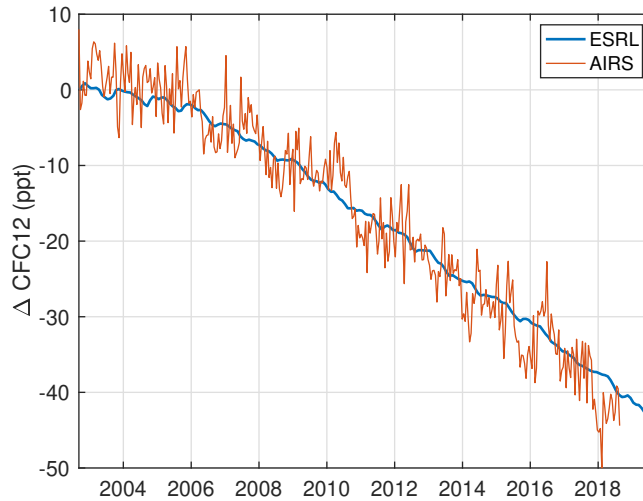


Figure 17. AIRS CFC12 retrieved anomaly compared to the NOAA ESRL Northern Hemisphere anomaly. Note that a 40 ppt trend in CFC12 corresponds to about 0.11K in brightness temperature for the channel with the highest CFC12 Jacobian.

instrument events. The excellent agreement between the CO₂ and SST anomalies and in-situ data strongly suggests that the AIRS blackbody is very stable, which is key to climate-level trend measurements.

There are several likely causes for some of the differences seen here between our observed anomalies and the N₂O and CH₄ truth anomalies from ESRL. Shifts in the frequency calibration of AIRS (Strow et al., 2006; Manning et al., 2019) have largely been removed in the AIRS L1c product, although some transient shifts in the AIRS M-4a and M-4c arrays (that cover N₂O and CH₄ channels) have not yet been corrected in L1c (see (Aumann et al., 2020)). The AIRS frequency shifts imply that detector views of the blackbody and cold scene targets have also shifted during the mission. While these shifts are very small, radiometric drifts/shifts could arise from these focal plane movements if the blackbody and cold scene targets are not perfectly uniform. As mentioned in Sec. 5.4, shifts of interference fringes in some of the AIRS entrance filters when **AQUA** was restarted in Nov. 2003 may also contribute to the observed anomaly shifts. These fringe shifts have been modeled by the authors and future work may include modification of AIRS radiances before Nov. 2003 to remove the effects of these small shifts in the instrument spectral response function.

Here we present several views of the AIRS anomaly ~~fit~~fits and their residuals as examples on how future work might proceed to potentially correct the AIRS radiances for small remaining radiometric drifts/shifts.

6.1 Retrieved Anomalies in BT Units

First to provide some context, Figure 18 shows the contribution of the various geophysical trends to the observed BT anomalies for channels sensitive to different geophysical variables. This is done by multiplying the BT Jacobian for some particular geophysical variable by its retrieved anomaly over time. For illustration purposed we averaged the trends over the latitude bins from $\pm 50^\circ$ latitude.

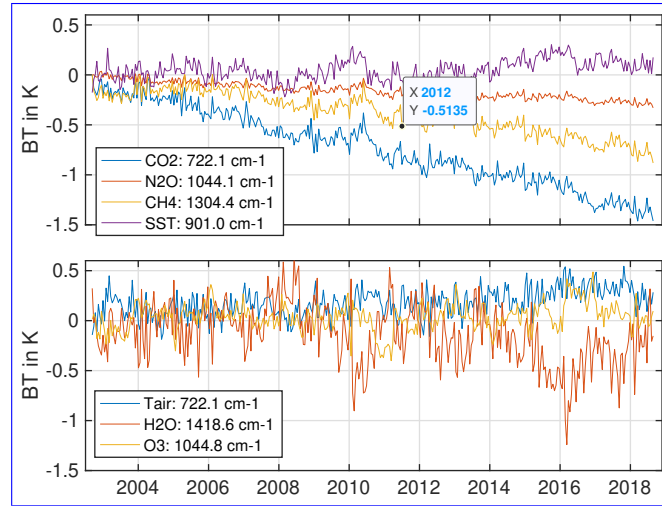


Figure 18. Contribution to the observed BT anomalies caused by the retrieved geophysical anomalies. These are simply the BT Jacobian multiplied by the time-dependent retrieved geophysical anomalies. The BT anomalies in the bottom panel are multiplied by the sum, over all layers, of the retrieved profile anomalies.

710 The upper panel shows that the retrieved CO₂ anomaly translates into a BT trend for the 722.1 cm⁻¹ channel of more than -1K. Channels very sensitive to the retrieved CH₄ and N₂O anomalies have BT trends that are lower than CO₂. The anomaly for a channel sensitive to SST in this panel has an upward trend due to increasing SST values, but these are quite small compared to the minor gas trends.

715 The bottom panel of Fig. 18 plots the BT anomalies due to the retrieved temperature, H₂O, and O₃ anomalies. The profile anomalies have been summed over all levels for this figure. The same channel chosen to illustrate the BT anomaly due to the CO₂ anomaly, 722.1 cm⁻¹, is also used to illustrate the contribution of the temperature anomaly. The BT trend for the 722.1 cm⁻¹ channel due to the temperature anomaly is far smaller than for CO₂, is slightly noisier, and has a small positive trend that mostly occurs after 2014. This would be expected since there is also a positive trend for SST with the same general time dependence. The BT trend due to the retrieved H₂O anomaly is plotted for the 1418.6 cm⁻¹ channel sensitive to mid-tropospheric H₂O. This

720 BT anomaly moves in the opposite direction to the BT anomaly due to temperature, which is expected since on a large scale increasing temperatures raise H₂O amounts, which leads to lower BT values.

Spectra illustrating how the various geophysical anomalies contribute to the BT anomalies are constructed by multiplying the BT Jacobians times the 16-year mean of the retrieved geophysical anomalies. Since these are computed quantities, all channels can be included. These are plotted in Fig. 19, where we separate the geophysical contributions just as in Fig. 18. If

725 the trends are linear in time, the 16-year mean anomalies represent the anomalies for year eight. Divided these by eight gives the nominal BT trend in K/year.

This figure clearly shows that CO₂ dominates the changes in the longwave region, as expected. The N₂O and CH₄ BT anomalies are concentrated in the 1230-1400 cm⁻¹ region with significant overlap, which is largely separable in the retrieval.

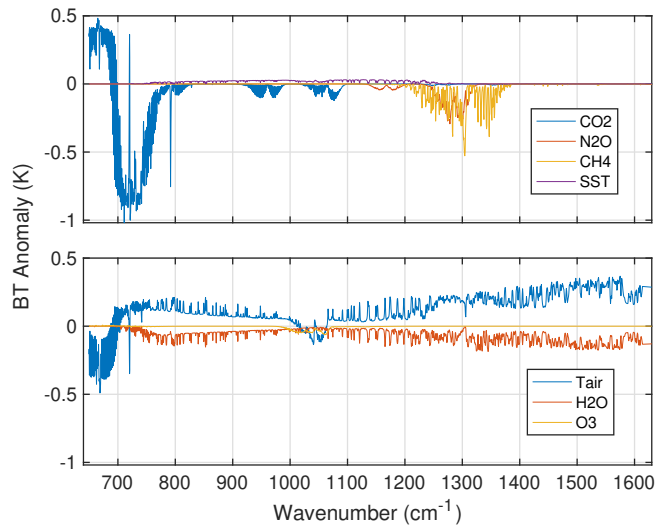


Figure 19. Contribution to the observed BT anomalies caused by the retrieved geophysical anomalies. These are simply the BT Jacobian multiplied by the mean, over time, of the 16-year record of geophysical anomalies. The BT anomalies in the bottom panel are multiplied by the sum, over all layers, of the retrieved profile anomalies.

On this scale the BT changes due to SST are quite small. In the lower panel the temperature, H₂O, and O₃ BT anomaly trends are derived from the sum of the profile Jacobians over all layers. In many regions of the spectrum the temperature and H₂O BT anomaly trends are dominant, an indication that our anomaly retrievals successfully accounted for variability in those parameters. BT trends in the channels sensitive to tropospheric temperature (700-750 cm⁻¹) are in the range of 0.01-0.02K/year (after dividing the plotted mean anomaly by eight), nominally consistent with global warming during this period.

The H₂O greenhouse effect is clearly seen in the bottom panel of Fig. 19. The increased emission in the water band (1200-1615 cm⁻¹) due to higher atmospheric temperatures is largely negated by the decrease in emission due to increasing amounts of H₂O, which shifts the emission in any given channel to higher altitudes where the temperature is lower.

Also note that channels sensitive to stratospheric temperatures in the 650-690 cm⁻¹ region have a negative trend, indicating stratospheric cooling. This is also an expected result for global warming, but great care should be taken in using this data set for general conclusions since the sampling is non-uniform, and the trend standard deviation (Fig. 20) is almost 2X larger than the trend.

For completeness the standard deviation of the nominal linear anomaly trends shown in Fig. 19 are plotted in Fig. 20 using the same breakouts of geophysical anomalies. The CO₂ BT anomaly trend maximum standard deviation of ~0.1 K near 730 cm⁻¹ is only slightly higher than the standard deviation expected if it was solely due to a linear trend in CO₂, 0.08K. The air temperature stratospheric standard deviation is large, as previously noted, presumably due to the effects of the quasi-biennial oscillation (QBO) and possibly ENSO variability. The variability due to air temperature and H₂O produces standard deviations in the water region (1250-1615 cm⁻¹) that is generally larger than variability due to trends in CH₄ and N₂O, but apparently our retrieval successfully removed those interferences. Note the relatively high O₃ variability, which we do retrieve but have not

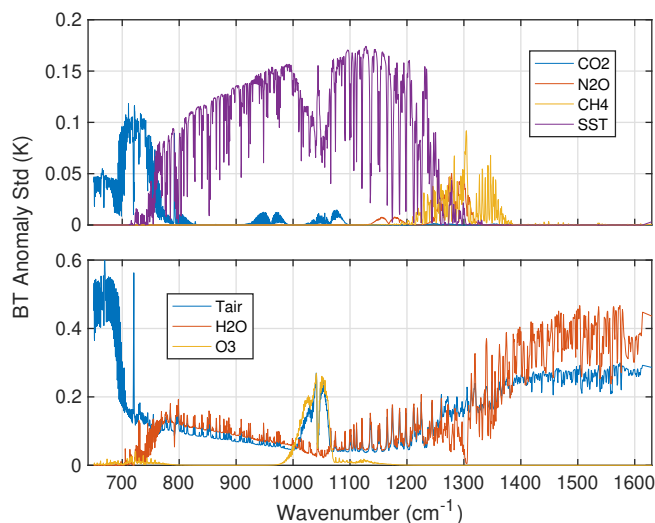


Figure 20. Standard deviation for the contribution to the observed BT anomalies caused by the mean retrieved geophysical anomalies shown in Fig. 19.

examined carefully. It is important to remember that these are anomaly standard deviations, so they do not include seasonal variability.

750 6.2 Anomaly BT Residuals

The anomaly fits shown above are summed and then subtracted from the observed BT anomalies to obtain the the BT anomaly fit residuals. Any trends in these residuals can also be examined to search for channels that changed characteristics during the 16-year time period.

Figure 21 shows the BT anomaly fit residual slopes for A+B, A-only, and B-only channels separately. Most of the A+B channels shown, all of which were used in the anomaly retrievals, are within ± 0.004 K/year of zero. While a large number of A-only and B-only channel are in agreement, there are a number of cases where they exhibit significant slopes (trends) that are not in agreement with the A+B channels. Module M-05 channels near 1100 cm^{-1} are clearly drifting differently than the other channels (we did not use any A+B M-05 channels in the retrievals since they are also in error). Module M-08 channels near 851 cm^{-1} show a clear separation between A+B channels and A-only, B-only. Clearly, the opposite sign of the A-only versus B-only drifts are largely cancelled when A+B channels are used. Since the SST retrievals are quite good, and because the surface channels near 1200 cm^{-1} agree with the A+B channels, we conclude that the A-only and B-only drifts are real, and possibly due to drifts, or offsets, in the exact part of the blackbody and/or cold target scenes observed by these detectors.

Since the N_2O retrieved anomalies exhibit some small unphysical behaviors, we examine the fit residuals for the 24 channels (used in the retrievals) that are most sensitive to N_2O . Visual inspection of these channel's residual time series clearly indicated that 12 of them had easily identifiable features due to AIRS events. Figure 22 shows three different averages of these residual time series; (a) 12 good channels, with no strong evidence of AIRS events, (b) 12 bad channels which clearly exhibit jumps at

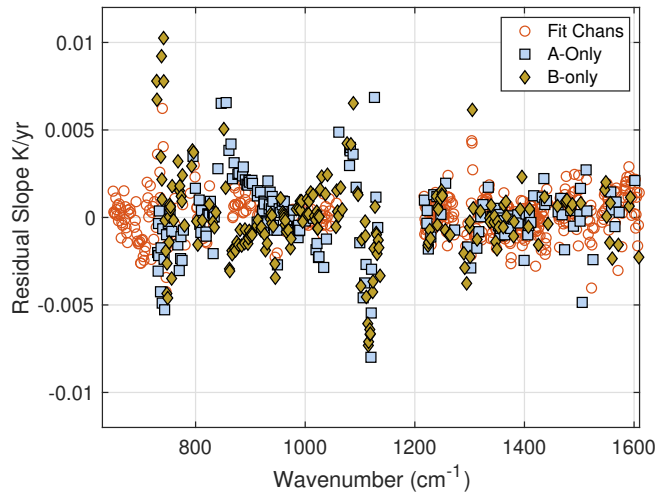


Figure 21. Slope of the AIRS anomaly residuals separated by A+B (Fit channels), A-Only, and B-Only. This illustrates trends in the A-only and B-only channels relative to A+B channels in some modules. The A-only and B-only channels were not used in the fitting, so they are not strictly residuals, but Observed - Computed differences.

the time of AIRS events, and (c) the mean time series for all 24 channels used in the anomaly fits. We see that the good channel mean (blue) is very flat, with a slight indication of a jump near the Nov. 2003 event. The bad channel curve (red) shows a large jump near Nov. 2003, possibly some longer-term drifts, and a feature in March 2014 that seems to last for 1 to 1 1/2 years.

770 This last feature can change sign depending on which bad channel is observed, making it very likely that this is due to the M-4a/M-4c frequency calibration shift that is not yet corrected in the L1c product.

A new set of anomaly retrievals were produced, but with the 12 bad N₂O channels removed. When compared with the ESRL N₂O anomalies, this change produced slightly better agreement with ESRL after Nov. 2013. The slope of the (AIRS - ESRL) anomaly difference curve was reduced from -0.141 K/Decade (as reported in Table 5) to -0.113 K/Decade, a slight

775 improvement. This drift relative to ESRL reduces to -0.069 K/Decade if anomaly data before Nov. 2013 is ignored. This illustrates that improvements to the AIRS products can be ~~improved~~achieved by removing channels with residuals that have non-physical jumps. If the Nov. 2013 radiometric jumps can be removed (whether due to frequency shifts, fringe shifts, or pure radiometric jumps) even higher stability is possible. However, one could presently begin the AIRS time series, say on Jan. 1, 2004 and retain a stability approximately 2X better than climate trends.

780 These results illustrate a simple case for how the anomaly fit residuals can be used to improve AIRS trend products. In this work we have not looked for non-physical jumps in the retrieved temperature, H₂O, and O₃ profile anomalies. These products likely exhibit some of these behaviors and need to be included in any comprehensive study to further improve the AIRS radiance stability. Some sort of iterative approach will likely be needed in order to ensure that these small remaining radiometric jumps become undetectable in both the retrieved anomalies and in the anomaly residuals.

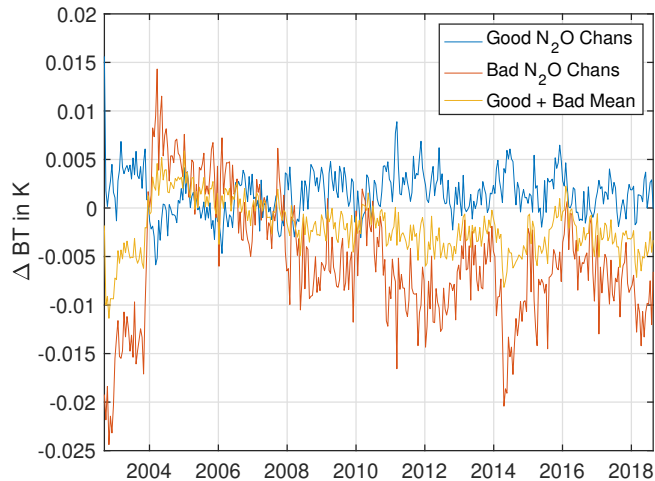


Figure 22. Anomaly fit residual time series for various combinations of 24 channels sensitive to N₂O in the long wave. The bad N₂O channels have easily visible jumps at times corresponding to AIRS hardware events.

785 7 Conclusions

A framework for establishing stability of the AIRS radiances has been introduced that uses retrievals of minor gas and SST trends from BT anomaly spectra. Extremely good agreement between retrieved CO₂ trends (or anomalies) and in-situ trends from NOAA ESRL illustrates that a large fraction of AIRS channels are extremely stable, well below climate trends, where agreement with ESRL CO₂ anomalies is -0.023 ± 0.009 K/Decade. The SST anomaly retrievals also compare favorably to the
 790 ERA-I reanalysis and to NOAA's OISST SST product, with differences of less than 0.022 K/Decade, and slightly higher values for comparisons to OISST. Such good agreement for a wide range of detectors strongly suggests that the AIRS blackbody is very stable.

Unphysical radiometric jumps are observed in ~~the all~~ all the retrieved anomaly time series, but especially for N₂O and CH₄. These jumps can largely be related to AIRS events, and we illustrate how the anomaly fit residuals, combined with
 795 inter-comparisons to truth anomaly trends such as N₂O may provide a way to correct small remaining jumps in some AIRS channels.

This work emphasizes that users of AIRS ~~data~~ radiances (both Level-1b and Level-1c) for climate applications must pay careful attention to channel selection, since certain detector arrays and channels are presently not suitable for climate trending, including all of the AIRS short wave channels. However, establishment of such a high level of stability for so many remote
 800 sensing observations/channels is highly unusual, and should lead to a high level of trust in AIRS climate trends that pay careful attention to only using validated climate-level channels.

Array Name	Start ν (cm ⁻¹)	End ν (cm ⁻¹)
1a	2552	2677
2a	2432	2555
1b	2309	2434
2b	2169	2312
4a	1540	1614
4b	1460	1527
3	1337	1443
4c	1283	1339
4d	1216	1273
5	1055	1136
6	973	1046
7	910	974
8	851	904
9	788	852
10	727	782
11	687	729
12	649	682

Table A1. The wavenumber ranges covered by each of the 17 AIRS arrays.

Acknowledgement

The authors thank Steve Broberg, NASA JPL AIRS Project Office, for supplying us with a table of AIRS events. We also thank Steven Buczkowski at UMBC/JCET for the extensive data handling and production needed for this work. The hardware used for this work is part of the UMBC High Performance Computing Facility (HPCF). The facility is supported by the U.S. National Science Foundation through the MRI program (grant nos. CNS-0821258, CNS-1228778, and OAC-1726023) and the SCREMS program (grant no. DMS-0821311), with additional substantial support from the University of Maryland, Baltimore County (UMBC).

Appendix A: AIRS Detector Array Wavenumbers

Table A1 shows the wavenumber ranges covered by each of the 17 AIRS arrays.

Appendix B: Anomaly and Profile Trend Retrievals

A complete simulated BT anomaly dataset was generated using ERA-I model fields, by matching each AIRS clear observation to ERA-I and generating a simulated radiance. This simulated dataset was used to set the regularization parameters for the profile inversions. The measurement of anomalies largely removes systematic errors in both the radiance observations (radio-
815 metric accuracy) and in the RTA (spectroscopy errors). We believe that these two factors helped make the retrieval inversions quite stable, requiring only minimal regularization.

Since our interest is mainly in the minor-gas profile offsets we used 20 atmospheric layers for the retrievals (20 each for temperature, H₂O, and O₃), created by concatenating layers from the 100-layer atmospheric profile model in (Strow et al., 2003). This choice, coupled with our regularization, provided more layers than degrees of freedom, as desired. We found that
820 low noise of the AIRS zonally averaged 16-day anomalies (see Sect. 4.1 coupled with low bias errors in the measurement covariances allowed us to use only minimal regularization.

We first adapted Tikhonov-only first-derivative (L1-type) regularization which mostly removed obvious outliers, mostly in the higher latitudes in the stratosphere. This gave averaged linear-trend accuracies in our simulations of -0.03 ± 0.07 K/year compared to the ERA-I model field trends used to generate the anomaly data set. (This degrades to -0.05 ± 0.08 K/year if
825 the regularization is lowered by a factor of 10X.) A reasonable goal is to achieve trends in simulation accurate to 0.01K/year, averaged over the troposphere. We then added a-priori uncertainties to the temperature and H₂O profiles of 2.5K and 60% respectively, which are roughly the maximum variation in these quantities over time for $\pm 50^\circ$ latitude. These covariances are not very restrictive given that measurement uncertainties are so low. It appears that their main impact is again for high latitudes under conditions where we have higher noise due to low number of clear samples.

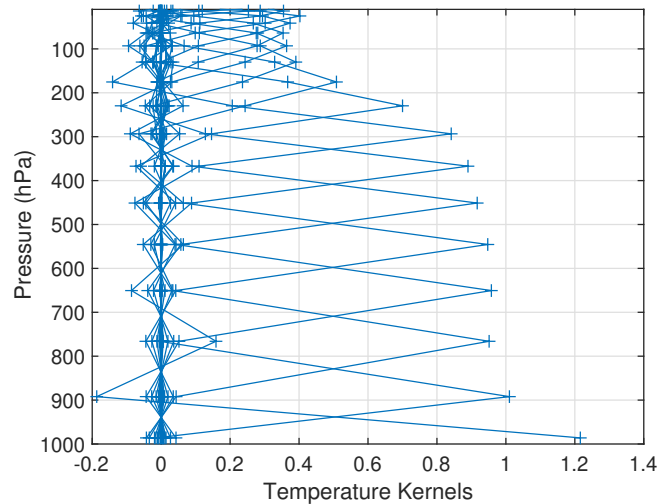


Figure B1. Temperature kernels for the anomaly retrievals. These are taken from a random day for the zonal bin centered at 28.3°N.

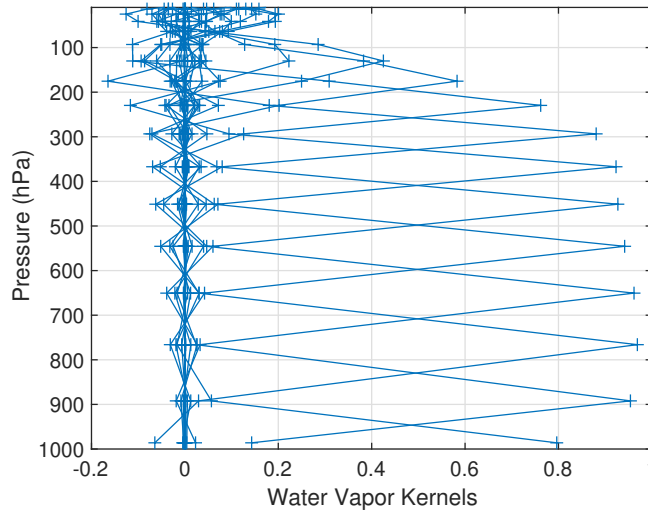


Figure B2. H₂O kernels for the anomaly retrievals. These are taken from a random day for the zonal bin centered at 28.3°N.

830 The temperature and water vapor retrieval kernels are shown in Figs. B1,B2. They exhibit a very regular spacing in the troposphere with roughly 12 well-separated kernels.

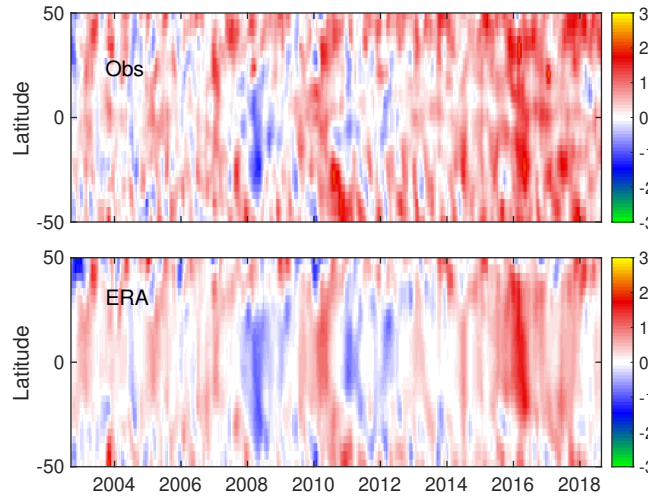


Figure B3. Retrieved 400 hPa temperature anomalies versus latitude. Top: Our retrievals from the AIRS observations. Bottom: ERA-I anomalies.

Figure B3 illustrates the 400 hPa temperatures we retrieved from the AIRS data (top panel) along with the ERA-I anomalies computed directly from the model fields. We do not expect these two data sets to compare perfectly, since for example, the ERA-I anomalies are from relatively large gridded data and the AIRS measurement are from a nominal 15 x 15 km field-of-
835 view. Given the non-uniform sampling of our data set we do not think detailed examination of the observed versus ERA-I

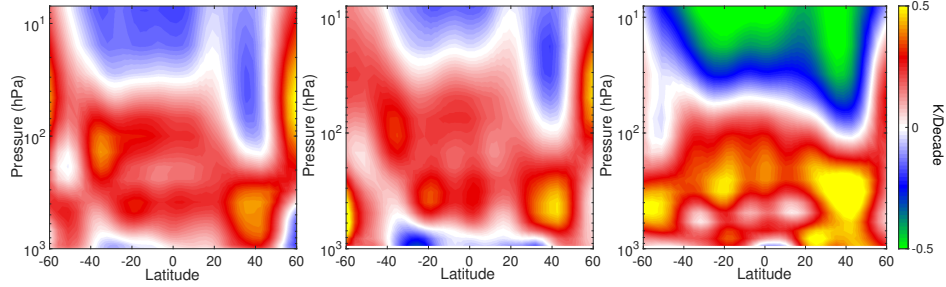


Figure B4. Temperature trends from the 16-year data period studied here. Left: ERA-I trends derived directly from the model temperature fields. Middle: Simulated retrievals of the ERA-I trends using radiance anomalies created from the ERA-I fields and our SARTA RTA. Right: Temperature profile trends retrieved from the AIRS observed anomalies. The middle panel simulation assumes that RTA is perfectly accurate.

anomalies is warranted. We do note there are many similarities in time and latitude that give some measure of validation to our profile retrievals. Similar results are seen with water vapor profiles.

Figure B4 summarizes the temperature trend simulations and comparisons between ERA-I trends, our anomaly retrievals from the ERA-I generated radiances, and those observed with the AIRS clear subset. The trends are computed from the anomaly retrievals (or model fields) using Eq. 16, where the input is the layer temperature instead of a [radiance \$\text{CO}_2\$ amount](#).

These results have been slightly smoothed to make visual inter-comparisons easier. The left panel shows the vertical trends versus latitude directly computed from the ERA-I temperature fields. The middle panel shows our simulated temperature trend retrievals. These simulations agree quite well with the ERA-I model fields, the largest differences are seen in the lower troposphere at the higher latitudes, and near the boundary layer in the tropics. The simulated retrievals are also placing the tropopause too high, not surprising given the lack of sensitivity of the infrared to the tropopause height and our limited number of vertical layers. The right panel are the temperature anomaly trends retrieved from the AIRS observed anomalies. Clearly there are significant differences between the ERA-I temperature profile trends and those we retrieved from AIRS, although the basic structure is relatively similar. Note that the uncertainties in these trends are quite high in the stratosphere (not shown) due to variations in the quasi-biennial oscillation (QBO), especially in the tropics, with errors larger than the observed trends in the vicinity of the tropopause. However, these uncertainties are largely present in both ERA-I and the AIRS observations.

The AIRS observed anomalies may also be impacted by errors in the BT Jacobians. The middle panel in Fig. B4 used similar RTAs for both simulations and the retrieval. The version of SARTA used for the radiance simulations is based on HITRAN2008 while the Jacobians used in the retrieval used kCARTA which is based on HITRAN2016 and a slightly modified version of CO_2 line-mixing. We expect that these spectroscopy differences have little impact since the CO_2 line strengths for the strong $15\text{ }\mu\text{m}$ bands have not changed between HITRAN versions. In addition, no noise was added to the simulated anomalies.

We believe that these results show that the anomaly retrievals used for measuring minor-gas trends exhibit realistic behavior and given our simulation testing this retrieval approach is likely to give accurate minor-gas trends. The impact of some of the regularization choices are discussed in Sect.5.4.

Author contributions. LLS led the study and made the comparisons between the anomaly fits and in-situ data. SDM developed the anomaly
860 retrieval algorithm. LLS and SDM together optimized the anomaly retrieval regularization.

Competing interests. The authors declare that they have no conflict of interest.

References

- Anderson, G. P., Clough, S. A., Kneizys, F. X., Chetwynd, J. H., and Shettle, E. P.: AFGL atmospheric constituent profiles (0.120km), Tech. rep., 1986.
- 865 Argo: (2019). Argo float data and metadata from Global Data Assembly Centre (Argo GDAC)., SEANOE, 2019.
- Aumann, H., [Broberg, S., Manning, E., Pagano, T., Sutn, B., and Strow, L.](#): [AIRS Level 1C Algorithm Theoretical Basis Document, Version 6.7](#) ~~AIRICRADATBD and Test Documents~~, available as <https://docserver.gesdisc.eosdis.nasa.gov/public/project/AIRS/AIRICRAD.v6.7.ATBD.pdf>, 2020.
- Aumann, H. H., Chahine, M. T., Gautier, C., Goldberg, M. D., Kalnay, E., McMillin, L. M., Revercomb, H., Rosenkranz, P. W., Smith, W. L.,
870 Staelin, D. H., Strow, L. L., and Susskind, J.: AIRS/AMSU/HSB on the Aqua Mission, IEEE Transactions on Geoscience and Remote Sensing, 41, 253, <https://doi.org/10.1109/TGRS.2002.808356>, <https://doi.org/10.1109/TGRS.2002.808356>, 2003.
- Aumann, H. H., Broberg, S., Manning, E., and Pagano, T.: Radiometric Stability Validation of 17 Years of AIRS Data Using Sea Surface Temperatures, Geophysical Research Letters, 46, 12 504–12 510, <https://doi.org/10.1029/2019GL085098>, <https://doi.org/10.1029/2019GL085098>, 2019.
- 875 Banzon, V., Smith, T. M., Chin, T. M., Liu, C., and Hankins, W.: A long-term record of blended satellite and in situ sea-surface temperature for climate monitoring, modeling and environmental studies, Earth System Science Data, 8, 165–176, <https://doi.org/10.5194/essd-8-165-2016>, <https://doi.org/10.5194/essd-8-165-2016>, 2016.
- Blaisdell, J. M.: private communication, 2019.
- Cowtan, K., Hausfather, Z., Hawkins, E., Jacobs, P., Mann, M. E., Miller, S. K., Steinman, B. A., Stolpe, M. B., and Way, R. G.: Robust
880 comparison of climate models with observations using blended land air and ocean sea surface temperatures, Geophysical Research Letters, 42, 6526–6534, <https://doi.org/10.1002/2015gl064888>, 2015.
- Dee, D. P., Uppala, S. M., Simmons, A. J., Berrisford, P., Poli, P., Kobayashi, S., Andrae, U., Balmaseda, M. A., Balsamo, G., Bauer, P., Bechtold, P., Beljaars, A. C. M., Berg, L. v. d., Bidlot, J., Bormann, N., Delsol, C., Dragani, R., Fuentes, M., Geer, A. J., Haimberger, L., Healy, S. B., Hersbach, H., Hólm, E. V., Isaksen, L., Kållberg, P., Köhler, M., Matricardi, M., McNally, A. P., Monge-Sanz, B. M., Morcrette, J.,
885 Park, B., Peubey, C., Rosnay, P. d., Tavolato, C., Thépaut, J., and Vitart, F.: The ERA-Interim reanalysis: configuration and performance of the data assimilation system, Quarterly Journal of the Royal Meteorological Society, 137, 553–597, <https://doi.org/10.1002/qj.828>, <https://doi.org/10.1002/qj.828>, 2011.
- [DeSouza-Machado, S., Strow, L. L., Tangborn, A., Huang, X., Chen, X., Liu, X., Wu, W., and Yang, Q.](#): [Single-footprint retrievals for AIRS using a fast TwoSlab cloud-representation model and the SARTA all-sky infrared radiative transfer algorithm](#), Atmospheric Measurement
890 Techniques, 11, 529–550, <https://doi.org/10.5194/amt-11-529-2018>, 2018.
- DeSouza-Machado, S., Strow, L., Motteler, H., and Hannon, S.: kCARTA: A fast pseudo line-by-line radiative transfer algorithm with analytic Jacobians, fluxes, Non-Local Thermodynamic Equilibrium and scattering for the infrared, Atmos. Meas. Tech., <https://doi.org/10.5194/amt-2019-282>, accepted for publication, 2019.
- ESRL: Combined Chlorofluorocarbon-12 data from the NOAA/ESRL Global Monitoring Division.
- 895 Fiedler, E. K., McLaren, A., Banzon, V., Brasnett, B., Ishizaki, S., Kennedy, J., Rayner, N., Roberts-Jones, J., Corlett, G., Merchant, C. J., and Donlon, C.: Intercomparison of long-term sea surface temperature analyses using the GHRSSST Multi-Product Ensemble (GMPE) system, Remote Sensing of Environment, 222, 18–33, <https://doi.org/10.1016/j.rse.2018.12.015>, <https://doi.org/10.1016/j.rse.2018.12.015>, 2019.

- Gordon, I. E., Rothman, L. S., Hill, C., Kochanov, R. V., Tan, Y., Bernath, P. F., Birk, M., Boudon, V., Campargue, A., Chance, K. V., Drouin, B. J., Flaud, J. M., Gamache, R. R., Hodges, J. T., Jacquemart, D., Perevalov, V. I., Perrin, A., Shine, K. P., Smith, M. A. H., Tennyson, J., Toon, G. C., Tran, H., Tyuterev, V. G., Barbe, A., Császár, A. G., Devi, V. M., Furtenbacher, T., Harrison, J. J., Hartmann, J. M., Jolly, A., Johnson, T. J., Karman, T., Kleiner, I., Kyuberis, A. A., Loos, J., Lyulin, O. M., Massie, S. T., Mikhailenko, S. N., Moazzen-Ahmadi, N., Müller, H. S. P., Naumenko, O. V., Nikitin, A. V., Polyansky, O. L., Rey, M., Rotger, M., Sharpe, S. W., Sung, K., Starikova, E., Tashkun, S. A., Auwera, J. V., Wagner, G., Wilzewski, J., Wcisło, P., Yu, S., and Zak, E. J.: The HITRAN2016 molecular spectroscopic database, *Journal of Quantitative Spectroscopy and Radiative Transfer*, 203, 3–69, <https://doi.org/10.1016/j.jqsrt.2017.06.038>, 2017.
- Hansen, J., Ruedy, R., Sato, M., and Lo, K.: GLOBAL SURFACE TEMPERATURE CHANGE, *Reviews of Geophysics*, 48, <https://doi.org/10.1029/2010RG000345>, <https://agupubs.onlinelibrary.wiley.com/doi/abs/10.1029/2010RG000345>, 2010.
- [Kulawik, S. S., Jones, D. B. A., Nassar, R., Irion, F. W., Worden, J. R., Bowman, K. W., Machida, T., Matsueda, H., Sawa, Y., Biraud, S. C., Fischer, M. L., and Jacobson, A. R.: Characterization of Tropospheric Emission Spectrometer \(TES\) CO₂ for carbon cycle science, *Atmospheric Chemistry and Physics*, 10, 5601–5623, <https://doi.org/10.5194/acp-10-5601-2010>, 2010.](#)
- Manning, E. M., Strow, L. L., and Aumann, H. H.: AIRS version 6.6 and version 7 level-1C products, in: *Earth Observing Systems XXIV*, edited by Butler, J. J., Xiong, X. J., and Gu, X., vol. 11127, pp. 247 – 253, International Society for Optics and Photonics, SPIE, <https://doi.org/10.1117/12.2529400>, <https://doi.org/10.1117/12.2529400>, 2019.
- Masarie, K. A. and Tans, P. P.: Extension and integration of atmospheric carbon dioxide data into a globally consistent measurement record, *Journal of Geophysical Research: Atmospheres*, 100, 11 593–11 610, <https://doi.org/10.1029/95JD00859>, <https://doi.org/10.1029/95JD00859>, 1995.
- Masson-Delmotte, V., Zhai, P., Pörtner, H. O., Roberts, D., Skea, J., Shukla, P. R., Pirani, A., Moufouma-Okia, W., Péan, C., Pidcock, R., Connors, S., Matthews, J. B. R., Chen, Y., Zhou, X., Gomis, M. I., Lonnoy, E., Maycock, T., Tignor, M., and (eds.), W. Waterfield): IPCC, 2018: Summary for Policymakers. In: *Global warming of 1.5°C. An IPCC Special Report on the impacts of global warming of 1.5°C above pre-industrial levels and related global greenhouse gas emission pathways, in the context of strengthening the global response to the threat of climate change, sustainable development, and efforts to eradicate poverty*, Tech. rep., World Meteorological Organization, 2018.
- Morice, C. P., Kennedy, J. J., Rayner, N. A., and Jones, P. D.: Quantifying uncertainties in global and regional temperature change using an ensemble of observational estimates: The HadCRUT4 data set, *Journal of Geophysical Research: Atmospheres*, 117, <https://doi.org/10.1029/2011JD017187>, <https://agupubs.onlinelibrary.wiley.com/doi/abs/10.1029/2011JD017187>, 2012.
- [Pagano, T. S. and Broberg, S. E.: Recent checks on the radiometric and spatial calibration of AIRS in-orbit, in: *Earth Observing Systems XXI*, edited by Butler, J. J., Xiong, X. J., and Gu, X., vol. 9972, pp. 68 – 76, International Society for Optics and Photonics, SPIE, <https://doi.org/10.1117/12.2238765>, <https://doi.org/10.1117/12.2238765>, 2016.](#)
- Rodgers, C. D.: Retrieval of atmospheric temperature and composition from remote measurements of thermal radiation, *Reviews of Geophysics*, 14, 609–624, <https://doi.org/10.1029/RG014i004p00609>, <https://agupubs.onlinelibrary.wiley.com/doi/abs/10.1029/RG014i004p00609>, 1976.
- Santer, B. D., Wigley, T. M. L., Boyle, J. S., Gaffen, D. J., Hnilo, J. J., Nychka, D., Parker, D. E., and Taylor, K. E.: Statistical significance of trends and trend differences in layer-average atmospheric temperature time series, *Journal of Geophysical Research: Atmospheres*, 105, 7337–7356, <https://doi.org/10.1029/1999JD901105>, <https://doi.org/10.1029/1999JD901105>, 2000.
- [Simmons, A., Poli, P., Dee, D., Berrisford, P., Hersbach, H., Kobayashi, S., and Peubey, C.: Estimating low-frequency variability and trends in atmospheric temperature using ERA-Interim, *Quarterly Journal of the Royal Meteorological Society*, 140, 329–353, <https://doi.org/10.1002/qj.2317>, 2014.](#)

- Stark, J. D., Donlon, C. J., Martin, M. J., and McCulloch, M. E.: Ostia: An operational, high resolution, real time, global sea surface temperature analysis system, OCEANS 2007 - Europe, pp. 1–4, <https://doi.org/10.1109/OCEANSE.2007.4302251>, <https://doi.org/10.1109/OCEANSE.2007.4302251>, 2007.
- Steck, T.: Methods for determining regularization for atmospheric retrieval problems., *Applied Optics*, 41, 1788–97, 2002.
- 940 Strow, L., Motteler, H. E., Benson, R. G., Hannon, S. E., and Souza-Machado, S. D.: Fast computation of monochromatic infrared atmospheric transmittances using compressed look-up tables, *Journal of Quantitative Spectroscopy and Radiative Transfer*, 59, 481–493, [https://doi.org/10.1016/S0022-4073\(97\)00169-6](https://doi.org/10.1016/S0022-4073(97)00169-6), [https://doi.org/10.1016/S0022-4073\(97\)00169-6](https://doi.org/10.1016/S0022-4073(97)00169-6), 1998.
- Strow, L. L., Hannon, S. E., Souza-Machado, S. D., Motteler, H. E., and Tobin, D.: An Overview of the AIRS Radiative Transfer Model, *IEEE Transactions on Geoscience and Remote Sensing*, 41, 303, <https://doi.org/10.1109/TGRS.2002.808244>, <https://doi.org/10.1109/TGRS.2002.808244>, 2003.
- 945 Strow, L. L., Hannon, S. E., Machado, S. D., Motteler, H. E., and Tobin, D. C.: Validation of the Atmospheric Infrared Sounder radiative transfer algorithm, *Journal of Geophysical Research: Atmospheres* (1984–2012), 111, <https://doi.org/10.1029/2005JD006146>, <https://doi.org/10.1029/2005JD006146>, 2006.
- Susskind, J., Blaisdell, J. M., and Iredell, L.: Improved methodology for surface and atmospheric soundings, error estimates, and quality control procedures: the atmospheric infrared sounder science team version-6 retrieval algorithm, *Journal of Applied Remote Sensing*, 8, 084 994–084 994, <https://doi.org/10.1117/1.JRS.8.084994>, <https://doi.org/10.1117/1.JRS.8.084994>, 2014.
- 950 Susskind, J., Schmidt, G. A., Lee, J. N., and Iredell, L.: Recent global warming as confirmed by AIRS, *Environmental Research Letters*, 14, 044 030, <https://doi.org/10.1088/1748-9326/aafd4e>, <https://doi.org/10.1088/1748-9326/aafd4e>, 2019.
- Tans, P. and Keeling, R.: Trends in Atmospheric Carbon Dioxide, <http://www.esrl.noaa.gov/gmd/ccgg/trends/>.