

***** Reply to reviewer #1 *****

We are grateful to referee #1 for their review of this manuscript and identification of important points where clarification was needed. The referee's endorsement of the paper is appreciated. In the text below, we detail responses to each of the referee's comments. Page and line numbers refer to the originally submitted discussion paper.

referee comment: "Abstract, page 2, line 1 following: Concerning the sentence "...seasonal variability in biases was observed, and this variability was more pronounced at the TCCON sites than when comparing to EM27/SUN observations in Fairbanks." Is that a robust finding, i.e., does this suggest that EM27/SUN is better than TCCON?"

Our study uses only two instruments from the TCCON network and one EM27, all of which are deployed at different locations, so the present work is not sufficient to suggest which instrument is better, and that answer might also depend upon the application. It is possible that the seasonal stability in OCO-2 bias relative to the EM27 at Fairbanks could be due to the EM27 spectral resolution (~ 0.5 cm⁻¹), which is much closer to that of OCO-2 (~ 0.3 cm⁻¹) than TCCON (~ 0.02 cm⁻¹). While the EM27s used in Fairbanks were calibrated against the Caltech TCCON, there is no TCCON in Fairbanks and vertical distributions of CO₂ at these two sites are likely to differ. An analysis of OCO-2 data compared to long term EM27 observations at multiple TCCON sites would be necessary to more fully address whether the relative seasonal stability in OCO-2 bias at Fairbanks is due to geography or instrumentation. There are a small number of sites that have published analyses or data from EM27 observations alongside a TCCON for multiple consecutive years, but we are not aware of any that have published results comparing multiple years of EM27 measurements to OCO-2. Sha et al., 2019 (AMTD, doi: 10.5194/amt-2019-371) present thorough comparisons amongst EM27 observations, TCCON observations, and TCCON measurements truncated to a lower resolution, as well as other infrared spectrometers, using a full year of measurements at Sodankylä, Finland. Their results suggest that the EM27 may retrieve higher XCO₂ in spring than the TCCON, and this could result in reduced seasonal dependence in bias. Their results also suggest that factors such as temperature and water vapor may play a role in the differences between EM27 and TCCON retrievals of XCO₂. In general, the EM27 is a relatively new instrument and has yet to undergo the extensive effort that has been applied to TCCON measurements, so more research is needed. A sentence was added to the abstract and conclusions to clarify this point, and the discussion in section 4 (page 21, line 28) was enhanced with this citation and further discussion.

referee comment: "Page 3, line 12 following: Concerning the discussion of the trend in the CO₂ seasonal cycle amplitude: Please consider also this recent publication: Yin et al., 2018, Changes in the Response of the Northern Hemisphere Carbon Uptake to Temperature Over the Last Three Decades, <https://agupubs.onlinelibrary.wiley.com/doi/abs/10.1029/2018GL077316>"

Thank you for calling attention to this study, which will also be helpful in future research of Boreal Forest seasonal cycles. Citation of Yin et al., 2018, was added at page 3 line 12 and some additional description of their findings was added at the end of the first paragraph in the introduction.

referee comment: "Page 5, line 28 following: Concerning the suggested new quality control filters for Boreal Forest regions: Are they limited to this region or can they also be used for the global data?"

The alternative set of quality controls proposed in this manuscript are specifically validated in the Boreal Forest (the biome covering the majority of land between 50°N and 70°N latitude) and yield the optimal combination of throughput and data quality when applied to these data. Our analysis only vetted these quality control parameters using ground-based observations from three Boreal Forest sites, so it is unknown how they will affect data quality when applied to regions south of 50°N or over the high Arctic (Greenland and places with abundant sea ice). The Boreal QC yields slightly higher standard deviation than the B9 QC, and while this may be a worthwhile sacrifice to increase data throughput at high latitudes, it may not be worthwhile for a region that already has high data throughput with B9 QC. In particular, some aerosol filters were removed in the Boreal QC, which are redundant for these Boreal sites but could be important over urban areas. Stricter bounds placed on the slope of the continuum albedo in the strong CO₂ band (albedo_slope_sco2) in the Boreal QC may also cause unexpected cuts in

regions outside of what was considered. If one intended to apply the Boreal QC to another region, we recommend a careful comparison to well-established ground-based validation data within the region of interest before making any decision. While there is some effort made to clarify this point within the paper, we also added some language to the end of the introduction (near page 5, line 28) to clarify that the alternative quality filters are designed and vetted for the Boreal Forest.

referee comments: "Captions Fig. 3-5: I recommend to write "flagged bad" (e.g. bad with quotes) or equivalent instead of just "flagged". It would then be easier for the readers to understand(if this is correct) that the figures show the number of rejected observations and not the number of accepted observations. Perhaps one may also extend a bit the main text as the figures may wrongly suggest that there are less good data in summer than in winter although the opposite is probably the case (one may also report the fraction(percentage) of rejected pixels per months; does this number depend on season ?).

Figures 5 and 6: Perhaps add also the relative (percentage) increase for each month(just a recommendation; not mandatory as this info is partially provided in Fig. 7)."

First, captions in Fig. 2, 3, and 4 were modified to read "flagged bad", as suggested, and corresponding references in the text were also changed from "flagged" to "flagged bad". In response to your suggestion about showing fraction (percentage) of rejected pixels, we took what may be a slightly different approach than intended and decided to modify Figures 5, 6, and 7, as well as making other revisions to section 3.2. Figures 5 and 6 were the maps of additional spatial coverage from using Boreal QC instead of B9 QC, and they were changed to show the difference in the number of soundings between Boreal QC and B9 QC in each 1x1 degree geographic grid cell, on a diverging color scale and including small reductions in throughput. These maps are now much more informative and give a more holistic perspective on the changes in throughput from the Boreal QC. As suggested, we changed Fig. 7 to show the fraction of soundings passed by each QC relative to the total number of soundings over land north of 50N rather than showing the absolute number of soundings passed. We believe that this better represents the improvements in data throughput because for some months there are already fewer data points prior to quality filtering as a result of pre-screening done on the OCO-2 Lite file data or from lack of data collection.

***** Reply to Reviewer #2 *****

We are grateful to referee #2 for constructive suggestions for improvement. The referee's favorable account of the implications of these results for improving satellite data throughput in under-sampled regions and validating EM27 measurements against TCCON are also appreciated and reflect what we had hoped to communicate in this manuscript. In addition, the referee makes a good suggestion to provide a publicly available dataset with Boreal QC filtered OCO-2 data. Major efforts have been put into developing and validating the globally appropriate B9 QC scheme (and subsequent QC releases) for OCO-2 and the Boreal application is a more specific one, so we do not think it appropriate to release OCO-2 data with the Boreal QC filtering already applied. However, all of the filtering parameters are defined in Table 1 with names that match their corresponding variables in the OCO-2 Lite files, so an interested group could follow the methods described in this manuscript and code a script to apply the filters to data in the OCO-2 Lite files, either independently or by contacting us to collaborate and share code. All of the referee's recommendations for organizational revisions were implemented with the following details. Page and line numbers refer to the originally submitted discussion paper.

referee comment: "Pages 20/22: combine Figures 11 and 12 into a single figure, to emphasize how the seasonality is introduced by the OCO-2 bias correction."

Figures 11 and 12 were combined into side-by-side boxplots of a similar style to previously numbered Fig. 19 and Fig. 20. As an extension of this change, the color-scheme and formatting of all boxplots, including previously numbered Fig. 15, 19, 20, 22, and 28, were changed to improve clarity and aesthetics.

referee comment: "Pages 23/24/25: in Figures 15/16/17, for consistency with the text, I suggest using the label 'abc' instead of 'bc' when showing the 'with T700' results."

Figures 15, 16, and 17 were relabeled for consistency with the text as suggested.

referee comment: "Sections 4.2 and 4.3: I suggest moving these (and their associated figures) to an appendix, so that the discussion section is more focused on the QC parameters which have a greater impact on the seasonal variability in the XC02 biases."

Sections 4.2 and 4.3 were added as appendices and text in the discussion and conclusions was altered in accordance with this change.

referee comment: "Appendix A: a paragraph here which briefly describes how the quality control histograms are used to obtain the QC thresholds would be helpful (the authors may still refer to the O'Dell paper here for further detail)."

A descriptive paragraph was added to Appendix A describing the QC histograms and giving some brief explanation of how they are used to determine quality control filters.

***** Revised manuscript *****

The revised manuscript in "tracked changes" mode follows. We also re-uploaded the supplement, which had no changes.

Quality controls, bias, and seasonality of CO₂ columns in the Boreal Forest with OCO-2, TCCON, and EM27/SUN measurements

Nicole Jacobs¹, William R. Simpson¹, Debra Wunch², Christopher W. O'Dell³, Gregory B. Osterman⁴, Frank Hase⁵, Thomas Blumenstock⁵, Qiansi Tu⁵, Matthias Frey^{5,6}, Manvendra K. Dubey⁷, Harrison A. Parker^{7,8}, Rigel Kivi⁹, and Pauli Heikkinen⁹

¹Department of Chemistry and the Geophysical Institute, University of Alaska Fairbanks, Fairbanks, AK, USA

²Department of Physics, University of Toronto, Toronto, Canada

³Cooperative Institute for Research in the Atmosphere, Colorado State University, Fort Collins, CO, USA

⁴Jet Propulsion Laboratory, California Institute of Technology, Pasadena, CA, USA

⁵Karlsruhe Institute of Technology, Institute of Meteorology and Climate Research, Karlsruhe, Germany

⁶National Institute for Environmental Studies, Tsukuba, Japan

⁷Earth and Environmental Sciences, Los Alamos National Laboratory, Los Alamos, NM, USA

⁸California Institute of Technology, Pasadena, CA, USA

⁹Finnish Meteorological Institute, Sodankylä, Finland

Correspondence: William Simpson (wrsimpson@alaska.edu)

Abstract. Seasonal CO₂ exchange in the Boreal Forest plays an important role in the global carbon budget and in driving interannual variability in seasonal cycles of atmospheric CO₂. Satellite-based observations from polar orbiting satellites like the Orbiting Carbon Observatory-2 (OCO-2) offer an opportunity to characterize Boreal Forest seasonal cycles across longitudes with a spatially and temporally rich dataset, but data quality controls and biases still require vetting at high latitudes. With the objective of improving data availability at northern, terrestrial high latitudes, this study evaluates quality control methods and biases of OCO-2 retrievals of atmospheric column-averaged dry-air mole fractions of CO₂ (X_{CO_2}) in Boreal Forest regions. In addition to the standard quality control filters recommended for ACOS B8 (B8 QC) and ACOS B9 (B9 QC) OCO-2 retrievals, a third set of quality control filters were specifically tailored to Boreal Forest observations (Boreal QC) with the goal of increasing data availability at high latitudes without sacrificing data quality. Ground-based reference measurements of X_{CO_2} include observations from two sites in the Total Carbon Column Observing Network (TCCON) at East Trout Lake, Saskatchewan, Canada and Sodankylä, Finland. OCO-2 retrievals were also compared to ground-based observations from two Bruker EM27/SUN FTS at Fairbanks, Alaska, United States. EM27/SUN spectrometers that were deployed in Fairbanks were carefully monitored for instrument performance and were bias corrected to TCCON using observations at the Caltech TCCON site. The B9 QC were found to pass approximately twice as many OCO-2 retrievals over land north of 50°N than the B8 QC, and the Boreal QC were found to pass approximately twice as many retrievals in May, August, and September as the B9 QC. While Boreal QC results in a substantial increase in passable retrievals this is accompanied by increases in the standard deviations in biases at Boreal Forest sites from ~ 1.4 ppm with B9 QC to ~ 1.6 ppm with Boreal QC. Total average biases for coincident OCO-2 retrievals at the three sites considered did not consistently increase or decrease with different QC methods, and instead responses to changes in QC varied according to site and satellite viewing geometries. Regardless of the quality

control method used, seasonal variability in biases was observed, and this variability was more pronounced at ~~the TCCON sites~~
~~than when comparing to Sodankylä and East Trout Lake than at Fairbanks.~~ Long-term coincident observations from TCCON,
EM27/SUN~~observations in Fairbanks,~~ and satellites from multiple locations would be necessary to determine whether the
reduced seasonal variability in bias at Fairbanks is due to geography or instrumentation. Monthly average biases generally
5 varied between -1 ppm and +1 ppm at the three sites considered, with more negative biases in spring (MAM) and autumn (SO),
but more positive biases in summer months (JJA). Monthly standard deviations in biases ranged from approximately 1.0 ppm to
2.0 ppm and do not exhibit strong seasonal dependence apart from exceptionally high standard deviation observed with all three
QC methods at Sodankylä in June. There was no evidence found to suggest that seasonal variability in bias is a direct result
of airmass dependence in ground-based retrievals or of proximity bias from coincidence criteria, but there were a number of
10 retrieval parameters used as quality control filters that exhibit seasonality and could contribute to seasonal dependence in OCO-
2 bias. Furthermore, it was found that OCO-2 retrievals of X_{CO_2} without the standard OCO-2 bias correction exhibit almost
no perceptible seasonal dependence in average monthly bias at these Boreal Forest sites, suggesting that seasonal variability in
bias is introduced by the bias correction. Overall, we found that modified quality controls can allow for significant increases
in passable OCO-2 retrievals with only marginal compromises in data quality, but seasonal dependence in biases still warrants
15 further exploration.

1 Introduction

The Boreal Forest or Taiga Biome is the largest terrestrial biome on Earth, it includes the sub-Arctic regions of Europe, Asia, and North America between 50°N and 70°N latitudes, it represents an important and influential component of the global carbon cycle, and it is a principle driver of the atmospheric carbon dioxide (CO₂) seasonal cycle. Accurate accounting of seasonal CO₂ exchange in Boreal Forest regions is an essential component in quantifying the global carbon budget and predicting future climate scenarios (~~Tans et al., 1990; Pan et al., 2011; Graven et al., 2013; Barlow et al., 2015; Bradshaw and Warkentin, 2015; Gauthier et al., 2015; Yin et al., 2018~~). Studies by Graven et al. (2013) and Barlow et al. (2015) used a combination of atmospheric modeling, aircraft observations, and a network of ground based in-situ observations to investigate seasonal carbon exchange in the Boreal Forest. Both studies found that the Boreal Forest plays an important role in global atmospheric CO₂ concentrations, significantly influencing in-situ observations of CO₂ in the tropics (Mauna Loa). Multiple studies have shown there is a latitude-dependent trend in the seasonal amplitude of atmospheric CO₂ with increased seasonal uptake of CO₂ in Boreal Forest regions (Graven et al., 2013; Wunch et al., 2013; Barlow et al., 2015; Lindqvist et al., 2015). Furthermore, the studies by Graven et al. (2013) and Barlow et al. (2015) found that the trend in seasonal cycle amplitudes of CO₂ with respect to latitude nearly doubled between 1960 and 2011, suggesting that seasonal changes in the Boreal Forest are growing at an accelerated rate relative to lower latitude regions. While some studies have reported rapid changes in seasonal carbon exchange in the Boreal Forest and proposed that this is a dominant driver in the global carbon budget, another study by Barnes et al. (2016) suggests that it is actually the ~~temperate forest~~ Temperate Forest between 30°N and 50°N that is the dominant driver in the global carbon budget. Another study by Yin et al. (2018) found evidence of limits on previous assumptions about the relationship between seasonal cycle amplitude and spring and autumn temperatures in northern high latitudes, emphasizing the need for continued data driven model validation for these regions. It remains difficult to reconcile conflicting claims about contributions to the global carbon budget without a spatially and temporally rich set of measurements for high latitude regions, and data availability in the Boreal Forest remains a major impediment to accurately quantifying uptake in the world's largest terrestrial biome (Pan et al., 2011; Barlow et al., 2015; Euskirchen et al., 2017). Therefore, methods of expanding observational coverage through improved satellite observations at high latitudes are essential for clarifying our understanding of global CO₂ exchange.

Satellite-based observations of atmospheric CO₂ columns offer a more holistic view of global CO₂ dynamics by expanding spatial coverage. NASA's Orbiting Carbon Observatory 2 (OCO-2) was launched in July 2014 with CO₂ column retrievals available from September 2014 to present (OCO-2 Science Team/Michael Gunson, Annmarie Eldering, 2018). Satellite-based observations from OCO-2 consist of solar reflectance in three spectral windows centered at 0.76 μm , 1.61 μm , and 2.06 μm , and referred to as the O₂ A band, weak CO₂ band, and strong CO₂ band, respectively. The ACOS full-physics retrieval algorithm (currently on version 9 or "ACOS B9") described by O'Dell et al. (2012, 2018) and Connor et al. (2008) fits absorption features in these windows and incorporates additional meteorology and model data to retrieve column-averaged dry air mole fractions

of atmospheric CO₂ (X_{CO_2}) along with a variety of other parameters, such as aerosol optical depth, surface albedo, surface pressure, and total column water vapor. A number of parameters in the full physics retrievals are used to designate thresholds for post-processing quality control filters. OCO-2 is polar orbiting, so overpasses are more frequent at high latitudes than mid-latitudes, presenting a valuable opportunity to amass an extensive archive of CO₂ observations over the Boreal Forest.

5 However, before OCO-2 can be used to evaluate CO₂ seasonality for the Boreal Forest, these data need to be validated in high latitude regions. Quality control filters implemented in previous versions of the ACOS algorithm, like version 8 (ACOS B8) discussed by O'Dell et al. (2018), removed the majority of high latitude observations, and as a result OCO-2 high latitude data have been underutilized. Validation of OCO-2 satellite-based retrievals at high latitudes has also been limited by the relatively few dedicated ground-based monitoring sites at high latitudes (Wunch et al., 2017b).

10 In addition to the limited availability of ground-based validation data, there are a number of other challenges to passive satellite measurements at high latitudes. The sun stays low in the sky at high latitudes, even in summer when the sun travels a long azimuthal path it does not reach the same solar elevations as at lower latitudes. Low solar elevation corresponds to a high solar zenith angle (sza) and high airmass, meaning that sunlight travels a greater distance through the atmosphere before reaching the instrument. High airmasses can cause absorption spectra to become saturated at line center, making column
15 retrievals more sensitive to the line wings and thus the line shape of the absorption line. Spectroscopic uncertainties tend to be exacerbated at higher airmasses, and the relative impacts of radiative transfer effects from atmospheric aerosols on satellite retrievals are also increased at high airmass. In particular, slant-path aerosol optical depths (aod) are larger and scattering angles are smaller, which increases the fractional contribution of aerosol scatter to the total radiance detected by the satellite. Airmass dependence in passive column measurements continues to be an area of ongoing research in retrieval algorithms (Wunch et al.,
20 2015), and high airmass in winter is one of primary reasons for halting observations at high latitude sites in November through February. Aside from the sunlight, climates and ecosystems at high latitudes are highly seasonally dependent, so there are a number of seasonal parameters that may produce time-dependent biases at high latitudes if they are not handled properly in retrieval algorithms. In particular, Wu et al. (2018) noted time dependent biases at Sodankylä with the RemoTeC/OCO-2 retrieval algorithm. Wunch et al. (2017b) suggests that there are not enough passable retrievals from ACOS B7 to identify
25 seasonal bias at high latitudes. Snow and ice covered surfaces are known to introduce extensive challenges in passive retrievals of X_{CO_2} due to low surface albedo in the weak (1.61 μm) and strong (2.06 μm) CO₂ bands used by OCO-2 (Wiscombe and Warren, 1980), and reflection anisotropy effects can further complicate retrievals over snow (Boesch et al., 2011; Crisp et al., 2012). Because snow cover is also seasonal and follows the solar cycle, it may be difficult to isolate causes of seasonal bias at high latitudes. As a result a certain amount of seasonal dependence may be inevitable, but we still endeavor to minimize it with
30 careful attention to quality control methods.

Ground-based column measurements from solar-viewing spectrometers complement passive satellite observations because both use infrared absorption spectroscopy, with the sun as radiation source, and observe a full atmospheric column abundance. The total carbon column observing network (TCCON) is a ground-based network that uses solar-viewing, high-resolution infrared spectrometers to retrieve X_{CO_2} (Wunch et al., 2011a). TCCON is the reference measurement for OCO-2 and is the
35 primary source of validation data. In addition to comparing OCO-2 to TCCON, this paper compares OCO-2 observations

to ground-based observations from an EM27/SUN Fourier transform infrared spectrometer (EM27/SUN FTS) operated in Fairbanks, Alaska. The EM27/SUN FTS was developed by the Karlsruhe Institute of Technology (KIT) in collaboration with Bruker Optics (Gisi et al., 2012; Hase et al., 2016) to be a compact, mobile solar-viewing FTS designed for field deployment. The EM27/SUN spectrometers have a resolution of 0.5 cm^{-1} , similar to that of OCO-2 with $\sim 0.3 \text{ cm}^{-1}$ resolution, while the Bruker IFS 125HR used by TCCON has a much higher resolution of $\sim 0.02 \text{ cm}^{-1}$. All three instruments record a solar infrared spectrum that can be used to retrieve X_{CO_2} . Several recent studies have compared EM27/SUN observations to TCCON (Hedelius et al., 2016, 2017; Velazco et al., 2018; Frey et al., 2019). This paper uses similar retrieval methods for EM27/SUN retrievals of X_{CO_2} as Hedelius et al. (2016), Hedelius et al. (2017), and Velazco et al. (2018) by implementing the GGG2014 retrieval algorithm coupled with the EM27/SUN GGG interferogram processing suite (EGI) (Hedelius and Wennberg, 2017). Hedelius et al. (2016) observed a $0.03\% \pm 0.08\%$ ($\sim 0.12 \pm 0.32 \text{ ppm}$) offset when comparing four EM27/SUN spectrometers to co-located observations at the Caltech TCCON site. Hedelius et al. (2017) found some EM27/SUN biases to TCCON as large as 0.14% ($\sim 0.56 \text{ ppm}$), but also found statistically significant variability amongst TCCON sites up to 0.3 ppm , suggesting that the site-to-site biases amongst TCCON sites may be of similar size to biases between EM27/SUN FTS and TCCON observed by Hedelius et al. (2016). Velazco et al. (2018) found an average offset to TCCON of approximately 0.46% ($\sim 1.84 \text{ ppm}$) when comparing two years of co-located observations between an EM27/SUN FTS and the TCCON site at the University of Wollongong. While some of these biases are large enough to produce significantly different results when choosing the EM27/SUN FTS or TCCON for ground-based validation of satellite-based X_{CO_2} retrievals, these biases tend to be systematic in nature and can be corrected to achieve acceptable agreement with TCCON through regular calibration measurements. The two EM27/SUN FTS used in Fairbanks were calibrated against the Caltech TCCON and bias corrections were implemented to ensure that both EM27/SUN and TCCON observations are comparable sources of validation data for OCO-2 (see supplemental materials section 1 for details on EM27/SUN instrument comparisons). The EM27/SUNs were also aligned and serviced at the KIT, during which time they were compared to measurements from the Karlsruhe TCCON.

The objective of this study is to explore ways of defining quality control criteria for OCO-2 in high latitude regions, as to maximize spatial and temporal coverage over the Boreal Forest while maintaining acceptable agreement with ground sites. It is also essential that biases in OCO-2 retrieved X_{CO_2} be carefully evaluated under different quality control filtering regimes and in the context of high latitude seasonality studies. To this end, we first define retrieval, quality control, and aggregation methods for ground-based measurements that are reasonably equivalent for EM27/SUN or TCCON observations. We verify that EM27/SUN retrievals of X_{CO_2} in Fairbanks are interchangeable with TCCON through comparisons with the Caltech TCCON, which are used to rescale EM27/SUN observations to the TCCON trace-gas scale. Then, we turn to the problem of data paucity in OCO-2 at high northern latitudes during spring and autumn, and investigate the quality control filters applied to those data. We subsequently suggest new quality control filters ~~for~~, specifically validated in Boreal Forest regions, that substantially increase OCO-2 high latitude data throughput, and we evaluate the consequences of applying different sets of quality control filters to coincident OCO-2 retrievals at three Boreal Forest sites. Finally, we discuss observed seasonality in OCO-2 biases in the Boreal Forest and explore some retrieval parameters that may contribute to seasonality in bias.

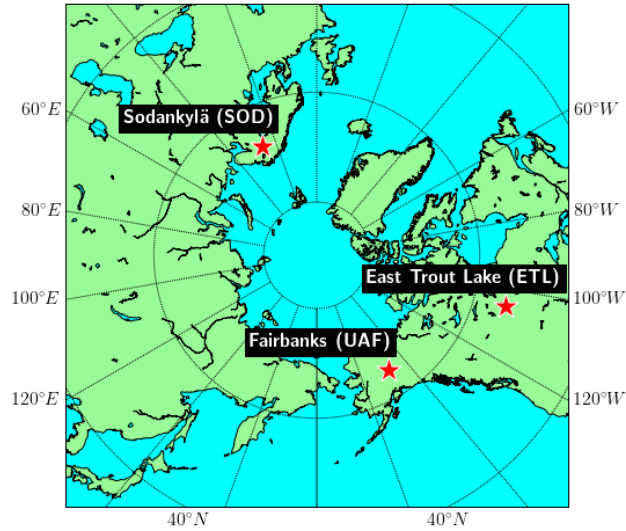


Figure 1. Circumpolar map show locations of Boreal Forest sites included in this study.

2 Sites and data sources

Ground-based column measurements were collected at three sites in the Boreal Forest including two TCCON sites at East Trout Lake, Saskatchewan, Canada (54.354°N, 104.987°W; "ETL"; Wunch et al. (2017a)) and Sodankylä, Finland (67.367°N, 26.631°E; "SOD"; Kivi et al. (2017)), as well as long-term measurements in Fairbanks, Alaska, U.S. (65.859°N, 147.85°W; "UAF") using two Bruker EM27/SUN spectrometers (see Fig. 1). Observations at the Sodankylä TCCON site began in 2009, and span the full period of OCO-2 observations considered in this analysis from September 2014 to November 2018 with the exception of winter months (Kivi and Heikkinen, 2016; Kivi et al., 2017). At East Trout Lake observations began in October 2016, and because this site is further south, these measurements are nearly year round (Wunch et al., 2017a). In Fairbanks, the LANL EM27 (owned by Los Alamos National Laboratory) was operated August-October 2016 and March-October 2017, while the KIT EM27 (owned by the Karlsruhe Institute of Technology) was operated April-October 2018. Regular characterization of the Instrument Line Shape (ILS) for each EM27/SUN spectrometer was used to monitor instrument performance over time (see supplemental materials section 1). The LANL EM27 was regularly compared to the Caltech TCCON spectrometer in side-by-side observations and was used as a transfer standard to rescale EM27/SUN retrievals in Fairbanks to the TCCON trace-gas scale (see supplemental materials section 1). Tight correlations between the LANL and KIT EM27/SUN spectrometers, and between the LANL EM27 and Caltech TCCON instrument, suggest that, given appropriate bias correction, observations from either of the two EM27/SUN spectrometers are relatively interchangeable with TCCON observations.

Retrievals from TCCON sites are vetted with careful quality control standards before being archived publicly (Kivi et al., 2017; Wunch et al., 2017a). The GGG2014 retrieval algorithm is used to retrieve X_{CO_2} from TCCON and EM27/SUN observations (Wunch et al., 2015) with some input modifications introduced in EM27/SUN retrievals by EGI, discussed by Hedelius

et al. (2016) and sourced from Hedelius and Wennberg (2017). Quality controls applied to EM27/SUN retrievals follow those outlined by Hedelius et al. (2016) including an upper bound on sza at 82° and an upper bound on X_{CO2} retrieval error at 5 ppm. In addition to the quality controls suggested by Hedelius et al. (2016), a lower bound is set on the average solar intensity (SIA) in EM27/SUN retrievals at 90 AU. After quality control filtering, EM27/SUN retrievals are smoothed by eliminating retrieved X_{CO2} that deviates by more than 1 ppm from a five-point moving average (spectra are collected approximately every 10-15 seconds). Throughout this paper, all time aggregations of retrieved X_{CO2} from ground-based observations were weighted by the inverse of the retrieval error using

$$\bar{x} = \frac{\sum_i x_i x_{err,i}^{-2}}{\sum_i x_{err,i}^{-2}} \quad (1)$$

where x_i is the retrieved X_{CO2} of the i th retrieval in the aggregation interval and $x_{err,i}$ is the corresponding retrieval error.

OCO-2 observations were retrieved with the ACOS B9 retrieval algorithm and retrievals for this study were obtained from OCO-2 B9 Lite files (OCO-2 Science Team/Michael Gunson, Annmarie Eldering, 2018), which have been initially screened for cloud cover as described by Taylor et al. (2016) and bias corrected as described by Osterman et al. (2018). Only OCO-2 soundings over land are included in this analysis (with `land_fraction` =100), and the standard bias correction to TCCON is applied to all OCO-2 retrievals of X_{CO2} unless otherwise stated. Following the coincidence criteria defined by Wunch et al. (2017b), OCO-2 soundings were considered coincident to ground sites if they fall within a 5° latitude by 10° longitude box centered on the ground site and occur on the same day as the corresponding ground measurements. At Fairbanks and Sodankylä OCO-2 observations consistently occur within approximately 30 minutes of local solar noon and at East Trout Lake they occur within approximately one hour of local solar noon. Therefore we define a daily ground-based reference value for X_{CO2} (referred to as the near noon ground measurement or NNG), which is the error weighted average (see Eq. 1) of ground-based X_{CO2} collected within two hours of local solar noon.

3 Results

3.1 OCO-2 quality control filtering

Three different sets of quality control filters were applied to OCO-2 high latitude retrievals in this study, and are defined in Table 1 (see supplemental materials or Osterman et al. (2018) for definitions of quality control parameters). Two of these three sets of quality control filters are recommended by the OCO Science Team for ACOS B8 retrievals (B8 QC) and ACOS B9 retrievals (B9 QC), and are summarized by the binary variables `xco2_quality_flag_b8` and `xco2_quality_flag` in the OCO-2 B9 Lite files (Osterman et al., 2018; O'Dell et al., 2018). Methods for selecting quality thresholds and details on the B8 QC filters are discussed by O'Dell et al. (2018). Improvements in pointing accuracy in ACOS B9 (Kiel et al., 2019), as well as a careful reevaluation of quality control parameters, allowed for intentionally more permissive quality thresholds in B9 QC than those in B8 QC, and this resulted in a substantial increase in data throughput over regions, such as the Boreal Forest and high latitudes in general, that have been sparsely represented under past OCO-2 ACOS spectral fitting and quality control regimes. The third set of quality control filters (Boreal QC) were determined by evaluating quality control histograms like those presented by

O'Dell et al. (2018) with "truth" as the NNG observations from the three Boreal Forest sites (see Appendix Fig. A). Scatter plots of bias in X_{CO_2} ($\Delta X_{CO_2} \equiv \text{OCO-2} - \text{NNG}$) against various retrieval parameters were also considered as a way to search for groupings of bias outliers that could be eliminated with small changes in quality control thresholds. The Boreal QC were set with the goal of maximizing data throughput for high latitude Boreal Forest sites in spring and autumn, while maintaining acceptable ranges of bias at Boreal Forest sites. Additional retrieval parameters, not used in B8 or B9 QC, were also considered for the Boreal QC that relate to challenges in high latitude observations, including the difference between retrieved and a priori temperature (deltaT), solar zenith angle (sza), X_{CO_2} retrieval uncertainty (xco2_uncertainty), and total column water vapor (tcwv).

Changes to thresholds for albedo in the strong CO_2 band (albedo_sco2), the quality of the spectral fit in the weak CO_2 band (rms_rel_wco2), and the standard deviation in surface elevation in the satellite field of view (altitude_stddev) were major contributors to the increase in passable high latitude retrievals with B9 QC relative to B8 QC (compare Fig. 2 and Fig. 3). In the Boreal QC, ranges of acceptable values are expanded from those in the B9 QC for the ratios of single band retrievals of CO_2 (co2_ratio) and H_2O (h2o_ratio), and the quality of the spectral fit in the weak CO_2 band (rms_rel_wco2). Albedo in the strong CO_2 band (albedo_sco2) is not used as a QC filter in the Boreal QC because it seemed that problematic data with low albedo_sco2 could be screened by other QC filters, and there was no evidence that low albedo_sco2 was explicitly correlated to larger OCO-2 biases at Boreal Forest sites (see quality control plots in Appendix A). In fact, increases in bias and retrieval standard deviation were more often associated with high albedo in the strong CO_2 band, rather than low values. More conservative thresholds were placed on the slope of albedo in the strong CO_2 band given by the continuum fit (albedo_slope_sco2) than were previously used in the B8 QC or the B9 QC due to observed increases in the standard deviation of retrievals and larger negative biases specifically associated with more negative albedo slopes. One possible explanation for this observation is that certain surface types that are more prevalent in the Boreal Forest are not correctly modeled by the ACOS B9 algorithm, and this could be related to snow covered surfaces. We expect that introducing a polynomial fit to the albedo in each band, rather than a linear fit, could improve the accuracy of modeled surface albedo in future ACOS versions and potentially result in reduced high latitude biases. Thresholds for the difference between retrieved surface pressure and a priori surface pressure at the pointing location of the O_2A band (dp_o2a) remained the same in Boreal QC as in B9 QC, while thresholds for the difference between retrieved surface pressure and a priori surface pressure at the pointing location of the strong CO_2 band (dp_sco2) were made marginally more conservative. Kiel et al. (2019) discuss the pointing errors and other long term challenges with surface pressure bias in OCO-2 retrievals that lead to the addition of the dp_o2a and dp_sco2 parameters, in which there is one retrieved surface pressure and a separate a priori surface pressure defined for each band. The aerosol optical depth (aod) parameters are mostly the same in the Boreal QC as in the B9 QC with the exceptions that total aod (aod_total) and the combined dust, water, and seasalt aod (dws) were removed in the Boreal QC because these seemed superfluous after applying other aod filters. While the range of acceptable values for the difference between retrieved and a priori vertical CO_2 gradient (co2_grad_del) is nearly the same in the B9 QC as in the Boreal QC, the range of values is shifted up. This choice was made based on the distribution for co2_grad_del for the Boreal Forest sites, and the difference may be attributed to the use of a regional dataset for Boreal QC rather than a global dataset for B9 QC. As previously mentioned, several parameters were used

Table 1. Quality control thresholds currently used to determine the B8 QC (xco2_quality_flag_b8=0 in OCO-2 Lite files), B9 QC (xco2_quality_flag=0 in OCO-2 Lite files), and Boreal QC (new proposed thresholds for terrestrial high latitude sites). Descriptions of QC parameters in this table can be found in supplemental materials (Table S2) or from Osterman et al. (2018).

Name	B8 QC		B9 QC		Boreal QC
	glint and nadir	target	glint and nadir	target	all modes
co2_ratio	[1.00, 1.025]		[1.00, 1.023]		[1.00, 1.028]
h2o_ratio	[0.88, 1.01]		[0.88, 1.01]		[0.80, 1.02]
altitude_stddev	[0, 60]	[0, 20]	[0, 110]		[0, 110]
max_declocking_wco2	[0.0, 0.75]		–		–
dp	[-6, 14]		–		–
dp_sco2	–		[-10, 12]		[-9, 12]
dp_o2a	–		[-8, 11]		[-8, 11]
dp_abp	[-10, 13]	[-10, 50]	[-12, 16]	[-12, 50]	[-12, 20]
co2_grad_del	[-80, 100]		[-60, 85]		[-50, 100]
albedo_sco2	[0.05, 0.60]		[0.03, 0.60]		–
rms_rel_wco2	[0.0, 0.22]		[0.0, 0.28]		[0.0, 0.35]
rms_rel_sco2	–		[0.0, 0.45]		–
s31	[0.03, 0.4]		–		–
albedo_slope_sco2	[-0.00018, 0.001]		[-0.00013, 0.001]		[-0.0001, 0.0004]
aod_total	[0.0, 0.5]		[0.0, 0.5]		–
dws	[0.0, 0.25]		[0.0, 0.25]		–
aod_water	[0.0005, 0.1]		[0.0005, 0.1]		[0.0005, 0.1]
aod_ice	[0.0, 0.04]		[0.0, 0.04]		[0.0, 0.04]
ice_height	[-0.5, 0.45]		[-0.5, 0.5]		[-0.5, 0.5]
aod_sulfate + aod_oc	[0.0, 0.3]		–		–
aod_strataer	[0.0, 0.02]		[0.0002, 0.02]		[0.0002, 0.02]
aod_oc	[0.0, 0.08]		[0.0, 0.20]		[0.0, 0.20]
aod_seasalt	[0.0, 0.125]		[0.0, 0.125]		[0.0, 0.125]
deltaT	–		–		[-1, 1]
sza	–		–		[0, 70]
xco2_uncertainty	–		–		[0, 1.5]
tcwv	–		–		[3, 40]

to define quality control filters in the Boreal QC that were not included in the parameters for B8 QC and B9 QC. A threshold for sza was introduced in the Boreal QC, and was chosen to restrict data furthest North to the months of March through November. Potential challenges with data at high sza are discussed in the introduction of this paper and high sza was found to be correlated

with larger negative OCO-2 biases at Boreal Forest sites. The sza threshold in the Boreal QC only screens approximately 0.5% of retrievals that manage to get through the other Boreal QC filters. The thresholds placed on the difference between retrieved and a priori temperature (ΔT) and total column water vapor (tcwv) were chosen because very low atmospheric water vapor or large differences between retrieved and modeled temperatures are likely to correspond with cold weather and snow cover. In particular, before the application of quality control filters, large negative biases in OCO-2 retrievals were found to be associated with low values of tcwv (discussed in more detail in section 4.3). Although the majority of biased retrievals with low tcwv are screened out by other quality filters, this filter helped to remove a small number of outliers that pass the other QC filters (see Fig. 21). Finally, the uncertainty in retrieved X_{CO_2} (xco2_uncertainty) was included arbitrarily in the analysis and found to be effective in eliminating a small number of outliers that made up less than 0.05% of retrievals not screened by other filters.

3.2 Effect of QC on data throughput north of 50°N

For each set of QC filters all retrievals over land north of 50°N latitude in OCO-2 Lite files were evaluated to determine how many failed to meet the quality thresholds for each parameter in each month (see Fig. 2, Fig. 3, and Fig. 4) show the number of soundings flagged as bad for each individual QC parameter, so larger values suggest that more data is being removed during quality filtering. One caveat is that for a sounding removed in QC filtering there could be multiple parameters for which the retrieval was flagged bad or there could be as few as one parameter for which the retrieval is flagged bad. Figures 2 and 3 show there is a clear seasonality to triggered quality filters with the majority of soundings flagged bad occurring in spring and early summer. This seasonality is slightly diminished with the B9 QC (Fig. 3) relative to the more conservative B8 QC (Fig. 2) and is only marginally manifested in the Boreal QC (Fig. 4). The reduction in the number of filtered soundings in spring with Boreal QC is largely attributable to less conservative bounds on the spectral fit quality in the weak and strong CO₂ bands (rms_rel_wco2, rms_rel_sco2) and the ratios of single band retrievals of CO₂ (co2_ratio) and H₂O (h2o_ratio). In all three sets of quality control filters the parameters whose thresholds are most often triggered which most often cause soundings to be flagged bad, resulting in the removal of data points, are the spectral fit quality (rms_rel_wco2, rms_rel_sco2), the ratios of single band retrievals of CO₂ (co2_ratio) and H₂O (h2o_ratio), and differences between the retrieved and various a priori surface pressures (dp_sco2, dp_o2a, dp). The fact that these parameters account for a greater abundance of flagged retrievals—retrievals being flagged bad in spring and autumn suggests that there could be seasonal effects related to these retrieval parameters that need to be accounted for in high latitude measurements. In particular, there has been speculation that spring snow cover would result in low surface albedo in the 1.61 μm and 2.06 μm bands and patchy snow cover or snow-free vegetation protruding from snow pack could cause variability in albedo within the satellite's field of view (Wiscombe and Warren, 1980; Boesch et al., 2011). However, after matching MODIS snow cover data to coincident OCO-2 retrievals at our Boreal Forest sites there was no clear connection found between snow cover and increased magnitudes of OCO-2 bias with or without QC filtering. It may still be the case that incongruous spatial resolution between MODIS and OCO-2 is masking the effects of snow cover on bias or that OCO-2 is only biased by snow in combination with certain other effects of cold weather conditions that are more frequently occurring in spring.

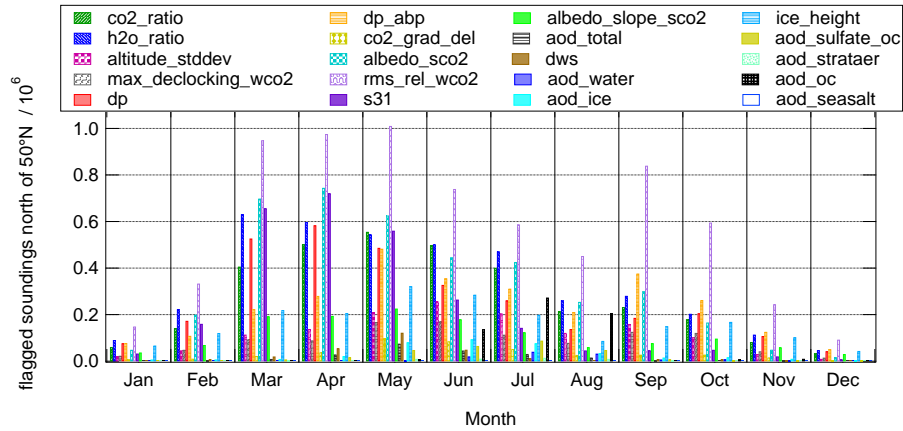


Figure 2. Total number of land soundings north of 50°N flagged bad by B8 quality filters in each month.

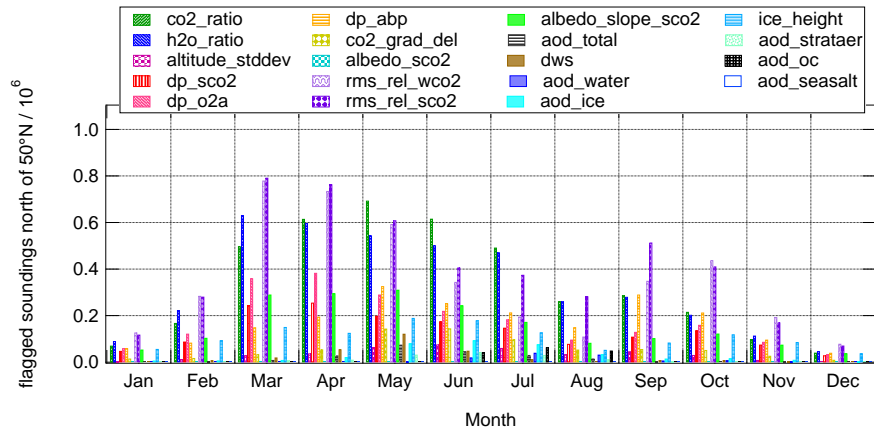


Figure 3. Total number of land soundings north of 50°N flagged bad by B9 quality filters in each month.

Additional data gained from applying Boreal QC rather than B9 QC can be visualized as an increase in spatial coverage of terrestrial high latitude regions. Figures 5 and 6 show the latitude and longitude with difference in the number of sounding passed as "good" by Boreal QC relative to B9QC in each 1° precision that are represented with passable OCO-2 retrievals in Boreal QC and are not in B9 QC latitude by 1° longitude geographic grid cell. These maps point to substantial increases in spatial coverage of the Boreal Forest (~ 50°N-70°N latitude band) in the spring and autumn months with Boreal QC. This improvement in coverage is an important advantage of the Boreal QC for selecting OCO-2 retrievals with the goal of evaluating longitudinal trends in seasonal cycles for the Boreal Forest. The maps in Fig. 5 and Fig. 6 also show some areas where Boreal QC provides less OCO-2 data throughput than B9 QC. First, the sza threshold on the Boreal QC removes most soundings that manage to pass the other quality filters in winter (November through February), but winter observations nearly absent from the OCO-2 Lite files before any QC filtering is applied either because they are removed by pre-screening or the data

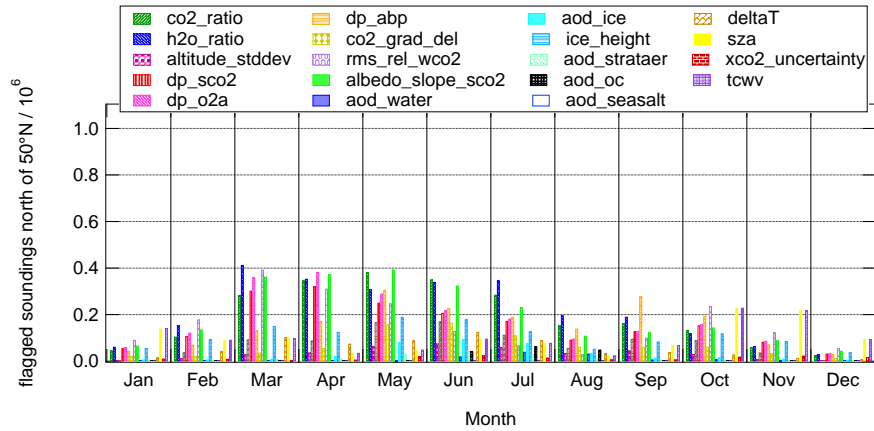


Figure 4. Total number of land soundings north of 50°N flagged bad by Boreal quality filters in each month.

are not collected in the first place. It, therefore, seems reasonable to exclude these data points to the greatest extent possible, and, in general, analyses on satellite-based high latitude X_{CO_2} continues to be confined to the period between March and October. Second, Fig. 5 and Fig. 6 show that there are some regions where Boreal QC yields noticeably less throughput than B9 QC in June, July, and August; however, these months are when there is already an abundance of data and these grid cells with decreased Boreal QC throughput are often adjacent to grid cells with an increase in throughput. Overall, the Boreal QC provides increased spatial coverage and this is complimented by an increase in total throughput for soundings over land north of 50°N (see Fig. 7).

The B9 QC filters succeed in tripling the number of passed retrievals over land at high latitudes, relative to the B8 QC, and the Boreal QC allow nearly double the number of retrievals allowed by B9 QC (see Fig. 7 and the right column of Fig. 9). An important result of the Boreal QC is the increase in passed retrievals in May, August, and September relative to the B9 QC. While the more relaxed B9 QC allow more high latitude retrievals than B8 QC, the relative ~~number of soundings passed from month-to-month~~ throughput between any two months remains roughly unchanged and the shapes of the histograms in Fig. 7 panel (a) and Fig. 7 panel (b) are very similar despite scaling. By plotting monthly snow extent in the Northern Hemisphere, as reported by NOAA (Robinson et al., 2012), alongside monthly average sza and monthly ~~passed-fraction of~~ soundings north of 50°N passed by QC filters, Fig. 7 provides further evidence that some combination of sza and snow cover could be playing a role in high latitude data removal. If solar zenith angles (sza) were the primary driver of seasonality in high latitude data throughput, one would expect to obtain approximately the same quantity of passed retrievals in May as in July, but Fig. 7 indicates that nearly twice as many high latitude retrievals pass QC filters in July. As mentioned previously in this section, additional analysis did not lead us to the conclusion that snow is the culprit in itself, but some effects from snow or differences between fresh and melting snow cannot be entirely excluded either. It remains unclear how combinations of radiative transfer effects may be contributing to increased data removal at high latitudes in spring.

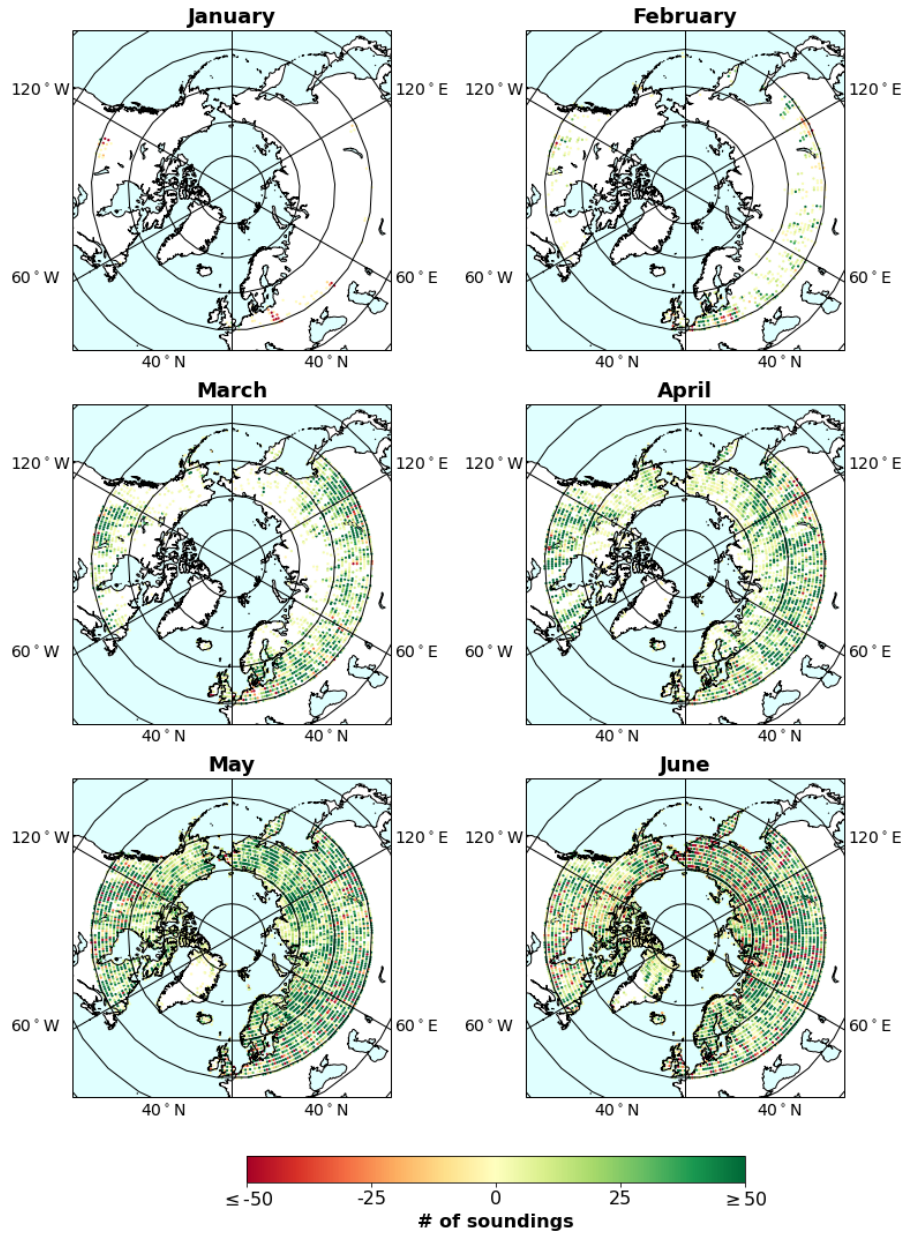


Figure 5. Maps of ~~additional data coverage gained~~ differences between the number of soundings passed by Boreal QC and the number of soundings passed by B9 QC in each 1° latitude by 1° longitude grid cell in each month (January to June, and summing all years 2014 to 2018)~~from applying Boreal QC instead of B9 QC, with 1° resolution.~~

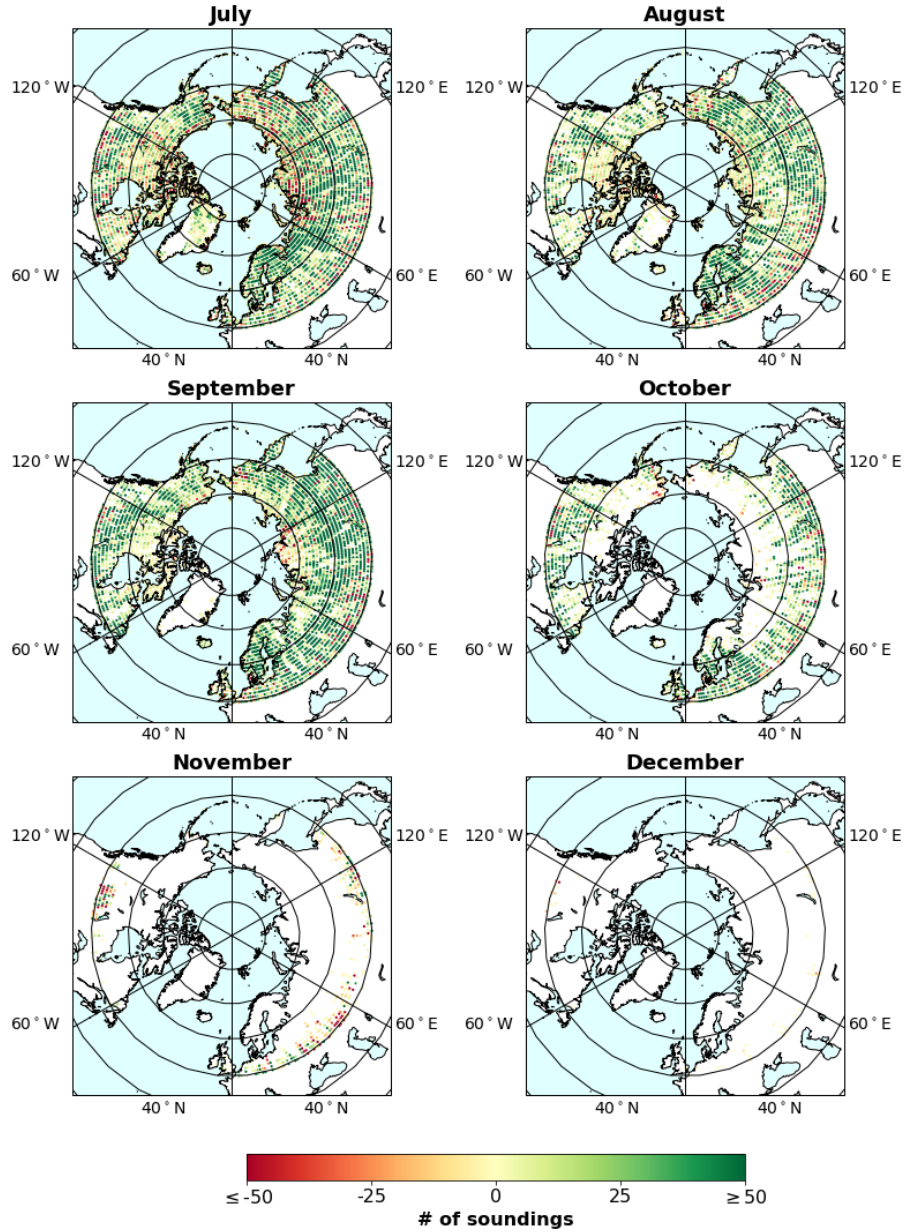


Figure 6. Maps of ~~additional data coverage gained~~ differences between the number of soundings passed by Boreal QC and the number of soundings passed by B9 QC in each 1° latitude by 1° longitude grid cell in each month (July to December, and summing all years 2014 to 2018)~~from applying Boreal QC instead of B9 QC, with 1° resolution.~~

3.3 Comparing OCO-2 and ground-based observations

3.3.1 Averaging kernel corrections

The retrieval averaging kernel represents the sensitivity of retrieved X_{CO_2} to enhancements at different altitudes in the atmospheric column. When comparing retrievals of X_{CO_2} from two different spectrometers, averaging kernels can be used to

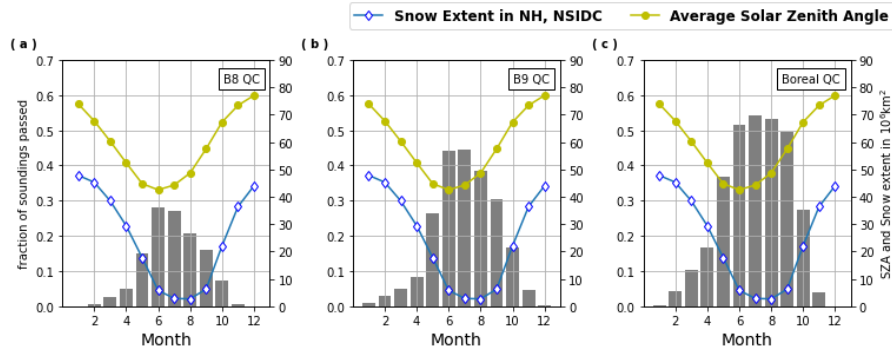


Figure 7. ~~Total number~~ The fraction of soundings that pass each set of QC filters for each month out of all land soundings north of 50°N in the OCO-2 Lite files (note that ~~pass QC filters~~ OCO-2 observations are filtered by a preliminary cloud screening before being compiled in each month, the Lite files). Also plotted along with are the average sza reported in OCO-2 retrievals that pass in each month and the monthly snow extent in the Northern Hemisphere averaged over 2014-2018 as reported in the NOAA database (Robinson et al., 2012).

mathematically correct for systematic sources of disagreement that result from instrumental differences. In this paper, averaging kernel corrections were applied to simulate the OCO-2 retrieval that would result by assuming the ground-based retrieval to be truth and scaling by the OCO-2 averaging kernel with an averaging kernel correction factor, $dNNG$ (see supplemental materials section 2). The result of averaging kernel corrections is a set of modified ground-based measurements (\tilde{X}_{NNG}) that are the sum of the NNG X_{CO2} aggregate (X_{NNG}) and a $dNNG$ value that is uniquely calculated for each coincident OCO-2 retrieval, such that

$$\tilde{X}_{NNG} = X_{NNG} + dNNG. \quad (2)$$

and

$$dNNG = (1 - \gamma) \mathbf{h}^T \mathbf{A}_0 \mathbf{x}_a \quad (3)$$

- 10 where γ is the scaling ratio of retrieved to a priori near noon ground-based X_{CO2} , \mathbf{h} is the pressure weighting function, \mathbf{A}_0 is the OCO-2 averaging kernel, and \mathbf{x}_a is the a priori CO_2 profile (see supplemental materials section 2 for details). Averaging kernel correction factors ($dNNG$) display some seasonal variability, the ratio of retrieved to a priori ground-based X_{CO2} was found to be the dominant term causing this seasonality (see supplemental materials and compare $dNNG$ in the top row of Fig. S2 to $(1 - \gamma)$ in the third row of Fig. S2). Any seasonality introduced by averaging kernel corrections appears to be on too
- 15 small a scale to explain seasonal variability observed in the following sections. Note that in the remainder of this paper East Trout Lake, Sodankylä, and Fairbanks are abbreviated in figures to ETL, SOD, and UAF, respectively.

3.3.2 Biases by site, viewing mode, and QC method

To evaluate the effects of these three quality control methods on observed biases and data throughput, NNG observations with averaging kernel corrections applied (\tilde{X}_{NNG}) were compared against coincident OCO-2 retrievals at three sites in the Boreal

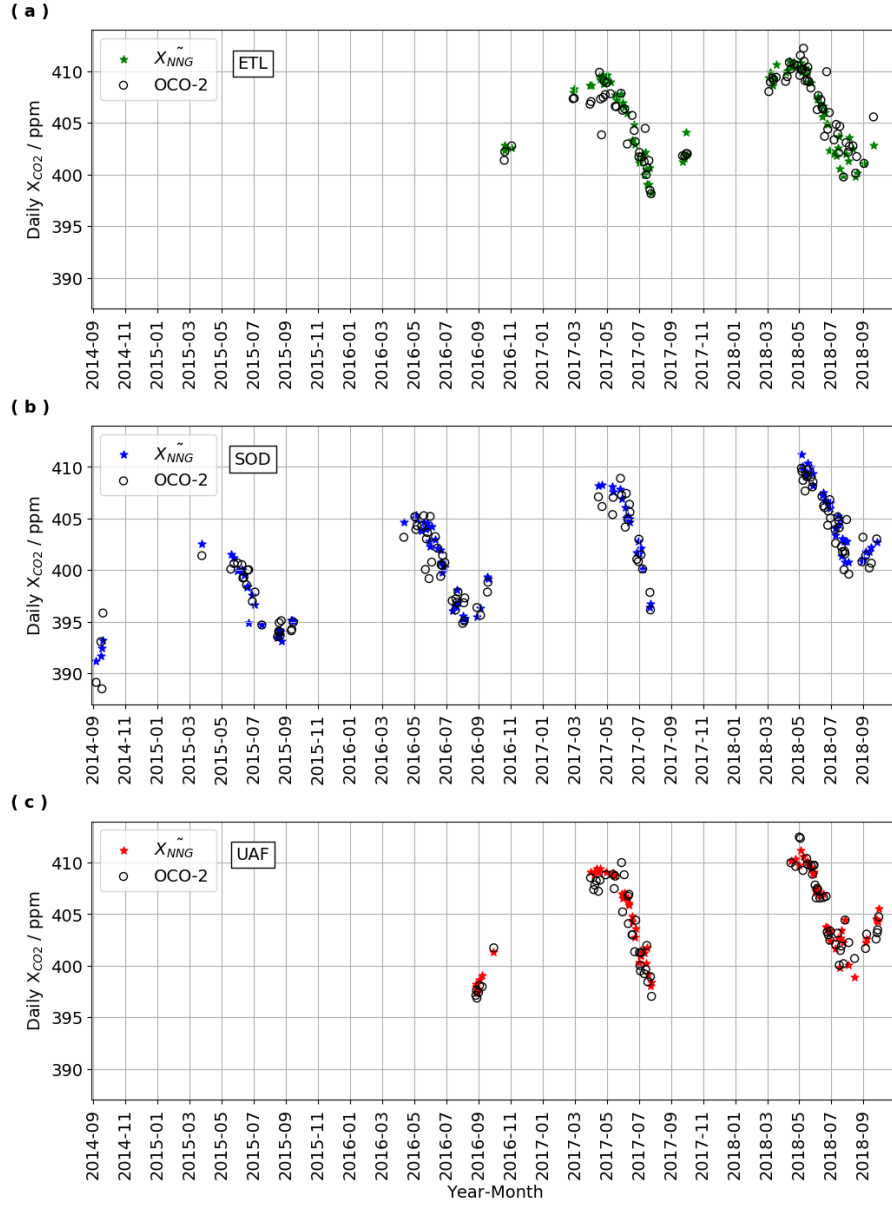


Figure 8. Time-series of ground-based and satellite-based data at each Boreal Forest site. Consisting of daily averages of OCO-2 coincident soundings filtered with Boreal QC, alongside corresponding daily averages of NNG with averaging kernel corrections to OCO-2 applied as described in section 3.3.1 (\tilde{X}_{NNG}).

Forest (East Trout Lake, Fairbanks, and Sodankylä) (see section 2 for definitions of NNG and coincidence criteria). Daily averages for the complete set of coincident OCO-2 retrievals obtained with Boreal QC and corresponding \tilde{X}_{NNG} are shown in Fig. 8. While the OCO-2 and NNG observations in Fig. 8 appear to be in close agreement on most days there are a few

outliers in the OCO-2 daily averages in spring and autumn that may contribute to a potential seasonal dependence in bias. Figure 9 provides an overview of the full datasets for each site including total average bias, standard deviation in bias, and data throughput, sorted by satellite observing mode and quality control method. Note that bias is defined as $\Delta X_{CO_2} \equiv (\text{OCO-2 retrieval})_i - (\tilde{X}_{\text{NNG}})_i$ for each coincident OCO-2 sounding, so that a negative bias indicates that OCO-2 retrievals are lower than NNG and a positive bias indicates that OCO-2 retrievals are higher than NNG. At all three sites, target mode retrievals had 0.1 ppm to 0.5 ppm lower standard deviation than glint or nadir retrievals, which may indicate the introduction of proximity bias (i.e., soundings further from the ground site contributing larger bias). If proximity bias is an important source of bias, one may expect that target mode retrievals would also have lower average biases than glint and nadir retrievals. Results from East Trout Lake (ETL) and Fairbanks (UAF) meet this expectation, with the exception of results from the B8 QC at East Trout Lake. Only at Sodankylä the average biases in target mode retrievals substantially exceed the average biases in glint or nadir retrievals, warranting further investigation of target observations at Sodankylä. In particular, the B8 QC results in an average bias in target mode soundings at Sodankylä that is at least twice that observed at East Trout Lake or Fairbanks, and because this increase is accompanied by increased standard deviation in target mode biases at Sodankylä, it could indicate influence from outliers. While the allowance of additional data switching from B8 QC to B9 QC or from B9 QC to Boreal QC tends to be accompanied by an approximate increase in the standard deviation in biases of 0.1 ppm to 0.3 ppm, average biases at the three sites are not consistently larger with the Boreal QC (see left and center columns of Fig. 9). In considering the use of Boreal QC for certain science applications at high latitudes, the introduction of additional scatter should be weighed against the large increase in usable retrievals as shown in the right column (panels (c), (f), and (i)) of Fig. 9 and in Fig. 7.

3.4 Seasonal variability in bias

High latitude regions experience a higher degree of seasonality in many climate and environment variables than mid-latitude regions, and one of our primary motivations in this study is expanding our ability to evaluate CO₂ seasonality in the Boreal Forest. Considering the total average and standard deviation in biases for all coincident soundings, as in Fig. 9, can obscure seasonal variability in biases that contribute to uncertainty in characterizing seasonal cycles of CO₂ obtained from satellite observations. Figure 10 shows monthly average biases and monthly standard deviation in biases, considered for each site and each set of QC filters. Under all three sets of QC filters we observe seasonal trends in biases, which are more pronounced at East Trout Lake and Sodankylä than at Fairbanks. The observed seasonal variability is characterized by more positive biases in mid to late summer and more negative biases in spring and autumn, which may cause satellite-based estimates of seasonal amplitude and timing to differ from ground-based estimates of these seasonal parameters. For most months the Boreal QC do not result in substantial increases in the absolute value of average monthly biases relative to B9 QC, but in April the Boreal QC yields larger negative biases than B9 QC at Fairbanks and at Sodankylä large negative biases are observed in the Boreal QC without any counterpart in the B8 or B9 QC to compare to. In Fairbanks the average April bias drops from -0.59 ppm, with the B9 QC, to -1.15 ppm, with the Boreal QC. Figure 17, panel (a), shows that the difference in the absolute values of the average April bias in Fairbanks is the largest difference in absolute monthly biases when comparing the Boreal and B9 QC methods. At Sodankylä April data are only allowed by the Boreal QC, while B8 QC and B9 QC filter out all coincident OCO-2 retrievals,

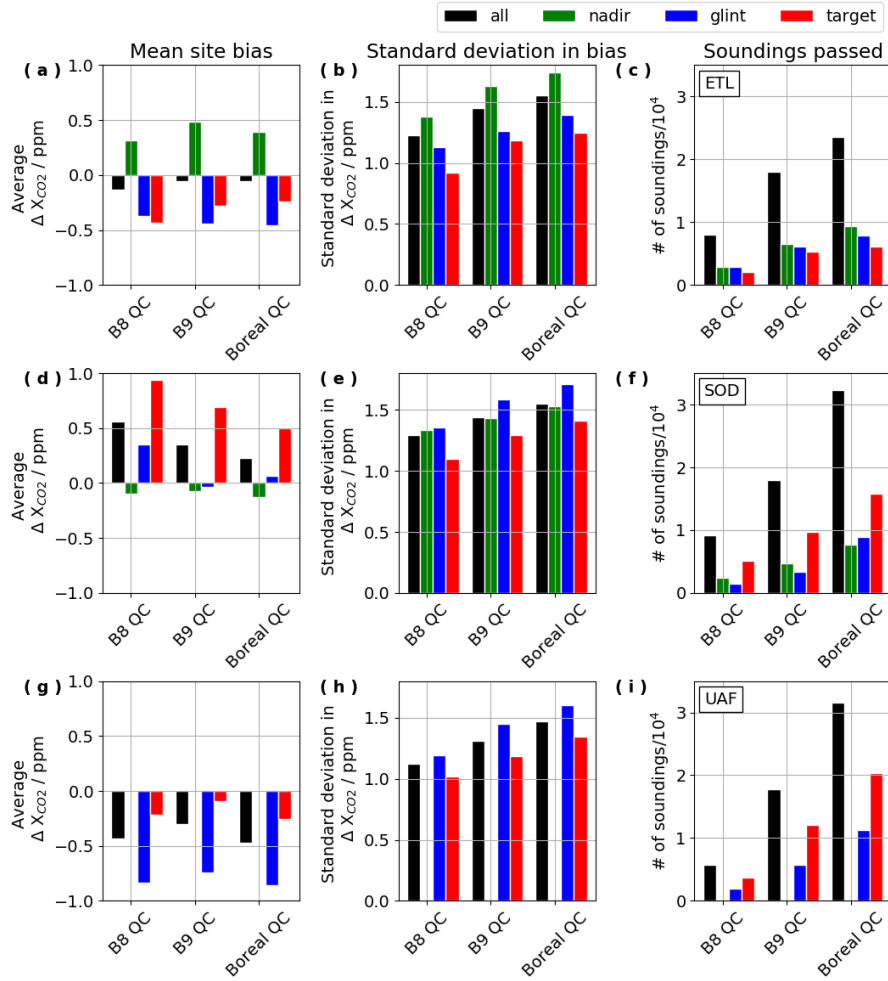


Figure 9. Average bias, standard deviation in bias, and number of passed soundings sorted by viewing geometry and quality control method and considering all coincident soundings at each of the three Boreal forest sites. Note that there are no coincident nadir soundings for Fairbanks due to the satellites operational design, which favors glint observations in orbits primarily over oceans. Note that bias is defined as ($\Delta X_{CO2} \equiv (\text{OCO-2 retrieval})_i - (\tilde{X}_{\text{NNG}})_i$) for each coincident OCO-2 sounding.

but the negative average bias obtained with Boreal QC at Sodankylä in April represents the maximum absolute monthly bias of any month, site, or QC method. Figure 10 also shows larger negative biases with the Boreal QC at Fairbanks in August, September, and October in which the Boreal QC yields average monthly biases descending from -0.46 ppm to -0.72 ppm in consecutive months, while the B9 QC yields average biases descending from -0.08 ppm to -0.43 ppm. At East Trout Lake and Sodankylä, the monthly biases are only marginally different between the Boreal QC and B9 QC, and the Boreal QC resulted in slightly smaller monthly biases in March, June, and November at East Trout Lake and in August at Sodankylä (see Fig.10 and Fig. 17 panel (a)).

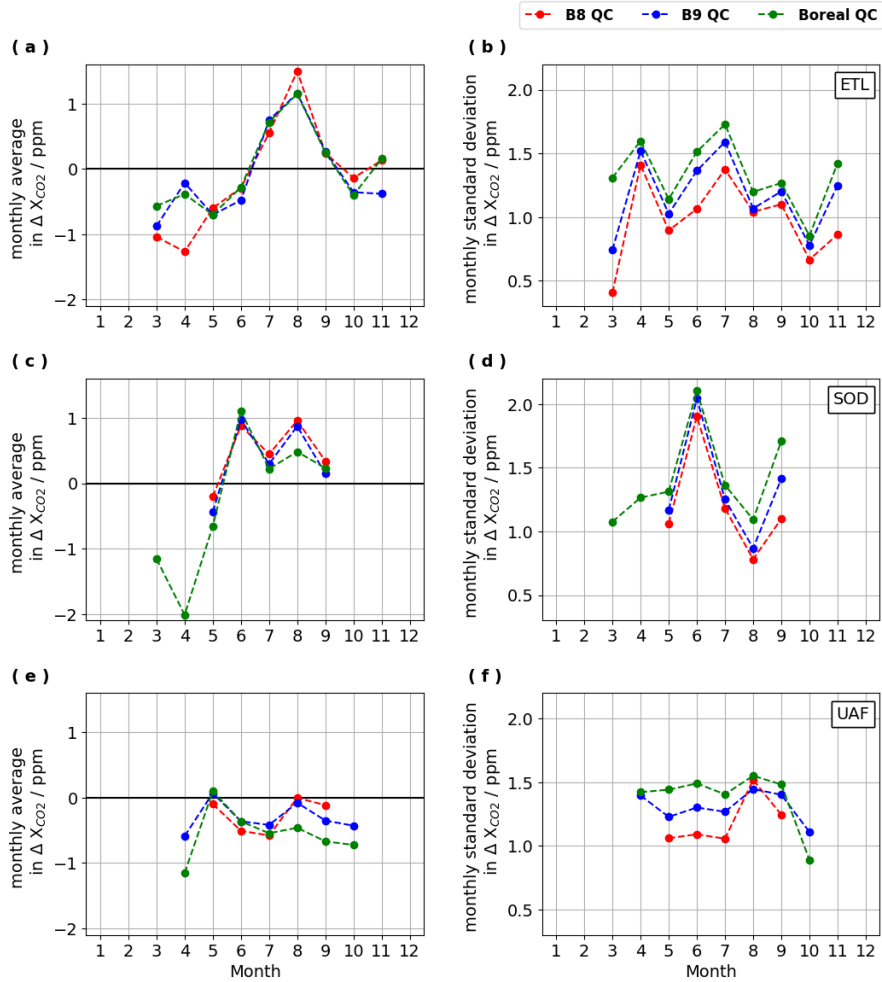


Figure 10. Monthly average bias (left) and standard deviation in biases (right) of coincident OCO-2 soundings at each of the three Boreal Forest sites and with each of the QC methods. Note that bias is defined as $(\Delta X_{CO_2} \equiv (\text{OCO-2 retrieval})_i - (\tilde{X}_{\text{NNG}})_i)$ for each coincident OCO-2 sounding.

Monthly bias distributions are visualized with box-plots for each site and set of QC filters in Fig. 11 to further elucidate potential seasonal trends in OCO-2 biases. Figure 11, panels (a), (b), and (c) show that East Trout Lake has the most pronounced seasonal variability in biases and the trends observed are similar for all three sets of QC filters. Figure 11 panel (f) suggests there is a slight seasonal trend at Sodankylä with the Boreal QC that appears when March and April soundings are included.

5 Overall, the monthly bias distributions also serve to emphasize the similarity in results from the different QC methods.

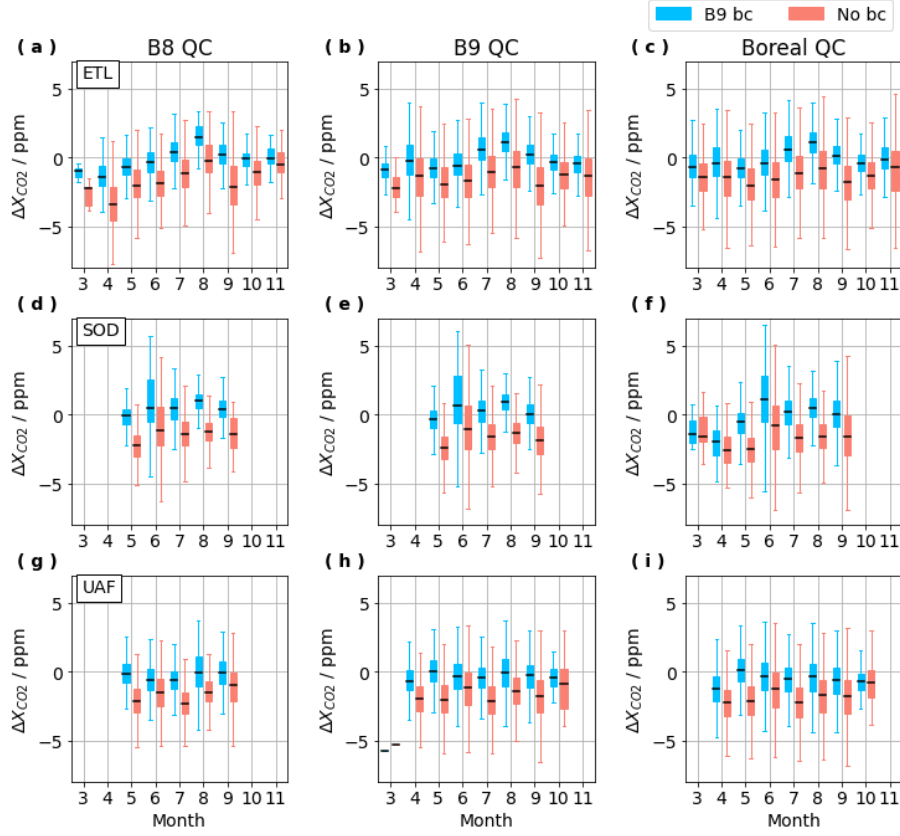


Figure 11. Box-plots of distributions of monthly biases for each Boreal Forest site and for each QC, [showing results with and without the standard B9 bias correction](#). Box-plots show the median in the center of the box, the first and third quartile as the bottom and top of the box and the full range of data values as the bars extending above and below the box. Note that bias is defined as $(\Delta X_{CO_2} \equiv (\text{OCO-2 retrieval})_i - (\tilde{X}_{\text{NNG}})_i)$ for each coincident OCO-2 sounding.

3.5 A modified OCO-2 bias correction with T700

The seasonal dependence of ΔX_{CO_2} described in the previous section was found to be largely induced by the OCO-2 bias correction, and is not apparent in ΔX_{CO_2} calculated with un-bias-corrected OCO-2 retrievals (see Fig. [??11](#)). In OCO-2 B9 retrievals, the B9 bias correction (B9 bc) for soundings over land is defined by Osterman et al. (2018) as

$$X_{CO_2, corrected} = \frac{X_{CO_2, raw} - foot + 0.9(dpfrac) + 9.0(dws) + 0.029(co2_grad_del - 15)}{0.9954} \quad (4)$$

with a footprint bias correction term, $foot$, an overall divisor to agree with TCCON, and parameter dependent terms adjusting based on a modified parameterization of the retrieved surface pressure bias defined by Kiel et al. (2019) ($dpfrac$), the sum of dust, water, and seasalt aods (dws), and the difference between retrieved and a priori vertical gradients in the CO_2 profile ($co2_grad_del$). Of the terms in the B9 bc, $dpfrac$ was the only one found to have seasonal variability at Boreal Forest sites that

was similar to that observed in ΔX_{CO_2} with the OCO-2 bias correction (see Fig. 11 and 25). As will be discussed in section 4.4, all versions of the residual in retrieved surface pressure relative to a priori surface pressure (dpfrac, dp, dp_o2a, dp_sco2) have seasonal variability that can be at least partially attributed to temperature dependence, so we propose new OCO-2 bias corrections with a term for temperature at 700 hPa (T700) to correct for the temperature dependence in dpfrac and dp. To

5 calculate the temperature dependent modification to the B9 bc we consider the linear regressions for dpfrac as a function of T700 in each of the satellite viewing modes for soundings over land north of 50°N that pass Boreal QC (see Fig. 12). Then the regression coefficients for the different viewing modes are combined into average slope and average y-intercept with weighting by the fractional abundance of retrievals in that mode to obtain an alternative B9 bias correction (B9 abc), as follows:

$$X_{CO_2,corrected} = \frac{X_{CO_2,raw} - foot + 0.9(dpfrac - (0.068(T700) - 19.03)) + 9.0(dws) + 0.029(co2_grad_del - 15)}{0.9954} \quad (5)$$

$$10 \quad = \frac{X_{CO_2,raw} - foot + 0.9(dpfrac) - 0.0612(T700 - 279.9) + 9.0(dws) + 0.029(co2_grad_del - 15)}{0.9954}. \quad (6)$$

An alternative B8 bias correction (B8 abc) was also constructed using linear regression terms for the difference between the retrieved and a priori surface pressure from GEOS5-FP-IT (dp) as a function of T700 in Fig. 13, as follows:

$$X_{CO_2,corrected} = \frac{X_{CO_2,raw} - foot + 0.36(dp - (0.165(T700) - 45.84)) + 8.5(dws) + 0.029(co2_grad_del - 15)}{0.9958} \quad (7)$$

$$= \frac{X_{CO_2,raw} - foot + 0.36(dp) - 0.0594(T700 - 277.8) + 8.5(dws) + 0.029(co2_grad_del - 15)}{0.9958}. \quad (8)$$

- 15 Applying a modification of the B8 bias correction is consistent with the fact that spectroscopy and most aspects of the radiative transfer model remained the same when the ACOS version was updated from B8 to B9. Ideally, a global bias correction would be constructed to include temperature as a component of a broader analysis that considers contributions to the OCO-2 bias in a more holistic context. In this way, the bias correction would be more uniform and widely applicable, while the effects of potential parameter covariance or other influences that we are unable to control for in this regional analysis can be mitigated.
- 20 That being said, the results that follow suggest that correcting for temperature dependence could be effective in reducing seasonality in OCO-2 bias over the Boreal Forest.

The second column of Fig. 14 (panels (b), (f), and (j)), in addition to results in Fig. 15 and Fig. 16, show that seasonally dependent variability in biases is reduced when the dpfrac term is removed from the B9 bc, but both monthly and overall standard deviations in biases are increased. Without the dpfrac term in the B9 bc, monthly biases in March and April at

25 Sodankylä and in April at Fairbanks are substantially reduced, and month to month variability at East Trout Lake is also reduced. Replacing the dpfrac or dp term with a T700 modification, as in B9 abc and B8 abc (Eq. 6 and Eq. 8), results in lower monthly standard deviations in biases than those obtained in the B9 bc with the dpfrac term removed, and that are nearly equivalent to those obtained with the standard B9 bc (Eq. 4). While some of the seasonal shape is reintroduced with the B9 abc and the B8 abc, biases are still reduced in spring and ~~fall~~autumn relative to the B9 bc (see Fig. 15). The combined results of

30 Fig. 15 with the total average biases and total standard deviations in biases shown in Fig. 16 suggest that the B8 abc is slightly more effective than B9 abc in reducing seasonal variability in bias, reducing total average bias, and reducing total standard deviations in biases. Figure 16 demonstrates that for all sites and viewing modes, most of the total average biases with the B8 abc are within ± 0.5 ppm. In particular, the B8 abc results in reduced average bias in target mode soundings at all three sites,

Box-plots of distributions of monthly biases for each Boreal Forest site and for each QC, without the OCO-2 bias correction. Note shift in y-axis scaling relative to Fig. 11.

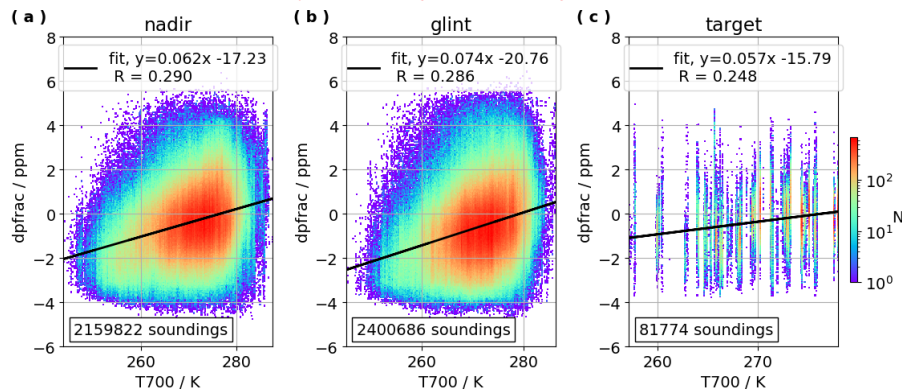


Figure 12. Correlations and linear regressions for dpfrac (defined in supplemental materials or by Kiel et al. (2019)) as a function of temperature at 700 hPa (T700) for all retrievals over land north of 50°N that pass Boreal QC, separated by viewing geometry.

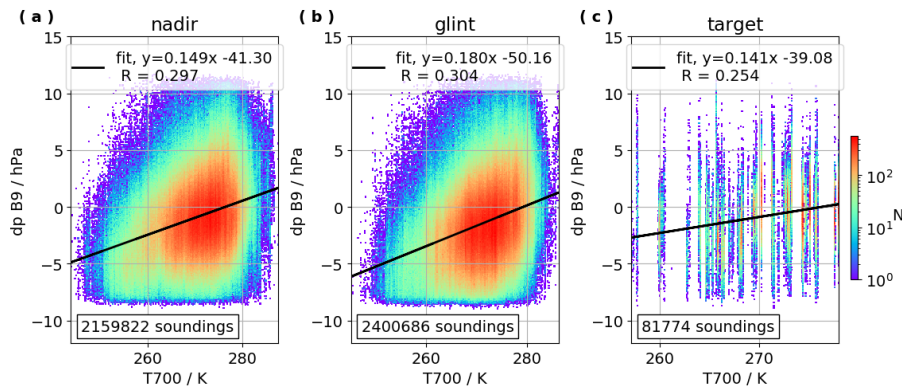


Figure 13. Correlations and linear regressions for the difference between retrieved and a priori surface pressure from GEOS5-FP-IT (dp) as a function of temperature at 700 hPa (T700) for all retrievals over land north of 50°N that pass Boreal QC, separated by viewing geometry.

as well as in nadir soundings at Sodankylä and in glint soundings at East Trout Lake and Fairbanks. The B8 abc did result in slight increases in total average biases in nadir soundings at East Trout Lake and in glint soundings at Sodankylä (see Fig. 16). However, with the B9 abc, average biases in all modes at Sodankylä, and in nadir and target retrievals at East Trout Lake, are nearly doubled relative to the standard B9 bc.

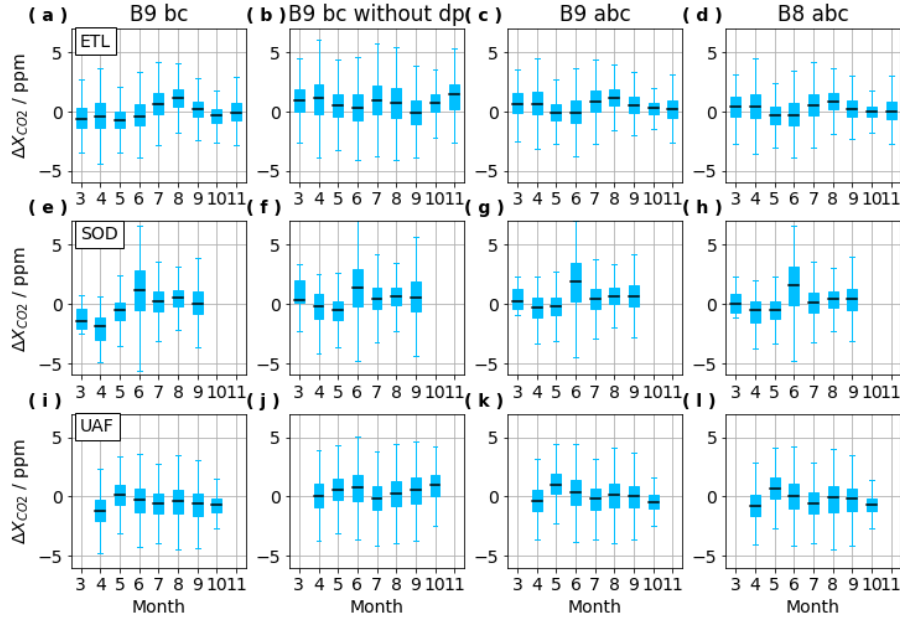


Figure 14. Box-plots of distributions of monthly biases at each Boreal Forest site, and filtered by Boreal QC, given the standard B9 bc (Eq. 4), given the B9 bc without the dpfrac term, given the B9 abc (Eq. 6), or given the B8 abc (Eq. 8). Note that bias is defined as $(\Delta X_{CO_2} \equiv (\text{OCO-2 retrieval})_i - (\tilde{X}_{\text{NNG}})_i)$ for each coincident OCO-2 sounding.

4 Discussion

Results from this analysis have revealed that modified QC filters for OCO-2 retrievals have the potential to recover large quantities of previously screened terrestrial high latitude observations and provide double or triple the number of retrievals for use in scientific studies of high latitude regions. This increase in data throughput is accompanied by only minor changes in average bias and increases in standard deviations in bias of approximately 0.3 ppm or less (see Fig. 9 and Fig. 17). Through monthly comparisons between coincident OCO-2 retrievals and ground-based measurements at three Boreal Forest sites, biases (ΔX_{CO_2}) were found to exhibit some seasonal variability that is mostly independent of the QC method applied (see Fig. 10 and Fig. 11). Observations from Fairbanks exhibit less seasonal variability in OCO-2 bias than East Trout Lake or Sodankylä, and it is unclear whether this is due to geography or the difference in ground-based instrumentation. The EM27/SUN has similar spectral resolution to OCO-2 ($\sim 0.5 \text{ cm}^{-1}$ and $\sim 0.3 \text{ cm}^{-1}$, respectively), both of which differ from that of TCCON ($\sim 0.02 \text{ cm}^{-1}$) by an order of magnitude. The more similar spectral resolution of the EM27/SUN to OCO-2 could be a reason for smaller biases between these instruments. A recent study by Sha et al. (2019) compared long-term measurements of X_{CO_2} using multiple ground-based infrared spectrometers at Sodankylä, including the EM27/SUN and TCCON. Their results suggest that the EM27/SUN at Sodankylä may retrieve higher X_{CO_2} than TCCON in spring, and factors such as temperature and water vapor may influence differences between EM27/SUN and TCCON retrievals of X_{CO_2} . A more direct comparison between

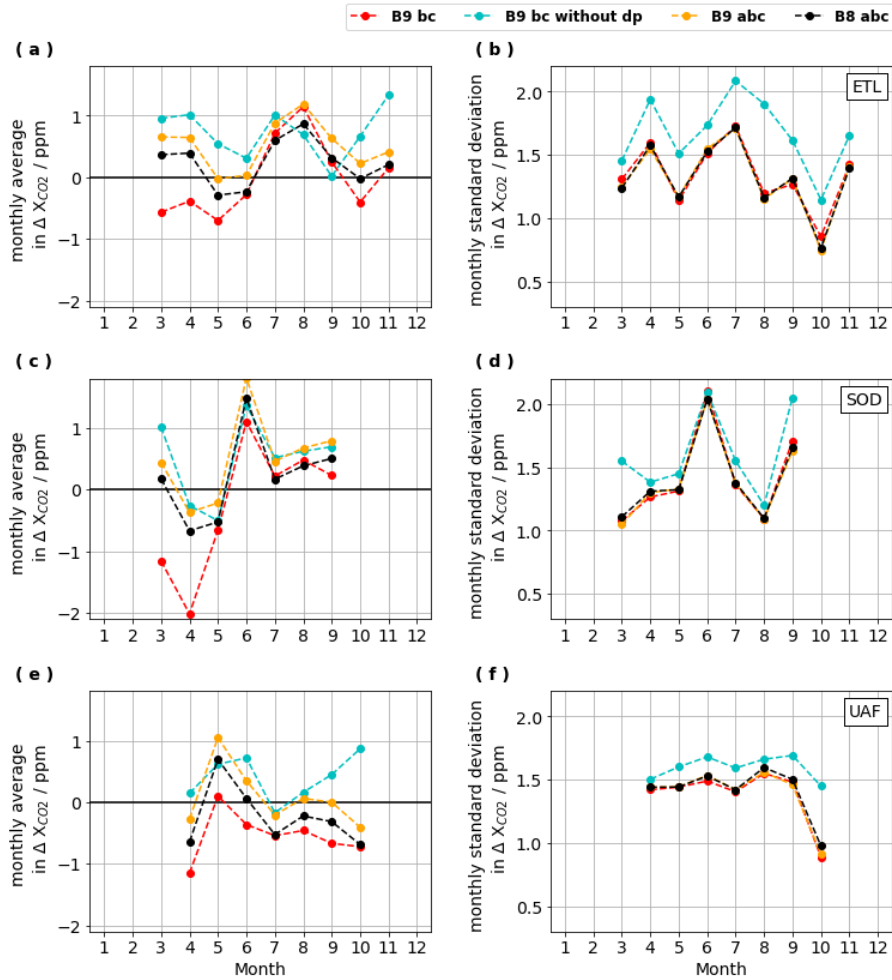


Figure 15. Monthly average bias (left) and standard deviation in biases (right) of coincident OCO-2 soundings at each of the three Boreal Forest sites with Boreal QC filtering and given each bias correction modification: the standard B9 bc (Eq. 4), the B9 bc without the dpfrac term, B9 abc with a term for temperature at 700hPa-700 hPa (T700; Eq. 6), and B8 bc with a term for T700 (Eq. 8).

the EM27/SUN observations and satellite measurements from Sodankylä, as well as other locations, are needed to further investigate these relationships. Seasonally dependent biases can be challenging to correct and can ultimately result in biases between satellite-based and ground-based estimates of seasonal cycle parameters such as amplitude and timing. Therefore, it is essential that any seasonality in biases be characterized and potential sources be identified. Both the B9 abc in Eq. 6 and the B8 abc in Eq. 8 result in reduced monthly average biases in spring and fall-monthsautumn, and the standard deviations in biases are nearly equivalent to those obtained with the standard B9 bc in Eq. 4. The B8 abc was found to be slightly more effective than the B9 abc in reducing the seasonal curvature in monthly biases at East Trout Lake and Sodankylä, which could allow for lower uncertainty in seasonal cycle parameters estimated using OCO-2 retrievals over the Boreal Forest. However, some

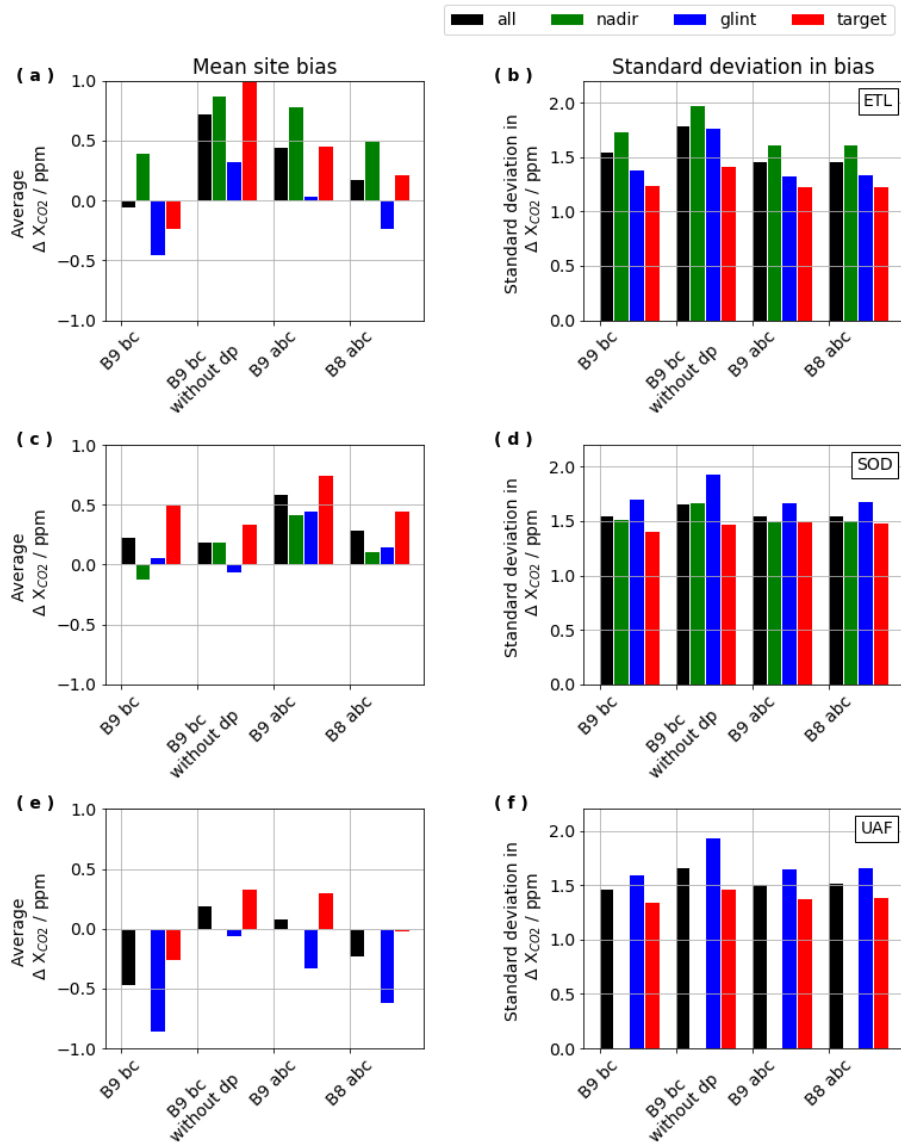


Figure 16. Average bias and standard deviation in bias, sorted by viewing geometry and bias correction modification for all coincident soundings at each of the three Boreal forest sites with Boreal QC. Note that there are no coincident nadir soundings for Fairbanks due to the satellites operational design, which favors glint observations in orbits primarily over oceans.

month-to-month variability persists with any of the bias corrections applied in this paper and it is still important to continue to explore other contributions to seasonal variability in OCO-2 bias, such as the choice of QC, coincidence criteria, or processing of ground-based data. In this vein, the following sections consider differences in monthly average bias and standard deviation in bias between Boreal QC and B9 QC. Then we ~~explore how~~ consider a number of QC parameters that exhibit seasonal

behavior and their potential role in seasonally dependent biases at Boreal Forest sites. The effects of limiting coincidence by mid-tropospheric temperature, or changing the ground-based reference from NNG to an average of ground-based retrievals at a restricted range of solar zenith angles ~~affects monthly bias distributions. We go on to consider a number of QC parameters that exhibit seasonal behavior and their potential role in seasonally dependent biases at Boreal Forest sites~~ were also explored,
5 but found to not significantly affect seasonal dependence in bias (see Appendices B and C).

4.1 Potential contribution to seasonal bias from QC method

Overall, the B8 QC is the most conservative set of QC filters, the B9 QC allows for more relaxed thresholds in the QC parameters, and the Boreal QC is the most permissive set of QC filters. It was observed in Fig. 9 that the total standard deviations in biases for all coincident soundings at East Trout Lake and Sodankylä gradually increase from ~ 1.3 ppm to ~ 1.4 ppm to ~ 1.6 ppm ascending with the increase in throughput obtained from relaxing QC filters (B8 QC < B9 QC < Boreal QC). A similar trend at Fairbanks is reflected by an increase from ~ 1.1 ppm to ~ 1.3 ppm to ~ 1.4 ppm. Figure 10 also demonstrates this increase in standard deviation with different QC filters, but there does not appear to be a seasonal trend in the monthly standard deviation in biases at East Trout Lake and Fairbanks. The anomalously high standard deviation in biases in June at Sodankylä remains to be reconciled, and represents a potential complication that would perpetuate mid-summer uncertainty even if some method of correcting seasonal trends in monthly bias were devised and implemented. Additionally, there is substantial increase in standard deviation in biases at East Trout Lake in March with Boreal QC compared to the B9 QC. While this increase in standard deviation is concerning, the availability of OCO-2 retrievals in the Boreal Forest in March remains insufficient for a representative sample of northern regions, and is not likely to be included in seasonal studies of the Boreal Forest at this time.

The largest difference in the absolute values of monthly bias between Boreal QC and B9 QC is 0.56 ppm in April at Fairbanks (see Fig. 17 panel (a)). Boreal QC also results in a 0.18 ppm larger absolute bias than B9 QC in April at East Trout Lake. In July through October Boreal QC results in monthly biases at Fairbanks that are 0.1 ppm to 0.4 ppm larger than with B9 QC, while in May and June there is no change in average monthly biases between the two QC methods. At East Trout Lake and Sodankylä Boreal QC produces some monthly biases that are smaller by up to 0.4 ppm than B9 QC. Despite some increases in monthly biases with Boreal QC relative to B9 QC, it is clear from Fig. 17 that the modifications in QC filters do not always result in larger monthly biases, and the effects should be weighed against the potential advantages of increasing passable retrievals and spatial coverage. We conclude that differences between Boreal QC and B9 QC are not likely to be a major source of seasonal variability in bias because seasonal dependence is observed with both QC methods in Fig. 10 and Fig. 11.

4.2 ~~Potential contribution to seasonal bias from proximity bias~~

~~Monthly bias distributions for coincident OCO-2 retrievals filtered with Boreal QC comparing the full set of coincident retrievals (black), alongside a subset with the temperature at 700 hPa (T700) in the OCO-2 retrieval equal to ± 1 K of T700 from NCEP reanalysis at the ground site (red).~~

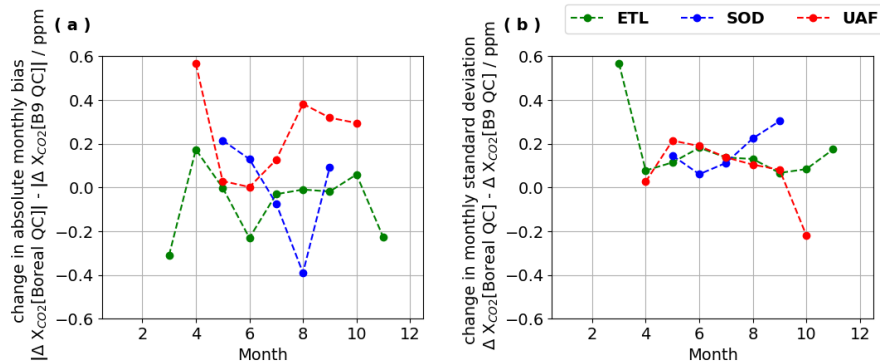


Figure 17. Differences between average monthly biases (left) or standard deviation in monthly biases (right) when comparing Boreal QC to B9 QC. Note that Fig. 10 shows typical average monthly bias ranges from -1 ppm to 1 ppm.

Another suspected source of bias, which may or may not have a seasonal component, is proximity bias. Assuming that the ground-based reference measurements are representative of the full coincidence region depends on a certain amount of regional homogeneity in CO_2 columns, and spatial CO_2 fields may not meet this criteria during seasonal transitions in spring and autumn. One method applied to GOSAT data by Wunch et al. (2011b) and based on modeling results by Keppel-Aleks et al. (2011) will isolate satellite soundings in the coincidence region that are likely to represent the same atmospheric plume observed at the ground site by choosing soundings with a mid-tropospheric temperature, at 700 hPa (T_{700}), close to that above the ground site. Figure B1 shows monthly bias distributions for the full set of coincident retrievals alongside the monthly bias distributions of a subset of coincident retrievals that have retrieved T_{700} within $\pm 1\text{K}$ of T_{700} in the daily NCEP reanalysis results for the ground site. Results in Fig. B1 suggest that using T_{700} to screen coincident retrievals yields little to no observable improvements in seasonality of biases overall. At East Trout Lake the T_{700} coincidence criteria does reduce the absolute monthly bias in March and April with Boreal QC, but in a number of other cases T_{700} screening results in a slight increase in absolute monthly biases for spring and autumn months.

4.2 Potential contribution to seasonal bias from ground-based instrument air mass dependence

Monthly bias distributions for coincident OCO-2 retrievals filtered with Boreal QC and referenced to NNG (black), alongside monthly bias distributions for coincident OCO-2 retrievals with Boreal QC and referenced to SZAG (red).

Seasonal biases in NNG data may arise from air mass dependence of ground-based retrievals, particularly in high latitude regions (Wunch et al., 2011a). However, Fig. C1 shows that when the daily ground-based reference is defined as the daily average of retrieved X_{CO_2} with apparent sza between 65° and 70° (SZAG) instead of using NNG, there is nearly no observable change in the monthly bias distributions at the two TCCON sites. At Fairbanks, the change in ground-based reference to SZAG results in positive shift in almost all ΔX_{CO_2} values, which for some months corresponds to a reduction in the size of biases and for other months corresponds to an increase in the size of biases. The results at Fairbanks may suggest that sza dependence

in EM27/SUN observations requires further study. Seasonal variability in biases persists at all three sites and is largely the same regardless of whether the ground-based reference is NNG or SZAG. These results suggest that airmass dependence of the ground-based instrument is not likely to be a dominant source of seasonal variability in OCO-2 biases.

4.2 Seasonal variability in co2_ratio ($X_{\text{CO}_2}[2.06 \mu\text{m}]:X_{\text{CO}_2}[1.61 \mu\text{m}]$)

- 5 The co2_ratio refers to the ratio of X_{CO_2} retrieved by the $2.06 \mu\text{m}$ band to that retrieved by the $1.61 \mu\text{m}$ band. Recall that Wiscombe and Warren (1980) measured low as well as differing reflectance for snow in the $1.61 \mu\text{m}$ and $2.06 \mu\text{m}$ bands. Systematic departure from unity in the co2_ratio could result from spectroscopic inaccuracies in either band that are characteristic of the instrument or the line-list used in the retrieval algorithm. Anomalous departures from unity in the co2_ratio can arise from low signal to noise ratio in either or both CO_2 bands, which can be due to cloud and aerosol interference or the low reflectivity of snow and ice covered surfaces (Crisp et al., 2012). Patchy snow cover or vegetation protruding through the snow may also cause discrepancies in signal intensity between the weak and strong CO_2 bands as a result of variable surface reflectivity in the satellite field of view. In all months at mid-latitudes and in May through October at high latitudes, terrestrial retrievals have a systematic departure from unity in the median co2_ratio , with the data approximately normally distributed around 1.012 (see Fig. 18). There is an even greater departure from unity in the co2_ratio for high latitude retrievals in the winter months, 15 November through April, with the data approximately normally distributed around 1.020. Figure 18 demonstrates that there is seasonal variation in the median and distribution of co2_ratio at latitudes north of 50°N that is not observed at latitudes from 10°N to 50°N . This monthly difference in the distribution of retrieved co2_ratio at high latitudes may be a symptom of the effects of snow albedo or it may be attributable to some other factor, but it warrants some attention because it may be associated with radiative transfer effects that contribute to negative biases in spring at the Boreal Forest sites.

20 4.3 Total column water vapor (tcwv), bias, and temperature dependence

- The parameter tcwv refers to total column water vapor, which is calculated as the product of a scaling factor determined by the full physics retrieval and the a priori tcwv from the European Centre for Medium-Range Weather Forecasts (ECMWF). Atmospheric water vapor is expected to be seasonal and the seasonality of tcwv at the three Boreal Forest sites is illustrated in the box-plots in Fig. 19. Large amounts of atmospheric water vapor can suggest that there may be more cloud cover degrading the quality of both satellite-based and ground-based measurements. Even in the absence of clouds, water vapor is a strong infrared absorber in all three bands used by OCO-2, and water vapor is identified in Boesch et al. (2019) as the most important absorbing gas interfering with line fitting in OCO-2 retrievals. In selecting QC filters for the Boreal QC, large negative biases (OCO-2 retrievals reporting lower values of X_{CO_2} than NNG) were correlated to low tcwv , prompting the introduction of quality thresholds for tcwv in the Boreal QC (see Fig. 20 and Table 1). Figure 21 shows the additional retrievals cut by the 25 lower bound on tcwv at 3 kg m^{-2} (data left of the black dashed line) in the Boreal QC which are not cut by other QC filters, and an overall downward trend persists in these removed data. One possible explanation is path-shortening resulting from atmospheric scattering, which could result in retrieved spectral radiance that has failed to penetrate atmospheric layers near the surface. This would cause all retrieved gases to be underestimated, so that total column water vapor and the total CO_2 column 30

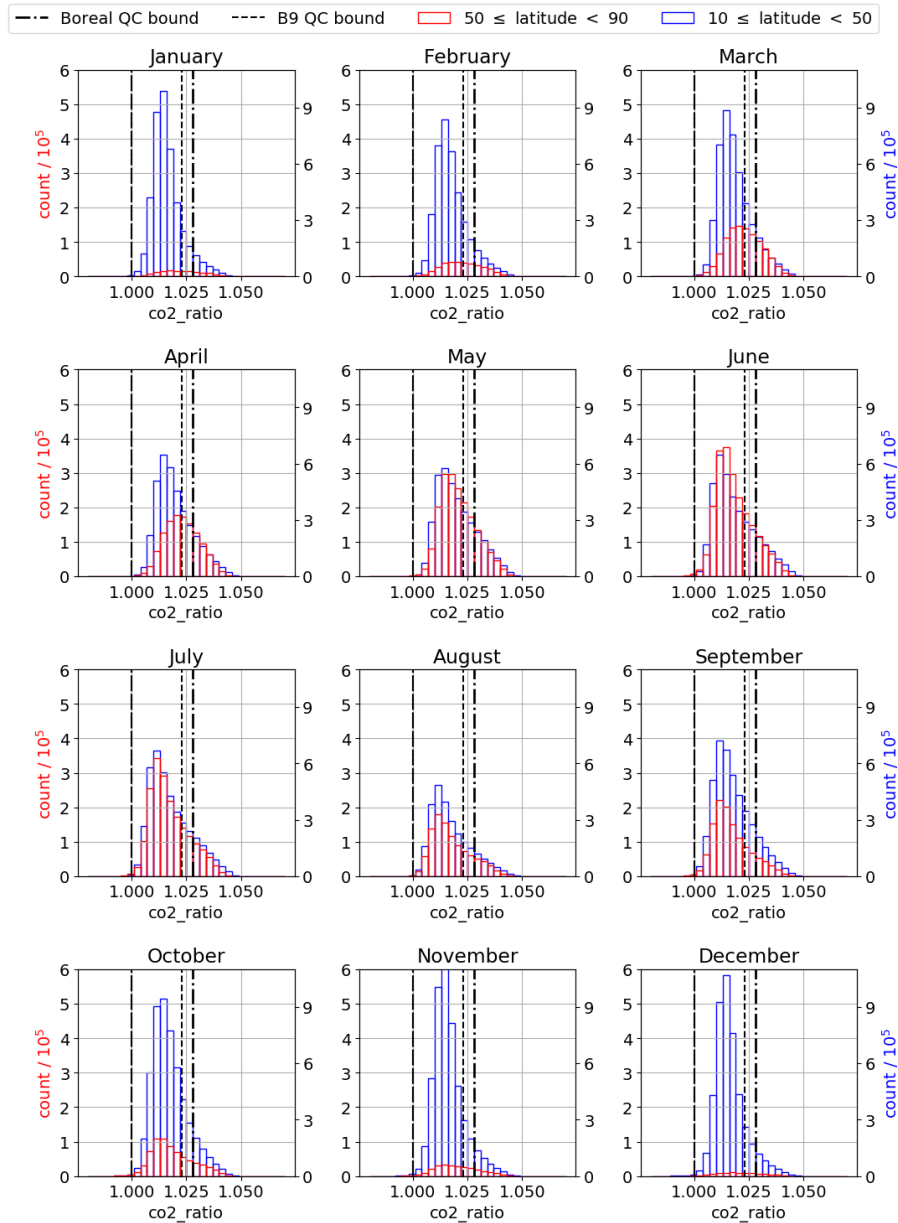


Figure 18. Monthly histograms of the ratio in single band retrievals of CO₂ (co2_ratio) for all unfiltered OCO-2 retrievals over land (land_fraction=100) split into two latitude bands, 10°N to 50°N and 50°N to 90°N.

are both erroneously low. However, Fig. 22 shows that while path-shortening may explain some instances of negative biases and low tcwv, the relationship persists between a priori tcwv from ECMWF reanalysis and negative X_{CO_2} biases. Because water vapor is a strong infrared absorber, it would be reasonable to expect retrieval errors when tcwv is high, but low atmospheric

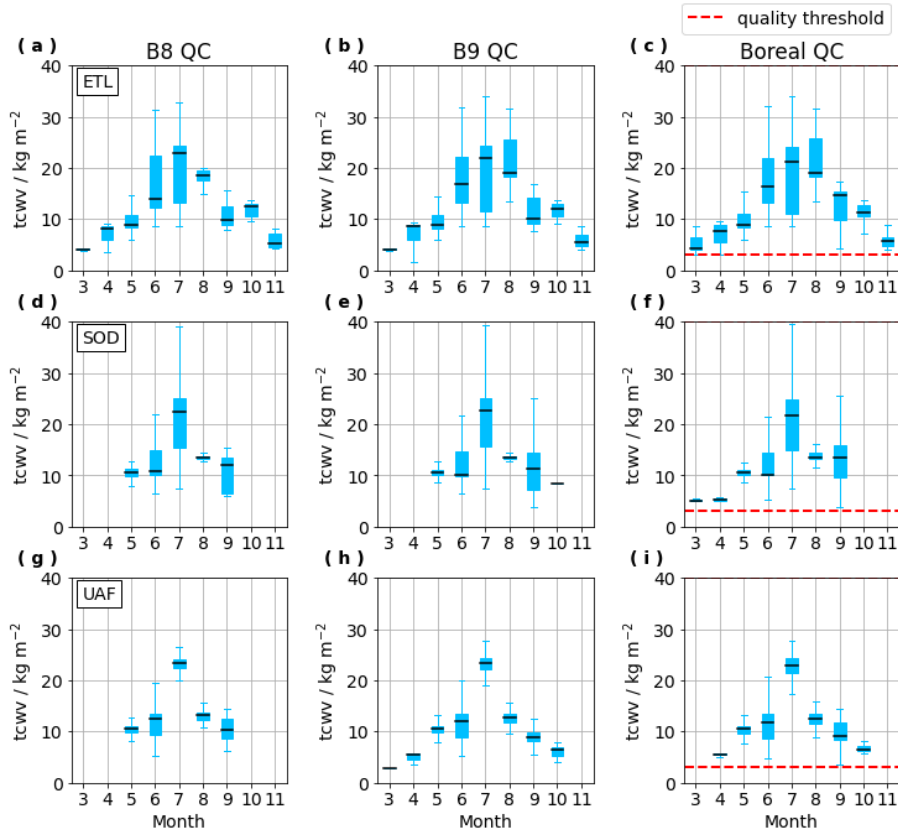


Figure 19. Seasonal box-plots of retrieved tcwv (total column water vapor) at (top) East Trout Lake, (center) Sodankylä, and (bottom) Fairbanks given each of the three quality control methods.

water vapor is also associated with cold fronts and snow cover. Figure 23 illustrates the relationship between tcwv and mid-tropospheric temperature (T_{700}), at 700 hPa, in Boreal Forest coincident OCO-2 retrievals. There is a distinct maximum for tcwv at a given atmospheric temperature that is defined by the condensation temperature of water, and Fig. 23 shows that most of the retrievals with tcwv below 3 kg m^{-2} are also those with mid-tropospheric temperature (T_{700}) below approximately 250 K. Therefore, it is reasonable to conclude that negative OCO-2 biases are also occurring at low temperatures, which is demonstrated by the correlations between ΔX_{CO_2} and T_{700} in Fig. 24.

4.4 Seasonal variability and temperature dependence in retrieved surface pressure bias

The dp_{o2a} and dp_{sco2} variables are the residuals of retrieved and a priori surface pressure at the pointing locations of the O_2A and strong CO_2 bands, respectively. These two retrieval parameters were first included in B9 following the discovery of a pointing error that caused systematic inaccuracies in retrieved surface pressure (Kiel et al., 2019). Before the release of ACOS B9 only a single dp variable (the difference between retrieved and a priori surface pressure from GEOS5-FP-IT) was

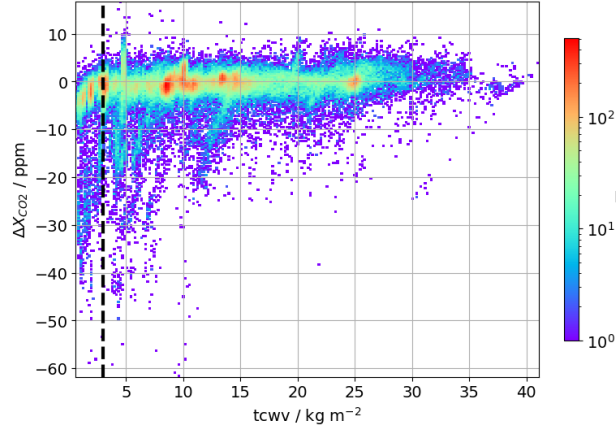


Figure 20. Bias in coincident retrievals of X_{CO_2} ($\Delta X_{CO_2} \equiv \text{OCO-2} - \text{NNG}$) with no QC filtering against retrieved tcwv (total column water vapor), plotted as a density map. The lower bound placed on tcwv in the Boreal QC (3 kg m^{-2}) is shown as a black, dashed vertical line.

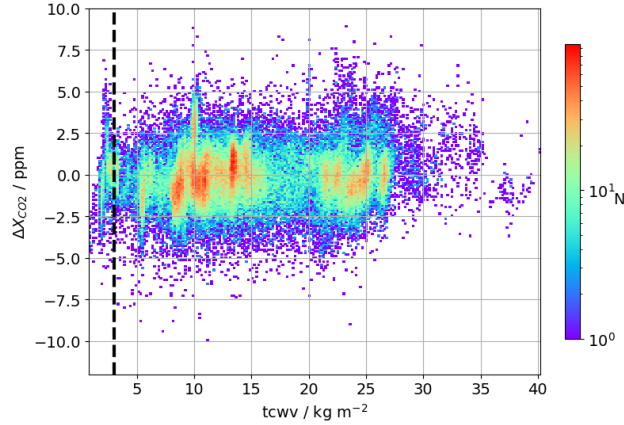


Figure 21. Bias in coincident retrievals of X_{CO_2} ($\Delta X_{CO_2} \equiv \text{OCO-2} - \text{NNG}$) with all Boreal QC filtering except the bound on total column water vapor (tcwv) against retrieved tcwv, plotted as a density map. The lower bound placed on tcwv in the Boreal QC (3 kg m^{-2}) is shown as a black, dashed vertical line.

used as a quality control and bias correction parameter. In the analysis by Kiel et al. (2019) an additional parameterization of surface pressure residuals (dpfrac) was introduced for use in the OCO-2 B9 bc. The inclusion of dpfrac and dp in the OCO-2 bias correction is not the only reason that surface pressure residuals are important, accurate surface pressure measurements are essential for calculating X_{CO_2} which is defined as the ratio of the total CO_2 column to the total column of dry air. These

5 terms are essential components of quality control and bias correction methods because even small inaccuracies can translate to unacceptable errors in X_{CO_2} . While the effects of removing the dp term from the bias correction are considered in section 3.5, it is probably inadvisable to remove this term entirely from bias correction or to loosen quality thresholds on dp variables

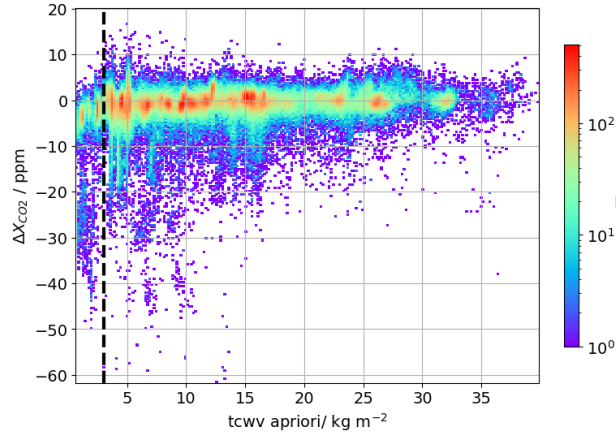


Figure 22. Bias in coincident retrievals of X_{CO_2} ($\Delta X_{CO_2} \equiv \text{OCO-2} - \text{NNG}$) with no QC filtering against a priori tcwv (total column water vapor), plotted as a density map. A priori tcwv is defined by ECMWF reanalysis data. The lower bound placed on tcwv in the Boreal QC (3 kg m^{-2}) is shown as a black, dashed vertical line.

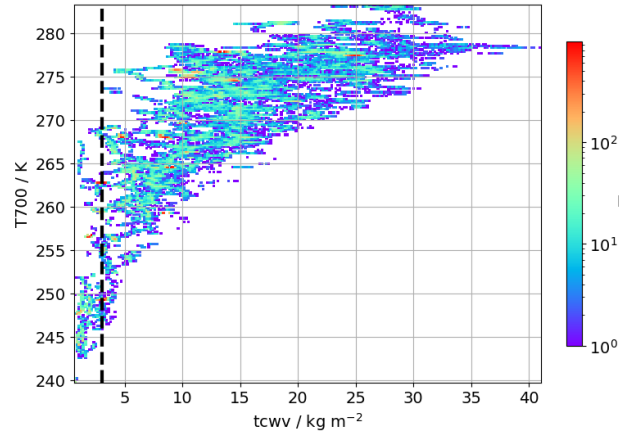


Figure 23. Mid-tropospheric temperature ($T700 \equiv$ temperature at 700 hPa) as a function of total column water vapor (tcwv) for all coincident retrievals without QC filters.

without careful consideration of the impacts on X_{CO_2} . Furthermore, in attributing the causes and effects of trends in surface pressure residuals there may be many competing factors. The seasonal box-plots in Fig. 25 show that there is a seasonality in all four of the variants on surface pressure residuals (dpfrac, dp_o2a, dp_sco2, and dp) at the three Boreal Forest sites that are similar to the seasonality in bias corrected ΔX_{CO_2} (compare to Fig. 11). Similar seasonality may be a result of multiple seasonal parameters that equally effect dp and X_{CO_2} . Figures 12 and 13 show that both dpfrac and dp also exhibit linear dependence on T700 with greater linearity than the correlations between ΔX_{CO_2} and T700 given either B9 QC or Boreal QC in Fig. 24 (panels (c) and (d)). Not only is temperature clearly seasonal and correlated to other seasonal parameters, but

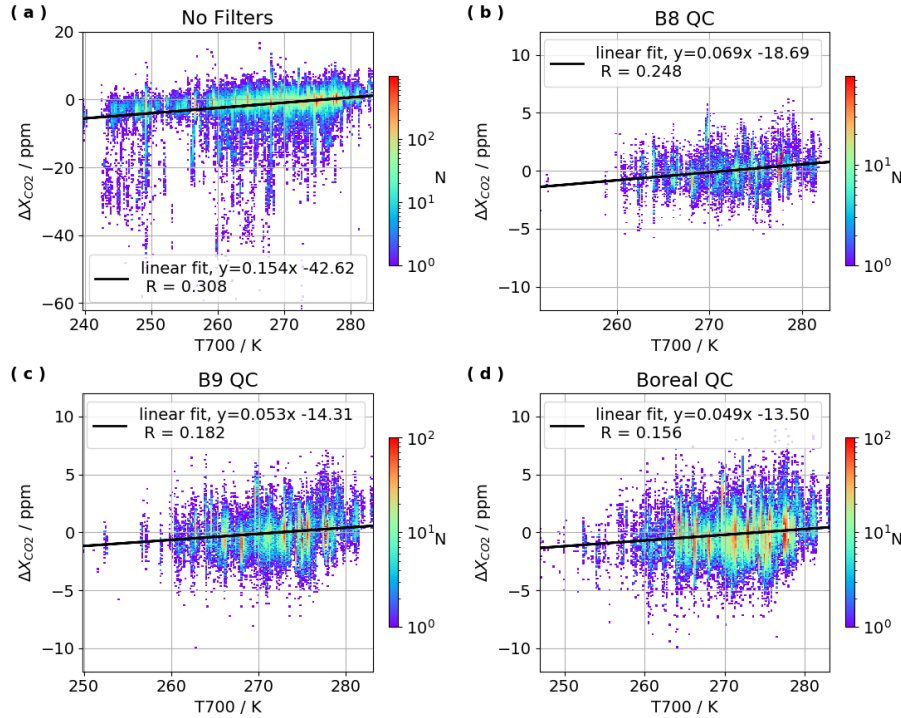


Figure 24. Bias in coincident retrievals of X_{CO_2} ($\Delta X_{CO_2} \equiv \text{OCO-2} - \text{NNG}$) as a function of mid-tropospheric temperature ($T700 \equiv$ temperature at 700 hPa) for all data without QC filters, and each of the three QC methods presented in this paper.

rates and directions of atmospheric transport are also seasonal and $T700$ has been found to link plumes in the free-troposphere (Keppel-Aleks et al., 2011). Kiel et al. (2019) show that systematic biases in dp are characterized by a positive trend close to the equator and a negative trend at higher southern and northern latitudes, and we claim that this could also be a manifestation of temperature dependence.

5 5 Conclusions

Through ILS testing of EM27/SUN ~~spectrometers~~FTS used in Alaska, regular comparisons between multiple EM27/SUN ~~spectrometers~~FTS, and comparisons of EM27/SUN ~~spectrometers with TCCON~~spectrometers FTS with TCCON, we established the relative equivalence of EM27/SUN and TCCON observations as ground-based reference for OCO-2 validation (see supplemental materials section 1). With the application of multiplicative corrections, EM27/SUN FTS measurements in Fairbanks were compared to OCO-2 and yield similar magnitudes in OCO-2 biases as the TCCON sites considered in this study, with less seasonal variability in biases. More long-term observations with EM27/SUN FTS at different locations will be necessary to determine if the reduced seasonality in bias at Fairbanks is due to geography or instrumentation. While there were many challenges with data availability at high latitudes under the B8 QC, both the B9 QC and the Boreal QC offer a two to

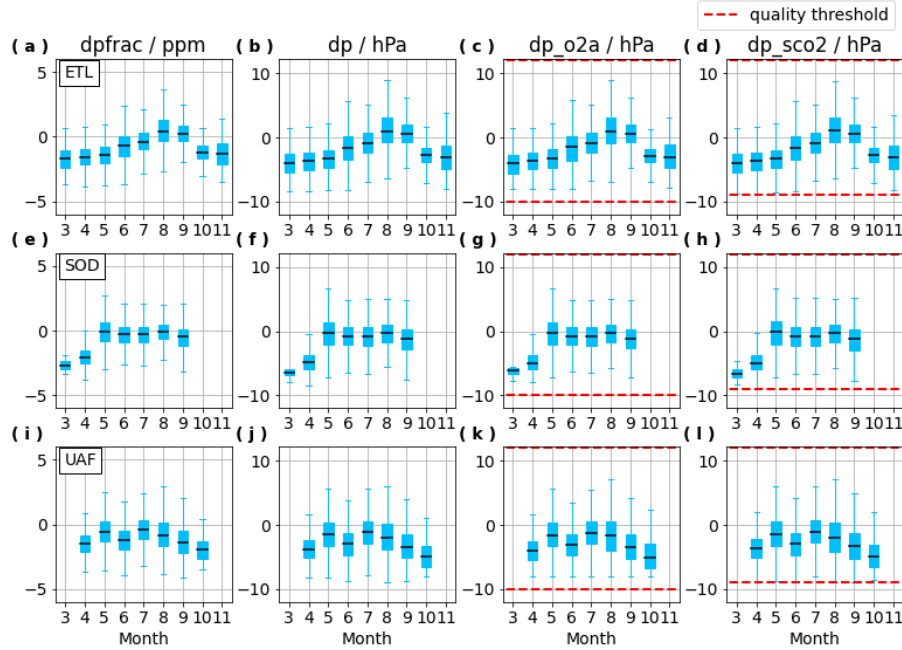


Figure 25. Seasonal box-plots of dp_{frac} , dp , dp_{o2a} , and dp_{sco2} at (top) East Trout Lake, (center) Sodankylä, and (bottom) Fairbanks given Boreal QC filters.

three fold increase in passable retrievals from OCO-2 Lite files (OCO-2 Science Team/Michael Gunson, Annmarie Eldering, 2018) without major sacrifices in data quality. Total average biases for all sites, viewing modes, and quality control methods were within ± 1 ppm (see Fig. 9). In particular, the Boreal QC allows for nearly twice as many terrestrial OCO-2 retrievals north of 50°N latitude in the months of May, August, and September relative to the B9 QC, while resulting in no distinct

5 increase in the total average bias and less than 0.3 ppm increase in total standard deviation of biases for coincident retrievals at Boreal Forest sites (see section 3.3.2 and Fig. 9). With the exception of an anomalously large negative April bias at Sodankylä, seasonal variability in monthly biases at these three Boreal Forest sites is mostly confined between -1 ppm and +1 ppm, which equates to the 2 ppm maximum monthly standard deviation of biases in June at Sodankylä (when data availability is most abundant, see Fig. 10). Even a slight seasonal trend can significantly impact the analysis of seasonal cycle parameters, so it is

10 important that valid methods for reducing the seasonal dependence in OCO-2 biases are identified. The OCO-2 bias correction seems to introduce some seasonality in OCO-2 bias through the inclusion of a dp (the difference between retrieved and a priori surface pressures) bias correction term. We propose two alternative OCO-2 bias corrections in Eq. 6 and Eq. 8 that correct for temperature dependence in dp_{frac} and dp , respectively, based on linear regressions shown in Fig. 12 and Fig. 13. It may be important to note that these alternative bias corrections are specifically tailored to high latitude OCO-2 B9 retrievals over land

15 with Boreal QC. Of these two alternative bias corrections, the B8 abc in Eq. 8 appears to be more effective in reducing seasonal variability without substantial increases in average biases in any viewing modes or increases in monthly standard deviations in

biases at Boreal Forest sites. The choice of B9 QC or Boreal QC were not found to be a clear source of seasonal dependence in monthly OCO-2 bias in the Boreal Forest (see section 4.1), nor were the effects of proximity bias or airmass dependence found to be important contributors to seasonal variability in biases (see Appendices B and C). Several sounding retrieval parameters that have been used as QC filters were found to exhibit seasonal variability at these Boreal Forest sites, including the ratio of single band retrievals of CO₂ (co2_ratio), total column water vapor (tcwv), and the differences between retrieved and a priori surface pressures (dp, dp_o2a, dp_sco2). These parameters may contribute to seasonal variability in biases by impacting data selection in the quality filtering process or they may be indicative of seasonal behavior at high latitudes that is not fully addressed in the retrieval algorithm. In particular, low tropospheric temperatures, or some other parameter that may be correlated to temperature, appears to be one of the primary contributors to seasonal dependence in OCO-2 bias at high latitudes. While the specific choices for QC parameters in the Boreal QC method, proposed here, may still be a subject for consideration and debate, this analysis has shown that it is possible to modify quality controls tailored to a specific region and substantially increase the quantity of usable OCO-2 retrievals with only minor sacrifices in data quality. Furthermore, Boreal QC coupled with an alternative bias correction that accounts for temperature dependence (Eq. 8) may yield sufficiently stable results for application in preliminary studies of Boreal Forest seasonal cycles of X_{CO_2} across longitudes. It is also possible that improvements in spectroscopic modeling in future versions of the ACOS retrieval algorithm would reduce or remove temperature dependence in surface pressure bias.

Appendix A: Quality control histograms

Following methods used for determining B8 QC and B9 QC parameters and thresholds, described in more detail by O'Dell et al. (2018), filters used in the Boreal QC are determined by qualitative assessment of the plots in Fig. A1. For these plots, only OCO-2 retrievals coincident to one of the three Boreal Forest ground sites, East Trout Lake, Sodankylä, and Fairbanks, are considered with the corresponding NNG measurements representing truth (see section 2 for coincidence criteria and site locations). The plots include a histogram that shows the number of retrievals within a certain range of values (bin) for the QC filtering parameter in question (gray bars), the average ΔX_{CO_2} in each bin with (black circles) and without (cyan circles) the standard bias correction, and the standard deviation in retrieved X_{CO_2} in each bin (blue diamonds). We began by assessing the parameters that are used in B9, but with thresholds extensively loosened or removed where-ever reasonably possible. Next, a number of additional retrieval parameters were assessed to see if their inclusion could reduce average bias and standard deviation in X_{CO_2} by eliminating small numbers of outliers. After adding these parameters (deltaT, solar Zenith, xco2_uncertainty, and tcwv), the loose bounds on the remaining QC filtering parameters brought from B9 were reassessed and incrementally tightened.

Appendix B: Potential contribution to seasonal bias from proximity bias

Another suspected source of bias, which may or may not have a seasonal component, is proximity bias. Assuming that the ground-based reference measurements are representative of the full coincidence region depends on a certain amount of regional

homogeneity in CO₂ columns, and spatial CO₂ fields may not meet this criteria during seasonal transitions in spring and autumn. One method applied to GOSAT data by Wunch et al. (2011b) and based on modeling results by Keppel-Aleks et al. (2011) will isolate satellite soundings in the coincidence region that are likely to represent the same atmospheric plume observed at the ground site by choosing soundings with a mid-tropospheric temperature, at 700 hPa (T700), close to that above the ground site.

5 Figure B1 shows monthly bias distributions for the full set of coincident retrievals alongside the monthly bias distributions of a subset of coincident retrievals that have retrieved T700 within $\pm 1\text{K}$ of T700 in the daily NCEP reanalysis results for the ground site. Results in Fig. B1 suggest that using T700 to screen coincident retrievals yields little to no observable improvements in seasonality of biases overall. At East Trout Lake the T700 coincidence criteria does reduce the absolute monthly bias in March and April with Boreal QC, but in a number of other cases T700 screening results in a slight increase in absolute monthly biases

10 for spring and autumn months.

Appendix C: Potential contribution to seasonal bias from ground-based instrument airmass dependence

Seasonal biases in NNG data may arise from airmass dependence of ground-based retrievals, particularly in high latitude regions (Wunch et al., 2011a). However, Fig. C1 shows that when the daily ground-based reference is defined as the daily average of retrieved X_{CO_2} with apparent sza between 65° and 70° (SZAG) instead of using NNG, there is nearly no observable

15 change in the monthly bias distributions at the two TCCON sites. At Fairbanks, the change in ground-based reference to SZAG results in positive shift in almost all ΔX_{CO_2} values, which for some months corresponds to a reduction in the size of biases and for other months corresponds to an increase in the size of biases. The results at Fairbanks may suggest that sza dependence in EM27/SUN observations requires further study. Seasonal variability in biases persists at all three sites and is largely the same regardless of whether the ground-based reference is NNG or SZAG. These results suggest that airmass dependence of

20 the ground-based instrument is not likely to be a dominant source of seasonal variability in OCO-2 biases.

Author contributions. Nicole Jacobs composed this manuscript and conducted the analysis under the supervision of William R. Simpson. Debra Wunch contributed data from the East Trout Lake TCCON site, as well as guidance in and thorough evaluations of methods and interpretations in the manuscript. Christopher W. O'Dell offered guidance and instructions in methods of evaluating OCO-2 satellite retrieval parameters, bias corrections, and quality controls. Gregory B. Osterman organized targeted satellite overpasses with OCO-2 over Fairbanks

25 and generally oversees satellite validation efforts for OCO-2. Frank Hase, Thomas Blumenstock, Qiansi Tu, Matthias Frey, Manvendra K. Dubey, and Harrison A. Parker all contributed to data collection with the EM27/SUNs in Fairbanks, including instrument evaluations, maintenance, and establishing long-term operations in Fairbanks. Harrison A. Parker has also acted as local host during calibration to the Caltech TCCON. Rigel Kivi and Pauli Heikkinen operate the TCCON station at Sodankylä, and they provided data and insights into unique aspects of high latitude ground-based measurements of X_{CO_2} .

30 *Competing interests.* The authors declare that they have no conflict of interest.

Disclaimer.

Acknowledgements. Thanks to Paul Wennberg, Coleen Roehl, and colleagues at Caltech for operation of the Caltech TCCON and support during side-by-side observations with the LANL EM27/SUN. The Simpson Lab at UAF acknowledges the Alaska Space Grant Graduate Fellowship and OCO Science Team Grant (NNH17ZDA001N-OCO2) for support. KIT acknowledges support by the ACROSS research
5 infrastructure of the Helmholtz Association of German Research Centres (HGF) and support by the Helmholtz Association in the framework of MOSES (Modular Observation Solutions for Earth Systems). LANL acknowledges NASA CMS and LDRD programs for support.

References

- Barlow, J. M., Palmer, P. I., Bruhwiler, L. M., and Tans, P.: Analysis of CO₂ mole fraction data: first evidence of large-scale changes in CO₂ uptake at high northern latitudes, *Atmos. Chem. Phys.*, 15, 13 739–13 758, <https://doi.org/10.5194/acp-15-13739-2015>, www.atmos-chem-phys.net/15/13739/2015/, 2015.
- 5 Barnes, E. A., Parazoo, N., Orbe, C., and Denning, A. S.: Isentropic transport and the seasonal cycle amplitude of CO₂, *J. Geophys. Res.-Atmos.*, 121, 8106–8124, <https://doi.org/10.1002/2016JD025109>, 2016.
- Boesch, H., Baker, D., Connor, B., Crisp, D., and Miller, C.: Global Characterization of CO₂ Column Retrievals from Shortwave-Infrared Satellite Observations of the Orbiting Carbon Observatory-2 Mission, *Remote Sens.-Basel*, 3, 270–304, <https://doi.org/10.3390/rs3020270>, 2011.
- 10 Boesch, H., Brown, L., Castano, R., Christi, M., Bonnor, C., Crisp, D., Eldering, A., Fisher, B., Frankenberg, C., Gunson, M., Granat, R., McDuffie, J., Miller, C., Natraj, V., O'Brien, D., O'Dell, C., Osterman, G., Oyafuso, F., Payne, V., Polonski, I., Smyth, M., Spurr, R., Thompson, D., and G., T.: Orbiting Carbon Observatory-2 & 3 (OCO-2 & OCO-3) Level 2 Full Physics Retrieval Algorithm Theoretical Basis, https://docserver.gesdisc.eosdis.nasa.gov/public/project/OCO/OCO2_L2_ATBD.V6.pdf, 2019.
- Bradshaw, C. J. A. and Warkentin, I. G.: Global estimates of boreal forest carbon stocks and flux, *Global Planet Change*, 128, 24–30, <https://doi.org/10.1016/j.gloplacha.2015.02.004>, 2015.
- 15 Connor, B. J., Boesch, H., Toon, G. C., Sen, B., Miller, C., and Crisp, D.: Orbiting Carbon Observatory: Inverse method and prospective error analysis, *J. Geophys. Res.*, 113, <https://doi.org/10.1029/2006JD008336>, 2008.
- Crisp, D., Fisher, B. M., O'Dell, C., Frankenberg, C., Basilio, R., Bösch, H., Brown, L. R., Castano, R., Connor, B., Deutscher, N. M., Eldering, A., Griffith, D., Gunson, M., Kuze, A., Mandrake, L., McDuffie, J., Messerschmidt, J., Miller, C. E., Morino, I., Natraj, V.,
- 20 Notholt, J., O'Brien, D. M., Oyafuso, F., Polonsky, I., Robinson, J., Salawitch, R., Sherlock, V., Smyth, M., Suto, H., Taylor, T. E., Thompson, D. R., Wennberg, P. O., Wunch, D., and Yung, Y. L.: The ACOS CO₂ retrieval algorithm - Part II: Global X_{CO_2} data characterization, *Atmos. Meas. Tech.*, 5, 687–707, <https://doi.org/10.5194/amt-5-687-2012>, 2012.
- Euskirchen, E. S., Edgar, C. W., Bret-Harte, M. S., Kade, A., Zimov, N., and Zimov, S.: Interannual and Seasonal Patterns of Carbon Dioxide, Water, and Energy Fluxes From Ecotonal and Thermokarst-Impacted Ecosystems on Carbon-Rich Permafrost Soils in Northeastern
- 25 Siberia, *J. Geophys. Res.-Biogeo.*, 122, 2651–2668, <https://doi.org/10.1002/2017JG004070>, 2017.
- Frey, M., Sha, M. K., Hase, F., Kiel, M., Blumenstock, T., Harig, R., Surawicz, G., Deutscher, N. M., Shiomi, K., Franklin, J. E., Bösch, H., Chen, J., Grutter, M., Ohyama, H., Sun, Y., Butz, A., Mengistu Tsidu, G., Ene, D., Wunch, D., Cao, Z., Garcia, O., Ramonet, M., Vogel, F., and Orphal, J.: Building the Collaborative Carbon Column Observing Network (COCCON): long-term stability and ensemble performance of the EM27/SUN Fourier transform spectrometer, *Atmos. Meas. Tech.*, 12, 1513–1530, [https://doi.org/10.5194/amt-12-](https://doi.org/10.5194/amt-12-1513-2019)
- 30 1513-2019, 2019.
- Gauthier, S., Bernier, P., Kuuluvainen, T., Shvidenko, A. Z., and Schepaschenko, D. G.: Boreal forest health and global change, *Science*, 349, 819–822, <https://doi.org/10.1126/science.aaa9092>, 2015.
- Gisi, M., Hase, F., Dohe, S., Blumenstock, T., Simon, A., and Keens, A.: X_{CO_2} -measurements with a tabletop FTS using solar absorption spectroscopy, *Atmos. Meas. Tech.*, 5, 2969–2980, <https://doi.org/10.5194/amt-5-2969-2012>, 2012.
- 35 Graven, H. D., Keeling, R. F., Piper, S. C., Patra, P. K., Stephens, B. B., Wofsy, S. C., Welp, L. R., Sweeney, C., Tans, P. P., Kelley, J. J., Daube, B. C., Kort, E. A., Santoni, G. W., and Bent, J. D.: Enhanced Seasonal Exchange of CO₂ by Northern Ecosystems Since 1960, *Science*, 341, <https://doi.org/10.1126/science.1239207>, 2013.

- Hase, F., Frey, M., Kiel, M., Blumenstock, T., R., H., Keens, A., and Orphal, J.: Addition of a channel for XCO observations to a portable FTIR spectrometer for greenhouse gas measurements, *Atmos. Meas. Tech.*, 9, 2303 – 2313, <https://doi.org/10.5194/amt-9-2303-2016>, 2016.
- Hedelius, J. and Wennberg, P.: EM27/SUN GGG interferogram processing suite Version 2014, Hosted on CaltechDATA data archive, California Institute of Technology, Pasadena, California, U.S.A., <https://doi.org/10.22002/d1.306>, 2017.
- 5 Hedelius, J. K., Viatte, C., Wunch, D., Roehl, C. M., Toon, G. C., Chen, J., Jones, T., Wofsy, S. C., Franklin, J. E., Parker, H., Dubey, M. K., and Wennberg, P. O.: Assessment of errors and biases in retrievals of X_{CO_2} , X_{CH_4} , X_{CO} , and X_{N_2O} from a 0.5 cm^{-1} resolution solar-viewing spectrometer, *Atmos. Meas. Tech.*, 9, 3527–3546, <https://doi.org/10.5194/amt-9-3527-2016>, 201, 2016.
- Hedelius, J. K., Parker, H., Wunch, D., Roehl, C. M., Viatte, C., Newman, S., Toon, G. C., Podolske, J. R., Hillyard, P. W., Iraci, L. T., Dubey, M. K., and Wennberg, P. O.: Intercomparability of XCO and XCH₄ from the United and States and TCCON sites, *Atmos. Meas. Tech.*, 10, 1481–1493, <https://doi.org/10.5194/amt-10-1481-2017>, www.atmos-meas-tech.net/10/1481/2017/doi:10.5194/amt-10-1481-2017, 2017.
- 10 Keppel-Aleks, G., Wennberg, P. O., and Schneider, T.: Sources of variations in total column carbon dioxide, *Atmos. Chem. Phys.*, 11, 3581–3593, <https://doi.org/10.5194/acp-11-3581-2011>, www.atmos-chem-phys.net/11/3581/2011/Atmosphericdoi:10.5194/acp-11-3581-2011, 2011.
- 15 Kiel, M., O'Dell, C. W., Fisher, B., Eldering, A., Nassar, R., MacDonald, C. G., and Wennberg, P. O.: How bias correction goes wrong: measurement of X_{CO_2} affected by erroneous surface pressure estimates, *Atmos. Meas. Tech.*, 12, 2241–2259, <https://doi.org/10.5194/amt-12-2241-2019>, <https://doi.org/10.5194/amt-12-2241-2019>, 2019.
- Kivi, R. and Heikkinen, P.: Fourier transform spectrometer measurements of column CO₂ at Sodankylä, Finland, *Geosci. Instrum. Method. Data Syst.*, 5, 271–279, <https://doi.org/10.5194/gi-5-271-2016>, 2016.
- 20 Kivi, R., Heikkinen, P., and Kyro, E.: TCCON data from Sodankyla, Finland, Release GGG2014R0. TCCON data archive, hosted by CaltechDATA, California Institute of Technology, Pasadena, CA, U.S.A., <https://doi.org/10.14291/tccon.ggg2014.sodankyla01.R0/1149280>, 2017.
- Lindqvist, H., O'Dell, C. W., Basu, S., Boesch, H., Chevallier, F., Deutscher, N., Feng, L., Fisher, B., Hase, F., Inoue, M., Kivi, R., Morino, I., Palmer, P. I., Parker, R., Schneider, M., Sussmann, R., and Yoshida, Y.: Does GOSAT capture the true seasonal cycle of carbon dioxide?, *Atmos. Chem. Phys.*, 15, 13 023–13 040, <https://doi.org/10.5194/acp-15-13023-2015>, www.atmos-chem-phys.net/15/13023/2015/, 2015.
- 25 OCO-2 Science Team/Michael Gunson, Annmarie Eldering: OCO-2 Level 2 bias-corrected XCO₂ and other select fields from the full-physics retrieval aggregated as daily files, Retrospective processing V9r, Greenbelt, MD, USA, Goddard Earth Sciences Data and Information Services Center (GES DISC), <https://doi.org/10.5067/W8QGIYNKS3JC>, https://disc.gsfc.nasa.gov/datasets/OCO2_L2_Lite_FP_9r/summary, Accessed: [18 December 2018], 2018.
- 30 O'Dell, C. W., Connor, B., H. Bösch, H., O'Brien, D., Frankenberg, C., Castano, R., Christi, M., D. Crisp, D., Eldering, A., Fisher, B., Gunson, M., McDuffie, J., Miller, C. E., Natraj, V., Oyafuso, F., Polonsky, I., M. Smyth, M., Taylor, T., Toon, G. C., Wennberg, P., and Wunch, D.: The ACOS CO₂ retrieval algorithm - Part 1: Description and validation against synthetic observations, *Atmos. Meas. Tech.*, 5, 99–121, <https://doi.org/10.5194/amt-5-99-2012>, www.atmos-meas-tech.net/5/99/2012/, 2012.
- O'Dell, C. W., Eldering, A., Wennberg, P. O., Crisp, D., Gunson, M. R., Fisher, B., Frankenberg, C., Kiel, M., Lindqvist, H., Mandrake, L., Merrelli, A., Natraj, V., Nelson, R. R., Osterman, G. B., Payne, V. H., Taylor, T. E., Wunch, D., Drouin, B. J., Oyafuso, F., Chang, A., McDuffie, J., Smyth, M., Baker, D. F., Basu, S., Chevallier, F., Crowell, S. M. R., Feng, L., Palmer, P. I., Dubey, M., García, O. E., Griffith, D. W. T., Hase, F., Iraci, L. T., Kivi, R., Morino, I., Notholt, J., Ohyama, H., Petri, C., Roehl, C. M., Sha, M. K., Strong, K., Sussmann, R., Te, Y., Uchino, O., and Velazco, V.: Improved retrievals of carbon dioxide from Orbiting Carbon Observatory-2 with the version 8 ACOS

- algorithm, *Atmos. Meas. Tech.*, 11, 6539–6576, <https://doi.org/10.5194/amt-11-6539-2018>, <https://doi.org/10.5194/amt-11-6539-2018>, 2018.
- Osterman, G. B., Eldering, A., Avis, C., Chafin, B., O’Dell, C., Frankenberg, C., Fisher, B., Mandrake, L., Wunch, D., Granat, R., and Crisp, D.: Data Product User’s Guide, Operational L1 and L2 Data Versions 8 and Lite File Version 9, https://docserver.gesdisc.eosdis.nasa.gov/public/project/OCO/OCO2_DUG.V9.pdf, 2018.
- 5 Pan, Y., Birdsey, R. A., Fang, J., Houghton, R., Kauppi, P. E., Kurz, W. A., Phillips, O. L., Shvidenko, A., Lewis, S. L., Canadell, J. G., Ciais, P., Jackson, R. B., Pacala, S. W., McGuire, A. D., Piao, S., Rautiainen, A., Sitch, S., and Hayes, D.: A Large and Persistent Carbon Sink in the World’s Forests, *Science*, 333, 988–993, <https://doi.org/10.1126/science.1201609>, 2011.
- Robinson, D. A., Estilow, T. W., and NOAA CDR Program: NOAA Climate Data Record (CDR) of Northern Hemisphere (NH) Snow Cover Extent (SCE), Version 1. NOAA National Centers for Environmental Information., <https://doi.org/10.7289/V5N014G9>, <https://climate.rutgers.edu/snowcover/>, Accessed:[3 June 2019], 2012.
- 10 Sha, M. K., De Mazière, M., Notholt, J., Blumenstock, T., Chen, H., Dehn, A., Griffith, D. W. T., Hase, F., Heikkinen, P., Hermans, C., Hoffmann, A., Huebner, M., Jones, N., Kivi, R., Langerock, B., Petri, C., S. F., Tu, Q., and Weidmann, D.: Intercomparison of low and high resolution infrared spectrometers for ground-based solar remote sensing measurements of total column concentrations of CO₂, CH₄ and CO, *Atmos. Meas. Tech. Discuss.*, <https://doi.org/10.5194/amt-2019-371>, <https://doi.org/10.5194/amt-2019-371>, 2019.
- 15 Tans, P. P., Fung, I. Y., and Takahashi, T.: Observational Constraints on the Global Atmospheric CO₂ Budget, *Science*, New Series 247, 1431–1438, 1990.
- Taylor, T. E., O’Dell, C. W., Frankenberg, C., Partain, P., Cronk, H., Savtchenko, A., Nelson, R. R., Rosenthal, E. J., Chang, A. Y., Fisher, B., Osterman, G. B., Pollock, R. H., Crisp, D., Eldering, A., and Gunson, M. R.: Orbiting Carbon Observatory-2 (OCO-2) cloud screening algorithms: validation against collocated MODIS and CALIOP data, *Atmos. Meas. Tech.*, 9, 973–989, <https://doi.org/10.5194/amt-9-973-2016>, 2016.
- 20 Velazco, V. A., Deutscher, N. M., Morino, I., Uchino, O., Bukosa, B., Ajiro, M., Kamei, A., Jones, N. B., Paton-Walsh, C., and Griffith, D. W. T.: Satellite and Ground-based Measurements of X_{CO2} in a Remote Semi-Arid Region of Australia, *Earth Syst. Sci. Data Discuss.*, <https://doi.org/10.5194/essd-2018-161>, 2018.
- 25 Wiscombe, W. J. and Warren, S. G.: A model for the spectral albedo of snow. I: Pure snow, *J. Atmos. Sci.*, 37, 2712–2733, 1980.
- Wu, L., Hasekamp, O., Hu, H., Landgraf, J., Butz, A., Aan de Brugh, J., Aben, I., Pollard, D. F., Griffith, D. W. T., Feist, D. G., Koshelev, D., Hase, F., Toon, G. C., Ohyama, H., Morino, I., Notholt, J., Shiomi, K., Iraci, L., Schneider, M., de Mazière, M., Sussmann, R., Kivi, R., Warneke, T., Goo, T.-Y., and Té, Y.: Carbon dioxide retrieval from OCO-2 satellite observations using the RemoTeC algorithm and validation with TCCON measurements, *Atmos. Meas. Tech.*, 11, 3111–3130, <https://doi.org/10.5194/amt-11-3111-2018>, 2018.
- 30 Wunch, D., Toon, G. C., Blavier, J. F. L., Washenfelder, R. A., Notholt, J., Connor, B. J., Griffith, D. W. T., Sherlock, V., and Wennberg, P. O.: The Total Carbon Column Observing Network, *Philos. T. R. Soc. A.*, 369, 2087–2112, <https://doi.org/10.1098/rsta.2010.0240>, <http://dx.doi.org/10.1098/rsta.2010.0240>, 2011a.
- Wunch, D., Wennberg, P. O., Toon, G. C., Connor, B. J., Fisher, B., Osterman, G. B., Frankenberg, C., Mandrake, L., O’Dell, C., Ahonen, P., Biraud, S. C., Castano, R., Cressie, N., Crisp, D., Deutscher, N. M., Eldering, A., Fisher, M. L., Griffith, D. W. T., Gunson, M., Heikkinen, P., Keppel-Aleks, G., Kyro, E., Lindenmaier, R., Macatangay, R., Mendonca, J., Messerschmidt, J., Miller, C. E., Morino, I., Notholt, J., A. F., Oyafuso, Rettinger, M., Robinson, J., Roehl, C. M., Salawitch, R. J., Sherlock, V., Strong, K., Sussmann, R., Tanaka, T., Thompson, D. R., Uchino, O., Warneke, T., and Wofsy, S. C.: A method for evaluating bias in global measurements of CO₂ total columns from
- 35

- space, *Atmos. Chem. Phys.*, 11, 12 317–12 337, <https://doi.org/10.5194/acp-11-12317-2011>, www.atmos-chem-phys.net/11/12317/2011/ Atmospheric, 2011b.
- Wunch, D., Wennberg, P. O., Messerschmidt, J., Parazoo, N. C., Toon, G. C., Deutscher, N. M., Keppel-Aleks, G., Roehl, C. M., Randerson, J. T., Warneke, T., and Notholt, J.: The covariation of Northern Hemisphere summertime CO₂ with surface temperature in boreal regions, *Atmos. Chem. Phys.*, 13, 9447–9459, <https://doi.org/10.5194/acp-13-9447-2013>, www.atmos-chem-phys.net/13/9447/2013/, 2013.
- Wunch, D., Toon, G. C., Sherlock, V., Deutscher, N. M., Liu, C., Feist, D. G., and Wennberg, P. O.: The Total Carbon Column Observing Network’s GGG2014 Data Version, 43, <https://doi.org/10.14291/tccon.ggg2014.documentation.R0/1221662>, <http://tccon.ornl.gov>, 2015.
- Wunch, D., Mendonca, J., Colebatch, O., Allen, N., Blavier, J.-F. L., Springett, S., Worthy, D., Kessler, R., and Strong, K.: TCCON data from East Trout Lake, Canada, Release GGG2014R0. TCCON data archive, hosted by CaltechDATA, California Institute of Technology, Pasadena, CA, U.S.A., <https://doi.org/10.14291/tccon.ggg2014.easttroutlake01.R0/1348207>, 2017a.
- Wunch, D., Wennberg, P. O., Osterman, G., Fisher, B., Naylor, B., Roehl, C. M., O’Dell, C., Mandrake, L., Viatte, C., Kiel, M., Griffith, D. W. T., Deutscher, N. M., Velasco, V. A., Notholt, J., Warneke, T., Petri, C., De Maziere, M., Sha, V., Sussmann, R., Rettinger, M., Pollard, D., Robinson, J., Morino, I., Uchino, O., Hase, F., Blumenstock, T., Feist, D. G., Arnold, S. G., Strong, K., Mendonca, J., Kivi, R., Heikkinen, P., Iraci, L., Podolske, J., Hillyard, P. W., Kawakami, S., Dubey, M. K., Parker, H. A., Sepulveda, E., García, O. E., Te, Y., Jeseck, P., Gunson, M. R., Crisp, D., and Eldering, A.: Comparisons of the Orbiting Carbon Observatory-2 (OCO-2) X_{CO_2} measurements with TCCON, *Atmos. Meas. Tech.*, 10, 2209–2238, <https://doi.org/10.5194/amt-10-2209-2017>, <https://doi.org/10.5194/amt-10-2209-2017>, 2017b.
- Yin, Y., Ciais, P., Chevallier, F., Li, W., Bastos, A., Piao, S., Wang, T., and Liu, H.: Changes in the Response of the Northern Hemisphere Carbon Uptake to Temperature Over the Last Three Decades, *Geophys. Res. Lett.*, 45, 4371–4380, <https://doi.org/https://doi.org/10.1029/2018GL077316>, 2018.

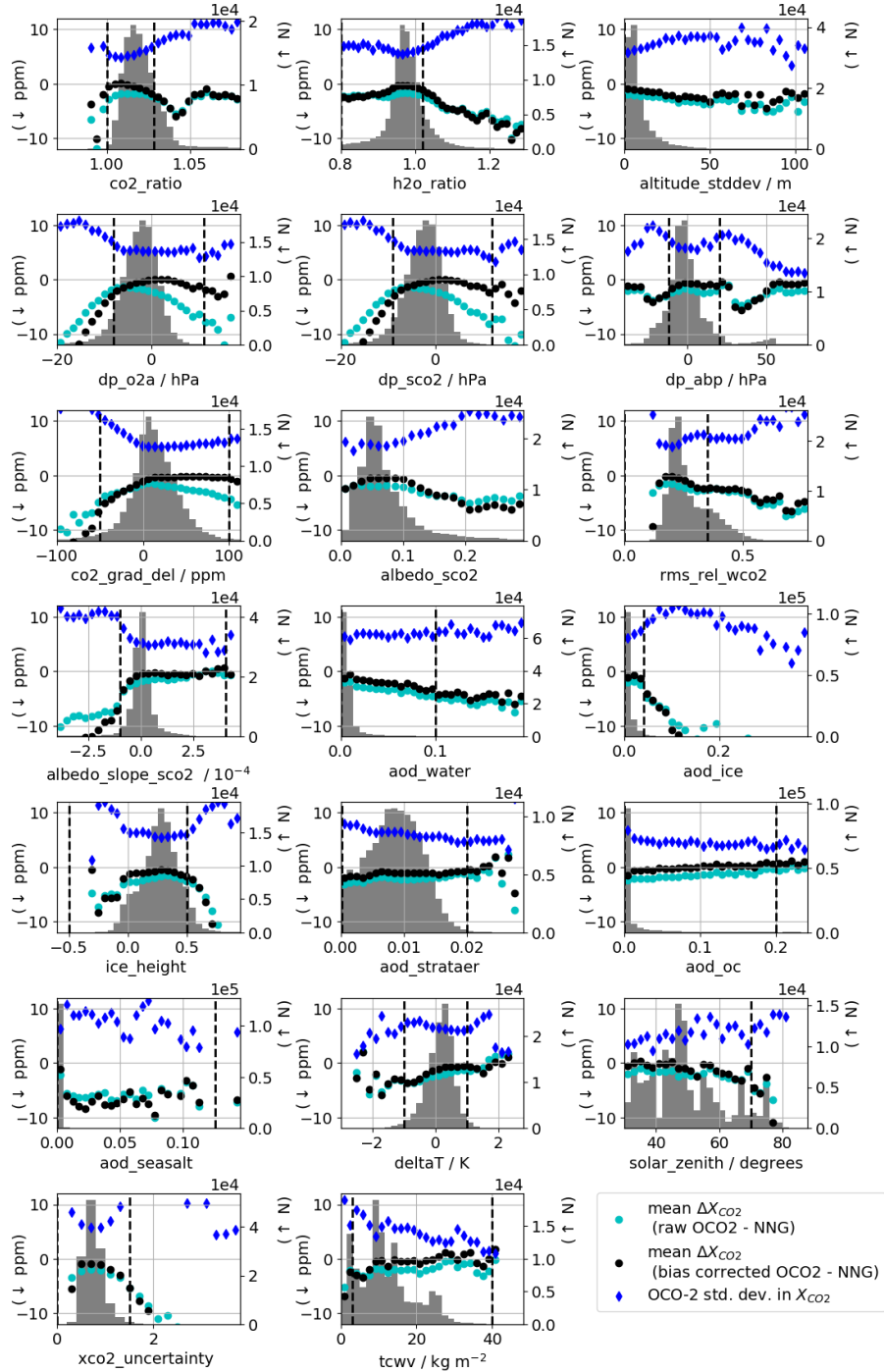


Figure A1. Quality-control histograms in the same style as those presented by O'Dell et al. (2018), presented for QC Histograms of retrieval parameters used in the selection of Boreal QC and considering only retrievals coincident to the three Boreal Forest sites in this paper. Also shown These plots are biases in X_{CO_2} with raw OCO-2 retrieved X_{CO_2} the same style as those presented by O'Dell et al. (2018), biases but with NNG measurements as truth. Biases in X_{CO_2} with OCO-2 retrieved X_{CO_2} and without the standard B9 bias corrected to TCCON correction, as well as the standard deviation in OCO-2 retrieved X_{CO_2} with the bias correction to TCCON and the quality-control thresholds selected, are shown for each bin (in the units of ppm). Implemented Boreal QC thresholds for each parameter are represented by the black-dashed vertical lines.

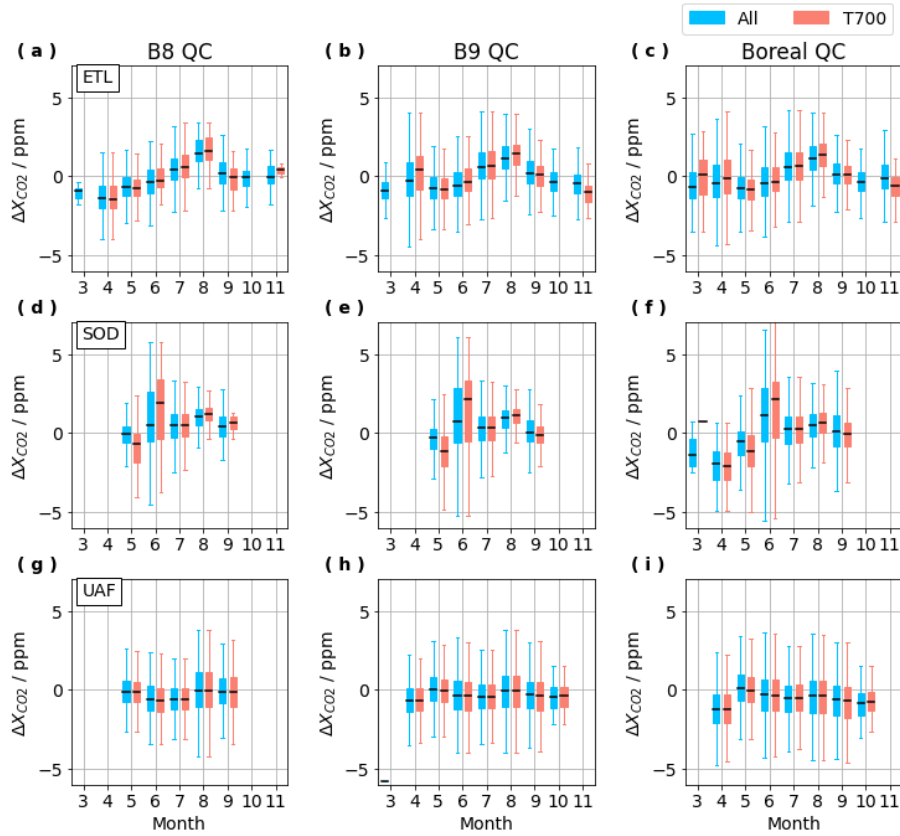


Figure B1. Monthly bias distributions for coincident OCO-2 retrievals filtered with Boreal QC comparing the full set of coincident retrievals (black), alongside a subset with the temperature at 700 hPa (T700) in the OCO-2 retrieval equal to $\pm 1\text{K}$ of T700 from NCEP reanalysis at the ground site (red).

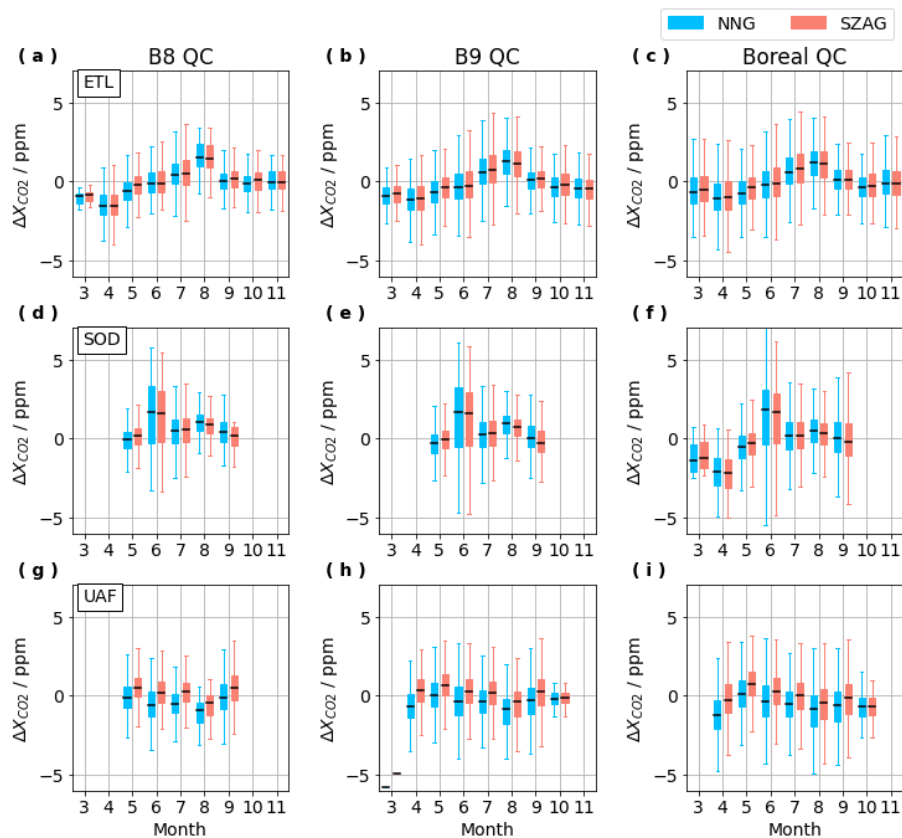


Figure C1. Monthly bias distributions for coincident OCO-2 retrievals filtered with Boreal QC and referenced to NNG (black), alongside monthly bias distributions for coincident OCO-2 retrievals with Boreal QC and referenced to SZAG (red).