

Supplement of

MIMiX: A Multipurpose In-situ Microreactor system for X-ray microspectroscopy to mimic atmospheric aerosol processing

Jan-David Förster et al.

Correspondence to: Jan-David Förster (jd.forster@mpic.de) & Christopher Pöhlker (c.pohlker@mpic.de)

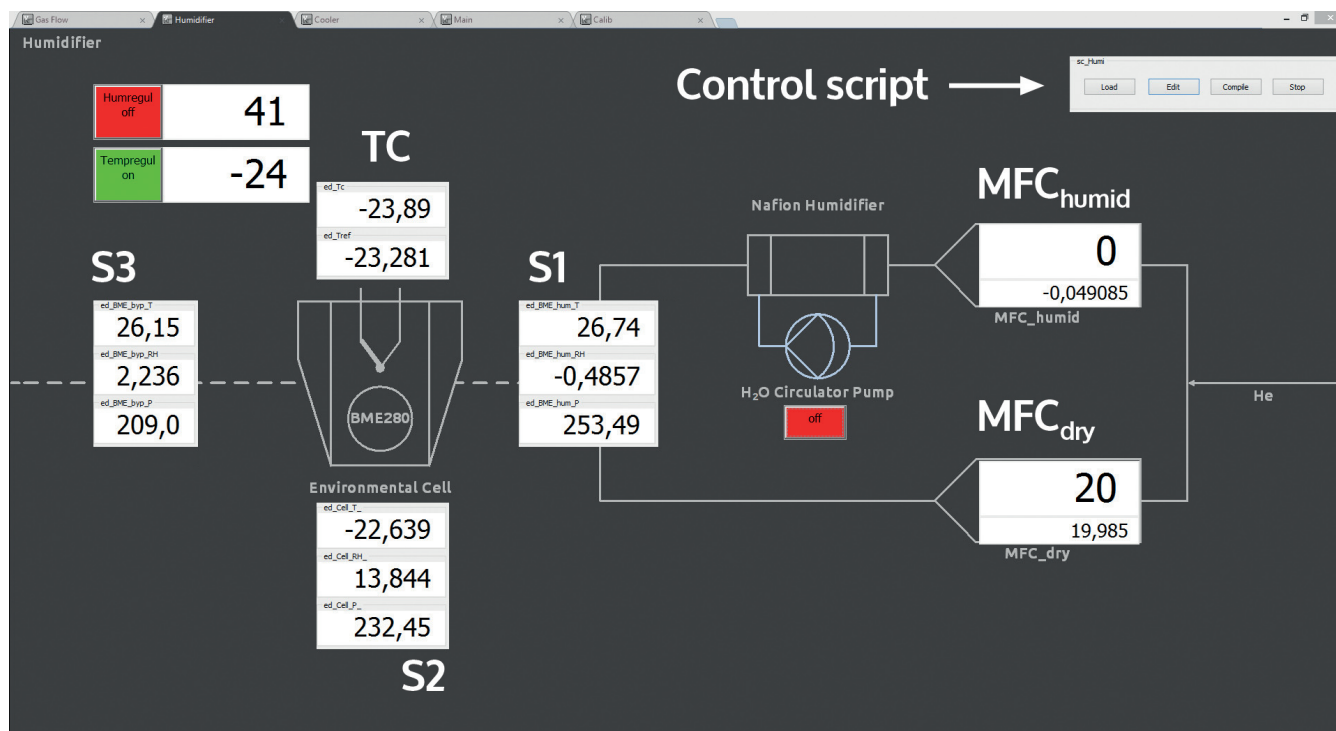


Figure S1. Screenshot of the T and RH control panel in the graphical user interface, emphasizing the cooling capacities of the setup. Please note that the sensor values shown here are uncalibrated. The actual microreactor temperature is at about -23°C .

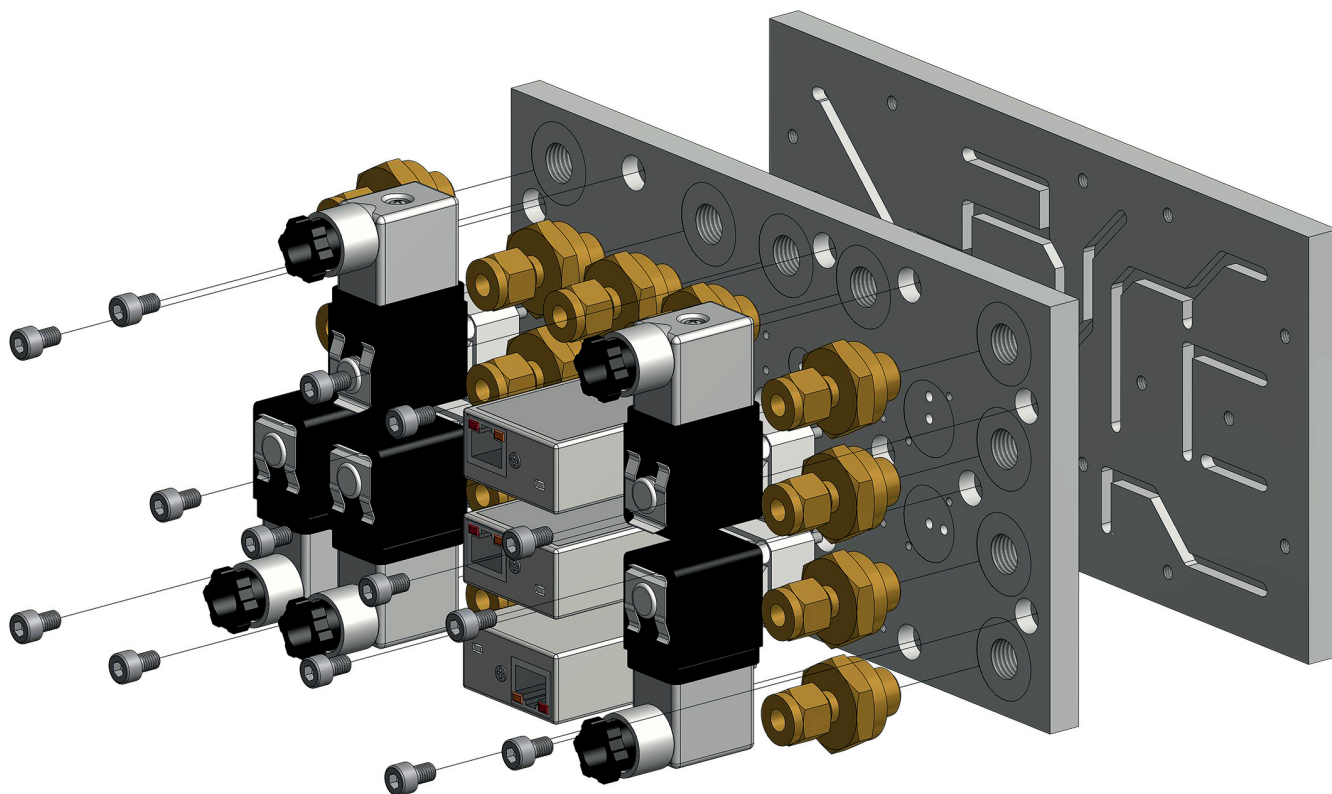


Figure S2. Exploded view of the gas flow circuit board, showing solenoid shut off valves, mass flow controllers, and the pressure controller. The screwed-in brass metal connectors serve two purposes: i) they connect the external gas supply to the circuit, the humidifier and eventually to the external pump; ii) they act as sockets for the environmental sensors and therefore allow their quick replacement in case of a failure.