

Interactive comment on “Retrieval of aerosols over Asia from the Advanced Himawari Imager: Expansion of temporal coverage of the global Dark Target aerosol product” by Pawan Gupta et al.

Title changed to: “Applying the Dark Target aerosol algorithm with Advanced Himawari Imager observations during the KORUS-AQ field campaign”

Anonymous Referee #2

In this paper, the authors ran MODIS Dark Target aerosol algorithm on Himawari-8 Advanced Himawari Imager (AHI) for two months and analyzed the retrievals for accuracy. Analysis of bias based on comparisons to AERONET and MODIS and characterizing the retrievals as a function of time of the day is presented. The AHI reflectances were averaged into a 20 x 20 square km grid to do aerosol optical depth retrieval. Matchups were done by further aggregating AHI retrievals to 0.25 x 0.25 degree grid space. The authors conclude that the performance of AHI AOD retrieval is similar to that of MODIS with some large significant biases that are not fully understood. The authors also conclude, by raising several questions in the end, that this work is preliminary and much more work needs to be done to fully transform the MODIS DT AOD algorithm to AHI and resolve issues that arise from the differences in sun-satellite geometries.

Thank you for your comments. Here just one small corrections here, for AHI & AERONET comparison, actual AHI pixel level retrievals are used to match with AERONET whereas 0.25x0.25 degree grids were used to compare with MODIS data. We have revised the text make this point clear for the reader.

Given the preliminary nature of this work, I encourage the reviewers to complete the work and re-submit the paper.

Developing an algorithm for a new sensor is a multi-stage effort, and even porting a known algorithm to a new instrument requires multiple steps. The first step in the process is to modify algorithms to receive new inputs and handle new geometry. Does the ported algorithm show any skill at all? If so, that provides motivation to continue the process. Disseminating the results of this first step is interesting to the remote sensing community who may be struggling with their own attempts to port an algorithm or develop a new algorithm for a GEO sensor. This is why we are submitting this paper now, before a final operational algorithm is achieved and before we have answers to all the questions.

We followed a similar route when describing the porting of the DT algorithm from MODIS to VIIRS. There was an initial paper published in 2015 (Levy et al., 2015) in AMT that showed significant bias with the MODIS record, and left several questions unanswered. We are following up now with a manuscript that will be submitted before the end of the calendar year that describes the final DT VIIRS operational algorithm and addresses those unanswered questions.

Remote sensing groups need to share preliminary results at all stages of development in order to advance the science of remote sensing faster. We are always very grateful to read papers by other groups that acknowledge lingering issues and show retrieval development at a preliminary stage. We feel that the work we present in this manuscript is a solid evaluation of the first attempt of porting DT to AHI. For this evaluation we leveraged the data made available during the KORUS-AQ field campaign. This was a special circumstance that allowed us to acquire AHI data and cloud mask in non-operational terms, at non-operational resolutions. This work primarily uses the data from the field campaign period and therefore the scope of the work is limited to the available data sets of that period. Furthermore, the KORUS-AQ data sets limit us to how much further we could go. We are currently working on implementing the algorithm with high resolution operationally-appropriate data, modifying cloud masks, and working to understand and answer the questions raised in this work. It may take years to move to operational status and to answer the lingering questions. In the meantime we don't want to sit on the experience we already have.

Some chief concerns I have are:

(1) A lot of spatial and temporal averaging is done rendering the advantages of a geostationary satellite useless. When the goal of a satellite in a geostationary satellite is to make frequent observations at high spatial resolution, why not demonstrate the usability of products at those resolutions?

We agree that the goal of the geostationary sensors is to obtain frequent aerosol measurements, to characterize short-lived aerosol events such as plumes, but also to characterize diurnal patterns in the aerosol that may be introduced from diurnal human, cloud or meteorological activity. Note that the DT algorithm inherently retrieves aerosol properties with a grid box that is substantially larger than the native resolution of the sensor. For MODIS with 500 m pixels, the standard retrieval grid box is nominally $10 \times 10 \text{ km}^2$. This is not averaging. This is inherent in the retrieval to eliminate pixels that are not optimal for retrieval and still represent the spatial distribution of aerosol properties. The grouping into retrieval boxes and elimination of sub-standard pixels helps to produce a robust and accurate product. For the AHI KORUS-AQ data set that we are using, the native resolution is 2 km. Rather than following the MODIS ratio between native pixel and retrieval box, which would have produced $40 \times 40 \text{ km}^2$ products for KORUS-AQ AHI, we have cut the size to $\frac{1}{4}$ of MODIS and implemented a $20 \times 20 \text{ km}^2$ retrieval box. Yes it is large, but should still resolve the major aerosol events. As we move towards an operational algorithm, we will explore finer spatial resolution retrieval boxes, as we did with MODIS that now also has a $3 \times 3 \text{ km}^2$ product. We note, that the MODIS 3 km product has proven to be less accurate than the 10 km product, and with a high bias.

The averaging to find the mean diurnal cycle is meant to discern systematic diurnal signals in the aerosol products, perhaps caused by sources or meteorology with specific diurnal signatures with the short 2-month observational period. Some examples are shown in Figure 12 and are discussed in the text. Discerning these mean diurnal signals are also a valuable contribution from a GEO sensor.

We thank the reviewer for pointing out that by seeking mean diurnal cycles, we had missed demonstrating the power of GEO to replicate diurnal variation at fine temporal scales. In the revised version we now also compare the retrieved AOD with AERONET across several days of measurements, preserving the native temporal resolution with no averaging. This plot is Figure 8.

We also provide additional timeseries over other 46 stations as supplement material (same as Figure 8). We have revised the text and title to make it clearer.

(2) Some large biases in AHI AOD vs. AERONET at some stations not explained

We purposely showed stations where the retrieval was biased, as well as one station where the retrieval was not biased. We do not want to hide the issues from the reader, but not all issues have been resolved, and this is one of the important issues that we raise. In the text we offer several suggestions as to why the bias, but we cannot make a conclusion using this limited data set.

(3) The AHI AOD artifacts near the terminator as well as sunglint region are noted. However, analysis of the bias between AHI and AERONET AOD as a function of various parameters (surface reflectance, view angle, solar angle, etc.) not carried out. The science in this paper is not new to rush towards a publication. The authors can take time to process additional data to cover different seasons and atmospheric conditions and conduct a more thorough investigations

We agree that additional analysis is required to explain certain artifacts in AHI retrieved AODs and as reviewers rightly pointed out that this required to include data from other seasons and for longer time period. Since, this paper mainly focus on our initial attempt to support a field campaign therefore, those additional analysis could not be performed. As the project move into more operational setting where routine AHI retrieval will become available, we plan to address those issues in our sub-sequent work.

We make a note about this effort in the revised text.

(4) An important concern that I have is that the authors do not bring in the discussion of spectral surface reflectance ratios and how the ones adapted from MODIS are suitable or not for a geostationary satellite. The viewing conditions (geometries) are quite different for geostationary satellite compared to a polar-orbiting satellite and the surface characterization need to be understood from this perspective

We agree with the reviewer that the surface reflectance characterization is an important aspect of the DT AOD retrieval algorithm. As discussed on (L302-305) in the manuscript, we have not modified the surface reflectance and used same as used in MODIS. We also mentioned that further research is required to accommodate change in wavelength, change in viewing geometry, and more specific to the region.

Additional text is included to identify these issues.

(5) Processing data from other time periods will also provide insights into cirrus cloud contamination, pixel screening for snow/ice etc. I applaud the work done by the authors in adapting MODIS AOD algorithm to AHI. There is no depth in the work, however. There are many groups doing similar work with much advanced state of understanding and maturity. For example, similar work done more thoroughly by other groups such as the GOCI aerosol retrievals is not mentioned in the paper (Evaluation of VIIRS, GOCI, and MODIS Collection 6 AOD retrievals against ground sunphotometer observations over East Asia by Q. Xiao, H. Zhang, M. Choi, S. Li, S. Kondragunta, J. Kim, B. Holben, R.C. Levy, and Y. Liu, Atmospheric Chemistry and Physics, 2017). I find the work to be incomplete and only in a very C2 AMTD Interactive comment Printer-friendly version Discussion paper preliminary state. I recommend the authors to complete the processing to cover all four seasons and re-analyze the data to fully understand the retrievals at their native resolution and various sources of uncertainties, chief among them contributions from an inadequate characterization of surface. My recommendation, therefore, is for the paper to be resubmitted after additional work is completed.

As explained above, there is value in publishing at each stage in an algorithm development, even when not all questions can be answered. The data set used here cannot be expanded to a full year. It is limited to KORUS-AQ. In the future we will work with operational data sets, but analysis will take years to complete. The GOCI work and that reference in particular (Xiao et al. 2017) are very important, but none of the products in that reference were newly applied to their respective sensors. Each had a list of previous publications describing products, development and at least preliminary validation. We cannot compare the work we present here with the Xiao et al. (2017) paper. A better comparison of the stage of our work here to GOCI work would be Park et al. (2014), where the new GOCI retrieval is compared to just 2 months of collocated AERONET in conjunction with evaluating a pollution transport model. Another GOCI paper does another evaluation with AERONET using just 3 months of collocations (Choi et al., 2015). The Choi et al. (2015) goes into greater analysis, but in a very limited geographical region. Our interest is the full disk observed by AHI. The point we want to make is that it is not unusual to publish preliminary results from a limited data set with a new algorithm, as the GOCI group demonstrates.

There is substantial analysis in the submitted study.

1. There is preliminary validation against AERONET
2. There is comparison with MODIS, both Terra and Aqua showing differences between AHI and MODIS is roughly the same as the differences between MODIS and MODIS
3. (1) and (2) demonstrate that the ported DT algorithm is making overall sense when applied to AHI. Limitations and discrepancies are noted.
4. The full disk is evaluated, not just a small region highlighting Korea-east China-Japan
5. The ability of the retrieved AHI product to capture the mean diurnal cycle over the 2-month observation period at specific stations is shown, so validation is not just about a scatter plot, but in the ability of the AHI product to resolve the mean diurnal cycle at a location.
6. Now, in the new figure, the full KORUS-AQ time series shows how well the AHI product follows the AERONET time series at specific stations, with no averaging. There are offsets, but the hour-by-hour, day-by-day signature is captured.

7. The artifact at the terminator (low solar zenith angle) is identified, and the differences in geometry between GEO and LEO (AHI and MODIS) shows that these low zenith angles were never encountered by MODIS. Thus, moving DT to GEO is pushing DT to completely untested geometries, and those geometries have unresolved issues. This is a significant finding.
8. The mean diurnal cycle in AOD is investigated at specific locations, some of which are obviously artifacts, but some are physical. This demonstrates the strength of GEO to characterize physical diurnal cycles that can be linked to sources or meteorology at the regional level.
9. Finally, all of this is packaged up and discussed in a manner that provides insight to other remote sensing groups that may be trying to port their LEO algorithms to GEO, or to users who may be starting to use GEO AOD for the first time and should become aware of potential issues in the full disk retrieval.

This work is sound, substantial, innovative and important. It should be published for the benefit of the developer and user communities.

1 **Applying the Dark Target aerosol algorithm with Advanced Himawari Imager**
2 **observations during the KORUS-AQ field campaign**

3
4 Pawan Gupta^{1,2}, Robert C. Levy³, Shana Mattoo^{3,4}, Lorraine A. Remer⁵, Robert E. Holz⁶,
5 Andrew K. Heidinger⁷

6
7 [1] {STI, Universities Space Research Association (USRA), Huntsville, AL, USA}

8 [2] {NASA Marshall Space Flight Center, Huntsville, AL 35758, USA}

9 [3] {NASA Goddard Space Flight Center, Greenbelt, MD 20771, USA}

10 [4] {Science Systems and Applications, Inc, Lanham, MD 20709, USA}

11 [5] {JCET, University of Maryland – Baltimore County, Baltimore, MD 21228, USA}

12 [6] {SSEC, University of Wisconsin-Madison, WI 53707, USA}

13 [7] {NOAA Advanced Satellite Product Branch, Madison, WI 53707, USA}

14
15 Correspondence to: Pawan Gupta (pawan.gupta@nasa.gov)

16
17 **Abstract**

18
19 For nearly two decades we have been quantitatively observing the Earth’s aerosol system
20 from space at one or two times of the day by applying the Dark Target family of
21 algorithms to polar-orbiting satellite sensors, particularly MODIS and VIIRS. With the
22 launch of the Advanced Himawari Imager (AHI) and the Advanced Baseline Imagers
23 (ABIs) into geosynchronous orbits, we have the new ability to expand temporal coverage
24 of the traditional aerosol optical depth (AOD) to resolve the diurnal signature of aerosol
25 loading during daylight hours. [The Korean-United States – Air Quality \(KORUS-AQ\)](#)
26 [campaign taking place in and around the Korean peninsula during May-June 2016](#)
27 [initiated a special processing of full disk AHI observations that allowed us to make a](#)
28 [preliminary adoption of](#) Dark Target aerosol algorithms [to](#) the wavelengths and

resolutions of AHI. [Here, we describe the adaptation](#) and show retrieval results from AHI for [this two-month period](#). The AHI-retrieved AOD is collocated in time and space with existing AErosol RObotic NETwork stations across Asia and with collocated Terra- and Aqua-MODIS retrievals. The new AHI AOD product matches AERONET, as well as does the standard MODIS product, and the agreement between AHI and MODIS retrieved AOD is excellent, as can be expected by maintaining consistency in algorithm architecture and most algorithm assumptions. Furthermore, we show that the new product approximates the AERONET-observed diurnal signature. Examining the diurnal patterns of the new AHI AOD product we find specific areas over land where the diurnal signal is spatially cohesive. For example, in Bangladesh the AOD increases by 0.50 from morning to evening, and in northeast China the AOD decreases by 0.25. However, over open ocean the observed diurnal cycle is driven by two artifacts, one associated with solar zenith angles greater than 70° that may be caused by a radiative transfer model that does not properly represent spherical Earth, and the other artifact associated with the fringes of the 40° glint angle mask. [This opportunity during KORUS-AQ provides encouragement to move towards an operational Dark Target algorithm for AHI](#). Future work will need to re-examine masking including snow mask, re-evaluate assumed aerosol models for geosynchronous geometry, address the artifacts over the ocean and investigate size parameter retrieval from the over ocean algorithm.

1.0 Introduction

Atmospheric aerosols, small liquid or solid particles suspended in the atmosphere, play a key role in Earth's energy balance, cloud physics, geochemical cycles and air quality/public health (Boucher et al., 2013; Rosenfeld et al., 2014ab; Seinfeld et al., 2016; Jickells et al., 2005; Yu et al., 2015; Lim et al., 2012). These particles originate from both human activity and natural processes, and they can cover vast regions of the globe. Observations from satellite sensors provide the best means for monitoring and quantifying the extent and transport of large-scale aerosol events (Kaufman et al., 2005; Yu et al., 2012), and provide some characterization of aerosol particle properties (Remer et al., 2005; Torres et al., 2013; Kalashnikova and Kahn, 2006; Kahn and Gaitley 2015).

Especially since the launch of NASA's Earth Observing System (EOS) and similar satellites by international agencies, the community has benefitted from nearly two decades of quantitative measures of the global aerosol system. While both passive and active sensors have contributed to our understanding of the global aerosol system, here we focus on only passive sensors. These, such as the MODerate resolution Imaging Spectroradiometer (MODIS) (Levy et al., 2013; Hsu et al. 2013; Lyapustin et al., 2011), the Multiangle Imaging Spectro-Radiometer (MISR) (Diner et al., 1998; Martonchik 1998; Kahn et al., 2010), the Ozone Monitoring Instrument (OMI) (Torres et al., 2013), and POLarization and Directionality of the Earth's Reflectances (POLDER) (Tanré et al., 2011) have provided instantaneous measures of aerosol loading, particle size, particle absorption and aerosol type across the globe. The community has used these data to calculate decadal statistics of aerosol climatology, seasonal and monthly statistics, quantitative measures of intercontinental aerosol transport and fertilization of ecosystems (Remer et al., 2008; Yu et al., 2012, 2013, 2015). These satellite aerosol products have been used to estimate aerosol radiative effects and climate forcing, associations between aerosols and cloud micro- and macrophysics, precipitation, air quality and public health, and have provided critical constraints on global climate modeling (Zhang et al., 2005; Koren et al. 2005; Lin et al. 2006; Wang and Christopher, 2003; Quaas et al., 2009; Patadia et al., 2008; to give just one early example of each application).

The sensors mentioned above all have been launched on polar orbiting satellites in low earth orbit (LEO). Such satellites are sun synchronous, passing over each location on Earth at approximately the same local solar time each day. A LEO sensor imaging a broad swath of Earth will image every spot on Earth, and thus achieve full global coverage in 1 or 2 days. However, each spot on Earth is only viewed once per day in daylight and once per day at night, always at approximately the same local solar time. In contrast a geosynchronous (GEO) satellite orbits at a high altitude above Earth, matching the same period as the Earth's rotation. A sensor on a GEO satellite can scan the full or partial portion of Earth's face presenting to the satellite. Neither the sensor nor the Earth appear to move in these images although the terminator between day and night on the Earth appears to move from east to west across the image over time. A GEO imager

always views the same Earth locations across approximately 1/3 of the Earth, and cannot by itself provide full global coverage. However, a sensor on a GEO satellite can provide information on the aerosol in any viewed location as a function of time of the day, enabling monitoring of the diurnal cycle.

For about a decade there has been a publicly available operational aerosol product derived from a GEO sensor. This is the GOES Aerosol Smoke Product (GASP) (Prados et al., 2007), where GOES stands for Geostationary Operational Environmental Satellite. GASP provides aerosol optical depth for the daylight section of the continental United States at 4 km spatial resolution every 30 minutes in near real time, and the data is archived. The sensor has only five channels, one spectrally broad channel (0.52-0.71 μm) in the visible and four in the near to thermal infrared. The aerosol retrieval algorithm makes use of the infrared channels for cloud masking, but must acquire all of its aerosol information from a single visible channel. The lack of a channel in the shortwave infrared (e.g. 2.1 or 2.2 μm) prohibits application of an EOS-era Dark Target retrieval (Kaufman et al., 1997; Levy et al., 2007) and the lack of any channel in the blue eliminates the possibility of a Deep Blue retrieval (Hsu et al. 2004, 2013). Thus the GASP retrieval is handicapped by the relative primitiveness of the GOES-13 sensor. Even so, aerosol optical depth (AOD) retrievals from GASP collocated and compared with AOD measurements from the AERosol Robotic NETwork (AERONET; Holben et al. 1998) at 10 sites in the northeastern U.S. and Canada showed reasonable agreement. Regression of GASP and AERONET AOD derived correlation of 0.79, rms difference of 0.13, and absolute bias of less than 30% for larger AOD (e.g. $\text{AOD} > 0.1$). Validation in the southeast and western U.S. was less good. The GASP validation statistics are reasonable, but not as good as those produced by MODIS AOD retrievals at the same AERONET locations. The main point of GASP, though, is not its absolute accuracy, but that it provides quantitative information on the diurnal cycle of aerosol across the continental United States and southern Canada.

We are now entering a new era in GEO observations. With the launch of the Advanced Himawari Imager (AHI) (Yu and Wu, 2016) and the Advanced Baseline Imager (ABI) on

GOES-16 and GOES-17 (Kalluri et al., 2018), we have sensors in GEO orbit with spectral capability similar to MODIS. AHI has 16 bands, including three in the visible and another in the SWIR. ABI also has 16 bands, but distributed differently across the visible to the SWIR. This spectral capability combined with nominal spatial resolution 0.5 to 2 km creates opportunity for aerosol retrievals that can advance beyond what GASP could produce. Aerosol algorithms developed and implemented by the agencies responsible for the operations of the GEO satellites are or will be produced operationally and made public. These include the Japanese Meteorological Agency (JMA) for AHI on Himawari (Uesawa, 2016) and the National Oceanographic and Atmospheric Agency (NOAA) for ABI on the GOES-R series. In addition to these official operational products, other algorithms have been developed that make use of the new generation of GEO observations for aerosol retrievals, especially for AHI data (Sekiyama et al., 2015; Yumimoto et al., 2016; Lim et al., 2016, 2018ab; Zhang et al., 2018; Yoshida et al., 2018; Yang et al., 2018; Shi et al., 2018; Yan et al., 2018). Some of these alternative aerosol products are research algorithms for specific purposes, while others could be of general interest and could be made public.

Because the capabilities of the new GEO sensors replicate the important spectral and spatial capabilities of the MODIS sensors, the MODIS Dark Target (DT) algorithms over land and ocean (Remer et al., 2005; Levy et al., 2010, 2015, 2018; Gupta et al., 2016) can be applied to AHI or ABI observations with only minor adjustments. The expectation is that the resulting aerosol product will match the original MODIS product in terms of accuracy and availability (number of retrievals). More than providing just another alternative aerosol product to the community, application of the traditional DT algorithm to GEO sensors offers continuity with a nearly 20-year well-studied, validated, and accepted aerosol product. The continuity of a DT AHI or ABI algorithm means that there could be an accurate MODIS-like aerosol product that resolves the day time diurnal cycle, providing a well-understood quantitative measure of aerosol loading at fine temporal resolution at the large regional scale.

In this study we present the results of the first attempt at porting the MODIS DT aerosol algorithm to the AHI sensor on the Himawari-8 geosynchronous satellite. The study makes use of a special limited data set of AHI spectral reflectances, prepared for research purposes during the KORUS-AQ field campaign during May-June 2016. The purpose of this work is to test whether there is any skill in applying the DT to AHI, and whether the goal of a continuous time series of retrieved AOD from MODIS to AHI has any probability of success. Furthermore, the study will identify issues that arise from the new geometry, and demonstrate the ability of the new sensor to resolve aerosol signals using the DT algorithm that previous sensors could not.

The AHI inputs and the algorithm will be described in Section 2, with emphasis made on how the AHI algorithm differs compared to the MODIS implementation. Section 3 will present results and compare these with standard MODIS retrievals and collocated ground-based observations. Section 4 will explore the AHI aerosol product's diurnal cycle at AERONET stations for validation, and then question how well the diurnal mean AOD inferred from once-a-day LEO observations compare with a truer diurnal mean compared from observations made at finer temporal resolution. Finally, results will be summarized and discussed in Section 5.

2.0 Data and retrieval algorithm

2.1 AHI sensor characteristics

The AHI was first launched on the Himawari-8 satellite in 2014 and became operational in July 2015. It is in geosynchronous orbit over the equator at 140.7° East. The second AHI was launched on the Himawari-9 in November 2016 and remains in a standby mode. The instrument has the capability to image a mesoscale region every 30 seconds while providing full disk coverage every 10 minutes. In this study, the full disk data have been used. The data to be presented here were obtained from the University of Wisconsin atmospheric Science Investigator lead Processing System (SIPS) which processed the NOAA's operational cloud operating system – extended (CLAVR-x) which provides

radiance values at all 16 channels at a consistent 2km resolution as a diagnostic/byproduct of the cloud retrieval. SIPS made the AHI data available specifically to support the KORUS-AQ campaign and for research purposes, and thus only two months of data were available. For this analysis we processed the DT algorithm at 1-hour temporal resolution from 0000 UTC to 0800 UTC, 9 full disk images per day. Figure 1 shows an example of the AHI full disk image. AHI wavelengths used in the DT aerosol retrieval along with their spatial resolution are shown in Table 1, and compared with their counterparts from the MODIS and Visible InfraRed Imaging Radiometer Suite (VIIRS) instruments. From Table 1 we see that AHI nearly matches MODIS and VIIRS, wavelength by wavelength in the bands needed by the DT algorithm, except for missing the 1.24 μm band that is used in the aerosol retrieval over ocean and also in masking snow/ice over land and sediments in the ocean. It is also missing the 1.38 μm channel that the DT aerosol algorithm has relied on for identifying and masking thin cirrus. For the bands that overlap MODIS, although close in spectral resolution, they do not exactly match. For this reason the algorithm Look Up Tables (LUT), gas absorption corrections etc. cannot be applied directly from the current MODIS algorithm and must be calculated specifically for AHI.

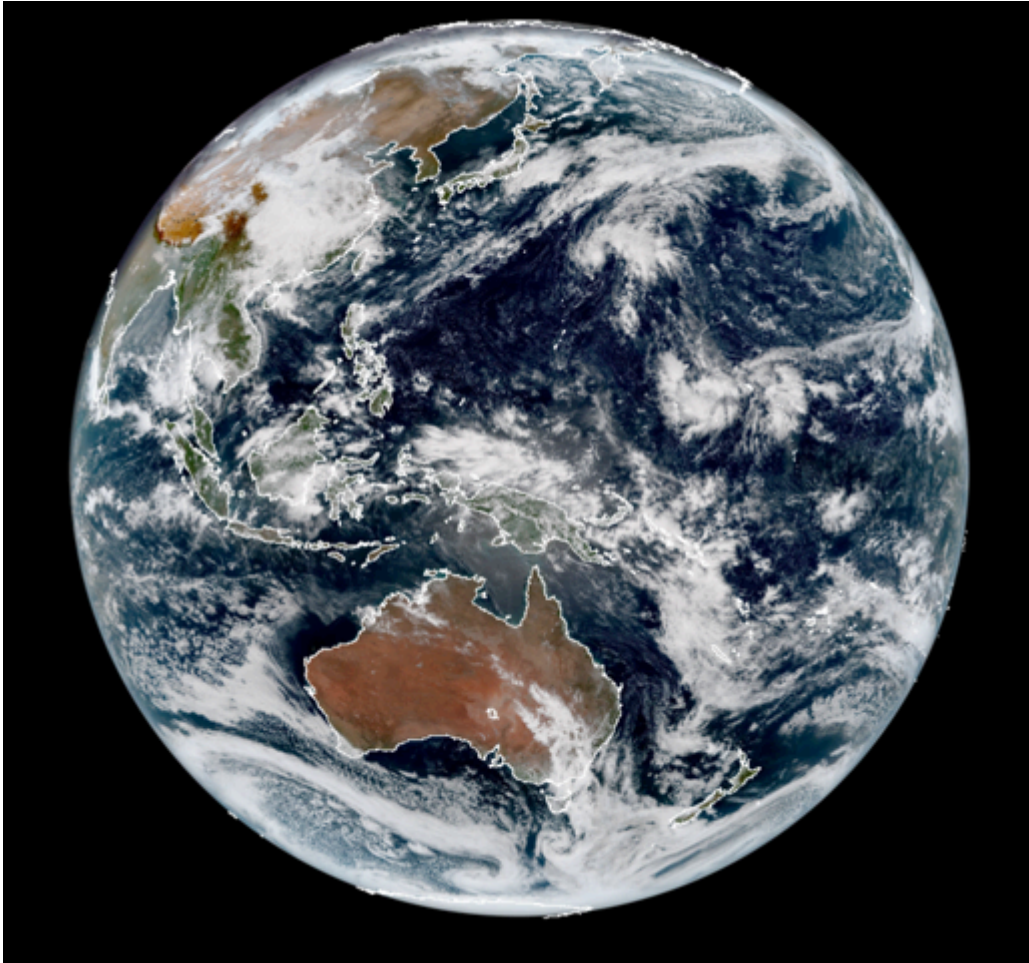


Figure 1. Full disk true color image from AHI using the 0.64 μm , 0.51 μm , 0.47 μm channels. The image is taken on October 20, 2018 at 02:10 UTC.

AHI's [native](#) spatial resolution is coarser than MODIS's, but comparable to VIIRS. Note, however, that the spatial resolution noted in Table 1 refers to the subsatellite point. The spatial resolution of Earth scenes at the edges of MODIS and VIIRS swaths or at the edge of the AHI disk will have spread from their subsatellite value. MODIS pixels spread by 4 times their nadir value, and VIIRS pixels spread by 2 times. AHI pixels remain 1-3 times their size at the subsatellite point for all but the extreme edge of the full disk image. [Also note that the actual KORUS-AQ data used in this study have reduced spatial resolution in all channels \(2 km\).](#)

Table 1. MODIS, VIIRS and AHI wavelengths in μm used directly in the DT algorithm (**bold**) and subsatellite point spatial resolution in kilometers. The table presents native resolution of sensors, but this study uses a special run of AHI where all spectral channels were reduced to a resolution of 2 km.

MODIS	VIIRS	AHI
0.47 /0.5	0.49 /0.75	0.47 /1.0
0.55 /0.5	0.55 /0.75	0.51 /1.0
0.66 /0.25	0.67 /0.75	0.64 /0.5
0.86 /0.25	0.86 /0.75	0.86 /1.0
1.24 /0.5	1.24 /0.75	
1.38 /0.5	1.38 /0.75	
1.61 /0.5	1.61 /0.75	1.61 /2.0
2.11 /0.5	2.25 /0.75	2.25 /2.0

Given that the wavelengths and spatial resolution of AHI differ from the heritage DT aerosol algorithm means that while the structure, heritage and experience of the MODIS DT algorithm can be adapted for AHI to maintain as much continuity as possible, the resulting AHI algorithm and product will not be an identical twin.

2.2 Dark Target AHI aerosol algorithm and research product

The DT aerosol algorithms are a family of algorithms, based on the original two algorithms that retrieved aerosol over ocean and over land from the MODIS instruments aboard NASA's Terra and Aqua satellites. Levy et al. (2010, 2015, 2018) and the on-line Algorithm Theoretical Basis Document (<https://darktarget.gsfc.nasa.gov>) describe these algorithms in depth. Here we only provide an overview in order to highlight the differences between the original algorithms and the DT algorithm applied to AHI inputs. DT algorithms should not be confused with other operational NASA aerosol algorithms applied to MODIS inputs (e.g. Deep Blue; Hsu et al., 2013 and MAIAC: Lyapustin et al.,

2011). Both DT ocean and DT land procedures use Lookup Tables (LUTs). LUTs are created by using radiative transfer (RT) code to simulate spectral top-of-atmosphere (TOA) reflectance for expected conditions of aerosols over a theoretical rough ocean surface or black land surface. These LUTs assume intrinsic physical and optical properties (size, shape, refractive index) as well as total column loading of atmospheric aerosols.

The original DT retrieval relies on seven reflective solar bands for aerosol retrieval and one for cirrus detection and masking (Table 1). Additional bands are used for tasks like cloud masking, snow identification, etc. The algorithm adapted for AHI makes use of 6 bands for the aerosol retrieval that are similar, but not exactly the same as the original MODIS ones. The differences require new corrections for trace gas absorption in the channels, and the calculations of new LUTs. It is thus impossible to exactly duplicate the DT algorithm as it is ported from sensor to sensor. However, the basic physical assumptions, RT codes, algorithm architecture, and intrinsic physical, and optical properties used to calculate the LUTs are the same in the AHI DT algorithm, as they are in the current MODIS and VIIRS DT algorithms.

The greatest consequences to missing the 1.24 μm band is in sediment masking for ocean and snow/ice masking for land. New techniques that compensate for the missing information were applied to the AHI data. For sediment masking, we follow Li et al. (2003) as is standard for the DT algorithm, but substitute the 1.61 channel for the standard 1.24 μm channel. Physically this substitution should work, as both channels are expected to be black in sea water, which provides the background from which sediments are flagged, but the substitution has not yet been well-vetted. We have not yet devised a substitute for the over land snow/ice mask. The data analyzed and shown here are from May and June 2016, months when no snow is expected in the domain. Devising, testing and implementing an AHI snow mask will be needed before the DT AHI algorithm can be applied year round. In terms of the direct aerosol retrieval, the lack of the 1.24 μm information only affects the over ocean algorithm slightly, as the information from the

0.86 μm and the two longer wavelengths compensate for its absence (Tanré et al., 1996; 1997).

The loss of the 1.38 μm channel may have more pronounced consequences as it proved to be the first line of defense against thin cirrus contamination in the aerosol product (Gao and Kaufman, 1995). In this initial adaptation of the algorithm to AHI we have not implemented any alternative test for thin cirrus, and therefore cirrus contamination is expected in the results shown here. For clouds other than thin cirrus, we apply an internal cloud mask to the input radiances, similar to the traditional MODIS aerosol cloud mask. This mask is based on spatial variability of groupings of 3x3 input radiance pixels (Martins et al., 2002), and the same thresholds were used. However, while the MODIS aerosol cloud mask also incorporates specific tests from the standard MODIS cloud mask (MOD/MYD35: Frey et al. 2008) that are based on thermal infrared channels, those products are not available for AHI. No direct substitution is employed to compensate. The absence of these specific external cloud mask tests will mostly affect high cold cloud identification, and again this suggests that the results shown here will be affected by cirrus contamination. Because alternative methods have not been developed for masking clouds, and the alternative method for identifying sediments has not been vetted to the same extent as the original MODIS DT masking techniques, the possibility of contamination from these features affecting the aerosol retrievals is higher than expectations based on the MODIS heritage.

The traditional MODIS DT algorithm aggregates 20 x 20 pixels at 0.5 km resolution to form a “retrieval box”. These 400 pixels are screened for clouds, glint, sediments, improper land surfaces and other elements. Then the remaining pixels that have escaped the masking are sorted from high to low reflectance, and the darkest and brightest “good” pixels are arbitrarily eliminated. Darkest is defined as the darkest 20% over land and 25% over ocean. Brightest is defined as the brightest 50% over land and 25% over ocean. At that point, the spectral reflectance from those pixels that remain after the 2-tiered elimination process are averaged to represent the mean spectral reflectance in the nominal 10 x 10 km^2 retrieval box. The algorithm proceeds with the inversion using that

representative spectral reflectance and produces one set of aerosol properties
representative of the retrieval box.

The AHI retrieval algorithm adapts this MODIS process for its coarser spatial resolution by aggregating 10 x 10 pixels at 2.0 km resolution to create retrieval boxes that have nominal resolution of 20 x 20 km² (at the subsatellite point). The same 2-tier elimination process using modified cloud, sediment, glint etc. masking, and removal of darkest and brightest pixels is applied. Both the MODIS and AHI remove the same percentage of dark and bright pixels. Because AHI starts the process with 100 pixels but MODIS with 400 pixels, there are fewer pixels to remove with AHI, and smaller number of pixels remaining to be used to represent the spectral reflectance in the box with AHI. After the representative reflectances have been calculated there are corrections for gas absorption (H₂O, O₃, CO₂). The result is a single set of spectral reflectances in the six bands that is input to the retrieval algorithm. Additional inputs include ancillary data such as ozone profiles, wind speed and water vapor columns from NOAA's Global Data Assimilation System (GDAS) reanalysis data, and a global land/sea mask generated by CLAVR-x at 2 km resolution.

Whether ocean or land, the DT retrieval searches the pre-computed LUTs to find the best match to the spectral observations. The over land algorithm makes use of measured reflectance at 0.47, 0.66 and 2.1 μm and assumptions about the surface reflectance to determine the aerosol loading and establish the relative weights between two aerosol models, both defined by geographical location and season. Over ocean, the algorithm uses six wavelengths (0.55, 0.66, 0.86, 1.24, 1.61 and 2.13 μm) to determine the aerosol loading and define an aerosol model from one fine mode and one coarse mode, and the relative weight between these modes. There are no restrictions on the distribution of modes by location and season in the ocean algorithm. Once the aerosol model is defined by the weighting between models or modes, the spectral extinction of the aerosol is defined. The retrieved aerosol loading can be translated to AOD at any wavelength because of the known spectral extinction, and all wavelengths are reported in the output. The primary wavelength we will use here is AOD at 0.55 μm . Two measures of aerosol

particle size are given for the over ocean retrieval, Fine Mode Weighting and Ångström Exponent (AE). AHI-retrieved aerosol size parameters will not be examined in this paper. Although the ocean and land retrievals have similarities, the details are different because land surface optical properties are different than ocean. The ocean algorithm calculates a “rough” surface (whitecaps, foam, glitter), which is a function of wind-speed, while the land algorithm assumes quasi-static ratios between blue (0.47 μm), red (0.64 μm), and shortwave infrared (e.g. 2.25 μm) wavelengths. Land surface ratios for the retrievals shown in this study are identical to those used by the standard MODIS Collection 6.1 algorithm. Different wavelengths and different viewing geometry may introduce unexpected uncertainties. Of particular concern is the assumption that LEO land surface ratios will hold for the new GEO view geometry. Previously land surface ratios were found to have only a weak dependence on the viewing geometry encountered by a LEO observation (Levy et al., 2007), but the range of geometries encountered by a GEO instrument are different and require further analysis. Still, the original assumption of predictable surface reflectance ratios is based on the physical linkage between chlorophyll and liquid water light absorption that should continue to transcend Bidirectional Reflectance Distribution Function (BRDF) and other angular effects. In addition to the aerosol properties, DT provides many diagnostics including Quality Assurance and Confidence (QAC).

The new AHI DT algorithm was applied to input AHI full disk radiances, daylight portion of the disk-only. View angles were confined to less than 72 degrees and solar zenith angles were restricted to less than 80 degrees. The period of analysis spans two months (May-June 2016). Given 9 images per day, the data base for analysis thus includes more than 549 disk images of AOD derived from AHI inputs using the new AHI DT algorithm.

2.3 MODIS aerosol products

The AOD retrieved from AHI using the DT retrieval will be compared with the more established and well-characterized DT AOD product from MODIS on board the Terra

and Aqua satellites. Specifically we will be accessing Collection 6.1 Level 2 MOD04 and MYD04 data products, where MOD refers to products derived from Terra MODIS inputs and MYD refers to those derived from Aqua MODIS inputs. Level 2 refers to derived geophysical parameters from the Level 1b geolocated and calibrated measured radiance inputs. Level 2 data are provided in 5 minute cut sections of the orbital image called granules. These images are not gridded, but instead follow directly from the instrument scan as it follows its orbital path. There are many individual aerosol and diagnostic parameters within each MOD/MYD04 file. This study makes use of only one parameter, Optical_Depth_Land_And_Ocean. This parameter combines the retrieved AOD at 0.55 μm from the independent algorithms applied separately over land and ocean, and uses only those retrievals identified with the highest quality (QAC=3 over land and QAC > 0 over ocean). MODIS granules were selected that fall within the daylight portion of the AHI radiances, corresponding to the same days of the AHI images analyzed. Further temporal (± 0.5 hour) and spatial (0.25x0.25 degree) collocations have been performed for specific analysis.

2.4 AERONET aerosol products

AERONET is a global ground network of CIMEL sun-sky radiometers and data processing and analysis software commonly used to evaluate satellite-derived aerosol products (Holben et al., 1998). In this work, only the direct sun measurements will be used. AERONET processes these spectral measurements to derive AOD at the wavelengths corresponding to the direct sun measurements. The AERONET spectral AOD product is a community standard for satellite-derived AOD validation, given that AERONET's AOD uncertainty of 0.01-0.02 (Eck et al., 1999) is sufficiently more accurate and precise than can be expected by any satellite retrieval. The configuration of the spectral bands varies, but typically is centered at 0.34, 0.38, 0.44, 0.50, 0.67, 0.87, and 1.02 μm . Here we use a quadratic log-log fit (Eck et al., 1999) to interpolate AERONET AOD to 0.55 μm to match the AHI AOD product. The typical temporal frequency of direct sun measurements is every 15 minutes. The network consists of hundreds of stations, located globally, across all continents and in a wide variety of aerosol, meteorological and surface type conditions.

Here, we only include stations within the AHI view disk. AOD data from AERONET are reported for three different quality levels: unscreened (level 1.0), cloud screened (level 1.5) and cloud screened and quality assured (level 2.0). We will only use Version 3 Level 2.0 AERONET AODs in this study.

3.0 Comparison with AERONET and MODIS DT

The new AHI DT algorithm was applied to AHI-measured radiances over the full disk (except for extreme viewing and solar angles), daily, through the 9 measurement times (hourly: 0000 to 0800 UTC). We will test this new product by first validating it against collocated AERONET measurements and then comparing it with the well-vetted MODIS DT product.

3.1 Validation against collocated AERONET AOD

The validation procedure requires calculating the spatio-temporal statistics of a collocated AHI-retrieved and AERONET-measured AOD pair (Ichoku et al. 2002; Petrenko et al., 2012; Munchak et al., 2013; Remer et al., 2013, Gupta et al., 2018). Thus, the temporal mean AOD of all AERONET AOD measurements within ± 30 minutes of an AHI scan will be compared with the spatial mean of all [Level 2 AHI-retrieved AOD values within a 0.25x0.25 degree box centered at the AERONET station](#). This method of matching spatio-temporal statistics, in one form or another, has become a standard within the aerosol remote sensing community (Levy et al., 2010; Petrenko et al., 2012; Remer et al., 2013, Huang et al., 2016, Gupta et al., 2018). As new satellite aerosol product types have been introduced, the specifics of the spatio-temporal match-ups have been re-evaluated. For example for the DT MODIS 3 km product different temporal and spatial averaging windows were investigated, with smaller windows chosen to better test the ability of the finer resolution product to capture spatial gradients at less than 10 km scales (Remer et al., 2013). As the DT geosynchronous products mature, we will conduct a similar investigation into better ways to validate the ability of the new products to represent the immediate diurnal cycle of the AOD at an AERONET station. For now, our purpose is to

see if the product from ported the algorithm can match AERONET at a very basic level, and we will use the standard match-up procedure at traditional scales. The validation exercise with AERONET only considers AHI AODs pairs with highest quality AHI retrievals.

From the collection of these ordered pairs of collocated AHI and AERONET AODs a set of correlation and regression statistics will be calculated, assuming that the AERONET AODs are the independent variables and the AHI AODs are the dependent variables. These include number of AOD pairs (N), the correlation coefficient (R), the slope (m) and intercept (I) of the linear regression through the points, the overall mean bias and Root Mean Square Error (RMSE) of the AHI AODs. Also we apply the expected error (EE), based on previous validation of MODIS DT AODs against collocated AERONET (Levy et al., 2013). We show the percentage of AHI AODs that fall within the EE bounds. EE gives us a sense of whether a new product is meeting the standards of the original product, which in itself has become a standard within the aerosol remote sensing community. Another metric that could be used would be the Global Climate Observing System (GCOS) criteria for AOD, which is 0.03 or 10%. This is a more stringent requirement than what we have been able to achieve with the DT algorithm applied to MODIS for 20 years, or to VIIRS. Thus, the GCOS requirement is not shown on the validation plots, as it is certainly out of reach for this first test of DT applied to a GEO sensor.

Figure 2 shows the results of this validation for the over land retrieval, with Fig. 2a showing the scatterplot of the accumulation of all collocations for the duration of the time period investigated, and also specific panels showing the same, but for individual AERONET sites. The specific stations were chosen to represent three different validation situations: when DT is biased high, biased low and unbiased against AERONET. Figure 3 shows the validation statistics calculated for each AERONET location within the AHI domain. Altogether there were 1982 collocations during the period of the study, with a dynamic range spanning AERONET-measured AOD from less than 0.05 to nearly 2. The AHI AODs match AERONET observations with a correlation coefficient of 0.84, a mean

bias of 0.09 and RMSE of 0.20. Approximately 55% of the retrievals fall within the EE that was based on MODIS validation. Figure 3 shows that the distribution of validation statistics varies from station to station, but that correlations tend to be overall high across mainland Asia, while biases, RMSE and percent within MODIS DT Expected Error vary more widely, even within tightly packed local networks. The variability in AHI AOD performance against AERONET over the domains comes from various reasons, including variations in surface reflectance characterization (i.e. different type of land use type), variability in assumed aerosols models within the algorithm and availability of high quality valid AOD retrievals over individual stations. Often AOD is biased high when surface reflectance ratios do not conform to assumptions. Such was the case for many years with urban surfaces, until Collection 6.1 made an alteration (Gupta et al. 2016). Even with that alteration, DT retrievals over Beijing continue to be high (Figure 4). Low biases will occur when the assumed aerosol model is underrepresenting the amount of light absorption of the particles. The land aerosol model used in this region in this season is the moderately absorbing aerosol in May and the non-absorbing model in June. If the aerosols are actually absorbing in June or more heavily absorbing in May in a particular locality, such as at KORUS_UNIST_Ulsan, then the retrieved AOD will be biased low. The DT algorithm is designed for global-scale representation of the aerosol system, which for GEO means full disk retrievals. The goal is to provide the most accurate retrieval at each individual location, but the reality is that on the global scale we cannot fine-tune land surface and aerosol model assumptions for each individual location, and some locations will have products that are biased high and some biased low.

As a comparison, Figure 4 shows a similar set of plots, but for MODIS DT retrievals against AERONET. These collocations were made at the same stations as in Fig. 2, and over the same time period. Both Terra and Aqua are included. First, we see about half as many points as were seen in the AHI collocations because Terra and Aqua MODIS each pass over the area only once per day during daylight hours, while AHI is scanning these sites up to 9 times per day. Second, we notice that MODIS AODs match collocated AERONET AODs about the same as AHI AODs with $R = 0.91$, bias = 0.10, RMSE =

0.19, and with 55% within EE. Only the correlation between MODIS and AERONET is substantially better than between AHI and AERONET.

We see from this limited validation that the AHI-retrieved AOD is sufficiently accurate to represent the aerosol in this region, during this time period, approaching the same validation statistics as the durable MODIS product. [Additional analysis of AHI AOD biases as a function of surface reflectance, aerosol typing, season, and sensor and satellite geometry required data covering a longer time period. We plan to perform a more robust analysis in our ongoing and future research before making the product operational. We will next compare the full overlap of AHI-retrieved AOD with MODIS retrievals, regardless of AERONET.](#)

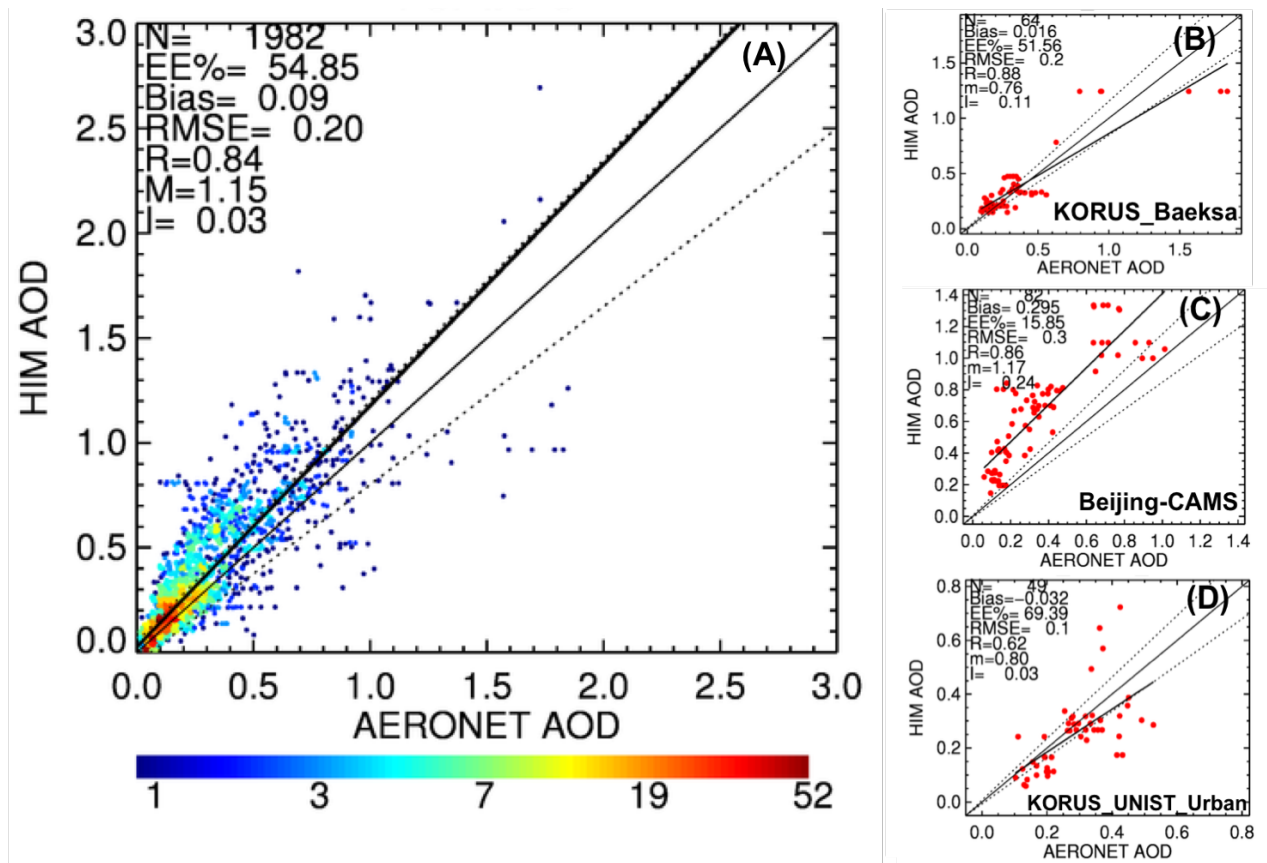


Figure 2. Density scatterplots of retrieved AOD at 550 nm derived from AHI radiances using the new DT AHI algorithm versus AOD at 550 nm spectrally interpolated from measured AODs from AERONET instruments collocated in time and space. Left panel

A. All accumulated collocations in the AHI full disk domain over the 2 months study period May-June 2016. Right panels B, C and D, same for individual stations KORUS-Baeksa and KORUS-UNIST_Ulsan in Korea and Beijing-CAMS in China. Shown in each panel are the number of collocations (N), percent within expected error as determined from MODIS DT analysis (EE%), mean bias (Bias), Root Mean Square Error (RMSE), correlation coefficient (R), slope (m) and intercept (I) of a linear regression equation through the points.

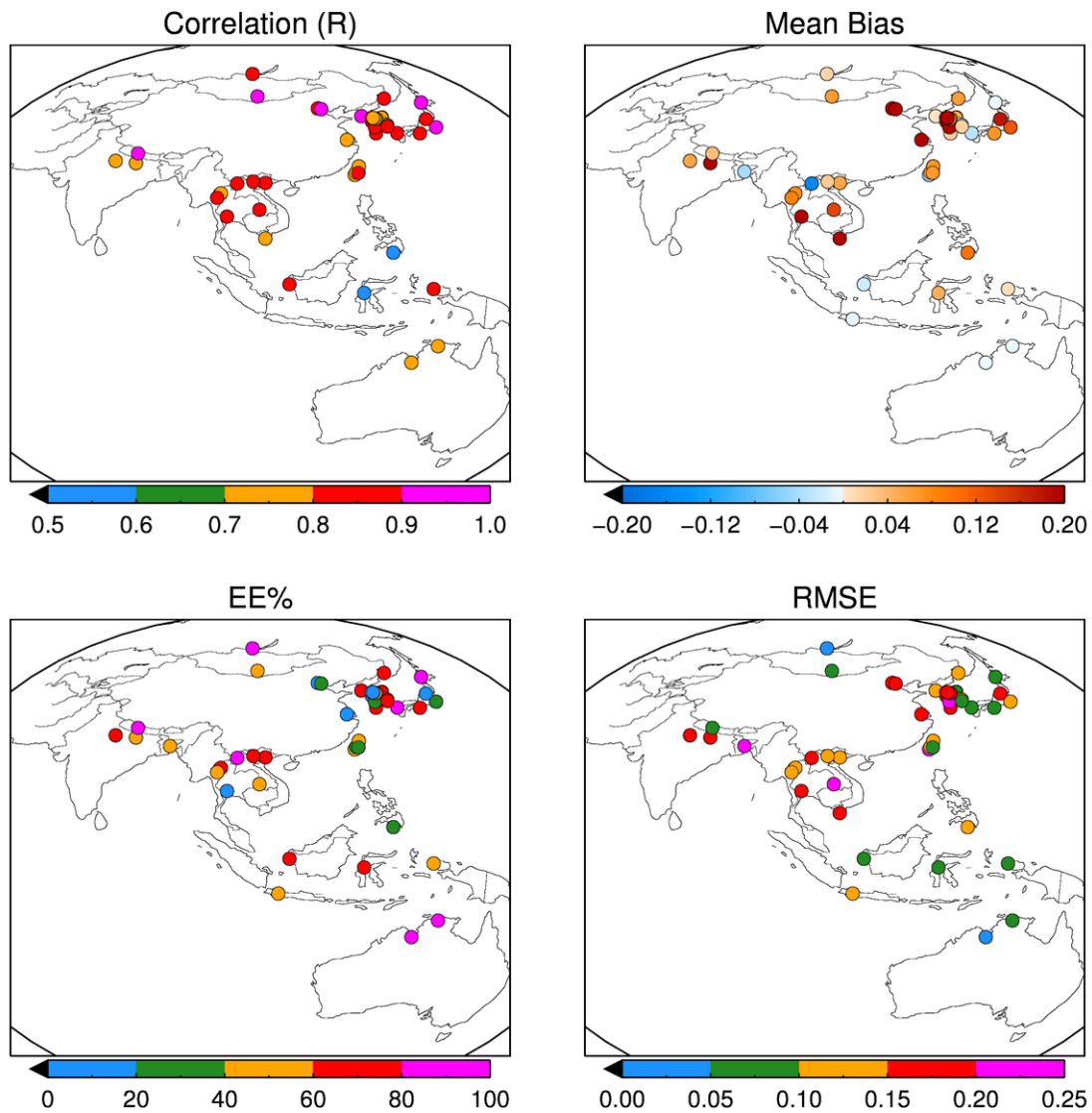


Figure 3. Spatial distribution of the collocation statistics between retrieved AOD at 550 nm derived from AHI radiances using the new DT AHI algorithm versus AOD at 550 nm spectrally interpolated from measured AODs from AERONET instruments collocated in time and space. Shown are upper left: correlation (R); upper right: mean bias; lower left: Percentage within expected error (EE%); lower right: RMSE. Each point represents an AERONET station location.

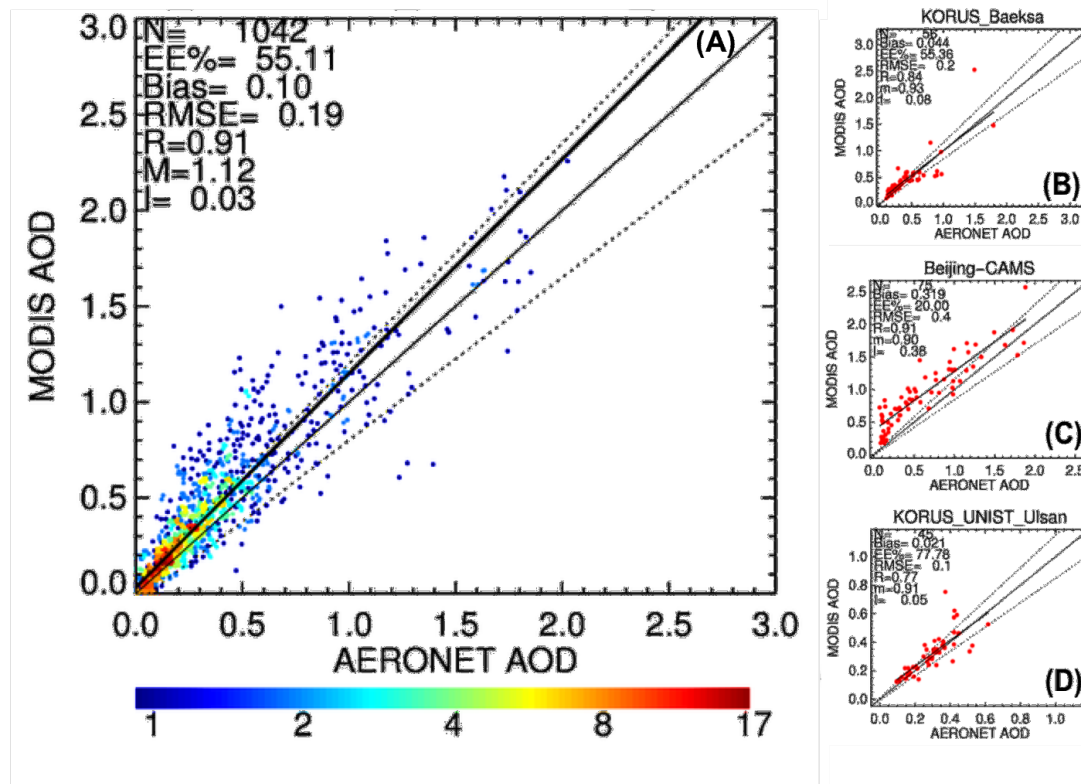


Figure 4. Same as Figure 2 except now density scatterplots of retrieved AOD at 550 nm derived from Terra and Aqua MODIS using the operational DT Collection 6.1 algorithm. This data represents same stations and time period as shown in Fig2.

3.2 AHI versus MODIS DT

To collocate AHI and MODIS AOD, the Level 2 MODIS and AHI AOD data were mapped to a common 0.25° latitude by 0.25° longitude grid for each AHI full disk scan. To fill the grid, we include all MODIS retrievals within ± 30 minutes of the AHI scan. All

the AOD retrievals falling within the above spatial and temporal windows were averaged and statistics are retained for further analysis. It takes MODIS approximately 35-45 minutes to cut a poleward-to-poleward swath across an AHI image, and about 6-7 swaths to transverse east-west across the disk. Thus, in the common grid, at any particular time, while most of the grid has the possibility to include an AHI retrieval when cloud and glint free, only a relatively small portion of the grid will be filled with MODIS retrievals to create the possibility of a collocation.

Figure 5 presents the scatter plots from matching the products of the Terra/Aqua and AHI sensors on the common grid in each subset. Terra and Aqua collocations are kept separate, as are over land and over ocean retrievals. The DT AHI-retrieved AOD and the DT MODIS-retrieved AOD exhibit excellent correlation and similarity, as is expected from applying nearly the same retrieval algorithm to the radiance measurements of both sensors. Over ocean there are over 600,000 match-ups for Terra and over 1 million for Aqua. The geosynchronous AHI retrievals match the polar-orbiting MODIS retrievals with essentially zero bias and RMSE of 0.05 or less. Correlation between the two data sets is 0.93 or greater. Over land, there are over 100,000 match-ups for each satellite with no bias for Terra and 0.02 for Aqua, and RMSE of 0.09 or less. Correlations exceed 0.95 over dynamic ranges from 0.0 to approximately 2.0. The plots in Figure 5 show how well the new AHI-retrieved AOD matches its MODIS counterpart when both AHI and MODIS offer retrievals for a particular time and location. These plots do not address situations in which a retrieval occurs for one satellite, but not the other, and therefore do not address typical retrieval issues such as cloud masking and choosing appropriate situations for the DT algorithm to make a retrieval. There can be also differences in AODs from two sensors due to difference in their viewing geometries. This is something beyond the scope of this paper and will be addressed in subsequent research.

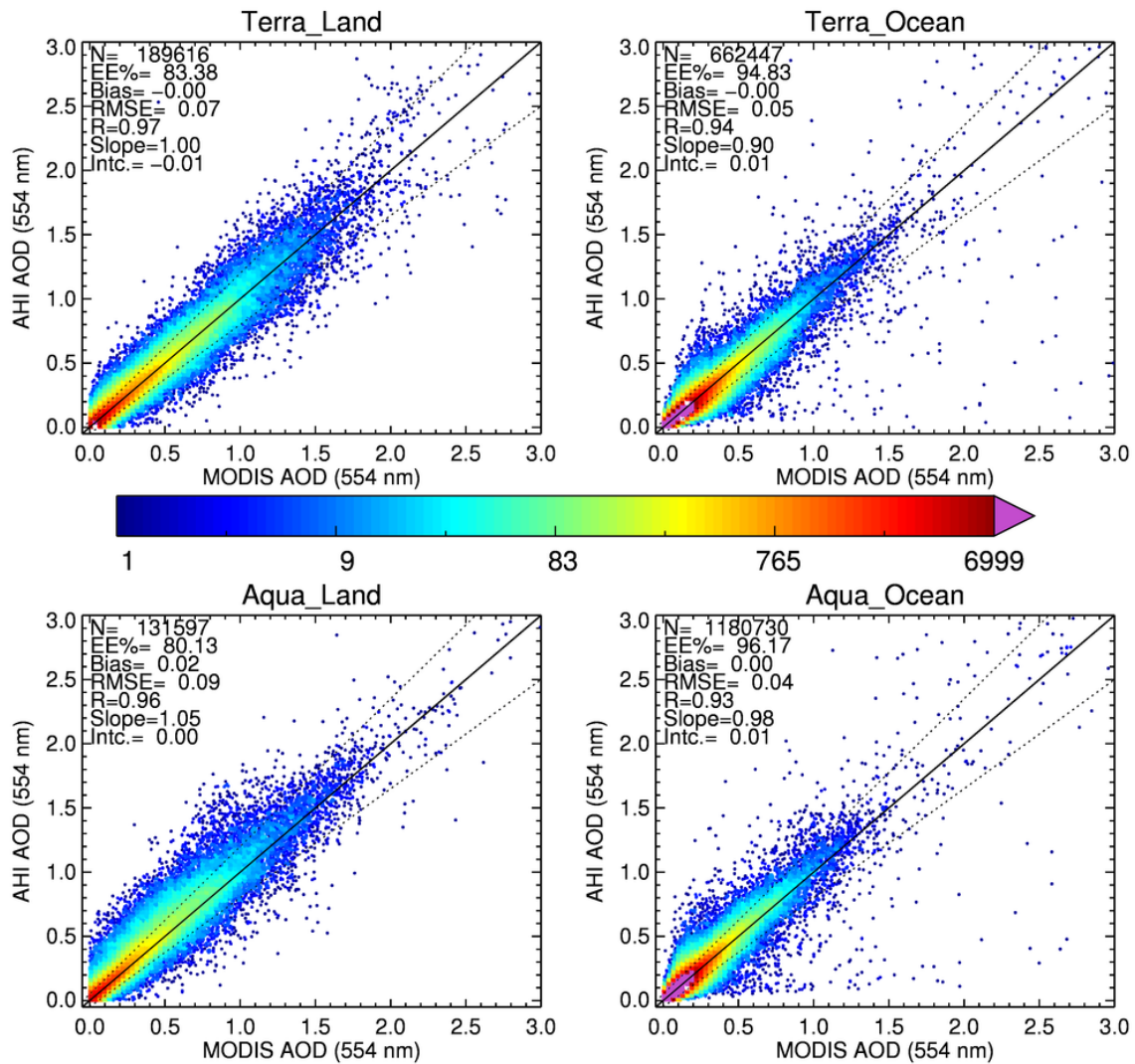


Figure 5. Density scatterplots of retrieved AOD at 554 nm derived from AHI radiances using the new DT AHI algorithm versus retrieved AOD at 554 nm from the operational MODIS Collection 6.1 algorithm, collocated in time and space. Top row are Terra MODIS. Bottom row are Aqua MODIS. Left panels are results from the over land retrieval. Right panels are results from the over ocean retrieval. The same collocation statistics are displayed as in Figure 2.

Figure 6 shows the two-month mean AOD over the AHI disk from AHI and Aqua MODIS, calculated from the data mapped to the common grid during our study period.

The mean AODs plotted here are collocated, and represent the AHI-derived AOD at approximately the same time as the MODIS overpass.

We see that the DT algorithm applied to both sensors results in very similar distributions of mean AOD across the AHI full disk image (Figure 6). This is despite the different sensor characteristics and very different viewing geometries. There is elevated aerosol across south and southeast Asia, and a separate pocket of elevated aerosol in northeast China. Low AOD occurs across most of the tropical and southern oceans. Australia is very clean and both sensors show a bit of moderately elevated AODs over the Indonesian island of Java. The magnitude of mean AOD in these images ranges from near 0.0 to almost 1.0.

The bottom panels of Figure 6 show the absolute differences in AOD when subtracting the top row MODIS panel from the top row AHI panel, and a similar difference map showing the differences between the top panel AHI values and a similar MODIS plot, but from the Terra satellite. The difference maps are AHI minus MODIS so that positive values, in red, indicate that AHI is higher than MODIS, while the negative values, in blue, indicate that AHI is lower than MODIS. The range of differences span +0.10 to about -0.08.

These plots indicate that over the elevated AOD regions, AHI retrievals are higher than MODIS retrievals by as much as 0.10. This higher AHI AOD is more prevalent and widespread with MODIS Aqua than with MODIS Terra. AHI tends to be about 0.02 to 0.03 higher than MODIS Aqua over much of the ocean regions surrounding the Asian and maritime continents, while AHI tends to be closer to MODIS Terra in these regions and sometimes even negative. Over Australia, AHI is less than MODIS Terra by as much as -0.08. Because AOD values over Australia are very low to begin with, this negative with respect to MODIS Terra indicates that AHI retrievals over Australia are often absolutely negative more consistently than the MODIS retrievals and suggest that some adjustment to the surface parameterization in the AHI DT retrieval will be required.

603 The inconsistencies between the two difference maps, one showing AHI with respect to
604 MODIS Aqua and the other with respect to MODIS Terra highlight the difficulty in
605 producing consistent representations of the AOD field, even when applying the same
606 algorithm to different sensors that should be exact duplicates of each other as in the case
607 of MODIS Terra and MODIS Aqua (Levy et al., 2018). Given this inconsistency between
608 the two MODIS instruments, the differences between AHI results and both MODIS
609 instruments fall within expected and manageable ranges. The DT algorithm as applied to
610 AHI is producing a representation of the spatial distribution of AOD with the same level
611 of fidelity as the original DT MODIS algorithm. This is the first attempt of applying the
612 DT algorithm to AHI, and we expect that future refinements to algorithm assumptions
613 that account for specific instrument characteristics and calibration will bring AHI AOD
614 results even closer to MODIS and AERONET values of AOD.

615

616

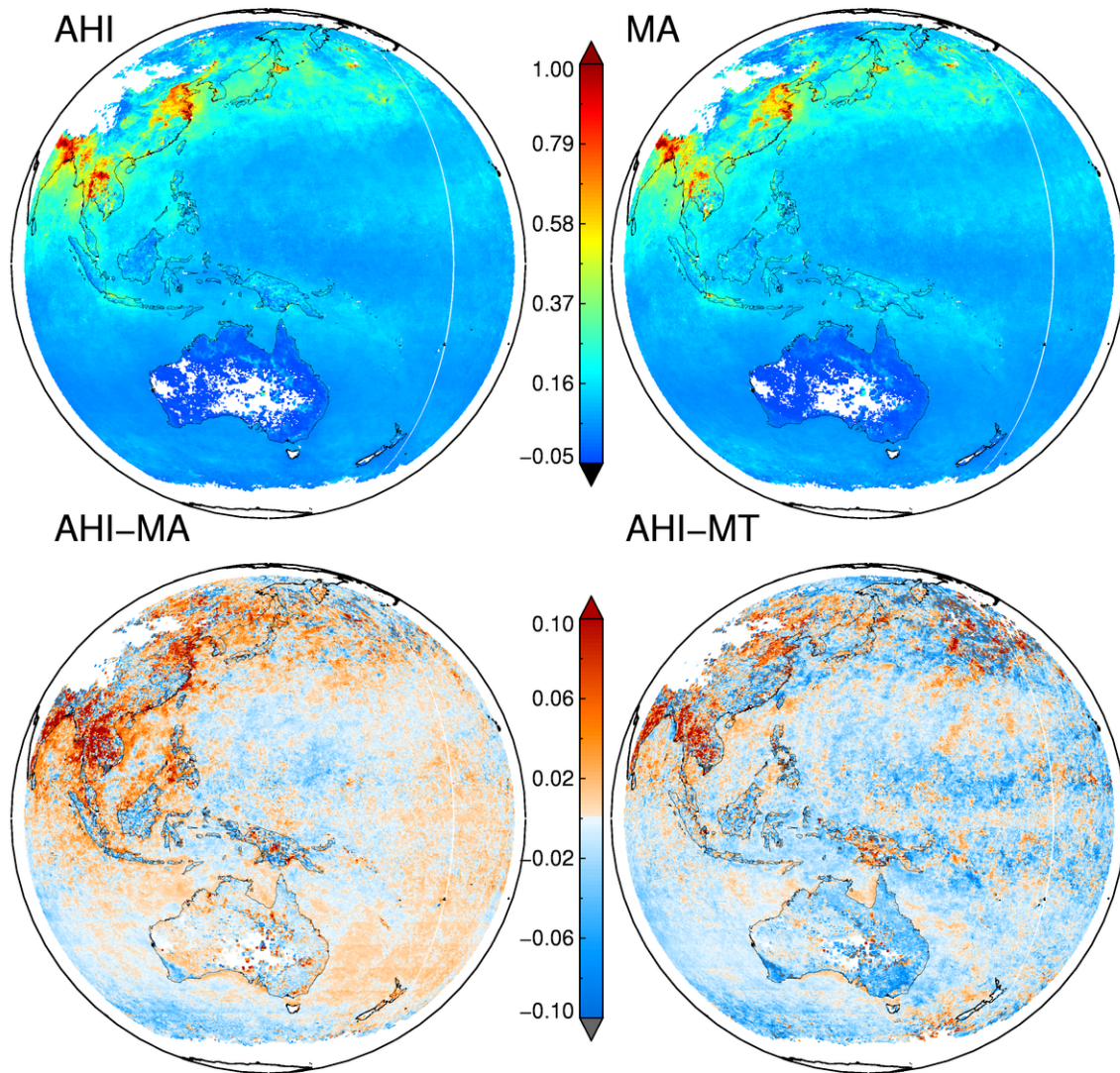


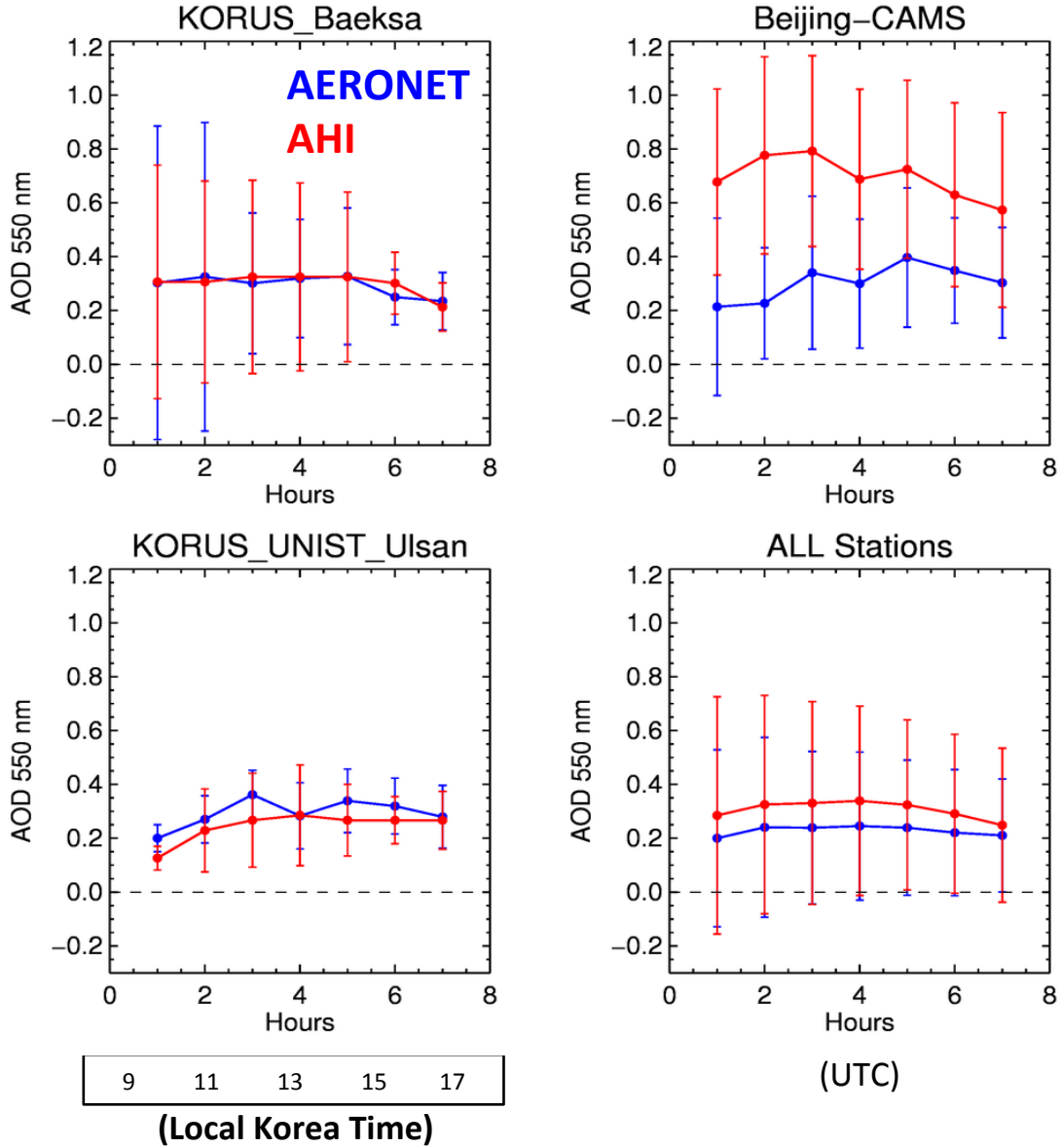
Figure 6. Top row: Mean AOD at 550 nm over the 2-month study period of May-June 2016. Upper left: mean AOD derived from retrievals using the new DT AHI algorithm applied to AHI. Upper right: mean AOD derived from the standard Aqua MODIS DT product. Bottom row: Difference maps of mean AOD at 550. Bottom left: Difference between the two maps in the top row. Bottom right: Similar difference map but between AOD from AHI and AOD from Terra MODIS (MT), instead of Aqua MODIS (MA).

4.0 Representation of AOD diurnal cycle using DT algorithm

4.1 Comparing AHI-derived diurnal signatures with AERONET

In the previous section we show how well the new DT AHI algorithm matches the AOD measurements from AERONET and the retrievals from MODIS. However, the point of applying an aerosol retrieval algorithm to a geosynchronous satellite sensor such as AHI is not to match the individual station data of AERONET nor the once-per-day retrievals from MODIS. The point of porting the DT aerosol algorithm to AHI is to represent the diurnal cycle of AOD over the broad regional area covered by the AHI full disk. In this section we explore the diurnal cycle of AOD derived from AHI and evaluate how much of the aerosol system MODIS has been missing because of its limited temporal sampling.

The diurnal cycle of AHI-derived AOD is compared with collocated diurnal patterns of AOD exhibited by AERONET stations within the AHI full disk image. The diurnal cycle at each AERONET station was calculated by finding the mean AERONET AOD at seven specific times of the day corresponding to the time of an AHI scan. These times are 01:00, 02:00, 03:00, 04:00, 05:00, 06:00 and 07:00 UTC, corresponding to the hours of 10:00 to 16:00 in local Korean time. All AERONET AOD measurements ± 30 minutes of the nominal time were included in the average to represent the mean AOD at the nominal time. In parallel, the mean AOD at these specific times were calculated from all high quality AHI-derived level 2 AOD located within a 0.25×0.25 degree box centered around the AERONET station for all AHI scans taken at the nominal time. Thus, we created two representations of the diurnal cycle of AOD at each AERONET station, one from AERONET data and one from AHI-derived data, all from the collocation data set. This means that both AERONET and AHI must report at the same specific time for the instruments' AOD to be included in the calculated hourly average. This is the purest means to compare the actual retrieval, but will not reveal differences in sampling factors such as cloud masking because AHI will benefit from AERONET's cloud identification.



660

661 Figure 7. Median AOD at 550 nm in each of 7 time-of-day bins corresponding to 10:00 to
 662 16:00 Korean standard time. Shown are three individual AERONET stations and also
 663 (lower right) the results of binning all of the AERONET stations across the full disk
 664 image as shown in Figure 3. Red indicates AOD derived from AHI using the new DT
 665 algorithm. Blue indicates AOD measured by AERONET. The statistics were calculated
 666 from the collocation data base such that each bin contains the same number of
 667 observations from AHI and AERONET taken at the same time, although the number of
 668 observations in each diurnal bin will differ. Vertical error bars represent one standard
 669 deviation among different days for the same hour.

Figure 7 shows the calculated median AOD diurnal cycles from AERONET and AHI-retrievals for three individual stations in Korea and China, and also the median of all stations located in the AHI full disk image and reporting during our period of study. Error bars represent the standard deviation of the sample in each hourly bin. At the three stations shown individually in Figure 7, we see that the same biases seen in Figure 2 also appear here, particularly with Beijing CAMS showing a strong positive bias. There is wide scatter in the AOD for each hourly bin, as portrayed by the relatively large error bars. The diurnal pattern of AOD, as measured by AERONET at KORUS Baeksa shows a sudden decrease after 0500 UTC (14:00 Korea Standard Time), dropping from a steady 0.3 to 0.2 in two hours. The AHI AOD retrievals match this pattern almost exactly. The other Korean station, KORUS_UNIST_Ulsan, shows an opposite daily pattern, with AOD increasing from a morning low of 0.2 at 0100 UTC (10:00 Korean Standard Time) to 0.3-0.4 at midday and then a drop off towards evening. The AHI AOD at this station is biased low throughout most of the day, but does reflect the same diurnal signature of increasing AOD over the morning. At the third station, Beijing CAMS, the AHI AOD diurnal pattern does not match AERONET as well, but there is a strong positive bias there with very large scatter in each hour. With error bars spanning 0.5 AOD, it is difficult to discern diurnal changes with amplitudes of 0.2 AOD or less in either AERONET or AHI.

The diurnal analysis shown in Figure 7 suffers from relatively small data samples. The number of collocations for KORUS_Baeksa, KORUS_UNIST_Ulsan and Beijing_CAMS are 56, 45 and 75, respectively, distributed over 7 hourly bins. If clouds were not a factor, each hourly bin median might be constructed from only 6 to 11 samples. However, clouds are indeed a factor, with their own diurnal patterns. The actual number of AHI-AERONET collocations at any particular hour might be as few as 3, and morning and afternoon bins reported in Figure 7 might be constructed from entirely different days. Therefore, the diurnal patterns in Figure 7 may be artificial composites and not representative of the actual changes in AOD over the course of a single day. However, the point of this comparison is not to speculate on the cause of the diurnal

signatures, but to establish that the AHI-derived AOD has the ability to describe the same mean diurnal pattern in the aerosol as AERONET for individual locations.

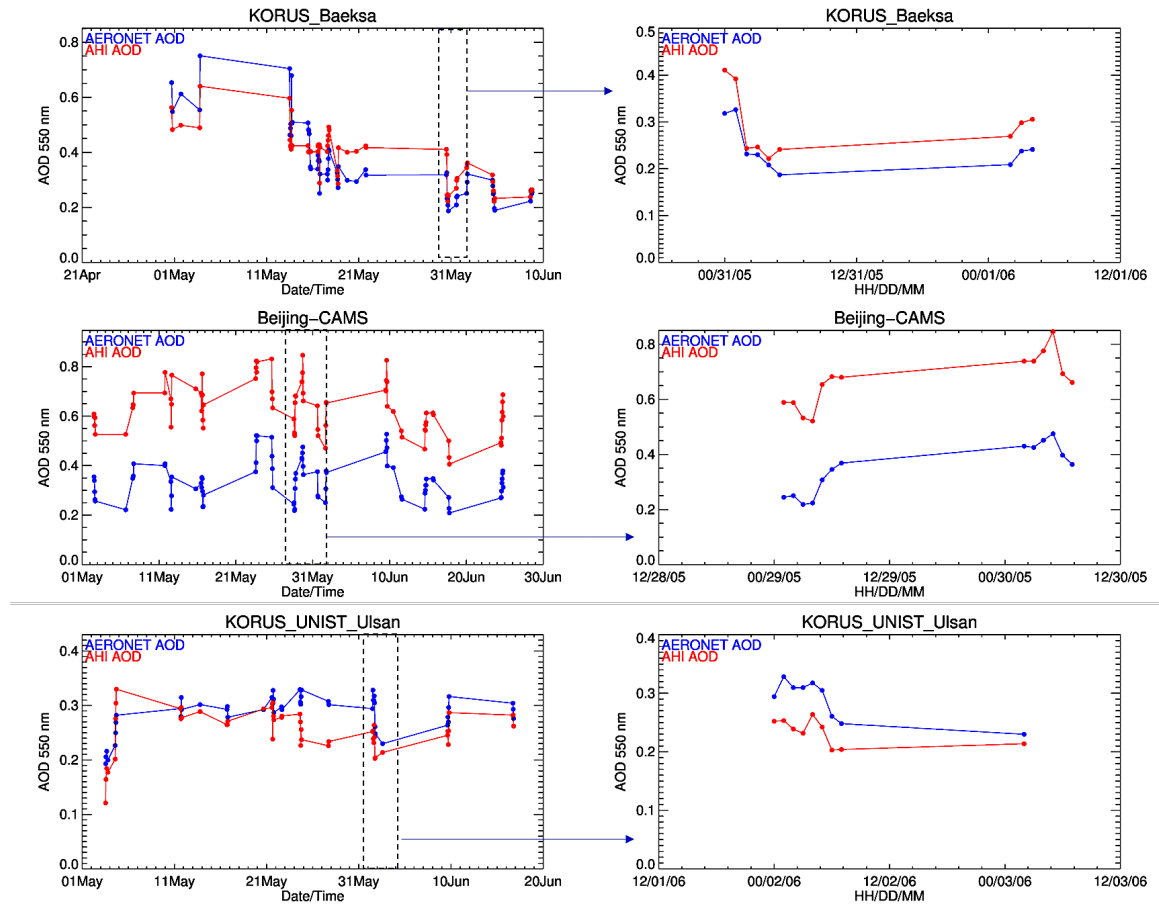


Figure 8. The time series of spatio-temporal mean AODs from AERONET (blue) and AHI (red) for each hour of observation during the KORUS-AQ field campaign for the same three stations as shown in Figure 7 (left panels). The right panels zoom into selected days as shown in the box with dotted lines in the left panels for each station.

Figure 8 further demonstrates the capability of AHI retrieved AODs to represent realistic diurnal cycles over these three stations on individual days rather than in average sense as shown in Figure 7. This analysis shows that AHI retrieved AODs follow AERONET AODs hour-by-hour and day-by-day with apparent positive and negative biases over different stations as discussed in the earlier section. Additional KORUS-AQ time series

of AHI and AERONET AOD for 46 other stations are shown in the Supplemental Material. While there are some stations where AHI AOD does not follow the AERONET temporal variability as well as those shown in Figure 8, most do.

The ensemble statistics of the diurnal signature for all AERONET stations and collocated AHI retrievals in the AHI full disk image show the high bias of the AHI retrievals, as per Figure 2, but also that the ensemble mean diurnal signature of AHI AOD is mostly flat, as is the diurnal signature from AERONET. Both AHI and AERONET AOD exhibit a slight increase in AOD from morning to midday. Then, AHI decreases towards the end of the day, while AERONET stays flat. The scatter in each hourly bin is large, as shown by error bars that span 0.6 in AOD, and thus diurnal patterns with amplitudes of 0.1, exhibited by both AHI and AERONET fall well below a significant signal to noise threshold. Still the basic agreement of AHI to AERONET in the overall ensemble diurnal statistics and in the individual time series comparisons is encouraging.

4.2 Full disk AHI-derived AOD diurnal cycle

Previously, Figure 6 showed the mean full disk AHI AOD calculated for the approximate times of the MODIS overpasses. Now we calculate the overall mean AHI-derived AOD calculated over the entire day light diurnal cycle and not just at MODIS overpass time, for the duration of our study period at each of the 0.25° latitude by 0.25° longitude grid squares. Figure 9 shows this overall period mean map, with all diurnal information lost. The period mean map at MODIS overpass time (Figure 6) looks qualitatively very similar to the overall period mean map (Figure 9), suggesting that MODIS sampling provides a good representation of the overall AOD distribution.

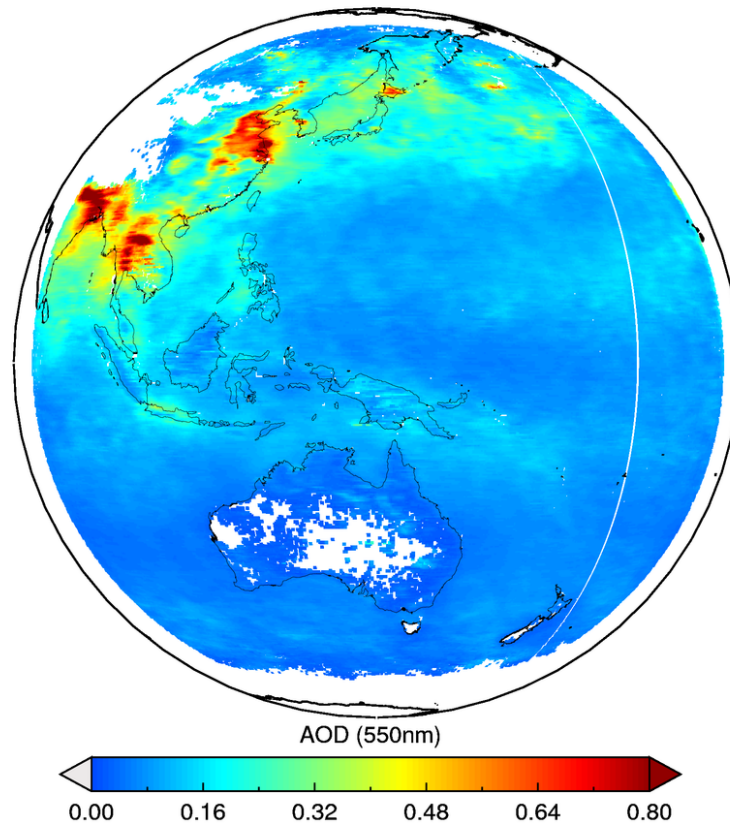


Figure 9 Daily mean AOD at 550 nm calculated over all daylight full disk images of AHI during May-June 2016. No requirements of collocation with MODIS or AERONET were imposed.

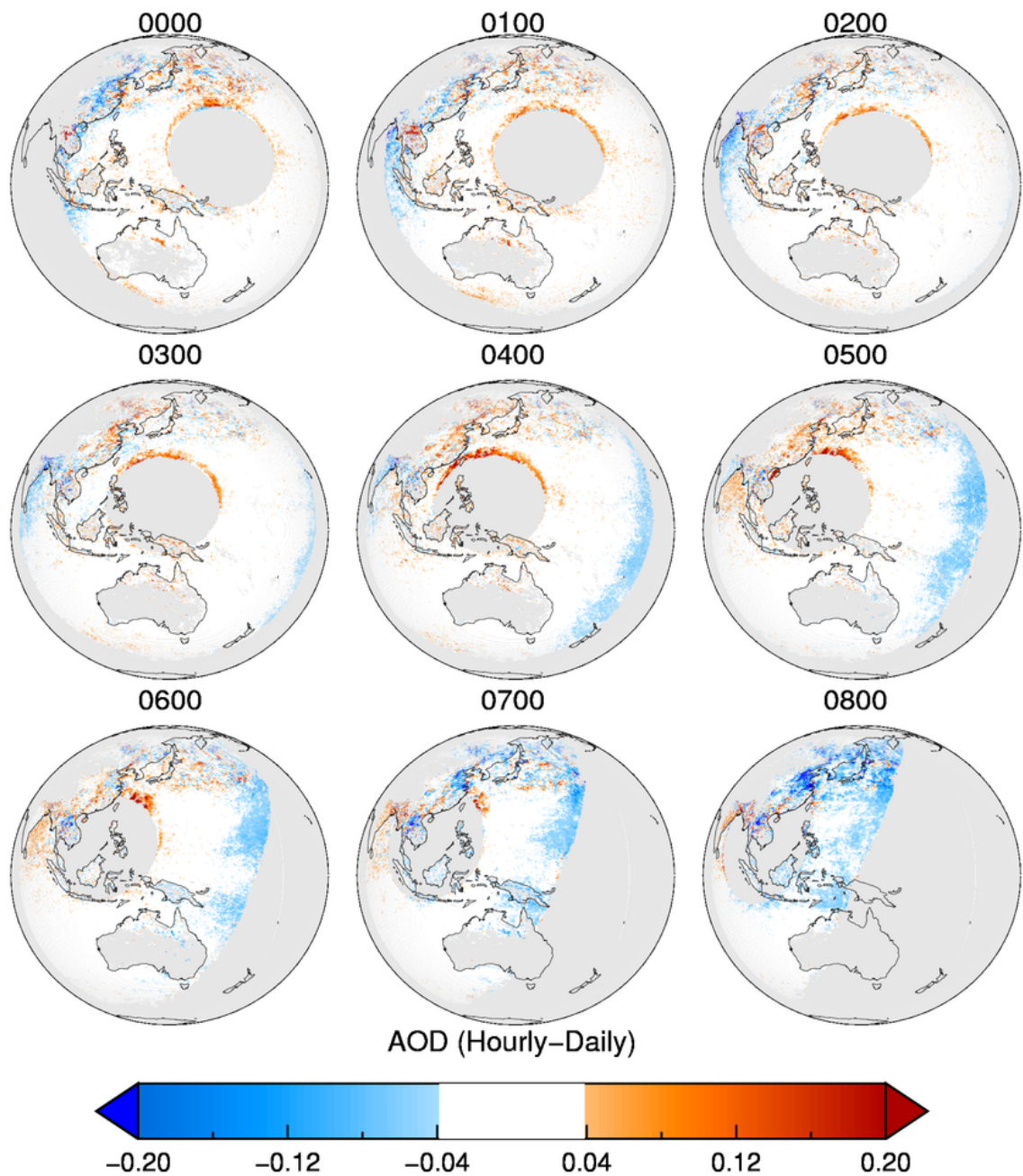
Then we calculate the mean AOD for each AHI full disk scan corresponding to a particular UTC hour, in each grid over the period of our study. **Figure 10** shows the plots of the absolute difference (mean hourly AOD minus mean daily AOD) at each of these diurnal hours.

Figure 10 captures the diurnal signature of the aerosol over a broad region of Earth. Red colors indicate that at a particular hour of the day, the AOD is higher than the daily mean. Blue colors indicate that the hourly AOD is lower than the daily mean. The large gray circle that traverses the image from hour to hour is the glint mask preventing the over ocean algorithm from retrieving an AOD value. The glint mask is set for glint angles <

40°, which unfortunately eliminates large portions of a geosynchronous image from being suitable for a DT aerosol retrieval. The glint mask proceeds across the image hour by hour so that the glint mask becomes indiscernible in the daily mean. That is why there is no apparent glint mask in the overall daily average of [Figure 9](#), nor in Figure 6 constructed from AHI AOD collocated with MODIS. Continents and islands within the glint mask will call on the over land DT algorithm that does not mask for glint, and therefore, will return an AOD value.

The most striking feature in [Figure 10](#) is the blue shading at the edges of the over ocean retrieval domains that begin the day to the west in the Indian Ocean and then switch to the east in the Pacific in the afternoon. This band of “lower than daily average” AOD is associated with solar zenith angle, not view angle, as it hugs the day/night terminator in the images, even when that terminator crosses the center of the full disk image. By 0700 and 0800 UTC, the terminator artifact encompasses a broad geographical swath of ocean, which would introduce an incorrect interpretation of local diurnal AOD signal with amplitudes of 0.15, when daily mean values are only 0.10. Such strong diurnal swings in AOD over the remote ocean on global scales are unrealistic.

The problem may be introduced by the radiative transfer code used to create the Look Up Tables for the over ocean retrieval (Ahmad and Fraser, 1982) that does not fully account for Earth’s curvature. Although this code has served the DT retrieval well through the MODIS and VIIRS eras, those polar orbiting satellites only encounter extreme solar zenith angles at the beginning and end of their orbits near the poles, where DT aerosol retrievals are rare due to other factors such as extreme cloudiness or snow/ice. The inability to properly model Earth’s sphericity is likely to be of greater concern for geosynchronous satellites that encounter extreme solar zenith angles across all latitudes and in prime retrieval areas. [See Figure 11](#). Currently the AHI DT algorithm retrieves all geometries with solar zenith angle < 80 degrees. [Figures 10 and 11](#) suggest that the terminator artifact could be mitigated by applying a more stringent threshold of 70 degrees. However, development and application of a spherical radiative transfer code is the more satisfying long-term solution.

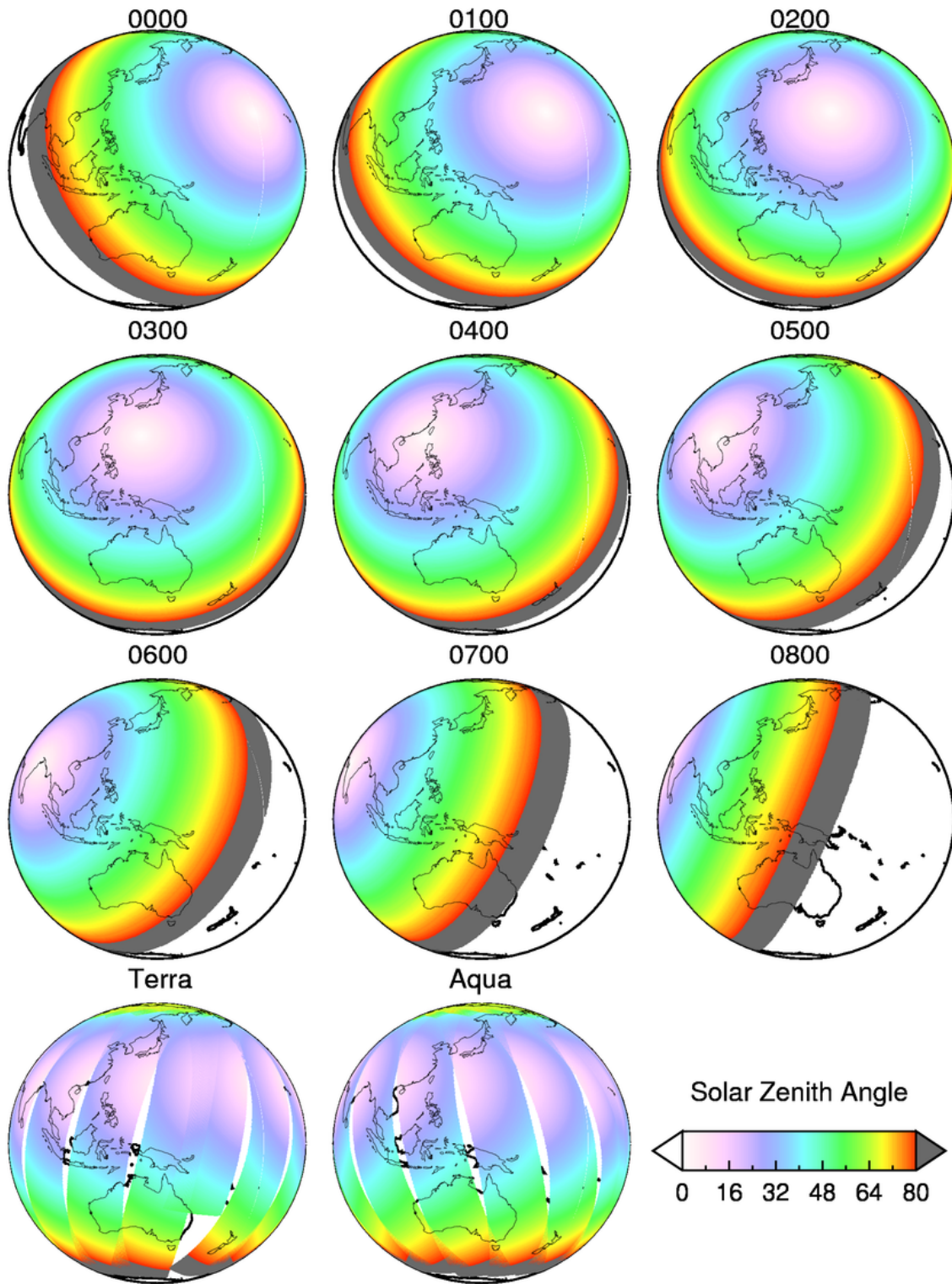


804

805

806 **Figure 10.** Difference in hourly mean AOD at 550 nm as derived from the new DT AHI
807 algorithm from the daily mean AOD, as plotted in Figure 8. Red indicates the specific
808 hour has higher AOD than the daily mean, and blue indicates the opposite.

809



810
811

812 **Figure 11.** Mean solar zenith angle associated with each of the diurnal hours from the
813 AHI geometry and also for MODIS on Terra and Aqua for May 29, 2016.

There also appears to be another AOD retrieval artifact over the ocean associated with the glint angle. Here AODs seem artificially high. Incorrect estimation of wind speed from ancillary data or modeling of the rough ocean surface will introduce near-glint mask inaccuracies in the AOD retrieval. With MODIS, such areas were relatively small and the overall effect on global or regional AOD minimal. In the geosynchronous view, because the glint mask is such a dominant feature, the near-glint artifacts appear much more pronounced.

The good news seen in [Figure 10](#) is that the retrieval over land does not appear to have encountered any systematic artifacts. Blue and red shading is distributed spottedly across the Asian, Indonesian and Australian land masses. Without validation we cannot say for sure, but typically local factors determine aerosol diurnal trends, and thus, the spotty blue/red shading could indicate that the retrieved AOD is representing the consequences of these local diurnal forcing mechanisms. We have already seen in [Figures 7 and 8](#) that the AHI retrievals resolved the differing local diurnal patterns at three over land AERONET stations within relative close proximity. In terms of the over land retrieval, [Figure 10](#) demonstrates that the DT algorithm applied to AHI will identify land regions where the diurnal signal is more spatially cohesive. For example the east coast of India and Bangladesh experience an increase in AOD in the late afternoon, while the overall trend in northeast China is to decrease AOD in the afternoon, although there are local contradictions to these regional patterns.

4.3 AHI-derived AOD diurnal cycle over 5-degree squares

The factors that drive a diurnal AOD signature tend to be local in character. These include sources and sinks linked to time-of-day (rush hour traffic, agricultural burning, afternoon convection/precipitation) or diurnally influenced mesoscale circulations and transport (sea breeze or mountain slope regimes). Thus, individual stations as shown in [Figure 7](#) exhibit stronger diurnal signatures than does an ensemble average consisting of stations distributed across the region (bottom right panel of [Figure 7](#)). The full disk plots of [Figure 10](#) suggest that there are regions of moderate extent that do experience a

cohesive diurnal AOD pattern. To further investigate the ability of the DT AHI to provide insight into diurnal patterns of AOD during daylight hours we calculate the average AOD in specific 5° latitude by 5° longitude boxes as a function of the hour of the day.

Figure 12 shows the diurnal AOD signatures of five of these 5° by 5° boxes. As suggested by Figure 10, the AOD over northeastern China (Fig. 12, Box# 1) exhibits its highest AOD during morning hours, 00 UTC to 03 UTC, corresponding to local times of 0800 to 1100, then experiences a slow decrease during the remainder of the day until sunset. Average mean AOD at 550 nm in this area ranges from morning values of 0.65 to late afternoon values of less than 0.40. Over Bangladesh (Fig. 12, Box #2) the glint mask does not interrupt ocean retrievals until the last diurnal hour of the day. Ocean and land retrievals exhibit very similar diurnal signatures in this area, slowly rising from morning lows of 0.3-0.4 to late afternoon highs of 0.8-0.9, at least over land. Another area containing both land and ocean retrievals is over northern Japan and adjacent Pacific Ocean (Fig. 12, Box #3). This area is far enough north to not be hampered by the glint mask at this time of year. The over ocean and over land diurnal patterns are similar with morning to midday values of 0.30-0.35 gradually decreasing through the afternoon to lows of 0.15 by sunset. This is a significant diurnal range of AOD over ocean.

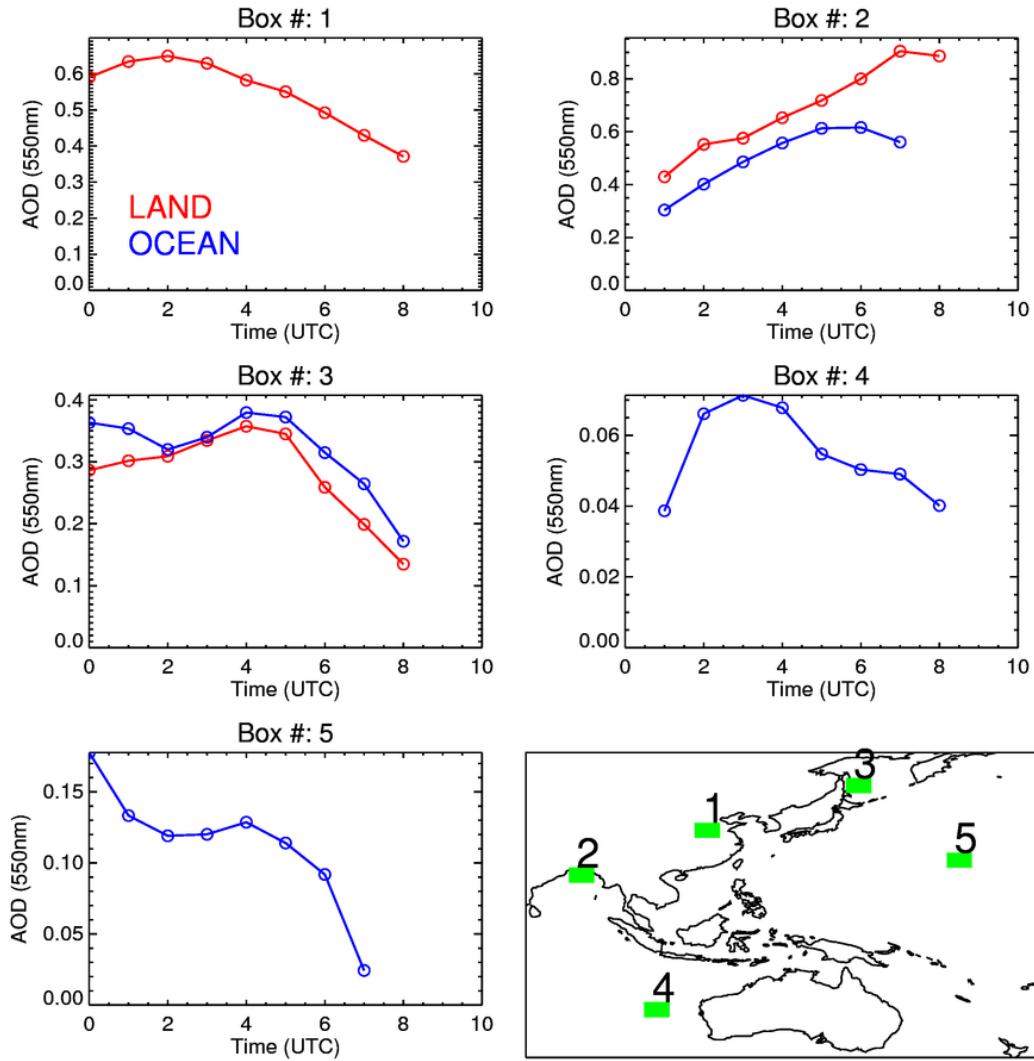


Figure 12. Spatially averaged mean AOD at 550 nm from the derived DT AHI product for selected 5° by 5° latitude-longitude squares (boxes) in each hourly bin for the two-month study period, producing AOD diurnal signatures for these selected areas. Red lines depict over land retrievals. Blue lines depict over ocean retrievals. X-axes are in UTC hours, for the reference, the local time in Beijing is +8 hours from UTC. Y-axes scale vary from plot to plot. The green squares on global map indicate location of the specific box.

Two areas over open ocean are shown in Figure 12, one in the Indian ocean west of Australia (Fig. 12 Box #4) and the other in the Pacific (Fig. 12, Box #5). Note that the

scales on the y-axes of these two plots are different. At the Indian ocean area there appears to be a diurnal signal, but the amplitude of that signal is only about 0.02, well within the noise levels of both the retrieval itself and of the sampling and statistics of calculating the diurnal pattern. Essentially there is no significant diurnal signal at this location and the mean AOD is about 0.05 ± 0.01 . In contrast the Pacific example exhibits a strong diurnal pattern, ranging almost an order of magnitude from 0.18 (~ 0.2) to 0.02. It is in this area that the two ocean artifacts become apparent. During the early morning hours this area resides just north of the sun glint mask where insufficient modeling of the rough ocean surface creates an artifact in the retrieval, introducing a high bias. During late afternoon hours, the solar zenith angle increases to beyond 70° and the low bias artifact from the terminator affects the retrieval. It is only midday day when this Pacific region escapes either artifact and then we see little diurnal signature and a mean AOD of 0.11 ± 0.015 . Thus, the apparently strong diurnal signal here is in reality just the combination of two different artifacts in the retrieval.

The examples in Figure 12 illustrate the variety of aerosol diurnal patterns over Asia with polluted regions like northeastern China and Bangladesh showing diurnal amplitudes of 0.25 – 0.50 in AOD, but with oppositely signed slopes. The need to understand and explain these different patterns across an area as large as Asia opens new research questions as to what is the driving processes behind these AOD patterns, how will they affect assimilation into global and regional models, and what are the air quality and public health implications? While the processes creating diurnal aerosol patterns are primarily local, the consequences of spatially cohesive patterns will have non-local consequences, and aerosol products from geosynchronous observations, such as the AHI DT product, are key to identifying and quantifying these spatially cohesive situations. The patterns seen in [Figure 12](#) may also suffer from the caveats imposed upon the individual station analysis of [Figure 7](#). The diurnal patterns may be artificial constructs of observations made at different times on different days and not represent the true change of aerosol loading over the span of day light hours. However, because of the greater statistical sample offered by the larger spatial domain of the $5^\circ \times 5^\circ$ box there is greater confidence in the patterns of [Figure 12](#) than those of [Figure 7](#).

The examples in [Figure 12](#) also illustrate that artifacts still exist in the retrieval over the ocean, but that not all strong diurnal signatures over ocean are due to the artifacts, as shown in Fig. 12d where the ocean pattern mimics the artifact-free land pattern. Being aware of the possibility of artifacts and working towards mitigating those artifacts in the future will be essential to properly making use of any new geosynchronous product.

5.0 Discussion and conclusions

The traditional Dark Target (DT) aerosol retrieval algorithm was adapted for the Advanced Himawari Imager (AHI) and applied to AHI-measured spectral reflectances [produced for a limited data set in support of KORUS-AQ](#) for the two-month period of May-June 2016. The adaptation makes use of the spectral similarity between AHI and its predecessor DT sensors (e.g. MODIS, VIIRS), but omits certain important pixel selection procedures that require spectral bands unavailable from AHI. The lack of these specific masks may permit additional cirrus and cloud contamination into the results of this two-month preliminary demonstration, although large-scale comparisons of collocated AHI and AERONET or AHI and MODIS retrievals do not reveal significant overall biases. However, AHI retrievals may be benefitting from AERONET or MODIS cloud masking in the collocations. Expanding the AHI retrieval into the winter months when snow/ice will be encountered will then certainly show contamination from such surfaces, as the current DT snow/ice mask requires the 1.24 μm channel that is missing from AHI. Before wintertime retrievals are made with AHI, a new cloud/ice mask for this sensor must be developed.

Collocations between AHI and AERONET demonstrate that AHI retrievals match AOD_{550 nm} at AERONET stations as well as the MODIS DT aerosol product matches AERONET in terms of correlation, RMSE, overall bias and percentage within expected error. Additionally, because AHI can make aerosol retrievals multiple times per day, there were approximately twice as many AHI-AERONET collocations as there were from MODIS-AERONET. Geostationary aerosol retrievals will significantly increase the sampling of retrieved AOD from current polar-orbiting sensors. Not only did the DT AHI

product match AERONET, statistically, in scatterplots, it also represented the diurnal signal in AOD, as measured by AERONET at individual stations, and in the ensemble median statistics. The three stations shown are representative of varying retrieval biases and exhibit different diurnal signatures, even though they are in relatively close proximity. The AHI DT algorithm was able to distinguish these diurnal differences, although sample size was small and signal-to-noise impeded inference of the diurnal signature.

Plotting the time series of the collocated data along the same axis shows that the AHI AOD matches the temporal variability of the AERONET AOD hour-by-hour, even when there is a strong bias in the magnitude. These time series plots are strong evidence that the DT retrieval algorithm applied to geosynchronous sensors such as AHI will be able to resolve short duration events such as individual plumes when the algorithm moves to operational status.

Collocated AHI and MODIS retrievals demonstrate excellent agreement when applying the DT algorithm to the two different sensors. Both AHI and MODIS produce similar representations of the 2-month mean AOD across the AHI full disk region. However, difference maps do show regional biases. Interestingly, AHI is overall biased low against MODIS-Terra, but biased high against MODIS-Aqua, and thus falling within the offsets already noted between the AODs of the two MODIS sensors (Levy et al., 2018). The one place that AHI differs in the same way from both MODIS-Terra and MODIS-Aqua is in its positive bias of 0.10 in the high aerosol loading regions of south, southeast and northeast Asia. The fact that these biases are only seen in high aerosol loading suggests a problem with the traditional DT aerosol models, not the surface parameterization. We note that the over land aerosol models have never been tested for the unique geometry that AHI has brought to the table.

When the algorithm is applied to the full disk image and hourly mean AOD plots are made, we notice immediately an artifact in the diurnal signature that affects only the over ocean retrieval. This artifact occurs at the day/night terminator and is associated with

extreme solar zenith angles, not view angles. Extreme solar zenith angles are much more prevalent in geosynchronous images than in polar-orbiting ones, and thus our previous experience with polar-orbiting sensors did not prepare us for this artifact. The most likely explanation for the solar zenith artifact is the inability of the original radiative transfer code to model spherical Earth. Earth's curvature when the sun is on the horizon will introduce uncertainties into the radiative transfer calculation and result in inaccurate aerosol retrievals. Until modifications can be made to the radiative transfer code, the solution to mitigating this artifact will be to limit retrievals to lower solar zenith angles over ocean ($<70^\circ$). This is unfortunate because already the retrieval loses a goodly section of the equatorial ocean because of the 40° glint mask when solar zenith angles are small. Because we also saw retrieval artifacts along the edge of the glint mask, it is unlikely that the 40° threshold can be relaxed. For now, the DT AHI retrieval over ocean should be limited to a small range of solar zenith angles that will avoid both the glint and the artifact at the terminator, and this will limit the diurnal range of AHI-retrieved AOD over ocean.

In a preliminary analysis meant to show the scientific potential of the AHI DT product we found a balance between the local nature of diurnal signatures and the need of a substantial statistical sample by calculating the mean diurnal patterns of AOD in 5° latitude by 5° longitude boxes. The result of this analysis revealed a variety of diurnal patterns across Asia, as well as illustrating diurnal patterns of ocean areas affected and not affected by glint and solar zenith angle artifacts. A more mature AHI DT product will enable further exploration of these diurnal patterns and the consequences these patterns hold for climate processes, assimilation systems and air quality.

To make progress towards a more mature algorithm beyond the preliminary version analyzed here, we will need to continue the analysis and investigate the following points:

- What is the reason for the biases between AHI and both AERONET and MODIS?
- Are these biases linked to solar zenith angle, view angle or scattering angle?

- 1000 • Are these biases linked to surface parameterization? Specifically change in
- 1001 surface ratios with viewing geometry.
- 1002 • Do we mitigate artifacts by employing a more realistic spherical radiative transfer
- 1003 code?
- 1004 • How do we mask for snow/ice without the 1.24 μm wavelength?
- 1005 • Can we characterize cloud and cirrus contamination in the retrievals, and then
- 1006 mitigate those effects?
- 1007 • How does the retrieved AOD spectral dependence and size parameter from AHI
- 1008 compare to those from MODIS?
- 1009 • Can we surpass results obtained from the polar orbiting sensors by incorporating
- 1010 additional specific geosynchronous capabilities into the DT retrieval?

1011

1012 The short two-month demonstration described and illustrated here is a preliminary
 1013 assessment of the ability to bring the well-vetted DT aerosol retrieval to a
 1014 geosynchronous satellite sensor. The results show that porting the algorithm is possible,
 1015 that it can produce AOD that matches AERONET to the same degree as the MODIS
 1016 product, and that it can distinguish local diurnal signatures at AERONET stations over
 1017 land. The view from geosynchronous sensors will provide new insight into Earth's
 1018 aerosol system, especially if that view is steeped in and compatible with the 20-year
 1019 record of the DT polar-orbiting experience. This study puts us on the road to achieving
 1020 this new perspective.

1021

1022 **6. Acknowledgement**

1023

1024 This work was supported by the NASA ROSES program NNH17ZDA001N: Making
 1025 Earth System Data Records for Use in Research Environments and NASA's EOS
 1026 program managed by Hal Maring. We thank Space Science and Engineering Center
 1027 (SSEC), University of Wisconsin-Madison for providing Himawari-8 data. We thank
 1028 MCST for their efforts to maintain and improve the radiometric quality of MODIS data,
 1029 and LAADS/MODAPS for the continued processing of the MODIS products. The
 1030 AERONET team (GSFC and site PIs) are thanked for the creation and continued

stewardship of the sun photometer data record; which is available from
<http://aeronet.gsfc.nasa.gov>.

7. References

- Ahmad Z. and Fraser R.: An iterative radiative transfer code for ocean-atmosphere systems, *J. Atmos. Sci.*, 32, 656-665, doi:10.1175/1520-0469(1982)039, 1982.
- Boucher, O., et al.: Clouds and aerosols. In: *Climate Change 2013: The Physical Science Basis. Contribution of Working Group I to the Fifth Assessment Report of the Intergovernmental Panel on Climate Change* [Stocker, T. F., D. Qin, G.-K. Plattner, M. Tignor, S. K. Allen, J. Boschung, A. Nauels, Y. Xia, V. Bex, and P. M. Midgley (eds.)]. Cambridge University Press, Cambridge, United Kingdom and New York, NY, USA, 2013.
- Diner, D. J., Beckert, J. C., Reilly, T. H., Bruegge, C. J., Conel, J. E., Kahn, R. A., Martonchik, J. V., Ackerman, T. P., Davies, R., Gerstel, S. A. W., Gordon, H. R., Muller, J.-P., Myneni, R. B., Sellers, P. J., Pinty, B., and Verstraete, M. M.: Multi-angle Imaging SpectroRadiometer (MISR) instrument description and experiment overview, *IEEE T. Geosci. Remote*, 36, 1072–1087, doi:10.1109/36.700992, 1998.
- Diner, D. J., Abdou, W. A., Ackerman, T. P., Crean, K., Gordon, H. R., Kahn, R. A., Martonchik, J. V., McMuldroch, S., Paradise, S. R., Pinty, B., Verstraete, M. M., Wang, M., and West, R. A.: Multi-Angle Imaging SpectroRadiometer Level 2 Aerosol Retrieval Algorithm Theoretical Basis, Revision G, JPL D-11400, Jet Propulsion Laboratory, California Institute of Technology, Pasadena, USA, 2008.
- Eck, T. F., Holben, B.N., Reid, J.S., Dubovik, O., Smirnov, A., O'Neill, N.T., Slutsker, I., and Kinne, S., Wavelength dependence of the optical depth of biomass burning, urban, and desert dust aerosols, *J. Geophys. Res. – Atmos.*, 104, 31333–31349, doi:10.1029/1999JD900923, 1999.
- Frey, R. A., Ackerman, S. A., Liu, Y., Strabala, K. I., Zhang, H., Key, J. R., & Wang, X.: Cloud detection with MODIS. Part I: Improvements in the MODIS cloud mask for collection 5., *J. Atmos. Ocean. Tech.*, 25, 1057-1072, 2008.

1061 Gupta, P., Levy, R.C., Mattoo, S., Remer, L.A., and Munchak, L.A.: A surface
 1062 reflectance scheme for retrieving aerosol optical depth over urban surfaces in MODIS
 1063 Dark Target retrieval algorithm, *Atmos Meas Tech*, 9, 3293–3308, doi:10.5194/amt-9-
 1064 3293-2016, 2016.

1065 Gupta, P., Remer, L. A., Levy, R. C., and Mattoo, S.: Validation of MODIS 3 km land
 1066 aerosol optical depth from NASA's EOS Terra and Aqua missions, *Atmos. Meas.*
 1067 *Tech.*, 11, 3145-3159, <https://doi.org/10.5194/amt-11-3145-2018>, 2018.

1068 Hsu, N.C., Tsay, S.C., King, M.D. and Herman, J.R.: Aerosol properties over bright-
 1069 reflecting source regions. *IEEE Trans. Geosci. Rem. Sens.* 42. 557-569. doi:
 1070 10.1109/TGRS.2004.824067, 2004.

1071 Hsu, N.C., Jeong, M.-J., Bettenhausen, C., Sayer, A.M., Hansell, R., Seftor, C.S., Huang,
 1072 J. and Tsay, S.-C.: Enhanced Deep Blue aerosol retrieval algorithm: The second
 1073 generation. *J. Geophys. Res. – Atmos.* 118, 9296-9315, doi:10.1002/jgrd.50712, 2013.

1074 Ichoku, C., Chu, D.A., Mattoo, S., Kaufman, Y.J., Remer, L.A., Tanre, D., Slutsker, I.,
 1075 and Holben, B.N., A spatio-temporal approach for global validation and analysis of
 1076 MODIS aerosol products, *Geophys Res Lett*, 29, doi:10.1029/2001GL013206, 2002.

1077 Jickells, T.D., An, Z.S., Andersen, K.K. et al., Global iron connections between desert
 1078 dust, ocean biogeochemistry, and climate. *Science*, 308, 67-71, doi:
 1079 10.1126/science.1105959, 2005

1080 Kahn, R. A., Gaitley, B. J., Garay, M. J., Diner, D. J., Eck, T., Smirnov, A., and Holben,
 1081 B. N.: Multiangle Imaging SpectroRadiometer global aerosol product assessment by
 1082 comparison with the Aerosol Robotic Network, *J. Geophys. Res.*, 115, D23209,
 1083 doi:10.1029/2010JD014601, 2010.

1084 Kahn, R. A., and Gaitley, B.J.: An analysis of global aerosol type as retrieved by MISR.
 1085 *J. Geophys. Res. Atmos.*, 120, 4248–4281, doi:10.1002/2015JD02332, 2015.

1086 Kalashnikova, O.V., and Kahn, R.: Ability of multiangle remote sensing observations to
 1087 identify and distinguish mineral dust types: Part 2. Sensitivity over dark water, *J.*
 1088 *Geophys. Res. Atmos.*, 111, D11207, doi:10.1029/2005JD00675, 2006.

1089 Kalluri, S., Alcala, C., Carr, J., Griffith, P., Lebair, W., Lindsey, D., Race, R., Wu, X.,
 1090 and Zierk, S.: From photons to pixels: Processing data from the Advance Baseline
 1091 Imager, *Remote Sensing*, 10, 10.3390/rs10020177, 2018.

1092 Kaufman, Y. J., Koren, I., Remer, L. A., Tanré, D., Ginoux, P. and Fan, S.: Dust transport and
 1093 deposition observed from the Terra-MODIS spacecraft over the Atlantic Ocean, *J Geophys.*
 1094 *Res.*, 110, D10S12, doi:10.1029/2003JD004436,2005
 1095 Koren, I., Kaufman, Y.J., Rosenfeld, D., Remer, L.A. and Rudich, Y.: Aerosol
 1096 invigoration and restructuring of Atlantic convective clouds, *Geophys. Res. Lett.*, 32,
 1097 L14828, doi: 10.1029/2005GL023187, 2005.
 1098 Levy, R. C., Remer, L.A. and Dubovik, O.: Global aerosol optical properties and
 1099 application to Moderate Resolution Imaging Spectroradiometer aerosol retrieval over
 1100 land, *J Geophys Res-Atmos*, 112, D13210, doi:10.1029/2006JD007815, 2007a.
 1101 Levy, R. C., Remer, L.A., Mattoo, S., Vermote, E.F. and Kaufman, Y.J.: Second-
 1102 generation operational algorithm: Retrieval of aerosol properties over land from
 1103 inversion of Moderate Resolution Imaging Spectroradiometer spectral reflectance, *J.*
 1104 *Geophys. Res.-Atmos.*, 112, D13211, doi:10.1029/2006JD007811, 2007b.
 1105 Levy, R.C., S. Mattoo, L.A. Munchak, L.A. Remer, A. Sayer, N.C. Hsu. The Collection 6
 1106 MODIS aerosol products over land and ocean. *Atmos. Meas. Tech.*, 6, 2989-3034,
 1107 2013.
 1108 Levy, R.C., Munchak, L.A., Mattoo, S., Patadia, F., Remer, L.A. and Holz, R.E. :
 1109 Towards a long-term global aerosol optical depth record: applying a consistent aerosol
 1110 retrieval algorithm to MODIS and VIIRS-observed reflectance. *Atmos. Meas. Tech.*,
 1111 8, 4083-4110, <https://doi.org/10.5194/amt-8-4083-2015>, 2015.
 1112 Li, R.-R., Kaufman, Y.J., Gao, B.-C. and Davis, C.O.: Remote sensing of suspended
 1113 sediments and shallow coastal waters. *IEEE Trans. Geosci. Remote Sens.*, 41, 559–
 1114 566, 2003.
 1115 Lim, H., Choi, M., Kim, M., Kim, J., and Chan, P. W.: Retrieval and validation of
 1116 aerosol optical properties using Japanese next generation meteorological satellite,
 1117 Himawari-8. *Korean Journal of Remote Sensing*, 32, 681-691, 2016.
 1118 Lim, H., Choi, M., Kim, M., Kim, J., Go, S., and Lee, S.: Intercomparing the Aerosol
 1119 Optical Depth Using the Geostationary Satellite Sensors (AHI, GOCI and MI) from
 1120 Yonsei AErosol Retrieval (YAER) Algorithm. *J. Korean Earth Science Society*, 39,
 1121 119-130, 2018.

1122 Lim, H., Choi, M., Kim, J., Kasai, Y., and Chan, P. W.: AHI/Himawari-8 Yonsei Aerosol
 1123 Retrieval (YAER): Algorithm, Validation and Merged Products. Remote
 1124 Sensing, 10(5), 699, 2018.

1125 Lim, S.S., Vos, T., Flaxman, A.D., et al.: A comparative risk assessment of burden of
 1126 disease and injury attributable to 67 risk factors and risk factor clusters in 21 regions,
 1127 1990-2010: a systematic analysis for the Global Burden of Disease Study 2010.
 1128 Lancet, 380, 2224-2260, 2012.

1129 Lin, J. C., Matsui, T., Pielke Sr., R.A., and Kummerow, C.: Effects of biomass-burning-
 1130 derived aerosols on precipitation and clouds in the Amazon Basin: a satellite-based
 1131 empirical study, J. Geophys. Res., 111, D19204, doi:10.1029/2005JD006884, 2006.

1132 Lyapustin, A., Wang, Y., Laszlo, I., Kahn, R., Korkin, S., Remer, L., Levy, R. and Reid,
 1133 J.S.: Multiangle implementation of atmospheric correction (MAIAC): 2. Aerosol
 1134 algorithm. J. Geophys. Res. 116, D03211, doi:10.1029/2010JD014986, 2011.

1135 Martins, J. V., Tanré, D., Remer, L., Kaufman, Y., Mattoo, S. and Levy, R.: MODIS
 1136 Cloud screening for remote sensing of aerosols over oceans using spatial variability,
 1137 Geophys Res Lett, 29, 32139, doi:10.1029/2001GL013252, 2002.

1138 Martonchik, J. V., Diner, D. J., Kahn, R., Ackerman, T. P., Verstraete, M. M., Pinty, B.,
 1139 and Gordon, H. R., 1998, Techniques for the retrieval of aerosol properties over land
 1140 and ocean using multiangle imaging, IEEE Transactions on Geoscience and Remote
 1141 Sensing, 36(4), 1212–1227.

1142 Munchak, L. A., Levy, R. C. Mattoo, S., Remer, L.A., Holben, B.N., Schafer, J.S.,
 1143 Hostetler, C.A., and Ferrare, R.A.: MODIS 3 km aerosol product: applications over
 1144 land in an urban/suburban region, Atmos Meas Tech, 6, 1747–1759, doi:10.5194/amt-
 1145 6-1747-2013, 2013.

1146 Patadia, F., Gupta, P., and Christopher, S. A.: First observational estimates of global clear
 1147 sky shortwave aerosol direct radiative effect over land, Geophys. Res. Lett., 35,
 1148 L04810, <https://doi.org/10.1029/2007GL032314>, 2008.

1149 Petrenko, M., Ichoku, C., and Leptoukh, G.: Multi-sensor Aerosol Products Sampling
 1150 System (MAPSS), Atmos Meas Tech, 5, 913–926, doi:10.5194/amt-5-913-2012, 2012.

1151 Prados, A. I., Kondragunta, S., Ciren, P. and Knapp, K.R.: GOES Aerosol/Smoke
 1152 Product (GASP) over North America: Comparisons to AERONET and MODIS
 1153 observations, *J. Geophys. Res.*, 112, D15201, doi: 10.1029/2006JD007968, 2007.
 1154 Quaas, J., Ming, Y., Menon, S., Takemura, T., Wang, M., Penner, J. E., and Sayer, A. M.:
 1155 Aerosol indirect effects—general circulation model intercomparison and evaluation
 1156 with satellite data. *Atmos. Chem. Phys.*, 9, 8697-8717, 2009.
 1157 Remer, L.A., Kaufman, Y.J., Tanré, D., Mattoo, S., Chu, D.A., Martins, J.V., Li, R.,
 1158 Ichoku, C., Levy, R.C., Kleidman, R.G., Eck, T.F., Vermote, E. and Holben,
 1159 B.N.: The MODIS Aerosol Algorithm, Products, and Validation. *J. Atmos.*
 1160 *Sci.*, 62, 947–973, 2005.
 1161 Remer, L. A., Mattoo, S., Levy, R.C., Heidinger, A., Pierce, R.B., and Chin, M.:
 1162 Retrieving aerosol in a cloudy environment: aerosol product availability as a function
 1163 of spatial resolution, *Atmos Meas Tech*, 5, 1823–1840, doi:10.5194/amt-5-1823-2012,
 1164 2012.
 1165 Rosenfeld, D., Sherwood, S., Wood, R. and Donner, L.: Climate effects of aerosol-cloud
 1166 interactions. *Science*, 343, 379-380, DOI: 10.1126/science.1247490, 2014a.
 1167 Rosenfeld, D., Andreae, A. and Asmi, A.: Global observations of aerosol-cloud-
 1168 precipitation-climate interactions. *Rev. Geophys.* 52, 750–808,
 1169 doi:10.1002/2013RG000441, 2014b.
 1170 Sekiyama, T. T., Yumimoto, K., Tanaka, T. Y., Nagao, T., Kikuchi, M., & Murakami, H.
 1171 :Data assimilation of Himawari-8 aerosol observations: Asian dust forecast in June
 1172 2015. *Sola*, 12, 86-90, 2016.
 1173 Seinfeld, John H., et al.: Improving our fundamental understanding of the role of
 1174 aerosol– cloud interactions in the climate system. *Proc. Nat. Acad. Sci.*, 113, 5781-
 1175 5790, 2016.
 1176 Shi, S., Cheng, T., Gu, X., Letu, H., Guo, H., Chen, H., and Wu, Y.: Synergistic Retrieval
 1177 of Multi-temporal Aerosol Optical Depth over North China Plain Using Geostationary
 1178 Satellite Data of Himawari-8. *Journal of Geophysical Research: Atmospheres*, 123,
 1179 5525–5537. <https://doi.org/10.1029/2017JD027963>.
 1180 Tanré, D., Herman, M. and Kaufman, Y.: Information on the aerosol size distribution
 1181 contained in the solar reflected spectral radiances, *J. Geophys. Res.*, 101,

1182 19,043–19,060, 1996.

1183 Tanré, D., Kaufman, Y.J., Herman, M., and Mattoo, S.: Remote sensing of aerosol
 1184 properties over oceans using the MODIS/EOS spectral radiances, *J. Geophys. Res.*,
 1185 102, 16,971–16,988, 1997.

1186 Tanré, D., Bréon, F. M., Deuzé, J. L., Dubovik, O., Ducos, F., François, P., Goloub, P.,
 1187 Herman, M., Lifermann, A., and Waquet, F. : Remote sensing of aerosols by using
 1188 polarized, directional and spectral measurements within the A-Train: the PARASOL
 1189 mission, *Atmos. Meas. Tech.*, 4, 1383-1395, <https://doi.org/10.5194/amt-4-1383-2011>,
 1190 2011.

1191 Torres, O., Tanskanen, A., Veihelman, B. , Ahn, C. , Braak, R., Bhartia, P. K. , Veefkind,
 1192 P. and Levelt, P. : Aerosols and surface UV products from OMI observations: An
 1193 overview, *J. Geophys. Res.*, 112, D24S47, doi: 10.1029/2007JD008809, 2007.

1194 Torres, O., Ahn, C., and Chen, Z.: Improvements to the OMI near-UV aerosol algorithm
 1195 using A-train CALIOP and AIRS observations. *Atmos. Meas. Tech.*, 6, 3257-3270,
 1196 doi:10.5194/amt-6-3257-2013, 2013.

1197 Uesawa, D.: Aerosol Optical Depth product derived from Himawari-8 data for Asian dust
 1198 monitoring, Meteorological Satellite Center Technical Note, No.61, 2016..

1199 Wang, J. and Christopher, S. A.: Intercomparison between satellite-derived aerosol
 1200 optical thickness and PM_{2.5} mass: Implications for air quality studies. *Geophys. Res.*
 1201 *Lett.*, 30, 2095, doi:10.1029/2003GL018174, 2003.

1202 Yan, X., Li, Z., Luo, N., Shi, W., Zhao, W., Yang, X., and Jin, J.: A minimum albedo
 1203 aerosol retrieval method for the new-generation geostationary meteorological satellite
 1204 Himawari-8, *Atmos. Res.*, 207, 14-27, 2018.

1205 Yang, F., Wang, Y., Tao, J., Wang, Z., Fan, M., de Leeuw, G., and Chen, L.: Preliminary
 1206 Investigation of a New AHI Aerosol Optical Depth (AOD) Retrieval Algorithm and
 1207 Evaluation with Multiple Source AOD Measurements in China, *Rem. Sens.*, 10, 748,
 1208 2018.

1209 Yoshida, M., Kikuchi, M., Nagao, T. M., Murakami, H., Nomaki, T., and Higurashi, A.:
 1210 Common retrieval of aerosol properties for imaging satellite sensors, *J. Meteorol. Soc.*
 1211 *Japan. Ser. II*, 2018.

1212 Yu, F. and Wu, X.: Radiometric Inter-Calibration between Himawari-8 AHI and S-NPP

1213 VIIRS for the Solar Reflective Bands, *Rem. Sens.*, 8, 165, 2016.
 1214 Yu, Hongbin, Remer, L.A., Chin, Mian, Bian, Huisheng, Tan, Qian, Yuan, Tianle and
 1215 Zhang, Yan, Aerosols from overseas rival domestic emissions over North America,
 1216 *Science* 337, 566-569, doi: 10.1126/science.1217576, 2012.
 1217 Yu, Hongbin, Remer, L.A., Kahn, R.A., Chin, Mian and Zhang, Yan (2013). Satellite
 1218 perspective of aerosol intercontinental transport: From qualitative tracking to
 1219 quantitative characterization, *Atmos. Res.* 124, 73-100, doi:
 1220 10.1016/j.atmosres.2012.12.013, 2013.
 1221 Yu, H., Chin, M., Yuan, T.L., Bian, H., Remer, L.A., Prospero, J.M., Omar, A., Winker,
 1222 D., Yang, Y.K., Zhang, Y., Zhang, Z. and Zhao, C.: The fertilizing role of African dust
 1223 in the Amazon rainforest: A first multiyear assessment based on data from Cloud-
 1224 Aerosol Lidar and Infrared Pathfinder Satellite Observations, *Geophys. Res. Lett.*, 42,
 1225 1984-1991, doi: 10.1002/2015GL063040, 2015.
 1226 Yumimoto, K., Nagao, T. M., Kikuchi, M., Sekiyama, T. T., Murakami, H., Tanaka, T.
 1227 Y., and Arai, K.: Aerosol data assimilation using data from Himawari-8, a next-
 1228 generation geostationary meteorological satellite. *Geophys. Res. Lett.*, 43, 5886-5894,
 1229 2016.
 1230 Zhang, J., Christopher, S.A., Remer, L.A. and YKaufman, Y.J.: Shortwave aerosol
 1231 radiative forcing over cloud-free oceans from Terra: 2. Seasonal and global
 1232 distributions, *J. Geophys. Res.*, 110, D10S24, doi:10.1029/2004JD005009, 2005.
 1233 Zhang, W., Xu, H., and Zheng, F.: Aerosol Optical Depth Retrieval over East Asia Using
 1234 Himawari-8/AHI Data, *Rem. Sens.*, 10, 137, 2018.
 1235
 1236