

Recent improvements of Long-Path DOAS measurements: impact on accuracy and stability of short-term and automated long-term observations

Jan-Marcus Nasse¹, Philipp G. Eger^{1,2}, Denis Pöhler¹, Stefan Schmitt¹, Udo Frieß¹, and Ulrich Platt¹

¹Institute of Environmental Physics, University of Heidelberg, Im Neuenheimer Feld 229, D-69120 Heidelberg, Germany

²now at: Max Planck Institute for Chemistry, Hahn-Meitner-Weg 1, D-55128 Mainz, Germany

Correspondence to: J.-M. Nasse (jan.nasse@iup.uni-heidelberg.de)

Referees' comments and authors' responses

Page and line indications in the referees' comments refer to the original paper:

<https://www.atmos-meas-tech-discuss.net/amt-2019-69/amt-2019-69.pdf>

5 The authors' responses refer to this document.

Anonymous Referee #2

Comment 1. Several places: the term 'measurement accuracy' is used in a way which in my opinion
10 is better described by 'measurement precision' as absolute accuracy of the mixing ratios is not discussed
but rather the reduction in RMS of the residual. Please check and change where appropriate.

Response 1:

The reduction of residual RMS can reflect an improvement of both precision and accuracy. A reduction of
the residual would indeed only affect the precision if the residual would only consist of statistical noise.
15 However, as discussed in the manuscript, there are several effects (lamp instabilities, fibre modes, etc.),
that introduce systematic spectral structures. A reduction of these structures, which have a systematic
influence on the retrieved column densities and hence mixing ratios, improves not only the precision but
also the accuracy. The reduction of systematic structures is the main goal of the improvements presented
here and their result is clearly visible in Fig. 10. Therefore the presented changes lead to an improved
20 accuracy through a reduced influence of systematic structures as well as an improvement in precision.

5 The difference between accuracy and precision with respect to the residual was discussed in more detail in Sec. 2.2 (P. 12 L. 12 ff) to make this difference clear. The instances when accuracy was used in the original text where checked and where both precision and accuracy are affected/meant, the latter was added (P. 8 L. 26; P. 13 L. 27 and 29; P.32 L. 5, P. 38 L. 4). Where measures against systematic spectral structures are discussed, only accuracy is used.

Comment 2. Page 4, line 2: comatic => chromatic

Response 2:

10 In this list of phenomena that lead to a blurring of the focal point, "comatic" is not a typo but refers to the comatic aberration (coma) that can occur when parabolic telescope mirrors are used and the incident light is not parallel to the optical axis of the mirror.

Comment 3. Page 4, line 18: Why is there scattered sun light in short-cut measurements? This should not be the case in my opinion.

15 **Response 3:**

To ensure an optimal coupling of light from the sending fibre(s) to the receiving fibre(s), the reference plate is mounted in a distance of 1-4 mm from the fibre bundle depending on the surface properties of the reference plate and the numerical aperture of the fibres (see Fig. A1 for a sketch). This is necessary to ensure a sufficient homogenisation which at shorter distances of the reference plate would be limited by the surface properties of the sand-blasted surface of the reference plate. Since the light path between fibre bundle and reference plate is not shielded from external light, there is a small contribution of background light in short-cut background spectra as well. This contribution is 5-10 times smaller than the background in atmospheric spectra. To correct this but mainly to correct CCD offset and dark current signal of reference spectra, a reference background spectrum is recorded with the light source shut off.

25 The distance between reference plate and fibres is mentioned in the description of the reference plate system (P. 10 L. 27 of this document). For further clarification, the distance of the reference plate was added to the sketch in Figure A1.

30 Comment 4. Equation 1: For sake of consistency, it would be better to denote broad band absorption not with a subscript but with a dash or star like the differential part. Using ϵ for the scattering cross-section

is also maybe not ideal as this would usually be read as extinction which is the sum of scattering and absorption.

Response 4:

5 Equation 1: Similar to the differential absorption cross-section, the subscript "B" was moved into a superscript position. ϵ in this expression is indeed an extinction (the contribution of Rayleigh and Mie scattering) and not the scattering cross-section. To make clear that the second part of the equation only includes the extinction due to scattering processes, a sum of the two extinction coefficients ϵ_R for Rayleigh- and ϵ_M for Mie-scattering was added.

10 Comment 5. Page 4, line 13: of gas => of a gas

Response 5:

The "a" was added to the sentence.

Comment 6. Figure 7: amplification => magnification

15 **Response 6:**

Amplification was replaced by the correct term magnification.

Comment 7. Figure 8: Why is vibration not resulting in any improvements in reverse geometry, while roughening is very effective?

20 **Response 7:**

The mode mixing effect of vibrations is a result of the mechanical stress caused on the fibre. Fibres with a larger diameter are less influenced by a given vibration strength than smaller diameter fibres. In contrast, the influence of the roughening is independent of the fibre diameter.

25 Comment 8. Section 5.2: I'm not convinced that the reader can learn anything from this section in addition to what is shown in Section 5.3 other than the specific characteristics of a specific LP-DOAS system and would therefore suggest to remove it.

Response 8:

30 We agree with the referee's opinion and have moved the discussion of the field campaign in the Nördlinger Ries to the appendix to make the corresponding part of the publication more concise while keeping the

technical details of the LP-DOAS system and typical detection limits in Tables 1 and 6, as this information illustrates that the improvements discussed can be realised independently of specific components such as particular CCD types etc.

5 Comment 9. Page 21, line 6: section number missing

Response 9:

There were two references to the same section in this sentence. One was removed and the other moved within the sentence.

10 Comment 10. Figure A1: I don't think this figure is needed.

Response 10:

In the light of the explanations of the background light in shortcut background spectra (see Response 3), we added the distance between reference plate and fibre bundle to this figure to better illustrate the basic working principle of the reference plate system and therefore prefer to keep the figure.

15

Comment 11. Figure B1: If I read this figure right, measurements with filter WG 280 show larger intensities around 300 nm than measurements without filter. This points at the general problems of straylight measurements (stability of lamp and set-up) which should at least be mentioned in the main text.

Response 11:

20 The referee's observation in the plot in its current form is correct. The current caption does not sufficiently explain the data shown which leads to an apparently higher intensity of the spectrum with the WG 280 filter. However, it is not the lamp stability that causes the mismatch between the spectrum without filter and the WG 280. To compensate for intensity losses when a filter is placed in the light path (typically around 5-20%), the spectra recorded with a filter in the plot were scaled to match the spectrum without
25 filter in the 700-800 nm spectral region. This leads to the observed apparently higher intensity of the WG 280 spectrum. Additionally, the distance of the fibre from the light source was optimised for a light path with a filter and kept constant (including the measurement without filter). In the measurement without filter the focal point of the lens coupling the signal from the LDLS into the fibre is at a slightly different location which explains the different shape of the spectrum without filter. This is the same effect that is
30 used in the chromatic aberration filter discussed in Sec. 3.4. This information was added to the caption of

the figure.

Anonymous Referee #3

5 Comment 1. P2 L5, I suggest to include some other important atmospheric active species, e.g. HONO, NO₃, which made the LP-DOAS technique wide influences in the urban pollution research, along with the related references.

Response 12:

The species and according references were added to the list of detectable species.

10

Comment 2. P5 L23-25, Please re-structured this long sentence to be easily understood. And residuals attained in this study still were a factor 2-4 larger than pure photon shot noise described the status before improvement or after Not so clear.

Response 13:

15 The sentence was restructured into several shorter ones for better comprehensibility. The comparison of attained residuals to the theoretical limit of shot noise underlines the fact that other sources of noise affect the RMS of the residuals. Since the relative importance of shot noise strongly depends on the number of spectra that are summed (i.e. photon statistics), the quantitative comparison of residuals to the shot noise limit was removed. Instead it was made clear that (both before and after the improvements) other sources
20 of noise limit the residual RMS. The reduction of these other factors is achieved through the presented changes to the setup.

Comment 3. P11 L4, 800 μ m diameter

Response 14:

25 The word diameter was added.

Comment 4. P18 Line 7, 'ar' to 'are'. In this paragraph, I am not so clear about the 'spectra summation'. During the experiment, the spectra was sampled in 60s temporal resolution during the 10 hours. The spectra at 10 min, 60 min and 600 min were added with the measured spectra offline? Or the summation
30 was performed during the sampling before the related spectra was recorded.

Response 15:

The typo was corrected. The summation in this and all other cases was done after the measurements by combining sets of consecutively recorded spectra into groups corresponding to the different time periods. This was made clearer with an additional sentence detailing the summation procedure.

5

Comment 5. Fig. 8, Because the LP-DOAS measurements are usually expected to be applied with high temporal resolution e.g. min. Why the authors test with such long periods? I think exam the RMS dependency on the temporal stability of different mode mixing methods should be focused on the even shorter duration of the spectra summation.

Response 16:

The goal of the summations over these long time periods was to investigate, whether the different mode mixing techniques would be stable when large numbers of spectra corresponding to long measurement periods are summed up. It is correct that, depending on the absorber, its mixing ratios in the atmosphere, and the optical performance of a setup, LP-DOAS measurements can be performed with a high temporal resolution (e.g. for NO₂ under polluted conditions). However, summing up spectra allows to lower detection limits (at the expense of temporal resolution) which is necessary for the detection of molecules with a weaker absorption cross-section or smaller mixing ratio (or both), e.g. detection of reactive halogens in polar environments with mixing ratios down to the sub-ppt range). Prerequisite for this is a sufficient temporal stability of all components (including the mode mixing measures).

15
20

Comment 6. P24-27, It's better to shorten the conclusions part, such as Fig. 10, 11 and related detailed description can be moved to the Sect. 5.

Response 17:

Following the referee's suggestions, the conclusions were shortened considerably focussing on the quantified improvements presented here. Results illustrating the achieved improvements in comparison with the benchmark setup and in terms of spectral properties of the residual spectra were either moved to section 5.1 (formerly Figs. 10 and 11 now 9 and 10) (Heidelberg intercomparison campaign) and briefly discussed there.

25

Abstract. Over the last decades, Differential Optical Absorption Spectroscopy (DOAS) has been used as a common technique to simultaneously measure abundances of a variety of atmospheric trace gases. Exploiting the unique differential absorption cross section of trace gas molecules, mixing ratios can be derived by measuring the optical density along a defined light path and by applying the Beer-Lambert law. Active long-path (LP-DOAS) instruments can detect trace gases along a light path of
5 a few hundred metres up to 20 km with sensitivities for mixing ratios down to ppbv and pptv levels, depending on the trace gas species. To achieve high measurement accuracy and low detection limits, it is crucial to reduce instrumental artefacts that lead to systematic structures in the residual spectra of the analysis. Spectral residual structures can be introduced by most components of a LP-DOAS measurement system, namely by the light source, in the transmission of the measurement signal between the system components or at the level of spectrometer and detector. This article focuses on recent improvements by the
10 first application of a new type of light source and consequent changes to the optical setup to improve measurement accuracy.

Most state-of-the-art LP-DOAS instruments are based on fibre optics and use xenon arc lamps or light emitting diodes (LEDs) as light sources. Here we present the application of a Laser Driven Light Source (LDLS), which significantly improves the measurement quality compared to conventional light sources. In addition the lifetime of LDLS is about an order of magnitude higher than of typical Xe-arc lamps. The small and very stable plasma discharge spot of the LDLS allows the application
15 of a modified fibre configuration. This enables a better light coupling with higher light throughput, higher transmission homogeneity, and a better suppression of light from disturbing wavelength regions. Furthermore, the mode mixing properties of the optical fibre are enhanced by an improved mechanical treatment. The combined effects lead to spectral residual structures in the range of $5 - 10 \cdot 10^{-5}$ RMS (in units of optical density). This represents a reduction of detection limits of typical trace gas species by a factor of 3-4 compared to previous setups. High temporal stability and reduced operational complexity of this new
20 setup allow the operation of low-maintenance automated LP-DOAS systems as demonstrated here by more than two years of continuous observations in Antarctica.

1 Introduction

Active long-path differential optical absorption spectroscopy (LP-DOAS) is a well-established remote sensing technique based on the DOAS principle introduced by Perner et al. (1976); Platt and Perner
25 (1980, 1983). It can attain detection limits in the order of ppbv to pptv (nanomole per mole to picomole per mole) for absorbers in the ultraviolet to near-infrared spectral range (270-800 nm). Detectable species include NO_2 , NO_3 , HONO , O_3 , SO_2 , ClO , OCIO , BrO , IO , OBrO , OIO , I_2 , OIO , formaldehyde, glyoxal, and the oxygen dimer O_4 . LP-DOAS setups have been used in various applications such as studying urban pollution ([Volkamer et al., 2005](#); [Chan et al., 2012](#)) ([Platt et al., 1980, 1981](#); [Volkamer et al., 2005](#))
30 ([Platt et al., 2009](#); [Asaf et al., 2010](#); [Chan et al., 2012](#); [Lu et al., 2015](#)) and its vertical distribution

(Wang et al., 2006)(Alicke et al., 2002; Veitel et al., 2002; Stutz et al., 2004; Wang et al., 2006), in remote sensing of volcanic emissions (Kern et al., 2009), investigation of atmospheric halogen chemistry in coastal (Peters et al., 2005; Pikel'naya et al., 2007; Keene et al., 2007; Commane et al., 2011), desert (Holla et al., 2015) (Hebestreit, 1999; Holla et al., 2015) or polar regions (Hausmann and Platt, 1994; Hön-
5 ninger et al., 2004; Friß et al., 2011; Liao et al., 2011; Stutz et al., 2011), and ship-based in the Arctic sea ice region (Pöhler et al., 2010).

The main advantage of DOAS in atmospheric remote sensing is that it allows the contact-free and simultaneous measurement of several trace gases. Exploiting that many molecules have unique differential absorption cross sections, mixing ratios can be derived by measuring the optical density of long light paths
10 in the atmosphere using the DOAS principle (see e.g. Platt and Stutz (2008) for a detailed introduction).

In contrast to passive instruments (e.g. Multi Axis (MAX)-DOAS or satellite instruments), which use scattered or reflected light and hence rely on natural light sources such as solar (or lunar Wagner et al., 2000) radiation, active DOAS instruments use artificial light sources such as LEDs or arc lamps. The
15 independence from natural light sources allows continuous observations of trace gases to e.g. study night-time chemistry. It also enables investigations of trace gases absorbing in the deep UV where no natural light sources exist. Another advantage is the well-defined light path of up to 20 km. Along this light path, a mean mixing ratio is determined. In comparison to passive instruments, this reduces the analytical effort to obtain mixing ratios and usually leads to smaller uncertainties as no radiative transport models
20 are needed for the interpretation of the data. Furthermore, compared to point measurements, Long-Path DOAS results are less sensitive to large spatial gradients yielding concentrations with a better representativeness for comparison with chemistry models or typical footprints of air borne platforms and satellites.

Most modern LP-DOAS setups use fibre optics for light transfer between light source, telescope and
25 spectrometer (Merten et al., 2011) and a mono-static telescope, i.e. one telescope is used for both sending and receiving the light reflected from a retro-reflector array. In the following, recent improvements to this setup will be presented which, in combination, can increase accuracy and precision and hence reduce detection limits of LP-DOAS measurements by a factor of 3 to 4 compared to previous setups. To achieve this, a novel light source type was applied and the light coupling from the light source to the telescope was
30 optimised to reduce stray light. Furthermore, a new configuration of the optical fibres with an improved

mode mixing was introduced. In addition to an enhanced measurement performance, these improvements have made the previously quite cumbersome setup of LP-DOAS instruments considerably easier and now allow the operation of low-maintenance, automated instruments for long-term observations.

In section 2 the state of the art in LP-DOAS instrument design will be described. Improvements of measurement performance and operation procedure following the introduction of the novel light source and changes to the fibre configuration are presented in section 3. In section 4 the influence of residual structures due to fibre modes and a new method for mode mixing to reduce these structures is presented. In section 5 the combined contribution to the improved instrument performance with respect to reduced stray light and reduction of total noise is quantified based both on lab measurements and field campaigns and typical detection limits for setups that incorporate the improvements are presented.

2 Long-path DOAS

LP-DOAS instruments couple light from an artificial light source into a telescope which creates a light beam that is transmitted through the atmosphere across a distance ranging from a couple of hundred metres to several kilometres. At the end of this atmospheric path, the light is collected by a telescope and analysed for spectral absorption structures - typically with a grating spectrometer. This originally bi-static setup with separate telescopes for sending and receiving was replaced by a mono-static setup with a single telescope and a retro-reflector array introduced by Axelsson et al. (1990). After reflection at the retro-reflector, the light is received again by the same telescope which reduces the complexity of the setup with regard to power supply and alignment. It also doubles the length of the light path. State of the art LP-DOAS instruments mostly rely on fibre optics for light coupling between light source, telescope and spectrometer (see Fig. 1). Compared to traditional systems that use a complex system of mirrors for the light coupling between light source, telescope and spectrometer, this approach, first introduced by Merten et al. (2011), further reduces the complexity of alignment of the telescope itself and increases the transmittance compared to the coaxial Newton-type telescopes used with the mirror coupling.

2.1 State of the art instrument setup

The crucial components in a modern fibre-based LP-DOAS setup are the light source and a Y-shaped optical fibre bundle where one end serves as sending fibre bundle that guides the light from the light source to the telescope and the other end serves as a receiving fibre bundle, leading from the telescope to the spectrometer (see Fig. 1). According to Merten et al. (2011), the fibre bundle in such a "classical" setup (see upper row in Fig. 2 for a detailed schematic of the sections of the bundle) on the transmitting end typically consists of a mono fibre with a large diameter (typically 800 μm) to maximize light collection at the light source (at letter A in Fig. 1 and also column A, upper row in Fig. 2). This fibre is then coupled to a ring of smaller diameter (200 μm) fibres (at letter B/column B) leading to the combined end of the bundle. The monofibre (800 μm) is required to guarantee an equal illumination of all small diameter fibres of the ring. Then the end of the bundle (letter C/column C) is placed close to the focal point of the telescope mirror to create a parallelized light beam. For a fibre at the focal point of a parabolic mirror and omitting beam widening effects, the light emitted by the sending fibre bundle would be imaged on itself, so that no light would reach the receiving fibre. However, there are a number of effects that blur the reflected image of the light source and lead to a coupling of light into the central receiving fibre: (a) comatic aberration when the incident beam is parallel but not paraxial, (b) diffraction at the apertures of telescope and retro-reflectors (c) surface irregularities of mirror and retro-reflectors, (d) defocussing of the fibre bundle, (e) atmospheric turbulence, and (f) for spherical main mirrors the spherical aberration in combination with the lateral offset of the beam at the retro-reflectors (Rityn, 1967; Eckhardt, 1971; Merten et al., 2011). Merten et al. (2011) have determined (a)-(c) to have a negligible influence for components typically used in LP-DOAS systems. Considering (d) and (e) (and (f) if a spherical main mirror is used), the light throughput of a fibre based system is optimised by setting the end of the fibre bundle to a slightly out of focus position in front of the main mirror.

To homogenize the illumination of the entrance slit of the spectrometer and hence the grating, different mode mixing techniques (see e.g. Stutz and Platt (1997)) can optionally be applied between telescope and spectrometer (at D in Fig. 1/column D upper row in Fig. 2) before the light is coupled into the spectrometer passing an (optional) optical slit (letter E/column E) (see section 4).

For the analysis of the atmospheric absorption, a reference spectrum without absorption of the gases is required. This is obtained by temporarily inserting a diffuse reflector, e.g. a sandblasted white surface,

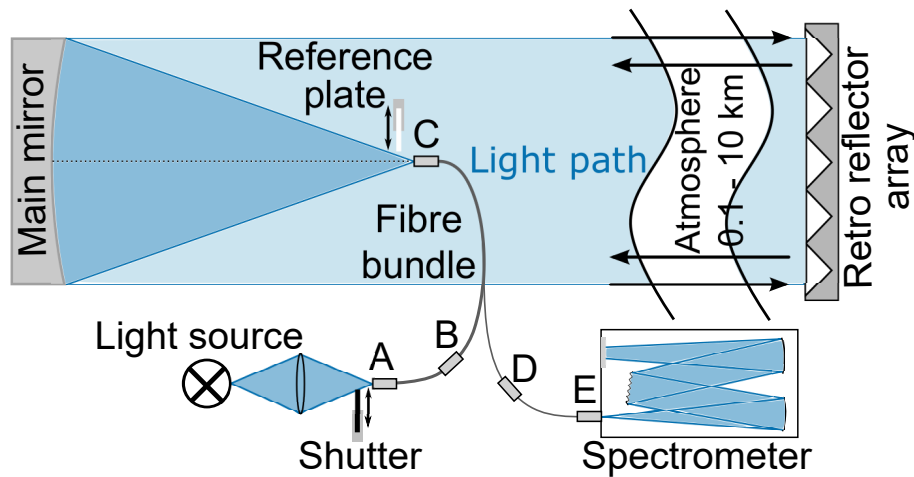


Figure 1. Components of a fibre-based LP-DOAS system consisting of a light source, a y-shaped fibre bundle, a telescope for sending and receiving the light, a retro reflector array and a spectrometer. [Adapted from Sihler \(2007\).](#)

close (i.e. around 1-4 mm distance) to the end of the fibre at (C) thus creating an optical "shortcut" (SC) for the light (for sketch of this mechanism see Fig. A1 in the appendix). In the following, spectra recorded this way will be referred to as reference. The reflector mechanism will be referred to as shortcut.

To account for scattered sun light from the atmosphere in both atmospheric and reference spectra as well as to correct for the CCD's dark current and offset signal, background spectra for both types of measurement spectra are recorded on a regular basis by shutting off the light source at (A). All four spectrum types are recorded in an interleaved fashion with typically a couple of pairs of reference and atmospheric spectra followed by one atmospheric background and one reference background. Examples of such measurement routines are discussed in detail in [section ?? below. Sec. C in the appendix.](#)

10 2.2 DOAS analysis and measurement accuracy

Obtaining average trace gas mixing ratios \bar{c}_i on the light path L between telescope and reflector is based on *Beer-Lambert's law*. Extended by scattering processes, the attenuation of an initial radiance $I_0(\lambda)$ traversing the atmosphere yielding the measured spectrum $I(\lambda)$ can be described by Eq. 1. The central idea of the DOAS approach is the separation of narrow band (differential) molecular absorption cross

section $\sigma'_i(\lambda)$ of a suited absorber i from the broad band portion ~~$\sigma_{B,i}(\lambda)$~~ : $\sigma_i^B(\lambda)$:

$$I(\lambda) = I_0(\lambda) \cdot \exp \left(- \sum_i \left[(\sigma'_i(\lambda) + \sigma_{B,i}^B(\lambda)) \cdot \bar{c}_i \cdot L \right] - (\epsilon_R(\lambda) + \epsilon_M(\lambda)) \cdot L \right) \quad (1)$$

The optical density τ (Eq. 2) is calculated taking the logarithm of the ratio of atmospheric $I(\lambda)$ and reference spectra $I_0(\lambda)$ after correcting with their respective backgrounds. Mixing ratios \bar{c}_i are determined by using the differential optical density $\sigma'_i(\lambda)$ modelled from differential literature absorption cross-sections $\sigma'_{i,\text{Lit}}$. To adapt the high-resolution literature cross-section to the resolution of the spectrometer, prior to the analysis it is convoluted with the instrument response function which usually is obtained by recording the shape of an emission line of a gas discharge lamp (e.g. mercury). For the detailed mathematical description of the analysis refer to Platt and Stutz (2008). Broad band absorption ~~$\sigma_{B,i}(\lambda)$~~ : $\sigma_i^B(\lambda)$ in τ is combined with (broad band) atmospheric scattering ~~(including both Rayleigh and Mie processes)~~ $\epsilon(\lambda)$ and either where $\epsilon_R(\lambda)$ denotes extinction due to Rayleigh-scattering and $\epsilon_M(\lambda)$ accounts for Mie-scattering. The broad band contributions can either be modelled with a polynomial $P(\lambda)$ or removed with a high-pass filter. The fitting process then minimizes the difference $R(\lambda)$ between measured and modelled optical density using a least-squares approach yielding mixing ratios \bar{c}_i :

$$\tau = \underbrace{\ln(I_0(\lambda)/I(\lambda))}_{\text{Measurement}} = \underbrace{\sum_i \sigma'_{i,\text{Lit}}(\lambda) \cdot \bar{c}_i \cdot L + P(\lambda)}_{\text{Model}} + \underbrace{R(\lambda)}_{\text{Residual}} \quad (2)$$

The measurement accuracy and precision and hence the detection limit of the retrieved mixing ratios is determined from this difference $R(\lambda)$ called the residual of the DOAS fit. The magnitude of the residual determines the precision, while systematic structures limit the accuracy. The magnitude of the residual can be affected e.g. by a low signal-to-noise ratio or noise generated in the CCD e.g. through thermal excitation or the read-out electronics. Systematic structures are caused e.g. by spectral lamp structures, absorbers missing in the model, inaccurate literature cross-sections used in the model, ~~low signal-to-noise ratios~~ or inhomogeneous illumination of the spectrometer grating, where the angular response of the detector causes residual structures (Stutz and Platt, 1997). A fundamental limit is the photon shot noise ~~Decreasing which decreases~~ with the square root of the count number in spectra, ~~its~~. Its relative contribution to the residual however, can become very small ~~and residuals attained~~ (e.g. when several spectra are summed up). Residuals in this study ~~still were a factor 2-4 generally were~~ larger than pure photon shot noise indicating that other sources of noise dominate. To reduce the contribution of systematic structures

to the residual and hence measurement errors and detection limits, in this study the influence of different components of the LP-DOAS instrumental setup was assessed and optimized.

2.3 LP-DOAS setups used in this study

We tested several improvements to the classic fibre based DOAS setup (as described in Sec. 2.1), an
5 overview of the three different set-ups is given in Tab. 1 and will be described in the following sections. The systematic comparison of improvements to the setup was done in the rooftop laboratory of the Institute of Environmental Physics at the University of Heidelberg (setup HD) with an Acton 500i spectrometer and a smaller laboratory telescope that allows quick changes of components but is not suited for outdoor deployment. For atmospheric measurements a 1.55 km light path (one way) passing over a residential area
10 of Heidelberg to another institute was used. Tests with atmospheric measurements were performed during 6 weeks from March 11 until May 3, 2014. In each configuration, measurements were performed for at least 24 h to ensure sufficient statistics and the comparability of different setups.

As for all measurements not performed under fully controlled laboratory conditions, the influence of environmental parameters has to be considered in such a comparison. An important factor in LP-DOAS
15 measurements are variations of the telescope-reflector alignment which can be influenced by changes to the setup as well as environmental parameters such as air temperatures. To ensure an optimal alignment, as part of the measurement routine and in alternation with measurement periods, an optimisation of the received signal is performed on a regular basis by systematically varying the telescope alignment around the current position and selecting the alignment with the highest signal. LP-DOAS telescopes thus adap-
20 tively counter sudden changes to the system transmissivity e.g. through mechanical interaction with the telescope structure as well as long-term drifts.

In addition to the alignment, atmospheric visibility between telescope and reflectors can vary. Potentially very low visibilities were removed from the comparison data set by excluding days with rainfall. Other visibility conditions with a similar influence (e.g. fog or smog) did not occur during the comparison
25 period.

We estimate the resulting variations of the absolute intensity of the measurement signal from both factors to be 20%. This value has to be considered when comparing absolute atmospheric intensities achieved with the different setups, which determine the temporal resolution of LP-DOAS measurements. For ~~the~~
~~accuracy~~ accuracy and precision, here assessed through the comparison of the RMS of fit residuals how-

ever (Sec. 2.2), due to the use of differential absorption features in DOAS, variations of the recorded absolute intensity only influence photon statistics and hence photon shot noise -(i.e. the precision). Therefore in the comparisons of residuals from atmospheric measurements, the square root of intensity variations has to be considered and an uncertainty of 10% has to be assumed. For the majority of setups tested here, this is much smaller than the systematic differences of residual RMS values between the different configurations.

It should be noted that in contrast to passive DOAS instruments, changes of the global radiation do not affect LP-DOAS measurements since the atmospheric background signal is corrected with regularly recorded background spectra (see Sec. 2.2). Therefore measurements under e.g. overcast conditions can be compared to observations under clear skies.

The combined changes to the LP-DOAS setup, which were found to be the best combination were then tested with a campaign-grade telescope and a smaller Acton 300i spectrometer (setup "NR") during a six weeks campaign in a rural area in the "Nördlinger Ries" in southern Germany. Findings from both campaigns were incorporated in a new, low-maintenance automated LP-DOAS system (setup "NMIII"). It was operated on the German Antarctic station Neumayer III from January 2016 until May 2018 and allows the assessment of the long-term performance of the different components. All telescopes investigated here, were equipped with spherical, aluminium coated mirrors.

Table 1. Overview of the different LP-DOAS setups used in this study.

Setup		HD	NR	NMIII
Location		Heidelberg Campus	Nördlinger Ries/Germany	Neumayer III/Antarctica
Light source		various	EQ-99 (2014)	EQ-99X (2015)
Fibre bundle	sending bundle length	various	6 m + 3 m	8.55 m
	receiving bundle length		3 m + 7 m	7.55 m + 1 m
	sending fibre diameters	various	1x200 μm +1x200 μm	1x200 μm
	receiving fibre diameters		6x200 μm +1x800 μm	6x200 μm +1x800 μm
	treatment (spectrometer end)		12 μm coarse polished	5 μm coarse polished
Telescope	focal length	0.6 m	1.5 m	1.5 m
	mirror diameter	20 cm	30 cm	30 cm
	mirror type	spherical	spherical	spherical
	Numerical aperture	0.17	0.1	0.1
	Telescope front	open	open	covered with quartz glass window
Light path	total (one way)	3.1 (1.55) km	5.64 (2.82) km	3.2 (1.55) km/5.9 (2.95) km
Retroreflector	No. of 2'' elements	7	28	24 (heated)/(32)
	target size (H x W)	21 x 18 cm	45 x 32 cm	60 x 40 cm/(140 x 80 cm)
Spectrometer	Model	Acton 500i	Acton 300i	Acton 300i
	Focal length	500 mm	300 mm	300 mm
	f-number	6.5	4	4
	Numerical aperture	0.07	0.12	0.12
	Optical slit	200 μm	150 μm	200 μm
	Grating	600 gr./mm	1000 gr./mm	1200 gr./mm / 600 gr./mm
	CCD	Roper Scientific	Roper Scientific	Andor DU440 BU
	Spectral resolution	0.50 nm	0.49 nm	0.54 nm/(0.95 nm)
	Spectral window	85 nm	85 nm	65 nm/140 nm

3 Light sources and fibre configurations

The light source of a LP-DOAS instrument is a key component because it has a major influence on the achievable signal-to-noise ratio and temporal resolution. The measurement quality depends on both, its temporal and, particularly for arc lamps, the spatio-temporal stability of the light emitting medium (i.e. the plasma) and its spectral characteristics, namely on its (spectral) radiance (see Platt and Stutz (2008) for comparison of different light sources).

3.1 Comparison of light sources

In the past, for most LP-DOAS applications xenon arc lamps have been used that often suffered from poor stability of the light arc which affected the optical coupling into the fibre and hence the effective intensity and shape of the lamp's spectral structures. Furthermore, lifetimes of most models with high radiance were relatively short (200 to 2000 h when in constant use; Kern et al. (2006)) and regular replacement during longer measurements required - in addition to the considerable expenses - a time-consuming re-alignment of the optics after each exchange. Depending on the lamp model used, power consumption was high (up to 500 W plus losses in the power supply), which limited the applicability of LP-DOAS instruments. Additionally, the high voltages necessary for ignition are a shock hazard and cause electromagnetic interferences. Although LEDs are useful for compact applications due to their low power consumption and high spatial stability of the light emitting area, up to now light output is not high enough to achieve sufficient signal-to-noise ratios in the ultraviolet regime below 350 nm. Their application has been so far limited to very compact "single housing" systems and to ensure sufficient spectral stability, often considerable efforts for temperature stabilization are necessary (Kern et al., 2006, 2009; Sihler et al., 2009).

In our new LP-DOAS setups presented here, a novel, commercially available Laser-Driven Light Source (Energetiq EQ-99 and the follow-up model Energetiq EQ-99X, in the following referred to as LDLS) was applied both, for laboratory tests and different field measurements. Supplying energy to the xenon plasma with an infra-red laser (rather than a high voltage), it combines the advantages of a high power xenon lamp with long lifetime and high spatio-temporal stability of LEDs at a modest power consumption (140 W). Similar to conventional xenon lamps, xenon emission lines, whose differential nature can limit sensitivity in DOAS applications (in particular around 450 nm, a spectral window in which e.g. IO or glyoxal can be

Table 2. Specifications of several lamps used for LP-DOAS measurements.

Light source	LDLS	XBO-75	PLI-500	UV LED
Type	Laser-driven LS	Xe-arc	Xe-arc	Light Emitting Diode
luminous surface [μm]	63 x 144	250 x 500	300 x 300	1000 x 1000
(experimental value)	95 x 146 \pm 6 %	(*)	(*)	
Typical lifetime [h]	> 10 000	200-2000	< 200	> 10 000
Power requirements [W]	140	75	500	3

(*) only valid for new lamps - can increase drastically within days

detected), are broadened by a high Xe pressure in the bulb. Details on the LDLS can be found in Zhu and Blackborow (2011b); Horne et al. (2010); Islam et al. (2013)

We couple the light from the LDLS into a fibre with a lens as described in Sec. 3.4 and depicted in Fig. 5. The light source offers the possibility to purge the lamp housing with a constant flow of nitrogen gas. This prevents ozone formation around the light bulb and hence increases output in spectral regions where ozone has absorption bands and reduces the intrusion of pollutants into the lamp housing (see manufacturers' technical notes for details; Zhu and Blackborow, 2011a). In a test we performed, the radiance at 255 nm increased by about 30 % compared to no purging when a high flow of nitrogen (about 1 L/min) was used. Due to logistical reasons, the LDLS most of the time was purged with filtered and dried air during the measurements reported in this study. In the system used for long-term observations in Antarctica (see Sec. 5.2), the lamp housing was only purged 30 min per day with filtered and dried air attaining a life time of 22500 h.

3.2 Adaptation of the optical setup to the light source

In addition to a long life time and high spatio-temporal stability, a further advantage of the LDLS is the very small and stable plasma spot due to the very precise localisation of the plasma inside the bulb in the focal point of the laser. Its dimension in the order of 100 μm (full width at half maximum) is about 3 times smaller than in conventional arc lamps (see Tab. 2). This can be exploited in several ways to further improve the design of LP-DOAS systems - first with respect to the configuration of the fibre bundle and overall system optical throughput.

Table 3. Étendues for the coupling between the different components in the three setups used in this study (see Tab. 1). For setup HD, the spectrometer étendue for two fibre bundle configurations (classical and reversed) are indicated. See Fig. 2 and Sec. 3.3 for a description.

Coupling	HD	NR	NMIII
LDLS → fibre	$19.34 \cdot 10^{-4} \text{ sr mm}^2$	$21.10 \cdot 10^{-4} \text{ sr mm}^2$	$9.80 \cdot 10^{-4} \text{ sr mm}^2$
Telescope	$28.73 \cdot 10^{-4} \text{ sr mm}^2$	$9.89 \cdot 10^{-4} \text{ sr mm}^2$	$9.89 \cdot 10^{-4} \text{ sr mm}^2$
fibre → spectrometer	$5.74 \cdot 10^{-4} \text{ sr mm}^2$ (classical config.)	$76.66 \cdot 10^{-4} \text{ sr mm}^2$	$76.66 \cdot 10^{-4} \text{ sr mm}^2$
	$29.25 \cdot 10^{-4} \text{ sr mm}^2$ (reversed config.)		

For optical systems in which light propagates unobstructed in a clear and transparent medium, an invariant, the étendue G can be defined as follows (e.g. Welford and Winston, 1978; Markvart, 2007):

$$G = n^2 A \Omega \quad (3)$$

It is the product of the square of the refractive index n of the medium, the area A of the entrance pupil and the solid angle Ω subtended at this pupil by an object. Since the exact assignment of these quantities depends on the components of an optical setup that are considered, its definition can vary. For the étendue of a light source for example, A could be the size of the emitting area and Ω the solid angle around the emitter that is covered by the light collecting optics.

The étendue allows to link the spectral radiant flux $\Phi(\lambda)$ (in W) through an optical system with transmittance $\tau(\lambda)$ to the spectral radiance $R(\lambda)$ (spectral radiant flux per solid angle and surface area in $\text{W sr}^{-1} \text{m}^{-2}$) of the light source:

$$\Phi(\lambda) = \tau(\lambda) R(\lambda) G \quad (4)$$

For a system that consists of several components with different étendues, the overall spectral radiant flux $\Phi(\lambda)$ is limited by the component with the smallest G_{lim} , which makes it a very useful quantity for optical design considerations. For an optimal overall throughput, the étendues of all components should match as closely as possible.

In fibre-based LP-DOAS setups, typically either the spectrometer (where G is the illuminated area of the entrance slit times the solid angle of acceptance of the spectrometer) or the telescope (where G is the entrance area of the fibre core times the solid angle of the light cone hitting the main mirror) have the limiting étendue (see Tab. 3).

For a given light collection solid angle, the LDLS has a small étendue compared to other light sources owing to its small plasma spot. The manufacturer indicates for example a maximum attainable numerical aperture of $NA = 0.447$ (determined by the geometry of the lamp housing) corresponding to a solid angle Ω of 0.663. Assuming an emitting surface with $100\ \mu\text{m}$ diameter, this yields an étendue $G_{\text{max}} =$
5 $52 \cdot 10^{-4}\ \text{sr mm}^2$. This is about four times smaller than for a conventional XBO-75 xenon arc lamp with the same coupling optics (see Tab. 2). A small étendue is favourable for optimal utilization of the light source since, regardless of the coupling optics, the usable fraction of the emitted radiation cannot be increased beyond the radiant flux through the element of the system with the limiting étendue.

This is illustrated by an investigation of the coupling between different light sources and fibres with
10 different diameters. For LP-DOAS systems, a light source that efficiently can be coupled into a fibre with a smaller diameter is advantageous because it allows to use the fibre bundle in a reversed configuration (see Sec. 3.3 and in Fig. 2 lower row).

Using setup HD (see Tab. 1) with a fixed exposure time and number of scans in reference mode, the intensity spectra of several light sources commonly used for LP-DOAS applications were recorded (shown
15 in Fig. 3). Since angular information of the light is lost on the sand-blasted surface of the reference plate, the spectrometer only samples the intensity of the scattered light. For the comparison between light sources and different fibres, therefore only the coupling between the light sources and the fibre has to be considered.

First, a classical fibre setup described in section 2.1 was used (Fig. 3 panel (a)). The light from the
20 different sources was coupled into a 1 m fibre with $800\ \mu\text{m}$ diameter that was coupled to a $6 \times 200\ \mu\text{m}$ ring of a 3 m long y-shaped fibre bundle (see Fig. 2, upper row, 'classical setup'). The receiving fibre was the single $200\ \mu\text{m}$ core fibre of this bundle which was coupled to a 10 m long $200\ \mu\text{m}$ fibre that led to the spectrometer.

The recorded irradiance of the LDLS in this setup is about twice as high as the conventional xenon arc
25 lamp Osram XBO 75W (in the following referred to as XBO-75), and differential xenon structures are weaker. The commercially no longer available Hanovia PLI-500W (in the following referred to as PLI-500) xenon arc lamp delivers considerably higher irradiances. However, due to poor spatial and temporal arc stability and the resulting introduction of systematic spectral structures as well as a very complicated handling and short lifetime (around 200 h), this light source was excluded from further investigations.
30 Comparison of the LDLS and high power LED light sources (for the UV a 3 W Engin LZ1; in the blue

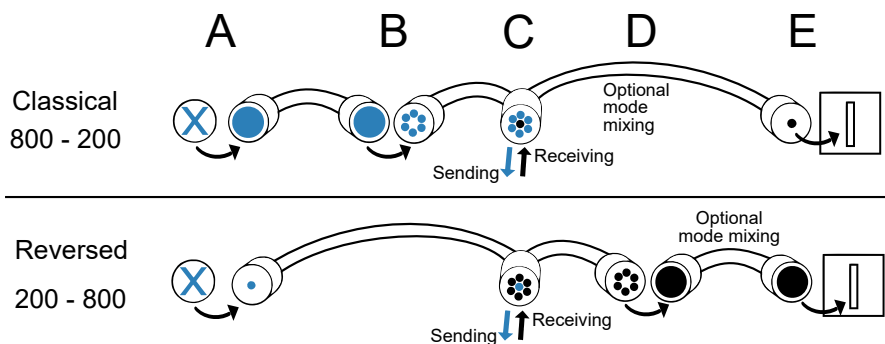


Figure 2. Schematic diagrams of sections of the fibre setup and corresponding cross-sections when y-shaped bundle is used in the classical (top row) or reversed (bottom row) way. Additional fibres or fibre bundles can be coupled to the end of the receiving fibre section to improve mode mixing or change the cross section (not sketched). The letters A through E correspond to positions marked in Fig. 1.

spectral range a 3.5 W Cree XP-E Royal Blue) gives comparable (around 365 nm) or superior irradiances (around 450 nm) for the LEDs however only within the small spectral coverage inherent to the LED principle (Kern et al., 2006).

In a second measurement, a 1 m long 200 μm diameter single fibre with the same numerical aperture was added to the previous setup between light source and the 800 μm diameter fibre (Fig. 3 panel (b)). This reduces the étendue of the fibre setup by a factor of 16 (ratio of fibre cross sections). When comparing the effect, it has to be kept in mind that the additional 200 μm /800 μm fibre interface introduces a coupling loss of about 20-25% (empirical value).

In the setup with added 200 μm fibre (panel (b) in Fig. 3), the smaller étendue of the fibre bundle favours the LDLS with its small, high luminance plasma spot relative to the other light sources. The decrease of the transmitted radiant flux compared to the previous setup (about a factor of 2-3 when correcting for a coupling loss of 25%) and relative to all other light sources therefore is the smallest for the LDLS. Both, the XBO-75 xenon lamp (reduction by a factor of 9) and the LEDs (reduction by a factor of 11-13) clearly have lower radiant fluxes than the LDLS and even that of the PLI-500 (reduction of a factor of 10) now is only a factor of 2-3 brighter than the LDLS.

3.3 Fibre bundle configurations

The favourable properties of the LDLS when coupled into smaller diameter fibres allow to reverse the y-shaped fibre bundle (see Fig. 2 lower row). The ring of fibres previously used for sending is now used for

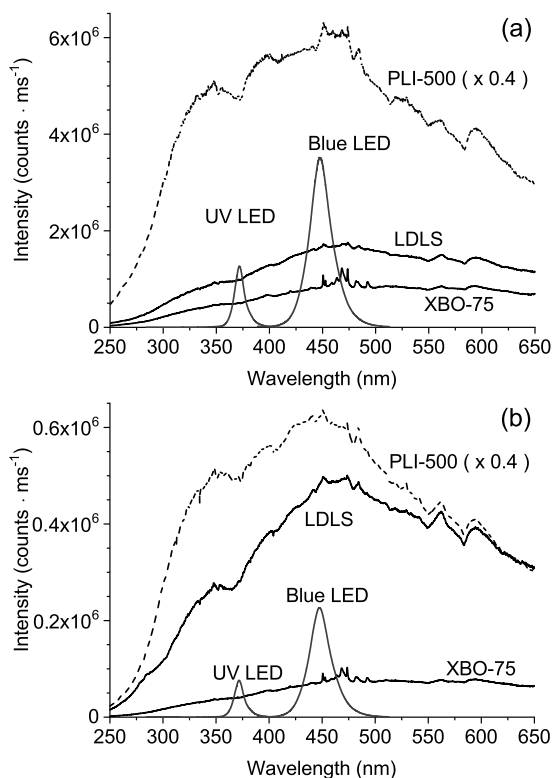


Figure 3. Intensities of several light sources measured on the shortcut plate (no atmospheric light path). The position of the lens focussing the light sources onto the fibre was adapted to the respective spectral region. Panel (a): Light coupled into a bundle in classical configuration (see Fig. 2) with 800 μm fibre diameter. Panel (b): Light coupled into the same bundle with an additional 200 μm fibre added in front of the 800 μm fibre of the bundle (also in classical configuration - see Fig. 2). For better comparison, the PLI-500 has been downscaled. Please note that for comparisons between both setups/panels the loss by the additional coupling of the 200 μm fibre, which we estimate to be around 20-25 %, has to be taken into account.

receiving and the central fibre that previously received the returning radiation now sends it out. Reversing the fibre bundle setup has no influence on the instrument transmissivity since the light path is reversible (see C in Fig. 1 and Fig. 2), but offers several advantages. The larger 800 μm fibre is now coupled to the optical slit. If the limiting étendue of the system is that of the spectrometer (as e.g. in setup HD), a larger illuminated area of the slit increases it (e.g. by a factor of 3.8 when comparing a single 200 μm to the 800 μm fibre with a 150 μm optical slit). Furthermore, a larger diameter fibre has better mode mixing properties as will be discussed in detail in Sec. 4 below.

However, the ring of fibres generally has a larger field of view. When in the reversed bundle setup the fibre ring is used for receiving, the atmospheric background light signal (see Sec. 3.4 below) can be six times larger - in particular when the reflector array size is much smaller than the field of view of the ring (often the case in field campaigns due to logistical reasons). This trade-off between the favourable aspects of the reversed fibre bundle configuration like the potential increase in the measurement signal and an improvement of signal quality due to mode mixing (see Sec. 4) has to be weighed against the potentially increased atmospheric background light. If feasible, the latter should be reduced as much as possible by e.g. shielding the area of the ring's field of view around the reflectors with a low reflectance screen.

For applications where radiant fluxes are crucial, a cross-section modulating fibre could be used instead of a large diameter single fibre assuming a detector with sufficient vertical extent. However, it would come at the expense of the favourable mode mixing properties of larger fibre diameters and can add a potential complication to the determination of the spectrometer's instrument line function which can vary along the optical slit for misaligned fibres in the cross-section modulating fibre or when the different fibres due to atmospheric conditions are not illuminated homogeneously.

In the following sections, the performance of LP-DOAS systems with both, classical and reversed fibre configurations will be compared and discussed (see Fig. 2 upper and lower row respectively). For all classical configurations (Fig. 2 upper row), in the sending section a 800 μm diameter fibre is used to collect the light from the light source, which is then coupled to a ring of 6x200 μm fibres of y-shaped bundles. The receiving section consists of a single 200 μm that is extended by another 200 μm single fibre if necessary. These classical configurations will be denoted "800 \rightarrow 200". In all reversed configurations (Fig. 2 lower row), the sending section consists of a single 200 μm fibre at the light source that is either the core of a y-shaped bundle or (if required) an extension fibre then coupled to a core fibre of a y-shaped bundle. The receiving section consists of the ring of 6x200 μm fibres then coupled to a 800 μm diameter single fibre. These reversed configurations will be denoted "200 \rightarrow 800".

As the influence of lamp performance and fibre configuration in atmospheric measurements cannot be assessed individually in our setup, the noise of the entire measurement system was investigated to quantify the improvement of measurement quality of this reversed setup and results are discussed in section 5.

3.4 Comparison of instrumental stray light

When operating a LP-DOAS, different types of stray light occur that can cause residual structures and limit the measurement accuracy. Atmospheric background light is scattered into the instrument from outside sources (usually the Sun). It depends on the external light source's relative position and orientation as well as atmospheric properties e.g. the visibility. To correct for background light, background spectra for both atmospheric and reference spectra are recorded on a regular basis by blocking the light source (see Sect. ?? for details).

Internal or spectrometer stray light is caused by unintended deflections of light inside the spectrometer. In particular in the UV spectral range, where lamp intensities are low compared to the visible spectral range of the light source, this can lead to a systematic underestimation of optical densities since it represents an additive quantity with respect to the total received radiance.

We investigated the amount and origin of spectrometer stray light for different spectral regions using setups HD and NR with the telescope shortcut in place and a set of band-pass filters that block increasing portions of the UV-VIS from 280 nm to 665 nm (see Fig. B1 for the set of filters and their effect on a spectrum). Considering the UV spectral region and the spectrometer of setup HD ($f=500$ mm) with a 600 grooves/mm grating (blaze 300 nm), stray light levels increase from less than 1% around 400 nm to about 15% at 240 nm. For smaller wavelengths it quickly reaches 80-90% due to the diminishing spectral radiance of the LDLS in this region. About 95 % of the stray light in this configuration originates from the visible spectral range between 400 nm and 650 nm. For a grating with 1200 grooves/mm in the same spectrometer, stray light levels are between 3 to 7 times smaller than in the previous configuration reaching about 2% at 240 nm. For this grating about 50% of the stray light originates from the visible spectral range between 400 nm and 650 nm with the other half being from the IR. The smaller spectrometer of setup NR ($f=300$ mm) with a 1000 grooves/mm grating has stray light levels of less than 1% above 320 nm which increases to about 10% at 260 nm.

For evaluations in the spectral region around 330 nm and the 600 grooves/mm (a typical spectral window for the detection of SO₂, BrO, formaldehyde, or ozone), an exemplary stray light distribution determined with setup HD with the shortcut in place is illustrated by the histogram in Fig. 4. The relative importance of stray light for UV measurements is further increased when atmospheric spectra are considered. Since Rayleigh scattering is proportional to λ^{-4} , loss of UV radiation is higher on the way through

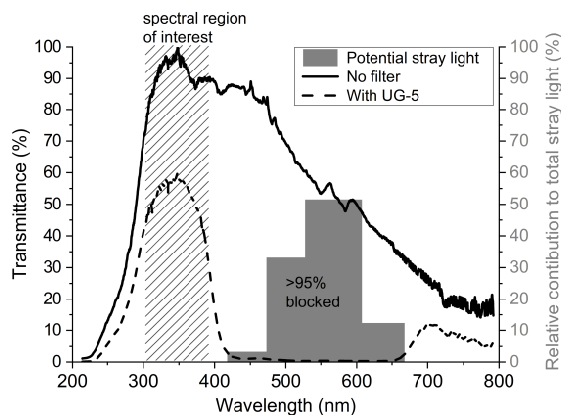


Figure 4. Stray light reduction in the UV by using an UG-5 filter. The distribution of the relative contribution of different spectral areas to the total stray light as determined with a set of band-pass filters is shown in grey bars. The two curves show the lamp spectrum determined with setup HD and a classical 800→200 fibre configuration by a measurement on the SC plate with (dashed) and without (solid) a UG-5 band-pass filter between light source and sending fibre.

the atmosphere compared to the visible parts of the spectrum. This decreases the ratio between UV and VIS and thus increases the relative importance of stray light from VIS spectral regions on UV measurements. Below 300 nm this is further augmented by strong ozone absorption bands. For the NR setup stray light in atmospheric measurements increases from 1.5% at 320 nm to 10% at 290 nm quickly reaching 5 levels of more than 50% for 280 nm and below.

There are different ways to suppress spectrometer stray light to reduce its influence on the measurement accuracy. One is to add band pass filters (usually colour glass) between light source and fibre to select only the part of the lamp spectrum needed for measurement. In Fig. 4 the effect of a UG5 band pass filter (200-400 nm) on the lamp spectrum is shown. Over 95 % of the light between 400 and 650 nm and hence 10 of the stray light originating from here can be removed while keeping light losses around 330 nm at about 40-50 % yielding stray light levels of less than 0.1%.

The LDLS with its small and stable arc spot allows a second stray light reduction before coupling the light into the fibre. By mounting the entrance of the fibre (A in Fig. 2) on a stepper motor that can translate around the focal point along the optical axis of the lens which projects the plasma spot onto the fibre end, 15 the chromatic aberration of the lens can be exploited to selectively optimize the input of different spectral

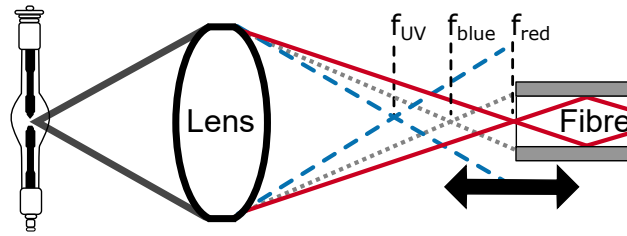


Figure 5. Principle of selectively coupling light from a light source into a fibre for stray light reduction using the chromatic aberration of the lens. The foci of different spectral regions can be attained by a translation of the fibre along the optical axis of the lens.

ranges (see principle in Fig. 5, see Fig. B2 for a determination of the relative positions of foci for different spectral regions).

Due to the steep increase of the refractive index of quartz glass towards shorter wavelengths (Malitson, 1965), this chromatic filter is particularly selective for the UV spectral range. Figure 6 shows the spectral shapes of the radiation reaching the spectrometer when the position of the fibre is optimised for (a) measurements around 260 nm (dashed line in Fig. 6) and (b) for 400 nm (solid black line in Fig. 6). This can be compared against an artificial intensity distribution that represents the envelope of spectral distributions when the fibre position is tuned through several foci between 200 nm and 800 nm.

When this chromatic aberration filter is optimised for 260 nm, stray light originating around 400 nm, 540 nm, and 680 nm is reduced by about 60 %, 75 %, and 80 % respectively (details are given in appendix B2).

4 Fibre modes

The modes of an optical fibre represent different distributions of the light travelling inside the core of the fibre. The solutions of the Helmholtz wave equation for the fibre core using Maxwell's equations and considering core geometry and boundary conditions yield the possible modes (Kaminow et al., 2013). For a given wavelength λ_0 the number n of modes is proportional to both, numeric aperture N_A and fibre radius a :

$$n \propto \frac{a \cdot N_A}{\lambda_0} \quad (5)$$

When the light travels only in a few modes, the resulting light spot leaving the fibre can be inhomogeneous because of the intensity patterns of the individual modes. The intensity distribution between different

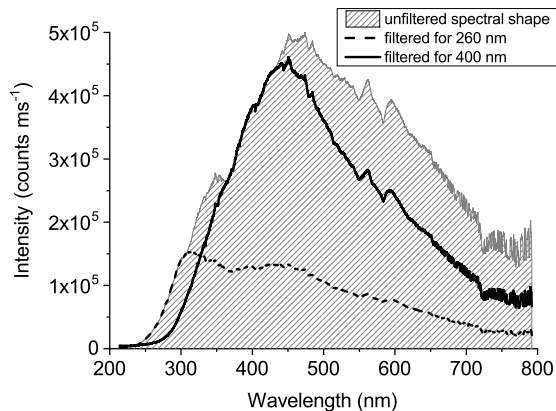


Figure 6. Comparison of lamp spectra with the position of the fibre entrance optimized for 260 nm (dashed line) and 400 nm (drawn line) respectively. For comparison a modelled spectral distribution of the light source unaltered by the chromatic aberration of the lens is also shown (shaded area). The latter was obtained by varying the fibre position through all foci from 200 nm to 800 nm and taking the envelope of the resulting spectra.

modes can change along the fibre when energy is transferred from one mode to another which is referred to as mode coupling. This can be caused e.g. by impurities, temperature changes or mechanical stress on the fibre (Stutz and Platt, 1997; Kaminow et al., 2013). In fibres with a smaller diameter in which fewer modes are possible, this inherent or 'natural' mode coupling has a less homogenizing effect than for an otherwise identical fibre with a larger diameter. Therefore, placing a fibre with a larger diameter between telescope and spectrometer as it is the case in the 'reversed fibre configuration' (see Fig. 2 lower row) improves the mode mixing capacity of LP-DOAS setups.

4.1 Comparison of mode mixing techniques

In applications with grating spectrometers, an irregular and temporally unstable illumination of the grating resulting from non-uniform illumination of the spectrometer field of view, e.g. due to fibre modes can create systematic, temporally unstable residual structures in the DOAS analysis (see Stutz and Platt (1997) for a detailed study) and thus degrade the measurement accuracy. To reduce these structures, 'artificial' i.e. intentional mode coupling can be induced by different methods. This is referred to as mode mixing (some publications also use the term mode scrambling).

Suitable fibres containing more impurities inherently lead to more mode coupling. However, since impurities cause signal loss when fibres are used in communication applications, manufacturers have improved

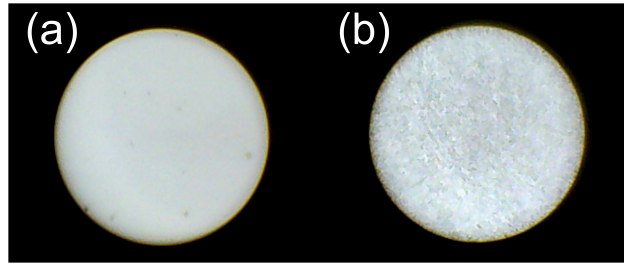


Figure 7. 800 µm fibre under the microscope with 30-times ~~amplification~~magnification. (a) untreated (factory-polished) (b) roughened (12 µm sheet).

fibre purities leading to a reduced inherent mode coupling in modern fibres (Kaminow et al., 2013). Since larger diameter fibres allow more modes (Eq. 5), adding such a fibre to the y-shaped bundle in front of the spectrometer can have a homogenising effect. The same is achieved by adding diffusing discs to the optical setup (at the expense of transmissivity). Furthermore, mode coupling by mechanical stress can be induced artificially by squeezing or bending the fibre (micro-bending, e.g. Blake et al., 1986; Stutz and Platt, 1997). However, this requires bare fibres to ensure the transmission of the pressure, which makes the handling quite delicate. The mode mixing is also difficult to reproduce and easily influenced by environmental factors such as temperature. Stutz and Platt (1997) solved this by mechanically vibrating a coiled section of the bare fibre in front of the mode mixer to temporally average over different mechanical conditions. When the intensity of the fibre vibration is increased, micro-bending and temporal averaging are effectively combined and can be applied to fibres with a protective coating. This was done in this investigation by attaching the fibre to a vibrating filter pump.

A new method we tested for this study is the intentional degrading of fibre ends to create a quasi built-in diffusing disc. To achieve this, fibre ends were treated with polishing sheets - first with 5 µm and then 12 µm granulation. A homogeneous treatment of the surface was insured by visual inspection using a fibre microscope. Figure 7 shows microphotographs of a fibre end surface before and after the treatment.

This new mode mixing approach was compared to the previously used techniques in a series of atmospheric measurements over a 1.55 km light path (one way) using setup HD (see Tab. 1) and the LDLS as light source. All methods were applied to the fibre bundle between light source (A in Fig. 1) and telescope (C) as well as between telescope (C) and spectrometer (E). However, mode mixing between light source and telescope had almost no effect which probably is due to the fact that homogenized light sent out into the atmosphere still can selectively induce modes in the fibre(s) leading to the spectrometer. One reason

Table 4. Comparison of different mode mixing methods with LDLS and classical (upper part) reversed fibre configuration (lower part) and their effect on intensity and residual. The number combination in the legend indicates the fibre diameter on the light source end (first number) and spectrometer end (second number). The 800 μm fibre is always coupled to a ring of six 200 μm fibres. Errors of the atmospheric intensities reflect variations through alignment and atmospheric conditions.

Fibre config.	Method	Atmos. int. (counts ms^{-1})	Residual RMS @ 500 Scans
	—	167 ± 33	$14 \cdot 10^{-5}$
LDLS-800→200 (classical)	Vibrated (V)	143 ± 28	$8 \cdot 10^{-5}$
	Diffuser (D)	17 ± 3	$9 \cdot 10^{-5}$
	Roughened (R)	83 ± 17	$8 \cdot 10^{-5}$
	—	400 ± 80	$10 \cdot 10^{-5}$
LDLS-200→800 (reversed)	Vibrated (V)	310 ± 62	$9 \cdot 10^{-5}$
	Diffuser (D)	105 ± 21	$7 \cdot 10^{-5}$
	Roughened (R)	250 ± 50	$6 \cdot 10^{-5}$

for this can be the inhomogeneous illumination of the telescope's field of view because the retro reflector elements do not entirely cover the surface of the array or the light beam partly misses the array. Therefore, in the following only mode mixing between telescope and spectrometer is considered. Light losses caused by the different methods were also quantified and both, the classical and the reversed fibre configurations were tested (Sec. 3.3). In the former setup, a 200 μm fibre was added between the single 200 μm core fibre and the spectrometer. For the latter, a 800 μm fibre was used to couple the 6 x 200 μm fibre ring to the spectrometer. The residual was determined from a fit of 500 added scans between 313 nm and 325 nm considering the cross-sections of O_3 (Bogumil et al., 2003), NO_2 (Bogumil et al., 2003), HCHO (Meller and Moortgat, 2000), and SO_2 (Bogumil et al., 2003). Results for both setups are shown in Tab. 4.

Taking the atmospheric intensity of the uninfluenced fibre as a fixed reference, vibrating the fibre (in the following indicated by "V") causes the smallest light losses for both configurations followed by the novel "Roughened fibre end mode mixing method" (in the following indicated by "R", 12 μm grit). The diffuser (denoted by "D") leads to light losses of 90% (classical setup) and 75% (reversed setup) respectively.

The roughened fibre end yields the lowest residual RMS values for both fibre configurations. Vibrating the fibre in the classical configuration yields comparable residuals at almost twice the intensity of the roughened fibre end. However, when the fibre is reversed, the roughening yields the overall smallest resid-

uals and only a modest loss of intensity (38% compared to the uninfluenced fibre against 23% vibrating against the uninfluenced fibre).

4.2 Temporal stability of mode mixing methods

To reduce measurement errors and to lower detection limits, spectra in the LP-DOAS analysis can be added up before the DOAS fitting process. At the expense of temporal resolution, this reduces photon shot noise. It relies on a high temporal stability of the measurement system. A good mode mixing method therefore should also be temporally stable and residuals should decrease when spectra are summed (with photon shot noise as fundamental limit). The potential for residual RMS reductions by adding spectra for both, the classical and the reversed fibre configuration was investigated summing spectra over up to 10 hours (see Fig. 8 upper and lower panel). For this, groups of single, consecutively recorded spectra from the tests with the different configurations were summed up after the measurements to correspond to periods of 1 to 600 minutes. Note that in Fig. 8 results for given measurement times ~~ar~~ are plotted, thus the effects of the higher photon shot noise due to signal reduction by the various mode-mixing techniques are included. Averaging measurement data is not necessary for typical applications, but may be required if very weak signals need to be identified.

In the classical fibre configuration, the diffusing disc only attains residual RMS values comparable to vibrated and roughened fibres when 10 hours of observations are added up. Vibrating and roughening for all time spans yields lower results than without additional mode mixing, with lowest residuals for the roughening (Fig. 8, upper panel). In the reversed setup, the differences between the methods are generally smaller which could be due to the favourable effect on mode mixing of the 800 μm fibre coupling into the spectrometer. Residuals for measurements with the diffuser after 60 minutes are even smaller than for a vibrating fibre. The consistently overall best results for both fibre configurations and all tested mode mixing methods are attained by the reversed (200 \rightarrow 800) configuration with roughened fibre end.

4.3 The optimal mode mixing setup

Considering light losses (looking at counts per milli second, see Tab. 4), vibrating the fibre leads to smaller losses compared to roughening the fibre end. In the reversed (200 \rightarrow 800) fibre configuration, this disadvantage of the roughening is more than compensated by the smaller residuals and also yields the best results when considering the summation of spectra over longer time periods. Compared with

vibrating and especially bending the fibre (Stutz and Platt, 1997), it has the additional advantage of being very reproducible and limiting mechanical stress on the fibre.

For the laboratory comparison with setup HD and a 3 m 800 μm fibre coupled to a 3 m y-shaped bundle with 200 μm fibres, a 12 μm grit gave the best results. For a long-term LP-DOAS instrument for operation
5 in Antarctica with a 8.55 m fibre bundle in reversed configuration that includes a 1 m 800 μm fibre (setup NMIII), 5 and 12 μm roughening gave comparable results with a lower light loss for the 5 μm grit size. We conclude that the fibre bundle needs to be optimized for the particular measurement setup it is used with considering the trade-off between homogenization of the field of view illumination and light loss for the intended application.

10 5 Overall improvement of LP-DOAS measurement performance

5.1 Intercomparison measurements in Heidelberg

In order to quantify the combined effect of the changes to the fibre-based LP-DOAS setup discussed above, atmospheric measurements with different configurations were performed with setup HD over a residential area of Heidelberg for a period of six weeks from March 11 until May 3, 2014. During this
15 time, the different configurations were each tested for at least one day. The influence of atmospheric conditions as well as comparability and representativeness of these observations were discussed in Sec. 2.3.

The measurements were analysed in a UV spectral window between 300 and 350 nm (where trace gases such as SO_2 , BrO, formaldehyde, and ozone absorb). As a benchmark, the different improvements were
20 compared against a setup with a XBO-75 xenon lamp in a classical 800 \rightarrow 200 fibre configuration.

A fibre bundle with a 3 m 800 μm fibre coupled to a 3 m y-shaped bundle with 200 μm fibres was used in the classical (setup XBO_75-800 \rightarrow 200) and reversed (setup XBO_75-200 \rightarrow 800) fibre configuration before and after the fibre roughening (R), the most efficient mode mixing treatment identified above (Sec. 4.3) was applied. The measurement performance achieved with the benchmark setup during this com-
25 parison period agrees with results from previous measurement campaigns when comparable components were used. Results are summarized in Tab. 5.

Comparing the two light sources with a classical fibre configuration (setups LDLS-800 \rightarrow 200 and XBO_75-800 \rightarrow 200 in Tab. 5), the higher intensity and better temporal stability of the LDLS discussed in

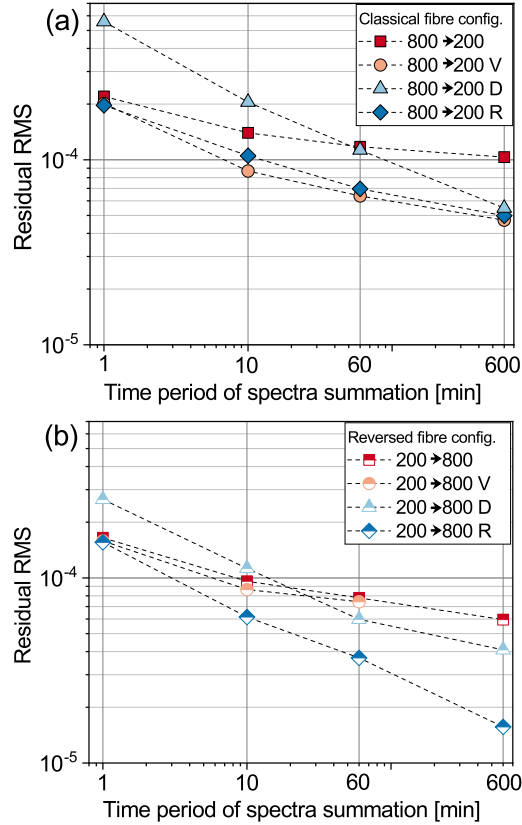


Figure 8. Residual comparison for different mode mixing methods and its temporal stability with LDLS and the reversed fibre configuration (panel (a)) and a classical fibre setup (panel (b), for comparison the plot of 'roughened fiber exit' for the reversed setup is also included). The mode mixing methods are abbreviated as follows: V=Vibration; D=Diffuser; R=Roughened fibre end.

Sec. 3 are apparent. The average residual RMS for the LDLS is about 30% smaller while the received radiance is about 10% larger. The mode mixing by roughening of the fibre end ("R") reduces the residuals by approximately a factor of 2 for XBO-75 and LDLS (setups LDLS-800→200-R and XBO_75-800→200-R). In the reversed fibre configuration with roughened fibre end mode mixing (setups LDLS-200→800-R and XBO_75-200→800-R), average residual RMS values are comparable. However, the received radiance (and hence temporal resolution for a given signal to noise level) of the XBO-75 is one order of magnitude smaller than for the LDLS, again illustrating the advantage of the smaller arc spot of the latter. Considering the overall improvements from the benchmark setup XBO_75-800→200 to setup LDLS-200→800-R,

Table 5. Comparison of atmospheric measurements in Heidelberg utilising the LDLS with different fibre configurations with and without roughening (marked with "R") against the benchmark light source XBO 75 for the HD setup. The number combination in the setup indicates the fibre diameter on the light source end (first number) and spectrometer end (second number). The 800 μm fibre is always coupled to a ring of six 200 μm fibres. The 500 scans cover different averaging times due to different intensities for the configurations but thus contain a similar amount of recorded photons. Errors of the atmospheric intensities reflect variations through alignment and atmospheric conditions.

Fibre config.	Atmos. int. (counts ms^{-1})	Residual RMS @500 Scans
LDLS-800→200	167 ± 33	$14 \cdot 10^{-5}$
XBO_75-800→200	143 ± 28	$21 \cdot 10^{-5}$
LDLS-800→200-R	83 ± 16	$8 \cdot 10^{-5}$
XBO_75-800→200-R	40 ± 8	$9 \cdot 10^{-5}$
LDLS-200→800-R	250 ± 50	$6 \cdot 10^{-5}$
XBO_75-200→800-R	26 ± 5	$7 \cdot 10^{-5}$

with reversed fibre configuration and roughened fibre end mode mixing, average residual RMS could be reduced by a factor of 3.5 while detector signals increase by 70%.

Example residual spectra illustrating the improvement are can be found in Fig. 9. Compared to the benchmark setup (top panel in Fig. 9), the use of the LDLS and the reversed fibre configuration clearly decreases the residual improving both accuracy and precision. The additional roughening (compare middle panel to bottom panel in Fig. 9) further reduces systematic structures that are still visible in the middle panel thus further improving accuracy.

As the systematic comparison of the different configurations with benchmark light source and the LDLS for several summation periods from one minute to ten hours in Fig. 10 indicates, this advantage of the new LP-DOAS configuration even increases to a factor of 5 in residual RMS when spectra are summed for 10 h (Fig. 8 and Sec. 5).

5.2 Performance in **Nördlinger Ries field campaign** campaigns and stability in long-term operation in Antarctica

Following the investigations in Heidelberg, the modified LP-DOAS setup with the overall best performance (LDLS-200→800-R together with stray light suppression by filters (see Tab. D1 for the models used for the different spectral regions) and additionally using the chromatic aberration approach ~~—see Sec. 3.4—~~ for further stray light suppression (see Sec. 3.4) was deployed with a campaign grade tele-

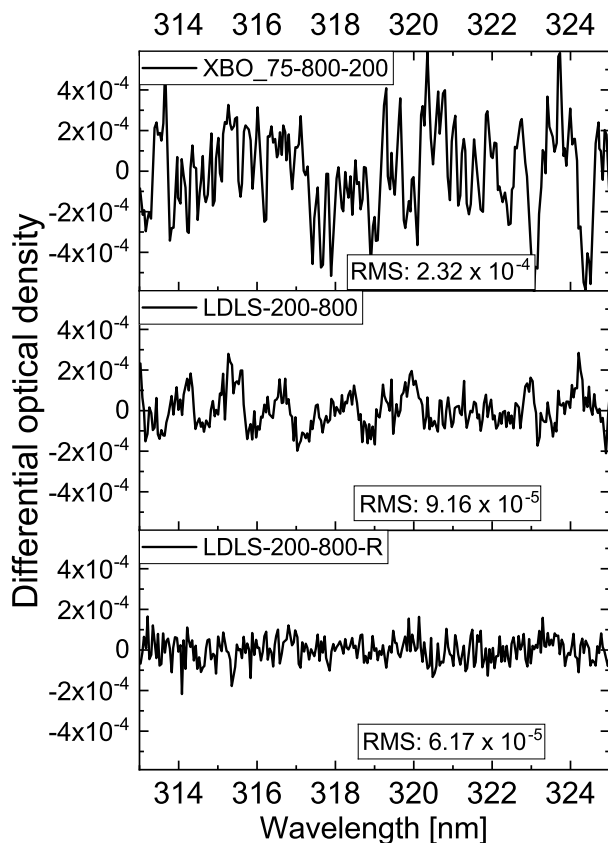


Figure 9. Examples of residual spectra and corresponding root mean square (RMS) values for the benchmark configuration with a XBO-75W arc lamp and a classical fibre configuration (top), the new LDLS light source and a reversed fibre bundle (middle) and the new LDLS, reversed fibre bundle and roughened fibre ends (bottom). The latter was found to give best results.

scope(Setup). A description of the measurement procedure for a first campaign in the Nördlinger Ries in Germany ("NR" in Tab. 1) in a three and a half month measurement campaign from August, 12 until December, 8 2014 in the Nördlinger Ries, a rural area in southern Germany. The campaign had a focus on investigating the link between precipitation and emission of and from soils. The LP-DOAS was operated in five spectral windows from the UV to the visible (see Tab. D1) on a 5.7 light path (2.85 one way). Since these spectral regions are not covered at once by the detector, the grating in the spectrometer was turned sequentially to attain the different spectral regions (the measures for stray light reduction i. e. the band pass filters and the chromatic aberration filter approach (see Sec.) for further stray light suppression in

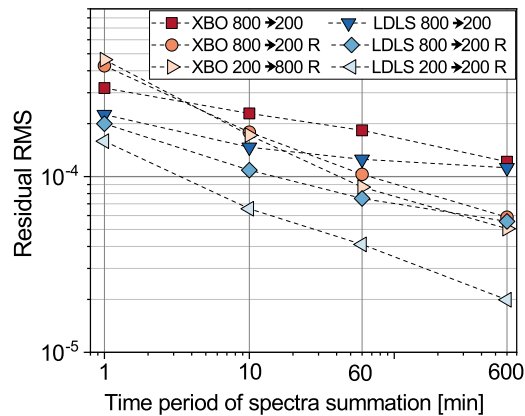


Figure 10. Systematic comparison of LP-DOAS setups with classical fibre configuration, classical configuration with improved mode mixing, and the reversed fibre configuration with improved mode mixing for the benchmark light source XBO-75 and the LDLS. Attained residual RMS values for different summation periods up to 10 h are plotted.

~~the light source discussed in section 3.4 were changed/adjusted accordingly between spectral windows). " in Tabs. 1 and 6) can be found in Sec. C in the appendix.~~

~~When set up for a particular spectral window, atmospheric and reference spectra were recorded alternately in sets (five reference spectra interleaved with four atmospheric spectra). At the end of each set, one atmospheric background and one reference background were recorded after blocking the light source. Especially when atmospheric conditions change quickly, short temporal offsets between measurement (atmospheric and reference) and background spectra are important. In each spectral window, several (3-5) of these sets was recorded before the grating was turned to the next spectral position.~~

~~To avoid or minimise the influence of detector non-linearity, exposure times for atmospheric and reference spectra in LP-DOAS measurements were adjusted to yield comparable saturations of the CCD. The exposure times of atmospheric spectra and hence the measurement time were therefore in dependence of atmospheric visibility. The revisiting time of a spectral window (here about 20-30) in the whole measurement routine thus depended on the number and total recording durations of the other spectral windows and hence also on atmospheric visibility.~~

Given a sufficient temporal stability of the instrumental setup, spectra within sets, across sets, or even across subsequent recordings of a spectral window can be summed to improve the signal to noise ratio and to lower detection limits.

Table 6. Attained measurement performance for the detection of different absorbers during the field campaign in the Nördlinger Ries/Germany (NR; total light path: 5.7 km) and during the long term observations on the German Antarctic Station Neumayer III (NMIII; total light paths: 3.1 km and 5.9 km). Where two values are available, attainable residual RMS and detection limits for two different summations and hence temporal resolutions corresponding to 10 min (left value) and 30 min to 2 h (right value) are indicated.

Absorber		ClO	O ₃	BrO	SO ₂	HCHO	NO ₂	IO
Fit range [nm]	NR	290-305	295-330	290-310	320-380	320-380	420-480	410-450
	NMIII	287-305.5	286.5-329.5	302-346	286.5-329.5	302-346	352.5-386.5	290-310
Temporal res. [min]	NR	10* / 120*	30	10* / 120*	30	30	30	10* / 120*
	NMIII	4 / 40	2 / 40	2 / 40	2 / 40	2 / 40	2 / 40	1.7 / 40
Residual RMS [10 ⁻⁵]	NR	20* / 10*	15	15* / 10*	15	15	30	25* / 15*
	NMIII	22 / 19	28 / 17	21 / 13	28 / 17	21 / 13	22 / 13	22 / 17
Detection limit [ppt]	NR	16.5* / 8.2*	1124	3.7* / 2.5*	139	166	61	2.1* / 1.2*
	NMIII	7.5 / 6	420 / 282	0.81 / 0.56	21 / 14	180 / 138	62 / 35	1.2 / 0.5

(*) The halogen-containing molecules were not fitted in the measurements from the Nördlinger Ries, as their presence was not expected. Instead, the respective spectral regions were summed up for 10 min and 2 h and the attained residual RMS values were used to estimate upper limits for the detection limits of these trace gases. See Sec. E in the appendix for details.

For the comparison of instrument performances in different measurement campaigns, no truly regular and universal temporal resolution exists. We therefore indicate typical residual RMS values and detection limits for two temporal resolution regimes: high (2-10 min) and medium (30 min to 2 h). Typical fit ranges, average residual RMS values and detection limits for selected absorbers are given in Tab. 6.

5 5.3 Performance and stability in long-term operation in Antarctica

A second LP-DOAS setup (NMIII in Tab.1) based on the presented improvements was purpose-built for long-term operation on the German Antarctic station Neumayer III (70.67°S 8.27°W) and operated for 31 months from January 2016 until August 2018 (Nasse et al., 2019, , in prep.). It was set up with two light paths 3.1 km (1.55 km one way) and 5.9 km (2.95 km one way) with nearly the same geographical orientation between which the instrument could switch autonomously depending on atmospheric conditions. This was achieved by moving the end of the fibre (C in Figs. 1 and 2) by a motorised x-y translation stage in the focal plane of the telescope main mirror in order to point the light beam to the respective reflector array. Since visibility on the ice shelf at Neumayer III station is often reduced by blowing snow or atmospheric refractions due to strong vertical temperature inversions (optical scintillation and El Mirage effects), most

of the time measurements were performed on the shorter light path. The measurement routine was similar to the one applied during the Nördlinger Ries campaign with five different spectral windows (see Tab. D1). Average residual RMS values and detection limits for selected absorbers measured with this setup can be found in Tab. 6.

5 During this long period of continuous operation, maintenance requirements were mostly limited to a monthly cleaning of optical components of the setup, in particular the outside of the quartz front window (added to the Neumayer telescope to prevent snow from entering the telescope and allow the interior heating of the telescope), and regular wavelength calibrations. This routine maintenance and the repair of smaller mechanical malfunctions could be performed by the station's wintering crew. Regular major
10 maintenance was only conducted on a yearly basis.

The long operation time allows to draw conclusions about the long-term performance of the light source and potential ageing effects of the entire setup. Due to logistical reasons and also in view of the low abundances of organics in the air, the LDLS in this setup was only purged daily for 30 min with filtered air (rather than nitrogen gas). Ambient air was passed through a three stage filtering system of silica gel to
15 remove water vapour, active charcoal to remove gaseous pollutants and a particle filter. The light source reached a total operation time of about 22500 hours before a permanent failure occurred. During this time, no realignment of the light source-fibre coupling optics was required which indicates an exceptional spatio-temporal stability of the plasma spot inside the bulb.

~~Evolution of the net radiance of reference spectra in the NMIII setup over time for the five spectral
20 ranges UV I through VIS II defined in Tab. D1. The average intensity value (in counts) of the reference spectra in the different measurement windows was corrected for background light by subtracting corresponding reference background spectra (light source blocked and shortcut in front of the fibre end in the telescope). Then weekly medians were calculated. Since in the VIS I window, the grating was changed in February 2017, the recorded radiances (which due to the lower dispersion of the new grating were about three times
25 higher) were adjusted to that of the first grating (dotted line). Maintenance was performed on a monthly basis (as far as meteorological conditions allowed) and optical components (filters in the light source) were exchanged after roughly one year of operation. This resulted in temporarily enhanced intensities.~~

It is not possible in this setup to separate contamination and ageing phenomena of the optical components from changes of the radiance of the LDLS. However, an investigation of reference spectra corrected
30 by their respective backgrounds for all spectral windows (Tab. D1) shows similar decreases of the av-

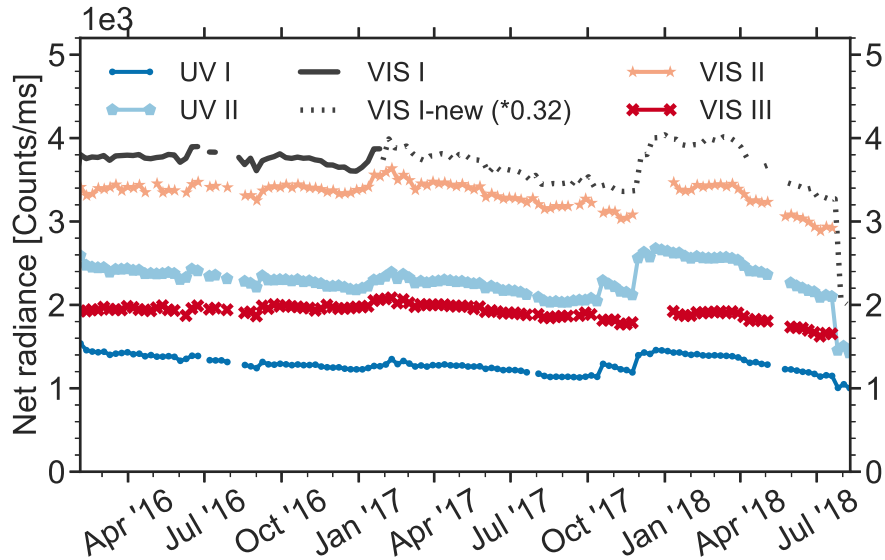


Figure 11. Evolution of the net radiance of reference spectra in the NMIII setup over time for the five spectral ranges UV I through VIS II defined in Tab. D1. The average intensity value (in counts) of the reference spectra in the different measurement windows was corrected for background light by subtracting corresponding reference background spectra (light source blocked and shortcut in front of the fibre end in the telescope). Then weekly medians were calculated. Since in the VIS I window, the grating was changed in February 2017, the recorded radiances (which due to the lower dispersion of the new grating were about three times higher) were adjusted to that of the first grating (dotted line). Maintenance was performed on a monthly basis (as far as meteorological conditions allowed) and optical components (filters in the light source) were exchanged after roughly one year of operation. This resulted in temporarily enhanced intensities.

erage intensities for all spectral windows (see Fig. 11). The largest decreases of 17% and 12% until the first general maintenance of the instrument after the first year of operation are observed for the UV I and UV II spectral windows. A thorough cleaning of all optical components which was not always possible in Antarctic winter and an exchange of the band pass filters in the light source could restore intensities to 93% and 95.5% respectively. Throughout the 31 months measurement period, intensities were never lower than 80% of the initial values (except for the days directly before the final lamp failure) even when components probably were dirty. The seemingly irreversible intensity decreases of 4.5-7% for the two UV spectral windows over two years might be explained by a permanent reduction of the transmissivity of optical components e.g. by solarisation of fibres and lenses or indeed a decreased output of the LDLS.

6 Conclusions

Here we present a series of improvements to fibre based long-path-differential optical absorption spectroscopy (LP-DOAS) systems and discuss their respective contributions to the overall improvement of the measurement accuracy and precision. The basis for this study was a mono-static LP-DOAS setup using
5 optical fibre bundles for light coupling between the different instrumental components.

A laser driven light source (LDLS) with a high-pressure xenon bulb was introduced as a new type of light source for LP-DOAS measurements ~~. It offers a very localised and stable plasma spot with a bright, very weakly structured broad band spectrum that covers a spectral range between 250 and the near infrared. When coupled into an 800 fibre, as it is often done in fibre-based LP-DOAS setups, the~~
10 ~~LDLS intensity is slightly higher than benchmark~~ that combines the broad spectral coverage of xenon arc lamps ~~(here a XBO 75W) and comparable to high power LEDs while offering much simpler handling and longer life times than the former (10000 to 22500 compared to 200 to 2000 (Kern et al., 2006)) and a better spectral coverage than the latter (with the stability and simple handling of LEDs (see Sec. 3.2).~~
Compared to ~~the a~~ XBO 75W arc lamp, which was used as the benchmark in our analysis, employing the
15 LDLS leads to 35% smaller residuals while the received signal and hence the temporal resolution of a setup is about 70% higher.

The small plasma spot of the LDLS allows to reverse the previously used fibre configuration of the LP-DOAS which significantly improves performance (see Sec. 3.3). The ~~larger area of the optical slit now illuminated by a larger fibre can increase the system overall throughput when the spectrometer has~~
20 ~~the limiting étendue of the system (which in this study is the case for setup HD, see Tabs. 1 and 3). The larger diameter fibre also improves mode mixing and hence reduces irregular illumination of the grating which causes spectral structures limiting the measurement accuracy~~ mixing of fibre modes which cause spectral structures and limit accuracy is improved by this reversal through the favourable properties of larger diameter fibres which now couple to the spectrometer (see Sec. 4). ~~Alternatively, when light yield~~
25 ~~is crucial, the ring of fibres on the receiving side could also be formed into a line resembling the optical slit of the spectrometer further increasing throughput. In atmospheric measurements, these advantages were found to outweigh the potentially higher fraction of atmospheric stray light that can enter the LP-DOAS system in this reversed fibre configuration.~~ Furthermore, the overall light throughput can be increased if the spectrometer has the limiting étendue of the system (see Tabs. 1 and 3).

Spectrometer stray light leads to an under-estimation of optical densities and, when spectrally not homogeneous, creates differential structures that limit accuracy. The spectral origin of stray light was investigated for different spectrometers and gratings. For measurements in the UV and depending on the grating, stray light levels are below 1% for spectral regions above 320 increasing to 3 to 15% around 240-260 and dominating the signal for lower wavelengths (see Sec. 3.4). Between 50 to 95% of the stray light originates from the visible spectral region between 450 nm and 650 nm. To decrease the influence of stray light on accuracy and precision, the spectral origins of which were found to mainly be a region between 450 nm and 650 nm. To reduce the influence of stray light (see Sec. 3.4), band pass filters adapted to the respective measurement spectral window can be used at the expense of transmissivity (losses of 40-50%), which was already done previously. The application of the LDLS allows a further suppression of stray light by exploiting the chromatic aberration of the quartz lens that couples the light from the light source into the fibre. By precisely positioning the fibre in the focal point of a certain spectral range, light from other, out of focus spectral regions is suppressed. Combined, these measures lead to an overall stray light reduction of more than 95% for measurements around 330 nm yielding stray light levels of less than 0.1%.

The application of optical fibres in LP-DOAS greatly reduces the complexity of instrument alignment and increases the overall light throughput compared to light coupling with mirrors in the Newton type telescopes used before (Merten et al., 2011). Even though fibres produce a nearly homogeneous illumination, remaining fibre modes can still play a significant role, e.g. by a slightly inhomogeneous illumination of the spectrometer grating. This causes differential spectral structures limiting the measurement accuracy of DOAS instruments. To homogenise the illumination of the grating, additional caused by fibre modes, mode mixing can be introduced. Here, we compared previously applied techniques like vibrating or micro-bending of the fibre, adding diffusers to the optical setup and a new fibre roughening method (see Sec. 4). In this approach, the highly polished end faces of the fibre bundle are artificially degraded with polishing sheets (5 to 12 μm grit size). Thus a quasi built-in diffuser is added to the fibre.

While the light losses compared to vibrating the fibre are between 20 to 40% higher for the roughened fibre ends, the reduction of the residual is 30% larger when the reversed fibre configuration is considered (see Tab. 4). At the same time, the roughening offers the major advantage of being much more reproducible and temporally stable than the vibration. Diffuser disks attain residuals comparable to roughened fibres but light losses are between 20 to 40% higher for the roughened fibre ends, the reduction of the residual is 30% larger when the reversed fibre configuration is considered (see Tab. 4). At the same time, the roughening offers the major advantage of being much more reproducible and temporally stable than the vibration. Diffuser disks attain residuals comparable to roughened fibres but light losses are between 20 to 40% higher for the roughened fibre ends, the reduction of the residual is 30% larger when the reversed fibre configuration is considered (see Tab. 4).

is about 4 to 10 times larger ~~which drastically reduces the temporal resolution of measurements~~ with the roughened fibres at comparable RMS values. It should be noted that this method is not limited to setups with LDLS but can be applied e.g. with conventional xenon arc lamps. The residual with a "XBO 75W" and classical fibre bundle with a 800 μm mono- to 200 μm multi-fibre bundle is reduced by a factor of 2, however at the cost of a 70% reduction of the total light throughput (tab. 5).

By combining the changes to the LP-DOAS setup, ~~namely the use of an LDLS with the improved stray light suppression, the reversed configuration of the fibre bundle, and the new mode mixing method,~~ in intercomparison field measurements in Heidelberg, the residuals could be reduced by a factor of 3-4 compared to the benchmark setup and residual RMS values in the order of $6 \cdot 10^{-5}$ in units of optical density could be achieved (See Fig. 10). ~~Example residual spectra illustrating the improvement are can be found in Fig. 9. As the systematic comparison of the different configurations with benchmark light source and the LDLS for several summation periods in Fig. 10 indicates, this advantage of the new LP-DOAS configuration even increases to a factor of 5 in residual RMS when spectra are summed for 10 (Fig. 8 and Sec. 5).~~

When the improvements described above were applied to two campaign grade LP-DOAS setups using smaller spectrometers (see Tab. 1), residuals of the order of $(0.9 - 1.0) \cdot 10^{-4}$ were achieved under optimal conditions and on average $1.1 - 2.0 \cdot 10^{-4}$ in a long-term measurement campaign in Antarctica. Measurements in the UV spectral region particularly benefit from these improvements. During the measurements in Antarctica, for instance average detection limits of ClO were between 6 to 7.5 pptv at temporal resolution between 4 and 40 minutes. BrO could be detected at detection limits of 0.6 to 0.8 pptv at temporal resolutions of 2 to 30 minutes (see Tab. 6).

In conclusion, the application of the LDLS with its greatly reduced operational complexity and maintenance requirements, its high spatial and temporal stability as well as its long life time has enabled a number of technical improvements to the fibre based LP-DOAS setup. These increase measurement accuracy, precision, and reliability of LP-DOAS systems and make this versatile remote sensing technique much easier to deploy even in longer field campaigns or permanently operated applications.

~~Examples of residual spectra and corresponding root mean square (RMS) values for the benchmark configuration with a XBO-75W arc lamp and a classical fibre configuration (top), the new LDLS light source and a reversed fibre bundle (middle) and the new LDLS, reversed fibre bundle and roughened fibre ends (bottom). The latter was found to give best results.~~

~~Systematic comparison of LP-DOAS setups with classical fibre configuration, classical configuration with improved mode mixing, and the reversed fibre configuration with improved mode mixing for the benchmark light source XBO-75 and the LDLS. Attained residual RMS values for different summation periods up to 10 are plotted.~~

Appendix A: Additional information on LP-DOAS instrumental setup

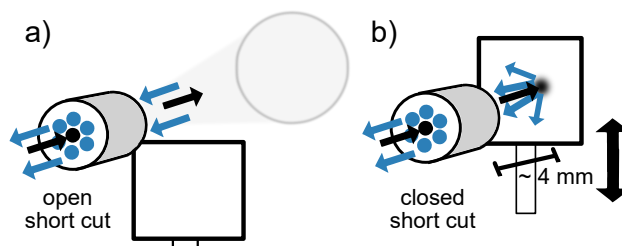


Figure A1. Working principle of the shortcut system. When the shortcut is open, light can reach the main mirror, traverse the atmospheric light path and is collected by the fibres (panel a)). To record a reference spectrum, a diffuse reflector plate (here a sandblasted aluminium plate) is moved into the light path at a distance of 1 to 4 mm from the fibre end (panel b)). The radiation is scattered from the surface of this plate back into the fibre bundle without traversing the atmosphere and is thus free of atmospheric absorption. [4 mm distance between reference plate and fibres added to sketch.](#)

Appendix B: Details of stray light investigations

B1 Band-pass filters used in stray light investigation

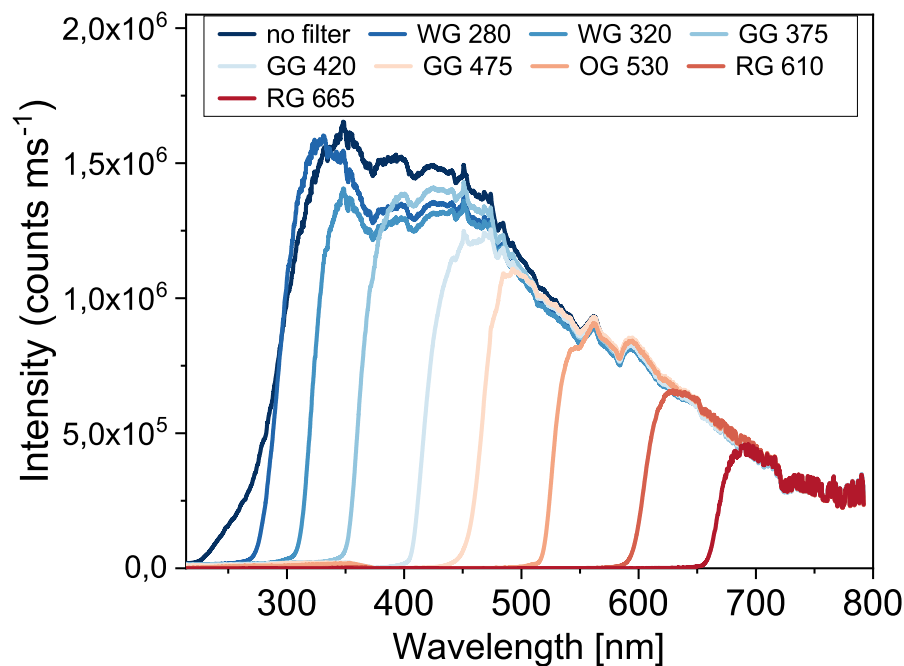


Figure B1. Overview of the band-pass and long-pass glass filters used in the investigation of the spectral origin of spectrometer stray light and their influence on the spectrum of a LDLS. The spectra recorded with a filter were scaled to match the spectrum without filter in the spectral region between 700 and 800 nm. This explains the higher intensities of the WG 280 spectrum compared to the one without filter. The position of the fibre with respect to the lens coupling the radiation from the LDLS into the fibre was optimised for filters in the light path. For the spectrum without filter this leads to the slightly different spectral shape.

B2 Locations of foci for different spectral ranges

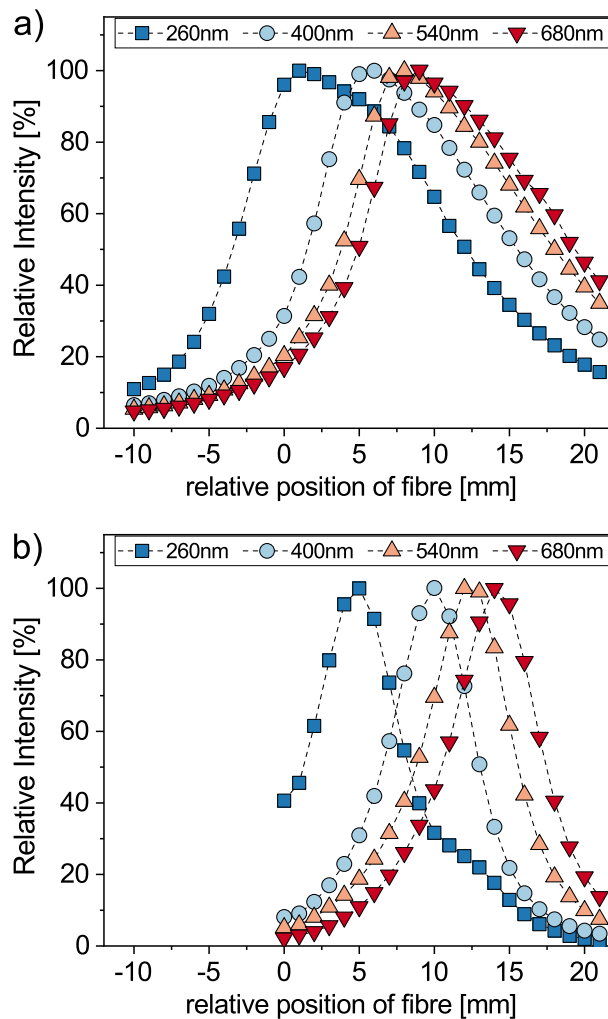


Figure B2. Variation of the relative intensity of selected spectral regions as a result of the chromatic aberration as a function of the relative position of the fibre. Panel a) shows results for a coupling into a 800 μm fibre, panel b) for a 200 μm fibre. For both plot, the increasing selectivity towards the UV due to the non-linear increase of the refractive index is visible. For the smaller fibre diameter the chromatic aberration filter becomes even more selective.

Appendix C: Description of campaign in the Nördlinger Ries/Germany and technical details on measurement routine

A LP-DOAS setup based on the improvements discussed above (setup "NR" in Tab. 1) was deployed in a three and a half month measurement campaign from August, 12 until December, 8 2014 in the Nördlinger Ries, a rural area in southern Germany. The campaign had a focus on investigating the link between precipitation and emission of NO₂ and HCHO from soils. The LP-DOAS was operated in five spectral windows from the UV to the visible (see Tab. D1) on a 5.7 km light path (2.85 km one way). Since these spectral regions are not covered at once by the detector, the grating in the spectrometer was turned sequentially to attain the different spectral regions (the measures for stray light reduction i.e. the band pass filters and the chromatic aberration filter approach for further stray light suppression in the light source (see Sec. 3.4) discussed in section 3.4 were changed/adjusted accordingly between spectral windows).

When set up for a particular spectral window, atmospheric and reference spectra were recorded alternately in sets (five reference spectra interleaved with four atmospheric spectra). At the end of each set, one atmospheric background and one reference background were recorded after blocking the light source. Especially when atmospheric conditions change quickly, short temporal offsets between measurement (atmospheric and reference) and background spectra are important. In each spectral window, several (3-5) of these sets was recorded before the grating was turned to the next spectral position.

To avoid or minimise the influence of detector non-linearity, exposure times for atmospheric and reference spectra in LP-DOAS measurements were adjusted to yield comparable saturations of the CCD. The exposure times of atmospheric spectra and hence the measurement time were therefore in dependence of atmospheric visibility. The revisiting time of a spectral window (here about 20-30 min) in the whole measurement routine thus depended on the number and total recording durations of the other spectral windows and hence also on atmospheric visibility.

Appendix D: Measurement routine in field campaigns in the Nördlinger Ries/Germany and Antarctica

Table D1. Measurement routines for field campaigns in the Nördlinger Ries/Germany (NR) and long-term observations on the German Antarctic station Neumayer III (NMIII).

	Spectral window	UV I	UV II	VIS I	VIS II	VIS III
NR	Spectral range [nm]	258-343	308-393	404-489	508-593	603-688
	Number of sets	2	5	5	2	2
	Band pass filter	UG-5	UG-5	-	-	OG-550
NMIII	Spectral range [nm]	280-348	327-395	378-521*	528-596	614-682
	Number of sets	5	5	5	3**	3**
	Band pass filter	UG-5	UG-5	BG-25	GG-495	RG-610

(*) Due to instrumental stray light problems, another grating was used for the VIS I window in the Neumayer setup (see setup "NMIII" in Tab. 1). (**) For optimisation of the measurement time, these spectral windows were skipped during most of the day time ($SZA < 85^\circ$) since trace gas molecules of interest here are expected to only be present during the night because of their photochemical instability.

Appendix E: Estimate of detection limits

To estimate the expected detection limit of an absorber that is not present in the atmosphere and hence not included in the DOAS fit, the residual RMS value in the spectral region where the absorber would be fitted can be used. A upper limit of a detectable concentration c_{lim} can be inferred by calculating the concentration of the absorber along the light path L for which the optical depth is as large as the root mean square (RMS) of the residual optical density:

$$c_{lim} = \frac{2 \cdot R_{RMS}}{\Delta\sigma' \cdot L} \quad (E1)$$

This estimate tends to be an upper limit for actually achievable detection limits.

Author contributions. JMN composed the manuscript and updated all figures based on drafts by PGE (except Figs. A1 and 11). Together with DP, SS, UF, and UP he was involved in the planning, design, and setup of the LP-DOAS instrument in Antarctica and was responsible for its operation. Supported by DP, SS, UF, and UP he analysed and interpreted the Neumayer III data set contributing results in Fig. 11 and Tabs. D1 and 6. PGE, DP, and SS devised the fibre-based optical setup including stray light filtering and fibre treatment used in the lab studies.

5 PE designed, performed, and evaluated all Heidelberg-based measurements supported by DP, SS, and UP. PGE, DP, and SS performed the measurement campaign in the Nördlinger Ries. UF is coordinating the project activities at the German research station Neumayer III.

Competing interests. The authors declare no competing interests.

Acknowledgements. The measurements at the Neumayer III station were supported by the German Research Association (DFG) in the framework of the project HALOPOLE III (grant number FR 2497/3-2) and by the Alfred Wegener Institute - Helmholtz Centre for Polar and Marine Research. We thank Rolf Weller for advice and practical help during the entire campaign as well as the 36th, 37th, and 38th

10 wintering crews of the station with respective air chemists Thomas Schaefer, Zsófia Jurányi, and Helene Hoffmann for taking good care of the instrument. JMN ~~is~~was supported by scholarships of the Evangelisches Studienwerk Villigst and the Studienstiftung des deutschen Volkes.

References

- Alicke, B., Platt, U., and Stutz, J.: Impact of nitrous acid photolysis on the total hydroxyl radical budget during the Limitation of Oxidant Production/Pianura Padana Produzione di Ozono study in Milan, *Journal of Geophysical Research*, 107, <https://doi.org/10.1029/2000jd000075>, 2002.
- 5 Asaf, D., Tas, E., Pedersen, D., Peleg, M., and Luria, M.: Long-Term Measurements of NO₃ Radical at a Semiarid Urban Site: 2. Seasonal Trends and Loss Mechanisms, *Environmental Science & Technology*, 44, 5901–5907, <https://doi.org/10.1021/es100967z>, 2010.
- Axelsson, H., Galle, B., Gustavsson, K., Ragnarsson, P., and Rudi, M.: A transmitting/receiving telescope for DOAS measurements using retro-reflector technique, *Optical Remote Sensing of the Atmosphere, OSA Technical Digest Series*, 4, 641–644, 1990.
- Blake, J. N., Kim, B. Y., and Shaw, H. J.: Fiber-optic modal coupler using periodic microbending, *Optics Letters*, 11, 177, <https://doi.org/10.1364/ol.11.000177>, 1986.
- 10 Bogumil, K., Orphal, J., Homann, T., Voigt, S., Spietz, P., Fleischmann, O., Vogel, A., Hartmann, M., Kromminga, H., Bovensmann, H., Frerick, J., and Burrows, J.: Measurements of molecular absorption spectra with the SCIAMACHY pre-flight model: instrument characterization and reference data for atmospheric remote-sensing in the 230–2380 nm region, *Journal of Photochemistry and Photobiology A: Chemistry*, 157, 167–184, [https://doi.org/10.1016/s1010-6030\(03\)00062-5](https://doi.org/10.1016/s1010-6030(03)00062-5), 2003.
- 15 Chan, K. L., Pöhler, D., and Platt, U.: Long term NO₂ measurements in Hong Kong using LED based long path differential optical absorption spectroscopy, *Atmospheric measurement techniques*, 5, 901–912, <https://doi.org/10.5194/amt-5-901-2012>, 2012.
- Commane, R., Seitz, K., Buxmann, J., Platt, U., and Pöhler, D.: Iodine monoxide at a clean marine coastal site, *Atmospheric chemistry and physics*, 11, 6721–6733, <https://doi.org/10.5194/acp-11-6721-2011>, 2011.
- Eckhardt, H. D.: Simple Model of Corner Reflector Phenomena, *Applied Optics*, 10, 1559, <https://doi.org/10.1364/ao.10.001559>, 1971.
- 20 Frieß, U., Sihler, H., Pöhler, D., Yilmaz, S., and Platt, U.: The vertical distribution of BrO and aerosols in the Arctic, *Journal of geophysical research*, 116, <https://doi.org/10.1029/2011JD015938>, 2011.
- Hausmann, M. and Platt, U.: Spectroscopic measurement of bromine oxide and ozone in the high Arctic during Polar Sunrise Experiment 1992, *Journal of Geophysical Research*, 99, 25 399, <https://doi.org/10.1029/94jd01314>, 1994.
- Hebestreit, K.: DOAS Measurements of Tropospheric Bromine Oxide in Mid-Latitudes, *Science*, 283, 55–57, <https://doi.org/10.1126/science.283.5398.55>, 1999.
- 25 Holla, R., Schmitt, S., Frieß, U., Pöhler, D., and Platt, U.: Vertical distribution of BrO in the boundary layer at the Dead Sea, *Environmental chemistry*, 12, 438–460, <https://doi.org/10.1071/EN14224>, 2015.
- Hönninger, G., Leser, H., Sebastián, O., and Platt, U.: Ground-based measurements of halogen oxides at the Hudson Bay by active longpath DOAS and passive MAX-DOAS, *Geophysical Research Letters*, 31, L04 111, 2004.
- 30 Horne, S., Smith, D., Besen, M., Partlow, M., Stolyarov, D., Zhu, H., and Holber, W.: A novel high-brightness broadband light-source technology from the VUV to the IR, in: *Next-Generation Spectroscopic Technologies III*, edited by Druy, M. A., Brown, C. D., and Crocombe, R. A., SPIE, <https://doi.org/10.1117/12.850269>, 2010.
- Islam, M., Ciaffoni, L., Hancock, G., and Ritchie, G. A. D.: Demonstration of a novel laser-driven light source for broadband spectroscopy between 170 nm and 2.1 μm , *The Analyst*, 138, 4741, <https://doi.org/10.1039/c3an01020a>, 2013.
- 35 Kaminow, I. P., Li, T., and Willner, A. E.: *Optical Fiber Telecommunications*, vol. VIA, Elsevier Science, Oxford, UK, 6th edn., 2013.

- Keene, W. C., Stutz, J., Pszenny, A. A. P., Maben, J. R., Fischer, E. V., Smith, A. M., von Glasow, R., Pechtl, S., Sive, B. C., and Varner, R. K.: Inorganic chlorine and bromine in coastal New England air during summer, *Journal of Geophysical Research: Atmospheres*, 112, <https://doi.org/10.1029/2006jd007689>, 2007.
- Kern, C., Trick, S., Rippel, B., and Platt, U.: Applicability of light-emitting diodes as light sources for active differential optical absorption spectroscopy measurements, *Applied Optics*, 45, 2077, <https://doi.org/10.1364/ao.45.002077>, 2006.
- Kern, C., Sihler, H., Vogel, L., Rivera, C., Herrera, M., and Platt, U.: Halogen oxide measurements at Masaya Volcano, Nicaragua using active long path differential optical absorption spectroscopy, *Bulletin of Volcanology*, 71, 659–670, 2009.
- Liao, J., Sihler, H., Huey, L. G., Neuman, J. A., Tanner, D. J., Friess, U., Platt, U., Flocke, F. M., Orlando, J. J., Shepson, P. B., Beine, H. J., Weinheimer, A. J., Sjostedt, S. J., Nowak, J. B., Knapp, D. J., Staebler, R. M., Zheng, W., Sander, R., Hall, S. R., and Ullmann, K.: A comparison of Arctic BrO measurements by chemical ionization mass spectrometry and long path-differential optical absorption spectroscopy, *J. Geophys. Res.*, 116, D00R02, <https://doi.org/10.1029/2010JD014788>, <http://dx.doi.org/10.1029/2010JD014788>, 2011.
- Lu, X., Qin, M., Xie, P., Duan, J., Fang, W., Shen, L., Liu, J., and Liu, W.: Observation of NO₃ radicals by LP-DOAS over Hefei, China, in: *Light, Energy and the Environment 2015*, OSA, <https://doi.org/10.1364/pv.2015.jtu5a.29>, 2015.
- Malitson, I. H.: Interspecimen Comparison of the Refractive Index of Fused Silica, *Journal of the Optical Society of America*, 55, 1205, <https://doi.org/10.1364/josa.55.001205>, 1965.
- Markvart, T.: The thermodynamics of optical étendue, *Journal of Optics A: Pure and Applied Optics*, 10, 015008, <https://doi.org/10.1088/1464-4258/10/01/015008>, 2007.
- Meller, R. and Moortgat, G. K.: Temperature dependence of the absorption cross sections of formaldehyde between 223 and 323 K in the wavelength range 225–375 nm, *Journal of Geophysical Research: Atmospheres*, 105, 7089–7101, <https://doi.org/10.1029/1999jd901074>, 2000.
- Merten, A., Tschirter, J., and Platt, U.: Design of differential optical absorption spectroscopy long-path telescopes based on fiber optics, *Applied Optics*, 50, 738–754, 2011.
- Nasse, J.-M., Frieß, U., Weller, R., Pöhler, D., Schmitt, S., Sihler, H., and Platt, U.: Reactive halogens in the boundary layer of coastal Antarctica - Results from two years of observations at Neumayer III, in prep., 2019.
- Perner, D., Ehhalt, D. H., Pätz, H. W., Platt, U., Röth, E. P., and Volz, A.: OH - Radicals in the lower troposphere, *Geophysical Research Letters*, 3, 466–468, <https://doi.org/10.1029/gl003i008p00466>, 1976.
- Peters, C., Pechtl, S., Stutz, J., Hebestreit, K., Hönninger, G., Heumann, K. G., Schwarz, A., Winterlik, J., and Platt, U.: Reactive and organic halogen species in three different European coastal environments, *Atmospheric Chemistry and Physics*, 5, 3357–3375, <https://doi.org/10.5194/acp-5-3357-2005>, 2005.
- Pikel'naya, O., Hurlock, S. C., Trick, S., and Stutz, J.: Intercomparison of multi-axis and long-path differential optical absorption spectroscopy measurements in the marine boundary layer, *Journal of Geophysical Research: Atmospheres*, 112, <https://doi.org/10.1029/2006jd007727>, 2007.
- Platt, U. and Perner, D.: Direct measurements of atmospheric CH₂O, HNO₂, O₃, NO₂, and SO₂ by differential optical absorption in the near UV, *Journal of Geophysical Research: Oceans*, 85, 7453–7458, <https://doi.org/10.1029/JC085iC12p07453>, 1980.
- Platt, U. and Perner, D.: Measurements of Atmospheric Trace Gases by Long Path Differential UV/Visible Absorption Spectroscopy, in: *Optical and Laser Remote Sensing*, edited by Schawlow, A. L., Killinger, D. K., and Mooradian, A., Springer Series in Optical Sciences, Springer, Berlin/Heidelberg, 1 edn., 1983.

- Platt, U. and Stutz, J.: Differential optical absorption spectroscopy, Physics of Earth and Space Environments, Springer, Berlin ; Heidelberg, 2008.
- Platt, U., Perner, D., Harris, G. W., Winer, A. M., and Pitts, J. N.: Observations of nitrous acid in an urban atmosphere by differential optical absorption, *Nature*, 285, 312–314, <https://doi.org/10.1038/285312a0>, 1980.
- 5 Platt, U., Perner, D., Schröder, J., Kessler, C., and Toennissen, A.: The diurnal variation of NO₃, *Journal of Geophysical Research*, 86, 11 965, <https://doi.org/10.1029/jc086ic12p11965>, 1981.
- Platt, U., Heue, K.-P., and Pöhler, D.: Atmospheric and Biological Environmental Monitoring, chap. Two- and Three Dimensional Observation of Trace Gas and Aerosol Distributions by DOAS Techniques, pp. 3–11, Springer Netherlands, <https://doi.org/10.1007/978-1-4020-9674-7>, 2009.
- 10 Pöhler, D., Vogel, L., Frieß, U., Platt, U., and Finlayson-Pitts, B. J.: Observation of halogen species in the Amundsen Gulf, Arctic, by active long-path differential optical absorption spectroscopy, *Proceedings of the National Academy of Sciences of the United States of America*, 107, 6582–6587, 2010.
- Rityn, N. E.: Optics of corner cube reflectors, *Sov. J. Opt. Technol.*, 34, 198–201, 1967.
- Sihler, H.: Light-Emitting Diodes as Light Sources in Spectroscopic Measurements of Atmospheric Trace Gases, Diploma thesis, Friedrich-Schiller-Universität Jena - Physikalisch-Astronomische Fakultät, 2007.
- 15 Sihler, H., Kern, C., Pöhler, D., and Platt, U.: Applying light-emitting diodes with narrowband emission features in differential spectroscopy, *Opt. Lett.*, 34, 3716–3718, <https://doi.org/10.1364/OL.34.003716>, <http://ol.osa.org/abstract.cfm?URI=ol-34-23-3716>, 2009.
- Stutz, J. and Platt, U.: Improving long-path differential optical absorption spectroscopy with a quartz-fiber mode mixer, *Applied Optics*, 36, 1105, 1997.
- 20 Stutz, J., Alicke, B., Ackermann, R., Geyer, A., Wang, S., White, A. B., Williams, E. J., Spicer, C. W., and Fast, J. D.: Relative humidity dependence of HONO chemistry in urban areas, *Journal of Geophysical Research: Atmospheres*, 109, n/a–n/a, <https://doi.org/10.1029/2003jd004135>, 2004.
- Stutz, J., Thomas, J. L., Hurlock, S. C., Schneider, M., von Glasow, R., Piot, M., Gorham, K., Burkhart, J. F., Ziemba, L., Dibb, J. E., and Lefer, B. L.: Longpath DOAS observations of surface BrO at Summit, Greenland, *Atmospheric Chemistry and Physics*, 11, 9899–9910, <https://doi.org/10.5194/acp-11-9899-2011>, 2011.
- 25 Veitel, H., Kromer, B., Mossner, M., and Platt, U.: New techniques for measurements of atmospheric vertical trace gas profiles using DOAS, *Environmental Science and Pollution Research*, pp. 17–26, 2002.
- Volkamer, R., Molina, L. T., Molina, M. J., Shirley, T., and Brune, W. H.: DOAS measurement of glyoxal as an indicator for fast VOC chemistry in urban air, *Geophysical Research Letters*, 32, <https://doi.org/10.1029/2005gl022616>, 2005.
- 30 Wagner, T., Otten, C., Pfeilsticker, K., Pundt, I., and Platt, U.: DOAS moonlight observation of atmospheric NO₃ in the Arctic winter, *Geophysical Research Letters*, 27, 3441–3444, <https://doi.org/10.1029/1999gl011153>, 2000.
- Wang, S., Ackermann, R., and Stutz, J.: Vertical profiles of O₃ and NO_x chemistry in the polluted nocturnal boundary layer in Phoenix, AZ: I. Field observations by long-path DOAS, *Atmospheric Chemistry and Physics*, 6, 2671–2693, <https://doi.org/10.5194/acp-6-2671-2006>, 2006.
- 35 Welford, W. T. and Winston, R.: The optics of nonimaging concentrators : light and solar energy, New York : Academic Press, 1978.
- Zhu, H. and Blackborow, P.: Operation of Laser-Driven Light Sources below 300nm: Ozone Mitigation, techreport, Energetiq, <https://www.energetiq.com/Operation-of-Laser-Driven-Light-Sources-below-300nm-Ozone-Mitigation.php>, 2011a.
- Zhu, H. and Blackborow, P.: LDLS sheds light on analytical-sciences applications, *Laser Focus World*, 47, 53–53, 2011b.