

Author comments AMT 2019-84

Callewaert Sieglinde et al.

1 Comments referee #1

1.1 Main comments

The authors indicate the existence of parallel efforts such as the ones described in Clarisse et al. (2019) and by Cuesta et al. (2015) to make mineral aerosol retrieval. Although these efforts are mentioned in the introduction there is no mention to the reader of how the presented work here differ by its methods upon these two other studies. I am not asking for quantitative statements but rather that the readers be made aware of the limitations of each of the studies.

Response: Clarisse et al., 2019 provide a long-term data set of AOD and aerosol mean layer altitude retrieved from IASI measurements. This data set does not contain aerosol profiles and differs from the MAPIR data set as such. We believe this should be clear from the way it is formulated in the manuscript.

It is true that the existence of the aerosol profile product by Cuesta et al., 2015 might be confusing for the reader. To our knowledge, there is no long-term global data set available using the method described in Cuesta et al. (2015). This we see as the main added value of MAPIR compared to existing products: MAPIR provides the first global data set containing aerosol profiles over a long time period.

To make this more clear to the reader, we added the following: "*The main differences between MAPIR and this alternative study are that Cuesta et al. (2015) follow an autoadaptive Tikhonov-Phillips-type approach and their method has until now only been applied to a very limited number of dust events, while MAPIR provides a global data set over a long time period using optimal estimation.*"

A lot of effort is devoted to improvements in the algorithm so that the screening of the scene is improved and the detectability of dust over desert areas with low emissivity becomes feasible. I was surprised that the dust properties chosen in the retrieval were not looked at critically. With regards to either the particle size distribution, and the refractive indices in the shortwave taken from Volz (1972, 1973) and Shettle and Fenn (1979) there are many studies showing large deficiencies in these description of dust properties. A recent study from Ryder et al. (2018) where the full size distribution of dust is measured clearly indicates that a single mode with an effective radius of 2 μm and a width of 2.0 accounts only for a small part of this size distribution. Have the authors tried to estimate the influence this could have on their retrievals? The following references -Dubovik et al. (2002); Sinyuk et al. (2003); Colarco et al., (2003); Balkanski et al. (2007) and Di Biagio et al. (2019)- all show that the refractive indices used here are much too absorbing compared to any dust sample examined over the last 10 years. The same question than above should be addressed by the authors: how does a correction in the refractive index use would influence their results and the description of the 3-D dust distributions that they provide.

Response: Regarding the particle size distribution, for thermal infrared retrievals it is usual to represent it by a mono-modal lognormal distribution; see for example the recent Capelle et al., 2018 (doi: 10.1016/j.rse.2017.12.008) or Clarisse et al., 2019 (doi: 10.1029/2018JD029701). The exact size distribution used in those studies and in ours are close, although not precisely identical: effective radius of 2.3 μm

for Capelle et al, of $1.66\ \mu\text{m}$ for Clarisse et al. and of $2\ \mu\text{m}$ in our work. It has previously been shown that in thermal infrared retrievals, the precise size has only a second order impact on the radiance and on the retrievals (Capelle et al. 2014 - doi:10.5194/acp-14-9343-2014; and Vandenbussche et al. 2013 - doi:10.5194/amt-6-2577-2013). In the analysis mentioned by the referee (Ryder 2018 - doi: 10.5194/acp-18-17225-2018), although indeed the presence of giant mode particles is highlighted, the conclusion states that the mean effective diameter was $4\ \mu\text{m}$, perfectly agreeing with our model. Therefore, we do believe that although not perfect the current MAPIR particle size distribution is relevant for thermal infrared (longwave) retrievals where the size sensitivity is limited.

Regarding the choice of refractive index, indeed it was shown in multiple papers, including those mentioned by the referee, that the refractive index from Volz is too absorbing in the shortwave part of the spectrum. However our retrievals are performed in the longwave. In our retrieval, we do not use exactly the Volz refractive index but the "dust-like" refractive index from the GEISA-HITRAN database, which is based on measurements by Volz but also by Shettle and Fenn. That refractive index is actually less absorbing than most of the more recent measurements in the longwave (including for example Di Biagio 2017 - doi: 10.5194/acp-17-1901-2017). That difference is minor around 900 and $1200\ \text{cm}^{-1}$ (in two of our retrieval windows) but the GEISA-HITRAN is more scattering and less absorbing at about $1100\ \text{cm}^{-1}$ (our third retrieval window). In Vandenbussche et al, 2013 (doi: 10.5194/amt-6-2577-2013), the first publication of this algorithm, we discussed the selection of refractive index, and how we picked the one leading to the more plausible and best quality results (in terms of RMS of spectral residuals after the retrieval, convergence rate, ...).

We agree that our current selection of refractive index and particle size is not the perfect model for the real dust (especially as we use it as globally constant), but the major steps in the algorithm development done here were the change of radiative transfer code and the adaptation of the retrieval in the logarithmic space with the modified optimal estimation method including the Levenberg-Marquardt regularisation. As we wanted to show how those modifications improved the retrievals, and because the refractive index (and particle size) are second-order parameters for thermal infrared retrievals, we decided to keep them as in the previous MAPIR versions. At the end of the manuscript, it was mentioned that "Future work to further improve the MAPIR algorithm can include the better characterization of aerosols by implementing a more complex particle size distribution and varying refractive index", highlighting that we are aware there is room for improvement. For particle size, one possibility is to use a bimodal distribution, but that also requires knowing the ratio between both modes, meaning an additional parameter to retrieve, making the retrieval even more challenging. For the refractive index, we might consider a varying refractive index, for example based on the work of Di Biagio (2017). That however requires a significant additional work linked to the selection for each scene of the best refractive index to use in the retrieval. It is therefore out of the scope of this work at its current stage.

The future work sentence in the manuscript was updated to "*Future work to further improve the MAPIR algorithm can include the better characterization of the dust aerosols. Possible improvements are the use of more recent refractive index data, for example those of Di Biagio et al. (2017) and the use of a bi-modal particle size distribution. Both represent significant scientific work: the development of an automated selection of the best refractive index and/or the retrieval of an additional parameter being the ratio between the 2 modes of the particle size distribution.*".

When examining the AERONET coarse mode AOD, I did not see any discussion about the possible influence of seasalt on these AOD. This would be particularly sensitive for marine or coastal sites near sea-level and could explain a good part of the discrepancies at these sites. Please indicate it, or try to estimate how much the total coarse mode AOD could deviate from the dust coarse mode AOD at these sites.

Response: Indeed sea salt can contribute significantly to the AERONET coarse mode AOD, especially when the dust load is very limited or absent. Therefore, the presence of sea salt would indeed impact the comparisons between IASI MAPIR dust AOD and AERONET coarse mode AOD. In particular it could impact the correlation at coastal low altitudes stations in places where dust is not present along the whole year. For example, we think it is the case in Guadeloupe (Figure 1 in the appendix of this document) where the AERONET coarse mode AOD is constantly higher than the MAPIR dust AOD. In the winter especially, it is highly improbable that the almost constant non-negligible AERONET coarse mode AOD in Guadeloupe is dust.

In the new section 2.2 describing the AERONET product, we added the sentence: *There is currently no aerosol type specification in the AERONET product, and the coarse mode mainly contains mineral dust, sea salt and/or volcanic ash.*

In section 5.1 discussing the AOD comparisons, the following changes were made:

(1) *A last requirement is that the AERONET station should be dusty enough: only sites for which there is a sufficient amount of dust measured are included, the median of the AERONET coarse mode AOD at 500 nm over the considered time period should be higher than 0.05. [...] was replaced by Finally, we considered only sites for which the median of the AERONET coarse mode AOD at 500 nm over the considered time period is higher than 0.05. As mentioned in Sect. 2.2, the coarse mode AOD contains all coarse mode aerosols, i.e. mainly dust, sea salt and volcanic ash. The selection therefore does not ensure the presence of only dust at those selected AERONET sites. [...].*

(2) After the paragraph describing in general the AOD correlation between MAPIR and AERONET, we added: *The coastal stations where the presence of sea salt aerosols plausibly impacts the AERONET coarse mode AOD and its correlation with MAPIR dust AOD are indicated with an asterisk in Table A1.*

(3) In the discussion about transport to the Caribbean, we added: *However, those are coastal stations where the coarse mode probably contains sea salt aerosols with a possible impact on the AERONET coarse mode AOD.*

(4) *Three of the sites with a weak or very weak correlation are situated in the American continent: Arica, Bakersfield and UPC-GEAB-Valledupar. The reason for this discrepancy is not clear. They are situated in regions that are not known for the presence of dust. For UPC-GEAB-Valledupar and Arica, the AOD values from AERONET are higher than the MAPIR AOD. This could indicate that there are other coarse aerosol types measured with AERONET, to which MAPIR is not sensitive. was replaced by Three of the sites with a weak or very weak correlation are situated in the American continent, in areas not known for the presence of dust: Arica, Bakersfield and UPC-GEAB-Valledupar. Arica is a coastal station, potentially experiencing sea salt aerosols. For the other 2 stations, the reason for the discrepancy is not clear.*

I propose a change in the structure of the text of paragraph 5.3. The description of the Lidar characteristics for the 3 lidars at MBour, at Al Dhaid and on-board the space station should have been given on an earlier part of the paper so that the authors focus only on the comparison which is the title of paragraph 5.3. This whole paragraph needs to be better organized and better written if you want to keep the attention of the reader. This paper is relatively long so this part has to be well written.

Response: The description of the three lidar instruments is moved to a new Section 2 called 'Instruments'. To be consistent along the manuscript, we also added a short description of AERONET and CALIOP in this new section. It should now contain information on all instruments used in this study.

And last but not least of the major comments, that Data availability statement at the bottom of page 28 is very fuzzy as it is. Since this project is financed by Copernicus, the data availability is mandatory and cannot be delayed in time. How can someone interested in studying this dataset access it?

Response: We agree that the sentence could lead to some confusion. Part of the data was submitted to Copernicus: the dust AOD (550 nm and 10 μm) and the dust mean altitude. The full profiles were not submitted because they can not be accommodated by the Copernicus system at the moment. The Copernicus funding was only to deliver AOD and if possible mean altitude, but the fact that MAPIR provides profiles does not matter here. We are working on a way to make those profiles available through our institute but it takes time to do it properly. In the meanwhile, interested scientists are encouraged to contact the authors to obtain profile data. In addition, there is a delay on the side of Copernicus to make the delivered data (AOD and mean altitude) available, which is out of our hands and is delicate to mention in a publication. Again, in the meanwhile, interested scientists may contact us for the data.

The sentence in the manuscript was modified as follows: "*Under the Copernicus Climate Change Service aerosols project, the MAPIR dust 10 μm and 550 nm AOD and the MAPIR dust aerosol mean altitude were submitted to the Copernicus Climate Data Store where they currently undergo technical processing. The full profiles (and the AOD and mean altitude) from MAPIR are available upon request to the authors*".

1.2 Minor Comments

In the introduction, the authors should mention that 3-D fields of dust based upon observations are described in Ridley et al. (2016).

Response: The article suggested by the referee is about seasonal AOD estimated using a combination of several satellites, models and AERONET. We don't see why this should be mentioned in the introduction as AOD is not a 3-D field.

Page 6, line 16: please delete the sentence: Above 7 km there is rarely found mineral dust particles, as is shown by a CALIOP based 3-D climatology described in Winker et al. (2013). This statement is inaccurate, many lidar profiles above the Mediterranean Sea show dust plumes above 7 and even 10 km. Hence, saying that dust is rarely seen above 7 km can mislead readers.

Response: The sentence is deleted.

Page 16, line 3: you mention that you chose 4 surface stations to conduct a more thorough comparison with AERONET, please indicate how these stations were chosen.

Response: Those 4 AERONET sites shown in Figure 6 are more an illustration to show how the time series of AERONET and MAPIR compare than they are an additional comparison. We performed no additional study on these specific sites. The stations were chosen quite randomly, although we wanted them to have enough dusty events and with a continuous time series over a period that is long enough. We included them in the manuscript as we believe that the time series give a different view on the AOD comparison between MAPIR and AERONET that could be interesting for the reader.

To make it more clear, we changed the sentence to: "*To illustrate the similarities and differences between MAPIR AOD and AERONET AOD in an alternative way, Fig. 6 shows time series for the AOD at 4 AERONET stations.*"

Page 16, line 18, please change: Indeed, for the a priori, a monthly climatology over 8 years is used (...) To A monthly climatology over 8 years is used for the a priori (...)

Response: Done.

Page 16, line 31-32: The first period is identical to the same time and region used by Kylling et al. (2018): 18.., please indicate the lat, lon of the region that you mention here.

Response: The coordinates of the region are mentioned in the next sentence: "These dates cover four desert dust events in the region between 0-40 N and 80 W-120 E."

Page 16; in paragraph 5.2 you should indicate that if the dust layer is situated above 7 km, it will be missed by your algorithm.

Response: This is not the case. Indeed, the signature of the dust will be present in the spectra even if the dust is higher than 7 km, therefore the retrieval will be performed. Obviously, if the dust layer is above the final layer from the retrieval grid, the retrieval will be biased, especially in terms of vertical distribution and mean altitude. It will result in the dust being retrieved in the last retrieval layer (6 to 7 km altitude) and the concentration/AOD being biased depending on the temperature difference between that retrieval layer and the real dust altitude. In the comparisons between IASI and CALIOP mean altitude, we think that this has no consequence. Indeed, as can be seen in the detailed Figure 5 in Kylling et al (2018), there are no comparisons where the mid layer altitude is higher than 5 to 5.5 km. The corresponding detailed plot for the current MAPIR version is not included in the manuscript, but the sample was identical for 2010 and is very similar for 2017 with also no mean altitude from CALIOP higher than 5 to 5.5 km.

Page 21 lines 19-20: stating that *"This qualitative analysis of aerosol profiles at MBour supports our confidence in the value of the new MAPIR algorithm."* Is not justified since we do not have, as of today, a golden standard for dust profiles to judge when we can be confident in a dust retrieving algorithm. Please delete this sentence.

Response: It is true there is no golden standard for assessing the quality of a dust profile retrieving algorithm. However, we believe that if two independent measurement systems show similar patterns it increases the reliability of these patterns. The sentence does not state that our algorithm provides true profiles in any case, it is just saying that the similarities between the two data sets confirm our confidence in that MAPIR is able to provide reasonable profiles. We would leave the sentence as it is.

Page 25 line 14, the work you do here is more an evaluation than a validation since you would need very well defined uncertainties on the dust quantities that are measured to make that validation. I propose that you change the term validation to evaluation in the title of this manuscript and change the text provide validation to evaluate in this sentence.

Response: Indeed, it is more correct to call the performed analyses an evaluation rather than a validation, as also pointed out by another referee. We have changed all occurrences of 'validation' by 'evaluation'.

Page 27, line 12, there is a typo that your co-authors should have picked up: the units of extinction should be km^{-1} and not km.

Response: This is not true, the units don't correspond to an extinction but to the difference in cumulative extinction altitude between CALIOP and MAPIR dust layers. As explained in the text, this is the altitude where the dust cumulative extinction at 532 nm is half of the total extinction column. Since the values mentioned in the conclusion correspond to a measure of altitude, the unit is km.

Page 28, line 8, there is one comma too many, please delete the comma and change the text from: In Al Dhaid, United Arab Emirates, almost all dust events that were detected by the

lidar during the two-month comparison period, were also seen in the MAPIR data. To In Al Dhaid, United Arab Emirates, almost all dust events that were detected by the lidar during the two-month comparison period were also seen in the MAPIR data.

Response: Done.

2 Comments referee #2

2.1 Main comment

One broader question that I have, which I feel is considered implicitly but not explicitly throughout the manuscript, is whether there is much to be said about the relationship between the IASI-derived atmospheric profiles of water vapour (and temperature) and the dust aerosol profiles (validated in Sections 5.2 and 5.3). In the infrared, the significance of the dust heights for the measured signal at TOA is surely dependent on the coincident water vapour and temperature profiles. Depending on the wavelength, the signal of a dust layer may be obfuscated by a particularly moist atmosphere above it: the signal of two identical dust profiles will be different if their water vapour profiles are different. Would it be possible for you to discuss, briefly or otherwise, how often the dust layers are lofted above the moistest layers of the atmosphere and to what extent this might be significant for the retrievals?

Response: Indeed, we mention the impact of the quality of the IASI level 2 vertical profiles of temperature and humidity on the quality of our dust retrievals. However, that impact is relatively limited and indeed can be evaluated through the difference in validation for different time periods as discussed in the manuscript.

Our retrieval windows are not in the main water vapour absorption bands. They do however contain small absorption bands and the continuum effect, obviously. A strong humidity never saturates the TIR spectrum in those windows, leaving the opportunity to observe dust in all cases including particularly moist atmospheres. The change in the depth of the water vapour absorption bands in the spectral windows used in the retrieval will mostly impact the spectral residuals after the retrieval. However, the change in the continuum also affects the spectral "baseline", with an effect similar to that of the surface temperature, therefore affecting the retrieval of the latter, which itself also affects the retrieval of the aerosols. This has potentially more impact over land as our retrieval is set up with a T_s a priori standard deviation of 15% over land and 5% over ocean, making the T_s retrieval over land much more flexible. This is necessary because of the high uncertainty in the EUMETSAT IASI land T_s (in deserts mainly), especially under dusty conditions.

To test more specifically the effect of a change in relative humidity, we undertook the retrievals for the 9 June 2018 (the day used as example in the manuscript) with the relative humidity set to 90% of the value from IASI level 2 data normally used in the retrievals. This 10% change is driven by the IASI scientific objective of 10% accuracy in relative humidity, and from IASI validation results for level 2 version 5 (August et al, JQSRT 2012) showing an RMS of about 10% in relative humidity (and up to 20% for the lowest layers). The IASI level 2 version 6 has improved validation results in the lowest layers with about 10% standard deviation of comparisons with ECMWF (IASI L2 PPF 6.4 validation report, EUM/RSP/REP/18/974859). The results of our test retrievals shows that an uncertainty in water vapour at altitudes above 6 km has negligible impact on the MAPIR retrievals. A 10% change in relative humidity below 2 km, in the 2 to 4 km layers or in the 4 to 6 km layers changes the MAPIR dust mean altitude by at most 0.5 km and the TIR AOD by at most 0.06. See Figure 2 in the appendix of this document for an example. Depending on the location (and on the difference between the surface temperature and the aerosols temperature), a lower humidity can lead to a higher or lower AOD and respectively a lower or higher mean altitude. An increase of 10% in humidity has the opposite effect than the decrease. Overall it is improbable that the whole water vapour profile is shifted and more probable that there are some positive and some negative differences with respect to the true profile (indeed the water vapour validation does not show a constant shift). Therefore the impact on the dust retrievals of different water vapour biases at different altitudes should partially compensate and the total effect on dust aerosols retrievals is limited. We did not observe a significant effect of the relative altitude of the dust with respect to the altitudes where we modified the humidity.

A similar analysis was done with the temperature profile (see Figure 3 in the appendix of this document as example). We shifted the whole profile by 1 K (a layer by layer approach here has little sense as such

a strong jump in the temperature is nonphysical). This shift of the entire temperature profile leads to a maximum 0.6 km shift the MAPIR mean dust altitude and a maximum TIR AOD change of 0.09. Again such a bias of the temperature profile is improbable, therefore these test results provide an upper limit to the impact of uncertainty of the temperature profile on the MAPIR dust retrievals.

2.2 Minor comments

p.4, line 28: this is a new aspect... Could you briefly mention what the process was in the previous version, to put this into context?

Response: Indeed, this was not clear from the text. A clarification was added: "This is a new aspect with respect to previous MAPIR versions, *where the ordinary Gauss–Newton iteration method was used.*"

p.5, line 5: this could also use a brief extra explanation, to define what the convergence criteria are.

Response: The convergence criteria are not mentioned in the manuscript as adding two extra equations would probably make the paragraph too heavy. We use the standard convergence criteria as mentioned in Rodgers (2000). Therefore we changed the sentence as follows: "*The iterations are stopped when the steps both in state space and measurement space are small enough or after 20 steps, whereby the retrieval is signalled as unsuccessful. The convergence criteria on the step sizes is taken from Rodgers (2000, p90), with $\epsilon = 10^{-1}$.*"

p.7, line 22: would it be possible to quantify the number of very dusty IASI scenes which get discarded? Can this information be retained somehow in the retrieval output?

Response: No, this is not possible. The discarded scenes due to the cloud filter are not treated any further in the retrieval process. To quantify when the center of a plume was flagged as a cloud, one would need to do a post-retrieval analysis on the pixels surrounding such a discarded scene. This would lead to a completely new study and falls outside the scope of this work.

p.21, line 4: the higher dust layer is stated to be around 15th February but in the plot it appears to be 16-18th?

Response: That is correct, the two co-located MAPIR retrievals involved actually correspond to the IASI overpass on the morning of 16 February and 17 February. We changed it to be 'around 17 February'.

p.23, line 3: does this potential underestimation of the LIDAR signal in the bottom layer of the atmosphere imply that the MAPIR retrieval has a better ability to retrieve dust at these altitudes?

Response: No, it doesn't imply that. It is just saying that the lidar might be underestimating the lowest layer because of instrumental features. This has no connection with the performance of MAPIR in that layer at all. The only thing it implies is that the comparison in the lowest layer is less trustworthy.

Figures 11 and 12: instead of presenting the near-global maps of the AOD, it might be better here to zoom in instead on Africa and the rectangular region directly over the CATS tracks. It is quite difficult to see on the map where the pink parts of the tracks are, and to distinguish the AODs. Does the global view add any insight to this analysis compared to the regional view?

Response: The AOD maps were replaced with regional maps over the selected part of the CATS track, for example see Figures 4 and 5 in the appendix.

3 Comments referee #3

3.1 Main comments

I suggest combining the description of the lidars from Secs. 5.3.1-5.3.3 with the IASI description in Sect.2.

Response: Done, as also suggested by referee #1. Section 2 is expanded with subsections of all used instrument descriptions.

The algorithm is explained in detail, but I am a bit confused with the cloud screening. In Sect. 3.5 the IASI operational L2 cloud product is mentioned, while on P9 the failure of the EUMETSAT cloud filter is discussed as a possible reason for the cloud contamination. Is EUMETSAT cloud filter is used as an additional check?

Response: These two cloud filters are the same. It is true that the different names can be confusing. To be consistent, we changed any occurrence of the cloud filter to "*IASI operational level 2 cloud product*".

Since AERONET AOD is not measuring the IR AOD (as you discuss in Sect 5.1), I would rather call the exercise an evaluation rather than validation and suggest to change the title accordingly.

Response: As also suggested by another referee, the undertaken comparison exercises in the validation section are more an evaluation. Therefore we have changed the title and other occurrences of *validation* to *evaluation*.

AERONET coarse AOD product includes other than dust species. According to Satheesh et al (<https://doi.org/10.1029/2005GL024856>), at high wind speeds, sea salt contributes 81 % to the coarse mode. To classify (to some extent) the aerosol type, I suggest looking at the SSA product from the AERONET. The other useful reference for the discussion might be Khatri et al. (<https://agupubs.onlinelibrary.wiley.com/doi/pdf/10.1002/2013JD019961>).

Response: The possible impact of the sea salt aerosols was discussed in an answer to Referee 1 (third question, bottom of page 2 of this document) and changes were done to the manuscript accordingly.

An attempt to classify the AERONET aerosol type using SSA could indeed be done. However, that should be done very carefully and should represent a separate work by itself, with specific validation. Otherwise, the comparison of MAPIR dust AOD would not anymore be against a standard and validated reference data set. In addition, the AERONET inversion description documentation, mentions that: "NOTE: The fine and coarse modes of single scattering albedo are technically estimated, however, it is not advised to use these values for the physical interpretation because the retrieval is implemented under assumption that complex refractive index is the same for all particle sizes." Therefore, we really think that although the AERONET aerosol typing seems extremely interesting, it is outside the scope of this work and it requires very specific expertise which we do not have.

Since the performance of the retrieval algorithm often depends on the aerosol load/type and surface contribution to the TOA reflectance, the evaluation results are not expected to be similar for e.g., low or high AOD loading conditions. Moreover, the number of cases with $AOD > 0.5$ is much lower (may be up to several magnitudes lower) than the number of $AOD < 0.5$ cases. Thus, the linear regression is not always the correct tool to evaluate the algorithm performance and I suggest to remove the regression line from Fig. 6. Instead, I suggest looking at the AOD bias for certain AOD bins (e.g., Figs. 1-2 in www.ncbi.nlm.nih.gov/pmc/articles/PMC6101972/ or Fig. 3 in www.atmos-chem-phys.net/18/11389/2018/).

Response: New plots were made to replace the linear regression analysis in Fig.6 (See Figure 6 in appendix). Now the plots represent the distribution of the MAPIR - AERONET AOD difference in function of AERONET AOD as a scatter plot. In addition, 5 bins of equal sizes were composed of which the median and interquartile range (IQR) of the AOD differences were calculated and shown on top of the scatter plot. It shows that indeed the number of low AOD cases is much higher than the number of high AOD cases. Moreover, we see that the low AOD scenes tend to have a small positive bias while the medians of the more dusty cases are close to 0 or slightly negative.

We have added the following in the manuscript: *"Another way of showing this are the plots in the second column of Fig. 6. It presents a scatter plot of the AOD differences in function of the size of the AERONET AOD. Additionally, the data per station is split into AOD bins of equal quantity. Binned medians (black dots) and interquartile ranges (IQR, vertical black lines) of the AOD differences are shown on the plots. For example at Tunis Carthage, we see in the AOD difference scatter plot that most of the observations are low AOD cases with small positive bias, 4 out of the 5 AOD bins are situated below 0.1. The AOD bin of larger AOD values shows a slightly negative bias, thus they are generally underestimated. This negative trend, positive bias for low AOD and negative bias for higher AOD, is to some extent present at the other stations in Fig. 6 too."*

As we see the added value in presenting our data this way, we added a similar plot for all AERONET data to the bias histogram in Fig. 7 (see response of the next comment).

I have some doubts on how meaningful the mean bias of -0.04 is for the estimation of the MAPIR AOD quality. To my rough estimation from Fig.7, only ca 10% of matches hit the bin which includes the number of -0.04 ; the highest probability (~ 0.16) is for slightly positive bias and the probability of the abs difference of > 0.1 is high (ca > 0.40). Thus, the spread is essential, even though the mean bias is low. The intercept (Table A1) is positive for most of the stations and on average is as high as ca 0.08 (my rough estimates).

Response: The mean bias of MAPIR AOD with respect to AERONET AOD actually is 0.04 instead of -0.04 . This misinterpretation happened because the histogram in Fig.7 of the submitted manuscript was plotted with the difference AERONET - MAPIR, and the bias was calculated with the same data. It is however common to mention the mean difference as MAPIR - AERONET, which leads to a reverse sign. It has been corrected in the manuscript. We believe reporting the mean bias is more meaningful now as it is consistent with the positive intercepts at the stations.

Further, we have made the histogram plot more clear (see Fig.7b in appendix): horizontal grid lines were added, the borders of the histogram boxes were added and also the position and width of the bins were adapted. Now it is well visible that almost 50% of the absolute differences is below 0.05 and more than 70% is below 0.1 , which means the MAPIR AOD quality is indeed decent. We have added the standard deviation ($\sigma = 0.16$) and the following sentence in the manuscript: *"... and more than 70% of the absolute differences fall below 0.1 ".*

Additionally, we added another plot to Figure 7: a similar scatter plot as the ones replaced in Fig. 6, but now for all AERONET data (See Fig. 7a in appendix). We believe this gives some additional information to the reader about the difference distribution. It shows that most of the positive bias comes from low AERONET AOD measurements while the negative bias is mainly from the more dusty scenes. Also, it visualizes the positivity constraint on the AOD as an imaginary line in the lower left corner of the scatter plot.

Accompanying this new plot, we added the following paragraph in the manuscript: *"...Figure 7(a) shows the same kind of plot but for all AERONET stations combined and split up into 10 bins of equal size. The total number of points used for these statistics are 76976, for the whole time period over the 72 selected AERONET stations. The binned medians show that the low AOD cases ($AOD < 0.1$) have a small positive bias, the cases with AERONET AOD between 0.1 and 0.4 have almost no bias but there is a bigger spread, and the most dusty scenes ($AOD > 0.4$) show a small negative bias. The imaginary line that is visible in the lower left part of the scatter plot is due to the positivity constraint on the AOD values."*

The deviation of the cumulative extinction is smaller over ocean (Table1). Is that because P7L6: we believe existing databases of ocean Ts are more reliable than land Ts or other reasons exist? However, as for the comparison with AERONET, the results for inland stations look better than for coastal/island stations.

Response: The explanation about the better existing databases for Ts over ocean than land justifies that in the retrieval we use a different standard deviation for the a priori value of Ts. This is probably part of the reason for a different spread of the mean altitude from MAPIR versus CALIOP over ocean and land. We think that overall this is the result of an easier case over ocean for the retrieval: the surface emissivity and temperature are less uncertain and the plume height is relatively constant (therefore with less deviation from the a priori).

We added the following sentence in section 5.2 of the manuscript: *We also observe a lower standard deviation over ocean than over land. This is probably linked to the fact that retrievals over ocean are less uncertain: the surface emissivity and temperature are more stable. In addition, the plume height is more constant over ocean (no local source), therefore less deviating from the a priori.*

The fact that the AERONET AOD validation shows better results inland than for coastal stations is not so clear. Some inland stations show a weak correlation and some coastal stations show a very good correlation. Part of the weak correlation at coastal stations could be due to the sea salt issue mentioned by this referee and another one.

The transition in land/ocean AOD is not smooth (Fig 3a,b; Fig.4). Please, discuss the reason(s).

Response: The referee probably refers to the land/ocean transition along the west African coast. The coastline AOD transition in the Arabian Peninsula in this plot is very smooth. For other days, a smooth transition is observed along the African coastline but it appears that around 9 June 2018 the plume was a bit unusual. A similar dust plume with also a discontinuity along the African coast was observed by MODIS (the data can be visualized at <https://worldview.earthdata.nasa.gov>). However, there is a small area near the South coast of Mauritania where the MAPIR AOD is indeed quite low while it is higher to the North and West. In that area (S Mauritania) we see an RMS that almost reaches our quality filter of 1 K. This could indicate that MAPIR is slightly underestimating the dust load in that particular case.

We have added the following sentences to the manuscript: *The apparent discontinuity along the West coast of Africa (which can be better seen in Fig. 4), is probably caused by the shape of the dust plume itself. This event observed by MODIS shows similar patterns (the data can be visualized at <https://worldview.earthdata.nasa.gov>). However, a small area near the South coast of Mauritania where the MAPIR AOD is low compared to its surroundings, shows relatively high RMSSR values almost reaching our quality filter of 1 K. This could indicate that MAPIR is slightly underestimating the dust load in that particular area.*

3.2 Minor comments

P2L25: OMI retrieves AOD at UV and interpolates AOD to 500 nm using the Angstrom.

Response: To make the interpretation of the sentence more correct, regarding the wave numbers at which the mentioned AOD products are delivered, it has been changed as follows: *"... is a parameter that many sensors provide, such as.... They measure in the UV, visible or near-infrared and typically report AOD around 550 nm."*

P3L15: I suggest the following changes: ... updated algorithm is presented; AOD product is evaluated against AERONET and compared... The work is organized as follows.

Response: In general, we have changed *validated* by *evaluated* along the manuscript because it is indeed a more accurate term, considering the comparison exercises performed.

P13L10: Please, specify the wavelengths here.

Response: Done. We convert to 550 nm.

Fig. 6, second column. Here I suggest to color the dots with AERONET SSA, when retrieved and add the corresponding discussion on the sea salt contribution to the AERONET coarse AOD.

Response: Not done, linked to our response concerning using AERONET SSA.

Fig. 7 Please, add the grid.

Response: Done. See Figure 7 in the appendix of this document.

P16L32 One period, 1-12 July 2010, is mentioned twice

Response: Thank you for pointing out this typo which the authors have missed. The correct fourth period (14–20 September 2010) is added.

Table 1. I suggest making the case specs (e.g., CALIOP, All data) more visible by adding additional horizontal line below the case name, or/and changing the fonts and/or moving the name to the left.

Response: The case specs were moved to the left and put in bold.

P22L6: I suggest to specify months here

Response: It is indeed more clear to repeat the exact months also here in the text, not only on the corresponding figure and the description of the instrument. Especially since the latter is moved to another section following a previous comment. A clarification of the considered time period is added: *A comparison of the 2 months measurements (March to April 2018) [...]*

P23L3: Please, provide a reference, where the radar limit for the close to surface measurements is specified and discussed.

Response: The detailed information can be found in Engelmann et al., 2016, which was cited on p21 line 28 (now moved to section 2.5). The reference is cited again where the lidar limit is mentioned.

A Figures

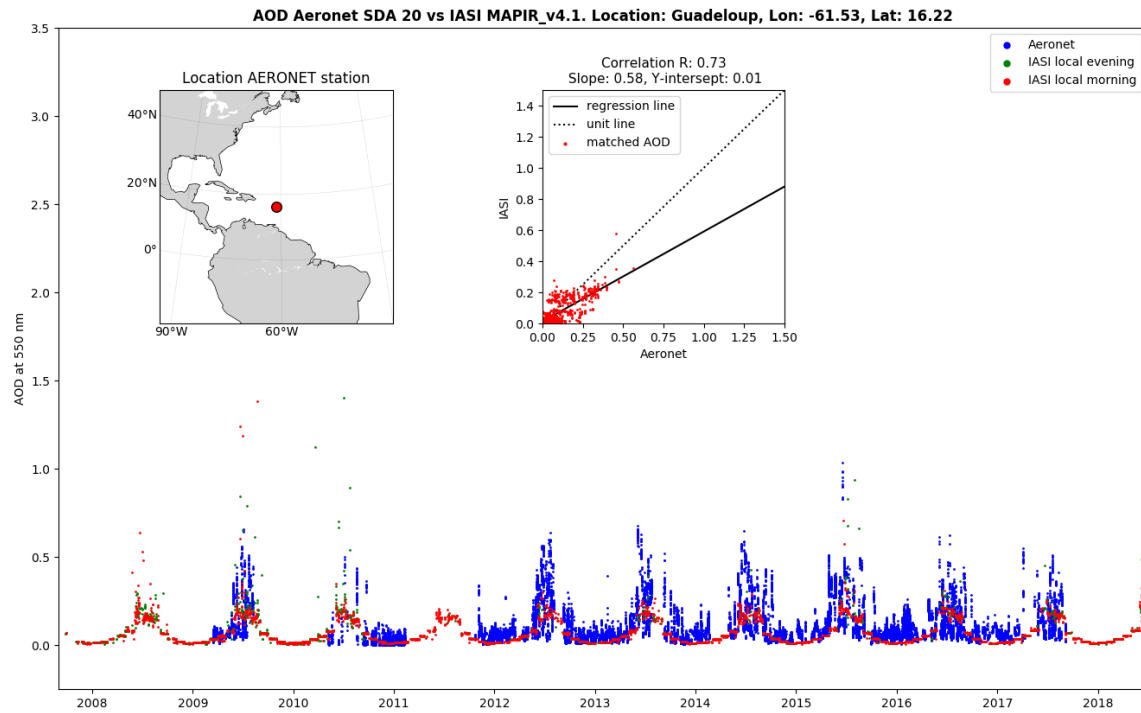


Figure 1: Time series of the available AERONET data at Guadeloup stations showing the possible contamination of sea salt. The blue dots are the AERONET coarse mode AOD, the red dots are the matched MAPIR AOD converted to the same wavelength.

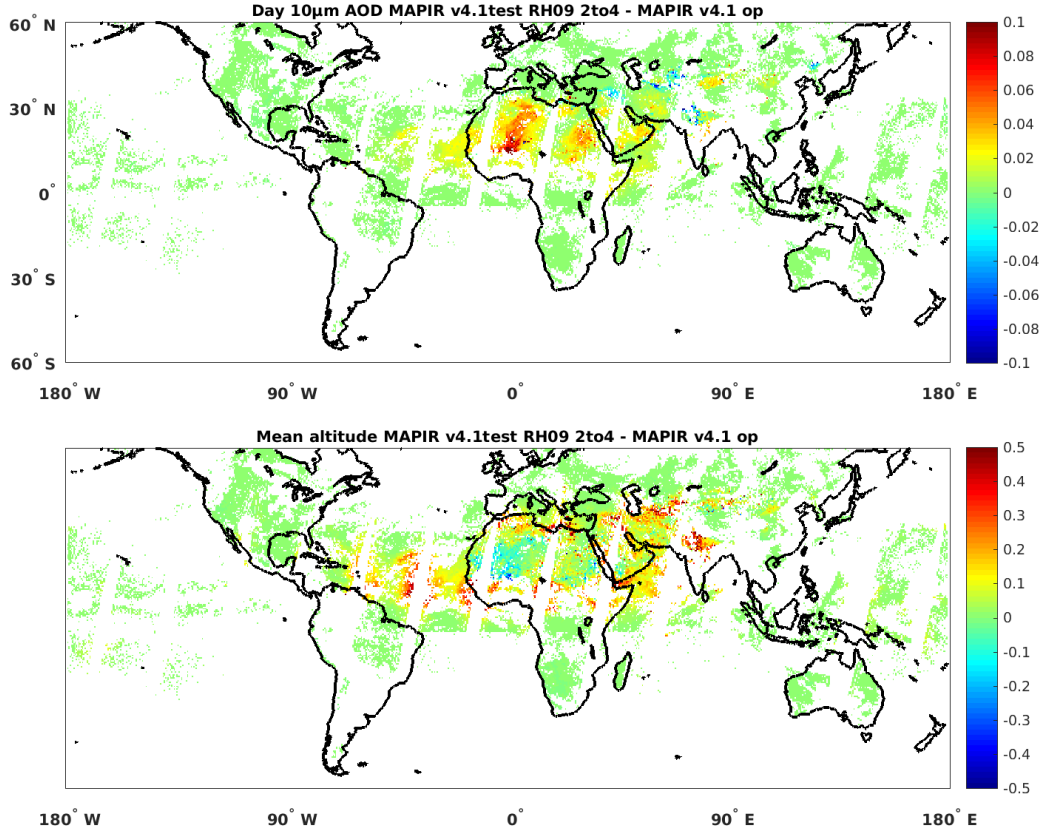


Figure 2: MAPIR dust TIR AOD and mean altitude absolute changes due to a reduction of the relative humidity by 10% at altitudes between 2 and 4 km with respect to the standard MAPIR v4.1 retrieval, for the 9th of June 2018, daytime. An increase by 10% of the relative humidity has the opposite effect on the dust retrievals.

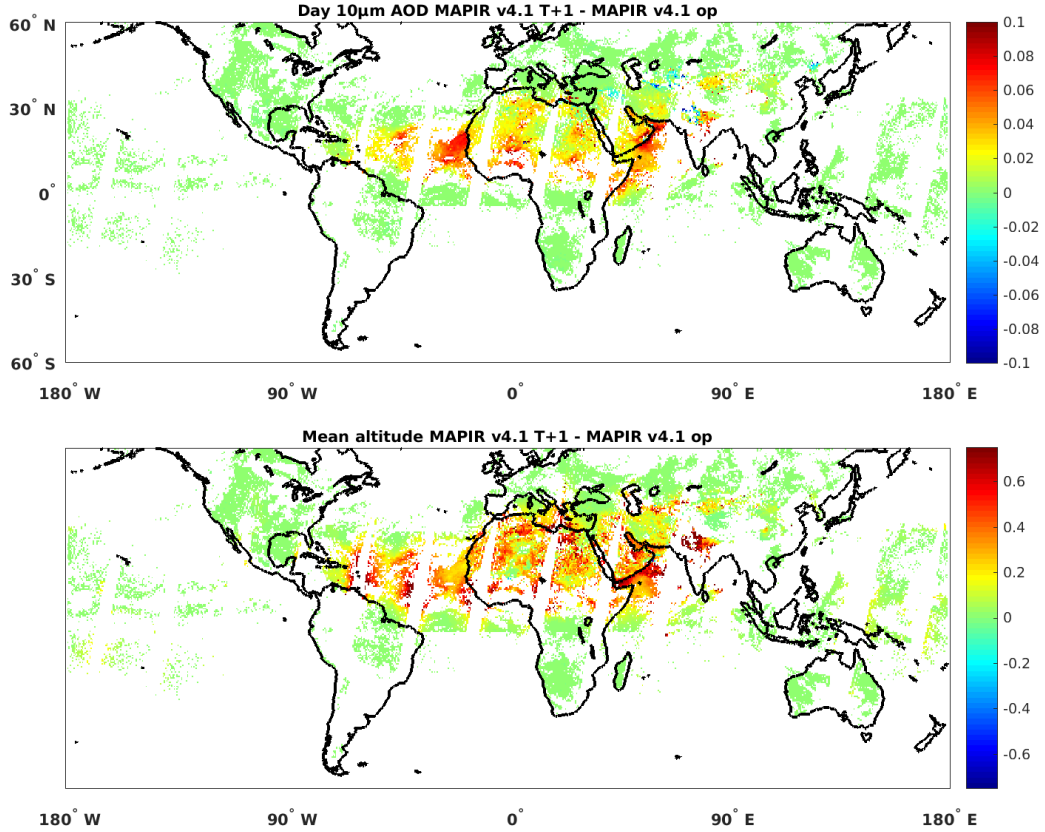


Figure 3: MAPIR dust TIR AOD and mean altitude absolute changes due to a (positive) shift of the complete temperature profile by 1 K with respect to the standard MAPIR v4.1 retrieval, for the 9th of June 2018, daytime. A negative shift has the opposite effect on the dust retrievals. Please remark that the maximum scale for the altitude difference is changed with respect to Figure 2.

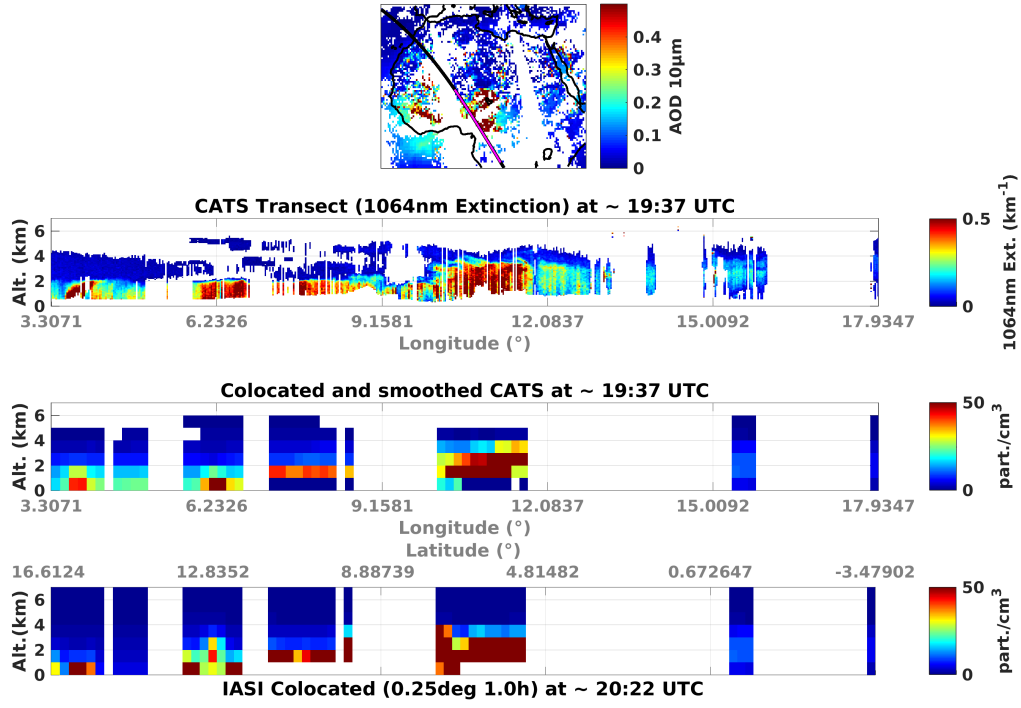


Figure 4: New Figure 11 of the manuscript with zoom over matched CATS track.

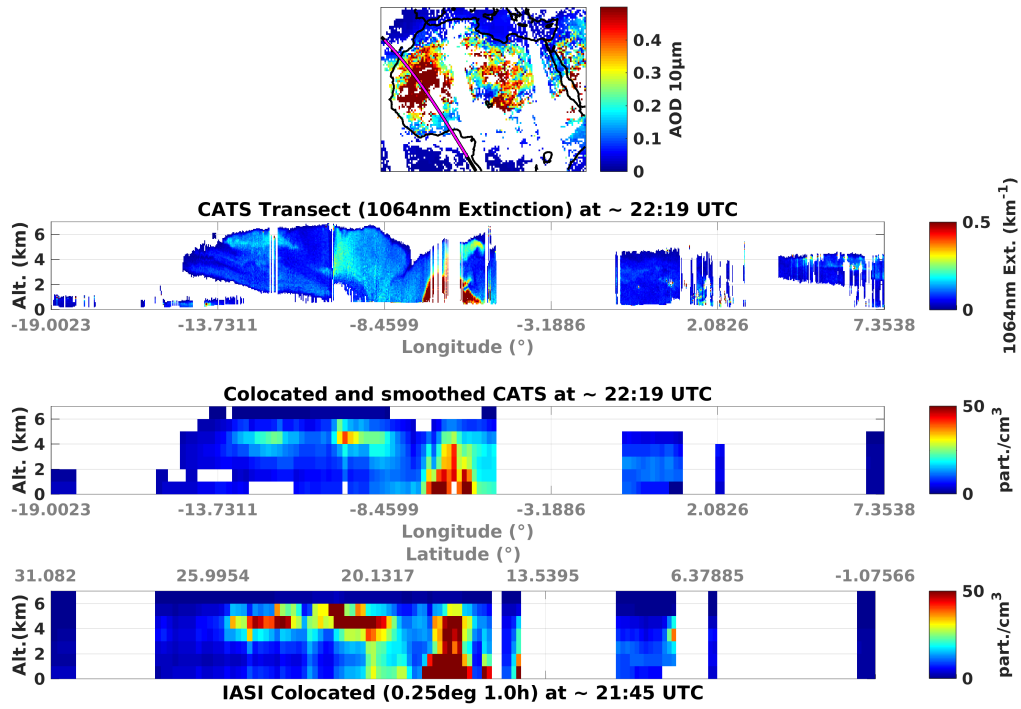


Figure 5: New Figure 12 of the manuscript with zoom over matched CATS track.

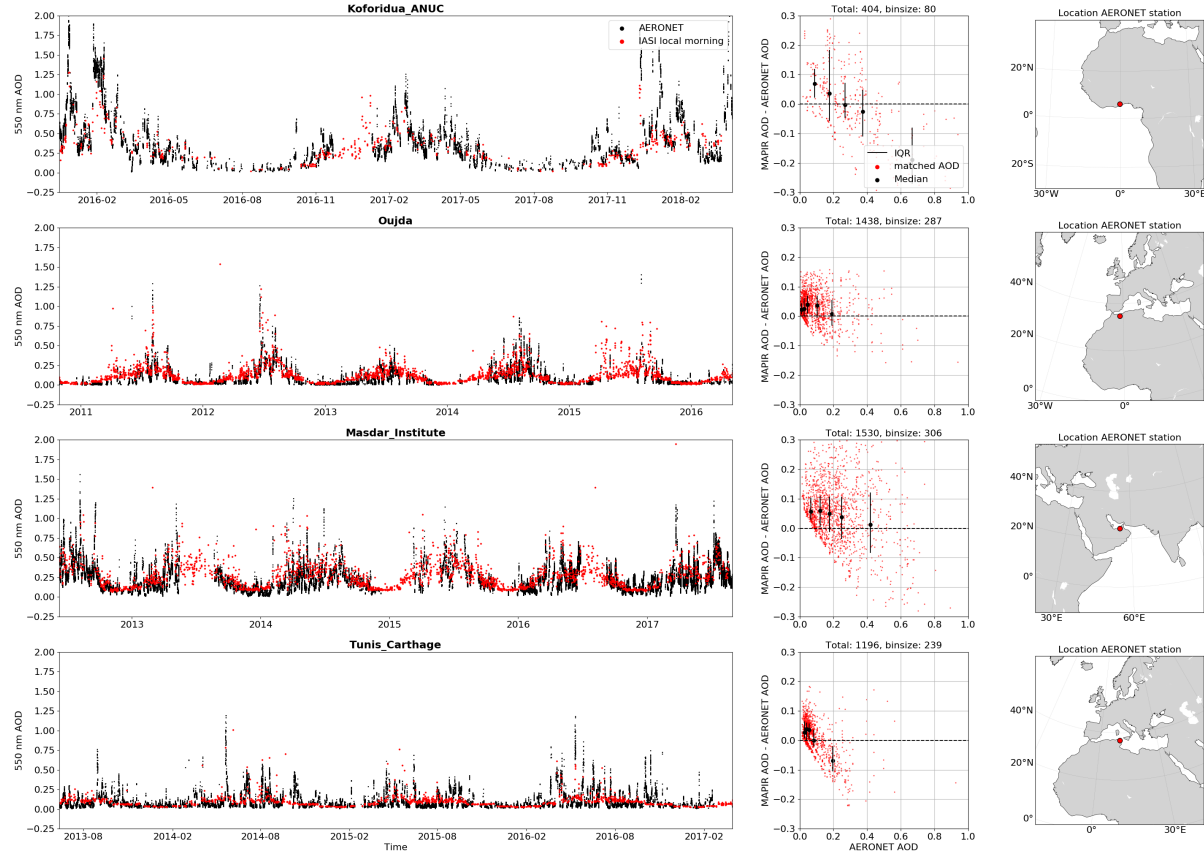


Figure 6: New Figure 6 of the submitted manuscript. The plots in the second column were replaced by bias scatter plots.

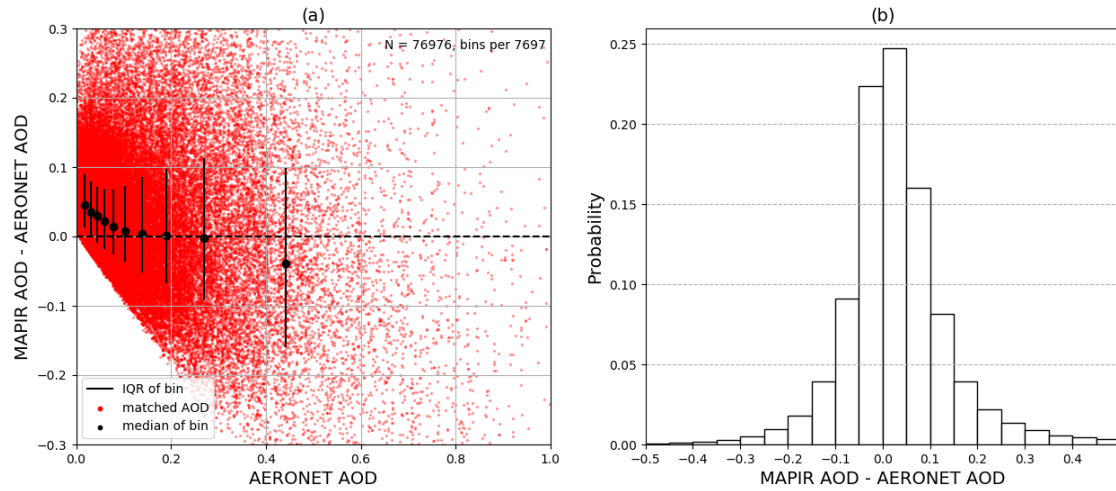


Figure 7: New Figure 7 of the manuscript. The first bias scatter plot is new and is similar as the ones added in Figure 6 of the manuscript, only now it contains all AERONET data and it is divided into 10 bins. The second plot is the suggested replacement of the difference histogram.

The Mineral Aerosol Profiling from Infrared Radiances (MAPIR) algorithm: version 4.1 description and ~~validation~~evaluation

Sieglinde Callewaert¹, Sophie Vandenbussche¹, Nicolas Kumps¹, Arve Kylling², Xiaoxia Shang³, Mika Komppula³, Philippe Goloub⁴, and Martine De Mazière¹

¹Royal Belgian Institute for Space Aeronomy (BIRA-IASB), Avenue Circulaire 3, 1180 Brussels, Belgium

²Norwegian Institute for Air Research (NILU), P. O. Box 100, 2027 Kjeller, Norway

³Finnish Meteorological Institute (FMI), P.O. Box 1627, 70211, Kuopio, Finland

⁴Laboratoire d'Optique Atmosphérique (LOA), Université des Sciences et Technologies de Lille, Villeneuve d'Ascq, France

Correspondence: Sieglinde Callewaert (sieglinde.callewaert@aeronomie.be), Sophie Vandenbussche (sophie.vandenbussche@aeronomie.be)

Abstract. The Mineral Aerosol Profiling from Infrared Radiances (MAPIR) algorithm retrieves vertical dust concentration profiles from cloud-free IASI thermal infrared (TIR) radiances using the Rodgers Optimal Estimation Method (OEM). We describe the new version 4.1 and ~~validation~~evaluation results. Main differences with respect to previous versions are the Levenberg-Marquardt modification of the OEM, the use of the logarithm of the concentration in the retrieval and the use of

5 RTTOV for in-line radiative transfer calculations. The dust aerosol concentrations are retrieved in seven 1 km thick layers centered at 0.5 to 6.5 km. A global data set of the daily dust distribution was generated with MAPIR v4.1 covering September 2007 to June 2018, with further extensions planned every six months. The post-retrieval quality filters reject about 16 % of the retrievals, a huge improvement with respect to the previous versions where up to 40 % of the retrievals were of bad quality. The median difference between the observed and fitted spectra of the good quality retrievals is 0.32 K, with lower values over

10 oceans. The information content of the retrieved profiles shows dependency on the total aerosol load due to the assumption of a log-normal state vector. The median degrees of freedom in dusty scenes (min 10 μm AOD of 0.5) is 1.4. ~~A validation~~An evaluation of the aerosol optical depth (AOD) obtained from the integrated MAPIR v4.1 profiles was performed against 72 AERONET stations. The MAPIR AOD correlates well with the ground-based data with a mean correlation coefficient of 0.66 and values as high as 0.88. Overall, there is a mean AOD (~~500-550~~500-550 nm) ~~negative~~positive bias of only 0.04 with respect

15 to AERONET, which is an extremely good result. The previous versions of MAPIR were known to largely overestimate AOD (about 0.28 for v3). A second ~~validation~~evaluation exercise was performed comparing the mean aerosol layer altitude from MAPIR with the mean dust altitude from CALIOP. A small underestimation was found, with a mean difference of about 350 m (standard deviation of about 1 km) with respect to the CALIOP cumulative extinction altitude, which is again considered very good as the vertical resolution of MAPIR is 1 km. In the comparisons against AERONET and CALIOP, a dependency

20 of MAPIR on the quality of the temperature profiles used in the retrieval is observed. Finally, a qualitative comparison of dust aerosol concentration profiles was done against lidar measurements from two ground-based stations (M'Bour and Al Dhaid) and from the CATS instrument onboard the ISS. MAPIR v4.1 showed the ability to detect dust plumes at the same time and with a similar extent as the lidar instruments. This new MAPIR version shows a great improvement of the accuracy of the

aerosol profile retrievals with respect to previous versions, especially so for the integrated AOD. It now offers a unique 3-D dust data set, which can be used to gain more insight in the transport and emission processes of mineral dust aerosols.

1 Introduction

Aerosols are solid or liquid particles such as desert dust, sea salt, volcanic ash, sulfate, black carbon and particulate organic matter which are suspended in Earth's atmosphere. Of all aerosol types, windblown mineral dust is the one with the highest mass burden, originating from soils in arid and semi-arid regions. These small particles can be transported over large distances to be finally deposited back on the surface of the Earth (Knippertz and Stuut, 2014).

The presence of mineral dust in the atmosphere has consequences for a wide range of aspects of life on Earth as it can cause respiratory diseases, reduce visibility and act as a fertilizer both on ocean and land. But it can also alter the radiative budget, have an impact on cloud microphysics, weather and climate dynamics and atmospheric chemistry (Knippertz and Stuut, 2014). Dust particles alter the radiative budget of the Earth through the aerosol direct and indirect effect. The direct effect is caused by the thermal emission of the dust particles and most importantly by the absorption and scattering of the solar shortwave and thermal longwave radiation by these particles. Dust aerosols can also act as cloud condensation nuclei and alter the lifetime and properties of clouds, thereby influencing the hydrological cycle and having an indirect effect on the radiation budget of the Earth (Boucher et al., 2013). Moreover, mineral dust affects the temperature profiles in the troposphere, which may impact the general atmospheric stability in the boundary layer and free troposphere. All effects of aerosols on Earth's climate are determined by a combination of their composition, size distribution and vertical distribution.

To better assess the role of mineral dust in the climate system, it is therefore needed to observe their composition and distribution, vertically as well as horizontally, and analyze its transport and emission processes. Ground-based measurement stations typically offer high quality observations of those aerosol parameters, but have poor horizontal resolution. Due to the high spatial and temporal variability of mineral dust events, remote sensing from space is the most adequate tool to daily monitor them at global scale.

A large effort has already been made to develop satellite products for retrieving aerosol properties. The total aerosol columnar load, expressed in aerosol optical depth (AOD) or optical thickness (AOT) is a parameter that many sensors provide, especially in the visible range of the spectrum at 550 nm, such as Moderate Resolution Imaging Spectroradiometer (MODIS, Remer et al. (2005); Levy et al. (2013)), Advanced Along-Track Scanning Radiometer (AATSR, Veefkind et al. (1998)), POLarization and Directionality of the Earth's Reflectances (POLDER, Deuzé et al. (2001)), Ozone monitoring instrument (OMI, Torres et al. (2013)) and Visible Infrared Imaging Radiometer Suite (VIIRS, Jackson et al. (2013)). They measure in the UV, visible or near-infrared and typically report the AOD around 550 nm. Generally, those instruments also offer additional information on aerosol size, type or optical properties. However, measurements made in the UV, visible or near-infrared are limited to daytime observations and often have difficulties retrieving aerosol properties over bright surfaces such as deserts (Xu et al., 2018). Moreover they don't provide information on the effect of mineral dust on the longwave thermal radiation, crucial for understanding the total aerosol radiative forcing.

Hence recently, also infrared sensors are used to retrieve aerosol properties. Further, these sensors allow making observations at nighttime. Currently, global long term data sets of AOD are available from infrared sensors like the Atmospheric InfraRed Sounder (AIRS) and the Infrared Atmospheric Sounding Interferometer (IASI), onboard the polar-orbiting Aqua and MetOp satellites, respectively (DeSouza-Machado et al., 2010; Capelle et al., 2018; Clarisse et al., 2019; Popp et al., 2016). They can additionally provide dust layer mean altitude because infrared channels are sensitive to different levels of the atmosphere. Vandembussche et al. (2013) have developed a strategy to retrieve aerosol profiles at seven distinct heights using thermal infrared (TIR) radiances from the hyperspectral IASI sensor. Thereby providing additional information on the daily 3-D dust distribution on global scale. This retrieval algorithm is called MAPIR (Mineral Aerosol Profiling from Infrared Radiances, Popp et al. (2016)) and is based on Rodgers optimal estimation method (Rodgers, 2000). Also Cuesta et al. (2015) developed a method to derive dust extinction profiles with 1 km resolution at 10 μm from IASI ~~and applied it to a dust event over East Asia~~. The main differences between MAPIR and this alternative study are that Cuesta et al. (2015) follow an auto-adaptive Tikhonov–Phillips–type approach and their method has until now only been applied to a very limited number of dust events, while MAPIR provides a global data set over a long time period using optimal estimation However, higher resolution aerosol profiles are only available with the use of active lidar instruments, such as the Cloud–Aerosol Lidar with Orthogonal Polarization (CALIOP) onboard CALIPSO. This two-wavelength (532 nm and 1064 nm) polarization-sensitive lidar provides products of aerosol backscatter and extinction with a vertical resolution of 30 m below 8.2 km and a horizontal footprint of 70 m. Due to this small footprint, it takes 16 days to scan the whole globe once and therefore the spatial and temporal coverage of CALIOP is unfortunately much more limited than that of IASI, which offers almost global coverage twice a day. Thus, with CALIOP it is highly likely that many mineral dust events are missed and it is therefore important to keep investing in the improvement of passive remote sensing retrievals.

Previous versions of the MAPIR algorithm often failed to retrieve mineral dust over desert surfaces with low emissivity due to non-convergence or quality issues. To cope with those weaknesses and to make the processing less costly, a new version of MAPIR has been developed: version 4.1. In this manuscript the updated algorithm is presented and ~~validated~~evaluated, the work is organized as follows. First an introduction to the IASI instrument is given in Sect. ~~2.1~~2, together with a description of the instruments that were used to evaluate the retrieved profiles. Section 3 contains the theoretical description of the retrieval method, the input parameters and the forward model used. Afterwards, in Sect. 4 the results of the processing of more than 10 years IASI measurements are discussed together with an error analysis, followed by a comparison with measurements from other instruments in Sect. 5 to provide a quality assessment.

2 ~~IASI~~Instruments

This study uses the data of various instruments. The spectra on which the retrievals are carried out are from IASI. The evaluation of the retrieved profiles in Sect. 5 uses products derived from AERONET, CALIOP, CATS and two ground-based lidar instruments. In this section we describe these instruments and their data selection.

2.1 IASI

The Infrared Atmospheric Sounding Interferometer (IASI) is a high-resolution TIR Fourier transform spectrometer onboard MetOp-A, -B and -C satellites, launched in October 2006, September 2012 and November 2018 respectively. It is set up to provide detailed observations of the global atmosphere for a period up to 15 years. Moreover, the IASI-NG instrument, which will have higher resolution and better signal-to-noise ratio, will be onboard of the MetOp-SG satellites which are to be launched between 2021 and 2035, guaranteeing continuous data up to 2040. They are on a polar sun-synchronous orbit about 817 km above Earth with equator crossing at 09:30 (21:30) mean local solar time in descending (ascending) mode, leading to an almost global coverage twice a day per instrument. IASI is a nadir viewing instrument with a swath width of 2200 km (off-nadir measurements with a viewing angle up to 48.3° on both sides of the satellite track) that scans in 30 elementary fields of view, each composed of 4 circular pixels of 12 km ground diameter at nadir and up to an ellipse of 39 km by 20 km at the extremities of the swath. It measures radiances over a spectral range that extends from 645 cm^{-1} to 2760 cm^{-1} with a spectral resolution of 0.5 cm^{-1} after apodization and has a radiometric noise of 0.2 K in the TIR atmospheric window (Clerbaux et al., 2009). Each spectrum is sampled every 0.25 cm^{-1} , providing a total of 8461 radiance channels. In the TIR part of the IASI spectrum, as far as aerosols are concerned only mineral dust and volcanic ash have a significant spectral signature (e.g. Maes et al., 2016).

2.2 AERONET

AERONET (AErosol RObotic NETwork) is a worldwide network of around 400 permanently running ground-based sun photometers established by NASA and PHOTONS (LOA-CNRS) which measure atmospheric aerosol properties (Holben et al., 1998). The Cimel Electronique CE318 sun photometers perform measurements of sun irradiance in eight spectral bands (340, 380, 440, 500, 670, 870, 940 and 1020 nm) every 15 minutes. For our comparisons in Sect. 5.1 we use the version 3 level 2.0 (cloud screened and quality-assured) Spectral Deconvolution Algorithm (SDA) retrieval of the coarse mode AOD at 500 nm. There is currently no aerosol type specification in the AERONET product, and the coarse mode mainly contains mineral dust, sea salt and/or volcanic ash.

2.3 CALIOP

The Cloud-Aerosol Lidar with Orthogonal Polarization (CALIOP) is an instrument on the Cloud-Aerosol Lidar and Infrared Pathfinder Satellite Observations (CALIPSO) platform (Winker et al., 2009), launched in 2006. CALIPSO is one of the six satellites in the A-train constellation, which are on a sun-synchronous polar orbit at about 705 km above Earth with equator crossing around 13:30 local time. CALIOP has two simultaneous co-aligned lasers at 532 and 1064 nm with a horizontal footprint of 70 m. It provides high resolution vertical profiles of aerosol attenuated backscatter and depolarization of which numerous data products can be derived, such as aerosol extinction profiles for six aerosol-types (clean marine, dust, polluted continental, clean continental, polluted dust and smoke). For the analysis in Sect. 5.2, the 5 km profile product from CALIOP data version V4-10 is used.

2.4 M'Bour lidar

The monoaxial Cimel Micro-Pulsed lidar is continuously operating at the M'Bour site (14.39° N, 16.96° W) close to Dakar, Senegal since 2005. This site is situated in a nature reserve, at less than 100 m from the Atlantic Ocean. The lidar provides attenuated backscatter profiles at 532 nm up to a height of 30 km, with a vertical resolution of 15 m. The extinction profiles are then calculated with 15 min averaged backscatter profiles co-located sun photometer, which is included in AERONET (AERosol RObotic NETwork). Hence, the lidar ratio can be retrieved and the related uncertainty reduced. More details on the instrument and the used inversion method can be found in Mortier et al. (2016).

Only cloud-free data are used for the analysis in Sect. 5.3.1 and in order to separate dust profiles from others we only use those profiles where the Angstrom exponent is lower than 0.4. Indeed, in Johnson and Osborne (2011) it is shown that the Angstrom exponent is typically lower than 0.2 for dust during the GERBILS campaign over the western region of the Sahara, but with measured values up to 0.6. Our selected threshold of 0.4 is a good compromise to be conservative enough but avoid the fine mode biomass burning and smoke aerosols which are plausible in M'Bour during the winter.

2.5 Al Dhaid lidar

The Multi-wavelength Raman polarization lidar PollyXT performed continuous measurements from March to April 2018 at the Al Dhaid site (25.24° N, 55.98° E) in United Arab Emirates. This is a rural site located at a deserted area, about 70 km east from Dubai, and 10 km from Al Dhaid town. To the east the site faces some hills/mountains (20 km away) and the sea (Gulf of Oman) at about 40 km distance.

PollyXT enables the retrieval of aerosol optical properties at three wavelengths, with an initial vertical resolution of 7.5 m along the line of sight and an initial temporal resolution of 30 s. More details of the instrument can be found in Althausen et al. (2009) and Engelmann et al. (2016).

To evaluate the MAPIR profiles in Sect. 5.3.2, the Klett inversion method (Klett, 1981) is applied to retrieve the aerosol backscatter coefficients and aerosol extinction coefficients at 355 nm and 532 nm, using lidar ratios of ~ 45 sr and ~ 35 sr, which are derived using Raman inversion for night-time lidar measurements (method description in Ansmann et al. (1990); Shang et al. (2016)). The volumetric depolarization ratio (VDR) and linear particle depolarization ratio (PDR) at 355 nm and 532 nm are also derived following the procedure described in Chazette et al. (2012).

We separate the optical properties of desert dust and the non-dust particles as a function of height, by applying the methodology proposed by Tesche et al. (2009). According to the literature (e.g. Groß et al. (2015); Tesche et al. (2009) and references therein), the PDR of dust is assumed to be 0.30 at 355 nm and 0.35 at 532 nm, with the non-dust PDR of 2 % and 3 %, respectively. Due to the lidar overlap effect the lower range limit is at ~ 180 m (bin 24) (Engelmann et al., 2016), the values below are filled with the average of the 23rd to 25th bin. The final dust optical properties used in the comparisons were vertically smoothed by the sliding averaging of 11 bins (~ 82 m) and temporally averaged by 1 hour.

2.6 CATS

CATS is a lidar instrument onboard the International Space Station (ISS) providing vertically resolved cloud and aerosol properties at 1064 nm from March 2015 until October 2017 (Yorks et al., 2016). CATS is orbiting between 375 km and 435 km above Earth’s surface at a 51.6° inclination with nearly a three-day repeat cycle (McGill et al., 2015). Due to this unique orbit path, the same location is not measured at the same local time every day by CATS, unlike sun-synchronous orbiting satellites like MetOp or CALIPSO.

For the study in Sect. 5.3.3, the Level 2 Operational extinction profiles between 0 and 5 km from version 3.00 are used, thereby selecting only the dust aerosol types (Dust, Dust Mixture and Marine Mixture). Quality filtering of the CATS data is done similar as in Lee et al. (2018).

3 Retrieval algorithm

- This section presents the technical details of MAPIR v4.1, which are implemented in Python. MAPIR retrieves vertical profiles of desert dust concentration. It is an application of Rodgers’ optimal estimation method (OEM) which is briefly described in the first subsection. Afterwards, the choice and set-up of the forward model is described, followed by a summary of how the state vector and observation vector are composed, together with their prior constraints.

3.1 Method

- We use the notation and concepts of the optimal estimation approach as described by Rodgers (2000). The IASI observations are represented by an m -dimensional vector \mathbf{y} and the unknown atmospheric state by an n -dimensional vector \mathbf{x} . The details of vectors \mathbf{x} and \mathbf{y} will be discussed in subsections 3.3 and 3.5, respectively. The relationship between \mathbf{x} and \mathbf{y} can be expressed as:

$$\mathbf{y} = \mathbf{F}(\mathbf{x}, \mathbf{b}) + \boldsymbol{\epsilon}, \quad (1)$$

- where \mathbf{F} is the forward model, \mathbf{b} a set of fixed model parameters and $\boldsymbol{\epsilon}$ an error vector representing both model and measurement errors. When a description of the atmospheric state is given, the forward model computes the radiances at the top of the atmosphere as it would be measured by the IASI instrument. The radiative transfer model used here is Radiative Transfer for TOVS (RTTOV), which will be described in more detail in subsection 3.2. The inverse problem consists of finding a state vector that matches the observation well enough. By comparing the simulated spectra with the observed, a solution $\hat{\mathbf{x}}$ for the inverse problem can be found. Since the inversion problem is ill determined, additional constraints on the prior information are necessary and $\hat{\mathbf{x}}$ is found by minimizing a cost function χ^2 determined by:

$$\chi^2 = [\mathbf{y} - \mathbf{F}(\mathbf{x}, \mathbf{b})]^T \mathbf{S}_{\boldsymbol{\epsilon}}^{-1} [\mathbf{y} - \mathbf{F}(\mathbf{x}, \mathbf{b})] + [\mathbf{x} - \mathbf{x}_a]^T \mathbf{S}_a^{-1} [\mathbf{x} - \mathbf{x}_a]. \quad (2)$$

- In the above expression, \mathbf{x}_a is the a priori state vector, \mathbf{S}_a the corresponding $n \times n$ covariance matrix and $\mathbf{S}_{\boldsymbol{\epsilon}}$ the $m \times m$ measurement covariance matrix. As the forward model $\mathbf{F}(\mathbf{x}, \mathbf{b})$ is a complicated and non-linear function of \mathbf{x} , an iteration method is required to obtain the minimum of this cost function. To ensure reaching closer to the minimum in each iteration step,

the Levenberg–Marquardt modification of the Gauss–Newton method is adopted (Rodgers, 2000; Levenberg, 1944; Marquardt, 1963). This is a new aspect with respect to previous MAPIR versions, where the ordinary Gauss–Newton iteration method was used. Each step can then be described as follows:

$$\mathbf{x}_{i+1} = \mathbf{x}_i + ((1 + \gamma)\mathbf{S}_a^{-1} + \mathbf{K}_i^T \mathbf{S}_\epsilon^{-1} \mathbf{K}_i)^{-1} (\mathbf{K}_i^T \mathbf{S}_\epsilon^{-1} (\mathbf{y} - \mathbf{F}(\mathbf{x}_i)) - \mathbf{S}_a^{-1} (\mathbf{x}_i - \mathbf{x}_a)), \quad (3)$$

- 5 where γ is a damping parameter that changes every iteration step and \mathbf{K} is the weighting function matrix, or Jacobian, $\mathbf{K} = \frac{\partial \mathbf{y}}{\partial \mathbf{x}}$. The parameter γ starts at a value of 1 and is adapted in every step: if the cost function of the new state vector \mathbf{x}_{i+1} has increased relative to the cost function at the previous step ($\chi^2(\mathbf{x}_{i+1}) > \chi^2(\mathbf{x}_i)$), then the iteration step is repeated with $\gamma' = 10\gamma$. In case the new cost function has decreased, the new state vector will be accepted and γ will be reduced with a factor of 2.
- The iterations are stopped when ~~some predefined convergence criteria on the size of the steps~~ the steps both in state space and
 10 measurement space are ~~met~~ small enough or after 20 steps, whereby the retrieval is signalled as unsuccessful. The convergence criteria on the step sizes is taken from Rodgers (2000, p90), with $\epsilon = 10^{-1}$.

3.2 The forward model

- The optimal estimation method requires a forward model that defines the relation between the state vector \mathbf{x} and the obser-
 15 vation \mathbf{y} . The radiances as measured by the IASI instrument can be simulated by the fast radiative transfer model RTTOV
 v12.1 (Radiative Transfer for TOVS), developed by the EUMETSAT Satellite Application Facility on Numerical Weather Pre-
 diction (NWP SAF). It consists of a predictor-based regression scheme, generated from a database of accurate line-by-line
 transmittances computed for a set of diverse atmospheric profiles (Saunders et al., 2017). The coefficients for the optical depths
 regressions are stored in instrument-specific coefficient files. We use the IASI v9 predictor coefficients calculated on 101 levels.
The aerosols effect is calculated with the Discrete Ordinate Method (DOM). As RTTOV is fast, easy to use, and allows for the
 20 computation of the Jacobians (the gradient of the radiances with respect to the state vector), it is very suitable for our retrieval
 approach. Especially, it is much faster than LIDORT (Spurr, 2008), which was used in previous MAPIR versions. The inputs
 to the radiative transfer model are presented below.

- To compute the top of the atmosphere radiances in each of the IASI channels, atmospheric profiles of temperature, water
 25 vapour and aerosols are needed together with surface parameters and a viewing geometry. The profiles of other atmospheric
 gases are taken from the suitable reference profiles that RTTOV provides.

- The atmospheric profiles of temperature and water vapour are taken from IASI level 2 operational products from EUMETSAT.
 As no full reprocessing has been done yet, this data is available in different versions (4 to 6), with version 5 and 6 starting at
 14 September 2010 and 30 September 2014, respectively. From version 6 a new retrieval method was used which additionally
 30 includes microwave information. It should be noted that we have observed large quality differences in our retrieved aerosol
 profiles between these versions, as will be further discussed in Sect. 4. Indeed, as the temperature profile is an essential param-
 eter in infrared retrievals, it has a major impact on our results.

The aerosol a priori concentrations are discussed in section 3.4. In addition, the radiative transfer model requires some micro-

physical properties of the aerosols. We have chosen to maintain the parameters used in previous versions of MAPIR (Vandenbussche et al., 2013): a log-normal particle size distribution (PSD) with median radius $0.6\ \mu\text{m}$ and geometric standard deviation of 2, corresponding with an effective radius of $2\ \mu\text{m}$, and the spatially invariant and time-constant refractive index of the GEISA–HITRAN dust-like data set, gathered by Massie (1994); Massie and Goldman (2003) from measurements by Volz (1972, 1973) and Shettle and Fenn (1979) on transported Saharan dust.

MAPIR v4.1 is based on thermal infrared radiances, therefore the surface parameters - surface emissivity and surface temperature - are of considerable importance for the modelled spectrum, especially over desert areas. The surface temperature is included in the retrieval (Sect. 3.3), while the surface emissivity is taken from two different databases, one for ocean and one for land surface. The ocean is very close to being a black body whereby its surface emissivity is close to 1, with a slight spectral variation. In that case, we use the emissivity of Newman et al. (2005). However, over land, there is a bigger variability. The surface emissivity varies spectrally and slowly as a function of time, depending on the surface composition, humidity and vegetation. Therefore, the emissivity database of Zhou et al. (2011), updated in 2015, is chosen for land surfaces. It is a monthly climatology at 0.25° horizontal resolution, obtained from IASI spectra. To retrieve the surface emissivity, Zhou et al. (2011) assume that the clear sky spectra (no clouds and no aerosols) coincide with the higher radiances within a month. It is therefore highly probable that, for places and times where dust is almost always present, the obtained emissivity is biased to low values.

3.3 State vector

The state vector contains those input parameters of the forward model that will be optimized to fit the observation. As mentioned in the above section, the surface temperature is included in the state vector because this is a dominant parameter for TIR radiation. Together with the aerosol load relative to the a priori concentration in the lowest seven layers of the troposphere, more specifically at 0.5 km, 1.5 km, 2.5 km, 3.5 km, 4.5 km, 5.5 km and 6.5 km, they form the state vector of parameters we want to retrieve from the IASI measurements. The aerosol abundances are represented by their mid-layer altitudes with respect to sea level. ~~Above 7 there is rarely found mineral dust particles, as is shown by a CALIOP-based 3-D climatology described in Winker et al. (2013).~~ In cases where the surface elevation is higher than the mid-layer altitude, the corresponding abundances are put to zero.

To avoid nonphysical negative concentrations during the iteration process, which can not be handled correctly by RTTOV, MAPIR v4.1 uses the logarithm of the relative aerosol load in each layer in the iterations, which is transformed to absolute aerosol concentrations ($\text{particles} \cdot \text{cm}^{-3}$) after convergence. This was not done in previous versions of MAPIR, where they were manually put to zero. It induces different underlying constraints as now log-normal statistics are assumed instead of normal. Consequently, retrievals starting at low a priori concentrations will be more constrained than when starting at higher concentrations (Deeter et al., 2007). This also means that the calculation of the information content parameters will be impacted by the dust load, as will be seen in Sect. 4.2.

3.4 A priori

To retrieve a unique solution, the OEM requires a priori information of the state vector. This information is a crucial constraint to make the inverse problem soluble.

For the dust aerosol retrievals, a monthly climatology derived from CALIOP measurements between 2007 and 2014 by the National Observatory of Athens (Amiridis et al., 2013, 2015), is used. This 3-D database provides high-resolution dust extinction profiles at 532 nm globally on a $1^\circ \times 1^\circ$ horizontal grid. The extinction at 532 nm is then converted to concentration (particles $\cdot \text{cm}^{-3}$) using an extinction cross-section computed with a Mie code and the PSD and refractive index described above. To assure data in each grid cell and continuity between adjacent cells, a running mean of the data set is calculated along $5^\circ \times 5^\circ$.

The additional constraints on the inverse problem require an a priori covariance matrix \mathbf{S}_a . The diagonal elements are represented by the square of the standard deviation of the individual elements of the state vector \mathbf{x} . Those standard deviations are taken to be 50 % of the a priori concentrations and the off-diagonal elements are filled according to a vertical Gaussian correlation of 1 km length.

The a priori surface temperature (T_s) is taken from IASI level 2 data, or the ECMWF ERA interim reanalysis skin temperature for dates before 14 September 2010 as the IASI temperatures are too unrealistic before, in level 2 version 4. Due to the difference in heat capacity of land and ocean, the surface temperature over land varies much more over time. This effect is even greater in arid regions where the temperatures fluctuate highly during the day. Therefore we believe existing databases of ocean T_s are more reliable than land T_s and the standard deviation of T_s is set at 15 K over land and at 5 K over ocean surfaces.

3.5 Observation vector

The observation vector \mathbf{y} contains the radiances as observed by IASI, in brightness temperature. To save computation time, \mathbf{y} does not hold the complete spectrum, but only the radiances in three spectral bands: 905–927 cm^{-1} , 1098–1123 cm^{-1} and 1202–1204 cm^{-1} . The selection of these wave numbers is based upon the sensitivity to retrieve mineral dust profiles and is discussed in Vandenbussche et al. (2013). Together with the observation vector, a measurement covariance matrix \mathbf{S}_e is defined. Although the reported spectral noise is 0.2 K (Clerbaux et al., 2009), we increase this instrumental error by a factor of 5, thus use $\mathbf{S}_e = \mathbf{I}$, to also take into account the uncertainties of the forward model and input parameters which are currently not modelled.

Only cloud-free observations can be used for the retrieval. To filter out the cloud spectra, the IASI operational level 2 cloud product is used with a threshold limit of 10 %. We have observed that dense aerosol scenes are occasionally misflagged as clouds within this product, for example the center of a big dust plume. It is important to note that this will lead to some discarded IASI scenes where actually there was a huge amount of dust.

4 Results

In the context of the C3S aerosols project, more specifically Copernicus Climate Change Service C3S_312a Lot 5, more than 10 years of IASI data have been processed. This data set starts at 25 September 2007, ends at 30 June 2018 and allows us to assess the quality of MAPIR v4.1. The processing is continued within C3S_312b Lot 2, every six months. For example, the retrievals until December 2018 will be delivered in February 2019. For technical reasons linked to the unavailability of the IASI spectra under the principal components scores format before 22 February 2011, only a part of the globe has been processed for that period: the so-called dust belt with longitudes between 80° W and 120° E and latitudes between 0° N and 40° N. From that date on, the IASI spectra are available in principal component scores and the whole globe is processed. However the latitudes above 60° N and below 60° S, where generally no desert dust aerosols are present, were neglected to save computational resources. Currently, only the data from IASI on MetOp-A has been processed.

To additionally reduce the computational power needed for this large data set, we applied a dust filter before undertaking the retrievals. To avoid missing too many dust events, we ran all retrievals in the dust belt area given in Fig. 1 and defined as follows: latitude between 5° S and 45° N, longitude between 20° W and 120° E and latitude between 5° S and 30° N, longitude between 80° W and 20° W. Outside this area we always performed the retrieval when the surface emissivity was below 0.85 in

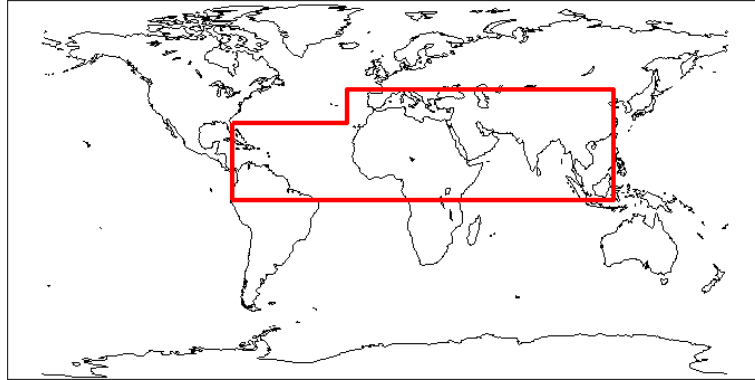


Figure 1. Map of the world with the red box defining the dust belt area where all MAPIR retrievals are undertaken (if cloud fraction is smaller than 10 % and no problem with input level 1 and level 2 data is detected).

any channel because those are potential desert areas. When the surface emissivity was higher than 0.85 the MAPIR retrievals were only performed when the following criterion on the slope of the spectrum was met:

$$BT_{1155-1160} - BT_{1082-1087} > 0.5 \text{ K}, \quad (4)$$

where BT stands for Brightness Temperature, $BT_{1155-1160}$ is the average BT between 1155 and 1160 cm^{-1} , and similarly for the second wave numbers range.

This large set of almost 11 years of MAPIR data allows us to perform reliable statistics to determine the value of the updated retrieval algorithm MAPIR v4.1. In the following the general performance of the retrieval will be discussed, followed by an

analysis of the information content and an example of MAPIR v4.1 output.

4.1 General performance of the retrieval

The quality of the retrievals can be described using different parameters. Here we will evaluate the quality filter, convergence rate and the spectral residuals to get an idea of the overall performance of MAPIR v4.1.

To discard unreliable results, we apply a post-retrieval quality check with the following criteria: the root mean square of the spectral residuals (RMSSR), being the difference between the modeled spectrum with the final state vector and the observed spectrum, must be smaller than 1 K (which is about 5 times the IASI radiometric noise in the TIR); the 10 μm AOD must be below 5 and the retrieved surface temperature (T_s) should be between 200 K and 350 K. The criteria on AOD and T_s are mainly to avoid cloudy scenes which were not detected by the ~~EUMETSAT-cloud-filter~~ [IASI operational level 2 cloud product](#).

We find that 84 % of the retrievals pass the post-retrieval quality check and thus are said to be of good quality. There is good coverage of the Sahara and Sahel regions, while this was one of the main shortcomings in earlier MAPIR versions. Indeed, when we apply the same quality filter on the data set produced with MAPIR v3 under the European Space Agency aerosols Climate Change Initiative phase 2 (Popp et al., 2016), only 59 % is accepted. Even though this previous data set covers only the dust belt region up to December 2016, it is clear that MAPIR v4.1 performs better. Further, we observe an increase of quality through the time series, with a yearly ratio of good quality retrievals between 71 % and 85 % until 2014 and above 90 % after 2014. This is probably due to the different versions (and quality) of the EUMETSAT IASI l2 products for temperature profiles that are used for the retrievals (see in Sect 3.2) of which the most recent, version 6, starts at 30 September 2014. Indeed, the temperature profile is crucial for computing the radiative impact of dust aerosols, and biased temperature profiles certainly lead to biased dust aerosol profiles.

As previously mentioned, we want the iteration scheme to find convergence within 20 steps. If this is not the case, the retrieval is killed and flagged as failed. We do this mainly for computational reasons, but also because in those cases it is very likely that the assumed ancillary data, such as surface emissivity, temperature or aerosol properties, are too far from reality. The convergence rate was improved in MAPIR v4.1 by including the Levenberg–Marquardt modification. We see that only 0.6 % of all attempted retrievals has to be stopped after 20 iterations, which is less than the 0.78 % with MAPIR v3. Those that fail are likely cloudy scenes that were not correctly filtered out, or scenes in which the real situation was not well enough represented by the used parameters. The retrievals were usually completed after two iteration steps. For the good quality retrievals, we observe an average amount of iterations of 2.93 and a median of 2. Only 5 % of the retrievals that pass the quality filter needed more than 6 iteration steps to converge.

To assess the quality of the converging retrievals that pass our aforementioned quality filter, we look at the values of the RMSSR. Due to the quality filter, they are all between 0 K and 1 K, but there are more residuals close to 0 K as the median RMSSR is 0.32 K. Furthermore we see a mean of 0.39 ($\sigma^2 = 0.05$). Overall, the observed spectra are well reproduced by the simulated spectra, within error bounds.

4.2 Information content

To correctly interpret and use this data set of dust profiles, it is necessary to also consider the averaging kernels and degrees of freedom. The averaging kernels (AK) represent the vertical sensitivity of the retrieved profiles while the degrees of freedom (DOF), which is the trace of the AK matrix, give an estimate of the number of independent pieces of information that is contained in the measurement.

Rodgers OEM provides a way to calculate the AK matrices (Rodgers, 2000), but as we implemented the Levenberg–Marquardt (LM) method, this computation has to be adapted. Ceccherini and Ridolfi (2010) give a detailed description of how to deal with the AK matrix in such cases. It takes into account both the LM damping term γ and all the iteration steps that were required to reach the minimum of the cost function. They are calculated as follows:

$$\mathbf{A} = \mathbf{T}_r \mathbf{K}, \quad (5)$$

where \mathbf{K} is the Jacobian matrix of the forward model with respect to the state vector in the true profile and \mathbf{T}_r is a recursively calculated matrix which depends on the path in the parameter space followed by the minimization procedure. The recursive formula for the matrices \mathbf{T}_i is given by:

$$\begin{cases} \mathbf{T}_0 &= 0 \\ \mathbf{T}_{i+1} &= \mathbf{S}_i \mathbf{K}_i^T \mathbf{S}_\epsilon^{-1} + (\mathbf{I} - \mathbf{S}_i \mathbf{K}_i^T \mathbf{S}_\epsilon^{-1} \mathbf{K}_i - \mathbf{S}_i \mathbf{S}_a^{-1}) \mathbf{T}_i \end{cases} \quad (6)$$

with $\mathbf{S}_i = \mathbf{S}_a^{-1} + \mathbf{K}_i^T \mathbf{S}_\epsilon^{-1} \mathbf{K}_i$ and \mathbf{K}_i the Jacobian with respect to the state vector at step i .

The shape of the averaging kernels are quite variable, an example is given in Fig. 2. Two profiles are given together with their a priori, averaging kernels and degrees of freedom. The shape of the AKs includes information on the vertical resolution of the retrieval. In Fig. 2 we see they are quite broad, with overlapping peak altitudes, which suggests that adjacent retrieved aerosol concentrations are correlated. Besides, the peaks of the AK clearly coincide with the retrieved aerosol peaks. Indeed, as noted by Deeter et al. (2007), the averaging kernels tend to be smaller where there are low concentrations, and larger at high aerosol concentrations, as a consequence of using a logarithmic state vector. When summing up the diagonal elements of \mathbf{A} , we get a value for the degrees of freedom for signal. It describes the number of independent pieces of information that can be retrieved from the observation. However, due to the different underlying constraints when performing log-normal retrievals, retrievals in very dusty regions are less constrained by the a priori and relatively more sensitive to the true profile, thereby increasing the DOFs (Deeter et al., 2007). Indeed, in the more dusty scenes we observe a median DOF of 1.4 and a mean of 1.43 ($\sigma^2 = 0.15$). In clear regions, the DOFs can be very low, as also illustrated in the next section .

4.3 Global distribution

MAPIR v4.1 results for both the morning and evening overpass on 9 June 2018 are presented in Fig. 3. Maps of the AOD at 10 μm are plotted together with the corresponding DOF and RMSSR. Areas on the AOD maps with missing data correspond

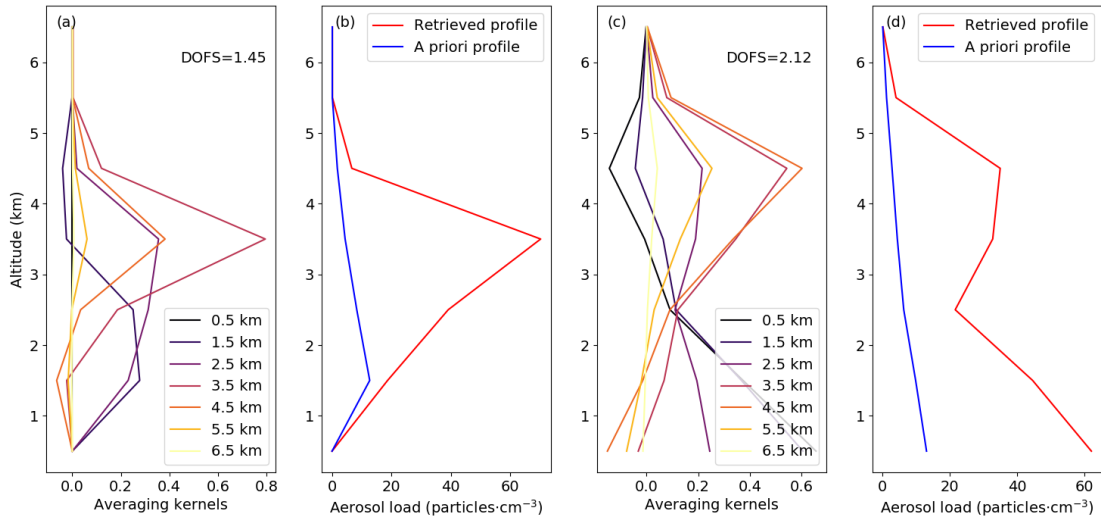


Figure 2. Averaging kernels and associated retrieved profile at two different locations: (a,b) 14.97° N, 23.7° E on 12 March 2016 and (c,d) 28.99° N, 5.3° E on 27 May 2016. Degrees of freedom (DOFs) are also given.

to areas which were identified as cloudy by the IASI [operational level 2](#) cloud product, areas where the retrieval didn't pass our quality filter or where there was no IASI data. On the DOF and RMSSR maps also areas that were not treated due to our complex dust filter discussed in the introduction of this section are omitted. In the AOD map, those areas are considered to have an AOD of 0.

- 5 To calculate the MAPIR 10 μm AOD, we sum the aerosol concentrations ($\text{particles} \cdot \text{cm}^{-3}$) in each layer multiplied by its thickness and multiply this with the extinction cross-section at 10 μm as calculated with Mie theory. In Fig. 3(a) and 3(b) we can observe several dust events occurring on that day. ~~A plume is~~ Major amounts of dust are emitted in the center of the Sahara, while a plume is being transported from the Sahara desert over the Atlantic Ocean, ~~while we see major amounts of dust being emitted in the center of the Sahara.~~ The apparent discontinuity along the West coast of Africa (which can be better seen in Fig.
- 10 4), is probably caused by the shape of the dust plume itself. This event observed by MODIS shows similar patterns (the data can be visualized at <https://worldview.earthdata.nasa.gov>). However, a small area near the South coast of Mauritania where the MAPIR AOD is low compared to its surroundings, shows relatively high RMSSR values almost reaching our quality filter of 1 K. This could indicate that MAPIR is slightly underestimating the dust load in that particular area. Near the coast of Oman, in the northern part of the Arabic Sea, another transported plume is visible on the AOD plots. Additionally, we also observe
- 15 dust emissions in northern India and the Taklamakan desert during daytime and around the southern part of the Red Sea during nighttime.

In 3(c) and 3(d) the DOFs are plotted for each retrieved aerosol profile. They are clearly connected to the AOD values: in areas

with a high dust load the degrees of freedom go up to 2, while in clear areas we observe values close to 0. Indeed, as mentioned before, the averaging kernels and DOFs are linked with the retrieved aerosol loads because of the constraints associated with using a log-normal state vector.

In 3(e) and 3(f) the global distribution of the RMSSR of the good quality retrievals on 9 June 2018 is presented. These values seem to be randomly distributed over the globe, not related to the dust load. However, the RMSSR are clearly smaller over ocean than over land. This is most likely due to the lower uncertainty on ocean surface properties compared to land.

Figure 4 shows a cross section of the retrieved dust distribution on the morning of 9 June 2018 to have more detail on the events

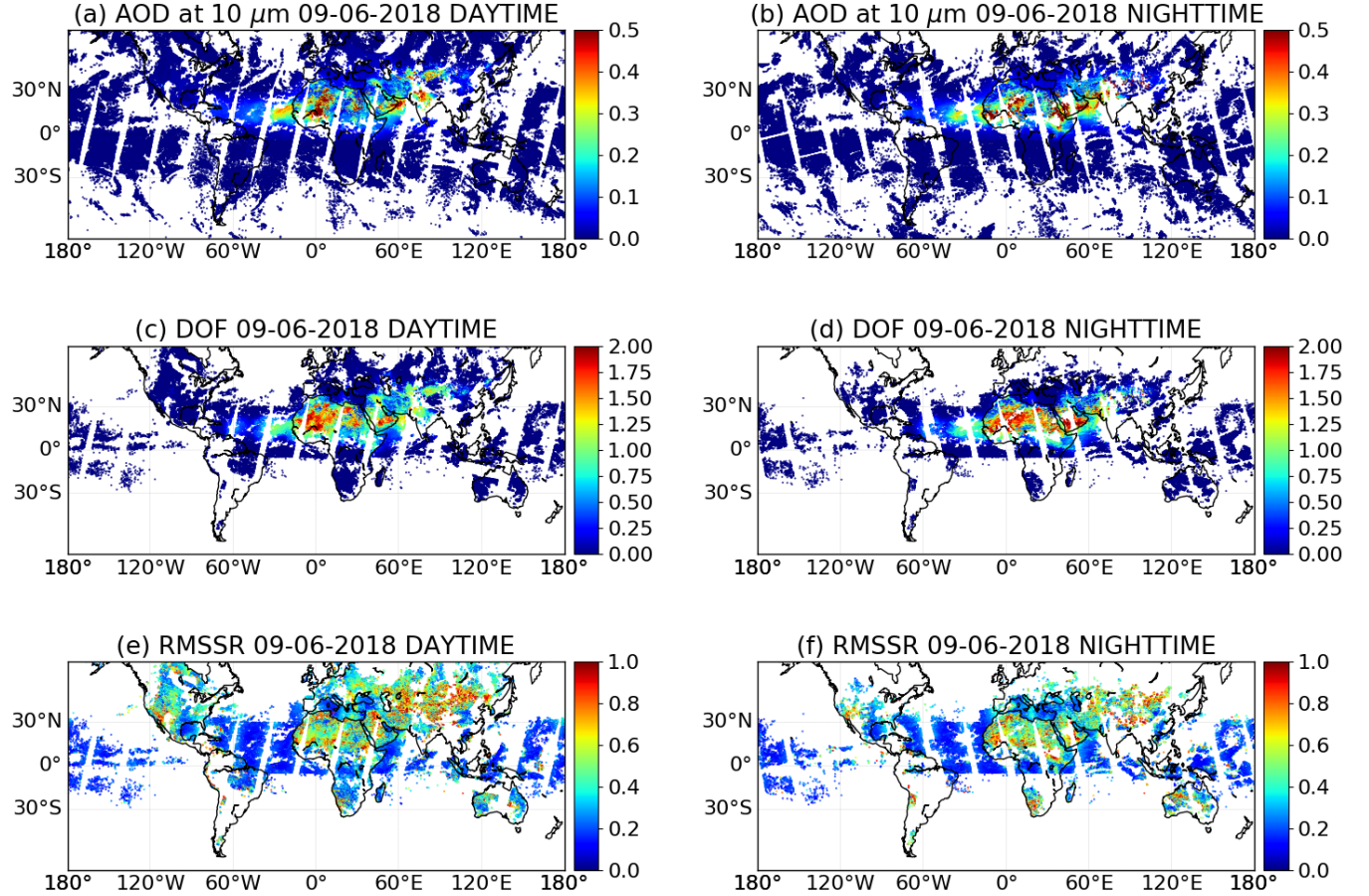


Figure 3. (a, b) Maps of the aerosol optical depth (AOD) at 10 μm on 9 June 2018, calculated by integrating the retrieved aerosol profiles and multiplying by the extinction cross-section. (c,d) Maps of the degrees of freedom (DOF), June 2018. (e,f) Maps of the root mean square of the spectral residuals (RMSSR). Daytime (nighttime) measurements on the left (right) correspond to a mean local solar time of 09:30 (21:30) when crossing the equator.

detected in Fig. 3(a). The plume over the Atlantic Ocean is indeed transported dust, at an elevated altitude of approximately

3–4 km. Over the Sahara desert, big amounts of mineral aerosols are emitted in the troposphere up to 5 km, with the highest load near the surface. This suggests those areas are possible dust sources. Finally, the plume near the Gulf of Oman is spread over different altitudes. It is likely that the dust was emitted over land near the coastline (around 60° E) and then transported both over the Arabic Sea and landward over the Arabian peninsula.

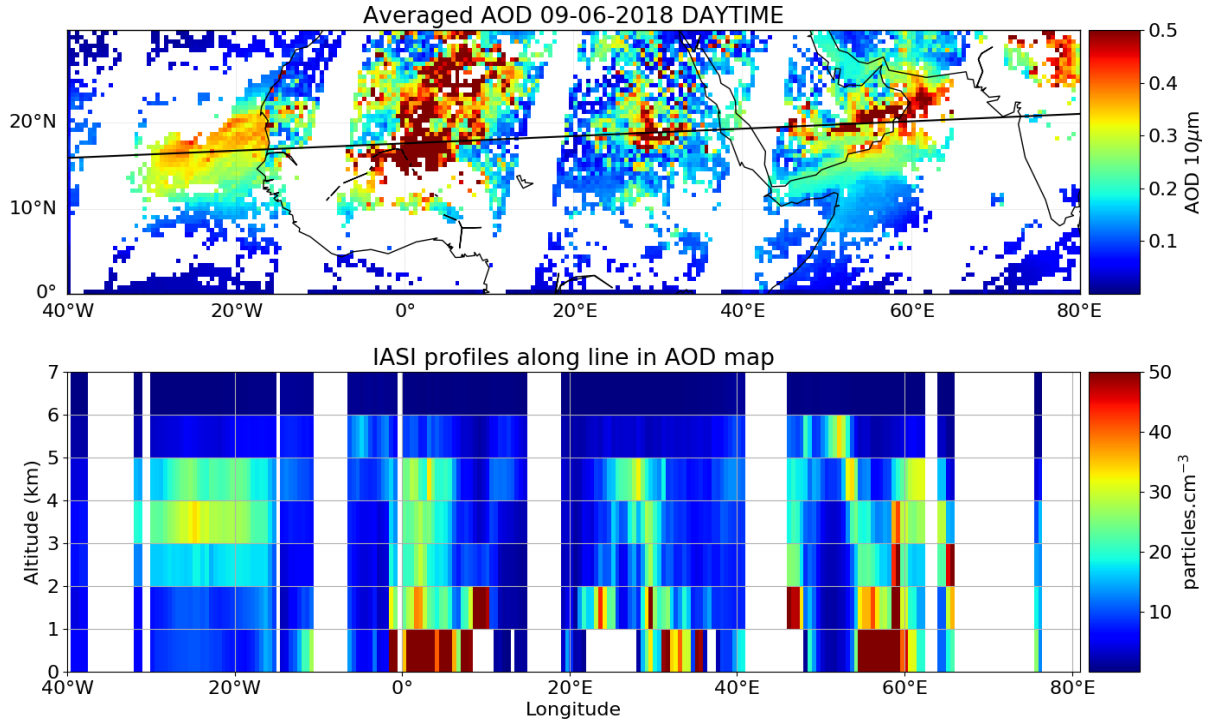


Figure 4. Cross section of MAPIR dust profiles on 9 June 2018. The first plot gives a map of the retrieved daytime 10 μm AOD on a 0.5° by 0.5° grid over the region we are interested in. The black line represents the locations along which the cross section in the second plot is given. Each profile of the cross section is an average of all profiles within 0.5° of the transect line.

5 ValidationEvaluation

To ~~validate~~-evaluate the MAPIR v4.1 dust profiles, comparisons with recognized independent data sets are needed. First we examine the AERONET data set (Holben et al., 1998), comparing the integrated profiles resulting in the AOD, as this is the most common reported dust feature. Second, we compare the mean altitude of the aerosol layer from MAPIR (i.e. altitude for which half the aerosols are below and half above) to the mean altitude of the dust aerosols from measurements by CALIOP onboard CALIPSO. As there is a time lag of 3 to 5 hours between IASI and CALIOP overpass times, a transport model is used to model the air mass movement during that time. However, over dust source areas, this might not be sufficient, as an emission event could occur at the IASI overpass time and be finished at the CALIOP overpass time, with a part of the dust quickly

deposited and a part transported. In that case, the two instruments would observe completely different air masses and vertical profiles of dust, and the transport model may not be sufficient to account for that difference. Therefore, as final exercise, we provide a qualitative comparison of MAPIR dust profiles with other lidar measurements, close to dust source areas, for which a shorter time difference is possible (1 hour). These lidar measurements are from two ground-based instruments at M’Bour (Senegal) and Al Dhaid (United Arab Emirates), and from the Cloud–Aerosol Transport System (CATS) instrument onboard the International Space Station (ISS).

5.1 AOD ~~validation~~evaluation with AERONET

We compare the MAPIR 10 μm AOD with in-situ measurements at AERONET (~~AERosol ROBotic NETwork~~) sites. ~~AERONET is a worldwide network of around 400 permanently running ground-based sun photometers established by NASA and PHOTONS (LOA–CNRS) which measure atmospheric aerosol properties. For our comparisons we use the version 3 level 2.0 (cloud screened and quality-assured) Spectral Deconvolution Algorithm (SDA) retrieval of the coarse mode AOD at 500 sites.~~ As AERONET provides only daytime measurements of AOD in the visible range of the spectrum, we have to be careful when comparing them to our thermal infrared AOD values. Therefore only the IASI measurements at local morning are used here and the MAPIR AOD values at 10 μm are converted to a visible equivalent at 550 nm using the ratio of extinction cross sections at both wavelengths. The values of these extinction cross sections are calculated according to Mie theory with the aerosol characteristics as mentioned in previous sections and are thus dependent on the chosen micro-physical properties. As we assume spherical particles with a fixed size distribution and refractive index, these micro-physical properties can deviate from reality and significant uncertainty is introduced by this conversion. Indeed, a sensitivity analysis performed by Capelle et al. (2014) shows the impact of the dust aerosol micro-physical properties on the infrared to visible conversion. Comparisons are then made for those AERONET stations for which there is enough data to match the IASI measurements. There should be at least 100 matches over the whole period (from 25 September 2007 until 30 June 2018). The matches should be close both in time and space and are found as follows: we take those IASI measurements which are within 0.25° of an AERONET station, for each of them we take the AERONET measurement closest in time with maximum one hour time difference. Furthermore, and as also done by Capelle et al. (2018), we eliminate those matches for which the measured differences are beyond the 97th percentile as we believe these are caused by bad input data. By removing these questionable data we can better assess the true quality of the retrieval.

~~A last requirement is that the AERONET station should be dusty enough: there is a sufficient amount of dust measured are included;~~ Finally, we considered only sites for which ~~there is a sufficient amount of dust measured are included;~~ the median of the AERONET coarse mode AOD at 500 nm over the considered time period ~~should be~~is higher than 0.05. As mentioned in Sect. 2.2, the coarse mode AOD contains all coarse mode aerosols, i.e. mainly dust, sea salt and volcanic ash. The selection therefore does not ensure the presence of only dust at those selected AERONET sites. This leads to a set of 72 stations spread over different regions. A list of the sites including their coordinates can be found in Appendix A.

For each of the 72 stations, we calculated the Pearson correlation coefficient between the AERONET AOD and the MAPIR AOD. Figure 5 shows the stations on a map with their corresponding ~~correlations~~correlation in color, the exact values can be

found in Appendix A. Overall we see a strong agreement between MAPIR retrieved AOD and AERONET measured AOD. More than 93 % of the matched AERONET stations have a moderate ([0.4, 0.59]), strong ([0.6, 0.79]) or very strong ([0.8, 1.0]) positive correlation with the MAPIR retrieved AOD. Moreover we see a mean Pearson correlation coefficient of 0.66 on all stations. The coastal stations where the presence of sea salt aerosols plausibly impacts the AERONET coarse mode AOD and its correlation with MAPIR dust AOD are indicated with an asterisk in Table A1.

Pearson correlation coefficient between AERONET SDA coarse mode AOD and MAPIR AOD at 500 nm

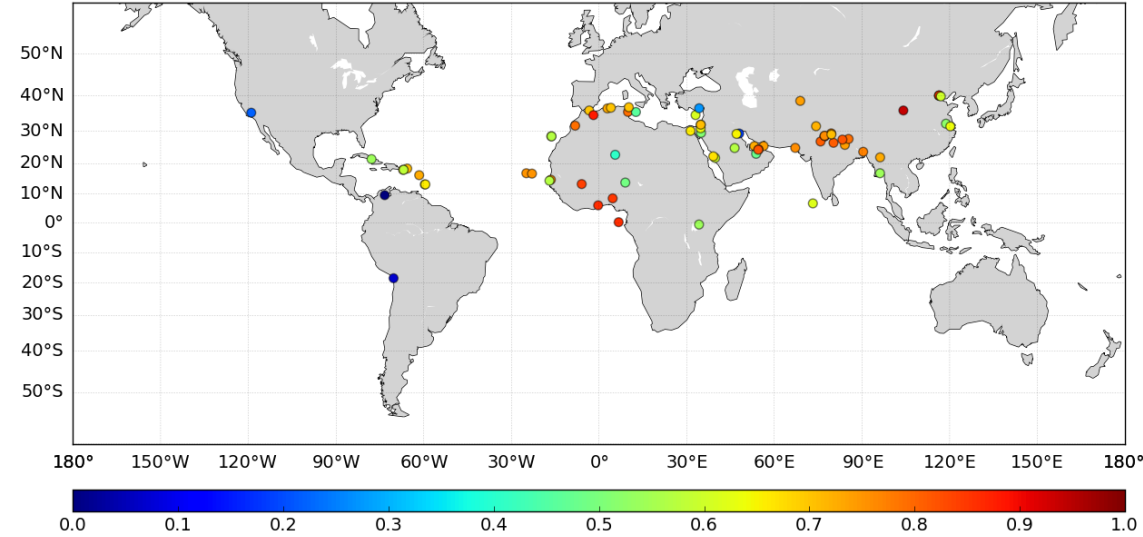


Figure 5. Map of the 72 AERONET stations that were matched with IASI measurements. The color scale represents the value of the Pearson correlation coefficient between the AERONET SDA coarse mode AOD and the MAPIR AOD converted to 500-550 nm.

In the northern part of India all stations have a strong or very strong Pearson correlation coefficient ranging from 0.71 at Pantnagar to 0.86 at Gual Pahari with a mean of 0.78 over 14 stations.

The region just North and South of the Sahara covers stations with an overall good correlation. There is for instance a very strong correlation of 0.86 at Sao Tome. However, two stations in the center of the Sahara and Sahel region have only a moderate positive correlation with a coefficient of 0.41 and 0.49 at Tamanrasset and Zinder airport, respectively. The Tamanrasset AERONET station is located in the south foothills of the Hoggar Mountains in Algeria at almost 1400 m altitude, and at the northeast limit of a main source area (Schepanski et al., 2012; Ashpole and Washington, 2013; Todd and Cavazos-Guerra, 2016). It is therefore surrounded by very different air masses in different directions, which is expected to lead to noisy comparisons when using our simple criterion of distance between a IASI footprint center and the AERONET station. Zinder, on the other hand, is a city in the south of Niger, and we see no reason on the location of the Zinder AERONET station to justify the lesser correlation. However, the station at Zinder seems to have almost only AERONET measurements during dust seasons

and big events and very few from background situations, which can lead to biased statistics. Still it remains unclear why the retrieval shows such weak performance at higher aerosol loads near Zinder. As both Tamanrassat and Zinder AERONET stations are situated in the Sahara and Sahel deserts, this mismatch between AERONET AOD and MAPIR AOD could also point to an incorrect surface emissivity there, as the used data set of Zhou et al. (2011) might be biased by the presence of aerosols in dusty regions.

The transport of the Saharan desert dust across the Atlantic Ocean is observed at several stations in the Caribbean, such as: Camaguey, Guadeloup, ~~Cape-Cape~~ San Juan and La Parguera. With correlation coefficients ranging from 0.54 to 0.73, they show a moderate to strong correlation between AERONET and MAPIR AOD of coarse mode transported dust. However, those are coastal stations where the coarse mode probably contains sea salt aerosols with a possible impact on the AERONET coarse mode AOD.

Three of the sites with a weak or very weak correlation are situated in the American continent: ~~Arica, Bakersfield and UPC-GEAB-Valledupar. The reason for this discrepancy is not clear. They are situated in regions that are, in areas~~ not known for the presence of dust. ~~For UPC-GEAB-Valledupar and Arica, the AOD values from AERONET are higher than the MAPIR AOD. This could indicate that there are other coarse aerosol types measured with AERONET, to which MAPIR is not sensitive.~~ Arica, Bakersfield and UPC-GEAB-Valledupar. Arica is a coastal station, potentially experiencing sea salt aerosols. For the other 2 stations, the reason for the discrepancy is not clear.

Another AERONET station with a weak correlation is Kuwait University. As there is a second AERONET station very close by, Shagaya Park, which has a strong correlation of 0.66, it is not immediately a sign of incorrect performance of the MAPIR retrieval. Moreover, the AERONET data at Shagaya Park is from the period between 2015 and 2016 while the data at Kuwait University is from 2008 to 2010. This means this discrepancy could also be caused by the quality improvement of the water vapour and temperature profiles of the IASI operational I2 data over that time period. Indeed, the co-located retrievals at Shagaya Park use the better IASI I2v6 temperature profiles, while the retrievals at Kuwait university were computed using profiles from the IASI I2v4 product.

Apart from the Pearson correlation coefficient, we calculated a linear regression line for every station of which the slope and intersection of the Y-axis can be found in Appendix A. We see that overall the slope is around 1, or slightly below, with a median of 0.71. These lower values for the regression slope might indicate an underestimation of the conversion factor used for transforming the infrared AOD to its visible equivalent. The y-interception is almost everywhere close to 0 with a median value of 0.06.

~~In-~~To illustrate the similarities and differences between MAPIR AOD and AERONET AOD in an alternative way, Fig. 6 ; time-series-are-given-shows time series for the AOD at 4 AERONET stations. The dates that are plotted are those for which AERONET data is available at that particular station. In agreement with the good correlation coefficients, we see that the MAPIR AOD reproduces the AERONET AOD well throughout the year at those sites. At sites like Masdar Institute and Koforid, the big AOD variation is reproduced by the MAPIR AOD. At Tunis Carthage, where there is in general a lower AOD, MAPIR sometimes misses a peak in AOD leading to a small underestimation of the AOD by MAPIR at that station. Another way of showing this are the plots in the second column of Fig. 6. It presents a scatter plot of the AOD differences in function

of the size of the AERONET AOD. Additionally, the data per station is split into AOD bins of equal quantity. Binned medians (black dots) and interquartile ranges (IQR, vertical black lines) of the AOD differences are shown on the plots. For example at Tunis Carthage, we see in the AOD difference scatter plot that most of the observations are low AOD cases with small positive bias, 4 out of the 5 AOD bins are situated below 0.1. The AOD bin of larger AOD values shows a slightly negative bias, thus they are generally underestimated. This negative trend, positive bias for low AOD and negative bias for higher AOD, is to some extent present at the other stations in Fig. 6 too.

Figure 7(a) shows the same kind of plot but for all AERONET stations combined and split up into 10 bins of equal size. The

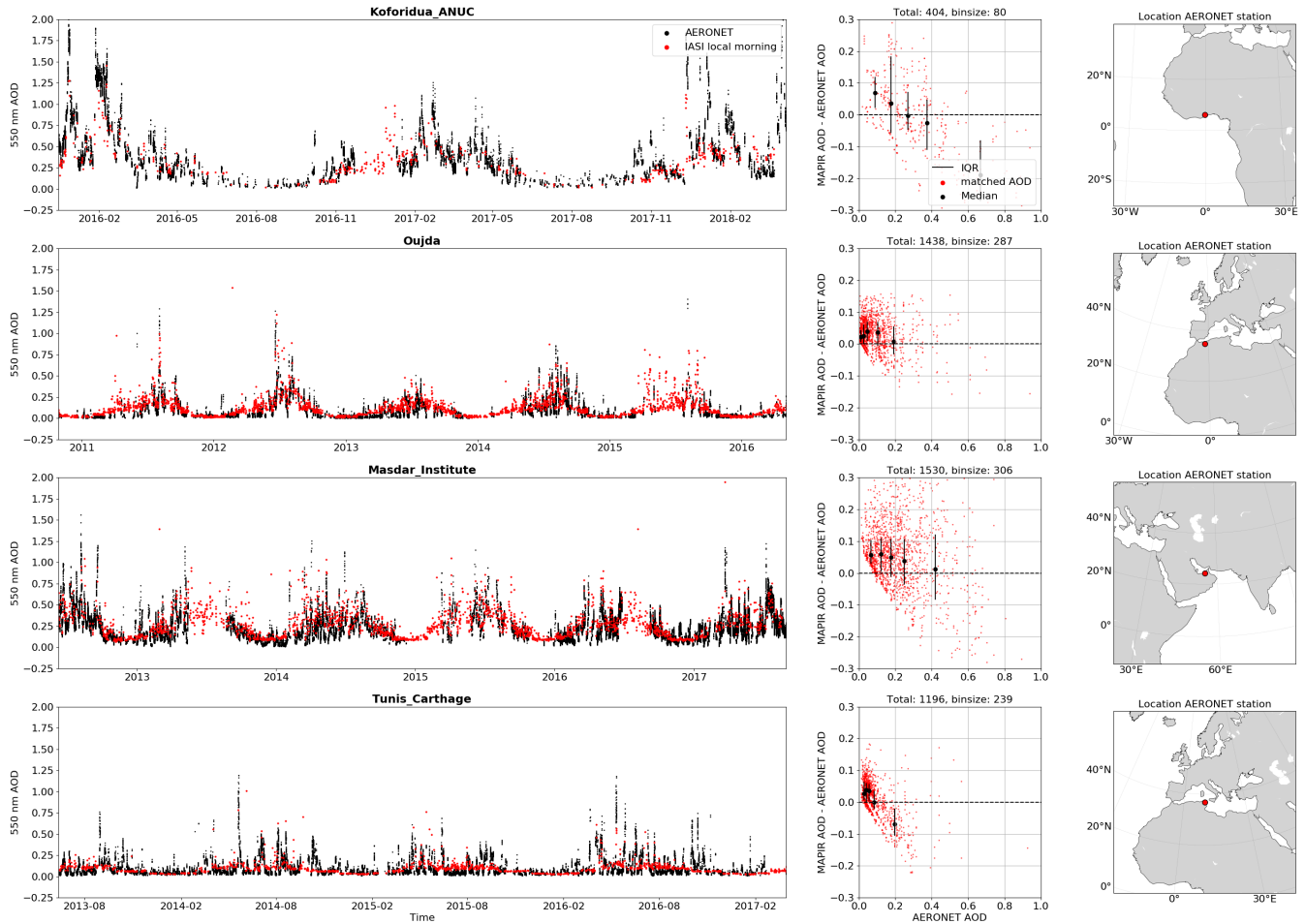


Figure 6. Time series of the available AERONET data at four stations in the first column: Koforidua ANUC, Oujda, Masdar Institute and Tunis Carthage. The black dots are the AERONET SDA coarse mode AOD, the red dots are the matched MAPIR AOD converted to the same wavelength 550 nm. The second column gives the corresponding scatter plots of the difference between the matched observations, together with the correlation-coefficient median and regression-parameters interquartile range (IQR) of 5 bins of equal size. The location of each AERONET site is given in the third column.

total number of points used for these statistics are 76976, for the whole time period over the 72 selected AERONET stations. The binned medians show that the low AOD cases ($\text{AOD} < 0.1$) have a small positive bias, the cases with AERONET AOD between 0.1 and 0.4 have almost no bias but there is a bigger spread, and the most dusty scenes ($\text{AOD} > 0.4$) show a small negative bias. The imaginary line that is visible in the lower left part of the scatter plot is due to the positivity constraint on the AOD values. This constraint is probably the main cause for the small positive bias for low AOD cases. Moreover, as the distribution of AOD is skewed to the right, it will affect the overall bias.

When calculating the mean difference of all matched AOD measurements, we observe a small positive bias of only -0.04 ± 0.04 ($\sigma = 0.16$) with respect to AERONET. In Fig. 7(b) the associated difference histogram is given. The number of points used for these statistics are 76976, for the whole time period over the 72 selected AERONET stations. The root mean square error (RMSE) between all matched AOD is 0.17 and more than 70% of the absolute differences fall below 0.1. These numbers show that AOD values retrieved by MAPIR v4.1 are quite reliable and most importantly, MAPIR is improved with respect to its previous versions. Indeed, in Popp et al. (2016) a similar comparison with AERONET AOD was done using MAPIR v3. With a bias of 0.28, MAPIR v3 had a significant overestimation which is now almost gone.

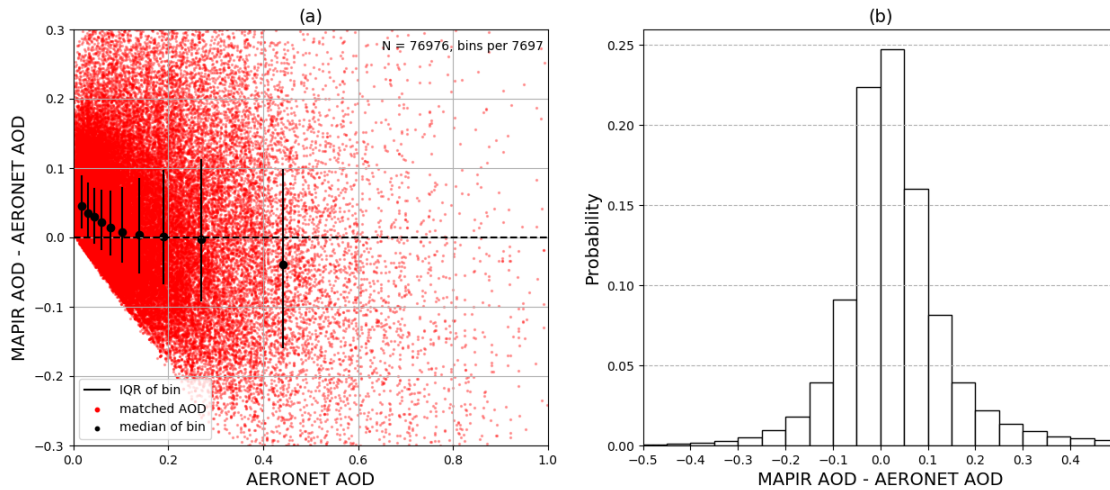


Figure 7. Difference histogram of MAPIR AOD, converted to 550 nm, versus the AERONET SDA coarse mode AOD versus difference distribution. (a) Scatter plot of the MAPIR-AOD difference in function of the AERONET AOD (red dots), converted to 500 for all considered stations combined. Data are split into 10 bins of equal quantity, corresponding binned median (black dots) and interquartile range (IQR, vertical black lines) are shown. (b) AOD difference histogram.

5.2 Altitude validation-evaluation with CALIOP

The aerosol altitude from the updated MAPIR algorithm was validated-evaluated by comparing with altitudes from CALIOP. The fact that the MAPIR a priori is obtained from CALIOP measurements does not invalidate the MAPIR validation-evaluation

with CALIOP data. ~~Indeed, for the a priori, a~~ A monthly climatology over ~~8-8~~ years is used for the a priori (i.e. for each month, the mean profile from the same month from 8 years of CALIOP data), with a running mean over 5° latitude and longitude as detailed in section 3.4, while the ~~validation-evaluation~~ is done by comparing single co-located measurements. The comparison was made following the methodology described in Kylling et al. (2018). Within the region of interest the closest CALIOP swaths in time and space to the MAPIR dust pixels were identified. Due to different equator crossing times between the CALIPSO and MetOp satellites and the possible transport of dust, a co-location criterion of maximum 5 h and 500 km was used for a first selection of CALIOP data. Only CALIOP data with vertically continuous dust profiles and cloud discrimination values between -100 and -20 (Winker et al., 2013) were retained for further analysis. CALIOP dust altitudes were calculated for the remaining profiles and moved in time and space to the IASI overpass time using the FLEXTRA trajectory model (Stohl et al., 1995). Finally, co-location of the CALIOP and MAPIR dust altitudes were checked and maximum differences of 20 km allowed. CALIOP profiles do not provide a unique dust altitude. Here we use the same CALIOP altitudes as Kylling et al. (2018), namely the purely geometric mean altitude (mean of the bottom and top altitudes of the dust layer) and the cumulative extinction altitude (dust altitude set to altitude where the cumulative extinction at 532 nm is half of the total extinction column). The 5 km profile product from CALIOP data version V4-10 was used for the comparison. The comparison is made for two periods. The first period is identical to the same time and region used by Kylling et al. (2018): 18–27 March, 22 May–1 June, 1–12 July, and ~~14–12 July–20~~ September in 2010, totalling 40 days. These dates cover four desert dust events in the region between 0–40° N and 80° W–120° E. The second period covers four dust events in 2017: 21–30 April, plumes over Africa, Middle East and Asia, mainly over land; 3–12 July, large plume over Africa with massive transport to America, and some plumes over the Middle East and India; 1–10 October, some dust over Africa and some activity in the Taklamakan area, Middle East and India; and 21–30 December, Sahel plumes and East Asia dust. For 2017 the full region between 60° S–60° N and 180° W–180° E was included in the analysis. The findings for the MAPIR dust altitude comparison with CALIOP dust altitudes are summarized in Table 1. The table includes the 2010 data from the comparison presented in Kylling et al. (2018) for MAPIR v3.2/v3.4.

For 2010 the previous MAPIR version in general overestimated both the cumulative extinction (by 0.357 to 1.008 km) and geometric mean (by 0.038 to 0.340 km) dust altitudes from CALIOP. MAPIR v4.1 generally underestimates the CALIOP dust altitudes by -0.148 to -0.567 km (cumulative extinction) and by -0.822 to -1.035 km (geometric mean). The reason for this is most likely because the previous MAPIR version retrieved the dust concentrations on levels starting at an altitude of 1 km. MAPIR v4.1 retrieves layer concentrations where the lowest layer is between 0 and 1 km. Thus, the new MAPIR version will give a lower mean dust altitude compared to the previous versions. The difference between the cumulative extinction and geometric mean altitude differences are about the same for both versions. However, MAPIR v4.1 gives a consistently smaller standard deviation by about 0.1 km. The percentage of MAPIR altitudes within the CALIOP dust layer is somewhat smaller for MAPIR v4.1 and especially for CALIOP day time measurements over the ocean. However, for night time CALIOP measurements over the ocean MAPIR v4.1 places more dust altitude within the CALIOP dust layer.

For 2017 a smaller difference between MAPIR and CALIOP dust altitudes are observed compared to 2010. We also note that the standard deviation for most cases (CALIOP night data over land being an exception) is smaller for the 2017 comparison.

Table 1. The mean \pm the standard deviation of the dust altitude difference between the MAPIR and CALIOP dust altitudes, and the number (#) of co-located points. The inlay is the percentage of MAPIR altitudes that are within the CALIOP layer. MAPIR 3.2/3.4 results are taken from Kylling et al. (2018).

Year	2010		2010		2017	
Algorithm	MAPIR v3.2/v3.4		MAPIR v4.1		MAPIR v4.1	
CALIOP altitude	Cumulative extinction	Geometric mean	Cumulative extinction	Geometric mean	Cumulative extinction	Geometric mean
CALIOP, All data (Day and Night, Ocean and Land)						
Altitude difference (km)	0.590 ± 1.213	0.078 ± 1.108	-0.361 ± 1.090	-0.871 ± 1.047	-0.322 ± 1.044	-0.640 ± 1.031
points (#)	2620	2408	2575	2358	2304	2244
inlay (%)	83.1	81.1	79.8	77.9	77.2	76.6
CALIOP Day, Land						
Altitude difference (km)	0.357 ± 1.665	0.087 ± 1.572	-0.567 ± 1.535	-0.888 ± 1.435	-0.452 ± 1.160	-0.633 ± 1.146
points (#)	605	598	607	597	1097	1100
inlay (%)	58.5	57.7	63.2	63.0	69.1	69.1
CALIOP Day, Ocean						
Altitude difference (km)	0.783 ± 0.913	0.340 ± 1.187	-0.456 ± 1.076	-0.850 ± 1.021	-0.225 ± 0.709	-0.535 ± 0.768
points (#)	172	170	204	204	312	313
inlay (%)	74.4	72.4	58.5	57.6	72.8	71.9
CALIOP Night, Land						
Altitude difference (km)	0.567 ± 1.020	0.038 ± 0.903	-0.314 ± 0.920	-0.822 ± 0.896	-0.181 ± 1.064	-0.625 ± 1.017
points (#)	1501	1330	1390	1228	689	661
inlay (%)	91.0	89.4	85.8	84.3	85.5	85.5
CALIOP Night, Ocean						
Altitude difference (km)	1.008 ± 0.741	0.094 ± 0.678	-0.148 ± 0.670	-1.035 ± 0.666	-0.247 ± 0.556	-0.943 ± 0.553
points (#)	342	310	374	329	206	170
inlay (%)	96.5	95.8	96.2	93.9	99.5	100.0

This may be due to the improved IASI temperature profiles available for the 2017 analysis as noted in Sect. 4.1. For both periods included in the comparison the agreement is better for night than day CALIOP measurements. It is noted that CALIOP day time measurements generally are more noisy than night time measurements. [We also observe a lower standard deviation over ocean than over land. This is probably linked to the fact that retrievals over ocean are less uncertain: the surface emissivity and temperature are more stable. In addition, the plume height is more constant over ocean \(no local source\), therefore less deviating from the a priori.](#)

5.3 Qualitative profile comparison

In this section an effort is made to analyze the full MAPIR aerosol profiles. As the two previous sections already contain a comprehensive [validation-evaluation](#) study on the AOD and aerosol layer mean altitude, here only a qualitative profile comparison is done. Thus, we need data sets containing high-resolution aerosol profiles that are close to IASI data in both time and space. This small difference in time is very important, especially over source areas. We selected two ground-based lidar sites at relevant locations which offer aerosol extinction profiles with a very small time lag with IASI: M’Bour in Senegal and

Al Dhaid in the United Arab Emirates (UAE), operated by the Laboratory of Atmospheric Optics (University of Lille, CNRS) and the Finnish Meteorological Institute respectively. The M'Bour site is situated at the coast of the Atlantic Ocean in the Sahel region, where large amounts of dust are emitted yearly. The Al Dhaid site is located on the Arabian peninsula and also frequently experiences dust events. They are therefore both relevant locations to study the dust distribution. Additionally, we will explore data from the Cloud–Aerosol Transport System (CATS) onboard the International Space Station (ISS) to look for interesting profile comparisons. [A description of these instruments was given in Sect. 2.](#)

For each independent data set we co-locate the measurements with our IASI data in time and space. The matching criteria however differ slightly in between data sets. For the ground-based lidar sites at M'Bour and Al Dhaid we select the IASI measurements that are within 0.5° of the station and within 1 hour of a lidar measurement. We compare the average of those MAPIR retrievals with the lidar profile averaged over a certain time period. At M'Bour, we take the average of all lidar profiles within an hour before the first IASI measurement and an hour after the last. At Al Dhaid we compare with a lidar profile that is averaged over 1 hour centered around the expected IASI overpass time. These differences in the temporal co-location arise from the difference in the available data from the two stations. For the CATS data, we loop over all points on the ISS orbit in steps of 0.25° . We compare the average CATS extinction profiles within 0.25° of those points with the average of MAPIR retrievals around the points, only if the time difference is less than 1 hour.

To account for the different resolution between the MAPIR and the various higher resolved lidar profiles, a smoothing is applied to the regridded lidar profile x_L by the MAPIR AK:

$$x'_L = x_a \exp \left(A \ln \left(\frac{x_L}{x_a} \right) \right), \quad (7)$$

where x'_L is the smoothed or convolved lidar dust profile and x_a and A are the MAPIR a priori profile and AK. Equation (7) is based on the smoothing equation of Rodgers (2000) but transformed to suit our state vector. If the lidar measurement was the true atmospheric profile, then the smoothed lidar profile x'_L represents how our observing system, the combination of the IASI instrument and the MAPIR retrieval method, would retrieve it considering the limitations of the system (Rodgers and Connor, 2003). The lidar profiles both before and after smoothing will be presented.

5.3.1 M'Bour lidar

~~The monoaxial Cimel Micro-Pulsed lidar is continuously operating at the M'Bour site (14.39° N, 16.96° W) close to Dakar, Senegal since 2005. This site is situated in a nature reserve, at less than 100 from the Atlantic Ocean. The lidar provides attenuated backscatter profiles at 532 up to a height of 30, with a vertical resolution of 15. The extinction profiles are then calculated with 15 averaged backscatter profiles by the AOD-constrained Klett–Fernald method (Klett, 1981). This AOD is provided by the co-located sun photometer, which is included in AERONET. Hence, the lidar ratio can be retrieved and the related uncertainty reduced. More details on the instrument and the used inversion method can be found in Mortier et al. (2016). Only cloud-free data are used for this analysis and in order to separate dust profiles from others we only use those profiles where the Angstrom exponent is lower than 0.4. Indeed, in Johnson and Osborne (2011) it is shown that the Angstrom exponent is typically lower than 0.2 for dust during the GERBILS campaign over the western region of the Sahara, but with measured~~

~~values up to 0.6. Our selected threshold of 0.4 is a good compromise to be conservative enough but avoid the fine mode biomass burning and smoke aerosols which are plausible in M'Bour during the winter.~~ Some comparisons between the filtered extinction profiles from the M'Bour lidar and the retrieved MAPIR dust profiles can be found in Fig. 8 and Fig. 9. They cover the two-month period January–February 2015 and March–April 2016, respectively. Given that both aerosol profiles are reported in different units and measured by other instruments, the results from this comparison should be treated with caution. For example in Fig. 8, if the colors representing the extinction at 532 nm differ from the colors representing particle density, this difference can be caused by the conversion factor used or by errors in either the lidar or MAPIR retrievals. It is more reliable to study the extent of the dust plumes in both data sets and verify if the occurrence of dust events is detected at the same time. This argument also applies for the analyses performed in the following subsections.

During winter 2015, M'Bour experiences dust events almost every day, as can be seen in the first plot of Fig. 8. These dust plumes roughly stretch between 0 and 2 km altitude, except at about mid-February where there is an elevated layer around 3 km. These features can be seen in the MAPIR profiles too. There is some amount of aerosols present at all co-located MAPIR retrievals in this period (see lowest plot in Fig. 8). The load is concentrated close to the surface with different intensities, the larger corresponding with the bigger events detected by the lidar. Moreover the higher dust layer around ~~15~~¹⁷ February is also detected by MAPIR. When comparing the smoothed lidar profiles (middle plot in Fig. 8) with the MAPIR retrievals, we come to similar conclusions. However, the intensity of dust events is probably sometimes underestimated by MAPIR. In January and February 2015, we see that in general MAPIR is good at detecting the dust events near M'Bour and additionally retrieves the vertical extent quite well.

Figure 9 shows the dust distribution near M'Bour in the spring of 2016. Again, mineral aerosols are detected on a daily basis, with occasionally some larger events. In the middle and end of April, there are large dust plumes reaching an altitude of 4 km and 5 km, respectively. Unfortunately, there are no co-located MAPIR profiles of good quality during the first event. Although a small part of it can still be seen in the MAPIR profile on 18 April, where it gets the same vertical extent as the lidar profile. The second event is better covered by MAPIR, where it reproduces the plume seen by the lidar adequately. The smoothed lidar profiles agree well with the MAPIR profiles in April, but less in March. Especially on 19 March 2016, the averaged MAPIR profiles near M'Bour show a very high dust concentration around 2–3 km which is not seen in the lidar profiles. The reason for this rather contradictory result is not completely clear, but might be caused by a bad retrieval for that comparison. Among the averaged profiles, we observe a retrieval with an unrealistic surface temperature of more than 340 K, hence this difference is most probably due to a problem in the IASI data. Despite some differences in the comparisons, we believe that MAPIR observes the mineral dust profiles near M'Bour adequately, taking into account its limitations. This qualitative analysis of aerosol profiles at M'Bour supports our confidence in the value of the new MAPIR algorithm.

5.3.2 Al Dhaid lidar

~~The Multi-wavelength Raman polarization lidar PollyXT performed continuous measurements from March to April 2018 at the Al Dhaid site (25.24° N, 55.98° E) in United Arab Emirates. This is a rural site located at a deserted area, about 70 east from Dubai, and 10 from Al Dhaid town. To the east the site faces some hills/mountains (20 away) and the sea (Gulf of~~

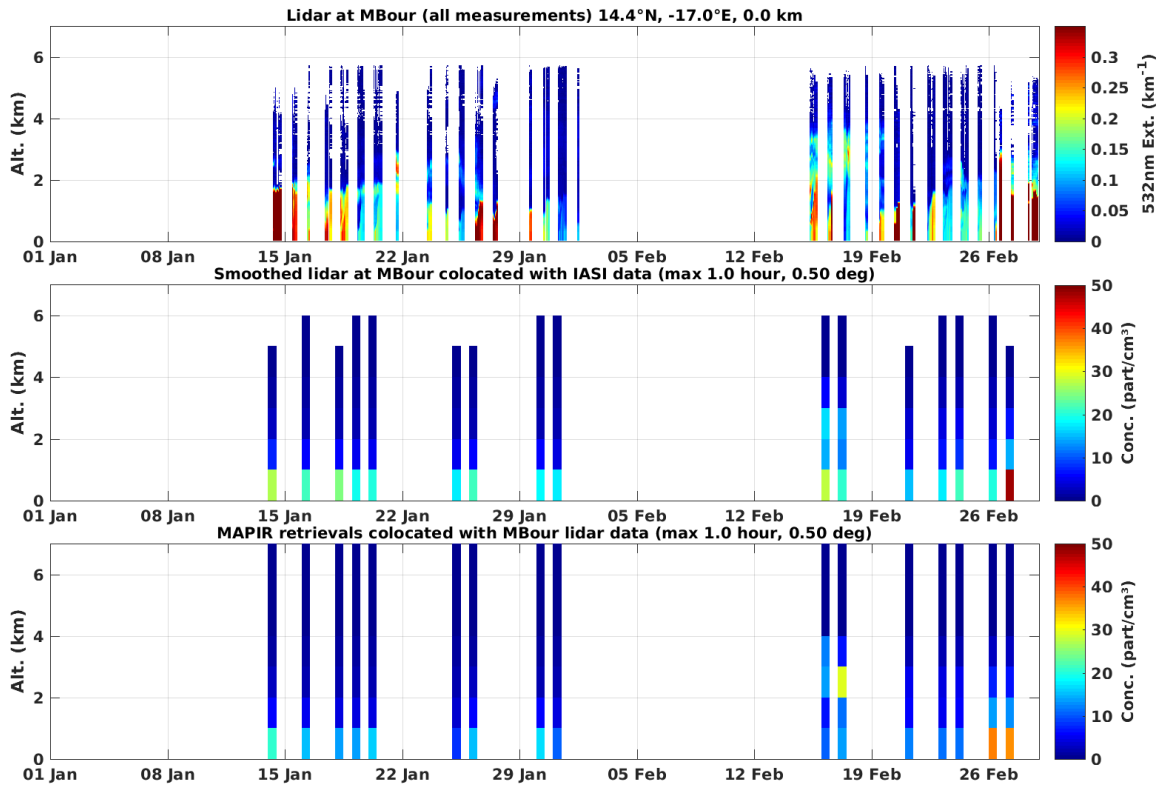


Figure 8. Mineral dust profile comparison at M'Bour site (Senegal) from 1 January to 1 March 2015. First plot gives the lidar data (extinction profiles at 532 nm) as provided for this study. On the second plot, the lidar data smoothed according to Eq. (7) is presented, for those times when there is a co-located MAPIR profile. The third plot presents the MAPIR profiles over time averaged around the M'Bour site.

Oman) at about 40 distance. PollyXT enables the retrieval of aerosol optical properties at three wavelengths, with an initial vertical resolution of 7.5 along the line of sight and an initial temporal resolution of 30 . More details of the instrument can be found in Althausen et al. (2009) and Engelmann et al. (2016). In this study, the Klett inversion method (Klett, 1981) is applied to retrieve the aerosol backscatter coefficients and aerosol extinction coefficients at 355 and 532, using lidar ratios of ~ 45 and ~ 35 , which are derived using Raman inversion for night-time lidar measurements (method description in Ansmann et al. (1990); Shang et al. (2018)). The volumetric depolarization ratio (VDR) and linear particle depolarization ratio (PDR) at 355 and 532 are also derived following the procedure described in Chazette et al. (2012). We separate the optical properties of desert dust and the non-dust particles as a function of height, by applying the methodology proposed by Tesche et al. (2009). According to the literature (e.g. Groß et al. (2015); Tesche et al. (2009) and references therein), the PDR of dust is assumed to be 0.30 at 355 and 0.35 at 532, with the non-dust PDR of 2 and 3, respectively. Due to the lidar overlap effect the lower range limit is at ~ 180 (bin 24), the values below are filled with the average of the 23rd to 25th bin. The final dust optical properties

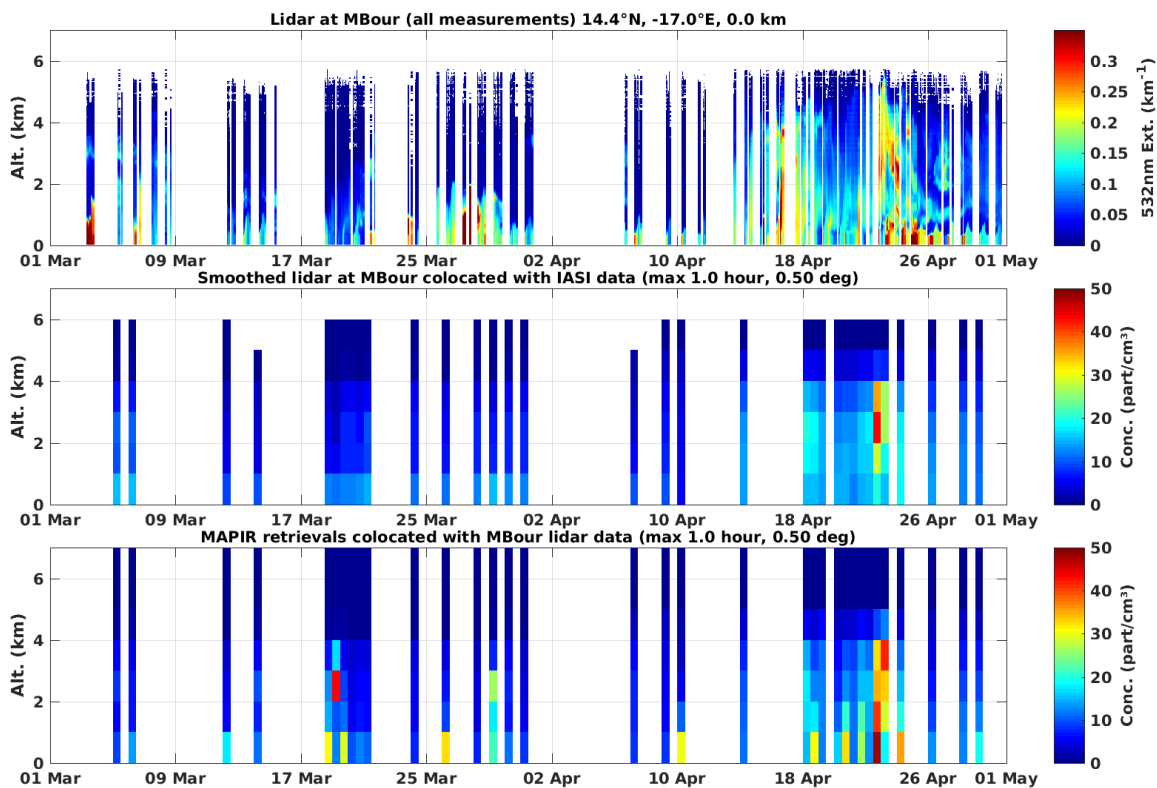


Figure 9. Same as Fig. 8 but for 1 March to 1 May 2016.

used in the comparisons were vertically smoothed by the sliding averaging of 11 bins (~ 82) and temporally averaged by 1 hour. A comparison of the 2 months measurements (March to April 2018) at Al Dhaid with the MAPIR profiles is given Fig. 10. In general there are no large dust plumes detected by the lidar in March 2018. There is one event on 11 March where the lidar at Al Dhaid detects a high aerosol load between 0 and 2 km altitude, but there is no co-located MAPIR profile of good quality to compare with. In the evening of 17 and 18 March, there is a faint elevated dust layer around 2 km that is seen by both the lidar and MAPIR. Likewise, the amount of aerosols concentrated below 1 km in the morning of 18 March is detected by both instruments. The second half of March does not contain any interesting events. However, the MAPIR profiles seem to have an almost continuous dust plume in the lowest layer, not as much detected by the lidar. The concentrations are relatively small and since the observing system has a low sensitivity in those cases, this background plume is probably linked to the a priori. It is also possible that the mean values of the LIDAR in the first layer are underestimated because the lower range limit of the lidar is about 180 m above ground level (Engelmann et al., 2016). Finally, the high aerosol concentration around 9 March as retrieved by MAPIR is probably the result of a bad retrieval. Since the retrieval passed all quality filters, it could also point to a problem in the ancillary data.

During April 2018, more interesting dust plumes pass nearby Al Dhaid. On 1 and 2 April, the lidar observes a dust layer reaching 2 and 4 km, respectively, which is similar to what MAPIR observes. However, MAPIR retrieves a much higher aerosol concentration near the surface. The dust plumes around 13 and 17 April are detected by both instruments, with similar ranges. Another event occurs on 22 and 23 April. The lidar at Al Dhaid as well as the MAPIR retrievals close by, show larger dust signatures in that period. However, they do not completely agree on the altitudes of the layer.

Overall, this shows that MAPIR is reliable for the detection of mineral aerosols and even for the extent of the plumes. Based on the comparisons of this two-month period, yet a small overestimation of the lowest layer aerosol load near Al Dhaid appeared.

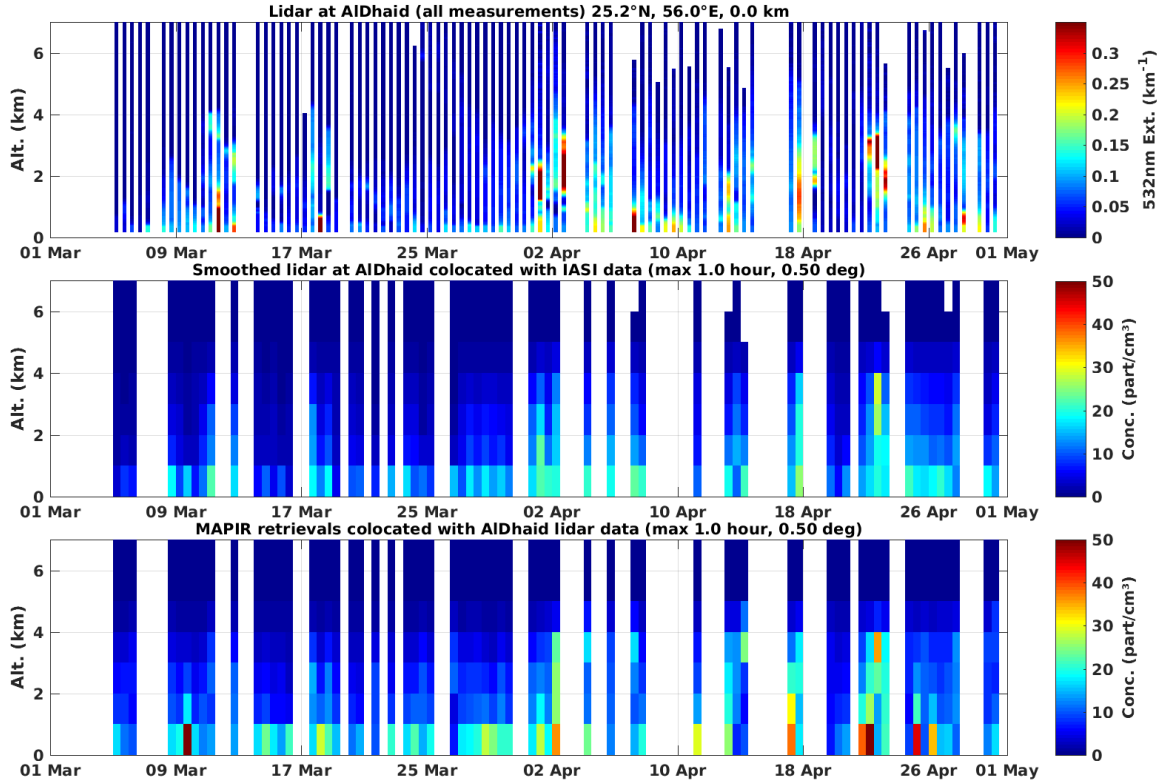


Figure 10. Mineral dust profile comparison at Al Dhaid site (UAE) from 1 March to 1 April 2018. First plot gives the lidar data (extinction profiles at 532 nm) as provided for this study. On the second plot, the lidar data smoothed according to Eq. (7) is presented, for those times when there is a co-located MAPIR profile. The third plot presents the MAPIR profiles over time averaged around the Al Dhaid site.

5.3.3 CATS

CATS is a lidar instrument onboard the International Space Station providing vertically resolved cloud and aerosol properties at 1064 nm from March 2015 until October 2017 (Yorks et al., 2016). CATS is orbiting between 375 and 435 km above Earth's surface

at a 51.6° inclination with nearly a three-day repeat cycle (McGill et al., 2015). Due to this unique orbit path, the same location is not measured at the same local time every day by CATS, unlike sun-synchronous orbiting satellites like MetOp or CALIPSO. For this study, the Level 2 Operational extinction profiles between 0 and 5 from version 3.00 are used, thereby selecting only the dust aerosol types (Dust, Dust Mixture and Marine Mixture). Quality filtering of the CATS data is done similar as in

5 Lee et al. (2018). There were 1780 occurrences where CATS and IASI measurements could be co-located close both in time and space, not all of them containing interesting dust events. Two examples where high aerosol concentrations were observed are plotted in Fig. 11 and 12. They cover the Sahel on 16 February 2017 and Western Sahara on 19 June 2015, respectively.

In Figure 11 we see a spatially extended dust plume over the Sahel, with high concentrations relatively close to the surface. The width of the layer varies between 1 and 2 km, always reaching the ground. Similar features are observed by MAPIR: an almost continuous, very dense surface layer of mineral aerosols along the track. The plume never reaches an altitude higher than 4 km. A bit further down the track, the dust plume is more elevated and spread out around 2–3 km height. Even though the load has decreased significantly, it is still detected by both CATS and IASI instruments.

Figure 12 presents another profile comparison of co-located CATS and IASI measurements. It shows several dust plumes over the Sahara in the evening of 19 June 2015. Both CATS and MAPIR retrieve a very dense plume extending from the surface to 5 km altitude around 6° E. Additionally, more eastward-westward two elevated layers around 5 km and 3–6 km can be observed by the two sensors. Since both CATS and MAPIR show such a good agreement, both in detection of dust events and extent of dust plumes, this is another example of the performance of MAPIR v4.1.

6 Discussion, conclusion and further work

In this work, we describe and provide ~~validation~~ an evaluation of the updated Mineral Aerosol Profiling from Infrared Radiances (MAPIR) algorithm version 4.1, retrieving dust aerosol concentration profiles in seven 1 km-thick layers centered at 0.5 to 6.5 km altitude, using the optimal estimation method applied on thermal infrared radiances measured by the Infrared Atmospheric Sounding Interferometer onboard the MetOp satellite series. The new version of MAPIR was developed to cope with known issues of earlier versions: the high fraction of bad retrievals over Sahara and Sahel regions (about 40 % on average), the huge overestimation of the aerosol optical depth (AOD, overestimated on average by 0.28) and the large computation time.

25 The main modifications to the algorithm are: (1) a faster radiative transfer (RT) model Radiative Transfer for TOVS (RTTOV) to replace LIDORT, (2) using the logarithmic concentrations in the retrieval to avoid numerically plausible but nonphysical negative concentrations and (3) adding the Levenberg–Marquardt modification of the OEM for a better and faster convergence. All input parameters, such as the IASI level 1 spectra, aerosol properties, temperature and humidity profiles and other ancillary data remain unchanged with regard to the previous MAPIR versions.

30 Using concentrations in the logarithmic space induces different underlying constraints on the state vector than before. In cases with high aerosol concentrations, the retrievals will be less constrained by the a priori and more sensitive to the true profile. Conversely, retrievals are more constrained in regions with low aerosol concentrations (Deeter et al., 2007).

MAPIR v4.1 has been applied to almost 11 years of IASI measurements, resulting in a large data set that makes it possible

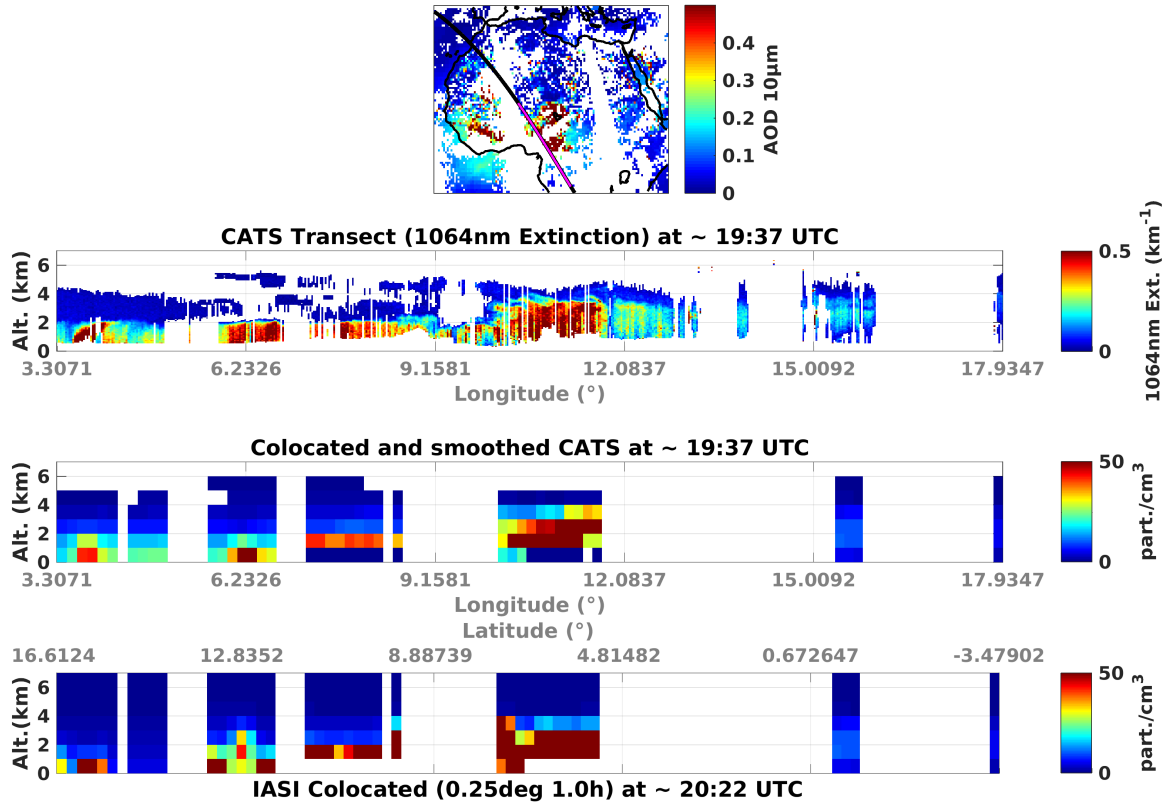


Figure 11. Mineral dust profile comparison along the CATS track on 16 February 2017. The first plot gives the global retrieved AOD by MAPIR together with the pathway of CATS that could be co-located with IASI in time and space. The part which corresponds to the plotted profiles below is given in pink. It covers the Sahel region. The second plot shows the dust extinction profiles along the pink track, as measured by CATS. On the third plot, the CATS data smoothed according to Eq. (7) is presented, on those locations where there is a MAPIR profile. Finally, the fourth plot presents the averaged MAPIR profiles along the track.

to accurately assess the quality of the updated algorithm. The results show a significant increase in retrieval quality (from 40 % to 16 % bad retrievals) and convergence (from about 0.8 % to 0.6 % non-converging). There is an increase of MAPIR data quality over time, most likely due to the evolution of the different EUMETSAT IASI level 2 products for temperature profiles used in MAPIR retrievals. The goodness of fit of the retrievals (after quality filtering) is represented by a median root mean square of the spectral residuals of 0.32 K.

The information content of the retrievals is assessed through the so-called averaging kernels (AKs) obtained from the OEM. The trace of those AKs provides the number of degrees of freedom (DOF) or independent pieces of information which can be retrieved from the observations, considering the instrumental noise and the a priori knowledge of the atmosphere. For dusty scenes ($\text{AOD} \geq 0.5$) there is a median DOF of 1.4. For non-dusty scenes, the DOF can be very low due to the constraints

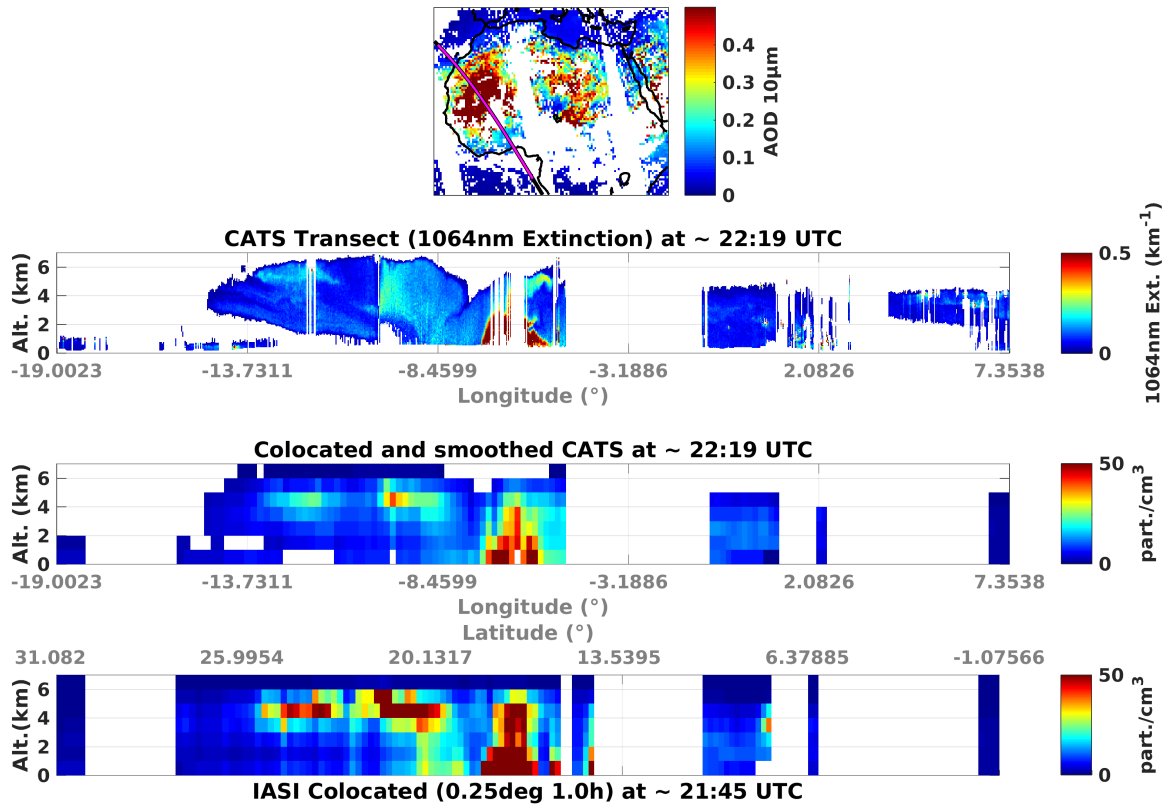


Figure 12. Same as Fig. 11 but with a co-located track on 19 June 2015. The pink track covers Western Sahara.

associated with log-normal retrievals.

This new 3-D data set of mineral dust has been ~~validated~~evaluated using data from the ground-based AERONET network, the CALIOP satellite data, data from the CATS instrument onboard the international space station and data from two ground-based lidar sites, at M'Bour (Senegal) and Al Dhaid (United Arab Emirates).

- 5 First, a selection of 72 AERONET sites was used to compare the dust AOD obtained from the integrated MAPIR profiles to the AERONET SDA coarse mode AOD at 500 nm. Overall there is a strong correlation of up to 0.88, especially over Northern India and Sahara and Sahel regions. A limited number of stations show a weaker correlation which can be caused by various reasons: a specific station location between different air masses, biased statistics due to misrepresentation of the actual AOD distribution at a specific station, AERONET SDA being sensitive to another type of coarse mode aerosol than dust or unrealistic
- 10 MAPIR retrieval input data (temperature profiles, surface emissivity) leading to lesser quality retrieved information. However, in general MAPIR is quite good at reproducing AERONET AOD with a mean ~~negative~~positive AOD bias of only 0.04 over all stations along the whole time series. The AOD overestimation observed with previous versions of MAPIR is therefore now solved.

The MAPIR mean dust layer altitudes were compared with the CALIOP geometric mean and cumulative extinction dust layer altitudes. In those comparisons, the time difference between IASI and CALIOP (3 to 5 hours) is accounted for, using the FLEXTRA transport model to simulate the transport of the air masses observed by CALIOP backwards in time to the IASI observation time. MAPIR v4.1 underestimates the CALIOP cumulative extinction and geometric mean dust layer altitudes for the 2017 sample by 0.322 ± 1.044 km and 0.640 ± 1.031 km, respectively. Considering that the MAPIR profiles are retrieved with a resolution of 1 km, this comparison shows the dust layer altitude from MAPIR v4.1 is rather accurate. The standard deviation of the difference between the MAPIR and CALIOP altitude is consistently smaller by about 0.1 km for MAPIR v4.1 compared with earlier MAPIR versions. Furthermore, comparing 2010 and 2017 results, the improved IASI temperature profiles (from EUMETSAT), used as input to our retrievals, appears to lead to smaller differences between MAPIR and CALIOP altitudes.

Finally, the full vertical profiles were qualitatively compared with data from two ground-based lidar sites and from the CATS instrument. Four months of lidar measurements at M'Bour near Dakar, Senegal, were compared with the associated MAPIR profiles. Both instruments detected similar dust plumes at the same times. In Al Dhaid, United Arab Emirates, almost all dust events that were detected by the lidar during the two-month comparison period, were also seen in the MAPIR data. However, MAPIR also detects a constant low altitude low concentration dust layer not seen with the lidar. A very good agreement was obtained when comparing the MAPIR profiles with the measured extinction by CATS. MAPIR showed the ability to reproduce the CATS dust plumes both at low and high altitudes over bright surfaces, such as Sahara and Sahel. Overall, these qualitative profile comparisons give us confidence in the competence of MAPIR to retrieve mineral aerosol profiles. In particular, the full profile comparisons were selected as being in areas close to sources, where the temporal difference with CALIOP does not ensure that both instruments observe the same air mass, while with CATS and the ground-based instruments a maximum time difference of 1 hour was accepted for the comparisons.

We have shown that the new MAPIR algorithm provides reliable AOD, dust layer mean altitude and profiles. Together with the extensive spatial and temporal coverage of IASI, MAPIR v4.1 is a new powerful tool to improve the understanding of the 3-D dust distribution over time.

Future work to further improve the MAPIR algorithm can include the better characterization of ~~aerosols by implementing a more complex the dust aerosols~~. Possible improvements are the use of more recent refractive index data, for example those of Di Biagio et al. (2017) and the use of a bi-modal particle size distribution ~~and varying refractive index~~. Also, Both represent significant scientific work: the development of an automated selection of the best refractive index and/or the retrieval of an additional parameter being the ratio between the 2 modes of the particle size distribution. In addition, assuming non-spherical particles would make the aerosol representation more realistic, which is especially important for the conversion to visible AOD. Further, the product would benefit from a better cloud and dust filter. An improved cloud filter would add valuable information on the most intense dust events as those are often missed now, being misflagged as clouds in the ~~EUMETSAT IASI operational level 2~~ cloud product. Finally, as the retrieval is much affected by the quality of surface emissivity and temperature profiles, improved data sets of these input parameters could also increase the accuracy of MAPIR in the future.

Data availability. Under the Copernicus Climate Change Service aerosols project, the MAPIR dust 10 μm and 550 nm AOD and the MAPIR dust aerosol mean altitude were submitted to the Copernicus Climate Data Store where they currently undergo technical processing. The full profiles (and the AOD and mean altitude) from MAPIR are available upon request to the authors

Appendix A: AERONET - MAPIR data

This appendix contains additional data from the comparison between AOD at AERONET stations and AOD from MAPIR. In Table A1 a list of the AERONET stations that were used for this study is given together with their coordinates and correlation parameters.

Table A1: List of the 72 AERONET sites selected for the [validation-evaluation](#) study, together with their geographical coordinates and the results from the regression analysis: geographical location, latitude, longitude, number of observations used in the analysis, Pearson correlation coefficient between AOD at the site and MAPIR, slope and Y-intersection of the regression line. The standard deviation of the correlation and regression parameters is also given. [Coastal sites where the AERONET coarse mode AOD is potentially impacted by sea salt are marked with an asterisk after their name.](#)

Site	Geogr. terr.	Lat.(°)	Long.(°)	Nb	Corr.	σ_{corr}	Slope	σ_{slope}	Inters.	σ_{inters}
Abu Al Bukhoosh	UAE	25.50	53.15	355	0.73	0.04	0.48	0.02	0.14	0.01
Bukhoosh*										
Alboran Alboran*	Spain	35.94	−3.35	191	0.71	0.05	0.56	0.04	0.05	0.01
Arica Arica*	Chile	−18.47	−70.31	493	0.07	0.05	0.03	0.02	0.03	0.00
Bakersfield	USA	35.33	−119.00	715	0.22	0.04	0.68	0.12	0.04	0.01
Bambey-ISRA	Senegal	14.71	−16.48	157	0.75	0.05	0.86	0.06	−0.02	0.03
Barbados	Barbados	13.15	−59.62	133	0.66	0.07	0.51	0.05	0.06	0.01
SALTRACE										
SALTRACE*										
Beijing-CAMS	China	39.93	116.32	1562	0.64	0.02	0.89	0.03	0.12	0.00
Beijing	China	39.98	116.38	833	0.71	0.02	0.75	0.03	0.14	0.00
Beijing RAD1	China	40.00	116.38	172	0.85	0.04	1.09	0.05	0.12	0.01
Ben Salem	Tunesia	35.55	9.91	514	0.79	0.03	0.80	0.03	0.06	0.00
Blida	Algeria	36.51	2.88	800	0.73	0.02	0.70	0.02	0.05	0.00
Cairo EMA 2	Egypt	30.08	31.29	2022	0.66	0.02	0.60	0.02	0.03	0.00
Calhau Calhau*	Cape Verde	16.86	−24.87	391	0.75	0.03	0.65	0.03	0.09	0.01
Camaguey	Cuba	21.42	−77.85	1347	0.54	0.02	0.52	0.02	0.00	0.00
Camaguey*										
Cape San Juan Juan*	Puerto Rico	18.38	−65.62	1052	0.71	0.02	0.53	0.02	0.02	0.00
Capo Verde Verde*	Cape verde	16.73	−22.94	177	0.75	0.05	0.64	0.04	0.09	0.02
CUT-TEPAK	Cyprus	34.67	33.04	1206	0.61	0.02	0.46	0.02	0.04	0.00
CUT-TEPAK*										
Dakar Dakar*	Senegal	14.39	−16.96	2410	0.57	0.02	0.62	0.02	0.13	0.01
Dhadnah Dhadnah*	UAE	25.51	56.32	496	0.74	0.03	0.74	0.03	0.10	0.01

Continued on next page

Table A1: List of the 72 AERONET sites selected for the [validation-evaluation](#) study, together with their geographical coordinates and the results from the regression analysis: geographical location, latitude, longitude, number of observations used in the analysis, Pearson correlation coefficient between AOD at the site and MAPIR, slope and Y-intersection of the regression line. The standard deviation of the correlation and regression parameters is also given. [Coastal sites where the AERONET coarse mode AOD is potentially impacted by sea salt are marked with an asterisk after their name.](#)

Site	Geogr. terr.	Lat.(°)	Long.(°)	Nb	Corr.	σ_{corr}	Slope	σ_{slope}	Inters.	σ_{inters}
Dhaka University	Bangladesh	23.73	90.40	794	0.77	0.02	0.76	0.02	0.01	0.00
Dushanbe	Tajikistan	38.55	68.86	2084	0.74	0.02	0.74	0.02	0.04	0.00
Eilat-Eilat*	Israel	29.50	34.92	2243	0.51	0.02	0.55	0.02	0.07	0.00
Gandhi College	India	25.87	84.13	1377	0.74	0.02	0.87	0.02	0.09	0.01
Guadeloup	France/Carribean	16.22	-61.53	903	0.73	0.02	0.57	0.02	0.01	0.00
Guadeloup*										
Gual Pahari	India	28.43	77.15	473	0.86	0.02	0.92	0.03	0.08	0.01
Hada El-Sham	Saudi Arabia	21.80	39.73	469	0.60	0.04	0.58	0.04	0.21	0.01
ICIPE-Mbita	Kenia	-0.43	34.21	826	0.54	0.03	0.47	0.03	0.02	0.00
IER Cinzana	Mali	13.28	-5.93	114	0.84	0.05	0.79	0.05	0.08	0.02
Ilorin	Nigeria	8.48	4.67	1340	0.85	0.01	0.71	0.01	0.13	0.01
IMS-METU-ERDEMLI	Turkey	36.56	34.26	2498	0.27	0.02	0.15	0.01	0.06	0.00
IMS-METU-ERDEMLI*										
Jaipur	India	26.91	75.81	2651	0.81	0.01	1.00	0.01	0.11	0.00
Kanpur	India	26.51	80.23	2751	0.81	0.01	0.86	0.01	0.10	0.00
Karachi	Pakistan	24.95	67.14	1344	0.76	0.02	0.74	0.02	0.08	0.01
Kathmandu-Bode	Nepal	27.68	85.39	505	0.79	0.02	0.92	0.02	-0.00	0.00
KAUST Campus	Saudi Arabia	22.30	39.10	1550	0.67	0.02	0.56	0.02	0.12	0.00
Campus*										
Koforidua ANUC	Ghana	6.11	-0.30	404	0.86	0.03	0.65	0.02	0.11	0.01
Kuwait University	Kuwait	29.32	47.97	299	0.19	0.06	0.47	0.14	0.34	0.06
Lahore	Pakistan	31.48	74.26	1254	0.72	0.02	0.86	0.02	0.15	0.01
La Laguna-Laguna*	Tenerife	28.48	-16.32	1621	0.69	0.02	0.68	0.02	0.04	0.00
Lampedusa	Italy	35.52	12.63	1690	0.46	0.02	0.31	0.02	0.07	0.00
Lampedusa*										
La Parguera	Puerto Rico	17.97	-67.05	2679	0.72	0.01	0.61	0.01	0.01	0.00
Parguera*										
Lumbini	Nepal	27.49	83.28	582	0.82	0.02	0.94	0.03	0.09	0.01
Mandalay MTU	Myanmar	21.97	96.19	383	0.73	0.04	0.75	0.04	0.02	0.00
Masdar Institute	UAE	24.44	54.62	1530	0.79	0.02	0.80	0.02	0.09	0.00
Institute*										

Continued on next page

Table A1: List of the 72 AERONET sites selected for the validation-evaluation study, together with their geographical coordinates and the results from the regression analysis: geographical location, latitude, longitude, number of observations used in the analysis, Pearson correlation coefficient between AOD at the site and MAPIR, slope and Y-intersection of the regression line. The standard deviation of the correlation and regression parameters is also given. Coastal sites where the AERONET coarse mode AOD is potentially impacted by sea salt are marked with an asterisk after their name.

Site	Geogr. terr.	Lat.(°)	Long.(°)	Nb	Corr.	σ_{corr}	Slope	σ_{slope}	Inters.	σ_{inters}
MCO-Hanimaadhoo	Maldives	6.78	73.18	1362	0.62	0.02	0.45	0.02	0.02	0.00
<u>MCO-Hanimaadhoo*</u>										
Mezaira	UAE	23.10	53.75	1905	0.48	0.02	0.75	0.03	0.12	0.01
Mussafa-Mussafa*	UAE	24.37	54.47	563	0.82	0.02	0.64	0.02	0.09	0.01
Myanmar	Myanmar	16.86	96.15	154	0.54	0.07	0.45	0.06	0.02	0.00
Nainital	India	29.36	79.46	361	0.77	0.03	1.27	0.06	0.03	0.01
NEON	GUAN Puerto Rico	17.97	-66.87	197	0.58	0.06	0.50	0.05	0.03	0.00
<u>GUAN*</u>										
Nes Ziona-Ziona*	Israel	31.92	34.79	1675	0.63	0.02	0.54	0.02	0.07	0.00
New Delhi IMD	India	28.59	77.22	168	0.82	0.04	1.00	0.05	0.08	0.02
New Delhi	India	28.63	77.18	134	0.76	0.06	0.71	0.05	0.15	0.02
NUIST	China	32.21	118.72	182	0.52	0.06	0.55	0.07	0.11	0.02
Oujda	Morocco	34.65	-1.90	1438	0.88	0.01	0.89	0.01	0.04	0.00
Pantnagar	India	29.05	79.52	318	0.71	0.04	0.82	0.05	0.09	0.01
Ragged Point-Point*	Barbados	13.17	-59.43	2271	0.66	0.02	0.55	0.01	0.02	0.00
Saada	Morocco	31.63	-8.16	364	0.79	0.03	0.95	0.04	0.05	0.01
SACOL	China	35.95	104.14	410	0.94	0.02	0.99	0.02	0.04	0.01
Santa Cruz	Tenerife	28.47	-16.25	2620	0.57	0.02	0.53	0.02	0.05	0.00
<u>Tenerife*</u>										
Sao Tome-Tome*	Sao Tome and Principe	0.37	6.71	96	0.86	0.05	0.87	0.05	0.00	0.01
SEDE BOKER	Israel	30.86	34.78	3525	0.64	0.01	0.62	0.01	0.05	0.00
Shagaya Park	Kuwait	29.21	47.06	156	0.65	0.06	0.46	0.04	0.02	0.01
Solar Village	Saudi Arabia	24.91	46.40	1996	0.57	0.02	0.52	0.02	0.11	0.01
Taihu	China	31.42	120.22	361	0.64	0.04	0.80	0.05	0.04	0.01
Tamanrasset INM	Algeria	22.79	5.53	3187	0.41	0.02	1.04	0.04	0.41	0.01
Tizi Ouzou	Algeria	36.70	4.06	1177	0.70	0.02	0.68	0.02	0.06	0.00
Tunis Carthage	Tunesia	36.84	10.20	1196	0.70	0.02	0.57	0.02	0.05	0.00
UPC-GEAB-	Colombia	9.56	-73.33	111	-0.11	0.09	-0.07	0.07	0.04	0.00
Valledupar										

Continued on next page

Table A1: List of the 72 AERONET sites selected for the [validation-evaluation](#) study, together with their geographical coordinates and the results from the regression analysis: geographical location, latitude, longitude, number of observations used in the analysis, Pearson correlation coefficient between AOD at the site and MAPIR, slope and Y-intersection of the regression line. The standard deviation of the correlation and regression parameters is also given. [Coastal sites where the AERONET coarse mode AOD is potentially impacted by sea salt are marked with an asterisk after their name.](#)

Site	Geogr. terr.	Lat.(°)	Long.(°)	Nb	Corr.	σ_{corr}	Slope	σ_{slope}	Inters.	σ_{inters}
Weizmann Institute*	Israel	31.91	34.81	944	0.71	0.02	0.61	0.02	0.06	0.00
XiangHe	China	39.75	116.96	2744	0.60	0.02	0.70	0.02	0.13	0.00
Zinder Airport	Niger	13.78	8.99	203	0.49	0.06	0.70	0.09	0.24	0.04

Competing interests. The authors declare that they have no conflict of interest.

Acknowledgements. The development of the MAPIR algorithm was supported by the European Space Agency (ESA) as part of the Aerosol_cci project, by the Belgian Science Policy (BELSPO) supplementary researcher program and by the ESA/BELSPO PRODEX program under the IASI.flow project phases 2 and 3. [The data processing was partially funded by the European Center for Medium-Range Weather Forecast \(ECMWF\) Copernicus Climate Change Services \(C3S\) project 312a and 312b.](#) We would like to thank the EUMETSAT service for providing the IASI data. Our thanks goes also to all involved with the necessary data sets for input and [validation-evaluation](#). We thank the principal investigators of AERONET and their staff for establishing and maintaining the 72 sites used in the AOD analysis study. We are grateful to the NASA Atmospheric Science Data Center for providing CALIOP data. We would like to acknowledge ACTRIS-France, the Service National d’Observations PHOTONS/AERONET and the IRD (Institut de Recherche pour le Développement) for the lidar data near Dakar. The lidar profiles used for the profile comparisons at Al Dhaid, UAE are based on work supported by the National Center of Meteorology, Abu Dhabi, UAE, under the UAE Research Program for Rain Enhancement Science. Our thanks goes to Matthew McGill, John Yorks and Dennis Hlavka for establishing the CATS data set. We thank Jeffrey Reid, Logan Lee and Jianglong Zhang for interesting and useful scientific exchanges about CATS. The participants of the COST action CA16202 inDust are praised for fruitful discussions. We also acknowledge the BIRA-IASB IT team for providing support in the processing of the MAPIR data set, [and Jérôme Vidot \(Meteo France\) for his help in starting up with RTTOV and preparing the aerosols table for our specific parameters.](#)

References

- Althausen, D., Engelmann, R., Baars, H., Heese, B., Ansmann, A., Müller, D., , and Komppula, M.: Portable Raman lidar PollyXT for automated profiling of aerosol backscatter, extinction, and depolarization, *Journal of Atmospheric and Oceanic Technology*, 26, 2366–2378, <https://doi.org/10.1175/2009JTECHA1304.1>, 2009.
- 5 Amiridis, V., Wandinger, U., Marinou, E., Giannakaki, E., Tsekeri, A., Basart, S., Kazadzis, S., Gkikas, A., Taylor, M., Baldasano, J., and Ansmann, A.: Optimizing CALIPSO Saharan dust retrievals, *Atmospheric Chemistry and Physics*, 13, 12089–12106, <https://doi.org/10.5194/acp-13-12089-2013>, 2013.
- Amiridis, V., Marinou, E., Tsekeri, A., Wandinger, U., Schwarz, A., Giannakaki, E., Mamouri, R., Kokkalis, P., Biniotoglou, I., Solomos, S., Herekakis, T., Kazadzis, S., Gerasopoulos, E., Proestakis, E., Kottas, M., Balis, D., Papayannis, A., Kontoes, C., Kourtidis, K., Papiannopoulos, N., Mona, L., Pappalardo, G., Le Rille, O., and Ansmann, A.: LIVAS: a 3-D multi-wavelength aerosol/cloud database based on CALIPSO and EARLINET, *Atmospheric Chemistry and Physics*, 15, 7127–7153, <https://doi.org/10.5194/acp-15-7127-2015>, 2015.
- 10 Ansmann, A., Riebesell, M., and Weitkamp, C.: Measurement of atmospheric aerosol extinction profiles with a Raman lidar, *Optics Letters*, 15, 746–748, 1990.
- Ashpole, I. and Washington, R.: A new high-resolution central and western Saharan summertime dust source map from automated satellite dust plume tracking, *J. Geophys. Res. Atmos.*, 118, 1–15, <https://doi.org/10.1002/jgrd.50554>, <http://dx.doi.org/10.1002/jgrd.50554>, 2013.
- 15 Boucher, O., Randall, D., Artaxo, P., Bretherton, C., Feingold, G., Forster, P., Kerminen, V.-M., Kondo, Y., Liao, H., Lohmann, U., Rasch, P., Satheesh, S., Sherwood, S. and Stevens, B., and Zhang, X.: *Climate Change 2013: The Physical Science Basis. Contribution of Working Group I to the Fifth Assessment Report of the Intergovernmental Panel on Climate Change*, chap. Clouds and Aerosols, pp. 571–657, Cambridge University Press, Cambridge, United Kingdom and New York, NY, USA, https://www.ipcc.ch/pdf/assessment-report/ar5/wg1/WG1AR5_Chapter07_FINAL.pdf, 2013.
- 20 Capelle, V., Chédin, A., Siméon, M., Tsamalis, C., Pierangelo, C., Pondrom, M., Crevoisier, C., Crepeau, L., and Scott, N. A.: Evaluation of IASI-derived dust aerosol characteristics over the tropical belt, *Atmospheric Chemistry and Physics*, 14, 9343–9362, <https://doi.org/10.5194/acp-14-9343-2014>, <http://www.atmos-chem-phys.net/14/9343/2014/>, 2014.
- Capelle, V., Chédin, A., Pondrom, M., Crevoisier, C., Armante, R., Crepeau, L., and Scott, N.: Infrared dust aerosol optical depth retrieved daily from IASI and comparison with AERONET over the period 2007–2016, *Remote Sensing of Environment*, 206, 15 – 32, <https://doi.org/https://doi.org/10.1016/j.rse.2017.12.008>, <http://www.sciencedirect.com/science/article/pii/S0034425717305837>, 2018.
- 25 Ceccherini, S. and Ridolfi, M.: Technical Note: Variance-covariance matrix and averaging kernels for the Levenberg-Marquardt solution of the retrieval of atmospheric vertical profiles, *Atmospheric Chemistry and Physics*, 10, 3131–3139, <https://doi.org/10.5194/acp-10-3131-2010>, 2010.
- 30 Chazette, P., Dabas, A., Sanak, J., Lardier, M., and Royer, P.: French airborne lidar measurements for Eyjafjallajökull ash plume survey, *Atmospheric Chemistry and Physics*, 12, 7059–7072, <https://doi.org/10.5194/acp-12-7059-2012>, <https://www.atmos-chem-phys.net/12/7059/2012/>, 2012.
- Clarisse, L., Clerbaux, C., Franco, B., Hadji-Lazaro, J., Whitburn, S., Kopp, A. K., Hurtmans, D., and Coheur, P.-F.: A Decadal Data Set of Global Atmospheric Dust Retrieved From IASI Satellite Measurements, *Journal of Geophysical Research: Atmospheres*, 0, <https://doi.org/10.1029/2018JD029701>, 2019.
- 35

- Clerbaux, C., Boynard, A., Clarisse, L., George, M., Hadji-Lazaro, J., Herbin, H., Hurtmans, D., Pommier, M., Razavi, A., Turquety, S., Wespes, C., and Coheur, P.-F.: Monitoring of atmospheric composition using the thermal infrared IASI/MetOp sounder, *Atmospheric Chemistry and Physics*, 9, 6041–6054, <https://doi.org/10.5194/acp-9-6041-2009>, <http://www.atmos-chem-phys.net/9/6041/2009/>, 2009.
- Cuesta, J., Eremenko, M., Flamant, C., Dufour, G., Laurent, B., Bergametti, G., Höpfner, M., Orphal, J., and Zhou, D.: Three-dimensional distribution of a major desert dust outbreak over East Asia in March 2008 derived from IASI satellite observations, *J. Geophys. Res. Atmos.*, 120, 7099–7127, <http://dx.doi.org/10.1002/2014JD022406>, 2015.
- Deeter, M. N., Edwards, D. P., and Gille, J. C.: Retrievals of carbon monoxide profiles from MOPITT observations using lognormal a priori statistics, *Journal of Geophysical Research*, 112, <https://doi.org/10.1029/2006JD007999>, <https://agupubs.pericles-prod.literatumonline.com/doi/abs/10.1029/2006JD007999>, 2007.
- DeSouza-Machado, S. G., Strow, L. L., Imbiriba, B., McCann, K., Hoff, R. M., Hannon, S. E., Martins, J. V., Tanré, D., Deuzé, J. L., Ducos, F., and Torres, O.: Infrared retrievals of dust using AIRS: Comparisons of optical depths and heights derived for a North African dust storm to other collocated EOS A-Train and surface observations, *J. Geophys. Res.*, 115, D15 201, <http://dx.doi.org/10.1029/2009JD012842>, 2010.
- Deuzé, J. L., Bréon, F. M., Devaux, C., Goloub, P., Herman, M., Lafrance, B., Maignan, F., Marchand, A., Nadal, F., Perry, G., and Tanré, D.: Remote sensing of aerosols over land surfaces from POLDER-ADEOS-1 polarized measurements, *Journal of Geophysical Research: Atmospheres*, 106, 4913–4926, <https://doi.org/10.1029/2000JD900364>, <https://agupubs.onlinelibrary.wiley.com/doi/abs/10.1029/2000JD900364>, 2001.
- Di Biagio, C., Formenti, P., Balkanski, Y., Caponi, L., Cazaunau, M., Pangui, E., Journet, E., Nowak, S., Caqueneau, S., Andreae, M. O., Kandler, K., Saeed, T., Piketh, S., Seibert, D., Williams, E., and Doussin, J.-F.: Global scale variability of the mineral dust long-wave refractive index: a new dataset of in situ measurements for climate modeling and remote sensing, *Atmospheric Chemistry and Physics*, 17, 1901–1929, <https://doi.org/10.5194/acp-17-1901-2017>, <http://www.atmos-chem-phys.net/17/1901/2017/>, 2017.
- Engelmann, R., Kanitz, T., Baars, H., Heese, B., Althausen, D., Skupin, A., Wandinger, U., M., K., Stachlewska, I. S., Amiridis, V., Marinou, E., Mattis, I., Linné, H., and Ansmann, A.: The automated multiwavelength Raman polarization and water-vapor lidar PollyXT: the neXT generation, *Atmospheric Measurement Techniques*, 9, 1767–1784, <https://doi.org/10.5194/amt-9-1767-2016>, 2016.
- Groß, S., Freudenthaler, V., Schepanski, K., Toledano, C., Schäfler, A., Ansmann, A., and Weinzierl, B.: Optical properties of long-range transported Saharan dust over Barbados as measured by dual-wavelength depolarization Raman lidar measurements, *Atmospheric Chemistry and Physics*, 15, 11 067–11 080, <https://doi.org/10.5194/acp-15-11067-2015>, <http://www.atmos-chem-phys.net/15/11067/2015/>, 2015.
- Holben, B., Eck, T., Slutsker, I., Tanré, D., Buis, J., Setzer, A., Vermote, E., Reagan, J., Kaufman, Y., Nakajima, T., Lavenue, F., Jankowiak, I., and Smirnov, A.: AERONET—A Federated Instrument Network and Data Archive for Aerosol Characterization, *Remote Sensing of Environment*, 66, 1 – 16, [https://doi.org/https://doi.org/10.1016/S0034-4257\(98\)00031-5](https://doi.org/https://doi.org/10.1016/S0034-4257(98)00031-5), 1998.
- Jackson, J. M., Liu, H., Laszlo, I., Kondragunta, S., Remer, L. A., Huang, J., and Huang, H.-C.: Suomi-NPP VIIRS aerosol algorithms and data products, *Journal of Geophysical Research: Atmospheres*, 118, 12,673–12,689, <https://doi.org/10.1002/2013JD020449>, <https://agupubs.onlinelibrary.wiley.com/doi/abs/10.1002/2013JD020449>, 2013.
- Johnson, B. T. and Osborne, S. R.: Physical and optical properties of mineral dust aerosol measured by aircraft during the GERBILS campaign, *Quarterly Journal of the Royal Meteorological Society*, 137, 1117–1130, <https://doi.org/10.1002/qj.777>, 2011.
- Klett, J. D.: Stable analytical inversion solution for processing lidar returns, *Appl. Opt.*, 20, 211–220, <https://doi.org/10.1364/AO.20.000211>, <http://ao.osa.org/abstract.cfm?URI=ao-20-2-211>, 1981.
- Knippertz, P. and Stuut, J.-B. W.: *Mineral Dust: A Key Player in the Earth System*, Springer, 2014.

- Kylling, A., Vandenbussche, S., Capelle, V., Cuesta, J., Klüser, L., Lelli, L., Popp, T., Stebel, K., and Veefkind, P.: Comparison of dust-layer heights from active and passive satellite sensors, *Atmospheric Measurement Techniques*, 11, 2911–2936, <https://doi.org/10.5194/amt-11-2911-2018>, <https://www.atmos-meas-tech.net/11/2911/2018/>, 2018.
- Lee, L., Zhang, J., Reid, J. S., and Yorks, J. E.: Investigation of CATS aerosol products and application toward global diurnal variation of aerosols, *Atmospheric Chemistry and Physics Discussions*, 2018, 1–47, <https://doi.org/10.5194/acp-2018-1298>, 2018.
- Levenberg, K.: A method for the solution of certain problems in least squares., *Q.Appl.Math.*, 2, 164–168, 1944.
- Levy, R. C., Mattoo, S., Munchak, L. A., Remer, L. A., Sayer, A. M., Patadia, F., and Hsu, N. C.: The Collection 6 MODIS aerosol products over land and ocean, *Atmospheric Measurement Techniques*, 6, 2989–3034, <https://doi.org/10.5194/amt-6-2989-2013>, <http://www.atmos-meas-tech.net/6/2989/2013/>, 2013.
- 10 Maes, K., Vandenbussche, S., Klüser, L., Kumps, N., and De Mazière, M.: Vertical Profiling of Volcanic Ash from the 2011 Puyehue Cordón Caulle Eruption Using IASI, *Remote Sensing*, 8, <https://doi.org/10.3390/rs8020103>, <http://www.mdpi.com/2072-4292/8/2/103>, 2016.
- Marquardt, D.: An algorithm for the least-squares estimation of nonlinear parameters, *J.Appl.Math.*, 11, 431–441, 1963.
- Massie, S.: Indices of refraction for the Hitran compilation, *Journal of Quantitative Spectroscopy and Radiative Transfer*, 52, 501–513, 1994.
- Massie, S. and Goldman, A.: The infrared absorption cross-section and refractive-index data in HITRAN, *Journal of Quantitative Spectroscopy and Radiative Transfer*, 82, 413–428, 2003.
- 15 McGill, M. J., Yorks, J. E., Scott, S. V., Kupchok, A. W., and Selmer, P. A.: The Cloud-Aerosol Transport System (CATS): a technology demonstration on the International Space Station, *Proc.SPIE*, 9612, 9612 – 9612 – 6, <https://doi.org/10.1117/12.2190841>, 2015.
- Mortier, A., Goloub, P., Derimian, Y., Tanré, D., Podvin, T., Blarel, L., Deroo, C., Marticorena, B., Diallo, A., and Ndiaye, T.: Climatology of aerosol properties and clear-sky shortwave radiative effects using Lidar and Sun photometer observations in the Dakar site., *Journal of Geophysical Research: Atmospheres*, 121, 6489–6510, <https://doi.org/10.1002/2015JD024588>, 2016.
- 20 Newman, S. M., Smith, J. A., Glew, M. D., Rogers, S. M., and Taylor, J. P.: Temperature and salinity dependence of sea surface emissivity in the thermal infrared, *Quarterly Journal of the Royal Meteorological Society*, 131, 2539–2557, <https://doi.org/10.1256/qj.04.150>, <http://dx.doi.org/10.1256/qj.04.150>, 2005.
- Popp, T., De Leeuw, G., Bingen, C., Brühl, C. and Capelle, V., Chedin, A., Clarisse, L., Dubovik, O., Grainger, R., Griesfeller, J., Heckel, A., Kinne, S., Klüser, L., Kosmale, M., Kolmonen, P., Lelli, L., Litvinov, P., Mei, L., North, P., Pinnock, S., Povey, A., Robert, C., Schulz, M., Sogacheva, L., Stebel, K., Stein Zweers, D., Thomas, G., Tilstra, L., Vandenbussche, S., Veefkind, P., Vountas, M., and Xue, Y.: Development, Production and Evaluation of Aerosol Climate Data Records from European Satellite Observations (Aerosol_cci), *Remote Sensing*, 8, 421, <https://doi.org/10.3390/rs8050>, 2016.
- 25 Remer, L. A., Kaufman, Y. J., Tanré, D., Mattoo, S., Chu, D. A., Martins, J. V., Li, R.-R., Ichoku, C., Levy, R. C., Kleidman, R. G., Eck, T. F., Vermote, E., and Holben, B. N.: The MODIS Aerosol Algorithm, Products, and Validation, *J. Atmos. Sci.*, 62, 947–973, <http://dx.doi.org/10.1175/JAS3385.1>, 2005.
- 30 Rodgers, C. D.: Inverse Methods for Atmospheric Sounding - Theory and Practice, vol. 2 of *Series on Atmospheric, Oceanic and Planetary Physics*, World Scientific, 2000.
- Rodgers, C. D. and Connor, B. J.: Intercomparison of remote sounding instruments, *Journal of Geophysical Research: Atmospheres*, 108, <https://doi.org/10.1029/2002JD002299>, 2003.
- 35 Saunders, R., Hocking, J., Rundle, D., Rayer, P., Havemann, S., Matricardi, M., Geer, A., Lupu, C., Brunel, P., and Vidot, J.: RTTOV-12 Science and Validation Report, Tech. rep., EUMETSAT, 2017.

- Schepanski, K., Tegen, I., and Macke, A.: Comparison of satellite based observations of Saharan dust source areas, *Remote Sensing of Environment*, 123, 90–97, <http://www.sciencedirect.com/science/article/pii/S0034425712001381>, 2012.
- Shang, X., Chazette, P., and Totems, J.: Analysis of a warehouse fire smoke plume over Paris with an N₂ Raman lidar and an optical thickness matching algorithm, *Atmospheric Measurement Techniques*, 11, 6525–6538, <https://doi.org/10.5194/amt-11-6525-2018>, <https://www.atmos-meas-tech.net/11/6525/2018/>, 2018.
- Shettle, E. P. and Fenn, R. W.: Models for the Aerosols of the Lower Atmosphere and the Effects of Humidity Variations on Their Optical Properties, AFGL-TR-79-0214, 1979.
- Spurr, R.: LIDORT and VLIDORT: Linearized pseudo-spherical scalar and vector discrete ordinate radiative transfer models for use in remote sensing retrieval problems, in: *Light Scattering Reviews 3*, edited by Kokhanovsky, A. A., Springer Praxis Books, pp. 229–275, Springer Berlin Heidelberg, http://dx.doi.org/10.1007/978-3-540-48546-9_7, 10.1007/978-3-540-48546-9_7, 2008.
- Stohl, A., Wotawa, G., Seibert, P., and Kromp-Kolb, H.: Interpolation Errors in Wind Fields as a Function of Spatial and Temporal Resolution and Their Impact on Different Types of Kinematic Trajectories, *Journal of Applied Meteorology*, 34, 2149–2165, [https://doi.org/10.1175/1520-0450\(1995\)034<2149:IEIWFA>2.0.CO;2](https://doi.org/10.1175/1520-0450(1995)034<2149:IEIWFA>2.0.CO;2), 1995.
- Tesche, M., Ansmann, A., Müller, D., Althausen, D., Engelmann, R., Freudenthaler, V., and Groß, S.: Vertically resolved separation of dust and smoke over Cape Verde using multiwavelength Raman and polarization lidars during Saharan Mineral Dust Experiment 2008, *Journal of Geophysical Research: Atmospheres*, 114, <https://doi.org/10.1029/2009JD011862>, <https://agupubs.onlinelibrary.wiley.com/doi/abs/10.1029/2009JD011862>, 2009.
- Todd, M. C. and Cavazos-Guerra, C.: Dust aerosol emission over the Sahara during summertime from Cloud-Aerosol Lidar with Orthogonal Polarization (CALIOP) observations, *Atmospheric Environment*, 128, 147 – 157, <https://doi.org/10.1016/j.atmosenv.2015.12.037>, <http://www.sciencedirect.com/science/article/pii/S1352231015306099>, 2016.
- Torres, O., Ahn, C., and Chen, Z.: Improvements to the OMI near-UV aerosol algorithm using A-train CALIOP and AIRS observations, *Atmospheric Measurement Techniques*, 6, 3257–3270, <https://doi.org/10.5194/amt-6-3257-2013>, <http://www.atmos-meas-tech.net/6/3257/2013/>, 2013.
- Vandenbussche, S., Kochenova, S., Vandaele, A. C., Kumps, N., and De Mazière, M.: Retrieval of desert dust aerosol vertical profiles from IASI measurements in the TIR atmospheric window, *Atmospheric Measurement Techniques*, 6, 2577–2591, <https://doi.org/10.5194/amt-6-2577-2013>, <http://www.atmos-meas-tech.net/6/2577/2013/>, 2013.
- Veefkind, J. P., de Leeuw, G., and Durkee, P. A.: Retrieval of aerosol optical depth over land using two-angle view satellite radiometry during TARFOX, *Geophysical Research Letters*, 25, 3135–3138, <https://doi.org/10.1029/98GL02264>, <https://agupubs.onlinelibrary.wiley.com/doi/abs/10.1029/98GL02264>, 1998.
- Volz, F.: Infrared refractive index of atmospheric aerosol substances, *Applied Optics*, 11, 755–759, 1972.
- Volz, F. E.: Infrared Optical Constants of Ammonium Sulfate, Sahara Dust, Volcanic Pumice, and Flyash, *Applied Optics*, 12, 564–568, <https://doi.org/10.1364/AO.12.000564>, <http://www.opticsinfobase.org/ao/abstract.cfm?URI=ao-12-3-564>, 1973.
- Winker, D. M., Tackett, J. L., Getzewich, B. J., Liu, Z., Vaughan, M. A., and Rogers, R. R.: The global 3-D distribution of tropospheric aerosols as characterized by CALIOP, *Atmospheric Chemistry and Physics*, 13, 3345–3361, <https://doi.org/10.5194/acp-13-3345-2013>, <http://www.atmos-chem-phys.net/13/3345/2013/>, 2013.
- Xu, X., Wang, J., Wang, Y., and Kokhanovsky, A.: Chapter 1 - Passive Remote Sensing of Aerosol Height, in: *Remote Sensing of Aerosols, Clouds, and Precipitation*, edited by Islam, T., Hu, Y., Kokhanovsky, A., and Wang, J., pp. 1

- 22, Elsevier, <https://doi.org/https://doi.org/10.1016/B978-0-12-810437-8.00001-3>, <http://www.sciencedirect.com/science/article/pii/B9780128104378000013>, 2018.
- Yorks, J. E., McGill, M. J., Palm, S. P., Hlavka, D. L., Selmer, P. A., Nowotnick, E. P., Vaughan, M. A., Rodier, S. D., and Hart, W. D.: An overview of the CATS level 1 processing algorithms and data products, *Geophysical Research Letters*, 43, 4632–4639, <https://doi.org/10.1002/2016GL068006>, 2016.
- 5 Zhou, D., Larar, A., Liu, X., Smith, W., Strow, L., Yang, P., Schlüssel, P., and Calbet, X.: Global Land Surface Emissivity Retrieved From Satellite Ultraspectral IR Measurements, *Geoscience and Remote Sensing, IEEE Transactions on*, 49, 1277–1290, <https://doi.org/10.1109/TGRS.2010.2051036>, <http://ieeexplore.ieee.org/stamp/stamp.jsp?tp=&arnumber=5523979&isnumber=5738422>, 2011.