

Morphology and Raman spectra of aerodynamically classified soot samples

Alberto Baldelli, Steven Nicholas Rogak¹

¹Department of Mechanical Engineering, University of British Columbia
6250 Applied Science Ln #2054, Vancouver, BC V6T 1Z4

Reply to anonymous reviewer 1

We would like to thank the reviewer for the interest in our publication. We carefully considered the reviewer's comment and we agree with it. Even though we mentioned that some previous studies that encountered a correlation between the morphological and chemical properties of soot aggregate, we agree that these literature references should be cited. Therefore, the following sentence was added at page 2 and line 9: "A few references investigate the chemical and morphological properties soot sampled downstream of a single source operating at constant conditions (Alfe' et al. 2009, Haller et al. 2019, Ghazi et al., 2013). However, these studies did not directly correlate the two types of properties, chemical and morphological. The correlation between particle size and chemical/optical properties can be observed by reviewing the results of a few literature references (Saffaripour et al., 2017, Ess et al. 2016). The present work takes a step towards confirming, verifying and understanding these correlations by applying Transmission Electron Microscopy (TEM) and Raman spectroscopy to soot segregated by aerodynamic diameter."

Reply to anonymous reviewer 2

We appreciate the detailed comments of the reviewer and we carefully considered each of the comments suggested.

Abstract, p1, L15: "5 absorption bands" this is simply wrong. Raman is an inelastic scattering technique and is not related to any absorption phenomena. Just say "5 vibrational bands"

As pointed out by the reviewer, the term "absorption" was wrongly used when associate it with Raman spectroscopy. Therefore, the term absorption was substituted it with the suggested term "vibrational"

P1, L29: "crystalline fullerenic carbon" is not the right wording. Soot either includes crystalline graphite-like carbon, amorphous carbon and very rarely fullerenes. Incomplete fullerene structures (fullerenic carbon?) are caused by defects and are non-planar (incomplete sp² hybridized) and therefore are amorphous.

As in the previous comment, a wrong wording was used. As suggested by the reviewer, the wording "crystalline fullerenic carbon" is substituted with "crystalline graphite-like carbon".

P2, L7: “A correlation between particle size. . . .” You might quote here a recently accepted AMTD paper: Haller, T., Rentenberger, C., Meyer, J. C., Felgitsch, L., Grothe, H., and Hitznerberger, R.: Structural changes of CAST soot during a thermal-optical measurement protocol, *Atmos. Meas. Tech. Discuss.*, <https://doi.org/10.5194/amt2019-10>, in review, 2019.

We agree with the reviewer that the suggested reference needs to be added with other previous literature references regarding the correlation between particle size and chemical/optical properties. This literature reference emphasizes the presence of a relationship between particle size and chemical properties of soot nanoparticles. At page 2 and line 10, the following sentence was added:

“A few references investigate the chemical and morphological properties soot sampled downstream of a single source operating at constant conditions (Alfe’ et al. 2009, Haller et al. 2019, Ghazi et al., 2013). However, these studies did not directly correlate the two types of properties, chemical and morphological. The correlation between particle size and chemical/optical properties can be observed by reviewing the results of a few literature references (Saffaripour et al., 2017, Ess et al. 2016). The present work takes a step towards confirming, verifying and understanding these correlations by applying Transmission Electron Microscopy (TEM) and Raman spectroscopy to soot segregated by aerodynamic diameter”

P2, L12: “Laboratory burners. . . .” You might discuss similarities and differences regarding the CAST burner, which is the most commonly used burner for laboratory soot studies.

The reviewer suggest that CAST burner has to be mentioned while describing alternatives in laboratory burners. Since the CAST burners are extensively used in research studies, we agree that we should discuss the similarities and the differences between CAST burners and inverted burners. Therefore, the following sentence was added at page 2 and line 17:

“Combustion aerosol standard CAST or miniCAST are commonly used since they easy to operate and allow to readily adjust the particle size in a large range, typically between 10 nm and 200 nm (Ess and Vasilatou 2019). Like CAST burners, inverted burners are advantageous because they produce very steady flames with high soot yields (Ghazi et al., 2013). The miniCAST and the mini inverted burner are considered alternative techniques to produce a steady stream of soot particles. The main difference is the lower cost of the mini inverted burner compared to the most popular miniCAST burner.”

P5, L18: “Raman spectroscopy is sensitive not only to. . . .” better write “Raman spectroscopy is sensitive only to short-range order, molecular structures but due to the symmetry of the observed vibrations also structures and morphologies can be differentiated (Sadezky et al. 2005).

As suggested by the reviewer, the sentence at page 5 and at line 18 was modified.

P6, L5: “The titanium substrate was selected. . .” better write “. . .since titanium and TiO₂ exhibit no Raman active vibrations in the area of interest. . .”

We agree with the reviewer that his or her suggestion would be a better wording. Therefore, the sentence at page 6 and at line 5 was modified as follow:

“Since titanium and titanium oxide exhibit no Raman active vibrations in the area of interest, titanium substrates were selected for the Raman analysis”.

P6, L14: Explain how you subtracted the fluorescence of the soot.

The reviewer is interested in the fluorescence subtraction procedure taken in this publication. We did use a straight line in case residual fluoresce was present. However, due to the characteristics of the soot analyzed, which has a high EC content, the experimental conditions, which include long laser wavelengths, and the subtraction procedure, which involves the use if titanium substrate Raman signal as the baseline subtraction, most of samples analyzed did not show any residual fluorescence. In the main publication, a brief explanation is added in page 6 and line 15 as follow:

“By using a long wavelength laser (Grafen et al. 2015) and the titanium substrates Raman signal as baseline subtraction, most of the samples do not show any residual fluorescence. Otherwise, the residual fluorescence was subtracted using a straight line.”

General Comments

- Don't use the word “peak ratios” when describing “band ratios”. Other phrases are: intensity ratios, ratios of band areas, etc.
- Transfer “lpm” into “sccm”
- Major revisions to the conclusion section

As suggested by the reviewer, all the word “peak ratios” were substituted wit “band ratios”. However, the unit of lpm was kept since we consider this unit to be more representative and understandable for the broad range of flow rates used both for the combustion fuel gas and for the air.

In addition, we agree with the reviewer that the conclusion section might appear weak. As a result, some statements have been emphasized since supported by strong experimental results. However, the length of the conclusion section has not been majorly modified since we would like to leave it concise and direct.

Morphology and Raman spectra of aerodynamically-classified soot samples

Alberto Baldelli, Steven Nicholas Rogak¹

5 ¹Department of Mechanical Engineering, University of British Columbia
6250 Applied Science Ln #2054, Vancouver, BC V6T 1Z4

Correspondence to: Alberto Baldelli (baldelli.alberto@yahoo.com)

Abstract. Airborne soot is emitted from combustion processes as aggregates of “primary” particles. The size of the primary particles and the overall aggregate size control soot transport properties, and prior research shows that these parameters may be related to the soot nanostructure. In this work, a laminar, inverted non-premixed burner has been used as a source of soot that is almost completely elemental carbon. The inverted burner was connected to an Electrostatic Low-Pressure Impactor, which collected particles on stages according to the aerodynamic diameter, from 0.3 to 10 μm . The morphology was analyzed using a Transmission Electron Microscope followed by image processing to extract projected area and average primary particle size for each aggregate (approximately 1000 aggregates analyzed in total for the 9 impactor stages). Carbon nanostructure was analyzed using a Raman spectrometer, and 5 vibrational bands (D4, D1, D3, G, and D2) were fitted to the spectra to obtain an estimate of the carbon disorder. The average primary particle diameter increases from 15 to 30 nm as the impactor stage aerodynamic diameter increases. The D1, D3, D2, and D4 bands decreased (relative to the G band) with the particle size, suggesting that the larger aggregates have larger graphitic domains.

Deleted: absorption

1 Introduction

20 Many studies on carbonaceous aerosols, their production, properties, and impacts on the environment and human health have been conducted (Pöschl, 2005). Considering the complexity of the soot formation processes, the diversity of sources that produce it, and the variety of measurement approaches used, it is not surprising that the literature contains a wide range of measured values for soot size, optical properties, and chemical reactivity (relevant to toxicity, behavior in the environment, and behavior in engineered systems such as oxidation traps).

25 Soot is produced through the rapid pyrolysis of fuel molecules followed by nucleation, surface growth, aggregation and oxidation (Frenklach, 2002). Typically, mature soot is composed of graphene layers held together by weak van der Waals interactions, separated by a distance of approximately 0.335 nm (Frenklach, 2002). However, in addition to this structure, soot can contain both amorphous carbon and crystalline graphite-like carbon (Vander Wal et al., 2010). Amorphous soot consists of short, disconnected, and randomly oriented graphene segments (Jaramillo et al., 2014). The amorphous soot includes PAHs and other components, such as aliphatics, sulfates, and metal oxides. The ratio between the amorphous organic carbon and the

Deleted: fullerenic

crystalline graphite-like carbon relates to the condition of the soot formation process (Sadezky et al., 2005). The processes described here lead to the formation of nearly spherical “primary particles” of 10-40 nm diameter that join together through Brownian coagulation into aggregates 50-1000 nm long. Apparently, the majority of this coagulation happens over very short length and timescales, because within each aggregate the primary particle size is quite uniform. This is suggestive of uniform conditions present for the formation of each aggregate (Dastanpour and Rogak, 2014), which would imply that the primary particle size might be correlated with soot chemical and optical properties. If this is true, then variations in soot aggregate properties could provide information on variations in flame reaction zones. A correlation between particle size and chemical/optical properties would have implications for the way that soot is measured and how it would behave in the environment. [A few references investigate the chemical and morphological properties soot sampled downstream of a single source operating at constant conditions \(Alfe' et al. 2009, Haller et al. 2019, Ghazi et al., 2013\). However, these studies did not directly correlate the two types of properties, chemical and morphological. The correlation between particle size and chemical/optical properties can be observed by reviewing the results of a few literature references \(Saffaripour et al., 2017, Ess et al. 2016\).](#) The present work takes a step towards [confirming, verifying and](#) understanding these correlations by applying Transmission Electron Microscopy (TEM) and Raman spectroscopy to soot segregated by aerodynamic diameter.

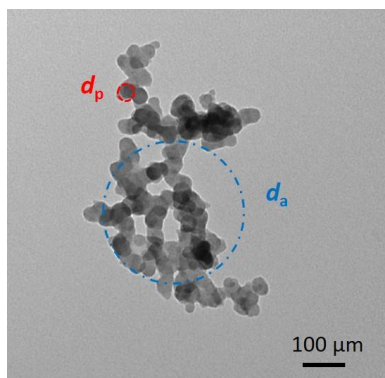


Figure 1 Illustration of the terms primary particle diameter (d_p , red dashed circle) and projected-area-equivalent diameter (d_a , blue dot dashed circle). The image is from stage 6 of the ELPI for an ethylene flow of 0.13 lpm.

Laboratory burners are commonly used for studies on the properties of soot. Premixed flame burners, such as the McKenna burner, require globally rich mixtures to produce soot; non-premixed flame burners, such as the Santoro burner or inverted burner (Stipe et al., 2005) are a better model of practical combustion devices in that they produce soot with globally lean mixtures. [Combustion aerosol standard CAST or miniCAST are commonly used since they easy to operate and allow to readily adjust the particle size in a large range, typically between 10 nm and 200 nm \(Ess and Vasilatou 2019\). Like CAST burners, inverted burners are advantageous because they produce very steady flames with high soot yields \(Ghazi et al., 2013\).](#) [The](#)

Deleted: I

miniCAST and the mini inverted burner are considered alternative techniques to produce a steady stream of soot particles. The main difference is the lower cost of the mini inverted burner compared to the most popular miniCAST burner. In this work, we applied the TEM image analysis and Raman spectroscopy to study soot produced by an inverted burner and subsequently segregated by size.

Deleted: .

5 2 Materials and Methods

2.1 Soot nanoparticles production and sampling

Soot was produced with a miniature inverted burner (Argonaut Scientific) using ethylene (0.13 lpm) burning in bottled air (10 lpm). The inverted burner is sealed during operation to avoid flickering flames. A tee connection at the exhaust of the burner ensures that the burner operates at atmospheric pressure (Figure 2). A pump is used to supply a dilution line to reduce concentrations at the instruments.

Deleted: Figure 2

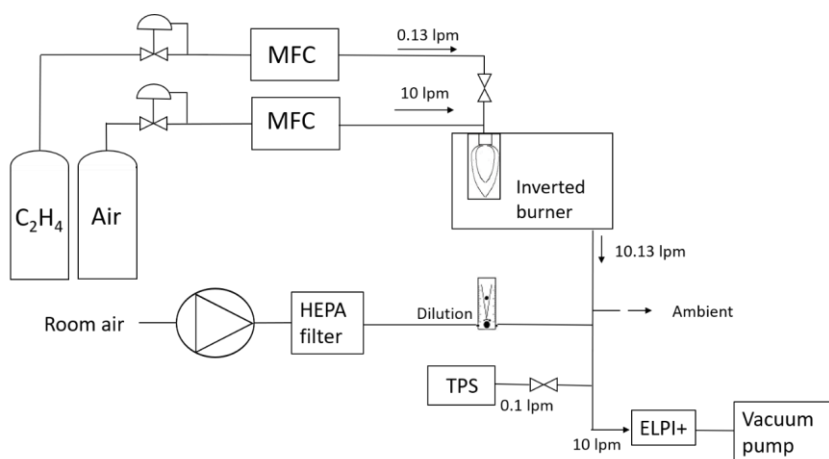


Figure 2 Schematic of the setup used for the production and sampling of soot. MFC and TPS refer to Mass Flow Controller and Thermal Particle Sampler, respectively.

An Electrical Low Pressure Impactor (Dekati ELPI+) was used to collect size-segregated samples, as in some earlier work (Kim et al., 2013; Liati et al., 2018). The ELPI+ also provides electrical currents from each stage that are used to recover aerosol size distributions. For determining size distributions from the currents, an acquisition time of 120 seconds was used, with a dilution flow of 2 lpm. For collection of samples for TEM (which required a light loading), a sample time of 5 seconds was used with a dilution flow of 3 lpm. For the Raman samples on titanium foils, a sample time of 10 seconds was used with

a dilution flow of 3 lpm. TEM and Raman samples were collected from stages 3 to 11 of the ELPI+. Raman spectra of soot aerosols were collected at least 30 minutes after burner ignition to ensure flame stability. A Carbon Type-B- 300 mesh Copper, 1813, Ted Pella has been used as a collection substrate for the TEM analysis, while a titanium foil of 3×3 mm for the Raman analysis. Both types of substrates were placed on each stage using a piece of tape applied only at the edges of the grid. Impactor grease was not applied in the area of the collection substrates. The impactor grease reduces the aggregates bouncing from one stage to the following one.

A Thermophoretic Particle Sampler (TPS) was used to collect unsegregated (total) samples from the exhaust of the burner. For samples collected by the TPS and analyzed by Raman microscopy, a sample time of 30 seconds was used with a dilution flow of 4 lpm. This sampler heats the aerosol to approximately 200°C in a small capillary (residence time of <0.1 s) before the sample is deposited on a room-temperature microscope grid (or titanium foil).

2.2 Sample analysis

TEM has been widely used to analyze the morphology of soot nanoparticles. Manual or automatic codes are commonly used to pursue a detailed analysis of TEM images (Wang et al., 2016; Yehliu et al., 2011). Manual sizing is laborious which makes it difficult to generate statistically adequate measurements. These issues can be solved by using an automatic codes, but usually with a loss of accuracy in the measurements for each aggregate (Wang et al., 2016).

A Hitachi H7600 TEM was used to produce at least 50 images per ELPI+ stage. In this work we use the algorithm developed by Dastanpour et al. (Dastanpour, 2016). The [validated](#) code is used in the current work to determine the projected area-equivalent diameter of the aggregates and the average primary particle diameter for each aggregate ([Baldelli et al., 2019](#)) (Figure 1 shows an example of a primary particle highlighted in red within a complete aggregate). The projected area-equivalent diameter is the diameter of a sphere with the same projected area as the aggregate. The algorithm determines the average primary particle diameter for each aggregate with an error of less than 14% relative to manual sizing, for individual aggregates, and a bias of less than 4% for typical samples.

TEM images are analyzed using two different procedures. TEM images can be defined “overloaded”, as shown in Figure 3 a, which shows soot aerosols collected on the ELPI stage 6 and generated by an ethylene flow of 0.13 lpm using the system shown in Figure 1. Red dot dashed ovals identify overloaded areas where it is impossible to use our image analysis codes. Blue dashed circles identify the areas selected for imaging. Imaging only soot aggregates located in the blue dashed areas may exclude large aggregates that tend to follow the impactor streamlines and to impact onto other large aggregates creating larger clusters. [Another possible source of formation of aggregates larger than 2 \$\mu\text{m}\$ in an inverted burner is the stagnation plane formed at the tip of the inverted flame; here, aggregates can be confined and, with a long residence time, they tend to grow in](#)

size (Kazemimanesht 2019). Thus, we expect these TEM samples to bias the results to smaller sizes than the true mass-averaged size.

Deleted: Another possible source of formation of aggregates larger than 2 μm in an inverted burner

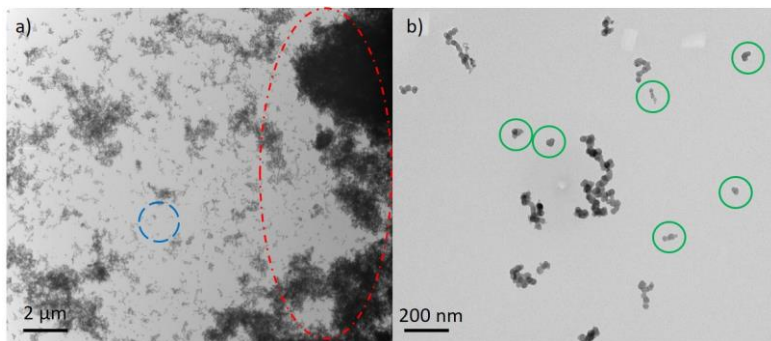


Figure 3 TEM images of aerosols collected on stage 6 for a) low dilution, and b) more diluted sample¹. For both cases the ethylene flow was 0.13 lpm. In a) red dot dashed circles identify overloaded areas, and blue dashed circles identify the area selected for image processing. In b) green circles identify aggregates composed by less than three soot nanoparticles that are removed by the image analysis.

- 5 Decreasing the collection time and increasing the dilution rate improved the sampling considerably producing “low-loaded” samples. Figure 3 b) (for stage 6) has been produced using a dilution rate of 2 lpm, a purge flow of 2 lpm, and a collection time of 2 seconds; for those tests the bottled air was replaced with building air, shown in the SI (Figure S.3). Using this alternative setup system, TEM grids have been placed on stage 4, 6, 8, and 10. TEM images show much less populated samples, Figure 3 b). However, now we noticed the presence of some aggregates much smaller than expected (green circles). For stage
- 10 6, the expected mean aerodynamic diameter would be 120 nm; the aggregates contained in the green circles in Figure 3 b) are approximately 20 nm. A recent work shows the impactation effect of micro and nanoparticles on impactor stages; large aggregates seem to break into smaller aggregates while impacting onto the stage (Wernet et al., 2017). Conceivably a similar mechanism could apply to the ELPI+ sampling. These small aggregates, although surprising, have little influence on the results for either the TEM (because primary particle sizes are plotted as a function of aggregate size) or Raman analysis (which we
- 15 expect to reflect mass-averaged characteristics). Given the potential of these small particles being artifacts, we have removed them in the reported averages for the stages. Specifically, aggregates lower than the 15% of the average equivalent area diameter at each stage and at each operating condition of the inverted burner. The 15% is an arbitrary cutoff but small differences are encountered if values between 10 to 20% are selected.

¹ The diluted samples were created using filtered building compressed air for combustion rather than the bottled air. There were indications that this may have affected Raman spectra, but the overall conclusion (see supplemental information) was that the air source has negligible effect on the soot.

Raman spectroscopy has been used to find the ratio between the amorphous and the crystalline contents of soot nanoparticles (Sadezky et al., 2005). Raman spectroscopy is sensitive only to short-range order, molecular structures but due to the symmetry of the observed vibrations also structures and morphologies can be differentiated, (Sadezky et al., 2005). Here, we assume that

Raman spectra can be taken as an indication of nano-structural features relevant to optical or chemical properties. The Raman spectrum of soot shows clear bands, each one with a specific reference to the chemical properties of soot (Saffaripour et al., 2017). By knowing the fingerprints of soot nanoparticles may be possible to recognize the influence of the production conditions, as gas type, flame location, flame velocity, and source type (Patel et al., 2012). Since titanium and titanium oxide exhibit no Raman active vibrations in the area of interest, titanium substrates were, selected for the Raman analysis. The titanium foils can be punched to produce disks of 3 mm, which can be substituted for common TEM grids in the TPS.

The Raman spectrometer used was a Renishaw Confocal with a digital stage and 785 nm point-focus laser at typical power of 0.2 mW. Three or more Raman spectra were collected for each sample in order to generate a standard deviation (later, the error bars presented on the graphs are from error propagation of these standard deviations). The exposure time was 10 seconds, and the accumulation time was 1 second. The soot Raman spectra were fitted using Origin Pro software as follow. Spectra were smoothed over the 500 to 2000 cm^{-1} range selected for fitting of the first-order soot Raman bands. The roughness of the titanium disks and their oxide layer generate a Raman spectrum background, which was used as a baseline in order to eliminate the spectra slopes (Calabrese et al., 2017). By using a long wavelength laser (Grafen et al. 2015) and the titanium substrates Raman signal as baseline subtraction, most of the samples do not show any residual fluorescence. Otherwise, the residual fluorescence was subtracted using a straight line. An approximate location for the peak centers was selected, but a change of the peak centers was allowed within the expected ranges shown below. Blank samples with and without the impactor grease showed a near-linear trend that was removed by the baseline subtraction process described above. The five-peak deconvolution has been used and validated in previous literature references (Lapuerta et al., 2012; Lapuerta et al., 2011; Sadezky et al., 2005; Saffaripour et al., 2017; Seong and Boehman, 2013). The five main peaks in soot (Lapuerta et al., 2012; Lapuerta et al., 2011; Sadezky et al., 2005; Saffaripour et al., 2017) are as follows:

D4 (centered 1127 cm^{-1} to 1208 cm^{-1}) - Caused by curved PAHs layers in graphitic crystallites, carbon atoms in sp^3 and intermediate $\text{sp}^2 - \text{sp}^3$ hybridization states;

D1 (centered 1301 cm^{-1} to 1317 cm^{-1} for a laser wavelength of 780 nm) - Induced by defects along graphitic edge planes;

D3 (centered around 1489 cm^{-1} to 1545 cm^{-1}) - Induced from impurity ions (ex. calcium, fluorine, and potassium), and amorphous carbon mixtures;

G (centered around 1571 cm^{-1} to 1598 cm^{-1}) - Identifies the graphitic content in soot nanoparticles;

D2 (centered around 1610 cm^{-1} to 1625 cm^{-1}) – Related to the disorder in polycyclic aromatic hydrocarbons (PAHs) around the soot boundaries.

Deleted: Raman spectroscopy is sensitive not only to crystal structures but also to molecular structures (short-range order)

Deleted: The

Deleted: as

Deleted: since it is Raman inactive and oxidation is much slower than for most metals

The combination of a Gaussian curve for D3 band and Lorentzian curve for D4, D1, D2 and G bands, all with floating peak locations, was found here to generate the lowest chi-squared sums, the highest linear regression coefficients, and very repeatable results from sample to sample. The number of free parameters used in these fits is comparable to those used by (Saffaripour et al., 2017) and others that used five bands. Figure 4 shows a typical curve fitting of a Raman spectrum of soot nanoparticles deposited on a stage (stage 4 is used as example). The Supplemental Information Table S.1, S.2, and S.3 provides the details of the fits and peaks for the samples.

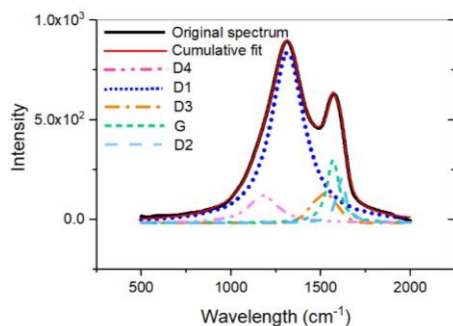


Figure 4 Five bands curve fitting of a typical soot Raman spectrum. D1, D2, D4, and G bands are fitted with a Lorentzian curve, while D3 band is fitted with a Gaussian curve. The sample is from soot nanoparticles generated by an inverted burner and collected with an ELPI+ (Stage 4) with the system shown in Figure 1.

3 Results and discussion

Soot aerosols were characterized by their aerodynamic size distribution, electron microscopy of samples, and Raman spectroscopy. The results discussed below were obtained using the conditions explained in Section 2.1 and the apparatus shown in Figure 2 and, only for TEM samples, an alternative system shown in Figure S.4 in the SI including building air instead of bottled air.

3.1 Aerodynamic size distribution

Figure 5 shows the number distribution as a function of aerodynamic diameter. In Figure 5, the mean aerodynamic diameter D_{ae} (in microns) are 0.02, 0.04, 0.07, 0.12, 0.2, 0.31, 0.48, 0.76, and 1.25 for the Stages 3 to 11 respectively. The particle density used in the ELPI+ data inversion was set to 1.2 g/cc based on work in (Maricq and Xu, 2004). In fact, the effective density of soot decreases with size, but we still expect that most of the *mass* is on largest stages. At the burner condition used, the flame tip is “open”, soot emissions are very high, and super aggregates can form (Ghazi et al., 2013; Saffaripour et al.,

2017). Figure 5 shows the distribution of the aerodynamic diameter at each stage of ELPI+. The aerodynamic diameter distribution shows a peak at Stages 5 to 7; most aggregates produced by the inverted burner are between 0.1 to about 5 μm . Stages 8, 9, and 10 shows the highest mass content, as shown in the supplementary material by observing Figure S.1.

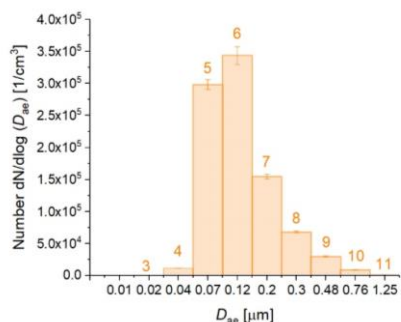


Figure 5 Number distribution recorded by ELPI+ for stages 3 to 11, with the stage mean aerodynamic diameter given below each column.

5 3.2 TEM analysis

In Figure 6, the relationship between the projected-area-equivalent diameter (d_a) and the primary particle diameter (d_p) is shown. For comparison, we show the “universal fit” (Olfert and Rogak, 2019) for a wide range of soot sources; the fit equation is

$$d_p = 17.8 \left(\frac{d_a}{100} \right)^{0.35} \quad \text{Equation 1}$$

Results from the samples collected here from the ELPI+ are quite close to Equation 1 (dashed line), but depending on which parts of the impactor deposits are analyzed, there are some discrepancies. In Figure 6, full symbols identify the method and system explained in Figure 3.a, empty symbols in Figure 3 b. In the case of full symbols, the TEM grids were often overloaded, such that imaging needed to be done in areas away from the main deposits on the impactor stages, Figure 3 a. Thus, there could be bias in the choice of particles imaged, but in fact the TEM sizing is reasonably consistent with the impactor stage. For example, the mean area-equivalent diameter for stage 5 is 140 nm. Aggregates of this size should have an effective density of approximately 430 kg/m^3 (using the Olfert and Rogak relations), resulting in an aerodynamic behavior equivalent to an 83 nm sphere with density of 1200 kg/m^3 (using projected-area diameter as a proxy for mobility diameter). Given the uncertainties involve in the effective density and the resolution of the ELPI (and TEM), this appears consistent with the nominal midpoint aerodynamic diameter for this stage: 70 nm. For stage 10, the area-equivalent diameter is 208 nm, which we expect to result in an aerodynamic diameter of 112 nm. This far lower than the stage midpoint of 760 nm – most likely an indication that the TEM imaging is biased towards unusually small aggregates that deposit on the stage away from the stagnation point by a

mixture of inertial effects and diffusion. This interpretation is supported by additional sampling for similar burner operation, but much lower concentrations, as shown in the empty symbols in Figure 6. In this case, TEM measurements followed Equation 1 quite closely up to aggregate sizes of a micron –closer to but still smaller than the expected impactor stage cut point. The comparison between the heavily-loaded and lightly-loaded cases clearly shows that the sizing can be biased, but in either case the primary particle size increases monotonically with the stage number, so differences in Raman spectra with the stage number are plausibly associated with primary particle size.

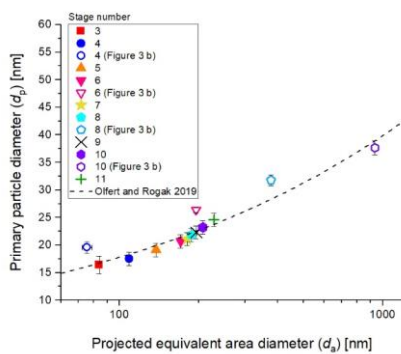


Figure 6 The relationship between the primary particle diameter and the projected-area-equivalent diameter from the literature is shown as the dashed line (Olfert and Rogak, 2019) and experimentally here (symbols). Full and empty symbols identify results achieved by analyzing similar images as Figure 3 a) and b), respectively.

3.3 Raman spectroscopy

Figure 7 shows the Raman spectra (normalized by the D1 peak) of soot aerosols collected on different stages and from a sample of unclassified soot collected by a thermophoretic sampler (TPS) onto the same type of titanium foil (“Total”). The spectra are very similar, and it is only when ratios are plotted that differences become apparent.

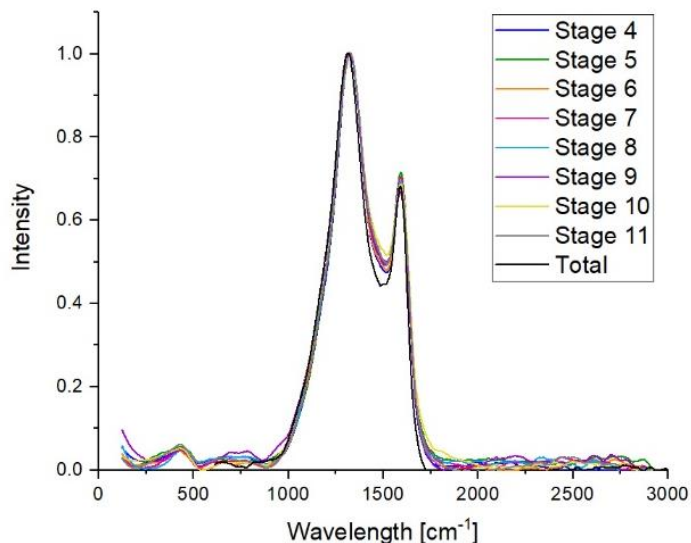


Figure 7 Normalized Raman **band** ratios of soot segregated by a sampling on the stages of the ELPI+ impactor. Raman spectrum of the total exhaust (“total”) is derived from samples collected by the Thermophoretic Particle Sampler (TPS).

Deleted: peak

Figure 8 shows D1/G, D3/G, D2/G, and D4/G **band** ratios based on the areas of the fitted bands; these are generally consistent with the values reported in previous literature references (Patel et al., 2012; Sadezky et al., 2005; Saffaripour et al., 2017).

Deleted: peak

Figure 8 suggests that the D3/G and D1/G band ratios decrease with particle size. Other **band** ratios, as D2/G and D4/G

Deleted: peak

5 moderately decrease. A straightforward interpretation of this is that the amorphous carbon content of the soot is smaller for larger particles. This confirms the expectation from (Dastanpour, 2016) that the larger particles would be more graphitic. Samples were collected for other conditions but are not included here because the burner warmup time was not consistent. However, those samples also show, qualitatively, a similar trend between the Raman band ratios and the particle size (Supplementary Information, Figure S.5). Furthermore, one series of experiments was conducted using compressed building
 10 air for the burner supply. Samples from these experiments did NOT show the same trends with stage number (Supplemental Information Tables S.4 and S.5), but when the aerosol was run through a thermodenuder the expected falling trend of D1/G with stage was recovered (Tables S.6 and S.7). Apparently, contamination in the supply air produced a coating on the particles that affected the Raman spectra. In all cases, the ratios for the unsegregated samples (from TPS, labeled “total”) are close to the average for all stages – as expected.

15

The ratios shown in Figure 8 are derived from peak fitting to the average of 3 Raman spectra. The smoothed average of these 3 spectra are fitted to the 5 bands in Origin Pro, using the standard deviation of the triplicates as the weighting in the Levenberg-Marquardt (L-M) algorithm. The error bars for the ratios (typically lower than 20%) in Figure 7 are derived from error propagation of the fit uncertainties in the peak areas reported by Origin Pro. These fit uncertainties are the standard errors produced through the L-M algorithm. Actually, the repeatability of the procedure is better than indicated by the error bars. For example, when 4 samples were re-analyzed after about 5 months and re-fitted, D1/G ratio increase by a mean of 2.6 %.

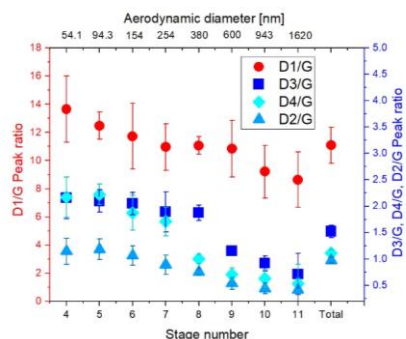


Figure 8 Raman peaks ratios of soot segregated by an ELPI+ impactor are shown. Raman peaks ratios of soot produced for ethylene flow 0.13 lpm collected on titanium grids on the stages 3 to 11. The Raman band ratios of the total exhaust ("total") are reported as well.

Deleted: peak

4 Conclusions

Raman spectroscopy and TEM analysis were performed on samples of soot classified by aerodynamic diameter. The primary particle diameter increases for larger projected area diameters; the relationship is in approximate agreement with a correlation developed recently for multiple soot sources (Olfert and Rogak, 2019). The challenge in validating this relationship quantitatively using the impactor sampling is that there are potential artifacts due to overloaded samples and possible fragmentation. However, it is clear that the upper stages (larger aerodynamic diameter) contained aggregates with much larger primary particles. Therefore, the relationship between the soot aggregates aerodynamic diameter and the primary particle diameter can be considered validated.

Raman spectra showed a consistent variation from the bottom (small aerodynamic diameter) to top (large aerodynamic diameter) stages. The spectra for the total (unclassified) soot samples are similar to the spectra for the middle stages, which makes sense given that the middle stages collect most of the aerosol mass. Fitting the Raman spectra to a 5-band model results in decreasing D1/G, D2/G, D3/G and D4/G ratios with size. This implies that the larger particles contain larger graphitic

Deleted: would

Deleted: y

domains and are more ordered. The most plausible explanation for this shift in the Raman spectra is the associated shift in primary particle size for each stage, rather than the changing aggregate size *per se*.

This work provides evidence that both soot primary particle size and nanostructure depend on the aggregate size. This suggests that samples collected post-flame still carry information about local formation conditions in the flame. It also means that conventional approaches to modelling fractal aggregates are incorrect in assuming that size and soot material properties are independent.

5 Supplemental material link

Supplemental material includes additional results on the soot sampling and the repeatability of the experiments. The supplemental material is uploaded in the following link.

References

- Alfè, M., Apicella, B., Barbella, R., Rouzaud, J. N., Tregrossi, A., and Ciajolo, A., [Structure–property relationship in nanostructures of young and mature soot in premixed flames](#), *Proceedings of the Combustion Institute*, 32(1), 697-704, 2009.
- Baldelli, A., Trivanovic, U., & Rogak, S. N., [Electron tomography of soot for validation of 2D image processing and observation of new structural features](#), *Aerosol Science and Technology*, 1-8, 2019.
- Calabrese, G., Pettersen, S. V., Pfüller, C., Ramsteiner, M., Grepstad, J., Brandt, O., Geelhaar, L., and Fernández-Garrido, S.: Effect of surface roughness, chemical composition, and native oxide crystallinity on the orientation of self-assembled GaN nanowires on Ti foils, *Nanotechnology*, 28, 425602, 2017.
- Dastanpour, R.: Characterization of primary particle size variation and its influence on measurable properties of aerosol soot, University of British Columbia, PhD thesis, Vancouver, 2016.
- Dastanpour, R. and Rogak, S. N.: Observations of a correlation between primary particle and aggregate size for soot particles, *Aerosol Science and Technology*, 48, 1043-1049, 2014.
- Ess, M. N., Vasilatou, K., [Characterization of a new miniCAST with diffusion flame and premixed flame options: Generation of particles with high EC content in the size range 30 nm to 200 nm](#), *Aerosol Science and Technology*, 53(1), 29-44, 2019.
- Ess, M. N., Ferry, D., Kireeva, E. D., Niessner, R., Ouf, F. X., & Ivleva, N. P. [In situ Raman microspectroscopic analysis of soot samples with different organic carbon content: Structural changes during heating](#), *Carbon*, 105, 572-585, 2016.
- Frenklach, M.: Reaction mechanism of soot formation in flames, *Physical Chemistry Chemical Physics*, 4, 2028-2037, 2002.
- Ghazi, R., Tjong, H., Soewono, A., Rogak, S. N., and Olfert, J. S.: Mass, mobility, volatility, and morphology of soot particles generated by a McKenna and inverted burner, *Aerosol Science and Technology*, 47, 395-405, 2013.
- Grafen, M., Nalpanitidis, K., Platte, F., Monz, C., and Ostendorf, A., [Multivariate characterization of a continuous soot monitoring system based on Raman spectroscopy](#), *Aerosol Science and Technology*, 49(10), 997-1008, 2015.
- Haller, T., Rentenberger, C., Meyer, J. C., Felgitsch, L., Grothe, H., and Hitzzenberger, R.: [Structural changes of CAST soot during a thermal-optical measurement protocol](#), *Aerosol Measurement Techniques*, 1-34, 2019.
- Jaramillo, I. C., Gaddam, C. K., Vander Wal, R. L., Huang, C.-H., Levinthal, J. D., and Lighty, J. S.: Soot oxidation kinetics under pressurized conditions, *Combustion and Flame*, 161, 2951-2965, 2014.
- Kazemimanes, M., Moallemi, A., Thomson, K., Smallwood, G., Lobo, P., and Olfert, J. S. [A novel miniature inverted-flame burner for the generation of soot nanoparticles](#), *Aerosol Science and Technology*, 53, 184-195, 2019.
- Kim, B., Lee, J. S., Choi, B.-S., Park, S.-Y., Yoon, J.-H., and Kim, H.: Ultrafine particle characteristics in a rubber manufacturing factory, *Annals of Occupational Hygiene*, 57, 728-739, 2013.
- Lapuerta, M., Oliva, F., Agudelo, J. R., and Boehman, A. L.: Effect of fuel on the soot nanostructure and consequences on loading and regeneration of diesel particulate filters, *Combustion and Flame*, 159, 844-853, 2012.
- Lapuerta, M., Oliva, F., Agudelo, J. R., and Stitt, J. P.: Optimization of Raman spectroscopy parameters for characterizing soot from different diesel fuels, *Combustion Science and Technology*, 183, 1203-1220, 2011.

Deleted: Kazemimanes, M., Moallemi, A., Thomson, K., Smallwood, G., Lobo, P., Olfert, J. S. A novel miniature inverted-flame burner for the generation of soot nanoparticles. *Aerosol Science and Technology*, 53, 184-195, 2019.¶

- Liati, A., Schreiber, D., Dasilva, Y. A. R., and Eggenschwiler, P. D.: Ultrafine particle emissions from modern Gasoline and Diesel vehicles: An electron microscopic perspective, *Environmental Pollution*, 239, 661-669, 2018.
- Maricq, M. M. and Xu, N.: The effective density and fractal dimension of soot particles from premixed flames and motor vehicle exhaust, *Journal of Aerosol Science*, 35, 1251-1274, 2004.
- 5 Olfert, J. and Rogak, S. N.: Ubiquitous relations between soot effective density and primary particle size for common combustion sources, *Aerosol Science & Technology*, Accepted, 1-9 2019.
- Patel, M., Ricardo, C. L. A., Scardi, P., and Aswath, P. B.: Morphology, structure and chemistry of extracted diesel soot—Part I: Transmission electron microscopy, Raman spectroscopy, X-ray photoelectron spectroscopy and synchrotron X-ray diffraction study, *Tribology International*, 52, 29-39, 2012.
- 10 Pöschl, U.: Atmospheric aerosols: composition, transformation, climate and health effects, *Angewandte Chemie International Edition*, 44, 7520-7540, 2005.
- Sadezky, A., Muckenhuber, H., Grothe, H., Niessner, R., and Pöschl, U.: Raman microspectroscopy of soot and related carbonaceous materials: spectral analysis and structural information, *Carbon*, 43, 1731-1742, 2005.
- 15 Saffaripour, M., Tay, L. L., Thomson, K. A., Smallwood, G. J., Brem, B. T., Durdina, L., and Johnson, M.: Raman spectroscopy and TEM characterization of solid particulate matter emitted from soot generators and aircraft turbine engines, *Aerosol Science and Technology*, 51, 518-531, 2017.
- Seong, H. J. and Boehman, A. L.: Evaluation of Raman parameters using visible Raman microscopy for soot oxidative reactivity, *Energy & Fuels*, 27, 1613-1624, 2013.
- 20 Stipe, C. B., Higgins, B. S., Lucas, D., Koshland, C. P., and Sawyer, R. F.: Inverted co-flow diffusion flame for producing soot, *Review of Scientific Instruments*, 76, 023908, 2005.
- Vander Wal, R. L., Bryg, V. M., and Hays, M. D.: Fingerprinting soot (towards source identification): Physical structure and chemical composition, *Journal of Aerosol Science*, 41, 108-117, 2010.
- 25 Wang, C., Chan, Q. N., Zhang, R., Kook, S., Hawkes, E. R., Yeoh, G. H., and Medwell, P. R.: Automated determination of size and morphology information from soot transmission electron microscope (TEM)-generated images, *Journal of Nanoparticle Research*, 18, 127, 2016.
- Wernet, R., Nazareus, D., and Seipenbusch, M.: Investigations on the correlations of fragmentation, penetration and charge transfer of Pt and SiO₂ particles due to inertial impaction on TEM grids, Cu and Si wafer targets, *Journal of Aerosol Science*, 110, 1-10, 2017
- Yehliu, K., Vander Wal, R. L., and Boehman, A. L.: A comparison of soot nanostructure obtained using two high resolution transmission electron microscopy image analysis algorithms, *Carbon*, 49, 4256-4268, 2011.

Morphology and Raman spectra of aerodynamically classified soot samples

Alberto Baldelli, Steven Nicholas Rogak¹

5 ¹Department of Mechanical Engineering, University of British Columbia
6250 Applied Science Ln #2054, Vancouver, BC V6T 1Z4

Correspondence to: Alberto Baldelli (baldelli.alberto@yahoo.com)

Supplementary material

Here we describe some practical issues related to the aerosol sampling, TEM analysis, and choice of aerosol generation system.

10 Several variants of aerosol generation were tested, resulting in slightly different Raman spectra, as discussed below.

Aerosol sampling on ELPI+ stages

Figure S.1 shows the images of soot aerosols deposition on each stage of ELPI+ impactor. The collection time was set at 10 minutes to produce a visible deposit, needed for Raman microscopy. Soot production conditions are set as follows: dilution flow rate of 4 lpm, and ethylene flow rate of 0.13 lpm.

15

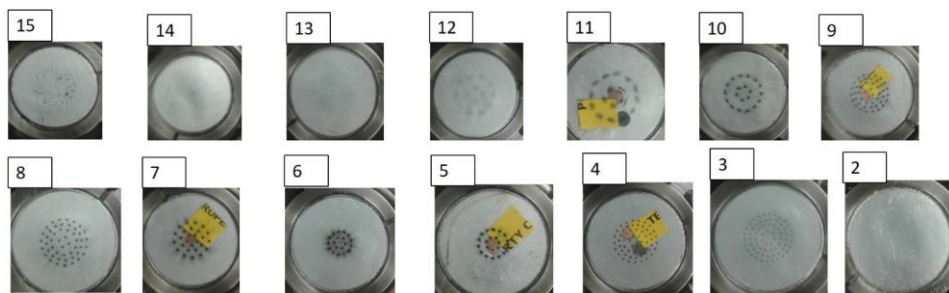


Figure S.1 Images of each stage of ELPI+ impactor using the system introduced in Figure 1 in the main publication.

Alternative configurations and operating conditions of inverted burner

The results described in the main manuscript used bottled commercial air for the burner combustion air. However, before this some variants were used with filtered compressed building air supplied to the burner. In configuration b (“Building Air without Thermodenuder”), we were concerned that the organic content based on TC/EC was too large, so tests were conducted with configuration c (“Building Air with Thermodenuder”).

a) Bottled air

The experimental setup using the bottled air is introduced in Figure 1 of the main publication, and is the basis of the Raman spectra in the main publication. Additional details are shown below. Table S.1 shows the centers of the fitted peaks for each band of the Raman spectra shown in the main publication (Figure 7). The repeatability of the peak centers shows the stability of the Raman spectra deconvolution.

Table S.1 Centers of the fitted peaks for each band of the Raman spectra for test cases shown in Figure 6 and 7 in the main publication.

Stages	D1	D3	D2	D4	G
3	1315.5	1519.3	1613.6	1159.3	1583.8
4	1314.2	1521.0	1611.5	1157.1	1583.4
5	1310.5	1519.1	1609.5	1150.3	1579.9
6	1311.1	1516.6	1608.9	1156.6	1579.3
7	1313.0	1521.2	1610.9	1155.3	1581.4
8	1313.9	1521.8	1610.5	1155.4	1581.1
9	1312.0	1503.4	1619.5	1169.8	1587.1
10	1314.5	1502.2	1619.5	1169.8	1588.8
11	1319.0	1507.3	1619.5	1176.3	1589.7
Total	1315.1	1510.9	1620.8	1169.8	1588.0

A constant flame is achieved after about 30 minutes from the flame ignition. Raman spectra of soot produced at the ignition shows a possible presence of organics (Figure S.2). A peak at about 2050 cm^{-1} is identified. Previous literature references define that this peak could correspond to oxidized polyaromatic hydrocarbons (PAHs) (Cloutis et al., 2016; Cordeiro and Corio, 2009). Oxidized PAHs are obtained by a chemical reaction of PAHs, precursors of soot, and NO_x, SO_x, or oxygen (Nowakowski et al.). The correlation of this peak with oxidized PAHs is speculative.

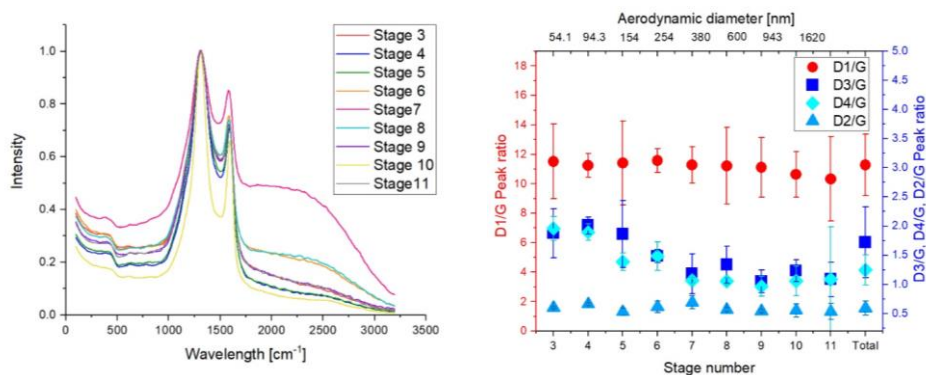


Figure S.2 Raman spectra and peak ratios of soot collected ethylene flow rate of 0.13 lpm and use of a bottled air at 10 lpm. Samples were collected at directly after ignition using the setup system shown in Figure 1 in the main publication.

Even with the likely presence of organics for the non-stabilized flame, the D3/G and D4/G peak ratios show a decrease with the stage number (as for the stabilized samples of the main publication).

Another potential artifact considered in this work was the effect of the substrate on the Raman spectra. All Raman spectra have been deconvoluted using Origin Pro, using several baseline subtraction approaches. The baseline correction in the main publication subtracts the best-fit scaling of the clean titanium substrate signal. This shows a slight peak that overlap with peaks D1 and D3 in the soot Raman spectrum. The alternative considered (used initially) was a simple linear baseline subtraction.

5 Figure S.3 shows the Raman peak ratios for this simplified approach. By comparing Figure S.3 with Figure 7 in the main publication, the lower stages show lower D/G peak ratios, while higher stages show a slightly higher D/G peak ratio. The middle stage (from 6 to 8) shows the highest soot aerosols mass content and, thus, are less affected by the Raman signal of titanium substrates. In other words, the simplified baseline correction yields the same qualitative trends, but they are not as clear as when the actual titanium spectrum is used in the correction.

10

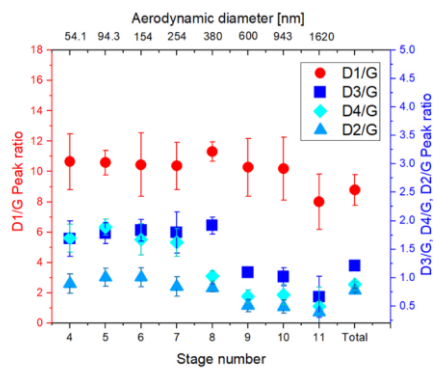


Figure S.3 Raman peak ratios of soot aerosols produced by the inverted burner fed with 0.13 lpm of ethylene and 10 lpm of bottle air and with the operating system shown in Figure 1 in the main publication. The Raman spectra have been deconvoluted *without* using the titanium substrate Raman signal as baseline.

b) Building air without thermodenuder

In these experiments, building compressed air was used for the flame air supply (Figure S.4). Flow rates of ethylene, air, and collection system were unchanged. This air is cleaned using a system of three particulate filters and a silica bead dehumidifier.

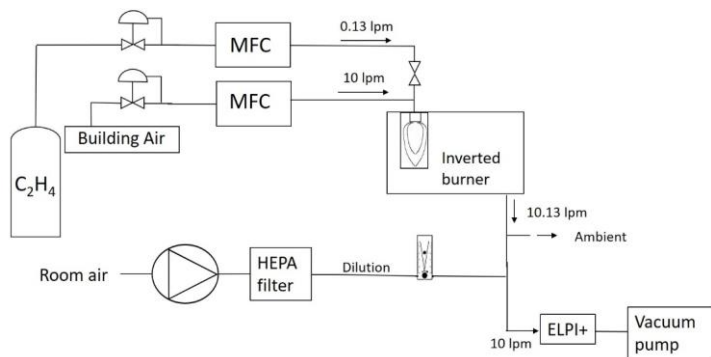


Figure S.4 Schematic of the experimental setup involving the use of the building air as source of the inverted burner combustion flame.

Using this experimental setup, the morphology of segregated soot aerosols was analyzed. Two fuel flow rates have been considered: 0.09 and 0.13 lpm. A minor difference is encountered between the two different production flow rates; the case of 0.09 lpm shows slightly lower peak ratios and a stronger difference between lower and upper stages of the impactor. Reasons can be found in the possible difference in the organics present in the flame. A higher content of elemental carbon could show a lower amount of amorphous carbon contained in the sample. Thermal-Optical-Transmittance (TOT) is a common technique to analyze organic carbon (OC), elemental carbon (EC), carbonate carbon (CC), total carbon (TC) (Lappi and Ristimäki, 2017). TOT has been conducted on the total exhaust of the inverted burner collected on pre-fired glass fiber filters. Results shows an average ratio of elemental and organic carbon (EC/TC) of 0.98 and 0.88 when the flow rate production is 0.13 lpm and 0.087 lpm respectively (Kazemimanesh et al., 2019).

Deleted: fuel

10 Figure S.5 shows the distribution of primary particles respect to the projected equivalent diameter for soot collected using building air as feeding gas. Similar data are shown in Figure 6 in the main publication; results obtained by analyzing soot aerosols generated with an ethylene flow rate of 0.09 lpm are shown.

Deleted: 0

Deleted: 91

Deleted: 87

Deleted: 09

Deleted: 2018

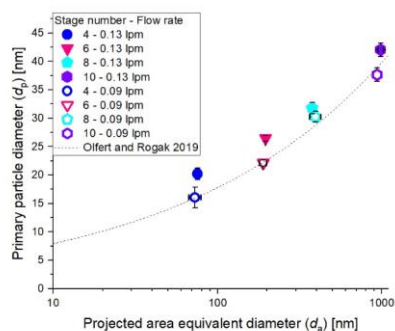


Figure S.5 Distribution of primary particles respect to the projected area equivalent diameter for stages 4, 6, 8 and 10. Building air was set at 10 lpm. Two ethylene flow rates, 0.09 and 0.13 lpm have been considered and have been shown as full and empty symbols respectively.

Figure S.6 shows the Raman peak ratio of soot nanoparticles generated by an inverted burner fed with 0.13 lpm a) and 0.09 lpm b) of ethylene gas using the system shown in Figure S.4. The trend of Raman peak ratios (D1/G, D2/G, D3/G, and D4/G) is opposite compared to the ones shown in Figure 8 in the main publication. We estimate that the reason of this trend is due to the presence of hydrocarbons in building air. These hydrocarbons could increase the disordered content in the soot aerosols at certain aerodynamic diameters. The reasons of the trend encountered in Figure S.6 are unclear and more investigations might be needed.

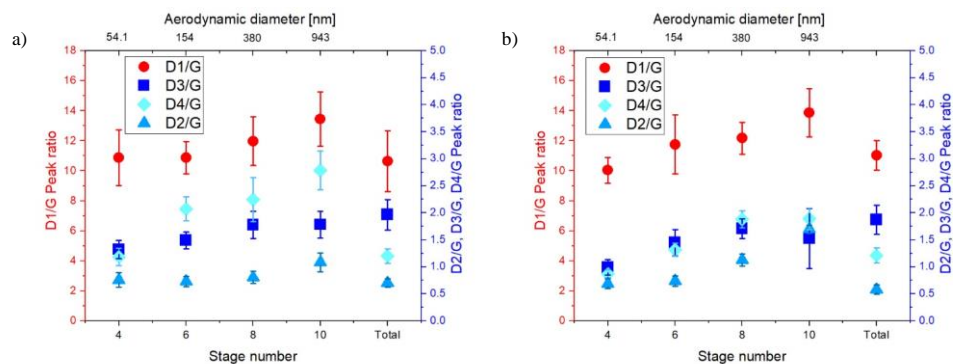


Figure S.6 Raman spectra of soot nanoparticles generated by an inverted burner fed with 0.13 lpm a) and 0.09 lpm b) of ethylene gas using the system shown in Figure S.4, including the use of building air without thermodenuder. Soot nanoparticles are collected on stages 4, 6, 8, and 10 of an ELPI+ impactor.

c) Building air with thermodenuder

In order to avoid the possibility of presence of any hydrocarbon in the building air, a thermodenuder was added to the experimental system shown in Figure S.4, as shown in Figure S.7.

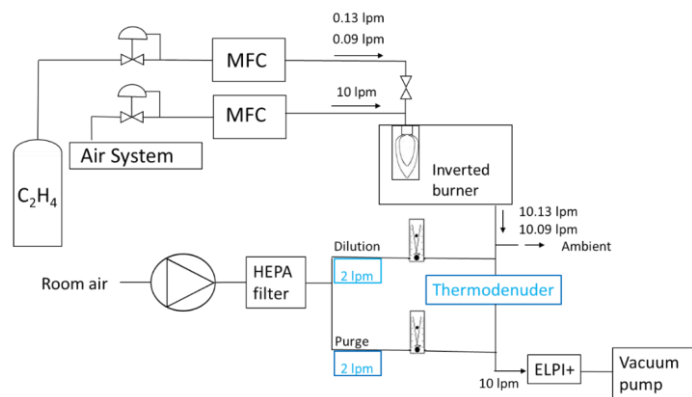


Figure S.7 Schematic of the experimental setup involving the use of the building air as source of the inverted burner combustion flame. A thermodenuder is used to reduce the hydrocarbons present in the building air.

Figure S.8 shows the distribution of number per each stage of ELPI+ for the test system shown in Figure S.7, building air with the use of thermodenuder. The trends of aggregates number recorded for the system of building air and thermodenuder (Figure S.8) and bottle air (shown in Figure 4 in the main publication) are very similar indicating that the results obtained by these two systems are comparable.

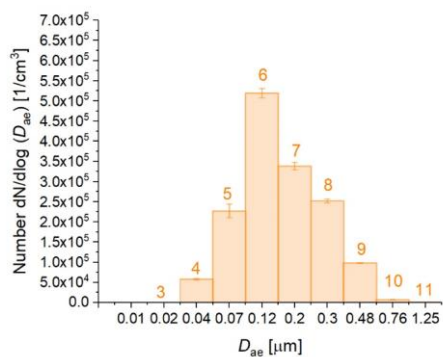


Figure S.8 Number distribution for each stage of the ELPI+ impactor for the setup shown in Figure S.7.

5

Figure S.9 shows the Raman spectra of soot generated by an inverted burner fed with 0.13 lpm and 0.09 lpm of ethylene gas and for the system shown in Figure S.7. All the peak ratios, D1/G, D2/G, D3/G, and D4/G decrease with stage number,

indicating that the disordered carbon content is higher for smaller projected area equivalent diameter. The results shown in Figure S.9 are the same to the results shown in the main publication (Figure 7); this strengthens the conclusions in the main publication.

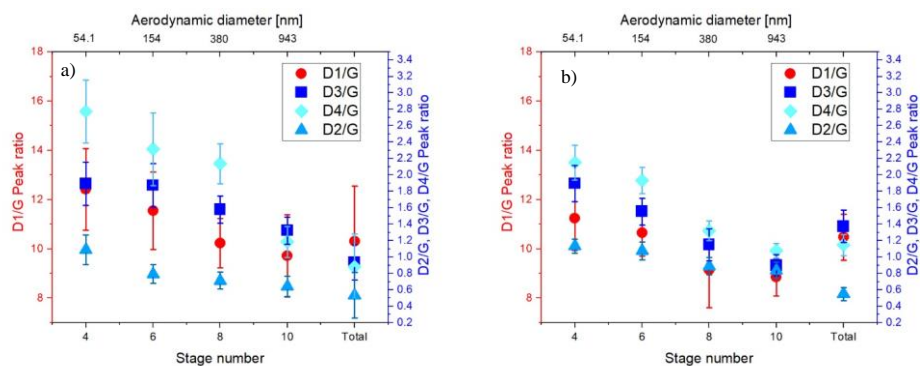


Figure S.9 Raman spectra of soot nanoparticles generated by an inverted burner fed with 0.13 lpm a) and 0.09 lpm b) of ethylene gas using the system shown in Figure S.7, including the use of building air and thermodeuder. Soot nanoparticles are collected on stages 4, 6, 8, and 10 of an ELPI+ impactor.

5 Summary of the results

Table S.2, S.3, S.4, S.5, S.6, and S.7 show the summary of peak ratios of the Raman spectra, showing their average and standard deviation values, for the Raman spectra obtained from different operating conditions and deconvolutions procedures.

Table S.2 Raman peak ratios obtained by the operating conditions of a) Bottled air, ethylene flow rate of 0.13 lpm and air flow rate of 10 lpm.

Stages	D1/G	D3/G	D2/G	D4/G
4	13.6 ± 2.4	2.16 ± 0.4	1.15 ± 0.2	2.17 ± 0.4
5	12.5 ± 0.9	2.10 ± 0.2	1.19 ± 0.2	2.23 ± 0.19
6	11.7 ± 2.3	2.05 ± 0.2	1.07 ± 0.2	1.88 ± 0.3
7	10.9 ± 1.6	1.89 ± 0.4	0.89 ± 0.2	1.71 ± 0.3
8	11.1 ± 0.6	1.87 ± 0.1	0.76 ± 0.1	1.01 ± 0.1
9	10.8 ± 2.0	1.15 ± 0.1	0.54 ± 0.1	0.71 ± 0.1
10	9.21 ± 1.9	0.92 ± 0.1	0.44 ± 0.1	0.64 ± 0.2
11	8.60 ± 2.0	0.71 ± 0.4	0.42 ± 0.2	0.54 ± 0.4
Total	11.1 ± 1.3	1.52 ± 0.1	0.98 ± 0.1	1.123 ± 0.1

Table S.3 Same data as above, but spectra background subtraction using linear baseline rather than titanium background.

Stages	D1/G	D3/G	D2/G	D4/G
4	10.6 ± 1.8	1.68 ± 0.3	0.90 ± 0.2	1.70 ± 0.2
5	10.6 ± 0.8	1.78 ± 0.2	1.01 ± 0.2	1.89 ± 0.1
6	10.4 ± 2.1	1.83 ± 0.2	1.01 ± 0.2	1.67 ± 0.3
7	10.4 ± 1.6	1.79 ± 0.4	0.84 ± 0.2	1.62 ± 0.2
8	11.3 ± 0.6	1.92 ± 0.1	0.82 ± 0.1	1.03 ± 0.1
9	10.3 ± 1.9	1.09 ± 0.1	0.51 ± 0.1	0.67 ± 0.1
10	10.2 ± 2.1	1.02 ± 0.2	0.49 ± 0.1	0.70 ± 0.2
11	8.01 ± 1.8	0.66 ± 0.4	0.39 ± 0.2	0.50 ± 0.3
Total	8.77 ± 1.0	1.21 ± 0.1	0.77 ± 0.1	0.89 ± 0.1

Table S.4 Raman peak ratios obtained by the operating conditions of building compressed air *without* thermodenuder, ethylene flow rate of 0.13 lpm and air flow rate of 10 lpm.

Stages	D1/G	D3/G	D2/G	D4/G
4	10.8 ± 1.8	1.32 ± 0.2	0.66 ± 0.1	1.19 ± 0.2
6	10.9 ± 1.1	1.49 ± 0.2	0.73 ± 0.1	2.07 ± 0.2
8	11.9 ± 1.6	1.78 ± 0.2	0.80 ± 0.1	2.25 ± 0.4
10	13.4 ± 1.8	1.79 ± 0.2	1.08 ± 0.2	2.79 ± 0.3
Total	10.6 ± 2.0	1.67 ± 0.3	0.71 ± 0.1	1.22 ± 0.1

Table S.5 As above, but for ethylene flow rate of 0.09 lpm.

Stages	D1/G	D3/G	D2/G	D4/G
4	10.1 ± 0.8	1.04 ± 0.1	0.69 ± 0.1	0.87 ± 0.1
6	11.7 ± 1.9	1.45 ± 0.2	0.74 ± 0.1	1.32 ± 0.1
8	12.6 ± 1.2	1.71 ± 0.2	1.13 ± 0.1	1.88 ± 0.1
10	13.8 ± 1.6	1.53 ± 0.6	1.27 ± 0.1	1.89 ± 0.2
Total	11.1 ± 0.9	1.30 ± 0.5	0.73 ± 0.1	1.21 ± 0.1

Table S.6 Same as S.4 except that aerosol was stripped with a thermodenuder.

Stages	D1/G	D3/G	D2/G	D4/G
4	12.4 ± 1.6	1.89 ± 0.3	1.09 ± 0.2	2.77 ± 0.4
6	11.5 ± 1.6	1.87 ± 0.3	0.79 ± 0.1	2.31 ± 0.4
8	10.2 ± 1.0	1.58 ± 0.2	0.71 ± 0.1	2.14 ± 0.2
10	9.71 ± 1.6	1.32 ± 0.2	0.64 ± 0.1	1.19 ± 0.2
Total	10.3 ± 2.2	0.93 ± 0.2	0.53 ± 0.3	0.88 ± 0.4

Table S.7 Same as S.5 except that aerosol was stripped with a thermodenuder.

Stages	D1/G	D3/G	D2/G	D4/G
4	11.2 ± 1.3	1.89 ± 0.2	1.13 ± 0.1	2.15 ± 0.2
6	10.6 ± 0.9	1.55 ± 0.2	1.08 ± 0.1	1.93 ± 0.2
8	9.14 ± 1.5	1.15 ± 0.2	0.89 ± 0.1	1.32 ± 0.1
10	8.85 ± 0.8	0.90 ± 0.1	0.84 ± 0.1	1.08 ± 0.1
Total	10.5 ± 0.9	1.37 ± 0.2	0.55 ± 0.1	1.15 ± 0.1

To test the stability of the deconvolution procedure, the total exhaust samples (as collected by TPS) of each operating condition were collected at a different times respect to the results shown in Table S.2, S.3, S.4, S.5, S.6 and S.7. The total exhausts obtained with different operating conditions have been collected using a thermophoretic particle sampler (TPS). The Raman spectra of the total exhausts were obtained and the disordered/ordered ratios are shown in Table S.8. The D1/G ratio differs at most of 8.6 % indicating a high stability of the Raman deconvolution procedure.

Table S.8 Raman peak ratios of total exhausts obtained by different operating conditions. These peak ratios are obtained from soot exhausts collected at a different time respect to the results shown in Table S.2, S.4, S.5, S.6, and S.7.

Operating condition	Measurement time	D1/G	D3/G	D2/G	D4/G
a) Bottled air (0.13 lpm fuel)	Original	11.1 ± 1.3	1.52 ± 0.1	0.98 ± 0.1	1.123 ± 0.1
	Repeat	11.3 ± 1.0	1.32 ± 0.1	0.67 ± 0.1	1.38 ± 0.1
b) Building system (0.13 lpm fuel)	Original	10.6 ± 2.0	1.67 ± 0.3	0.71 ± 0.1	1.22 ± 0.1
	Repeat	11.2 ± 1.2	1.23 ± 0.1	0.64 ± 0.1	1.38 ± 0.1
b) Building system (0.09 lpm fuel)	Original	11.1 ± 0.9	1.30 ± 0.5	0.73 ± 0.1	1.21 ± 0.1
	Repeat	11.0 ± 1.0	1.30 ± 0.1	0.56 ± 0.2	1.45 ± 0.2
c) Building system and thermodenuder (0.13 lpm fuel)	Original	10.3 ± 2.2	0.93 ± 0.2	0.53 ± 0.3	0.88 ± 0.4
	Repeat	11.2 ± 0.9	1.23 ± 0.1	0.63 ± 0.1	1.32 ± 0.1
c) Building system and thermodenuder (0.09 lpm fuel)	Original	10.5 ± 0.9	1.37 ± 0.2	0.55 ± 0.1	1.15 ± 0.1
	Repeat	10.4 ± 0.8	1.16 ± 0.1	0.70 ± 0.1	1.49 ± 0.2

References

- Cloutis, E., Szymanski, P., Applin, D., and Goltz, D.: Identification and discrimination of polycyclic aromatic hydrocarbons using Raman spectroscopy, *Icarus*, 274, 211-230, 2016.
- Cordeiro, D. S. and Corio, P.: Electrochemical and photocatalytic reactions of polycyclic aromatic hydrocarbons investigated by raman spectroscopy, *Journal of the Brazilian Chemical Society*, 20, 80-87, 2009.
- 5 [Kazemimanesh, M., Moallemi, A., Thomson, K., Smallwood, G., Lobo, P., Olfert, J. S. A novel miniature inverted-flame burner for the generation of soot nanoparticles. *Aerosol Science and Technology*, 53, 184-195, 2019.](#)
- Lappi, M. K. and Ristimäki, J. M.: Evaluation of thermal optical analysis method of elemental carbon for marine fuel exhaust, *Journal of the Air & Waste Management Association*, 67, 1298-1318, 2017.
- 10 Nowakowski, M., Rostkowski, P., and Andrzejewski, P.: Oxidized forms of polycyclic aromatic hydrocarbons (Oxy-PAHs): determination in suspended particulate matter (SPM), 15th International Conference on Environmental Science and Technology, 2017.

Formatted: Indent: Left: 0 cm, First line: 0 cm

Deleted: Kazemimanesh, M., Moallemi, A., Thomson, K., Smallwood, G., Lobo, P., and Olfert, J. S.: A novel miniature inverted-flame burner for the generation of soot nanoparticles, *Aerosol Science and Technology*, 2018. 1-12, 2018.¶