

Retrieval of atmospheric CH₄ vertical information from ~~TCCON~~ ground-based FTIR near-infrared spectra

Minqiang Zhou¹, Bavo Langerock¹, Mahesh Kumar Sha¹, Nicolas Kumps¹, Christian Hermans¹, Christof Petri², Thorsten Warneke², Huilin Chen³, Jean-Marc Metzger⁴, Rigel Kivi⁵, Pauli Heikkinen⁵, Michel Ramonet⁶, and Martine De Mazière¹

¹Royal Belgian Institute for Space Aeronomy (BIRA-IASB), Brussels, Belgium

²Institute of Environmental Physics, University of Bremen, Bremen, Germany

³Centre for Isotope Research (CIO), Energy and Sustainability Research Institute Groningen (ESRIG), University of Groningen, Groningen, the Netherlands

⁴UMS 3365 – OSU Réunion, Université de La Réunion, Saint-Denis, Réunion, France

⁵Finnish Meteorological Institute, Space and Earth Observation Centre, Sodankylä, Finland

⁶Laboratoire des Sciences du Climat et de l'Environnement (LSCE/IPSL), UMR CEA-CNRS-UVSQ, Gif-sur-Yvette, France

Correspondence: Minqiang Zhou (minqiang.zhou@aeronomie.be)

Abstract. TCCON (Total Carbon Column Observing Network) column-averaged dry air mole fraction of CH₄ (X_{CH_4}) measurements have been widely used to validate satellite observations and to estimate model simulations. The GGG2014 code is the standard TCCON retrieval software performing a profile scaling retrieval. In order to obtain several vertical information in addition to total column, in this study, the SFIT4 retrieval code is applied to retrieve CH₄ mole fraction vertical profile **using**
5 ~~TCCON spectra (SFIT4TCCON)~~ from the Fourier transform infrared (FTIR) spectrum at six sites (Ny-Ålesund, Sodankylä, Bialystok, Bremen, Orléans and St Denis) during the time period of 2016 – 2017. The retrieval strategy of ~~SFIT4TCCON~~ the CH₄ profile retrieval from ground-based FTIR near-infrared (NIR) spectra using the SFIT4 code (SFIT4NIR) is investigated. The degree of freedom for signal ~~of the SFIT4TCCON (DOFS) of the SFIT4NIR~~ retrieval is about 2.4, with two distinct **species**
10 **pieces** of information in the troposphere and in the stratosphere. The averaging kernel and error budget of the ~~SFIT4TCCON~~ SFIT4NIR retrieval are presented. The data accuracy and precision of the ~~SFIT4TCCON~~ SFIT4NIR retrievals, including the total column and two partial columns (in the troposphere and stratosphere), are estimated by TCCON standard retrievals, ground-based in situ measurements, ACE-FTS satellite observations, TCCON proxy data ~~and AirCore~~, AirCore and aircraft measurements. By comparison against TCCON standard retrievals, it is found that the retrieval uncertainty of ~~SFIT4TCCON~~ SFIT4NIR X_{CH_4} is similar to that of TCCON standard retrievals with the systematic uncertainty within 0.35% and the ran-
15 dom uncertainty about 0.5%. The tropospheric and stratospheric X_{CH_4} from ~~SFIT4TCCON~~ SFIT4NIR retrievals are assessed by comparing with AirCore ~~measurements at Sodankylä and aircraft measurements~~, and there is a ~~+21.0 ± 0.3%~~ overestimation in the ~~SFIT4TCCON~~ SFIT4NIR tropospheric X_{CH_4} and a ~~4.0 ± 2.0%~~ underestimation in the ~~SFIT4TCCON~~ SFIT4NIR stratospheric X_{CH_4} , which are within the systematic uncertainties of ~~SFIT4TCCON~~ SFIT4NIR retrieved partial columns in the troposphere and stratosphere, respectively.

1 Introduction

The Total Carbon Column Observing Network (TCCON) is an international network established in 2004 using ground-based Fourier transform infrared (FTIR) ~~spectrometer~~spectrometers to record direct solar absorption spectra in the near-infrared (NIR) spectral range and to retrieve from these spectra total columns of atmospheric greenhouse gases, including methane (CH₄) (Wunch et al., 2011). Currently, there are about 25 TCCON sites around the world with a latitude coverage from 45°S to 80°N. The standard TCCON retrieval code is GGG2014 (developed and maintained at JPL, NASA); it performs a profile scaling retrieval. TCCON provides the dry air total column averaged mole fraction of CH₄ (X_{CH_4}), which have been compared to and indirectly calibrated by the Infrastructure for the Measurement of the Europe Carbon Cycle (IMECC) profiles over the European TCCON stations, the high-performance instrumented airborne platform for environmental research (HIAPER) Pole-to-Pole Observations (HIPPO) profiles over the TCCON stations in Northern America East Asia and Oceania, and several AirCore profiles (Karion et al., 2010) over Lamont (USA). A scaling factor of 0.977 ± 0.002 (1σ) is applied to the retrieved X_{CH_4} values to correct for the systematic bias. As one fixed value of 0.977 is applied to all the TCCON sites, the site-to-site bias is not taken into account. It is assumed that the remaining systematic uncertainty of the TCCON X_{CH_4} products is within 0.2%. The random uncertainty of the X_{CH_4} retrieval is about 0.5% (Wunch et al., 2015). TCCON X_{CH_4} observations have relatively larger footprints compared to surface in situ measurements, and thus could provide flux information on a regional scale (Wunch et al., 2016). TCCON X_{CH_4} measurements are widely used to validate the satellite observations, e.g. the Scanning Imaging Absorption Spectrometer for Atmospheric Chartography (SCIAMACHY) and the Thermal And ~~Near-infrared~~Near-infrared Sensor for carbon Observation Fourier-Transform Spectrometer (TANSO-FTS) (Houweling et al., 2014; Dils et al., 2014; Zhou et al., 2016). In addition, the TCCON X_{CH_4} observations are also used to evaluate ~~the~~ atmosphere chemistry transport model simulations (Saito et al., 2012; Fraser et al., 2013; Agusti-Panareda et al., 2017).

The concentration of atmospheric CH₄ remained almost constant from about 1995 to 2006. However, after 2007, the CH₄ concentration started to ~~increasing~~increase with an annual growth rate about 0.7 ppb/year (Rigby et al., 2008). The CH₄ in the atmosphere is released from gas and oil, coal, landfill, ruminant animal, rice agriculture, biomass burning, wetland and lake. The CH₄ in the troposphere is removed mainly by the oxidation with hydroxyl radicals (OH), partly by ~~the~~ getting absorbed in the soil and partly by reacting with chlorine radicals in the marine boundary layer. The CH₄ in the stratosphere is removed by the oxidation with OH, chlorine atoms and excited oxygen atoms (IPCC, 2013). The mole fraction of CH₄ decreases rapidly with altitude above the tropopause due to a higher photolysis rate in the stratosphere (Ehhalt and Heidt, 1973). The separation of the tropospheric and stratospheric CH₄ partial columns helps to better understand the atmospheric CH₄ variability and to comprehensively evaluate model simulations (Ostler et al., 2016; Saad et al., 2016; Wang et al., 2017). The seasonal variation of CH₄ in the troposphere is dominated by its source and sink as well as the horizontal transport, while seasonal variation of CH₄ in the stratosphere is strongly affected by the Brewer-Dobson circulation, the vertical transport, the intertropical convergence zone movement and stratospheric chemical reactions. A proxy method to derive the tropospheric and stratospheric X_{CH_4} from the TCCON retrievals based on the known relationship between CH₄ and hydrogen fluoride (HF) or nitrous oxide (N₂O) in the stratosphere has already been demonstrated by Wang et al. (2014) and Saad et al. (2014). The N₂O and HF total columns are

also available in the TCCON standard products. An alternative CH₄ profile retrieval method has been provided by Tukiainen et al. (2016), using dimension reduction and the Markov chain Monte Carlo statistical estimation.

In this study, ~~we employ the full-physics SFIT4 code to retrieve vertical profile of the CH₄ from TCCON spectra (named SFIT4TCCON retrievals)~~ profile retrieval from ground-based FTIR near-infrared spectra using the SFIT4 code (named SFIT4NIR retrievals) is carried out at six sites (Ny-Ålesund, Sodankylä, Bialystok, Bremen, Orléans and St Denis) for measurements performed during the time period of 2016-2017 ~~. The in the framework of the EU Readiness of ICOS for Necessities of integrated Global Observations (RINGO) project. The full-physics SFIT4 retrieval code is based on the optimal estimation method (Rodgers, 2000), which is an updated version of SFIT2 (Pougatchev et al., 1995) and commonly used in the Network for the Detection of Atmospheric Composition Change - the Infrared Working Group (NDACC-IRWG) (De Mazière et al., 2018). The TCCON sites and the SFIT4TCCON-SFIT4NIR retrieval strategy are introduced in the next section. The motivation behind this study is to retrieve vertical information of CH₄ from TCCON spectra. In section 3 the difference in X_{CH₄} retrieved using the SFIT4TCCON-SFIT4NIR to the X_{CH₄} retrieved from the standard TCCON retrievals is investigated. The tropospheric and the stratospheric X_{CH₄} retrieved using the SFIT4TCCON-SFIT4NIR retrievals are compared with other available datasets, such as ground-based in situ measurements, Atmospheric Chemistry Experiment - Fourier Transform Spectrometer (ACE-FTS) satellite observations, and TCCON proxy data. Furthermore, the comparison results from the SFIT4TCCON-SFIT4NIR retrievals relative to the AirCore profiles at Sodankylä TCCON site (Kivi and Heikkinen, 2016) and aircraft profiles~~ are also discussed in this section. Finally, conclusions are drawn in Section 4.

2 Data and method

2.1 TCCON sites

The locations of the TCCON sites used in this study are listed in Table 1. All sites use a Bruker IFS 125HR instrument to record NIR spectra in the range of 5000-10000 cm⁻¹ with a spectral resolution of 0.02 cm⁻¹. The TCCON spectra from all sites in the time period of 2016-2017 were transferred to BIRA-IASB. A ~~python code is developed to convert the TCCON spectra from the OPUS format to the SFIT4 readable format.~~ A DC correction is applied to remove the ~~noise variation~~ of the interferogram caused by the solar intensity variation due to the presence of clouds during a measurement (Keppel-Aleks et al., 2007). A python code is developed to convert the TCCON spectra from the OPUS format to the SFIT4 readable format.

2.2 ~~SFIT4TCCON-SFIT4NIR~~ retrieval strategy

The ~~SFIT4TCCON-SFIT4NIR~~ retrieval strategy is investigated based on the TCCON spectra at St Denis using the SFIT4_v9.4.4 retrieval code. After that, the optimized retrieval strategy is applied for other sites. The key parameters used in the ~~SFIT4TCCON-SFIT4NIR~~ retrieval are listed in Table 2. The ~~AFM-spectroscopy-atmospheric line list (ATM)~~ used in the GGG2014 code ~~(Toon and Wunch, 2014) (Toon, 2014)~~ has also been used in the forward model of the ~~SFIT4TCCON-SFIT4NIR~~. A linear polynomial fitting is applied to a time-domain ideal instrument line shape (ILS) and the parameters are retrieved simultaneously.

Table 1. The coordinates and the altitudes (m a.s.l.) of the TCCON FTIR sites used in this study.

Site	Latitude	Longitude	Altitude (m a.s.l.)	Reference
Ny-Ålesund	78.9°N	11.9°E	20	Notholt et al. (2014e) Notholt et al. (2017)
Sodankylä	67.4°N	26.6°E	188	Kivi et al. (2014a) Kivi et al. (2014b)
Bialystok	53.2°N	23.0°E	180	Deutscher et al. (2014)
Bremen	53.1°N	8.8°E	30	Notholt et al. (2014a) Notholt et al. (2014b)
Orléans	48.0°N	2.1°E	130	Warneke et al. (2014a) Warneke et al. (2014b)
St Denis (Reunion Island)	21.0°S	55.4°E	87	De Maziere et al. (2014) De Mazière et al. (2014)

The a priori ILS is set as the ideal ILS. Since the Bruker 125HR spectrometers exhibit excellent ILS stability, the retrieved ILS are very constant and the retrieved maximal variations for modulation efficiency (ME) amplitude are within 2% at these six sites. A detailed description of the retrieval settings, the averaging kernel and the retrieval uncertainty are presented in section 2.2.1 - 2.2.5.

Table 2. Lists of the most important parameters in the ~~SFIT4TCCON-CH₄~~[SFIT4NIR](#) retrieval strategy.

Retrieval window (cm ⁻¹)	5996.45-6007.55
Interfering species	CO ₂ , H ₂ O
Spectroscopy	ATM
Regularization	Tikhonov L_1 with $\alpha = 1000$
A priori profile	WACCM v6 (fixed)
SNR	250
ILS	a linear polynomial fitting

5 2.2.1 Retrieval window

Three windows ~~which are~~ listed in Table 3 are used to retrieve CH₄ total column values using the GGG2014 code. All these retrieval windows were tested with ~~SFIT4TCCON-~~[SFIT4NIR](#) retrieval. The typical transmittance and residual for the three windows are shown in Figure 1. The root-mean-square (RMS) of the residual in band 1 is largest due to a bad fitting of several strong H₂O absorption lines. The RMS of the residual in band 2 is the lowest and is slightly better than that in band 3.

- 10 As an example, the retrieved CH₄ total columns using these three bands ~~along with the dry air pressure (subtracting the water vapor pressure from the surface pressure)~~ on 30 July 2016 are shown in Figure 2. A clearly artificial symmetric variation for band 1 is seen, which is probably due to a bad fitting of the spectra. ~~As St Denis is a remote site and there is no strong CH₄ emission nearby, it is assumed that the diurnal variation of X_{CH_4} above St Denis is relatively small. Therefore, the diurnal variation of CH₄ total columns is dominated by the variation of dry air columns ($TC_{CH_4} = X_{CH_4} \times TC_{air}^{dry}$). A high dry air~~
- 15 ~~pressure is expected to result in a high total column of dry air and vice versa. The correlation coefficients (R) between the dry~~

air-pressure-and-the The results from Band 2 and 3 are similar. The difference between the retrieved CH_4 total columns from the band 1, Band 2 and 3 are 0.04, 0.82 and 0.27 respectively. In order to get a robust result, 6 more days in 2016 (01 March, 29 May, 30 June, 28 July, 20 September and 01 November) are selected for the analysis. The selection is made based on the criteria that there should be at least 100 measurements for that day and no strong diurnal variation in X_{CH_4} is observed. The R-between-retrieved- CH_4 total columns and dry air partial pressure is computed for each chosen day. The mean R-value for within $0.3 \pm 0.1\%$. As the band 2 has the best fitting, it is 0.78, which is much larger than the R-value for band 1 (0.05) or the R-value for band 3 (0.35). Consequentially, band 2 is selected as the retrieval window for our SFIT4TCCON-SFIT4NIR retrieval.

Table 3. The retrieval windows used in the GGG2014 code.

	Window (cm^{-1})	Width (cm^{-1})	Interfering species
band 1	5781.0-5897.0	116.0	CO_2 , H_2O , N_2O
band 2	5996.45-6007.55	11.1	CO_2 , H_2O
band 3	6007.0-6145.0	138.0	CO_2 , H_2O

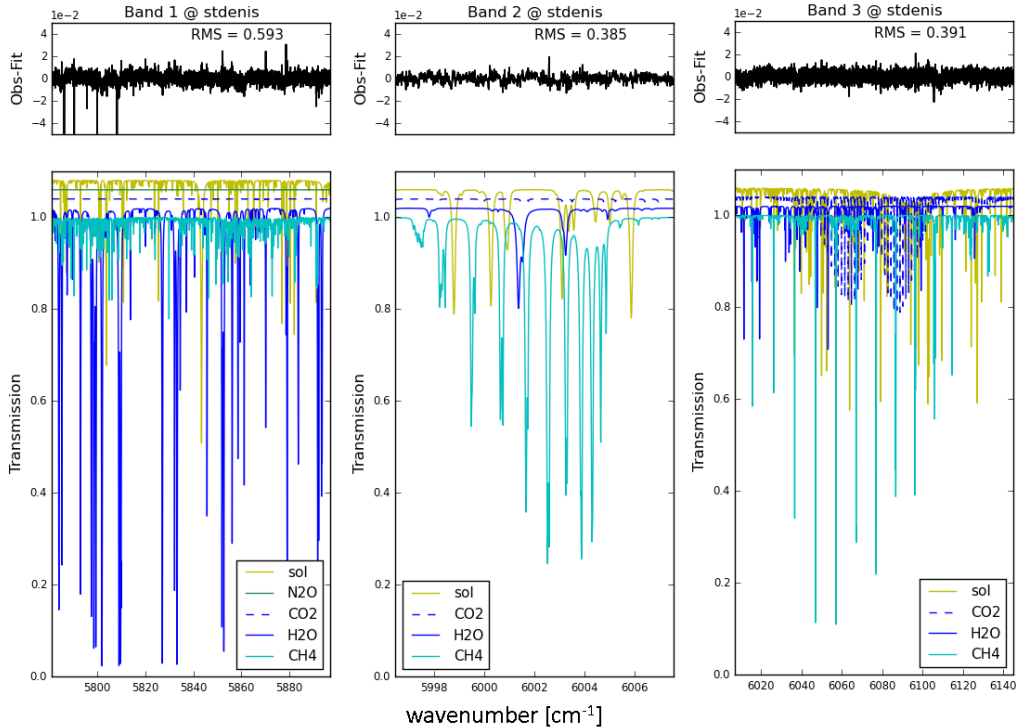


Figure 1. The transmittances of the species and solar lines in three bands from a typical spectrum at St Denis, together with the residual (observation - fitting). The transmittance of each component is shifted by 0.02 to better identify different species and the solar lines (sol).

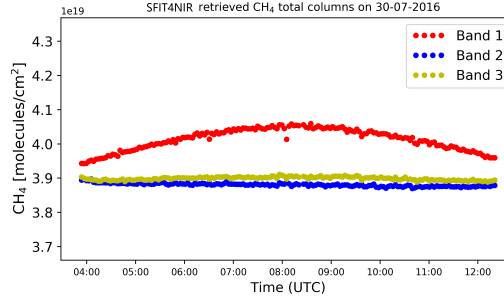


Figure 2. The SFIT4 retrieved CH₄ total columns using the 3 bands listed in Table 1 on 30 July 2016 (184 spectra), ~~together with the computed dry-air pressure for that day (green line).~~

2.2.2 A priori profile

According to the optimal estimation method (OEM) (Rodgers, 2000), a priori profile is used to initialize the iteration during a retrieval process. In this study, ~~SFIT4TCCON~~ SFIT4NIR uses the mean of the monthly profiles between 1980 and 2020 from the Whole Atmosphere Community Climate Model (WACCM) version 6 as the a priori profiles for CH₄ and CO₂, while H₂O

5 a priori profile is derived from the 6-hourly NCEP reanalysis data because of its high variability in the atmosphere.

2.2.3 Regularization

The retrieved CH₄ profile can be written as

$$\mathbf{x}_{r,CH_4} = \mathbf{x}_{a,CH_4} + \mathbf{A}(\mathbf{x}_{t,CH_4} - \mathbf{x}_{a,CH_4}) + \boldsymbol{\varepsilon}, \quad (1)$$

$$\mathbf{A} = (\mathbf{K}^T \mathbf{S}_{\varepsilon}^{-1} \mathbf{K} + \mathbf{S}_a^{-1})^{-1} \mathbf{K}^T \mathbf{S}_{\varepsilon}^{-1} \mathbf{K}, \quad (2)$$

- 10 where \mathbf{x}_{a,CH_4} , \mathbf{x}_{t,CH_4} and \mathbf{x}_{r,CH_4} are the a priori, true and retrieved CH₄ mole fraction profiles, respectively. \mathbf{A} is the averaging kernel, representing the sensitivity of the retrieved CH₄ profile to the true atmosphere status. The trace of \mathbf{A} is the degree of freedom for signal (DOFS), indicating the number of individual vertical information derived from the retrieval. \mathbf{K} is the Jacobian matrix. $\boldsymbol{\varepsilon}$ is the retrieval uncertainty. \mathbf{S}_a and \mathbf{S}_{ε} are the a priori covariance matrix and the measurement covariance matrix, respectively. \mathbf{S}_{ε} is ~~reply on~~ determined by the signal to noise ratio (SNR). \mathbf{S}_a^{-1} and $\mathbf{S}_{\varepsilon}^{-1}$ are the two
- 15 key parameters to ~~constraint~~ constrain the retrieved CH₄, and to determine whether the retrieved CH₄ profile is mainly from the a priori information or from the measurement information. It is assumed that \mathbf{S}_{ε} is a diagonal matrix, where the diagonal elements are the inverse square of the SNR. The SNR of spectra is set to 250 at all the TCCON sites. \mathbf{S}_a^{-1} is created by the Tikhonov L₁ method $\mathbf{S}_a^{-1} = \alpha \mathbf{L}_1^T \mathbf{T} \mathbf{L}_1 \in \mathbf{R}^{(n,n)}$ (Tikhonov, 1963). ~~The matrix \mathbf{T} considers~~ (Tikhonov, 1963)

$$\mathbf{S}_a^{-1} = \alpha \mathbf{L}_1^T \mathbf{T} \mathbf{L}_1 \in \mathbf{R}^{(n,n)}, \quad (3)$$

where $L_1 = \begin{bmatrix} -1 & 1 & 0 & \dots & 0 & 0 \\ 0 & -1 & 1 & \dots & 0 & 0 \\ \vdots & \vdots & \vdots & \ddots & \vdots & \vdots \\ 0 & 0 & 0 & \dots & -1 & 1 \end{bmatrix}$, $\mathbf{T} = \text{diag}(\Delta h^2)$ (Δh is the thickness of each layer. ~~The~~), and regularization

strength α is the key parameter to ~~control the strength of \mathbf{S}_a^{-1}~~ determine the correlation strength among layers.

The optimized α value is chosen by extracting maximum possible information from the measurement while eliminating the artificial oscillation for the retrieved CH_4 profiles. Several α values are tested using the spectra on 30 July 2016, and the RMS, DOFS and retrieved CH_4 total columns are listed in Table 4, along with the retrieved CH_4 vertical profiles in Figure 3. The retrieved CH_4 profile shows a strong oscillation in the troposphere for $\alpha = 100$. The vertical profiles are similar for $\alpha = 1000$ and $\alpha = 10000$, but it allows us to get a smaller RMS with $\alpha = 1000$. In summary, a regularization strength (α) of 1000 with the DOFS of about 2.4 is the selected as the best choice for the ~~SFIT4TCCON-SFIT4NIR~~ SFIT4NIR retrieval.

Table 4. The mean and standard deviation of RMS, DOFS and retrieved CH_4 total columns from ~~SFIT4TCCON-SFIT4NIR~~ SFIT4NIR retrievals using different regularization strength α values.

α	100	1000	10000
RMS (%)	0.34 ± 0.06	0.34 ± 0.06	0.35 ± 0.06
DOFS	3.25 ± 0.11	2.42 ± 0.08	1.77 ± 0.04
Total column CH_4 (10^{18} molec/cm ²)	38.62 ± 0.05	38.64 ± 0.04	38.65 ± 0.04

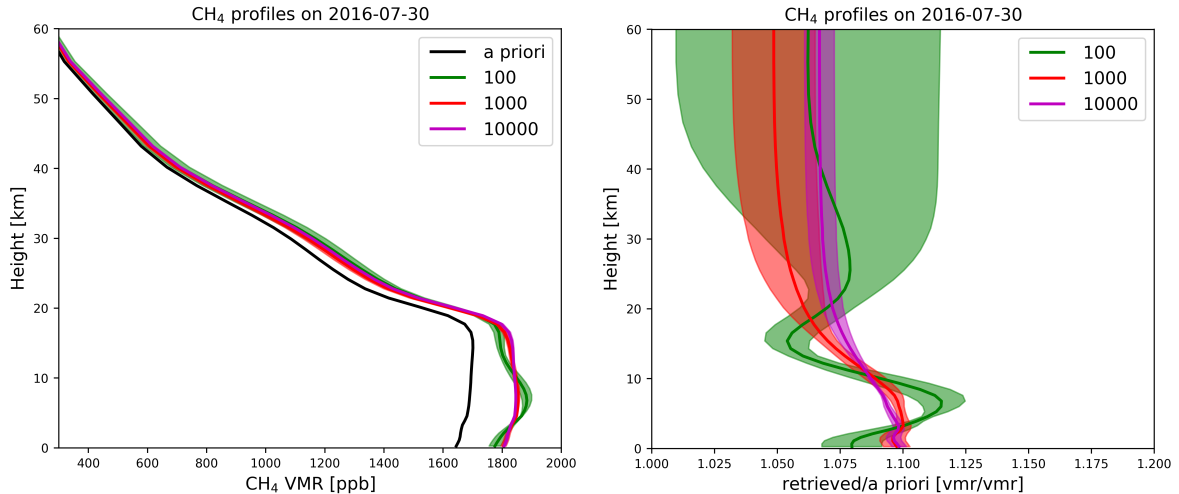


Figure 3. The ~~SFIT4TCCON-SFIT4NIR~~ SFIT4NIR a priori and the retrieved CH_4 vertical profiles ~~using~~ (left panel), together with the ratios of the retrieved profiles to the a priori profile (right panel), with different regularization strength α values.

2.2.4 Averaging kernel

Left panel in Figure 4 shows the typical averaging kernel (AVK) of SFIT4TCCON-CH₄-SFIT4NIR retrieval with a solar zenith angle (SZA) of 63° at St Denis. The retrieved CH₄ profile is sensitive to the altitude range from the surface to the middle stratosphere (about 40 km). The AVK shows that the SFIT4TCCON-SFIT4NIR retrieved profile contains independent information in the troposphere and in the stratosphere (DOFS close to 1.0 for these two layers). In addition, the column averaging kernels (right ~~panel~~ in Figure 4) indicate that the retrieved CH₄ total column has a good sensitivity in the whole atmosphere, with the value close to 1.0 at all altitudes. The column averaging kernels slightly vary with the SZAs, which is more constant than the AVK variability for the SZAs of the standard TCCON products (see Figure 4 in Wunch et al. (2011)).

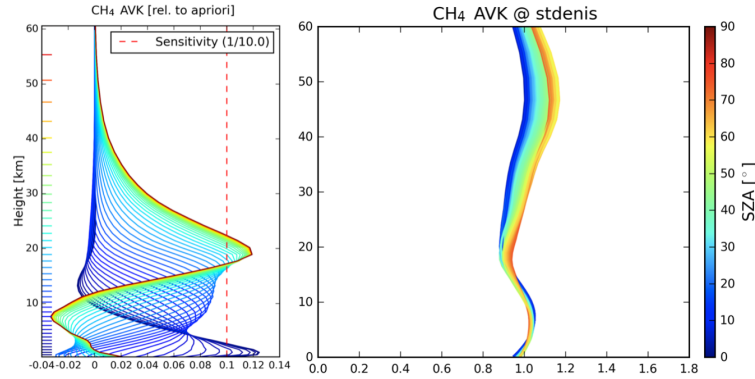


Figure 4. Left panel: a typical CH₄ averaging kernel matrix of the SFIT4TCCON-SFIT4NIR retrieval with the SZA of 63° at St Denis, in unit of the mole fraction profile with respect to the a priori. Right panel: CH₄ column averaging kernels for different solar zenith angles.

2.2.5 Error budget

- 10 According to the OEM (Rodgers, 2000), the measurement uncertainty of SFIT4TCCON-SFIT4NIR retrieval (ε in Eq. 1) is estimated from three components: the smoothing error covariance matrix (\mathbf{S}_s), the forward model parameter error covariance matrix (\mathbf{S}_f) and the measurement error covariance matrix (\mathbf{S}_m).

$$\mathbf{S}_s = (\mathbf{A} - \mathbf{I})\mathbf{S}_e(\mathbf{A} - \mathbf{I})^T, \quad (4)$$

$$\mathbf{S}_f = \mathbf{G}_y \mathbf{K}_b \mathbf{S}_b \mathbf{K}_b^T \mathbf{G}_y^T, \quad (5)$$

15 $\mathbf{S}_m = \mathbf{G}_y \mathbf{S}_\varepsilon \mathbf{G}_y^T, \quad (6)$

where \mathbf{G}_y is the contribution matrix, representing the sensitivity of the retrieval to the measurement. \mathbf{S}_e , \mathbf{S}_b and \mathbf{S}_ε are the covariance matrices of the retrieval state vector, the forward model parameter and the measurement, respectively. The retrieval state vector (x in Eq. 1) not only includes the CH₄ vertical profile, but also includes the H₂O and CO₂ columns, the slope of the background, the wavenumber shift and several ILS parameters. Each retrieved parameter has systematic and random

Table 5. The systematic and random uncertainties for the ~~SFIT4TCCON~~-SFIT4NIR retrieved CH₄ total column, partial columns in the troposphere (0–16.5 km) and in the stratosphere (16.5–50 km). The uncertainties are in the unit of percentage (%). The sign “—” blank place is ~~used for cases~~ where the uncertainty is negligible with a value which is less than 0.1%.

Error	Total column		Troposphere (0-16.5 km)		Stratosphere (16.5-50 km)	
	Systematic	Random	Systematic	Random	Systematic	Random
Smoothing	0.2	0.2	0.2	0.2	1.2	1.6
Measurement	—	0.1	—	0.1	—	0.9
Retrieved parameters	0.2	0.2	0.1	0.1	2.5	2.5
Temperature	1.1	0.4	1.0	0.4	1.8	0.5
Spectroscopy	3.1	—	3.1	—	6.0	—
SZA	0.1	0.2	0.1	0.2	0.2	0.9
Total	3.2	0.5	3.1	0.5	6.8	3.3

uncertainties. The relative standard deviation of the CH₄ monthly means from the WACCM model in 1980-2020 is calculated as the random uncertainty of the CH₄ profile. For the systematic uncertainty, we have chosen a value of 5% (about 90 ppb in the troposphere), based on the difference between the a priori CH₄ mole fraction near the surface and the local in situ measurements (Zhou et al., 2018). As CH₄ is relatively stable in the atmosphere with a life time of ~ 9 years, it is assumed that

5 5% systematic uncertainty is acceptable for all altitudes. The systematic and the random uncertainties for H₂O and CO₂ are set to 5%. The systematic and random uncertainties of ILS parameters are set to 1%. The other retrieved parameters ~~have~~-do not contribute significantly to the CH₄ uncertainty. The smoothing error in Table 5 represents the uncertainty contribution from the CH₄ vertical profile, while the ~~error~~-errors from the retrieved parameters in the Table 5 include the contribution from the H₂O and CO₂ columns, the slope of the background, the wavenumber shift and several ILS parameters. The spectroscopy, the

10 temperature and the SZA are the most important parameters contributing to the forward model. According to the HITRAN2012 (Rothman et al., 2013), the uncertainty of CH₄ absorption in the selected retrieval window is about 2-5%. Therefore, the systematic uncertainty of the spectroscopy is set to 3%, and the random uncertainty on the spectroscopic data is assumed to be negligible. The systematic and random uncertainties are set to 1% for the temperature. The systematic uncertainty is set to 0.1% and the random uncertainty is set to 0.5% for the SZA. S_{ϵ} is assumed to be diagonal where the diagonal elements are the inverse

15 square of the SNR. The propagated uncertainties of the total column and the partial columns (troposphere and stratosphere) are listed in Table 5. The mean tropopause height above St Denis is about 16.5 km. The systematic and random uncertainties of the ~~SFIT4TCCON~~-SFIT4NIR retrieved CH₄ total column are 3.2% and 0.5%, respectively. The dominating component of the systematic uncertainty is coming from the spectroscopy. The uncertainties of the partial column in the troposphere are closer to those of the total column, while the uncertainties of the partial column in the stratosphere are relatively large.

3 Results and discussions

The retrieval strategy listed in Table 2 is applied for all six sites. In this section, the data quality of the ~~SFIT4TCCON-CH₄~~-~~SFIT4NIR~~ retrievals is evaluated with TCCON standard retrievals, ground-based in situ measurements, ACE-FTS satellite remote sensing observations, TCCON proxy X_{CH_4} data and AirCore measurements.

5 3.1 TCCON standard retrievals

According to Section 2.2.5, the random uncertainty of ~~SFIT4TCCON-CH₄~~-~~SFIT4NIR~~ total column is about 0.5%, which is close to that of TCCON retrieval (Wunch et al., 2015). The systematic uncertainty of ~~SFIT4TCCON-CH₄~~-~~SFIT4NIR~~ total column is about 3.2% where a large contribution is from the spectroscopy. To better understand the systematic uncertainty of the ~~SFIT4TCCON-SFIT4NIR~~ retrieved total column, the ~~SFIT4TCCON-SFIT4NIR~~ X_{CH_4} at six sites in 2016-2017 are calculated and compared with TCCON standard products. The systematic uncertainty of TCCON X_{CH_4} products is within 0.2%.

GGG2014 uses the ratio between CH₄ and O₂ total columns to calculate the X_{CH_4} (Yang et al., 2002), as the atmospheric O₂ mole fraction is relatively stable with the mole fraction of 0.2095

$$X_{CH_4} = 0.2095 TC_{CH_4} / TC_{O_2}. \quad (7)$$

15 The X_{CH_4} from the ~~SFIT4TCCON-SFIT4NIR~~ retrieval is calculated as

$$X_{CH_4} = \frac{TC_{CH_4}}{TC_{air}^{dry}} = \frac{TC_{CH_4}}{P_s / (gm_{air}^{dry}) - TC_{H_2O} (m_{H_2O} / m_{air}^{dry})}, \quad (8)$$

where TC_{air}^{dry} and TC_{H_2O} are total columns of dry air and H₂O; P_s is the surface pressure; g is the total column-averaged gravitational acceleration; m_{H_2O} and m_{air}^{dry} are molecular masses of H₂O and dry air, respectively (Deutscher et al., 2010). The uncertainty of P_s is better than 0.1 hPa and the uncertainty of H₂O column in the troposphere is about 5-10%, as a result, the uncertainty of the dry air column is about 0.1%. The uncertainty of X_{CH_4} is the combination of the uncertainties of the total column of CH₄ and the dry air column, while the uncertainty of the dry air column is negligible compared to the uncertainty of ~~SFIT4TCCON-CH₄~~-~~SFIT4NIR~~ retrieval (see Table 5). The ~~SFIT4TCCON-SFIT4NIR~~ tropospheric and stratospheric X_{CH_4} can be calculated following Eq. 7-8 using the partial columns of CH₄ and dry air in the troposphere and in the stratosphere, respectively. The tropopause height is calculated individually for each ~~SFIT4TCCON-SFIT4NIR~~ retrieval using the temperature and pressure profiles from the NCEP 6-hourly reanalysis data. The tropopause height varies from site-to-site according to its latitude. The tropopause height is about 8–11 km at Ny-Ålesund and Sodankylä, 10–12 km at Bialystok, Bremen and Orléans, and 16–17 km at St Denis.

Figure 5 shows the time series of the hourly means of X_{CH_4} from ~~SFIT4TCCON-SFIT4NIR~~ and TCCON retrievals and their differences for measurements performed in 2016-2017. The mean and standard deviation of the X_{CH_4} difference between ~~SFIT4TCCON-SFIT4NIR~~ and TCCON (~~SFIT4TCCON-SFIT4NIR~~ - TCCON) at the six sites are in the range between -2.3 ppb (-0.14%) and 2.5 ppb (0.15%) and between 4.7 ppb (0.3%) and 9.7-9.9 ppb (0.5%). The standard deviations of the differences

at all sites are within 0.5%, which is consistent with the combined random uncertainties from SFIT4TCCON-SFIT4NIR and TCCON retrievals. The systematic bias between the SFIT4TCCON-SFIT4NIR and TCCON retrieved X_{CH_4} is much lower than 3.2%, indicating that the systematic uncertainty of SFIT4TCCON-CH₄-SFIT4NIR total column from the spectroscopy (see Table 3) is overestimated. Since the systematic uncertainty of TCCON X_{CH_4} retrieval is better than 0.2%, it is inferred

5 that the systematic uncertainty of SFIT4TCCON-SFIT4NIR X_{CH_4} retrieval is within 0.35%. Figure 6 shows the scatter plots of the X_{CH_4} retrievals from SFIT4TCCON-SFIT4NIR and TCCON at the six sites. The linear regression line (dashed red line) is very close to the one-to-one lines for all panels. The correlation coefficient is in the range between 0.74-0.76 and 0.94. No obvious seasonal variation is seen from Figure 5 and 6.

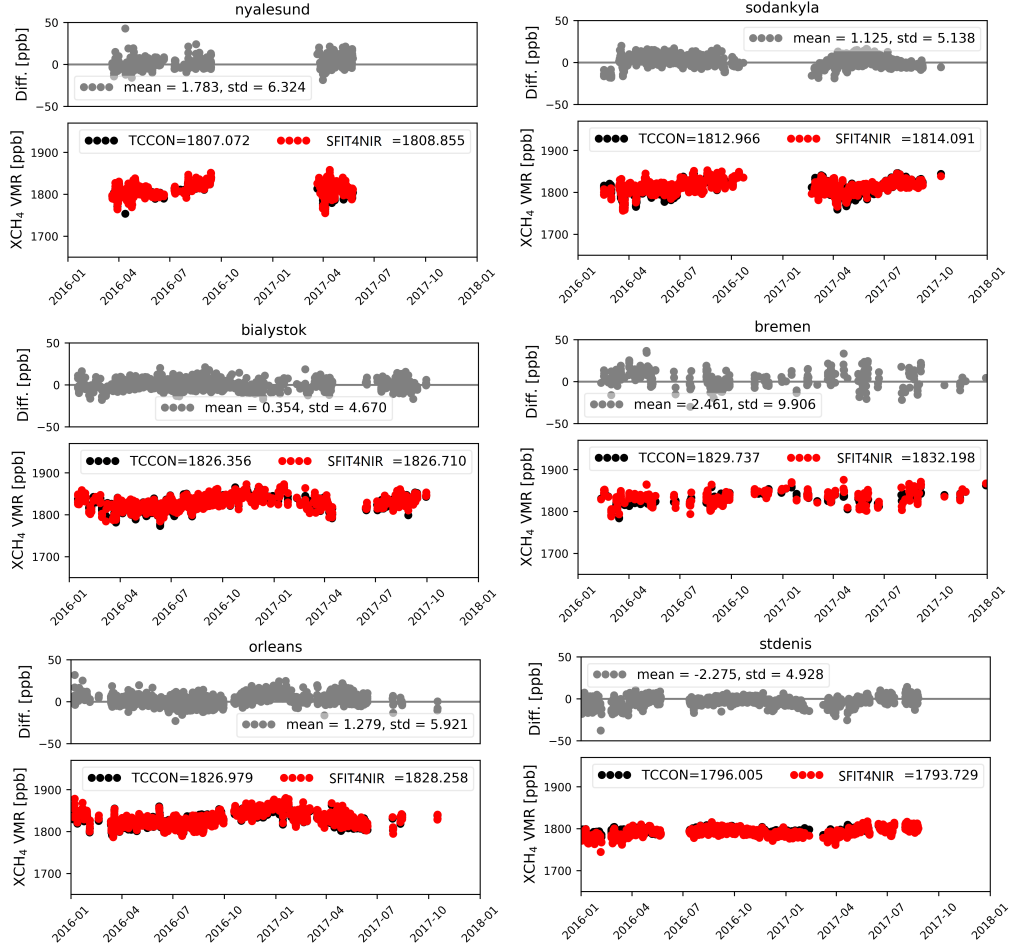


Figure 5. The time series of hourly means of X_{CH_4} from the SFIT4TCCON-SFIT4NIR and the TCCON retrievals at six TCCON sites during 2016 – 2017, together with their differences. For each site, the lower panel shows the time series of SFIT4TCCON-SFIT4NIR and TCCON measurements, and the upper panel shows the absolute difference between them (SFIT4TCCON-SFIT4NIR - TCCON; in ppb units). The values in the legend of the lower panel are the means of the TCCON and SFIT4NIR retrievals.

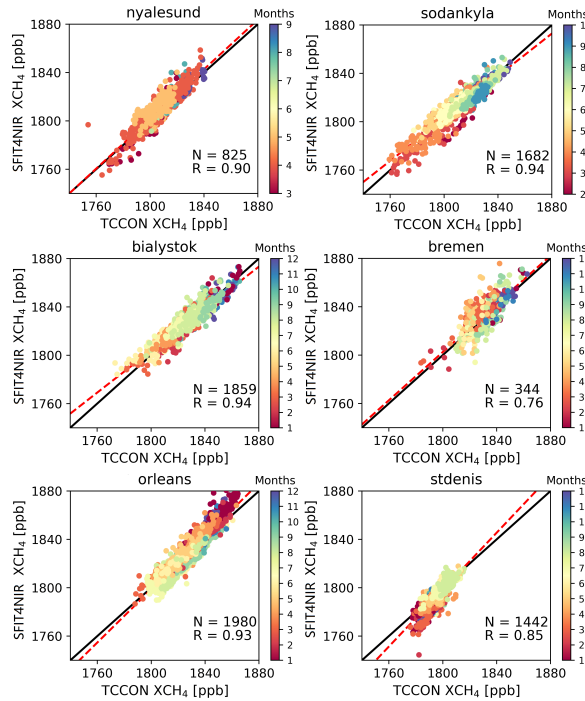


Figure 6. The scatter plots between ~~SFIT4TCCON~~ ~~SFIT4NIR~~ and TCCON X_{CH_4} hourly retrievals at the six TCCON sites. The dots are colored with the measurement months. In each panel, the black line is the one-to-one line and the dashed red line is the linear fitting. N is the measurement number, and R is the correlation coefficient.

3.2 In situ measurements

This section presents the comparison results between the ground-based in situ measurements at the individual sites and the tropospheric X_{CH_4} retrieved using ~~SFIT4TCCON~~ ~~SFIT4NIR~~. Ground-based in situ measurements are more sensitive to the local sources and sinks as compared to the FTIR measurements. The Traînou tower at Orléans site operates in situ measurements at
5 four heights (180, 100, 50 and 5 m). The measurements at 180 m ~~is are~~ used here as ~~it is~~ ~~they are~~ less affected by the boundary layer (Schmidt et al., 2014). In situ measurements for the St Denis site ~~is are~~ taken from the measurements performed at Maïdo (2155 m) located at about 20 km away from St Denis (Zhou et al., 2018). The in situ measurements at Maïdo are less affected by the surface, and CH_4 is well-mixed in the lower atmosphere with a life time of 8-10 years (Kirschke et al., 2013). Both
10 ground-based in situ measurements at Orléans and Maïdo are ~~well~~-calibrated frequently at the Laboratoire des Sciences du Climat et de l'Environnement (LSCE). The in situ measurements from other sites are not used in order to reduce the influence from the boundary layer.

Figure 7 shows the ~~time-series-of-the-monthly means and standard deviations of the co-located~~ ground-based in situ ~~measurements-and-the-SFIT4TCCON-and-the-SFIT4NIR~~ tropospheric X_{CH_4} ~~together-with-their-differences,~~ hourly means at

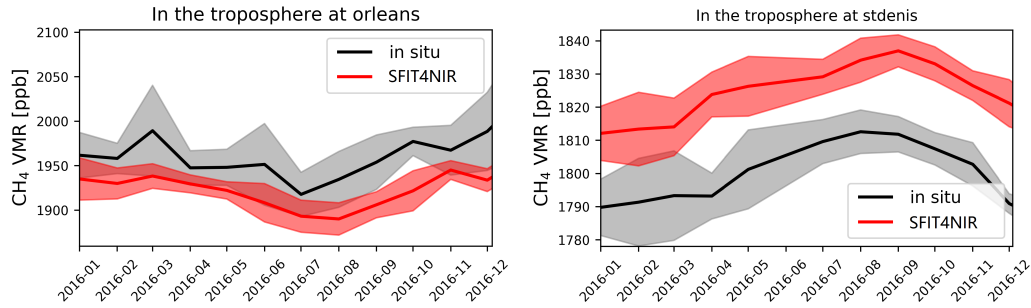


Figure 7. The time series of the ~~hourly-monthly~~ means (solid line) and standard deviations (shadow) from the ~~SFIT4TCCON-SFIT4NIR~~ tropospheric X_{CH_4} and the ground-based in situ CH_4 measurements at Orléans (left panels) and at St Denis (right panels), ~~together-with-the absolute-difference (unit: ppb) between-them (lower-and-top, respectively).~~ At Orléans, the in situ measurements are recorded at 180 m on a tower at the same place. The in situ measurements at St Denis are recorded at 2155 m on the Maïdo mountain, which is about 20 km away from St Denis.

Orléans and St Denis. ~~There are several high spikes seen in the~~ in ~~2016. In general, the seasonal cycle from the in~~ situ measurements ~~, especially is similar to the one from the SFIT4NIR tropospheric X_{CH_4} retrievals at these two sites. However, the in situ tower measurements (180 m) at Orléans, which are because of the influence from the boundary layer, are still influenced by the boundary layer, and several high spikes are observed in March, June and December 2016.~~ The in situ measurements at Orléans are found to be about 36 ppb larger than the ~~SFIT4TCCON-SFIT4NIR~~ tropospheric X_{CH_4} . Schmidt et al. (2014) showed that the CH_4 mole fractions at the 4 layers of the Orléans tower measurements are decreasing with increasing altitude. There is a strong CH_4 anthropogenic emission around Orléans (European Commission, 2013), which remains mainly at the surface. This might explain the bias between the ~~SFIT4TCCON-SFIT4NIR~~ tropospheric X_{CH_4} and the in situ tower measurements at Orléans. The in situ measurements at St Denis are found to be about 24 ppb lower than the ~~SFIT4TCCON-SFIT4NIR~~ tropospheric X_{CH_4} . Zhou et al. (2018) pointed out that the air near the surface above St Denis (0-2 km) is mainly coming from the Indian Ocean and partly from Southern African region, whereas the air mass in the middle and upper troposphere (4-12 km) is mainly coming from Africa and South America. As CH_4 emission on the land is much larger than that from the ocean, it is reasonable that ~~SFIT4TCCON-SFIT4NIR~~ tropospheric X_{CH_4} is systematically larger than the CH_4 mole fraction at the surface.

The phases and amplitudes of the seasonal cycles from the ~~SFIT4TCCON-SFIT4NIR~~ tropospheric X_{CH_4} and the ground-based in situ CH_4 measurements are found to be in good agreement. CH_4 mole fraction is high in ~~January-December~~ – March and low in July – September at Orléans (located in Northern Hemisphere), and high in July – September and low in ~~January-December~~ – March at St Denis (located in Southern Hemisphere). The CH_4 seasonal variations in the troposphere are driven by the OH variation, which is the major sink of CH_4 in the atmosphere.

3.3 ACE-FTS satellite observations

The comparison results between the ~~SFIT4TCCON~~ SFIT4NIR stratospheric X_{CH_4} and the ACE-FTS satellite observations are discussed in this section. The vertical range from the tropopause height up to 50 km is treated as the stratosphere in this study. ACE-FTS satellite monitors the atmospheric CH_4 concentration mainly in the stratosphere since 2004 in the solar occultation mode (Bernath et al., 2005). The latest level 2 version 3.6 data with data quality flag equal to 0 (without any known issue) are selected from ACE/~~SCI~~~~AST~~ SCISAT dataset (Sheese et al., 2015). The ACE-FTS CH_4 profile is retrieved on target altitudes with a vertical resolution of 3-4 km, and then it is interpolated onto a 1 km grid. ~~To our knowledge, there is no validation report for the version 3.6 CH_4 data yet, but the~~ The older version v2.2 data of the ACE-FTS CH_4 data have been compared to space-based satellite, balloon-borne and ground-based FTIR data (De Maziere et al., 2008). The accuracy of the version 2.2 data is within 10% in the upper troposphere - lower stratosphere, and within 25% in the middle and higher stratosphere up to the lower mesosphere. The uncertainty of the new version of the ACE-FTS data has a reduction of about 10% near 35-40 km and a slight reduction at 23 km (Waymark et al., 2014).

Figure 8 shows the ~~SFIT4TCCON~~ SFIT4NIR and ACE-FTS co-located daily means of the stratospheric X_{CH_4} at Bialystok, Orléans and St Denis. The ACE-FTS measurements are selected within $\pm 3 \times 30^\circ$ (latitude by longitude) around each FTIR site. Limited co-locations are found for Ny-Ålesund, Sodankylä and Bremen sites and so the results are not shown here. Figure 8 shows that the seasonal cycles (both phase and amplitude) of the stratospheric X_{CH_4} from ~~SFIT4TCCON~~ SFIT4NIR and ACE-FTS are similar. The stratospheric X_{CH_4} shows a minimum in February-April and a maximum in August-October for the Bialystok and Orléans sites located in the northern hemisphere. Whereas, the stratospheric X_{CH_4} shows a minimum in August-October and a maximum in February-April for St Denis site located in the southern hemisphere. The mean and the standard deviation of the differences in stratospheric X_{CH_4} between the ~~SFIT4TCCON~~ SFIT4NIR and ACE-FTS measurements at these three ~~sits~~ sites are in the range between ~~0.27~~ -0.27 and 2.06% and between 1.92 and 3.21%, respectively, which are within their uncertainties.

3.4 TCCON proxy data

In this section, the tropospheric and stratospheric X_{CH_4} from ~~SFIT4TCCON~~ SFIT4NIR retrievals are compared with the results derived from the N_2O and HF proxy methods at the six TCCON sites. We refer to Wang et al. (2014) and Saad et al. (2014) for the details of computing the tropospheric and stratospheric X_{CH_4} by the proxy retrieval method using N_2O and HF. Figure 9 shows the time series of the tropospheric and stratospheric X_{CH_4} from the TCCON proxy N_2O and HF method. First, the tropospheric and stratospheric X_{CH_4} from the N_2O and HF proxy methods are close to each other. However, a slight seasonal and site dependent bias is observed. For example, the difference in tropospheric X_{CH_4} between N_2O proxy method and HF proxy method is larger in summer than that in winter at Ny-Ålesund. The tropospheric X_{CH_4} from N_2O and HF proxy method are very close to each other for St Denis. While for the other five sites, the tropospheric X_{CH_4} from the N_2O method is larger by about 15-20 ppb than the HF method. The bias in the tropospheric X_{CH_4} between the N_2O and HF methods are in a good agreement with the Figure 7 in Wang et al. (2014). As the TCCON N_2O retrievals are corrected to the WMO scale (Wunch

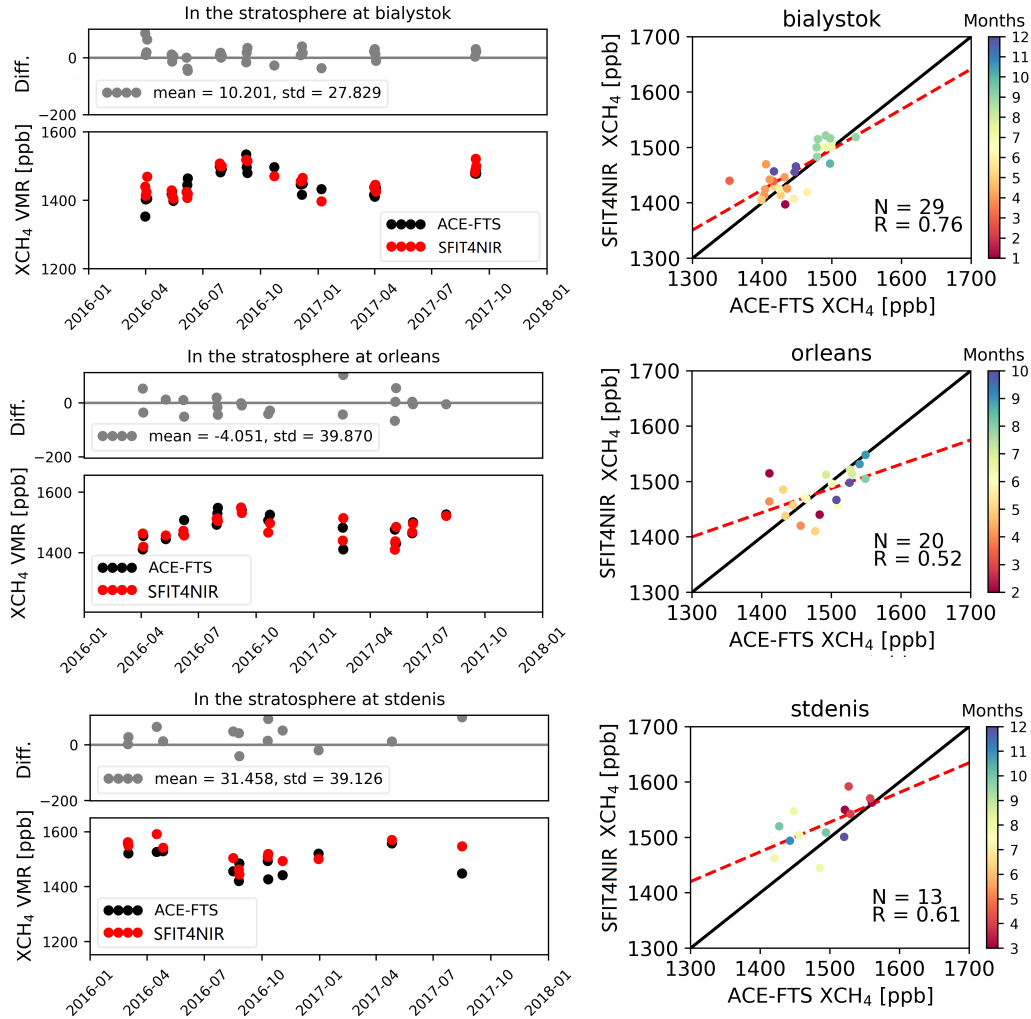


Figure 8. The Left panels: the time series of the daily mean of the stratospheric X_{CH_4} from the SFIT4TCCON-SFIT4NIR and the ACE-FTS co-located daily mean measurements, together with the absolute difference (unit: ppb) between them for Bialystok, Orléans and St Denis. Right panels: the correlation plots between the SFIT4NIR and the ACE-FTS co-located stratospheric X_{CH_4} daily means.

et al., 2015) while HF retrievals has not been validated, the systematic bias is probably due to the uncertainty of the X_{HF} product. Second, at St Denis (a moist site), the TCCON HF retrievals are strongly affected by H_2O so that the TCCON proxy method tropospheric and the stratospheric X_{CH_4} data using HF have many outliers.

Figure 9 also shows the time series of the tropospheric and stratospheric X_{CH_4} from the SFIT4TCCON-SFIT4NIR retrievals.

- The SFIT4TCCON-SFIT4NIR tropospheric X_{CH_4} are close to the proxy data at St Denis, while the SFIT4TCCON-SFIT4NIR tropospheric X_{CH_4} are systematic-systematically larger than the results from the proxy method at the five sites located in the Northern Hemisphere. The vital difference between St Denis and other sites is that the tropopause height at St Denis is about

16.5 km, which is relatively higher than the tropopause height of 9-12 km at other sites. It ~~looks~~ seems that the partial column of CH₄ from the ~~SFIT4TCCON-SFIT4NIR~~ retrieval is larger ~~/smaller~~ than that from the TCCON proxy data in the vertical range from surface to about 10 km~~4~~, while it is smaller than that from the TCCON proxy data above 10 km. The bias in the in the vertical range from surface to 10 km might be able to get compensation from the part of 10–16.5 km, due to the relatively high tropopause height at St Denis. The phases of the X_{CH₄} seasonal variations from the ~~SFIT4TCCON-SFIT4NIR~~ retrievals are almost the same as those from the proxy method, while the amplitudes of the variations from the ~~SFIT4TCCON-SFIT4NIR~~ retrievals are larger than those from the proxy method in the tropospheric component. There are ~~several~~ 2 possible explanations: 1) the proxy method assumes that the vertical mole fraction profile of HF or N₂O are constant in the troposphere; ~~2)~~, and the CH₄ mole fraction in the upper troposphere is calculated as the tropospheric X_{CH₄} for the proxy method; ~~3)~~ 2 the tropopause height in the proxy method has a chemical definition, which differs from the tropopause height calculated from the temperature and the altitude profiles (Wang et al., 2017).

3.5 AirCore measurements at Sodankylä

The AirCore is an atmospheric sampling system which uses a long tube to sample the air from the surrounding atmosphere and preserve profiles of the trace gases of interest from the surface (few hundred meters) to the middle stratosphere (about 30 km) (Karion et al., 2010). Regular AirCore measurements of CH₄ have been carried out at Sodankylä since September 2013. During 2016-2017, we select 7 AirCore profiles which are within 1 hour of ~~SFIT4TCCON-SFIT4NIR~~ measurements.

As an example, the AirCore CH₄ profile on 5 September 2017, together with the co-located (within ± 1 hour) ~~SFIT4TCCON-SFIT4NIR~~ a priori and retrieved profiles are shown in the left panel of Figure 10. AirCore and FTS data cannot be compared directly, because the AirCore profile has a high vertical resolution but it covers only a part of the total column that is observed by the FTS. The AirCore measurement for this launch ~~only~~ covers the vertical range from about 0.6 ~~km~~ to 26 km, and needs to be extended to compare with the FTIR data. ~~A sealed SFIT4TCCON~~ For the extrapolation, a scaled SFIT4NIR a priori profile is applied to extend the AirCore CH₄ profile above 26 km. ~~The, and the local surface CH₄ mole fractions are observed at 0.048 km by a Picarro G2401 instrument at Sodankylä (Kilkkil et al., 2015). A linear interpolation is applied based on the AirCore measurement and the simultaneous in situ measurement to obtain the fraction observations (Kilkkil et al., 2015) are applied to extend the AirCore CH₄ mole fraction profile below 0.6 km. The~~ In order to take the vertical sensitivity of the FTIR retrieval into account (Rodgers, 2003), the “extended” AirCore profile is then smoothed with the closest SFIT4TCCON retrieval-co-located SFIT4NIR retrieval

$$\underline{x_{aircore,s}} = x_a + A(x_{insitu} - x_a), \quad (9)$$

where x_{insitu} is the “extended” AirCore profile, x_a is the a priori profile of the ~~SFIT4NIR~~ retrieval, and x_{aircore,s} is the smoothed AirCore profile. The mean and the standard deviation of the relative differences between the co-located ~~SFIT4TCCON-SFIT4NIR~~ retrievals and the smoothed AirCore profile ((~~SFIT4TCCON-SFIT4NIR~~ - AirCore) / AirCore × 100%) are shown in the right panel of Figure 10. The bias is about +1.5% in the lower and the middle troposphere, between +1 and -4% in the upper troposphere and lower stratosphere region, and about -2.5% in the middle and upper stratosphere.

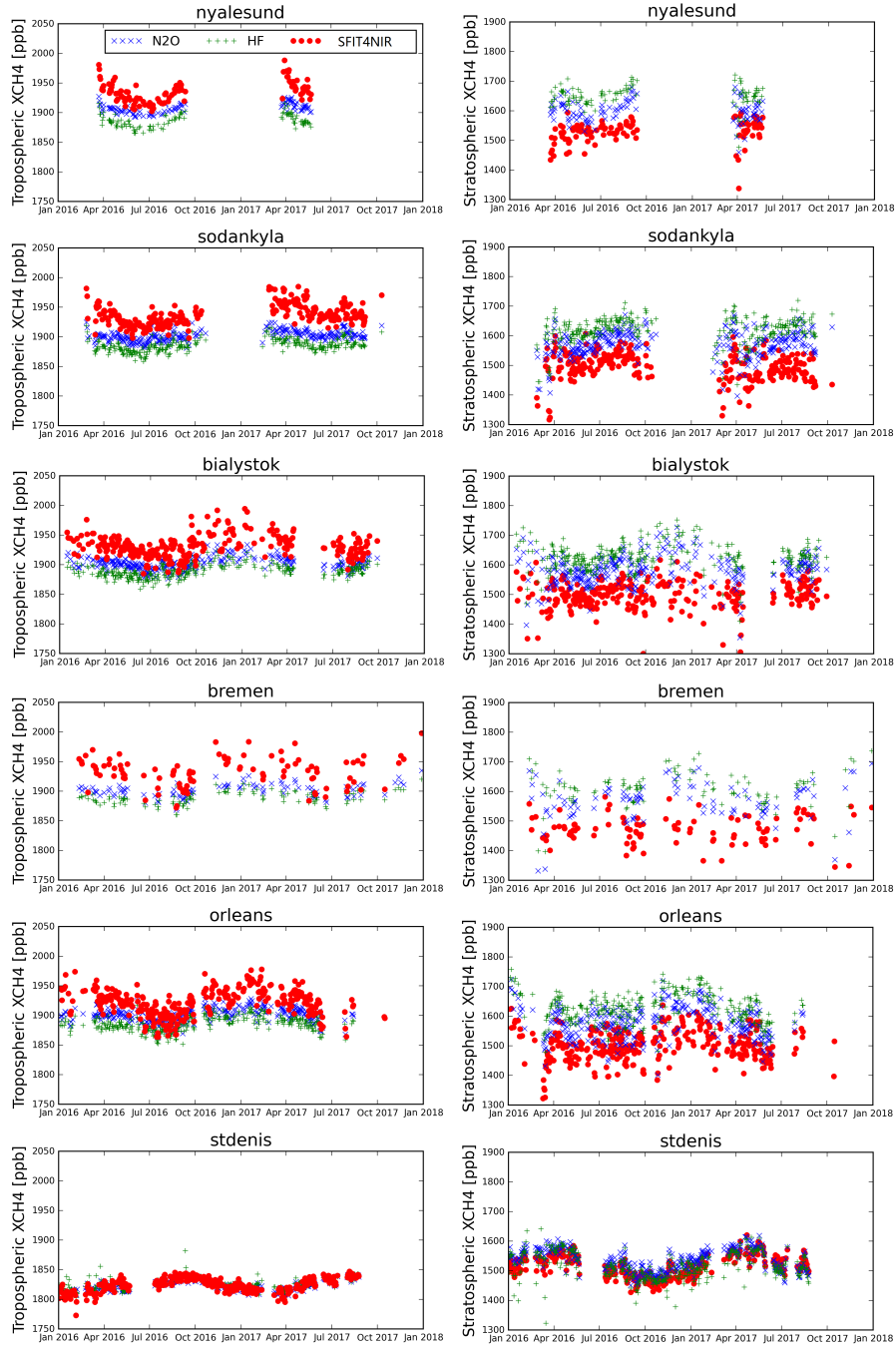


Figure 9. The time series of the tropospheric (left panels) and the stratospheric (right panels) co-located XCH_4 hourly means from the SFIT4TCCON SFIT4NIR and the proxy method (both N₂O and HF) at the six TCCON sites.

Figure 11 shows the scatter plots of X_{CH_4} between the co-located [SFIT4TCCON-SFIT4NIR](#) retrievals and the AirCore measurements for the whole atmosphere, for the tropospheric and for the stratospheric components. The errorbars are the random uncertainties of the [SFIT4TCCON-SFIT4NIR](#) retrievals and the AirCore measurements. It is assumed that the random uncertainty of the AirCore profile is about 0.1% between the surface and its maximum measurement altitude (~ 30 km), and it is about 2% above the maximum measurement altitude. The slope of the regression line ($a = 1.001$) in the whole atmosphere indicates that there is almost no systematic difference between the [SFIT4TCCON-SFIT4NIR](#) and the AirCore X_{CH_4} , which is consistent with the result in the comparison between [SFIT4TCCON-SFIT4NIR](#) and TCCON X_{CH_4} measurements (Figures 5 and 6). The [SFIT4TCCON-SFIT4NIR](#) tropospheric X_{CH_4} is about $+2.1 \pm 0.4\%$ larger than the AirCore measurements and the [SFIT4TCCON-SFIT4NIR](#) stratospheric X_{CH_4} is about $4.0 \pm 2.0\%$ less than the AirCore measurements. These differences between the [SFIT4TCCON-SFIT4NIR](#) retrievals and AirCore measurements are within the systematic uncertainties of the [SFIT4TCCON-SFIT4NIR](#) partial columns in the troposphere and stratosphere, and it is inferred that the systematic uncertainty of the [SFIT4TCCON-SFIT4NIR](#) partial column is mainly coming from the uncertainty of the spectroscopy (see Table 5).

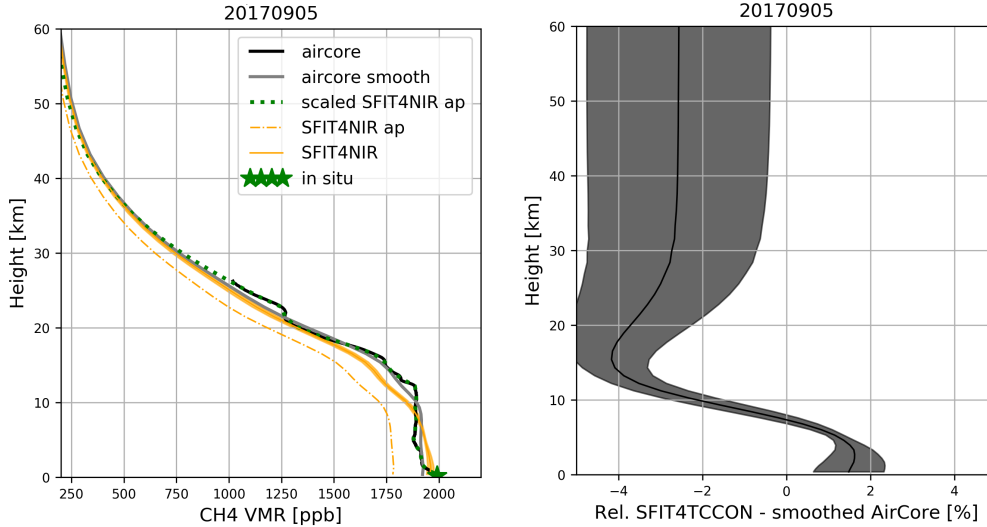


Figure 10. Left panel: the CH_4 profile from the AirCore measurement (solid black line) on 5 September 2017, together with the [SFIT4NIR](#) a priori (dash-dotted orange line) and retrieved (solid orange line) profiles. The AirCore measurement is extrapolated with the surface in situ measurements (green star) and the scaled [SFIT4NIR](#) a priori profile (dotted green line). The grey line is the smoothed AirCore profile. Right panel: the mean (solid black line) and the stand deviation (shadow) of relative difference between the co-located [SFIT4NIR](#) retrieved profiles and the smoothed AirCore measurements ($(SFIT4NIR - AirCore) / AirCore \times 100\%$).

3.6 Aircraft measurements during the IMECC campaign

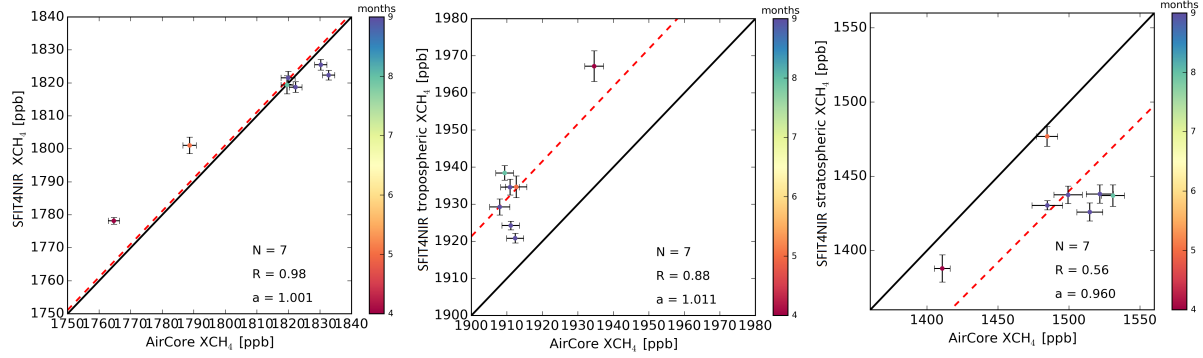


Figure 11. The scatter plots of X_{CH_4} between the SFIT4NIR and the AirCore measurements for the whole atmosphere (left panel), for the tropospheric (middle panel) and for the stratospheric (right panel) components. In each panel, the black line is the one-to-one line and the dashed red line is the regression line with the intercept to zero ($y = a \cdot x$). N is the co-located measurement number, R is the correlation coefficient, and a is the slope.

The Infrastructure for Measurement of the European Carbon Cycle (IMECC) aircraft measurements passed over several European TCCON sites in September and October 2009, including Orléans, Bremen and Bialystok. We refer to Geibel et al. (2012) for a detail description of the IMECC aircraft data. The aircraft measurement covers a vertical range from about 300 to 13000 m, mainly in the troposphere. Therefore, in this section, we use the co-located aircraft measurements to compare with the SFIT4NIR tropospheric X_{CH_4} . The location, date and time of the overflight, SZA and the profile code are listed in the Table 1 in Geibel et al. (2012). There are 4 aircraft vertical profiles over Bialystok (BI-OF1a, BI-OF1b, BI-OF2a, BI-OF2b), 4 profiles over Orléans (OR-OF1a, OR-OF1b, OR-OF2a, OR-OF2b), and 2 profiles over Bremen (BR-OF1a, BR-OF2a).

To compare the aircraft measurements with the SFIT4NIR, the aircraft profile need to be extended to compare with FTIR retrievals. The extrapolation method is the same as described in Section 4.2 in Geibel et al. (2012). For the near-ground part, ground-based in-situ data from the co-located tall-tower stations are used to extend the aircraft data to the ground at Orléans and Bialystok, and the values measured at the lowermost altitude by the aircraft are linearly extrapolated to the surface at Bremen. For the upper part, the TCCON (GGG2012) a priori profile multiplied by the retrieval scaling factor is used. The uncertainties of “extended” aircraft profiles have been shown in Table 2 in Geibel et al. (2012). After that, the “extended” aircraft profile is smoothed with FTIR retrieval using Eq. 9, where the $x_{in\,situ}$ is the aircraft measurement. The SFIT4NIR retrievals within a time window of ± 1 hour around the aircraft overflight are chosen. The standard deviation of the co-located SFIT4NIR retrievals is used as the random uncertainty of the FTIR retrieval.

The smoothed aircraft tropospheric X_{CH_4} is $1.0 \pm 0.2 \%$ larger than the SFIT4NIR tropospheric X_{CH_4} , which is consistent with the result from the comparison between the AirCore measurements and SFIT4NIR retrievals ($1.1 \pm 0.4 \%$). Combining the AirCore measurements at Sodankylä and aircraft measurements at Orléans, Bremen and Bialystok, Figure 12 shows that there is a systematic overestimation of $1.0 \pm 0.3 \%$ in the SFIT4NIR tropospheric X_{CH_4} . Further investigation is required to see if the systematic bias can be observed at other sites.

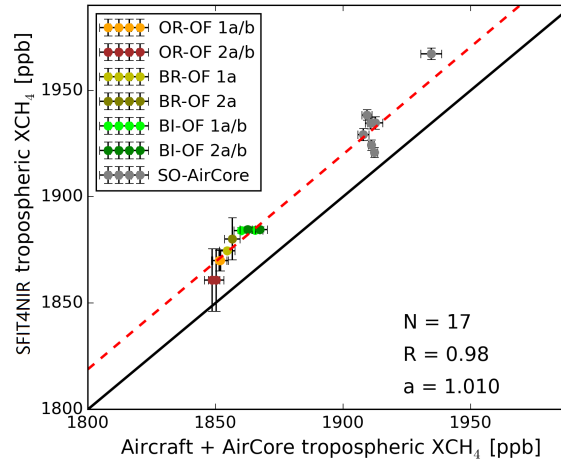


Figure 12. Left panel: The scatter plots of X_{CH_4} between the CH_4 profile from SFIT4NIR and the AirCore measurement (solid black line) on 5 September 2017, IMECC aircraft measurements together with the SFIT4TCCON a priori (dash-dotted orange line) and retrieved (solid orange line) profiles. The AirCore measurement is extrapolated with the surface in situ measurements (green star) and for the sealed SFIT4TCCON a priori profile (dotted black line) tropospheric components. The grey-black line is the smoothed AirCore profile. Right panel: the mean (solid black one-to-one line) and the standard deviation dashed red line is the regression line with the intercept to zero (shadow $y = a \cdot x$) of relative difference between. N is the co-located SFIT4TCCON retrieved profiles measurement number, R is the correlation coefficient, and a is the smoothed AirCore measurements $((SFIT4TCCON - AirCore) / AirCore \times 100\%)$ slope.

The scatter plots of X_{CH_4} between the SFIT4TCCON and the AirCore measurements for the whole atmosphere (left panel), for the tropospheric (middle panel) and for the stratospheric (right panel) components. In each panel, the black line is the one-to-one line and the dashed red line is the regression line with the intercept to zero ($y = a \cdot x$). N is the co-located measurement number, R is the correlation coefficient, and a is the slope.

5 4 Conclusions

The retrieval of CH_4 vertical information from TCCON FTIR spectra has been carried out at six sites during 2016-2017 using the SFIT4 code. The retrieval strategy of the SFIT4TCCON-SFIT4NIR has been discussed, including the spectroscopy, retrieval window, a priori profile, SNR and regularization. The AVK shows that the SFIT4TCCON-SFIT4NIR retrieved profile is sensitive to the altitude range from the surface to the middle stratosphere (about 40 km), and the column averaging kernel has a good sensitivity in the whole atmosphere. The DOFS of the SFIT4TCCON-SFIT4NIR is about 2.4, with two distinct pieces of information in the troposphere and the stratosphere. The systematic and random uncertainties of the SFIT4TCCON-SFIT4NIR retrieved total column are about 3.2 and 0.5%.

The ~~SFIT4TCCON-SFIT4NIR~~ retrieved CH₄ total columns and partial columns (troposphere and stratosphere) have been evaluated based on the standard TCCON retrievals, ground-based in situ measurements, ACE-FTS satellite observations, TCCON proxy X_{CH₄} data, and AirCore measurements at Sodankylä. It is found that the ~~SFIT4TCCON-SFIT4NIR~~ retrieved X_{CH₄} data are very close to the standard TCCON retrievals with the mean bias between -0.14 and 0.15% and the standard deviation of bias between 0.3 and 0.5% at the six TCCON sites. Additionally, there is no obvious seasonal variation in the difference between the ~~SFIT4TCCON-SFIT4NIR~~ and TCCON X_{CH₄} data. The ~~SFIT4TCCON-SFIT4NIR~~ tropospheric and stratospheric X_{CH₄} can observe the CH₄ seasonal variation very well, which has been confirmed by the ground-based in situ measurements and ACE-FTS observations, respectively. The tropospheric and the stratospheric X_{CH₄} from ~~SFIT4TCCON-SFIT4NIR~~ retrievals have also been compared with the results from the TCCON proxy method. The phases of the seasonal cycles from ~~SFIT4TCCON-SFIT4NIR~~ retrievals and TCCON proxy data are consistent, though the amplitudes of the variations from the ~~SFIT4TCCON-SFIT4NIR~~ retrievals are relatively larger than those from the proxy method, especially in the troposphere. ~~As there are several limitations in the assumption of TCCON proxy method and the seasonal cycle from the tropospheric X_{CH₄} from the SFIT4TCCON retrieval is very close to that from the tower measurements at Orléans, it is inferred that the seasonal cycle from the tropospheric X_{CH₄} is more reliable.~~ Further investigation is needed to understand the accuracy of the seasonal cycle from the ~~SFIT4TCCON-SFIT4NIR~~ tropospheric X_{CH₄} when more aircraft or AirCore measurements become available. By comparison against AirCore measurements at Sodankylä, it is found that there is almost no systematic bias between the ~~SFIT4TCCON-SFIT4NIR~~ and AirCore X_{CH₄} (in the whole atmosphere), which is consistent with the comparison between the ~~SFIT4TCCON-SFIT4NIR~~ and the TCCON standard retrievals. An ~~overestimation of 1.2~~underestimation of 4.0 ± 2.0% in the ~~SFIT4TCCON-tropospheric-SFIT4NIR stratospheric X_{CH₄} and an underestimation of 4.0~~is seen by comparing with AirCore measurements, and an overestimation of 1.0 ± 0.3% in the ~~SFIT4TCCON-stratospheric-SFIT4NIR tropospheric X_{CH₄} is seen by comparing with AirCore measurements~~ These values and IMECC aircraft measurements. These biases are within the systematic uncertainties of ~~SFIT4TCCON-SFIT4NIR~~ retrieved partial columns in the troposphere and stratosphere, respectively.

Data availability. The TCCON data are publicly available through the TCCON wiki (<https://tccodata.org/>). The ACE-FTS data used in this study are available from <http://ace.uwaterloo.ca/data/> (registration required). The SFIT4NIR retrievals, TCCON proxy data, ground-based in situ measurements and AirCore measurements are available by contacting the author.

Competing interests. The authors declare that they have no conflict of interest.

Acknowledgements. This study is supported by the EU H2020 RINGO project. The TCCON site at Réunion Island is operated by the Royal Belgian Institute for Space Aeronomy with financial support in 2014, 2015, and 2016, 2017 under the EU project ICOS-Inwire and the ministerial decree for ICOS (FR/35/IC2) and local activities supported by LACy/UMR8105 - Université de La Réunion. We want to thank Francis Scolas (BIRA-IASB) for maintaining the TCCON measurements at St Denis, Juha Hatakka and Tuomas Laurila (FMI) for

operating the in situ and AirCore measurements at Sodankylä, [Christoph Gerbig and Dietrich Feist for providing the IMECC aircraft data](#). We would also like to thank TCCON network for making the data publicly available. The AirCore data from the Sodankylä site in 2017 is generated from the FRM4GHG project which received financial support from the European Space Agency under the grant agreement number ESA-IPL-POE-LG-cl-LE-2015-1129.

- 5 *Author contributions.* MZ wrote the manuscript. MZ, BL and MDM investigated the SFIT4 retrieval strategy. MKS, CH, CP, TW, JMM, RK and PH provided and interpreted the TCCON data. NK and MR provided and analysed the in situ measurements. HC and RK provided the AirCore measurements. All authors read and commented the manuscript.

References

- Agusti-Panareda, A., Diamantakis, M., Bayona, V., Klappenbach, F., and Butz, A.: Improving the inter-hemispheric gradient of total column atmospheric CO₂ and CH₄ in simulations with the ECMWF semi-Lagrangian atmospheric global model, *Geosci. Model Dev.*, 10, 1–18, <https://doi.org/10.5194/gmd-10-1-2017>, 2017.
- 5 Bernath, P. F., McElroy, C. T., Abrams, M. C., Boone, C. D., Butler, M., Camy-Peyret, C., Carleer, M., Clerbaux, C., Coheur, P. F., Colin, R., DeCola, P., DeMazière, M., Drummond, J. R., Dufour, D., Evans, W. F. J., Fast, H., Fussen, D., Gilbert, K., Jennings, D. E., Llewellyn, E. J., Lowe, R. P., Mahieu, E., McConnell, J. C., McHugh, M., McLeod, S. D., Michaud, R., Midwinter, C., Nassar, R., Nichitiu, F., Nowlan, C., Rinsland, C. P., Rochon, Y. J., Rowlands, N., Semeniuk, K., Simon, P., Skelton, R., Sloan, J. J., Soucy, M. A., Strong, K., Tremblay, P., Turnbull, D., Walker, K. A., Walkty, I., Wardle, D. A., Wehrle, V., Zander, R., and Zou, J.: Atmospheric chemistry experiment (ACE): Mission overview, *Geophys. Res. Lett.*, 32, <https://doi.org/10.1029/2005GL022386>, 2005.
- 10 De Mazière, M., Vigouroux, C., Bernath, P. F., Baron, P., Blumenstock, T., Boone, C., Brogniez, C., Catoire, V., Coffey, M., Duchatelet, P., Griffith, D., Hannigan, J., Kasai, Y., Kramer, I., Jones, N. B., Mahieu, E., Manney, G. L., Piccolo, C., Randall, C., Robert, C., Senten, C., Strong, K., Taylor, J., Tetard, C., Walker, K. a., and Wood, S.: Validation of ACE-FTS v2.2 methane profiles from the upper troposphere to the lower mesosphere, *Atmos. Chem. Phys.*, 8, 2421–2435, <https://doi.org/10.5194/acp-8-2421-2008>, 2008.
- 15 De Mazière, M., Sha, M. K., Desmet, F., Hermans, C., Scolas, F., Kumps, N., Metzger, J.-M., Duflot, V., and Cammas, J.-P.: TCCON data from Reunion Island (La Reunion), France, Release GGG2014R0, <https://doi.org/10.14291/tcon.ggg2014.reunion01.R0/1149288>, TCCON data archive, hosted by the Carbon Dioxide Information Analysis Center, Oak Ridge National Laboratory, Oak Ridge, Tennessee, U.S.A., 2014.
- De Mazière, M., Sha, M. K., Desmet, F., Hermans, C., Scolas, F., Kumps, N., Metzger, J.-M., Duflot, V., and Cammas, J.-P.: TCCON data from Reunion Island (RE), Release GGG2014R0, TCCON data archive, hosted by CaltechDATA, <https://doi.org/10.14291/tcon.ggg2014.reunion01.R0/1149288>, 2014.
- 20 De Mazière, M., Thompson, A. M., Kurylo, M. J., Wild, J. D., Bernhard, G., Blumenstock, T., Braathen, G. O., Hannigan, J. W., Lambert, J.-C., Leblanc, T., McGee, T. J., Nedoluha, G., Petropavlovskikh, I., Seckmeyer, G., Simon, P. C., Steinbrecht, W., and Strahan, S. E.: The Network for the Detection of Atmospheric Composition Change (NDACC): history, status and perspectives, *Atmos. Chem. Phys.*, 18, 4935–4964, <https://doi.org/10.5194/acp-18-4935-2018>, 2018.
- 25 Deutscher, N. M., Griffith, D. W., Bryant, G. W., Wennberg, P. O., Toon, G. C., Washenfelder, R. A., Keppel-Aleks, G., Wunch, D., Yavin, Y., Allen, N. T., Blavier, J. F., Jiménez, R., Daube, B. C., Bright, A. V., Matross, D. M., Wofsy, S. C., and Park, S.: Total column CO₂ measurements at Darwin, Australia - Site description and calibration against in situ aircraft profiles, *Atmos. Meas. Tech.*, 3, 947–958, <https://doi.org/10.5194/amt-3-947-2010>, 2010.
- 30 Deutscher, N. M., Notholt, J., Messerschmidt, J., Weinzierl, C., Warneke, T., Petri, C., Grupe, P., and Katrynski, K.: TCCON data from Bialystok (PL), Release GGG2014R0, TCCON data archive, hosted by CaltechDATA, <https://doi.org/10.14291/tcon.ggg2014.bialystok01.R0/1149277>, 2014.
- Dils, B., Buchwitz, M., Reuter, M., Schneising, O., Boesch, H., Parker, R., Guerlet, S., Aben, I., Blumenstock, T., Burrows, J. P., Butz, A., Deutscher, N. M., Frankenberg, C., Hase, F., Hasekamp, O. P., Heymann, J., De Mazière, M., Notholt, J., Sussmann, R., Warneke, T., Griffith, D., Sherlock, V., and Wunch, D.: The greenhouse gas climate change initiative (GHG-CCI): Comparative validation of GHG-CCI SCIAMACHY/ENVISAT and TANSO-FTS/GOSAT CO₂ and CH₄ retrieval algorithm products with measurements from the TCCON, *Atmos. Meas. Tech.*, 7, 1723–1744, <https://doi.org/10.5194/amt-7-1723-2014>, 2014.
- 35

- Ehhalt, D. H. and Heidt, L. E.: Vertical profiles of CH₄ in the troposphere and stratosphere, *J. Geophys. Res.*, 78, 5265–5271, <https://doi.org/10.1029/JC078i024p05265>, 1973.
- European Commission, .: Emission Database for Global Atmospheric Research (EDGAR), release EDGARv4.2 FT2010, Tech. rep., Joint Research Centre (JRC)/Netherlands Environmental Assessment Agency (PBL). last access: 12 April 2018, <http://edgar.jrc.ec.europa.eu>, 2013.
- Fraser, A., Palmer, P. I., Feng, L., Boesch, H., Cogan, A., Parker, R., Dlugokencky, E. J., Fraser, P. J., Krummel, P. B., Langenfelds, R. L., O’Doherty, S., Prinn, R. G., Steele, L. P., Van Der Schoot, M., and Weiss, R. F.: Estimating regional methane surface fluxes: The relative importance of surface and GOSAT mole fraction measurements, *Atmos. Chem. Phys.*, 13, 5697–5713, <https://doi.org/10.5194/acp-13-5697-2013>, 2013.
- 10 Geibel, M. C., Messerschmidt, J., Gerbig, C., Blumenstock, T., Chen, H., Hase, F., Kolle, O., Lavrič, J. V., Notholt, J., Palm, M., Rettinger, M., Schmidt, M., Sussmann, R., Warneke, T., and Feist, D. G.: Calibration of column-averaged CH₄ over European TCCON FTS sites with airborne in-situ measurements, *Atmos. Chem. Phys.*, 12, 8763–8775, <https://doi.org/10.5194/acp-12-8763-2012>, 2012.
- Houweling, S., Krol, M., Bergamaschi, P., Frankenberg, C., Dlugokencky, E. J., Morino, I., Notholt, J., Sherlock, V., Wunch, D., Beck, V., Gerbig, C., Chen, H., Kort, E. A., Röckmann, T., and Aben, I.: A multi-year methane inversion using SCIAMACHY, accounting for 15 systematic errors using TCCON measurements, *Atmos. Chem. Phys.*, 14, 3991–4012, <https://doi.org/10.5194/acp-14-3991-2014>, 2014.
- IPCC: Climate change 2013: The physical science basis. Contribution of Working Group I to the Fifth Assessment Report of the Intergovernmental Panel on Climate Change, 2013.
- Karion, A., Sweeney, C., Tans, P., and Newberger, T.: AirCore: An innovative atmospheric sampling system, *J. Atmos. Ocean. Technol.*, 27, 1839–1853, <https://doi.org/10.1175/2010JTECHA1448.1>, 2010.
- 20 Keppel-Aleks, G., Toon, G. C., Wennberg, P. O., and Deutscher, N. M.: Reducing the impact of source brightness fluctuations on spectra obtained by Fourier-transform spectrometry., *Appl. Opt.*, 46, 4774–4779, <https://doi.org/10.1364/AO.46.004774>, 2007.
- Kilkkki, J., Aalto, T., Hatakka, J., Portin, H., and Laurila, T.: Atmospheric CO₂ observations at Finnish urban and rural sites, *Boreal Environ. Res.*, 20, 227–242, 2015.
- Kirschke, S., Bousquet, P., Ciais, P., Saunio, M., Canadell, J. G., Dlugokencky, E. J., Bergamaschi, P., Bergmann, D., Blake, D. R., Bruhwiler, L., Cameron-Smith, P., Castaldi, S., Chevallier, F., Feng, L., Fraser, A., Heimann, M., Hodson, E. L., Houweling, S., Josse, B., Fraser, P. J., Krummel, P. B., Lamarque, J.-F., Langenfelds, R. L., Le Quééré, C., Naik, V., O’Doherty, S., Palmer, P. I., Pison, I., Plummer, D., Poulter, B., Prinn, R. G., Rigby, M., Ringeval, B., Santini, M., Schmidt, M., Shindell, D. T., Simpson, I. J., Spahni, R., Steele, L. P., Strode, S. A., Sudo, K., Szopa, S., van der Werf, G. R., Voulgarakis, A., van Weele, M., Weiss, R. F., Williams, J. E., and Zeng, G.: Three decades of 25 global methane sources and sinks, *Nat. Geosci.*, <https://doi.org/10.1038/ngeo1955>, 2013.
- 30 Kivi, R. and Heikkinen, P.: Fourier transform spectrometer measurements of column CO₂ at Sodankylä, Finland, *Geosci. Instrumentation, Methods Data Syst.*, 5, 271–279, <https://doi.org/10.5194/gi-5-271-2016>, 2016.
- Kivi, R., Heikkinen, P., and Kyro, E.: TCCON data from Sodankyla, Finland, Release GGG2014R0, <https://doi.org/10.14291/tcon.ggg2014.sodankyla01.R0/1149280>, TCCON data archive, hosted by the Carbon Dioxide Information Analysis Center, Oak Ridge National Laboratory, Oak Ridge, Tennessee, U.S.A., 2014a.
- 35 Kivi, R., Heikkinen, P., and Kyro, E.: TCCON data from Sodankyla (FI), Release GGG2014R0, TCCON data archive, hosted by Caltech-DATA, <https://doi.org/10.14291/tcon.ggg2014.sodankyla01.R0/1149280>, 2014b.

- Notholt, J., Petri, C., Warneke, T., Deutscher, N., Buschmann, M., Weinzierl, C., Macatangay, R., and Grupe, P.: TCCON data from Bremen, Germany, Release GGG2014R0, <https://doi.org/10.14291/tcon.ggg2014.bremen01.R0/1149275>, TCCON data archive, hosted by the Carbon Dioxide Information Analysis Center, Oak Ridge National Laboratory, Oak Ridge, Tennessee, U.S.A., 2014a.
- Notholt, J., Petri, C., Warneke, T., Deutscher, N. M., Buschmann, M., Weinzierl, C., Macatangay, R., and Grupe, P.: TCCON data from Bremen (DE), Release GGG2014R0, TCCON data archive, hosted by CaltechDATA, <https://doi.org/10.14291/tcon.ggg2014.bremen01.R0/1149275>, 2014b.
- Notholt, J., Schrems, O., Warneke, T., Deutscher, N., Weinzierl, C., Palm, M., and M., B.: TCCON data from California Institute of Technology, Pasadena, California, USA, Release GGG2014R1, <https://doi.org/10.14291/tcon.ggg2014.nyalesund01.R0/1149278>, TCCON data archive, hosted by the Carbon Dioxide Information Analysis Center, Oak Ridge National Laboratory, Oak Ridge, Tennessee, U.S.A., 2014c.
- Notholt, J., Warneke, T., Petri, C., Deutscher, N. M., Weinzierl, C., Palm, M., and Buschmann, M.: TCCON data from Ny Ålesund, Spitsbergen (NO), Release GGG2014.R0, TCCON data archive, hosted by CaltechDATA, <https://doi.org/10.14291/tcon.ggg2014.nyalesund01.R0/1149278>, 2017.
- Ostler, A., Sussmann, R., Patra, P. K., Houweling, S., De Bruine, M., Stiller, G. P., Haenel, F. J., Plieninger, J., Bousquet, P., Yin, Y., Saunio, M., Walker, K. A., Deutscher, N. M., Griffith, D. W. T., Blumenstock, T., Hase, F., Warneke, T., Wang, Z., Kivi, R., and Robinson, J.: Evaluation of column-averaged methane in models and TCCON with a focus on the stratosphere, *Atmos. Meas. Tech.*, 9, 4843–4859, <https://doi.org/10.5194/amt-9-4843-2016>, 2016.
- Pougatchev, N. S., Connor, B. J., and Rinsland, C. P.: Infrared measurements of the ozone vertical distribution above Kitt Peak, *J. Geophys. Res.*, 100, 16 689, <https://doi.org/10.1029/95JD01296>, 1995.
- Rigby, M., Prinn, R. G., Fraser, P. J., Simmonds, P. G., Langenfelds, R. L., Huang, J., Cunnold, D. M., Steele, L. P., Krummel, P. B., Weiss, R. F., O'Doherty, S., Salameh, P. K., Wang, H. J., Harth, C. M., Mühle, J., and Porter, L. W.: Renewed growth of atmospheric methane, *Geophys. Res. Lett.*, 35, L22 805, <https://doi.org/10.1029/2008GL036037>, 2008.
- Rodgers, C. D.: *Inverse Methods for Atmospheric Sounding – Theory and Practice*, Series on Atmospheric Oceanic and Planetary Physics, vol. 2, World Scientific Publishing Co. Pte. Ltd, Singapore, <https://doi.org/10.1142/9789812813718>, 2000.
- Rodgers, C. D.: Intercomparison of remote sounding instruments, *J. Geophys. Res.*, 108, 46–48, <https://doi.org/10.1029/2002JD002299>, 2003.
- Rothman, L. S., Gordon, I. E., Babikov, Y., Barbe, A., Chris Benner, D., Bernath, P. F., Birk, M., Bizzocchi, L., Boudon, V., Brown, L. R., Campargue, A., Chance, K., Cohen, E. A., Coudert, L. H., Devi, V. M., Drouin, B. J., Fayt, A., Flaud, J. M., Gamache, R. R., Harrison, J. J., Hartmann, J. M., Hill, C., Hodges, J. T., Jacquemart, D., Jolly, A., Lamouroux, J., Le Roy, R. J., Li, G., Long, D. A., Lyulin, O. M., Mackie, C. J., Massie, S. T., Mikhailenko, S., Müller, H. S. P., Naumenko, O. V., Nikitin, A. V., Orphal, J., Perevalov, V., Perrin, A., Polovtseva, E. R., Richard, C., Smith, M. A. H., Starikova, E., Sung, K., Tashkun, S., Tennyson, J., Toon, G. C., Tyuterev, V. G., and Wagner, G.: The HITRAN2012 molecular spectroscopic database, *J. Quant. Spectrosc. Radiat. Transf.*, 130, 4–50, <https://doi.org/10.1016/j.jqsrt.2013.07.002>, 2013.
- Saad, K. M., Wunch, D., Toon, G. C., Bernath, P., Boone, C., Connor, B., Deutscher, N. M., Griffith, D. W. T., Kivi, R., Notholt, J., Roehl, C., Schneider, M., Sherlock, V., and Wennberg, P. O.: Derivation of tropospheric methane from TCCON CH₄ and HF total column observations, *Atmos. Meas. Tech.*, 7, 2907–2918, <https://doi.org/10.5194/amt-7-2907-2014>, 2014.
- Saad, K. M., Wunch, D., Deutscher, N. M., Griffith, D. W., Hase, F., De Mazière, M., Notholt, J., Pollard, D. F., Roehl, C. M., Schneider, M., Sussmann, R., Warneke, T., and Wennberg, P. O.: Seasonal variability of stratospheric methane: Implications for constraining tropospheric

- methane budgets using total column observations, *Atmos. Chem. Phys.*, 16, 14003–14024, <https://doi.org/10.5194/acp-16-14003-2016>, 2016.
- Saito, R., Patra, P. K., Deutscher, N., Wunch, D., Ishijima, K., Sherlock, V., Blumenstock, T., Dohe, S., Griffith, D., Hase, F., Heikkinen, P., Kyrö, E., Macatangay, R., Mendonca, J., Messerschmidt, J., Morino, I., Notholt, J., Rettinger, M., Strong, K., Sussmann, R., and Warneke, T.: Technical Note: Latitude-time variations of atmospheric column-average dry air mole fractions of CO₂, CH₄ and N₂O, *Atmos. Chem. Phys.*, 12, 7767–7777, <https://doi.org/10.5194/acp-12-7767-2012>, 2012.
- Schmidt, M., Lopez, M., Yver Kwok, C., Messenger, C., Ramonet, M., Wastine, B., Vuillemin, C., Truong, F., Gal, B., Parmentier, E., Cloué, O., and Ciais, P.: High-precision quasi-continuous atmospheric greenhouse gas measurements at Trainou tower (Orléans forest, France), *Atmos. Meas. Tech.*, 7, 2283–2296, <https://doi.org/10.5194/amt-7-2283-2014>, 2014.
- 10 Sheese, P. E., Boone, C. D., and Walker, K. A.: Detecting physically unrealistic outliers in ACE-FTS atmospheric measurements, *Atmos. Meas. Tech.*, 8, 741–750, <https://doi.org/10.5194/amt-8-741-2015>, 2015.
- Tikhonov, A. N.: Solution of Incorrectly Formulated Problems and the Regularisation Method, *Soviet. Math. Dokl.*, 4, 1035–1038, <https://doi.org/10.1111/J.1365-246X.2012.05699.X>, 1963.
- Toon, G. C.: Telluric line list for GGG2014, TCCON data archive, hosted by the Carbon Dioxide Information Analysis Center, Oak Ridge National Laboratory, Oak Ridge, Tennessee, U.S.A., <https://doi.org/10.14291/tcon.ggg2014.atm.R0/1221656>, 2014.
- 15 Toon, G. C. and Wunch, D.: A stand-alone a priori profile generation tool for GGG2014 release, TCCON data archive, hosted by the Carbon Dioxide Information Analysis Center, Oak Ridge National Laboratory, Oak Ridge, Tennessee, U.S.A., <https://doi.org/10.14291/TCCON.GGG2014.PRIORS.R0/1221661>, 2014.
- Tukiainen, S., Railo, J., Laine, M., Hakkarainen, J., Kivi, R., Heikkinen, P., Chen, H., and Tamminen, J.: Retrieval of atmospheric CH₄ profiles from Fourier transform infrared data using dimension reduction and MCMC, *J. Geophys. Res. Atmos.*, 121, 10,312–10,327, <https://doi.org/10.1002/2015JD024657>, <https://agupubs.onlinelibrary.wiley.com/doi/abs/10.1002/2015JD024657>, 2016.
- 20 Wang, Z., Deutscher, N. M., Warneke, T., Notholt, J., Dils, B., Griffith, D. W. T., Schmidt, M., Ramonet, M., and Gerbig, C.: Retrieval of tropospheric column-averaged CH₄ mole fraction by solar absorption FTIR-spectrometry using N₂O as a proxy, *Atmos. Meas. Tech.*, 7, 3295–3305, <https://doi.org/10.5194/amt-7-3295-2014>, 2014.
- 25 Wang, Z., Warneke, T., Deutscher, N. M., Notholt, J., Karstens, U., Saunio, M., Schneider, M., Sussmann, R., Sembhi, H., Griffith, D. W. T., Pollard, D. F., Kivi, R., Petri, C., Velasco, V. A., Ramonet, M., and Chen, H.: Contributions of the troposphere and stratosphere to CH₄ model biases, *Atmos. Chem. Phys.*, 17, 13283–13295, <https://doi.org/10.5194/acp-17-13283-2017>, 2017.
- Warneke, T., Messerschmidt, J., Notholt, J., Weinzierl, C., Deutscher, N., Petri, C., Grupe, P., Vuillemin, C., Truong, F., Schmidt, M., Ramonet, M., and Parmentier, E.: TCCON data from Orleans, France, Release GGG2014R0, <https://doi.org/10.14291/tcon.ggg2014.orleans01.R0/1149276>, TCCON data archive, hosted by the Carbon Dioxide Information Analysis Center, Oak Ridge National Laboratory, Oak Ridge, Tennessee, U.S.A., 2014a.
- 30 Warneke, T., Messerschmidt, J., Notholt, J., Weinzierl, C., Deutscher, N. M., Petri, C., Grupe, P., Vuillemin, C., Truong, F., Schmidt, M., Ramonet, M., and Parmentier, E.: TCCON data from Orléans (FR), Release GGG2014R0, TCCON data archive, hosted by CaltechDATA, <https://doi.org/10.14291/tcon.ggg2014.orleans01.R0/1149276>, 2014b.
- 35 Waymark, C., Waymark, C., Walker, K., Boone, C. D., and Bernath, P. F.: ACE-FTS version 3.0 data set: validation and data processing update, *Ann. Geophys.*, 56, <https://doi.org/10.4401/ag-6339>, 2014.

- Wunch, D., Toon, G. C., Blavier, J.-F. L., Washenfelder, R. A., Notholt, J., Connor, B. J., Griffith, D. W. T., Sherlock, V., and Wennberg, P. O.: The Total Carbon Column Observing Network, *Philos. Trans. R. Soc. A Math. Phys. Eng. Sci.*, 369, 2087–2112, <https://doi.org/10.1098/rsta.2010.0240>, 2011.
- Wunch, D., Toon, G. C., Sherlock, V., Deutscher, N. M., Liu, C., Feist, D. G., and Wennberg, P. O.: The Total Carbon Column Observing
5 Network’s GGG2014 Data Version, p. 43, <http://dx.doi.org/10.14291/tccon.ggg2014.documentation.R0/1221662>, 2015.
- Wunch, D., Toon, G. C., Hedelius, J. K., Vizenor, N., Roehl, C. M., Saad, K. M., Blavier, J. F. L., Blake, D. R., and Wennberg, P. O.: Quantifying the loss of processed natural gas within California’s South Coast Air Basin using long-term measurements of ethane and methane, *Atmos. Chem. Phys.*, 16, 14 091–14 105, <https://doi.org/10.5194/acp-16-14091-2016>, 2016.
- Yang, Z., Toon, G. C., Margolis, J. S., and Wennberg, P. O.: Atmospheric CO₂ retrieved from ground-based near IR solar spectra, *Geophys. Res. Lett.*, 29, 53–1–53–4, <https://doi.org/10.1029/2001GL014537>, 2002.
10
- Zhou, M., Dils, B., Wang, P., Detmers, R., Yoshida, Y., O’Dell, C. W., Feist, D. G., Velazco, V. A., Schneider, M., and De Mazière, M.: Validation of TANSO-FTS/GOSAT XCO₂ and XCH₄ glint mode retrievals using TCCON data from near-ocean sites, *Atmos. Meas. Tech.*, 9, 1415–1430, <https://doi.org/10.5194/amt-9-1415-2016>, 2016.
- Zhou, M., Langerock, B., Vigouroux, C., Sha, M. K., Ramonet, M., Delmotte, M., Mahieu, E., Bader, W., Hermans, C., Kumps, N., Metzger, J.-M., Duflot, V., Wang, Z., Palm, M., and De Mazière, M.: Atmospheric CO and CH₄ time series and seasonal variations on
15 Reunion Island from ground-based in-situ and FTIR (NDACC and TCCON) measurements, *Atmos. Chem. Phys.*, 18, 13 881–13 901, <https://doi.org/10.5194/acp-18-13881-2018>, 2018.