

Review of Ylivinkka et al. "Clouds over Hyytiälä, Finland: an algorithm to classify clouds based on solar radiation and cloud base height measurements" by Anonymous Referee #1

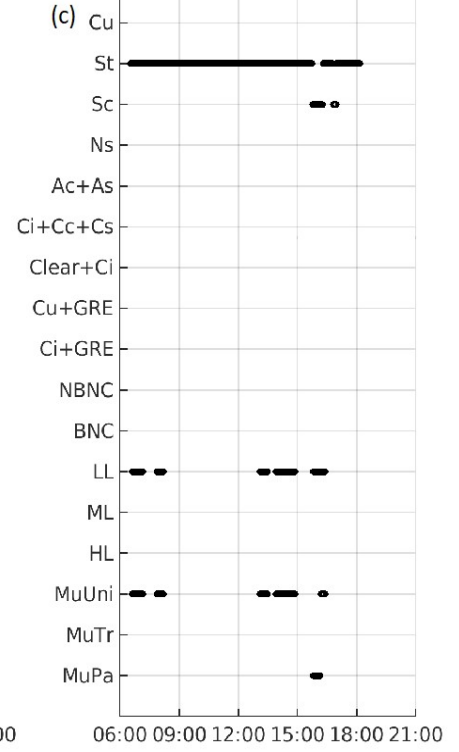
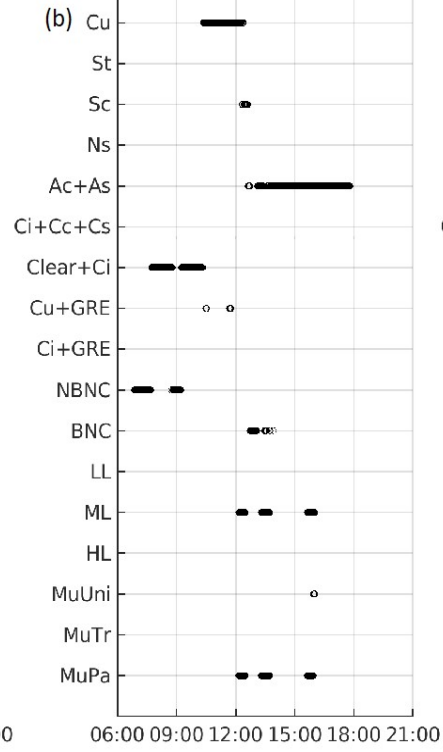
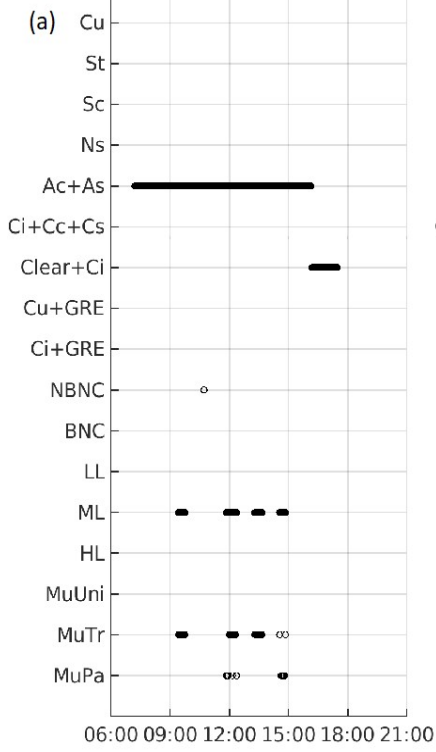
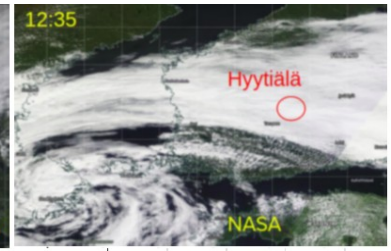
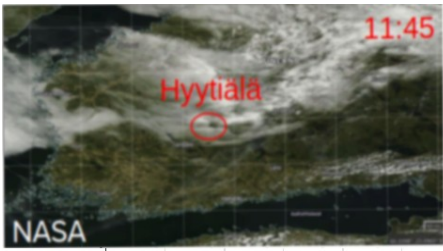
We thank Referee 1 for the valuable comments and improvements to our manuscript. We have revised our manuscript, and provide below a point-by-point answers to the comments, which are repeated in italic.

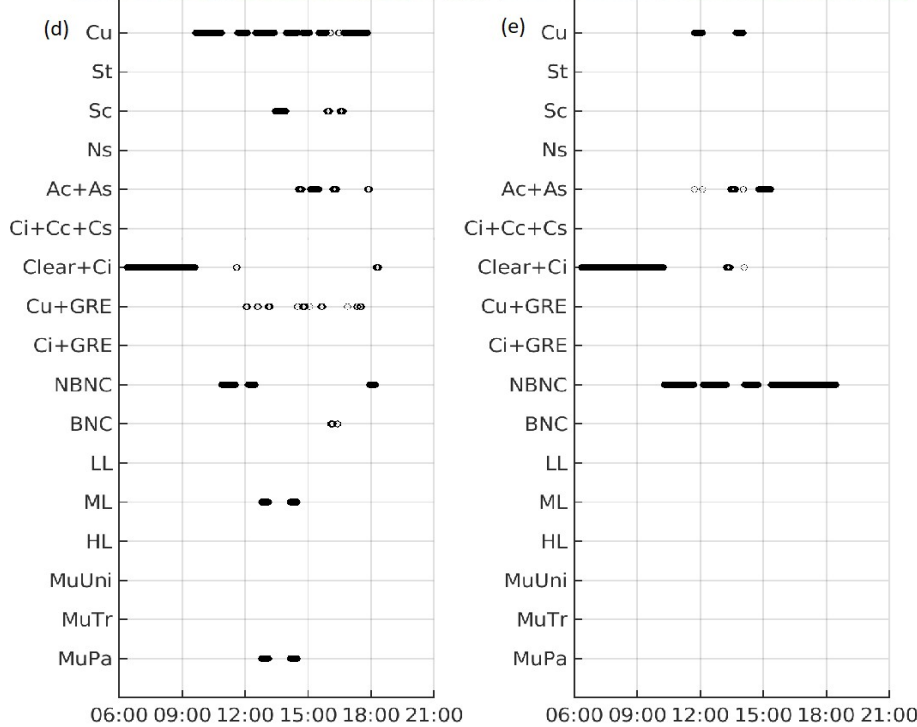
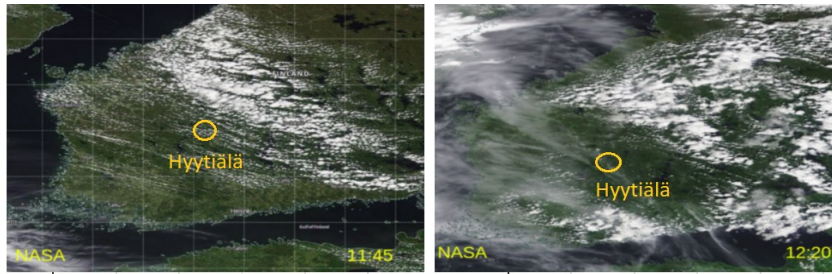
The classification and quantification of clouds from routine surface and remote-sense measurements remains essential information from studies that range from weather, atmospheric chemistry and the interaction between land and atmosphere. In this research, the authors present an algorithm that enables a cloud classification based on global radiation (observed with a pyranometer) and cloud base height (measured with a ceilometer). The algorithm is based on the calculation of three variables related to the cloud characteristics: transparency, patchiness and the measured CBH. By combining these metrics they are able to identify and classify low, middle and high clouds. To evaluate the performance of the algorithm they compare with an observed who use total sky images. The agreement is 70 %. The paper explained and discussed very interesting findings that can help the SMEAR II site -a referent site in the boreal ecosystem due to its completeness in measurements and other sites. The article is very well written with a very complete introduction that stresses the relevance to have this sort of classification and quantification as a routine product for meteorological/atmospheric chemistry sites. The paper discussed interesting histograms of the cloud types monthly and daily averages, and as the authors mentioned in the conclusions, it will become a valuable tool to study the interactions between surface and the cloudy-boundary layer at boreal ecosystems. I agree with them. My comments to the article are the following:

We are grateful for the positive viewing of our manuscript and helpful comments to improve it.

1) For the completeness of the article, I would have appreciated a short section discussing the evaluation of the algorithm against satellite measurements. For instance the Meteosat Second Generation provides information on cloud classification. Please note that I am not asking a full comparison of the three years under analysis, but perhaps some case examples, for instance related to the diurnal variability or the more demanding and difficult to classify multi-layer clouds. Would it be possible to include this information?

We thank Referee for a valuable comment. Data from satellite products could surely be used as an optional parameter to improve the algorithm, and especially its ability to detect and classify multilayered and high clouds. Additionally, we could test how well satellite cloud classification and satellite-derived parameters with clearness index and patchiness compare with the results of our algorithm. This is, however, something that we must investigate further in the future. Now, we tested five random case examples of satellite images taken over southern Finland against the classification made by the algorithm. The results are shown below. The selected days were (a) 03 May 2016, (b) 13 May 2016, (c) 27 May 2016, (d) 07 June 2017 and (e) 17 June 2017. BNC refers to the "Base, no class" and NBNC to the "No base, no class". We used satellite data provided by NASA Worldview (<https://worldview.earthdata.nasa.gov/>, last access: 27 August 2020). We can see that mostly the algorithm was able to produce similar clouds as seen in the satellite image.





2) Section 2.2 The length of the time interval (21 minutes) to calculate the transparency needs to be better justified. There is not a clear explanation on why it is used (only a reference to the work of Duchon and O'Malley (1999)). Is it related to a life time of clouds? More important, What is the sensitive of the algorithm to this value to the proposed classification? At the discussion, there is a short discussion on these values (lines 383-389), but it does not include the sensitivity to it.

We added a new paragraph to better describe the use of 21 min interval. The text now reads (L. 157):

“The chosen time interval in this work was 21 min, similar to Duchon and O'Malley (1999) to be able to compare our results. However, the length of the time interval is based on empirical experience of the time span of cloud variability in the sky and the life time of clouds. Cumulus clouds are the largest patchy clouds, and hence they are used as a reference for the time span of clouds. The representative size of typical cumulus clouds is 1 km and if assuming that the average wind speed is about 3–6 m s⁻¹ (Stull, 2000), then during 21 min the clouds can move 3.8–7.6 km, meaning that roughly 4–8 clouds can pass the measurement beam of the instruments. Capturing several clouds is necessary for the calculation of standard deviation, which is employed when calculating patchiness as described below. Hence, decreasing the 21 min time interval can be problematic due to insufficient number of passing clouds, needed for the calculation. Moreover, a study by Rodts et al. (2003) show that ca. 1 km sized clouds dominate the vertical mass and buoyancy fluxes. Thus, they can be expected to be optically thicker than smaller or larger

clouds, and thereby they cause the largest decrease in solar radiation which contributes to the standard deviation the most. Rodts et al. (2003) also showed that the cloud cover density is dominated by intermediate clouds with linear sizes of 0.7–1 km. This means that they give the largest contribution to the cloud cover, determined as a ratio of the 2D projection of the area occupied by clouds to the total image area. Another time constraint is related to the life time of clouds. A typical life time of cumulus cloud is 20 min, so 21 min is a reasonable to capture one life cycle of cumulus clouds (Lohmann et al., 2016). Other clouds have longer life times (Lohmann et al., 2016). Therefore, we can expect that 20–30 min would give the same results but considerably shorter time intervals would not give the best representation of the overall cloudiness conditions and longer time interval will increase the number of poorly defined cases when there is a transition from one type of cloudiness to another.”

3) Due to the completeness of the SMEAR II data set, I think it will be nice to attempt to connect the proposed metrics to other variables that are very relevant in the modelling of the clouds, but remain difficult to be measured. For example, Have the authors compared the transparency with an estimation of the cloud optical depth?

We thank Referee for pointing out this important question related to connection of modeling and measurement results. In Hyytiälä cloud optical depth (COD) has been measured with Three-Waveband Spectrally-agile Technique (TWST) sensor (Niple and Scott, 2016) during the BA ECC campaign. Transmittance is related with COD with a theoretical formula (Sena et al., 2016, Eq. (6)). We plotted the transmittance against measured COD along with the theoretical relation curve, and hence compared the results. We could conclude that COD for non-patchy clouds can be estimated utilizing transmittance during daytime. We added new sections 2.4 and 3.4.2 to describe the theory and results related to COD.

4) Equations (1) and (2). How do they model the clear sky radiation?

We clarified the behavior of transmittance and patchiness in clear sky and cloudy conditions (L. 151):

“Transmittance is the ratio of the measured global radiation (I_{meas}) to the modeled clear sky radiation (I_{gh}), given by Eq. (5), averaged over a running time interval: ...”, (L. 155):

“Transmittance describes how effectively clouds block solar radiation. It is equal to 1 in clear sky conditions and approaches 0 for an overcast sky.”, and (L. 177):

“The modeled clear sky radiation is calculated using Eq. (5). Patchiness determines the variability of the cloud layer. The value is smallest both for uniform and overcasting, and clear sky conditions, and increases in partly cloudy conditions.”

Besides the comments by Referee, we changed term “transparency” to more generally used “transmittance”. We additionally removed parameter “TR_max” as in the further examination of the algorithm it was found to be redundant. Because the data availability of AERONET data was low during March, April and September of 2016 and 2017, we calculated median values of the available data separately for spring (March and April) and September, and applied those when data was missing in those months. Lastly, we changed the upper limit of transmittance for stratus clouds from 0.4 to 0.6. This was done because we could see that many St clouds fall into this area but were previously not classified. These latter two changes to the algorithm decreased the number of cases

falling into the class “Base, no class”. Now also the frequency of occurrence of stratus clouds is better in accordance with observations in *Climatic Atlas of Clouds Over Land and Ocean* (available online at <https://atmos.uw.edu/CloudMap/>, last access: 10 January 2020). We additionally changed the upper transmittance limit of Ns from 0.4 to 0.3 and lower transmittance limit of Ac+As clouds from 0.4 to 0.3. This was done because we could see that especially in springtime Ac+As clouds were previously falsely classified as Ns. The overall occurrence of Ns clouds decreased (from 1.4 % to 0.6 %) and occurrence of Ac+As increased (from 9.0 % to 10.3 %) but otherwise the change did not affect our results.

References

Duchon, C. E. and O’Malley, M. S.: Estimating cloud type from pyranometer observations, *Journal of Applied Meteorology*, 38, 132–141, 1999.

Lohmann, U., Lüönd, F., and Mahrt, F.: An introduction to clouds: From the microscale to climate, Cambridge University Press, 2016.

Niple, E. R. and Scott, H. E.: Biogenic Aerosols – Effects on Climate and Clouds. Cloud Optical Depth (COD) Sensor Three-Waveband Spectrally-Agile Technique (TWST) Field Campaign Report, Tech. rep., United States, <https://doi.org/10.2172/1248494>, 2016.

Rodts, S. M. A., Duynkerke, P. G., and Jonker, H. J. J.: Size Distributions and Dynamical Properties of Shallow Cumulus Clouds from Aircraft Observations and Satellite Data, *Journal of the Atmospheric Sciences*, 60, 1895–1912, [https://doi.org/10.1175/1520-0469\(2003\)060<1895:SDADPO>2.0.CO;2](https://doi.org/10.1175/1520-0469(2003)060<1895:SDADPO>2.0.CO;2), 2003.

Sena, E. T., McComiskey, A., and Feingold, G.: A long-term study of aerosol–cloud interactions and their radiative effect at the Southern Great Plains using ground-based measurements, *Atmospheric Chemistry and Physics*, 16, 11 301–11 318, <https://doi.org/10.5194/acp-16-11301-2016>, 2016.

Stull, R. B.: *Meteorology for scientists and engineers*, Brooks/Cole, 2nd edn., 2000.

Review of Ylivinkka et al. “Clouds over Hyytiälä, Finland: an algorithm to classify clouds based on solar radiation and cloud base height measurements” by Anonymous Referee #2

We thank Referee 2 for the valuable comments and improvements to our manuscript. We have revised our manuscript, and provide below a point-by-point answers to the comments, which are repeated in italic.

This paper revisits the relatively old topic of guessing cloud characteristics from solar radiation measurements. Specifically in this case, the main novelty is the simultaneous use of ceilometer (cloud base height) data so in principle a better estimation of cloud type can be made. The paper is in general correct, but with some effort it could be quite significantly improved.

We are grateful for the positive viewing of our manuscript and helpful comments to improve it.

1. In my opinion, mixing the presentation and validation of the algorithm with “climatic” style (but for only 3 years) analysis of observations is somewhat confusing. So section 3.1 and then 3.3 and so, are kind of distracting the attention. I would focus on the new algorithm, so after sections 1 and 2 I would jump to current section 3.2. Then, you could add a whole new section regarding results of applying the “occurrence” criteria and the new algorithm.

We agree, and thank Referee for the valuable comment. We changed the order of the sections, and now Sect. 2 is followed by the section describing the derivation of the algorithm.

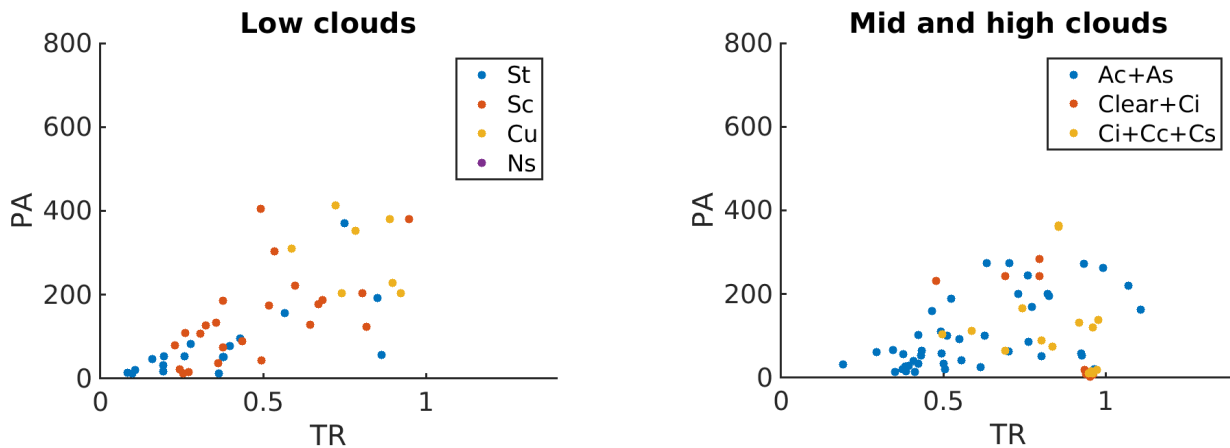
2. To my understanding, the fundamentals used to determine occurrence (lines 177-78, “the ratio between the measured global radiation and modeled radiation at the top of the atmosphere (I)”) is almost the same as the “brightness parameter” (lines 340-341, “relation between the measured global radiation and the radiation at the top of the atmosphere”). So, I would suggest defining this once, and then using for occurrence (setting a threshold) and after that using it also to further explore cloud type characteristics. Moreover, brightness parameter is usually known as “clearness index” in this context of cloud determination from solar radiation measurements. This would simplify the whole manuscript.

Referee is correct. We unified the terminology and theory related to cloud occurrence calculations from pyranometer measurements, and changed the term ‘brightness parameter’ to ‘clearness index’. Now, in Sect. 2.3 we introduce the clearness index, and in Sect. 3.4.1 we discuss its implementation in previous publications and ecosystem-atmosphere interactions related studies.

3. The dataset used to develop (and test) the algorithm is quite limited. Actually, the authors already recognize this (lines 312-13 “This may be caused by the fact that the used total sky images were taken between 1 May and 31 July, leading to overrepresentation of summertime clouds. Thus, the number of undefined cases could increase in spring and autumn”). In addition, the authors decided not to use observations with SZA > 70 deg. I understand their concerns, but this threshold is usually set at 80 deg. In summary, admitting observations up to 80 deg SZA, and using more whole sky images, would allow a largest number of cases to be used in the algorithm development and validation.

We have now further tested the springtime performance of the algorithm by taking additional 124 TSIs from March and April 2014 including also middle and high clouds (minimum CBH>2000 m). The method was similar as described in the Sect. 3.1: we visually classified the TSIs, and placed the transmittance

and patchiness values of the cases in the plane of parameters (TR,PA). The results are shown below separately for low clouds, and middle and high clouds. We can see that the parameters mainly fall well to the parameter ranges displayed in Fig. 2 and Table 1. The results of the analysis are shown in the table.



		Algorithm								
		Cu	St	Sc	Ns	Ac+As	Ci+Cc+Cs	Clear+Ci	Other	Agreement (%)
Visual inspection	Cu	6	0	1	0	0	0	0	0	86
	St	1	13	1	0	0	0	0	2	76
	Sc	2	8	9	0	0	0	0	3	41
	Ns	0	0	0	0	0	0	0	0	NaN
	Ac+As	0	0	0	2	41	2	0	1	91
	Ci+Cc+Cs	0	0	0	0	0	4	4	7	27
	Clear+Ci	1	0	1	0	1	0	14	1	78
Total										70

The discrepancies between St and Sc are mainly caused by cases when either both of them were present simultaneously, and it was hard to tell which one was more representative, or there was Ac or As layer on top of St/Sc clouds which affected the patchiness and transmittance readings. Similarly, the discrepancies between cirriform and clear sky cases from the introduced parameter ranges were mainly caused by partly cloudy conditions.

After this additional analysis, we are confident that the performance of the algorithm is good also during springtime, and therefore we removed the above-mentioned sentence considering the overrepresentation of the summertime cases. Furthermore, as the data availability of AERONET

data was low during March and April of 2016 and 2017, we produced median values of the data that we had, separately for spring (March+April) and September as explained in L. 135-139, we could define classes for many of the cases that had been in the “Base, no class” cloud class.

After careful consideration, we decided not to increase the SZA threshold from 70 deg to 80 deg as we could see that there were discrepancies between what the upward pointing ceilometer and the pyranometer measured at high SZAs. Cases falling into “No base, no class” cloud class 50 % had SZA > 60 deg, and in 25 % of the cases had SZA > 65 deg. Moreover, the further application of this algorithm is related to the studies investigating ecosystem-atmosphere interactions. SZA < 70 deg includes daytime data from March to September i.e. the whole growing season in southern Finland.

Besides these three general comments, that should be addressed as comprehensively as possible, I do have a number of minor comments:

a. L. 14. “aerosol formation” or simply “aerosol load”

We kept the original wording as we specifically were pointing to the possibility of clouds to affect aerosol formation as discussed in Dada et al. (2017), instead of more general concept of aerosol load/concentration in the presence of clouds.

b. L. 53-57. This paragraph breaks the introduction. In my opinion, it could appear later, along with the content of the paragraph starting in L. 84.

Referee is correct. We moved the paragraph as suggested.

c. L. 84-89. In these 6 lines, the reference Duchon and O’Malley appears 4 times (!). I understand that this reference is important in the present study, but this is made clear by saying that the new algorithm is based on that previous work. You don’t need to repeat it 4 times.

We agree with Referee. We reduced the number of citations to Duchon and O’Malley (L. 84-90): “Our automatic cloud classification algorithm is based on global radiation and CBH measurements. It is an adaptation of the work by Duchon and O’Malley (1999). Their so called “pyranometer method”, using only pyranometer data, was developed to classify clouds in places where no human observations were available. Even though the pyranometer method is simple and effective, its cloud type classes are rather broad (stratus, cumulus, cumulus+cirrus, cirrus, clear sky, precipitation+fog, and other), and the classification was found to be in agreement with human observations only 45 % of the time. Our improved cloud type classification algorithm uses additionally CBH data. Hence, the number of cloud type classes can be increased compared to Duchon and O’Malley (1999) because the clouds at different levels can be distinguished.”

d. L. 107, in the context of an applied Meteorology paper, the age of the pines is not relevant. Actually, it would be more relevant the height of trees and possible “shadows” on the instruments.

Referee is correct. We removed the information of the age of the forest and added the information of canopy height as well as that the radiation measurements are conducted above the canopy level. The text now reads (L. 108):

“The station was established in 1995, and it is surrounded by Scots pine (*Pinus sylvestris*) dominated forest with canopy height of ca. 18 m (Hari and Kulmala, 2005).

The main data set in this work includes data from a pyranometer and a ceilometer. The pyranometer (Middleton solar SK08 pyranometer) measures global radiation at wavelengths of 0.3–4.8 μm . The measurements were conducted above the canopy level at SMEAR II.”

e. L. 118-119. You mention here that the Solis model is fed with AOD and precipitable water from Aeronet. This is ok, but then, this means that the method is not as easily “transferable” to other sites: they need to have not only pyranometer and ceilometer, but an Aeronet (Cimel sunphotometer) equipment too.

This is a good notation, and we agree that the need of AOD and precipitable water for the clear sky model may complicate the transferability of the algorithm. It is possible, however, to change the clear sky model to some other that is better suitable for the environment or does not need extra variables. We added this information to the text (L. 118):

“We used Solis model because it explicitly takes into account the aerosol load in the atmosphere. However, in case AOD and precipitable water data are not available when applying this algorithm in other environments, other clear sky models may be employed, though we recommend to use as accurate model as possible.”

f. L. 124-125. Authors introduce here, too early, the idea of “parameter ranges”. I think is not needed yet, before presenting the method for cloud classification.

We agree with Referee, and changed the wording as follows (L. 127):

“In the development and validation process of the algorithm, we employed cloud classification made by human observer based on total sky images taken during the BAECC campaign between 01 May and 31 July 2014 (Fig. 1).”

g. L. 141-142. I would say that the ceilometer is not at all (or hardly, if any) sensitive to SZA.

Referee is correct. We changed the wording. The text now reads (L. 146):

“However, for the cloud occurrence and CBH analysis using the ceilometer measurements, we used data independent of the time of day and season, because unlike the pyranometer, the ceilometer is not sensitive to SZA.”

h. L. 156. Why not presenting and discussing here the need for “scaling” radiation measurements?

We agree with Referee that leaving the discussion of the scaling for later complicated the readability unnecessary. The text was changed accordingly (L. 180).

i. L. 157. I would start a new paragraph regarding TR_max. Otherwise, it might be confused with the CBH from ceilometer.

Please, see answer to item j.

j. L. 159. Well, before applying the classification you don't know if there are cumulus clouds. You should mention any type of varying cloudiness (obscuring and not obscuring the sun).

After revising the algorithm, it was clear that TR_max was a redundant parameter, and hence we removed it completely, and thereby also the section discussing its use.

k. L. 178. You could better use "irradiance on a horizontal surface" instead of the too generic "radiation".

We changed the wording as suggested. The text now reads (L. 199):

"It is determined as a relation between the measured global irradiance and modeled irradiance on a horizontal surface at the top of the atmosphere."

l. Section 2. Is cloud occurrence from ceilometer data described in this methods section?

It was not as the cloud occurrence from the ceilometer is simply the number of cases when the ceilometer detected a cloud base, but we now added clarifying sentence (L. 197):

"From the ceilometer data, the cloud occurrence is simply the number of cases when the ceilometer detected a cloud base."

m. L. 200-201. Cloud occurrence from radiation data cannot show seasonality as 5 months are missing.

Referee is correct. We removed the sentence describing the variation in cloud occurrence from the pyranometer data.

n. L. 224. How are middle and high clouds distinguished if there is a range (5000-7000m) where both are cloud types are included?

We have now decreased the upper limit of middle clouds from 7000 m to 5000 m to avoid problems with distinguishing middle and high clouds. This had negligible effects on our results.

o. L. 241. What do you mean by "uniformly and randomly"?

We modified the sentence to make it easier to understand. The text now reads (L. 233):

"We took a sample of 665 total sky image-measurement data pairs randomly yet timewise uniformly, i.e. making sure that we utilized the whole measurement period, from among a set of total sky images taken between 01 May and 31 July 2014 in Hyytiälä."

p. L. 244. "We first VISUALLY classified..."

We changed the wording as suggested.

q. Figure 4, caption. Explain the meaning of whiskers.

We changed the caption to be more detailed:

“Illustration of the transmittance and patchiness ranges used as classification criteria for different cloud types. Markers display the locations of the maximum data point density of each cloud type, and whiskers extend to the lower and upper limits of the permitted parameter ranges, listed also in Table 1. Color shows the average CBH of each cloud type.”

r. L. 289. *With the current form of Fig. 4, the U shape is difficult to catch.*

Referee is correct. We removed the paragraph.

s. L. 341. *“averaged over half an hour”, but later you talk about 21 minutes. Please clarify (and consider my previous general comment #2)*

We thank Referee for pointing out the discrepancy in the text. The averaging was done over 21 min moving time window. We clarified the text and followed the general comment 2.

t. *Section 3.4, last paragraph. This is a somewhat confusing paragraph. If this paper is about cloud classification, why a discussion about ecosystem interactions? And, in this section the algorithm is not used, but the brightness parameter. Regarding the use of 0,7 as threshold, it is clearly too low to guarantee a clear sky. In any case, if this is a discussion about results, it would fit better in section 3.5.*

The reason for discussing about ecosystem interactions comes from the idea of future application of the algorithm. However, we agree with Referee that the paragraph fits better to Sect. 3.5.

u. L. 464-465. *Well, this is a matter of which threshold you use. The “clearness index” in different versions is used to detect clear skies, by applying (if I’m right) a higher threshold (about 0,9).*

The selection of the suitable threshold is indeed depending on the application in question. Yet, the information of cloud variability is important as there can be situations when transmittance and clearness index are high e.g. in the presence of cumulus and cirriform clouds. We modified the text a bit to be more precise (L. 504):

“We found that cumulus, altocumulus, altostratus and cirriform clouds were present when clearness index was above 0.7 threshold that has been used as a limit for clear sky when studying aerosol–cloud interactions. Thus, the studies defining clear sky cases based on clearness index, may be biased. High clearness index threshold is deficient criterion as in the presence of patchy clouds, the clearness index may still be high periodically. Hence, the criterion should concern conditions with high transmittance and low patchiness.”

Besides the comments by Referee, we changed term “transparency” to more generally used “transmittance”. We changed the upper limit of transmittance for stratus clouds from 0.4 to 0.6. This was done because we could see that many St clouds fell into this area but were previously not classified. This, along with the applied median AOD and precipitable water values (see item 3), decreased the number of cases falling into the class “Base, no class”. Now also the frequency of occurrence of stratus clouds is better in accordance with observations in *Climatic Atlas of Clouds Over Land and Ocean* (available online at <https://atmos.uw.edu/CloudMap/>, last access: 10 January 2020). We additionally changed the upper transmittance limit of Ns from 0.4 to 0.3 and lower

transmittance limit of Ac+As clouds from 0.4 to 0.3. This was done because we could see that especially in springtime Ac+As clouds were previously falsely classified as Ns. The overall occurrence of Ns clouds decreased (from 1.4 % to 0.6 %) and occurrence of Ac+As increased (from 9.0 % to 10.3 %) but otherwise the change did not affect our results.

References

Dada, L., Paasonen, P., Nieminen, T., Buenrostro Mazon, S., Kontkanen, J., Peräkylä, O., Lehtipalo, K., Hussein, T., Petäjä, T., Kerminen, V.-M., Bäck, J., and Kulmala, M.: Long-term analysis of clear-sky new particle formation events and nonevents in Hyytiälä, *Atmos. Chem. Phys.*, 17, 6227–6241, <https://doi.org/10.5194/acp-17-6227-2017>, 2017.

Duchon, C. E. and O'Malley, M. S.: Estimating cloud type from pyranometer observations, *Journal of Applied Meteorology*, 38, 132–141, 1999.

Hari, P. and Kulmala, M.: Station for Measuring Ecosystem–Atmosphere Relations (SMEAR II), *Boreal Environment Research*, 10, 2005.

Dear Editor and Referees,

We are grateful for the helpful suggestions and improvements provided by the reviewers for our manuscript «Clouds over Hyytiälä, Finland: an algorithm to classify clouds based on solar radiation and cloud base height measurements». We have addressed the comments, and the main changes to the manuscript are the changes in the cloud classification algorithm: the applied median aerosol optical depth and precipitable water values during March-April and September when data were missing (item 2), and changes in transmittance limits of stratus, nimbostratus and altocumulus+altostratus clouds (item 5). Additionally, to relate our results with modeling and measurement data, we added a section in which we show that transmittance can be used to estimate cloud optical depth during daytime for non-patchy clouds (item 8). The detailed list of the changes is shown below.

Thank you for your interest!

Best regards,
Ilona Ylivinkka et al.

1. We changed the term “transparency” to more generally used “transmittance” as well as the term “brightness parameter” was replaced with “clearness index”.
2. Because the data availability of AERONET data (precipitable water and aerosol optical depth) was low during March, April and September of 2016 and 2017, we calculated median values of the available data separately for spring (March and April) and September, and applied those when data was missing in those months. (L.135) This decreased the number of cases that could not be classified considerably (Fig. 5).
3. We added a new paragraph to better describe the use of 21 min averaging interval. (L. 157)
4. We changed the order of the Sect. 3.1 and 3.2, and now Sect. 2 is followed by the section describing the derivation of the algorithm.
5. We changed the upper limit of transmittance for stratus clouds from 0.4 to 0.6. This was done because we could see that many stratus clouds fell into this area but were previously not classified. Additionally, we changed the upper limit of transmittance of nimbostratus clouds from 0.4 to 0.3 and lower transmittance limit of altocumulus+altostratus clouds from 0.4 to 0.3 because these two cloud types were often mixed by the algorithm, especially during springtime (Sect. 3.1).
6. After revising the algorithm, it was clear that TR_max was a redundant parameter, and hence we removed it completely, and thereby also the section discussing its use (Sect. 2.2).
7. Previously there was overlapping between the middle and high multilayered clouds. We have now decreased the upper limit of middle clouds from 7000 m to 5000 m to avoid problems with distinguishing middle and high clouds (described in Sect. 3.1). This had negligible effects on our results.
8. We created a subsection 3.4 “Applications of the algorithm” which has subsections 3.4.1 describing the use of clearness index in previous publications and comparing the clearness index values with the results of our algorithm, and a new subsection 3.4.2 which describes how well measured cloud optical depth and transmittance follow the theoretical relation between them, to connect modeling and measurement data with our results. The theoretical relation between cloud optical depth and transmittance is described in Sect. 2.4.

Clouds over Hyytiälä, Finland: an algorithm to classify clouds based on solar radiation and cloud base height measurements

Ilona Ylivinkka^{1,2}, Santeri Kaupinmäki^{1,*}, Meri Virman¹, Maija Peltola¹, Ditte Taipale^{1,2},
Tuukka Petäjä¹, Veli-Matti Kerminen¹, Markku Kulmala¹, and Ekaterina Ezhova¹

¹Institute for Atmospheric and Earth System Research / Physics, Faculty of Science, University of Helsinki, P.O. Box 64, 00014 Helsinki, Finland

²SMEAR II station, University of Helsinki, 35500 Korkeakoski, Finland

**Current address:* Department of Medical Physics and Biomedical Engineering, University College London, London, WC1E 6BT, United Kingdom

Correspondence: Ilona Ylivinkka (ilona.ylivinkka@helsinki.fi)

Abstract. We developed a simple algorithm to classify clouds based on global radiation and cloud base height measured by pyranometer and ceilometer, respectively. We separated clouds into seven different classes (stratus, stratocumulus, cumulus, nimbostratus, altocumulus+altostratus, cirrus+cirrocumulus+cirrostratus and clear sky+cirrus). We also included classes for cumulus and cirrus clouds causing global radiation enhancement, and classified multilayered clouds, when captured by the
5 ceilometer, based on their height and characteristics (transmittance, patchiness and uniformity). The overall performance of the algorithm was nearly 70 % when compared with classification by an observer using total sky images. The performance was best for clouds having well-distinguishable effects on solar radiation: nimbostratus clouds were classified correctly in 100 % of the cases. The worst performance corresponds to cirriform clouds (50 %). Although the overall performance of the algorithm was good, it is likely to miss the occurrence of high and multilayered clouds. This is due to the technical limits of
10 the instrumentation: the vertical detection range of the ceilometer and occultation of the laser pulse by the lowest cloud layer.

We examined the use of clearness index, which is defined as a ratio between measured global radiation and modeled radiation at the top of the atmosphere, as an indicator of clear sky conditions. Our results show that cumulus, altocumulus, altostratus and cirriform clouds can be present when the index indicates clear sky conditions. Those conditions have previously been associated with enhanced aerosol formation under clear sky. This is an important finding especially in case of low clouds
15 coupled to the surface which can influence aerosol population via aerosol–cloud interactions. Overall, caution is required when the clearness index is used in the analysis of processes affected by partitioning of radiation by clouds.

1 Introduction

Clouds regulate the radiative heating of the Earth because they reflect a large share of the incoming solar radiation back to space, and also absorb and re-emit long-wave radiation radiated by the Earth (Schneider and Dennett, 1975; IPCC, 2013). The
20 light scattering and absorption properties of clouds depend on their thickness and spatial distribution, but also on the size and phase of cloud droplets. These characteristics, in turn, vary for different types of clouds. For example, optically thick stratiform

clouds effectively decrease the amount of solar radiation reaching the surface of the Earth, thereby cooling the climate. The dominant impact of optically thin and transparent cirrus clouds is mainly on the outgoing long-wave radiation, leading to a net warming effect (IPCC, 2013). Additionally, clouds alter the ratio between direct and diffuse radiation on the surface of the Earth (Kasten and Czeplak, 1980; Calbó et al., 2001). Hence, the cloud properties largely affect the radiation budget of the Earth (Sinha and Shine, 1995; Loeb et al., 2009) as well as many physical and chemical processes in the planetary boundary layer (Gu et al., 1999; Mogensen et al., 2015; Jokinen et al., 2017). Many of the cloud-related interactions and feedbacks are not well understood, causing large uncertainties in the predictions of the future climate change (IPCC, 2013).

Shortwave global radiation comprises direct radiation coming from the direction of the Sun, and diffuse radiation coming from all other directions due to scattering of solar radiation in the atmosphere. Under clear sky conditions, 10–20 % of global radiation is diffuse radiation, depending on the aerosol load in the atmosphere and time of the day. When clouds overcast the sky, diffuse radiation is nearly equal to global radiation (Page, 2012). Additional effect related to partitioning of solar radiation by clouds is global radiation enhancement (GRE), which means that the measured global radiation exceeds the theoretical maximum clear sky radiation, and is associated with specific “focusing” of radiation by clouds (Pecenak et al., 2016).

Partitioning of radiation by clouds affects on ecosystem and atmospheric processes. For example, under diffuse radiation conditions, the photosynthesis of a forest ecosystem is more effective. Such enhancement is presumably caused by the facts that diffuse radiation penetrates more evenly inside the canopy so that a larger number of leaves can photosynthesize efficiently, and that photosynthetic saturation of the leaves on top of the canopy is less likely to be reached (Gu et al., 2002; Kivalov, 2018). In cloudy conditions, the increase in gross primary production, which is a measure of ecosystem-scale photosynthesis, can be up to 30 % compared to clear sky and clean atmosphere conditions in boreal forests (Ezhova et al., 2018).

The presence of clouds modulates also atmospheric chemistry. For example, the production of OH, which is the most important oxidant in the atmosphere, is reduced when clouds limit the incoming ultraviolet radiation, thereby reducing also the oxidation of e.g. biogenic volatile organic compounds (BVOC) (Atkinson and Arey, 2003; Mogensen et al., 2011, 2015; Hellén et al., 2018). Oxidized BVOCs form vapors that are able to contribute to the formation and growth of atmospheric aerosol particles (Hallquist et al., 2009; Riipinen et al., 2012; Donahue et al., 2013; Schobesberger et al., 2013; Ehn et al., 2014; Kulmala et al., 2014b; Riccobono et al., 2014). The changes in aerosol processes additionally affect cloud condensation nuclei (CCN) production in the atmosphere (Kerminen et al., 2012; Paasonen et al., 2013; Scott et al., 2018; Sporre et al., 2019), altering also several cloud properties, such as their albedo and lifetime, their ability to precipitate, and cloudiness in a more general sense (Twomey, 1977; Albrecht, 1989; Gryspeerdt et al., 2014; Rosenfeld et al., 2014). Hence, the modulations in cloudiness affect variety of different simultaneous processes and feedbacks, and the research on these interactions requires accurate knowledge of different cloud types and their effects on radiation on different time scales (Hussein et al., 2009; Rannik et al., 2013; Dada et al., 2018; Ezhova et al., 2018).

Traditionally, cloud type classification has been based on human observations. However, human observations are not always available, especially in remote locations, and the time resolution of the data is too low for many scientific applications. Thus, automated cloud classification methods have been developed. Either data from ground or satellite instrumentation can be used for the classification. The equipment for this purpose include cameras, radiosondes, different kinds of irradiance meters,

and radars (Tapakis and Charalambides, 2013). The classification applied in simple models can base only on one instrument (Duchon and O'Malley, 1999), or the algorithm can employ data from several instruments (Wang and Sassen, 2001). Ground-based measurements provide accurate results on local variations in cloudiness, whereas satellite measurements cover large-scale phenomena (Duchon and O'Malley, 1999; Ricciardelli et al., 2008).

In instrumental-based cloud classification, the clouds can be classified according to e.g. the attenuation of irradiance compared to theoretical clear sky values, or meteorological variables, such as temperature thresholds. Image-based classification employs spectral and textural features of an image. For example, the tonal variation may help in distinguishing between different types of clouds (e.g. cirrus and cumulus), and the spatial homogeneity allows to discriminate between similar types of clouds (e.g. cumulus and stratocumulus) (Haralick et al., 1973; Calbó and Sabburg, 2008; Heinle et al., 2010). The algorithms calculating the cloud occurrence can be very simple separating only clouds from the background (Cayula and Cornillon, 1996; Long and Ackerman, 2000; Mukherjee and Acton, 2002), or sophisticated classifying different cloud types into several classes (Calbó et al., 2001; Bankert and Wade, 2007; Ricciardelli et al., 2008). The classification can be based on exceeding linear threshold values (Kegelmeyer Jr, 1994), or it can apply machine learning and artificial intelligence with large training sets (Bankert and Wade, 2007; Mazzoni et al., 2007).

The selection of a suitable method depends on the application of the results. For example, Cloudnet measurement stations, producing cloudiness data for the needs of weather forecasting, have at least three instruments providing information of cloud vertical structure, and ice and liquid water contents (Illingworth et al., 2007). The main instruments include dopplerized cloud radar, ceilometer and dual-frequency microwave radiometer. The calibration and data handling processes are exact and pre-arranged (Illingworth et al., 2007). While overall, Cloudnet provides very detailed information of clouds, for some applications this information is redundant. As an example, when dealing with the processes related to solar radiation, it is reasonable to characterize clouds using solar radiation as a classification parameter. Moreover, Cloudnet stations and the instruments they use are rare, while for example global radiation and cloud base height (CBH) are often measured routinely.

Measurements at SMEAR II (Station for Measuring Ecosystem–Atmosphere Relations) in Hyytiälä, Finland, aim for comprehensive understanding of the ongoing processes in the atmosphere, ecosystem and the interactions between them (Hari and Kulmala, 2005). Despite the importance of the clouds on these processes, to date the prevailing cloud types have not been identified. Therefore, the objective of this work is to formulate a simple and inexpensive method to estimate cloud types over SMEAR II, employing its existing instruments.

Our automatic cloud classification algorithm is based on global radiation and CBH measurements. It is an adaptation of the work by Duchon and O'Malley (1999). Their so called “pyranometer method”, using only pyranometer data, was developed to classify clouds in places where no human observations were available. Even though the pyranometer method is simple and effective, its cloud type classes are rather broad (stratus, cumulus, cumulus+cirrus, cirrus, clear sky, precipitation+fog, and other), and the classification was found to be in agreement with human observations only 45 % of the time. Our improved cloud type classification algorithm uses additionally CBH data. Hence, the number of cloud type classes can be increased compared to Duchon and O'Malley (1999) because the clouds at different levels can be distinguished. Cloud classes in our algorithm are cumulus, stratus, strotocumulus, nimbostratus, altocumulus+altostratus, cirrus+cirrocumulus+cirrostratus, clear+cirrus, cumu-

lus+GRE, and Ci+GRE. Although the algorithm is developed using the data from one measurement station, it can be applied also to other environments.

95 In order to illustrate the application of the new cloud classification algorithm, we study the cloud statistics over Hyytiälä. In the future, the results of this algorithm may be employed in other analyses regarding cloud-related interactions and feedbacks. This is possible due to the fact that the data set including ceilometer and pyranometer data from SMEAR II is ten years long, compared to just few years' data set of more advanced cloudiness measurements (e.g. Cloudnet), and one year of total sky imagery from Hyytiälä.

2 Materials and methods

100 We developed a cloud classification algorithm, utilizing global radiation and CBH data, to identify cloud types and analyze the statistics pertaining to cloudiness. In Sect. 2.1 we first introduce measurement site, instruments and data set. The radiation based parameters employed for the cloud classification are derived in Sect. 2.2, and in Sect. 2.3 we describe how cloud occurrence can be estimated. Finally in Sect. 2.4, we introduce cloud optical depth (COD) which is later used for examining how well our parameter and measured COD are connected and follow the theoretical relation.

105 2.1 Site and data set

SMEAR II in Hyytiälä in southern Finland (61°51'N, 24°17'E, 181 m a.s.l.) is a background measurement site. The state of the atmosphere and ecosystem are monitored with various instruments to understand the ongoing processes, interactions and feedbacks. The station was established in 1995, and it is surrounded by Scots pine (*Pinus sylvestris*) dominated forest with canopy height of ca. 18 m (Hari and Kulmala, 2005).

110 The main data set in this work includes data from a pyranometer and a ceilometer. The pyranometer (Middleton solar SK08 pyranometer) measures global radiation at wavelengths of 0.3–4.8 μm . The measurements were conducted above the canopy level at SMEAR II. The ceilometer (Vaisala CL31) detects CBHs for a maximum of three different cloud layers based on the back-scattering profile of a laser pulse. Its maximum measurement height is 7 500 m. Data points with full and partial obscuration, occurring usually during rain or fog events, have been excluded from the analysis.

115 The measured global radiation (I_{meas}) was compared to modeled clear sky radiation (I_{gh}) to quantify how effectively clouds block radiation. To calculate the modeled clear sky radiation, we used Solis clear sky model (Ineichen, 2008). The model is different from that of Duchon and O'Malley (1999), in which precipitable water (PW) was estimated based on dew point and aerosol optical depth (AOD) was taken constant. We used Solis model because it explicitly takes into account the aerosol load in the atmosphere. However, in case AOD and precipitable water data are not available when applying this algorithm in other environments, other clear sky models may be employed, though we recommend to use as accurate model as possible.

120 The input parameters for the Solis model are measured AOD at 700 nm and precipitable water. We used AOD at 675 nm and precipitable water obtained from Aerosol Robotic Network (AERONET) data base for Hyytiälä (Holben et al., 1998). Note, however, that the data from 2014 can be found under the name “ARM Hyytiälä Finland” because in 2014 Atmospheric



Figure 1. An example of total sky images taken in Hyytiälä that were used when formulating the algorithm. Transmittance, patchiness and the lowest CBH are marked in the figures. Figure courtesy of ARM.

Radiation Measurement (ARM) facility of the U.S. Department of Energy had a campaign called “Biogenic Aerosols – Effects on Cloud and Climate” (BAECC) in Hyytiälä (Petäjä et al., 2016). We used version 2 and level 2 (cloud screened and quality controlled) AERONET data. The data are available at <https://aeronet.gsfc.nasa.gov/> (last access: 04 February 2020).

In the development and validation process of the algorithm, we employed cloud classification made by human observer based on total sky images taken during the BAECC campaign between 01 May and 31 July 2014 (Fig. 1). In the validation process, we used ceilometer data from the BAECC campaign. The ceilometer used in the campaign was also Vaisala CL31, but it was positioned about 500 m away from the standard ceilometer of SMEAR II. We discuss the consequences of ceilometer position for cloud classification in Appendix A1 (Fig. A1).

In the cloudiness and cloud classification analysis, we used quality checked pyranometer and ceilometer data, measured at SMEAR II in 2014 and 2016–2017. Data from 2015 was excluded because the data availability was low due to instrumental issues of the ceilometer. The time resolution of the data was 1 min, and gaps were interpolated with the nearest value. The interpolation was important only for intermittent measurements of precipitable water and AOD. Moreover, due to their low availability in March, April and September, we calculated the median values of the available data, and employed them when the data were missing in those months. We calculated median values separately for spring (March and April) and September. The gained values for springtime were $AOD_{Spr} = 0.0252$ and $PW_{Spr} = 0.4731$ cm, and for September $AOD_{Sep} = 0.0872$ and $PW_{Sep} = 1.1970$ cm. Otherwise the data availabilities of the measured variables were high during the measurement period, ca. 90 %. When conducting seasonal analysis, we determined the seasons so that spring included March, April and May, followed by summer (June, July and August), autumn (September, October and November), and winter included (December, January and February).

For the cloud type classification and cloud occurrence analysis based on pyranometer measurements, we used only data when solar zenith angle (SZA) was less than 70° as the pyranometer data are not reliable when the Sun is close to horizon. Because

145 SZA is always larger than 70° before 27 February and after 16 October, we included only data from March to September so that we used only months with full data availability. However, for the cloud occurrence and CBH analysis using the ceilometer measurements, we used data independent of the time of day and season, because unlike the pyranometer, the ceilometer is not sensitive to SZA. We calculated the value of SZA with Solar Position Algorithm (SPA) online calculator, available in <https://midcdmz.nrel.gov/solpos/spa.html> (last access: 09 January 2020).

150 2.2 Cloud type classification parameters

Our algorithm uses three parameters to classify clouds: transmittance (TR), patchiness (PA) and measured CBH. Transmittance is the ratio of the measured global radiation (I_{meas}) to the modeled clear sky radiation (I_{gh}), given by Eq. (5), averaged over a running time interval:

$$\text{TR} = \left\langle \frac{\text{measured global radiation}}{\text{modeled clear sky radiation}} \right\rangle_{21 \text{ min}} = \left\langle \frac{I_{\text{meas}}}{I_{\text{gh}}} \right\rangle_{21 \text{ min}}. \quad (1)$$

155 Transmittance describes how effectively clouds block solar radiation. It is equal to 1 in clear sky conditions and approaches 0 for an overcast sky.

The chosen time interval in this work was 21 min, similar to Duchon and O'Malley (1999) to be able to compare our results. However, the length of the time interval is based on empirical experience of the time span of cloud variability in the sky and the life time of clouds. Cumulus clouds are the largest patchy clouds, and hence they are used as a reference for the time span of clouds. The representative size of typical cumulus clouds is 1 km and if assuming that the average wind speed is about 3–6 m s^{-1} (Stull, 2000), then during 21 min the clouds can move 3.8–7.6 km, meaning that roughly 4–8 clouds can pass the measurement beam of the instruments. Capturing several clouds is necessary for the calculation of standard deviation, which is employed when calculating patchiness as described below. Hence, decreasing the 21 min time interval can be problematic due to insufficient number of passing clouds, needed for the calculation. Moreover, a study by Rodts et al. (2003) show that ca. 1 km sized clouds dominate the vertical mass and buoyancy fluxes. Thus, they can be expected to be optically thicker than smaller or larger clouds, and thereby they cause the largest decrease in solar radiation which contributes to the standard deviation the most. Rodts et al. (2003) also showed that the cloud cover density is dominated by intermediate clouds with linear sizes of 0.7–1 km. This means that they give the largest contribution to the cloud cover, determined as a ratio of the 2D projection of the area occupied by clouds to the total image area. Another time constraint is related to the life time of clouds. A typical life time of cumulus cloud is 20 min, so 21 min is a reasonable to capture one life cycle of cumulus clouds (Lohmann et al., 2016). Other clouds have longer life times (Lohmann et al., 2016). Therefore, we can expect that 20–30 min would give the same results but considerably shorter time intervals would not give the best representation of the overall cloudiness conditions and longer time interval will increase the number of poorly defined cases when there is a transition from one type of cloudiness to another.

175 Patchiness is the running standard deviation (σ) of scaled measured global radiation ($I_{\text{sc,meas}}$):

$$\text{PA} = \sigma \left(\frac{\text{measured global radiation} \times 1400 \text{ Wm}^{-2}}{\text{modeled clear sky radiation}} \right)_{21 \text{ min}} = \sigma (I_{\text{sc,meas}})_{21 \text{ min}}. \quad (2)$$

The modeled clear sky radiation is calculated using Eq. (5). Patchiness determines the variability of the cloud layer. The value is smallest both for uniform and overcasting, and clear sky conditions, and increases in partly cloudy conditions. The same time interval of 21 min was used.

180 The relationship between the measured global radiation and the modeled global radiation gives the fraction of radiation that reaches the surface of the Earth. We scaled the measured radiation because the magnitude of the oscillations in the radiation due to clouds are different depending on the time of day. Since the amount of incoming solar radiation is lower in the morning and evening compared to the noon, the fluctuations due to same types of clouds are higher around noon. We used 1400 Wm^{-2} for scaling because it is slightly higher than the theoretical maximum of incoming solar radiation. The scaling factor (s) was
 185 calculated as in Duchon and O'Malley (1999):

$$s = \frac{1400 \text{ Wm}^{-2}}{I_{\text{gh}}}. \quad (3)$$

We multiplied the measured global radiation by the scaling factor in order to obtain the scaled radiation:

$$I_{\text{sc,meas}} = I_{\text{meas}} \cdot s. \quad (4)$$

The third parameter of our algorithm is the running minimum of the lowest CBH over a 21 min time interval.

190 In this study, we used Solis clear sky model to calculate the amount of global radiation that would reach the surface of the Earth in case there were no clouds (Ineichen, 2008). From the model, the obtained global radiation at ground level is

$$I_{\text{gh}} = I'_0 \cdot \exp\left(\frac{-\tau_g}{\cos^g(\text{SZA})}\right) \cdot \cos(\text{SZA}), \quad (5)$$

where I'_0 is the solar flux density at the top of the atmosphere (I_0) multiplied by a factor associated with AOD and precipitable water, τ_g is global total optical depth, and g is a fitting parameter related to AOD and precipitable water. The detailed
 195 descriptions of the parameters can be found in Ineichen (2008).

2.3 Cloud occurrence

We analyzed the cloud occurrence in Hyytiälä based on the ceilometer and pyranometer measurements. From the ceilometer data, the cloud occurrence is simply the number of cases when the ceilometer detected a cloud base. From the pyranometer data, the clear sky or cloudy conditions can be estimated using a clearness index (C). It is determined as a relation between the
 200 measured global irradiance and modeled irradiance on a horizontal surface at the top of the atmosphere:

$$C = \frac{I_{\text{meas}}}{I}. \quad (6)$$

The irradiance at the top of the atmosphere can be calculated as

$$I = \cos(\text{SZA}) \cdot I_0. \quad (7)$$

When the radiation measured with the pyranometer was less than a certain percentage of the modeled top of the atmosphere
 205 radiation, we assumed that the data point corresponded to cloudy conditions. For summer months, the percentage that we

used was 70 %, for April 65 %, and for March and September 55 %. We estimated the percentages separately for each month using a clear sky model with relatively high aerosol load ($AOD_{675\text{ nm}} = 0.17$). The percentages were different for different months because the position of the Sun is higher in summer than in spring and autumn. We used 21 min running average of the pyranometer data in 1 min time resolution. Only data from March to September was used to avoid errors in the measurements caused by large SZAs.

2.4 Transmittance and cloud optical depth

For a homogeneous, non-patchy cloud, the connection between transmittance and COD is described by the following theoretical formula (Bohren, 1987; Sena et al., 2016):

$$TR = \frac{2}{2 + \frac{(1-a)COD}{\cos(SZA)}}, \quad (8)$$

where a is an asymmetry parameter of the cloud droplets. Note that in Sena et al. (2016) there is an extra cosine term in the numerator of the formula, which we removed. In the limiting case of $COD = 0$, the extra cosine term leads to an incorrect result $TR = \cos(SZA)$, instead of $TR = 1$.

In Hyytiälä, COD has been measured between 17 July and 31 August 2014 during the BAECC campaign with Three-Waveband Spectrally-agile Technique (TWST) sensor (Niple and Scott, 2016). To estimate how well our transmittance parameter, calculated with Eq. (1), and the measured COD follow the theory, we calculated theoretical transmittance values using Eq. (8) for several SZAs, and compared those with the measured values. We assumed that in Eq. (8), $a = 0.86$ similar to Sena et al. (2016).

3 Results and discussion

First, the cloud classification algorithm is introduced along with the evaluation of the performance of the algorithm (Sect. 3.1). Second, we analyze the ceilometer and the pyranometer data to study the seasonal variation in cloud occurrence in order to gain insight into how often clouds are observed over Hyytiälä, and what are the typical CBHs (Sect. 3.2). We study the statistics of the automatically produced cloud types in Sect. 3.3. In Sect. 3.4, we shortly discuss the further applications and developments of the algorithm, including the use of clearness index as an indicator of clear sky conditions, and possibility to estimate COD using transmittance, and finally in Sect. 3.5 we compare the main findings of this work with other studies.

3.1 New cloud classification algorithm and its evaluation

The algorithm classifies clouds based on three parameters, determined in Sect. 2.2: transmittance, patchiness and CBH. Based on total sky images from Hyytiälä (Fig. 1), we adjusted the ranges of the parameters, corresponding to different types of clouds, by constructing planes of parameters (TR,PA) separately for each cloud type. We took a sample of 665 total sky image-measurement data pairs randomly yet timewise uniformly, i.e. making sure that we utilized the whole measurement period, from among a set of total sky images taken between 01 May and 31 July 2014 in Hyytiälä. To ensure that the middle

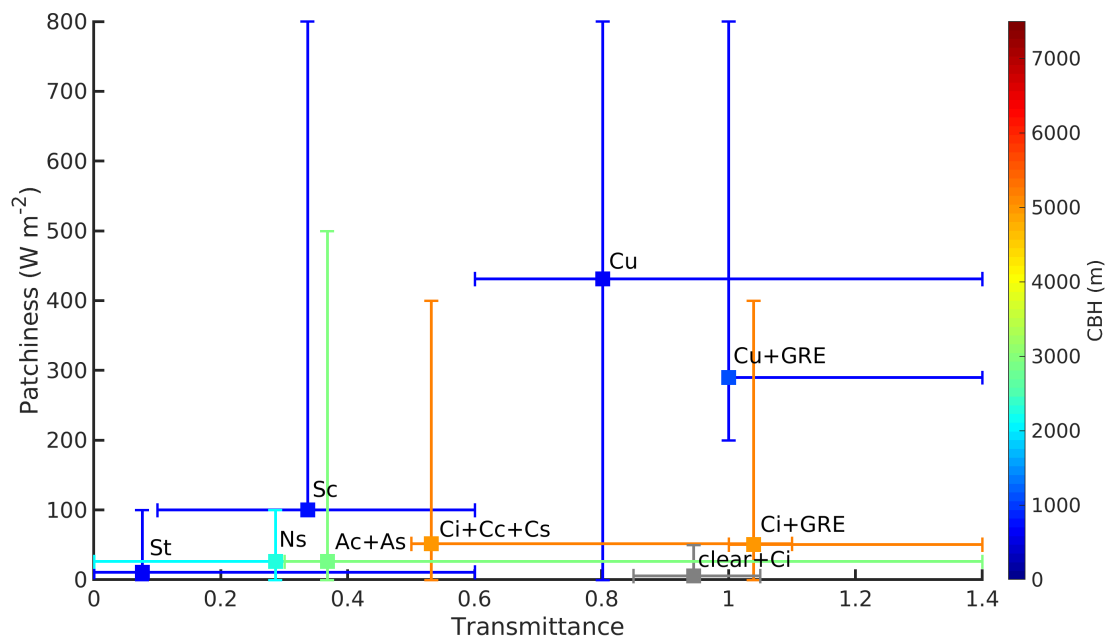


Figure 2. Illustration of the transmittance and patchiness ranges used as classification criteria for different cloud types. Markers display the locations of the maximum data point density of each cloud type, and whiskers extend to the lower and upper limits of the permitted parameter ranges, listed also in Table 1. Color shows the average CBH of each cloud type.

and high clouds were represented in the analysis, we took another sample of 320 pairs with the condition that the minimum CBH at that time was at least 2 000 m.

We first visually classified the clouds into cumulus, stratus, stratocumulus, nimbostratus, altocumulus, altostratus, cirrus, cirrocumulus, cirrostratus or clear sky, and the corresponding transmittance, patchiness and CBH were recorded. We put the transmittance and patchiness values in the plane of parameters (TR,PA) in order to determine the regions in the plane, corresponding to different cloud types. Some cloud types had a significant overlapping in the plane of parameters (TR,PA), and thus could not be distinguished from each other from the point of view of their influence on solar radiation. Those we combined in more general cloud classes (altocumulus and altostratus, cirrus, cirrocumulus and cirrostratus, and clear sky and cirrus). The clear sky class contains also cirrus clouds because cirrus clouds are difficult to distinguish from clear sky as they are transmittance and may have non-detectable CBH. Hence, the final cloud classes used in this study are cumulus (Cu), stratus (St), stratocumulus (Sc), nimbostratus (Ns), altocumulus+altostratus (Ac+As), cirrus+cirrocumulus+cirrostratus (Ci+Cc+Cs) and clear+cirrus (clear+Ci). Additionally, we defined separate classes for cumulus and cirrus clouds that caused global radiation enhancement (Cu+GRE and Ci+GRE, respectively).

We created rectangular segmentations in the (TR,PA) plane based on those cloud classes, and thus gained the new parameter ranges for each cloud type. After that, we implemented the parameter ranges into the cloud type classification algorithm. The

Table 1. The cloud types and corresponding parameter ranges used in the algorithm to determine the different cloud types. Nr of layer refers to the number of the cloud layer that is used as a criterion. Notice that cumulus, cirrus+cirrocumulus+cirrostratus and low level multilayered cloud classes have multiple criteria (see also Sect. 3.1)

Cloud type	CBH (m)	Transmittance	Patchiness (Wm^{-2})	Nr of layer
Cumulus (Cu)	< 2000	0.6–0.85	≥ 200	1
	< 2000	> 0.85	> 0	1
Stratus (St)	< 2000	< 0.6	< 100	1
Stratocumulus (Sc)	< 2000	0.1–0.6	≥ 100	1
Nimbostratus (Ns)	2000–3000	< 0.3	< 100	1
Alto cumulus+Altostratus (Ac+As)	2000–5000	≥ 0.3	< 500	1
Cirrus+Cirrocumulus+Cirrostratus (Ci+Cc+Cs)	≥ 4000	0.85–1.1	50–400	1
	≥ 4000	0.5–0.85	< 400	1
Clear+Cirrus (Clear+Ci)	NaN	0.85–1.05	< 50	1
Cumulus+GRE (Cu+GRE)	< 2000	> 1	≥ 200	1
Cirrus+GRE (Ci+GRE)	≥ 4000	> 1	< 400	1
Low level (LL)	< 2000			2 or 3
	$\text{CBH}_{\text{max}} - \text{CBH}_{\text{min}} > 1000 \text{ m}$ & $\text{CBH}_{\text{max}} < 2000 \text{ m}$			1
Middle level (ML)	2000–5000			2 or 3
High level (HL)	≥ 5000			2 or 3
Multilayer uniform (MuUni)		< 0.5	< 120	2 or 3
Multilayer transparent (MuTt)		> 0.5	< 120	2 or 3
Multilayer patchy (MuPa)		> 0	> 120	2 or 3

whiskers inserted into Fig. 2 indicate the transmittance and patchiness ranges for different cloud type classes. The CBHs and parameter ranges of radiation characteristics for all cloud types are listed in Table 1.

If the parameters did not fit to the parameter ranges of any of the listed cloud types (Table 1), or the data were missing, we classified the cases into separate classes based on whether the ceilometer did (“Base, no class”) or did not (“No base, no class”) capture a cloud base. As the ceilometer data were quality checked, the latter class contains basically data points when the sky was clear but the values of other parameters did not fit to the clear sky parameter ranges, or the data were missing. Additionally, as the field of view of the ceilometer is narrow, the class contains data points when the cloud was not in the field of view of the ceilometer although there were clouds present.

We also examined the characteristics of the second and third cloud layer in cases of multilayered clouds as measured by the ceilometer. We classified these clouds based on the height of the second or third cloud base, and characteristics defined by

Table 2. Contingency table presenting the performance of the cloud classification algorithm compared to the cloud types determined with visual inspection from total sky images.

		Algorithm								Agreement (%)
		Cumulus	Stratus	Stratocumulus	Nimbostratus	Alto cumulus + Altostratus	Cirrus + Cirrocumulus + Cirrostratus	Clear + Cirrus	Other types	
Visual inspection	Cumulus	19	0	3	0	0	0	1	3	73
	Stratus	0	28	5	0	0	0	0	1	82
	Stratocumulus	0	7	10	0	0	0	0	2	53
	Nimbostratus	0	0	0	4	0	0	0	0	100
	Alto cumulus + Altostratus	0	0	0	2	58	5	0	15	73
	Cirrus + Cirrocumulus + Cirrostratus	0	0	0	0	5	11	0	6	50
	Clear + Cirrus	0	0	0	0	0	0	15	6	71
	Other types	1	0	1	0	4	0	0	2	25

transmittance and patchiness. We used three height classes: “Low level” (LL), “Middle level” (ML) and “High level” (HL). If the second or third cloud base was below 2 000 m, the case was classified as “Low level”, if between 2 000 and 5 000 m situation was “Middle level”, and if above 5 000 m the situation was “High level” (Houze, 1993). We classified the different cloud layers separately. Hence, even though e.g. the second cloud layer was middle level cloud, simultaneously there might also exist low or high level cloud layers. As other cloud layers could be difficult to be detected above the first cloud layer with the ceilometer, additional condition low level cloud layer was determined: if the difference between the 21 min moving maximum and minimum CBH ($CBH_{max} - CBH_{min}$) of the lowest cloud layer was more than 1 000 m, and CBH_{max} was less than 2 000 m, the case was considered as low level multilayered cloud (Table 1).

We divided multilayered clouds into three characteristic classes: “Multilayer uniform” (MuUni) for uniform and thick cloud layers such as stratus and nimbostratus, “Multilayer transparent” (MuTr) for uniform and transparent cloud layers like cirrostratus and “Multilayer patchy” (MuPa) for patchy clouds with varying transmittance such as alto cumulus. However, the actual cloud types of the second and third cloud layer could not be determined with the current algorithm. Hence, multilayered classes rather inform of the presence of other cloud layers on top of the lowest, classified, cloud layer.

Before analyzing the cloud type data produced by the algorithm, the performance of the algorithm was investigated. To test the performance, a third sample of 204 total sky images was selected, and the cloud type determined through visual inspection. These cloud types were compared with the results of the algorithm in matrix form (Table 2). The results showed that the overall performance of the algorithm was 68.4 %. The performance depended on the cloud type. Some clouds, such as nimbostratus, cause very distinguishable changes in solar radiation, and hence were easily determined by the algorithm, while

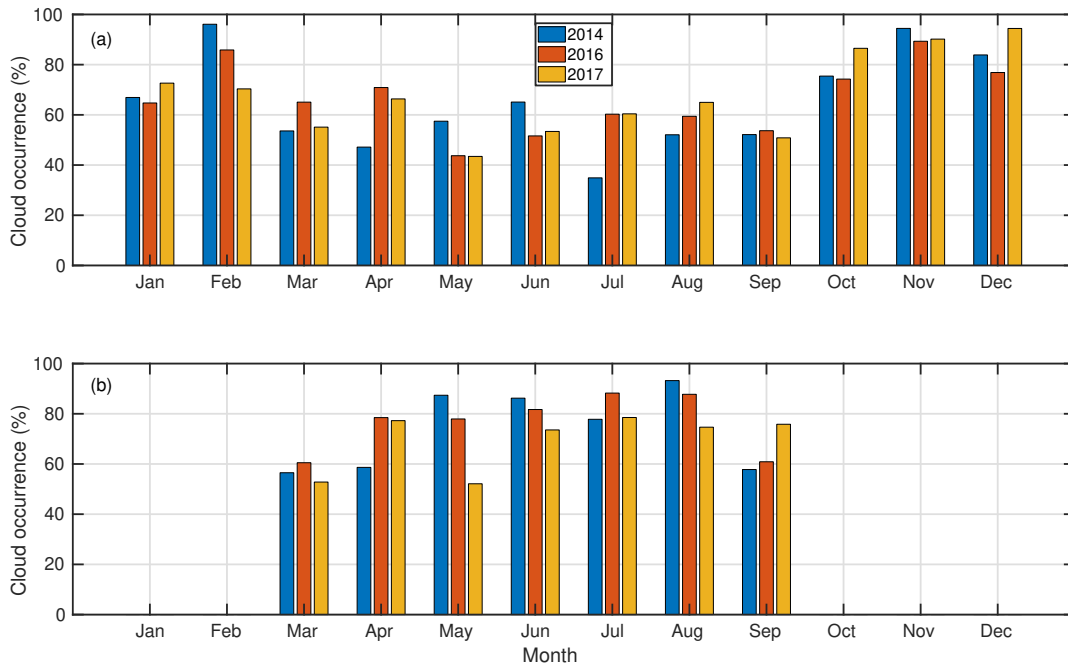


Figure 3. The monthly average cloud occurrence observed over Hyytiälä based on (a) the ceilometer data and (b) the pyranometer data. The pyranometer data were limited to values when SZA was less than 70° .

some other types, such as altocumulus and altostratus, cause similar changes as cirriform clouds, and were more often mixed
 280 by the algorithm. Indeed, the most often the algorithm mixed similar types of clouds, e.g. cumulus and stratus to stratocumulus.
 “Other types” includes cases when the cloud type was changing, and two types of clouds were present in the same image, or
 cases when it was hard for the observer to distinguish between two similar cloud types (e.g. stratocumulus and stratus).

3.2 Cloud properties

We studied the seasonal variation of cloud occurrence measured with the ceilometer (Fig. 3a) and the pyranometer (Fig.
 285 3b). We obtained the cloud occurrence by dividing the number of cloud observations in one month by the total number of
 data points in the month. Cloud occurrence calculated using ceilometer data (Fig. 3a) included all the data, whereas cloud
 occurrence calculated using the pyranometer data (Fig 3b) included only times when SZA was less than 70° . The ceilometer
 measurements show a robust seasonal variation in cloud occurrence in Hyytiälä, with cloud occurrence being lower during
 summer months (56 %) and higher during winter months (79 %) (Fig. 3a). The overall cloud occurrence was about 66 %, and
 290 from March to September it was about 55 % (Fig. 3a). Cloud occurrence calculated from the pyranometer was higher (73 %)
 compared to the ceilometer measurements (Fig. 3b).

Diurnal variation of cloud observations by the ceilometer in different seasons is shown in Fig. B1. A diurnal cycle in
 cloud occurrence was observed in summertime (Fig. B1b). The cloud occurrence had a maximum around 14:00, likely being

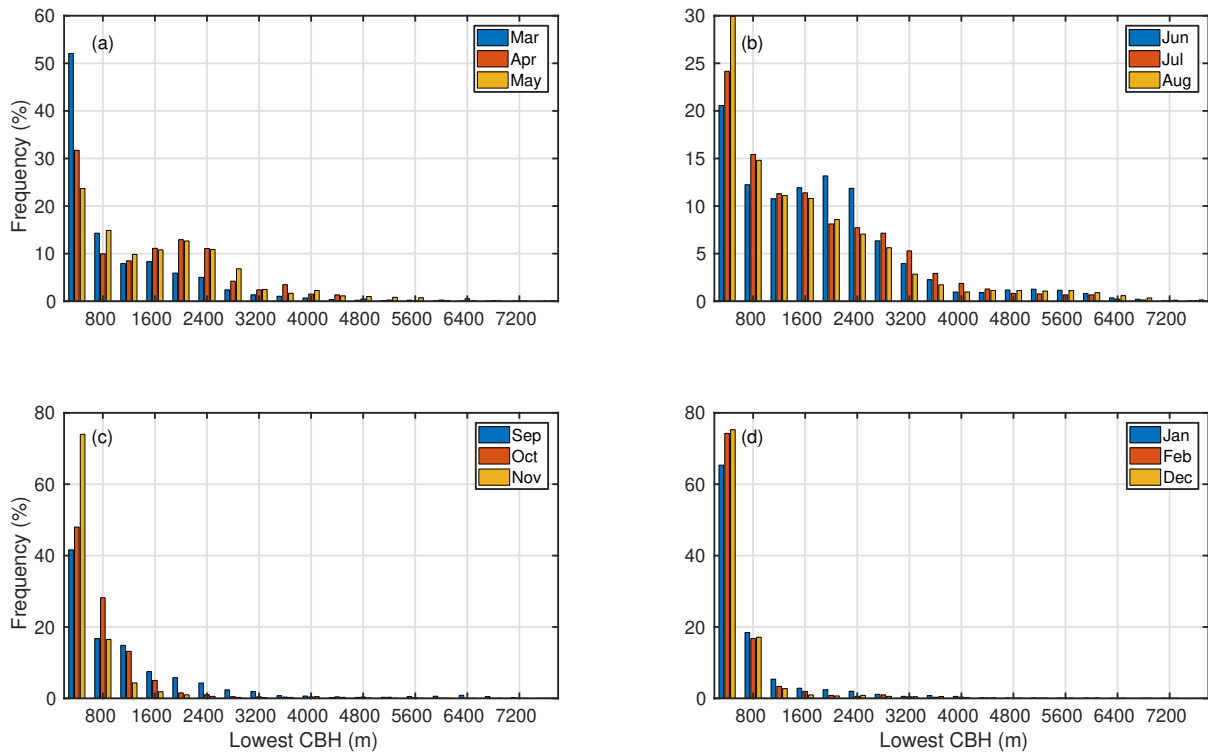


Figure 4. The number of CBH observations, from the lowest level of the ceilometer, in each 400 m height bin in one month with respect to the total number of observed cloud bases in that month in (a) spring, (b) summer, (c) autumn and (d) winter months. Notice the differences in y-axes scaling.

associated with the development of convective clouds. In May and September, a robust diurnal cycle was also observed whereas
 295 in other months the variation was absent (Fig. B1a and c). We did not investigate the diurnal variation from the pyranometer
 measurements as the method is limited by SZA, and hence the observations were not distributed evenly throughout the day.

From the ceilometer data, we could retrieve the occurrence of the two-layered and three-layered clouds. The second and the
 third cloud base were observed about 2–10 % and less than 1 % of the time, respectively, depending on the month (Fig. B2).
 Hence, the frequency of the times when single-layered clouds were detected by the ceilometer, was approximately the same
 300 as the observed cloudiness in total. Both the second and third cloud layer seemed to have higher frequencies of occurrence
 during summertime compared to winter, even though there were substantial differences between the years (Fig. B2). When a
 multilayered cloud was observed, it was two-layered in 92 % of the cases.

To identify the most common CBHs observed over Hyttiälä, we investigated the seasonal (Fig. 4) and diurnal (Fig. B3)
 variation of CBHs measured with the ceilometer. In each month, we divided every CBH record from the lowest cloud layer
 305 into 400 m bins. We calculated the frequency of CBH records in each bin as a ratio between the number of CBH records in
 the bin and the total number of CBH records in that month. Figure 4 shows that when a cloud base was observed, the most

frequently observed CBH was below 800 m for all months, although the relative amount of CBH records below 800 m was higher in winter than in summer. Figure 4 also shows that in spring and summer, the CBH distribution was more dispersed, and a second maximum at about 1 600 m was detected. The measured CBHs were most likely associated with cumulus clouds as they were more often observed in summer (see Fig. 5 in Sect. 3.3). This is also supported by the fact that a pronounced diurnal cycle in CBH, with higher values in afternoon compared to morning, was measured in summer, whereas in winter no diurnal cycle was observed (Fig. B3). In summertime, the frequently detected CBHs around 3 000–4 000 m are probably middle level altocumulus and altostratus clouds. Overall, low clouds (CBH < 2 000 m) were observed 87 % of the time when clouds were detected, middle clouds (2 000 m < CBH < 5 000 m) 13 %, and high clouds (CBH > 5 000 m) 1 % of the time.

The seasonal variation of CBH distribution of all clouds, and single, two and three-layered clouds, are presented in Fig. B4. It confirms the observation of single-layered clouds dominating the CBH distribution based on ceilometer data that we found also in Figs. 3 and B2, as the distribution of single-layered clouds resembles the distribution of total observed cloudiness. The seasonal variation of the CBHs of multilayered clouds reflects the seasonal variation of the lowest cloud layer (Fig. 4).

Figure B5 displays the height differences between cloud layers in different seasons. In all the seasons, the most common height difference between all the layers (1st and 2nd in two-layered clouds, 1st and 2nd in three-layered clouds and 2nd and 3rd in three-layered clouds) was less than 400 m (50–70 %). Towards the higher end, the distribution decreased gradually. The large distances between cloud layers were slightly more common in autumn and winter than in spring and summer (Fig. B5). In cases when three cloud layers were detected, the distance between the first and the second cloud layer was usually smaller than the distance between the second and the third cloud layer. Also, the first and the second cloud layer, in cases with three-layered clouds, were found more often close to each other (distance less than 400 m) than the first and the second cloud layer in two-layered cloud cases (Fig. B5).

3.3 Cloud statistics using the new cloud algorithm

The algorithm was applied to the data from 2014 and 2016–2017 from SMEAR II. Only cases when SZA was less than 70° were included. Figure 5 displays the monthly occurrence of each cloud type with respect to the total number of data points in that month. Figure 5a-d represent the classified cloud types of the lowest cloud layer detected by the ceilometer. As clear sky cases and cases when the cloud class could not be determined are included (Fig. 5c and d), Fig. 5a-d will give the frequency of occurrence of each cloud type month-wisely. Thereby, summing the percentages corresponding to these classes (Fig. 5a-d) monthly will give 100 %. Figure 5e and f represent the second and the third cloud layer in multilayered cloud cases. Overall, the most commonly observed cloud types were stratus (33 %), cumulus (24 %) and stratocumulus (17 %), which altogether comprised approximately 75 % of clouds. Cirriform clouds were rarely observed, accounting only for about 1 % of the classified clouds. Clear sky and cirrus cases contributed 15 % of the classified cases.

The seasonal variation of each cloud type was studied (Fig. 5). Many cloud types showed a robust seasonal variation. Stratus clouds were slightly less frequent during summertime whereas others had a maximum in occurrence during spring or summer. Altocumulus and altostratus, and clear and cirrus classes had maxima in occurrence already in spring, while cumulus had a maximum in August. Variation in the frequency of occurrence of stratocumulus, nimbostratus and cirriform clouds was less

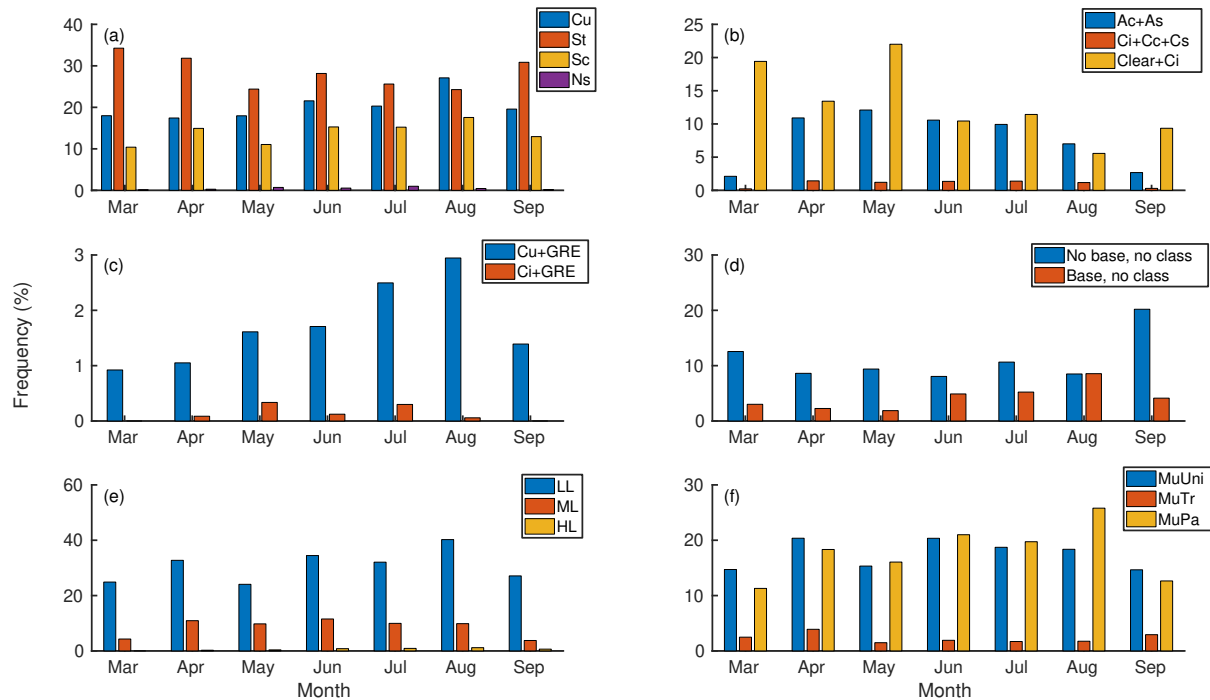


Figure 5. Occurrence of cloud types with respect to total number of data points month-wisely. (a) Low clouds, (b) middle and high clouds, (c) cumulus and cirrus clouds causing GRE, (d) cases when the cloud class could not be determined in situations when the ceilometer did or did not detect a cloud base, (e) height classes of multilayered clouds, and (f) characteristic classes of multilayered clouds. Notice the differences in y-axes scaling.

clear. The lack of variation of cirriform clouds may partially be related to the relatively high occurrence of clear sky and cirrus cases in summertime, because also this class contains cirriform clouds as they cannot be distinguished from the clear sky (Fig. 5b). The seasonal variation of cumulus clouds causing global radiation enhancement followed the variation of cumulus cloud occurrence. Also cirrus clouds causing global radiation enhancement were more frequent during summertime. It should, however, be noted that wintertime was not included.

The relative share of “No base, no class” cases peaked in the beginning and end of the period of investigation (Fig. 5d). This is generally related to discrepancies between the field of view of the instruments when SZA is high: the ceilometer is always pointing upwards, detecting only clouds that are directly above it, whereas the pyranometer can detect the decrease in solar radiation caused by clouds whenever there is a cloud between the instrument and the Sun. This also illustrates why we chose to use the threshold of 70° for SZA.

Figure 5e shows that the most commonly observed multilayered cloud type was the low level class (79 %). This is in line with the CBH observations (Fig. B4). Multilayered clouds with middle level cloud layer were also observed often (23 %), whereas high level multilayered clouds were seldom observed (2 %). Overall, the relative fraction of high clouds was smaller compared to the other cloud types (Fig. 5a and b, 3 and B2).

355 Multilayered clouds were characterized by low transparency: 47 % of the clouds were patchy and 45 % uniform (Fig. 5f).
Multilayered clouds were transparent in 6 % of the cases. The reason why the numbers do not sum up to 100 % is the missing
radiation data needed for the calculation of transmittance and patchiness.

When multilayered clouds were present, the lowest cloud layer was most often stratus (41 %), stratocumulus (27 %) or
cumulus (21 %). The first cloud layer was determined as low cloud in 90 % of the multilayered cloud cases. Hence, there was
360 typically a low cloud layer above another low cloud layer. This can also be seen in Fig. B4 and B5 as the distance between the
cloud layers was usually less than 400 m.

The diurnal variation of cloud types show that low cumulus clouds peak in the afternoons (Fig. B6a). Similar diurnal variation
can also be seen in the frequency of low and patchy multilayered clouds (Fig. B6e and f). Nimbostratus, altocumulus and
altostratus, and cirriform clouds were more common in the morning and evening compared to noon (Fig. B6a and b). Clear
365 sky combined with cirrus clouds were most often observed in the morning (Fig. B6b). Global radiation enhancement during
the presence of cumulus clouds were more common in late afternoons and evenings compared to mornings while during the
presence of cirrus clouds, it took place both in the mornings and evenings (Fig. B6c).

3.4 Applications of the algorithm

In this section, we shortly introduce some applications of the new algorithm, which could be analyzed further in the future.

370 3.4.1 Clearness index

The clearness index, also known as brightness parameter (Kulmala et al., 2010, 2014a) or cloudiness parameter (Dada et al.,
2017), has been used as a simplified measure of the prevailing cloudiness in terms of “cloudy” or “clear sky” when studying
aerosol–cloud interactions. In Kulmala et al. (2010), the limit of clear sky conditions was set to $C > 0.50$, in Kulmala et al.
(2014a) it was $C > 0.60$, and in Dada et al. (2017) it was $C > 0.70$. The limit of cloudy sky in all the three articles was
375 $C < 0.30$.

Figure 6 demonstrates the clearness index values obtained when different cloud types were present. We can see that even
when the clearness index was above 0.7 (black line in Fig. 6), different types of clouds were present. According to our results,
cumulus, altocumulus, altostratus and cirriform clouds occurred when the clearness index was above the 0.6 or 0.7 limit. Only
stratus and nimbostratus were not observed with the lowest clearness index limit ($C > 0.5$).

380 3.4.2 Estimation of cloud optical depth using transmittance

Figure 7 shows daytime (09:00–15:00) transmittance, calculated using Eq. (1), as a function of measured COD between 17 July
and 31 August 2014 in Hyttiälä. The data have been divided into three different SZA ranges ($40^\circ \leq \text{SZA} < 50^\circ$, $50^\circ \leq \text{SZA} <$
 60° and $60^\circ \leq \text{SZA} < 70^\circ$). The data points corresponding to situations of low patchiness ($\text{PA} < 100 \text{ W m}^{-2}$) are shown by
red markers. The black curves in Fig. 7 represent the theoretical relation between transmittance and COD, calculated using Eq.
385 (8). For each SZA range, the theoretical curve was calculated using SZA in the middle of the range, i.e. 45° , 55° , and 65° ,

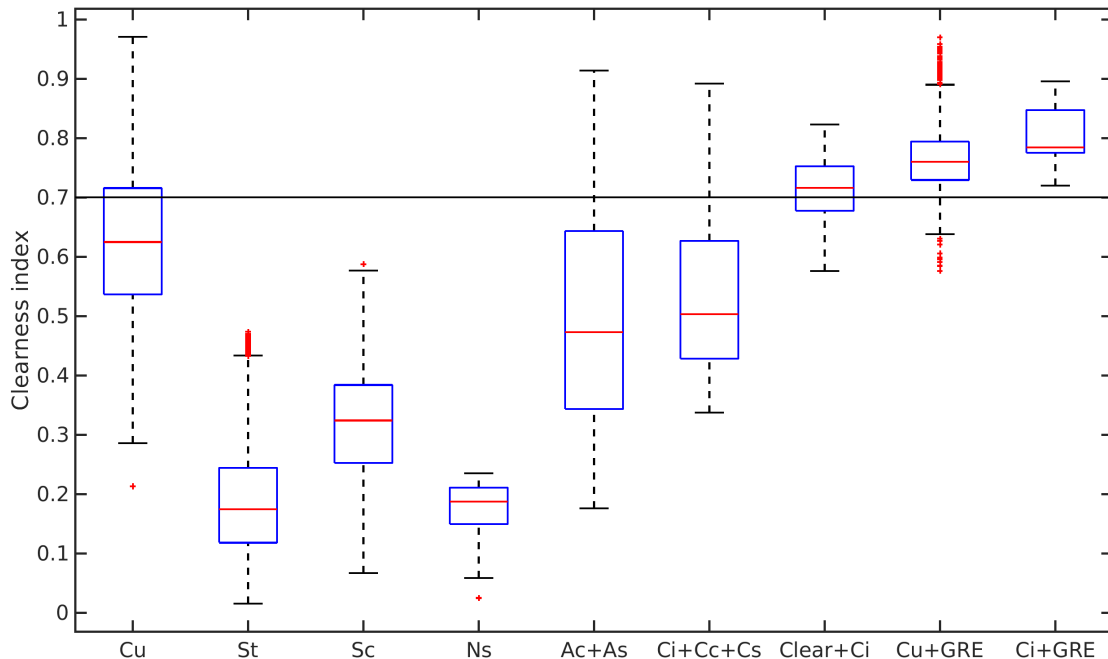


Figure 6. Obtained clearness index values when different types of clouds were present. The clearness index was calculated as 21 min running average. The values are from daytime (9:00–15:00) during the maximum growing season (from June to August). Red lines show the median values, lower and upper edges of the boxes are 25th and 75th percentiles, and whiskers correspond to 99.3 % coverage of the data. More extreme values are represented separately with red “+” symbol. The black line represents the limit for clear sky used e.g. in Dada et al. (2017).

respectively. The markers follow the theoretical curve well, especially those that are related to clouds with low patchiness. The exception in Fig. 7a corresponds to two days when thick 3D clouds developed. Hence, transmittance can be used for estimating COD for non-patchy clouds during daytime when measured COD is not available.

3.5 Discussion

390 Karlsson (2003), Pipatti et al. (2010), and Joro et al. (2010) reported similar frequency of cloud occurrence and yearly variations in Finland, based on satellite and surface observations, as we found in Hyytiälä from the ceilometer measurements (Fig. 3a). The cloud occurrence retrieved with the pyranometer method were found to be higher than those measured with the ceilometer, and the seasonal variation was absent (Fig. 3b). One reason for the difference between ceilometer and pyranometer results might be the limited vertical resolution of the ceilometer, in which case some of the highest clouds would not be detected,
 395 lowering the observed cloud occurrence. As pyranometer measures only the attenuation of solar radiation, the altitude of the

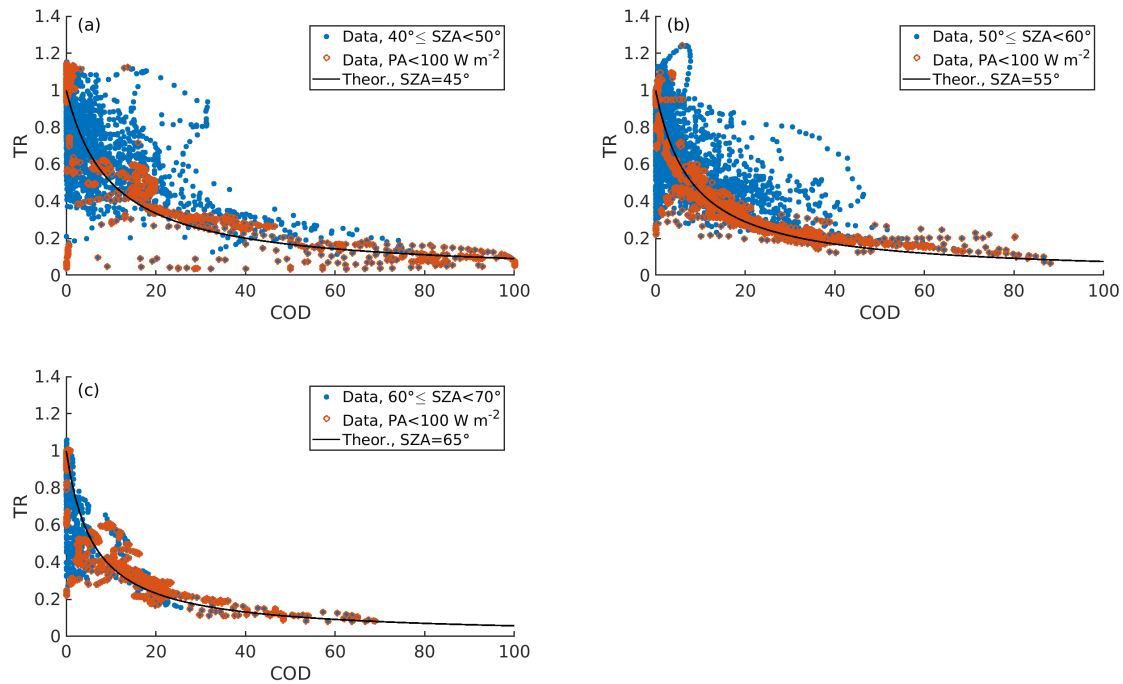


Figure 7. Transmittance as a function of measured COD during daytime (09:00–15:00). Blue markers represent all data points and red markers represent data points during which the patchiness was below 100 W m^{-2} . The data has been divided based on SZA: (a) represents cases when $40^\circ \leq \text{SZA} < 50^\circ$, (b) $50^\circ \leq \text{SZA} < 60^\circ$, and (c) the cases when $60^\circ \leq \text{SZA} < 70^\circ$. The black curve follows the theoretical relation between transmittance and COD, calculated using Eq. (8). It has been calculated using the SZA in the middle of the range: (a) 45° , (b) 55° , and (c) 65° .

cloud does not affect its performance. However, this explanation is improbable because the cloud occurrence estimated using the pyranometer method gave higher values than those found in the literature. Furthermore, the several studies mention the capability of ceilometers to detect clouds reliably, though their field of view is narrow, and performance is better with low clouds (Rodríguez, 1998; Kalb et al., 2004).

400 In Fig. 3, the cloud occurrence from the ceilometer observations contained also nighttime data points contrarily to the pyranometer data which were filtered by SZA. When only daytime (9:00-15:00) data from the time when SZA was less than 70° were used in both methods, the difference between the calculated cloud occurrences was reduced slightly (Fig. B7). The cloud occurrence estimated from the ceilometer measurements increased, presumably because the cloud occurrence had a maximum during daytime (Fig. B1). Additionally, the cloud occurrence from the pyranometer method decreased, implicating
 405 that the pyranometer method overestimated the cloudiness when data from early mornings and evenings were included, despite the filtering with SZA. Due to Finland's northern location, SZA is high throughout the year compared to locations closer to the

Equator. Hence, as the pyranometer method is sensitive to SZA, the most reliable results are obtained during the hours when the Sun is at the highest position, especially in summertime when cloud occurrence had a diurnal cycle (Fig. B1). Moreover, as shown also in Fig. 6, the simple limits set for determining cloudiness may not be efficient in all cases.

410 The cloud occurrence by the pyranometer was also modulated by the averaging over a 21 min time window. Thereby also cloudless data points might have been considered as cloudy whereas the ceilometer separated clear and cloudy periods. However, the best practice to separate between clear and cloudy cases depends on the application. For example, if the objective is to quantify albedo, it is reasonable to rely on ceilometer data. Yet, if the objective is to study the effect of clouds generally on the ecosystem, pyranometer data averaged over 21 min are more appropriate in describing the integrated effect of changing
415 light conditions on plants.

Despite the good agreement with the frequency of the cloud occurrence with values found in other studies, we are likely to miss the occurrence of the second and third cloud layer (Fig. B2). Costa-Surós et al. (2013) found similar occurrence of multilayered clouds in Girona, Spain, using identical ceilometer. They compared their results with observations from the nearby airport, and noticed that the ceilometer overestimated the occurrence of single-layered clouds. They hypothesized that
420 it might be due to the occultation of the laser pulse by the first cloud layer, and the fact that the vertical resolution of the ceilometer was too low to detect all high clouds. The occultation by the first cloud layer might be an important phenomenon in Hyytiälä where low and stratiform clouds were frequently observed (Fig. 5). Other studies have also shown higher frequencies of multilayered clouds (Wang and Rossow, 1995; Wang et al., 2000; Li et al., 2015), and differences in detection of cloud layers depending on the method (Wang et al., 1999, 2000; Rossow et al., 2005; Rossow and Zhang, 2010). Additionally, when
425 multilayered clouds were observed, they predominately were two-layered, having two low cloud layers on top of each other (Fig. B4). Comparing the results with previous publications, this indicates that we miss middle and high clouds (Rossow et al., 2005; IPCC, 2013; Li et al., 2015).

The high contribution of low single-layered clouds also modulates the observed CBHs. Joro et al. (2010) investigated cloudiness in Finland by combining satellite and ceilometer data. They found that in February low clouds dominated the CBH distribution while in August there was a second maxima around 2500 m. We found a similar second maximum in April, May and
430 June but in August the distribution decreased towards the end of higher CBHs (Fig. 4 and B4). The second maximum that we found was around 1600 m, i.e. at lower altitude compared to results by Joro et al. (2010). However, Joro et al. (2010) reported results from only two months whereas we had data from three years. Despite the high frequency of low clouds, our findings produce the distribution of CBHs similar to Wang and Rossow (1995) and Wang et al. (2000) who reported averaged CBH
435 distribution of satellite and rawinsonde, respectively, data from many stations.

Our observation that there is often a low level cloud layer on top of low clouds explains the small difference between cloud layers (Fig. B5). Wang and Rossow (1995) reported separation distances between cloud layers. They found that most often the separation distance was about 1 km whereas we found that the distance between two consecutive cloud layers was about 400 m. However, the results are not completely comparable due to different data analyzing procedures.

440 The cloud classification algorithm was able to produce the correct cloud type in about 70 % of the cases (Table 2). When other types of clouds than those that are classified by the algorithm were excluded, the performance was up to 84 %. The performance

was better with clouds having distinguishable effects on radiative conditions. For example, very opaque nimbostratus clouds, the algorithm identified correctly in 100 % of the cases. The least accuracy was obtained with cirriform clouds (50 %). This may be caused by the weaker detection of the high clouds by the ceilometer.

445 The performance of our algorithm was significantly better compared to the 45 % agreement of the original algorithm by Duchon and O'Malley (1999), and 45 % agreement of an other algorithm employing also solar radiation measurements (Calbó et al., 2001). Moreover, when Calbó et al. (2001) reduced the number of cloud classes from nine to five, the classifier reached 58 % agreement with human-observed cloud classes. The performance of the new algorithm was approximately similar to the average performance of the reviewed cloud classification algorithms in Tapakis and Charalambides (2013). Our simple algo-
450 rithm is based on measurements by two common instruments: pyranometer and ceilometer, and hence the good performance compared also to other, more sophisticated or expensive methods, is remarkable.

We found that low clouds were frequently observed (Fig. 5). When comparing the results with surface observations from Finland, we found that the algorithm produced approximately a similar frequency of occurrence and diurnal variation (Fig. 5 and B6) as the observations in Eastman and Warren (2014) and *Climatic Atlas of Clouds Over Land and Ocean* (available online
455 at <https://atmos.uw.edu/CloudMap/>, last access: 10 January 2020; method explained in Hahn and Warren (2007)). However, the frequency of middle, and especially high cirriform clouds, were up to tenfold smaller compared to the values in *Climatic Atlas of Clouds Over Land and Ocean* (Fig. 5b). This can partly be explained by the fact that our clear sky class contained also cirrus cloud cases. The better accuracy for low clouds was, however, likely caused by the limitations of the ceilometer to observe high clouds as discussed above. Moreover, Li et al. (2015) reported that high and middle clouds often coexist with
460 other types of clouds. According to their results, at 60°N high clouds are often observed together with low or middle clouds. We could not capture cases with many cloud layers because of the occultation of the laser pulse. When studying our results, high level multilayered clouds were seldom observed but rather two low cloud layers coexisted (Fig. 5).

Many cloud types showed variation during the measurement period, having a maximum in summertime, e.g. cumulus clouds peaking in late summer (Fig. 5), **except for stratus that was more frequent during spring and autumn.** The algorithm reproduced
465 the seasonal variation of clouds reported in *Climatic Atlas of Clouds Over Land and Ocean*. However, as our analysis does not cover winter months, some possible discrepancies were observed: according to *Climatic Atlas of Clouds Over Land and Ocean*, the occurrence of nimbostratus has a minimum in summertime. In our study, nimbostratus showed relatively constant frequency of occurrence from April to August but was almost absent in March and September. The overall performance of the simple algorithm was very good, but we cannot conclude the deviation from the cloud observations reported in *Climatic Atlas*
470 *of Clouds Over Land and Ocean*.

The clearness index is defined as a ratio between the measured global radiation and calculated radiation at the top of the atmosphere, and has been used as an indicator of clear sky or presence of clouds. We found that cumulus, altocumulus, altostratus and cirriform clouds were present when clearness index was above 0.7 that has been used as a threshold for clear sky conditions when studying aerosol–cloud interactions. Thus, the studies defining clear sky cases based on clearness index,
475 may be biased if not high enough threshold value is used. For example, Dada et al. (2017) concluded that aerosol formation was enhanced under clear sky conditions. Yet it is possible that there could be a mechanism similar to that in the tropics

where aerosol particles formed in the upper layers of the atmosphere are delivered to the surface by convective plumes that are often enhanced in the presence of boundary layer clouds (Perry and Hobbs, 1994; Twohy et al., 2002; Waddicor et al., 2012; Leino et al., 2019; Lampilahti et al., 2020). Hence, cloudy cases falsely classified as clear sky might have complicated the analyses related to ecosystem–atmosphere interactions and new particle formation, hindering the understanding of the processes occurring in the boundary layer (Kulmala et al., 2010, 2014a; Dada et al., 2017). Our results show that a single parameter may not indicate clear sky conditions reliably, and thus when using clearness index in analysis, extra care should be taken when drawing the conclusions. Our algorithm is a new tool for the future research regarding the radiation partitioning modified processes.

485 4 Conclusions

The present study included a formulation of a cloud type classification algorithm, and investigation of cloud properties at SMEAR II measurement site in Hyytiälä, Finland. The overall cloud occurrence measured by the ceilometer was in agreement with the reported values in literature, though the frequency of single-layered clouds were likely overestimated, and the occurrence of middle and high clouds underestimated. We hypothesize that this is caused by the facts that the vertical maximum measurement height of the ceilometer did not allow it to detect all the high clouds, and that the occultation of the laser pulse by the lowest cloud layer prevented the observation of other cloud layers.

The developed cloud classification algorithm is based on two variables measured continuously at the station: global radiation and CBH. Despite the simplicity of the algorithm, it can identify seven different cloud types along with classification of multilayered clouds based on their base height and characteristics (uniform, transparent or patchy). The overall performance of the algorithm was almost 70 %, indicating a good ability to distinguish cloud types observed over a boreal forest. The algorithm may, however, be utilized also in other environments. Because the algorithm is based on attenuation of solar radiation, the performance is better with cloud types that have a distinguishable impact on radiative conditions on the Earth, such as nimbostratus. We are confident that the algorithm is able to reproduce the cloud types rather reliable in common situations, though it is probable that it does not reproduce all the high and multilayered clouds due to the limitations of the performance of the ceilometer, as discussed above. Indeed, we showed that low and optically thick stratiform and cumulus clouds occurred frequently, indicating the high probability for occultation of the laser pulse.

The clearness index is defined as a ratio between the measured global radiation and calculated radiation at the top of the atmosphere, and has been used as an indicator of clear sky or presence of clouds. We found that cumulus, altocumulus, altostratus and cirriform clouds were present when clearness index was above 0.7 threshold that has been used as a limit for clear sky when studying aerosol–cloud interactions. Thus, the studies defining clear sky cases based on clearness index, may be biased. High clearness index threshold is deficient criterion as in the presence of patchy clouds, the clearness index may still be high periodically. Hence, the criterion should concern conditions with high transmittance and low patchiness. The new algorithm may be utilized in the future to distinguish clear sky conditions in a more reliable way when studying ecosystem–atmosphere interactions.

510 As the focus of this study was in the development of the algorithm, we used data only from three years. The measurements of the CBH and the global radiation at SMEAR II have been ongoing since 2008, and therefore the analysis can easily be extended in the future for longer time periods and different data sets. The current algorithm is the first one indicating the prevailing cloud types at SMEAR II, and we encourage to use it in studies related to the boundary layer interactions involving radiation processes and clouds.

515 *Data availability.* The used data measured at SMEAR II can be accessed with Smart-SMEAR online tool (<https://avaa.tdata.fi/web/smart>, last access: 09 January 2020, (Junninen et al., 2009)). AOD and precipitable water were obtained from AERONET data base are available at <https://aeronet.gsfc.nasa.gov/> (last access: 04 February 2020, (Holben et al., 1998)). Total sky images are available at <https://adc.arm.gov/discovery/#v/results/s/site::tmp> (last access: 11 March 2020, (Petäjä et al., 2016)). The cloud classification produced in this study is available upon request from the first author at ilona.ylivinkka@helsinki.fi.

A1 Site and data set

When comparing the performance of the cloud algorithm using SMEAR II and ARM ceilometers, the results are similar on a daily scale (Fig. A1). However, the distance between the ceilometers led to different results if data from certain moments of time were examined. Thus, the classification algorithm developed with one instrument is also applicable with another instrument.

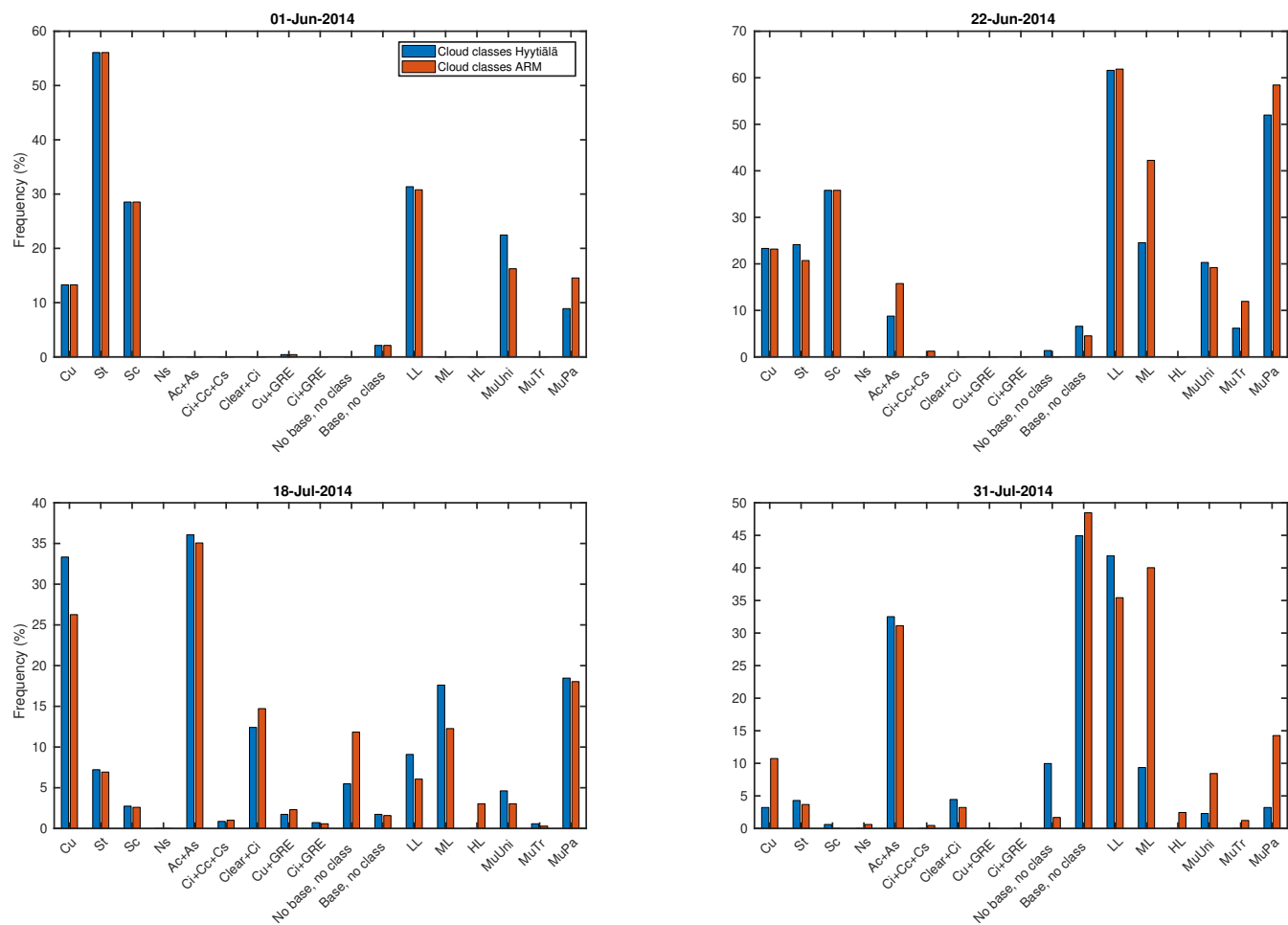


Figure A1. Comparison of the frequencies of the produced cloud types with the ceilometer of SMEAR II (blue) and ARM campaign (red) during four random days. The frequencies were obtained by dividing the number of cloud type records by the total number of data points in the day. The abbreviations of the cloud types are found in Table 1. Note the different limits of the y-axes.

B1 Cloud properties

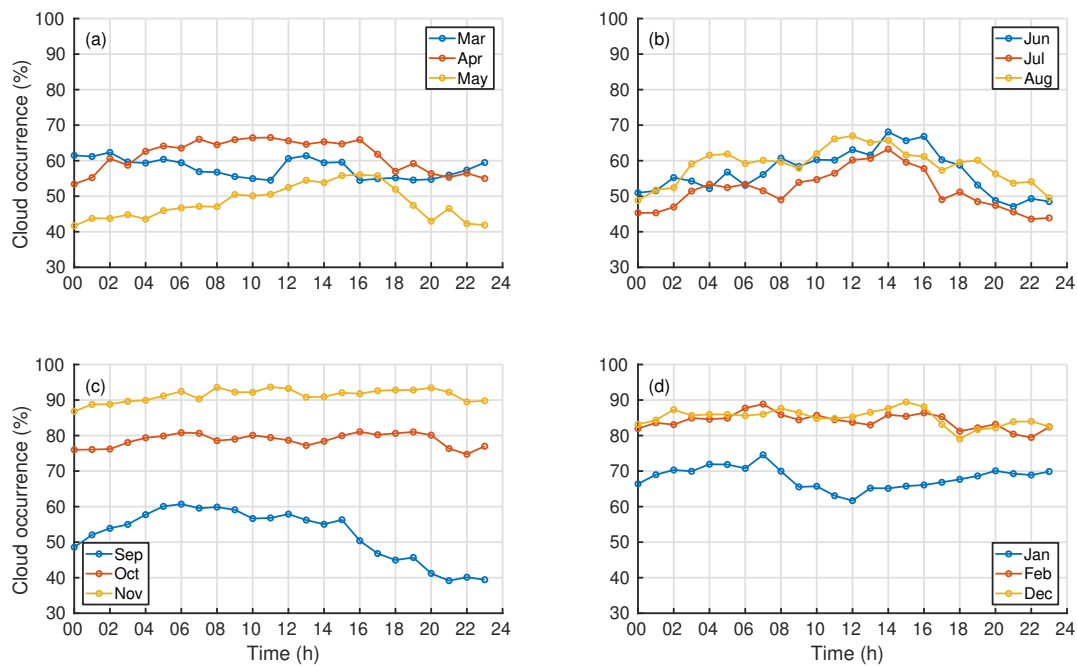


Figure B1. Diurnal variation of the cloud occurrence in (a) spring, (b) summer, (c) autumn and (d) winter months. The figure contains data from the lowest cloud layer measured with the ceilometer. The number of cloud observations was divided by the total number of data points in the certain hour to obtain the relative cloud occurrence.

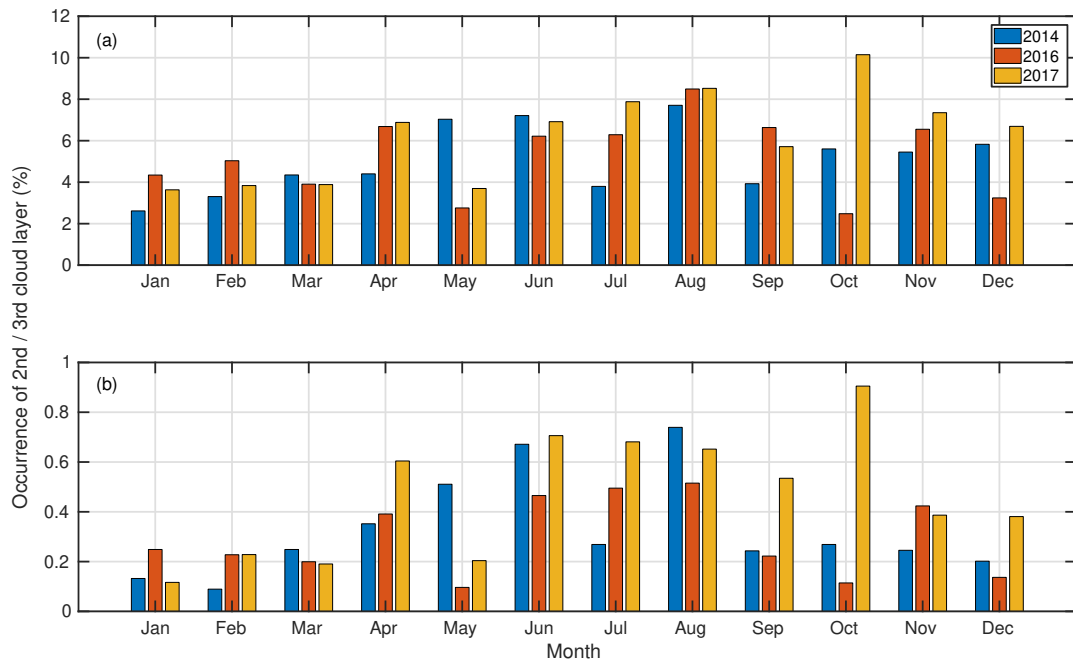


Figure B2. Monthly average occurrence of (a) the second and (b) the third cloud layer over Hyytiälä. Note the different limits of the y-axes.

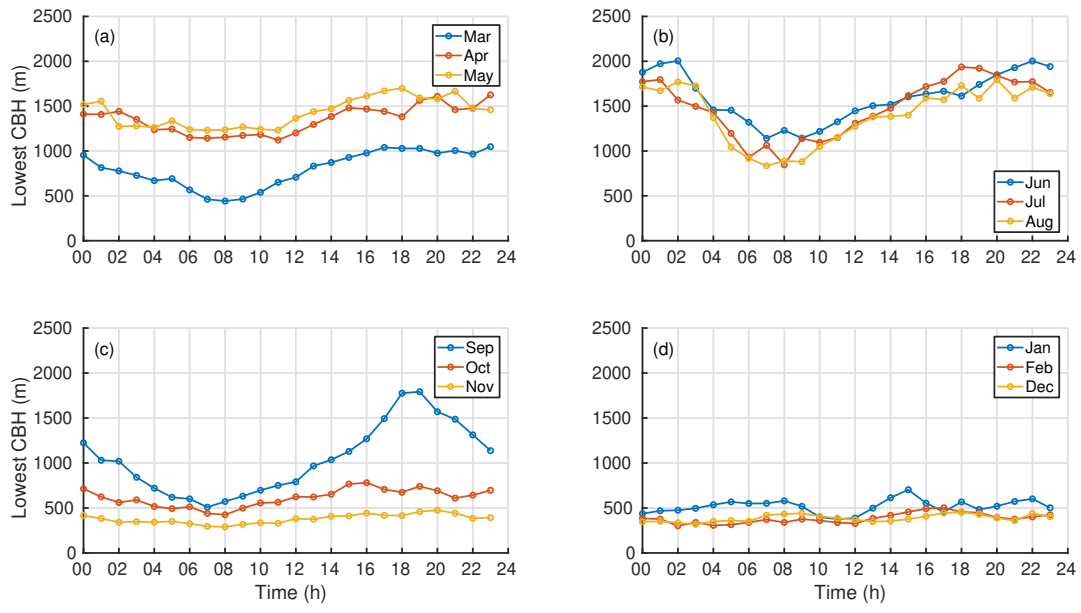


Figure B3. Hourly averaged CBH of the lowest cloud layer from (a) spring, (b) summer, (c) autumn and (d) winter months. Before calculating the hourly averages, the data from all three years was first separated month wisely.

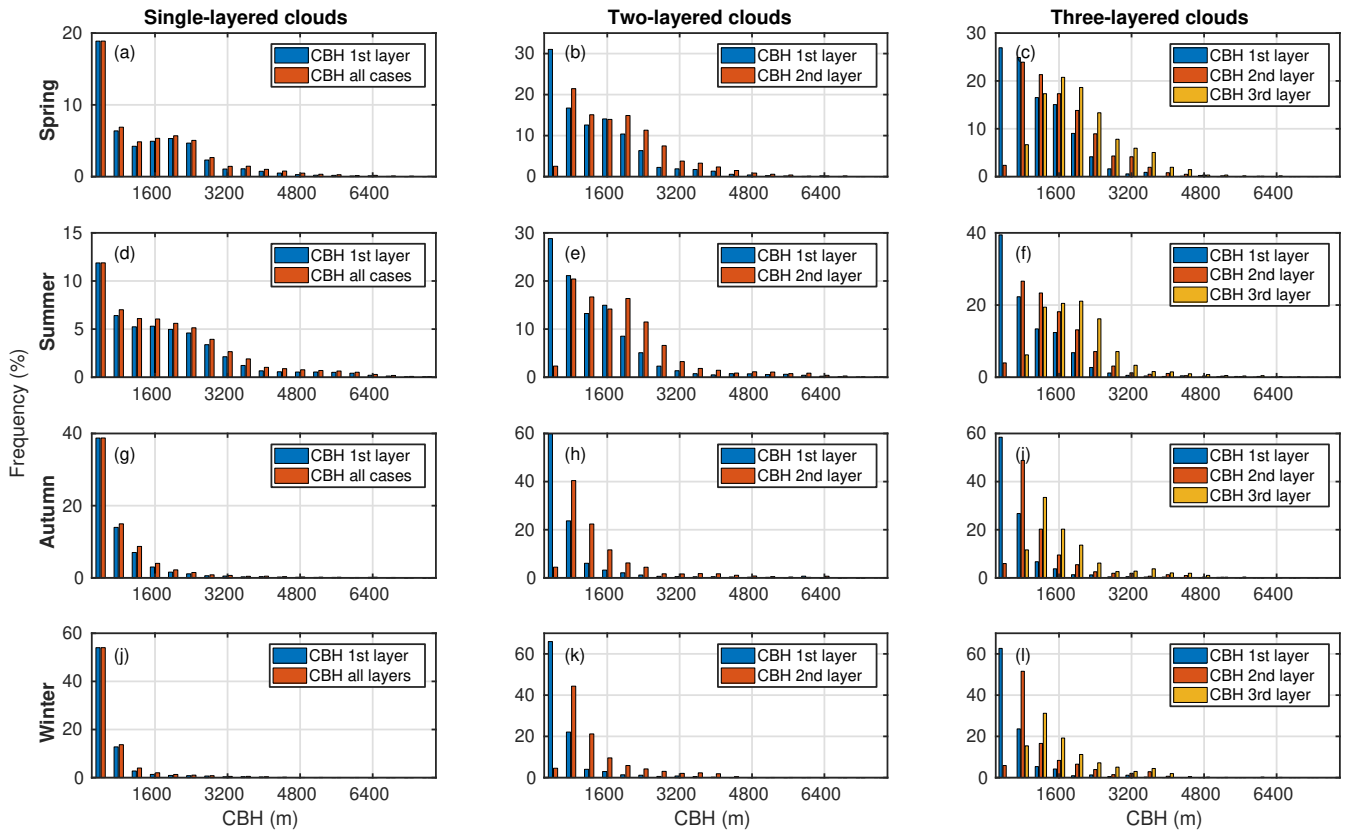


Figure B4. The frequency of single-layered clouds (a,d,g,j), two-layered clouds (b,e,h,k), and three-layered clouds (c,f,i,l). The CBH records of one season were divided into 400 m bins, and the frequencies were obtained by dividing the number of CBH records in each bin by the total number of CBH records in the season. Figures (a-c) represent spring, (d-f) summer, (g-i) autumn and (j-l) winter. Note the different limits of the y-axes.

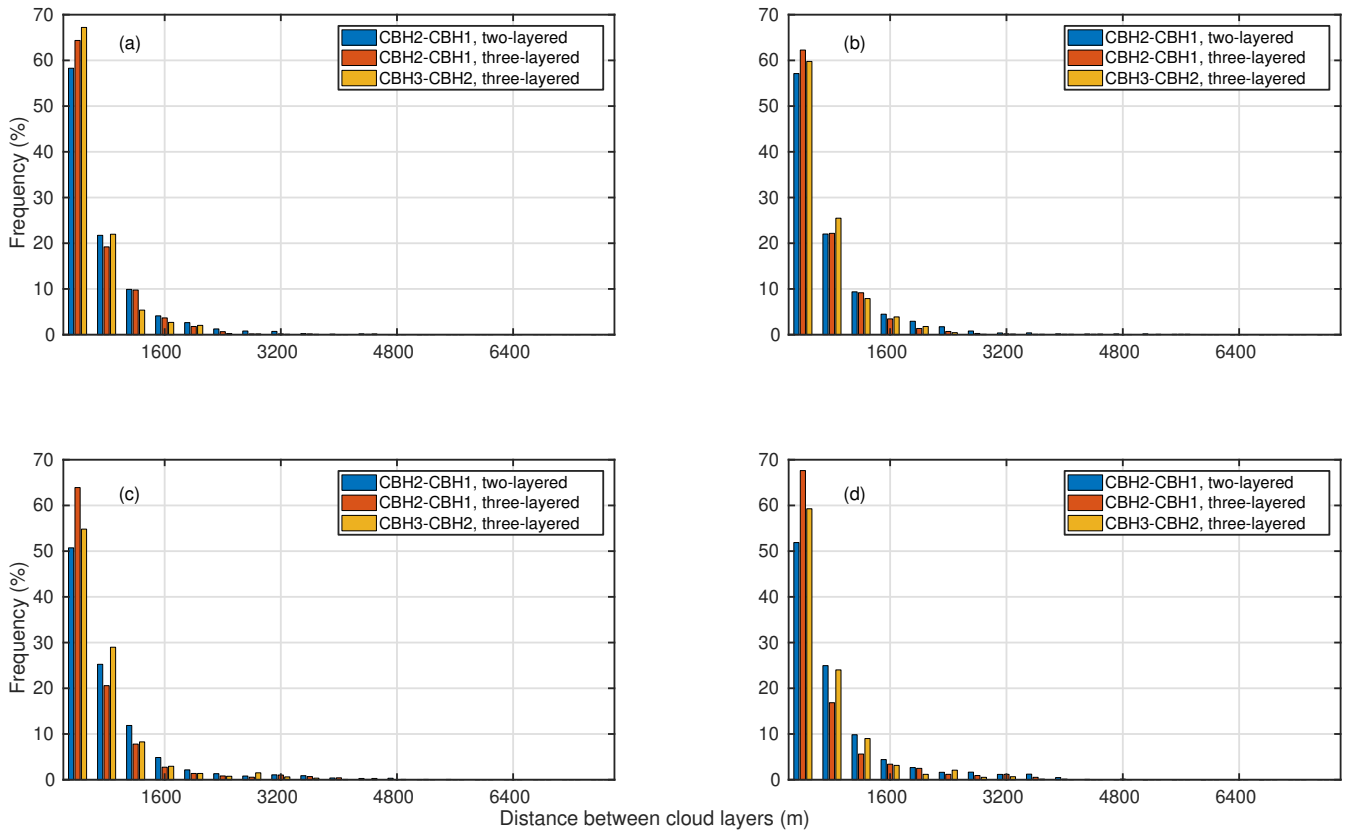


Figure B5. Distribution of the height difference between cloud layers. Blue represents the difference between the lowest and the second cloud layer in two-layered clouds, red similarly but in three-layered clouds, and yellow represents the difference between the second and the third cloud layer. (a) Spring, (b) summer, (c) autumn and (d) winter.

B2 Cloud statistics using the new cloud algorithm

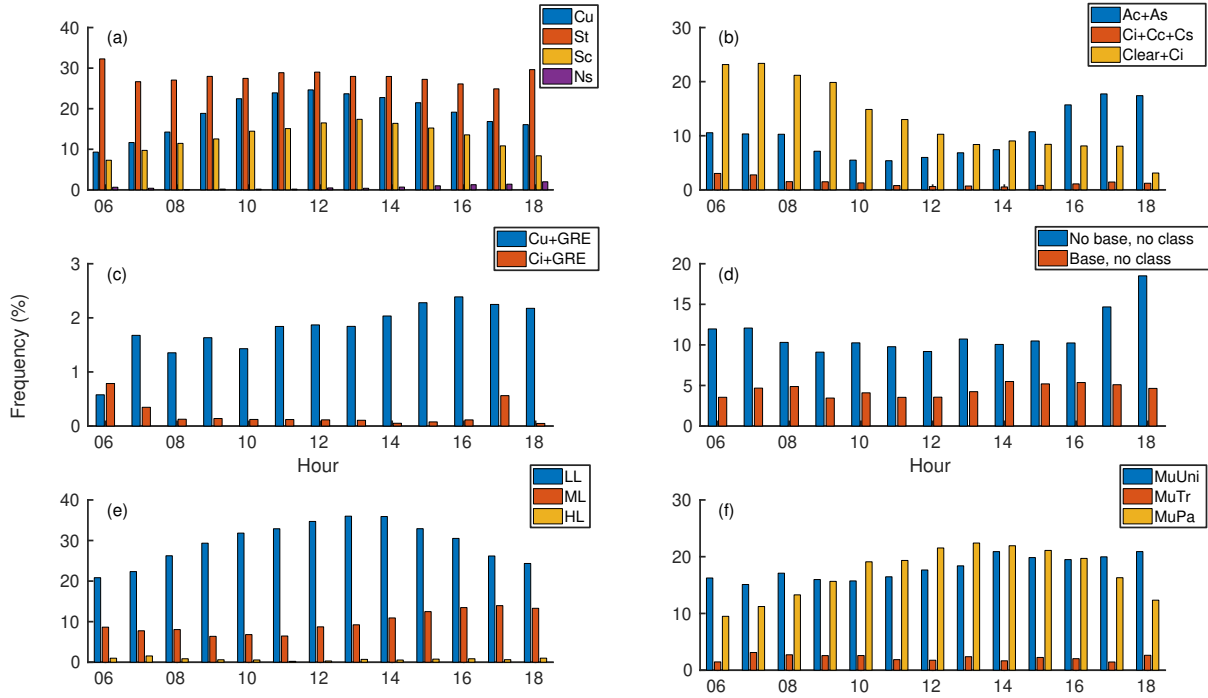


Figure B6. Diurnal variation of clouds types. (a) Low clouds, (b) middle and high clouds, (c) height classes of multilayered clouds, (d) characteristic classes of multilayered clouds, (e) cumulus and cirrus clouds causing GRE, and (f) cases when cloud class could not be determined in situations when the ceilometer did or did not detect a cloud base. The explanations of the abbreviations of the cloud classes are provided in Table 1. Notice the differences in y-axes scaling.

B3 Discussion

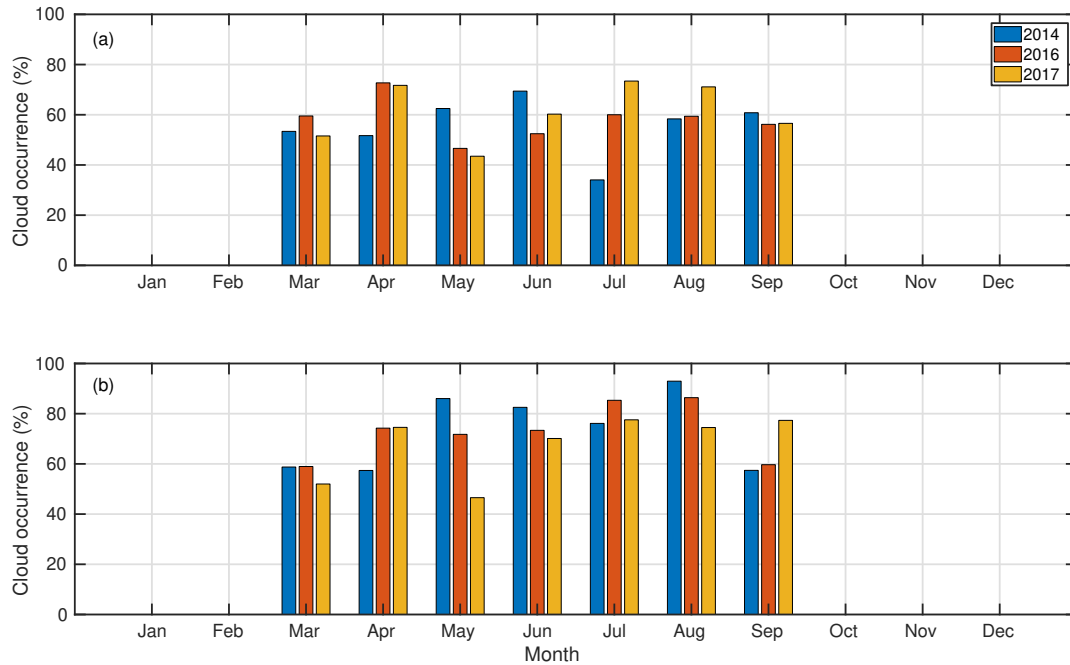


Figure B7. Monthly average cloud occurrence observed in Hyytiälä based on (a) the ceilometer and (b) the pyranometer measurements. Daytime (9:00–15:00) values from March to September when SZA was less than 70° were used. The number of cloud observations was divided by the total number of data points in one month to obtain the cloud occurrence. The occurrence estimated from the ceilometer measurements (64 %) was lower compared to the occurrence estimated from the pyranometer data (71 %).

530 *Author contributions.* EE and MK developed the concept of the study. MP and MV initiated the data analysis and development of the algorithm. SK refined the parameter ranges of the algorithm using total sky images, and estimated the performance of the algorithm. IY performed the data analysis for the paper and wrote it. EE, DT and VMK helped with the interpretation of the results. All authors gave critical feedback and helped with shaping the paper.

Competing interests. The authors declare that they have no conflict of interest.

535 *Acknowledgements.* This work was supported by the Academy of Finland Center of Excellence programme (grant no. 307331) and the Academy of Finland professor grant to Markku Kulmala (grant no. 302958). The results are part of a project (ATM-GTP/ERC) that has received funding from the European Research Council (ERC) under the European Union's Horizon 2020 research and innovation programme (grant agreement no. 742206). D. Taipale was supported by the Academy of Finland (no. 307957).

References

- Albrecht, B. A.: Aerosols, cloud microphysics, and fractional cloudiness, *Science*, 245, 1227–1230, 1989.
- 540 Atkinson, R. and Arey, J.: Gas-phase tropospheric chemistry of biogenic volatile organic compounds: a review, *Atmospheric Environment*, 37, 197–219, 2003.
- Bankert, R. L. and Wade, R. H.: Optimization of an instance-based GOES cloud classification algorithm, *Journal of applied meteorology and climatology*, 46, 36–49, 2007.
- Bohren, C. F.: Multiple scattering of light and some of its observable consequences, *American Journal of Physics*, 55, 524–533, 1987.
- 545 Calbó, J. and Sabburg, J.: Feature extraction from whole-sky ground-based images for cloud-type recognition, *Journal of Atmospheric and Oceanic Technology*, 25, 3–14, 2008.
- Calbó, J., González, J.-A., and Pagès, D.: A method for sky-condition classification from ground-based solar radiation measurements, *Journal of Applied Meteorology*, 40, 2193–2199, 2001.
- Cayula, J.-F. and Cornillon, P.: Cloud detection from a sequence of SST images, *Remote Sensing of Environment*, 55, 80–88, 1996.
- 550 Costa-Surós, M., Calbó, J., González, J., and Martín-Vide, J.: Behavior of cloud base height from ceilometer measurements, *Atmospheric research*, 127, 64–76, 2013.
- Dada, L., Paasonen, P., Nieminen, T., Buenrostro Mazon, S., Kontkanen, J., Peräkylä, O., Lehtipalo, K., Hussein, T., Petäjä, T., Kerminen, V.-M., Bäck, J., and Kulmala, M.: Long-term analysis of clear-sky new particle formation events and nonevents in Hyytiälä, *Atmospheric Chemistry and Physics*, 17, 6227–6241, 2017.
- 555 Dada, L., Chellapermal, R., Buenrostro Mazon, S., Paasonen, P., Lampilahti, J., Manninen, H. E., Junninen, H., Petäjä, T., Kerminen, V.-M., and Kulmala, M.: Refined classification and characterization of atmospheric new-particle formation events using air ions, *Atmospheric Chemistry and Physics*, 18, 17 883–17 893, 2018.
- Donahue, N. M., Ortega, I. K., Chuang, W., Riipinen, I., Riccobono, F., Schobesberger, S., Dommen, J., Baltensperger, U., Kulmala, M., Worsnop, D. R., et al.: How do organic vapors contribute to new-particle formation?, *Faraday discussions*, 165, 91–104, 2013.
- 560 Duchon, C. E. and O'Malley, M. S.: Estimating cloud type from pyranometer observations, *Journal of Applied Meteorology*, 38, 132–141, 1999.
- Eastman, R. and Warren, S. G.: Diurnal cycles of cumulus, cumulonimbus, stratus, stratocumulus, and fog from surface observations over land and ocean, *Journal of Climate*, 27, 2386–2404, 2014.
- Ehn, M., Thornton, J. A., Kleist, E., Sipilä, M., Junninen, H., Pullinen, I., Springer, M., Rubach, F., Tillmann, R., Lee, B., et al.: A large source of low-volatility secondary organic aerosol, *Nature*, 506, 476, 2014.
- 565 Ezhova, E., Ylivinkka, I., Kuusk, J., Komsaare, K., Vana, M., Krasnova, A., Noe, S., Arshinov, M., Belan, B., Park, S.-B., et al.: Direct effect of aerosols on solar radiation and gross primary production in boreal and hemiboreal forests, *Atmospheric Chemistry and Physics*, 18, 17 863–17 881, 2018.
- Gryspeerdt, E., Stier, P., and Partridge, D.: Satellite observations of cloud regime development: the role of aerosol processes, *Atmospheric Chemistry and Physics*, 14, 1141–1158, 2014.
- 570 Gu, L., Fuentes, J. D., Shugart, H. H., Staebler, R. M., and Black, T. A.: Responses of net ecosystem exchanges of carbon dioxide to changes in cloudiness: Results from two North American deciduous forests, *Journal of Geophysical Research: Atmospheres*, 104, 31 421–31 434, 1999.

- 575 Gu, L., Baldocchi, D., Verma, S. B., Black, T., Vesala, T., Falge, E. M., and Dowty, P. R.: Advantages of diffuse radiation for terrestrial ecosystem productivity, *Journal of Geophysical Research: Atmospheres*, 107, ACL–2, 2002.
- Hahn, C. J. and Warren, S. G.: A gridded climatology of clouds over land (1971-96) and ocean (1954-97) from surface observations worldwide, Oak Ridge National Laboratory, Carbon Dioxide Information Analysis Center, 2007.
- 580 Hallquist, M., Wenger, J. C., Baltensperger, U., Rudich, Y., Simpson, D., Claeys, M., Dommen, J., Donahue, N., George, C., Goldstein, A., et al.: The formation, properties and impact of secondary organic aerosol: current and emerging issues, *Atmospheric chemistry and physics*, 9, 5155–5236, 2009.
- Haralick, R. M., Shanmugam, K., et al.: Textural features for image classification, *IEEE Transactions on systems, man, and cybernetics*, pp. 610–621, 1973.
- Hari, P. and Kulmala, M.: Station for Measuring Ecosystem–Atmosphere Relations (SMEAR II), *Boreal Environment Research*, 10, 2005.
- Heinle, A., Macke, A., and Srivastav, A.: Automatic cloud classification of whole sky images, *Atmospheric Measurement Techniques*, 3, 585 557–567, 2010.
- Hellén, H., Praplan, A. P., Tykkä, T., Ylivinkka, I., Vakkari, V., Bäck, J., Petäjä, T., Kulmala, M., and Hakola, H.: Long-term measurements of volatile organic compounds highlight the importance of sesquiterpenes for the atmospheric chemistry of a boreal forest, *Atmospheric Chemistry and Physics*, 18, 13 839–13 863, 2018.
- Holben, B. N., Eck, T. F., Slutsker, I., Tanre, D., Buis, J., Setzer, A., Vermote, E., Reagan, J. A., Kaufman, Y., Nakajima, T., et al.: 590 AERONET—A federated instrument network and data archive for aerosol characterization, *Remote sensing of environment*, 66, 1–16, 1998.
- Houze, Jr, R. A.: *Cloud dynamics*, Academic press, 1993.
- Hussein, T., Junninen, H., Tunved, P., Kristensson, A., Dal Maso, M., Riipinen, I., Aalto, P., Hansson, H.-C., Swietlicki, E., and Kulmala, M.: Time span and spatial scale of regional new particle formation events over Finland and Southern Sweden., *Atmospheric Chemistry & Physics*, 9, 2009. 595
- Illingworth, A., Hogan, R., O’connor, E., Bouniol, D., Brooks, M., Delanoë, J., Donovan, D., Eastment, J., Gaussiat, N., Goddard, J., et al.: Cloudnet: Continuous evaluation of cloud profiles in seven operational models using ground-based observations, *Bulletin of the American Meteorological Society*, 88, 883–898, 2007.
- Ineichen, P.: A broadband simplified version of the Solis clear sky model, *Solar Energy*, 82, 758–762, 2008.
- 600 IPCC: *Climate Change 2013: The Physical Science Basis. Contribution of Working Group I to the Fifth Assessment Report of the Intergovernmental Panel on Climate Change*, Cambridge University Press, Cambridge, United Kingdom and New York, NY, USA, 2013.
- Jokinen, T., Kontkanen, J., Lehtipalo, K., Manninen, H. E., Aalto, J., Porcar-Castell, A., Garmash, O., Nieminen, T., Ehn, M., Kangasluoma, J., et al.: Solar eclipse demonstrating the importance of photochemistry in new particle formation, *Scientific reports*, 7, 45 707, 2017.
- Joro, S., Hyvärinen, O., and Kotro, J.: Comparison of satellite cloud masks with ceilometer sky conditions in southern Finland, *Journal of Applied Meteorology and Climatology*, 49, 2508–2526, 2010. 605
- Junninen, H., Lauri, A., Keronen, P., Aalto, P., Hiltunen, V., Hari, P., and Kulmala, M.: Smart-SMEAR: on-line data exploration and visualization tool for SMEAR stations, *Boreal Environment Research*, 2009.
- Kalb, C. P., Dean, A., Peppler, R., and Sonntag, K.: Intercomparison of cloud base height at the ARM Southern Great plains site, *Proceedings of the 14th Atmospheric Radiation Measurement (ARM’04)*, 2004.
- 610 Karlsson, K.-G.: A 10 year cloud climatology over Scandinavia derived from NOAA advanced very high resolution radiometer imagery, *International journal of climatology*, 23, 1023–1044, 2003.

- Kasten, F. and Czeplak, G.: Solar and terrestrial radiation dependent on the amount and type of cloud, *Solar energy*, 24, 177–189, 1980.
- Kegelmeyer Jr, W.: Extraction of cloud statistics from whole sky imaging cameras, Tech. rep., Sandia National Labs., Livermore, CA (United States), 1994.
- 615 Kerminen, V.-M., Paramonov, M., Anttila, T., Riipinen, I., Fountoukis, C., Korhonen, H., Asmi, E., Laakso, L., Lihavainen, H., Swietlicki, E., et al.: Cloud condensation nuclei production associated with atmospheric nucleation: a synthesis based on existing literature and new results, *Atmospheric Chemistry and Physics*, 12, 12 037–12 059, 2012.
- Kivalov, S. N.: Whole-Canopy Net Ecosystem Exchange and Water Use Efficiency in an Intermittent-Light Environment—Dynamic Approach, State University of New York at Albany, 2018.
- 620 Kulmala, M., Riipinen, I., Nieminen, T., Hulkkonen, M., Sogacheva, L., Manninen, H. E., Paasonen, P., Petäjä, T., Dal Maso, M., Aalto, P. P., et al.: Atmospheric data over a solar cycle: no connection between galactic cosmic rays and new particle formation, *Atmospheric Chemistry and Physics*, 10, 1885–1898, 2010.
- Kulmala, M., Nieminen, T., Nikandrova, A., Lehtipalo, K., Manninen, H. E., Kajos, M. K., Kolari, P., Lauri, A., Petäjä, T., Krejci, R., Hansson, H.-C., Swietlicki, E., Lindroth, A., Christensen, T. R., Arneth, A., Hari, P., Bäck, J., Vesala, T., and Kerminen, V.-M.: CO₂-induced terrestrial climate feedback mechanism: From carbon sink to aerosol source and back, *Boreal Environment Research*, 2014a.
- 625 Kulmala, M., Petäjä, T., Ehn, M., Thornton, J., Sipilä, M., Worsnop, D., and Kerminen, V.-M.: Chemistry of atmospheric nucleation: on the recent advances on precursor characterization and atmospheric cluster composition in connection with atmospheric new particle formation, *Annual review of physical chemistry*, 65, 21–37, 2014b.
- Lampilahti, J., Manninen, H. E., Leino, K., Väänänen, R., Manninen, A., Buenrostro Mazon, S., Nieminen, T., Leskinen, M., Enroth, J., Bister, M., Zilitinkevich, S., Kangasluoma, J., Järvinen, H., Kerminen, V.-M., Petäjä, T., and Kulmala, M.: Roll vortices induce new particle formation bursts in the planetary boundary layer, *Atmospheric Chemistry and Physics Discussions*, 2020, 1–35, <https://doi.org/10.5194/acp-2019-1013>, 2020.
- 630 Leino, K., Lampilahti, J., Poutanen, P., Väänänen, R., Manninen, A., Buenrostro Mazon, S., Dada, L., Franck, A., Wimmer, D., Aalto, P. P., Ahonen, L. R., Enroth, J., Kangasluoma, J., Keronen, P., Korhonen, F., Laakso, H., Matilainen, T., Siivola, E., Manninen, H. E., Lehtipalo, K., Kerminen, V.-M., Petäjä, T., and Kulmala, M.: Vertical profiles of sub-3 nm particles over the boreal forest, *Atmospheric Chemistry and Physics*, 19, 4127–4138, <https://doi.org/10.5194/acp-19-4127-2019>, 2019.
- Li, J., Huang, J., Stamnes, K., Wang, T., Lv, Q., and Jin, H.: A global survey of cloud overlap based on CALIPSO and CloudSat measurements, *Atmospheric Chemistry and Physics*, 15, 519–536, 2015.
- 640 Loeb, N. G., Wielicki, B. A., Doelling, D. R., Smith, G. L., Keyes, D. F., Kato, S., Manalo-Smith, N., and Wong, T.: Toward optimal closure of the Earth’s top-of-atmosphere radiation budget, *Journal of Climate*, 22, 748–766, 2009.
- Lohmann, U., Lüönd, F., and Mahrt, F.: An introduction to clouds: From the microscale to climate, Cambridge University Press, 2016.
- Long, C. N. and Ackerman, T. P.: Identification of clear skies from broadband pyranometer measurements and calculation of downwelling shortwave cloud effects, *Journal of Geophysical Research: Atmospheres*, 105, 15 609–15 626, 2000.
- Mazzoni, D., Garay, M. J., Davies, R., and Nelson, D.: An operational MISR pixel classifier using support vector machines, *Remote Sensing of Environment*, 107, 149–158, 2007.
- 645 Mogensen, D., Smolander, S., Sogachev, A., Zhou, L., Sinha, V., Guenther, A., Williams, J., Nieminen, T., Kajos, M., Rinne, J., et al.: Modelling atmospheric OH-reactivity in a boreal forest ecosystem, *Atmospheric Chemistry and Physics*, 11, 9709–9719, 2011.

- Mogensen, D., Gierens, R., Crowley, J., Keronen, P., Smolander, S., Sogachev, A., Nölscher, A., Zhou, L., Kulmala, M., Tang, M., et al.: Simulations of atmospheric OH, O₃ and NO₃ reactivities within and above the boreal forest, *Atmospheric Chemistry and Physics*, 15, 3909–3932, 2015.
- Mukherjee, D. P. and Acton, S. T.: Cloud tracking by scale space classification, *IEEE Transactions on Geoscience and Remote Sensing*, 40, 405–415, 2002.
- Niple, E. R. and Scott, H. E.: Biogenic Aerosols – Effects on Climate and Clouds. Cloud Optical Depth (COD) Sensor Three-Waveband Spectrally-Agile Technique (TWST) Field Campaign Report, Tech. rep., United States, <https://doi.org/10.2172/1248494>, 2016.
- Paasonen, P., Asmi, A., Petäjä, T., Kajos, M. K., Äijälä, M., Junninen, H., Holst, T., Abbatt, J. P., Arneth, A., Birmili, W., et al.: Warming-induced increase in aerosol number concentration likely to moderate climate change, *Nature Geoscience*, 6, 438–442, 2013.
- Page, J.: The role of solar-radiation climatology in the design of photovoltaic systems, in: *Practical Handbook of Photovoltaics*, pp. 573–643, Elsevier, 2012.
- Pecanek, Z. K., Mejia, F. A., Kurtz, B., Evan, A., and Kleissl, J.: Simulating irradiance enhancement dependence on cloud optical depth and solar zenith angle, *Solar Energy*, 136, 675–681, 2016.
- Perry, K. D. and Hobbs, P. V.: Further evidence for particle nucleation in clear air adjacent to marine cumulus clouds, *Journal of Geophysical Research: Atmospheres*, 99, 22 803–22 818, 1994.
- Petäjä, T., O’Connor, E. J., Moisseev, D., Sinclair, V. A., Manninen, A. J., Väänänen, R., von Lerber, A., Thornton, J. A., Nicoll, K., Petersen, W., et al.: BAECC: A field campaign to elucidate the impact of biogenic aerosols on clouds and climate, *Bulletin of the American Meteorological Society*, 97, 1909–1928, 2016.
- Pipatti, R., Esala, M., Jääskeläinen, S., Pingoud, K., Kimpanpää, M., et al.: Finland’s Fifth National Communication under the United Nations Framework Convention on Climate Change, 2010.
- Rannik, Ü., Launiainen, S., Pumpanen, J., Kulmala, L., Kolari, P., Vesala, T., Korhonen, J. F., and Hari, P.: Environmental factors, in: *Physical and Physiological Forest Ecology*, pp. 27–42, Springer, 2013.
- Ricciardelli, E., Romano, F., and Cuomo, V.: Physical and statistical approaches for cloud identification using meteosat second generation-spinning enhanced visible and infrared imager data, *Remote Sensing of Environment*, 112, 2741–2760, 2008.
- Riccobono, F., Schobesberger, S., Scott, C. E., Dommen, J., Ortega, I. K., Rondo, L., Almeida, J., Amorim, A., Bianchi, F., Breitenlechner, M., et al.: Oxidation products of biogenic emissions contribute to nucleation of atmospheric particles, *Science*, 344, 717–721, 2014.
- Riipinen, I., Yli-Juuti, T., Pierce, J. R., Petäjä, T., Worsnop, D. R., Kulmala, M., and Donahue, N. M.: The contribution of organics to atmospheric nanoparticle growth, *Nature Geoscience*, 5, 453, 2012.
- Rodriguez, D.: On the comparability of cloud fractions derived from whole sky imager and ceilometer data, Tech. rep., Lawrence Livermore National Lab., CA (United States), 1998.
- Rodts, S. M. A., Duynkerke, P. G., and Jonker, H. J. J.: Size Distributions and Dynamical Properties of Shallow Cumulus Clouds from Aircraft Observations and Satellite Data, *Journal of the Atmospheric Sciences*, 60, 1895–1912, [https://doi.org/10.1175/1520-0469\(2003\)060<1895:SDADPO>2.0.CO;2](https://doi.org/10.1175/1520-0469(2003)060<1895:SDADPO>2.0.CO;2), 2003.
- Rosenfeld, D., Andreae, M. O., Asmi, A., Chin, M., de Leeuw, G., Donovan, D. P., Kahn, R., Kinne, S., Kivekäs, N., Kulmala, M., et al.: Global observations of aerosol-cloud-precipitation-climate interactions, *Reviews of Geophysics*, 52, 750–808, 2014.
- Rossow, W. B. and Zhang, Y.: Evaluation of a statistical model of cloud vertical structure using combined CloudSat and CALIPSO cloud layer profiles, *Journal of Climate*, 23, 6641–6653, 2010.

- 685 Rossow, W. B., Zhang, Y., and Wang, J.: A statistical model of cloud vertical structure based on reconciling cloud layer amounts inferred from satellites and radiosonde humidity profiles, *Journal of climate*, 18, 3587–3605, 2005.
- Schneider, S. H. and Dennett, R. D.: Climatic barriers to long-term energy growth, *Ambio*, pp. 65–74, 1975.
- Schobesberger, S., Junninen, H., Bianchi, F., Lönn, G., Ehn, M., Lehtipalo, K., Dommen, J., Ehrhart, S., Ortega, I. K., Franchin, A., et al.: Molecular understanding of atmospheric particle formation from sulfuric acid and large oxidized organic molecules, *Proceedings of the National Academy of Sciences*, 110, 17 223–17 228, 2013.
- 690 Scott, C., Arnold, S., Monks, S., Asmi, A., Paasonen, P., and Spracklen, D.: Substantial large-scale feedbacks between natural aerosols and climate, *Nature Geoscience*, 11, 44, 2018.
- Sena, E. T., McComiskey, A., and Feingold, G.: A long-term study of aerosol–cloud interactions and their radiative effect at the Southern Great Plains using ground-based measurements, *Atmospheric Chemistry and Physics*, 16, 11 301–11 318, [https://doi.org/10.5194/acp-16-](https://doi.org/10.5194/acp-16-11301-2016)
- 695 11301-2016, 2016.
- Sinha, A. and Shine, K.: Simulated sensitivity of the earth’s radiation budget to changes in cloud properties, *Quarterly Journal of the Royal Meteorological Society*, 121, 797–819, 1995.
- Sporre, M. K., Blichner, S. M., Karset, I. H., Makkonen, R., and Berntsen, T. K.: BVOC–aerosol–climate feedbacks investigated using NorESM, *Atmospheric Chemistry and Physics*, 19, 4763–4782, 2019.
- 700 Stull, R. B.: *Meteorology for scientists and engineers*, Brooks/Cole, 2nd edn., 2000.
- Tapakis, R. and Charalambides, A.: Equipment and methodologies for cloud detection and classification: A review, *Solar Energy*, 95, 392–430, 2013.
- Twohy, C. H., Clement, C. F., Gandrud, B. W., Weinheimer, A. J., Campos, T. L., Baumgardner, D., Brune, W. H., Faloon, I., Sachse, G. W., Vay, S. A., et al.: Deep convection as a source of new particles in the midlatitude upper troposphere, *Journal of Geophysical Research: Atmospheres*, 107, AAC–6, 2002.
- 705 Twomey, S.: The influence of pollution on the shortwave albedo of clouds, *Journal of the atmospheric sciences*, 34, 1149–1152, 1977.
- Waddicor, D. A., Vaughan, G., Choulaton, T. W., Bower, K. N., Coe, H., Gallagher, M., Williams, P. I., Flynn, M., Volz-Thomas, A., Pätz, H.-W., Isaac, P., Hacker, J., Arnold, F., Schlager, H., and Whiteway, J. A.: Aerosol observations and growth rates downwind of the anvil of a deep tropical thunderstorm, *Atmospheric Chemistry and Physics*, 12, 6157–6172, <https://doi.org/10.5194/acp-12-6157-2012>, 2012.
- 710 Wang, J. and Rossow, W. B.: Determination of cloud vertical structure from upper-air observations, *Journal of Applied Meteorology*, 34, 2243–2258, 1995.
- Wang, J., Rossow, W. B., Uttal, T., and Rozendaal, M.: Variability of cloud vertical structure during ASTEX observed from a combination of rawinsonde, radar, ceilometer, and satellite, *Monthly weather review*, 127, 2484–2502, 1999.
- Wang, J., Rossow, W. B., and Zhang, Y.: Cloud vertical structure and its variations from a 20-yr global rawinsonde dataset, *Journal of climate*,
- 715 13, 3041–3056, 2000.
- Wang, Z. and Sassen, K.: Cloud type and macrophysical property retrieval using multiple remote sensors, *Journal of Applied Meteorology*, 40, 1665–1682, 2001.