

The authors would like to thank the two reviewers for the valuable comments, which helped us to improve the manuscript. Below we address all the reviewer's points. The reviewer comments are in blue color, our responses are in black. References to figures and sections are as they were in the original manuscript.

Reply to Reviewer #1

1) The spectral polarimetric measurements are acquired at the elevation 30 deg. Why this choice? Is it an optimum elevation angle for the proposed self-consistency method?

Actually, there is no solid argument for exactly 30 deg elevation. We just considered that in the case of zenith pointing (90 deg elevation) the Doppler resolution is the best, because the terminal-velocity projection on the radar-line-of-sight is the largest. Nevertheless, scattering from near-horizontally aligned spheroids is close to isotropic and ZDR and delta are close to 0. In contrast, at 0 deg elevation, polarimetric signatures are the strongest, but the projection of the terminal velocity on the radar beam is close to 0, so Doppler observations are not really possible. We did not optimize the elevation angle for this study and used 30 deg because we have had measurements at this elevation angle. This information was added to the manuscript (Sec. 3.6).

2) In page 7, the ratios (1)-(2) and the specific attenuation (3) are parameterized as a function of the backscattering differential phase, δ , and δ and the measured equivalent reflectivity factor Z_0 , respectively. Can you discuss the choice of the function f for the parameterization? And for the number of coefficients (a_i , b_i , c_i) where i varies from 1 to 10, or 1 to 17. What is/ are the criterium/ criteria to select these numbers?

For the function approximation, we typically use non-linear regressions (neural networks). In general, an advantage of neural networks is that they can approximate any function with a number of input/output parameter with a good quality. Since we have this standard tool in hand, we do not have to choose which type of polynomial or power law to choose for different functions. The resulting fits (Eqs. 1-3) are nothing but neural networks with 3 neurons in the hidden layer. Since the explanation of the neural networks would add another section to already quite lengthy manuscript we just provided a final result in form of equations/tables and ready-to-use functions (in supplementary materials, so a reader does not need to type all these coefficients manually in his/her code). The quality of the fits is discussed in the text. We agree that another fitting strategy could lead to similar results, but we do not think that this would affect the results. We added to the manuscript that the approximations were obtained using neural networks.

3) Equations corrections

Thanks for checking the formulas. We corrected all the items.

4) Do the authors use the estimated radar calibration constant, CZ, to correct the equivalent reflectivity factor values of the radar 2?

We added a sentence to the summary section: „The derived calibration factors can be used to monitor the radar stability and to correct the observed reflectivity values“

5) Page13, lines 10 and 21: For the calculation of Z_0 (equivalently Z_d) using the disdrometer DSDs, I don't understand the use of Table A1, which is related to the other method, selfconsistency. I may miss the point here.

Please note, that the non-attenuated reflectivity and attenuation are used in both methods. Therefore, the appendix A is relevant for both methods. The table A1 specifies how to calculate the non-attenuated reflectivity and attenuation using disdrometer data.

6) For comparing disdrometer and radar reflectivity factor measurements, the trade-off radar range is 250 m. What is the expected underestimation of Z_m related to the FMCW measurement mode at this range? Is this significant for the radar calibration constant?

The estimated overlap of two beams is about 90% at 250 m. In order to correct for this we apply the method by Sekelsky and Clothiaux (2002). Please note that this information is given in the first paragraph of the Sec. 4: „For a two-antenna system, such as used for the FMCW systems in this study, the incomplete beam overlap is corrected for using the method in Sekelsky and Clothiaux (2002). At ranges larger than 250 m from the radar, the beam overlap for all radars used is better than 90%.”

7) What is the argument for the rain rate upper limit 20 mm h⁻¹?

In the case of strong rain, the liquid water on the radomes can affect the calibration results. This is one of the conclusions from Fig. 17 (please see sec 4.4). According to the figure, these effects might become significant (1-2 dB) already at 10 mm/hr. Since the radome effects are hard to quantify, we do not extend the method to higher rain rates.

8) Be consistent with the terminology for the radar observables in the whole paper. I would avoid the term “shift” for Φ_{DP} , KDP and δ . Instead of Φ_{DP} differential phase shift, just term it as “differential phase”. Example: line 10 in page 19. Instead of KDP specific differential phase shift, just term it as “specific differential phase”. Example: line 9 in page 15. Instead of δ backscattering phase shift, term it as “backscattering differential phase”. Examples: line 3 in page 7, line 8 in page 15.

Corrected

9) Page 10, lines 26-28: Taking into account that signal-to-noise ratio in rain within the first kilometer typically exceeds 30 dB, and the copolar correlation coefficient in rain approaches 1, variability in the polarimetric variables are low.....

Corrected

10) Page 11, line 15: discussion related to Fig. 8, ... Around 21 UTC positive and negative values in both ZDR and Φ_{DP} are visible.....I don't see this. Add in Fig. 8 a zoomed window in the area of interest.

Added

11) Page 12, line10: (3) the median KDP must be lower than -0.3okm⁻¹, and (4) the median ADP is lower than -0.06 dB km⁻¹. How are found these threshold values?

The self-consistency method relies on propagation variables KDP and ADP, which are used to constrain profiles of Z. In the case that magnitudes of KDP and ADP are low and comparable with measurement noise, the method shows larger uncertainties. In general, the large the magnitude of KDP and ADP the better the Z constraint. Using the approach shown in Sec. 3.5 we identified ranges of the method applicability by keeping the uncertainties in the calibration factor within the accuracy specified in Sec. 3.5. This information was added to the manuscript.

12) About Table A1. Mention the units of N_i , V_i , v_i and S_i .

Added

$|K|^2$ is the dielectric factor of water at a certain temperature. How is defined $|K_0|^2 = 0.74$ (water? which temperature?)

Water at 8 deg C. This is added to the caption of the table A1.

Typo in the Table: Parsivel

Corrected

13) What is the meaning of the bending of the curve ZEPV-ZNOEVP versus ZEPV at values of ZEPV near 20 dBZ in Figure 15?

The value on the x-axis is mainly defined by the non-attenuated reflectivity and attenuation by liquid, which both monotonically increase with rain rate. The attenuation increases with rain rate a bit faster than the non-attenuated reflectivity. This leads to the fact that the same reflectivity value can correspond to two different rain rates (lower and larger). This effect can also be seen in Fig. 2 in the paper by Hogan et al. 2002 (JTECH). In the case of lower rain rate, the contribution of small drops (which evaporate faster) is larger. At higher rain rates, there are more large drops which evaporate slower. This explains why the same value of ZEPV corresponds to two different points on the y-axis. This information is added to the manuscript.

Technical corrections

1) Page 4, line 10: ...The calibration methods and their comparison are shown in Secs. 3-4.

Corrected

2) Page 8, line 3:and c1-17 are given

Corrected

3) Replace Φ by Φ_{DP} in the whole text (line 12 in page 8, lines 11, 13, 23, 31 in page 11)

Corrected

4) Page 10, line 23: ...Size distributions with A less than 3 dB km⁻¹ were excluded from the analysis Is it not 0.3 dB km⁻¹ instead of 3 dB km⁻¹?

The variable A is specific attenuation (not to be confused with Adp which is differential attenuation). The attenuation by rain at 94 GHz is relatively large. 0.3 dB/km attenuation is characteristic to liquid clouds but it is too low for rain. So, 3 dB/km is right here.

5) Page 11, line 11: ...The melting layer can be depicted at the height 2.5 km by enhanced values of

Corrected

6) Page 13, line 27,to LPM, Parsivel, and radar 1

Corrected

7) Page 14, line 1: ...The blue dots were calculated according to Sec. 4.1, while

Corrected

8) Page 14, line 21: ...As it was mentioned in Sec. 4.5, the

I checked the version at the AMT site. It is written exactly this way. It is not clear to us what is the reviewer's concern.

9) Page 15, line 6: spectral polarimetry obtained from a W-Band radar....

Corrected

10) Page 15, line 11: ...based on realistical assumptions of errors

Corrected

11) Page 18, line 13:the application of such evaporation correction.....

Corrected

12) Page 18, lines 23-24: ...one-way differential attenuation ADP [dB km⁻¹], and specific differential phase KDP [o km⁻¹]...

Corrected

13) Figure 5 caption: replace (d), (e), (f), (g) and (h) by (1), (2), (3), (4) and (5) to be consistent with Figure 5c.

Corrected

Reply to Reviewer #2

Major Comments:

1. Section 3.2: One large question I have here is how this varies by temperature, DSR, and choice of canting angle distribution. You discuss in the appendix how it is fairly stable with rotation (and so likely not dependent on DSR and canting angle) but that is only for the back scattering coefficients. Is this true for the forward scattering coefficients and delta upon which this method relies?

Please note, that in order to take the temperature dependence of the scattering properties of raindrops into account, we provide fit coefficients (used in Eq. 1-3) for temperatures 0, 10, 20, and 30 deg C. The coefficients are given in Appendix A (Tables A1 – A4) of the original manuscript and ready-to-use Octave/MATLAB functions are provided in supplementary materials. We now explicitly mention this in the sec. 3.2.

We are not sure what the reviewer refers to with DSR. We assume that the reviewer means drop-size-distribution. Please also note that the self-consistency method (also the original version from Goddard for cm-wavelength) is based on the relations between backscattering and propagation variables, which are nearly immune to variabilities in drop-size-distribution. As shown in Fig. 5, the relations are calculated for different combinations of the shape parameter, median diameter, and concentration. We used a huge number of combinations of these parameters to simulate radar observables. This is described in the beginning of sec. 3 of the original manuscript:

"To infer suitable relations between radar observables, we simulate them using the T-Matrix model (Mishchenko, 2000) and a range of PSDs similar to Hogan et al. (2003). We assume normalized gamma distributions with μ from 0 to 15 and NL from 5×10^2 to 2.5×10^4 mm⁻¹ m⁻³. For given μ and NL, the median volume diameter D_0 was increased in 0.05 mm steps starting at 0.1 mm until the rain rate reached 20 mm h⁻¹"

These simulations (several thousands of size-distributions) are used to get the fits (eqs. 1-3). The uncertainties of these fits are given in the end of the section of 3.2. We reformulated a sentence to make it clearer: "Using the large set of **simulated** rain PSDs **introduced above** and **corresponding** forward simulated radar parameters, we can parameterize..."

We agree with the reviewer that analysis of the dependence of delta and propagation parameters on canting angle distribution is missing. We now added a figure showing simulations based on T-matrix scattering model. Simulations were made for 0 deg elevation as one expects the largest effect from drop's canting at the lowest elevation angle. The canting angle was assumed to be in the polarization plane. A number of studies show that observed standard deviation in the canting angle typically does not exceed 10 deg. We thus compared radar variables calculated assuming horizontal alignment with those calculated with 10 deg standard deviation. The results show that the canting angle affects backscattering and specific differential phase. The differences at 20 mm/h may reach 0.5 deg and 0.2 deg/km, respectively. Other parameters are not affected much. The found uncertainties due to the canting angle are within the uncertainty levels assumed in sec. 5.3, and thus do not change the results of our study. This information is added to the sec. 3.5.

2. The choice of fitting functions (both parametric form, and the actual form of $f(x)$) feels incredibly arbitrary and over parameterized on first read. I'm sure a lot of thought went into this, so maybe a sentence or two justification on why this form and so many parameters over something like a polynomial or power law?

For the function approximation, we typically use non-linear regressions (neural networks). In general, an advantage of neural networks is that they can approximate any function with a number of input/output parameter with a good quality. Since we have this standard tool in hand, we do not have to choose which type of polynomial or power law to choose for different functions. The resulting fits (Eqs. 1-3) are, thus, nothing but neural networks with 3 (Eqs. 1 and 2) and 4 (Eq. 3) neurons in the hidden layer. Since the explanation of the neural networks would add another section to already quite lengthy manuscript we just provided a final result in form of equations/tables and ready-to-use functions (in supplementary materials, so a reader does not need to type all these coefficients manually in his/her code). The quality of the fits is discussed in the text. We agree that another fitting strategy could lead to similar approximation quality, but we do not think that this would affect the results.

3. Looking at the fit parameters they seem to vary fairly drastically based on temperature (for instance changing both in order of magnitudes, and in sign).

As mentioned in the previous answer, we use neural network for fitting. Training of neural networks is a stochastic process with random initial conditions. Therefore, two neural networks trained to solve the same task can converge to different sets of coefficient values. There is not much physical meaning in sign and absolute values of the coefficients. What is important is the fit quality, which is appropriate for the method.

4. Section 3.3: There seems to be no discussion of air effects on the fall speed here. Is the argument just that at ~240 meters there is no vertical air motion, or that it is bounded such that it won't effect the choice of 0-2 m/s choice for spectra? This assumption should be stated. If it is not the case, it should be shown that realistic wind speeds at this height don't effect the methodology.

Please note, that for the self-consistency method observations are made at 30 deg elevation. At this relatively low elevation angle in addition to vertical air motions, we have strong contributions from the horizontal wind, which are often much stronger than vertical motions. Due to air motions (regardless vertical or horizontal) the Doppler velocity corresponding to each spectral line is a sum of two components, namely projections of terminal velocity and air motions. In general, air motions would shift the whole spectra along the velocity axis,

but the shape of spectra is still roughly the same in the case of low turbulence. For the described method, the exact knowledge of the terminal velocities is not required. We roughly mitigate air motions (both vertical and horizontal) by shifting spectra in such a way that the right most detected spectral line (drops with the slowest fall velocity) corresponds to 0 m/s. As shown in Sec 3.6, such rough mitigation is good enough to clearly separate drops with Rayleigh scattering and those producing resonance effects. This information was added to the Sec. 3.3.

5. Section 3.5: I am okay with most of the uncertainty characterization, but page 11 first paragraph uses a value of 0.5 standard deviation for the separation of Δ and DP. This feels a little low to me, but can the authors provide some justification for these values?

The separation of Δ and KDP is done using polarimetric spectra, where Rayleigh and resonance zones are clearly separable. In section 3.6 we show an example, where one can see that the standard deviation of the measured differential phase in the Rayleigh area is typically about 0.2-0.3 deg (Figs. 9c, 10b, and 11b). If we average over all spectral lines within this area, the standard deviation becomes even lower. The value we assume as an uncertainty of the separation (0.5 deg) is therefore already a very conservative assumption and even exceeds the actual measurement uncertainty.

6. Minor comments — p3.10: "Calibration with a point target does not take into account the volumetric scattering" -> I don't understand this point, nor do I think it matters. The calibration process is only concerned with transmitted/retrieved power and as long as the IF filters are set appropriately, volumetric vs point does not matter.

We do not agree with the reviewer here. The radar equation for meteorological (volume distributed) targets includes a characterization of the antenna beam pattern often by means of the antenna gain and beam width. A point target covers a very small part of the radar beam and thus cannot characterize the complete antenna pattern. Moreover, if the exact position of the point target in the beam is not known, this may introduce a large uncertainty in such an end-to-end calibration. If a location of the target is just a few 0.1 deg off relative to the maximum gain direction (antenna half power beam-width is 0.56 deg), the antenna gain can easily be lower than the maximum by a few dB. Therefore, an accurate characterization of the whole system including the antenna patterns is crucial. This is exactly what is pointed out by Gorgucchi et al (1992) and Chandrasekar et al. (2015).

7. p6.4: I think you mean 50% of terminal fall speed. The wording behind a factor of 2 is a little ambiguous (for instance 5 m/s , a factor of 2 would mean you reject anything between 0 and 10 m/s)

We reformulated the sentence as follows: 'In order to further reduce the effects of splashing on the calculated rain rate and reflectivity, we follow the approach of Tokay et al. (2014) and reject all particles with velocities outside the range of $\pm 50\%$ relative to a theoretical size-velocity relation (Foote and Du Toit, 1969).

8. p7.20: You should define Z_0 here by name at least. I know it is done in the appendix, but it took a little bit to track down.

We added names of all variables in the text: '(non-attenuated reflectivity Z_0 , one-way attenuation A , differential reflectivity Z_{DR} , specific differential phase K_{DP} , differential attenuation A_{DP} , and backscattering phase Δ)'

9. Eq(7): I assume the two dielectric terms are just to account for differences in assumed dielectric at the radar vs the actual measured based on temperature. A sentence should be added just to clarify this.

This is correct. We added a sentence: 'The two dielectric factors in Eq.~\ref{eq:z0} account for differences in the actual dielectric properties of liquid water and those assumed in the radar software.'

10. Section 3.6: Applications to radar 2-> Did I miss applications to radar 1? Later on you bring up radar 1, but maybe change how you refer to them as it is a bit confusing to start with radar 2 in evaluation.

We changed 'radar 1' to 'radar 2' and vice versa.

11. P12.10 The hyphens to stand off the 0.3 deg and 0.06km should be removed, it reads as negative values.

Please note, that the value of KDP of -0.3 deg/km is indeed negative here. But the value of the differential attenuation should be positive. We corrected this. Similar problem was in sec. 5. Where KDP of +0.3 deg/km was given while it should be negative. We rephrased the sentence in sec. 5: "The differential attenuation and specific differential phase shift should preferably be higher than 0.06 dB km⁻¹ and lower than -0.3 km⁻¹, respectively."

12. Lapse rate is misspelled as laps rate.

Corrected

13. P11.28: Convoluted should be convolved

Corrected

Evaluation of the reflectivity calibration of W-band radars based on observations in rain

Alexander Myagkov¹, Stefan Kneifel², and Thomas Rose¹

¹Radiometer Physics GmbH, Meckenheim, Germany

²Institute for Geophysics and Meteorology, University of Cologne, Cologne, Germany

Correspondence: Alexander Myagkov (alexander.myagkov@radiometer-physics.de)

Abstract.

This study presents two methods to evaluate the reflectivity calibration of W-band cloud radars. Both methods use natural rain as a reference target. The first approach is based on a self-consistency method of polarimetric radar variables, which is widely used in the precipitation radar community. As previous studies pointed out, the method cannot be directly applied to higher frequencies, where non-Rayleigh scattering effects and attenuation have a non-negligible influence on radar variables. The method presented here solves this problem by using polarimetric Doppler spectra to separate backscattering and propagational effects. New fits between the separated radar variables allow to estimate the absolute radar calibration using a minimization technique. The main advantage of the self-consistency method is its less dependence on the spatial variability in radar drop-size-distribution (DSD). The estimated uncertainty of the method is ± 0.7 dB. The method was applied to three intense precipitation events and the retrieved reflectivity offsets were within the estimated uncertainty range. The second method is an improvement of the conventional disdrometer-based approach, where reflectivity from the lowest range gate is compared to simulated reflectivity using surface disdrometer observations. The improved method corrects first for the time-lag between surface DSD observations and the radar measurements at a certain range. In addition, the effect of evaporation of raindrops on their way towards the surface is mitigated. The disdrometer-based method was applied to 12 rain events observed by vertically-pointed W-band radar and showed repeatable estimates of the reflectivity offsets at rain rates below 4 mm h^{-1} within ± 0.9 dB. The proposed approaches can analogously be extended to Ka-band radars. Although very different in terms of complexity, both methods extend existing radar calibration evaluation approaches, which are inevitably needed for the growing cloud radar networks in order to provide high-quality radar observation to the atmospheric community.

1 Introduction

During the last decades, millimeter-wavelength radars (also known as cloud radars) became an invaluable source of information for cloud and precipitation research (Kollias et al., 2007). Due to the shorter wavelengths, cloud radars are not only sensitive to precipitating particles but also to cloud droplets, small ice particles, and fog. This makes these instruments extremely valuable tools to study, for example, cloud formation, cloud microphysical processes, or the associated radiative effect of clouds. Consequently, cloud radars have been set up around the world. The U.S. Department of Energy (DOE) Atmospheric

Radiation Measurement (ARM) program maintains a number of fixed stations and mobile platforms equipped with 35 and 94 GHz radars (Mather and Voyles, 2013). In Europe, many universities and atmospheric research centers have deployed cloud radars (Haeffelin et al., 2005; Illingworth et al., 2007; Bouniol et al., 2010; Löhnert et al., 2015; Hirsikko et al., 2014). The majority of cloud radars sites provide their data to the CloudNet project (Illingworth et al., 2007), which is part of the European research infrastructure ACTRIS (Aerosols, Clouds, and Trace gases Research InfraStructure; <http://www.actris.eu>, last access: 5 January 2019). Cloudnet provides algorithms to produce cloud and precipitation classification and the datasets are converted in a unified format. This allows to derive long-term cloud statistics, which of course rely strongly on proper radar calibration.

At CloudNet and ARM sites, cloud radars are often operated in collocation with a microwave radiometer and a lidar in order to derive macrophysical (Wang and Sassen, 2001; Shupe et al., 2011), microphysical (Matrosov et al., 1998; Shupe et al., 2006; 10 Shupe, 2011; Bühl et al., 2016; Kalesse et al., 2016; Acquistapace et al., 2017) and dynamical properties (Shupe et al., 2008; Bühl et al., 2015; Borque et al., 2016; Radenz et al., 2018) of clouds.

One of the most widely used radar observables is the equivalent radar reflectivity factor (henceforth called reflectivity). This parameter depends on size, concentration, phase, shape, density, and orientation of particles. Many operational cloud property retrievals (Matrosov, 1997, 1999; Frisch et al., 2002; Hogan et al., 2006; Heymsfield et al., 2008) rely on accurate measurements 15 of reflectivity. Some studies combine reflectivities at different frequencies in order to derive detailed microphysics of cloud particles (Matrosov, 2011; Leinonen et al., 2013; Kneifel et al., 2015) and, therefore, require precise calibration of all radar systems involved. For networks of cloud radars, which are supposed to provide long-term observations of cloud properties, methods to validate the quality of the reflectivity calibration are of key importance. This study focuses on the reflectivity calibration, because it is one of the most commonly used parameters for retrievals and for model evaluation. This, nevertheless, 20 does not imply that the calibration of Doppler and polarimetric observations is of less importance. Aspects of antenna pointing calibration, which is essential for accurate Doppler measurements, can be found in Huuskonen and Holleman (2007) and Muth et al. (2012). Moisseev et al. (2002) and Myagkov et al. (2015, 2016a) showed the calibration of polarimetric variables for cloud radars operating in different configurations.

Proper calibration and monitoring of reflectivity calibration are key considering the growing number of meteorological 25 radars worldwide. However, even radars operated within large observational networks have been shown to be sometimes prone to calibration errors (Protat et al., 2011; Ewald et al., 2019; Maahn et al., 2019; Kollias et al., 2019).

Chandrasekar et al. (2015) compiled a detailed review of the centimeter-wavelength radar calibration techniques for an operational use. Many of the described aspects are also relevant for cloud radars. Maintaining the accurate reflectivity measurements requires temperature stabilization of the radar housing, protecting antennas and radomes from water (Hogan et al., 30 2003; Delanoë et al., 2016), frequent automatic internal calibrations, and regular maintenance (Chandrasekar et al., 2015). Cloud radar manufacturers typically apply a budget calibration, i.e. characterize individual radar components separately during manufacturing and take the results into account in the reflectivity calculations (Görsdorf et al., 2015; Küchler et al., 2017; Ewald et al., 2019). The budget calibration has several shortcomings. First, it requires calibrated measurement equipment and experienced technical staff. Second, during the calibration, the analyzed radar is out of operation and has to be partly dis-

assembled. Third, the calibration accuracy still depends on the component stability during operation. Finally, the calibration procedure may significantly differ for radars of different types, which is problematic for operational cloud radar networks.

A calibration using an external target with known properties (known as end-to-end calibration) allows for mitigating of the above-mentioned problems. One of the conventional external calibration methods of meteorological radars is based on point target observations (Chandrasekar et al., 2015). Unfortunately, its applicability to cloud radars is often limited. The target has to be mounted in the far field on a tower that is often not available. For precision pointing of the radar to the target, this method requires a scanning unit, which many of the currently deployed cloud radars are not equipped with. In principle, the target can be lifted up by a balloon or a drone. But it is challenging to achieve perfect pointing and spatial stability of the target. Both aspects are very critical due to the narrow antenna beams. In addition, as pointed out by Gorgucci et al. (1992) and Chandrasekar et al. (2015), the calibration with a point target does not directly take into account the volumetric scattering by clouds and precipitation.

Another approach is a comparison of observations of an inspected radar against a calibrated reference system. For instance, Protat et al. (2011) proposed to compare observations in ice clouds by ground-based cloud radars and the space-borne W-band radar CloudSat (Stephens et al., 2008). Based on the scattering from the sea surface, CloudSat reflectivity calibration is performed on a monthly basis and is accurate within ± 0.5 dB (Tanelli et al., 2008). Due to the high velocity and 1.5 km footprint, direct comparison of the reflectivity value from CloudSat and a static ground-based leads to large uncertainties (standard deviation of 2-3 dB). In order to reduce the uncertainties, Protat et al. (2009) used time periods in the order of several months for the statistical comparisons. With the CloudSat flight cycle of 16 days and the requirement in pure ice non-precipitating clouds during an overpass, this method is mainly applicable for long-term calibration monitoring (Kollias et al., 2019).

Using natural volume-distributed targets for the calibration verification is a well established approach. The use of rain drops as reference targets allows to directly account for the antenna properties in the calibration procedure. First successful attempts to evaluate meteorological radars with rain date back to 1968 (Atlas, 2002). Since then, several different approaches have been developed. Among the most widely used methods is the one based on disdrometer observations. Drop-size-distributions (DSD) observed in-situ are converted to the radar reflectivity. Time series (Gage et al., 2004; Frech et al., 2017) or distributions (Kollias et al., 2019; Dias Neto et al., 2019) of calculated and observed reflectivities are then compared. Hogan et al. (2003) showed a calibration verification method suitable for W-band cloud radars only. They found that for a range of DSD, the reflectivity is about 19 dBZe for rain intensities from 5 to 20 mm/h at the range of 250 m from the radar. Clearly, one of the main sources of uncertainties for the methods using in-situ rain observations is the vertical variability of rain properties. This variability might originate from a number of effects among which are turbulence, wind shear, evaporation, drop break up, and coalescence.

Goddard et al. (1994) proposed a self-consistency calibration method based on polarimetric radar observations at low elevation angles. Within this method radar range bins are analyzed independently and, therefore, the methods is less sensitive to spatial variability of DSD. The method has been operationally used for the 3-GHz Chilbolton radar Hogan et al. (2003) and is well established in the weather radar community. Hogan et al. (2003) claim the accuracy of this method to be better than

± 0.5 dB. Nevertheless, the authors pointed out that the method cannot be directly used for cloud radar calibration because of strong attenuation at millimeter wavelengths by liquid water and non-Rayleigh scattering effects.

This study presents two methods to evaluate the reflectivity calibration of W-Band radars. The first approach is a new attempt to extend the polarimetric consistency method of Goddard et al. (1994) for cloud radars. Due to lower costs, polarimetric cloud radars become increasingly available and therefore, it is highly desirable to utilize their polarization capabilities for calibration monitoring. The second approach is an improvement of the conventional disdrometer-based method using additional corrections for wind shear and evaporation. This method, which does not require scanning or polarimetric capabilities, is applicable to a large number of radar sites, which are already equipped with disdrometers.

The paper is organized as follows. In Sec. 2 the used instrumentation is described. The calibration methods and their comparison are shown in [Secs. 3 and 4](#). In Section 5 we summarize the estimated accuracy and discuss the applicability of the calibration evaluation methods.

2 Data and instrumentation

For the comparison of different calibration methods, we combine observations from two sites. In this way, we are able to collect a dataset with a wide range of rainfall rates observed with various radar and in-situ instrumentation. During summer 2018, a number of convective rainfall events were recorded at the Radiometer Physics GmbH (RPG) site in Meckenheim, Germany (henceforth RPG site). The site is equipped with a demonstration W-Band cloud radar as well as a weather station and disdrometer. The second dataset was collected at the Jülich Observatory for Cloud Evolution Core Facility (JOYCE-CF, Löhnert et al., 2015) which is located ca. 50 km north of Meckenheim. JOYCE-CF is regularly equipped with cloud radars as well as a suite of remote sensing and in situ instruments including disdrometers. The permanently installed instrumentation has been extended by additional cloud radars and disdrometers during the measurement campaign "TRIple frequency and Polarimetric radar Experiment for improving process observation of winter precipitation" (TRIPEX-pol) which took place from October 2018 until February 2019. The larger range of rainfall rates observed at the RPG site allows to test both calibration methods with the same dataset. The continuous observations at JOYCE are lacking more intense rainfall rates (larger than 7 mm h^{-1}) required for the self-consistency method, but the longer time series allow for more detailed evaluation of the calibration performance using disdrometers.

2.1 Radars

For this study, we use two 94 GHz cloud radars manufactured by Radiometer Physics GmbH (RPG), Meckenheim, Germany (Fig. 1). The radars are based on solid state technology and use frequency modulated continuous wave (FMCW) signals. Note, that the methods described in this study are also applicable to any other W-Band cloud radar (FMCW or pulsed) with a proper rain mitigation system. An overview on the used radar design, operation, and the budget calibration was described in Küchler et al. (2017). Typical radar specifications are summarized in Table 1. Configuration, maintenance, and observation periods for

each radar are given in Table 2. Throughout the paper, the radars are denoted according to their numbers in Table 2 (see first column).

2.2 In situ instruments

The radars are equipped with Vaisala WXT520 weather stations (Basara et al., 2009) which provide atmospheric pressure, temperature, relative humidity, as well as one minute averaged rainfall rate derived from a piezoelectric sensor. The optical disdrometer PARSIVEL² (hereafter Parsivel, Löffler-Mang and Joss, 2000; Tokay et al., 2014) and the rain weighing gauge PLUVIO² (Pluvio throughout the paper) are manufactured by OTT Hydromet GmbH, Kempten, Germany. They belong to the permanently installed instrumentation of JOYCE (roof platform, 17 m above ground level). Due to a site maintenance, Parsivel and Pluvio were operated until 27 Nov 2018 at a nearby roof in ca. 50 m distance from the radars. From 27 Nov 2018 on, both instruments were installed back very close to the radars with distances of less than 10 m. The Pluvio installed at JOYCE has a 200 cm² orifice and a single Alter type wind shield (OTT Precipitation Wind Shield, Kochendorfer et al., 2017). Data are recorded with a one-minute averaging period; the real time output product is used for this study. Parsivel is an optical disdrometer which uses a laser band to detect size and fall velocity of precipitating particles (Löffler-Mang and Joss, 2000; Löffler-Mang and Blahak, 2001; Tokay et al., 2014). The Parsivel software groups the measured drop sizes and velocities into predefined 32×32 matrix. The size and velocity bins can be found in Angulo-Martínez et al. (2018). Rain rate and reflectivity are calculated using the raw data (32×32 Matrix). A similar optical disdrometer, the Laser Precipitation Monitor (LPM, Fig. 2a) from Adolf Thies GmbH (Angulo-Martínez et al., 2018), is continuously operated at RPG site since 14 June 2018. The LPM collected data during summer 2018 at RPG site; from 1 Nov 2018 to 6 Dec 2018 the LPM was installed at the JOYCE site as part of TRIPEX-pol campaign. The LPM provides a particle-event mode where a message with the size and velocity of each individual particle is generated (Prata de Moraes Frasson et al., 2011). The particle-event mode is normally used for calibration purposes. The particle's size and velocity is provided separately assuming either a spherical or a "hamburger" shape. The later shape lacks a detailed description in the LPM manual, hence, we decided to only use the values for the spherical shape. Prata de Moraes Frasson et al. (2011) report that the data transfer rate may not be sufficient for a large number of particles. The manufacturer also notes in the LPM manual that not all particles might be registered at high precipitation rates. Unfortunately, a more detailed explanation of this issue and whether it is related to the data transfer rate or to other well-known issues of optical disdrometers, such as multiple particles in the field of view or partial beam filling, is missing. We developed a test device to estimate the underestimation of events due to limited data transfer rate. A chopper wheel with 2 closed and 2 open quadrants was mounted in a way to completely block or open the LPM laser beam (Fig. 2b). The event frequency was registered with a photo transducer and subsequently increased in steps from 3.7 to 83.2 s⁻¹. The data from the LPM was transferred using a serial RS485 full-duplex connection with 115 kBaud transfer rate. The LPM detected the event rate accurate with 1 s⁻¹ up to 77 s⁻¹. Larger event rates were significantly underestimated by the LPM. If we assume a Marshall-Palmer distribution, the event rate due to a rainfall rate of 20 mm h⁻¹ is 30 s⁻¹. As most rainfall events analyzed in this study are well below this rainfall rate, the LPM data transfer problem is unlikely to introduce large uncertainties. A more serious issue for rainfall measurements with the LPM are splashing effects which have been found by Angulo-Martínez et al. (2018) to cause up to 20%

overestimation of the particle number. In order to reduce splashing effects, we covered all the LPM surfaces with spongy and cotton material (Fig. 2a). In order to further reduce the effects of splashing on the calculated rain rate and reflectivity, we follow the approach of Tokay et al. (2014) and reject all particles with velocities ~~deviating by more than a factor of 2 from~~ outside the range of $\pm 50\%$ relative to a theoretical size-velocity relation (Foote and Du Toit, 1969).

5 Figure 3 shows a comparison of measured one-minute rain rates from the four in-situ sensors. The basis for the comparison are observations from 1 Nov 2018 to 6 Dec 2018. In total we found 391 minutes of precipitation detected by all sensors. The observed rain rates were mainly below 7 mm h^{-1} . The correlation between LPM and Parsivel rainfall rates is 0.96; LPM shows slightly smaller values than Parsivel. The two weather stations show a correlation with disdrometers varying from 0.84 to 0.88. These correlations are in an agreement with Prata de Moraes Frasson et al. (2011). The one-minute rainfall rates provided by
 10 Pluvio were found to be very noisy with correlations to the other in situ sensors ranging from 0.5 to 0.6. Nevertheless, the one-day accumulated precipitation from Pluvio correlates well with those from the Thies and Parsivel (0.997 and 0.99, respectively, calculated with 10 rainy days). As Pluvio is a weighting gauge, it measures mass representing accumulation of droplets in the bucket. The rainfall rate is derived as the time derivative of accumulated mass which can lead to more noisy rainfall rates. In contrast, optical disdrometers measure every single droplet crossing the laser beam and calculate the accumulated rainfall as
 15 integral over time. The accumulated precipitation from WXT520 weather stations has not been stored and therefore cannot be analyzed.

3 Method 1: The self-consistency method for W-band polarimetric cloud radars

Goddard et al. (1994) developed a calibration approach for 3 GHz radars based on observations of reflectivity Z , differential reflectivity Z_{DR} , and specific differential phase ~~shift~~ K_{DP} in rain at low elevation angles. At S-band, Z_{DR} defines the K_{DP}/Z
 20 ratio because Z and K_{DP} depend on the number concentration of droplets, while Z_{DR} is a proxy for drop median size (Ryzhkov et al., 2005; Kumjian, 2013). For Z_{DR} exceeding 2 dB, which is often observed in strong rainfall, the relation between the three parameters is not affected by DSD variability. Z_{DR} and Z profiles can thus be used in strong rainfall to reconstruct the expected differential phase Φ_{DP} profile. The radar is considered to be well calibrated if the expected and the measured profiles of Φ_{DP} agree. According to Chandrasekar et al. (2015), a standard accuracy, which can be achieved for
 25 Z_{DR} , is about 0.1 dB. K_{DP} is calculated as a range derivative and, therefore, is immune to the radar polarimetric calibration. As a small bias in Z_{DR} affects the expected Φ_{DP} profiles much less than a bias in Z , any difference between measured and expected profiles of Φ_{DP} is assigned to a reflectivity offset. The reflectivity calibration factor is then simply determined by shifting the reflectivity profile until a minimum between the estimated and measured profiles of Φ_{DP} is reached.

Hogan et al. (2003) noticed that the method of Goddard et al. (1994) is not directly applicable to W-band radars for the
 30 following reasons. First, attenuation due to rain is almost negligible at 3 GHz while it strongly increases towards higher frequencies. Second, non-Rayleigh scattering causes reflectivity at W-band to increase much less with rainfall rate as compared to lower frequencies. As a result, W-band reflectivities become less sensitive to rain rate for increasing rain intensities (Hogan et al., 2003). Third, in contrast to lower frequencies, Z_{DR} at W-band does not exceed 0.12 dB for rain rates up to 150 mm h^{-1}

(Aydin and Lure, 1991). Fourth, estimation of K_{DP} from radar observations becomes more complicated. Otto and Russchenberg (2011) and Trömel et al. (2013) show that the total measured ~~phase-shift~~ differential phase is the sum of a backscattering and a propagational component (see Eq. B6). At low frequencies, the backscattering ~~phase-shift~~ differential phase δ is usually negligible but it increases with larger frequencies. At mm-wavelengths, even relatively small drops in the range of 2–3 mm diameter produce up to 10° backscattering differential phase (Matrosov et al., 1999). For a polarimetric calibration method applicable to mm-wavelengths it is thus crucial to find a way how to separate δ and K_{DP} . In order to find a solution for the above-mentioned problems, we identify a set of different propagation and backscattering variables, to which an approach similar to Goddard et al. (1994) can be applied. To infer suitable relations between radar observables, we simulate them using the T-Matrix model (Mishchenko, 2000) and a range of PSDs similar to Hogan et al. (2003). We assume normalized gamma distributions with μ from 0 to 15 and N_L from 5×10^2 to $2.5 \times 10^4 \text{ mm}^{-1} \text{ m}^{-3}$. For given μ and N_L , the median volume diameter D_0 was increased in 0.05 mm steps starting at 0.1 mm until the rain rate reached 20 mm h^{-1} . Detailed description of how ~~the various radar variables (non-attenuated reflectivity~~ Z_0 , one-way attenuation A , differential reflectivity Z_{DR} , specific differential phase K_{DP} , differential attenuation A_{DP} , and backscattering differential phase δ are calculated can be found in Appendices A and B.

3.1 Replacement for Z_{DR}

As discussed above, Mie scattering effects complicate the use of Z_{DR} at W-Band and we need to find an alternative parameter which is closely related to D_0 . Trömel et al. (2013) found at X-Band that δ is a suitable parameter which is independent of N_L and sufficiently related to D_0 . As can be seen in Figure 4, δ is nearly directly proportional to D_0 at W-Band for rain rates up to 7 mm h^{-1} and even at larger rain rates, δ seems to be a reasonable proxy for D_0 . Thus, we will use δ in the following as a replacement for Z_{DR} used at lower frequencies in order to find relations between Z_0 and propagation variables.

3.2 Relations between propagation and backscattering variables

In the original method of Goddard et al. (1994), a ratio of the propagation parameter K_{DP} and the backscattering parameter Z_0 is parameterized as a function of Z_{DR} characterizing the median drop size. Using the large set of ~~rain PSDs and simulated~~ rain PSDs introduced above and corresponding forward simulated radar parameters, we can parameterize the ratio K_{DP}/Z_0 as a function of δ for W-Band:

$$\frac{K_{DP}}{Z_0} = a_1 f(a_2 \delta + a_3) + a_4 f(a_5 \delta + a_6) + a_7 f(a_8 \delta + a_9) + a_{10}, \quad (1)$$

At frequencies where rain attenuation is non-negligible, we also need to parameterize specific attenuation A . The backscattering differential phase ~~shift~~ δ defines also the ratio A_{DP}/A :

$$\frac{A_{DP}}{A} = b_1 f(b_2 \delta + b_3) + b_4 f(b_5 \delta + b_6) + b_7 f(b_8 \delta + b_9) + b_{10}. \quad (2)$$

We also introduce an additional relation to constrain relations between Z_0 and δ . This is done by coupling these two parameters via the absolute value of the specific attenuation A in dB km^{-1} :

$$A = c_1 f(c_2 \delta + c_3 Z_0 + c_4) + c_5 f(c_6 \delta + c_7 Z_0 + c_8) + c_9 f(c_{10} \delta + c_{11} Z_0 + c_{12}) + c_{13} f(c_{14} \delta + c_{15} Z_0 + c_{16}) + c_{17}. \quad (3)$$

In Eqs. 1–3 f is the following function:

$$f(x) = \frac{2}{1 + e^{-2x}} - 1. \quad (4)$$

The [approximations \(Eqs. 1–3\) were derived using the neural network approach. The used neural networks have one hidden layer with 3 neurons for Eqs. 1 and 2 and 4 neurons in Eq. 3. The neural networks were trained with the widely used backpropagation algorithm. Details of function approximations using neural networks can be found in \(Hagan et al., 2014\).](#) The fit coefficients a_{1-10} , b_{1-10} , and ~~c_{1-13}~~ c_{1-17} are given in Tables A1, A2, and A3, respectively. In Eqs. 1–3 the units of Z_0 , A , K_{DP} , A_{DP} , and δ are $\text{mm}^6 \text{ m}^{-3}$, dB km^{-1} , $^\circ \text{ km}^{-1}$, dB km^{-1} , and $^\circ$ respectively. In the supplementary materials we provide Matlab/Octave functions for Eqs. 1–3. [In order to take into account possible variability in Eqs. 1–3 caused by environment temperature, the fit coefficients are provided for 0, 10, 20, and 30°C.](#)

Figure 5 shows the simulated polarimetric variables and the fitted approximations (Eqs. 1–3). The remaining RMSE of the K_{DP}/Z_0 , A_{DP}/A , and A approximations are $2.3 \times 10^{-4} \text{ }^\circ \text{ km}^{-1} \text{ m}^3 \text{ mm}^{-6}$, $3.2 \times 10^{-4} \text{ dB km}^{-1} \text{ dB}^{-1} \text{ km}$, and 0.3 dB/km , respectively. Figure 5a indicates that at δ close to 0.5 ° K_{DP}/Z_0 is close to 0, which represents a limit of the self-consistency method. The method becomes robust at δ values exceeding 1 ° .

3.3 Separating propagational and backscattering components using Doppler spectra

Profiles of Z_0 , A , δ , A_{DP} , and K_{DP} are not directly measured by a dual-polarized cloud radar. Instead, the radar measures variables (Z , Z_{DR} , and ~~Φ~~ Φ_{DP}), which are combinations of propagational and backscattering effects as can be seen in Eqs. A1, B5 and B6. Several studies presented approaches to separate propagational and backscattering components for centimeter wavelength radars (Otto and Russchenberg, 2011; Schneebeli and Berne, 2012; Trömel et al., 2013). These approaches are based on relations between profiles of Z_{DR} and δ (Otto and Russchenberg, 2011; Schneebeli and Berne, 2012), and A and K_{DP} (Trömel et al., 2013). However, as already discussed above, those methods cannot be applied to W-Band because of non-Rayleigh scattering and attenuation effects. As a result, Z_{DR} becomes less informative, and relations between A and K_{DP} vary for different DSD when δ exceeds 1 ° .

A common approach to separate backscattering from propagational effects is the use of Doppler spectra. In the absence of strong turbulence, smaller droplets populate in the slow falling part of the spectrum while the larger drops are found on the fast falling side. Due to the relatively well-known relation of drop size and terminal velocity, the spectral power at each velocity bin can be associated to a certain drop size range (Kollias et al., 2002). The small droplets can be assumed to be only affected by propagational effects while the larger drops are also affected by Mie scattering effects. Therefore, the spectral information can be used to separate the two components in low turbulence conditions. This approach has been applied to non-polarimetric dual-wavelength spectra in rainfall and snow to separate attenuation and Mie scattering effects (Tridon and Battaglia, 2015; Tridon et al., 2017; Li and Moiseev, 2019). Here we follow the same idea but with polarimetric spectra.

Polarimetric Doppler spectra have only been sporadically used in the past, probably due to the demands regarding storage capacity and required high data quality. At centimeter wavelength, their potential has been shown for microphysical retrievals (Moisseev and Chandrasekar, 2007; Spek et al., 2008; Dufournet and Russchenberg, 2011; Pfitzenmaier et al., 2018) and efficient clutter suppression (Unal, 2009; Moisseev and Chandrasekar, 2009; Alku et al., 2015). The number of installed
5 polarimetric Doppler cloud radars is only recently increasing with only a few studies so far exploring their potential for microphysical studies and retrievals (Oue et al., 2015; Myagkov et al., 2015, 2016b; Oue et al., 2018).

As shown by Aydin and Lure (1991), drops up to a size of 1.2 mm do not produce a strong backscattering differential reflectivity z_{DR} at W-Band. At sizes larger than 1.2 mm, the z_{DR} spectrum reveals a series of minima and maxima. The authors also simulated a velocity z_{DR} spectrum for 1 mm h⁻¹. The values of z_{DR} are nearly 0 dB below 3 m s⁻¹ terminal
10 velocity and, therefore, any changes in Z_{DR} in this terminal velocity range can be addressed to differential attenuation.

We therefore derive differential reflectivity from the Doppler velocity range 0–2 m s⁻¹, where we assume all particles to be Rayleigh scatterers (hereafter refereed as the small-size part of a Doppler spectrum). Estimating this small-particle Z_{DR} individually for each range bin directly provides us with the profile of the cumulative differential attenuation DA :

$$DA(r) = C_{DA} - 2 \int_0^r A_{DP}(r) dr, \quad (5)$$

where C_{DA} is an offset in differential reflectivity in dB due to the polarimetric calibration. Uncertainties of the DA profile can be characterized using the variances of Z_{DR} over the small-size part of the spectra. Unfortunately, Aydin and Lure (1991) do not show the size spectrum of δ . Nevertheless, as it is shown for lower frequencies (Matrosov et al., 1999; Ryzhkov, 2001; Trömel et al., 2013) and as we further show in Sec. 3.6, the spectrally resolved δ shows a similar oscillatory behaviour as z_{DR} . Applying the same approach as described above, we can estimate the cumulative differential phase shift- DP from the Φ_{DP} in
20 the small-size part of the spectrum:

$$DP(r) = C_{DP} + 2 \int_0^r K_{DP}(r) dr, \quad (6)$$

where C_{DP} is an offset in differential phase in ° due to the polarimetric calibration. The profile of δ can be simply estimated by subtracting DP from the Φ_{DP} profile (see Eq. B6).

Spectral polarimetric observations are typically performed at low elevation angles ($<45^\circ$, Unal and Moisseev, 2004; Spek et al., 2008) in order to maximize polarimetric signatures of hydrometeors. Doppler velocities corresponding to each spectral bin represent projections of terminal velocities of drops, vertical air motions, and horizontal wind. In order to separate propagation and backscattering effects, the knowledge of the absolute terminal velocities is not required. The effect of air motions (both vertical and horizontal) can be roughly mitigated by shifting spectra in such a way that the rightmost detected spectral line, corresponding to drops with the slowest fall velocity, is set to 0 m/s. As it is shown in Sec. 3.6, such a rough mitigation is good enough to separate small drops scattering in the Rayleigh regime from those producing resonance effects.
25
30

3.4 Algorithm

The different modules of the method are illustrated in Fig. 6. The method is based on finding a state vector corresponding to an optimal match of expected and the observed radar variables. The matching is achieved by minimizing a cost function using a global stochastic optimization method called differential evolution (DE) approach (Storn and Price, 1997). DE was recently
5 used by Rusli et al. (2017) for a detailed characterization of drizzle and cloud liquid. In this study, we use the built-in Octave implementation of DE, which is based on Das et al. (2009). We use the default strategy DEGL/SAW/bin with a mutation factor of 0.8, a crossover probability of 0.9, a tolerance of 10^{-3} , maximum number of iterations of 200, and a population size $NP = 20N_v$, where N_v is the number of elements in the state vector. DE stops when the maximum number of iterations is reached or the relative difference in the cost function between the best and the worst state vector in the population is below the
10 specified tolerance. When DE reaches one of the stopping criteria, the state vector with the lowest cost function is taken as the output.

The state vector contains a range profile of $A(r)$ [dB km⁻¹] and the calibration factors C_Z [dB], C_{DA} [dB], and C_{DP} [°]. DE does not require an a priori state vector. Instead, it requires realistic limits for each element of the state vector (Table 3). Within each iteration, the DE algorithm stochastically creates NP state vectors.

15 From each generated state vector a profile of Z_0 is calculated as follows:

$$Z_0(r) = Z(r) + C_Z + 2 \int_0^r [A(r) + A_g(r)] dr - 10 \log_{10} |K_0|^2 + 10 \log_{10} |K|^2, \quad (7)$$

where $Z(r)$ is the measured reflectivity profile in dBZ, $|K_0|^2$ is the dielectric factor assumed ~~by the radar in the radar software~~ (0.74 for our radars). The two dielectric factors in Eq. 7 account for differences in the actual dielectric properties of liquid water and those assumed in the radar software. Surface observations of temperature, relative humidity, and pressure are used
20 to estimate the attenuation profile due to gases $A_g(r)$ (see Sec. A2). The dielectric factor $|K|^2$ is calculated for liquid water at surface temperature. Using profiles of Z_0 and δ , an expected profile DP' is found using Eq. 1. The prime is used to discriminate the expected variable from the one estimated from measurements. Profiles of A and δ are used to estimate the expected DA' profile from Eq. 2. Finally, the expected profile of A' is calculated using the expected profiles of DA' and DP' and Eq. 3.

The profiles of A' , DA' , and DP' are further used for the calculation of the cost function CF :

$$25 \quad CF = CF_{DA} + CF_{DP} + CF_A, \quad (8)$$

where

$$CF_i = [\mathbf{w}_i - \mathbf{W}_i]^T \mathbf{S}_i^{-1} [\mathbf{w}_i - \mathbf{W}_i]. \quad (9)$$

In Eq. 9, i specifies a variable and \mathbf{w}_i contains the profile of the expected values for the i -th variable (DA , DP , and A). The vector \mathbf{W}_i contains the profile of the i -th variable inferred from measurements. The attenuation profile in the current state
30 vector is taken as \mathbf{W}_A . \mathbf{S}_i is the error covariance matrix of the i -th variable. Non-diagonal elements of \mathbf{S}_i are assumed to be 0 since no correlation between errors in different range bins is expected. Based on uncertainty estimates of A (see Sec. 3.2)

related to uncertainties in the approximation Eq. 3, diagonal elements of \mathbf{S}_A are set to $(0.3 \text{ dB km}^{-1})^2$. Estimation of DA , and DP from radar observations as well as their diagonal elements in the error covariance matrix is done as described in Sec. 3.3.

3.5 Uncertainties of the method

In order to estimate the uncertainties of the method, we simulated 1000 samples of slanted 1 km profiles of Z_0 , A , A_{DP} , K_{DP} , and δ , as described in Appendices A and B. For the simulations, the normalized gamma DSD were used with μ and N_L randomly chosen for each sample and each range bin. The ranges of μ and N_L were from 0 to 15 and from 5×10^2 to $2.5 \times 10^4 \text{ mm}^{-1} \text{ m}^{-3}$, respectively. Size distributions with A less than 3 dB km^{-1} were excluded from the analysis because such attenuation values are close to the magnitude of the measurement variability. In order to take into account measurement variability of radar reflectivity, a random Gaussian noise was added to Z_0 with variance set to $Z_0^2/20$, where 20 is typical number of spectra averaged by the used radars (Eq. 5.193 in Bringi and Chandrasekar, 2001). Taking into account that signal-to-noise ratio in rain within the first kilometer typically exceeds 30 dB, [and the copolar correlation coefficient in rain approaches 1](#), variability in the polarimetric variables are low (Sec. 6.5 in Bringi and Chandrasekar, 2001) and are thus neglected. With the simulated variables the profiles of Z , DA , and DP were derived. Variability in calibration constants C_Z , C_{DA} , and C_{DP} were randomly generated assuming uniform distributions given in Table 3 and added to Z , DA , and DP , respectively. The uncertainties in C_Z , C_{DA} , and C_{DP} are assumed to be the same for all range bins for a single sample.

[The forward model of the radar observables used in this study assumes that raindrops are oriented horizontally. A number of studies show that drops typically have a canting angle distribution with zero mean and standard deviation up to \$10^\circ\$ \(Bringi and Chandrasekar, 2001; Huang et al., 2008\). In order to check the level of uncertainty introduced by the drop orientation, we compared simulated radar variables with \$0\$ and \$10^\circ\$ standard deviation of the canting angle distribution. The sensitivity experiment was made for \$0^\circ\$ elevation, when the strongest effect of the canting angle on polarimetric variables is expected. The canting angle is assumed to be in the polarization plane. The results shown in Fig. 7 indicate that the canting angle mainly affects the backscattering and specific differential phase. The uncertainties become larger with rain rate due to the larger number of large oblate drops included. At \$20 \text{ mm h}^{-1}\$ the uncertainties might reach \$\sim 0.5^\circ\$ and \$0.2^\circ \text{ km}^{-1}\$ in backscattering and specific differential phase, respectively. Uncertainties in the other variables are negligibly low. In order to take into account uncertainties ~~in the~~ related to the canting angle distribution and also the separation of \$\delta\$ and \$DP\$, we added a random Gaussian noise with standard deviation of \$0.5^\circ\$ to \$DP\$ and subtracted the corresponding values from \$\delta\$. Similarly, a random Gaussian noise with standard deviation of \$0.3 \text{ dB}\$ was added to \$DA\$. All ~~Noise-noise~~ values were different for each range bin and each sample.](#)

The method was tested using the simulated profiles of Z , DA , and DP as input. For each sample, the best estimate of C_Z provided by the algorithm was then compared to C_Z used for the simulation. The results shown in Fig. 8 show that 90% of the differences are within $\pm 0.7 \text{ dB}$.

3.6 Application to measurements from radar 21

We now exemplarily demonstrate the different steps of the self-consistency method with a case study. A precipitation event, which includes drizzle and stronger rainfall was observed at Meckenheim on 9th June 2018 operating the radar at 30° elevation (Fig. 9). The melting layer can be depicted at the height 2.5 km by enhanced values of Z_{DR} and Φ_{DP} . During the period
 5 between 18 and 21 UTC, the rain sensor only registered drizzle on the ground, while later, a short and more intense rainfall event with up to 15 mm h^{-1} rainfall took place. As expected, Z_{DR} and Φ_{DP} are close to zero in the drizzle part due to the near spherical shape of the drops. Non-zero values are found during the stronger rainfall event due to the larger and hence more aspherical raindrops. Around 21 UTC positive and negative values in both Z_{DR} and Φ_{DP} are visible. These values indicate presence of backscattering and propagational effects of rain drops.

10 Backscattering and propagational effects can be better separated when moving to the Doppler spectral space (Fig. 10). The spectra during the stronger rainfall event show the expected oscillatory behaviour for larger Doppler velocities which are principally related to larger sizes. It should be noted that we did only apply a very rough correction for horizontal wind as the method itself is not dependent on such a correction. The main goal in the spectral analysis is the separation of the Rayleigh scattering part (only affected by propagational effects) from the Mie scattering part (affected by both backscattering
 15 and propagational effects). The spectral part which is not affected by oscillations (approximately Doppler velocities slower than -2 m s^{-1}) shows decreasing values for Z_{DR} and Φ_{DP} with increasing range caused by propagational effects (see also spectra plotted for constant ranges in Fig. 11). The reflectivity spectra themselves show somewhat unexpected increase with range and also the oscillations are less pronounced than in the polarimetric variables. This can be explained by the fact that Z is also dependent on the particle concentration.

20 The spectral regions with oscillatory behaviour represent drop sizes for which backscattering and propagational effects are ~~convoluted~~-convolved (Fig. 11). In the part where the smaller droplets scatter in the Rayleigh regime, we find a plateau-like region in the spectra of Z_{DR} and Φ_{DP} (Fig. 11). The deviation of the plateau from 0 dB indicates the propagational effects. It should be noted that calibration offsets would of course also result in a shifted plateau region, however, independent of range. Z_{DR} and Φ_{DP} of radar 2-1 have been calibrated using zenith observations in light rain as described in Myagkov
 25 et al. (2016a). Vertical observations in light rain show Z_{DR} and Φ_{DP} values of 1.003 ± 0.01 (linear units) and $0 \pm 0.15^\circ$. After proper calibration, we can assign the shift of the plateau region solely to propagation effects for which we derive mean and standard deviation for each range (Fig. 12). A_{DP} and K_{DP} are found for this case to be on average about 0.13 dB km^{-1} and -0.95 - $0.95^\circ \text{ km}^{-1}$, respectively.

In order to estimate a profile of δ , which is used as an input for Eqs. 1 and 2, the profile of DP shown in Fig. 12b is subtracted
 30 from the profile of Φ_{DP} . Profiles of Φ_{DP} and δ are shown in Fig. 12c.

Figure 13a and b show the best fits for DA and DP profiles found by the optimization algorithm. The resulting best matching radar calibration coefficient for reflectivity C_Z has been found for this time sample to be -0.7 dB meaning that the radar 2-1 is slightly underestimating reflectivity values.

The self consistency method allows for an evaluation of the radar calibration even from a single sample. In order to test how repeatable the results of the self-consistency method are, we applied the method to 64 samples from 3 rain events. As it was shown in previous sections, the self consistency method relies on propagation variables K_{DP} and A_{DP} , which are used to constrain profiles of Z . If the magnitudes of K_{DP} and A_{DP} are comparable with measurement noise, the method shows

5 larger uncertainties. Using the approach described in Sec. 3.5, we identified the applicability range of the method. For the method to produce reasonable results, the rainfall events and associated profiles have to fulfill the following criteria: (1) rain rate observed at the surface by the weather station must be below 20 mm h^{-1} , (2) δ has to be larger than 1° over at least 900 m one-way range, (3) the median K_{DP} must be lower than $-0.3^\circ \text{ km}^{-1}$, and (4) the median A_{DP} is ~~lower than -0.06~~ higher than -0.06 dB km^{-1} . The results shown in Fig. 14 indicate that the radar ~~2-1~~ has a small negative reflectivity bias. The mean C_Z

10 estimated from the 64 samples is -0.6 dB . The single-sample estimate of C_Z from the 3 rain events varies from -1 to 0 dB which is within the uncertainty of the method estimated in Sec. 3.5. One might see an increasing trend in C_Z , but taking into account the method uncertainty of $\pm 0.7 \text{ dB}$ and the few cases, the trend is not statistically significant. As it will be shown further in the next section, certain variability in C_Z can be explained by imperfections in the removal of liquid water from the radome.

15 The 30° elevation used in this study was chosen considering the following aspects: (1) the maximum Doppler resolution is obtained with zenith pointing observations, because the projection of the terminal-velocity on the radar-line-of-sight is the largest. However, at zenith the required polarimetric variables are close to zero. In the other extreme, (2) at 0° deg elevation, polarimetric signatures are the strongest, but the projection of the terminal velocity on the radar beam is close to 0. Thus, 30° elevation appears to be a good compromise for spectral polarimetry applications but a detailed numerical study, which tries to

20 identify the optimal elevation angle for this method was not performed.

4 Method 2: Disdrometer-based method

The second method is based on a comparison of measured reflectivities (denoted as Z_m) at distances close to the surface with calculated reflectivities based on DSDs observed by collocated disdrometer (Z_d hereafter). Values of Z_d are calculated according to Appendix. A. This well-known approach is generally applicable to radars operating at any frequency, however,

25 the issue of variable rain properties between the lowest range gate and the disdrometer location remains a source of uncertainty. Using radar observations at the lowest range gates also requires that there are no antenna near field or receiver saturation effects and that wet radome or wet antenna effects are minimized. For a two-antenna system, such as used for the FMCW systems in this study, the incomplete beam overlap is corrected for using the method in Sekelsky and Clothiaux (2002). At ranges larger than 250 m from the radar, the beam overlap for all radars used is better than 90%. For the following analysis, we use Z_m at

30 250 m range. It should be noted that the calculations in this section use altitude and not range; for slanted path, a conversion of range to altitude has to be applied. In the following, we will describe our approach how to mitigate two main sources of uncertainty for this method in the rainfall cases analyzed. A schematic of the entire processing chain is illustrated in Fig. 15.

4.1 Mitigating the effect of rain evaporation

Evaporation of rain on its way towards the surface is often observed at our sites. Figure 16 shows a simulation of the impact of evaporation on the reflectivity at 250 m. It can be seen that in sub-saturated conditions the difference in radar reflectivity caused by evaporation can be strong. The effect is particularly pronounced for light precipitation where the difference can exceed 2 dB.

5 In this case, the scattering is dominated by relatively small drops, whose diameters decrease faster due to evaporation than for big drops. In order to mitigate the effect of evaporation, we use an evaporation model described in Appendix A3. Based on temperature, relative humidity, and drop size at surface level, the model predicts the corresponding drop size at 250 m altitude.

For the calculations of drop sizes at 250 m altitude, all drops detected by the LPM within one minute prior to a radar sample time are used. In the case of Parsivel, which typically has a time resolution of 1 min, the data closest to a radar sample time are taken. The LPM in the single-event mode provides diameters of single particles and the evaporation model (Eq. A6) is directly
10 applied to all detected drops. For Parsivel data, the evaporation model is applied to mean bin sizes and the number of particles per size bin is assumed to be constant with altitude. Note that in this case the width of the size bin changes with altitude. This is equivalent to keeping the 32×32 raw data matrix - which is the standard output of Parsivel - constant but changing the mean drop diameters assigned to each matrix cell.

15 The estimated DSD for 250 m are then used for the calculation of Z_0 and A at 250 m according to Table A1. Since the calculation of the whole attenuation profile with evaporation effect accounted for is time consuming, $A(r)$ is assumed to be constant and equal to the mean of A values at the surface and at 250 m taken in dB km^{-1} .

4.2 Comparison of expected and measured reflectivity time series

In order to identify a potential time lag between Z_m and Z_d , we calculate their temporal correlation assuming a range of
20 time shifts. The time lag for which the maximum correlation is found is used for correcting the time series and the difference between Z_m and Z_d is analyzed. We recommend to only use Z_m and Z_d larger than 5 dBZ because the number of drops sampled by the disdrometer might be too low and not representative for smaller reflectivities.

4.3 Case study

We apply the disdrometer-based method to observations of radar ~~1~~² from 1 November 2018. From 12:30 to 16:20 UTC there
25 was light precipitation at the JOYCE site. The mean precipitation rate was 0.5 mm h^{-1} with maximum at 4.4 mm h^{-1} . The LPM operated in the particle-event mode (see Sec. 2.2). Z_d are calculated according to Table A1. For calculating Z_d , all drop sizes have been corrected for evaporation. Figure. 17a shows the correlations between Z_d and Z_m at different time lags. The time shift corresponding to the maximum correlation of 0.93 is -65 s which is applied to Z_d . After correcting for the time lag, Z_m and Z_d show a high correlation for values exceeding 5 dBZ (Figure 17b). A direct comparison of Z_m and Z_d (Figs. 17
30 c) shows that the mean difference in $Z_d - Z_m$ is -1.2 dBZ with a standard deviation of 0.3 dBZ (calculated according to Appendix. C).

4.4 Repeatability

In order to check how repeatable the results of the disdrometer-based method are, it was applied to LPM, [Parisvel](#) [Parsivel](#), and radar [1-2](#) observations in 12 rain events collected during the TRIPEX-pol campaign from 1 Nov 2018 to 6 Dec 2018. The same rain events are shown in Fig. 3. In the supplementary materials we provide figures similar to Fig. 17 and statistical analysis for each rain event.

Figure 18 shows the reflectivity differences $Z_d - Z_m$ for radar [1-2](#). The blue dots were calculated according to Sec. [4.4.1](#), while red dots are calculated without taking evaporation into account. Evaporation leads on average to about 0.7 dB underestimation in Z_d , which might be critical if a reflectivity accuracy within ± 1 dB is desired.

In Fig. 18 the differences $Z_d - Z_m$ are shown as functions of maximum rain rate observed by the disdrometers. At rain rates lower than 4 mm h^{-1} , values of $Z_d - Z_m$ vary from -2 to -0.9 dB and from -2.1 to -0.5 dB with mean values of -1.4 and -1.1 dB based on LPM and Parsivel (blue dots in Figure 18a and c), respectively. On average, reflectivity values based on Parsivel observations are about 0.3 dB larger than those from LPM. The reason for this difference are likely related to the specific differences of the disdrometers, however, a detailed analysis of such differences is out of the scope of this study. A comprehensive comparison of LPM and Parsivel disdrometers can be found for example in Angulo-Martínez et al. (2018) and Johannsen et al. (2020).

The results for both disdrometers indicate a dependence of the calibration offset on maximum rain rate observed during a precipitation event. Since the slope of the linear regressions are similar with and without the evaporation correction, we conclude that this effect may come from limitations of the rain mitigation system. However, the radome attenuation effects would certainly be much larger without a mitigation system. as shown by Hogan et al. (2003), those effects can easily exceeding 10 dB for strong rainfall.

4.5 Comparison with the self-consistency method

As has been shown in the previous section, the comparison of radar [1-2](#) observations with LPM and Parsivel shows that the radar on average overestimates the reflectivity by 1.4 and 1.1 dB, respectively. The calibration of the radar [2-1](#) was estimated using the self-consistency methods and indicates that the radar underestimates the reflectivity by 0.7 dB.

During the TRIPEX-pol campaign the radar 1 and radar 2 were operating at the JOYCE site. The radar [2-1](#) was performing RHI and PPI scans. As it was mentioned in Sec. 4.5, the disdrometer-based method does not often show consistent results when applied to scanning data. Nevertheless, the radar [2-1](#) performed a PPI scan at the 85° elevation every 15 min. Therefore, we used vertical observations from the radar [1-2](#) and the PPI scans from the radar [2-1](#) to find a reflectivity difference between the radars 1 and 2. The difference can be used to check the consistency of the two calibration evaluation methods. During the 12 rain events we identified more than 8000 samples for the comparison. For each sample of the radar [2-1](#), a closest time sample of the radar [1-2](#) was found. Within each sample we identified the closest range bins with reflectivity values exceeding 5 dBZ. The radar [1-2](#) shows on average 2.1 dB higher reflectivity values in comparison to the radar [2-1](#). This value is consistent with the difference of 2.0 ± 1.3 dB between the biases found by the two methods separately for the radars 1 and 2.

5 Summary

Monitoring and evaluation of radar reflectivity calibration is a key requirement in order to provide long-term observational radar datasets to the cloud and precipitation community. In this study, we describe and compare two methods requiring very different degree of complexity in terms of instrumentation and retrieval technique. Both methods use natural stratiform rainfall as reference target.

The first method is an extension of the widely used approach from Goddard et al. (1994) applied to precipitation radars. The original method uses the $Z_{DR}-K_{DP}-Z$ relation, but due to the more complex attenuation and scattering behaviour, this method is not directly applicable to millimeter wavelengths. In this study, we provide a solution for this problems using spectral polarimetry obtained ~~form~~ from a W-Band radar. The use of the spectral information allows to disentangle propagational and backscattering effects. The method requires a observations of Z_{DR} and Φ_{DP} and is only applicable to slanted observations in rain with distinct backscattering and propagational polarimetric signatures. The backscattering ~~phase-shift~~ differential phase should mostly exceed 1° . The differential attenuation and specific differential phase ~~shift~~ should preferably be ~~at least~~ 0.05 higher than 0.06 dB km $^{-1}$ and 0.3 lower than -0.3° km $^{-1}$, respectively. The main advantage of this method is its low sensitivity to variabilities in rain DSD. We estimated the uncertainty of this method based on ~~realistical assumptions~~ realistic assumptions of errors in the profiles of radar observables to be within ± 0.7 dB.

We also tested and extended a much simpler and commonly used method, which compares reflectivities based on disdrometer DSDs measured at the surface with radar reflectivity at a close range gate. We included corrections for the time lag between the surface and elevated observation, as well as a correction for evaporation. The method allows for a repeatable evaluation of the radar reflectivity calibration within ± 0.9 dB even with only a few hours of observations in rain with intensity below 4 mm h $^{-1}$. Averaging over a larger number of rain events allows to further reduce the uncertainties of the method. The disdrometer-based method was tested with two common disdrometers of type LPM and Parsivel. The results do not differ by more than 0.4 dB.

The two methods were used to evaluate the reflectivity calibration of two W-Band radars. The self-consistency method showed that the radar ~~2-1~~ underestimates the reflectivity by about 0.7 ± 0.7 dB, while the disdrometer-based method indicated that the radar ~~1-2~~ overestimates the reflectivity by $0.5-2.1$ dB. Unfortunately, the rainfall rates during the parallel operation of the two radars at JOYCE were not strong enough to compare the two methods directly. However, in case both methods provide reliable estimates for each radar, the reflectivity difference seen by both radars should be close to the sum of both offsets. Indeed, the observed reflectivity difference is with 2.1 dB quite consistent with the difference of 2.0 ± 1.3 dB between the biases found by the two methods separately for the radars 1 and 2. ~~We~~ The derived calibration factors can be used to monitor the radar stability and to correct the observed reflectivity values, although we would also like to emphasize that a further evaluation of the two methods described here ~~and with~~ other methods, e.g. using point target calibration or multi-frequency approach (Tridon et al., 2017) would be beneficial.

As wet radomes of W-band radar can cause attenuation exceeding 10 dB, the evaluation methods rely on efficient rain mitigation. We have found an evidence that the reflectivity bias of the used radars is correlated to the maximum rain rate, the slope of the linear regression is about 0.15 dB mm h $^{-1}$. The uncertainty of the used rain mitigation method is much smaller

than uncertainties and wet antenna effects reported by (Hogan et al., 2003). Further investigations on this topic are required in order to understand effects limiting the performance of the used rain mitigation systems.

Summarizing the results, we recommend the disdrometer-based method for continuous monitoring of cloud radar calibration. Many operational sites are already equipped with disdrometers, which allows for a straight-forward application of the technique. The method can be applied to both vertical and slanted observations, though continuous scanning may limit the applicability of the method. The extended consistency-method is less sensitive to DSD variability and also allows calibration evaluation if only a few rainfall cases are available. Both methods can analogously be derived for Ka-Band systems.

Code availability. MATLAB/Octave functions for the approximations Eqs. 1–3, and Eq. A6 are given in the supplementary material.

Appendix A: Reflectivity calculation

The radar reflectivity factor Z along a path of rainfall with constant properties can be calculated as

$$Z(r) = Z_0(r) - 2 \int_0^r (A(r) + A_g(r)) dr, \quad (\text{A1})$$

where Z_0 [dBZ] is the non-attenuated reflectivity, A [dB km⁻¹] is the one-way attenuation by rain, and A_g [dB km⁻¹] is one-way gas attenuation, r is in km. The factor of 2 is related to the two-way propagation.

A1 Non-attenuated reflectivity and attenuation by rain

For the DSD of rain we assume the widely used normalized gamma distribution (Illingworth and Blackman, 2002):

$$n(D) = \frac{0.033 N_L D_0^4 \Lambda^{\mu+4}}{\Gamma(\mu+4)} D^\mu \exp(-\Lambda D), \quad (\text{A2})$$

where $\Lambda = (3.67 + \mu)/D_0$, D is the equivalent sphere diameter in mm, D_0 is the median volume diameter in mm, N_L is the concentration parameter in mm⁻¹ m⁻³, and μ is the distribution shape parameter. For numerical calculations, we discretized the DSD with D_i describing the mean diameter and N_i denoting the drop number of the i -th size bin. D_i are equispaced from 10⁻² up to 8 mm with a constant bin width of 10⁻² mm.

We approximate raindrops with oblate spheroids. The shape-size relation was taken from Pruppacher and Pitter (1971). Based on video disdrometer observations, Huang et al. (2008) showed that raindrops are mostly aligned horizontally with canting angle standard deviation of 8°. Aydin and Lure (1991) showed that this fluttering of drop orientation has a relatively small effect at 94 GHz. Even for the reflectivity difference between horizontal and vertical polarization, for which one expects the effect of particle orientation to be maximum, the differences do not exceed 0.12 dB for rainfall rates up to 150 mm h⁻¹. In the following calculations we therefore assume the rain drops to be horizontally aligned.

We calculate backscattering $S_{jk}(D_i)$ and forward $F_{jk}(D_i)$ scattering coefficients using the T-matrix method (Mishchenko, 2000). Here indices j and k stand for the polarization of transmitted and received waves, respectively. The temperature de-

Table A1. Summary of calculation formulas for rain rate, reflectivity, and attenuation for the normalized gamma DSD, DSD from Parsivel, and drops detected by LPM. For the normalized gamma DSD and Parsivel the index i ranges over n diameter bins, while for LPM it varies over n drops detected by the instrument 1 minute prior to a radar sample time. The index j moves over m velocity bins of Parsivel. $C_{i,j}$ is the cell of the Parsivel raw data matrix. N_i is a number of particles in the diameter bin i . V_i and v_i are volume in m^3 and terminal velocity in m s^{-1} of a drop with the diameter D_i , respectively. Z_i and A_i are reflectivity and attenuation for one drop with the diameter D_i in a unit volume, respectively. $S_i = L_b(W_b - D_i/2)$ is effective sampling area in m^2 of a disdrometer with L_b and W_b being the length and the width of the disdrometer laser beam (Tokay et al., 2014). $|K|^2$ is the dielectric factor of water at a certain temperature. $|K_0|^2 = 0.74$ is the constant dielectric factor of water at 8°C set in the processing routine of the used radars.

Parameter	Normalized gamma DSD	Parsivel Parsivel	LPM
$R [\text{mm h}^{-1}]$	$3.6 \times 10^6 \sum_{i=1}^n N_i V_i v_i$	$6 \times 10^4 \sum_{i=1}^n \sum_{j=1}^m \frac{C_{i,j} V_i}{S_i}$	$6 \times 10^4 \sum_{i=1}^n \frac{V_i}{S_i}$
$Z [\text{dBZ}]$	$10 \log \left(\frac{ K ^2}{ K_0 ^2} \sum_{i=1}^n N_i Z_i \right)$	$10 \log \left(\frac{1}{60} \frac{ K ^2}{ K_0 ^2} \sum_{i=1}^n \sum_{j=1}^m \frac{C_{i,j} Z_i}{v_i S_i} \right)$	$10 \log \left(\frac{1}{60} \frac{ K ^2}{ K_0 ^2} \sum_{i=1}^n \frac{Z_i}{v_i S_i} \right)$
$A [\text{dB km}^{-1}]$	$\sum_{i=1}^n N_i A_i$	$\frac{1}{60} \sum_{i=1}^n \sum_{j=1}^m \frac{C_{i,j} A_i}{v_i S_i}$	$\frac{1}{60} \sum_{i=1}^n \frac{A_i}{v_i S_i}$

pendence of the refractive index of liquid water is taken from Ray (1972). Using $S_{hh}(D_i)$ and $F_{hh}(D_i)$, the non-attenuated reflectivity Z_i in $\text{mm}^6 \text{m}^{-3}$ and specific one-way attenuation due to liquid water A_i in dB km^{-1} for one drop with the diameter D_i per unit volume are calculated with:

$$Z_i = \frac{10^{18} \lambda^4}{\pi^5 |K|^2} \left(4\pi |S_{hh}(D_i)|^2 \right), \quad (\text{A3})$$

5

$$A_i = 8.686 \times 10^3 \left(\frac{2\pi}{k} \text{Im} \left[\textcolor{red}{S} \textcolor{blue}{F}_{hh}(D_i) \right] \right), \quad (\text{A4})$$

where $|K|^2$ is the dielectric factor of liquid water, λ is the wavelength, and k is the wave number.

The final rainfall rate, reflectivity, and one-way attenuation are calculated as sum over the DSD. The equations used for the different in situ instruments are summarized in Table A1.

10 A2 Gas attenuation

Unlike for longer wavelength radars (e.g. precipitation radars), gas attenuation cannot be neglected for W-band. The major contributions to gas attenuation at W-Band are due to water vapor and oxygen which we calculate with the model by Liebe (1989). As continuous profile information of temperature, water vapor, and pressure are unavailable at RPG site and JOYCE-CF, we use the surface measurements of the weather station to approximate the vertical profiles. For the temperature profile,

15 we use a constant empirical ~~lapse~~-~~lapse~~ rate K_t . Based on the radiosonde database from Essen (Station number: 10410, 90 km

from Meckenheim, 75 km from Jülich) the ~~laps~~-lapse rate K_t was estimated to be $4.8 \times 10^{-3} \text{ K m}^{-1}$. The launches from 1 Jan 2010 to 23 Oct 2018 with surface relative humidity exceeding 65% were used. For the K_t estimation only the lowest 3 km of radiosonde ascends were taken. Relative humidity is assumed to be constant with height. The statistics of the calculated one-way gas attenuation profiles are shown in Fig. 19.

5 A3 Drop evaporation

Xie et al. (2016) showed that change of the drop size due to evaporation can be derived from the following equation:

$$vD \frac{dD}{dH} = 4 \frac{S - 1}{F_K + F_D}, \quad (\text{A5})$$

where D and v are the diameter and velocity of a drop, respectively, H is a vertical range traveled by the drop, $S - 1$ is the supersaturation with respect to liquid water, F_K and F_D are coefficients related to heat conduction and vapor diffusion, respectively. The calculation of F_K and F_D is based on Kumjian and Ryzhkov (2010).

Equation A5 relates an initial drop size at a certain altitude to the drop size at the surface. The disdrometer-based method requires an opposite relation, i.e. what would be the drop size at 250 m altitude if its size at the surface is known. The relation can also be found by solving Eq. A5. The equation is solved numerically for surface diameters D_s from 0.06 to 3 mm with a grid of 0.01 mm using an iterative approach. Large drops are less influenced by evaporation (Xie et al., 2016), therefore, for drops larger than 3 mm the size change is neglected. The surface drop size is taken as the first guess of the drop size at 250 m D_{250} . Using Eq. A5 the corresponding size at the surface D_{sm} is calculated and compared with D_s . In case the difference is smaller than 0.01 mm, D_{250} is taken as the solution for corresponding D_s . If the difference is larger, D_{250} is changed until the condition is satisfied. For minimization of the difference, the differential evolution method (Das et al., 2009) is applied, although any other optimization algorithm can be also used. Even though, the convergence for a single size is fast, the application of such the evaporation correction to a number of sizes and different environment conditions is time consuming. Therefore, a set of precalculated D_s – D_{250} relations at surface temperatures from 0 to 20°C with the 5°C step and surface relative humidity from 60 to 100% with the 5% step at the 1000 hPa surface pressure is used for the D_s – D_{250} function approximation:

$$D_{250}(D_s, T, RH) = \begin{cases} \left[\sum_{i=1}^{10} g_i f(p_i D_s + q_i T + u_i RH + \alpha_i) \right] + \beta, & \text{if } 0 < D_s < 3 \text{ mm} \\ D_s, & \text{if } D_s \geq 3 \text{ mm} \end{cases} \quad (\text{A6})$$

where D_{250} and D_s are in mm, T is in °C and has to be in the range from 0 to 30 °C, and RH is in % and should be in the range from 60 to 100%. The coefficients g , p , q , u , and α are given in Table A4, $\beta = 20.038$. For the given ranges of the input parameters the root mean square difference between the simulated and approximated values of D_{250} is 5.8 μm. In the supplementary materials we provide a Matlab/Octave function for Eq. A6.

Appendix B: Polarimetric variables

The T-matrix calculations are also used to derive polarimetric variables such as backscattering differential reflectivity z_{DR} [dB], backscattering differential phase δ [°], one-way differential attenuation A_{DP} [dB km⁻¹], and ~~one-way propagation phase shift~~

5 specific differential phase K_{DP} [° km⁻¹]:

$$z_{DR} = 10 \log_{10} \left(\frac{\sum_{i=1}^n |S_{hh}(D_i)|^2 N_i}{\sum_{i=1}^n |S_{vv}(D_i)|^2 N_i} \right), \quad (\text{B1})$$

$$\delta = \frac{180}{\pi} \arg \left[\sum_{i=1}^n N_i S_{hh}^* (D_i) S_{vv}^{\text{shift}} (D_i) \right], \quad (\text{B2})$$

$$A_{DP} = 8.686 \times 10^3 \frac{2\pi}{k} \sum_{i=1}^n \text{Im} \left[\underline{S} \underline{F}_{hh}(D_i) - \underline{S} \underline{F}_{vv}(D_i) \right] N_i, \quad (\text{B3})$$

10

$$K_{DP} = \underline{10^3} \frac{180}{\pi} \frac{2\pi}{k} \sum_{i=1}^n \text{Re} \left[\underline{S} \underline{F}_{hh}(D_i) - \underline{S} \underline{F}_{vv}(D_i) \right] N_i, \quad (\text{B4})$$

where * denotes the complex conjugation.

Differential reflectivity $Z_{DR}(r)$ [dB] and differential phase ~~shift~~ $\Phi_{DP}(r)$ [°] at a certain range r [km] from the radar are a sum of corresponding backscattering and propagational components:

$$15 \quad Z_{DR}(r) = z_{DR}(r) + \underbrace{2 \int_0^r -A_{DP}(r) dr}_{DA(r)}, \quad (\text{B5})$$

$$\Phi_{DP}(r) = \delta(r) + \underbrace{2 \int_0^r K_{DP}(r) dr}_{DP(r)}, \quad (\text{B6})$$

where DA and DP are propagation components in differential reflectivity and differential phases~~shift~~, respectively.

Appendix C: Variance of a numerical average

20 A variance (denoted as var) of an average of N_s samples can be found as follows:

$$\text{var} \left(\frac{1}{N_s} \sum_{i=0}^{N_s-1} s_i \right) = \frac{1}{N_s^2} \sum_{i=0}^{N_s-1} \sum_{j=0}^{N_s-1} \text{cov}(s_i, s_j), \quad (\text{C1})$$

where cov stands for covariance, s is a sample with a lag is indicated by the subscripts i and j . The covariance $\text{cov}(s_i, s_j)$ is calculated as a multiplication of the standard deviations of the corresponding variables and their correlation. Assuming that the analyzed process is stationary with the standard deviation σ_s , $\text{cov}(s_i, s_j)$ can be written as follows:

$$5 \quad \text{cov}(s_i, s_j) = \rho_\tau \sigma_s^2. \quad (\text{C2})$$

Here ρ_τ is the normalized auto-covariance function at the lag $\tau = i - j$. Substituting Eq. C2 into Eq. C1:

$$\text{var} \left(\frac{1}{N_s} \sum_{i=0}^{N_s-1} s_i \right) = \frac{\sigma_s^2}{N_s^2} \sum_{i=0}^{N_s-1} \sum_{j=0}^{N_s-1} \rho_\tau. \quad (\text{C3})$$

Similar relation for analytic functions was derived by Leith (1973). In the case of uncorrelated samples, the normalized auto-covariance function is a delta function, the double sum in Eq. C3 is equal to N_s , and the variance can be found using the

- 10 well-known relation σ_s^2/N_s . This relation is widely used in the weather radar community for improving the signal detection (Eq. 5.193 in Bringi and Chandrasekar, 2001; G6rsdorf et al., 2015). In contrast, when all the samples are highly correlated within the averaging period, the double sum is equal to N_s^2 and, as expected, the variance of the average does not change. In the general case, when the analyzed process has a certain coherency time, the variance is within the range between σ_s^2/N_s and σ_s^2 .

- 15 *Author contributions.* AM developed and tested the self-consistency method. AM and SK added the time-lag and evaporation corrections to the disdrometer-based method. SK organized the TRIPEX-pol measurement campaign. AM applied the disdrometer-based method. AM and SK evaluated the results of the calibration evaluation. AM and SK prepared the manuscript. TR developed the scanning polarimetric W-band radar and reviewed the manuscript.

Competing interests. S. Kneifel has no competing interests. A. Myagkov and T. Rose are employees of Radiometer Physics GmbH.

- 20 *Acknowledgements.* The contributions by S. Kneifel have been funded by the Deutsche Forschungsgemeinschaft (DFG, German Research Foundation) under grant KN 1112/2-1 as part of the Emmy-Noether Group OPTIMIce. The TRIPEX-pol campaign has also been supported by the DFG Priority Program SPP2115 ‘‘Fusion of Radar Polarimetry and Numerical Atmospheric Modelling Towards an Improved Understanding of Cloud and Precipitation Processes’’ (PROM) under grant PROM-IMPRINT (Project Number 408011764). We would also like to acknowledge Juan-Antonio Bravo Aranda, University of Granada, for providing the vertically-pointed LDR-mode W-Band radar for the
- 25 TRIPEX-pol campaign. We also acknowledge the staff of the University of Cologne, research center J6lich, and RPG, especially B. Bohn, R. Haseneder-Lind, and A. Saljihi for their help with the installation of the W-band radars, and K. Schmidt for the preparation of the scanning polarimetric W-band radar for the TRIPEX-pol campaign.

References

- Acquistapace, C., Kneifel, S., Löhnert, U., Kollias, P., Maahn, M., and Bauer-Pfundstein, M.: Optimizing observations of drizzle onset with millimeter-wavelength radars, *Atmospheric Measurement Techniques*, 10, 1783–1802, <https://doi.org/10.5194/amt-10-1783-2017>, 2017.
- 5 Alku, L., Moiseev, D., Aittomäki, T., and Chandrasekar, V.: Identification and Suppression of Nonmeteorological Echoes Using Spectral Polarimetric Processing, *IEEE Transactions on Geoscience and Remote Sensing*, 53, 3628–3638, <https://doi.org/10.1109/TGRS.2014.2380476>, 2015.
- Angulo-Martínez, M., Beguería, S., Latorre, B., and Fernández-Raga, M.: Comparison of precipitation measurements by OTT Parsivel² and Thies LPM optical disdrometers, *Hydrology and Earth System Sciences*, 22, 2811–2837, <https://doi.org/10.5194/hess-22-2811-2018>,
10 2018.
- Atlas, D.: RADAR CALIBRATION, *Bulletin of the American Meteorological Society*, 83, 1313–1316, <https://doi.org/10.1175/1520-0477-83.9.1313>, 2002.
- Aydin, K. and Lure, Y.-M.: Millimeter wave scattering and propagation in rain - A computational study at 94 and 140 GHz for oblate spheroidal and spherical raindrops, *IEEE Transactions on Geoscience and Remote Sensing*, 29, 593–601,
15 <https://doi.org/10.1109/36.135821>, 1991.
- Basara, J. B., Illston, B. G., Winning, Jr., T. E., and Fiebrich, C. A.: Evaluation of Rainfall Measurements from the WXT510 Sensor for Use in the Oklahoma City Micronet, *The Open Atmospheric Science Journal*, 3, 39–47, <https://doi.org/10.2174/1874282300903010039>, 2009.
- Borque, P., Luke, E., and Kollias, P.: On the unified estimation of turbulence eddy dissipation rate using Doppler cloud radars and lidars, *Journal of Geophysical Research: Atmospheres*, 121, 5972–5989, <https://doi.org/10.1002/2015JD024543>, <https://agupubs.onlinelibrary.wiley.com/doi/abs/10.1002/2015JD024543>, 2016.
20
- Bouniol, D., Protat, A., Delanoë, J., Pelon, J., Piriou, J.-M., Bouyssel, F., Tompkins, A. M., Wilson, D. R., Morille, Y., Haeffelin, M., O’Connor, E. J., Hogan, R. J., Illingworth, A. J., Donovan, D. P., and Baltink, H.-K.: Using Continuous Ground-Based Radar and Lidar Measurements for Evaluating the Representation of Clouds in Four Operational Models, *Journal of Applied Meteorology and Climatology*, 49, 1971–1991, <https://doi.org/10.1175/2010JAMC2333.1>, 2010.
- 25 Bringi, V. N. and Chandrasekar, V.: *Polarimetric Doppler Weather Radar*, Cambridge University Press, 2001.
- Bühl, J., Leinweber, R., Görsdorf, U., Radenz, M., Ansmann, A., and Lehmann, V.: Combined vertical-velocity observations with Doppler lidar, cloud radar and wind profiler, *Atmospheric Measurement Techniques*, 8, 3527–3536, <https://doi.org/10.5194/amt-8-3527-2015>, 2015.
- Bühl, J., Seifert, P., Myagkov, A., and Ansmann, A.: Relation between ice and liquid water mass in mixed-phase cloud layers measured with Cloudnet, *Atmospheric Chemistry and Physics Discussions*, 2016, 1–19, <https://doi.org/10.5194/acp-2016-25>, <http://www.atmos-chem-phys-discuss.net/acp-2016-25/>, 2016.
30
- Chandrasekar, V., Baldini, L., Bharadwaj, N., and Smith, P. L.: Calibration procedures for global precipitation-measurement ground-validation radars, *URSI Radio Science Bulletin*, 2015, 45–73, <https://doi.org/10.23919/URSIRSB.2015.7909473>, 2015.
- Das, S., Abraham, A., Chakraborty, U. K., and Konar, A.: Differential Evolution Using a Neighborhood-Based Mutation Operator, *IEEE Transactions on Evolutionary Computation*, 13, 526–553, <https://doi.org/10.1109/TEVC.2008.2009457>, 2009.
- 35 Delanoë, J., Protat, A., Vinson, J.-P., Brett, W., Caudoux, C., Bertrand, F., Parent du Chatelet, J., Hallali, R., Barthes, L., Haeffelin, M., and Dupont, J.-C.: BASTA: A 95-GHz FMCW Doppler Radar for Cloud and Fog Studies, *Journal of Atmospheric and Oceanic Technology*, 33, 1023–1038, <https://doi.org/10.1175/JTECH-D-15-0104.1>, 2016.

- Dias Neto, J., Kneifel, S., Ori, D., Trömel, S., Handwerker, J., Bohn, B., Hermes, N., Mühlbauer, K., Lenefer, M., and Simmer, C.: The TRIPLE-frequency and Polarimetric radar Experiment for improving process observations of winter precipitation, *Earth System Science Data*, 11, 845–863, <https://doi.org/10.5194/essd-11-845-2019>, 2019.
- 5 Dufournet, Y. and Russchenberg, H. W. J.: Towards the improvement of cloud microphysical retrievals using simultaneous Doppler and polarimetric radar measurements, *Atmospheric Measurement Techniques*, 4, 2163–2178, <https://doi.org/10.5194/amt-4-2163-2011>, <https://www.atmos-meas-tech.net/4/2163/2011/>, 2011.
- Ewald, F., Groß, S., Hagen, M., Hirsch, L., Delanoë, J., and Bauer-Pfundstein, M.: Calibration of a 35 GHz airborne cloud radar: lessons learned and intercomparisons with 94 GHz cloud radars, *Atmospheric Measurement Techniques*, 12, 1815–1839, <https://doi.org/10.5194/amt-12-1815-2019>, <https://www.atmos-meas-tech.net/12/1815/2019/>, 2019.
- 10 Foote, G. B. and Du Toit, P. S.: Terminal Velocity of Raindrops Aloft., *Journal of Applied Meteorology*, 8, 249–253, [https://doi.org/10.1175/1520-0450\(1969\)008<0249:TVORA>2.0.CO;2](https://doi.org/10.1175/1520-0450(1969)008<0249:TVORA>2.0.CO;2), 1969.
- Frech, M., Hagen, M., and Mammen, T.: Monitoring the Absolute Calibration of a Polarimetric Weather Radar, *Journal of Atmospheric and Oceanic Technology*, 34, 599–615, <https://doi.org/10.1175/JTECH-D-16-0076.1>, 2017.
- 15 Frisch, S., Shupe, M., Djalalova, I., Feingold, G., and Poellot, M.: The Retrieval of Stratus Cloud Droplet Effective Radius with Cloud Radars, *Journal of Atmospheric and Oceanic Technology*, 19, 835, [https://doi.org/10.1175/1520-0426\(2002\)019<0835:TROSCD>2.0.CO;2](https://doi.org/10.1175/1520-0426(2002)019<0835:TROSCD>2.0.CO;2), 2002.
- Gage, K. S., Clark, W. L., Williams, C. R., and Tokay, A.: Determining reflectivity measurement error from serial measurements using paired disdrometers and profilers, *Geophysical Research Letters*, 31, L23107, <https://doi.org/10.1029/2004GL020591>, 2004.
- Goddard, J. W. F., Tan, J., and Thurai, M.: Technique for calibration of meteorological radars using differential phase, *Electronics Letters*, 20, 166–167, <https://doi.org/10.1049/el:19940119>, 1994.
- Gorgucci, E., Sarchilli, G., and Chandrasekar, V.: Calibration of radars using polarimetric techniques, *IEEE Transactions on Geoscience and Remote Sensing*, 30, 853–858, <https://doi.org/10.1109/36.175319>, 1992.
- Görsdorf, U., Lehmann, V., Bauer-Pfundstein, M., Peters, G., Vavriv, D., Vinogradov, V., and Volkov, V.: A 35-GHz polarimetric Doppler radar for long term observations of cloud parameters - Description of system and data processing, *Journal of Atmospheric and Oceanic Technology*, 32, 675–690, <https://doi.org/10.1175/JTECH-D-14-00066.1>, 2015.
- 25 Haeffelin, M., Barthès, L., Bock, O., Boitel, C., Bony, S., Bouniol, D., Chepfer, H., Chiriaco, M., Cuesta, J., Delanoë, J., Drobinski, P., Dufresne, J.-L., Flamant, C., Grall, M., Hodzic, A., Hourdin, F., Lapouge, F., Lemaître, Y., Mathieu, A., Morille, Y., Naud, C., Noël, V., O’Hirok, W., Pelon, J., Pietras, C., Protat, A., Romand, B., Scialom, G., and Vautard, R.: SIRTa, a ground-based atmospheric observatory for cloud and aerosol research, *Annales Geophysicae*, 23, 253–275, <https://doi.org/10.5194/angeo-23-253-2005>, 2005.
- 30 Hagan, M. T., Demuth, H. B., Beale, M. H., and Jesus, O. D.: *Neural network design*, 2nd edition edn., 2014.
- Heymsfield, A. J., Protat, A., Austin, R. T., Bouniol, D., Hogan, R. J., Delanoë, J., Okamoto, H., Sato, K., van Zadelhoff, G.-J., Donovan, D. P., and Wang, Z.: Testing IWC Retrieval Methods Using Radar and Ancillary Measurements with In Situ Data, *Journal of Applied Meteorology and Climatology*, 47, 135, <https://doi.org/10.1175/2007JAMC1606.1>, 2008.
- Hirsikko, A., O’Connor, E. J., Komppula, M., Korhonen, K., Pfüller, A., Giannakaki, E., Wood, C. R., Bauer-Pfundstein, M., Poikonen, A., Karppinen, T., Lonka, H., Kurri, M., Heinonen, J., Moisseev, D., Asmi, E., Aaltonen, V., Nordbo, A., Rodriguez, E., Li-havainen, H., Laaksonen, A., Lehtinen, K. E. J., Laurila, T., Petäjä, T., Kulmala, M., and Viisanen, Y.: Observing wind, aerosol particles, cloud and precipitation: Finland’s new ground-based remote-sensing network, *Atmospheric Measurement Techniques*, 7, 1351–1375, <https://doi.org/10.5194/amt-7-1351-2014>, <https://www.atmos-meas-tech.net/7/1351/2014/>, 2014.

- Hogan, R. J., Field, P. R., Illingworth, A. J., Cotton, R. J., and Choulaton, T. W.: Properties of embedded convection in warm-frontal mixed-phase cloud from aircraft and polarimetric radar, *Quarterly Journal of the Royal Meteorological Society*, 128, 451–476, <https://doi.org/10.1256/003590002321042054>, 2002.
- 5 Hogan, R. J., Bouniol, D., Ladd, D. N., O'Connor, E. J., and Illingworth, A. J.: Absolute Calibration of 94/95-GHz Radars Using Rain, *Journal of Atmospheric and Oceanic Technology*, 20, 572, [https://doi.org/10.1175/1520-0426\(2003\)20<572:ACOGRU>2.0.CO;2](https://doi.org/10.1175/1520-0426(2003)20<572:ACOGRU>2.0.CO;2), 2003.
- Hogan, R. J., Mittermaier, M. P., and Illingworth, A. J.: The Retrieval of Ice Water Content from Radar Reflectivity Factor and Temperature and Its Use in Evaluating a Mesoscale Model, *Journal of Applied Meteorology and Climatology*, 45, 301–317, <https://doi.org/10.1175/JAM2340.1>, 2006.
- 10 Huang, G.-J., Brangi, V. N., and Thurai, M.: Orientation Angle Distributions of Drops after an 80-m Fall Using a 2D Video Disdrometer, *Journal of Atmospheric and Oceanic Technology*, 25, 1717, <https://doi.org/10.1175/2008JTECHA1075.1>, 2008.
- Huuskonen, A. and Holleman, I.: Determining Weather Radar Antenna Pointing Using Signals Detected from the Sun at Low Antenna Elevations, *Journal of Atmospheric and Oceanic Technology*, 24, 476, <https://doi.org/10.1175/JTECH1978.1>, 2007.
- Illingworth, A. J. and Blackman, T. M.: The Need to Represent Raindrop Size Spectra as Normalized Gamma Distributions for
15 the Interpretation of Polarization Radar Observations., *Journal of Applied Meteorology*, 41, 286–297, [https://doi.org/10.1175/1520-0450\(2002\)041<0286:TNTRRS>2.0.CO;2](https://doi.org/10.1175/1520-0450(2002)041<0286:TNTRRS>2.0.CO;2), 2002.
- Illingworth, A. J., Hogan, R. J., O'Connor, E. J., Bouniol, D., Delanoë, J., Pelon, J., Protat, A., Brooks, M. E., Gaussiat, N., Wilson, D. R., Donovan, D. P., Baltink, H. K., van Zadelhoff, G.-J., Eastment, J. D., Goddard, J. W. F., Wrench, C. L., Haeffelin, M., Krasnov, O. A., Russchenberg, H. W. J., Pirou, J.-M., Vinit, F., Seifert, A., Tompkins, A. M., and Willén, U.: Cloudnet, *Bulletin of the American
20 Meteorological Society*, 88, 883–898, <https://doi.org/10.1175/BAMS-88-6-883>, 2007.
- Johannsen, L. L., Zambon, N., Strauss, P., Dostal, T., Neumann, M., Zumr, D., Cochrane, T. A., Blöschl, G., and Klik, A.: Comparison of three types of laser optical disdrometers under natural rainfall conditions, *Hydrological Sciences Journal*, 65, 524–535, <https://doi.org/10.1080/02626667.2019.1709641>, <https://doi.org/10.1080/02626667.2019.1709641>, 2020.
- Kalesse, H., Szyrmer, W., Kneifel, S., Kollias, P., and Luke, E.: Fingerprints of a riming event on cloud radar Doppler spectra: observations
25 and modeling, *Atmospheric Chemistry & Physics*, 16, 2997–3012, <https://doi.org/10.5194/acp-16-2997-2016>, 2016.
- Kneifel, S., von Lerber, A., Tiira, J., Moisseev, D., Kollias, P., and Leinonen, J.: Observed relations between snowfall microphysics and triple-frequency radar measurements, *Journal of Geophysical Research (Atmospheres)*, pp. 6034–6055, <https://doi.org/10.1002/2015JD023156>, <http://dx.doi.org/10.1002/2015JD023156>, 2015JD023156, 2015.
- Kochendorfer, J., Nitu, R., Wolff, M., Mekis, E., Rasmussen, R., Baker, B., Earle, M. E., Reverdin, A., Wong, K., Smith, C. D., Yang, D.,
30 Roulet, Y.-A., Buisan, S., Laine, T., Lee, G., Aceituno, J. L. C., Alastrué, J., Isaksen, K., Meyers, T., Brækkan, R., Landolt, S., Jachcik, A., and Poikonen, A.: Analysis of single-Alter-shielded and unshielded measurements of mixed and solid precipitation from WMO-SPICE, *Hydrology and Earth System Sciences*, 21, 3525–3542, <https://doi.org/10.5194/hess-21-3525-2017>, 2017.
- Kollias, P., Albrecht, B. A., and Marks, F.: Why Mie?, *Bulletin of the American Meteorological Society*, 83, 1471–1484, <https://doi.org/10.1175/BAMS-83-10-1471>, 2002.
- 35 Kollias, P., Clothiaux, E. E., Miller, M. A., Albrecht, B. A., Stephens, G. L., and Ackerman, T. P.: Millimeter-Wavelength Radars: New Frontier in Atmospheric Cloud and Precipitation Research, *Bulletin of the American Meteorological Society*, 88, 1608–1624, <https://doi.org/10.1175/BAMS-88-10-1608>, 2007.

- Kollias, P., Puigdomènech Treserras, B., and Protat, A.: Calibration of the 2007–2017 record of ARM Cloud Radar Observations using CloudSat, *Atmospheric Measurement Techniques Discussions*, 2019, 1–30, <https://doi.org/10.5194/amt-2019-34>, <https://www.atmos-meas-tech-discuss.net/amt-2019-34/>, 2019.
- 5 Küchler, N., Kneifel, S., Löhnert, U., Kollias, P., Czekala, H., and Rose, T.: A W-Band Radar-Radiometer System for Accurate and Continuous Monitoring of Clouds and Precipitation, *Journal of Atmospheric and Oceanic Technology*, 34, 2375–2392, <https://doi.org/10.1175/JTECH-D-17-0019.1>, 2017.
- Kumjian, M. R.: Principles and Applications of Dual-Polarization Weather Radar. Part I: Description of the Polarimetric Radar Variables, *J. Operational Meteor.*, 1 (19), 226–242, <https://doi.org/10.15191/nwajom.2013.0119>, 2013.
- 10 Kumjian, M. R. and Ryzhkov, A. V.: The impact of evaporation on polarimetric characteristics of rain: Theoretical model and practical implications, *Journal of Applied Meteorology and Climatology*, 49, 1247–1267, <https://doi.org/10.1175/2010JAMC2243.1>, 2010.
- Leinonen, J., Moiseev, D., and Nousiainen, T.: Linking snowflake microstructure to multi-frequency radar observations, *Journal of Geophysical Research: Atmospheres*, 118, 3259–3270, <https://doi.org/10.1002/jgrd.50163>, <https://agupubs.onlinelibrary.wiley.com/doi/abs/10.1002/jgrd.50163>, 2013.
- 15 Leith, C. E.: The Standard Error of Time-Average Estimates of Climatic Means, *Journal of Applied Meteorology*, 12, 1066–1069, [https://doi.org/10.1175/1520-0450\(1973\)012<1066:TSEOTA>2.0.CO;2](https://doi.org/10.1175/1520-0450(1973)012<1066:TSEOTA>2.0.CO;2), [https://doi.org/10.1175/1520-0450\(1973\)012<1066:TSEOTA>2.0.CO;2](https://doi.org/10.1175/1520-0450(1973)012<1066:TSEOTA>2.0.CO;2), 1973.
- Li, H. and Moiseev, D.: Melting Layer Attenuation at Ka- and W-Bands as Derived From Multifrequency Radar Doppler Spectra Observations, *Journal of Geophysical Research: Atmospheres*, 124, 9520–9533, <https://doi.org/10.1029/2019JD030316>, 2019.
- 20 Liebe, H. J.: MPM - An atmospheric millimeter-wave propagation model, *International Journal of Infrared and Millimeter Waves*, 10, 631–650, <https://doi.org/10.1007/BF01009565>, 1989.
- Löffler-Mang, M. and Blahak, U.: Estimation of the Equivalent Radar Reflectivity Factor from Measured Snow Size Spectra., *Journal of Applied Meteorology*, 40, 843–849, [https://doi.org/10.1175/1520-0450\(2001\)040<0843:EOTERR>2.0.CO;2](https://doi.org/10.1175/1520-0450(2001)040<0843:EOTERR>2.0.CO;2), 2001.
- Löffler-Mang, M. and Joss, J.: An Optical Disdrometer for Measuring Size and Velocity of Hydrometeors, *Journal of Atmospheric and*
- 25 *Oceanic Technology*, 17, 130, [https://doi.org/10.1175/1520-0426\(2000\)017<0130:AODFMS>2.0.CO;2](https://doi.org/10.1175/1520-0426(2000)017<0130:AODFMS>2.0.CO;2), 2000.
- Löhnert, U., Schween, J. H., Acquistapace, C., Ebell, K., Maahn, M., Barreraverdejo, M., Hirsikko, A., Bohn, B., Knaps, A., O’connor, E., Simmer, C., Wahner, A., and Crewell, S.: JOYCE: Jülich observatory for cloud evolution, *Bulletin of the American Meteorological Society*, 96, 1157–1174, <https://doi.org/10.1175/BAMS-D-14-00105.1>, <http://dx.doi.org/10.1175/BAMS-D-14-00105.1>, 2015.
- Maahn, M., Hoffmann, F., Shupe, M. D., de Boer, G., Matrosov, S. Y., and Luke, E. P.: Can liquid cloud microphysical processes be used for
- 30 vertically-pointing cloud radar calibration?, *Atmospheric Measurement Techniques Discussions*, 2019, 1–31, <https://doi.org/10.5194/amt-2019-20>, <https://www.atmos-meas-tech-discuss.net/amt-2019-20/>, 2019.
- Mather, J. H. and Voyles, J. W.: The Arm Climate Research Facility: A Review of Structure and Capabilities, *Bulletin of the American Meteorological Society*, 94, 377–392, <https://doi.org/10.1175/BAMS-D-11-00218.1>, <https://doi.org/10.1175/BAMS-D-11-00218.1>, 2013.
- Matrosov, S. Y.: Variability of Microphysical Parameters in High-Altitude Ice Clouds: Results of the Remote Sensing Method., *Journal of*
- 35 *Applied Meteorology*, 36, 633–648, <https://doi.org/10.1175/1520-0450-36.6.633>, 1997.
- Matrosov, S. Y.: Retrievals of vertical profiles of ice cloud microphysics from radar and IR measurements using tuned regressions between reflectivity and cloud parameters, *Journal of Geophysical Research (Atmospheres)*, 104, 16 741, <https://doi.org/10.1029/1999JD900244>, 1999.

- Matrosov, S. Y.: Feasibility of using radar differential Doppler velocity and dual-frequency ratio for sizing particles in thick ice clouds, *Journal of Geophysical Research (Atmospheres)*, 116, D17202, <https://doi.org/10.1029/2011JD015857>, 2011.
- Matrosov, S. Y., Heymsfield, A. J., Kropfli, R. A., Martner, B. E., Reinking, R. F., Snider, J. B., Piironen, P., and Eloranta, E. W.: Comparisons
5 of Ice Cloud Parameters Obtained by Combined Remote Sensor Retrievals and Direct Methods, *Journal of Atmospheric and Oceanic Technology*, 15, 184, [https://doi.org/10.1175/1520-0426\(1998\)015<0184:COICPO>2.0.CO;2](https://doi.org/10.1175/1520-0426(1998)015<0184:COICPO>2.0.CO;2), 1998.
- Matrosov, S. Y., Kropfli, R. A., Reinking, R. F., and Martner, B. E.: Prospects for measuring rainfall using propagation differential phase in X- and K_a -radar bands, *Journal of Applied Meteorology*, 38, 766–776, [https://doi.org/10.1175/1520-0450\(1999\)038<0766:PFMRUP>2.0.CO;2](https://doi.org/10.1175/1520-0450(1999)038<0766:PFMRUP>2.0.CO;2), 1999.
- 10 Mishchenko, M. I.: Calculation of the Amplitude Matrix for a Nonspherical Particle in a Fixed Orientation, *Applied Optics*, 39, 1026–1031, <https://doi.org/10.1364/AO.39.001026>, 2000.
- Moisseev, D. N. and Chandrasekar, V.: Nonparametric Estimation of Raindrop Size Distributions from Dual-Polarization Radar Spectral Observations, *Journal of Atmospheric and Oceanic Technology*, 24, 1008–1018, <https://doi.org/10.1175/JTECH2024.1>, <https://doi.org/10.1175/JTECH2024.1>, 2007.
- 15 Moisseev, D. N. and Chandrasekar, V.: Polarimetric Spectral Filter for Adaptive Clutter and Noise Suppression, *Journal of Atmospheric and Oceanic Technology*, 26, 215–228, <https://doi.org/10.1175/2008JTECHA1119.1>, <https://doi.org/10.1175/2008JTECHA1119.1>, 2009.
- Moisseev, D. N., Unal, C. M. H., Russchenberg, H. W. J., and Ligthart, L. P.: Improved Polarimetric Calibration for Atmospheric Radars, *Journal of Atmospheric and Oceanic Technology*, 19, 1968, [https://doi.org/10.1175/1520-0426\(2002\)019<1968:IPCFAR>2.0.CO;2](https://doi.org/10.1175/1520-0426(2002)019<1968:IPCFAR>2.0.CO;2), 2002.
- Muth, X., Schneebeli, M., and Berne, A.: A sun-tracking method to improve the pointing accuracy of weather radar, *Atmospheric Measure-
20 ment Techniques*, 5, 547–555, <https://doi.org/10.5194/amt-5-547-2012>, 2012.
- Myagkov, A., Seifert, P., Wandinger, U., Bauer-Pfundstein, M., and Matrosov, S. Y.: Effects of antenna patterns on cloud radar polarimetric measurements, *Journal of Atmospheric and Oceanic Technology*, 32, 1813–1828, <https://doi.org/10.1175/JTECH-D-15-0045.1>, <http://dx.doi.org/10.1175/JTECH-D-15-0045.1>, 2015.
- Myagkov, A., Seifert, P., Bauer-Pfundstein, M., and Wandinger, U.: Cloud radar with hybrid mode towards estimation of shape and orienta-
25 tion of ice crystals, *Atmospheric Measurement Techniques*, 9, 469–489, <https://doi.org/10.5194/amt-9-469-2016>, 2016a.
- Myagkov, A., Seifert, P., Wandinger, U., Bühl, J., and Engelmann, R.: Shape-temperature relationships of pristine ice crystals derived from polarimetric cloud radar observations during the ACCEPT campaign, *Atmospheric Measurement Techniques Discussions*, 2016, 1–37, <https://doi.org/10.5194/amt-2015-365>, <http://www.atmos-meas-tech-discuss.net/amt-2015-365/>, 2016b.
- Otto, T. and Russchenberg, H. W. J.: Estimation of specific differential phase and differential backscatter phase from polarimetric weather
30 radar measurements of rain, *IEEE Geoscience and Remote Sensing Letters*, 8, 988–992, <https://doi.org/10.1109/LGRS.2011.2145354>, 2011.
- Oue, M., Kumjian, M. R., Lu, Y., Verlinde, J., Aydin, K., and Clothiaux, E. E.: Linear depolarization ratios of columnar ice crystals in a deep precipitating system over the Arctic observed by zenith-pointing Ka-band Doppler radar, *Journal of Applied Meteorology and Climatology*, 54, 1060–1068, <https://doi.org/10.1175/JAMC-D-15-0012.1>, 2015.
- 35 Oue, M., Kollias, P., Ryzhkov, A., and Luke, E. P.: Toward Exploring the Synergy Between Cloud Radar Polarimetry and Doppler Spectral Analysis in Deep Cold Precipitating Systems in the Arctic, *Journal of Geophysical Research: Atmospheres*, 123, 2797–2815, <https://doi.org/10.1002/2017JD027717>, <https://agupubs.onlinelibrary.wiley.com/doi/abs/10.1002/2017JD027717>, 2018.

- Pfizenmaier, L., Unal, C. M. H., Dufournet, Y., and Russchenberg, H. W. J.: Observing ice particle growth along fall streaks in mixed-phase clouds using spectral polarimetric radar data, *Atmospheric Chemistry and Physics*, 18, 7843–7862, <https://doi.org/10.5194/acp-18-7843-2018>, <https://www.atmos-chem-phys.net/18/7843/2018/>, 2018.
- 5 Prata de Moraes Frasson, R., Kindl da Cunha, L., and Krajewski, W. F.: Assessment of the Thies optical disdrometer performance, *Atmospheric Research*, 101, 237–255, 2011.
- Protat, A., Bouniol, D., Delanoë, J., May, P. T., Plana-Fattori, A., Hasson, A., O'Connor, E., Görsdorf, U., and Heymsfield, A. J.: Assessment of Cloudsat Reflectivity Measurements and Ice Cloud Properties Using Ground-Based and Airborne Cloud Radar Observations, *Journal of Atmospheric and Oceanic Technology*, 26, 1717, <https://doi.org/10.1175/2009JTECHA1246.1>, 2009.
- 10 Protat, A., Bouniol, D., O'Connor, E. J., Klein Baltink, H., Verlinde, J., and Widener, K.: CloudSat as a Global Radar Calibrator, *Journal of Atmospheric and Oceanic Technology*, 28, 445–452, <https://doi.org/10.1175/2010JTECHA1443.1>, 2011.
- Pruppacher, H. R. and Pitter, R. L.: A Semi-Empirical Determination of the Shape of Cloud and Rain Drops., *Journal of Atmospheric Sciences*, 28, 86–94, [https://doi.org/10.1175/1520-0469\(1971\)028<0086:ASEDOT>2.0.CO;2](https://doi.org/10.1175/1520-0469(1971)028<0086:ASEDOT>2.0.CO;2), 1971.
- Radenz, M., Bühl, J., Lehmann, V., Görsdorf, U., and Leinweber, R.: Combining cloud radar and radar wind profiler for a value added estimate of vertical air motion and particle terminal velocity within clouds, *Atmospheric Measurement Techniques*, 11, 5925–5940, <https://doi.org/10.5194/amt-11-5925-2018>, 2018.
- 15 Ray, P. S.: Broadband complex refractive indices of ice and water, *Applied Optics*, 11, 1836–1844, <https://doi.org/10.1364/AO.11.001836>, 1972.
- Rusli, S. P., Donovan, D. P., and Russchenberg, H. W. J.: Simultaneous and synergistic profiling of cloud and drizzle properties using ground-based observations, *Atmospheric Measurement Techniques*, 10, 4777–4803, <https://doi.org/10.5194/amt-10-4777-2017>, <https://www.atmos-meas-tech.net/10/4777/2017/>, 2017.
- Ryzhkov, A. V.: Interpretation of polarimetric radar covariance matrix for meteorological scatterers: Theoretical analysis, *Journal of Atmospheric and Oceanic Technology*, 18, 315–328, [https://doi.org/10.1175/1520-0426\(2001\)018<0315:IOPRCM>2.0.CO;2](https://doi.org/10.1175/1520-0426(2001)018<0315:IOPRCM>2.0.CO;2), 2001.
- Ryzhkov, A. V., Schuur, T. J., Burgess, D. W., Heinselman, P. L., Giangrande, S. E., and Zrnic, D. S.: The Joint Polarization Experiment: Polarimetric Rainfall Measurements and Hydrometeor Classification., *Bulletin of the American Meteorological Society*, 86, 809–824, <https://doi.org/10.1175/BAMS-86-6-809>, 2005.
- 25 Schneebeli, M. and Berne, A.: An Extended Kalman Filter Framework for Polarimetric X-Band Weather Radar Data Processing, *Journal of Atmospheric and Oceanic Technology*, 29, 711–730, <https://doi.org/10.1175/JTECH-D-10-05053.1>, <https://doi.org/10.1175/JTECH-D-10-05053.1>, 2012.
- 30 Sekelsky, S. M. and Clothiaux, E. E.: Parallax Errors and Corrections for Dual-Antenna Millimeter-Wave Cloud Radars, *Journal of Atmospheric and Oceanic Technology*, 19, 478–485, [https://doi.org/10.1175/1520-0426\(2002\)019<0478:PEACFD>2.0.CO;2](https://doi.org/10.1175/1520-0426(2002)019<0478:PEACFD>2.0.CO;2), [https://doi.org/10.1175/1520-0426\(2002\)019<0478:PEACFD>2.0.CO;2](https://doi.org/10.1175/1520-0426(2002)019<0478:PEACFD>2.0.CO;2), 2002.
- Shupe, M. D.: Clouds at Arctic atmospheric observatories. Part II: Thermodynamic phase characteristics, *Journal of Applied Meteorology and Climatology*, 50, 645–661, <https://doi.org/10.1175/2010JAMC2468.1>, 2011.
- 35 Shupe, M. D., Matrosov, S. Y., and Uttal, T.: Arctic Mixed-Phase Cloud Properties Derived from Surface-Based Sensors at SHEBA., *Journal of Atmospheric Sciences*, 63, 697–711, <https://doi.org/10.1175/JAS3659.1>, 2006.
- Shupe, M. D., Kollias, P., Persson, P. O. G., and McFarquhar, G. M.: Vertical Motions in Arctic Mixed-Phase Stratiform Clouds, *Journal of Atmospheric Sciences*, 65, 1304, <https://doi.org/10.1175/2007JAS2479.1>, 2008.

- Shupe, M. D., Walden, V. P., Eloranta, E., Uttal, T., Campbell, J. R., Starkweather, S. M., and Shiobara, M.: Clouds at Arctic Atmospheric Observatories. Part I: Occurrence and Macrophysical Properties, *Journal of Applied Meteorology and Climatology*, 50, 626–644, <https://doi.org/10.1175/2010JAMC2467.1>, 2011.
- 5 Spek, A. L. J., Unal, C. M. H., Moisseev, D. N., Russchenberg, H. W. J., Chandrasekar, V., and Dufournet, Y.: A new technique to categorize and retrieve the microphysical properties of ice particles above the melting layer using radar dual-polarization spectral analysis, *Journal of Atmospheric and Oceanic Technology*, 25, 482–497, <https://doi.org/10.1175/2007JTECHA944.1>, 2008.
- Stephens, G. L., Vane, D. G., Tanelli, S., Im, E., Durden, S., Rokey, M., Reinke, D., Partain, P., Mace, G. G., Austin, R., L’Ecuyer, T., Haynes, J., Lebsock, M., Suzuki, K., Waliser, D., Wu, D., Kay, J., Gettelman, A., Wang, Z., and Marchand, R.: CloudSat mission: Performance and early science after the first year of operation, *Journal of Geophysical Research (Atmospheres)*, 113, D00A18, <https://doi.org/10.1029/2008JD009982>, <http://dx.doi.org/10.1029/2008JD009982>, d00A18, 2008.
- 10 Storn, R. and Price, K.: Differential Evolution – A Simple and Efficient Heuristic for global Optimization over Continuous Spaces, *Journal of Global Optimization*, 11, 341–359, <https://doi.org/10.1023/A:1008202821328>, <https://doi.org/10.1023/A:1008202821328>, 1997.
- Tanelli, S., Durden, S. L., Im, E., Pak, K. S., Reinke, D. G., Partain, P., Haynes, J. M., and Marchand, R. T.: CloudSat’s Cloud Profiling Radar After Two Years in Orbit: Performance, Calibration, and Processing, *IEEE Transactions on Geoscience and Remote Sensing*, 46, 3560–3573, <https://doi.org/10.1109/TGRS.2008.2002030>, 2008.
- 15 Tokay, A., Wolff, D. B., and Petersen, W. A.: Evaluation of the New Version of the Laser-Optical Disdrometer, OTT Parsivel2, *Journal of Atmospheric and Oceanic Technology*, 31, 1276–1288, <https://doi.org/10.1175/JTECH-D-13-00174.1>, <https://doi.org/10.1175/JTECH-D-13-00174.1>, 2014.
- 20 Tridon, F. and Battaglia, A.: Dual-frequency radar Doppler spectral retrieval of rain drop size distributions and entangled dynamics variables, *Journal of Geophysical Research: Atmospheres*, 120, 5585–5601, <https://doi.org/10.1002/2014JD023023>, 2015.
- Tridon, F., Battaglia, A., Luke, E., and Kollias, P.: Rain retrieval from dual-frequency radar Doppler spectra: validation and potential for a mid-latitude precipitating case-study, *Quarterly Journal of the Royal Meteorological Society*, 143, 1364–1380, <https://doi.org/10.1002/qj.3010>, 2017.
- 25 Tridon, F., Battaglia, A., and Watters, D.: Evaporation in action sensed by multiwavelength Doppler radars, *Journal of Geophysical Research: Atmospheres*, 122, 9379–9390, <https://doi.org/10.1002/2016JD025998>, 2017.
- Trömel, S., Kumjian, M. R., Ryzhkov, A. V., Simmer, C., and Diederich, M.: Backscatter Differential Phase–Estimation and Variability, *Journal of Applied Meteorology and Climatology*, 52, 2529–2548, <https://doi.org/10.1175/JAMC-D-13-0124.1>, <http://dx.doi.org/10.1175/JAMC-D-13-0124.1>, 2013.
- 30 Unal, C.: Spectral Polarimetric Radar Clutter Suppression to Enhance Atmospheric Echoes, *Journal of Atmospheric and Oceanic Technology*, 26, 1781–1797, <https://doi.org/10.1175/2009JTECHA1170.1>, <https://doi.org/10.1175/2009JTECHA1170.1>, 2009.
- Unal, C. M. H. and Moisseev, D. N.: Combined Doppler and Polarimetric Radar Measurements: Correction for Spectrum Aliasing and Nonsimultaneous Polarimetric Measurements, *Journal of Atmospheric and Oceanic Technology*, 21, 443, [https://doi.org/10.1175/1520-0426\(2004\)021<0443:CDAPRM>2.0.CO;2](https://doi.org/10.1175/1520-0426(2004)021<0443:CDAPRM>2.0.CO;2), 2004.
- 35 Wang, Z. and Sassen, K.: Cloud Type and Macrophysical Property Retrieval Using Multiple Remote Sensors., *Journal of Applied Meteorology*, 40, 1665–1683, [https://doi.org/10.1175/1520-0450\(2001\)040<1665:CTAMPR>2.0.CO;2](https://doi.org/10.1175/1520-0450(2001)040<1665:CTAMPR>2.0.CO;2), 2001.
- Xie, X., Evaristo, R., Troemel, S., Saavedra, P., Simmer, C., and Ryzhkov, A.: Radar Observation of Evaporation and Implications for Quantitative Precipitation and Cooling Rate Estimation, *Journal of Atmospheric and Oceanic Technology*, 33, 1779–1792, <https://doi.org/10.1175/JTECH-D-15-0244.1>, 2016.



Figure 1. Impressions of the two FMCW W-Band radars used in this study as indicated in Table 2. Photos courtesy of the radar owners.

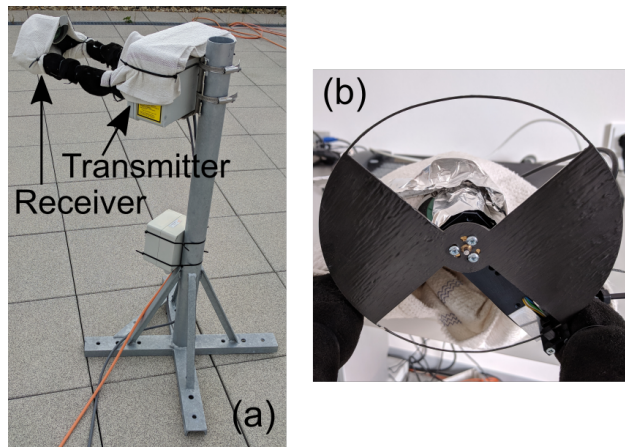


Figure 2. The Laser Precipitation Monitor (LPM) at the RPG site (a). Metal surfaces close to the laser beam are covered with spongy/cotton material for splashing mitigation. The chopper wheel (b) was mounted on side of the LPM detector for testing data transmission rate (see text for details).

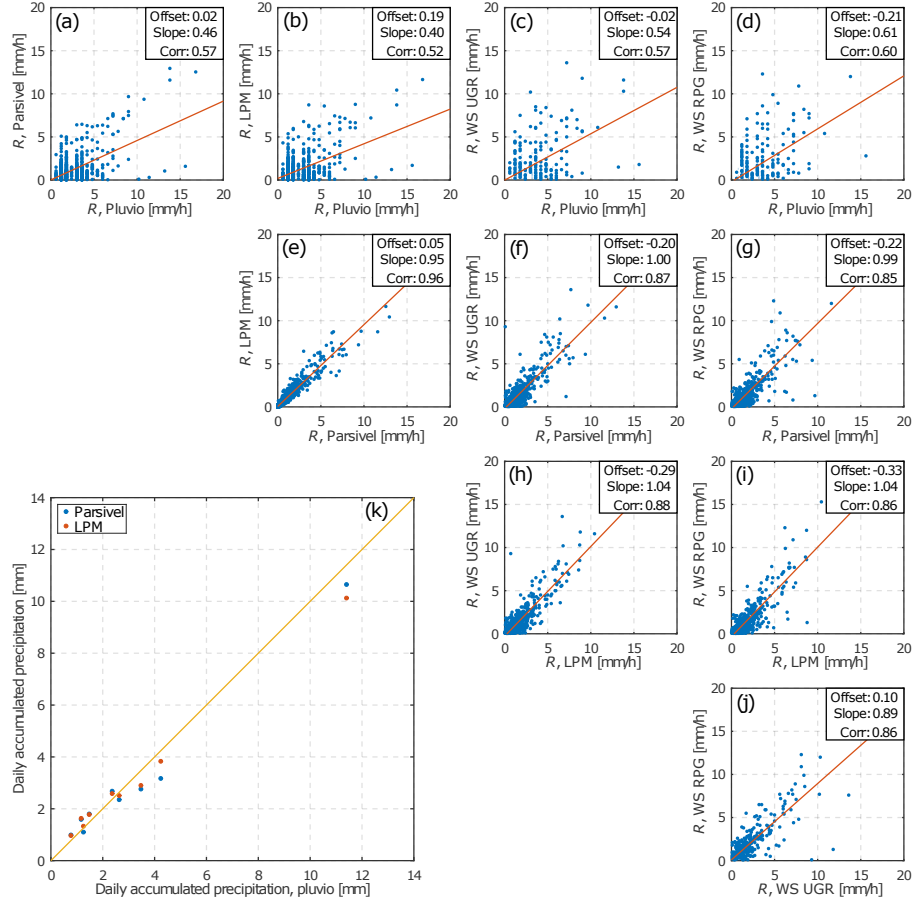


Figure 3. A comparison of one-minute rain rates observed by Pluvio, Parsivel, LPM, and the two WXT520 weather stations attached to the radars (a-j). The weather stations of radars 1 and 2 are denoted as WS UGR and WS RPG, respectively. The dataset from the TRIPEX-pol campaign (1 Nov 2018 to 6 Dec 2018) contains 391 minutes of rainfall detected by all sensors simultaneously. Each subplot contains estimated offset and slope of a linear fit (red line) as well as the Pierson correlation coefficient. Panel (k) shows a comparison of the daily accumulated precipitation from Pluvio, Parsivel, and LPM from 10 precipitating days. The yellow line is the one-to-one relation.

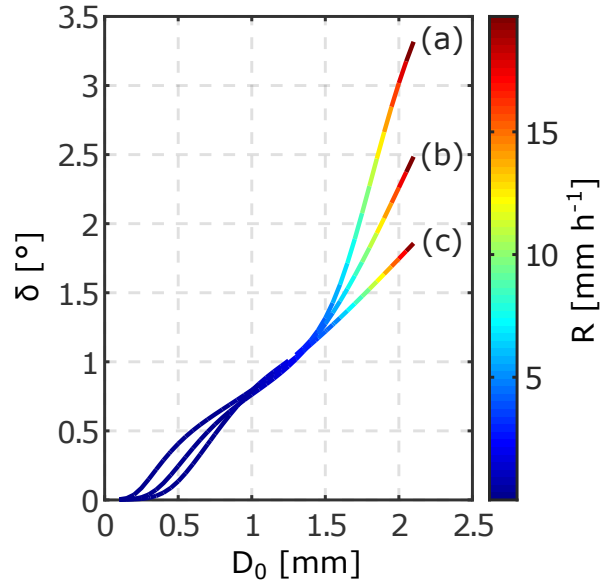


Figure 4. Simulated relations between the backscattering differential phase ~~shift~~ δ and the median drop diameter D_0 at 94 GHz. The curves show simulations for DSDs with $N_L = 2500 \text{ mm}^{-1} \text{ m}^{-3}$ and μ equal to 5 (a), 0 (b), and 15 (c). The corresponding rain rate R is color-coded; maximum rain rate for all simulations is limited to values smaller than 20 mm h^{-1} . The calculations are made for 20°C and 30° elevation angle.

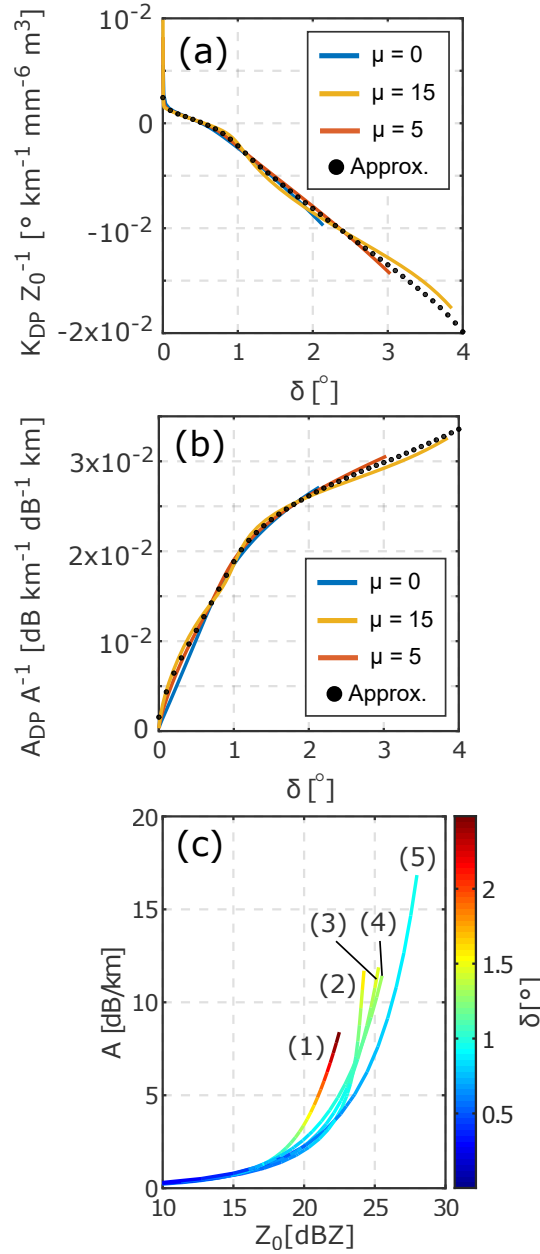


Figure 5. Relations between K_{DP} , Z_0 , and δ (a); A_{DP} , A , and δ (b); A , Z_0 , and δ (c) at 94 GHz. The solid lines show the calculations for different DSD, the black dots denote the fitted approximations (Eq. 1 (a) and Eq. 2 (b)). In panel (c) the calculations are made for $\mu = 5$ and $N_L = 2500 \text{ mm}^{-1} \text{ m}^{-3}$ (d1), $\mu = 5$ and $N_L = 8000 \text{ mm}^{-1} \text{ m}^{-3}$ (e2), $\mu = 5$ and $N_L = 25000 \text{ mm}^{-1} \text{ m}^{-3}$ (f3), $\mu = 0$ and $N_L = 8000 \text{ mm}^{-1} \text{ m}^{-3}$ (g4), and $\mu = 15$ and $N_L = 8000 \text{ mm}^{-1} \text{ m}^{-3}$ (h5). The rain rates are all smaller than 20 mm h^{-1} . All calculations are made for 30° elevation angle and a temperature of 20°C . The units of Z_0 , A , K_{DP} , and A_{DP} in the panels (a) and (b) are $\text{mm}^6 \text{ m}^{-3}$, dB km^{-1} , $^{\circ} \text{ km}^{-1}$, and dB km^{-1} , respectively.

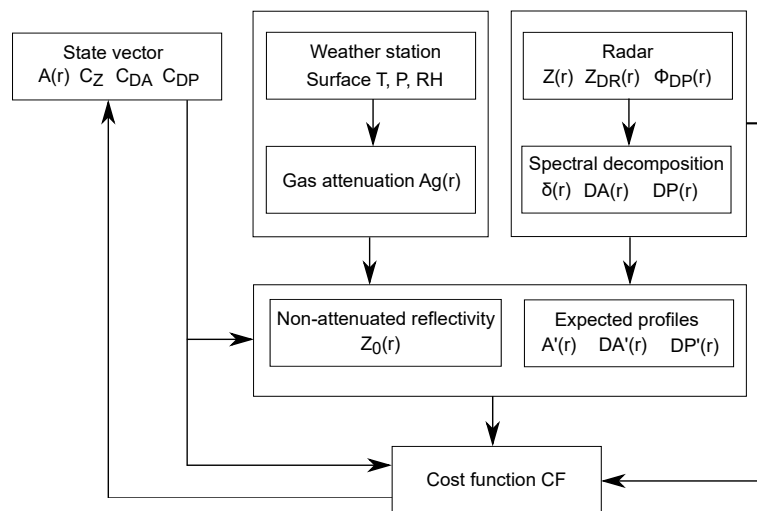


Figure 6. Schematic illustrating the processing steps of the self-consistency method. A detailed description can be found in text.

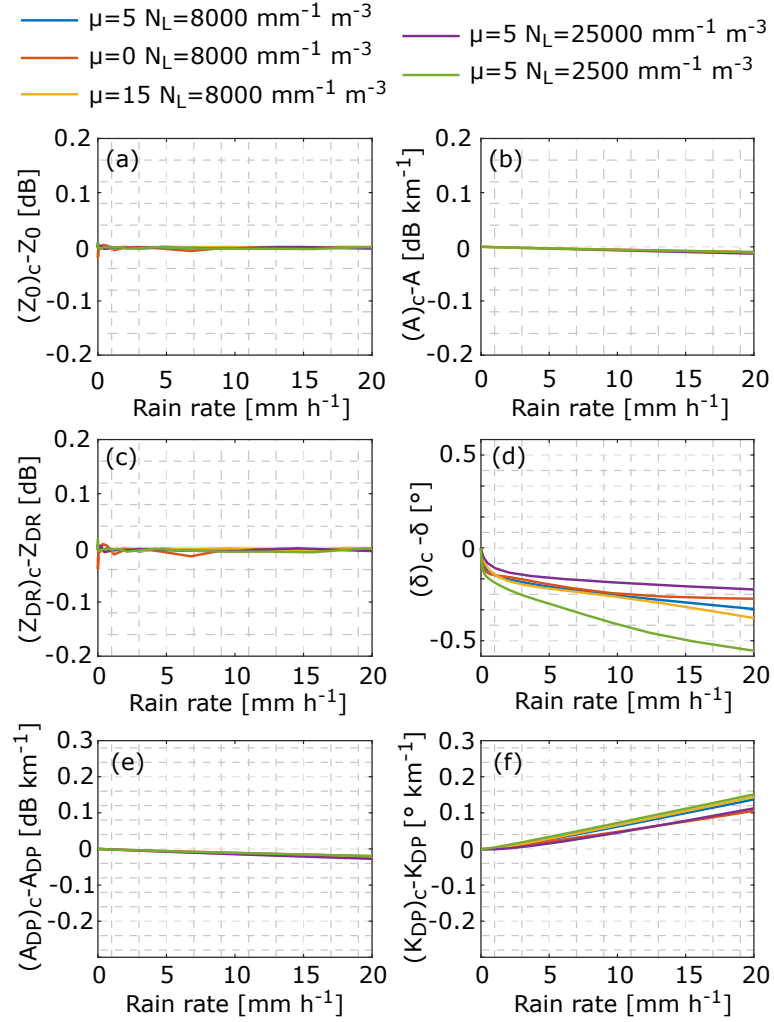


Figure 7. Differences between reflectivity (a), specific attenuation (b), differential reflectivity (c), backscattering differential phase (d), differential attenuation (e), and specific differential phase (f) calculated with 10 and 0° standard deviation of the canting angle distribution. Variables calculated with 10° are indicated by the index "c". The differences are shown for different DSDs indicated by line colors.

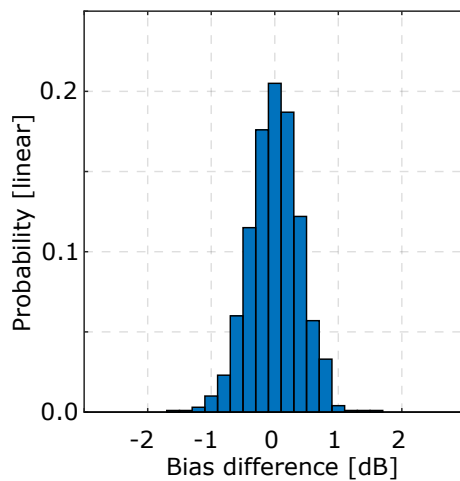


Figure 8. Estimated uncertainty of the reflectivity calibration coefficient C_Z using the the self-consistency method (Sec. 3). Various rain DSDs were used to simulate ideal profiles of radar variables. Random noise was then added to these profiles and several calibration coefficients before applying the self-consistency method (see also details in the text). The distribution shows the difference between original C_Z and the retrieved value. The 5th and 95th percentiles, and the standard deviation of the distribution are -0.7, 0.7, and 0.4 dB, respectively.

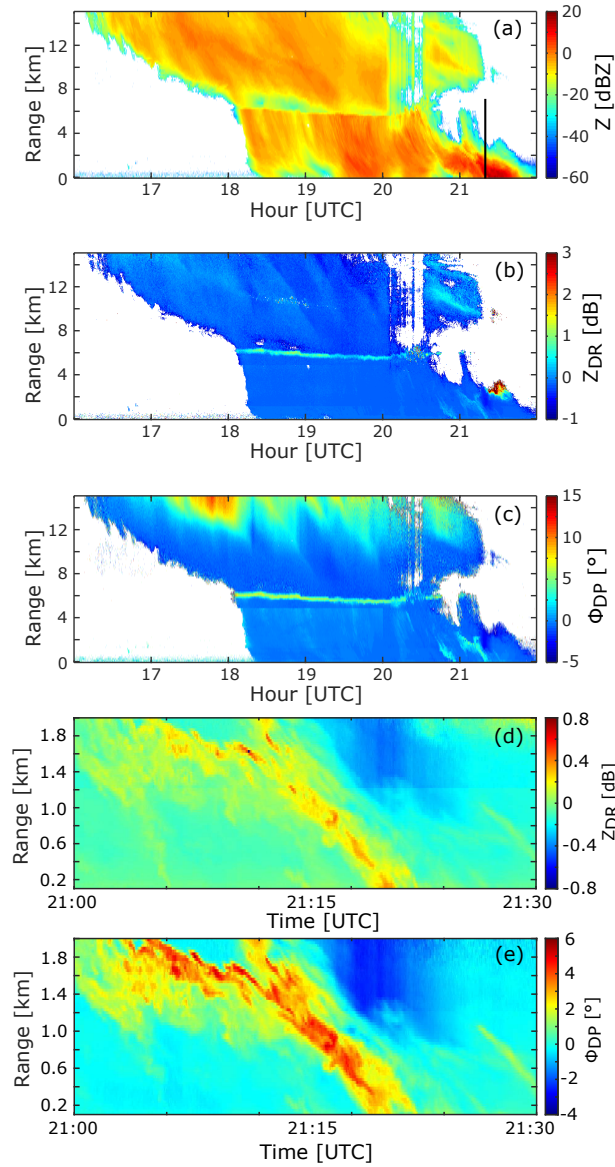


Figure 9. Time-range cross sections of radar reflectivity (a), differential reflectivity (b), and differential phase (c). Panels (d) and (e) are a zoomed view of differential reflectivity and differential phase, respectively. The observations were taken by the radar 2-1 on 9 June 2018 in Meckenheim, Germany. The radar was pointed to 30° elevation. Range corresponds to the slanted distance from the radar. The black vertical line indicates in (a) indicates the time sample used for the spectral analysis shown in Fig. 10.

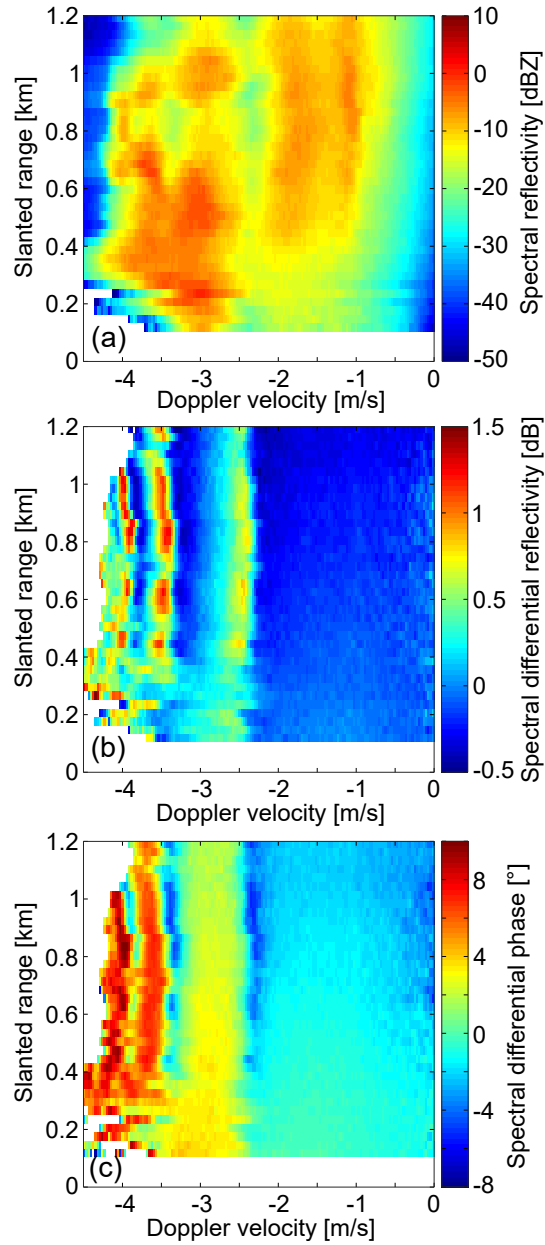


Figure 10. Range profiles of Doppler spectra of reflectivity (a), differential reflectivity (b), and differential phase (c). The measurements were taken by the radar [2-I](#) on 9 June 2018 at 21:19:23 UTC in Meckenheim, Germany. The radar was pointed to 30° elevation. Negative velocities indicate movements towards the radar. Relatively slow (small) drops are at the right side of the spectrum profile, while the fast falling (big) drops are at the left side. Note that in order to make the figure easier to interpret, the horizontal wind contribution has been roughly mitigated by shifting the right most detected spectral line of a spectrum to 0 m s^{-1} .

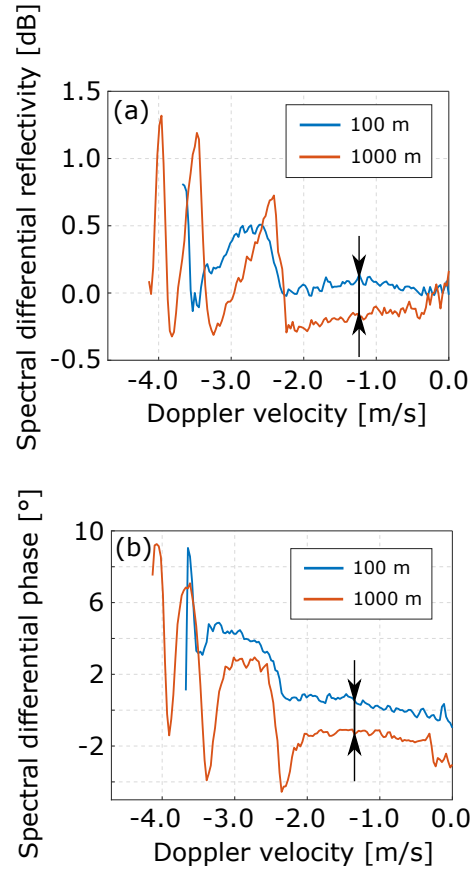


Figure 11. Doppler spectra of differential reflectivity (a) and differential phase (b) taken at 0.1 (blue lines) and 1 km (red lines) for the case shown in Fig. 10. The differences between the observations in the area of relatively slowly moving particles indicated by the arrows are associated with the propagation effects, namely differential attenuation in (a) and propagation differential phase ~~shift~~in (b).

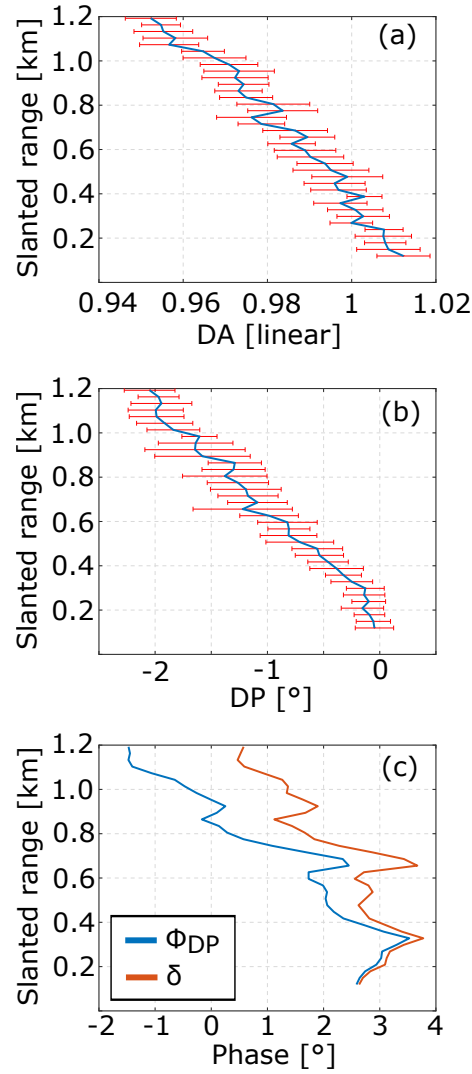


Figure 12. Profiles of differential attenuation DA (a) and differential phase DP (b) which are solely due to propagational effects. The profiles have been derived using the spectral decomposition technique illustrated in Fig. 11 applied to the profiles of spectra shown in Fig. 10. Blue lines and red bars indicate mean values and ± 1 standard deviation, respectively. Panel (c) shows profiles of ~~total~~differential phase ~~shift~~ Φ_{DP} (blue) and δ (red).

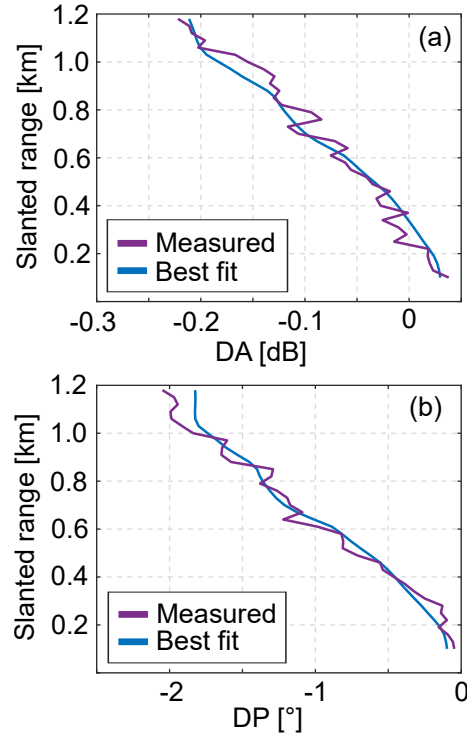


Figure 13. Range profiles of DA (a) and DP (b). Blue solid lines correspond to the best fit found by the self-consistency method for radar [2](#) [1](#) with $C_Z = -0.7$ dB. The magenta lines represent profiles estimated from the measurements (shown by blue lines in Fig. 12). The results are obtained for the case shown in Figs. 10 and 12.

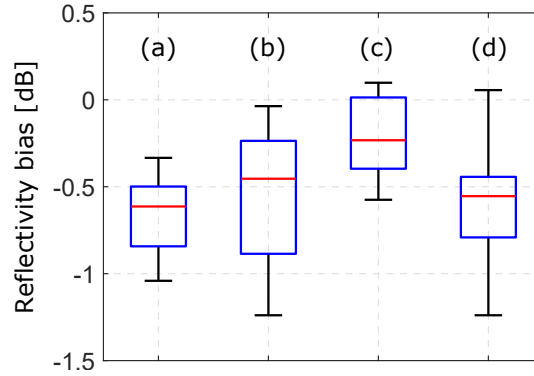


Figure 14. Reflectivity biases due to the calibration coefficient C_Z estimated using the self-consistency method applied to observations at 30° elevation angle during rain events on 9 June 2018 at 21 UTC (a), 20 July 2018 at 17 UTC (b), and 28 July 2018 at 11:22 UTC (c). The box (d) shows the results for all 64 available samples. The measurements were taken with the radar [2-1](#) at the RPG site. The total number of samples are 45 for (a), 11 for (b), and 8 for (c). The upper and lower edges of the boxes correspond to 75th and 25th percentiles, respectively. The upper and lower whiskers indicate 95th and 5th percentiles, respectively. The horizontal red bars correspond to median values.

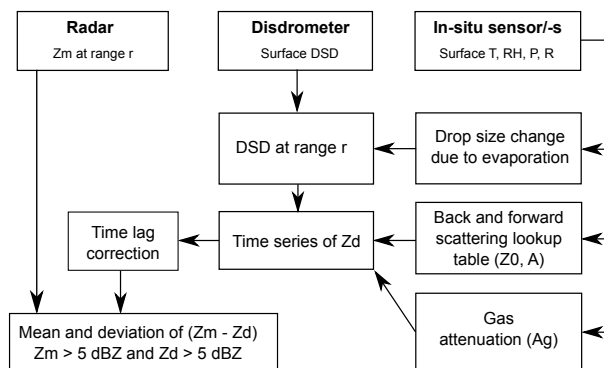


Figure 15. Schematic illustration of the extended disdrometer-based method. Detailed descriptions can be found in text.

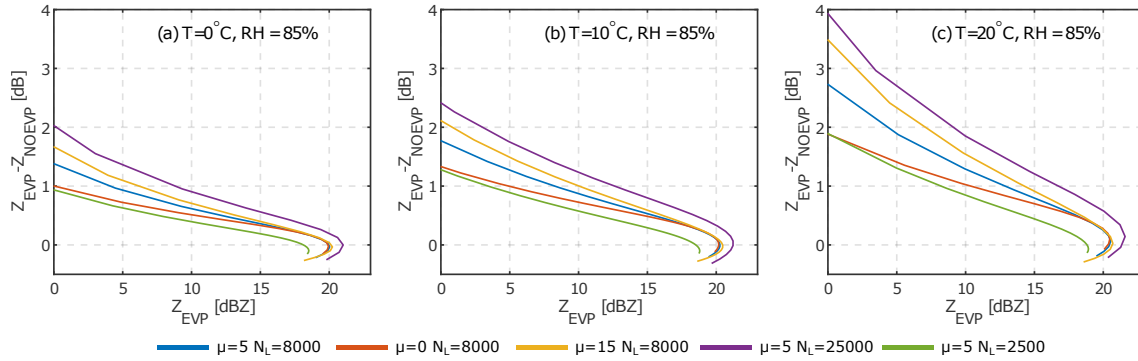


Figure 16. Simulated impact of evaporation on the simulated reflectivity at 250 m range for DSDs measured at the surface. Z_{NOEVP} is the reflectivity at 250 m range calculated with DSDs assumed at the surface without taking evaporation into account. Z_{EVP} is the reflectivity at 250 m range assumed for the same surface rain DSDs but corrected for drop evaporation within the 250 m layer. For the shown evaporation scenario, surface temperature and humidity are assumed to be 10°C and 85%, respectively. Color denotes simulations with different rain DSD parameters. [The effect of "bending" at \$Z_{EVP}\$ values around 20 dBZ results from faster increase of attenuation with rain rate relative to non-attenuated reflectivity \(Hogan et al., 2002\).](#)

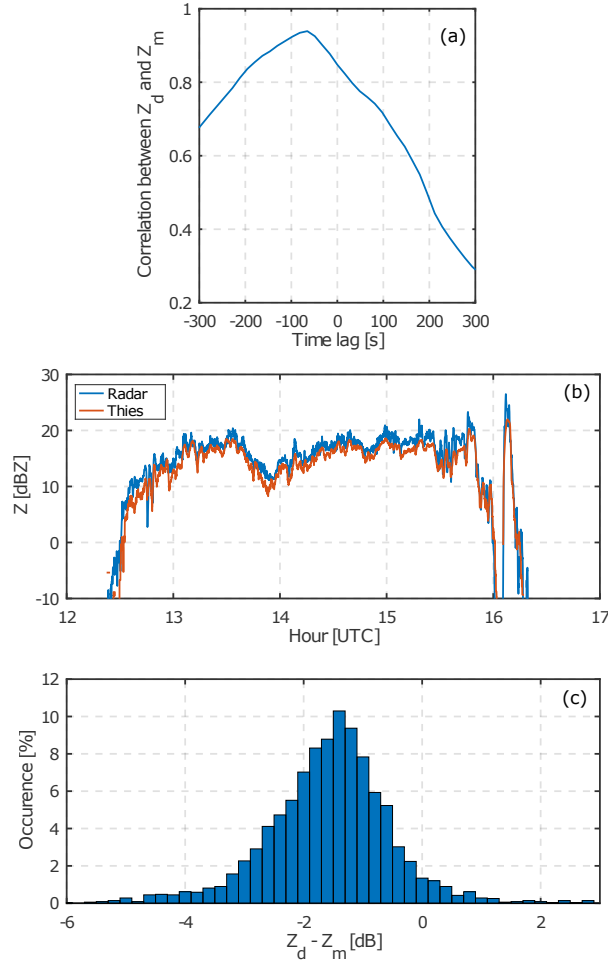


Figure 17. Correlation (a) between Z_d and Z_m at 250 m distance from the radar for the rain event on 1 November 2018 observed by radar [1](#) and [2](#). Various time lags are successively applied in order to detect the most likely time delay (maximum correlation) between 250 m range and surface level. Time series (b) of the reflectivity Z_m measured by the radar [1](#) and [2](#) at 250 m altitude (blue line) and the reflectivity Z_d modeled from the LPM observations (red line). Panel (c) shows the distribution of $Z_d - Z_m$. Only 3 s samples for which Z_d and Z_m exceed 5 dBZ are used. The mean reflectivity difference is -1.2 ± 0.3 dB. The standard deviation of the mean is calculated according to Appendix C.

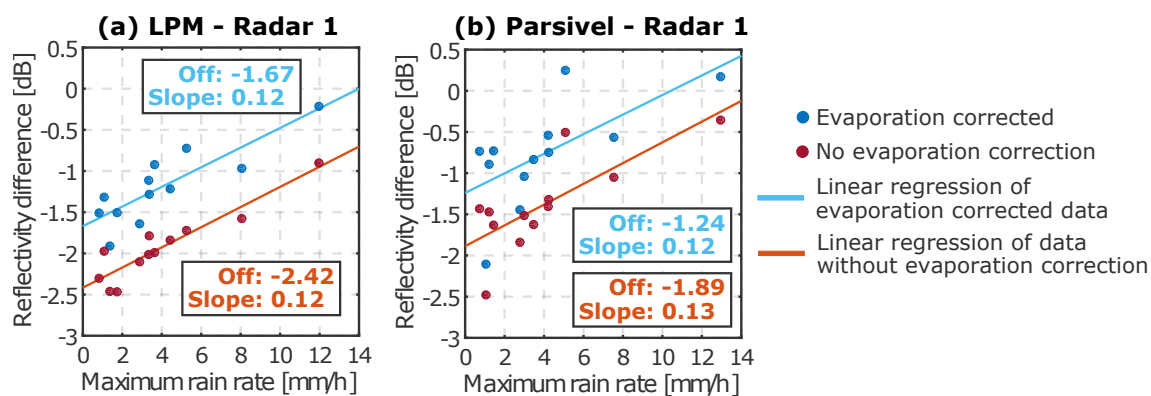


Figure 18. The results of the disdrometer-based method from 12 rain events. The calibration evaluation is made for the radar-2 using LPM (a) and Parsivel (b). Each dot represents a result for a single rain event. Solid lines show linear regressions. Offsets and slopes of the regressions are given in corresponding boxes. Color of dots and lines indicates whether the evaporation correction has been applied (blue) or not (red).

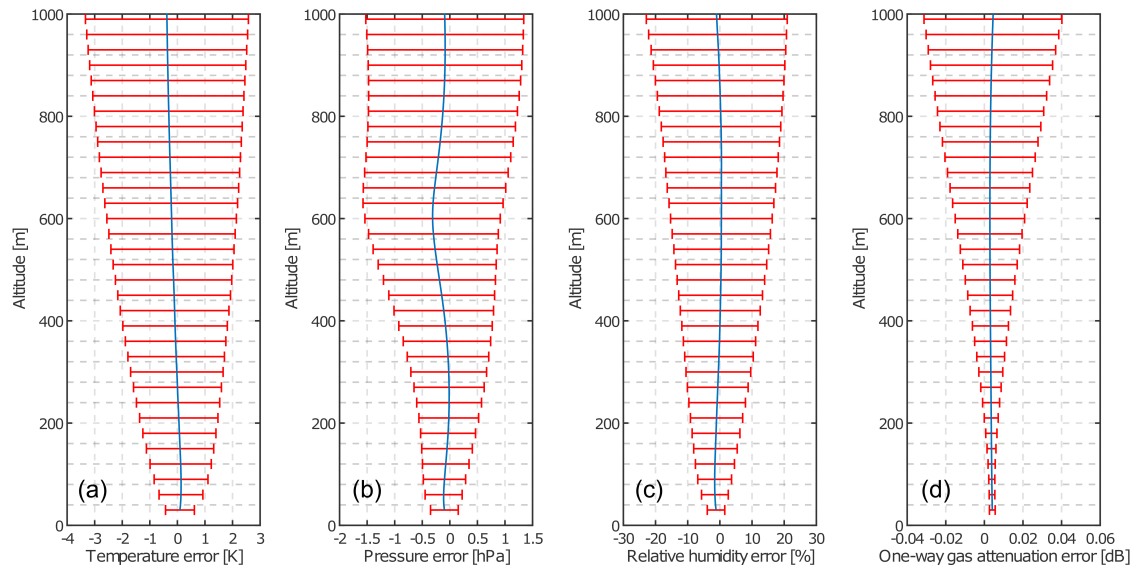


Figure 19. Uncertainties in the derived profiles of temperature (a), pressure (b), relative humidity (c), and one-way gas attenuation (d) when using only surface values from a weather station. The uncertainties have been estimated with a large set of radiosonde profiles restricted to a minimum surface relative humidity of 65%. The blue lines and the red bars show mean and \pm one standard deviation of the corresponding difference, respectively.

Table 1. Some key technical specifications of the analyzed W-Band radars.

Parameter	Value
Center frequency [GHz]	94
Transmitted power (at antenna output) [W]	1.5
Antenna type	2 Cassegrain
Antenna gain [dB]	50.1
Antenna beam width [$^{\circ}$]	0.56
Intermediate frequency range [kHz]	300 - 3700
Receiver type	homodine
System noise figure [dB]	4.5

Table 2. Information of type, data periods, and calibration of the radars used for this study.

No.	Polarimetry	Operation	Radome exchange	Receiver calibration	Transmitter calibration	Observation periods
1	Linear depolarization ratio (LDR) <u>Simultaneous</u> <u>transmission and</u> <u>simultaneous reception</u> <u>(STSR) mode</u>	Zenith <u>Scanning</u>	1.10.2018 <u>Oct 2018</u>	25.05.2018 6.11.2018	Spring 2018 <u>2017</u>	<u>Summer 2018, Meckenheim,</u> 1.11.2018 to 28.02 <u>31.01</u> .2019, Jülich
2	Simultaneous transmission and simultaneous reception (STSR) <u>Linear</u> <u>depolarization ratio</u> <u>(LDR) mode</u>	Scanning <u>Zenith</u>	Oct 2018 <u>1.10.2018</u>	30.05.2018 6.11.2018	Spring 2018 <u>2017</u> Summer 2018 ; Meckenheim;	1.11.2018 to 31.01 <u>28.02</u> .2019, Jülich

Table 3. Ranges of values for differential evolution (DE) used in the self-consistency method.

Variable	Minimum	Maximum	Units
A	0	25	dB km ⁻¹
C_Z	-6	6	dB
C_{DA}	-0.05	0.05	dB
C_{DP}	-0.2	0.2	°

Table A1. Coefficients a_{1-10} for the ratio K_{DP}/Z_0 in Eq. 1. The coefficients were calculated for 30° elevation.

Index	0°C	10°C	20°C	30°C
1	1.2009	−1.1258	−2.8779	−1.8256
2	0.57645	0.40592	−3.3353	3.9987×10^{-3}
3	−0.63757	−0.29526	−3.9686	−0.46699
4	1.1668	1.7753	6.1885×10^{-4}	−3.0455
5	−0.58585	0.47124	5.6427	−1.2881
6	0.65202	−0.39622	−2.9301	1.2233
7	1.1906	0.70655	3.1233	−3.0428
8	-1.2823×10^{-2}	−0.54765	-1.4422×10^{-2}	1.2892
9	0.21614	0.51483	−1.6498	−1.2249
10	−0.24463	1.2125×10^{-2}	2.6475×10^{-2}	−0.79335

Table A2. Coefficients b_{1-10} for the ratio A_{DP}/A in Eq. 2. The coefficients were calculated for 30° elevation.

Index	0°C	10°C	20°C	30°C
1	-8.2211×10^{-3}	-4.5595×10^{-2}	1.794×10^{-3}	1.9692
2	1.2129	-0.77215	3.348	-2.1116
3	0.53705	0.86755	-2.9703	0.87381
4	10.658	-3.3521×10^{-2}	0.48458	1.9814
5	7.5556×10^{-2}	0.87027	0.49678	2.105
6	1.2967	-1.2025	1.9062	-0.87086
7	1.4359	-0.21182	4.9308×10^{-2}	-3.6404
8	-0.13421	-1.2072×10^{-2}	0.23934	-1.1534×10^{-3}
9	-0.19654	3.9624×10^{-2}	-2.1627	-3.2384×10^{-2}
10	-8.8884	1.6606×10^{-2}	-0.41128	-0.1098

Table A3. Coefficients c_{1-17} for A in Eq. 3. The coefficients were calculated for 30° elevation.

Index	0°C	10°C	20°C	30°C
1	40.205	219.03	-59.016	284.28
2	-7.0826×10^{-2}	0.23509	5.1985×10^{-2}	0.20864
3	-2.3107	4.7215×10^{-5}	2.3352	8.2423×10^{-5}
4	-0.57936	-0.33685	0.58912	-0.3047
5	97.864	135.85	-194.27	130.09
6	-0.92476	-0.24005	0.22257	-0.18727
7	-8.579×10^{-4}	8.2907×10^{-4}	-6.3754×10^{-4}	-7.8938×10^{-4}
8	0.57887	0.42938	-0.40174	8.4885×10^{-2}
9	-89.12	-84.345	331.89	160.48
10	-8.2716×10^{-3}	0.2336	0.21176	-0.22374
11	-7.8008×10^{-4}	1.0573×10^{-3}	5.3636×10^{-5}	6.816×10^{-4}
12	-0.31605	-0.14118	-0.30519	0.4095
13	-96.211	9.2789	-142.34	96.122
14	-0.93417	-8.079×10^{-2}	0.19708	-5.9172×10^{-2}
15	-4.8612×10^{-4}	-2.2057	7.7241×10^{-4}	-2.2104
16	0.58409	-0.51589	-0.1073	-0.51291
17	12.477	13.823	68.223	107.13

Table A4. Coefficients for D_{250} in Eq. A6.

Index	g	p	q	u	α
1	-20.127	0.68097	-2.4517×10^{-3}	-7.2329×10^{-3}	0.86151
2	20.19	-0.51637	1.6484×10^{-3}	-1.0423×10^{-3}	-0.84634
3	-19.996	2.8944×10^{-2}	-1.3688×10^{-3}	-9.1852×10^{-3}	-0.7242
4	-20.054	-0.1005	1.5558×10^{-3}	8.7377×10^{-3}	0.26384
5	-20.176	6.129×10^3	1.3961×10^3	-3.2785×10^4	-3.3515×10^2
6	-19.919	-0.72646	2.2635×10^{-3}	4.6927×10^{-3}	-0.62472
7	24.614	4.5325×10^4	5.0256×10^3	-6.6315×10^3	1.0859×10^4
8	20.019	-4.0408×10^{-2}	1.0534×10^{-3}	5.0666×10^{-3}	9.138×10^{-2}
9	19.928	0.32405	-1.8539×10^{-3}	-6.4004×10^{-3}	1.2194
10	-24.296	-1.6549×10^4	-1.6845×10^3	1.6804×10^3	1.8939×10^4