

Using Two-Stream Theory to Capture Fluctuations of Satellite-Perceived TOA SW Radiances Reflected from Clouds over Ocean

Florian Tornow^{1,2,3}, Carlos Domenech⁴, Howard W. Barker⁵, René Preusker¹, and Jürgen Fischer¹

¹Institute for Space Sciences, Freie Universität Berlin, Berlin, Germany

²Earth Institute, Columbia University, New York, NY, USA

³NASA GISS, New York, NY, USA

⁴GMV, Madrid, Spain

⁵Environment and Climate Change Canada, Toronto, Ontario, Canada

Correspondence: florian.tornow@fu-berlin.de

Abstract. Shortwave (SW) fluxes estimated from broadband radiometry rely on empirically gathered and hemispherically resolved fields of outgoing top-of-atmosphere (TOA) radiances. This study aims to provide more accurate and precise fields of TOA SW radiances reflected from clouds over ocean by introducing a novel semi-physical model predicting radiances per narrow sun-observer geometry. ~~Like previous approaches,~~ This model was statistically trained using CERES-measured radiances paired with MODIS-retrieved cloud parameters as well as reanalysis-based geophysical parameters. By using radiative transfer approximations as a framework to ingest above parameters, the new approach incorporates cloud-top effective radius and above-cloud water vapor in addition to traditionally used cloud optical depth, cloud fraction, cloud phase, and surface wind speed. A two-stream cloud albedo—serving as a function of to statistically incorporate cloud optical thickness and cloud-top effective radius—and Cox-Munk ocean reflectance were used to describe an albedo over each CERES footprint. Effective radius-dependent asymmetry parameters were obtained empirically and separately for each viewing-illumination geometry. A simple equation of radiative transfer, with this albedo and attenuating above-cloud water vapor as inputs, was used in its log-linear form to allow for statistical optimization. We identified the two-stream cloud albedo functional form that minimized radiance residuals calculated against CERES observations and outperformed the state-of-the-art approach for most observer-geometries outside the sun-glint and solar zenith angles between 20° and 70°, reducing median standard deviations of radiance residuals per solar geometry by up to 13.2% for liquid clouds, 1.9% for ice clouds, and 35.8% for footprints containing both cloud phases. Geometries affected by sun-glint (constituting between 10% and 1% of the discretized upward hemisphere for solar zenith angles of 20° and 70°, respectively), however, often showed weaker performance when handled with the new approach and had increased residuals by as much as 60% compared to the state-of-the-art approach. Overall, uncertainties were reduced for liquid-phase and mixed-phase footprints by 5.76% and 10.81%, respectively, while uncertainties for ice-phase footprints increased by 0.34%. Tested for a variety of scenes, we further demonstrated the plausibility of scene-wise predicted radiance fields. This new approach may prove useful when employed in Angular Distribution Models and may result in improved flux estimates, in particular dealing with clouds characterized by small or large droplet/crystal sizes.

1 Introduction

Radiative fluxes at top-of-atmosphere (TOA) inferred from satellite observations serve many purposes. Instantaneous flux estimates paired with properties of underlying clouds, aerosols, atmospheric gases, and Earth’s surface may inform us about the radiative effect of each component of Earth’s radiation budget (e.g. Loeb and Manalo-Smith, 2005; Li et al., 2011; Thorsen et al., 2018). TOA fluxes may also help to constrain uncertainties concerning cloud-aerosol-radiation interactions, which will be tested in the EarthCARE satellite mission (Illingworth et al., 2015). In EarthCARE’s radiative closure assessment, observation-based fluxes will be used to help continuously assess both active-passive retrievals of cloud and aerosol properties, and results from radiative transfer simulations performed on them (Barker et al., 2011; Barker and Wehr, 2012). Integrals of estimated fluxes over large areas and long time spans (Loeb et al., 2018) help us understand the Earth-atmosphere system’s current radiation budget (e.g. Stephens et al., 2012), thus helping to verify global climate models (e.g. Bender et al., 2006; Boucher et al., 2013; Calisto et al., 2014; Nam et al., 2012).

Inferring fluxes from satellite-based radiometry involves a number of steps. The key challenge for solar fluxes, the general focus of this paper, is that constituents such as clouds reflect solar radiation unevenly across the upward hemisphere and we need to assume how measurements from a subset of directions relate to radiances in directions not viewed. The intention is to adequately represent hemispheric distributions of radiances such that when integrated yield accurate flux estimates. The solution to this challenge has been empirical angular distribution models (ADMs) that learn, via statistical approaches, hemispherically-resolved radiance fields associated with atmospheric scenes using ~~months~~ **years** of satellite observations. For clouds over ocean, the specific concern of this paper, early efforts (Suttles et al., 1988; Smith et al., 1986) worked with ERBE (Earth Radiation Budget Experiment) radiometry as well as GOES (Geostationary Operational Environmental Satellite) measurements and defined four scene types ranging in cloud coverage (**including “clear ocean” that used a cloud cover up to 5%, two cloudy scene types over ocean, and “overcast” that blended all surface types**). Observations were sorted to produce mean radiances per observed angular ranges for each illumination geometry. Using CERES (Clouds and the Earth’s Radiant Energy) and VIRS (Visible and Infrared Scanner) on the TRMM (Tropical Rainfall Measuring Mission) satellite, Loeb et al. (2003) refined this method and sorted observations into combinations of 12 cloud coverage classes and 14 cloud optical thickness groups and treated ice and liquid phase clouds separately. Instead of a discrete scene type definition, Loeb et al. (2005) defined a continuous description of scene type for the Terra mission, using a sigmoidal function to fit cloud optical thickness and cloud fraction based on MODIS (Moderate Resolution Imaging Spectroradiometer) measurements with CERES-measured TOA shortwave (SW) radiances. They treated footprints containing both ice and liquid phase clouds (throughout the paper referred to as “mixed phase”) separately from pure ice and liquid cases. Much of their state-of-the-art methodology was adapted for the Aqua mission (also hosting CERES and MODIS instruments) using improved cloud algorithms and longer data records (Su et al., 2015).

A recent case study (Tornow et al., 2018) focused on marine Stratocumulus-like clouds of optical thickness $\tilde{\tau} \approx 10$ and identified additional parameters that influence ADMs: above-cloud water vapor $ACWV$ and layer mean cloud-top effective radius $\overline{R_e}$. They showed that ignoring these parameters could cause deviations in instantaneous flux estimates of about 10

Wm⁻². This suggests the non-negligible role of **solar absorption and** single-scattering for determination of cloud reflectance patterns. Features of single-scattering, such as the cloud bow and glory for liquid clouds or the specular reflection peak for ice clouds, were generally visible in earlier ADMs (e.g. Loeb et al., 2005). These features – solely shaped by the particle phase function that largely depends on particle shape and size – can occur for a wide range of cloud optical thicknesses. Using simulated radiance fields, Gao et al. (2013) demonstrated that scattering regimes, ranging from foremost single-scattering to Lambertian-like multi-scattering mediums, are functions of the cloud optical thickness. For an intermediate regime, which showed single-scattering features, Gao et al. speculated that the uppermost $\tau \approx 1$ of cloud is responsible for single-scattering contributions.

This study presents a novel ~~semi-statistical~~ **semi-physical** model that predicts TOA SW radiances for cloudy scenes over ocean for narrow ranges of Sun-observer angles. Estimates are sensitive to $\overline{R_e}$ and $ACWV$, and are compared to results from the state-of-the-art methodology. This new approach used the two-stream approximation to ~~explain cloud albedo based on~~ **statistically ingest** MODIS cloud properties and other geophysical auxiliary parameters. We began by finding the framework of approximations that best explained CERES-observed radiance fluctuations and then demonstrated that semi-physical log-linear models produced tenable radiance fields.

Section 2 presents data from Aqua and Terra satellites used in the current study. Section 3 explains both the state-of-the-art methodology for radiances estimation and the new approach. Section 4 identifies optimal solutions and assesses their properties. Section 5 discusses results and conclusions.

2 Data

Measured TOA SW radiances paired with scene properties – including imager-based cloud properties and further geophysical auxiliary parameters – were obtained from the CERES Ed4SSF (Edition 4.0 Single Scanner Footprint) dataset of Aqua and Terra satellite missions, primarily from days during years 2000-2005 when CERES instruments were measuring in rotating azimuth plane scan mode to provide angular coverage for ADM construction.

We extracted parameters concerning CERES broadband radiometry. Apart from upwelling unfiltered TOA SW radiances I^* , covering the spectral range of 0.4-4.5 μ m, and their angular geometry (i.e. solar zenith angle θ_0 , viewing zenith angle θ_v , and relative azimuth angle φ), we collected downwelling TOA SW fluxes F^\downarrow that incorporate each measurements' prevalent Sun-Earth-distance which allowed normalization of gathered radiances via $I = I^* \frac{S_0 \cos \theta_0}{F^\downarrow}$, with solar constant $S_0 = 1361.0$ Wm⁻².

Collocated to each CERES footprint, the SSF dataset summarizes cloud property retrievals (Sun-Mack et al., 2018) on the MODIS pixel level taking into account the CERES point spread function (PSF) (Wielicki et al., 1996) and reports properties for up to two cloud layers per footprint (given that both layer's cloud-top pressure differed by 50 hPa or more; Loeb et al., 2003). We extracted layer cloud fraction f , several statistics on the retrieved field of cloud optical depth τ (layer average of its logarithm $\bar{\tau} = e^{\overline{\log \tau}}$, layer average $\bar{\tau}$, and layer standard deviation $\sigma(\tau)$), as well as layer mean values of cloud ~~partiele~~ **condensate** phase ϕ (i.e. **liquid, ice, or a mixture of both**; involving MODIS band 3.7 μ m), effective radii of water or ice particles

Table 1. Number of CERES footprints obtained after screening for marine clouds. Number are shown in million; in total 1 711 937 663 footprints.

Year	No. of CERES footprints ($\times 10^6$)		
	Terra	Aqua	Mode
	(FM1 & FM2)	(FM3 & FM4)	
2000	164.02	/	RAPS
2001	228.10	/	RAPS
2002	236.74	84.39	RAPS
2003	236.60	203.30	RAPS
2004	243.53	245.65	RAPS
2005	6.05	63.56	RAPS

90 $\overline{R_e}$ (using band $3.7\mu\text{m}$), and cloud-top pressure p^{ctop} . A quality flag summarizing the retrieval confidence (using the parameter “Note for cloud layer” from the SSF dataset) was also collected.

Additional geophysical auxiliary parameters provided in the SSF dataset were extracted. We obtained a surface broadband albedo α^{surface} , surface IGBP (International Geosphere-Biosphere Programme) types, and 10 m surface wind speed w_{10m} . The wind speed parameter stemmed from GEOS data assimilation version 5.4.1.

95 Lastly, to incorporate above-cloud water vapor $ACWV$ into our analysis, we used layer mean cloud top pressure (of the layer with larger cloud fraction) and extracted from ERA-20C (ECMWF twentieth-century) reanalysis (Poli et al., 2016) four dimensional fields whose vertical profiles of relative humidity $rh(p)$ and temperature $T(p)$ that were nearest in time and geolocation to the footprint center. For each CERES footprint we collocated the following vertical integral of mixing ratio $mr(p)$, with saturation vapor pressure $e_s = 6.112e^{\frac{17.67T}{T+243.5}}$ (using T in degree Celsius) (Bolton, 1980), gravitational acceleration g , and molecular weights of water and dry air mol_{h_2o} and mol_{air} respectively:

$$ACWV = \frac{1}{g} \int_{p^{ctop}}^0 mr(p, T, rh) dp = \frac{1}{g} \int_{p^{ctop}}^0 \frac{e_s(T)}{p} \frac{mol_{h_2o}}{mol_{air}} rh(p) dp \quad (1)$$

For footprints consisting of multiple cloud layers, relying on a single cloud-top pressure may introduce uncertainty, especially for mixed-phase footprints (see Sec. 3) where pressure difference between ice and liquid-phase layers is exceptionally large.

For our analysis, we filtered the extracted dataset for samples with more than 95% water surface, more than 0.1% cloud fraction, and solar zenith angles between 0° and 82° . Table 1 lists the resulting subset of 1.7 billion samples.

3 Methods for Capturing Radiance Fluctuations

In order to provide hemispherically resolved fields of backscattered radiances to radiance-to-flux-converting ADMs, statistical approaches capture observed radiances together with prevalent scene properties per narrow and discretized Sun-observer-geometry. Following Su et al. (2015), solar zenith, viewing zenith, relative azimuth angles were discretized into 2° intervals, referred to as θ_0^Δ , θ_v^Δ , and φ^Δ , respectively. Combinations of θ_0^Δ , θ_v^Δ , and φ^Δ were denoted as angular bins and observations were sorted into bins for separate treatment. The following subsection presents the state-of-the-art methodology. Subsection 3.2 introduces a novel semi-physical approach that includes additional parameters.

3.1 State-of-the-Art Approach (Su et al., 2015)

An analytic sigmoidal function related TOA SW radiance with MODIS-based f and $\tilde{\tau}$.

$$I(\theta_0^\Delta, \theta_v^\Delta, \varphi^\Delta) = I_0 + \frac{a}{[1 + e^{-\frac{(x-x_0)}{b}}]^c} \quad (2)$$

Where $x = \log f \tilde{\tau}$ for a single cloud layer or $x = \log[(f_1 + f_2)e^{\frac{f_1 \log \tilde{\tau}_1 + f_2 \log \tilde{\tau}_2}{f_1 + f_2}}]$ for two layers and I_0 , a , b , c , and x_0 were free parameters. Optimization of sigmoidal parameters relied on mean radiances that were produced per x interval (every 0.02, shown as black dots in Figure 1a).

Models were generated separately per cloud phase. A footprint's cloud phase was determined via an effective phase, defined as $\phi_{eff} = \frac{f_1 \phi_1 + f_2 \phi_2}{f_1 + f_2}$ for two layers, and thresholds: liquid for $1 < \phi_{eff} < 1.01$, mixed for $1.01 \leq \phi_{eff} \leq 1.75$, and ice for $1.75 < \phi_{eff} \leq 2$.

To handle radiance fluctuations caused by sun-glint, a glint region was defined (sun glint angles $< 20^\circ$). Observations with $x > 6$ in affected geometries remained captured by a sigmoid fit. For $x \leq 6$ on the other hand, a look-up-table approach stored mean radiances per wind speed interval (0-2, 2-4, 4-6, 6-8, 8-10, and $> 10 \text{ m s}^{-1}$) and per x interval (< 3.5 , 3.5-4.5, 4.5-5.5, 5.5-6).

Selected angular bin in Fig. 1 had a sun-glint angle of about 14° and shows how tabulated radiances (colors correspond to wind speed intervals) and sigmoidal curve both covered observed radiances.

3.2 Novel Semi-Physical Approach

There are several ways one might incorporate additional variables $\overline{R_e}$ and $ACWV$ into a radiance-predicting statistical model. One could divide each angular bin's samples into classes of $\overline{R_e}$ and $ACWV$ and repeat sigmoidal fitting for each combination of classes (see Section 3.1). Some bins, however, contained too few samples or failed to cover the full spectrum of at least one of the two parameters. As a viable alternative, we explored radiative transfer approximations as a way to ingest scene properties (i.e. MODIS-based cloud properties and geophysical auxiliary parameters), and this allowed incorporating all samples in a continuous manner.

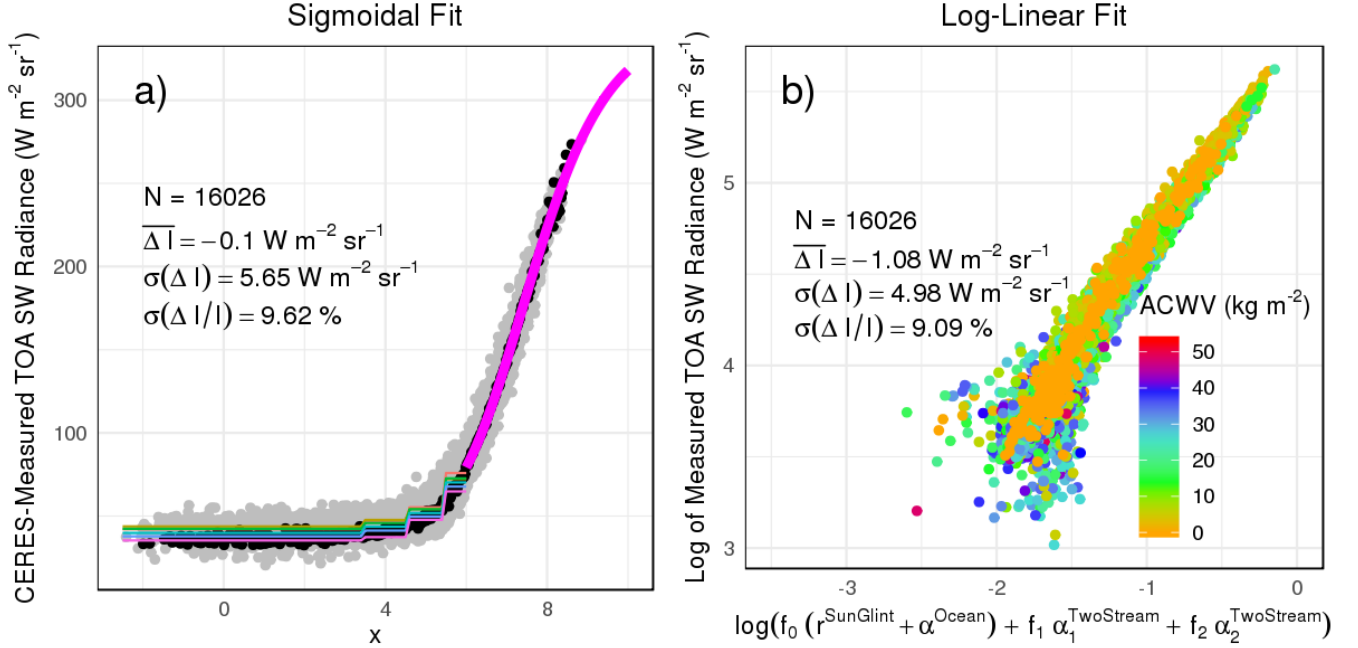


Figure 1. For an exemplary angular bin ($\theta_0 \in [20^\circ, 22^\circ]$, $\theta_v \in [6^\circ, 8^\circ]$, $\varphi \in [12^\circ, 14^\circ]$), we show how a state-of-the-art sigmoidal fit (a) and proposed log-linear model (b) capture fluctuations of CERES-measured TOA SW radiances. As this angular bin is within Sun-glint region, (a) shows the LUT-approach for $x < 6$ (as defined in Section 3.1; note that f_1 and f_2 are taken between 0-100 in (a) and between 0-1 in (b)). Colors in (b) mark the amount of above-cloud water vapor. Statistics in both panels summarize each approach's number of samples, bias, and standard deviation of radiance residuals as well as relative deviations.

135 Working with cloudy atmospheres over ocean surfaces, we assumed that radiance fluctuations were mainly driven by the bidirectional reflection of clouds and water surfaces and by directional absorption through water vapor located above (highly reflective) clouds. We initially set out with following simple equation of radiative transfer:

$$I(\theta_0^\Delta, \theta_v^\Delta, \varphi^\Delta) \approx S_o \cos \theta_0 \alpha e^{-2ACWV} \quad (3)$$

140 with solar influx $S_o \cos \theta_0$ and the albedo α of an Earth-atmospheric scene covered by the CERES footprint (hereafter referred to as footprint albedo).

In following subsection we present how footprint albedo was approximated. This then allowed us to use Eq. 3 in its log-linear form and weight the contribution of reflection and absorption via ordinary least square with free parameters A , B and C .

$$\log I(\theta_0^\Delta, \theta_v^\Delta, \varphi^\Delta) \approx A + B \log \alpha + C ACWV \quad (4)$$

145 Like the state-of-the-art methodology (Section 3.1), we applied this approach per angular bin (resolved by 2° in θ_0 , θ_v , and φ) allowing us to treat $S_o \cos \theta_0$ as constant. We also separated by cloud phase but choose a different threshold to discriminate phase. As elaborated in more detail below, we rely on pure liquid and ice phases to, then, treat the mixed phase. Therefore, we

consider a footprint as liquid phase for $\phi_{1/2} = 1$, as ice for $\phi_{1/2} = 2$, and as mixed for $\phi_1 = 1$ and $\phi_2 = 2$. $\phi_{1/2}$ were rounded in case their values were neither 1 or 2.

3.2.1 Approximating CERES Footprint Albedo

150 To approximate the albedo within each CERES footprint by means of MODIS-based cloud properties and additional geophysical variables ($\alpha^{surface}$, w_{10m} , $ACWV$), we separately handled clear and cloudy portions.

For clear portions within each footprint, we used the surface broadband albedo of underlying water bodies (referred to $\alpha^{ocean} = \alpha^{surface}$, see Section 2). To capture sun-glint, i.e. the specular reflection at ocean's surface that alters as low-level winds perturb the water surface and tilt reflective facets, we used a Cox-Munk reflectance (Cox and Munk, 1954), as formulated
 155 in Wald and Monget (1983) with Fresnel reflection factor $\rho(\omega)$ for a perfectly smooth surface, and sun-observer-geometry per CERES footprint:

$$r^{SunGlint} = \frac{\pi \rho(\omega) P(\theta_n, W_{10m})}{4 \cos \theta_0 \cos \theta_v \cos^4 \theta_n} \quad (5)$$

where

$$P(\theta_n, W_{10m}) = \frac{1}{\pi \sigma^2} \exp\left(-\frac{\tan^2 \theta_n}{\sigma^2}\right) \quad (6)$$

160

$$\sigma^2 = 0.003 + 0.00512 W_{10m} \quad (7)$$

$$\theta_n = \arccos\left(\frac{\cos \theta_v + \cos \theta_0}{2 \cos \omega}\right) \quad (8)$$

$$165 \quad \cos 2\omega = \cos \theta_v \cos \theta_0 + \sin \theta_v \sin \theta_0 \cos \varphi \quad (9)$$

To describe the albedo of cloudy portions, we explored the application of two-stream cloud albedo that uses cloud optical thickness and cloud micro-physical properties **equations as a function to ingest MODIS-retrieved cloud optical thickness $\tilde{\tau}$ and cloud-top effective radius $\overline{R_e}$** through asymmetry parameter $g(\overline{R_e})$ or backscattering fraction $\beta(\overline{R_e})$, ~~This allowed us to ingest MODIS-based $\tilde{\tau}$ and $\overline{R_e}$ through $g(\overline{R_e})$,~~ as explained in more detail in the following subsection. The following solutions
 170 are thoroughly described in Meador and Weaver (1980), which presents a unifying theoretical framework to a variety of two-stream cloud albedos based on coupled differential equations that describe upward and downward directed intensity fields. We considered two cloud albedos that proved useful for a range of cloud optical thicknesses (King and Harshvardhan, 1986): the Eddington approximation (Shettle and Weinman, 1970) and the Coakley-Chylek approximation (using solution I of Coakley and Chylek, 1975).

175 The Eddington approximation considered an incident flux explicitly in coupled equations and thus described diffuse intensity fields. Assuming conservative scattering (i.e. a single scattering albedo of 1), a perfectly absorbing lower boundary ($\alpha^{bottom} = 0$), and no further influx at TOA, the analytical solution for cloud albedo was as follows, where $\mu_0 = \cos \theta_0$:

$$\alpha^{TwoStream} = \frac{\frac{3}{4}(1-g)\tilde{\tau} - \frac{1}{4}(1-3\mu_0)(1 - e^{-\frac{\tilde{\tau}}{\mu_0}})}{1 + \frac{3}{4}(1-g)\tilde{\tau}} \quad (10)$$

The Coakley-Chylek approximation excluded the incident flux in differential equations and thus its intensities referred to total radiation fields (i.e. direct and diffuse). Assuming conservative scattering, a perfectly absorbing lower boundary ($\alpha^{bottom} = 0$) and only a solar influx at TOA, the analytical solution for cloud albedo was:

$$\alpha^{TwoStream} = \frac{\frac{(1-g)\tilde{\tau}}{2}}{1 + \frac{(1-g)\tilde{\tau}}{2}} \quad (11)$$

where β was substituted with $\frac{(1-g)}{2}$ as done in textbook solutions (e.g. Bohren and Clothiaux, 2008). Using the Coakley-Chylek approximation and a reflective lower boundary with albedo $\alpha^{bottom} > 0$ (in this study $\alpha^{bottom} = \alpha^{surface}$), we produced
185 following cloud albedo:

$$\alpha^{TwoStream} = \frac{\alpha^{ocean} + \frac{(1-\alpha^{ocean})(1-g)\tilde{\tau}}{2}}{1 + \frac{(1-\alpha^{ocean})(1-g)\tilde{\tau}}{2}} \quad (12)$$

Because it was unclear which solution could explain radiance fluctuations over narrow sun-observer-geometries most successfully, we tested a variety of solutions in Section 4.

Both ocean and cloud albedos (for up to two cloud layers) were used to calculate the footprint albedo, using clear fraction
190 f_0 and cloud fractions of layer 1 and layer 2, f_1 and f_2 , respectively:

$$\alpha = f_0(\alpha^{ocean} + r^{SunGlint}) + f_1\alpha_1^{TwoStream} + f_2\alpha_2^{TwoStream} \quad (13)$$

where $f_0 + f_1 + f_2 = 1$.

3.2.2 Statistical Optimization

Before comparing different two-stream approximations in Sec. 4, we performed two steps that ensured statistical optimization
195 for each approximation. Finding an optimal $g(\overline{R_e})$ was designed to best capture radiance fluctuations per angular bin. Higher weights to a subset of data per angular bin - homogeneous clouds that were well retrieved - was used to facilitate consistency of radiances across bins. Both steps are explained in more detail below.

As shown in the previous subsection, we used two-stream cloud albedo to explain radiance fluctuations for narrow sun-observer-geometries. Applied to all angular bins of an upward hemisphere, it was unclear which $g(\overline{R_e})$ to choose. Initial tests
200 that used a $g(\overline{R_e})$ from Mie theory (see Fig. 2b) for all geometries proved sub-optimal for some angular bins and left radiance residuals correlated to layer mean effective radius (not shown). We therefore decided to optimize $g(\overline{R_e})$ for each angular bin and for each cloud phase (liquid and ice). Inspired by the shape of Mie-calculated $g(\overline{R_e})$, we approximated $g(\overline{R_e})$ via a

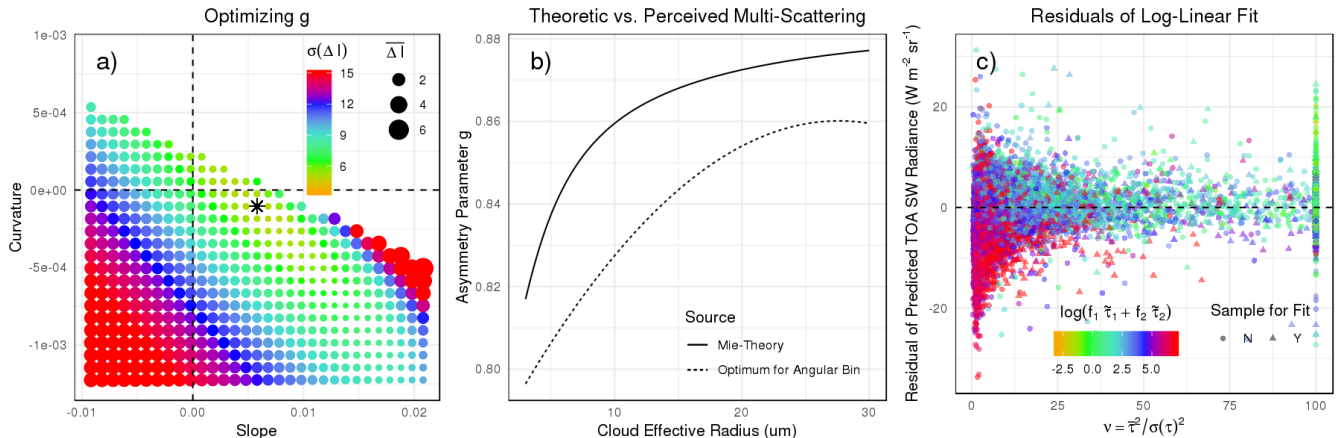


Figure 2. For the same angular bin as in Figure 1, we present details of the proposed model that highlight essential steps aside from log-linear least-square fitting (Eq. 4). (a) shows the search for an optimal $g(\overline{R_e})$ (as described in Sec. 3.2): we plotted a two-dimensional slice (showing b and c of Eq. 14) through the three-dimensional space (spanned by a , b , and c). Colors show standard deviations of radiance residuals and point size relates to model bias. The star marks the combination of a , b , and c that produced smallest residual standard deviations and is considered optimal for this bin. (b) compares the $g(\overline{R_e})$ of the determined optimal solution against Mie-calculations. (c) shows final radiance residuals against cloud homogeneity (x-axis) and cloud optical depth (color). As described in Section 3.2.2., only homogeneous ($\nu > 10$) clouds which were well-retrieved (MODIS-reported portion $> 90\%$) - marked as triangles in (c) - were considered for optimization of $g(\overline{R_e})$ and least-square fitting. Statistics and error metrics throughout the manuscript incorporate all samples.

Table 2. In search for optimal $g(\overline{R_e})$, we list the range (Minimum and Maximum) and step size for each parameter in Eq. 14.

Parameter	Minimum	Maximum	Step
a	-0.5	0.95	0.01
b	-0.01	0.01	0.0003
c	-0.00025	0.00025	0.000015

quadratic function:

$$g(\overline{R_e}) = a + b\overline{R_e} + c\overline{R_e}^2 \quad (14)$$

205 and searched a three-dimensional grid, spanned by a , b , and c , for combinations that minimized the standard deviation of radiance residuals. The search covered parameters a , b , and c as listed in Table 2. As shown in Fig. 2a, we usually found a single optimum value that could minimize standard deviation of radiance residuals and that deviated from Mie calculations (Fig. 2b).

A second step aimed at using a subset of data that was consistent across angular bins. Looking into samples of individual
 210 angular bins, we observed stark variability in radiances that could be attributed to cloud horizontal heterogeneity (cloud homo-
 geneity was approximated by $\nu = \frac{\bar{\tau}^2}{\sigma(\tau)^2}$; radiance residuals are shown in Fig. 2c). We suspected that clouds' three-dimensional
 structure caused tilted cloud facets that led to more or less reflective cloud portions (e.g. as accounted for in Scheck et al.,
 2018). In order to avoid an uncontrollable impact of cloud heterogeneity onto final models, we decided to select homogeneous
 samples only for statistical optimization. As a threshold of homogeneity, we used $\nu > 10$ (e.g. Barker et al., 1996; Kato et al.,
 215 2005). As shown in Tab. 3 per solar geometry, median homogeneity varied considerably across bins as well as cloud phase,
 and this resulted in ranging portions of data being selected. For optimization, we further limited selection to CERES footprints
 with quality flags indicating a confident retrieval of 80% or more of all cloudy MODIS pixels within a CERES footprint. This
 subset of samples served to optimize the above search for $g(\overline{R_e})$ and to find weights via least-square (Eq. 4). To compute error
 metrics, we used all available samples. An example for the application of the log-linear model in shown in Fig. 1b.

220 4 Results

Radiance-predicting statistical models that capture narrow sun-observer-geometries form the basis for empirical angular dis-
 tribution models. And these statistical models fit observations from satellites, typically capturing how TOA SW radiances
 measured by a broadband radiometer change with scene type (defined by surface conditions as well as cloud and aerosol
 properties within the radiometer's footprint area) retrieved using a multi-spectral imager (see Sec. 2). To investigate whether
 225 a new approach, the proposed semi-physical log-linear model in Sec. 3.2, is a superior way to fit observations compared to
 the state-of-the-art approach, the sigmoidal fit described in Sec. 3.1, we took CERES Ed4SSF observations (Sec. 2) of liquid-
 phase clouds along the principal plane of an exemplary solar geometry covering major scattering features of clouds and the
 ocean surface. We applied the sigmoidal fit as well as a variety of log-linear models, each using a different analytic solution
 of two-stream cloud albedo (Eqs. 10-12) that is used in this study as a framework to ingest MODIS-based cloud properties.
 230 Looking at the standard deviation of radiance residuals per angular bin (in this study used as a measure of model uncertainty),
 the Coakley-Chylek approximation using a reflective lower boundary (Eq. 12) outperformed the sigmoidal fit for most bins
 and by up to $1.5 \text{ W m}^{-2} \text{ sr}^{-1}$ (shown in Fig. 3). Only the central portion of sun-glint-affected geometries remained best ex-
 plained by sigmoidal fits (and accompanied look-up-table approach as laid out in Section 3.1). In contrast, the Coakley-Chylek
 approximation using a perfectly absorbing lower boundary (Eq. 11) or the Eddington approximation (Eq. 10) performed only
 235 equally well or worse than sigmoidal fits.

To ensure that the Coakley-Chylek approximation using a reflective lower boundary performed well for other Sun-observer-
 geometries, we processed all angular bins that contained more than 100 samples. As Table 3 shows, this covered between 13
 and 96% of all angular bins. We found that for liquid clouds (top panels of Fig. 4) and $\theta_0 \sim 20^\circ$ - 70° more than half of the
 bins were better explained by the log-linear approach and errors were reduced by up to 13.2%. For solar geometries $\theta_0 > 40^\circ$,
 240 bins in sun-glint-affected geometries (constituting a portion of all bins in a hemisphere between 10% for a $\theta_0 \sim 20^\circ$ and 1%
 for a $\theta_0 \sim 75^\circ$) caused higher uncertainties in log-linear models, **increasing with solar zenith angle and higher by up to 60%**

Table 3. Per solar geometry θ_0 and per cloud phase (L - liquid, I - ice, M - mixed) as defined in Section 3.2, we show what portions of the upward hemisphere were covered with observations, and how large the range of cloud homogeneity, above-cloud water vapor, cloud-top effective radius was. The range lists minima and maxima of median values computed per angular bin within a hemisphere.

θ_0^Δ (in $^\circ$)	Angular Coverage			ν		$ACWV$ (kg m $^{-2}$)		$\overline{R_e}$ (μ m)	
	L	I	M	L	I	L	I	L	I
6-8	0.13	0.01	0.16	2.3-4.4	5.2-12.2	11.10-16.52	0.03-0.04	11.4-14.5	39.8-45.7
8-10	0.23	0.05	0.25	1.7-4.8	4.3-10.4	9.29-16.85	0.02-0.05	11.5-13.5	38.6-47.8
10-12	0.35	0.12	0.35	2.3-10.9	3.7-15.8	9.39-17.37	0.02-0.06	10.2-13.3	38.5-49.6
12-14	0.59	0.20	0.58	2.4-9.4	3.0-17.1	7.76-16.79	0.02-0.06	10.1-15.2	38.7-47.5
14-16	0.75	0.34	0.77	2.3-7.5	3.2-22.4	6.31-18.78	0.02-0.08	9.9-18.3	36.7-74.3
16-18	0.83	0.61	0.85	1.8-7.2	3.4-24.9	7.17-21.15	0.02-0.06	9.6-20.5	36.3-47.3
18-20	0.88	0.71	0.89	2.0-8.5	3.1-20.2	7.68-19.19	0.02-0.07	9.5-20.0	37.4-47.2
20-22	0.91	0.76	0.93	2.0-9.1	3.0-16.2	6.77-19.97	0.02-0.06	10.0-19.5	39.1-49.9
22-24	0.93	0.79	0.95	2.0-9.1	3.5-16.1	7.00-18.79	0.02-0.06	10.0-19.4	38.6-49.0
24-26	0.94	0.81	0.96	2.1-8.0	3.6-15.5	7.26-18.18	0.02-0.07	9.8-18.8	40.1-61.0
26-28	0.94	0.82	0.97	1.9-8.3	3.2-15.5	7.23-16.98	0.02-0.06	10.3-16.9	40.2-51.9
28-30	0.95	0.83	0.97	2.0-11.0	3.3-15.8	6.72-20.07	0.02-0.07	10.8-16.2	39.5-51.6
30-32	0.95	0.83	0.98	1.9-10.0	3.4-16.4	7.04-17.02	0.02-0.08	11.2-17.2	40.7-73.2
32-34	0.95	0.83	0.98	2.0-8.8	3.1-17.0	7.06-17.99	0.02-0.10	11.6-16.9	41.0-55.5
34-36	0.96	0.83	0.98	2.0-8.8	3.5-17.2	6.44-18.76	0.02-0.11	11.8-16.0	41.9-52.8
36-38	0.96	0.83	0.98	1.9-6.9	3.9-18.8	6.66-18.18	0.02-0.13	11.9-15.8	42.2-56.6
38-40	0.95	0.83	0.98	2.0-7.7	4.4-20.0	6.61-16.88	0.02-0.13	11.7-15.8	42.2-54.8
40-42	0.95	0.83	0.98	1.9-7.7	5.4-20.6	5.55-19.06	0.03-0.14	11.5-16.3	43.6-55.8
42-44	0.94	0.82	0.98	2.0-7.1	5.0-20.3	5.94-15.28	0.03-0.16	11.6-16.5	43.0-62.8
44-46	0.94	0.83	0.98	2.1-8.1	5.7-20.5	5.90-12.69	0.04-0.15	11.5-16.4	43.7-74.4
46-48	0.94	0.83	0.97	2.1-7.9	6.0-19.4	5.37-12.45	0.03-0.15	11.6-15.6	44.3-78.2
48-50	0.93	0.83	0.97	2.0-7.3	6.1-17.9	4.97-12.23	0.04-0.16	11.7-15.0	45.3-76.1
50-52	0.92	0.83	0.97	2.0-7.3	5.7-18.1	4.55-10.34	0.05-0.16	11.6-14.8	44.6-80.0
52-54	0.91	0.83	0.96	2.2-7.5	5.6-16.6	4.09-9.76	0.00-0.17	11.8-15.0	46.1-77.0
54-56	0.90	0.83	0.96	2.1-7.0	5.5-14.9	3.88-8.67	0.04-0.16	11.0-15.7	46.1-78.6
56-58	0.89	0.83	0.96	3.0-7.4	5.2-13.3	3.30-8.88	0.05-0.15	10.8-15.0	45.0-76.2
58-60	0.88	0.83	0.96	3.1-8.8	4.6-12.4	2.99-8.77	0.05-0.15	10.7-15.1	44.0-76.9
60-62	0.87	0.84	0.95	2.8-8.7	4.8-11.7	3.24-10.05	0.05-0.14	11.2-15.2	43.8-76.8
62-64	0.86	0.83	0.95	3.4-8.7	4.5-13.3	2.74-7.62	0.04-0.15	11.5-14.9	44.1-76.2
64-66	0.85	0.84	0.94	3.5-9.6	3.9-11.7	2.32-7.73	0.04-0.15	11.5-14.7	42.9-79.5
66-68	0.85	0.84	0.94	3.5-9.3	3.5-10.6	2.37-8.56	0.05-0.15	11.6-15.2	44.1-82.2
68-70	0.84	0.84	0.93	3.8-11.2	3.2-10.1	2.30-9.00	0.05-0.15	11.5-15.3	41.0-75.6
70-72	0.83	0.83	0.93	3.9-11.6	2.7-10.2	2.45-7.02	0.05-0.16	11.7-15.1	42.3-76.1
72-74	0.82	0.82	0.92	3.8-12.7	2.2-9.1	2.05-6.44	0.06-0.15	11.8-15.8	40.6-86.2
74-76	0.80	0.81	0.91	4.0-10.9	1.8-10.0	1.98-7.46	0.04-0.15	11.1-16.1	40.0-76.6
76-78	0.79	0.79	0.90	2.8-12.0	1.5-8.8	1.87-9.26	0.06-0.15	11.6-15.8	39.2-88.6

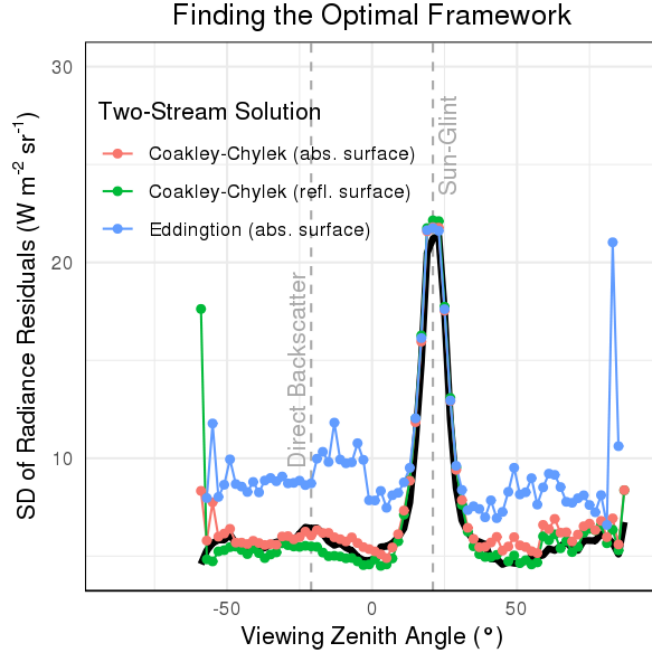


Figure 3. Applied to angular bins of the principal plane for $\theta_0 \in [20^\circ, 22^\circ]$, we test a variety of two-stream solutions for cloud albedo (Eqs. 10-12) as input to log-linear models as presented in Eq. 4. This plot shows standard deviations of resulting residuals and compares against the state-of-the-art sigmoidal fit (black line). As labelled, grey dashed lines mark position of sun-glint and direct backscatter.

compared against the sigmoidal approach. For solar geometries $\theta_0 < 20^\circ$, on the other hand, we found bins outside the sun-glint – i.e. mostly slant observation angles – were best treated with the sigmoidal approach. Few footprints (indicated by circle size) of the top row were treated as mixed in the log-linear model and will be evaluated further below. With these limitations
 245 in mind, we use the Coakley-Chylek approximation using a reflective lower boundary standard as two-stream cloud albedo for the remainder of this study.

To determine whether the log-linear approach predicted plausible radiance fields, we tested it on a variety of scenarios. When applied to a range of cloud optical thicknesses, we found a similar radiance response compared to sigmoidal fit (Fig. 5b). Setting cloud fraction to zero ($f_1 = f_2 = 0$) and using a range of 10 m wind speeds, log-linear and sigmoidal models produced again
 250 comparable radiance fields (Fig. 5c). This shows that the sensitivities of the state-of-the-art approach were captured by log-linear models. When varying cloud-top effective radius – a newly added sensitivity – we found radiances grow as droplet size increased (leaving cloud optical thickness constant; shown in Fig. 5e). With a focus on single-scattering features, we found the cloud glory (centered around the direct backscatter) to widen and the cloud glory (positioned about 20° away from the backscatter) to shift towards the direct backscatter as effective radii became smaller. This observation is corroborated by
 255 Mie-calculations of scattering phase functions (e.g. Fig. 1 in Tornow et al., 2018). The newly introduced concept of bin-wise optimized asymmetry parameters (Sec. 3.2.2) made changing cloud bow and glory possible and $g(\overline{R_e})$ exhibited a symmetry

Change in Model Uncertainty Using Log-Linear over Sigmoidal Fit

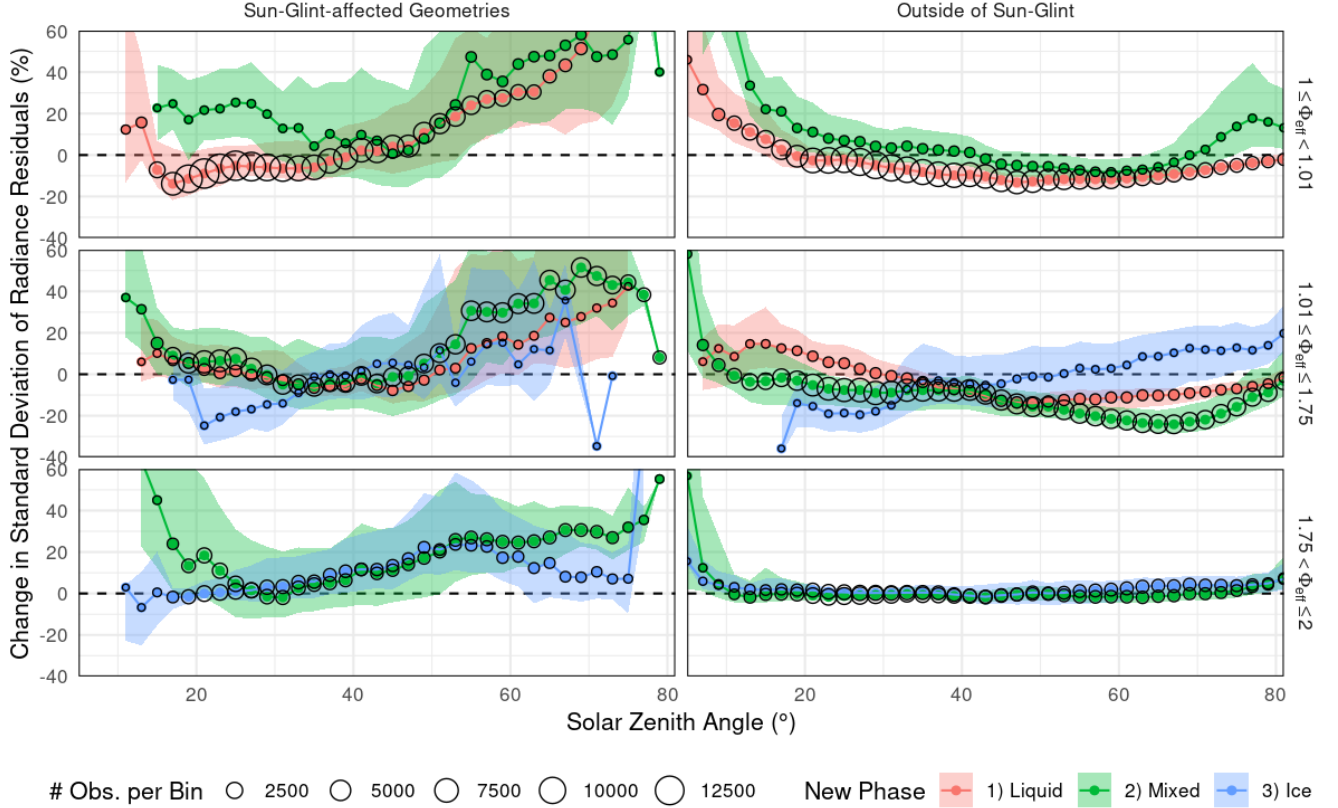


Figure 4. Using all observed angular bins within $\theta_0 \in [6^\circ, 82^\circ]$, we show how radiance residuals from proposed log-linear models compare against state-of-the-art sigmoidal fits. Results are presented by CERES-defined cloud phase (vertically), by newly-defined phase (colors), and by whether the angular geometry is affected by sun-glint (left) or free of sun-glint (right). We show relative change in model uncertainty: $\delta = [\sigma(\Delta I^{\text{LogLinear}}) - \sigma(\Delta I^{\text{Sigmoidal}})] / \sigma(\Delta I^{\text{Sigmoidal}}) \cdot 100\%$. **Consequently, negative values relate to a better performance of the log-linear model, while positive values mark a better performance by the state-of-the-art methodology.** Solid lines and dots mark 50th percentile and shades show the interquartal range between 25th and 75th percentiles. Point size relates to the average number of observations per angular bin. The dashed black line marks zero change.

left and right of the direct backscatter between θ_v of -50° and 0° (Fig. 5f). For a range of above-cloud water vapor (Fig. 5d) – another newly added sensitivity - we observed that smaller loads produced higher radiances and found a slight increase in sensitivity with larger θ_v .

260 We also tested log-linear models on observations of ice-phase clouds. We found that model uncertainties outside the sun glint were of similar magnitude as sigmoidal fits (Fig. 4, bottom panels). Possible reasons will be discussed in Sec. 5. **Similar to liquid-phase clouds, angular geometries affected by sun-glint showed worse performance when using log-linear models, increasing residuals by up to 30%.** Like the liquid-phase, predicted radiances increased with smaller ice crystal radii. However, distinct scattering features were absent (not shown); possibly a result of ice clouds’ rich variety of crystal shapes (e.g. Zhang
265 et al., 1999; Baum et al., 2005) that was unaccounted for. The response to above-cloud water vapor was consistent and covered much of the lower levels (0.03 - 0.17 kg m^{-2} , see Table 3).

Roughly 50% of all CERES footprints cover both a liquid and an ice cloud and have been treated separately as “mixed-phase”. The proposed log-linear approach allows us to handle mixed-phase cases fundamentally differently. Instead of a footprint-effective optical depth (as used in Equ. 2), we can produce a footprint-effective albedo (Equ. 13) and account not
270 only for cloud macro-physical ($f_{1/2}$, $\tilde{\tau}_{1/2}$) but also for microphysical ($\overline{R_{e1/2}}$) changes. Optimized asymmetry parameters from pure liquid and pure ice cases (Fig. 6b) were reused to describe the cloud albedo of respective cloud phase within each mixed-phase CERES footprint. Hence only A , B , and C from Eq. 4 needed to be estimated. Fig. 6a illustrates the reduction in model uncertainty for many bins and of up to $2.5 \text{ W m}^{-2} \text{ sr}^{-1}$ when using the log-linear approach. Once again, the center of sun-glint remained best captured by the sigmoidal approach, **especially for SZA beyond 50° where semi-physical models produce up to**
275 **55% higher residuals.** Using a cloud-phase-specific albedo allowed us to account for radiance changes with varying amount of liquid versus ice fraction within a footprint. Fig. 6c shows radiance predictions for different liquid-ice-proportions (which could not be captured by the state-of-the-art approach) and that both approaches agree for 50% liquid and 50% ice cloud footprints **for the backscattering direction and 75% liquid and 25% ice cloud fractions for much of the forward scattering direction, indicating that sampled footprints shifted in liquid-to-ice proportions along the principal plane.** Fig. 6d shows the
280 sigmoidal fit’s sensitivity to ranging cloud optical depth was captured by the log-linear approach. Looking at all available sun-observer-geometries (Fig. 4, middle panels) for solar geometries between $\theta_0 \sim 20^\circ$ - 70° , we found model uncertainty of most bins reduced by as far as 35.8%.

Across all solar and viewing geometries, we calculated the median change in uncertainty when using the log-linear over the state-of-the-art approach to be -5.76% for liquid-phase clouds, +0.34% for ice-phase clouds, and -10.81% when both phases
285 **were present.**

In summary, we showed that the proposed log-linear model had the ability to outperform the existing sigmoidal approach in capturing CERES radiance fluctuations per angular bin. **It For most geometries it produced lower uncertainties, added new radiance sensitivities, and allowed to treat mixed-phase footprints in a fundamentally different manner. Drawbacks were typically found for geometries affected by sun-glint.**

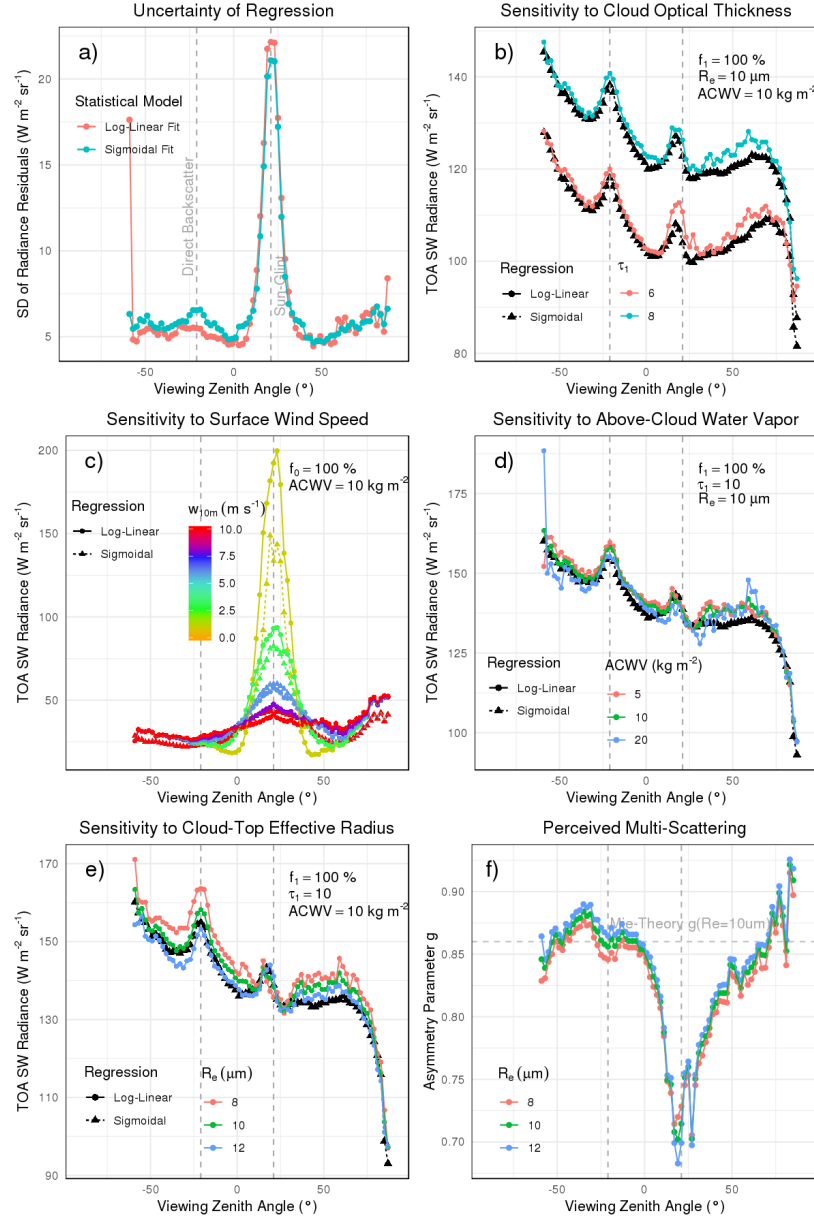


Figure 5. For angular bins along the principal plane for $\theta_0 \in [20^{\circ}, 22^{\circ}]$ containing liquid-phase footprints, we present error metrics and sensitivities of proposed log-linear versus state-of-the-art sigmoidal fits. (a) shows standard deviations of residuals; colors mark the type of fit. (b) displays the optimal $g(\overline{R_e})$ for three R_e (by color). (c), (d), and (e) demonstrate predicted radiances by both fits for varying cloud optical thickness (c), cloud-top effective radius (d), and above-cloud water vapor (e). Predictions from log-linear fits are colored while predictions from sigmoidal fits are shown in black. (f) presents the response of both fits to a variety of surface wind-speeds. Properties held constant in (c), (d), (e), and (f) are listed in the each panel's top-right corner.

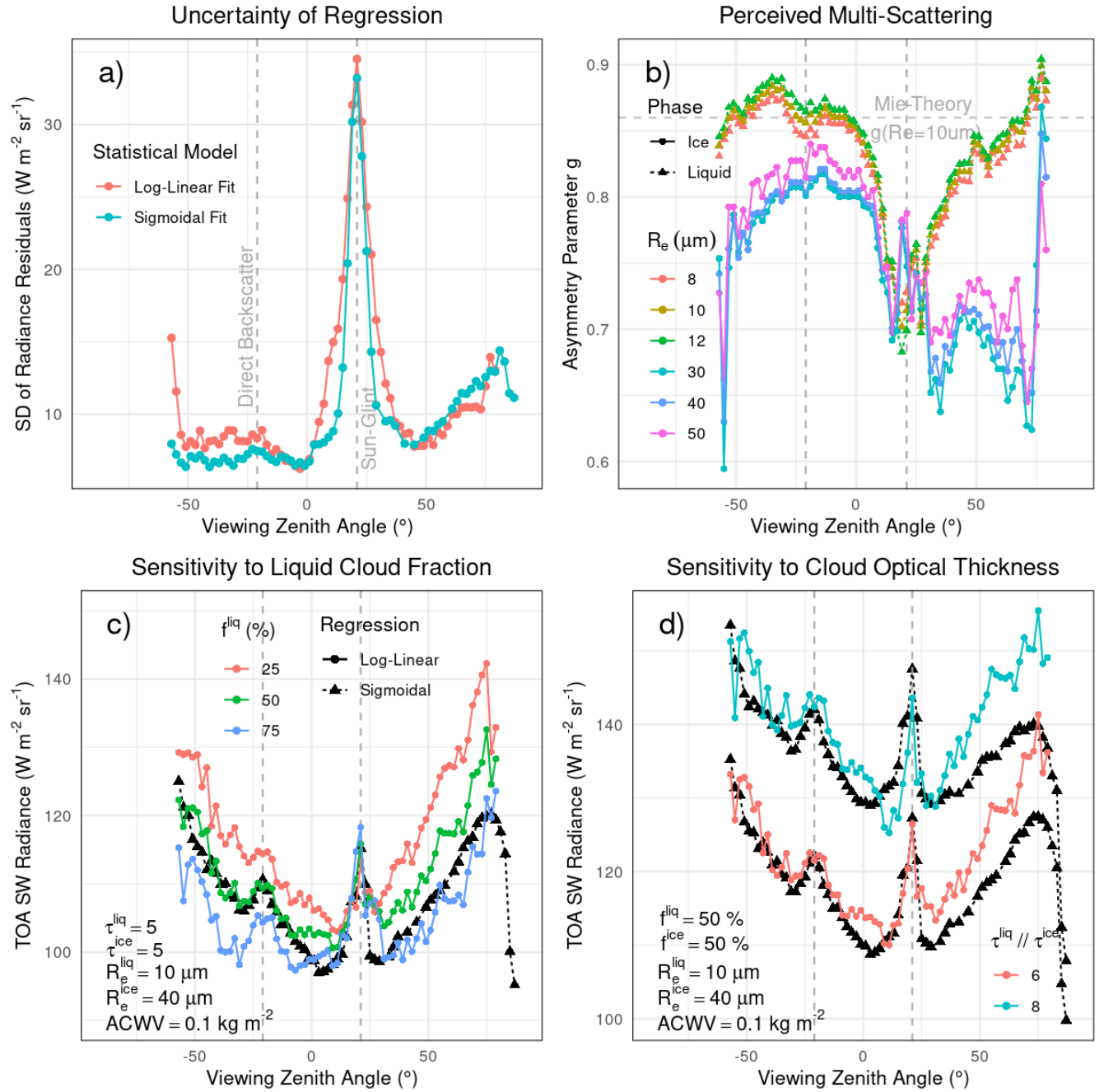


Figure 6. For angular bins along the principal plane for $\theta_0 \in [20^\circ, 22^\circ]$, we show details for mixed-phase footprints. (a) presents standard deviations of residuals (colors mark the type of fit). (b) shows optimal $g(\overline{R_e})$ from pure ice and liquid-phase footprints employed for mixed-phase cases (colors mark liquid and ice particle effective radius). (c) and (d) show predicted radiances for liquid cloud fraction (c) and cloud-optical thickness (d). In both (c) and (d), we show log-linear fits in color and sigmoidal fits in black. Quantities left constant are shown in the bottom-left corner.

Statistical models that capture measurements of TOA SW radiances as a function of corresponding scene type for narrow sun-observer-geometries are the basis for Angular Distribution Models. In this study, we introduced a new alternative that incorporated additional parameters – namely cloud-top effective radius and above-cloud water vapor – via a semi-physical log-linear approach. We found this new approach to better explain radiance fluctuations for the majority of observed geometries and to produce plausible radiance fields. **Weaker performance than the state-of-the-art approach was generally observed for solar zenith angles lower than 20° and for sun-glint-affected geometries that constitute between 1% and 10% of the hemispheric radiance field.**

Incorporating additional parameters that help explain radiance fluctuations may have minimized sampling bias. Ranges in effective radius or above-cloud water vapor varied across bins and ignoring this variation can cause a radiance bias in individual angular bins. Even accounting for parameters that may not affect TOA anisotropy, such as cloud horizontal heterogeneity, has the potential to minimize sampling biases. We found varying portions of heterogeneous samples across bins and suspect that their variation in radiance (cf. Fig. 2c) failed to cancel out. Thus, giving higher (or all) weight to homogeneous samples during regression, as done in this study, should eliminate any sampling bias.

The inclusion of cloud-top effective radius and above-cloud water vapor was successful as evidenced by reduced radiance residuals and credible radiance fields. We failed to reduce radiance residuals for ice-phase clouds and made the following observations looking at ice cloud samples. First, among collected observations, we found footprints to mostly contain homogeneous ice clouds. Second, ice clouds had only small loads of water vapor aloft. Lastly, there was an absence of distinct single-scattering features. We suspect that these are characteristics that drive potential reduction of radiance residuals and that liquid clouds samples, having near asymmetric properties (few homogeneous samples, large loads of water vapor aloft, distinct scattering features), benefitted especially from this new approach.

We successfully used a theoretic framework – inspired by radiative transfer approximations designed for hemispheric averages – and applied it to narrow sun-observer-geometries. A derived byproduct, the asymmetry parameter $g(\overline{R_e}|\theta_0^\Delta, \theta_v^\Delta, \varphi^\Delta)$, captured observer-specific multi-scattering. Could this byproduct contain information that allows inference on multi-scattering properties? Monte-Carlo radiative transfer simulations may help in answering this. Future work should simulate radiances, derive simulation-based $g(\overline{R_e}|\theta_0^\Delta, \theta_v^\Delta, \varphi^\Delta)$ and extract additional properties, such as photon path length or number of scattering events.

Statistical models allow finding scene properties that produce similar radiative responses (often referred to as similarity conditions). Like the state-of-art-approach, where different combinations of cloud fraction and cloud optical thickness produced similar radiances, the new semi-physical approach added cloud particle size and above-cloud absorber mass to parameter combinations. A similarity condition explaining albedo through adjusted optical thickness, $(1 - g)\tilde{\tau}$, was found earlier using simulations (e.g. van de Hulst, 1996). To our knowledge, this is the first time adjusted optical thickness (here employed in the framework of two-stream albedo) has been used to capture similarities of observed radiances.

The proposed semi-physical approach can easily be applied to land surfaces. Imager-based bidirectional reflectance distribution function (BRDF) products, such as MCD43GF (MODIS BRDF/albedo/nadir BRDF-adjusted reflectance Climate Modeling Grid gap-filled; Moody et al., 2008), could provide land surface albedo and surface bi-directional reflectance in order to determine each observation's footprint albedo. Future efforts should test if this application over land can compete with CERES' separate treatment by latitude-longitude boxes. Recent efforts that demonstrated circumvention of this regional separation for clear-sky ADMs by using MCD43GF instead indicated a positive outcome (Tornow et al., 2019).

Lastly, we hope this new log-linear approach will form the basis of future angular distribution models. In particular, we expect that cloudy scenes of microphysical extremes (i.e. clouds consisting of very small or very large droplets) observed from the backscattering direction will benefit from radiance-to-flux conversion using new models. More accurate estimates of instantaneous fluxes should benefit EarthCARE' studies of cloud-radiative processes regarding both water and energy fluxes. We are currently examining this impact on instantaneous fluxes as well as the propagation of updated flux estimates into daily and monthly flux products.

Author contributions. FT had the idea, designed the experiment, and conducted the research. CD, HB, and RP had major influence on the development of the methodology through discussion. CD and HB further helped revising this manuscript. JF provided essential resources for data processing and evaluation.

Competing interests. No competing interests.

Acknowledgements. We thank Jason N. S. Cole, Almudena Velazquez Blazquez, Tobias Wehr, and all other members of the CLARA team as well as colleagues at Institute for Space Sciences at Freie Universität Berlin for helpful discussion. We further thank the Atmospheric Sciences Data Center at the National Aeronautics and Space Administration Langley Research Center for providing the Clouds and Earth's Radiant Energy System Single Scanning Footprint TOA/Surface Fluxes and Clouds data product. We specifically thank Wenying Su for providing us with details on the CERES methodology. **We further thank two anonymous referees very much for their feedback that helped to improve this manuscript substantially.** This work was possible through funding within the ESA Contract 4000112019/14/NL/CT.

345 References

- Barker, H. W. and Wehr, T.: Computation of Solar Radiative Fluxes by 1D and 3D Methods Using Cloudy Atmospheres Inferred from A-train Satellite Data, *Surv Geophys*, 33, 657–676, <https://doi.org/10.1007/s10712-011-9164-9>, 2012.
- Barker, H. W., Wielicki, B. A., and Parker, L.: A Parameterization for Computing Grid-Averaged Solar Fluxes for Inhomogeneous Marine Boundary Layer Clouds. Part II: Validation Using Satellite Data, *Journal of the Atmospheric Sciences*, 53, 2304–2316,
350 [https://doi.org/10.1175/1520-0469\(1996\)053<2304:APFCGA>2.0.CO;2](https://doi.org/10.1175/1520-0469(1996)053<2304:APFCGA>2.0.CO;2), 1996.
- Barker, H. W., Jerg, M. P., Wehr, T., Kato, S., Donovan, D. P., and Hogan, R. J.: A 3D cloud-construction algorithm for the EarthCARE satellite mission, *Quarterly Journal of the Royal Meteorological Society*, 137, 1042–1058, <https://doi.org/10.1002/qj.824>, 2011.
- Baum, B. A., Heymsfield, A. J., Yang, P., and Bedka, S. T.: Bulk Scattering Properties for the Remote Sensing of Ice Clouds. Part I: Microphysical Data and Models, *Journal of Applied Meteorology*, 44, 1885–1895, <https://doi.org/10.1175/JAM2308.1>, 2005.
- 355 Bender, F. A.-M., Rohde, H., Charloson, R. J., Ekman, A. M. L., and Loeb, N.: 22 views of the global albedo—comparison between 20 GCMs and two satellites, *Tellus A*, 58, 320–330, <https://doi.org/10.1111/j.1600-0870.2006.00181.x>, 2006.
- Bohren, C. F. and Clothiaux, E. E.: *Scattering: The Life of Photons*, chap. 3, pp. 125–184, John Wiley and Sons, Ltd, <https://doi.org/10.1002/9783527618620.ch3>, 2008.
- Bolton, D.: The Computation of Equivalent Potential Temperature, *Monthly Weather Review*, 108, 1046–1053, [https://doi.org/10.1175/1520-0493\(1980\)108<1046:TCOEPT>2.0.CO;2](https://doi.org/10.1175/1520-0493(1980)108<1046:TCOEPT>2.0.CO;2), 1980.
360
- Boucher, O., Randall, D., Artaxo, P., Bretherton, C., Feingold, G., Forster, P., Kerminen, V.-M., Kondo, Y., Liao, H., Lohmann, U., Rasch, P., Satheesh, S., Sherwood, S., Stevens, B., and Zhang, X.: Clouds and Aerosols, book section 7, p. 571–658, Cambridge University Press, Cambridge, United Kingdom and New York, NY, USA, <https://doi.org/10.1017/CBO9781107415324.016>, www.climatechange2013.org, 2013.
- 365 Calisto, M., Folini, D., Wild, M., and Bengtsson, L.: Cloud radiative forcing intercomparison between fully coupled CMIP5 models and CERES satellite data, *Annales Geophysicae*, 32, 793–807, <https://doi.org/10.5194/angeo-32-793-2014>, <https://www.ann-geophys.net/32/793/2014/>, 2014.
- Coakley, J. A. and Chylek, P.: The Two-Stream Approximation in Radiative Transfer: Including the Angle of the Incident Radiation, *Journal of the Atmospheric Sciences*, 32, 409–418, [https://doi.org/10.1175/1520-0469\(1975\)032<0409:TTSAIR>2.0.CO;2](https://doi.org/10.1175/1520-0469(1975)032<0409:TTSAIR>2.0.CO;2), 1975.
- 370 Cox, C. and Munk, W.: Measurement of the Roughness of the Sea Surface from Photographs of the Sun’s Glitter, *J. Opt. Soc. Am.*, 44, 838–850, <https://doi.org/10.1364/JOSA.44.000838>, 1954.
- Gao, M., Huang, X., Yang, P., and Kattawar, G. W.: Angular distribution of diffuse reflectance from incoherent multiple scattering in turbid media, *Appl. Opt.*, 52, 5869–5879, <https://doi.org/10.1364/AO.52.005869>, <http://ao.osa.org/abstract.cfm?URI=ao-52-24-5869>, 2013.
- Illingworth, A. J., Barker, H. W., Beljaars, A., Chepfer, H., Delanoe, J., Domenech, C., Donovan, D. P., Fukuda, S., Hiraoka, M., Hogan, R. J., Huenerbein, A., Kollias, P., Kubota, T., Nakajima, T., Nakajima, T. Y., Nishizawa, T., Ohno, Y., Okamoto, H., Oki, R., Sato, K., Sato, M., Wandinger, U., Wehr, T., and van Zadelhoff, G.: The EarthCARE Satellite: the next step forward in global measurements of clouds, aerosols, precipitation and radiation, *Bull. Am. Meteorol. Soc*, 96, 1311–1332, <https://doi.org/10.1175/BAMS-D-12-00227.1>, 2015.
- 380 Kato, S., Rose, F. G., and Charlock, T. P.: Computation of Domain-Averaged Irradiance Using Satellite-Derived Cloud Properties, *Journal of Atmospheric and Oceanic Technology*, 22, 146–164, <https://doi.org/10.1175/JTECH-1694.1>, 2005.

- King, M. D. and Harshvardhan: Comparative Accuracy of Selected Multiple Scattering Approximations, *Journal of the Atmospheric Sciences*, 43, 784–801, [https://doi.org/10.1175/1520-0469\(1986\)043<0784:CAOSMS>2.0.CO;2](https://doi.org/10.1175/1520-0469(1986)043<0784:CAOSMS>2.0.CO;2), 1986.
- Li, J., Yi, Y., Minnis, P., Huang, J., Yan, H., Ma, Y., Wang, W., and Ayers, J. K.: Radiative effect differences between multi-layered and single-layer clouds derived from CERES, CALIPSO, and CloudSat data, *Journal of Quantitative Spectroscopy and Radiative Transfer*, 112, 361 – 375, <https://doi.org/https://doi.org/10.1016/j.jqsrt.2010.10.006>, international Symposium on Atmospheric Light Scattering and Remote Sensing (ISALSaRS'09), 2011.
- Loeb, N. G. and Manalo-Smith, N.: Top-of-Atmosphere Direct Radiative Effect of Aerosols over Global Oceans from Merged CERES and MODIS Observations, *Journal of Climate*, 18, 3506–3526, <https://doi.org/10.1175/JCLI3504.1>, 2005.
- Loeb, N. G., Manalo-Smith, N., Kato, S., Miller, W. F., Gupta, S. K., Minnis, P., and Wielicki, B. A.: Angular Distribution Models for Top-of-Atmosphere Radiative Flux Estimation from the Clouds and the Earth's Radiant Energy System Instrument on the Tropical Rainfall Measuring Mission Satellite. Part I: Methodology, *Journal of Applied Meteorology*, 42, 240–265, [https://doi.org/10.1175/1520-0450\(2003\)042<0240:ADMFTO>2.0.CO;2](https://doi.org/10.1175/1520-0450(2003)042<0240:ADMFTO>2.0.CO;2), 2003.
- Loeb, N. G., Kato, S., Loukachine, K., and Manalo-Smith, N.: Angular Distribution Models for Top-of-Atmosphere Radiative Flux Estimation from the Clouds and the Earth's Radiant Energy System Instrument on the Terra Satellite. Part I: Methodology, *Journal of Atmospheric and Oceanic Technology*, 22, 338–351, <https://doi.org/10.1175/JTECH1712.1>, 2005.
- Loeb, N. G., Doelling, D. R., Wang, H., Su, W., Nguyen, C., Corbett, J. G., Liang, L., Mitrescu, C., Rose, F. G., and Kato, S.: Clouds and the Earth's Radiant Energy System (CERES) Energy Balanced and Filled (EBAF) Top-of-Atmosphere (TOA) Edition-4.0 Data Product, *Journal of Climate*, 31, 895–918, <https://doi.org/10.1175/JCLI-D-17-0208.1>, 2018.
- Meador, W. E. and Weaver, W. R.: Two-Stream Approximations to Radiative Transfer in Planetary Atmospheres: A Unified Description of Existing Methods and a New Improvement, *Journal of the Atmospheric Sciences*, 37, 630–643, [https://doi.org/10.1175/1520-0469\(1980\)037<0630:TSATRT>2.0.CO;2](https://doi.org/10.1175/1520-0469(1980)037<0630:TSATRT>2.0.CO;2), 1980.
- Moody, E. G., King, M. D., Schaaf, C. B., and Platnick, S.: MODIS-Derived Spatially Complete Surface Albedo Products: Spatial and Temporal Pixel Distribution and Zonal Averages, *Journal of Applied Meteorology and Climatology*, 47, 2879–2894, <https://doi.org/10.1175/2008JAMC1795.1>, 2008.
- Nam, C., Bony, S., Dufresne, J.-L., and Chepfer, H.: The 'too few, too bright' tropical low-cloud problem in CMIP5 models, *Geophysical Research Letters*, 39, <https://doi.org/10.1029/2012GL053421>, 2012.
- Poli, P., Hersbach, H., Dee, D. P., Berrisford, P., Simmons, A. J., Vitart, F., Laloyaux, P., Tan, D. G. H., Peubey, C., Thépaut, J.-N., Trémolet, Y., Hólm, E. V., Bonavita, M., Isaksen, L., and Fisher, M.: ERA-20C: An Atmospheric Reanalysis of the Twentieth Century, *Journal of Climate*, 29, 4083–4097, <https://doi.org/10.1175/JCLI-D-15-0556.1>, 2016.
- Scheck, L., Weissmann, M., and Mayer, B.: Efficient Methods to Account for Cloud-Top Inclination and Cloud Overlap in Synthetic Visible Satellite Images, *Journal of Atmospheric and Oceanic Technology*, 35, 665–685, <https://doi.org/10.1175/JTECH-D-17-0057.1>, 2018.
- Shettle, E. P. and Weinman, J. A.: The Transfer of Solar Irradiance Through Inhomogeneous Turbid Atmospheres Evaluated by Eddington's Approximation, *Journal of the Atmospheric Sciences*, 27, 1048–1055, [https://doi.org/10.1175/1520-0469\(1970\)027<1048:TTOSIT>2.0.CO;2](https://doi.org/10.1175/1520-0469(1970)027<1048:TTOSIT>2.0.CO;2), 1970.
- Smith, G. L., Green, R. N., Raschke, E., Avis, L. M., Suttles, J. T., Wielicki, B. A., and Davies, R.: Inversion methods for satellite studies of the Earth's Radiation Budget: Development of algorithms for the ERBE Mission, *Reviews of Geophysics*, 24, 407–421, <https://doi.org/10.1029/RG024i002p00407>, 1986.

- Stephens, G., Li, J., and Wild, M.: An update on Earth's energy balance in light of the latest global observations, *Nature Geosci*, 5, 691–696, <https://doi.org/10.1038/ngeo1580>, 2012.
- 420 Su, W., Corbett, J., Eitzen, Z., and Liang, L.: Next-generation angular distribution models for top-of-atmosphere radiative flux calculation from CERES instruments: methodology, *Atmospheric Measurement Techniques*, 8, 611–632, <https://doi.org/10.5194/amt-8-611-2015>, 2015.
- Sun-Mack, S., Minnis, P., Chen, Y., Doelling, D. R., Scarino, B. R., Haney, C. O., and Smith, W. L. J.: Calibration Changes to Terra MODIS Collection-5 Radiances for CERES Edition 4 Cloud Retrievals, *IEEE Trans Geosci Remote Sens*, 56, 6016–6032, 425 <https://doi.org/10.1109/TGRS.2018.2829902>, 2018.
- Suttles, J. T., Green, R. N., Minnis, P., Smith, G., Staylor, W. F., Wielicki, B., J., W. I., Young, D., Taylor, V. R., and Stowe, L. L.: Angular radiation models for Earth-atmosphere systems, Volume 1 - Shortwave Radiation, Tech. Rep. 1, NASA, reference Publication 1184, 1988.
- Thorsen, T. J., Kato, S., Loeb, N. G., and Rose, F. G.: Observation-Based Decomposition of Radiative Perturbations and Radiative Kernels, *Journal of Climate*, 31, 10 039–10 058, <https://doi.org/10.1175/JCLI-D-18-0045.1>, 2018.
- 430 Tornow, F., Preusker, R., Domenech, C., Carbajal Henken, C. K., Testorp, S., and Fischer, J.: Top-of-Atmosphere Shortwave Anisotropy over Liquid Clouds: Sensitivity to Clouds' Microphysical Structure and Cloud-Topped Moisture, *Atmosphere*, 9, <https://doi.org/10.3390/atmos9070256>, <https://www.mdpi.com/2073-4433/9/7/256>, 2018.
- Tornow, F., Domenech, C., and Fischer, J.: On the Use of Geophysical Parameters for the Top-of-Atmosphere Shortwave Clear-Sky Radiance-to-Flux Conversion in EarthCARE, *Journal of Atmospheric and Oceanic Technology*, 36, 717–732, [https://doi.org/10.1175/JTECH-D-18-](https://doi.org/10.1175/JTECH-D-18-0087.1) 435 0087.1, 2019.
- van de Hulst, H.: Scaling Laws in Multiple Light Scattering under very Small Angles. (Karl Schwarzschild Lecture 1995), *Reviews in Modern Astronomy*, 9, 1–16, 1996.
- Wald, L. and Monget, J. M.: Sea surface winds from sun glitter observations, *Journal of Geophysical Research: Oceans*, 88, 2547–2555, <https://doi.org/10.1029/JC088iC04p02547>, 1983.
- 440 Wielicki, B. A., Barkstrom, B. R., Harrison, E. F., III, R. B. L., Smith, G. L., and Cooper, J. E.: Clouds and the Earth's Radiant Energy System (CERES): An Earth Observing System Experiment, *Bulletin of the American Meteorological Society*, 77, 853–868, [https://doi.org/10.1175/1520-0477\(1996\)077<0853:CATERE>2.0.CO;2](https://doi.org/10.1175/1520-0477(1996)077<0853:CATERE>2.0.CO;2), 1996.
- Zhang, Y., Macke, A., and Albers, F.: Effect of crystal size spectrum and crystal shape on stratiform cirrus radiative forcing, *Atmospheric Research*, 52, 59–75, [https://doi.org/10.1016/S0169-8095\(99\)00026-5](https://doi.org/10.1016/S0169-8095(99)00026-5), 1999.