



Evaluating Sentinel-5P TROPOMI tropospheric NO₂ column densities with airborne and Pandora spectrometers near New York City and Long Island Sound

Laura M. Judd¹, Jassim A. Al-Saadi¹, James J. Szykman², Lukas C. Valin², Scott J. Janz³, Matthew G. Kowalewski^{3,4}, Henk J. Eskes⁵, J. Pepijn Veefkind^{5,6}, Alexander Cede⁷, Moritz Mueller⁷, Manuel Gebetsberger⁷, Robert Swap³, R. Bradley Pierce⁸, Caroline R. Nowlan⁹, Gonzalo González Abad⁹, Amin Nehrir¹, and David Williams²

¹NASA Langley Research Center, Hampton, VA 23681, USA

²Office of Research and Development, United States Environmental Protection Agency, Triangle Research Park, NC 27709, USA

³NASA Goddard Space Flight Center, Greenbelt, MD 20771, USA

⁴Universities Space Research Association, Columbia, MD 21046, USA

⁵Royal Netherlands Meteorological Institute (KNMI), De Bilt, the Netherlands

⁶Department of Geoscience and Remote Sensing, Delft University of Technology, Delft, the Netherlands

⁷LuftBlick, Kreith, Austria

⁸University of Wisconsin–Madison Space Science and Engineering Center, Madison, WI 53706, USA

⁹Harvard-Smithsonian Center for Astrophysics Cambridge, MA 02138, USA

Correspondence: Laura M. Judd (laura.m.judd@nasa.gov)

Received: 20 April 2020 – Discussion started: 25 May 2020

Revised: 29 September 2020 – Accepted: 2 October 2020 – Published:

Abstract. Airborne and ground-based Pandora spectrometer NO₂ column measurements were collected during the 2018 Long Island Sound Tropospheric Ozone Study (LISTOS) in the New York City/Long Island Sound region, which coincided with early observations from the Sentinel-5P TROPospheric Monitoring Instrument (TROPOMI) instrument. Both airborne- and ground-based measurements are used to evaluate the TROPOMI NO₂ Tropospheric Vertical Column (TrVC) product v1.2 in this region, which has high spatial and temporal heterogeneity in NO₂. First, airborne and Pandora TrVCs are compared to evaluate the uncertainty of the airborne TrVC and establish the spatial representativeness of the Pandora observations. The 171 coincidences between Pandora and airborne TrVCs are found to be highly correlated ($r^2 = 0.92$ and slope of 1.03), with the largest individual differences being associated with high temporal and/or spatial variability. These reference measurements (Pandora and airborne) are complementary with respect to temporal coverage and spatial representativity. Pandora spectrometers can provide continuous long-term measurements but

may lack areal representativity when operated in direct-sun mode. Airborne spectrometers are typically only deployed for short periods of time, but their observations are more spatially representative of the satellite measurements with the added capability of retrieving at subpixel resolutions of 250 m × 250 m over the entire TROPOMI pixels they overfly. Thus, airborne data are more correlated with TROPOMI measurements ($r^2 = 0.96$) than Pandora measurements are with TROPOMI ($r^2 = 0.84$). The largest outliers between TROPOMI and the reference measurements appear to stem from too spatially coarse a priori surface reflectivity (0.5°) over bright urban scenes. In this work, this results during cloud-free scenes that, at times, are affected by errors in the TROPOMI cloud pressure retrieval impacting the calculation of tropospheric air mass factors. This factor causes a high bias in TROPOMI TrVCs of 4 %–11 %. Excluding these cloud-impacted points, TROPOMI has an overall low bias of 19 %–33 % during the LISTOS timeframe of June–September 2018. Part of this low bias is caused by coarse a priori profile input from the TM5-MP model; replacing these

profiles with those from a 12 km North American Model–Community Multiscale Air Quality (NAMCMAQ) analysis results in a 12 %–14 % increase in the TrVCs. Even with this improvement, the TROPOMI–NAMCMAQ TrVCs have a 7 %–19 % low bias, indicating needed improvement in a priori assumptions in the air mass factor calculation. Future work should explore additional impacts of a priori inputs to further assess the remaining low biases in TROPOMI using these datasets.

1 Introduction

Nitrogen dioxide (NO₂) is an air pollutant emitted naturally through soil emissions and lightning, as well as anthropogenically as a combustion product from sources such as mobile vehicles, powerplants, and industrial processes. NO₂ is harmful to human health (e.g., Fischer et al., 2015; Anenberg et al., 2018) both directly and through its role in the production of near-surface ozone and particulate matter, making it a criteria air pollutant monitored and regulated by the Clean Air Act (<https://www.epa.gov/clean-air-act-overview>; last access: 18 April 2020). Due to its short lifetime of a few hours as a component of NO_x (NO + NO₂) (Liang et al., 1998; Beirle et al., 2011; Liu et al., 2016), the spatial distribution of NO₂ near anthropogenic emission sources is highly heterogeneous, with complex patterns that are hard to characterize from sparse networks of ground-based monitors.

The Tropospheric Monitoring Instrument (TROPOMI) on board the Copernicus Sentinel-5 Precursor (S5P) satellite currently measures column densities of NO₂ globally at unprecedented spatial resolution, making it an important tool for studying and monitoring urban air pollution. TROPOMI continues a long legacy of ultraviolet–visible (UV–VIS) backscatter measurements from satellites observing trace gas column densities related to air quality (González Abad et al., 2019). Global NO₂ measurements have heritage from the Global Ozone Monitoring Experiment (GOME; Burrows et al., 1999), SCanning Imaging Absorption spectroMeter for Atmospheric CHartographY (SCIAMACHY; Bovensmann et al., 1999), GOME-2 (Callies et al., 2000; Behrens et al., 2018), Ozone Monitoring Instrument (OMI; Levelt et al., 2006; Levelt et al., 2018), Ozone Mapping and Profiling Suite (OMPS; Yang et al., 2014), and as of October 2017, TROPOMI (Veefkind et al., 2012) aboard S5P. Over the last couple decades, the spatial and temporal resolution of these satellite NO₂ products have improved, with the first daily global coverage achieved by OMI launched in 2004 and with TROPOMI achieving a spatial resolution an order of magnitude finer (currently approximately 3.5 km × 5.5 km at nadir) than the still-operating OMI (13 km × 24 km at nadir) and OMPS (50 km × 50 km at nadir on Suomi NPP) instruments. The use of the TROPOMI tropospheric NO₂ products for applications such as evaluating emissions inventories and

distinguishing point sources has already been documented in recent literature. Goldberg et al. (2019) used data from the first year of TROPOMI operation to evaluate top-down NO_x emissions over three major US cities and two large powerplants. Complementary studies also pinpointed emissions from large point sources (Beirle et al., 2019) and even showed that emissions in Paris, France, have not decreased as expected since 2012 (Lorente et al., 2019). Griffin et al. (2019) found that the improved spatial resolution of TROPOMI was able to distinguish NO₂ plumes from individual sources near the Canadian Oil Sands, which was not possible with the coarser measurements from OMI.

To enhance the integrity of using TROPOMI data in research and applications, each product requires systematic evaluation and validation. Validation activities include evaluating the data products under polluted and clean scenes using reference measurements from satellite, airborne, and ground-based instrumentation (van Geffen et al., 2019). Routine TROPOMI NO₂ validation reports are produced regularly and documented at <http://mpc-vdaf.tropomi.eu/> (last access: 30 March 2020). Additional in-depth studies in recent literature have been mostly confined to ground-based column measurements from multi-axis differential optical absorption spectroscopy (MAX-DOAS) and/or direct-sun column measurements (e.g., from Pandora spectrometers) (e.g., Griffin et al., 2019; Zhao et al., 2020; Ialongo et al., 2020; Wang et al., 2020). These types of measurements have been used in the past to evaluate the OMI Tropospheric Vertical Column (TrVC) product, though this was shown to be challenging in polluted areas as spatial variability in NO₂ can result in sampling mismatches between the small spatial scale measurements from the ground-based spectrometers and the > 300 km² pixels from OMI (Lamsal et al., 2014; Reed et al., 2015; Goldberg et al., 2017; Judd et al., 2019). Initial results of TROPOMI NO₂ product validation with Pandora spectrometer direct-sun measurements show more encouraging results with higher levels of correlation than OMI evaluations (OMI examples found in Goldberg et al., 2017, and Judd et al., 2019; TROPOMI examples found in Griffin et al., 2019, Zhao et al., 2020, Ialongo et al., 2020, and this work).

In addition to ground-based column measurements, airborne column mapping datasets have been identified as valuable for TROPOMI TrVC validation efforts (van Geffen et al., 2019). Airborne spectrometers have the capability to map at much finer spatial resolutions than current satellite-based observations; for example, those used in this study have a spatial resolution of approximately 250 m × 250 m. Airborne spectrometers have been used to visualize high spatiotemporal variations in NO₂ over select areas in Europe, North America, Africa, and Asia (Popp et al., 2012; Schönhardt et al., 2015; Lawrence et al., 2015; Nowlan et al., 2016, 2018; Lamsal et al., 2017; Meier et al., 2017; Tack et al., 2017, 2019; Broccardo et al., 2018; Judd et al., 2018, 2019) and have even contributed toward evaluating emissions inventories and ozone production sensitivity (Schön-

hardt et al., 2015; Souri et al., 2018; Souri et al., 2020). Measurements from airborne spectrometers have also been compared to the OMI NO₂ products. Broccardo et al. (2018) found that agreement between the airborne mapper, iDOAS, and OMI improves with distance away from large emission source regions. Lamsal et al. (2017) discovered moderate correlation during a small subset of comparisons between the Airborne Compact Atmospheric Mapper (ACAM) and OMI over the Maryland region in 2011, though large differences were found for instances with insufficient sampling by the airborne mapper in areas subject to spatial heterogeneity of NO₂. The large pixels from OMI are difficult to completely sample with airborne spectrometer observations; however, with the improved spatial resolution of TROPOMI, undersampling by airborne spectrometers is less of a concern though it can still impact statistical analysis between airborne spectrometers and TROPOMI as was demonstrated by Tack et al. (2020) as well as the work presented in this paper.

In this study, we use data from two NASA airborne spectrometers and nine ground-based (Pandora) spectrometers to evaluate the S5P TROPOMI NO₂ TrVC v1.2 product over New York City (NYC) and Long Island Sound during the summer 2018 Long Island Sound Tropospheric Ozone Study (LISTOS) field campaign. The intercomparisons between the three independent datasets help bound NO₂ product uncertainties due to spatial and temporal variability and a priori assumptions within the retrievals. Section 2 introduces LISTOS and each NO₂ dataset: S5P TROPOMI, the airborne spectrometers, and Pandora spectrometer, along with details on methodology. Section 3 evaluates the airborne spectrometer retrieval using Pandora measurements. Section 4 presents comparisons of TROPOMI NO₂ columns to the airborne spectrometer observations during LISTOS. Section 5 compares TROPOMI NO₂ TrVCs to Pandora spectrometer data for the LISTOS timeframe as well as expanded through winter 2019. Throughout these sections causes for bias in the TROPOMI product based on the a priori profile and cloud assumptions are discussed. Section 6 summarizes TROPOMI NO₂ TrVC performance in the NYC region, and Sect. 7 presents concluding remarks. Together these results demonstrate TROPOMI's capability for observing the spatial distribution of NO₂ in heterogeneous environments and demonstrate approaches for resolving apparent differences associated with linking observations from different measurement strategies.

2 Data and methods

2.1 The Long Island Sound Tropospheric Ozone Study

Data in this study were acquired across the NYC and Long Island Sound region in the United States as part of the Long Island Sound Tropospheric Ozone Study (LISTOS: <https://www.nescaum.org/documents/listos>; <https://www-air.larc.nasa.gov/missions/listos/index.html>: last access: 18 April 2020).

LISTOS was a multiorganizational collaborative air quality study focused on understanding the sources and temporal emission profiles of the ozone precursors, nitrogen oxides (NO_x) and volatile organic compounds (VOCs), across the NYC metropolitan area and ozone formation and transport in this coastal region. Measurements conducted include in situ and remotely sensed air quality and meteorology measurements from satellites, aircraft, and ground sites as well as the integration of the measurements with air quality models. This urban to suburban coastal area is a diverse region for validating satellite products due to the heterogeneous patterns in pollution as well as varying environmental factors such as surface reflectivity. In this study, we consider measurements from the LISTOS timeframe to span late June through September 2018, though some measurements extended before and after this time period.

2.2 S5P TROPOMI

Sentinel-5 Precursor (S5P) was launched October 2017 into a sun-synchronous low Earth orbit with a 13:30 local Equator crossing time. S5P carries a single instrument, TROPOMI, which consists of a hyperspectral spectrometer observing eight bands spanning the ultraviolet (UV), visible (VIS), near-infrared, and shortwave infrared portions of the electromagnetic spectrum (Veefkind et al., 2012). The S5P orbit combined with the wide TROPOMI swath width of 2600 km provides observations between approximately 17:00 and 19:00 UTC (13:00–15:00 EDT) over the New York City and Long Island Sound region, capturing the early afternoon spatial distribution of trace gas columns including CO (Borsdorff et al., 2018), HCHO (De Smedt et al., 2018), CH₄ (Hu et al., 2018), NO₂ (van Geffen et al., 2019, 2020), SO₂ (Theys et al., 2017), and O₃ (Garane et al., 2019).

In this work, the TROPOMI v1.2 NO₂ TrVC product is evaluated with airborne and ground-based column density measurements from 25 June 2018 to 19 March 2019 over the LISTOS domain. The retrieval is built on the heritage of the Ozone Monitoring Instrument DOMINO product (Boersma et al., 2011), including developments from the QA4ECV project (Boersma et al., 2018; van Geffen et al., 2019; <http://www.qa4ecv.eu/>: last access: 18 April 2020). NO₂ total slant columns are retrieved via the differential optical absorption spectroscopy (DOAS; Platt and Stutz, 2008) method in the visible window of 405–465 nm. Following the spectral fit, the slant columns are separated into their stratospheric and tropospheric components. The stratospheric column is estimated by assimilating the total columns in the TM5-MP model. The remaining tropospheric slant columns are converted into vertical columns through the calculation and application of air mass factors (AMFs; Palmer et al., 2001). A priori inputs for the tropospheric NO₂ AMF calculations include viewing and solar geometry, surface pressure, and NO₂ profile shape from the 1° × 1° TM5-MP model

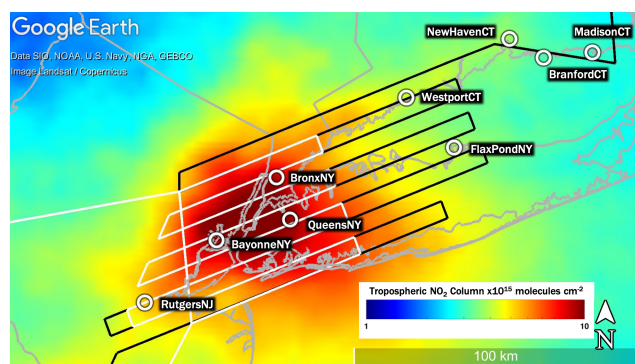


Figure 1. Map showing the annual average TROPOMI tropospheric NO₂ columns between April 2018 and March 2019. Overlaid circles show the locations of the nine Pandora spectrometers considered in this analysis. Table 4 shows when each of these instruments operated. The black and white lines represent the two types of flight plans flown by the airborne spectrometers (large in black and small in white). This map was created in ©Google Earth Pro.

(Williams et al., 2017), $0.5^\circ \times 0.5^\circ$ surface albedo climatology built upon 5 years of OMI data (Kleipool et al. 2008), and the FRESKO-S cloud fraction and cloud height (Loyola et al., 2018) (Table 1).

TROPOMI data during the time period of this analysis have a nadir spatial resolution of $3.5 \text{ km} \times 7 \text{ km}$, with pixel areas ranging from 32.5 to 129.5 km^2 . Beginning on 6 August 2019, the nadir spatial resolution of the TROPOMI NO₂ product is refined to $3.5 \text{ km} \times 5.5 \text{ km}$ (Ludewig et al., 2020). TROPOMI is capable of observing pollution at a spatial resolution a factor of 10 times more refined than its predecessor satellite sensor, OMI (Levelt et al., 2006, 2018).

Only TROPOMI data with $qa_value = 1$ are considered in this analysis, which removes pixels influenced by issues such as sun glint, missing retrieval information, or cloud radiative fractions (CRFs) above 50 % (van Geffen et al., 2019, Eskes et al., 2019). We note that qa_values down to 0.75 are deemed acceptable for most data uses, but 2 % or less of the TROPOMI data in this work had qa_values between 0.75 and 1 and do not affect the results. This work also makes use of the averaging kernel and pressure profiles used in the retrieval to explore the impact of different NO₂ profile shapes within the air mass factor calculation and explores sensitivity of the results to cloud retrievals during clear-sky scenes.

Figure 1 shows the annual average of NO₂ TrVCs observed over the LISTOS region from April 2018 to March 2019, depicting peak NO₂ in the domain of over $10 \times 10^{15} \text{ molecules cm}^{-2}$ over much of New York City. The largest value is over the southern tip of Manhattan Island at a magnitude of $12 \times 10^{15} \text{ molecules cm}^{-2}$. The spatial distribution and dynamic range of NO₂ varies widely day to day over this region due to variable meteorology, emissions, and the lifetime of NO₂, as shown through examples in this analysis.

2.3 Airborne spectrometers

Two airborne UV–VIS mapping spectrometers are used in this study: Geostationary Trace gas and Aerosol Sensor Optimization (GeoTASO) and GEO-CAPE Airborne Simulator (GCAS). GeoTASO and GCAS are very similar instruments but differ in characteristics such as their size, weight, wavelength range, and sensitivity. Specific details about these two instruments can be found in Leitch et al. (2014), Kowalewski and Janz (2014), Nowlan et al. (2016), and Nowlan et al. (2018), with a brief summary in Table 2. The two instruments have very similar performance with respect to the NO₂ retrieval. Due to varying aircraft availability during LISTOS, these instruments were flown either interchangeably or together during 16 flight days between 18 June 2018 and 19 October 2018. Only flights from 25 June to 6 September (13 flight days) are considered in this analysis due to availability of the high-resolution model data used to provide the a priori NO₂ profile shapes in the full vertical column retrieval (Table 1). GeoTASO was flown on the NASA LaRC HU-25 Falcon during the three June flight days, and GCAS was flown on the NASA LaRC B200 from July through October. The HU-25 Falcon is a faster aircraft (average ground speed at altitude was 215 m s^{-1}) capable of mapping approximately a 50 % larger area per flight than the B200 (average ground speed at altitude was 123 m s^{-1}). This capability enabled us to also conduct measurements for the second Ozone Water-Land Environmental Transition Study domain (OWLETS2: <https://www-air.larc.nasa.gov/missions/owlets/index.html>; last access: 7 January 2020) during June flights over Baltimore, Maryland, in the early morning and late afternoon hours (outside the S5P overpass window). The NASA LaRC B200 has two nadir-viewing remote sensing portals, allowing installation of a second instrument along with GCAS. The second instrument from July through September was the High Altitude Lidar Observatory (HALO: Nehrir et al., 2018) providing colocated measurements of nadir profiles of aerosols and methane. This analysis uses HALO aerosol optical thickness (AOT) retrievals at 532 nm to discuss aerosol conditions qualitatively. GeoTASO was the second instrument for flights in October, allowing for direct comparison of GCAS and GeoTASO retrievals; however, these flights did not coincide with any clear-sky TROPOMI overpasses.

Figure 1 shows the two basic raster patterns that were flown by the NASA aircraft to create gapless maps of the high-spatial-resolution spectra from which NO₂ TrVCs are retrieved. Both airborne instruments have a swath width of approximately 7 km at the nominal flight altitude of 9 km (aircraft indicated altitude of 28 000 ft); thus, flight lines are spaced slightly over 6 km apart to ensure overlap between adjacent swaths. Table 3 includes a summary of all flights considered in this study along with cloud conditions, number of coincidences with Pandora and TROPOMI (assuming coincidence criteria discussed in Sect. 2.5 and throughout this pa-

Table 1. A priori input for tropospheric AMF calculations for TROPOMI and airborne TrVCs.

	TROPOMI v1.2	Airborne
A priori NO ₂ profile shape	TM5-MP 1° × 1° model (Williams et al., 2017)	Troposphere: 12 km NAMCMAQ (Stajner et al., 2011) Stratosphere: PRATMO climatology (Prather, 1992; McLinden et al., 2000) bias corrected daily with TROPOMI stratospheric vertical columns
Surface reflectivity	OMI 0.5° × 0.5° 5-year climatology (Kleipool et al., 2008)	Land: MCD43A1 daily L3 500 m v006 product (Lucht et al., 2000; Schaaf and Wang, 2015) averaged over the period of the campaign Water: assumed Lambertian reflectance of at least 3 % and Cox–Munk kernel
Pressure/temperature profiles	TM5-MP 1° × 1° model driven by the ECMWF corrected with a 3 km DEM	Troposphere: 12 km NAMCMAQ (Stajner et al., 2011) Stratosphere: 1° RAQMS (Pierce et al., 2009)
Clouds	FRESCO-S (Loyola et al., 2018)	Cloudy scenes are not included in this analysis

Table 2. Comparison of GeoTASO and GCAS.

	GeoTASO	GCAS
Spectral range	290–390 nm, 415–695 nm	300–490 nm, 480–900 nm
Spectral resolution	0.43 nm, 0.88 nm	0.6 nm, 2.8 nm
Size/weight	90 kg	36 kg
Detector dimensions	1056 spectral × 1033 spatial	1072 spectral × 1024 spatial
Integration times	250 ms	225 to 750 ms
Native spatial resolution	Approximately 250 m × 250 m	
Field of view	45°	
References	Leitch et al. (2014) Nowlan et al. (2016) Judd et al. (2019)	Kowalewski and Janz (2014) Nowlan et al. (2018)

per), and raster type. All flight days included two flights lasting approximately 4–5 h each (morning and afternoon). The small raster (white lines in Fig. 1) could be accomplished two times in one flight (four times per day), repeatedly measuring the same area to observe the temporal variation throughout the day. The large raster (black lines in Fig. 1) could only be flown once per flight (twice per day) and was meant to capture a more regional view of the spatial distribution of NO₂ on days with expected air pollution over Long Island Sound and the surrounding communities.

The NO₂ retrieval algorithm is identical for GCAS and GeoTASO. The retrieval process is summarized here with additional detail in Judd et al. (2019). NO₂ differential slant columns are retrieved at an approximate spatial resolution of 250 m × 250 m in the spectral fitting window of 425–460 nm relative to in-flight-measured reference spectra using the open-source DOAS computing software, QDOAS (<http://uv-vis.aeronomie.be/software/QDOAS/>; last access: 18 April 2020). Reference spectra were collected over ar-

eas with low and homogeneous NO₂ absorption over a 4–5 min time period using nadir observations for each of the 30 across-track positions. Three separate references were collected during the LISTOS campaign: 30 June for all GeoTASO flights, 2 July for the GCAS flights for this day only (due to unique instrument conditions), and 5 August for the rest of the GCAS flights as the instrument conditions were stable for the rest of the flight period. All reference spectra were colocated with total column NO₂ measurements from Pandora spectrometers: 5.6×10^{15} molecules cm⁻² at MadisonCT on 30 June, 5.7×10^{15} molecules cm⁻² at MadisonCT on 2 July, and 6.2×10^{15} molecules cm⁻² at WestportCT on 5 August, with values estimated to be over 50 % stratospheric according to our TROPOMI bias-corrected stratospheric column estimation (see below).

Fitted trace gas absorption cross sections in the slant column spectral fit include NO₂ (Vandaele et al., 1998), O₄ (Thalman and Volkamer, 2013), water vapor (Rothman et al., 2009), CHOCHO (Volkamer et al., 2005),

Table 3. GeoTASO/GCAS flight summary for LISTOS. Flights with shaded boxes are not considered in this analysis.

Flight	Date	Time (UTC fractional hour)	Pollution scale (95th percentile $\times 10^{15}$ molecules cm ⁻²)	% Cloudy pixels	No. of valid Pandora coincidences	No. of valid TROPOMI coincidences	Flight pattern type (Fig. 1)
1	18 Jun 2018	12.0–15.6					Large
2		17.0–20.7					Large
3	25 Jun 2018	12.5–15.7	7.3	10	5	34	Small
4		16.8–20.3	7.2	5			Small
5	30 Jun 2018	12.2–15.6	11.2	0	9	65	Small
6		16.7–20.4	13.5	1			Small
7	2 Jul 2018	11.4–16.6	14.5	0	7	18	Small
8		17.9–21.5	18.9	0			Small
9	19 Jul 2018	11.4–15.3	17.9	0	11	47	Large
10		16.9–20.9	32.4	0			Large
11	20 Jul 2018	11.4–15.3	30.4	3	15	38	Large
12		17.1–21.1	16.3	5			Large
13	5 Aug 2018	12.5–16.5	15.5	1	15	0	Large
14		17.8–22.3	10.2	5			Large
15	6 Aug 2018	11.7–16.0	21.3	0	13	11	Large
16		17.2–21.5	16.1	5			Small
17	15 Aug 2018	11.2–15.5	12.4	0	17	52	Large
18		17.0–21.6	9.8	5			Large
19	16 Aug 2018	11.3–15.3	13.7	17	16	31	Small
20		17.3–21.5	9.8	2			Small
21	24 Aug 2018	10.9–15.3	14.7	0	18	32	Large
22		16.6–21.0	37.8	4			Large
23	28 Aug 2018	11.3–15.3	16.6	0	15	10	Small
24		16.6–20.3	16.0	2			Small
25	29 Aug 2018	11.2–15.1	16.8	0	17	17	Small
26		16.6–20.8	14.0	3			Small
27	6 Sep 2018	11.9–15.8	11.8	9	13	33	Small
28		17.2–21.4	12.2	5			Small
29	3 Oct 2018	12.3–16.7					Small
30		18.2–21.8					Small
31	19 Oct 2018	12.8–15.2					Small
32		16.8–20.3					Small

Ring spectrum (Chance and Kurucz, 2010), and a fifth-order polynomial. Average \pm standard deviation spectral fitting uncertainties for the NO₂ slant columns during cloud-free scenes at cruising altitude for GeoTASO are $1.6 \times 10^{15} \pm 0.3 \times 10^{15}$ molecules cm⁻² and for GCAS are $0.8 \times 10^{15} \pm 0.1 \times 10^{15}$ molecules cm⁻². The differences in uncertainty between spectral fits are likely due to a minor amount of undersampling of the GeoTASO slit function, which has a

slightly flattened top hat shape compared to the more purely Gaussian shape exhibited by GCAS.

Air mass factors (AMFs) are calculated using the Smithsonian Astrophysical Observatory AMF tool (Nowlan et al., 2016, 2018), which packages the VLIDORT radiative transfer model (Spurr, 2006) for calculating scattering weights based on user inputs of viewing and solar geometries, a priori assumptions about surface reflectivity with bidirectional reflectance distribution function (BRDF) kernels, and mete-

orological and trace gas vertical profiles. AMFs are then calculated following the methodology of Palmer et al. (2001) as the integrated product of scattering weights and shape factor (e.g., Nowlan et al., 2016; Lamsal et al., 2017; Judd et al., 2019).

Table 1 compares a priori assumptions used for TROPOMI and airborne AMF calculations. For both retrievals, the spatial resolutions of the a priori assumptions are coarser than those of the observations, but a priori assumptions for airborne observations are at a finer resolution than those for TROPOMI. Airborne a priori NO₂ vertical profile shapes are obtained for the troposphere from hourly output from a parallel developmental simulation of the North American Model–Community Multiscale Air Quality (NAMCMAQ) model from the National Air Quality Forecasting Capability (NAQFC; Stajner et al., 2011) and stratospheric NO₂ climatology developed using PRATMO (PRather ATmospheric MOdel) (Prather, 1992; McLinden et al., 2000; Nowlan et al., 2016). The stratospheric column is bias corrected daily using TROPOMI NO₂ stratospheric vertical columns by calculating the average offset between the two datasets over the LISTOS domain for each day (ranging from 5×10^{13} to 6×10^{14} molecules cm⁻²). This analysis only focuses on the below-aircraft portion of the NO₂ columns from the aircraft, which is henceforth referred to as tropospheric vertical columns or TrVCs.

Surface reflectance over land is represented in the AMF tool input files with the isometric, geometric, and volumetric BRDF kernels given by the MODIS MCD43A1 product at 500 m resolution at 470 nm averaged over the time period of the LISTOS campaign (Lucht et al., 2000; Schaaf and Wang, 2015). Input over water includes only the isometric BRDF kernel, limited to a minimum of 3 % Lambertian reflectivity (similar to Nowlan et al., 2016), as well as an added Cox–Munk kernel (derived through references from Cox and Munk, 1954; Nakajima and Tanaka, 1983; Gordon and Wang, 1992; Spurr 2014; and wind speed from the lowest layer of the NAMCMAQ model and viewing and solar geometry). The brighter areas where the isometric BRDF kernel exceeds 3 % are mostly over lakes, rivers, and coastlines rather than open water. Water surfaces are flagged using the Terra MODIS Land–Water Mask MOD44W product.

A temperature correction is applied within the air mass factor calculation (e.g., Bucsela et al., 2013) as the slant column retrievals only use an NO₂ absorption cross section at one temperature (294 K). The temperature correction factor is the same factor used in the TROPOMI NO₂ product (van Geffen et al., 2019).

Clouds or aerosols are not accounted for in the AMF calculation in this analysis, though cloudy scenes are excluded from the analysis using a defined count rate threshold measured by the airborne spectrometer detector and visual verification from GOES 16 imagery (<https://www.star.nesdis.noaa.gov/smcd/spb/aq/AerosolWatch/>; last access: 18 April 2020).

Differential slant columns are converted to below-aircraft vertical columns (assumed as the tropospheric vertical column, TrVC) by subtracting the estimated stratospheric slant column (PRATMO climatology bias corrected daily with TROPOMI multiplied by the stratospheric AMF), adding the estimated reference slant column amount (from Pandora), and dividing by the tropospheric air mass factor, similar to Eq. (1) in Judd et al. (2019) or Eq. (4) in Nowlan et al. (2018).

Previous work quantified uncertainty in airborne TrVCs from GCAS and GeoTASO by applying error propagation through the calculation of the vertical column based on uncertainties in the slant column fit, reference spectrum, and AMF calculation (Nowlan et al., 2016, 2018; Judd et al., 2019). Relative uncertainties are largest for relatively clean sites (up to and over 100 % in individual cases); however, they decrease as pollution increases. Lorente et al. (2017) found that different methodologies applied to the same datasets can lead to structural uncertainty of 31 %–42 %, which is mostly due to sensitivity to selection of a priori vertical profile shapes in the AMF calculation. In this work, airborne TrVCs are evaluated by comparing to Pandora NO₂ columns (Sect. 3) as Pandora NO₂ columns have relatively low uncertainties and their AMFs are not dependent on a priori profile shapes as described in the following section.

2.4 Pandora spectrometers

The Pandora instrument is a ground-based UV–VIS spectrometer that provides high-quality spectrally resolved direct-sun/lunar or sky scan radiance measurements. The Pandora radiance measurements combine trace gas spectral fitting routines and, in the case of sky scan measurements, radiative transfer models to provide column densities of trace gas species similar to TROPOMI and airborne spectrometers. Pandora measurements obtained throughout the LISTOS study were limited to direct-sun mode, during which the instrument tracks the sun to observe the direct solar irradiance. Direct-sun columns are particularly beneficial for validation/evaluation due to their low uncertainties in the AMF (Herman et al., 2009). All data are processed as part of the Pandonia Global Network (PGN; <https://www.pandonia-global-network.org/>, last access: 6 November 2020), and only data with a quality flag of 0 or 10 (high quality) are used. Accuracy and precision of the total NO₂ column measurements from Pandora are reported as 2.69×10^{15} molecules cm⁻² as a function of AMF_{CEI} and 1.35×10^{14} molecules cm⁻², respectively (Herman et al., 2009; LuftBlick, 2016). All Pandora data are converted from total vertical columns to TrVCs by subtracting either the airborne-estimated or TROPOMI-retrieved stratospheric columns for comparison purposes.

Nine Pandora spectrometers were deployed and operated in the LISTOS domain in support of the LISTOS air quality study and as long-term measurements in support of EPA's

Photochemical Assessment Monitoring Station Enhanced Monitoring (PAMS-EM) program (<https://www3.epa.gov/ttnamti1/files/ambient/pams/PAMSEMPGuidance.pdf>; last access: 24 March 2020). Here, we use available Pandora data from these nine instruments between June 2018 and March 2019. There is one additional long-term Pandora located in NYC (CCNY campus, Instrument PI: M. Tzortziou) that is not part of the PAMS-EM program and thus is not included in the quantitative analysis presented here. However, this instrument is used briefly to describe a case study in Sect. 4.

The names, locations, and monthly days of operation of the nine Pandora spectrometer sites used in this analysis are shown in Table 4. Figure 1 also shows the spatial distribution of these sites, which includes one site to the west of NYC (RutgersNJ), three instruments within the New York City metro area (BayonneNJ, BronxNY, and QueensNY), and five along the shoreline of Long Island Sound to the east-northeast of the city. Pandora sites were chosen to capture upwind, in-city, and downwind emissions from NYC, particularly NO₂ transport down Long Island Sound from the city to help investigate the complex ozone pollution near this land–water interface. All instruments operated during the summer 2018 LISTOS campaign (defined as through September 2018), though four sites operated beyond LISTOS and are used in Sect. 5.2 for evaluation through 19 March 2019.

2.5 Methods

All linear regression statistics in this work are calculated using a reduced major axis (RMA) including the coefficient of determination (r^2). This regression was chosen over ordinary least squares (OLS) to recognize the potential for uncertainty in both evaluated and reference measurements. Percent and mean differences are also calculated and analyzed and are calculated by the following convention:

$$\text{column difference} = \text{evaluated measurement} - \text{reference measurement}, \quad (1)$$

$$\text{percent (\%)} \text{ difference} = \frac{\text{column difference}}{\text{reference measurement}} \times 100. \quad (2)$$

In Sects. 3 and 5, the reference measurements are the Pandora TrVCs and the evaluated measurements are the airborne and TROPOMI TrVCs, respectively. In Sect. 4, the reference measurements are the aircraft TrVCs and the evaluated measurements are TROPOMI NO₂ columns.

For all comparisons, coincidence criteria are chosen based on spatial, temporal, and physical components of the evaluated and reference measurements. In the following analysis, we use the following coincidence criteria (unless otherwise noted).

For Pandora and airborne coincidences, the recommended coincidence criteria are from Judd et al. (2019), which are the

median airborne TrVCs within a 750 m radius of the Pandora site and the temporally closest Pandora measurement (within ± 5 min of the aircraft overpass).

For airborne comparisons to TROPOMI, each TROPOMI pixel must be at least 75 % mapped by cloud-free airborne pixels within ± 30 min of the S5P overpass.

- For Pandora comparisons to TROPOMI, the coincidence is identified by the TROPOMI pixel in which the Pandora spectrometer is located (according to the TROPOMI pixel corners) and the median Pandora TrVC is calculated within ± 30 min of the S5P overpass.
- All TROPOMI data have cloud radiative fractions (CRFs) less than 50 %. An additional new criterion is invoked to exclude points for which the difference between surface pressure and cloud pressure in the retrieval (as an indication of cloud height) exceeds 50 hPa. Justification of this criterion is discussed primarily in Sects. 4.1 and S3, and the influence of the criterion is considered throughout the paper.
- Sensitivities to coincidence criteria are detailed in Tables S1–S3 and briefly discussed in each section and within the Supplement to this paper.
- In addition to the standard TROPOMI v1.2 NO₂ TrVC product we consider the effect of using a higher-spatial-resolution a priori NO₂ vertical profile shape in the TROPOMI retrieval. This is done by recalculating TROPOMI tropospheric AMF using the tropospheric averaging kernel to replace the TM5-MP a priori profile with the 12 km NAMCMAQ data used in the airborne spectrometer AMF calculations following the guidance provided in Sect. 8.8 of Eskes et al. (2019).

3 Evaluating airborne TrVC with Pandora data

This work begins by comparing airborne and Pandora TrVC to evaluate the uncertainty of the airborne TrVCs and establish the spatial representativeness of the Pandora observations. This evaluation provides a consistent basis for using the high-spatial-resolution airborne data and high-temporal-resolution Pandora data to independently assess TROPOMI TrVCs.

During LISTOS, overflights of Pandora sites with the airborne spectrometers occurred during all 13 flight days spanning 25 June–6 September 2018, between 12:00 and 22:00 UTC (08:00–18:00 EDT). Site-by-site scatter plots of all coincident measurements and linear regression statistics are shown in Fig. 2. At most sites the Pandora and airborne tropospheric NO₂ columns are highly correlated with slopes of approximately 1. Bars extending from each coincidence illustrate the spatial and temporal variability at the time of the measurements; the horizontal bars show the maximum and minimum Pandora observations within ± 5 min of the

Table 4. Pandora sites and time of operation. Shaded boxes represent the months of LISTOS.

Pandora name	Latitude, longitude	Months with valid data (number of measurement days per month)											
		2018						2019					
		J	J	A	S	O	N	D	J	F	M		
QueensNY	40.7361, −73.8215	5	23	27	26	27	27	25	26	26	29		
BronxNY	40.8679, −73.8781	6	29	29	16	21	10	—	—	—	—		
BayonneNJ	40.6703, −74.1261	—	21	31	27	26	25	25	26	24	28		
FlaxPondNY	40.9635, −73.1402	2	13	28	19	5	—	—	—	—	—		
WestportCT	41.1183, −73.3367	5	19	29	25	27	24	26	23	5	22		
NewHavenCT	41.3014, −72.9029	6	30	29	19	19	14	24	15	—	—		
RutgersNJ	40.4622, −74.4294	2	30	30	21	27	22	25	21	5	21		
MadisonCT	41.2568, −72.5533	7	13	—	—	—	—	—	—	—	—		
BranfordCT	41.2420, −72.7604	—	9	30	4	—	—	—	—	—	—		

aircraft overpass, and the vertical bars show the 10th–90th percentiles of the airborne pixels within a 750 m radius of the Pandora site (usually ~ 25 –30 pixels). High temporal and spatial variations are mostly observed at polluted locations (e.g., QueensNY, BronxNY, and BayonneNJ). NewHavenCT has the lowest slope (0.71) of all sites yet a high correlation ($r^2 = 0.87$) which suggests a possible systematic site bias. Such a bias could be due to the inability of the MODIS BRDF product to resolve the spatial gradient of surface reflectance near this site, as this site is adjacent to both a bright urban area in New Haven and also the darker surface of the nearby river. Excluding MadisonCT, which has a poor linear regression due to the few (4) coincidences and small data range, the y intercepts of the linear regressions range from -1.2×10^{15} to 2.0×10^{15} molecules cm^{-2} . The most likely cause for the range in y intercepts between sites would be uncertainty in the estimated column for the reference spectrum in the Pandora retrieval, which uses the minimum Langley extrapolation (MLE) approach and has an estimated accuracy of 2.69×10^{15} molecules cm^{-2} for an AMF of 1 (Herman et al., 2009). The observed intercepts are all smaller than this estimated uncertainty.

Figure 3 shows the aggregated comparison of airborne and Pandora TrVC coincidences from all sites during LISTOS ($n = 171$). Figure 3a shows the scatter plot and linear regression statistics. Each point is colored by the Pandora location, consistent with Fig. 2. Together, these data are highly correlated ($r^2 = 0.92$) with a slope of 1.03 and small offset of -0.4×10^{15} molecules cm^{-2} . Figure 3a also includes whiskers showing the spatial and temporal variability associated with each coincident observation similar to Fig. 2. Two different symbols are used as an objective indicator of temporal variability as quantified by Pandora observations; the outlined squares in Fig. 3a are coincidences where the Pandora TrVCs vary less than 30 % within ± 15 min from the aircraft overpass ($n = 97$), and the nonoutlined circles indicate those exceeding 30 % ($n = 74$). (The temporal win-

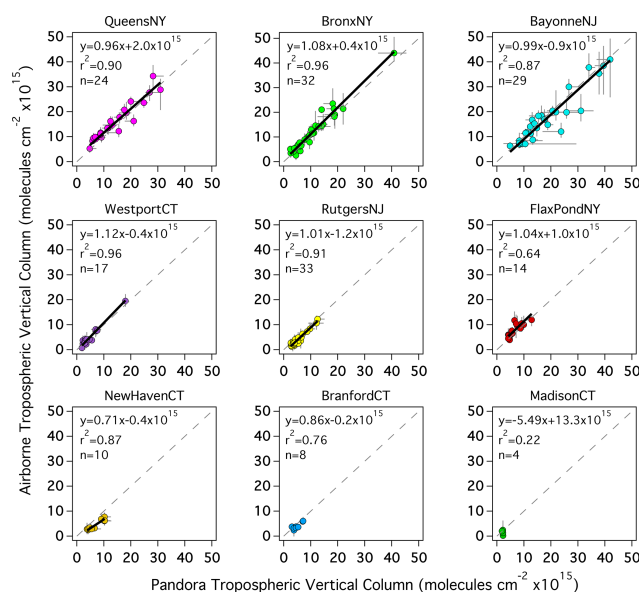


Figure 2. Scatter plots of the temporally closest Pandora TrVC to the aircraft overpass (\pm min/max observation within a ± 5 min window from the aircraft overpass) vs. median airborne TrVC within a 750 m radius of Pandora (\pm 10th–90th percentile) with labeled statistics. The 1 : 1 line is indicated with the grey dashed line. The solid black lines indicate the RMA linear regression for sites with r^2 greater than 0.5.

dow for this assessment is larger than the ± 5 min shown in the max/min horizontal whiskers to include more data points to assess temporal variability.) Most of the temporally homogeneous points tightly span the 1 : 1 relationship, with 95 % falling within ± 25 % or having a difference less than 2.69×10^{15} molecules cm^{-2} . More of the temporally variable points expand further from the 1 : 1 line though still mostly fall within ± 50 % or have a difference less than 2.69×10^{15} molecules cm^{-2} (98 %). Considering only

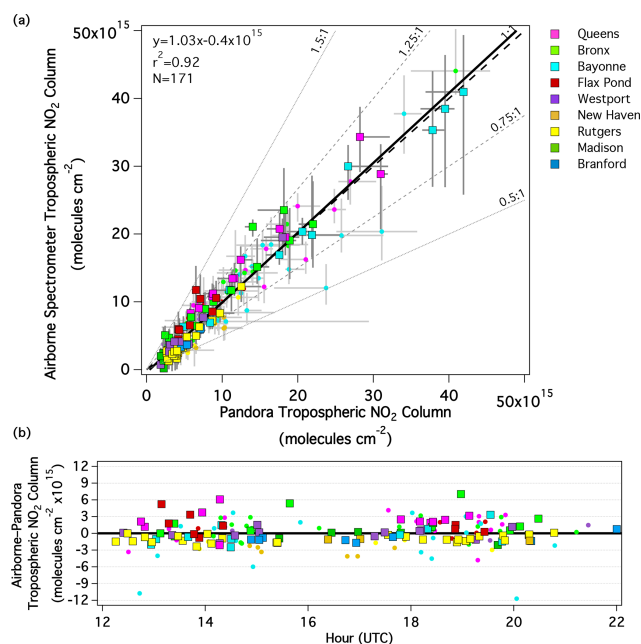


Figure 3. (a) Scatter plot showing the temporally closest Pandora TrVC to the aircraft overpass (\pm min/max observation within a ± 5 min window from the aircraft overpass) vs. the median airborne TrVC (\pm 10th–90th percentile) within a 750 m radius of the Pandora site. The thick solid black line represents the RMA linear regression. Each point is colored by Pandora location, where the outlined squares are points where Pandora TrVCs do not vary more than 30 % within a ± 15 min window from the aircraft overpass, whereas the circles indicate times where Pandora TrVCs do vary more than 30 %. (b) The difference between airborne and Pandora tropospheric NO₂ columns vs. time of day in hours (UTC) colored similarly to (a).

the temporally homogeneous measurements results in a very similar RMA fit (slope and offset) and a distinctly improved r^2 (0.96 vs. 0.92) but a loss of 43 % of the number of data points (compare Table S1 row H to row B). This demonstrates the potential benefit of the high temporal resolution of Pandora observations for evaluating the impact of heterogeneity in NO₂ comparisons.

Previous work has suggested that the azimuth direction of the Pandora observation (due to its sunward-viewing observations) can impact comparisons to airborne spectrometers in heterogeneously NO₂ polluted regions (Nowlan et al., 2018; Judd et al., 2019). We assessed this directionality sensitivity by also examining subsets of the airborne data within sectors surrounding Pandora's azimuth pointing direction (± 22.5 and $\pm 45^\circ$ sectors were considered). The sector constraint slightly degrades the linear regression statistics, with an increase in slope of 4 %–5 %, decrease in y intercept of $2\text{--}3 \times 10^{14}$ molecules cm⁻², and no change in correlation (Table S1, compare rows D and E to row B). Considering directionality of Pandora can still be important in assessing individual cases but is not broadly implemented in this analy-

sis due to the relative insensitivity found here and the limited feasibility of doing it in comparisons with the more spatially coarse measurements from satellites (including TROPOMI).

While most of the temporally homogeneous points are within ± 25 % of each other, there are a small number of coincidences where the airborne spectrometer retrievals are more than 25 % larger than Pandora. There were no clouds during these coincidences. The two Bronx coincidences that fall near the 1.25 : 1 line both occurred on 2 July 2018 during the morning and afternoon flights. The viewing direction of Pandora toward the southeast in the morning along with elevated NO₂ to the west of the site can partially explain the differences in the morning flight (as indicated by the large vertical whiskers for the green box near an airborne TrVC of 23×10^{15} molecules cm⁻²), though in the afternoon NO₂ is more homogeneous spatially near this location. Aerosols are elevated over the site on this day (HALO-measured AOT at 532 nm is ~ 0.3), which could lead to a high bias in airborne TrVCs due to an underestimation in the AMF. However other coincidences during LISTOS also occurred with AOT of 0.3 or larger, and there is no apparent correlation between AOT and the airborne/Pandora differences (Fig. S1). Other coincidences on 2 July ($n = 7$) do not show a systematic aircraft high bias. The other temporally homogeneous high outlier occurred at Flax Pond on 29 August 2019 just after 13:00 UTC, with no explanation related to the viewing direction of Pandora and no elevated aerosols (AOT ~ 0.16). This coincidence has the lowest calculated airborne tropospheric AMF (0.53), which may be too low due to the a priori profile being strongly weighted toward the surface than it is in reality. The NAMCMAQ TrVC at this time is 1.7×10^{15} molecules cm⁻² ^{TS1}, where 84 % of that NO₂ is below 300 m a.g.l., suggesting too much near-surface NO₂ in this a priori profile. Less NO₂ near the surface in this a priori profile would increase the tropospheric AMF calculation at this site, and a tropospheric AMF of 0.83 would bring this point into agreement with Pandora. The most likely reason for all these differences is incorrect vertical distribution and magnitude of NO₂ by the NAMCMAQ model and its influence on the tropospheric AMF (which would need to increase 27 %–64 % to bring these cases into agreement with Pandora).

Figure 3b shows the difference between the airborne and Pandora observations as a function of time of day. Overall, there does not appear to be a dependence on time of day, which gives confidence that the airborne retrievals are correctly representing the effects of viewing and solar geometrical input, varying NO₂ a priori profiles through the day due to dynamic mixing and the growth of the boundary layer, and varying surface reflectivity based on the MODIS BRDF data in the radiative transfer model. Most (81 %) of these differences are within $\pm 2.69 \times 10^{15}$ molecules cm⁻² – the quoted accuracy of Pandora NO₂ retrievals in Herman et al. (2009). These results are encouraging for future validation studies of retrievals from data collected aboard geostationary platforms

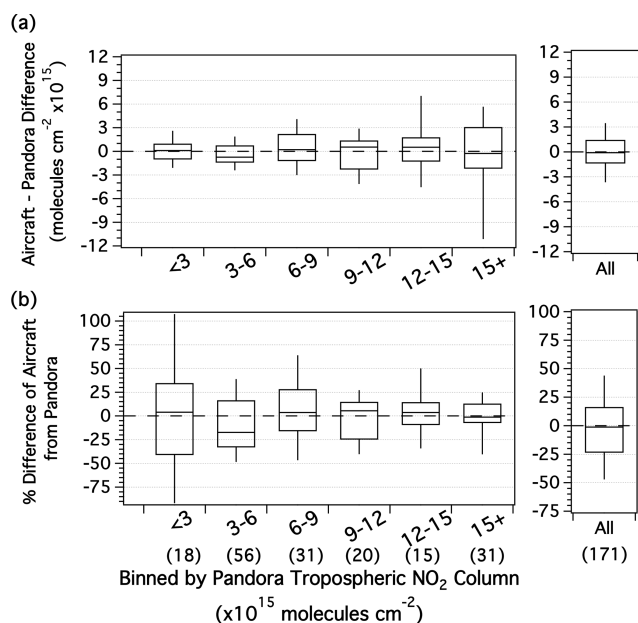


Figure 4. Box plots (95, 75, 50, 25, 5) showing the airborne column (a) column difference and (b) percent difference from Pandora binned at the labeled thresholds ($\times 10^{15}$) as well as all data points (right). The number of points in each bin is indicated by the numbers in parentheses above the x axis label.

(e.g., TEMPO; Zoogman et al., 2017) with these types of airborne measurements. Considering only those coincidences during the overpass window of S5P (Table S1, compare row B to row I) slightly improves the correlation (r^2 increases from 0.92 to 0.94) but degrades the slope and intercept (slope increases from 1.03 to 1.13 with a compensating decrease in the y intercept from -0.4 to -1.1×10^{15} molecules cm^{-2}). However, the median percent difference from Pandora is only 2 % during this time period.

Figure 4 assesses the uncertainty of the airborne data and its potential sensitivity to pollution level. For the least polluted columns (below 3×10^{15} molecules cm^{-2}), the interquartile range of the column difference is within $\pm 1 \times 10^{15}$, with a median of 0.1×10^{15} . For the more polluted columns, the interquartile range of the percent difference is mostly within 25 %, with a median difference within 0.6×10^{15} molecules cm^{-2} . These conclusions are not dependent on choice of reference (i.e., the results are similar if examined as a function of binned airborne TrVC). For all data, the median percent difference is -1 % with an interquartile range of -23 % to 16 %.

Considering all results between Pandora and the airborne spectrometers, uncertainty in the airborne spectrometer TrVC NO₂ is generally within ± 25 % with no obvious bias overall. This uncertainty is lower than estimated using error propagation in previous literature, suggesting the errors in a priori datasets are smaller than was estimated in each study (Nowlan et al., 2016, 2018; Judd et al., 2019).

4 Evaluating TROPOMI TrVC with airborne data

Airborne spectrometer data provide a spatially representative dataset in which to compare to TROPOMI with added information about subpixel variability. During the LISTOS campaign, flight plans were designed with the intent to be airborne at the time of the S5P overpass. Figure 5 illustrates how the airborne data are matched to TROPOMI coincidences during three separate orbits – 30 June, 19 July, and 6 September. The maps on the top row are true color imagery from the Visible Infrared Imaging Radiometer Suite (VIIRS) sensor which overpasses approximately 5 min before S5P (data source: <https://worldview.earthdata.nasa.gov/>, last access: 6 November 2020), showing that the first 2 d of the campaign were clear of clouds but cumulus clouds were present during the 6 September overpass. The second row shows the overlaid TROPOMI TrVCs. NO₂ data are colored on a log₁₀ scale spanning 1 – 100×10^{15} molecules cm^{-2} . These three cases illustrate how the day-to-day changes in spatial patterns and the dynamic range of NO₂ can be dramatically different from the annual average shown in Fig. 1 (note difference in color bar ranges between Figs. 5 and 1).

To compare the two datasets, coincident data following appropriate spatial, temporal, and other physical characteristics are extracted as discussed in Sect. 2.5. The third row in Fig. 5 shows the airborne data that match the temporal coincidence criteria for these three orbits (± 30 min from the S5P overpass). The black outlines show TROPOMI pixels that are at least 75 % mapped by the airborne spectrometers during this temporal window. Visually, the spatial patterns in TrVC observed by TROPOMI and the airborne instrument are consistent with each other. Finally, the subpixel airborne data within each TROPOMI pixel are gridded to a 250 m matrix to account for overlapping data from adjacent swaths, and then the area-weighted averages of the airborne TrVCs are computed to create values that are spatially and temporally consistent with the TROPOMI TrVC observations (bottom row in Fig. 5; gridding methodology from Kim et al., 2016).

From 25 June to 6 September 2018, the airborne spectrometers collected data that coincided with over 1300 TROPOMI pixels within ± 30 min of the S5P overpass. However, when considering only pixels 75 % mapped by the airborne spectrometer and with CRF less than 50 %, the number of coincidences decreases to 621. Additionally, through this analysis, we found that several notable outliers (coincidences with large apparent differences between the two measurements) corresponded with cloud retrieval effects in cloud-free scenes. Therefore, one additional coincidence criterion is applied to include only scenes with differences between the cloud pressure and surface pressures (ΔC_S) less than 50 hPa (the reported uncertainty of the cloud pressure retrieval in van Geffen et al., 2019). This criterion eliminates any TROPOMI pixels with assumed clouds and results in a reduction in the number of data points to 388. The impact of this criterion is discussed in Sect. 4.1, with an illustrative case study in

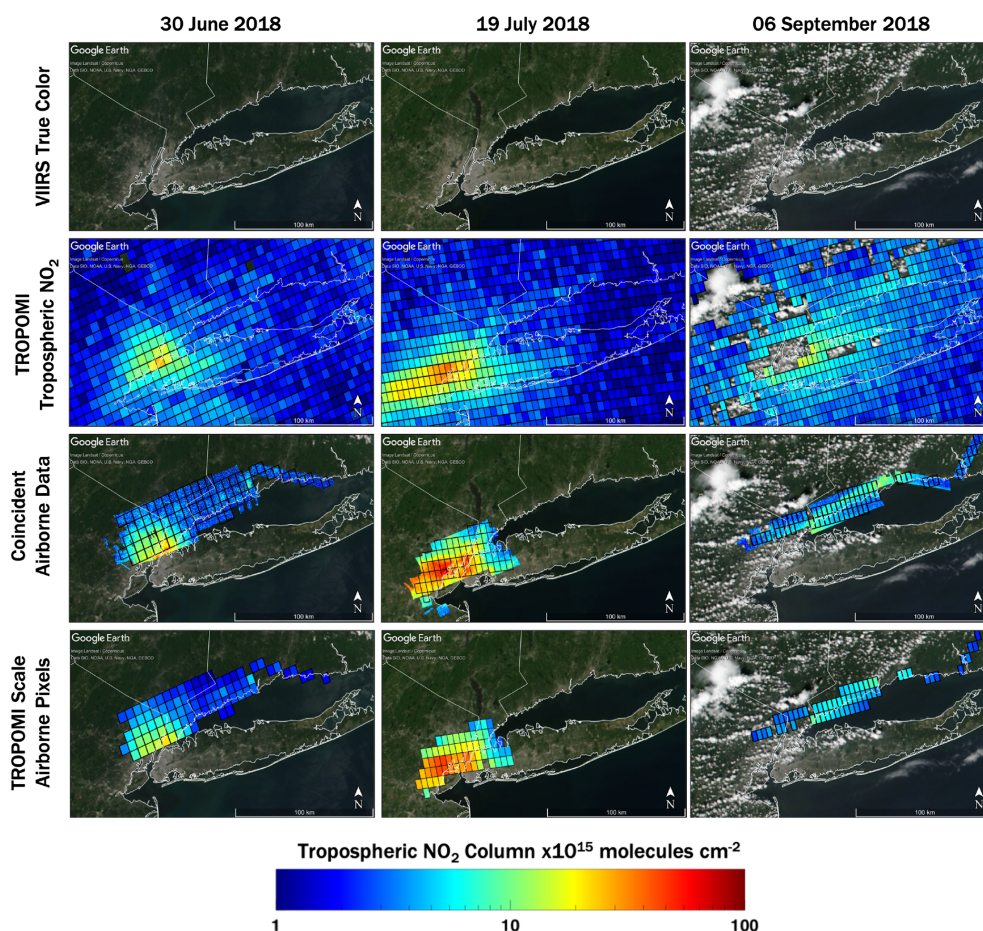


Figure 5. Maps demonstrating how airborne data are matched to TROPOMI for 3 out of 15 example overpasses: (top) VIIRS true color imagery (source: <https://worldview.earthdata.nasa.gov/>; last access: 18 April 2020), (second row) overlaid TROPOMI TrVCs where CRFs < 50 %, (third row) overlaid airborne data collected within ± 30 min of the TROPOMI overpass with outlined TROPOMI pixels with CRFs < 50 % and area mapped by aircraft > 75 %, and (bottom) airborne NO₂ column data scaled to the TROPOMI pixel. All maps were created in © Google Earth Pro.

Sect. S3 in the Supplement, though points exceeding this coincidence criteria are still shown in scatter plots throughout this paper as blue crosses. (Statistics without this criterion are shown within Tables 5 and 7 and in the Supplement).

Figure 6 shows scatter plot and linear regression statistics of all slant and vertical column coincidences between TROPOMI and the airborne data. The red circles in these plots represent the data that meet the strictest coincidence criteria discussed in the previous paragraph. For these points, the slant columns are very highly correlated ($r^2 = 0.96$). TROPOMI slant columns are consistently smaller than the airborne spectrometer slant columns (slope = 0.59), though airborne slant columns are expected to be larger in comparison to satellite observations because the airborne spectrometers are more sensitive to altitudes nearer to the surface (where much of the NO₂ resides) due to the lower observational altitude of the aircraft. However, as shown by the high correlation, TROPOMI and the aircraft are sampling nearly

the same atmosphere, at least in the lowest parts of the atmosphere that make up the majority of the TrVC. Converting from slant to vertical column increases (improves) the regression slope by 15 % while preserving the very high correlation ($r^2 = 0.96$).

While the remaining low bias reflected by the slope below the 1 : 1 line will be discussed in subsequent subsections, we first begin with some discussion about potential reasoning for the small amount of scatter that exists between the TROPOMI and airborne measurements. These causes include (1) a spatial component (i.e., we allow TROPOMI-scale airborne pixels to be missing data in up to 25 % of the area of the TROPOMI pixel), (2) a temporal component as we allow up to 30 min difference between the time of the measurements, and (3) differing a priori assumptions made within each retrieval.

Considering the spatial component of scatter, the horizontal bars in Fig. 6 show the standard deviation of the subpixel

Table 5. Statistics for TROPOMI and airborne comparisons with the coincidence criteria of CRF < 50 % and aircraft sampled within ± 30 min of the S5P overpass with different a priori profiles and indication of whether the Δ_{CS} threshold is applied.

TROPOMI dataset	Δ_{CS} < 50 hPa	RMA fit	r^2	Median percent difference	<i>N</i>
Standard slant column	No	$y = 0.58 \times +1.5 \times 10^{15}$	0.95	−12 %	621
	Yes	$y = 0.59 \times +1.5 \times 10^{15}$	0.96	−13 %	388
Standard TrVC	No	$y = 0.71 \times +0.9 \times 10^{15}$	0.90	−11 %	621
	Yes	$y = 0.68 \times +0.6 \times 10^{15}$	0.96	−19 %	388
NAMCMAQ TrVC	No	$y = 0.84 \times +1.0 \times 10^{15}$	0.83	4 %	621
	Yes	$y = 0.77 \times +0.7 \times 10^{15}$	0.95	−7 %	388

airborne TrVCs within each TROPOMI pixel. Generally, the variation in subpixel NO₂ increases as the NO₂ TrVC increases, illustrating how scatter in the comparisons could increase if only small subsets of the pixel are mapped. Sensitivity to the mapped percentage is annotated in Table S2 (rows B–D and M–O) and shows little impact when relaxing the percent-mapped criterion to 50 % (though it is impacted negatively when the Δ_{CS} criterion is applied; Table S2: rows M–O) and a more significant decrease when relaxing to 25 %. At least with the airborne samples in this case the linear statistics are driven by the most polluted pixels that are 100 % mapped by the airborne spectrometers, explaining the limited sensitivity in the RMA fit to the percentage of the TROPOMI pixel mapped in this study.

Addressing the temporal component, if the temporal window is decreased to ± 15 min from ± 30 min, the number of mapped TROPOMI pixels by the aircraft decreases by 65 % while the quality of linear statistics is moderately improved (Table S2, compare row B to row E). However, there is a larger adverse impact to the RMA fit and r^2 when the time window is extended to extract airborne data within ± 60 min of the S5P overpass. Coincidences occurring between 30 and 60 min from the S5P overpass are shown as open circles in Fig. 6. For example, the small subset of very polluted airborne TrVCs that are much larger than what is retrieved by TROPOMI occurred during a time with high temporal variability on 2 July 2018. The airborne spectrometer observed a distinct very polluted plume over NYC and over the 48 min period between the airborne and TROPOMI observations, and the Pandora spectrometer located at CCNY observed a 50 % decrease in NO₂ total vertical column, leading to a large difference between the airborne and TROPOMI TrVCs when the temporal window is extended to ± 60 min (Maria Tzortziou, personal communication, 8 August 2020).

These outliers are caused by real spatiotemporal variability rather than issues in either of the retrievals and demonstrate the care needed for matching airborne data collected over time to the nearly instantaneous observations from S5P TROPOMI. These large differences are also ap-

parent in the slant column comparisons, and future studies should consider slant column comparison between aircraft and TROPOMI as a guide for identifying potential spatial and temporal mismatches.

With respect to differing retrieval assumptions, we consider two factors in the following subsections: treatment of clouds and NO₂ vertical profile shape.

4.1 Cloud retrieval effects

In previous literature, a coincidence criterion based on CRF from TROPOMI has been the common consideration for data comparisons, though studies vary slightly in their chosen CRF threshold (ranging from 30 %–50 % in Griffin et al., 2019; Ialongo et al., 2020; and Zhao et al., 2020). We investigate the effect on the statistics of varying CRF threshold, alone, but find that retrieved cloud height is also an important factor and here consider the two effects together.

In the TROPOMI retrieval, surface reflectivity is estimated using the $0.5^\circ \times 0.5^\circ$ climatology from 5 years of OMI observations (Kleipool et al., 2008; van Geffen et al., 2019). When the surface albedo climatology used for TROPOMI has a low bias, which can occur over bright city centers, the algorithm increases the overall brightness of the scene by assuming a nonzero cloud fraction. In cloud-free urban scenes, this approach generally results in a nonzero CRF with a nominal cloud pressure equal to the surface pressure. Figure S2a illustrates this behavior on a cloud-free day (19 July 2018).

This CRF-adjustment approach over bright surfaces generally appears to work well; however, we identified a potential issue when the retrieval also places retrieved clouds above the surface rather than at the surface in cloud-free scenes. The two most obvious illustrations of this effect are evident as the two blue crosses farthest above the regression line with airborne TrVCs greater than 25×10^{15} molecules cm^{−2} in Fig. 6. Section S3 presents a case study demonstrating that the effect is correctable for these two points. We note that, in the presence of significant scattering aerosols, CRF may also be larger than zero and the cloud pressure level may mimic the height of the aerosol layer. During aircraft coincidences

Table 6. Statistics between Pandora and TROPOMI by site for the LISTOS period as well as extended to 19 March 2019.

Site	LISTOS only (June–September 2018)					Valid data from June 2018 to March 2019				
	RMA fit	r^2	Median difference %	Median column difference	N	RMA fit	r^2	Median difference %	Median column difference	N
QueensNY	$Y = 0.77 \times + 0.6 \times 10^{15}$	0.87	−9 %	-0.5×10^{15}	22	$Y = 0.63 \times + 1.3 \times 10^{15}$	0.76	−23 %	-2.1×10^{15}	68
BronxNY	$Y = 0.81 \times + 0.03 \times 10^{15}$	0.90	−15 %	-1.1×10^{15}	20	$Y = 0.73 \times + 0.5 \times 10^{15}$	0.87	−15 %	-1.1×10^{15}	33
BayonneNJ	$Y = 0.84 \times - 2.1 \times 10^{15}$	0.87	−38 %	-4.1×10^{15}	9	$Y = 0.74 \times - 1.8 \times 10^{15}$	0.88	−41 %	-5.3×10^{15}	45
WestportCT	$Y = 0.49 \times + 1.1 \times 10^{15}$	0.50	−19 %	-0.6×10^{15}	21	$Y = 0.68 \times + 0.4 \times 10^{15}$	0.95	−21 %	-0.9×10^{15}	49
RutgersNJ	$Y = 0.63 \times + 0.4 \times 10^{15}$	0.69	−26 %	-0.9×10^{15}	6	$Y = 0.76 \times - 0.1 \times 10^{15}$	0.95	−24 %	-1.4×10^{15}	33
Flax PondNY	$Y = 0.53 \times + 0.4 \times 10^{15}$	0.59	−37 %	-1.7×10^{15}	23	$Y = 0.53 \times + 0.5 \times 10^{15}$	0.60	−37 %	-1.4×10^{15}	25
NewHavenCT	$Y = 0.52 \times - 0.5 \times 10^{15}$	0.29	−52 %	-2.7×10^{15}	25	$Y = 0.70 \times - 1.3 \times 10^{15}$	0.71	−50 %	-2.7×10^{15}	47
BrantfordCT	$Y = 1.22 \times - 2.7 \times 10^{15}$	0.31	−46 %	-1.9×10^{15}	22	$Y = 1.2 \times - 2.7 \times 10^{15}$	0.31	−46 %	-1.9×10^{15}	22
MadisonCT	$Y = 1.94 \times - 2.7 \times 10^{15}$	0.12	−24 %	-0.6×10^{15}	8	$Y = 2.4 \times - 3.9 \times 10^{15}$	0.02	−24 %	-0.7×10^{15}	11

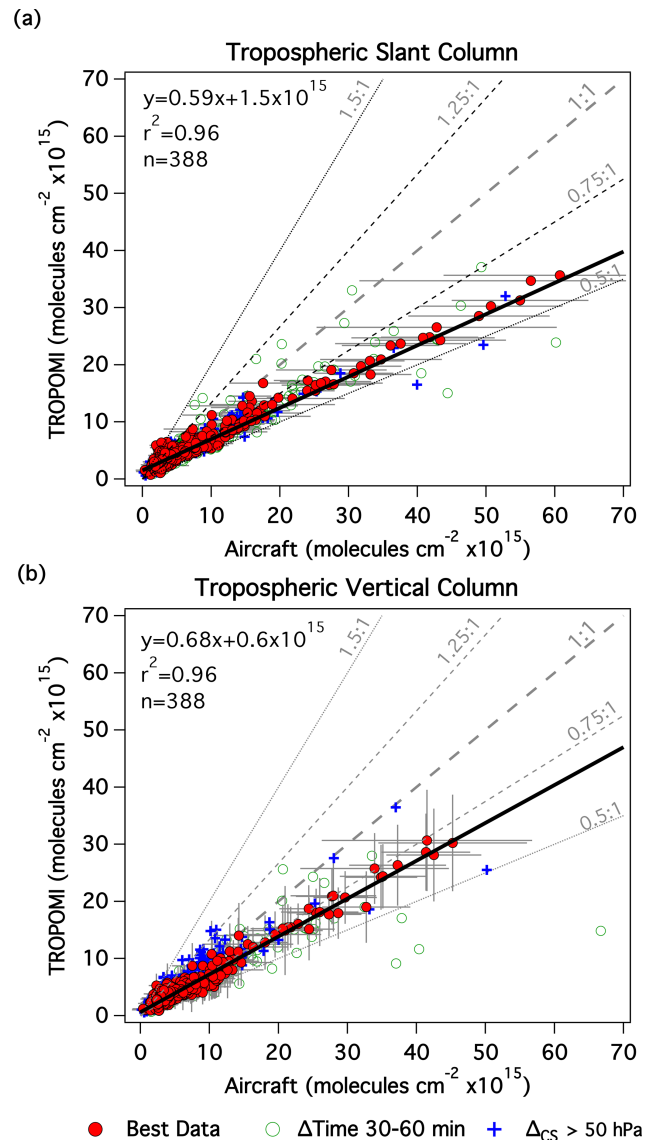
**Figure 6.** Scatter plots of airborne data gridded and scaled up to the TROPOMI pixel footprint vs. TROPOMI NO₂ tropospheric (a) slant column and (b) vertical column that are at least 75 % mapped with a CRF < 50 % within ± 30 min of the TROPOMI overpass in red circles (open green circles show points when the time window is expanded to ± 60 min, and blue crosses symbolize points where ΔCS > 50 hPa). The horizontal bars indicate the subpixel heterogeneity measured by the aircraft quantified as the standard deviation of aircraft slant columns over that pixel, and vertical bars in panel (b) show the reported precision of the TROPOMI TrVC (the precision of the tropospheric slant columns in panel (a) is not large enough to be visible in this figure, but the average is 5×10^{14} molecules cm^{−2} with a standard deviation of 7×10^{13} molecules cm^{−2}).

Table 7. Summary statistics for Pandora and TROPOMI over the LISTOS time period and extended to 19 March 2019 with different a priori profiles and indication of whether the Δ_{CS} threshold is applied.

Time period	Location	TROPOMI dataset	$\Delta_{\text{CS}} < 50 \text{ hPa}$	RMA fit	r^2	Median percent difference	N
LISTOS only	All sites	Standard	No	$y = 0.82 \times -0.6 \times 10^{15}$	0.79	−30 %	294
			Yes	$y = 0.80 \times -0.7 \times 10^{15}$	0.84	−33 %	156
		NAMCMAQ	No	$y = 1.05 \times -0.7 \times 10^{15}$	0.77	−9 %	294
			Yes	$y = 0.82 \times -0.2 \times 10^{15}$	0.80	−19 %	156
LISTOS only	RutgersNJ	Standard	No	$y = 0.78 \times -0.5 \times 10^{15}$	0.79	−17 %	132
	BayonneNJ		Yes	$y = 0.76 \times +0.1 \times 10^{15}$	0.88	−19 %	58
26 June 2018– 19 March 2019	QueensNY		No	$y = 0.74 \times +0.2 \times 10^{15}$	0.82	−21 %	373
	WestportCT		Yes	$y = 0.78 \times -0.3 \times 10^{15}$	0.87	−27 %	195

with TROPOMI, the average AOT at 532 nm measured by HALO was 0.22 with a standard deviation of 0.15. In the case of these outliers, elevated aerosol loading has been ruled out (AOT at 532 nm was 0.04). Clouds and their effect on the estimated vertical sensitivity are an important component within the NO₂ retrieval, as clouds are assumed to shield the view of the atmosphere below the cloud level in some fractions of the pixel. However, in cloud-free scenes, cloud pressures significantly less than the surface pressure with elevated CRF can lead to an underestimation in the AMF, and therefore an overestimation in TROPOMI TrVC, as the shielding that is assumed through the retrieval is not occurring in reality. Because the airborne screening criteria ensure that only cloud-free observations are included in our analysis, our comparisons are biased toward cloud-free scenes, and therefore high CRFs are associated generally with bright surfaces instead of clouds.

To avoid these impacts, we explored an additional coincidence criterion based on cloud parameters in the TROPOMI product file. We consider an allowable difference between retrieved cloud pressure and surface pressure (henceforth Δ_{CS}) of less than 50 hPa (which is the reported uncertainty in cloud pressure retrieval from van Geffen et al., 2019). Figure 6 shows points that exceed this criterion as blue cross symbols, and the linear regression statistics with and without this criterion applied are summarized in Table 5. Applying this criterion removes approximately 30 % of coincidences including the largest outliers but also many points that are not outliers. Of the 233 data points that have Δ_{CS} greater than 50 hPa, 58 % ($n = 136$) of them have aircraft-measured cloud fractions of less than 2 %, and 69 % of these cloud-free coincidences ($n = 94$) have reported CRFs greater than 10 %, illustrating that the cloud retrieval regularly yields an effective cloud height above the surface even during cloud-free scenes. Further filtering data by only removing data with CRFs > 10 % results in very little change in the overall statistics. Table 5 shows that the largest impact of the Δ_{CS} criterion

is an improvement in the correlation (r^2 of 0.96 vs. 0.90) but a slope further from 1 (0.68 vs. 0.71) and a more negative median percent difference (−19 % vs. −11 %), showing that there is excellent correlation between the two measurements but an apparent low bias in the TROPOMI retrieval that the cloud pressure errors partially offset. This impact is also confined to the TrVC comparisons and not apparent in the slant column comparisons, which demonstrates the impact is through assumptions made in the AMF calculation.

Eskes and Eichmann (2019) mention occurrences of negative effective cloud fractions in the FRESCO cloud product that could also result in positive cloud fraction in the NO₂ window in v1.2 of the TROPOMI TrVC product, which causes a noisy NO₂ retrieval. The occurrence of negative FRESCO cloud fractions with positive CRFs did occur during many of these coincidences (63 % of the 621 pixels). However, this fraction is much lower for Δ_{CS} flagged pixels (18 %), and they were not associated with the largest outliers in this analysis. Applying a criterion to remove negative cloud fractions instead of Δ_{CS} flagged pixels results in similar results to only filtering for CRFs < 50 % and no Δ_{CS} criterion (slope = 0.72, offset = 0.7×10^{15} molecules cm^{−2}, $r^2 = 0.91$, and $n = 233$). Therefore, this impact is not the cause for the described patterns in the previous paragraph.

In the vertical columns, coincidences identified by the Δ_{CS} criterion typically lie above the best-fit line, consistent with the hypothesis of effective cloud shielding in the AMF calculation during cloud-free scenes. There is one obvious coincidence exceeding the Δ_{CS} threshold that opposes this general pattern by falling below the best-fit line (blue cross with airborne TrVC around 50×10^{15} molecules cm^{−2}). This apparent disparity appears to be caused by large temporal variation between the times of the airborne and satellite measurements. The airborne measurement preceded TROPOMI by 23 min, and in a subsequent airborne measurement over the same area 70 min later, the airborne NO₂ TrVC had decreased to approximately 30×10^{15} molecules cm^{−2}, which

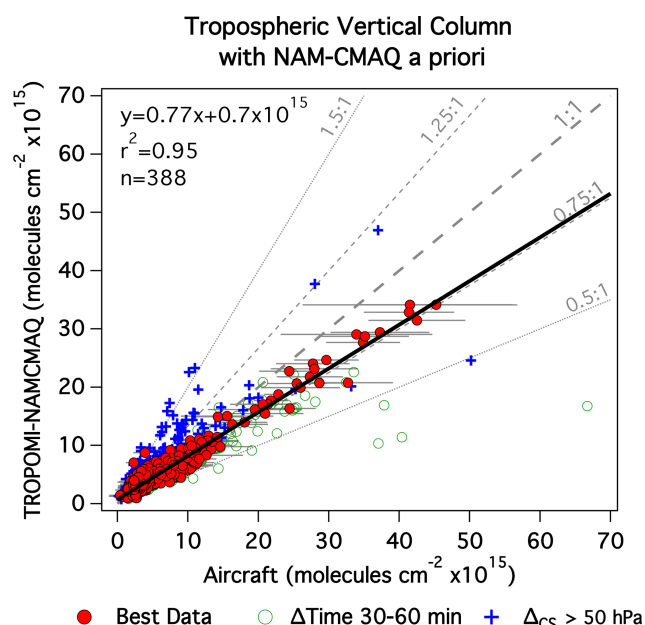


Figure 7. Scatter plots of airborne data gridded and scaled up to the TROPOMI pixel footprint vs. TROPOMI-NAMCMAQ NO₂ TrVCs that are at least 75 % mapped with a CRF < 50 % within ±30 min of the TROPOMI overpass in red circles (open green circles show points when the time window is expanded to ±60 min, and blue crosses symbolize points where ΔCS > 50 hPa). The horizontal bars indicate the subpixel heterogeneity measured by the aircraft quantified as the standard deviation of aircraft vertical columns over that TROPOMI pixel.

is much nearer to the TROPOMI-measured value of 25×10^{15} molecules cm⁻². This is another example where a temporal mismatch resulted in an outlier in the slant column comparisons in Fig. 6a demonstrating the use of slant column comparisons to assist in identifying spatial and temporal mismatches.

Finally, we summarize the sensitivity to different CRF thresholds. Without the ΔCS criterion applied (Table S2; rows F–I), allowing larger CRF values generally decreases r^2 while increasing the slope slightly and dramatically increasing the number of coincidences. The highest correlations, up to 0.96, are maintained with CRF < 20 %. When the ΔCS threshold is applied, the RMA fit is largely insensitive to changes in CRF up to 50 % (Table S2; rows J–M), maintaining the high quality of the linear regression while including progressively more data points with increasing CRF thresholds. Because CRF can often exceed 20 % over urban areas even in cloud-free conditions due to effects of the coarse a priori surface reflectivity used in the retrieval, the ΔCS criterion appears useful for retaining valid cloud-free coincidences over bright urban scenes. Overall, the best fit is attained either by restricting CRF to less than 20 % and not using the ΔCS criterion or by using the ΔCS criterion, which allows inclusion of CRF values up to 50 % and provides 35 %

more coincidences. Future research could explore using alternative cloud measurements (e.g., from VIIRS) to identify cloud-free scenes and the use of clear-sky AMFs.

4.2 NO₂ vertical profile shape

The a priori vertical profiles in the TROPOMI NO₂ retrieval are from the TM5-MP model with a spatial resolution of $1^\circ \times 1^\circ$ interpolated to the center of the TROPOMI pixels (van Geffen et al., 2019). In a heterogeneously polluted region such as NYC, NO₂ profiles vary at much smaller spatial scales. For spatial reference, the airborne spectrometer flights for each LISTOS raster (Fig. 1) cover an area of approximately $1^\circ \times 1^\circ$ or smaller, and airborne TrVCs span up to 2 orders of magnitude in this domain. Here, TROPOMI tropospheric AMFs are recalculated with the 12 km NAMCMAQ analysis used in the airborne TrVC retrieval to demonstrate the impact of spatial resolution of a priori profiles. These TROPOMI TrVCs columns are hereafter labeled as TROPOMI-NAMCMAQ. The original TROPOMI v1.2 product is referred to as TROPOMI standard.

Figure 7 has the same format as Fig. 6 but instead compares TROPOMI-NAMCMAQ to airborne TrVCs. (Note that both datasets are now using the same a priori profiles.) In general, applying the NAMCMAQ profile to the TROPOMI AMF calculation brings the airborne and TROPOMI data into closer agreement; with the ΔCS criterion applied, the slope increases 13 % from 0.68 to 0.77, the median percent difference improves from -19 % to -7 %, and a high r^2 is maintained (changing from 0.96 to 0.95).

Incorporating a higher-resolution a priori profile appears to result in an increase in the sensitivity to the ΔCS criterion, with more of the blue cross points visible in Fig. 7 than in Fig. 6, which can likely be attributed to increased sensitivity to the lower altitude levels in the AMF calculation. In the higher-resolution NAMCMAQ analysis, the lower levels are more polluted and thus more sensitive to cloud shielding.

The biases of the TROPOMI standard and TROPOMI-NAMCMAQ TrVCs with respect to the airborne data are further examined as a function of pollution level in Fig. 8. The majority of points (68 %) are less than 6×10^{15} molecules cm⁻², so the overall distributions are dominated by the behavior in the lowest bins in Fig. 8. In these lowest two bins, the median percent difference is -10 % and +3 %, respectively, for TROPOMI standard and TROPOMI-NAMCMAQ TrVCs. Column differences unsurprisingly increase with pollution level and are small in these two lowest bins, with the interquartile range within 1×10^{15} molecules cm⁻² and inner 90 % of points having differences within 2×10^{15} molecules cm⁻². TROPOMI standard has a median absolute bias of zero in the lowest bin. Using the NAMCMAQ profile shifts the bias more positive in all bins, creating a small positive bias in the lowest bin but reducing the overall median bias from -1×10^{15} molecules cm⁻² to 0.3×10^{15} molecules cm⁻². For air-

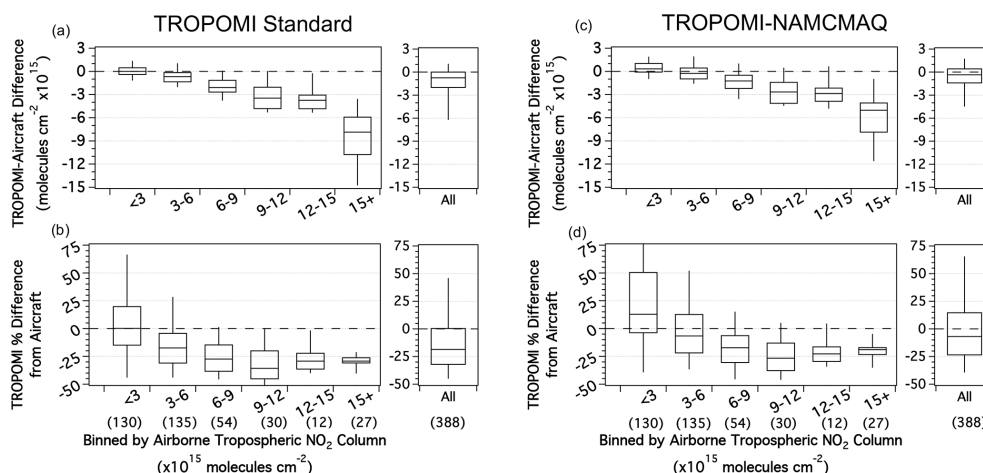


Figure 8. Box plots (95, 75, 50, 25, 5) showing the TROPOMI TrVC (a) column difference and (b) percent difference from airborne TrVCs binned at the labeled thresholds ($\times 10^{15}$) as well as for the total dataset (right), along with the equivalent box plots for TROPOMI-NAMCMAQ in panels (c) and (d). The number of points in each bin are indicated by the numbers in parentheses above the x axis label.

borne TrVCs above 6×10^{15} molecules cm⁻², the median percent difference is -29% for the TROPOMI standard but improves to -20% for TROPOMI-NAMCMAQ. Although a higher-resolution a priori profile improves the overall bias in the TROPOMI product, there is still a low bias for the most polluted TROPOMI TrVCs columns.

5 Evaluating TROPOMI TrVC with Pandora data

Pandora spectrometers operated in the LISTOS domain during and after the conclusion of the intensive LISTOS airborne measurements as part of the PAMS-EM program (see Table 4). Following coincidence criteria in line with those from Sect. 4 (TROPOMI CRF $< 50\%$, Δ_{CS} less than 50 hPa, and median Pandora TrVC within ± 30 min), Fig. 9 shows all coincidences between Pandora and TROPOMI through 19 March 2019, with coincidences during the LISTOS intensive period (defined as any measurements prior to and including 30 September 2018) outlined in black. Site-by-site statistics are listed in Table 6 for both time periods. In this section we discuss consistency in TROPOMI evaluation results with airborne spectrometers using data from only the LISTOS time period and also from an extended temporal window at select sites that operated through winter 2019.

5.1 TROPOMI vs. Pandora during LISTOS

During the LISTOS time period, there were 156 coincidences between the nine Pandora spectrometers and TROPOMI, ranging from 8 to 25 coincidences by site (Table 6). With the exception of MadisonCT and BranfordCT (which lack in TrVC dynamic range), the slope of TROPOMI vs. Pandora is less than 1 (ranging from 0.49 to 0.84, similar to the results in Sect. 4) with moderate to high values of r^2 (0.29–0.90).

All median percent differences are negative and vary by site ranging from -9% to -52% .

Figure 10a shows the aggregated TROPOMI standard and Pandora dataset during LISTOS; red circles/blue crosses are those that have a Δ_{CS} less than/greater than 50 hPa, respectively, similar to Fig. 6. The bars represent the reported precision of the TROPOMI standard product (vertical) and the 10th–90th percentile of Pandora data within the ± 30 min window (horizontal). Temporal variation of TrVCs measured by Pandora increases proportionally to pollution level ($r^2 = 0.69$). The aggregated dataset shows that TROPOMI TrVCs have a low bias in comparison to Pandora (slope = 0.80 and offset of -0.7×10^{15} molecules cm⁻²) and high correlation ($r^2 = 0.84$). As a whole, TROPOMI has a median percent difference from Pandora of -33% with an interquartile range of -48% to -14% , consistent with comparisons of TROPOMI to airborne TrVCs for values above 6×10^{15} molecules cm⁻². Comparing Figs. 10a to 6b, the slope is 18 % higher (better) than in the comparisons to the TROPOMI standard product to airborne TrVCs, though at the expense of a lower r^2 (0.96 vs. 0.84). Coincidences at QueensNY and BronxNY have the lowest median percent difference of all the sites, and the aggregate slope is sensitive to whether these two sites are included or not (0.80 and 0.72 with and without BronxNY and QueensNY, respectively). This result highlights the sensitivity of site selection and duration in the combined analysis and can likely be attributed to differences in spatial representativity between the TROPOMI and Pandora and perhaps sampling temporally over just the short period of the LISTOS study.

Spatial representativity of Pandora and subpixel variation in the TROPOMI area can also influence the results. TROPOMI pixels span an areal coverage of approximately 30–130 km² depending on the position in the swath through

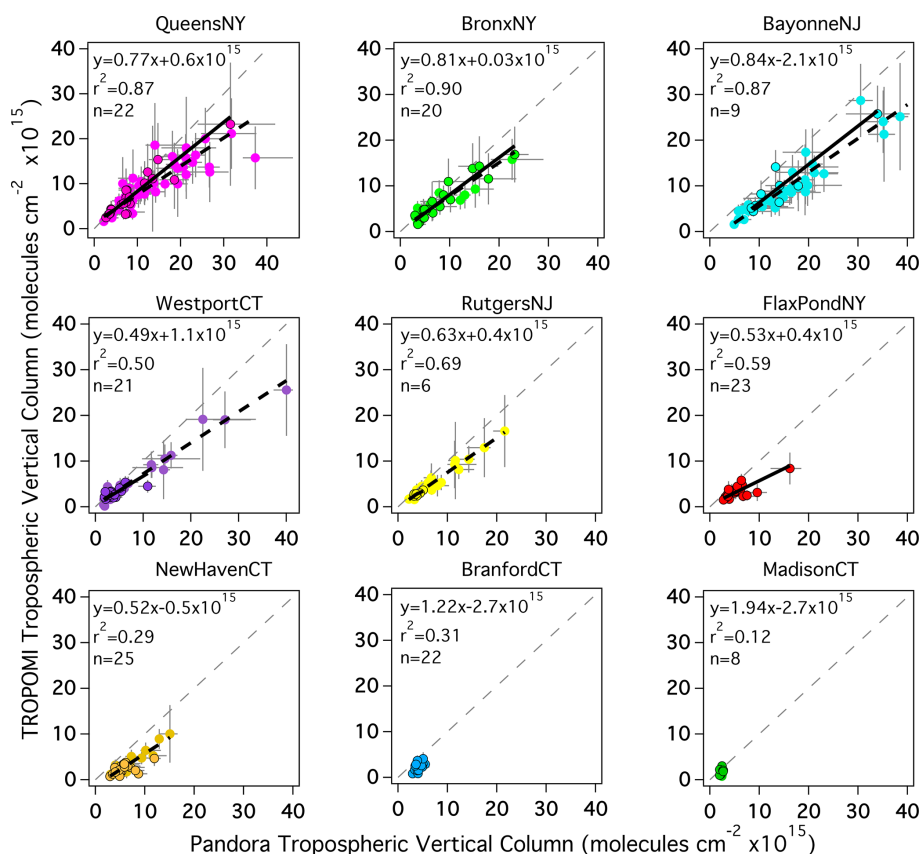


Figure 9. Scatter plots of the median Pandora TrVC within ± 30 min of the S5P overpass vs. TROPOMI TrVC for all coincidences with CRF $< 50\%$ and $\Delta_{CS} < 50$ hPa between 25 June 2018 and 19 March 2019 at each individual site. Coincidences during the LISTOS intensive period (through the end of September 2018) are outlined in black. Vertical bars indicate the reported precision of TROPOMI TrVCs, and the horizontal bars are the 10th–90th percentile of Pandora TrVCs within ± 30 min of the S5P overpass. The 1 : 1 line is indicated with the grey dashed line. Statistics are summarized in Table 6, but the RMA regression lines are shown for datasets with r^2 greater than 0.5 (solid black line is for the LISTOS timeframe and dashed black line is all data).

S5P's 16 d orbit cycle, while Pandora measurements represent a more localized environment. We found that the interquartile range of the TROPOMI bias relative to Pandora becomes slightly more negative as the pixel size gets larger (not shown). For pixels less than 40 km^2 , the interquartile range is -1% to -46% ($n = 67$), whereas for pixels larger than 80 km^2 , it is -14% to -59% ($n = 18$).

Unlike with airborne spectrometer data comparisons, sub-TROPOMI pixel cloud information is not readily available for these comparisons to Pandora. However, the impact of coincidence criteria based on clouds is assessed similarly to Sect. 4. Lowering of the CRF threshold preferentially excludes data from sites with brighter surface reflectivity and, typically, larger NO₂ values. For example, QueensNY has a median CRF of 34% (minimum of 17%), whereas a more rural location like WestportCT has a median CRF of 8% (minimum of 0%). Without applying the Δ_{CS} criterion, we find the quality of the linear regression statistics to be quite sensitive to CRF threshold (Table S3, rows F–I). Using more restrictive CRF thresholds generally worsens the correlation,

and the trends here are less consistent than found in the TROPOMI-airborne comparisons. This inconsistency is due to the relatively fewer number of Pandora coincidences having large values, e.g., above $10 \times 10^{15} \text{ molecules cm}^{-2}$, which makes the linear regression sensitive to screening criteria such as CRF that exclude any of the larger-valued data points. Though applying the Δ_{CS} criterion removes nearly half the coincidences for CRFs $< 50\%$, its application increases r^2 values at all CRF thresholds (Table S3; rows J–M). Applying the Δ_{CS} criterion maintains high correlations while allowing retention of data from bright urban sites that would be preferentially left out by filtering by CRF for thresholds 30% and lower.

Figure 10b shows the comparison between TROPOMI-NAMCMAQ TrVCs and Pandora. Many more coincidences with Δ_{CS} greater than 50 hPa (blue crosses) are evident above the 1 : 1 line, again illustrating the increased sensitivity to this parameter when higher-resolution a priori profiles are used within the TROPOMI AMF calculation. Table 7 summarizes all the various cases. Considering all co-

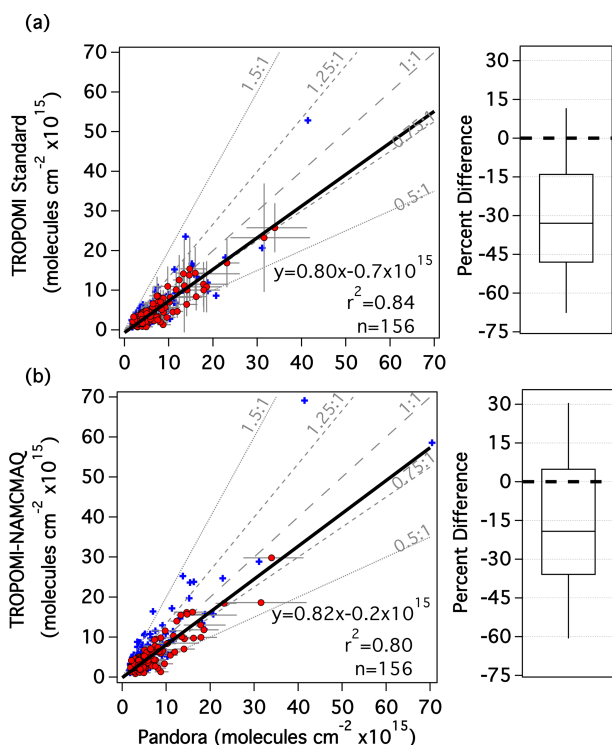


Figure 10. Scatter plot showing coincident (a) TROPOMI standard TrVCs and (b) TROPOMI-NAMCMAQ TrVCs with CRF < 50 % vs. median Pandora NO₂ TrVC over a ± 30 min temporal window during the LISTOS intensive period. Red points have a $\Delta C_S < 50$ hPa, whereas blue crosses have a $\Delta C_S > 50$ hPa. The horizontal bars represent the 10th–90th percentile of Pandora data within the ± 30 min temporal window. The vertical bars in panel (a) represent the reported precision of TROPOMI standard. The thick solid black line represents the RMA linear regression applied to the red data points. The box plots (95, 75, 50, 25, 5) show the TROPOMI TrVC percent difference from Pandora for the red data points to the right of each scatter plot.

incidences without invoking the ΔC_S criterion (i.e., including blue crosses and red circles), there is a large improvement in the regression statistics from TROPOMI standard to TROPOMI-NAMCMAQ, with the slope closer to 1 and a median percent difference of only -9% (relative to the -30% for TROPOMI standard). However, as illustrated by the blue points in Fig. 10b, it is clear that this improvement is partially driven by a high bias related to the impact of clouds. When points with ΔC_S greater than 50 hPa are excluded, the slope between TROPOMI-NAMCMAQ and Pandora improves by only 2.5 % in comparison to TROPOMI standard, with a slight degradation of r^2 from 0.84 to 0.80. However, there is a large improvement in the median percent difference, from -33% (interquartile range of -48% to -14%) for TROPOMI standard to -19% (interquartile range of -36% to 5%) for TROPOMI-NAMCMAQ.

Much of the correlation in Fig. 10 is driven by the 20 points above 10×10^{15} molecules cm^{-2} ; considering only

points below 10×10^{15} molecules cm^{-2} lowers r^2 to 0.42 and 0.39 for TROPOMI standard and TROPOMI-NAMCMAQ, respectively, though this results in the same median percent differences. The loss in correlation demonstrates the challenge of doing linear regressions on datasets with a lack of dynamic range well above 10×10^{15} molecules cm^{-2} in this analysis when spatiotemporal variability impacts can be at a similar magnitude. However, extending analysis through winter 2019 results in a larger sampled dynamic range as demonstrated in the next section.

5.2 TROPOMI vs. Pandora through 19 March 2019

The deployment of many of the Pandora instruments in this region as part of the PAMS-EM program presents the opportunity for evaluation beyond the period of the LISTOS intensive campaign. TROPOMI level 2 NO₂ processing switched to version 1.3 after 19 March 2019; thus, this analysis goes only through this date to avoid possible influences associated with the version change. To ensure consistent spatial representativity through the period, analysis is limited to the four sites that continued operation through 19 March 2019 (Table 4; RutgersNJ, BayonneNJ, QueensNY, and WestportCT). The focus of this extended analysis is to see whether conclusions made from the LISTOS time period are still valid through the fall and winter months as photochemistry and meteorological changes lead to potential shifts in spatial and temporal variation and dynamic range at these sites. These four sites represent two in-city sites and sites upwind and downwind from NYC, though the upwind/downwind side of the city is dependent on wind direction from day to day. Figure 11 shows time series of Pandora and TROPOMI standard TrVCs from 25 June 2018 through 19 March 2019 at each of the sites. Colored circles represent the Pandora measurements during the S5P overpass, the black stars show the TROPOMI TrVC, and the whiskers indicate variability or uncertainty (see figure caption). Note that some days have two overpasses. In general, temporal patterns are similar in both TROPOMI and Pandora measurements, demonstrating each instrument's ability to observe synoptic and seasonal variability in TrVCs.

At RutgersNJ and WestportCT, Pandora and TROPOMI TrVCs rarely exceed 10×10^{15} molecules cm^{-2} during the year. More polluted coincidences occurred periodically during November–March as expected given the longer photochemical lifetime of NO₂ during winter. In early January, when both Pandora and TROPOMI values were low, the spatial distribution of NO₂ in the LISTOS domain from TROPOMI showed that the NYC plume was advected over the Atlantic Ocean on most of these days and was not intercepted by either site. At WestportCT, there was an extended period of elevated columns near the end of January and beginning of February. The larger TrVC values during that period coincide with days when the NYC plume extends toward Long Island Sound and Connecticut, likely driven by synop-

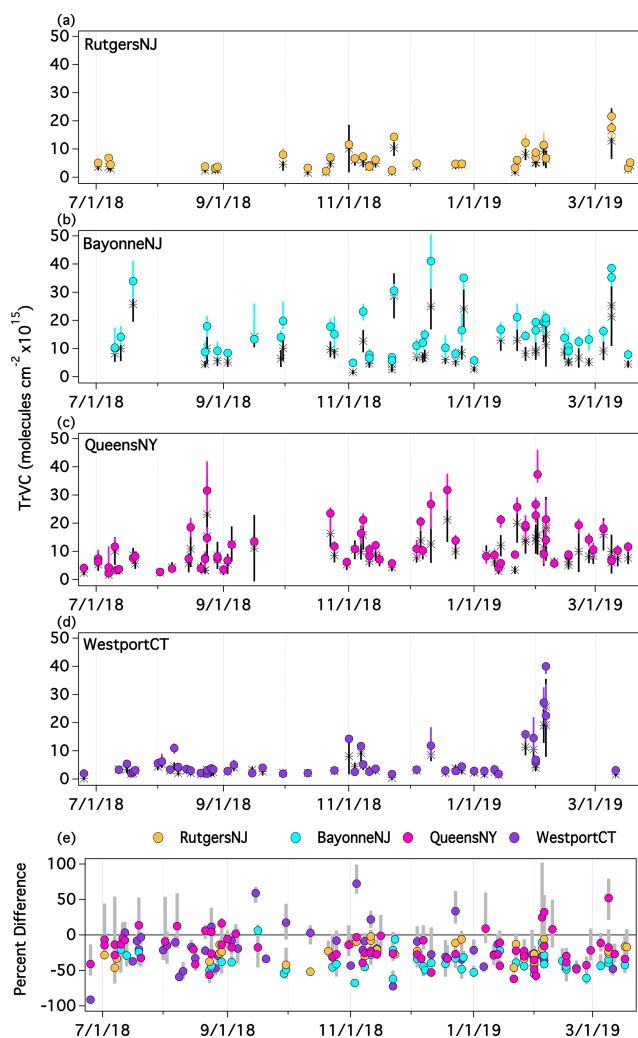


Figure 11. Time series of Pandora and TROPOMI standard TrVCs from 25 June 2018 through 19 March 2019. Circles represent the Pandora data \pm 10th–90th percentile in the \pm 30 min window and the stars indicated the TROPOMI TrVC \pm the reported precision at (a) RutgersNJ, (b) BayonneNJ, (c) QueensNY, and (d) WestportCT. The percent difference of the TROPOMI standard TrVC from Pandora colored by site is shown in panel (e), and the grey bars indicate the 10th–90th percentile of the column difference of TROPOMI TrVC from the subtemporal Pandora data.

tic flow from the southwest quadrant. (This is the flow orientation that is often linked with poor ozone air quality along the shorelines of Long Island Sound during the summertime, e.g., the late August 2018 timeframe which was active with respect to ozone (airnow.gov: last accessed 11 March 2019) but did not result in an NO₂ enhancement over WestportCT, likely due to the shorter NO₂ lifetime in summer.) Alternatively, at RutgersNJ on the 9 March, the Pandora site was encompassed by an NO₂ plume extending from the center of NYC during two consecutive TROPOMI overpasses leading to its maximum TrVC values during the time period assessed.

Unlike the other two sites, BayonneNJ and QueensNY have large dynamic ranges in NO₂ TrVCs in all seasons due to their proximity to strong sources within the NYC metropolitan area. Extending comparisons through the winter allows for more frequently measuring large values to extend the dynamic range of the coincident measurements.

Figure 11e shows the percent difference in TROPOMI TrVCs from Pandora with the bars showing the temporal variability of these percent differences during the \pm 30 min temporal window from the S5P overpass (10th–90th percentile). Despite some changes seasonally in the magnitude of NO₂ at each of the sites, the percent difference in TROPOMI from Pandora does not have an apparent significant trend over this time period. The majority of points fall within 0 % to –50 %. The points with percent differences closest to zero, including points with positive percent differences, are associated with small values at WestportCT. Many of the coincidences have very large ranges in percent difference due to the temporal variability of Pandora TrVCs within the \pm 30 min time period that are likely associated with sub-pixel heterogeneity, again illustrating the challenge of quantifying biases with Pandora in urban environments.

Figure 12 shows a scatter plot of the coincidences at these four sites during both the LISTOS timeframe (Fig. 12a) and the longer 9-month period (Fig. 12b). During the LISTOS period the slope is 0.76, and a reasonably high r^2 of 0.89 is caused by the large range of TrVCs observed at BayonneNJ and QueensNY. These results are similar to those at all nine locations during the LISTOS timeframe (Fig. 10a) with the same median percent difference. The number of coincidences through the LISTOS months is low ($n = 58$) due to the ΔC_S threshold being frequently exceeded (Table 7). The number and dynamic range of observations is greater when extended through the rest of the year ($n = 195$). The overall median percent difference is 8 % lower over the 9-month period (–27 %) than the LISTOS timeframe (–19 %), and though it is not visually apparent in Fig. 11e, this drop is reflected by a decrease in the median percent difference at QueensNY (Table 6). At QueensNY, the median percent difference for TrVCs becomes more negative at higher magnitudes of TrVC; Pandora TrVCs less than/greater than 15×10^{15} molecules cm^{–2} have a median percent difference of –15 % and –33 %, respectively, at this site. Despite large day-to-day variations and changes in dynamic range through the seasons, the linear statistics for the aggregated data at these four sites are largely unchanged when comparing the LISTOS time frame to the extended 9-month period (2.5 % difference in slope and 0.01 range in r^2).

6 Overall evaluation of TROPOMI v1.2 NO₂ TrVCs

Tables 5 and 7 summarize the overall results of TROPOMI TrVC comparisons to the airborne and Pandora spectrometers from this work. No matter the reference dataset or

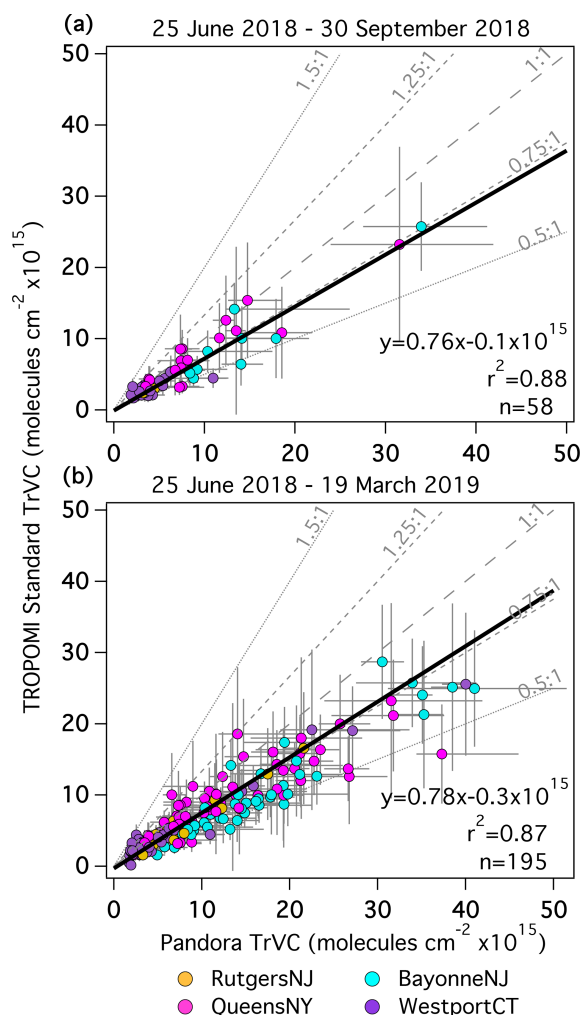


Figure 12. TROPOMI standard vs. Pandora TrVCs colored by site during (a) the LISTOS intensive period for the four locations with extended measurements in time (RutgersNJ, BayonneNJ, QueensNY, WestportCT) followed by (b) coincidences extending from 25 June 2018 to 19 March 2019 at the same four sites. The horizontal bars represent the 10th–90th percentile of Pandora data within the ± 30 min temporal window. The vertical bars represent the reported precision of TROPOMI. Each point is colored by Pandora location.

data selection criteria, linear regression and percent difference statistics indicate that in this urban coastal region the v1.2 TROPOMI standard TrVC product has a low bias. Median TROPOMI NO₂ TrVCs are 19 % and 33 % lower than airborne and Pandora TrVCs, respectively, during the LISTOS timeframe. These different values are partially related to the characteristics of sampling at different TrVC ranges between the two datasets. One-third (130) of the airborne coincidences have TrVC less than 3×10^{15} molecules cm⁻², with no observed bias between the two measurements, while only 19 of the 156 Pandora coincidences have TrVC less than 3×10^{15} molecules cm⁻², with TROPOMI having a low

bias of –21 % at these cleanest levels. At higher TrVC magnitudes (greater than 6×10^{15} molecules cm⁻²), the percent differences of TROPOMI from aircraft (–29 %) and Pandora (–31 %) are more similar to each other. Lesser polluted columns are more sensitive to uncertainties related to the stratospheric columns, references, and other assumptions (which are different between all retrievals), whereas at more polluted levels the bias is more attributed to uncertainties in tropospheric air mass factors.

Overall these results are consistent with other studies using independent measurements to evaluate the TROPOMI NO₂ products, as they also found that the TROPOMI NO₂ product has a low bias in the Canadian Oil Sands (Griffin et al., 2019); Toronto, Canada (Zhao et al., 2020); Paris, France (Lorente et al., 2019); polluted scenes ($> 10 \times 10^{15}$ molecules cm⁻²) near Helsinki (Ialongo et al., 2020); Brussels, Belgium (Dimitropoulou et al., 2020); China (Liu et al., 2020); Munich, Germany (Chan et al., 2020); and Belgium (Tack et al., 2020). Verhoelst et al. (2020) completed a comprehensive analysis of TROPOMI NO₂ products using broad networks of Pandora direct-sun and MAX-DOAS observations and also saw a low bias in the tropospheric product, including consistent results with three Pandora spectrometers used in this analysis (QueensNY, BronxNY, and BayonneNJ) with similar patterns in results (e.g., BronxNY, QueensNY, and BayonneNJ having a median percent difference of –15 %, –23 %, –41 % (this work) vs. –13 %, –26 %, and –31 % (Verhoelst et al., 2020), respectively). Slight differences are expected due to different date windows and coincidence criteria. Tack et al. (2020) also evaluate TROPOMI NO₂ using an airborne spectrometer, and they reported a –14 % bias in the TROPOMI standard product vs. airborne measurements collected over urban areas in Belgium in 2019. Many of these studies found improvement by using higher-resolution regional model a priori profile shapes in the AMF calculation for TROPOMI. In this study, recalculating the TROPOMI tropospheric AMF with the higher-resolution 12 km NAM-CMAQ analysis resolves some of the low bias in TROPOMI TrVCs, improving median percent differences from –19 % to –7 % with respect to airborne data and from –33 % to –19 % with respect to Pandora data. However, despite this improvement, there is still a persistent low bias in the TROPOMI TrVCs. This contrasts from the results of the Tack et al. (2020) study that found that the bias improved to –1 % when recalculating AMFs with a 0.1° spatial resolution from a CAMS regional ensemble. Though differences could be due to region-specific biases (NYC vs. Belgium), airborne retrieval biases, or different filtering techniques, such as the Δ_{CS} filter.

This analysis is impacted by influences of cloud pressure in the TROPOMI retrieval. Invoking the Δ_{CS} criterion increases (worsens) the overall TROPOMI low bias as it removes a high bias caused by assumed cloud shielding in the AMF calculation in cloud-free scenes. In all comparisons shown in Tables 5 and 7, the median percent differ-

ence is more negative (worse) when only points with Δ_{CS} less than 50 hPa are included, and the effect is more pronounced for TROPOMI-NAMCMAQ coincidences (decreasing 10 %–11 %) than for TROPOMI standard (decreasing 4 %–8 %). Invoking the criterion also consistently improves the correlation in every case by removing many of the outlier points, as intended. The most striking examples are the airborne comparison with TROPOMI-NAMCMAQ (r^2 improved from 0.83 to 0.95) and Pandora comparison with TROPOMI standard for the four-site subset of the LISTOS period (r^2 improved from 0.79 to 0.88).

7 Conclusions

The operational nature of the S5P TROPOMI mission as part of the Copernicus program marks an important step forward in monitoring of the environment, amplifying the need for increased validation capacity of satellite trace gas data. The datasets collected in support of the Long Island Sound Tropospheric Ozone Study during summer 2018 and as part of the PAMS-EM program are exceptional for evaluation of TROPOMI TrVCs, providing a robust set of independent remotely sensed NO₂ column densities from airborne spectrometers (13 mapping flights from 25 June 2018 to 6 September 2018) and a network of nine ground-based Pandora spectrometer systems.

Previous studies have shown that Pandora direct-sun NO₂ columns are valuable for validating airborne spectrometer retrievals due to their high precision and temporal resolution and comparable spatial resolution (e.g., Nowlan et al., 2016; Judd et al., 2019). In this study, the airborne spectrometer data are highly correlated with Pandora measurements with a slope of 1.03, an offset of -0.4×10^{15} molecules cm⁻², and $r^2 = 0.92$. Much of the remaining scatter in the data can be attributed to the spatiotemporal heterogeneity of NO₂ in this urban coastal environment, as evaluating only the less temporally varying measurements shows similar statistics but a higher r^2 of 0.96. Though singular comparisons can exceed differences of 25 %, overall the majority of the coincidences fall well within ± 25 % and 81 % of the coincidences fall within the reported accuracy of Pandora of 2.69×10^{15} molecules cm⁻². These results give confidence for using both datasets to assess the TROPOMI TrVC product.

The combination of these two reference measurements in one region presents unique strengths for validation of TROPOMI TrVCs over a domain with large variations in NO₂. Pandora measurements are useful for evaluating space-based and aircraft-based retrievals due to their ability to observe continuously in one location for long time periods. However, the impact of subpixel heterogeneity within satellite pixel areas can lead to mismatches between the Pandora and satellite observations despite the much-improved spatial resolution of TROPOMI. Airborne spectrometers are

typically only deployed for short periods of time, but their observations are more spatially representative of the satellite measurements with the added capability of retrieving at subpixel resolutions over the entire TROPOMI pixel areas they overfly. In this study, the strengths of the two reference measurements were able to be combined. TROPOMI comparisons to airborne TrVCs are more correlated than Pandora comparisons during the LISTOS timeframe ($r^2 = 0.96$ vs. 0.84). Additionally, the long-term deployment of Pandora instruments as part of the PAMS-EM program allowed TROPOMI TrVCs to be assessed over multiple seasons. We find the strongest impact of seasonality is the extension of the TrVC dynamic range sampled in the winter months, providing more robust statistical fits though not very significant changes in the statistics overall between the two time periods.

During the LISTOS timeframe, TROPOMI standard TrVC data have a low bias in comparison to Pandora and airborne TrVCs of -33 % and -19 %, respectively. This bias improves to -19 % and -7 % when TROPOMI TrVCs are recalculated using AMFs with the 12 km NAMCMAQ a priori profile. These results are obtained by screening out cases where cloud shielding estimated in the TROPOMI retrieval occurred over cloud-free scenes, which tend to compensate partially for the TROPOMI TrVC low bias and introduce significant artifacts that degrade correlations with reference measurements. These instances of shielding were found where the $0.5^\circ \times 0.5^\circ$ surface reflectivity climatology used as a priori in the AMF calculation was insufficient in resolution to capture bright urban surfaces. This results in a positive cloud radiative fraction but appears to only result in an outlier when these scenes also have errors in the cloud pressure assuming shielding in cloud-free scenes. Future exploration of cloud-based coincidence criteria would help in identifying effects of cloud parameters and surface reflectivity on NO₂ trace gas comparisons as well as other evaluations of near-surface weighted trace gases such as HCHO. It will also help in evaluating how these sensitivities change as cloud retrievals, surface reflectivity input, and their implementation into the trace gas retrievals evolve in future versions (e.g., in v1.3, implemented after 19 March 2019, the FRESCO-S cloud retrieval was updated to adjust surface albedo in cloud-free areas where the surface albedo climatology is too low, as discussed in Eskes and Eichmann, 2019).

We find the v1.2 TROPOMI standard TrVCs to be within the validation requirements for the mission (bias within ± 25 %–50 %; van Geffen et al., 2019) but with a persistent low bias in the NYC region. While some of the bias is removed by the incorporation of a higher-resolution a priori vertical profile, there is still a low bias in the TROPOMI NO₂ TrVC retrieval, which indicates the need for improved a priori assumptions in the AMF calculations. This analysis looked at the impacts of a priori NO₂ profiles at a moderately higher resolution and of clouds, and future work should also explore effects of surface reflectivity. A component not explicitly explored in this work, which could be in the fu-

ture, is the potential impact of aerosols on the TROPOMI retrieval and whether their indirect accounting through the cloud retrieval accurately reflects the impacts within the radiative transfer calculations for the air mass factor calculation (e.g., Leitaño et al., 2010; Ma et al., 2013; Jin et al., 2016). Some differences between TROPOMI and airborne TrVCs can be related to differences in a priori assumptions between the TROPOMI and airborne retrievals; Lorente et al. (2017) discussed that the structural uncertainty in tropospheric air mass factors is up to 42 % in polluted regions due to different retrieval methodologies. Future comparisons should consider using common methodologies for AMF calculation for both airborne and TROPOMI TrVCs to better quantify the sensitivity of specific a priori assumptions in AMF calculations. As the spatial and temporal resolution of satellite-based observations have and will continue to improve in the near future, gathering large datasets of coincident observations with airborne spectrometers becomes more feasible during air quality field studies. This provides a unique perspective for satellite validation and evaluation strategies, especially with the added information on subpixel variability compared to traditional reference datasets. The datasets presented in this work and others like it will continue to provide a reference for validating and evaluating UV–VIS trace gas retrievals, including the assessment of reprocessed TROPOMI products and near-future geostationary measurements.

Data availability. TROPOMI data can be accessed at <https://s5phub.copernicus.eu/dhus/#/home> (last access: 6 November 2020; KNMI, 2019); Airborne spectrometer NO₂ data version R0 can be accessed at <https://www-air.larc.nasa.gov/cgi-bin/ArcView/listos> (last access: 6 November 2020, Janz et al., 2019); Pandora data can be found at <https://www.pandonia-global-network.org/> (last access: 6 November 2020; Luftblick, 2020). QueensNY, BayonneNJ, and BronxNY were processed with versions rnvslp1-7, and the rest of the sites were processed with rnvso1-5. On the official PGN web page just the rnvslp1-7 data will be accessible as soon as the data are available. There is no difference between the products except the data-flagging procedures. Access to the rnvso1-5 Pandora data used here can be provided upon request.

Supplement. The supplement related to this article is available online at: <https://doi.org/10.5194/amt-13-1-2020-supplement>.

Author contributions. LMJ prepared the manuscript with contributions from all coauthors. JAA-S, LCV, JJS, RBP, and LMJ led flight planning activities for LISTOS. SJJ, MGK, and LMJ collected the airborne spectrometer data, and AN collected HALO data during LISTOS flights. LMJ processed the airborne spectrometer NO₂ retrievals. RBP provided the NAMCMAQ analysis used in the vertical column retrieval and in reprocessing of TROPOMI data. CRN and GGA provided the Smithsonian Astrophysical Observatory AMF tool as well as guidance in its use for AMF calculations. HJE and JPV provided their expertise in the TROPOMI product and dis-

cussed results periodically through this project. JJS, DW, LCV, and RS led the coordination, installation, and maintenance of Pandora spectrometers in the LISTOS domain. AC, MM, and MG led the processing of the Pandora NO₂ retrievals and provided guidance in Pandora data analysis.

Competing interests. The authors declare that they have no conflict of interest.

Disclaimer. The research described in this article has been reviewed by the U.S. Environmental Protection Agency (EPA) and approved for publication. Approval does not signify that the contents necessarily reflect the views and the policies of the agency nor does mention of trade names or commercial products constitute endorsement or recommendation for use.

Special issue statement. This article is part of the special issue “TROPOMI on Sentinel-5 Precursor: first year in operation (AMT/ACP inter-journal SI)”. It is not associated with a conference.

Acknowledgements. Authors would like to acknowledge Peter Pantina and Sanxiong Xiong for their participation in airborne data collection during LISTOS flights, members of the HALO team for supporting flights and data processing of aerosol optical depth, Nader Abuhassan and Lena Shalaby for their assistance in installing and monitoring the Pandora network in the LISTOS domain, extending to the larger Pandora teams at the NASA Goddard Space Flight Center (GSFC) and LuftBlick through their support in Pandora data processing. The LISTOS airborne measurements would not have been possible without the support of the NASA Geostationary Coastal and Air Pollution Events (GEO-CAPE) mission study as well as the NASA Earth Science Division (ESD) Tropospheric Composition Program. We express gratitude to the entire LISTOS science team for their expertise, research, and measurement contributions toward the successful collaborative field study. Finally, we would like to give recognition and thanks to Maria Tzortziou for contributing information about the Pandora located at CCNY.

This work is done in part through the Sentinel-5P Validation Team projects 28695 and 40030. This work contains modified Copernicus data.

Financial support. This research has been supported by the NASA GEO-CAPE Mission Study.

Review statement. This paper was edited by Steffen Beirle and reviewed by three anonymous referees.

References

- Anenberg, S. C., Henze, D. K., Tinney, V., Kinney, P. L., Raich, W., Fann, N., Malley, C. S., Roman, H., Lamsal, L., Duncan, B., Martin, R. V., van Donkelaar, A., Brauer, M., Doherty, R., Jonson, J. E., Davila, Y., Sudo, K. and Kuylenstierna, J. C. I.: Estimates of the Global Burden of Ambient PM_{2.5}, Ozone, and NO₂ on Asthma Incidence and Emergency Room Visits, *Environ. Health Persp.*, 126, 107004, <https://doi.org/10.1289/EHP3766>, 2018.
- Behrens, L. K., Hilboll, A., Richter, A., Peters, E., Eskes, H., and Burrows, J. P.: GOME-2A retrievals of tropospheric NO₂ in different spectral ranges – influence of penetration depth, *Atmos. Meas. Tech.*, 11, 2769–2795, <https://doi.org/10.5194/amt-11-2769-2018>, 2018.
- Beirle, S., Boersma, K. F., Platt, U., Lawrence, M. G., and Wagner, T.: Megacity Emissions and Lifetimes of Nitrogen Oxides Probed from Space, *Science*, 333, 1737–1739, <https://doi.org/10.1126/science.1207824>, 2011.
- Beirle, S., Borger, C., Dörner, S., Li, A., Hu, Z., Liu, F., Wang, Y. and Wagner, T.: Pinpointing nitrogen oxide emissions from space, *Sci. Adv.*, 5, eaax9800, <https://doi.org/10.1126/sciadv.aax9800>, 2019.
- Boersma, K. F., Eskes, H. J., Dirksen, R. J., van der A, R. J., Veefkind, J. P., Stammes, P., Huijnen, V., Kleipool, Q. L., Sneep, M., Claas, J., Leitão, J., Richter, A., Zhou, Y., and Brunner, D.: An improved tropospheric NO₂ column retrieval algorithm for the Ozone Monitoring Instrument, *Atmos. Meas. Tech.*, 4, 1905–1928, <https://doi.org/10.5194/amt-4-1905-2011>, 2011.
- Boersma, K. F., Eskes, H. J., Richter, A., De Smedt, I., Lorente, A., Beirle, S., van Geffen, J. H. G. M., Zara, M., Peters, E., Van Roozendaal, M., Wagner, T., Maasakkers, J. D., van der A, R. J., Nightingale, J., De Rudder, A., Irie, H., Pinardi, G., Lambert, J.-C., and Compernelle, S. C.: Improving algorithms and uncertainty estimates for satellite NO₂ retrievals: results from the quality assurance for the essential climate variables (QA4ECV) project, *Atmos. Meas. Tech.*, 11, 6651–6678, <https://doi.org/10.5194/amt-11-6651-2018>, 2018.
- Borsdorff, T., Aan de Brugh, J., Hu, H., Aben, I., Hasekamp, O., and Landgraf, J.: Measuring Carbon Monoxide With TROPOMI: First Results and a Comparison With ECMWF-IFS Analysis Data, *Geophys. Res. Lett.*, 45, 2826–2832, <https://doi.org/10.1002/2018GL077045>, 2018.
- Bovensmann, H., Burrows, J. P., Buchwitz, M., Frerick, J., Noël, S., Rozanov, V. V., Chance, K. V., and Goede, A. P. H.: SCIAMACHY: Mission objectives and measurement modes, *J. Atmos. Sci.*, 56, 127–150, 1999.
- Broccardo, S., Heue, K.-P., Walter, D., Meyer, C., Kokhanovsky, A., van der A, R., Piketh, S., Langerman, K., and Platt, U.: Intrapixel variability in satellite tropospheric NO₂ column densities derived from simultaneous space-borne and airborne observations over the South African Highveld, *Atmos. Meas. Tech.*, 11, 2797–2819, <https://doi.org/10.5194/amt-11-2797-2018>, 2018.
- Bucsela, E. J., Krotkov, N. A., Celarier, E. A., Lamsal, L. N., Swartz, W. H., Bhartia, P. K., Boersma, K. F., Veefkind, J. P., Gleason, J. F., and Pickering, K. E.: A new stratospheric and tropospheric NO₂ retrieval algorithm for nadir-viewing satellite instruments: applications to OMI, *Atmos. Meas. Tech.*, 6, 2607–2626, <https://doi.org/10.5194/amt-6-2607-2013>, 2013.
- Burrows, J. P., Weber, M., Buchwitz, M., Rozanov, V., Ladstätter-Weißmayer, A., Richter, A., DeBeek, R., Hoogen, R., Bramstedt, K., and Eichmann, K.-U.: The global ozone monitoring experiment (GOME): Mission concept and first scientific results, *J. Atmos. Sci.*, 56, 151–175, 1999.
- Callies, J., Corpaccioli, E., Eisinger, M., Hahne, A., and Lefebvre, A.: GOME-2-Metop's second-generation sensor for operational ozone monitoring, *ESA bulletin*, 102, 28–36, 2000.
- Chan, K. L., Wiegner, M., van Geffen, J., De Smedt, I., Alberti, C., Cheng, Z., Ye, S., and Wenig, M.: MAX-DOAS measurements of tropospheric NO₂ and HCHO in Munich and the comparison to OMI and TROPOMI satellite observations, *Atmos. Meas. Tech.*, 13, 4499–4520, <https://doi.org/10.5194/amt-13-4499-2020>, 2020.
- Chance, K. and Kurucz, R. L.: An improved high-resolution solar reference spectrum for earth's atmosphere measurements in the ultraviolet, visible, and near infrared, *J. Quant. Spectrosc. Ra. Transf.*, 111, 1289–1295, <https://doi.org/10.1016/j.jqsrt.2010.01.036>, 2010.
- Cox, C. and Munk, W.: Measurement of the Roughness of the Sea Surface from Photographs of the Sun's Glitter, *J. Opt. Soc. Am.*, JOSA, 44, 838–850, <https://doi.org/10.1364/JOSA.44.000838>, 1954.
- De Smedt, I., Theys, N., Yu, H., Danckaert, T., Lerot, C., Compernelle, S., Van Roozendaal, M., Richter, A., Hilboll, A., Peters, E., Pedergrana, M., Loyola, D., Beirle, S., Wagner, T., Eskes, H., van Geffen, J., Boersma, K. F., and Veefkind, P.: Algorithm theoretical baseline for formaldehyde retrievals from S5P TROPOMI and from the QA4ECV project, *Atmos. Meas. Tech.*, 11, 2395–2426, <https://doi.org/10.5194/amt-11-2395-2018>, 2018.
- Dimitropoulou, E., Hendrick, F., Pinardi, G., Friedrich, M. M., Merlaud, A., Tack, F., De Longueville, H., Fayt, C., Hermans, C., Laffineur, Q., Fierens, F., and Van Roozendaal, M.: Validation of TROPOMI tropospheric NO₂ columns using dual-scan multi-axis differential optical absorption spectroscopy (MAX-DOAS) measurements in Uccle, Brussels, *Atmos. Meas. Tech.*, 13, 5165–5191, <https://doi.org/10.5194/amt-13-5165-2020>, 2020.
- Eskes, H. and Eichmann, K.-U.: S5P Mission Performance Centre Nitrogen Dioxide [L2_NO2_] Readme, available at: http://www.tropomi.eu/sites/default/files/files/publicSentinel-5P-Nitrogen-Dioxide-Level-2-Product-Readme-File_20191105.pdf (last access: 14 April 2020), 2019.
- Eskes, H., van Geffen, J., Boersma, F., Eichmann, K.-U., Apituley, A., Pedergrana, M., Sneep, M., Veefkind, J. P. and Loyola, D.: Sentinel-5 precursor/TROPOMI Level 2 Product User Manual Nitrogen dioxide, available at: http://www.tropomi.eu/sites/default/files/files/publicS5P-KNMI-L2-0021-MA-Product_User_Manual_for_the_Sentinel_5_precursor_Nitrogen_dioxide-3.0.0-20190327.pdf (last access: 14 April 2020), 2019.
- Fischer, P. H., Marra, M., Ameling, C. B., Hoek, G., Beelen, R., de Hoogh, K., Breugelmans, O., Kruize, H., Janssen, N. A. H., and Houthuijs, D.: Air Pollution and Mortality in Seven Million Adults: The Dutch Environmental Longitudinal Study (DUELS), *Environ. Health Perspect.*, 123, 697–704, <https://doi.org/10.1289/ehp.1408254>, 2015.
- Garane, K., Koukouli, M.-E., Verhoelst, T., Lerot, C., Heue, K.-P., Fioletov, V., Balis, D., Bais, A., Bazureau, A., Dehn, A., Goutail, F., Granville, J., Griffin, D., Hubert, D., Keppens, A., Lambert, J.-C., Loyola, D., McLinden, C., Pazmino, A., Pommereau, J.-P., Redondas, A., Romahn, F., Valks, P., Van Roozendaal, M., Xu,

- J., Zehner, C., Zerefos, C., and Zimmer, W.: TROPOMI/S5P total ozone column data: global ground-based validation and consistency with other satellite missions, *Atmos. Meas. Tech.*, 12, 5263–5287, <https://doi.org/10.5194/amt-12-5263-2019>, 2019.
- Goldberg, D. L., Lamsal, L. N., Loughner, C. P., Swartz, W. H., Lu, Z., and Streets, D. G.: A high-resolution and observationally constrained OMI NO₂ satellite retrieval, *Atmos. Chem. Phys.*, 17, 11403–11421, <https://doi.org/10.5194/acp-17-11403-2017>, 2017.
- Goldberg, D. L., Lu, Z., Streets, D. G., de Foy, B., Griffin, D., McLinden, C. A., Lamsal, L. N., Krotkov, N. A., and Eskes, H.: Enhanced Capabilities of TROPOMI NO₂: Estimating NO_x from North American Cities and Power Plants, *Environ. Sci. Technol.*, 53, 12594–12601, <https://doi.org/10.1021/acs.est.9b04488>, 2019.
- González Abad, G., Souri, A. H., Bak, J., Chance, K., Flynn, L. E., Krotkov, N. A., Lamsal, L., Li, C., Liu, X., Miller, C. C., Nowlan, C. R., Suleiman, R., and Wang, H.: Five decades observing Earth's atmospheric trace gases using ultraviolet and visible backscatter solar radiation from space, *J. Quant. Spectrosc. Ra. Transf.*, 238, 106478, <https://doi.org/10.1016/j.jqsrt.2019.04.030>, 2019.
- Gordon, H. R. and Wang, M.: Surface-roughness considerations for atmospheric correction of ocean color sensors 1: The Rayleigh-scattering component, *Appl. Opt.*, 31, 4247, <https://doi.org/10.1364/AO.31.004247>, 1992.
- Griffin, D., Zhao, X., McLinden, C. A., Boersma, F., Bourassa, A., Dammers, E., Degenstein, D., Eskes, H., Fehr, L., Fioletov, V., Hayden, K., Kharol, S. K., Li, S.-M., Makar, P., Martin, R. V., Mihele, C., Mittermeier, R. L., Krotkov, N., Sneep, M., Lamsal, L. N., Linden, M. ter, Geffen, J. van, Veefkind, P., and Wolde, M.: High-Resolution Mapping of Nitrogen Dioxide With TROPOMI: First Results and Validation Over the Canadian Oil Sands, *Geophys. Res. Lett.*, 46, 1049–1060, <https://doi.org/10.1029/2018GL081095>, 2019.
- Herman, J., Cede, A., Spinei, E., Mount, G., Tzortziou, M., and Abuhassan, N.: NO₂ column amounts from ground-based Pandora and MFDOAS spectrometers using the direct-sun DOAS technique: Intercomparisons and application to OMI validation, *J. Geophys. Res.*, 114, D13307, <https://doi.org/10.1029/2009JD011848>, 2009.
- Hu, H., Landgraf, J., Detmers, R., Borsdorff, T., Brugh, J. A. de, Aben, I., Butz, A., and Hasekamp, O.: Toward Global Mapping of Methane With TROPOMI: First Results and Intersatellite Comparison to GOSAT, *Geophys. Res. Lett.*, 45, 3682–3689, <https://doi.org/10.1002/2018GL077259>, 2018.
- Ialongo, I., Virta, H., Eskes, H., Hovila, J., and Douros, J.: Comparison of TROPOMI/Sentinel-5 Precursor NO₂ observations with ground-based measurements in Helsinki, *Atmos. Meas. Tech.*, 13, 205–218, <https://doi.org/10.5194/amt-13-205-2020>, 2020.
- Janz, S., Judd, L., and Kowalewski, M.: Long Island Sound Tropospheric Ozone Study GeoTASO/GCAS NO₂ Vertical Columns, NASA ASDC Long Island Sound Tropospheric Ozone Study, available at: <https://www-air.larc.nasa.gov/missions/listos/index.html> (last access: 14 April 2020), 2019.
- Jin, J., Ma, J., Lin, W., Zhao, H., Shaiganfar, R., Beirle, S., and Wagner, T.: MAX-DOAS measurements and satellite validation of tropospheric NO₂ and SO₂ vertical column densities at a rural site of North China, *Atmos. Environ.*, 133, 12–25, <https://doi.org/10.1016/j.atmosenv.2016.03.031>, 2016.
- Judd, L. M., Al-Saadi, J. A., Valin, L. C., Pierce, R. B., Yang, K., Janz, S. J., Kowalewski, M. G., Szykman, J. J., Tiefengraber, M., and Mueller, M.: The Dawn of Geostationary Air Quality Monitoring: Case Studies From Seoul and Los Angeles, *Front. Environ. Sci.*, 6, 85, <https://doi.org/10.3389/fenvs.2018.00085>, 2018.
- Judd, L. M., Al-Saadi, J. A., Janz, S. J., Kowalewski, M. G., Pierce, R. B., Szykman, J. J., Valin, L. C., Swap, R., Cede, A., Mueller, M., Tiefengraber, M., Abuhassan, N., and Williams, D.: Evaluating the impact of spatial resolution on tropospheric NO₂ column comparisons within urban areas using high-resolution airborne data, *Atmos. Meas. Tech.*, 12, 6091–6111, <https://doi.org/10.5194/amt-12-6091-2019>, 2019.
- Kim, H. C., Lee, P., Judd, L., Pan, L., and Lefer, B.: OMI NO₂ column densities over North American urban cities: the effect of satellite footprint resolution, *Geosci. Model Dev.*, 9, 1111–1123, <https://doi.org/10.5194/gmd-9-1111-2016>, 2016.
- Kleipool, Q. L., Dobber, M. R., de Haan, J. F., and Lev-elt, P. F.: Earth surface reflectance climatology from 3 years of OMI data, *J. Geophys. Res.-Atmos.*, 113, D18308, <https://doi.org/10.1029/2008JD010290>, 2008.
- KNMI: TROPOMI NO₂ Product RPRO v1.2, available at: <https://www-air.larc.nasa.gov/cgi-bin/ArcView/listos> (last access: 6 November 2020), 2019.
- Kowalewski, M. G. and Janz, S. J.: Remote sensing capabilities of the GEO-CAPE airborne simulator, SPIE Conference Proceedings, San Diego, California, United States, <https://doi.org/10.1117/12.2062058>, 2014.
- Lamsal, L. N., Krotkov, N. A., Celarier, E. A., Swartz, W. H., Pickering, K. E., Bucsela, E. J., Gleason, J. F., Martin, R. V., Philip, S., Irie, H., Cede, A., Herman, J., Weinheimer, A., Szykman, J. J., and Knepp, T. N.: Evaluation of OMI operational standard NO₂ column retrievals using in situ and surface-based NO₂ observations, *Atmos. Chem. Phys.*, 14, 11587–11609, <https://doi.org/10.5194/acp-14-11587-2014>, 2014.
- Lamsal, L. N., Janz, S. J., Krotkov, N. A., Pickering, K. E., Spurr, R. J. D., Kowalewski, M. G., Loughner, C. P., Crawford, J. H., Swartz, W. H., and Herman, J. R.: High-resolution NO₂ observations from the Airborne Compact Atmospheric Mapper: Retrieval and validation: High-Resolution NO₂ Observations, *J. Geophys. Res.-Atmos.*, 122, 1953–1970, <https://doi.org/10.1002/2016JD025483>, 2017.
- Lawrence, J. P., Anand, J. S., Vande Hey, J. D., White, J., Leigh, R. R., Monks, P. S., and Leigh, R. J.: High-resolution measurements from the airborne Atmospheric Nitrogen Dioxide Imager (ANDI), *Atmos. Meas. Tech.*, 8, 4735–4754, <https://doi.org/10.5194/amt-8-4735-2015>, 2015.
- Leitão, J., Richter, A., Vrekoussis, M., Kokhanovsky, A., Zhang, Q. J., Beekmann, M., and Burrows, J. P.: On the improvement of NO₂ satellite retrievals – aerosol impact on the airmass factors, *Atmos. Meas. Tech.*, 3, 475–493, <https://doi.org/10.5194/amt-3-475-2010>, 2010.
- Leitch, J. W., Delker, T., Good, W., Ruppert, L., Murcray, F., Chance, K., Liu, X., Nowlan, C., Janz, S. J., Krotkov, N. A., Pickering, K. E., Kowalewski, M., and Wang, J.: The GeoTASO airborne spectrometer project, SPIE Proceedings, Vol. 921, edited by: Butler, J. J., Xiong, X. (Jack), and Gu, X., p. 92181H, <https://doi.org/10.1117/12.2063763?SSO=1>, 2014.

- Levelt, P. F., Oord, G. H. J. van den, Dobber, M. R., Malkki, A., Visser, H., Vries, J. de, Stammes, P., Lundell, J. O. V., and Saari, H.: The ozone monitoring instrument, *IEEE Trans. Geosci. Remote Sens.*, 44, 1093–1101, <https://doi.org/10.1109/TGRS.2006.872333>, 2006.
- Levelt, P. F., Joiner, J., Tamminen, J., Veefkind, J. P., Bhartia, P. K., Stein Zweers, D. C., Duncan, B. N., Streets, D. G., Eskes, H., van der A, R., McLinden, C., Fioletov, V., Carn, S., de Laat, J., DeLand, M., Marchenko, S., McPeters, R., Ziemke, J., Fu, D., Liu, X., Pickering, K., Apituley, A., González Abad, G., Arola, A., Boersma, F., Chan Miller, C., Chance, K., de Graaf, M., Hakkarainen, J., Hassinen, S., Ialongo, I., Kleipool, Q., Krotkov, N., Li, C., Lamsal, L., Newman, P., Nowlan, C., Suleiman, R., Tilstra, L. G., Torres, O., Wang, H., and Wargan, K.: The Ozone Monitoring Instrument: overview of 14 years in space, *Atmos. Chem. Phys.*, 18, 5699–5745, <https://doi.org/10.5194/acp-18-5699-2018>, 2018.
- Liang, J., Horowitz, L. W., Jacob, D. J., Wang, Y., Fiore, A. M., Logan, J. A., Gardner, G. M., and Munger, J. W.: Seasonal budgets of reactive nitrogen species and ozone over the United States, and export fluxes to the global atmosphere, *J. Geophys. Res.*, 103, 13435–13450, <https://doi.org/10.1029/97JD03126>, 1998.
- Liu, F., Beirle, S., Zhang, Q., Dörner, S., He, K., and Wagner, T.: NO_x lifetimes and emissions of cities and power plants in polluted background estimated by satellite observations, *Atmos. Chem. Phys.*, 16, 5283–5298, <https://doi.org/10.5194/acp-16-5283-2016>, 2016.
- Liu, M., Lin, J., Kong, H., Boersma, K. F., Eskes, H., Kanaya, Y., He, Q., Tian, X., Qin, K., Xie, P., Spurr, R., Ni, R., Yan, Y., Weng, H., and Wang, J.: A new TROPOMI product for tropospheric NO₂ columns over East Asia with explicit aerosol corrections, *Atmos. Meas. Tech.*, 13, 4247–4259, <https://doi.org/10.5194/amt-13-4247-2020>, 2020.
- Lorente, A., Folkert Boersma, K., Yu, H., Dörner, S., Hilboll, A., Richter, A., Liu, M., Lamsal, L. N., Barkley, M., De Smedt, I., Van Roozendael, M., Wang, Y., Wagner, T., Beirle, S., Lin, J.-T., Krotkov, N., Stammes, P., Wang, P., Eskes, H. J., and Krol, M.: Structural uncertainty in air mass factor calculation for NO₂ and HCHO satellite retrievals, *Atmos. Meas. Tech.*, 10, 759–782, <https://doi.org/10.5194/amt-10-759-2017>, 2017.
- Lorente, A., Boersma, K. F., Eskes, H. J., Veefkind, J. P., van Geffen, J. H. G. M., de Zeeuw, M. B., Denier van der Gon, H. A. C., Beirle, S., and Krol, M. C.: Quantification of nitrogen oxides emissions from build-up of pollution over Paris with TROPOMI, *Sci. Rep.*, 9, 20033, <https://doi.org/10.1038/s41598-019-56428-5>, 2019.
- Loyola, D., Lutz, R., Argyrouli, A., and Spurr, R.: S5P/TROPOMI ATBD Cloud Products, sentinel-5p, DLR, [TS3](https://www.esa.int/ESA/Technology/SENTINEL-5P/ATBD/Cloud_Products), 2018.
- Lucht, W., Schaaf, C. B., and Strahler, A. H.: An algorithm for the retrieval of albedo from space using semiempirical BRDF models, *IEEE Trans. Geosci. Remote Sens.*, 38, 977–998, <https://doi.org/10.1109/36.841980>, 2000.
- Ludwig, A., Kleipool, Q., Bartstra, R., Landzaat, R., Leloux, J., Loots, E., Meijering, P., van der Plas, E., Rozemeijer, N., Vonk, F., and Veefkind, P.: In-flight calibration results of the TROPOMI payload on-board the Sentinel-5 Precursor satellite, preprint, *Gases/Remote Sensing/Instruments and Platforms*, 2020.
- LuftBlick: ESA Ground-Based Air-Quality Spectrometer Validation Network and Uncertainties Study, available at: https://www.pandonia-global-network.org/wp-content/uploads/2019/06/LuftBlick_Pandonia_TraceGasRetrievalFeasibilityStudy_RP_2016001_v1.1.1.pdf (last access: 14 April 2020), 2016.
- LuftBlick: Pandora Direct Sun Total NO₂ Vertical Columns, Pandonia Global Network, available at: <https://www.pandonia-global-network.org/>, last access: 6 November 2020.
- Ma, J. Z., Beirle, S., Jin, J. L., Shaiganfar, R., Yan, P., and Wagner, T.: Tropospheric NO₂ vertical column densities over Beijing: results of the first three years of ground-based MAX-DOAS measurements (2008–2011) and satellite validation, *Atmos. Chem. Phys.*, 13, 1547–1567, <https://doi.org/10.5194/acp-13-1547-2013>, 2013.
- McLinden, C. A., Olsen, S. C., Hannegan, B., Wild, O., Prather, M. J., and Sundet, J.: Stratospheric ozone in 3-D models: A simple chemistry and the cross-tropopause flux, *J. Geophys. Res.-Atmos.*, 105, 14653–14665, <https://doi.org/10.1029/2000JD900124>, 2000.
- Meier, A. C., Schönhardt, A., Bösch, T., Richter, A., Seyler, A., Ruhtz, T., Constantin, D.-E., Shaiganfar, R., Wagner, T., Merlaud, A., Van Roozendael, M., Belegante, L., Nicolae, D., Georgescu, L., and Burrows, J. P.: High-resolution airborne imaging DOAS measurements of NO₂ above Bucharest during AROMAT, *Atmos. Meas. Tech.*, 10, 1831–1857, <https://doi.org/10.5194/amt-10-1831-2017>, 2017.
- Nakajima, T. and Tanaka, M.: Effect of wind-generated waves on the transfer of solar radiation in the atmosphere-ocean system, *J. Quant. Spectrosc. Ra. Transf.*, 29, 521–537, [https://doi.org/10.1016/0022-4073\(83\)90129-2](https://doi.org/10.1016/0022-4073(83)90129-2), 1983.
- Nehrir, A., Notari, A., Harper, D., Fitzpatrick, F., Collins, J., Kooi, S., Antill, C., Hare, R., Barton-Grimley, R., Hair, J., Ferrare, R., Hostetler, C., and Welch, W.: The High Altitude Lidar Observatory (HALO): A multi-function lidar and technology test-bed for airborne and space-based measurements of water vapor and methane, available at: http://www.estotechnology.us/techportfolio/pdf/additionalInfo/1914_Nehrir/Nehrir_ESTF2018_A1P2.pdf (last access: 14 April 2020), 2018. [TS4](#)
- Nowlan, C. R., Liu, X., Leitch, J. W., Chance, K., González Abad, G., Liu, C., Zoogman, P., Cole, J., Delker, T., Good, W., Murcray, F., Ruppert, L., Soo, D., Follette-Cook, M. B., Janz, S. J., Kowalewski, M. G., Loughner, C. P., Pickering, K. E., Herman, J. R., Beaver, M. R., Long, R. W., Szykman, J. J., Judd, L. M., Kelley, P., Luke, W. T., Ren, X., and Al-Saadi, J. A.: Nitrogen dioxide observations from the Geostationary Trace gas and Aerosol Sensor Optimization (GeoTASO) airborne instrument: Retrieval algorithm and measurements during DISCOVER-AQ Texas 2013, *Atmos. Meas. Tech.*, 9, 2647–2668, <https://doi.org/10.5194/amt-9-2647-2016>, 2016.
- Nowlan, C. R., Liu, X., Janz, S. J., Kowalewski, M. G., Chance, K., Follette-Cook, M. B., Fried, A., González Abad, G., Herman, J. R., Judd, L. M., Kwon, H.-A., Loughner, C. P., Pickering, K. E., Richter, D., Spinei, E., Walega, J., Weibring, P., and Weinheimer, A. J.: Nitrogen dioxide and formaldehyde measurements from the GEOstationary Coastal and Air Pollution Events (GEO-CAPE) Airborne Simulator over Houston, Texas, *Atmos. Meas. Tech.*, 11, 5941–5964, <https://doi.org/10.5194/amt-11-5941-2018>, 2018.

- Palmer, P. I., Jacob, D. J., Chance, K., Martin, R. V., Spurr, R. J. D., Kurosu, T. P., Bey, I., Yantosca, R., Fiore, A., and Li, Q.: Air mass factor formulation for spectroscopic measurements from satellites: Application to formaldehyde retrievals from the Global Ozone Monitoring Experiment, *J. Geophys. Res.*, 106, 14539–14550, <https://doi.org/10.1029/2000JD900772>, 2001.
- Pierce, R. B., Schaack, T., Al-Saadi, J. A., Fairlie, T. D., Kitaka, C., Lingenfelter, G., Natarajan, M., Olson, J., Soja, A., Zapotocny, T., Lenzen, A., Stobie, J., Johnson, D., Avery, M. A., Sachse, G. W., Thompson, A., Cohen, R., Dibb, J. E., Crawford, J., Rault, D., Martin, R., Szykman, J., and Fishman, J.: Impacts of background ozone production on Houston and Dallas, Texas, air quality during the Second Texas Air Quality Study field mission, *J. Geophys. Res.*, 114, D00F09, <https://doi.org/10.1029/2008JD011337>, 2009.
- Platt, U. and Stutz, J.: Differential optical absorption spectroscopy: principles and applications?; with 55 tables, Springer, Berlin, 2008.
- Popp, C., Brunner, D., Damm, A., Van Roozendaal, M., Fayt, C., and Buchmann, B.: High-resolution NO₂ remote sensing from the Airborne Prism EXperiment (APEX) imaging spectrometer, *Atmos. Meas. Tech.*, 5, 2211–2225, <https://doi.org/10.5194/amt-5-2211-2012>, 2012.
- Prather, M.: Catastrophic loss of stratospheric ozone in dense volcanic clouds, *J. Geophys. Res.-Atmos.*, 97, 10187–10191, <https://doi.org/10.1029/92JD00845>, 1992.
- Reed, A. J., Thompson, A. M., Kollonige, D. E., Martins, D. K., Tzortziou, M. A., Herman, J. R., Berkoff, T. A., Abuhassan, N. K., and Cede, A.: Effects of local meteorology and aerosols on ozone and nitrogen dioxide retrievals from OMI and Pandora spectrometers in Maryland, USA during DISCOVER-AQ 2011, *J. Atmos. Chem.*, 72, 455–482, <https://doi.org/10.1007/s10874-013-9254-9>, 2015.
- Rothman, L. S., Gordon, I. E., Barbe, A., Benner, D. C., Bernath, P. F., Birk, M., Boudon, V., Brown, L. R., Campargue, A., Champion, J.-P., Chance, K., Coudert, L. H., Dana, V., Devi, V. M., Fally, S., Flaud, J.-M., Gamache, R. R., Goldman, A., Jacquemart, D., Kleiner, I., Lacome, N., Lafferty, W. J., Mandin, J.-Y., Massie, S. T., Mikhailenko, S. N., Miller, C. E., Moazzen-Ahmadi, N., Naumenko, O. V., Nikitin, A. V., Orphal, J., Perevalov, V. I., Perrin, A., Predoi-Cross, A., Rinsland, C. P., Rotger, M., Šimečková, M., Smith, M. A. H., Sung, K., Tashkun, S. A., Tennyson, J., Toth, R. A., Vandaele, A. C., and Vander Auwera, J.: The HITRAN 2008 molecular spectroscopic database, *J. Quant. Spectrosc. Ra. Transf.*, 110, 533–572, <https://doi.org/10.1016/j.jqsrt.2009.02.013>, 2009.
- Schaaf, C. and Wang, Z.: MCD43A1 MODIS/Terra+Aqua BRDF/Albedo Model Parameters Daily L3 Global – 500m V006, LP DAAC, <https://doi.org/10.5067/MODIS/MCD43A1.006>, 2015.
- Schönhardt, A., Altube, P., Gerilowski, K., Krautwurst, S., Hartmann, J., Meier, A. C., Richter, A., and Burrows, J. P.: A wide field-of-view imaging DOAS instrument for two-dimensional trace gas mapping from aircraft, *Atmos. Meas. Tech.*, 8, 5113–5131, <https://doi.org/10.5194/amt-8-5113-2015>, 2015.
- Souri, A. H., Choi, Y., Pan, S., Curci, G., Nowlan, C. R., Janz, S. J., Kowalewski, M. G., Liu, J., Herman, J. R., and Weinheimer, A. J.: First Top-Down Estimates of Anthropogenic NO_x Emissions Using High-Resolution Airborne Remote Sensing Observations, *J. Geophys. Res.-Atmos.*, 123, 3269–3284, <https://doi.org/10.1002/2017JD028009>, 2018.
- Souri, A. H., Nowlan, C. R., Wolfe, G. M., Lamsal, L. N., Chan Miller, C. E., Abad, G. G., Janz, S. J., Fried, A., Blake, D. R., Weinheimer, A. J., Diskin, G. S., Liu, X., and Chance, K.: Revisiting the effectiveness of HCHO/NO₂ ratios for inferring ozone sensitivity to its precursors using high resolution airborne remote sensing observations in a high ozone episode during the KORUS-AQ campaign, *Atmos. Environ.*, 224, 117341, <https://doi.org/10.1016/j.atmosenv.2020.117341>, 2020.
- Spurr, R.: VLIDORT Version 2.7 User's Guide, Cambridge, USA, 2014.
- Spurr, R. J. D.: VLIDORT: A linearized pseudo-spherical vector discrete ordinate radiative transfer code for forward model and retrieval studies in multilayer multiple scattering media, *J. Quant. Spectrosc. Ra. Transf.*, 102, 316–342, <https://doi.org/10.1016/j.jqsrt.2006.05.005>, 2006.
- Stajner, I., Davidson, P., Byun, D., McQueen, J., Draxler, R., Dickerson, P., and Meagher, J.: US National Air Quality Forecast Capability: Expanding Coverage to Include Particulate Matter, in: *Air Pollution Modeling and its Application XXI*, edited by: Steyn, D. G. and Trini Castelli, S., 379–384, Springer Netherlands, 2011.
- Tack, F., Merlaud, A., Iordache, M.-D., Danckaert, T., Yu, H., Fayt, C., Meuleman, K., Deutsch, F., Fierens, F., and Van Roozendaal, M.: High-resolution mapping of the NO₂ spatial distribution over Belgian urban areas based on airborne APEX remote sensing, *Atmos. Meas. Tech.*, 10, 1665–1688, <https://doi.org/10.5194/amt-10-1665-2017>, 2017.
- Tack, F., Merlaud, A., Meier, A. C., Vlemmix, T., Ruhtz, T., Iordache, M.-D., Ge, X., van der Wal, L., Schuettmeyer, D., Ardelean, M., Calcan, A., Constantin, D., Schönhardt, A., Meuleman, K., Richter, A., and Van Roozendaal, M.: Intercomparison of four airborne imaging DOAS systems for tropospheric NO₂ mapping – the AROMAPEX campaign, *Atmos. Meas. Tech.*, 12, 211–236, <https://doi.org/10.5194/amt-12-211-2019>, 2019.
- Tack, F., Merlaud, A., Iordache, M.-D., Pinardi, G., Dimitropoulou, E., Eskes, H., Bomans, B., Veefkind, P., and Van Roozendaal, M.: Assessment of the TROPOMI tropospheric NO₂ product based on airborne APEX observations, *Atmos. Meas. Tech. Discuss.*, <https://doi.org/10.5194/amt-2020-148>, in review, 2020.
- Thalman, R. and Volkamer, R.: Temperature dependent absorption cross-sections of O₂-O₂ collision pairs between 340 and 630 nm and at atmospherically relevant pressure, *Phys. Chem. Chem. Phys.*, 15, 15371, <https://doi.org/10.1039/c3cp50968k>, 2013.
- Theys, N., De Smedt, I., Yu, H., Danckaert, T., van Gent, J., Hörmann, C., Wagner, T., Hedelt, P., Bauer, H., Romahn, F., Pedernana, M., Loyola, D., and Van Roozendaal, M.: Sulfur dioxide retrievals from TROPOMI onboard Sentinel-5 Precursor: algorithm theoretical basis, *Atmos. Meas. Tech.*, 10, 119–153, <https://doi.org/10.5194/amt-10-119-2017>, 2017.
- Vandaele, A. C., Hermans, C., Simon, P. C., Carleer, M., Colin, R., Fally, S., Mérianne, M. F., Jenouvrier, A., and Coquart, B.: Measurements of the NO₂ absorption cross-section from 42 000 cm⁻¹ to 10 000 cm⁻¹ (238–1000 nm) at 220 K and 294 K, *J. Quant. Spectrosc. Ra. Transf.*, 59, 171–184, [https://doi.org/10.1016/S0022-4073\(97\)00168-4](https://doi.org/10.1016/S0022-4073(97)00168-4), 1998.
- van Geffen, J., Eskes, H., Boersma, F., Maasakkers, J. D., and Veefkind, J. P.: TROPOMI ATBD of the total and tropospheric

- NO₂ data products, available at: http://www.tropomi.eu/sites/default/files/files/publicS5P-KNMI-L2-0005-RP-ATBD_NO2_data_products-20190206_v140.pdf (last access: 14 April 2020), 2019.
- 5 van Geffen, J., Boersma, K. F., Eskes, H., Sneep, M., ter Linden, M., Zara, M., and Veefkind, J. P.: S5P TROPOMI NO₂ slant column retrieval: method, stability, uncertainties and comparisons with OMI, *Atmos. Meas. Tech.*, 13, 1315–1335, <https://doi.org/10.5194/amt-13-1315-2020>, 2020.
- 10 Veefkind, J. P., Aben, I., McMullan, K., Förster, H., de Vries, J., Otter, G., Claas, J., Eskes, H. J., de Haan, J. F., Kleipool, Q., van Weele, M., Hasekamp, O., Hoogeveen, R., Landgraf, J., Snel, R., Tol, P., Ingmann, P., Voors, R., Kruizinga, B., Vink, R., Visser, H., and Levelt, P. F.: TROPOMI on the ESA Sentinel-5 Precursor: A GMES mission for global observations of the atmospheric composition for climate, air quality and ozone layer applications, *Remote Sens. Environ.*, 120, 70–83, <https://doi.org/10.1016/j.rse.2011.09.027>, 2012.
- Verhoelst, T., Compernolle, S., Pinardi, G., Lambert, J.-C., Eskes, H. J., Eichmann, K.-U., Fjæraa, A. M., Granville, J., Niemeijer, S., Cede, A., Tiefengraber, M., Hendrick, F., Pazmiño, A., Bais, A., Bazureau, A., Boersma, K. F., Bognar, K., Dehn, A., Donner, S., Elokhov, A., Gebetsberger, M., Goutail, F., Grutter de la Mora, M., Gruzdev, A., Gratsea, M., Hansen, G. H., Irie, H., Jepsen, N., Kanaya, Y., Karagkiozidis, D., Kivi, R., Kreher, K., Levelt, P. F., Liu, C., Müller, M., Navarro Comas, M., Piter, A. J. M., Pommereau, J.-P., Portafaix, T., Puenteadura, O., Querel, R., Remmers, J., Richter, A., Rimmer, J., Rivera Cárdenas, C., Saavedra de Miguel, L., Sinyakov, V. P., Strong, K., Van Roozendaal, M., Veefkind, J. P., Wagner, T., Wittrock, F., Yela González, M., and Zehner, C.: Ground-based validation of the Copernicus Sentinel-5p TROPOMI NO₂ measurements with the NDACC ZSL-DOAS, MAX-DOAS and Pandonia global networks, *Atmos. Meas. Tech. Discuss.*, <https://doi.org/10.5194/amt-2020-119>, in review, 2020.
- 35 Volkamer, R., Spietz, P., Burrows, J., and Platt, U.: High-resolution absorption cross-section of glyoxal in the UV-vis and IR spectral ranges, *J. Photochem. Photobiol. A*, 172, 35–46, <https://doi.org/10.1016/j.jphotochem.2004.11.011>, 2005.
- Wang, P., Piter, A., van Geffen, J., Tuinder, O., Stammes, P., and Kinne, S.: Shipborne MAX-DOAS measurements for validation of TROPOMI NO₂ products, *Atmos. Meas. Tech.*, 13, 1413–1426, <https://doi.org/10.5194/amt-13-1413-2020>, 2020.
- Williams, J. E., Boersma, K. F., Le Sager, P., and Verstraeten, W. W.: The high-resolution version of TM5-MP for optimized satellite retrievals: description and validation, *Geosci. Model Dev.*, 10, 721–750, <https://doi.org/10.5194/gmd-10-721-2017>, 2017.
- Yang, K., Carn, S. A., Ge, C., Wang, J., and Dickerson, R. R.: Advancing measurements of tropospheric NO₂ from space: New algorithm and first global results from OMPS, *Geophys. Res. Lett.*, 41, 4777–4786, <https://doi.org/10.1002/2014GL060136>, 2014.
- Zhao, X., Griffin, D., Fioletov, V., McLinden, C., Cede, A., Tiefengraber, M., Müller, M., Bognar, K., Strong, K., Boersma, K. F., Eskes, H., Davies, J., Ogyu, A., and Lee, S. C.: Assessment of the quality of TROPOMI high-spatial-resolution NO₂ data products in the Greater Toronto Area, *Atmos. Meas. Tech.*, 13, 2131–2159, <https://doi.org/10.5194/amt-13-2131-2020>, 2020. **ITSS**
- Zoogman, P., Liu, X., Suleiman, R. M., Pennington, W. F., Flittner, D. E., Al-Saadi, J. A., Hilton, B. B., Nicks, D. K., Newchurch, M. J., Carr, J. L., Janz, S. J., Andraschko, M. R., Arola, A., Baker, B. D., Canova, B. P., Chan Miller, C., Cohen, R. C., Davis, J. E., Dussault, M. E., Edwards, D. P., Fishman, J., Ghulam, A., González Abad, G., Grutter, M., Herman, J. R., Houck, J., Jacob, D. J., Joiner, J., Kerridge, B. J., Kim, J., Krotkov, N. A., Lamsal, L., Li, C., Lindfors, A., Martin, R. V., McElroy, C. T., McLinden, C., Natraj, V., Neil, D. O., Nowlan, C. R., O’Sullivan, E. J., Palmer, P. I., Pierce, R. B., Pippin, M. R., Saiz-Lopez, A., Spurr, R. J. D., Szykman, J. J., Torres, O., Veefkind, J. P., Veihelmann, B., Wang, H., Wang, J., and Chance, K.: Tropospheric emissions: Monitoring of pollution (TEMPO), *J. Quant. Spectrosc. Radiat. Transf.*, 186, 17–39, <https://doi.org/10.1016/j.jqsrt.2016.05.008>, 2017.

Remarks from the language copy-editor

- CE1** The use of a slash in units usually translates to "per" and thus formatted exponentially according to our standards; as "/AMF" in this case doesn't really mean that, I've just added "as a function of" here to clarify. Please confirm if this is acceptable.

Remarks from the typesetter

- TS1** Please note that as this is a value magnitude change, it would need to be approved by the editor before it can be inserted. We are only allowed to insert minor technical changes at this stage without editor approval. Please provide an explanation for the editor for this change.
- TS2** Abbreviating "day" with "d" together with a number is our house standard.
- TS3** Please confirm that the not working link has been deleted.
- TS4** This reference is not cited in the text.
- TS5** Please note the update and the change from 2019 to 2020.