

Monitoring Sudden Stratospheric Warmings using radio occultation: a new approach demonstrated based on the 2009 event

Ying Li¹, Gottfried Kirchengast², Marc Schwärz², Florian Ladstätter², Yunbin Yuan¹

¹ State Key Laboratory of Geodesy and Earth's Dynamics, Innovation Academy for Precision Measurement Science and Technology (APM), Chinese Academy of Sciences, Wuhan, 430071, China

² Wegener Center for Climate and Global Change (WEGC) and Institute for Geophysics, Astrophysics, and Meteorology/ Institute of Physics, University of Graz, 8010 Graz, Austria

Correspondence to: Ying Li (liying@asch.whigg.ac.cn)

Abstract. We introduce a new method to detect and monitor Sudden Stratospheric Warming (SSW) events using Global Navigation Satellite System (GNSS) Radio Occultation (RO) data at high northern latitudes and demonstrate it for the well-known Jan-Feb 2009 event. We first construct RO temperature, density, and bending angle anomaly profiles and estimate vertical-mean anomalies in selected altitude layers. These mean anomalies are then averaged into a daily-updated 5° latitude × 20° longitude grid over 50°N – 90°N. Based on the gridded mean anomalies, we employ the concept of Threshold Exceedance Areas (TEAs), the geographic areas wherein the anomalies exceed predefined threshold values such as 40 K or 40%. We estimate five basic TEAs for selected altitude layers and thresholds and use them to derive primary-, secondary-, and trailing-phase TEA metrics to detect SSWs and to monitor in particular their main-phase (primary- plus secondary-phase) evolution on a daily basis. As an initial setting, the main-phase requires daily TEAs to exceed 3 Mio. km², based on which main-phase duration, area, and overall event strength are recorded. Using the Jan-Feb 2009 SSW event for demonstration, and employing RO data plus cross-evaluation data from analysis fields of the European Centre for Medium-range Weather Forecasts (ECMWF), we find the new approach has strong potential for detecting and monitoring SSW events. The TEA metrics show a strong SSW emerging on Jan 18, reaching a maximum on Jan 23, and the strong primary-phase temperature anomaly fading by Jan 27. On Jan 22–23, temperature anomalies over the middle stratosphere exceeding 40 K cover an area of more than 10 Mio. km². The geographic tracking of the SSW showed that it was centered over East Greenland, covering Greenland entirely and extending from Western Norway to Eastern Canada. The secondary- and trailing-phase metrics track the further SSW development, where the thermodynamic anomaly propagated downward and was fading with a transient upper stratospheric cooling, spanning until end February and beyond. Given the encouraging demonstration results, we expect the method very suitable for long-term monitoring of how SSW characteristics evolve under climate change and variability using both RO and reanalysis data.

删除的内容: 35

删除的内容: 35

删除的内容: 22

删除的内容: 26

删除的内容: 35

删除的内容: the west of Greenland.

1 Introduction

Sudden Stratospheric Warming events (SSWs) are strong and highly dynamic phenomena that often occur in the northern polar stratosphere (McInturff et al., 1978; Butler et al., 2015, Butler et al., 2018). Such events are characterized by a rapid increase of temperature (> 30 to 40 K) in the middle and upper stratosphere accompanied by vortex displacements or even splits (Charlton and Polvani, 2007). Occurrence of SSWs is generally believed to be caused by tropospheric planetary waves which penetrate into the stratosphere, mediated by the Quasi-Biennial Oscillation (QBO) and the Southern Oscillation (SO) in the tropics (Thompson et al., 2002; Labitzke and Kunze, 2009). Such waves influence the stratospheric polar vortex and cause a warming in the upper stratosphere and mesosphere.

The warming will propagate gradually downward and cause an anomalous widespread warming that persists for several weeks (Baldwin and Dunkerton, 2001; Hitchcock and Shepherd, 2013; Dhaka et al., 2015; Newman et al., 2018). Following the initial warming, a cold anomaly forms in the upper stratosphere that also causes an elevated stratopause (Siskind et al., 2007; Manney et al., 2008; Hitchcock and Shepherd, 2013). The tropical atmosphere is as well found to be influenced (Kodera et al., 2011; Yoshida and Yamazaki, 2011; Dhaka et al., 2015). Cooling can be observed in the tropical stratosphere and also the tropopause is found altered (Yoshida and Yamazaki, 2011; Dhaka et al., 2015). Furthermore, gravity wave activity, cirrus cloud formation and electron density of ionosphere are all found affected by SSWs (Eguchi, N., Kodera, K. 2010; Yue et al., 2010; Sathishkumar and Sridharan, 2011; Kohma and Sato, 2014). Due to such strong impacts and far-reaching teleconnections of SSWs, it is hence important to detect and monitor SSW events in a robust and reliable way.

The observation and detection of SSWs requires evenly distributed and accurate height-resolved observations of the stratosphere at high latitudes. However, robust techniques providing high-quality observations in these remote regions are notoriously sparse. Past researches mainly used radiosonde, rocketsonde, conventional satellite or reanalysis data to study SSWs (McInturff et al., 1978; Charlton and Polvani, 2007; Manney et al., 2008, 2009; Hitchcock and Shepherd, 2013). However, both radiosonde and rocketsonde cannot provide evenly-distributed observations due to their mostly land-limited properties. Furthermore, since vulnerable to radiation biases and constrained by elevation limits, few radiosondes can provide data above 30 km (Butler et al., 2015).

With the advent of the satellite era, it became possible to put passive sounding instruments, such as microwave limb sounders and infrared radiometers, on satellites to observe the atmosphere (e.g., Charlton et al., 2007; Manney et al., 2008, Manney et al., 2009). Due to the movements of the satellites, observations are globally distributed, in principle. However, satellite passive sounding data come in the form of radiances and no unique solution then exists, in terms of the radiative transfer equation, to accurately convert radiances to height-resolved temperature or winds, which are key variables for SSW monitoring (McInturff, et al., 1978, Manney et al., 2008). Therefore, the fit-for-purpose of measurements from these instruments is limited.

With the development of atmospheric data assimilation systems, re-analysis data have become a quite reliable data source for long-term atmospheric analysis, due to their advantages of regularly distributed data in space and time and their capability to provide data up into the mesosphere (Charlton et al., 2007; Yoshida and Yamazaki, 2011; Butler et al., 2018). However, re-

analysis data may have inhomogeneities and irregularities in the long-term, due to observation system updates and varying analysis biases in sparsely observed domains, which may limit their long-term stability in monitoring SSWs and possible changes in their characteristics due to climate change and interannual variability (Butler et al., 2015).

As a consequence of the limitations of classical observations and re-analyses data, there is currently no standard definition of

5 SSWs. Early definitions were usually based on temperature increases and wind reversals. An often used early definition was provided by McInturff in 1978, presented in one of the reports of World Meteorological Organization (WMO) Commission for Atmospheric Sciences (CAS): 1. A stratospheric warming can be called minor if a significant temperature increase is observed of at least 25 °degrees in a week or less at any stratospheric level in any area of the wintertime hemisphere and if criteria for major warmings are not met; 2. A stratospheric warming can be said to be major if at 10 mb or below the latitudinal
10 mean temperature increase poleward from 60 °degrees and an associated circulation reversal is observed. This definition has been dominated over the 1980s and 1990s though the detailed interpretations could be different, e.g., using observations below 10 mb, or using wind observations at 65 °N degrees, etc.

With the development of observation techniques, several new definitions for characterizing SSWs have been proposed. Butler et al., 2015 made a detailed literature review on the definitions of SSW and discussed as many as 9 often used definitions of
15 SSWs, such as zonal-mean zonal winds at 10hPa and 60 °latitude (Christiansen 2001; Charlton and Polvani, 2007), polar cap-averaged geopotential height anomalies at 10hPa (e.g., Thompson et al., 2002), Empirical Orthogonal Functions (EOFs) of gridded pressure-level data of geopotential height anomalies (Baldwin and Dunkerton 2001; Baldwin 2001), zonal wind anomalies (Limpasuvan et al. 2004) or temperature anomalies (e.g., Kuroda and Kodera 2004; Hitchcock and Shepherd 2013; Hitchcock et al., 2013). Each definition has unique characteristics and application purposes, e.g., EOFs of height anomalies
20 focus more on the stratosphere-troposphere coupling.

One of the most commonly used SSW definitions in recent studies is the one based on zonal-mean zonal wind at 60 °N. This definition has been used in several previous studies though interpretation could be slightly different (e.g., Andrews et al., 1985; Labitzke and Naujokat 2000) and was described in detail by Charlton and Polvani, 2007 (denoted as CP07 below). According to the CP07 definition, a major midwinter warming occurs when the zonal mean zonal winds at 60 °N and 10hPa become
25 easterly during winter, defined here as (November-March (NDJFM)). The first day on which the daily mean zonal mean zonal wind at 60 °N and 10hPa becomes easterly is defined as the central date of the warming. Once SSW events have been identified, they are classified into polar vortex displacements or split ones by identifying the number and relative sizes of cyclonic vortices during the evolution of the warming.

From the above, we can find that it would be impossible to find a single definition to serve every purpose to describe every
30 event perfectly. However, it is still important to find a standard definition for the purposes of statistical assessments, based on historical data and future climate simulations. Butler et al. (2015) suggest that with the development of observation techniques, it is time again to propose a standard definition of SSWs. The new definition should be proposed primarily for the purpose of describing polar winter variability. Secondly, it should be easily calculated and applicable to reanalysis and model outputs,

both in post-processing and in real time. Finally, the new definition should not be highly sensitive to details, such as an exact latitude, background climatology, threshold wind speed, spatial extent, or pressure level.

Since the early 2000s, Global Navigation Satellite System (GNSS) radio occultation (RO) has become a new and reliable data source for weather and climate studies (e.g., Kursinski et al., 1997; Steiner et al., 2001; Hajj et al., 2002; Anthes, 2011; Steiner et al., 2011). The RO technique uses GNSS receiver instruments on low Earth orbit satellites to receive GNSS signals for active atmospheric limb sounding in occultation geometry. As the signals propagate through the atmosphere, they are phase-delayed and bent in their path, due to vertical refractivity gradients determined by density and temperature changes. Building on these properties, accurate bending angle profiles can be retrieved from RO signal phase delays, which are highly stable during the measurement time of vertically scanning from mesopause into the troposphere (setting events) or from troposphere into mesopause (rising events) of just about one minute, called an RO event. The bending angle profile is then converted to a refractivity profile (via an Abel transform), which is directly proportional to the density profile in the stratosphere (refractivity equation), from which then the pressure profile (via hydrostatic integration) and finally temperature profile (via equation of state) is derived.

The vertical resolution of RO in the stratosphere is about 1 km, supporting height-resolved studies, and validation results against radiosonde and (re-)analysis data suggest that RO data are of small discrepancy to these in the upper troposphere and lower stratosphere (Scherllin-Pirscher et al., 2011a; 2011b; Ladstätter et al., 2015). Finally, RO data can be combined without the need of inter-calibration, which makes them very suitable for climate-related studies (Foelsche et al. 2011; Steiner et al., 2011; 2013; 2020). Due to these distinctive advantages, RO data have been successfully used in many weather and climate studies and are hence a promising data source also for detecting and monitoring SSWs. Since continuous multi-satellite RO data started in 2006 (see Sect.2 below), the geographic data coverage is sufficiently dense for monitoring and analyzing regional-scale phenomena such as SSWs. Complementary to reanalysis datasets, which also offer dense coverage, RO reprocessing datasets hence feature an accurate and long-term stable observational data record of climate benchmark quality (Steiner et al., 2020), allowing stable conditions for SSW monitoring over decades. Therefore, given the high complementarity of these observations to reanalysis (Bosilovich et al., 2013; Parker, 2016; Simmons et al., 2020), RO data well fulfill the requirements presented by Butler et al. (2015).

A couple of studies have used RO data to analyze SSW already. For example, Wang et al. (2009) have used RO to study SSW influences on gravity waves during events in 2007-2008. Yue et al. (2010) and Lin et al. (2012) have used RO data to study ionospheric variations related to the 2009 SSW event. Klingler (2014) has used RO data to examine the temperature changes during the 2009 SSW event, and compared the results to European Centre for Medium-Range Weather Forecasts (ECMWF) data, while Dhaka et al. (2015) have used them to study the dynamical coupling between polar and tropical regions during this event.

In this study, we use RO data to introduce a new method to detect and monitor SSW events. As a demonstration case, the Jan-Feb 2009 SSW event was used, since this is well known from other studies (such as the ones just cited above) and therefore context knowledge is good. As a cross-check and for evaluation of robustness, ECMWF analysis data are also used and the

results are compared to those with RO data. The paper is arranged as follows. Section 2 introduces the data and methodology. Section 3 introduces the detection and monitoring results. Section 4 provides our conclusions.

2 Data and methodology

2.1 Radio occultation data

5 Continuous RO data started in 2001 with the Challenging Mini-satellite Payload mission (CHAMP; Wickert et al., 2001), followed by the Gravity Recovery and Climate Experiment (GRACE; Wickert et al., 2005), the Constellation Observing System for Meteorology, Ionosphere and Climate (COSMIC; Schreiner et al., 2007), the European Meteorological Operational satellites (MetOp; Luntama et al., 2008), the Chinese FengYun-3C operational satellite (Sun et al., 2018), and others. These missions, especially the launch of the COSMIC mission in 2006, which was a constellation of six satellites, have ensured as
10 of 2006 a sufficient coverage with RO event observations for regional-scale studies such as of SSWs.

In this study, we use the atmospheric RO profile data from the Wegener Center for Climate and Global Change (WEGC), processed by its latest Occultation Processing System version 5.6 (denoted as OPSv5.6 hereafter). Several studies that introduced, validated and evaluated these OPSv5.6 data (e.g., Ladstätter et al., 2015; Schwärz et al., 2016; Angerer et al., 2017; Scherllin-Pirscher et al., 2017) as well as inter-comparison to other RO center datasets (Steiner et al., 2020) show that the
15 OPSv5.6 stratospheric profiling data of interest in this study are of high quality for the purpose. For a detailed discussion of quality aspects of the OPSv5.6 data we refer to Angerer et al. (2017). We use the high quality-flagged temperature, density, and bending angle profiles over Jan-Feb 2009, the time period of our demonstration study, in the northern high latitude study domain of 50–90 °N.

Figure 1 illustrates the distribution of RO events on 23 Jan 2009 and the number of RO events we used per day over Jan–Feb
20 2009. The upper panel shows the distribution of RO observations in the study domain from 50 °N to North Pole, within which strong warmings were found by previous studies of the SSW event (Labitzke and Kunze, 2009; Harada et al., 2010; Kodera et al., 2011; Taguchi et al., 2011). It can be seen that most of the polar region is covered by RO observations. Similarly, high observation density also applies to the other days of the study period. The bottom panel shows that daily numbers of RO events within the three successively smaller polar cap regions 50 °– 90 °N, 60 °– 90 °N, and 70 °– 90 °N are within about 500–700,
25 300–400, and 150–200 RO events per day, respectively. This is typical for the RO observation period as of 2006 and sufficiently dense for robust SSW monitoring as we will see.

2.2 ECMWF analysis data

As mentioned in Sect. 1, a robust SSW definition should not only be applied to observation data, but also be readily applicable to (re)analysis and model outputs with their regular-gridded datasets. Therefore, we also use operational analysis data from the
30 ECMWF over the same study period for cross-check and demonstration of the applicability of our new approach also to such

gridded datasets. The ECMWF analysis fields used are based on T42L91 resolution (sampled at 2.5° latitude \times 2.5° longitude grids, and 91 hybrid-pressure vertical levels up to about 80 km), and at the four time layers 00, 06, 12, and 18 UTC each day. This corresponds to roughly 300 km horizontal resolution that is similar to RO in the stratosphere (e.g., Kursinski et al., 1997). The 91 vertical levels correspond to about 1 km resolution in the tropopause region and gradually coarser resolution across the stratosphere, up to several kilometers in the mesosphere (Untch et al., 2006).

ECMWF data are used for cross-check in two variants. The first variant is to use the RO-located analysis profiles, extracted by interpolation from the analysis fields to the RO event locations, together with the OPSv5.6 RO profiles. We apply the approach in the same way to these collocated analysis profiles as to the RO profiles. We note that while the density and temperature profiles derive directly from analysis field interpolations, the bending angle profiles are obtained from forward modeling (Abelian transform from refractivity profiles) in the OPSv5.6 system.

The second variant is that we directly use the ECMWF analysis data at their regularly gridded resolution of $2.5^\circ \times 2.5^\circ$ and with 4 time layers per day, which makes the averaging into coarser bins straightforward in this case and hence enables to clearly assess possible (under-)sampling biases if brought in by the limited RO events coverage, given that we intend a monitoring on a daily basis. At the same time this prepares the use of the new method with reanalysis data, such as the new European Reanalysis ERA5 (Hersbach et al., 2019, 2020; Simmons et al., 2020), foreseen in parallel to the use with RO data in future long-term application over the recent decades.

2.3 SSW detection and monitoring method

Table 1 illustrates the methodology of our SSW detection. The first step is to generate RO temperature, density, and bending angle anomaly profiles by using individual RO profiles minus collocated climatological profiles, with the latter extracted from long-term gridded RO climatology fields interpolated to RO locations as described in (1), (2), and (3) of Table 1. Temperature anomalies are calculated as absolute values, while density and bending angle anomalies are calculated as relative (percentage) values, by dividing the absolute-value anomaly profiles by the collocated climatological profiles. In order to avoid the impacts of background model on bending angles, we used non-optimized bending angle in our study. Anomalies of various atmospheric parameters have been successfully used in lots of researches for SSW detection, cloud-top altitude detection and atmospheric blocking (Hitchcock and Shepherd, 2013; Biondi et al., 2015, 2017; Brunner et al., 2016). The long-term climatology was constructed monthly using RO data of the same months over 2007 to 2017. It is based on a 2.5° latitude \times 2.5° longitude grid. At each of the grid centers, RO profiles within 300 km of the same month over the 11 years' period are used for averaging. Sensitivity tests show that our constructed RO climatology show only small differences to climatologies calculated using ECMWF analysis data. Based on the climatology, for our time period used as a January-February average, collocated climatological profiles can be obtained through a vertical and horizontal interpolation.

Figure 2 shows RO profiles and their anomaly profiles of two exemplary RO events as indicated in Fig. 1. Left panel shows that RO profiles of event1, which locates in the most warming area, deviate more from climatological profiles than that of event2 locating in less warming area. Anomaly profiles shown in the right panel illustrate consistent larger anomalies of event1.

删除的内容: -

The next steps are to generate five basic daily updated Thresholds Exceedance Areas (TEAs) as described in (4) – (8) of Table 1. TEA is the the geographic area wherein RO gridded mean anomalies of the day exceed predefined thresholds such as 40 K or 40 %. The first step of calculating TEA is to calculate vertical mean anomaly values of selected stratospheric altitude ranges.

The vertical mean anomalies are then averaged into geographic bins on a 5° latitude × 20° longitude grid on a daily basis over observation area 50 – 90°N, with grid points on latitude circles from 50°N to 90°N and on longitude meridians from 0°E to 340°E (0° × 18 grid points in total; those at 90°N just formally 18 points).

In order to allow more RO events coming in for a reliable statistical averaging, we use overlapping bin areas on the 5° × 20° grid as well as include time-wise, with lower weight, also the neighbor days of the given day. The latitudinal extent of the bins is set to be 10° (+/-5° about grid point latitude) for all latitude circles. Longitudinal bin extents $\Delta\lambda$ are determined to be 30° (+/-15° about grid point longitude) at the 50°N grid line and then gradually expand with increasing latitude in line with

meridian convergence as $\Delta\lambda_\varphi = \Delta\lambda_{50^\circ} \frac{\cos(50^\circ)}{\cos\varphi}$, where φ denotes the grid point latitudes from 50°N to 85°N. At 90°N (north pole), we just directly average data from 85°N to the pole over all longitudes, (and formally assign this average to all 18 grid points at 90°N). The temporal extent is set to be 3 days (+/-1 day about given day), with the data of the two neighbor days getting a weight of 0.25 only, while those of the given day are weighted by 0.5. In this way the daily sampling is indeed still meaningful, while we statistically improve the robustness of the average profiles from enabling a bigger ensemble of profiles for the weighted averaging, by taking 3-day windows. Detailed sensitivity tests showed that these selections of gridding and of spatial and temporal extents are reasonable and robust. It would allow a more reliable statistical calculation, but not blur the dynamic evolution of the SSW. Based on this averaging scheme, the number of RO profiles available per grid bin for the daily-updated averaging ranges from 60 to more than 120 profiles.

To examine various atmospheric layers, five basic TEAs are calculated, i.e., MSTA-TEA (Middle Stratosphere Temperature Anomaly TEA); LMBA-TEA, (Lower Mesosphere Bending angle Anomaly TEA); LSTA-TEA (Lower Stratosphere Temperature Anomaly TEA); USDA-TEA (middle and Upper Stratosphere Density Anomaly TEA); USTA-TEA (Upper Stratosphere Temperature Anomaly TEA). The altitude ranges for calculating these TEAs are selected according to the response altitude ranges of the three anomalies and also the utilities of the TEAs in formulating the metrics. Response altitude ranges are regarded as the altitude ranges where anomalies show distinct increases and decreases to reflect with good sensitivity the thermodynamic changes caused by an SSW event. Based on our inspections of small ensembles of individual RO anomaly profiles and also results of Sect. 3.1 on polar mean anomaly profiles, the response altitude ranges for calculating the five TEAs are carefully selected according to their utilities in measuring SSW. MSTA-TEA and LMBA-TEA are used to capture the sudden warming and are therefore calculated using temperature anomalies of 30–35 km and bending angle anomalies of 50–55 km. LSTA-TEA and USDA-TEA are used to examine the downward propagated warming and therefore they are calculated using temperature and density anomalies in lower response altitude ranges, i.e., 20–25 km for LSTA-TEA and 40–45 km for USDA-TEA. Finally, USTA-TEA is to capture the upper stratospheric cooling in the SSW trailing phase and is calculated using temperature anomalies of 40–45 km.

删除的内容: 35

删除的内容: 35

删除的内容: 85

删除的内容: 10

删除的内容: 350

删除的内容: 8

删除的内容:

删除的内容: 80°N. At the final

带格式的: 字体: Times New Roman

删除的内容: latitude circle (representing the polar cap area 80 –

删除的内容:

删除的内容: .

As the thresholds for calculating these five TEAs, we use those defined in Table 1, (4)–(8); for example, the thresholds for MSTA are 30, ~~40~~, and ~~50~~ K as seen therein. The selection of these thresholds was mainly guided by results on the polar-mean and regional mean anomalies shown in Sections 3.1 and 3.2. We examined the temporal variations of the magnitudes of warming and cooling of the five TEAs by sensitivity checks and finally chose suitable thresholds as summarized in Table 1 for the analysis of this 2009 event. Figure 3 illustrates our selection of height ranges of anomaly profiles for calculating the five TEAs based on representative example profiles. The short vertical lines represent vertical mean values in corresponding altitude ranges. For this RO event, temperature vertical mean anomalies at the 40–45 km, 30–35 km, and 20–25 km ranges are about ~~30~~ K, ~~60~~ K, and 15 K, respectively. The density vertical mean anomaly at 40–45 km is near ~~50~~ % and the bending angle vertical mean anomaly in 50–55 km near ~~70~~ %.

Based on the five TEAs, we formulated our SSW metrics as defined in Table 1, (9)–(13), where (9)–(11) are the preferred metrics while (12)–(13) are fallback metrics for (9)–(10) requiring only temperature as variable. First is the SSW Primary-Phase metric SSW-PP-TEA (9), used to express the main and primary sudden stratospheric warming anomaly strength. It is calculated by averaging the exceedance areas $MSTA-TEA > \underline{40}$ K and $LMBA-TEA > \underline{40}$ %. The Secondary-Phase metric SSW-SP-TEA (10) is used to express the downward propagated warming anomaly strength, and is estimated by averaging the areas $LSTA-TEA > \underline{25}$ K and $USDA-TEA > \underline{40}$ %. The Trailing-Phase metric SSW-TP-TEA (11) is expressing the trailing upper stratospheric cooling anomaly strength, and is estimated by using the area $USTA-TEA < \underline{-30}$ K. The thresholds for formulating the metrics are selected based on the condition that the TEAs calculated for the chosen thresholds can suitably capture the main features of warming or cooling of the SSW event.

The preferred primary- and secondary-phase metrics (9) and (10) are constructed as a two-variable estimate (combining temperature and bending angle/density TEAs), since we find them more robust for characterizing the main phase of the SSW than single-variable metrics. However, users who prefer a simplified approach, or who only have stratospheric temperature profiles or fields available (within 20 to 45 km), can use the temperature-only metrics (12)–(13) instead, which do not include the averaging with the TEAs co-estimated from bending angle (9) or density (10).

Based on the three metrics, either (9)–(11) or (12)–(13) and (11), we can finally detect a SSW event and monitor the strength of the event. We introduce three SSW indicators for this purpose as defined in Table 1, (14)–(16). The first is main-phase duration, SSW-MPD, which indicates the duration of the SSW warming anomaly based on the primary- and secondary-phase metrics. This indicator is estimated by counting the number of days with either the SSW-PP-TEA or the SSW-SP-TEA being larger than a minimum exceedance area TEA_{min} . The latter is set to the plausible value of 3 Mio. km² in this demonstration study (an area of ~1000 km effective radius around center location) and may become somewhat adjusted in longer-term application. The second indicator is main-phase area, SSW-MPA, which represents the mean daily threshold exceedance area during the main-phase duration. Combining these two indicators into an area-duration product yields the main-phase strength, SSW-MPS, as the third and overall indicator of the severity of the SSW, enabling a classification into weak, medium, and strong events for example.

刪除的內容: 35

刪除的內容: 40

刪除的內容:

刪除的內容: 25

刪除的內容: 55

刪除的內容: 40

刪除的內容: 60

刪除的內容: 35

刪除的內容: 35

刪除的內容: 20K

刪除的內容: 30

刪除的內容: 35

In a follow-on work using long-term RO and reanalysis datasets, these indicators will be used to detect SSW events, for example by requiring a minimum main-phase duration of 7 days or so to qualify as an SSW, and to record the strength of the events. However, the specific thresholds for our metrics and indicators for SSW detection, monitoring, and classification can only be determined after the new approach is applied to longer-term data containing multiple events.

5 Below we demonstrate the utility to do so, both for profile-based RO and gridded analysis data, for the Jan-Feb 2009 SSW event. In addition to demonstrating the detection and monitoring approach, we also demonstrate the parallel possibility intrinsic in our TEA-based approach to dynamically track the geographic movements of any event of interest. For this purpose we introduce the parameters Anomaly Maximum/Minimum (AM) value, and the location of these AM values, which can be used to locate the warming/cooling centers and their geographic track for the five basic TEAs. For convenience, Table 1, (17)–(18),
10 lists and briefly explains also these auxiliary parameters.

3 Results and discussion

Section 3.1 presents temporal evolution of polar-cap mean RO anomaly profiles to have a general understanding of the characteristics of RO anomalies. Section 3.2 shows the distribution of RO gridded mean anomalies on several selected days for providing insight on the basic space-time dynamics tracked by the approach. Section 3.3 introduces our detection results
15 of the Jan-Feb 2009 SSW demonstration event in terms of the five basic TEAs at selected thresholds and also discusses the SSW metrics of the event.

3.1 Polar-cap mean anomalies

Figure 4 shows the temporal evolution of polar cap ($60^\circ - 90^\circ\text{N}$) mean temperature, density and bending angle anomaly profiles of RO data and collocated ECMWF data during the days of January and February 2009. RO temperature, density, and
20 bending angle anomalies in their response altitude ranges show clear positive anomalies ($>10\text{K}/>10\%$) from Jan 18 that quickly increase up to more than ~~30 K~~/~~40%~~ on Jan 22-23 and then quickly decrease. Such rapid increase and decrease of positive anomalies indicate a strong and rapid warming in the middle stratosphere. The positive anomalies propagate downwards to lower altitude levels (lower stratosphere for temperature, middle stratosphere for density and bending angle) and cause longer-lasting anomalous conditions there till the end of February.

25 Before the sudden and rapid warming, negative anomalies are found for all the three parameters, indicating a moderate precursor cooling of the stratosphere. The cooling signal is imprinted more strongly in the density and bending angle anomalies in the upper stratosphere and lower mesosphere than it is observed in temperature over the lower and middle stratosphere. After the sudden warming, negative (cooling) anomalies are again found at higher altitude levels than altitude levels showing of the sudden and rapid warming, with a particular strong imprint in upper stratosphere temperature, where its fingerprint lasts
30 over many weeks while the altitude of maximum cooling exhibits a slow downward propagation. Related to the chosen altitude

删除的内容: 20

删除的内容: 30

layers for computing the five TEAs, we can see that they are defined so that they can well capture the SSW evolution from the initial phase to the trailing phase.

Comparing the RO profiles-based anomalies with the ECMWF analysis-based anomalies, we find that both the magnitudes and dynamical variations of the anomalies from the two datasets are generally consistent below about 45 km. The differences are found above 45 km, where RO data show larger positive density and bending angles anomalies during the sudden warming and smaller negative temperature anomalies compared to ECMWF data, from early February after the sudden warming. These increased differences are attributable to both datasets for the following reasons: (1) ECMWF data are of sparse vertical resolution and with limited constraint from assimilated data above 50 km (e.g., Untch et al., 2006; Simmons et al., 2020), degrading their accuracy; (2) RO data accuracy reaches somewhat higher in bending angle and density profiles (errors <1% to about 50–60 km) and less high in temperature (<1% to about 40 km); e.g., Steiner et al., 2020), so that also for these data the accuracy degrades above 45 km. In the follow-on work using long-term datasets with a range of SSW events we will analyze the different qualities of RO and (re)analysis datasets more closely, including for different RO processing and (re)analysis variants.

3.2 Spatial and temporal variations of RO anomalies

Figure 5 shows distributions of MSTA, USDA and USTA anomalies over 50°–90°N on four exemplary days of Jan 16, Jan 23, Jan 30, and Feb 13, 2009, depicting the space-time dynamics of the SSW event during different phases of its evolution. Looking at MSTA results, temperature anomalies are generally negative in most of the regions on Jan 16 with values up to near -30 K. Positive anomalies emerge over the northern part of Atlantic Ocean (0°–60°W, 50°–55°N). From that day on, positive anomalies move towards to higher latitudinal regions (can be seen from map results of other days not shown here, and from tracking of TEAs AM values discussed in Sect. 3.3 below). The magnitudes of the anomalies increase and the area of warming enlarges during the week after. This indicates an increase of the strength of the warming.

On Jan 23, positive MSTA values dominate the whole polar-cap region across the Atlantic sector, from over North America to over Europe. The warmest region is found centered on Greenland with anomalies exceeding 50 K. Results in this section (and in Sect. 3.3 below) indicate that Jan 23, 2009, is the warmest day of this SSW event. With the further progression of time, positive anomalies decrease, indicating a decrease of the strength of the warming. On Jan 30, smaller anomalies up to 20 K are found. On Feb 13, which is three weeks after the warmest day, negative anomalies up to -10 K are found. Results of the LMBA (not shown) confirm that variations of bending angle anomalies are generally consistent with temperature anomalies, confirming the capability of RO bending angle to serve as a valuable support variable for monitoring SSWs, since this RO variable is observed accurately to better than 1% up to about 60 km altitude (cf. Sect. 3.1).

USDA results, which are well suited to capture the downward propagated positive anomalies, show largest anomalies at the end of January. The warmest region is found from over Eastern Greenland to oceanic regions north of Russia. On Feb 13, large positive anomalies still occupy most of the polar region indicating a long-lasting warming effect caused by the SSW. The USTA results show positive (warming) anomalies on the initial two days illustrated. However, on Jan 30, cooling anomalies

删除的内容: 15

删除的内容: 22

删除的内容: 29

删除的内容: 12

删除的内容:

删除的内容: 15

删除的内容: -40

删除的内容: 22

删除的内容: temperature anomalies

删除的内容: 22

删除的内容: temperature

删除的内容: 12

删除的内容: two

删除的内容: 20

删除的内容: 12

删除的内容: 29

are found to occupy most of the polar region. On Feb 13, the magnitude of the cooling anomalies increases to more than 40 K and the area of strong cooling is enlarged. This indicates a strong upper stratospheric cooling, with maximum cooling centered over the Oceanic part north of Russia.

3.3 SSW detection and monitoring results

5 Figure 6 shows the temporal evolution of the MSTA-TEA, LMBA-TEA, LSTA-TEA, USDA-TEA, and USTA-TEA results that instructively exhibit the threshold exceedance area changes during the SSW event. The geographic tracking of maximum (positive and negative) anomaly (AM) values is also shown. MSTA-TEA and LMBA-TEA results (first two rows) are generally of similar characteristics, with positive anomalies emerging from Jan 17/18 which then quickly increase to maximum values on Jan 22/23. MSTA-TEAs are found to be largest on Jan 23, amounting for threshold exceedance areas over 30, 40,
10 and 50 K to 20, 11, and 5 Mio. km², respectively. LMBA-TEA values are found to be largest on Jan 23 as well, with areas exceeding the 30%, 40%, and 50% thresholds amounting to 20, 15, and 10 Mio. km².

After the maximum value day, both MSTA-TEA and LMBA-TEA quickly decrease to zero. Such quick increase and decrease of the two metrics further reflect the sudden and rapid warming character of the SSW. Before the sudden warming, LMBA exhibits negative (cooling) anomalies as a pre-cursor signal, with the TEA exceeding 30% amounting to about 13 Mio. km².

15 The negative anomalies show a tendency of increasing and reaching maximum on Jan 10 and then gradually decrease in approaching the beginning of the sudden warming. After the sudden warming, there is a phase of silence where no strong positive/negative anomalies (exceeding ± 30 K / %) are found. The right panel shows the tracking of AM values, indicating the movement of warming and cooling centers. It can be seen that the warming was centered over the east of Greenland, covering Greenland entirely and extending from Western Norway to Eastern Canada. During the most warmed days, the center
20 locations of MSTA-TEA and LMBA-TEA AM values are close.

LSTA-TEA and USDA-TEA results are generally consistent in their evolution pattern as well, with most warming days found near the end of January and early February. Compared to the sharp increase and decrease of positive anomalies of MSTA-TEA and LMBA-TEA, the increase and decrease of LSTA-TEA and USDA-TEA are smoother, with maximum warming days somewhat delayed. The numbers of days showing positive (warming) anomalies are more than for MSTA-TEA and LMBA-TEA, indicating a longer-lasting warming at the lower stratospheric altitude levels. The locations of AM values of the warming anomalies are centered over Northern Russia. Negative (cooling) anomalies are found from early to middle January and are strongest over the oceanic part northeast of Russia. The USTA-TEA results, finally, show strong cooling anomalies from early February throughout the month until end of February (end of this demonstration study analysis period). From middle to end of February, the TEAs that exceed a cooling of 30 and 40 K amount to more than 15 and 5 Mio. km², respectively. The cooling
25 centers are found over the oceanic part north of Russia. These results are consistent to the strong upper stratospheric cooling in the SSW trailing phase found by a range of previous studies (e.g., Manney et al., 2008; Dhaka et al., 2015; Hitchcock and Shepherd, 2013).

刪除的內容: 12

刪除的內容: 50

刪除的內容: 22

刪除的內容: 35

刪除的內容: 40

刪除的內容: 13, 10

刪除的內容: 7

刪除的內容: 22

刪除的內容: 35

刪除的內容: 40

刪除的內容: 13, 11

刪除的內容: 8

刪除的內容: both TEAs show

刪除的內容: LMBA shows larger cooling anomalies

刪除的內容: 35

刪除的內容: 20

刪除的內容: 11

刪除的內容: At the end of February, negative anomalies of both metrics emerge again.

刪除的內容: East Greenland.

刪除的內容: , -35,

刪除的內容: , respectively,

刪除的內容: , 8.

Figure 7 depicts the overall results for our SSW metrics that we suggest to practically use for the detection and monitoring of SSW events. Geographic tracks of the metric-relevant temperature anomalies are shown as well. The first day on which the primary-phase metric SSW-PP-TEA exceeds 3 Mio. km² is Jan 20. From this day on, SSW-PP-TEA increases quickly up to maximum on Jan 23 and then quickly decreases to be smaller than 3 Mio. km² on Jan 31. The secondary-phase metric SSW-SP-TEA exceeds 3 Mio. km² as of Jan 23, increases to maximum on Jan 31, and then gradually decreases to be smaller than 3 Mio. km² on Feb 8. SSW-PP-TEA and SSW-SP-TEA comprise our defined main-phase, i.e., where either or both of these two metrics exceed 3 Mio. km². The number of days of this main-phase, our defined main-phase duration SSW-MPD, is found 19 days for this Jan-Feb 2009 demonstration event. The mean TEA over the main-phase duration, our defined main-phase area SSW-MPA, is 8.64 Mio. km² for this event. Multiplying duration and area yields the SSW's main-phase strength SSW-MPS, amounting to 164.2 Mio. km² days for this event. This clearly highlights that this SSW event extended over an area of near 2000 km effective radius around center location for more than two weeks; a major part of the polar cap north of 50 °N. In line with previous studies on this particular event, and also with our recent preliminary studies on several other events, the values of main-phase duration and also of the strength indicate that this is a very strong SSW event.

Summarizing relevant definitions, the first day of the main-phase is defined as the start day of the detected event and the end of the main-phase is defined as its final day. The center day is defined as the day with maximum TEA value of the primary metric, i.e., the Jan 23 of this demonstration event. The trailing metric SSW-TP-TEA (blue in Fig. 7), is an auxiliary metric to capture the long-lasting upper stratospheric cooling in the wake of the event. For this Jan-Feb 2009 event, the SSW-TP-TEA exceeds 3 Mio. km² from Feb 6, then gradually increases to a maximum of near 13 Mio. km² around middle February, and then gradually decreases to about 10 Mio. km² at the end of the study period (end of February).

As introduced in Sect. 2.3, a simplified fallback of the approach is to use temperature as the only variable for the metric estimation. Hence we illustrate in Fig. 7 also the results, where the primary- and secondary-phase metrics are computed from temperature only (the trailing-phase metric is temperature-only anyway). These two simplified metrics are generally seen consistent with the preferred dual variable-based metrics, but it is visible that they appear somewhat more “volatile” and less robust in the sense that they exhibit more short-scale time variation. Follow-on work for a longer-term data record with a range of SSW events will analyze these characteristics in more detail.

The right panel shows that the main warming tracked by SSW-PPT-TEA (red) emerges from Norway and extends to Greenland and moves toward to higher latitudinal regions. The lower stratosphere warming (yellow/orange), tracked by SSW-SPT-TEA, is found emerging at the high latitudinal regions of Greenland and moving towards the northern part of Russia. The upper stratospheric cooling (blue) tracked by SSW-SPT-TEA is found mainly at the high latitudinal oceanic region north of Russia.

These detection and monitoring results have been cross-tested using RO-collocated profiles from ECMWF analysis and also the regularly sampled ECWMF analysis fields as alternative data sources for these datasets. The results from both datasets (not separately shown) are found generally consistent for this demonstration event with the detection results using RO data. This indicates that, on an individual SSW event basis, RO observational data are of comparable utility as ECMWF (re)analysis data to monitor the event and the influence of sampling uncertainty is small. This verifies that the new approach is readily applied

删除的内容: 19

删除的内容: 22

删除的内容: after Jan 23

删除的内容: 27

删除的内容: shows a small warming peak several days before the most warming day

删除的内容: the primary-phase, and then decrease to minimum on Jan 24, after which it

删除的内容: 10

删除的内容: 22

删除的内容: 7.78

删除的内容: 171

删除的内容: about

删除的内容: 22

带格式的: 字体: 八号

删除的内容: 5

删除的内容: 10

删除的内容: 8

to both observational and (re)analysis data (and also model output data). As discussed in the introduction (Sect. 1) and along with the analysis data description (Sect. 2.2), follow-on work on long-term records next needs to show how the possible advantages in long-term stability and accuracy of the RO data play out or not in SSW detection and monitoring in comparison to reanalysis data.

5 To summarize, the metrics proposed in this study for monitoring the SSW events can well satisfy the conditions that Butler et al. (2015) suggest for proposing a standard definition (cf. Section 1). Firstly, our approach well captures the sudden warming of the main phase and also its downward propagation into the lower stratosphere as well as the cooling occurring after the warming phase in the upper stratosphere. Secondly, the approach can be used for both RO and other suitable profile data and likewise for reanalysis data, and can be applied for both post-processing and in real time. Finally, the new approach is using anomalies over several height layers, and TEAs over larger area, and hence the detection and monitoring results are not sensitive to details such as exact latitude or pressure level.

10 Potential further refinements of the thresholds for our metrics will be determined from recently started follow-on work on multiple SSW events, using longer-term data over the recent decades both from RO and re-analysis. This refinement work and testing based on a whole ensemble of SSW events with different characteristics will also complete the assessment of meeting those requirements noted by Butler et al. (2015) that relate to identifying the independence of closely timed events, the classification type (like split-type, displacement-type) and distinction of various strengths (minor, major, etc.).

删除的内容: Potential further refinements of the thresholds for our metrics will be determined from recently started work on multiple SSW events, using longer-term data over the recent decades.

4 Conclusion

In this study, we introduced a new approach to detect and monitor SSW events based on RO temperature, density, and bending angle anomaly profiles over 50 °N – 90 °N and demonstrated it for the well-known January-February 2009 event. The approach tracks the evolution by daily updates and is shown equally applicable to gridded (re)analysis data and, given the same type of gridded field structure, also to model output data.

20 Based on constructed anomaly profiles for the three variables temperature, density, and bending angle, we employed the concept of Threshold Exceedance Area (TEA), which is the geographic area wherein absolute or relative anomaly values exceed predefined threshold values, as the basis for formulating SSW metrics. Computing TEAs based on anomalies in selected stratospheric altitude layers and using adequate threshold values (mainly 40 K/40 %), we formulated three SSW detection and monitoring metrics. As a simplified fallback, the metrics can be computed alternatively from profiles or fields of temperature only.

删除的内容: 35

删除的内容: 35

30 The primary-phase metric is to examine the initial main-phase of warming caused by SSW events. The secondary-phase metric is to examine the further main-phase of downward propagated warming effects during the SSW. The trailing-phase metric is an auxiliary metric to co-examine the upper stratospheric cooling in the wake of an SSW. Based on the two main-phase metrics, we introduced three key indicators for SSW detection and monitoring. The first is the main-phase duration, recording the number of days of SSW warming that exceed a defined minimum TEA (initially set to 3 Mio. km², corresponding to an area of

about 1000 km effective radius around center location). The second is the average daily main-phase TEA during main-phase duration, which is to quantify the average spatial extent of the event. The third is the area-duration product of the first two, termed main-phase strength, which expresses the overall strength and severity of the event.

For complementary space-dynamics information, the approach also enables, for the selected anomaly variables, daily tracking of the maximum anomaly values and of the related geographic center location of the event. In combination with the daily TEA estimates this quantifies also the approximate effective radius of the SSW-induced anomalies around the center location.

Applying the new approach for demonstration to the Jan-Feb 2009 SSW event, the detection and monitoring results find, where it is comparable, similar characteristics as previous studies using other approaches and datasets. We found that the SSW warming emerged from about Jan 20 and reached maximum on Jan 23 and then fading by Jan 31. In terms of our three indicators, the duration of the main-phase of this SSW was 19 days, with an average main-phase area of 8.64 Mio. km², yielding main-phase strength of 164.2 Mio. km² days. This indicates that it is a very strong SSW event, for which pronounced anomalies (>40 K / >40% >25 K) extended over an area of more than 2000 km effective radius around center location for about three weeks; a major part of the polar cap north of 60 °N. The geographic tracking of the SSW showed that it was centered over East Greenland, covering Greenland entirely and extending from Western Norway to Eastern Canada. Cross-check application of the approach using ECMWF analysis data showed results generally consistent with these results from RO data. This verifies the approach to be readily applied to both irregular profile-based observational, and to regular grid-based (re)analysis and model data.

Based on the encouraging demonstration in this study, follow-on work will apply the method to long-term RO and reanalysis datasets (RO overlapping 2006–2020 with reanalyses over 1979–2020) and assess its utility for long-term SSW monitoring.

In this way, the most suitable settings to use for the duration, area, and overall strengths indicators for robust SSW detection, monitoring, and classification can be determined. In addition, we will be able to learn how the possible advantages in long-term stability and accuracy of the RO data play out or not in SSW monitoring in comparison to reanalysis data, including for different variants of RO processing and reanalysis. Overall, we expect the approach to be valuable for monitoring how SSW characteristics unfold event by event but also, and in particular, how they possibly vary under transient climate change and how they tele-connect to lower latitude regions.

Author contributions. Ying Li implemented the new method, performed the analysis, produced the figures, and wrote the initial draft of the manuscript. Gottfried Kirchengast served as primary coauthor, providing advice and guidance on all aspects of the design, analysis, figure production, and significantly contributed to writing of the manuscript. Marc Schwärz supported the setup and advancements of the OPSv5.6 analysis system and advised on data and algorithms. Florian Ladstätter supported RO climatology provision and use and advised on data and the algorithm as well as on the results interpretation. Yunbin Yuan advised on analysis and algorithm comparison. All authors commented on the final submitted manuscript.

刪除的內容: 18

刪除的內容: 22

刪除的內容: 27

刪除的內容: 22

刪除的內容: 7.78

刪除的內容: 171

刪除的內容: 20

刪除的內容: 30 %)

刪除的內容: near

Competing interests. The authors declare that they have no conflict of interest.

Acknowledgements. We acknowledge ECMWF (Reading, UK) for providing access to their analysis and forecast data. The research at APM (Wuhan, China) funded by the National key Research Program of China “Collaborative Precision Positioning Project” (No. 2016YFB0501900), and the Chinese Natural Sciences Foundation (grant no. 41874040, 41604033). At the WEGC (Graz, Austria) the work was supported by the Aeronautics and Space Agency of the Austrian Research Promotion Agency (FFG-ALR) under the Austrian Space Applications Programme (ASAP) project ATROMSAFI (proj.no. 859771) funded by the Ministry for Transport, Innovation, and Technology (BMVIT).

References

- 10 Angerer, B., Ladstätter, F., Scherllin-Pirscher, B., Schwärz, M., and Kirchengast, G.: Quality aspects of the Wegener Center multi-satellite GPS radio occultation record OPSv5.6, *Atmos. Meas. Tech.*, 10(12), 4845–4863, doi: 10.5194/amt-10-4845-2017, 2017.
- Anthes, R. A.: Exploring Earth’s atmosphere with radio occultation: contributions to weather, climate and space weather, *Atmos. Meas. Tech.*, 4, 1077–1103, doi:10.5194/amt-4-1077-2011, 2011.
- 15 Ao, C. O., Mannucci, A. J., and Kursinski, E. R.: Improving GPS radio occultation stratospheric refractivity retrievals for climate benchmarking, *Geophys. Res. Lett.*, 39, L12701, doi: 10.1029/2012GL051720, 2012.
- Baldwin, M. P. and Dunkerton, T. J.: Stratospheric harbingers of anomalous weather regimes, *Science*, 294, 581–584, doi:10.1126/science.1063315.2001, 2001.
- Biondi, R., Steiner, A. K., Kirchengast, G., and Rieckh, T.: Characterization of thermal structure and conditions for overshooting of tropical and extratropical cyclones with GPS radio occultation, *Atmos. Chem. Phys.*, 15, 5181–5193, doi: 10.5194/acp-15-5181-2015, 2015.
- Biondi, R., Steiner, A. K., Kirchengast, G., Brenot, H., and Rieckh, T.: Supporting the detection and monitoring of volcanic clouds: a promising new application of global navigation satellite system radio occultation, *Adv. Space. Res.*, 60, 2707–2722, doi: 10.1016/j.asr.2017.06.039, 2017.
- 25 Bosilovich M.G., Kennedy J., Dee D., Allan R., O’Neill A.: On the Reprocessing and Reanalysis of Observations for Climate. In: Asrar G., Hurrell J. (eds) *Climate Science for Serving Society.*, Springer, Dordrecht, doi:10.1007/978-94-007-6692-1_3, 2013.
- Brunner, L., Steiner, A.K., Scherllin-Pirscher, B., and Jury, M.W.: Exploring atmospheric blocking with GPS radio occultation observations, *Atmos. Chem. Phys.*, 16, 4593–4604, doi: 10.5194/acp-16-4593-2016, 2016.
- Butler, A.H., Seidel, D.J., Hardiman, S.C., Butchart, N., Birner, T., and Match, A.: Defining sudden stratospheric warmings, *Bull. Amer. Meteor. Soc.*, 96, 1913–1928, doi:10.1175/BAMS-D-13-00173.1, 2015.
- 30 Butler, A.H. and Gerber, E. P.: Optimizing the definition of a sudden stratospheric warming, *J. Climate*, 31, 2337–2344, doi: 10.1175/JCLI-D-17-0648.1, 2018.

- Charlton, A. J. and Polvani, L. M.: A new look at stratospheric sudden warmings. Part I: Climatology and modeling benchmarks, *J. Climate.*, 20, 449–469, doi:10.1175/JCLI3996.1, 2007.
- Dhaka, S. K., Kumar, V., Choudhary, R. K., Ho, S. P., Takahashi, M., and Yoden, S.: Indications of a strong dynamical coupling between the polar and tropical regions during the sudden stratospheric warming event January 2009, based on COSMIC/FORMASAT-3 satellite temperature data, *Atmos. Res.*, 166, 60–69, doi:10.1016/j.atmosres.2015.06.008, 2015.
- Eguchi, N. and Kodera, K.: Impacts of stratospheric sudden warming event on tropical clouds and moisture fields in the TTL: a case study, *SOLA.*, 6, 137–140, doi:10.2151/sola.2010-035, 2010.
- Foelsche, U., Scherllin-Pirscher, B., Ladstätter, F., Steiner, A.K., and G. Kirchengast.: Refractivity and temperature climate records from multiple radio occultation satellites consistent within 0.05%, *Atmos. Meas. Tech.*, 4, 2007–2018, doi:10.5194/amt-4-2007-2011, 2011.
- Gleisner, H. and Healy, S.B.: A simplified approach for generating GNSS radio occultation refractivity climatologies, *Atmos. Meas. Tech.*, 6, 121–129, doi:10.5194/amt-6-121-2013, 2013.
- Hajj, G. A., Kursinski, E. R., Romans, L. J., Bertiger, W. I., and Leroy, S. S.: A technical description of atmospheric sounding by GPS occultation, *J. Atmos. Sol. Terr. Phys.*, 64, 451–469, doi:10.1016/S1364-6826(01)00114-6, 2002.
- Harada, Y., Goto, A., Hasegawa, H., Fujikawa, N., Naoe, H., and Hirooka, T.: A Major stratospheric sudden warming event in January 2009, *J. Atmos. Sci.*, 67, 2052–2069, doi:10.1175/2009JAS3320.1, 2010.
- Hersbach, H., Bell, W., Berrisford, P., Horányi, A., Muñoz-Sabater, J., Nicolas, J., Radu, R., Schepers, D., Simmons, A., Soci, C., and Dee, D.: Global reanalysis: goodbye ERA-Interim, hello ERA5, *ECMWF Newsl.*, 159, 17–24, doi:10.21957/vf291hehd7, 2019.
- Hersbach, H., Bell, B., Berrisford, P., Hirahara, S., Horányi, A., Muñoz-Sabater, J., Nicolas, J., Peubey, C., Radu, R., Schepers, D., Simmons, A., Soci, C., Abdalla, S., Abellan, X., Balsamo, G., Bechtold, P., Biavati, G., Bidlot, J., Bonavita, M., De Chiara, G., Dahlgren, P., Dee, D., Diamantakis, M., Dragani, R., Flemming, J., Forbes, R., Fuentes, M., Geer, A., Haimberger, L., Healy, S., Hogan, R.J., Hólm, E., Janisková, M., Keeley, S., Laloyaux, P., Lopez, P., Radnoti, G., De Rosnay, P., Rozum, I., Vamborg, F., Villaume, S., and Thépaut, J.-N.: The ERA5 Global Reanalysis, *Q. J. ROY. METEOR. SOC. Quarterly.*, doi: 10.1002/qj.3803, 2020.
- Hitchcock, P. and Shepherd, T. G.: Zonal-mean dynamics of extended recoveries from stratospheric sudden warmings, *J. Atmos. Sci.*, 70, 688–707, doi:10.1175/JAS-D-12-0111.1, 2013.
- Ho, S.-P., Hunt, D., Steiner, A. K., Mannucci, A. J., Kirchengast, G., Gleisner, H., Heise, S., von Engel, A., Marquardt, C., Sokolovskiy, S., Schreiner, W., Scherllin-Pirscher, B., Ao, C., Wickert, J., Syndergaard, S., Lauritsen, K., Leroy, S., Kursinski, E. R., Kuo, Y.-H., Foelsche, U., Schmidt, T., and Gorbunov, M.: Reproducibility of GPS radio occultation data for climate monitoring: Profile-to-profile inter-comparison of CHAMP climate records 2002 to 2008 from six data centers, *J. Geophys. Res.*, 117, D18111, doi: 10.1029/2012JD017665, 2012.
- Klingler, R.: Observing Sudden Stratospheric Warmings with Radio Occultation Data, with Focus on the Event 2009, MSc thesis, University of Graz, Graz, 2014.
- Kodera, K., Eguchi, N., Lee, J.N., Kuroda, Y., and Yukimoto, S.: Sudden changes in the tropical stratospheric and tropospheric circulation during January 2009, *J. Meteorol. Soc. Jpn.*, 89, 283–290, doi:10.2151/jmsj.2011-308, 2011.

- Kohma, M. and K. Sato.: Variability of upper tropospheric clouds in the polar region during stratospheric sudden warmings, *J. Geophys. Res. Atmos.*, 119, 10100–10113, doi:10.1002/2014JD021746, 2014.
- Kursinski, E. R., Hajj, G. A., Schofield, J. T., Linfield, R. P., and Hardy, K. R.: Observing Earth’s atmosphere with radio occultation measurements using the Global Positioning System, *J. Geophys. Res.*, 102, 23429–23465, doi:10.1029/97JD01569, 1997.
- 5 Labitzke, K. and Kunze, M.: On the remarkable Arctic winter in 2008/2009, *J. Geophys. Res. Atmos.*, 114, D00I02, doi: 10.1029/2009JD012273, 2009.
- Ladstätter, F., Steiner, A. K., Schwärz, M., and Kirchengast, G.: Climate intercomparison of GPS radio occultation, RS90/92 radiosondes and GRUAN from 2002 to 2013, *Atmos. Meas. Tech.*, 8, 4, 1819–1834, doi:10.5194/amt-8-1819-2015, 2015.
- Limpasuvan, V., Thompson, D. W. J., and Hartmann, D. L.: The life cycle of the northern hemisphere sudden stratospheric warmings, *J. Climate.*, 17, 2584–2596, doi:10.1175/1520-0442(2004)017<2584:TLCOTN>2.0.CO;2, 2004.
- 10 Lin, J. T., Lin, C.H., Chang, L.C., Huang, H.H., Liu, J.Y., Chen, A. B., Chen, C.H., and Liu, C.H.: Observational evidence of ionospheric migrating tide modification during the 2009 stratospheric sudden warming, *Geophys. Res. Lett.*, 39, L02101, doi:10.1029/2011GL050248, 2012.
- Luntama, J.-P., Kirchengast, G., Borsche, M., Foelsche, U., Steiner, A., Healy, S., von Engel, A., O’Clerigh, E., and Marquardt, C.: Prospects of the EPS GRAS mission for operational atmospheric applications, *B. Am. Meteorol. Soc.*, 89, 1863–1875, doi: 10.1175/2008BAMS2399.1, 2008.
- 15 Manney, G.L., Krüger, K., Pawson, S., Minschwaner, K., Schwartz, M.J., Daffer, W.H., Livesey, N.J., Mlynarczyk, M.G., Remsberg, E.E., Russell III, J.M., and Waters, J.W.: The evolution of the stratopause during the 2006 major warming: satellite data and assimilated meteorological analyses, *J. Geophys. Res.*, 113, D11115, doi: 10.1029/2007JD009097, 2008.
- 20 Manney, G.L., Schwartz, M.J., Kruger, K., Santee, M.L., Pawson, S., Lee, J.N., Daffer, W.H., Fuller, R.A., and Livesey, N.J.: Auramicrowave limb sounder observations of dynamics and transport during the record-breaking 2009 Arctic stratospheric major warming, *Geophys. Res. Lett.*, 36, L12815, doi: 10.1029/2009GL038586, 2009.
- McInturff, R. M., Ed.: Stratospheric warmings: Synoptic, dynamic and general-circulation aspects, NASA Reference Publ., NASA-RP-1017, 174, 1978.
- 25 Mitchell, D. M., Charltonperez, A.J., and Gray, L. J.: Characterizing the variability and extremes of the stratospheric polar vortices using 2D moment analysis, *J. Atmos. Sci.*, 68, 1194–1213, doi:10.1175/2010JAS3555.1, 2011.
- Newman et al.: The Major Stratospheric Sudden Warming of February 2018, Thursday, 21 March 2019, Vienna, Aerosol and Environmental Physics Group, Seminar talk, 2018.
- Parker, W. S.: Reanalyses and observations: What’s the difference? *Bull. Amer. Meteor. Soc.*, 97, 1565–1572, doi: 10.1175/BAMS-D-14-00226.1, 2016.
- 30 Sathishkumar, S. and Sridharan, S.: Observations of 2–4 day inertia-gravity waves from the equatorial troposphere to the F region during the sudden stratospheric warming event of 2009, *J. Geophys. Res.*, 116, A12320, doi:10.1029/2011JA017096, 2011.
- Scherllin-Pirscher, B., Kirchengast, G., Steiner, A. K., Kuo, Y.-H., and Foelsche, U.: Quantifying uncertainty in climatological fields from GPS radio occultation: an empirical-analytical error model, *Atmos. Meas. Tech.*, 4, 2019–2034, doi:10.5194/amt-4-2019-2011, 2011a.
- 35

- Scherllin-Pirscher, B., Steiner, A. K., Kirchengast, G., Kuo, Y.-H., and Foelsche, U.: Empirical analysis and modelling of errors of atmospheric profiles from GPS radio occultation, *Atmos. Meas. Tech.*, 4, 1875–1890, doi:10.5194/amt-4-1875-2011, 2011b.
- Scherllin-Pirscher, B., Syndergaard, S., Foelsche, U. and Lauritsen, K. B.: Generation of a bending angle radio occultation climatology (BAROCLIM) and its use in radio occultation retrievals, *Atmos. Meas. Tech.*, 8, 109–124, doi:10.5194/amt-8-109-2015, 2015.
- Scherllin-Pirscher, B., Steiner, A. K., Kirchengast, G., Schwaerz, M., and Leroy, S. S.: The power of vertical geolocation of atmospheric profiles from GNSS radio occultation, *J. Geophys. Res.-Atmos.*, 122, 1595–1616, doi:10.1002/2016JD025902, 2017.
- Schwaerz, M., Kirchengast, G., Scherllin-Pirscher, B., Schwarz, J., Ladstätter, F., and Angerer, B.: Multi-Mission Validation by Satellite Radio Occultation – Extension Project, Final Report for ESA/ESRIN No. 01/2016, WEGC, University of Graz, Graz, Austria, 2016.
- Schreiner, W., Rocken, C., Sokolovskiy, S., Syndergaard, S. and Hunt, D.: Estimates of the precision of GPS radio occultations from the COSMIC/FORMOSAT-3 mission, *Geophys. Res. Lett.*, 34, L04808, doi:10.1029/2006GL027557, 2007.
- Seviour, W. J. M., Mitchell, D. M., and Gray, L.J.: A practical method to identify displaced and split stratospheric polar vortex events, *Geophys. Res. Lett.*, 40, 5268–5273, doi:10.1002/grl.50927, 2013.
- Simmons, A., Soci, C., Nicolas, J., Bell, B., Berrisford, P., Dragani, R., Flemming, J., Haimberger, L., Healy, S., Hersbach, H., Horányi, A., Inness, A., Muñoz-Sabater, J Radu, R., and Schepers, D.: Global stratospheric temperature bias and other stratospheric aspects of ERA5 and ERA5.1, *ECMWF Tech., Memo.*, No. 859, doi:10.21957/rcxqfmg0, 2020.
- Siskind, D. E., Eckermann, S.D., Coy, L., McCormack, J. P., and Randall, C.E.: On recent interannual variability of the Arctic winter mesosphere: Implications for tracer descent, *Geophys. Res. Lett.*, 34, L09806, doi:10.1029/2007GL029293, 2007.
- Steiner, A. K., Hunt, D., Ho, S.-P., Kirchengast, G., Mannucci, A. J., Scherllin-Pirscher, B., Gleisner, H., von Engeln, A., Schmidt, T., Ao, C., Leroy, S. S., Kursinski, E. R., Foelsche, U., Gorbunov, M., Heise, S., Kuo, Y.-H., Lauritsen, K. B., Marquardt, C., Rocken, C., Schreiner, W., Sokolovskiy, S., Syndergaard, S., and Wickert, J.: Quantification of structural uncertainty in climate data records from GPS radio occultation, *Atmos. Chem. Phys.*, 13, 1469–1484, doi:10.5194/acp-13-1469-2013, 2013.
- Steiner, A.K., Kirchengast, G., Foelsche, U., Kornblüth, L., Manzini, E., and Bengtsson, L.: GNSS occultation sounding for climate monitoring, *Phys. Chem. Earth (A)*, 26, 113–124, doi: 10.1016/S1464-1895(01)00034-5, 2001.
- Steiner, A. K., Lackner, B. C., Ladstätter, F., Scherllin-Pirscher, B., Foelsche, U., and Kirchengast, G.: GPS radio occultation for climate monitoring and change detection, *Radio Sci.*, 46, RS0D24, doi:10.1029/2010RS004614, 2011.
- Steiner, A. K., Ladstätter, F., Ao, C. O., Gleisner, H., Ho, S.-P., Hunt, D., Schmidt, T., Foelsche, U., Kirchengast, G., Kuo, Y.-H., Lauritsen, K. B., Mannucci, A. J., Nielsen, J. K., Schreiner, W., Schwärz, M., Sokolovskiy, S., Syndergaard, S., and Wickert, J.: Consistency and structural uncertainty of multi-mission GPS radio occultation records, *Atmos. Meas. Tech.*, 13, doi:10.5194/amt-13-2547-2020, 2020.
- Sun, Y., Bai, W., Liu, C., Liu, Y., Du, Q., Wang, X., Yang, G., Liao, M., Yang, Z., Zhang, X., Meng, X., Zhao, D., Xia, J., Cai, Y., and Kirchengast, G.: The FengYun-3C radio occultation sounder GNOS: a review of the mission and its early results and science applications, *Atmos. Meas. Tech.*, 11, 5797–5811, doi:10.5194/amt-11-5797-2018, 2018.

删除的内容: report

删除的内容: ESRIn

删除的内容: 2019-358, 2019

- Taguchi, M., Latitudinal Extension of Cooling and Upwelling Signals associated with Stratospheric Sudden Warmings, *Journal of the Meteorological Society of Japan*, 89, 5, 571–580, 2011, doi:10.2151/jmsj.2011-511, 2011.
- Thompson, D. W. J., Baldwin, M. P., and Wallace, J. M.: Stratospheric connection to northern hemisphere wintertime weather: implications for prediction, *J. Climate*, 15(12), 1421–1428, doi:10.1175/1520-0442(2002)015<1421:SCTNHW>2.0.CO;2, 2002.
- 5 Untch, A., Miller, M., Hortal, M., Buizza, R., and Janssen, P.: Towards a global meso-scale model: The high-resolution system T799L91 and T399L62 EPS, *ECMWF Newsl.*, 108, 6–13, 2006.
- Wang, L. and Alexander, M. J.: Gravity wave activity during stratospheric sudden warmings in the 2007–2008 Northern Hemisphere winter, *J. Geophys. Res. Atmos.*, 114, D18108, doi:10.1029/2009JD011867, 2009.
- 10 Yoshida, K. and Yamazaki, K.: Tropical cooling in the case of stratospheric sudden warming in January 2009: focus on the tropical tropopause layer, *Atmos. Chem. Phys.*, 11, 6325–6336, doi:10.5194/acp-11-6325-2011, 2011.
- Yue, X., Schreiner, W.S., Lei, J., Rocken, C., Hunt, D.C., Kuo, Y.-H. and Wan, W.: Global ionospheric response observed by COSMIC satellites during the January 2009 stratospheric sudden warming event, *J. Geophys. Res.*, 115, A00G09, doi:10.1029/2010JA015466, 2010.
- 15 Wickert, J., Reigber, C., Beyerle, G., König, R., Marquardt, C., Schmidt, T., Grundwaldt, L., Galas, R., Meehan, T. K., Melbourne, W. G., and Hocke, K.: Atmosphere sounding by GPS radio occultation: First results from CHAMP, *Geophys. Res. Lett.*, 28, 32633266, doi:10.1029/2001GL013117, 2001.
- Wickert, J., Beyerle, G., König, R., Heise, S., Grundwaldt, L., Michalak, G., Reigber, Ch., and Schmidt, T.: GPS radio occultation with CHAMP and GRACE: A first look at a new and promising satellite configuration for global atmospheric sounding, *Ann. Geophys.*, 23, 653–658, doi:10.5194/angeo-23-653-2005, 2005.

Table 1. Basic parameters and methodology of the new SSW monitoring approach (all parameters (4)–(18) updated daily).

Parameter	Equation/Definition	Explanation/Description
(1) Temperature anomaly profile T_{Anomaly}	$T_{\text{Anomaly}} = T_{\text{RO}} - T_{\text{ROCl1}}$	T_{RO} : RO temperature profile ; T_{ROCl1} : collocated climatological profile
(2) Density anomaly profile ρ_{Anomaly}	$\rho_{\text{Anomaly}} = (\rho_{\text{RO}} - \rho_{\text{ROCl1}}) / \rho_{\text{ROCl1}} \times 100\%$	ρ_{RO} : RO density profile; ρ_{ROCl1} : collocated climatological profile
(3) Bending angle anomaly profile α_{Anomaly}	$\alpha_{\text{Anomaly}} = (\alpha_{\text{RO}} - \alpha_{\text{ROCl1}}) / \alpha_{\text{ROCl1}} \times 100\%$	α_{RO} : RO bending angle profile; α_{ROCl1} : collocated climatological profile
(4) Middle Stratosphere Temperature Anomaly Threshold Exceedance Area: MSTA-TEA	Altitude range: 30–35 km Thresholds selected: +50 K, +40 K, +30 K; -30 K, -40 K, -50 K	Extract from individual anomaly profiles in selected stratosphere and stratopause region altitude layers (e.g., 30–35 km for MSTA-TEA) to estimate a vertical mean anomaly value for all RO events. The vertical mean anomalies are then averaged into a suitable space-time-binned grid over 50–90 °N (5 ° latitude × 20 ° longitude grid). The geographic areas wherein temperature, density and bending angle anomalies exceed predefined thresholds such as 40 K or 40 % are calculated and denoted as Threshold Exceedance Areas (TEAs).
(5) Lower Mesosphere Bending angle Anomaly Threshold Exceedance Area: LMBA-TEA	Altitude range: 50–55 km Thresholds selected: +50 %, +40 %, +30 %; -30 %, -40 %, -50 %	
(6) Lower Stratosphere Temperature Anomaly Threshold Exceedance Area: LSTA-TEA	Altitude range: 20–25 km Thresholds selected: 30 K, 25 K, 20 K; -20 K, -25 K, -30 K	
(7) Upper Stratosphere Density Anomaly Threshold Exceedance Area: USDA-TEA	Altitude range: 40–45 km Thresholds selected: 50 %, 40 %, 30 %; -30 %, -40 %, -50 %	
(8) Upper Stratosphere Temperature Anomaly Threshold Exceedance Area: USTA-TEA	Altitude range: 40–45 km Thresholds selected: +50 K, +40 K, +30 K; -30 K, -40 K, -50 K	
(9) Primary-phase metric: SSW-PP-TEA	SSW-PP-TEA [km ²] = Avg(MSTA-TEA >40 K , LMBA-TEA >40 %)	
(10) Secondary-phase metric: SSW-SP-TEA	SSW-SP-TEA [km ²] = Avg(LSTA-TEA >25 K , USDA-TEA >40 %)	
(11) Trailing-phase metric: SSW-TP-TEA	SSW-TP-TEA [km ²] = Abs(USTA-TEA <-30 K)	
(12) Primary-phase T-only metric: SSW-PPT-TEA	SSW-PPT-TEA [km ²] = (MSTA-TEA >40 K)	
(13) Secondary-phase T-only metric: SSW-SPT-TEA	SSW-SPT-TEA [km ²] = (LSTA-TEA >25 K)	
(14) Main-phase duration: SSW-MPD	SSW-MPD [days] (definition see right column)	
(15) Main-phase area: SSW-MPA	SSW-MPA [Mio. km ²] (definition see right column)	
(16) Main-phase strength: SSW-MPS	SSW-MPS [Mio. km ² days] = (SSW-MPA × SSW-MPD)	
(17) Anomaly Maximum (AM) values	ΔT_{Max} [K], $\Delta \alpha_{\text{Max}}$ [%], $\Delta \rho_{\text{Max}}$ [%]	
(18) Geographic location (Lat, Lon) of AM values	ϕ^{AM} [°N], λ^{AM} [°E]	

删除的内容: 35 K, +

删除的内容: 35 K, -

删除的内容: 35 %, +

删除的内容: 35 %, -

删除的内容: -;

删除的内容: -

删除的内容: -

删除的内容: %35

删除的内容: -

删除的内容: -35 %, -

删除的内容: 35

删除的内容: 30

删除的内容: 35 K, +

删除的内容: 35 K, -

删除的内容: 35

删除的内容: 35

删除的内容: 20K

删除的内容: 30

删除的内容: 35K

删除的内容: 35K

删除的内容: 20K

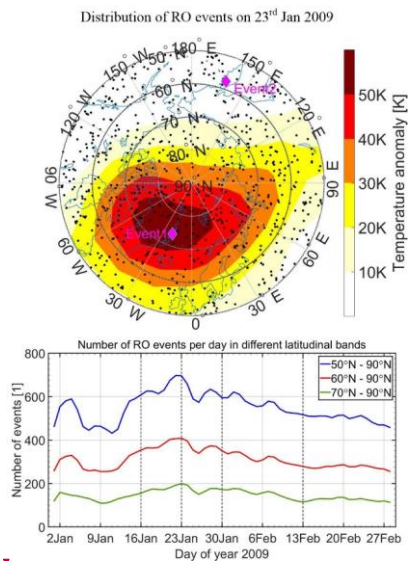
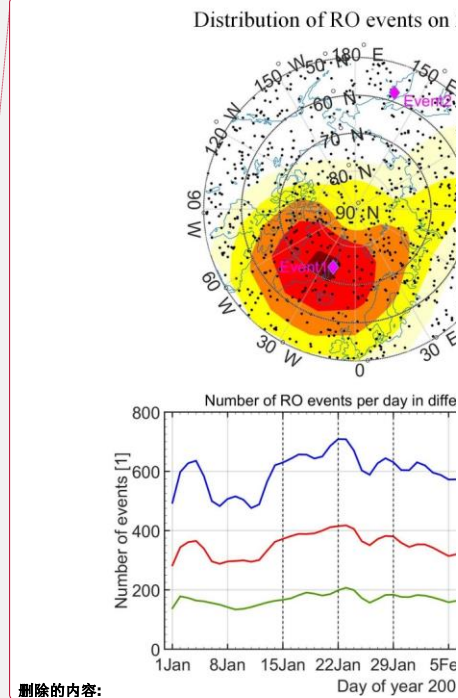


Figure 1. Illustrative distribution of RO event locations on 23 Jan 2009 (black dots), overlotted on the middle-stratosphere temperature anomaly of the day (upper panel), and number of RO events per day in the latitudinal bands of 50 - 90 °N (blue), 60 - 90 °N (red), and 70 - 90 °N (red), during January and February of 2009 (lower panel). In the upper panel, “Event1” represents an RO event with a large temperature anomaly, and “Event2” one with small anomaly (diamond symbols), as used in the subsequent Figs. 2 and 3.



删除的内容:

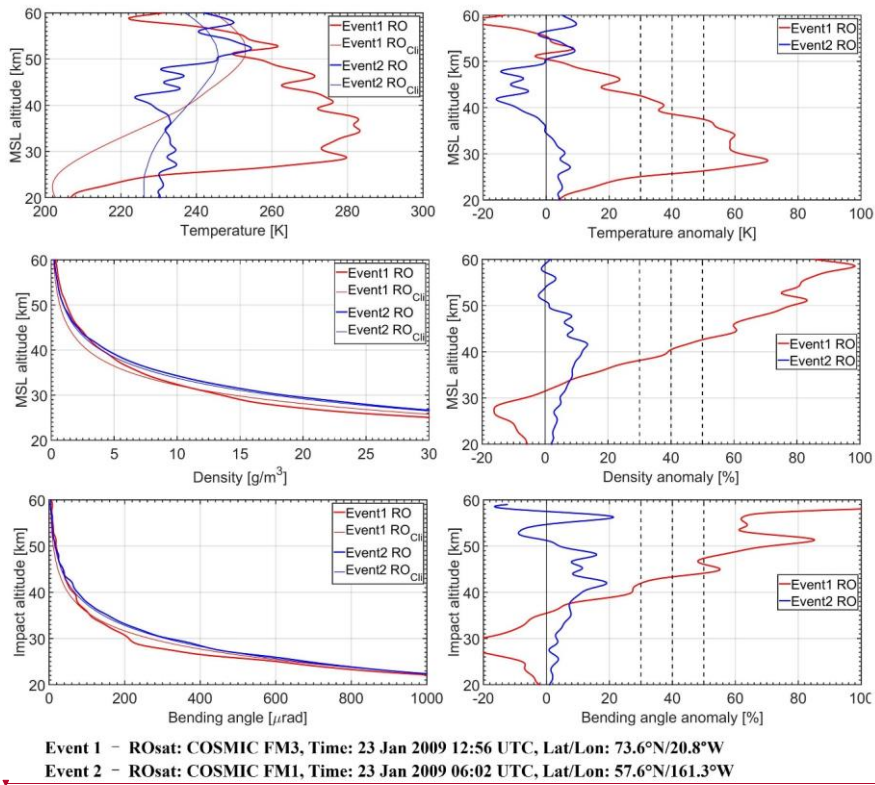
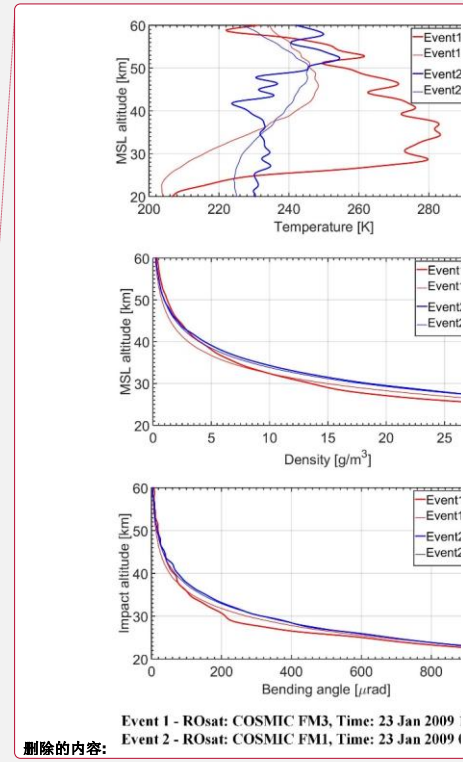


Figure 2. Event1 and Event2 temperature (top), density (middle), and bending angle (bottom) profiles from RO and their collocated climatological profiles RO_{Cli} (left column), together with the corresponding anomaly profiles (right column), the latter computed according to Table 1, (1) – (3).

5



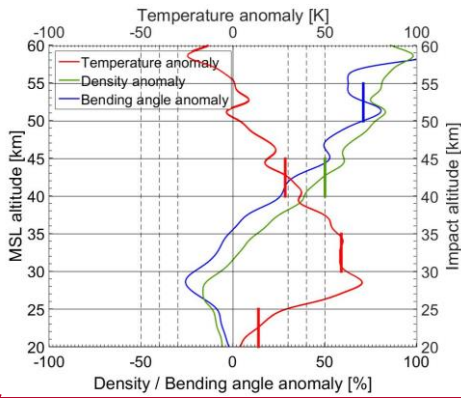
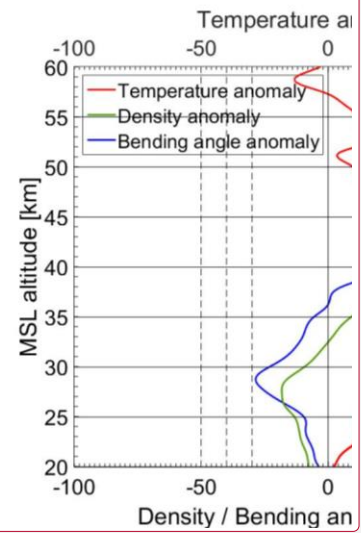


Figure 3. Temperature (blue), density (green) and bending angle (red) anomaly profiles of Event1 (same as in Figs. 1 and 2), with the horizontal gray lines delineating the altitude layers chosen for calculating the five basic TEAs (Table 1, (4) – (8)) and the colored vertical thick lines indicating the vertical mean anomaly values in corresponding altitude layers.

5



删除的内容:

带格式的: 字体: 非加粗

带格式的: 字体: 10 磅, 非加粗

删除的内容:分页符.....

.

.

...

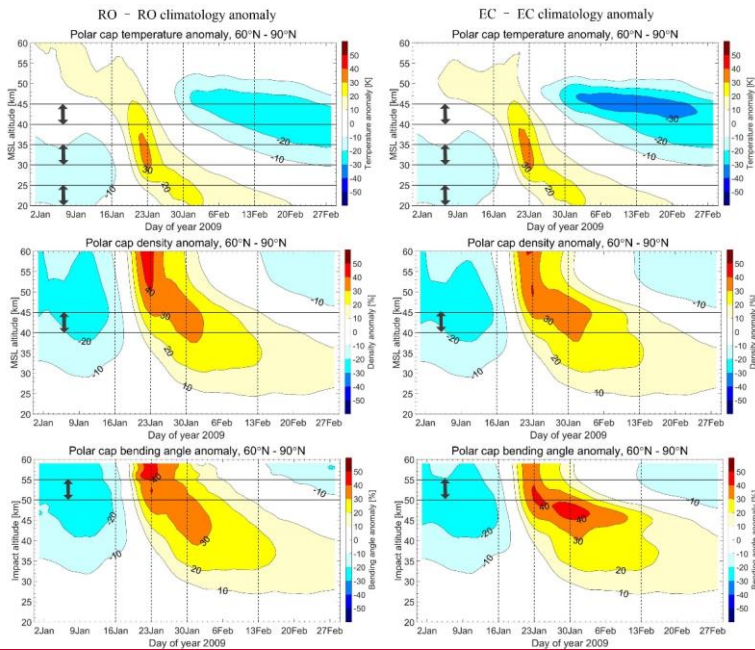


Figure 4. Temporal evolution of polar-cap (60°–90°N) mean temperature (top), density (middle), and bending angle (bottom) anomaly profiles from RO (left column), complemented by the corresponding anomalies from the ECMWF analysis data (right column). The vertical dashed lines indicate four days selected for showing anomaly distributions in Fig. 5 and the horizontal lines in the panels delineate those altitude layers chosen for the respective variables to help compute the TEA metrics as presented in Fig. 3.

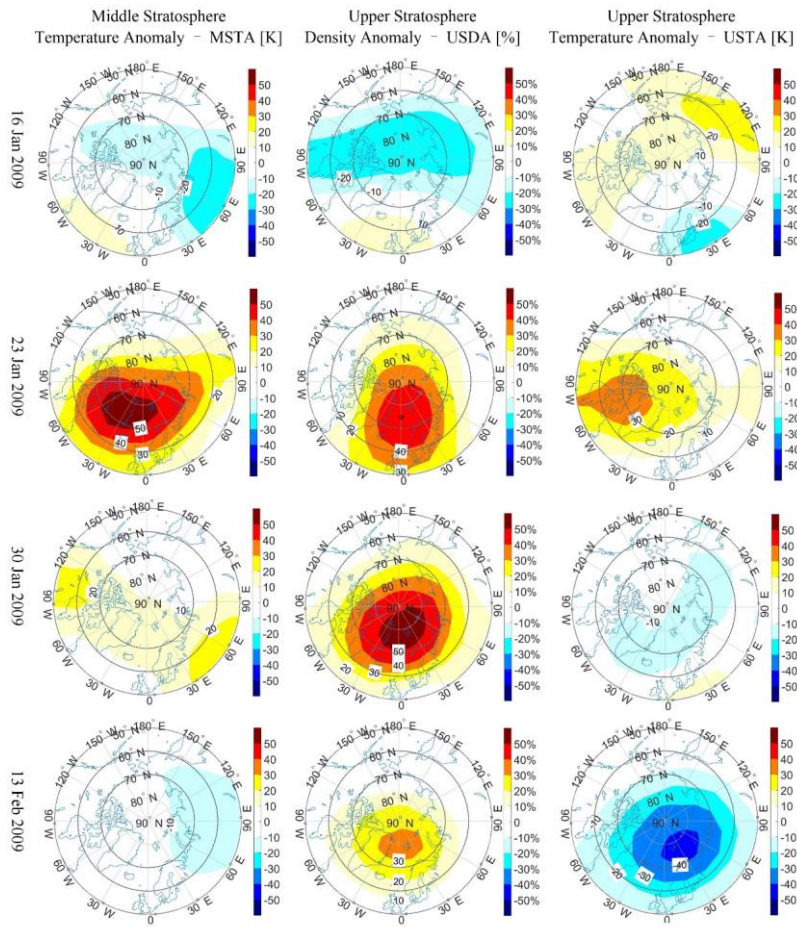
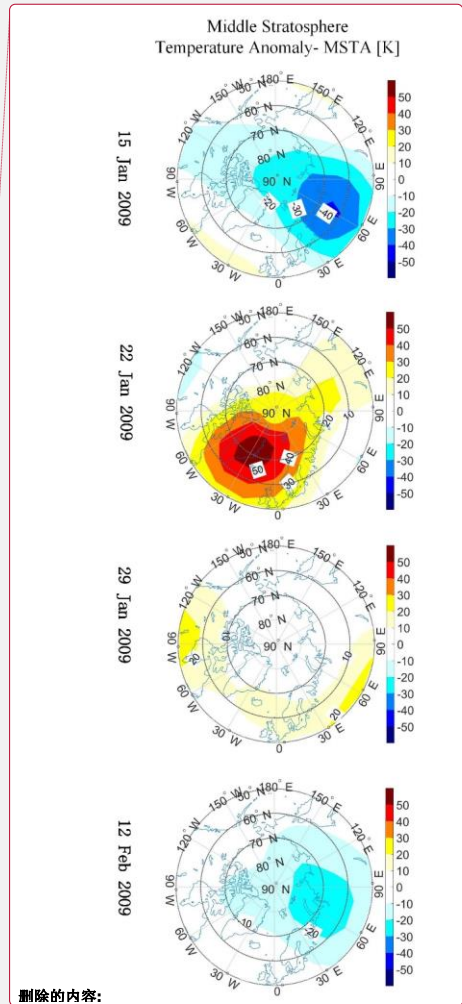


Figure 5. Middle Stratosphere Temperature Anomaly (MSTA, left column), Upper Stratosphere Density Anomaly (USDA, middle column) and Upper Stratosphere Temperature Anomaly (USTA, right column) on the four exemplary days of Jan 16, Jan 23, Jan 30, and Feb 13, 2009, illustrating the space-time dynamics of the SSW event in these three anomaly quantities.



删除的内容:

删除的内容: 15

删除的内容: 22

删除的内容: 29

删除的内容: 12

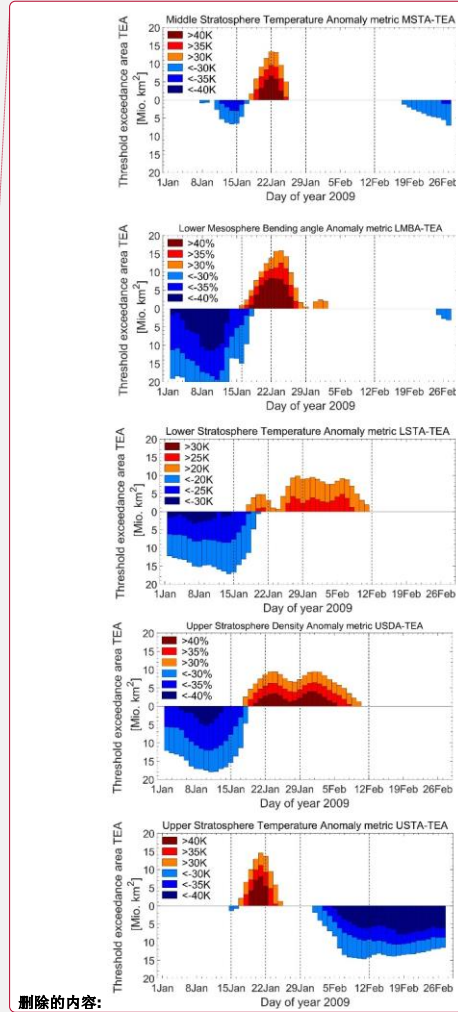
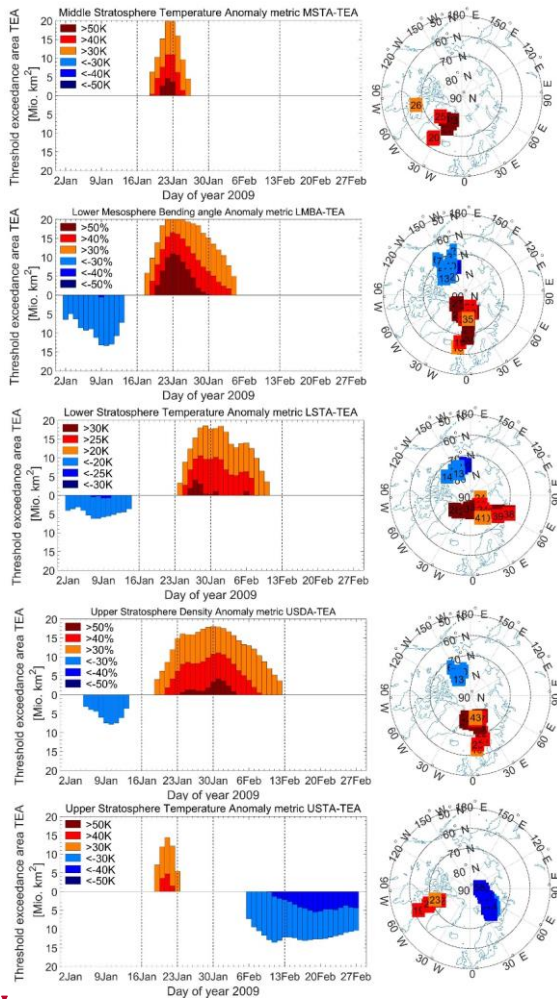


Figure 6. Time evolution of the daily MSTA, LMBA, LSTA, USDA, and USTA (from top to bottom) Threshold Exceedance Areas (TEAs) during the SSW event, using thresholds according to Table 1, (4)–(8) (left column). For complementary space-dynamics information, geographic tracks and magnitude classes (color scheme of left panels, numbering by day-of-year) of maximum positive/negative anomaly values are shown for days with TEAs with smallest thresholds $>3 \text{ Mio. km}^2$ (right column).

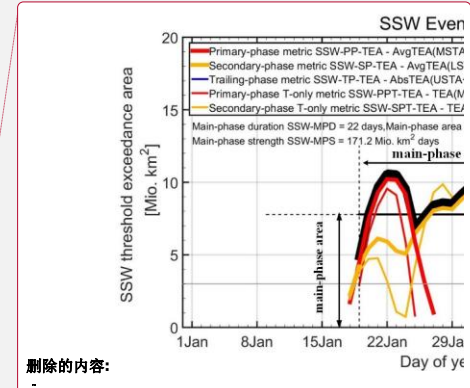
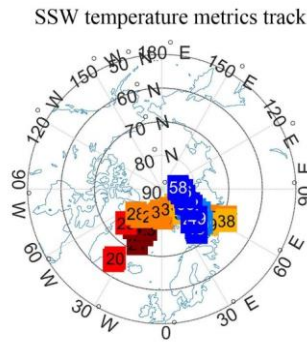
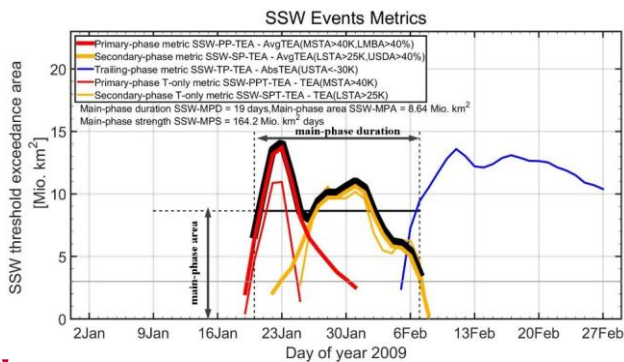


Figure 7. Time evolution of the daily primary-phase (heavy red), secondary-phase (heavy yellow), trailing-phase (heavy blue), primary-phase temperature-only (light red), and secondary-phase temperature-only (light yellow) metrics, respectively (left panel), shown for daily TEAs exceeding a TEA_{Min} of 3 Mio. km² (plus a day before and after). The main-phase metrics envelope for computing the main-phase area and duration (heavy black) and the related area, duration, and strength indicator results are depicted as well (numeric results in legend) and the TEA_{Min} threshold is indicated (gray horizontal line). For complementary space-dynamics information, the geographic tracks and magnitude classes of the three metric-relevant temperature anomalies (MSTA red, LSTA yellow, USTA blue) are also shown for days with $TEAs > TEA_{Min}$ (right; style as in right panels of Fig. 6).

- 删除的内容: -
- 删除的内容: 1
- 删除的内容: .
- 删除的内容: the
- 删除的内容: of 3 Mio. km²
- 删除的内容: as
- 删除的内容: .