

We would like to thank the reviewers for their comments on this study. Below, we address the comments by the reviewers. The reviewers' comments are typed in bold and our replies to them in regular font. To help the reviewers, we also list some parts of the revised manuscript in our replies and these parts are typed in italic font or with quotation marks for small comments. Below our replies, a revised version of the manuscript showing all the changes made in the revision.

1 Comments by the reviewer #1

This work provides solid scientific knowledge, and the general quality is very good. It presents an interesting technique to obtain improved aerosol products based on satellite retrievals.

We are glad to hear you find our work interesting. Thank you for this encouraging feedback.

It could be interesting to see if there is a pattern found in the stations with better improvements, compared to those with fewer improvements (region / urban sites / etc.).

We carefully compared and analysed the seasonal average retrieval errors, as mean absolute AOD error, by station. In the analysis, we compared the ratio of the average errors between Dark Target and post-process corrected and compared this ratio, for example, to the measurement geometry related variables, AERONET AOD, AERONET station location elevation, and the amount of training data samples used for the post-process correction model. In these comparisons, we did not find a clear pattern in the AOD correction to explain the rate of improvements between different stations.

To include this information described above into the manuscript, the end of the results section now reads:

To analyse the possible reasons for the improvements in the AOD accuracy, we also examined the correlations between the improvement in the AOD accuracy and some post-process correction model inputs and training parameters. In this analysis, we used seasonal averages of the improvements in the mean absolute error of AOD from each AERONET station. The input variables used for the AOD improvement correlation test included the measurement geometry related variables such as solar zenith angle, sensor zenith angle, and relative azimuth angle, AERONET AOD, AERONET station elevation, Dark Target fine aerosol model, and the amount of training data samples used to train the post-process correction model. We also analysed the geographic locations of the AERONET stations for which the post-process correction model performed best and worst by visual inspection. In these correlation analyses, we did not find a clear pattern to explain AOD accuracy improvements.

The results of the post-process corrected aerosol dataset show that it is highly beneficial to combine both the physics-based retrieval algorithm and machine learning based post-process correction.

Did you find both AOD and AE large improvements at the same stations?

There is no clear correlation between the improvements in AOD and AE. We did not find the largest improvements in both AOD and AE at the same stations.

2 Comments by the reviewer #2

Lipponen et al. have tried to use a model enforced post-process correction of satellite retrievals, especially the post-process correction of approximation error in the retrieval. It seems helpful as it allows to use other ancillary dataset and efficiently reprocess the existing aerosol dataset without much change in raw retrievals. I found the method innovative and potential for broader applications. However, the model has some unexplained characteristic that needs to be addressed.

Thank you very much for your comments, we are happy to hear you think the method is innovative and there is potential for broader applications.

Specific comments:

1. I found the abstract too general with having description only on the description/uncertainty and processing of the dataset by the algorithm. It lacks how much the AOD/AE retrievals were improved against a standard algorithm and any other specific observation (like regional or temporal advantages/ performance).

The abstract was revised for better grammar and easier reading, and we also briefly list details on improvement of AOD retrievals. As the journal instructions advice the abstract to be short we do not want to add too much details in the abstract. The revised abstract is now of the form:

Satellite-based aerosol retrievals provide a timely view of atmospheric aerosol properties, having a crucial role in the subsequent estimation of air quality indicators, atmospherically corrected satellite data products, and climate applications. However, current aerosol data products based on satellite data often have relatively large biases compared to accurate ground-based measurements and distinct uncertainty levels associated with them. These biases and uncertainties are often caused by oversimplified assumptions and approximations used

in the retrieval algorithms due to unknown surface reflectance or fixed aerosol models. Moreover, the retrieval algorithms do not usually take advantage of all the possible observational data collected by the satellite instruments and may, for example, leave some spectral bands unused. The improvement and the re-processing of the past and current operational satellite data retrieval algorithms would become tedious and computationally expensive. To overcome this burden, we have developed a model enforced post-process correction approach to correct the existing operational satellite aerosol data products. Our approach combines the existing satellite aerosol retrievals, and a post-processing step carried out with a machine learning-based correction model for the approximation error in the retrieval. The developed approach allows for the utilization of auxiliary data sources, such as meteorological information, or additional observations such as spectral bands unused by the original retrieval algorithm. The post-process correction model can learn to correct for the biases and uncertainties in the original retrieval algorithms. As the correction is carried out as a post-processing step, it allows for computationally efficient re-processing of existing satellite aerosol datasets without fully re-processing the much larger original radiance data. We demonstrate with over land aerosol optical depth (AOD) and Angstrom exponent (AE) data from the Moderate Imaging Spectroradiometer (MODIS) of Aqua satellite that our approach can significantly improve the accuracy of the satellite aerosol data products and reduce the associated uncertainties. For instance, in our evaluation, the number of AOD samples within the MODIS Dark Target expected error envelope increased from 63 % to 85 % when the post-process correction was applied. In addition to method description and accuracy results, we also give recommendations for validating machine learning-based satellite data products.

2. Abstract: modify line 1, as all satellite do not provide global data. Atmospheric characterization by aerosol does not mean anything.

We have removed the word "global" and "atmospheric characterization by aerosol" in the revision. See also reply to the comment 1.

3. Introduction: authors have used the word 'anthropogenic' too general, as it would be crude to decide the anthropogenic nature of aerosol based solely on high AE, as it could also be attributed by natural forest fire and other. Kindly revise the text.

We have revised the text and the first paragraph of the introduction now reads:

Climate change is one of the most serious problems humankind is facing today. Despite the long and active research, the future climate projections still contain significant uncertainties, and anthropogenic aerosol forcing currently comprises the largest source of this uncertainty (Pachauri et al., 2014). More accurate

information about the anthropogenic aerosols would help us improve our understanding of anthropogenic aerosol forcing, leading to a significant reduction of the uncertainties in future climate projections. Kaufman et al. (2005) and Yu et al. (2009) developed an algorithm to estimate anthropogenic aerosol component utilizing MODIS fine-mode aerosol optical depth (AOD) fraction and corrections to exclude fine mode natural dust and marine aerosols. The algorithm was only applicable over oceans due to the low accuracy of fine mode fraction over land, directly linked to inaccurate Angstrom exponent (AE). Therefore, any prospects to improve the satellite-based AE, particularly over land, could bring fundamental advances in measurement-based estimates of the global aerosol anthropogenic fraction. Another major global problem is air quality. In 2017, 2–25 % of all deaths globally were attributable to ambient particulate matter pollution (GBD 2017 Risk Factor Collaborators et al., 2018). To better monitor and understand air quality and pollution sources, near real-time global observations of aerosols are needed. In this respect, the only way to get wide coverage and near real-time information about atmospheric aerosols is to use satellite aerosol retrievals.

4. Line 30: AE is not a typical satellite retrieval data as it is negative slope of AOD for a particular wavelength in log. Avoid writing AE as retrievals.

Revised according to the comment. Now the sentence on line 30 reads: "Satellite aerosol retrieval algorithms retrieve the aerosol optical properties such as AOD given the satellite observed top-of-atmosphere radiances or reflectances and the measurement geometry information. Other aerosol optical property-related quantities, such as the AE, are often derived from the retrieved aerosol optical properties." AE as an example of an accurate satellite retrieval was also removed from Section 2.

5. Section 3.1: what quality flag was considered to retrieve DT AOD to avoid cloud contamination and other errors in the AOD retrieval?

All quality flags were used in MODIS DT data. This selection was intentional as we also wanted to correct for the lower quality flagged data as well to improve the AOD retrievals at as many retrievals as possible. We have now mentioned this in the revised text by adding a sentence: "We accept all pixels with all quality flags in our datasets in this study."

6. Line 195: Why authors have pointed that AE (and the AI) is not reliable over land?

The Dark Target team website says in their frequently asked questions: "Why can't I find fine mode AOD or Angstrom Exponent over land in collection 6? This product is not accurate over land and the MODIS aerosol group decided not to include it in collection 6." We have added a citation to a paper

(Levy et al., 2010) that concludes "MODIS does not provide quantitative information about aerosol size over land. Thus, we strongly recommend that users NOT use size products quantitatively."

7. As in Fig. 3, model-enforced correction model has achieved higher accuracy and lower bias compared to other. How the model-enforced processing are dependent on the selection of ancillary data? Is selection of different variable or a different group of variables have any possibility to change the outcome?

The accuracy of a correction model naturally depends on the information content of the inputs. We have analysed the correlations between the model inputs and the improvements in retrieval accuracy (see reply to Referee #1). Our analysis did not show any clear pattern or correlations between the inputs and improvement in the retrieval accuracy. This could indicate that the reason for the improvement varies from region to region or there may be multiple inputs together that are the major contributor to the accuracy improvement.

Machine learning, especially with the Random Forest regressor, however, is quite tolerant against having non-informative inputs in the models. In the possible case some of the input variables did not have information content to improve the correction model, the training of the Random Forest model would effectively leave these variables mostly unused. Therefore having too many input variable is not a big issue here and the model-enforced processing is not too dependent on the selection of ancillary data as long as there is enough information content in the inputs. Adding new inputs with additional, new information content, on the other hand, should improve the results even more.

8. Line 215: I agree, due to poor mixing of aerosol models in DT over land there is no operational DT AE product. In Fig. 4, there is improvement in AE prediction by model-enforced correction but result is comparable to fully learned Random Forest based regression model. Why author have not tried FMF which is a quantitative value and provide better estimation of aerosol size? Selection of a different parameter would have leads to add the applicability of the result.

Use of fine mode fraction would have lead to issues related on how to the fine mode fraction definition. In AERONET alone, different data products define the fine mode fraction differently. Whereas in the Dark Target retrieval algorithm, the FMF is defined as the ratio of fine aerosol model caused top-of-atmosphere reflectance to the total top-of-atmosphere reflectance (reflectance vs. aerosol loading). The use of FMF would therefore easily lead to "apples to oranges" comparison that we wanted to avoid. As AE is at least a qualitative indicator of aerosol size distribution but better defined, we decided to use it in our study. We thank the reviewer for pointing out this type of comparison and think that the comparison of FMF is a good topic for the future studies.

9. Clearly in Fig. 6, model-process data is well comparable to that of MODIS RFREGRESSOR for AOD_{0.5} while at high AOD, machine learning based models have negative bias but the range of error values is clearly smaller. So, can we conclude from it that the post-processing of the AOD will not work well for the cases with extreme aod observation? How post-processing will improve aod estimation for a region with high AOD, like in China/ India?

The number of samples corresponding to high AOD cases is clearly small compared to number of cases with small AOD. Therefore, more data is needed and it is not possible to conclude with this data that the post-processing of the AOD will not work well for the cases with extreme AODs - on the other hand, with these data, we cannot conclude either that the correction is working well with extreme AODs. More careful analysis of the method with high AODs is a good topic for future studies and clearly more data with extreme AODs is needed both for training the correction models and validating the results. More data exists already (full MODIS timeseries from both of the satellites could be used) so this would be a feasible but somewhat labourous task to carry out and we are considering to run post-process correction for full timeseries of data in the future.

We have already mentioned this issue in the manuscript's Results section: "*The samples with AOD > 0.5, however, represent only about 5% of all data samples so more data is needed for more accurate assessment of the accuracy of the models with large AOD.*" Now based on this referee comment we have revised the manuscript and added the following sentence to the conclusions and divided a paragraph into two: "*However, due to the small number of cases available with high AOD values, further studies would be required to better assess the post-process correction method's accuracy in high AOD scenarios.*"

Referee #2 had also two comments regarding our manuscript given in the earlier phase of the review. Below are the replies to these two comments.

1. Please explain why DT 10 km data was used to compare.

We added the following sentence to the manuscript: "MODIS Dark Target aerosol data is available also with spatial resolution of 3 km but as the 10 km data product is the most widely used we selected to use this data product in our study."

2. include AERONET version

AERONET version and level were included in the text: "In this study, we will use the AERONET Version 3, Level 2.0 Direct Sun data for both model training and validation purposes."

Model Enforced Post-Process Correction of Satellite Aerosol Retrievals

Antti Lipponen¹, Ville Kolehmainen², Pekka Kolmonen¹, Antti Kukkurainen¹, Tero Mielonen¹, Neus Sabater¹, Larisa Sogacheva¹, Timo H. Virtanen¹, and Antti Arola¹

¹Finnish Meteorological Institute, Atmospheric Research Centre of Eastern Finland, Kuopio, Finland

²Department of Applied Physics, University of Eastern Finland, Kuopio, Finland

Correspondence: Antti Lipponen (antti.lipponen@fmi.fi)

Abstract. Satellite-based aerosol retrievals provide a timely ~~global~~ view of atmospheric aerosol properties ~~for air quality, atmospheric characterization, and correction of~~, having a crucial role in the subsequent estimation of air quality indicators, atmospherically corrected satellite data products, and climate applications. ~~Current~~ However, current aerosol data products based on satellite data ~~, however,~~ often have relatively large biases relative compared to accurate ground-based measurements and distinct ~~levels of uncertainty~~ uncertainty levels associated with them. These biases and uncertainties are often caused by oversimplified assumptions and approximations used in the retrieval algorithms due to unknown surface reflectance or fixed aerosol models. Moreover, the retrieval algorithms do not usually take advantage of all the possible observational data collected by the satellite instruments and may, for example, leave some spectral bands unused. The improvement and the re-processing of the past and current operational satellite data retrieval algorithms would become ~~a tedious and computationally expensive task~~.
5 To overcome this burden, we have developed a model enforced post-process correction approach that can be used to correct the existing and operational satellite aerosol data products. Our approach combines the existing satellite aerosol retrievals, and a post-processing step carried out with a machine learning based learning based correction model for the approximation error in the retrieval. The developed approach allows for the utilization of auxiliary data sources, such as meteorological information, or additional observations such as spectral bands unused by the original retrieval algorithm. The post-process
15 correction model can learn to correct for the biases and uncertainties in the original retrieval algorithms. As the correction is carried out as a post-processing step, it allows for computationally efficient re-processing of existing satellite aerosol datasets with no need to fully reprocess without fully re-processing the much larger original radiance data. We demonstrate with over land aerosol optical depth (AOD) and Angstrom exponent (AE) data from the Moderate Imaging Spectroradiometer (MODIS) of Aqua satellite that our approach can significantly improve the accuracy of the satellite aerosol data products and reduce
20 the associated uncertainties. We For instance, in our evaluation, the number of AOD samples within the MODIS Dark Target expected error envelope increased from 63 % to 85 % when the post-process correction was applied. In addition to method description and accuracy results, we also give recommendations for the validation of validating machine learning based satellite data products that are constructed using machine learning based models.

1 Introduction

25 Climate change is one of the most serious problems humankind is facing today. Despite the long and active research, the future climate projections still contain significant uncertainties, and anthropogenic aerosol forcing ~~comprises currently~~ comprises the largest source of this uncertainty (Pachauri et al., 2014). ~~A more~~ More accurate information about the ~~aerosol optical depth (AOD) and Angstrom exponent (AE) anthropogenic aerosols~~ would help us improve our understanding of anthropogenic aerosol forcing ~~and thus lead~~, leading to a significant reduction of the uncertainties in future climate
30 projections. Kaufman et al. (2005) and Yu et al. (2009) developed an algorithm to estimate anthropogenic aerosol component utilizing MODIS fine-mode aerosol optical depth (AOD) fraction and corrections to exclude fine mode natural dust and marine aerosols. The algorithm was only applicable over oceans due to the low accuracy of fine mode fraction over land, directly linked to inaccurate Angstrom exponent (AE). Therefore, any prospects to improve the satellite-based AE, particularly over land, could bring fundamental advances in measurement-based estimates of the global aerosol anthropogenic fraction. Another major global problem is air quality. In ~~year~~ 2017, 2–25 % of all deaths globally were attributable to ambient particulate matter pollution (GBD 2017 Risk Factor Collaborators et al., 2018). To better monitor and understand air quality and pollution sources, near real-time global observations of aerosols are needed. In this respect, the only way to get wide coverage and near real-time information about atmospheric aerosols is to use satellite aerosol retrievals.

Satellite aerosol retrieval algorithms retrieve the aerosol optical properties such as AOD ~~and AE~~ given the satellite observed
40 top-of-atmosphere radiances or reflectances and the measurement geometry information. Other aerosol optical property-related quantities, such as the AE, are often derived from the retrieved aerosol optical properties. Currently, satellite retrieval algorithms for multiple satellite instruments have been developed and the satellite aerosol data records span timeseries that are over 40 years long (Sogacheva et al., 2020). One of the most widely used satellite aerosol data products is based on the Moderate Imaging Spectroradiometer (MODIS) data (Salomonson et al., 1989) and the Dark Target algorithm (Levy et al., 2013). The
45 MODIS Dark Target data starts from year 2000 and global data is available from two satellites: Terra and Aqua. The expected error (EE) envelope for AOD in Dark Target data over land is estimated to be $\pm(0.05 + 15\%)$ resulting to relatively large uncertainties especially in regions with relatively low AOD. For more information about the concept of the EE envelope see, for example, Sayer et al. (2015).

To improve the existing aerosol data sets, machine learning based solutions have been used in many studies. Most of the
50 approaches that utilize machine learning employ a *fully learned* approach for the solution of a satellite retrieval. In the fully learned approach, a machine learning based model is trained to predict the values of the unknown aerosol parameters such as AOD given the measurement data (top-of-atmosphere radiances or reflectances) and observation geometry as the inputs. Neural network based fully learned aerosol retrievals are assimilated into NASA’s MERRA-2 re-analysis model (Randles et al., 2017). In Di Noia et al. (2017), a fully learned AOD retrieval neural network model is used to retrieve the initial AOD for an iterative
55 retrieval algorithm. In Lary et al. (2009), a fully learned approach with MODIS retrieved AOD and the surface type as an additional inputs was used for the satellite AOD retrieval with MODIS data. The results of Lary et al. (2009) were evaluated using the accurate ground-based Aerosol Robotic Network (AERONET) data (Holben et al., 1998). With neural networks the

authors were able to reduce the bias of the MODIS AOD data from 0.03 to 0.01, while with support vector machines even better improvement was reported - AOD bias was less than 0.001 and the correlation coefficient with AERONET was larger than 0.99. In the above mentioned work, the validation was performed using all the available AERONET network stations both for training and validation. The split between the training and validation datasets was carried out using random splits of the pixels. With the random split of all pixels, the data samples from the same AERONET station were present both in training and evaluation datasets. This may lead to overly optimistic results as the model learns, for example, the surface properties at the locations of the AERONET stations and can thus predict the aerosol properties very accurately at these locations but may not generalize the results to other regions very well. In Albayrak et al. (2013), a neural network based fully learned MODIS AOD retrieval model was trained and evaluated. In their model, in addition to MODIS reflectances and measurement geometry information, they used MODIS retrieved AOD and its quality flag as additional auxiliary inputs. The output of their model was AOD. They found their model to produce more accurate AOD retrievals than the operational MODIS Dark Target algorithm. In Lanzaco et al. (2017), a slightly different type of machine learning based approach was used to improve satellite AOD retrievals. The authors used MODIS AOD retrievals and local meteorology information as inputs to predict the AOD in South America. This approach that combines the conventional AOD retrievals and local meteorology information was reported to improve the AOD accuracy over the operational MODIS AOD. A problem in fully learned approaches is that they fully rely on trained data and do not employ physics-based models in the retrievals. This may cause problems in the capability of the model to generalize to cases in which the inputs are far outside the input space spanned by the training dataset.

Following the philosophy of a post-processing correction strategy, we have developed a new *model enforced* machine learning approach in which we exploit also the models and the physics-based satellite-derived aerosol retrieval product. More specifically, we train the machine learning model for post-process correction of the approximation error in the result of the conventional retrieval algorithm. While the post-process correction approach is new to satellite retrievals, it has been found to perform better and produce more stable and accurate results than a fully learned approach in generation of surrogate simulation models (Lipponen et al., 2013, 2018) and in medical imaging, where many of the inverse imaging problems are mathematically highly similar to the satellite retrieval problems, see for example Hamilton et al. (2019). The key advantages of the new model enforced post-process correction approach are 1) the improved accuracy over the existing data products and existing fully learned satellite data approaches, and 2) the possibility to post-process correct existing (past) satellite data products with no need for full re-processing of the enormous satellite datasets. A reason why our approach outperforms the current state-of-the-art fully learned machine learning retrievals is that the approximation error is a less complicated function for machine learning regression than the full physics-based retrieval. In our proposed correction approach, we combine the best aspects of the conventional retrievals and machine learning to get the full information content out of the satellite data. Our approach is not limited to aerosols and is generally applicable to different types of satellite data products as long as suitable training data for the model is available.

The manuscript is organized as follows. The proposed post-process correction of satellite aerosol retrievals is presented in Section 2. In Section 3, the data and models used to test our approach are shown. Evaluation of the models is presented in Section 4 and results are shown in Section 5. The conclusions are given in Section 6.

2 Post-process Correction of Satellite Aerosol Retrievals

Let y be an accurate satellite aerosol retrieval (e.g. AOD~~or~~AE) so that

$$\begin{aligned} 95 \quad y &= f(\mathbf{x}) \\ &= \tilde{f}(\mathbf{x}) + [f(\mathbf{x}) - \tilde{f}(\mathbf{x})] \\ &= \tilde{f}(\mathbf{x}) + e(\mathbf{x}) \end{aligned} \tag{1}$$

where f is an accurate retrieval algorithm and \mathbf{x} contains all the algorithm inputs including the observation geometry and satellite observations such as the top-of-atmosphere reflectances. An approximative retrieval algorithm is denoted by \tilde{f} . In reality, due to uncertainties in the atmospheric properties and computational limitations among other reasons, it is not possible to construct an accurate retrieval algorithm f which is why an approximative algorithm \tilde{f} is used instead. The discrepancy between the accurate and approximative algorithm retrievals, that is the approximation error corresponding to $\tilde{f}(\mathbf{x})$, is denoted by

$$e(\mathbf{x}) = f(\mathbf{x}) - \tilde{f}(\mathbf{x}). \tag{2}$$

105 To compute the corrected retrieval in the model enforced post-process correction of satellite aerosol retrievals, we use both the conventional retrieval algorithm \tilde{f} and a machine learning based model $\hat{e}(\mathbf{x})$ to predict the realization of the approximation error $e(\mathbf{x})$, and Equation (1). Note that this is different from the fully learned model in which the aim is to emulate the accurate retrieval algorithm $f(\mathbf{x})$ with a machine learning model $\hat{f}(\mathbf{x})$. The approximation error $e(\mathbf{x})$ is typically less complicated function for machine learning regression than the full physics-based retrieval $f(\mathbf{x})$ thus resulting in more accurate and reliable results with the model enforced correction than with a fully learned approach. For a chart of conventional retrieval, fully learned machine learning, and model enforced post-process correction approaches see Figure 1. Remark that as the training of the post process correction is based on existing satellite data and retrievals, the implementation can be done in a straightforward manner, for example, using black-box machine learning code packages. In addition, the post process correction model is also flexible with respect to the choice of the statistical regression model, and the choice of the regression model can be tailored to different retrieval problems separately.

3 Data and models

For testing the model enforced post-process correction, we use MODIS satellite aerosol retrieval data (AOD and AE) over land from Aqua satellite. Both the proposed model enforced correction model and a fully learned model as a reference are trained and tested using data from the ground-based AERONET measurements.

120 3.1 MODIS Dark Target

MODIS instruments are flying on board NASA's Terra and Aqua satellites. Terra was launched in year 1999 and the MODIS aerosol products currently span a relatively long time series of about 20 years. MODIS Dark Target aerosol data products are

among the most widely used satellite aerosol data. In this study, we use the 10 km resolution MODIS Dark Target over land level 2 Collection 6.1 data of Aqua satellite (MYD04_L2) from years 2014–2018 (Levy et al., 2013). [MODIS Dark Target aerosol data is available also with spatial resolution of 3 km but as the 10 km data product is the most widely used we selected to use this data product in our study.](#) We use the AOD retrievals at wavelengths 440, 550, and 660 nm to compute the AE with a least-squares linear fit in log-log-scale. [We accept all pixels with all quality flags in our datasets in this study.](#) In addition to aerosol quantities, we use the observation (satellite acquisition and illumination) geometry, land surface altitude, and retrieval quality flags as inputs for our models from the aerosol data products in our study.

130 3.2 AERONET

AERONET is a global network of sun photometers (Holben et al., 1998). AERONET has a Direct Sun data product which contains both the AOD and Angstrom Exponent data that we will use in our study. AERONET data are most commonly used as an independent data source for aerosol retrieval validation and all the data is publicly available at the AERONET website (<http://aeronet.gsfc.nasa.gov/>). An extensive description of the AERONET sites, procedures and data provided is available from this website. Ground-based sun photometers provide accurate measurements of AOD, because they directly observe the attenuation of the solar radiation without interference from land surface reflections. The AOD estimated uncertainty varies spectrally from ± 0.01 to ± 0.02 with the highest error in the ultraviolet wavelengths (Eck et al., 1999). In this study, we will use the AERONET [Version 3, Level 2.0 Direct Sun](#) data for both model training and validation purposes. The AERONET data are divided in cross-validation to sets of training stations and validation stations for good generalization of the machine learning model.

3.3 Fully learned and model enforced post-process correction models for aerosol retrievals

In this study, in addition to the model enforced post-process correction model, we also train a fully learned model for the aerosol retrieval to be used as a reference. We use the Random Forest (RF) regressor (Breiman, 2001) as our machine learning method to train all the machine learning based models. RF is an ensemble learning algorithm that uses regression trees as base learners. RFs can learn non-linear functions and they are relatively tolerant against overfitting. RFs have been shown to provide highly accurate results in many applications and they are relatively straightforward to train with a low number of hyperparameters to tune in the training. Training of the RFs can also be done with a relatively low computational costs and the trained models are fast to evaluate. We use Python Scikit-Learn library implementation for the RFs (Pedregosa et al., 2011). During our work we also carried out preliminary tests with neural network based models trained with the same data as RFs but due to worse performance did not use them in the final evaluation.

Before training the final models we carried out a hyperparameter optimization for each of the models. In the hyperparameter optimization, we used an exhaustive 3D grid search and tested all possible combinations of hyperparameters in our candidate sets using 2-fold cross validation with our training data. In the candidate set, we had three hyperparameters to be optimized:

- Number of trees: 100, 200, 400

- 155 – Maximum depth of a single tree: 30, 40, 50, 60
- Maximum number of features to consider when building the regression trees (as fraction of number of features): 100%, 80%, 60%, 40%

For other hyperparameters, the default values of the Scikit-Learn library were used. Based on the exhaustive grid search results, we averaged the hyperparameter values of the 10 best performing models measured with the explained variance metric. The
160 hyperparameter values obtained by the averaging were used for the training of the final models. See derived values of the optimized hyperparameters in Table 1.

3.3.1 Fully learned model

The fully learned machine learning model $\hat{f}(\mathbf{x})$ takes the MODIS observation geometry information and the top-of-atmosphere reflectance information as inputs and directly predicts the AOD at 550 nm and AE. The input variables in the fully learned
165 models for both AOD and AE are the same and they are listed in Table 2. Top-of-atmosphere reflectances include the mean values and standard deviations of the native MODIS pixels inside the 10 km MODIS aerosol pixel. The optimal hyperparameter values found in the hyperparameter optimization are listed in Table 1.

3.3.2 Model enforced correction model

The model enforced correction approach takes the same set of input variables as the fully learned model together with some
170 additional Dark Target related variables to predict the approximation errors for the AOD at 550 nm and AE. In the evaluation of the trained model enforced post-process correction model, an estimate of the approximation error $e(\mathbf{x})$ is first computed and Equation 1 is used to compute the corrected satellite AOD or AE as $\tilde{f}(\mathbf{x}) + \hat{e}(\mathbf{x})$ where $\hat{e}(\mathbf{x})$ is the machine learning based estimate of the approximation error $e(\mathbf{x})$. The input variables in the model enforced models for both AOD and AE are the same and they are listed in Table 2. Top-of-atmosphere reflectance inputs include the mean values and standard deviations of
175 the native MODIS pixels inside the 10 km MODIS aerosol pixel. The wavelengths used for the Dark Target related variables are those that are delivered in the operational data product files. More information on the specific details of the Dark Target related variables can be found from the Algorithm Theoretical Basis Document (ATBD) (Levy et al., 2009). The optimal hyperparameter values found in the hyperparameter optimization are listed in Table 1.

4 Evaluation of the Models

180 To evaluate the model-derived aerosol data products, we first collocate the MODIS and AERONET observations. In the MODIS-AERONET collocation, we follow similar comparison protocol as in Petrenko et al. (2012). For collocated MODIS pixel and AERONET observation we require:

- The distance from the center of a MODIS pixel to an AERONET stations is less than 25 km.

– Each MODIS pixel corresponds to at least three AERONET observations within ± 30 minutes from the satellite overpass.

185 We use the AERONET AOD at 500 nm and the AE 440–870 nm to compute the median AERONET AOD at 550 nm corresponding to the collocated satellite pixels. In the construction of the training dataset, all MODIS pixels fulfilling the above criteria are used. In the construction of the validation dataset, we compute spatial median values for the MODIS and temporal median values for the AERONET AOD and AE values corresponding to a single satellite overpass and fulfilling the above criteria. We use medians instead of averages as recommended in Sayer and Knobelspiesse (2019) to obtain more representative
190 and outlier tolerant results.

To get realistic estimates for the accuracy of the models, validation is carried out with cross-validation. In our two-fold cross-validation, we randomly divide AERONET stations into two groups and use other group of AERONET stations for training and other group for validation. To take full advantage of the data and get a global estimate for the accuracies of the models, the training and testing are carried out two times with both combinations of the two groups. The AERONET stations and their
195 groups used in this study are shown in Figure 2. We also considered to use a conventional cross-validation in which the full dataset would have been randomly divided into training and validation groups as it is done for example in Lary et al. (2009). In the conventional cross-validation approach, however, the validation dataset pixels would have almost always contained remarkably similar pixels in the training dataset corresponding to the same AERONET station (e.g. two adjacent pixels). This would have resulted into overly optimistic results. We tested the conventional cross-validation approach and obtained almost
200 perfect retrievals with the coefficient of determination $R^2 = 0.99$ for both the fully learned and model enforced models. This is a similar result as reported in Lary et al. (2009). However, to get realistic estimates for the model accuracies, we decided to divide the training and validation datasets based on AERONET stations so that an AERONET station is only present either in training or validation datasets not in both.

Our goal is to get globally applicable results and we use the coefficient of determination R^2 based on correlation coefficient,
205 root mean squared error (RMSE), and median bias as the metrics to compare the datasets. For AOD datasets we also compute the ratio of samples that are inside the Dark Target over land EE envelope of $\pm(0.05 + 15\%)$. In addition to AOD and AE, we will also evaluate the aerosol index (AI) that is defined as

$$\text{AI} = \text{AOD} \cdot \text{AE}.$$

AI has been considered as a better proxy for cloud condensation nuclei (CCN) than AOD (e.g. Gryspeerd et al., 2017), since
210 AI is more sensitive than AOD to the accumulation mode aerosol concentration. However, as the AE has not been reliable over the land regions (Levy et al., 2010), the AI over land has not been properly usable either in satellite-based studies of aerosol cloud interactions.

5 Results

The developed model enforced post-process correction method was tested with MODIS Aqua satellite data over land. We
215 compare the post-process corrected datasets to the operational Dark Target over land data and to a conventional fully learned

machine learning retrievals. The number of samples and AERONET stations in training and validation datasets are shown in Table 3.

Figure 3 shows the MODIS-AERONET AOD comparison for the MODIS Dark Target, fully learned regression-based MODIS data, and model enforced post-process corrected Dark Target AOD. The model enforced correction model is clearly the most accurate dataset measured with the samples inside the Dark Target EE envelope (85%), $R^2 = 0.87$, and RMSE=0.08. With both of machine learning based datasets, similar median AOD bias of about 0.01 is obtained while in the MODIS Dark Target, the median AOD bias is 0.02. The MODIS Dark Target data also shows the non-physical negative AOD retrievals whereas the fully learned and model enforced machine learning based datasets do not have samples with negative AOD. In the fully learned model with a RF regressor that cannot extrapolate values outside the training set, the non-negativity of retrieved AOD was expected as AERONET AOD is always non-negative. As the model enforced correction model, however, uses the MODIS Dark Target AOD as a starting point, this is a very good result as the model regardless of the negative Dark Target AOD values learns to predict only non-negative AOD values.

Figure 4 shows the AE validation results. The results show that the satellite-based AE over land is clearly less accurate quantity than the AOD. MODIS Dark Target is clearly the worst performing retrieval with a low information content and high uncertainty. Furthermore, the Dark Target AE values are mostly concentrated around three different values. This is a clear indication of relatively poor performance of the Dark Target mixing of fine and coarse aerosol models over land which is the reason why there is no operational Dark Target AE product Mielonen et al. (2011). Both of the machine learning based models result in a relatively similar performance. The model enforced post-process correction has the best performance in all the metrics we use.

Figure 5 shows the results for the AI datasets. The accuracy of the AI datasets is generally similar to AOD datasets. Measured with R^2 and RMSE the post-process corrected dataset has the best accuracy. The machine learning based models have median bias of 0.02 and the MODIS Dark Target is free of bias. The MODIS Dark Target AOD has positive bias and AE negative bias thus resulting into bias-free AI.

Figure 6 shows the AOD and AE error distributions for each dataset for four different AOD and AE ranges. For AOD, the model enforced post-process corrected model is clearly the best performing model for AOD < 0.5. For AOD larger than 0.5, the machine learning based models have negative bias but the range of error values is clearly smaller than in the Dark Target. The samples with AOD > 0.5, however, represent only about 5% of all data samples so more data is needed for more accurate assessment of the accuracy of the models with large AOD. For AE, AE > 1.0 that corresponds to fine particles clearly results in smaller bias for machine learning based datasets than AE < 1.0. Generally, the error distribution is certainly narrower with machine learning based datasets than with Dark Target. With AE < 1.0, Dark Target results in smaller median bias than the other datasets.

We also evaluate our datasets by comparing the AOD and AE with a grouping based on the dominant aerosol types of the AERONET stations (Sogacheva et al., 2020). Figure 7 shows the error distributions for AOD and AE for background aerosol, fine aerosol, and coarse aerosol dominated AERONET stations. The seasonal classification from Sogacheva et al. (2020) is used for the classification of the AERONET stations according to prevailing aerosol type. The results for both AOD and AE

show that for background aerosol and fine dominated aerosol stations the machine learning based datasets clearly perform better than the Dark Target. The background aerosol dominated data forms the clear majority of the data (80 % of all samples) and the model enforced post-process corrected dataset is clearly the best performing dataset for these AERONET stations. For coarse aerosol dominated AERONET stations, the Dark Target has smaller bias in the data than other datasets. Coarse aerosol dominated AERONET station data, however, has only about 3 % of all the samples both in training and validation and thus more data is needed for further assessment of the results with coarse aerosol data and for better training of the machine learning methods.

~~These results-~~ To analyse the possible reasons for the improvements in the AOD accuracy, we also examined the correlations between the improvement in the AOD accuracy and some post-process correction model inputs and training parameters. In this analysis, we used seasonal averages of the improvements in the mean absolute error of AOD from each AERONET station. The input variables used for the AOD improvement correlation test included the measurement geometry related variables such as solar zenith angle, sensor zenith angle, and relative azimuth angle, AERONET AOD, AERONET station elevation, Dark Target fine aerosol model, and the amount of training data samples used to train the post-process correction model. We also analysed the geographic locations of the AERONET stations for which the post-process correction model performed best and worst by visual inspection. In these correlation analyses, we did not find a clear pattern to explain AOD accuracy improvements.

The results of the post-process corrected aerosol dataset show that it is highly beneficial to combine both the physics-based retrieval algorithm and machine learning based post-process correction.

6 Conclusions

A model enforced post-process correction method for the satellite aerosol retrievals was developed. In the correction method, a machine learning based model is trained to predict the approximation error in the conventional aerosol retrievals and the estimate of the error is used to correct the retrievals. The proposed post-process correction approach is computationally efficient and processing of the existing satellite aerosol datasets does not require the much larger radiance datasets. The proposed approach is also generic in the sense that it does not require modifications to the original retrieval algorithm. The approach is also flexible with respect to the machine learning model (e.g. neural network, Random Forest) which can be chosen case specifically for each satellite dataset.

We found that the post-processing correction method resulted into significantly improved accuracy of the MODIS AOD and AE retrievals over land. With the proposed correction we obtained AOD bias smaller than the accuracy of the accurate ground-based AERONET AOD. Furthermore, the correction approach resulted in better accuracy retrievals than the conventional fully learned machine learning based models in which the satellite observations are used to directly predict the accurate retrievals. In many applications, even a small improvement in the aerosol characterization accuracy and precision could be translated into a significant gain, e.g. in remote sensing of land surface derived products such as solar induced fluorescence or surface reflectance based indices within the visible and near-infrared parts of the spectrum. However, due to the small number of

cases available with high AOD values, further studies would be required to better assess the post-process correction method's accuracy in high AOD scenarios.

285 Compared to the Dark Target algorithm performance, the improved AOD and AE retrievals derived from the post-processing correction lead to a significant gain in the computation of the Aerosol Index (AI) over land. The accurate AI retrievals, especially for the small AI values, are highly important ~~for example~~, for example, for the aerosol-cloud-interaction studies in which AI is commonly used as a proxy for the CCN concentration. Here we observe that with the machine learning based retrievals there are significantly lower number of highly biased AI retrievals especially corresponding to small AI values. Improvement of
290 small AI retrievals are highly beneficial especially for the aerosol-cloud-interaction studies. For the land satellite remote sensing community, any improvement in the aerosol characterization is translated into an important gain in terms of the achieved satellite-derived surface reflectance accuracy. In this regard, the use of the post-processing approach opens up the possibility to easily re-correct the long satellite-based land surface property time series.

We also found that the conventional cross-validation, in which the pixels of the full dataset are randomly divided into training
295 and validation datasets, may lead to overly optimistic results in machine learning based algorithms for satellite retrievals. This is because too similar pixels corresponding to the same AERONET station are in both training and validation datasets. In our study, if we carried out this conventional cross-validation we would have obtained almost perfect retrievals with coefficient of determination $R^2 = 0.99$. This is a similar result that can be found in some publications evaluating machine learning based approaches for satellite retrievals. We tackled the cross-validation issue by dividing the data into training and validation datasets
300 by AERONET station.

Even though we tested the proposed approach with satellite aerosol data, our approach is not limited to aerosols only and is generally applicable to different types of satellite data products as long as suitable training data is available. In addition to observational data, simulated data could be suitable for training the post-process correction models in some applications. As we use an ensemble method Random Forest for the correction, it could be possible to use the spread of the ensemble members
305 outputs to obtain pixel-based uncertainty estimates for the corrected retrievals. Furthermore, a sensitivity study for the post-process correction models could provide us valuable information on the weak parts of the conventional retrieval algorithms and they could be used as a tool to assess the retrieval sensitivity.

Code and data availability. The code and data to reproduce the results is available from the corresponding author on request.

Author contributions. AL and VK developed the methodology presented. AL collected and processed the data. AL, VK, PK, AK, TM, NS,
310 LS, THV, and AA analysed the results. AL wrote the original manuscript. VK, PK, AK, TM, NS, LS, THV, and AA reviewed and edited the manuscript.

Competing interests. The authors declare that they have no competing interests.

Acknowledgements. We thank the AERONET PIs and their staff for establishing and maintaining the AERONET sites used in this investigation. We thank NASA MODIS and Dark Target teams to kindly make the MODIS data publicly available. V. Kolehmainen acknowledges
315 the Academy of Finland, Centre of Excellence in Inverse Modelling and Imaging (project 312343). The authors wish to acknowledge CSC – IT Center for Science, Finland, for computational resources.

References

- Albayrak, A., Wei, J., Petrenko, M., Lynnes, C. S., and Levy, R. C.: Global bias adjustment for MODIS aerosol optical thickness using neural network, *Journal of Applied Remote Sensing*, 7, 073 514, 2013.
- 320 Breiman, L.: Random forests, *Machine learning*, 45, 5–32, 2001.
- Di Noia, A., Hasekamp, O. P., Wu, L., van Dierenhoven, B., Cairns, B., and Yorks, J. E.: Combined neural network/Phillips–Tikhonov approach to aerosol retrievals over land from the NASA Research Scanning Polarimeter, *Atmospheric Measurement Techniques*, 10, 4235–4252, <https://doi.org/10.5194/amt-10-4235-2017>, <https://www.atmos-meas-tech.net/10/4235/2017/>, 2017.
- Eck, T. F., Holben, B., Reid, J., Dubovik, O., Smirnov, A., O’neill, N., Slutsker, I., and Kinne, S.: Wavelength dependence of the optical
325 depth of biomass burning, urban, and desert dust aerosols, *Journal of Geophysical Research: Atmospheres*, 104, 31 333–31 349, 1999.
- GBD 2017 Risk Factor Collaborators et al.: Global, regional, and national comparative risk assessment of 84 behavioural, environmental and occupational, and metabolic risks or clusters of risks for 195 countries and territories, 1990–2017: a systematic analysis for the Global Burden of Disease Study 2017, *Lancet (London, England)*, 392, 1923, 2018.
- Gryspeerdt, E., Quaas, J., Ferrachat, S., Gettelman, A., Ghan, S., Lohmann, U., Morrison, H., Neubauer, D., Partridge, D. G., Stier, P., et al.:
330 Constraining the instantaneous aerosol influence on cloud albedo, *Proceedings of the National Academy of Sciences*, 114, 4899–4904, 2017.
- Hamilton, S. J., Hänninen, A., Hauptmann, A., and Kolehmainen, V.: Beltrami-net: domain-independent deep D-bar learning for absolute imaging with electrical impedance tomography (a-EIT), *Physiological measurement*, 40, 074 002, 2019.
- Holben, B. N., Eck, T., Slutsker, I., Tanre, D., Buis, J., Setzer, A., Vermote, E., Reagan, J. A., Kaufman, Y., Nakajima, T., et al.:
335 AERONET—A federated instrument network and data archive for aerosol characterization, *Remote sensing of environment*, 66, 1–16, 1998.
- Kaufman, Y. J., Boucher, O., Tanré, D., Chin, M., Remer, L., and Takemura, T.: Aerosol anthropogenic component estimated from satellite data, *Geophysical Research Letters*, 32, 2005.
- Lanzaco, B. L., Olcese, L. E., Palancar, G. G., and Toselli, B. M.: An Improved Aerosol Optical Depth Map Based on Machine-Learning
340 and MODIS Data: Development and Application in South America, *Aerosol and Air Quality Research*, 17, 1523–1536, 2017.
- Lary, D. J., Remer, L., MacNeill, D., Roscoe, B., and Paradise, S.: Machine learning and bias correction of MODIS aerosol optical depth, *IEEE Geoscience and Remote Sensing Letters*, 6, 694–698, 2009.
- Levy, R., Remer, L., Tanre, D., Mattoo, S., and Kaufman, Y.: Algorithm for remote sensing of tropospheric aerosol over dark targets from MODIS: Collections 005 and 051: Revision 2; Feb 2009, *MODIS Algorithm Theoretical Basis Document*, 2009.
- 345 Levy, R., Remer, L., Kleidman, R., Mattoo, S., Ichoku, C., Kahn, R., and Eck, T.: Global evaluation of the Collection 5 MODIS dark-target aerosol products over land, *Atmospheric Chemistry and Physics*, 10, 10 399–10 420, 2010.
- Levy, R., Mattoo, S., Munchak, L., Remer, L., Sayer, A., Patadia, F., and Hsu, N.: The Collection 6 MODIS aerosol products over land and ocean, *Atmospheric Measurement Techniques*, 6, 2989, 2013.
- Lipponen, A., Kolehmainen, V., Romakkaniemi, S., and Kokkola, H.: Correction of approximation errors with Random Forests applied
350 to modelling of cloud droplet formation, *Geoscientific Model Development*, 6, 2087–2098, <https://doi.org/10.5194/gmd-6-2087-2013>, <https://www.geosci-model-dev.net/6/2087/2013/>, 2013.
- Lipponen, A., Huttunen, J. M. J., Romakkaniemi, S., Kokkola, H., and Kolehmainen, V.: Correction of model reduction errors in simulations, *SIAM Journal on Scientific Computing*, 40, B305–B327, 2018.

- Mielonen, T., Levy, R., Aaltonen, V., Komppula, M., de Leeuw, G., Huttunen, J., Lihavainen, H., Kolmonen, P., Lehtinen, K., and Arola, A.:
355 Evaluating the assumptions of surface reflectance and aerosol type selection within the MODIS aerosol retrieval over land: the problem of
dust type selection, *Atmospheric Measurement Techniques*, 4, 201–214, <https://doi.org/10.5194/amt-4-201-2011>, 2011.
- Pachauri, R. K., Allen, M. R., Barros, V. R., Broome, J., Cramer, W., Christ, R., Church, J. A., Clarke, L., Dahe, Q., Dasgupta, P., et al.:
Climate change 2014: synthesis report. Contribution of Working Groups I, II and III to the fifth assessment report of the Intergovernmental
Panel on Climate Change, *Ipcc*, 2014.
- 360 Pedregosa, F., Varoquaux, G., Gramfort, A., Michel, V., Thirion, B., Grisel, O., Blondel, M., Prettenhofer, P., Weiss, R., Dubourg, V.,
Vanderplas, J., Passos, A., Cournapeau, D., Brucher, M., Perrot, M., and Duchesnay, E.: Scikit-learn: Machine Learning in Python, *Journal
of Machine Learning Research*, 12, 2825–2830, 2011.
- Petrenko, M., Ichoku, C., and Leptoukh, G.: Multi-sensor Aerosol Products Sampling System (MAPSS), *Atmospheric Measurement Tech-
niques*, 5, 913–926, <https://doi.org/10.5194/amt-5-913-2012>, <https://www.atmos-meas-tech.net/5/913/2012/>, 2012.
- 365 Randles, C., Da Silva, A., Buchard, V., Colarco, P., Darmenov, A., Govindaraju, R., Smirnov, A., Holben, B., Ferrare, R., Hair, J., et al.:
The MERRA-2 aerosol reanalysis, 1980 onward. Part I: System description and data assimilation evaluation, *Journal of Climate*, 30,
6823–6850, 2017.
- Salomonson, V. V., Barnes, W., Maymon, P. W., Montgomery, H. E., and Ostrow, H.: MODIS: Advanced facility instrument for studies of
the Earth as a system, *IEEE Transactions on Geoscience and Remote Sensing*, 27, 145–153, 1989.
- 370 Sayer, A., Hsu, N., Bettenhausen, C., Jeong, M.-J., and Meister, G.: Effect of MODIS Terra radiometric calibration improvements on Collec-
tion 6 Deep Blue aerosol products: Validation and Terra/Aqua consistency, *Journal of Geophysical Research: Atmospheres*, 120, 12–157,
2015.
- Sayer, A. M. and Knobelspiesse, K. D.: How should we aggregate data? Methods accounting for the numerical distributions, with an as-
sessment of aerosol optical depth, *Atmospheric Chemistry and Physics*, 19, 15 023–15 048, <https://doi.org/10.5194/acp-19-15023-2019>,
375 <https://www.atmos-chem-phys.net/19/15023/2019/>, 2019.
- Sogacheva, L., Popp, T., Sayer, A. M., Dubovik, O., Garay, M. J., Heckel, A., Hsu, N. C., Jethva, H., Kahn, R. A., Kolmonen, P., Kosmale,
M., de Leeuw, G., Levy, R. C., Litvinov, P., Lyapustin, A., North, P., Torres, O., and Arola, A.: Merging regional and global aerosol optical
depth records from major available satellite products, *Atmospheric Chemistry and Physics*, 20, 2031–2056, [https://doi.org/10.5194/acp-
20-2031-2020](https://doi.org/10.5194/acp-
20-2031-2020), <https://www.atmos-chem-phys.net/20/2031/2020/>, 2020.
- 380 Yu, H., Chin, M., Remer, L. A., Kleidman, R. G., Bellouin, N., Bian, H., and Diehl, T.: Variability of marine aerosol fine-mode fraction
and estimates of anthropogenic aerosol component over cloud-free oceans from the Moderate Resolution Imaging Spectroradiometer
(MODIS), *Journal of Geophysical Research: Atmospheres*, 114, 2009.

Table 1. Hyperparameter values used for training the RF models.

Hyperparameter	AOD		AE	
	Fully Learned	Model Enforced	Fully Learned	Model Enforced
Number of trees	360	320	400	360
Maximum depth of a tree	47	47	46	52
Maximum number of features in a split	68 %	44 %	84 %	68 %

Table 2. Input parameters of the fully learned and model enforced post-process correction aerosol retrieval models.

Fully learned retrieval model	Model enforced post-process correction model
Top-of-atmosphere reflectances at 470, 550, 650, 860, 1240, 1630, and 2110 nm.	Top-of-atmosphere reflectances at 470, 550, 650, 860, 1240, 1630, and 2110 nm.
Sensor zenith and azimuth angles	Sensor zenith and azimuth angles
Solar zenith and azimuth angles	Solar zenith and azimuth angles
Scattering angle	Scattering angle
Land topographic altitude	Land topographic altitude
	Dark Target retrieved surface reflectances at 470, 660, and 2130 nm
	Dark Target retrieved AOD at 470, 550, and 660 nm
	Dark Target Angstrom exponent based on AOD retrieved at 470, 550, and 660 nm
	Dark Target retrieval quality flag
	Dark Target fine aerosol model used for land retrieval

Table 3. Number of samples and AERONET stations in training and validation dataset groups.

		Group 1	Group 2	Total
Training	Number of data samples	1 488 482	1 638 409	3 126 891
	Number of AERONET stations	278	277	555
Validation	Number of data samples	45 365	49 253	94 618
	Number of AERONET stations	262	265	527

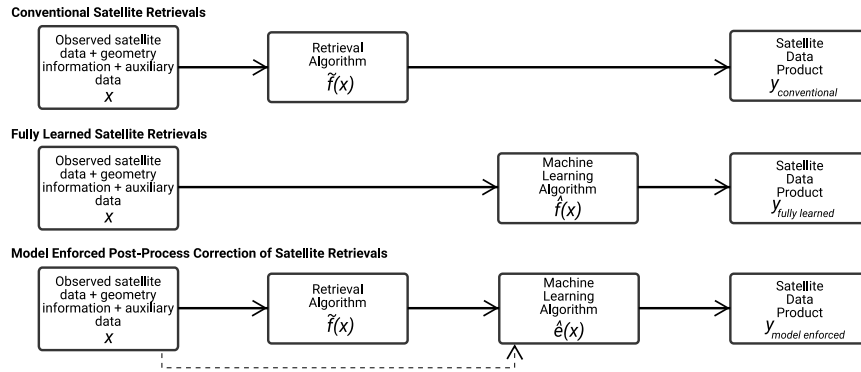


Figure 1. Top: Conventional satellite retrieval. Middle: Fully learned machine learning based satellite retrieval approach. Bottom: Model enforced post-process correction satellite retrieval approach.

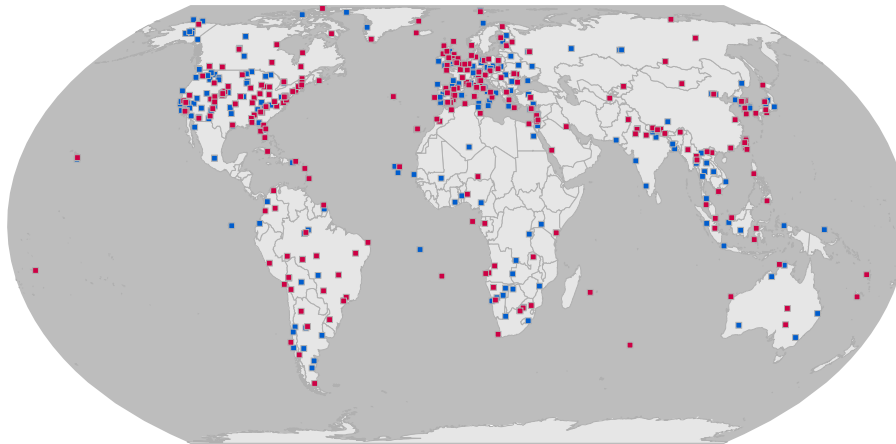


Figure 2. Locations of AERONET stations used in training and testing of the models. Red and blue colors indicate the random grouping of the stations used in the cross-validation.

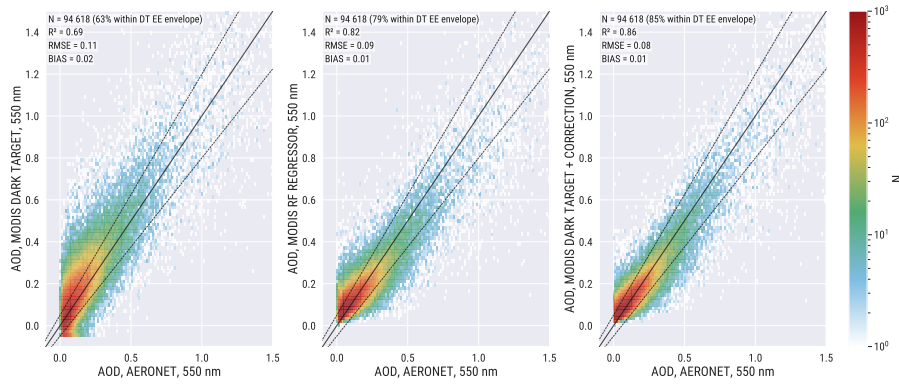


Figure 3. Comparison of AERONET and MODIS AOD at 550 nm. Left: MODIS Dark Target over land. Middle: MODIS fully learned Random Forest (RF) based regression model. Right: MODIS Dark Target with RF regression based model enforced post-process correction. The solid black line indicates the 1:1 line. The dashed black lines show the MODIS Dark Target expected error (EE) envelope.

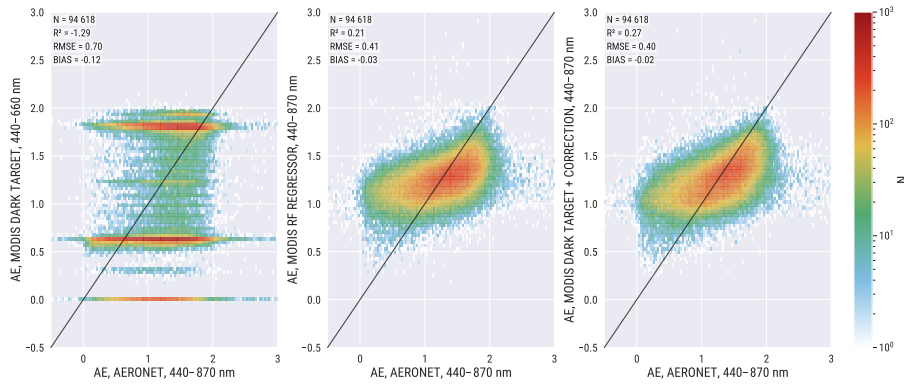


Figure 4. Comparison of AERONET and MODIS Angstrom exponent (AE). Left: MODIS Dark Target over land AE 440–660 nm. Middle: MODIS fully learned Random Forest (RF) based regression model AE 440–870 nm. Right: MODIS Dark Target AE 440–660 nm with RF regression based model enforced post-process correction. The solid black line indicates the 1:1 line.

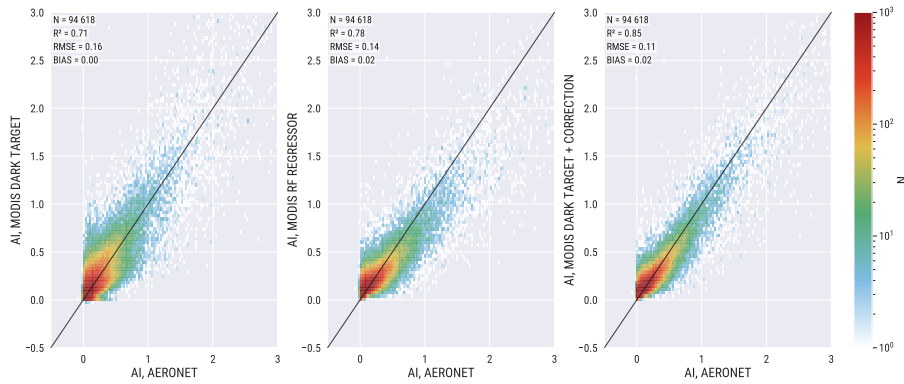


Figure 5. Comparison of AERONET and MODIS aerosol index (AI). Left: MODIS Dark Target over land. Middle: MODIS fully learned Random Forest (RF) based regression model. Right: MODIS Dark Target with RF regression based model enforced post-process correction. The solid black line indicates the 1:1 line.

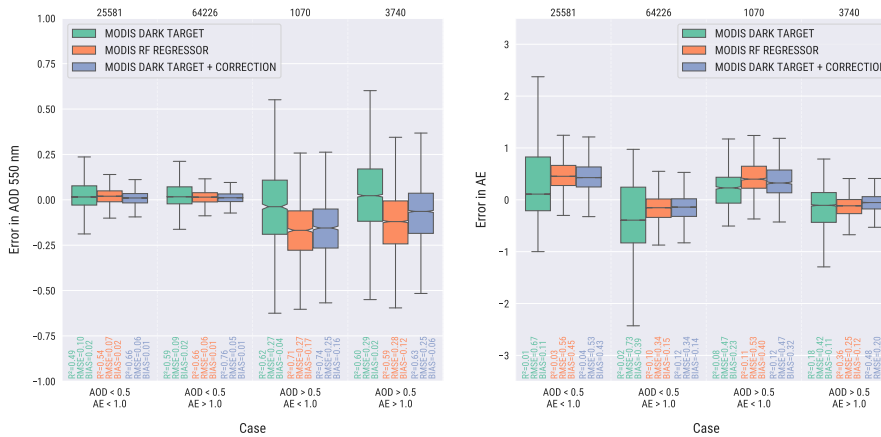


Figure 6. Error distribution in AOD at 550 nm (left) and Angstrom exponent (AE) (right) in different validation datasets. The data are grouped to four different groups based on AERONET AOD and AE. The numbers at the top of the figure indicate the number of validation samples in each group. The box shows the 25–75% quartiles of the datasets. The whiskers extend to display the rest of the distribution, except for points that are determined to be outliers. The notch in the box shows the 95% confidence interval around the median.

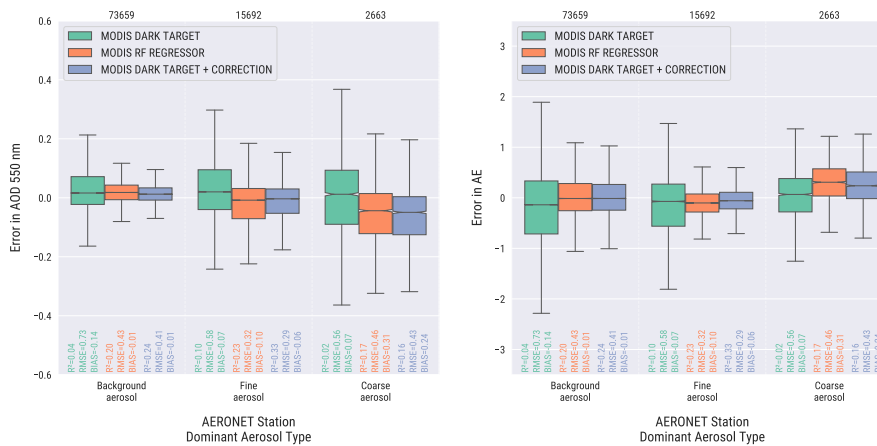


Figure 7. Error distribution in AOD at 550 nm (left) and Angstrom exponent (AE) (right) in different validation datasets. The data are grouped based on dominant aerosol type of AERONET stations based on Sogacheva et al. (2020). The numbers at the top of the figure indicate the number of validation samples in each group. The box shows the 25–75% quartiles of the datasets. The whiskers extend to display the rest of the distribution, except for points that are determined to be outliers. The notch in the box shows the 95% confidence interval around the median.