

Response to Reviewer # 1

We thank the reviewer for his review and valuable comments. The manuscript has been modified according to the suggestions proposed by the reviewer. The remainder is devoted to the specific response item-by-item of the reviewer's comments.

RC=Reviewer Comments

AR=Author response

TC=Text Changes

General Comments

The paper describes a MonteCarlo-based multiple scattering Doppler radar and lidar simulator. Though some of the described techniques replicate already published methods the work has its value because it offers a tool for both radars and lidars and represents an independent mean to evaluate results of other simulators developed by the scientific community. The simulator will have value especially with the launch of the EarthCARE mission. The scenarios proposed to demonstrate the capabilities are quite simplistic (e.g. only box clouds are used), but this is ok for presenting the potential applications of the tool.

Specific Comments

1) There are no results shown for polarization. It would be great to see some results for the other Stokes parameters (not simply the intensity)

We used the McRALI code to simulate profiles of the volume depolarization ratio measured by the CALIOP/CALIPSO lidar in our previous work (see Figs. 7-8, Alkasem et al., 2017). In the same work, we demonstrated that our simulation of the linear and circular depolarization profiles in a C1 cloud are in good agreement with the published data (see Appendix A.3, Alkasem et al., 2017). The later result was confirmed by other authors that cited our work (see, e.g., Sato et al., 2019; Wang et al., 2019).

We prefer to not present our new results on polarization in this work because they would make the paper under review too long. Those results will be the subject of a separated publication.

We modified the last sentence of the revised paper as follows:

“Real detailed cloud case studies and statistical analysis of representative fine-structure 3-D cloud field effects on lidar and radar observables, while taking into account the polarization of the light, will be the topic of future papers.”

2) I am a little bit surprised to see a mirror image from a Lambertian surface (but I may be radar-biased). Is this also present in lidar observations?

To our knowledge, there exist no publications showing a mirror image in lidar observations from the atmosphere. Indeed, signal to noise ratio (SNR) of lidar is generally much lower than the SNR of radar. Thus, it seems to be practically impossible to observe a mirror image with a spaceborne lidar, contrary to a spaceborne radar (Battaglia et al., 2010).

The results presented in figure 3 should be considered as a numerical and theoretical exercise that demonstrates the McRALI capacities. The simulations were performed with a very high number of photon trajectories, so that the numerical noise of the McRALI simulator is low. Under these idealized simulations conditions, we show that McRALI is capable not only to

simulate lidar / radar systems with inclined sighting, by taking into account the properties of the Lambertian surface, but also the mirror images (as it is seen in certain radar observations). It should be noted that to make the mirror image appear in this simulation, we have imposed a maximum surface albedo equal to 1.

We add these sentences at the end of section 2.4 :

“Signal to noise ratio (SNR) of lidars is generally much lower than the SNR of radars. Thus, in practice it is impossible to observe a mirror image with a spaceborne lidar, contrary to a spaceborne radar. Results presented in fig.3 should be considered as a numerical and theoretical exercise that demonstrates the McRALI capacities. The simulations were performed with a very high number of photon trajectories, so that the numerical noise of the McRALI simulator is very low. Under these idealized simulations conditions, we show that McRALI is able to simulate lidar / radar systems with inclined sighting by taking into account the properties of the Lambertian surface, but also the mirror images (as it is seen in certain radar observations). It should be noted that to make the mirror image appear in this simulation, we have imposed a maximum surface albedo equal to 1”.

3) *Line 16 in the intro: not true for the EC radar, no spectrum will be actually be provided.*

We thank the reviewer for this comment. In the revised paper, and according to suggestions of the second reviewer, we have changed the sentence “The Atmospheric LAsER Doppler INstrument (ALADIN) of the ADM-Aeolus, the ATmospheric LIDar (ATLID) and the Cloud Profiling Radar (CPR) of the EarthCARE mission will provide spectrally resolved data.” by :

The Atmospheric LAsER Doppler INstrument (ALADIN) of the ADM-Aeolus provides spectrally resolved data. Indeed, the Mie receiver is a Fizeau spectrometer combined with a charge-coupled detector that measures the spectrum of the return around the emitted laser wavelength using 16 different frequency bins (Stoffelen et al., 2005; Reitebuch, 2018). The ATmospheric LIDar (ATLID) signals of the EarthCARE mission will be optically filtered in such a way that the atmospheric Mie and Rayleigh scattering contributions are separated and independently measured (Pereira do Carmo et al., 2019). The radar echoes of the Cloud Profiling Radar (CPR) of the EarthCARE mission will be input to autocovariance analysis by means of the pulse-pair processing technique for the estimation of the Doppler properties (Zrnich, 1977, Kollias et al., 2013; Kollias et al., 2018). Note however that ATLID and CPR will not provide the spectrally resolved data.

4) *line 14 page 4: “receiver shape” which shape??*

In the revised paper, we have changed “... and account for emitter and receiver shape” by :

“... and account for emitter and receiver patterns of the lidar (or radar) system”.

5) Notation of Eq.8 is confusing, you are using first double and then single subscripts

We agree with the reviewer. In the submitted paper, before Eq.8, the unit director vector defined between the scatterer i and $i + 1$, is written $\mathbf{k}_{i,i+1}$. Then, after Eq.8, this same vector is written \mathbf{k}_i . In the revised paper, we have changed $\mathbf{k}_{i,i+1}$ by $\hat{\mathbf{k}}_{i,i+1}$ and we have added the definition of \mathbf{k}_i in page 7, just after the Eq.8 :

“where \mathbf{k}_i is the unit director vector defined between the scatterer i and $i + 1$ ”.

6) Fig4, bottom left panels: not sure why in the SS result there are values below cloud base. There should be none.

In the submitted paper, the authors wanted to show in Fig4.c the values predicted by the theory using a vertical dotted line. But this way of doing things brings confusion since under the cloud, the theory does not foresee any value, as argued by the reviewer. In the revised paper we have removed these dotted lines and deleted the information in the legend and in the explanation of the figure.

7) Page 7: “The frequency shift due to satellite motion is deliberately ignored...” well it is not clear to me then how you can simulate the Doppler broadening due to the satellite motion itself.

In order to clarify how the Doppler broadening due to the satellite motion itself is simulated, we have modified this sentence (page 7) of the submitted paper “For example, at the second scattering event, the total frequency shift is computed as $\Delta f_{2;total} = \Delta f_1 + \Delta f'_2$, where $\Delta f'_2 = \frac{f_0}{c} \mathbf{v}_2 \cdot (\mathbf{k}_1 - \mathbf{k}'_2)$, \mathbf{k}'_2 being the direction from the second scattering event to the detector (dotted blue line) which works with the local estimate method.” by :

For example, at the second scattering event, the total frequency shift is computed as $\Delta f_{2;total} = \Delta f_1 + \Delta f'_2 + \Delta f'_{sat}$, where $\Delta f'_2 = \frac{f_0}{c} \mathbf{v}_2 \cdot (\mathbf{k}_1 - \mathbf{k}'_2)$, \mathbf{k}'_2 being the direction from the second scattering event to the detector (dotted blue line) which works with the local estimate method and where $\Delta f'_{sat} = -\frac{f_0}{c} \mathbf{v}_{sat} \cdot (\mathbf{k}_0 - \mathbf{k}'_2)$, \mathbf{v}_{sat} being the satellite velocity.

8) Formula 19: the formula is not accounting for other causes of spectral widths (for sure microphysics should be accounted for!). Add missing terms.

In page 12 of the revised paper, we have changed “On Fig. 4c the MS and SS Doppler velocity spectral width profiles are drawn. Under SS approximation, the Doppler velocity spectral width is given by (Tanelli et al., 2002):

$$\sigma_{Dop}^2 = \sigma_{turb}^2 + \left(\frac{\rho_R v_{sat}}{2\sqrt{\ln(2)}} \right)^2 \quad (19)$$

where v_{sat} is the satellite velocity relative to the ground and ρ_R is the Gaussian (3-dB) FOV half-angle” by :

On Fig. 4c the MS and SS Doppler velocity spectral width profiles are drawn. Under SS approximation, the Doppler velocity spectral width σ_{Dop} is given by (Kobayashi et al., 2003 ; Battaglia et al., 2013) $\sigma_{Dop}^2 = \sigma_{hydro}^2 + \sigma_{shear}^2 + \sigma_{turb}^2 + \sigma_{motion}^2$, where σ_{hydro} is due to the spread of the terminal fall velocities of hydrometeors of different size, σ_{shear} is the broadening due to the vertical shear of vertical wind, σ_{turb} is the broadening of the vertical wind due to turbulent motions in the atmosphere and σ_{motion} is the spread caused by the coupling between the platform motion and the vertical wind shears of the horizontal winds. For a Gaussian circular antenna pattern, assuming zero fall velocities of hydrometeors and no wind shear, σ_{Dop} is given by (Tanelli et al., 2002):

$$\sigma_{Dop}^2 = \sigma_{turb}^2 + \left(\frac{\rho_R v_{sat}}{2\sqrt{\ln(2)}} \right)^2 \quad (19)$$

where v_{sat} is the satellite velocity relative to the ground and ρ_R is the Gaussian (3-dB) FOV half-angle”.

9) *Other minor comments: why not using the same color scheme for 65 and 650 microrad?*

In the revised paper, same colors are used for 65 and 650 microrad.

10) *Line 9 in the introduction: not clear why this line is there, out of context.*

In the revised paper, the sentence “CALIPSO and CloudSat missions were then extended for other 3 years (see, e.g., Vandemark et al., 2017)” is deleted.

11) *Introduce titles for the Appendices*

We have added titles in the revised paper.

Title of appendix A is “Definition of acronyms”

Title of appendix B is “Estimation of the PP bias of molecular, particulate and total ATB as a function of cloud coverage and multiple scattering intensity for the box cloud model”

References

K. Sato, H. Okamoto, and H. Ishimoto, "Modeling the depolarization of space-borne lidar signals," Opt. Express 27, A117-A132 (2019) <https://doi.org/10.1364/OE.27.00A117>

Z. Wang, S. Cui, Z. Zhang, J. Yang, H. Gao, F. Zhang, Theoretical extension of universal forward and backward Monte Carlo radiative transfer modeling for passive and active polarization observation simulations, Journal of Quantitative Spectroscopy and Radiative Transfer, 235, 2019, p. 81-94, <https://doi.org/10.1016/j.jqsrt.2019.06.025>.

Response to Reviewer # 2

We thank the reviewer for his review and valuable comments. The manuscript has been modified according to the suggestions proposed by the reviewer. The remainder is devoted to the specific response item-by-item of the reviewer's comments.

RC=Reviewer Comments

AR=Author response

TC=Text Changes

General Comments

Some time ago now, I reviewed an earlier version of this paper for another journal. Now, I find the work and presentation to be much improved! I have only a few mainly minor comments/concerns.

We thank the referee for all comments on the early version of this paper, which allowed us to progress and improve the content of this new version.

Specific Comments

1) Aeolus carries a Fizeau spectrometer, which measures the spectrum of the return +/- 0.33 pm around the emitted laser wavelength using 16 different frequency bins. Thus, Aeolus provides spectrally resolved data in the normal sense of the phrase. ATLID separates the pure so-called "Mie" and Rayleigh backscatter returns. This is not the same as measuring the full spectrum. Please adjust the text accordingly.

We thank the reviewer for this comment. In the revised paper, and according to suggestions of the first reviewer, we have changed the sentence "The Atmospheric LAser Doppler INstrument (ALADIN) of the ADM-Aeolus, the ATmospheric LIDar (ATLID) and the Cloud Profiling Radar (CPR) of the EarthCARE mission will provide spectrally resolved data." by :

The Atmospheric LAser Doppler INstrument (ALADIN) of the ADM-Aeolus provides spectrally resolved data. Indeed, the Mie receiver is a Fizeau spectrometer combined with a charge-coupled detector that measures the spectrum of the return around the emitted laser wavelength using 16 different frequency bins (Stoffelen et al., 2005; Reitebuch, 2018). The ATmospheric LIDar (ATLID) signals of the EarthCARE mission will be optically filtered in such a way that the atmospheric Mie and Rayleigh scattering contributions are separated and independently measured (Pereira do Carmo et al., 2019). The radar echoes of the Cloud Profiling Radar (CPR) of the EarthCARE mission will be input to autocovariance analysis by means of the pulse-pair processing technique for the estimation of the Doppler properties (Zrnic, 1977, Kollias et al., 2013; Kollias et al., 2018). Note however that ATLID and CPR will not provide the spectrally resolved data.

2) Page 2: Line 20: Simulation tools are steadily advancing thus allowing the exploration of the direct...way. Lidar and/or radar simulators are no exception.

In the revised paper, we have changed “Simulation tools are steadily advancing thus allowing the exploration of the direct...way. Lidar and/or radar simulators are no exception” by

“Lidar and/or radar simulators are steadily advancing hence allowing to explore direct and inverse problems in a cost-effective way”.

3) Page 3: Line 5. This text is not clear. Is DOMUS part of ECSIM or something separate ?

DOMUS is not a part of ECSIM. In the revised paper, we have added in page 3 :

“Note that DOMUS is not a part of ECSIM.”

4) Section 2.2: The modelling of Doppler shifts is well described, however, the treatment of polarization is not described at all (despite the section title of "Modelling of idealized polarized backscattered power spectrum profiles") ! At least short description with references should be given.

This remark of reviewer 2 joins the comment of reviewer 1 which asks for results on polarization.

We used the McRALI code to simulate profiles of the volume depolarization ratio measured by the CALIOP/CALIPSO lidar in our previous work (see Figs. 7-8, Alkasem et al., 2017). In the same work, we demonstrated that our simulation of the linear and circular depolarization profiles in a C1 cloud are in good agreement with the published data (see Appendix A.3, Alkasem et al., 2017). The later result was confirmed by other authors that cited our work (see, e.g., Sato et al, 2019; Wang et al, 2019).

We prefer not to present our new results on polarization in this work because they would make the paper under reviewing too long. Those results will be a subject of a separated publication.

We modified the last sentence of the revised paper as following:

“Real detailed cloud case studies and statistical analysis of representative fine-structure 3-D cloud field effects on lidar and radar observables, while taking into account the polarization of the light, will be the topic of future papers.”

Moreover, in the revised paper, we have modified the title of section 2.2 by deleting the word “polarized”.

5) Page 14: Lines 10-15. The cross-talk coefficient used in this paper have been apparently derived assuming ideal behavior of the EarthCARE FP element. In practice, the Airy function will be "blurred" due to the effects of non-ideal collimation of the beam, frequency jitter, surface roughness etc.. These factor all act to decrease the peak transmission and lower the FWHM. For a more realistic view on these parameters you should take into account the information in CEAS Space Journal (2019) 11:423–435 <https://doi.org/10.1007/s12567-019-00284-6> (See Fig 9).

Looking at the FP characterization curve, it is certain that here will be substantially more Mie to Ray cross-talk than reflected by the present choice of coefficients. This fact will not alter any of the present papers conclusions (the increased X-talk will act mainly to reduce the SNR of the

cross-talk corrected observations). Rather than redo the "EarthCARE" cases (which would be ideal but may require too-much time/effort) the authors could instead make it clear that the calculations shown are merely "EarthCARE like" but with an idealized modeled FP etc...

We thank the reviewer for the information, comments (and the publication reference) on cross-talk effects in ATLID which are not all taken into account in the McRALI simulator, the one using an idealized modeled FP interferometer. We also agree that this fact does not alter any of our conclusions. In order to clarify the fact that our calculations are carried out under idealized conditions (idealized FP interferometer, as suggested by the reviewer), we have added in the revised paper, page 15, this sentence:

Note that the cross-talk coefficients used in this paper assume ideal behavior of the ATLID FP interferometer. In practice, the Airy function will be "blurred" due to the effects of non-ideal collimation of the beam, frequency jitter, surface roughness and so on. All these factors end to decrease the peak transmission and lower the full width at half maximum (see the Fig. 9 in Pereira do Carmo et al., 2019). It is important to keep in mind that all the calculations shown in this paper are merely "EarthCARE like" but with an idealized modeled FP interferometer.

Page 14: Line 21 "(named by abuse of language)" ==> "the so-called"

Corrected in the revised paper.

Page 14: Line 26 "..step a simulated FP interferometer separates the ..."

Corrected in the revised paper.

Page 15: Figure 5 and associated text. It is likely worth pointing out the quasi exponential decay of the below cloud molecular return towards single scattering return levels. This result is consistent with the cases shown by Donovan 2016.

We thank the reviewer for this remark. We have added these sentences in the revised paper (page 16, line 5-6 in the revised manuscript) :

It is likely worth pointing out the quasi exponential decay of the below cloud molecular return towards single scattering return levels. This result is consistent with the cases shown by Donovan (2016).

Page 25: Lines 10-15: Have the the variance reduction techniques described by Buras et al. been employed in these calculations ? If so, it is work some more discussion regarding why these spikes in the spectrum remain. If not, then why were they not used ?

The variance reduction techniques described by Buras et al. has not been employed in calculations of this work.

With reference to the variance reduction techniques (VRTs), the Monte-Carlo code McRALI has two separated sets of subroutines. With the first set (without VRTs), simulations are done only using the local estimate method. In the second set (with VRTs), the methods and equations

of the work by Buras and Mayer (2011), hereafter BM2011, are implemented. A McRALI user can choose to do simulations with or without the VRTs. The user must assign the set of parameters (see, Section 2.6 of BM2011) when simulations with the VRTs are performed.

We consider a set of VRTs parameters to be acceptable when there is good amelioration in the computing time and there are no biases between simulations with and without VRTs. For instance, our simulations of the MUSCLE cases are in very good agreement with the MUSCLE community results (see, Section A.1, Alkasem et al. 2017). The difference between the ratios of multiple-to-single scattering, which were computed using the McRALI code with and without VRTs, is within $\pm 5\%$. The VRTs computing time is 100 times faster. The important point of the MUSCLE cases is the extinction coefficient value that is of 17.25 km^{-1} .

When the extinction coefficient value is rather low (1 km^{-1} or lower), it is especially difficult and time consuming to get an acceptable set of VRTs parameters. Unfortunately, we have not succeeded to find a unique set of VRTs parameters, which is acceptable for different lidar types and configurations, and different particles phase functions. Thus, we decided to perform simulations of that work without the VRTs.

Of course, the statement above has to be considered as only our personal experience. Thorough investigations are needed before it will be accepted or rejected.

We added to the revised manuscript (page 3 line 25) the following text.

“All simulations of this work were done without application of the variance reduction techniques.”

References

K. Sato, H. Okamoto, and H. Ishimoto, "Modeling the depolarization of space-borne lidar signals," *Opt. Express* 27, A117-A132 (2019) <https://doi.org/10.1364/OE.27.00A117>

Z. Wang, S. Cui, Z. Zhang, J. Yang, H. Gao, F. Zhang, Theoretical extension of universal forward and backward Monte Carlo radiative transfer modeling for passive and active polarization observation simulations, *Journal of Quantitative Spectroscopy and Radiative Transfer*, 235, 2019, p. 81-94, <https://doi.org/10.1016/j.jqsrt.2019.06.025>.

McRALI: a Monte Carlo high spectral resolution lidar and Doppler radar simulator for three-dimensional cloudy atmosphere remote sensing

Frédéric Szczap¹, Alaa Alkasem¹, Guillaume Mioche^{1,2}, Valery Shcherbakov^{1,2}, Céline Cornet³, Julien Delanoë⁴, Yahya Gour^{1,5}, Olivier Jourdan¹, Sandra Banson¹, Edouard Bray¹

¹Université Clermont Auvergne, CNRS, UMR 6016, Laboratoire de Météorologie Physique (LaMP), 63178 Aubière, France

²Université Clermont Auvergne, Institut Universitaire de Technologie d'Allier, 03100 Montluçon, France

³Université Lille, CNRS, UMR 8518, Laboratoire d'Optique Atmosphérique (LOA), F-59000 Lille, France

⁴Université de Versailles Saint-Quentin-en-Yvelines, Université Paris-Saclay, Sorbonne Université, CNRS, Laboratoire Atmosphère, Milieu, Observations Spatiales (LATMOS), Institut Pierre Simon Laplace (IPSL), Guyancourt, France

⁵Université Clermont Auvergne, Institut Universitaire de Technologie d'Allier, 03200 Vichy, France

Correspondence to: Frédéric Szczap (szczap@opgc.univ-bpclermont.fr)

Abstract.

The aim of this paper is to present the Monte-Carlo code McRALI that provides simulations, under multiple scattering regimes of polarized high spectral resolution (HRS) lidar as well as Doppler radar observations for three-dimensional (3D) cloudy atmosphere. The effects of non-uniform beam filling (NUBF) on HSR lidar and Doppler radar signals related to the EarthCARE mission are investigated with the help of an academic 3D box-cloud, characterized by a single isolated jump in cloud optical depth, assuming vertically constant wind velocity. Regarding Doppler radar signals, it is confirmed that NUBF induces a severe bias in velocity estimates. The correlation of the NUBF bias of Doppler velocity with the horizontal gradient of reflectivity shows a correlation coefficient value around $0.15 \text{ m.s}^{-1}(\text{dBZ.km}^{-1})^{-1}$ close to that given in scientific literature. Regarding HSR lidar signals, we confirm that multiple scattering processes are not negligible. We show that NUBF effects on molecular, particulate and total attenuated backscatter are mainly due to unresolved variability of cloud inside the receiver field of view, and to a lesser extent, to the horizontal photon transport. This finding gives some insight into the reliability of lidar signal modelling using independent column approximation (ICA).

1. Introduction

Spaceborne atmospheric LIDAR (Light Detection And Ranging) and RADAR (Radio Detection And Ranging) are suitable tools to investigate vertical properties of clouds on a global scale. Over the last decade, the Cloud-Aerosol Lidar and Infrared Pathfinder Satellite Observations (CALIPSO) (Winker et al., 2010) and the Cloud Satellite (CloudSat) (Stephens et al., 2008) improved our understanding of the spatial distribution of microphysical and optical properties of clouds and aerosols (Stephens et al., 2018). However, clouds remain the largest source of uncertainty in climate projections (Boucher et al., 2014, Dufresnes and Bony, 2008). Like clouds, aerosols are another large source of uncertainty in climate models (both direct and indirect radiative forcing) (see, e.g., Hilsenrath and Ward (2017) and references therein). ~~CALIPSO and CloudSat missions were then extended for other 3 years (see, e.g., Vandemark et al., 2017).~~ Future missions are planned to pursue those observations. For example, the Earth Clouds, Aerosol and Radiation Explorer (EarthCARE) (Illingworth et al., 2015) is scheduled for 2022, which will deploy for the first time in space the combination of a high resolution spectral (HSR) lidar and a Doppler radar. More recently, following the Atmospheric Dynamics Mission ADM-Aeolus (ESA report, 2016) by the European Space Agency (ESA), an atmospheric dynamics observation satellite was placed in orbit on August 2018, which deployed the first space Doppler lidar. ~~The Atmospheric Laser Doppler INstrument (ALADIN) of the ADM-Aeolus, the ATmospheric LIDar (ATLID) and the Cloud Profiling Radar (CPR) of the EarthCARE mission will provide spectrally resolved data.~~ The Atmospheric LASer Doppler INstrument (ALADIN) of the ADM-Aeolus provides spectrally resolved data. Indeed, the Mie receiver is a Fizeau spectrometer combined with a charge-coupled detector that measures the spectrum of the return around the emitted laser wavelength using 16 different frequency bins (Reitebuch et al., 2018; Stoffelen et al., 2005). The ATmospheric LIDar (ATLID) signals of the EarthCARE mission will be optically filtered in such a way that the atmospheric Mie and Rayleigh scattering contributions are separated and independently measured (Pereira do Carmo et al., 2019). The radar echoes of the Cloud Profiling Radar (CPR) of the EarthCARE mission will be input to autocovariance analysis by means of the pulse-pair processing technique for the estimation of the Doppler properties (Kollias et al., 2014, 2018; Zrníc, 1977). Note however that ATLID and CPR will not provide the spectrally resolved data. ~~The CPR will allow to account for the Doppler effect and~~ will provide information on convective motions, wind profiles and fall speeds (Illingworth et al., 2015). The ATLID will perform measurements of extinction coefficient and lidar ratio (ESA, 2016; Illingworth et al., 2015).

~~Simulation tools are steadily advancing hence allowing to explore direct and inverse problems in a cost-effective way. And, simulators of lidar and/or radar signals are no exception.~~ Lidar and/or radar simulators are steadily advancing hence allowing to explore direct and inverse problems in a cost-effective way. In this introduction, published works restricted to the case when multiple scattering was taken into account are briefly discussed. Fruitful findings, mostly on lidar returns from clouds, were obtained by the MUSCLE (Multiple SCattering in Lidar Experiments) community in the nineties. A review of the participating models can be found in the work by Bissonnette et al. (1995). A Monte Carlo (MC) model was used by Miller and Stephens (1999) to study the specific roles of cloud optical properties and instrument geometries in determining the magnitude of lidar pulse stretching. Several models, which take into consideration Stokes parameters, were developed in the 2000s (Hu et al., 2001; Noel et al., 2002; Ishimoto and Masuda, 2002; Battaglia et al., 2006). Fast approximate lidar and radar multiple-scattering models (Chaikovskaya, 2008; Hogan, 2008; Hogan and Battaglia, 2008; Sato et al., 2019) provide possibility, for example, to explain certain important characteristics of the dual-wavelength reflectivity profiles (Battaglia et al., 2015), although the codes are inherently one dimensional. In addition, a comprehensive review of multiple-scattering in radar systems can be found in the work by Battaglia et al. (2010). The basic principles of Monte-Carlo models, which consider the Doppler effect and spectral properties of received signals, were developed in the nineties for the needs of laser Doppler flowmetry (see, e.g., de Mul et al. (1995) and references therein). As for lidar and radar measurements, we can refer to the EarthCARE simulator (ECSIM) that is a modular multi-sensor simulation framework, where a fully 3D Monte Carlo forward model can calculate the spectral-polarization state of ATLID lidar signals (Donovan et al., 2008; Donovan et al., 2015). A radar DOppler Multiple Scattering (DOMUS) simulator can be run in a full 3D configuration and allows a comprehensive treatment of non-uniform-beam-filling (NUBF) scenarios (Battaglia and Tanelli, 2011). **Note that DOMUS is not a part of ECSIM.**

The McRALI simulators (Monte Carlo modeling of RADar and LIdar signals) developed at the Laboratoire de Météorologie Physique (LaMP) are based on 3DMcPOLID (3D Monte Carlo simulator of POLarized LIDar signals), a MC code dedicated to simulate polarized active sensor signals from atmospheric compounds in single and/or multiple-scattering conditions (Alkasem et al., 2017). As their core they use the three-dimensional polarized Monte-Carlo atmospheric radiative transfer model (3DMCPOL, Cornet et al. (2010). As 3DMCPOL, they use the local estimate method (Marchuk et al., 1980; Evans and Marshak, 2005) to reduce the noise level and take into account the polarization state of the light. Photons are followed step by step through the cloudy atmosphere. At

each interaction, the contribution to the detector is computed according to the scattering matrix and the field of view (FOV) of the detector. Variance reduction techniques proposed by Buras and Mayer (2011) can be employed for the purpose of reducing noise due to the strong forward scattering peak and consequently increasing the computational efficiency. **All simulations of this work were done without application of the variance reduction techniques.**

The objective of this work is to describe the latest evolution of McRALI which provides the means to simulate High-Spectral-Resolution (HSR) lidar and Doppler radar signals. The organization of this paper is as follows. In Sect. 2, we explain in detail the methodology used in McRALI to model spectral properties of lidar or radar data. Two illustrative applications (i.e. ATLID lidar and CPR radar of EarthCARE mission) of the developed simulator are presented. In Sect. 3 we briefly investigate errors induced by NUBF on the EarthCARE lidar and radar measurements with the help of the academic 3D box-cloud. This work is unique in that the results can be obtained only if the simulator is a fully 3D Monte Carlo forward model. Conclusions and discussions are presented in Sect. 4.

2. Modelling of HSR lidar and Doppler radar signals with McRALI

2.1. General principles for the computation of frequency resolved signal

Basic lidar or radar equation can be written as (Weitkamp, 2005; Battaglia et al., 2010) :

$$p(r) = \frac{K(r)}{r^2} \beta(r) \exp \left[-2 \int_0^r \sigma_{ext}(r') dr' \right] \quad (1)$$

where p is the power on the detector from range r , K is the instrument function, σ_{ext} (in m^{-1}) is the extinction, and β (in $\text{m}^{-1} \text{sr}^{-1}$) is the backscattering coefficient defined as

$$\beta = P(\pi) \sigma_s \quad (2)$$

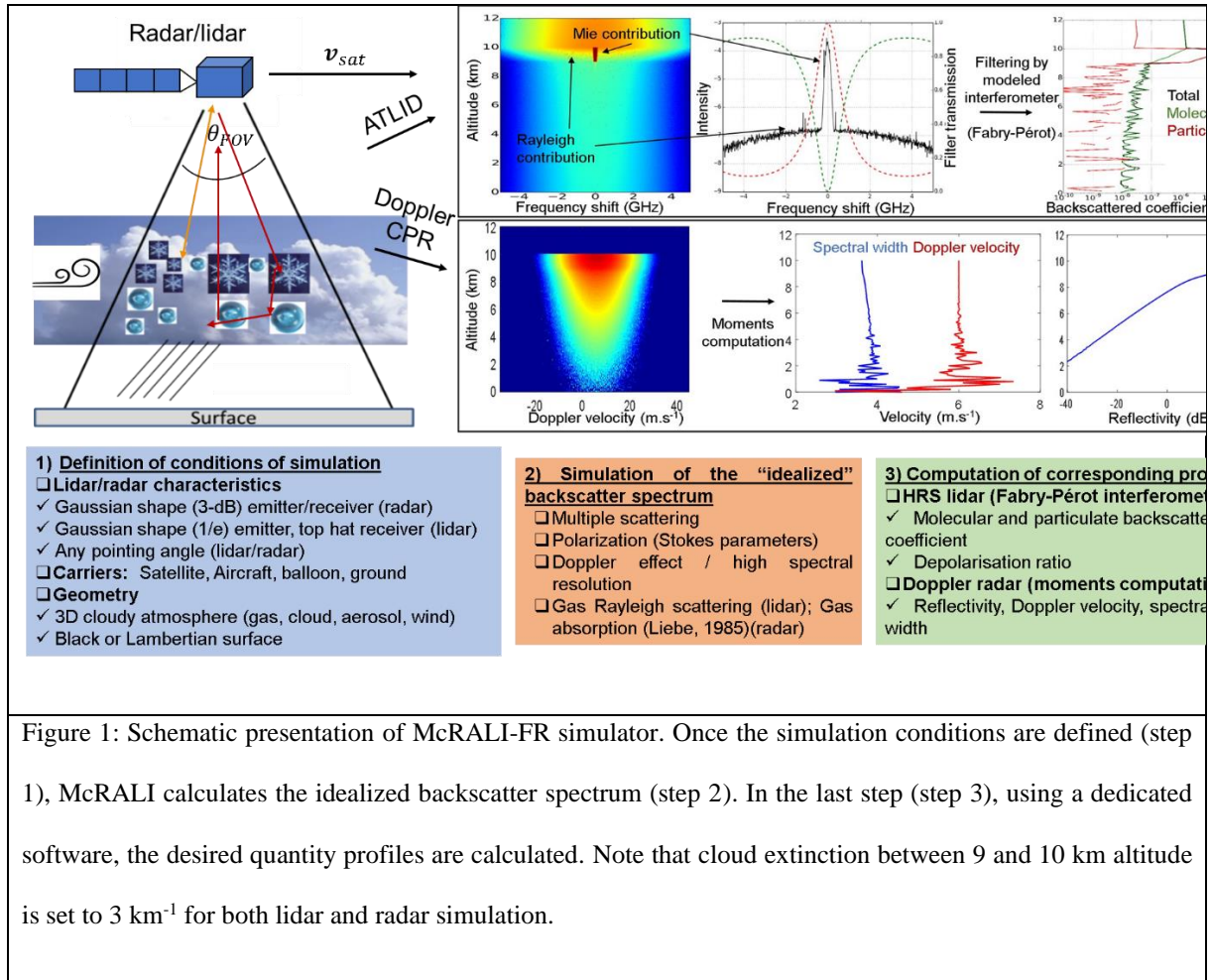
where $P(\pi)$ (in sr^{-1}) is the scattering phase function in the backward direction and σ_s (in m^{-1}) is the scattering coefficient. Whereas the lidar community use the backscattering coefficient β , the radar community prefers to use the reflectivity Z related to β as

$$Z = \frac{4}{|K_w|^2} \left(\frac{\lambda}{\pi} \right)^4 \beta \quad (3)$$

where $|K_w|^2$ is a dielectric factor usually assumed for liquid water and λ is the wavelength. The radar reflectivity factor is expressed in $\text{mm}^6 \cdot \text{m}^{-3}$. However, due to its large dynamic range, it is more commonly expressed in dBZ and $10\log_{10}(Z)$ is used. Note that the reflectivity given in Eq. (3) is the radar non-attenuated reflectivity.

If the extinction value of the medium tends to zero, the measured backscatter $\hat{\beta}$ (or in the case of radar, the measured reflectivity \hat{Z}) is equal to the “true” backscatter of the medium β (or Z) (Hogan, 2008). Under single scattering regimes, in an optically thicker medium, $\hat{\beta}(r) = \beta(r) \exp[-2 \int_0^r \sigma_{ext}(r') dr']$, and $\hat{Z}(r) = 4\lambda^4 \hat{\beta}(r) / \pi^4 |K_w|^2$. $\hat{\beta}(r)$ is then also called attenuated backscattering coefficient, hereafter also noted ATB. $\hat{Z}(r)$ is then the attenuated reflectivity. Under multiple scattering regimes, there is no rigorous analytical solution of $\hat{\beta}$ (or \hat{Z}). The common feature of the McRALI codes is that they provide range-resolved profiles of Stokes parameters $\mathbf{S}(r) = [I(r), Q(r), U(r), V(r)]$ and account for emitter and receiver ~~shape~~ **shape patterns of the lidar (or radar) system**.

Generally speaking, high-spectral-resolution lidars of any type as well as Doppler radars share basic principles, that is the useful retrieved data are based on the spectral dependence of the recorded signals. Consequently, the Monte Carlo forward simulator has to account for an additional parameter, namely, the frequency shift when a photon interacts with a particle or the molecular atmosphere. The photon frequency has to be tracked through all scattering events until the photon is recorded by a receiver. Of course, it is computationally expensive to store the frequency value of all received photons. A solution developed for the needs of Laser Doppler flowmetry (see, e.g., de Mul et al., 1995) was used by Battaglia and Tanelli (2011) in their DOMUS simulator. It consists to create discrete frequency distribution, which represents the number of photons with a Doppler shift in a certain frequency range. We follow that approach in the latest version of McRALI as our simulators provide Stokes parameters $\mathbf{S}(r, f) = [I(r, f), Q(r, f), U(r, f), V(r, f)]$, tabulated by range r and frequency f at the same time. $\mathbf{S}(r, f)$ is hereinafter referenced to “idealized polarized backscattered power spectrum profiles” or simply “power spectra”. In other words, the result of simulations is a two-dimensional matrix for each of the computed Stokes parameters, without considering the Doppler spectrum folding depending on the measurement technology (step 2 in Fig.1). The generic name McRALI-FR will be used for our Frequency-Resolved simulators.



The simulation conditions (step 1 in Fig.1) consists to set the 3D optical and dynamical properties of the cloudy atmosphere, the surface and main characteristics of the instrument (currently monostatic high-spectral-resolution lidar or a Doppler radar), that are its spatial position, its velocity, the viewing direction, the frequency and the polarization state of the emitted radiation, and the shape of the emitter as well as the receiver. If at least one of those parameters varies, the simulation has to be carried out once more even when 3-D cloudy atmosphere properties remain unchanged. Computations are carried out and profiles of $S(r, f)$ are stored in output files (step 2 in Fig.1). A separated software uses the saved files to account for spectral and polarization characteristics of receivers and computes profiles of corresponding HSR lidar or Doppler radar signals (step 3 in Fig.1), such as the particulate and molecular backscattering coefficient profiles for HSR lidar or reflectivity and Doppler velocity profiles for Doppler radar.

The next five subsections describe in detail how McRALI-FR accounts for the Doppler effect, the modelling of transmitter and receiver patterns, the Lambertian ground surface and present two examples of McRALI-FR configuration in order to simulate the HRS ATLID lidar and the Doppler CPR radar of the EarthCARE mission.

2.2. Modelling of idealized **polarized** backscattered power spectrum profiles

McRALI-FR accounts for phenomena that lead to the frequency shift of the received photon. This is the Doppler effect, which is due to the motion of gas (negligible for radar application), aerosol (negligible for radar application) and cloud particles. We use the term “cloud particles” for precipitating hydrometeors as well.

When both the source and the receiver are moving, the Doppler effect can be expressed in a ground-based frame of reference as follows (see, e.g., Tipler and Mosca, 2008):

$$f_r = f_s \left(\frac{1 - \frac{1}{c} \mathbf{v}_r \cdot \hat{\mathbf{k}}_{s,r}}{1 - \frac{1}{c} \mathbf{v}_s \cdot \hat{\mathbf{k}}_{s,r}} \right) \quad (4)$$

where f_s and f_r denote the frequencies; \mathbf{v}_s and \mathbf{v}_r are the velocity vectors; the source and receiver parameters are identified by the subscripts s and r , respectively; $\hat{\mathbf{k}}_{s,r}$ is the unit vector directed from the source to the receiver; c is the speed of electro- magnetic waves; $\mathbf{a} \cdot \mathbf{b}$ denotes the scalar product. If absolute values $|\mathbf{v}_s|$ and $|\mathbf{v}_r|$ of the velocities are both small compared to the speed c , the series expansion of Eq. (4) takes the form:

$$f_r = f_s \left[1 - \frac{1}{c} (\mathbf{v}_r - \mathbf{v}_s) \cdot \hat{\mathbf{k}}_{s,r} \right] \quad (5)$$

where the terms of the second order or higher than $1/c$ are neglected.

In the multiple scattering conditions, Eq. (5) can be rewritten for the scattering order i as follows:

$$f_{i+1} = f_i \left[1 - \frac{1}{c} (\mathbf{v}_{i+1} - \mathbf{v}_i) \cdot \hat{\mathbf{k}}_{i,i+1} \right], i = 0, 1, \dots, n \quad (6)$$

where n is the total number of the scattering orders. The frequency f_0 of an emitted photon and the vector $\mathbf{v}_0 = \mathbf{v}_{n+1} = \mathbf{v}_{sat}$ of the satellite velocity belong to the set of the input parameters of McRALI-FR.

In general, if a photon was scattered by particles n times, its frequency at the lidar/radar receiver is expressed as follows:

$$f_n = f_0 \left[1 - \frac{1}{c} \sum_{i=0}^n (\mathbf{v}_{i+1} - \mathbf{v}_i) \cdot \hat{\mathbf{k}}_{i,i+1} \right] \quad (7)$$

All terms of the second order or higher than $1/c$ are neglected as above. The unit vector $\hat{\mathbf{k}}_{0,1}$ is directed from the satellite to the first scatterer; $\hat{\mathbf{k}}_{n,n+1}$ is directed from the last scatterer to the satellite. It should be noted that Eq.

(7) is in agreement with Eq. (5) of the work by Battaglia and Tanelli (2011), where, at the scattering order i , the frequency shift Δf_i can also be given by

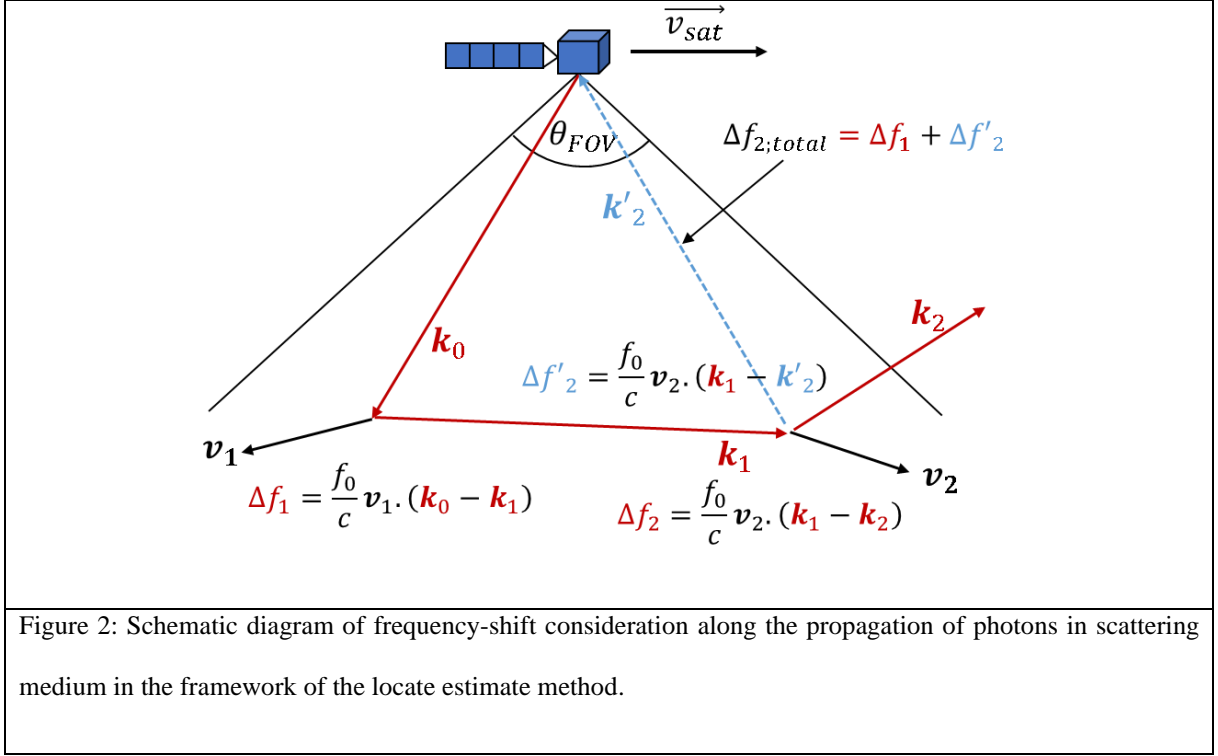
$$\Delta f_i = \frac{f_0}{c} \mathbf{v}_i \cdot (\mathbf{k}_{i-1,i} - \mathbf{k}_{i,i+1}) = \frac{f_0}{c} \mathbf{v}_i \cdot (\mathbf{k}_{i-1} - \mathbf{k}_i) \quad (8)$$

where \mathbf{k}_i is the unit director vector defined between the scatterer i and $i + 1$.

Figure 2 shows a schematic diagram of the frequency-shift consideration, at each interaction, by using the local estimate method. A photon path of two scattering events within the lidar/radar FOV is represented in red. Velocity of the first and the second scatterer is \mathbf{v}_1 and \mathbf{v}_2 , respectively. At the first and second scattering, frequency shift is $\Delta f_1 = \frac{f_0}{c} \mathbf{v}_1 \cdot (\mathbf{k}_0 - \mathbf{k}_1)$ and $\Delta f_2 = \frac{f_0}{c} \mathbf{v}_2 \cdot (\mathbf{k}_1 - \mathbf{k}_2)$, respectively. At each scattering event, McRALI-FR uses the local estimate method to compute the contribution to the detector. ~~For example, at the second scattering event, the total frequency shift is computed as $\Delta f_{2,total} = \Delta f_1 + \Delta f'_2$, where $\Delta f'_2 = \frac{f_0}{c} \mathbf{v}_2 \cdot (\mathbf{k}_1 - \mathbf{k}'_2)$, \mathbf{k}'_2 being the direction from the second scattering event to the detector (dotted blue line) which works with the local estimate method.~~ For example, at the second scattering event, the total frequency shift is computed as $\Delta f_{2,total} = \Delta f_1 + \Delta f'_2 + \Delta f'_{sat}$, where $\Delta f'_2 = \frac{f_0}{c} \mathbf{v}_2 \cdot (\mathbf{k}_1 - \mathbf{k}'_2)$, \mathbf{k}'_2 being the direction from the second scattering event to the detector (dotted blue line) which works with the local estimate method and where $\Delta f'_{sat} = -\frac{f_0}{c} \mathbf{v}_{sat} \cdot (\mathbf{k}_0 - \mathbf{k}'_2)$, \mathbf{v}_{sat} being the satellite velocity. The frequency shift due to satellite motion is deliberately ignored to simplify the scheme but it is present in the codes. Computation of McRALI-FR power spectrum can also be performed following the convention of the ‘‘Gaussian approach’’ proposed by Battaglia and Tanelli (2011).

Note that in the current version of McRALI-FR codes, the wind velocity can be set by the user or provided by Large Eddy Simulation models at their grid scale. Sub-grid turbulence wind velocity is supposed to be homogeneous and isotropic; the turbulence velocity vector \mathbf{v}_{turb} is distributed according to a Gaussian probability density function (PDF) (see, Wilczek et al. (2011) and references therein). The single-point velocity PDF has zero mean and the standard deviation σ_{turb} for all three coordinates of \mathbf{v}_{turb} . The multivariate normal distribution is generated using the Box–Muller method (see, e.g., Tong (1990)).





2.3. Modelling of transmitter and receiver pattern

The current version of McRALI-FR codes only allows the monostatic configuration of transmitters and receivers of lidar or radar systems. Lidar/radar systems can be positioned at any altitude, allowing for ground-based, spaceborne and airborne configurations, with any viewing direction. Lidar transmitter is assumed to be a Gaussian laser beam with $1/e$ angular half-width θ_{laser} . For instance, a Gaussian laser beam pattern with $1/e$ angular half-width θ_{laser} is described by (Hogan, 2008)

$$g_1(\theta) = \exp \left[- \left(\frac{\theta^2}{\theta_{laser}^2} \right) \right] \quad (9)$$

Lidar receiver is assumed to be a top-hat telescope with a half-angle field of view θ_{FOV} and its pattern can be described by (Hogan and Battaglia, 2008)

$$g_2(\theta) = \begin{cases} 1; & \theta \leq \theta_{FOV} \\ 0; & \theta > \theta_{FOV} \end{cases} \quad (10)$$

Radar transmitters and receivers are assumed to be Gaussian antennas with a 3-dB half-width θ_{FOV} . For instance a Gaussian antenna pattern with 3-dB half-width θ_{FOV} is described by (Battaglia et al., 2010)

$$g_3(\theta) = \exp \left[-\ln 2 \left(\frac{\theta^2}{\theta_{FOV}^2} \right) \right] \quad (11)$$

The lidar and radar transmitter and receiver pointing direction is defined by the zenith Θ_0 and azimuthal ϕ_0 angles. Direction cosines (u_0, v_0, w_0) of the initial photon leaving the transmitter, calculated in the same way as Battaglia et al. (2006), are given by:

$$u_0 = a_1 \cos \Theta_0 \cos \phi_0 - a_2 \sin \phi_0 + a_3 \sin \Theta_0 \cos \phi_0 \quad (12.1)$$

$$v_0 = a_1 \cos \Theta_0 \sin \phi_0 + a_2 \cos \phi_0 + a_3 \sin \Theta_0 \sin \phi_0 \quad (12.2)$$

$$w_0 = -a_1 \sin \Theta_0 + a_3 \cos \Theta_0 \quad (12.3)$$

where $a_1 = x_1/(1 + x_1^2 + x_2^2)^{1/2}$, $a_2 = x_2/(1 + x_1^2 + x_2^2)^{1/2}$, $a_3 = 1/(1 + x_1^2 + x_2^2)^{1/2}$ with $x_1 = \tan \eta$ and $x_2 = \tan \xi$. To reproduce the Gaussian pattern of Eq.(9) and Eq.(11), η and ξ are Gaussian-distributed random numbers with zero mean and standard deviation equal to $\theta_{laser}/\sqrt{2}$ and $\theta_{FOV}/\sqrt{2\ln 2}$, respectively. The multivariate normal distribution is generated using the Box–Muller method (see, e.g., Tong (1990)).

2.4. Modelling of a Lambertian surface

The current version of McRALI-FR code uses the Lambertian-surface model. The probability that a photon is scattered by the surface is defined by the albedo Λ . When $\Lambda = 0$, i.e., the black surface model, it is assumed that all photons are absorbed by the surface. Otherwise, i.e., $0 < \Lambda \leq 1$, the photon weight is multiplied by Λ . All photons scattered by the Lambertian surface are depolarized, i.e., have the Stokes parameters of the form $\mathbf{S} = [I, 0, 0, 0]$. The interaction of a photon with the surface is treated in the same way as the scattering by a cloud or aerosol particle or the Rayleigh scattering (Cornet et al., 2010).

First, the new direction of a photon scattered by the surface is random and it is simulated according to the well-known algorithm (see, e.g., Mayer, 2009). The azimuth angle φ is chosen randomly between 0 and 2π :

$$\varphi = 2\pi q_1 \quad (13)$$

as for the zenith angle θ , its cosine $\mu = \cos(\theta)$ is randomly drawn using the expression:

$$\mu = -\sqrt{q_2} \quad (14)$$

where q_1 and q_2 are uniform random numbers between 0 and 1.

Secondly, the local estimate technique (Marchuk et al., 1980) is implemented to calculate at each scattering point the contribution of the photon in the direction of the sensor.

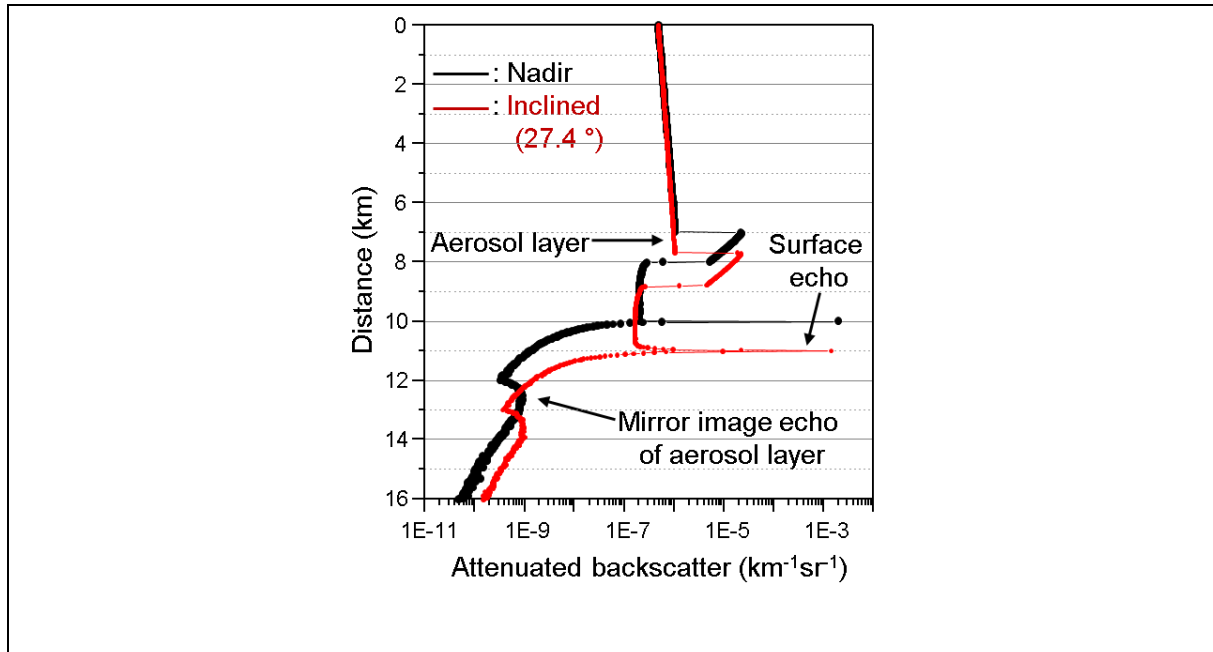


Figure 3: Profiles of the attenuated backscatter (ATB) coefficient (black – nadir looking, red – inclined at 24.7°) as a function of the distance from the lidar position. The lidar altitude is 10 km.

Figure 3 shows as an example the two lidar signals as a function of the distance from the lidar position for two viewing directions (nadir and inclined at 24.7° degrees, chosen so that the distance to the ground is 11 km). The lidar altitude is 10 km, the laser divergence is 0.0007 and the field of view of the receiver is 0.005 radians. An aerosol layer, between altitudes of 2 and 3 km, has an optical thickness of 0.15. The single scattering albedo of 0.91888 and the phase function were computed with the refractive index and microphysical parameters of the coarse mode of desert dust and assuming that particles are spheroids with a distribution of the aspect ratio (Dubovik et al., 2006). The albedo of the Lambertian surface is set to 1.

For the nadir-direction example, the layer at distances between 7 and 8 km that exhibit large values of backscatter coefficient corresponds to the aerosol layer between 2 and 3 km in altitude. At a distance of 10 km, the very large value of the backscatter coefficient corresponds to the echo from the surface. Then, for distances larger than 10 km, the lidar signal drastically decreases. But for the distances from 12 km to 13 km, another layer can be observed. That layer corresponds to a third and higher order of scattering. In this particular case, the triple scattering is of the type “surface – aerosol layer – surface”. It is also called the mirror image and refers to reflectivities measured by airborne or spaceborne radars at ranges beyond the range of the surface reflection (see, e.g., Battaglia et al., 2010). It should be underscored that the mirror image disappears when, during a simulation, one photon can

undergo no more than two scatterings. The same behaviour is observed for the case of the inclined viewing direction. The position of the aerosol layer, the surface echo and the mirror image shift in agreement with corresponding distances from the lidar.

Signal to noise ratio (SNR) of lidars is generally much lower than the SNR of radars. Thus, in practice it is impossible to observe a mirror image with a spaceborne lidar, contrary to a spaceborne radar. Results presented in fig.3 should be considered as a numerical and theoretical exercise that demonstrates the McRALI capacities. The simulations were performed with a very high number of photon trajectories, so that the numerical noise of the McRALI simulator is very low. Under these idealized simulations conditions, we show that McRALI is able to simulate lidar/radar systems with inclined sighting by taking into account the properties of the Lambertian surface, but also the mirror images (as it is seen in certain radar observations). It should be noted that to make the mirror image appear in this simulation, we have imposed a maximum surface albedo equal to 1.

2.5. Doppler radar CPR/EarthCARE configuration

2.5.1. Modelling gas absorption

At 94 GHz (3.2 mm, W-band), the attenuation by atmospheric gas is mainly due to absorption of water vapour and oxygen (Liebe, 1985; Lenoble, 1993; Liou, 2002). Attenuation A (in dB.km⁻¹) by water vapour and oxygen in McRALI codes is computed from Liebe (1985) tabulations. Absorption coefficient σ_{abs} (in km⁻¹) is given by $\sigma_{abs} = 0.2303 A$. Absorption and scattering are treated separately in McRALI codes, as is done in 3DMCPOL (Fauchez et al., 2014), where absorption is considered by a photon weight w_{abs} according to the Lambert-Beer's law (Partain et al., 2000 ; Emde et al., 2011):

$$w_{abs} = e^{-\int_0^S \sigma_{abs}(s') ds'} \quad (15)$$

where ds' is a path element of the photon path.

2.5.2. Doppler spectrum and its relation to reflectivity, Doppler velocity and spectral width

The Doppler Radar community uses the Doppler spectrum $S(r, v)$, a power-weighted distribution of the radial velocities v in the velocity range dv of the scatterers (Doviak and Zrnić, 1984). McRALI-FR codes dedicated to Doppler radar simulations compute $S(r, v)$ by using the first Stokes parameter $I(r, f)$ and the Doppler formula

$v = c f / 2 f_0$. We follow the convention that the Doppler velocity is positive for motion away from the radar. The backscattering coefficient profile $\beta(r)$ is then given by:

$$\beta(r) = \int_{-\infty}^{+\infty} I(r, v) dv \quad (16)$$

The reflectivity $Z(r)$ profile is computed using Eq. (3) and $\beta(r)$. The Doppler velocity profile $V_{Dop}(r)$ is defined as

$$V_{Dop}(r) = \frac{\int_{-\infty}^{+\infty} v I(r, v) dv}{\int_{-\infty}^{+\infty} I(r, v) dv} \quad (17)$$

and the Doppler velocity spectral width profile $\sigma_{Dop}(r)$ is obtained from:

$$\sigma_{Dop}^2(r) = \frac{\int_{-\infty}^{+\infty} [v - V_{Dop}(r)]^2 I(r, v) dv}{\int_{-\infty}^{+\infty} I(r, v) dv} \quad (18)$$

Figure 4 shows, as an example, a simulation of the Doppler power spectrum, the Doppler velocity, the Doppler velocity spectral width and the reflectivity profiles for a CPR/EarthCARE-like radar for a homogenous iced cloud layer with fixed 6 m.s^{-1} downdraft at all altitudes (see details of conditions of simulation in Tab. 1) with ($\sigma_{turb} = 0.5 \text{ ms}^{-1}$) and without ($\sigma_{turb} = 0 \text{ ms}^{-1}$) sub-grid turbulent wind. In a first step, McRALI-FR codes dedicated to Doppler radar simulations compute the idealized Doppler power spectrum density $\mathbf{S}(r, v)$. The first Stokes parameter $I(r, v)$ of the Doppler spectrums (with and without sub-grid turbulent wind) are shown in Fig. 4a and Fig. 4b, respectively. Then, in a second step, a software computes the reflectivity, the Doppler velocity and the Doppler velocity spectral width profiles with Eq.16, Eq.17 and Eq.18, respectively. Multiple scattering (MS) and single scattering (SS) Doppler velocity profiles are superimposed on the MS Doppler spectrum. MS and SS Doppler velocity values are constant within the cloud layer (between 9 km and 10 km of altitude) and are equal to the “true” 6 ms^{-1} vertical velocity, whatever the wind turbulence value is. Due to multiple scattering processes, the apparent Doppler velocity of 6 ms^{-1} can be observed between the cloud base altitude and the ground, contrary to the SS apparent Doppler velocity which appears only in the cloud layer.

~~On Fig. 4c the MS and SS Doppler velocity spectral width profiles are drawn. Under SS approximation, the Doppler velocity spectral width is given by (Tanelli et al., 2002):~~

$$\sigma_{Dop}^2 = \sigma_{turb}^2 + \left(\frac{\rho_R v_{sat}}{2\sqrt{\ln(2)}} \right)^2 \quad (19)$$

~~where v_{sat} is the satellite velocity relative to the ground and ρ_R is the Gaussian (3-dB) FOV half angle.~~

On Fig. 4c the MS and SS Doppler velocity spectral width profiles are drawn. Under SS approximation, the Doppler velocity spectral width σ_{Dop} is given by (Kobayashi et al., 2003; Battaglia et al., 2013) $\sigma_{Dop}^2 = \sigma_{hydro}^2 + \sigma_{shear}^2 + \sigma_{turb}^2 + \sigma_{motion}^2$, where σ_{hydro} is due to the spread of the terminal fall velocities of hydrometeors of different size, σ_{shear} is the broadening due to the vertical shear of vertical wind, σ_{turb} is the broadening of the vertical wind due to turbulent motions in the atmosphere and σ_{motion} is the spread caused by the coupling between the platform motion and the vertical wind shears of the horizontal winds. For a Gaussian circular antenna pattern, assuming zero fall velocities of hydrometeors and no wind shear, σ_{Dop} is given by (Tanelli et al., 2002):

$$\sigma_{Dop}^2 = \sigma_{turb}^2 + \left(\frac{\rho_R v_{sat}}{2\sqrt{\ln(2)}} \right)^2 \quad (19)$$

where v_{sat} is the satellite velocity relative to the ground and ρ_R is the Gaussian (3-dB) FOV half-angle.

Simulated SS Doppler velocity spectral width without turbulence and with turbulence are close to 3.58 m.s⁻¹ and 3.62 m.s⁻¹, respectively. Both computed values are very close to theory predicted values. On the other hand, MS processes together with sub-grid turbulent wind are a source of broadening. For example, at 2 km under the cloud base, $\sigma_{Dop} = 3.75$ m.s⁻¹, which is larger than the SS value.

Vertical profiles of MS and SS reflectivity are shown on Fig. 4d. These profiles are not sensitive to the wind turbulence. MS processes are a source of enhancement of the reflectivity compared to the SS reflectivity and the apparent reflectivity that can be observed under the cloud layer.

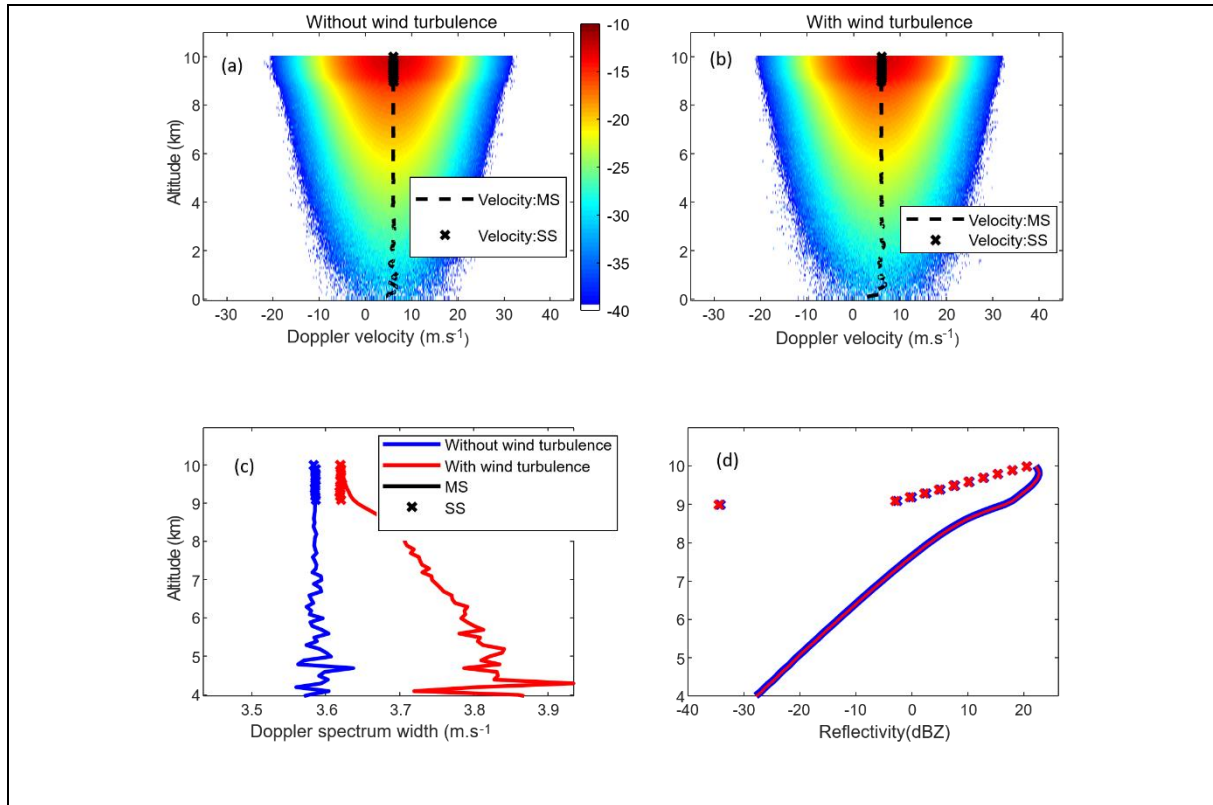


Figure 4: Estimated Doppler spectrum moments for Doppler CPR/EarthCARE-like radar. (a) Doppler spectrum without wind turbulence. Doppler velocity profiles are superimposed (MS: dotted line, SS: cross). (b) Same as (a), but with wind turbulence. (c) Vertical profiles of MS (full lines) and SS (crosses) Doppler spectrum width with wind turbulence (red) and without wind turbulence (blue). ~~Dotted lines indicate predicted values by theory.~~ (d) Vertical profiles of MS (full lines) and SS (crosses) reflectivity with wind turbulence (red) and without wind turbulence (blue). The altitude of the base of the iced homogeneous cloud layer (optical depth of 3) is 9 km. Its geometrical thickness is 1 km.

2.6. High spectral resolution (HRS) lidar ATLID/EarthCARE configuration

2.6.1. Modelling of the emitted laser energy spectrum

The laser transmitter of the ATLID instrument has spectral requirements with a spectral linewidth below 50 MHz (Hélière et al., 2017). In McRALI-FR codes, frequency of the emitted radiation is drawn randomly according to a Gaussian law of average f_0 with a $1/e$ half-width $\sigma_{f_0} = 50$ MHz.

2.6.2. Modelling of thermal molecular velocity distribution

The current version of McRALI-FR codes assumes that each component of molecular velocity is distributed according to the Maxwell-Boltzmann density function with null mean and standard deviation a given by:

$$a = \sqrt{\frac{kT}{m}} \quad (20)$$

where k is the Boltzmann's constant, T is the temperature and m is the molecular mass of gas. The multivariate normal distribution is generated using the Box-Muller method. As a next step, we plan to take into account spontaneous Rayleigh-Brillouin scattering.

2.6.3. Relation of the HSR spectrum to molecular and particulate backscattering coefficient: modelling of a Fabry-Pérot interferometer

One of the important features of HSR lidars is the possibility to retrieve profiles of particle extinction and backscattering coefficient without the need for additional information on the lidar ratio (Shipley et al., 1983; Ansmann et al., 2007 and references therein). HSR technology relies on the principle of measuring Doppler frequency shift resulting from the scattering of photons by molecules (referred as molecular scattering or Rayleigh scattering) and by particles (referred as particulate scattering or Mie scattering). The characteristic shape of HSR spectrum depends on both these two scattering processes: broad spectrum of low intensity for molecules scattering and narrow peak of large intensity for the particles scattering.

The spectral width of the particles peak will be determined by the spectral width of the laser pulse itself along with any turbulence present in the sampling volume. The spectral width of the ATLID laser will be on the order of 50 MHz so that the laser line width would be the dominant factor. Thus, the molecular backscatter will be much broader than the particulate scattering return. This is due to the fact that the atmospheric molecules have a large thermal velocity. Assuming Gaussian molecular thermal velocity distribution with a half-width at $1/e$ of the maximum, molecular broadening γ_m can be written (Bruneau and Pelon, 2003):

$$\gamma_m = \frac{2}{\lambda_0} \sqrt{\frac{2kT}{m}} \quad (21)$$

If $T = 230$ K, then γ_m is in the order of 2 GHz, which is about 40 times larger than the laser line width. Thus, using interferometers (such as a Fabry-Pérot interferometer (FP) equipping the ATLID/EarthCARE lidar) and

appropriate signal processing (Hélière et al., 2017), the molecular and particulate contributions of the lidar backscattered signal can be separated. Then particulate and molecular backscattering coefficients profiles (attenuated or apparent attenuated backscattering coefficient or simply attenuated backscatter, also noted ATB) can be separately determined. In this study, we suppose that the FP interferometer has the following parameters. The free spectral range is 7.5 GHz, the finesse is 10, and the FP is centered at the wavelength 355 nm. The cross-talk effects were taken into account according to the work by Shipley et al. (1983). The coefficients of the cross-talk correction were computed using an Airy function (see, e.g., Vallée and Soares, 2004), which describes the FP transmission spectrum, assuming a Gaussian molecular thermal velocity distribution with a half-width at $1/e$ of the maximum γ_m (Eq. 21). This method determines four calibration coefficients corresponding to the fraction of cloud/aerosol backscatter in the molecular and particulate channels (C_{am} and C_{aa} , respectively), and the fraction of molecular backscatter in the molecular and particulate channels (C_{mm} and C_{ma} , respectively). The calculation method of these coefficients is described in detail in Shipley et al. (1983). As an indication, for the present study in the ATLID/EarthCARE lidar configuration, these coefficients have the following values: $C_{mm} = 0.543$, $C_{ma} = 0.457$, $C_{aa} = 0.998$ and $C_{am} = 0.002$. **Note that the cross-talk coefficients used in this paper assume ideal behavior of the ATLID FP interferometer. In practice, the Airy function will be "blurred" due to the effects of non-ideal collimation of the beam, frequency jitter, surface roughness and so on. All these factors end to decrease the peak transmission and lower the full width at half maximum (see the Fig. 9 in Pereira do Carmo et al., 2019). It is important to keep in mind that all the calculations shown in this paper are merely "EarthCARE like" but with an idealized modeled FP interferometer.**

Figure 5 shows particulate and molecular ATB profiles for ATLID/EarthCARE-like lidar. We consider in this example an ice cloud, corresponding to a homogenous layer with optical depth of 3 between 9 and 10 km in altitude (see details of simulation conditions in Sect. 3.1). In the first step, McRALI-FR codes, dedicated to HRS lidar simulations, compute the HRS spectrum $\mathbf{S}(r, f)$. The first Stokes parameter $I(r, f)$ of the MS HRS spectrum is shown in Fig. 5a. The peak of intensity (in red) centered at 0 GHz between 9 and 10 km of altitude, corresponds to the position of the cloud. It is the contribution of the cloud particles (~~named by abuse of language~~ the so-called “Mie contribution”). This spectrum is also characterized by the molecular contribution (Rayleigh contribution). The intensity of the spectrum below the cloud is lower than the intensity of the spectrum above the cloud due to particulate extinction. In Fig. 5b, the MS (computed with McRALI-FR) and SS (computed from SS theory) vertical profiles of spectral width are represented. We note a very good agreement between the SS theoretical and MS simulated values, both at the cloudy and molecular levels. This suggests that MS effects have very little impact on

spectral width. Then, in a second step, ~~a software models a FP interferometer that~~ a simulated FP interferometer separates the particulate contribution from the molecular contribution and provides the vertical profiles of particulate and molecular ATB as shown on Fig. 5c. The total ATB calculated directly from the spectrum, SS molecular and SS particulate backscatter profiles are also represented. Above the cloud, particulate ATB is not strictly zero and molecular ATB is not strictly equal to total ATB because of the FP remaining cross-talk effects (see above). In the cloudy part between 9 and 10 km altitude, the molecular and particulate ATB logically decrease exponentially with the depth. The SS backscatter profiles decrease faster with depth than the MS backscatter profiles, revealing that MS effects on ATB are not negligible. Under the cloud, molecular ATB is almost equal to total ATB. It is likely worth pointing out the quasi exponential decay of the below cloud molecular return towards single scattering return levels. This result is consistent with the cases shown by Donovan (2016). Particulate ATB is almost zero. Some non-zeros values exist due to FP cross-talk effects but also due to Monte Carlo noise and MS processes.

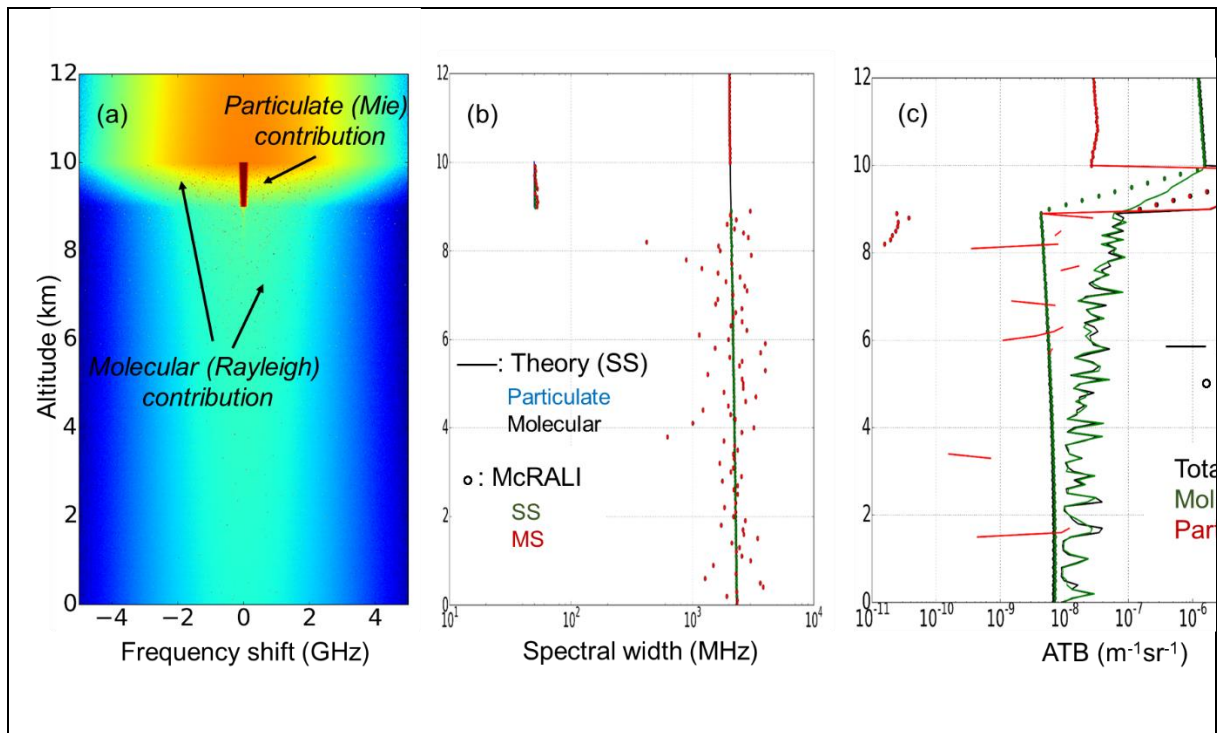


Figure 5: (a) Vertical profile of MS HSR spectrum for ATLID-like lidar. (b) Spectral width profiles. SS and MS spectral width profiles computed by McRALI (circle) are in green and red, respectively. Theoretical SS molecular and SS particulate width profiles (full line) are in black and blue, respectively. (c) Vertical profiles of MS (line) and SS (circle) backscattered coefficient (ATB). Total, molecular and particulate signals are in

black, green and red, respectively. The altitude of base of the iced homogeneous cloud layer (optical depth of 3) is 9 km. Its geometrical depth is 1 km.

3. Assessment of errors induced by NUBF on lidar and radar data

The objectives of this section are to investigate effects of cloudy atmosphere having 3D spatial heterogeneities under multiple scattering regime on HRS lidar and Doppler data by using McRALI-FR simulators. One of the simplest shapes of heterogeneous cloud to study this kind of effects is the idealized “step” cloud defined in the international Intercomparison of 3D Radiation Codes (I3RC) phase 1 (Cahalan et al., 2005). The main interest is to model behaviour in the vicinity of the single isolated jump in optical depth. With this in mind, we prefer to use an even more simplistic cloud model, the box-cloud, described in the following paragraph. A detailed statistical analysis at different averaging scales of representative fine-structure 3D cloud field effects on lidar and radar observables is beyond the scope of this paper and will be investigated in a future work.

3.1. Conditions of simulation and definition of the box-cloud

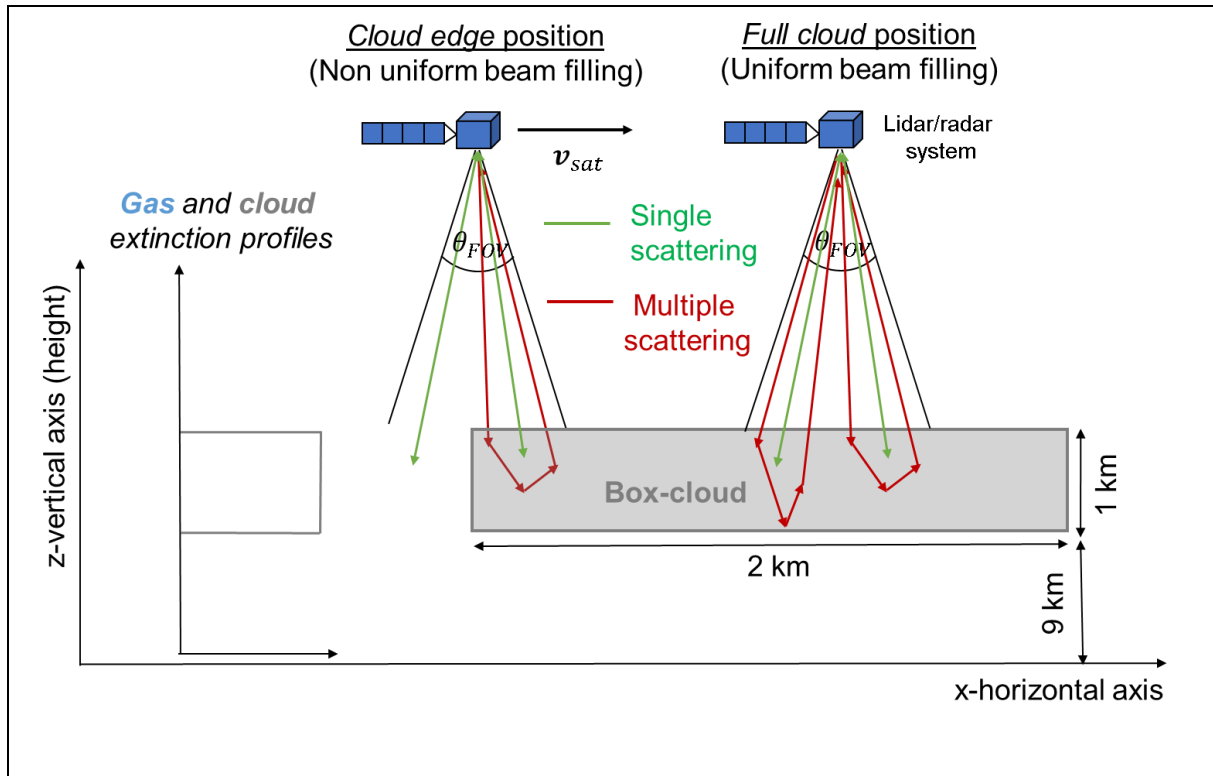


Figure 6: Schematic representation of two specific positions of spaceborne lidar/radar system relative to the idealized box-cloud. The box-cloud base altitude is 9 km, its geometrical thickness is 1 km, and its x-horizontal and y-horizontal extension is 2 km and infinite, respectively. Cloud vertical extinction profile is constant. In the two positions, single and multiple scattering photon paths examples are represented in green and red arrows, respectively.

The box-cloud base altitude is 9 km, its geometrical thickness is 1 km, and its x-horizontal and y-horizontal extension is 2 km and infinite, respectively. Temperature and pressure vertical profiles assume 1976 U.S. standard atmosphere models. Optical cloud properties are characterized by the extinction coefficient set to 0.1, 1.0 and 3 km^{-1} .

Figure 6 shows a representation of two specific positions of spaceborne lidar/radar system relative to the idealized box-cloud. Cloud optical properties are spatially homogeneous within the box-cloud. When the lidar/radar system is just above the cloud edge, the NUBF effect can be significant whereas it is null when the system is completely over the cloud. Table 1 summarizes the conditions of McRALI-FR simulations of data from the HSR ATLID lidar and Doppler CPR radar of the EarthCARE mission when the heterogeneous box-cloud is considered.

At a wavelength of 355 nm (lidar configuration), gas scattering properties are based on Hansen and Travis (1974). Gas Doppler broadening is computed assuming Maxwell-Boltzmann distribution as presented in Sect. 2.4.1. The scattering matrix was computed for a gamma size-distribution of ice crystals having an effective diameter of 50 μm and the aspect ratio of 0.2. The refractive index value was $= 1.3243 + i \cdot 3.6595 \cdot 10^{-9}$; the surface of particles was supposed to be rough (Yang and Liou, 1996). Optical characteristics were computed using the improved geometric optics method (IGOM) (Yang and Liou, 1996). The asymmetry parameter is $g = 0.73$, which is in agreement with experimental data for cirrus clouds (Gayet, 2004; Shcherbakov et al., 2006). Single scattering albedo is set to 1.0.

At 94 GHz (radar configuration), we assumed Henyey-Greenstein phase function with asymmetry parameter $g = 0.6$. Single scattering albedo is set to 0.98. These last two values are taken from Battaglia and Tanelli (2011) for the scenario involving a deep convective core with graupel. Wind vertical velocity (downdraft) is set to 6 ms^{-1} . We assume no wind turbulence nor particle sedimentation velocity. For a cloud layer at an altitude of around 9 km, the pressure, the temperature and the relative humidity can be set to 308 hPa, 229.7 K and 100%, respectively

(1976 U.S. standard atmosphere); then gas absorption $\sigma_{abs} \approx 2 \times 10^{-5} \text{ km}^{-1}$. We assumed that this value is small enough to neglect the gas absorption for the simulations carried out in this work.

Spacecraft velocity and altitude are set to $v_{sat} = 7.2 \text{ km.s}^{-1}$ and 393 km, respectively. The lidar/radar system pointing angle is set to 0° . The lidar transmitter is assumed to be a Gaussian laser beam with $1/e$ angular half-width $\theta = 22.5 \mu\text{rad}$. The lidar receiver is assumed to be a top-hat telescope with a half-angle field of view $\theta_{FOV} = 32.5 \mu\text{rad}$, which represents a ground beam footprint of around 30 m. Radar transmitters and receivers are assumed to be Gaussian antenna with a 3-dB half-width $\theta = \theta_{FOV} = 0.0475^\circ$, which represents a ground beam footprint of around 660 m.

McRALI-FR code simulates the multiple scattering and single scattering idealized HSR and Doppler spectrum for lidar and radar configurations, respectively. Lidar spectra are computed for five positions (x-horizontal ground projected distance) relative to the box-cloud edge. Lidar positions values are $x = -8.6, -4.0, 0, 4.0$ and 8.6 m . Indeed, the ratio (we also talk about cloud coverage) of the cloudy part inside the ATLID lidar FOV divided by the full lidar footprint area at the altitude of 10 km, is 10, 30, 50, 70 and 90 %, respectively. Then, a software computes apparent molecular and particulate backscattering coefficient profiles, assuming that ATLID/EarthCARE lidar is equipped with FP interferometers (see Sect. 2.5.3). For radar configuration, simulations are carried out every 100 m; Doppler spectra are computed for position values fixed at $x = -500, -250, 0, 250$ and 500 m . Then, a software computes reflectivity, Doppler velocity and Doppler velocity spectrum width profiles with the help of Eq. (16), (17) and (18).

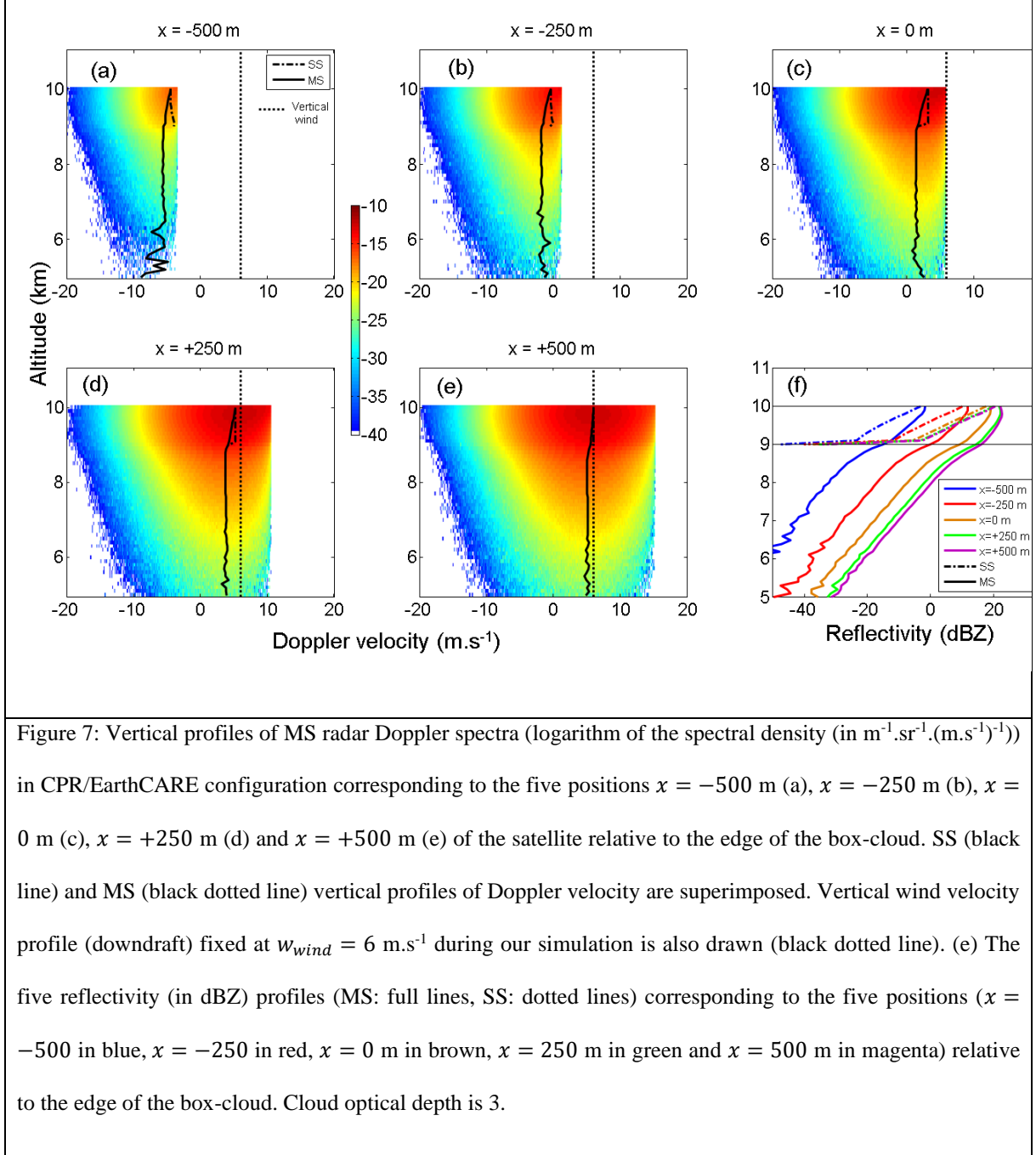
	ATLID/EarthCARE type lidar	CPR/EarthCARE type radar
<u>Characteristics of lidar and radar systems</u>		
Spacecraft altitude	393 km	393 km
Projected spacecraft velocity	7.2 kms ⁻¹	7.2 kms ⁻¹
Wavelength or frequency	355 nm	94 GHz
Pointing angle	0°	0°
Emitter model and beam half-width	Gaussian (1/e), 22.5 μ rad	Gaussian (3-dB), 0.0475°
Receiver model and FOV half-angle	Top hat, 32.5 μ rad (1)	Gaussian (3-dB), 0.0475°
Beam footprint	~26 m	~650 m
<u>Characteristics of cloudy atmosphere</u>		
Temperature and pressure vertical profiles	U.S. standard atmosphere model (1976)	No gas (4)
Gas optical properties vertical profile	Hansen and Travis (1974)	No gas (4)
Gas Doppler broadening	Maxwell-Boltzmann distribution	-
Geometry of box-cloud model	x-wide = 2 km, y-depth = 100 km, z-thickness = 1 km	
Cloud top and base altitude	9-10 km	
Cloud geometrical depth	1 km	
Cloud extinction	0.1, 1.0, 3 km ⁻¹	
Single scattering albedo	1.0	0.98
Cloud phase function	Rough ice crystals, $R_{eff} = 25 \mu\text{m}$ (Yang and Liou, 1996)	Henyey-Greenstein
Asymmetry parameter	0.73	0.6
Interferometer	Fabry-Pérot	-
Vertical wind velocity	0 ms ⁻¹	6 ms ⁻¹ (downdraft) (5)
Wind turbulence (standard deviation σ_{turb} of Gaussian isotropic model)	0 ms ⁻¹	0 ms ⁻¹
Particle sedimentation velocity	0 ms ⁻¹	0 ms ⁻¹
<u>Simulated quantities from idealized range and frequency resolved Stokes parameters (2)</u>		
Relative horizontal position of lidar/radar system to the cloud edge	x = -8.6, -4.0, 0, 4.6 and 8.6 m	x = -500, -250, 0, 250 and 500 m (7)

Power spectrum profiles	High spectral resolution spectrum	Doppler spectrum
Vertical profiles	Molecular, particle and total backscatter, depolarization ratio	Doppler velocity, Doppler spectral width, reflectivity
Vertical resolution (3)	100 m	100 m
Power spectrum interval resolution	0.01 Hz	1 ms ⁻¹

Table 1: Description of the simulation conditions presented in this work. This table summarizes the characteristics of the ATLID/EarthCARE type lidar and the CPR/EarthCARE type radar and properties of cloudy atmosphere and quantities computed by McRALI-FR codes. (1) Other simulations are performed with FOV half-angle of 325 μ rad. (2) Idealized means that receiver noise, along-track integration and Nyquist folding are ignored. (3) ATLID and CPR vertical resolution is 100 m from -1 to 20 km in height. (4) Gas absorption (Liebe, 1985) can be taken into account. (5) A specific case with a two-layer cloud with 6 ms⁻¹ and -6 ms⁻¹ vertical wind velocity in the top layer and bottom layer, respectively, is also studied. (7) For radar configurations, simulations are also carried out every 100 m according to the horizontal distance.

3.2. CPR/EarthCARE configuration

3.2.1. NUBF effects on Doppler radar data: Doppler spectrum and reflectivities



Figures 7a, b, c, d and e show vertical profiles of MS radar Doppler spectra density in CPR/EarthCARE configuration corresponding to the five positions of satellite relative to the edge of the box-cloud with optical depth

set to 3. Regardless of the satellite position, Doppler spectra correspond to negative Doppler velocity values. This is consistent with the convention that the Doppler velocity is positive for motion away from the radar. As the satellite approaches the edge of the cloud and carries on, the NUBF effect decreases. Indeed, the Doppler spectrum becomes more and more symmetrical. The asymmetric shape of the Doppler spectrum is due to zero values beyond a critical value of Doppler velocity v_{crit} . As an example, $v_{crit} \approx -3.4 \text{ ms}^{-1}$ in Fig. 7a. The explanation of v_{crit} value is purely geometric. The Doppler broadening is dominated by the Doppler fading due to satellite motion. Under SS approximation, neglecting wind velocity, Doppler shift is given by $\Delta v = \frac{1}{2} \mathbf{v}_{sat} \cdot (\mathbf{k}_0 - \mathbf{k}'_1)$, with $\mathbf{k}_0 = -\mathbf{k}'_1$. Assuming \mathbf{v}_{sat} with x-horizontal positive component, \mathbf{k}_0 in the (z-x) vertical plan with k_x x-horizontal component, then $\Delta v = -v_{sat} \cdot k_x$. Assuming that satellite is at the x-horizontal d distance to the box-cloud edge and at the z-vertical D distance above the cloud, with a vertical (downdraft) wind velocity v_{wind} fixed at 6 ms^{-1} , then $v_{crit} = -v_{sat} d / (d^2 + D^2)^{1/2} + v_{wind}$. For $x = -500, x = -250, x = 0, x = 250$ and $x = 500 \text{ m}$, $v_{crit} = -3.4, v_{crit} = -1.3, v_{crit} = 6, v_{crit} = 10.7$ and $v_{crit} = 15.4 \text{ m.s}^{-1}$, respectively. These values are very close to those estimated from the five respective power spectra of Fig. 7.

Figure 7f also shows the five reflectivity profiles corresponding to the five positions of the satellite relative to the edge of the box-cloud. MS reflectivity profiles are larger than SS reflectivity profiles because MS processes logically increase the reflectivity value. We can also see MS effects on the apparent reflectivity that is non-null under the cloud layer, contrary to the SS apparent reflectivity. At the same time, as the satellite approaches the edge of the cloud and keeps moving forward, SS and MS apparent reflectivity profiles values increase, due to the fact that the NUBF effect decreases. Many studies have focused on the NUBF effect on rain fields retrieved by radar from space (Amayenc et al., (1993), Testud et al., (1996); Durden et al., (1998); Iguchi et al., (2009)). Iguchi et al., (2000) showed that the NUBF effect could be accounted for by a factor determined from horizontal variation of attenuation coefficient. Our simulations are coherent with literature. Detailed investigation of the NUBF effect on reflectivity profiles for spaceborne cloud radar will be carried out in a later work.

3.2.2. NUBF effects on Doppler velocity and Doppler spectrum width

Figure 7 shows the SS and MS vertical profiles of Doppler velocity superimposed on the five power spectra for the five positions of the satellite relative to the box-cloud edge $x = -500, -250, 0, 250$ and 500 m . Since each power spectrum has no value beyond the v_{crit} velocity, which is due to the NUBF effect, it is obvious that the profile of the apparent Doppler velocity is different from the profile of the vertical wind velocity fixed at 6 ms^{-1} . Figure 8 shows the MS and SS apparent Doppler velocity and Doppler spectrum width computed every 100 m

along the horizontal axis. These quantities are estimated at different altitudes (cloud top, middle and base) and are plotted as a function of the satellite distance to the box-cloud left edge. Differences between apparent Doppler velocities are in general small (around 1 m.s^{-1}) whatever the altitude is, and differences between MS and SS Doppler velocities are also small, no larger than 1 m.s^{-1} at the bottom of the cloud. The same conclusions can be drawn for Doppler spectrum width where differences are no larger than 0.3 m.s^{-1} . This implies that MS processes do not play an important role in the estimation of the apparent Doppler velocity nor in the estimation of apparent spectrum width (for the specific conditions of simulation with the box-cloud) compared to the NUBF effect. The NUBF Doppler velocity bias between apparent Doppler velocity and “true” vertical wind velocity fixed at 6 m.s^{-1} is around -10, -5, -3, -2 and -1 ms^{-1} at $x = -500, -250, 0, 250, 500 \text{ m}$, respectively.

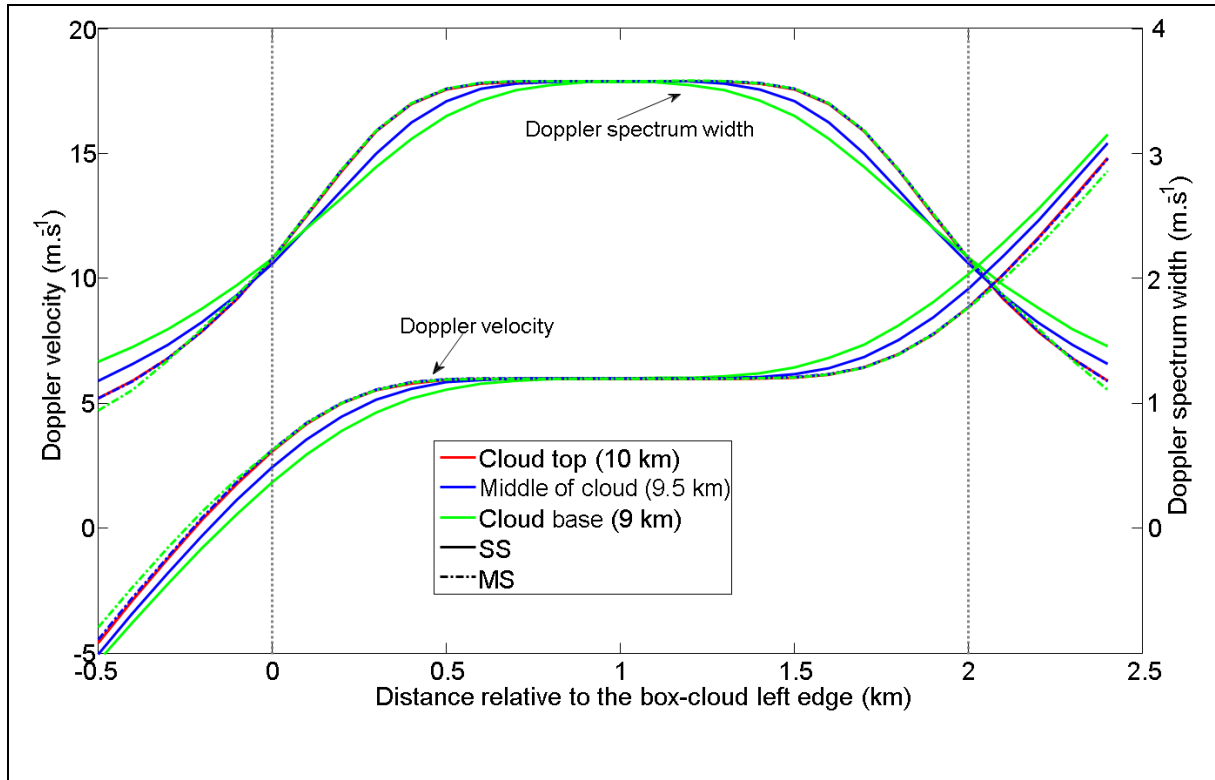


Figure 8: MS (full lines) and SS (dotted line) apparent Doppler velocity and Doppler spectrum width as a function of the distance of the satellite relative to the box-cloud left edge. Values are computed at cloud top (10 km of altitude, in red), middle (9.5 km of altitude, in blue) and base (9 km of altitude, in green). Optical thickness of the box-cloud is 3. Simulations are done every 100 m.

In general NUBF bias of Doppler velocity can be expressed as a function of the distribution of the radar reflectivity (Tanelli et al., 2002). An estimate of NUBF bias of Doppler velocity can be obtained by considering the difference

between the Doppler velocity computed with a satellite velocity (i.e. $v_{sat} = 7.2 \text{ km s}^{-1}$) and the Doppler velocity computed with a satellite velocity set to 0 m s^{-1} (Battaglia et al., 2018). Sy et al. (2014) showed that the NUBF bias of Doppler velocity is correlated to the horizontal gradient of reflectivity and demonstrated that theoretical proportional coefficient α value is bounded between 0.165 and $0.219 \text{ m s}^{-1}(\text{dBZ.km}^{-1})^{-1}$. Kollias et al. (2014) estimated this proportional coefficient value close to $\alpha = 0.23 \text{ m s}^{-1}(\text{dBZ.km}^{-1})^{-1}$ for along-track horizontal integration of 500 m (i.e. Doppler CPR/EarthCARE resolution) and for all their available simulations performed with a cirrus cloud and a precipitation system. Figure 9 shows Doppler velocity NUBF bias as a function of horizontal reflectivity gradient for horizontal integration of 500 m , for four positions relative to the box-cloud edge (-200 m , 100 m , 0 m and 100 m). Computations are carried out for different optical depths of the box-cloud are 0.1 , 1 and 3 . We note that the α value is between 0.14 and $0.16 \text{ m s}^{-1}(\text{dBZ.km}^{-1})^{-1}$ and is almost independent of the position of satellite relative to the box-cloud edge. If satellite position is just above the cloud edge, the proportional coefficient value is close to $0.15 \text{ m s}^{-1}(\text{dBZ.km}^{-1})^{-1}$, a value close to value obtained by Sy et al. (2014).

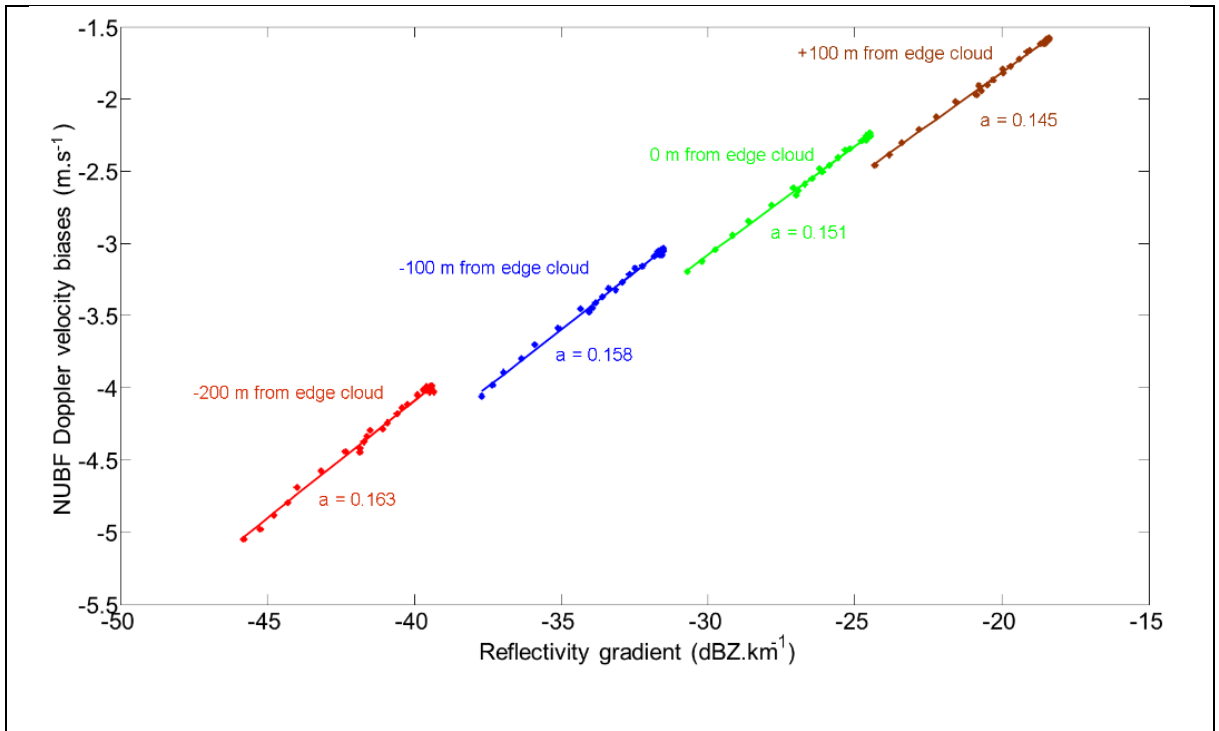


Figure 9: NUBF velocity bias as a function of horizontal reflectivity gradient for horizontal integration of 500 m , estimated for four positions relative to the box-cloud edge: -200 m (red), -100 m (blue), 0 m (green) and $+100 \text{ m}$ (brown). Optical depths of box-cloud are 0.1 , 1 and 3 . Vertical (downdraft) velocity is set to 6 m s^{-1} .

Proportional coefficient value α (in $\text{m.s}^{-1}(\text{dBZ.km}^{-1})^{-1}$) between NUBF velocity bias and horizontal reflectivity gradient is also given.

3.2.3. Effects of vertically heterogeneous wind velocity on Doppler velocity

A first study of the effects of multiple scattering on the Doppler velocity vertical profile in case of vertically heterogeneous wind velocity is carried out, for a very specific case, in CPR/EarthCARE configuration. Indeed, for a homogeneous cloud layer with a base altitude of 9 km and with geometrical thickness of 1 km, the vertical velocity is set to 6 m.s^{-1} (downdraft) and to -6 m.s^{-1} (updraft) in the upper and the lower part of the cloud layer, respectively. Figure 10 shows vertical profiles of MS radar Doppler spectrum and the MS and SS Doppler velocity profiles computed with McRALI-FR. The measured Doppler velocity under SS regime (black dotted line in Fig. 10) is equal to 6 m.s^{-1} (-6 m.s^{-1}) in the upper (lower) part of the cloud, the SS Doppler velocity can be used as the reference of the true velocity. In the upper part of the cloud, measured MS Doppler velocity is 6 m.s^{-1} , equals the true velocity. In the lower part of the cloud, the measured MS Doppler velocity is biased by multiple scattering processes with a value not smaller than -3 m.s^{-1} , contrary to the true velocity of -6 m.s^{-1} in this cloudy part. For altitudes less than 7 km, we can also note that multiple scattering processes can lead to a Doppler velocity lower than -6 m.s^{-1} .

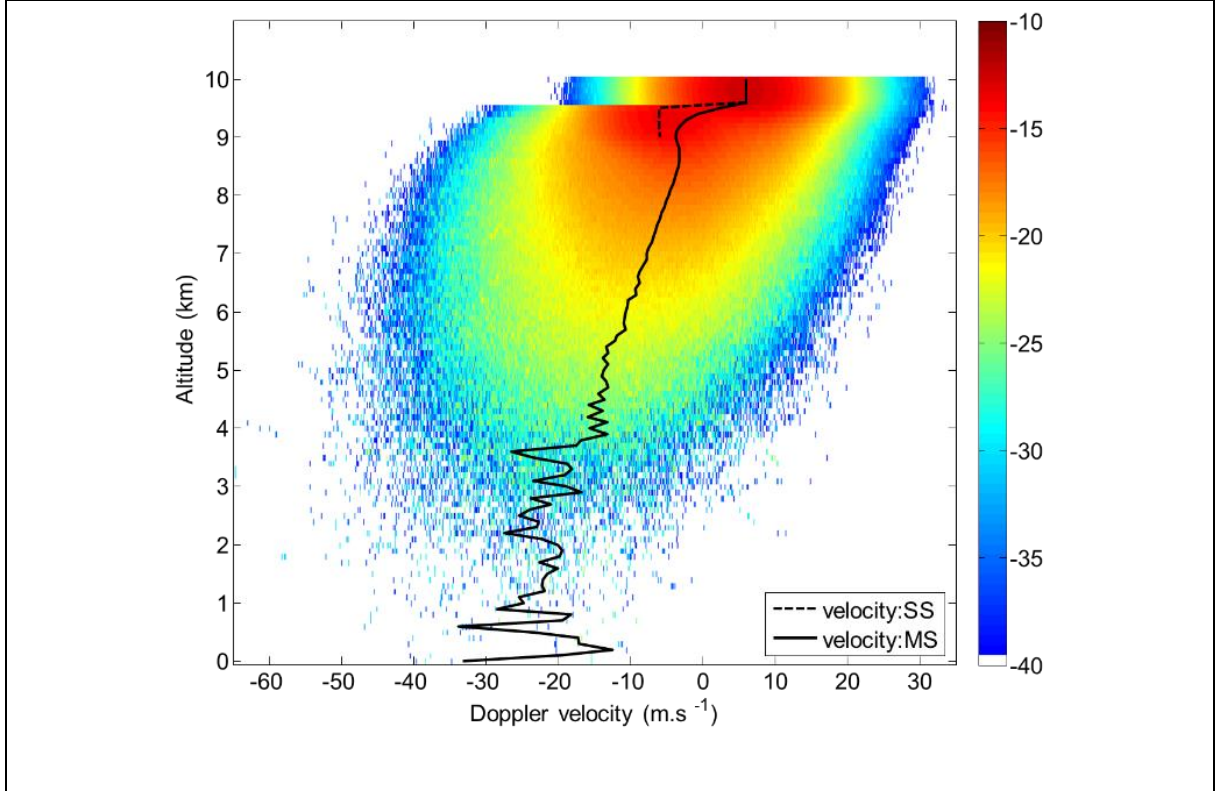


Figure 10: Vertical profiles of MS radar Doppler spectrum (logarithm of the spectra density (in $\text{m}^{-1} \cdot \text{sr}^{-1} \cdot (\text{m} \cdot \text{s}^{-1})^{-1}$)) in CPR/EarthCARE configuration simulated by McRALI-FR. The MS Doppler velocity (black line) and SS (black dotted line) vertical profiles of Doppler velocity are superimposed. The homogeneous cloud layer base altitude is 9 km, its geometrical thickness is 1 km. The vertical velocity is set to $6 \text{ m} \cdot \text{s}^{-1}$ (downdraft) and to $-6 \text{ m} \cdot \text{s}^{-1}$ (updraft) in the upper and the lower part of the cloud layer, respectively. Optical depth is 3.

3.3. ATLID/EarthCARE configuration

3.3.1. NUBF effects on the HRS lidar data

In order to investigate the NUBF effects on HSR lidar observables under MS regimes we firstly compare simulation results carried out with the box-cloud (full 3D simulation) of optical depth equal to 3 (hereafter called 3D cloud) with simulations performed under the Plane-Parallel and homogeneous cloud model (hereafter called PP cloud) and under the Independent Column Approximation (or independent pixel approximation) cloud model (hereafter called ICA cloud). PP theory and ICA assumption are commonly used to assess the radiative effects of inhomogeneous cloud when cloud unresolved variability and net horizontal fluxes are ignored, respectively (Marshak and Davis, 2005). For the specific case of the satellite position relative to the box-cloud edge is $x =$

−4.0 m (see Fig. 11a), the cloud coverage α inside the lidar receiver FOV is 30% (see Sect. 3.1). As cloud optical depth (COD) is set to 3, this implies that mean COD weighted by cloud coverage inside the lidar footprint is 0.9, the assigned value to the optical depth of the PP cloud (Fig. 11b). In other words, PP profile can be considered as a profile computed with a homogeneous cloud with optical depth equal to the mean optical depth of the cloudy part weighted by the cloud cover of the 3D cloud. The ICA simulation is carried out by averaging 30 % of a simulation with a homogeneous cloud with COD of 3 and 70% of a simulation in a clear sky atmosphere (Fig. 11c). In other words, ICA profiles can be considered as a profile averaged over columns (two columns in this case) weighted by the cloud coverage.

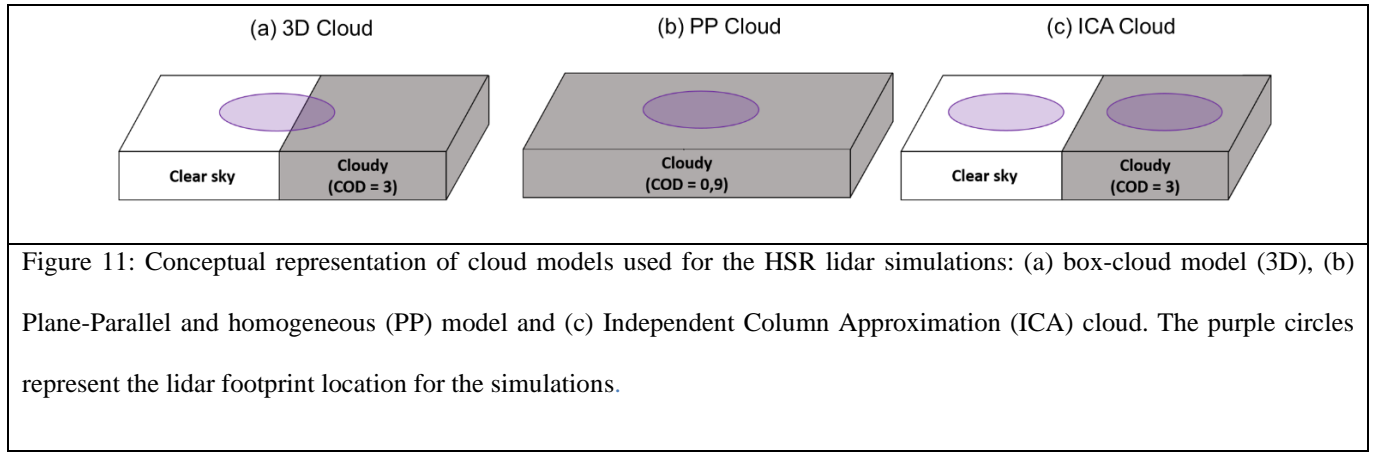
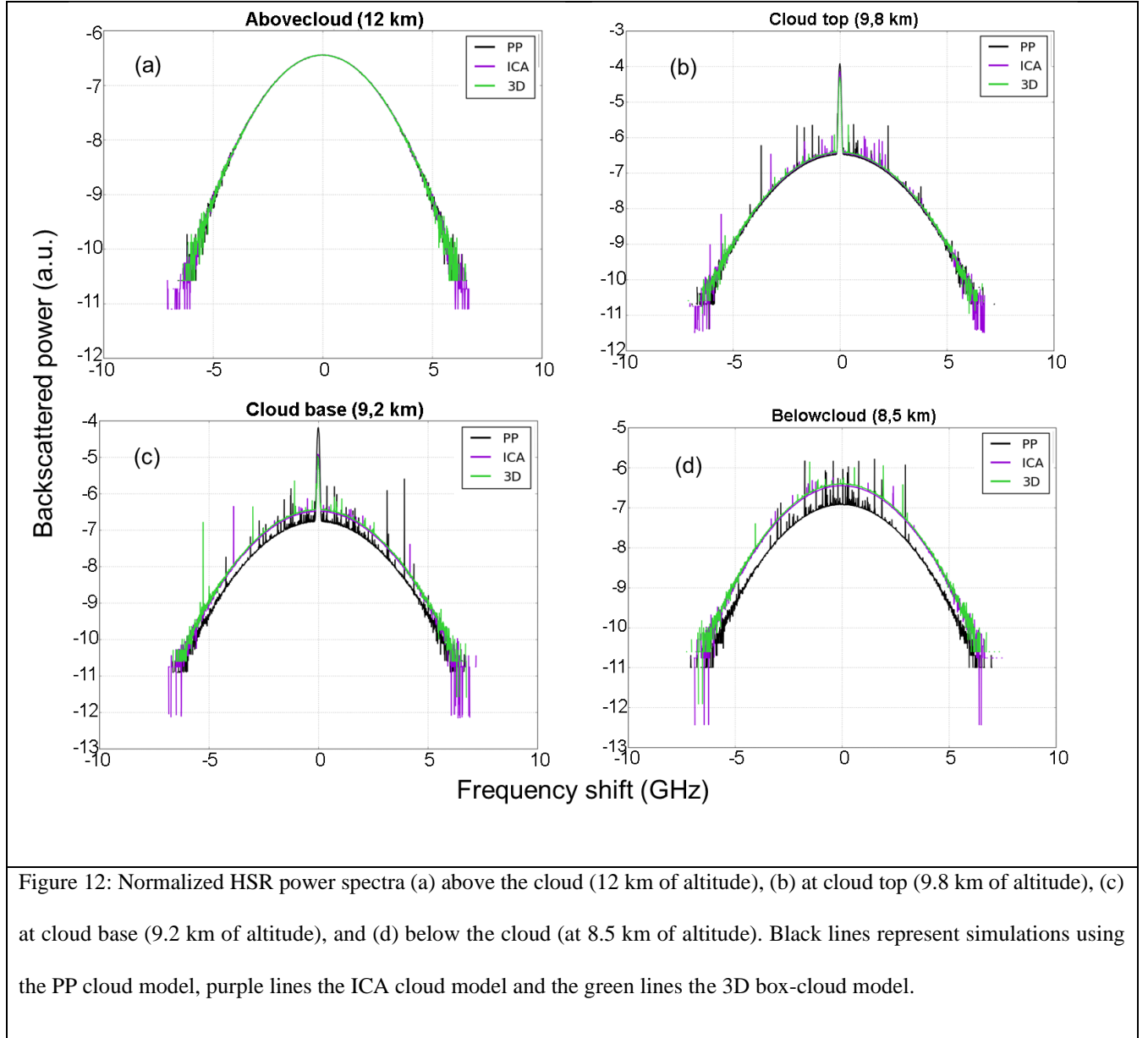
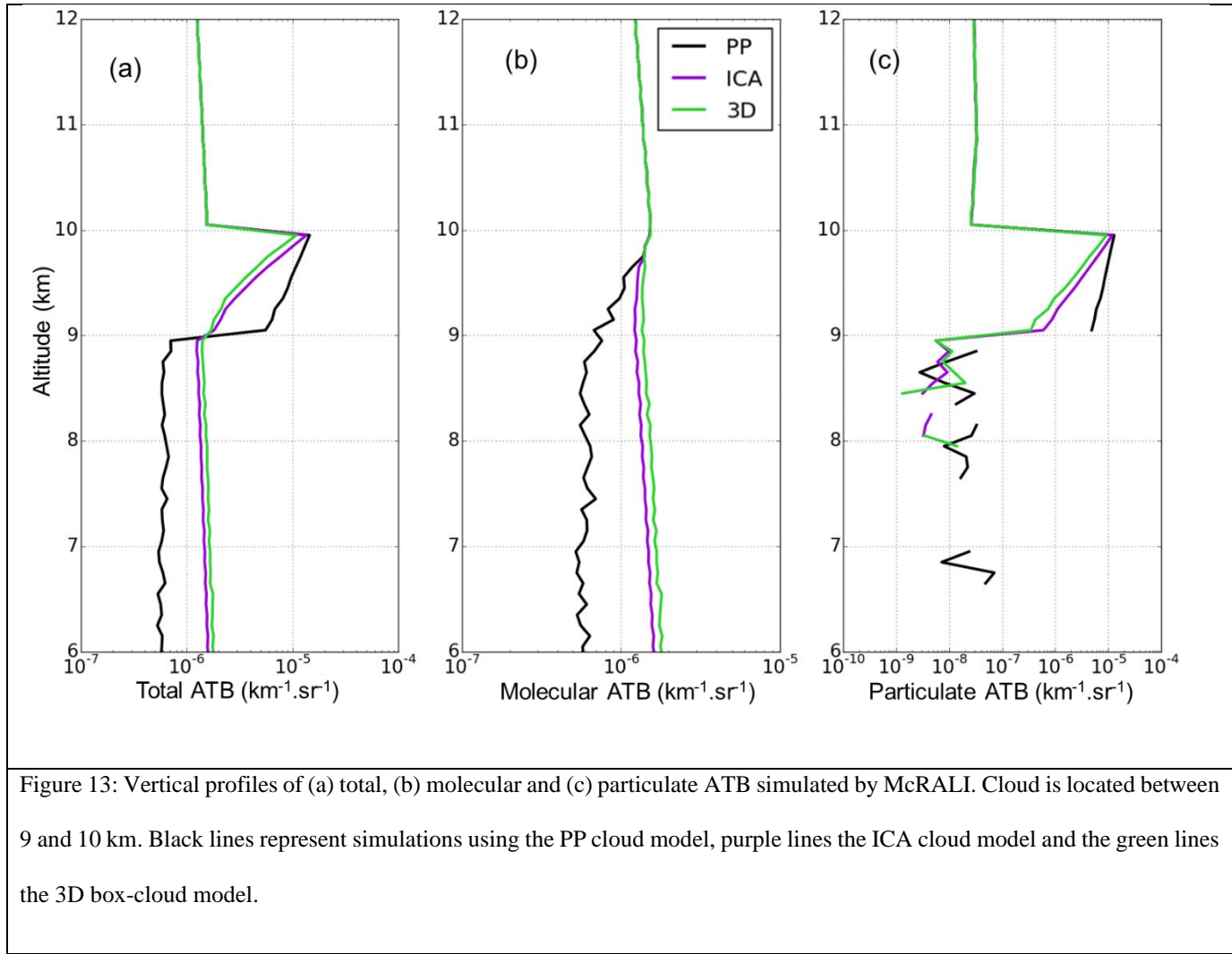


Figure 12 shows the HRS spectra simulated by McRALI-FR for the three cloud models at four altitude levels: above the cloud (12 km, Fig. 12a), at cloud top (9.8 km, Fig. 12b) and base (9.2 km, Fig. 12c) and below the cloud (8.5 km, Fig. 12d). In the clear sky region above the cloud (Fig. 12a), the three frequency spectra line up very well, as expected, because the lidar laser beam has not yet been scattered by the cloud. A similar feature is observed at cloud top (Fig. 12b), whereas a few spikes can be seen on the molecular broad spectrum. Deeper in the cloud (Fig. 12c) and below (Fig. 12d), spikes are more numerous with higher intensity. These spikes are simulation artefacts. They are caused by specific events of multiple scattering, namely, by the cases when forward scattering is involved during a photon random path. For example, the photons can be first scattered by air molecules inducing a large frequency shift, then by cloud particles inducing a large contribution due to the highly forward-peaked phase function. The scattering phase function of ice particles spans about six orders of magnitude. Thus, the forward scattered photons have a weight, which is several orders of magnitude larger than those scattered in other directions. At the same time, such cases occur rarely. Consequently, we should carry out simulations with an

unrealistic number of photons emitted by the lidar to smooth spikes, which is not possible. Spikes are not observed on simulations under the single scattering regime (not shown here).



One can clearly see that the intensity of the central Mie (particulate) peak computed by ICA and 3D is lower than the one computed by the PP simulation. The opposite behaviour is observed concerning the Rayleigh (molecular) scattering region: the broad and low intensity spectra for ICA and 3D simulations show larger values (in intensity) compared to PP simulation, and for the full range of frequency shift. The same observation can be made below the cloud.



In order to obtain the molecular and particulate ATB vertical profiles for the three cloud models (Fig. 13b and Fig. 13c), the HSR spectra are filtered by a modelled Fabry-Perot interferometer (see Sect. 2.5.3 for the filtering parameters) at each altitude level. The ATB vertical profiles (Fig. 13a) exhibit features observed on HSR spectra more clearly: once the cloud is reached (i.e. below 10 km), the three cloud models give very different total ATB. Higher values are observed in clouds for the PP model compared to ICA and 3D cloud models, whereas the opposite is observed below the cloud. This feature shows that PP cloud representation can lead to large discrepancies and it is suitable to account for 3D cloud structure. On the contrary, ICA cloud models give results rather close to 3D cloud models. In Fig. 13b and Fig. 13c the PP cloud shows the most significant differences, with PP particulate ATB in cloud larger than that from ICA and 3D particulate ATB and a PP molecular ATB smaller. To a lesser extent, ICA and 3D computations show differences also with 3D total and 3D particulate ATB smaller than ICA computation. This difference is the opposite for the molecular ATB.

In order to quantify the differences coming from the cloud models, PP, ICA and 3D biases have been computed. These biases, well described in Davis and Polonsky (2005), were firstly defined in the radiance framework by Cahalan et al. (1994) and were adapted to lidar signals framework by Alkasem et al. (2017). The 3D bias on ATB (i.e. ΔATB_{3D}) is the sum of the PP bias (i.e. ΔATB_{PP}) and of the ICA bias (i.e. ΔATB_{ICA}) defined as:

$$\Delta ATB_{PP} = ATB_{PP} - ATB_{ICA} \quad (22.1)$$

$$\Delta ATB_{ICA} = ATB_{ICA} - ATB_{3D} \quad (22.2)$$

$$\Delta ATB_{3D} = \Delta ATB_{PP} + \Delta ATB_{ICA} = ATB_{PP} - ATB_{3D} \quad (22.3)$$

where ATB_{ICA} , ATB_{PP} and ATB_{3D} are ATB computed by McRALI with the ICA, PP and 3D cloud models, respectively. The relative biases are also computed and correspond to the biases divided by the reference ATB_{3D} . In appendix B, it is shown that the PP bias of molecular ATB and particulate ATB is always negative and positive, respectively. It is also shown that the larger multiple scattering is the smaller the PP particulate bias. Note that the PP bias of total ATB is positive but becomes negative with increasing cloud optical depth (Alkasem et al., 2017).

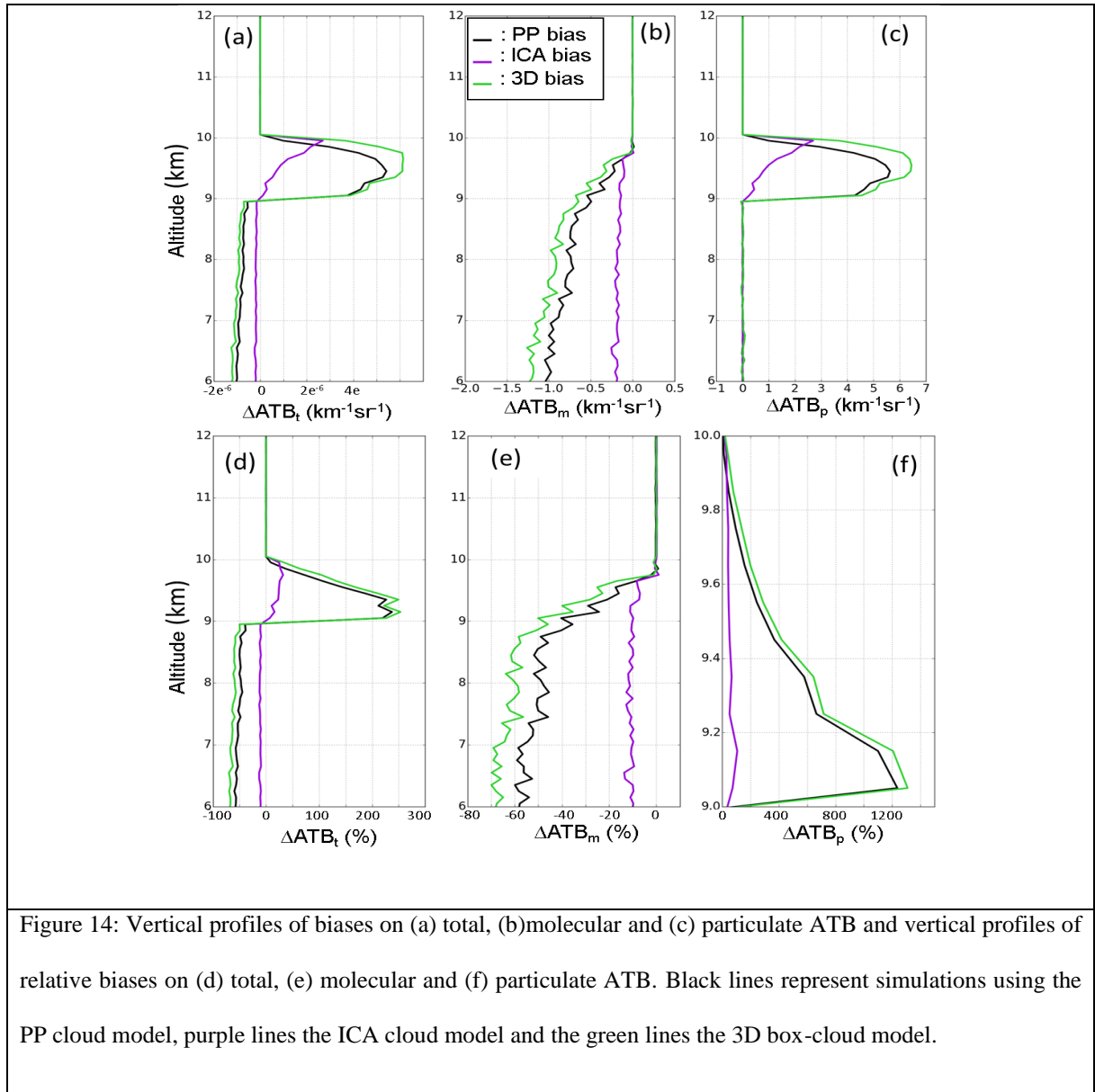


Figure 14 shows that the PP biases are the largest both on total ATB and the molecular and particulate components. Indeed, it reaches 250%, -60% and 1200% for total, molecular and particulate ATB respectively. The ICA biases present lower values (around 25%, -10% and less than 100% for total, molecular and particulate ATB respectively). These results show thus that 3D biases are mainly due to the PP biases.

Based on the three cloud models, further simulations have been carried out with varying the cloud coverage inside the lidar FOV from 10 % to 90% in order to evaluate the impact of cloud coverage on HSR lidar observations. It has been carried out for the study of the NUBF effect on radar observations in a similar way (see Sect. 3.2). The SS bias and the MS relative bias on total, molecular and particulate ATBs at cloud top (9.8 km), cloud base (9.2 km) and in the middle of the cloud (9.5 km) have been computed for each cloud model in Fig. 15.

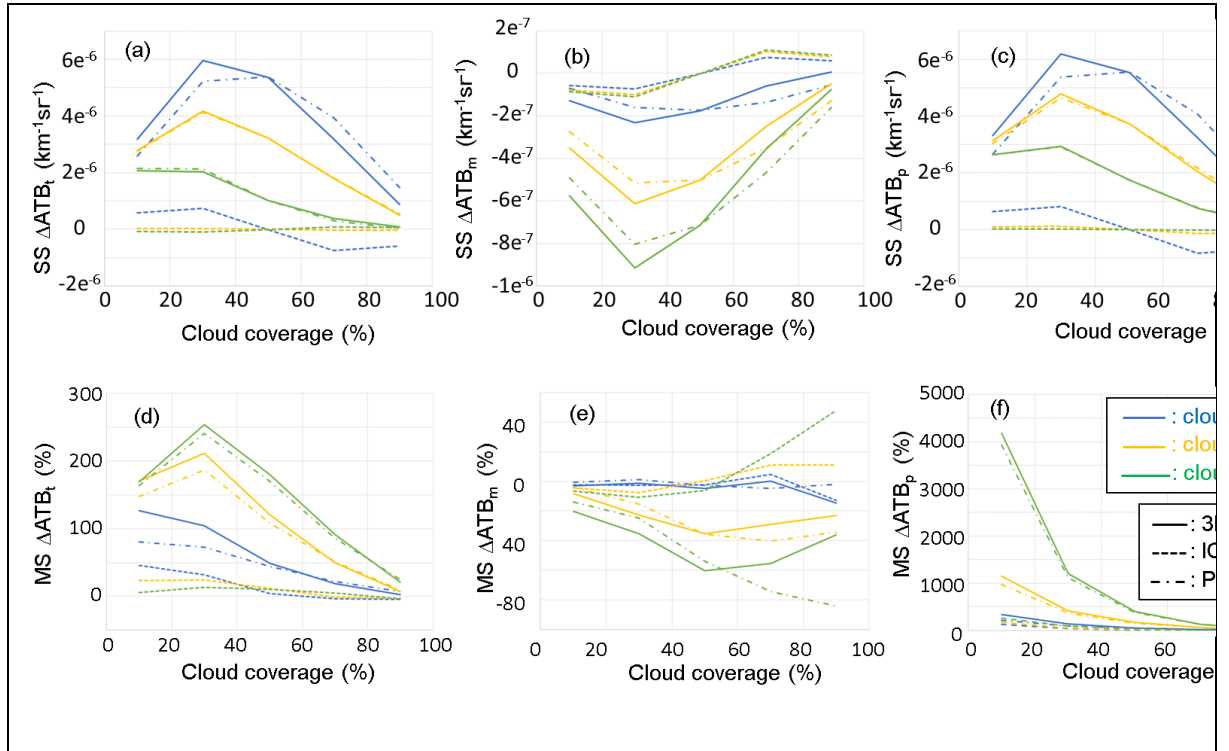


Figure 15: ICA (dashed), PP (dotted dashed) and 3D (full line) biases under single scattering (SS) regime on (a) total ATB, (b) molecular ATB and (c) particulate ATB as a function of cloud coverage (%) inside the lidar receiver FOV, computed at cloud top (9.8 km, blue curves), in the middle of the cloud (9.5 km; yellow curves) and at cloud base (9.2 km; green curves). (d), (e) and (f) same as (a), (b) and (c) but for relative bias and MS regime. Cloud optical depth is 3.

Figure 15d and Fig. 15f show that MS total and particulate biases decrease when cloud coverage increases and reach almost zero for 90% cloud coverage. These relative biases always show the largest values at cloud base, then in the middle of cloud, then at cloud top whereas it is not observed for SS bias (Fig. 15a and Fig. 15c). This is due to the division by reference ATB_{3D} values that exponentially increase with cloud altitude. We also find that PP biases are positive, with maximum bias of 250% observed for the total relative ATB at cloud base and for a cloud coverage of 30%. These last two observations are consistent with simulation results done under SS regime: PP biases of total ATB and of particulate ATB are generally positive (see Eq. (B8)) and strictly positive (see Eq. (B7)), respectively. The maximum bias of ATB also occurs for a cloud coverage of 30%. Otherwise, regardless of cloud coverage, Fig. 15d and Fig. 15f show that MS total and particulate ICA biases are still rather small ($< 50\%$ and $< 200\%$ respectively) compared to the PP biases ($< 250\%$ and $< 4000\%$ respectively). For total and

particulate ATB, PP bias are the largest and are mainly responsible for the 3D biases, confirming the findings of the previous section, and that for any cloud coverage, both in SS and MS regime.

For molecular signals, Fig. 15e shows the negative PP bias that increases in absolute value with increasing the cloud coverage, reaching -40% and -80% for a 90% cloud coverage in the middle of the cloud and at cloud base respectively. The negative value of MS molecular PP bias is consistent with SS molecular PP bias definition (see Eq. (B6)). Otherwise, MS ICA bias is negative for a cloud coverage smaller than 50 % and rather positive for a cloud coverage larger than 50 %. This latter observation is consistent with simulation results performed under SS regimes (see Fig 15b): molecular ICA bias is negative, null and positive for a cloud coverage smaller than, equal to, and larger than 50%, respectively. Figure 15e shows that MS ICA bias reaches only 15% and 50% in the middle of the cloud and at cloud base respectively. At cloud top, all the molecular biases remain small (between 5% and -15%). Because of the competition under MS regime between the rather negative PP bias with the positive and negative ICA bias of the same order of magnitude, no specific trend on the 3D molecular biases according to the cloud coverage can be highlighted and conclusions are less obvious than for total and particulate ATB.

Finally, our simulation results also show that 3D bias decreases in magnitude when COD decreases, due to the PP bias that decreases. For example, if COD is 0.1, 3D total, molecular and particulate biases are less than 6%, 15 % and 100%, respectively, mainly driven by ICA bias.

3.3.2. Impact of size of field of view on total, molecular and particulate ATB

We briefly investigate the impact of the size of the field of view (FOV) by carrying out simulations with a FOV ten times greater than that one in the simulations performed in the previous sections. Simulations have been carried out for a cloud coverage of 50%, implying COD of 1.5 for the PP cloud model. Figure 16 shows vertical profiles of ATB biases and relative ATB biases computed with this large FOV (i.e. 650 μ rad) and those computed with the ATLID FOV (i.e. 65 μ rad).

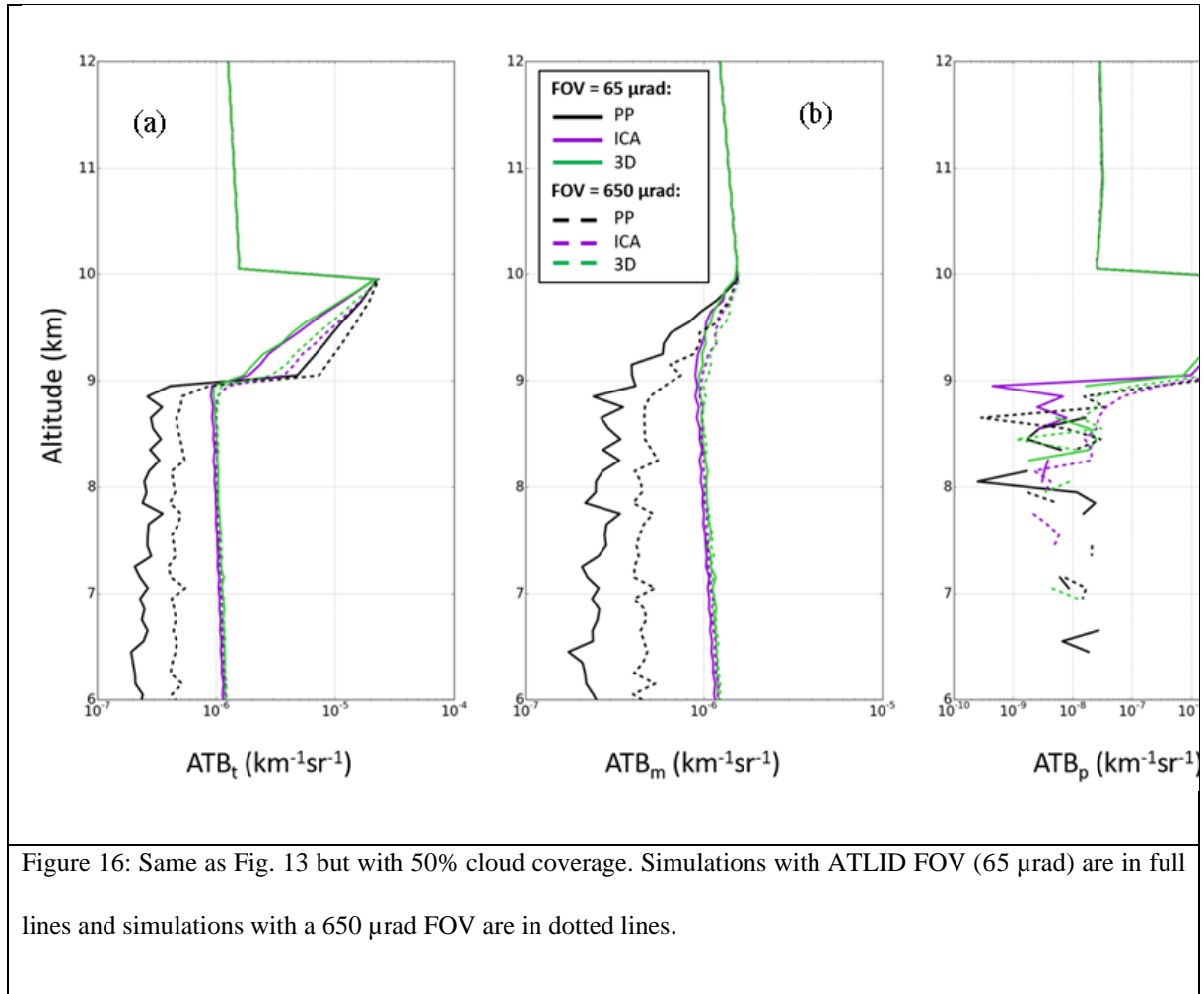


Figure 16: Same as Fig. 13 but with 50% cloud coverage. Simulations with ATLID FOV ($65 \mu rad$) are in full lines and simulations with a $650 \mu rad$ FOV are in dotted lines.

When comparing ATB computed with the three cloud models (i.e. PP, ICA and 3D cloud model) for the large FOV, the same conclusions as for the ATLID FOV can be made: when reaching the cloud base, total and particulate ATBs show lower values for ICA and 3D models than for PP model, and the opposite for the molecular ATB. Biases also show the same trend as for ATLID FOV with a maximum bias for the PP model, and lower values for ICA models.

When comparing simulations carried out with a large FOV with those performed with a small FOV, we observed that with a larger FOV, ATB are larger when going into the cloud, and this for the three cloud models. The reason is mainly the multiple scattering which is obviously more pronounced as the FOV increases. Figure 16 shows that the biases and the relative biases for the large FOV present the same trend as for a small FOV. For total and particulate ATB, we can note that ICA biases are larger whatever the vertical position in the cloud whereas PP biases are smaller in the upper part of the cloud, due to multiple scattering which becomes more significant as the FOV increases; this latter behaviour is coherent with Eq. (B7). The relative biases for the large FOV show slightly

smaller values for the three signal components (total, molecular and particulate). The maximum values for the 3D bias are 150%, -60% and 200% for the total, molecular and particulate ATBs respectively.

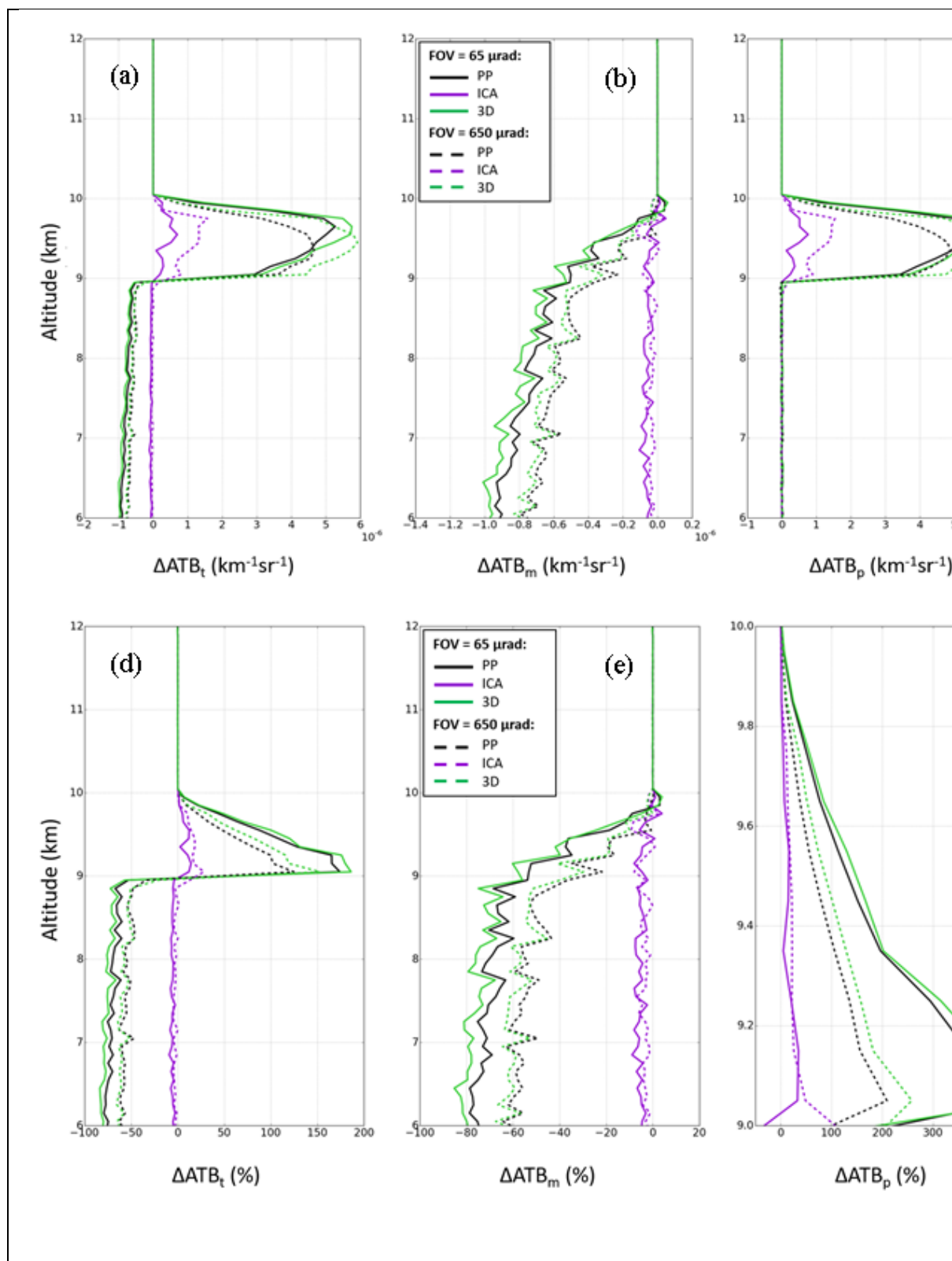


Figure 17: Same as Fig. 14 but with a 50% cloud coverage. Simulations with ATLID FOV (65 μrad) are in straight lines and simulations with a 650 μrad FOV are in dotted lines.

4. Conclusions

This paper presents the Monte-Carlo code McRALI-FR that provides simulations of range z and frequency f resolved Stokes parameters $\mathbf{S}(z, f) = (I, Q, U, V)$ recorded by different kinds of monostatic polarized high spectral resolution lidars as well as Doppler radars from 3D cloudy atmosphere and/or precipitation fields. McRALI-FR is an extension of 3DMcPOLID, a Monte Carlo code simulating polarized active sensor (Alkasem et al., 2017). The core of McRALI-FR is based on the 3D polarized Monte Carlo atmospheric radiative transfer model 3DMCPOL (Cornet et al., 2010; Fauchez et al., 2014) which uses the local estimate method to reduce the noise level. Gas absorption in micro-wavelength is taken into account according to the work of Liebe (1985). McRALI-FR considers the Doppler effect related to the motion of hydrometeors and aerosols. The random motion, i.e., the turbulent flow, is supposed to be homogeneous and isotropic. It is modeled as a multivariate normal distribution. Generally, the regular motion of particles, i.e., the wind and/or precipitating hydrometeors, is assigned as a 3D vector field. The spectral distribution of the molecular scattering is modeled following the conventional method based on the Doppler shift from independent molecules moving with a Maxwell distribution of velocities. Each of the Stokes parameters is computed by McRALI-FR as a two-dimensional matrix (range and frequency resolved) and stored in an output file. Separated software uses the saved files to account for spectral and polarization characteristics of receivers and computes profiles of corresponding HSR lidar or Doppler radar signals.

A study has been carried out on the effects of NUBF on the HSR ATLID lidar and Doppler CPR radar signals of the EarthCARE mission with the help of the academic 3D box-cloud, characterized by a single isolated jump in cloud optical depth. It is the simplest 3D cloud model that can be used to show and interpret the 3D radiative effects of clouds and for which the displayed results can only be obtained if the simulator is entirely in 3D. Moreover, for simplification, the wind speed is assumed only vertical and constant. Particles sedimentation velocity is null.

Regarding Doppler CPR radar signals, it appears that multiple scattering does not affect the velocity estimation when the cloud characteristics are locally homogeneous across the radar beam. But if vertical wind velocity sharply varies with altitude, measured Doppler velocity profile can be largely affected by multiple scattering processes, as

already mentioned by Battaglia and Tanelli (2011). At the same time, it is confirmed that the horizontally non-uniform beam filling induces a severe bias in velocity estimates. Indeed, Doppler spectra shape is geometrically affected by the NUBF: the shape is all the more asymmetrical as the radar system vertically points away from the edge of the box cloud, inducing a bias in the estimation of the Doppler velocity. Within our very specific conditions of simulation with the box-cloud and with McRALI-Fr code, we found a proportional coefficient value around $0.15 \text{ m.s}^{-1}(\text{dBZ.km}^{-1})^{-1}$ close to that obtained by Sy et al. (2014) and Kollias et al. (2014).

Regarding HSR ATLID lidar signals, we confirm that multiple scattering processes are not negligible, whatever the box-cloud cloud optical depth between 0.1 and 3, as previously studied by Reverdy et al. (2015) and pointed out by Donovan (2016). We also investigated the NUBF effect due to different cloud coverages inside the FOV on HSR ATLID lidar observables under MS regime. For this purpose, we computed the vertical profiles of the 3D, PP and ICA biases for total, molecular and particulate ATB. The main conclusion is that 3D biases are mainly due to the PP biases, implying that NUBF effects are mainly due to unresolved variability of cloud inside the FOV, and to a lesser extent, to the horizontal photon transport which increases if FOV increases. Finally, these results give an indication of the reliability of the lidar signals modelled using ICA approximation.

All these simulations and results are still a test bench to show the ability of the McRALI-FR simulation tool to study the impact of multiple scattering and 3D cloud radiative effects on remote sensing observations and products. Real detailed cloud case studies and statistical analysis of representative fine-structure 3-D cloud field effects on lidar and radar observables, **while taking into account the polarization of the light**, will be the topic of future papers.

Code availability

FORTTRAN McRALI-FR codes can be obtained by contacting the corresponding author of this article.

Appendix A : Definition of acronyms

Acronym	Definition
A-train	Afternoon Constellation
ADM-Aeolus	Atmospheric Dynamics Mission
ALADIN	Atmospheric LAsER Doppler Instrument

ATB	ATtenuated Backscatter
ATLID	ATmospheric LIDar
CALIPSO	Cloud-Aerosol Lidar and Infrared Pathfinder Satellite Observations
CNES	French National Centre for Space Studies
COD	Cloud Optical Depth
CPR	Cloud Profiling Radar
3D	Three-Dimensional
3DMCPOL	3D POLarized Monte-Carlo atmospheric radiative transfer model
3DMcPOLID	3D Monte Carlo simulator of POLarized LIDar signals
DOMUS	DOppler MUltiple Scattering simulator
EECLAT	Expecting EarthCare, Learning from A-train
EarthCARE	Earth Clouds, Aerosol and Radiation Explorer mission
ECSIM	EarthCARE simulator
ESA	European Space Agency
FOV	Field Of View
ICA	Independent Column Approximation
INSU	French National Institute for Earth Sciences and Astronomy
HSR	High Spectral Resolution
MC	Monte Carlo
MS	Multiple Scattering
McRALI	Monte Carlo modeling of RADar and LIdar signals
McRALI-FR	McRALI Frequency-Resolved simulator

MUSCLE	MULTiple SCattering in Lidar Experiments
NUBF	Non Uniform Beam Filling
PDF	Probability Density Function
PP	Plan-Parallel and homogenous cloud
RTE	Radiative Transfer Equation
SS	Single Scattering

Table A1: List of acronyms used in this work and their definition.

Appendix B : Estimation of the PP bias of molecular, particulate and total ATB as a function of cloud coverage and multiple scattering intensity for the box cloud model

Total, molecular and particulate ATB are hereafter noted ATB_t , ATB_m and ATB_p , respectively. According to Alkasem et al. (2017), PP bias can be understood from the following. Assuming null absorption and vertically constant atmospheric properties, then $ATB(r)_t$ at position r can be expressed as

$$ATB(r)_t = (P_m\sigma_m + P_p\sigma_p)e^{-2\int_0^r(\sigma_m+\gamma\sigma_p)dr} \quad (B1)$$

where σ_m and σ_p are the molecular and particulate scattering coefficients, respectively, P_m and P_p are the molecular and particulate phase functions at 180° , respectively, and γ is a factor that takes into account the multiple scattering effects (Platt, 1973). In the same way, $ATB(r)_m$ and $ATB(r)_p$, by voluntarily omitting r , assuming that σ_m and σ_p are vertically constant, and introducing the thickness Δr to lighten the writing, can be expressed as:

$$ATB_m = P_m\sigma_me^{-2(\sigma_m+\gamma\sigma_p)\Delta r} \quad (B2)$$

$$ATB_p = P_p\sigma_pe^{-2(\sigma_m+\gamma\sigma_p)\Delta r} \quad (B3)$$

Let α the cloud coverage inside the lidar receiver FOV, then the molecular (i.e. $ATB_{m,IPA}$), the particulate (i.e. $ATB_{p,IPA}$) and the total ATB (i.e. $ATB_{t,IPA}$) computed with the IPA cloud model can be written as:

$$ATB_{m,IPA} = (1 - \alpha)P_m\sigma_me^{-2\sigma_m\Delta r} + \alpha P_m\sigma_me^{-2(\sigma_m+\gamma\sigma_p)\Delta r} \quad (B4.1)$$

$$ATB_{p;IPA} = \alpha P_p \sigma_p e^{-2(\sigma_m + \gamma \sigma_p) \Delta r} \quad (B4.2)$$

$$ATB_{t;IPA} = (1 - \alpha) P_m \sigma_m e^{-2\sigma_m \Delta r} + \alpha (P_m \sigma_m + P_p \sigma_p) e^{-2(\sigma_m + \gamma \sigma_p) \Delta r} \quad (B4.3)$$

and the molecular (i.e. $ATB_{m;PP}$), the particulate (i.e. $ATB_{p;PP}$) and the total (i.e. $ATB_{t;PP}$) ATB computed with the PP cloud model can be written as :

$$ATB_{m;PP} = P_m \sigma_m e^{-2(\sigma_m + \alpha \gamma \sigma_p) \Delta r} \quad (B5.1)$$

$$ATB_{p;PP} = \alpha P_p \sigma_p e^{-2(\sigma_m + \alpha \gamma \sigma_p) \Delta r} \quad (B5.2)$$

$$ATB_{t;PP} = (P_m \sigma_m + \alpha P_p \sigma_p) e^{-2(\sigma_m + \alpha \gamma \sigma_p) \Delta r} \quad (B5.3)$$

The PP molecular bias $\Delta ATB_{m;PP}$, estimated as:

$$\begin{aligned} \Delta ATB_{m;PP} &= ATB_{m;PP} - ATB_{m;IPA} \\ &= P_m \sigma_m \left[e^{-2(\sigma_m + \alpha \gamma \sigma_p) \Delta r} - (1 - \alpha) e^{-2\sigma_m \Delta r} - \alpha e^{-2(\sigma_m + \gamma \sigma_p) \Delta r} \right] \end{aligned} \quad (B6)$$

is always negative. The PP particulate bias $\Delta ATB_{p;PP}$, estimated as:

$$\Delta ATB_{p;PP} = ATB_{p;PP} - ATB_{p;IPA} = P_p \sigma_p \left\{ \alpha \left[e^{-2(\sigma_m + \alpha \gamma \sigma_p) \Delta r} - e^{-2(\sigma_m + \gamma \sigma_p) \Delta r} \right] \right\} \quad (B7)$$

is always positive. Note that the smaller γ is, the smaller $\Delta ATB_{p;PP}$. In other words, the larger multiple scattering effects are the smaller the PP particulate bias. The PP total bias $\Delta ATB_{t;PP}$, estimated as:

$$\begin{aligned} \Delta ATB_{t;PP} &= ATB_{t;PP} - ATB_{t;IPA} \\ &= (P_m \sigma_m + \alpha P_p \sigma_p) e^{-2\gamma(\sigma_m + \alpha \sigma_p) \Delta r} - (1 - \alpha) P_m \sigma_m e^{-2\gamma \sigma_m \Delta r} \\ &\quad - \alpha (P_m \sigma_m + P_p \sigma_p) e^{-2\gamma(\sigma_m + \sigma_p) \Delta r} \end{aligned} \quad (B8)$$

is positive but becomes negative with increasing cloud optical depth, as explained in Alkasem et al. (2017).

Acknowledgements

This work is part of the French scientific community EECLAT project (Expecting EarthCare, Learning from A-train) (Luebke et al., 2018). The EECLAT community and research activities are supported by the National Center for Space Studies (CNES) and the National Institute for Earth Sciences and Astronomy (INSU). This work has also been in part supported by the Programme National de Télédétection Spatiale (PNTS, <http://www.insu.cnrs.fr/pnts>), grant n°PNTS-2019-8.

References

- Alkasem, A., Szczap, F., Cornet, C., Shcherbakov, V., Gour, Y., Jourdan, O., Labonnote, L. C. and Mioche, G.: Effects of cirrus heterogeneity on lidar CALIOP/CALIPSO data, *Journal of Quantitative Spectroscopy and Radiative Transfer*, 202, 38–49, doi:10.1016/j.jqsrt.2017.07.005, 2017.
- Amayenc, P., Marzoug, M. and Testud, J.: Analysis of cross-beam resolution effects in rainfall rate profile retrieval from a spaceborne radar, *IEEE Transactions on Geoscience and Remote Sensing*, 31(2), 417–425, doi:10.1109/36.214918, 1993.
- Battaglia, A. and Tanelli, S.: DOMUS: DOppler Multiple-Scattering Simulator, *IEEE Transactions on Geoscience and Remote Sensing*, 49(1), 442–450, doi:10.1109/TGRS.2010.2052818, 2011.
- Battaglia, A., Ajewole, M. O. and Simmer, C.: Evaluation of Radar Multiple-Scattering Effects from a GPM Perspective. Part I: Model Description and Validation, *Journal of Applied Meteorology and Climatology*, 45(12), 1634–1647, doi:10.1175/JAM2424.1, 2006.
- Battaglia, A., Tanelli, S., Kobayashi, S., Zrníc, D., Hogan, R. J. and Simmer, C.: Multiple-scattering in radar systems: A review, *Journal of Quantitative Spectroscopy and Radiative Transfer*, 111(6), 917–947, doi:10.1016/j.jqsrt.2009.11.024, 2010.
- Battaglia, A., Tanelli, S., Mroz, K. and Tridon, F.: Multiple scattering in observations of the GPM dual-frequency precipitation radar: Evidence and impact on retrievals: MULTIPLE SCATTERING IN DPR OBSERVATIONS, *Journal of Geophysical Research: Atmospheres*, 120(9), 4090–4101, doi:10.1002/2014JD022866, 2015.
- Battaglia, A., Dhillon, R. and Illingworth, A.: Doppler W-band polarization diversity space-borne radar simulator for wind studies, *Atmospheric Measurement Techniques*, 11(11), 5965–5979, doi:10.5194/amt-11-5965-2018, 2018.
- Bissonnette, L. R., Brusaglioni, P., Ismaelli, A., Zaccanti, G., Cohen, A., Benayahu, Y., Kleiman, M., Egert, S., Flesia, C., Schwendimann, P., Starkov, A. V., Noormohammadian, M., Oppel, U. G., Winker, D. M., Zege, E. P., Katsev, I. L. and Polonsky, I. N.: LIDAR multiple scattering from clouds, *Applied Physics B Laser and Optics*, 60(4), 355–362, doi:10.1007/BF01082271, 1995.
- Boucher, O., Randall, D., Artaxo, P., Bretherton, C., Feingold, G., Forster, P., Kerminen, V.-M., Kondo, Y., Liao, H., Lohmann, U., Rasch, P., Satheesh, S. K., Sherwood, S., Stevens, B. and Zhang, X. Y.: Clouds and Aerosols, in *Climate Change 2013: The Physical Science Basis. Contribution of Working Group I to the Fifth Assessment Report of the Intergovernmental Panel on Climate Change*, edited by T. F. Stocker, D. Qin, G.-K. Plattner, M. Tignor, S. K. Allen, J. Doschung, A. Nauels, Y. Xia, V. Bex, and P. M. Midgley, pp. 571–658, Cambridge University Press, Cambridge, UK., 2014.
- Bruneau, D. and Pelon, J.: Simultaneous measurements of particle backscattering and extinction coefficients and wind velocity by lidar with a Mach–Zehnder interferometer: principle of operation and performance assessment, *Applied Optics*, 42(6), 1101, doi:10.1364/AO.42.001101, 2003.

Buras, R. and Mayer, B.: Efficient unbiased variance reduction techniques for Monte Carlo simulations of radiative transfer in cloudy atmospheres: The solution, *Journal of Quantitative Spectroscopy and Radiative Transfer*, 112(3), 434–447, doi:10.1016/j.jqsrt.2010.10.005, 2011.

Cahalan, R. F., Ridgway, W., Wiscombe, W. J., Gollmer, S. and Harshvardhan: Independent Pixel and Monte Carlo Estimates of Stratocumulus Albedo, *Journal of the Atmospheric Sciences*, 51(24), 3776–3790, doi:10.1175/1520-0469(1994)051<3776:IPAMCE>2.0.CO;2, 1994.

Cahalan, R. F., Oreopoulos, L., Marshak, A., Evans, K. F., Davis, A. B., Pincus, R., Yetzer, K. H., Mayer, B., Davies, R., Ackerman, T. P., Barker, H. W., Clothiaux, E. E., Ellingson, R. G., Garay, M. J., Kassianov, E., Kinne, S., Macke, A., O'hirok, W., Partain, P. T., Prigarin, S. M., Rublev, A. N., Stephens, G. L., Szczap, F., Takara, E. E., Várnai, T., Wen, G. and Zhuravleva, T. B.: THE I3RC: Bringing Together the Most Advanced Radiative Transfer Tools for Cloudy Atmospheres, *Bulletin of the American Meteorological Society*, 86(9), 1275–1294, doi:10.1175/BAMS-86-9-1275, 2005.

Chaikovskaya, L. I.: Remote sensing of clouds using linearly and circularly polarized laser beams: techniques to compute signal polarization, in *Light Scattering Reviews 3*, edited by A. A. Kokhanovsky, pp. 191–228, Springer Berlin Heidelberg, Berlin, Heidelberg., 2008.

Cornet, C., C-Labonnote, L. and Szczap, F.: Three-dimensional polarized Monte Carlo atmospheric radiative transfer model (3DMCPOL): 3D effects on polarized visible reflectances of a cirrus cloud, *Journal of Quantitative Spectroscopy and Radiative Transfer*, 111(1), 174–186, doi:10.1016/j.jqsrt.2009.06.013, 2010.

Davis, A. B. and Polonsky, I. N.: Approximation Methods in Atmospheric 3D Radiative Transfer Part 1: Resolved Variability and Phenomenology, in *3D Radiative Transfer in Cloudy Atmospheres*, edited by A. Marshak and A. Davis, pp. 283–340, Springer-Verlag, Berlin/Heidelberg., 2005.

Donovan, D., Voors, R., van Zadelhoff, G.-J. and Acarreta, J.-R.: ECSIM Model and Algorithms Document, KNMI Tech. Rep.: ECSIM-KNMI-TEC-MAD01-R, [online] Available from: <https://www.knmi.nl/kennis-en-datacentrum/publicatie/ecsime-model-and-algorithms-document> (Accessed 16 April 2019), 2008.

Donovan, D. P.: The Expected Impact of Multiple Scattering on ATLID Signals, edited by B. Gross, F. Moshary, and M. Arend, *EPJ Web of Conferences*, 119, 01006, doi:10.1051/epjconf/201611901006, 2016.

Doviak, R. J. and Zrnić, D. S.: *Doppler radar and weather observations*, Academic Press, Orlando., 1984.

Dubovik, O., Sinyuk, A., Lapyonok, T., Holben, B. N., Mishchenko, M., Yang, P., Eck, T. F., Volten, H., Muñoz, O., Veißelmann, B., van der Zande, W. J., Leon, J.-F., Sorokin, M. and Slutsker, I.: Application of spheroid models to account for aerosol particle nonsphericity in remote sensing of desert dust, *Journal of Geophysical Research*, 111(D11), doi:10.1029/2005JD006619, 2006.

Durden, S. L., Haddad, Z. S., Kitiyakara, A. and Li, F. K.: Effects of Nonuniform Beam Filling on Rainfall Retrieval for the TRMM Precipitation Radar, *Journal of Atmospheric and Oceanic Technology*, 15(3), 635–646, doi:10.1175/1520-0426(1998)015<0635:EONBFO>2.0.CO;2, 1998.

Emde, C., Buras, R. and Mayer, B.: ALIS: An efficient method to compute high spectral resolution polarized solar radiances using the Monte Carlo approach, *Journal of Quantitative Spectroscopy and Radiative Transfer*, 112(10), 1622–1631, doi:10.1016/j.jqsrt.2011.03.018, 2011.

ESA: European Space Agency (ESA): ADM-Aeolus Mission Requirements Document, ESA EOP-SM/2047, 57p, [online] Available from: http://esamultimedia.esa.int/docs/EarthObservation/ADM-Aeolus_MRD.pdf (Accessed 16 April 2019), 2016.

ESA report: ADM-Aeolus Mission Requirements Document, ESA EOP-SM/2047, 57p, [online] Available from: http://esamultimedia.esa.int/docs/EarthObservation/ADM-Aeolus_MRD.pdf (Accessed 16 April 2019), 2016.

Fauchez, T., Cornet, C., Szczap, F., Dubuisson, P. and Rosambert, T.: Impact of cirrus clouds heterogeneities on top-of-atmosphere thermal infrared radiation, *Atmospheric Chemistry and Physics*, 14(11), 5599–5615, doi:10.5194/acp-14-5599-2014, 2014.

Gayet, J.-F.: Cirrus cloud microphysical and optical properties at southern and northern midlatitudes during the INCA experiment, *Journal of Geophysical Research*, 109(D20), doi:10.1029/2004JD004803, 2004.

Hansen, J. E. and Travis, L. D.: Light scattering in planetary atmospheres, *Space Science Reviews*, 16(4), 527–610, doi:10.1007/BF00168069, 1974.

Hélière, A., Le Hors, L. and Toulemont, Y.: Development of ATLID, the earthcare UV backscatter lidar, in *International Conference on Space Optics — ICSO 2014*, edited by B. Cugny, Z. Sodnik, and N. Karafolas, p. 27, SPIE, Tenerife, Canary Islands, Spain., 2017.

Hilsenrath, E. and Ward, A. B.: The Third A-Train Symposium: Summary and Perspectives on a Decade of Constellation-Based Earth Observations, [online] Available from: https://eosps.nasa.gov/sites/default/files/eo_pdfs/July%20August%202017%20color%20508.pdf (Accessed 16 April 2019), 2017.

Hogan, R. J.: Fast Lidar and Radar Multiple-Scattering Models. Part I: Small-Angle Scattering Using the Photon Variance-Covariance Method, *Journal of the Atmospheric Sciences*, 65(12), 3621–3635, doi:10.1175/2008JAS2642.1, 2008.

Hogan, R. J. and Battaglia, A.: Fast Lidar and Radar Multiple-Scattering Models. Part II: Wide-Angle Scattering Using the Time-Dependent Two-Stream Approximation, *Journal of the Atmospheric Sciences*, 65(12), 3636–3651, doi:10.1175/2008JAS2643.1, 2008.

Hu, Y.-X., Winker, D., Yang, P., Baum, B., Poole, L. and Vann, L.: Identification of cloud phase from PICASSO-CENA lidar depolarization: a multiple scattering sensitivity study, *Journal of Quantitative Spectroscopy and Radiative Transfer*, 70(4–6), 569–579, doi:10.1016/S0022-4073(01)00030-9, 2001.

Iguchi, T., Kozu, T., Meneghini, R., Awaka, J. and Okamoto, K.: Rain-Profiling Algorithm for the TRMM Precipitation Radar, *Journal of Applied Meteorology*, 39(12), 2038–2052, doi:10.1175/1520-0450(2001)040<2038:RPAFTT>2.0.CO;2, 2000.

Iguchi, T., Kozu, T., Kwiatkowski, J., Meneghini, R., Awaka, J. and Okamoto, K.: Uncertainties in the Rain Profiling Algorithm for the TRMM Precipitation Radar, *Journal of the Meteorological Society of Japan*, 87A, 1–30, doi:10.2151/jmsj.87A.1, 2009.

Illingworth, A. J., Barker, H. W., Beljaars, A., Ceccaldi, M., Chepfer, H., Clerbaux, N., Cole, J., Delanoë, J., Domenech, C., Donovan, D. P., Fukuda, S., Hirakata, M., Hogan, R. J., Huenerbein, A., Kollias, P., Kubota, T., Nakajima, T., Nakajima, T. Y., Nishizawa, T., Ohno, Y., Okamoto, H., Oki, R., Sato, K., Satoh, M., Shephard, M. W., Velázquez-Blázquez, A., Wandinger, U., Wehr, T. and van Zadelhoff, G.-J.: The EarthCARE Satellite: The Next Step Forward in Global Measurements of Clouds, Aerosols, Precipitation, and Radiation, *Bulletin of the American Meteorological Society*, 96(8), 1311–1332, doi:10.1175/BAMS-D-12-00227.1, 2015.

Kobayashi, S., Kumagai, H. and Iguchi, T.: Accuracy Evaluation of Doppler Velocity on a Spaceborne Weather Radar through a Random Signal Simulation, *Journal of Atmospheric and Oceanic Technology*, 20(6), 944–949, doi:10.1175/1520-0426(2003)020<0944:AEODVO>2.0.CO;2, 2003.

Kollias, P., Tanelli, S., Battaglia, A. and Tatarevic, A.: Evaluation of EarthCARE Cloud Profiling Radar Doppler Velocity Measurements in Particle Sedimentation Regimes, *Journal of Atmospheric and Oceanic Technology*, 31(2), 366–386, doi:10.1175/JTECH-D-11-00202.1, 2014.

Kollias, P., Battaglia, A., Tridon, F., Tatarevic, A., Pfizenmaier, L. and Lamer, K.: The EarthCARE cloud profiling radar (CPR) doppler measurements in deep convection: challenges, post-processing, and science applications, in *Remote Sensing of the Atmosphere, Clouds, and Precipitation VII*, edited by E. Im and S. Yang, p. 30, SPIE, Honolulu, United States., 2018.

Liebe, H. J.: An updated model for millimeter wave propagation in moist air, *Radio Science*, 20(5), 1069–1089, doi:10.1029/RS020i005p01069, 1985.

Luebke, A. E., Delanoë, J., Noel, V., Chepfer, H. and Stevens, B.: A Workshop on Remote Sensing of the Atmosphere in Anticipation of the EarthCARE Satellite Mission, *Bulletin of the American Meteorological Society*, 99(12), ES195–ES198, doi:10.1175/BAMS-D-18-0143.1, 2018.

Marchuk, G. I., Mikhailov, G. A., Nazareliev, M. A., Darbinjan, R. A. and Elepov, B. S.: *The Monte Carlo method in atmospheric optics*, Springer-Verlag, 1980.

Marshak, A. and Davis, A., Eds.: *3D Radiative Transfer in Cloudy Atmospheres*, Springer-Verlag, Berlin/Heidelberg, 2005.

Mayer, B.: Radiative transfer in the cloudy atmosphere, *The European Physical Journal Conferences*, 1, 75–99, doi:10.1140/epjconf/e2009-00912-1, 2009.

Miller, S. D. and Stephens, G. L.: Multiple scattering effects in the lidar pulse stretching problem, *Journal of Geophysical Research: Atmospheres*, 104(D18), 22205–22219, doi:10.1029/1999JD900481, 1999.

de Mul, F. F. M., Koelink, M. H., Kok, M. L., Harmsma, P. J., Greve, J., Graaff, R. and Aarnoudse, J. G.: Laser Doppler velocimetry and Monte Carlo simulations on models for blood perfusion in tissue, *Applied Optics*, 34(28), 6595, doi:10.1364/AO.34.006595, 1995.

Partain, P. T., Heidinger, A. K. and Stephens, G. L.: High spectral resolution atmospheric radiative transfer: Application of the equivalence theorem, *Journal of Geophysical Research: Atmospheres*, 105(D2), 2163–2177, doi:10.1029/1999JD900328, 2000.

Pereira do Carmo, J., de Villele, G., Hélière, A., Wallace, K., Lefebvre, A. and Chassat, F.: ATLID, ESA atmospheric backscatter LIDAR for the ESA EarthCARE mission, *CEAS Space Journal*, 11(4), 423–435, doi:10.1007/s12567-019-00284-6, 2019.

Platt, C. M. R.: Lidar and Radiometric Observations of Cirrus Clouds, *Journal of the Atmospheric Sciences*, 30(6), 1191–1204, doi:10.1175/1520-0469(1973)030<1191:LAROOC>2.0.CO;2, 1973.

Reitebuch, O., Huber, D. and Nikolaus, I.: ADM-Aeolus Algorithm Theoretical Basis Document (ATBD) Level1B Products, AE-RPDLR-L1B-001, 4.4, 117 pp., [online] Available from: https://earth.esa.int/pi/esa?type=file&table=aotarget&cmd=image&alias=Aeolus_L1B_Algorithm_TBD (Accessed 23 September 2020), 2018.

Reverdy, M., Chepfer, H., Donovan, D., Noel, V., Cesana, G., Hoareau, C., Chiriaco, M. and Bastin, S.: An EarthCARE/ATLID simulator to evaluate cloud description in climate models: AN EARTHCARE/ATLID SIMULATOR, *Journal of Geophysical Research: Atmospheres*, 120(21), 11,090–11,113, doi:10.1002/2015JD023919, 2015.

Shipley, S. T., Tracy, D. H., Eloranta, E. W., Trauger, J. T., Sroga, J. T., Roesler, F. L. and Weinman, J. A.: High spectral resolution lidar to measure optical scattering properties of atmospheric aerosols 1: Theory and instrumentation, *Applied Optics*, 22(23), 3716, doi:10.1364/AO.22.003716, 1983.

Stephens, G., Winker, D., Pelon, J., Trepte, C., Vane, D., Yuhas, C., L'Ecuyer, T. and Lebsock, M.: *CloudSat and CALIPSO within the A-Train: Ten Years of Actively Observing the Earth System*, *Bulletin of the American Meteorological Society*, 99(3), 569–581, doi:10.1175/BAMS-D-16-0324.1, 2018.

Stephens, G. L., Vane, D. G., Tanelli, S., Im, E., Durden, S., Rokey, M., Reinke, D., Partain, P., Mace, G. G., Austin, R., L'Ecuyer, T., Haynes, J., Lebsock, M., Suzuki, K., Waliser, D., Wu, D., Kay, J., Gettelman, A., Wang, Z. and Marchand, R.: CloudSat mission: Performance and early science after the first year of operation, *Journal of Geophysical Research*, 113, doi:10.1029/2008JD009982, 2008.

Stoffelen, A., Pailleux, J., Källén, E., Vaughan, J. M., Isaksen, L., Flamant, P., Wergen, W., Andersson, E., Schyberg, H., Culoma, A., Meynart, R., Endemann, M. and Ingmann, P.: THE ATMOSPHERIC DYNAMICS MISSION FOR GLOBAL WIND FIELD MEASUREMENT, *Bulletin of the American Meteorological Society*, 86(1), 73–88, doi:10.1175/BAMS-86-1-73, 2005.

Sy, O. O., Tanelli, S., Takahashi, N., Ohno, Y., Horie, H. and Kollias, P.: Simulation of EarthCARE Spaceborne Doppler Radar Products Using Ground-Based and Airborne Data: Effects of Aliasing and Nonuniform Beam-Filling, *IEEE Transactions on Geoscience and Remote Sensing*, 52(2), 1463–1479, doi:10.1109/TGRS.2013.2251639, 2014.

Tanelli, S., Im, E., Durden, S. L., Facheris, L. and Giuli, D.: The Effects of Nonuniform Beam Filling on Vertical Rainfall Velocity Measurements with a Spaceborne Doppler Radar, *Journal of Atmospheric and Oceanic Technology*, 19(7), 1019–1034, doi:10.1175/1520-0426(2002)019<1019:TEONBF>2.0.CO;2, 2002.

Testud, J., Amayenc, P., Dou, X. and Tani, T.: Tests of Rain Profiling Algorithms for a Spaceborne Radar Using Raincell Models and Real Data Precipitation Fields, *Journal of Atmospheric and Oceanic Technology*, 13(2), 426–453, doi:10.1175/1520-0426(1996)013<0426:TORPAF>2.0.CO;2, 1996.

Tipler, P. A. and Mosca, G.: *Physics for scientists and engineers: standard*, 6th ed., W.H. Freeman, New York, NY., 2008.

Tong, Y. L.: *The Multivariate Normal Distribution*, Springer New York, New York, NY., 1990.

Vallée, O. and Soares, M.: *Airy functions and applications to physics*, World Scientific, New Jersey., 2004.

Vandemark, D., Bourassa, M., Chen, S.-H., Dierssen, H., Houser, P., Jaegle, L., Johnson, C., Liu, G., Mount, G., Mitchell, D., Wickland, W. and Woodcock, C.: *NASA Earth Science Senior Review Subcommittee Report -2017*, [online] Available from: https://smd-prod.s3.amazonaws.com/science-pink/s3fs-public/atoms/files/2017-NASA-ESSR_V2_FINALcorrected.pdf (Accessed 16 April 2019), 2017.

Weitkamp, C., Ed.: *Lidar Range-Resolved Optical Remote Sensing of the Atmosphere*, Springer., 2005.

Wilczek, M., Daitche, A. and Friedrich, R.: On the velocity distribution in homogeneous isotropic turbulence: correlations and deviations from Gaussianity, *Journal of Fluid Mechanics*, 676, 191–217, doi:10.1017/jfm.2011.39, 2011.

Winker, D. M., Pelon, J., Coakley, J. A., Ackerman, S. A., Charlson, R. J., Colarco, P. R., Flamant, P., Fu, Q., Hoff, R. M., Kittaka, C., Kubar, T. L., Le Treut, H., McCormick, M. P., Mégie, G., Poole, L., Powell, K., Trepte, C., Vaughan, M. A. and Wielicki, B. A.: The CALIPSO Mission: A Global 3D View of Aerosols and Clouds, *Bulletin of the American Meteorological Society*, 91(9), 1211–1230, doi:10.1175/2010BAMS3009.1, 2010.

Yang, P. and Liou, K. N.: Geometric-optics–integral-equation method for light scattering by nonspherical ice crystals, *Applied Optics*, 35(33), 6568, doi:10.1364/AO.35.006568, 1996.

Zrnic, D.: Spectral Moment Estimates from Correlated Pulse Pairs, *IEEE Transactions on Aerospace and Electronic Systems*, AES-13(4), 344–354, doi:10.1109/TAES.1977.308467, 1977.