

Supplement

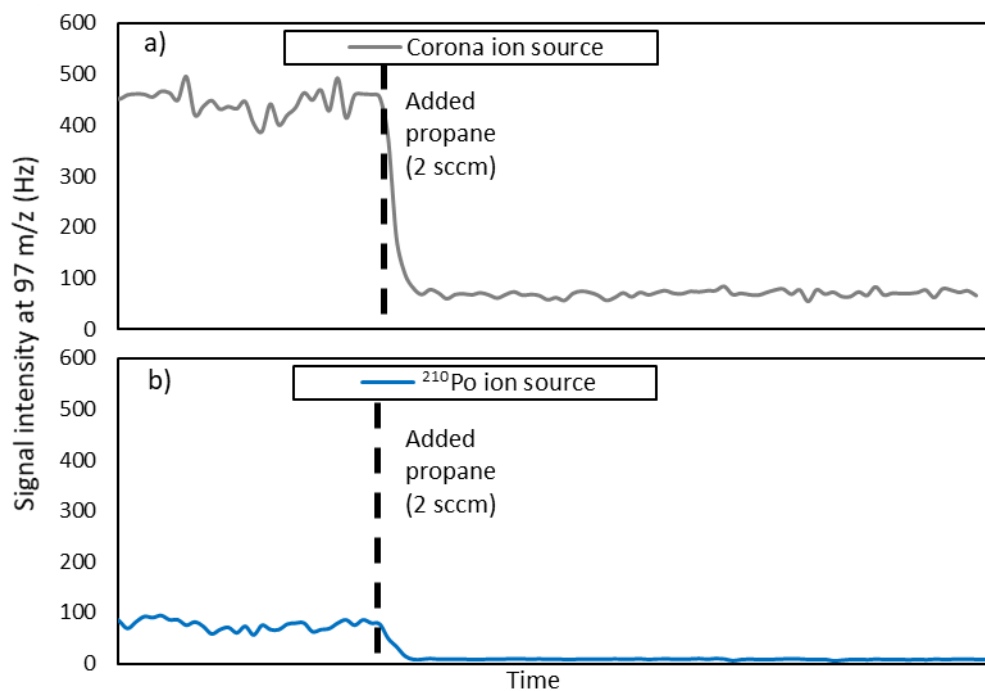


Figure S1. Signal intensity at 97 m/z when using a) corona and b) ²¹⁰Po as ion source. SO₂ flow rate was 5 sccm.

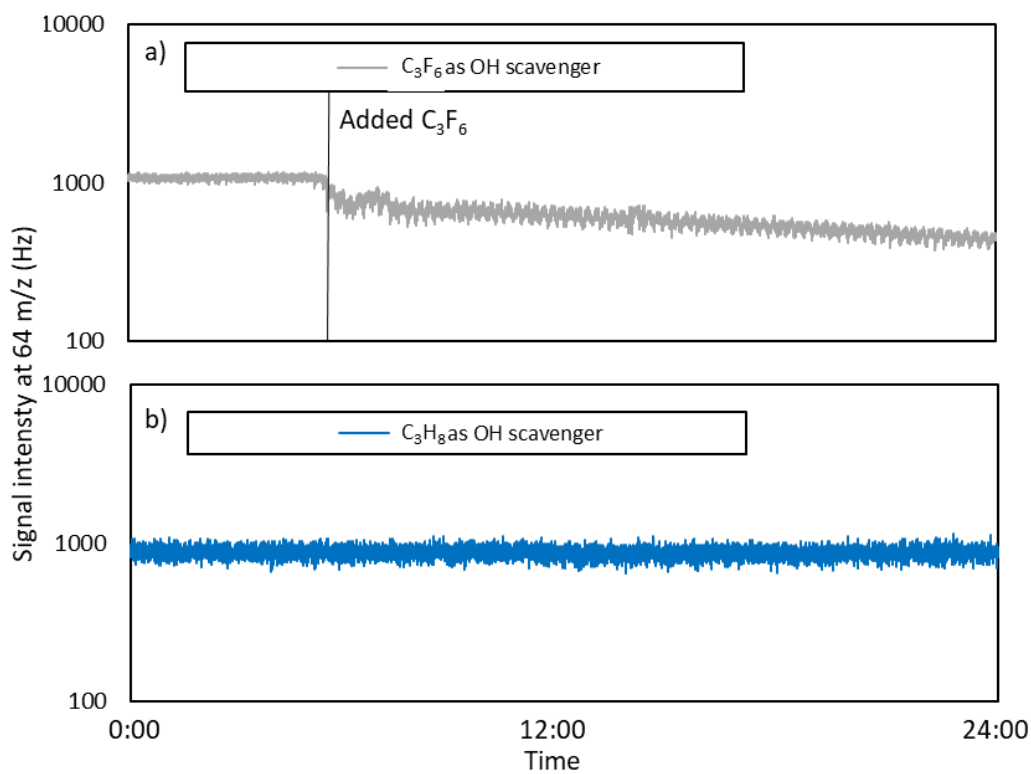


Figure S2. Signal intensity at 64 m/z when using a) C₃F₆ and b) C₃H₈ as OH scavenger.

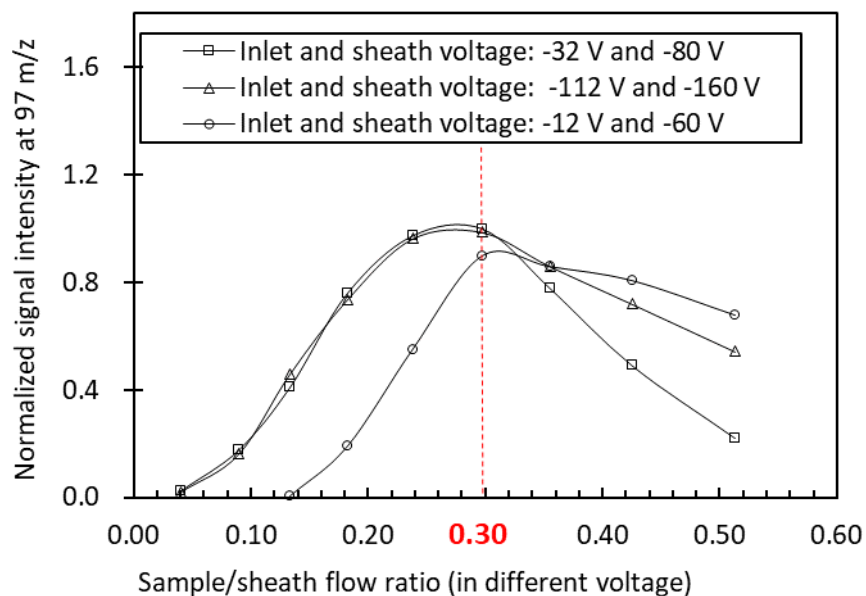


Figure S3. The normalized signal intensity at 97 m/z as a function of sample/sheath flow ratio at different voltages.

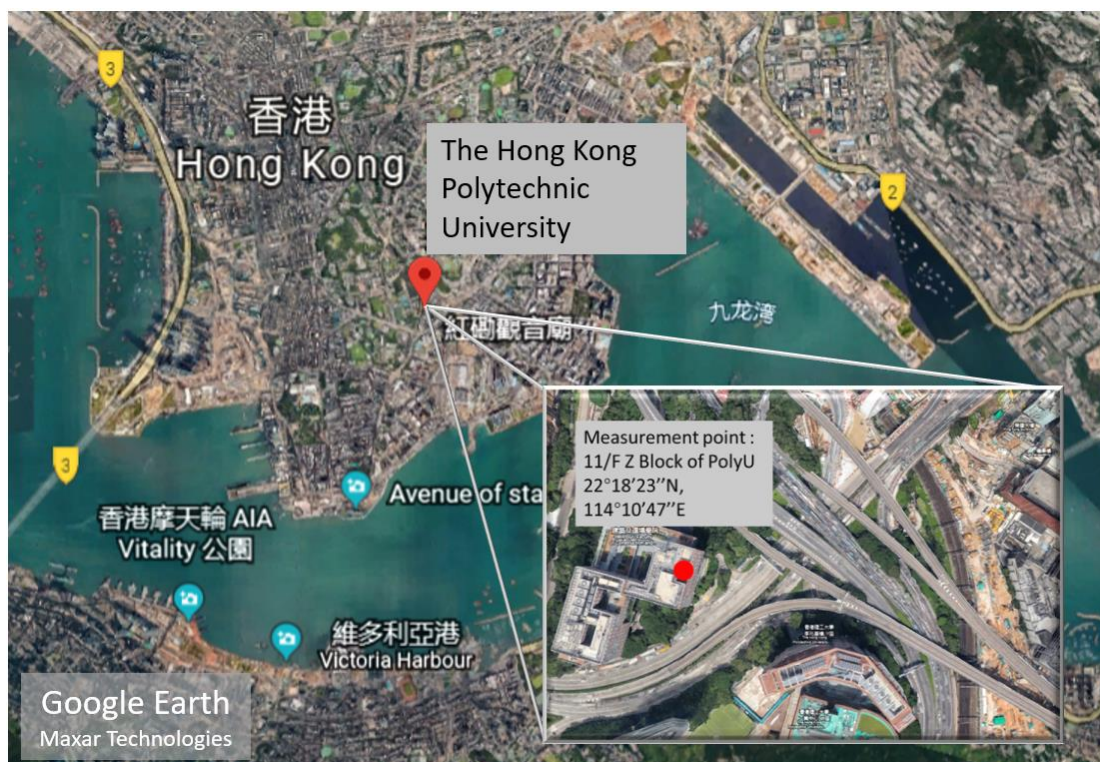


Figure S4. The map of ambient experiment location from the Google Earth (© Google Earth). The measurement site is labeled by red dot. The location is inside the Hong Kong Polytechnic University, around 50 m high above the ground and right next to the highway.