

Interactive comment on “An in situ gas chromatograph with automatic detector switching between Vocus PTR-TOF-MS and EI-TOF-MS: Isomer resolved measurements of indoor air” by Megan S. Claflin et al.

Anonymous Referee #1

Received and published: 14 August 2020

This paper presents a new instrument taking advances of both chromatographic and direct MS methods and two different ionization systems having therefore high potential for producing new kind data future air chemistry studies. Manuscript is clearly suitable for AMT. The method is well-described. Detection limits are low enough not just for indoor/urban air, but also for measurements of ambient air at more remote sites. Here results from indoor air measurements were presented showing the great potential of the instrument. I recommend publishing with minor changes.

Specific comments:

Line 109: The range of compounds is not this large if you use the trap at 20C. For very light VOCs, like ethane and ethane, breakthrough volume even at -30C is quite low. Please, correct this.

Authors' response: The reviewer is correct that the range quoted here is mis-leading as it is the maximum range of the trap itself and not for the entire TDPC-GC system. We have updated the text to clarify, the text now reads:

“The combination of adsorbents in the TO-15/TO-17 trap allows for the analysis of a wide range of VOCs (including oxygenates) in the C₂ – C₃₂ n-alkane volatility range. However, for the system deployed for this work the instrument was operated in a way that was optimized for VOCs in the C₅ – C₁₂ volatility range. Details of operational parameters (e.g. temperatures, flows) are described in Section 2.8.”

Line 199-200: Did you flush whole 5 ml/min into the column or did you have some split? What was your desorption efficiency?

Authors' response: We did not use a split flow for our injection, so the entire 5 sccm was sent to the column. To gauge our desorption efficiency, we would run a sample and then an instrument blank and measure the residual sample. The result of the instrument blank was < 1% of the signal measured in the sample. We have added the following text to Section 2.8 to address this:

“To gauge our desorption efficiency, we would run a sample and then an instrument blank, with no sample flow through the trap during the collection period, to measure the residual sample remaining in the trap. The result of the instrument blank was < 1 % of the signal measured in the sample indicating highly efficient transfer of sample, and this was deemed acceptable.”

Line 245: You calibrated your system with 2 ppb standard and sampling of time of 1 to 6 min.. Lowest calibration corresponds the ambient air concentration of 333 pptv, which is clearly higher than your detection limit. Did you test the linearity of your calibration curve with lower concentrations? Sometimes with TD systems curve is not linear with lower concentration for all

compounds (due to the incomplete desorption or other losses in the system). At least camphene results in Fig. S1 give some indication on this.

Authors' response: The reviewer presents an excellent point, and for this study we did not calibrate to lower concentrations. The authors acknowledge the reviewer's point about incomplete desorption and other losses impacting the lower end of the calibration curve. Since this study, we have transitioned to multi-stage trapping which has many benefits, making the single-stage TD configuration described in this paper obsolete. With our multi-stage trapping configuration, we have increased the dynamic range of our calibrations to over 2 orders of magnitude (down to 0.2 ppb). We are continuing to expand this range to lower concentrations. But until we can calibrate to lower concentrations, we acknowledge larger uncertainties at the lower mixing ratios.

Section 2.7: You have quite long inlet line (3.4m) for this low flow (30 ml/min). Maybe for future prototypes you will increase the flow to enable the quantitative measurement of more sticky compounds as well.

Authors' response: We agree with the reviewer. For campaigns since this work we have implemented a "fast inlet" which uses 1/4" OD PFA tubing with an external pump, with a short 1/8" PFA line via tee to the GC inlet; this new inlet typically has a total residence time of <1s from the inlet tip to GC port. The GC system has also improved, and we now sample at much faster flows (100-150 sccm typical).

Section 2.8: Could you add a chromatogram (calibration and indoor air) maybe as a supplement? It is very nice if with this short chromatogram, you are able to separate so many different compounds.

Authors' response: We have added an example calibration and indoor air chromatogram from the GC-Vocus to demonstrate the separation of monoterpenes and C₇ and C₈ aromatics during this project. This new figure is in the supporting information, Figure S2. However, the instrument has progressed significantly since this study and now use multi-stage trapping and focusing which has greatly improved the chromatographic separation and thus rendered obsolete the performance shown here. However, we are happy to include this figure for the sake of completeness. Along with the new figure, we have added the following sentence to the main text:

"GC-Vocus chromatograms of both calibration and ambient indoor air are shown in Figure S2 to demonstrate the chromatographic separation of this system."

Section 2.8.: Did you detect any blank/background for any of the measured compounds? Degradation of Tenax TA results often to some blank (e.g benzene).

Authors' response: To check for residual backgrounds of these compounds, we ran instrument zeros (where the traps were filled with zero air during the sample collection period) and instrument blanks. In these samples, remaining peaks that were above the baseline were < 1% of the signal measured during a typical ambient sample. We appreciate this comment from the reviewer, as we have also noticed elevated signal as the trap degrades over time (e.g. benzaldehyde) and contaminations from our gases.

Table 1: Could you also give precision and uncertainty of these systems in this table or in some other part of the paper?

Authors' response: We have added 1- σ uncertainties and precisions as requested by the reviewer. As an example, the uncertainty of the sensitivity calculated from the calibration curve for α -pinene measured by the GC-Vocus was 4.9% and the accuracy of the calibration preparation was 3.0%, resulting in a total uncertainty of 5.7%. This is an explicit explanation for α -pinene; the uncertainties for the other compounds can be found in the newly added Table S1. We have also updated the text in the main paper to mention the uncertainties and precisions. The text now reads:

“From our calibration data, we estimate typical 1- σ uncertainties to be 12 % and 5 % for the GC-EI-TOF and GC-Vocus configurations, respectively, with typical precisions of 5 % and 1 %. The individual uncertainties for each calibrated compound reported from the GC are listed in Table S1.”

Table 2: Even though you are able to detect some compounds (e.g. methanol, acetaldehyde etc.) I doubt their measurements are not quantitative. I would expect high breakthrough of them from the cold trap. Also some other molecules may have high losses in TD. If you have some results that show they are quantitative, please present it. If not, maybe you could mention more clearly that GC can also be used just for identification of these compounds and maybe RT-Vocus can be used for quantification of some of them?

Authors' response: The authors appreciate this comment from the reviewer, and agree that clarification in the text was needed. We have added an explanation to section 3.2 about Table 2. The text now reads:

“Table 2 reports the EI characteristic ion and the ion(s) detected by the Vocus (typically a combination of the molecular ion [MH⁺] along with water clusters and/or fragments) for a subset of the chromatographic peaks that were identified through the GC analysis. These identified species include alcohols, aldehydes, ketones, ethers, nitrogen containing compounds, halocarbons, siloxanes, alkanes, alkenes, and aromatics. It should be noted that not every compound listed in Table 2 can be reported quantitatively from the GC system due to breakthrough in the thermal desorption trap or other losses in the system. However, even for these species that are difficult to quantify, the GC is an excellent tool for compound identification.”

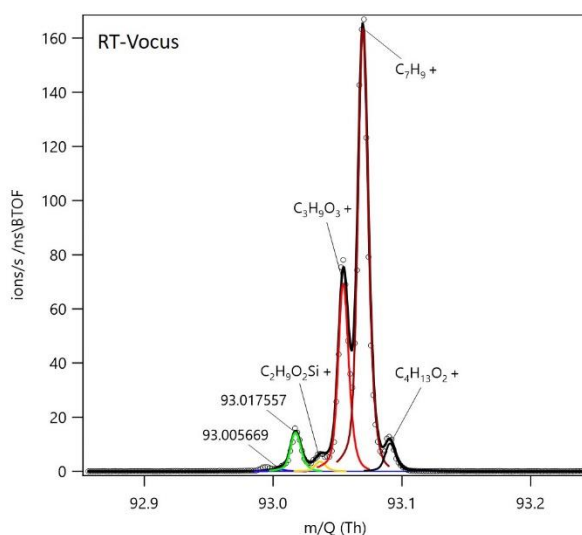
Line 342: Benzaldehyde has often quite high background in TD-GC runs (possibly due to degradation of Tenax TA). Even though it does not matter here, it could be more appropriate to use some other compounds as an example.

Authors' response: We agree with the reviewer that benzaldehyde can be an artifact of Tenax TA used in thermal desorption traps. However, benzaldehyde was used here as a model example of how to use the PTR mass spectrum, EI mass spectrum, and GC retention time to identify a compound. This example does not attribute the source or characterize the benzaldehyde time

profile, and so we feel it is appropriate to keep this section as is to demonstrate a “work flow” for how to use all of the information given from this system.

Section 3.4: Did you detect this compound with RT-Vocus? If so, please, show the results. This would prove that this is not coming from the TD system. Is DMSD known to have some health effects?

Authors' response: Unfortunately, in the RT-Vocus spectrum, the DMSD protonated molecular ion ($C_2H_9O_2Si^+$, m/z 93.0366) appears at a mass where there are large signals for species like toluene (m/z 93.099), and the water clusters of $C_4H_{10}O$ (m/z 93.0910) and $C_3H_6O_2$ (m/z 93.0546), among others. These other species are present in the spectrum in larger amounts, causing the DMSD signal to be a minor peak on the shoulder of these others, making it difficult to quantitate.



With the added dimension of the GC, we are able to separate the DMSD from these other species. As noted in the text, we were concerned that the DMSD could be an artifact of the TD system so we ran humidified system zeros to check. From these experiments we found no generation of DMSD and thus ruled out its formation from the TD system itself.

The authors are not aware of DMSD health effects. However, currently very little is known about this compound.

Interactive comment on “An in situ gas chromatograph with automatic detector switching between Vocus PTR-TOF-MS and EI-TOF-MS: Isomer resolved measurements of indoor air” by Megan S. Claflin et al.

Anonymous Referee #2

Received and published: 25 October 2020

Claflin et al. demonstrate a novel dual-channel TDPC-GC-EI/Vocus(H₃O⁺)TOFMS instrument. The combination of chromatography with preconcentration, soft and hard ionization methods, highly time and mass resolved time-of-flight detector makes it probably the most universal and comprehensive state-of-the-art instrument currently available for time-resolved isomer-specified VOC measurements. These measurements are particularly needed in the field of air quality and indoor and outdoor atmospheric chemistry. This manuscript shows a significant improvement in quantified chemical completeness, time resolution, and molecular speciation thanks to enormous synergy from coupling complementary state-of-the-art analytical methods. While I can see some potential for further improvement, overall, the manuscript is well written and, in my opinion, will be a valuable contribution to the fields of gas chromatography and mass spectrometry for indoor and other atmospheric applications. I would have relatively minor comments and suggestions which hopefully can be easily addressed in the revision.

Specific Comments and Suggestions

1) The title reads nicely exhaustively informative but the presence of “indoor air” in the title might be misleading. I interpret the novel instrument/method as more generally applicable than just for the indoor air but perhaps the title might mislead the AMT audience that the method/instrument is dedicated only to indoor air measurements rather than that the indoor air was just the indoor gym field example. The extremely impressive detection limit thanks to the Vocus sensitivity and preconcentration makes this method particularly powerful for discoveries also in the outdoor atmosphere and many other contexts.

Authors response: We thank the reviewer for their support of the application of this technique to many different environments (e.g. outdoor ambient applications). However, we added “isomer resolved measurements of indoor air” to the title because this technique was demonstrated for the first time during this indoor air study. While we understand the reviewer’s concern about the title limiting the perceived future applications, we feel this is appropriate to leave as is, to inform the reader about the data presented in the manuscript.

2) I think the novel instrumentation presented in this paper is absolutely outstanding, but I do have a feeling that the capabilities are much greater than described in the manuscript. The table 2 nicely shows different classes but with the sub-ppt detection limit indoors one would expect thousands of ions. Are the compounds in Table 2 just select, example compounds from the weight room or was it meant to represent the complete chemical composition?

Authors response: The compounds reported in Table 2 are select examples and do not represent a complete chemical composition of the air. In general, the GC system deployed for this work was able to resolve VOCs in the volatility range of C₅ – C₁₂ n-alkanes, with the ability to detect non- to mid-polarity VOCs (e.g. alkanes, alkenes, aromatics, siloxanes, carbonyls). The RT-Vocus

measurements, without GC speciation, cover a wider range of VOC volatilities and the ability to detect polar compounds (e.g. carboxylic acids).

3) The paper focuses predominantly on monoterpenes, select aromatics and silicon containing VOCs (cVMS, DMSD). This is great but I would recommend expanding beyond the weight room, on the detectable compounds, ideally across a range of c^* , and chemical classes. It would also be nice to add to the discussion which compounds are not detectable or are particularly challenging.

Authors response: We agree that the GC system has potential for a wide range of compounds in terms of functionality and volatility. In section 2.3 we address the capabilities and limitations of the system with the configuration used for this project:

“This column resolves non- to mid-polarity VOCs including hydrocarbons, oxygenates, and nitrogen and sulfur containing compounds, with the exception of high polarity compounds like carboxylic acids. The volatility range that the GC can resolve is a function of both the chosen GC column and the TDPC adsorbent trap. With the combination of column and adsorbent trap used for this study, the ARI GC was optimized for $C_5 - C_{12}$ hydrocarbons, along with oxygen, nitrogen, halogen, and sulfur containing VOCs.”

4) I really appreciate the switching capability between the RT-Vocus, GC-Vocus and GC-EITOF. The “automatic detector switching” is emphasized already in the title. However, I could not find information how fast the switching is and how the data between switching is treated/trimmed. It would be great to include this information.

Authors response: The switching for this system is on a per chromatogram basis, not within a chromatogram. At the beginning of the GC cycle, a chromatography valve in the GC switches to the desired detector. We have updated the text in Section 2.8 to make this clearer, the text now reads:

“After the chromatographic separation, the column effluent was automatically directed to either the EI-TOF or the Vocus for detection by switching the 3rd chromatography valve (Figure 1).”

The ability to switch between detectors during a chromatogram, or to have the GC effluent split between the two detectors (like Bi et al., 2020 demonstrated) would be separate method development projects that were not a part of this work.

5) One big issue, not specific to this paper, but applicable to analytical chemistry methods in general are potential chemical conversions in the instruments or sampling system due to contact with materials (e.g. metal surface) or thermal (e.g. high temperature ramp or desorption). The authors are in an excellent position to shed some light on this question because RT-Vocus and GC-Vocus data can be directly compared for compounds which would be expected thermally unstable. I think expanding on this general issue could be interesting for the AMT community.

Authors response: We appreciate the reviewer’s comment on this issue, and agree that conversions on reactive surfaces are important processes to understand (and avoid). The system

presented did implement a passivated sample flow path as described in section 2.3, however, because the system described in this work was a prototype and not a final system, we did not do an in-depth analysis of the stability of thermally labile compounds. In the future, this is a type of analysis that will be under investigation for the evolved system.

6) 100 ppq LOD for mp-xylenes is certainly extremely impressive! While 1 ppt for o-xylene is still impressive, I wonder what exactly is causing a large difference in LOD between those isomers.

Authors response: As noted in section 2.9, the LOD is a function of the standard deviation of the baseline, the full width half maximum of the chromatographic peak, and the sensitivity. The difference in LOD between the m&p- versus the o-xylene isomers is likely a function of the baseline around these chromatographic peaks. Since this work, the chromatographic peak widths have been narrowed considerably due to improvements made to the TDPC-GC system which results in lower LODs.

7) Two units are used for the normalized signals (ncps, and ncts). The text cautions the reader about the differences which helps. The normalization process is well described in Sect. 2.9. It seems that the ncps normalization was done by the second water cluster which makes me wonder if the signal was relatively constant in the Vocus at the given E/N ratio and unaffected by sample humidity. Is it assumed that this ion would reflect changes in H₃O⁺ more than the changes in ambient H₂O? Because changes in the E/N ratio would largely affect ncps values normalized to humidity-independent water cluster I would suggest adding a subscript with E/N ratio used (e.g. Sn150Td). This should allow for comparisons in future campaigns and prevent confusion of normalized sensitivities derived at different E/N ratios. I would also suggest showing in addition (maybe in parenthesis) the absolute sensitivity (cps/ppb).

Authors response: In the Vocus PTR-TOF, the water vapor added to the ion source is not pumped away separately like in a PTR-MS, and as a result the water vapor concentration in the IMR is very high and largely independent of ambient humidity. This allows the normalization of the product ion signals to a water cluster ion, which is done here because the H₃O⁺ signal is too weak. The reviewer is correct to point out that this way of normalizing the signal depends on E/N and that it is important to explicitly mention the E/N value in the analysis. We have added “E/N = 150 Td” at the following places in the manuscript:

In section 2.9 we have updated the text to read: “Analyte signal was divided by (H₂O)₃H⁺ and multiplied by 1 x 10⁶ cps to obtain normalized signal. This method of normalization depends on the E/N value used, which for this study was 150 Td.”

Subscript on Table 1: ncps and ncts for both RT- and GC-Vocus measurements are for Vocus operation with E/N = 150 Td.

8) Further to the comment above, I have been missing some details on the Vocus operation and data processing. The reader is referred to the paper by Finewax et al. (2020) but this paper does not seem to be published yet so I could not refer to it. It is great to see the parameters for the

IMR, but it is unclear if the TPS voltages have been optimized with the Thuner or manually. I am also specifically wondering why 1.5 mbar of IMR pressure was used? It is not an issue but usually ≥ 2 mbar is used. The E/N ratio of 150 Td is already somewhat high so the higher pressure could lower it and further boost the sensitivity but if there was a specific reason perhaps it could be interesting to include.

Authors response: An E/N of 150 Td is relatively high compared with PTR-MS instruments, but it does need to be a little higher because of the higher humidity in the IMR. This increases the amount of H₃O⁺ relative to water dimer, allowing for more sensitive detection of aromatic compounds such as benzene, which are not ionized efficiently by protonated water dimer. Voltages were optimized using Thuner software. The IMR pressure of 1.5 mbar was chosen to limit the DC and RF voltages needed to run the IMR and avoid the risk of discharges. These experiments were done shortly after the instrument arrived in our laboratory, and more experience with operating the instrument has been gained since then. The manuscript by Finewax is close to acceptance in *Indoor Air*, however we have added some further details on the operation of the Vocus PTR-TOF to the text. The text for sections 2.4.2 now reads:

“The proton transfer reaction mass spectrometer used in this study is a Tofwerk Vocus PTR-TOF-MS (Tofwerk AG) described by Krechmer et al. (2018). It has nominal resolution of 12000 $m/\Delta m$ and was operated with a resolution of 11500 at m/z 150. The Vocus was operated with a data acquisition rate of 1 Hz for RT-Vocus and 5 Hz for GC-Vocus measurements. The focusing ion-molecule reactor DC and RF voltages were set to 500 V and 450 V, respectively, and was operated at a pressure of 1.5 mbar, giving a reduced electrical field (E/N) of 150 Td. Additional details of Vocus operation during this campaign are given in Finewax et al. (2020).”

9) It is nice to see the good performance of the GC-(PTR)Vocus channel. For instance, the speciating power of monoterpenes looks simply excellent. In terms of the other isomeric mixtures, would there be any benefit from using GC-(NH₄⁺) Vocus ionization or has it not been tried yet in this configuration? Perhaps it could be inspiring to add some prognosis on this to the future work.

Authors response: Using different ionization chemistries in the Vocus (e.g. NH₄⁺, NO⁺) along with the GC separation is an area of current and future work, but was beyond the scope of this paper.

10) By looking at the detected compounds in the indoor campaign (Table 2) I am missing more highly oxygenated compounds such as acids, hydroxy acids. Would it be useful to try the instrument with an in-situ derivatization (e.g. Isaacman et al., 2014)? Other compound families I am wondering about detection/speciation by this GC are sulfur-containing, amides, amines, heterocycles, metalorganics. By comparing the data from the GC-Vocus and RT-Vocus, it should be possible to delineate the groups of compounds which may not have made it through the column.

Authors response: The compounds listed in Table 2 are a subset of the compounds that the GC system can resolve. As noted in our response to the reviewers comment 3, the GC system employed for this study (combination of column and traps) was able to analyze for

hydrocarbons, halocarbons, oxygenates, and nitrogen and sulfur containing compounds in the C₅ – C₁₂ n-alkane volatility range. This does include amides, amines, heterocycles, and sulfur-containing species. However, the column used (Rxi-624, Restek) is not suitable for the analysis of highly polar compounds (e.g. carboxylic acids). Currently we are working toward using our GC systems to analyze for more polar, low-volatility species through the use of different columns. And there are GC columns that are designed for the analysis of carboxylic acids; however, these columns are not suitable for the analysis of some of the compounds of interest here. So, the value of that configuration would depend on the application and science questions of the researcher.

11) It is great to see GC and Vocus synergistically complementary. I understand that Finewax et al. (2020) is going to report expanded Vocus dataset from the gym, but I wonder why D5 is shown as detected by GC-EITOF but not GC-Vocus (Table 2). It is surprising because Vocus is definitely very sensitive to D5. Could it be that the sample did not reach Vocus for some reason? What was the detectability of D6 and D7?

Authors response: D5 siloxane was unfortunately not detected by the GC-Vocus in this work due to losses in our GC-Vocus transfer line. This has been resolved since this campaign. D6 and D7 were outside the GC elution range for this system.

12) L365 The use of “artifacts” term in this context reads extremely misleading here. The fragments or clusters are typically not artifacts in PTRMS. In many cases they can be used to quantify compounds (e.g. the cyclohexadiene fragment of monoterpenes m/z 81.0699 or methanol cluster m/z 51.0446). I suggest replacing with “interferences” or “complications” to avoid confusion with artifacts from sampling tube materials, etc.

Authors response: We have updated the text as recommended by the reviewer. The sentence now reads:

“Although these interferences complicate the RT-Vocus interpretation, with the addition of GC separation the molecular identification, and identification of fragment and cluster signals, is possible to do for complex ambient samples.”

13) The DMSD story is very well done. Clearly this discovery would have been much more difficult without the complementary power of this instrument. However, I am completely unconvinced by the indoor OH radical hypothesis. It simply does not make sense to me in terms of Fig 4 showing increase in concentration over night and being correlated with RH. This does seem perfectly aligned with a possibility of microbial biodegradation of siloxanes in PCPs in sweat. It would be consistent with numerous sources reporting it as a biodegradation product (Accettola et al., 2008; Xu, 1999). While this explanation seems most likely to me for this indoor air case, it does not necessarily mean that DMSD is not formed via OH oxidation outdoors which would be another example of an analogy between the atmospheric and microbial oxidation/ degradation.

Authors response: We agree with the reviewer that a potential source of DMSD is the OH oxidation of both cyclic and linear siloxanes and we acknowledge this in the text with the

following statement:

“DMSD has been shown to be an environmental degradation product of both cyclic (cVMS) and linear (PDMS) siloxanes (Rücker and Kümmerer, 2015; Tuazon et al., 2000). Both classes of organosiloxanes degrade to DMSD through gas-phase oxidation by hydroxyl (OH) radicals (Tuazon et al., 2000) and through condensed-phase hydrolysis reactions (Xu et al., 1998; Lehmann et al., 1994a,b; Lehmann et al., 1995; Carpenter et al., 1995).”

However, for the conditions of this study as described in the text (indoors with no natural light) we feel it is appropriate to rule out OH oxidation as the source of the DMSD observed in this environment. We agree with the reviewer that other formation pathways (including OH oxidation) are likely important in ambient environments. To clarify that our assessment of the role of OH oxidation is specific to this study, we have updated the text which now reads:

“For these reasons, we conclude that the DMSD observed in this study was not formed inside through gas-phase oxidation of cVMSs (e.g. D₅ siloxane) by OH radicals, and instead hypothesize that the production is through condensed-phase reactions followed by volatilization.”

14) The quantified speciation of monoterpenes by GC-Vocus is extraordinarily skillful. These instruments are perfectly suited to contribute to a progress in source apportionments between anthropogenic, plant, fruit, and microbial sources of this important group of compounds. I strongly suspect but it would be great to know if the instrument is also capable of speciating sesquiterpenes.

Authors response: The instrument configuration presented in this paper was not set-up to resolve low-volatility compounds. However, since the work presented here, we have optimized our GC system for an expanded volatility range, including low-volatility VOCs such as sesquiterpenes, using an alternative column.

Technical

15) In several places a number and a unit are not separated by a space.

Authors response: We have gone through the manuscript and added spaces between all numbers and units.

References:

Bi, C.; Krechmer, J. E.; Frazier, G. O.; Xu, W.; Lambe, A. T.; Clafin, M. S.; Lerner, B. L.; Jayne, J. T.; Worsnop, D. R.; Canagaratna, M. R.; Isaacman-VanWertz, G. Coupling a gas chromatograph simultaneously to a flame ionization detector and chemical ionization mass spectrometer for isomer-resolved measurements of particle-phase organic compounds. Atmos. Meas. Tech. Under Review.

List of relevant changes made to “An *in situ* gas chromatograph with automatic detector switching between Vocus PTR-TOF-MS and EI-TOF-MS: Isomer resolved measurements of indoor air” during revisions:

1. In Section 2.2, on page 4 we have added the following text to clarify the volatility range of the system described in the manuscript:

“The combination of adsorbents in the TO-15/TO-17 trap allows for the analysis of a wide range of VOCs (including oxygenates) in the C₂ – C₃₂ *n*-alkane volatility range. However, for the system deployed for this work the instrument was optimized for VOCs in the C₅ – C₁₂ volatility range. Details of operational parameters (e.g. temperatures, flows) are described in Section 2.8.”

2. In Section 2.4.2, on page 5 we added the following sentence to further describe the operational settings of the Vocus detector:

“The focusing ion-molecule reactor DC and RF voltages were set to 500 V and 450 V, respectively, and was operated at a pressure of 1.5 mbar, giving a reduced electrical field (*E/N*) of 150 Td.”

3. In Section 2.8, on page 8 we have added the following text to describe how we measured the desorption efficiency of the system:

“To gauge the desorption efficiency, we would run a sample and then an instrument blank, with no sample flow through the trap during the collection period, to measure the residual sample remaining in the trap. The result of the instrument blank was < 1 % of the signal measured for all reported compounds in the sample indicating highly efficient transfer of sample, and this was deemed acceptable.”

4. In Section 2.8, on page 8 we have added the following text to clarify how the GC effluent was automatically switched between the two detectors:

“After the chromatographic separation, the column effluent was automatically directed to either the EI-TOF or the Vocus for detection by switching the 3rd chromatography valve (Figure 1).”

5. In Section 2.9, on page 9 we have added the following text to make clear to readers that normalization of the Vocus data in the manner done for this study does depend on the *E/N* ratio:

“This method of normalization depends on the *E/N* value used, which for this study was 150 Td.”

6. In Section 2.9, on page 10 a foot note for Table 1 was added that acknowledges that the sensitivities reported for the Vocus are for Vocus operation with an *E/N* ratio of 160 Td.

7. In Section 2.9, on page 10 we have added text that generalized the uncertainties in the measured sensitivities and typical precisions of the measurements. The individual uncertainties are now reported in the newly added Table S1.

“From our calibration data, we estimate typical 1- σ uncertainties to be 12 % and 5 % for the GC-EI-TOF and GC-Vocus configurations, respectively, with typical precisions of 5 % and 1 %. The individual uncertainties for each calibrated compound reported from the GC are listed in Table S1.”

8. In Section 2.9, on page 10 we have added text acknowledging the addition of a new figure to the SI which demonstrates the chromatographic separation of the system:

“GC-Vocus chromatograms of both calibration and ambient indoor air are shown in Figure S2 to demonstrate the chromatographic separation of this system.”

9. In Section 3.2, on page 15 we have added the following text which notes that not all compounds resolved by the GC can be reported quantitatively:

“It should be noted that not every compound listed in Table 2 can be reported quantitatively from the GC system due to breakthrough in the thermal desorption trap or other losses in the system. However, even for these species that are difficult to quantify, the GC is an excellent tool for compound identification.”

10. In Section 3.2, on page 17 we have replaced the work “artifacts” with “interferences” as requested by Reviewer 2.
11. In Section 3.4, on page 23 we have amended the text to clarify that our conclusion is that the DMSD observed in this study was formed inside, and not from gas-phase OH oxidation:

“For these reasons, we conclude that the DMSD observed in this study was not formed inside through gas-phase oxidation of cVMSs (e.g. D₅ siloxane) by OH radicals, and instead hypothesize that the production is through condensed-phase reactions followed by volatilization.”

12. Supporting Information page S3, we have added a table (Table S1) of sensitivity uncertainties as requested by Reviewer 1.
13. Supporting Information page S4, we have added a figure (Figure S2) that demonstrated the chromatographic separation of compounds in both a calibration and an ambient sample.

All of these changes are highlighted in yellow in the following manuscript and SI mark-ups.

An *in situ* gas chromatograph with automatic detector switching between Vocus PTR-TOF-MS and EI-TOF-MS: Isomer resolved measurements of indoor air

Megan S. Claflin¹, Demetrios Pagonis^{2,3}, Zachary Finewax^{2,3,4}, Anne V. Handschy^{2,3}, Douglas A. Day^{2,3},
5 Wyatt L. Brown^{2,3}, John T. Jayne¹, Douglas R. Worsnop¹, Jose L. Jimenez^{2,3}, Paul J. Ziemann^{2,3},
Joost de Gouw^{2,3}, Brian M. Lerner¹

¹ Aerodyne Research Inc., Billerica, Massachusetts 01821, United States

² Cooperative Institute for Research in Environmental Sciences (CIRES), Boulder, Colorado 80309, United States

10 ³ Department of Chemistry, University of Colorado, Boulder, Colorado 80309, United States

⁴ Now at Chemical Sciences Laboratory, Earth System Research Laboratory, National Oceanic and Atmospheric Administration, Boulder, Colorado, 80305, United States

Correspondence to: Megan S. Claflin (mclaflin@aerodyne.com)

Abstract. We have developed a field-deployable gas chromatograph (GC) with thermal desorption preconcentration (TDPC),
15 which is demonstrated here with automatic detector switching between two high-resolution time-of-flight mass spectrometers
(TOF-MS) for *in situ* measurements of volatile organic compounds (VOCs). This system provides many analytical advances
including acquisition of fast time-response data in tandem with molecular speciation and two types of mass spectral information
for each resolved GC peak: molecular ion identification from Vocus proton transfer reaction (PTR) TOF-MS and fragmentation
20 pattern from electron ionization (EI) TOF-MS detection. This system was deployed during the 2018 ATHLETIC campaign at
the University of Colorado Dal Ward Athletic Center in Boulder, Colorado where it was used to characterize VOC emissions
in the indoor environment. The addition of the TDPC-GC increased the Vocus sensitivity by a factor of 50 due to
preconcentration over a 6 min GC sample time versus direct air sampling with the Vocus which was operated with a time
resolution of 1 Hz. The GC-TOF methods demonstrated average limits of detection of 1.6 ppt across a range of monoterpenes
and aromatics. Here, we describe the method to use the two-detector system to conclusively identify a range of VOCs including
25 hydrocarbons, oxygenates and halocarbons, along with detailed results including the quantification of anthropogenic
monoterpenes, where limonene accounted for 47 – 80 % of the indoor monoterpene composition. We also report the detection
of dimethylsilanediol (DMSD), an organosiloxane degradation product, which was observed with dynamic temporal behavior
distinct from volatile organosiloxanes (e.g. decamethylcyclopentasiloxane, D5 siloxane). Our results suggest DMSD is
30 produced from humidity-dependent, heterogeneous reactions occurring on surfaces in the indoor environment, rather than
formed through gas-phase oxidation of volatile siloxanes.

1 Introduction

Historically, volatile organic compound (VOC) emissions from transportation were the most important air pollution source in urban environments (Gentner et al., 2017; Watson et al., 2001). However, with the success of emission reduction strategies (Warneke et al., 2012; McDonald et al., 2013), other sources of anthropogenic VOCs are becoming significant in most developed nations, such as emissions from volatile chemical products (VCPs) (McDonald et al., 2018). VCPs consist of a large diversity of compounds including oxygenated species like alcohols (e.g. glycols), esters, siloxanes, and carbonyls along with hydrocarbons like alkanes, alkenes (e.g. monoterpenes), and aromatics (McDonald et al., 2018). This emission class stems from human activities such as the use of personal care products, paints, cleaning supplies, pesticide application, and the industrial use of solvents. Typically, VCPs are emitted in residential or commercial buildings, making their emissions highly variable both spatially and temporally depending on the occupancy and activities occurring in the space (Weschler and Carslaw, 2018; Abbatt and Wang, 2020; Pagonis et al., 2019). To understand changing emission patterns, analytical instrumentation that can quantitatively detect these classes of VOCs with little ambiguity and high time resolution is needed along with a range of studies to understand how emissions differ depending on the indoor environment and its use.

While indoor air quality has been studied for decades (Weschler and Shields, 1997; Wolkoff, 2013), recently the use of advanced gas-phase analysis techniques developed for atmospheric research, like in situ (real-time, direct air sampling) proton transfer reaction (PTR) and chemical ionization (CI) mass spectrometry (MS), have been applied for the characterization of indoor VOCs. These techniques have been used to characterize emissions in indoor environments such as a movie theater (Williams et al., 2016), art museum (Pagonis et al., 2019; Price et al., 2019), university classrooms (Liu et al., 2016, 2017; Tang et al., 2015, 2016), and to study how episodic events like cleaning and cooking impact indoor air quality (Wong et al., 2017; Kristensen et al., 2019; Lunderberg et al., 2019). While these studies conducted with PTR-MS and CIMS provide VOC emission signatures in a variety of environments, they often cannot provide molecular identification due to the detection of isobaric ions, which can be associated with multiple isomers, cluster ions, or fragmentation products that have the same molecular formula (Thompson et al., 2017). Without molecular identification, source apportionment and fate characterization remain difficult.

Improved molecular information can be gained by coupling gas chromatography (GC) with mass spectrometric detection (Warneke et al., 2003). Some studies have conducted off-line GC measurements for indoor air research, which generally consist of sorbent tube or solid phase microextraction (SPME) fiber collection with subsequent GC analysis (Gallagher et al., 2008; He et al., 2019; Sun et al., 2017; Liu et al., 2019). These studies have focused on emissions from human skin and breath (Gallagher et al., 2008; He et al., 2019; Sun et al., 2017), with the exception of Liu et al. (2019), which utilized off-line GCxGC analysis to study VOCs in a single-family home in northern California.

While these approaches provide some molecular identification and quantification, the low time resolution and time-consuming nature of off-line methods along with the potential for the introduction of artifacts due to sample handling between collection

and analysis are not ideal. In situ GC measurements of indoor environments are currently limited (Kristensen et al., 2019; Lunderberg et al., 2019; Rizk et al., 2018). During the single-family house study mentioned above (Liu et al., 2019), a semi-
65 volatile thermal desorption aerosol gas chromatograph (SV-TAG) was deployed to make measurements during normal occupancy (Kristensen et al., 2019; Lunderberg et al., 2019). In the summer of 2018, an intensive indoor air study, HOMEChem, was conducted to study emissions and removal processes of gases and particles in a model home. This campaign included SV-TAG, an in situ 4-channel GC with flame ionization detection (FID) and electron capture detection (ECD), and passive sampling for off-line GC-MS samples (Farmer et al., 2019). The use of multiple types of chromatographic separation
70 during this campaign illustrates the shift in focus for indoor air research toward more complete molecular analysis.

Building upon the research that has been conducted to study indoor environments, the ATHLETic center study of Indoor Chemistry (ATHLETIC) campaign was conducted during November of 2018 at the University of Colorado Dal Ward Athletic Center in Boulder, Colorado. The goal of ATHLETIC was to quantify the effects of human exercise, the use of chlorine-based cleaners, and other parameters on indoor air quality with instrumentation that provides high-time resolution information and
75 detailed characterization of both gases and particles. To address the need for high time resolution measurements and molecular identification of VOCs we have developed an automated, field-deployable GC equipped with thermal desorption (TD) preconcentration and automated detector switching between two high-resolution time-of-flight mass spectrometers (HR-TOF-MS): a Vocus PTR-TOF-MS and an electron ionization (EI) TOF-MS for in situ measurements of VOCs. This system was deployed during the 2018 ATHLETIC campaign to characterize VOC emission profiles in the weight room facility. The
80 instrument configuration and details of operation are discussed here along with measurement results that were made possible through the analytical advances this technique offers. These results include the identification of a range of VOCs including hydrocarbons, oxygenates, and halocarbons in the athletic center along with details of their detection by both types of TOF-MS. We also report the quantification of anthropogenic monoterpenes and evidence of VOC emissions from humidity-dependent, heterogeneous reactions occurring on walls and surfaces in the indoor environment. The results presented here are
85 a demonstration of this new GC-TOF-MS technique that produces three detailed and complementary data sets.

2 Methods

2.1 Instrument Description

The GC-TOF-MS system consists of three main components: (1) thermal desorption pre-concentrator (TDPC) for sample collection, (2) gas chromatograph (GC) for sample separation, and (3) high resolution time-of-flight mass spectrometers (HR-
90 TOF-MS) for sample detection. Each of these components is described in the following sections. While the *in situ* GC can be operated with either the Vocus PTR-TOF-MS or EI-TOF-MS as individual detectors, coupling the GC with both detectors creates a technique that produces three complementary data sets: (1) real-time Vocus PTR-TOF-MS, (2) GC-Vocus PTR-TOF-MS, and (3) GC-EI-TOF-MS. Hereafter, these three techniques will be referred to as RT-Vocus, GC-Vocus, and GC-EI-TOF,

respectively. It should be noted that the instrument described in this work, and deployed for the ATHLETIC campaign, was a
95 prototype system used to demonstrate this technique. The instrument is undergoing continued development to improve
sensitivities, chromatographic performance, and extend the volatility range of resolved compounds since this campaign.

2.2 Thermal Desorption Preconcentration

Ambient VOCs are typically present in low mixing ratios (sub-ppb), and so to increase GC-MS sensitivity a preconcentration
method is required. For this study, the samples were collected using a simplified version of a thermal desorption
100 preconcentrator (TDPC) (Aerodyne Research, Inc.). Briefly, the TDPC employed for this study relied upon a single-stage
adsorbent trap for pre-concentration of analytes. The design is based upon that of Tanner et al. (2006), and uses a commercial
cold-plate Peltier thermoelectric cooler (CP-110, TE Technology) to allow for precise ambient to sub-ambient temperature
regulation. Results from this TDPC have been described previously (Anderson et al., 2019). The system was simplified by not
using water trapping or oxidant scrubbing before sample collection due to the expected low humidity and oxidant mixing ratios
105 in this study. The sample trap was a commercial glass sorbent tube (TO-15/TO-17 cold trap, Markes International) operated
at 20 °C during sample collection to avoid potential water condensation. The chosen sample trap was a multi-bed adsorbent
trap equipped with 3 stages of adsorbents (Tenax, Carboxen 1003; personal comm., Markes International, 2020)
to expand the volatility range of compounds that can be trapped and desorbed for analysis. The combination of adsorbents in
the TO-15/TO-17 trap allows for the analysis of a wide range of VOCs (including oxygenates) in the C₂ – C₃₂ n-alkane volatility
110 range. However, for the system deployed for this work the instrument was optimized for VOCs in the C₅ – C₁₂ volatility range.
Details of operational parameters (e.g. temperatures, flows) are described in Section 2.8.

2.3 Gas Chromatograph

To separate analytes before detection with TOF-MS, a compact GC from Aerodyne Research, Inc. (hereafter referred to as
ARI GC) was used. The ARI GC is designed to be an *in situ*, field-deployable system. It fits into a 55 cm x 55 cm x 30 cm
115 rack, weighs 24 kg, consumes 300 W of power during typical operation, and contains all hardware for GC sample collection
and control of TDPC and GC flows and temperatures, including a make-up flow needed for GC-Vocus measurements
(described in Section 2.8). Here, the flow path contained three 2-position chromatography valves with Nitronic 60 valve bodies
(VICI Instruments): one 10-port and two 6-port valves (Figure 1B) to direct flows during the GC cycle. The chromatography
valves and transfer lines (Sulfinert-treated 304-SS, 1.6 mm OD, 0.76 mm ID, Restek) are housed in a heated enclosure held at
120 150 °C. The carrier gas (UHP helium; Matheson) was controlled by a mass flow controller (MKS Technology) with variable
setpoint capability in the range of 0.1 – 10 cm³ min⁻¹. The GC column is housed in a custom interlocking aluminum spindle
(12 cm x 3 cm) with surface-mounted flexible resistive heaters, as described by Lerner et al. (2017). For this study, the ARI
GC was configured as a one-channel system (single column separation), with a 30 m Rxi-624 analytical column (Restek, 0.25
mm ID, 1.4 μm film thickness) installed in the spindle. This column resolves non- to mid-polarity VOCs including

125 hydrocarbons, oxygenates, and nitrogen and sulfur containing compounds, with the exception of high polarity compounds like
carboxylic acids. The volatility range that the GC can resolve is a function of both the chosen GC column and the TDPC
adsorbent trap. With the combination of column and adsorbent trap used for this study, the ARI GC was optimized for C₅ –
C₁₂ hydrocarbons, along with oxygen, nitrogen, halogen, and sulfur containing VOCs.

2.4 HR-TOF-MS Detection

130 2.4.1 EI-TOF-MS

The electron ionization mass spectrometer used in this study is a Tofwerk EI-TOF-MS (Tofwerk AG) that has been described
previously (Obersteiner et al., 2016). While the EI-TOF has nominal mass resolution up to 5000 $m/\Delta m$, here it was operated
with a resolution of 3900 at m/z 69 to optimize both mass resolution and instrument sensitivity. During acquisition, mass
spectra were averaged on a 6 Hz time base to obtain enough data points across each chromatographic peak. The ionizer
135 temperature was kept at 280 °C, with ionization energy set to 70 eV and an electron emission current of 0.3 mA. The interface
between the GC and both EI-TOF and Vocus is described in Section 2.8.

2.4.2 Vocus PTR-TOF-MS

The proton transfer reaction mass spectrometer used in this study is a Tofwerk Vocus PTR-TOF-MS (Tofwerk AG) described
by Krechmer et al. (2018). It has nominal resolution of 12000 $m/\Delta m$ and was operated with a resolution of 11500 at m/z 150.
140 The Vocus was operated with a data acquisition rate of 1 Hz for RT-Vocus and 5 Hz for GC-Vocus measurements. The
focusing ion-molecule reactor DC and RF voltages were set to 500 V and 450 V, respectively, and was operated at a pressure
of 1.5 mbar, giving a reduced electrical field (E/N) of 150 Td. Additional details of Vocus operation during this campaign are
given in Finewax et al. (2020).

2.5 Instrument Control, Data Acquisition and Analysis

145 ARI GC operation is fully automated via a Labview-based (National Instruments, Inc) stand-alone executable in a Windows
10 OS environment (Microsoft) on one of the TOF-MS computers (here, the EI-TOF computer was used). The ARI GC
communicates with the control computer via USB 2.0, with two communication devices (data board, serial communications
board) required for operation. Each mass spectrometer is equipped with its own acquisition software (Tofwerk AG), the EI-
TOFMS operating TofDAQ v.1.99 and the Vocus using Igor Pro-based (Wavemetrics) Acquility v.2.3.6 which acts as a
150 command shell and GUI interface for TofDAQ.

The analysis of high-resolution mass spectrometric data from both the EI-TOF and the Vocus was performed using Tofware
(v3.1.2; TofWerk AG and Aerodyne Research, Inc.), where both nominal (unit mass resolution, UMR) and accurate (high-
resolution, HR) data were used for analysis. Once the data had undergone mass calibration and high-resolution ion peak fitting,

the data was then imported into GC analysis software, TERN (Aerodyne Research, Inc.). TERN is a software package based
155 in Igor Pro that automatically calculates chromatographic peak areas, for either UMR or HR data, by mathematically fitting
peak functions to the data rather than peak integration (Isaacman-VanWertz et al., 2017). Instrument calibration and data
normalization procedures employed for this study are described in Section 2.9.

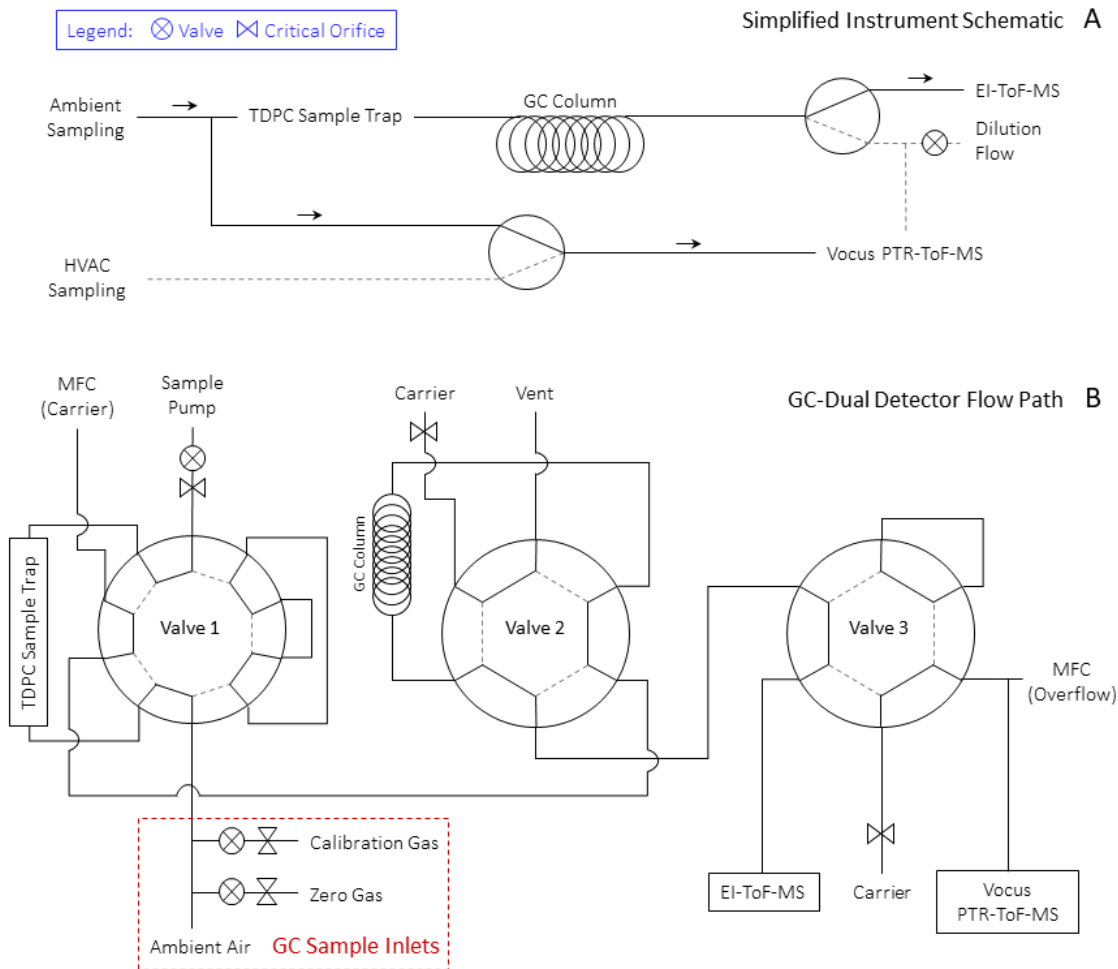
2.6 Measurement Site

ATHLETIC was a three-week study conducted at the University of Colorado Dal Ward Athletic Center in November 2018 in
160 Boulder, Colorado. During the campaign, instruments were housed within the athletes' weight room and sampled from both
inside the weight room (hereafter "room air") and the supply air from the heating, ventilation, and air conditioning (HVAC)
system. During the measurement period, the instruments switched between sampling the room and supply air every 10 min via
an automated valve system. The weight room is serviced by the main air handling unit (AHU) of the building that circulates \approx
400–1400 $\text{m}^3 \text{min}^{-1}$, of which 200 $\text{m}^3 \text{min}^{-1}$ is supplied to the weight room. The fraction of outside air that was mixed with the
165 main AHU flow varied from \approx 10–80 % during this study. The volume of the weight room is \approx 1700 m^3 , which corresponds to
an average residence time of air in the weight room of \approx 8.5 min, and an outdoor air exchange rate of 0.7 – 5.6 air changes per
hour (ACH). The Dal Ward Athletic Center is directly adjacent to the University of Colorado football stadium, Folsom Field.
The athletic center is to the north of the football stadium and to the northeast of a fieldhouse where cooking and other activities
occurred before and during two football games that took place during this study on November 10 and 17.

170 The campaign included additional instrumentation that sampled gases and particles. Although ATHLETIC was a three-week
study, the GC-TOF-MS system operated for a subset of the campaign. Here, only results from the GC-TOF-MS system will
be presented along with relative humidity (RH) and temperature data collected using a Picarro Gas Analyzer (G2401) and
building space temperature sensors located on the walls of the main floor of the weight room (provided and operated by CU
Facilities Management). Room RH was derived from the building temperature and local pressure along with the H_2O mixing
175 ratio measured by the Picarro instrument. A separate analysis of RT-Vocus data, focusing on species not discussed here, is
published elsewhere (Finewax et al., 2020).

2.7 Sample Inlet

The ARI GC houses three separate sample inlets, an ambient inlet and two calibration gas inlets (Figure 1B). The GC ambient
inlet sampled from the weight room via a 3.4 m PFA (0.16 cm OD) sampling line with 30 $\text{cm}^3 \text{min}^{-1}$ flow rate. The two
180 calibration gas inlets are for pressurized gases where each inlet has a critical orifice inline to regulate flow followed by a
solenoid shut-off valve. The calibration inlets operate by overflowing the ambient inlet during the sampling period; this excess
flow is ensured by setting the pressure on the gas cylinder regulator based upon the critical orifice diameter (typical size 75
 μm) installed upstream of the solenoid valves. For this study, the calibration gases were (1) a custom-made multicomponent



185 **Figure 1. Instrument schematics of (A) dual detector GC-TOF-MS instrument configuration with valving shown for GC detector selection (EI-TOF or Vocus) and Vocus inlet source (room or supply air or GC effluent) (B) GC flow path and valve positions to incorporate a single stage thermal desorption preconcentrator (TDPC), single column separation, and dual TOF-MS detection.**

calibration mixture: a certified natural gas standard (Restek) diluted with UHP nitrogen and (2) a zero gas (ultra zero grade
 190 air, Airgas) for system zeros. For RT-Vocus sampling, room air was sampled at 10 L min⁻¹ through a 1.3 m length PFA Teflon
 inlet with 0.47 cm inner diameter (ID) that was shared by all instruments. Supply air was sampled at the same flow rate through
 a 4.3 m length of PFA Teflon with the same ID. From those shared inlets, 1.6 L min⁻¹ was pulled through a 1.5 m PFA (0.16
 cm ID) sampling line, where 100 cm³ min⁻¹ was sampled into the Vocus and the remainder to excess. Sample selection (room
 versus supply air) was done via automated valve switching, and a makeup flow was applied to the inlet not being sampled to

195 ensure continued inlet passivation. The RT-Vocus room air inlet and GC ambient inlet were separate but co-located in the weight room. The GC did not sample from the supply air during this study.

2.8 Sample Acquisition, Separation and Detection

At the start of the GC cycle (22 min), the sample was collected onto the adsorbent trap held at 20 +/- 1 °C for 6 min at 30 cm³ min⁻¹. The adsorbent trap was then backflushed for 1 min with 2 cm³ min⁻¹ of UHP helium (Matheson) to remove oxygen and water from the trap. Next, the carrier flow was increased to 5 cm³ min⁻¹ and the sample was thermally desorbed onto the GC column by flash heating the adsorbent trap to 225 °C for 20 s at 10.5 °C s⁻¹. During this sample transfer, the GC column was held at 40 °C. To gauge the desorption efficiency, we would run a sample and then an instrument blank, with no sample flow through the trap during the collection period, to measure the residual sample remaining in the trap. The result of the instrument blank was < 1 % of the signal measured for all reported compounds in the sample indicating highly efficient transfer of sample, and this was deemed acceptable.

The method of chromatographic separation was as follows: after sample transfer the column temperature was held at 40 °C for 40 s, then ramped from 40 °C to 100 °C at 40 °C min⁻¹, increased to 150 °C at 15 °C min⁻¹, and finally increased to 225 °C at 30 °C min⁻¹ and then held at 225 °C for 100 s for a total chromatogram time of 9 min. Following the separation, the GC column was backflushed with UHP helium for 140 s while held at 235 °C and the sample trap was switched out of the path and backflushed with 2 cm³ min⁻¹ UHP He while heated to 225 °C for 20 s to prepare the adsorbent trap for the next sample collection. After this cleaning period, the column was cooled and held at 40 °C over 575 s with continuous backflushing until the next sample transfer. Column flow rate was 2 cm³ min⁻¹ of UHP helium controlled by a mass flow controller during sample transfer and chromatography, and by a critical orifice during backflushing.

After the chromatographic separation, the column effluent was automatically directed to either the EI-TOF or the Vocus for detection by switching the 3rd chromatography valve (Figure 1). The ARI GC was coupled to the EI-TOF by a fused-silica capillary line (Siltek guard column, 0.25 mm ID, Restek) which passed through a heated capillary feedthrough, kept at 230 °C, so that the GC effluent was directed into the ionization region of the EI-TOF. For GC-Vocus measurements, the ARI GC was coupled to the Vocus by a passivated stainless steel (Sulfinert treated, 1.6 mm OD, 0.76 mm ID, Restek) transfer line heated to 150 °C. For GC-Vocus measurements, the total flow provided from the GC must be adequate for the Vocus ambient pressure inlet, which is fixed at 100 cm³ min⁻¹ via a PEEK capillary tube and pressure controller. Since the GC column effluent flow rate is 2 cm³ min⁻¹, an additional make-up flow of 100 cm³ min⁻¹ of zero grade air (Airgas) was introduced upstream of the GC-Vocus transfer line, downstream of the GC column (Figure 1B).

2.9 Normalization of Instrument Response and Calibration

225 Normalization of the EI-TOF data is required to account for changes in instrument sensitivity due to changes in detector response. For this study a normalization method that utilizes the detection of long-lived halocarbons in the atmosphere was used, as described previously by Lerner et al. (2017). Specifically, ambient carbon tetrachloride (CCl_4) was used here to normalize the EI-TOF data, as no sources were expected in the weight room, consistent with a lack of significant variations in its time series. A normalization factor (NF) was calculated for each sample by dividing the GC peak area of CCl_4 by the average CCl_4 peak area for the entire campaign. The EI-TOF data was then corrected by dividing the raw data by the NF.

230 The Vocus signal is dependent on the concentration of the analyte, time spent in the ion-molecule reactor, the rate of reaction, and the concentration of the reagent ion (Yuan et al., 2017). Variability of analyte signal is reduced by normalizing to a constant reagent ion signal of 1×10^6 counts per second (cps). During the ATHLETIC campaign, the largest signal observed in the Vocus was $(\text{H}_2\text{O})_3\text{H}^+$; actual ion concentrations in the reactor were dominated by H_3O^+ ions, but these are poorly measured due to mass discrimination in the quadrupole ion guide between the reactor and time-of-flight analyzer. Analyte signal was
235 divided by $(\text{H}_2\text{O})_3\text{H}^+$ and multiplied by 1×10^6 cps to obtain normalized signal. **This method of normalization depends on the E/N value used, which for this study was 150 Td.** Monoterpene calibration of the RT-Vocus signal was accomplished immediately following the campaign, where a 6-point calibration of a gravimetric standard of limonene was diluted in zero air, resulting in a calibration factor of 139 ncps/ppbv for $\text{C}_{10}\text{H}_{17}^+$. The validity of using a single monoterpene to generate a general sensitivity for the RT-Vocus to represent the mixture of monoterpenes present in ambient air will be discussed in
240 Section 3.3.1. Backgrounds for the Vocus were obtained using a zero-air generator for 30 s every 15 min, and subtracted with linear interpolation between background collection periods (Krechmer et al., 2018).

At the end of the campaign both the GC-EI-TOF and GC-Vocus were calibrated for aromatic compounds and monoterpenes. This was accomplished by performing a 3-point calibration curve with duplicates for each detector using a 3 L Tedlar bag (Restek) containing 2 ppb each of BTEX (benzene, toluene, ethyl benzene, m-, p-, and o-xylene) and five monoterpenes. The
245 calibration sample was made by diluting a standard solution of BTEX (Restek) with methanol (HPLC grade, Sigma-Aldrich), and creating a solution of five standard monoterpenes (α -pinene (99 %), β -pinene (99 %), camphene (96 %), carene (97 %), and limonene (99 %) (Sigma-Aldrich)) by diluting in hexanes (HPLC grade, Sigma-Aldrich). Using a glass microsyringe, 5 μL of each of these solutions was then injected into a stream of UPH N_2 (Airgas) flowing into the Tedlar bag at nominally $500 \text{ cm}^3 \text{ min}^{-1}$. This mixture was attached to the sample inlet of the GC for calibrations. For the GC calibrations the sampling rate
250 of the GC was kept constant ($30 \text{ cm}^3 \text{ min}^{-1}$) but the collection time was varied (1 min, 3 min, and 6 min of collection) to generate the calibration curves. This created a curve that gave instrument response (normalized counts; ncts) versus sample volume. By dividing the response at each sample volume by the compound concentration in the Tedlar bag, the instrument sensitivity (ncts ppb^{-1}) was calculated. The difference in units between the RT-Vocus and the GC data should be noted; the RT-Vocus data is reported as normalized counts per second (ncps), while the GC data is given as normalized counts (ncts), the

255 **Table 1. Quantification ions, measured sensitivities (normalized counts per ppb; ncts/ppb), limits of detection (ppt), and linearity (R^2) for compounds used for calibration of both the GC-EI-TOF and GC-Vocus. RT-Vocus sensitivities (normalized counts per second per ppb; ncps/ppb) for a subset of the compounds are included for comparison.**

	Quant. Ion		Sensitivity				LOD		R^2	
			(ncps/ppb) ^a		(ncts/ppb) ^{a,b}		(ppt) ^{b,c}			
	GC-EI-TOF	GC-Vocus	RT-Vocus	GC-EI-TOF	GC-Vocus	GC-EI-TOF	GC-Vocus	GC-EI-TOF	GC-Vocus	
α -pinene	C ₇ H ₉ ⁺	C ₁₀ H ₁₇ ⁺		23600	6920	0.2	0.4	0.98	1.00	
camphene	C ₇ H ₉ ⁺	C ₁₀ H ₁₇ ⁺		20500	9690	1.0	1.2	0.99	1.00	
β -pinene	C ₇ H ₉ ⁺	C ₁₀ H ₁₇ ⁺		10600	3850	1.7	2.6	0.98	1.00	
carene	C ₇ H ₉ ⁺	C ₁₀ H ₁₇ ⁺		11500	3830	1.4	2.3	0.97	1.00	
limonene	C ₇ H ₉ ⁺	C ₁₀ H ₁₇ ⁺	139	5300	2990	3.8	3.9	0.98	1.00	
benzene	C ₆ H ₆ ⁺	C ₆ H ₇ ⁺	62	36800	3810	2.8	2.9	0.97	1.00	
toluene	C ₇ H ₇ ⁺	C ₇ H ₉ ⁺	138	52700	9460	0.9	0.6	0.99	1.00	
ethyl-benzene	C ₇ H ₇ ⁺	C ₈ H ₁₁ ⁺		43000	4680	1.6	1.5	0.98	1.00	
m&p-xylenes	C ₇ H ₇ ⁺	C ₈ H ₁₁ ⁺		32100	12500	0.5	0.1	0.98	1.00	
o-xylene	C ₇ H ₇ ⁺	C ₈ H ₁₁ ⁺	171	29300	9500	2.2	1.0	0.98	1.00	

^a ncps and ncts for both RT- and GC-Vocus measurements are for Vocus operation with E/N = 150 Td.

^b Sensitivity and LOD for a sample volume of 180 cm³, the volume used for GC-TOF ambient sampling during the ATHLETIC campaign.

260 ^c LOD calculated as 3 times the standard deviation of the baseline multiplied by the full width half maximum (FWHM) of the chromatographic peak divided by the sensitivity.

integration of detector response across the peak elution time. Figure S1 shows calibration curves of GC-TOF instrument sensitivity versus sample volume of selected monoterpenes. The limits of detection (LOD) were calculated as 3 times the standard deviation of the baseline multiplied by the full width half maximum (FWHM) of the chromatographic peak, then divided by the sensitivity. Calibration results for both the GC-EI-TOF and GC-Vocus, including ions used for quantification, instrument sensitivity, LODs, and correlation coefficients (R^2), are given in Table 1. From our calibration data, we estimate typical 1- σ uncertainties to be 12 % and 5 % for the GC-EI-TOF and GC-Vocus configurations, respectively, with typical precisions of 5 % and 1 %. The individual uncertainties for each calibrated compound reported from the GC are listed in Table S1. Available RT-Vocus sensitivities measured for this campaign are also reported in Table 1 for comparison with the GC sensitivities. The ambient GC data was converted to mixing ratio by dividing the normalized signal with the sensitivity. GC-Vocus chromatograms of both calibration and ambient indoor air are shown in Figure S2 to demonstrate the chromatographic separation of this system.

265

270

3 Results and Discussion

275 3.1 Benefits of Dual-Detector System and Instrument Performance

The novelty of this system is the ability to produce three complementary data sets: (1) RT-Vocus, (2) GC-Vocus, and (3) GC-EI-TOF during routine operation. As shown in Figure 1A, this setup allowed the Vocus to sample in real time from the weight room, the supply air, or the GC effluent. With this instrument configuration, the Vocus can make real-time measurements with fast time resolution (< 1 Hz) or automatically switch to GC detection for molecular speciation. When the Vocus was not
280 sampling from the GC, the column effluent was instead sent to the EI-TOF for detection (shown in Figure 1A), which allowed continuous coverage of the GC identification measurements.

Another benefit of this system is that the two detectors use different ionization methods: proton transfer reaction (PTR) versus electron ionization (EI). By alternating between the detection methods, two sets of chromatograms were created with different types of information about each molecule (which had the same GC retention time regardless of the detector). For GC-Vocus
285 chromatograms, the analytes are ideally detected as their protonated molecular ion $[MH^+]$. The extent to which this is true depends on instrument operating parameters such as the reduced electric field (E/N), where greater ratios tend to induce fragmentation due to increased collisions while also limiting the formation of cluster ions (Yuan et al., 2017). For GC-EI-TOF chromatograms, the analytes are detected by their ion fragments and identified with their EI fragmentation pattern. Benefits of EI detection, compared to PTR, is compound identification through fragmentation pattern matching (e.g. NIST/EPA/NIH mass
290 spectral library, Linstrom and Mallard, 2019, <https://webbook.nist.gov/chemistry/>) and the ability to detect compounds such as saturated hydrocarbons, which have a proton affinity too low for detection by PTR-MS (Yuan et al., 2017). However, since the Vocus generally detects an intact molecular ion, this can lead to a simpler analysis, where each compound is ideally detected as a single ion (giving the molecular formula of the protonated parent) rather than a series of fragments as with EI detection.

Calibration results (measured sensitivities, LODs, and R^2 values) from both the GC-EI-TOF and GC-Vocus are reported in
295 Table 1. A quantification ion was chosen for each method: for GC-Vocus this was the protonated molecular ion $[MH^+]$, and for GC-EI-TOF the most abundant fragment ion present in the mass spectrum was used. These ions were chosen because they generally result in the highest sensitivity due to their abundance; however, in select circumstances (e.g. interference such as co-elution) another ion may be chosen. The comparison of GC-EI-TOF and GC-Vocus sensitivities and LODs is a comparison of detector response since GC operation was identical for calibration of each detector. EI-TOF detection was on average 4.3
300 times more sensitive than detection by the Vocus. This increase in sensitivity implies higher ion counts at the detector for the EI-MS versus PTR-MS; this may be attributed to several parameters including ionization efficiency (Cappellin et al., 2012; Sekimoto et al., 2017; Harland and Vallance, 1997).

Available RT-Vocus sensitivities are also reported in Table 1 for comparison with those measured by the GC-Vocus. For the limited overlap of calibration compounds presented in this work, the GC-Vocus was on average 50 times more sensitive than

305 the RT-Vocus. The gained sensitivity with the addition of the GC is due to differences in sample volume. When the Vocus is operating in the RT-Vocus mode, it samples ambient air at $100 \text{ cm}^3 \text{ min}^{-1}$ with 1 s resolution, so each data point is representative of 1.7 cm^3 of ambient air. However, sensitivity is gained with the addition of the GC due to preconcentration of sample, where 180 cm^3 of ambient air is preconcentrated over the 6 min sample collection period before injection into the Vocus with typical peak widths here of $\leq 2 \text{ s}$ (FWHM). The measured 50-fold increase in sensitivity agrees very well with the expected increase of a factor of 53, which is calculated by dividing the 180 cm^3 sample preconcentrated by the GC and injected into the Vocus over a 2 s wide chromatographic peak ($90 \text{ cm}^3 \text{ s}^{-1}$) by the $1.7 \text{ cm}^3 \text{ s}^{-1}$ analyzed by the RT-Vocus. The factor of 50 increase in sensitivity is due to the sampling schemes employed for this study. However, RT-Vocus LODs can be improved by averaging the signal to reduce noise. Figure S3 shows the Allan variance plot for the RT-Vocus $\text{C}_{10}\text{H}_{17}^+$ signal (protonated molecular ion of monoterpenes) during a relatively unperturbed, low concentration sampling period of room air. The Allan variance plot shows a broad minimum around 250 s, indicating the maximum period of effective sample averaging; assuming Poisson statistics for the data, this averaging window reduces RT-Vocus noise by a factor of ~ 16 . This analysis shows that averaging the RT-Vocus data beyond 250 s would not decrease the noise further, as the RT-Vocus signal no longer follows Poisson statistics for these larger time periods, likely due to environmental factors such as changes in instrument temperature.

The GC LODs reported in Table 1 are a function of the standard deviation of the baseline surrounding the chromatographic peak, chromatographic peak width, and instrument sensitivity. Across these compounds, the LODs for each instrument are very similar, each averaging 1.6 ppt for a 180 cm^3 sample (GC-EI-TOF $\text{LOD}_{\text{avg}} = 1.6 \pm 1.1 \text{ ppt}$; GC-Vocus $\text{LOD}_{\text{avg}} = 1.7 \pm 1.2 \text{ ppt}$). As discussed in Section 2.8, the GC-Vocus measurements include a $100 \text{ cm}^3 \text{ min}^{-1}$ make-up flow for instrument operation. For this study, ultra zero air was used for the make-up flow, as a gas with low purity will create elevated baselines and negatively impact the instrument LODs.

325 For each detection method, the differences in sensitivity and LODs between isomers (e.g. α -pinene versus limonene) are primarily a function of the extent to which the compound fragments. The greatest sensitivity would occur if the ionization of an analyte resulted in zero fragmentation, so that all analyte signal was associated with a single ion. Instead, if a compound fragments, the signal associated with that analyte is spread out across multiple ions, taking signal away from the ion used for quantification and decreasing the sensitivity (and increasing the LOD). In the α -pinene versus limonene example given above, α -pinene fragments less than limonene, resulting in a greater sensitivity (and lower LOD) to the α -pinene monoterpene isomer.

3.2 Molecular Identification of VOCs in an Indoor Environment

The GC dataset was extensive and included detection of hydrocarbons, oxygenates and halocarbons in the volatility range of C_5 – C_{12} *n*-alkanes. Table 2 reports the EI characteristic ion and the ion(s) detected by the Vocus (typically a combination of the molecular ion $[\text{MH}^+]$ along with water clusters and/or fragments) for a subset of the chromatographic peaks that were identified through the GC analysis. These identified species include alcohols, aldehydes, ketones, ethers, nitrogen containing compounds,

Table 2. Compounds identified during the ATHLETIC campaign using the GC analysis with both EI-TOF-MS and Vocus PTR-TOF-MS detection.

Name	Retention Time (s)	EI-TOF-MS Characteristic Ion	Vocus PTR-TOF-MS Detected Ion					
			MH ⁺	M[H ₂ O]H ⁺	M[H ₂ O] ₂ H ⁺	Fragment	Fragment	Fragment
Alcohols								
methanol	153	CH ₃ O ⁺	CH ₄ OH ⁺	CH ₄ O[H ₂ O]H ⁺	CH ₄ O[H ₂ O] ₂ H ⁺			
ethanol	159	CH ₃ O ⁺	C ₂ H ₆ OH ⁺	C ₂ H ₆ O[H ₂ O]H ⁺	C ₂ H ₆ O[H ₂ O] ₂ H ⁺			
2-hexen-1-ol	270	C ₃ H ₅ O ⁺	C ₆ H ₁₂ OH ⁺	C ₆ H ₁₂ O[H ₂ O]H ⁺		C ₆ H ₁₁ ⁺		
nonen-1-ol	424	C ₅ H ₁₀ ⁺	C ₉ H ₁₈ OH ⁺	C ₉ H ₁₈ O[H ₂ O]H ⁺		C ₉ H ₁₇ ⁺	C ₆ H ₁₁ ⁺	C ₅ H ₉ ⁺
decen-1-ol	469	C ₅ H ₁₀ ⁺	C ₁₀ H ₂₀ OH ⁺	C ₁₀ H ₂₀ O[H ₂ O]H ⁺		C ₆ H ₁₁ ⁺		
Aldehydes								
acetaldehyde	151	C ₂ H ₄ O ⁺	C ₂ H ₄ OH ⁺	C ₂ H ₄ O[H ₂ O]H ⁺	C ₂ H ₄ O[H ₂ O] ₂ H ⁺			
2-methyl propanal	182	C ₄ H ₈ O ⁺	C ₄ H ₈ OH ⁺	C ₄ H ₈ O[H ₂ O]H ⁺				
methacrolein	185	C ₄ H ₆ O ⁺	C ₄ H ₆ OH ⁺					
2-butenal	216	C ₄ H ₆ O ⁺	C ₄ H ₆ OH ⁺					
furfural	302	C ₅ H ₄ O ₂ ⁺	C ₅ H ₄ O ₂ H ⁺	C ₅ H ₄ O ₂ [H ₂ O]H ⁺				
n-heptanal	320	C ₅ H ₁₀ ⁺	C ₇ H ₁₄ OH ⁺	C ₇ H ₁₄ O[H ₂ O]H ⁺		C ₇ H ₁₃ ⁺		
benzaldehyde	369	C ₆ H ₅ ⁺	C ₇ H ₆ OH ⁺	C ₇ H ₆ O[H ₂ O]H ⁺				
nonanal	408	C ₇ H ₁₄ ⁺	C ₉ H ₁₈ OH ⁺	C ₉ H ₁₈ O[H ₂ O]H ⁺				
decanal	441	C ₅ H ₁₀ ⁺	C ₁₀ H ₂₀ OH ⁺	C ₁₀ H ₂₀ O [H ₂ O]H ⁺				
Ketones								
acetone	166	C ₃ H ₆ O ⁺	C ₃ H ₆ OH ⁺	C ₃ H ₆ O[H ₂ O]H ⁺				
methyl vinyl ketone	192	C ₄ H ₆ O ⁺	C ₄ H ₆ OH ⁺	C ₄ H ₆ O[H ₂ O]H ⁺				
methyl ethyl ketone	194	C ₄ H ₈ O ⁺	C ₄ H ₈ OH ⁺	C ₄ H ₈ O[H ₂ O]H ⁺				
6-methyl-5-hepten-2-one	368	C ₈ H ₁₂ ⁺	C ₈ H ₁₄ OH ⁺			C ₈ H ₁₃ ⁺		
Nitrogen Containing								
acetonitrile	174	C ₂ H ₃ N ⁺	C ₂ H ₃ NH ⁺					
<i>unknown</i>	253		C ₄ H ₅ NH ⁺	C ₄ H ₅ N[H ₂ O]H ⁺	C ₄ H ₅ N[H ₂ O] ₂ H ⁺			
<i>unknown</i>	268		C ₄ H ₅ NH ⁺					
Halocarbons								
carbon tetrachloride	204	CCl ₃ ⁺	ND					
tetrachloroethylene	264	C ₂ Cl ₃ ⁺	ND					
parachlorobenzotrifluoride	292	C ₇ H ₄ ClF ₃ ⁺	ND					
bromoform	321	CHBr ₂ ⁺	ND					

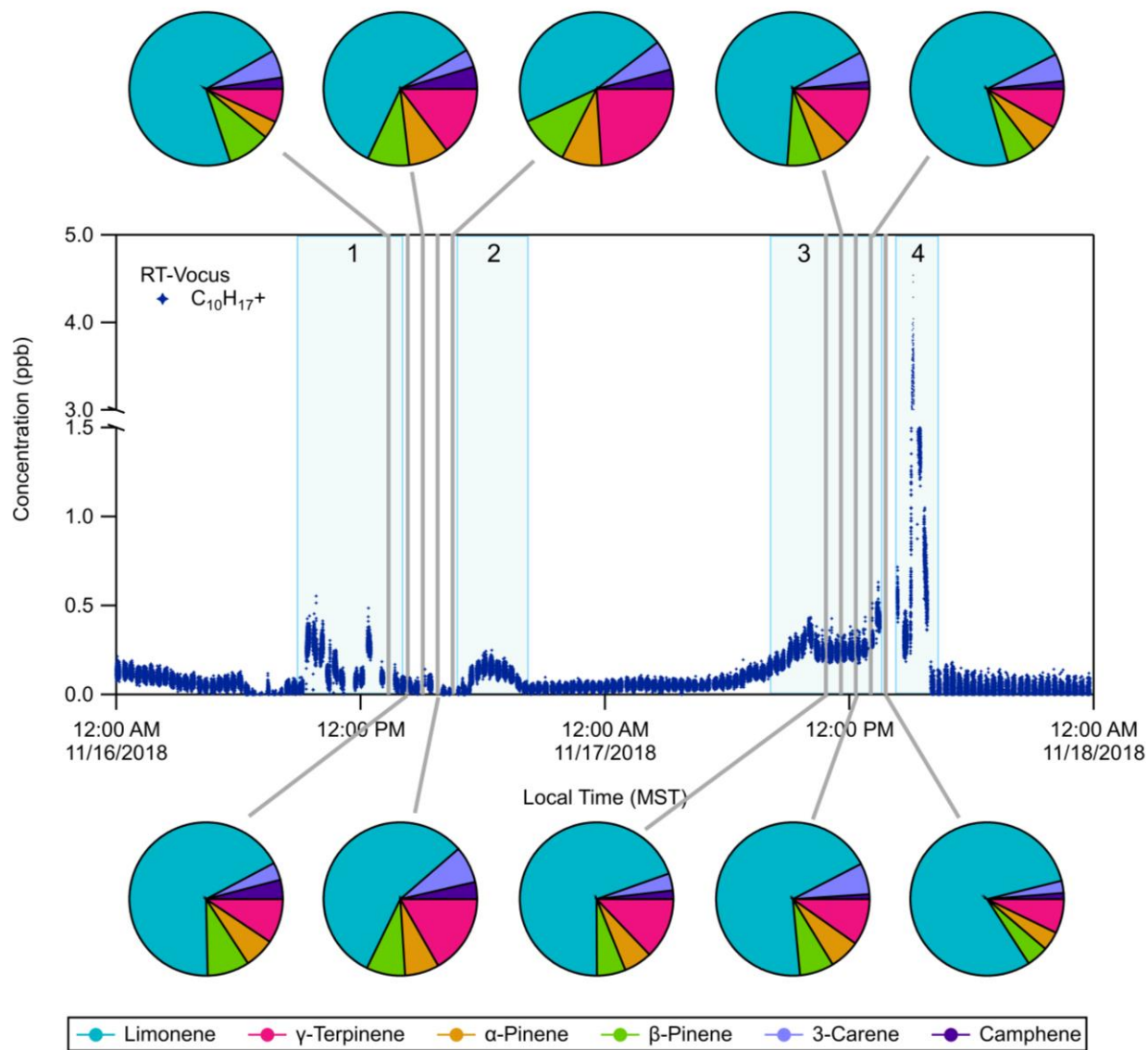
Table 2 Continued. Compounds identified during the ATHLETIC campaign using the GC analysis with both EI-TOF-MS and Vocus PTR-TOF-MS detection.

Name	Retention Time (s)	EI-TOF-MS Characteristic Ion	Vocus PTR-TOF-MS Detected Ion					
			MH ⁺	M[H ₂ O]H ⁺	M[H ₂ O] ₂ H ⁺	Fragment	Fragment	Fragment
Ethers								
furan	166	C ₄ H ₄ O ⁺	C ₄ H ₄ OH ⁺					
eucalyptol	382	C ₃ H ₇ ⁺	C ₁₀ H ₁₈ OH ⁺					
Siloxanes								
dimethylsilanediol	230	CH ₅ O ₂ Si ⁺	C ₂ H ₈ O ₂ SiH ⁺	C ₂ H ₈ O ₂ Si[H ₂ O]H ⁺				
D3 siloxane	252	C ₅ H ₁₅ O ₃ Si ₃ ⁺	C ₆ H ₁₈ O ₃ Si ₃ H ⁺	C ₆ H ₁₈ O ₃ Si ₃ [H ₂ O]H ⁺				
D4 siloxane	328	C ₇ H ₂₁ O ₄ Si ₄ ⁺	C ₈ H ₂₄ O ₄ Si ₄ H ⁺	C ₈ H ₂₄ O ₄ Si ₄ [H ₂ O]H ⁺				
D5 siloxane	411	C ₉ H ₂₇ O ₅ Si ₅ ⁺	ND					
Alkanes								
n-hexane	178	C ₄ H ₉ ⁺	ND					
methyl-cyclopentane	193	C ₄ H ₈ ⁺	C ₆ H ₁₂ H ⁺			C ₅ H ₁₁ ⁺	C ₄ H ₉ ⁺	
Alkenes								
isoprene	164	C ₅ H ₈ ⁺	C ₅ H ₈ H ⁺			C ₅ H ₈ ⁺	C ₅ H ₇ ⁺	
α-pinene	322	C ₇ H ₉ ⁺	C ₁₀ H ₁₆ H ⁺			C ₆ H ₉ ⁺		
camphene	334	C ₇ H ₉ ⁺	C ₁₀ H ₁₆ H ⁺			C ₆ H ₉ ⁺		
β-pinene	347	C ₇ H ₉ ⁺	C ₁₀ H ₁₆ H ⁺			C ₆ H ₉ ⁺		
carene	363	C ₇ H ₉ ⁺	C ₁₀ H ₁₆ H ⁺			C ₆ H ₉ ⁺		
limonene	374	C ₇ H ₉ ⁺	C ₁₀ H ₁₆ H ⁺			C ₆ H ₉ ⁺		
γ-terpinene	384	C ₇ H ₉ ⁺	C ₁₀ H ₁₆ H ⁺			C ₆ H ₉ ⁺		
Aromatics								
benzene	211	C ₆ H ₆ ⁺	C ₆ H ₆ H ⁺			C ₆ H ₆ ⁺		
toluene	250	C ₇ H ₇ ⁺	C ₇ H ₈ H ⁺			C ₇ H ₈ ⁺		
ethyl-benzene	293	C ₇ H ₇ ⁺	C ₈ H ₁₀ H ⁺			C ₆ H ₇ ⁺		
m&p-xylenes	297	C ₇ H ₇ ⁺	C ₈ H ₁₀ H ⁺					
o-xylene	311	C ₇ H ₇ ⁺	C ₈ H ₁₀ H ⁺					
styrene	312	C ₈ H ₈ ⁺	C ₈ H ₈ H ⁺					
n-propyl benzene	340	C ₇ H ₇ ⁺	C ₉ H ₁₂ H ⁺					
1-ethyl-3&4-methyl benzenes	344	C ₈ H ₉ ⁺	C ₉ H ₁₂ H ⁺					
1,3,5-trimethyl benzene	347	C ₈ H ₉ ⁺	C ₉ H ₁₂ H ⁺					
1-ethyl-2-methyl benzene	357	C ₈ H ₉ ⁺	C ₉ H ₁₂ H ⁺					
1,2,4-trimethyl benzene	364	C ₈ H ₉ ⁺	C ₉ H ₁₂ H ⁺					
1,2,3-trimethyl benzene	383	C ₈ H ₉ ⁺	C ₉ H ₁₂ H ⁺					

halocarbons, siloxanes, alkanes, alkenes, and aromatics. It should be noted that not every compound listed in Table 2 can be reported quantitatively from the GC system due to breakthrough in the thermal desorption trap or other losses in the system. However, even for these species that are difficult to quantify, the GC is an excellent tool for compound identification. Specific results from the GC-TOF-MS system are reported in detail in Sections 3.3 for monoterpenes and in section 3.4 for dimethylsilanediol.

Table 2 presents three types of information about each molecule resolved by the GC: the retention time (which is a function of its vapor pressure, polarity, and functionality), and mass spectrometric response from both the EI-TOF and Vocus. One way to identify compounds is to analyze standards, where each standard compound is injected into the GC to directly measure the analyte retention time and detector response. However, to do this analysis for each compound present in ambient air is time consuming and may not be feasible as some compounds are not available for purchase as analytical standards. Alternatively, retention time indices along with the mass spectrometric data can be used to confidently identify compounds without authentic standards. For example, a compound that eluted from the GC with retention time 369 s was detected in the Vocus as both $C_7H_6OH^+$ and $C_7H_8O_2H^+$, which are formulas that could correspond to the protonated molecular ion of either benzaldehyde or methyl-benzenediols, respectively. However, the EI fragmentation pattern of this compound showed large signal at $C_7H_6O^+$ and $C_6H_5^+$, which match the pattern expected for benzaldehyde ($C_7H_6O^+$, molecular ion; $C_6H_5^+$, due to loss of the aldehyde group). This information is enough to infer that the peak is benzaldehyde, and that the ions detected by the Vocus were the protonated molecular ion ($C_7H_6OH^+$) and its water cluster ($C_7H_6O[H_2O]H^+$). However, this assignment can be made unambiguous by also comparing the retention time and retention index to other compounds present in the chromatogram (Van den Dool and Kratz, 1963; Linstrom and Mallard, 2019, <https://webbook.nist.gov/chemistry/>). The compound retention time of 369 s is between those of *o*-xylene (311 s) and limonene (374 s), which have retention indices of 890 and 1030, respectively (Linstrom and Mallard, 2019, <https://webbook.nist.gov/chemistry/>). Because benzaldehyde has a retention index of 960, we can predict it would elute between *o*-xylene and limonene, whereas methyl-benzenediols have retention indices of ≈ 1200 , meaning these would elute after limonene. With this method, we can use the combination of mass spectrometric data from the Vocus and the EI-TOF along with the chromatographic retention time to definitively identify compounds. Most species were positively identified using the workflow demonstrated for benzaldehyde; however, some compounds were only detected by a single detector. Unsaturated alkanes (e.g. *n*-hexane) and halocarbons (e.g. carbon tetrachloride, bromoform) were only detected by the EI-TOF, which was expected as these classes of compounds have proton affinities too low for detection by PTR-MS methods (Yuan et al., 2017).

Aside from using the GC to aid in compound identification, the GC data can also be used to characterize the ion chemistry occurring in the Vocus. From the information reported in Table 2, it can be seen that classes of compounds showed similar responses in the Vocus (e.g. forming single or double water clusters ($M[H_2O]H^+$ or $M[H_2O]_2H^+$) or undergoing fragmentation). Both results are non-ideal as they complicate the mass spectrum and make quantification and interpretation of the PTR-MS



375 **Figure 2. RT-Vocus detection of $C_{10}H_{17}^+$ with occasional speciation with GC-Vocus analysis. The RT-Vocus trace contains only room air measurements for simplicity. Pie charts show the GC-Vocus speciation of the RT-Vocus $C_{10}H_{17}^+$ signal into six resolved monoterpene species during each of the highlighted (grey) sampling periods. The pie chart fractions represent the contribution (in concentration, ppb) of each monoterpene isomer to the total monoterpene concentration measured by GC-Vocus. Some specific events are numbered and highlighted in light blue with the following distinctions: 1) exercise session, 2) in flow of outdoor air, 3) football game, and 4) post-game activities.**

380

signals more difficult. Alcohols, aldehydes, ketones, siloxanes, and an unknown nitrogen-containing compound all formed significant water clusters within the Vocus ion-molecule reactor, while alkenes and aromatics demonstrated fragmentation. Classes of compounds that were exclusively observed as their protonated molecular ion in the Vocus include ethers, large aromatics (e.g. C₉ aromatics) and some nitrogen containing compounds. The extent to which species form clusters or undergo fragmentation in the PTR-MS is a function of instrument operational parameters like the *E/N* ratio (operated here at 150 Td). Although these interferences complicate the RT-Vocus interpretation, with the addition of GC separation the molecular identification, and identification of fragment and cluster signals, is possible to do for complex ambient samples. Furthermore, by using GC separation to quantify the ratio of fragmentation or cluster formation to the protonated molecular ion, the RT-Vocus measurements can be constrained and more easily interpreted.

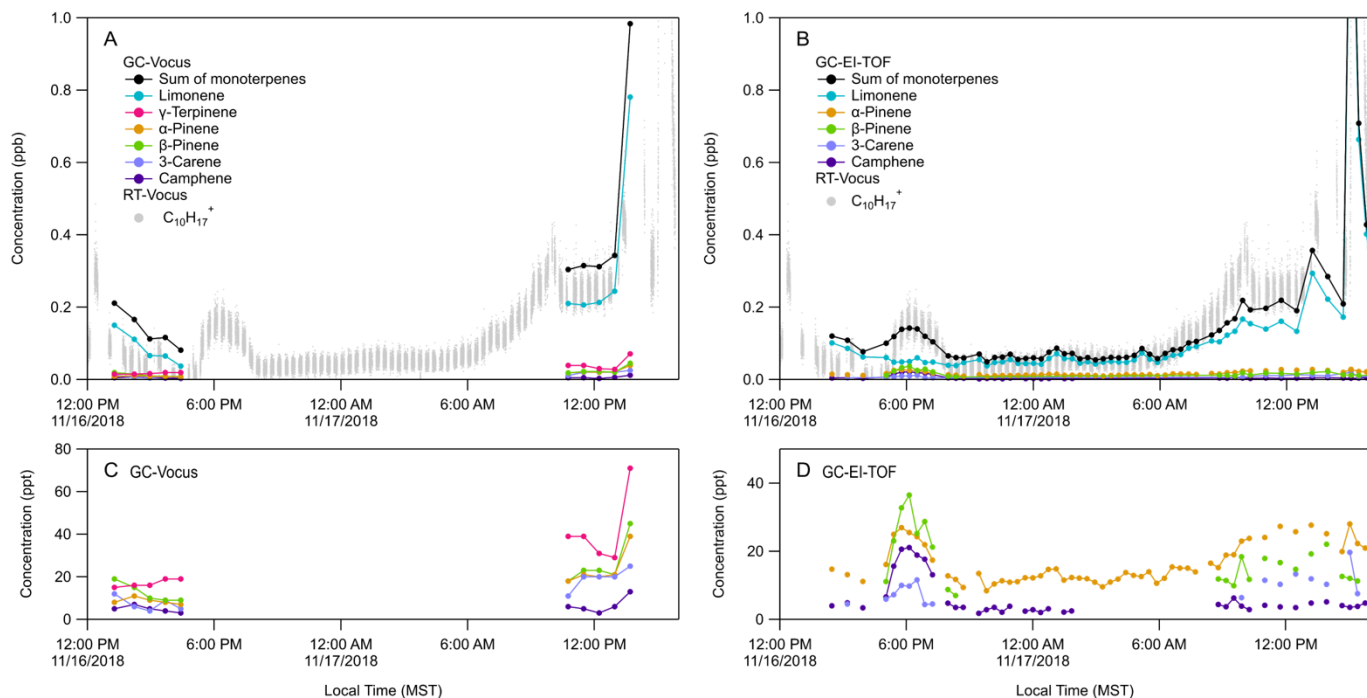
3.3 Monoterpenes in an Indoor Environment

3.3.1 Quantitative Assessment of Monoterpene Detection

A subset of the C₁₀H₁₇⁺ time series, the monoterpene protonated molecular ion measured by RT-Vocus, is shown in Figure 2. During this period, GC-Vocus and GC-EI-TOF chromatograms were acquired and used to resolve individual monoterpene isomers. The separation of the C₁₀H₁₇⁺ RT-Vocus signal into six different monoterpenes by the GC-Vocus is shown as pie charts in Figure 2, where the pie chart fractions represent the contribution of each isomer (by concentration, ppb) to the summed concentration of all monoterpene isomers resolved by the GC-Vocus. As mentioned above, when the GC effluent was not being sent to the Vocus it was directed to the EI-TOF. Figure S4 shows the GC-EI-TOF time series of monoterpenes during the same sampling period shown in Figure 2. During these sampling periods, limonene accounted for 47 – 80 % of the measured monoterpene composition due to activities occurring in and near the weight room. Details of the temporal behavior are discussed in Section 3.3.2.

The RT-Vocus, GC-Vocus, and GC-EI-TOF monoterpene data sets are shown together in Figure 3. The RT-Vocus C₁₀H₁₇⁺ signal along with the speciated monoterpenes (and their sum) resolved by GC-Vocus and GC-EI-TOF are overlaid in Figure 3A and 3B, respectively. The GC-EI-TOF monoterpene sum (Figure 3B) agrees within a factor of 1.2 on average to the RT-Vocus signal across the entire measurement period. The GC-Vocus monoterpene sum also agrees within a factor of 1.2 with the RT-Vocus signal on November 17; however, the agreement was not as good (only within a factor of 3) on November 16. The better agreement on November 17 is due to the monoterpene composition being 70 % limonene on average, which was the isomer used to calibrate the RT-Vocus monoterpene signal.

Previous studies have found that comparing GC speciation with online PTR-MS measurements may result in discrepancies (de Gouw et al., 2003; de Gouw and Warneke, 2007; Kari et al., 2018; Kim et al., 2009). For example, Kari et al. (2018) demonstrated errors of 26 % in PTR-MS ambient measurements when the terpene composition was not accounted for, and instead a calibration factor determined from one isomer was used to represent the mixture. To avoid these errors, they urge



415 **Figure 3. Quantitative speciation of RT-Vocus $C_{10}H_{17}^+$ signal (grey trace) into resolved monoterpene isomers by (A) GC-Vocus (B) GC-EI-TOF. Panel C and Panel D show the same GC-Vocus and GC-EI-TOF timeseries as in Panel A and Panel B, respectively, but focused on isomers detected at lower concentrations. Absent data points in Panel D are for chromatograms where the chromatographic peak area was below the limit of detection. RT-Vocus trace in Panels A and B only shows RT-Vocus $C_{10}H_{17}^+$ detected in the room (not the supply air) for a direct comparison with the GC samples.**

PTR-MS users to use complementary methods (e.g. GC) to identify the speciated terpene composition and calibrate the total
 420 signal from PTR-MS using this speciation. The findings from Kari et al. (2018) are supported by the results shown here, where the best agreement between the speciated (GC) and online (RT) measurements are when the monoterpene composition is dominated by the isomer that was used to calibrate the RT-Vocus. When the mixture includes significant fractions of multiple isomers, the bias in the RT-Vocus measurement increases. However, if RT-Vocus calibration factors for monoterpenes other than limonene were measured the RT-Vocus signal could be weighted according to the continuous GC-EI-TOF speciation
 425 measurements and corrected for the mixed monoterpene composition.

As discussed above, fragmentation and cluster formation can complicate the interpretation of real-time measurements, where now there are multiple ions associated with one compound. An example of this behavior is shown in Figure S5, where Figure S5A is a GC-Vocus chromatogram of the monoterpene protonated molecular ion, $C_{10}H_{17}^+$, and Figure S5B is the chromatogram of $C_6H_9^+$, a common monoterpene fragment ion formed in proton-transfer reactions. Relative signals for the fragment ion
 430 versus the protonated molecular ions for each monoterpene (labeled 1–6 in Figure S5A) are reported in Table 3. For all monoterpenes, detection of the fragment ion $C_6H_9^+$ occurred in approximately a 1:1 ratio to the intact parent ion, $C_{10}H_{17}^+$.

Table 3. Relative signals of ions detected in the Vocus, fragmentation ion ($C_6H_9^+$) versus protonated molecular ion ($C_{10}H_{17}^+$), for monoterpene isomers.

	Vocus Relative Signal	
	Peak Number	$C_6H_9^+/C_{10}H_{17}^+$
α -pinene	1	0.97 ± 0.09
Camphene	2	1.90 ± 0.65
β -pinene	3	1.10 ± 0.41
Carene	4	1.13 ± 0.29
Limonene	5	1.00 ± 0.13
γ -Terpinene	6	0.78 ± 0.12

435 Specifically, the ratios measured for the isomers ranged from 0.78 to 1.90 with an average of 1.15 ± 0.40 , these results are comparable to monoterpene fragmentation ratios reported elsewhere (Steeghs et al., 2007). While the GC can be used to select PTR-MS parameters that optimize the formation of the protonated molecular ion, these other pathways are unavoidable across the range of compound classes observed, and routine GC measurements allow the user to account for them.

3.3.2 Monoterpene Temporal Behavior During ATHLETIC

440 During ATHLETIC, several monoterpene enhancement events took place while the system operated in multiple modes. On November 16, from 9 am to 12 pm local time, the RT-Vocus measured an increase in the $C_{10}H_{17}^+$ signal in the room air versus the supply air (Figure 2). This increase correlated with the presence of people in the weight room, who presumably acted as the source of the elevated levels of monoterpenes (likely from personal care products). The GC measurements between 1 pm to 4:30 pm on November 16 were taken while people were present in, and then left, the weight room. During this time the RT-
 445 Vocus $C_{10}H_{17}^+$ signal and the limonene measured by GC-Vocus decreased while the other monoterpene isomers stayed relatively constant (Figure 3A, 3C). Interestingly, at about 5 pm on November 16, the sum of monoterpenes measured by the GC-EI-TOF showed an increase that was also observed in the RT-Vocus $C_{10}H_{17}^+$ signal (Figure 3B), and the GC speciation showed that the concentration of all the monoterpene isomers other than limonene increased (Figure 3D). The increase was first observed by the RT-Vocus in the supply air (Figure S6A), which, when combined with the GC-EI-TOF identification of

450 non-limonene monoterpenes, allows us to attribute this event to an inflow of outdoor air not influenced by game-related activities.

An increase on November 17, between 9 am and 3 pm, occurred during a tailgating event and football game that took place adjacent to the Dal Ward Athletic Center. During this event, the room air and the supply air both showed increased $C_{10}H_{17}^+$ signals (Figure S6B) indicating a source in close proximity to the facility. Since the supply air for the weight room enters the building from an intake on the north side of the football stadium, VOCs emitted during the sporting event could be subsequently transported through the HVAC system and into the weight room. The large spike in $C_{10}H_{17}^+$ observed that day at 3 pm, however, was predominantly measured inside the weight room rather than in the supply air (Figure S6C), suggesting an emission source in the room associated with people and possibly cleaning activities in the Dal Ward center after the game. Evaluating the November 17 enhancement events with the GC measurements, it is clear that the increase in the RT-Vocus $C_{10}H_{17}^+$ signal during the football game and the spike that occurred at 3 pm were due to an increase in limonene (Figure 3A, 3B), with no corresponding significant increases in the other monoterpene isomers (Figure 3C, 3D). The large monoterpene enhancement observed during and after the football game, which was dominated by limonene, was likely due to VCPs from personal care products used by the athletes and spectators, and/or cleaning supplies.

3.3.3 Anthropogenic Signature of Monoterpenes

465 Indoor environments generally have relatively low oxidant and high VOC concentrations compared to the ambient atmosphere (Pagonis et al., 2019; Price et al., 2019). As a result, the fraction of monoterpenes that are oxidized indoors is small, and to a large extent are transported outdoors. The monoterpene composition measured in this study provides anthropogenic source signatures that differ from those associated with typical outdoor biogenic sources (Guenther et al., 2012). These source signatures were compared using three ratios: limonene/ α -pinene (lim/ α p), limonene/ β -pinene (lim/ β p), and α -pinene/ β -pinene (α p/ β p). Generally, these ratios are a function of their emission profiles either from plant species outdoors, VCPs from human activity indoors, and a mixture of these sources in urban areas. Geron et al. (2000) reports monoterpene compositions for forested regions in the United States, which give the following averages for these ratios (average +/- standard deviation): lim/ α p = 0.32 +/- 0.21, lim/ β p = 0.56 +/- 0.46 and α p/ β p = 1.63 +/- 0.70. These values reflect the emission profiles from the types of plants in the forest and agree very well with those of Faiola et al. (2015), where the average ratios determined from emissions from coniferous plants (e.g. blue spruce, grand fir, bristlecone pine) were lim/ α p = 0.29 +/- 0.16, lim/ β p = 0.73 +/- 1.16, α p/ β p = 2.18 +/- 2.28. These studies show that when the source of the monoterpenes is biogenic, α - and β -pinene emissions dominate over limonene, and α -pinene emissions are about twice those of β -pinene. For comparison, the average ratios measured by GC-EI-TOF during ATHLETIC were lim/ α p = 4.67 +/- 4.97 (maximum 56.4, minimum 1.62), lim/ β p = 8.66 +/- 16.1 (maximum 131, minimum 1.36) and α p/ β p = 1.73 +/- 0.61 (maximum 3.93, minimum 0.70). The large standard deviations of the limonene to α - and β -pinene ratios are due to the large limonene emission event after the football game on November 17. Unlike the biogenic ratios described above, the results from the indoor environment show that limonene

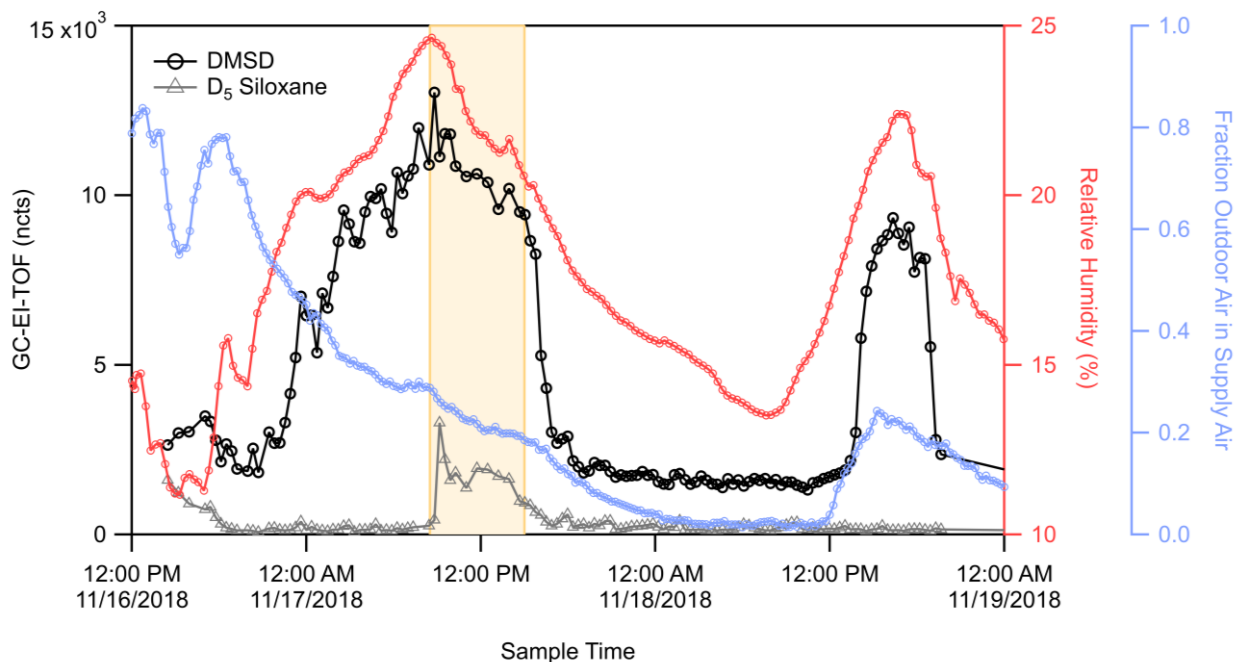
emissions always dominate over α - and β -pinene emissions, although the magnitude is highly variable and depends on proximity to sources (like the application of cleaning or personal care products). The $\alpha p/\beta p$ ratio measured during ATHLETIC is indicative of biogenic sources, consistent with our attribution of these isomers in the weight room to transport by outdoor
485 air, where their source was likely biogenic. This shift in dominance from isomers like α - and β -pinene to limonene can have important implications on ambient air quality due to differences in reactivity (Atkinson and Arey, 2003) and SOA formation potential (Lee et al., 2006).

3.4 Detection of Dimethylsilanediol

In the GC-EI-TOF chromatograms, a well-resolved peak was observed at retention time 230 s (Figure S7A) with a mass
490 spectrum base peak at m/z 77 (Figure S8A). Using TERN analysis software, the unit mass resolution (UMR) electron ionization fragmentation pattern for this chromatographic peak (Figure S8) was compared against the NIST mass spectral database (Linstrom and Mallard, 2019, <https://webbook.nist.gov/chemistry/>) resulting (90.8 % probability) in an identification of that compound as dimethylsilanediol (DMSD). Analyzing the same chromatographic peak with the high-resolution EI-TOF data, the mass spectral peak at UMR m/z 77 was assigned as molecular formula $\text{CH}_5\text{O}_2\text{Si}^+$ (Figure S9A). This characteristic ion is
495 formed from DMSD through the loss of a methyl (CH_3) group. The protonated molecular ion of DMSD ($\text{C}_2\text{H}_8\text{O}_2\text{SiH}^+$) and its protonated water cluster ($\text{C}_2\text{H}_8\text{O}_2\text{Si}[\text{H}_2\text{O}]\text{H}^+$) were identified at the same retention time in the GC-Vocus chromatogram (Figure S7B). The tailing observed only in the GC-Vocus chromatographic peak was likely from inefficient transport through the transfer line due to non-uniform heating. The high-resolution mass spectral fits for these peaks from the GC-Vocus are shown in Figures S9B and S9C, respectively. From the high-resolution identification of the molecular ion (GC-Vocus) and the
500 fragmentation pattern with characteristic ions (GC-EI-TOF), this compound was conclusively identified as DMSD.

It should be recognized that siloxanes have historically been a class of compounds that are difficult to measure analytically due to artifacts created throughout sampling systems (Rücker and Kümmerer, 2015). For example, siloxanes have been associated with artifacts for GC analyses that utilize septa in the sample path (de Zeeuw, 2005; Wang, 2006). For the instrument used in this study, no septa are present, and with our *in situ* GC sampling we avoid many artifacts that can be introduced due
505 to sample collection and storage for off-line analysis. The sample trap used for pre-concentration is also of concern for artifact generation. To determine if DMSD is being produced as an artifact from the adsorbent trap, we conducted system zeros using dry ($\text{RH} < 2\%$) and humidified ($\text{RH} \approx 50\%$) UHP N_2 to cover humidity conditions relevant for this study, and saw no evidence of DMSD. From these results, we conclude that the DMSD observed during this study was not an artifact of the instrumentation but was instead present in the air sampled from the weight room.

510 Figure 4 shows the time series of the integrated chromatographic peak areas detected from the GC-EI-TOF. The time series shows dynamic behavior where DMSD builds up in the room starting at midnight on November 17 until a sharp decay after the football game, as seen with the RT-Vocus $\text{C}_{10}\text{H}_{17}^+$ signal (Figure 2) and the GC-EI-TOF limonene signal (Figure S4A).



515 **Figure 4. Time series of DMSD (black trace) and D₅ siloxane (grey trace) detected by GC-EI-TOF (normalized counts, ncts), weight room relative humidity (pink trace), and the fraction of outside air in the room supply air (blue trace). The area highlighted in yellow represents the time during which pre-game activities and a football game were occurring adjacent to the athletic center.**

This elevated concentration of DMSD on November 17 is also observed in the more limited GC-Vocus data set where only 10 chromatograms were obtained. As shown in Figure S9, DMSD was detected as both the protonated molecular ion (C₂H₈O₂SiH⁺) and as the protonated water cluster of the molecular ion (C₂H₈O₂Si[H₂O]H⁺). After the decay on November 17, the DMSD stabilizes to a background concentration until another increase in concentration starting in early afternoon on November 18. The temporal behavior follows that of the RH in the room (Figure 4), where DMSD begins to increase following an increase in RH and then declines sharply as the RH begins to decrease. Figure 4 shows that during the first DMSD enhancement, the fraction of outside air in the supply air was tapering down from 40 % to 15 %; however, during the enhancement on November 18, outside air was increasing from near 0 to about 20 %. The lack of correlation between DMSD and the fraction of outdoor air in the supply air indicates that this compound was not being transported from outdoors, but instead had a source inside the room or building. The sharp decrease in DMSD, which correlated with the observed decay for limonene on November 17, appears to be from reduced production of DMSD in the room along with fast loss from ventilation. The observed behavior of DMSD does not follow that of decamethylcyclopentasiloxane (D₅), a siloxane commonly used in personal care products like deodorants (Coggon et al., 2018; Tang et al., 2015). The time trace for D₅ is also shown in Figure 4. There is an enhancement in the D₅ signal during the football game and associated activities on November 17 (due to people

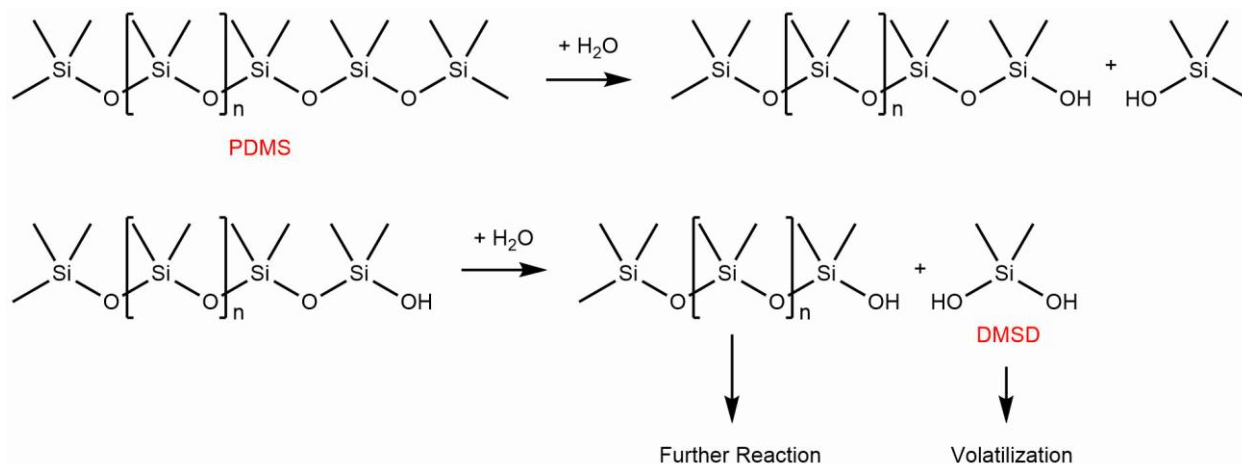
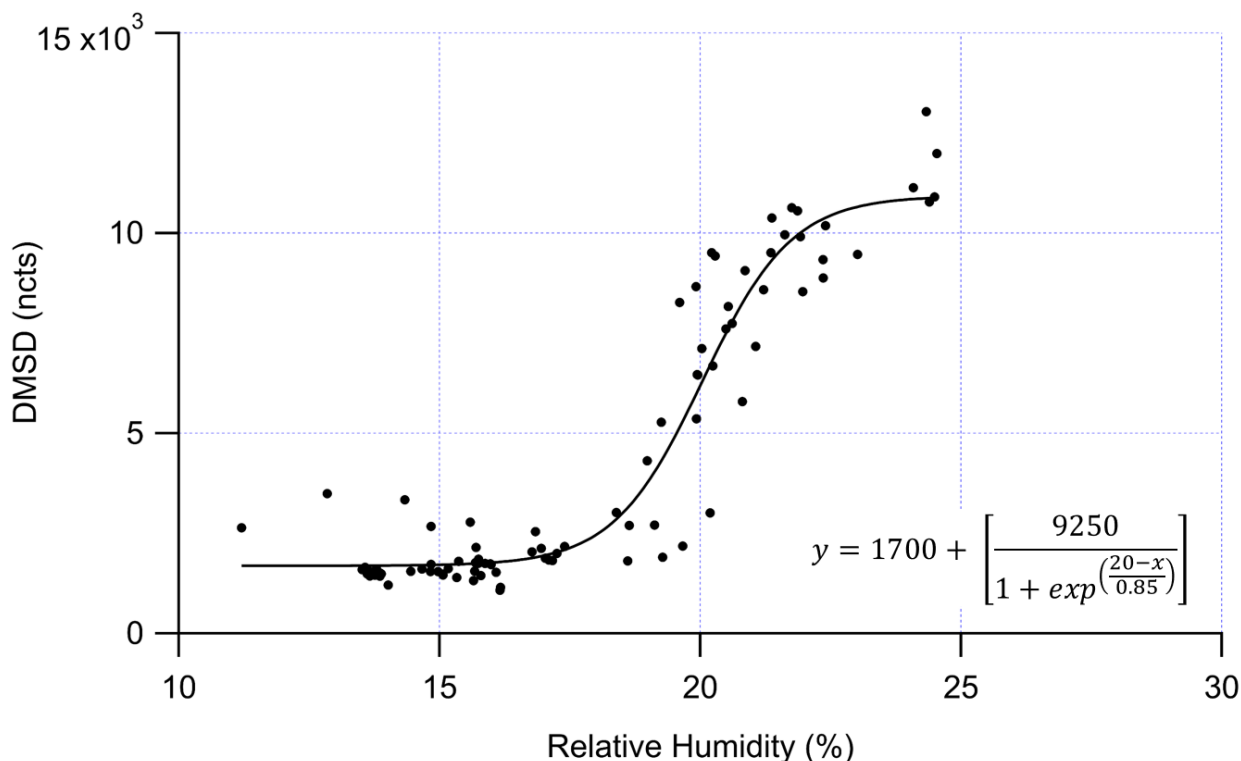


Figure 5. Proposed mechanism for the formation of DMSD from the hydrolysis of PDMS.

535 inside and adjacent to the weight room), but the D₅ time series does not track the initial buildup of DMSD on November 17 and shows no enhancement during the DMSD pulse on November 18. Therefore, it is apparent there are different sources for these two organosiloxane compounds.

DMSD has been shown to be an environmental degradation product of both cyclic (cVMS) and linear (PDMS) siloxanes (Rücker and Kümmerer, 2015; Tuazon et al., 2000). Both classes of organosiloxanes degrade to DMSD through gas-phase oxidation by hydroxyl (OH) radicals (Tuazon et al., 2000) and through condensed-phase hydrolysis reactions (Xu et al., 1998; Lehmann et al., 1994a,b; Lehmann et al., 1995; Carpenter et al., 1995). While there is uncertainty surrounding the importance of OH radical chemistry indoors, previous works have estimated that typical indoor OH radical concentrations are on the order of 10⁵ molecules cm⁻³ due to low lighting conditions that reduce conventional photolysis reactions that produce OH radicals (Weschler and Carslaw, 2018; Abbatt and Wang, 2020; Pagonis et al., 2019; Gligorovski and Weschler, 2013; Young et al., 2019). In the weight room during the DMSD enhancement events there was no natural light (i.e. no windows in the room) and little artificial light as the space was often unoccupied. And, as discussed above and shown in Figure 4, DMSD enhancement events do not track the observed behavior of D₅ siloxane. **For these reasons, we conclude that the DMSD observed in this study was not formed inside through gas-phase oxidation of cVMSs (e.g. D₅ siloxane) by OH radicals, and instead hypothesize that the production is through condensed-phase reactions followed by volatilization.**

550 The mechanism by which PDMS (the less volatile class of organosiloxanes) decompose to form DMSD has primarily been studied with regards to degradation in soils. There, PDMS undergoes moisture dependent hydrolysis to form DMSD, a process shown to be catalyzed by minerals present in clay (Xu et al., 1998). Figure 5 provides a proposed mechanism for the formation of DMSD from PDMS, though note that the PDMS co-product of DMSD can also undergo hydrolysis to produce more DMSD.



555 **Figure 6. DMSD (normalized counts, ncts) measured by the GC-EI-TOF versus relative humidity (%). The data was fit with a sigmoidal curve that shows the greatest rate of change in DMSD production at ≈ 20 % RH.**

Once formed, the DMSD then either volatilizes or is retained in the condensed phase to undergo subsequent reactions. Depending on the moisture conditions and mineral composition, hydrolysis occurs on timescales of minutes to days and efficiently in the presence of calcified minerals like Ca-kaolinite, Ca-beidellite, and Ca-nontronite (Xu et al., 1998). The hydrolysis of PDMS to DMSD has been shown to only occur in the presence of moderate amounts of water (Rücker and Kümmerer, 2015; Lehmann et al., 1998). Some water is required for the hydrolysis reaction, but when moisture levels are too high the reaction shuts off, presumably due to saturation of catalytic mineral sites by adsorbed water.

565 While the exact source of DMSD observed during this study cannot be determined from our measurements, we can suggest at least two possible sources for the DMSD production that would account for our observations. As shown in Figure 6, the DMSD signal has a sigmoidal relationship with RH, where the greatest rate of change in DMSD production is around 20 % RH. The steepness of the curve suggests the DMSD is being produced from a discrete process, likely due to some material that combines siloxanes with a mineral catalyst taking up water around 20 % RH providing the needed water for the hydrolysis reaction.

Indoors, sources of PDMS are numerous: paints, coatings, sealants, textiles, and electronics (Andriot et al., 2007). Particularly relevant is their use in paints, where PDMS are used as the binder (30–100 % w/w of the mixture) and as additives (0.1–5 % w/w of the mixture), depending on the product and manufacturer (Andriot et al., 2007). Another significant component of paints are inorganic minerals, used as pigments and extenders, constituting 20–50 % of the paint mixture (Karakas et al., 2010). While TiO₂ is commonly added for its optical properties, minerals like calcite, Ca-kaolin, talc, and dolomite are used as fillers (Karakas et al., 2011). The abundance of painted surfaces indoors and the correlation between room humidity and enhancement of DMSD (Figure 4) provide a possible explanation for the observation of DMSD during this study: mineral-catalyzed hydrolysis of PDMS on painted surfaces analogous to what occurs in soils. While the presence of PDMS in paints and coatings makes this chemistry plausible, the partitioning of lower-volatility cVMS could also act as a source of condensed-phase siloxanes in indoor environments. Using the D₅ siloxane vapor pressure measured by Lei et al. (2010), the saturation vapor concentration (C*) is estimated to be $\approx 10^6 \mu\text{g m}^{-3}$. According to Pagonis et al. (2019) and Algrim et al. (2020), for compounds with $C^* < 10^8 \mu\text{g m}^{-3}$ deposition to surfaces can compete with ventilation as a removal process. Thus, some of the cVMS emitted in the weight room may partition to surfaces where they could react to produce DMSD as discussed above for PDMS. The observation of DMSD as an atmospheric reaction product of cVMS, as a soil degradation product of PDMS, and now in an indoor environment where its formation is proposed to occur by surface hydrolysis of siloxanes, demonstrates the need to quantify its environmental impact. A review by Rucker and Kummerer (2015) refers to DMSD as the most important intermediate of organosiloxanes degradation, and yet very little is known about its physical properties, even boiling point or vapor pressure. This lack of knowledge has been due in part to an absence of analytical methods that can measure these compounds. Here, we have demonstrated an *in situ*, field-deployable technique capable of measuring DMSD that can be used in a wide variety of environments to understand the sources and fates of this compound. These measurements are of particular interest considering that the eventual fate of DMSD in the atmosphere is to form CO₂ and SiO₂, where SiO₂ could contribute to new particle formation and growth in the atmosphere (Bzdek et al., 2014).

4 Summary and Conclusions

In this study we present a field-deployable *in situ* GC with thermal desorption preconcentration and automatic switching between two time-of-flight mass spectrometric detectors, Vocus PTR-TOF-MS and EI-TOF-MS. We have demonstrated how this novel technique generates three complementary data sets: RT-Vocus for fast, non-specified, detection of VOCs, and molecular identification with both GC-Vocus and GC-EI-TOF. The latter provide molecular ion and electron ionization fragmentation pattern information, respectively, for each compound resolved by the GC. Unambiguous molecular identification is obtained with the combination of these three techniques and the molecular speciation from the GC methods can be used to aid interpretation of complex real-time PTR-MS measurements, where fragmentation and the formation of clusters can complicate analysis. By including the GC with thermal desorption preconcentration, Vocus sensitivities were

600 increased by a factor of 50 on average over the real-time measurements that were acquired with 1 Hz time resolution, and both GC-TOF methods demonstrated LODs of 1.6 ppt on average across a range of monoterpenes and aromatics.

To demonstrate this technique, the prototype GC-TOF-MS system was deployed during the 2018 ATHLETIC campaign at the University of Colorado Dal Ward Athletic Center to characterize VOC profiles with detailed speciation and high time resolution. The results presented report the identification of a wide range of VOCs, including hydrocarbons, oxygenates, and
605 nitrogen-containing compounds and their responses in each TOF-MS detector. Two sets of notable results from the GC-TOF-MS system are described in detail, including the quantification of speciated anthropogenic monoterpenes, where the composition is dominated (47 – 80 %) by limonene due to the use of personal care products and cleaning supplies in the indoor environment. Furthermore, the detection of DMSD, hypothesized to be due to the heterogenous hydrolysis of siloxanes on painted surfaces, demonstrates this technique's ability to detect new processes due to its ability to be field deployed with *in*
610 *situ* sampling, high time resolution measurements, and high-resolution mass spectrometric detection which provides molecular formulas to aid interpretation.

Further development including flow path optimization, expanding the volatility range of resolved VOCs, and increasing system sensitivities by preconcentrating larger sample volumes using multi-stage sample trapping is underway. Increased instrument sensitivity and decreased limits of detection scale with larger sample volumes, and while the simplified TDPC used here had
615 limitations to sampling rate and volume, we have recently developed a two-stage TDPC that improves upon these parameters and can collect large volumes (1 L typical) in 10 min or less. Although the instrument presented here was a prototype system, the results reported demonstrate that this is a valuable analytical tool that should be deployed in future field campaigns and laboratory experiments to characterize VOC emissions and their reaction products in new and changing environments.

Author Contribution

620 MSC and BML built the ARI GC designed by BML and JTJ. The ATHLETIC campaign was designed by PJZ, JLJ, JdG. Instrument operation during ATHLETIC: GC-TOF-MS by MSC, Vocus PTR-TOF-MS by DP, Piccaro by AVH and DAD. Data analysis: GC-TOF-MS by MSC, RT-Vocus by ZF, Piccaro by AVH and DAD, temperature and air handling by WLB. MSC prepared the manuscript with contributions from all coauthors.

Competing Interests

625 The authors declare that they have no conflict of interest.

Acknowledgements

The authors acknowledge Jason DePaepe, Shawn Herrera, MT Eisner, Jennifer Green, and Jeremy Johnson at the University of Colorado - Athletics and Facilities for hosting and supporting this study. We thank the Alfred P. Sloan Foundation (Grants No. G-2016-7173 and G-2019-12444) for funding the ATHLETIC study and for contributing to the support of subsequent activities related to this publication. WLB acknowledges support from a CIRES Graduate Fellowship.

Supporting Information

Monoterpene calibration curves for GC-EI-TOF and GC-Vocus; GC-EI-TOF and GC-Vocus sensitivity uncertainties; exemplary GC-Vocus calibration and ambient chromatogram; monoterpene chromatogram by GC-Vocus; Allan variance plot of RT-Vocus data; monoterpene timeseries by GC-EI-TOF; RT-Vocus detection of C₁₀H₁₇+ in the room versus supply air during elevated events; chromatogram, electron ionization mass spectrum, high resolution fitting, and time series of dimethylsilanediol.

References

- Abbatt, J. P. D., and Wang, C.: The atmospheric chemistry of indoor environments, *Environ. Sci.: Process. Impacts*, 22, 25-48, doi:10.1039/c9em00386j, 2020.
- Algrim, L. B., Pagonis, D., de Gouw, J. A., Jimenez, J. L., and Ziemann, P. J.: Measurements and modeling of absorptive partitioning of volatile organic compounds to painted surfaces, *Indoor Air*, 30, 745-756, doi:10.1111/ina.12654, 2020.
- Anderson, D. C., Pavelec, J., Daube, C., Herndon, S. C., Knighton, W. B., Lerner, B. M., Roscioli, J. R., Yacovitch, T. I., and Wood, E. C.: Characterization of ozone production in San Antonio, Texas, using measurements of total peroxy radicals, *Atmos. Chem. Phys.*, 19, 2845-2860, doi:10.5194/acp-2018-1083, 2019.
- Andriot, M., Chao, S., Colas, A., Cray, S., DeBuyl, F., DeGroot, J., Dupont, A., Easton, T., Garaud, J., and Gerlach, E.: Silicones in industrial applications, *Inorganic polymers*, 61-161, 2007.
- Atkinson, R., and Arey, J.: Atmospheric degradation of volatile organic compounds, *Chem. Rev.*, 103, 4605-4638, doi:10.1021/cr0206420, 2003.
- Bzdek, B. R., Horan, A. J., Pennington, M. R., Janecek, N. J., Baek, J., Stanier, C. O., and Johnston, M. V.: Silicon is a frequent component of atmospheric nanoparticles, *Environ. Sci. Technol.*, 48, 11137-11145, doi:10.1021/es5026933, 2014.

- Cappellin, L., Karl, T., Probst, M., Ismailova, O., Winkler, P. M., Soukoulis, C., Aprea, E., Märk, T. D., Gasperi, F., and Biasioli, F.: On quantitative determination of volatile organic compound concentrations using proton transfer reaction time-of-flight mass spectrometry, *Environ. Sci. Technol.*, 46, 2283-2290, doi:10.1021/es203985t, 2012.
- 655 Carpenter, J. C., Cella, J. A., and Dorn, S. B.: Study of the degradation of polydimethylsiloxanes on soil, *Environ. Sci. Technol.*, 29, 864-868, doi:10.1021/es00004a005, 1995.
- Coggon, M. M., McDonald, B. C., Vlasenko, A., Veres, P. R., Bernard, F., Koss, A. R., Yuan, B., Gilman, J. B., Peischl, J., Aikin, K. C., DuRant, J., Warneke, C., Li, S.-M., and de Gouw, J. A.: Diurnal variability and emission pattern of decamethylcyclopentasiloxane (D5) from the application of personal care products in two North American cities, *Environ. Sci. Technol.*, 52, 5610-5618, doi:10.1021/acs.est.8b00506, 2018.
- 660 de Gouw, J., Goldan, P., Warneke, C., Kuster, W., Roberts, J., Marchewka, M., Bertman, S., Pszenny, A., and Keene, W.: Validation of proton transfer reaction-mass spectrometry (PTR-MS) measurements of gas-phase organic compounds in the atmosphere during the New England Air Quality Study (NEAQS) in 2002, *J. Geophys. Res. Atmos.*, 108, doi:10.1029/2003JD003863, 2003.
- de Gouw, J., and Warneke, C.: Measurements of volatile organic compounds in the earth's atmosphere using proton-transfer-reaction mass spectrometry, *Mass Spectrom. Rev.*, 26, 223-257, doi:10.1002/mas.20119, 2007.
- 665 de Zeeuw, J.: How to minimize septum problems in GC, *Am. Lab.*, 37, 18-20, 2005.
- Faiola, C., Jobson, B., and VanReken, T.: Impacts of simulated herbivory on volatile organic compound emission profiles from coniferous plants, *Biogeosciences*, 12, 527-547, doi:10.5194/bg-12-527-2015 2015.
- Farmer, D. K., Vance, M. E., Abbatt, J. P., Abeleira, A., Alves, M. R., Arata, C., Boedicker, E., Bourne, S., Cardoso-Saldaña, F., Corsi, R., et al.: Overview of HOMEChem: House observations of microbial and environmental chemistry, *Environ. Sci.: Process. Impacts*, 21, 1280-1300, doi:10.1039/C9EM00228F, 2019.
- 670 Finewax, Z., Pagonis, D., Claflin, M. S., Handschy, A. V., Brown, W., Jenks, O., Nault, B. A., Day, D. A., Lerner, B. M., Jimenez, J. L., Ziemann, P. J., and de Gouw, J. A.: Quantification and source characterization of volatile organic compounds from exercising and application of chlorine-based cleaning products in a university athletic center, *Indoor Air*, submitted 2020.
- 675 Gallagher, M., Wysocki, C. J., Leyden, J. J., Spielman, A., Sun, X., and Preti, G.: Analyses of volatile organic compounds from human skin, *Br. J. Dermatol.*, 159, 780-791, doi:10.1111/j.1365-2133.2008.08748.x, 2008.
- Gentner, D. R., Jathar, S. H., Gordon, T. D., Bahreini, R., Day, D. A., El Haddad, I., Hayes, P. L., Pieber, S. M., Platt, S. M., and de Gouw, J.: Review of urban secondary organic aerosol formation from gasoline and diesel motor vehicle emissions, *Environ. Sci. Technol.*, 51, 1074-1093, doi:10.1021/acs.est.6b04509, 2017.

- 680 Geron, C., Rasmussen, R., Arnts, R. R., and Guenther, A.: A review and synthesis of monoterpene speciation from forests in the United States, *Atmos. Environ.*, 34, 1761-1781, doi:10.1016/S1352-2310(99)00364-7, 2000.
- Guenther, A., Jiang, X., Heald, C., Sakulyanontvittaya, T., Duhl, T., Emmons, L., and Wang, X.: The Model of Emissions of Gases and Aerosols from Nature version 2.1 (MEGAN2. 1): an extended and updated framework for modeling biogenic emissions, *Geosci. Model Dev.*, 5, 1471-1492, doi:10.5194/gmd-5-1471-2012, 2012.
- 685 Harland, P. W., and Vallance, C.: Ionization cross-sections and ionization efficiency curves from polarizability volumes and ionization potentials, *Int. J. Mass Spectrom.*, 171, 173-181, doi:10.1016/S0168-1176(97)00137-7 1997.
- He, J., Zou, Z., and Yang, X.: Measuring whole-body volatile organic compound emission by humans: A pilot study using an air-tight environmental chamber, *Building and Environment*, 153, 101-109, doi:10.1016/j.buildenv.2019.02.031, 2019.
- Isaacman-VanWertz, G., Sueper, D. T., Aikin, K. C., Lerner, B. M., Gilman, J. B., de Gouw, J. A., Worsnop, D. R., and
690 Goldstein, A. H.: Automated single-ion peak fitting as an efficient approach for analyzing complex chromatographic data, *J. Chromatogr. A*, 1529, 81-92, doi:10.1016/j.chroma.2017.11.005, 2017.
- Karakaş, F., Boylu, F., Karaağaçlıoğlu, I., and Çelik, M.: Minerals in paint industry: Talc utilization as an extender material and its effect on paint performance, XII International Mineral Processing Symposium, 2010.
- Karakaş, F., Hassas, B. V., Özhan, K., Boylu, F., and Çelik, M. S.: Calcined kaolin and calcite as a pigment and substitute for
695 TiO₂ in water based paints, XIV Balkan Mineral Processing Congress, 461-464, 2011.
- Kari, E., Miettinen, P., Yli-Pirilä, P., Virtanen, A., and Faiola, C. L.: PTR-ToF-MS product ion distributions and humidity-dependence of biogenic volatile organic compounds, *Int. J. Mass Spectrom.*, 430, 87-97, doi:10.1016/j.ijms.2018.05.003, 2018.
- Kim, S., Karl, T., Helmig, D., Daly, R., Rasmussen, R., and Guenther, A.: Measurement of atmospheric sesquiterpenes by proton transfer reaction-mass spectrometry (PTR-MS), *Atmos. Meas. Tech.*, 2, 99-112, doi:10.5194/amt-2-99-2009, 2009.
- 700 Krechmer, J., Lopez-Hilfiker, F., Koss, A., Hutterli, M., Stoermer, C., Deming, B., Kimmel, J., Warneke, C., Holzinger, R., Jayne, J., et al.: Evaluation of a new reagent-ion source and focusing ion-molecule reactor for use in proton-transfer-reaction mass spectrometry, *Anal. Chem.*, 90, 12011-12018, doi:10.1021/acs.analchem.8b02641, 2018.
- Kristensen, K., Lunderberg, D. M., Liu, Y., Misztal, P. K., Tian, Y., Arata, C., Nazaroff, W. W., and Goldstein, A. H.: Sources and dynamics of semivolatile organic compounds in a single-family residence in northern California, *Indoor Air*, 29, 645-655,
705 doi:10.1111/ina.12561, 2019.
- Lee, A., Goldstein, A. H., Kroll, J. H., Ng, N. L., Varutbangkul, V., Flagan, R. C., and Seinfeld, J. H.: Gas-phase products and secondary aerosol yields from the photooxidation of 16 different terpenes, *J. Geophys. Res. Atmos.*, 111, doi:10.1029/2006jd007050, 2006.

- Lehmann, R., Varaprath, S., and Frye, C.: Fate of silicone degradation products (silanols) in soil, *Environ. Toxicol. Chem.*, 13, 1753-1759, doi:10.1002/etc.5620131106, 1994a.
- Lehmann, R., Varaprath, S., and Frye, C.: Degradation of silicone polymers in soil, *Environ. Toxicol. Chem.*, 13, 1061-1064, doi:10.1002/etc.5620130707, 1994b.
- Lehmann, R., Varaprath, S., Annelin, R. B., and Arndt, J. L.: Degradation of silicone polymer in a variety of soils, *Environ. Toxicol. Chem.*, 14, 1299-1305, doi:10.1002/etc.5620140806, 1995.
- Lehmann, R., Miller, J., Xu, S., Singh, U., and Reece, C.: Degradation of silicone polymer at different soil moistures, *Environ. Sci. Technol.*, 32, 1260-1264, doi:10.1021/es970918z, 1998.
- Lei, Y. D., Wania, F., and Mathers, D.: Temperature-dependent vapor pressure of selected cyclic and linear polydimethylsiloxane oligomers, *J. Chem. Eng. Data*, 55, 5868-5873, doi:10.1021/je100835n, 2010.
- Lerner, B. M., Gilman, J. B., Aikin, K. C., Atlas, E. L., Goldan, P. D., Graus, M., Hendershot, R., Isaacman-VanWertz, G. A., Koss, A., and Kuster, W. C.: An improved, automated whole air sampler and gas chromatography mass spectrometry analysis system for volatile organic compounds in the atmosphere, *Atmos. Meas. Tech.*, 10, 291-313, doi:10.5194/amt-10-291-2017, 2017.
- Linstrom, P. J., and Mallard, W. G.: NIST Chemistry WebBook, NIST Standard Reference Database Number 69, National Institute of Standards and Technology, Gaithersburg MD, Retrieved December 2019.
- Liu, S., Li, R., Wild, R., Warneke, C., de Gouw, J., Brown, S., Miller, S., Luongo, J., Jimenez, J., and Ziemann, P.: Contribution of human-related sources to indoor volatile organic compounds in a university classroom, *Indoor Air*, 26, 925-938, doi:10.1111/ina.12272, 2016.
- Liu, S., Thompson, S. L., Stark, H., Ziemann, P. J., and Jimenez, J. L.: Gas-phase carboxylic acids in a university classroom: Abundance, variability, and sources, *Environ. Sci. Technol.*, 51, 5454-5463, doi:10.1021/acs.est.7b01358, 2017.
- Liu, Y., Misztal, P. K., Xiong, J., Tian, Y., Arata, C., Weber, R. J., Nazaroff, W. W., and Goldstein, A. H.: Characterizing sources and emissions of volatile organic compounds in a northern California residence using space-and time-resolved measurements, *Indoor Air*, 29, 630-644, doi:10.1111/ina.12562, 2019.
- Lunderberg, D. M., Kristensen, K., Liu, Y., Misztal, P. K., Tian, Y., Arata, C., Wernis, R., Kreisberg, N., Nazaroff, W. W., and Goldstein, A. H.: Characterizing airborne phthalate concentrations and dynamics in a normally occupied residence, *Environ. Sci. Technol.*, 53, 7337-7346, doi:10.1021/acs.est.9b02123, 2019.
- McDonald, B. C., Gentner, D. R., Goldstein, A. H., and Harley, R. A.: Long-term trends in motor vehicle emissions in US urban areas, *Environ. Sci. Technol.*, 47, 10022-10031, doi:10.1021/es401034z, 2013.

- McDonald, B. C., de Gouw, J. A., Gilman, J. B., Jathar, S. H., Akherati, A., Cappa, C. D., Jimenez, J. L., Lee-Taylor, J., Hayes, P. L., and McKeen, S. A.: Volatile chemical products emerging as largest petrochemical source of urban organic emissions, *Science*, 359, 760-764, doi:10.1126/science.aag0524, 2018.
- 740 Obersteiner, F., Bönisch, H., and Engel, A.: An automated gas chromatography time-of-flight mass spectrometry instrument for the quantitative analysis of halocarbons in air, *Atmos. Meas. Tech.*, 9, 179-194, doi:10.5194/amt-9-179-2016, 2016.
- Pagonis, D., Price, D. J., Algrim, L. B., Day, D. A., Handschy, A. V., Stark, H., Miller, S. L., de Gouw, J., Jimenez, J. L., and Ziemann, P. J.: Time-resolved measurements of indoor chemical emissions, deposition, and reactions in a university art museum, *Environ. Sci. Technol.*, 53, 4794-4802, doi:10.1021/acs.est.9b00276, 2019.
- 745 Price, D. J., Day, D. A., Pagonis, D., Stark, H., Algrim, L. B., Handschy, A. V., Liu, S., Krechmer, J. E., Miller, S. L., and Hunter, J. F.: Budgets of organic carbon composition and oxidation in indoor air, *Environ. Sci. Technol.*, 53, 13053-13063, doi:10.1021/acs.est.9b04689, 2019.
- Rizk, M., Guo, F., Verrielle, M., Ward, M., Dusanter, S., Blond, N., Locoge, N., and Schoemaeker, C.: Impact of material emissions and sorption of volatile organic compounds on indoor air quality in a low energy building: Field measurements and modeling, *Indoor air*, 28, 924-935, doi:10.1111/ina.12493, 2018.
- 750 Rücker, C., and Kümmerer, K.: Environmental chemistry of organosiloxanes, *Chem. Rev.*, 115, 466-524, doi:10.1021/cr500319v, 2015.
- Sekimoto, K., Li, S.-M., Yuan, B., Koss, A., Coggon, M., Warneke, C., and de Gouw, J.: Calculation of the sensitivity of proton-transfer-reaction mass spectrometry (PTR-MS) for organic trace gases using molecular properties, *Int. J. Mass Spectrom.*, 421, 71-94, doi:10.1016/j.ijms.2017.04.006, 2017.
- 755 Steeghs, M., Crespo, E., and Harren, F.: Collision induced dissociation study of 10 monoterpenes for identification in trace gas measurements using the newly developed proton-transfer reaction ion trap mass spectrometer, *Int. J. Mass Spectrom.*, 263, 204-212, doi:10.1016/j.ijms.2007.02.011, 2007.
- 760 Sun, X., He, J., and Yang, X.: Human breath as a source of VOCs in the built environment, Part II: concentration levels, emission rates and factor analysis, *Building and Environment*, 123, 437-445, doi:10.1016/j.buildenv.2017.07.009, 2017.
- Tang, X., Misztal, P. K., Nazaroff, W. W., and Goldstein, A. H.: Siloxanes are the most abundant volatile organic compound emitted from engineering students in a classroom, *Environ. Sci. Tech. Lett.*, 2, 303-307, doi:10.1021/acs.estlett.5b00256, 2015.
- 765 Tang, X., Misztal, P. K., Nazaroff, W. W., and Goldstein, A. H.: Volatile organic compound emissions from humans indoors, *Environ. Sci. Technol.*, 50, 12686-12694, doi:10.1021/acs.est.6b04415, 2016.

- Tanner, D., Helmig, D., Hueber, J., and Goldan, P.: Gas chromatography system for the automated, unattended, and cryogen-free monitoring of C2 to C6 non-methane hydrocarbons in the remote troposphere, *J. Chromatogr. A*, 1111, 76-88, doi:10.1016/j.chroma.2006.01.100, 2006.
- Thompson, S. L., YataVELLI, R. L., Stark, H., Kimmel, J. R., Krechmer, J. E., Day, D. A., Hu, W., Isaacman-VanWertz, G.,
770 Yee, L., Goldstein, A. H., et al.: Field intercomparison of the gas/particle partitioning of oxygenated organics during the Southern Oxidant and Aerosol Study (SOAS) in 2013, *Aerosol Sci. Tech.*, 51, 30-56, doi:10.1080/02786826.2016.1254719, 2017.
- Tuazon, E. C., Aschmann, S. M., and Atkinson, R.: Atmospheric degradation of volatile methyl-silicon compounds, *Environ. Sci. Technol.*, 34, 1970-1976, doi:10.1021/es9910053, 2000.
- 775 Van den Dool, H., and Kratz, P. D.: A generalization of the retention index system including linear temperature programmed gas-liquid partition chromatography, *J. Chromatogr. A*, 11, 463-471, doi:10.1016/S0021-9673(01)80947-X, 1963.
- Wang, Y.: How pierced PTFE/silicone septa affect GC-MS experiments, *Am. Lab.*, 38, 10-12, 2006.
- Warneke, C., De Gouw, J. A., Kuster, W. C., Goldan, P. D., and Fall, R.: Validation of atmospheric VOC measurements by proton-transfer-reaction mass spectrometry using a gas-chromatographic pre-separation method, *Environ. Sci. Technol.*, 37,
780 2494-2501, doi:10.1021/es026266i, 2003.
- Warneke, C., De Gouw, J. A., Holloway, J. S., Peischl, J., Ryerson, T. B., Atlas, E., Blake, D., Trainer, M., and Parrish, D. D.: Multiyear trends in volatile organic compounds in Los Angeles, California: Five decades of decreasing emissions, *J. Geophys. Res. Atmos.*, 117, doi:10.1029/2012JD017899, 2012.
- Watson, J. G., Chow, J. C., and Fujita, E. M.: Review of volatile organic compound source apportionment by chemical mass
785 balance, *Atmos. Environ.*, 35, 1567-1584, doi:10.1016/S1352-2310(00)00461-1, 2001.
- Weschler, C. J., and Shields, H. C.: Potential reactions among indoor pollutants, *Atmos. Environ.*, 31, 3487-3495, doi:10.1016/S1352-2310(97)00219-7, 1997.
- Williams, J., Stönnner, C., Wicker, J., Krauter, N., Derstroff, B., Bourtsoukidis, E., Klüpfel, T., and Kramer, S.: Cinema audiences reproducibly vary the chemical composition of air during films, by broadcasting scene specific emissions on breath,
790 *Sci. Rep.*, 6, 25464, doi:10.1038/srep25464, 2016.
- Wolkoff, P.: Indoor air pollutants in office environments: assessment of comfort, health, and performance, *Int. J. Hyg. Envir. Heal.*, 216, 371-394, doi:10.1016/j.ijheh.2012.08.001, 2013.
- Wong, J., Carslaw, N., Zhao, R., Zhou, S., and Abbatt, J.: Observations and impacts of bleach washing on indoor chlorine chemistry, *Indoor Air*, 27, 1082-1090, doi:10.1111/ina.12402, 2017.

- 795 Xu, S., Lehmann, R. G., Miller, J. R., and Chandra, G.: Degradation of polydimethylsiloxanes (silicones) as influenced by clay minerals, *Environ. Sci. Technol.*, 32, 1199-1206, doi:10.1021/es9708676, 1998.
- Young, C. J., Zhou, S., Siegel, J. A., and Kahan, T. F.: Illuminating the dark side of indoor oxidants, *Environ. Sci.: Process. Impacts*, 21, 1229-1239, doi:10.1039/C9EM00111E, 2019.
- 800 Yuan, B., Koss, A. R., Warneke, C., Coggon, M., Sekimoto, K., and de Gouw, J. A.: Proton-transfer-reaction mass spectrometry: applications in atmospheric sciences, *Chem. Rev.*, 117, 13187-13229, doi:10.1021/acs.chemrev.7b00325, 2017.

Supporting Information¹

An *in situ* gas chromatograph with automatic detector switching between Vocus PTR-TOF-MS and EI-TOF-MS: Isomer resolved measurements of indoor air

Megan S. Claflin¹, Demetrios Pagonis^{2,3}, Zachary Finewax^{2,3,4}, Anne V. Handschy^{2,3}, Douglas A. Day^{2,3}, Wyatt L. Brown^{2,3}, John T. Jayne¹, Douglas R. Worsnop¹, Jose L. Jimenez^{2,3}, Paul J. Ziemann^{2,3}, Joost de Gouw^{2,3}, Brian M. Lerner¹

¹ Aerodyne Research Inc., Billerica, Massachusetts 01821, United States

² Cooperative Institute for Research in Environmental Sciences (CIRES), Boulder, Colorado 80309, United States

³ Department of Chemistry, University of Colorado, Boulder, Colorado 80309, United States

⁴ Now at Chemical Sciences Laboratory, Earth System Research Laboratory, National Oceanic and Atmospheric Administration, Boulder, Colorado, 80305, United States

Correspondence to: Megan S. Claflin (mclaflin@aerodyne.com)

Monoterpene calibration curves for GC-EI-TOF and GC-Vocus; GC-EI-TOF and GC-Vocus sensitivity uncertainties; exemplary GC-Vocus calibration and ambient chromatogram; monoterpene chromatogram by GC-Vocus; Allan variance plot of RT-Vocus data; monoterpene timeseries by GC-EI-TOF; RT-Vocus detection of C₁₀H₁₇⁺ in the room versus supply air during elevated emission events; chromatogram, electron ionization mass spectrum, high resolution fitting, and time series of dimethylsilanediol.

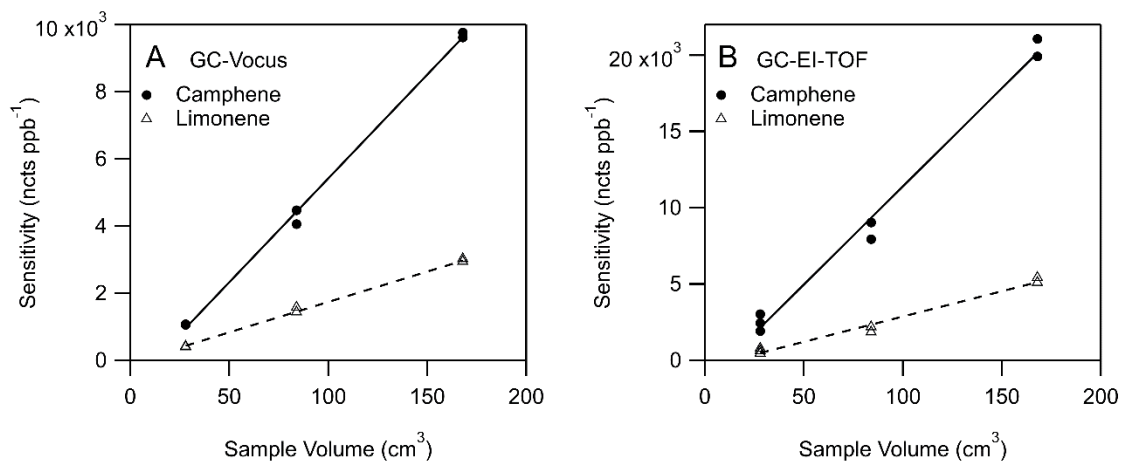


Figure S1. Monoterpene sensitivities (normalized counts per ppb) versus sample volume for limonene and camphene acquired by A) GC-Vocus and B) GC-EI-TOF. Monoterpenes were quantified using their protonated molecular ion ($C_{10}H_{17}^+$) for GC-Vocus, and characteristic fragment ion ($C_7H_9^+$) for GC-EI-TOF.

Table S1. Sensitivity uncertainties (1- σ) for the GC-EI-TOF and GC-Vocus calibrations.

	Sensitivity Uncertainty (%)	
	GC-EI-TOF	GC-Vocus
α -pinene	+/- 14.5	+/- 5.7
camphene	+/- 8.5	+/- 5.4
β -pinene	+/- 13.4	+/- 6.1
carene	+/- 14.7	+/- 4.4
limonene	+/- 11.2	+/- 5.4
benzene	+/- 11.8	+/- 3.8
toluene	+/- 8.4	+/- 6.2
ethyl-benzene	+/- 11.5	+/- 5.2
m&p-xylenes	+/- 12.4	+/- 6.1
o-xylene	+/- 12.3	+/- 3.9

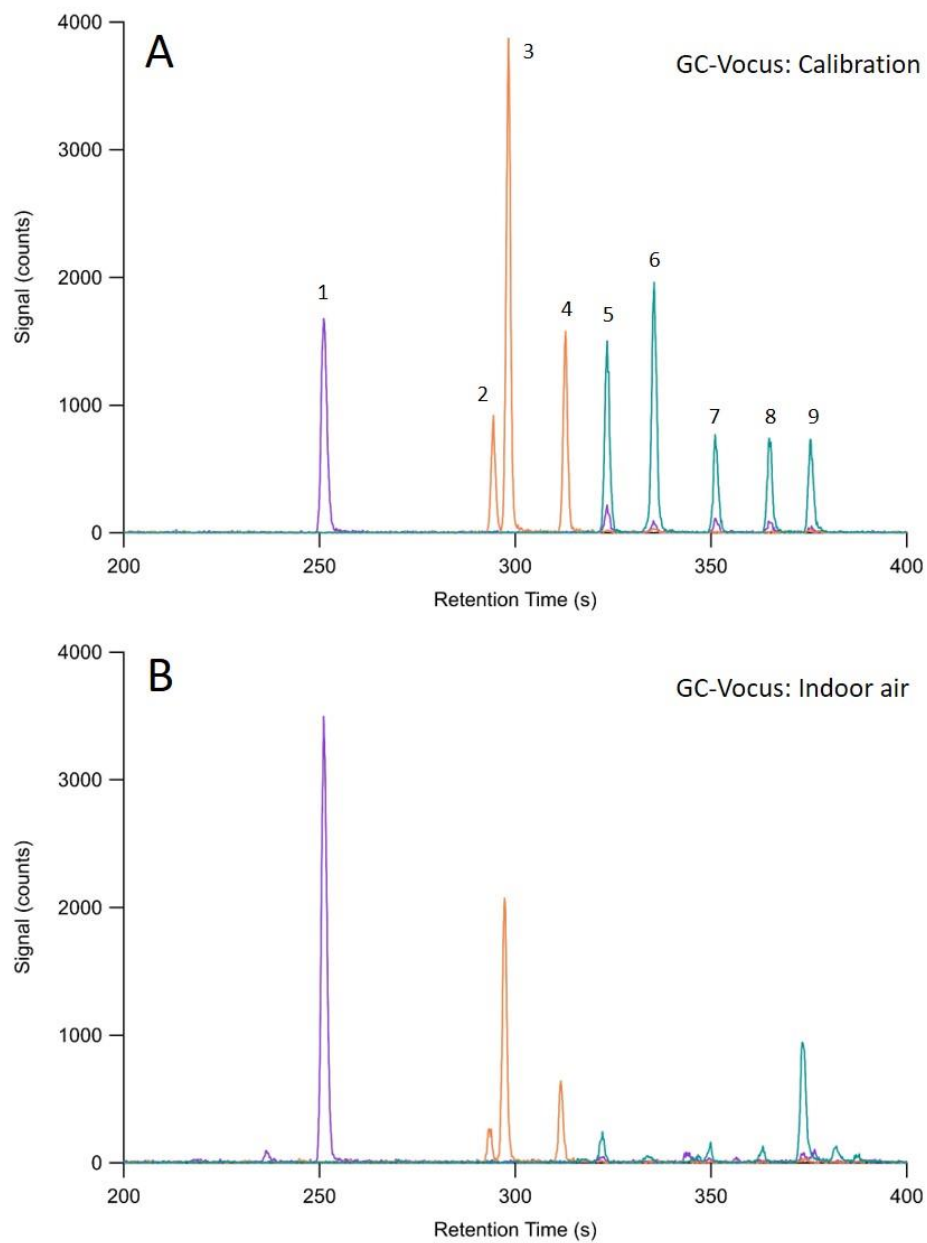


Figure S2. GC-Vocus chromatograms demonstrating the separation of monoterpenes and C₇ and C₈ aromatics in (A) the calibration mixture and (B) ambient indoor air. The compounds labeled in the calibration chromatogram are (1) toluene (2) ethyl benzene (3) m&p-xylenes (4) o-xylene (5) α -pinene (6) camphene (7) β -pinene (8) carene and (9) limonene.

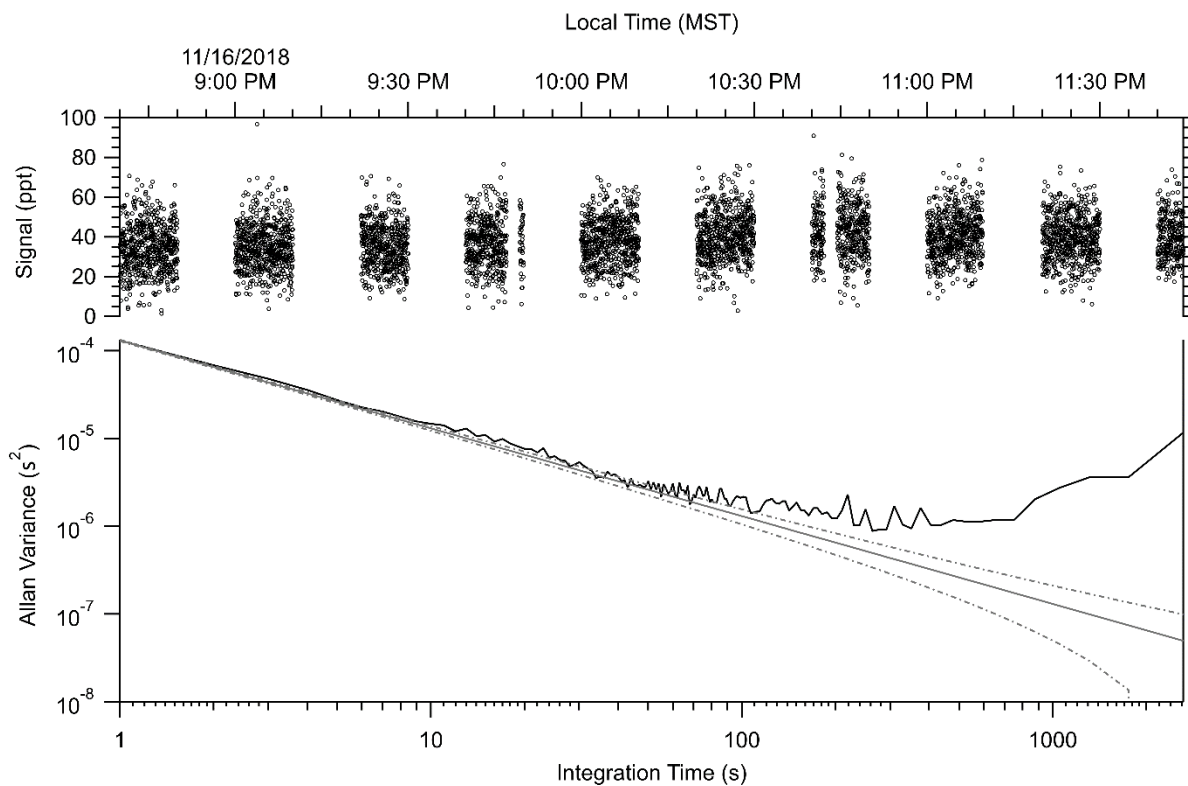


Figure S3. Allan variance plot of the RT-Vocus $C_{10}H_{17}^+$ signal. The RT-Vocus trace contains only room air measurements, periods of sampling from the supply air were removed. The subset of $C_{10}H_{17}^+$ signal was chosen when the concentration was both low and contained minimum perturbations from local sources. The Allan variance analysis results in a minimum at ~ 250 s of averaging time, meaning that if the RT-Vocus data was averaged to give one data point every 250 s the noise could be reduced by a factor of ~ 16 .

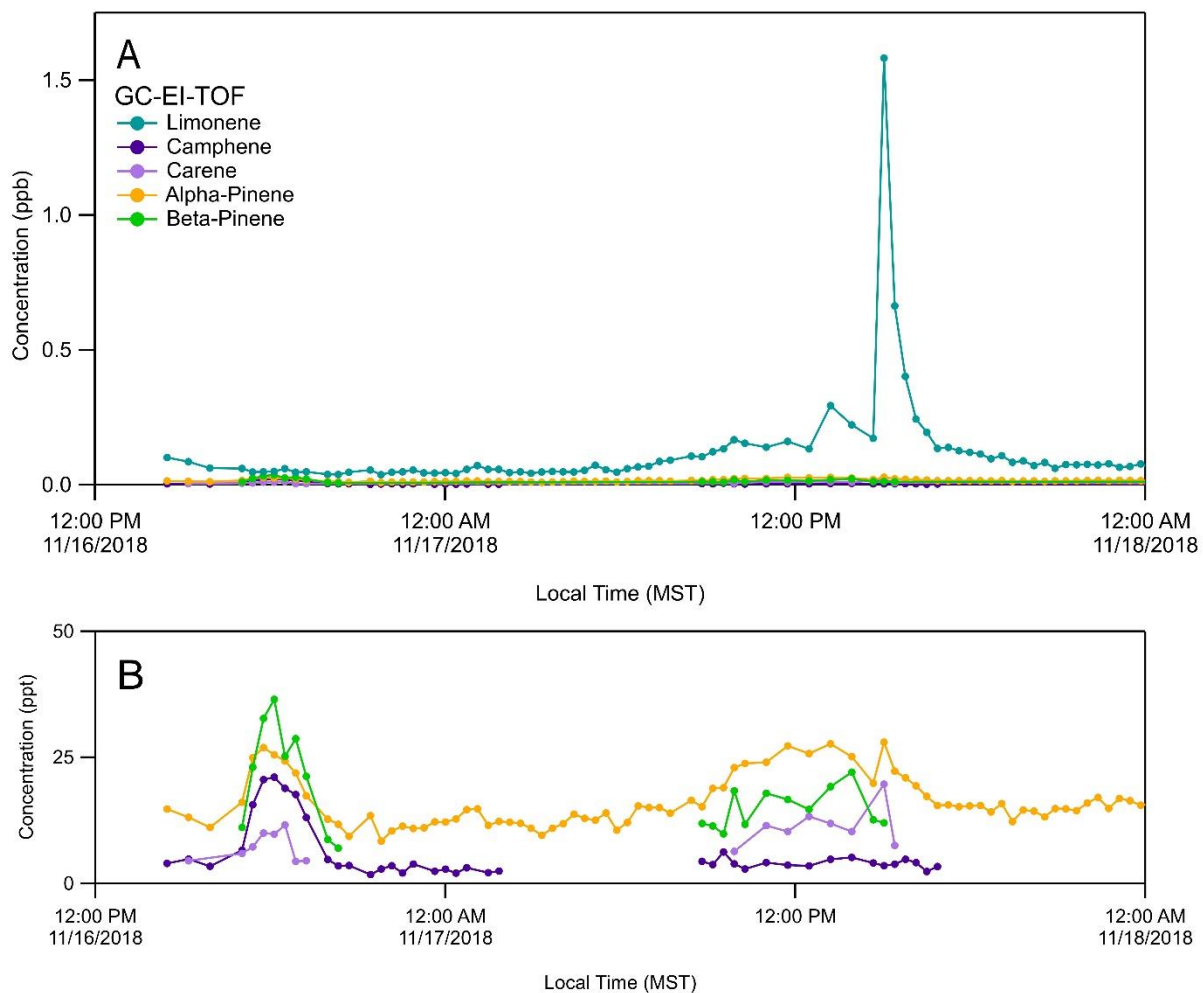


Figure S4. (A) GC-EI-TOF monoterpene time series (B) details of monoterpenes detected in lower ambient concentrations, absent data points are for chromatograms where the chromatographic peak was below the limit of detection. Large peak in limonene on November 17 is due to enhancements observed after the football game, while the increase in signal for the other monoterpenes on November 16 is associated with the inflow of outdoor air into the room.

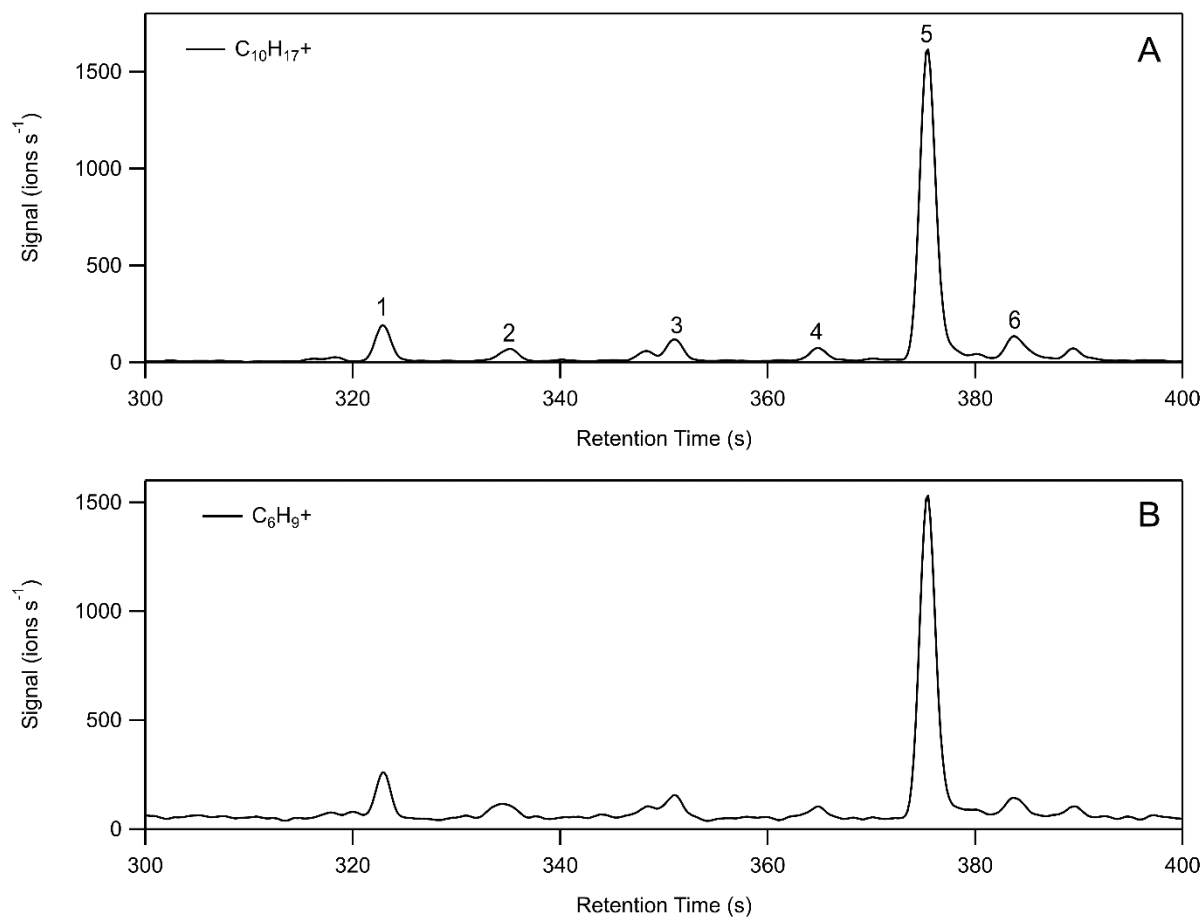


Figure S5. Ambient GC-Vocus chromatogram, showing subsection of the chromatogram where the monoterpenes elute, demonstrating separation of Vocus signal (A) C₁₀H₁₇⁺ (m/z 137.1325), the protonated molecular ion of monoterpenes where peaks labeled 1 – 6 correspond to α -pinene, camphene, β -pinene, carene, limonene, and γ -terpinene, respectively, and (B) C₆H₉⁺ (m/z 81.0699) ion being detected here as fragmentation ions of the monoterpenes.

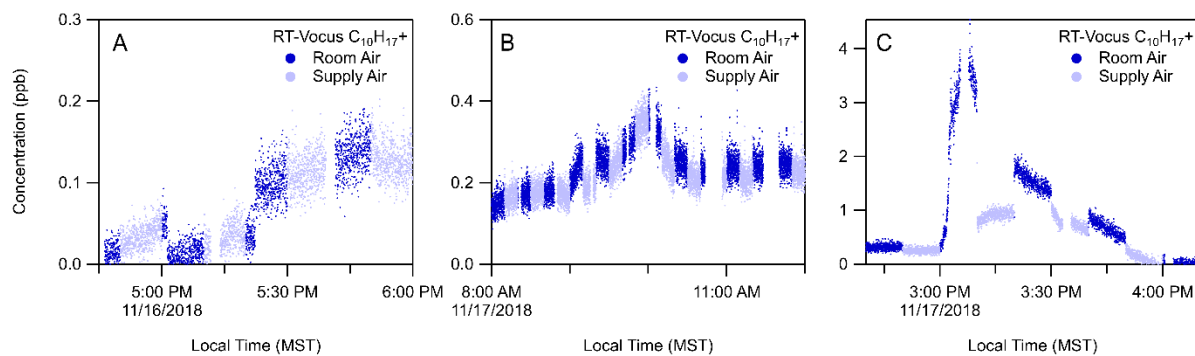


Figure S6. RT-Vocus detection of $C_{10}H_{17}^+$ during A) elevation increase on November 16, initially observed in the supply air indicating an outdoor source of biogenics B) the tailgating and football game event on November 17 where both the room and supply air showed similar elevated signals indicating a source in close proximity to the weight room and C) elevation increase after the football event on November 17, where the increase in signal was initially detected in the room air at 3 pm, followed by subsequent increase in the supply air, indicating an in-room source of monoterpene emissions.

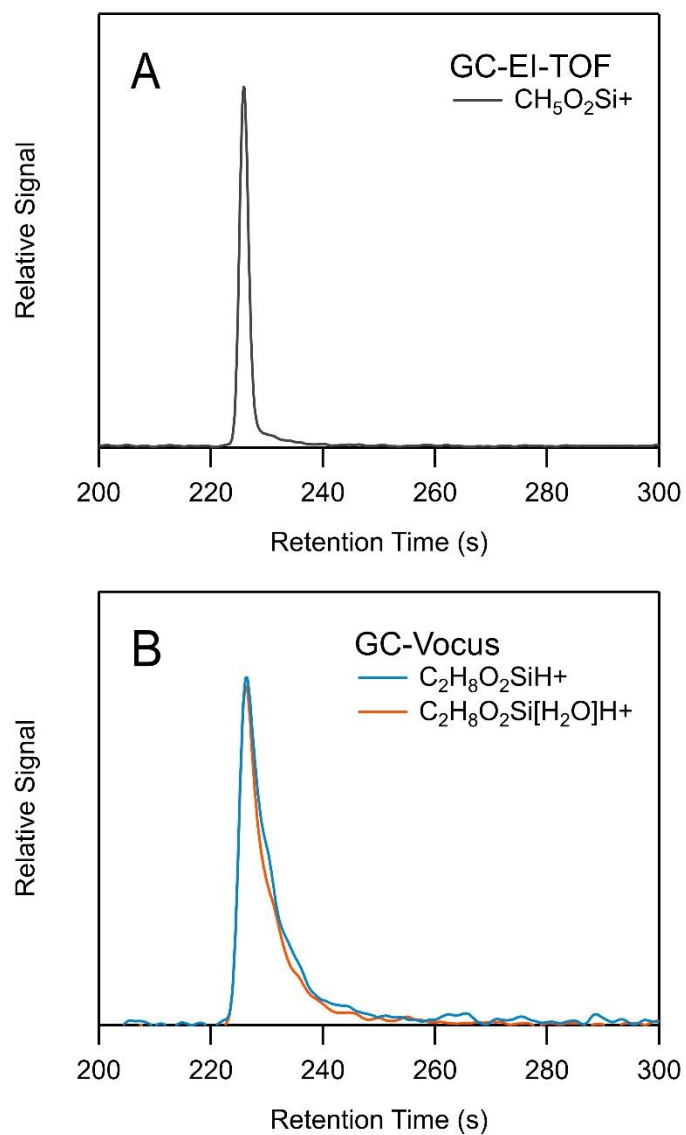


Figure S7. Chromatographic separation of DMSD with retention time 230 s (A) GC-EI-TOF detection of DMSD characteristic ion $\text{CH}_5\text{O}_2\text{Si}^+$ (B) GC-Vocus detection of both the protonated molecular ion, $\text{C}_2\text{H}_8\text{O}_2\text{SiH}^+$, and its water cluster, $\text{C}_2\text{H}_8\text{O}_2\text{Si}[\text{H}_2\text{O}]\text{H}^+$.

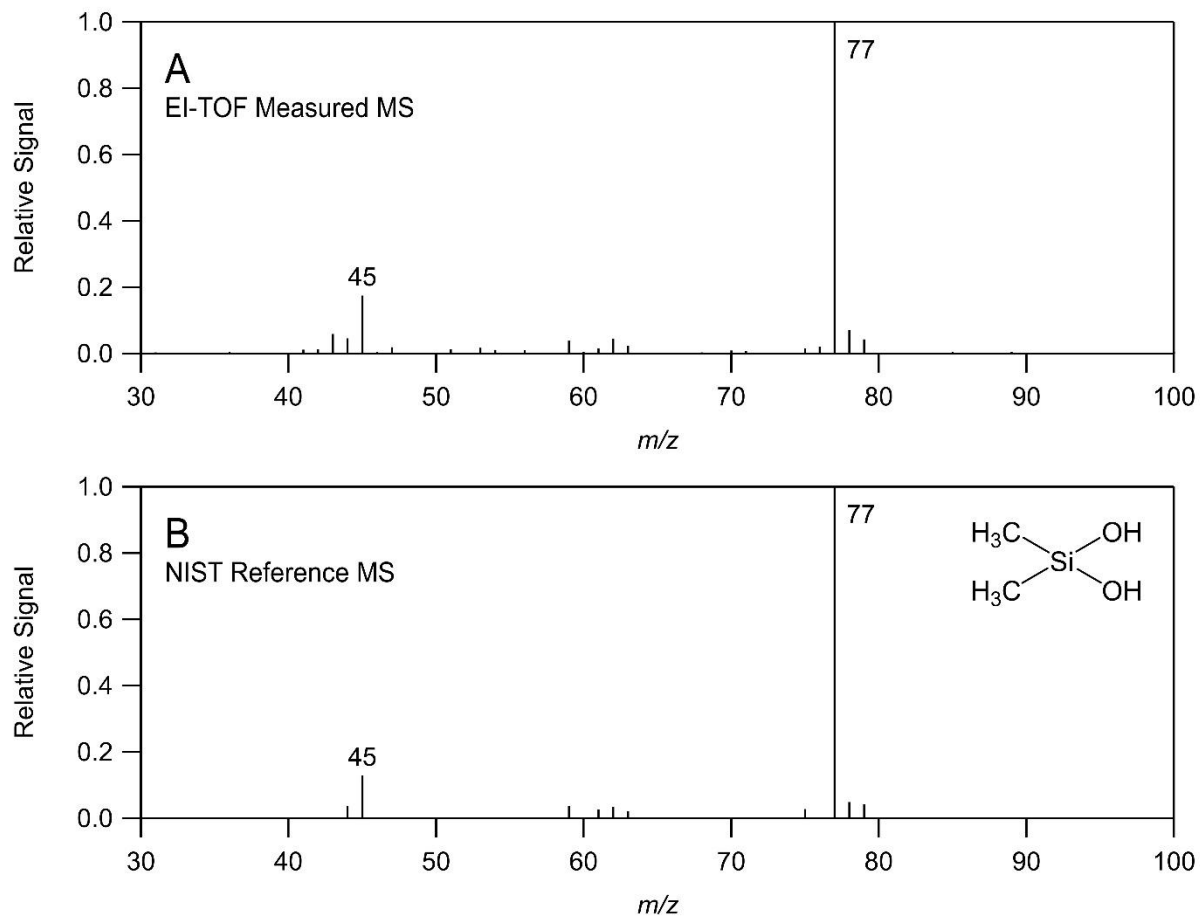


Figure S8. Electron ionization mass spectrum of DMSD for (A) chromatographic peak obtained by GC-EI-TOF and (B) standard NIST mass spectrum.

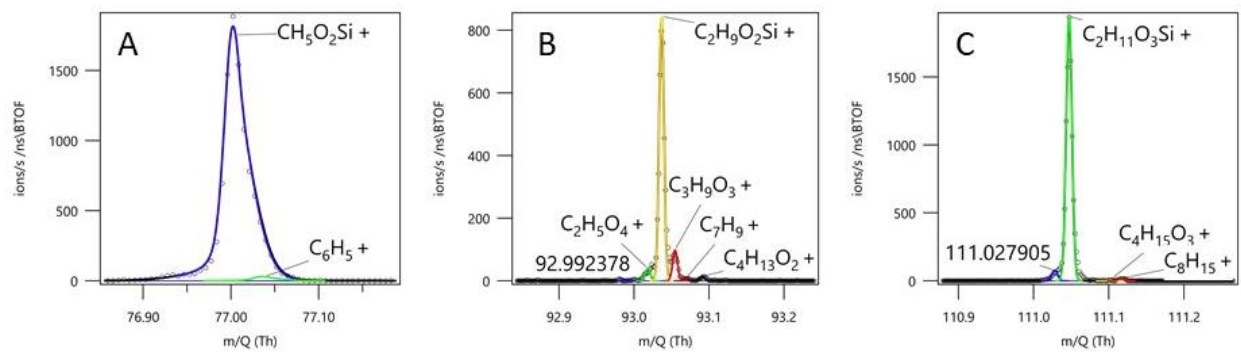


Figure S9. Mass spectrum high resolution peak fits of DMSD during chromatographic separation (A) characteristic fragmentation ion, $\text{CH}_3\text{O}_2\text{Si}^+$, detected by EI-TOF (B) protonated molecular ion, $\text{C}_2\text{H}_8\text{O}_2\text{SiH}^+$, and (C) its water cluster, $\text{C}_2\text{H}_8\text{O}_2\text{Si}[\text{H}_2\text{O}]\text{H}^+$, detected by Vocus.

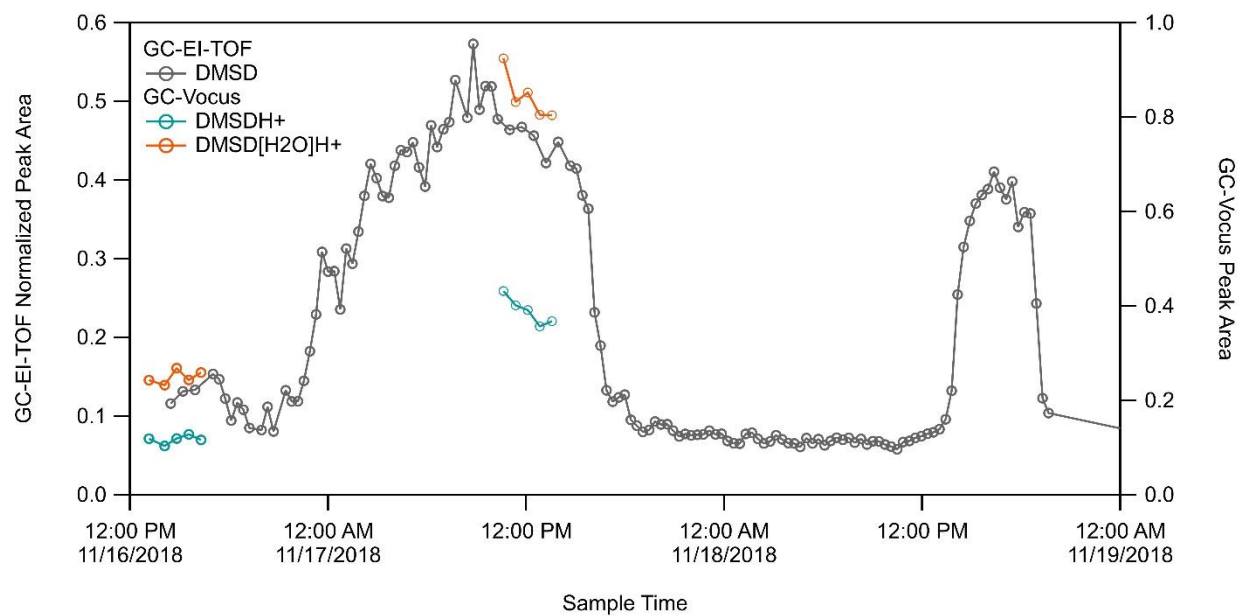


Figure S9. Time series of DMSD detected by GC-EI-TOF (grey trace) and GC-Vocus (blue trace, protonated molecular ion; orange trace, water cluster of protonated molecular ion).