

## Response to editor's comments

We thank the editor for the comments which have helped us to improve the manuscript. Our point-by-point responses are below. The editor's comments are in black font and our responses are in blue font.

Comments to the Author:

The authors have reasonably addressed the comments of the two anonymous referees and they have modified their manuscript accordingly. However, the current version of the manuscript suffers from poor language and grammar and contains many errors and other shortcomings. Therefore, I have numerous alterations and corrections that should be made before the manuscript can be published in AMT.

For the Main text:

Use is made of both "thermo/optical" and "thermo-optical" within the manuscript. I strongly suggest that the authors stick to a single term and that, in addition, they use "thermal-optical" throughout the text (NOT in the References).

R: We have used the "thermal-optical" throughout the revised manuscript. (see lines 2, 29, 50-51, 76, 85, 101-102, 114, 117, and 453)

Line 24: remove the comma before " mainly".

R: Corrected. (see line 24)

Line 26: replace ", makes" by " and makes".

R: Corrected. (see line 26)

Line 30: replace "on one-year" by "on a one-year".

R: Corrected. (see line 30)

Line 31: replace "Due to" by "Since".

R: Corrected. (see line 31)

Line 34: replace "carbonaceous aerosols" by "carbonaceous aerosol".

R: Corrected. (see line 35)

Line 37: replace "in OC and EC aerosols, however dEC aerosols were" by "for OC and EC; however dEC was".

R: Corrected. (see line 37)

Line 41: replace "obvious higher" by "obviously higher".

R: Corrected. (see line 42)

Line 42: replace "days," by "days;".

R: Corrected. (see line 42)

Line 46: replace "monitored in winter," by "observed in winter and".

R: Corrected. (see line 46)

Line 46: abbreviations and acronyms, here "YRD", should be defined (written full-out) when first used. Since "YRD" is only used once within the Abstract, it should not be defined here, but replaced by "Yangtze River Delta".

R: Corrected. (see line 47)

Line 50: replace "traditional" by "the traditional".

R: Corrected. (see line 50)

Line 51: replace "BrC, the application of dEC data need" by "BrC; the application of dEC data needs".

R: Corrected. (see lines 51-52)

Line 69: replace "can't" by "cannot".

R: Corrected. (see line 70)

Line 70: replace "emitted from" by "produced by".

R: Corrected. (see line 71)

Line 73: replace "of BrC" by "of the BrC".

R: Corrected. (see line 74)

Line 74: replace "modeling method" by "modeling".

R: Corrected. (see line 75)

Line 76: replace "method of OC" by "methods for OC".

R: Corrected. (see line 77)

Line 79: replace "and return" by "and the return".

R: Corrected. (see line 80)

Line 80: replace "as a split" by "as the split".

R: Corrected. (see line 81)

Line 82: replace "wildly used in present studies applied in" by "widely used in studies employing".

R: Corrected. (see line 83)

Line 90: replace "in ultraviolet" by "in the ultraviolet".

R: Corrected. (see line 92)

Line 90: abbreviations and acronyms, here "BC", should be defined (written full-out) when first used within the main text.

R: Corrected. (see line 92)

Line 91: replace "in near-infrared" by "in the near-infrared".

R: Corrected. (see line 93)

Line 98: replace "(2012a) and Wang et al. (2012b)" by "(2012a; 2012b)".

R: Corrected. (see line 100)

Line 99: abbreviations and acronyms, here "TOT" and "TOR", should be defined (written full-out) when first used within the main text.

R: Corrected. (see lines 101-102)

Line 106: replace "collected wintertime" by "collected during wintertime".

R: Corrected. (see line 109)

Line 114: replace "organic carbon (OC)" by "OC"; "OC" was already defined in line 53.

R: Corrected. (see line 116)

Line 115: replace "can't" by "cannot".

R: Corrected. (see line 117)

Line 118: replace "where cover" by "with".

R: Corrected. (see line 120)

Line 120: replace "EC aerosols" by "EC".

R: Corrected. (see line 123)

Line 124: replace "laser, focus" by "laser focus".

R: Corrected. (see line 127)

Line 125: replace "chamber then the laser beam passed" by "chamber, then the laser beam passes".

R: Corrected. (see line 127)

Line 127: replace "analyzer," by "analyzer;".

R: Corrected. (see line 130)

Line 129: replace "mode," by "mode;".

R: Corrected. (see line 132)

Line 137: replace "dEC aerosols" by "dEC".

R: Corrected. (see line 139)

Line 138: replace "observed" by "measured".

R: Corrected. (see line 139)

Line 141: replace "dEC aerosols" by "dEC".

R: Corrected. (see line 143)

Line 159: replace "analyzed" by "determined".

R: Corrected. (see line 160)

Line 160: replace "and applied" by "by applying".

R: Corrected. (see line 160)

Line 161: replace "were shown" by "are shown".

R: Corrected. (see line 161)

Line 162: replace "was first" by "is first".

R: Corrected. (see line 163)

Line 163: replace "was volatilized" by "is volatilized".

R: Corrected. (see line 164)

Line 164: replace "kept at 840°C for a while and went down to 550°C. In the second stage, EC was" by "is kept at 840°C for a while and goes down to 550°C. In the second stage, EC is".

R: Corrected. (see lines 164-165)

Line 166: replace "2% oxygen and 98% helium. The pyrolysis products were" by "2% oxygen and 98% helium. The pyrolysis products are".

R: Corrected. (see lines 166-167)

Line 168: replace "two-diode lasers (658nm and 405nm) equipped Sunset analyzer," by "a two-diode lasers (658 nm and 405 nm) equipped Sunset analyzer;"

R: Corrected. (see line 169)

Line 170: replace "was detected" by "is detected".

R: Corrected. (see line 171)

Line 171: replace "was same as the" by "is the same as for the".

R: Corrected. (see line 172)

Line 173: replace "was shown" by "is shown".

R: Corrected. (see line 174)

Line 174: replace "were both" by "are both" and replace "signal were" by "signal is".

R: Corrected. (see line 175)

Line 176: replace "both two" by "both".

R: Corrected. (see line 177)

Line 177: replace "658nm" by "658 nm" and replace "BrC in" by "BrC at the".

R: Corrected. (see line 178)

Line 178: replace "thus this enhanced absorption at 405nm" by "the enhanced absorption at 405 nm".

R: Corrected. (see line 179)

Line 180: replace "study provided" by "study provides".

R: Corrected. (see line 181)

Line 182: replace "658nm" by "658 nm".

R: Corrected. (see line 183)

Line 183: replace "5%methane" by "5% methane".

R: Corrected. (see line 184)

Line 184: replace "95%Helium was injected and thus a known carbon mass could" by "95% helium is injected and thus a known carbon mass can".

R: Corrected. (see line 185)

Line 188: replace "All the data" by "All data".

R: Corrected. (see line 189)

Line 192: insert a space before "of 0.4 for EC".

R: Corrected. (see line 193)

Lines 199, 202, and 206: remove "Equation.".

R: Corrected. (see lines 200, 203, and 207)

Line 200: replace "were the" by "are the".

R: Corrected. (see line 201)

Line 203: replace "was the" by "is the".

R: Corrected. (see line 204)

Line 204: replace "was used" by "is used".

R: Corrected. (see line 205)

Lines 205, 241, 267, 329, and 463: there should be a space after each ";".

R: Corrected. (see lines 205-206, 241, 266, 327, and 460)

Line 207: replace "were fitting" by "are fitting" and replace "was the" by "is the".

R: Corrected. (see line 208)

Line 208: replace "represented" by "represents".

R: Corrected. (see line 209)

Line 210: replace "square" by "squares" and replace "led to" by "leading to".

R: Corrected. (see line 211)

Line 212: replace "showed that" by "shows that".

R: Corrected. (see line 213)

Line 213: replace "were within" by "are within" and replace "showed the" by "shows the".

R: Corrected. (see lines 213-214)

Line 214: replace "were found" by "is found".

R: Corrected. (see line 215)

Lines 225-226: replace "were collected on prebaked quartz fiber filters which were under 450°C for 6 hours (QFF, PALL, America) with 8\*10 inch by" by "was collected on 8\*10 inch prebaked quartz fiber filters (QFF, PALL, America) by".

R: Corrected. (see lines 226-227)

Lines 230-231: replace "bank filters in four seasons collected following 10 mins exposures" by "blanks in the four seasons using 10 min exposure".

R: Corrected. (see line 231)

Line 233: replace "weighed by" by "weighed with an".

R: Corrected. (see line 233)

Line 235: replace "for further" by "until further".

R: Corrected. (see line 235)

Line 239: replace "(NOAA) were" by "(NOAA), was".

R: Corrected. (see line 239)

Line 242: replace "air masses" by "air mass".

R: Corrected. (see line 242)

Line 243: replace "500m" by "500 m".

R: Corrected. (see line 243)

Lines 249-250: replace "be seen in the research reported by Bao" by "be found in Bao".

R: Corrected. (see line 249)

Line 257: replace "were comparable" by "are comparable".

R: Corrected. (see line 256)

Line 257: "Chen et al. (2017)" is missing in the Reference list.

R: We have added "Chen et al. (2017)" in the Reference list. (see lines 495-497)

Line 260: replace "were probably" by "are probably".

R: Corrected. (see line 259)

Line 264: replace "1.3% to" by "1.3% to the" and replace "with max" by "with maximum".

R: Corrected. (see line 263)

Line 266: replace "sources of" by "sources of the".

R: Corrected. (see line 265)

Line 268: replace "aerosols levels" by "aerosol levels".

R: Corrected. (see line 267)

Line 270: replace "was affected" by "are affected".

R: Corrected. (see line 269)

Line 272: replace "which was" by "which is".

R: Corrected. (see line 271)

Line 273: replace "set in" by "in".

R: Corrected. (see line 272)

Line 274: replace "aerosols concentrations in China was" by "aerosol concentrations in China is".

R: Corrected. (see line 273)

Line 276: replace "winter, the" by "winter and the".

R: Corrected. (see line 275)

Line 277: replace "ratios in this study was 3.6, which was" by "ratio in this study was 3.6, which is".

R: Corrected. (see line 276)

Line 278: replace "in our" by "at our".

R: Corrected. (see line 277)

Line 281: replace "periods. During the study" by "period. During that".

R: Corrected. (see line 279)

Line 285: replace "Larger" by "A larger".

R: Corrected. (see line 283)

Line 286: replace "for period" by "for".

R: Corrected. (see line 284)

Line 288: replace "carbonaceous aerosols mass fraction of 5.2%. The result indicated" by "a carbonaceous aerosol mass fraction of 5.2%. The results indicate that".

R: Corrected. (see lines 285-286)

Line 289: replace "contributes" by "contribute".

R: Corrected. (see line 287)

Line 293: replace "14.3% when" by "14.3% for".

R: Corrected. (see line 291)

Line 294: replace "Similar trend was found in" by "A similar trend was found for the".

R: Corrected. (see lines 291-292)

Line 295: replace "studies had" by "studies have".

R: Corrected. (see line 293)

Line 298: replace "in four" by "in the four".

R: Corrected. (see line 296)

Line 309: replace "February, more details could" by "February; more details can".

R: Corrected. (see line 307)

Line 310: replace "emissions intensities" by "emission intensities".

R: Corrected. (see line 308)

Line 311: replace "in four" by "in the four".

R: Corrected. (see line 309)

Line 312: replace "aerosols concentrations" by "aerosol concentrations".

R: Corrected. (see line 310)

Line 315: replace "summer, higher" by "summer, the higher".

R: Corrected. (see line 313)

Line 316: replace "and higher" by "and the higher".

R: Corrected. (see line 314)

Line 317: replace "into gaseous" by "into the gaseous".

R: Corrected. (see line 315)

Line 320: replace "The OC/EC" by "The average OC/EC".



R: Corrected. (see line 318)

Line 326: replace "the 3.3 sections" by "section 3.3".

R: Corrected. (see line 324)

Lines 326-327: replace "indicated that strong" by "indicate strong".

R: Corrected. (see lines 324-325)

Line 328: replace "carbon, further" by "carbon; further".

R: Corrected. (see line 326)

Line 329: replace "need to" by "needs to".

R: Corrected. (see line 327)

Line 334: replace "EC aerosols" by "EC".

R: Corrected. (see line 332)

Line 335: replace "quality in the" by "quality in".

R: Corrected. (see line 333)

Line 337: replace "source on" by "sources on".

R: Corrected. (see line 335)

Line 341: replace "there was no" by "there were no".

R: Corrected. (see line 339)

Line 343: replace "aerosols formations" by "aerosol formation".

R: Corrected. (see line 341)

Line 347: replace "could be found in three areas, first showed" by "can be found in three areas, first shown".

R: Corrected. (see line 344)

Line 349: replace "also shown" by "also seen".

R: Corrected. (see line 346)

Line 350: replace "was displayed" by "is".

R: Corrected. (see line 347)

Line 351: replace "appeared when" by "appears for".

R: Corrected. (see lines 347-348)

Line 353: replace "The OC and EC showed" by "OC and EC show".

R: Corrected. (see line 350)

Line 356: replace "However the" by "However, the".

R: Corrected. (see lines 352-353)

Line 361: replace "influences of air masses" by "influence of air mass".

R: Corrected. (see line 357)

Line 362: replace "in four seasons is illustrated" by "in the four seasons is shown".

R: Corrected. (see line 358)

Line 364: replace "indicating by" by "indicated by".

R: Corrected. (see line 360)

Line 364: abbreviations and acronyms, here "WS", should be defined (written full-out) when first used within the main text.

R: Corrected. (see line 360)

Line 367: replace "that sources" by "that the sources".

R: Corrected. (see line 363)

Line 369: replace "aerosols showed" by "showed".

R: Corrected. (see line 365)

Lines 369-370: replace "with the increasing of WS and highest dEC/OC were found when" by "with increasing WS and the highest dEC/OC were found for".

R: Corrected. (see line 366)

Line 371: replace "was highly likely the main sources contributing to" by "were highly likely the main sources contributing to the".

R: Corrected. (see line 367)

Line 373: replace "map are" by "maps are".

R: Corrected. (see line 370)

Line 375: replace "PSCF" by "the PSCF".

R: Corrected. (see line 372)

Line 376: replace "dEC aerosols and local contributions to OC and EC aerosols" by "dEC and local contributions to OC and EC".

R: Corrected. (see line 373)

Line 377: replace "Nanjing," by "Nanjing;".

R: Corrected. (see line 374)

Line 378: replace "dEC aerosols" by "dEC".

R: Corrected. (see line 375)

Line 379: replace "main sources" by "main source".

R: Corrected. (see line 376)

Line 380: replace "from southeast" by "from the southeast".

R: Corrected. (see line 377)

Line 383: replace "sources areas of dEC and EC were displayed" by "sources areas of dEC and EC were".

R: Corrected. (see lines 379-380)

Line 384: replace "to biomass burning," by "with biomass burning;"

R: Corrected. (see line 381)

Line 385-366: replace "were in the section 3.3. In autumn, strongest local sources from the study site of OC and EC were found. However, the dEC" by "are given in section 3.3. In autumn, local sources from the study site were strongest for OC and EC. However, dEC".

R: Corrected. (see lines 381-383)

Line 392: replace "aerosols pollution levels. In winter, dEC were" by "aerosol pollution levels. In winter, dEC was".

R: Corrected. (see lines 388-389)

Line 397: replace "scale, it" by "scale; it".

R: Corrected. (see line 394)

Line 399: replace "reached to" by "amounted to".

R: Corrected. (see line 396)

Lines 400-401: replace "Mar 2016 in the areas around our study site, respectively, suggesting" by "March 2016, respectively, in the areas around our study site, suggesting".

R: Corrected. (see lines 397-398)

Line 402: replace "dEC aerosols" by "dEC".

R: Corrected. (see line 399)

Line 403: replace "3 Mar" by "3 March".

R: Corrected. (see line 400)

Line 404: replace "aerosols concentrations" by "aerosol concentrations".

R: Corrected. (see line 401)

Line 407: replace "we did found" by "we found".

R: Corrected. (see line 404)

Line 409: replace "went through" by "passed over".

R: Corrected. (see line 406)

Line 410: replace "in northwest" by "in the northwest".

R: Corrected. (see line 407)

Line 411: replace "trajectory showed air mass" by "trajectories showed that the air masses".

R: Corrected. (see line 408)

Line 413: replace "trajectory showed" by "trajectories showed".

R: Corrected. (see line 411)

Line 414: replace "mass was" by "masses came".

R: Corrected. (see line 411)

Line 416: replace "periods which was" by "period which were".

R: Corrected. (see line 413)

Line 418: replace "appeared on" by "on".

R: Corrected. (see line 415)

Line 420: replace "only sources" by "only source" and replace "in the 3.1 and 3.2 section" by "in sections 3.1 and 3.2".

R: Corrected. (see line 417)

Line 421: replace "couldn't be ignored, too" by "cannot be ignored, either".

R: Corrected. (see line 418)

Line 424: replace "obvious higher" by "obviously higher" and replace "than those in" by "than in".

R: Corrected. (see lines 420-421)

Line 426: replace "dEC aerosols" by "dEC".

R: Corrected. (see line 423)

Line 428: replace "winter, in addition, the location" by "winter; in addition, the locations".

R: Corrected. (see lines 424-425)

Line 430: replace "in the section" by "in section".

R: Corrected. (see line 427)

Line 432: replace "Conclusion" by "Conclusions".

R: Corrected. (see line 429)

Line 436: replace "wavelength at" by "wavelength" and replace "so we" by "so that we".

R: Corrected. (see line 433)

Line 439: replace "Winter" by "winter".

R: Corrected. (see line 436)

Line 440: replace "of rain" by "by rain".

R: Corrected. (see line 437)

Line 442: replace "layers" by "layer".

R: Corrected. (see line 439)

Line 443: replace "significant" by "a significant".

R: Corrected. (see line 440)

Line 444: replace "ratios increased" by "ratio increased".

R: Corrected. (see line 441)

Lines 446-447: replace "in OC and EC aerosols, however dEC aerosols were" by "for OC and EC; however, dEC was".

R: Corrected. (see lines 443-444)

Line 450: replace "informations" by "information".

R: Corrected. (see line 446)

Line 451: replace "dEC aerosols in" by "dEC in".

R: Corrected. (see line 448)

Line 453: replace "Large" by "A large".

R: Corrected. (see line 449)

Lines 453-454: replace "were monitored, significantly contributed to all the carbonaceous aerosols pollutions" by "was observed; these fires significantly contributed to the carbonaceous aerosol pollution".

R: Corrected. (see lines 450-451)

Line 455: replace "than traditional" by "than the traditional".

R: Corrected. (see line 452)

Line 458: replace "couldn't be ignored , further" by "could not be ignored; further".

R: Corrected. (see lines 455-456)

Line 459: replace "need to" by "needs to".

R: Corrected. (see line 456)

Line 460: replace "More chemical" by "more chemical".

R: Corrected. (see lines 457-458)

Line 461: replace "of the ion, the organic matter or the sugars in PM2.5 can be measured," by "for ions, organic matter or sugars in PM2.5 can be made;".

R: Corrected. (see line 458)

Line 463: replace "Wu et al., 2018;Wu et al., 2019" by "Wu et al., 2018; 2019".

R: Corrected. (see line 460)

Line 464: replace "researches" by "research".

R: Corrected. (see line 461)

Line 467: replace "is financially" by "was financially".

R: Corrected. (see line 464)

Line 470: replace "is supported" by "was supported".

R: Corrected. (see line 467)

Line 472: insert a space before "We would".

R: Corrected. (see line 469)

Line 474: replace "obsevation period. Besides, we are grateful for Prof. Yunhua Chang, who makes" by "observation period. Besides, we are grateful for Prof. Yunhua Chang, who made".

R: Corrected. (see line 471)

Line 475: replace "suggerestions to" by "suggestions for".

R: Corrected. (see line 472)

References:

1. Titles of journal articles should be in lower case instead of in Title Case.

R: We have changed the titles of journal articles in Title Case to lower case. (see lines 516-517, 524-525, 575-576, 585-586, 620-621, and 624-625)

2. Abbreviated journal names should be used.

R: We have changed the wrong journal names. (see lines 539-540)

3. For articles with only two authors, there should be no comma before the " and" that precedes the second author.

R: Corrected. (see lines 490 and 519)

Lines 507, 526, and 582: replace "Envirn." by "Environ.".

R: Corrected. (see line 507, 525, and 586)

Line 510: replace "Air. Waste." by "Air Waste".

R: Corrected. (see line 510)

Line 533: replace "Ji, D., Zhang, J., He, J., Wang, X., BoPanga, Liua, Z., Wang, L., and Wang, Y.:" by "Ji, D. S., Zhang, J. K., He, J., Wang, X. J., Pang, B., Liu, Z. R., Wang, L. L., and Wang, Y. S.:"

R: Corrected. (see line 533)

Line 535: replace "306," by "306, 293-306,".

R: Corrected. (see line 535)

Lines 568-574: "Petit et al., 2017" should come before "Pio et al., 2011".

R: Corrected. (see lines 568-574)

Lines 580-587: "Saleh et al., 2014" should come before "Sандрadewi et al., 2008".

R: Corrected. (see lines 580-587)

Line 636: replace "7," by "7, 43182,".

R: Corrected. (see line 636)

Line 639: replace "254," by "254, 115620,".

R: Corrected. (see line 639)

Line 655: replace "38," by "38, L21810,".

R: Corrected. (see line 655)

Line 677, inside the figure: replace twice "solit" by "split".

R: Corrected. (see line 677)

Line 700: replace "periods" by "period".

R: Corrected. (see line 700)

Line 709: replace twice "bar" by "bars".

R: Corrected. (see line 709)

Line 712: replace "3 Mar" by "3 March".

R: Corrected. (see line 712)

Line 713: replace twice "bar" by "bars".

R: Corrected. (see line 713)

Line 719, inside the table: replace "Mar" by "March".

R: Corrected. (see line 719)

For the Supplement:

Page 1: At the top of this page it should be indicated that this the Supplement; furthermore, the title of the paper and at least its first author should be given.

R: We have added a title of the Supplement including the title of the paper and the first author.  
(see lines 1-4)

Line 5: replace "Comparisons" by "Comparison".

R: Corrected. (see line 10)

Line 7: replace "at NUIST" by "at the NUIST".

R: Corrected. (see line 12)

Line 13: replace "Meared" by "Measured".

R: Corrected. (see line 18)

Line 14: replace "model" by "model".

R: Corrected. (see line 19)

Line 20: replace "from the" by "above the".

R: Corrected. (see line 25)

Line 24: replace "Reference" by "References".

R: Corrected. (see line 29)

Line 28: replace "Comparisons" by "Comparison".

R: Corrected. (see line 33)

Line 31: replace "at NUIST" by "at the NUIST".

R: Corrected. (see line 36)

Line 39: replace "Meared" by "Measured".

R: Corrected. (see line 44)

Line 50: replace "from the" by "above the".

R: Corrected. (see line 55)

Line 69: replace "Ji, D., Zhang, J., He, J., Wang, X., BoPanga, Liua, Z., Wang, L., and Wang, Y.:"  
by "Ji, D. S., Zhang, J. K., He, J., Wang, X. J., Pang, B., Liu, Z. R., Wang, L. L., and Wang, Y.  
S.:"

R: Corrected. (see line 74)

Line 82: an abbreviated journal name is needed here.

R: Corrected. (see line 87)



# Highly time-resolved characterization of carbonaceous aerosols using a two-wavelength Sunset thermal-optical carbon analyzer

Mengying Bao<sup>1,2,3</sup>, Yan-Lin Zhang<sup>1,2,3\*</sup>, Fang Cao<sup>1,2,3</sup>, Yu-Chi Lin<sup>1,2,3</sup>, Yuhang Wang<sup>4</sup>, Xiaoyan Liu<sup>1,2,3</sup>, Wenqi Zhang<sup>1,2,3</sup>, Meiyi Fan<sup>1,2,3</sup>, Feng Xie<sup>1,2,3</sup>, Robert Cary<sup>5</sup>, Joshua Dixon<sup>5</sup> and Lihua Zhou<sup>6</sup>

*1 Yale-NUIST Center on Atmospheric Environment, Joint International Research Laboratory of Climate and Environment Change (ILCEC), Nanjing University of Information Science and Technology, Nanjing 210044, China*

*2 Key Laboratory of Meteorological Disaster Ministry of Education (KLME), Collaborative Innovation Center on Forecast and Evaluation of Meteorological Disasters (CIC-FEMD), Nanjing University of Information Science and Technology, Nanjing 210044, China*

*3 School of Applied Meteorology, Nanjing University of Information Science and Technology, Nanjing 210044, China*

*4 School of Earth and Atmospheric Sciences, Georgia Institute of Technology, Atlanta 30332, USA*

*5 Sunset Laboratory, 1080 SW Nimbus Avenue, Suite J/5 Tigard, OR 97223, USA*

*6 College of Global Change and Earth System Science, Beijing Normal University, Beijing 100875, China*

*Correspondence: Yan-Lin Zhang (dryanlinzhang@outlook.com)*

## Abstract

Carbonaceous aerosols have great influence on the air quality, human health and climate change. Except for organic carbon (OC) and elemental carbon (EC), brown carbon (BrC) mainly originates from biomass burning, as a group of OC with strong absorption from the visible to near-ultraviolet wavelengths and makes a considerable contribution to global warming. Large amounts of studies have reported long-term observation of OC and EC concentrations throughout the world, but studies of BrC based on long-term observations are rather limited. In this study, we established a two-wavelength method (658 nm and 405 nm) applied in the Sunset thermal-optical carbon analyzer. Based on a one-year observation, we firstly investigated the characteristics, meteorological impact and transport process of OC and EC. Since BrC absorbs light at 405 nm

more effectively than 658 nm, we defined the enhanced concentrations ( $dEC = EC_{405\text{ nm}} - EC_{658\text{ nm}}$ ) and gave the possibility to provide an indicator of BrC. The receptor model and MODIS fire information were used to identify the presence of BrC aerosols. Our results showed that the carbonaceous aerosol concentrations were highest in winter and lowest in summer. Traffic emission was an important source of carbonaceous aerosols in Nanjing. Receptor model results showed that strong local emissions were found for OC and EC; however, dEC was significantly affected by regional or long-range transport. The dEC/OC and OC/EC ratios showed similar diurnal patterns and the dEC/OC increased when the OC/EC ratios increased, indicating strong secondary sources or biomass burning contributions to dEC. Two biomass burning events both in summer and winter were analyzed and the results showed that the dEC concentrations were obviously higher in biomass burning days; however, no similar levels of the OC and EC concentrations were found both in biomass burning days and normal days in summer, suggesting that biomass burning emission made a great contribution to dEC and the sources of OC and EC were more complicated. Large number of open fire counts from the northwest and southwest areas of the study site were observed in winter and significantly contributed to OC, EC and dEC. In addition, the near-by Yangtze River Delta (YRD) area was one of the main potential source areas of dEC, suggesting that anthropogenic emissions could also be important sources of dEC. The results proved that dEC can be an indicator of BrC in biomass burning days. Our modified two-wavelength instrument provided more information than the traditional single-wavelength thermal-optical carbon analyzer and gave a new idea about the measurement of BrC; the application of dEC data needs to be further investigated.

### 531. Introduction

Carbonaceous aerosols including organic carbon (OC) and elemental carbon (EC), which have significant influence on the global radiative transfer, human health and atmospheric visibility, have been the focus of research in the atmospheric environment field for many years (Lelieveld et al., 2015; Wu and Yu, 2016; Wang et al., 2018; Zhang et al., 2017; Liu et al., 2019; Zhang et al., 2019). EC mainly originates from fossil fuel and biomass combustion and is estimated to be the second largest warming factor behind CO<sub>2</sub> contributing to climate change (Liu et al., 2015; Zhang and Kang, 2019; Cao and Zhang, 2015). OC originates both from primary emissions and gas-to-particle conversion as secondary organic carbon (SOC) and can scatter the solar radiation which causes negative forcing globally (Zhou et al., 2014; Huang et al., 2014).

In the recent decades, brown carbon (BrC), as a kind of light-absorbing organic carbon which can absorb light especially from near-UV to visible wavelength, has caused global concern due to its positive climate effect (Andreae and Gelencsér, 2006; Zhang et al., 2020). BrC is mainly emitted from anthropogenic and biogenic emissions (Zhang et al., 2011). Previous studies have proved that biomass burning and biofuel combustion are the most important sources of primary BrC (Saleh et al., 2014; Wu et al., 2020; Lei et al., 2018). Recent researches reported that in developing countries such as China and India, the contribution of fossil fuel combustion to BrC cannot be ignored (Satish et al., 2017; Yan et al., 2017; Kirillova et al., 2014). Secondary BrC is mainly produced by heterogeneous photo-oxidation reactions or aqueous reactions of anthropogenic and biogenic precursors (Zhang et al., 2020; Li et al., 2020; Zhang et al., 2011). However, due to the lack of understanding of BrC at the molecular level and in situ BrC data, there are still large uncertainties in the estimates of the distribution and the magnitude of the BrC climate effect in both remote sensing and modeling (Arola et al., 2011; Feng et al., 2013).

The thermal-optical analysis (TOA) method is one of the most widely used quantitative methods for OC and EC taking use of the difference between the thermo-optical properties of OC and EC (Birch and Cary, 1996; Chow et al., 2004). OC and EC will be volatilized at different heating protocol. The reflectance/transmittance of one laser source (near-infrared wavelength) through the sample filter are continuously monitored and the return of the reflectance/transmittance to its initial value on the thermograph is taken as the split point between OC and EC. This way, the formation of pyrolyzed carbon which can also absorb the light and make the sample darker, is corrected. This method has been widely used in studies employing the NIOSH protocol or IMPROVE\_A protocol (Ji et al., 2016; Chow et al., 2007). However, the thermal-optical approach assumed that EC is the only light-absorbing species, the presence of BrC, which is part of OC but also a light-absorbing component, shifts this separation towards EC, resulting in overestimated EC values and underestimated OC values (Chen et al., 2015; Birch and Cary, 1996).

Sandradewi et al. (2008) pointed out that light absorption measurements at different wavelength by the aethalometer can be used to quantify the contributions of wood combustion and traffic emissions to aerosols since wood smoke contains organic compounds which enhance the light absorption in the ultraviolet wavelength. But traffic emissions produce more black carbon (BC), which dominates the light absorption in the near-infrared wavelength. They took use of aethalometer data measured at 470 nm and 950 nm to quantify the BC distinction between wood

burning and traffic emission. With the similar principle, Wang et al. (2011) used a two-wavelength Aethalometer (370 and 880 nm) to identify the presence of residential wood combustion (RWC) particles which was closely associated with BrC. Organic components of wood smoke particles absorb light at 370 nm more effectively than 880 nm in two-wavelength aethalometer measurements. They believed that the enhanced absorption ( $\Delta C = BC_{370nm} - BC_{880nm}$ ) can serve as an indicator of RWC particles. This method was further used by Wang et al. (2012a; 2012b). Chen et al. (2015) used a modified seven-wavelength thermal-optical transmittance/thermal-optical reflectance (TOT/TOR) instrument (Thermal Spectral Analysis – TSA) allowing the determination of the OC-EC split at different wavelengths and light absorption measurements to be made with wavelength-specific loading corrections, providing additional information including the optical properties of black carbon (BC) and BrC from the IR to UV parts of the solar spectrum and their contributions. Massabò et al. (2016) further corrected the OC/EC split point using the Multi-Wavelength Absorbance Analyzer (MWAA) which provides the aerosol absorbance values at five wavelengths from IR to UV together with a Sunset OC/EC analyzer to achieve the BrC concentration. With a set of samples collected during wintertime in the Ligurian Apennines in Italy, clear correlations were found between the BrC and levoglucosan mass concentration. A further step of BrC quantification taking use of TSA was reported by Chow et al. (2018), further proving that the use of seven wavelengths in thermal-optical carbon analysis allows contributions from biomass burning and secondary organic aerosols to be estimated. Their results clearly demonstrated the role of BrC in the thermal-optical analysis. However, these techniques focus on the light absorption measurement of BrC and are still limited reported in previous researches, though they provide quartz-fiber filter samples that are currently being characterized for OC and EC by thermal-optical analysis. These methods mentioned above still cannot achieve the observation of long-term real-time BrC mass concentrations.

Since the establishment of the TOT method by the Sunset Laboratory, the Sunset OC/EC instrument, as part of the Chemical Speciation Network (CSN), with over 100 monitors across the United States over 15 years, offering long-term measurement of OC and EC concentrations, has been widely used in the United States and throughout the world providing important in-situ data of OC and EC (U.S.EPA, 2019; Birch and Cary, 1996). This instrument had been designed with a tuned diode laser (red 660 nm) to correct the formation of pyrolyzed carbon. In this study, we modified the Sunset instrument to a two-wavelength (658 nm and 405 nm) Sunset carbon analyzer

by adding one more violet diode laser at  $\lambda=405$  nm. The violet diode laser together with the red diode **laser focus** through the sample **chamber, then the laser beam passes** through the filter to correct for the pyrolysis-induced error. Previous work reported by Chen et al. (2015) as mentioned above was integrating the optical instrument like the aethalometer to the traditional OC/EC **analyzer**; in this way, they provided the light absorption contributions of BC and BrC. The enhanced carbon analyzer provided new insight into more accurate OC and EC measurements. Their work was conducted in offline **mode**; based on their work, our instrument can get the real-time OC and EC mass concentrations both at 658 nm and 405 nm. BrC particles absorb light at 405 nm more effectively than 658 nm in the two-wavelength Sunset carbon measurements. We define  $dEC = EC_{405\text{ nm}} - EC_{658\text{ nm}}$  and hope it can be an indicator of BrC aerosols so that we can divide real-time BrC mass concentration measurement from the two-wavelength measurement.

Nanjing, as one of the largest cities in the Yangzi River Delta region, represents a heavy industry area with a dense population. In addition, due to its topography, Nanjing is very sensitive to regional transport of air masses from its surrounding areas. OC, EC and **dEC** were **measured** from June 2015 to July 2016 at Nanjing University of Information Science and Technology (NUIST). Based on the abundant data, together with MODIS fire information, we can analyze the temporal variation, transport processes and sources of carbonaceous aerosols in North Nanjing and evaluate the biomass burning impact on **dEC**, which can be the scientific basis of pollution control policy.

## **1432. Methods**

### **144 2.1 Study site**

In this study, the sampling site is located at Nanjing University of Information Science and Technology (NUIST) in the North Suburb of Nanjing (32°20'N, 118°7'17"E). The study site is surrounded by housing and industrial areas. Many chemical enterprises, for example, Yangzi Petrochemical, Nanjing Chemical Industry and Nanjing Iron and Steel Group are located at the northeast of the study region, which produces exhaust with large amounts of aerosol particles. The study site is adjacent to a heavily trafficked road (Ningliu Road) located near the site, approximately 600 m to the east. Therefore, this region has intense human activities, industrial emissions and heavy traffic flow.

### **153 2.2 Two-wavelength TOT measurement**

Hourly concentrations of OC and EC in  $PM_{2.5}$  were sampled and measured by a semi-continuous carbon analyzer (Model-4, Sunset Lab, USA). Air samples were collected continuously

with a sample flow of  $\sim 8$  L/min through a PM<sub>2.5</sub> cyclone. The collection time was set at 45 min for each cycle. The airstream passed through a parallel plate organic denuder to reduce the effect of volatile organic compounds and finally deposited on a quartz filter with a diameter of  $\sim 17$  mm.

After a sample was collected, OC and EC were determined using the TOT method by applying a slightly modified NIOSH 5040 protocol. The details of the heating setup are shown in Table S1. Figure 1 shows the structure and operational principle of the instrument. Briefly, it consists of two stages: the oven is first purged with helium and the oven temperature increased in a stepped ramp to 840°C, OC is volatilized in this stage. Then the oven temperature is kept at 840°C for a while and goes down to 550°C. In the second stage, EC is volatilized in a second temperature ramp to 850°C while purging the oven with a mixture containing 2% oxygen and 98% helium. The pyrolysis products are converted to carbon dioxide (CO<sub>2</sub>) which is quantified using a self-contained nondispersive infrared (NDIR) system.

Also, in this study, we used a two-diode lasers (658 nm and 405 nm) equipped Sunset analyzer; thus mass concentrations of OC and EC at different wavelengths can be measured with the 2-lasers system. The split point between OC and EC is detected automatically by the RTCalc731 software provided by Sunset Lab. The principle is the same as for the traditional Sunset carbon analyzer (Birch and Cary, 1996). An example thermogram of sample analysis using the two-wavelength Sunset semi-continuous carbon analyzer is shown in Fig. 2. During the sample analysis, the laser beam at 658 nm and 405 nm are both sent through the filter and the transmitted light signal is monitored to correct the undesired formation of pyrolyzed carbon (PyrC) and then to determine the split point of OC and EC at both wavelengths. BrC aerosols absorb light at 405 nm more significantly than 658 nm in the 2-lasers system. Due to the strong absorption of BrC at the near-ultraviolet wavelength, the enhanced absorption at 405 nm can serve as an indicator of BrC aerosols (Liu et al., 2015). We define dEC data as the difference of EC concentrations at two wavelengths ( $dEC = EC_{405nm} - EC_{658nm}$ ) to identify the presence of BrC aerosols. Our study provides a one-year measurement of dEC mass concentrations. Besides, OC and EC represent the OC and EC concentrations at 658 nm in this paper without a special explanation.

At the end of each analysis, a fixed volume of an internal standard containing 5% methane and 95% Helium is injected and thus a known carbon mass can be derived. The external sucrose standard ( $4.207 \mu\text{g } \mu\text{L}^{-1}$ ) calibration was conducted every week to insure repeatable quantification. Calibration with an instrument blank was conducted every day. Both detection limit for OC and



EC of the instrument was  $0.5 \mu\text{g m}^{-3}$ . We also did the measurements of OC and EC in PM<sub>2.5</sub> filter samples using the same method followed by the NIOSH protocol. All data were corrected to blank measurement before comparison. Figure S1 shows the correlations between the real-time OC, EC concentrations and sampling OC, EC concentrations at the same time. The results showed that the online and offline data during the corresponding periods had good correlations with R<sup>2</sup> of 0.8 for OC, R<sup>2</sup> of 0.4 for EC and R<sup>2</sup> of 0.8 for TC. In order to evaluate the impact of PyrC, we calculated the PyrC at 658 nm fraction of dEC and the average PyrC/dEC was 4.4%, indicating the little influence of PyrC.

### 2.3 Test of the new dEC data

To evaluate the new dEC data, parallel BC concentrations were measured with a seven-wavelength Aethalometer with dEC concentrations in December, 2019. Radiation attenuation of an aerosol deposition on a filter ( $ATN_{\lambda}$ ) is determined by the Beer-Lambert law:

$$ATN_{\lambda} = \ln \frac{I_{0,\lambda}}{I_{\lambda}} \quad (1)$$

Where  $I_{0,\lambda}$  and  $I_{\lambda}$  are the measured wavelength-specific laser reflectance signals.  $ATN_{\lambda}$  is used to calculate the attenuation coefficient with Eq. (2):

$$b_{ATN} = \frac{A}{V} \quad (2)$$

Where A is the filter area and V is the sampled air volume. Then a simplified two-component model is used to calculate the contribution of light attenuation to both BC and BrC (Chow et al., 2018; Chen et al., 2015; Sandradewi et al., 2008; Hareley et al., 2008):

$$b_{ATN}(\lambda) = q_{BC} \times \lambda^{-AAE_{BC}} + q_{BrC} \times \lambda^{-AAE_{BrC}} \quad (3)$$

Where  $q_{BC}$  and  $q_{BrC}$  are fitting coefficients, AAE is the absorption Ångström exponent which represents the wavelength-dependent characteristics of light absorption capability of aerosols. The AAE of BC was assumed to be 1. Fitting coefficients in Eq. (3) were obtained for potential  $AAE_{BrC}$  between 1 and 8 by least squares linear regression and the  $AAE_{BrC}$  leading to the overall best fit in terms of  $r^2$  is selected as the effective  $AAE_{BrC}$ . Using these fitting coefficients, the  $b_{ATN}$  due to BC and BrC are calculated at each wavelength. Figure S2 shows that the fitted  $b_{ATN}$  at 405 nm are within  $\pm 5\%$  of the measured values for  $b_{ATN} > 0.01$ . Figure 3 shows the relationship between the  $b_{ATN}$  due to BrC at 405 nm and the dEC. Good correlation between them is found with R square of 0.64, indicating that dEC was associated with BrC.

### 2.4 Sampling

#### 2.4.1 Real-time PM<sub>2.5</sub> observation

The real-time PM<sub>2.5</sub> concentrations were measured through the Tapered Element Oscillating Microbalance (TEOM) method (TEOM1405-DF, Thermo Scientific, America) from August, 2015 to July, 2016. The resolution of the measured data was 6 min. The instrumental operation maintenance, data assurance and quality control were performed according to the Chinese Ministry of Environmental Protection Standards for PM<sub>10</sub> and PM<sub>2.5</sub> which was named “HJ 653-2013” (Zhang and Cao, 2015b).

#### 2.4.2 Sample collections

PM<sub>2.5</sub> in the atmosphere was collected on 8\*10 inch prebaked quartz fiber filters (QFF, PALL, America) by a high volume air sampler (KC-1000, Qingdao, China) at a flow rate of 999 L min<sup>-1</sup> in four months: 4 June to 18 June, 6 October to 2 November and 10 December to 31 December in 2015, 10 May to 31 May in 2016. Sampling started and ended at around 8:00 and 20:00 every day; each sample was collected for 12 hours. A total of 148 samples were collected including four field banks in the four seasons using 10 min exposure to ambient air without active sampling.

All QFFs were pre-baked at 450 °C for 6 h before sampling to remove residual carbon. Before and after sampling, all QFFs were weighed with an electronic balance (Sartorius, 0.1 mg, Germany). After weighting, the filters were wrapped in aluminum foils, packed in air-tight polyethylene bags and stored at -20°C until further analysis. All procedures during handling of filters were strictly quality controlled to avoid any possible contamination.

### 2.5 Identification of potential regional sources

The Hybrid Single-Particle Lagrangian Integrated Trajectory (HYSLPIT4.8) model, provided by the National Oceanic and Atmospheric Administration (NOAA), was used to investigate the air mass origins of carbonaceous aerosols. The 48-hour back trajectories at Nanjing (32.2°N, 118.7°E) were calculated every hour (Draxler and Hess, 1998; Rolph et al., 2017; Cohen et al., 2015). In order to evaluate the behavior of the air mass circulation in the planetary boundary layer (PBL), the trajectories at 500 m corresponding to the upper-middle height of the PBL were calculated, representing well-mixed convective boundary layer for regional transport investigation (Xu and Akhtar, 2010). The National Center for Environmental Prediction Global Data Assimilation System (NCEP GDAS) data obtained from NOAA with a spatial resolution of 1°×1° and 24 levels of the vertical resolution were used as meteorological data input to the model. The Potential Source



Contribution Function (PSCF) model was usually applied to localize the potential sources of pollutants. The details about the setup of the model can be found in Bao et al. (2017).

### 3. Results and discussion

#### 3.1 Characteristics of carbonaceous aerosols

##### 3.1.1 Concentrations of carbonaceous aerosols

The statistics for the PM<sub>2.5</sub>, OC, EC and dEC mass concentrations at the NUIST site are summarized in Table 1. The hourly OC concentrations ranged from 0.5 to 45.8  $\mu\text{g m}^{-3}$  (average of  $8.9 \pm 5.5 \mu\text{g m}^{-3}$ ), and the EC concentrations ranged from 0.0 to 17.6  $\mu\text{g m}^{-3}$  (average of  $3.1 \pm 2.0 \mu\text{g m}^{-3}$ ). The results are comparable to those reported by Chen et al. (2017) in the Xianlin Campus of Nanjing University ( $5.7 \mu\text{g m}^{-3}$  for OC and  $3.2 \mu\text{g m}^{-3}$  for EC), which site was located in the southeast suburb of Nanjing and close to the G25 highway and were also affected by traffic sources. The higher OC concentrations in this study are probably due to the around chemical enterprise emissions. The average contributions of OC and EC to the total measured PM<sub>2.5</sub> mass was 12.8% and 4.3%, respectively, suggesting that carbonaceous fraction made an important contribution to fine particulate matter. The average dEC mass concentration was  $0.8 \mu\text{g m}^{-3}$  contributing 10.0% to OC, 22.3% to EC and 1.3% to the PM<sub>2.5</sub> concentrations with maximum concentration of  $8.1 \mu\text{g m}^{-3}$  contributing 48.2% to OC, 97.8% to EC and 17.6% to total PM<sub>2.5</sub> concentrations. This information can be further applied in the PMF analysis to evaluate the sources of the carbonaceous aerosols (Zhu et al., 2014; Sahu et al., 2011; Yan et al., 2019).

Compared with carbonaceous aerosol levels in other cities (Table S2), the OC and EC concentrations in Nanjing were generally lower than those observed in urban sites such as Beijing and Shanghai and inland cities like Chengdu and Chongqing which are affected by the basin terrain characteristics with static wind and unfavorable diffusion conditions, but higher than those observed in the southern coastal cities such as Guangzhou, which is a megacity in China. It could be explained since the site in Guangzhou was a rural site. In general, the level of carbonaceous aerosol concentrations in China is higher than that in developed countries in the United States and Europe and lower than that in developing countries like India, though the sampling period in India was from late autumn to winter and the much higher concentrations in India indicated the heavy pollution level. The average OC/EC ratio in this study was 3.6, which is lower than most of those reported in other studies, indicating the important impact of vehicle emissions at our study site.

Figure 4 shows the mass fractions of hourly carbonaceous aerosols and OC/EC ratios at different PM<sub>2.5</sub> concentration intervals during the study period. During that period, 84.2% of the PM<sub>2.5</sub> samples exceeded the daily averaged Chinese national ambient air quality standard (NAAQS) of 35.0 µg m<sup>-3</sup> for the first grade and 40.1% of the total samples exceeded the NAAQS of 75.0 µg m<sup>-3</sup> for the second grade, reflecting heavy aerosol pollution in the study area. Generally, the fractions of carbonaceous components decreased with increasing PM<sub>2.5</sub> pollution level. A larger mass fraction (about 32.3%) of carbonaceous aerosols in PM<sub>2.5</sub> was found for relatively lower PM<sub>2.5</sub> levels (0–20 µg m<sup>-3</sup>) compared to high PM<sub>2.5</sub> levels (300–500 µg m<sup>-3</sup>) with a carbonaceous aerosol mass fraction of 5.2%. The results indicate that other components like secondary inorganic aerosol (SIA) contribute more significantly to heavy haze events in Nanjing, which was also found in other cities in the Yangtze River Delta area (Yang et al., 2011; Zhang and Zhang, 2019). The contribution of dEC to OC decreased with the increase of PM<sub>2.5</sub> concentrations between 0–200 µg m<sup>-3</sup>, and then increased with the increase of PM<sub>2.5</sub> concentrations between 200–500 µg m<sup>-3</sup>. The dEC contributed most significantly to OC of 14.3% for PM<sub>2.5</sub> concentrations below 20 µg m<sup>-3</sup>. A similar trend was found for the OC/EC ratios which showed a sharp increase along with enhanced PM<sub>2.5</sub> level above 150 µg m<sup>-3</sup>. Previous studies have reported that high OC/EC ratios were related to SOC formation or biomass burning emissions whereas low OC/EC ratios were related to vehicle exhaust (Wang et al., 2015). We divided the dEC/OC at different intervals of OC/EC ratios and found that the dEC/OC increased when the OC/EC ratios increased in the four seasons, indicating strong secondary sources or biomass burning contributions to dEC during heavy pollution periods (Fig. S3).

### 3.1.2 Seasonal variations of carbonaceous aerosols

As shown in Fig. 5, the OC, EC, dEC concentrations and dEC/OC ratios showed similar variations with highest in winter and lowest in summer. The average OC and EC concentration in winter was ~1.4 times and 1.5 times higher than that in summer and the average dEC concentrations and dEC/OC in winter were approximately 1.4 and 1.6 times higher than those in summer (Table 1). High dEC/OC was found in January and February in winter, indicating strong influence of anthropogenic sources on dEC, such as coal combustion. In addition, we found strong biomass burning activities in February, which significantly contributed to the high concentrations of dEC in February; more details can be found in section 3.3. The seasonality of carbonaceous species in PM<sub>2.5</sub> was strongly influenced by seasonal variations in emission intensities and

meteorological parameters. Table S3 summarizes the meteorological parameters in the four seasons during the study period. The high carbonaceous aerosol concentrations in winter were mainly a result of relatively stable atmospheric conditions with low temperature, relative humidity and boundary layer on one hand, and on the other hand, increasing emissions from fossil-fuel combustion for heating from the chemical enterprises nearby. In summer, the higher boundary layer resulted in the dispersion of aerosols in the atmosphere, and the higher temperature promoted the partitioning of semi-volatile organic compounds (SVOCs) into the gaseous phase (Yang et al., 2011). In addition, large precipitation in summer (586 mm in total) favored the wet scavenging processes of aerosols.

The average OC/EC ratios in spring, summer, autumn and winter were 3.9, 4.0, 2.8 and 3.4, respectively (Table 1). The OC/EC ratio could give some information about primary and secondary organic carbon (Turpin and Huntzicker, 1995; Lim and Turpin, 2002). In summer, strong convective activities in the atmospheric boundary layer and solar radiation, high temperature and plenty of moisture in the atmosphere were favorable for the formation of SOC. On the other hand, the high OC/EC ratios in June in this study were also strongly related to biomass burning which will be discussed in 3.3 sections. The lower ratios of OC to EC in autumn and winter indicate strong primary sources in these two seasons. It should be noted that the OC/EC ratios were a rough indicator to estimate the primary and secondary organic carbon; further analysis of the formation of SOC needs to be conducted in the future (Pio et al., 2011; Wu and Yu, 2016).

### 3.1.3 Diurnal variation of carbonaceous aerosols

The diurnal pattern of carbonaceous aerosols can be affected by both meteorological parameters and sources (Ji et al., 2016). Figure 6 depicts the diurnal variation of OC, EC, dEC, dEC/OC and OC/EC ratios during the study period. Clear diurnal variations were observed in OC and EC. Both the OC and EC concentrations kept high levels at night and low levels in the daytime, indicating the strong influence of the atmospheric boundary layer on air quality in northern Nanjing. The peak occurred in the morning both for OC and EC, indicating the significant impact of traffic sources on the OC and EC concentrations. The dEC/OC and OC/EC ratios showed similar trends in the daytime with gradually increase from morning till afternoon, indicating the importance of the contribution of secondary sources to dEC. Similar though not so obvious diurnal variations were found in dEC. It should be noted that the vehicle emissions and the boundary layer height had no significant effect on the diurnal variation of dEC/OC, suggesting there were no

significant local sources of dEC. There was a small peak in dEC/OC at 3:00 am, which might be related to the aqueous secondary organic aerosol formation during nighttime (Sullivan et al., 2016).

The relative humidity (RH) and Temperature (T) dependent distributions of OC, EC mass concentrations and dEC/OC and OC/EC throughout the study period are shown in Fig. 7. High dEC/OC (>30 %) can be found in three areas, first shown in the right area with relatively high T at 25-40 °C and RH at 40-60 %, which were usually found in the summer afternoon which was closely related to the strong formation of SOC. This distribution was also seen in OC/EC. The second area is in the upper region with RH over 80 % and T at 10-20 °C and the third area appears for RH below 30 % and T at about 10 °C, corresponding to nighttime and winter afternoon. In general, dEC had no strong dependence on the RH and T distribution, indicating the complex formation mechanism of dEC. OC and EC show similar distributions with the highest mass loading (OC: > 20  $\mu\text{g m}^{-3}$ ; EC: > 8  $\mu\text{g m}^{-3}$ ) at relatively high RH at 60-80 % which usually occurred at night with relatively low boundary layer height, leading to the accumulation of aerosols. However, the corresponding OC/EC ratios were low, suggesting the importance of primary sources to OC and EC in northern Nanjing, which will be verified in the wind rose of OC and EC (Fig. 8).

### 3.2 Air mass transport

#### 3.2.1 Windrose of carbonaceous aerosols

To investigate the influence of air mass transport to the study site, the wind rose of OC, EC and dEC/OC using hourly data in the four seasons is shown in Fig. 8 (Carslaw and Ropkins, 2012). Two points should be noted. First, high OC and EC mass concentrations were found near the field site (indicated by wind speed (WS) < 1  $\text{m s}^{-1}$ ), suggesting that local and primary emissions (e.g., industrial and vehicle emissions) were stable and important sources contributing to atmospheric OC and EC mass concentrations in northern Nanjing. The OC mass concentrations from the southwest increased with the increase of WS in summer, indicating that the sources of OC are complicated in summer including secondary reaction during long-range or regional transport. Second, compared with OC and EC, dEC showed no significant local sources. The dEC/OC increased with increasing WS and the highest dEC/OC were found for WS over 3  $\text{m s}^{-1}$ . Long-range or regional transport were highly likely the main sources contributing to the dEC mass concentrations.

#### 3.2.2 The potential source areas of carbonaceous aerosols

The possible source contributions were evaluated using the PSCF model and the PSCF maps are shown in Fig. 9 (Petit et al., 2017). The areas with high PSCF values were highly likely the potential pollution source areas. As shown in Fig. 9, the PSCF results further proved the strong regional transport contribution to dEC and local contributions to OC and EC. In spring, the potential source areas of OC and EC were mainly from the southwest of Nanjing; however, the potential source areas of dEC were from the east of Nanjing, indicating obvious different sources between OC, EC and dEC. In summer, local areas were the main source areas of EC and the nearby Yangtze River Delta City Group from the southeast of Nanjing including developed cities like Shanghai were the main sources areas of OC and dEC. The anthropogenic emissions from these areas might be important sources of OC and dEC. Besides, both the potential sources areas of dEC and EC were in the northwest of Nanjing in summer, suggesting strong primary sources of dEC from this area which were very likely associated with biomass burning, more details are given in section 3.3. In autumn, local sources from the study site were strongest for OC and EC. However, dEC mainly originated from regional transport from the northwest and southeast areas of Nanjing. Biomass burning has been proved to be an important source of air pollutants in the Yangtze River Delta (YRD) area, especially in the wheat harvest seasons (e.g., June and October) (Cheng et al., 2014; Zhang and Cao, 2015a). In addition, the YRD area is the most economically developed region in China and has lots of industrial cities, which means that industrial emissions and anthropogenic sources contributed to high carbonaceous aerosol pollution levels. In winter, dEC was mainly from long-range transport from northern cities and regional transport from the southwest areas of Nanjing while both long-range transport and local sources were found in OC and EC concentrations.

### 3.3 The characteristics of carbonaceous aerosols during biomass burning periods

The biomass burning emission has been proved to be an important source of BrC on a global scale; it is consistently observed in large-scale forest fire events (Laskin et al., 2015). Based on the Fire Information for Resource Management System (FIRMS) derived from the Moderate Resolution Imaging Spectroradiometer (MODIS), we found that the fire points amounted to 2028, 1773 and 967 on 11 Jun 2015, 7 February 2016 and 2 March 2016, respectively, in the areas around our study site, suggesting there were strong biomass burning events on these days (Fig. S4). To further investigate the biomass burning impact on dEC, we analyzed the temporal trends of carbonaceous aerosols from 4 June 2015 to 19 June 2015 and 7 February 2016 to 3 March 2016,

respectively. Combining the observed aerosol concentrations and fire information, we divided the periods into normal days and biomass burning days. It should be noted that the biomass burning days are not determined based only on fire points. We also considered the 48-h backward trajectories and open biomass burning areas. For example, we found lots of fire points from 11 June 2015 to 12 June 2015 and from 7 February 2016 to 10 February 2016, respectively, and the 48-h back trajectories passed over these biomass burning areas (Fig. S5b, c). However, although there were large amounts of fire points in the northwest of Nanjing from 8 June 2015 to 9 June 2015, the backward trajectories showed that the air masses during the periods came from the southeast areas where no open fire points were found (Fig. S5a). In contrast, there were only a few fire points found near the study site from 26 February 2016 to 27 February 2016, the 48-h backward trajectories showed the air masses came exactly from the area (Fig. S5d).

As shown in Fig. 10 and Fig. 11, we found that dEC concentrations, dEC/OC and OC/EC ratios showed peaks during each biomass burning period which were not that obvious in OC and EC concentrations, suggesting the unique biomass burning impact on dEC and the sources of OC and EC were more complicated. It should be noted that there were peaks of dEC on 9 June 2015 and 13 February 2016, which were not biomass burning days, suggesting that biomass burning was not the only source of dEC. As mentioned in sections 3.1 and 3.2, anthropogenic emissions could be the sources of dEC and the secondary sources cannot be ignored, either. Summarized in Table 2 are the average and standard deviation values of OC, EC, OC/EC, dEC and dEC/OC during biomass burning and normal days. The OC/EC, dEC concentrations and dEC/OC were obviously higher in biomass burning days than in normal days, but similar levels of the OC and EC concentrations were found both in biomass burning days and normal days in summer, suggesting the great contribution of biomass burning emissions to dEC and there were other sources of OC and EC in summer. All the carbonaceous aerosols were higher in biomass burning days in winter; in addition, the locations of open fire counts were mainly in the northwest and southwest area of the study site (Fig. S5c, d), which were the potential source areas of OC, EC and dEC in winter as discussed in section 3.2.2, indicating strong contributions of biomass burning emissions to all the carbonaceous aerosols in winter.

#### 4. Conclusions

In this study, the characteristics and sources of carbonaceous aerosols in North Nanjing were investigated and we introduced a two-wavelength method by modifying the Sunset carbon



analyzer. We incorporated a new diode laser at  $\lambda=405$  nm in the instrument, making it possible to detect the laser beam passing through the filter at both wavelength  $\lambda=658$  nm and  $\lambda=405$  nm, so that we can obtain the dEC concentrations. Our study illustrated the feasibility of using dEC to characterize the BrC aerosols, providing a new idea about the measurement of BrC. The results showed that high (low) OC, EC and dEC concentrations were found in winter (summer), indicating the significant impact of the increase of various emission sources in winter and wet scavenging by rain in summer. Similar diurnal cycles for OC and EC concentrations were found with high at night and low in daytime, strongly affected by the boundary layer. Traffic emissions were found to have a significant influence on the concentrations of OC and EC. Similar trends were found in the diurnal cycle of dEC/OC and OC/EC and the dEC/OC increased when the OC/EC ratio increased, indicating strong secondary sources or biomass burning impact on dEC. The wind rose and receptor model results showed that strong local emissions were found for OC and EC; however, dEC was significantly affected by regional or long-range transport. The near-by YRD area was one of the main potential source areas of dEC, suggesting that anthropogenic emissions could be the sources of dEC. Together with the back trajectories analysis and MODIS fire information, we analyzed two biomass burning events both in summer and winter. The results showed that the sources of OC and EC were more complicated than those of dEC in summer. Biomass burning emission made a great contribution to dEC concentrations in summer. A large number of open fire counts from the northwest and southwest areas of the study site was observed; these fires significantly contributed to the carbonaceous aerosol pollution.

Our modified two-wavelength instrument provided more information than the traditional single-wavelength thermal-optical carbon analyzer. The results proved that dEC can be an indicator of BrC in biomass burning days. It should be noted that the sources of dEC were complicated and the anthropogenic emissions and secondary formations of dEC aerosols could not be ignored; further chemical analysis needs to be conducted in the future. The evaluation of SOC formation and the relationship between dEC and SOC can be conducted. In addition, more chemical analysis such as the analysis for ions, organic matter or sugars in  $PM_{2.5}$  can be made; thus we can get some information of the tracers of different sources and more accurate and quantitative source apportionment can be done (Bhattarai et al., 2019; Wu et al., 2018; 2019). We also hope that the dEC data can be further applied in more research.

## Acknowledgments

This research was financially supported by the National Natural Science Foundation of China (grant no. 41977305), the Provincial Natural Science Foundation of Jiangsu (grant no. BK20180040) and the Postgraduate Research & Practice Innovation Program of Jiangsu Province (grant no. KYCX18\_1014). This study was supported by the funding of Jiangsu Innovation & Entrepreneurship Team. The authors would also like to thank the China Scholarship Council for the support to Mengying Bao. We would also like to express our gratitude to Yuanyuan Zhang, Zufe Xu and Tianran Zhang for their assistance in the instrument maintenance throughout the observation period. Besides, we are grateful for Prof. Yunhua Chang, who made considerable comments and suggestions for this paper.

## References:

- Andreae, M. O. and Gelencsér, A.: Black carbon or brown carbon? The nature of light-absorbing carbonaceous aerosols, *Atmos. Chem. Phys.*, 6, 3131–3148, 2006.
- Arola, A., Schuster, G., Myhre, G., Kazadzis, S., Dey, S., and Tripathi, S. N.: Inferring absorbing organic carbon content from AERONET data, *Atmos. Chem. Phys.*, 11, 215–225, 10.5194/acp-11-215-2011, 2011.
- Bao, M., Cao, F., Chang, Y., Zhang, Y.-L., Gao, Y., Liu, X., Zhang, Y., Zhang, W., Tang, T., Xu, Z., Liu, S., Lee, X., Li, J., and Zhang, G.: Characteristics and origins of air pollutants and carbonaceous aerosols during wintertime haze episodes at a rural site in the Yangtze River Delta, China, *Atmos. Pollut. Res.*, 8, 900–911, 10.1016/j.apr.2017.03.001, 2017.
- Bhattarai, H., Saikawa, E., Wana, X., Zhu, H., Ram, K., Gao, S., Kang, S., Zhang, Q., Zhang, Y., Wu, G., Wang, X., Kawamura, K., Fui, P., and Cong, Z.: Levoglucosan as a tracer of biomass burning recent progress and perspectives, *Atmos. Res.*, 220, 20–33, 10.1016/j.atmosres.2019.01.004, 2019.
- Birch, M. E. and Cary, R. A.: Elemental carbon-based method for occupational monitoring of particulate diesel exhaust: methodology and exposure issues, *Analyst*, 121, 1183–1190, 1996.
- Carslaw, D. C. and Ropkins, K.: openair — An R package for air quality data analysis, *Environ. Model. Softw.*, 27–28, 52–61, 10.1016/j.envsoft.2011.09.008, 2012.
- Cao, F. and Zhang, Y.-L.: Principle, method development and application of radiocarbon ( $^{14}\text{C}$ ) — based source apportionment of carbonaceous aerosols: a review, *Adv. Earth Sci.*, 30, 425–432,



10.11867 / j. issn. 1001-8166. 2015. 04. 0425., 2015.

Chen, D., Cui, H., Zhao, Y., Yin, L., Lu, Y., and Wang, Q.: A two-year study of carbonaceous aerosols in ambient PM<sub>2.5</sub> at a regional background site for western Yangtze River Delta, China, *Atmos. Res.*, 183, 351-361, 10.1016/j.atmosres.2016.09.004, 2017.

Chen, L. W. A., Chow, J. C., Wang, X. L., Robles, J. A., Sumlin, B. J., Lowenthal, D. H., Zimmermann, R., and Watson, J. G.: Multi-wavelength optical measurement to enhance thermal/optical analysis for carbonaceous aerosol, *Atmos. Meas. Tech.*, 8, 451-461, 10.5194/amt-8-451-2015, 2015.

Cheng, Z., Wang, S., Fu, X., Watson, J. G., Jiang, J., Fu, Q., Chen, C., Xu, B., Yu, J., Chow, J. C., and Hao, J.: Impact of biomass burning on haze pollution in the Yangtze River delta, China: a case study in summer 2011, *Atmos. Chem. Phys.*, 14, 4573-4585, 10.5194/acp-14-4573-2014, 2014.

Chow, J. C., Watson, J. G., Chen, L.-W. A., Arnott, W. P., Moosmüller, H., and Fung, K.: Equivalence of elemental carbon by thermal/optical reflectance and transmittance with different temperature protocols, *Environ. Sci. Technol.*, 38, 4414-4422, 10.1021/es034936u 2004.

Chow, J. C., Watson, J. G., Chen, L. W., Chang, M. C., Robinson, N. F., Trimble, D., and Kohl, S.: The IMPROVE\_A temperature protocol for thermal/optical carbon analysis: maintaining consistency with a long-term database, *J. Air Waste. Manag. Assoc.*, 57, 1014-1023, 10.3155/1047-3289.57.9.1014, 2007.

Chow, J. C., Watson, J. G., Green, M. C., Wang, X., Chen, L. A., Trimble, D. L., Cropper, P. M., Kohl, S. D., and Gronstal, S. B.: Separation of brown carbon from black carbon for IMPROVE and Chemical Speciation Network PM<sub>2.5</sub> samples, *J. Air Waste Manag. Assoc.*, 68, 494-510, 10.1080/10962247, 2018

Cohen, M. D., Stunder, B. J. B., Rolph, G. D., Draxler, R. R., Stein, A. F., and Ngan, F.: NOAA's HYSPLIT atmospheric transport and dispersion modeling system, *B. Am. Meteorol. Soc.*, 96, 2059-2077, 10.1175/bams-d-14-00110.1, 2015.

Draxler, R. R. and Hess, G. D.: An overview of the HYSPLIT\_4 modelling system for trajectories, dispersion, and deposition, *Aust. Meteorol. Mag.*, 47, 295-308, 1998.

Feng, Y., Ramanathan, V., and Kotamarthi, V. R.: Brown carbon: a significant atmospheric absorber of solar radiation?, *Atmos. Chem. Phys.*, 13, 8607-8621, 10.5194/acp-13-8607-2013, 2013.

Hareley, O. L., Corrigan, C. E., and Kirchstetter, T. W.: Modified thermal-optical analysis using

524 spectral absorption selectivity to distinguish black carbon from pyrolyzed organic carbon, *Environ.*  
525 *Sci. Technol.*, 42, 8459–8464, 10.1021/es800448n, 2008.

526 Huang, R. J., Zhang, Y., Bozzetti, C., Ho, K. F., Cao, J. J., Han, Y., Daellenbach, K. R., Slowik, J.  
527 G., Platt, S. M., Canonaco, F., Zotter, P., Wolf, R., Pieber, S. M., Bruns, E. A., Crippa, M., Ciarelli,  
528 G., Piazzalunga, A., Schwikowski, M., Abbaszade, G., Schnelle-Kreis, J., Zimmermann, R., An,  
529 Z., Szidat, S., Baltensperger, U., El Haddad, I., and Prevot, A. S.: High secondary aerosol  
530 contribution to particulate pollution during haze events in China, *Nature*, 514, 218-222,  
531 10.1038/nature13774, 2014.

532 Ji, D. S., Zhang, J. K., He, J., Wang, X. J., Pang, B., Liu, Z. R., Wang, L. L., and Wang, Y. S.:  
533 Characteristics of atmospheric organic and elemental carbon aerosols in urban Beijing, China,  
534 *Atmos. Environ.*, 306, 293-306, 10.1016/j.atmosenv.2015.11.020, 2016.

535 Kirillova, E. N., Andersson, A., Han, J., Lee, M., and Gustafsson, O.: Sources and light absorption  
536 of water-soluble organic carbon aerosols in the outflow from northern China, *Atmos. Chem. Phys.*,  
537 14, 1413-1422, 10.5194/acp-14-1413-2014, 2014.

538 Laskin, A., Laskin, J., and Nizkorodov, S. A.: Chemistry of atmospheric brown carbon, *Chem.*  
539 *Rev.*, 115, 4335-4382, 10.1021/cr5006167, 2015.

540 Lei, Y., Shen, Z., Zhang, T., Zhang, Q., Wang, Q., Sun, J., Gong, X., Cao, J., Xu, H., Liu, S., and  
541 Yang, L.: Optical source profiles of brown carbon in size-resolved particulate matter from typical  
542 domestic biofuel burning over Guanzhong Plain, China, *Sci. Total. Environ.*, 622-623, 244-251,  
543 10.1016/j.scitotenv.2017.11.353, 2018.

544 Lelieveld, J., Evans, J. S., Fnais, M., Giannadaki, D., and Pozzer, A.: The contribution of outdoor  
545 air pollution sources to premature mortality on a global scale, *Nature*, 525, 367-371,  
546 10.1038/nature15371, 2015.

547 Li, C., He, Q., Hettiyadura, A. P. S., Kafer, U., Shmul, G., Meidan, D., Zimmermann, R., Brown,  
548 S. S., George, C., Laskin, A., and Rudich, Y.: Formation of secondary brown carbon in biomass  
549 burning aerosol proxies through NO<sub>3</sub> radical reactions, *Environ. Sci. Technol.*, 54, 1395-1405,  
550 10.1021/acs.est.9b05641, 2020.

551 Lim, H.-J. and Turpin, B. J.: Origins of primary and secondary organic aerosol in Atlanta: results  
552 of time-resolved measurements during the Atlanta supersite experiment, *Environ. Sci. Technol.*,  
553 36, 4489-4496, 10.1021/es0206487 2002.

554 Liu, S., Aiken, A. C., Gorkowski, K., Dubey, M. K., Cappa, C. D., Williams, L. R., Herndon, S.

C., Massoli, P., Fortner, E. C., Chhabra, P. S., Brooks, W. A., Onasch, T. B., Jayne, J. T., Worsnop, D. R., China, S., Sharma, N., Mazzoleni, C., Xu, L., Ng, N. L., Liu, D., Allan, J. D., Lee, J. D., Fleming, Z. L., Mohr, C., Zotter, P., Szidat, S., and Prevot, A. S. H.: Enhanced light absorption by mixed source black and brown carbon particles in UK winter, *Nat. Commun.*, 6, 8435, 10.1038/ncomms9435, 2015.

Liu, X., Zhang, Y.-L., Peng, Y., Xu, L., Zhu, C., Cao, F., Zhai, X., Haque, M. M., Yang, C., Chang, Y., Huang, T., Xu, Z., Bao, M., Zhang, W., Fan, M., and Lee, X.: Chemical and optical properties of carbonaceous aerosols in Nanjing, eastern China: regionally transported biomass burning contribution, *Atmos. Chem. Phys.*, 19, 11213-11233, 10.5194/acp-19-11213-2019, 2019.

Massabò, D., Caponi, L., Bove, M. C., and Prati, P.: Brown carbon and thermal–optical analysis: A correction based on optical multi-wavelength apportionment of atmospheric aerosols, *Atmos. Environ.*, 125, 119-125, 10.1016/j.atmosenv.2015.11.011, 2016.

Petit, J. E., Favez, O., Albinet, A., and Canonaco, F.: A user-friendly tool for comprehensive evaluation of the geographical origins of atmospheric pollution: Wind and trajectory analyses, *Environ. Model. Softw.*, 88, 183-187, 10.1016/j.envsoft.2016.11.022, 2017.

Pio, C., Cerqueira, M., Harrison, R. M., Nunes, T., Mirante, F., Alves, C., Oliveira, C., Sanchez de la Campa, A., Artíñano, B., and Matos, M.: OC/EC ratio observations in Europe: Re-thinking the approach for apportionment between primary and secondary organic carbon, *Atmos. Environ.*, 45, 6121-6132, 10.1016/j.atmosenv.2011.08.045, 2011.

Rolph, G., Stein, A., and Stunder, B.: Real-time environmental applications and display system: READY, *Environ. Model. Softw.*, 95, 210-228, 10.1016/j.envsoft.2017.06.025, 2017.

Sahu, M., Hu, S., Ryan, P. H., Le Masters, G., Grinshpun, S. A., Chow, J. C., and Biswas, P.: Chemical compositions and source identification of PM<sub>2.5</sub> aerosols for estimation of a diesel source surrogate, *Sci. Total. Environ.*, 409, 2642-2651, 10.1016/j.scitotenv.2011.03.032, 2011.

Saleh, R., Robinson, E. S., Tkacik, D. S., Ahern, A. T., Liu, S., Aiken, A. C., Sullivan, R. C., Presto, A. A., Dubey, M. K., Yokelson, R. J., Donahue, N. M., and Robinson, A. L.: Brownness of organics in aerosols from biomass burning linked to their black carbon content, *Nat. Geosci.*, 7, 647-650, 10.1038/ngeo2220, 2014.

Sandradewi, J., Prévôt, A. S. H., Szidat, S., Perron, N., Alfarra, M. R., Lanz, V. A., Weingartner, E., and Baltensperger, U.: Using aerosol light absorption measurements for the quantitative determination of wood burning and traffic emission contributions to particulate matter, *Environ.*

586 Sci. Technol., 42, 3316-3323, 10.1021/es702253m, 2008.

587 Satish, R., Shamjad, P., Thamban, N., Tripathi, S., and Rastogi, N.: Temporal characteristics of  
588 brown carbon over the central Indo-Gangetic Plain, Environ. Sci. Technol., 51, 6765-6772,  
589 10.1021/acs.est.7b00734, 2017.

590 Sullivan, A. P., Hodas, N., Turpin, B. J., Skog, K., Keutsch, F. N., Gilardoni, S., Paglione, M.,  
591 Rinaldi, M., Decesari, S., Facchini, M. C., Poulain, L., Herrmann, H., Wiedensohler, A., Nemitz,  
592 E., Twigg, M. M., and Collett Jr, J. L.: Evidence for ambient dark aqueous SOA formation in the  
593 Po Valley, Italy, Atmos. Chem. Phys., 16, 8095-8108, 10.5194/acp-16-8095-2016, 2016.

594 Turpin, B. J. and Huntzicker, J.: Identification of secondary organic aerosol episodes and  
595 quantitation of primary and secondary organic aerosol concentrations during SCAQS, Atmos.  
596 Environ., 29, 3527-3544, 1995.

597 U.S.EPA: Review of sunset organic and elemental carbon (OC and EC) measurements during  
598 EPA's sunset carbon evaluation project, prepared by Sonoma Technology, Inc., CA 94954-6515,  
599 prepared for U.S. Environmental Protection Agency, NC 27711, 2019.

600 Wang, J., Nie, W., Cheng, Y., Shen, Y., Chi, X., Wang, J., Huang, X., Xie, Y., Sun, P., Xu, Z., Qi,  
601 X., Su, H., and Ding, A.: Light absorption of brown carbon in eastern China based on 3-year multi-  
602 wavelength aerosol optical property observations and an improved absorption Ångström exponent  
603 segregation method, Atmos. Chem. Phys., 18, 9061-9074, 10.5194/acp-18-9061-2018, 2018.

604 Wang, P., Cao, J. J., Shen, Z. X., Han, Y. M., Lee, S. C., Huang, Y., Zhu, C. S., Wang, Q. Y., Xu,  
605 H. M., and Huang, R. J.: Spatial and seasonal variations of PM<sub>2.5</sub> mass and species during 2010 in  
606 Xi'an, China, Sci. Total. Environ., 508, 477-487, 10.1016/j.scitotenv.2014.11.007, 2015.

607 Wang, Y., Hopke, P. K., Rattigan, O. V., Xia, X., Chalupa, D. C., and Utell, M. J.: Characterization  
608 of residential wood combustion particles using the two-wavelength aethalometer, Environ. Sci.  
609 Technol., 45, 7387-7393, 10.1021/es2013984, 2011.

610 Wang, Y., Hopke, P. K., and Rattigan, O. V.: A new indicator of fireworks emissions in Rochester,  
611 New York, Environ. Monit. Assess., 184, 7293-7297, 10.1007/s10661-011-2497-5, 2012a.

612 Wang, Y., Hopke, P. K., Rattigan, O. V., Chalupa, D. C., and Utell, M. J.: Multiple-year black  
613 carbon measurements and source apportionment using delta-C in Rochester, New York, J. Air  
614 Waste Manag. Assoc., 62, 880-887, 10.1080/10962247.2012.671792, 2012b.

615 Wu, C. and Yu, J. Z.: Determination of primary combustion source organic carbon-to-elemental  
616 carbon (OC/EC) ratio using ambient OC and EC measurements: secondary OC-EC correlation

minimization method, *Atmos. Chem. Phys.*, 16, 5453-5465, 10.5194/acp-16-5453-2016, 2016.

Wu, G., Wan, X., Gao, S., Fu, P., Yin, Y., Li, G., Zhang, G., Kang, S., Ram, K., and Cong, Z.: **Humic-like substances (HULIS) in aerosols of central Tibetan Plateau (Nam Co, 4730 m asl): Abundance, light absorption properties, and sources**, *Environ. Sci. Technol.*, 52, 7203-7211, 10.1021/acs.est.8b01251, 2018.

Wu, G., Ram, K., Fu, P., Wang, W., Zhang, Y., Liu, X., Stone, E. A., Pradhan, B. B., Dangol, P. M., Panday, A. K., Wan, X., Bai, Z., Kang, S., Zhang, Q., and Cong, Z.: **Water-soluble brown carbon in atmospheric aerosols from Godavari (Nepal), a regional representative of South Asia**, *Environ. Sci. Technol.*, 53, 3471-3479, 10.1021/acs.est.9b00596, 2019.

Wu, G., Wan, X., Ram, K., Li, P., Liu, B., Yin, Y., Fu, P., Loewen, M., Gao, S., Kang, S., Kawamura, K., Wang, Y., and Cong, Z.: Light absorption, fluorescence properties and sources of brown carbon aerosols in the Southeast Tibetan Plateau, *Environ. Pollut.*, 257, 113616, 10.1016/j.envpol.2019.113616, 2020.

Xu, X. and Akhtar, U. S.: Identification of potential regional sources of atmospheric total gaseous mercury in Windsor, Ontario, Canada using hybrid receptor modeling, *Atmos. Chem. Phys.*, 10, 7073-7083, 10.5194/acp-10-7073-2010, 2010.

Yan, C., Zheng, M., Bosch, C., Andersson, A., Desyaterik, Y., Sullivan, A. P., Collett, J. L., Zhao, B., Wang, S., He, K., and Gustafsson, O.: Important fossil source contribution to brown carbon in Beijing during winter, *Sci. Rep.*, 7, 43182, 10.1038/srep43182, 2017.

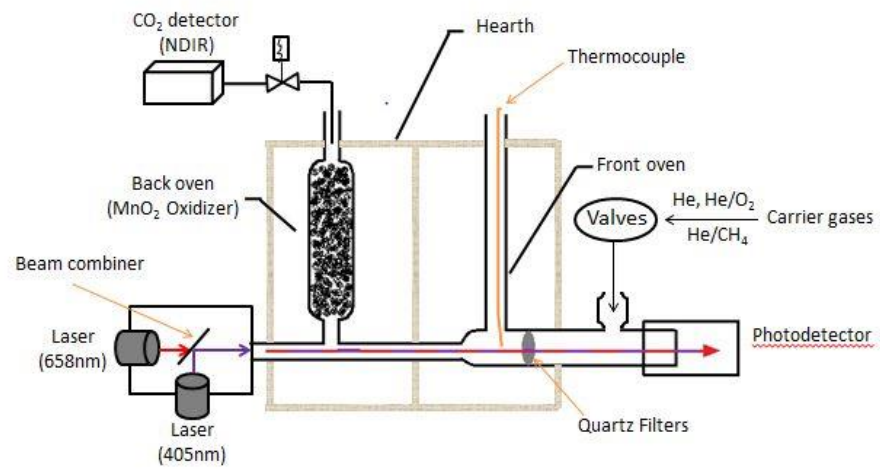
Yan, C., Zheng, M., Shen, G., Cheng, Y., Ma, S., Sun, J., Cui, M., Zhang, F., Han, Y., and Chen, Y.: Characterization of carbon fractions in carbonaceous aerosols from typical fossil fuel combustion sources, *Fuel*, 254, 115620, 10.1016/j.fuel.2019.115620, 2019.

Yang, F., Tan, J., Zhao, Q., Du, Z., He, K., Ma, Y., Duan, F., Chen, G., and Zhao, Q.: Characteristics of PM<sub>2.5</sub> speciation in representative megacities and across China, *Atmos. Chem. Phys.*, 11, 5207-5219, 10.5194/acp-11-5207-2011, 2011.

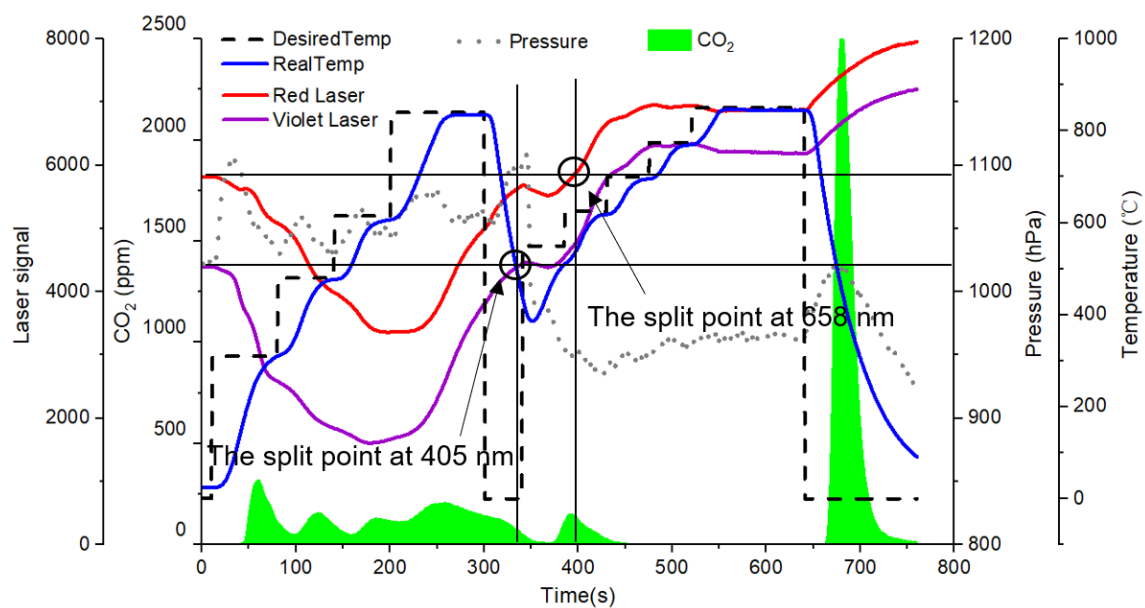
Zhang, Q., Shen, Z., Zhang, L., Zeng, Y., Ning, Z., Zhang, T., Lei, Y., Wang, Q., Li, G., Sun, J., Westerdaal, D., Xu, H., and Cao, J.: Investigation of primary and secondary particulate brown carbon in two Chinese cities of Xi'an and Hong Kong in wintertime, *Environ. Sci. Technol.*, 54, 3803-3813, 10.1021/acs.est.9b05332, 2020.

Zhang, W. and Zhang, Y.: Oxygen isotope anomaly ( $\Delta^{17}\text{O}$ ) in atmospheric nitrate: a review, *Chinese Sci. Bull.*, 64, 649-662, 10.1360/n972018-01028, 2019.

648 Zhang, W., Zhang, Y.-L., Cao, F., Xiang, Y., Zhang, Y., Bao, M., Liu, X., and Lin, Y.-C.: High time-  
 649 resolved measurement of stable carbon isotope composition in water-soluble organic aerosols:  
 650 method optimization and a case study during winter haze in eastern China, *Atmos. Chem. Phys.*,  
 651 19, 11071-11087, 10.5194/acp-19-11071-2019, 2019.  
 652 Zhang, X., Lin, Y.-H., Surratt, J. D., Zotter, P., Prevot, A. S. H., and Weber, R. J.: Light-absorbing  
 653 soluble organic aerosol in Los Angeles and Atlanta: a contrast in secondary organic aerosol,  
 654 *Geophys. Res. Lett.*, 38, L21810, 10.1029/2011gl049385, 2011.  
 655 Zhang, Y. and Kang, S.: Characteristics of carbonaceous aerosols analyzed using a  
 656 multiwavelength thermal/optical carbon analyzer: a case study in Lanzhou City, *Sci. China Earth*  
 657 *Sci.*, 62, 389-402, 10.1007/s11430-017-9245-9, 2019.  
 658 Zhang, Y., Ren, H., Sun, Y., Cao, F., Chang, Y., Liu, S., Lee, X., Agrios, K., Kawamura, K., Liu,  
 659 D., Ren, L., Du, W., Wang, Z., Prevot, A. S. H., Szida, S., and Fu, P.: High contribution of nonfossil  
 660 sources to submicrometer organic aerosols in Beijing, China, *Environ. Sci. Technol.*, 51, 7842-  
 661 7852, 10.1021/acs.est.7b01517, 2017.  
 662 Zhang, Y.-L. and Cao, F.: Is it time to tackle PM<sub>2.5</sub> air pollutions in China from biomass-burning  
 663 emissions?, *Environ. Pollut.*, 202, 217-219, 10.1016/j.envpol.2015.02.005, 2015a.  
 664 Zhang, Y. L. and Cao, F.: Fine particulate matter (PM<sub>2.5</sub>) in China at a city level, *Sci. Rep.*, 5,  
 665 14884, 10.1038/srep14884, 2015b.  
 666 Zhou, S., Wang, T., Wang, Z., Li, W., Xu, Z., Wang, X., Yuan, C., Poon, C. N., Louie, P. K. K.,  
 667 Luk, C. W. Y., and Wang, W.: Photochemical evolution of organic aerosols observed in urban  
 668 plumes from Hong Kong and the Pearl River Delta of China, *Atmos. Environ.*, 88, 219-229,  
 669 10.1016/j.atmosenv.2014.01.032, 2014.  
 670 Zhu, C. S., Cao, J. J., Tsai, C. J., Shen, Z. X., Han, Y. M., Liu, S. X., and Zhao, Z. Z.: Comparison  
 671 and implications of PM<sub>2.5</sub> carbon fractions in different environments, *Sci. Total. Environ.*, 466-  
 672 467, 203-209, 10.1016/j.scitotenv.2013.07.029, 2014.

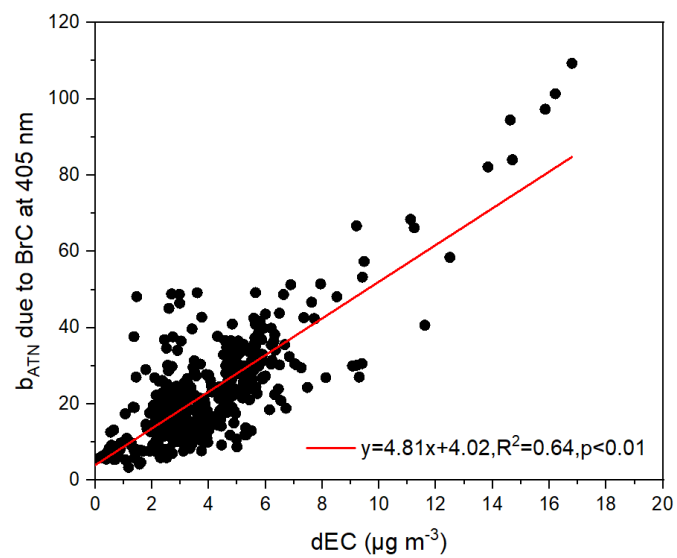


**Figure 1.** Principle and structure of the Sunset semi-continuous carbon analyzer.



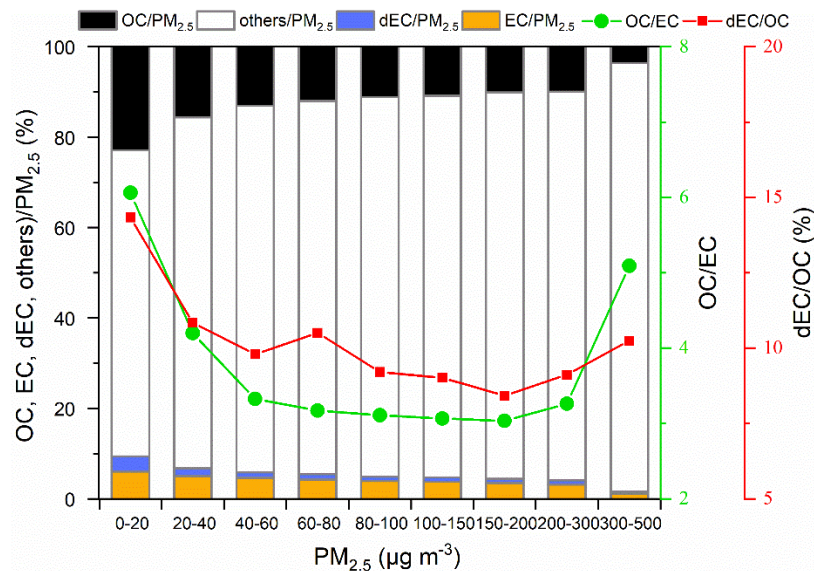
**Figure 2.** Example thermogram of sample analysis using the two-wavelength Sunset semi-continuous carbon analyzer.



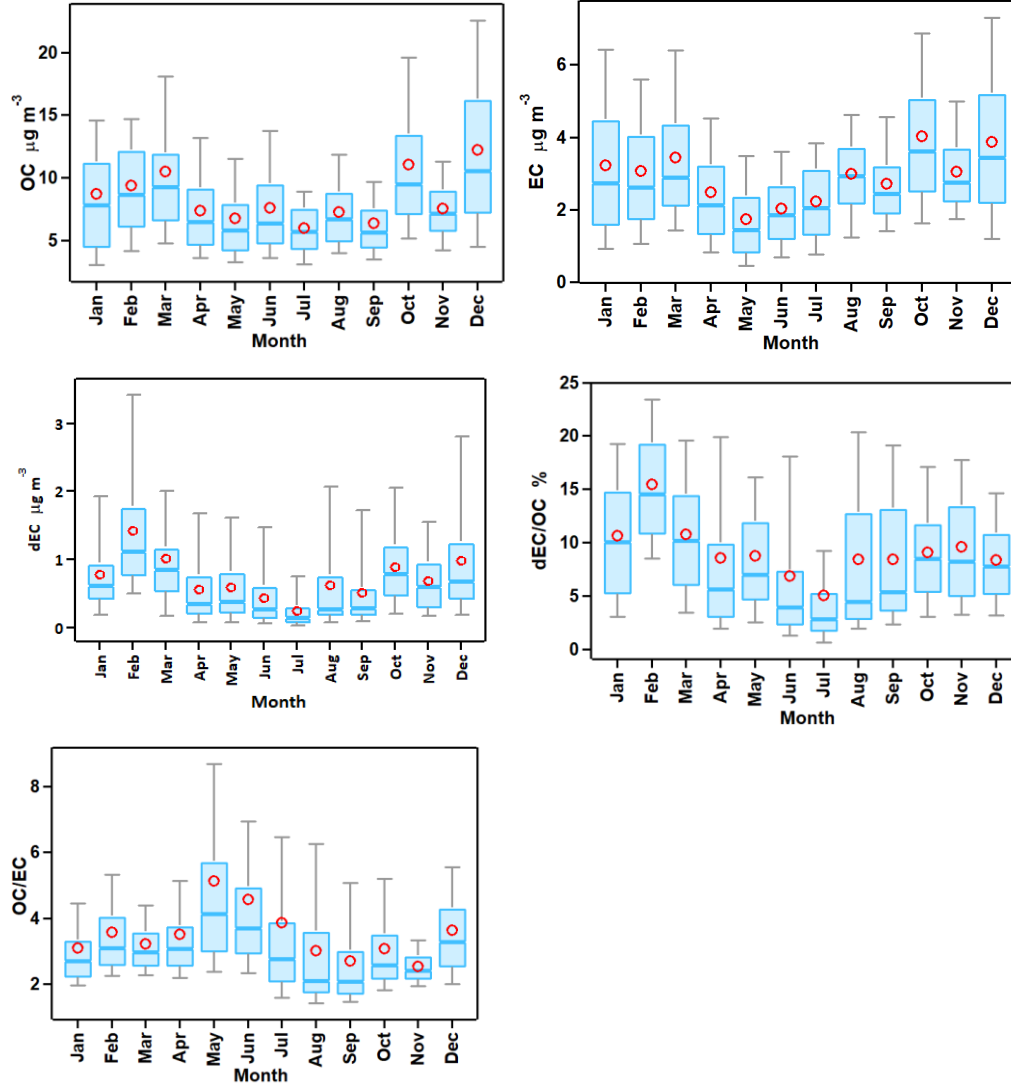


679

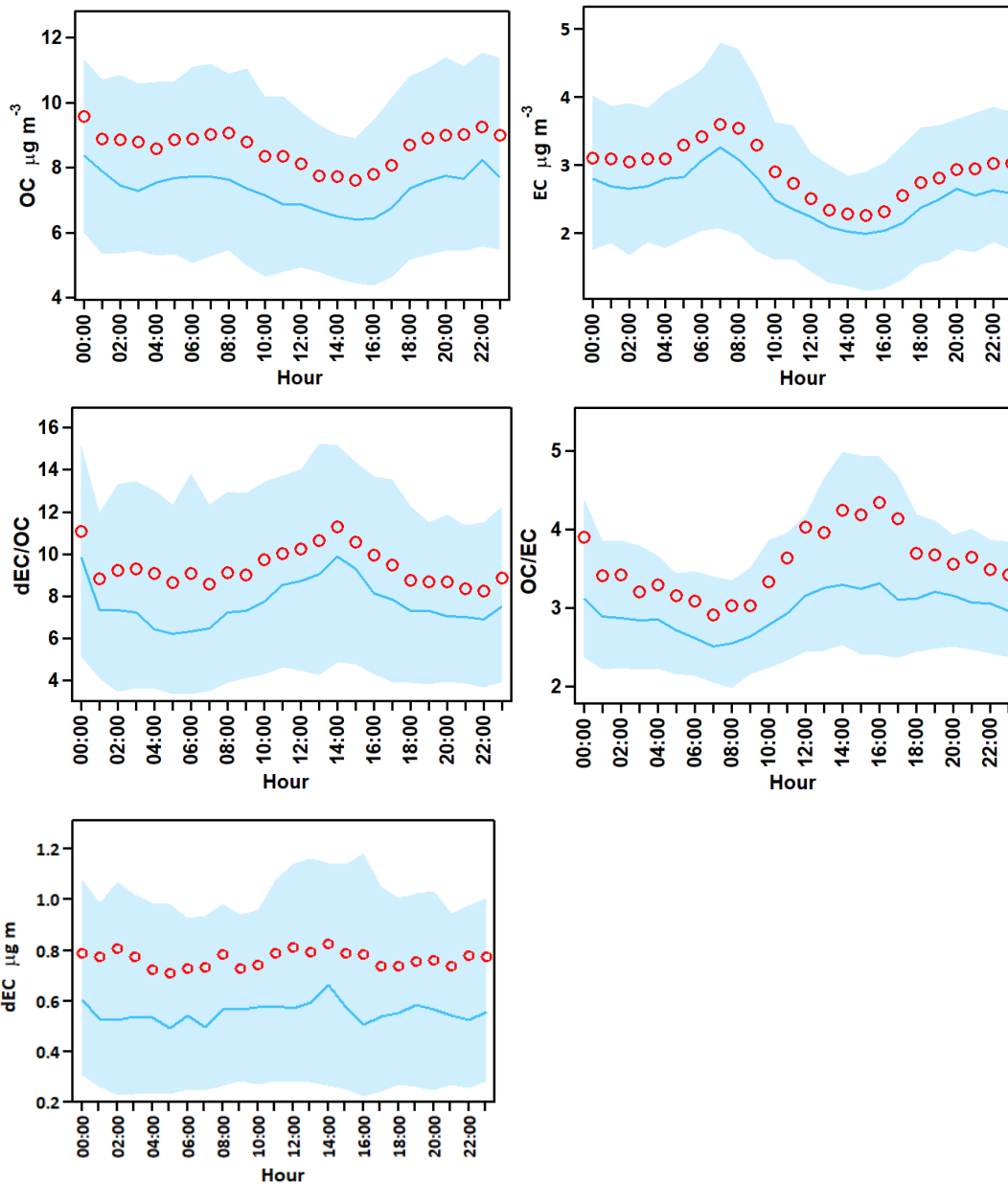
680 **Figure 3.** Relationship between the  $b_{\text{ATN}}$  due to BrC at 405 nm and the dEC concentrations.



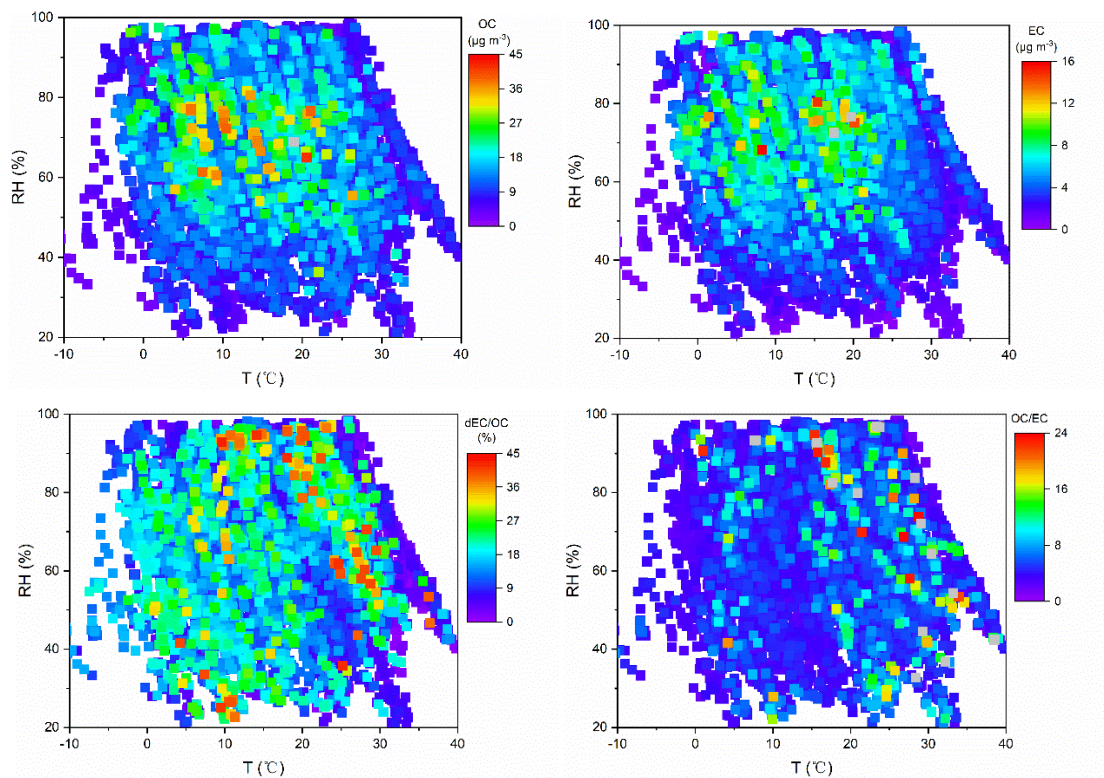
**Figure 4.** Carbonaceous species fractions of PM<sub>2.5</sub> and OC/EC ratios at different PM<sub>2.5</sub> concentration intervals at NUIST from June 2015 to August 2016.



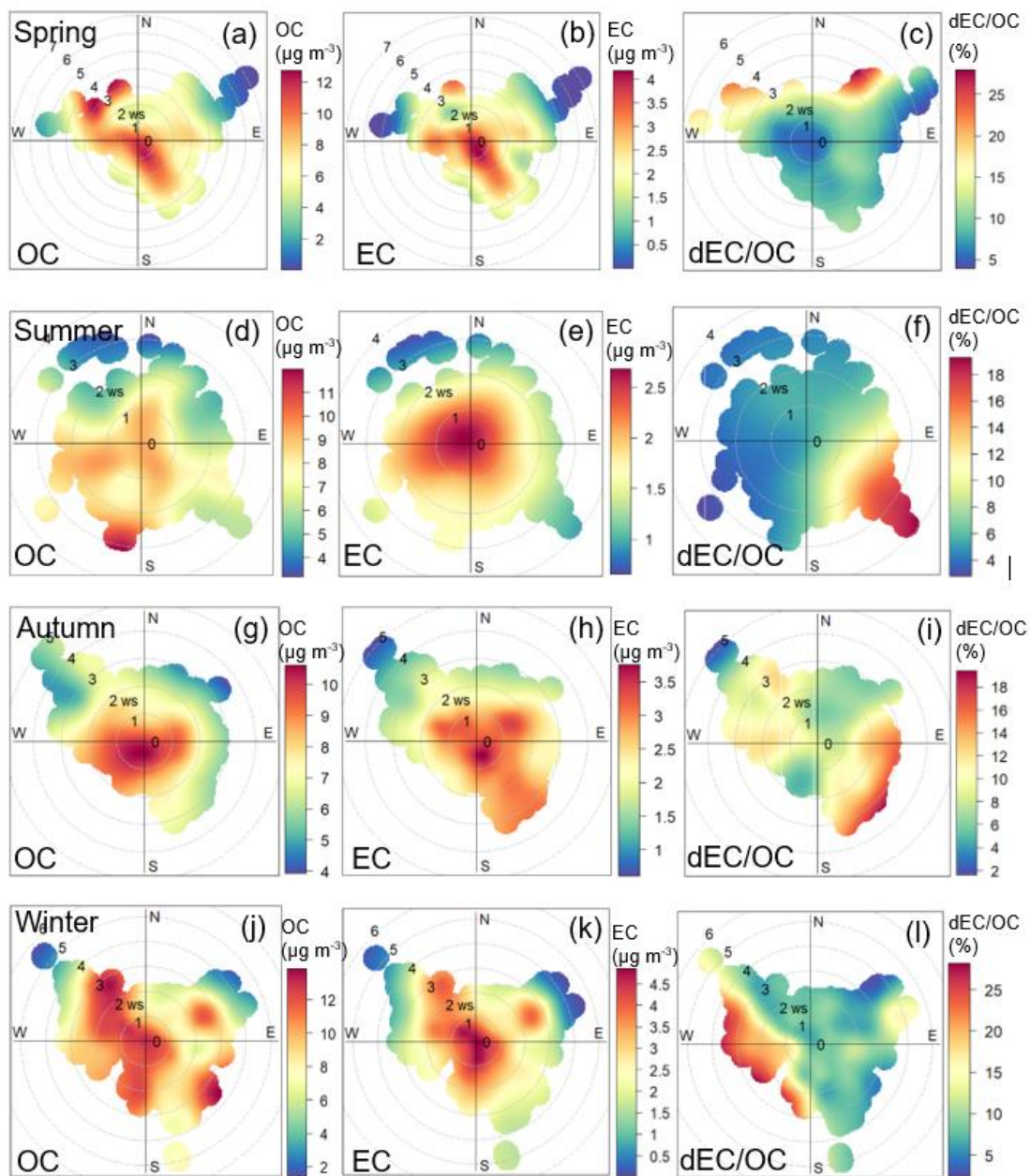
**Figure 5.** Monthly variations of OC, EC, dEC, dEC/OC and OC/EC ratios at NUIST from June 2015 to August 2016. The boundary of the box indicates the 25% and 75% percentile, respectively. The lower and upper whiskers indicate the 10% and 90% percentile, respectively. The red circle within the box marks the average while the line within the box marks the median.



**Figure 6.** Diurnal variations of OC, EC, dEC concentrations, dEC/OC and OC/EC ratios during the study period. The boundary of the shaded area indicates the 25% and 75% percentile, respectively. The red circle marks the average while the blue line marks the median.

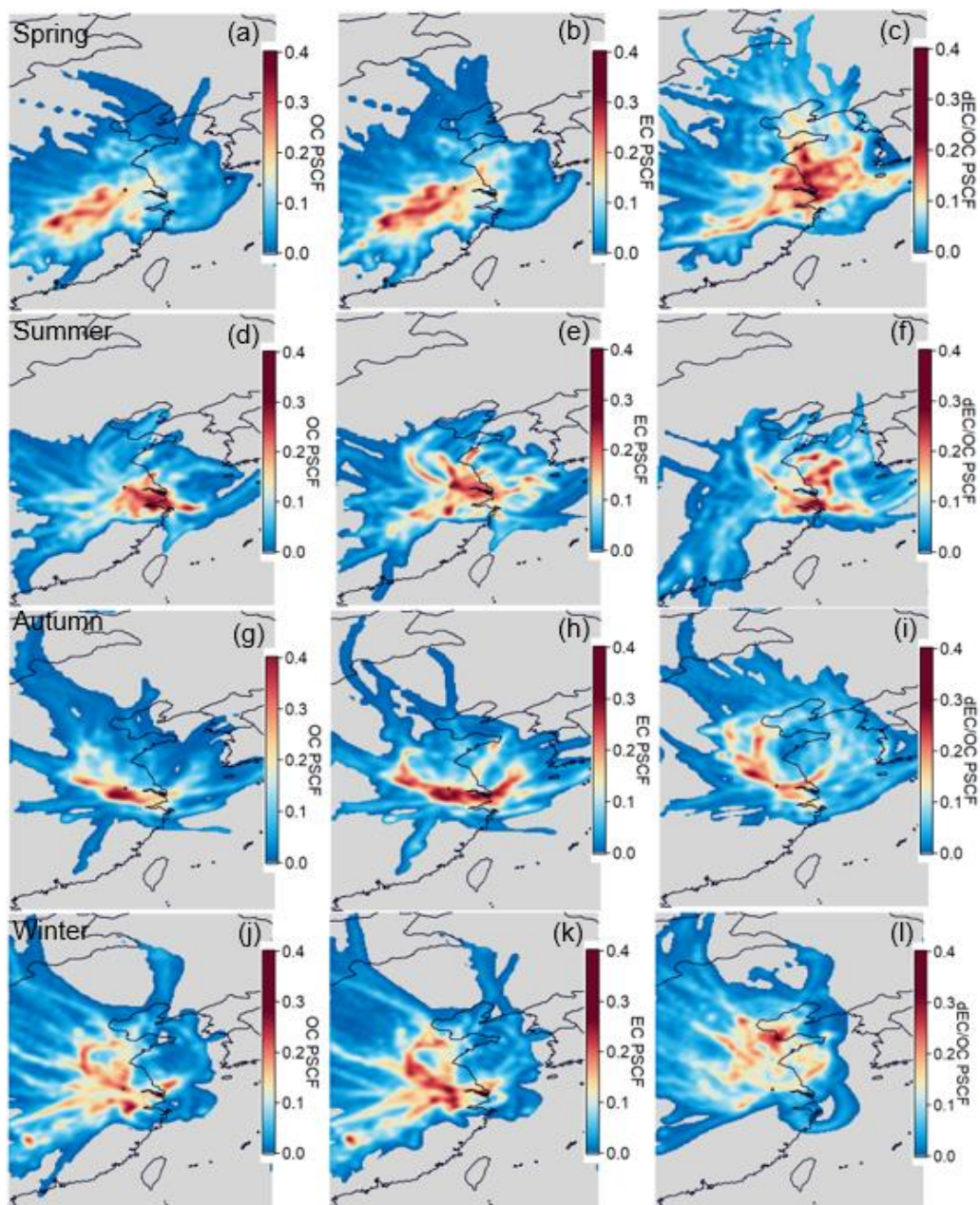


**Figure 7.** RH/T dependence of OC, EC, dEC/OC and OC/EC ratios during the study period.

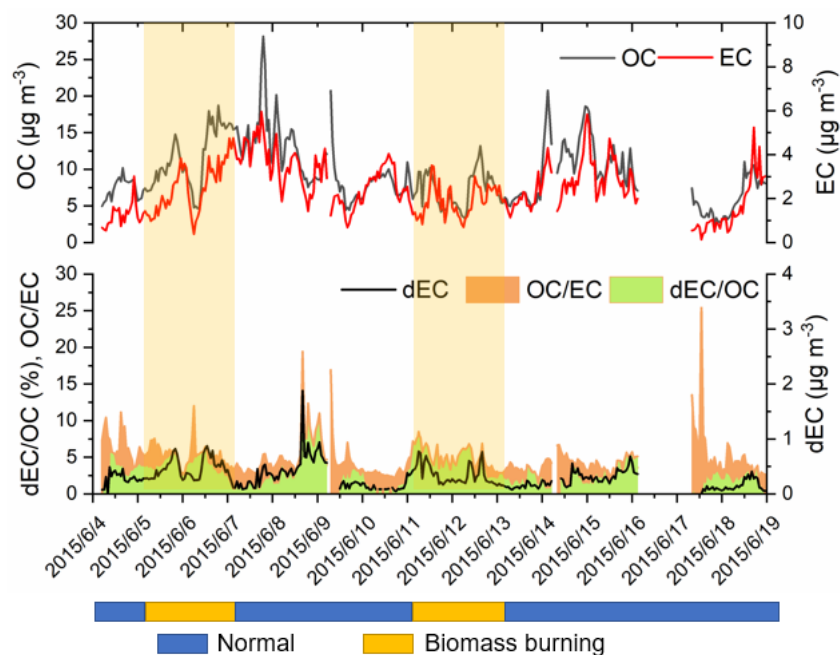


**Figure 8.** Wind rose of OC, EC and dEC/OC in spring ((a), (b), (c)), summer ((d), (e), (f)), autumn ((g), (h), (i)) and winter ((j), (k), (l)).



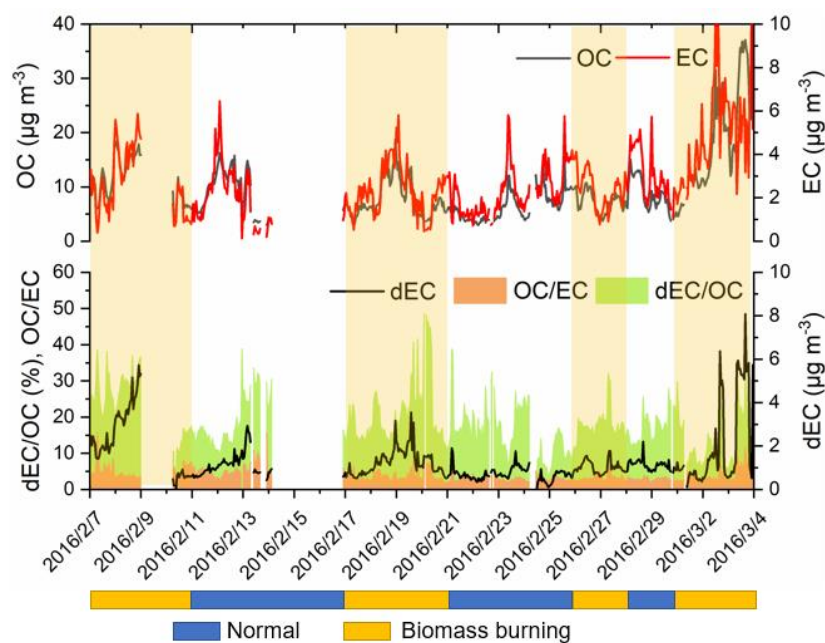


**Figure 9.** PSCF map for OC, EC and dEC/OC in spring ((a), (b), (c)), summer ((d), (e), (f)), autumn ((g), (h), (i)) and winter ((j), (k), (l)).



**Figure 10.** Time series of OC, EC, dEC/OC, dEC and OC/EC from 4 June 2015 to 19 June 2015. The period was divided into normal days (blue bars) and biomass burning days (yellow bars). The yellow shadow represents the biomass burning periods.





**Figure 11.** Time series of OC, EC, dEC/OC, dEC and OC/ EC from 7 February 2016 to 3 March 2016. The period was divided into normal days (blue bars) and biomass burning days (yellow bars). The yellow shadow represents the biomass burning periods.

714 **Table 1.** Statistical summary on the PM<sub>2.5</sub> and carbon species concentrations.

N=5113	Annual					Spring	Summer	Autumn	winter
	Average	Standard Deviation	Median	Min	Max	Average	Average	Average	Average
PM <sub>2.5</sub> (µg m <sup>-3</sup> )	77.2	48.6	65.0	2.5	458.1	72.1	47.9	70.5	91.8
OC (µg m <sup>-3</sup> )	8.9	5.5	7.5	0.5	45.8	8.4	7.2	8.4	10.2
EC (µg m <sup>-3</sup> )	3.1	2.0	2.6	0.0	17.6	2.6	2.3	3.3	3.4
OC/EC	3.5	2.4	2.9	1.0	29.3	3.9	4.0	2.8	3.4
dEC (µg m <sup>-3</sup> )	0.8	0.8	0.6	0.0	8.1	0.8	0.5	0.7	1.1
dEC/OC (%)	10.0	7.2	8.6	0.0	48.2	9.5	6.9	9.0	11.3
dEC/EC (%)	22.3	16.7	18.5	0.1	97.8	24.5	18.2	18.7	25.9
OC/PM <sub>2.5</sub> (%)	12.8	5.6	11.6	0.7	66.2	13.2	14.4	14.1	11.1
EC/PM <sub>2.5</sub> (%)	4.3	2.3	3.9	0.0	33.2	3.9	4.7	5.8	3.7
dEC/PM <sub>2.5</sub> (%)	1.3	1.2	0.9	0.0	17.6	1.4	1.3	1.2	1.3

715

**Table 2.** Statistics of OC, EC, OC/EC, dEC and dEC/OC during biomass burning days and normal days. The values represent average±standard deviation.

		OC ( $\mu\text{g m}^{-3}$ )	EC ( $\mu\text{g m}^{-3}$ )	OC/EC	dEC ( $\mu\text{g m}^{-3}$ )	dEC/OC (%)
June 4 <sup>th</sup> to 19 <sup>th</sup>	Normal days	9.5±4.5	2.6±1.3	4.3±2.3	0.2±0.1	2.5±1.3
	Biomass burning days	9.0±3.6	2.0±0.9	4.8±1.6	0.4±0.2	4.6±1.4
February 7 <sup>th</sup> to March 3 <sup>rd</sup>	Normal days	7.5±3.3	2.5±1.2	3.3±1.3	0.8±0.3	12.7±5.6
	Biomass burning days	11.2±7.2	3.1±1.9	4.0±1.8	1.7±1.4	15.4±7.8