

~~Effect~~ Idealized simulation study of the relationship of disdrometer sampling area and time on statistics to the precision of precipitation rate measurement

Karlie N. Rees¹ and Timothy J. Garrett¹

¹Department of Atmospheric Sciences, Salt Lake City, UT, USA

Correspondence: Tim Garrett (tim.garrett@utah.edu)

Abstract. Due to the discretized nature of rain, the measurement of a continuous precipitation rate by disdrometers is subject to statistical sampling errors. Here, Monte Carlo simulations are employed to obtain the precision of rain detection and rate as a function of disdrometer collection area and compared with World Meteorological Organization guidelines for a one-minute sample interval and 95% probability. To meet these requirements, simulations suggest that measurements of light rain with rain rates $R \leq 0.50 \text{ mm h}^{-1}$ require a collection area of at least $6 \text{ cm} \times 6 \text{ cm}$, and for $R \gtrsim 1 \text{ mm h}^{-1}$, the minimum collection area is ~~10-13~~ 10-13 $\text{cm} \times 10-13 \text{ cm}$. For $R = 0.01 \text{ mm h}^{-1}$, a collection area of $2 \text{ cm} \times 2 \text{ cm}$ is sufficient to detect a single drop. Simulations are compared with field measurements using a new hotplate device, the Differential Emissivity Imaging Disdrometer. The field results suggest an even larger plate may be required to meet the stated accuracy, ~~although for reasons that remain to be determined~~ likely in part due to non-Poissonian hydrometeor clustering.

10 1 Introduction

Ground-based precipitation sensors are commonly used to validate larger scale precipitation measurement systems including satellite (TRMM), WSR-88D radar measurements (Kummerow et al., 2000; Fulton et al., 1998), and numerical weather prediction models (Colle et al., 2005) aimed at hydrology, agriculture, transportation, and recreation applications (WMO, 2018; Estévez et al., 2011; Campbell and Langevin, 1995; Brun et al., 1992). The ability of an automated weather station to detect the presence of even very light precipitation can be crucial for weather forecasting in remote locations where a human observer is not available to verify the presence of rainfall (Horel et al., 2002; Miller and Barth, 2003). Light rain or drizzle can severely impede road safety (Andrey and Yagar, 1993; Andrey and Mills, 2003; Bergel-Hayat et al., 2013; Theofilatos and Yannis, 2014).

Disdrometers measure particle drop size distributions and provide calculated precipitation rate from the integrated mass flux. Among available disdrometers are the mechanical Joss Waldvogel (JW) disdrometer (Joss and Waldvogel, 1967), laser or optical sensors such as the OTT Parsivel2 (Tokay et al., 2013; Bartholomew, 2014), and video disdrometers such as the 2DVD (Kruger and Krajewski, 2002; Thurai et al., 2011; Brandes et al., 2007).

In instrument development, striking a balance between sampling area size and accurate fine-scale precipitation detection is a well-known problem. Among other instrument-specific considerations, disdrometer accuracy depends on the sampling

25 area and time interval (Gultepe, 2008). Joss and Waldvogel (1969) defined a sample size as the product of an area and a
sample time. Under the assumption that raindrop size follows a negative exponential distribution, to measure a precipitation
rate of $R = 1 < 0.3 \text{ mm h}^{-1}$ to a precision of $\pm 10\%$ within 95%
30 confidence bounds, the required sample size is ≈ 250 when $R > 1.5 \text{ mm h}^{-1}$. Despite these observations, they found that
optical and hotplate disdrometers can more accurately detect light precipitation compared to weighing gauges, despite having
comparatively small sampling areas, typically 50 cm^2 s, corresponding to a cross-sectional sampling area of $A = 250$, where
the VRG101 weighing gauge sampling area is 400 cm^2 for a nominal 60 s collection interval. Here, we focus solely on the
effect of disdrometer sampling area and time interval on the precision of precipitation rate measurement distinct from any other
35 uncertainties associated with the instruments themselves.

The World Meteorological Organization (WMO) recommends that a disdrometer measure precipitation intensities between
0.02 and 2,000 mm h^{-1} with an output averaging time of one-minute (WMO, 2018). Measurement uncertainty is defined as
“the uncertainty of the reported value with respect to the true value and indicates the interval in which the true value lies within
a stated probability” specified to be 95%. For liquid precipitation intensity, the uncertainty requirements for rates of 0.2 to
40 2 mm h^{-1} are $\pm 0.1 \text{ mm h}^{-1}$, and for precipitation rates $> 2 \text{ mm h}^{-1}$ they are 5% (see Table 2). For $< 0.2 \text{ mm h}^{-1}$, the
requirement is only detection.

Most commercial instruments do not reach such strict standards. Table 1 provides the reported uncertainties for several
precipitation instruments. The instrumentation used by ASOS weather stations located at major airports utilizes a Heated
Tipping Bucket (HTB) for precipitation accumulation and a Light Emitting Diode Weather Identifier (LEDWI) for precipitation
45 type and intensity. The LEDWI uses signal power return to determine the drop size distribution of rain or snow, then classifies
the precipitation intensity based on the size distribution (Nadolski, 1998). A significant limitation of the ASOS system is that
it cannot discriminate drizzle from light rain, and it qualitatively expresses small amounts as a trace (Wade, 2003; Nadolski,
1998).

Vaisala manufactures a range of optical precipitation sensors that detect and categorize precipitation from the forward scat-
50 tering of a light beam, including the PWD12, PWD22, PWD52, and FD71P. The PWD12 detects rain, snow, unknown precip-
itation, drizzle, fog, and haze. The PWD22 has the same resolution and accuracy as the PWD12, but it also detects freezing
drizzle, freezing rain, and ice pellets (Vaisala, 2019b). The PWD52 has an increased observation range of 50 km, compared to
20 km for the PWD 22 (Vaisala, 2018a). All three PWD instruments have a precipitation intensity resolution of 0.05 mm h^{-1}
for a 10-minute sampling interval at 10% uncertainty (Vaisala, 2019b). The PWD22 is included with tactical weather instru-
55 mentation intended for U.S. military and aviation operations (TACMET) and reports precipitation type in WMO METAR code
format (Vaisala, 2018b). The FD71P has a higher stated sampling frequency and resolution than the PWD instruments of 0.01
 mm h^{-1} with 2.2% uncertainty in a 5-second measurement cycle (Vaisala, 2019a), although there has yet to be independent
scientific evaluation of the device.

Hotplate disdrometers offer an alternative with the advantage of requiring fewer assumptions as mass is inferred from the energy required for evaporation. The Yankee Environmental Systems TPS-3100 determines liquid water precipitation rate of rain or snow by taking the power difference between an upward and a downward-facing hot plate as a measure of the latent heat energy required to evaporate precipitation (Rasmussen et al., 2010). The technology is currently marketed as the Pond Engineering Laboratories K63 Hotplate Total Precipitation Gauge (Pond Engineering, 2020). The hotplate is 5 inches in diameter, or 126.7 cm², which is equivalent to a square with a width of 11.26 cm. It measures precipitation rate with a resolution of 0.10±0.5 mm h⁻¹ and can detect the onset of light snow within one minute (Yankee Environmental Systems, 2011; Pond Engineering, 2020).

Table 1. Precipitation measurement instrument specifications

Model	Type	Resolution [mm h ⁻¹]	Uncertainty	Time [s]	Meets WMO Requirement
Vaisala PWD12/22/52	Optical	0.05	10%	600	N
Vaisala FD71P	Optical	0.01	2.2%	5	Y
ASOS HTB	Tipping Bucket	0.25	0.5 mm or 4%*	60	N
ASOS LEDWI	Optical	0.25	> 4 mm h ⁻¹	60	N
YES TPS-3100 / Pond K63	Hotplate	0.10	0.5 mm h ⁻¹	60	N
WMO		0.10	0.1 mm h ⁻¹ or 5%*	60	

*Whichever is greater

A newer hotplate disdrometer, yet to be commercialized, is the Differential Emissivity Imaging Disdrometer (DEID) developed at the University of Utah. ~~By assuming conservation of energy during heat transfer from a square plate to a melting hydrometeor, the DEID measures the mass of individual precipitation particles is obtained. To determine particle size during evaporation, a thermal camera is directed at a heated aluminum sheet. Since aluminum is a thermal reflector (thermal emissivity $\epsilon \approx 0.03$), whereas water is not ($\epsilon \approx 0.96$), particles are seen as white regions on a black background. From the measured cross-sectional surface area, temperature, and evaporation time of each hydrometeor, the effective diameter and volume, and mass of each particle can be calculated with high precision (Singh et al., 2021).~~

~~hydrometeors using a hotplate and a thermal camera, which provide accurate, fine-scale measurements. A larger hotplate sampling area increases the operating cost through higher power consumption.~~ The work here was originally motivated by a desire to minimize DEID power and maximize measurement precision, although the calculations are applicable more generally to other disdrometers such as those described. We employ a Monte Carlo approach (Liu et al., 2012, 2018; Jameson and Kostinski, 1999, 2001a, 2002) to stochastically generate raindrops based on canonical size distributions aimed at determining the minimum required disdrometer collection area and sampling frequency for precise measurement of precipitation rates between 0.01 and 10 mm h⁻¹. We consider the precipitation rate uncertainty relative to WMO standards. Inherent precipitation measurement uncertainties associated with the instrument mechanism are not addressed here. Where ~~(Joss and Waldvogel, 1969)~~ Joss and Waldvogel (1969) approached the problem analytically by assuming the interarrival times of droplets up to 6 mm in

diameter are distributed according to a Poisson distribution, here we approach the problem numerically by employing a Monte Carlo approach. In principle, the results should converge, although the Monte Carlo approach also facilitates the calculation here of the time required to measure the “first drop” in a precipitation event. [Joss and Waldvogel \(1969\) defined a sample size as the product of an area and a sample time. Under the assumption that raindrop size follows an exponential distribution, to measure a precipitation rate of \$R = 1 \text{ mm h}^{-1}\$ to a precision of 10% within 95% confidence bounds, the required sample size is \$1.5 \text{ m}^2 \text{ s}\$, corresponding to a cross-sectional sampling area of \$A = 250 \text{ cm}^2\$ with a square width \$W = 15.8 \text{ cm}\$ for a nominal 60 s collection interval. The required square width \$W\$ found in this work for the same parameters is 13 cm.](#)

90 2 DEID principle

The DEID obtains the mass of individual precipitation particles by assuming conservation of energy during heat transfer from a square plate to a melting hydrometeor. To determine particle size during evaporation, a thermal camera is directed at a heated aluminum sheet. Since aluminum is a thermal reflector (thermal emissivity $\epsilon \approx 0.03$), whereas water is not ($\epsilon \approx 0.96$), particles are seen as white regions on a black background. From the measured cross-sectional surface area, temperature, and evaporation time of each hydrometeor, the effective diameter and volume, and mass of each particle can be calculated with high precision ([Singh et al., 2021](#)). A piece of polyimide tape with $\epsilon \approx 0.95$ is placed on the side of the sampling area as a reference for the differential emissivity calculation and determination of the camera’s pixel resolution. For the study described here, the DEID’s aluminum plate had an area of $15.24 \text{ cm} \times 15.24 \text{ cm}$ and the camera pixel resolution was 0.2 mm . Polyimide tape applied to the surface restricted the collection area to $A \approx 7 \text{ cm} \times 5 \text{ cm}$, equivalent to a square width of $W = 5.8 \text{ cm}$. Thermal camera imagery with a sampling frequency between 2 and 60 Hz was used to determine the cross-sectional surface area, temperature, and evaporation time of each hydrometeor ([Singh et al., 2021](#)). From these parameters, individual hydrometeor mass is calculated from conservation of energy, whereby the heat gained by the hydrometeor is equal to the heat lost by the hotplate when evaporating water through

$$c_p \Delta T \int dm + L_{eqv} \int dm = \int_0^t \frac{K}{H} A(t) (T_p - T_w(t)) dt \quad (1)$$

105 where c_p is the specific heat capacity of water at constant pressure, ΔT is the difference in temperature between 0 and time t , m is the mass of the hydrometeor, and L_{eqv} is the equivalent latent heat required for the conversion of the hydrometeor to gas. For liquid precipitation $L_{eqv} = L_v$ where L_v is the latent heat of vaporization of water. K is the thermal conductivity of the plate, H is hotplate thickness, $A(t)$ is the area of the water droplet at time t , T_p is the temperature of the hotplate, and $T_w(t)$ is the temperature of the water at time t .

110 Equation (1) simplifies to

$$\int dm = K_d \int_0^t A(t) (T_p - T_w(t)) dt$$

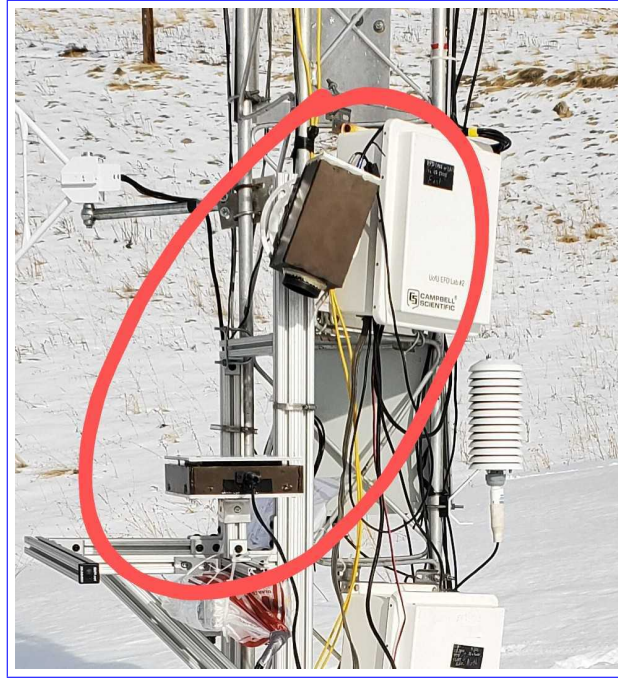


Figure 1. Photograph of the DEID with the thermal camera and hotplate circled.

where the constant K_d is determined experimentally.

The precipitation rate R_{DEID} is calculated from the total mass of hydrometeors evaporated on the hotplate during a given sample time interval. For each frame of the hotplate captured by the thermal camera,

$$115 \quad R_{DEID} = \frac{\beta f_s K_d A_{evap} I_{mean}}{\rho_w A_{hot}} \quad (2)$$

where $\beta = 3.6 \times 10^6 \text{ mm s mm}^{-1} \text{ h}^{-1}$, f_s is the camera resolution in frames per second, A_{evap} is the total area of water on the sampling area, I_{mean} is the pixel intensity related to the temperature difference between the plate and water through $T_p - T_w(t) \approx (255 - I_{mean})/256 \times T_p$, ρ_w is the density of water (1000 kg m^{-3}), and A_{hot} is the hotplate area in units of meters squared.

3.1 Size distribution generation

For a range of collection areas A and time intervals Δt , a rain drop distribution is generated stochastically and compared with the assumed rate R . Initially, we adopt a Marshall-Palmer (Marshall and Palmer, 1948) drop size distribution

$$n(D) = n_0 e^{-\Lambda D} \quad (3)$$

125 where $n_0 = 8000 \text{ m}^{-3} \text{ mm}^{-1}$ and $\Lambda = 4.1R^{-0.21} \text{ mm}^{-1}$. D ranges between 0 and D_{max} in linear bins evenly spaced by ΔD . We establish $D_{max} = 6 \text{ mm}$ to account for the expected breakup of large raindrops (Villiermaux and Bossa, 2009) and $\Delta D = 0.25 \text{ mm}$ for 50 bins. The value of ΔD is arbitrary but was chosen to approximate the spatial measurement resolution of the prototype DEID. For an assumed value of R , the array of drops is stochastically generated according to Eq. (3) where $N_{MP} = \sum n(D)\Delta D$ is the total number of drops generated from each bin. Each drop in the bin is assigned a diameter of
 130 $D_{mean} = D + \Delta D/2$. For each value of D_{mean} , the fall speed is

$$v = aD_{mean}^b \quad (4)$$

where the coefficient a and the exponent b are determined for the Stokes regime for $D_{mean} \leq 0.08 \text{ mm}$, the intermediate regime for $0.08 \text{ mm} \leq D_{mean} < 1.2 \text{ mm}$. and the turbulent regime for $D_{mean} \geq 1.2 \text{ mm}$ following Lamb and Verlinde (2011). The maximum value of v is used to determine the sample volume of the generated Marshall-Palmer distribution of drops
 135 $v_{max}A\Delta t \text{ m}^3$.

The calculated size distribution of drops incident on the collection area during sampling time Δt is then

$$N(D)_{coll} = n(D)Av\Delta t \quad (5)$$

with units of inverse millimeter. The total calculated number of drops N_{coll} incident on the collection area is a summation of Eq. (5) over the range 0 to D_{max} .

140 Note that the size distribution for $N(D)_{coll}$ does not converge to $N(D)_{MP}$ for long sampling times because smaller drops fall slowly. Rather, as will be discussed, the distribution more closely resembles a gamma distribution (Ulbrich and Atlas, 1984). Nevertheless, the contribution of small drops to ground-based measurements of precipitation tends to be small as they are comparatively less massive. Also, precipitation particles form primarily from droplet collisions in the updrafts within clouds, and so must attain the size that they fall sufficiently fast to leave cloud base and fall to the ground where they can be
 145 sampled by ground-based instruments (Garrett, 2019).

3.2 Calculated precipitation rate

N_{coll} drops are randomly sampled assuming a Marshall-Palmer distribution. From the drops that impact the collection area, the calculated precipitation rate R_{calc} is (cf. Lane et al., 2009)

$$R_{calc} = \alpha \frac{\pi}{6} \frac{\sum_{i=1}^{50} N_i D_i^3}{A \Delta t} \quad (6)$$

150 where $\alpha = 3.6/1000 \text{ m}^2 \text{ s mm}^{-1} \text{ h}^{-1}$ and N_i is the number of drops with diameter D_i with i corresponding to bin number. 100 simulations of R_{calc} are performed for each value of equivalent sampling area width $W = \sqrt{A}$, each evenly spaced by 1 cm. The 95th and 5th percentile bounds of R_{calc} are specified as the upper and lower bounds of sampling uncertainty ($R_{calc}/R - 1$).

3.3 First and Hundredth Drop

155 To determine the sampling time required to detect the onset of precipitation, 100 simulations were performed for $R = 0.01$, 0.1, and 1 mm h⁻¹ and for 100 evenly spaced width bins W between 1 cm and 20 cm. For each width bin, the number size distribution (Fig. 4a) was calculated from $n(D)$ for a 1 m³ volume directly above the collection area with height $h = 1/A$. A sample of drops is generated from Eq. (5), ~~where~~. To ensure that the drop with the smallest size D_{mean} could feasibly fall from the top to the bottom of the sample volume, $\Delta t = h/v$ is maximized for the value of v corresponds with the smallest droplet diameter. Small drops may using the fallspeed of the minimum value of D_{mean} . In general small drops contribute negligibly to the precipitation rate but calculations of precipitation rate (Smith et al., 2003) but due to their higher concentrations they may nonetheless be the first detected, so the value. Accordingly, the functional form of $n(D)$ is ~~taken from a gamma distribution rather than the exponential in~~ adjusted from the more simple exponential form described by Eq. (3) to a gamma distribution

160 ~~rather than the exponential in~~ adjusted from the more simple exponential form described by Eq. (3) to a gamma distribution

$$165 \quad n(D) = n_0 D^\mu e^{-\Lambda D} \quad (7)$$

So that small particles with $D < 1 \text{ mm}$ are not over-represented (Ulbrich and Atlas, 1984), the drop size distribution is modified by the shape parameter μ . The drop distribution is generated according to Eq. (5) and each drop is assigned a random height Δz above the collection area within a distance h above the plate. The time elapsed for the plate to detect a drop is $t_p = \Delta z/v$. The shortest of these times is the first drop detection time t_1 (Fig. 4).

170 Following the collection approach taken by Marshall et al. (1947), reproduction of a Marshall-Palmer size distribution is assumed to require collection of 100 drops. The time elapsed for the calculated incidence of 100 drops is t_{100} (Fig. 4). If fewer than 100 drops were obtained in N_{coll} , a new sample of drops is obtained from Eq. (5) with an increased value of Δt .

4 Results

4.1 Monte Carlo simulations

175 The sampling uncertainty in the precipitation rate is illustrated in Fig. 2. Precipitation rates of $R = 0.02, 0.20,$ and 2.00 mm h^{-1} were analyzed for a standard sampling time of 60 seconds. Collection areas smaller than approximately $6 \text{ cm} \times 6 \text{ cm}$ meet WMO standards for $R \leq 0.50 \text{ mm h}^{-1}$, but a collection area of over $10 \text{ cm} \times 10 \text{ cm}$ is required for $R > 1 \text{ mm h}^{-1}$.

To illustrate the relationship between accuracy and sampling time, Fig. 3 compares $R = 0.10, 1.00,$ and 10.00 mm h^{-1} with sampling times of 10 seconds, 5 minutes, and 10 minutes. For heavy rain rates of 10 mm h^{-1} , for a time interval of 5
180 minutes, a disdrometer width of 4 cm yields measured rain rates with a precision of $\pm 5\%$ error for 95% of the measurements. The intersection between 95th and 5th percentile bounds and WMO accuracy criteria occurs at larger collection areas as R increases.

First drop simulation results are shown in Fig. 4. Three simulations were performed using three values of μ , where $\mu = 0$ represents the Marshall-Palmer exponential distribution and closely represents the distributions generated by the uncertainty
185 simulations. Following (Ulbrich and Atlas, 1984)Ulbrich and Atlas (1984), DEID measurements show values of μ between 1 and 2 best represent the distribution of drops that arrive on the hotplate (Fig. 5b and 6b). Monte Carlo calculations of the size distribution N_{coll} are shown in Fig. 4. For $\mu = 2$, few of the smallest drops with $D < 1 \text{ mm}$ are incident on the collection area. A square collection width of $2 \text{ cm} \times 2 \text{ cm}$ is sufficient to detect the onset of light precipitation with a rate of $R = 0.01 \text{ mm h}^{-1}$ within one minute.

Table 2. Minimum collection area required to meet WMO precision criteria for various precipitation rates and time intervals evaluated within one centimeter intervals

Rate (mm h^{-1})	WMO Precision	$\Delta t = 10 \text{ s}$	$\Delta t = 60 \text{ s}$	$\Delta t = 300 \text{ s}$	$\Delta t = 600 \text{ s}$
		Width (cm)			
0.01	First Drop ($\mu=2$)	5	2	< 1	< 1
0.10	First Drop ($\mu=2$)	<1	1	<1	<1
0.20	$\pm 0.1 \text{ mm h}^{-1}$	6	1	1	<1
0.50	$\pm 0.1 \text{ mm h}^{-1}$	14	6	3	3
1.00	$\pm 0.1 \text{ mm h}^{-1}$	25	13	5	4
2.00	$\pm 0.1 \text{ mm h}^{-1}$ & $\pm 5\%$	40	2920	8	5
10.00	$\pm 5\%$	30	15	6	4

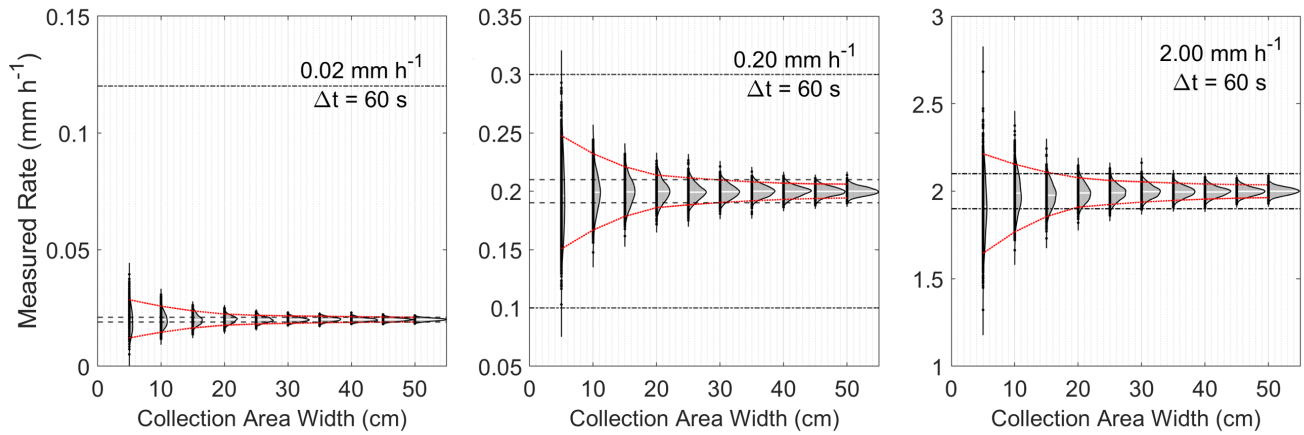


Figure 2. Precipitation rate R_{calc} calculated 1000 times for each W with a uniformly distributed random selection of particle sizes from a Marshall-Palmer distribution with diameters up to 6 mm for $\Delta t = 60$ s. Vertical curves represent a PDF of calculated R_{calc} with the widths scaled according to the widest curve. 95th and 5th percentile bounds are smoothed and shown in red, dotted lines. WMO standards ($\pm 5\%$ (dashed) and ± 0.1 mm h⁻¹ (dot-dashed)) are shown as horizontal lines. The intersection of these lines indicates the required square disdrometer sampling width to determine R according to WMO standards.

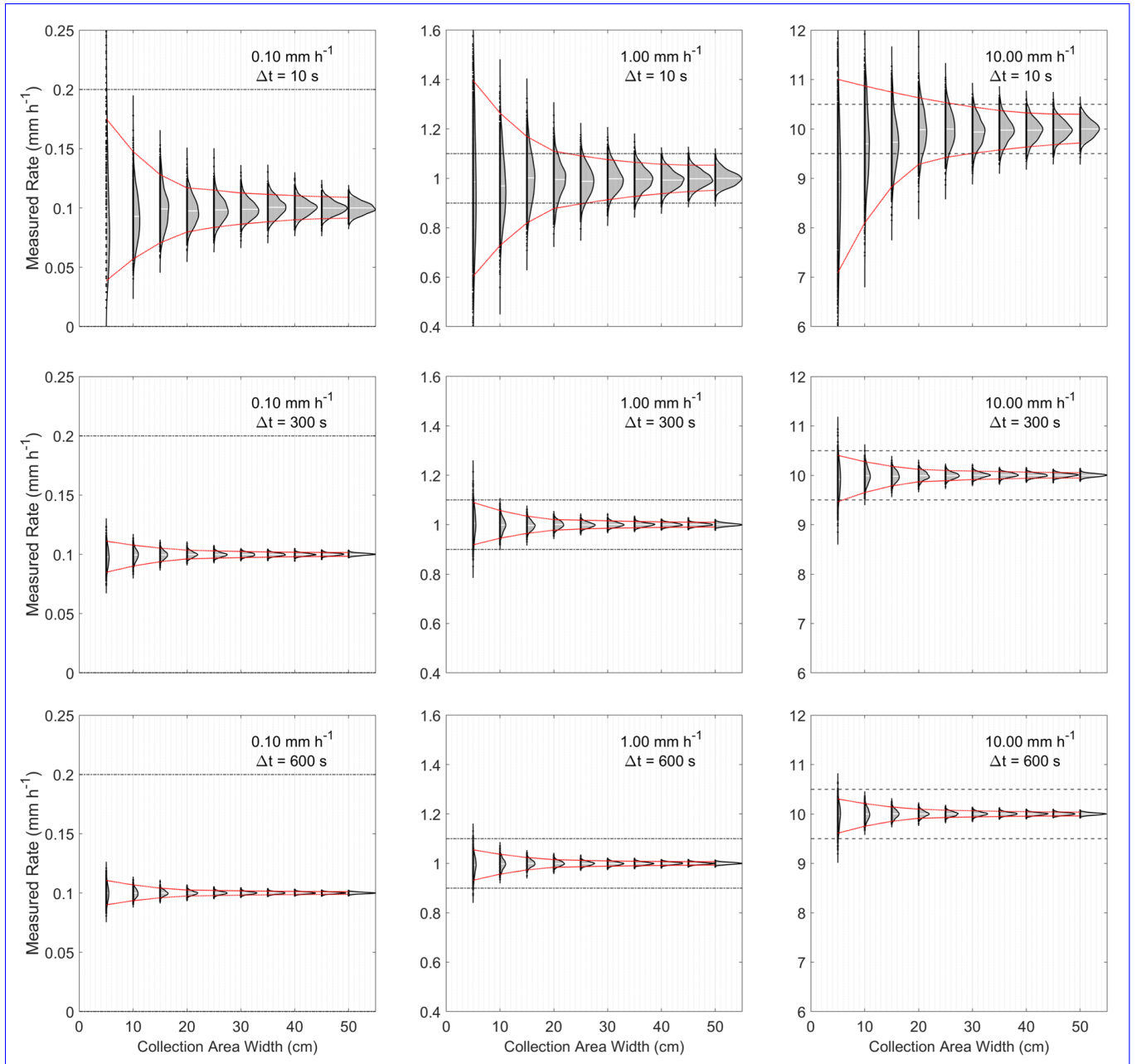


Figure 3. Comparison of $R = 0.10, 1.00,$ and 10.00 mm h^{-1} for $\Delta t = 10 \text{ s}, 5 \text{ minutes},$ and 10 minutes . The applicable WMO standards for each rate ($\pm 5\%$ (dashed) and $\pm 0.1 \text{ mm h}^{-1}$ (dot-dashed)) are shown as horizontal lines.

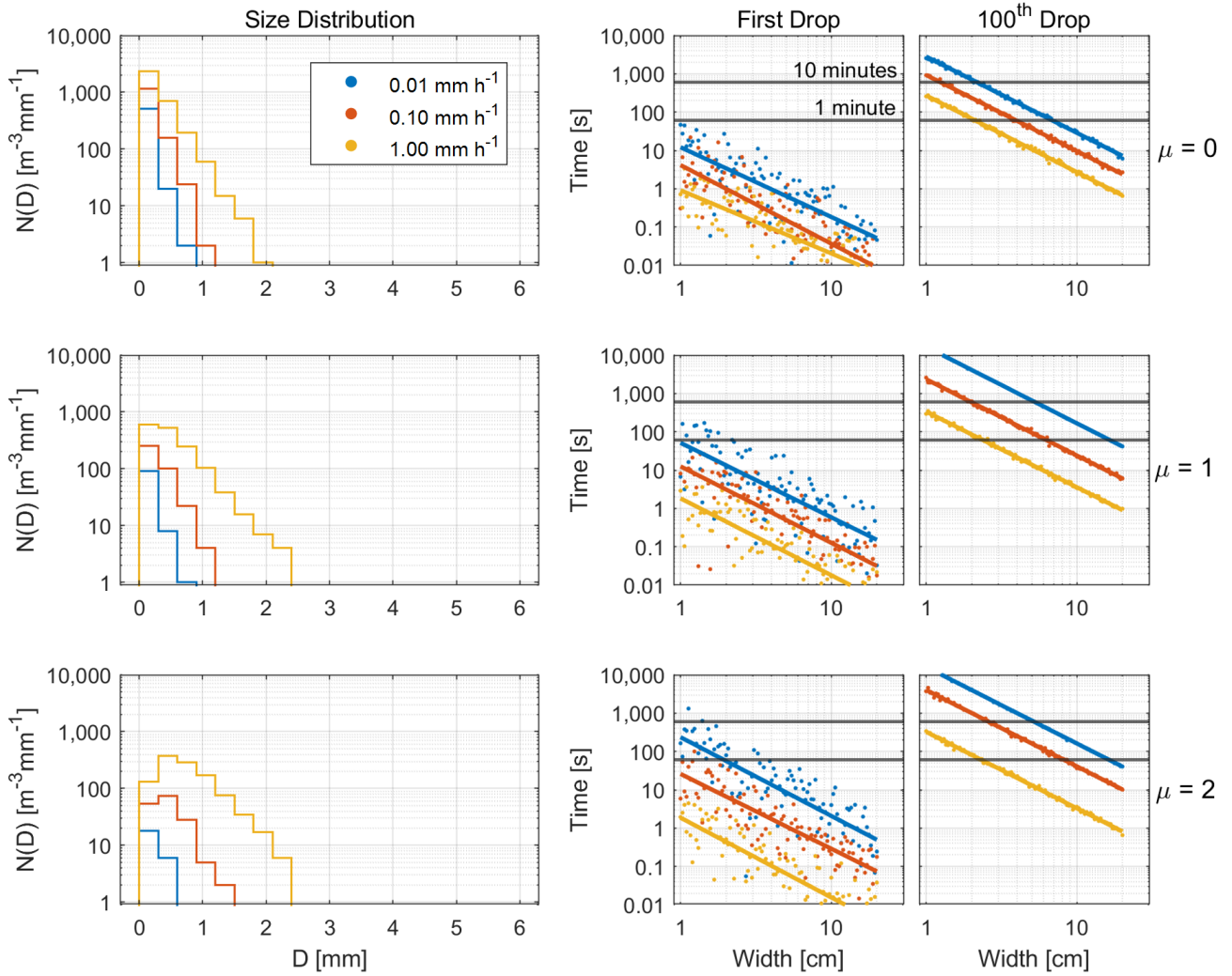


Figure 4. Generated size distributions (left) First Drop Simulation (middle), and 100th Drop Simulation (right) for $\mu = 0, 1,$ and 2 (top, middle, and bottom).

190 4.2 Application to DEID measurements

During a field campaign that took place at the University of Utah between April 2019 and March 2020, the DEID recorded the mass and density of individual hydrometeors, along with the one-minute-averaged precipitation rate R_{DEID} for six rain events and five snow events with data spanning 1185 total minutes. DEID particle mass distributions for two contrasting one-minute samples of convective moderate ($R_{DEID} = 4.2 \text{ mm h}^{-1}$) and light ($R_{DEID} = 0.1 \text{ mm h}^{-1}$) rain are shown in Fig. 5 and 6. 195 These samples were selected from rain-only events with measured R_{DEID} values closest to the values of R that were analyzed in Section 4.1. These disdrometer data are used here in place of an assumed size distribution to calculate R_{calc} (Eq. 6) in 100 iterations, each taken from data randomly sampled over time interval segments of $\Delta t = 10, 20, 30, 40,$ and 50 s (Fig. 5c and 6c) and plate area segments of $W = 1, 2, 3, 4,$ and 5 cm (Fig. 5d and 6d). Segments of Δt include all particles within the DEID collection area and segments in W encompass the entire 60 second time interval. In a three dimensional space of plate 200 cross-sectional area and sampling time, the associated number concentration of drops for each case is shown in Fig. 5a-b and Fig. 6a-b.

The version of the DEID used in this study had a maximum collection area width of $W = 5.8 \text{ cm}$. For the moderate rain case, the WMO precision requirement is $\pm 5\%$ (dashed lines). The derived minimum required hotplate width to meet WMO requirements is larger than 10 cm, larger than the plate used. That is, the size of plate used was insufficient for the measurement of rain this intense. For light rain, the statistical uncertainty bounds at 95% confidence converge to within $\pm 0.1 \text{ mm h}^{-1}$ of the DEID 1-minute measured rate for a plate collection area width of $W \sim 3 \text{ cm}$. This value is larger than ~~that the width of 2 cm~~ suggested by the Monte Carlo calculation shown in Table 2, ~~although for reasons that are unclear~~. One possibility is that the raindrop interarrival time and spacing were ~~non-Poissonian (Jameson and Kostinski, 2001b) as implicitly supposed using a Monte Carlo approach. For the moderate rain case not in fact Poissonian (Jameson and Kostinski, 2001b). In the event of~~ 210 clustering then a larger plate would be required to provide an accurate assessment of the average rain rate during a given time interval.

To assess whether this is the case, two-point correlation functions η were calculated following Shaw et al. (2002). A value of unity indicates interarrival times that are Poissonian and values greater than unity the presence of non-random clustering. Based on the location of hydrometeor centroids as they arrive on the DEID plate, storm-averaged values of η were found to 215 be equal to 1.01 for rain falling under light winds on March 8, 2020, between 13:38 and 15:49 MST, and equal to 1.10 for the period between 05:00-07:34 MST earlier that day when high winds were present. For contrast, the value of η was 1.55 for a snow event with large aggregate snowflakes that took place on January 14, the WMO precision requirement is $\pm 5\%$ (dashed lines). The derived minimum required hotplate width to meet WMO requirements is larger than 10 cm, larger than the plate used. That is, the size of plate used was insufficient for the measurement of rain this intense 2020 at 12:43-14:06 MST. While 220 more extensive analysis is required, the implication is that non-Poissonian clustering can occur.

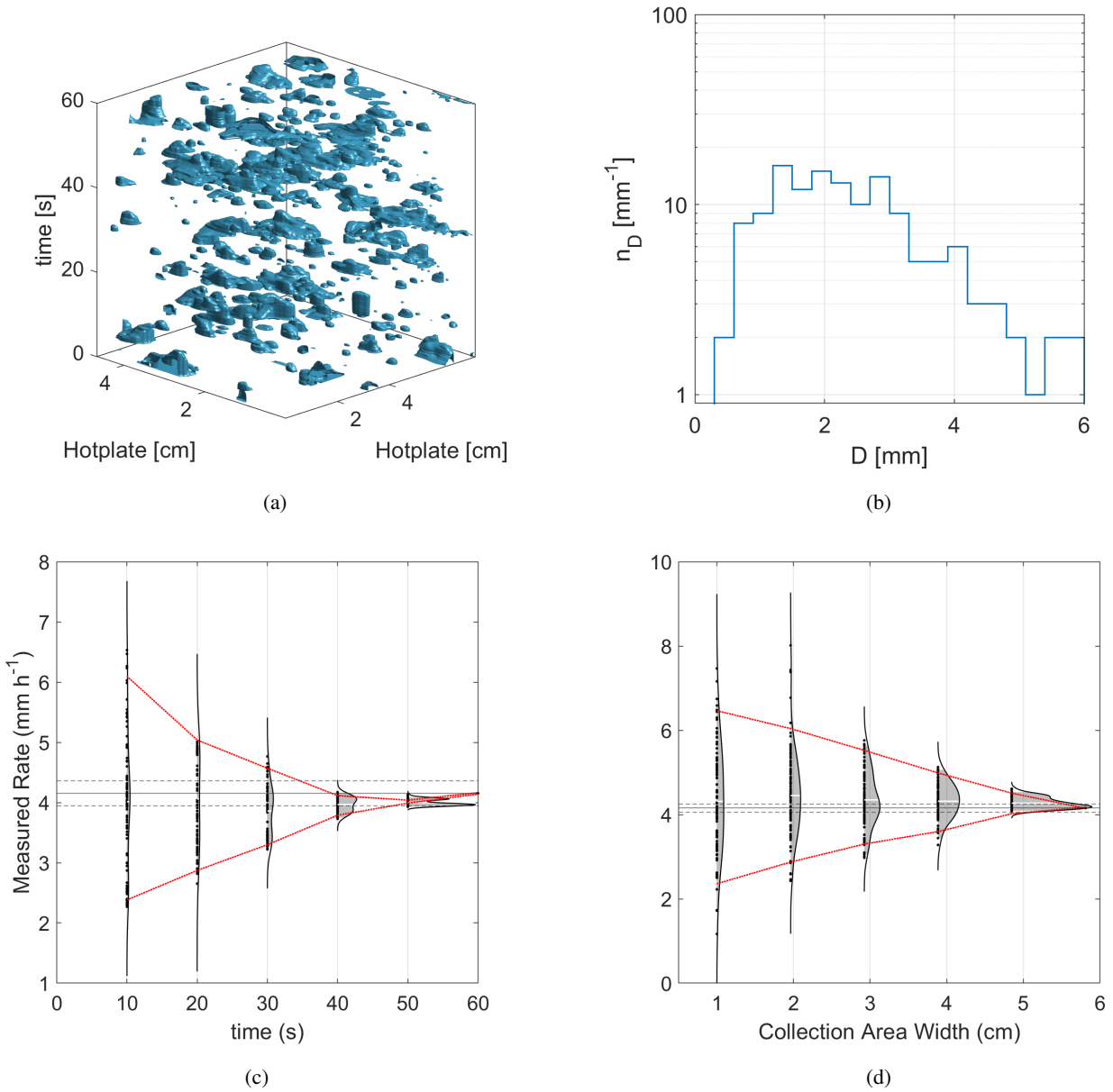


Figure 5. Recalculation of R_{calc} (Eq. 6) from 1000 uniformly distributed, randomly sampled iterations of a 1-minute DEID data set from March 8, 2020 at 1443 MST with rain rate $R_{DEID} = 4.2 \text{ mm h}^{-1}$ (a). R_{calc} was recalculated using uniformly distributed random segments of time (c) and hotplate width (d). As $t \rightarrow 60$ and $W \rightarrow W_{DEID}$, R_{calc} approaches R_{DEID} .

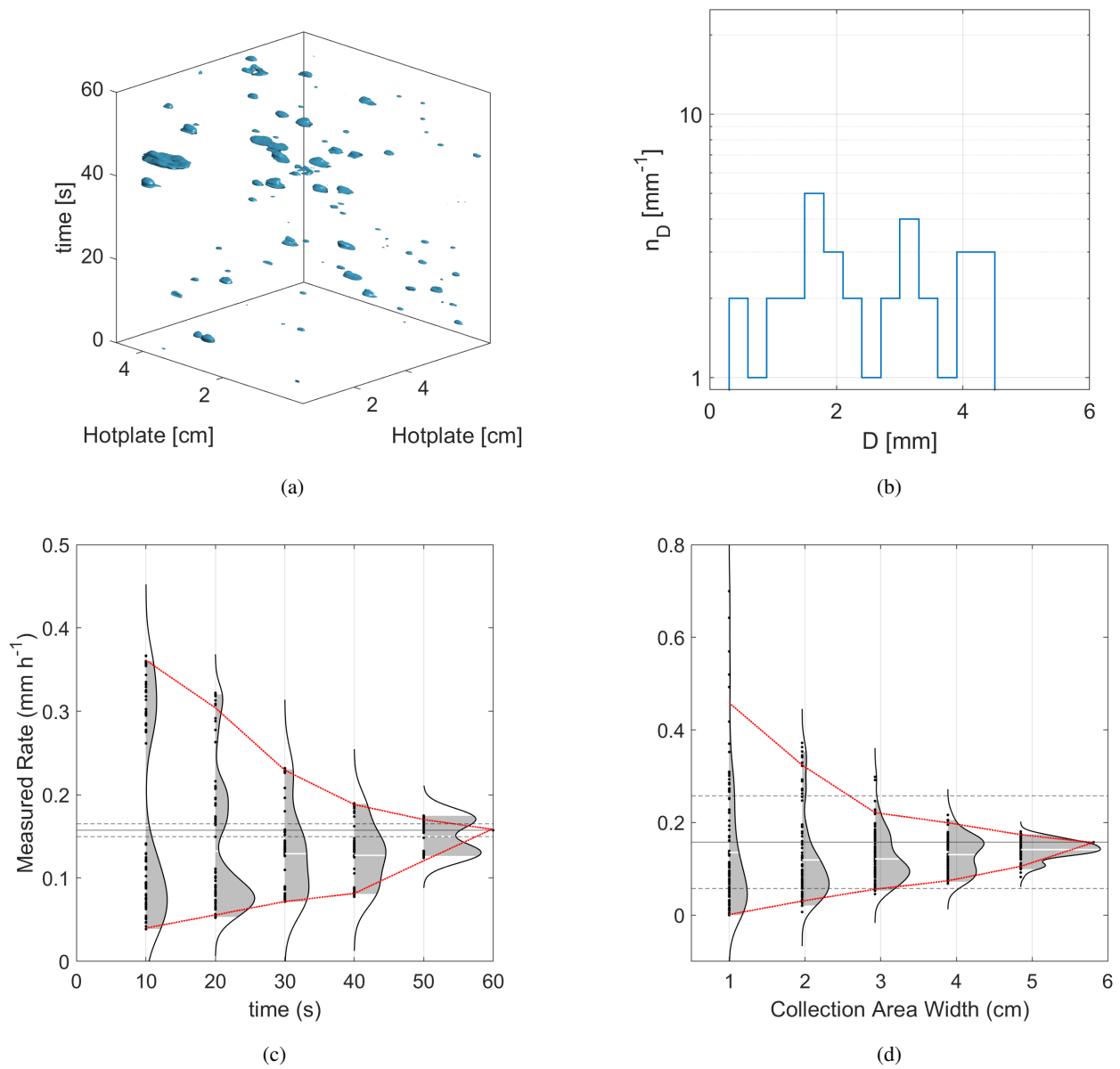


Figure 6. Recalculation of R_{calc} from 1000 iterations of a 1-minute DEID data set from March 8, 2020 at 1514 MST with rain rate $R_{DEID} = 0.1 \text{ mm h}^{-1}$ (a). R_{calc} was calculated using uniformly distributed random segments of time (c) and hotplate width (d). As $t \rightarrow 60$ and $W \rightarrow W_{DEID}$, R_{calc} approaches R_{DEID} .

5 Conclusions

A Monte Carlo approach was used to determine the minimum required cross-sectional collection area for a disdrometer to measure a given precipitation rate with a WMO target precision at 95% probability for a one-minute collection period. Intrinsic instrument uncertainties were not considered, only those associated with statistical sampling errors associated with the raindrop size distribution. Following these criteria, a square collection area of $6\text{ cm} \times 6\text{ cm}$ is sufficient to detect the onset of light rain with $R \leq 0.50\text{ mm h}^{-1}$.

For $R > 1\text{ mm h}^{-1}$, a sample area of over $10\text{ cm} \times 10\text{ cm}$ is required, although a smaller collection area may achieve the required accuracy by increasing the sampling time. For example, in five ten minutes, a $4\text{ cm} \times 4\text{ cm}$ collection area can measure 10 mm h^{-1} precipitation rates to within the WMO required precision 95% of the time. A collection area as small as $2\text{ cm} \times 2\text{ cm}$ may detect the onset of light drizzle with $R = 0.01\text{ mm h}^{-1}$ within one minute, even in instances where small particles in the drop size distribution fall too slowly to intercept the collection area.

Theoretical results obtained from Monte Carlo simulations were compared with observed field measurements from a new precipitation sensor, the Differential Emissivity Imaging Disdrometer, for both light and moderate rain. Randomly selected segments of decreasing sampling time and area from the DEID were used to recalculate the precipitation rate. The results suggest a larger plate may be required to meet a specified precision than those indicated by the Monte Carlo simulations ; ~~although it is not yet known why.~~ A possible explanation is the presence of non-Poissonian clustering that was revealed by two-point correlation function calculations, particularly during high wind and snow events.

The results presented here have general implications for the sampling limitations of other widely used particle-by-particle disdrometers such as the PARSIVEL with a sample area of 48.6 cm^2 or effective W of 7 cm (Battaglia et al., 2010), and the 2DVD (Kruger and Krajewski, 2002) with a W of 10 cm . Despite their sizable collection areas, like the DEID, they may nonetheless fail to meet WMO standards if operated at a nominal 1 minute sampling interval.

Competing interests. The DEID intellectual property is protected through a pending patent and is commercially available through Particle Flux Analytics, Inc. TJG is a co-owner of Particle Flux Analytics which has a licence from the University of Utah to commercialize the DEID.

Acknowledgements. This work ~~was supported by awards from~~ is supported by the U.S. Department of Energy ~~grant number 235586 and the~~ (DOE) Atmospheric System Research program award number DE-SC0016282 and National Science Foundation ~~grant~~ (NSF) Physical and Dynamic Meteorology program award number 1841870. ~~The DEID was developed in collaboration with Dhiraj Singh and Eric Pardyjak at the University of Utah.~~ We are grateful to Dr. Dhiraj Singh, Professor Eric Pardyjak, Spencer Donovan, and Allan Reaburn and colleagues at Particle Flux Analytics for their contributions to the field program and the development of the DEID. We thank the two anonymous reviewers for their constructive comments.

References

- Andrey, J. and Yagar, S.: A temporal analysis of rain-related crash risk, *Accident Analysis & Prevention*, 25, 465–472, [https://doi.org/10.1016/0001-4575\(93\)90076-9](https://doi.org/10.1016/0001-4575(93)90076-9), 1993.
- Andrey, J. C. and Mills, B. E.: *Collisions, Casualties, and Costs: Weathering the Elements on Canadian Roads*, Institute for Catastrophic Loss Reduction Canada, 2003.
- Bartholomew, M. J.: *Laser Disdrometer Instrument Handbook*, Tech. rep., Department of Energy Atmospheric Radiation Measurement Program, https://www.arm.gov/publications/tech_reports/handbooks/lidis_handbook.pdf, 2014.
- Battaglia, A., Rustemeier, E., Tokay, A., Blahak, U., and Simmer, C.: PARSIVEL snow observations: A critical assessment, *Journal of Atmospheric and Oceanic Technology*, 27, 333 – 344, <https://doi.org/10.1175/2009JTECHA1332.1>, https://journals.ametsoc.org/view/journals/atot/27/2/2009jtecha1332_1.xml, 2010.
- Bergel-Hayat, R., Debbbarh, M., Antoniou, C., and Yannis, G.: Explaining the road accident risk: Weather effects, *Accident Analysis & Prevention*, 60, 456–465, <https://doi.org/10.1016/j.aap.2013.03.006>, 2013.
- Brandes, E. A., Ikeda, K., Zhang, G., Schönhuber, M., and Rasmussen, R. M.: A Statistical and Physical Description of Hydrometeor Distributions in Colorado Snowstorms Using a Video Disdrometer, *Journal of Applied Meteorology and Climatology*, 46, 634–650, <https://doi.org/10.1175/JAM2489.1>, 2007.
- Brun, E., David, P., Sudul, M., and Brunot, G.: A numerical model to simulate snow-cover stratigraphy for operational avalanche forecasting, *Journal of Glaciology*, 38, 13–22, <https://doi.org/10.3189/S0022143000009552>, 1992.
- Campbell, J. F. and Langevin, A.: Operations management for urban snow removal and disposal, *Transportation Research Part A: Policy and Practice*, 29, 359 – 370, [https://doi.org/10.1016/0965-8564\(95\)00002-6](https://doi.org/10.1016/0965-8564(95)00002-6), 1995.
- Colle, B. A., Garvert, M. F., Wolfe, J. B., Mass, C. F., and Woods, C. P.: The 13–14 December 2001 IMPROVE-2 Event. Part III: Simulated Microphysical Budgets and Sensitivity Studies, *Journal of the Atmospheric Sciences*, 62, 3535–3558, 2005.
- Estévez, J., Gavilán, P., and García-Marín, A.: Data validation procedures in agricultural meteorology—a prerequisite for their use, *Advances in Science and Research*, 6, 141, 2011.
- Fulton, R. A., Breidenbach, J. P., Seo, D.-J., Miller, D. A., and O’Bannon, T.: The WSR-88D Rainfall Algorithm, *Weather and Forecasting*, 13, 377–395, 1998.
- Garrett, T. J.: Analytical solutions for precipitation size distributions at steady-state, *Journal of the Atmospheric Sciences*, 76, 1031–1037, <https://doi.org/10.1175/JAS-D-18-0309.1>, 2019.
- Gultepe, I.: Measurements of light rain, drizzle and heavy fog, in: *Precipitation: Advances in measurement, estimation and prediction*, pp. 59–82, Springer, 2008.
- Horel, J., Splitt, M., Dunn, L., Pechmann, J., White, B., Ciliberti, C., Lazarus, S., Slemmer, J., Zaff, D., and Burks, J.: Mesowest: Cooperative Mesonets in the Western United States, *Bulletin of the American Meteorological Society*, 83, 211–226, 2002.
- Jameson, A. R. and Kostinski, A. B.: Fluctuation Properties of Precipitation. Part V: Distribution of Rain Rates—Theory and Observations in Clustered Rain, *Journal of the Atmospheric Sciences*, 56, 3920–3932, 1999.
- Jameson, A. R. and Kostinski, A. B.: Reconsideration of the physical and empirical origins of Z–R relations in radar meteorology, *Quarterly Journal of the Royal Meteorological Society*, 127, 517–538, 2001a.
- Jameson, A. R. and Kostinski, A. B.: What is a Raindrop Size Distribution?, *Bulletin of the American Meteorological Society*, 82, 1169–1178, 2001b.

- Jameson, A. R. and Kostinski, A. B.: Spurious power-law relations among rainfall and radar parameters, *Quarterly Journal of the Royal Meteorological Society*, 128, 2045–2058, 2002.
- 290 Joss, J. and Waldvogel, A.: Ein spektrograph für niederschlagstropfen mit automatischer auswertung, *Pure and Applied Geophysics*, 68, 240–246, 1967.
- Joss, J. and Waldvogel, A.: Raindrop Size Distribution and Sampling Size Errors, *Journal of the Atmospheric Sciences*, 26, 566–569, 1969.
- Kruger, A. and Krajewski, W. F.: Two-Dimensional Video Disdrometer: A Description, *Journal of Atmospheric and Oceanic Technology*, 19, 602–617, 2002.
- 295 Kummerow, C., Simpson, J., Thiele, O., Barnes, W., Chang, A. T. C., Stocker, E., Adler, R. F., Hou, A., Kakar, R., Wentz, F., Ashcroft, P., Koizu, T., Hong, Y., Okamoto, K., Iguchi, T., Kuroiwa, H., Im, E., Haddad, Z., Huffman, G., Ferrier, B., Olson, W. S., Zipser, E., Smith, E. A., Wilheit, T. T., North, G., Krishnamurti, T., and Nakamura, K.: The Status of the Tropical Rainfall Measuring Mission (TRMM) after Two Years in Orbit, *Journal of Applied Meteorology*, 39, 1965–1982, 2000.
- Lamb, D. and Verlinde, J.: *Physics and Chemistry of Clouds*, Cambridge University Press, 2011.
- 300 Lane, J. E., Kasparis, T., Metzger, P. T., and Jones, W. L.: Spatial and Temporal Extrapolation of Disdrometer Size Distributions Based on a Lagrangian Trajectory Model of Falling Rain, *The Open Atmospheric Science Journal*, 3, 172–186, <https://doi.org/10.2174/1874282300903010172>, 2009.
- Liu, X., Gao, T., Hu, Y., and Shu, X.: Measuring hydrometeors using a precipitation microphysical characteristics sensor: Sampling effect of different bin sizes on drop size distribution parameters, *Advances in Meteorology*, 2018, 1–15, <https://doi.org/10.1155/2018/9727345>, 2018.
- 305 Liu, X. C., Gao, T. C., and Liu, L.: Effect of sampling variation on error of rainfall variables measured by optical disdrometer, *Atmospheric Measurement Techniques Discussions*, 5, 8895–8924, <https://doi.org/10.5194/amtd-5-8895-2012>, 2012.
- Marshall, J. S. and Palmer, W.: The distribution of raindrops with size, *Journal of Meteorology*, 5, 165–166, 1948.
- Marshall, J. S., Langille, R. C., and Palmer, W. M. K.: Measurement of Rainfall by Radar, *Journal of Meteorology*, 4, 186–192, 1947.
- 310 Miller, P. A. and Barth, M. F.: Ingest, integration, quality control, and distribution of observations from state transportation departments using MADIS, in: 19th International Conference on Interactive Information and Processing Systems, 2003.
- Nadolski, V.: Automated surface observing system (ASOS) user’s guide, Tech. rep., <https://www.weather.gov/media/asos/aum-toc.pdf>, 1998.
- Pond Engineering: Model K63 Hotplate Total Precipitation Gauge Operation Maintenance Manual, http://www.pondengineering.com/s/K63_man_Mar2020.pdf, 2020.
- 315 Rasmussen, R. M., Hallett, J., Purcell, R., Landolt, S. D., and Cole, J.: The Hotplate Precipitation Gauge, *Journal of Atmospheric and Oceanic Technology*, 28, 148–164, <https://doi.org/10.1175/2010JTECHA1375.1>, 2010.
- Shaw, R. A., Kostinski, A. B., and Lanterman, D. D.: Super-exponential extinction of radiation in a negatively correlated random medium, , 75, 13–20, 2002.
- Singh, D. K., Donovan, S., Pardyjak, E. R., and Garrett, T. J.: A differential emissivity imaging technique for measuring hydrometeor mass and type, *Atmos. Meas. Tech. Discuss.* [preprint], in review, <https://doi.org/10.5194/amt-2021-44>, 2021.
- 320 Smith, R. B., Jiang, Q., Fearon, M. G., Tabary, P., Dorninger, M., Doyle, J. D., and Benoit, R.: Orographic precipitation and air mass transformation: An Alpine example, *Quarterly Journal of the Royal Meteorological Society*, 129, 433–454, <https://doi.org/https://doi.org/10.1256/qj.01.212>, <https://rmets.onlinelibrary.wiley.com/doi/abs/10.1256/qj.01.212>, 2003.
- Theofilatos, A. and Yannis, G.: A review of the effect of traffic and weather characteristics on road safety, *Accident Analysis & Prevention*, 325 72, 244–256, <https://doi.org/10.1016/j.aap.2014.06.017>, 2014.

- Thurai, M., Petersen, W. A., Tokay, A., Schultz, C., and Gatlin, P.: Drop size distribution comparisons between Parsivel and 2-D video disdrometers, *Advances in Geosciences*, 30, 3–9, <https://doi.org/10.5194/adgeo-30-3-2011>, 2011.
- Tokay, A., Petersen, W. A., Gatlin, P., and Wingo, M.: Comparison of Raindrop Size Distribution Measurements by Collocated Disdrometers, *Journal of Atmospheric and Oceanic Technology*, 30, 1672–1690, <https://doi.org/10.1175/JTECH-D-12-00163.1>, 2013.
- 330 Ulbrich, C. W. and Atlas, D.: Assessment of the contribution of differential polarization to improved rainfall measurements, *Radio Science*, 19, 49–57, <https://doi.org/10.1029/RS019i001p00049>, 1984.
- Vaisala: Present Weather Detector PWD52 B211065EN-C, <https://www.vaisala.com/sites/default/files/documents/\PWD52-Datasheet-B211065EN.pdf>, datasheet, 2018a.
- Vaisala: MAWS201M Datasheet B210730EN-F, datasheet, 2018b.
- 335 Vaisala: Forward Scatter FD70 Series B211744EN-C, <https://www.vaisala.com/sites/default/files/documents/\FD70-Series-Datasheet-B211744EN.pdf>, datasheet, 2019a.
- Vaisala: Present Weather and Visibility Sensors PWD10, PWD12, PWD20, and PWD22 B210385EN-F, <https://www.vaisala.com/sites/default/files/documents/\PWD-Series-Datasheet-B210385EN.pdf>, datasheet, 2019b.
- Villermaux, E. and Bossa, B.: Single-drop fragmentation determines size distribution of raindrops, *Nature Physics*, 5, 697–702, 2009.
- 340 Wade, C. G.: A Multisensor Approach to Detecting Drizzle on ASOS, *Journal of Atmospheric and Oceanic Technology*, 20, 820–832, 2003.
- WMO: Guide to meteorological instruments and methods of observation (WMO-No. 8), World Meteorological Organization, https://library.wmo.int/doc_num.php?explnum_id=3148, 2018.
- Yankee Environmental Systems, I.: TPS-3100 Total Precipitation Sensor, Installation and User Guide, Version 2.0, Rev M, 2011.