

Revision of the WMO/GAW CO₂ Calibration Scale

Bradley D. Hall¹, Andrew M. Crotwell^{1,2}, Duane R. Kitzis^{1,2}, Thomas Mefford^{1,2}, Benjamin R. Miller³, Michael F. Schibig^{4,5}, and Pieter P. Tans¹

¹ National Oceanic and Atmospheric Administration, Global Monitoring Laboratory, Boulder, CO, USA
² Cooperative Institute for Research in Environmental Sciences, University of Colorado, Boulder, CO, USA
³ Previously with the Cooperative Institute for Research in Environmental Sciences, University of Colorado, Boulder, CO, USA
⁴ Climate and Environmental Physics, University of Bern, Bern, Switzerland
⁵ Oeschger Centre for Climate Change Research, University of Bern, Bern, Switzerland

Correspondence to: Brad Hall (Bradley.Hall@noaa.gov)

Abstract The NOAA Global Monitoring Laboratory serves as the [World Meteorological Organization Global Atmosphere Watch \(WMO/GAW\)](#) Central Calibration Laboratory (CCL) for CO₂ and is responsible for maintaining the WMO/GAW mole fraction scale used as a reference within the WMO/GAW program. The current WMO-CO₂-X2007 scale is embodied by 15 aluminum cylinders containing [modified](#) natural air, with CO₂ mole fractions determined using the NOAA manometer from 1995 to 2006. We have made two minor corrections to historical manometric records: fixing an error in the applied second virial coefficient of CO₂, and accounting for loss of a small amount of CO₂ to materials in the manometer during the measurement process. By incorporating these corrections, extending the measurement records of the original 15 primary standards through 2015, and adding four new primary standards to the suite, we define a new scale, identified as WMO-CO₂-X2019. The new scale is 0.18 μmol mol⁻¹ (ppm) greater than the previous scale at 400 ppm CO₂. While this difference is small in relative terms (0.045%), it is significant in terms of atmospheric monitoring. All measurements of tertiary-level standards will be reprocessed to WMO-CO₂-X2019. The new scale is more internally consistent than WMO-CO₂-X2007 owing to revisions in propagation, and should result in an overall improvement in atmospheric data records traceable to the CCL.

1 Introduction

Measurements of the atmospheric distribution of carbon dioxide (CO₂) are essential to understanding sources and sinks of this powerful greenhouse gas. We need well-calibrated measurements to track the history of the global abundance of CO₂ because it is the main driving force of man-made climate change. Small differences in the relative abundances of CO₂ and other trace gases observed at different locations, combined with information on atmospheric transport and mechanisms for land-atmosphere-ocean exchange can provide constraints on estimates of the sources and sinks of CO₂. Measurements are made at numerous sites around the globe in conjunction with the WMO Global Atmosphere Watch program and through regionally-coordinated programs (e.g. Integrated Carbon Observing System, ICOS).

Deleted:

Because the atmospheric gradients of CO₂ are small in the background atmosphere far from sources of pollution, the WMO/GAW has adopted a single reference scale, maintained and disseminated by a designated Central Calibration Laboratory (CCL), on which to base all measurements made within the program. The quantity to be measured is the mole fraction of CO₂ in dry air ($\mu\text{mol mol}^{-1}$, abbreviated as ppm, from parts per million), because it is conserved when air expands or contracts or when water vapour is added or removed. The WMO community has set network compatibility goals for the measurements, 0.1 ppm in the northern and 0.05 ppm in the southern hemisphere, aimed at minimizing bias between measurement sites in the network (WMO, 2020). To help meet these stringent goals, the WMO/GAW community voted in their 1995 meeting for the NOAA Climate Monitoring and Diagnostics Laboratory (subsequently known as the Global Monitoring Division, and currently as the Global Monitoring Laboratory) to serve as the Central Calibration Laboratory (CCL) for CO₂. The Scripps Institution of Oceanography (SIO) initially served in this capacity (Keeling et al., 1986) before responsibilities were transferred to NOAA. The WMO/GAW CO₂ calibration scale also serves as a reference linking other measurement programs, such as those involving aircraft and total column measurements to the surface measurement networks (Wunch et al., 2010; Messerschmidt et al., 2011).

As the CCL for CO₂, NOAA maintains a set of 15 aluminum high-pressure gas cylinders containing modified natural air, with CO₂ spanning the range 250-520 ppm. CO₂ mole fractions were determined using an absolute method based on manometry (Zhao et al., 1997). These cylinders serve as primary standards and along with their assigned mole fractions constitute the WMO-CO₂-X2007 mole fraction scale, where X is used to denote mole fraction, and 2007 is the year in which the assigned values were adopted (hereafter simplified to X2007). The scale is distributed in high-pressure aluminum cylinders containing natural air (tertiary-level standards) with value assignment made by comparison against secondary standards (also natural air), which are traceable to the primary standards. The CCL at NOAA is a designated institute of WMO, which is a signatory to the *Comité International des Poids et Mesures* Mutual Recognition Arrangement (CIPM-MRA). Accordingly, calibration and measurement capabilities are listed in the Key Comparison Database maintained by the *Bureau International des Poids et Mesures* (BIPM) (<http://kcdb.bipm.org/>). It is through primary methods, such as manometry, and comparison to other validated methods, such as gravimetry, that traceability to the International System of Units (SI) is established (Milton, 2013).

Since 1995, primary standards have been measured every 2-3 years to develop a measurement history and monitor for possible drift. Each measurement period is called an “episode”. The X2007 scale was developed following the 2006 measurement episode (Tans et al., 2011). We have performed three measurement episodes since 2006 (2009, 2012, and 2015) to assess the X2007 assigned values using methods similar to those in use in 2006 (Zhao and Tans, 2006). Results from the 2009, 2012, and 2015 episodes were sufficiently close to the X2007 assignments that no updates to the scale have been made since 2007. While the X2007 scale has served the community well for more than a decade, there are some compelling reasons to update the scale: 1) we discovered an error in the computer code used to reduce the manometer data; 2) we have improved our experimental methods in recent years, leading to a more accurate measure of CO₂ in the primary standards; 3) we would like

to expand the range of the WMO/GAW scale to 800 ppm to better constrain instrument response and also provide support for measurements obtained closer to emission sources, such as urban areas; and 4) we have recently developed a new measurement system used to transfer the scale to reference [gases](#) (Tans et al., 2017), which now allows us to harmonize the primary standards and define the scale with higher precision than what can be done with a single standard (see section 6.0).

Deleted: materials

Here we introduce a revision of the WMO/GAW CO₂ scale, with the new scale identified as WMO-CO₂-X2019 (hereafter referred to as X2019), and describe its implementation. This article is organized as follows. We first provide some background on the manometric method. We then describe two corrections to previous manometric results. These include corrections to rectify a calculation error related to the second virial coefficient of CO₂, and a correction for CO₂ absorption/adsorption to manometer surfaces (most likely O-rings) that occurs during the measurement process. The magnitude of the overall correction is small (~0.18 ppm at 400 ppm), but significant in terms of network compatibility goals (WMO, 2020). We have applied these corrections to 23 years of manometric measurements. By reassigning CO₂ mole fractions to previous and newly-introduced primary standards, we define the X2019 scale and explore differences between X2019 and X2007. We provide an estimate of the uncertainty associated with CO₂ reference [gases](#), updating the work of Zhao and Tans (2006). Finally, we propagate the X2019 scale to all reference [gases](#) analysed by the CCL and discuss the implementation of the X2019 scale.

Deleted: materials

Deleted: materials

2 The NOAA manometer

The manometric procedure is described in Zhao et al. (1997), and Zhao and Tans (2006). Briefly, the manometer consists of two glass volumes housed in a temperature-controlled oven, two glass traps for cryogenically extracting CO₂ from air and purifying the CO₂, and devices to measure pressure and temperature (Fig. 1). During a measurement experiment, [the manometer is evacuated to ~5 mtorr and then](#) gas from a cylinder is loaded into the larger of the two volumes (large volume, ~6 L). [The large volume is flushed for 10 min. at 200 mL min⁻¹ and the exit gas stream is monitored by NDIR to ensure a stable CO₂ signal. Inability to observe a stable CO₂ signal \(<0.1 ppm\) can result in the run being aborted. The large volume is then sealed off, allowed to equilibrate for five minutes, and the large volume temperature and pressure are recorded.](#) The air sample is then pumped across the glass traps, which are held at liquid nitrogen temperature, to cryogenically extract the CO₂ from the air sample. The CO₂ is then purified (to remove H₂O) by alternately freezing at L-N₂ temperature (~ -197 °C at 84 kPa) and warming to ~-67 °C. Finally, the purified CO₂ is cryogenically trapped into the smaller of the two volumes (~7 mL) and allowed to sublime. The pressure and temperature of CO₂ in the small volume are recorded at ~30 s intervals as the CO₂ warms and equilibrates to the oven temperature.

Formatted: Subscript

Deleted: After flushing the large volume for 10 min. at 200 mL min⁻¹ and allowing the gas temperature to equilibrate to oven temperature, the large volume is sealed off and the large volume temperature and pressure are recorded.

The mole fraction of CO₂ is determined from measurements of pressure, temperature, and the ratio of the two volumes. The volume ratio is determined by a gas expansion method using two additional volumes, also housed in the oven. A gas, usually

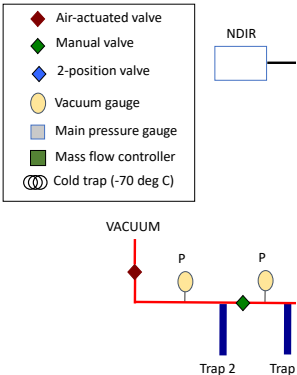
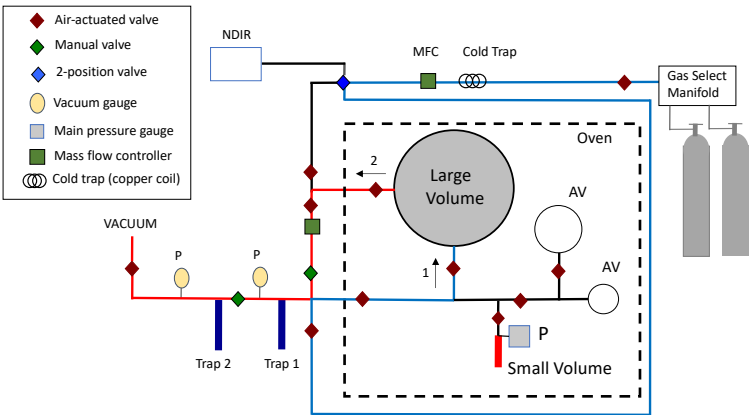
air or nitrogen, is expanded into successive volumes, with P and T measured at each stage, to bridge the difference between small and large volumes (Zhao et al., 1997). The mole fraction of CO₂, X_{CO_2} , is calculated using:

$$X_{CO_2} = (\phi^{-1}) \frac{P_{CO_2} T_{air}}{P_{air} T_{CO_2}} (1 + A_1 - A_2) - X_{N_2O} \tag{1}$$

$$A_1 = \frac{P_{air} \beta_{air}}{RT_{air}}$$

$$A_2 = \frac{P_{CO_2} \beta_{CO_2}}{RT_{CO_2}}$$

where T and P are the temperatures and pressures of air in the large volume (air) and nearly pure CO₂ in the small volume (CO₂), β_{air} and β_{CO_2} are second virial coefficients, R is the gas constant, Φ is the volume ratio (large/small), and X_{N_2O} is the mole fraction of N₂O in the air sample (measured separately by gas chromatography with electron capture detection) (Hall et al., 2011). Equation (1) is an alternate form of eq. 8 from Zhao et al. (1997).



Deleted:

Figure 1: Schematic of the NOAA manometer. Air is passed through a cold trap ($\sim -69^\circ\text{C}$) and mass flow controller into the large volume in the direction of arrow (1), shown as blue lines. After the temperature and pressure of the air in the large volume are recorded, the air is drawn from the large volume, in the direction of arrow (2) (red lines), and through traps 1 and 2 to cryogenically trap the CO_2 . The CO_2 is cryogenically purified in glass traps 1 and 2, and then transferred to the small volume where its pressure and temperature are determined. Auxiliary volumes (“AV”) are used in separate experiments to determine the ratio of large and small volumes (volume ratio). The dashed line depicts a temperature-controlled oven housing the glass volumes and pressure gauge.

Deleted: (approx. -197°C at 84 kPa)

3 Reprocessing historical manometer data

Manometer data were obtained using software designed to read and store temperature and pressure data during a manometer run, and calculate the CO_2 mole fraction. Prior to each manometric episode, temperature and pressure were referenced to national standards (and to the SI) through calibration at accredited laboratories. [Volume ratio experiments were performed prior to and during each episode \(e.g. SM, Fig. S6\).](#) Pressure and temperature calibration coefficients needed to convert measured variables to P and T, as well as the volume ratio, were hard-coded in this software. During the final P and T measurement, CO_2 was calculated periodically as the gas in the small volume warmed and equilibrated to oven temperature during the final stage of measurement. An example of CO_2 mole fraction calculated as a function of time is shown in Fig. 2.

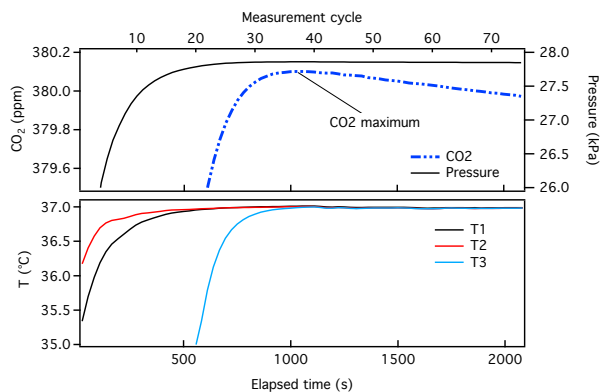
Deleted: s.

Deleted: ,

Mole fractions of CO_2 were previously determined as the maximum X_{CO_2} calculated during the final stage (Fig. 2), adjusted for $X_{\text{N}_2\text{O}}$. There are two minor issues associated with this method that we correct with the implementation of the X2019 scale. First, we recently discovered an error in the software used to calculate X_{CO_2} . The second virial coefficient for CO_2 (β_{CO_2}) (Sengers et al., 1971) was calculated corresponding to a temperature that was 10 K higher than the actual T_{CO_2} (320 K instead of 310 K) due to an interpolation error. Temperature was recorded correctly, but β_{CO_2} was calculated incorrectly. Consequently, X_{CO_2} was underestimated by about ~ 0.03 ppm at 400 ppm. Second, we recognize that the pressure in the small volume decreases slowly with time after the temperature of the small volume stabilizes (Fig. 2). For the 380 ppm sample shown in Fig. 2, the rate of change in pressure is $\sim 10^{-5}$ kPa s^{-1} , or -0.036 kPa hr^{-1} . We suspect that CO_2 adsorbs to Viton O-rings and possibly adsorbs to surfaces of the small volume (Fig. 3). Separate tests conducted with pure CO_2 and Viton O-rings [in a test tube](#) revealed CO_2 loss rates comparable to what is observed in the manometer small volume ([unpublished data](#)). Essential to the development of the X2019 scale was revisiting previous data and making corrections for the incorrect β_{CO_2} and the loss of CO_2 that occurred prior to the maximum measured X_{CO_2} .

The results from all manometric determinations are stored in a database. Historical manometer results were adjusted using the following equation:

$$X_{\text{CO}_2}(\text{update}) = X_{\text{CO}_2}(\text{original}) + X_{\text{virial_correction}} + X_{\text{loss_correction}} \quad (2)$$



155 **Figure 2:** Typical data from a manometric run, showing the small volume pressure and CO₂ (+N₂O) calculated as a function of time (upper panel), and temperature measured at three locations within the oven (lower panel). Historical manometric records are time-stamped with “measurement cycle”, which is shown on the upper x-axis. Here, each measurement cycle corresponds to ~30s. Temperature probe T3 is adjacent to the small volume and is cooled to liquid nitrogen temperature during extraction.

160

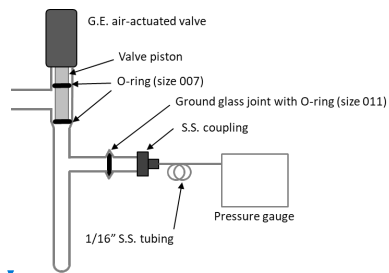
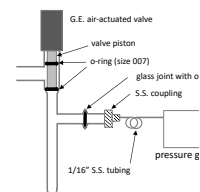


Figure 3: Diagram of the small volume showing position of Viton O-rings in the air-actuated valve (Glass Expansion, Pocasset, MA) and a glass joint.



Deleted:

3.1 Correcting for β_{CO_2}

For $X_{\text{virial_correction}}$, we first updated the data reduction software to calculate β_{CO_2} by correctly interpolating between the same β_{CO_2} coefficients used to define X2007 ($-112.8 \text{ cm}^3 \text{ mol}^{-1}$ at 310 K, and $-104.8 \text{ cm}^3 \text{ mol}^{-1}$ at 320 K (Zhao et al., 1997)). We then use the correct β_{CO_2} to calculate X_{CO_2} from pressure and temperature recorded in manometric data files, and compare to X_{CO_2} calculated using the original (incorrect) values for β_{CO_2} . Fig. 4 shows differences between the updated results (β_{CO_2} correct) and the original X_{CO_2} (β_{CO_2} incorrect). There are three representative periods that correspond to three nominally different volume ratios. The data show compact relationships with CO_2 mole fraction, as expected, since the mole fraction determined is largely a function of the pressure of CO_2 collected in the small volume. During each manometric determination, several temperatures were recorded. Since there are periods for which we do not know specifically which temperature records were used or the exact volume ratio used in the original calculation, we used three polynomial functions to estimate $X_{\text{virial_correction}}$ corresponding to three time periods: 1996-1999, 1999-2003, and 2004-2016 (Fig. 4). The uncertainty associated with the estimated $X_{\text{virial_correction}}$ is less than 0.01 ppm.

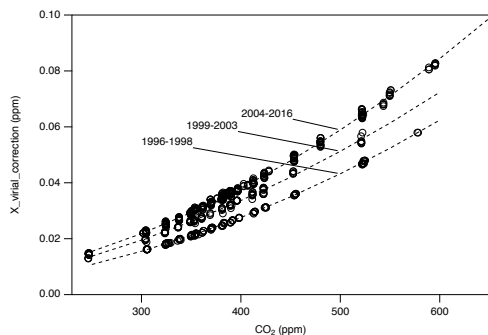


Figure 4: Corrections applied to account for an incorrect second virial coefficient ($X_{\text{virial_correction}}$). Three second order polynomial functions were used corresponding to periods with nominally different volume ratios. Measurements performed after 2016 do not require this correction.

3.2 Correcting for CO_2 loss

To correct for CO_2 loss, we assume that loss of CO_2 to materials in the small volume begins soon after CO_2 sublimates and occurs at a constant rate. By extending the manometer run time out several hours, we can see that the loss rate decreases with time (see [SM, section 1.2](#)). However, the loss rate is sufficiently linear over the short term that a linear correction is a reasonable approach.

We derive loss rates by fitting a linear function to the calculated X_{CO_2} , beginning ~ 3 minutes after the maximum CO_2 and fitting 10-12 minutes of data (Fig. 5). This period corresponds to near-constant temperature and a steady decrease in pressure.

Deleted: the original X_{CO_2} results (β_{CO_2} incorrect) and

Deleted: Supplemental Material

After obtaining a loss rate from each data file, we correct the existing CO₂ record using the loss rate and elapsed time (expressed in terms of a measurement cycle, each approx. 30 s in duration).

$$X_{loss_correction} = -a(t - t_0) \quad (3)$$

where a is the slope calculated from a record of CO₂ vs time as in Fig. 5 (ppm time⁻¹), t is the time corresponding to the CO₂ maximum, and t_0 is the time at the start of the record, where we expect CO₂ loss to begin. Since $a < 0$, $X_{loss_correction}$ is positive. As an example, the maximum CO₂ shown in Fig. 5 occurs at cycle 35 in the data file, ~1050 seconds after the liquid nitrogen was removed from the small volume. The slope (a), is -0.0074 ± 0.0002 ppm min⁻¹. If the loss of CO₂ begins at time $t_0=0$, the correction required would be 0.13 ppm. After the liquid nitrogen is removed from the small volume, we estimate that the purified CO₂ reaches a temperature of 273 K within 1 minute, and 300 K within 3 minutes. Adsorption of CO₂ probably begins about 1 minute after the liquid nitrogen is removed. For many data records, we know that there was a software delay of three minutes between the time the small volume was sealed off (and the liquid N₂ removed) and the first data record. While this cannot be confirmed for all records, we include a two-minute delay: $t_{max\ CO_2} + 2$ minutes ($t_0 = 2$ min.). An error of 2 minutes in elapsed time would correspond to 0.015 ppm for a typical 400 ppm sample. Using an elapsed time of $t_{max\ CO_2} + 2$ min. (17.5 + 2 min, or 39 measurement cycles) in the above example, the loss correction is 0.14 ppm.

- Deleted: about 1 minute
- Deleted: about
- Deleted: 2
- Deleted: the time the liquid nitrogen was removed
- Formatted: Subscript
- Deleted:
- Deleted: this 2-minute delay is consistent with the rate of pressure rise observed, so
- Deleted: this
- Deleted: 2
- Deleted: delay in all data records
- Deleted: . Thus, for elapsed time we use
- Deleted: 2

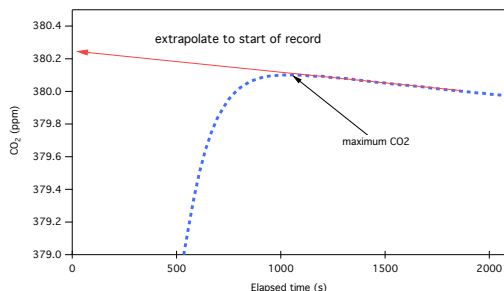


Figure 5: Typical manometer results showing CO₂ calculated as a function of time as the purified CO₂ warms while contained in the small volume. The loss rate is calculated from a linear fit as shown.

All loss rates and estimated uncertainties are shown in Fig. 6. There is some time dependence to the corrections applied, possibly due to changes in materials (valves, O-rings, etc.). The rate of CO₂ loss has generally increased over time, however it may have improved slightly after a new air-actuated valve with new Viton O-rings was installed in 2013.

Formatted: Justified, Line spacing: 1.5 lines

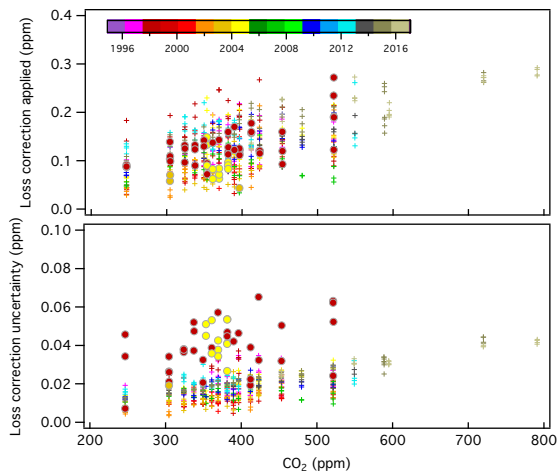


Figure 6: CO₂ loss correction ($X_{loss_correction}$) applied to manometer results in developing the X2019 scale (upper panel), and estimated uncertainty associated with the loss correction (lower panel), color-coded by year (see SM, section 2.4). The corrections are mole fraction and time-dependent. Filled circles correspond to runs in which two CO₂ maxima were observed (1998 and 2004), and loss rates were determined from data after the second maximum. Forty-eight manometric runs were processed this way (8.9% of the total).

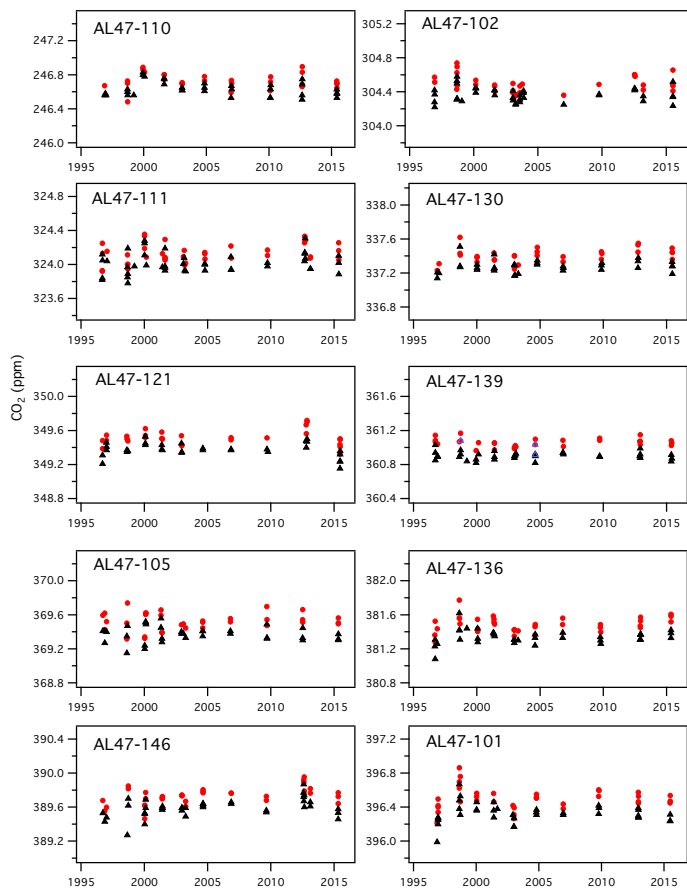
4 Summary of manometer results

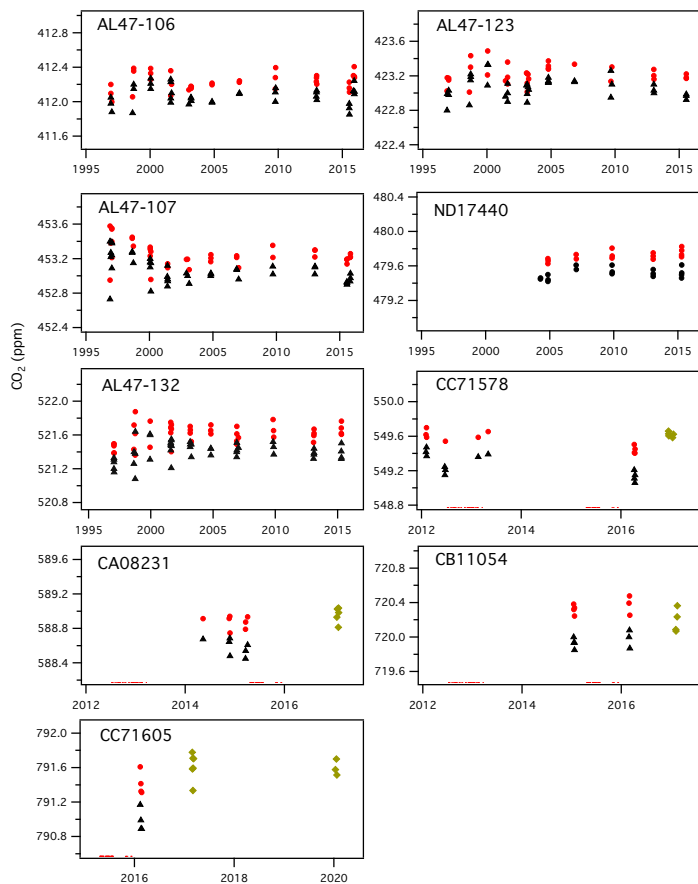
The X2007 scale was derived by averaging results from seven manometric episodes (1996, 1998, 2000, 2001, 2003, 2004, 2006) (Table 1). In developing X2019, we examined data files back to 1996, and applied the corrections discussed previously (Fig. 7). There is not a 1:1 correspondence between original and reprocessed results. In a few cases, the original data appeared abnormal and were flagged when developing X2019. In other cases, we were either unable to find raw files corresponding to results in the database, or the records were not sufficient to calculate a CO₂ loss rate (data not stored for sufficient time). In all, we were able to recover and apply corrections to 93% of the original data records.

Deleted: O-rings was installed in 2013.

Deleted: symbols

Deleted: a





245 **Figure 7:** History of manometric results, showing CO₂ (ppm) from the manometric database before corrections (black triangles), CO₂ values after applying X_{virial} and $X_{\text{loss_correction}}$ (red circles), and results from 2017 and 2020 for which the 2nd virial coefficient β_{CO_2} was calculated correctly and only the loss correction was applied (green diamonds). Note that cylinders CC71578, CA08231, CB11054, and CC71605 have a shorter measurement history.

250 Higher variability in 1998 could be related to higher water vapor in samples extracted during that period. Manometric records from 1998 often did not show the characteristic single CO₂ maximum. Instead, those records show an initial “CO₂” peak, followed by a short decline, and then a secondary peak followed by the normal decline (see [SM](#), Fig. S1). This secondary peak could be related to H₂O desorbing from surfaces in the small volume. We have seen this pattern recently when the manometer has not been run for several weeks and tends to show characteristics of residual moisture (longer pump-down times and higher than normal X_{CO_2} results). For most of the records from 1998 and some records from 2004, $X_{\text{loss_correction}}$ was determined from the time associated with the first peak in CO₂, and the loss rate determined after the second peak in CO₂. We used the later loss rates because it appears that the initial slopes (loss rates) are impacted by evolution of H₂O, and the loss rates calculated after the second peak in CO₂ are more consistent with loss rates determined during other episodes. Although this introduces additional uncertainty, results from 1998 are generally consistent with those from other years (Fig. 7). Comparing 1998 results to other years, it would appear any potential impact of additional water vapor as an impurity is less than 0.1 ppm. Further, if we used the time associated with the second peak instead of that associated with the first peak, manometer results from 1998 and 2004 would be slightly greater, but this would translate into an increase of only 0.01 ppm in the average manometric values for primary standards in the 250-520 ppm range.

Deleted: Supplemental Material

265 It is also important to note that in May of 2014 we damaged the small volume during routine maintenance. New glassware and a new air-actuated valve (Glass Expansion, Pocasset, MA) were installed in August 2014. This meant that the volume ratio, which had been essentially constant since 2004, needed to be re-established. After establishing traceability for temperature and pressure, we performed a number of volume ratio experiments and obtained a new volume ratio that was 2% larger than the previous one. Results from the 2015 episode, with the new small volume and volume ratio, agree well with those from previous episodes. The mean difference between the 2012 episode and 2015 episode, for all primary standards in the 250-520 ppm range, is only 0.03 ppm.

Deleted: (see Supplemental Material)

Table 1: Primary standard CO₂ mole fractions (ppm) determined using the NOAA manometer. A lower case “x” is used here to indicate that these are mean values determined from manometric measurement, and have not yet been harmonized into a calibration scale. For x2007 we report the average manometric results from seven episodes (as the mean of the episode averages). For x2019 we averaged all valid recoverable data from 1996-2017 after correcting for β_{CO_2} and CO₂ loss. Note that primary ND17440 was put into service in 2010 to replace a standard that was thought to be drifting upward. ND17440 was not part of the original X2007 scale. CC71605 includes data from 2020.

Cylinder	Avg. (x2007)	Avg. (x2019)	s.d. (x2019)	N (x2019)	N _{ep} (x2019)
AL47-110	246.656	246.730	0.079	30	10
AL47-102	304.370	304.495	0.099	31	9
AL47-111	324.004	324.134	0.116	38	10
AL47-130	337.271	337.403	0.087	31	10
AL47-121	349.387	349.515	0.089	28	9
AL47-139	360.905	361.054	0.056	30	10
AL47-105	369.378	369.523	0.104	33	10
AL47-136	381.335	381.487	0.092	34	10
AL47-146	389.569	389.731	0.100	35	10
AL47-101	396.333	396.495	0.130	34	10
AL47-106	412.069	412.231	0.103	34	10
AL47-123	423.086	423.218	0.112	32	10
AL47-107	453.078	453.255	0.144	37	10
ND17440	479.510	479.720	0.054	15	5
AL47-132	521.410	521.605	0.122	41	10
CC71578	not used	549.571	0.091	15	4
CA08231	not used	588.909	0.090	12	3
CB11054	not used	720.288	0.126	11	3
CC71605	not used	791.551	0.160	13	3

N = total number of measurements, N_{ep} = number of episodes

5 Drift assessment

The mole fraction of CO₂ (in air) in aluminum cylinders can increase with use (Langenfelds et al., 2005; Leuenberger et al., 2015; Schibig et al., 2018). Our experience suggests that X_{CO_2} is relatively stable over the useful life of a cylinder when used sparingly at flowrates ~0.3 L min⁻¹ or lower, but can increase as the pressure drops below about 15% of the fill pressure. However, it is worth noting that detecting small drift rates over decades is very difficult because it requires a stable reference with comparably low uncertainties. At the end of the 2015 measurement episode, all 15 primary standards contained at least one third of the original gas, with pressures of at least 4.4 MPa (600 psi), and most contained more than 6 MPa.

Drift in the X2007 scale was assessed through repeated manometric measurement. Only AL47-103 (no longer in use) was found to be drifting. With the update to X2019, we applied corrections to the primary standards that were both a function of mole fraction and time. We therefore need to reassess the possibility of drift in the primary standards. We performed a weighted least squares linear fit to the mean mole fraction determined during each episode. Uncertainties were estimated by combining the manometer repeatability during each episode ($\sigma_i/\sqrt{N_i}$), where σ_i is the standard deviation of results within episode "i", and N_i is the number of measurements during that episode, with the relative uncertainty in the volume ratio and the average uncertainty associated with $X_{\text{virial_correction}}$ and $X_{\text{loss_correction}}$ for each episode (0.02-0.04 ppm). We lack sufficient information to fully evaluate the uncertainty in the volume ratio dating back to the earliest periods, so we assume that our current uncertainty assessment is valid for the entire record. We consider each episode independent since traceability to national standards for temperature and pressure was established prior to each episode, and do not include uncertainty components common to all episodes (which include components of the volume ratio uncertainty related to temperature gradients in the oven, and differences in volume ratio obtained using difference gases (N_2 , air, and argon)). We estimate the total uncertainty in the volume ratio to be 0.014% (see [SM, section 2.3.4](#)). Excluding components common to all episodes, we use 0.013% for uncertainty on the volume ratio in the drift assessment.

Drift rates, in ppm per decade, are summarized in Fig. 8 (see also Table S1). For primary standards with $X_{\text{CO}_2} > 530$ ppm, the manometric histories are too short to adequately assess drift. For those with X_{CO_2} in the range 250-520 ppm, all but [three](#) show positive drift, although none is significant at the 95% C.L. While some calculated drift rates are of order 0.05 ppm/decade, we are unable to detect drift rates less than [-0.08](#) ppm/decade owing mostly to the [uncertainties](#) associated with the volume ratio and [reproducibility of the manometric measurements](#). The average drift rate among standards in the 350-450 ppm range is 0.02 ppm decade⁻¹, which would have only a minor impact on the heart of the X2019 scale if drift rates shown in Fig. 8 were incorporated, [except when making comparisons across decades](#). Thus, while relative drift among cylinders can be observed over short time periods, as in Leuenberger et al. (2015) and Schibig et al. (2018), detecting long-term drift on an absolute basis is difficult. Still, drift in cylinders is typically small compared to the growth rate of atmospheric CO_2 (~ 2 ppm yr⁻¹).

Deleted: 6
Deleted: Supplemental Material
Deleted: 2

Deleted: two

Deleted: 0.1
Deleted: y
Deleted: repeatability
Deleted: 19
Deleted: d.

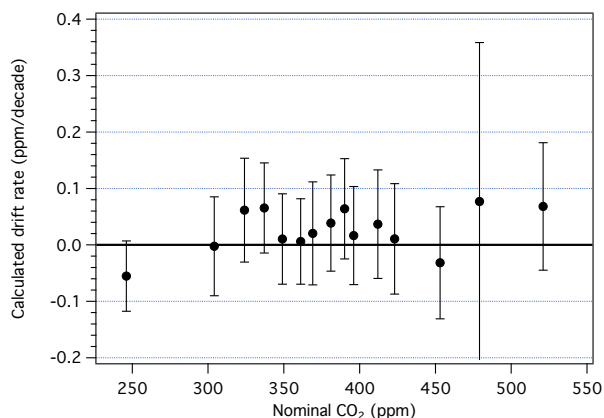
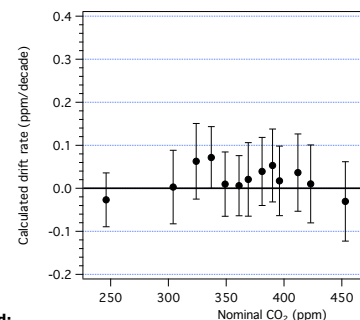


Figure 8: Drift rates (ppm decade⁻¹) determined from 5-10 manometric episodes. Error bars are 95% confidence limits.

6 Defining the X2019 WMO CO₂ mole fraction scale

Primary standards were analyzed using the laser-spectroscopy system described in Tans et al. (2017). These data were then used to harmonize the standards and define a scale. Each primary standard was analyzed six times relative to a ~400 ppm reference cylinder. On this analysis system we treat the three major isotopologues of CO₂ separately to eliminate subtle biases due to variations in isotopic compositions among the standards and between samples and references cylinders. We harmonized the primary standards using only the major (¹⁶O¹²C¹⁶O) isotopologue measurement.

The average manometer results are decomposed into the component mole fractions of ¹⁶O¹²C¹⁶O, ¹⁶O¹³C¹⁶O, and ¹⁶O¹²C¹⁸O based on the $\delta^{13}\text{C}$ and $\delta^{18}\text{O}$ assignments for each standard (Tans et al., 2017). The isotopic assignments for the primary standards were made by filling a pair of flask samples from each primary standard and having the flasks measured by the Stable Isotope Laboratory at the University of Colorado, Institute of Arctic and Alpine Research (INSTAAR) relative to the JRAS-06 realization of VPDB-CO₂ (Sylvia Michel, *personal communication*). Typical analytical uncertainties reported for flask measurements by INSTAAR are ± 0.014 ‰ and ± 0.035 ‰ for $\delta^{13}\text{C}$ and $\delta^{18}\text{O}$ respectively (White et al., 2015). Additionally, there is uncertainty in the tie to the JRAS-06 scale realization which is currently being evaluated as part of the conversion of INSTAAR data to the JRAS-06 scale realization. Based on a re-evaluation of recent comparisons with other laboratories, it is expected to be less than 0.05 ‰ for both $\delta^{13}\text{C}$ and $\delta^{18}\text{O}$ (Sylvia Michel, *personal communication*). These



345 uncertainties are insignificant relative to the uncertainty in the manometric determination of total CO₂ in terms of the calculated mole fraction of the ¹⁶O¹²C¹⁶O isotopologue.

The uncertainties on flask measurements at INSTAAR listed above are determined for ambient atmospheric samples (~7.5 to -9 ‰). Several of the primary standards are depleted relative to the atmosphere (see Table 2) and this could increase the uncertainty of these measurements due to scale contraction in the measurements at INSTAAR. At δ¹³C = -20‰ and δ¹⁸O = -20‰, Wendeberg et al. (2013) found the INSTAAR realization of VPDB-CO₂ to be offset from JRAS-06 by approximately 0.2‰ in δ¹³C and 0.8‰ in δ¹⁸O. This was primarily due to scale contraction due to the instrumentation in use at INSTAAR. Subsequent conversion of the INSTAAR records to JRAS-06 is not expected to correct for the scale contraction in historical measurements since these measurements were not done with two-point normalization. Errors in the isotopic assignments of the primary standards of this magnitude due to scale contraction issues will result in errors of less than 0.01 ppm in the calculated ¹⁶O¹²C¹⁶O mole fraction. We therefore feel confident that we can harmonize the primary standards based on the ¹⁶O¹²C¹⁶O measurements only.

A linear fit (orthogonal distance regression) was applied to the normalized analyzer response and the ¹⁶O¹²C¹⁶O component of the average manometer results. This was repeated six times over three years. To test the sensitivity of the harmonization process, we performed an orthogonal distance regression with two variations of manometric average values and two variations of weighting factors for each primary standard (four combinations). For the manometric data, we used either the average of all manometric measurements of each primary standard, or the weighted average from each measurement episode. For the weights in the regression, we used either the inverse variance (1/σ²) (as in Table 1) or the square of the inverse standard error. All four variations give essentially the same result (within 0.01 ppm near 400 ppm). Therefore, the X2019 scale is defined from an orthogonal distance linear regression using the average manometric result and standard deviation (using 1/σ² as weighting factors) for each cylinder (“Avg. (x2019)” and “s.d. (x2019)” in Table 1).

Fig. 9 shows the residuals from six analysis periods over three years associated with harmonization. There is good agreement among the different analysis periods, indicating that variability seen in the residuals relates to the manometer average values. For each primary standard, we corrected the CO₂ mole fraction by the mean residual from the linear fit (Table 2). The X2019 scale is defined as the average residual-corrected mole fraction, determined over six analysis periods, for each primary standard. In this way, the scale is defined over a range, with better consistency and smaller uncertainty compared to individual primary standards. For X2019, we include the 15 primary standards used to define the X2007 scale, plus four additional primary standards with X_{CO2} > 530 ppm. Additional primary standards in the upper range help to constrain the fit and reduce end-effects. Many residuals are less than 0.05 ppm, but the newer standards in the upper CO₂ range show larger residuals. Some of this may be due to their short measurement history compared to standards in the 250-520 ppm range. Finally, while harmonization is not strictly necessary if all primary standards are to be analyzed at the same time when propagating the scale,

it provides some insurance on the potential loss of a primary standard. By assigning mole fractions consistent with the best fit
 380 response, loss of one or two standards from the suite of 19, especially in the middle of the X_{CO_2} range would not be catastrophic.

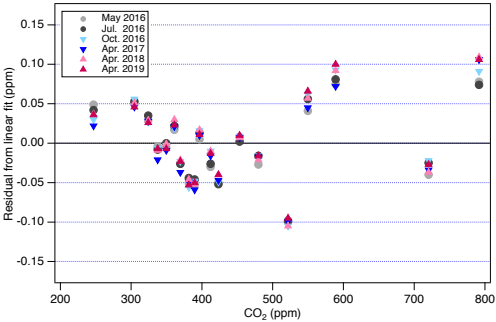


Figure 9: Residuals from a linear fit to analysis data obtained on six different days. The standard deviation of all residuals is 0.05 ppm.

385 Fig. 10 shows differences between primary standard assignments on X2019 and X2007. As expected, the differences are a function of mole fraction, since both the virial correction and loss correction are functions of mole fraction. The scale difference based on primary standards alone (not including scale transfer) is 0.17 ppm at 400 ppm, and the average scale correction over the range 250-520 ppm is 0.04%. Some of the scatter in Fig. 10 is due to updated assignments owing to a longer measurement record for X2019 compared to X2007. However, the largest deviation is due to a mis-assigned value: the assigned value for
 390 AL47-146 was inadvertently listed as 389.55 in our database instead of 389.64. The implications of this mis-assignment are discussed in section 9.

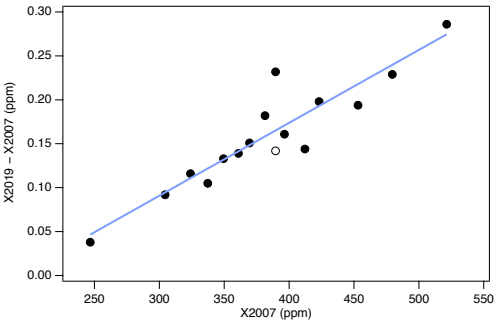


Figure 10: Differences between X2019 and X2007 assignments for the 15 primary standards used to define scale X2007 (black symbols) and the best-fit line (blue line). The open symbol corresponds to primary AL47-146 with value 389.64 ppm (we used 389.55 ppm in 2007 by mistake).

Table 2: WMO primary standard assignments on X2007 and X2019 scales. Assignments were determined following analysis and residual correction by NDIR (X2007) and laser-spectroscopy (X2019). The average ratio of primary standards on scales X2019/X2007 is 1.00040, with standard deviation 0.00011.

Cylinder	Assigned X_{CO_2} X2007 (ppm)	$\delta^{13}C$ (‰)	$\delta^{18}O$ (‰)	Assigned X_{CO_2} X2019 (ppm)	X2019 minus X2007 (ppm)	X2019/X2007
AL47-110	246.650	-6.8	0.1	246.688	0.038	1.00015
AL47-102	304.353	-7.5	0.2	304.445	0.092	1.00030
AL47-111	323.989	-8.0	-0.3	324.105	0.116	1.00036
AL47-130	337.307	-7.6	-0.5	337.412	0.105	1.00031
AL47-121	349.387	-7.7	0.1	349.520	0.133	1.00038
AL47-103*	353.238			<i>not used</i>		
AL47-139	360.893	-8.5	-1.6	361.032	0.139	1.00039
AL47-105	369.398	-9.2	-1.8	369.549	0.151	1.00041
AL47-136	381.355	-10.1	-3.0	381.537	0.182	1.00048
AL47-146	389.550	-10.7	-4.0	389.782	0.232	1.00060
AL47-101	396.322	-11.2	-4.5	396.483	0.161	1.00041
AL47-106	412.105	-12.2	-5.7	412.249	0.144	1.00035
AL47-123	423.066	-12.9	-6.8	423.264	0.198	1.00047
AL47-107	453.054	-14.6	-9.6	453.248	0.194	1.00043
ND17440*	479.510	-14.0	-13.8	479.739	0.229	1.00048
AL47-132	521.419	-17.7	-14.8	521.705	0.286	1.00055
CC71578	<i>not used</i>	-15.2	-12.7	549.516		
CA08231	<i>not used</i>	-8.9	-13.8	588.823		
CB11054	<i>not used</i>	-8.5	-19.2	720.319		
CC71605	<i>not used</i>	-8.8	-21.1	791.457		

* AL47-103 was found to be drifting and was replaced with ND17440 in 2010.

7 Independent Assessment

Revision of the X2007 scale relies on the assumption that the loss of CO₂ to Viton O-rings in the small volume of the manometer can be adequately addressed by linear extrapolation (Fig 5). Knowledge on CO₂ losses prior to the availability of representative pressure and temperature measurements (during the time while the small volume is warming) is lacking. Experiments in which pure CO₂ was loaded into the small volume by overpressure (not transfer by cryogenic extraction)

suggest that the loss process is initially non-linear and approaches a linear rate after about 10 minutes. If this is true, then the correction we apply is too small (by ~0.2 ppm) (see [SM, section 1.2](#)). However, these experiments were not carried out under the same conditions used to extract CO₂ from air, so we cannot be sure that they are representative. Therefore, we explored an independent method to provide insight into potential bias in the X2007 scale and our attempt to correct for that bias.

Deleted: Supplemental Material

7.1 Comparison to in-house, gravimetrically-prepared standards

We prepared CO₂ primary standards using a gravimetric method (Hall et al., 2019). Briefly, known masses of highly pure CO₂ were introduced into 29.5-L aluminum cylinders and diluted with known masses of CO₂-free air. Uncertainties were reduced by preparing standards in one step and by accounting for CO₂ likely to be adsorbed to cylinder walls at high pressure (Schibig et al., 2018). These standards were analyzed by laser spectroscopy and assigned X_{CO_2} values on the X2019 scale (Table 3). The X2019 assignments are consistent with the gravimetrically-prepared values, with an average difference of 0.03 ppm, and an average ratio of 1.00008 (Table 3). If the gravimetric standards were used to define a calibration scale, it would, on average, be 0.045% greater than the X2007 scale (avg ratio 1.00045, std. dev. 0.00017) (Hall et al., 2019). This is very close to the average ratio of 1.00040 derived by correcting historical manometric data (Table 2).

Table 3: Comparison of gravimetrically-prepared standards to the X2019 scale (prep. = prepared value; unc. = standard uncertainty, ~68% confidence level). Gravimetric standards were analyzed by laser-spectroscopy.

cylinder	Grav. prep. (ppm)	unc. (ppm)	X2019 (ppm)	unc. (ppm)	Difference X2019-prep (ppm)	unc. (ppm)	Ratio X2019/prep
CB11873	357.55	0.06	357.56	0.08	0.01	0.10	1.00004
CB11906	397.50	0.06	397.54	0.09	0.04	0.11	1.00011
CB11941	405.34	0.07	405.46	0.09	0.12	0.12	1.00030
CB11976	449.30	0.08	449.27	0.10	-0.03	0.12	0.99993
CB12009	491.76	0.08	491.76	0.10	0.00	0.13	0.99999
					avg, 0.03		avg, 1.00008

7.2 Comparison with NIST

Based on an exchange of 30 tertiary standards in 2010, Rhoderick et al. (2016) compared the National Institute of Standards and Technology (NIST) gravimetric CO₂ scale to the NOAA X2007 scale, reporting an average difference of 0.19 ± 0.03 ppm (NOAA lower) over the range 388-394 ppm. After adjusting NOAA results to X2019, differences range from -0.08 to +0.07 ppm, with a mean difference of 0.0 ± 0.03 ppm.

Formatted: Subscript

Deleted: , NOAA and the National Institute of Standards and Technology (NIST) reported an average

Deleted: (Rhoderick et al., 2016)

7.3 Key Comparison CCQM-K120a

NOAA recently participated in an international comparison (CCQM-K120a) organized under the auspices of the Consultative Committee for Amount of Substance: Metrology in Chemistry and Biology (CCQM), and hosted by the BIPM. Fourteen National Metrology Institutes or Designated Institutes submitted compressed gas standards for analysis by FTIR and GC-FID (Flores et al., 2018). Key Comparison Reference Values (KCRVs) were calculated using FTIR results from consistent sets of standards submitted by participants near 380 and 480 ppm. NOAA standards were value-assigned at GML on a provisional version of the X2019 scale, identified as X2017p, which is within 0.02 ppm of the now complete X2019 scale. During K120a, NOAA standards differed from the reference values by -0.01 ± 0.23 ppm at 380 ppm, and by -0.10 ± 0.28 ppm at 480 ppm (uncertainties ~95% confidence level). Had we submitted values on X2007, the NOAA samples would have been approximately 0.16 ppm lower than the reference value at 380 ppm, and 0.24 ppm lower at 480 ppm. While the X2007 scale would also likely have agreed with the reference values within uncertainties at 380 ppm and 480 ppm during K120a, better agreement was achieved with X2017p, and hence also with X2019.

8 Uncertainty Analysis

Here, we estimate the total uncertainty associated with a CO₂ determination on the X2019 scale. We extend the work of (Zhao and Tans, 2006), following accepted methods for uncertainty propagation (JCGM, 2008). To arrive at an uncertainty estimate, we use equation (4), which is a modified version of equation (1), and propagate uncertainties over a range of CO₂ mole fractions. We include the terms $X_{\text{virial_correction}}$ and $X_{\text{loss_correction}}$ since the X2019 scale was derived based on these corrections. Future manometric analysis will not include the term $X_{\text{virial_correction}}$ since β_{CO_2} is now correctly determined. We also include the term $X_{\text{H}_2\text{O}}$ and estimated uncertainty even though we do not correct for water vapor in the final sample ($X_{\text{H}_2\text{O}} = 0$).

$$X_{\text{CO}_2} = (\phi^{-1}) \frac{P_{\text{CO}_2} T_{\text{air}}}{P_{\text{air}} T_{\text{CO}_2}} (1 + A_1 - A_2) - X_{\text{N}_2\text{O}} - X_{\text{H}_2\text{O}} + X_{\text{virial_correction}} + X_{\text{loss_correction}} \quad (4)$$

We establish traceability of manometric measurements to national temperature and pressure standards. Prior to a measurement episode, three platinum resistance thermometers, one thermistor, and a piston gauge are typically sent to an accredited laboratory for calibration (National Voluntary Laboratory Accreditation Program, NVLAP). We estimate the uncertainties associated with measurement of temperature and pressure from uncertainties reported by the calibration laboratories, repeatability, and experience. Uncertainty components are described in the SM, and are similar to those estimated by Zhao and Tans (2006) except for the uncertainty associated with the volume ratio. We calculate a larger uncertainty for Φ , in part, because we observed small temperature gradients in the oven, and hence our ability to measure the gas temperature at each stage of the expansion sequence with existing equipment is probably less certain than previously estimated (Zhao and Tans, 2006).

Deleted:

8.1 Purity Assessment

The primary function of the separation steps is to remove H₂O from the extracted CO₂. The purified CO₂ introduced into the small volume contains N₂O and trace amounts of other gases. Considering the major constituents in air and their boiling points under the conditions at which CO₂ is trapped, Zhao et al. (1997) concluded that a correction for N₂O sufficient to account for impurities in the purified CO₂. We go one step further here by verifying, through analysis, that the purified CO₂ is, indeed, highly pure and that additional purity corrections are not needed.

We used the manometer to extract CO₂ from a 380 ppm air sample. At the end of a normal manometer run, we transferred the purified CO₂, first to a stainless steel tube (5 mL volume with stainless steel metal bellows valve) and then to a 2.3 L stainless steel flask with a stainless steel metal bellows valve. We then added ~0.24 MPa (35 psia) UHP-grade nitrogen to create a mixture with X_{CO_2} at approximately 380 ppm, the same as that of the original air. We analyzed this mixture by GC-MS, GC-FID (Dlugokencky et al., 2005) and GC-ECD (Hall et al., 2011). We confirmed that gases likely to be trapped in the extraction step (nitrous oxide, ethane, propane, some chlorofluorocarbons) are present in the purified CO₂ sample. The combined mole fraction of all gases measured in the flask, excluding CO₂, N₂O, and H₂O, was 6 parts per billion (ppb). Of this 6 ppb, we found ~3.4 ppb Xe, 0.8 ppb ethane, 0.5 ppb CCl₂F₂ (CFC-12), 0.2 ppb CFCl₃ (CFC-11) and trace amounts of other halogenated gases. Had Xe been quantitatively trapped and retained, we would have found ~87 ppb, which would then require a correction. CH₄ was not detected in the purified CO₂ sample, confirming that CH₄ is not trapped during the extraction process.

We did not attempt to measure H₂O, krypton, argon, and oxygen since these would either not be trapped at the pressure of the traps (~4 kPa), or would likely be present at very low levels and would be difficult to measure. The water vapor content of our primary standards is < 2 ppm, and after two cryogenic separation steps we expect H₂O to be <0.03 ppm. While we do not make a correction for water vapor that might remain in the final sample, we do include an estimate in the uncertainty budget. With traps 1 and 2 at -67 °C, we estimate that 98% of the water vapor in the sample would be removed in trap 1, and 50% of the remaining water vapor would be removed in trap 2. This would correspond to 0.02 ppm in the measured CO₂. Because the trap temperatures vary from run to run (-65°C to -70°C), we include an uncertainty of 0.03 ppm in the uncertainty propagation.

... [1]

Formatted: Space Before: 6 pt

Deleted: re

Deleted: peatability during a manometer run

Deleted: We use these to estimate the uncertainty in the volume ratio. Estimates for standard uncertainties (1-sigma) are described in the Supplemental Material. We calculated standard uncertainties for X_{CO_2} using software developed by NIST (*metRology*) (<http://cran.at.r-project.org/web/packages/metRology/>). The *metRology* software allows the user to input a measurement equation, central values, standard uncertainties, and estimated degrees of freedom for each variable. The software then calculates

... [2]

Deleted: listed in Table S

Deleted: 4

By calculating expanded uncertainties over a range of mole fractions, we arrive at a general expression for the expanded uncertainty (μX_{CO_2}) as a function of X_{CO_2} :

$$\mu X_{\text{CO}_2} = 0.000257 * X_{\text{CO}_2} + 0.072 \text{ (ppm)} \quad (5)$$

From equation (5), the expanded uncertainty at 400 ppm is 0.17 ppm, or 0.043%. This estimate is only slightly larger than that estimated by Zhao and Tans (2006) ($2 * 0.069 = 0.14$ ppm). We acknowledge that the uncertainty could be larger, owing to non-linear loss processes in the early stages of the final pressure and temperature measurements. However, the magnitude of this potential bias could not be quantified experimentally under conditions consistent with manometric experiments.

We include in our uncertainty estimate the scale transfer uncertainty, which is particularly relevant for users comparing data traceable to the same scale. From repeated measurements of multiple cylinders we estimate the scale transfer uncertainty based on laser-spectroscopy to be 0.01 ppm (1-sigma), similar to what was reported by Tans et al. (2017). For cylinders value-assigned by NDIR (~1995 to 2016) we estimate the scale transfer uncertainty at 0.03 ppm (1-sigma) (see SM, section 2.5).

9 Scale Implementation

As discussed above, the implementation of the scale involves the harmonization of primary standard manometric results through analysis, with assigned mole fractions derived using a linear response function based on spectroscopic analysis. These assigned mole fractions are then used to define the X2019 scale, and transfer that scale to lower-order standards.

In the hierarchy of value-assignment, standards used to support NOAA atmospheric measurements and those distributed by the CCL are known as "tertiary standards". Recalculating tertiary standard values on the X2019 scale involves three steps: 1) updating primary standards to X2019, 2) re-assigning secondary standards based on primary-secondary comparisons (note that some secondaries were re-assigned based on additional data not available upon initial assignment), 3) and re-assigning tertiary standards based on updated daily response functions, relative to secondaries. Here we present the impact of the X2019 scale update on tertiary value assignments dating back to 1995. In a subsequent section we present the implications of the scale update on NOAA atmospheric measurements.

Tertiary standards are value-assigned based on analysis vs secondary standards (Zhao and Tans, 2006). From 1995 to October 2016, value assignment was performed by NDIR (Siemens Ultramat-3, -6F; LiCor Li-6251, Li-6252, or Li-7000), and from November 2016 by laser spectroscopy (Picarro G2301; Los Gatos Research CCIA-46-EP; Aerodyne Research Inc. QC-TILDAS-CS). There was an approximately 12-month overlap period where tertiary standards were run on both systems. The NDIR response to CO₂ is typically non-linear. For analysis on a given day, a quadratic response function was determined based on four secondary standards which were previously value-assigned based on similar mole fraction dependent subsets of the suite of primary standards. Secondary standards were selected such that X_{CO_2} spanned the range of tertiary standards to be

Deleted: ¶

Deleted: 87

Deleted: 7

Deleted: 4

Deleted: →

Deleted: Using

Deleted: 9

Deleted: 7

Deleted: ¶

Deleted: -5, or

calibrated. For example, analysis of a nominal 380 ppm tertiary standard would typically involve secondary standards at 370, 380, 390, and 400 ppm (10 ppm spacing). For X_{CO_2} greater than 450 ppm, three secondaries, spaced ~25 ppm apart, were used. For analysis by laser-spectroscopy, 16 secondary standards over the range 250-800 ppm (prior to April 2020, 14 secondary standards covering 250 - 600 ppm) are used to define response curves for the three major isotopologues of CO_2 ($^{16}O^{12}C^{16}O$, $^{16}O^{13}C^{16}O$, and $^{16}O^{12}C^{18}O$). The mole fraction of each of the three major isotopologues is measured and then converted into total CO_2 , $\delta^{13}C$, and $\delta^{18}O$, accounting for the unmeasured minor isotopologues as described in Tans *et al.* (2017).

Upon revision to X2019, all secondary standards used as far back as 1979 were re-evaluated. Secondary standards were compared to primary standards multiple times during their use. A statistical test and expert judgement were employed to evaluate drift in secondary standards. The statistical test was occasionally overruled in cases where we suspect a step change due to change in instrumentation was the underlying driver rather than drift in the secondary standard. If drift was suspected, a weighted linear or polynomial function was fit to the data (weighted by instrument reproducibility, [see SM section 2.5](#)) and a time-dependent mole fraction used. Note that it is easier to detect drift in secondary standards compared to primary standards because we evaluate secondary standards relative to the scale defined by many standards. Thus, the limiting factor is measurement reproducibility and not the absolute uncertainty of the scale.

During this re-evaluation, the drift status of some secondary standards was updated, with more data being available compared to when drift rates were first assigned. Thus, some standards that had previously assigned time-dependent values are now held constant, and vice-versa. Generally, the X2019 scale is more consistent across mole fraction and time, and therefore the new evaluations for secondary standard drift are considered more reliable. After updating secondary standard value assignments to X2019, X_{CO_2} for all tertiary standards dating to 1979 were re-assigned from raw data. We focus here mainly on the period from 1995 onward because our role as a WMO/GAW CCL began in 1995.

Fig. 11 shows differences between tertiary standard assignments on X2019 and X2007, from 1995 through February 2020. The overall scale difference is clearly a function of mole fraction, with the difference approximately 0.18 ppm at 400 ppm. It is immediately obvious that differences are not a perfect linear function of mole fraction. Differences that are consistent over several months can be seen as coherent traces in Fig. 11. The coherent differences are due to secondaries being exhausted and replaced by others at slightly different mole fractions. Even though tertiary standards were bracketed by secondaries during analysis, limitations in the ability to value-assign any particular secondary standard, coupled with the limitations associated with fitting a quadratic response function to three or four secondaries contributes to variability. Even so, most of the year-to-year variability at a particular mole fraction is less than 0.02 ppm (1-sigma). Outliers, such as those corresponding to analysis performed in the mid-1990s above 400 ppm (red and purple symbols), are the result of extrapolation beyond the range of the secondaries. Prior to 1997, the highest secondary standard in regular use was 390 ppm.

Deleted: , 0.03 and 0.01 ppm for the NDIR and laser spectroscopic systems respectively

Formatted: Not Highlight

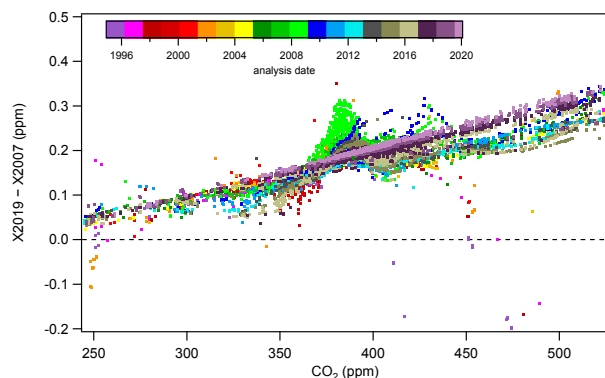


Figure 11: Differences between X2019 and X2007 assignments to tertiary standards from 1995 to 2020. Each data point represents one analysis record (over 25,000 records shown), and a full calibration of a tertiary standard involves multiple analysis records.

Deleted: s

The more prominent variations evident in Fig. 11 stem from re-assignment of primary and secondary standards, the non-linear response of NDIR instruments, and the nature of the value-assignment process. Scale differences appear significantly larger during 2008-2009 over the 360-390 ppm range (light green symbols). These value assignments, which involved around 600 analysis records (less than 3% of the total number), are inconsistent with most other data due to a revision of X_{CO_2} assigned to a particular secondary standard (CA01982) in use at the time. This particular secondary was assigned a value of 391.87 on the X2007 scale in 2008 when compared to primary standards. However, incorporating subsequent analysis of this cylinder against primary standards, it was evident that the cylinder was drifting upward rapidly. This secondary standard drifted ~0.2 ppm in two years (not common), but that drift was not accounted for in the X2007 value assignment, which caused the value used for data reduction to be too low. The drift is accounted for in the X2019 value assignment leading to larger X2019-X2007 differences for tertiary standards measured against this secondary standard.

The more recent data based on analysis by laser spectroscopy are represented as dark purple and maroon colors in Fig. 11. These show a more linear relationship without the wavy structure, as expected for an instrument with a linear response calibrated over the entire scale range. The fact that the laser spectroscopic results do not agree with the NDIR data in the upper X_{CO_2} range (> 420 ppm) is due to the use of secondary standards on this system that were not well-characterized. Value-assignments for these secondary standards were determined on the NDIR system and thus incorporate the biases associated with that system on X2007. They were not well characterized when they went into service, especially at the upper end of the range where we effectively expanded the calibration range in anticipation of the X2019 revision. We now have more

680 information on these secondary standards, including analysis vs the primary standards on the laser spectroscopic system and can better define them on X2019.

It is important to note that differences in value-assignment between the NDIR and laser spectroscopic system (Fig. 11) are only present on the X2007 scale. The X2019 revision resolves the underlying cause of the offsets. Fig. 12 shows the results from the ~12 month overlap during which tertiary standards were analyzed on both systems. There is a clear mole fraction dependence to the offset on the X2007 scale. [Tans et al. \(2017\)](#) attributed this to the assigned values of the primary standards coupled with the method used for scale transfer using the NDIR but were not able to rule out other potential issues such as gas handling on the NDIR based system. The X2007 primary standard assignments (Table 2), based on harmonization by NDIR analysis, were not as robust as we thought. The X2007 scale was based on relatively few NDIR analysis runs, and as such the residuals were not as well defined as they are for X2019 (Fig. 9). By using small subsets of standards to calibrate the NDIR, the data reduction of the NDIR system tracked errors in the assigned values rather than averaging those errors over the entire range of the scale. By normalizing the primary standards on a linear system, using the full suite of primary standards multiple times over several years (as was done for X2019), we can better define the assigned values of the primary standards. After converting to X2019, the NDIR system is still subject to end effects and errors in value assignments of the primary standards, but these errors are much smaller compared to X2007, and the comparison data show much better agreement between the two systems (lower panel in Fig. 12). [The good agreement between the two systems on X2019 leads us to believe that the mole fraction dependence in the offsets on X2007 \(Fig 12a\) is due the assigned values of the primary standards and not to some other issue related to gas handling. This also indicates that the agreement is probably relatively stable in time and there is likely no mole fraction dependent bias in the NDIR results prior to the comparison period.](#)

Deleted:

Deleted: that is due

Deleted: and

Deleted: .

Deleted: We expect future value assignments to be more consistent than those based on the NDIR method.*

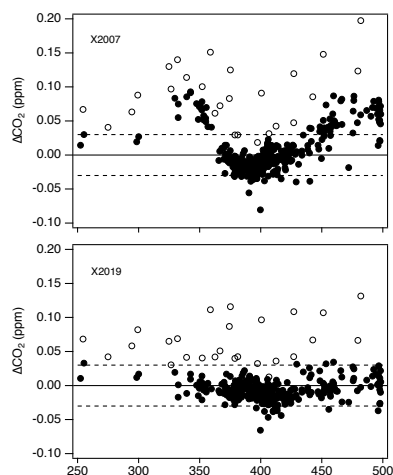


Figure 12: Differences between NDIR and laser spectroscopic systems used for tertiary value-assignment on X2007 (upper panel) and X2019 (lower panel) during a 12-month overlap period. Open symbols denote tertiary standards with significantly lower ^{13}C - CO_2 isotopic ratios compared to the others ($\delta^{13}\text{C} < -20\text{‰}$), and thus subject to bias in the NDIR measurement. Dashed lines are the expected reproducibility of the NDIR system (± 0.03 ppm).

9.1 Approximating X2019 using a linear scale conversion

For users of standards obtained from the CCL, the best way to update to the X2019 scale is to implement the X2019 re-assignments and propagate through to atmospheric data. A database management system allows for efficient propagation of scale changes to atmospheric data. However, for datasets in which a full reprocessing is not possible or practical, a linear scale conversion could be an option. The linear function shown below is based on primary standard assigned values (weighted linear regression):

$$X_{2019} = 1.00079 * X_{2007} - 0.142 \text{ (ppm)} \quad (6)$$

It is clear from Fig. 13 that the linear conversion, shown as the solid black line, will introduce errors in the 370-390 ppm range compared to full reprocessing, as the line does not pass through the majority of the data in that range. This is an unfortunate consequence of the mis-assigned primary standard (AL47-146) and the mis-assigned secondary in use in 2008. Nevertheless,

the linear conversion introduces errors less than 0.05 ppm for 94% of the tertiary standards in the range 320-460 ppm (Fig. 14). Errors are less than 0.03 ppm for 78% of the data in the same range, although there is a persistent low bias between 380 and 390 ppm.

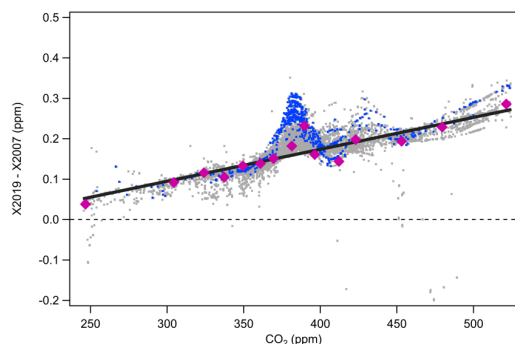


Figure 13: Differences between X2019 and X2007 tertiary assignments from 1995 to 2017, (NDIR only) showing 2008 analysis in blue, all others in gray. A linear scale conversion derived from primary standards (pink) is shown as the black line.

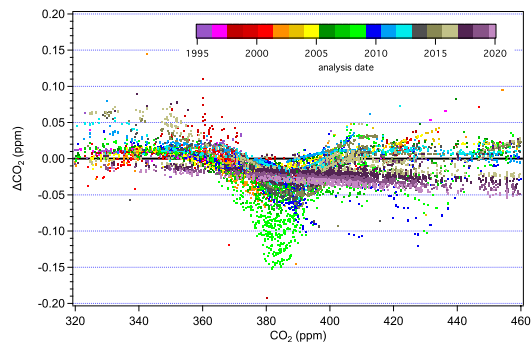
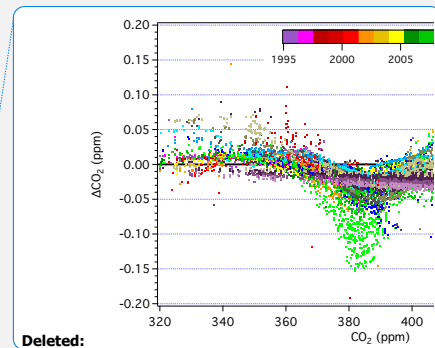


Figure 14: Scale conversion bias seen in tertiary standard assignments when using the linear scale conversion, shown as the difference between the linear scale conversion and the reprocessed values.

9.2 Revision of NOAA atmospheric data

We have reprocessed NOAA atmospheric data back to ~1979 for internal evaluation. This involved re-assigning X_{CO_2} values for working (tertiary level) standards to X2019 by reprocessing the original tertiary-secondary comparisons. For data prior to



1995, this also involved converting from a Scripps Institution of Oceanography (SIO) scale to X2019. Complete detail of the conversion from the SIO scale to X2019 is beyond the scope of this paper, and will be addressed in a separate publication. After fully converting to X2019, NOAA data prior to ~1979 will still be traceable to the SIO scale in use at the time of measurement.

We include examples of atmospheric data here to provide a comparison of two methods used for propagating the X2019 scale: full reprocessing using updated tertiary standard values and response functions, and a simple linear scale conversion applied to atmospheric records. Actual bias introduced into atmospheric records by implementing the linear conversion will depend on the calibration procedures used in a particular laboratory, and the range and calibration history of standards. For example, if a particular set of standards used by a laboratory was analyzed multiple times by the CCL over several years, the impact of the 2008-2009 secondary standard mis-assignment would be reduced.

The lower panel in Fig. 15 shows the difference between the linear scale conversion and full reprocessing applied to in situ CO₂ at Mauna Loa, HI (MLO). Generally, the linear scale conversion is fairly close to the fully reprocessed data but has a negative bias which is larger during 2007-2009 due to the 2008 secondary mis-assignment issue. There are time periods of larger differences, such as in late 2014, due to a reassessment of drift in the working standards. In the case of the 2014 period, one of the working standards had a relatively large drift correction (0.2 ppm yr⁻¹, which is not common), but the drift correction was implemented on X2007 in a way that exaggerated the effect (this only applies to relatively few cylinders in 2014). Without fully reprocessing, this error would be preserved in the data set.

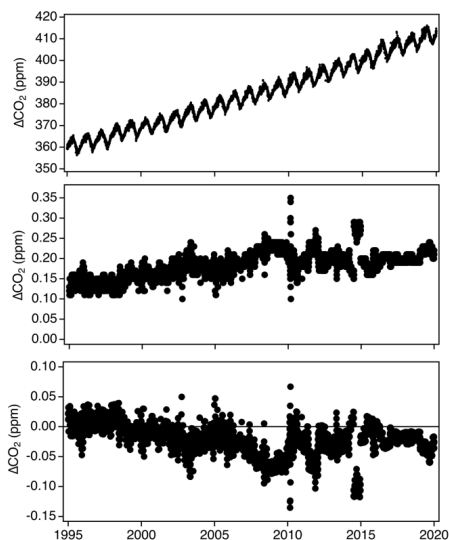


Figure 15: Hourly-averaged CO₂ measurements from Mauna Loa Observatory fully reprocessed to X2019 (upper panel), the difference between the fully reprocessed X2019 data and X2007 (middle panel), and the difference between using the linear scale conversion and full reprocessing methods to determine X2019 values (lower panel).

In addition to MLO, we reprocessed in situ data from the other NOAA baseline observatories (Barrow, AK; American Samoa; South Pole) and flask samples from marine boundary layer (MBL) sites using both the linear scale conversion and full reprocessing methods. Biases in the linear scale conversion were binned by year to get a sense of how well the linear scale conversion approximates the scale difference over time. Again, differences due to reassessment of drift in the working standards are included in these binned bias terms. Fig. 16 shows the average annual bias in each of these data records that would be included if the records were converted to X2019 using the linear function rather than fully reprocessed (note, only hourly averages and flask samples identified as representing baseline conditions were used for this comparison). Average bias across the whole period is -0.03 ppm but there are years in individual records with biases up to -0.09 ppm. These measurement systems are tightly tied to the calibration chain. The larger biases during 2007–2009 show that these systems all follow the bias in the scale due to the 2008-2009 mis-assigned secondary standard. The effect is moderated slightly due to the use of multiple standards and the fact that most standards have pre- and post-deployment value assignments and typically only one of these would have occurred during the 2008-2009 excursion.

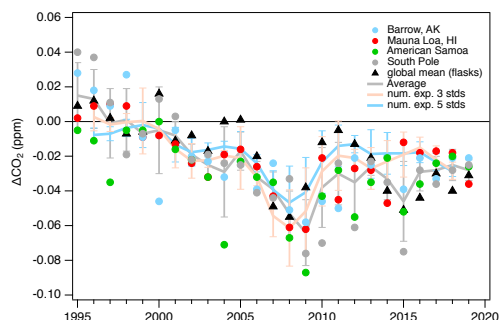


Figure 16: Estimates of scale conversion bias (linear scale conversion minus full reprocessing) derived from in situ measurements at four NOAA observatories, global averages determined from measurements of discrete air samples collected at marine boundary layer sites (gray line), and two numerical experiments (orange and blue lines, see text). All error bars are one standard deviation. Numerical experimental results are shown as three-year running means.

We also conducted a numerical experiment to examine scale conversion bias without the added complications from a re-assessment of drift in working standards. We randomly selected sets of three and five individual tertiary standards measured within a calendar year. Each set required a standard within ± 10 ppm of the global average from a particular year (<https://www.esrl.noaa.gov/gmd/ccgg/trends/global.html>). The other standards were required to be at least 10 ppm but less than 30 ppm apart and cover mole fractions above and below the initial selected standard. Quadratic fits to the actual X2019 - X2007 differences vs. the X2007 assignments were made. The point on this curve corresponding to the calendar year global average (on the X2007 scale) was compared to the global average converted to X2019 using the linear scale conversion. The experiment was run 50 times for each year. In essence, this lets us approximate the bias due to the use of the linear scale conversion on a hypothetical sample equal to the global average for 50 different sets of standards. The average biases due to the use of the linear scale conversion for 3-standard and 5-standard suites are shown in Fig. 16 expressed as 3-year running means. The results show good agreement with the bias seen in the in situ and flask MBL records. It is important to note that both the results of the numerical experiment and these particular atmospheric records are tightly tied to the CO₂ scale transfer system in time. Atmospheric data from 2007-2009 measured by external programs would not be as sensitive to the 2008 bias if their standards were not calibrated by the CCL during that time. Conversely, measurements at other times tied to standards that were only measured during the 2007-2008 period (without subsequent re-analysis) would be more sensitive.

9.3 Historical Scales

795 The impact of the revision from X2007 to X2019 is well understood and the linear conversion agrees with full reprocessing
within 0.03 ppm for nearly 80% of standards value-assigned since 1995 over the range 320-460 ppm (Fig. 14). However, data
traceable to NOAA scales prior to the release of X2007 that cannot be fully reprocessed are an additional concern. [The](#)
800 [implementation of NOAA scales prior to X2007 was not rigorously documented. Prior to 2001, NOAA scales were partially](#)
[based on SIO value assignments of the NOAA primary standards and thus were sensitive to revisions of the SIO scale. The](#)
[incorporation of SIO revisions over time at NOAA and how these translated into distributed scales is not well documented,](#)
[and therefore it is difficult to determine relationships between X2019 and historical scales prior to the full conversion to X2007.](#)
[\(Note that the CCL has taken multiple steps since then to ensure these lapses do not occur again and that the evolution of the](#)
[scale is transparent and fully documented.\)](#)

805 [To assess the magnitude of potential bias relative to X2007 that could exist in archived data sets still traceable to historical](#)
NOAA scales, we examined records from CSIRO (Australia), NIWA (New Zealand), and Environment Canada, who provided
records of tertiary standard value-assignments prior to the formal adoption of the X2007 scale. Fig. 17 shows the difference
between the original reported value (assigned by NOAA at that time) and the value re-assigned on scale X2007 upon its release.

810 NOAA primary standards were initially value-assigned by SIO from 1992 to 1995. From 1996-2000, we used a mixture of
NOAA and SIO manometric results, and from 2001 onward we used only NOAA manometric results. Scales propagated by
NOAA from 1993-2000 were effectively a mixture of the SIO scale in use at the time (now obsolete) and the NOAA
manometric data up to that time. Bias is largest and shows more scatter prior to 1994 because the NOAA scale was based on
relatively few SIO measurements of the NOAA primary standards (Keeling et al., 2012). Primary assignments improved over
815 time as the number of measurements increased. Data traceable to these unnamed NOAA scales are biased relative to X2007
(Fig. 17). However, any potential bias in atmospheric records would be related to the date the standards were value-assigned,
not necessarily the date the atmosphere was measured. The potential bias in historical data sets relative to X2019 would
increase due to the X2019 to X2007 relationship. The linear conversion (equation 6) is not strictly applicable to data not
traceable to X2007, but would be a close approximation for data traceable to scales in use between 2001 and 2006. These
820 limitations should be considered with regard to the uncertainty of historical data.

Deleted: in use

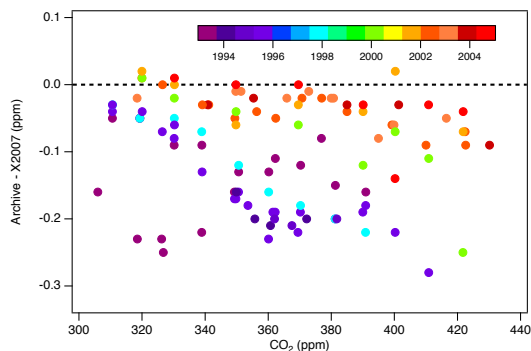
Deleted: c

Deleted: re

Deleted: not identified by name

Deleted: ,

Deleted: and involved a transition from scales based on SIO manometric measurements to NOAA manometric measurements.



830 **Figure 17:** Potential bias that could exist in archive data sets traceable to NOAA standards prior to the release of X2007, shown as the difference between a hypothetical archived result and that result expressed on scale X2007 (derived from a sample of standards analyzed from 1993 to 2005).

10 Conclusions

835 We have applied two corrections to manometric data used to define the WMO/GAW CO₂ scale and include four additional standards to define a new scale, identified as WMO-CO₂-X2019. The net result of a scale update is two-fold: 1) The X2019 scale is more accurate and internally consistent than the previous X2007 scale. 2) Tertiary assignments on X2019 are more consistent across time because, with additional manometric analysis of primary standards and additional information on secondary assignments, scale propagation has been improved. While the scale difference at the tertiary standard level (~0.18 ppm at 400 ppm) is small in relative terms (0.045%), it is significant in terms of atmospheric monitoring. Measurement laboratories will need to update to the X2019 scale to avoid mis-interpretation of scale-induced (artificial) atmospheric gradients as real signals.

845 For users of standards obtained from the CCL, the best way to update to the X2019 scale is to implement the X2019 re-assignments and propagate through to atmospheric data. However, for datasets in which a full reprocessing is not possible or practical, a linear scale conversion is an option. The linear conversion will result in bias compared to full-reprocessing, but that bias is relatively small in many cases, and is less than 0.03 ppm for nearly 80% of standards value-assigned since 1995 over the range 320-460 ppm.

Deleted: ,

References

850 Flores, E., Viallon, J., Choteau, T., Moussay, P., Idrees, F., Wielgosz, R. I., Lee, J., Zalewska, E., Nieuwenkamp, G., Veen, A. v. d., Konopelko, L. A., Kustikov, Y. A., Kolobova, A. V., Chubchenko, Y. K., Efremova, O. V., Zhe, B. I., Zhou, Z., Zhou, Z., Rhoderick, G. C., Hodge, J. T., Shimosaka, T., Aoki, N., Hall, B., Brewer, P., Cieciora, D., Sega, M., Macé, T., Fükő, J., Nagyné Szilágyi, Z., Büki, T., Jozela, M. I., Ntsasa, N. G., Leshabane, N., Tshilongo, J., Johri, P., and Tarhan, T.: CCQM-K120 (Carbon dioxide at background and urban level), *Metrologia*, 56, 08001-08001, 10.1088/0026-1394/56/1a/08001, 2018.

855 Hall, B. D., Dutton, G. S., Mondeel, D. J., Nance, J. D., Rigby, M., Butler, J. H., Moore, F. L., Hurst, D. F., and Elkins, J. W.: Improving measurements of SF₆ for the study of atmospheric transport and emissions, *Atmos. Meas. Tech.*, 4, 2441-2451, 10.5194/amt-4-2441-2011, 2011.

Hall, B. D., Crotwell, A. M., Miller, B. R., Schibig, M., and Elkins, J. W.: Gravimetrically prepared carbon dioxide standards in support of atmospheric research, *Atmos. Meas. Tech.*, 12, 517-524, 10.5194/amt-12-517-2019, 2019.

860 [JCGM, Evaluation of Measurement Data – Guide to the Expression of Uncertainty in Measurement \(ISO GUM 1995 with minor corrections\), Joint Committee for Guides in Metrology, 2008.](#)

Keeling, C. D., Guenther, P. R., and Moss, D. J.: Scripps reference gas calibration system for carbon dioxide-in-air standards: revision of 1985, WMO/TD-No. 125, https://scrippsco2.ucsd.edu/assets/publications/keeling_scripps_ref_gas_calibration_system_revision_1986.pdf, 1986.

865 https://scrippsco2.ucsd.edu/assets/publications/keeling_scripps_ref_gas_calibration_system_revision_1986.pdf, 1986.

Keeling, R. F., Guenther, P. R., Walker, S., and Moss, D.: Scripps Reference Gas Calibration System for Carbon Dioxide-in-Nitrogen and Carbon Dioxide-in-Air Standards: Revision of 2012, Technical Report, March 2016, Scripps Institution of Oceanography, La Jolla, CA, 2012.

Langenfelds, R. L., van der Schoot, M. V., Francey, R. J., Steele, L. P., Schmidt, M., and Mukai, H.: Modification of air standard composition by diffusive and surface processes, *Journal of Geophysical Research: Atmospheres*, 110, 10.1029/2004JD005482, 2005.

870 Leuenberger, M. C., Schibig, M. F., and Nyfeler, P.: Gas adsorption and desorption effects on cylinders and their importance for long-term gas records, *Atmos. Meas. Tech.*, 8, 5289-5299, 10.5194/amt-8-5289-2015, 2015.

Messerschmidt, J., Geibel, M. C., Blumenstock, T., Chen, H., Deutscher, N. M., Engel, A., Feist, D. G., Gerbig, C., Gisi, M., Hase, F., Katrynski, K., Kolle, O., Lavrič, J. V., Notholt, J., Palm, M., Ramonet, M., Rettinger, M., Schmidt, M., Sussmann, R., Toon, G. C., Truong, F., Warneke, T., Wennberg, P. O., Wunch, D., and Xueref-Remy, I.: Calibration of TCCON column-averaged CO₂: the first aircraft campaign over European TCCON sites, *Atmos. Chem. Phys.*, 11, 10765-10777, 10.5194/acp-11-10765-2011, 2011.

875 Milton, M. J. T.: The mole, amount of substance and primary methods, *Metrologia*, 50, 158-163, 10.1088/0026-1394/50/2/158, 2013.

Rhoderick, G. C., Kitzis, D. R., Kelley, M. E., Miller, W. R., Hall, B. D., Dlugokencky, E. J., Tans, P. P., Possolo, A., and Carney, J.: Development of a Northern Continental Air Standard Reference Material, *Anal Chem*, 88, 3376-3385, 10.1021/acs.analchem.6b00123, 2016.

Schibig, M. F., Kitzis, D., and Tans, P. P.: Experiments with CO₂-in-air reference gases in high-pressure aluminum cylinders, *Atmos. Meas. Tech.*, 11, 5565-5586, 10.5194/amt-11-5565-2018, 2018.

885 Sengers, J. M. H., Klien, M., Gallagher, J. S.: Pressure-Volume-Temperature Relationships of Gases Virial Coefficients, 54 pp., 1971.

Tans, P. P., Zhao, C. L., and Kitzis, D.: The WMO Mole Fraction Scales for CO₂ and other Greenhouse Gases, and Uncertainty of the Atmospheric Measurements, 15th WMO/IAEA Meeting of Experts on Carbon Dioxide, Other

Deleted: Dlugokencky, E. J., Myers, R. C., Lang, P. M., Masarie, K. A., Crotwell, A. M., Thoning, K. W., Hall, B. D., Elkins, J. W., and Steele, L. P.: Conversion of NOAA atmospheric dry air CH₄ mole fractions to a gravimetrically prepared standard scale, *Journal of Geophysical Research: Atmospheres*, 110, 10.1029/2005JD006035, 2005.

Formatted: Font: (Default) Times New Roman

Formatted: Font: (Default) Times New Roman

Formatted: Normal, Space After: 6 pt, Don't adjust space between Latin and Asian text, Don't adjust space between Asian text and numbers

Formatted: Font: English (US), Check spelling and grammar

Deleted: 8

Formatted: Font: 10 pt

Formatted: Font: 10 pt

Deleted: ¶

Formatted: Subscript

Deleted: O₂

Formatted: Subscript

900 Greenhouse Gases and Related Tracers Measurement Techniques, GAW Report No. 194 Geneva, Switzerland, 152-159, 2011.

| Tans, P. P., Crotwell, A. M., and Thoning, K. W.: Abundances of isotopologues and calibration of CO₂ greenhouse gas measurements, Atmos. Meas. Tech., 10, 2669-2685, 10.5194/amt-10-2669-2017, 2017.

905 Wendeberg, M., Richter, J. M., Rothe, M., and Brand, W. A.: Jena Reference Air Set (JRAS): a multi-point scale anchor for isotope measurements of CO₂ in air, Atmos. Meas. Tech., 6, 817-822, 10.5194/amt-6-817-2013, 2013.

| White, J. W. C., B.H. Vaughn, and S.E. Michel (2015), University of Colorado, Institute of Arctic and Alpine Research (INSTAAR), Stable Isotopic Composition of Atmospheric Carbon Dioxide (¹³C and ¹⁸O) from the NOAA ESRL Carbon Cycle Cooperative Global Air Sampling Network, 1990-2014, Version: 2015-10-26, Path: ftp://aftp.cmdl.noaa.gov/data/trace_gases/co2c13/flask/.

910 WMO (2020), 20th WMO/IAEA Meeting on Carbon Dioxide, Other Greenhouse Gases and Related Tracers Measurement Techniques (GGMT-2019), Jeju Island, South Korea, GAW Rep. No. 255, Geneva, Switzerland.

Wunch, D., Toon, G. C., Wennberg, P. O., Wofsy, S. C., Stephens, B. B., Fischer, M. L., Uchino, O., Abshire, J. B., Bernath, P., Biraud, S. C., Blavier, J. F. L., Boone, C., Bowman, K. P., Browell, E. V., Campos, T., Connor, B. J., Daube, B. C., Deutscher, N. M., Diao, M., Elkins, J. W., Gerbig, C., Gottlieb, E., Griffith, D. W. T., Hurst, D. F., Jiménez, R., Keppel-
915 Aleks, G., Kort, E. A., Macatangay, R., Machida, T., Matsueda, H., Moore, F., Morino, I., Park, S., Robinson, J., Roehl, C. M., Sawa, Y., Sherlock, V., Sweeney, C., Tanaka, T., and Zondlo, M. A.: Calibration of the Total Carbon Column Observing Network using aircraft profile data, Atmos. Meas. Tech., 3, 1351-1362, 10.5194/amt-3-1351-2010, 2010.

| Zhao, C. L., Tans, P. P., and Thoning, K. W.: A high precision manometric system for absolute calibrations of CO₂ in dry air, J. Geophys. Res., 102, 5885-5894, 1997.

920 Zhao, C. L., and Tans, P. P.: Estimating uncertainty of the WMO mole fraction scale for carbon dioxide in air, J. GeoPhys. Res., 111, 10.1029/2005JD006003, 2006.

Author contributions

All authors played a role in experiment design and analysis. BH, AC, and PT performed the calculations. BH prepared the manuscript with contributions from all co-authors.

925 **Acknowledgments**

| We appreciate the work of Conglong Zhao and Kirk Thoning, who developed the NOAA manometric method, Ed
Dlugokencky for thoughtful review of the manuscript, and two reviewers for their thorough reviews. We thank Sylvia Michel
and Bruce Vaughn at the University of Colorado Stable Isotope Laboratory for their analysis. We thank Paul Krummel and
Ray Langenfelds of the Commonwealth Scientific and Industrial Research Organization (CSIRO) (Australia), Armin Jordan
930 of the Max Planck Institute for Biogeochemistry (Jena, Germany), Doug Worthy (Environment Canada), and Gordon
Brailsford at the National Institute for Water and Atmospheric Research (NIWA) (New Zealand) for providing historical
calibration data for evaluation. This work was supported, in part, by the NOAA Atmospheric Chemistry, Carbon Cycle, and
Climate Program. M. F. Schibig was supported by an Early Postdoc Mobility fellowship from the Swiss National Science
Foundation.

935

Formatted: Subscript

Deleted: <sub>

Deleted: </sub>

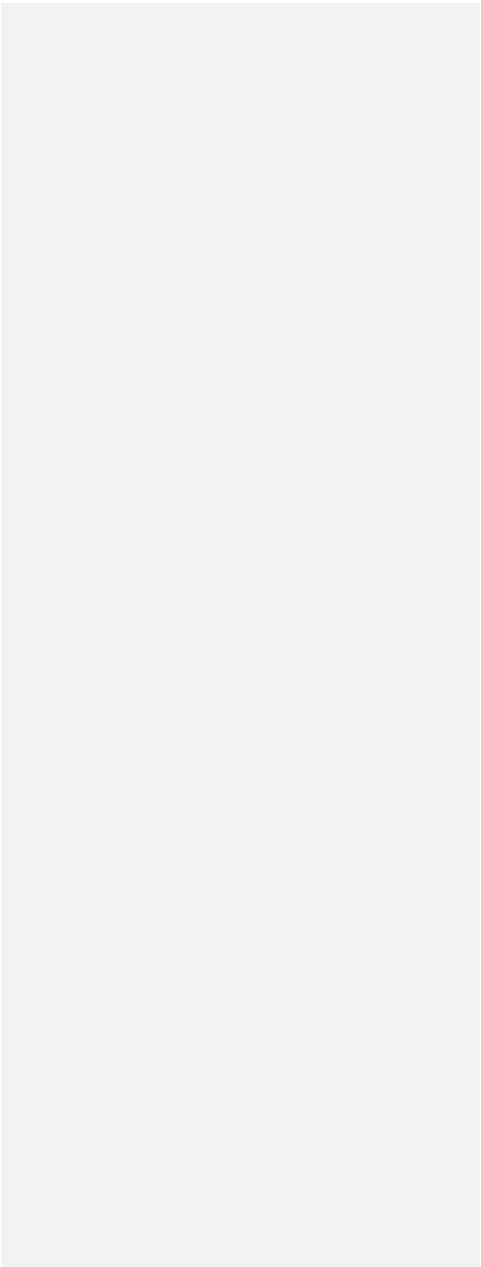
Formatted: Superscript

Formatted: Superscript

Formatted: Subscript

Deleted: and

Deleted: .



Page 20: [1] Deleted	Brad Hall	1/11/21 4:50:00 PM
----------------------	-----------	--------------------

Page 20: [2] Deleted	Brad Hall	1/11/21 4:59:00 PM
----------------------	-----------	--------------------

