

Supplement

Continuum radiances for the full sample (Table 1) as shown in Figure 2. Shown are all soundings over a period of more than 1,000 days, starting 28th of April 2018. The median radiance (red) and a linear fit (green) are shown with lines. Data has been corrected for the solar zenith angle at each individual overpass and assuming the surface is Lambertian. A yearly variation has been corrected using a fitted sine wave with a period of 365 days.

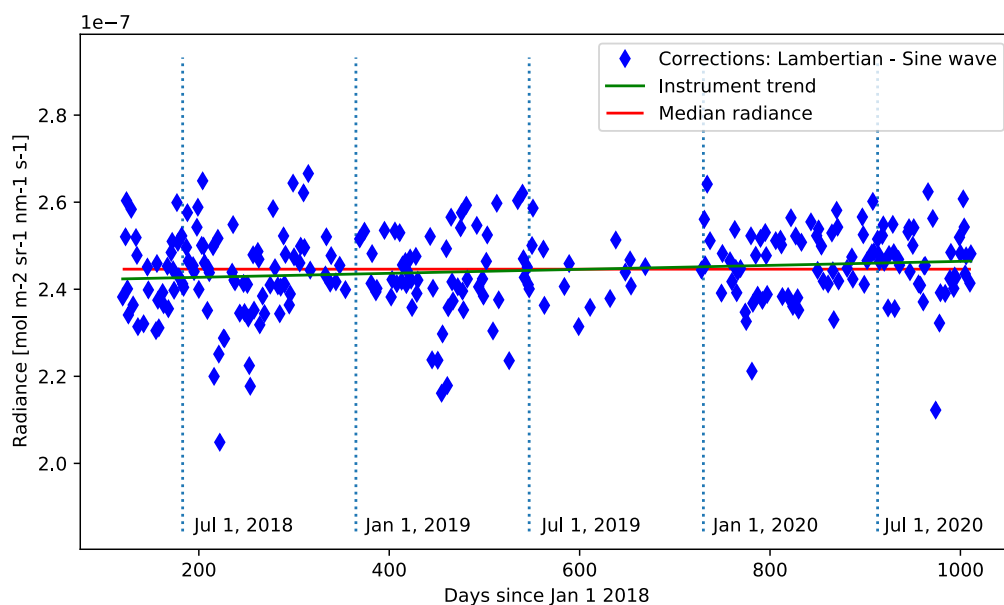


Fig. S1: Algeria1

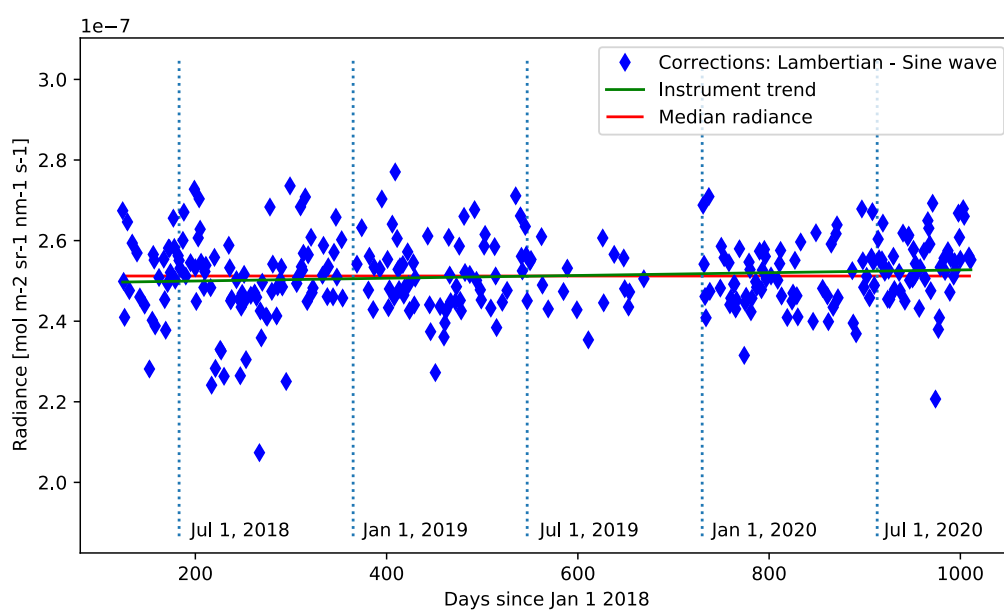


Fig. S2: Algeria2

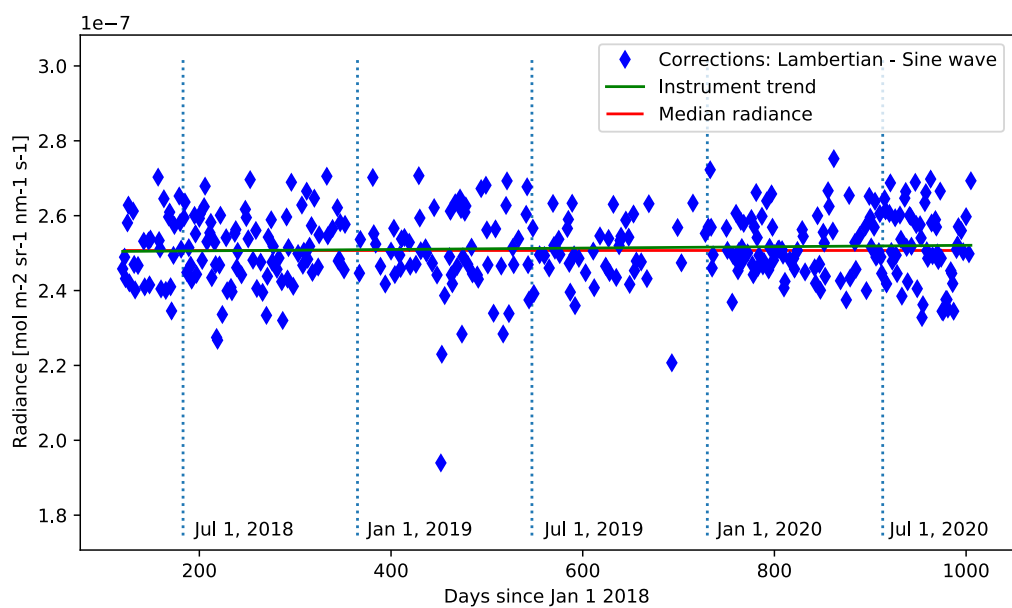


Fig. S3: Algeria3

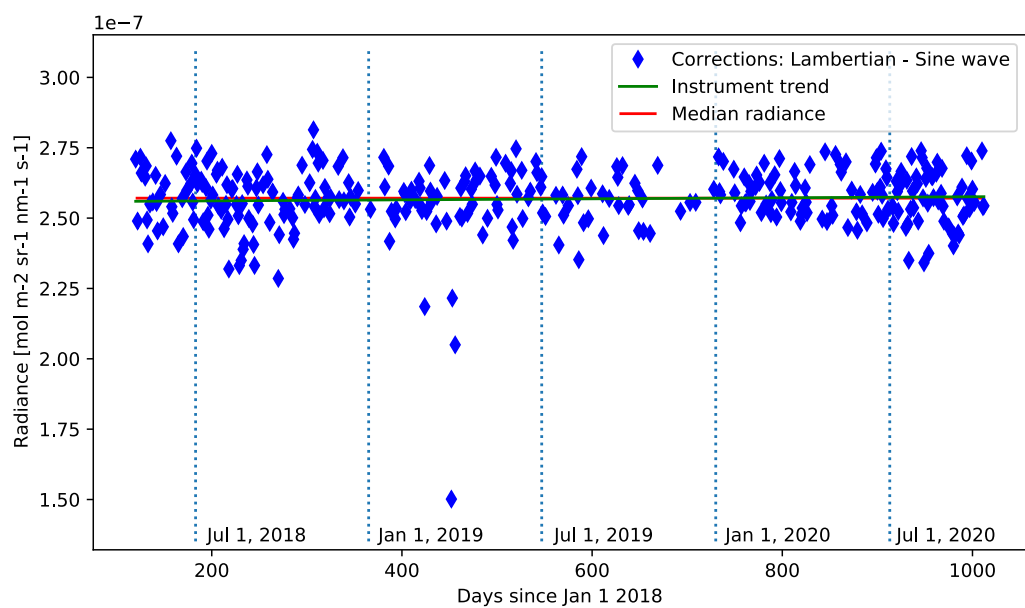


Fig. S4: Algeria4

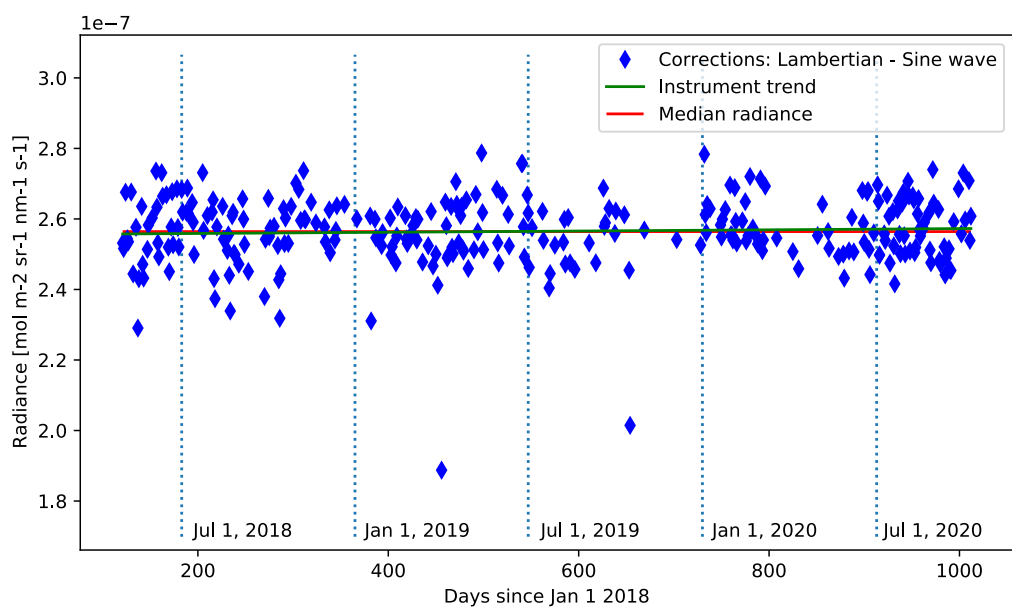


Fig. S5: Algeria5

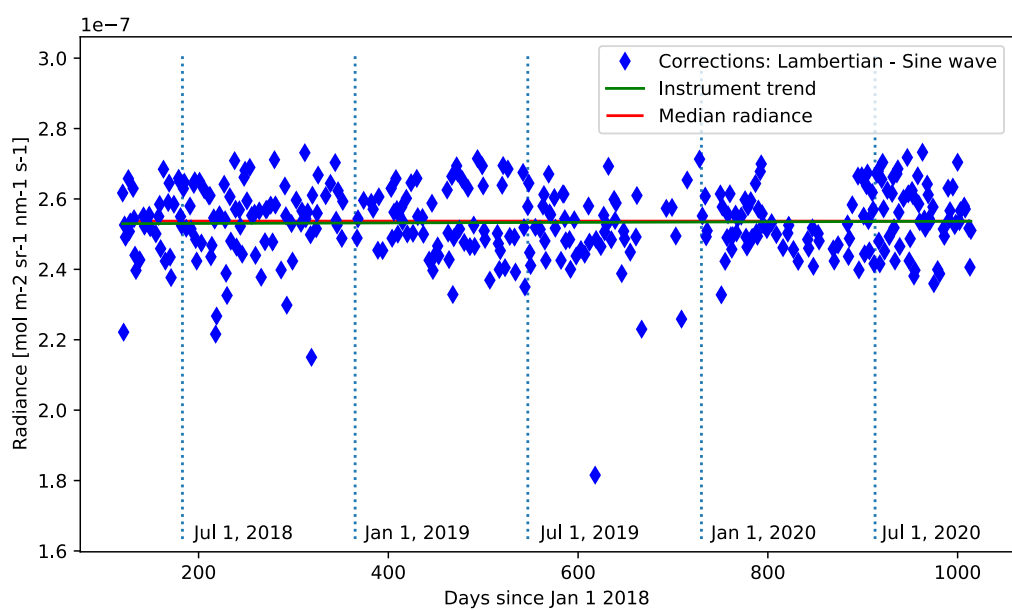


Fig. S6: AlgeriaPICSAND1

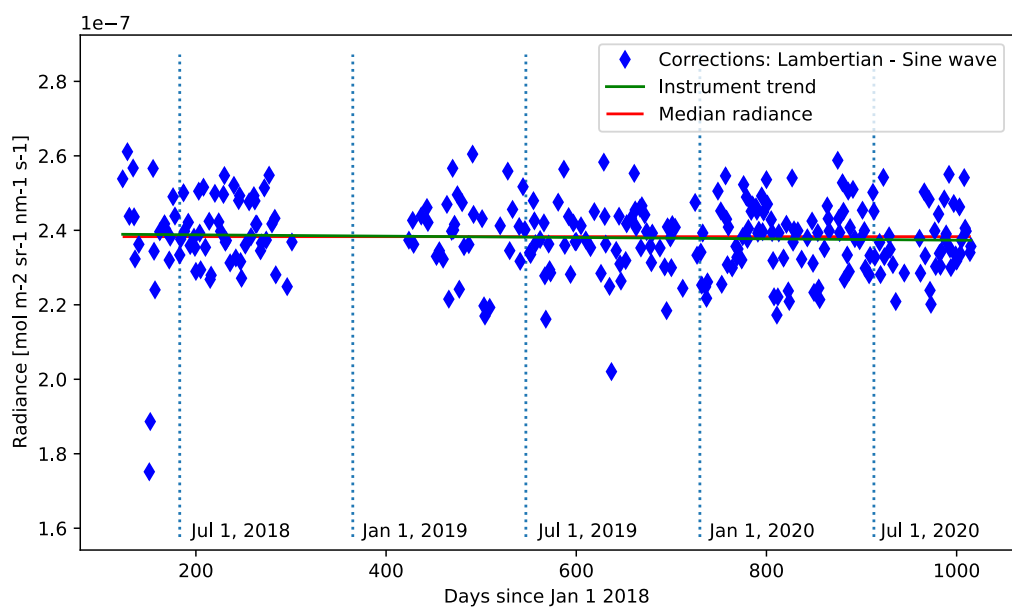


Fig. S7: Arabia1

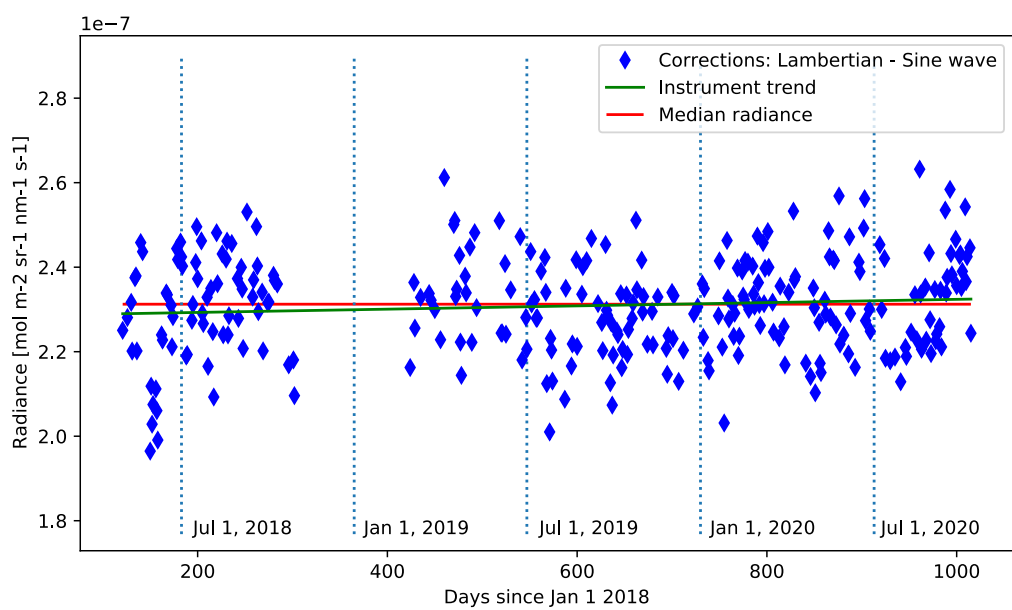


Fig. S8: Arabia2

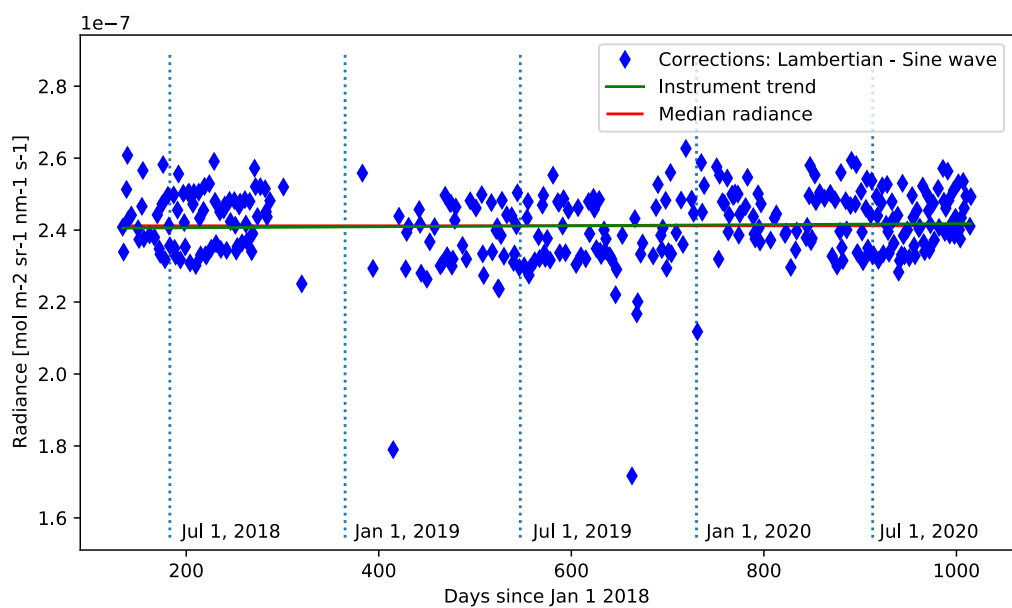


Fig. S9: Arabia3

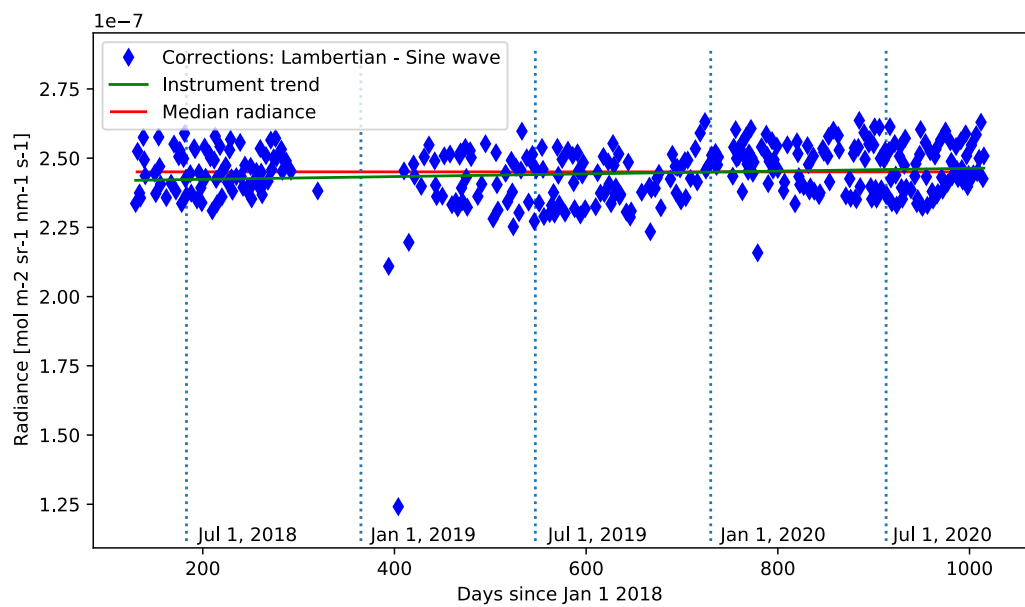


Fig. S10: ArabiaPICSAND1

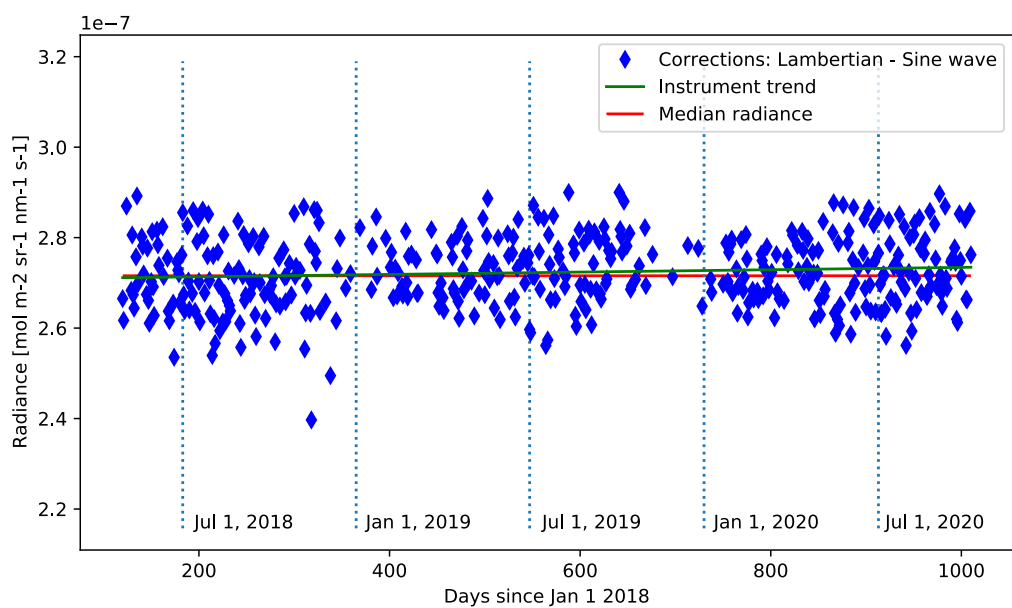


Fig. S11: Egypt1

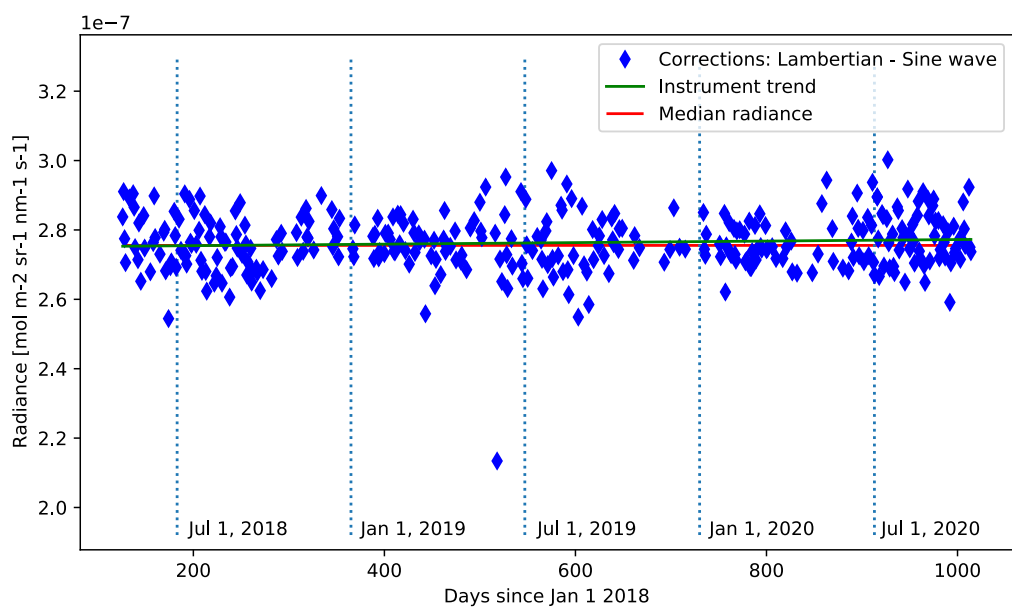


Fig. S12: Libya1

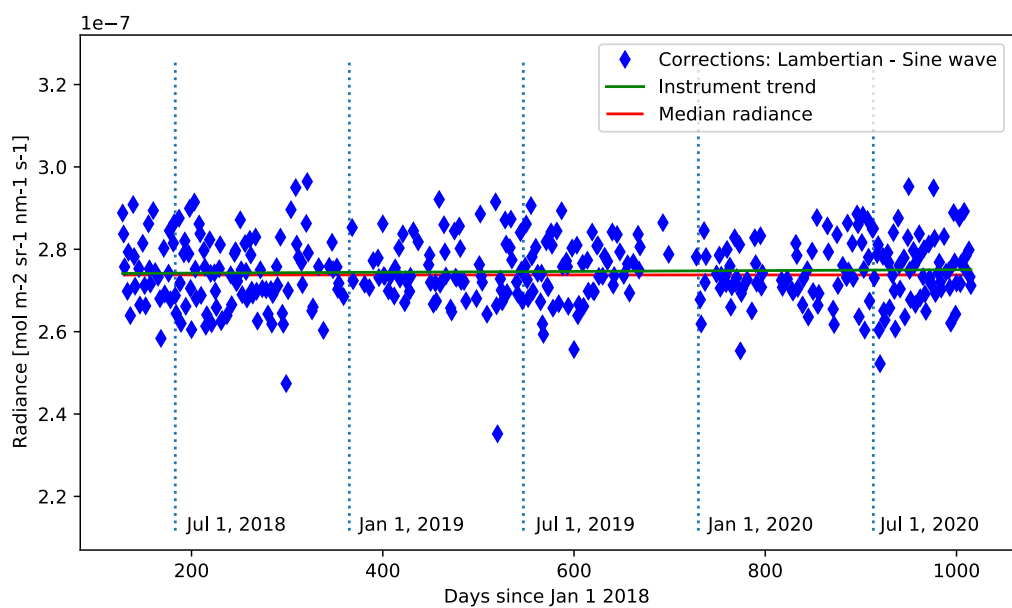


Fig. S13: Libya2

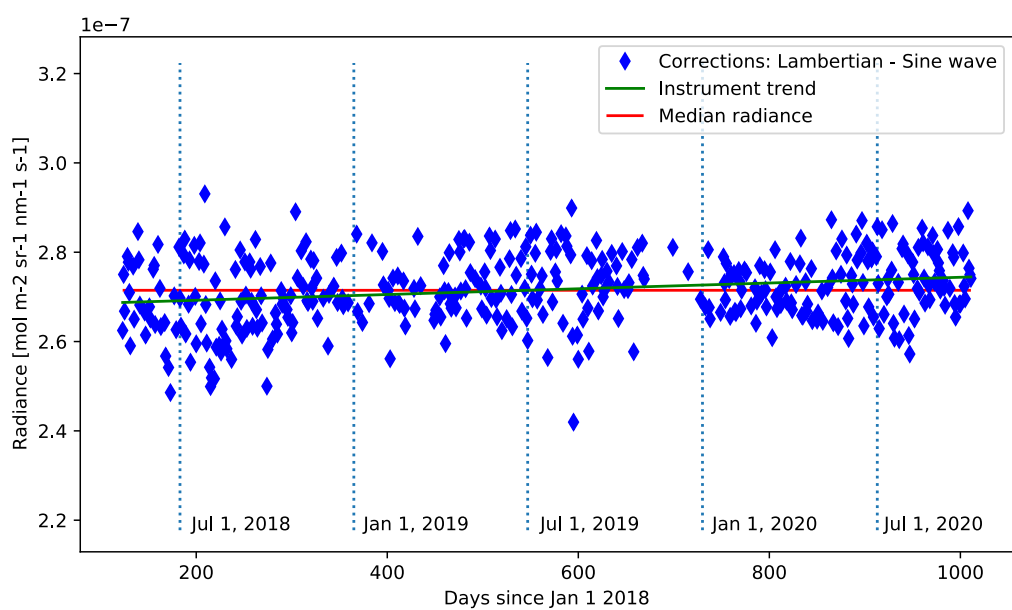


Fig. S14: Libya3

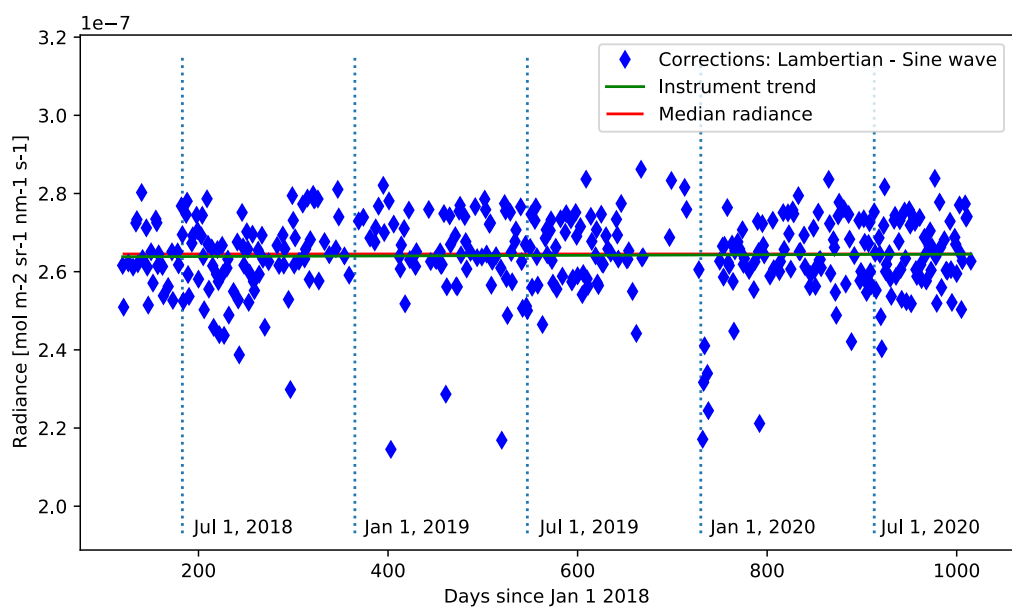


Fig. S15: Libya4

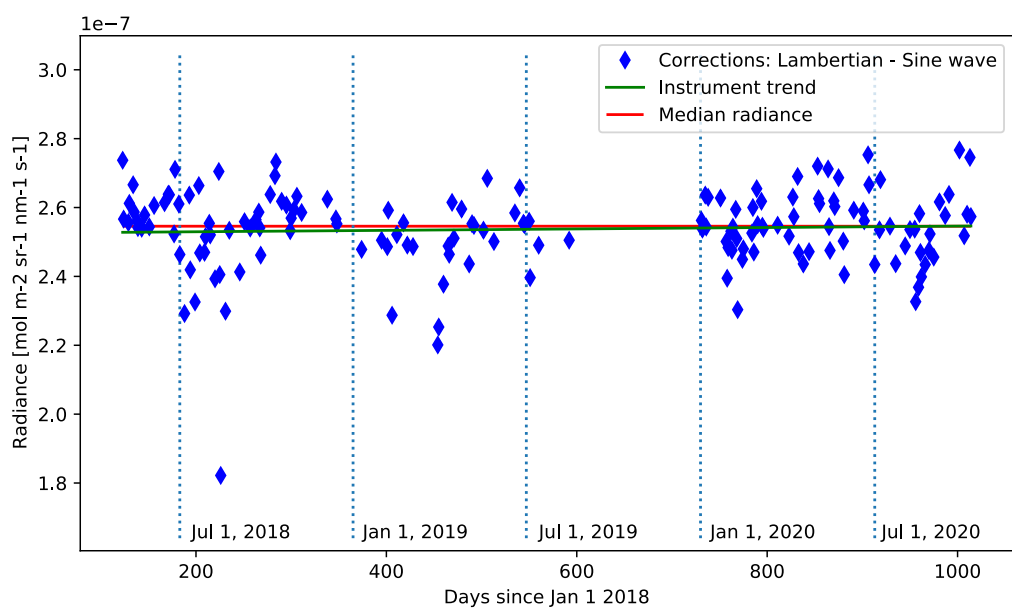


Fig. S16: Mali1

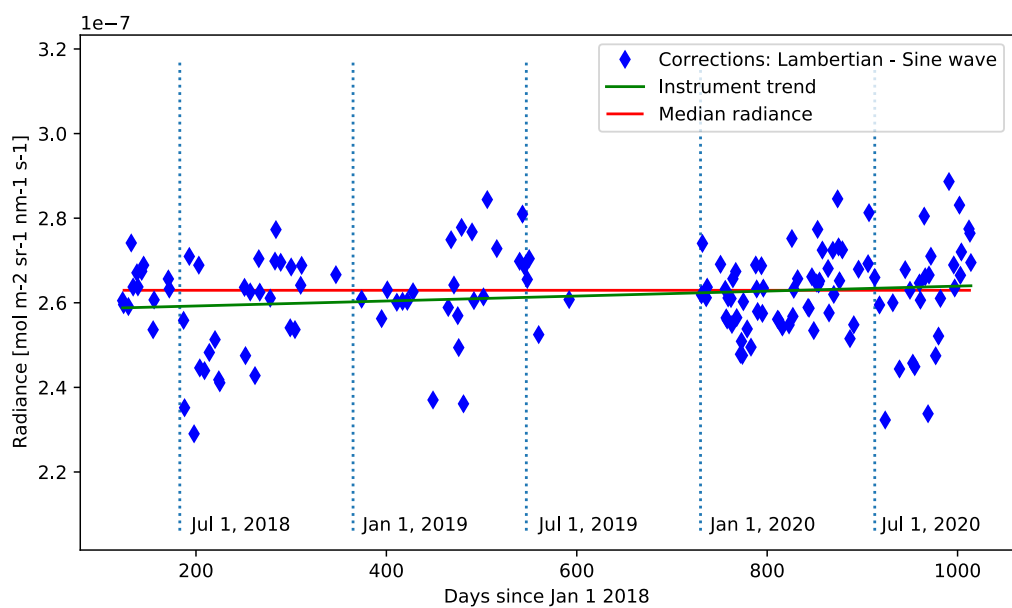


Fig. S17: Mauritania1

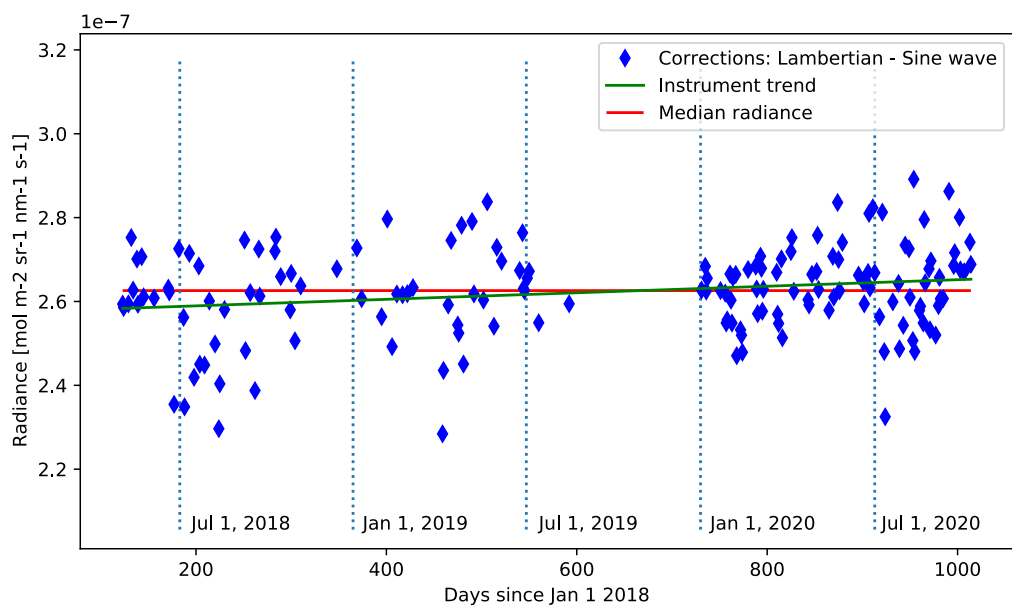


Fig. S18: Mauritania2

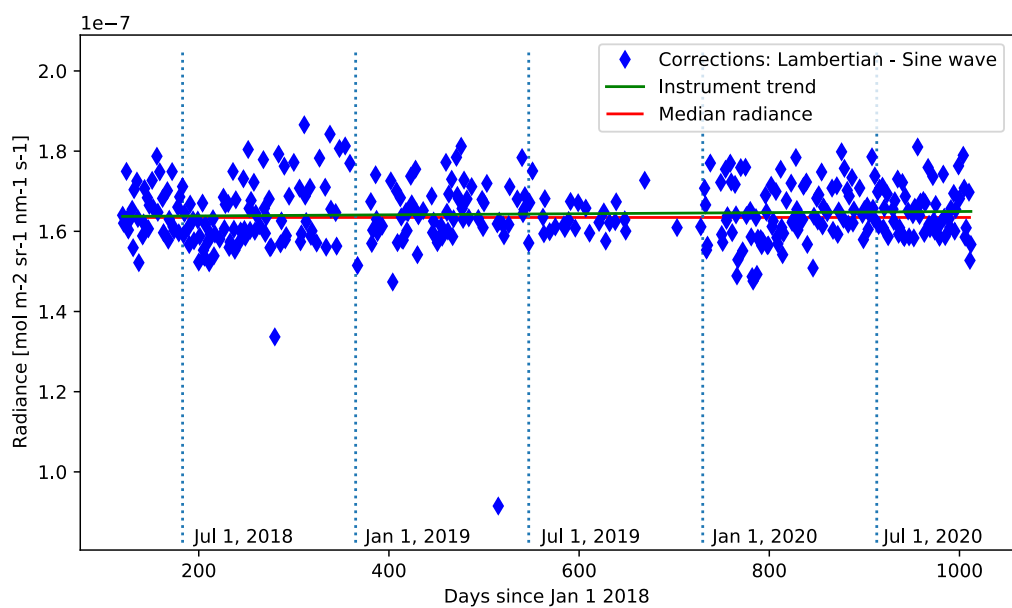


Fig. S19: NamibiaPICSAND1

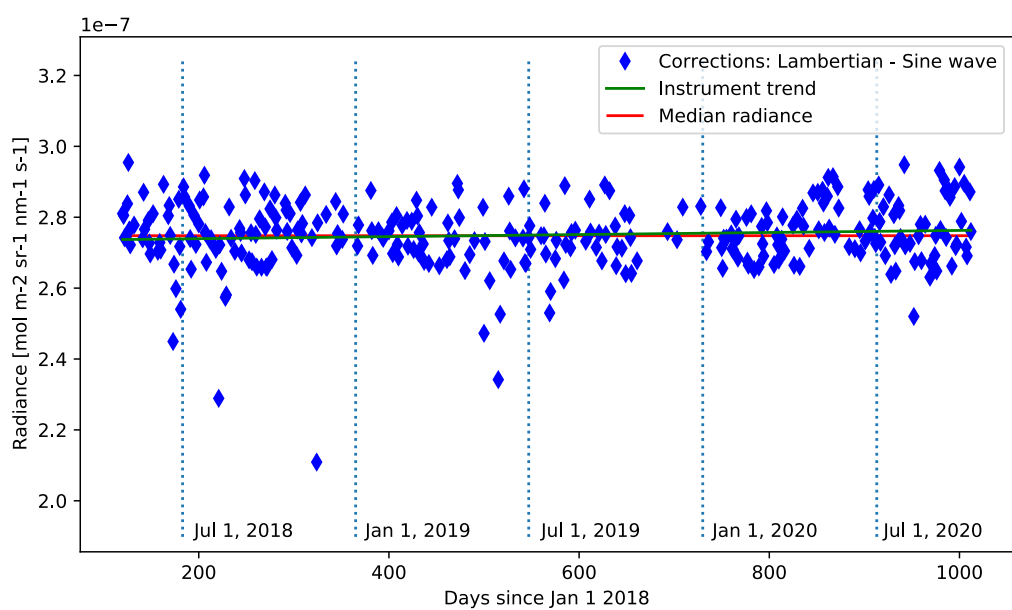


Fig. S20: Niger1

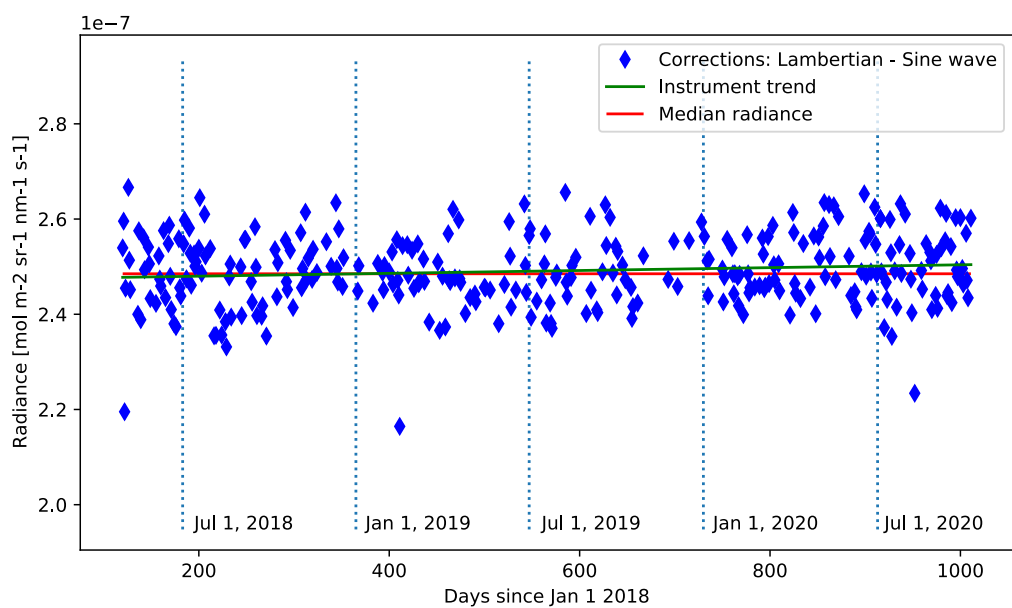


Fig. S21: Niger2

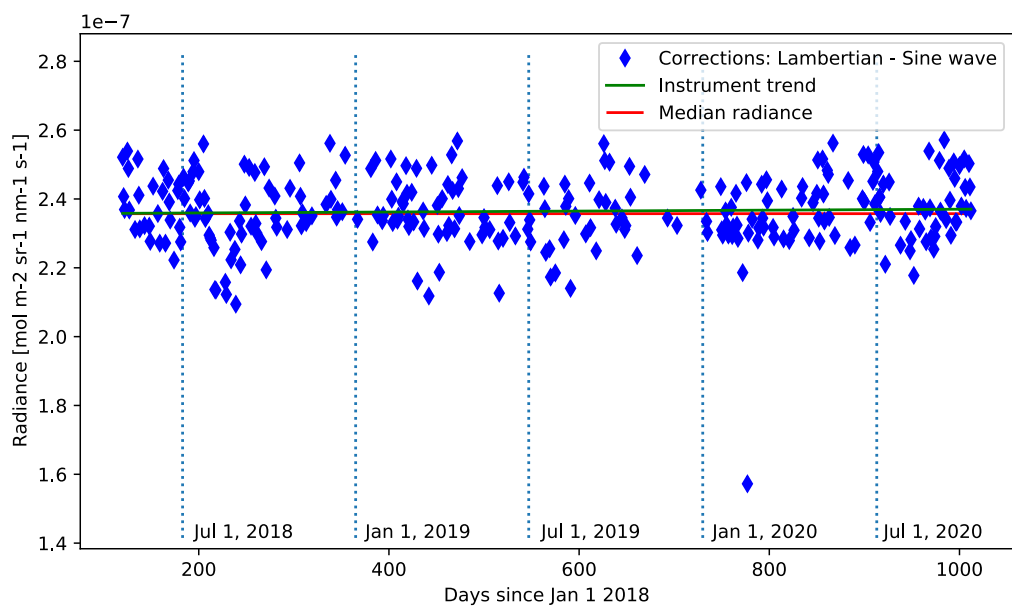


Fig. S22: Niger3

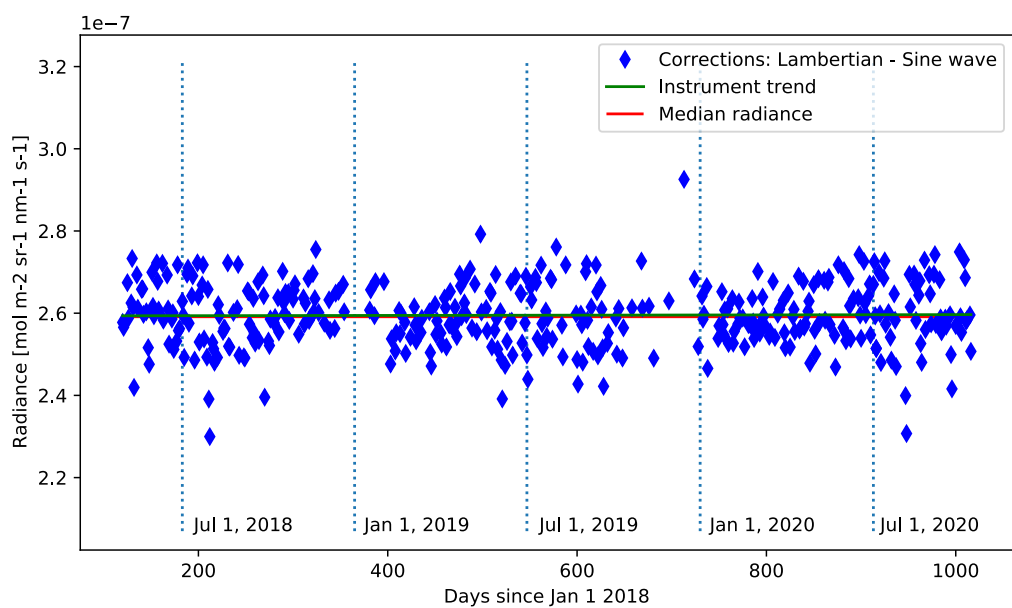


Fig. S23: Sudan1

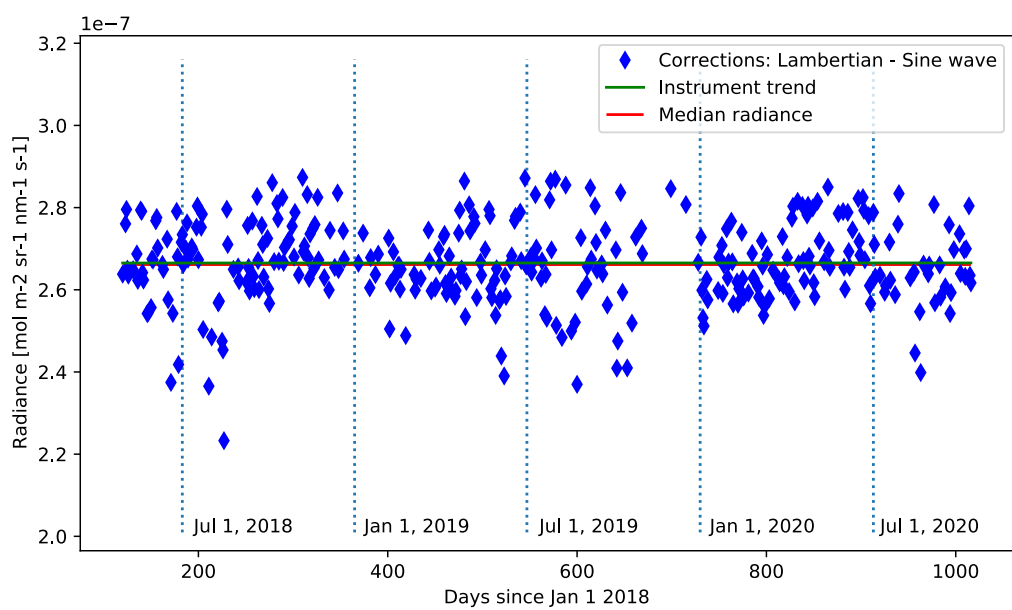


Fig. S24: SudanPICSAND1