

Retrieval Algorithm for the Column CO₂ Mixing Ratio from Pulsed Multi-Wavelength IPDA Lidar Measurements

Xiaoli Sun¹, James B. Abshire^{1,2}, Anand Ramanathan,^{1,3} S. Randy Kawa¹, and Jianping Mao^{1,2}

¹NASA Goddard Space Flight Center, Science and Exploration Directorate, Greenbelt, Maryland, USA

5 ²University of Maryland, CRESST II, College Park, Maryland, USA

³Audible, Inc., Newark, New Jersey, USA

Correspondence to: Xiaoli Sun (xiaoli.sun-1@nasa.gov)

Abstract. The retrieval algorithm for the column mixing ratio of CO₂ from the measurements of a pulsed multi-wavelength integrated path differential absorption (IPDA) lidar is described. The lidar samples the shape of the 1572.33 nm CO₂ absorption line at multiple wavelengths. The algorithm uses a least-squares fit between the CO₂ line shape computed from a layered atmosphere model to that sampled by the lidar. In addition to the column average CO₂ dry air mole fraction (XCO₂), several other parameters are also solved simultaneously from the fit. These include the Doppler shift in the received laser signal wavelengths, the product of the surface reflectivity and atmospheric transmission and a linear trend in the lidar receiver's spectral response. The algorithm can also be used to solve for the average water vapor mixing ratio, which causes a secondary absorption in the wings of the CO₂ absorption line under high humidity conditions. The least-squares fit is linearized about the expected XCO₂ value which allows the use of a standard linear least-squares fitting method and software tools. The standard deviation of the retrieved XCO₂ is obtained from covariance matrix of the fit. The averaging kernel is also provided similarly to that used for passive trace-gas column measurements. Examples are presented of using the algorithm to retrieve XCO₂ from the measurements from NASA Goddard's airborne CO₂ Sounder lidar that were made at a constant altitude and during spiral-down maneuvers.

1 Introduction

Accurate remote sensing of atmospheric CO₂ from Earth orbiting satellites is a key component in a long-term carbon-climate observing system (Sellers et al., 2018). Airborne and spaceborne lidar can be used to remotely monitor the global CO₂ and other trace-gas concentrations under conditions that are inaccessible to passive space-borne CO₂ measurement missions, such as GOSAT (Kuze et al., 2016), OCO-2 (Crisp, 2017), and OCO-3 (Eldering et al., 2017; 2019). Studies have shown (Kawa et al., 2018) that a polar orbiting integrated path differential absorption (IPDA) lidar can measure XCO₂ with low bias and high precision at all sun angles, seasons and latitudes using a constant nadir-zenith illumination and observing geometry. A pulsed IPDA lidar also provides the range-resolved atmospheric backscatter profiles, so that return signals from the surface, clouds, and aerosols can be uniquely separated (Allan et al., 2019). This allows pulsed IPDA lidar to measure XCO₂ to the surface, cloud tops, or both (Ramanathan et al., 2015). Because the laser pulses reflected from clouds, aerosols and surface are separated

in time, the XCO₂ retrievals to the ground surface are not affected by multiple scattering from clouds and aerosols (Mao et al., 2018).

Several types of dual wavelength (on-line and off-line) IPDA lidar have been demonstrated previously for measuring XCO₂ from aircraft (Spiers et al., 2011; Menzies et al., 2014; Jacob et al., 2019; Dobler et al., 2013; Campbell et al., 2020; Refaat et al., 2016, 2020; and Amediek et al., 2017). A multi-wavelength IPDA lidar has also been reported (Zhu et al., 2019, 2020). The retrieval algorithms used in these IPDA lidar calculate the ratios of on-line to the off-line atmosphere transmission, convert them to differential absorption optical depths (DAOD), and then solve for XCO₂ from the DAOD based on the atmosphere models. For the multi-wavelength lidar, a series of DAODs are calculated and a least-squares fit is used to solve for XCO₂ (Han et al., 2020). The XCO₂ can be solved directly from the DAOD without *a priori* knowledge of the XCO₂. However, these algorithms rely on the accurate knowledge of the line shape of the CO₂ absorption. They are sensitive to measurement biases due to uncertainties in spectroscopy and meteorological conditions that affect the line shape. They also require precise knowledge of the laser wavelengths, the lidar receiver optical transmission versus wavelength, and the Doppler shift of the received laser signals.

NASA Goddard Space Flight Center (GSFC) has developed an airborne multi-wavelength CO₂ Sounder lidar and demonstrated XCO₂ measurements through a series of airborne campaigns (Abshire et al., 2010, 2013, 2014, 2018; Ramanathan et al., 2013, 2015, 2018; Mao et al., 2018). It compares the lidar-sampled line shape with the one computed from an atmosphere model to retrieve XCO₂. Several other parameters, such as the Doppler shift, surface reflectance, and the lidar receiver spectral are solved simultaneously via a least-squares fit. The retrieval algorithm is similar to those used for passive trace gas measurements with modifications specifically for the lidar measurement. Although this multiwavelength approach requires more laser power to achieve a given XCO₂ measurement precision, it provides more tolerance to the uncertainties in the CO₂ absorption line shape, lidar receiver response, and Doppler shift, so that the retrieved XCO₂ is more robust against bias errors.

This paper describes the retrieval algorithm for the multi-wavelength CO₂ Sounder lidar and provides a framework for similar IPDA lidar for other atmospheric gas measurements. Parts of the algorithm have been reported earlier (Ramanathan et al., 2013, 2015, 2018). This paper gives a complete description of the algorithm, the mathematical derivations, signal processing techniques, estimation error, and averaging kernel. An example of the use of the algorithm with the airborne CO₂ Sounder lidar measurement data is also presented.

2. Measurement Approach

The measurement geometry for the CO₂ Sounder lidar is shown in Fig. 1. The lidar transmits laser pulses toward nadir and its receiver telescope collects the optical signal backscattered from the atmosphere and the surface. Figure 2 shows a block diagram of the airborne CO₂ Sounder lidar, which was developed as an airborne demonstrator for NASA's Active Sensing of CO₂ Emissions over Nights, Days, & Seasons (ASCENDS) mission (Kawa et al., 2018). The laser consists of a tunable seed

Commented [XSun1]: New reference added per Interactive comment.

Commented [XSun2]: Sentences added to compare the existing algorithm with DAOD to the one described in this paper per suggestion from Reviewer 1

laser, a pulsed modulator and a power amplifier. The seed laser module consists of two single-frequency continuous wave (CW) diode lasers. One is the reference laser whose wavelength locked to the center of the CO₂ absorption line in a gas cell. The other diode laser is tunable and its wavelength is locked to that of the master, plus an programmable offset frequency. The offset frequency is step-tuned across the CO₂ absorption line. The number of laser wavelengths in the scan and the exact wavelength of each laser pulse are digitally pre-programmed and can be adjusted via software commands (Numata et al., 2012). An electro-optical modulator is used to gate the output of the slave laser into 1-μsec wide pulses. The laser pulses are then amplified by a multi-stage commercial fiber laser amplifier. The airborne lidar's laser pulse rate is 10 KHz and there are 30 wavelengths per scan, which gives a wavelength scan rate of about 300 Hz. The transmitted laser pulse energies at all wavelengths are also sampled and the results are used to normalize the received signal to correct for fluctuations in the transmitted laser energy with wavelength.

The lidar receiver detects and records the received laser pulse waveform over the entire atmosphere column travelled by the laser pulses. In the airborne lidar all signals are digitized and recorded and the lidar analysis is performed on ground after the flight. The received signals from the scattering surface are used to retrieve XCO₂. The signals before the ground returns are used to obtain the atmosphere backscatter profiles as an ancillary data set. The signals recorded after the ground returns are used to estimate the solar background, the detector dark noise, and the baseline voltage offset in the detector output. The baseline offset is subtracted from the signal before calculating the ground return pulse energies. The times-of-flight of the laser pulse to the targeted scattering surface are used to determine the atmosphere column height for the CO₂ is measured.

80

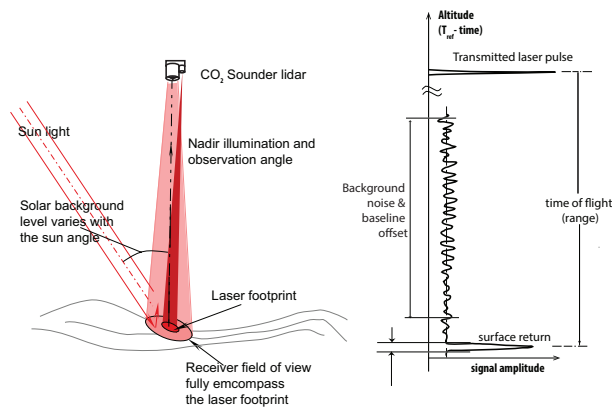


Figure 1. Illustrations of the CO₂ Sounder lidar measurement geometry and received signal at a single laser wavelength.

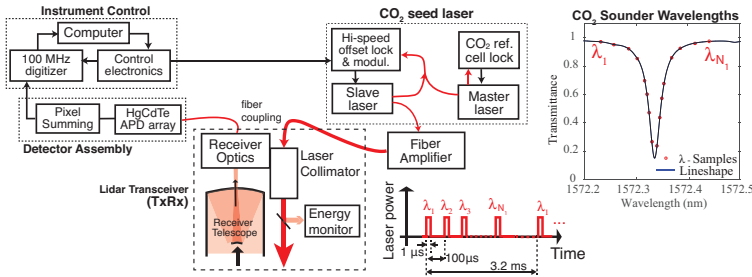


Figure 2. Block diagram of the airborne CO₂ Sounder lidar.

3. Lidar Signal Processing and Atmosphere Modelling

An overview of the retrieval algorithm for lidar data is shown in Fig. 3. The initial processing consists of (a) processing the stored lidar data to estimate ranges to the reflecting surfaces and form a series of atmosphere transmission measurements across the CO₂ absorption line; (b) generating a CO₂ absorption line shape from the radiative transfer model and meteorological data at the time and location of lidar measurements; and (c) performing a least-squares fit of the modelled line shape function to the measurements to solve for XCO₂ and other parameters.

3.1. Lidar Signal Processing

The signal waveforms are first corrected for the detector baseline offset and other instrument characteristics and then scaled to the received optical signal power. The pulse energies from the scattering surfaces are calculated by integrating the received pulse waveforms over the pulse width interval. The relative atmosphere transmittances for all laser wavelengths are calculated by dividing the received pulse energies by the transmitted ones and then multiplying by the square of the range from the lidar to the reflecting surface. The signal to noise ratio (SNR) of the atmospheric transmittances at each wavelength is estimated based on the received signal energy, the estimated background noise, and the detector noise. Finally, a least-squares fit of the modelled line shape to the lidar measurements is used to estimate XCO₂ along with the other parameters.

The lidar returns from clouds are identified by comparing the elevations the lidar returns, namely, aircraft altitude minus the lidar range, to the surface elevation from either the on-board radar measurements or from a Digital Elevation Model (DEM). For dense clouds, the laser energies reflected from the cloud tops are usually sufficient for XCO₂ retrievals (Mao et al., 2018). For thin clouds and aerosols, the laser pulses can often reach the ground surface and be received at the lidar with sufficient energy to allow useful XCO₂ retrievals. The signal waveform before ground return can be averaged to obtain the

atmospheric backscatter profiles at the laser wavelength, which gives information about the heights and densities of thin clouds and aerosols (Allan et al., 2019).

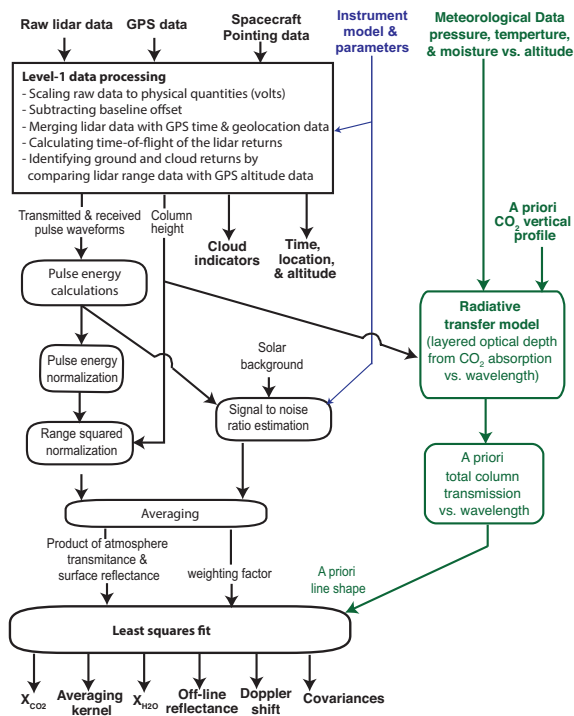


Figure 3. Flowchart of the XCO₂ retrieval algorithm for the CO₂ Sounder lidar.

110

3.2. Model for the Lidar Signals

The average signal pulse energy reflected from the scattering surface can be calculated from the lidar equation (McManamon, 2019), as

$$115 \quad E_r(\lambda) = E_t(\lambda) \cdot T_A^2(\lambda) \frac{V_s}{\pi} \frac{A_r}{R^2} \cdot \eta_r \quad (1)$$

where

$E_r(\lambda)$ and $E_t(\lambda)$ are the received and transmitted laser pulse energies;

λ is the laser wavelength;

$T_A(\lambda)$ is the one-way atmosphere transmission at laser wavelength λ ;

120 r_s is the diffuse surface reflectance in nadir direction;

A_r is the collecting area of the receiver telescope;

R is the range from the lidar to the scattering surface (the column height);

η_r is the receiver optical transmission efficiency.

125 The product of the surface reflectance and the two-way atmospheric transmission can be calculated from the received laser pulse energy after correcting for the range, as

$$y(\lambda) = r_s T_A^2(\lambda) = \left(\frac{\pi}{A_r \eta_r} \right) \left[\frac{E_r(\lambda)}{E_t(\lambda)} \cdot \frac{1}{R^2} \right]. \quad (2)$$

The term in the parenthesis of the right-hand side of Eq. (2) is a constant related to the lidar receiver. The telescope diameter and overall optical transmission can be measured in the lab. The optical transmission can also be calibrated in flight by flying

130 over an area where the surface reflectance and the atmospheric transmission are known from independent measurements. The term in brackets consists of variables measured by the lidar.

Commented [XSun3]: Eq. (2) is revised and more text is added for better clarity per suggestion by Reviewer 1.

3.3. Model for the CO₂ Absorption Line Shape

The total atmospheric transmission from the lidar to the surface can be written as

$$T_A^2(\lambda) = T_{CO_2}^2(\lambda) \cdot T_w^2(\lambda) \cdot T_o^2. \quad (3)$$

135 Here, $T_{CO_2}^2(\lambda)$ and $T_w^2(\lambda)$ are the two-way atmospheric transmissions of CO₂ and water vapor at laser wavelength λ . The term T_o^2 , accounts for the transmission of aerosols and other particles, which are independent of the laser wavelength. T_o^2 is often called the off-line atmospheric transmission. Note that Eq. (3) and the XCO₂ measurement is for the atmosphere column from the lidar to the surface. This is different from the passive remote sensing measurement where the incident light from the sun and the reflected light are at an angle and go through different atmosphere columns.

140 To compute the transmission line shapes of CO₂ and water vapor, the atmosphere is divided into a number of layers. The total transmission is modelled as the product of the individual transmissions of all the layers travelled by the laser pulse. The layered transmission is calculated from the layered radiative transfer atmospheric model, which takes into account the effects of the temperature, pressure, and humidity for each layer. The vertical profiles of temperature, pressure and humidity are obtained from a meteorological analysis model, or, when possible, from atmospheric in situ measurements made during
145 spiral down maneuvers.

The atmospheric transmissions of each layer for each of the lidar wavelength across the CO₂ absorption line are calculated by using the Beer-Lambert law. The total two-way transmission due to CO₂ can be written as

$$T_{CO_2}^2(\lambda_i) = \exp\left[-2 \sum_{j=1}^{N_2} \rho_{CO_2}(H_j) \sigma_{CO_2}(H_j, \lambda_i) \Delta H_j\right] \quad (4)$$

where

150 $i = 1, 2, \dots, N_1$ is the index for the laser wavelengths with N_1 the total number of laser wavelengths used in the lidar measurements;

$j = 1, 2, \dots, N_2$ is the index for the atmosphere layer with N_2 the total number atmosphere layers;

$\rho_{CO_2}(H_j)$ is the molecular density of CO₂ for the j^{th} layer;

H_j is the average altitude of the j^{th} layer;

155 $\sigma_{CO_2}(H_j, \lambda_i)$ is the absorption cross-section of a CO₂ molecule in the j^{th} layer at the i^{th} wavelength.

Here we assumed that the laser wavelengths are known precisely and the laser spectral line width is much narrower than the CO₂ absorption line width. For the CO₂ Sounder lidar, the laser is step locked to an on-board CO₂ gas cell with fixed frequency offsets in each scan. The frequency accuracy is <1 MHz peak to peak and the linewidth is about 30 MHz (Numata et al., 2012), which are small compared to the CO₂ absorption linewidth. It has been shown that for lidar measurements of XCO₂ such small laser frequency deviations are negligible compared to other noise sources (Chen et al., 2012, 2014, 2015, 2019).

The modelled optical transmission due to CO₂ can also be expressed in terms of the optical depth (OD) defined as the absolute value of the logarithm of the one-way atmospheric transmission, as

$$T_{CO_2}^2(\lambda_i) = \exp[-2OD_{CO_2}(\lambda_i)] \quad (5)$$

165 and

$$OD_{CO_2}(\lambda_i) = \sum_{j=1}^{N_2} \rho_{CO_2}(H_j) \sigma_{CO_2}(H_j, \lambda_i) \Delta H_j = \sum_{j=1}^{N_2} \Delta OD_{CO_2}(H_j, \lambda_i) \quad (6)$$

where $OD_{CO_2}(\lambda_i)$ is the column OD at wavelength λ_i and $\Delta OD_{CO_2}(H_j, \lambda_i) = \sum_{j=1}^{N_2} \rho_{CO_2}(H_j) \sigma_{CO_2}(H_j, \lambda_i) \Delta H_j$ is the OD of the atmosphere layer due to CO₂ absorption at wavelength λ_i and altitude H_j .

The molecular density of CO₂ for the j^{th} layer can be expressed as

$$170 \rho_{CO_2}(H_j) = x_{CO_2}(H_j) \rho_{air}(H_j). \quad (7)$$

where $x_{CO_2}(H_j)$ is the CO₂ mixing ratio and $\rho_{air}(H_j)$ is the dry air molecular density at altitude H_j .

In our XCO₂ retrieval algorithm the layered OD is calculated by using the HITRAN 2008 spectroscopy database (Rothman et al., 2009) and the Line-By-Line Radiative Transfer Model (LBLRTM) V12.1, (Clough et al., 1992; Clough and Iacono, 1995), for a given CO₂ mixing ratio and meteorological vertical profiles at the time and location of the lidar measurement.

175 The atmospheric pressure, temperature and water vapor can cause shifts and broadening of the CO₂ absorption line which affects the cross sections at measured wavelengths. The LBLRTM software incorporates these effects and computes a numerical line shape function in OD at the given altitude of each layer. For the airborne data retrievals, meteorological data are obtained from the near real-time forward processing of the Goddard Modelling and Assimilation Office, (GMAO) FP

Commented [XSun4]: Text added to describe the effect of laser frequency noise per suggestion by Reviewer 1.

Commented [XSun5]: Eqs. (5) and (6) are added to explicitly define the column and layered OD, as suggested by Reviewer 1.

180 system, the Goddard Earth Observing System Model, Version 5 (GEOS-5) (Rienecker et al., 2008). The data are drawn from
 the 8-per-day analyzed fields on the full model grid (0.25 x 0.3125 degrees x 72 layers, inst3_3d_asm_Nv files). The GEOS-
 5 data are used for the meteorological conditions for the retrievals for the times and places where the airborne in situ profile
 measurements are not available. For analysis of our airborne campaign measurements the GEOS-5 data were used primarily
 except during the spiral maneuvers. We extract the nearest-in-time, latitude-longitude interpolated meteorological soundings
 185 from the GEOS-5 data every minute at regular positions along the flight's ground tracks. The 42 lowest analysis levels are
 used for each profile location. The analyzed pressure is used for the vertical grid coordinate for any of the profiles. The surface
 pressure and surface height are horizontally interpolated from the model.

190 Since the power and size of the CO₂ Sounder lidar are limited, there is a limit about number of laser wavelengths to
 use to sample the XCO₂ absorption line at a given rate and maintaining adequate SNR at each wavelength. Although
 Ramanathan et al. (2018) showed a few additional parameters about the CO₂ absorption line shape may be retrieved, they
 provide only limited information about the vertical profile of CO₂ mixing ratio. Therefore, we choose to retrieve a single scale
 factor for a reference profile, similar to the profile-scaling used in passive remote sensing (Borsdorff et al. 2014). Here the
 reference profile is obtained from the radiative transfer model and meteorological data described above. A least squares method
 is used to solve for the scale factor that minimizes the error between the line shape model and the lidar sampled CO₂ absorption
 195 line shape at all laser wavelengths. This retrieval method assumes that the modelled line shape is accurate. In practice, there
 may be differences between the model and the actual line shape which could cause biases in the solutions. However, if the
 modelling error is random, the approach of using lidar's sampling of the line at multiple wavelengths and using a line fit tends
 to average out the effect of the discrepancies.

Using the scale factor, the OD which is attributable to the CO₂ absorption can be written as

$$200 \quad OD_{CO_2}(\lambda_i) \approx \alpha_{CO_2} \sum_{j=1}^{N_2} x_{CO_2a}(H_j) \rho_{air}(H_j) \sigma_{CO_2}(H_j, \lambda_i) \Delta H_j = \alpha_{CO_2} OD_{CO_2a}(\lambda_i) \quad (8)$$

where α_{CO_2} is the scale factor, $x_{CO_2a}(H_j)$ is the *a priori* (initial guess) CO₂ mixing ratio at altitude H_j , and $OD_{CO_2a}(\lambda_i)$ is the
a priori total column OD attributed to CO₂ absorption. The atmospheric transmission due to CO₂ absorption can now be
 approximated as

$$T_{CO_2}^2(\lambda_i) \approx \exp\{-2 \alpha_{CO_2} OD_{CO_2a}(\lambda_i)\}. \quad (9)$$

205 4. Solving for XCO₂ from the Lidar Measurements via a Least-Squares Fit

The column XCO₂ and several other variables are solved simultaneously from a least-squares fit of the modelled line shape to
 the lidar measurements. One variable is the Doppler shift in the wavelengths of the received signal, which occurs when
 measuring at non-nadir angles from a moving platform. Another parameter being solved is the product of the surface
 reflectance and the two-way off-line atmospheric transmission. For the CO₂ line at 1572.33 nm and under high humidity, there
 210 is a weak water vapor absorption feature on the left wing of the CO₂ absorption line. The retrieval algorithm can solve this
 absorption feature to avoid compensating it and causing biases in the retrieved XCO₂. For our airborne lidar, there is also small

Commented [XSun6]: This paragraph is revised per reviewers' suggestion to put the retrieval algorithm in context of profile scaling used in passive remote sensing.

linear trend (slope) in the received laser pulse energy as a function of the wavelength. The primary cause of this trend is the residual errors from modelling the uneven spectral response of the receiver optics, especially the optical bandpass filter. Since the bandpass spectral shape can change slightly with temperature and time, the retrieval also solves for this residual slope.

215 The least-squares fit may be formulated by expressing the lidar measurement data in matrix form, \mathbf{Y} , a single column matrix with elements y_i given by Eq. (2). The parameters to be solved for, $\mathbf{S} = \{s_k\}$, is expressed as a $N_3 \times 1$ matrix. In our case $N_3 = 5$, where each element is defined as

$s_1 = r_s T_o^2$ is the product of the surface reflectance and the two-way atmosphere transmission at off-line wavelength;

$s_2 = \alpha_{CO_2}$ is the scale factor for the XCO₂ line shape function;

220 $s_3 = \alpha_{water}$ is the scale factor for the water vapor line shape function;

s_4 is the linear slope of the receiver spectral response; and

s_5 is the Doppler shift of the received signal wavelengths.

The modeled atmospheric transmission given in Eq. (9) can be expressed as a single column matrix, $\mathbf{F}(\mathbf{S})$, called forward model, with each element equal to

225
$$f_i(\mathbf{S}) = r_s T_A^2(\lambda_i, \mathbf{S}) \approx s_1 [s_2 T_{CO_2}^2(\lambda_i + s_5)] [s_3 T_{water}^2(\lambda_i + s_5)] \eta_0(\lambda_i + s_5, s_4) \quad (10)$$

where $T_A^2(\lambda, \mathbf{S})$ is the atmosphere transmission defined in Eq. (1) but expressed as a function of both the laser wavelength and the parameters to be solved, and $\eta_0(\lambda, s_4)$ is the normalized receiver optical transmission as a function of the wavelength and the slope of the linear trend of the receiver spectral response. Here we also included the term for the water vapor.

A scalar-valued loss function can be defined as the sum of squared differences between the lidar measurement data and the model, as,

230
$$J(\mathbf{Y}, \mathbf{S}) = [\mathbf{Y} - \mathbf{F}(\mathbf{S})]^T \mathbf{W} [\mathbf{Y} - \mathbf{F}(\mathbf{S})] = \sum_{i=1}^{N_1} w_{i,i} [y_i(\lambda_i) - f_i(\mathbf{S})]^2 \quad (11)$$

where $[\mathbf{Y} - \mathbf{F}(\mathbf{S})]$ is an $N_1 \times 1$ matrix and \mathbf{W} is a $N_1 \times N_1$ diagonal matrix for weighting factors used in the fits. The weighting factors are chosen to balance the contributions from the measurements at different laser wavelengths that have different SNRs.

The least-squares fit finds the parameter set that minimizes the loss function.

235 For small changes in XCO₂ and for high SNR lidar measurements, Eq. (11) can be linearized by the first two terms of its power series expansion about initial estimates of the parameter values, \mathbf{S}_0 . The function $\mathbf{F}(\mathbf{S})$, also known as the forward model, can then be approximated by

$$\mathbf{F}(\mathbf{S}) \approx \mathbf{F}_0 + \frac{\partial \mathbf{F}(\mathbf{S})}{\partial \mathbf{S}} \Big|_{\mathbf{S}=\mathbf{S}_0} (\mathbf{S} - \mathbf{S}_0) \quad (12)$$

where

240
$$\mathbf{F}_0 = \mathbf{F}(\mathbf{S}_0) = \begin{bmatrix} f_0(\lambda_{N_1}) \\ \vdots \\ f_0(\lambda_1) \end{bmatrix}$$

with $f_0(\lambda_i)$ equal to Eq. (10) evaluated at the initial value of the parameter set.

Substituting Eq. (12) into Eq. (11) and defining $\Delta Y = (Y - F_0)$ and $\Delta S = S - S_0$, the loss function can now be approximated as

$$J(Y, S) \approx \left[\Delta Y - \frac{\partial F(S)}{\partial S} \Big|_{S=S_0} \Delta S \right]^T W \left[\Delta Y - \frac{\partial F(S)}{\partial S} \Big|_{S=S_0} \Delta S \right]. \quad (13)$$

245 For mathematical convenience, we normalize the lidar measurements with respect to their initial estimate and define a new variable

$$\Delta y_1(\lambda_{i1}) = \frac{\Delta y(\lambda_i)}{f_0(\lambda_i)}. \quad (14)$$

A diagonal matrix I_0 can be defined with each element equal to $1/f_0(\lambda_i)$. The loss function can be rewritten using the identity matrix $I \equiv I_0 I_0^{-1} \equiv I_0^{-1} I_0$, as,

$$250 \quad J(Y, S) \approx \left[\Delta Y - \frac{\partial F(S)}{\partial S} \Big|_{S=S_0} \Delta S \right]^T (I_0 I_0^{-1}) W (I_0^{-1} I_0) \left[\Delta Y - \frac{\partial F(S)}{\partial S} \Big|_{S=S_0} \Delta S \right] \\ = \left[\Delta Y \mathbf{1} - \frac{\partial F \mathbf{1}(S)}{\partial S} \Delta S \right]^T W \mathbf{1} \left[\Delta Y \mathbf{1} - \frac{\partial F \mathbf{1}(S)}{\partial S} \Delta S \right] \quad (15)$$

where $\Delta Y \mathbf{1} = I_0 \Delta Y$, $F \mathbf{1}(S) = I_0 F(S)$, and $W \mathbf{1} = I_0^{-1} W I_0$.

[The use of the above normalization greatly simplifies the mathematical derivation as well as the data processing since it cancels out the exponential terms in $F(S)$. However, this technique can only be used when the values of the forward model

255 $f_0(\lambda_i)$ are not approaching zero at all sampling wavelengths.]

The loss function given in Eq. (13) is of the same form as that of a linear least-squares fit with measurement data $\Delta Y \mathbf{1}$ and weighting factor $W \mathbf{1}$. The derivative of the function $F(S)$, which is often referred to as the Jacobian, is given by

$$\mathbf{K} = \frac{\partial [F \mathbf{1}(S)]}{\partial S} \Big|_{S=S_0}. \quad (16)$$

For the CO₂ Sounder lidar, each term of the Jacobian can be derived as

$$260 \quad k_{i,1} = \frac{\partial F(S)}{\partial s_i} \frac{1}{f_0(\lambda_i)} = \frac{1}{(r_s T_s^2)}, \text{ same for all } i = 1, 2, \dots, N_1; \\ k_{i,2} = -2 \sigma_{CO_2}^2(\lambda_i), \text{ one for each laser wavelength, } i = 1, 2, \dots, N_1; \\ k_{i,3}, \text{ same as above but for water vapor;} \\ k_{i,4} \approx \frac{T_{CO_2}^2(\lambda_i + \Delta \lambda) - T_{CO_2}^2(\lambda_i)}{\Delta \lambda} \cdot \frac{1}{(T_{CO_2}^2(\lambda_i))}, \text{ with } \Delta \lambda = 1 \text{ pm and } T_{CO_2}^2(\lambda_i) \text{ given by Eq. (4); and} \\ k_{i,5} = (\lambda_i - \lambda_c), \text{ with } \lambda_c \text{ the center wavelength of the CO}_2 \text{ line shape function.}$$

265 For measurement noise that is zero-mean and follows a Gaussian distribution, the optimal weighting factors are given by the reciprocal of the variance of the measurement data (Bevington 1969). In our case, the optimal weighting factors can be approximated as

$$w_{1,i} = \frac{1}{\text{var}\{\Delta y_1(\lambda_i)\}} = \frac{f_0(\lambda_i)^2}{\text{var}\{y(\lambda_i)\}} \approx \frac{y(\lambda_i)^2}{\text{var}\{y(\lambda_i)\}} = \text{SNR}(\lambda_i)^2 \quad (17)$$

where $y(\lambda_i)$ is the average value of the lidar measurement which is assumed to be close to the initial estimate $f_0(\lambda_i)$.

270 Therefore, for each wavelength the weighting factors can be approximated by the SNR of the lidar measurement at that

Commented [XSun7]: A new paragraph added per recommendation from Reviewer 2 to state the applicability of this normalization.

wavelength. As mentioned earlier, the SNRs are calculated based on signal energy and background noise estimated from received pulse waveforms.

The XCO₂ and other parameters can now be solved using a standard linear least-squares fitting method with the loss function Eq. (15), Jacobian Eq. (16), and weighting factors Eq. (17). The solutions can be obtained numerically using the pseudo inverse function, as

$$\Delta \mathbf{S} = \mathbf{G} \Delta \mathbf{Y} \mathbf{1} \quad (18)$$

with \mathbf{G} a $N_3 \times N_1$ matrix, which is often called gain matrix and can be computed from the pseudo inverse function $\mathbf{pinv}()$ (Peters and Wilkinson, 1970), as

$$\mathbf{G} = \mathbf{pinv}[\mathbf{K}^T \mathbf{pinv}(\mathbf{W} \mathbf{1}) \mathbf{K}] \mathbf{K}^T \mathbf{pinv}(\mathbf{W} \mathbf{1}). \quad (19)$$

280 The pseudo inverse matrix function can be found in Matlab software package and in other software tools.

The covariance of the parameters can be obtained from Eq. (18), as

$$\mathbf{cov}(\Delta \mathbf{S}) = \mathbf{G}^T \mathbf{var}(\Delta \mathbf{Y} \mathbf{1}) \mathbf{G}. \quad (20)$$

with $\mathbf{var}(\Delta \mathbf{Y} \mathbf{1})$ a diagonal matrix with the elements given by Eq. (17). The covariance matrix $\mathbf{cov}(\Delta \mathbf{S})$ is in general not a diagonal matrix even though $\mathbf{var}(\Delta \mathbf{Y} \mathbf{1})$ is a diagonal matrix.

285 The variances of the estimated parameters are given by the diagonal elements of $\mathbf{cov}(\Delta \mathbf{S})$. However, variance is only one of the criteria of the XCO₂ retrieval. There can still be a bias in the estimated parameters if there is a mismatch between the measurements and the modelled line shape.

The total column averaging kernel can be calculated as (Borsdorff et al., 2014),

$$\mathbf{A} = \mathbf{G}_\alpha \mathbf{K}_x, \quad (21)$$

290 where \mathbf{G}_α is the row of the \mathbf{G} matrix for calculating the XCO₂ scale factor and \mathbf{K}_x is the Jacobian of the measurement with respect to the layered CO₂ mixing ratios, which is an $N_1 \times N_2$ matrix given by

$$\mathbf{K}_x = \frac{\partial F(x_{CO2})}{\partial x_{CO2}}. \quad (22)$$

Each term of \mathbf{K}_x can be written according to Eqs. (2)-(4), (7), and (10), as

$$K_x(i, j) = \rho_{air}(H_j) \sigma_{CO2}(H_j, \lambda_i) \Delta H_j.$$

295 The linear least squares fit can also be iterated by correcting for the Doppler shift of the received laser wavelengths of the modeled line shape based on the solution from the previous iteration. The Jacobian terms are recalculated about the updated linearization point in each iteration to improve the results.

Commented [XSun8]: New text added about the algorithm to describe how the fitting is iterated.

5. Evaluation of the Retrieval Algorithm Using Airborne Lidar Data

300 The algorithm described here was used to retrieve XCO₂ from measurements of our 2017 airborne lidar campaign (Mao et al., 2019). The lidar and the airborne measurements have been described in detail in Abshire et al. (2018). Table 1 lists the

instrument parameters relevant to the XCO₂ retrieval. Here we show a few examples of using the retrieval algorithm on a data set collected during one of the 2017 flights. We also show the retrieved XCO₂ at different altitudes in comparison to XCO₂ calculated from the in situ measurements made during two spiral-down maneuvers.

305

Table 1. The airborne CO₂ Sounder lidar instrument parameters.

<i>Instrument Parameters</i>	<i>Values</i>
<i>Laser:</i>	
Pulse energy	25 μ J
Wavelength scan range	1572.235-1572.440 nm
Number of wavelengths	30 (see Fig. 5)
Wavelength accuracy	0.008 pm (1 MHz)
Spectral line width	< 0.247 pm (30 MHz)
Pulse width	1 μ s
Pulse rate	10 kHz
Divergence angle	0.43 mrad (4.3 m laser spot size on ground from a 10 km altitude)
<i>Receiver Optics</i>	
Telescope size	20 cm diameter
Field of view	0.50 mrad
Optical filter bandwidth	1.4 nm
Total optical transmission	81.3%
<i>Detector and Receiver Electronics</i>	
Quantum efficiency, including fill factor	69%
Responsivity	6.39×10^8 V/W
Noise equivalent power (NEP), 16 pixels combined	6.9 fW/Hz ^{1/2}
Signal sample rate	100 MHz, 16 bits
Integration time for each XCO ₂ retrieval	1 sec
Data recording duty cycle	90%

Figure 4 shows an example of a Level-1 data set from our 2017 airborne campaign. It shows 30 transmitted pulse waveforms and the corresponding received pulse waveforms averaged over 32 laser wavelength scans. The decrease (tilt) of laser pulse amplitudes over the pulse width interval is caused by the depletion of energy stored in the laser gain media, which does not affect the IPDA lidar measurements. The energies of the transmitted laser pulses at different wavelengths fluctuate by a few percent, which is monitored and corrected in the signal processing. The tails in the transmitted pulse waveforms shown in Fig. 4 (b) are caused by an artifact of the laser monitor detector, which is different from the one used in the receiver. The amplitudes and energies of the received laser pulse waveform plotted in Fig. 4 (c) clearly show the CO₂ absorption near the center of the wavelength scan. The XCO₂ retrieval is carried out at 1 Hz, during which the host aircraft typically travels about 200 m.

310

315

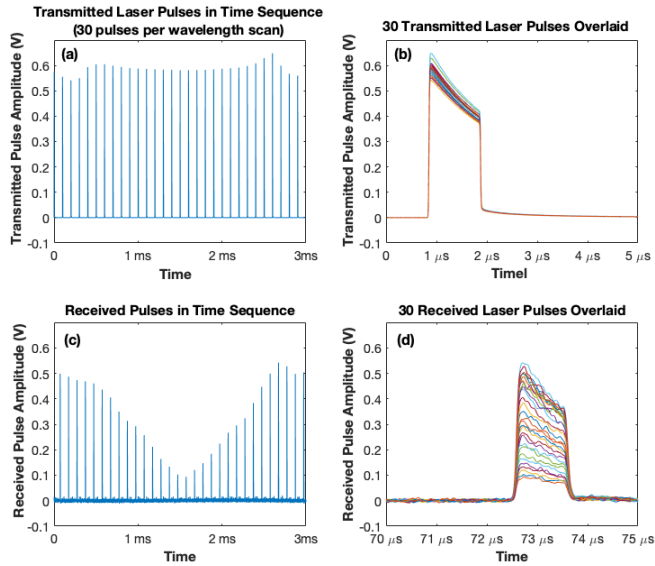


Figure 4. Sample pulse waveforms of the airborne CO₂ Sounder lidar taken during the flight of 7/21/2017 00:30:00 (UTC) (local time 7/20/2017 17:30:00). (a) The 30 transmitted laser pulse waveforms in a wavelength scan averaged over 32 repeated scans; (b) overlay of transmitted pulse waveforms (c) the corresponding received laser pulse waveforms reflected from the ground surface showing the lidar sampled CO₂ absorption, and (d) an overlay of the received pulse waveforms for all 30 laser wavelengths.

For the least-squares fit the weighting factor for each wavelength is the square of the SNR of the lidar detected signals at that wavelength. The SNRs are estimated from the received lidar signal as (Gagliardi and Karp, 1995)

$$SNR(\lambda_i) = \frac{\eta_d \langle n_s(\lambda_i) \rangle}{\sqrt{F_d [\eta_d \langle n_s(\lambda_i) \rangle + (1 + \frac{\tau_s}{\tau_b}) \langle n_b \rangle] + (1 + \frac{\tau_s}{\tau_b}) \langle n_d \rangle + (1 + \frac{\tau_s}{\tau_b}) \langle n_a \rangle^2 / (G_d)^2}} \quad (25)$$

Here $\langle n_s(\lambda_i) \rangle$ is the average number of received signal photons per pulse at wavelength λ_i , G_d is the average gain of the avalanche photodiode (APD) detector, η_d is the APD quantum efficiency, F_d is the APD gain excess noise factor, τ_s is the integration time for the signal pulse, τ_b is the integration time for the background and dark noise, $\langle n_b \rangle$ and $\langle n_d \rangle$ are the average number of background photons and detector dark counts integrated over the pulse interval, and $\langle n_a \rangle$ is the standard deviation

of the preamplifier noise in terms of equivalent number of photoelectrons. The signal here refers to the number of detected signal photons, which is equal to the difference of the number of the detected photons minus the number of detected background photons.

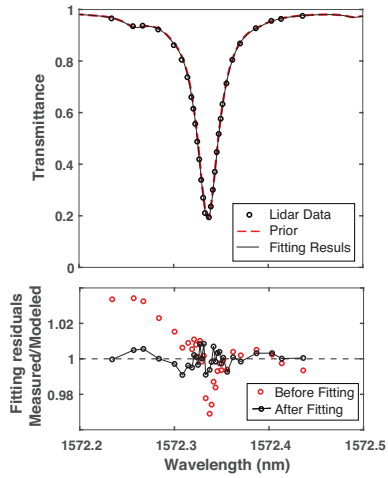
335 [The laser speckle noise term (Goodman 1965, 1975) is not included in Eq. (25), since it is not a major noise source
for our airborne lidar measurements at nominal flight altitude. This is because of the large number of speckle cells in the laser
footprint and the numerical averaging of the 30 received laser pulses for each XCO₂ retrieval. Laser speckle noise is also not
expected to be a major noise source for space version of the CO₂ Sounder lidar being developed at NASA GSFC (see chapter
5 of Kawa et al., 2018) since the effects of spatial and numerical averaging are similar. The effects of errors in the
340 meteorological data used to construct the line shape model of CO₂ is also not considered in Eq. (25). We are currently
conducting computer simulations to quantify the effect of meteorological data errors and the results will be reported in a
separate publication.]

For the XCO₂ retrieval, the average number of received signal photons are estimated from the received pulse waveform. This is obtained by first integrating the received pulse waveform from the detector in volts, dividing the result by
345 the detector responsivity in volts/watt, and the photon energy in Joules. The average number of background noise photons is
estimated from the average surface reflectance, off-line atmosphere transmission, the nominal sun light irradiance on the
surface, and the receiver optics model. All other parameter values in Eq. (24) are instrument related and can be found in
Abshire et al. (2018).

Figure 5 shows the CO₂ absorption line shape sampled by the lidar along with that from the model which assumes a
350 constant XCO₂ vertical profile of 400 parts per million (ppm). It also shows the placement of laser wavelengths across the CO₂
absorption line. One laser wavelength (the second from the left) was placed at a secondary absorption feature due to deuterated
water vapor (HDO). Three wavelengths were placed on the wings of the CO₂ absorption line. The rest were roughly equally
spaced in OD along the absorption line. The residual differences between the measurements and the model after the least-
squares fit is also plotted in Fig. 5. The averaging kernel is calculated based on Eq. (22) for each fit of 1-second lidar
355 measurement data. Figure 6 shows the normalized averaging kernel with respect to its average value over the atmosphere
column height and a 4th order polynomial fit for the data shown above.

Figure 7 shows the results of the retrieval using the algorithm described above from the airborne CO₂ Sounder lidar
measurements made on July 21, 2017 starting at 00:30:00 for 820 seconds. The data consist of about a 500 second segment
measured at a nearly constant aircraft altitude followed by about 300 seconds of measurements a spiral descent. The last part
360 of the flight was near Edwards Air Force Base CA and the surface elevation was nearly constant for the last 500 seconds. The
ground surface over this stretch of the flight was dry desert and the sky was clear at the time. The retrieved XCO₂ during this
period was steady with a slow downward trend. The root-mean-squared (rms) variation of the retrieved XCO₂ from 2100 to
2300 seconds was 0.67 ppm, which includes both the fitting error and the actual XCO₂ variation along the flight path. By
comparison, the estimated standard deviation from the covariance matrix was about 0.35 ppm, as shown in Fig. 7(e).

Commented [XSun9]: A new paragraph is added per suggestion
by Reviewer 1



365

Figure 5. Top, an example of a CO₂ absorption line shape sampled by the airborne lidar (black circles) for 1-sec averaging time and the models before and after the fit (red and black lines). Bottom, differences (the residuals) between the lidar measurement and the models at the lidar wavelengths before (in red circles) and after (in black circles) the least-squares fit for the data set shown in Fig. 4.

370

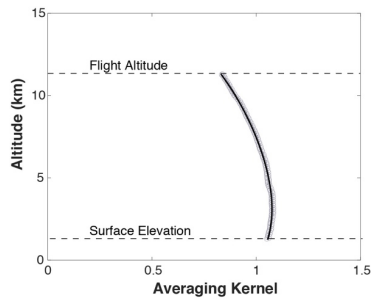
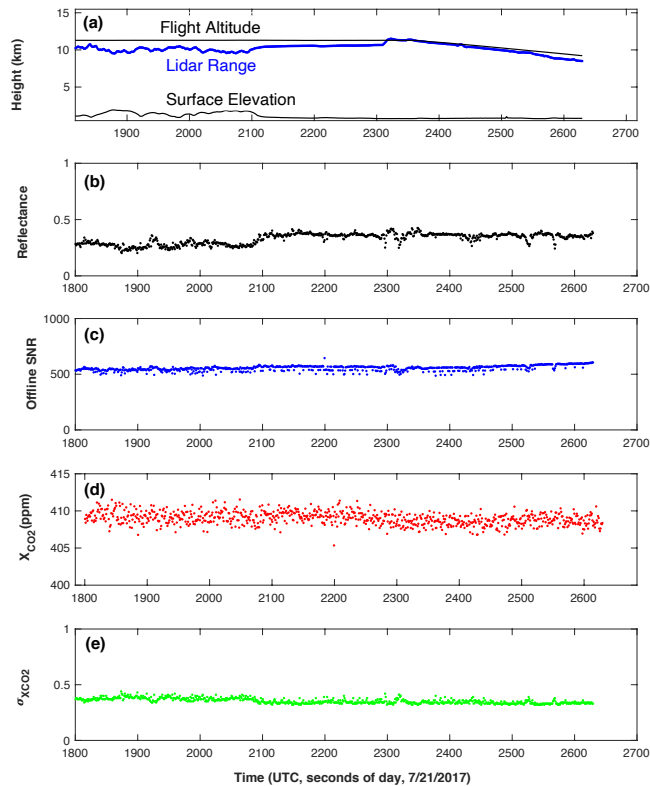
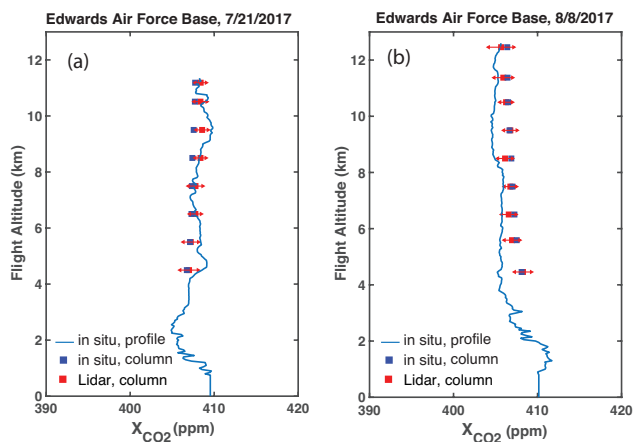


Figure 6. The averaging kernel from the retrieved data (open circles) and the 4th order polynomial fit with altitude (solid black curve) from the measurement data shown in Fig. 5.



375 Figure 7. The results of the retrieval sequence from the airborne CO₂ Sounding lidar data starting at 7/21/2020
 00:30:00 UTC for 820 seconds over Edwards Air Force Base in California. These are all based on 1-second
 receiver integration time. They are, from top down, (a) the aircraft altitude, the lidar range from the laser pulse
 time of flight, and surface elevation from the on-board GPS receiver, the radar altimeter, and the digital elevation
 380 map; (b) the retrieved surface reflectance times the two-way off-line atmospheric transmission; (c) off-line SNR
 calculated from Eq. (24); (d) the retrieved XCO₂; and (e) standard deviation of the retrieved XCO₂ from the
 covariance matrix. The airplane velocity was about 200 m/s. The distance covered by the data shown in the plot
 is about 164 km.

385 Figure 8 shows the retrieved XCO₂ compared to that calculated from in situ measurements as the airplane flew in a
 spiral-down path from 12 km to 4 km over Edwards Air Force Base for the flight on July 21, 2017 and for that on August 8,
 2017. The in situ profile was measured by an updated version of the AVOCET gas analyzer on board the airplane (Vay et al.,
 2011). The in situ XCO₂ is calculated from the airplane altitude to the ground and is obtained by integrating the CO₂ profile
 390 agrees with that calculated from the in situ measurements at all airplane altitudes above 4 km. Below 4 km, the laser beam no
 longer completely overlaps the field of view of the receiver and the total CO₂ absorption (line depth) becomes small. The lidar
 measurements are not calibrated at such low altitude.



395 Figure 8. The column XCO₂ from the aircraft to the surface retrieved from the lidar measurements (red squares)
 compared to that computed from the in situ measurements (blue squares) during the spiral-downs on (a) 7/21/2017,
 near the end of the data segment shown in Fig. 7 and (b) August 8, 2017. The error bars on the red squares represent
 mean and the standard deviation of the lidar measurement results binned into 1-km layers. The blue squares are the
 column mixing ratio integrated from the readings of the AVOCET gas analyzer from the flight altitude to the surface.
 400 For the spiral-down comparisons, the median differences (biases) between the retrieved lidar and column *in situ*
 measurements are 0.72 ppm for July 21 and 0.16 ppm for August 8, 2017.

6. Discussion

6.1 Biases in the Retrieved XCO₂

405 Although the least-squares-fit method minimizes the sum of squared errors between the modelled line shape and the lidar measurements, it does not guarantee minimum biases in the estimated parameters. The variances of the solutions can approach zero as the SNR increases, as shown in Eq. (18), but bias remains. For example if the actual CO₂ absorption line shape does not match that of the model, the retrieved results can be biased. Therefore, it is important to model the atmosphere accurately and avoid systematic errors.

6.2. Choice of Laser Wavelengths

410 The choice of the lidar's laser wavelengths is a tradeoff among several factors. The total number of laser wavelengths has to be greater than the number of parameters to be solved for in the retrieval. However, the total average laser output power is fixed. Using fewer wavelength samples allows improving the SNR for each sample, but provides fewer constraint to the curve fit. More wavelength samples lower the SNR at each wavelength, but allows solving for more parameters and help to reduce the bias in the XCO₂ retrieval. There is also an advantage to select the laser wavelengths to be symmetrically distributed about the line center since the effect of the nonuniformity in the receiver's spectral response may cancel out (Chen et al., 2019).
415 Finally, the laser wavelengths should be placed where the CO₂ absorption is not too high, e.g., OD>1.5, and the received signal level becomes too low to contribute to the retrieval.

The airborne CO₂ Sounder lidar mostly used 30 wavelengths with four off-line, four near the center of the peak absorption up to OD=1.2, one on the water vapor peak absorption, and the rest approximately uniformly distributed in OD
420 (Abshire et al, 2018). This choice of the laser wavelengths produced measurement precisions < 1 ppm and biases < 1 ppm. Abshire et al., (2018) also report airborne measurement made using 15 laser wavelengths that showed no apparent difference in the XCO₂ measurements to those using 30 wavelengths.

The retrieval algorithm described in this paper can be used for the on- and off-line dual wavelength IPDA lidar to retrieve XCO₂ and the product of surface reflectance and two-way atmosphere transmission. The solution to the least squares
425 fit for the two parameters can be derived analytically and become the same as those reported earlier (Abshire et al., 2010). The standard deviation of the retrieved XCO₂ at a given averaging laser power can lower compared to that of a multi-wavelength IPDA lidar, depending on the placement of the on-line wavelength. However, the Doppler shift, water vapor content, and the receiver spectral response would have to be obtained and corrected well enough to avoid XCO₂ bias. The results would be much more sensitive to uncertainties in the CO₂ absorption line shape.

430 6.3. Number of Parameters to Retrieve

It is possible to use the least-squares fit to solve for more parameters of the CO₂ line and lidar instrument, as long as the information content of the lidar measurements support them. However, solving for more parameters, especially when they are

Commented [XSun10]: A new paragraph is added here per suggestion by Reviewer 2. The retrieval algorithm described in this paper can indeed be used for on/offline IPDA lidar.

correlated, increases the variance in the retrieved values, which limits the benefit. One example is to divide the atmosphere into a few layers, each with its own line shape function and scale factor, to obtain some information about the vertical distribution of XCO₂. However, the results from the least-squares fit for the XCO₂ for the layers are correlated and the errors from the fits are usually too large to be useful (Chen et al., 2014). A singular value decomposition (SVD) method also has been used to extract a few more parameters about the line shape without the need for an *a priori* vertical XCO₂ profile (Ramanathan et al., 2018). For measurement with high SNR, the SVD method can retrieve the certain characteristics of the line shape, such as the line width, and provide some constraints about the vertical distribution of XCO₂

440 **Conclusion**

An algorithm to retrieve XCO₂ has been developed for measurements from a pulsed multi-wavelength integrated path differential absorption (IPDA) lidar. The retrieval algorithm uses a least-squares fit of the line shape function derived from a multi-layer atmosphere radiative transfer model based on meteorological data to the line shape sampled by the lidar measurements. In addition to XCO₂, the algorithm simultaneously solves for the product of the surface reflectance and the off-line atmosphere transmission, Doppler shift of the received laser signals, a secondary water vapor mixing ratio (if present), and a linear trend of the lidar receiver non-uniformity in its spectral response. Since it can accurately retrieve XCO₂ in the presence of these conditions, this approach provides a more robust measurement of XCO₂ compared to IPDA lidar that use only on-line and off-line wavelengths. The retrieval algorithm has been used successfully in the data processing of the NASA Goddard's multi-wavelength pulsed IPDA lidar from its 2016 and 2017 airborne campaigns. The algorithm may also be used for retrievals for multi-wavelength lidar that target other atmospheric gases, such as CH₄.

Acknowledgements. The CO₂ Sounder lidar development was supported by the NASA ESTO Instrument Incubator program and the flights were supported by the NASA ASCENDS Mission preformulation program. We thank the CO₂ Sounder lidar team at NASA Goddard for the development of the lidar, conducting the airborne campaigns, and collecting the measurement data. We also thank Joshua P. Digangi for the AVOCET measurements, Julie Nicely for updating and testing the software for the XCO₂ retrieval, and Jeffrey Chen for many technical discussions about XCO₂ retrievals.

References

- Abshire, J. B., Riris, H., Allan, G. R., Weaver, C., Mao, J., Sun, X., Hasselbrack, W. E., Kawa, S. R., and Biraud, S.: Pulsed airborne lidar measurements of atmospheric CO₂ column absorption, *Tellus B*, 62(5), 770-783, 2010.
- 460 Abshire, J. B., Riris, H., Weaver, C., Mao, J., Allan, G., Hasselbrack, W., and Browell, E. V.: Airborne measurements of CO₂ column absorption and range using a pulsed direct-detection integrated path differential absorption lidar, *Appl. Optics*, 52, 4446-4461, 2013.

- Abshire, J. B., Ramanathan, A., Riris, H., Mao, J., Allan, G. R., Hasselbrack, W. E., Weaver, C. J., and Browell, E. V.: Airborne measurements of CO₂ column concentration and range using a pulsed direct-detection IPDA lidar, *Remote Sens.*, 6, 443–469, 2014.
- Abshire, J. B., Ramanathan, A., Riris, H., Allan, G. R., Sun, X., Hasselbrack, W. E., Mao, J., Wu, S., Chen, J., Numata, K., Kawa, S. R., Ying, M., Yang, M., and DiGangi, J.: Airborne measurements of CO₂ column concentrations made with a pulsed IPDA lidar using multiple-wavelength-locked laser and HgCdTe APD detector, *Atmos. Meas. Tech.*, 11, 2001–2025, 2018.
- Amediek, A., Ehret, G., Fix, A., Wirth, M., Büdenbender, C., Quatrevalet, M., Kiemle, C., and Gerbig, C.: CHARM-F: A new airborne integrated-path differential-absorption lidar for carbon dioxide and methane observations: measurement performance and quantification of strong point source emissions, *Appl. Optics*, 56, 5182–5197, 2017.
- Allan, G. R., Sun, X., Abshire, J. B., Riris, H., Hasselbrack, W. E., Kawa, S. R., Numata, K., Mao, J. and Chen, J.: Atmospheric backscattering profiles from the 2017 ASCENDS/ABOVE airborne campaign measured by the CO₂ Sounder lidar, 2019 Fall AGU Annual Meeting, San Francisco, CA, Dec. 9-13, 2019, Paper A51M-2726.
- Bevington, P. R.: *Data Reduction and Error Analysis for the Physical Science*, McGraw-Hill, New York, 1969, Ch. 6.
- Campbell, J. F., Lin, B., Dobler, J., Pal, S., Davis, K., Obland, M. D., Erxleben, W., McGregor, D., O'Dell, C., Bell, E., Weir, B., Fan, T.-F., Kooi, S., Gordon, I., Corbett, A., Kochanov, R.: Field evaluation of column CO₂ retrievals from intensity-modulated continuous-wave differential absorption lidar measurements during the ACT-America campaign, *Earth Space Sci.*, 7, e2019EA000847, 2020.
- Borsdorff, T., Hasekamp, O. P., Wassmann, A., Landgraf, J.: Insights into Tikhonov regularization: application to trace gas column retrieval and the efficient calculation of total column averaging kernels, *Atmos. Meas. Tech.*, 7, 523–535, 2014.
- Chen, J. R., Numata, K., and Wu, S. T.: Error reduction methods for integrated-path differential-absorption lidar measurements, *Opt. Express*, 20, 15590–15609, 2012.
- Chen, J. R., Numata, K., and Wu, S. T.: Error reduction in retrieval of atmospheric species from symmetrically measured lidar sounding absorption spectra, *Opt. Express*, 22, 26055–26075, 2014.
- Chen, J. R., Numata, K., and We, S. T.: Impact of broadened laser line-shape on retrieval of atmospheric species from lidar sounding absorption spectra, *Opt. Express*, 23, 2660–2675, 2015.
- Chen, J. R., Numata, K., and Wu, S. T.: Error analysis for lidar retrievals of atmospheric species from absorption spectra, *Opt. Express*, 27, 36487–36504, 2019.
- Clough, S. A., Iacono, M. J. and Moncet, J.: Line-by-line calculations of atmospheric fluxes and cooling rates: Application to water vapor, *J. Geophys. Res.* 97, 15,761–715,785, 1992.
- Clough, S. A. & Iacono, M. J.: Line-by-line calculation of atmospheric fluxes and cooling rates 2. Application to carbon dioxide, methane, nitrous oxide and the halocarbons, *J. Geophys. Res.* 100, 16,519–516,535, 1995.
- Crisp, D., Pollock, H. R., Rosenberg, R., Chapsky, L., Lee, R. A. M., Oyafuso, F. A., Frankenberg, C., O'Dell, C. W., Bruegge, C. J., Doran, G. B., Eldering, A., Fisher, B. M., Fu, D., Gunson, M R., Mandrake, L., Osterman, G. B., Schwandner, F.

- M., Sun, K., Taylor, T. E., Wennberg, P. O., and Wunch, D.: The on-orbit performance of the Orbiting Carbon Observatory-2 (OCO-2) instrument and its radiometrically calibrated products, *Atmos. Meas. Tech.* 10, 59-81, 2017.
- 500 Dobler, J., Harrison, F., Browell, E., Lin, B., McGregor, D., Kooi, S., Choi, Y., and Ismail, S.: Atmospheric CO₂ column measurements with an airborne intensity-modulated continuous wave 1.57 μm fiber laser lidar, *Appl. Optics*, 52, 2874–2892, 2013.
- Eldering, A., O'Dell, C. W., Wennberg, P., Crisp, O. D., Gunson, M. R., Viatte, C., et al.: The Orbiting Carbon Observatory-2: first 18 months of science data products, *Atmos. Meas. Tech.*, 10, 549–563, 2017.
- 505 Eldering, A., Taylor, T. E., O'Dell, C. W., and Pavlick, R.: The OCO-3 mission: measurement objectives and expected performance based on 1 year of simulated data, *Atmos. Meas. Tech.*, 12, 2341–2370, 2019.
- Gagliardi, R. M. and Karp, S.: *Optical Communications*, 2nd ed, John Wiley and Sons, 1995.
- Goodman, J. W.: Some effects of target-induced scintillation on optical radar performance. *Proc. IEEE*, 55, 1688-1700, 1965.
- Goodman, J. W.: Statistics properties of laser speckle patterns, in *Laser Speckle and Related Phenomena*, Dainty, J. C. ed., Springer-Verlag, Berlin Heidelberg, 9-75, 1975.
- 510 Han, G., Shi, T., Ma, X., Xu, H., Zhang, M., Liu, Q., and Gong, Wei, G.: Obtaining gradients of XCO₂ in atmosphere using the constrained linear least-squares technique and multi-wavelength IPDA LiDAR, *Remote Sens.*, 12, 2395, 2020.
- Jacob, J. C., Menzies, R. T., and Spiers, G. D.: Data processing and analysis approach to retrieve carbon dioxide weighted-column mixing ratio and 2- μm reflectance with an airborne laser absorption spectrometer, *IEEE Trans. Geosci. Remote Sens.*, 57(2), 958-971, 2019.
- 515 Kawa, S. R., Abshire, J. B., Sun, X., Mao, J., and Ramanathan, A.: Updated performance simulations for a space-based CO₂ lidar mission, 12th International Workshop on Greenhouse Gas Measurements from Space (IWGGMS-12), Jun. 7-9, 2016, Kyoto, Japan, Paper 48, https://www.nies.go.jp/soc/events/iwggms12/pdf/Session_10/48_Stephan_Kawa.pdf.
- Kawa, S. R., Abshire, J. B., Baker, D. F., Browell, E. V., Crisp, D., Crowell, S. M. R., Hyon, J. J., Jacob, J. C., Jucks, K. W., Lin, B., et al.: Active Sensing of CO₂ Emissions over Nights, Days, and Seasons (ASCENDS): Final Report of the ASCENDS Ad Hoc Science Definition Team, Document ID: 20190000855, NASA/TP–2018-219034, GSFC-E-DAA-TN64573, 2018.
- 520 Kuze, A., Suto, H., Shiomi, K., Kawakami, S., Tanaka, M., Ueda, Y., Deguchi, A., Yoshida, J., Yamamoto, Y., Kataoka, F., Taylor, T. E., and Buijs, H. L., Update on GOSAT TANSO-FTS performance, operations, and data products after more than 6 years in space, *Atmos. Meas. Tech.*, 9, 2445–2461, 2016.
- 525 Mao, J., Ramanathan, A., Abshire, J. B., Kawa, S. R., Riris, H., Allan, G. R., Hasselbrack, W. E., Sun, X., Chen, J., and Numata, K.: Atmospheric CO₂ concentration measurements to cloud tops from airborne lidar measurement during ASCENDS science campaigns, *Atmos. Meas. Tech.*, 11, 127-140, 2018.
- Mao, J., Abshire, J. B., Kawa, S. R., Riris, H., Allan, G. R., Hasselbrack, W. E., Numata, K., Chen, J., Sun, X., Nicely, J. M., DiGangi, P. J., and Choi, Y.: Airborne demonstration of atmospheric CO₂ concentration measurements with a pulsed
- 530 multi-wavelength IPDA lidar, 15th International Workshop on Greenhouse Gas Measurements from Space (IWGGMS),

- Jun. 3-5, 2019, Sapporo, Japan, Paper 5-5, www.nies.go.jp/soc/doc/Oral_Presentations/Session5-6/5-5_iw15op_Jianping_Mao.pdf.
- Menzies, R. T., Spiers, G. D., and Jacob, J.: Airborne laser absorption spectrometer measurements of atmospheric CO₂ column mole fractions: source and sink detection and environmental impacts on retrievals, *J. Atmos. Ocean Technol.*, 31, 404-421, 2014.
- McManamon, P. LiDAR, Technologies and Systems, SPIE Press, Bellingham, 2019, Ch. 3.
- Peters, G. and Wilkinson, J. H.: The least squares problem and pseudo-Inverses, *The Computer Journal*, 13, 309-316, 1970, <https://doi.org/10.1093/comjnl/13.3.309>.
- Numata, K., Chen, J. R., and Wu, S. T.: Precision and fast wavelength tuning of a dynamically phase-locked widely-tunable laser, *Opt. Express*, 20, 14234-14243, 2012.
- Ramanathan, A., Mao, J., Allan, G. R., Riris, H., Weaver, C. J., Hasselbrack, W. E., Browell, E. V., and Abshire, J. B.: Spectroscopic measurements of a CO₂ absorption line in an open vertical path using an airborne lidar, *Appl. Phys. Lett.*, 103, 214102 (2013).
- Ramanathan, A. K., Mao, J., Abshire, J., and Allan, G. R.: Remote sensing measurements of the CO₂ mixing ratio in the planetary boundary layer using cloud slicing with airborne lidar, *Geophys. Res. Lett.*, 42, 2055-2062, 2015.
- Ramanathan, A. K., Nguyen, H. M., Sun, X., Mao, J., Abshire, J. B., Hobbs, J. M., and Braverman, A. J.: A singular value decomposition framework for bias-free retrievals with vertical distribution information from column greenhouse gas absorption spectroscopy measurements, *Atmos. Meas. Tech.*, 11, 4909-4928, 2018.
- Refaat, T. F., Singh, U. N., Yu, J., Petros, M., and Ismail, S.: Double-pulse 2- μ m integrated path differential absorption lidar airborne validation for atmospheric carbon dioxide measurement, *Appl. Optics*, 55, 4232-4246, 2016.
- Refaat, T. F., Petros M., Singh, U. N., Antill, C. W., and Remus, Jr., R. G.: High-precision and high-accuracy column dry-air mixing ratio measurement of carbon dioxide using pulsed 2- μ m IPDA lidar, *IEEE Trans. Geosci. Remote Sens.*, 58(8), 5804-5819, 2020.
- Rienecker, M.M., Suarez, M.J., Gelaro, R.; Todling, R., Bacmeister, J., Liu, E.; Bosilovich, M.G., Shubert, S.D., Takacs, L., Kim, G.-K., et al.: MERRA: NASA's modern-era retrospective analysis for research and applications. *J. Clim.*, 24, 3624–3648, 2011.
- Rodgers, C. D.: *Inverse Methods for Atmospheric Sounding, Theory and Practice*, World of Scientific Publishing, Singapore, 2000.
- Rothman, L., et al.: The HITRAN 2008 molecular spectroscopic database, *J. Quant. Spectros. Radiat. Transfer*, 110(9), 533–572, 2009.
- Sellers, P. J., Schimel, D. S., Moore III, B., Liu, J., and Eldering, A.: Observing carbon cycle–climate feedbacks from space. *Proceedings of the National Academy of Science of the United States of America*, 115(31), 7860–7868, 2018.
- Spiers, G., Menzies, R., Jacob, J., Christensen, L., Phillips, M., Choi, Y., and Browell, E.: Atmospheric CO₂ measurements with a 2 μ m airborne laser absorption spectrometer employing coherent detection, *Appl. Optics*, 50, 2098–2111, 2011.

- 565 Vay, S. A., Choi, Y., Vadrevu, K. P., Blake, D. R., Tyler, S. C., W., Woo, J.-H., Weinheimer, A. J., Burkart, J. F., Stohl, A.,
and Wennberg, P. O., Wisthaler, A., Hecobian, A., Kondo, Y., Diskin, G. S., and Sachse, G.: Patterns of CO₂ and
radiocarbon across high northern latitudes during International Polar Year 2008, *J. Geophys. Res.-Atmos.*, 116, D14301,
2011.
- Zhu, Y., Liu, J., Chen, X., Zhu, D. B., and Chen, W.: Sensitivity analysis and correction algorithms for atmospheric CO₂
570 measurements with 1.57- μ m airborne double-pulse IPDA LIDAR, *Opt. Express*, 27, 32679-32699, 2019.
- Zhu, Y., Yang, J., Chen, X., Zhu, X., Zhang, J., Li, S., Sun, Y., Hou, X., Bi, D., Bu, L., Zhang, Y., Liu, J., and Chen, W.:
Airborne validation experiment of 1.57- μ m double-pulse IPDA lidar for atmospheric carbon dioxide measurement, *Remote
Sens.*, 12, 1999, 2020.