

# Detection of Ship Plumes from Residual Fuel Operation in Emission Control Areas using Single-Particle Mass Spectrometry

Johannes Passig<sup>1,2,3</sup>, Julian Schade<sup>2,3</sup>, Robert Irsig<sup>3,4</sup>, Lei Li<sup>5,6</sup>, Xue Li<sup>5,6</sup>, Zhen Zhou<sup>5,6</sup>, Thomas Adam<sup>1,7</sup> and Ralf Zimmermann<sup>1,2,3</sup>

5

<sup>1</sup>Joint Mass Spectrometry Centre, Helmholtz Zentrum München, 85764 Neuherberg, Germany

<sup>2</sup>Joint Mass Spectrometry Centre, Analytical Chemistry, University Rostock, 18059 Rostock, Germany

<sup>3</sup>Department Life, Light & Matter, University of Rostock, 18051 Rostock, Germany

<sup>4</sup>Photonion GmbH, 19061 Schwerin, Germany

10 <sup>5</sup>Institute of Mass Spectrometry and Atmospheric Environment, Jinan University, Guangzhou 510632, China

<sup>6</sup>Guangzhou Hexin Instrument Co., Ltd, Guangzhou 510530, China

<sup>7</sup>Universität der Bundeswehr München, 85577 Neubiberg, Germany

*Correspondence to:* Johannes Passig ([johannes.passig@uni-rostock.de](mailto:johannes.passig@uni-rostock.de))

**Abstract.** Ships are main contributors to global air pollution with substantial impacts on climate and public health. To improve  
15 air quality in densely populated coastal areas and to protect sensitive ecosystems, sulfur emission control areas (SECA) were  
established in many regions of the world. Ships in SECAs operate with low-sulfur fuels, typically distillate fractions such as  
marine gas oil (MGO). Alternatively, exhaust gas cleaning devices ('scrubbers') can be implemented to remove SO<sub>2</sub> from the  
exhaust, thus allowing the use of cheap high-sulfur residual fuels. Compliance monitoring is established in harbors, but difficult  
in open water because of high costs and technical limitations. Here we present the first experiments to detect individual ship  
20 plumes from distances of several kilometers by single-particle mass spectrometry (SPMS). In contrast to most monitoring  
approaches that evaluate the gaseous emissions, such as manned or unmanned surveillance flights, sniffer technologies and  
remote sensing, we analyze the metal content of individual particles which is conserved during atmospheric transport. We  
optimized SPMS technology for the evaluation of residual fuel emissions and demonstrate their detection in a SECA. Our  
experiments show that ships with installed scrubbers can emit PM emissions with health-relevant metals in quantities high  
25 enough to be detected from more than 10 km distance, emphasizing the importance of novel exhaust cleaning technologies  
and cleaner fuels. Because of the unique and stable signatures, the method is not affected by urban background. With this  
study, we establish a route towards a novel monitoring protocol for ship emissions. Therefore, we present and discuss mass  
spectral signatures that indicate the particle age, and thus the distance to the source. By matching ship transponder data,  
measured wind data and air mass back trajectories, we show, how real-time SPMS data can be evaluated to assign distant ship  
30 passages.

## 1 Introduction

Among the variety of air pollution sources, ships emit particular large amounts of sulfur, carbonaceous aerosols and metals with substantial impacts on climate and public health (Corbett et al., 2007; Eyring et al., 2010; Viana et al., 2014; Jonson et al., 2020). Between 60,000 and 400,000 annual deaths by cardiopulmonary diseases and lung cancer as well as 14 million cases of childhood asthma were attributed to ship emissions (Sofiev et al., 2018). Mitigation strategies focus on the sulfur aspect, e.g. by a global 0.5% standard for ship fuels since 2020 and by implementation of Sulfur Emission Control Areas (SECA, <0.1% S in fuel mass since 2015) that currently comprise the Baltic Sea, the North Sea, and most of the U.S. and Canadian coast. Legal alternatives to the use of expensive distillate fuels in SECAs include desulfurized 'hybrid' blends of low-grade residual fuels (Lähteenmäki-Uutela et al., 2019) or the installation of exhaust cleaning devices for SO<sub>2</sub> like flue gas scrubbers (Winnes et al., 2018; Lehtoranta et al., 2019; Winnes et al., 2020).

Several studies investigated the effect of fuel composition on ship emissions and their respective effects on climate (Lack et al., 2011; Sofiev et al., 2018; Yu et al., 2020; Corbin et al., 2019) and health (Winebrake et al., 2009; Oeder et al., 2015). Beyond the SO<sub>2</sub> emissions, also the particle-phase pollution is specifically serious if low-grade heavy fuel oils (bunker fuels) are used (Moldanová et al., 2009; Sippula et al., 2014; Streibel et al., 2017; Di Wu et al., 2018). Within the various health effects of such combustion particles, specific risks for acute cardiovascular effects were associated with water-soluble fractions of particle-bound metals (Ye et al., 2018). Of note, iron solubility is promoted by the presence of sulfur (Fang et al., 2017), a situation that particularly arises for ship emission particles. Implementation of the sulfur regulations substantially decreased the use of residual fuels in SECAs (Jonson et al., 2019; Lähteenmäki-Uutela et al., 2019). However, scrubber operation and combustion of desulfurized residual fuels reduce PM emissions only partially (Fridell and Salo, 2016; Lehtoranta et al., 2019; Winnes et al., 2020) and there is vital interest to assess the environmental and health effects (Winnes et al., 2018). Furthermore, compliance monitoring and emission inventories would benefit from the ability to distinguish between these options for ship operation.

Compliance monitoring on short distances is typically based on gas phase measurements of CO<sub>2</sub> and SO<sub>2</sub> in the plume of passing ships in harbors or at bridges (Kattner et al., 2015; Mellqvist et al., 2017b; Zhang et al., 2019). However, these places are known to be monitored, and also on-board checks occur frequently (Lähteenmäki-Uutela et al., 2019). Plume analyses in open water requires expensive surveillance flights (Beecken et al., 2014; Van Roy, W and Scheldemann, K., 2016). Unmanned aerial vehicles can reduce these costs but have limitations in cruising range, payload and weather conditions (Zhou et al., 2020). Optical sensing technologies that have been utilized to monitor ship plumes on few-km distances comprise light detection and ranging (LIDAR), ultraviolet cameras and multi-axis differential optical absorption spectroscopy (MAX-DOAS) (Balzani Lööv et al., 2014; Seyler et al., 2017).

Particles often preserve source-specific chemical signatures while being transported by the wind over large distances. Field studies on particulate matter (PM) from ship plumes can be performed by following ships at some hundred meters to few kilometers distance (Chen, 2005; Lack et al., 2009; Petzold et al., 2008; Berg et al., 2012). A different approach to characterize

ship plumes are stationary ambient measurements downwind of shipping lanes while recording the ship transponder data (Automatic Identification System, AIS) (Diesch et al., 2013). Recently, Ausmeel et al. measured physical and chemical properties of more than 150 ship plumes in the Baltic Sea from a distance of about 10 km (Ausmeel et al., 2019; Ausmeel et al., 2020) and Celik et al. characterized 252 ship plumes in the Mediterranean Sea and around the Arabian Peninsula in distances up to 40 km from an ship-based measurement station (Celik et al., 2020). Such methods determine the presence of a ship plume mainly by an increase in particle number and changes in its size distribution or by an increase of a marker substance in the particle ensemble. Dispersion models of ship plumes showed rapid decrease in particle number concentration within the first minutes after emission (Tian et al., 2014; Celik et al., 2020). Therefore, particle number-based methods as well as particle integrating approaches are limited to low background levels and clear chemical indicators for ship plume presence combined with single-particle information may push the limits of stationary ambient measurements.

Established markers for aerosols from residual fuel combustion are combinations of vanadium, iron and nickel (Celo et al., 2015; Zhang et al., 2014). Single-particle mass spectrometry (SPMS) can detect these particle-bound metals in real time (Pratt and Prather, 2012; Passig and Zimmermann, 2021). Briefly, after optical sizing and introduction into vacuum, particles are exposed to intense UV laser pulses that form a microplasma (laser desorption/ionization, LDI). Both positive and negative ions are analyzed with respect to their mass-to-charge ratio ( $m/z$ ). Thus, the size and a chemical profile from individual particles is obtained. SPMS studies documented air pollution by regional transport of emissions from harbors and shipping lanes (Reinard et al., 2007; Ault et al., 2009; Arndt et al., 2017; Gaston et al., 2013; Liu et al., 2017; Wang et al., 2019). Also individual ship plumes were analyzed by in-port studies (Healy et al., 2009; Ault et al., 2010; Xiao et al., 2018), demonstrating that SPMS can distinguish between residual fuel combustion and distillate fuel operation, predominantly by the metal signatures. All these studies were performed outside SECA zones, and, for the individual plume analyses, on short distances to the ships.

With the present study, we apply SPMS with resonant ionization of iron (Passig et al., 2020) for the detection of individual ship plumes from the distance to evaluate residual fuel combustion in SECA, also for ships equipped with scrubbers. We show that this approach is independent from background air pollution and we discuss the limits of detection over large distances. By examining indicators for particle ageing and the effects of inaccuracies in wind field determination, we pave the way to future open-sea monitoring of ship plumes using SPMS.

## 2 Experimental

### 2.1 Single-particle mass spectrometer and sampling

The SPMS was manufactured by Hexin Instruments Ltd., Guangzhou, China, and Photonion GmbH, Schwerin, Germany (Li et al., 2011; Zhou et al., 2016). It consists of a dual-polarity mass spectrometer in Z-TOF geometry (Pratt et al., 2009), an aerodynamic lens inlet and 75 mW continuous-wave lasers (wavelength  $\lambda=532$  nm), ellipsoidal mirrors and photomultipliers for particle detection and sizing. The instrument is equipped with a KrF-excimer laser ( $\lambda=248.3$  nm, PhotonEx, Photonion

GmbH, Germany). The used wavelength is well-suited for resonance-enhanced laser desorption/ionization (LDI) of iron (Passig et al., 2020). Setting the lens ( $f=200$  mm) to an off-focus position of 7 mm with respect to the particle beam, the spot size was about  $150 \times 300$   $\mu\text{m}$  and the resulting intensity  $5 \text{ GW}/\text{cm}^2$  at 6 mJ pulse energy. The off-focus position in conjunction with the flat-top profile of the excimer laser beam allows hit rates around 50% (particles producing mass spectra vs. optically  
100 detected particles) (Schade et al., 2019; Passig et al., 2020).

The setup was housed in the southern periphery of the town Rostock (population 210,000) contributing urban background aerosols in between the sampling site and the coast. Possible regional aerosol sources comprise the urban area of Rostock, forests in north-eastern direction and farmland in the surrounding area, see Fig. 1. Ambient air was sampled directly on the roof of the laboratory building ( $54^\circ 04' 41.5''\text{N}$   $12^\circ 06' 30.6''\text{E}$ ), about 35 m above sea level. Because the study focuses on  
105 particles from distant sources, the sampling was optimized for larger particles  $\geq 0.5$   $\mu\text{m}$  size at the expense of efficiency for smaller particles, such as local traffic emissions. Therefore, an aerosol concentrator, originally designed for particles above 2  $\mu\text{m}$  size, was used (Model 4240, MSP corp., USA) (Romay et al., 2002). The multi-stage virtual impactor of this device concentrates particles from the  $300 \text{ L min}^{-1}$  intake airflow into a  $1 \text{ L min}^{-1}$  carrier gas stream, from which  $0.1 \text{ L min}^{-1}$  were finally guided into the SPMS instrument. The real concentration factor for ambient air particles around 0.5  $\mu\text{m}$  size was  
110 approximately 10:1, as estimated in previous experiments (Passig et al., 2020). Corrections of the inlet efficiency have not been applied.

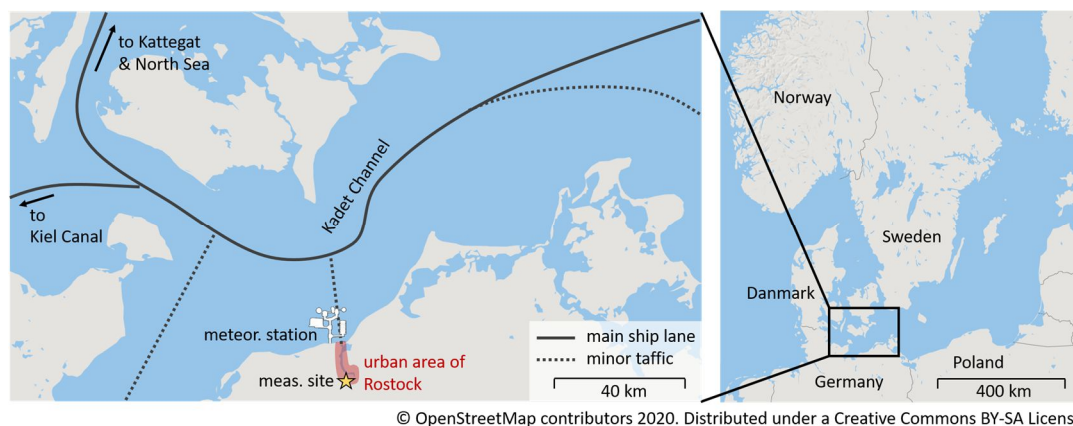
## 2.2 Analysis of single-particle mass spectra

Using custom software on MATLAB platform (MathWorks Inc.), mass spectra were computed from time-of-flight data considering peak area within nominal mass resolution. Positive and negative mass spectra including the metal signatures were  
115 separately normalized and missing negative ion spectra were set to zero. We classified the particles using the adaptive resonance theory neural network, ART-2a (Song et al., 1999) extracted from the open-source toolkit FATES (Flexible Analysis Toolkit for the Exploration of SPMS data) (Sultana et al., 2017) with a learning rate 0.05, a vigilance factor of 0.8 and 20 iterations. Ion peak assignments corresponds to the most likely ion at a given mass ( $m/z$ ). It should be noted, that SPMS obtains numbers of particles with particular chemical signatures, not the mass concentration of these components.

## 120 2.3 Meteorological and ship transponder data

Air trajectories were calculated using the interactive HYSPLIT web tool from the National Oceanic and Atmospheric Administration, model GDAS with  $0.5^\circ$  resolution (<http://www.ready.noaa.gov/HYSPLIT.php>, last access 24 March 2021) (Stein et al., 2015). Hourly wind data was obtained from the web archive of a local meteorological station that belongs to Germany's National Meteorological Service, 12 km north of the sampling site and close to the harbor exit  
125 (<https://www.dwd.de/DE/leistungen/klimadatendeutschland/klarchivstunden.html#buehneTop>, last access 12 November 2020). AIS data for all ships sailing between  $54^\circ\text{N}$ ,  $11.5^\circ\text{E}$  and  $55.5^\circ\text{N}$ ,  $16^\circ\text{E}$  in the measurement period (26 June – 2 July

2018) was acquired from the German Federal Waterways and Shipping Administration in anonymized form, analyzed and filtered by custom software on Matlab platform.



© OpenStreetMap contributors 2020. Distributed under a Creative Commons BY-SA License

130 **Figure 1: Overview map of the region illustrating the major ship lanes and the position of the measurement site and the meteorological station providing the wind data. A more detailed map can be found in Fig.5.**

### 3 Results and Discussion

#### 3.1 Chemical profile of residual fuel emission particles

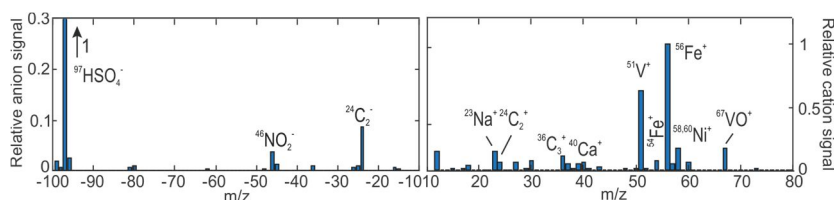
During 26 June – 2 July 2018, a total number of 290,144 particles were detected by the SPMS instrument, 162,288 particles  
135 yielded mass spectra and were sized and chemically analyzed. The ART-2a algorithm produced 715 particle clusters, whereof  
the top 300 clusters accounting for >90 % of the particles were visually inspected. Similar clusters, based on the ion signal of  
key species were grouped by hand into six general categories. The mass spectra of the six general particle classes can be found  
in the Supplement, Fig. S1, as well as the discussion on it. Here we focus on the class of ship emission particles.

The combination of signals from the transition metals V, Fe and Ni is a well-documented marker for particles from residual  
140 fuel combustion on ships (Healy et al., 2009; Ault et al., 2010; Xiao et al., 2018; Furutani et al., 2011; Reinard et al., 2007),  
see Fig. 2 for the mass spectrum. The relative peak intensities do not reflect the mass concentration of these species and further  
metals such as Zn and Cu are less frequently detected in SPMS, despite their high concentration in the fuels and particles  
(Viana et al., 2009; Popovicheva et al., 2012; Moldanová et al., 2009; Streibel et al., 2017; Corbin et al., 2018). In previous  
studies on ship emissions, Vanadium signals dominated largely over Fe and Ni peaks (Healy et al., 2009; Ault et al., 2010),  
145 and were partly treated as a singular marker (Xiao et al., 2018). Of note, the KrF-excimer laser used in our experiment  
resonantly ionizes particle-bound Fe, enabling a more efficient and secure detection of iron (Passig et al., 2020). This allows  
us to strengthen the assignment by counting only particle clusters to the V-Fe-Ni class that show either the complete peak  
pattern of  $^{51}\text{V}^+$ ,  $^{56}\text{Fe}^+$ ,  $^{58}\text{Ni}^+$ ,  $^{67}\text{VO}^+$  or  $^{51}\text{V}^+$ ,  $^{54}\text{Fe}^+$ ,  $^{56}\text{Fe}^+$ ,  $^{67}\text{VO}^+$ .

Beyond the transition metals from residual fuel combustion, the V-Fe-Ni particles reveal  $\text{Ca}^+$  ions that can be attributed to  
150 additives of lubrication oil (Toner et al., 2006; Spencer et al., 2006), minor signals from EC and OC as well as a particularly

intense  $^{97}\text{HSO}_4^-$  peak. Considering a strong  $^{97}\text{HSO}_4^-$  signal also from other particle classes (compare Fig. S1), the sulfate can be primary and secondary.

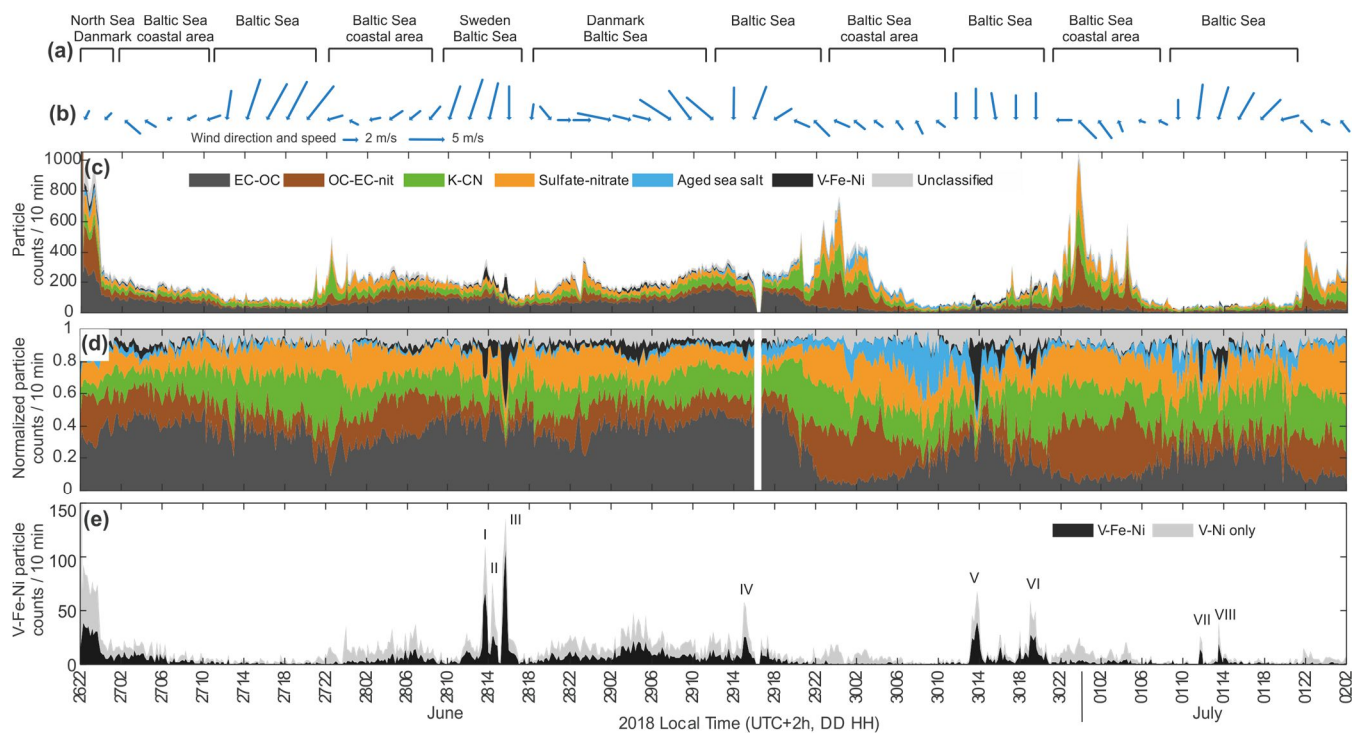
Apart from the sea salt, the particles of all classes show comparable sizes, peaking around 400 – 500 nm, see Fig. S1(a). One explanation lies in the setup: The optical detection of particles based on Mie scattering drops rapidly approaching the Rayleigh limit around 150 nm (for 532 nm scattering wavelength) (Gaie-Levrel et al., 2012). Furthermore, the aerosol concentrator is optimized for particles of 2.5 – 10  $\mu\text{m}$  size (Romay et al., 2002). While detailed data on its performance for small particles is not available, we could estimate an approximately ten-fold concentration for 0.5  $\mu\text{m}$  particles and particle losses of at least 50% below 0.5  $\mu\text{m}$  in a previous study (Passig et al., 2020). Beyond the instrumental aspect, particles in the accumulation mode can be dominant if local emissions are of minor importance or if they rapidly grow, e.g. by condensation of secondary material (Seinfeld and Pandis, 2016).



**Figure 2: Average anion mass spectra (left) and cation mass spectra (right) of residual fuel emission particles. The other particle classes are shown in the Supplement Fig. S1, the top 300 particle clusters from ART-2a analysis are shown in Figs. S5 and S6.**

### 165 3.2 Temporal profile of residual fuel emission particles

The measurements were performed during a period of relatively calm summer weather with light to moderate winds from mostly northern to eastern directions, representing a typical scenario for a North-European coastal region during summer. The mean PM 2.5 mass was 4.0  $\mu\text{g}/\text{cm}^3$  and the mean particle number density was 44  $\text{cm}^{-3}$  (0.25–32  $\mu\text{m}$ ), as measured by a monitoring station near the coast line (Grimm EDM-180, [http://www.lung.mv-regierung.de/umwelt/luft/akt\\_wahl.htm](http://www.lung.mv-regierung.de/umwelt/luft/akt_wahl.htm)). Fig. 3(a) lists the regions passed by the air masses within the last 24h before arriving at the sampling site, while the back trajectories are shown in Fig. S4. The last hour of air transport before arriving at the site can be determined from the local wind data. Air masses crossing the heavily trafficked ship lanes >20 km north off the coast (see Fig. 1) enter the site passing the urban area of Rostock. The wind data (Fig. 3(b)) reveal a pronounced land/onshore circulation, with regularly northern winds in the afternoon and light winds from different directions in the night and morning hours. Fig. 3(c) shows time series of the particle numbers within the general particle classes, while Fig. 3(d) shows their relative contribution to total particle numbers, both with 10 min resolution.



180 **Figure 3: (a) Air mass origin (top row: >12 h, bottom row <12 h) according to the HYSPLIT back trajectory analysis (Fig. S4). (b) Measured wind data from the meteorological station at the harbor exit, 12 km north of the measurement site. (c) The time series of particle counts from the general particle classes shows regional/long-range transported air pollution (26–29 June) and night-time secondary organic aerosol formation (29 June – 02 July), see Supplement for a detailed discussion. (d) The same data as (c), but normalized to total particle counts illustrate the contribution of each particle type. (e) The temporal behavior of V-Fe-Ni particles (black) from residual fuel combustion reveals transient events (ship plumes I–VIII) and smooth background signals, predominantly during onshore winds. Apart from the short events, their contribution to total particle numbers is low. The plumes can also be recognized by evaluating only the presence of  $^{51}\text{V}^+$  and  $^{67}\text{VO}^+$  (grey area, relative peak area of  $^{51}\text{V}^+>5\%$  and  $^{67}\text{VO}^+>0\%$ ), however with some false positive results from interference with fragments, especially during events with high counts of organic aerosols.**

185

In the following, we discuss only the mass spectra and time series of V-Fe-Ni particles, for all other classes we refer to the supplement. The V-Fe-Ni particles (Fig. 3(e)) resembles the temporal profile of the ECOC particles, however, with additional transient features that have a width of approximately 20–60 min and occur only during wind from the North. As apparent from Fig. 3(d), the V-Fe-Ni class contributes only a small fraction to total particle numbers, while during the transient events they account for 10–20 %.

In order to give an estimate on the benefit of resonant Fe ionization we performed laboratory experiments on a research ship engine. Herein, we compared the SPMS spectra and the fraction of particles showing metal signatures for the resonant Fe ionization at 248 nm versus the more common SPMS wavelength at 266 nm. The results are shown in the Supplement, Fig. S3. Although these are no ambient air experiments on real plumes, the results indicate an  $\approx 15$  times more frequent detection of Fe at 248 nm, which roughly corresponds to the Fe enhancements found in the ambient air study (Passig et al., 2020). Of note, V is  $\approx 2$  times and Ni  $\approx 4$  times more frequently detected, see Fig. S3. An explanation can be found in the relatively broad laser spectrum at 248 nm overlapping with further atomic absorption lines of the metals (Passig et al., 2020).

200

The particle identification via ART-2a clustering that recognizes the full pattern of V, Ni and Fe can be evaluated by a comparison with an ion-marker screening for only  $^{51}\text{V}^+$  and  $^{67}\text{VO}^+$ , as shown by the grey area in Fig. 3(e).  $^{51}\text{V}^+$  and  $^{67}\text{VO}^+$  may interfere with major organic fragments (and  $^{56}\text{Fe}^+$  with  $^{56}\text{CaO}^+$ ), as apparent for periods with high contributions from organic particles in Fig. 3. Higher signal thresholds for marker ions can mitigate that problem, on the costs of sensitivity.

205

### 3.3 Background particles and particles from transient events

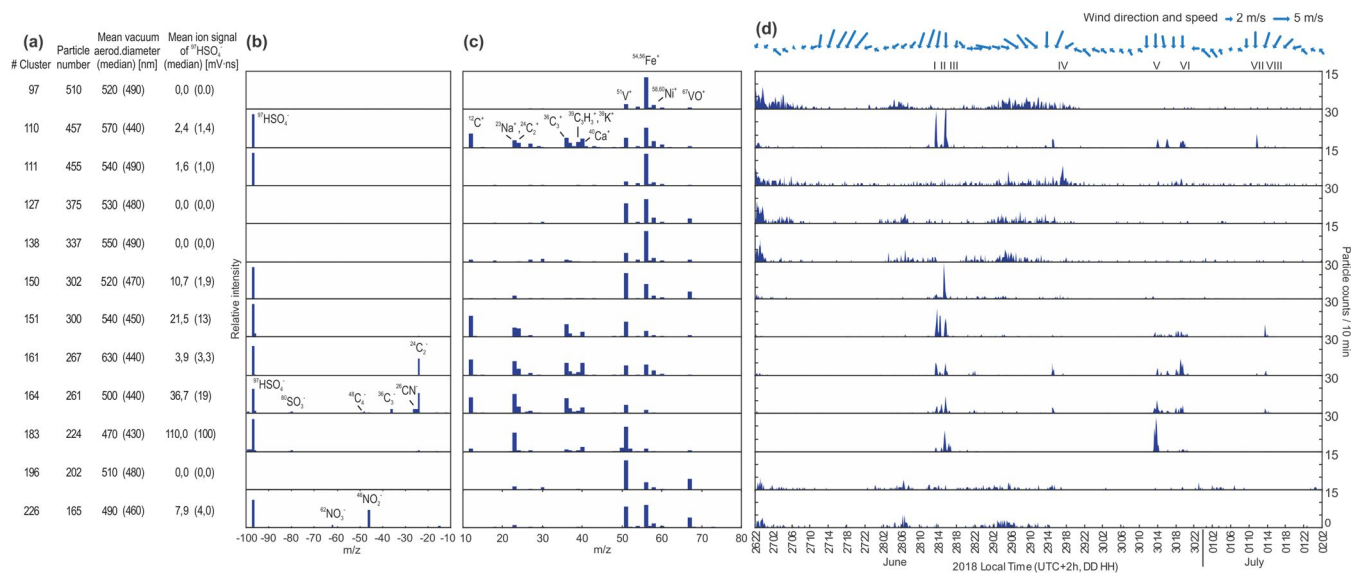
To elucidate the sources and atmospheric processing of the V-Fe-Ni particles, we separately analyzed the mass spectra and temporal behavior of the 12 most abundant clusters out of the total 15 clusters assigned to the V-Fe-Ni class. Fig. 4(a) lists the clusters according to their labels in the full cluster analysis (1<sup>st</sup> row) in the order of their respective particle counts (2<sup>nd</sup> row).

210 The average mass spectra of the clusters (Fig. 4(b) and (c)) show signals from EC, OC,  $\text{Ca}^+$  and  $\text{Na}^+$ , as well as the metal signatures. Generally, all clusters with negative ion spectra reveal a dominant  $^{97}\text{HSO}_4^-$  peak (with additional EC signals for cluster 161 and 164 and nitrate for cluster 226).

Time series of the particle clusters are depicted in Fig. 4(d). An important finding here is that the cluster algorithm was exclusively applied to chemical particle data, but it also yielded two distinct groups according to the particle's temporal behavior, as discussed in the following. The first group of V-Fe-Ni particles, comprising the clusters 97, 111, 127, 138, 196 and 226 shows rather smooth time series, comparable to the EC-OC class in Fig. 3(c). The mass spectra of this group reveal either no negative ions or comparable small signals from sulfate (4<sup>th</sup> row in Fig. 4(a)) or secondary nitrate (cluster 226). Also, the positive ion signals apart from transition metals are weak. The smooth temporal behavior (Fig. 4(d)) gives rise to the term 'background group'. These particles are predominantly observed during phases of light on-shore winds, also from North-  
220 Western directions, where heavily trafficked ship routes towards the North Sea and the Atlantic Ocean are located. Such particles most likely origin from distant shipping lanes.

The second group identified by mass spectral signatures contributes the transient events and is formed by the clusters 110, 150, 151, 161, 164 and 183. All of these particle clusters show negative ions and, with the exception of cluster 150, also remarkable signals of EC, OC,  $\text{Ca}^+$  and  $\text{Na}^+$  in the positive ion mass spectra. We term these particles the "transient group", as their temporal  
225 behavior point on individual, less distant sources. Cluster 111 combines both properties. Because of the biased aerosol concentration and sampling in our study, the particle size distribution is rather uniform and allows no differentiation between local and distant emissions.





230 **Figure 4: Results of the ART-2a clustering for 12 of the 15 clusters showing signatures of residual fuel combustion. (a) Cluster number according to their labels in the full cluster analysis (see Supplement), particle number, vacuum aerodynamic diameter and average sulfate signal of the clusters. (b) Weight matrices (spectra of the cluster center) of negative ions and (c) positive ions corresponding to average mass spectra. (d) top: measured wind data and ship plume numbers; below: time series of particle counts with 10 min resolution. Note the different y-axis scales. While only mass spectral data was considered in the clustering algorithm, also the time series of the resulting clusters reveal two distinct groups: The transient group with bipolar mass spectra and short events as well as the background group with dominant metal signatures and smooth time series.**

235

The main difference between the two groups is the limited number of negative ion signals and the weaker positive signatures from EC, OC,  $\text{Ca}^+$  and  $\text{Na}^+$  for the background particles. The absence of negative ion signals in SPMS was commonly associated with water uptake during aerosol ageing (Neubauer et al., 1998; Moffet et al., 2008; Ault et al., 2010), but also suppression effects on positive ions were documented (Neubauer et al., 1997; Dall'Osto et al., 2006). Hatch et al. (2014) found that laser absorption and particle ablation in LDI are reduced from coatings of secondary species, finally affecting mass spectra for both polarities (Hatch et al., 2014).

240

Previous studies on ship emission particles have discussed the lack of negative ion mass spectra (Ault et al., 2009), the balance between sulfate and nitrate (Liu et al., 2017) or solely the presence of nitrate signals (Wang et al., 2019) as indicators for atmospheric ageing. However, a suppression of positive ions through ageing was not reported in these studies, although the mass spectra of substantially aged ship particles shown by Ault et al. (2009) also reveal a low relative intensity of EC, OC,  $\text{Ca}^+$  and  $\text{Na}^+$  compared to the freshly emitted particles documented by in-port studies (Healy et al., 2009; Ault et al., 2010; Liu et al., 2017; Xiao et al., 2018). Generally, the formation of negative ions by electron capture requires previous generation of positive ions, and is therefore more prone to suppression effects. In consequence, the relative heights of positive ion peaks apart from the transition metals should be considered as a further estimate for the amount of atmospheric ageing of ship particles. The respective mass spectral indicators for ageing of V-Fe-Ni particles are summarized in Table 1.

250

**Table 1: Mass spectral signatures that indicate the degree of ageing for particles from residual fuel combustion.**

	Neg. ion mass spectra	Pos. ion mass spectra	References
freshly emitted	EC, high-sulfur fuels: $^{-80}\text{SO}_3^-$ , dominant $^{-97}\text{HSO}_4^-$	V-Fe-Ni, EC, OC, Na, Ca	(Ault et al., 2010; Healy et al., 2009; Xiao et al., 2018; Liu et al., 2017)
moderately aged, local – regional	$^{-97}\text{HSO}_4^-$ , secondary nitrate	V-Fe-Ni, smaller EC, OC, Na, Ca	(Liu et al., 2017; Arndt et al., 2017; Gaston et al., 2013; Wang et al., 2019), this work
substantially aged, regional – long range	no signals or secondary sulfate, nitrate, methanesulfonate	dominant V-Fe-Ni	(Ault et al., 2009; Furutani et al., 2011; Arndt et al., 2017), this work

### 3.4 Metal signatures of V-Fe-Ni particles

255 In contrast to anions and EC, OC as well as alkali cations, the transition metal signals are more stable and remain also after long-range transport (Furutani et al., 2011; Ault et al., 2009). A difference to all previous SPMS studies on ship emissions is the strong  $\text{Fe}^+$  signal and the remarkably  $\text{Ni}^+$  signal in most particles. Therefore, it appears feasible to evaluate whether V/Fe signal ratios may be indicative for a specific source, e.g. as a result of different fuel composition (Viana et al., 2009). However, from Fig. 4(c) and (d), it becomes apparent that the same transient events, respective sources, contribute particle clusters with

260 very different V/Fe ratios. On the other hand, these ratios differ not much among the plumes, as summarized in Table 2. Only plume V stands out by higher  $\text{V}^+$  signals in relation to the other metals, and also by a particularly high sulfate signal.

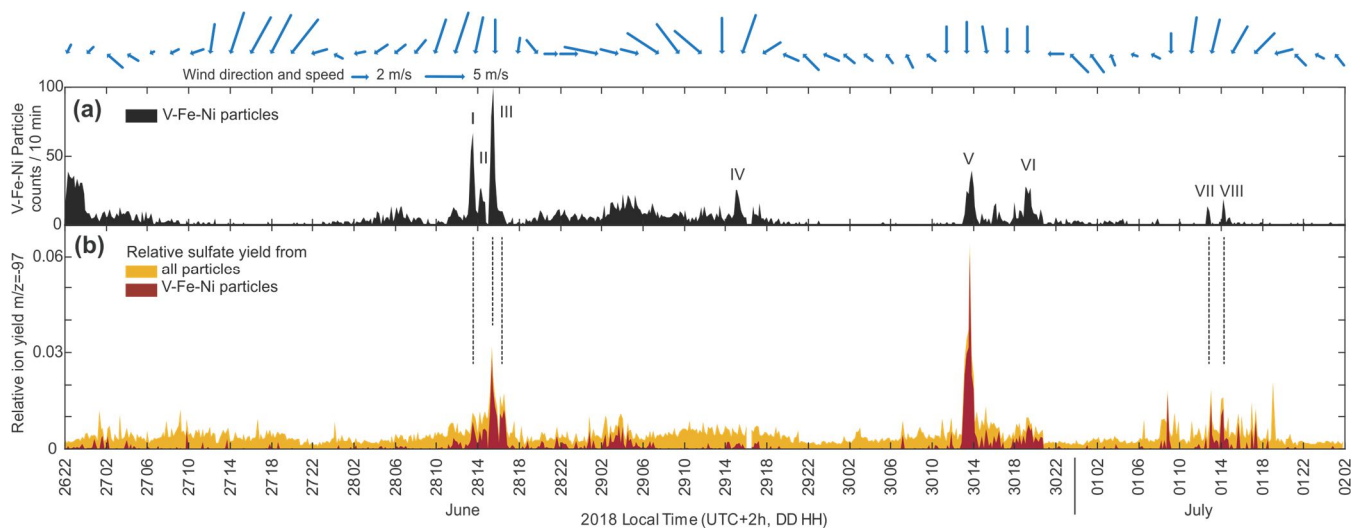
**Table 2: Ship plumes according to Figs. 3,4&5, their main properties as well as the median of relative signal ratios for metals and sulfate signals.**

Ship plume	Peak time	Plume duration (min)	Number of characterized particles	Particle size (nm)	Peak area ratio V/(V+Fe)	Peak area ratio V/(V+Ni)	Peak area ratio Fe/(Fe+Ni)	$^{97}\text{HSO}_4^-$ signal / particle (mV·ns)
I	06/28 13:45	45	182	450	0.55	0.64	0.57	0.23
II	06/28 14:30	45	103	470	0.69	0.85	0.70	0.73
III	06/28 15:30	45	276	450	0.56	0.73	0.70	0.33
IV	06/29 15:15	60	119	470	0.48	0.58	0.59	0.40
V	06/30 13:30	45	138	410	0.76	0.88	0.69	2.20
VI	06/30 19:30	45	126	420	0.53	0.59	0.56	0.50
VII	07/01 11:45	30	24	330	0.53	0.56	0.52	1.76
VIII	07/01 14:00	30	37	410	0.60	0.62	0.54	2.51

265 In general, background particles tend to show larger Fe and lower V signals compared to the transient group, but due to a number of exceptions (clusters 110 and 196) we cannot draw clear conclusions here. Note that the LDI signal strength in SPMS does not necessarily indicate the component's mass concentration. Beyond the transition metals,  $\text{Ca}^+$  signals appear in all clusters of the transient group. Strong calcium signals from lubrication oil additives were frequently observed in SPMS studies on diesel engines (Toner et al., 2008; Shields et al., 2007), mainly because of its low ionization potential, and calcium was also  
 270 found in particulate emissions from ships using residual fuels (Moldanová et al., 2009; Streibel et al., 2017).

### 3.5 Sulfate signals

As apparent from the 4<sup>th</sup> row in Fig. 4(a) there are considerable differences in sulfate signals, both between the clusters of the transient group and between the plumes, see Table 2. Although sulfate can also be secondary, fresh plumes from sulfur-rich fuel combustion have particular high sulfate contents from gas-particle conversion of  $\text{SO}_2$  (Murphy et al., 2009; Ault et al.,  
 275 2010; Healy et al., 2009). With this regard, the temporal trend of the sulfate ion yield from all particles is plotted in Fig. 5(b) (yellow area), while the time series of all V-Fe-Ni-particles again shown in Fig. 5(a) for comparison. The sulfate yield shows slightly elevated background for marine air during northern winds and some smaller features that are not correlated with the number of V-Fe-Ni particles. However, for some of the transients from V-Fe-Ni particles, we find coinciding features of sulfate levels within the full particle ensemble. Comparison with the sulfate ion yield from only V-Fe-Ni particles (brown)  
 280 that this particle type contributes the main fraction of sulfate during these incidents.



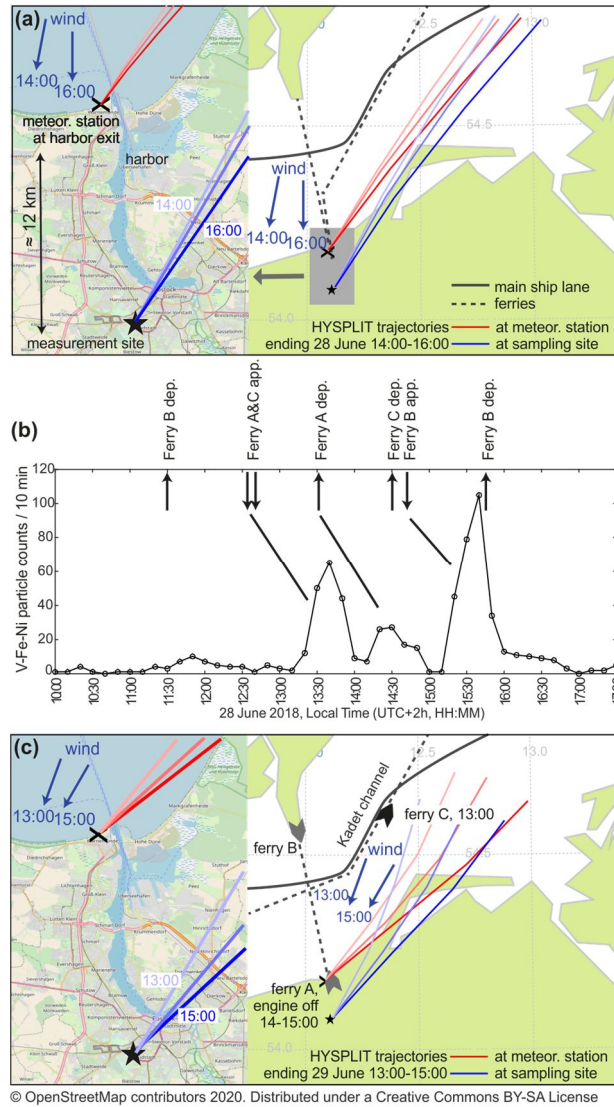
**Figure 5: (a) Time series of V-Fe-Ni particles (same as Fig. 3e). (b) Yellow area: The ion yield of  $\text{HSO}_4^-$  normalized to the particle number per 10 minutes reveals coinciding sulfate events for some of the V-Fe-Ni features. The majority of sulfate is detected on the V-Fe-Ni particles itself (brown area). Most of these particles belong to cluster 183 in Fig. 4.**

Land-based sources can be excluded for the transient group particles, because there are no refineries or chemical industry plants in the town and the local coal power plant was not in operation during measurements. There are two possible source regions of V-Fe-Ni particles: The main shipping lane (Kadet Channel, >50,000 passages per year), about 40 km north of the sampling site and the harbor of Rostock ( $\approx 7000$  approaches, 75% ferries and roll-on-roll-off ships), located about 10 km north of the site, see Fig. 6(a). The complete Baltic Sea is a SECA, with a 0.1% limit for sulfur in fuel mass. Several studies assessed the compliance of ships to more than 95% (International Transport Forum Policy Papers, 2016; Lahteenmaki-Uutela et al., 2019), thus it is not very likely to detect many ship plumes from operation with conventional high-sulfur bunker fuel within about 36h with northern wind in our study. However, an increasing number of ships is currently equipped with scrubbers (Winnes et al., 2018), efficiently removing SO<sub>2</sub> from the exhaust with moderate effects on the PM emissions (Fridell and Salo, 2016; Lehtoranta et al., 2019). Several ships with scrubbers regularly approach the port of Rostock. The ferry route to Denmark is operated with a pair of hybrid ferries (ferry A and B), being equipped with scrubbers and using batteries for in-port manoeuvring. The diesel engines are started at the harbor exit, directly east of the meteorological station and 12 km north of the measurement site, see the enlarged view in Fig 6(a). On the way back, the engines are stopped at the same position. The typical turnaround time between two departures is 2h and 15 min, matching the delay between two major transient events during afternoon at the 28 June and 30 June, see Fig. 4(d).

For the period with northern-wind at June 28, the times when the ferries pass the harbor exit, where the engines are typically started and stopped, are derived from AIS data, see Fig. 6(b). These passages of the harbor exit are followed by strong events of particles from the transient group with a delay of 45-60 min, in agreement with the wind speed of about 4 m/s. There was a further ferry ‘C’ with scrubber (no hybrid), approaching Rostock around 12:45 and leaving the port at 14:30 whose signals interfere with ferries A and B. For earlier and later departures and arrivals, the wind direction was unfavourable at this day. From the HYSPLIT back trajectories, shown by the red and blue lines in Fig. 6(a), it appears unlikely that the V-Fe-Ni particle transients stem from the harbor area, as they indicate distant source regions further east. However, there is substantial difference between the trajectories and the measured wind data, see blue arrows in Fig. 6. Using the measured wind data, the group of transient particle events at 28 June are in agreement with AIS data from the ferries.

On the next day (29 June), there is no transient feature of comparable intensity, because the wind turned rapidly to North-East. However, a broader event, lasting about one hour around 15:00 can be noticed for particles of cluster 111 (Fig. 4). This cluster shows a different chemical profile, with solely sulfate in negative mode and marginal signals of EC, OC and alkali metals in positive mode, what we associated with ageing and a more distant source, see section 3.3. Both the trajectories as well as the measured wind data shown in Fig. 6(c) reveal a north-eastern direction, guiding air masses from the eastern Kadet channel to the site. Among six cargo ships, ferry C passed this stretch between 12:30 and 14:00 on its way from a different harbor to Sweden. This ferry is also equipped with a scrubber and therefore legally operated with heavy fuel oil, contributing a possible source for the detected V-Fe-Ni particles. Its position at 13:00 is indicated in Fig. 6(c), while the hybrid ferries A and B were

in the harbor (engines off) in the relevant time between 14:00 and 15:00 and can therefore be excluded as source. Therefore, it appears likely that the event of cluster 111 at 29 June 15:00 results from regional transport from the Kadet channel (>30 km distance). In conjunction with the strong transient signals from the 28 June, this suggests that long-range detection of residual fuel operation might be possible if the wind field is captured correctly and if the traffic is not too dense.



325 **Figure 6: Assignment of transient particle events to distant ship passages. (a)** For the first transients, observed on 28 June during a period of northern wind, the HYSPLIT trajectories indicate transport of particles from distant sea areas to the sampling site (star). However, the measured wind directions (blue arrows) in conjunction with ship transponder data reveal ferries with scrubbers as the probable source. **(b)** Time series of particles from the transient group during northern winds at June 28. The particle events follow the approach and departure times of the ferries (arrows) with a delay of about 45 min during optimum wind directions. **(c)** On 29 June, the wind direction is north-northeast and only one weak transient event appears (see Fig. 4). However, a broader feature of aged V-Fe-Ni particles at 15:00 indicate a distant source and ferry C is underway in the Kadet channel in the respective timeframe

330 (and six further ships). The difference between trajectories and measured wind data emphasize the importance of accurate meteorological data in potential future monitoring systems.

At 30 June, during straight north winds, Fig. 4(d) shows several transient V-Fe-Ni particle events, including a small dual peak pattern for cluster 110 with 2 h 15 min delay, matching to AIS-derived departures of ferry A and B, respectively. The time series of sulfate signals in Fig. 5(b) reveals a strong increase that is mainly contributed by particles from cluster 183, compare  
335 Fig. 4. The event coincides with departure of ferry A and may be associated with scrubber malfunction or delayed onset of its operation. High sulfate emissions from ships with installed scrubbers have previously been reported (Mellqvist et al., 2017b; Mellqvist et al., 2017a). However, a different source, such as a further passing ship, cannot be excluded.

The background particles signals can be associated with general ship traffic, which is also supported by their increase during wind from the western Baltic Sea and the North Sea. The high levels at beginning of the measurements followed a period of  
340 air mass stagnation in the western Baltic Sea, where emissions have probably been enriched. Ships can emit V-Fe-Ni particles for three reasons: (I) under operation with residual fuels by using scrubbers or (II) if non-compliant fuels or (III) desulfurized hybrid fuels are used. Antturi et al. estimated, that only 136 of about 5000 ships sailing in the Baltic Sea had installed a scrubber and the large majority of ships use distillate fuels such as MGO (Antturi et al., 2016). Therefore, a further source is conceivable: As shown in Fig. 4, all particle clusters that belong to the transient group show calcium signals from lubrication oil. While the  
345 size distribution of freshly emitted soot particles from diesel engines peaks well below 100 nm (Streibel et al., 2017; Oeder et al., 2015), the majority of particles in the accumulation modes show signatures of lube oil (Lyyräinen et al., 1999; Sakurai et al., 2003; Toner et al., 2006). Because many ships run on residual fuels outside the SECAs and switch to low-sulfur distillates when entering them (Van Roy, W and Scheldemann, K., 2016; Lähteenmäki-Uutela et al., 2019), their lubrication oil contains metals from previous residual fuel operation that can consequently be emitted in small amounts also during operation in  
350 SECAs, as shown by our measurements on a research ship engine, see Supplement. Recently, also (Zanatta et al., 2020) found a limited number of V-Fe particles in the marine boundary layer along ship lanes in the Baltic Sea using an aircraft-based SPMS.

Our analysis of AIS data revealed that a total number of 470 cargo ships, tankers and passenger ships of all sizes were sailing the major ship lane during our measurement period. It should be noted, that the ships running on distillate fuels such as MGO,  
355 cannot be separated from other fuel combustion sources by our approach. Considering the typical compliance rate and the small number of ships with scrubbers, it can be estimated that less than 10% of the particles from ships are V-Fe-Ni particles. Consequently, a substantial fraction of the EC-OC particles may also stem from ships, which is supported by the increased number of EC-OC particles during on-shore winds, see Fig. 3.

#### 4. Conclusions

360 With the present study, we demonstrated the chemical detection of individual ship plumes from more than 10 km distance. It could be shown that also ships with installed scrubbers can be detected by their PM emissions indicating that the emissions of

toxic transition metals from residual fuel combustion are not sufficiently abated by scrubbers. This emphasizes the need for additional cleaning technologies and cleaner fuels. By using chemical indicators on a single-particle basis for the presence of ship plumes, we extended the approach to perform stationary measurements at some distance downwind of shipping lanes (Ausmeel et al., 2019; Celik et al., 2020). Of note, this renders the method independent from background aerosols, as long as source-specific and detectable markers exist. We analyzed mass spectral signatures for ageing of particles from residual fuel combustion and recommend to consider the suppression of positive ions apart from transition metals as additional ageing indicator for this particle class. Our results furthermore suggest that the signal ratio between transition metals is not a suitable marker for individual ship assignment with SPMS.

From analysis of transient particle events, wind data and ship transponder signals, it becomes apparent that accuracy in wind data, possible mixing of different plumes during high traffic and prevailing wind directions are key limiting factors rather than chemical detection limits or background air pollution. Consequently, SPMS-based monitoring systems should acquire local wind data and small-scale plume dispersion models should be integrated (Matthias et al., 2018; Badeke et al., 2020). The possible operation time is mainly limited by the prevailing wind directions, which should be perpendicular to the ship lane to avoid plume mixing and straight to the monitoring site. However, this limitation can be overcome by installation of two monitoring stations. Favorable places are opposite sides of straits covering the main wind directions, at islands near major shipping routes and waterways to large ports. Mobile ship-based units could complement such monitoring networks.

While our approach can detect ships plumes from residual fuel operation, it is not applicable for monitoring of ship emissions from distillate fuels, because in its present form, it is not unambiguously separating ships running on MGO from land-based traffic emissions. Novel markers for ship emissions beyond the metal signatures have been identified, including source-specific signatures of polycyclic aromatic hydrocarbons (PAH) (Czech et al., 2017a; Czech et al., 2017b). Recent developments in SPMS allow to acquire detailed PAH-profiles from individual particles (Passig et al., 2017; Schade et al., 2019) and therefore they open a perspective towards a comprehensive monitoring protocol for ship emissions and individual plumes.

**Data availability.** Data are available on request from Johannes Passig ([johannes.passig@uni-rostock.de](mailto:johannes.passig@uni-rostock.de)).

**Supplement.** The supplement related to this article is available online at:

**Author contributions.** JP designed the experiments, analyzed data, prepared the figures and wrote the manuscript with contributions from all authors. JS and RI developed software and performed the experiments. LL, XL and ZZ provided the SPMS instrument. TA and RZ assisted with technical support, data interpretation and manuscript writing.

**Competing interests.** The authors declare that they have no conflict of interest.

**Acknowledgements.** Instrumental and technical support by Photonion GmbH, Schwerin, Germany is gratefully acknowledged. We thank the German Federal Waterways and Shipping Administration for providing AIS data, Germany's

National Meteorological Service, ‘Deutscher Wetterdienst’ for wind data and the State Agency for the Environment, Nature Conservation and Geology Mecklenburg-Vorpommern for PM 2.5 data. The authors gratefully acknowledge the NOAA Air Resources Laboratory (ARL) for the provision of the HYSPLIT transport and dispersion model and READY website (<https://www.ready.noaa.gov>, last access: 20 November 2020) used in this publication.

**Financial support.** This research has been supported by the Deutsche Forschungsgemeinschaft (grant no. ZI 764/6-1), the Bundesministerium für Wirtschaft und Energie (grant no. ZF4402101 ZG7), the Helmholtz-Gemeinschaft (International Lab AeroHealth), and the Helmholtz Virtual Institute of Complex Molecular Systems in Environmental Health (HICE).

## References

- Antturi, J., Hänninen, O., Jalkanen, J.-P., Johansson, L., Prank, M., Sofiev, M., and Ollikainen, M.: Costs and benefits of low-sulphur fuel standard for Baltic Sea shipping, *J. Environ. Manag.*, 184, 431–440, <https://doi.org/10.1016/j.jenvman.2016.09.064>, 2016.
- Arndt, J., Sciare, J., Mallet, M., Roberts, G. C., Marchand, N., Sartelet, K., Sellegri, K., Dulac, F., Healy, R. M., and Wenger, J. C.: Sources and mixing state of summertime background aerosol in the north-western Mediterranean basin, *Atmos. Chem. Phys.*, 17, 6975–7001, <https://doi.org/10.5194/acp-17-6975-2017>, 2017.
- Ault, A. P., Gaston, C. I., Wang, Y., Dominguez, G., Thiemens, M. H., and Prather, K. A.: Characterization of the single particle mixing state of individual ship plume events measured at the Port of Los Angeles, *Environ. Sci. Technol.*, 44, 1954–1961, <https://doi.org/10.1021/es902985h>, 2010.
- Ault, A. P., Moore, M. J., Furutani, H., and Prather, K. A.: Impact of Emissions from the Los Angeles Port Region on San Diego Air Quality during Regional Transport Events, *Environ. Sci. Technol.*, 43, 3500–3506, <https://doi.org/10.1021/es8018918>, 2009.
- Ausmeel, S., Eriksson, A., Ahlberg, E., Sporre, M. K., Spanne, M., and Kristensson, A.: Ship plumes in the Baltic Sea Sulfur Emission Control Area: chemical characterization and contribution to coastal aerosol concentrations, *Atmos. Chem. Phys.*, 20, 9135–9151, <https://doi.org/10.5194/acp-20-9135-2020>, 2020.
- Ausmeel, S., Eriksson, A., Ahlberg, E., and Kristensson, A.: Methods for identifying aged ship plumes and estimating contribution to aerosol exposure downwind of shipping lanes, *Atmos. Meas. Tech.*, 12, 4479–4493, <https://doi.org/10.5194/amt-12-4479-2019>, 2019.
- Badeke, R., Matthias, V., and Grawe, D.: Parameterizing the vertical downward dispersion of ship exhaust gas in the near-field, *Atmos. Chem. Phys. Discuss.*, 2020, 1–27, <https://doi.org/10.5194/acp-2020-753>, 2020.
- Balzani Lööv, J. M., Alfoldy, B., Gast, L. F. L., Hjorth, J., Lagler, F., Mellqvist, J., Beecken, J., Berg, N., Duyzer, J., Westrate, H., Swart, D. P. J., Berkhout, A. J. C., Jalkanen, J.-P., Prata, A. J., van der Hoff, G. R., and Borowiak, A.:



- 425 Field test of available methods to measure remotely SO<sub>x</sub> and NO<sub>x</sub> emissions from ships, *Atmos. Meas. Tech.*, 7, 2597–2613, <https://doi.org/10.5194/amt-7-2597-2014>, 2014.
- Beecken, J., Mellqvist, J., Salo, K., Ekholm, J., and Jalkanen, J.-P.: Airborne emission measurements of SO<sub>2</sub> NO<sub>x</sub> and particles from individual ships using a sniffer technique, *Atmos. Meas. Tech.*, 7, 1957–1968, <https://doi.org/10.5194/amt-7-1957-2014>, 2014.
- 430 Berg, N., Mellqvist, J., Jalkanen, J.-P., and Balzani, J.: Ship emissions of SO<sub>2</sub> and NO<sub>2</sub> DOAS measurements from airborne platforms, *Atmos. Meas. Tech.*, 5, 1085–1098, <https://doi.org/10.5194/amt-5-1085-2012>, 2012.
- Celik, S., Drewnick, F., Fachinger, F., Brooks, J., Darbyshire, E., Coe, H., Paris, J.-D., Eger, P. G., Schuladen, J., Tadic, I., Friedrich, N., Dienhart, D., Hottmann, B., Fischer, H., Crowley, J. N., Harder, H., and Borrmann, S.: Influence of vessel characteristics and atmospheric processes on the gas and particle phase of ship emission plumes: in situ measurements in the Mediterranean Sea and around the Arabian Peninsula, *Atmos. Chem. Phys.*, 20, 4713–4734, <https://doi.org/10.5194/acp-20-4713-2020>, available at: <https://acp.copernicus.org/articles/20/4713/2020/>, 2020.
- 435 Celo, V., Dabek-Zlotorzynska, E., and McCurdy, M.: Chemical Characterization of Exhaust Emissions from Selected Canadian Marine Vessels: The Case of Trace Metals and Lanthanoids, *Environ. Sci. Technol.*, 49, 5220–5226, <https://doi.org/10.1021/acs.est.5b00127>, 2015.
- Chen, G.: An investigation of the chemistry of ship emission plumes during ITCT 2002, *J. Geophys. Res.*, 110, 16,213, <https://doi.org/10.1029/2004JD005236>, 2005.
- 440 Corbett, J. J., Winebrake, J. J., Green, E. H., Kasibhatla, P., Eyring, V., and Lauer, A.: Mortality from Ship Emissions: A Global Assessment, *Environ. Sci. Technol.*, 41, 8512–8518, <https://doi.org/10.1021/es071686z>, 2007.
- Corbin, J. C., Czech, H., Massabò, D., Mongeot, F. B. de, Jakobi, G., Liu, F., Lobo, P., Mennucci, C., Mensah, A. A., Orasche, J., Pieber, S. M., Prévôt, A. S. H., Stengel, B., Tay, L.-L., Zanatta, M., Zimmermann, R., El Haddad, I., and   
445 Gysel, M.: Infrared-absorbing carbonaceous tar can dominate light absorption by marine-engine exhaust, *npj clim. atmos. sci.*, 2, 12, <https://doi.org/10.1038/s41612-019-0069-5>, 2019.
- Corbin, J. C., Mensah, A. A., Pieber, S. M., Orasche, J., Michalke, B., Zanatta, M., Czech, H., Massabò, D., Buatier de Mongeot, F., Mennucci, C., El Haddad, I., Kumar, N. K., Stengel, B., Huang, Y., Zimmermann, R., Prévôt, A. S. H., and   
450 Gysel, M.: Trace Metals in Soot and PM<sub>2.5</sub> from Heavy-Fuel-Oil Combustion in a Marine Engine, *Environ. Sci. Technol.*, 52, 6714–6722, <https://doi.org/10.1021/acs.est.8b01764>, 2018.
- Czech, H., Schnelle-Kreis, J., Streibel, T., and Zimmermann, R.: New directions: Beyond sulphur, vanadium and nickel – About source apportionment of ship emissions in emission control areas, *Atmos. Environ.*, 163, 190–191, <https://doi.org/10.1016/j.atmosenv.2017.05.017>, 2017a.
- 455 Czech, H., Stengel, B., Adam, T., Sklorz, M., Streibel, T., and Zimmermann, R.: A chemometric investigation of aromatic emission profiles from a marine engine in comparison with residential wood combustion and road traffic: Implications for source apportionment inside and outside sulphur emission control areas, *Atmos. Environ.*, 167, 212–222, <https://doi.org/10.1016/j.atmosenv.2017.08.022>, 2017b.

- Dall'Osto, M., Harrison, R. M., Beddows, D. C. S., Freney, E. J., Heal, M. R., and Donovan, R. J.: Single-Particle Detection Efficiencies of Aerosol Time-of-Flight Mass Spectrometry during the North Atlantic Marine Boundary Layer Experiment, *Environ. Sci. Technol.*, 40, 5029–5035, <https://doi.org/10.1021/es050951i>, 2006.
- 460 Di Wu, Li, Q., Ding, X., Sun, J., Li, D., Fu, H., Teich, M., Ye, X., and Chen, J.: Primary Particulate Matter Emitted from Heavy Fuel and Diesel Oil Combustion in a Typical Container Ship: Characteristics and Toxicity, *Environ. Sci. Technol.*, 52, 12943–12951, <https://doi.org/10.1021/acs.est.8b04471>, 2018.
- Diesch, J.-M., Drewnick, F., Klimach, T., and Borrmann, S.: Investigation of gaseous and particulate emissions from various marine vessel types measured on the banks of the Elbe in Northern Germany, *Atmos. Chem. Phys.*, 13, 3603–3618, <https://doi.org/10.5194/acp-13-3603-2013>, available at: <https://acp.copernicus.org/articles/13/3603/2013/>, 2013.
- 465 Eyring, V., Isaksen, I. S., Bernsten, T., Collins, W. J., Corbett, J. J., Endresen, O., Grainger, R. G., Moldanova, J., Schlager, H., and Stevenson, D. S.: Transport impacts on atmosphere and climate: Shipping, *Atmos. Environ.*, 44, 4735–4771, <https://doi.org/10.1016/j.atmosenv.2009.04.059>, 2010.
- 470 Fang, T., Guo, H., Zeng, L., Verma, V., Nenes, A., and Weber, R. J.: Highly Acidic Ambient Particles, Soluble Metals, and Oxidative Potential: A Link between Sulfate and Aerosol Toxicity, *Environ. Sci. Technol.*, 51, 2611–2620, <https://doi.org/10.1021/acs.est.6b06151>, 2017.
- Fridell, E. and Salo, K.: Measurements of abatement of particles and exhaust gases in a marine gas scrubber, *Proceedings of the IMechE*, 230, 154–162, <https://doi.org/10.1177/1475090214543716>, 2016.
- 475 Furutani, H., Jung, J., Miura, K., Takami, A., Kato, S., Kajii, Y., and Uematsu, M.: Single-particle chemical characterization and source apportionment of iron-containing atmospheric aerosols in Asian outflow, *J. Geophys. Res.*, 116, <https://doi.org/10.1029/2011JD015867>, 2011.
- Gaie-Levrel, F., Perrier, S., Perraudin, E., Stoll, C., Grand, N., and Schwell, M.: Development and characterization of a single particle laser ablation mass spectrometer (SPLAM) for organic aerosol studies, *Atmos. Meas. Tech.*, 5, 225–241, <https://doi.org/10.5194/amt-5-225-2012>, 2012.
- 480 Gaston, C. J., Quinn, P. K., Bates, T. S., Gilman, J. B., Bon, D. M., Kuster, W. C., and Prather, K. A.: The impact of shipping, agricultural, and urban emissions on single particle chemistry observed aboard the R/V Atlantis during CalNex, *J. Geophys. Res.*, 118, 5003–5017, <https://doi.org/10.1002/jgrd.50427>, 2013.
- Hatch, L. E., Pratt, K. A., Huffman, J. A., Jimenez, J. L., and Prather, K. A.: Impacts of Aerosol Aging on Laser Desorption/Ionization in Single-Particle Mass Spectrometers, *Aerosol Sci. Technol.*, 48, 1050–1058, <https://doi.org/10.1080/02786826.2014.955907>, 2014.
- 485 Healy, R. M., O'Connor, I. P., Hellebust, S., Allan, A., Sodeau, J. R., and Wenger, J. C.: Characterisation of single particles from in-port ship emissions, *Atmos. Environ.*, 43, 6408–6414, <https://doi.org/10.1016/j.atmosenv.2009.07.039>, 2009. International Transport Forum Policy Papers, 2016.
- 490 Jonson, J. E., Gauss, M., Schulz, M., Jalkanen, J.-P., and Fagerli, H.: Effects of global ship emissions on European air pollution levels, *Atmos. Chem. Phys.*, 20, 11399–11422, <https://doi.org/10.5194/acp-20-11399-2020>, 2020.

- Jonson, J. E., Gauss, M., Jalkanen, J.-P., and Johansson, L.: Effects of strengthening the Baltic Sea ECA regulations, *Atmos. Chem. Phys.*, 19, 13469–13487, <https://doi.org/10.5194/acp-19-13469-2019>, 2019.
- 495 Kattner, L., Mathieu-Üffing, B., Burrows, J. P., Richter, A., Schmolke, S., Seyler, A., and Wittrock, F.: Monitoring compliance with sulfur content regulations of shipping fuel by in situ measurements of ship emissions, *Atmos. Chem. Phys.*, 15, 10087–10092, <https://doi.org/10.5194/acp-15-10087-2015>, 2015.
- Lack, D. A., Cappa, C. D., Langridge, J., Bahreini, R., Buffaloe, G., Brock, C., Cerully, K., Coffman, D., Hayden, K., Holloway, J., Lerner, B., Massoli, P., Li, S.-M., McLaren, R., Middlebrook, A. M., Moore, R., Nenes, A., Nuaaman, I., Onasch, T. B., Peischl, J., Perring, A., Quinn, P. K., Ryerson, T., Schwartz, J. P., Spackman, R., Wofsy, S. C., Worsnop, 500 D., Xiang, B., and Williams, E.: Impact of Fuel Quality Regulation and Speed Reductions on Shipping Emissions: Implications for Climate and Air Quality, *Environ. Sci. Technol.*, 45, 9052–9060, <https://doi.org/10.1021/es2013424>, 2011.
- Lack, D. A., Corbett, J. J., Onasch, T., Lerner, B., Massoli, P., Quinn, P. K., Bates, T. S., Covert, D. S., Coffman, D., Sierau, B., Herndon, S., Allan, J., Baynard, T., Lovejoy, E., Ravishankara, A. R., and Williams, E.: Particulate emissions from 505 commercial shipping: Chemical, physical, and optical properties, *J. Geophys. Res.*, 114, 4090, <https://doi.org/10.1029/2008JD011300>, 2009.
- Lähtenmäki-Uutela, A., Yliskylä-Peuralahti, J., Repka, S., and Mellqvist, J.: What explains SECA compliance: rational calculation or moral judgment?, *WMU J Marit Affairs*, 18, 61–78, <https://doi.org/10.1007/s13437-019-00163-1>, 2019.
- Lehtoranta, K., Aakko-Saksa, P., Murtonen, T., Vesala, H., Ntziachristos, L., Rönkkö, T., Karjalainen, P., Kuittinen, N., and 510 Timonen, H.: Particulate Mass and Nonvolatile Particle Number Emissions from Marine Engines Using Low-Sulfur Fuels, Natural Gas, or Scrubbers, *Environ. Sci. Technol.*, 53, 3315–3322, <https://doi.org/10.1021/acs.est.8b05555>, 2019.
- Li, L., Huang, Z., Dong, J., Li, M., Gao, W., Nian, H., Fu, Z., Zhang, G., Bi, X., Cheng, P., and Zhou, Z.: Real time bipolar time-of-flight mass spectrometer for analyzing single aerosol particles, *Int. J. Mass Spectrom.*, 303, 118–124, <https://doi.org/10.1016/j.ijms.2011.01.017>, 2011.
- 515 Liu, Z., Lu, X., Feng, J., Fan, Q., Zhang, Y., and Yang, X.: Influence of Ship Emissions on Urban Air Quality: A Comprehensive Study Using Highly Time-Resolved Online Measurements and Numerical Simulation in Shanghai, *Environ. Sci. Technol.*, 51, 202–211, <https://doi.org/10.1021/acs.est.6b03834>, 2017.
- Lyyräinen, J., Jokiniemi, J., Kauppinen, E. I., and Joutsensaari, J.: Aerosol characterisation in medium-speed diesel engines operating with heavy fuel oils, *J. Aerosol Sci.*, 30, 771–784, [https://doi.org/10.1016/S0021-8502\(98\)00763-0](https://doi.org/10.1016/S0021-8502(98)00763-0), available 520 at: <http://www.sciencedirect.com/science/article/pii/S0021850298007630>, 1999.
- Matthias, V., Arndt, J. A., Aulinger, A., Bieser, J., Denier van der Gon, Hugo, Kranenburg, R., Kuenen, J., Neumann, D., Pouliot, G., and Quante, M.: Modeling emissions for three-dimensional atmospheric chemistry transport models, *J. Air Waste Manage.*, 68, 763–800, <https://doi.org/10.1080/10962247.2018.1424057>, 2018.

- 525 Mellqvist, J., Beecken, J., and Conde, V. Ekholm, J.: Surveillance of sulphur emissions from ships in Danish waters. Report to the Danish Environmental Protection Agency., <https://research.chalmers.se/publication/500251>, last access: 24 November 2020, 2017a.
- Mellqvist, J., Conde, V., Beecken, J., and Ekholm, J.: Fixed remote surveillance of fuel sulfur content in ships from fixed sites in the Göteborg ship channel and Öresund bridge, Report, Chalmers University of Technology, 2017b.
- 530 Moffet, R. C., Qin, X., Rebotier, T., Furutani, H., and Prather, K. A.: Chemically segregated optical and microphysical properties of ambient aerosols measured in a single-particle mass spectrometer, *J. Geophys. Res.*, 113, <https://doi.org/10.1029/2007JD009393>, 2008.
- Moldanová, J., Fridell, E., Popovicheva, O., Demirdjian, B., Tishkova, V., Faccinetto, A., and Focsa, C.: Characterisation of particulate matter and gaseous emissions from a large ship diesel engine, *Atmospheric Environ.*, 43, 2632–2641, <https://doi.org/10.1016/j.atmosenv.2009.02.008>, 2009.
- 535 Murphy, S. M., Agrawal, H., Sorooshian, A., Padró, L. T., Gates, H., Hersey, S., Welch, W. A., Jung, H., Miller, J. W., Cocker, D. R., Nenes, A., Jonsson, H. H., Flagan, R. C., and Seinfeld, J. H.: Comprehensive Simultaneous Shipboard and Airborne Characterization of Exhaust from a Modern Container Ship at Sea, *Environ. Sci. Technol.*, 43, 4626–4640, <https://doi.org/10.1021/es802413j>, 2009.
- Neubauer, K. R., Johnston, M. V., and Wexler, A. S.: Humidity effects on the mass spectra of single aerosol particles, *Atmos. Environ.*, 32, 2521–2529, [https://doi.org/10.1016/S1352-2310\(98\)00005-3](https://doi.org/10.1016/S1352-2310(98)00005-3), 1998.
- 540 Neubauer, K. R., Johnston, M. V., and Wexler, A. S.: On-line analysis of aqueous aerosols by laser desorption ionization, *Int. J. Mass. Spectrom. Ion Process.*, 163, 29–37, [https://doi.org/10.1016/S0168-1176\(96\)04534-X](https://doi.org/10.1016/S0168-1176(96)04534-X), 1997.
- Oeder, S., Kanashova, T., Sippula, O., Sapcariu, S. C., Streibel, T., Arteaga-Salas, J. M., Passig, J., Dilger, M., Paur, H.-R., Schlager, C., Mülhopt, S., Diabaté, S., Weiss, C., Stengel, B., Rabe, R., Harndorf, H., Torvela, T., Jokiniemi, J. K.,
- 545 Hirvonen, M.-R., Schmidt-Weber, C., Traidl-Hoffmann, C., Bérubé, K. A., Włodarczyk, A. J., Prytherch, Z., Michalke, B., Krebs, T., Prévôt, A. S. H., Kelbg, M., Tiggesbäumker, J., Karg, E., Jakobi, G., Scholtes, S., Schnelle-Kreis, J., Lintelmann, J., Matuschek, G., Sklorz, M., Klingbeil, S., Orasche, J., Richthammer, P., Müller, L., Elsasser, M., Reda, A., Gröger, T., Wegler, B., Schwemer, T., Czech, H., Rüger, C. P., Abbaszade, G., Radischat, C., Hiller, K., Buters, J. T. M., Dittmar, G., and Zimmermann, R.: Particulate matter from both heavy fuel oil and diesel fuel shipping emissions
- 550 show strong biological effects on human lung cells at realistic and comparable in vitro exposure conditions, *PLoS one*, 10, e0126536, <https://doi.org/10.1371/journal.pone.0126536>, 2015.
- Passig, J. and Zimmermann, R.: Laser Ionization in Single-Particle Mass Spectrometry, in: Photoionization and Photo-induced Processes in Mass Spectrometry: Fundamentals and Applications, edited by: Hanley, L. and Zimmermann, R., Wiley-VCH, Weinheim, 359–411, <https://doi.org/10.1002/9783527682201.ch11>, 2021.
- 555 Passig, J., Schade, J., Rosewig, E. I., Irsig, R., Kröger-Badge, T., Czech, H., Sklorz, M., Streibel, T., Li, L., Li, X., Zhou, Z., Fallgren, H., Moldanova, J., and Zimmermann, R.: Resonance-enhanced detection of metals in aerosols using single-particle mass spectrometry, *Atmos. Chem. Phys.*, 20, 7139–7152, <https://doi.org/10.5194/acp-20-7139-2020>, 2020.

- Passig, J., Schade, J., Oster, M., Fuchs, M., Ehlert, S., Jäger, C., Sklorz, M., and Zimmermann, R.: Aerosol Mass Spectrometer for Simultaneous Detection of Polyaromatic Hydrocarbons and Inorganic Components from Individual Particles, *Anal. Chem.*, 89, 6341–6345, <https://doi.org/10.1021/acs.analchem.7b01207>, 2017.
- 560 Petzold, A., Hasselbach, J., Lauer, P., Baumann, R., Franke, K., Gurk, C., Schlager, H., and Weingartner, E.: Experimental studies on particle emissions from cruising ship, their characteristic properties, transformation and atmospheric lifetime in the marine boundary layer, *Atmos. Chem. Phys.*, 8, 2387–2403, <https://doi.org/10.5194/acp-8-2387-2008>, 2008.
- Popovicheva, O., Kireeva, E., Persiantseva, N., Timofeev, M., Bladt, H., Ivleva, N. P., Niessner, R., and Moldanová, J.: Microscopic characterization of individual particles from multicomponent ship exhaust, *J. Environ. Monit.*, 14, 3101–3110, <https://doi.org/10.1039/c2em30338h>, 2012.
- 565 Pratt, K. A. and Prather, K. A.: Mass spectrometry of atmospheric aerosols--recent developments and applications. Part II: On-line mass spectrometry techniques, *Mass Spectrom. Rev.*, 31, 17–48, <https://doi.org/10.1002/mas.20330>, 2012.
- Pratt, K. A., Mayer, J. E., Holecek, J. C., Moffet, R. C., Sanchez, R. O., Rebotier, T. P., Furutani, H., Gonin, M., Fuhrer, K., Su, Y., Guazzotti, S., and Prather, K. A.: Development and Characterization of an Aircraft Aerosol Time-of-Flight Mass Spectrometer, *Anal. Chem.*, 81, 1792–1800, <https://doi.org/10.1021/ac801942r>, 2009.
- 570 Reinard, M. S., Adou, K., Martini, J. M., and Johnston, M. V.: Source characterization and identification by real-time single particle mass spectrometry, *Atmos. Environ.*, 41, 9397–9409, <https://doi.org/10.1016/j.atmosenv.2007.09.001>, 2007.
- Romay, F. J., Roberts, D. L., Marple, V. A., Liu, B. Y. H., and Olson, B. A.: A High-Performance Aerosol Concentrator for Biological Agent Detection, *Aerosol Sci. Technol.*, 36, 217–226, <https://doi.org/10.1080/027868202753504074>, 2002.
- 575 Sakurai, H., Tobias, H. J., Park, K., Zarling, D., Docherty, K. S., Kittelson, D. B., McMurry, P. H., and Ziemann, P. J.: On-line measurements of diesel nanoparticle composition and volatility, *Atmos. Environ.*, 37, 1199–1210, [https://doi.org/10.1016/S1352-2310\(02\)01017-8](https://doi.org/10.1016/S1352-2310(02)01017-8), 2003.
- Schade, J., Passig, J., Irsig, R., Ehlert, S., Sklorz, M., Adam, T., Li, C., Rudich, Y., and Zimmermann, R.: Spatially Shaped Laser Pulses for the Simultaneous Detection of Polycyclic Aromatic Hydrocarbons as well as Positive and Negative Inorganic Ions in Single Particle Mass Spectrometry, *Anal. Chem.*, 91, 10282–10288, <https://doi.org/10.1021/acs.analchem.9b02477>, 2019.
- 580 Seinfeld, J. H. and Pandis, S. N.: *Atmospheric Chemistry and Physics: From Air Pollution to Climate Change*, 3rd ed., Wiley, s.l., 2185 pp., 2016.
- Seyler, A., Wittrock, F., Kattner, L., Mathieu-Üffing, B., Peters, E., Richter, A., Schmolke, S., and Burrows, J. P.: Monitoring shipping emissions in the German Bight using MAX-DOAS measurements, *Atmos. Chem. Phys.*, 17, 10997–11023, <https://doi.org/10.5194/acp-17-10997-2017>, 2017.
- 585 Shields, L. G., Suess, D. T., and Prather, K. A.: Determination of single particle mass spectral signatures from heavy-duty diesel vehicle emissions for PM<sub>2.5</sub> source apportionment, *Atmospheric Environ.*, 41, 3841–3852, <https://doi.org/10.1016/j.atmosenv.2007.01.025>, 2007.
- 590

- Sippula, O., Stengel, B., Sklorz, M., Streibel, T., Rabe, R., Orasche, J., Lintelmann, J., Michalke, B., Abbaszade, G., Radischat, C., Gröger, T., Schnelle-Kreis, J., Harndorf, H., and Zimmermann, R.: Particle emissions from a marine engine: chemical composition and aromatic emission profiles under various operating conditions, *Environ. Sci. Technol.*, 48, 11721–11729, <https://doi.org/10.1021/es502484z>, 2014.
- 595 Sofiev, M., Winebrake, J. J., Johansson, L., Carr, E. W., Prank, M., Soares, J., Vira, J., Kouznetsov, R., Jalkanen, J.-P., and Corbett, J. J.: Cleaner fuels for ships provide public health benefits with climate tradeoffs, *Nat. Commun.*, 9, 406, <https://doi.org/10.1038/s41467-017-02774-9>, 2018.
- Song, X.-H., Hopke, P. K., Fergenson, D. P., and Prather, K. A.: Classification of Single Particles Analyzed by ATOFMS Using an Artificial Neural Network, *ART-2A, Anal. Chem.*, 71, 860–865, <https://doi.org/10.1021/ac9809682>, 1999.
- 600 Spencer, M. T., Shields, L. G., Sodeman, D. A., Toner, S. M., and Prather, K. A.: Comparison of oil and fuel particle chemical signatures with particle emissions from heavy and light duty vehicles, *Atmos. Environ.*, 40, 5224–5235, <https://doi.org/10.1016/j.atmosenv.2006.04.011>, 2006.
- Stein, A. F., Draxler, R. R., Rolph, G. D., Stunder, B. J. B., Cohen, M. D., and Ngan, F.: NOAA’s HYSPLIT Atmospheric Transport and Dispersion Modeling System, *Bull. Am. Meteorol. Soc.*, 96, 2059–2077, [https://doi.org/10.1175/BAMS-](https://doi.org/10.1175/BAMS-D-14-00110.1)
- 605 [D-14-00110.1](https://doi.org/10.1175/BAMS-D-14-00110.1), 2015.
- Streibel, T., Schnelle-Kreis, J., Czech, H., Harndorf, H., Jakobi, G., Jokiniemi, J., Karg, E., Lintelmann, J., Matuschek, G., Michalke, B., Müller, L., Orasche, J., Passig, J., Radischat, C., Rabe, R., Reda, A., Rüger, C., Schwemer, T., Sippula, O., Stengel, B., Sklorz, M., Torvela, T., Weggler, B., and Zimmermann, R.: Aerosol emissions of a ship diesel engine operated with diesel fuel or heavy fuel oil, *Environ. Sci. Pollut. Res. Int.*, 24, 10976–10991, <https://doi.org/10.1007/s11356-016-6724-z>, 2017.
- 610 Sultana, C. M., Cornwell, G. C., Rodriguez, P., and Prather, K. A.: FATES: a flexible analysis toolkit for the exploration of single-particle mass spectrometer data, *Atmos. Meas. Tech.*, 10, 1323–1334, <https://doi.org/10.5194/amt-10-1323-2017>, 2017.
- Tian, J., Riemer, N., West, M., Pfaffenberger, L., Schlager, H., and Petzold, A.: Modeling the evolution of aerosol particles in a ship plume using PartMC-MOSAIC, *Atmos. Chem. Phys.*, 14, 5327–5347, [https://doi.org/10.5194/acp-14-5327-](https://doi.org/10.5194/acp-14-5327-2014)
- 615 [2014](https://doi.org/10.5194/acp-14-5327-2014), 2014.
- Toner, S. M., Shields, L. G., Sodeman, D. A., and Prather, K. A.: Using mass spectral source signatures to apportion exhaust particles from gasoline and diesel powered vehicles in a freeway study using UF-ATOFMS, *Atmospheric Environment*, 42, 568–581, <https://doi.org/10.1016/j.atmosenv.2007.08.005>, 2008.
- 620 Toner, S. M., Sodeman, D. A., and Prather, K. A.: Single Particle Characterization of Ultrafine and Accumulation Mode Particles from Heavy Duty Diesel Vehicles Using Aerosol Time-of-Flight Mass Spectrometry, *Environ. Sci. Technol.*, 40, 3912–3921, <https://doi.org/10.1021/es051455x>, 2006.

- Van Roy, W and Scheldemann, K.: Results MARPOL Annex VI Monitoring Report Belgian Sniffer campaign 2016, CompMon, [https://arkisto.trafi.fi/filebank/a/1482762219/4ba0baf93df900f6ac151919f527e2bc/23540-Results\\_Belgian\\_Sniffer\\_Campagin\\_2016-consealed.pdf](https://arkisto.trafi.fi/filebank/a/1482762219/4ba0baf93df900f6ac151919f527e2bc/23540-Results_Belgian_Sniffer_Campagin_2016-consealed.pdf), last access: 23 November 2020, 2016.
- 625 Viana, M., Hammingh, P., Colette, A., Querol, X., Degraeuwe, B., Vlieger, I. de, and van Aardenne, J.: Impact of maritime transport emissions on coastal air quality in Europe, *Atmospheric Environ.*, 90, 96–105, <https://doi.org/10.1016/j.atmosenv.2014.03.046>, 2014.
- Viana, M., Amato, F., Alastuey, A., Querol, X., Moreno, T., García Dos Santos, S., Herce, M. D., and Fernández-Patier, R.: Chemical Tracers of Particulate Emissions from Commercial Shipping, *Environ. Sci. Technol.*, 43, 7472–7477, <https://doi.org/10.1021/es901558t>, 2009.
- 630 Wang, X., Shen, Y., Lin, Y., Pan, J., Zhang, Y., Louie, P. K. K., Li, M., and Fu, Q.: Atmospheric pollution from ships and its impact on local air quality at a port site in Shanghai, *Atmos. Chem. Phys.*, 19, 6315–6330, <https://doi.org/10.5194/acp-19-6315-2019>, 2019.
- 635 Winebrake, J. J., Corbett, J. J., Green, E. H., Lauer, A., and Eyring, V.: Mitigating the Health Impacts of Pollution from Oceangoing Shipping: An Assessment of Low-Sulfur Fuel Mandates, *Environ. Sci. Technol.*, 43, 4776–4782, <https://doi.org/10.1021/es803224q>, 2009.
- Winnes, H., Granberg, M., Magnusson, K., Malmaeus, K., Mellin, A., Stripple, H., Yaramenka, K., and Zhang, Y.: Scrubbers: Closing the loop; Activity 3. Summary, IVL Swedish Environmental Research Institute, <https://www.ivl.se/publikationer/publikation.html?id=5737>, last access: 30 November 2020, 2018.
- 640 Winnes, H., Fridell, E., and Moldanová, J.: Effects of Marine Exhaust Gas Scrubbers on Gas and Particle Emissions, *J. Mar. Sci. Eng.*, 8, 2020.
- Xiao, Q., Li, M., Liu, H., Fu, M., Deng, F., Lv, Z., Man, H., Jin, X., Liu, S., and He, K.: Characteristics of marine shipping emissions at berth: profiles for particulate matter and volatile organic compounds, *Atmos. Chem. Phys.*, 18, 9527–9545, <https://doi.org/10.5194/acp-18-9527-2018>, 2018.
- 645 Ye, D., Klein, M., Mulholland, J. A., Russell, A. G., Weber, R., Edgerton, E. S., Chang, H. H., Sarnat, J. A., Tolbert, P. E., and Ebel Sarnat, S.: Estimating Acute Cardiovascular Effects of Ambient PM<sub>2.5</sub> Metals, *Environ. Health Perspect.*, 126, 27007, <https://doi.org/10.1289/EHP2182>, 2018.
- Yu, C., Pasternak, D., Lee, J., Yang, M., Bell, T., Bower, K., Wu, H., Liu, D., Reed, C., Bauguitte, S., Cliff, S., Trembath, J., Coe, H., and Allan, J. D.: Characterizing the Particle Composition and Cloud Condensation Nuclei from Shipping Emission in Western Europe, *Environ. Sci. Technol.*, <https://doi.org/10.1021/acs.est.0c04039>, 2020.
- 650 Zanatta, M., Bozem, H., Köllner, F., Schneider, J., Kunkel, D., Hoor, P., Faria, J. de, Petzold, A., Bundke, U., Hayden, K., Staebler, R. M., Schulz, H., and Herber, A. B.: Airborne survey of trace gases and aerosols over the Southern Baltic Sea: from clean marine boundary layer to shipping corridor effect, *Tellus B: Chemical and Physical Meteorology*, 72, 1–24, <https://doi.org/10.1080/16000889.2019.1695349>, 2020.
- 655

- Zhang, F., Chen, Y., Tian, C., Wang, X., Huang, G., Fang, Y., and Zong, Z.: Identification and quantification of shipping emissions in Bohai Rim, China, *The Science of the total environment*, 497-498, 570–577, <https://doi.org/10.1016/j.scitotenv.2014.08.016>, 2014.
- 660 Zhang, Y., Deng, F., Man, H., Fu, M., Lv, Z., Xiao, Q., Jin, X., Liu, S., He, K., and Liu, H.: Compliance and port air quality features with respect to ship fuel switching regulation: a field observation campaign, SEISO-Bohai, *Atmos. Chem. Phys.*, 19, 4899–4916, <https://doi.org/10.5194/acp-19-4899-2019>, 2019.
- Zhou, F., Hou, L., Zhong, R., Chen, W., Ni, X., Pan, S., Zhao, M., and An, B.: Monitoring the compliance of sailing ships with fuel sulfur content regulations using unmanned aerial vehicle (UAV) measurements of ship emissions in open water, *Atmos. Meas. Tech.*, 13, 4899–4909, <https://doi.org/10.5194/amt-13-4899-2020>, 2020.
- 665 Zhou, Y., Huang, X. H., Griffith, S. M., Li, M., Li, L., Zhou, Z., Wu, C., Meng, J., Chan, C. K., Louie, P. K., and Yu, J. Z.: A field measurement based scaling approach for quantification of major ions, organic carbon, and elemental carbon using a single particle aerosol mass spectrometer, *Atmos. Environ.*, 143, 300–312, <https://doi.org/10.1016/j.atmosenv.2016.08.054>, 2016.