

## Reply to reviewer #2

We thank Dr. Chris Boone (reviewer #2) for his constructive review that would improve the contents of our paper. The review comments by reviewer #2 are numbered and repeated below as *in italic letters*, followed by our answers. In the new draft with corrections (supplement file), red, green, purple, and blue corrections are the revisions suggested by reviewers #1, #2, #3, and co-authors, respectively.

<<Reviewer #2 (Chris Boone)>>

<2-1> *Ground-based column HFC-23 observations are reported for two locations, retrieved from FTIR measurements using SFIT4. Error sources are evaluated, trends are determined and compared to results from the AGAGE network. The results from the Japanese station exhibit large seasonal fluctuations that are attributed to transport from Asia, but the Antarctic results show no significant seasonal variation. The wintertime (December-January-February) results from the Japanese station are 10-15% lower than the AGAGE 12-box model estimates, while the results from the Antarctic station are roughly 25% lower than AGAGE estimates. The discrepancies are attributed in part to deficiencies in the temperature dependence of the pseudolines employed in the calculation of HFC-23, coupled with the latitudinal differences for the Antarctic station. Trend values for the two stations show generally good agreement with results from equivalent AGAGE measurement sites, supporting the use of ground-based FTIR measurements for HFC-23 trend monitoring.*

*Overall, the results appear to be of good quality, although I am not sure I agree with the interpretation of the seasonal HFC-23 variation (more on that later). The article is well organized, and the writing is clear, albeit with a few instances of wording/grammar issues.*

Thank you.

<2-2> *I felt there was a missed opportunity here for placing the bias relative to the AGAGE results into a broader context. I agree with the authors' choice of using their winter (DJF) results as their "background level" to avoid the unexpected seasonal variation. On page 18, line 23, the authors state: values from December to February are mostly stable with a relatively small standard deviations of about +/-10% and a value of 10–15% smaller than the AGAGE in-situ measurements of HFC-23.*

*Looking at Figure 4 of the Fernando et al article referenced in this paper, the global average results from the ACE-FTS exhibit very similar behavior, a persistent low bias relative to AGAGE*

results, roughly 10% in magnitude. Because the ACE-FTS employs the Harrison HFC-23 cross sections in its retrievals and the current study uses pseudo lines based primarily on the same cross sections, this agreement in the bias relative to AGAGE does not seem like a coincidence. It looks like there is a systematic discrepancy between results derived using the Harrison cross sections and AGAGE results. I believe absolute calibration of the Harrison cross sections made use of the PNNL measurements, and I would be surprised if that group's determination of HFC-23 concentrations were off by 10% or so. However, I have no knowledge of the measurement technique employed by AGAGE, so I have no idea if a ~10% error on that end is feasible. It seems clear HFC-23 derived using the Harrison cross sections are inconsistent with AGAGE measurements, but I have no insight into the source of that discrepancy.

We agree to reviewer #2 on the systematic negative bias of HFC-23 derived using the Harrison cross sections (ACE-FTS) and pseudo lines (this study). Therefore, we added description of negative biases of -15 to -20% and -25%, and their possible cause due to the HFC-23 spectroscopy in the abstract.

<2-3> I am somewhat skeptical that the seasonal variation in measured HFC-23 is real. No other station sees such behavior. They theorize that it comes from long range transport, and yet not a hint of it continues on across the Pacific Ocean to Trinidad Head, despite the apparent large magnitude of the emissions. It is possible the station in question is located in just the right location downwind of a large emitter, and perhaps the flow would routinely divert away from Trinidad head as it travels across the Pacific (not my area of expertise). Emissions during HCFC-22 production is a major source of HFC-23, and Japan is a significant HCFC-22 producer, so perhaps the emissions originate from near the station, which would explain why they see such large quantities. However, I would be inclined to think there might be an artifact in the retrieval. Are there systematic differences in the residuals for baseline HFC-23 conditions versus enhanced HFC-23 conditions? If additional structure appears in the residuals in the latter case, the retrieval may be compensating for something missing in the analysis or compensating for large residuals from some other constituent (e.g., from water lines if H<sub>2</sub>O levels are high). Is there a strong correlation of enhanced HFC-23 with H<sub>2</sub>O, temperature, the ratio of HDO to H<sub>2</sub>O, seasonal variations in CH<sub>4</sub>, or biomass burning products like HCN or C<sub>2</sub>H<sub>6</sub>? I suspect H<sub>2</sub>O might be the most dangerous of the bunch for impacting the retrieval. Correlation does not prove cause but may help identify the source of a retrieval artifact, if one exists.

Japanese HFC-23 emission had already diminished at around 2004 as shown in Figure 2-1. We think there is almost no emissions originate from near the station in Japan after 2004.

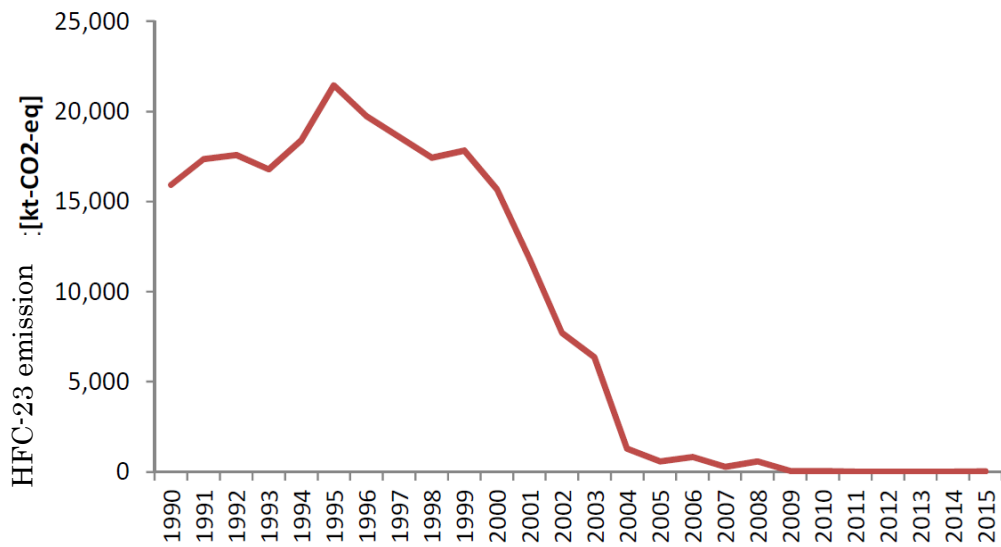


Figure 2-1 Temporal variation of HFC-23 emission in Japan from HCFC-22

[[https://www.env.go.jp/earth/ondanka/ghg-mrv/methodology/material/methodology\\_2B9\\_1.pdf](https://www.env.go.jp/earth/ondanka/ghg-mrv/methodology/material/methodology_2B9_1.pdf)]

And you can find spikey enhancement of HFC-23 especially in summer season in the surface measurement at Ochiishi, Japan in Figure 2-2. (Ochiishi is located in the same island as Rikubetsu. You can get the figure from <https://gaw.kishou.go.jp/search/file/0053-2008-1502-01-01-9999>).

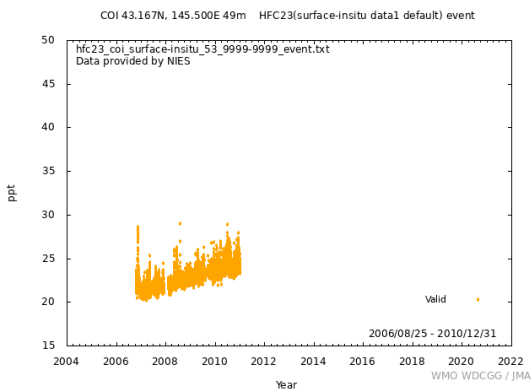


Figure 2-2. Surface HFC-23 measurement in Ochiishi

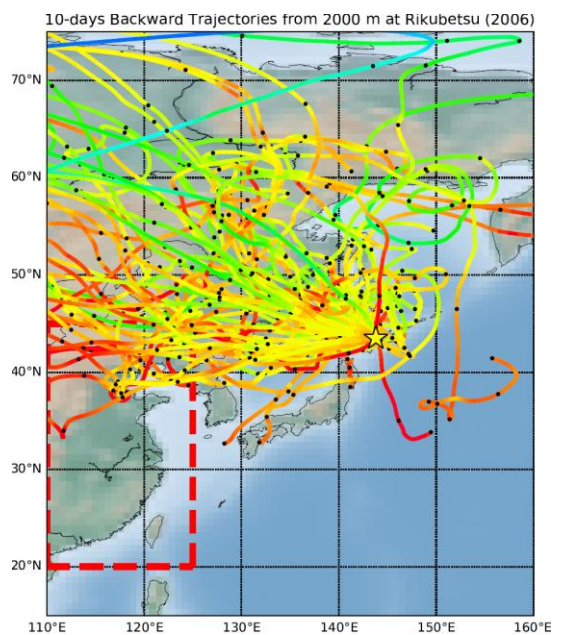


Figure 2-3. Airmass trajectory to Rikubetsu in 2006.

We calculated 10-days backward trajectories originated from Rikubetsu at 2000 km altitude on the days of FTIR observations. These backward trajectories showed that nearly 30 % of airmasses above Rikubetsu on the FTIR observation days came from Chinese region as is shown in Figure 2-3. We add these descriptions in Section 5.2. There is no significant difference in the RMS residuals between baseline HFC-23 conditions and enhanced HFC-23 conditions. Mean RMS residual and its standard deviation for baseline condition (DJF) in 2006-2010 are  $0.296\pm 0.034$ , while those for enhanced condition (other months) are  $0.296\pm 0.048$ . There is temperature dependency on the PLL and this explain 5% difference in maximum as described in Section 5.3. We have checked some correlations. Figures 2-4 and 2-5 are the correlations between HFC-23 and H<sub>2</sub>O, and HFC-23 and HDO/H<sub>2</sub>O, for Rikubetsu in 2006-2010, respectively. You can find positive correlations, but note that H<sub>2</sub>O, HDO/H<sub>2</sub>O, and also the transport from Eurasia are all high in summer season.

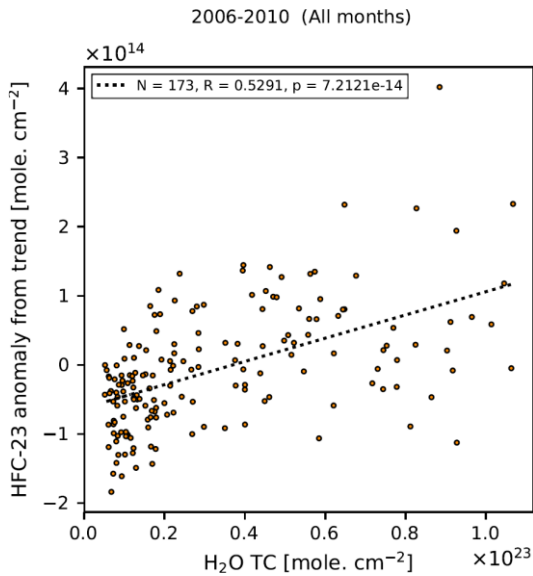


Figure 2-4. HFC-23 v.s. H<sub>2</sub>O correlation

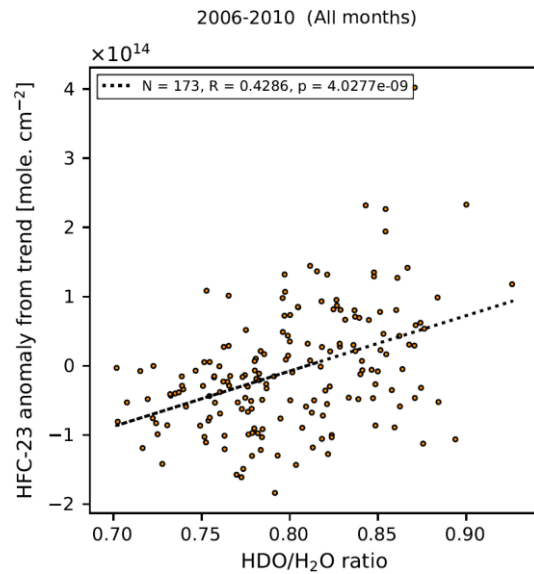


Figure 2-5. HFC-23 v.s. HDO/H<sub>2</sub>O correlation

Figures 2-6 and 2-7 are the correlations between HFC-23 and H<sub>2</sub>O, and HFC-23 and HDO/H<sub>2</sub>O, for Syowa in 2007-2016, respectively. Here, there is no significant correlations. These results indicate that the retrieval artifacts from H<sub>2</sub>O, and HDO/H<sub>2</sub>O are not significant. We add description on this in Section 5.2.

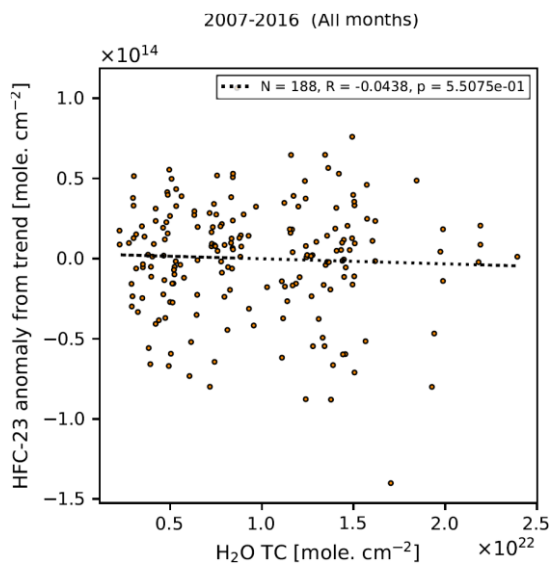


Figure 2-6. HFC-23 v.s. H<sub>2</sub>O correlation.

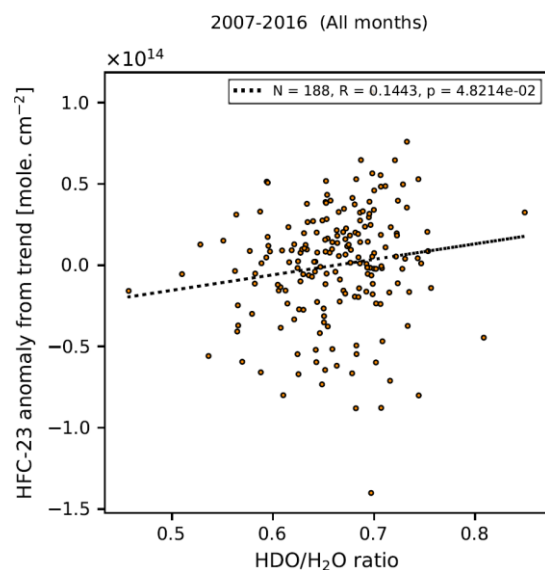


Figure 2-7. HFC-23 v.s. HDO/H<sub>2</sub>O correlation

<2-4> *In my opinion, asserting that the HFC-23 enhancements were real would at minimum require comparing residuals for enhanced versus background conditions, ideally with a similar quality in both cases and no evidence of additional significant systematic features in the residuals for the enhanced case.*

As mentioned in the reply for the previous comment, there is no significant difference in the residuals between baseline HFC-23 conditions and enhanced HFC-23 conditions

<2-5> *The authors use two microwindows in the retrieval. I assume independent 'background correction' parameters (slope and curvature) are used in each window. Is it possible to have SFIT4 use a single set of background correction parameters spanning the two windows? The windows are close together, so I expect a unified curve for the background correction should be viable. This adjustment would presumably make the retrieval less susceptible to artifacts.*

Since we are using relatively wide two microwindows ranging 20 cm<sup>-1</sup> in total and 6 cm<sup>-1</sup> apart each other, we consider that using independent background correction parameters is better than using a single background correction parameter.

<2-6> *Page 8, line 25: for all observed spectra with the IFS-120/5HR instrument no ILS function was used because the instrument has always been maintained best optical alignment*

*This statement is not entirely accurate. An instrumental line shape function is still required, associated with the FTS scan length and the finite field of view. It would be more appropriate*

*to say something like the ILS is accurately defined by the theoretical model for the given instrument configuration.*

You are right. We modified the description as you suggested.

<2-7> *Page 4, line 9: However, the ACE-FTS observations do not have sensitivity to the troposphere where all HFC-23 emissions occur.*

*Also not entirely accurate as stated. ACE-FTS measurements extend into the troposphere (i.e., below the tropopause). It would be more accurate to say ACE-FTS measurements do not extend low into the troposphere or do not probe near the surface.*

You are right. Also reviewer #3 mentioned on this by his comment <3-15>. We finally deleted the description of tropospheric sensitivity issue from the draft.

<2-8> *Page 20, line 3: a discussion of temperature sensitivity in relation to the ACE-FTS.*

*Note that ACE-FTS analysis uses the cross sections directly in the analysis (via a bilinear interpolation in pressure and temperature), whereas the current study employs pseudolines derived from a set of cross sections. I would assume that the deficiencies in temperature dependence described in the paper are a property of the pseudolines and not the cross sections themselves. There could conceivably be temperature consistency issues arising from the ACE-FTS interpolation approach, but I see no reason to expect it is similar in nature to the pseudoline temperature dependence deficiencies unless one claims the temperature dependence problems are inherent to the Harrison cross sections (I would need to see proof, if that were claimed).*

You are right. We mixed up temperature dependence of pseudolines with that of cross sections. We deleted description of ACE-FTS issue here, and inserted it in the next paragraph.

<2-9> *Page 7, line 25: only about 1% of the atmospheric transmittance of solar infrared radiation at ground level (see Figure 3).*

*It is traditional to make reference to figures in order. Figure 3 is referenced before Figures 1 and 2.*

You are right. The reference for Figure 3 was deleted here.

<2-10> *Page 17, line 21: g is the column-averaged acceleration  
acceleration due to gravity*

It was corrected as suggested.

<2-11> Grammar/wording issues:

-----

>Page 3, line 6: *all UNFCCC CDM project were terminated ... [projects]*

It was corrected as suggested.

>Page 5, line 31: *detected with the MCT detector ... [measured with]*

It was corrected as suggested.

>Page 5, line 31: *Note, that ... [no comma]*

It was corrected as suggested.

>Page 11, line 31: *DOFS for HDO was increased when the wider window used ... [was used]*

It was corrected as suggested.

>Page 14, line 7: *due to the lack of vertically measurement data ... [vertically resolved]*

It was corrected as suggested.

>Page 14, line 31: *The SZA random uncertainty was assumed an uncertainty of 0.15° ... [assumed a value of]*

It was corrected as suggested.

>Page 15, line 18: *Since the MW for CH4 pre-retrieval is closed to the HFC-23 MWs ... [close to]*

It was corrected as suggested.

>Page 16, line 29: *These relative biases lead underestimation to the trend ... [lead to an*

*underestimation of the trend]*

It was corrected as suggested.

*>Page 19, line 32: in all temperature region ... [regions]*

It was corrected as suggested.

*<2-15> In conclusion, while I think it is a good paper, I would like to see more said on AGAGE results and results from studies employing the Harrison cross sections (this study and ACE-FTS work) exhibiting a fairly consistent bias, suggesting a systematic error somewhere. I would also like to see further proof that the apparent seasonal enhancement in HFC-23 is real (e.g., comparing residuals in the enhanced case versus the background case).*

Thank you. We added some more descriptions on the negative bias issue, including the ACE-FTS negative bias, in the conclusion. As is described in the response to your comment <2-3>, we believe that the seasonal enhancement of HFC-23 is real. The description of backward trajectory calculation was also added in the conclusion.



# First ground-based FTIR observations of HFC-23 at Rikubetsu, Japan, and Syowa Station, Antarctica

Masanori Takeda<sup>1,2</sup>, Hideaki Nakajima<sup>2,1</sup>, Isao Murata<sup>1</sup>, Tomoo Nagahama<sup>3</sup>, Isamu Morino<sup>2</sup>, Geoffrey C. Toon<sup>4</sup>, Ray F. Weiss<sup>5</sup>, Jens Mühle<sup>5</sup>, Paul B. Krummel<sup>6</sup>, Paul J. Fraser<sup>6</sup>, and Hsiang-Jui Wang<sup>7</sup>

<sup>1</sup>Graduate School of Environmental Studies, Tohoku University, Sendai, Miyagi, 980-8572, Japan

<sup>2</sup>National Institute for Environmental Studies, Tsukuba, Ibaraki, 305-8506, Japan

<sup>3</sup>Institute for Space-Earth Environmental Research, Nagoya University, Nagoya, Aichi, 464-8601, Japan

<sup>4</sup>Jet Propulsion Laboratory, California Institute of Technology, Pasadena, CA, 91109, U. S. A.

<sup>5</sup>Scripps Institution of Oceanography (SIO), University of California San Diego, La Jolla, CA, 92093-0244, U. S. A.

<sup>6</sup>Climate Science Centre, Commonwealth Scientific and Industrial Research Organisation (CSIRO), Oceans and Atmosphere, Aspendale, Victoria, 3195, Australia

<sup>7</sup>School of Earth and Atmospheric Sciences, Georgia Institute of Technology, Atlanta, GA, 30332-0340, U. S. A.

15 Correspondence to: [Hideaki Nakajima](mailto:nakajimatakedamasanori@nies.go.jp), [Masanori Takeda](mailto:nakajimatakedamasanori@nies.go.jp) ([nakajimatakedamasanori@nies.go.jp](mailto:nakajimatakedamasanori@nies.go.jp))

## Abstract.

We have developed a procedure for retrieving atmospheric abundances of HFC-23 (CHF<sub>3</sub>) with a ground-based Fourier transform infrared spectrometer (FTIR) and analysed the spectra observed at Rikubetsu, Japan (43.5°N, 143.8°E), and at Syowa Station, Antarctica (69.0°S, 39.6°E). The FTIR retrievals were carried out with the SFIT4 retrieval program, and the two spectral windows of 1138.5–1148.0 cm<sup>-1</sup> and 1154.0–1160.0 cm<sup>-1</sup> in the overlapping ν<sub>2</sub> and ν<sub>5</sub> vibrational-rotational transition bands of HFC-23 were used to avoid strong H<sub>2</sub>O absorption features. We considered O<sub>3</sub>, N<sub>2</sub>O, CH<sub>4</sub>, H<sub>2</sub>O, HDO, CFC-12 (CCl<sub>2</sub>F<sub>2</sub>), HCFC-22 (CHClF<sub>2</sub>), PAN (CH<sub>3</sub>C(O)OONO<sub>2</sub>), HCFC-141b (CH<sub>3</sub>CCl<sub>2</sub>F), and HCFC-142b (CH<sub>3</sub>CClF<sub>2</sub>) as interfering species. Vertical profiles of H<sub>2</sub>O, HDO, and CH<sub>4</sub> are preliminarily retrieved with other independent spectral windows because these profiles may induce large uncertainties in the HFC-23 retrieval. Each HFC-23 retrieval has only one piece of vertical information with sensitivity to HFC-23 in the troposphere and the lower stratosphere. ~~The~~ Retrieval errors mainly arise from the systematic uncertainties of the spectroscopic parameters used to obtain ~~the~~ HFC-23, H<sub>2</sub>O, HDO, and CH<sub>4</sub> abundances. For comparison between FTIR-retrieved HFC-23 total columns and surface dry-air mole fractions provided by AGAGE (Advanced Global Atmospheric Gases Experiment), ~~the~~ FTIR-retrieved HFC-23 dry-air column-averaged mole fractions ( $X_{\text{HFC-23}}$ ) were calculated. The FTIR-retrieved  $X_{\text{HFC-23}}$  at Rikubetsu and Syowa Station have negative biases of -15 to -20% and -25% compared to AGAGE datasets, respectively. These negative biases might mainly come from the systematic uncertainties of HFC-23 spectroscopic parameters. The trend ~~of derived from~~ the FTIR-retrieved  $X_{\text{HFC-23}}$  data at Rikubetsu ~~were derived~~ for December to February (DJF) ~~observations data~~, which are considered to represent the background values when air mass reaching Rikubetsu has the least influenced by transport of HFC-23 emissions by nearby countries. The DJF trends of

Rikubetsu over the 1997–2009~~10~~ period is  $0.8107 \pm 0.09387$  ppt (parts per trillion) year<sup>-1</sup>, which is in good agreement with the trend derived from the annual global mean datasets of the AGAGE 12-box model for the same period ( $0.820 \pm 0.0134$  ppt year<sup>-1</sup>). The DJF trend of ~~the FTIR-retrieved  $X_{\text{HFC-23}}$  data at Rikubetsu for DJF data~~ over the 2008~~7~~–2019~~20~~ period is  $0.928894 \pm 0.108099$  ppt year<sup>-1</sup>, which is consistent with smaller than the trend in the AGAGE in-situ measurements at Trinidad Head (41.1°N, 124.2°W) for the ~~same 2007–2019~~ period ( $0.99484 \pm 0.0012$  ppt year<sup>-1</sup>). The trend ~~of computed from the FTIR-retrieved  $X_{\text{HFC-23}}$  datasets~~ at Syowa Station over the 2007–2016 period is  $0.823 \pm 0.075$  ppt year<sup>-1</sup>, which is consistent with that derived from the AGAGE in-situ measurements at Cape Grim (40.7°S, 144.7°E) for the same period ( $0.874 \pm 0.002$  ppt year<sup>-1</sup>). Although there are systematic biases on the FTIR-retrieved  $X_{\text{HFC-23}}$  at both sites, these results indicate that ground-based FTIR observations have the capability to monitor the long-term trend of atmospheric HFC-23. If this FTIR measurement technique were extended to other NDACC ground-based FTIR sites around world, the measurements reported from these sites would complement the global AGAGE observations, filling spatial and temporal gaps, and may lead to improved insights about changes in regional and global emissions of HFC-23 and its role in global warming.

## 1. Introduction

Trifluoromethane ( $\text{CHF}_3$ ), also known as hydrofluorocarbon-23 (HFC-23), has an atmospheric lifetime of 228 years and a global warming potential integrated over a 100-year time scale (100-year GWP) of 12,690 (Montzka et al., 2019). Due to this high GWP, emissions of HFC-23 are contributing to climate change. HFC-23 is an unwanted by-product of the production of chlorodifluoromethane ( $\text{CHClF}_2$ ), hydrochlorofluorocarbon-22 (HCFC-22), with the HFC-23/HCFC-22 production ratio estimated to be up to 4% (McCulloch and Lindley, 2007).

Under the regulations of the “Montreal Protocol on Substances that Deplete the Ozone Layer (Montreal Protocol)” (UNEP, 2000), production and consumption of ozone-destroying chlorofluorocarbons (CFCs) have been completely banned since 2010, whereas production and consumption of hydrochlorofluorocarbons (HCFCs), which have less effect on ozone depletion, have continued. The Montreal Protocol is phasing out the production and consumption of HCFCs for emissive uses by 2020 in developed countries, and by 2030 in developing countries, while use for feedstock (e.g., in production of HFCs and fluoropolymers) is not restricted. Hence, emissions of HCFCs to the earth’s atmosphere are expected to continue for quite a while. HCFC-22, one of the major HCFCs with an ozone depletion potential (ODP) of  $\sim 0.03$  and a 100-year GWP of 1,760 (Harris et al., 2014), has been widely used in air conditioners, refrigerators, foaming agents, or heat insulating materials, and therefore large banks still exist, which also contribute to ongoing emissions. Emissions of HCFC-22 have increased since 2004 (Montzka et al., 2009), and global emissions in 2010 are estimated to have reached  $386 \pm 41$  Gg yr<sup>-1</sup> by an inversion model (Simmonds et al., 2018a). Clearly, HFC-23 emissions have been increasing as a consequence.

Currently, hydrofluorocarbons (HFCs) are widely used as substitutes of CFCs and HCFCs, because they do not contain ozone depleting halogen atoms (Cl or Br). ~~have essentially no ODP and are therefore not contributing to ozone depletion.~~ However, HFC-23 is not used as a substitute for CFCs or HCFCs, but is used in halon-1301 ( $\text{CBrF}_3$ ) production, semiconductor

manufacturing, very low temperature refrigeration, and specialty fire extinguisher (Oram et al., 1998; Miller et al., 2010, Simmonds et al., 2018a), which means that emissions from deliberate use of HFC-23 are small. Hence, HFC-23 has mainly been vented from HCFC-22 production plants into the atmosphere (Montzka et al., 2019). Simmonds et al. (2018a) reported that global annual emissions of HFC-23 were estimated to have reached  $13.3 \pm 0.8 \text{ Gg yr}^{-1}$  in 2006 up from  $4.2 \pm 0.7 \text{ Gg yr}^{-1}$  in 1980 due to rising the production of HCFC-22. After 2006, HFC-23 emissions rapidly decreased to  $9.6 \pm 0.6 \text{ Gg yr}^{-1}$  in 2009 as a result of thermal destruction of HFC-23 incentivized by the Clean Development Mechanism (CDM) under the Kyoto Protocol to the United Nations Framework Convention on Climate Change (UNFCCC). Due to a scheduled end of the CDM project, however, HFC-23 emission again increased, rapidly reaching  $14.5 \pm 0.6 \text{ Gg yr}^{-1}$  in 2014 (Simmonds et al., 2018a). The annual global average mole fraction of HFC-23 reached 28.9 ppt (parts per trillion) in 2016, which corresponds to a radiative forcing of  $5.2 \text{ mW m}^{-2}$ . This is the second largest radiative forcing among all HFCs and fluorinated-gases just after HFC-134a ( $14.3 \text{ mW m}^{-2}$ ) (Montzka et al., 2019). Miller and Kuijpers (2011) suggested that if no additional abatement measures are implemented to reduce HFC-23, its emission will rise to  $24 \text{ Gg yr}^{-1}$  in 2035, and the mole fraction will rise to 50 ppt which corresponds to a radiative forcing of  $9 \text{ mW m}^{-2}$ . Furthermore, if the emissions of HFC-23 are not regulated and all UNFCCC CDM projects were terminated, the HFC-23 emission growth rate after 2030 would rise to  $0.8 \text{ Gg yr}^{-2}$ , which is four times larger than the previous trend (Miller and Kuijpers, 2011). In 2016, the parties to the Montreal Protocol agreed to amend the Montreal Protocol to gradually reduce the production and consumption of HFCs (the 2016 Kigali Amendment), and to control emissions of HFC-23. Unfortunately, Stanley et al. (2020) reported that the global HFC-23 emissions, derived from atmospheric measurements (top-down estimate), reached  $15.9 \pm 0.9 \text{ Gg yr}^{-1}$  in 2018 which was higher than in any year in history. Moreover, their results indicated that the top-down global emission in 2017 was  $12.5 \pm 0.7 \text{ Gg yr}^{-1}$  higher than the inventory-based emission of  $2.4 \text{ Gg yr}^{-1}$  (bottom-up estimate), ~~despite government mandated emission reductions in China and India~~. This result clearly implies that unreported HFC-23 by-product emissions exist. Therefore, the global observation system of atmospheric HCFC-22 and HFC-23 abundances is important to monitor the efficacy of the phase-down under the Montreal Protocol and to accurately project the impact of emissions of these compounds on ozone depletion and climate change into the future.

A ground-based in-situ measurement of HCFC-22 with a gas chromatography-mass spectrometer (GC-MS) technique was first reported by Rasmussen et al. (1980). Halocarbons and other Atmospheric Trace Species (HATS) group in Global Monitoring Division (GMD) of Earth System Research Laboratory in National Oceanic and Atmospheric Administration (NOAA/ESRL) has been analysing atmospheric minor constituents sampled in flasks at several remote sites since 1977, and the measurement of HCFC-22 by HATS group has started in 1992 (Montzka et al., 1993; Montzka et al., 2009). The Advanced Global Atmospheric Gases Experiment (AGAGE) observation network supported by a consortium of multinational institutions and organizations started HCFC-22 in-situ measurements in 1998 using a GC-MS (ADS systems since 1998 and more advanced “Medusa” systems since the mid-2000s) (Simmonds et al, 1995; Prinn et al., 2000; O’Doherty et al., 2004; Miller et al., 2008).

In contrast, the history of in-situ observation of atmospheric HFC-23 is relatively short. Atmospheric HFC-23 abundances were first reported in Oram et al. (1998) based on GC-MS measurements of flask background air samples collected at Cape Grim, Tasmania, Australia (40.7°S, 144.7°E), from 1978 to 1995. But high frequency in-situ measurement of HFC-23 by the AGAGE network are only available since the late 2000s using the GC-MS-Medusa at AGAGE stations (e.g., Cape Grim; Gosan, Jeju island, South Korea (33.3°N, 126.2°E)) (Miller et al., 2010; Kim et al., 2010; Simmonds et al., 2018a). Also, in-situ measurements of HFC-23 with AGAGE-compatible (but not identical) instruments have been operated at two stations of National Institute for Environmental Studies (NIES) in Japan: Hateruma, Okinawa (24.1°N, 123.8°E, since 2004) and Cape Ochiishi, Hokkaido (43.2°N, 145.5°E, since 2006) (Yokouchi et al, 2006; Fang et al., 2015). In total, there are, however, only 13 sites with HFC-23 in-situ measurements in the AGAGE network, including three affiliated stations.

Thanks to the evolution of molecular spectroscopy, and increasing atmospheric concentrations, space-borne remote sensing observation of HFCs, in addition to several CFCs and HCFCs, became possible (Nassar et al., 2006). For HFC-23, the first space-borne and balloon-borne remote sensing observations were done by the Atmospheric Chemistry Experiment-Fourier Transport Spectrometer (ACE-FTS) on SCISAT and the JPL MkIV interferometer, using the spectral region (1140–1160  $\text{cm}^{-1}$ ) covering the  $\nu_2$  and  $\nu_5$  vibrational-rotational transition bands of HFC-23 (Harrison et al., 2012). Fernando et al. (2019) reported the HFC-23 trend above cloud-top derived from the ACE-FTS measurements for the period of 2004–2017, and indicated that the annual HFC-23 mole fractions retrieved from the ACE-FTS consistently averaged 5% smaller than ones at ground level from the AGAGE annual global mean dataset. ~~However, the ACE-FTS observations do not have sensitivity to the troposphere where all HFC-23 emissions occur.~~

The Network for the Detection of Atmospheric Composition Change - Infrared Working Group (NDACC-IRWG) has been globally monitoring abundances of various atmospheric trace gases (e.g.,  $\text{O}_3$ , HCl,  $\text{HNO}_3$ ,  $\text{CH}_4$ , CO) using ground-based Fourier transform infrared spectrometer (FTIR) instruments (De Mazière et al., 2018). At present, the contributing ground-based FTIR instruments to the NDACC-IRWG are located at more than 20 sites around the world, and have yielded long-term consistent high-quality data by adherence to strict measurement and analysis procedures. For CFCs and HCFCs, for example, atmospheric CFC-11, CFC-12, and HCFC-22 have been retrieved from infrared spectra taken by ground-based FTIRs at Reunion island (Zhou et al., 2016). For HFCs, however, there has been no attempt to retrieve their atmospheric abundances. If routine observations of atmospheric HFC-23 using the NDACC's ground-based FTIRs were possible, we could fill spatial and temporal gaps in the existing observations by AGAGE and ACE-FTS, which would allow for monitoring of global atmospheric HFC-23 abundances in greater detail than ever.

This study aims to investigate the retrieval procedure of atmospheric HFC-23 using the overlapping  $\nu_2$  and  $\nu_5$  vibrational-rotational transition bands of HFC-23. We analyze solar infrared spectra observed by two ground-based FTIRs installed at Rikubetsu, Japan, and Syowa Station, Antarctica. First, the details of the FTIR observations at both sites are described in Section 2. In Section 3, the retrieval strategy of HFC-23 for both sites is described in detail. Section 4 presents the results and characteristics of the HFC-23 retrievals, including the retrieval error budget. In Section 5, the time-series of our FTIR-retrieved HFC-23 are compared to the in-situ measurements from the AGAGE network, and the modelled annual global mean dataset

based on the AGAGE measurements. In addition, we discuss the HFC-23 trends derived from each dataset. Finally, conclusions and perspectives are summarized in Section 6.

## 2. FTIR observations

### 5 2.1 Rikubetsu

Measurements of atmospheric trace gases at Rikubetsu, Hokkaido, Japan (43.5°N, 143.8°E), have been carried out ~~since May 1995~~ using two high spectral resolution FTIR instruments ~~since May 1995 as part of, contributing to the~~ NDACC-IRWG. The site is ~~located~~ 200 km east of Sapporo ~~and located~~ in a small town surrounded by forests and pastures. In October 1997, this observatory was relocated to the top of a hill (380 m a.s.l.) ~~near in the vicinity of~~ the town. The first instrument, which  
10 operated until April 2010, was a Bruker IFS-120M FTIR spectrometer. In 2013, a Bruker IFS-120/5HR, an upgrade of the IFS-120HR, was installed as a second instrument taking over the observations by the IFS-120M, contributing to the Total Carbon Column Observing Network (TCCON) in addition to ~~the~~ NDACC-IRWG. The FTIR instruments at Rikubetsu have taken solar infrared spectra from 500 to 7500  $\text{cm}^{-1}$  with a KBr beam splitter, the NDACC recommended optical filters, and two liquid nitrogen-cooled detectors: Indium-Antimonide (InSb) and Mercury-Cadmium-Telluride (HgCdTe, so-called MCT).  
15 Typically, measurements with 2 scans were executed to acquire a spectrum with resolution of 0.0035  $\text{cm}^{-1}$ , however, sometimes 4 to 16 scans were co-added ~~in order~~ to improve signal-to-noise ratios (SNR). ~~These measurements spectra,~~ covering long-~~term~~ periods ~~of time,~~ have been used for various studies of atmospheric tracers (e.g.,  $\text{O}_3$ , CO,  $\text{C}_2\text{H}_6$ , and HCN) related to stratospheric composition change and biomass burning (Nakajima et al., 1997; Zhao et al., 1997; 2002; Koike et al., 2006; Nagahama and Suzuki, 2007).

20 In this study, we used the spectra measured with the NDACC optical filter #6 (covering 500–1400  $\text{cm}^{-1}$ ) and a MCT detector under clear-sky conditions since October 1997. For the observations with the NDACC filter #6 ~~by using~~ the IFS-120/5HR from 2013 up to 2018, ~~unfortunately,~~ the SNR values of the spectra are ~~unfortunately~~ about 20% of those achieved before the replacement of the instrument ~~in 2013~~ because smaller apertures were used. Since 2019, the more suitable aperture size of 1.7 mm has been adopted for the measurements using the NDACC optical filter #6. Hence, those observed spectra were  
25 additionally used in the retrievals of HFC-23. Also, these spectra are degraded to 0.0070  $\text{cm}^{-1}$  (see Section 3.3).

### 2.2 Antarctic Syowa Station

Since the Japanese Antarctic Syowa Station (69.0°S, 39.6°E; 10 m a.s.l.) was established in 1957, various kinds of scientific observations (e.g., meteorology, upper atmospheric physics, cryospheric sciences, biology, geology) have ~~continuously~~ been  
30 conducted ~~around the station~~. Syowa Station has been maintained by members of the Japanese Antarctic Research Expedition (JARE) ~~each year~~. In 2007, a Bruker IFS-120M FTIR instrument was installed at Syowa Station by NIES and Tohoku

University, in cooperation with the 48<sup>th</sup> JARE members. Measurements using the FTIR at Syowa Station contributed to research related to stratospheric composition near the edge of the polar vortex during ozone hole evolution, due to its geographical location (Nakajima et al., 2020). As ~~this station~~ is a remote site in Antarctic, it is possible to observe the background atmosphere of the southern hemisphere which it is not influenced by local human activity.

5 The instrument ~~has~~ two liquid nitrogen-cooled detectors of InSb and MCT, which were the same as those in the FTIR at Rikubetsu. Solar infrared spectra (500–7500 cm<sup>-1</sup>) were recorded using the same measurement settings as used at Rikubetsu, under clear-sky conditions in 2007, 2011 and 2016, but not ~~during~~ the polar night periods. In this study, we used the spectra covering 500–1400 cm<sup>-1</sup> ~~measured~~ ~~detected~~ with the MCT detector. Note, that the observed spectra in 2007 were measured with the NDACC filter #6, but since 2011 the observations covering this spectral region were separated into two measurements  
10 using the narrower NDACC filter #7 (covering 500–1100 cm<sup>-1</sup>) and #8 (covering 1000–1400 cm<sup>-1</sup>). Similar to observations at Rikubetsu, these measurements were used from 2 to 16 scans with 0.0035 cm<sup>-1</sup> resolution. However, we degrade the resolution of these spectra to 0.0070 cm<sup>-1</sup> (see Section 3.3).

### 3. Retrieval strategy of HFC-23

15 To derive HFC-23 vertical mole fraction profiles and total column abundances, all spectra taken from the FTIR instruments at Rikubetsu and ~~at~~ Syowa Station were ~~analyzed~~ ~~analysed~~ with the SFIT4 version 0.9.4.4 program (see <https://wiki.ucar.edu/display/sfit4/>) based on the optimal estimation method (OEM) of Rodgers (Rodgers, 1976; Rodgers, 2000). This program was developed by scientists from the National Center for Atmospheric Research (NCAR), the University of Bremen, and other institutes taking part in the NDACC-IRWG, as an up-grade version of the previous SFIT2 algorithm  
20 (Pougatchev et al., 1995). This program includes the procedure ~~to which~~ ~~calculates~~ the theoretical absorption spectrum based on prior information (e.g., meteorological profiles, a priori profile of target) and fits the calculated spectrum to the observed one, for ~~one or more~~ selected ~~one or more~~ spectral regions (micro-windows; MWs). Finally, the program derives the most suitable state vector (i.e. the retrieved target profile) that balances information obtained from observation and from the a priori. Hereafter, the details of HFC-23 retrieval are described.

25

#### 3.1 Retrieval method

From the Rodgers's OEM, ~~the~~ measured spectrum  $\mathbf{y}$  can be written using a forward model  $\mathbf{F}$  with a vector vertical profile of gas  $\mathbf{x}$  and all non-retrieved parameters (temperature, pressure, etc.) ~~in~~ vector  $\mathbf{b}$  as;

$$\mathbf{y} = \mathbf{F}(\mathbf{x}, \mathbf{b}) + \boldsymbol{\varepsilon}, \quad (1)$$

30 where  $\boldsymbol{\varepsilon}$  is ~~the~~ measurement noise. By taking a Taylor's series expansion around ~~an~~ a priori profile  $\mathbf{x}_a$  and best estimated value  $\hat{\mathbf{b}}$  of  $\mathbf{b}$ , and neglecting higher orders, we get the linear expression of equation (1) as;

$$\mathbf{y} = \mathbf{F}(\mathbf{x}_a, \hat{\mathbf{b}}) + \frac{\partial \mathbf{F}}{\partial \mathbf{x}}(\mathbf{x} - \mathbf{x}_a) + \frac{\partial \mathbf{F}}{\partial \mathbf{b}}(\mathbf{b} - \hat{\mathbf{b}}) + \boldsymbol{\varepsilon} = \mathbf{y}_a + \mathbf{K}(\mathbf{x} - \mathbf{x}_a) + \mathbf{K}_b(\mathbf{b} - \hat{\mathbf{b}}) + \boldsymbol{\varepsilon}, \quad (2)$$

where  $\mathbf{y}_a$  is a spectrum calculated from a priori,  $\mathbf{K}$  and  $\mathbf{K}_b$  are weighting function matrices, ~~which are often also so-called the~~ Jacobians, for state vector  $\mathbf{x}$  and model parameter  $\mathbf{b}$ , respectively. From the inversion of equation (2), we get the best estimated vertical profile of gas mole fraction vector  $\hat{\mathbf{x}}$  as;

$$5 \quad \hat{\mathbf{x}} = \mathbf{x}_a + \mathbf{G}\mathbf{K}(\mathbf{x} - \mathbf{x}_a) + \mathbf{G}\mathbf{K}_b(\mathbf{b} - \hat{\mathbf{b}}) + \mathbf{G}\boldsymbol{\varepsilon}, \quad (3)$$

where  $\mathbf{G} = \partial \hat{\mathbf{x}} / \partial \mathbf{y}$  is ~~the~~ gain matrix, ~~whose line elements are so-called~~ contribution function, which ~~represents the mean inversion~~ sensitivity ~~of the retrieved parameters to the measurements~~. Combining a profile  $\mathbf{x}$  taken from an observed spectrum  $\mathbf{y}$  with ~~an~~ a priori profile as described in Rodgers (1976), ~~assuming if there is~~ a linear relationship ~~of~~  $\mathbf{y} = \mathbf{K}\mathbf{x} + \boldsymbol{\varepsilon}$ , the best estimation ~~of~~  $\hat{\mathbf{x}}$  is defined as following weighted average;

$$10 \quad \hat{\mathbf{x}} = (\mathbf{S}_a^{-1} + \mathbf{K}^T \mathbf{S}_\varepsilon^{-1} \mathbf{K})^{-1} (\mathbf{S}_a^{-1} \mathbf{x}_a + \mathbf{K}^T \mathbf{S}_\varepsilon^{-1} \mathbf{K} \mathbf{x}) = \mathbf{x}_a + \hat{\mathbf{S}} \mathbf{K}^T \mathbf{S}_\varepsilon^{-1} (\mathbf{y} - \mathbf{K} \mathbf{x}_a), \quad (4)$$

where  $\mathbf{S}_a$  and  $\mathbf{S}_\varepsilon$  are a priori and measurement noise covariance matrices, respectively,  $\hat{\mathbf{S}} = (\mathbf{S}_a^{-1} + \mathbf{K}^T \mathbf{S}_\varepsilon^{-1} \mathbf{K})^{-1} = \mathbf{S}_a \mathbf{K}^T (\mathbf{S}_\varepsilon + \mathbf{K} \mathbf{S}_a \mathbf{K}^T)^{-1} \mathbf{S}_\varepsilon \mathbf{K}$  is ~~the~~ covariance matrix of  $\hat{\mathbf{x}}$ . Comparing ~~the~~ equation (3), which ~~is neglected~~ the error terms of the forward model parameters and the measurement noise, with equation (4), we get the following matrix, so-called averaging kernel matrix  $\mathbf{A}$ ;

$$15 \quad \mathbf{A} = \mathbf{G}\mathbf{K} = \frac{\partial \hat{\mathbf{x}}}{\partial \mathbf{x}} = \hat{\mathbf{S}} \mathbf{K}^T \mathbf{S}_\varepsilon^{-1} \mathbf{K}, \quad (5)$$

which is described in Rodgers (2000) in detail. Each line in matrix  $\mathbf{A}$  is called the averaging kernel, which represents the sensitivity of retrieved value compared to the true value. The sum of diagonal elements of matrix  $\mathbf{A}$  (trace;  $\text{tr}(\mathbf{A})$ ) is called degrees of freedom for signal (DOFS), which gives the number of pieces of vertical information.

Since the forward model for FTIR observation is usually ~~a~~ non-linear problem,  $\hat{\mathbf{x}}$  is taken by minimizing the following cost function  $\mathbf{J}$  derived from Bayes' theorem and Gaussian statistics;

$$20 \quad \mathbf{J}(\mathbf{x}) = (\mathbf{y} - \mathbf{K}\mathbf{x})^T \mathbf{S}_\varepsilon^{-1} (\mathbf{y} - \mathbf{K}\mathbf{x}) + (\mathbf{x} - \mathbf{x}_a)^T \mathbf{R} (\mathbf{x} - \mathbf{x}_a), \quad (6)$$

where  $\mathbf{R} = \mathbf{S}_a^{-1}$  is a regularization matrix. The second term of Equation (6) is generally called the constraint and it is important for ~~a stable~~ solution ~~via~~ ~~stably~~ ~~of~~ the state vector  $\mathbf{x}$ . In the case of Rodgers' OEM, the covariance matrix obtained from a realistic variability of target gas is used as the regularization matrix  $\mathbf{R}$ , but we use Tikhonov regularization (Tikhonov, 1963) to set up  $\mathbf{R}$  in this study. The details about selection of the regularization matrix ~~are~~ ~~is~~ described ~~in~~ ~~at~~ Section 3.5. Finally, the cost function is minimized by the Gauss-Newton iteration method, so ~~that~~ the appropriate profile is found by ~~the~~ iteration which is described as;

$$25 \quad \mathbf{x}_{i+1} = \mathbf{x}_a + \mathbf{S}_a \mathbf{K}_i^T (\mathbf{S}_\varepsilon + \mathbf{K}_i \mathbf{S}_a \mathbf{K}_i^T)^{-1} [\mathbf{y} - \mathbf{y}_i + \mathbf{K}_i (\mathbf{x}_i - \mathbf{x}_a)], \quad (7)$$

where  $i = 0, 1, 2, \dots$ , is the iteration counter,  $\mathbf{K}_i$  is the Jacobian diagnosed at  $\mathbf{x}_i$ , and  $\mathbf{y}_i = \mathbf{F}(\mathbf{x}_i)$ . If this iterative calculation 30 converges, the best estimate of  $\hat{\mathbf{x}}$  results.

### 3.2 Retrieval micro-windows

Table 1 summarizes the strategy for the retrieval of HFC-23 ~~executed~~ in this study. For the retrieval of HFC-23 from FTIR spectra, we used the  $\nu_2$  and  $\nu_5$  vibrational-rotational transition bands of HFC-23 located at  $\sim 1150 \text{ cm}^{-1}$ , which is the same spectral region as the retrieval of ACE-FTS (Harrison et al., 2012). The infrared absorption by HFC-23 contributes typically to only about 1% of the atmospheric transmittance of solar infrared radiation at ground level ~~(see Figure 3)~~. Hence, ~~the~~ choice of MWs is critically important for the retrieval ~~of HFC-23~~ from ~~the~~ ground-based measurements. To avoid three strong  $\text{H}_2\text{O}$  absorption lines at  $1149.47 \text{ cm}^{-1}$ ,  $1151.54 \text{ cm}^{-1}$  and  $1152.44 \text{ cm}^{-1}$ , we used two MWs as; MW1:  $1138.5\text{--}1148.0 \text{ cm}^{-1}$ , MW2:  $1154.0\text{--}1160.0 \text{ cm}^{-1}$ . Major interfering species in these MWs are  $\text{O}_3$ ,  $\text{N}_2\text{O}$ ,  $\text{CH}_4$ ,  $\text{H}_2\text{O}$ ,  $\text{HDO}$ ,  $\text{CCl}_2\text{F}_2$  (CFC-12),  $\text{CHClF}_2$  (HCFC-22), and  $\text{CH}_3\text{C}(\text{O})\text{ONO}_2$  (peroxyacetyl nitrate: PAN). Since there are several strong absorption lines of  $\text{O}_3$  and  $\text{N}_2\text{O}$  in these MWs, we retrieve profiles of these gases in addition to HFC-23. For the other species except for  $\text{CH}_4$ , we fit to an observed spectrum by scaling the a priori profile (column retrieval). In addition,  $\text{CH}_3\text{CCl}_2\text{F}$  (HCFC-141b) and  $\text{CH}_3\text{CClF}_2$  (HCFC-142b) exist as minor interfering gases in these MWs, but these gases were not retrieved in this study because the contributions of these gases to the transmittance in the MWs are very small. More details ~~are given~~ ~~is described~~ in the following ~~sections~~.

### 3.3 Spectral correction and instrumental line shape

As was stated in Section 2, absorption spectra which include HFC-23 retrieval MWs were recorded with the NDACC #6 and #8 optical filters in the MCT channel with  $0.0035 \text{ cm}^{-1}$  resolution. In order to reduce the spectral random noise, we degraded the spectral resolution from  $0.0035 \text{ cm}^{-1}$  to  $0.0070 \text{ cm}^{-1}$ . Note that the zero-level of the measured spectra (see Figure 1) are raised (~~in maximum~~, about +5% relative to maximum signal intensity) and curved due to the non-linearity of the MCT detector. Therefore, we corrected this zero-level offset in ~~the measurement~~ spectrum with ~~a~~ second order polynomial fitting using well-known absorption saturated bands sprinkled over the spectral region ~~of between~~  $750\text{--}1350 \text{ cm}^{-1}$ .

On the other hand, the continuum level, which is equal to 100% in transmittance, ~~has a shape that was fitted by the following, because the shape of the continuum level~~ is caused by the optical characterization of the FTIR instrument, especially the optical bandpass filter. Since the MWs for HFC-23 retrieval are rather wide, the slope and curvature (parabola) of the spectral continuum level over each MWs are retrieved in the SFIT4 program. This correction multiplies the transmission spectrum  $\mathbf{B}$  by;

$$\mathbf{B} = \alpha(\mathbf{w} - w_0)^2 + \beta(\mathbf{w} - w_0) + 1, \quad (8)$$

where  $\alpha$  is the curvature,  $\beta$  is the slope factor,  $\mathbf{w}$  is the wavenumber vector in the MW, and  $w_0$  is the starting wavenumber of the MW. As a result, ~~the~~ calculated spectrum  $\mathbf{y}_c$  can be written as;

$$\mathbf{y}_c = \mathbf{B} \cdot \boldsymbol{\psi}[\boldsymbol{\tau}(\mathbf{w})], \quad (9)$$



where  $\tau(\mathbf{w})$  is a calculated transmission spectrum with absorptions by each gas and solar lines (the Fraunhofer lines), and  $\psi[\tau(\mathbf{w})]$  is a transmission spectrum of  $\tau(\mathbf{w})$  convolved with instrumental line shape (ILS) function.

Hydrogen bromide (HBr) gas-cell spectra were taken using a mid-infrared internal light source ~~in order~~ to check the alignment of the FTIR instrument and to evaluate the ILS function for both the instruments at Rikubetsu and Syowa Station.

5 At Rikubetsu, the first HBr cell spectrum was taken ~~on~~ 26 March 2002 after the relocation of the instrument in October 1997. In this study, all observed spectra from October 1997 to April 2010 with the IFS-120M instrument were convolved with the ILS function derived from the HBr cell measurement, ~~but~~ for all ~~observed~~ spectra ~~observed~~ with the IFS-120/5HR instrument, ~~the~~ ILS function was accurately defined by the theoretical model for the given instrument configuration ~~used~~ because the instrument had ~~s~~ always been maintained with the best optical alignment. At Syowa Station, HBr cell spectra were taken from  
10 time to time following installation and re-alignment. Therefore, ILS corrections were applied for all the spectra. The modulation efficiency and phase error of the ILS at Rikubetsu and Syowa Station were evaluated with LINEFIT9 and LINEFIT14 programs, respectively (Hase et al., 1999).

### 3.4 Spectroscopic parameters

15 For the calculation of absorption by each atmospheric ~~chemical~~ species, the HITRAN 2008 line-by-line spectroscopic database (Rothman et al., 2009) was primarily used. For spectroscopic parameters ~~off~~ for H<sub>2</sub>O and its isotopes, the updated ATM18 line-list by ~~co-author~~ ~~one of us~~ (G. C. Toon ~~(, NASA/JPL)~~ was used (~~For detail, see~~ <https://mark4sun.jpl.nasa.gov/toon/atm18/atm18.html>, last access 8 August 2020). For heavy molecules (such as CFCs, HCFCs, HFCs, and PAN), there are no resolved line-lists available ~~in~~ by HITRAN 2008. For our retrieval of CFC-12, HCFC-  
20 22, HFC-23, and PAN, we used pseudo-line-list (PLL) developed by ~~co-author~~ G. C. Toon (~~For detail, see~~ <https://mark4sun.jpl.nasa.gov/pseudo.html>). In these PLLs, the 296 K line strength and ground-state energy ( $E''$ ) for each pseudo line were empirically reproduced by fitting transmittance laboratory spectra (absorption cross sections) acquired under various temperature and pressure conditions. In Harrison et al. (2012), the PLL of HFC-23 obtained from the cross sections acquired with a resolution of 0.02 cm<sup>-1</sup> and a temperature range of 214–300 K and a total pressure range of 0.184–253 Torr by  
25 Chung (2005) were used to ~~analyze~~ analyze solar occultation spectra, but there was a large systematic bias of ~30% in the retrieved profiles. This is ~~mostly~~ dominantly caused by the poor quality of the used cross section dataset (e.g., inconsistency between the spectral absorptions and the temperature-pressure-mole fraction conditions). ~~In order to~~ To reduce the systematic uncertainty in the HFC-23 PLL, Harrison (2013) reported new absorption cross section measurements with a resolution of 0.015 cm<sup>-1</sup>, which cover a wider spectral range of 950–1500 cm<sup>-1</sup> and more realistic atmospheric conditions in the troposphere  
30 and the stratosphere, (i.e., a wider temperature range of 188–294 K and a wider pressure range of 23–762 Torr.)

For the current study, a new HFC-23 PLL was used with a wavenumber interval of 0.004 cm<sup>-1</sup> over a spectral range of 1105–1425 cm<sup>-1</sup> ([https://mark4sun.jpl.nasa.gov/data/spec/Pseudo/CHF3\\_PLL\\_Update.pdf](https://mark4sun.jpl.nasa.gov/data/spec/Pseudo/CHF3_PLL_Update.pdf)). In addition to the spectra from Chung (2005)'s laboratory spectra, this pseudo-line parameters were obtained from re-fitting Harrison's 2013 laboratory spectra, three

spectra from the Pacific Northwest National Laboratory (PNNL) infrared database (Sharpe et al., 2004), and one spectrum from Gohar et al. (2004). Using this new PLL, which is dominated by the Harrison 2013 data, the bias in MkIV balloon measurements of HFC-23 is eliminated. In the forward model, the absorption line intensities are calculated by assuming ~~the~~ Boltzmann distribution which includes the temperature dependences of rotational/vibrational partition functions and induced emission. For the rotational partition function, its temperature dependence is calculated from  $(296/T)^\beta$ , where  $T$  is ~~the~~ temperature and  $\beta$  is ~~the~~ temperature coefficient. For HFC-23,  $\beta$  was set to 1.5, the normal value for non-linear molecules. To calculate the vibrational partition function, we assumed a harmonic oscillator approximation and used the fundamental vibrational frequencies and degeneracies from Ceausu-Velcescu et al. (2003). For solar lines, we used the empirical line-by-line parameters in ~~the~~ mid-infrared region (Hase et al. 2006), ~~which is~~ in the SFIT4 program package.

10

### 3.5 Information of atmospheric state and regularization matrix

We consider 47 atmospheric layers for Rikubetsu, and 48 layers for Syowa Station from ~~the~~ ground to 120 km in altitude. The thickness of the layers increases with ~~altitude~~~~height~~. We used Reanalysis-1 daily temperature and pressure data ~~obtained from the~~~~by~~ National Center for Environmental Prediction (NCEP; <http://www.ncep.noaa.gov>) from the ground to 40 km, and zonal monthly-mean climatological profiles ~~from~~~~by~~ the COSPAR International Reference Atmosphere 1986 (CIRA-86) from 40 km to 120 km (Rees et al., 1990). For ~~the~~ a priori profiles of ~~atmospheric compositions~~~~N<sub>2</sub>O, O<sub>3</sub>, and PAN~~, the averaged profiles in the period of 1980–2020 derived from the monthly-mean profile data computed by the Whole Atmospheric Community Climate Model (WACCM) version 6 (Chang et al., 2008) were ~~basically~~ used.

15

~~For CFC-12, HCFC-22, HCFC-141b, and HCFC-142b, the mean profiles for 1995–2010 at Rikubetsu and for 2007–2016 at Syowa Station derived from the WACCM monthly dataset were used, because these species in the atmosphere have dramatically increased since 1980. Note that the mean profiles of HCFC-141b and HCFC-142b were used as fixed profiles in the HFC-23 retrieval.~~

20

For HFC-23, ~~the~~ WACCM does not ~~provide a~~~~compute its~~ profile and thus ~~the~~ a priori profile of HFC-23 was based on ~~the~~ globally and annually mean mole fraction profile by ~~the~~ two-dimensional chemistry-radiation-transport model by Naik et al. (2000). This a priori profile shows little decrease ~~in HFC-23 mixing ratios~~ above the tropopause, reflecting a very long lifetime (228 years) of HFC-23 in the atmosphere (Montzka et al., 2019). For Rikubetsu, the HFC-23 a priori profile was scaled to 16 ppt at ~~the~~ ground, which corresponds to the mole fraction of HFC-23 in 2002 in the northern hemisphere. For Syowa Station, the HFC-23 a priori profile was scaled to 24 ppt at ~~the~~ ground, which corresponds to the mole fraction of HFC-23 in 2011 in the southern hemisphere.

25

~~For CFC-12, HCFC-22, HCFC-141b, and HCFC-142b, the mean profiles for 1995–2010 at Rikubetsu and for 2007–2016 at Syowa Station derived from the WACCM monthly dataset were used, because these species in the atmosphere have dramatically increased since 1980. Note that the mean profiles of HCFC-141b and HCFC-142b were used as fixed profiles in the HFC-23 retrieval.~~

30

For H<sub>2</sub>O, HDO, and CH<sub>4</sub>, a priori profiles were preliminarily retrieved (pre-retrieved) using other independent MWs, because these profiles may induce large uncertainties in the HFC-23 retrieval. The detailed pre-retrieval procedure is described in Section 3.6.

In the retrieval of an atmospheric profile, it is crucial to select an optimal regularization matrix as a constraint on the a priori profile, because the regularization matrix affects the vertical resolution and the retrieval error. In the case of the general OEM, the regularization matrix  $\mathbf{R}$  is the inverse of the a priori covariance matrix  $\mathbf{S}_a$  which represents the natural variability for the target. To calculate  $\mathbf{S}_a$ , the climatological dataset, which is constructed by a large number of independent profiles, should be used. For O<sub>3</sub>, this is available because there are several high frequency observations (e.g., balloon-borne sondes, satellite measurements). In many cases, however, it is difficult to calculate a realistic natural variability for a priori profiles, and our target gas also is one of them. Therefore,  $\mathbf{S}_a$  is set up by an *ad hoc* method. In this study, Tikhonov regularization (Tikhonov, 1963) was used as in the previous studies of Sussman et al. (2009) for water vapor and Vigouroux et al. (2009) for formaldehyde (HCHO), and the regularization matrix is defined as  $\mathbf{R} = \alpha \mathbf{L}^T \mathbf{L}$ , where  $\alpha$  is the strength parameter of the constraint and  $\mathbf{L}$  is a discrete derivative operator. We used the discrete first-order derivative operator  $\mathbf{L}_1$  as  $\mathbf{L}$ :

$$\mathbf{L}_1 = \begin{pmatrix} -1 & 1 & 0 & \cdots & 0 \\ 0 & -1 & 1 & \ddots & \vdots \\ \vdots & \ddots & \ddots & \ddots & 0 \\ 0 & \cdots & 0 & -1 & 1 \end{pmatrix}. \quad (10)$$

The operator ~~conserves~~ respects the vertical shape of the a priori profile and suppresses oscillation of the retrieved profile. We have to properly determine the value of the regularization parameter  $\alpha$ , which is tuned to balance the constraint on the a priori profile and the residual between the measured and the calculated spectra, so-called the L-curve method (Hansen, 1992). In this study, we were tuning  $\alpha$  following the alternative method described in Section 4.D of Steck (2002). This method can determine the optimal  $\alpha$  to minimize the total retrieval error (the smoothing plus the measurement errors; for details, see in Section 4.2).

In this study, we used  $\alpha = 100$  for all retrievals at Rikubetsu and Syowa Station.

According to Equation (6), we can understand that the measurement noise covariance matrix  $\mathbf{S}_\epsilon$  is also a key constraint that balances the observations against the regularization matrix. ~~We use the~~ real SNR of the measured spectrum ~~is~~ an indicator of the noise level ~~in the first iteration for each spectrum~~, but ~~for each retrieval the ad hoc SNR is used to determine  $\mathbf{S}_\epsilon$ . The ad hoc the SNR is~~ defined as the inverse of the root-mean-square (RMS) value of the residuals in ~~the~~ previous spectral fit (referred to as the fitted residuals) ~~is used in the following iterations~~. The ~~ad hoc~~ SNR ~~from the fitted residuals~~ is smaller than the real one since the fitted residuals are caused by various imperfections in forward model parameters (e.g., spectroscopic data, temperature profile, ILS) in addition to simple measurement noise. It is assumed that  $\mathbf{S}_\epsilon$  is a diagonal matrix, and we put  $\text{SNR}^{-2} = (\mathbf{y}_m - \mathbf{y}_c)^T (\mathbf{y}_m - \mathbf{y}_c) / N$  in the diagonal elements of  $\mathbf{S}_\epsilon$ , where  $\mathbf{y}_m$  and  $\mathbf{y}_c$  are the measured and the calculated spectrum, respectively, and  $N$  is the number of spectral points.

### 3.6 Pre-retrievals for H<sub>2</sub>O, HDO, and CH<sub>4</sub>

The vertical gradient and spatial-temporal variability of water vapor in the atmosphere are very large. ~~For~~ many ~~eases~~ ~~with~~ ground-based FTIR observations, it is impossible to choose the retrieval MWs without absorption structures of water vapor and its isotopes, and thus it is important to use accurate water vapor profiles that are coincident with the location and time of each observation. Many previous studies (Vigouroux et al., 2009; 2012; Ortega et al., 2019) used the pre-retrieved H<sub>2</sub>O (and/or HDO) profiles using ~~the~~ dedicated MWs in order to reduce their interference errors. In this study, a priori profiles of H<sub>2</sub>O and HDO were acquired by pre-retrievals using the different MWs shown in Table 2.

H<sub>2</sub>O profiles were retrieved by using the MW of 824.40–825.90 cm<sup>-1</sup> ~~as suggested in the NDACC IR reference micro-window which has been shown in the~~ Atlas (Meier et al., 2004) and the monthly profiles derived from the WACCM version 6 in the period of 1980–2020 as a priori profile for each spectrum. Since ~~a an~~ H<sub>2</sub>O absorption line having ~~an~~  $E''$  of 586.48 cm<sup>-1</sup> is in the MW, we assume that the uncertainties of the retrieved H<sub>2</sub>O profiles caused by temperature dependence ~~on the of~~ line strength are small. The H<sub>2</sub>O line is relatively weak and is hardly ever saturated, even when the humidity at Rikubetsu is high in summer. For HDO, the profile was pre-retrieved using the MW of 1208.40–1209.10 cm<sup>-1</sup>, and the pre-retrieved H<sub>2</sub>O profile shape was used as a priori profile shapes ~~for of~~ HDO and H<sub>2</sub>O. This HDO MW was used in the study of Vigouroux et al. (2012), but our MW is slightly wider than the previous study because the DOFS for HDO was increased when the wider window ~~was~~ used. We estimated the retrieval uncertainties ~~to be of~~ approximately 10% for the pre-retrieved total columns of H<sub>2</sub>O and HDO, ~~which were~~ mainly due to ~~the~~ systematic uncertainties of the spectroscopic parameters based on ~~the~~ HITRAN 2008.

~~As HFC-23 and CH<sub>4</sub> have absorption structures that which are overlapped each other at around 1156 cm<sup>-1</sup>, the retrievals of these species are difficult because they interfere with each other. Therefore, we took a strategy of ‘CH<sub>4</sub> pre-retrieval’ in which CH<sub>4</sub> amount is determined in another wavelength region and then used supply the solved CH<sub>4</sub> amount as a fixed value for in the course of HFC-23 retrieval. It is important in deriving the HFC-23 retrieval that the interfering CH<sub>4</sub> profile is pre-retrieved with the dedicated MW shown in Table 2 because the weak CH<sub>4</sub> absorption structure in the retrieval MWs of HFC-23 could disturb estimation of the true condition of HFC-23.~~ Figure 2 shows the time-series of the total columns of HFC-23 and CH<sub>4</sub> retrieved from ~~the~~ FTIR infrared spectra observed at Syowa Station in 2007 and their scatter plot. The HFC-23 total column amounts (~~red\_x-plots~~) derived from retrievals of HFC-23 accompanied by column-retrieval (scaling) of CH<sub>4</sub> profile, and the scaled CH<sub>4</sub> total columns (~~green\_x-plots~~) are presented in Figure 2 (a). There is an anti-correlation between these two time-series. Since the typical seasonal cycle of CH<sub>4</sub> shows a minimum in summer due to destruction by the OH radical, the seasonal cycle of the scaled CH<sub>4</sub> total columns in the retrievals is inconsistent with the expected cycle. Furthermore, a seasonal cycle in the HFC-23 total columns is observed, but this is not expected since the atmospheric lifetime of HFC-23 is very long and thus its variability due to atmospheric loss is very small. Figure 2 (b) shows that the scatter plot of the total columns of HFC-23 and CH<sub>4</sub> in Figure 2 (a). Examination by a two-side hypothesis testing with Student’s t-distribution under a null hypothesis in which there is no correlation between these total columns, the anti-correlation between HFC-23 and CH<sub>4</sub> is statistically

significant with a significance level of 5% ( $p$ -value  $< 0.05$ ). Figure 2 (c) shows the time-series of the independently retrieved CH<sub>4</sub> total columns using a spectral region from 1201.820 to 1202.605 cm<sup>-1</sup> from Meier et al. (2004) (green dots), and of the HFC-23 total columns from retrievals using these independently retrieved CH<sub>4</sub> profiles (CH<sub>4</sub>-fixed retrievals; red dots). In contrast to the scaled CH<sub>4</sub> in Figure 2 (a), the independently retrieved CH<sub>4</sub> shows the expected seasonal cycle. As the result, there is no un-realistic cycle in the HFC-23 total columns derived from analyzed by these CH<sub>4</sub>-fixed retrievals. As can be seen in the scatter plot of Figure 2 (d), there is no correlation between HFC-23 and interfering CH<sub>4</sub>. Therefore, we decided to pre-retrieve the CH<sub>4</sub> profile with the independent window before the retrieval of HFC-23. For pre-retrieving the profile of CH<sub>4</sub>, we used the mean CH<sub>4</sub> profile (1980–2020) derived from the WACCM and the pre-retrieved H<sub>2</sub>O profiles mentioned above.

In conclusion, the pre-retrieved profiles of H<sub>2</sub>O, HDO, and CH<sub>4</sub> were used as a priori profiles (H<sub>2</sub>O and HDO) and a fixed profile (CH<sub>4</sub>) in the subsequent retrieval of HFC-23.

#### 4. Results of HFC-23 retrievals

Figure 3 shows an example of a spectral fitting result for the two MWs (MW1 and MW2) for HFC-23. This typical fitting was for a spectrum observed by the IFS-120M FTIR spectrometer at Syowa Station on 9 November 2011 at 13:47 UTC with a solar zenith angle (SZA) of 67.3°. In this case, the absorption contribution of HFC-23 is about 1% relative to the total transmittance around 1156 cm<sup>-1</sup>, corresponding to a total column of  $3.85 \times 10^{14}$  molecules cm<sup>-2</sup>. The typical root-mean-square (RMS) of the fitted residual (observed minus calculated spectrum) is 0.34%.

A summary of all the HFC-23 retrievals with SFIT4 at Rikubetsu and Syowa Station is shown in Table 3. The retrievals at Rikubetsu are summarized for the periods of 1997–2010 and 2019–2020 due to the use of different instruments. The retrievals without negative values in the profile were counted into the number of observations as the “valid” number, and those results were used to calculate each statistic. About 6% of observations at Rikubetsu in 1997–2010 were rejected. On the other hand, almost all of observations at Rikubetsu in 2019–2020 and at Syowa Station were used. The mean RMS of the fitted residuals with the one standard deviation ( $1\sigma$ ) at Rikubetsu is  $0.35 \pm 0.14\%$  and  $0.27 \pm 0.03\%$  for the 1997–2010 and 2019–2020, respectively. The mean RMS with  $1\sigma$  at Syowa Station is  $0.43 \pm 0.38\%$ . The mean HFC-23 total column with  $1\sigma$  standard deviation at Rikubetsu increased from  $(3.23 \pm 1.10) \times 10^{14}$  molecules cm<sup>-2</sup> in the 1997–2010 period to  $(5.59 \pm 0.43) \times 10^{14}$  molecules cm<sup>-2</sup> in the 2019–2020 period due to the increase of atmospheric HFC-23.

In the following sections, we describe the vertical information and the error estimation of our HFC-23 retrieval.

##### 4.1 Vertical information

As mentioned in Section 3.1, the vertical information content of the FTIR retrievals is characterized by the averaging kernel matrix  $\mathbf{A}$ , defined by equation (5). Figure 4 shows typical averaging kernels of the HFC-23 retrieval for the same spectrum

shown in Figure 3. Each curve coloured according to the right colour-bar in Figure 4 represents the row value of the averaging kernel matrix on the corresponding vertical layer. All the retrievals, including the typical case in Figure 4, are sensitive to troposphere and lower stratosphere, having a sensitivity peak in averaging kernel at ~4 km. The full widths at half maximum of the averaging kernels are ~20 km, and the mean DOFS for ~~both~~ all retrievals at Rikubetsu and Syowa Station is approximately 1.0. Note that we use Tikhonov regularization. The DOFS is around 1.0 even if we apply OEM for the retrieval.

5 We conclude that only one piece of vertical information (the total column) can be extracted in this study.

## 4.2 Error analysis

The retrieval error can be considered as the difference between the retrieved and the true state vector. Subtracting the true state vector  $\mathbf{x}$  from Eq. (3) including the systematic forward model error  $\boldsymbol{\varepsilon}_f$ , the difference is defined as the following equation:

$$\hat{\mathbf{x}} - \mathbf{x} = (\mathbf{A} - \mathbf{I})(\mathbf{x} - \mathbf{x}_a) + \mathbf{G}\mathbf{K}_b\boldsymbol{\varepsilon}_b + \mathbf{G}\boldsymbol{\varepsilon}_f + \mathbf{G}\boldsymbol{\varepsilon}, \quad (11)$$

where  $\mathbf{I}$  is an identity matrix; and  $\boldsymbol{\varepsilon}_b = \mathbf{b} - \hat{\mathbf{b}}$  is the uncertainty of non-retrieved parameters (Rodgers, 1990; 2000). The retrieval error consists of four parts: the smoothing error  $(\mathbf{A} - \mathbf{I})(\mathbf{x} - \mathbf{x}_a)$ , the non-retrieved forward model parameter error  $\mathbf{G}\mathbf{K}_b\boldsymbol{\varepsilon}_b$ , the forward model error  $\mathbf{G}\boldsymbol{\varepsilon}_f$  and the measurement noise  $\mathbf{G}\boldsymbol{\varepsilon}$ . The smoothing error is caused by the lack of vertical sensitivity combined with uncertainty in  $\mathbf{x}_a$  and includes the uncertainties from the target gas, interfering gases and any other retrieved parameters (e.g., background correction parameters). The forward model parameter error  $\mathbf{G}\mathbf{K}_b\boldsymbol{\varepsilon}_b$  comes from the uncertainties of the parameters (e.g., profiles of temperature and pressure, line lists of target and interfering gases, SZA, etc.) that are used for the forward model calculation. The forward model error results from the uncertainty in the forward model itself relative to true physics. In this study, the forward model error was ignored, because the physical processes (radiation transfer, infrared absorption, etc.) in the SFIT4 algorithm has been well established well in previous studies.

The smoothing random error from target gas profile retrieval is described by the covariance matrix

$$\mathbf{S}_{s,\text{Tar}} = (\mathbf{A}_{\text{Tar}} - \mathbf{I})\mathbf{S}_{a,\text{Tar}}(\mathbf{A}_{\text{Tar}} - \mathbf{I})^T, \quad (12)$$

where  $\mathbf{A}_{\text{Tar}}$  is a part of the full averaging kernel matrix  $\mathbf{A}$  where the row and column elements run over all target components;  $\mathbf{S}_{a,\text{Tar}}$  is the a priori covariance matrix. In general,  $\mathbf{S}_{a,\text{Tar}}$  should represent the natural variability of the target gas, but we do not know well the natural variability of HFC-23 profile well due to the lack of vertically resolved measurement data. Therefore, a variability matrix derived from the AGAGE in-situ/sampling measurement dataset was used at each site as a substitute of  $\mathbf{S}_{a,\text{Tar}}$ . For Rikubetsu, the variability of 25% against the a priori profile (square of  $0.25\mathbf{x}_a$ ) based on the background air sampling data at Cape Grim in the period of 1995–2009 (Simmonds et al., 2018b) was adopted as the diagonal elements of the variability matrix. For Syowa Station, the variability of 10% against the a priori profile (square of  $0.10\mathbf{x}_a$ ) computed from the non-polluted data of the AGAGE in-situ measurements at Cape Grim ([https://agage2.eas.gatech.edu/data\\_archive/agage/gc-ms-medusa/complete/tasmania/](https://agage2.eas.gatech.edu/data_archive/agage/gc-ms-medusa/complete/tasmania/), last access 12 August 2020) was adopted as the diagonal elements of the variability matrix. Note that the systematic uncertainty for the smoothing error

was not considered because we assumed that the shape of the HFC-23 a priori profile does not have a large altitudinal gradient as mentioned in Section 3.1.5. The smoothing random errors for the retrieval uncertainties from all interfering species and some other retrieval parameters (background slope and curvature correction, wavenumber shift, solar line shift, solar line strength, and simple phase correction) can be written ~~as~~by:

$$5 \quad \boldsymbol{\varepsilon}_{\text{ret}} = \mathbf{A}_{\text{Tar,Int}}(\mathbf{x}_t^{\text{Int}} - \mathbf{x}_a^{\text{Int}}) + \mathbf{A}_{\text{Tar,Oth}}(\mathbf{x}_t^{\text{Oth}} - \mathbf{x}_a^{\text{Oth}}), \quad (13)$$

where  $\mathbf{A}_{\text{Tar,Int}}$  is a part of the full averaging kernel matrix  $\mathbf{A}$  where the row elements run over all target components and the column elements run over all interfering species;  $\mathbf{A}_{\text{Tar,Oth}}$  is a part of the  $\mathbf{A}$  matrix where the row and column elements run over all target and other parameter components, respectively;  $\mathbf{x}_t^{\text{Int}}$  and  $\mathbf{x}_a^{\text{Int}}$ ,  $\mathbf{x}_t^{\text{Oth}}$  and  $\mathbf{x}_a^{\text{Oth}}$  are the true and a priori state vectors of interfering species and other parameters, respectively. To estimate the retrieval errors from the interfering gases, the variabilities around the a priori profiles for H<sub>2</sub>O (HDO) were set to 10% and the ~~uncertainties~~ones for other species were set to the values calculated from the ~~appropriate~~used WACCM datasets.

In order to estimate the non-retrieved forward model parameter error, the ~~following~~covariance matrix  $\mathbf{S}_f$  is calculated ~~as~~:

$$\mathbf{S}_f = (\mathbf{G}\mathbf{K}_b)\mathbf{S}_b(\mathbf{G}\mathbf{K}_b)^T, \quad (14)$$

where  $\mathbf{S}_b$  is the model parameter covariance matrix, which is ~~derived~~ from the uncertainties in the model parameters. For the random and systematic uncertainties of temperatures ~~s~~ at Rikubetsu and Syowa Station, the uncertainties ~~reported from~~ the NCEP temperature profiles were assumed. The uncertainty of temperature at Rikubetsu is about 2 K in the troposphere, 2–10 K between the tropopause and 60 km, and 10 K above 60 km. The uncertainty of temperature at Syowa Station is about 2.5 K in the altitude range from the surface to 20 km, 2.5–10 K between 20 and 60 km, and 10 K above 60 km. The SZA random uncertainty was assumed ~~to be a~~value uncertainty of 0.15°, considering measurement time. For HFC-23, N<sub>2</sub>O, O<sub>3</sub>, H<sub>2</sub>O, and HDO, the uncertainties of the spectroscopic parameters (i.e. line intensity,  $S_\nu$ ; air-broadening coefficient,  $\gamma_{\text{air}}$ ; coefficient of temperature dependence for  $\gamma_{\text{air}}$ ,  $n_{\text{air}}$ ) were also estimated. ~~For~~The uncertainties of  $S_\nu$ ,  $\gamma_{\text{air}}$ , and  $n_{\text{air}}$  of HFC-23, were set to 10%, 15%, and 15%, respectively, based on the PLL database (see [https://mark4sun.jpl.nasa.gov/data/spec/Pseudo/CHF3\\_PLL\\_Update.pdf](https://mark4sun.jpl.nasa.gov/data/spec/Pseudo/CHF3_PLL_Update.pdf)). ~~With regard to~~For heavy molecules like HFC-23, ground state energy  $E''$  values, which are relevant to the temperature dependency of  $S_\nu$ , ~~are~~is empirically given ~~so that, and then~~ their uncertainties are larger than ~~for~~ light molecules (e.g., H<sub>2</sub>O, O<sub>3</sub>). In addition, the  $E''$  uncertainty ~~has a larger effect on~~more affects  $S_\nu$  at a cold site like Syowa Station. We assumed ~~an~~the error of 50 cm<sup>-1</sup> for the  $E''$  values of the HFC-23 PLL, and estimated ~~the~~uncertainties of 10% and 15% at Rikubetsu and Syowa Station, respectively, as the effect of the  $E''$  error ~~on~~to  $S_\nu$ . For N<sub>2</sub>O, O<sub>3</sub>, H<sub>2</sub>O and HDO, the spectroscopic uncertainties were derived from the HITRAN 2008 database. The uncertainties for N<sub>2</sub>O and O<sub>3</sub> were set ~~to~~with 5%, 10%, and 5% for  $S_\nu$ ,  $\gamma_{\text{air}}$ , and  $n_{\text{air}}$ , respectively. For H<sub>2</sub>O and HDO, we ~~assigned~~ ~~angave the~~ uncertainty of 10% to each parameter.

The measurement error was calculated ~~from~~by the error covariance matrix  $\mathbf{S}_n$  defined as:

$$\mathbf{S}_n = \mathbf{G}\mathbf{S}_\varepsilon\mathbf{G}^T, \quad (15)$$

where  $S_{\varepsilon}$  is the measurement noise covariance matrix. We adopted the square inverse of the ~~ad-hoc~~-SNR from the fitted residuals of the last iteration for the diagonal elements of  $S_{\varepsilon}$  as mentioned in Section 3.5.

Furthermore, we estimated the impact of the interfering CH<sub>4</sub> ~~on~~ the HFC-23 retrievals as ~~because~~ the retrieved HFC-23 total column is affected by the retrieval uncertainty of the pre-fitted CH<sub>4</sub> profile. The uncertainties of the pre-retrieved CH<sub>4</sub> total columns are dominated ~~entirely~~ caused by the systematic uncertainties of its spectroscopic parameters. Considering the spectroscopic parameter uncertainty provided by the HITRAN2008 database, the mean uncertainties of  $S_{\nu}$ ,  $\gamma_{\text{air}}$ , and  $n_{\text{air}}$  on the pre-retrieved CH<sub>4</sub> total columns were approximately 5%, 4%, and 1%, respectively, at both sites. Since the MW for CH<sub>4</sub> pre-retrieval is closed to the HFC-23 MWs, these spectroscopic uncertainties on CH<sub>4</sub> are partly cancelled between both MWs. Therefore, we assumed that the uncertainties of  $S_{\nu}$ ,  $\gamma_{\text{air}}$ , and  $n_{\text{air}}$  for CH<sub>4</sub> are 3%, 3%, and 1%, respectively, in the HFC-23 MWs. The effects of the CH<sub>4</sub> systematic uncertainties ~~on~~ the retrieved HFC-23 total column were calculated from Equation (14) using these uncertainties. On the other hand, the effect of the CH<sub>4</sub> random uncertainty ~~on~~ the retrieved HFC-23 was derived from the  $1\sigma$  variability on the pre-retrieved CH<sub>4</sub> total columns. The  $1\sigma$  standard deviations at Rikubetsu and Syowa Station were 4% and 3%, respectively. To quantify this uncertainty, we tested the HFC-23 retrievals by making the pre-retrieved CH<sub>4</sub> profiles scaled by  $\pm 4\%$  and  $\pm 3\%$  at Rikubetsu and Syowa Station, respectively. Then we calculated the percent difference between the HFC-23 total column retrieved with the scaled CH<sub>4</sub> profile (“Scaled CH<sub>4</sub>”) and the ones retrieved with the no-scaled CH<sub>4</sub> profile (“Normal”). The percent difference  $D$  is defined as the following equation:

$$D [\%] = \frac{TC_{\text{HFC-23,Scaled CH}_4} - TC_{\text{HFC-23,Normal}}}{(TC_{\text{HFC-23,Scaled CH}_4} + TC_{\text{HFC-23,Normal}})/2} \times 100, \quad (16)$$

where  $TC_{\text{HFC-23,Scaled CH}_4}$  and  $TC_{\text{HFC-23,Normal}}$  are the HFC-23 total columns retrieved with the Scaled CH<sub>4</sub> profile and the Normal CH<sub>4</sub> profile, respectively.

Table 4 lists the mean contributions to the relative total retrieval errors on the retrieved HFC-23 total columns at Rikubetsu for the 1997–2010 period and Syowa Station for the 2007–2016 period. Assuming that each error is independent, the total errors on retrieved total columns are simply calculated from the square root of the square sum of the error components.

At Rikubetsu, the random and systematic errors are 15% and 24%, respectively. The random error is dominated by the measurement error of 12%, and the error uncertainty of 7.3% by the pre-retrieved CH<sub>4</sub> profile. The relative random error uncertainty by the CH<sub>4</sub> pre-retrieved profile decreases from about 10% to about 5% during the period of 1998–2010. This ~~It~~ indicates that the random error has been decreasing with the increasing trend of atmospheric HFC-23. The systematic error is mainly caused characterized by the  $E''$  uncertainty of HFC-23, the  $S_{\nu}$  uncertainties of HFC-23 and CH<sub>4</sub>, and the  $\gamma_{\text{air}}$  uncertainties of H<sub>2</sub>O and HDO.

At Syowa Station, the random and systematic errors are 8.6% and 19%, respectively. The random error mostly comes from the measurement error uncertainty of 6.8%, and the CH<sub>4</sub> pre-retrieved profile error uncertainty of 4.4%. The CH<sub>4</sub> pre-retrieved profile error uncertainty reduces from 5% to 3% during the 2007–2016 period, similar to the result at Rikubetsu. The systematic error is mainly caused by the  $E''$  uncertainty of HFC-23 and the  $S_{\nu}$  uncertainties of HFC-23 and CH<sub>4</sub>. In contrast to with the retrievals at Rikubetsu, the contributions of the line parameter uncertainties of H<sub>2</sub>O and HDO are small.



~~In conclusion~~~~As the result~~, the mean total error for all the retrieved HFC-23 total columns at Rikubetsu for the 1997–2010 period and Syowa Station are 28% and 21%, respectively. In our HFC-23 retrieval strategy, the retrieval error is dominated by the systematic uncertainty of the line parameters, especially the  $S_v$  uncertainties of HFC-23 and CH<sub>4</sub>. The contribution of the random error caused mainly by the measurement noise is relatively small.

5 Figure 5 (a) shows the time-series of the FTIR-retrieved HFC-23 total columns with the total random errors at Rikubetsu and Syowa Station. Note that ~~the~~ two high total columns at Syowa Station in 2016 come from temporal contamination of HFC-23 refrigerant used for Cryogenic Frost-point Hygrometer (CFH) sonde observations (Vömel et al., 2007) which ~~were~~~~as~~~~flow~~~~n~~~~e~~~~x~~~~e~~~~c~~~~u~~~~t~~~~e~~~~d~~ at the same place and days. We can see the increasing trend of the retrieved HFC-23 total columns, even taking into account the random retrieval errors on the total columns.

10

### 4.3 Impact of background correction

Since the widths of the MWs for our HFC-23 retrieval ~~are~~~~s~~ 9.5 cm<sup>-1</sup> for MW1 and 6.0 cm<sup>-1</sup> for MW2, the shape of continuum levels (transmittance of 1.0) in the observed spectra, which result from the characteristic of the optical filters, should be properly corrected (a so-called background correction). In this study, we used a 2nd-order polynomial (slope + curvature) for fitting of the background continuum shape for a wide MW. If a simple linear slope is employed for the background spectra, the HFC-23 total column is systematically biased toward negative ~~amount~~. The difference between using a linear slope and ~~of~~ a 2nd-order polynomial was calculated using ~~the same formula as~~ Equation (16). At Rikubetsu, the mean percent difference was about -33% throughout the analysis period. At Syowa Station, the mean percent difference was about -10%, smaller than at Rikubetsu. These relative biases lead ~~to an~~ underestimation ~~of~~~~the~~ trend on the retrieved HFC-23 abundances compared to that from AGAGE in-situ measurements. Therefore, it is very important that the curvature ~~of the continuum~~ is considered ~~when applying~~~~to~~ the background correction.

20

## 5. Comparison with surface in-situ data

### 5.1 Datasets

25

#### 5.1.1 Ground-based FTIR data

In this study, the fitted RMS residuals for most retrievals were less than 0.5% (Table 3, Figure 5 (b), and Figure 6). Figure 5 (b) shows the time-series of the fitted RMS residuals at Rikubetsu and Syowa Station, along with the SZA. In general, the RMS values rise with increasing SZA due to a decrease in the SNR as shown in Figure 6. However, with SZA lower than 50°, there are some observations with fitted RMS values exceeding 0.5% at Rikubetsu before 1999. This is caused by relatively poor optical alignment of the FTIR instrument ~~before~~~~until~~ April 1999 when a Bruker technician re-aligned the instrument. In

30

the following analysis, we basically use the FTIR-retrieved HFC-23 data filtered with the threshold of the fitted RMS (< 0.5%) ~~in order~~ to make the FTIR-retrieved data as uniform in quality as possible. However, this threshold rejects most retrievals at Syowa Station in winter when ground-based FTIR observations at large SZA generally ~~give~~ large RMS for the spectral fit residuals due to weak solar intensity. Thus, for the retrievals at Syowa Station, we applied two fitted RMS thresholds depending on the value of SZA: the thresholds are < 0.5% for SZA < 85° and < 1.5% for SZA of 85° or greater. Note that the high HFC-23 abundances caused by ~~the water vapor profile observations with a CFH-sonde~~ [observations which used HFC-23 as cryogen](#) at Syowa Station in 2016, as mentioned in Section 4.2, are also excluded.

Since the HFC-23 retrievals have only one piece of vertical information, as ~~already~~ mentioned in Section 4.1, we consider the dry-air column-averaged mole fractions  $X_{\text{HFC-23}}$  as ~~in the following formula~~:

$$X_{\text{HFC-23}} = \frac{TC_{\text{HFC-23}}}{TC_{\text{dry}}} = \frac{TC_{\text{HFC-23}}}{\frac{P_s N_A}{g m_{\text{dry}}} - TC_{\text{H}_2\text{O}} \frac{m_{\text{H}_2\text{O}}}{m_{\text{dry}}}} \quad (17)$$

where  $TC_{\text{HFC-23}}$ ,  $TC_{\text{dry}}$ , and  $TC_{\text{H}_2\text{O}}$  are the FTIR-retrieved HFC-23 total column, the dry-air total column, and the a priori (pre-retrieved)  $\text{H}_2\text{O}$  total column, respectively;  $P_s$  is the surface pressure calculated from the NCEP reanalysis;  $N_A$  is Avogadro's constant;  $g$  is the column-averaged acceleration ~~due to gravity~~;  $m_{\text{dry}}$  and  $m_{\text{H}_2\text{O}}$  are the mean molecular masses of dry-air and  $\text{H}_2\text{O}$ , respectively. Finally, we calculated the monthly mean column-averaged  $X_{\text{HFC-23}}$  at both sites.

### 5.1.2 AGAGE in-situ and air archive measurements

The AGAGE instruments are based on gas chromatography coupled with mass spectrometry (GC-MS) and cryogenic sample pre-concentration system, so-called “Medusa” systems. ~~The~~ GC-MS-Medusa systems, with 2-hourly sampling and [cryogenic pre-concentration at cooling to ~-180 °C](#), are operated at each AGAGE station (Miller et al., 2008; Arnold et al., 2012). For HFC-23, reported in-situ measurements started in 2007, after HFC-23 contamination from the air pump module had been resolved by changing from Viton to Neoprene diaphragms (KNF Neuberger UN05 pumps). The HFC-23 abundances at all AGAGE stations are reported relative to Scripps Institution of Oceanography (SIO), SIO-07 primary calibration scales, in dry-air mole fractions. The absolute accuracies of the HFC-23 measurements were liberally estimated to be -3 to 2% (Simmonds et al., 2018a).

For the comparison with the FTIR measurements at Rikubetsu and Syowa Station, we used the AGAGE in-situ measurement HFC-23 data at Trinidad Head, California, USA (THD, 41.1°N, 124.2°W) and Cape Grim, Tasmania, Australia (CGO, 40.7°S, 144.7°E), respectively. We downloaded the high frequency HFC-23 in-situ measurement dataset for THD and CGO and used the embedded pollution flags (P) to remove polluted data ([https://agage2.eas.gatech.edu/data\\_archive/agage/gc-ms-medusa/complete/](https://agage2.eas.gatech.edu/data_archive/agage/gc-ms-medusa/complete/), last access 24 August 2020) and then calculated daily median mole fractions. Note that there are no in-situ measurements at THD and CGO or other AGAGE sites before 2007 due to ~~the~~ HFC-23 pump contamination problems. Therefore, we additionally used annual global mean mole fractions of HFC-23 estimated by the AGAGE 12-box model, a 2-dimensional atmospheric chemistry and transport model (Simmonds et al., 2018a), where pre-2007 abundances are only based

on HFC-23 dry-air mole fractions measured in the Cape Grim Air Archive (CGAA) samples (Simmonds et al., 2018b). These data were taken from the Simmonds et al. paper.

## 5.2 Time-series and seasonal variation

5 Figure 7 shows the time-series of the monthly mean FTIR-retrieved  $X_{\text{HFC-23}}$  at Rikubetsu and Syowa Station, along with the dry-air mole fractions from the AGAGE annual global mean dataset, the CGAA samples, and the in-situ measurements at THD and CGO. The error bar on each monthly mean  $X_{\text{HFC-23}}$  is a  $1\sigma$  standard deviation around the monthly mean. The AGAGE annual global mean data and the CGAA data are plotted with the uncertainties reported by Simmonds et al. (2018a, 2018b). The FTIR-retrieved  $X_{\text{HFC-23}}$  data at Rikubetsu during the whole period look consistent agree well with the AGAGE annual global mean and the CGAA data. However, the FTIR dataset at Rikubetsu has a peak during spring and summer of each year.  
10 In contrast~~On the other hand~~, the time-series at Syowa Station has a systematic underestimation of about 5 ppt (about 25% relative to the CGO in-situ data in 2007) compared to the CGO in-situ data, and almost no significant seasonal cycle.

Figure 8 shows monthly mean de-trended  $X_{\text{HFC-23}}$  values (in %, relative to the trend for all data) and  $1\sigma$  standard deviations at Rikubetsu and Syowa Station. At Rikubetsu, the monthly mean de-trended  $X_{\text{HFC-23}}$  rises rapidly from March to May, with a  
15 large fluctuation ( $\pm 15\text{--}20\%$ ) within each month. On the other hand, the monthly mean  $X_{\text{HFC-23}}$  values from December to February are mostly stable with a relatively small standard deviations of about  $\pm 10\%$  and a value of 10–15% smaller than the AGAGE in-situ measurements of HFC-23. As mentioned in Section 1, HFC-23 has a very long lifetime of 228 years and there is almost no sink for HFC-23 in the atmosphere, i.e. HFC-23 is chemically inactive in the atmosphere. In addition, the sources of HFC-23 exist in limited places on the ground. For example, there is no HCFC-22 production in Australia and therefore Cape  
20 Grim is not impacted by this major source of HFC-23. Consequently, we expect almost no seasonal variation of the HFC-23 dry-air mole fraction at any remote site as seen in the times-series of the THD and CGO measurements. At Syowa Station, the seasonal cycle on the FTIR-retrieved  $X_{\text{HFC-23}}$  is almost unrecognized in Figure 8 because the variability is smaller than the retrieval random error of about 10%. We suspected some retrieval artifacts and checked the correlations between HFC-23 and  $\text{H}_2\text{O}$ , HFC-23 and temperature, and HFC-23 and  $\text{HDO}/\text{H}_2\text{O}$ . There is temperature dependency on the PLL and this explains  
25 5% difference in maximum (see Section 5.3 in more detail), but ~~there we could not find any~~ are no other significant retrieval artefacts. Note that ~~And~~ enhancements of HFC-23 especially in spring and summer are also observed by the surface measurement at Cape Ochiishi (43.2°N, 145.5°E), which is located close (about 150 km) to Rikubetsu (<https://gaw.kishou.go.jp/search/file/0053-2008-1502-01-01-9999>). As a hypothesis, we suggest that the peaks at Rikubetsu during spring–summer were caused by atmospheric transport from somewhere emitting HFC-23. Several previous studies  
30 using FTIR observations of biomass burning-derived gases and a backward trajectory analysis method (Zhao et al., 1997; 2002; Nagahama and Suzuki, 2007), showed that the airmasses over northern Japan at 800–300 hPa level during April to November were mostly transported from the Eurasian continent. Furthermore, Koike et al. (2006) investigated the seasonal contribution from various sources of tropospheric carbon monoxide (CO) at Rikubetsu in 2001, using a 3-dimensional global

chemistry transport model. Their study showed that, for CO levels at 1 km, the contribution from Asian fossil fuel combustion increases from early spring to summer due to Asian pollutants transported by the weak southwesterly wind in summer. We also calculated 10-days backward trajectories for all FTIR measurement days from Rikubetsu originated at 2000 m and the results show that, for example, nearly 30 % of airmasses above Rikubetsu came from China region in 2006. Figure 5 (a) of Simmonds et al. (2018a) illustrated that while ~~for the developed countries (e.g. Europe, Japan, USA)~~ the contribution to annual global emission of HFC-23 has been decreasing since 2000 ~~for developed countries (e.g., Europe, Japan, USA)~~, annual Chinese emissions ~~has~~ yes been rapidly increasing since ~~the~~ late 1990s and the contribution of Chinese emission to global emission exceeded 50% in ~~the~~ early 2000s. Considering this, we suggest that the peaks of  $X_{\text{HFC-23}}$  at Rikubetsu during spring–summer before and after about 2002 may ~~resulteome~~ result from ~~the~~ HFC-23 emissions in ~~Japan~~ developed countries and China, respectively. This postulated change in the location of Eurasian HFC-23 emissions needs to be examined with an inversion study, but this exceeds the focus of our study.

We ~~also~~ propose that the FTIR observations at Rikubetsu in December, January, and February (DJF) represent the baseline of the atmospheric HFC-23 at the site. Although the observations at Rikubetsu look consistent with the AGAGE measurements as seen in Figure 7, ~~in fact, it is indicated in Figure 8 that~~ the retrievals at Rikubetsu in DJF have a negative bias of 3 to 4 ppt ~~of about 15%~~. The FTIR-retrieved  $X_{\text{HFC-23}}$  data at Rikubetsu in DJF are shown as green open circles in Figure 7. In Section 5.4, we derive the trends for the  $X_{\text{HFC-23}}$  data in DJF, ~~together with those for all  $X_{\text{HFC-23}}$  data~~. These trends are compared with the AGAGE measurements and whether the DJF dataset represents the background level of HFC-23 at Rikubetsu or not. For the trend analysis at Syowa Station, all  $X_{\text{HFC-23}}$  data are used due to no significant seasonal cycle. The negative biases occurred at both FTIR sites are described in the following section.

### 5.3 Negative bias on $X_{\text{HFC-23}}$

The negative bias with respect to the AGAGE ~~annual global mean datasets~~ surface measurements of the FTIR-retrieved  $X_{\text{HFC-23}}$  at Syowa Station (about 25% in 2007) is larger than that at Rikubetsu (about 15% in 2007). The difference of 10% between both sites could be explained by (1) the latitudinal concentration difference and (2) the temperature dependency of the derived HFC-23 pseudo-line parameter. With regard to the latitudinal concentration difference, Figure 1 of Simmonds et al. (2018a) shows that the difference between the in-situ measurements at mid-latitude in the northern and southern hemisphere is about 1 ppt (5% in 2007). For the remaining ~~of~~ 5% of our observed difference, by using the PLL we retrieved the HFC-23 mole fraction values from each spectrum of four laboratory measurement datasets which had been used to create the HFC-23 PLL (see Section 3.4), and then investigated the discrepancies between the retrieved mole fractions and the reported ones in the laboratory datasets. We here represent the discrepancies by the HFC-23 mole fraction scaling factors (MFSFs). Figure 9 (a) shows the HFC-23 MFSFs at the spectral region from 1105–1240  $\text{cm}^{-1}$  plotted versus temperature. In an ideal spectroscopic parameter, the MFSFs in all temperature regions would be 1. The red plots in regard to the laboratory spectral dataset of

Harrison (2013) in Figure 9 (a) present the curved temperature dependency like a parabola taking a minimum value of ~0.95 at around 240 K. In other words, it means that a retrieved mole fraction from a spectrum measured at 240 K is about 5% smaller than the actual mole fraction. ~~This is consistent with what the ACE-FTS HFC-23 time series illustrated in Fernando et al. (2019), whose study used the Harrison's laboratory spectra, has a negative difference of average 5% in comparing with the annual global mean data calculated by the AGAGE 12-box model.~~ As the annual mean surface temperature at Syowa Station is about 260 K, it is assumed that this temperature dependency caused the negative bias of 5% at Syowa Station, in addition to the latitudinal concentration contrast. Also, this temperature dependency on the PLL probably has affected the HFC-23 total columns at Rikubetsu. As shown in Figure 9 (a), the MFSFs of the Harrison's laboratory measurements at > 260 K rapidly increase with raising temperature. Therefore, the temperature dependency may cause a part of the seasonal variation of HFC-23 at Rikubetsu because the surface temperature at the site ranged from approximately 260 K to 300 K ~~approximately~~. For the unrealistic cycle of  $X_{\text{HFC-23}}$ , with maximum in summer, caused by the PLL, we estimated an amplitude of about 1 ppt as the peak-to-peak value.

Here we assess the large negative bias of 15% on the FTIR-retrieved  $X_{\text{HFC-23}}$  at both sites. As mentioned in Section 4.2, our HFC-23 retrieval was mainly affected by the spectroscopic parameter uncertainties of HFC-23, HDO, and CH<sub>4</sub>. Therefore, it is reasonable to assume that the negative bias mainly comes from the systematic uncertainty ~~of~~ these spectroscopic parameters. ~~This is consistent with what the negative average difference of 5% of the ACE-FTS HFC-23 time-series compared to the annual global mean data calculated by the AGAGE 12-box model illustrated in Fernando et al. (2019), which is based on a study used on the Harrison's laboratory spectra, has a negative average difference of average 5% in comparing with the annual global mean data calculated by the AGAGE 12-box model.~~ However, it is difficult to quantify the contributions of these parameters to the bias on  $X_{\text{HFC-23}}$ . In order to resolve the negative bias, we suggest that new laboratory measurements are needed to improve the spectroscopic parameters of the HFC-23 PLL. The negative bias of 15% is consistent with the systematic uncertainty of the HFC-23 line intensity which is estimated by the error analysis in Section 4.2. We suggest that the systematic uncertainty is affected by the temperature and pressure conditions in measuring the laboratory spectra of HFC-23. Figure 9 (b) shows the conditions of the HFC-23 laboratory measurements of Harrison et al. (2013). Harrison's laboratory measurements (total 27 measurements) cover the temperature and pressure region corresponding to the altitude from the surface to the stratosphere, but the number of the measurements corresponding to the lower troposphere (below 600 hPa level) is only 3. The typical surface temperatures at Rikubetsu and Syowa Station range from 260 K to 300 K and from 240 K to 280 K, respectively. Hence, at a pressure corresponding to the surface, there is no measurement in the temperature region covering the surface temperature at Rikubetsu, except for summer, and Syowa Station. This lack of the measurements could result in a significant error in creating the HFC-23 pseudo-line parameters. Therefore, high-accuracy laboratory spectra of HFC-23 are required at various atmospheric conditions of the lower troposphere in order to improve the pseudo-line parameters of HFC-23. In addition, ~~further studies~~ this should be ~~undertaken~~ done to ~~further~~ understand the reasons for the negative bias and ~~the apparent~~ the seasonal cycle by an intercomparison with HCF-23 total column ~~the retrievals using the observed spectra~~ at other NDACC-IRWG ground-based FTIR sites around the world.

## 5.4 Trend analysis

Table 5 summarizes the HFC-23 annual growth rate changes, in ppt year<sup>-1</sup>, computed from the monthly  $X_{\text{HFC-23}}$  at both FTIR sites and from the AGAGE datasets. The columns of Table 5 represent the trend in the time periods of 1997–2009, 19920087–201920, 2007–2016, and 2007–201620, according to the available data periods of both FTIR and AGAGE datasets. The annual growth rate changes were calculated by linear regression, and any seasonal cycles were neglected. The uncertainty on each annual growth rate change represents the standard error of the slope estimated by linear regression. The trend regression line for the  $X_{\text{HFC-23}}$  data at Rikubetsu in DJF over the 1997–2009 and 2008–201920 periods shown in Figure 7 as a green-solid and green-dashed lines are is consistently lower than the AGAGE datasets in situ measurements at THD by about 3 to 4 ppt (about -15 to -20% relative to the AGAGE in-situ measurements in 2007) as mentioned in Section 5.2. Although the annual growth change rate for all  $X_{\text{HFC-23}}$  at Rikubetsu over the 1997–2010 period ( $1.090 \pm 0.072$  ppt year<sup>-1</sup>) is larger than the AGAGE annual global mean data ( $0.820 \pm 0.011$  ppt year<sup>-1</sup>) and the CGAA data ( $0.805 \pm 0.006$  ppt year<sup>-1</sup>) over the same period. However, the annual growth change rate calculated from only  $X_{\text{HFC-23}}$  data at Rikubetsu in DJF over 1997–2009 ( $0.8107 \pm 0.09387$  ppt year<sup>-1</sup>) is in good agreement with the AGAGE annual global mean data ( $0.820 \pm 0.0134$  ppt year<sup>-1</sup>) and the CGAA data ( $0.805 \pm 0.006$  ppt year<sup>-1</sup>) within the uncertainties. For the 1997–2020 period, the annual growth change rate at Rikubetsu in DJF is  $0.806 \pm 0.044$  ppt year<sup>-1</sup>, which is consistent with the one derived from the AGAGE annual global mean dataset during 1997 to 2016 ( $0.843 \pm 0.008$  ppt year<sup>-1</sup>). For the 20087–201920 period, the annual growth change rate at Rikubetsu in DJF ( $0.928894 \pm 0.108099$  ppt year<sup>-1</sup>) is consistent with the one derived from the AGAGE annual global mean dataset during 20087 to 2016 ( $0.89278 \pm 0.0230$  ppt year<sup>-1</sup>), but slightly smaller than and that of the AGAGE in-situ measurements at THD over the 2007–2019 period ( $0.99484 \pm 0.0012$  ppt year<sup>-1</sup>) even though the differences of the annual growth rates are little bit larger than those in the periods of 1997–2009 it is within the standard error. In contrast, the annual trends for all  $X_{\text{HFC-23}}$  at Rikubetsu over the periods of 1997–2020 and 2007–2020 are  $0.794 \pm 0.043$  and  $0.528 \pm 0.086$  ppt year<sup>-1</sup>, respectively, and these are smaller than those for other AGAGE datasets because there are many high  $X_{\text{HFC-23}}$  at Rikubetsu before 2010. Considering with the above, we argue it would seem is obviously indicated that the FTIR-retrieved  $X_{\text{HFC-23}}$  data in DJF represents the baseline of the atmospheric HFC-23 at Rikubetsu.

At Syowa Station, the annual growth change rate over the 2007–2016 period ( $0.823 \pm 0.075$  ppt year<sup>-1</sup>) is consistent with the annual global mean dataset ( $0.878 \pm 0.020$  ppt year<sup>-1</sup>) and the AGAGE CGO in-situ measurements ( $0.874 \pm 0.002$  ppt year<sup>-1</sup>) over the same period.

Summarizing the above, the trends of the atmospheric HFC-23 retrieved with our strategy basically agree well within the errors with the trends derived from the AGAGE datasets used here, while except for the absolute values of HFC-23 are biased low. These results indicated that the ground-based FTIR measurement has a capacity to monitor the long-term trends of HFC-23.

## 6. Conclusions

We have developed a procedure for retrieving atmospheric column abundances of HFC-23 with ground-based FTIR, and the first HFC-23 retrievals were carried out using the infrared spectra taken from ground-based FTIRs at Rikubetsu (1997–2020) and Antarctic Syowa Station (2007–2016) with the SFIT4 retrieval software. The two retrieval micro-windows (1138.5–1148.0  $\text{cm}^{-1}$  and 1154.0–1160.0  $\text{cm}^{-1}$ ), encompassing the  $\nu_2$  and  $\nu_3$  vibrational-rotational bands of HFC-23, were selected to avoid strong  $\text{H}_2\text{O}$  absorption lines at 1149.47  $\text{cm}^{-1}$ , 1151.54  $\text{cm}^{-1}$  and 1152.44  $\text{cm}^{-1}$ . The significant interfering species in the micro-windows are  $\text{O}_3$ ,  $\text{N}_2\text{O}$ ,  $\text{CH}_4$ ,  $\text{H}_2\text{O}$ , HDO, CFC-12, HCFC-22 and PAN. In particular,  $\text{H}_2\text{O}$ , HDO and  $\text{CH}_4$  affect the HFC-23 retrievals. Due to large daily variabilities of  $\text{H}_2\text{O}$  and HDO in the atmosphere, those a priori profiles were pre-retrieved with the individual dedicated MWs ( $\text{H}_2\text{O}$ : 824.40–825.90  $\text{cm}^{-1}$ , HDO: 1208.40–1209.10  $\text{cm}^{-1}$ ) for each observed spectrum and were then simply scaled in the subsequent HFC-23 retrievals. For a priori profiles of  $\text{CH}_4$ , in order to reduce the retrieval error resulting from competition between several weak absorptions of  $\text{CH}_4$  and the weak HFC-23 absorption, a pre-retrieval with the dedicated MW of 1201.820–1202.605  $\text{cm}^{-1}$  was carried out for each spectrum and then these  $\text{CH}_4$  profiles were fixed in the subsequent HFC-23 retrievals in order to reduce the retrieval error resulting from competition between several weak absorptions of  $\text{CH}_4$  and the weak HFC-23 absorption. Our HFC-23 retrieval was typically sensitive to the atmospheric layer from the surface to the lower stratosphere. However, its DOFS was only 1 and only total column amount can be retrieved. The mean HFC-23 total columns retrieved from the observed spectra at Rikubetsu over the periods of 1997–2009 and 2008–2019 were estimated as  $(3.23 \pm 1.10) \times 10^{14}$  and  $(5.64 \pm 0.59) \times 10^{14}$  molecules  $\text{cm}^{-2}$ , respectively. The mean HFC-23 total column at Syowa Station over the 2007–2016 period was  $(3.69 \pm 1.35) \times 10^{14}$  molecules  $\text{cm}^{-2}$ .

We estimated the random/systematic retrieval errors for the FTIR-retrieved HFC-23 total columns assuming four error components – the smoothing error, other retrieved parameter error, non-retrieved model parameter error, and measurement noise error. The retrieval random/systematic errors at Rikubetsu and Syowa Station are 15%/24% and 8.6%/19%, respectively. The random errors at both sites mainly come from measurement noise and the  $\text{CH}_4$  pre-retrieved profile uncertainty. The systematic errors at both sites are dominated by the uncertainty of the spectroscopic parameters, in particular the spectroscopic uncertainties of HFC-23,  $\text{H}_2\text{O}$ , HDO, and  $\text{CH}_4$ . The total error for the retrieved HFC-23 total columns at Rikubetsu and Syowa Station are 28% and 21%, respectively.

The time-series of the FTIR-retrieved HFC-23 columns at Rikubetsu and Syowa Station show obviously an increasing trend. The FTIR-retrieved  $X_{\text{HFC-23}}$  at both sites were compared to with four ground-based datasets of the CGAA samples, the AGAGE 12-box model, and the AGAGE in-situ measurements at THD and CGO, CGAA samples filled at CGO, and results from the AGAGE 12-box model based on AGAGE measurements. The trends of  $X_{\text{HFC-23}}$  at Rikubetsu in DJF and Syowa Station are consistent with the trends derived from those datasets, but at Syowa Station there is a negative bias of 5 ppt (-25%) compared to the AGAGE in-situ measurements at CGO. The time-series of the FTIR-retrieved  $X_{\text{HFC-23}}$  at Rikubetsu has a seasonal cycle with a peak during spring to summer, but the  $X_{\text{HFC-23}}$  at Syowa Station did not show a significant cycle. We suggest that the seasonal cycle of HFC-23 at Rikubetsu is mainly caused by the transport of HFC-23 emitted from

the [East Asia and Eurasia](#), as is confirmed by [10-days backward trajectory calculations from Rikubetsu](#). We found that the minimum of the seasonal cycle occurred from December to February and represented the background concentration of HFC-23 at Rikubetsu at that time. The negative bias at Rikubetsu in DJF was [3 to 4 ppt \(-15 to -20%\)](#) compared to the [AGAGE datasets in situ measurements at THD](#). We showed that the bias occurred at both sites and were caused mostly by the spectroscopic parameter uncertainties of HFC-23, H<sub>2</sub>O, HDO, and CH<sub>4</sub>. Therefore, these molecules mostly affect the HFC-23 retrieval. [ACE-FTS HFC-23 measurements also showed a negative average difference of 5% compared with the AGAGE 12-box model](#). A solution for this bias problem may be found in new high-resolution laboratory spectra of HFC-23 measured under the atmospheric conditions of [the lower troposphere](#) leading to an expected improvement of the HFC-23 spectroscopic parameters [and HFC-23 retrievals](#).

The annual [growth rate](#) of the  $X_{\text{HFC-23}}$  at Rikubetsu in DJF over the periods of 1997–2009+0 and [2008+1997–2019+0](#) were  $0.8107 \pm 0.09387$  and  $0.92889406 \pm 0.10809944$  ppt year<sup>-1</sup>, respectively, which are in good agreement with the trend derived from [the annual global mean mole fractions by the AGAGE datasets 12-box model](#) over the same periods. The annual [growth rate](#) at Syowa Station is  $0.823 \pm 0.075$  ppt year<sup>-1</sup> over the 2007–2016 period, which is also consistent with the trend from the [AGAGE datasets CGO in situ measurements](#) over the same period. The trend derived from the  $X_{\text{HFC-23}}$  data retrieved with our retrieval strategy agreed with other ground-based [in-situ](#) measurements.

The present study demonstrates that ground-based FTIR measurements are capable of monitoring the long-term trend of HFC-23. If this FTIR measurement technique were extended to other NDACC ground-based FTIR sites around world, the measurements reported from these sites would complement the global AGAGE observations, [filling spatial and temporal gaps](#), and may lead to [improved](#) insights about [the atmospheric changes in regional and global emissions](#) of HFC-23 and its role in global warming.

*Author contributions.* MT, HN, and IMu designed the retrieval strategy with the SFIT4. MT performed the retrievals, [MT, HN, and IMu](#) and wrote the manuscript with comments and suggestions received from all co-authors. HN and MT performed FTIR observations at Syowa Station. TN was responsible for FTIR observations with IFS-120M instrument at Rikubetsu. IMo performed FTIR observations with IFS-120/5 HR instrument at Rikubetsu. GCT created the HFC-23 pseudo-line-list and provided advice on the use of the line list. RFW and JM provided the AGAGE in-situ measurements at Trinidad Head. PBK and PJF provided the AGAGE in-situ measurements at Cape Grim. HJW is responsible for the AGAGE data archival. HN and IMu supervised this work.

*Acknowledgements.* We acknowledge Makoto Koike, Kazuo Hanano, and Nobuyuki Yokozeki for the operation of the FTIR observations at Rikubetsu. We want to thank Kosuke Saeki and Takeshi Kinase for performing the FTIR observations at Syowa Station in 2007 and 2011, respectively. We are grateful to all the members of the 48<sup>th</sup> Japanese Antarctic Research Expedition (JARE-48), JARE-52, and JARE-57, and the National Institute for Polar Research (NIPR) for supporting for the FTIR observations at Syowa Station. This work was carried out by the joint research program of the Institute for Space-Earth



Environmental Research, Nagoya University. FTIR operations of the Rikubetsu site are financially supported in part by the GOSAT series project.

## References

- Arnold, T., Mühle, J., Salameh, P. K., Harth, C. M., Ivy, D. J., and Weiss, R. F.: Automated measurement of nitrogen trifluoride  
5 in ambient air, *Anal. Chem.*, 84, 4798–4804, 2012.
- Brown, A. T., Chipperfield, M. P., Boone, C., Wilson, C., Walker, K. A., and Bernath, P. F.: Trends in atmospheric halogen  
containing gases since 2004, *J. Quant. Spectrosc. Radiat. Transfer*, 112, 2552-2566, doi:10.1016/j.jqsrt.2011.07.005, 2011.
- Ceausu-Velcescu, A., Bürger, H., and Graner, G.: High-resolution infrared spectra of HCF<sub>3</sub> in the  $\nu_6$  (500 cm<sup>-1</sup>) and  $2\nu_6$  (1000  
10 cm<sup>-1</sup>) regions: rovibrational analysis and accurate determination of the ground state constants  $C_0$  and  $D^0_K$ , *J. Mol. Spectrosc.*,  
220, 298-305, 2003.
- Chang, L., Palo, S., Hagan, M., Richter, J., Garcia, R., Riggan, D., and Fritts, D.: Structure of the migrating diurnal tide in the  
Whole Atmosphere Community Climate Model (WACCM), *Adv. Space Res.*, 41, 1398-1407,  
doi:10.1016/j.asr.2007.03.035, 2008.
- Chung, Y. K.: Absorption cross-sections off HFC-23 at atmospheric conditions, *J. Quant. Spectrosc. Radiat. Transfer*, 96, 281-  
15 287, doi:10.1016/j.jqsrt.2005.04.004, 2005.
- Culbertson, J. A., Prins, J. M., Grimsrud, E. P., Rasmussen, R. A., Khalil, M. A. K., and Shearer, M. J.: Observed trends in  
CF<sub>3</sub>-containing compounds in background air at Cape Meares, Oregon, Point Barrow, Alaska, and Palmer Station,  
Antarctica, *Chemosphere*, 55, 1109-1119, 2004.
- De Mazière, M., Thompson, A. M., Kurylo, M. J., Wild, J. D., Bernhard, G., Blumenstock, T., Braathen, G. O., Hannigan, J.  
20 W., Lambert, J.-C., Leblanc, T., McGee, T. J., Nedoluha, G., Petropavlovskikh, I., Seckmeyer, G., Simon, P. C., Steinbrecht,  
W., and Strahan, S. E.: The Network for the Detection of Atmospheric Composition Change (NDACC): history, status and  
perspectives, *Atmos. Chem. Phys.*, 18, 4935–4964, doi:10.5194/acp-18-4935-2018, 2018.
- Fernando, A. M., Bernath, P. F., and Boone, C. D.: Trends in atmospheric HFC-23 (CHF<sub>3</sub>) and HFC-134a abundances, *J.*  
*Quant. Spectrosc. Radiat. Transfer*, 238, doi:10.1016/j.jqsrt.2019.06.019, 2019.
- 25 Fang, X., Stohl, A., Yokouchi, Y., Kim, J., Li, S., Saito, T., Park, S., and Hu, J.: Multiannual top-down estimate of HFC-23  
emissions in east Asia, *Environ. Sci. Technol.*, 49, 4345-4353, doi:10.1021/es505669j, 2015.
- Gohar, L. K., Myhre, G., and Shine, K. P.: Updated radiative forcing estimates of four halocarbons, *J. Geophys. Res.*, 109,  
D01107, doi:10.1029/2003JD004320, 2004.
- Hansen, P. C.: Analysis of discrete ill-posed problems by means of the L-curve, *SIAM Review*, 34, 561–580, 1992.
- 30 Harris, N. R. P., Wuebbles, D. J. (Lead Authors), Daniel, J. S., Hu, J., Kuijpers, L. J. M., Law, K. S., Prather, M. J., and  
Schofield, R.: Scenarios and information for policymakers, Chapter 5 in *Scientific Assessment of Ozone Depletion: 2014*,

- Global Ozone Research and Monitoring Project – Report No. 55, World Meteorological Organization, Geneva, Switzerland, 2014.
- Harrison, J. J., Boone, C. D., Brown, A. T., Allen, N. D. C., Toon, G. C., and Bernath, P. F.: First remote sensing observations of trifluoromethane (HFC-23) in the upper troposphere and lower stratosphere, *J. Geophys. Res.*, 117, D05308, doi:10.1029/2011JD016423, 2012.
- Harrison, J. J.: Infrared absorption cross sections for trifluoromethane, *J. Quant. Spectrosc. Radiat. Transfer*, 130, 359-364, doi:10.1016/j.jqsrt.2013.05.026, 2013.
- Hase, F., Blumenstock, T. and Paton-Walsh, C.: Analysis of the instrumental line shape of high-resolution Fourier transform IR spectrometers with gas cell measurements and new retrieval software, *Appl. Opt.*, 38, 3417-3422, doi:10.1364/AO.38.003417, 1999.
- Hase, F., Demoulin, P., Sauval, A. J., Toon, G. C., Bernath, P. F., Goldman, A., Hannigan, J. W., and Rinsland, C. P.: An empirical line-by-line model for the infrared solar transmittance spectrum from 700 to 5000  $\text{cm}^{-1}$ , *J. Quant. Spectros. Radiat. Transfer*, 102, 450-463, 2006.
- Kim, J., Li, S., Kim, K. R., Stohl, A., Mühle, J., Kim, S. K., Park, M. K., Kang, D. J., Lee, G., Harth, C. M., Salameh, P. K., and Weiss, R. F.: Regional atmospheric emissions determined from measurements at Jeju Island, South Korea: halogenated compounds from China, *Geophys. Res. Lett.*, 37, L12801, doi:10.1029/2010GL043263, 2010.
- Koike, M., Jones, N. B., Palmer, P. I., Matsui, H., Zhao, Y., Kondo, Y., Matsumi, Y., and Tanimoto, H.: Seasonal variation of carbon monoxide in northern Japan: Fourier transform IR measurements and source-labeled model calculations, *J. Geophys. Res.*, 111, D15306, doi:10.1029/2005JD006643, 2006.
- McCulloch, A. and Lindley, A. A.: Global emissions of HFC-23 estimated to year 2015, *Atmos. Environ.*, 41, 1560-1566, doi:10.1016/j.atmosenv.2006.02.021, 2007.
- Meier, A., Toon, G. C., Rinsland, C. P., Goldman, A., and Hase, F.: Spectroscopic Atlas of Atmospheric Microwindows in the Middle Infrared, 2<sup>nd</sup> Edition, IRF Technical Report 048, ISSN 0284-1738, Kiruna, Sweden, 2004.
- Miller, B. R., Weiss, R. F., Salameh, P. K., Tanhua, T., Grealley, B. R., Mühle, J., and Simmonds, P. G.: Medusa: A sample preconcentration and GC/MS detector system for in situ measurements of atmospheric trace halocarbons, hydrocarbons and sulfur compounds, *Anal. Chem.*, 80, 1536-1545, doi:10.1021/ac/702084k, 2008.
- Miller, B. R., Rigby, M., Kuijpers, L. J. M., Krummel, P. B., Steele, L. P., Leist, M., Fraser, P. J., McCulloch, A., Harth, C., Salameh, P., Mühle, J., Weiss, R. F., Prinn, R. G., Wang, R. H. J., O'Doherty, S., Grealley, B. R., and Simmonds, P. G.: HFC-23 ( $\text{CHF}_3$ ) emission trend response to HCFC-22 ( $\text{CHClF}_2$ ) production and recent HFC-23 emission abatement measures, *Atmos. Chem. Phys.*, 10, 7875–7890, doi:10.5194/acp-10-7875-2010, 2010.
- Miller, B. R. and Kuijpers, L. J. M.: Projecting future HFC-23 emissions, *Atmos. Chem. Phys.*, 11, 13,259-13,267, doi:10.5194/acp-11-13259-2011, 2011.
- Montzka, S. A., Myers, R. C., Butler, J. H., Elkins, J. W., and Cummings, S. O.: Global tropospheric distribution and calibration scale of HCFC-22, *Geophys. Res. Lett.*, 20, 703-706, 1993.

- Montzka, S. A., Hall, B. D. and Elkins, J. W.: Accelerated increases observed for Hydrochlorofluorocarbons since 2004 in the global atmosphere, *Geophys. Res. Lett.*, 36, L03804, doi:10.1029/2008GL036475, 2009.
- Montzka, S. A., Velders, G. J. M. (Lead Authors), Krummel, P. B., Mühle, J., Orkin, V. L., Park, S., Shah, N., and Walter-Terrinoni, H.: Hydrofluorocarbons (HFCs), Chapter 2 in Scientific Assessment of Ozone Depletion: 2018, Global Ozone Research and Monitoring Project – Report No. 58, World Meteorological Organization, Geneva, Switzerland, 2019.
- 5 Nagahama, Y., and Suzuki, K.: The influence of forest fires on CO, HCN, C<sub>2</sub>H<sub>6</sub>, and C<sub>2</sub>H<sub>2</sub> over northern Japan measured by infrared solar spectroscopy, *Atmos. Env.*, 41, 9570-9579, 2007.
- Naik, V., Jain, A. K., Patten, K. O. and Wuebbles, D. J.: Consistent sets of atmospheric lifetimes and radiative forcings on climate for CFC replacements: HCFCs and HFCs, *J. Geophys. Res.*, 105, 6903-6914, 2000.
- 10 Nakajima, H., Liu, X., Murata, I., Kondo, Y., Murcray, F. J., Koike, M., Zhao, Y., and Nakane, H.: Retrieval of vertical profiles of ozone from high-resolution infrared solar spectra at Rikubetsu, Japan, *J. Geophys. Res.*, 102, 29,981-29,990, 1997.
- Nakajima, H., Murata, I., Nagahama, Y., Akiyoshi, H., Saeki, K., Kinase, T., Takeda, M., Tomikawa, Y., Dupuy, E., and Jones, N. B.: Chlorine partitioning near the polar vortex edge observed with ground-based FTIR and satellites at Syowa Station, Antarctica, in 2007 and 2011, *Atmos. Chem. Phys.*, 20, 1043-1074, doi:10.5194/acp-20-1043-2020, 2020.
- 15 Nassar, R., Bernath, P. F., Boone, C. D., McLeod, S. D., Skelton, R., Walker, K. A., Rinsland, C. P., and Duchatelet, P.: A global inventory of stratospheric fluorine in 2004 based on Atmospheric Chemistry Experiment Fourier transform spectrometer (ACE-FTS) measurements, *J. Geophys. Res.*, 111, D22313, doi:10.1029/2006JD007395, 2006.
- O'Doherty, S., Cunnold, D. M., Manning, A., Miller, B. R., Wang, R. H. J., Krummel, P. B., Fraser, P. J., Simmonds, P. G., McCulloch, A., Weiss, R. F., Salameh, P., Porter, L. W., Prinn, R. G., Huang, J., Sturrock, G., Ryall, D., Derwent, R. G.,
- 20 and Montzka, S. A.: Rapid growth of hydrofluorocarbon 134a and hydrochlorofluorocarbons 141b, 142b, and 22 from Advanced Global Atmospheric Gases Experiment (AGAGE) observations at Cape Grim, Tasmania, and Mace Head, Ireland, *J. Geophys. Res.*, 109, D06310, doi:10.1029/2003JD004277, 2004.
- Oram, D. E., Sturges, W. T., Penkett, S. A., McCulloch, A., and Fraser, P. J.: Growth of fluorofrom (CHF<sub>3</sub>, HFC-23) in the background atmosphere, *Geophys. Res. Lett.*, 25, 35-38, 1998.
- 25 Ortega, I., Buchholz, R. R., Hall, E. G., Hurst, D. F., Jordan, A. F., and Hannigan, J. W.: Tropospheric water vapor profiles obtained with FTIR: comparison with balloon-borne frost point hygrometers and influence on trace gas retrievals, *Atmos. Meas. Tech.*, 12, 873–890, doi:10.5194/amt-12-873-2019, 2019.
- Pougatchev, N. S., Connor, B. J., and Rinsland, C. P.: Infrared measurements of the ozone vertical distribution above Kitt Peak, *J. Geophys. Res.*, 100, 16689-16697, doi:10.1029/95JD01296, 1995.
- 30 Prinn, R. G., Weiss, R. F., Fraser, P. J., Simmonds, P. G., Cunnold, D. M., Alyea, F. N., O'Doherty, S., Salameh, P., Miller, B. R., Huang, J., Wang, R. H. J., Hartley, D. E., Harth, C., Steele, L. P., Sturrock, G., Midgley, P. M., and McCulloch, A.: A history of chemically and radiatively important gases in air deduced from ALE/GAGE/AGAGE, *J. Geophys. Res.*, 105, 17,751-17,792, 2000.

- Rasmussen, R. A., Khalil, M. A. K., Penkett, S. A. and Prosser, N. J. D.: CHClF<sub>2</sub> (F-22) in the Earth's atmosphere, *Geophys. Res. Lett.*, 7, 809-812, 1980.
- Rees, D., Barnett, J. J., and Labitzke, K.: COSPAR International Reference Atmosphere: 1986, Part II, Middle Atmosphere Models, *Adv. Space Res.*, 10, 1-525, 1990.
- 5 Rodgers, C. D.: Retrieval of atmospheric temperature and composition from remote measurements of thermal radiation, *Rev. Geophys.*, 14, 609-624, 1976.
- Rodgers, C. D.: Characterization and error analysis of profiles retrieved from remote sounding measurements, *J. Geophys. Res.*, 95, 5587-5595, 1990.
- Rodgers, C. D.: Inverse methods for atmospheric sounding: Theory and practice, World Scientific, 238 pp., ISBN 981-02-10 2740-X, 2000.
- Rothman, L. S. Gordon, I. E., Barbe, A., Chris Benner, D., Bernath, P. F., Birk, M., Boudon, V., Brown, L. R., Campargue, A., Champion, J. -P., Chance, K., Coudert, L. H., Dana, V., Devi, V. M., Fally, S., Flaud, J. -M., Gamache, R. R., Goldman, A., Jacquemart, D., Kleiner, I., Lacome, N., Lafferty, W. J., Mandin, J. -Y., Massie, S. T., Mikhailenko, S. N., Miller, C. E., Moazzen-Ahmadi, N., Naumenko, O. V., Nikitin, A. V., Orphal, J., Perevalov, V. I., Perrin, A., Predoi-Cross, A., 15 Rinsland, C. P., Rotger, M., Šimečtová, M., Smith, M. A. H., Sung, K., Tashkun, S. A., Tennyson, J., Toth, R. A., Vandaele, A. C., and Vander Auwera, J.: The HITRAN 2008 molecular spectroscopic database, *J. Quant. Spectrosc. Radiat. Transfer*, 110, 533-572, doi:10.1016/j.jqsrt.2009.02.013, 2009.
- Sharpe, S. W., Johnson, T. J., Sams, R. L., Chu, P. M., Rhoderick, G. C., and Johnson, P. A.: Gas-phase databases for quantitative infrared spectroscopy, *Appl. Spectrosc.*, 58, 1452-1461, doi:10.1366/0003702042641281, 2004.
- 20 Simmonds, P. G., O'Doherty, S., Nickless, G., Sturrock, G. A., Swaby, R., Knight, P., Ricketts, J., Woffendin, G., and Smith, R.: Automated gas chromatograph/mass spectrometer for routine atmospheric field measurements of the CFC replacement compounds, the hydrofluorocarbons and hydrochlorofluorocarbons, *Anal. Chem.*, 67, 717-723, 1995.
- Simmonds, P. G., Rigby, M., McCulloch, A., Vollmer, M. K., Henne, S., Mühle, J., O'Doherty, S., Manning, A. J., Krummel, P. B., Fraser, P. J., Young, D., Weiss, R. F., Salameh, P. K., Harth, C. M., Reimann, S., Trudinger, C. M., Steele, L. P., 25 Wang, R. H. J., Ivy, D. J., Prinn, R. G., Mitrevski, B., and Etheridge, D. M.: Recent increases in the atmospheric growth rate and emissions of HFC-23 (CHF<sub>3</sub>) and the link to HCFC-22 (CHClF<sub>2</sub>) production, *Atmos. Chem. Phys.*, 18, 4153-4169, doi:10.5194/acp-18-4153-2018, 2018a.
- Simmonds, P. G., Rigby, M., McCulloch, A., Vollmer, M. K., Henne, S., Mühle, J., O'Doherty, S., Manning, A. J., Krummel, P. B., Fraser, P. J., Young, D., Weiss, R. F., Salameh, P. K., Harth, C. M., Reimann, S., Trudinger, C. M., Steele, L. P., 30 Wang, R. H. J., Ivy, D. J., Prinn, R. G., Mitrevski, B., and Etheridge, D. M.: Supplement of Recent increases in the atmospheric growth rate and emissions of HFC-23 (CHF<sub>3</sub>) and the link to HCFC-22 (CHClF<sub>2</sub>) production, Supplement of *Atmos. Chem. Phys.*, 18, 4153-4169, doi:10.5194/acp-18-4153-2018-supplement, 2018b.

- Stanley, K. M., Say, D., Mühle, J., Harth, C. M., Krummel, P. B., Young, D., O'Doherty, S. J., Salameh, P. K., Simmonds, P. G., Weiss, R. F., Prinn, R. G., Fraser, P. J., and Rigby, M.: Increase in global emissions of HFC-23 despite near-total expected reductions, *Nat. Commun.*, 11, 397, doi:10.1038/s41467-019-13899-4, 2020.
- Steck, T.: Methods for determining regularization for atmospheric retrieval problems, *Appl. Optics*, 41, 1788-1797, 2002.
- 5 Sussmann, R., Borsdorff, T., Rettinger, M., Camy-Peyret, C., Demoulin, P., Duchatelet, P., Mahieu, E., and Servais, C.: Technical Note: Harmonized retrieval of column-integrated atmospheric water vapor from the FTIR network - first examples for long-term records and station trends, *Atmos. Chem. Phys.*, 9, 8987-8999, doi:10.5194/acp-9-8987-2009, 2009.
- Tikhonov, A.: On the solution of incorrectly stated problems and a method of regularization, *Dokl. Acad. Nauk SSSR*, 151, 501-504, 1963.
- 10 UNEP: Montreal Protocol on substances that deplete the ozone layer, United Nations Environment Programme: UNEP, 2000.
- Vigouroux, C., Hendrick, F., Stavrakou, T., Dils, B., De Smedt, I., Hermans, C., Merlaud, A., Scolas, F., Senten, C., Vanhaelewyn, G., Fally, S., Carleer, M., Metzger, J.-M., Müller, J.-F., Van Roozendael, M., and De Mazière, M.: Ground-based FTIR and MAX-DOAS observations of formaldehyde at Réunion Island and comparisons with satellite and model data, *Atmos. Chem. Phys.*, 9, 9523-9544, doi:10.5194/acp-9-9523-2009, 2009.
- 15 Vigouroux, C., Stavrakou, T., Whaley, C., Dils, B., Dufлот, V., Hermans, C., Kumps, N., Metzger, J.-M., Scolas, F., Vanhaelewyn, G., Müller, J.-F., Jones, D. B. A., Li, Q., and De Mazière, M.: FTIR time-series of biomass burning products (HCN, C<sub>2</sub>H<sub>6</sub>, C<sub>2</sub>H<sub>2</sub>, CH<sub>3</sub>OH, and HCOOH) at Reunion Island (21° S, 55° E) and comparisons with model data, *Atmos. Chem. Phys.*, 12, 10367–10385, <https://doi.org/10.5194/acp-12-10367-2012>, 2012.
- Vömel, H., David, D. E., and Smith, K.: Accuracy of tropospheric and stratospheric water vapor measurements by the  
20 cryogenic frost point hygrometer: Instrumental details and observations, *J. Geophys. Res.*, 112, 8305, doi:10.1029/2006JD007224, 2007.
- Yokouchi, Y., Taguchi, S., Saito, T., Tohjima, Y., Tanimoto, H., and Mukai, H.: High frequency measurements of HFCs at a remote site in east Asia and their implications for Chinese emissions, *Geophys. Res. Lett.*, 33, L21814, doi:10.1029/2006GL026403, 2006.
- 25 Zhao, Y., Kondo, Y., Murcray, F. J., Liu, X., Koike, M., Kita, K., Nakajima, H., Murata, I., and Suzuki, K.: Carbon monoxide column abundances and tropospheric concentrations retrieved from high resolution ground-based infrared solar spectra at 43.5°N over Japan, *J. Geophys. Res.*, 102, 23,403-23,411, 1997.
- Zhao, Y., Strong, K., Kondo, Y., Koike, M., Matsumi, Y., Irie, H., Rinsland, C. P., Jones, N. B., Suzuki, K., Nakajima, H., Nakane, H., and Murata, I.: Spectroscopic measurements of tropospheric CO, C<sub>2</sub>H<sub>6</sub>, C<sub>2</sub>H<sub>2</sub>, and HCN in northern Japan, *J.*  
30 *Geophys. Res.*, 107, 4343, doi:10.1029/2001JD000748, 2002.
- Zhou, M., Vigouroux, C., Langerock, B., Wang, P., Dutton, G., Hermans, C., Kumps, N., Metzger, J.-M., Toon, G., and De Mazière, M.: CFC-11, CFC-12 and HCFC-22 ground-based remote sensing FTIR measurements at Réunion Island and comparisons with MIPAS/ENVISAT data, *Atmos. Meas. Tech.*, 9, 5621–5636, doi:10.5194/amt-9-5621-2016, 2016.

## Tables

**Table 1. Summary of retrieval settings used for HFC-23 retrievals.**

Micro-windows	MW1	MW2
Spectral region [cm <sup>-1</sup> ]	1138.50–1148.00	1154.00–1160.00
Profile retrieval	HFC-23, N <sub>2</sub> O, O <sub>3</sub>	
Column retrieval	H <sub>2</sub> O, HDO, CFC-12, PAN, HCFC-22	H <sub>2</sub> O, HDO, CFC-12, PAN
Pre-retrieval	H <sub>2</sub> O, HDO, CH <sub>4</sub>	
Fixed species	CH <sub>4</sub> , HCFC-141b, HCFC-142b	
Spectroscopic parameters	PLL (HFC-23, CFC-12, PAN, HCFC-22) ATM18 (H <sub>2</sub> O, HDO) HITRAN2008 (others)	
Pressure and temperature	NCEP Reanalysis-1, CIRA86	
A priori profiles (HFC-23)	Naik et al. (2000) but scaled to 16 ppt (Rikubetsu) / 24 ppt (Syowa Station) at surface	
A priori profiles (others)	Mean profiles in the period of 1995–2010 (Rikubetsu) / 2007–2016 (Syowa Station) from WACCM version 6 (CFC-12, HCFC-22, HCFC-141b, HCFC-142b) WACCM version 6 mean profiles from 1980 to 2020 (except for the above)	
Signal-to-noise ratio (SNR)	Calculated from each observed spectrum	
Background correction	Slope, Curvature	
Instrumental line shape (ILS)	LINEFIT9/14	

5

**Table 2. Windows used for the pre-retrievals of H<sub>2</sub>O, HDO, and CH<sub>4</sub>. Profile-retrieved species are in bold characters.**

Target species	Micro-windows [cm <sup>-1</sup> ]	Interfering species	References
<b>H<sub>2</sub>O</b>	824.40–825.90	<b>O<sub>3</sub></b> , CO <sub>2</sub> , C <sub>2</sub> H <sub>6</sub>	Meier et al. (2004)
<b>HDO</b>	1208.40–1209.10	CH <sub>4</sub> , N <sub>2</sub> O, H <sub>2</sub> O, CO <sub>2</sub> , O <sub>3</sub> , HNO <sub>3</sub> , COF <sub>2</sub>	Vigouroux et al. (2012)
<b>CH<sub>4</sub></b>	1201.820–1202.605	<b>N<sub>2</sub>O</b> , H <sub>2</sub> O, O <sub>3</sub> , HNO <sub>3</sub>	Meier et al. (2004)

10

5 **Table 3: Statistic summary of the fitted SNRs, the root-mean-squares (RMSs) of the fitted residuals (observed minus calculated spectrum), the degree of freedom for signals (DOFSs) and the retrieved HFC-23 total columns at Rikubetsu and Syowa Station. The errors of the fitted RMSs, the DOFSs, and the total columns are the one standard deviation ( $1\sigma$ ) around the averages. The numbers of the HFC-23 retrievals ( $N$ ) are divided into two parts of a number of the retrievals used in this analysis (valid) and of total ones including rejected ones (total).**

Site (instrument)	Period	$N$ (valid / total)	Mean fitted SNR (MW1 / MW2)	Mean fitted RMS [%]	Mean DOFS	Mean HFC-23 total column [ $10^{14}$ molecules $\text{cm}^{-2}$ ]
Rikubetsu (IFS-120M)	1997–2010	1081 / 1152	293 / 371	$0.35 \pm 0.14$	$1.0 \pm 0.02$	$3.23 \pm 1.10$
Rikubetsu (IFS-120/5HR)	2019–2020	30 / 30	350 / 414	$0.27 \pm 0.03$	$1.0 \pm 0.01$	$5.59 \pm 0.43$
Syowa Station (IFS-120M)	2007–2016	206 / 207	294 / 308	$0.43 \pm 0.38$	$1.0 \pm 0.03$	$3.69 \pm 1.35$

**Table 4: Mean random and systematic errors and uncertainties on FTIR-retrieved HFC-23 total columns at Rikubetsu and Syowa Station.**

Site (period)	Rikubetsu (1997–2010)		Syowa Station (2007–2016)	
	Random error [%]	Systematic error [%]	Random error [%]	Systematic error [%]
Smoothing	1.4		0.56	
Retrieved parameters	0.15		0.070	
Interfering species	2.8		0.51	
Measurement	12		6.8	
Temperature	3.8	3.8	1.2	1.2
SZA	1.1		2.5	
$S_{\text{pr}}$ of HFC-23		10		10
$E''$ of HFC-23		10		15
$\gamma_{\text{air}}$ of HFC-23		3.8		3.7
$n_{\text{air}}$ of HFC-23		0.51		0.59
$S_{\text{pr}}$ of N <sub>2</sub> O		0.16		0.072
$\gamma_{\text{air}}$ of N <sub>2</sub> O		4.4		1.3
$n_{\text{air}}$ of N <sub>2</sub> O		0.79		0.30
$S_{\text{pr}}$ of O <sub>3</sub>		0.063		0.037
$\gamma_{\text{air}}$ of O <sub>3</sub>		0.13		0.088
$n_{\text{air}}$ of O <sub>3</sub>		0.054		0.038
$S_{\text{pr}}$ of H <sub>2</sub> O		0.048		0.055
$\gamma_{\text{air}}$ of H <sub>2</sub> O		6.6		2.1
$n_{\text{air}}$ of H <sub>2</sub> O		0.24		0.13
$S_{\text{pr}}$ of HDO		0.070		0.069
$\gamma_{\text{air}}$ of HDO		15		2.3
$n_{\text{air}}$ of HDO		0.47		0.15
CH <sub>4</sub> pre-retrieved profile	7.3		4.4	
$S_{\text{pr}}$ of CH <sub>4</sub>		5.8		4.4
$\gamma_{\text{air}}$ of CH <sub>4</sub>		0.038		0.063
$n_{\text{air}}$ of CH <sub>4</sub>		0.012		0.026
Subtotal	15	24	8.6	19
Total	28		24	

Site (period)	Rikubetsu (1997–2010)			Syowa Station (2007–2016)		
	Uncertainty	Random [%]	Systematic [%]	Uncertainty	Random [%]	Systematic [%]
Smoothing	<sup>a</sup>	1.4		<sup>a</sup>	0.56	
Retrieved parameters	<sup>a</sup>	0.15		<sup>a</sup>	0.070	
Interfering species	<sup>a</sup>	2.8		<sup>a</sup>	0.51	
Measurement	<sup>a</sup>	12		<sup>a</sup>	6.8	
Temperature	2–10 K	3.8	3.8	2.5–10 K	1.2	1.2
SZA	0.15 °	1.1		0.15 °	2.5	



$S_v$ of HFC-23	<u>10%</u>		<u>10</u>	<u>10%</u>	<u>10</u>
$E''$ of HFC-23	<u>10%</u>		<u>10</u>	<u>15%</u>	<u>15</u>
$\gamma_{\text{air}}$ of HFC-23	<u>15%</u>		<u>3.8</u>	<u>15%</u>	<u>3.7</u>
$n_{\text{air}}$ of HFC-23	<u>15%</u>		<u>0.51</u>	<u>15%</u>	<u>0.59</u>
$S_v$ of $N_2O$	<u>5%</u>		<u>0.16</u>	<u>5%</u>	<u>0.072</u>
$\gamma_{\text{air}}$ of $N_2O$	<u>5%</u>		<u>4.4</u>	<u>5%</u>	<u>1.3</u>
$n_{\text{air}}$ of $N_2O$	<u>10%</u>		<u>0.79</u>	<u>10%</u>	<u>0.30</u>
$S_v$ of $O_3$	<u>5%</u>		<u>0.063</u>	<u>5%</u>	<u>0.037</u>
$\gamma_{\text{air}}$ of $O_3$	<u>5%</u>		<u>0.13</u>	<u>5%</u>	<u>0.088</u>
$n_{\text{air}}$ of $O_3$	<u>10%</u>		<u>0.054</u>	<u>10%</u>	<u>0.038</u>
$S_v$ of $H_2O$	<u>10%</u>		<u>0.048</u>	<u>10%</u>	<u>0.055</u>
$\gamma_{\text{air}}$ of $H_2O$	<u>10%</u>		<u>6.6</u>	<u>10%</u>	<u>2.1</u>
$n_{\text{air}}$ of $H_2O$	<u>10%</u>		<u>0.24</u>	<u>10%</u>	<u>0.13</u>
$S_v$ of HDO	<u>10%</u>		<u>0.070</u>	<u>10%</u>	<u>0.069</u>
$\gamma_{\text{air}}$ of HDO	<u>10%</u>		<u>15</u>	<u>10%</u>	<u>2.3</u>
$n_{\text{air}}$ of HDO	<u>10%</u>		<u>0.47</u>	<u>10%</u>	<u>0.15</u>
$CH_4$ pre-retrieved profile	<sup>a</sup>	<u>7.3</u>		<sup>a</sup>	<u>4.4</u>
$S_v$ of $CH_4$	<u>3%</u>		<u>5.8</u>	<u>3%</u>	<u>4.4</u>
$\gamma_{\text{air}}$ of $CH_4$	<u>1%</u>		<u>0.038</u>	<u>1%</u>	<u>0.063</u>
$n_{\text{air}}$ of $CH_4$	<u>3%</u>		<u>0.012</u>	<u>3%</u>	<u>0.026</u>
<b>Subtotal</b>		<u>15</u>	<u>24</u>		<u>8.6</u>
<b>Total</b>		<u>28</u>			<u>21</u>

<sup>a</sup>These uncertainties are described in detail in Section 4.2.

Table 5: HFC-23 annual growth rates and standard errors derived from monthly mean  $X_{\text{HFC-23}}$  at Rikubetsu and Syowa Station, in ppt year<sup>-1</sup>. The annual growth rates computed from the AGAGE annual global mean dataset, the CGAA air sample dataset, and the AGAGE in-situ measurements at THD and CGO are also listed for the same periods, unless indicated by other time frames lists in brackets.

5

Annual change [ppt year <sup>-1</sup> ]	<del>1997–2010</del>	<del>1997–2020</del>	<del>2007–2016</del>	<del>2007–2020</del>
Rikubetsu (FTIR)	<del>1.090 ± 0.072</del>	<del>0.794 ± 0.043</del>	–	<del>0.528 ± 0.086</del>
Rikubetsu DJF (FTIR)	<del>0.817 ± 0.087</del>	<del>0.806 ± 0.044</del>	–	<del>0.894 ± 0.099</del>
Syowa Station (FTIR)	–	–	<del>0.823 ± 0.075</del>	–
Annual global mean (12-box model)	<del>0.820 ± 0.011</del>	<del>0.843 ± 0.008</del> (1997–2016)	<del>0.878 ± 0.020</del> (2007–2016)	–
CGAA	<del>0.805 ± 0.006</del> (1997–2009)	–	–	–
THD (AGAGE in-situ)	–	–	<del>0.924 ± 0.002</del>	<del>0.984 ± 0.002</del> (2007–2019)
CGO (AGAGE in-situ)	–	–	<del>0.874 ± 0.002</del>	<del>0.928 ± 0.001</del> (2007–2019)

Observation Site / Dataset	Annual Change [ppt year <sup>-1</sup> ]		
<u>Annual change [ppt year<sup>-1</sup>]</u> <u>Data Period</u>	<del>1997–2009</del> <u>10</u>	<del>20087–2019</del> <u>20</u>	<del>2007–2016</del>
<u>Rikubetsu (FTIR)</u>	<del>1.090 ± 0.072</del>	<del>0.528 ± 0.086</del>	=
<u>Rikubetsu DJF (FTIR)</u>	<del>0.8107 ± 0.093</del> <u>87</u>	<del>0.928894 ± 0.1</del> <u>08099</u>	=
<u>Syowa Station (FTIR)</u>	=	=	<u>0.823 ± 0.075</u>
<u>Annual Global Mean (12-box model)</u>	<del>0.820 ± 0.013</del> <u>14</u>	<del>0.89278 ± 0.02</del> <u>30</u> <del>(2007–2016)</del> (20087–2016)	<u>0.878 ± 0.020</u>
<u>CGAA</u>	<del>0.805 ± 0.006</del> (1997–2009)	=	=
<u>THD (AGAGE in-situ)</u>	=	<del>0.99484 ± 0.00</del> <u>12</u> (2007–2019)	=
<u>CGO (AGAGE in-situ)</u>	=	<del>-0.928 ± 0.001</del> (2007–2019)	<u>0.874 ± 0.002</u>

## Figures

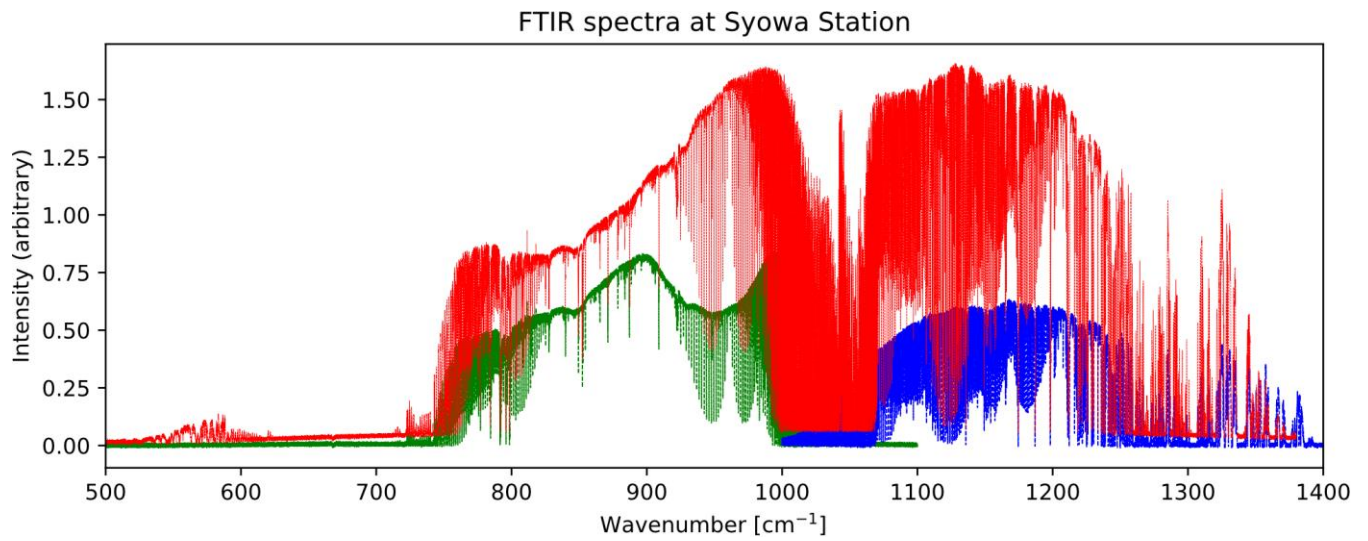


Figure 1: Examples of solar absorption spectra taken from FTIR observations at Syowa Station. The red spectrum was obtained with the filter #6 on 30 September 2007. The green and the blue ones were measured with filter #7 and #8 on 30 September 2011, respectively. A positive zero-level offset is clearly seen on the red filter #6 spectrum.

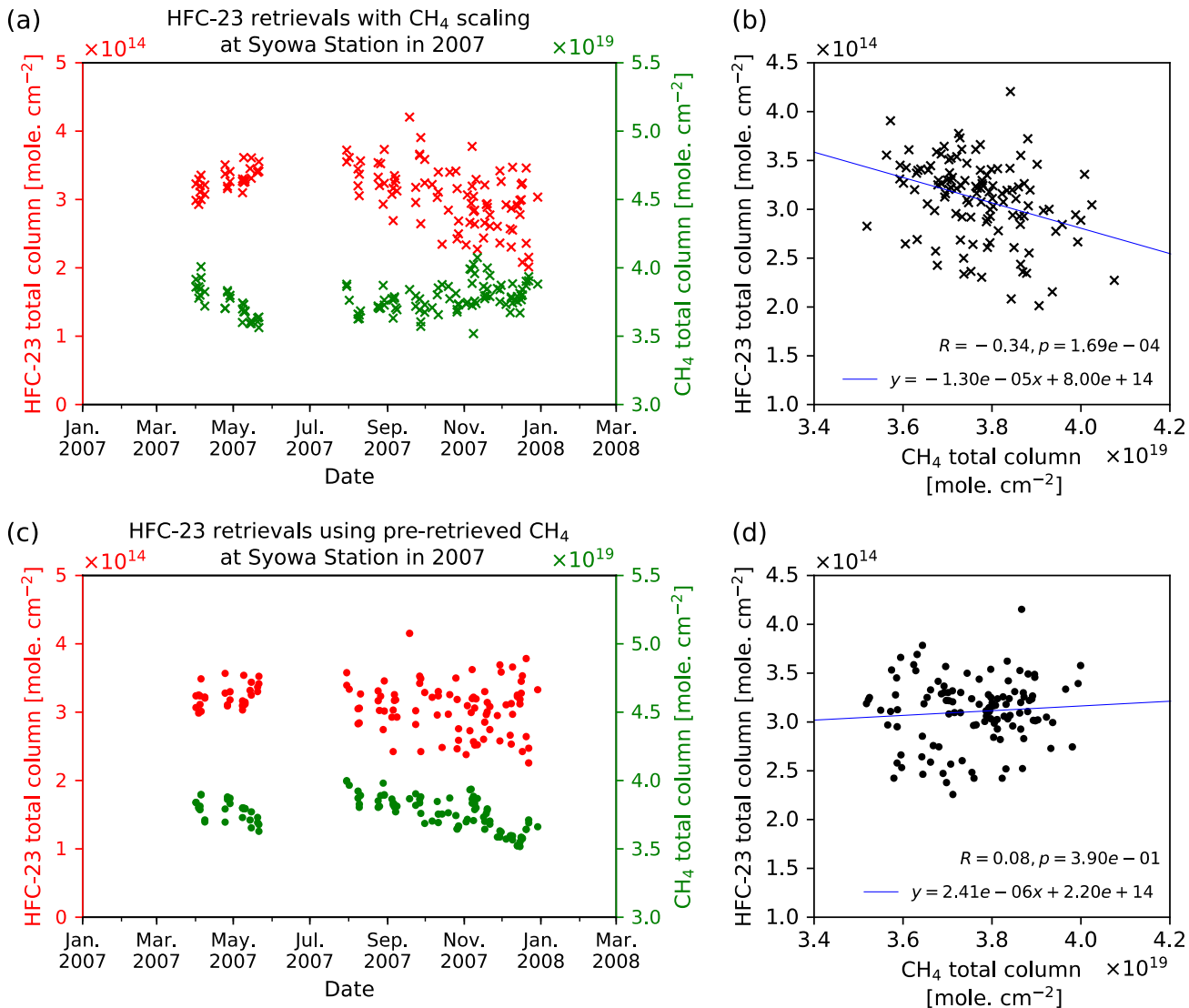


Figure 2: Time-series of the total columns of HFC-23 and CH<sub>4</sub> retrieved from FTIR infrared spectra observed at Syowa Station in 2007. (a) HFC-23 total columns (red-x plots) derived from HFC-23 retrievals accompanied by column-retrieval (scaling) of CH<sub>4</sub> profile, and the scaled CH<sub>4</sub> total columns (green-x plots). (b) The correlation between HFC-23 and CH<sub>4</sub> of (a). (c) Independent retrieved CH<sub>4</sub> total columns using a spectral region from 1201.820 to 1202.605 cm<sup>-1</sup> (green dots), and HFC-23 total columns from retrievals using the independent retrieved CH<sub>4</sub> profiles as fixed profiles (red dots). (d) The correlation between HFC-23 and CH<sub>4</sub> of (c). Note that these retrieved HFC-23 columns were selected by the threshold of the fitted RMS value depending on the value of solar zenith angle (SZA): the threshold of the fitted RMS are < 0.5% for SZA < 85° and < 1.5% for SZA of 85° or greater.

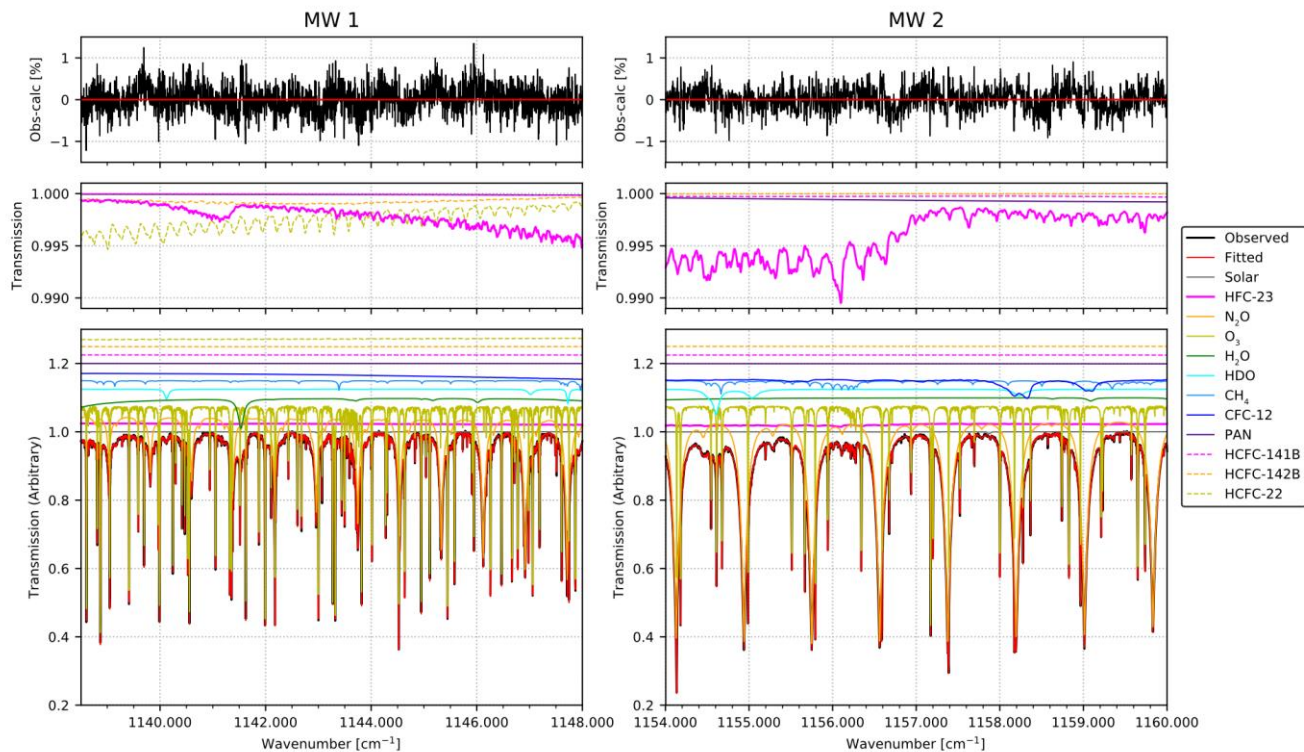
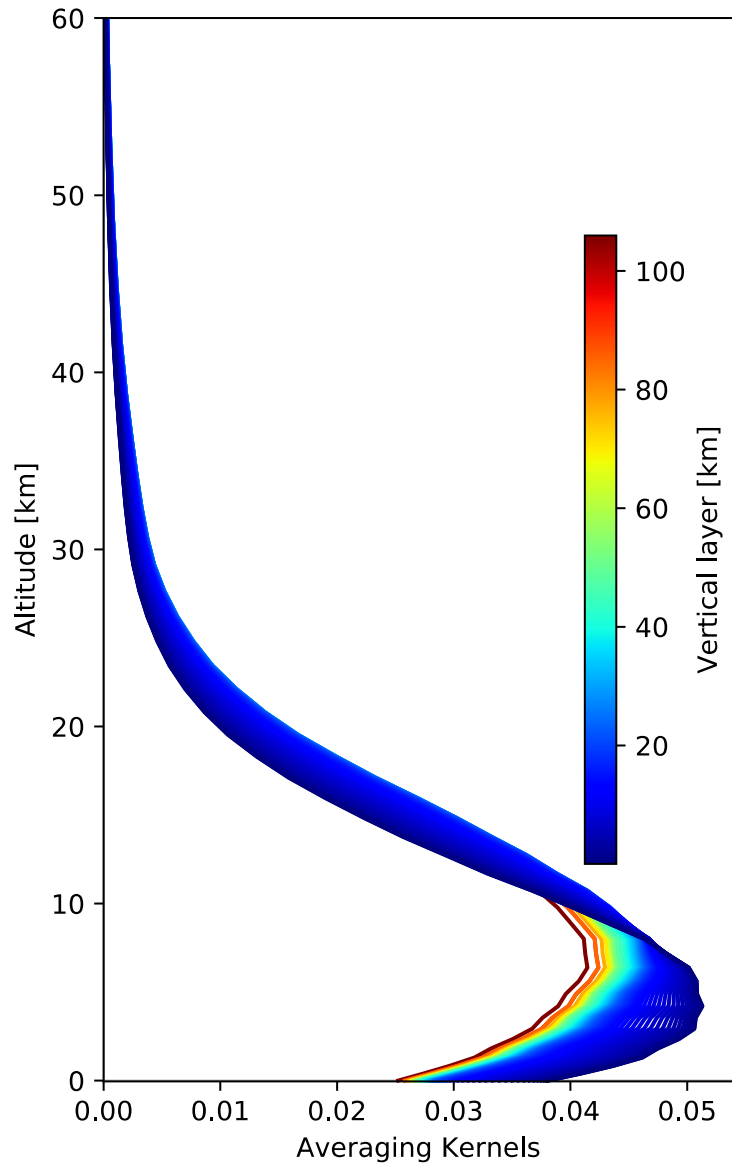
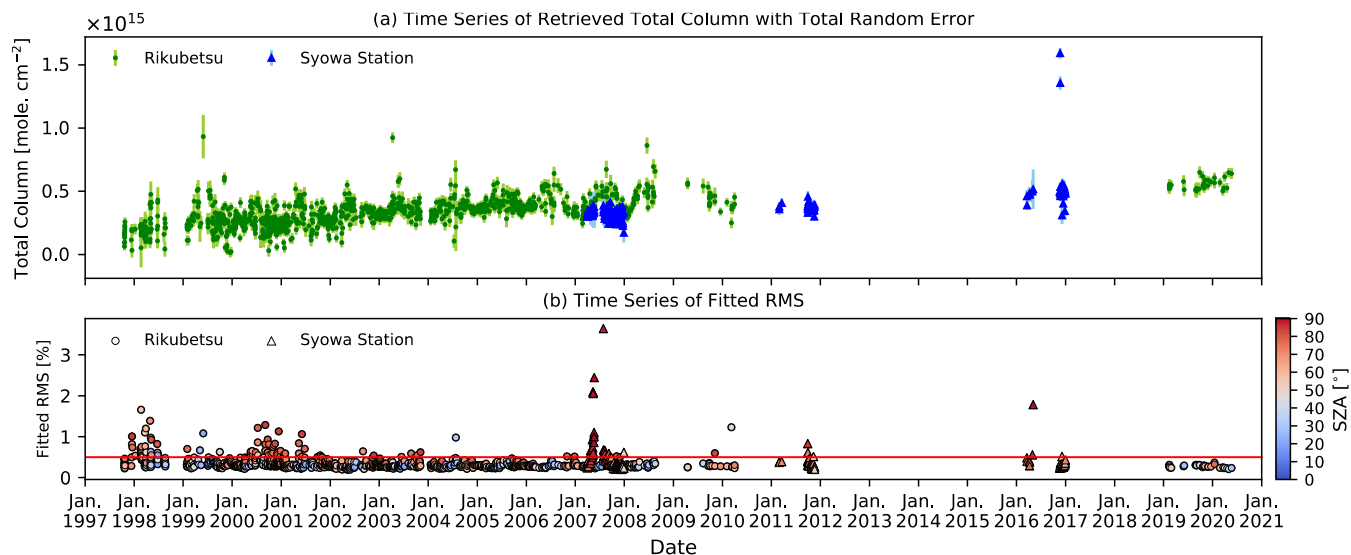


Figure 3: Typical spectral simulation results of the two HFC-23 retrieval micro-windows (left panel: MW1; right panel: MW2) fitted to the observed spectrum at Syowa Station on 9 November 2011 at 13:47 UTC. The top two panels show the residuals (observed minus calculated) of the fittings for MW1 and MW2. The middle two panels show the absorption contributions of HFC-23, PAN, HCFC-141b, HCFC-142b, and HCFC-22 in MW1 and MW2. The bottom two panels show the individual contributions from each interfering species, shifted by multiples of 0.025 for clarity, except the observed and the calculated lines.

5

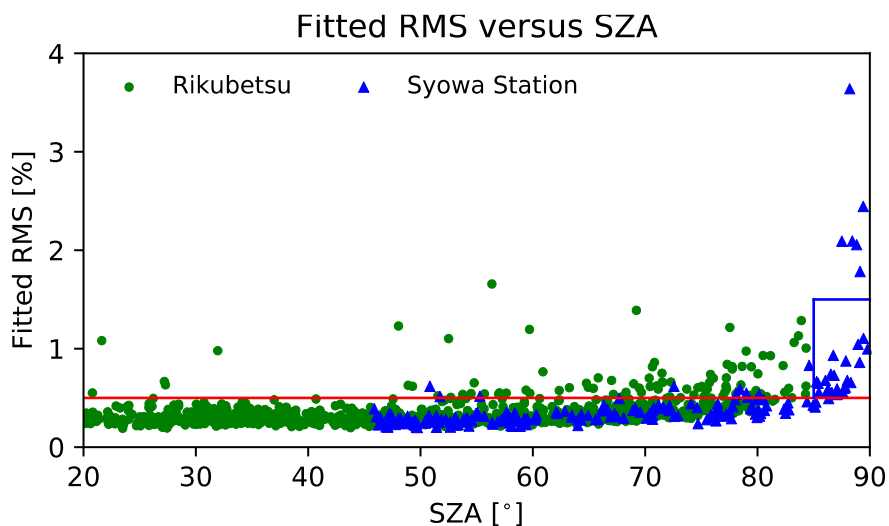


**Figure 4:** Typical averaging kernels of the HFC-23 retrieval for the same spectrum shown in Figure 3, which are normalized using the a priori profile. Note that the vertical scale is from surface up to 60 km because there is almost no sensitivity above 60 km.



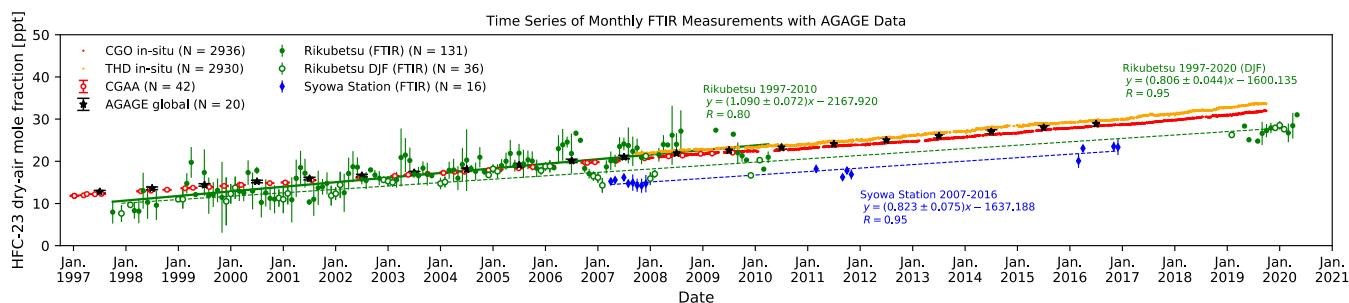
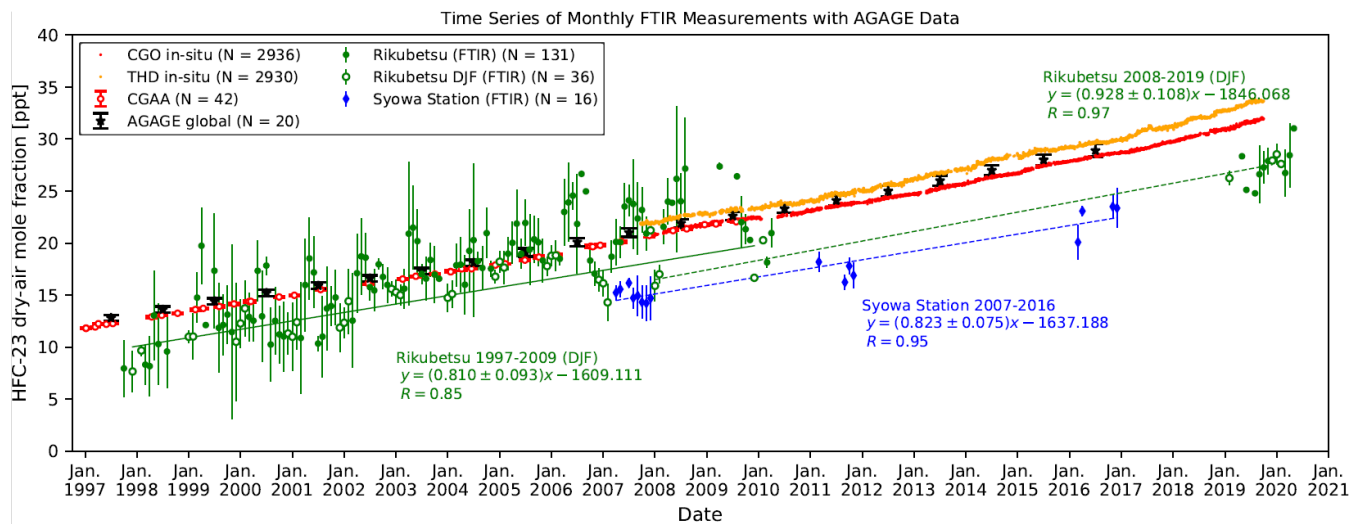
**Figure 5: (a): Time-series of FTIR-retrieved HFC-23 total columns with total random errors at Rikubetsu and Syowa Station. (b): The fitted RMS values on individual retrieved total column. The total columns at Rikubetsu and Syowa Station are shown by green circles and blue triangles, respectively. The fitted RMS values at Rikubetsu and Syowa Station are shown by circles and triangles, respectively, with the color-coding depended on the SZA.**

5



**Figure 6: The fitted RMS residuals versus the SZA values on individual retrieval. The RMS values at Rikubetsu and Syowa Station are shown by green circles and blue triangles, respectively.**

10



**Figure 7: Time-series of the monthly mean FTIR-retrieved  $X_{\text{HFC-23}}$  at Rikubetsu and Syowa Station, along with the AGAGE in-situ measurements at CGO and THD, and the annual global mean mole fractions and the Cape Grim Air Archive samples, which were reported by Simmonds et al. (2018b).**



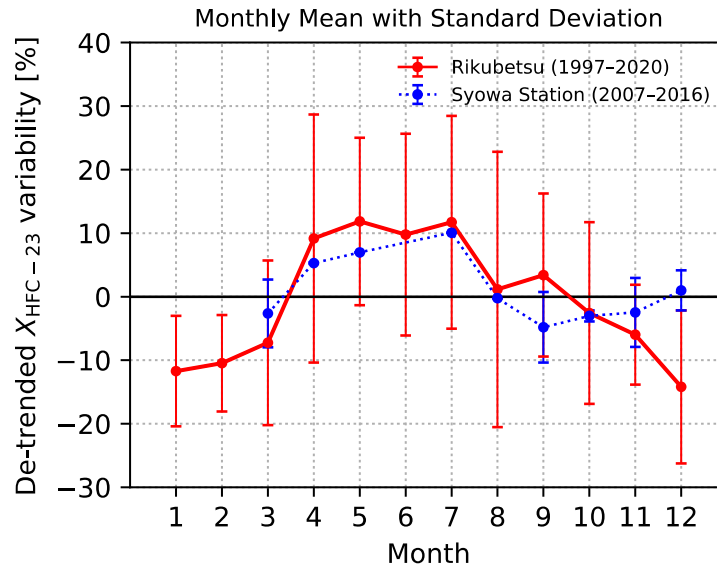


Figure 8: Seasonal cycles of the FTIR-retrieved  $X_{\text{HFC-23}}$  at Rikubetsu for the 1997–2020 period and at Syowa Station for the 2007–2016 period.

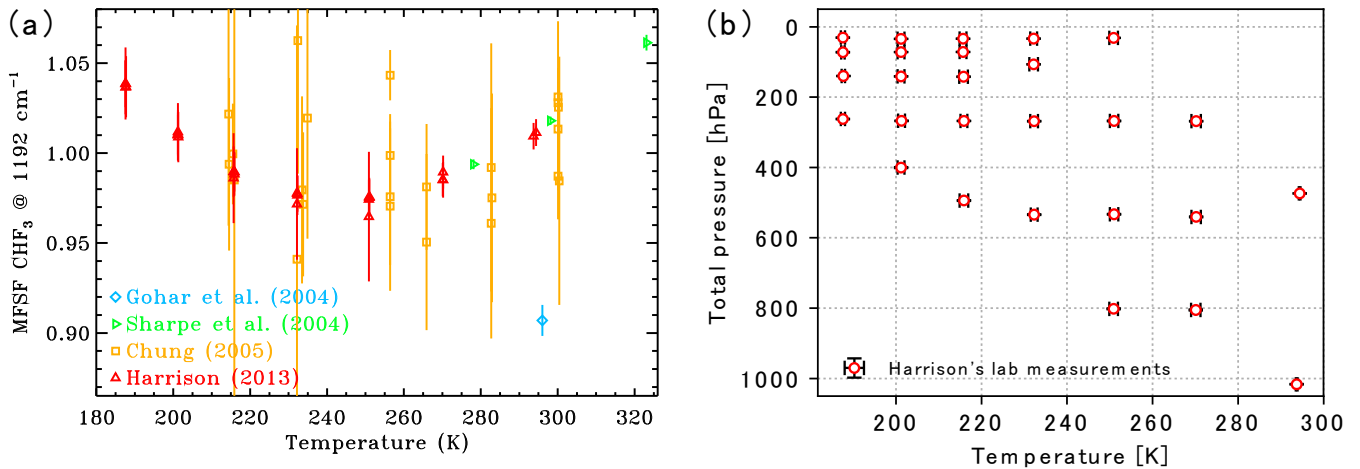


Figure 9: (a): Retrieved mole fraction scaling factors from four HFC-23 laboratory spectrum datasets using the 2020 HFC-23 PLL at the spectral region from 1105–1240  $\text{cm}^{-1}$  plotted versus temperature. (b): The temperature and pressure conditions of the laboratory measurements of Harrison (2013).