



Impact of 3D radiative transfer on airborne NO₂ imaging remote sensing over cities with buildings

Marc Schwaerzel^{1,2}, Dominik Brunner¹, Fabian Jakob³, Claudia Emde^{3,4}, Brigitte Buchmann¹, Alexis Berne², and Gerrit Kuhlmann¹

¹Empa, Swiss Federal Laboratories for Materials Science and Technology, Dübendorf, Switzerland

²Environmental Remote Sensing Laboratory, École Polytechnique Fédérale de Lausanne, Lausanne, Switzerland

³Meteorological Institute, Ludwig Maximilian University of Munich, Munich, Germany

⁴German Aerospace Center (DLR), Oberpfaffenhofen, Germany

Correspondence: Gerrit Kuhlmann (gerrit.kuhlmann@empa.ch)

Abstract. Airborne imaging remote sensing is increasingly used to map the spatial distribution of nitrogen dioxide (NO₂) in cities. Despite the small ground-pixel size of the sensors, the measured NO₂ distributions are much smoother than one would expect from high-resolution model simulations of NO₂ over cities. This could be caused by 3D radiative transfer effects due to observation geometry, adjacency effects and effects of buildings. Here, we present a case study of imaging a synthetic NO₂ distribution for a district of Zurich using the 3D MYSTIC solver of the libRadtran radiative transfer library. We compute NO₂ slant column densities (SCD) using the recently implemented 3D-box air mass factors (3D-box AMF) and a new urban canopy module to account for the effects of buildings. We found that for a single ground pixel (50 m x 50 m) more than 50% of the sensitivity is located outside of the pixel, primarily in the direction of the main optical path between sun, ground pixel, and instrument. Consequently, NO₂ SCDs are spatially smoothed, which results in an increase over roads when they are parallel to the optical path and a decrease otherwise. When buildings are included, NO₂ SCDs are reduced on average by 5% due to the reduced sensitivity to NO₂ in the shadows of the buildings. The effects of buildings also introduce a complex pattern of variability in SCDs that would show up in airborne observations as an additional noise component (about 12 μmol m⁻²) similar to typical measurement uncertainties. The smearing of the SCDs cannot be corrected using 1D-layer AMFs that assume horizontal homogeneity and thus remains in the final NO₂ map. 3D radiative transfer effects by including buildings need to be considered to compute more accurate AMFs and to reduce biases in NO₂ vertical columns obtained from high-resolution city-scale NO₂ remote sensing.

1 Introduction

Nitrogen oxides (NO_x = NO + NO₂) are key air pollutants mainly emitted by fuel combustion by traffic, heating systems, industrial facilities and power plants. Their short lifetime and localized sources result in a high spatial and temporal variability especially in urban areas (Berchet et al., 2017). An attractive possibility to create high-resolution maps (<100 m) of the NO₂ distribution in cities is to use an airborne imaging spectrometer. This was first demonstrated for measurements from the Airborne Prism Experiment (APEX) of a Swiss-Belgium consortium (Popp et al., 2012; Tack et al., 2017) and the Geostationary



Trace gas and Aerosol Sensor Optimization (GeoTASO) spectrometer (Nowlan et al., 2016) developed in the United States. A comprehensive comparison between four airborne NO₂ imaging spectrometers flown over the city of Berlin was performed during the AROMAPEX campaign (Tack et al., 2019), which included APEX (Schaepman et al., 2015), AirMAP (Airborne imaging DOAS instrument for Measurements of Atmospheric Pollution) (Schönhardt et al., 2015), SWING (Small Whiskbroom Imager for atmospheric composition monitorinG) (Merlaud et al., 2013) and SBI (Spectrolite Breadboard Instrument) (de Goeij et al., 2017).

Airborne imaging spectrometers are passive remote sensing instruments from which we can retrieve NO₂ slant column densities (SCD) from backscattered solar radiance spectra. SCDs are defined as the integrated trace gas concentrations along the optical path from the sun, through the atmosphere and to the instrument. The optical path and therefore the SCD depends on illumination conditions, viewing geometry, the scattering and absorption by air molecules, aerosols and clouds as well as the reflectance of the surface. To obtain a quantity that is independent of illumination and viewing conditions, SCDs are divided by air mass factors (AMF) to compute vertical column densities (VCD) defined as the vertically integrated concentrations from the ground to the top of the atmosphere.

NO₂ retrieval algorithms applied to airborne instruments have been derived from algorithms developed for satellite instruments with much lower spatial resolution (> 5 km). These algorithms rely on 1D radiative transfer simulations, which reach their limits at high resolution and in the presence of spatially variable properties of the atmosphere and the surface, as they assume horizontal homogeneity of all parameters within the optical path. A strong indication for the importance of 3D radiative transfer effects is NO₂ maps obtained from airborne imaging spectrometers over cities are spatially much smoother than one would expect from high-resolution city-scale dispersion models (see smeared NO₂ concentrations in Figure S1 in the supplement taken from Kuhlmann et al., 2017). A likely explanation is that the measurements are not only sensitive to NO₂ in the vertical column above the observed ground pixels but also to the atmosphere surrounding the pixels, which is known as the horizontal smoothing error or the adjacency effect (Cracknell and Varotsos, 2012; Lyapustin and Kaufman, 2001; Richter, 1990). The adjacency effect has been described especially in the context of high-resolution land-surface remote sensing, but it has also been discussed in the context of atmospheric measurements (e.g., Richter, 1990; Minomura et al., 2001; de Graaf et al., 2016). Evidence for 3D radiation effects due to the presence of clouds in the vicinity of an observed ground pixel has recently been reported for CO₂ observations from the OCO-2 satellite (Massie et al., 2017). Such effects are expected to become increasingly important with the increasing resolution of satellite observations (Schwaerzel et al., 2020). An additional complexity over cities to be accounted for is the effects of buildings on the photon paths due to multiple reflections and shadowing.

The aim of this study is to quantify, for the first time, the impact of these 3D radiative transfer effects in the presence of spatially variable surface properties and NO₂ concentrations over cities on NO₂ retrievals from high-resolution airborne imaging spectrometers. For this purpose, we use the phYSically correct Tracing of photons In Cloudy atmospheres (MYSTIC) solver of the library for Radiative transfer (libRadtran), which is a Monte Carlo solver that traces individual photons in a 3D model grid (Mayer and Kylling, 2005; Emde et al., 2016). These photon paths are converted to 3D-box AMFs that describe the sensitivity of an instrument to a trace gas (here NO₂) in each grid box (Schwaerzel et al., 2020). To account for the effect of buildings, we implemented a new urban canopy feature that represents the full 3D building structure of a city with assigned



optical properties of the different surfaces. 3D radiative transfer calculations in the urban canopy are not new, but so far focused only on applications not related to trace gas observations such as the computation of radiation budgets and broadband landscape
60 imaging (Gastellu-Etchegorry et al., 2015). The present study is the first to use such a model to investigate 3D effects on trace gas retrievals over a city. In order to isolate different effects on 3D-box AMFs and on the spatial smoothing of the information retrieved from an airborne instrument, we use a comparatively simple setup with 3D buildings representative of a district in the city of Zurich with uniform optical properties of roofs, walls and streets. The model, however, would be able to describe the optical properties of each single surface separately.

65 2 Methods

2.1 The MYSTIC radiative transfer solver

The MYSTIC radiative transfer (RT) solver is based on the Monte Carlo principle to calculate different radiative quantities such as irradiance, radiance, absorption, emission, actinic flux, photon's path length and air mass factors (Mayer and Kylling, 2005; Emde et al., 2016; Schwaerzel et al., 2020). A Monte Carlo based RTM traces individual photons from the source
70 (e.g., sun) to the instrument (e.g., airborne spectrometer) accounting for ground and atmospheric interactions. Photon paths are treated as a combination of random decisions with a given probability distribution for each interaction (e.g., probability distribution of the scattering direction) (Mayer, 2009; Emde and Mayer, 2007; Deutschmann et al., 2011). By tracing several thousands of photons, the averaged photon paths reaching the instrument become representative of the actual photon paths in the atmosphere. To simulate radiative transfer quantities as 3D-box AMFs, photons are traced backwards from the instrument
75 to the sun, which is equivalent to the forward mode but greatly enhances computational efficiency (Marchuk et al., 1980; Emde and Mayer, 2007). MYSTIC divides the atmosphere into 1D vertical layers or 3D grid boxes with different properties and saves the mean photon path length within each layer or box. A plane parallel geometry is used for 3D AMF calculations, while spherical geometry is possible for 1D calculations.

2.1.1 Air mass factors

80 AMFs are obtained by dividing the mean photon path length in each layer or box by its height. For a layer or box i with given concentration c_i and optical properties, the 1D-layer or 3D-box AMF is given by

$$AMF_i = \frac{SCD_i}{VCD_i} = \frac{\int_{path} c_i dl}{\int_{z_i}^{z_{i+1}} c_i dz} = \frac{\int_{path} dl}{h_i} = \frac{L_i}{h_i} \quad (1)$$

where L_i is the mean optical path in the layer/box i of all photons that reach the instrument and h_i is the height of the layer/box i .

85 To calculate a total AMF that can be used to convert measured SCDs to VCDs, an a priori VCD (VCD_i) is needed for every layer/box i . For the 1D case, the total AMF is computed as

$$AMF = \frac{\sum_{k=1}^{n_z} AMF_k VCD_k}{\sum_{k=1}^{n_z} VCD_k} = \frac{\sum_{k=1}^{n_z} SCD_k}{\sum_{k=1}^{n_z} VCD_k} \quad (2)$$



where n_z is the number of vertical layers. For the 3D case, the total AMF is computed as

$$AMF = \frac{\sum_{i=1}^{n_x} \sum_{j=1}^{n_y} \sum_{k=1}^{n_z} AMF_{i,j,k} VCD_{i,j,k}}{\sum_{k=1}^{n_z} VCD_k} = \frac{\sum_{i=1}^{n_x} \sum_{j=1}^{n_y} \sum_{k=1}^{n_z} SCD_{i,j,k}}{\sum_{k=1}^{n_z} VCD_k} \quad (3)$$

90 where n_x and n_y are the number of grid cells in x and y direction. In the 1D case, the AMF depends on the shape of the vertical profile of the trace gas (but not on its abundance) (Palmer et al., 2001). In the 3D case, it additionally depends on the horizontal distribution of the trace gas.

2.1.2 Urban canopy implementation

The urban canopy was implemented in libRadtran as a triangle mesh, where each triangle can be assigned different optical and
95 physical properties. Information on vertex positions and optical properties are read from an input file that has to be generated from a 3D building data set prior to the simulation. Using a ray tracing algorithm newly integrated into the model, MYSTIC detects if and where a photon hits a triangle. The interaction of the photon with the surface (absorption or reflection) is then simulated using preexisting MYSTIC functions.

To create a triangular mesh for each building, a Python script was written that converts buildings stored in an ESRI shapefile
100 into triangles. A building consists of one or several flat roofs and several vertical walls. To create triangles for the roof, we connect the polygon centroid to each polygon corner. Wall triangles are created by splitting each wall diagonally into two triangles. Each triangle surface carries information about its albedo and skin temperature. The skin temperatures are used for thermal simulations, a feature that is not used in this publication. The triangular mesh is stored in a NetCDF file that can be read in by MYSTIC (see an example file in the Supplement). The file contains a list of vertices (list of x , y and z coordinates),
105 a list of triangles (index of 3 vertices for each triangle), a list of materials (each triangle gets assigned a material), a list of material albedo values, a list of material types (name of materials) and a list of material temperatures.

In MYSTIC, each photon is traced step-wise along its optical path from one interaction to the other. To interact with the urban canopy, a ray tracing code searches for hits with one of the triangles during each step. We use the Star-3D library (<https://gitlab.com/meso-star/star-3d>) (Villefranque et al., 2019), which is a convenient wrapper for Intel® Embree
110 (www.embree.org) to facilitate efficient ray / triangle intersection tests using a bounding volume hierarchy (BVH).

In the case that a ray hits a surface, a Lambertian reflection happens and a new direction is attributed to the photon, which will continue its path until its next interaction. Absorption on surfaces is accounted for by reducing a photon weight by $1 - albedo$. Currently, the urban canopy module only supports Lambertian reflections but an extension, e.g., to specular reflections would be straightforward.

115 2.2 Study case in Zurich

To study radiative transfer effects on airborne measurements for a realistic scene, we selected a 1 km x 1 km region in Zurich, Switzerland (see Fig. 1a). The low-rise buildings (10-15 m) with simple geometries are rather typical for Swiss cities. The scene includes roads of different widths and orientations and two open areas without buildings.



2.2.1 Buildings

120 We used 3D building data from a shape file obtained from the Swiss Federal Office of Topography (swisstopo). Each building is defined as a polygon with x and y -coordinate for the edges and the centroid (Swiss LV03 coordinates system) with a single height. As described above, the data was converted to a triangular mesh and saved to a netCDF file. For simplicity, we either applied albedos of 0.1 for walls (identical to the used ground albedo) and 0.2 for roofs or used the same albedo of 0.1 for all surfaces (albedos chosen after Mussetti et al., 2020). Figure 1b shows the buildings colored by their heights in the selected model domain.

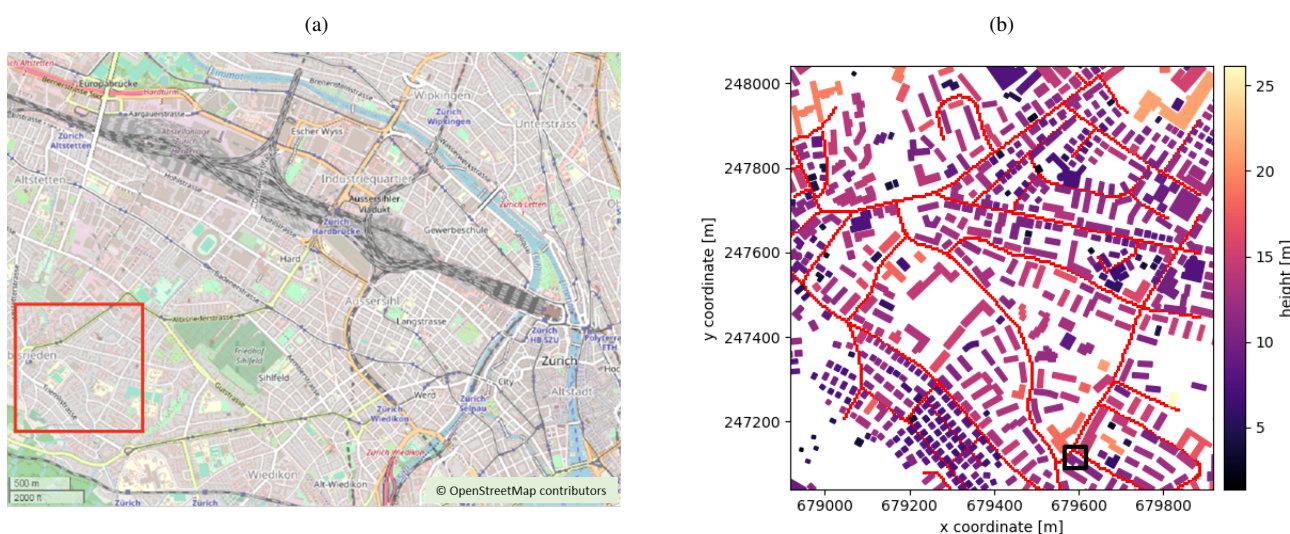


Figure 1. (a) Map of Zurich with the location of the study area in red. Map informations were obtained from OpenStreetMap (© OpenStreetMap contributors 2021. Distributed under the Open Data Commons Open Database License (ODbL) v1.0.) (b) Building heights and major roads in the study area with the lower left pixel at $x = 678918$ m and $y = 247040$ m in the Swiss LV03 coordinate system. The black square represents the location of the sub-domain used in Section 3.3.

125

2.2.2 Synthetic NO_2 field

We created a simple but quite realistic 3D NO_2 concentration field based on the traffic emission inventory of the city of Zurich (see Table 1 in Berchet et al., 2017). For this purpose, the road emissions available as line sources were rasterized at 5 m \times 5 m spatial resolution and normalized by the maximum value in the rasterized field. The normalized field was then multiplied
130 with a NO_2 concentration of $110 \mu\text{g m}^{-3}$, which is a typical high concentration measured next to busy streets in Zurich (Bär, 2016). A background NO_2 concentration of $15 \mu\text{g m}^{-3}$ was added using a typical low value observed in Zurich (Bär, 2016) (see Supplement for details). The maximum concentration is thus $125 \mu\text{g m}^{-3}$ or $2.7 \mu\text{mol m}^{-3}$. Finally, we smoothed the concentration field with a Gaussian filter with a standard deviation of 5 m to mimic the effect of turbulent dispersion. The



synthetic field of the NO_2 near surface concentrations is shown in Figure 2a binned on a 50 m x 50 m grid, which is the typical
135 resolution of trace gas measurements from an airborne instrument like APEX.

The vertical distribution was modelled as a linear decrease from the surface value to the background value of $0.65 \mu\text{mol m}^{-3}$ at 100 m. Above 100 m, all profiles decrease exponentially with altitude with an e-folding vertical length scale of 720 m, which was obtained by fitting a function to a measured vertical profile (see Supplement). Figure 2b shows a NO_2 background profile (blue) and a NO_2 profile over the road (red). Figure 2c shows the total VCDs over the selected region in Zurich calculated from the 3D NO_2 concentration field. For more details on the generation of the 3D NO_2 field, please refer to the Supplement.

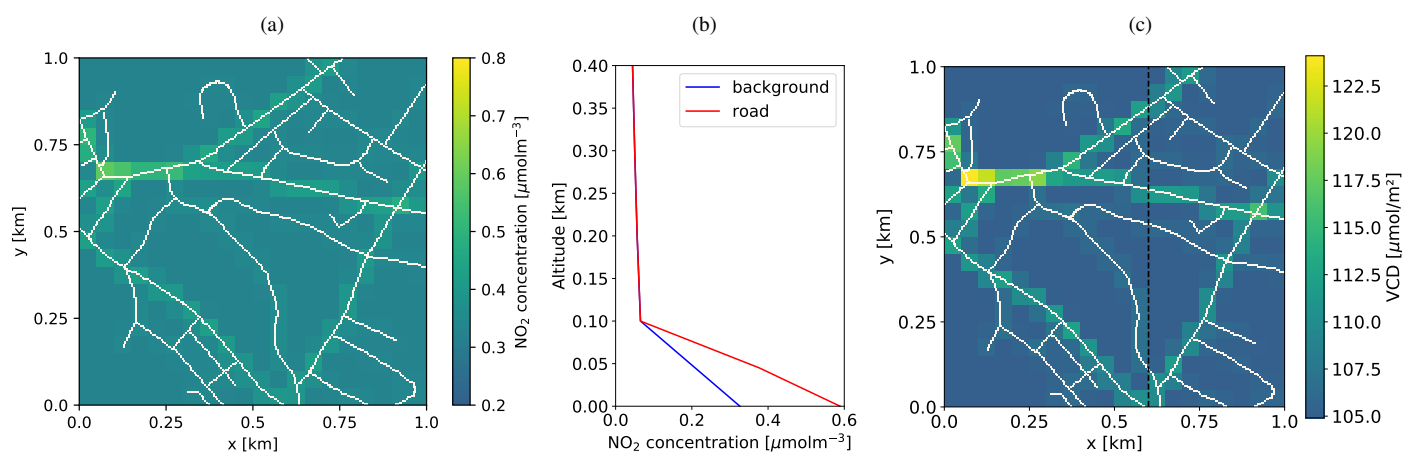


Figure 2. (a) NO_2 ground concentration map. (b) NO_2 vertical profile at a background location (blue line) and over a road at $x = 5 \text{ m}$, $y = 55 \text{ m}$ (red line). (c) Field of vertically integrated NO_2 column densities (VCD) with aircraft flight track overlaid as dashed black line.

140

2.2.3 MYSTIC simulations

Our scenario corresponds to an airborne imaging spectrometer flying across the model domain from south to north (y -direction) slightly to the east of the center ($x=600 \text{ m}$) at an altitude of 6 km, which represents the flight altitude of an airborne spectrometer (dashed black line in Fig. 2c). The viewing zenith angle was varied in discrete steps to cover the whole domain in across-flight
145 direction (i.e. in east-west direction). For simplicity, the sun was placed at an azimuth angle (SAA) of either 90° (i.e. west) or 0° (i.e. south). The solar zenith angle (SZA) was set to 60° , which corresponds to values in the morning or afternoon in summer over Zurich. Simulations with a SZA of 30° , which correspond to typical summer noon measurements over Zurich are shown in the Supplement.

The simulations were conducted for a standard atmosphere and for a wavelength of 490 nm, which is the center of the
150 NO_2 fitting window used for the APEX instrument (Kuhlmann et al., 2016). NO_2 absorption features at shorter wavelengths typically used in satellite retrievals are less suitable for APEX due to the high instrument noise at those wavelengths. Note that 3D effects would be stronger at shorter wavelengths due to enhanced Rayleigh scattering. Aerosols were only included in the



simulations as a case study to analyse the footprint of the spectrometer (see Sect. 2.3). Table S1 in the Supplement provides an overview of the MYSTIC input parameters used in the simulations.

155 To resolve the spatial variability of surfaces and elevations within each 50 m x 50 m ground pixel, we specified an instrument opening zenith angle corresponding to the 50 m pixel size in x-direction and moved the aircraft in 10 discrete steps of 5 m along the y-direction. The 10 different 3D-box AMF fields computed in this way were then averaged to a single field per pixel. The 3D-box AMFs were then used together with the synthetic NO₂ field to compute total SCDs that would be observed from an airborne instrument (see numerator in Eq. 3). Finally the total AMFs were calculated dividing the total SCDs by the total
160 VCDs. In the same way we also computed SCDs ignoring buildings and SCDs based on 1D-layer AMFs (Eq. 2). Differences between the three types of SCDs can be attributed to 3D and building effects.

2.3 Footprint of an airborne spectrometer

To study the sensitivity of a single measurement to the surrounding of the ground pixel, we simulated the horizontal distribution of 3D-box AMFs close to the ground for a single observation scenario. The simulations were conducted without aerosols and
165 for a typical urban aerosol scenario with an aerosol optical depth (AOD) of 0.1. For the scenario, the sensor was placed at $x = 675$ m and $y = 75$ m pointing at a ground pixel with the lower left corner located at $x = 650$ m and $y = 50$ m. The corresponding VZA was 0.72° in the center of the pixel and the VAA was 270° (instrument pointing eastwards) (for details see also table S1 in the Supplement).

To obtain a map of the close-to-ground NO₂ sensitivity of a single ground pixel measured by an airborne imaging spec-
170 trometer during a flight overpass, we simulated AMFs with a 5 m x 5 m horizontal resolution and a 5 m vertical resolution in the lowest 45 m above ground for 10 equally-spaced instrument opening zenith angles corresponding to the 50 m pixel size in x-direction and moved the aircraft in 10 discrete steps of 5 m along the y-direction. We averaged the obtained 100 AMFs fields, integrated them vertically for the first 45 m and scaled the result by the sum of all pixels to finally obtain a 2D map of the fraction of the sensitivity within one 5 m x 5 m grid cell. In the following, this will be called the NO₂ footprint of an airborne
175 spectrometer.

3 Results

In this section we first show the instrument incoming radiance calculated with MYSTIC over the selected study area. Second, we analyze the 3D-box AMFs for a single NO₂ observation both in the vertical and in the horizontal and compare results with and without buildings. Finally, we compare total AMFs for the complete image obtained from an airborne instrument flying
180 over the study domain as illustrated in Fig.2c between the solution obtained with the 3D and the 1D RTM to illustrate the importance of 3D radiative transfer effects on the SCD measurements.

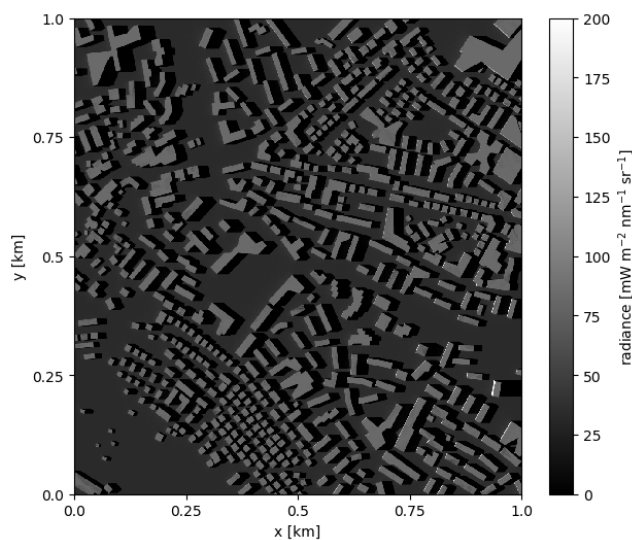


Figure 3. Radiance seen by a downward viewing instrument placed in the center of the 1 km x 1 km region at an altitude of 6 km. SZA and SAA are 60° and 90° , respectively.

3.1 Incoming radiance

An airborne imaging spectrometer measures radiance from back-scattered and reflected solar irradiance. Figure 3 shows the instrument incoming radiance at 490 nm for the selected region with the urban canopy. Note that for this example the instrument
185 was placed in the center of the domain at an altitude of 6 km observing the scene with a very wide opening angle of about 10° to cover the full 1 km x 1 km domain. The sun is located in the west with a SZA of 60° . The reflectance was set to 0.10, while the reflectance of roofs and walls was set to 0.20 in this example.

Since building surfaces have higher reflectance in this example, the bright building roofs clearly stand out. Some bright walls illuminated by the sun can be seen in the east of the domain. Shadows are also clearly visible in the east of the buildings with
190 taller buildings producing longer shadows. This radiance field is closely related to the close-to-ground NO_2 sensitivity. NO_2 over a bright surface can more easily be detected than NO_2 over a dark surface. In case of a pixel covered by both bright and dark surfaces, the retrieved signal will be more strongly affect by NO_2 above the bright parts.

3.2 3D-box air mass factors for a single observation

3.2.1 Vertical distribution along the main optical path

195 3D-box AMFs have a distinct 3D distribution for each ground pixel. Figure 4a shows an example of the 3D-box AMFs projected onto a 2D (x - z) plane by integrating in y -direction for an instrument pointing almost in nadir direction at the ground pixel centered at $x=675$ m and $y=75$ m (black square in Figure 1b). Since the pixel is partly covered by buildings, 3D-box AMFs close



to the ground (0-10 m) are smaller than those above roof level. Note that in this simulation all surfaces had a constant albedo of 0.1. Most photons follow the geometric path from the sun to a reflection on the ground or the roof and to the instrument as indicated by the high 3D-box AMFs along this path. Figure 4b shows the 1D-layer AMFs obtained by integrating the 3D-box AMFs in x - and y -direction. The decrease close to the ground due to the buildings is clearly visible. Figure 4c shows column AMFs along the x -axis, i.e. 3D-box AMFs integrated in y - and z -direction. AMFs in the column directly below the instrument are highest, because the collected photons cross at least one of the column boxes when they are scattered into the direction of the instrument. The column AMFs decrease in the x -direction with distance to the instrument due to atmospheric absorption and scattering. The slight increase in the column AMFs in the right is induced by scattering events in the right side of the domain appearing on the left of the domain due to circular boundaries.

Since 3D-box AMFs inform about the sensitivity to NO_2 , we can conclude that the measurement is mainly sensitive to NO_2 along the geometrical optical path. It is not very sensitive to adjacent pixels and also not to NO_2 at the surface because of the blocking of the path by buildings. The total AMF for the observation presented in this example computed with Eq. 3 is 1.98. The VCD above the ground pixel is $121 \mu\text{mol m}^{-2}$ and the SCD computed as VCD times total AMF is $239 \mu\text{mol m}^{-2}$.

3.2.2 Horizontal footprint

To further illustrate the horizontal sensitivity of an airborne spectrometer to layers close to the ground, Figure 5 shows the near-surface footprint defined as the vertically integrated 3D-box AMFs from 0-45 m above ground (see Sect. 2.3). The same scene was simulated as in Section 3.2.1 but with a higher horizontal resolution of 5 m x 5 m to illustrate the spatial pattern of the sensitivity in greater detail. The figure is normalized to show the fraction of the sensitivity represented by each 5 m x 5 m pixel.

Figure 5a shows the footprint for a flat surface without buildings without including aerosols. An important part of the sensitivity (51.4%) is located outside the ground pixel. The instrument will thus not only 'see' near-surface NO_2 above the ground pixel but also NO_2 outside. A major part of the sensitivity is located in the direction of the sun along the main optical path. The main optical path is dominated by photons that are either reflected from the ground pixel surface or scattered in the atmosphere above the ground pixel one single time upward into the direction of the instrument. A much smaller fraction is located outside this main path and is caused by photons experiencing at least one more scattering (or reflection) event before being scattered (or reflected) into the main optical path.

Figure 5b presents the same situation but with buildings added to the simulation. Buildings affect the sensitivity both within and outside the ground pixel. The footprint is reduced in the shadows of buildings but may be enhanced over the sunlit sections of streets due to multiple reflections, as seen near the upper right and lower left corners of the ground pixel. In this example, the part of the sensitivity located outside the ground pixel is 52.6%, comparable to the simulation without buildings.

Figure S2.6.1 in the supplement shows the footprint for the aerosol scenario. The aerosol scattering increases the sensitivity contribution from outside the ground pixel to 55% for both the scenario without and with buildings. The contribution from outside the main optical path is increased to 25% and 32% without and with buildings, respectively, compared to 18% and 24%, when not including aerosols.

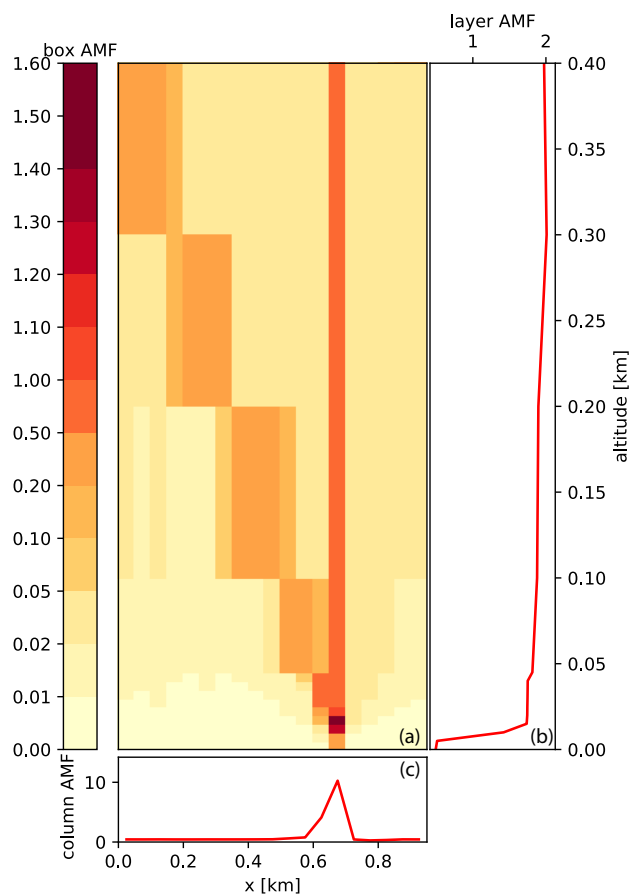


Figure 4. (a) Integrated 3D-box AMFs in y -direction for a ground pixel at $x=650$ m and $y=50$ m (lower left corner) for an instrument placed at $x=600$ m, $y=75$ m and $z=6000$ m. The sun is at $SAA = 90^\circ$ (west) with a SAZ of 60° . (b) Vertical profile of horizontally integrated AMFs (1D-layer AMFs) and (c) Horizontal profile of vertically integrated AMFs (column AMFs).

The main effect of the 3D optical path of the photons is thus to smear out the sensitivity of a measurement into the direction of the main optical path, which is determined by the viewing and illumination geometry. The presence of buildings further modifies the sensitivity by adding a complex pattern of enhancements and reductions due to shadowing effects and multiple reflections in street canyons.

3.3 Impact of 3D radiative transfer on NO_2 imaging over a city

In the previous section we have shown how 3D radiative transfer effects and buildings smear out and modify the sensitivity of a single observation. Here we demonstrate how a complete image of NO_2 slant columns is affected by these effects.

Figure 6 compares total AMFs computed from 1D-layer AMFs (Eq. 2) with total AMFs computed from 3D-box AMFs (Eq. 3) without and with the urban canopy. The corresponding SCDs are presented in the lower row of the figure, which are

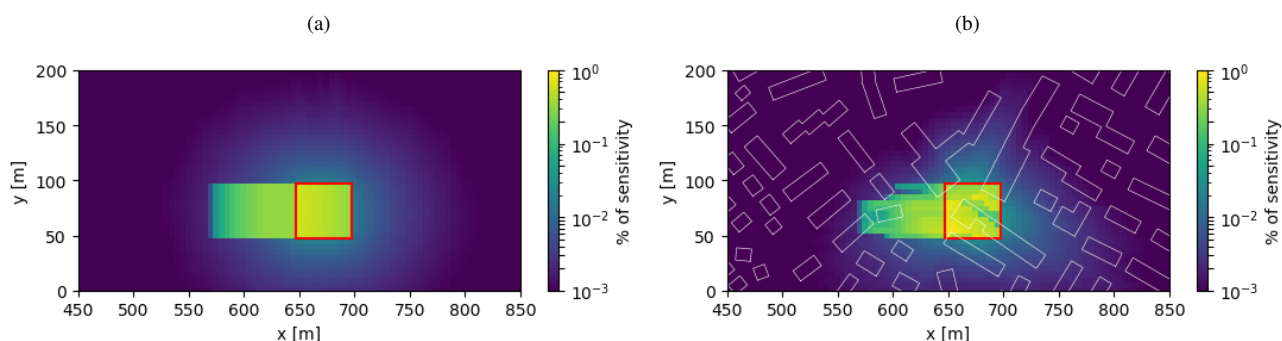


Figure 5. (a) Footprint without buildings. 51.4% of the signal is located outside the ground pixel (i.e. outside the red frame). (b) Footprint with buildings. 52.6% of the instrument sensitivity is located outside the ground pixel. Building contours in white.

related to the total AMFs by a division with VCDs shown in Figure 2c (see Eq. 1 and Eq. 3). In the following we refer to the SCDs calculated from 1D-layer AMFs as SCD_{1D} and to the SCDs calculated from 3D-box AMFs without and with the urban canopy as SCD_{3D} and SCD_{3D-UC} , respectively.

AMFs derived from 1D-layer AMFs (Figure 6a) are almost horizontally homogeneous. They vary only slightly with the instrument viewing zenith angle and the NO_2 distribution. The contribution of the a-priori NO_2 profile is only significant, when high values collocate with high 1D-layer AMFs values, but as our a-priori NO_2 profiles only differs in the lower 100 m, the effect is smaller than the noise of the Monte Carlo simulations ($\sigma_{AMF} = 0.014$ and $\sigma_{SCD} = 1.46 \mu\text{mol m}^{-2}$). The corresponding SCDs (Figure 6d), computed as the sum of the product of the 1D-layer AMFs with the 1D NO_2 profile (see Equ. 2) in Figure 2d show the same pattern as the VCDs with sharply elevated values above roads and a homogeneous background aside. The SCDs are higher than the VCDs because the AMFs are larger than 1.

AMFs calculated with 3D-box AMFs but without buildings (Figure 6b) are lower over the roads and slightly larger just aside the roads. This results in a spatial smearing of SCDs (Figure 6e) mainly in the direction of the main optical path from the sun in the west, to the ground pixel and to the instrument in the east of the center. Far from the roads, the SCDs are homogeneous and more or less identical to the 1D solution. The difference SCD_{3D} minus SCD_{1D} is presented in Figure 7. The smearing effect in the 3D solution is visible as negative differences over the roads and positive differences aside especially on the eastern side of the roads opposite to the sun. As a result, the individual roads show up much less prominently in the SCD_{3D} except for roads parallel to the optical path. The reason for this pattern is illustrated in Fig. 8. The main 3D optical path of the photons collected when viewing directly at the road (path 1) misses some of the enhanced NO_2 concentrations in the elevated levels above the road. In contrast, these enhanced NO_2 values are 'seen' by photons collected when viewing to the east of the road (path 2). In the 1D solution, the SCDs are only affected by NO_2 in the vertical column directly above the observed ground pixel.

The mean difference between SCD_{1D} and SCD_{3D} is around $1 \mu\text{mol m}^{-2}$ (relative difference of 0.02 %), which suggests that the signal is smeared, but the total amount of measured NO_2 is almost conserved. A small difference is to be expected because of statistical noise from the Monte Carlo method (about $1.3 \mu\text{mol m}^{-2}$ for 50000 photons).

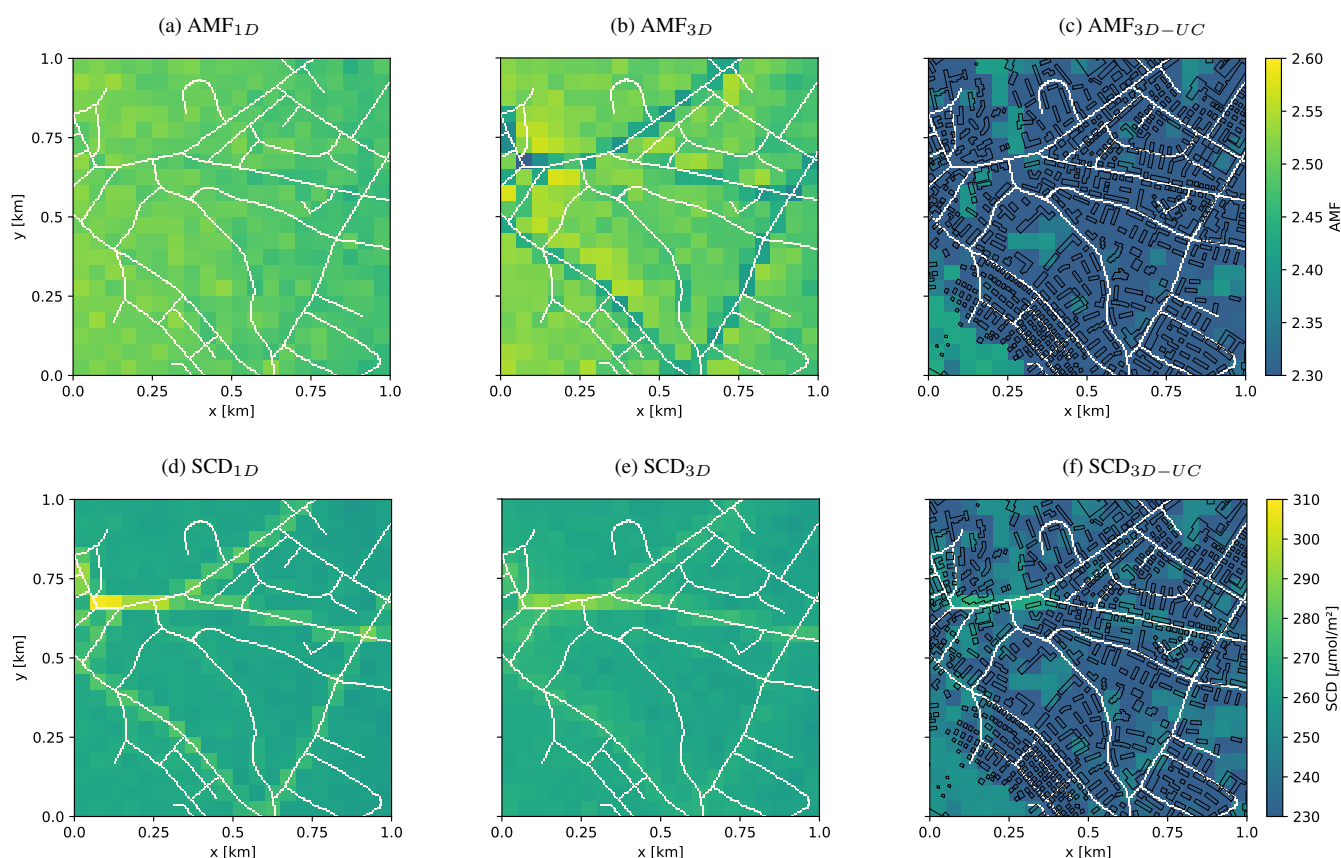


Figure 6. AMFs for a simulation with SAA of 90° with 1D-layer AMFs simulation (a), 3D-box AMFs without (b) and with (c) buildings. The respective SCDs are shown in the lower row (d,e,f). Roads are drawn in white and building contours in black for the simulation with buildings.

AMFs calculated with the 3D-box AMFs module including the urban canopy (Figure 6c) also show lower values over roads
265 compared to AMFs calculated with 1D-layer AMFs. In addition, they also show lower values over areas with buildings. As a consequence, the SCDs shown in Figure 6f are lower over regions with many buildings. On average, SCD_{3D-UC} are 12% lower than SCDs without buildings. The standard deviation of the difference between SCD_{3D-UC} and SCD_{3D} is $12.3 \mu\text{mol m}^{-2}$ for the whole domain. Not including the urban canopy would therefore underestimate VCDs by 12% and would add a source of
270 noise in the image of about 5% for this particular scenario with rather low buildings. In areas with background NO_2 and no buildings (e.g., lower left region) SCD_{1D} , SCD_{3D} and SCD_{3D-UC} closely agree (Fig. 7c).

The results presented above were obtained for the special situation where viewing and illumination directions were along the same east-west direction. In this case, the smearing effects are most prominent along this axis but relatively small in perpendicular direction. Here, we also analyze the situation where the sun is in the south and thus viewing and illumination directions are perpendicular to each other. As shown in Fig. 9, the results are generally similar but shadows and correspondingly

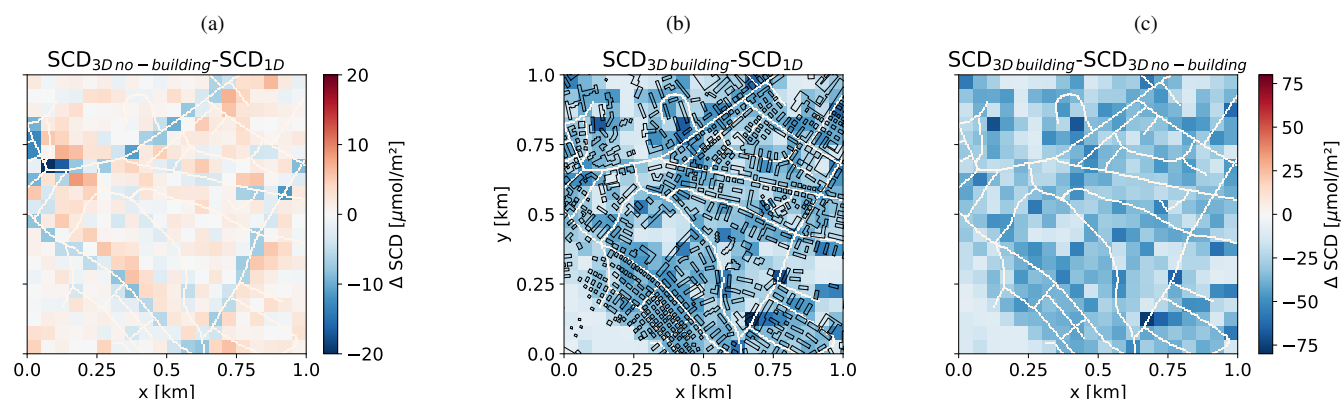


Figure 7. (a) Difference plot between SCDs calculated with 3D-box AMFs and the SCDs calculated with 1D-layer AMFs. (b) Difference plot between SCDs calculated with 3D-box AMFs including the urban canopy and SCDs calculated with 1D-layer AMFs. (c) Difference plot between SCDs calculated with 3D-box AMFs with and without including the urban canopy.

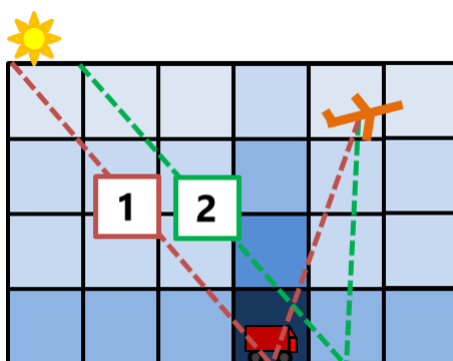


Figure 8. Sketch of the photon path with a road in grey

275 reduced SCDs are now found to the north instead of the east of the buildings. Furthermore, the SCDs tend to be lower because
the main optical path and the corresponding smearing is both N-S (sun to ground pixel) and E-W-oriented (ground pixel to the
instrument). The mean difference between SCD_{3D-UC} and SCD_{3D} is 12% and the standard deviation is 13%.

To investigate the reduced SCDs over buildings, we analyse the spatial distribution of SCDs within the 50 m x 50 m pixel
in more details. For this purpose, we ran additional simulations at higher spatial resolution (5 m x 5 m) for a 100 m x 100 m
280 sub-domain located at $x=600$ m and $y=0$ m (lower-left corner of the sub-domain) of the original domain. SCDs were calculated
from 3D-box AMFs with and without buildings (Fig. 10a and b).

At this resolution, we can better resolve the spatial distribution of NO_2 and SCDs remain high above roads. Since we can
also resolve individual buildings and their shadows, the simulations makes it possible to investigate how buildings reduce
SCDs.

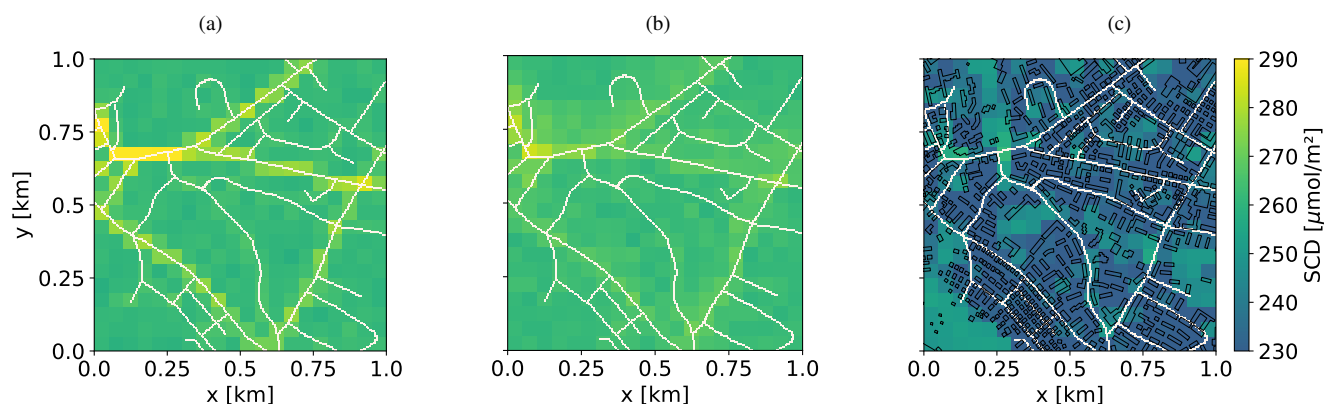


Figure 9. SCDs for simulations with a SAA of 0° with 1D-layer AMFs (a), 3D-box AMFs simulation without (b) and with (c) buildings. The roads are drawn in white and the building contours in black for the simulation with buildings

285 At 5 m resolution, we distinguish four types of ground pixels. (1) The ground pixel is on the surface and the geometric path to the sun and the instrument is not obscured by buildings. In this case, the 3D-box AMFs are only affected by buildings through multiple scattering either increasing the AMF when buildings reflect photons towards the ground pixel or reducing the AMF when buildings block photons from reaching the ground pixel. In our example, the effect results in a small but hardly visible reduction of AMFs (see Fig. 10c).

290 (2) The reflecting point of the geometric path is located on top of a building. The case is similar to the first case, but 3D-box AMFs are smaller, because photons cannot reach the ground. Since we assume that a priori VCDs are fixed regardless of the presence of a building, SCDs are reduced above buildings. However, the effect is very small because only about 3 % of the total VCD is below a 10 m building.

(3) In the third case, the ground pixel is located on the sunlit side of a building, but the direct path to the instrument is
295 blocked by the buildings. Since the VZAs of the simulated instrument are very small, we do not find these cases in our example with rather small buildings.

(4) In the final case, the ground pixel is located in the shadow of the buildings blocking the direct path towards the sun. In this case, photons can only reach the instrument after multiple scattering or simple atmospheric scattering directly into the direction of the instrument, which drastically reduces the 3D-box AMFs near the surface. As a result, SCDs are significantly lower in
300 the shadows of buildings (Figure 10b). For example, SCDs are about 35% lower when increased ground NO_2 concentrations (e.g., road) are located in the shadow of a building.

We can therefore conclude that the reduction of SCDs over buildings (Figures 7c) is mainly caused by the shadow of the building (case 4), while building height has a minor effect on the SCDs (case 2) in our study case with rather small buildings.

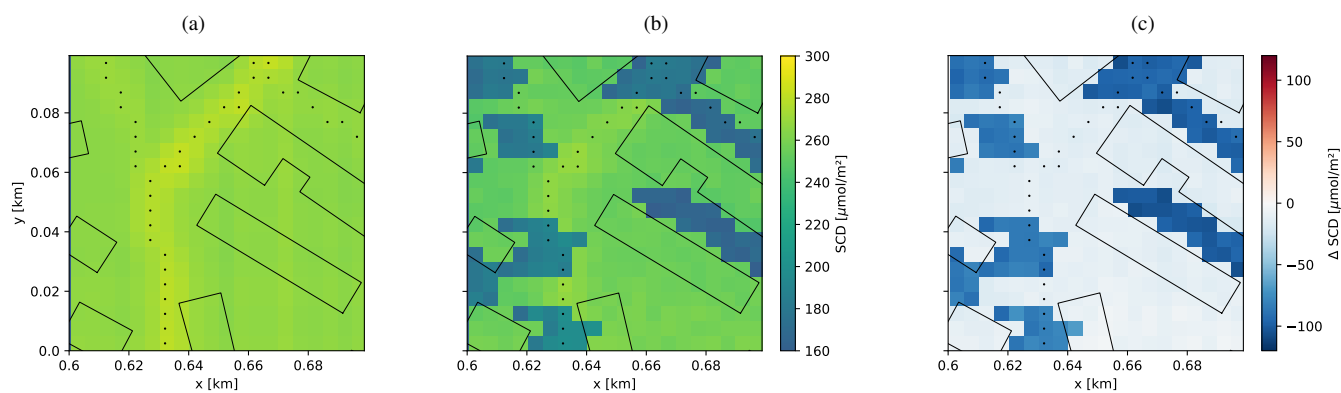


Figure 10. SCDs over a small sub-domain computed from high-resolution 3D-box AMFs simulated without (a) and with (b) buildings and the difference between both (c). In the simulation the sun was located in the west at a SZA of 60° . The albedo of roofs, walls and streets was set to 0.1. Roads are included as black dots and building contours as black lines.

4 Conclusions

305 Airborne imaging spectrometers are increasingly used for high-resolution mapping of NO_2 concentrations in cities. The NO_2 maps obtained in this way were usually found to be rather smooth and seemingly inconsistent with the much more rapidly varying near-surface NO_2 concentration fields derived from city-scale dispersion model simulations. The observed difference may partly be explained by atmospheric mixing more strongly affecting total columns than near-surface concentrations, but could also be caused by complex 3D radiative transfer effects in cities. To study the latter point, we implemented an urban canopy module into the 3D MYSTIC solver of the libRadtran radiative transfer model. We set up a case study for a 1 km x 1 km domain in Zurich, for which 3D-box AMFs and NO_2 slant column densities were computed for a realistic field of NO_2 concentrations.

Our case study shows that the footprint of a single observation is only partly located over the observed ground pixel and that there is a 'tail' in the direction the main optical path. In the presented simulations with a SZA of 60° and a 50 m x 50 m resolution, about 50% of the sensitivity is located outside the ground pixel for a nearly-nadir viewing instrument. Only a small but not negligible amount of photons are from outside the main optical path, with 19% and 24% for simulations without aerosols and without and with buildings, respectively. The effect become more important when aerosols are included with 25% and 32% of the sensitivity located outside the main optical path for scenarios without and with buildings, respectively. The footprint fine structure is further modified with the presence of buildings, but the general shape is conserved.

320 The 3D radiative transfer simulations show that 3D effects introduce significant spatial smearing of high NO_2 concentrations as for example over roads, which 1D-layer AMFs do not include. This results in increasing SCDs when roads are parallel to the main optical path and decreasing SCDs otherwise. When buildings are included, NO_2 SCDs are generally lower due to the shadows of buildings. The buildings also introduce a variability in the SCD field with a standard deviation of $12.9 \mu\text{mol m}^{-2}$ (5.5%) that would show up as additional noise component of airborne imagers. The magnitude is however slightly smaller



325 than the current NO₂ SCD uncertainty (about 20 μmol m⁻² for the APEX instrument), but could be noticeable for instruments
dedicated to NO₂ mapping that have lower SCD uncertainties.

In conclusion, our case study demonstrates that 3D effects explain the smooth NO₂ field observed by airborne imaging
spectrometers, at least partly. Atmospheric mixing can still result in additional smoothing that has not been studied here.
Furthermore, buildings reduce SCDs due to shadows and add an additional noise component that is difficult to generalize due
330 to the complexity and the heterogeneity of the buildings. The smearing in sun direction can result in features in the maps that
are difficult to interpret when the sun position is not known. 3D radiative transfer effects therefore need to be considered when
studying NO₂ maps obtained from airborne imagers and might become relevant with future NO₂ satellite instruments that
measure NO₂ at spatial resolutions down to 2 km.

Code availability. The libRadtran package including the 1D version of MYSTIC is freely available on www.libradtran.org, the 3D MYSTIC
335 code is available upon request to Claudia Emde (claudia.emde@lmu.de). The Python script used to create a triangular mesh from ESRI
shapefiles will be available on Gitlab after the final revision of the manuscript and the other used codes are available upon request to the
corresponding author.

Data availability. The data is available upon request to Marc Schwärzel (marc.schwaerzel@empa.ch) for the discussion paper and will be
made available on <https://zenodo.org> for the final revised paper.

340 *Author contributions.* MS designed and implemented the urban canopy module, designed and simulated the 3D scenarios and wrote the
manuscript with input from all co-authors. FJ designed and implemented the urban canopy module together with MS and CE. DB, BB and
AB provided critical feedback to the study and reviewed the manuscript, GK supervised the study, designed together with MS the case studies
and reviewed the manuscript.

Competing interests. The authors declare that they have no conflict of interest.

345 *Acknowledgements.* This study was conducted as part of the HighNOCS project funded by the Swiss National Science Foundation (SNSF)
under project number 172533. We obtained building data from the Swiss Federal Office of Topography (swisstopo) and the traffic emission
inventories from the City of Zurich.



References

- Berchet, A., Zink, K., Muller, C., Oetl, D., Brunner, J., Emmenegger, L., and Brunner, D.: A cost-effective method for
350 simulating city-wide air flow and pollutant dispersion at building resolving scale, *Atmospheric Environment*, 158, 181–196,
<https://doi.org/https://doi.org/10.1016/j.atmosenv.2017.03.030>, 2017.
- Bär, P.: *Luftbilanz 2016: Resultate der flächendeckenden Messkampagne*, 2016.
- Cracknell, A. P. and Varotsos, C.: *Remote sensing and atmospheric ozone: Human activities versus natural variability*, Springer Science &
Business Media, 2012.
- 355 de Goeij, B. T. G., Otter, G. C. J., van Wakeren, J. M. O., Veeffkind, J. P., Vlemmix, T., Ge, X., Levelt, P. F., Dirks, B. P. F., Toet, P. M.,
van der Wal, L. F., and Jansen, R.: First aircraft test results of a compact, low cost hyperspectral imager for earth observation from space,
in: *International Conference on Space Optics — ICSO 2016*, edited by Cugny, B., Karafolas, N., and Sodnik, Z., vol. 10562, pp. 465 –
475, International Society for Optics and Photonics, SPIE, <https://doi.org/10.1117/12.2296068>, <https://doi.org/10.1117/12.2296068>, 2017.
- de Graaf, M., Sihler, H., Tilstra, L. G., and Stammes, P.: How big is an OMI pixel?, *Atmos. Meas. Tech.*, 9, 3607–3618,
360 <https://doi.org/10.5194/amt-9-3607-2016>, <http://www.atmos-meas-tech.net/9/3607/2016/>, 2016.
- Deutschmann, T., Beirle, S., Frieß, U., Grzegorski, M., Kern, C., Kritten, L., Platt, U., Prados-Román, C., Puķi-te, J., Wagner, T., Werner,
B., and Pfeilsticker, K.: The Monte Carlo atmospheric radiative transfer model McArtim: Introduction and validation of Jacobians and
3D features, *Journal of Quantitative Spectroscopy and Radiative Transfer*, 112, 1119–1137, <https://doi.org/10.1016/j.jqsrt.2010.12.009>,
<http://www.sciencedirect.com/science/article/pii/S0022407310004668>, 2011.
- 365 Emde, C. and Mayer, B.: Simulation of solar radiation during a total eclipse: a challenge for radiative transfer, *Atmospheric Chemistry and
Physics*, 7, 2259–2270, 2007.
- Emde, C., Buras-Schnell, R., Kylling, A., Mayer, B., Gasteiger, J., Hamann, U., Kylling, J., Richter, B., Pause, C., Dowling, T., and Bugliaro,
L.: The libRadtran software package for radiative transfer calculations (version 2.0.1), *Geoscientific Model Development*, 9, 1647–1672,
<https://doi.org/10.5194/gmd-9-1647-2016>, 2016.
- 370 Gastellu-Etchegorry, J.-P., Yin, T., Lauret, N., Cajgřfinger, T., Gregoire, T., Grau, E., Feret, J.-B., Lopes, M., Guilleux, J., Dedieu, G., Malen-
ovský, Z., Cook, D. B., Morton, D., Rubio, J., Durrieu, S., Cazanave, G., Martin, E., and Ristorcelli, T.: Discrete Anisotropic Radiative
Transfer (DART 5) for Modeling Airborne and Satellite Spectroradiometer and LIDAR Acquisitions of Natural and Urban Landscapes,
Remote Sensing, 7, <https://doi.org/10.3390/rs70201667>, 2015.
- Kuhlmann, G., Hueni, A., Damm, A., and Brunner, D.: An Algorithm for In-Flight Spectral Calibration of Imaging Spectrometers, *Remote
375 Sensing*, 8, 1017, <https://doi.org/10.3390/rs8121017>, 2016.
- Kuhlmann, G., Berchet, A., and Brunner, D.: High-resolution remote sensing and modelling of NO₂ air pollution over the city of Zurich, in:
10th EARSeL SIG Imaging Spectroscopy Workshop 2017, Zurich, Switzerland, 2017.
- Lyapustin, A. and Kaufman, Y.: Role of adjacency effect in the remote sensing of aerosol, *Journal of Geophysical Research: Atmospheres*,
106, 11 909–11 916, 2001.
- 380 Marchuk, G., Mikhailov, G., Nazaratiev, M., Dacinjan, R., Kargin, B., and Elepov, B.: *Monte Carlo methods in atmospheric optics*, Berlin,
Germany, 1980.
- Massie, S. T., Sebastian Schmidt, K., Eldering, A., and Crisp, D.: Observational evidence of 3-D cloud effects in OCO-2 CO₂ retrievals,
Journal of Geophysical Research: Atmospheres, 122, 7064–7085, <https://doi.org/https://doi.org/10.1002/2016JD026111>, [https://agupubs.
onlinelibrary.wiley.com/doi/abs/10.1002/2016JD026111](https://agupubs.onlinelibrary.wiley.com/doi/abs/10.1002/2016JD026111), 2017.



- 385 Mayer, B.: Radiative transfer in the cloudy atmosphere, in: EPJ Web of Conferences, vol. 1, pp. 75–99, EDP Sciences, 2009.
- Mayer, B. and Kylling, A.: Technical note: The libRadtran software package for radiative transfer calculations - description and examples of use, *Atmospheric Chemistry and Physics*, 5, 1855–1877, 2005.
- Merlaud, A., Constantin, D., Mingireanu, F., Mocanu, I., Fayt, C., Maes, J., Murariu, G., Voiculescu, M., Georgescu, L., and Van Roozendael, M.: Small whiskbroom imager for atmospheric composition monitoring (SWING) from an unmanned aerial vehicle (UAV), in: Proceedings of the 21st ESA Symposium on European Rocket & Balloon Programmes and related Research, Thun, Switzerland, pp. 9–13, 2013.
- 390 Minomura, M., KUzE, H., and Takeuchi, N.: Adjacency effect in the atmospheric correction of satellite remote sensing data: Evaluation of the influence of aerosol extinction profiles, *Optical review*, 8, 133–141, 2001.
- Mussetti, G., Brunner, D., Henne, S., Allegrini, J., Krayenhoff, E. S., Schubert, S., Feigenwinter, C., Vogt, R., Wicki, A., and Carmeliet, J.: COSMO-BEP-Tree v1. 0: a coupled urban climate model with explicit representation of street trees, *Geoscientific Model Development*, 13, 1685–1710, 2020.
- 395 Nowlan, C. R., Liu, X., Leitch, J. W., Chance, K., González Abad, G., Liu, C., Zoogman, P., Cole, J., Delker, T., Good, W., Murcay, F., Ruppert, L., Soo, D., Follette-Cook, M. B., Janz, S. J., Kowalewski, M. G., Loughner, C. P., Pickering, K. E., Herman, J. R., Beaver, M. R., Long, R. W., Szykman, J. J., Judd, L. M., Kelley, P., Luke, W. T., Ren, X., and Al-Saadi, J. A.: Nitrogen dioxide observations from the Geostationary Trace gas and Aerosol Sensor Optimization (GeoTASO) airborne instrument: Retrieval algorithm and measurements during DISCOVER-AQ Texas 2013, *Atmospheric Measurement Techniques*, 9, 2647–2668, <https://doi.org/10.5194/amt-9-2647-2016>, <http://www.atmos-meas-tech.net/9/2647/2016/>, 2016.
- 400 Palmer, P. I., Jacob, D. J., Chance, K., Martin, A. V., Robert J., D., Kurosu, T. P., Bey, I., Yantosca, R., Fiore, A., and Li, Q.: Air mass factor formulation for spectroscopic measurements from satellites: Application to formaldehyde retrievals from the global ozone monitoring experiment, *Journal of Geophysical Research*, pp. 14–539, 2001.
- 405 Popp, C., Brunner, D., Damm, A., Van Roozendael, M., Fayt, C., and Buchmann, B.: High-resolution NO₂ remote sensing from the Airborne Prism EXperiment (APEX) imaging spectrometer, *Atmospheric Measurement Techniques*, 5, 2211–2225, <https://doi.org/10.5194/amt-5-2211-2012>, <http://www.atmos-meas-tech.net/5/2211/2012/>, 2012.
- Richter, R.: A fast atmospheric correction algorithm applied to Landsat TM images, *TitleREMOTE SENSING*, 11, 159–166, 1990.
- Schaepman, M. E., Jehle, M., Hueni, A., D’Odorico, P., Damm, A., Weyermann, J., Schneider, F. D., Laurent, V., Popp, C., Seidel, F. C., Lenhard, K., Gege, P., Küchler, C., Brazile, J., Kohler, P., De Vos, L., Meuleman, K., Meynart, R., Schläpfer, D., Kneubühler, M., and Itten, K. I.: Advanced radiometry measurements and Earth science applications with the Airborne Prism Experiment (APEX), *Remote Sensing of Environment*, 158, 207–219, <https://doi.org/10.1016/j.rse.2014.11.014>, <http://www.sciencedirect.com/science/article/pii/S0034425714004568>, 2015.
- 410 Schönhardt, A., Altube, P., Gerilowski, K., Krautwurst, S., Hartmann, J., Meier, A., Richter, A., and Burrows, J. P.: A wide field-of-view imaging DOAS instrument for two-dimensional trace gas mapping from aircraft, *Atmospheric Measurement Techniques*, pp. 5113–5131, 2015.
- Schwaerzel, M., Emde, C., Brunner, D., Morales, R., Wagner, T., Berne, A., Buchmann, B., and Kuhlmann, G.: Three-dimensional radiative transfer effects on airborne and ground-based trace gas remote sensing, *Atmospheric Measurement Techniques*, 13, 4277–4293, <https://doi.org/https://doi.org/10.5194/amt-13-4277-2020>, 2020.
- 420 Tack, F., Merlaud, A., Iordache, M. D., Danckaert, T., Yu, H., Fayt, C., Meuleman, K., Deutsch, F., Fierens, F., and Van Roozendael, M.: High resolution mapping of the NO₂ spatial distribution over Belgian urban areas based on airborne APEX remote sensing, *Atmos. Meas. Tech. Discuss.*, 2017, 1–52, <https://doi.org/10.5194/amt-2016-400>, 2017.



- 425 Tack, F., Merlaud, A., Meier, A. C., Vlemmix, T., Ruhtz, T., Iordache, M.-D., Ge, X., Van Der Wal, L., Schuettemeyer, D., Ardelean, M., et al.: Intercomparison of four airborne imaging DOAS systems for tropospheric NO₂ mapping—the AROMAPEX campaign, *Atmospheric Measurement Techniques*, 12, 211, 2019.
- Villefranque, N., Fournier, R., Couvreur, F., Blanco, S., Cornet, C., Eymet, V., Forest, V., and Tregan, J.-M.: A Path-Tracing Monte Carlo Library for 3-D Radiative Transfer in Highly Resolved Cloudy Atmospheres, *Journal of Advances in Modeling Earth Systems*, 11, 2449–2473, <https://doi.org/https://doi.org/10.1029/2018MS001602>, <https://agupubs.onlinelibrary.wiley.com/doi/abs/10.1029/2018MS001602>, 2019.